

1 **Sex Differences in Colonic Mucosal Microbiome of Irritable Bowel Syndrome Patients**  
2 **Compared to Healthy Controls**

3 Swapna Mahurkar-Joshi<sup>1-4</sup>, Simer Shera<sup>4</sup>, Jennifer Labus<sup>1-4</sup>, Tien S.  
4 Dong<sup>1-4</sup>, Jonathan P. Jacobs<sup>1-4</sup>, Lin Chang<sup>1-4</sup>

5  
6 **Affiliations**

- 7  
8 1. Vatche and Tamar Manoukian Division of Digestive Diseases, University of California, Los  
9 Angeles, Los Angeles, California.  
10 2. G. Oppenheimer Center for Neurobiology of Stress and Resilience, Los Angeles, California  
11 3. UCLA Goodman-Luskin Microbiome Center, Los Angeles, California.  
12 4. University of California, Los Angeles, Los Angeles, California.  
13  
14

15 **Conflicts of Interest:** None of the authors have any conflicts of interest to disclose.

16  
17 **Author contribution:** SMJ: design of study, analysis, writing, and editing. SS: writing and  
18 editing. JL: analysis and editing. TSD: data acquisition and editing. JPJ: data acquisition and  
19 editing. LC: design of study, data acquisition, analysis, writing, and funding. SCORE group:  
20 writing/editing, data acquisition.  
21

22 Tables and Figures: Tables - 2, Figures - 2

23 Supplementary Materials: Supplementary Table – 1

24 Abstract word count: 260

25 Manuscript Word Count: 2086  
26

27 **Funding:** NIH P50 DK64539, U54 DK123755, R21 DK104078, UL1TR0001881, VA  
28 IK2CX001717 (JPJ)

29 Corresponding author:  
30 Swapna Mahurkar-Joshi  
31 swapnajoshi@mednet.ucla.edu  
32  
33  
34

35 **Abstract**

36

37 **Background:** Irritable bowel syndrome (IBS) is a female-predominant disorder of brain-gut  
38 interactions. Our previous study on colonic mucosal microbiota demonstrated significant  
39 differences between IBS bowel habit subtypes and showed that gut microbiota is associated  
40 with abdominal pain in IBS patients. However, there is no consensus on sex-related differences  
41 in mucosal microbiota in IBS compared to healthy controls (HC). We aimed to identify sex-  
42 related differences in the mucosal microbes associated with IBS.

43

44 **Methods:** Sigmoid mucosal biopsies were obtained from 97 Rome+ IBS patients and 54 healthy  
45 controls (HC). Mucosal microbiome was characterized using 16S rRNA sequencing and  
46 analyzed and general linear models were used to test group differences between IBS diagnosis  
47 and sex. Sex-specific relationships between mucosal microbiome and IBS symptoms were  
48 assessed using sparse partial least squares (sPLS) regression.

49

50 **Results:** Beta diversity was significantly different between men and women overall ( $p=.03$ ) but  
51 not within IBS or HC. IBS women showed lower abundance of *Catenibacterium* and  
52 *Ruminoclostridium\_9* and increased abundance of *Bacteroides*, *Escherichia/Shigella*,  
53 *Lachnoclostridium* and *Ruminococcaceae* compared to men with IBS ( $p<0.05$ ). However,  
54 healthy women had a lower abundance of six distinct genera compared to healthy men. In  
55 women, higher IBS symptoms were associated with an increased abundance of bacteria  
56 including *prevotella\_9*, and *paraprevotella*, however, in men, IBS symptoms were associated  
57 with increased abundances of genera such as *Dialister*. Interestingly, increased abundance of  
58 *Desulfovibrio* was associated with higher symptoms in women but lower symptoms in men.

59

60 **Conclusion:** There are distinct sex-related differences in the mucosal microbiome between IBS  
61 and healthy participants supporting the importance of studying sex-specific mechanisms in IBS  
62 pathophysiology.

63

64

65

66

67

68

69

70

71

72

73

74

75

76

77

78

## 79 Introduction

80 Irritable bowel syndrome (IBS) is a female-predominant disorder of altered bidirectional gut-  
81 brain interactions characterized by chronic abdominal pain and altered bowel habits.<sup>1,2</sup> It is a  
82 widely prevalent condition affecting up to 11% of the general population.<sup>3</sup> IBS is associated with  
83 microbial dysbiosis and studies suggest a key role for the gut microbiome in its pathogenesis.<sup>4-7</sup>  
84 Most studies investigating relationships between the gut microbiome and IBS focused on fecal  
85 samples due to their noninvasive collection methods.<sup>8</sup> While these studies have provided  
86 valuable insight, fecal samples do not capture critical microbial interactions occurring at the  
87 mucosal surface. Emerging evidence suggests that mucosal microbiota, or microbiota in close  
88 proximity to the gut epithelium layer, immune cells and enteric nerves, may play a pivotal role in  
89 IBS.<sup>9,10</sup> Our earlier work identified significant IBS bowel habit differences in mucosal microbiota,  
90 such as constipation-predominant IBS (IBS-C), diarrhea-predominant IBS (IBS-D), and IBS with  
91 mixed bowel habits (IBS-M), and reported an association between gut microbiota composition  
92 and abdominal pain in IBS patients.<sup>11</sup> These findings emphasize the importance of considering  
93 mucosal microbiota when investigating IBS.

94  
95 The influence of sex on gut microbiome has not been well studied in IBS, despite IBS being  
96 more common in women compared to men and women reporting a higher symptom severity.<sup>12-14</sup>  
97 We recently found sex differences in fecal microbial composition in IBS participants but not  
98 healthy controls (HC). *Prevotella* was the main difference between men and women with IBS  
99 and it negatively correlated with IBS severity<sup>15</sup>. However, sex-specific differences in mucosal  
100 microbiota and their association with IBS have not been investigated. Therefore, this study  
101 aimed to identify 1) sex differences in mucosal microbial abundances overall and within IBS and  
102 HC groups and 2) mucosal microbiota associated with IBS symptom severity in women and  
103 men.

104

## 105 **Methods**

### 106 *Study participants*

107 The study population included 18-55 year-old men and women with IBS and HC recruited by  
108 community advertisement as described previously.<sup>11</sup> IBS and bowel habit subtypes were  
109 diagnosed based on medical history, physical exam, and Rome criteria.<sup>2</sup> Subtypes included  
110 IBS-C, IBS-D, IBS-M, and unsubtyped IBS (IBS-U). HC had no personal or family history of any  
111 pain conditions. Additional exclusion criteria for all participants included the following: celiac  
112 disease, inflammatory bowel disease, or other gastrointestinal (GI) illness which could explain  
113 IBS symptoms, active psychiatric illness in the past six months according to the Diagnostic and  
114 Statistical Manual of Mental Disorders, 4th Edition, Text Revision (MINI International  
115 Neuropsychiatric Interview),<sup>16</sup> current substance dependence or abuse, smoking more than 1/2  
116 pack per day, and use of corticosteroids in past six months, antibiotics or narcotics in past three  
117 months, or probiotics in past one month before the procedure. Participants were not excluded if  
118 they were on proton pump inhibitors. During the procedure, two patients were reported using  
119 pantoprazole or omeprazole. The University of California, Los Angeles Institutional Review  
120 Board approved the study, and participants signed a written informed consent before the study.  
121 Participants were compensated.

122

### 123 *Questionnaires*

124 Patients were assessed for overall severity, abdominal pain, and bloating within the prior week  
125 with numerical rating scales from 0 (no pain) to 20 (most intense symptoms imaginable) using  
126 our Bowel Symptom Questionnaire (BSQ).<sup>17</sup> The Hospital Anxiety and Depression Scale (HAD)  
127 was used to measure current anxiety and depression symptoms.<sup>18</sup> The IBS-SSS assesses the  
128 severity and frequency of abdominal pain, distention, bowel dysfunction, and global well-being  
129 in IBS.<sup>19</sup> Summed scores between 75 and 175 represent mild disease, 175-300 moderate

130 disease, and >300 severe disease. Each questionnaire is validated and widely used, with  
131 instructions for how to complete and score them.

132

### 133 *Sample Collection*

134 During flexible sigmoidoscopy, mucosal biopsies were collected at 30 centimeters from the anal  
135 verge. Biopsies were snap-frozen in liquid nitrogen and stored at -80C. Participants were asked  
136 to withhold from using aspirin and nonsteroidal anti-inflammatory drugs 72 hours before the  
137 procedure.

138

### 139 *Dietary Assessments*

140 An institution-developed Diet Checklist was used with the intention to represent diet(s) that best  
141 reflect what individuals consume regularly.<sup>20</sup> Options included standard or modified American,  
142 Mediterranean, vegetarian, vegan, dairy-free, gluten-free, and/or low fermentable  
143 oligosaccharides, disaccharides, monosaccharides, and polyols (FODMAP) diets. Each diet was  
144 classified as either standard or restrictive depending on the elimination of certain food groups by  
145 choice. A food frequency questionnaire (FFQ) and diet diary were used for a specific subset of  
146 patients to validate the diet checklist.<sup>20</sup>

147

### 148 *Microbiome Analysis*

#### 149 DNA Extraction and Sequencing

150 Bacterial DNA was extracted from the biopsies using the PowerSoil DNA Isolation Kit (MO BIO  
151 Laboratories) with bead beating. 16S rRNA gene sequence libraries were generated using the  
152 V4 hypervariable region and amplified with the 515F and 806R primers. Libraries were  
153 sequenced on Illumina HiSeq 2500 platform (Life Sciences, Branford, CT).

154

155 The DADA2 pipeline in R was used to process the raw reads.<sup>20</sup> Silva v132 reference database  
156 was used to eliminate chimeras and assign taxonomy. Samples were rarefied to even depth for  
157 calculation of alpha diversity measures using the function, “rarefy\_even\_depth.” The read depth  
158 was 29,709 (SD: 33,526.25) and rarefied to 538 counts. To avoid data loss, alpha diversity was  
159 calculated using unrarefied data and beta diversity using relative abundance. Amplicon  
160 sequence variant (ASV) data was agglomerated at the genus level to study shifts in microbial  
161 abundance. ASVs are exact sequence variants compared with operational taxonomic units, or  
162 clusters of reads with 97% similarity.

163

#### 164 Statistical Analysis

165

166 All statistical analyses were performed using R software.<sup>21</sup> Sex differences in alpha diversity  
167 and beta diversity overall and within IBS and HC were assessed using a general linear models.  
168 The model included age, body mass index (BMI), race, intake of a restrictive diet, and  
169 sequencing batch as covariates. Frequent category imputation for categorical data and mean  
170 values for continuous data were used to address missing data on covariates. To maximize  
171 power, the restrictive diet variable was imputed for missing data when used as a covariate.  
172 Chao1 and Shannon’s index were used as metrics for alpha diversity as described previously<sup>11</sup>.  
173 Briefly, beta diversity was evaluated using DEICODE, a form of Aitchison distance that is robust  
174 to high levels of sparsity, implemented in a QIIME environment. Adonis, a permutational  
175 analysis of variance, was used to test for associations with demographic characteristics and  
176 clinical factors.

177

178 Group comparisons for clinical and demographic characteristics were performed using t-test or  
179 chi-square tests. Genus-level data were extracted and filtered to include genera present in  
180 atleast 10% samples. Data were transformed using centered log-ratio (CLR) transformation.

181 Generalized linear (GLM) with sex as an independent variable, microbial abundance as an  
182 independent variable covarying for age, BMI, race, intake of restrictive diet, and technical  
183 sequencing batch as covariates, was used to evaluate differences in microbial abundances  
184 between females and males. We also evaluated sex differences within IBS and HC groups  
185 within the framework of a general linear model with microbial abundance dependent variable.  
186 Bowel habit was used as a covariate when analyzing group differences within IBS. Results were  
187 corrected for multiple comparisons using a false discovery rate (FDR) and an  $FDR < .25$  was  
188 considered significant.

189  
190 Sparse partial least squares (sPLS) regressions were performed to reduce dimensionality while  
191 analyzing correlations between clinical variables and microbiota data in multivariate analysis.<sup>22</sup>  
192 Data were residualized for sequencing batch, diet, and bowel habit subtypes. The “tune.spls”  
193 function from ‘mixOmics’ package was used to select tuning parameters and the first two  
194 components were used for analysis.<sup>23</sup>

195

196

## 197 **Results**

### 198 *Demographic and clinical characteristics*

199 We analyzed sex differences in colonic mucosal microbiome of 151 participants (97 Rome+ IBS  
200 patients and 54 healthy controls). **Table 1** shows the demographic characteristics of male and  
201 female IBS and HC participants. IBS women were younger compared to IBS men (mean  
202 [standard deviation] = 29.4 [10.8] vs 36.3 [10.3],  $p=0.003$ ), and there were differences in the  
203 bowel habit subtypes with more men with IBS-D subtype compared to IBS-C (Chi-squared =  
204 14.66,  $p=0.02$ ). There were no other significant differences in demographic characteristics  
205 between sexes within both groups. Additionally, IBS symptom scores were comparable between  
206 men and women with IBS (**Table 1**).



207

## 208 *Mucosal Microbiota in Men Compared to Women with IBS and Healthy Controls*

209 Microbial analysis revealed significant differences in beta diversity between men and women in  
210 the overall study population ( $r^2=0.014$ ,  $p=0.03$ ). There were no significant differences in alpha  
211 diversity. Although no genera were significant at an  $FDR<.25$ , we found nominal significance  
212 ( $p<0.05$ ) for differences between sexes. Genus-level differences were found in the abundance  
213 of five microbes between women and men in the overall participant population. Three genera  
214 (*Prevotella\_9*, *Catenibacterium*, and *Ruminiclostridium\_9*) were less abundant and two  
215 (*Tyzzarella* and *Escherichia/Shigella*) were more abundant in women compared to men (**Table**  
216 **2**). Within the IBS group, women showed an altered abundance of five genera including a lower  
217 abundance of *Catenibacterium*, and *Ruminoclostridium\_9*, and an increased abundance of  
218 *Bacteroides*, *Escherichia/Shigella*, and *Lachnoclostridium* compared to men (**Figure 1A**, **Table**  
219 **2**). However, within the HC group, women had a lower abundance of six genera compared to  
220 men (**Figure 1B**, **Table 2**). The sex-associated microbes within IBS were distinct compared to  
221 HC.

222

## 223 *Sex-related differences in IBS symptoms*

224 Multivariate analysis to evaluate microbial species associated with IBS symptoms identified 20  
225 IBS-symptom-associated genera in men and women. In women, higher symptoms were  
226 associated with an increase in abundance of bacterial genera including *Paraprevotella*,  
227 *Megasphaera*, *Clostridium\_sensu\_stricto\_1*, *Desulfovibrio*, *Candidatus\_Arthromonitus* and  
228 *Catenibacterium* (**Figure 2A**). In men, however, increased symptoms were associated with an  
229 increase of *Staphylococcus*, *Fingoldia*, and *Dialister* (**Figure 2B**). Increased abundances of  
230 *Prevotella\_7* and *Prevotella\_9* were associated with higher symptoms in both sexes, but  
231 stronger correlations were observed in women. Interestingly, an increased abundance of  
232 *Desulfovibrio* was associated with higher symptom severity in women but lower in men.

233

## 234 **Discussion**

235 The colonic mucosal microbiome is grossly understudied compared to the fecal microbiome in  
236 IBS. Despite growing evidence of sex differences in symptoms and physiologic alterations in  
237 IBS, there was previously no data on sex differences in mucosal microbiome in IBS. This is the  
238 first study to investigate sex-related differences in mucosal microbiota in IBS and HC. The  
239 important findings of our study are that 1) IBS is associated with distinct sex-related differences  
240 compared to HC and 2) distinct microbial genera are associated with the severity of IBS  
241 symptoms in women compared to men.

242

243 The distinct sex differences we identified in the IBS mucosal microbiome compared to HC and  
244 their correlation with IBS symptom severity support the importance of these differences in the  
245 pathophysiology of IBS. Increased abundance of bacterial genera including *Lachnoclostridium*  
246 in IBS women, which is associated with an immune inflamed gene expression profile suggests  
247 its potential role in modulating the immune microenvironment contributing to IBS symptoms.<sup>24</sup>  
248 Interestingly, our study identified mucosal-associated *Prevotella* as less abundant in healthy  
249 women than healthy men but this was not seen in IBS. Decreased fecal abundance of  
250 *Prevotella* in fecal samples has been previously reported in healthy women compared to men.  
251 <sup>25, 26</sup> In a different and larger cohort of IBS and HC participants, we also found that *Prevotella*  
252 was the main driver of sex differences in stool samples of IBS with lower in abundance in  
253 women compared to men, but this was not seen in HC. The lower fecal abundance of *Prevotella*  
254 was associated with increased IBS symptom severity, while increased mucosal abundance  
255 correlated with increased IBS severity in both women and men. Our differing results support  
256 prior studies that mucosal and fecal microbiota differ significantly from one another.<sup>27, 28</sup> Of note,  
257 *Prevotella* is a highly heterogeneous genus and some species can be beneficial, while others  
258 that can be pathogenic.<sup>29</sup> Due to the resolution of 16S sequencing, we could not determine

259 which species of *Prevotella* were associated with sex differences in the stool and mucosal  
260 samples.

261  
262 Our study identified other sex-specific associations of IBS symptoms with bacterial genera.  
263 Increased *Desulfovibrio* was associated with lower symptoms in men but higher symptoms in  
264 women. *Desulphovibrio* is a sulfate-reducing bacteria (SRB) known for its direct association with  
265 increased hydrogen sulfide production and high-fat diet-induced colitis.<sup>24</sup> One potential  
266 mechanism linking microbes to sex-specific disease association may be through sex hormones.  
267 For example, studies suggest that estrogen affects the expression of toll-like receptors (TLRs),  
268 which induce a pro-inflammatory environment that facilitates the translocation of bacteria into  
269 the lamina propria thereby amplifying the pro-inflammatory responses.<sup>30</sup> These sexually  
270 dimorphic effects of microbes on IBS symptoms emphasize the necessity for sex-specific  
271 investigations into the role of microbiota composition in IBS.

272  
273 Some of the bacteria we observed as differentially abundant between sexes were also reported  
274 in the context of various diseases and health (**Supplementary Table 1**). Similarly,  
275 *Clostridium\_sensu\_stricto\_1*, an opportunistic pathogen, which was associated with increased  
276 symptoms in women but not men in our study, is also reported to be increased in women with  
277 chronic fatigue syndrome (CFS),<sup>31</sup> which is a known comorbidity of IBS, predominantly women.  
278 Another genus, *Catenibacterium*, which was less abundant in the colonic mucosa of IBS women  
279 compared to men, was found to be lower in IBS compared to healthy controls. It is a butyrate-  
280 producing bacteria known to improve intestinal barrier function,<sup>32</sup> and has also been reported to  
281 be less abundant in women compared to men,<sup>33</sup> (**Supplementary Table 1**).

282  
283 There are some limitations to this study. We only sampled the sigmoid colonic mucosa but  
284 evidence suggests that there are significant differences in mucosal microbiota along the

285 intestinal tract.<sup>25</sup> While our sample size is lower than fecal microbiome studies, our study has  
286 the largest mucosal microbiome sample in the field so far. Metagenomic sequencing was limited  
287 to only the specific DNA regions covered by 16S rRNA sequencing. Using shotgun  
288 metagenomic sequencing instead would allow us to identify all genomic DNA in the sample.

289  
290 In conclusion, our study that sex moderates differences in microbial abundances in colonic  
291 mucosal tissue and their relationship to IBS symptom severity. The findings indicate the  
292 importance of investigating sex-specific mechanisms in-depth and they may differ in the stool vs  
293 intestinal mucosa. Further research is warranted to delineate the specific roles of the microbes  
294 identified in the pathophysiology of IBS.

295

296 References

- 297 1. Mearin F, Lacy BE, Chang L, et al. Bowel Disorders. *Gastroenterology* 2016.
- 298 2. Drossman DA, Hasler WL. Rome IV-Functional GI Disorders: Disorders of Gut-Brain  
299 Interaction. *Gastroenterology* 2016;150:1257-61.
- 300 3. Lovell RM, Ford AC. Global prevalence of and risk factors for irritable bowel syndrome: a  
301 meta-analysis. *Clin Gastroenterol Hepatol* 2012;10:712-721 e4.
- 302 4. Holtmann GJ, Ford AC, Talley NJ. Pathophysiology of irritable bowel syndrome. *Lancet*  
303 *Gastroenterol Hepatol* 2016;1:133-146.
- 304 5. Ford AC, Lacy BE, Talley NJ. Irritable Bowel Syndrome. *N Engl J Med* 2017;376:2566-  
305 2578.
- 306 6. Ghaffari P, Shoaie S, Nielsen LK. Irritable bowel syndrome and microbiome; Switching  
307 from conventional diagnosis and therapies to personalized interventions. *J Transl Med*  
308 2022;20:173.
- 309 7. Kerckhoffs AP, Samsom M, van der Rest ME, et al. Lower Bifidobacteria counts in both  
310 duodenal mucosa-associated and fecal microbiota in irritable bowel syndrome patients.  
311 *World J Gastroenterol* 2009;15:2887-92.
- 312 8. Juge N. Relationship between mucosa-associated gut microbiota and human diseases.  
313 *Biochem Soc Trans* 2022;50:1225-1236.
- 314 9. Sonnenburg JL, Angenent LT, Gordon JI. Getting a grip on things: how do communities  
315 of bacterial symbionts become established in our intestine? *Nat Immunol* 2004;5:569-73.
- 316 10. Tropini C, Earle KA, Huang KC, et al. The Gut Microbiome: Connecting Spatial  
317 Organization to Function. *Cell Host Microbe* 2017;21:433-442.
- 318 11. Choo C, Mahurkar-Joshi S, Dong TS, et al. Colonic mucosal microbiota is associated  
319 with bowel habit subtype and abdominal pain in patients with irritable bowel syndrome.  
320 *Am J Physiol Gastrointest Liver Physiol* 2022;323:G134-G143.

- 321 12. Enck P, Aziz Q, Barbara G, et al. Irritable bowel syndrome. *Nat Rev Dis Primers*  
322 2016;2:16014.
- 323 13. Ford AC, Sperber AD, Corsetti M, et al. Irritable bowel syndrome. *Lancet*  
324 2020;396:1675-1688.
- 325 14. Lee SY, Kim JH, Sung IK, et al. Irritable bowel syndrome is more common in women  
326 regardless of the menstrual phase: a Rome II-based survey. *J Korean Med Sci*  
327 2007;22:851-4.
- 328 15. Dong TS, Peters K, Gupta A, et al. Prevalence Is Associated with Sex-Based Differences  
329 in Irritable Bowel Syndrome. *Gastroenterology* 2024.
- 330 16. Sheehan DV, Lecrubier Y, Sheehan KH, et al. The Mini-International Neuropsychiatric  
331 Interview (M.I.N.I.): the development and validation of a structured diagnostic psychiatric  
332 interview for DSM-IV and ICD-10. *J Clin Psychiatry* 1998;59 Suppl 20:22-33;quiz 34-57.
- 333 17. Munakata J, Naliboff B, Harraf F, et al. Repetitive sigmoid stimulation induces rectal  
334 hyperalgesia in patients with irritable bowel syndrome. *Gastroenterology* 1997;112:55-  
335 63.
- 336 18. Zigmond AS, Snaith RP. The hospital anxiety and depression scale. *Acta Psychiatr*  
337 *Scand* 1983;67:361-70.
- 338 19. Francis CY, Morris J, Whorwell PJ. The irritable bowel severity scoring system: a simple  
339 method of monitoring irritable bowel syndrome and its progress. *Aliment Pharmacol Ther*  
340 1997;11:395-402.
- 341 20. Lenhart A, Dong T, Joshi S, et al. Effect of Exclusion Diets on Symptom Severity and the  
342 Gut Microbiota in Patients with Irritable Bowel Syndrome. *Clin Gastroenterol Hepatol*  
343 2021.
- 344 21. Team RC. R: A language and environment for statistical computing. Vienna, Austria: R  
345 Foundation for Statistical Computing, 2020.

- 346 22. Lê Cao K-A, González I. and Déjean S. integrOmics: an R package to unravel  
347 relationships between two omics data sets. *Bioinformatics*. *Bioinformatics* 2009;25:2855-  
348 2856.
- 349 23. Rohart F, Gautier B, Singh A, et al. mixOmics: An R package for 'omics feature selection  
350 and multiple data integration. *PLoS Comput Biol* 2017;13:e1005752.
- 351 24. Yilmaz E YA, Dwidar M.E., Geiger J.L., Koyfman S, Chan T.A., Silver N, .  
352 *Lachnoclostridium* and Immune Inflamed Gene Expression Signature Association in  
353 Head & Neck Cancers. *International Journal of Radiation Oncology, Biology, Physics*  
354 2022;112:E37.
- 355 25. Mueller S, Saunier K, Hanisch C, et al. Differences in fecal microbiota in different  
356 European study populations in relation to age, gender, and country: a cross-sectional  
357 study. *Appl Environ Microbiol* 2006;72:1027-33.
- 358 26. Takagi T, Naito Y, Inoue R, et al. Differences in gut microbiota associated with age, sex,  
359 and stool consistency in healthy Japanese subjects. *J Gastroenterol* 2019;54:53-63.
- 360 27. Ringel Y, Maharshak N, Ringel-Kulka T, et al. High throughput sequencing reveals  
361 distinct microbial populations within the mucosal and luminal niches in healthy  
362 individuals. *Gut Microbes* 2015;6:173-81.
- 363 28. Zoetendal EG, von Wright A, Vilpponen-Salmela T, et al. Mucosa-associated bacteria in  
364 the human gastrointestinal tract are uniformly distributed along the colon and differ from  
365 the community recovered from feces. *Appl Environ Microbiol* 2002;68:3401-7.
- 366 29. Precup G, Vodnar DC. Gut *Prevotella* as a possible biomarker of diet and its eubiotic  
367 versus dysbiotic roles: a comprehensive literature review. *Br J Nutr* 2019;122:131-140.
- 368 30. Garcia-Gomez E, Gonzalez-Pedrajo B, Camacho-Arroyo I. Role of sex steroid hormones  
369 in bacterial-host interactions. *Biomed Res Int* 2013;2013:928290.
- 370 31. Wallis A, Butt H, Ball M, et al. Support for the Microgenderome: Associations in a Human  
371 Clinical Population. *Sci Rep* 2016;6:19171.

- 372 32. Pozuelo M, Panda S, Santiago A, et al. Reduction of butyrate- and methane-producing  
373 microorganisms in patients with Irritable Bowel Syndrome. *Sci Rep* 2015;5:12693.
- 374 33. Santos-Marcos JA, Haro C, Vega-Rojas A, et al. Sex Differences in the Gut Microbiota  
375 as Potential Determinants of Gender Predisposition to Disease. *Mol Nutr Food Res*  
376 2019;63:e1800870.
- 377
- 378



379 **FIGURE LEGENDS**

380 **Figure 1. Microbial Genera Altered in Women Compared to Men in IBS Patients and**

381 **Healthy Controls.** At the genus level, five microbes were different between women compared  
382 to men in IBS and six microbes were different between women compared to men in healthy  
383 controls ( $p < 0.05$ ).

384

385 **Figure 2. Sex-specific Correlations between Mucosal Microbial Genera and Clinical**  
386 **Symptoms of IBS Patients**

387 The correlation heatmaps show the microbes selected by sparse partial least squared analysis  
388 within men and women at genus level that were positively or negatively correlated with IBS  
389 symptoms including abdominal pain, bloating, and overall symptom severity. X-axis represents  
390 IBS symptom severity measures and Y-axis represents microbes. Red color indicates a positive  
391 correlation and blue indicates a negative correlation.

392

393 **Supplementary Table 1. IBS and Sex-associated Microbiota Reported in Literature**

394 Supplementary Table 1 shows a list of studies that investigated microbes that were found to be  
395 associated with sex within IBS or healthy controls in this study.

396

397

398

399 **Table 1: Demographic and Clinical Characteristics of the Study Population**

	F (N=63)	M (N=34)	Chi-Square/ t value/Estimates	P-value
<b>IBS (N=97)</b>				
Age [Mean(SD)]	29.4 (10.8)	36.3 (10.3)	3.06	0.003
BMI [Mean(SD)]	25.1 (5)	25.9 (3.8)	0.75	0.457
<b>Bowel Habit Subtype</b>			14.66 <sup>§</sup>	0.002
IBS-C (N=27)	19 (30%)	8 (24%)		
IBS-D (N=37)	20 (32%)	17 (50%)		
IBS-M (N=23)	21 (33%)	2 (6%)		
IBS-U (N=10)	3 (5%)	7 (20%)		
<b>Ethnicity</b>			2.04 <sup>§</sup>	0.361
Hispanic (N=19)	14 (22%)	5 (15%)		
Non-Hispanic (N=76)	47 (75%)	29 (85%)		
Not Available (N=2)	2 (3%)	0 (0%)		
<b>Race</b>			4.11 <sup>§</sup>	0.250
Asian (N=10)	6 (9%)	4 (12%)		
Black (N=20)	15 (24%)	5 (15%)		
Multiracial (N=16)	7 (11%)	9 (26%)		
White (N=48)	32 (51%)	16 (47%)		
Not Available (N=3)	3 (5%)	0 (0%)		
<b>IBS Symptoms</b>				
HAD Anxiety (0-21) <sup>18</sup>	6.8 (4.3)	7.7 (5)	-0.89 <sup>#</sup>	0.36
HAD Depression (0-21) <sup>18</sup>	3 (3.3)	4.1 (3.8)	-1.11 <sup>#</sup>	0.14
IBS-SSS (0-500) <sup>19</sup>	214.7 (84.5)	208.4 (96.8)	6.36 <sup>#</sup>	0.79
Overall Symptom Severity (0-20) <sup>17</sup>	8.4 (4.3)	10.3 (4.2)	-1.89 <sup>#</sup>	0.04
Abdominal Pain (0-20) <sup>17</sup>	8.4 (4)	10.1 (4.1)	-1.68 <sup>#</sup>	0.06
Bloating (0-20) <sup>17</sup>	10.7 (4.6)	10.7 (5.1)	0.02 <sup>#</sup>	0.98
VSI Score (0-75) <sup>17</sup>	35.9 (16.2)	33.9 (16.6)	1.96 <sup>#</sup>	0.57
<b>Healthy controls (N=54)</b>	<b>F (N=26)</b>	<b>M (N=28)</b>		
Age [Mean(SD)]	30.4 (9.6)	33.6 (12.1)	1.07	0.29
BMI [Mean(SD)]	25.3 (4.2)	25.4 (3.3)	0.02	0.98
<b>Ethnicity</b>			1.27 <sup>§</sup>	0.259
Hispanic (N=12)	8 (31%)	4 (14%)		
Non-Hispanic (N=42)	18 (69%)	24 (86%)		
<b>Race</b>			2.33 <sup>§</sup>	0.507
Asian (N=5)	3 (11%)	2 (7%)		
Black (N=10)	5 (19%)	5 (18%)		
Multiracial (N=7)	5 (19%)	2 (7%)		
White (N=29)	12 (46%)	17 (61%)		
Not Available (N=3)	1 (4%)	2 (7%)		

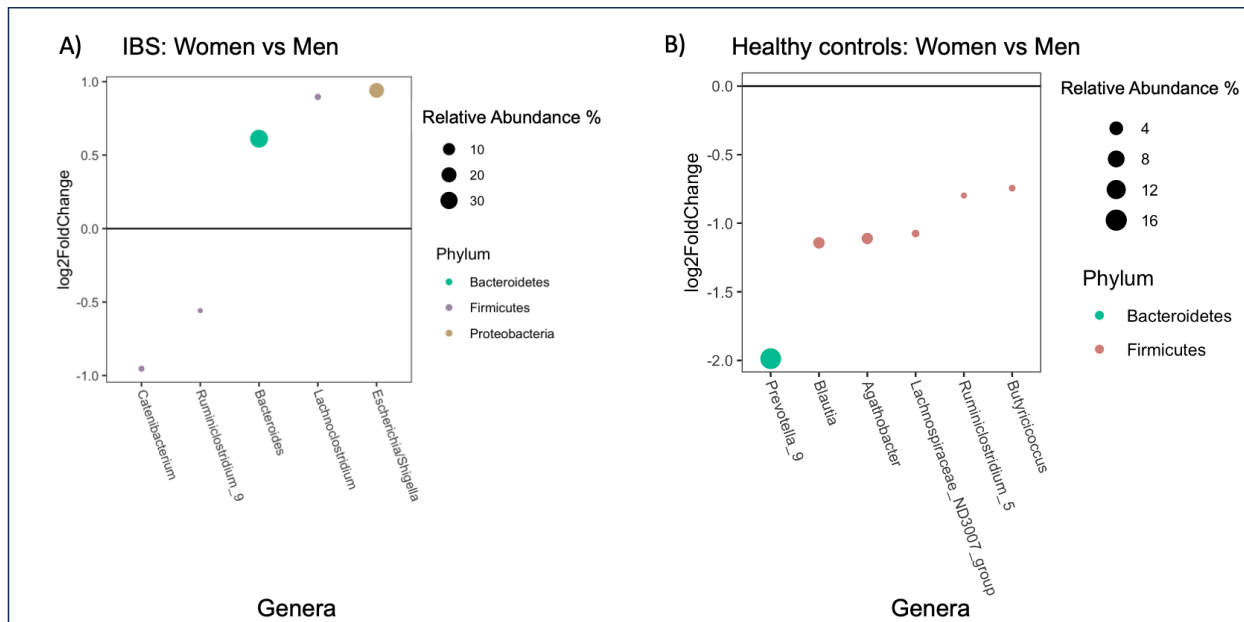
401 Table 1 shows the demographic and clinical characteristics of men and women with IBS and  
402 health controls; §, chi-square statistic; #, Estimate (beta); IBS-C, irritable bowel syndrome with  
403 constipation; IBS-D, irritable bowel syndrome with diarrhea; IBS-M, irritable bowel syndrome  
404 with mixed pattern; IBS-U, irritable bowel syndrome unsubtyped. IBS-SSS, IBS Severity Scoring  
405 System. HAD, Hospital Anxiety and Depression Scale.  
406  
407

408 **Table 2: Sex-associated Microbial Genera in IBS Patients and Healthy Controls.**

Genus	Phylum	Participants	Estimate	P.value	FDR
Prevotella_9	Bacteroidetes	All	-1.17	0.039	0.58
Escherichia/Shigella	Proteobacteria	All	0.84	0.027	0.51
Tyzzrella	Firmicutes	All	0.62	0.014	0.50
Ruminiclostridium_9	Firmicutes	All	-0.43	0.020	0.50
Catenibacterium	Firmicutes	All	-0.74	0.018	0.50
Bacteroides	Bacteroidetes	IBS	0.63	0.049	0.63
Escherichia/Shigella	Proteobacteria	IBS	1.16	0.035	0.63
Lachnoclostridium	Firmicutes	IBS	0.94	0.016	0.59
Ruminiclostridium_9	Firmicutes	IBS	-0.60	0.015	0.59
Catenibacterium	Firmicutes	IBS	-0.87	0.045	0.63
Prevotella_9	Bacteroidetes	Healthy controls	-2.43	0.020	0.28
Butyricococcus	Firmicutes	Healthy controls	-1.21	0.008	0.20
Ruminiclostridium_5	Firmicutes	Healthy controls	-1.06	0.022	0.28
Blautia	Firmicutes	Healthy controls	-1.37	0.019	0.28
Agathobacter	Firmicutes	Healthy controls	-1.70	0.007	0.20
Lachnospiraceae_ND3007_group	Firmicutes	Healthy controls	-1.33	0.006	0.20

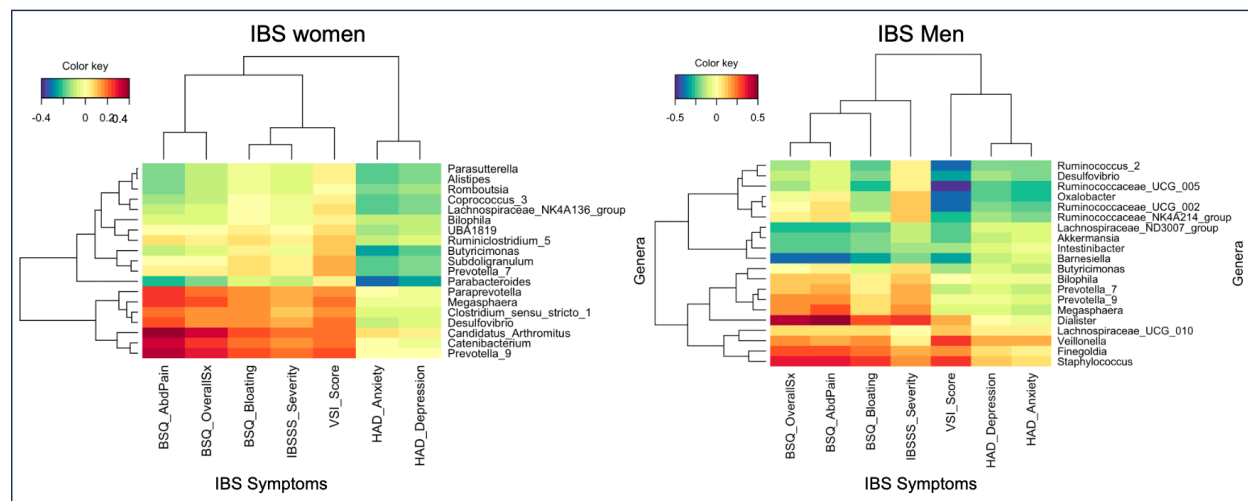
409  
410 Table 2 shows microbial genera altered in women compared to men within the entire study  
411 population, IBS, and healthy control groups. Negative estimates indicate a lower abundance,  
412 and positive estimates indicate a higher abundance of genera in women compared to men.

413 **Figure 1: Microbial Genera Altered in Women Compared to Men in IBS Patients and**  
414 **Healthy Controls.**  
415



416  
417  
418  
419

420 **Figure 2: Sex-specific Correlations between Mucosal Microbial Genera and Clinical**  
 421 **Symptoms of IBS Patients**  
 422



423