

# Uncertainty Quantification in Cost-effectiveness Analysis for Stochastic-based Infectious Disease Models: Insights from Surveillance on Lymphatic Filariasis

Mary Chriselda Antony Oliver<sup>a,h,\*</sup>, Matthew Graham<sup>h</sup>, Ioanna Manolopoulou<sup>b,c</sup>, Graham F. Medley<sup>d</sup>, Lorenzo Pellis<sup>e</sup>, Koen B. Pouwels<sup>f</sup>, Matthew Thorpe<sup>g</sup>, T. Deirdre Hollingsworth<sup>h</sup>

<sup>a</sup>University of Cambridge, Department of Applied Mathematics and Theoretical Physics, Wilberforce Road, Cambridge, CB3 0BN, UK

<sup>b</sup>University College London, Department of Statistical Science, Gower Street, London, WC1E 6BT, UK

<sup>c</sup>The Alan Turing Institute, London, NW1 2DB, UK

<sup>d</sup>London School of Hygiene and Tropical Medicine, Centre for Mathematical Modelling of Infectious Disease and Department of Global Health and Development, Keppel Street, London, WC1E 7HT, UK

<sup>e</sup>University of Manchester, Department of Mathematics, Oxford Road, Manchester, M13 9PL, UK

<sup>f</sup>University of Oxford, Health Economics Research Centre, Nuffield Department of Population Health, Oxford, OX3 7LF, UK

<sup>g</sup>University of Warwick, Department of Statistics, Coventry, CV4 7AL, UK

<sup>h</sup>University of Oxford, Big Data Institute, Li Ka Shing Centre for Health Information and Discovery, Oxford, OX3 7LF, UK

## Abstract

Cost-effectiveness analyses (CEA) typically involve comparing effectiveness and costs of one or more interventions compared to standard of care, to determine which intervention should be optimally implemented to maximise population health within the constraints of the healthcare budget. Traditionally, cost-effectiveness evaluations are expressed using incremental cost-effectiveness ratios (ICERs), which are compared with a fixed willingness-to-pay (WTP) threshold. Due to the existing uncertainty in costs for interventions and the overall burden of disease, particularly with regard to diseases in populations that are difficult to study, it becomes important to consider uncertainty quantification whilst estimating ICERs.

To tackle the challenges of uncertainty quantification in CEA, we propose an alternative paradigm utilizing the Linear Wasserstein framework combined with Linear Discriminant Analysis (LDA) using a demonstrative example of lymphatic filariasis (LF). This approach uses geometric embeddings of the overall costs for treatment and surveillance, disability-adjusted lifeyears (DALYs) averted for morbidity by quantifying the burden of disease due to the years lived with disability, and probabilities of local elimination over a time-horizon of 20 years to evaluate the cost-effectiveness of lowering the stopping thresholds for post-surveillance determination of LF elimination as a public health problem. Our findings suggest that reducing the stopping threshold from <1% to <0.5% microfilaria (mf) prevalence for adults aged 20 years and above, under various treatment coverages and baseline prevalences, is cost-effective. When validated on 20% of test data, for 65% treatment coverage, a government expenditure of WTP ranging from \$500 to \$3,000 per 1% increase in local elimination probability justifies the switch to the lower threshold as cost-effective.

Stochastic model simulations often lead to parameter and structural uncertainty in CEA. Uncertainty may impact the decisions taken, and this study underscores the necessity of better uncertainty quantification techniques within CEA for making informed decisions.

**Keywords:** Lymphatic filariasis, mathematical modelling, stopping threshold, cost-effective analysis, optimal transport

## 1. Introduction

### 1.1. Health Economics Motivation

Global health systems face enormous challenges as a result of the rising demand for healthcare services and the finite resources available to them. While other factors such as equity may play a role, a common aim for governments is to maximise overall population health within the constraints of the available healthcare budget. Planning, managing, and assessing health systems heavily relies on economic factors. The best use of limited resources is guided by health economic analyses, which provide cohesive techniques for evaluating the cost-effectiveness of health interventions.

The economic evaluation of health interventions is normally based on the outcome and cost of the interventions. Depending on the choice of how the outcome and intervention is evaluated, one of the main methodologies used is the cost-effectiveness analysis (CEA). This is an economic evaluation technique in which two or more health interventions are compared in terms of incremental costs and incremental effects compared to standard of care, with the cost-effectiveness expressed using the incremental cost-effectiveness ratio (ICER) which is a measure dividing the incremental costs by the incremental effects. Most countries that regularly use CEA to guide policy decisions around the implementation and reimbursement of interventions specify in their health-economic guidelines that cost-utility analyses should be used, where the denominator of the ICER is expressed in quality-adjusted life-years (QALYs) or QALYs. This preprint reports new research that has not been certified by peer review and should not be used to guide clinical practice.

\*Corresponding author: [mca52@cam.ac.uk](mailto:mca52@cam.ac.uk); postal address: DAMTP, Centre for Mathematical Sciences, Wilberforce Road, Cambridge CB3 0WA, UK

28 disability-adjusted life-years (DALYs). The latter is more fre- 85  
29 quently used in low- and middle-income countries (LMICs). 86  
30 Given the focus on LMICs in this paper, DALYs will be used 87  
31 from here onwards. 88

32 The interpretation of the ICER depends on where it lies on 89  
33 the cost-effectiveness plane (refer Figure 1 in [20]). If the new 90  
34 intervention is more effective and saves money compared to 91  
35 standard of care (South East quadrant), or the new intervention 92  
36 is less effective and more costly compared to standard of care 93  
37 (North West quadrant), the ICER is negative and interpretation 94  
38 is simple. In the former case the new intervention should clearly 95  
39 be adopted from a cost-effectiveness point of view, whereas in 96  
40 the latter case the intervention is clearly worse and should not 97  
41 be adopted. 98

42 To determine whether an intervention likely improves over- 97  
43 all population health within the healthcare budget constraints, 98  
44 the ICER can be compared with a cost-effectiveness threshold 99  
45 in situations where the intervention is more costly and more-100  
46 effective (North East quadrant) or less costly and less effec-101  
47 tive (South West quadrant). Assuming the decision-maker in-102  
48 deed wants to maximise overall population health, symmetrical-103  
49 threshold should be applied for both quadrants, whereby inter-104  
50 ventions that are more effective and more costly should remain-105  
51 below the threshold and interventions that are less effective and-106  
52 less costly should remain above the threshold. 107

53 If a new intervention costs more per DALY avoided than the-108  
54 healthcare it displaces, health opportunity costs exceed health-109  
55 benefits, and implementing the new intervention would be ex-110  
56 pected to lead to an overall reduction in population health mea-111  
57 sured in DALYs. Theoretically, the cost-effectiveness threshold-112  
58 [12; 48; 35] should reflect the point at which this occurs. Thus,113  
59 given the available budget, interventions that are more costly-114  
60 and more effective with an ICER below the threshold are ex-115  
61 pected to improve overall population health, while similar in-116  
62 terventions with an ICER above the threshold are expected to-117  
63 worsen overall population health. 118

64 Characterizing uncertainty is crucial in CEA, particularly-119  
65 when evaluating the need for additional evidence. Value of-120  
66 Information (VoI) analysis enhances CEA by quantifying the-121  
67 benefit of reducing uncertainty in decision-making. In health-122  
68 decision-analytic models, VoI assesses the potential benefit ob-123  
69 taining additional data aimed at reducing uncertainty in key-124  
70 parameters influencing decision uncertainty. Two key uncer-125  
71 tainties are model input values and model structure, whereby-126  
72 VoI analyses in the literature typically only focus on parameter-127  
73 uncertainty and completely ignore model structure uncertainty.128  
74 These models are typically law-driven due to a lack of long-129  
75 term data. To quantify input uncertainty, a probability distribu-130  
76 tion for true input values is propagated through the model using-131  
77 Monte Carlo sampling, known as probabilistic sensitivity anal-132  
78 ysis (PSA) [15; 43]. However, PSA only addresses input uncer-133  
79 tainty, not structural uncertainty, which is harder to quantify and-134  
80 requires judgments about the model's real-life representation. 135

81 Despite its potential, VoI analysis [56] is constrained by-136  
82 structural uncertainties, which are rarely quantified in model-137  
83 based analyses. Not quantifying structural uncertainty implies-138  
84 that the model is a perfect representation of real-world pro-139

cesses and relationships. While VoI analysis for structural un-  
certainty using model selection and model averaging has been  
explored previously [44; 6], methods in this area are still un-  
derdeveloped. Addressing these limitations is essential to fully  
leverage VoI analysis in making informed and effective health-  
care policy decisions.

## 1.2. Theoretical Background on Lymphatic Filariasis

Lymphatic filariasis (LF), a debilitating neglected tropi-  
cal disease caused by parasitic worms transmitted through  
mosquitoes, affects about 882 million people across 44 coun-  
tries [54]. In 2000, the World Health Organization (WHO)  
launched the Global Program to Eliminate Lymphatic Filaria-  
sis (GPELF), aiming to eradicate LF as a public health problem  
(EPHP) in 73 endemic nations by 2020 [53]. By 2021, 19 coun-  
tries, including Bangladesh and Lao People's Democratic Re-  
public, were validated as having achieved EPHP, with 11 others  
under surveillance after halting large-scale treatment [53; 54].

The primary intervention involves annual mass drug admin-  
istration (MDA) for at least five years in affected areas, employ-  
ing drug combinations such as diethylcarbamazine (DEC) + al-  
bendazole (DA) or albendazole + ivermectin (IA) [54]. Some  
areas also utilize a triple combination ivermectin + DEC + al-  
bendazole (IDA) [28; 24]. To assess MDA impact and deter-  
mine if infection levels have dropped below stopping thresh-  
olds, WHO recommends epidemiological monitoring surveys  
and transmission assessment surveys (TAS). The TAS uses the  
samples of blood smears, typically surveying children aged 5  
years and above for microfilariae (mf) prevalence [54]. Current  
MDA guidelines advise a minimum of 5 rounds of treatment  
before a pre-TAS is used to determine whether a first full TAS  
should be conducted, known as TAS-1. MDA can be stopped if  
TAS-1 is passed. Two subsequent surveys must also be passed  
before EPHP can be validated, TAS-2 and TAS-3, each within  
2–3 years of the previous assessment.

However, focusing solely on children may underestimate mf  
prevalence, potentially missing ongoing transmission due to  
higher mf prevalence in adults. This paper proposes to improve  
the sensitivity of TAS to evaluate mf prevalence in adults, tar-  
geting <0.5% mf prevalence. This involves randomly sampling  
approximately 30 sites with 40–60 adults per site to replicate the  
characteristics of an evaluation unit (EU). Achieving and sus-  
taining WHO goals necessitates effective surveillance, identify-  
ing new cases post-EPHP target attainment. Intensive surveil-  
lance thresholds (<2% antigenemia (Ag), <1% mf) may still  
be inadequate, especially in areas with *Culex* transmission vec-  
tors [3; 16]. Mathematical and biological theories [1] propose a  
transmission breakpoint influenced by local transmission con-  
ditions and biological factors, in helminth infections such as LF  
which depend on sexual reproduction of the parasites, where  
low worm burdens diminish onward transmission, potentially  
leading to disease extinction in deterministic scenarios. Stud-  
ies, have suggested that the breakpoint might be substantially  
lower than 1% mf prevalence [19; 34]. Stochastic extinction  
can still occur above this breakpoint but with a lower probabili-  
ty [16]. If MDA are halted after reaching the breakpoint, the

low-level remaining transmission will diminish gradually taking a longer time for LF extinction.

In this work, we aim to provide the first detailed model simulations of reducing the TAS stopping threshold in LF from <1% to <0.5% mf prevalence in a sample of adults aged 20 years and above. This facilitates the understanding of the different trade-offs between additional rounds of MDA treatment and rebounds that apply to the design of surveillance strategies. In this context, modelling can help us to understand how adjusting the threshold used in TAS impacts decisions about the stop of interventions and at what cost. For many settings, a reduction in the threshold increases the probability of elimination, decreases the number of treatment rounds required, and reduces costs. Importantly, however, in certain circumstances (e.g., when coverage is lower), lower thresholds can imply an increase in the number of rounds of treatment required to reach that threshold (with increased costs) but help mitigate chronic conditions (such as lymphoedema and hydrocele) and result in longer sustained elimination with fewer future rebounds.

To investigate the issues outlined above, here we use mathematical models of the transmission dynamics of LF as a case study to assess the potential implications of modifying the threshold for TAS. The paper addresses a key question: What are the potential trade-offs encountered in uncertainty quantification of cost-effectiveness analysis on lowering the stopping threshold for TAS in adults aged 20 years and above from an economic, epidemiological and mathematical perspective? In this paper, we restrict to lowering the stopping threshold from <1% mf prevalence to <0.5% mf prevalence for a sample of adults motivated by the work in [3] and [16]. Importantly, we focus on areas with *Culex* mosquitoes as the major transmission vector using IA drug combinations for potential comparisons.

### 1.3. Contributions

This study investigates the following three specific sub-questions outlined below which highlight the key contributions of our work:

1. What is the interplay between the dynamics of infection on DALY burden and elimination? In Section 5 we show the monotonic behaviour of the DALY burden and probability of elimination for different stopping thresholds, baseline mf prevalences and MDA coverages.
2. What are the dynamics of the costs both pre and post-MDA surveillance when the stopping threshold is lowered? In Section 5 we explain the tradeoff illustrated in the observed non-monotonic behaviour of the costs for different stopping thresholds, baseline prevalences and MDA coverages.
3. If lower stopping thresholds are required for elimination of transmission, then are we realistically able to measure them using current tools? In order to circumvent issues related to the ICERs to address this question using the CEA framework in Section 2, we instead adopt a linear formulation of Expected Incremental Net-Monetary Benefit (EINMB) metric for fixed country-level WTP values recommended by the several studies [38; 52] for DALY

averted and approximate the range of WTP for probability of elimination (due to lack of data) in order to align with the goals of GPLEF. We also extend the analysis to quantify uncertainty with every additional sample size using Value of Information Analysis (VoI) with the help of Expected Value of Sample Size (EVSI) metric for the optimum WTP values per DALY averted and unit increase in the probability of elimination for different stopping thresholds and baseline prevalences. Finally, we propose an alternate paradigm, the Linear Wasserstein Framework in Section 3 that might help us resolve some of the proposed limitations, particularly around structural uncertainty of the CEA framework.

Addressing these questions will help to assess whether lower thresholds have the potential to assist programmes in achieving LF local elimination goals and how such decisions impact programme costs aligning with the GPELF objectives.

### 1.4. Outline of the paper

We begin in Section 2 by summarizing the theoretical framework for CEA. In addition, we prescribe an alternative paradigm that circumvents structural uncertainties of CEA using the Linear Wasserstein framework in Section 3. The numerical implementation is then described in Section 4 and tested in Section 5. Finally, we will discuss our findings and present our conclusions in Section 6. For the reader's convenience we have provided a list of key terminologies used in the manuscript in Table C.15 (see Appendix C for more details).

## 2. Summary on Cost Effective Analysis (CEA) Framework

In this section, we extend the classic net-benefit framework to include resource implications alongside aligning with GPLEF goals by incorporating elimination probabilities [2]. Additionally, we incorporate Value of Information (VoI) analysis which directly addresses the potential implications of current uncertainty, not only in terms of the likelihood of modifying the current decision in light of new and more definitive evidence, but also in terms of the opportunity cost of the incorrect decision.

### 2.1. Notation and Basic Concepts

Health economic decision making aims to determine the optimal intervention considering costs and health impacts of various clinical effectiveness. A key metric is the Incremental Cost-Effectiveness Ratio (ICER), defined as the ratio of the difference in costs ( $\Delta C$ ) to the difference in health impacts ( $\Delta E$ ) between two interventions:

$$\text{ICER} = \frac{\Delta C}{\Delta E}, \quad (1)$$

Here, we use a cost-utility analysis, where health impacts ( $\Delta E$ ) are expressed in disability-adjusted life years ( $\Delta \text{DALYs}$ ) averted by quantifying overall disease burden due to morbidity and mortality. In the current analyses, we only include effects on morbidity (e.g., lymphoedema, hydrocele) as we assumed the intervention has no impact on mortality. For our analysis,

we will use both DALYs averted and the probability of elimination. A strategy is considered cost-effective if the ICER does not exceed the health planner's WTP per DALY averted ( $WTP_{DALY}$ ),

$$ICER = \frac{\Delta C}{\Delta DALYs} \leq WTP_{DALY}. \quad (2)$$

The net-benefit framework circumvents issues with ICERs by not having to deal with extended dominance (when one intervention is less cost-effective than a combination of two or more interventions) by transforming the ICER into a linear additive form, known as the net-monetary benefit (NMB).

$$\begin{aligned} \Delta C &\leq WTP_{DALY} \cdot \Delta DALYs =: \\ 0 &\leq WTP_{DALY} \cdot \Delta DALYs - \Delta C = NMB(WTP_{DALY}), \end{aligned} \quad (3)$$

By using NMB, which relies on single monetary values rather than ratios, the framework simplifies the evaluation of multiple interventions, regardless of which quadrant of the cost-effectiveness plane the ICER lies in. Given a Monte Carlo sample of  $N$  iterates of the costs and DALYs averted (denoted by the parameter set  $\theta$ ), a strategy is preferred over the comparator if the expected NMB exceeds zero:

$$0 \leq \mathbb{E}_{\theta}(NMB(\theta_i, WTP_{DALY})), \quad (4)$$

where  $\theta$  is the parameter vector and  $i = \{1, 2, \dots, N\}$  is the iterations per parameter to denote the samples drawn from the joint distribution  $p(\theta)$ . Extending this framework to multistrategy decision analysis between  $J$  strategies, the preferred strategy is the one that maximizes the  $\mathbb{E}_{\theta}(NMB(\theta_i, WTP_{DALY}))$ :

$$\max_{j=\{1,2,\dots,J\}} \mathbb{E}_{\theta} \left( NMB \left( j, \theta_i | WTP_{DALY} \right) \right). \quad (5)$$

We also include benefits related to the probability of elimination of LF, aligning with GPELF goals using WTP per unit increase in probability of elimination ( $WTP_{Elimination}$ ). The NMB is reformulated as:

$$\begin{aligned} NMB(\theta_i) &= 100 \cdot WTP_{Elimination} \times \Delta \mathbb{I}_{Elimination}(\theta_i) \\ &+ WTP_{DALY} \times \Delta DALYs(\theta_i) - \Delta C(\theta_i), \end{aligned} \quad (6)$$

Here,  $\Delta \mathbb{I}_{Elimination}(\theta_i)$  is 1 if only one strategy achieves elimination, and 0 otherwise such that  $\Delta \mathbb{I}_{Elimination}(\theta_i) = \mathbb{I}_{Elimination}^j(\theta_i) - \mathbb{I}_{Elimination}^{Comparator}(\theta_i)$ . Analogous to the traditional NMB, the strategy that ought to be implemented is indicated by,

$$\max_{j=\{1,2,\dots,J\}} \mathbb{E}_{\theta} \left( NMB \left( j, \theta_i | WTP_{DALY}, WTP_{Elimination} \right) \right), \quad (7)$$

Simultaneously, the framework allows for a probabilistic interpretation of cost effectiveness by conditioning on  $WTP_{DALY}, WTP_{Elimination}$  as follows,

$$\mathbb{P}(j \text{ is CE} | WTP_{DALY}, WTP_{Elimination}) = \frac{1}{N} \sum_{i=1}^N \mathbb{M}(j, \theta_i), \quad (8)$$

where

$$\mathbb{M}(j, \theta_i) = \begin{cases} 1 & \arg \max_{j \in \{1, \dots, J\}} NMB(j, \theta_i | WTP_{DALY}, WTP_{Elimination}) \\ 0 & \text{Otherwise} \end{cases} \quad (9)$$

The framework therefore presents a measure of uncertainty that the strategy with the highest expected NMB is optimal over all other strategies, given by the proportion of samples where the strategy has the highest NMB of all strategies.

In general terms, the Expected Value of Perfect Information (EVPI) [8] is the difference between the expected value of a decision made with perfect information and the expected value of a decision made with current knowledge. It represents the maximum amount a decision-maker would be willing to pay for perfect information to avoid the potential losses associated with uncertainty. EVPI is defined as,

$$\begin{aligned} EVPI &= \mathbb{E}_{\theta} \left( \max_{j=\{1,2,\dots,J\}} NMB(j, \theta_i | WTP_{DALY}, WTP_{Elimination}) \right) \\ &- \max_{j=\{1,2,\dots,J\}} \mathbb{E}_{\theta} \left( NMB(j, \theta_i | WTP_{DALY}, WTP_{Elimination}) \right). \end{aligned} \quad (10)$$

Here, the vector of parameters can be split in two components  $\theta = (\phi, \psi)$ , where  $\phi$  is the subvector of parameters of interest (i.e., those that could be investigated further) and  $\psi$  are the remaining "nuisance" parameters:

$$\max_{j=\{1,2,\dots,J\}} \mathbb{E}_{\psi|\phi} \left( NMB(j, \theta_i | WTP_{DALY}, WTP_{Elimination}) \right). \quad (11)$$

which is the value of learning  $\phi$  with no uncertainty. Of course, we will never be in the position to completely eliminate the uncertainty on  $\phi$ , so we then average over its current probability distribution while also subtracting the value of the current optimal decision to calculate the Expected Value of Partial Perfect Information (EVPPI) [8; 43; 22]. The economic value of eliminating all uncertainty about  $\phi$  (assuming risk neutrality) is equal to the EVPPI which is given by:

$$\begin{aligned} EVPPI &= \mathbb{E}_{\phi} \left( \max_{j=\{1,2,\dots,J\}} \mathbb{E}_{\psi|\phi} \left( NMB(j, \theta_i | WTP_{DALY}, WTP_{Elimination}) \right) \right) \\ &- \max_{j=\{1,2,\dots,J\}} \mathbb{E}_{\theta} \left( NMB(j, \theta_i | WTP_{DALY}, WTP_{Elimination}) \right). \end{aligned} \quad (12)$$

Expected Value of Sample Information (EVSI) [23] measures the value of collecting additional data  $X$  to inform  $\phi$ , assuming  $X$  directly updates  $\phi$  and is independent of  $\psi|\phi$ . EVSI is bounded above by EVPPI. If data  $X$  were observed as  $x$ , it would update  $\phi$ 's distribution  $p(\phi|x)$ , impacting the net benefit distribution for each treatment. EVSI is the average value over all possible data sets:

$$\begin{aligned} EVSI &= \mathbb{E}_X \left( \max_{j=\{1,2,\dots,J\}} \mathbb{E}_{\theta|X} \left( NMB(j, \theta_i | WTP_{DALY}, WTP_{Elimination}) \right) \right) \\ &- \max_{j=\{1,2,\dots,J\}} \mathbb{E}_{\theta} \left( NMB(j, \theta_i | WTP_{DALY}, WTP_{Elimination}) \right). \end{aligned} \quad (13)$$

In this paper, to estimate EVSI computationally we follow the efficient nested Monte Carlo method based on "moment matching" by [23]. The method improves computational efficiency by reducing the nested Monte Carlo error, using the moment

311 matching technique to approximate the distribution of the pos-362  
 312 terior samples more accurately (see for more details, Algorithm363  
 313 1 in Appendix A). Although, several other approaches [29]364  
 314 such as the Importance Sampling (IS), Regression techniques,365  
 315 Gaussian approximation method and Integrated Nested Laplace366  
 316 Analysis (INLA) [22] exist, we rely on moment matching for its367  
 317 ability to estimate EVSI for multiple alternative sample sizes368  
 318 with a fixed additional computational cost. We also note that369  
 319 Integrated Nested Laplace Analysis (INLA) is highly efficient  
 320 for performing Bayesian inference, especially in latent Gaus-370  
 321 sian models by treating the PSA simulations as a ‘spatial prob-371  
 322 lem’ and projecting from higher to lower dimension to evaluate372  
 323 EVPPI by dimensionality reduction. 373

## 324 2.2. Fundamental Issues using EVSI as a metric 374

325 There are several challenges that arise when using the EVSI376  
 326 metric: 375

- 327 1. Assumptions on Distributions: Implementing EVSI using  
 328 the moment-matching method (see Algorithm 1 in Ap-378  
 329 pendix A) involves approximating the distribution of the379  
 330 sample information using moments (mean, variance, etc.)380  
 331 This can introduce errors, especially if the true distribution381  
 332 of the sample information is not well-approximated by the382  
 333 moments.
- 334 2. Dependence on Prior Information: The quality of EVSI  
 335 estimates using moment matching depends heavily on the  
 336 prior information available. Poor or inaccurate priors can383  
 337 lead to misleading EVSI estimates. 384
- 338 3. Implementation Challenges: Moment matching is accu-385  
 339 rate and efficient when the health economic model has a386  
 340 low computation time but becomes more unfeasible as the387  
 341 model runtime increases and inaccurate when the sample388  
 342 size is less than 10. 389
- 343 4. Requires Accurate EVPPI Estimation: Moment matching390  
 344 is more accurate for studies that will have significant im-391  
 345 pact on the underlying uncertainty in the decision-analytic392  
 346 model, i.e., the EVPPI of  $\phi$  needs to be high compared to  
 347 the value of reducing all model uncertainty (i.e., EVPI),  
 348 ideally greater than 40% [23]. 393

349 While moment matching can be a useful tool for approxi-395  
 350 mating EVSI, these limitations must be carefully considered396  
 351 and addressed to ensure accurate and reliable health economic397  
 352 decision-making. 398

## 353 3. Linear Wasserstein Framework 399

354 This section introduces an alternative metric to EVSI for de-400  
 355 termining the cost-effectiveness of intervention strategies using401  
 356 the Linear Wasserstein Framework (also called “Linear Opti-402  
 357 mal Transport” (LOT)) which was originally formulated in [55].403  
 358 Wasserstein-like distances are metrics on probability measures.404  
 359 They can be motivated from a geometric point-of-view as they405  
 360 pay a cost based on rearrangement of mass. This means the dis-406  
 361 tance is assigned (loosely speaking) based on translations. The407

main obstacle concerning Wasserstein distances is the computa-  
 tional cost and a lack of off-the-shelf data analysis tools. This is  
 where the linearisation of optimal transport distances plays an  
 important role. The linearisation defines a map  $P : \mathcal{P}(X) \rightarrow \mathbb{R}^k$   
 (for some  $k$ ) such that the Wasserstein distance in  $\mathcal{P}(X)$  is ap-  
 proximately the Euclidean distance in  $\mathbb{R}^k$ . In the Euclidean  
 space we can easily apply several standard data analysis tools  
 such as dimensionality reduction, classification and modelling.

### 3.1. Notations

Let  $X, Y \subseteq \mathbb{R}^d$  with  $\mu \in \mathcal{P}(X)$  and  $\nu \in \mathcal{P}(Y)$ . Given  $\mu \in \mathcal{P}(X)$   
 and a transport map  $T : X \rightarrow Y$  we can define the pushforward  
 of  $\mu$  by  $T$  as follows.

**Definition 1.** Let  $\mu \in \mathcal{P}(X)$  and  $T : X \rightarrow Y$  be a measurable  
 map, the pushforward of  $\mu$  by  $T$ , denoted as  $T_{\#}\mu$  is the measure  
 $\nu$  defined by,

$$\nu(B) = \mu(T^{-1}(B)). \quad (14)$$

for all measurable set  $B \subseteq Y$ .

### 3.2. Optimal Transport Formulations

Let us consider  $T : X \rightarrow Y$  to be a Borel measurable function  
 such that  $T_{\#}\mu = \nu$ . The *Monge formulation* [11] would be to  
 find the transport map  $T$ , given the probability measures  $\mu, \nu$ ,  
 minimising the objective function in  $\mathbb{M}(\mu, \nu)$ , where

$$\mathbb{M}(\mu, \nu) := \inf_{T: T_{\#}\mu = \nu} \int_X |x - T(x)|^p d\mu(x). \quad (15)$$

We call any  $T$  which satisfies  $T_{\#}\mu = \nu$  a transport map and  
 the minimizer of the optimisation problem in Eq. (15) as the  
 optimal transport map  $T^*$ . It is often difficult to handle this  
 non-convex optimisation problem in Eq. (15) due to its non-  
 linearity in  $T$ .

We define the set  $\Pi(\mu, \nu)$  of couplings between measures  $\mu$   
 and  $\nu$  to be the set of probability measures on the product space  
 $\mathcal{P}(X \times Y)$  whose first marginal is  $\mu$  and the second marginal is  
 $\nu$ . For any transport map  $T : X \rightarrow Y$ , there exists an associated  
 transport plan  $\pi$  such that,

$$\pi = (\text{Id} \times T)_{\#}\mu. \quad (16)$$

where  $\text{Id}$  denotes the identity map. We recall that if  $P^X : X \times Y \rightarrow X$   
 and  $P^Y : X \times Y \rightarrow Y$  are the canonical projections, then  
 the marginals are  $P^X_{\#}\pi = \mu$  and  $P^Y_{\#}\pi = \nu$ .

The *Kantorovich formulation* [11] would be to minimise the  
 objective function  $\mathbb{K}(\mu, \nu)$ , given the probability measures  $\mu, \nu$ ,  
 where

$$\mathbb{K}(\mu, \nu) := \inf_{\pi \in \Pi(\mu, \nu)} \int_{X \times Y} |x - T(x)|^p d\pi(x, y). \quad (17)$$

The minimizer of Eq. (17) is the optimal transport plan  $\pi^*$ . In  
 this sense, the *Kantorovich formulation* in Eq. (17) can viewed  
 as a relaxation of the *Monge formulation*. The difficulty in  
 proving the existence of maps that satisfy the constraint  $T_{\#}\mu = \nu$   
 leads to mass splitting during transportation, especially in cases  
 involving discrete measures where such transport maps may not  
 be feasible. This modified formulation in Eq. (17) now de-  
 scribes the amount of mass  $\pi(x, y)$  that can be transported from  
 $x$  to different positions at  $y$ .

### 3.3. Wasserstein Distances

We denote the space of probability measures on  $X$  that have finite  $p^{\text{th}}$  moment, as follows:

$$\mathcal{P}_p(X) := \left\{ \mu \in \mathcal{P}(X) : \int_X |x|^p d\mu(x) < +\infty \right\}.$$

So, when  $X$  is bounded  $\mathcal{P}_p(X) = \mathcal{P}(X)$ . This allows us to define the  $p$ -Wasserstein distance [11], which is the minimum transportation cost between  $\mu$  and  $\nu$ , as

$$d_{W^p}(\mu, \nu) = \begin{cases} \inf_{\pi \in \Pi(\mu, \nu)} \left( \int_{X \times Y} |x - y|^p d\pi(x, y) \right)^{\frac{1}{p}} & \text{for } 1 \leq p < \infty, \\ \inf_{\pi \in \Pi(\mu, \nu)} \pi - \text{ess sup}_{(x, y)} |x - y| & \text{for } p = \infty. \end{cases} \quad (18)$$

The  $d_{W^p}$  distances are advantageous for Lagrangian modeling due to their simplicity, metric properties (like symmetry), existence of geodesics, Riemannian structure and theoretical benefits like existence of optimal transport maps and plans. However, they require the inputs to be probability measures, are computationally expensive, and there is a lack of off-the-shelf data analysis tools. We therefore opt for the Linear  $p$ -Wasserstein Framework.

### 3.4. Linear Wasserstein Framework

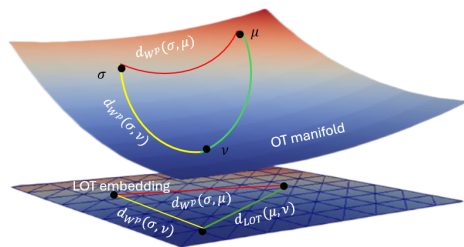


Figure 1: The Linear  $p$ -Wasserstein framework embeds measures in the tangent space of a fixed reference  $\sigma$ . As a consequence, the Euclidean distance between the non-negative measures  $\mu$  and  $\nu$  is an approximation for the 2-Wasserstein distance  $d_{W^2}(\mu, \nu)$ . This figure is computed using ParaView.

The Linear  $p$ -Wasserstein framework introduced by Wang in [55], illustrated in Figure 1, has several applications in biomedical imaging, analysis of 2-D point cloud data [5; 36], telescopic and facial expressions [32; 31]. The term “linear” refers to the (Euclidean) vector space structure that one gains after approximation. The method linearizes the Wasserstein distance by computing the projection to tangent space at a fixed reference.

To discuss the Linear  $p$ -Wasserstein framework in the continuous setting we consider a domain  $X \in \mathbb{R}^d$  that is a bounded, convex and closed subset of  $\mathbb{R}^d$  with a non-empty interior, alongside the probability measures  $\mu_i \in \mathcal{P}(X) \forall i \in \{1, 2, \dots, N\}$  and a fixed reference  $\sigma \in \mathcal{P}(X)$ . The optimal transport map  $T_i^*$  between  $\sigma$  and  $\mu_i$  satisfies,

$$d_{W^p}(\mu_i, \sigma) = \left( \int_X |x - T_i^*(x)|^p d\sigma(x) \right)^{\frac{1}{p}} \quad (19)$$

where  $T_{i\#}^* \sigma = \mu_i$ . This provides the basis to formally introduce the linear Wasserstein distance for two measures say  $\mu_1$  and  $\mu_2$ .

$$d_{LOT_{W^p}}(\mu_1, \mu_2, \sigma) = \left( \int_X |T_1^*(x) - T_2^*(x)|^p d\sigma(x) \right)^{\frac{1}{p}}. \quad (20)$$

This enables us to compute the linear embeddings in the form of projections  $P : \mathcal{P}(X) \rightarrow T_\sigma \mathcal{P}(X)$  which are the velocity maps from the manifold to the tangent space. This can be expressed as,

$$P(\mu_i) = T_i^* - \text{Id}, \quad (21)$$

Equivalently, relating the Linear Wasserstein distance  $d_{LOT_{W^p}}$  to  $p$ -Wasserstein distance  $d_{W^p}$  in equation (19) we can rewrite as follows,

$$d_{W^p}(\mu_i, \sigma) = \|P(\mu_i) - P(\sigma)\|_{L^p(\sigma)} = d_{LOT_{W^p}}(\mu_i, \sigma, \sigma). \quad (22)$$

*Remark 2.* This implies that the maps  $P(\mu_i)$  form the linear embeddings in the form of projections from the  $p$ -Wasserstein space to  $L^2$  (Euclidean) space, thereby preserving the optimal transport distance between  $\mu_i$  and  $\sigma$ . It is assumed that  $d_{LOT_{W^p}}(\mu_1, \mu_2, \sigma) \approx d_{W^p}(\mu_1, \mu_2)$  and the approximation depends on the curvature of the Wasserstein space and in general the linear Wasserstein distance is not equivalent (in terms of metric equivalence) to the Wasserstein space. However, when there is some special structure, such as when the measures are all translations or shearings then one gets established bounds [10] like  $c d_{LOT_{W^p}}(\mu_1, \mu_2, \sigma) \leq d_{W^p}(\mu_1, \mu_2) \leq C d_{LOT_{W^p}}(\mu_1, \mu_2, \sigma)$  where  $c, C$  are some positive constants.

### 3.5. Advantages of using the Linear Wasserstein Framework

The linear optimal transport (LOT) framework offers an alternative approach to the calculation of the Expected Value of Sample Information (EVSI), addressing several limitations associated with the moment matching method as outlined below:

1. **Approximation Accuracy:** Unlike moment matching, which approximates the distribution using moments, LOT can directly handle the full distribution of the data by using the probability measures. This leads to more accurate representations of the underlying distributions, reducing approximation errors. According to ISPOR’s recommendations [39], uncertainty in parameter input values should be characterized using probability distributions. Additionally, any dependencies between parameters should be represented by a joint, correlated probability distribution. We have modeled these inputs as a point cloud (discrete set of points in space).
2. **Handling High Dimensions:** The LOT framework provides linear projections that help reducing the dimensionality from the ambient to the tangent space after applying off-the-shelf data analysis tools.
3. **Distributional Assumptions:** LOT does not rely on the assumption that the distribution can be adequately described by expectation and variance. It considers the entire distribution suitable for handling non-linearities and interactions inherent in the data, thus accommodating higher-order moments more naturally by preserving salient properties of the data and accounting structural uncertainty.
4. **Independence from Prior Information:** The LOT approach minimizes this dependency by utilizing an empirical distribution derived from observed data. This empirical focus means that the approach is less susceptible to the biases introduced by incorrect prior assumptions.

By directly addressing the distribution of sample information and leveraging efficient optimization techniques, the LOT framework provides a robust and scalable uncertainty quantification tool to calculate cost-effectiveness analysis. This circumvents many of the limitations associated with moment matching, leading to more accurate and reliable decision-making.

#### 4. Methods

We utilize the stochastic TRANSFIL model [25] with parameters previously estimated [26; 45] to represent transmission by Culicine mosquitoes (for more details on the parameters refer Table C.14 in Appendix C). The model simulates the health impacts of lymphatic filariasis (LF) and incorporates mass drug administration (MDA) effects, based on simulated target coverage, systematic nonadherence, and drug efficacy [18]. We excluded other interventions such as vector control for this study. We modeled closed populations of 100,000-500,000 people, reflecting EU sizes in standard TAS surveys per WHO guidelines [54]. The detection parameters were fitted using Bayesian MCMC to data from Malindi, Kenya, Colombo, Gampaha and Sri Lanka [26]. MDAs were simulated at 65% and 80% coverage. Systematic non-adherence was included by calculating individual treatment probabilities based on coverage and between-round correlation, parameterized with data from Leogane, Haiti, and Egypt [18].

The model also simulates health impacts of lymphoedema, hydrocele, and acute adenolymphangitis (ADL) using published methods. Morbidity due to lymphoedema and hydrocele was modeled with data from India [13]. The model assumes morbidity occurs after accruing a certain cumulative worm burden. ADL incidence was estimated twice per year in 70% of hydrocele patients and four times annually in 95% of lymphoedema patients [14]. Prevalence was converted using published disability weights [21]. Side-effects of MDA were not considered, despite reports of 13% feeling unwell post-MDA, as these effects were deemed minor [59]. Mental illness was also excluded due to lack of accurate data, despite its recognized burden in LF [49; 30].

For WHO-prescribed starting and stopping decisions [54], we considered TAS surveys from 30 sites per EU. Baseline prevalences were sampled from a normal distribution with means of 5-10%, 10-20%, or 20-30%. In each site, we sampled 40-60 adults aged 20 years to evaluate TAS. If mf-positive adults were below the stopping threshold MDA was halted until the next survey; otherwise, it continued. We iterated this algorithm 1,000 times and reported mean baseline prevalences. Cost simulations considered TAS surveys (\$12,494.75 [7]) and MDA rounds (\$7,640.92 [47]) over a 20-year horizon, with discounting included. We note that for MDA restarts, the costs of the MDA and TAS are doubled.

For cost-effectiveness analysis, using the Expected Incremental Net Monetary Benefit (EINMB) metric, we used <1% mf prevalence in children (aged 5 years and above) as the comparator. We simulated transmission dynamics and morbidity associated with LF, including DALY burden for 30 sites and

a TAS-like survey across those sites. We investigated different MDA coverages (65% and 80%) and different baseline LF prevalences. We evaluated WTP<sub>DALY</sub> for DALYs averted, reflecting opportunity costs and adjusted for purchasing power parity [51] using \$500 (Ghana), \$2,500 (Congo) and \$5,000 (Southern Africa) based on the provided country-specific percentage of GDP per capita estimate that underlies the DALY-4 estimation method by multiplying the total per individual DALY value times a specific proportion of the GDP per capita [35] for LMIC and WTP<sub>Elimination</sub> per unit increase in local elimination ranging from \$0-\$10,000 [2]. We evaluated different stopping thresholds for Culicine transmitters using a model-based transmission dynamics, health, and economic impacts. To address our key questions, we examined:

1. Probability of elimination [46], i.e., the probability of achieving local elimination within 20 years post-MDA if mf prevalence in a sample of <1,700 adults aged  $\geq 20$  years was below the stopping threshold.
2. Health impact evaluation through DALYs averted for morbidity by quantifying the overall disease burden due to lymphoedema, hydrocele and ADL by the years lived with disability. In this context, we assume that the years of life lost due to premature death is zero as death due to LF is rare.
3. Costs due to MDA rounds and TAS surveys.
4. Computing the cost-effectiveness of lowering the stopping threshold to <0.5% in adults with the help of the EINMB metric (see Section 2). We note that for this metric we use the fixed country-specific WTP<sub>DALY</sub> and vary across an approximate range of WTP<sub>Elimination</sub>.
5. Evaluating the uncertainty in parameters (total costs, DALYs averted and/or probability of elimination) using Value of Information (VoI) methodology, with EVSI metric (see Section 2) implemented using moment matching method (see Algorithm 1 in Appendix A).
6. Evaluating the uncertainty in parameters (total costs, DALYs averted and/or probability of elimination) using the Linear Wasserstein Framework in conjunction with LDA (see Section 3). The total costs due to MDA rounds and TAS surveys, along with DALYs averted and probability of elimination, are represented as probability measures on point cloud data (discrete set of data points in space). Let  $\mu_i$  denote the empirical measure associated with the  $i$ -th point cloud, defined as:  $\mu_i = \frac{1}{m_i} \sum_{j=1}^{m_i} \delta_{x_j^{(i)}}$  where  $x_j \in \mathbb{R}^d$  and  $m_i$  denotes total data points in each  $\mu_i$ . We sample the point clouds so that each point cloud has the same fixed number  $m = 1000$  data points, i.e.  $\mu_i = \frac{1}{m} \sum_{j=1}^m \delta_{x_j^{(i)}}$  (up to relabelling of the  $x_j^{(i)} \in \mathbb{R}^d$ ) for  $i = \{1, 2, \dots, N\}$  and  $j = \{1, 2, \dots, m\}$ . Following this, we compute the projections  $P(\mu_i)$  as defined in Eq. (21) for each measure  $\mu_i$ . Using these projections, firstly we apply PCA to obtain the eigenvectors that accounts for principle variations of the distributions. We then use these projected eigenvectors from PCA as feature vectors (denoted as  $\{\mathbf{X}_i\}_{i=1}^L$ ) along with three classes of baseline prevalences (5-10%, 10-20%, 20-30%) as labels (denoted

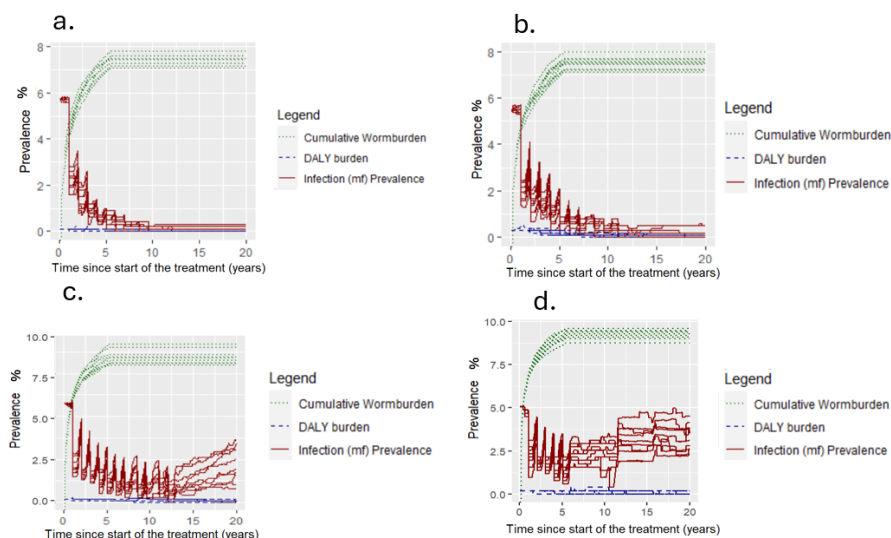


Figure 2: Simplified timeline plots for a single population of size 1000 for 10 simulations illustrating the model-predicted temporal trends in mf prevalence (solid red lines), DALY burden are computed as the morbidity prevalence of lymphoedema, hydrocele and acute adenolymphangitis (dashed blue lines) times the disability weights [21] and cumulative wormburden (dotted green lines) for 5-10% mf prevalence using (a) <0.5%, (b) <1%, (c) <2% and (d) <5% as the stopping threshold criteria for TAS with 80% MDA coverage for a sample of adults.

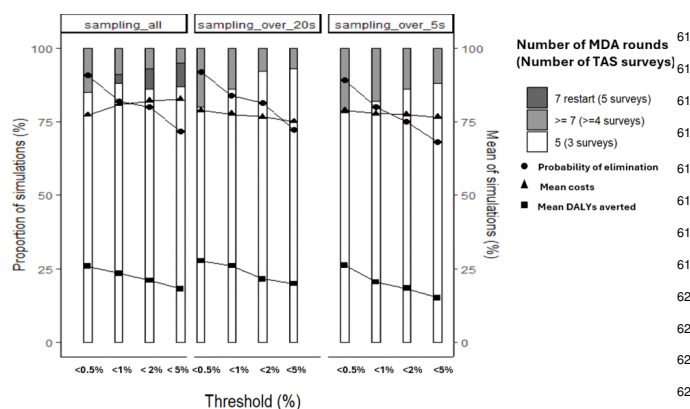


Figure 3: Epidemiological outcomes for different mf stopping threshold prevalences for TAS with 5-10% baseline prevalence with 80% MDA coverage of different age-groups of the eligible population post-surveillance. Here, we represent the mean outcomes by randomly sampling approximately 30 sites with 40-60 people stratified by age per site to replicate the characteristics of an evaluation unit (EU, < 500,000 people). Note that costs and DALYs averted are normalized to the same scale for improved visualization in the plots.

on the threshold criteria defined for passing the TAS, as illustrated in the example of a setting with a baseline prevalence of 5-10% and 80% MDA coverage of a single population size of 1000 for 10 simulations (Figure 2).

In Figure 3 (circles) replicating the characteristics of an EU, we find that the probability for local elimination at 5-10% baseline prevalence with 80% MDA coverage and a threshold of <0.5% mf prevalence was 89.2% ( $\geq 5$  years), 91.8% ( $\geq 20$  years), and 90.72% (entire eligible population). For a threshold of <1% mf prevalence, it was 80.05%, 83.8%, and 81.76%, respectively. Lowering the threshold increases the probability for local elimination across different prevalences, coverages, and age-groups. These trends follow across different baseline prevalences, MDA coverages and treatment strategies (refer B.1, B.2, and B.3 in Appendix B).

Additionally in Figure 3 (triangles), a lower threshold results in fewer MDA rounds and surveys due to reduced probability of restarting after stopping, hence lower costs. However, for the lowest baseline prevalence, restarting MDA is unlikely for either threshold for children and adults, with slightly higher costs for the lower threshold due to extra rounds needed. For the entire eligible population, higher threshold costs are greater due to MDA restarts. In general, more restarts occur at higher baseline prevalences and lower MDA coverage for all thresholds due to the stochastic nature of the model dynamics accounting for higher transmission and increased treatment rounds to achieve elimination (refer Tables B.4, B.5 and B.6, in Appendix B).

Figure 3 (squares) shows mean DALYs averted across different thresholds for 80% MDA coverage. Lowering the threshold results in more DALYs averted due to a reduction in worm burdens. Trends are similar for 65% MDA coverage. The choice of threshold depends on epidemiological context and economic considerations, including  $WTP_{DALY}$ .

To evaluate costs, health impact, and monetization benefits

as  $\{y_i\}_{i=1}^L$  where  $L$  is the size of training dataset used as inputs for LDA [58] to classify the <0.5% mf threshold for different baseline prevalences relative to the reference. We note that we train the LDA on 80% of the feature vector and labels (iteratively) and make predictions on the remaining 20% of the unseen feature vector and labels. In this study, we use the fixed  $WTP_{DALY}$  as outlined above and estimate the range for  $WTP_{Elimination}$  (see Algorithm 2 in Appendix A for more details)

## 5. Results

The impact of MDA on the interruption of LF transmission and reduction of the disease burden using DALYs is dependent



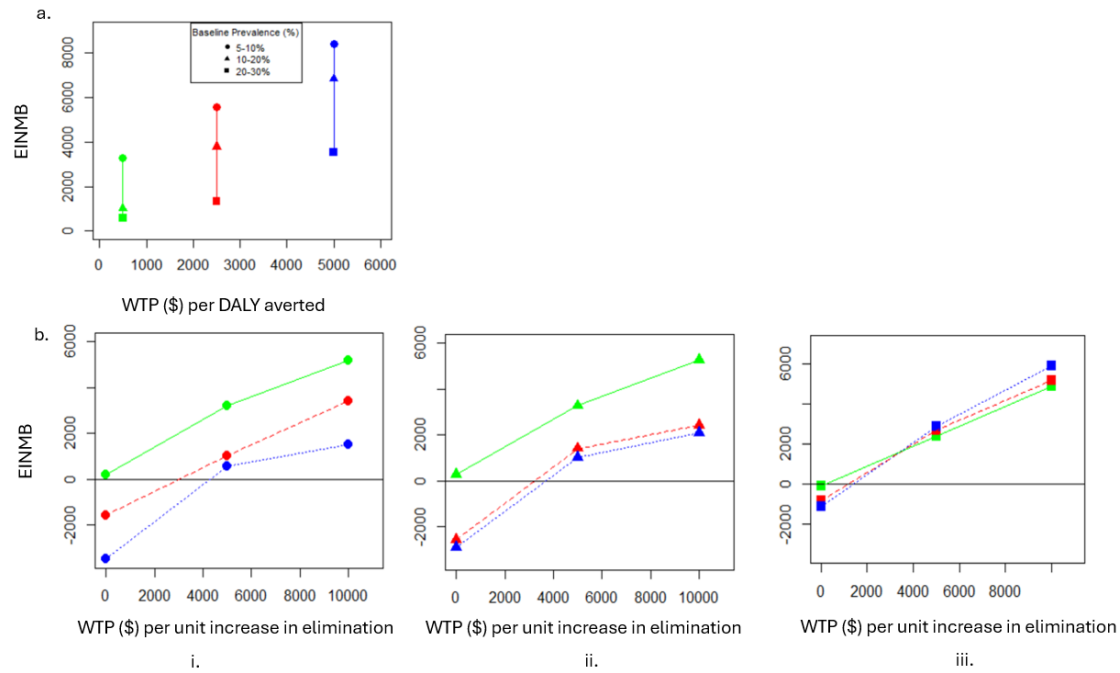


Figure 4: a. EINMB based on the WTP for range of DALY averted for morbidity: \$500 (green), \$2500 (red), \$5000 (blue) for 5-10% (circles), 10-20% (triangles) and 20-30% (squares) baseline prevalence for a sample of adults. b. EINMB based on the WTP for 1% increase in probability of elimination from \$0-\$10,000 and the  $WTP_{DALY}$ : \$500 (green), \$2500 (red), \$5000 (blue) for sample of adults for (i) 5-10% - circles (ii) 10-20% - triangles (iii) 20-30% - squares baseline prevalences comparing  $<0.5\%$  threshold in a sample of adults with respect to  $<1\%$  threshold of mf prevalence in children (comparator).

of local elimination, we use expected incremental net monetary benefit (EINMB). Higher EINMB indicates optimal cost-effectiveness at a given  $WTP_{DALY}$ . Our findings (Figure 4a) show that at 80% coverage, switching to a lower threshold is cost-effective across all baseline prevalences, keeping costs per DALY averted below national WTP thresholds (positive EINMB). Variability in results is due to demographic factors such as age, treatment strategy, and population growth [40]. At 65% coverage (Figure 4b), more rounds and surveys suggest switching to a lower threshold is cost-effective based on WTP per 1% increase in local elimination probability, aligning with GPELF goals (refer Tables B.7, B.8 in Appendix B). For WTP of approximately \$4200, \$3000, and \$1000 per 1% increase in local elimination for different baseline prevalence, switching is recommended (Figure 4b, black solid line).

Health economic decision-analytic models are used to estimate the expected net benefits of competing decision options. The true values of the input parameters of such models are rarely known with certainty, and it is often useful to quantify the value to the decision maker of reducing uncertainty through collecting new data. In the context of understanding how to measure the prevalence for different stopping threshold with precision, we need a handle to quantify uncertainty revolving around the costs due to MDA rounds and surveys alongside DALYs averted and unit increase in probability of elimination. In this light, the value of the proposed research design for every additional sample size can be quantified by the EVSI metric as defined in Section 2. In Figure 5 (a)-(b), we find that the EVSI peaks around a  $WTP_{Elimination}$  of \$2,500-\$3,000 (max) for  $<0.5\%$  and  $<1\%$  stopping threshold. On the other hand, for Fig-

ure 5 (c)-(d) we see that the EVSI peaks around a  $WTP_{Elimination}$  of about \$1,500-\$1,700 (max) for  $<2\%$  and  $<5\%$ . This corresponds to the fact that additional information obtained from extra EVSI per person (illustrated in Figure 5 by higher peaks in  $0.5\%$  than  $5\%$ ) in lower stopping thresholds is more beneficial to account for uncertainty quantification of MDA stopping decisions as justified for 5-10% baseline prevalence. Additionally, in Tables B.11, B.12 and B.13 (see Appendix B), we find that moment matching is much faster than the benchmark nested Monte-Carlo method, although both converge to the same EVSI at larger sample sizes. Figure 5 illustrates the theoretically established trend in the fact that the EVSI (dark blue lines) approached the EVPPI (thick dark blue line below EVPI) as defined in Section 2 at larger sample sizes, indicating that the value of information gained from larger studies may approach the theoretical maximum value of removing the uncertainty of reaching elimination based on the different thresholds. In order to further test the robustness of the MDA stopping decision based on the cost-effectiveness of lower stopping threshold ( $<0.5\%$  mf prevalence in adults), we rely on the Linear Wasserstein Framework in conjunction with PCA and LDA. In Figure 6a, we find the scattergram of the costs with DALYs averted with 80% MDA coverage for different baseline prevalences (represented as circles, triangles and squares) show that the lower stopping thresholds ( $<0.5\%$ ) are cost-effective using the fixed country-specific  $WTP_{DALY}$  ranging from \$500-\$5,000 when predicted on the unseen 20% of the feature vector (test sample). Each symbol represents the mean incremental costs to incremental DALYs averted to obtain a standardized comparison to the EINMB metric in Figure 4a. Likewise, in Figure

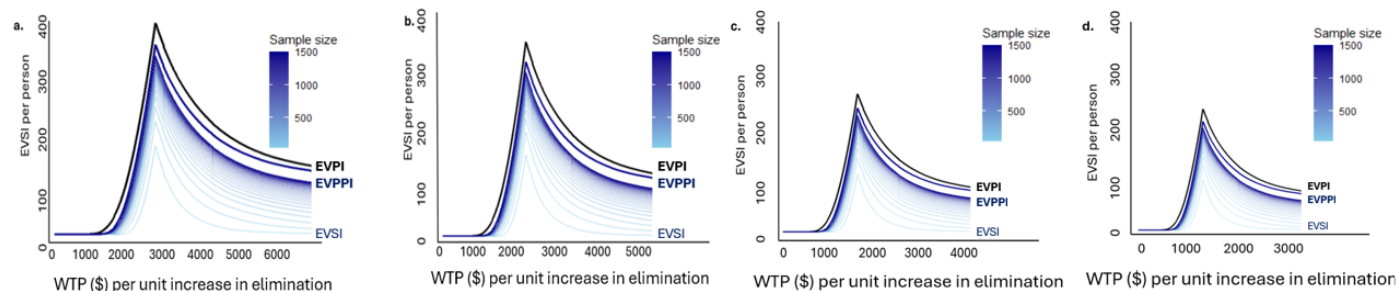


Figure 5: EVSI implemented using the moment matching method for different thresholds (a: <0.5%, b: <1%, c: <2% and d: <5%) to evaluate the uncertainty related to the cost-effectiveness of different stopping threshold for TAS under a range of WTP per unit increase in elimination for 5-10% baseline prevalence in a sample of adults with 65% MDA coverage.

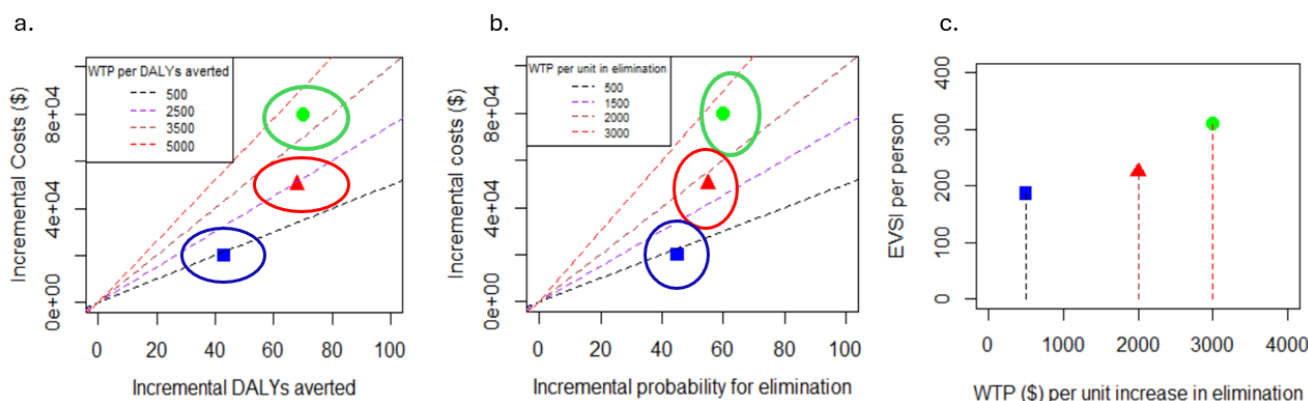


Figure 6: Summary figure illustrating the variations in the cost-effectiveness of the lower threshold for TAS using the Linear Wasserstein framework by considering the total costs and DALYs averted, probability for elimination as inputs. The LOT embeddings are projected into a lower-dimension space using PCA and this reduced feature vector from PCA is trained using LDA (80:20 split) for classifying <0.5% threshold at different baseline prevalence (labels) depicted as (circles) 5-10%, (triangles) 10-20% and (squares) 20-30% alongside the WTP for DALY averted for morbidity: \$500 (green), \$2,500 (red), \$5,000 (blue) for a sample of adults. a. Scattergram of incremental costs and DALYs averted for 80% MDA coverage b. Scattergram of incremental costs and unit increase in probability of elimination for 65% MDA coverage c. EVSI per person for the estimated optimum WTP per unit increase in elimination. Note: The comparator chosen as the reference template is <1% mf prevalence as the stopping threshold for TAS in children. The ellipses estimated from the covariance matrix and the mean vectors of each baseline prevalence (class labels) denote the 95% confidence intervals accounting for the uncertainty and variability within the distribution of each class. Each symbol represents the mean of the incremental costs to DALYs averted or probability of elimination classified by their respective baseline prevalences.

6b. we find the scattergram of the costs with DALYs averted<sup>727</sup> in addition to the probability of elimination show when <0.5%<sup>728</sup> stopping thresholds are cost-effective with a narrower estimated<sup>729</sup> WTP<sub>Elimination</sub> per unit increase in the probability of elimina-<sup>730</sup> tion from \$500-\$3000 for 65% MDA coverage when predicted<sup>731</sup> on the unseen 20% of the feature vector (test sample). Simi-<sup>732</sup> larly, each symbol here represents the mean incremental costs<sup>733</sup> to incremental probability for elimination to obtain a standard-<sup>734</sup> ized comparison to the EINMB metric in Figure 4b. We re-<sup>735</sup> mark that the results illustrated in Figure 6 a and b were com-<sup>736</sup> puted using Step 1-3 of Algorithm 2 with 80% training sample<sup>736</sup> size. Finally, in Figure 6c, we illustrate the EVSI per person<sup>737</sup> using the utility gained from additional information predicted<sup>737</sup> from LDA (see Algorithm 2 for more details) with the optimum<sup>738</sup> WTP<sub>Elimination</sub> estimated. We observe that as baseline preva-<sup>739</sup> lence decreases, the optimum WTP<sub>Elimination</sub> to make the lower<sup>740</sup> stopping threshold cost-effective increases due to more addi-<sup>741</sup> tional benefits gained from elimination and DALYs averted as<sup>742</sup> demonstrated in Figure 3. Consequently, in Tables B.9 and B.10<sup>743</sup> (refer to Supplementary Appendix B), we present the classifi-<sup>744</sup> cation error for accurately predicting the baseline prevalences<sup>745</sup>

(class labels) for different stopping thresholds which decreases as training sample sizes increase. This improvement enhances the power of the utility function, which reflects the additive benefits gained with varying stopping thresholds, as indicated by the EVSI metric. This effect is achieved by training the LDA classifier with different fractions of the sample sizes, demonstrating that larger training datasets lead to more accurate classifications and thus greater potential benefits from additional data.

## 6. Discussion

The probability of local elimination is determined by stopping thresholds, which are crucial for many disease control policies. That being said, it would be worthwhile to look into the effects of a lower threshold on program costs overall as well as whether it raises the likelihood of local elimination. The application of such a lower threshold in China [57] and its significance in effective LF control serve as examples of the potential advantages of a lower threshold, which this study highlights. However, the GPELF can use this example to gather crucial

746 data in order to establish standards for assessing whether MDA<sup>803</sup>  
747 has been successful in bringing the infection prevalence down<sup>804</sup>  
748 to a point where recrudescence is unlikely to happen.<sup>805</sup>

749 As we reduce the mf prevalence threshold from  $<1\%$  to<sup>806</sup>  
750  $<0.5\%$ , the likelihood of local elimination increases, accord-<sup>807</sup>  
751 ing to our analysis of the effects of various stopping thresholds<sup>808</sup>  
752 for TAS across 30 sites. Diminished DALY burden and restart<sup>809</sup>  
753 probability are mitigated by a lower threshold, despite requir-<sup>810</sup>  
754 ing more rounds. Employing the defined EINMB metric for<sup>811</sup>  
755 CEA reveals that switching to a lower threshold is economical<sup>812</sup>  
756 at 80% MDA coverage. However, for 65% MDA coverage, ex-<sup>813</sup>  
757 tra benefits are needed, such as utilizing the WTP<sub>Elimination</sub> per<sup>814</sup>  
758 unit increase for elimination. The low amount of data, espe-<sup>815</sup>  
759 cially on systematic non-adherence and wider disease impacts<sup>816</sup>  
760 like mental illness, is the reason for the conservative morbidity<sup>817</sup>  
761 estimates [49; 30].<sup>818</sup>

762 The expanded use of CEA in healthcare faces several chal-<sup>819</sup>  
763 lenges. First, decision-makers must account for social concerns<sup>820</sup>  
764 like prioritizing the sick, reducing health disparities by inte-<sup>821</sup>  
765 grating more social concerns into CEA techniques. Second,<sup>822</sup>  
766 current CEA practices, focused on evaluating new strategies of<sup>823</sup>  
767 technologies, often overlook signs of resource misallocation.<sup>824</sup>  
768 Third, assessing the broad range of interventions needed for<sup>825</sup>  
769 CEA to improve allocative efficiency can be prohibitively ex-<sup>826</sup>  
770 pensive and time-consuming. Additionally, many CEA studies<sup>827</sup>  
771 produce context-specific results, limiting their applicability to<sup>828</sup>  
772 different populations. Progress towards providing timely, af-<sup>829</sup>  
773 fordable information on the costs and effects of various inter-<sup>830</sup>  
774 ventions remains limited, particularly for LMIC [48; 60].<sup>831</sup>

775 On the other hand, the Linear Wasserstein Framework de-<sup>832</sup>  
776 spite being mathematically rigorous has its own limitations.<sup>833</sup>  
777 Firstly, the framework makes several modelling assumptions.<sup>834</sup>  
778 Namely, that the distance should be proportional to the cost of<sup>835</sup>  
779 translations. This can make the distance sensitive to outliers.<sup>836</sup>  
780 Secondly, the Linear Wasserstein distance is also an approxi-  
781 mation of the Wasserstein distance and this approximation may  
782 deteriorate depending on the local curvature. Thirdly, being<sup>837</sup>  
783 balanced, this framework requires equal number of datapoints  
784 (1000) for each probability measures derived from each of the<sup>838</sup>  
785 pointcloud data for the different baseline prevalences (classes)  
786 which can disproportionately affect the robustness of the re-  
787 sults, if class-imbalance exists. A further extension to this<sup>839</sup>  
788 framework could be to generate future projections of the model  
789 simulations for different baseline prevalences using fewer runs<sup>840</sup>  
790 to save the computational power of the TRANSFIL model from<sup>841</sup>  
791 a Bayesian perspective [37] or use state-of-art methods such as<sup>842</sup>  
792 graph-based semi-supervised methods [9] that can leverage the<sup>843</sup>  
793 advantages of this geometric embedding when very little infor-<sup>844</sup>  
794 mation on the data is provided so that it can learn the geometry<sup>845</sup>  
795 of the underlying point cloud data effectively.<sup>846</sup>

796 Our study assumes constant survey implementation costs,<sup>847</sup>  
797 excluding potential out-of-pocket expenses and future cost<sup>848</sup>  
798 changes [41]. Despite challenges in estimating precise costs<sup>849</sup>  
799 for MDA and TAS due to incomplete records and data access<sup>850</sup>  
800 issues, simulations help understand the TAS threshold's im-<sup>851</sup>  
801 pact on stopping MDA. A limitation in this study is the exclu-<sup>852</sup>  
802 sion of vector control benefits, which remain debated. While<sup>853</sup>

some studies suggest combined MDA and vector control bene-  
fits in low endemic regions, others find no added advantage over  
MDA alone upon which further research is needed. Another  
major limitation is that our modelling study relies on *Culex* vec-  
tor due to its increased efficiency in transmission. Although di-  
rect implication of *Culex* species in the transmission of LF in  
West and Central Africa is still not well documented [42; 4], in  
East Africa, *Culex* species particularly *Cx. quinquefasciatus* is  
known to have a major role in LF transmission [17; 33]. With  
changing climate associated to increased traffic between East  
and West African countries and rapid expansion of this species  
in urban settings, it is becoming crucial to assess the role of  
*Culex* species in the transmission of diseases like LF. We also  
restrict our analysis to the IA drug, but studies [50] for oncho  
have found that IA may not lead to elimination of transmis-  
sion (EoT) in all endemic areas and moxidectin-based strategies  
could accelerate progress toward EoT and reduce programmatic  
delivery costs compared with ivermectin-based strategies. We  
also note that the use of the three-drug combination IDA, has  
particular challenges [45] for survey design due to reductions  
in mf density but not Ag over one or two rounds of treatment  
[27].

Despite these drawbacks, our research emphasizes how im-  
portant it is to choose the right framework for uncertainty quan-  
tification when making decisions, especially when it comes to  
disease interventions, particularly LF. It is also essential to com-  
prehend the dynamics of local elimination post-threshold cross-  
ing and how it interacts with LF interventions. Our research in-  
dicates that although there is a long transient phase involved in  
the path to LF local elimination post-MDA surveillance, lower  
thresholds may help programs achieve their objectives. In addi-  
tion, we also propose the need for better framework to quantify  
the uncertainty inherent in the model parameters to analyze the  
cost-effectiveness of lowering the stopping threshold in LF.

## 7. Competing interests

The authors declare no competing interests.

## 8. Funding

MCAO, MG and TDH were supported by funding from the  
Bill & Melinda Gates Foundation (INV-030046), via the NTD  
Modelling Consortium. TDH is supported by funding from  
the Li Ka Shing Foundation at the Big Data Institute, Li Ka  
Shing Centre for Health Information and Discovery, University  
of Oxford. MT would like to acknowledge the support of the  
Leverhulme Trust Research through the Project Award “Robust  
Learning: Uncertainty Quantification, Sensitivity and Stabili-  
ty” (grant agreement RPG-2024-051) and the EPSRC Mathe-  
matical and Foundations of Artificial Intelligence Probabilistic  
AI Hub (grant agreement EP/Y007174/1). LP gratefully ac-  
knowledges funding from the Wellcome Trust and Royal So-  
ciety Sir Henry Dale Fellowship (202562/Z/16/Z), the Well-  
come Trust Discovery Award “Harnessing epidemiological and

854 genomic data for understanding of respiratory virus transmis-<sup>914</sup>  
855 sion at multiple scales” (227438/Z/23/Z) and the UKRI Im-<sup>915</sup>  
856 pact Acceleration Award (IAA 386). KBP is supported by the<sup>916</sup>  
857 Medical Research Foundation (MRF-160-0017-ELP-POUW-<sup>917</sup>  
858 C0909). MCAO acknowledges the receipt of funding obtained<sup>918</sup>  
859 from the Health Data Research UK-The Alan Turing Insti-<sup>920</sup>  
860 tute Wellcome (Grant Ref: 218529/Z/19/Z) and the Cambridge<sup>921</sup>  
861 Trust scholarship from the Commonwealth European and In-<sup>922</sup>  
862 ternational Trust (CCEIT). The funders had no role in study de-<sup>923</sup>  
863 sign, data collection and analysis, decision to publish, or prepa-<sup>924</sup>  
864 ration of the manuscript.<sup>925</sup>  
<sup>926</sup>  
<sup>927</sup>  
<sup>928</sup>  
<sup>929</sup>

## 865 9. CRediT authorship contribution statement

866 Mary Chriselda Antony Oliver: Conceptualization, Method-<sup>932</sup>  
867 ology, Software, Formal analysis, Writing-original draft,<sup>933</sup>  
868 Writing-review and editing, Visualization. Matthew Graham:<sup>934</sup>  
869 Software, Writing- review and editing. Ioanna Manolopoulou,<sup>935</sup>  
870 Graham F. Medley, Lorenzo Pellis - Writing- review and<sup>936</sup>  
871 editing. Koen B Poewels, Matthew Thorpe, T. Deirdre,<sup>937</sup>  
872 Hollingsworth - Conceptualization, Methodology, Writing - re-<sup>938</sup>  
873 view and editing, Supervision.<sup>939</sup>  
<sup>940</sup>  
<sup>941</sup>  
<sup>942</sup>  
<sup>943</sup>  
<sup>944</sup>

## 874 References

875 [1] Anderson, R.M. and May, R. (1992) *Infectious Diseases of Humans: Dy-*<sup>947</sup>  
876 *namics and Control* (Paper Backed) Oxford. Oxford University Press,<sup>948</sup>  
877 New York.<sup>949</sup>  
878 [2] Antillon, Marina et al. “Economic evaluation of disease elimination:<sup>950</sup>  
879 An extension to the net-benefit framework and application to human<sup>951</sup>  
880 African trypanosomiasis.” *Proceedings of the National Academy of Sci-*<sup>952</sup>  
881 *ences of the United States of America* vol. 118,50 (2021): e2026797118.<sup>953</sup>  
882 doi:10.1073/pnas.2026797118.<sup>954</sup>  
883 [3] Antony Oliver, Mary Chriselda et al. “Reducing the Antigen Prevalence,<sup>955</sup>  
884 Target Threshold for Stopping and Restarting Mass Drug Administration<sup>956</sup>  
885 for Lymphatic Filariasis Elimination: A Model-Based Cost-effectiveness<sup>957</sup>  
886 Simulation in Tanzania, India and Haiti.” *Clinical infectious diseases* :<sup>958</sup>  
887 an official publication of the Infectious Diseases Society of America vol.<sup>959</sup>  
888 78,Supplement 2 (2024): S160-S168. doi:10.1093/cid/ciae108<sup>960</sup>  
889 [4] Appawu, M A et al. “Lymphatic filariasis in Ghana: entomological inves-<sup>961</sup>  
890 tigation of transmission dynamics and intensity in communities served<sup>962</sup>  
891 by irrigation systems in the Upper East Region of Ghana.” *Tropical*<sup>963</sup>  
892 *medicine & international health : TM & IH* vol. 6,7 (2001): 511-6.<sup>964</sup>  
893 doi:10.1046/j.1365-3156.2001.00737.x<sup>965</sup>  
894 [5] Basu, Saurav et al. “Detecting and visualizing cell phenotype differences<sup>966</sup>  
895 from microscopy images using transport-based morphometry.” *Proceed-*<sup>967</sup>  
896 *ings of the National Academy of Sciences of the United States of America*<sup>968</sup>  
897 vol. 111,9 (2014): 3448-53. doi:10.1073/pnas.1319779111<sup>969</sup>  
898 [6] Bojke, Laura et al. “Characterizing structural uncertainty in decision<sup>970</sup>  
899 analytic models: a review and application of methods.” *Value in*<sup>971</sup>  
900 *health: the journal of the International Society for Pharmacoeconomics,*<sup>972</sup>  
901 *and Outcomes Research* vol. 12,5 (2009): 739-49. doi:10.1111/j.1524-<sup>973</sup>  
902 4733.2008.00502.x<sup>974</sup>  
903 [7] Brady, Molly A et al. “Costs of Transmission Assessment Surveys<sup>975</sup>  
904 to Provide Evidence for the Elimination of Lymphatic Filariasis.”<sup>976</sup>  
905 *PLoS Neglected Tropical Diseases* vol. 11,2 e0005097. 1 Feb. 2017.<sup>977</sup>  
906 doi:10.1371/journal.pntd.0005097.<sup>978</sup>  
907 [8] Brennan, Alan et al. “Calculating partial expected value of perfect infor-<sup>979</sup>  
908 mation via Monte Carlo sampling algorithms.” *Medical decision making*<sup>980</sup>  
909 : an international journal of the Society for Medical Decision Making vol.<sup>981</sup>  
910 27,4 (2007): 448-70. doi:10.1177/0272989X07302555<sup>982</sup>  
911 [9] Calder, Jeff et al. “Poisson Learning: Graph Based Semi-Supervised<sup>983</sup>  
912 Learning At Very Low Label Rates.” *International Conference on Ma-*<sup>984</sup>  
913 *chine Learning* (2020).<sup>984</sup>

[10] Caroline Moosmüller, Alexander Cloninger. Linear optimal transport embedding: provable Wasserstein classification for certain rigid transformations and perturbations, *Information and Inference: A Journal of the IMA*, Volume 12, Issue 1, March 2023, Pages 363–389, <https://doi.org/10.1093/imaia/iaac023>

[11] Cedric, Villani. *Topics in Optimal Transportation*. American Mathematical Society, 2003.

[12] Chi, Y-Ling et al. “What next after GDP-based cost-effectiveness thresholds?” *Gates open research* vol. 4 176. 30 Nov. 2020, doi:10.12688/gatesopenres.13201.1

[13] Chan, M S et al. “Epifil: a dynamic model of infection and disease in lymphatic filariasis.” *The American Journal of tropical medicine and Hygiene* vol. 59,4 (1998): 606-14. doi:10.4269/ajtmh.1998.59.606.

[14] Chu BK, Hooper PJ, Bradley MH, et al. The economic benefits resulting from the first 8 years of the Global Programme to Eliminate Lymphatic Filariasis (2000–2007). *PLoS Negl Trop Dis* 2010;4:e708.

[15] Claxton, K., et al. “Probabilistic Sensitivity Analysis for Decision Making in Health Care: The Value of Collecting Information.” *Medical Decision Making*, 2005.

[16] Davis, E. L., Reimer, L. J., Pellis, L., and Hollingsworth, T. D. (2019). Evaluating the Evidence for Lymphatic Filariasis Elimination. *Trends in parasitology*, 35(11), 860–869. <https://doi.org/10.1016/j.pt.2019.08.003>

[17] Derua YA, Rumisha SF, Batengana BM, Max DA, Kisinza WN, Mboera LE. Lymphatic filariasis transmission on Mafia Islands, Tanzania: Evidence from xenomonitoring in mosquito vectors. *PLoS neglected tropical diseases*. 2017;11(10):e0005938 10.1371/journal.pntd.0005938

[18] Dyson, Louise et al. “Measuring and modelling the effects of systematic non-adherence to mass drug administration.” *Epidemics* vol. 18 (2017): 56-66. doi:10.1016/j.epidem.2017.02.002

[19] Gambhir, Manoj, and Edwin Michael. “Complex ecological dynamics and eradicability of the vector borne macroparasitic disease, lymphatic filariasis.” *PloS one* vol. 3,8 e2874. 6 Aug. 2008, doi:10.1371/journal.pone.0002874

[20] Griffin, S., Fusco, F., Naidoo, B., Taylor, M., & Walker, S. M. (2020). Does Health Technology Assessment guidance give adequate consideration to decisions about less costly and less effective alternatives? (CHE Research Paper; No. 175). Centre for Health Economics, University of York.

[21] Global Burden of Disease Study 2019 (GBD 2019) Disability Weights. <http://ghdx.healthdata.org/record/ihme-data/gbd-2019-disability-weights>. Accessed 25 March 2022.

[22] Heath A, Manolopoulou I, Baio G. Estimating the expected value of partial perfect information in health economic evaluations using integrated nested Laplace approximation. *Stat Med*. 2016;35(23):4264–80.

[23] Heath, Anna et al. “Estimating the Expected Value of Sample Information across Different Sample Sizes Using Moment Matching and Non-linear Regression.” *Medical decision making : an international journal of the Society for Medical Decision Making* vol. 39,4 (2019): 346-358. doi:10.1177/0272989X19837983.

[24] Irvine, Michael A et al. “Effectiveness of a triple-drug regimen for global elimination of lymphatic filariasis: a modelling study.” *The Lancet. Infectious diseases* vol. 17,4 (2017): 451-458. doi:10.1016/S1473-3099(16)30467-4

[25] Irvine, Michael A et al. “Modelling strategies to break transmission of lymphatic filariasis–aggregation, adherence and vector competence greatly alter elimination.” *Parasites & vectors* vol. 8 547. 22 Oct. 2015, doi:10.1186/s13071-015-1152-3.

[26] Irvine, Michael A et al. “Understanding the relationship between prevalence of microfilariae and antigenaemia using a model of lymphatic filariasis infection.” *Transactions of the Royal Society of Tropical Medicine and Hygiene* vol. 110,2 (2016): 118-24. doi:10.1093/trstmh/trv096.

[27] James, Ananthu et al. “Predictive Value of Microfilariae-Based Stop-MDA Thresholds After Triple Drug Therapy With IDA Against Lymphatic Filariasis in Treatment-Naive Indian Settings.” *Clinical infectious diseases* : an official publication of the Infectious Diseases Society of America vol. 78,Supplement 2 (2024): S131-S137. doi:10.1093/cid/ciae019

[28] King, Christopher L et al. “A Trial of a Triple-Drug Treatment for Lymphatic Filariasis.” *The New England journal of medicine* vol. 379,19 (2018): 1801-1810. doi:10.1056/NEJMoA1706854

[29] Kunst, Natalia et al. “Computing the Expected Value of Sample Infor-

- 985 mation Efficiently: Practical Guidance and Recommendations for Four<sup>056</sup>  
986 Model-Based Methods.” *Value in health : the journal of the Interna<sup>057</sup>*  
987 tional Society for Pharmacoeconomics and Outcomes Research vol. 23,6<sup>058</sup>  
988 (2020): 734-742. doi:10.1016/j.jval.2020.02.010 <sup>1059</sup>
- 989 [30] Koschorke, Mirja et al. “Mental health, stigma, and neglected tropical<sup>060</sup>  
990 diseases: A review and systematic mapping of the evidence.” *Frontiers in*<sup>061</sup>  
991 *Tropical Diseases* (2022). <sup>1062</sup>
- 992 [31] Kolouri, Soheil et al. “Optimal Mass Transport: Signal processing and<sup>063</sup>  
993 machine-learning applications.” *IEEE signal processing magazine* vol.10<sup>064</sup>  
994 34,4 (2017): 43-59. doi:10.1109/MSP.2017.2695801. <sup>1065</sup>
- 995 [32] Kolouri, Soheil and Gustavo Kunde Rohde. “Transport-based single<sup>066</sup>  
996 frame super resolution of very low resolution face images.” 2015 IEEE<sup>067</sup>  
997 Conference on Computer Vision and Pattern Recognition (CVPR) (2015)<sup>1068</sup>  
998 4876-4884. <sup>1069</sup>
- 999 [33] Mwakitalu, Mbutolwe E et al. “Urban lymphatic filariasis in the metropo<sup>070</sup>  
1000 lis of Dar es Salaam, Tanzania.” *Parasites & vectors* vol. 6 286. 30 Sep<sup>071</sup>  
1001 2013, doi:10.1186/1756-3305-6-286 <sup>1072</sup>
- 1002 [34] Michael E, Singh BK. Heterogeneous dynamics, robustness/fragility<sup>073</sup>  
1003 trade-offs, and the eradication of the macroparasitic disease, lymphatic<sup>074</sup>  
1004 filariasis. *BMC Med* 2016; 14:14. <sup>1075</sup>
- 1005 [35] Ochalek, Jessica et al. “Estimating health opportunity costs in low<sup>076</sup>  
1006 income and middle-income countries: a novel approach and evidence<sup>077</sup>  
1007 from cross-country data.” *BMJ Global Health* vol. 3,6 e000964. 5 Nov<sup>078</sup>  
1008 2018, doi:10.1136/bmjgh-2018-000964. <sup>1079</sup>
- 1009 [36] Ozolek, John A et al. “Accurate diagnosis of thyroid follicular lesions<sup>080</sup>  
1010 from nuclear morphology using supervised learning.” *Medical image<sup>081</sup>*  
1011 analysis vol. 18,5 (2014): 772-80. doi:10.1016/j.media.2014.04.004 <sup>1082</sup>
- 1012 [37] Park, S. & Thorpe, M. Representing and Learning High Dimensional<sup>083</sup>  
1013 Data with the Optimal Transport Map from a Probabilistic Viewpoint<sup>084</sup>  
1014 In 2018 IEEE/CVF Conference on Computer Vision and Pattern Recog<sup>085</sup>  
1015 nition, 7864–7872, <https://doi.org/10.1109/CVPR.2018.00820>. <sup>1086</sup>
- 1016 [38] Pichon-Riviere, Andres et al. “Determining the efficiency path to univer<sup>087</sup>  
1017 sal health coverage: cost-effectiveness thresholds for 174 countries based<sup>088</sup>  
1018 on growth in life expectancy and health expenditures.” *The Lancet. Global<sup>089</sup>*  
1019 health vol. 11,6 (2023): e833-e842. doi:10.1016/S2214-109X(23)00162.<sup>1090</sup>
- 1020 [39] Rothery, Claire et al. “Value of Information Analytical Methods: Report<sup>091</sup>  
1021 2 of the ISPOR Value of Information Analysis Emerging Good Practices<sup>092</sup>  
1022 Task Force.” *Value in health : the journal of the International Society for<sup>093</sup>*  
1023 *Pharmacoeconomics and Outcomes Research* vol. 23,3 (2020): 277-286<sup>1094</sup>  
1024 doi:10.1016/j.jval.2020.01.004. <sup>1095</sup>
- 1025 [40] Stone CM, Kastner R, Steinmann P, et al, Modelling the health impact and<sup>096</sup>  
1026 cost-effectiveness of lymphatic filariasis eradication under varying lev<sup>097</sup>  
1027 els of mass drug administration scale-up and geographic coverage.*BMJ<sup>098</sup>*  
1028 *Global Health* 2016;1:e000021 <sup>1099</sup>
- 1029 [41] Sawers, Larry, and Eileen Stillwaggon. “Economic Costs and Benefits of<sup>100</sup>  
1030 Community-Based Lymphedema-Management Programs for Lymphatic<sup>101</sup>  
1031 Filariasis in India.” *The American journal of tropical medicine and hy<sup>102</sup>*  
1032 giene vol. 103,1 (2020): 295-302. doi:10.4269/ajtmh.19-0898. <sup>1103</sup>
- 1033 [42] Samy AM, Elaagip AH, Kenawy MA, Ayres CF, Peterson AT, Soli<sup>104</sup>  
1034 man DE. Climate change influences on the global potential distribution  
1035 of the mosquito *Culex quinquefasciatus*, vector of West Nile virus and  
1036 lymphatic filariasis. *PLoS ONE*. 2016;11(10):e0163863 10.1371/jour<sup>1037</sup>  
1038 nal.pone.0163863
- 1038 [43] Strong M, Oakley J, Brennan A, Breeze P. Estimating the expected value  
1039 of sample information using the probabilistic sensitivity analysis sam<sup>1040</sup>  
1040 ple a fast nonparametric regression-based method. *Med Decis Making*.  
1041 2015;35(5): 570–83.
- 1042 [44] Strong M, Oakley JE. When is a model good enough? Deriv<sup>1043</sup>  
1043 ing the expected value of model improvement via specifying internal  
1044 model discrepancies.*SIAM/ASA Journal on Uncertainty Quantification*.  
1045 2014;2(1):106–125.
- 1046 [45] Stolk WA, Prada JM, Smith ME, et al. Are alternative strategies required  
1047 to accelerate the global elimination of lymphatic filariasis? Insights from  
1048 mathematical models. *Clin Infect Dis* 2018; 66:2606.
- 1049 [46] Stolk, Wilma A et al. “Comparing antigenaemia- and microfilaraemia  
1050 as criteria for stopping decisions in lymphatic filariasis elimination  
1051 programmes in Africa.” *PLoS Neglected Tropical Diseases* vol. 16,12  
1052 e0010953. 12 Dec. 2022, doi:10.1371/journal.pntd.0010953
- 1053 [47] Stolk, Wilma A et al. “Modeling the impact and costs of semiannual  
1054 mass drug administration for accelerated elimination of lymphatic fi<sup>1055</sup>  
1055 lariasis.” *PLoS Neglected Tropical Diseases* vol. 7,1 (2013): e1984.  
doi:10.1371/journal.and.0001984.
- [48] Turner, Hugo C et al. “An Introduction to the Main Types of Economic  
Evaluations Used for Informing Priority Setting and Resource Allocation  
in Healthcare: Key Features, Uses, and Limitations.” *Frontiers in public  
health* vol. 9 722927. 25 Aug. 2021, doi:10.3389/fpubh.2021.722927
- [49] Ton, T.G., Mackenzie, C. and Molyneux, D.H. The burden of men<sup>1056</sup>  
1057 tal health in lymphatic filariasis. *Infect Dis Poverty* 4, 34 (2015).  
https://doi.org/10.1186/s40249-015-0068-7
- [50] Turner, Hugo C et al. “An Updated Economic Assessment of Mox<sup>1058</sup>  
1059 idectin Treatment Strategies for Onchocerciasis Elimination.” *Clini<sup>1059</sup>*  
1060 cal infectious diseases : an official publication of the Infectious Dis<sup>1060</sup>  
1061 eases Society of America vol. 78,Supplement 2 (2024): S138-S145.  
doi:10.1093/cid/ciae054.
- [51] Turner, Hugo C et al. “Adjusting for Inflation and Currency Changes  
Within Health Economic Studies.” *Value in health: the journal of the In<sup>1062</sup>*  
1063 ternational Society for Pharmacoeconomics and Outcomes Research vol.  
1064 22,9 (2019): 1026-1032. doi:10.1016/j.jval.2019.03.021
- [52] Vallejo-Torres, Laura et al. “Challenges of calculating cost-effectiveness  
thresholds.” *The Lancet. Global health* vol. 11,10 (2023): e1508.  
doi:10.1016/S2214-109X(23)00351-0
- [53] World Health Organization (WHO). *Weekly Epidemiological Record*  
(WER), 13 October 2023, Vol. 98, No. 41, pp. 489 - 502.
- [54] World Health Organization (WHO). *Lymphatic filariasis: monitoring and  
epidemiological assessment of mass drug administration, a manual for na<sup>1065</sup>*  
1066 tional elimination programmes. Geneva, Switzerland: WHO, 2011, page  
1067 29.
- [55] W. Wang, D. Slepcev, S. Basu, J. A. Ozolek, and G. K. Rohde, “A linear  
optimal transportation framework for quantifying and visualizing varia<sup>1068</sup>  
1069 tions in sets of images,” *Int. J. Comput. Vision*, vol. 101, no. 2, pp.  
1070 254–269, 2013.
- [56] Wilson E. *A Practical Guide to Value of Information Analysis*. *Pharma<sup>1071</sup>*  
1072 coEconomics 2015; 33(2):105–121.
- [57] World Health Organization Regional Office for the Western Pacific, *Control  
of Lymphatic Filariasis in China* Editorial Board. *Control of lymphatic  
filariasis in China*. Manila: World Health Organization Regional  
Office for the Western Pacific; 2003.
- [58] Wang, W., Mo, Y., Ozolek, J.A., Rohde, G.K.: Penalized discriminant  
analysis and its application to image-based morphometry. *Pattern Recog<sup>1073</sup>*  
1074 nition Letters.
- [59] Willis, Gabriela A et al. “A community survey of coverage and adver<sup>1074</sup>  
1075 se events following country-wide triple-drug mass drug admin<sup>1075</sup>  
1076 istration for lymphatic filariasis elimination, Samoa 2018.” *PLoS  
neglected tropical diseases* vol. 14,11 e0008854. 30 Nov. 2020,  
1077 doi:10.1371/journal.pntd.0008854.
- [60] World Health Organization, Baltussen, Rob M. P. M, Adam, Taghreed,  
Tan-Torres Edejer, Tessa, Hutubessy, Raymond C. W. et al. (2003). *Mak<sup>1078</sup>*  
1079 ing choices in health : WHO guide to cost-effectiveness analysis. World  
1080 Health Organization.