

# Quantitative Microscopy in Medicine

Alexandre Matov<sup>1, †</sup>, Shayan Modiri<sup>2, 3</sup>

<sup>1</sup> DataSet Analysis LLC, 155 Jackson St, San Francisco, CA 94111, United States

<sup>2</sup> Center for Research in Computer Vision, University of Central Florida, Orlando, FL 32816, United States

<sup>3</sup> Present address: Google Inc., 12400 Bluff Creek Dr, Los Angeles, CA 90094, United States

<sup>†</sup> Corresponding author:

email: [matov@datasetanalysis.com](mailto:matov@datasetanalysis.com)

**Key words:** Circulating Tumor Cells (CTCs), Prostate Specific Membrane Antigen (PSMA), Stationary Wavelet Transform, Watershed Algorithm, Active Contour

## ABSTRACT

**Introduction:** Methods for personalizing medical treatment are the focal point of contemporary biomedical research. In cancer care, we can analyze the effects of therapies at the level of individual cells. Quantitative characterization of treatment efficacy and evaluation of why some individuals respond to specific regimens, whereas others do not, requires additional approaches to genetic sequencing at single time points. Methods for the analysis of changes in phenotype, such as *in vivo* and *ex vivo* morphology and localization of cellular proteins and organelles can provide important insights into patient treatment options.

**Methods:** Novel therapies are needed to extend survival in metastatic castration-resistant prostate cancer (mCRPC). Prostate-specific membrane antigen (PSMA), a cell surface glycoprotein that is commonly overexpressed by prostate cancer (PC) cells relative to normal prostate cells, provides a validated target.

**Results:** We developed a software for image analysis designed to identify PSMA expression on the surface of epithelial cells in order to extract prognostic metrics. In addition, our software can deliver predictive information and inform clinicians regarding the efficacy of PC therapy. We can envisage additional applications of our software system, beyond PC, as PSMA is expressed in a variety of tissues. Our method is based on image denoising, topologic partitioning, and edge detection. These three steps allow to segment the area of each PSMA spot in an image of a coverslip with epithelial cells.

**Conclusions:** Our objective has been to present the community with an integrated, easy to use by all, tool for resolving the complex cellular organization and it is our goal to have such software system approved for use in the clinical practice.

## INTRODUCTION

PC affects hundreds of thousands of men each year in the United States and around the World. Despite advances in diagnostic and treatment strategies, PC is the second most common cause of cancer mortality in men (Bray et al., 2018). Though treatment options for mCRPC have expanded over the past decade, highly proliferative phenotypes frequently emerge at the time of progression on androgen signaling inhibitors (Tannock et al., 2004). Though initially effective in reducing tumor burden for some patients, resistance to systemic is universal and approximately one-third of tumors are primarily refractory to this treatment approach (Petrylak et al., 2004). This is clinically highly significant as mCRPC refractory to tubulin inhibitors is uniformly fatal within 12-18 months (Francini et al., 2019). Currently, mCRPC chemotherapy is limited to FDA-approved docetaxel and cabazitaxel, and could be potentially impactful (Sung et al., 2013; Sung et al., 2012). However, even for the FDA-approved taxanes, there is currently no good mechanistic understanding of drug action and, for instance, docetaxel is always used as first line without having to examine patient cells *ex vivo* for susceptibility. For patients with progressive mCRPC that was refractory to androgen receptor pathway inhibitors and had received or been deemed ineligible for taxane chemotherapy, there are not many treatment options available (Thadani-Mulero et al., 2014). For patients with mutated BRACA1/2, treatment with olaparib offers a benefit (De Santis et al., 2024) and novel therapies are needed to extend survival (Unterrainer et al., 2024).

PSMA, a cell surface antigen overexpressed in PC, provides a validated target (Bander et al., 2005). <sup>225</sup>Ac-J591, anti-PSMA monoclonal antibody J591 radiolabeled with the alpha emitter actinium-225 is being investigated in the context of safety, efficacy, maximum tolerated dose (MTD), and recommended for phase II dose (RP2D) (Tagawa et al., 2024). PSMA expression is found in higher grade PC as well as mCRPC (Bostwick et al., 1998), while its expression is low in normal tissues (Silver et al., 1997), and recent clinical trials have validated PSMA as a target for therapy for high-risk and advanced PC (Sartor

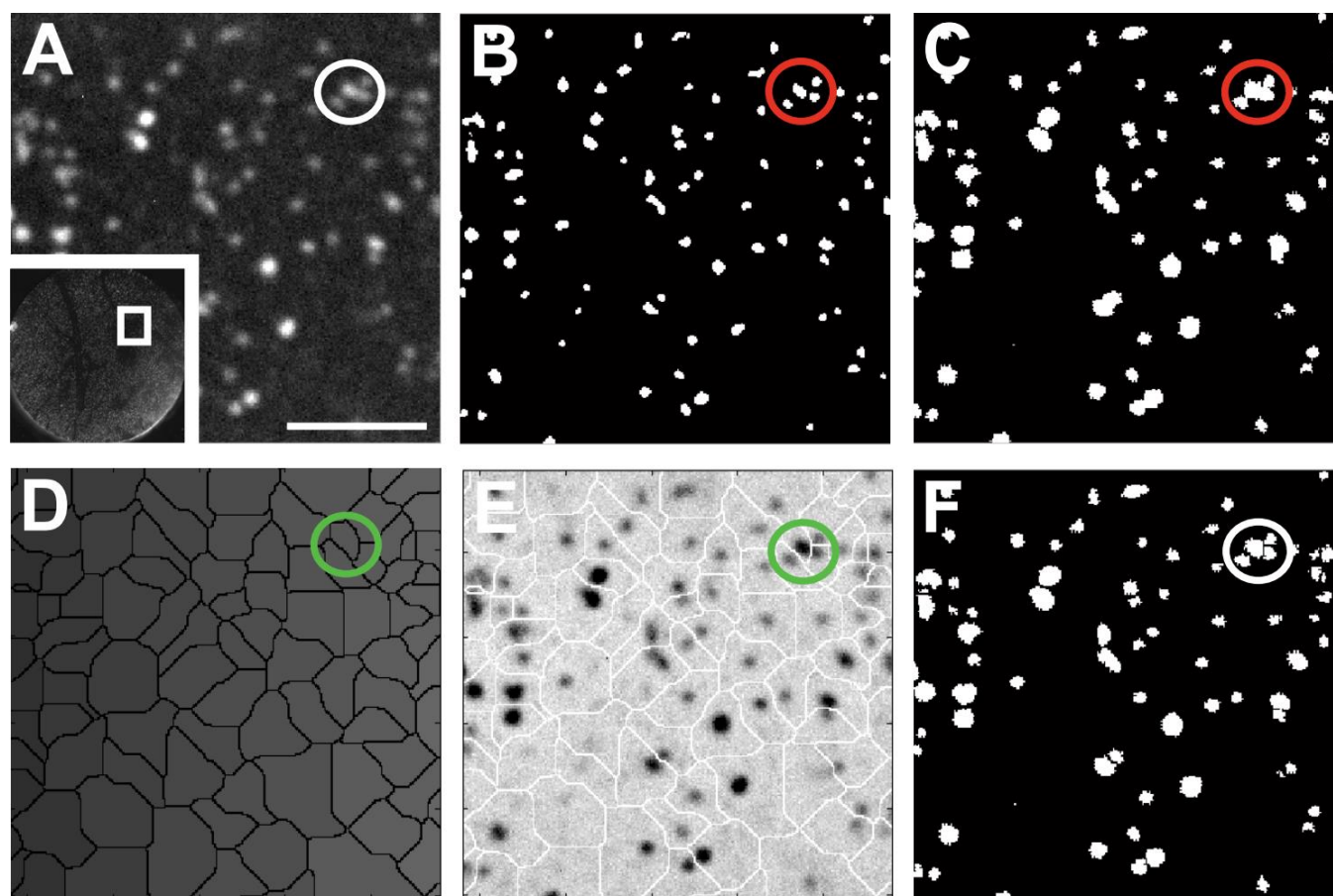
et al., 2021), demonstrating it may offer benefits over the use of tubulin inhibitors (Hofman et al., 2021). This highlights the need to develop methods to inform PSMA-targeting therapeutic strategies, which is the focus of this contribution.

We have developed an image analysis method for segmenting the cellular areas with cell surface expression of PSMA (Vlachostergios et al., 2021). Phenotype analysis can confirm the presence of significant cell surface expression of PSMA before initiating treatment (Tasaki et al., 2014). Further, during treatment, a determination of an effective drug-target engagement on PSMA, evidenced by changes in image metrics (Galletti et al., 2013; Galletti et al., 2014a; Matov, 2024a; Matov, 2024e), may allow early detection of molecular response to treatment, or lack thereof molecular response. This will improve the precision of therapy and its customization to the individual.

## **PSMA IMAGE SEGMENTATION**

The raw PSMA imaging data, shown on Fig. 1A, shows proximity of cells in clusters (see the encircled area for an example of a cluster). That presented us with two problems - to (1) correctly identify the four cells in the cluster and (2) precisely segment the cellular areas for each cell. To this end, we first processed the raw image with a stationary wavelet transform (Olivo-Marin, 2002) and this step identified clusters of pixels with high intensity values (Starck et al., 2000), which we call “seeds” (Jones et al., 2005). In the same region, highlighted with a red circle on Fig. 1B, we detected four bright pixel clusters. As our next step, we wanted to outline the precise contours based on the detected “seeds” and the areas were refined using an active contour algorithm (Caselles et al., 1997; Chan and Vese, 2001). This step, however, fused three of the areas, as seen within the red circle on Fig. 1C. We then applied a watershed transformation (Meyer, 1994) based on the “seeds” shown on Fig. 1B. The watershed results are presented on Fig. 1D and we can see the topological lines representing the borders of the four cellular areas discussed above (shown in the green circle). For visualization purposes and to appreciate

the segmentation result, we show on Fig. 1E the overlay of Fig. 1C and Fig. 1D, both with reversed intensities, and the reader can appreciate the accuracy of the separation between the four cells within the green circle. In order to obtain the final segmentation, we performed a logical conjunction (a logical “and” operation) between the image shown on Fig. 1C and the black borders shown on Fig. 1D. This allowed to improve the precision of the contours from Fig. 1C by introducing pixels with zero intensity as borders (Fig. 1D) between any fused cellular areas. The improved segmentation for the four discussed cells and can be seen in the white circle on Fig. 1F. It depicts a correct representation of the segmentation masks of the raw image of the four cells highlighted with the white circle on Fig. 1A.



**Figure 1. Strategy for the analysis of organoid morphology after drug treatment.** (A) Raw image of PSMA labeling in CTCs. The white circle shows four cells in high proximity. Scale bar equals 150  $\mu\text{m}$ . The inset shows the 8 mm coverslip. The white square marks the zoomed area in (A). (B) The initial image segmentation is accomplished by stationary wavelet transform, which identifies bright clusters in noisy images; we use this step as “seeding”. (C) Active contour, as our next step, identifies precisely the edges of the image features based on the seeds. (D) Watershed of the seeding step in (B). (E) Overlay of (C) and (D), reversed intensities. (F) Logical “and” of (C) and (D) identifies the area and their exact borders.

This way, we can precisely identify the expression levels of PSMA in patient cells collected from a peripheral blood draw before and during therapy. This method can aid in the drug selection and the evaluation of any changes in the regimen based on the *ex vivo* analysis of patient cells (Matov, 2024b; Matov, 2024c; Matov, 2024d; Matov, 2025b).

## CONCLUSIONS

About a third of the patients progressing after treatment with hormonal therapies have intrinsic resistance to systemic therapy (Petrylak et al., 2004; Sweeney et al., 2015; Tannock et al., 2004). The two-thirds which respond, suffer visible side effects from drug toxicity and rapidly acquire resistance to therapy. Overall, the treatment of advanced PC is hampered by the lack of known molecular markers for reliable targeted therapies (Gao et al., 2014; Matov, 2025a). In this context, the PSMA offers a much-needed target and clinical trials are demonstrating that patients experience low levels of toxicity and manageable side effects. In this contribution, we have proposed a method to evaluate the expression of PSMA in patient cells and inform therapy. Besides PC, the expression of PSMA is elevated in other epithelial tumors (de Galiza Barbosa et al., 2020; Lauri et al., 2022), such as tumors in the kidney (Muselaers et al., 2022), breast (Unger et al., 2022), thyroid (Piek et al., 2022), liver (Thompson et al., 2022), pancreas (Sirtl et al., 2021), lung (Osman et al., 2017), and other, which shows an applicability of the approach beyond diseases of the prostate gland. We compared our method, based on the analysis of PSMA labeling only, to analysis of multiplex microscopy imaging and generated also datasets for which PSMA images were acquired in combination with positive epithelial cell nuclear identifiers (DAPI staining) and negative leukocyte cell identifiers (CD45 staining) (Galletti et al., 2014a; Galletti et al., 2014b; Gleghorn et al., 2010; Tasaki et al., 2014). However, the three-color datasets did not offer any computational benefit and did not improve on our ability to correctly identify the tumor cells and the areas with PSMA expression. This highlights the ability of this clinical method to detect disease and monitor drug activity based on a peripheral blood draw, a simple processing step, and a straightforward

quantitative microscopy method. It also demonstrates that PSMA labeling alone is sufficient to detect many types of epithelial tumors.

## **MATERIALS AND METHODS**

### **Coverslip Processing**

Peripheral blood previously drawn from mCRPC patients (the samples were de-identified) receiving docetaxel-based first line chemotherapy was thawed and processed using ficolling (Ficoll-Paque®) to separate cells in the buffy coat from the blood. The cells were isolated by centrifugation, fixed in phenol, and blocked on 8 mm coverslips. In brief, the ficolling method, through centrifugation, isolates peripheral blood mononuclear cells and plasma from granulocytes and erythrocytes. The mononuclear layer contains lymphocytes, monocytes, and CTCs. These cells are plated onto an 8 mm coverslip and subsequently stained for biomarkers (PSMA, CD45, and DAPI). PSMA labeling was done using <sup>177</sup>Lu - J591, anti-PSMA monoclonal antibody J591.

### **Microscopy Imaging**

The type of microscopy used was widefield epi-fluorescence with 10x objective. The acquisition was accomplished using an ORCA-Flash 4.0 (6.5 μm/pixel) camera.

### **Image Analysis**

All image analysis programs for PSMA segmentation and graphical representation of the results were developed in Matlab and C/C++. The wavelet transform method used, spotDetector, was described and validated in (Olivo-Marin, 2002). The computer code is available for download at: <https://github.com/amatov/SegmentationBiomarkerCTC>.

### **Data Availability Statement**

The datasets used and/or analyzed during the current study are available from the corresponding author upon reasonable request.

### **Conflicts of Interest**

The authors declare no conflicts of interest.

### **Funding Statement**

No funding was received to assist with the preparation of this manuscript.

### **Author Contributions**

A.M. designed the algorithm, wrote the proof-of-principle code to demonstrate the feasibility of PSMA segmentation via stationary wavelet transform, and prepared the manuscript. S.M. wrote the code to incorporate watershed transformation and active contour.

### **ACKNOWLEDGEMENTS**

We thank Guang-Yu Lee for processing coverslips and acquiring CTC images. The patient blood samples analyzed were from clinical studies with IRB protocols 0804009740 and 0707009283 at Cornell Medicine.

### **REFERENCES**

- Bander, N.H., M.I. Milowsky, D.M. Nanus, L. Kostakoglu, S. Vallabhajosula, and S.J. Goldsmith. 2005. Phase I trial of <sup>177</sup>lutetium-labeled J591, a monoclonal antibody to prostate-specific membrane antigen, in patients with androgen-independent prostate cancer. *Journal of clinical oncology : official journal of the American Society of Clinical Oncology*. 23:4591-4601.
- Bostwick, D.G., A. Pacelli, M. Blute, P. Roche, and G.P. Murphy. 1998. Prostate specific membrane antigen expression in prostatic intraepithelial neoplasia and adenocarcinoma: a study of 184 cases. *Cancer*. 82:2256-2261.



- Bray, F., J. Ferlay, I. Soerjomataram, R.L. Siegel, L.A. Torre, and A. Jemal. 2018. Global cancer statistics 2018: GLOBOCAN estimates of incidence and mortality worldwide for 36 cancers in 185 countries. *CA: a cancer journal for clinicians*. 68:394-424.
- Caselles, V., R. Kimmel, and G. Sapiro. 1997. Geodesic Active Contours. *International Journal of Computer Vision* 22:61-79.
- Chan, T.F., and L.A. Vese. 2001. Active contours without edges. *IEEE Transactions on Image Processing*. 10:266-277.
- de Galiza Barbosa, F., M.A. Queiroz, R.F. Nunes, L.B. Costa, E.C. Zaniboni, J.F.G. Marin, G.G. Cerri, and C.A. Buchpiguel. 2020. Nonprostatic diseases on PSMA PET imaging: a spectrum of benign and malignant findings. *Cancer Imaging*. 20:23.
- De Santis, M., S.M. Breijo, P. Robinson, C. Capone, K. Pascoe, S. Van Sanden, M. Hashim, M. Trevisan, C. Daly, F. Reitsma, S. van Beekhuizen, H. Ruan, B. Heeg, and E. Verzoni. 2024. Feasibility of Indirect Treatment Comparisons Between Niraparib Plus Abiraterone Acetate and Other First-Line Poly ADP-Ribose Polymerase Inhibitor Treatment Regimens for Patients with BRCA1/2 Mutation-Positive Metastatic Castration-Resistant Prostate Cancer. *Advances in therapy*.
- Francini, E., K.P. Gray, G.K. Shaw, C.P. Evan, A.A. Hamid, C.E. Perry, P.W. Kantoff, M.E. Taplin, and C.J. Sweeney. 2019. Impact of new systemic therapies on overall survival of patients with metastatic castration-resistant prostate cancer in a hospital-based registry. *Prostate cancer and prostatic diseases*. 22:420-427.
- Galletti, G., K. Cleveland, A. Matov, J.E. Hayes, R.J. Klein, D.C. Hassane, L.V. Nicacio, and P. Giannakakou. 2013. Clinical and preclinical evaluation of taxane sensitivity in gastric cancer (GC): Relevance of GC histology. *Journal of Clinical Oncology*. 31:37-37.
- Galletti, G., K. Cleveland, C. Zhang, A. Gjyzezi, A. Matov, D. Betel, M.A. Shah, and P. Giannakakou. 2014a. Elucidating the molecular basis of intrinsic taxane resistance in gastric cancer. *Cancer Research*. 74:897.
- Galletti, G., A. Matov, H. Beltran, J. Fontugne, J. Miguel Mosquera, C. Cheung, T.Y. MacDonald, M. Sung, S. O'Toole, J.G. Kench, S. Suk Chae, D. Kimovski, S.T. Tagawa, D.M. Nanus, M.A. Rubin, L.G. Horvath, P. Giannakakou, and D.S. Rickman. 2014b. ERG induces taxane resistance in castration-resistant prostate cancer. *Nat Commun*. 5:5548.
- Gao, D., I. Vela, A. Sboner, P.J. Iaquina, W.R. Karthaus, A. Gopalan, C. Dowling, J.N. Wanjala, E.A. Undvall, V.K. Arora, J. Wongvipat, M. Kossai, S. Ramazanoglu, L.P. Barboza, W. Di, Z. Cao, Q.F. Zhang, I. Sirota, L. Ran, T.Y. MacDonald, H. Beltran, J.M. Mosquera, K.A. Touijer, P.T. Scardino, V.P. Laudone, K.R. Curtis, D.E. Rathkopf, M.J. Morris, D.C. Danila, S.F. Slovin, S.B. Solomon, J.A. Eastham, P. Chi, B. Carver, M.A. Rubin, H.I. Scher, H. Clevers, C.L. Sawyers, and Y. Chen. 2014. Organoid cultures derived from patients with advanced prostate cancer. *Cell*. 159:176-187.
- Gleghorn, J.P., E.D. Pratt, D. Denning, H. Liu, N.H. Bander, S.T. Tagawa, D.M. Nanus, P.A. Giannakakou, and B.J. Kirby. 2010. Capture of circulating tumor cells from whole blood of prostate cancer patients using geometrically enhanced differential immunocapture (GEDI) and a prostate-specific antibody. *Lab Chip*. 10:27-29.
- Hofman, M.S., L. Emmett, S. Sandhu, A. Iravani, A.M. Joshua, J.C. Goh, D.A. Pattison, T.H. Tan, I.D. Kirkwood, S. Ng, R.J. Francis, C. Gedye, N.K. Rutherford, A. Weickhardt, A.M. Scott, S.T. Lee, E.M. Kwan, A.A. Azad, S. Ramdave, A.D. Redfern, W. Macdonald, A. Guminski, E. Hsiao, W. Chua, P. Lin, A.Y. Zhang, M.M. McJannett, M.R. Stockler, J.A. Violet, S.G. Williams, A.J. Martin, and I.D. Davis. 2021. [(177)Lu]Lu-PSMA-617 versus cabazitaxel in patients with metastatic castration-resistant prostate cancer (TheraP): a randomised, open-label, phase 2 trial. *Lancet (London, England)*. 397:797-804.

- Jones, S.E., J. Erban, B. Overmoyer, G.T. Budd, L. Hutchins, E. Lower, L. Laufman, S. Sundaram, W.J. Urba, K.I. Pritchard, R. Mennel, D. Richards, S. Olsen, M.L. Meyers, and P.M. Ravdin. 2005. Randomized phase III study of docetaxel compared with paclitaxel in metastatic breast cancer. *Journal of clinical oncology : official journal of the American Society of Clinical Oncology*. 23:5542-5551.
- Lauri, C., L. Chiurchioni, V.M. Russo, L. Zannini, and A. Signore. 2022. PSMA Expression in Solid Tumors beyond the Prostate Gland: Ready for Theranostic Applications? *Journal of clinical medicine*. 11.
- Matov, A. 2024a. Analysis of Multiple Myeloma Drug Efficacy. *medRxiv:2024.24311450*.
- Matov, A. 2024b. Computational Analysis of Treatment Resistant Cancer Cells. *medRxiv:2024.24312813*.
- Matov, A. 2024c. Microtubule Regulation in Cancer Cells *SSRN:2024.5072927*.
- Matov, A. 2024d. Modulation of the Cytoskeleton for Cancer Therapy *SSRN:2024.5061950*.
- Matov, A. 2024e. Quantitative Video Microscopy in Medicine. *SSRN:2024.4909311*.
- Matov, A. 2025a. Microtubule Dysregulation in Prostate Cancer Metastasis to the Vertebrae *SSRN:2025.50*.
- Matov, A. 2025b. Quantitative Cell Division in Medicine. *SSRN:2025.50*.
- Meyer, F. 1994. Topographic distance and watershed lines. *Signal Processing*. 38:113-125.
- Muselaers, S., S. Erdem, R. Bertolo, A. Ingels, Ö. Kara, N. Pavan, E. Roussel, A. Pecoraro, M. Marchioni, U. Carbonara, L. Marandino, D. Amparore, R. Campi, and G. On Behalf Of The European Association Of Urology Eau Young Academic Urologists Yau Renal Cancer Working. 2022. PSMA PET/CT in Renal Cell Carcinoma: An Overview of Current Literature. *Journal of clinical medicine*. 11.
- Olivo-Marin, J.-C. 2002. Extraction of spots in biological images using multiscale products. *Pattern Recogn*. 35:1989-1996.
- Osman, M.M., A. Iravani, R.J. Hicks, and M.S. Hofman. 2017. Detection of Synchronous Primary Malignancies with <sup>68</sup>Ga-Labeled Prostate-Specific Membrane Antigen PET/CT in Patients with Prostate Cancer: Frequency in 764 Patients. 58:1938-1942.
- Petrylak, D.P., C.M. Tangen, M.H. Hussain, P.N. Lara, Jr., J.A. Jones, M.E. Taplin, P.A. Burch, D. Berry, C. Moynour, M. Kohli, M.C. Benson, E.J. Small, D. Raghavan, and E.D. Crawford. 2004. Docetaxel and estramustine compared with mitoxantrone and prednisone for advanced refractory prostate cancer. *N Engl J Med*. 351:1513-1520.
- Piek, M.W., L.H. de Vries, M.L. Donswijk, B. de Keizer, J.P. de Boer, L. Lodewijk, R.S. van Leeuwen, M.R. Vriens, K.J. Hartemink, and I.M.C. van der Ploeg. 2022. Retrospective analysis of PSMA PET/CT thyroid incidental uptake in adults: incidence, diagnosis, and treatment/outcome in a tertiary cancer referral center and University Medical Center. *European journal of nuclear medicine and molecular imaging*. 49:2392-2400.
- Sartor, O., J. de Bono, K.N. Chi, K. Fizazi, K. Herrmann, K. Rahbar, S.T. Tagawa, L.T. Nordquist, N. Vaishampayan, G. El-Haddad, C.H. Park, T.M. Beer, A. Armour, W.J. Pérez-Contreras, M. DeSilvio, E. Kpamegan, G. Gericke, R.A. Messmann, M.J. Morris, and B.J. Krause. 2021. Lutetium-177-PSMA-617 for Metastatic Castration-Resistant Prostate Cancer. *The New England journal of medicine*. 385:1091-1103.
- Silver, D.A., I. Pellicer, W.R. Fair, W.D. Heston, and C. Cordon-Cardo. 1997. Prostate-specific membrane antigen expression in normal and malignant human tissues. *Clinical cancer research : an official journal of the American Association for Cancer Research*. 3:81-85.
- Sirtl, S., A. Todica, H. Ilhan, M. Zorniak, P. Bartenstein, and J. Mayerle. 2021. Incidental Finding of a PSMA-Positive Pancreatic Cancer in a Patient Suffering from a Metastasized PSMA-Positive Prostate Cancer. *Diagnostics (Basel, Switzerland)*. 11.

- Starck, J.-L., F. Murtagh, and A. Bijaoui. 2000. *Image Processing and Data Analysis: The Multiscale Approach*. Cambridge Press, Cambridge.
- Sung, M.S., A. Gjyrezi, G.Y. Lee, A. Matov, G. Galletti, M. Loftus, Y. Syed, T. Lannin, A. Hristov, C. Mason, S.T. Tagawa, B.J. Kirby, D.M. Nanus, and P. Giannakakou. 2013. Using CTCs to interrogate mechanisms of taxane resistance in the prospective Taxynergy clinical trial in prostate cancer. *Cancer Research*. 73:3492.
- Sung, M.S., A. Gjyrezi, Y. Syed, T. Lannin, A. Hristov, A. Matov, M. Loftus, G. Galletti, G.Y. Lee, C. Mason, B.J. Kirby, D.M. Nanus, S.T. Tagawa, and P. Giannakakou. 2012. Molecular determinants of taxane activity using circulating tumor cells (CTCs) from castrate-resistant prostate cancer patients. *Understanding Cancer: Genomes to Devices Symposium, New York Academy of Medicine*.
- Sweeney, C.J., Y.H. Chen, M. Carducci, G. Liu, D.F. Jarrard, M. Eisenberger, Y.N. Wong, N. Hahn, M. Kohli, M.M. Cooney, R. Dreicer, N.J. Vogelzang, J. Picus, D. Shevrin, M. Hussain, J.A. Garcia, and R.S. DiPaola. 2015. Chemohormonal Therapy in Metastatic Hormone-Sensitive Prostate Cancer. *N Engl J Med*. 373:737-746.
- Tagawa, S.T., C. Thomas, A.O. Sartor, M. Sun, J. Stangl-Kremser, M. Bissassar, S. Vallabhajosula, S. Huicochea Castellanos, J.T. Nauseef, C.N. Sternberg, A. Molina, K. Ballman, D.M. Nanus, J.R. Osborne, and N.H. Bander. 2024. Prostate-Specific Membrane Antigen-Targeting Alpha Emitter via Antibody Delivery for Metastatic Castration-Resistant Prostate Cancer: A Phase I Dose-Escalation Study of (225)Ac-J591. *Journal of clinical oncology : official journal of the American Society of Clinical Oncology*. 42:842-851.
- Tannock, I.F., R. de Wit, W.R. Berry, J. Horti, A. Pluzanska, K.N. Chi, S. Oudard, C. Theodore, N.D. James, I. Turesson, M.A. Rosenthal, and M.A. Eisenberger. 2004. Docetaxel plus prednisone or mitoxantrone plus prednisone for advanced prostate cancer. *N Engl J Med*. 351:1502-1512.
- Tasaki, S., M. Sung, A. Matov, G. Galletti, E. Diamond, N. Bander, K. Zhou, S. Tagawa, D. Nanus, and P. Giannakakou. 2014. Analysis of microtubule perturbations and androgen receptor localization in circulating tumor cells from castration resistant prostate cancer patients as predictive biomarkers of clinical response to docetaxel chemotherapy. *Cancer Research*. 74:923-923.
- Thadani-Mulero, M., L. Portella, S. Sun, M. Sung, A. Matov, R.L. Vessella, E. Corey, D.M. Nanus, S.R. Plymate, and P. Giannakakou. 2014. Androgen receptor splice variants determine taxane sensitivity in prostate cancer. *Cancer Res*. 74:2270-2282.
- Thompson, S.M., G. Suman, M.S. Torbenson, Z.E. Chen, D.E. Jondal, A. Patra, E.C. Ehman, J.C. Andrews, C.J. Fleming, B.T. Welch, A.N. Kurup, L.R. Roberts, K.D. Watt, M.J. Truty, S.P. Cleary, R.L. Smoot, J.K. Heimbach, N.H. Tran, A. Mahipal, J. Yin, T. Zemla, C. Wang, Z. Fogarty, M. Jacobson, B.J. Kemp, S.K. Venkatesh, G.B. Johnson, D.A. Woodrum, and A.H. Goenka. 2022. PSMA as a Theranostic Target in Hepatocellular Carcinoma: Immunohistochemistry and (68) Ga-PSMA-11 PET Using Cyclotron-Produced (68) Ga. *Hepatology communications*. 6:1172-1185.
- Unger, C., P. Bronsert, K. Michalski, A. Bicker, and I. Juhasz-Böss. 2022. Die Expression des prostataspezifischen Membranantigens (PSMA) beim Mammakarzinom. *Geburtshilfe und Frauenheilkunde*. 82:50 - 58.
- Unterrainer, L.M., J. Calais, and N.H. Bander. 2024. Prostate-Specific Membrane Antigen: Gateway to Management of Advanced Prostate Cancer. *Annual review of medicine*. 75:49-66.
- Vlachostergios, P.J., M.J. Niaz, M. Skafida, S.A. Mosallaie, C. Thomas, P.J. Christos, J.R. Osborne, A.M. Molina, D.M. Nanus, N.H. Bander, and S.T. Tagawa. 2021. Imaging expression of prostate-specific membrane antigen and response to PSMA-targeted  $\beta$ -emitting radionuclide therapies in metastatic castration-resistant prostate cancer. *The Prostate*. 81:279-285.