

1 **TITLE PAGE:**

2

3 **Type of the Study: Original Research Article**

4

5 **Title: Association of quantified cardiovascular health with all-cause mortality in prediabetic**
6 **patients**

7

8 **Short Runnine Title: Association of LE-8 with mortality in prediabetic patients**

9

10 **Authors:**

11 Aomiao Chen, UNDERGRADUATE^{1,2,4†}

12 Qiuyu He, UNDERGRADUATE^{1,2,4†}

13 Yichuan Wu, UNDERGRADUATE^{1,3,4†}

14 Jiaqi Chen, MD^{1,2}

15 Xiaoqin Ma, MD^{1,2}

16 Lingyuan Hu, UNDERGRADUATE^{1,2,4}

17 Geningyue Wang, UNDERGRADUATE^{1,3,4}

18 Zhuotong Wang, UNDERGRADUATE^{1,2,4}

19 Zongji Zheng, MD, Attending Physician^{1,2,4*}

20 Yijie Jia, MD, Attending Physician^{1,2,4*}

21

22 **Affiliations:**

23 1: Department of Endocrinology & Metabolism, Nanfang Hospital.Southern Medical University,
24 Guangzhou, China

25 2: The First School of Clinical Medicine, Southern Medical University, Guangzhou, China

26 3: School of Stomatology, Southern Medical University, Guangzhou, China

27 4: De Feng Academy, Southern Medical University, Guangzhou, China

28 †: These authors contributed equally to this work

29 *: Corresponding Author

30

31 **Correspondence:**

32 Yijie Jia

33 Department of Endocrinology & Metabolism, Nanfang Hospital, Southern Medical University,
34 Guangzhou 510515, China. Tel: (86) 020-61641635, ORCID ID: 0000-0002-4338-8397, E-mail:
35 yijie0207@126.com

36

37 Zongji Zheng

38 Department of Endocrinology & Metabolism, Nanfang Hospital, Southern Medical University,
39 Guangzhou 510515, China. Tel.: (86) 020-61641635, ORCID ID: 0000-0003-0434-0152, E-mail:
40 zhengzongji2014@163.com

41

42 **Email:**

43 Aomiao Chen: 2066181700@qq.com

NOTE: This preprint reports new research that has not been certified by peer review and should not be used to guide clinical practice.

44 Qiuyu He: 1311673203@qq.com
45 Yichuan Wu: wuyichuan402@126.com
46 Jiaqi Chen: m15626492040@163.com
47 Xiaoqin Ma: mxqmxqcq@163.com
48 Lingyuan Hu: 1951473860@qq.com
49 Geningyue Wang: 2605436175@qq.com
50 Zhuotong Wang: 1712880074@qq.com
51 Yijie Jia: yijie0207@126.com
52 Zongji Zheng: zhengzongji2014@163.com
53

54 **Number of words: 3457**

55 **Number of references: 44**

56 **Number of tables: 2**

57 **Number of figures: 3**

58

59

60

61

62

63

64

65

66

67

68

69

70

71

72 **Association of quantified cardiovascular health with**
73 **all-cause mortality in prediabetic patients**

74

75 **Abstract**

76 **Aim:** We aimed to explore the association between all-cause mortality and
77 cardiovascular health (CVH) lifestyle interventions (as accurately quantified by Life's
78 essential 8) in prediabetic patients and to observe the dose-response relationship of the
79 potential association.

80 **Methods and Participants:** The retrospective study included 5344 participants with
81 prediabetes (age: 52.9 ±15.8 years; (51.6% of men)). The Life's essential 8 (LE8)
82 score includes four health indicators and four health behaviors. We calculated Cox
83 proportional hazard ratios (HRS) for all-cause mortality in subgroups of high CVH
84 (≥ 80), low CVH (≤ 50), and moderate CVH (50-79) based on the CVH quantification
85 score of LE8, and explored the dose-response relationship of potential associations.
86 We also performed separate analyses of the associations of all-cause mortality with
87 each LE8 components and CVH health behaviors and indicators.

88 **Results:** In the median follow-up period of 8.33 years, 658 deaths occurred.
89 Compared with participants with high CVH, the covariate-adjusted HR(95%CI) for
90 participants with moderate and low CVH were 2.55(1.23-5.31) and 3.92 (1.70-9.02),
91 respectively. There was a dose-response relationship between the improvement of

92 CVH status and the reduction of all-cause mortality (P-overall < 0.0001, P-nonlinear =
93 0.7989). The improvement of CVH health behaviors has a more significant protective
94 effect on patients with prediabetes than CVH health indicators.

95 **Conclusion:** High CVH status, quantified by LE8, has a significant effect on
96 preventing mortality outcomes in prediabetic adults in the U.S.

97 **Keywords:** Prediabetes; Cardiovascular health; Life's Essential 8; All-cause mortality;
98 Primary prevention.

99

100 **I. Background**

101 Prediabetes is defined as a glucose condition which is a high-risk metabolic state of
102 diabetes¹. It is estimated that by the year of 2030, 470 million people will suffer from
103 prediabetes in the world^{2, 3}, and more than 70% of prediabetic patients will eventually
104 develop diabetes⁴. Moreover, prior guidelines and two meta-analyses involving more
105 than one million people have shown that patients with prediabetes indeed encounter
106 elevated risk for cardiovascular disease (CVD)^{2, 5, 6}.

107 Previous guidelines and numerous large cohort studies have focused on identifying
108 effective health interventions for diabetes, which are essential to reduce the medical
109 burden and improve survival outcomes⁷⁻¹⁰. However, there is heterogeneity in the
110 health status of individual patients' lifestyle that cannot be ignored¹¹. Using an
111 intervention-control design based on a single cutoff point, studies to determine the
112 effectiveness of health interventions without accurate quantification of the health
113 assessment process are likely to produce diametrically opposite results^{8, 12}. This is
114 most likely due to differences between the two studies in the setting of cut-off points

115 for health assessment (For example, the physical activity requirement for healthy
116 young adults is an additional 280 minutes of moderate-intensity activity per week in
117 the DQDPOS and 150 minutes per week in the DPPOS)^{9, 13}. Therefore, we believe that
118 quantified healthy living status based on uniform standards will be useful to confirm
119 whether health interventions can preventatively reduce the risk of death in prediabetic
120 patients. To further improve the global cardiovascular health (CVH), the AHA
121 recently recommended the Life's Essential 8 (LE8) score to quantify cardiovascular
122 health, which includes four CVH behaviors (diet, sleep, exercise, smoking cessation)
123 and four ideal CVH indicators (blood lipids, blood glucose, blood pressure, body
124 mass index)^{14, 15}. We believe that LE8 can achieve accurate quantification of CVH,
125 which is beneficial to clarify whether health interventions in prediabetic patients can
126 reduce the overall risk of death, and its intuitive score is important for urging the
127 prediabetic population to achieve and maintain optimal CVH status¹⁶.

128 Based on its efficacy in health assessment, LE8 has been widely used in prevention
129 and prognosis related studies¹⁷⁻²⁰. However, to our knowledge, there are few study has
130 investigated the association between LE8 and all-cause mortality in patients with
131 T2DM²¹. We conclude that CVH intervention should be strengthened as early as
132 possible in not only T2DM patients, but also pre-diabetic patients who are at risk of
133 death and CVD. Especially in prediabetic patients, early health intervention can often
134 achieve better results⁴. However, in medical practice, many prediabetic patients with
135 CVD will be forced to change their lifestyle due to functional limitations or
136 psychological reasons²²⁻²⁴. These patients will be more difficult to achieve a high CVH

137 state ($LE8 \geq 80$) or even a moderate CVH state ($LE8 \geq 50$) as defined by the AHA. In
138 addition, because special factors are not considered by LE8 such as the obesity
139 paradox may exist in the disease patient population²⁵, it is important to analyze the
140 relationship between the individual components of LE8 and mortality to clarify their
141 efficacy. Finally, CVH behavioral intervention itself can improve CVH indicators and
142 is more accessible in the components of LE8²⁶. However, assessment of this
143 component has not been implemented in prediabetic population.

144 Therefore, we studied a nationally representative queue, in order to realize the
145 following three goals. First, we aimed to determine whether quantified high CVH
146 status, based on LE8, could preventatively reduce the risk of all-cause mortality in
147 prediabetic patients. Second, the dose-response form of this preventive effect will be
148 confirmed, which will benefit prediabetic patients who can only achieve limited CVH
149 improvement. Finally, we aimed to explore the associations of health behaviors,
150 health indicators and individual components of LE8 with mortality risk in order to
151 identify the most effective intervention strategies.

152

153 **II. Research Design and Methods**

154 **1. Study Design and Population**

155 The data and guidelines used in this analysis are freely available from
156 NCHS:<https://www.cdc.gov/nchs/nhanes/index.htm>. The National Health and
157 Nutrition Examination Survey (NHANES) is a nationally representative study which
158 was designed to investigate the nutritional status and health in the United States.

159 Research design and methods has been described in detail
160 (http://www.cdc.gov/nchs/nhanes/about_nhanes.htm.) . The NHANES study
161 protocol has been approved by the National Center for Health Statistics Institutional
162 Review board, and each participant provided formal informed consent.
163 Five NHANES cycles from 2007 to 2016 with 29201 adult participants was used as
164 baseline. After excluding participants with insufficient data on diabetes-related
165 biochemical markers (n = 16295), serum creatinine (n = 160), cardiovascular healthy
166 lifestyle (n = 2333), and mortality follow-up (n = 5), weight data missing (n = 317),
167 and 10091 participants were included in the analysis.

168 According to ADA's criteria and previous studies^{14, 27, 28}, prediabetes was defined as a
169 self-reported physician-diagnosed prediabetic state or an HbA1c level from 5.7% to
170 6.4% or a fasting blood glucose level from 100mg/dL to 125mg/dL. Since this study
171 targeted a prediabetic population, 5344 participants were included in this study after
172 screening.

173

174 **2. Assessment of cardiovascular health**

175 Cardiovascular health (CVH) was assessed using the LE8 score²², which consists of :
176 Physical activity, Diet health, nicotine exposure, BMI, Sleep health, Blood glucose,
177 Blood lipid, Blood pressure. LE8 scores were calculated as the average of the eight
178 component scores, ranging from 100 to 0 . According to recommendations from AHA,
179 CVH status was classified according to the LE8 score: 80-100 as high CVH, 0-49 as
180 low CVH, and 50-79 as moderate CVH .

181 Eight components were scored according to different metrics (Supplementary Table 1).
182 The Healthy Eating Index 2020 (HEI-2020) was used to calculate the diet score²⁹, and
183 dietary information was obtained by self-reported food frequency questionnaire.
184 Information on self-reported physical activity, nicotine exposure, and sleep duration
185 was collected by NHANES questionnaire. Height, weight, and blood pressure were
186 measured at the examination centers using standard instruments. Non-HDL
187 cholesterol was used to calculate Lipid score. Blood glucose was scored by means of
188 fasting plasma glucose or HbA1c measured by standard methods.

189

190 **3. Covariate assessment**

191 Covariates included demographic variables, health-related exposures, and underlying
192 diseases. Demographic variables include years of age, gender, ethnicity, income and
193 poverty rate. Health related exposure include drinking, smoking, BMI(kg/m²), total
194 cholesterol. Basic diseases including diabetes, hypertension, cardiovascular disease
195 (myocardial infarction, congestive heart failure, angina attack, or coronary heart
196 disease, as diagnosed by a physician), and anemia.

197

198 **4. Mortality assessment**

199 Baseline data from the NHANES from 2007 through 2016 were linked to the National
200 Death Index (NDI) through December 31, 2019, to determine survival.

201

202 **5. Statistical analysis**

203 All analyses accounted for the complex sampling design of the NHANES and used
204 fasting subsample weights(wtsaf10yr) to ensure nationally representative results.
205 CVH status was classified according to the LE8: 80-100 as high CVH, 0-49 as low
206 CVH, and 50-79 as moderate CVH status¹⁵.
207 First, Kaplan-Meier method was used to visually analyze the cumulative mortality of
208 prediabetic patients with different CVH status categories. We then developed
209 multivariable COX proportional hazards models to assess the association between
210 CVH status and all-cause mortality based on follow-up time. The model passed
211 Schoenfeld residual tests for statistical compliance (Supplementary Figure 1), and C
212 statistics were calculated. We included demographic variables, health-related
213 exposures, and basic diseases as covariates to adjust for confounding factors.
214 Next, to analyze the dose-response relationship between all-cause mortality and the
215 total CVH score LE8 in prediabetic patients, restricted cubic spline models (RCS) of 3
216 sections (90th, 50th, and 10th percentiles) were applied. Models were evaluated
217 according to Akaike information criterion (AIC) and tested for nonlinearity. To test
218 the generalizability and sensitivity of this relationship, we repeated the RCS models,
219 stratified according to age, sex, income and poverty ratio, and the presence or absence
220 of cardiovascular disease or anemia. The second sensitivity analysis eliminates the
221 survival time less than one year follow-up of adults, to evaluate whether the results
222 under the influence of reverse causation. In the third sensitivity analysis, all
223 participants with CVD were excluded, because the disease itself may force patients to
224 make lifestyle changes, such as physical activity restrictions.

225 Finally, to investigate the best protective factors for patients with prediabetes, and to
226 analyze the protective effect of health behaviors and health indicators, each LE8
227 component score (grouped by whether it was 50 or higher) and the mean score on
228 health behaviors and on health indicators were included as additional covariates in the
229 COX proportional-hazards model. R software was used to perform all analyses
230 (Version: R 4.2.1; <https://www.r-project.org/>). Double-sided P-values of less than 0.05
231 were considered to indicate statistical significance.

232

233 **III. Results**

234 **1. Baseline characteristics**

235 Table 1 describes the baseline characteristics of the total cohort of participants. Only
236 7.0% of participants were classified as having high CVH. Prediabetic adults with
237 better CVH status were more likely to be male, white people with higher family
238 income level, do not drink alcohol or smoke, better control of blood lipids, blood
239 glucose, and blood pressure, and do not have basic diseases.

240

241 **2. Association between CVH status and mortality in patients with prediabetes**

242 During a median follow-up period of 8.33 years (95%CI, 8.25-8.50), 658 deaths
243 occurred. As shown in Figure1, Kaplan-Meier survival curves differed by CVH status
244 ($P < 0.001$, Log-rank). The survival curves of the high CVH group were significantly
245 higher than those of the moderate and low CVH groups.

246

247 **3. Association between CVH status and risk of mortality in patients with**

248 **prediabetes**

249 We developed multivariable COX proportional hazards models, as shown in Table 2,
250 in which worsening CVH status leading to an increased risk of death. After adjusting
251 for all potential covariates (Model 3, C-statistic: 0.8252166), the risk of death in the
252 moderate CVH group and the low CVH group was respectively 2.55 times (HR: 2.55,
253 95%CI: 1.23-5.31) and 3.92 times (HR:3.92, 95%CI:1.70-9.02) higher than that in the
254 high CVH group.

255

256 **4.Dose-response relationship between CVH total score (Life's essential 8) and**
257 **all-cause mortality in prediabetic patients**

258 RCS modeling and visualization were adopted to investigate the dose-response
259 relationship in prediabetic patients. Multivariable adjusted RCS models showed a
260 significant linear association between LE8 and all-cause mortality (P-overall < 0.0001,
261 P-nonlinear = 0.7989, Figure 2a). Akaike information criterion evaluation showed that
262 the model had good statistical power with AIC = 19.00. Through calculation, every 10
263 points average increment, can avoid the risk for all-cause mortality in patients with up
264 to 30%.

265 Stratified analyses showed that the LE8 score was linearly associated with all-cause
266 mortality across all strata (Figure 2b through 2f). In addition, after eliminated all CVD
267 patients, dose-response relationship between LE8 and all-cause mortality is still
268 significant(P-overall < 0.0001, P-nonlinear = 0.8749, Supplementary Figure 2a). To
269 avoid the effect of reverse causality, we also examined the association of LE8 with
270 all-cause mortality in the subgroup of patients who had at least 1 year of follow-up,

271 and the results were generally consistent with those in the overall population
272 (P-overall < 0.0001, P-nonlinear = 0.7198; Supplementary Figure 2b).

273

274 **5. Associations of individual components of CVH, health behaviors, and health**

275 indicators with all-cause mortality in patients with prediabetes

276 We included individual components of CVH status as covariates in the multivariable

277 COX regression model, and the results are shown in the forest plot (Figure 3a). We

278 found that among health behaviors, higher scores of sleep (HR: 0.76 , 95%CI:

279 0.62-0.92), exercise (HR: 0.49, 95%CI: 0.38-0.62) and smoking (HR: 0.73, 95%CI:

280 0.54-0.98) were associated with lower risk of all-cause mortality. However, no

281 significant association was found for Diet Score. In terms of health indicators, we

282 found that prediabetic patients with higher scores were at higher risk of all-cause

283 mortality, such as BMI Score (HR: 1.37, 95%CI: 1.13-1.66) and Bodylipid Score (HR:

284 1.21, 95%CI: 1.01-1.44) . Moreover, we noticed a protective association in the high

285 Glucose Score (HR: 0.63 , 95%CI: 0.49-0.80) but no significant association in the

286 Bloodpressure Score.

287 Because of the aforementioned heterogeneity in the associations between scores on

288 health behaviors and health indicators, we further explored the association between

289 mean scores on health behaviors and health indicators and all cause-mortality by

290 constructing a multivariate COX regression model (Figure 3b). Compared with

291 participants with high average scores of health behavior, participants with medium

292 and low average scores of health behavior had 1.93 times (HR: 1.93, 95%CI:

293 1.15-3.24) and 3.92 times (HR:3.06, 95%CI:1.89-4.98) risk of death, respectively.

294 However, the protective effect of higher mean scores on health indicators was no
295 longer significant (Figure 3b).

296

297 **IV. Discussion**

298 Based on a nationally representative sample from the NHANES, we found that high
299 CVH status quantified by LE8, had a significant effect on preventing mortality
300 outcomes in patients with prediabetes. In the linear dose-response relationship, the
301 avoidable mortality risk in prediabetic patients reached 30% for every 10-point LE8
302 increment on average. Improving CVH health behaviors has a more significant
303 protective effect on prediabetic patients than CVH health indicators. Due to the strong
304 accessibility of health behavior assessment in patients' daily life, the CVH status
305 based on LE8 may reduce the risk of death and improve their quality of life.

306 There has been controversy in previous large cohort studies about whether lifestyle
307 interventions are effective in reducing the all-cause mortality in diabetic patients. We
308 applied a uniform CVH quantification criterion based on LE8 and showed that high
309 CVH status was significantly associated with reduced all-cause mortality in
310 prediabetic patients. Effective health interventions are important for improving the
311 survival prognosis and reducing the medical burden of prediabetes, the results of the
312 Da Qing Diabetes Prevention Outcomes Study (DQDPOS) support our view.

313 Previous studies have shown that quantified CVH has a protective effect on diabetes
314 incidence, quality of life and mortality^{20, 30-33}. In a follow-up cohort of 309,789
315 participants, Sun et al. found that higher CVH status was associated with reduced
316 premature mortality among T2DM patients (HR=0.42,95%CI=0.39-0.45)²¹. Based on

317 the guidelines from American Association of Clinical Endocrinology and considering
318 the value of early life interventions, we further studied patients with prediabetes and
319 found a significant protective effect. In a meta-analysis of 193,126 participants, Geidl
320 et al. found that a 1-point improvement in CVH status based on the LS7 score was
321 associated with an average 11% reduction in all-cause mortality
322 (RR=0.89,95%CI=0.86-0.93) observing significant dose-response characteristics³⁴.
323 However, LS7 quantifies CVH by simply adding categorical scores of seven factors,
324 which may result in insufficient statistical power for dose-response associations²⁰.
325 Therefore, we used LE8 from the mean score of the hundred-mark scale for the eight
326 health factors for the analysis and found significant dose-response associations
327 (P-overall < 0.0001, P-nonlinear = 0.7989). Every 10-point improvement in LE8 score
328 was associated with a 30% reduction in prediabetic patients' all-cause mortality,
329 which means that even a slight improvement in CVH status may have a significant
330 effect on the prevention of mortality in prediabetic patients. Given the accessibility of
331 the various assessments of the LE8 in the daily life of patients, we focused on the
332 health behavior part of CVH. The results showed that health behaviors could have
333 more significant improvement on the survival prognosis of patients. However, after
334 adjustments, the health indicator scores have no significant protective effect, which
335 may be due to a more fundamental effect of health behaviors. Our results may suggest
336 that physicians should strengthen health behavior education for patients with
337 prediabetes. Marteau et al. highlighted that promoting diet, physical activity and other
338 behaviors into the healthiest state, remains a major challenge for cardiometabolic

339 disease prevention efforts, which further supports our view³⁵.

340 Among CVH health behaviors, we noticed that increased physical activity was the top
341 protective factor in reducing the risk of all-cause mortality. The protective association
342 of physical activity has been widely demonstrated³⁰, and our analysis validates the
343 recent scoring method of physical activity in LE8 in the prediabetic population. We
344 also suggest that nicotine exposure was the second most significant contributor to
345 prediabetic patient's mortality. Cohort study data show that smoking cessation is
346 associated with reduced risk for all-cause mortality³⁶. Our findings confirmed this
347 association and emphasize the protective significance of long-term maintenance of
348 smoking cessation status in prediabetic patients with a history of smoking, based on
349 the LE8-based scoring method for the duration of smoking cessation. Previous
350 evidence has shown that unhealthy sleep duration (<7 or >8 hours) is associated with
351 increased all-cause mortality³⁷. Our results showed that the risk of all-cause mortality
352 decreased significantly with the increase of sleep index score.

353 Interestingly, a significant positive association was shown between BMI score and
354 blood lipid score greater than 50 and all-cause mortality in prediabetic patients. This
355 may be related to the obesity paradox effect, where obesity appears as a risk factor in
356 disease incidence but has a protective effect in patients with severe disease^{25, 40-42}.

357 Similarly, in a meta-analysis of 161,984 participants, Liu et al. observed the protective
358 effect of overweight in patients with type 2 diabetes⁴³. However, an opposite result
359 was observed in a follow-up study with an average of 15.8 years, and Tobias et al.
360 suggested that the obesity paradox was due to insufficient follow-up time⁴⁴. Our

361 findings may provide new evidence in this controversial area, and further studies are
362 needed to confirm possible interactions in the prediabetic population. Our results
363 noticed that the relationship between dietary health score ≥ 50 and all-cause
364 mortality was not significant. Because there were few participants with a score of 80
365 or higher in each category, we used a cutoff of 50 or higher to improve statistical
366 power. This cutoff may not have met the health requirements for improved outcomes
367 in patients with prediabetes, given that diet quality is a major determinant of the risk
368 of diabetes^{38, 39}. In a cohort study, also based on a US population, Fretts et al. observed
369 a similar phenomenon³³. A similar reason may explain the nonsignificant results for
370 blood-pressure scores.

371 To the best of our knowledge, this is the first study to examine the association
372 between quantified CVH and all-cause mortality in prediabetic patients. The strength
373 of this study is that it considers both the need to prevent prediabetes and the need to
374 mitigate the impact of CVD comorbidities on prediabetic patients. In addition, we
375 designed the study with a relatively large sample size and long-term follow-up, used
376 the new LE8 score recommended by the AHA to accurately quantify CVH status, and
377 performed covariate adjustment and sensitivity analysis during the data analysis,
378 which makes our results more reliable.

379 However, there are still several potential limitations worth considering. First, this
380 study was an observational cohort study, so causality should be interpreted with
381 caution. Secondly, the four CVH health behaviors (diet, physical activity, nicotine
382 exposure, and sleep) in the LE8 score were all self-reported, which may lead to recall

383 bias. More objective monitoring would be beneficial to improve the accuracy of these
384 four health behaviors. Third, we obtained the CVH score only once at baseline, which
385 may change during long-term follow-up. Finally, our study population included only
386 U.S. adults, and generalization of the results to other populations should be cautious.

387

388 **V. Conclusion**

389 We suggest that a high CVH status based on LE8 quantification, especially CVH
390 health behaviors in prediabetic adults has a significant effect in preventing mortality
391 outcomes in prediabetic adults. There was a linear dose-response association between
392 increased LE8 and reduced all-cause mortality. Our findings highlight the importance
393 of focusing on CVH improvement in prediabetic patients, especially on more
394 accessible health behaviors, as even small improvements can yield substantial
395 reductions in the risk of all-cause mortality.

396

397 **Acknowledgement**

398 This research has been conducted using the NHANES resources. We are grateful to
399 the participants and staff of the NHANES for their valuable contributions.

400

401 **Funding**

402 This work was supported by research grants from the National Natural Science
403 Foundation of China (Y.J., 82370818, Z.Z., 82270862); Natural Science Foundation
404 of Guangdong Province(Y.J.,2024A1515012744); the Guangzhou Science and
405 Technology Project (Y.J.,2024A04J5098); and the National Undergraduate Training

406 Program for Innovation and Entrepreneurship, Southern Medical University (Z.Z.,
407 202312121031, Y.J., S202312121167).

408

409 **Author contributions**

410 A.C., Q.H., Y.W., Z.Z., and Y.J. designed this study, A.C., Y.W. and Q.H. performed
411 the data extraction and statistical analysis. Y.W., Q.H., J.C., X.M., L.H., G.W., and
412 Z.W. validated the statistical analysis. A.C. and Q.H. wrote the original draft of the
413 manuscript, which was revised by Y.W., Z.Z., and Y.J. All authors made great
414 contributions to the manuscript and approved it for submission. Z.Z. and Y.J. are the
415 guarantors of this work and, as much, had full access to all the data in the study and
416 take responsibility for the integrity of the data and accuracy of the data analysis.

417

418 **Conflict of interest**

419 All authors declare no competing interests.

420

421 **References:**

- 422 1. Tabák AG, Herder C, Rathmann W, Brunner EJ, Kivimäki M. Prediabetes: a high-risk state for
423 diabetes development. *The Lancet*. 2012;379(9833):2279-2290.
- 424 2. Cai X, Zhang Y, Li M, Wu JH, Mai L, Li J, Yang Y, Hu Y, Huang Y. Association between
425 prediabetes and risk of all cause mortality and cardiovascular disease: updated meta-analysis. *BMJ*.
426 2020;m2297.
- 427 3. Kim SH. Reframing prediabetes: A call for better risk stratification and intervention. *J INTERN*
428 *MED*. 2024;295(6):735-747.
- 429 4. 3. Prevention or Delay of Type 2 Diabetes:Standards of Medical Care in Diabetes — 2020.
430 *DIABETES CARE*. 2020;43(Supplement_1):S32-S36.
- 431 5. Cosentino F, Grant PJ, Aboyans V, Bailey CJ, Ceriello A, Delgado V, Federici M, Filippatos G,
432 Grobbee DE, Hansen TB, Huikuri HV, Johansson I, Jüni P, Lettino M, Marx N, Mellbin LG, Östgren
433 CJ, Rocca B, Roffi M, Sattar N, Seferović PM, Sousa-Uva M, Valensi P, Wheeler DC, Piepoli MF,
434 Birkeland KI, Adamopoulos S, Ajjan R, Avogaro A, Baigent C, Brodmann M, Bueno H, Ceconi C,

- 435 Chioncel O, Coats A, Collet J, Collins P, Cosyns B, Di Mario C, Fisher M, Fitzsimons D, Halvorsen S,
436 Hansen D, Hoes A, Holt RIG, Home P, Katus HA, Khunti K, Komajda M, Lambrinou E, Landmesser U,
437 Lewis BS, Linde C, Lorusso R, Mach F, Mueller C, Neumann F, Persson F, Petersen SE, Petronio AS,
438 Richter DJ, Rosano GMC, Rossing P, Rydén L, Shlyakhto E, Simpson IA, Touyz RM, Wijns W,
439 Wilhelm M, Williams B, Aboyans V, Bailey CJ, Ceriello A, Delgado V, Federici M, Filippatos G,
440 Grobbee DE, Hansen TB, Huikuri HV, Johansson I, Jüni P, Lettino M, Marx N, Mellbin LG, Östgren
441 CJ, Rocca B, Roffi M, Sattar N, Seferović PM, Sousa-Uva M, Valensi P, Wheeler DC, Windecker S,
442 Aboyans V, Baigent C, Collet J, Dean V, Delgado V, Fitzsimons D, Gale CP, Grobbee DE, Halvorsen S,
443 Hindricks G, Iung B, Jüni P, Katus HA, Landmesser U, Leclercq C, Lettino M, Lewis BS, Merkely B,
444 Mueller C, Petersen SE, Petronio AS, Richter DJ, Roffi M, Shlyakhto E, Simpson IA, Sousa-Uva M,
445 Touyz RM, Zelveian PH, Scherr D, Jahangirov T, Lazareva I, Shivalkar B, Naser N, Gruev I, Milicic D,
446 Petrou PM, Linhart A, Hildebrandt P, Hasan-Ali H, Marandi T, Lehto S, Mansourati J, Kurashvili R,
447 Siasos G, Lengyel C, Thrainsdottir IS, Aronson D, Di Lenarda A, Raissova A, Ibrahim P, Abilova S,
448 Trusinskis K, Saade G, Benlamin H, Petrulioniene Z, Banu C, Magri CJ, David L, Boskovic A, Alami
449 M, Liem AH, Bosevski M, Svingen GFT, Janion M, Gavina C, Vinereanu D, Nedogoda S, Mancini T,
450 Ilic MD, Fabryova L, Fras Z, Jiménez-Navarro MF, Norhammar A, Lehmann R, Mourali MS, Ural D,
451 Nesukay E, Chowdhury TA. 2019 ESC Guidelines on diabetes, pre-diabetes, and cardiovascular
452 diseases developed in collaboration with the EASD. *EUR HEART J*. 2020;41(2):255-323.
- 453 **6.** Huang Y, Cai X, Mai W, Li M, Hu Y. Association between prediabetes and risk of cardiovascular
454 disease and all cause mortality: systematic review and meta-analysis. *BMJ*. 2016;i5953.
- 455 **7.** Diagnosis and classification of diabetes mellitus. *DIABETES CARE*. 2014;37 Suppl 1:S81-S90.
- 456 **8.** Gong Q, Zhang P, Wang J, Ma J, An Y, Chen Y, Zhang B, Feng X, Li H, Chen X, Cheng YJ,
457 Gregg EW, Hu Y, Bennett PH, Li G, Qian X, Zhang L, Hui Y, He S, Wang X, Thompson TJ, Gerzoff
458 RB, Liu P, Jiang Y, Hu Z, Wang J, Jiang X, Zhang J, Xi R, Pang C, Li C, Hu X, Yang W, An Z, Sun X,
459 Chen C, Gang Y, Liu J, Xiao J, Cao H, Zheng H, Zhang H, Li H, Hong J, Liu X, Zhao F, Wang W,
460 Chen B, Howard BV, Engelgau MM, Roglic G. Morbidity and mortality after lifestyle intervention for
461 people with impaired glucose tolerance: 30-year results of the Da Qing Diabetes Prevention Outcome
462 Study. *The Lancet Diabetes & Endocrinology*. 2019;7(6):452-461.
- 463 **9.** Lee CG, Heckman-Stoddard B, Dabelea D, Gadde KM, Ehrmann D, Ford L, Prorok P, Boyko EJ,
464 Pi-Sunyer X, Wallia A, Knowler WC, Crandall JP, Temprosa M. Effect of Metformin and Lifestyle
465 Interventions on Mortality in the Diabetes Prevention Program and Diabetes Prevention Program
466 Outcomes Study. *DIABETES CARE*. 2021;44(12):2775-2782.
- 467 **10.** Effects of Intensive Lifestyle Intervention on All-Cause Mortality in Older Adults With Type 2
468 Diabetes and Overweight/Obesity: Results From the Look AHEAD Study. *DIABETES CARE*.
469 2022;45(5):1252-1259.
- 470 **11.** Zhang Y, Pan X, Lu Q, Wang Y, Geng T, Zhou Y, Liao LM, Tu Z, Chen J, Xia P, Wang Y, Wan Z,
471 Guo K, Yang K, Yang H, Chen S, Wang G, Han X, Wang Y, Yu D, He M, Zhang X, Liu L, Wu T, Wu S,
472 Liu G, Pan A. Association of Combined Healthy Lifestyles With Cardiovascular Disease and Mortality
473 of Patients With Diabetes: An International Multicohort Study. *MAYO CLIN PROC*. 2023;98(1):60-74.
- 474 **12.** Effect of Metformin and Lifestyle Interventions on Mortality in the Diabetes Prevention Program
475 and Diabetes Prevention Program Outcomes Study.
- 476 **13.** Pan XR, Li GW, Hu YH, Wang JX, Yang WY, An ZX, Hu ZX, Lin J, Xiao JZ, Cao HB, Liu PA,
477 Jiang XG, Jiang YY, Wang JP, Zheng H, Zhang H, Bennett PH, Howard BV. Effects of diet and
478 exercise in preventing NIDDM in people with impaired glucose tolerance. The Da Qing IGT and

- 479 Diabetes Study. *DIABETES CARE*. 1997;20(4):537-544.
- 480 **14.** He Y, Wang Z, Zhang H, Lai X, Liu M, Yang L, Zheng Y, He M, Kong W, Zhang X. Polygenic
481 Risk Score Modifies the Association of HbA1c With Hearing Loss in Middle-Aged and Older
482 Chinese: The Dongfeng-Tongji Cohort. *DIABETES CARE*. 2024.
- 483 **15.** Lloyd-Jones DM, Allen NB, Anderson CAM, Black T, Brewer LC, Foraker RE, Grandner MA,
484 Lavretsky H, Perak AM, Sharma G, Rosamond W. Life's Essential 8: Updating and Enhancing the
485 American Heart Association's Construct of Cardiovascular Health: A Presidential Advisory From the
486 American Heart Association. *CIRCULATION*. 2022;146(5).
- 487 **16.** Tang R, Wang X, Li X, Ma H, Liang Z, Heianza Y, Qi L. Adherence to Life's Essential 8 and
488 incident chronic kidney disease: a prospective study of 147,988 UK Biobank participants. *The*
489 *American Journal of Clinical Nutrition*. 2023;118(4):804-811.
- 490 **17.** Kulkarni AV, Anders M, Nazal L, Ridruejo E, Efe C. Cases of severe acute liver injury following
491 inactivated SARS-CoV-2 vaccination. *J HEPATOL*. 2023;78(2):e60-e61.
- 492 **18.** Wu S, Wu Z, Yu D, Chen S, Wang A, Wang A, Gao X. Life's Essential 8 and Risk of Stroke: A
493 Prospective Community-Based Study. *STROKE*. 2023;54(9):2369-2379.
- 494 **19.** Janssen I, Powell LH, Dugan SA, Derby CA, Kravitz HM. Cardiovascular Health, Race, and
495 Decline in Cognitive Function in Midlife Women: The Study of Women's Health Across the Nation. *J*
496 *AM HEART ASSOC*. 2024;13(9).
- 497 **20.** Sun J, Li Y, Zhao M, Yu X, Zhang C, Magnussen CG, Xi B. Association of the American Heart
498 Association's new "Life's Essential 8" with all-cause and cardiovascular disease-specific mortality:
499 prospective cohort study. *BMC MED*. 2023;21(1).
- 500 **21.** Sun Y, Yu Y, Zhang K, Yu B, Yu Y, Wang Y, Wang B, Tan X, Wang Y, Lu Y, Wang N. Association
501 between Life's Essential 8 score and risk of premature mortality in people with and without type 2
502 diabetes: A prospective cohort study. *Diabetes/Metabolism Research and Reviews*. 2023;39(5).
- 503 **22.** Lloyd-Jones DM, Ning H, Labarthe D, Brewer L, Sharma G, Rosamond W, Foraker RE, Black T,
504 Grandner MA, Allen NB, Anderson C, Lavretsky H, Perak AM. Status of Cardiovascular Health in US
505 Adults and Children Using the American Heart Association's New "Life's Essential 8" Metrics:
506 Prevalence Estimates From the National Health and Nutrition Examination Survey (NHANES), 2013
507 Through 2018. *CIRCULATION*. 2022;146(11):822-835.
- 508 **23.** Boyer TM, Avula V, Minhas AS, Vaught AJ, Sharma G, Gemmill A. Psychosocial Stressors as a
509 Determinant of Maternal Cardiovascular Health During Pregnancy. *The American Journal of*
510 *Cardiology*. 2023;201:302-307.
- 511 **24.** Zhang H, Zhang L, Li J, Xiang H, Liu Y, Gao C, Sun X. The influence of Life's Essential 8 on the
512 link between socioeconomic status and depression in adults: a mediation analysis. *BMC PSYCHIATRY*.
513 2024;24(1).
- 514 **25.** Zheng J, Hu Y, Xu H, Lei Y, Zhang J, Zheng Q, Li L, Tu W, Chen R, Guo Q, Zang X, You Q, Xu
515 Z, Zhou Q, Wu X. Normal-weight visceral obesity promotes a higher 10-year atherosclerotic
516 cardiovascular disease risk in patients with type 2 diabetes mellitus - a multicenter study in China.
517 *CARDIOVASC DIABETOL*. 2023;22(1).
- 518 **26.** Ueno K, Kaneko H, Okada A, Suzuki Y, Matsuoka S, Fujiu K, Michihata N, Jo T, Takeda N,
519 Morita H, Kamiya K, Ako J, Node K, Yasunaga H, Komuro I. Association of four health behaviors in
520 Life's Essential 8 with the incidence of hypertension and diabetes mellitus. *PREV MED*.
521 2023;175:107685.
- 522 **27.** Zhang Q, Xiao S, Jiao X, Shen Y. The triglyceride-glucose index is a predictor for cardiovascular

- 523 and all-cause mortality in CVD patients with diabetes or pre-diabetes: evidence from NHANES 2001 –
524 2018. *CARDIOVASC DIABETOL*. 2023;22(1).
- 525 **28.** Zou X, Zhou X, Zhu Z, Ji L. Novel subgroups of patients with adult-onset diabetes in Chinese and
526 US populations. *Lancet Diabetes Endocrinol*. 2019;7(1):9-11.
- 527 **29.** Shams-White MM, Pannucci TE, Lerman JL, Herrick KA, Zimmer M, Meyers MK, Stody EE,
528 Reedy J. Healthy Eating Index-2020: Review and Update Process to Reflect the Dietary Guidelines
529 for Americans,2020-2025. *JACAD NUTR DIET*. 2023;123(9):1280-1288.
- 530 **30.** Yang Q, Cogswell ME, Flanders WD, Hong Y, Zhang Z, Loustalot F, Gillespie C, Merritt R, Hu
531 FB. Trends in Cardiovascular Health Metrics and Associations With All-Cause and CVD Mortality
532 Among US Adults. *JAMA*. 2012;307(12):1273.
- 533 **31.** Perak AM, Ning H, Khan SS, Bundy JD, Allen NB, Lewis CE, Jacobs DR, Van Horn LV,
534 Lloyd-Jones DM. Associations of Late Adolescent or Young Adult Cardiovascular Health With
535 Premature Cardiovascular Disease and Mortality. *JAM COLL CARDIOL*. 2020;76(23):2695-2707.
- 536 **32.** Xanthakis V, Enserro DM, Murabito JM, Polak JF, Wollert KC, Januzzi JL, Wang TJ, Toftler G,
537 Vasani RS. Ideal Cardiovascular Health. *CIRCULATION*. 2014;130(19):1676-1683.
- 538 **33.** FRETTS AM, HOWARD BV, MCKNIGHT B, DUNCAN GE, BERESFORD SAA, METE M,
539 ZHANG Y, SISCOVICK DS. Life's Simple 7 and Incidence of Diabetes Among American Indians: The
540 Strong Heart Family Study. *DIABETES CARE*. 2014;37(8):2240-2245.
- 541 **34.** Geidl W, Schlesinger S, Mino E, Miranda L, Pfeifer K. Dose – response relationship between
542 physical activity and mortality in adults with noncommunicable diseases: a systematic review and
543 meta-analysis of prospective observational studies. *INT J BEHAV NUTR PHY*. 2020;17(1).
- 544 **35.** Marteau TM, Hollands GJ, Fletcher PC. Changing Human Behavior to Prevent Disease: The
545 Importance of Targeting Automatic Processes. *SCIENCE*. 2012;337(6101):1492-1495.
- 546 **36.** Han L, You D, Ma W, Astell-Burt T, Feng X, Duan S, Qi L. National Trends in American Heart
547 Association Revised Life's Simple 7 Metrics Associated With Risk of Mortality Among US Adults.
548 *JAMA Network Open*. 2019;2(10):e1913131.
- 549 **37.** Krittanawong C, Tunhasiriwet A, Wang Z, Zhang H, Farrell AM, Chirapongsathorn S, Sun T,
550 Kitai T, Argulian E. Association between short and long sleep durations and cardiovascular outcomes: a
551 systematic review and meta-analysis. *European Heart Journal: Acute Cardiovascular Care*.
552 2019;8(8):762-770.
- 553 **38.** Schwingshackl L, Hoffmann G, Lampousi A, Knüppel S, Iqbal K, Schwedhelm C, Bechthold A,
554 Schlesinger S, Boeing H. Food groups and risk of type 2 diabetes mellitus: a systematic review and
555 meta-analysis of prospective studies. *EUR J EPIDEMIOL*. 2017;32(5):363-375.
- 556 **39.** Wang B, Fu Y, Tan X, Wang N, Qi L, Lu Y. Assessing the impact of type 2 diabetes on mortality
557 and life expectancy according to the number of risk factor targets achieved: an observational study.
558 *BMC MED*. 2024;22(1).
- 559 **40.** Ottosson F, Smith E, Ericson U, Brunkwall L, Orho-Melander M, Di Somma S, Antonini P,
560 Nilsson PM, Fernandez C, Melander O. Metabolome-Defined Obesity and the Risk of Future Type 2
561 Diabetes and Mortality. *DIABETES CARE*. 2022;45(5):1260-1267.
- 562 **41.** Al-Chalabi S, Chinnadurai R, Kalra PA, Sinha S. Mortality and Renal Outcomes Are Impacted by
563 Obesity in Cardiorenal Metabolic Disease but Not in People with Concomitant Diabetes Mellitus.
564 *CARDIORENAL MED*. 2024;14(1):23-33.
- 565 **42.** Nie W, Zhang Y, Jee SH, Jung KJ, Li B, Xiu Q. Obesity survival paradox in pneumonia: a
566 meta-analysis. *BMC MED*. 2014;12:61.

- 567 43. Liu X, Liu Y, Zhan J, He Q. Overweight, obesity and risk of all-cause and cardiovascular
568 mortality in patients with type 2 diabetes mellitus: a dose - response meta-analysis of prospective
569 cohort studies. *EUR J EPIDEMIOL*. 2015;30(1):35-45.
- 570 44. Tobias DK, Pan A, Jackson CL, O'Reilly EJ, Ding EL, Willett WC, Manson JE, Hu FB.
571 Body-Mass Index and Mortality among Adults with Incident Type 2 Diabetes. *NEW ENGL J MED*.
572 2014;370(3):233-244.

573

574

575 **Figure legends**

576 Figure 1 Association of different CVH status and cumulative mortality in prediabetic patients.

577 Figure 2 Dose-response relationship between the total CVH score of Life's essential 8 and
578 all-cause mortality in patients with prediabetes. Panel b-f: Stratified analysis was performed
579 according to age group (greater than 60 years old or not), gender group (male or female), income
580 to poverty rate (higher than the study population median 2.06 or not), and whether there was
581 cardiovascular disease (defined as any one of myocardial infarction, congestive heart failure,
582 angina attack, or coronary heart disease, as diagnosed by a physician) and anemia(defined as
583 hemoglobin < 12mg/dL in men and < 11mg/dL in women).

584 Figure 3 Association of individual CVH component scores, health behaviors or indicators and
585 all-cause mortality in patients with prediabetes. Panel a-association of individual CVH
586 component scores and all-cause mortality in patients with prediabetes (high for ≥ 50 points,
587 otherwise low). Panel b-association of mean score of health behaviors or indicators and all-cause
588 mortality in patients with prediabetes. Covariates included age (greater than 60 years old or not),
589 gender (male or female), ethnicity (black, white, or other people), income and poverty rate (higher
590 than the study population median 2.06 or not), cardiovascular disease (defined as any one of
591 myocardial infarction, congestive heart failure, angina attack, or coronary heart disease, as
592 diagnosed by a physician), and anemia (defined as hemoglobin < 12mg/dL in men and < 11mg/dL
593 in women). ALQ110: at least 12 cups of alcohol in a life time. CVD: cardiovascular disease.

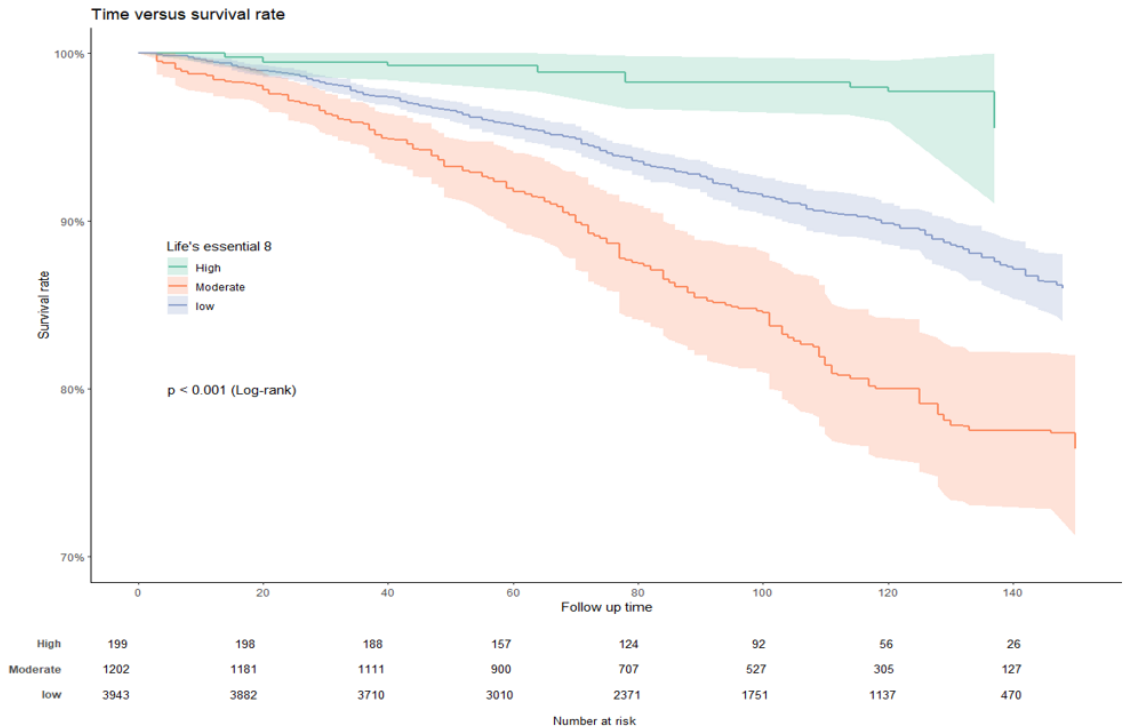


Figure 1 Association of different CVH status and cumulative mortality in prediabetic patients.

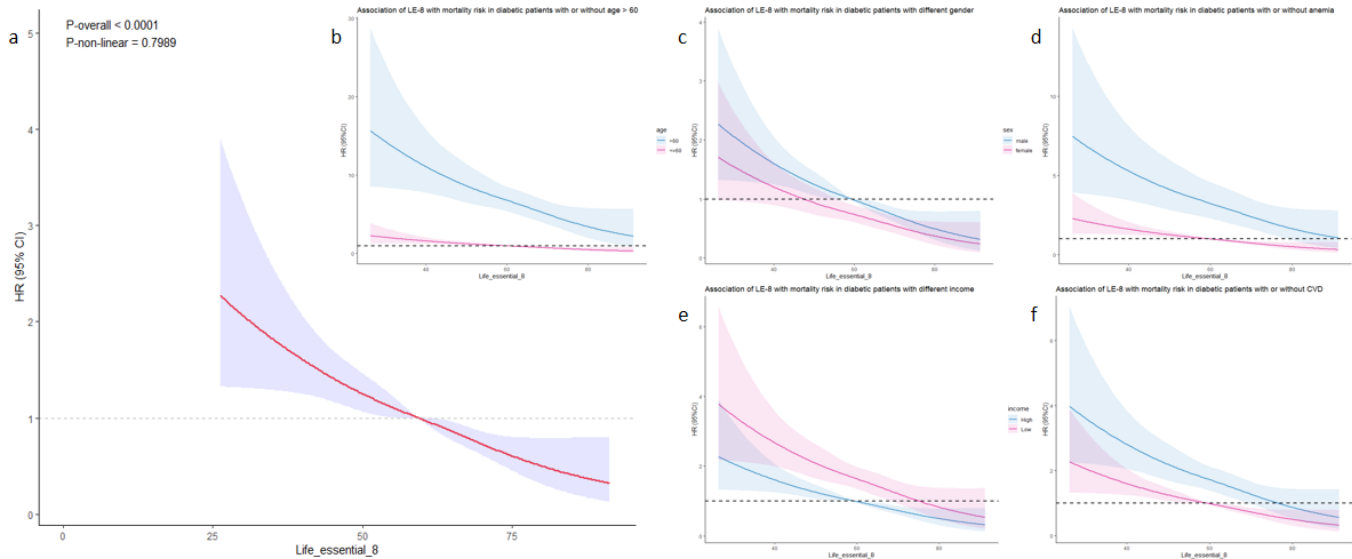


Figure 2 Dose-response relationship between the total CVH score of Life's essential 8 and all-cause mortality in patients with prediabetes. Panel b-f: Stratified analysis was performed according to age group (greater than 60 years old or not), gender group (male or female), income to poverty rate (higher than the study population median 2.06 or not), and whether there was cardiovascular disease (defined as any one of myocardial infarction, congestive heart failure, angina attack, or coronary heart disease, as diagnosed by a physician) and anemia (defined as hemoglobin < 12mg/dL in men and < 11mg/dL in women).

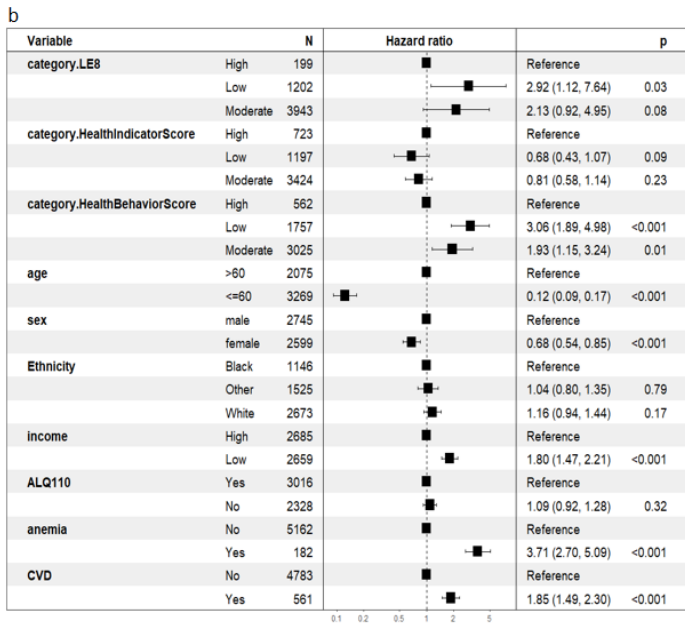
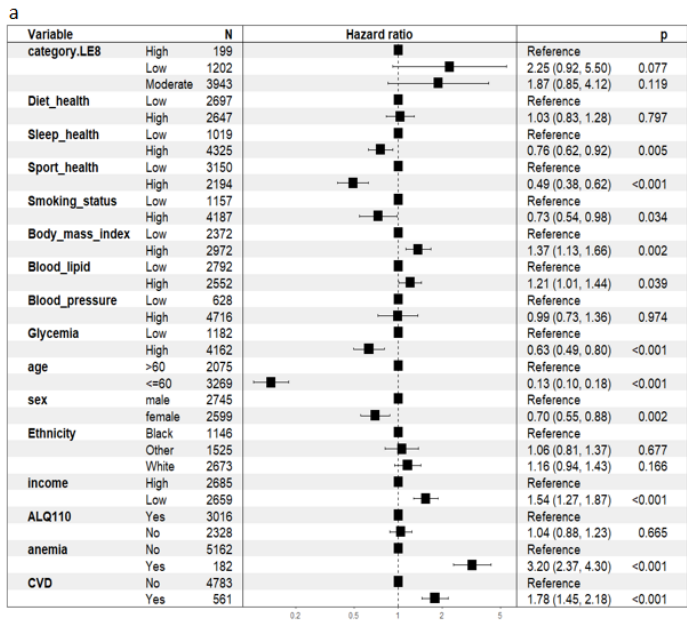


Figure 3 Association of individual CVH component scores, health behaviors or indicators and all-cause mortality in patients with prediabetes. Panel a-association of individual CVH component scores and all-cause mortality in patients with prediabetes (high for ≥ 50 points, otherwise low). Panel b-association of mean score of health behaviors or indicators and all-cause mortality in patients with prediabetes. Covariates included age (greater than 60 years old or not), gender (male or female), ethnicity (black, white, or other people), income and poverty rate (higher than the study population median 2.06 or not), cardiovascular disease (defined as any one of myocardial infarction, congestive heart failure, angina attack, or coronary heart disease, as diagnosed by a physician), and anemia (defined as hemoglobin $< 12\text{mg/dL}$ in men and $< 11\text{mg/dL}$ in women). ALQ110: at least 12 cups of alcohol in a life time. CVD: cardiovascular disease.

Table 1-Baseline characteristics of the weighted study population classified by CVH status

Characteristics	Overall	CVH status (LE8 score)			p
		High(80-100)	Moderate(50-79)	Low(0-49)	
Weighted N	226 million	7.0 (15.8 million)	76.7 (173.3 million)	13.6 (36.9 million)	
Age , years	52.86 (15.87)	44.73 (17.38)	53.24 (15.93)	54.58 (13.75)	<0.001
Sex					0.008
Male	51.6 (116.6 million)	57.4 (9.1 million)	52.3 (90.7 million)	45.7 (16.8 million)	
Female	48.4 (109.4 million)	42.6 (6.7 million)	47.7 (82.6 million)	54.3 (20 million)	
Ethnicity					0.01
Black	15.1 (34 million)	11.0 (1.7 million)	14.7 (25.5 million)	18.3 (6.8 million)	
Other	20.2 (45.6 million)	25.7 (4.1 million)	20.1 (34.9 million)	18.1 (6.7 million)	
White	64.7 (146.3 million)	63.3 (10 million)	65.1 (112.9 million)	63.6 (23.4 million)	
PIR*	2.97(1.64)	3.30(1.59)	3.05(1.63)	2.34(1.58)	<0.001
Drinker*	59.4 (134.3 million)	53.6 (8.5 million)	59.0 (102.3 million)	63.9 (23.6 million)	0.049
Smoker*	48.6 (109.7 million)	21.7 (3.4 million)	45.3 (78.5 million)	75.4 (27.8 million)	<0.001
BMI	30.14 (6.83)	24.80 (3.75)	29.72 (6.37)	34.40 (7.63)	<0.001
Sleep duration, hours	6.77 (1.66)	7.20 (0.91)	6.82 (1.21)	6.35 (3.06)	<0.001
Creatinine, mmol/L	0.89 (0.38)	0.87 (0.19)	0.90 (0.41)	0.87 (0.26)	0.151
Glucose, mmol/L	102.19 (20.34)	95.73 (10.04)	101.58 (18.67)	107.81 (28.36)	<0.001
TC, mmol/L	196.91 (41.58)	175.14 (29.26)	194.84 (40.58)	216.00 (43.65)	<0.001
SBP,mmHg	124.06 (17.00)	114.90 (12.86)	123.56 (16.29)	130.34 (19.41)	<0.001
DBP,mmHg	69.95 (12.56)	67.58 (8.87)	69.57 (12.37)	72.73 (14.26)	<0.001
CVD	9.3 (21 million)	7.2 (1.1 million)	8.7 (15.1 million)	13.0 (4.8 million)	0.006
Diabetes	17.8 (40.3 million)	0.7 (0.1 million)	16.1 (27.9 million)	33.3 (12.3 million)	<0.001
Hypertension	38.1 (86.1 million)	14.2 (2.3 million)	37.6 (65.2 million)	50.4 (18.6 million)	<0.001
Anemia	1.8 (4.1 million)	0.6 (0.1 million)	1.8 (3.1 million)	2.5 (0.9 million)	<0.001
LE8	62.17 (12.03)	83.77 (3.16)	64.12 (8.02)	43.76 (4.91)	<0.001

Data are % (weighted N) for categorical measures or mean (SD) for continuous measures.

*PIR :the rate of income to poverty; Smoker:smoked at least 100 cigarettes in the past; Drinker: had at least 12 alcohol drinkers in lifetime; TC:total cholesterol.

Table 2. Hazard ratios of cardiovascular health status to all-cause mortality in prediabetes.

CVH status (LE8 score)	N	Model1		Model2		Model3	
		HR(95%CI)	P-value	HR(95%CI)	P-value	HR(95%CI)	P-value
High(80-100)	199	Reference		Reference		Reference	
Moderate(50-79)	3943	4.32(2.10,8.91)	<0.001	2.68(1.34, 5.36)	0.005	2.55(1.23, 5.31)	0.012
Low(0-49)	1202	8.39(4.03,17.48)	<0.001	4.75(2.27, 9.93)	<0.001	3.92(1.70, 9.02)	0.001

Model1: No adjustment. Model2: Adjusted for sex, age, race/ethnicity, and income. Model3: Adjusted for sex, age, race/ethnicity, income, alcohol consumption, smoking, BMI, total cholesterol, diabetes, anemia, hypertension, and cardiovascular disease.