

1 **Antenatal corticosteroids for pregnant women at risk of preterm labor in low- and middle-**
2 **income countries: utilization and facility readiness**

3
4 **Authors information**

5 Wen-Chien Yang (0000-0001-8206-1496)^{1*}; Catherine Arsenault (0000-0003-2410-3015)¹;
6 Victoria Y. Fan (0000-0001-7755-9425)^{2,3}; Hannah H. Leslie (0000-0002-7464-3645)⁴; Fouzia
7 Farooq (0000-0001-6491-6323)¹; Andrea B. Pembe (0000-0002-8090-3298)⁵; Theodros
8 Getachew (0000-0002-6486-0531)⁶; Emily R. Smith (0000-0001-5715-9459)^{1,7}

- 9
10 1. Department of Global Health, Milken Institute School of Public Health, The George
11 Washington University, Washington, DC, USA
12 2. Center for Global Development, Washington, DC, USA
13 3. College of Social Sciences, University of Hawai‘i at Mānoa, Honolulu, HI, USA
14 4. Division of Prevention Science, University of California San Francisco, San Francisco, CA,
15 USA
16 5. School of Clinical Medicine, Muhimbili University of Health and Allied Sciences, Dar es
17 Salaam, Tanzania
18 6. Ethiopian Public Health Institute, Addis Ababa, Ethiopia
19 7. Department of Exercise and Nutrition Sciences, Milken Institute School of Public Health, The
20 George Washington University, Washington, DC, USA

21
22 *Corresponding author: Wen-Chien Yang, MD, MPH

23 Address: 950 New Hampshire Ave, NW, Washington DC, 20037

24 Telephone: 617-794-2209

25 Email: wenchienyang@gwmail.gwu.edu

26

27 **Source(s) of support:** This study was not funded.

28

29 **Word count:** 3075

30

31 **Number of figures and tables:** 4

32

33

34

35

36

37

38

39

40

41

42

43

44

45

46

47 **ABSTRACT**

48 **Background**

49 Antenatal corticosteroids (ACS) use among pregnant women with a high likelihood of preterm
50 labor improves newborn survival. ACS adoption in low- and middle-income countries (LMICs)
51 remains limited. Giving ACS in inadequately equipped settings could be harmful to mothers and
52 newborns. Thus, health facilities have to demonstrate readiness to administer ACS. However, the
53 degree to which health systems are ready is unknown.

54 **Objective**

55 We assessed facility readiness to administer ACS based on the 2022 WHO recommendations on
56 ACS use and ACS utilization.

57 **Methods**

58 The study used Service Provision Assessment surveys administered between 2013 and 2022 in
59 nine LMICs. The primary outcome was whether facilities had ever provided ACS. We also
60 assessed injectable corticosteroid (dexamethasone or betamethasone) availability and facility
61 readiness to administer ACS. We used a total of 35 indicators, grouped into four readiness
62 categories based on the WHO recommendations, to measure facility readiness.

63 **Findings**

64 Across eight countries with comparable sampling strategies, only 10.7% (median, range 6.7% -
65 35.2%) of facilities had ever provided ACS; one-fourth (median 25.3%, range 4.6% - 61.5%) of
66 facilities had injectable corticosteroids available at the time of the survey; overall readiness
67 indices were low ranging from 8.1% for Bangladesh to 32.9% for Senegal. Across four readiness
68 categories, the readiness index was the lowest for criterion 1 (ability to assess gestational age

69 accurately and identify a high likelihood of preterm birth) (7.3%), followed by criterion 2 (ability
70 to identify maternal infections) (24.8%), criterion 4 (ability to provide adequate preterm care)
71 (31.3%), and criterion 3 (ability to provide adequate childbirth care) (32.9%).

72 **Conclusion**

73 We proposed a strategy for measuring facility readiness to implement one of the most effective
74 interventions to improve neonatal survival. Countries should operationalize readiness
75 measurement, improve facilities readiness to deliver this life-saving intervention, and encourage
76 ACS uptake by targeting facilities that are well-equipped.

77

78

79

80

81

82

83

84

85

86

87

88

89

90

91

92 INTRODUCTION

93 Antenatal corticosteroids (ACS) use among pregnant women at risk of preterm labor is one of
94 the most effective interventions to improve neonatal outcomes. By accelerating fetal lung
95 maturity, ACS can reduce the risk of respiratory distress syndrome by 30% and neonatal death
96 by 20%.(1) The World Health Organization (WHO) and other professional medical organizations
97 recommend giving ACS to pregnant women at risk of imminent preterm labor from gestational
98 age (GA) of 24 to 34 weeks.(2-5)

99 While ACS is commonly used in high-income countries, its adoption remains extremely limited
100 in low- and middle-income countries (LMICs) despite LMICs contributing to 80% of preterm
101 births worldwide.(6) An estimated 13.4 million newborns were born prematurely in 2020.(7)
102 Globally, preterm births are the leading cause of neonatal death, accounting for nearly half (46%)
103 of under-five mortality (U5M).(8) Additionally, 75% of all neonatal deaths occur in the first
104 week of life, with 1 million neonatal deaths happening within the first 24 hours after birth (9, 10),
105 which motivates the interventions targeting this critical period.(11, 12) ACS has been considered
106 “*the lowest-hanging and sweetest fruit*” as an intervention to improve preterm outcomes in
107 LMICs.(13) However, ACS uptake in LMICs has been a subject of widespread debate.(13-18)
108 Two major evidence gaps remain. First, the current status of ACS use in LMICs is unknown
109 despite some outdated coverage data. Second, the structural readiness of health facilities in
110 LMICs to provide ACS based on international guidelines is unclear. In 2022, the WHO released
111 its recommendations emphasizing five conditions for safe and effective administration of ACS: 1)
112 GA can be accurately assessed, 2) there is a high likelihood of preterm birth within 7 days of
113 starting ACS therapy, 3) there is no evidence of maternal infections, 4) adequate childbirth care
114 is available, and 5) the preterm newborn can receive adequate care.(2)

115 The WHO recommendations caution that these five conditions might not be met consistently
116 across settings because of varied capabilities, highlighting the potential harms of ACS in places
117 lacking the capacity to meet the criteria.(2). As a potent anti-inflammatory drug, ACS suppresses
118 immune functions. Maternal infections remain a major concern if ACS is given to vulnerable
119 pregnant women who are ineligible for this intervention. Also, observational studies found
120 increased neurocognitive disorders among late-preterm infants (born at GA 34 to 36 weeks) who
121 were exposed to ACS.(19-21) The balance between the benefits and risks emphasized the
122 importance of locations in which ACS should be given. However, knowledge about facility
123 readiness in resource-constraint settings remains scarce. In 2021, Kankaria et al. found that
124 primary and secondary facilities in northern India were not ready to administer ACS safely,
125 which is, to date and to our knowledge, the only study assessing facility readiness to give
126 ACS.(22) As facility readiness is crucial in providing healthcare of good quality (23), there is an
127 urgent need to expand evidence on ACS use in low resource countries.

128 This study aimed to address these knowledge gaps. The objectives were to assess ACS use,
129 corticosteroid availability, and facility readiness to administer ACS according to the WHO
130 criteria.

131 **METHODS**

132 *Study sample*

133 This study used data from the Service Provision Assessment (SPA), a health facility survey on
134 service availability and quality of care.(24) We restricted our analysis to SPAs done in the past
135 10 years and used the latest survey available for countries with SPA data. This study included 10
136 surveys from 9 countries: Afghanistan 2018-2019, Bangladesh 2017-2018, Nepal 2021, Haiti
137 2017-2018, the Democratic Republic of Congo (DRC) 2017-2018, Ethiopia 2021-2022, Malawi

138 2013-2014, Senegal 2018 and 2019, and Tanzania 2014-2015. All surveys were completed
139 before the release of the 2022 WHO recommendations but most, except Malawi 2013-2014 and
140 Tanzania 2014-2015 surveys, were conducted after the WHO recommendations on interventions
141 to improve preterm birth outcomes in 2015, which contained guidelines on ACS use.(25) The
142 sampling strategies varied based on country needs.(26-35) The majority of surveys adopted
143 stratified random sampling strategies to obtain a national representative sample in the
144 country.(26-28, 31, 32) Malawi 2013-2014 and Haiti 2017-2018 SPAs were national census.(33,
145 35) Unlike other surveys, Afghanistan 2018-2019 mainly sampled urban hospitals.(34) Senegal
146 implemented continuous SPA over a consecutive 5 years to survey all health facilities.(29, 30, 36)
147 In order to have similar sample sizes across countries, we merged two years (2018 and 2019) of
148 data from Senegal (**Supplemental Table 1**). Our study used data from two core instruments (out
149 of five) of the SPA survey questionnaire: facility inventory and health worker interviews. In each
150 country, only facilities that provided antenatal care (ANC), performed normal deliveries, and/or
151 performed Cesarean deliveries were included.

152 *Measures*

153 Our primary outcome was ACS utilization, defined as facilities that had ever provided ACS to
154 pregnant women. We focused on two secondary outcomes: corticosteroid availability (injectable
155 dexamethasone or betamethasone) and facility structural readiness. Most countries did not survey
156 corticosteroid availability (except for Afghanistan 2018-2019) within the maternal and child
157 health care sections in SPA surveys. We reported the availability of injectable corticosteroids
158 that were surveyed in the section on medicines for non-communicable diseases.

159 We assessed facility readiness to provide ACS in accordance with the 2022 WHO
160 recommendations on ACS use. We identified 35 indicators from the SPA questionnaire, which

161 were grouped into four readiness categories based on the five WHO criteria (collapsing criterion
162 1 and criterion 2) as outlined in **Supplemental Table 2**. The first category focused on the
163 facility's ability to assess GA accurately and to identify pregnant women with a high likelihood
164 of preterm labor; we included only one indicator for this category (presence of a functional
165 ultrasound). The second category included 4 indicators and covered the facility's ability to
166 identify maternal infections. The third and fourth categories included 13 and 17 indicators and
167 assessed the facility's readiness to provide adequate childbirth care and preterm newborn care,
168 respectively. For each category, readiness indices were calculated by dividing the number of
169 indicators available by the total number of indicators assessed, where higher percentages
170 indicating higher readiness. An overall readiness index was calculated by averaging the readiness
171 indices from four categories. This approach was chosen based on previous studies on facility
172 readiness to implement health improvement interventions.(37, 38)

173 *Statistical analysis*

174 First, we presented descriptive statistics of ACS utilization, corticosteroid availability, and
175 facility readiness indices, taking into account survey sampling weights. Results were stratified by
176 three facility levels. Level 1 facilities were those that only provided ANC and did not conduct
177 deliveries; ANC was defined as the care that pregnant women receive before birth, including risk
178 identification, prevention, and management of pregnancy related health conditions, education,
179 and health promotion.(39) Level 2 facilities performed normal deliveries, but not Cesarean
180 deliveries, and level 3 facilities performed Cesarean deliveries. Because Afghanistan mainly
181 sampled hospitals, which substantially differed from other countries, it was excluded from the
182 summary descriptive analysis of our outcomes of interest and included only in analyses by
183 facility levels.

184 Second, we assessed the relationships between ACS use and, respectively, ACS availability, and
185 overall readiness indices at sub-national levels (e.g. regions in Ethiopia, provinces in DRC). This
186 was driven by the hypothesis that facilities without corticosteroids or with low readiness might
187 refer patients in need of ACS to facilities in geographic proximity. We averaged each of the three
188 measures (ACS use, corticosteroid availability, and readiness index) for all facilities in each sub-
189 national region. Lastly, we examined the difference in the overall readiness index between
190 facilities that had ever and never used ACS by country. All analyses were performed using R.

191 **RESULTS**

192 This study included a total of 8669 facilities from ten surveys in nine countries. All surveys had a
193 high response rate (median 94.9%) ranging from 88.8% in Afghanistan to 99.0% in Tanzania
194 (**Supplemental Table 3**).

195 The majority (88.9%, median; range 66.1% - 98.8%) of facilities provided maternal health care
196 services and were included in our analysis (**Supplemental Table 3**). The median sample size
197 was 929 facilities (median; range 108 -1500) (**Table 1**). Among eight countries (excluding
198 Afghanistan), 22.6% (median; range 7.1% - 88.7%) of facilities were urban. The proportion of
199 facilities of different levels varied across countries. Across eight countries, one third (median
200 32%) of the facilities were level 1 facilities that provided antenatal care, with Bangladesh having
201 the highest proportion (76.2%) of level 1 facilities and the DRC having the lowest proportion
202 (1.9%). The proportion of level 2 facilities was 59.4% (median) with Tanzania having the
203 highest proportion (83.3%) and Bangladesh with the lowest proportion (19.5%). Only 6.2%
204 (median) of facilities were level 3 facilities that performed Cesarean deliveries, with 26.5% of
205 facilities in DRC and 2.7% in Ethiopia were level 3 (**Table 1**).

206 *ACS utilization.* ACS was underutilized across all countries. Excluding Afghanistan, median
207 ACS use was 10.7%, ranging from 6.7% of facilities in Bangladesh to 35.2% of facilities in the
208 DRC having ever administered ACS (**Figure 1a**). In Afghanistan, 68.7% of facilities had
209 administered ACS at the time of the survey. We did not find higher ACS use in surveys that were
210 done in more recently. While none of the level 1 facilities had provided ACS, ACS use increased
211 by facility level (**Figure 1b**). Within facility level across 9 countries, 21.6% (median, range 5.0%
212 - 26.9%) of level 2 facilities and 76.3% (median, range 52.7% - 90.3%) of level 3 facilities had
213 provided ACS.

214 *ACS availability.* Corticosteroid availability was limited. Across eight countries, a fourth of the
215 facilities (median 25.3%, range 4.6% - 61.5%) had at least one valid corticosteroid (injectable
216 betamethasone or dexamethasone) available at the time of the survey, while 93.3% of facilities in
217 Afghanistan had corticosteroids available (**Figure 1c**). Corticosteroid availability generally
218 increased by facility level within each country (**Figure 1d**). Also, gaps between corticosteroid
219 availability and ACS utilization existed. For example, 48.5% of level 2 facilities in Nepal had
220 corticosteroid available at the time of survey but only 7.3% had ever used it (**Supplemental**
221 **Figure 5**).

222 *Facility readiness.* Readiness indices were low (**Figure 2**). Overall, only 22% of the facilities in
223 the sample had an overall readiness index above 50%. Other than Afghanistan, overall readiness
224 indices were low among the eight countries ranging from 8.1% in Bangladesh to 32.9% in
225 Senegal. Afghanistan had an overall readiness index of 57.7%. We did not see higher overall
226 readiness indices in surveys done in more recent years. Also, overall readiness indices increased
227 by facility level. Across four readiness categories among 8 countries, facilities performed the
228 worst in the ability to assess GA accurately, with a readiness index of 7.3% (median), followed

229 by the ability to identify maternal infection (median, 24.8%), provide adequate preterm care
230 (median 31.3%), and provide adequate childbirth care (median 32.9%). When delving into the
231 details of specific indicators among the 35 ones used, we found very limited availability for
232 respiratory support-related equipment across countries in the readiness category of adequate
233 preterm newborn care (**Supplemental Table 4, Supplemental Figures 1- 4**).

234 *ACS use, availability, and readiness at sub-national levels.* At the sub-national level, positive
235 associations were observed between corticosteroid availability and ACS use as well as between
236 average readiness and ACS use (**Figures 3a and 3b**). A few Ethiopian regions (Dire Dawa and
237 Harari) had an average overall readiness index above 50% but low ACS use (<25%). In contrast,
238 some regions of the DRC (Kasaï Central, Kongo Central, Kinshasa, and Haut-Katanga) had low
239 overall readiness indices (<50%), but ACS use greater than 50% (**Figure 3b**).

240 At the facility level, overall readiness indices differed between facilities that had ever and never
241 provided ACS within each country (**Supplemental Figures 6-8**). In Afghanistan, Bangladesh,
242 DRC, Senegal, and Tanzania, facilities that had utilized ACS had higher overall readiness indices
243 compared to facilities that had never used ACS. On the contrary, the results were reversed for
244 Nepal, Haiti, Ethiopia, and Malawi.

245 **DISCUSSION**

246 This study assessed antenatal corticosteroid use, corticosteroid availability and structural
247 readiness to administer the drug adequately based on international recommendations among
248 8,669 health facilities from nine resource-constrained countries. We had three major findings: 1)
249 antenatal corticosteroids were substantially underused, 2) corticosteroid availability was limited,
250 and 3) facilities in these countries had low levels of readiness.

251 We found limited ACS use with only one out of ten health facilities having ever administered
252 ACS. However, it is challenging to compare our results with existing literature as previous work
253 mostly measured ACS coverage among pregnant women who delivered preterm infants.(40-45)
254 A 2011 WHO maternal and newborn health survey for 29 countries found 54% of women who
255 gave birth at GA 26 to 34 weeks were given ACS, with the lowest use in Afghanistan (16%),
256 Nepal (20%), and DRC (16%).(41) Another analysis using the data from the 2015 Antenatal
257 Corticosteroids Trial (ACT trial) showed an overall low ACS use in control clusters; in Kenya,
258 only 3.8 % of pregnant women of infants born with birthweight less than the 5th percentile, a
259 proxy for preterm births, received ACS.(40) Our findings adds value in understanding the status
260 of ACS use at the facility level. Also, we found that only one third of the facilities in the sample
261 had either injectable dexamethasone or betamethasone. Dexamethasone is on the WHO List of
262 Essential Medicines, but limited availability remains a major barrier to ACS use.(46) Strategies
263 to improve ACS coverage need to ensure drug availability.

264 The location where ACS is given is crucial to ensure safe and effective use. Two landmark
265 studies on the effects of ACS in LMICs presented conflicting results, highlighting the importance
266 of settings in which ACS is given.(47, 48) The 2015 ACT trial, a cluster randomized trial of a
267 multifaceted intervention to promote ACS use in six LMICs unexpectedly found increased
268 neonatal deaths and suspected maternal infections among intervention clusters.(47) On the
269 contrary, the WHO Antenatal Corticosteroids for Improving Outcomes in Preterm Newborns
270 Trial (ACTION-I trial) in 2020, an RCT in five LMICs, showed ACS reduced neonatal deaths
271 without increasing maternal infections.(48) These contradictory findings can partially be
272 explained by the different settings for the two trials; the ACT trial was done in all levels of care
273 including clinics and primary care centers, whereas the ACTION-I trials included secondary or

274 tertiary hospitals.(48) The drastically different findings emphasized the importance of locations –
275 or more precisely, the readiness of facilities – in providing ACS. Our study offered a strategy for
276 measuring facility readiness to implement this life-saving intervention. However,
277 recommendations on what levels of facilities should give ACS need to be made carefully.
278 Assuming essential equipment, medicines and trained staff are available, some level 2 and level
279 3 facilities with high readiness that have never provided ACS should be targeted for the
280 expansion of ACS use. Also, our sub-national level analyses showed that some provinces in
281 DRC with low overall readiness (<50%) frequently administered ACS. Policymakers should
282 ensure that ACS is delivered in well-equipped settings.

283 Another critical issue centers around the different aspects of readiness to ensure safe and
284 effective ACS use. Our readiness index was developed based on the WHO criteria. However, it
285 is debatable, first, whether some criteria could be met across facility levels, and second, whether
286 facilities need to meet *all* criteria to safely and effectively administer ACS. For example,
287 ultrasound examination in early pregnancy is the gold standard for GA assessment. However, we
288 found that only 7.3% (median across eight countries, range 0.2% to 12.3%; 82.4% for
289 Afghanistan) of maternal care facilities had a functional ultrasound. Access to ultrasound for GA
290 dating remains a major barrier to proper ACS use despite its increasing use in obstetric care in
291 LMICs.(17, 49) In this case, GA dating should occur early in pregnancy, while ACS use occurs
292 later in pregnancy. Thus, the decision to administer ACS should not be based on the ultrasound
293 availability in place, but the availability of accurate GA assessment (which may come from care
294 obtained at another facility). In addition, regarding the WHO recommendations for adequate
295 preterm newborn care, one important element is non-invasive respiratory support, such as
296 continuous positive airway pressure (CPAP). However, this recommendation might exclude most

297 preterm infants who might benefit from ACS use because they usually do not have access to
298 respiratory support in LMICs.(50) A similar concern applies to adequate childbirth care,
299 referring to nine signal functions of Comprehensive Emergency Obstetric and Newborn Care
300 (CEmONC), including blood transfusions and Cesarean sections. Again, it is debatable whether a
301 facility can give ACS only when it can do blood transfusions.

302 Our study had several strengths. To our knowledge, this is the first study to assess ACS use,
303 availability and structural readiness to give ACS at the facility level. Also, we included data from
304 multiple countries to understand the landscape of ACS use and identify policy directions in areas
305 with a high burden of preterm births. Nonetheless, our study has a few limitations. First,
306 sampling strategies and survey years varied across countries spanning 9 years. All surveys were
307 done prior to the release of the 2022 WHO recommendations while most of them were
308 completed after the release of 2015 WHO recommendations on interventions to improve preterm
309 birth outcomes that contained guidelines on ACS utilization.(2, 25) Also, countries have
310 different national guidelines regarding ACS use. One policy analysis on ACS use in Africa
311 found ACS could be given in lower levels of care before referral in Ethiopia and Tanzania, but
312 DRC and Malawi only allowed ACS use in hospitals.(51) Hence, we caution careful
313 interpretations when comparing across countries. Secondly, some readiness indicators served as
314 proxies. For instance, SPA surveys do not assess the availability of corticosteroids and
315 ultrasound in the maternal care section. Instead, corticosteroid availability is surveyed in the
316 section for medicines for non-communicable diseases, and ultrasound availability is assessed
317 within the facility in general. We also used the availability of rapid diagnostic tests for HIV and
318 syphilis as a proxy to estimate facilities' ability to detect maternal infections. This approach
319 might overestimate or underestimate true availability or readiness. Thirdly, we were unable to

320 draw correlations between ACS use or facility readiness with preterm health outcomes because
321 SPAs do not have patient-level data for newborns.

322 Antenatal corticosteroid use has gained tremendous international attention as its population-level
323 health benefits could be profound.(12, 52-55) ACS should not be used as a “just-in-case”
324 intervention.(56) It should be given to the right people (pregnant women at risk of imminent
325 preterm labor and without maternal infections), at the right time (the specified GA window), and
326 in the right place (settings that are properly equipped and ready to provide quality maternal and
327 newborn care). Future research and programs should operationalize readiness measurement and
328 assess facility readiness for safe and effective ACS use to enhance readiness and encourage ACS
329 uptake among well-prepared facilities.

330 **Disclosure of relationships and activities:** All authors have completed the ICMJE uniform
331 disclosure form at www.icmje.org/coi_disclosure.pdf and declare no support from any
332 organization for submitted work; no financial relationships with any organization that might have
333 an interest in the submitted work in the previous three years; no other relationships or activities
334 that could appear to have influenced the submitted work.

335 **Supporting information**

336 S1 Supplementary file

References

1. McGoldrick E, Stewart F, Parker R, Dalziel SR. Antenatal corticosteroids for accelerating fetal lung maturation for women at risk of preterm birth. *Cochrane Database Syst Rev.* 2020;12(12):Cd004454. Epub 2020/12/29. doi: 10.1002/14651858.CD004454.pub4. PubMed PMID: 33368142; PubMed Central PMCID: PMC8094626 Stuart Dalziel reports receiving research funding, not associated with the review topic, from Cure Kids, Health Research Council, and Starship Foundation, New Zealand. Stuart Dalziel is employed by The University of Auckland and Auckland District Health Board. He is also on the board of the Advanced Paediatric Life Support New Zealand.
2. The World Health Organization. 2022 WHO recommendations on ACS to improve preterm birth outcomes. 2022. Epub 2022/09/29.
3. Reddy UM, Deshmukh U, Dude A, Harper L, Osmundson SS. Society for Maternal-Fetal Medicine Consult Series #58: Use of antenatal corticosteroids for individuals at risk for late preterm delivery: Replaces SMFM Statement #4, Implementation of the use of antenatal corticosteroids in the late preterm birth period in women at risk for preterm delivery, August 2016. *American journal of obstetrics and gynecology.* 2021;225(5):B36-b42. Epub 2021/08/08. doi: 10.1016/j.ajog.2021.07.023. PubMed PMID: 34363784.
4. Norman J, Shennan A, Jacobsson B, Stock SJ, Birth FWGfP. FIGO good practice recommendations on the use of prenatal corticosteroids to improve outcomes and minimize harm in babies born preterm. *Int J Gynaecol Obstet.* 2021;155(1):26-30. Epub 2021/09/15. doi: 10.1002/ijgo.13836. PubMed PMID: 34520057.
5. El-Sayed YY, Borders AEB, Gyamfi-Bannerma C. ACOG committee opinion, Antenatal Corticosteroid Therapy for Fetal Maturation The American College of Obstetricians and Gynecologists. 2017;130(2):e102-e9.
6. Chawanpaiboon S, Vogel JP, Moller AB, Lumbiganon P, Petzold M, Hogan D, et al. Global, regional, and national estimates of levels of preterm birth in 2014: a systematic review and modelling analysis. *The Lancet Global health.* 2019;7(1):e37-e46. Epub 2018/11/06. doi: 10.1016/s2214-109x(18)30451-0. PubMed PMID: 30389451; PubMed Central PMCID: PMC6293055.
7. Ohuma EO, Moller AB, Bradley E, Chakwera S, Hussain-Alkhatieb L, Lewin A, et al. National, regional, and global estimates of preterm birth in 2020, with trends from 2010: a systematic analysis. *Lancet (London, England).* 2023;402(10409):1261-71. Epub 2023/10/08. doi: 10.1016/s0140-6736(23)00878-4. PubMed PMID: 37805217.
8. Perin J, Mulick A, Yeung D, Villavicencio F, Lopez G, Strong KL, et al. Global, regional, and national causes of under-5 mortality in 2000-19: an updated systematic analysis with implications for the Sustainable Development Goals. *The Lancet Child & adolescent health.* 2022;6(2):106-15. Epub 2021/11/21. doi: 10.1016/s2352-4642(21)00311-4. PubMed PMID: 34800370; PubMed Central PMCID: PMC8786667.
9. The World Health Organization. Newborn mortality 2024 [cited 2024 May 13]. Available from: <https://www.who.int/westernpacific/news-room/fact-sheets/detail/newborn-mortality>.
10. Sankar MJ, Natarajan CK, Das RR, Agarwal R, Chandrasekaran A, Paul VK. When do newborns die? A systematic review of timing of overall and cause-specific neonatal deaths in developing countries. *Journal of perinatology : official journal of the California Perinatal Association.* 2016;36 Suppl 1(Suppl 1):S1-s11. Epub 2016/04/26. doi: 10.1038/jp.2016.27. PubMed PMID: 27109087; PubMed Central PMCID: PMC4848744.
11. Hofmeyr GJ, Black RE, Rogozińska E, Heuer A, Walker N, Ashorn P, et al. Evidence-based antenatal interventions to reduce the incidence of small vulnerable newborns and their associated poor outcomes. *Lancet (London, England).* 2023;401(10389):1733-44. Epub 2023/05/12. doi: 10.1016/s0140-6736(23)00355-0. PubMed PMID: 37167988.

12. Bhutta ZA, Das JK, Bahl R, Lawn JE, Salam RA, Paul VK, et al. Can available interventions end preventable deaths in mothers, newborn babies, and stillbirths, and at what cost? *Lancet* (London, England). 2014;384(9940):347-70. Epub 2014/05/24. doi: 10.1016/s0140-6736(14)60792-3. PubMed PMID: 24853604.
13. Jobe AH, Kemp MW, Kamath-Rayne B, Schmidt AF. Antenatal corticosteroids for low and middle income countries. *Semin Perinatol*. 2019;43(5):241-6. Epub 2019/04/14. doi: 10.1053/j.semperi.2019.03.012. PubMed PMID: 30979597.
14. Sultana S, Vogel JP, Oladapo OT. The efficacy of antenatal corticosteroids to improve preterm newborn outcomes in low-resource countries: Are we there yet? *BJOG : an international journal of obstetrics and gynaecology*. 2023. Epub 2023/08/02. doi: 10.1111/1471-0528.17611. PubMed PMID: 37530472.
15. Vogel JP, Oladapo OT, Pileggi-Castro C, Adejuyigbe EA, Alhabe F, Ariff S, et al. Antenatal corticosteroids for women at risk of imminent preterm birth in low-resource countries: the case for equipoise and the need for efficacy trials. *BMJ Glob Health*. 2017;2(3):e000398. Epub 2017/10/31. doi: 10.1136/bmjgh-2017-000398. PubMed PMID: 29082019; PubMed Central PMCID: PMC5656119.
16. McClure EM, Goldenberg RL, Jobe AH, Miodovnik M, Koso-Thomas M, Buekens P, et al. Reducing neonatal mortality associated with preterm birth: gaps in knowledge of the impact of antenatal corticosteroids on preterm birth outcomes in low-middle income countries. *Reprod Health*. 2016;13(1):61. Epub 2016/05/26. doi: 10.1186/s12978-016-0180-6. PubMed PMID: 27221397; PubMed Central PMCID: PMC4877818.
17. Townsend R, Calvert C. Antenatal corticosteroids in adequately equipped facilities in low-resource settings. *The Lancet Global health*. 2022;10(10):e1379-e80. Epub 2022/09/17. doi: 10.1016/s2214-109x(22)00387-4. PubMed PMID: 36113517.
18. Azad K, Costello A. Extreme caution is needed before scale-up of antenatal corticosteroids to reduce preterm deaths in low-income settings. *The Lancet Global health*. 2014;2(4):e191-2. Epub 2014/08/12. doi: 10.1016/s2214-109x(14)70020-8. PubMed PMID: 25103050.
19. Ninan K, Liyanage SK, Murphy KE, Asztalos EV, McDonald SD. Evaluation of Long-term Outcomes Associated With Preterm Exposure to Antenatal Corticosteroids: A Systematic Review and Meta-analysis. *JAMA pediatrics*. 2022;176(6):e220483. Epub 2022/04/12. doi: 10.1001/jamapediatrics.2022.0483. PubMed PMID: 35404395; PubMed Central PMCID: PMC9002717.
20. Lin YH, Lin CH, Lin MC, Hsu YC, Hsu CT. Antenatal Corticosteroid Exposure Is Associated with Childhood Mental Disorders in Late Preterm and Term Infants. *J Pediatr*. 2022. Epub 2022/10/07. doi: 10.1016/j.jpeds.2022.09.050. PubMed PMID: 36202238.
21. Raikkonen K, Gissler M, Kajantie E. Associations Between Maternal Antenatal Corticosteroid Treatment and Mental and Behavioral Disorders in Children. *JAMA*. 2020;323(19):1924-33. Epub 2020/05/20. doi: 10.1001/jama.2020.3937. PubMed PMID: 32427304; PubMed Central PMCID: PMC7237984.
22. Kankaria A, Duggal M, Chauhan A, Sarkar D, Dalpath S, Kumar A, et al. Readiness to Provide Antenatal Corticosteroids for Threatened Preterm Birth in Public Health Facilities in Northern India. *Global health, science and practice*. 2021;9(3):575-89. Epub 2021/10/02. doi: 10.9745/ghsp-d-20-00716. PubMed PMID: 34593583; PubMed Central PMCID: PMC8514043.
23. Leslie HH, Spiegelman D, Zhou X, Kruk ME. Service readiness of health facilities in Bangladesh, Haiti, Kenya, Malawi, Namibia, Nepal, Rwanda, Senegal, Uganda and the United Republic of Tanzania. *Bulletin of the World Health Organization*. 2017;95(11):738-48. Epub 2017/11/18. doi: 10.2471/blt.17.191916. PubMed PMID: 29147054; PubMed Central PMCID: PMC5677617.
24. The DHS program. The Demographic and Health Surveys, The Service Provision Assessment USAID; [cited 2023 July 20]. Available from: <https://dhsprogram.com/methodology/Survey-Types/SPA.cfm>.

25. The World Health Organization. WHO recommendations on interventions to improve preterm birth outcomes. 2015
26. Ministry of Health, ICF. Nepal Health Facility Survey 2021. Kathmandu, Nepal, Rockville, Maryland, USA: Ministry of Health and Population, New ERA and ICF, 2022.
27. Ethiopian Public Health Institute, Ministry of Health E, ICF. Ethiopia Service Provision Assessment 2021-22. 2021.
28. National Institute of Population Research, Ministry of Health, ICF. Bangladesh Health Facility Survey 2017. Dhaka, Bangladesh: NIPORT - ICF, 2020.
29. Agence Nationale de la Statistique et de la Démographie/ANSD, ICF. Senegal: Enquête Continue sur la Prestation des Services de Soins de Santé (ECPSS) 2018. Dakar, Sénégal: ANSD/ICF, 2020.
30. Agence Nationale de la Statistique et de la Démographie, ICF. Senegal: Enquête Continue sur la Prestation des Services de Soins de Santé (ECPSS) 2019. Dakar, Sénégal: ANSD/ICF, 2020.
31. Ecole de Santé Publique de Kishasa ESPK/Kinshasa RDdC, ICF. République Democratique du Congo Évaluation des Presentations des Services de soins de Santé EPSS 2017-2018. Kinshasa, République Démocratique du Congo: ESPK and ICF, 2019.
32. Ministry of Health Tanzania, National Bureau of Statistics Tanzania, Office of Chief Government Statistician/Tanzania, ICF International. Tanzania Service Provision Assessment Survey 2014-2015. Dar es Salaam, Tanzania: MoHSW/Tanzania, MoH/Tanzania, NBS/Tanzania, OCGS/Tanzania, and ICF International, 2016.
33. Ministry of Health - MoH/Malawi, ICF International. Malawi Service Provision Assessment 2013-14. Lilongwe, Malawi: MoH/Malawi and ICF International, 2014.
34. The World Bank. The World Bank Microdata Library. Service Provision Assessment Survey Afghanistan 2018-2019 Available from: <https://microdata.worldbank.org/index.php/catalog/3645/study-description>.
35. Institut Haïtien de l'Enfance, ICF. Haiti Évaluation de la Prestation des Services de Soins de Santé (EPSSS 2017-2018). 2019.
36. The DHS program. Continuous Service Provision Assessment.
37. Mallick L, Temsah G, Wang W. Comparing summary measures of quality of care for family planning in Haiti, Malawi, and Tanzania. PLOS ONE. 2019;14(6):e0217547. doi: 10.1371/journal.pone.0217547.
38. Sheffel A, Zeger S, Heidkamp R, Munos MK. Development of summary indices of antenatal care service quality in Haiti, Malawi and Tanzania. BMJ Open. 2019;9(12):e032558. doi: 10.1136/bmjopen-2019-032558.
39. The World Health Organization. WHO recommendations on antenatal care for a positive pregnancy experience. 2016.
40. Berrueta M, Hemingway-Foday J, Thorsten VR, Goldenberg RL, Carlo WA, Garces A, et al. Use of antenatal corticosteroids at health facilities and communities in low-and-middle income countries. Reprod Health. 2016;13(1):66. Epub 2016/05/28. doi: 10.1186/s12978-016-0176-2. PubMed PMID: 27228986; PubMed Central PMCID: PMC4882797.
41. Vogel JP, Souza JP, Gülmezoglu AM, Mori R, Lumbiganon P, Qureshi Z, et al. Use of antenatal corticosteroids and tocolytic drugs in preterm births in 29 countries: an analysis of the WHO Multicountry Survey on Maternal and Newborn Health. Lancet (London, England). 2014;384(9957):1869-77. Epub 2014/08/17. doi: 10.1016/s0140-6736(14)60580-8. PubMed PMID: 25128271.
42. Riganti AA, Cafferata ML, Althabe F, Gibbons L, Segarra JO, Sandoval X, et al. Use of prenatal corticosteroids for preterm birth in three Latin American countries. Int J Gynaecol Obstet. 2010;108(1):52-7. Epub 2009/11/07. doi: 10.1016/j.ijgo.2009.08.022. PubMed PMID: 19892349; PubMed Central PMCID: PMC3401047.

43. Pattanittum P, Ewens MR, Laopaiboon M, Lumbiganon P, McDonald SJ, Crowther CA. Use of antenatal corticosteroids prior to preterm birth in four South East Asian countries within the SEA-ORCHID project. *BMC pregnancy and childbirth*. 2008;8:47. Epub 2008/10/18. doi: 10.1186/1471-2393-8-47. PubMed PMID: 18925968; PubMed Central PMCID: PMCPMC2596081.
44. Krauss Silva L PT, Franklin R, Oliveira N. Assessment of quality of obstetric care and corticoid use in preterm labor. *Cadernos de Saude Publica*. 1999;15(4):1-23.
45. Tita AT, Selwyn BJ, Waller DK, Kapadia AS, Dongmo S. Evidence-based reproductive health care in Cameroon: population-based study of awareness, use and barriers. *Bulletin of the World Health Organization*. 2005;83(12):895-903. Epub 2006/02/08. PubMed PMID: 16462981; PubMed Central PMCID: PMCPMC2626486.
46. The World Health Organization. *The WHO Model List of Essential Medicines*. 2023.
47. Althabe F, Belizán JM, McClure EM, Hemingway-Foday J, Berrueta M, Mazzoni A, et al. A population-based, multifaceted strategy to implement antenatal corticosteroid treatment versus standard care for the reduction of neonatal mortality due to preterm birth in low-income and middle-income countries: the ACT cluster-randomised trial. *The Lancet*. 2015;385(9968):629-39. doi: 10.1016/s0140-6736(14)61651-2.
48. Collaborators WAT, Oladapo OT, Vogel JP, Piaggio G, Nguyen MH, Althabe F, et al. Antenatal Dexamethasone for Early Preterm Birth in Low-Resource Countries. *N Engl J Med*. 2020;383(26):2514-25. Epub 2020/10/24. doi: 10.1056/NEJMoa2022398. PubMed PMID: 33095526; PubMed Central PMCID: PMCPMC7660991.
49. Zahroh RI, Hazfiarini A, Eddy KE, Vogel JP, Tunçalp B, Minckas N, et al. Factors influencing appropriate use of interventions for management of women experiencing preterm birth: A mixed-methods systematic review and narrative synthesis. *PLoS medicine*. 2022;19(8):e1004074. doi: 10.1371/journal.pmed.1004074.
50. Hall M, Valencia CM, Soma-Pillay P, Luyt K, Jacobsson B, Shennan A. Effective and simple interventions to improve outcomes for preterm infants worldwide: The FIGO PremPrep-5 initiative. *Int J Gynaecol Obstet*. 2024;165(3):929-35. Epub 2024/01/24. doi: 10.1002/ijgo.15269. PubMed PMID: 38264849.
51. Greensides D, Robb-McCord J, Noriega A, Litch JA. Antenatal Corticosteroids for Women at Risk of Imminent Preterm Birth in 7 sub-Saharan African Countries: A Policy and Implementation Landscape Analysis. *Global health, science and practice*. 2018;6(4):644-56. Epub 2018/12/24. doi: 10.9745/gfsp-d-18-00171. PubMed PMID: 30573455; PubMed Central PMCID: PMCPMC6370350.
52. Sebastian E, Bykersma C, Eggleston A, Eddy KE, Chim ST, Zahroh RI, et al. Cost-effectiveness of antenatal corticosteroids and tocolytic agents in the management of preterm birth: A systematic review. *EClinicalMedicine*. 2022;49:101496. Epub 2022/06/25. doi: 10.1016/j.eclinm.2022.101496. PubMed PMID: 35747187; PubMed Central PMCID: PMCPMC9167884.
53. Eddy KE, Vogel JP, Scott N, Fetene D, Tidhar T, Oladapo OT, et al. Antenatal dexamethasone for improving preterm newborn outcomes in low-resource countries: a cost-effectiveness analysis of the WHO ACTION-I trial. *The Lancet Global Health*. 2022;10(10):e1523-e33. doi: 10.1016/s2214-109x(22)00340-0.
54. Bill and Melinda Gates Foundation. *2023 Goalkeepers Report*. 2023.
55. The United Nations Population Fund. *UN Commission on Life-Saving Commodities for Women and Children Commissioners' Report*. 2012.
56. Norman J, Shennan A, Jacobsson B, Stock SJ. FIGO good practice recommendations on the use of prenatal corticosteroids to improve outcomes and minimize harm in babies born preterm. *Int J Gynaecol Obstet*. 2021;155(1):26-30. Epub 2021/09/15. doi: 10.1002/ijgo.13836. PubMed PMID: 34520057.

Figure legends

Figure 1a. Utilization of antenatal corticosteroids by country

Figure 1b. Utilization of antenatal corticosteroids by country and facility level

Figure 1c. Availability of at least one valid corticosteroid by country

Figure 1d. Availability of at least one valid corticosteroid by country and facility level

Figure 2. Facility readiness by country, readiness category, and facility level

Figure 3a. Corticosteroid availability versus ACS utilization by region

Figure 3b. Overall readiness indices versus ACS utilization by region

Table 1. Characteristics of surveys and facilities included in the study

Country	Survey year	Number of facilities surveyed ¹	Number of facilities included in the analysis ²	Urban location	Facility type		
					Level 1: Facilities that provide antenatal care	Level 2: Facilities that perform normal delivery	Level 3: Facilities that perform Cesarean section
		N = 9793 Median 1158 (range 142 - 1576)	N = 8669 Median 929 (range 108 - 1500)	Median 22.6% ³ (range 7.1% - 88.7%) ³	Median 32.0% ³ (range 1.9% - 76.2%) ³	Median 59.4% ³ (range 19.5% - 83.3%) ³	Median 6.2% ³ (range 2.7% - 26.5%) ³
South Asia							
Afghanistan	2018-2019	142	108	107 (99.4%)	7 (4.1%)	10 (10.1%)	91 (85.9%)
Bangladesh	2017-2018	1524	1498	379 (7.1%)	676 (76.2%)	551 (19.5%)	271 (4.4%)
Nepal	2021	1576	1500	961 (53.2%)	693 (47.5%)	565 (47.1%)	242 (5.3%)
Caribbean							
Haiti	2017-2018	1007	929	340 (36.5%)	567 (61.0%)	255 (27.5%)	107 (11.5%)
Sub-Saharan Africa							
DRC	2017-2018	1380	1364	297 (22.0%)	10 (1.9%)	511 (71.6%)	843 (26.5%)
Ethiopia	2021-2022	1158	911	455 (18.2%)	261 (75.0%)	309 (22.3%)	341 (2.7%)
Malawi	2013-2014	977	645	119 (18.6%)	103 (16.5%)	471 (72.6%)	71 (10.9%)
Senegal	2018 and 2019	841	658	594 (88.7%)	65 (14.3%)	531 (78.6%)	62 (7.1%)
Tanzania	2014-2015	1188	1056	325 (19.1%)	104 (11.5%)	681 (83.3%)	271 (5.2%)

¹ A total of 625 facilities that were sampled had a sampling weight of zero, indicating non-response, refusal, or closure. Those facilities were not surveyed and were excluded.

² Only facilities that provided either antenatal care, performed normal delivery or Cesarean section were included in the analysis.

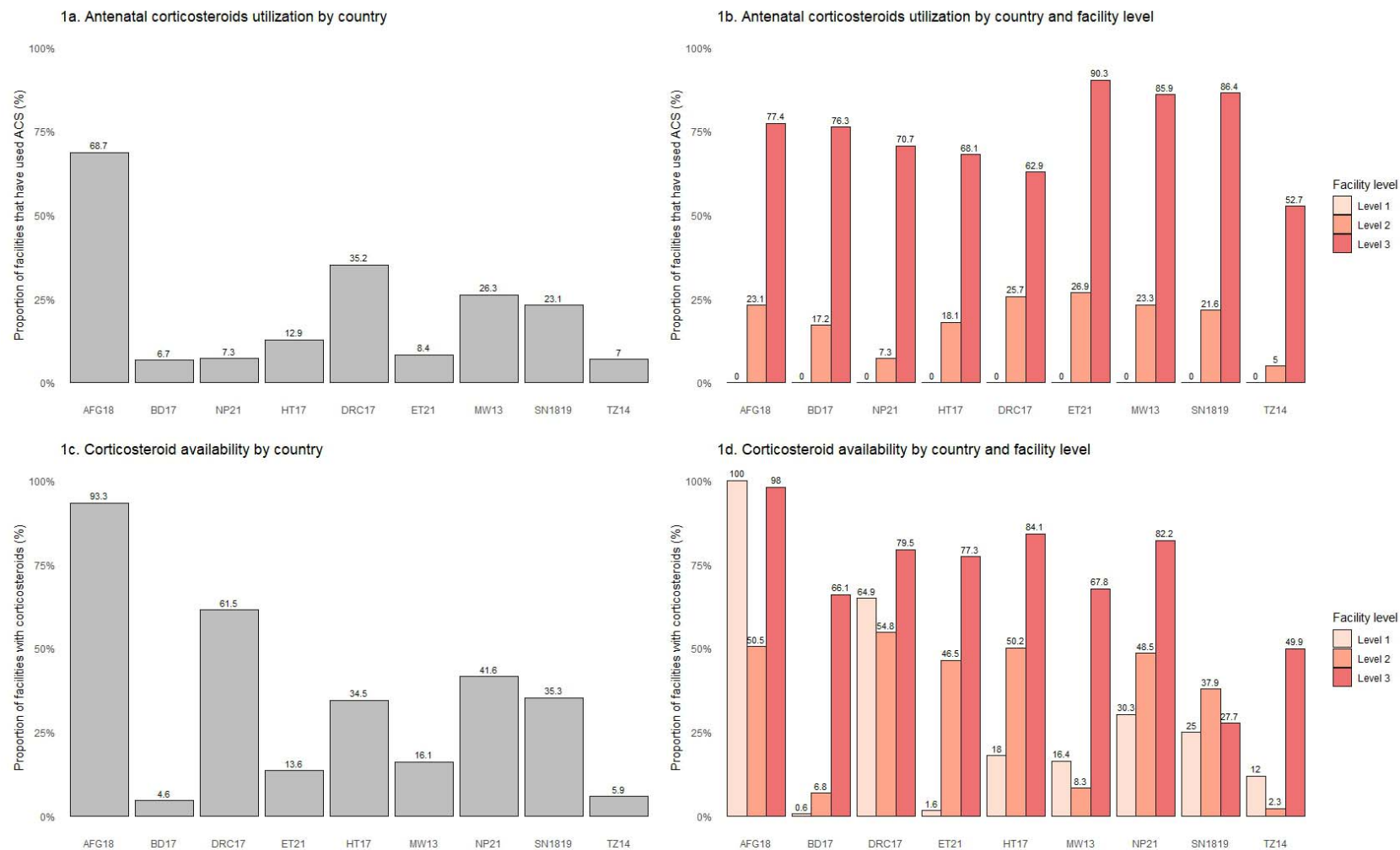
³ The median and range were obtained across eight countries excluding Afghanistan because its survey used a remarkably different sampling strategy.

Figure 1a. Utilization of antenatal corticosteroids by country

Figure 1b. Utilization of antenatal corticosteroids by country and facility level

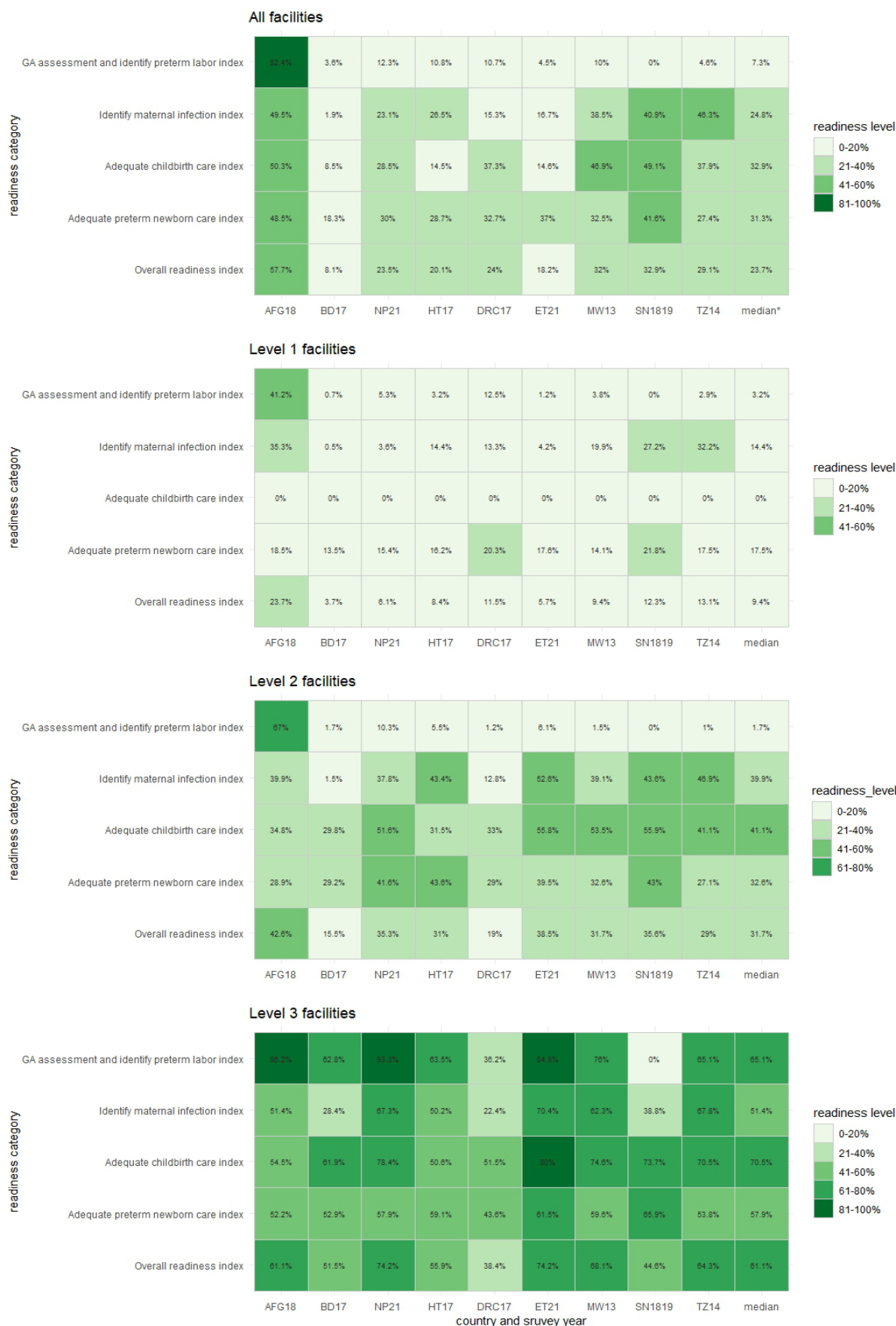
Figure 1c. Availability of at least one valid corticosteroid by country

Figure 1d. Availability of at least one valid corticosteroid by country and facility level



AFG18: Afghanistan 2018-2019; BD17: Bangladesh 2017-2018; NP21: Nepal 2021; HT17: Haiti 2017-2018; DRC17: the Democratic Republic of Congo 2017-2018; ET21: Ethiopia 2021-2022; MW13: Malawi 2013-2014; SN1819: Senegal 2018 and 2019; TZ14: Tanzania 2014-2015

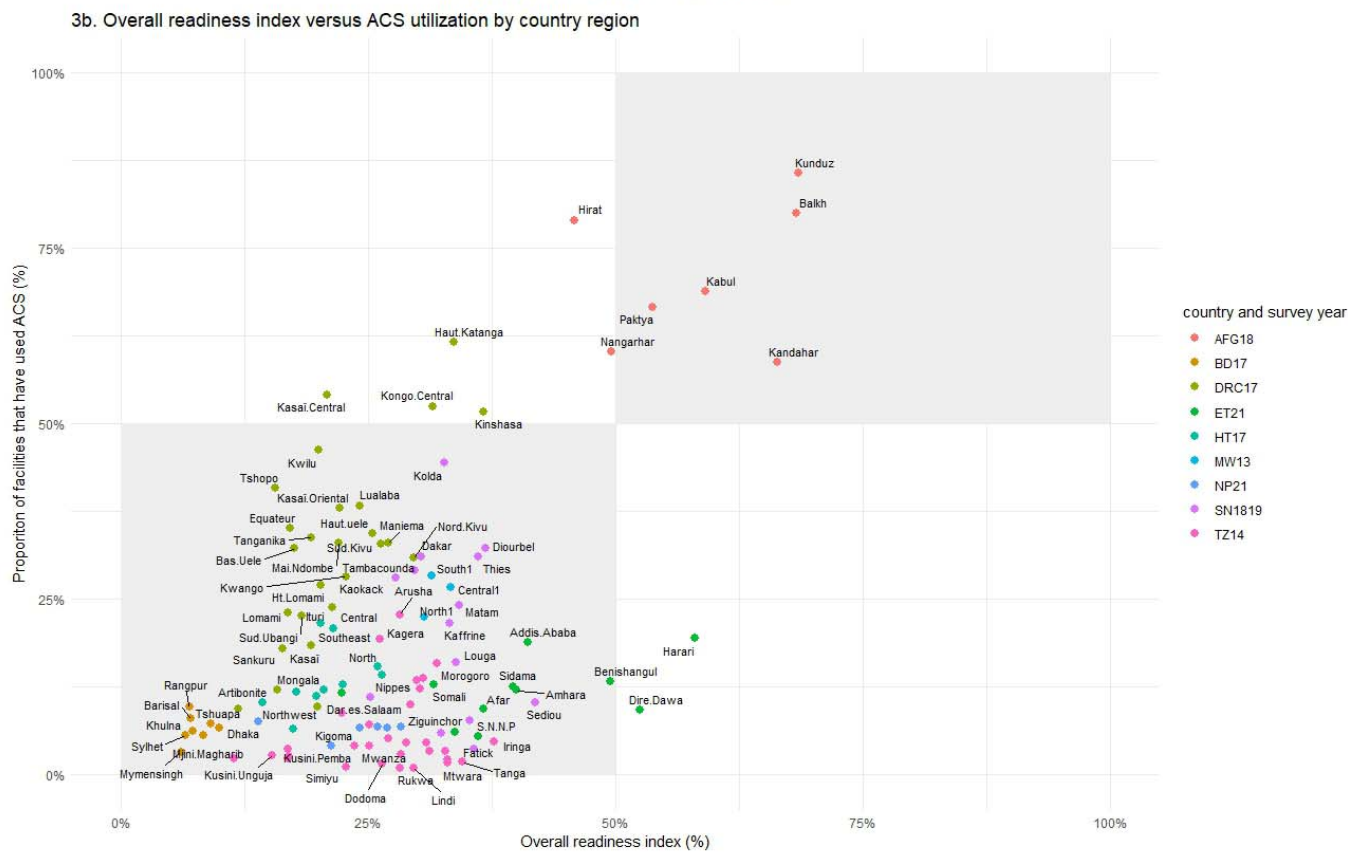
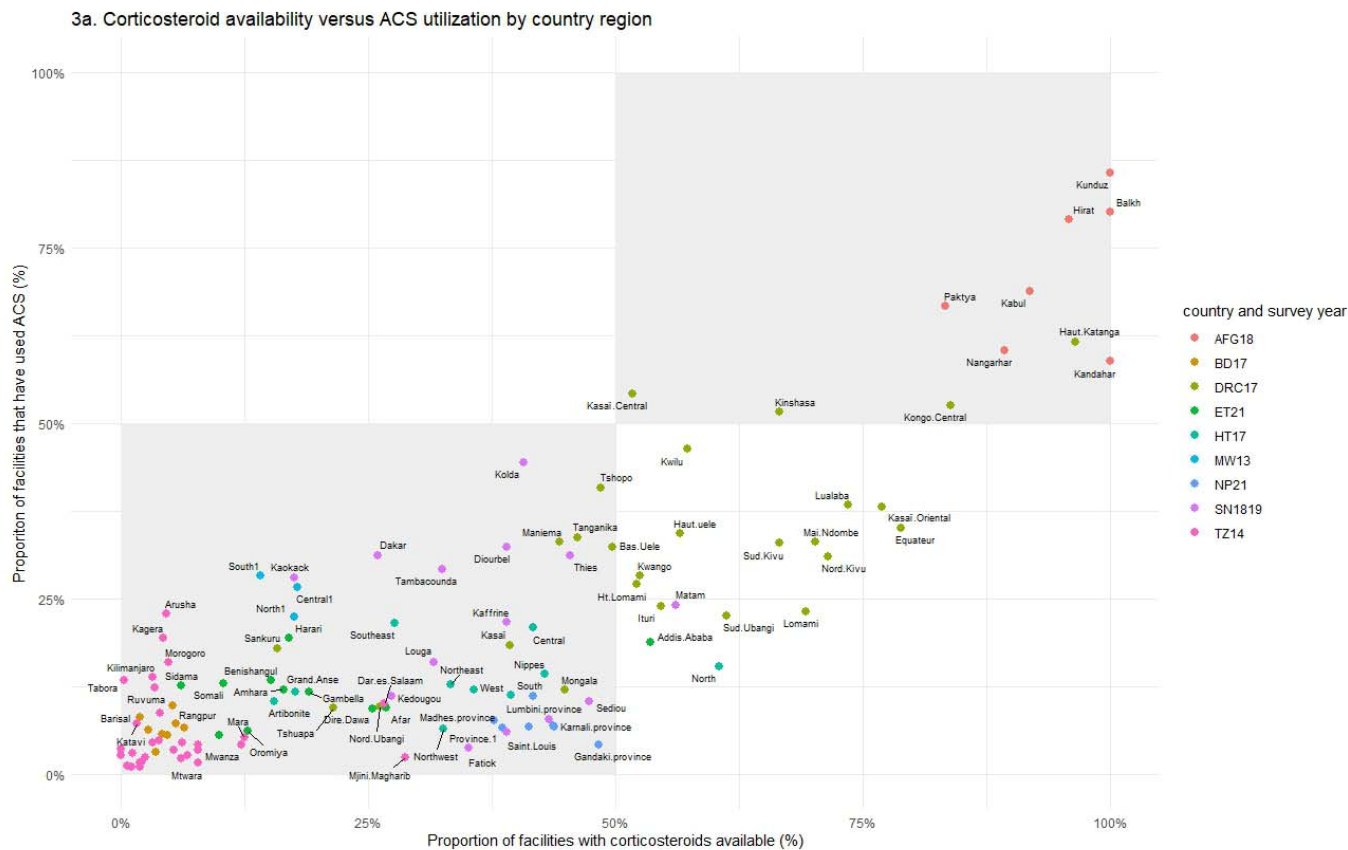
Figure 2. Facility readiness by country, readiness category, and facility level



AFG18: Afghanistan 2018-2019; BD17: Bangladesh 2017-2018; NP21: Nepal 2021; HT17: Haiti 2017-2018; DRC17: the Democratic Republic of Congo 2017-2018; ET21: Ethiopia 2021-2022; MW13: Malawi 2013-2014; SN1819: Senegal 2018 and 2019; TZ14: Tanzania 2014-2015; median*: median across eight countries, excluding AFG18

Figure 3a. Corticosteroid availability versus ACS utilization by region

Figure 3b. Overall readiness indices versus ACS utilization by region



AFG18: Afghanistan 2018-2019; BD17: Bangladesh 2017-2018; NP21: Nepal 2021; HT17: Haiti 2017; DRC17: the Democratic Republic of Congo 2017-2018; ET21: Ethiopia 2021-2022; MW13: Malawi 2013-2014; SN1819: Senegal 2018 and 2019; TZ14: Tanzania 2014-2015

Antenatal corticosteroids for pregnant women at risk of preterm labor in low- and middle-income countries: utilization and facility readiness

Supplementary file

Contents		Page
Supplemental Table 1	Sampling strategies of included SPA surveys	3
Supplemental Table 2	The indicators used to assess facility readiness based on the 2022 WHO recommendations on ACS	4
Supplemental Table 3	Response rates and number of facilities included in the analysis for each survey	5
Supplemental Table 4	Facility structural readiness for 35 indicators by country and facility level	6
Supplemental Figure 1	Heatmap of facility readiness for all facilities by country	11
Supplemental Figure 2	Heatmap of facility readiness for level 1 facilities by country	12
Supplemental Figure 3	Heatmap of facility readiness for level 2 facilities by country	13
Supplemental Figure 4	Heatmap of facility readiness for level 3 facilities by country	14
Supplemental Figure 5	ACS utilization and corticosteroid availability facility level	15
Supplemental Figure 6	Differences in overall readiness indexes by antenatal corticosteroids utilization for all facilities	16
Supplemental Figure 7	Differences in overall readiness indexes by antenatal corticosteroids utilization for level 2 facilities	17
Supplemental Figure 8	Differences in overall readiness indexes by antenatal corticosteroids utilization for level 3 facilities	18

Supplemental Table 1. Sampling strategies of included SPA surveys

Survey	Sampling strategy
Afghanistan 2018-2019	The survey focused on major public and private hospitals in the main seven provinces (including Nangarhar, Paktya, Kunduz, Balkh, Kandahar, and Herat, and Kabul) in the country. Among six provinces excluding Kabul, all 12 public hospitals, 37 private hospitals, and 52 private clinics were included. In Kabul, all 26 public and 20 private hospitals were surveyed, but a randomly selected sample of 13 private clinics (out of 84) were included.
Bangladesh 2017-2018	The survey adopted a stratified random sampling strategy for 1,600 facilities to obtain nationally representative data for different facility types, different facility management authorities, and each of the eight divisions (Barisal, Chittagong, Dhaka, Khulna, Mymensingh, Rajshahi, Rangpur, and Sylhet) of the country.
Nepal 2021	The survey adopted a stratified random sampling strategy for 1,633 health facilities through an equal probability systematic sampling. All government hospitals, all non-government hospitals with at least one bed, and all non-government hospitals in the provinces of Karnali and Sudurpashchim were included because of their small numbers. Also, all primary health care centers (PHCCs) and stand-alone HIV testing and counseling centers (stand-alone HTC) were included.
Haiti 2017-2018	The survey was a national census of all operational health facilities in the country during the survey period of 2017 to 2018.
Democratic Republic of Congo 2017-2018	The survey adopted a probability sampling strategy from 12,059 health facilities in the country, excluding health posts. On average, approximately 50 facilities were selected for each of the 26 provinces, reaching a sample of 1,380 facilities.
Ethiopia 2021-2022	The survey adopted a stratified random sampling strategy reaching a sample of 1,407 health facilities via an unequal probability systematic sampling. Within each region, stratification was achieved by facility type. All public and private hospitals were included because of their small numbers and crucial roles in the country's health system. Health centers were sampled but all health centers in Dire Dawa and Harari were included. Clinics were sampled with all higher clinics included and all clinics in Harari included. Health posts were sampled.
Malawi 2013-2014	The survey was a national census of all formal-sector health facilities, including public, private and other managing authority types, in the country during the survey period between 2013 to 2014.
Senegal 2018 and 2019	Senegal implemented a continuous SPA, which was designed to continuously collect data on health facilities over a period of 5 years from 2012 to 2017, aiming to survey all health facilities in the country.
Tanzania 2014-2015	The survey was a sample of formal-sector health facilities, including public and private, during the survey period between 2014 to 2015. The sample was selected to obtain national representative data by facility type, managing authority type, and regions.

Supplemental Table 2. The indicators used to assess facility readiness based on the 2022 WHO recommendations on ACS use

Antenatal corticosteroid therapy is recommended for women with a high likelihood of preterm birth from 24 weeks to 34 weeks of gestation when the following conditions (1 to 5) are met:							
WHO conditions/criteria	Readiness categories	Indicators extracted from SPA survey		SPA dataset			
1. Gestational age assessment can be accurately undertaken.	Readiness to accurately assess GA and identify high likelihoods of preterm labor	Equipment	ultrasound	Inventory dataset			
2. There is a high likelihood of preterm birth within 7 days of starting therapy.							
3. There is no clinical evidence of maternal infection.	Readiness to identify maternal infections	Equipment	thermometer				
		Diagnostics	hematology analyzer				
			HIV rapid diagnostic test syphilis rapid diagnostic test				
4. Adequate childbirth care is available (including capacity to recognize and safely manage preterm labor and birth).	Readiness to provide adequate childbirth care	Equipment	delivery pack				
			cord clamp				
			manual vacuum extractor				
			vacuum aspiration kit or D&C kit				
			forceps (large)				
			forceps (medium)				
		Medicines and commodities	parenteral antibiotics				
			parenteral anticonvulsants (diazepam) parenteral oxytocin				
		Staff and guidelines	a health worker who can perform C/S				
			an anesthetist				
national guidelines for BEmONC							
national guidelines for CEmONC							
5. The preterm newborn can receive adequate care (including resuscitation, kangaroo mother care, thermal care, feeding support, infection treatment and respiratory support including continuous positive airway pressure as needed).	Readiness to provide preterm newborn care	Equipment	suction bulb or penguin sucker				
			stethoscope				
			newborn masks (0, 1), neonatal size				
			self-inflating bag				
			incubator				
			other external heat source				
			pulse oximeter				
			oxygen concentrator				
			filled oxygen cylinder				
			oxygen distribution system				
			Medicines and commodities		glucometer		
					glucometer strips		
		hand-washing soap disposable latex gloves					
		Staff and guidelines	staff trained on integrated Management of Pregnancy and Childbirth (IMPAC)				
			staff trained on Comprehensive Emergency Obstetric and Newborn Care				
			staff trained on routine care for labor and normal vaginal delivery				
			guidelines on management of preterm labor		Health worker interview dataset ¹		
							Inventory dataset

*GA: gestational age; C/S Cesarean section; BEmONC: Basic Emergency Obstetrics and Newborn Care; CEmONC: Comprehensive Emergency Obstetrics and Newborn Care

¹ To report readiness at the facility level when using data from health worker interview, we converted data from health worker level to facility level by measuring the facility with at least one health worker who had received relevant training.

Supplemental Table 3. Survey response rates and number of facilities sampled, surveyed, and included in the analysis

Country	Survey year	Response rate ¹	Number of facilities sampled	Number of facilities surveyed ⁴	Number (%) of facilities included in the analysis ⁵
		median 94.9% (range 88.8%, 99.0%)	N = 10418 median 1130 (range 160, 1626)	N = 9793 median 1158 (range 142, 1576)	N = 8669 median 929 (range 108, 1500)
South Asia					
Afghanistan	2018-19	88.8% ²	160	142	108 (76.1%)
Bangladesh	2017-18	95.3%	1600	1524	1498 (98.3%)
Nepal	2021	97.0%	1626	1576	1500 (95.2%)
Caribbean					
Haiti	2017-18	97.5%	1033	1007	929 (92.3%)
Sub-Saharan Africa					
DRC	2017-18	97.7%	1412	1380	1364 (98.8%)
Ethiopia	2021-22	82.3%	1407	1158	911 (78.7%)
Malawi	2013-14	92.2%	1060	977	645 (66.1%)
Senegal	2018	89.3%	466	841	601 (71.5%)
Senegal	2019	94.5% ³	454	(2018: 416; 2019: 425)	
Tanzania	2014-15	99.0%	1200	1188	1056 (88.9%)

¹ Response rates were obtained from SPA final reports.

² Afghanistan 2018-2019 survey does not have a publicly available SPA final report. Its response rate was manually calculated.

³ The response rate for Senegal 2019 from its final report is 94.5%, calculated by excluding health huts. The rate is 93.6% (425/454) if including health huts.

⁴ The numbers of facilities surveyed are smaller than the numbers of facilities sampled because of non-response, refusal, or closure.

⁵ Facilities included in the analysis are facilities that either provided antenatal care, performed normal delivery, or performed Cesarean sections. The proportion was calculated by dividing the number of facilities included in the analysis by the number of facilities surveyed.

Supplemental Table 4. Facility structural readiness for 35 indicators by country and facility level

Four readiness categories based on five WHO criteria	The proportion of facilities with the indicators available	South Asia											
		Median (range) ¹	Overall	Afghanistan 2018-19		Level 3	Overall	Bangladesh 2017-18					
				Level 1	Level 2			Level 1	Level 2	Level 3			
1. Assess GA accurately and identify imminent preterm labor	Equipment	The proportion of facilities with a functional ultrasound machine in use	7.3% (0.2%, 12.3%)	92(82.4%)	3(41.2%)	5(67%)	84(86.2%)	178(3.6%)	13(0.7%)	19(1.7%)	92(82.4%)		
2. Identify maternal infections	Equipment	The proportion of facilities with this equipment	52.3% (20.7%, 76.2%)	65(58.6%)	0(0%)	6(75%)	59(59.4%)	734(20.7%)	0(0%)	481(85.2%)	65(58.6%)		
	Diagnostics	The proportion of facilities with the following diagnostics	(1) hematology analyzer	7.6% (2.7%, 30.5%)	94(92%)	6(86.3%)	5(70.1%)	83(94.8%)	131(2.7%)	11(0.5%)	16(1.7%)	94(92%)	
		(2) HIV rapid diagnostic test	52.4% (21.2%, 82.1%)	37(25.8%)	2(27.5%)	1(7.2%)	34(27.9%)					37(25.8%)	
(3) syphilis rapid diagnostic test	13.8% (3.0%, 68.8%)	30(21.9%)	2(27.5%)	1(7.2%)	27(23.3%)	128(3%)	18(1.1%)	22(2.7%)	30(21.9%)				
3. Provide adequate childbirth care	Equipment	The proportion of facilities with the following equipment to perform CEmONC (obstetric related)	(1) delivery pack	62.5% (19.0%, 87.5%)	80(74.5%)	0(0%)	5(28.6%)	75(83.4%)	692(19%)	0(0%)	449(77.5%)	80(74.5%)	
			(2) cord clamp	55.8% (15.8%, 82.1%)	78(70.3%)	0(0%)	6(37.3%)	72(77.5%)	566(15.8%)	0(0%)	358(63.6%)	78(70.3%)	
			(3) manual vacuum extractor	9.1% (4.7%, 33.9%)	76(69.1%)	0(0%)	3(17.4%)	73(78.4%)	214(4.8%)	0(0%)	90(14.7%)	76(69.1%)	
			(4) vacuum aspiration kit or D&C kit	10.9% (5.8%, 49.4%)	74(60.5%)	0(0%)	6(37%)	68(66.1%)	303(5.8%)	0(0%)	125(14.5%)	74(60.5%)	
			(5) forceps (large)	32.2% (5.4%, 73.5%)	85(74.9%)	0(0%)	10(100%)	75(75.6%)	718(19.7%)	0(0%)	473(80.4%)	85(74.9%)	
			(6) forceps (medium)	34.8% (5.2%, 82.2%)	84(74.3%)	0(0%)	10(100%)	74(74.8%)	697(19.4%)	0(0%)	451(79.4%)	84(74.3%)	
	Medicines and commodities	The proportion of facilities with the following medicines	(1) parenteral antibiotics	31.4% (4.6%, 51.3%)	45(42%)	0(0%)	2(50%)	43(43%)	281(4.6%)	0(0%)	82(7.6%)	45(42%)	
			(2) parenteral anticonvulsants (diazepam)	31.8% (4.7%, 66.6%)	49(45.1%)	0(0%)	2(50%)	47(46.7%)	264(4.7%)	0(0%)	73(8.6%)	49(45.1%)	
			(3) parenteral oxytocin	56.4% (7.5%, 79.2%)	78(74.4%)	0(0%)	5(32.2%)	73(82.8%)	401(7.5%)	0(0%)	178(21.6%)	78(74.4%)	
	Staff and guidelines	The proportion of facilities that has the following staff	(1) a health worker who can perform C/S	4.0% (2.2%, 20.5%)	46(32.5%)	0(0%)	0(0%)	46(37.8%)	158(2.5%)	0(0%)	0(0%)	46(32.5%)	
			(2) an anesthetist	3.8% (1.9%, 12.3%)	36(26.6%)	0(0%)	0(0%)	36(31%)	118(1.9%)	0(0%)	0(0%)	36(26.6%)	
			The proportion of facilities with the following guidelines	(1) national guidelines for BEmONC	18.2% (2.8%, 40.9%)	9(5.1%)	0(0%)	0(0%)	9(5.9%)	132(2.8%)	0(0%)	80(10.9%)	9(5.1%)
	(2) national guidelines for CEmONC	13.4% (2.2%, 41.9%)	9(5.1%)	0(0%)	0(0%)	9(5.9%)	114(2.2%)	0(0%)	65(8.7%)	9(5.1%)			
	4. Provide adequate preterm newborn care	Equipment	The proportion of facilities with the following equipment for neonatal resuscitation	(1) suction bulb or penguin sucker	46.2% (15.8%, 80.4%)	78(81.6%)	0(0%)	7(79.4%)	71(85.7%)	652(15.8%)	0(0%)	414(62.6%)	78(81.6%)
				(2) stethoscope (in general)	51.1% (23.1%, 81.3%)	87(87.4%)	0(0%)	5(69.7%)	82(93.7%)	804(23.2%)	0(0%)	540(97.6%)	87(87.4%)
(3) newborn masks, neonatal size self-inflating bag				37.3% (13.1%, 74.4%)	83(77.3%)	0(0%)	6(37%)	77(85.7%)	601(13.1%)	0(0%)	358(48%)	83(77.3%)	
(1) incubator				4.5% (2.2%, 6.6%)	54(55.4%)	0(0%)	2(11.1%)	52(63.3%)	127(2.2%)	0(0%)	29(2.7%)	54(55.4%)	
(2) other external heat source				14.6% (4.2%, 58.4%)	68(64.1%)	0(0%)	3(16.7%)	65(72.7%)	176(4.2%)	0(0%)	61(10.7%)	68(64.1%)	
(1) pulse oximeter				8.8% (2.8%, 42.0%)	49(53.7%)	1(13.7%)	1(5.6%)	47(61.2%)	142(3%)	7(0.4%)	18(1.1%)	49(53.7%)	
(2) oxygen concentrator				9.2% (2.4%, 15.2%)	40(48.2%)	0(0%)	0(0%)	40(56.1%)	192(3.2%)	6(0.3%)	69(5.8%)	40(48.2%)	
(3) filled oxygen cylinder				9.8% (1.8%, 22.5%)	82(84.9%)	3(45.1%)	7(82.4%)	72(87.1%)	334(6.6%)	23(1%)	122(13.2%)	82(84.9%)	
(4) oxygen distribution system				3.5% (1.6%, 8.5%)	16(13.3%)	2(27.5%)	1(5.6%)	13(13.5%)	84(1.6%)	2(0.1%)	26(2%)	16(13.3%)	
Medicines and commodities		The proportion of facilities with commodities for monitoring blood glucose	(1) glucometer	22.2% (19.3%, 79.7%)	42(37%)	0(0%)	3(55.5%)	39(36.6%)	310(21.1%)	124(21.7%)	64(10.6%)	42(37%)	
			(2) glucometer strips	20.6% (17.4%, 82.0%)	37(34%)	0(0%)	3(55.5%)	34(33.1%)	303(21.3%)	126(22.2%)	57(9.9%)	37(34%)	
			The proportion of facilities with medicines and commodities for infection management	(1) hand-washing soap	50.8% (45.3%, 88.5%)	71(62.6%)	7(100%)	4(22.7%)	60(65.5%)	1075(72.8%)	473(72.1%)	406(77.3%)	71(62.6%)
(2) disposable latex gloves		89.8% (69.4%, 96.4%)	102(88.9%)	7(100%)	8(50.5%)	87(92.9%)	1158(73.7%)	458(70.3%)	472(84.7%)	102(88.9%)			
Staff and guidelines		The proportion of facilities with at least one health worker who has received training about the following in the past 24 months	(1) Integrated Management of Pregnancy and Childbirth (IMPAC)	18.6% (2.4%, 37.8%)	15(12.9%)	1(13.7%)	0(0%)	14(14.3%)	116(15%)	32(16.6%)	45(11.7%)	15(12.9%)	
			(2) Comprehensive Emergency Obstetric and Newborn Care (CEmONC)	17.6% (2.0%, 29.6%)	7(4.2%)	0(0%)	0(0%)	7(4.9%)	84(10.6%)	19(12.3%)	32(6.1%)	7(4.2%)	
	(3) Routine care for labor and normal vaginal delivery		24.0% (2.8%, 43.5%)	16(13.5%)	1(13.7%)	0(0%)	15(15.1%)	153(18.2%)	32(20.5%)	78(14.8%)	16(13.5%)		
The proportion of facilities with the following guidelines	guidelines on management of preterm labor	10.2% (3.2%, 34.7%)	9(5.1%)	0(0%)	0(0%)	9(5.9%)	140(3.2%)	0(0%)	85(13.6%)	9(5.1%)			

¹ Median and range were obtained from data across 8 countries (excluding Afghanistan).

* : data unavailable

Supplemental Table 4. Facility structural readiness for 35 indicators by country and facility level (continued)

Four readiness categories based on five WHO criteria		The proportion of facilities with the indicators available		South Asia Nepal 2021			Caribbean Haiti 2017-2018				
				Overall	Level 1	Level 2	Level 3	Overall	Level 1	Level 2	Level 3
1. Assess GA accurately and identify imminent preterm labor	Equipment	The proportion of facilities with a functional ultrasound machine in use		422(12.3%)	61(5.3%)	135(10.3%)	226(93.3%)	100(10.8%)	18(3.2%)	14(5.5%)	68(63.5%)
2. Identify maternal infections	Equipment	The proportion of facilities with this equipment	thermometer	731(48%)	0(0%)	515(91.7%)	216(90.1%)	310(33.4%)	0(0%)	227(89%)	83(77.5%)
	Diagnostics	The proportion of facilities with the following diagnostics	(1) hematology analyzer	309(8.6%)	37(3.8%)	70(5.4%)	202(79.3%)	283(30.5%)	123(21.7%)	88(34.5%)	72(67.3%)
			(2) HIV rapid diagnostic test					197(21.2%)	97(17.1%)	68(26.6%)	32(29.9%)
			(3) syphilis rapid diagnostic test	304(12.8%)	69(7.2%)	149(16.2%)	86(32.4%)	194(20.9%)	106(18.7%)	60(23.5%)	28(26.2%)
3. Provide adequate childbirth care	Equipment	The proportion of facilities with the following equipment to perform CEmONC (obstetric related)	(1) delivery pack	767(50.6%)	0(0%)	549(97.2%)	218(88.6%)	283(30.5%)	0(0%)	198(77.6%)	85(79.4%)
			(2) cord clamp	714(46.8%)	0(0%)	505(89.4%)	209(87.1%)	314(33.8%)	0(0%)	218(85.5%)	96(89.6%)
			(3) manual vacuum extractor	313(12.1%)	0(0%)	137(17.6%)	176(70.8%)	51(5.5%)	0(0%)	20(7.8%)	31(28.9%)
			(4) vacuum aspiration kit or D&C kit	326(10.9%)	0(0%)	138(14.5%)	188(76.6%)	100(10.8%)	0(0%)	55(21.6%)	45(42%)
			(5) forceps (large)	640(40.6%)	0(0%)	441(76.7%)	199(83.9%)	50(5.4%)	0(0%)	17(6.7%)	33(30.8%)
			(6) forceps (medium)	707(46.1%)	0(0%)	499(88%)	208(87.1%)	49(5.3%)	0(0%)	20(7.9%)	29(27.1%)
	Medicines and commodities	The proportion of facilities with the following medicines	(1) parenteral antibiotics	575(34.4%)	0(0%)	388(64%)	187(79%)	179(19.3%)	0(0%)	109(42.8%)	70(65.3%)
			(2) parenteral anticonvulsants (diazepam)	358(14.7%)	0(0%)	175(22.4%)	183(76.8%)	112(12.1%)	0(0%)	67(26.3%)	45(41.9%)
			(3) parenteral oxytocin	760(50.5%)	0(0%)	547(97.4%)	213(86.7%)	257(27.7%)	0(0%)	173(67.9%)	84(78.4%)
	Staff and guidelines	The proportion of facilities that has the following staff	(1) a health worker who can perform C/S	166(3.5%)	0(0%)	0(0%)	166(65.6%)	54(5.8%)	0(0%)	0(0%)	54(50.4%)
			(2) an anesthetist	152(3.2%)	0(0%)	0(0%)	152(60.4%)	43(4.6%)	0(0%)	0(0%)	43(40.1%)
			The proportion of facilities with the following guidelines	(1) national guidelines for BEmONC							
(2) national guidelines for CEmONC						124(13.4%)	0(0%)	88(34.5%)	36(33.6%)		
4. Provide adequate preterm newborn care	Equipment	The proportion of facilities with the following equipment for neonatal resuscitation	(1) suction bulb or penguin sucker	393(22.3%)	0(0%)	252(40.4%)	141(61.2%)	325(35%)	0(0%)	226(88.6%)	99(92.5%)
			(2) stethoscope (in general)	771(51.1%)	0(0%)	551(98%)	220(91.9%)	335(36.1%)	0(0%)	242(94.9%)	93(86.8%)
			(3) newborn masks, neonatal size self-inflating bag	718(47.7%)	0(0%)	511(91.5%)	207(86.2%)	207(22.3%)	0(0%)	122(47.8%)	85(79.5%)
	The proportion of facilities with equipment for thermal care	(1) incubator	141(4.5%)	0(0%)	42(4.7%)	99(43.6%)	59(6.4%)	0(0%)	24(9.5%)	35(32.7%)	
		(2) other external heat source	530(33.6%)	0(0%)	354(63.2%)	176(72.8%)	160(17.2%)	0(0%)	90(35.3%)	70(65.4%)	
	The proportion of facilities with equipment for respiratory care, including safe oxygen use	(1) pulse oximeter	770(42%)	211(28.1%)	340(50.4%)	219(91.8%)	155(16.7%)	58(10.2%)	54(21.2%)	43(40.1%)	
		(2) oxygen concentrator	307(11.7%)	37(4.1%)	145(14.7%)	125(52.3%)	100(10.8%)	23(4.1%)	40(15.7%)	37(34.6%)	
		(3) filled oxygen cylinder	507(22.5%)	85(8.5%)	237(30.3%)	185(78.7%)	149(16.1%)	36(6.3%)	55(21.7%)	58(54.2%)	
		(4) oxygen distribution system	128(3.2%)	11(1%)	7(0.6%)	110(45.4%)	32(3.5%)	5(0.9%)	11(4.4%)	16(14.9%)	
	Medicines and commodities	The proportion of facilities with commodities for monitoring blood glucose	(1) glucometer	348(19.4%)	94(11.4%)	150(24.9%)	104(42.6%)	463(49.8%)	227(40%)	159(62.3%)	77(71.9%)
			(2) glucometer strips	325(17.4%)	82(10%)	138(21.9%)	105(42.9%)	424(45.6%)	201(35.4%)	146(57.2%)	77(71.9%)
	Staff and guidelines	The proportion of facilities with medicines and commodities for infection management	(1) hand-washing soap	1297(88.5%)	595(86.2%)	507(91.7%)	195(81.8%)	492(52.9%)	305(53.8%)	133(52.1%)	54(50.5%)
			(2) disposable latex gloves	1433(95.8%)	651(93.8%)	554(97.9%)	228(94.2%)	831(89.5%)	497(87.7%)	235(92.2%)	99(92.5%)
			The proportion of facilities with at least one health worker who has received training about the following in the past 24 months	(1) Integrated Management of Pregnancy and Childbirth (IMPAC)	87(4.5%)	4(0.7%)	54(7.7%)	29(10.2%)	257(27.8%)	76(13.5%)	109(42.8%)
	(2) Comprehensive Emergency Obstetric and Newborn Care (CEmONC)	98(4.4%)		5(1.2%)	57(6.8%)	36(12.5%)	218(23.5%)	59(10.4%)	91(35.7%)	68(63.5%)	
(3) Routine care for labor and normal vaginal delivery	180(11.1%)	7(1%)		119(20.4%)	54(18.9%)	258(27.9%)	75(13.3%)	111(43.6%)	72(67.3%)		
		The proportion of facilities with the following guidelines	guidelines on management of preterm labor					60(6.4%)	0(0%)	40(15.6%)	20(18.6%)

* : data unavailable

medRxiv preprint doi: <https://doi.org/10.1101/2024.07.31.24310883>; this version posted August 2, 2024. The copyright holder for this preprint (which was not certified by peer review) is the author/funder, who has granted medRxiv a license to display the preprint in perpetuity. It is made available under a [CC-BY-NC-ND 4.0 International license](#).

Supplemental Table 4. Facility structural readiness for 35 indicators by country and facility level (continued)

Four readiness categories based on five WHO criteria		The proportion of facilities with the indicators available		DRC 2017-2018			Sub-Saharan Africa			Ethiopia 2021-2022		
				Overall	Level 1	Level 2	Level 3	Overall	Level 1	Level 2	Level 3	
1. Assess GA accurately and identify imminent preterm labor	Equipment	The proportion of facilities with a functional ultrasound machine in use		450(10.7%)	1(12.5%)	8(1.2%)	441(36.2%)	344(4.5%)	16(1.2%)	38(6.1%)	290(84.9%)	
2. Identify maternal infections	Equipment	The proportion of facilities with this equipment	thermometer	1102(76.2%)	0(0%)	377(74.6%)	725(85.9%)	568(21%)	0(0%)	262(83.5%)	306(91%)	
	Diagnostics	The proportion of facilities with the following diagnostics	(1) hematology analyzer	179(5.4%)	1(12.5%)	8(2%)	170(14.1%)	364(5.7%)	17(1%)	68(12.4%)	279(82.2%)	
			(2) HIV rapid diagnostic test	654(44.2%)	4(28.1%)	189(39.3%)	461(58.5%)	616(29.1%)	62(10.5%)	258(85.6%)	296(80.1%)	
		(3) syphilis rapid diagnostic test	218(11.8%)	1(12.5%)	53(9.9%)	164(16.9%)	238(11.1%)	24(5.2%)	107(29.1%)	107(28.2%)		
3. Provide adequate childbirth care	Equipment	The proportion of facilities with the following equipment to perform CEmONC (obstetric related)	(1) delivery pack	1240(87.5%)	0(0%)	437(87.2%)	803(94.5%)	605(22.5%)	0(0%)	276(89.5%)	329(96.9%)	
			(2) cord clamp	1160(79.1%)	0(0%)	409(80.1%)	751(81.9%)	625(23.4%)	0(0%)	292(93.4%)	333(97.9%)	
			(3) manual vacuum extractor	273(7.2%)	0(0%)	28(5.1%)	245(13.4%)	518(16.5%)	0(0%)	205(62.8%)	313(92.8%)	
			(4) vacuum aspiration kit or D&C kit	729(36.4%)	0(0%)	134(26.4%)	595(65.9%)	385(10%)	0(0%)	124(36.2%)	261(70.4%)	
			(5) forceps (large)	127(5.9%)	0(0%)	31(5.4%)	96(7.6%)	617(23.9%)	0(0%)	286(95.4%)	331(97.4%)	
			(6) forceps (medium)	112(5.2%)	0(0%)	21(4.6%)	91(7.1%)	611(23.4%)	0(0%)	281(93.4%)	330(96.4%)	
	Medicines and commodities	The proportion of facilities with the following medicines	(1) parenteral antibiotics	549(36.4%)	0(0%)	174(34.3%)	375(44.4%)	489(16.4%)	0(0%)	204(64.6%)	285(75.7%)	
			(2) parenteral anticonvulsants (diazepam)	785(55.4%)	0(0%)	253(52.7%)	532(66.6%)	351(10.4%)	0(0%)	121(39.3%)	230(61.6%)	
			(3) parenteral oxytocin	1110(77.3%)	0(0%)	394(77.5%)	716(82.4%)	611(22.8%)	0(0%)	283(90.7%)	328(96.7%)	
	Staff and guidelines	The proportion of facilities that has the following staff	(1) a health worker who can perform C/S	725(20.5%)	0(0%)	0(0%)	725(77.3%)	312(2.2%)	0(0%)	0(0%)	312(83.5%)	
			(2) an anesthetist	486(12.3%)	0(0%)	0(0%)	486(46.4%)	311(2.2%)	0(0%)	0(0%)	311(82.8%)	
			The proportion of facilities with the following guidelines	(1) national guidelines for BEmONC					350(11.5%)	0(0%)	147(45%)	203(55%)
(2) national guidelines for CEmONC	411(24.7%)	0(0%)		118(23.2%)	293(30.5%)	162(4.3%)	0(0%)	45(15.5%)	117(33%)			
4. Provide adequate preterm newborn care	Equipment	The proportion of facilities with the following equipment for neonatal resuscitation	(1) suction bulb or penguin sucker	1099(80.4%)	0(0%)	388(80%)	711(87.1%)	577(21.3%)	0(0%)	261(84.3%)	316(93.6%)	
			(2) stethoscope (in general)	1144(81.3%)	0(0%)	412(81.5%)	732(86.3%)	612(23.1%)	0(0%)	290(92.1%)	322(95.1%)	
			(3) newborn masks, neonatal size self-inflating bag	561(26.9%)	0(0%)	102(21%)	459(44.6%)	593(21.6%)	0(0%)	262(85.2%)	331(97.4%)	
	The proportion of facilities with equipment for thermal care	(1) incubator	114(3%)	0(0%)	3(0.6%)	111(9.7%)	232(4.5%)	0(0%)	60(14.4%)	172(47.1%)		
		(2) other external heat source	411(18.2%)	0(0%)	62(12.4%)	349(35.3%)	382(9.4%)	0(0%)	118(32.7%)	264(79.5%)		
	The proportion of facilities with equipment for respiratory care, including safe oxygen use	(1) pulse oximeter	78(2.8%)	1(12.5%)	2(0.4%)	75(8.6%)	318(26.8%)	23(31.1%)	85(21%)	210(64.9%)		
		(2) oxygen concentrator	105(2.4%)	2(14.4%)	2(0.5%)	101(6.7%)	184(11.2%)	11(11.3%)	38(6.8%)	135(46.5%)		
		(3) filled oxygen cylinder	73(1.8%)	2(14.4%)	1(0.3%)	70(4.8%)	200(13%)	12(15.7%)	43(7.9%)	145(49%)		
		(4) oxygen distribution system					80(4.8%)	3(7.2%)	12(2.6%)	65(17.7%)		
	Medicines and commodities	The proportion of facilities with commodities for monitoring blood glucose	(1) glucometer	761(34%)	3(27.7%)	76(18.2%)	682(77%)	564(21%)	38(4.1%)	202(68.8%)	324(95.6%)	
			(2) glucometer strips	674(29.6%)	3(27.7%)	63(15.6%)	608(67.4%)	542(19.3%)	35(3.8%)	188(62.5%)	319(94.4%)	
	The proportion of facilities with medicines and commodities for infection management	(1) hand-washing soap	686(48.4%)	7(57.8%)	228(45.6%)	451(55.6%)	487(45.3%)	116(42.7%)	160(51.8%)	211(63.3%)		
(2) disposable latex gloves		1256(90.2%)	10(100%)	453(88.5%)	793(93.9%)	761(69.4%)	160(61.5%)	283(93%)	318(94.1%)			
Staff and guidelines	The proportion of facilities with at least one health worker who has received training about the following in the past 24 months	(1) Integrated Management of Pregnancy and Childbirth (IMPAC)	423(34.5%)	1(41.7%)	107(33.8%)	315(35.6%)	108(2.4%)	5(0.4%)	41(6.6%)	62(24.7%)		
		(2) Comprehensive Emergency Obstetric and Newborn Care (CEmONC)	401(29.6%)	1(41.7%)	93(28.6%)	307(31.2%)	112(2%)	4(0.3%)	38(5.6%)	70(19.3%)		
		(3) Routine care for labor and normal vaginal delivery	415(33.6%)	1(41.7%)	107(33.5%)	307(33.8%)	126(2.8%)	7(1.1%)	44(6.5%)	75(20.6%)		
		The proportion of facilities with the following guidelines	guidelines on management of preterm labor	232(11.4%)	0(0%)	46(8.8%)	186(19%)	248(7.2%)	0(0%)	86(27.1%)	162(43.2%)	

* : data unavailable

Supplemental Table 4. Facility structural readiness for 35 indicators by country and facility level (continued)

Four readiness categories based on five WHO criteria		The proportion of facilities with the indicators available		Sub-Saharan Africa								
				Malawi 2013-2014			Senegal 2018 and 2019					
				Overall	Level 1	Level 2	Level 3	Overall	Level 1	Level 2	Level 3	
1. Assess GA accurately and identify imminent preterm labor	Equipment	The proportion of facilities with a functional ultrasound machine in use		65(10%)	4(3.8%)	7(1.5%)	54(76%)	1(0.2%)	0(0%)	1(0.2%)	0(0%)	
2. Identify maternal infections	Equipment	The proportion of facilities with this equipment	thermometer	453(69.6%)	0(0%)	390(82.6%)	63(88.6%)	495(69.9%)	0(0%)	436(80.2%)	59(96.4%)	
	Diagnostics	The proportion of facilities with the following diagnostics	(1) hematology analyzer	57(8.8%)	8(7.7%)	6(1.3%)	43(60.8%)	139(16.1%)	7(28.9%)	80(10.5%)	52(52.2%)	
			(2) HIV rapid diagnostic test	391(60.6%)	57(55.4%)	288(61.2%)	46(64.6%)	548(78.7%)	40(40.5%)	461(86.2%)	47(72.7%)	
			(3) syphilis rapid diagnostic test	96(14.8%)	17(16.4%)	54(11.4%)	25(35.2%)	487(68.8%)	37(39.5%)	410(77.6%)	40(30.2%)	
3. Provide adequate childbirth care	Equipment	The proportion of facilities with the following equipment to perform CEmONC (obstetric related)	(1) delivery pack	486(74.8%)	0(0%)	418(88.7%)	68(95.7%)	579(83.7%)	0(0%)	521(97.8%)	58(96%)	
			(2) cord clamp	482(74.1%)	0(0%)	416(88.2%)	66(92.9%)	568(82.1%)	0(0%)	509(95.8%)	59(96.4%)	
			(3) manual vacuum extractor	221(33.9%)	0(0%)	165(34.8%)	56(78.8%)	96(11%)	0(0%)	57(7.6%)	39(71.5%)	
			(4) vacuum aspiration kit or D&C kit	131(20.1%)	0(0%)	97(20.4%)	34(48%)	343(49.4%)	0(0%)	303(55.7%)	40(79.1%)	
			(5) forceps (large)	448(69%)	0(0%)	390(82.8%)	58(81.7%)	521(73.5%)	0(0%)	464(85%)	57(94.9%)	
			(6) forceps (medium)	434(66.9%)	0(0%)	379(80.5%)	55(77.5%)	533(75.6%)	0(0%)	474(87.5%)	59(96.4%)	
	Medicines and commodities	The proportion of facilities with the following medicines	(1) parenteral antibiotics	299(46.1%)	0(0%)	244(51.9%)	55(77.4%)	362(51.3%)	0(0%)	316(60.7%)	46(51.1%)	
			(2) parenteral anticonvulsants (diazepam)	433(66.6%)	0(0%)	371(78.6%)	62(87.2%)	363(51.6%)	0(0%)	317(58.1%)	46(83.6%)	
			(3) parenteral oxytocin	514(79.2%)	0(0%)	449(95.3%)	65(91.4%)	451(62.3%)	0(0%)	402(74.5%)	49(52.2%)	
	Staff and guidelines	The proportion of facilities that has the following staff	(1) a health worker who can perform C/S	57(8.7%)	0(0%)	0(0%)	57(80.1%)	49(3.5%)	0(0%)	0(0%)	49(48.7%)	
			(2) an anesthetist	47(7.2%)	0(0%)	0(0%)	47(66%)	51(3.6%)	0(0%)	0(0%)	51(50.4%)	
			The proportion of facilities with the following guidelines	(1) national guidelines for BEmONC	266(40.9%)	0(0%)	231(48.9%)	35(49.1%)				
	(2) national guidelines for CEmONC	148(22.8%)		0(0%)	117(24.8%)	31(43.6%)	304(41.9%)	0(0%)	269(47.5%)	35(64.5%)		
	4. Provide adequate preterm newborn care	Equipment	The proportion of facilities with the following equipment for neonatal resuscitation	(1) suction bulb or penguin sucker	399(61.5%)	0(0%)	346(73.6%)	53(74.5%)	480(66.4%)	0(0%)	434(76.9%)	46(84.9%)
				(2) stethoscope (in general)	423(65.2%)	0(0%)	369(78.4%)	54(76.1%)	369(51.1%)	0(0%)	314(56.7%)	55(92.2%)
(3) newborn masks, neonatal size self-inflating bag				483(74.4%)	0(0%)	418(88.7%)	65(91.4%)	477(67.4%)	0(0%)	419(77.1%)	58(94.9%)	
The proportion of facilities with equipment for thermal care		(1) incubator	37(5.7%)	0(0%)	8(1.7%)	29(41.1%)	41(6.6%)	0(0%)	18(3%)	23(59.4%)		
		(2) other external heat source	78(12%)	0(0%)	31(6.5%)	47(66.3%)	407(58.4%)	0(0%)	350(65.9%)	57(94.2%)		
The proportion of facilities with equipment for respiratory care, including safe oxygen use		(1) pulse oximeter	60(9.3%)	9(8.8%)	25(5.3%)	26(36.9%)	68(8.2%)	2(1.2%)	22(2.5%)	44(85.1%)		
		(2) oxygen concentrator	99(15.2%)	9(8.5%)	54(11.4%)	36(50.7%)	61(7.5%)	1(0.6%)	23(2.9%)	37(73.4%)		
		(3) filled oxygen cylinder	47(7.3%)	7(6.8%)	16(3.4%)	24(34%)	99(12.4%)	5(10.9%)	44(6%)	50(85.7%)		
		(4) oxygen distribution system	27(4.2%)	2(1.9%)	15(3.2%)	10(14.2%)	60(8.5%)	19(1.9%)	16(2.1%)	43(78.4%)		
Medicines and commodities		The proportion of facilities with commodities for monitoring blood glucose	(1) glucometer	151(23.4%)	32(31.2%)	58(12.3%)	61(85.8%)	532(79.7%)	48(72.9%)	446(81.1%)	38(77.7%)	
			(2) glucometer strips	129(20%)	24(23.4%)	48(10.1%)	57(80.2%)	537(82%)	46(71%)	446(84%)	45(82.5%)	
Staff and guidelines		The proportion of facilities with medicines and commodities for infection management	(1) hand-washing soap	313(48.7%)	57(55.4%)	211(44.9%)	45(63.5%)	334(48.2%)	36(44.9%)	263(50.1%)	35(34.6%)	
			(2) disposable latex gloves	622(96.4%)	96(93%)	458(97.2%)	68(95.8%)	584(86.7%)	55(81.7%)	480(91.5%)	49(44.4%)	
			The proportion of facilities with at least one health worker who has received training about the following in the past 24 months	(1) Integrated Management of Pregnancy and Childbirth (IMPAC)	137(21.2%)	3(2.9%)	103(21.9%)	31(44.2%)	223(37.8%)	10(19%)	190(41.8%)	23(21.3%)
(2) Comprehensive Emergency Obstetric and Newborn Care (CEmONC)		133(20.6%)		5(4.8%)	97(20.6%)	31(44.3%)	170(27.5%)	9(17.5%)	141(29.6%)	20(18.6%)		
(3) Routine care for labor and normal vaginal delivery	214(33.2%)	3(2.9%)		166(35.3%)	45(64.1%)	236(43.5%)	10(46.1%)	205(45.4%)	21(18.8%)			
		The proportion of facilities with the following guidelines	guidelines on management of preterm labor	226(34.7%)	0(0%)	190(40.2%)	36(50.6%)	130(18%)	0(0%)	107(17.7%)	23(57.6%)	

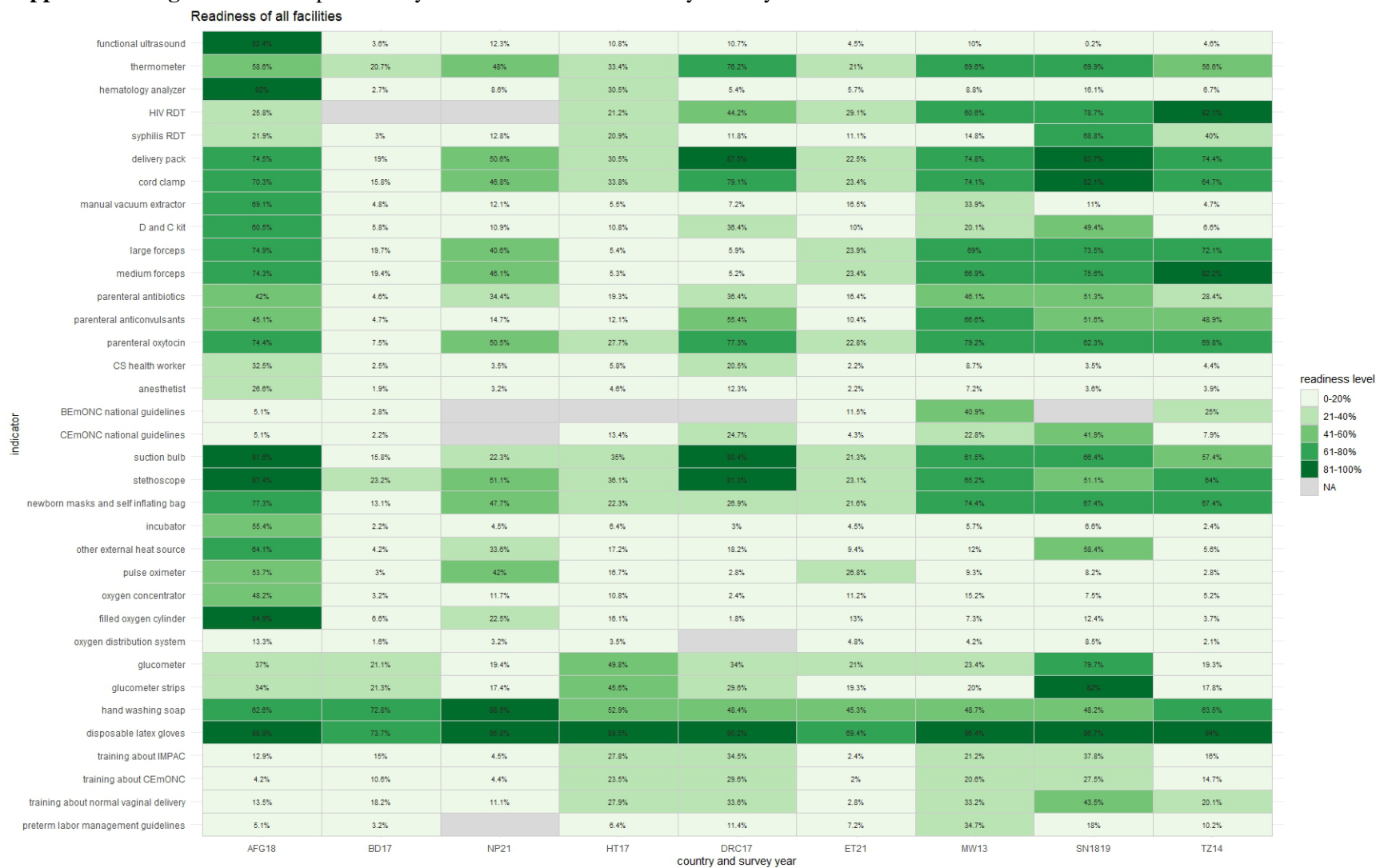
* : data unavailable

Supplemental Table 4. Facility structural readiness for 35 indicators by country and facility level (continued)

Four readiness categories based on five WHO criteria	The proportion of facilities with the indicators available		Sub-Saharan Africa Tanzania 2014-2015				
			Overall	Level 1	Level 2	Level 3	
1. Assess GA accurately and identify imminent preterm labor	Equipment	The proportion of facilities with a functional ultrasound machine in use	223(4.6%)	6(2.9%)	23(1%)	194(65.1%)	
2. Identify maternal infections	Equipment	The proportion of facilities with this equipment	thermometer	654(56.6%)	0(0%)	417(62.7%)	237(84.6%)
	Diagnostics	The proportion of facilities with the following diagnostics	(1) hematology analyzer	233(6.7%)	12(10.1%)	52(3%)	169(58.2%)
			(2) HIV rapid diagnostic test	879(82.1%)	76(77.4%)	573(82.6%)	230(83%)
			(3) syphilis rapid diagnostic test	455(40%)	50(41.1%)	275(39.5%)	130(45.4%)
3. Provide adequate childbirth care	Equipment	The proportion of facilities with the following equipment to perform CEmONC (obstetric related)	(1) delivery pack	838(74.4%)	0(0%)	575(83.2%)	263(97.1%)
			(2) cord clamp	711(64.7%)	0(0%)	487(72.4%)	224(83.3%)
			(3) manual vacuum extractor	176(4.7%)	0(0%)	26(2.2%)	150(54.5%)
			(4) vacuum aspiration kit or D&C kit	197(6.6%)	0(0%)	77(5.1%)	120(45.7%)
			(5) forceps (large)	821(72.1%)	0(0%)	568(80.7%)	253(93.3%)
			(6) forceps (medium)	896(82.2%)	0(0%)	634(92.5%)	262(96.9%)
	Medicines and commodities	The proportion of facilities with the following medicines	(1) parenteral antibiotics	363(28.4%)	0(0%)	211(30.7%)	152(54.4%)
			(2) parenteral anticonvulsants (diazepam)	580(48.9%)	0(0%)	369(53.9%)	211(76.7%)
			(3) parenteral oxytocin	818(69.8%)	0(0%)	562(77.9%)	256(93.2%)
	Staff and guidelines	The proportion of facilities that has the following staff	(1) a health worker who can perform C/S	238(4.4%)	0(0%)	0(0%)	238(83.6%)
			(2) an anesthetist	215(3.9%)	0(0%)	0(0%)	215(74.3%)
		The proportion of facilities with the following guidelines	(1) national guidelines for BEmONC	368(25%)	0(0%)	249(27.3%)	119(43.2%)
			(2) national guidelines for CEmONC	134(7.9%)	0(0%)	79(8.1%)	55(20.7%)
4. Provide adequate preterm newborn care	Equipment	The proportion of facilities with the following equipment for neonatal resuscitation	(1) suction bulb or penguin sucker	652(57.4%)	0(0%)	427(63.9%)	225(80.7%)
			(2) stethoscope (in general)	732(64%)	0(0%)	490(71.4%)	242(86.4%)
			(3) newborn masks, neonatal size self-inflating bag	772(67.4%)	0(0%)	512(75%)	260(94.8%)
		The proportion of facilities with equipment for thermal care	(1) incubator	97(2.4%)	0(0%)	17(1.1%)	80(28%)
			(2) other external heat source	188(5.6%)	0(0%)	41(3.4%)	147(52.5%)
			The proportion of facilities with equipment for respiratory care, including safe oxygen use	(1) pulse oximeter	84(2.8%)	8(10.1%)	9(0.4%)
	(2) oxygen concentrator	159(5.2%)		11(12.2%)	45(2.1%)	103(38.7%)	
	(3) filled oxygen cylinder	105(3.7%)		8(11.1%)	20(1%)	77(29.7%)	
	(4) oxygen distribution system	51(2.1%)		5(5.5%)	12(0.9%)	34(12.9%)	
	Medicines and commodities	The proportion of facilities with commodities for monitoring blood glucose	(1) glucometer	453(19.3%)	40(42.2%)	181(12%)	232(86%)
			(2) glucometer strips	395(17.8%)	35(39.3%)	147(11%)	213(78.4%)
	Staff and guidelines	The proportion of facilities with medicines and commodities for infection management	(1) hand-washing soap	697(63.5%)	67(64.1%)	434(63.1%)	196(70%)
			(2) disposable latex gloves	996(94%)	98(94.1%)	640(94%)	258(94.9%)
		The proportion of facilities with at least one health worker who has received training about the following in the past 24 months	(1) Integrated Management of Pregnancy and Childbirth (IMPAC)	228(16%)	3(5.1%)	138(16.6%)	87(31.5%)
			(2) Comprehensive Emergency Obstetric and Newborn Care (CEmONC)	252(14.7%)	2(5%)	146(14.6%)	104(36.8%)
(3) Routine care for labor and normal vaginal delivery			308(20.1%)	6(9.2%)	185(20.2%)	117(42.6%)	
		The proportion of facilities with the following guidelines	guidelines on management of preterm labor	153(10.2%)	0(0%)	83(10.7%)	70(24.9%)

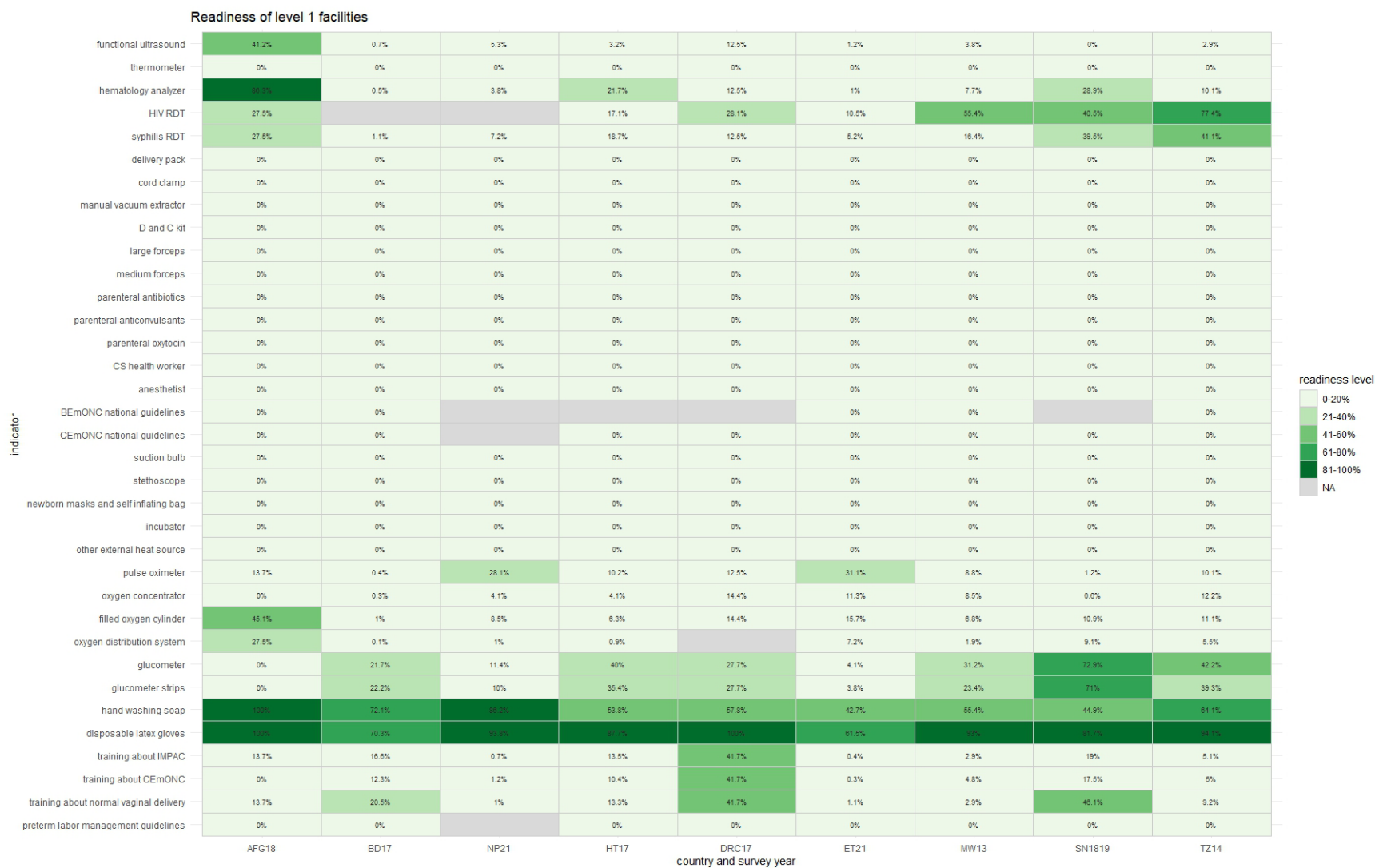
* : data unavailable

Supplemental Figure 1. Heatmap of facility readiness for all facilities by country



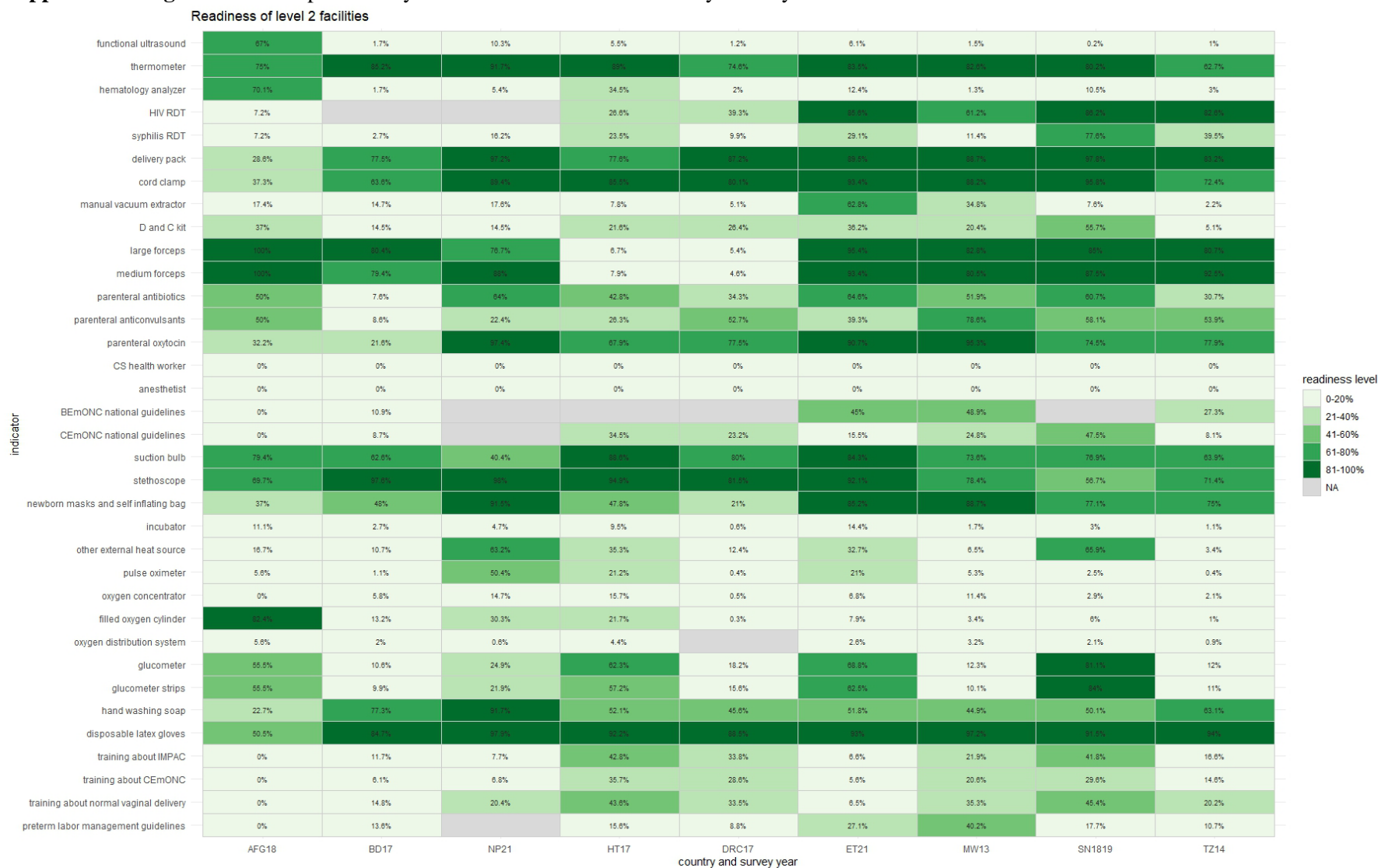
AFG18: Afghanistan 2018-2019; BD17: Bangladesh 2017-2018; NP21: Nepal 2021; HT17: Haiti 2017; DRC17: the Democratic Republic of Congo 2017-2018; ET21: Ethiopia 20121-2022; MW13: Malawi 2013-2014; SN1819: Senegal 2018 and 2019; TZ14: Tanzania 2014-2015; RDT: rapid diagnostic test; BEMoNC: Basic Emergency Obstetrics and Newborn Care; CEMoNC: Comprehensive Emergency Obstetrics and Newborn Care; IMPAC: Integrated Management of Pregnancy and Childbirth; NA: not applicable

Supplemental Figure 2. Heatmap of facility readiness for level 1 facilities by country



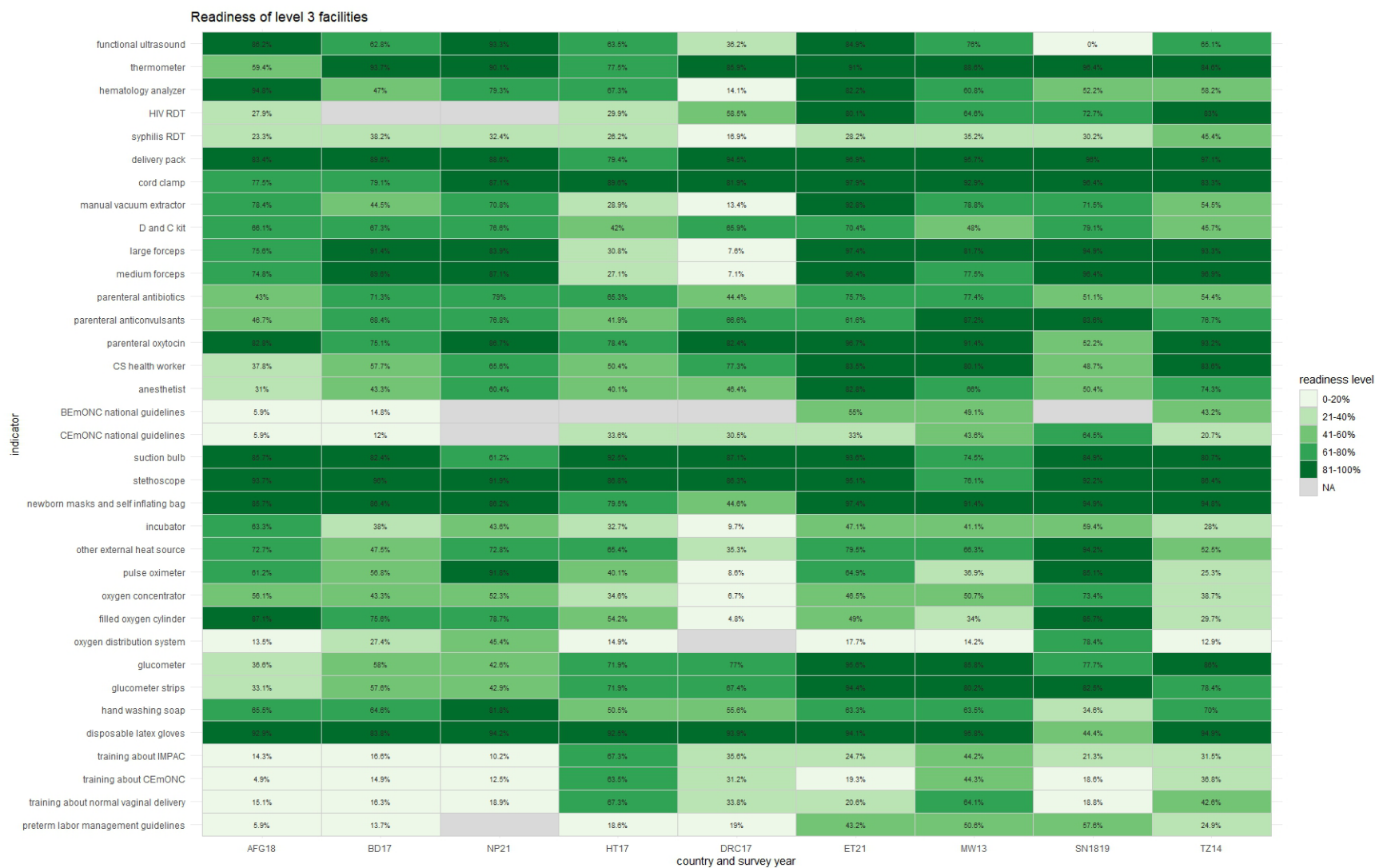
AFG18: Afghanistan 2018-2019; BD17: Bangladesh 2017-2018; NP21: Nepal 2021; HT17: Haiti 2017; DRC17: the Democratic Republic of Congo 2017-2018; ET21: Ethiopia 2021-2022; MW13: Malawi 2013-2014; SN1819: Senegal 2018 and 2019; TZ14: Tanzania 2014-2015; RDT: rapid diagnostic test; BEmONC: Basic Emergency Obstetrics and Newborn Care; CEmONC: Comprehensive Emergency Obstetrics and Newborn Care; IMPAC: Integrated Management of Pregnancy and Childbirth; NA: not applicable

Supplemental Figure 3. Heatmap of facility readiness for level 2 facilities by country



AFG18: Afghanistan 2018-2019; BD17: Bangladesh 2017-2018; NP21: Nepal 2021; HT17: Haiti 2017; DRC17: the Democratic Republic of Congo 2017-2018; ET21: Ethiopia 2021-2022; MW13: Malawi 2013-2014; SN1819: Senegal 2018 and 2019; TZ14: Tanzania 2014-2015; RDT: rapid diagnostic test; BEmONC: Basic Emergency Obstetrics and Newborn Care; CEmONC: Comprehensive Emergency Obstetrics and Newborn Care; IMPAC: Integrated Management of Pregnancy and Childbirth; NA: not applicable

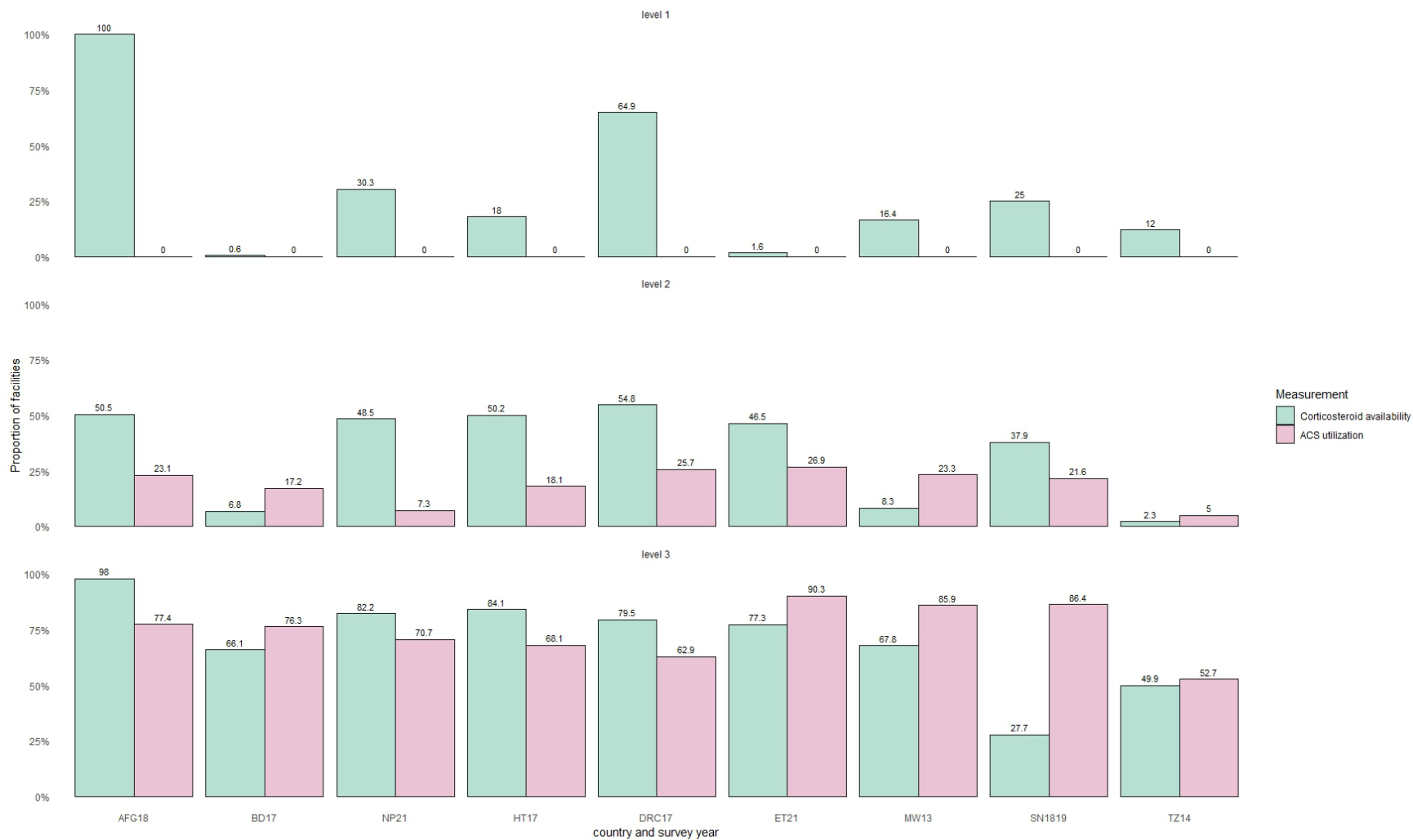
Supplemental Figure 4. Heatmap of facility readiness for level 3 facilities by country



AFG18: Afghanistan 2018-2019; BD17: Bangladesh 2017-2018; NP21: Nepal 2021; HT17: Haiti 2017; DRC17: the Democratic Republic of Congo 2017-2018; ET21: Ethiopia 2021-2022; MW13: Malawi 2013-2014; SN1819: Senegal 2018 and 2019; TZ14: Tanzania 2014-2015; RDT: rapid diagnostic test; BEmONC: Basic Emergency Obstetrics and Newborn Care; CEmONC: Comprehensive Emergency Obstetrics and Newborn Care; IMPAC: Integrated Management of Pregnancy and Childbirth; NA: not applicable

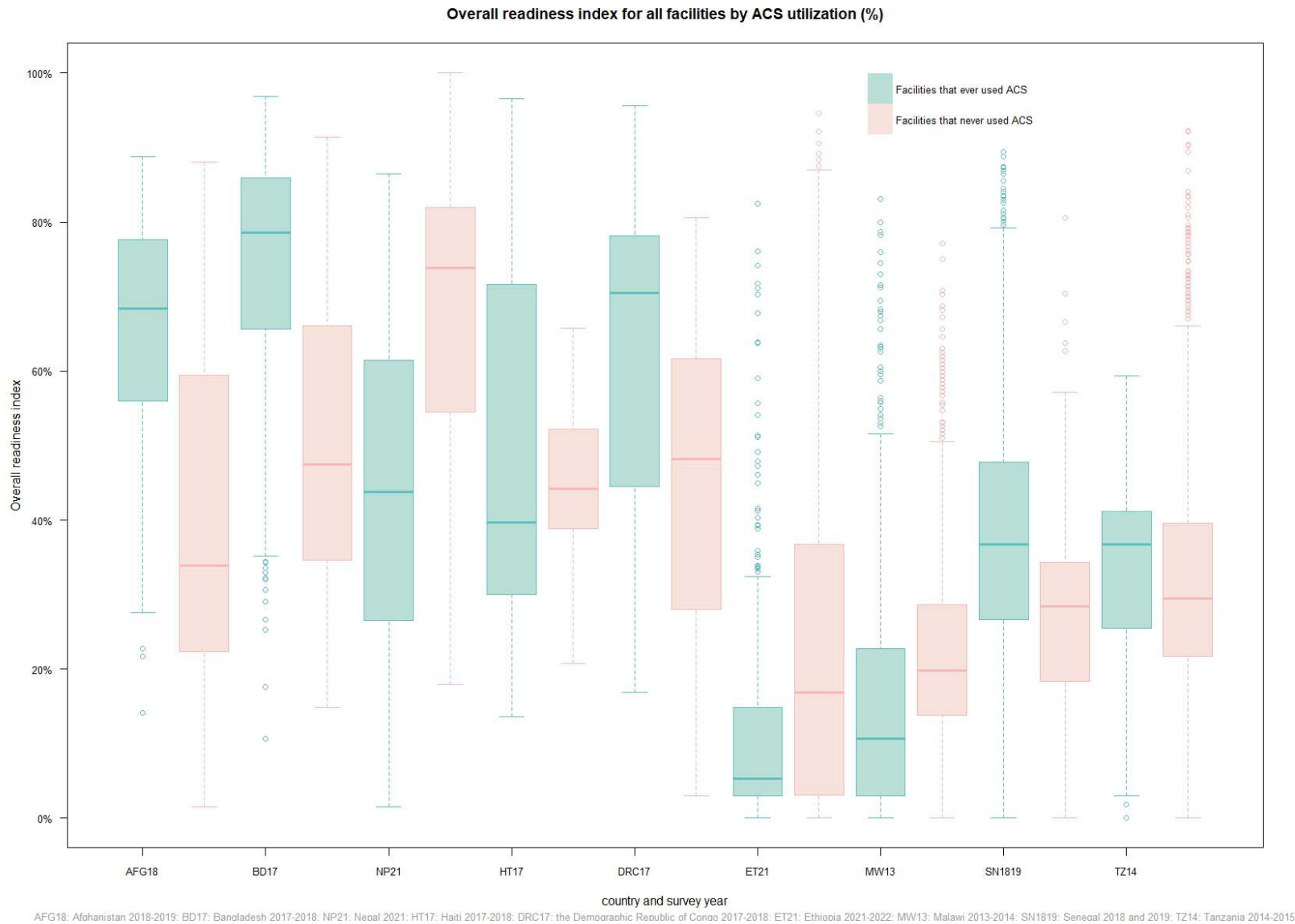
Supplemental Figure 5. ACS utilization and corticosteroid availability by facility level

Corticosteroids availability and ACS utilization by country and facility level



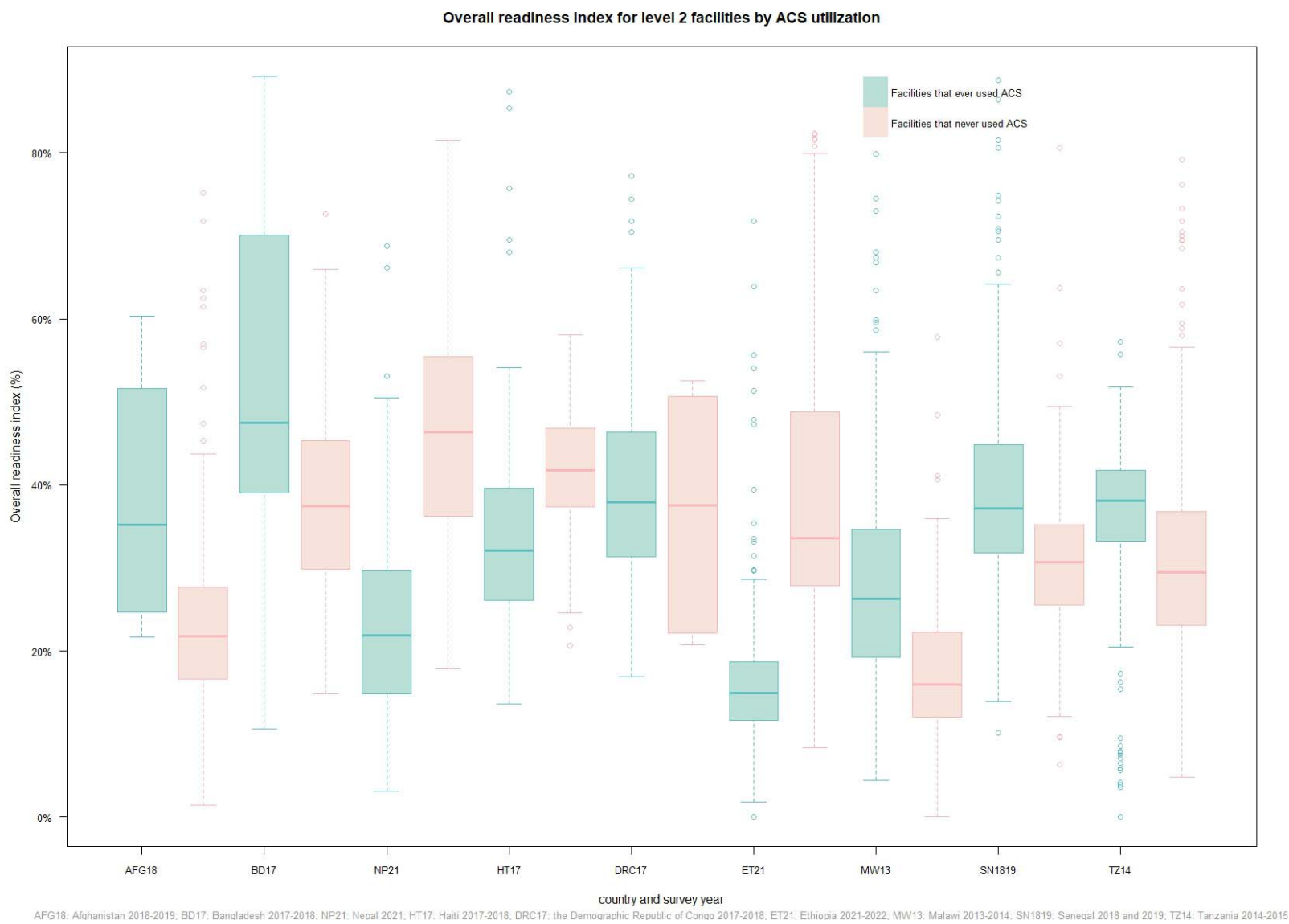
AFG18: Afghanistan 2018-2019; BD17: Bangladesh 2017-2018; NP21: Nepal 2021; HT17: Haiti 2017-2018; DRC17: the Democratic Republic of Congo 2017-2018; ET21: Ethiopia 2021-2022; MW13: Malawi 2013-2014; SN1819: Senegal 2018 and 2019; TZ14: Tanzania 2014-2015

Supplemental Figure 6. Differences in overall readiness indexes by antenatal corticosteroids utilization for all facilities



AFG18: Afghanistan 2018-2019; BD17: Bangladesh 2017-2018; NP21: Nepal 2021; HT17: Haiti 2017-2018; DRC17: the Democratic Republic of Congo 2017-2018; ET21: Ethiopia 2021-2022; MW13: Malawi 2013-2014; SN1819: Senegal 2018 and 2019; TZ14: Tanzania 2014-2015

Supplemental Figure 7. Differences in overall readiness indexes by antenatal corticosteroids utilization for level 2 facilities



Supplemental Figure 8. Differences in overall readiness indexes by antenatal corticosteroids utilization for level 3 facilities

