

It is made available under a [CC-BY 4.0 International license](#) .

1 **Understanding the alcohol harm paradox:**

2 **A multivariable Mendelian randomization approach**

3

4 Gemma Sawyer<sup>1\*</sup>, Hannah Sallis<sup>1,2</sup>, Marcus Munafò<sup>1,3</sup>, Liam Mahedy<sup>1,4</sup>, Jasmine Khouja<sup>1,3</sup>

5

6 <sup>1</sup> MRC Integrative Epidemiology Unit, Population Health Sciences, Bristol Medical School, University

7 of Bristol, Bristol, United Kingdom

8 <sup>2</sup> Centre for Academic Mental Health, Population Health Sciences, Bristol Medical School, University

9 of Bristol, Bristol, United Kingdom

10 <sup>3</sup> School of Psychological Sciences, University of Bristol, Bristol, United Kingdom

11 <sup>4</sup> Public Health Wales, Cardiff, United Kingdom

12

13 \*Corresponding author

14 Email: [gemma.sawyer@bristol.ac.uk](mailto:gemma.sawyer@bristol.ac.uk)

15

16 **Abstract**

17 The alcohol harm paradox, whereby low socioeconomic position (SEP) groups experience greater  
18 alcohol-related harms at a given level of alcohol consumption, is not yet fully understood. In  
19 observational studies, key drivers are correlated and share similar confounding structures. We used  
20 multivariable Mendelian randomization (MVMR) to estimate the direct causal effect of alcohol  
21 (drinks per week) and education (years of schooling) on multiple health outcomes, accounting for  
22 the effect of the other. Previously published genome-wide association summary (GWAS) statistics  
23 for drinks per week and years of schooling were used, and outcome summary statistics were  
24 generated from individual-level data from UK Biobank (N=462,818). Inverse variance weighted  
25 analyses demonstrated evidence for direct effects of alcohol and education on liver diseases  
26 (alcoholic liver disease: alcohol OR = 50.19, 95% CI 19.35 to 130.21 and education OR = 0.27, 95% CI  
27 0.14 to 0.53; other liver diseases: alcohol OR = 1.82, 95% CI 1.12 to 2.94 and education OR = 0.42,  
28 95% CI 0.30 to 0.58), mental and behavioural disorders due to alcohol (alcohol OR = 12.89, 95% CI  
29 7.46 to 22.27 and education OR = 0.51, 95% CI 0.35 to 0.75), and stroke (alcohol OR = 1.94, 95% CI  
30 1.30 to 2.89 and education OR = 0.73, 95% CI 0.55 to 0.97). There was evidence for direct effects of  
31 education on depression, anxiety, influenza/pneumonia, and heart disease. In contrast, there was  
32 evidence of total (without considering the effect of education), but not direct, effects of alcohol on  
33 depression, influenza/pneumonia, epilepsy, and injuries. Although caution is required when  
34 interpreting these results, given weak instruments for alcohol, these results provide some evidence  
35 that the alcohol harm paradox is partially due to the protective effect of additional years of  
36 education. Replication with strong genetic instruments for drinks per week would be necessary to  
37 draw causal inferences.

38

39 **Author Summary**

40 Individuals from lower socioeconomic position backgrounds tend to disproportionately experience  
41 alcohol-related physical and mental ill-health, despite reporting lower overall alcohol consumption  
42 than those from higher socioeconomic backgrounds. This is known as the alcohol harm paradox. One  
43 key difficulty in understanding this paradox is the methodological difficulty of establishing the  
44 relative contribution of multiple complex social behaviours. In this study, we used genetic variants  
45 associated with alcohol consumption and years of education to explore their direct effects on  
46 multiple health outcomes. The findings indicate that greater alcohol consumption and fewer years of  
47 education may each, independently increase the likelihood of developing various health conditions,  
48 including liver diseases, mental and behavioural disorders due to alcohol, and stroke. This may  
49 suggest that the alcohol harm paradox is due to the protective effect of additional years of  
50 education amongst those from higher socioeconomic position backgrounds, reducing their likelihood  
51 of developing the health conditions. However, these findings are preliminary and limited by various  
52 methodological issues, suggesting these findings should be interpreted with caution. Replication and  
53 further studies are needed.

54

55 **Introduction**

56 Alcohol-related harms are common and represent a large burden of morbidity and mortality  
57 worldwide, contributing to 5.3% of all deaths and 5.1% of global burden of disease [1]. Moreover,  
58 such alcohol-related harms tend to be disproportionately experienced by individuals from low  
59 socioeconomic position (SEP) backgrounds, despite reporting lower alcohol consumption compared  
60 to people from high SEP individuals background, a phenomenon known as the alcohol harm paradox  
61 [2–5]. Despite evidence for this paradox, there is limited understanding of its origins.

62

63 There have been multiple explanations proposed for the alcohol harm paradox. One is that, whilst  
64 low SEP individuals report consuming less alcohol on average, other patterns of drinking behaviour  
65 are more common. For example, low SEP individuals are more likely to be in the extreme ends of  
66 drinking consumption, with a greater proportion abstaining or drinking very lightly compared to high  
67 SEP groups, but also being more likely to drink excessively or binge drink [6]. The possibility that  
68 drinking patterns may account for the alcohol harm paradox has been supported by research  
69 demonstrating a greater socioeconomic gradient for acute health outcomes that are wholly  
70 attributable to alcohol, compared to chronic conditions that are influenced by a wide range of  
71 behaviours [7]. An alternative explanation is that individuals of low SEP may be more likely to engage  
72 in other unhealthy behaviours, such as tobacco use, which are associated with multiple adverse  
73 health outcomes [8]. Observational studies have supported this explanation, providing evidence that  
74 individuals of lower SEP are increasingly likely to smoke [3]. Furthermore, adjusting for tobacco  
75 smoking reduces the association between low SEP and hospital admissions [9], while causal  
76 mediation analysis demonstrated that 18% of the total effect of income on alcohol-related mortality  
77 was due to indirect effects via smoking and BMI [10]. Whilst these proposed explanations have  
78 received some support from observational studies, they are limited in their ability to draw causal  
79 inferences and are yet to fully account for the alcohol harm paradox.

80

81 The primary complication with disentangling the alcohol harm paradox is that a combination of  
82 highly correlated causes, including alcohol consumption, SEP, and smoking, could all be important  
83 independent drivers. Therefore, it is necessary to establish the relative causal contribution of alcohol  
84 consumption alongside these other factors on the likelihood of developing multiple adverse health  
85 outcomes with novel causal inference methods, such as Mendelian randomization (MR). MR relies  
86 on Mendel's law of random assortment, using genetic variants associated with the exposure as  
87 instrumental variables to assess the total causal effect of the exposure on the outcome [11].  
88 Multivariable MR (MVMR) builds upon this method, using genetic variants associated with multiple  
89 exposures to estimate the direct causal effect of each exposure on the outcome, accounting for the  
90 effect of the other exposures [12]. The validity of causal inferences drawn using MVMR relies on  
91 three key assumptions [13]: (1) each exposure is robustly predicted by the genetic instruments; (2)  
92 there are no confounders of the outcome and any of the genetic instruments; and (3) the genetic  
93 instruments only impact the outcome through at least one of the exposures.

94

95 The current study applies this MVMR framework to the alcohol harm paradox to examine the direct  
96 causal effect of alcohol consumption on adverse health outcomes whilst accounting for education  
97 (as a proxy for SEP), and vice versa. We first conducted MR to examine the total causal effect of  
98 alcohol and education separately on adverse health, followed by MVMR to examine their direct (i.e.,  
99 unique) causal effects. Comparison of the MR and MVMR results will provide insights into the  
100 relative contribution of alcohol and education. For example, if there appears to be a causal effect of  
101 alcohol in both the MR and MVMR, this suggests that alcohol consumption impacts the health  
102 outcome even when the impact of education is accounted for. However, if a causal effect of alcohol  
103 in the MR is attenuated in the MVMR, this may indicate that the impact of education was driving the  
104 evidence of a causal effect of alcohol consumption in the MR and imply that an alternative  
105 explanation is needed to account for the associations reported between alcohol consumption and  
106 the health outcome.

107

108 **Materials and Methods**

109 The analysis plan for this study was pre-registered on the Open Science Framework  
110 (<https://doi.org/10.17605/OSF.IO/5G8W4>), and the methods presented here are consistent with this  
111 unless otherwise specified. We have followed the STROBE-MR guidelines in the reporting of this  
112 study (Supplementary Materials page 3-6) [14,15].

113

114

115 *Exposures*

116 Summary-level data reported by the two Genome-Wide Association Studies (GWAS) were utilised to  
117 identify suitable genetic instruments associated with the relevant exposure phenotypes: drinks per  
118 week and years of schooling. In contrast with our pre-registration, the main analysis reported here  
119 focuses solely on these two exposures and additional supplementary analysis included cigarettes per  
120 day as a third exposure (see Supplementary Methods for details). We focus on the two exposures of  
121 drinks per week and years of schooling because alcohol and smoking are highly correlated and both  
122 suffer from weak instrument bias in the three-exposure MVMR, making it difficult to draw  
123 conclusions from results using this approach. To aid interpretation, the analysis comprised of a two-  
124 exposure model to explore whether SEP plays a causal role in the alcohol harm paradox.  
125 Consequently, the results of this study should be considered preliminary.

126

127 *GWAS & Sequencing Consortium of Alcohol and Nicotine Use (GSCAN)*. Liu and colleagues [16] report  
128 summary-level statistics from a GWAS meta-analysis of alcohol use based on data from participants  
129 of European ancestry from 29 cohorts (N=941,280). Alcohol use was defined as the reported number  
130 of drinks (combined across all alcohol types) consumed per week amongst active drinkers. Where  
131 individual studies recorded categorical bins of drinks per week (e.g., 1-4, 5-9), the midpoint value  
132 was taken. To minimise the impact of outliers, this was subsequently left-anchored and log

133 transformed and, as a result, we can only infer direction of effect and not size of the effect. Analyses  
134 adjusted for age, sex, age and sex interaction, and 10 genetic principal components. Independent  
135 variants were reported to be associated with drinks per week if they met the standard significance  
136 threshold ( $p < 5 \times 10^{-8}$ ). The associated SNPs explained 2.5% of the variance in drinks per week. We  
137 utilised the publicly available summary statistics from this GWAS, excluding UK Biobank, to minimise  
138 sample overlap, and 23andMe, due to data sharing restrictions (N=226,223). Smoking (cigarettes per  
139 day) was also measured in this GWAS, as described in the Supplementary Material (page 1-2).

140

141 *Social Science Genetic Association Consortium (SSGAC)*. Okbay and colleagues [17] report summary-  
142 level statistics from a GWAS meta-analysis of education, defined as years of schooling, based on data  
143 from participants of European ancestry from 65 cohorts (N=293,723). Reported number of years of  
144 schooling was utilised where this was available. Where individual studies reported qualifications, the  
145 International Standard Classification of Education (ISCED; 1997) [18] was used to map each major  
146 qualification that could be attained in each country into one of seven categories: pre-primary  
147 education, primary education, lower secondary education, upper secondary education, post-  
148 secondary non-tertiary education, first-stage tertiary education, and second-stage tertiary  
149 education. This was subsequently utilised to impute a years of schooling value for each category.  
150 Analyses adjusted for age, sex, age and sex interaction, ten genetic principal components, and  
151 cohort-specific controls. Variants were reported to be associated with years of schooling if they met  
152 the genome-wide significance threshold ( $p < 5 \times 10^{-8}$ ) and were independent.

153

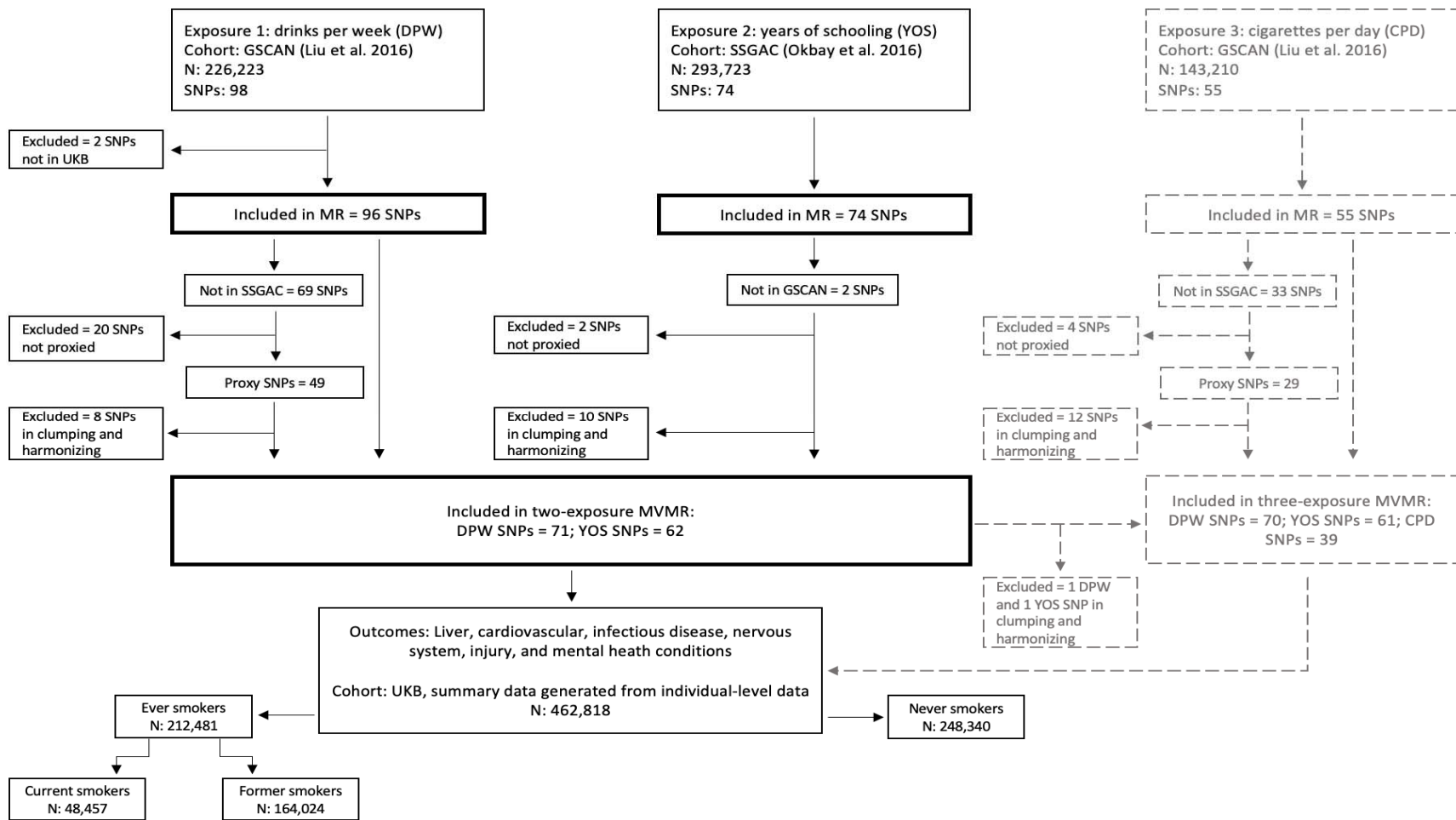
154 *Health outcomes*

155 Individual-level data, including genetic and outcome data for all individual participants, was obtained  
156 from UKB to generate summary statistics for multiple health outcomes.

157

158 *UK Biobank*. UK Biobank is a population-based cohort, which recruited 500,000 people aged  
159 between 40-69 years in 2006-2010. With their consent, they provided detailed information about  
160 their lifestyle, physical measures and had blood, urine and saliva samples collected and stored for  
161 future analysis. Using this individual-level data, we generated summary statistics by regressing each  
162 available SNP on each health outcome through the MRC-IEU UK Biobank GWAS pipeline [19] using  
163 BOLT-LMM (a linear mixed model) to account for relatedness and population stratification.  
164 Furthermore, we additionally adjusted for age, sex, and genotyping chip array. For the main two-  
165 exposure MVMR analysis, this was conducted for the overall UKB sample; however, it was also  
166 conducted in four smaller samples stratified by smoking status for comparison with the  
167 supplementary three-exposure MVMR: ever smokers (defined as those reporting smoking 2 or more  
168 cigarettes), never smokers (defined as those reporting smoking 1 or less cigarettes), current  
169 smokers, and former smokers (Figure 1).





170

171 **Figure 1.** Flowchart demonstrating the source of exposure and outcome data and the inclusion and exclusion of genetic variants (single nucleotide

172 polymorphisms; SNPs) in this analysis. Details of the three-exposure MVMR (grey dashed lines) are in the Supplementary Materials.

173 Our pre-registered analysis specified 15 outcomes wholly or partially attributable to alcohol, based  
174 upon ICD-10 summary diagnoses classification codes (UKB field ID 41270; see Supplementary Table  
175 S1). However, once all the necessary exclusions had been made, four outcomes (alcoholic  
176 cardiomyopathy, alcoholic myopathy, alcoholic polyneuropathy, and alcoholic poisoning) had a case  
177 number below 50 or less than 0.1% in at least one of the stratified datasets and were therefore  
178 removed from the analysis. The remaining outcomes included alcoholic liver disease, other liver  
179 diseases, stroke, ischaemic heart disease (IHD), influenza/pneumonia, viral hepatitis, epilepsy,  
180 injuries, mental and behavioural disorders due to alcohol, depression, and anxiety.

181

### 182 *Analysis*

183 Analyses were conducted in R version 4.1.2 [20], using the *Mendelian Randomization*[21],  
184 *TwoSampleMR* [22], *MVMR* [23] and *MR-PRESSO* [24] R packages.

185

186 *Selection of genetic variants.* Single nucleotide polymorphisms (SNPs) were selected for inclusion in  
187 the analysis if they were reported to be associated with the exposure phenotype of interest (alcohol  
188 use or education) and (conditionally) independent of any other SNP associations at the genome-wide  
189 significance level ( $p < 5 \times 10^{-8}$ ) in the relevant GWAS. In GSCAN, this involved sequential forward  
190 selection whereby SNPs within each locus were iteratively included in the set of independent SNPs  
191 until a SNP was no longer significant using a partial correlation-based score statistic whereas SSGAC  
192 applied conditional joint analysis in the Genome-Wide Complex Trait Analysis software (GCTA-COJO)  
193 which selected SNPs through a stepwise conditional regression model. These SNPs also needed to be  
194 available in UK Biobank, resulting in 96 drinks per week and 74 years of schooling SNPs in the  
195 univariable MR. For the MVMR analyses, where a SNP from GSCAN (drinks per week) was not  
196 available in SSGAC (years of schooling), we selected proxy SNPs with a minimum linkage  
197 disequilibrium (LD)  $R^2$  of 0.8. Moreover, an additional clumping stage was conducted in the MVMR to  
198 ensure all exposure SNPs were independent (LD  $R^2 < 0.1$ , clumping window  $> 500$  kb), resulting in 71

199 drinks per week and 62 years of schooling SNPs in the MVMR (Figure 1; see Supplementary Table S2  
200 for details).

201

202 We assessed instrument strength using a conditional F-statistic and instrument validity using  
203 Cochran’s Q-statistic. In line with conventional guidelines, the F-statistic should be greater than 10  
204 and the Q-statistic should be less than the number of SNPs [25].

205

206 *Univariable MR.* We estimated the total causal effects of alcohol use and education on all 11 health  
207 outcomes using two-sample, summary level MR. The main analysis was conducted using inverse  
208 variance weighted (IVW) regression [26]. We also conducted sensitivity analyses using three  
209 complementary MR methods MR-Egger [27], weighted median estimation [28], and weighted mode  
210 estimation [29]. These methods hold different assumptions regarding pleiotropy and therefore  
211 consistent results across the methods provide stronger evidence that the observed effects are  
212 causal.

213

214 *Multivariable MR.* In MVMR analyses, we estimated the direct causal effect of alcohol use,  
215 education, and tobacco use on all health outcomes using two sample, summary level MVMR with  
216 two complimentary methods – MVMR-IVW and MVMR-Egger. Whilst we intended to conduct  
217 MVMR-PRESSO in our pre-registered analysis plan, we had to remove this method due to issues with  
218 the R package.

219

## 220 **Results**

221 The MR-IVW, MVMR-IVW, MR-Egger and MVMR-Egger results exploring the total and direct effects  
222 of alcohol and education are displayed in Figure 2. The complete results of the MVMR analyses  
223 exploring the direct effects of (1) alcohol and education (n = 133 SNPs) and (2) alcohol, education,  
224 and smoking (n = 171 SNPs) on health outcomes are displayed in Supplementary Tables S3-S13. The

225 results are presented in odds ratios (ORs) per standard deviation (SD) increase in either drinks per  
226 week or years of schooling.

227

228 *Instrument strength and heterogeneity*

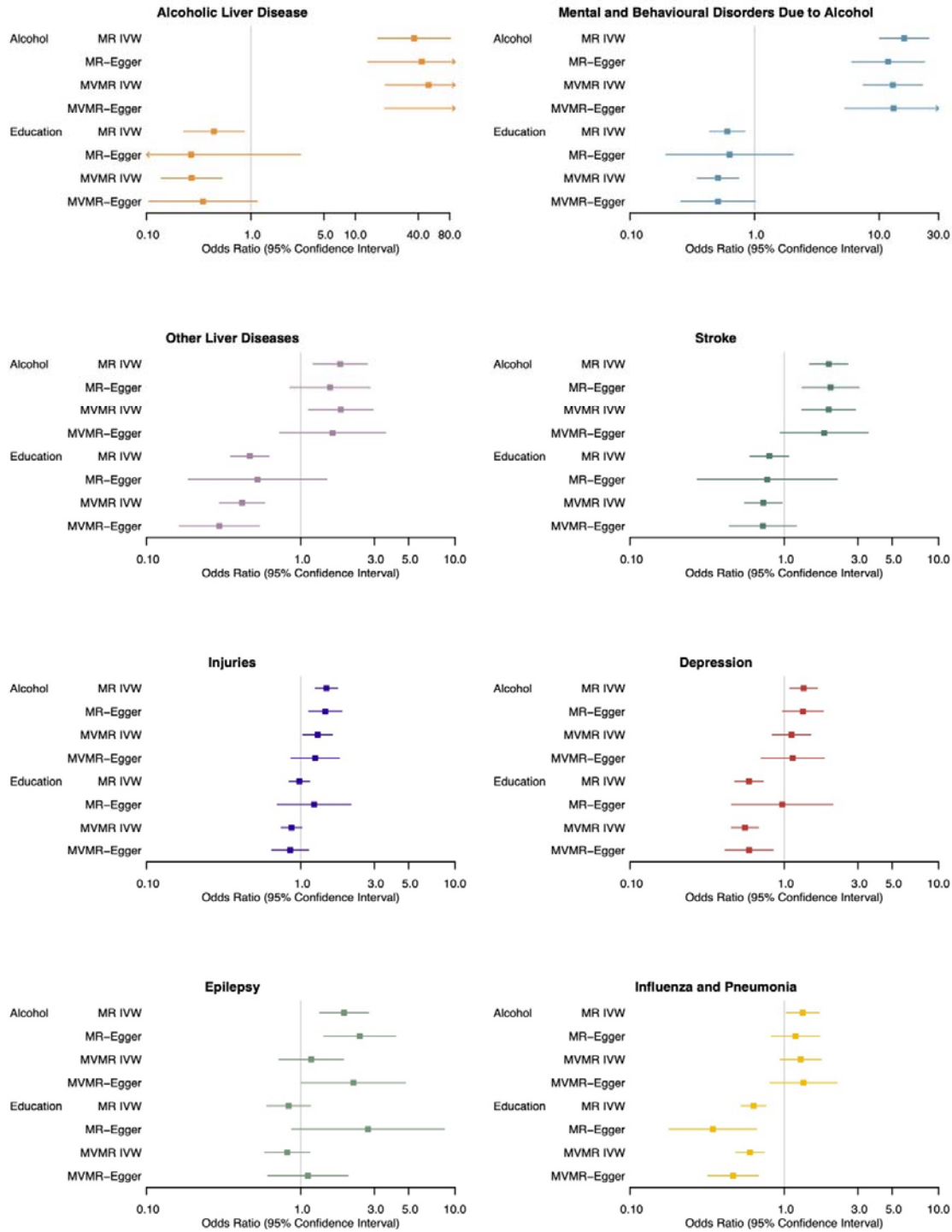
229 Instrument strength was calculated using the conditional F-statistic. In the MR, the F-statistics  
230 suggest that the SNPs included in the analysis are strong instruments for alcohol (F = 14.87) and  
231 education (F = 35.32). The conditional F-statistics in the two exposure MVMR indicate that the  
232 included SNPs are strongly associated with education whilst accounting for the effects of alcohol (F =  
233 17.42), but not strongly associated with alcohol while accounting for education (F = 6.32).

234

235 The Cochran's Q statistics were greater than the number of SNPs included in most of the models,  
236 indicating heterogeneity. Therefore, the results also include MVMR-Egger, which provides estimates  
237 that are robust to directional pleiotropy under the assumption that pleiotropy is uncorrelated with  
238 the strength of the association between the SNP and exposure. However, MVMR-Egger analyses  
239 have reduced statistical power compared with IVW analyses and therefore we must consider the  
240 results from both analysis when drawing conclusions. Where Egger results indicate a similar effect  
241 size but with larger confidence intervals which cross the null, we interpret this as evidence in  
242 support of the IVW analysis.

243

It is made available under a [CC-BY 4.0 International license](https://creativecommons.org/licenses/by/4.0/).



244

245 **Figure 2.** Forest plots displaying the effect of alcohol (drinks per week) and education (years of  
 246 schooling) on eight health outcomes using Mendelian randomization (MR) and multivariable MR  
 247 (MVMR) analysis: inverse variance weighted (IVW) and Egger regression.

248 *Alcoholic liver disease*

249 There was evidence for a total (OR = 36.57, 95% CI 16.46 to 81.24) and direct (OR = 50.19, 95% CI  
250 19.35 to 130.21) effect of alcohol on alcoholic liver disease when accounting for education. There  
251 was also evidence that education decreased the odds of alcoholic liver diseases in the univariable  
252 (OR = 0.44, 95% CI 0.23 to 0.86) and multivariable (OR = 0.27, 95% CI 0.14 to 0.53) analysis when  
253 accounting for alcohol (Figure 2; Supplementary Table S3). Whilst the MR-Egger and MVMR-Egger  
254 results were consistent with the IVW results for alcohol, for education, the effect estimates were  
255 similar but the wider confidence intervals overlapped the null.

256

257 *Mental and behavioural disorders due to alcohol*

258 There was evidence for a total (OR = 15.88, 95% CI 10.08 to 25.01) and direct (OR = 12.89, 95% CI  
259 7.46 to 22.27) effect of alcohol on mental and behavioural disorders due to alcohol, as well as a total  
260 (OR = 0.60, 95% CI 0.44 to 0.83) and direct (OR = 0.51, 95% CI 0.35 to 0.75) effect of education on  
261 mental and behavioural disorders due to alcohol (Figure 2; Supplementary Table S4). The MR- and  
262 MVMR-Egger findings were consistent with the IVW findings for alcohol and showed similar effect  
263 estimates for education, although the confidence intervals crossed the null.

264

265 *Other liver diseases*

266 There was evidence for a total (OR = 1.80, 95% CI 1.21 to 2.70) and direct (OR = 1.82, 95% CI 1.12 to  
267 2.94) effect of alcohol on other liver diseases, as well as evidence for a total (OR = 0.47, 95% CI 0.35  
268 to 0.62) and direct (OR = 0.42, 95% CI 0.30 to 0.58) effect of education on other liver diseases (Figure  
269 2; Supplementary Table S5). The MR- and MVMR-Egger results calculated similar effect estimates,  
270 although the wider confidence intervals crossed the null for alcohol and the total effect of  
271 education.

272

273 *Stroke*

274 There was evidence for a total (OR = 1.94, 95% CI 1.46 to 2.58) and direct (OR = 1.94, 95% CI 1.30 to  
275 2.89) effect of alcohol on stroke, when accounting for education. Also, whilst there was no clear  
276 evidence for a total effect of education on stroke, there was some evidence of a direct effect in the  
277 MVMR when accounting for alcohol (OR = 0.73, 95% CI 0.55 to 0.97) (Figure 2; Supplementary Table  
278 S6). The MR- and MVMR-Egger findings were similar to the IVW findings in terms of the effect  
279 estimates. However, the confidence intervals were wider and therefore crossed the null for  
280 education and the direct effect of alcohol.

281

### 282 *Injuries*

283 There was evidence for a total (OR = 1.47, 95% CI 1.24 to 1.73) and direct (1.29, 95% CI 1.03 to 1.60)  
284 effect of alcohol on injuries. However, there was no clear evidence for a total (OR = 0.98, 95% CI 0.85  
285 to 1.14) or direct (OR = 0.87, 95% CI 0.75 to 1.02) effect of education (Figure 2; Supplementary Table  
286 S7). The MR- and MVMR-Egger results supported the IVW results for education and the total effect  
287 of alcohol; however, the confidence intervals crossed the null for the direct effect of alcohol.

288

### 289 *Depression*

290 In the univariable MR, there was evidence for a total effect of alcohol on depression (OR = 1.33, 95%  
291 CI 1.09 to 1.64); however, there was no clear evidence for a direct effect when accounting for  
292 education (OR = 1.11, 95% CI 0.84 to 1.48). There was evidence that education decreased the odds  
293 of depression in the univariable (OR = 0.59, 95% CI 0.48 to 0.73) and multivariable analyses when  
294 accounting for alcohol (OR = 0.56, 95% CI 0.45 to 0.68) (Figure 2; Supplementary Table S8). The MR-  
295 and MVMR-Egger results supported the IVW findings of a total, but not direct, effect of alcohol  
296 (although the wider confidence intervals crossed the null), as well as a direct effect of education.  
297 However, the MR-Egger did not support IVW evidence for a total effect of education.

298

### 299 *Epilepsy*

300 Whilst there was evidence for a total effect of alcohol on epilepsy (OR = 1.91, 95% CI 1.33 to 2.75),  
301 there was no clear evidence for a direct effect when accounting for education (OR = 1.17, 95% CI  
302 0.72 to 1.89). Moreover, there was no clear evidence for a total (OR = 0.83, 95% CI 0.60 to 1.15) or  
303 direct (OR = 0.82, 95% CI 0.58 to 1.14) effect of education on epilepsy (Figure 2; Supplementary  
304 Table S9). The MR-Egger results supported a total effect of alcohol and also found some evidence for  
305 a direct effect, which was not indicated in the IVW findings. The MR- and MVMR-Egger effect  
306 estimates for education were in the opposite direction to the IVW results, although all confidence  
307 intervals crossed the null.

308

### 309 *Influenza and pneumonia*

310 There was evidence for a total (OR = 1.32, 95% CI 1.03 to 1.68) but not a direct effect of alcohol on  
311 influenza/pneumonia when accounting for education (OR = 1.28, 95% CI 0.94 to 1.73). There was  
312 evidence that education decreased the odds of influenza/pneumonia in the univariable (OR = 0.63,  
313 95% CI 0.53 to 0.76) and multivariable (OR = 0.60, 95% CI 0.48 to 0.74) analysis (Figure 2;  
314 Supplementary Table S10). The MR- and MVMR-Egger results were primarily consistent with the IVW  
315 results, supporting a total and direct effect of education and no direct effect of alcohol. Whilst the  
316 effect estimate for the total effect of alcohol was similar, the MR-Egger confidence interval crossed  
317 the null.

318

### 319 *Other outcomes*

320 There was no clear evidence for a total or direct effect of alcohol on IHD (Supplementary Table S11),  
321 viral hepatitis (Supplementary Table S12), or anxiety (Supplementary Table S13). There was evidence  
322 for a total (OR = 0.61, 95% CI 0.53 to 0.70) and direct (OR = 0.62, 95% CI 0.52 to 0.74) effect of  
323 education on IHD when accounting for alcohol. There was also evidence for a total (OR = 0.67, 95%  
324 CI 0.52 to 0.86) and direct (OR = 0.62, 95% CI 0.48 to 0.80) effect of education on anxiety. There was  
325 no clear evidence for a total or direct effect of education on viral hepatitis.



326

327 Overall, the MR- and MVMR-Egger results were mostly similar to the IVW results for IHD, anxiety,  
328 and viral hepatitis. The only differences were that the MR-Egger did not support a total effect of  
329 education on IHD or anxiety.

330

### 331 **Discussion**

332 We find evidence for direct effects of alcohol and education on alcoholic and other liver diseases,  
333 mental and behavioural disorders due to alcohol, and stroke, indicating that alcohol use increases  
334 the likelihood of such outcomes, whereas years of education decreases their likelihood. There was  
335 also evidence of a direct effect of education on depression, anxiety, influenza/pneumonia, and IHD.  
336 In contrast, there was evidence of a total effect, but not a direct effect (i.e., when accounting for  
337 education), of alcohol on depression, influenza/pneumonia, epilepsy, and injuries.

338

339 The direct effects of alcohol on liver diseases and mental and behavioural disorders due to alcohol  
340 are consistent with the aetiology of such conditions, as they are known to be ‘wholly attributable’ to  
341 alcohol [7,30]. For such ‘wholly attributable’ outcomes, these results are consistent with previous  
342 findings from observational studies suggesting the paradox may be due to the multiplicative  
343 contribution of drinks per week and years of schooling, which both may impact the likelihood of  
344 developing such health conditions [3,4]. Moreover, the direct effect of alcohol on stroke is  
345 supported by a previous MR meta-analysis demonstrating robust causal relationships between  
346 alcohol consumption and cardiovascular diseases, including ischaemic stroke [31].

347

348 However, the results for other outcomes (‘partially attributable’) imply that years of schooling, but  
349 not drinks per week, contribute to their development, including total but not direct effects of alcohol  
350 on some conditions such as depression, epilepsy, and injuries when accounting for education. This  
351 finding resonates with a recent genome wide meta-analysis which found novel genetic loci

352 associated with problematic alcohol use and its comorbidities, such as depression and other mental  
353 health disorders [32], suggesting that the contribution of alcohol to these may be, at least partially,  
354 mediated by other correlated factors.

355

356 The evidence for a causal contribution of years of schooling is consistent with previous natural and  
357 genetic studies suggesting that raising the school leaving age and additional years of education  
358 reduce the likelihood of developing adverse health outcomes [33,34]. The protective effects of  
359 education observed in conditions such as depression, anxiety, and ischemic heart disease (IHD) are  
360 consistent with previous population-based observational studies highlighting the protective effect of  
361 education on anxiety and depression [35] and large-scale MR studies demonstrating that education  
362 positively impacts coronary heart disease [36].

363

364 The finding that drinks per week is not causally related to many of the ‘partially attributable’  
365 conditions may be because drinks per week is a simplified a measure of alcohol consumption. Other,  
366 more complex drinking patterns (such as alcohol frequency, drinks consumed per drinking occasion,  
367 and alcohol type) may be more important in the development of these conditions. Previous  
368 observational research has reported that low SEP groups are more likely to binge drink or exceed  
369 high weekly drinking thresholds [6]. This has also been supported by genetic research which have  
370 reported opposite genetic correlations between SEP and drinking frequency compared with drinking  
371 consumption [37], and have demonstrated relationships between more years of education and  
372 reduced binge drinking, number of drinks per drinking occasion, and spirit intake using MR [38].  
373 Therefore, the results for these ‘partially attributable’ conditions may be because their relationship  
374 with alcohol consumption is more nuanced than is being captured by the genetic instruments  
375 associated with drinks per week.

376

377 Overall, the present study adds nuance to the alcohol harm paradox by illustrating that education  
378 not only mitigates the adverse effects of alcohol but also plays an independent protective role in  
379 mental and physical health outcomes. This complements earlier genetic studies on both alcohol use  
380 and educational attainment, which emphasise the complex interplay between these factors and  
381 various health outcomes. However, it is important to be cautious and consider the strength of  
382 instruments when interpreting these results. The conditional F-statistics indicate that the  
383 instruments were not strongly associated with alcohol in the MVMR, despite strong associations in  
384 the MR. Therefore, we cannot be as confident or draw causal inferences from our estimates of direct  
385 effects; instead, our findings may be indicative of possible causal effects which would need to be  
386 replicated with strong instruments to be confident. In addition, we were not able to explore the  
387 relative contribution of tobacco use alongside alcohol consumption and SEP as initially intended due  
388 to the weak genetic instruments for CPD and, therefore, we can only consider these results as  
389 exploratory as they were not all specified in our pre-registered analysis plan.

390

#### 391 *Strengths and Limitations*

392 This is the first study, to our knowledge, to apply MVMR, a novel causal inference method, to  
393 understand the direct causal effects of alcohol and education on multiple alcohol-related conditions  
394 to enhance understanding of the alcohol harm paradox. Also, the large sample size of the GWAS for  
395 education will have enhanced statistical power and the conditional F-statistics suggest good  
396 instrument strength for years of schooling. However, this study also has multiple limitations.

397

398 As previously mentioned, the conditional F-statistics indicate that alcohol suffers from weak  
399 instruments in the MVMR, which may possibly bias our results. Heterogeneity is indicated by the  
400 Cochran's Q statistics and, even though we applied MR-Egger to address this, heterogeneity may  
401 remain, indicating the analyses may also be biased by invalid instruments. Directional pleiotropy is  
402 similarly likely to persist in our analyses despite applying pleiotropy-robust methods as indicated by

403 the MR-Egger intercepts, which are not null in most of the models. This suggests that the genetic  
404 instruments may influence the adverse health outcomes within this study via pathways that do not  
405 include alcohol or education and therefore may not tell us about the causal effect of alcohol or  
406 education on such outcomes. Moreover, drinks per week is a somewhat limited phenotype to reflect  
407 alcohol as many factors influence the effects of alcohol beyond number of drinks, including binge  
408 patterns and alcohol types. Similarly, education is one factor that contributes to an individual's SEP;  
409 factors such as income, neighbourhood, and occupation are also important and may show different  
410 relationships. Therefore, focusing purely on drinks per week and years of schooling may be  
411 restricting our understanding. Combined with the exploratory nature of these analyses, these  
412 limitations suggest that caution is highly necessary in interpreting the current findings.

413

#### 414 *Future Research and Implications*

415 Due to limitations within the study regarding weak instruments and possible pleiotropy, the current  
416 study should be replicated with newly available GWAS data [39] allowing valid and stronger  
417 instruments to be utilised in these analyses. Replication will help confirm whether the results  
418 presented in this study reflect the true causal effects of alcohol and education or are due to  
419 methodological limitations. If the current findings were supported, this would suggest that the  
420 alcohol harm paradox may be due to the protective effect of years of schooling on many alcohol-  
421 related conditions resulting in a reduced likelihood of higher SEP groups developing such outcomes.  
422 Future research may therefore benefit from exploring the mechanisms through which education  
423 impacts such health outcomes to inform preventative policy. Beyond this, applying this MVMR  
424 framework to explore the contribution of alternative exposures (such as different drinking patterns,  
425 income, and impulsivity/risk-taking behaviour) may provide a useful next step for future research  
426 aiming to disentangle the alcohol harm paradox.

427

428

429 *Conclusion*

430 This research demonstrates the utility of applying the MVMR framework to enhance understanding  
431 of complex behavioural phenomena. We found evidence for a direct effect of alcohol on alcoholic  
432 and other liver diseases, mental and behavioural disorders due to alcohol, and stroke. There was  
433 also evidence for a total effect of alcohol on depression, epilepsy, influenza/pneumonia, and injuries,  
434 which were attenuated when education was accounted for. Despite weak instrument bias, such  
435 results cautiously indicate that many partially alcohol-attributable conditions are causally impacted  
436 by years of education, which we use here as a proxy for SEP. Replication with strong instruments is  
437 necessary to confirm these findings. Future research may endeavour to explore the causal effect of  
438 education on other partially alcohol-attributable conditions and identify the mechanisms through  
439 which further years of education protects against these conditions.

440

441 **Acknowledgements**

442 This research has been conducted using the UK Biobank Resource under application number 9142.

443 This work uses data provided by patients and collected by the NHS as part of their care and support.

444

445 **Funding**

446 GS, HS, MM, LM, and JK are/were all members of the Medical Research Council (MRC) Integrative

447 Epidemiology Unit at the University of Bristol when this work began. LM is now in Public Health

448 Wales. This publication is the work of the authors, and they will serve as guarantors for the contents

449 of this paper. GS is supported by a Wellcome Trust PhD studentship in Molecular, Genetic and

450 Lifecourse Epidemiology (ref: 218495/Z/19/Z). For the purpose of Open Access, the author has

451 applied a CC BY public copyright licence to any Author Accepted Manuscript version arising from this

452 submission.

453

454 **Conflict of Interest**

455 None to declare.

456

## 457 References

- 458 1. World Health Organization. Alcohol. 2018 [cited 9 Mar 2022]. Available:  
459 <https://www.who.int/news-room/fact-sheets/detail/alcohol>
- 460 2. Smith K, Foster J. Alcohol, Health Inequalities and the Harm Paradox: Why some  
461 groups face greater problems despite consuming less alcohol. 2014. Available:  
462 [https://www.alcoholpolicy.net/2014/11/alcohol-health-inequalities-and-the-harm-](https://www.alcoholpolicy.net/2014/11/alcohol-health-inequalities-and-the-harm-paradox-ias-report-reviews-higher-harms-in-deprived-groups.html)  
463 [paradox-ias-report-reviews-higher-harms-in-deprived-groups.html](https://www.alcoholpolicy.net/2014/11/alcohol-health-inequalities-and-the-harm-paradox-ias-report-reviews-higher-harms-in-deprived-groups.html)
- 464 3. Bellis MA, Hughes K, Nicholls J, Sheron N, Gilmore I, Jones L. The alcohol harm  
465 paradox: Using a national survey to explore how alcohol may disproportionately  
466 impact health in deprived individuals. *BMC Public Health*. 2016;16.  
467 doi:10.1186/s12889-016-2766-x
- 468 4. Beard E, Brown J, West R, Angus C, Brennan A, Holmes J, et al. Deconstructing the  
469 Alcohol Harm Paradox: A population based survey of adults in England. *PLoS One*.  
470 2016;11. doi:10.1371/journal.pone.0160666
- 471 5. Møller SP, Pisinger VSC, Christensen AI, Tolstrup JS. Socioeconomic position and  
472 alcohol-related harm in Danish adolescents. *J Epidemiol Community Health* (1978).  
473 2019;73: 839–845. doi:10.1136/jech-2018-211634
- 474 6. Lewer D, Meier P, Beard E, Boniface S, Kaner E. Unravelling the alcohol harm paradox:  
475 A population-based study of social gradients across very heavy drinking thresholds.  
476 *BMC Public Health*. 2016;16. doi:10.1186/s12889-016-3265-9
- 477 7. Sadler S, Angus C, Gavens L, Gillespie D, Holmes J, Hamilton J, et al. Understanding  
478 the alcohol harm paradox: an analysis of sex- and condition-specific hospital  
479 admissions by socio-economic group for alcohol-associated conditions in England.  
480 *Addiction*. 2017;112: 808–817. doi:10.1111/add.13726
- 481 8. Reitsma MB, Fullman N, Ng M, Salama JS, Abajobir A, Abate KH, et al. Smoking  
482 prevalence and attributable disease burden in 195 countries and territories, 1990-  
483 2015: A systematic analysis from the global burden of disease study 2015. *The Lancet*.  
484 2017;389: 1885–1906. doi:10.1016/S0140-6736(17)30819-X
- 485 9. Gartner A, Trefan L, Moore S, Akbari A, Paranjothy S, Farewell D. Drinking beer, wine  
486 or spirits - Does it matter for inequalities in alcohol-related hospital admission? A  
487 record-linked longitudinal study in Wales. *BMC Public Health*. 2019;19.  
488 doi:10.1186/s12889-019-8015-3
- 489 10. Peña S, Mäkelä P, Laatikainen T, Härkänen T, Männistö S, Heliövaara M, et al. Joint  
490 effects of alcohol use, smoking and body mass index as an explanation for the alcohol  
491 harm paradox: causal mediation analysis of eight cohort studies. *Addiction*. 2021;116:  
492 2220–2230. doi:10.1111/add.15395
- 493 11. Davey Smith G, Ebrahim S. “Mendelian randomization”: Can genetic epidemiology  
494 contribute to understanding environmental determinants of disease? *Int J Epidemiol*.  
495 2003;32: 1–22. doi:10.1093/ije/dyg070
- 496 12. Sanderson E, Davey Smith G, Windmeijer F, Bowden J. An examination of  
497 multivariable Mendelian randomization in the single-sample and two-sample  
498 summary data settings. *Int J Epidemiol*. 2019;48: 713–727. doi:10.1093/ije/dyy262
- 499 13. Sanderson E, Glymour MM, Holmes M v., Kang H, Morrison J, Munafò MR, et al.  
500 Mendelian randomization. *Nature Reviews Methods Primers*. 2022;2.  
501 doi:10.1038/s43586-021-00092-5

- 502 14. Skrivankova VW, Richmond RC, Woolf BAR, Yarmolinsky J, Davies NM, Swanson SA, et  
503 al. Strengthening the Reporting of Observational Studies in Epidemiology Using  
504 Mendelian Randomization. *JAMA*. 2021;326: 1614. doi:10.1001/jama.2021.18236
- 505 15. Von Elm E, Altman DG, Egger M, Pocock SJ, Gøtzsche PC, Vandenbroucke JP. The  
506 Strengthening the Reporting of Observational Studies in Epidemiology (STROBE)  
507 statement: guidelines for reporting observational studies. *www.thelancet.com*. 2007.  
508 Available: [www.plosmedicine.org](http://www.plosmedicine.org)
- 509 16. Liu M, Jiang Y, Wedow R, Li Y, Brazel DM, Chen F, et al. Association studies of up to  
510 1.2 million individuals yield new insights into the genetic etiology of tobacco and  
511 alcohol use. *Nature Genetics*. Nature Publishing Group; 2019. pp. 237–244.  
512 doi:10.1038/s41588-018-0307-5
- 513 17. Okbay A, Beauchamp JP, Fontana MA, Lee JJ, Pers TH, Rietveld CA, et al. Genome-  
514 wide association study identifies 74 loci associated with educational attainment.  
515 *Nature*. 2016;533: 539–542. doi:10.1038/nature17671
- 516 18. UNESCO. International Standard Classification of Education ISCED 1997. 2006.  
517 Available: [https://iscd.uis.unesco.org/wp-](https://iscd.uis.unesco.org/wp-content/uploads/sites/15/2022/12/international-standard-classification-of-education-1997-en_0.pdf)  
518 [content/uploads/sites/15/2022/12/international-standard-classification-of-](https://iscd.uis.unesco.org/wp-content/uploads/sites/15/2022/12/international-standard-classification-of-education-1997-en_0.pdf)  
519 [education-1997-en\\_0.pdf](https://iscd.uis.unesco.org/wp-content/uploads/sites/15/2022/12/international-standard-classification-of-education-1997-en_0.pdf)
- 520 19. Mitchell R, Elsworth B, Raistrick C, Paternoster L, Hemani G, Gaunt T. MRC IEU UK  
521 Biobank GWAS pipeline version 2. 2019.  
522 doi:10.5523/bris.pnoat8cxo0u52p6ynfaekeigi
- 523 20. R Core Team. R: A language and environment for statistical computing. R Foundation  
524 for Statistical Computing. 2021 [cited 18 Mar 2022]. Available: [https://www.R-](https://www.R-project.org/)  
525 [project.org/](https://www.R-project.org/)
- 526 21. Yavorska OO, Burgess S. MendelianRandomization: An R package for performing  
527 Mendelian randomization analyses using summarized data. *Int J Epidemiol*. 2017;46:  
528 1734–1739. doi:10.1093/ije/dyx034
- 529 22. Hemani G, Zheng J, Elsworth B, Wade KH, Haberland V, Baird D, et al. The MR-Base  
530 platform supports systematic causal inference across the human phenome. *Elife*.  
531 2018;7. doi:10.7554/eLife.34408
- 532 23. Spiller W, Bowden J, Sanderson E. MVMR: MVMR. R package version 0.3. 2022.  
533 Available: <https://github.com/WSpiller/MVMR>
- 534 24. Verbanck M, Chen CY, Neale B, Do R. Detection of widespread horizontal pleiotropy in  
535 causal relationships inferred from Mendelian randomization between complex traits  
536 and diseases. *Nat Genet*. 2018;50: 693–698. doi:10.1038/s41588-018-0099-7
- 537 25. Sanderson E, Spiller W, Bowden J. Testing and correcting for weak and pleiotropic  
538 instruments in two-sample multivariable Mendelian randomization. *Stat Med*.  
539 2021;40: 5434–5452. doi:10.1002/sim.9133
- 540 26. Burgess S, Butterworth A, Thompson SG. Mendelian randomization analysis with  
541 multiple genetic variants using summarized data. *Genet Epidemiol*. 2013;37: 658–  
542 665. doi:10.1002/gepi.21758
- 543 27. Bowden J, Smith GD, Burgess S. Mendelian randomization with invalid instruments:  
544 Effect estimation and bias detection through Egger regression. *Int J Epidemiol*.  
545 2015;44: 512–525. doi:10.1093/ije/dyv080
- 546 28. Bowden J, Davey Smith G, Haycock PC, Burgess S. Consistent Estimation in Mendelian  
547 Randomization with Some Invalid Instruments Using a Weighted Median Estimator.  
548 *Genet Epidemiol*. 2016;40: 304–314. doi:10.1002/gepi.21965



- 549 29. Hartwig FP, Smith GD, Bowden J. Robust inference in summary data Mendelian  
550 randomization via the zero modal pleiotropy assumption. *Int J Epidemiol.* 2017;46:  
551 1985–1998. doi:10.1093/ije/dyx102
- 552 30. Public Health England and UK Health Forum. Alcohol-attributable fractions for  
553 England: An update. In: GOV.UK [Internet]. 12 Jun 2020 [cited 8 Nov 2022]. Available:  
554 [https://www.gov.uk/government/publications/alcohol-attributable-fractions-for-](https://www.gov.uk/government/publications/alcohol-attributable-fractions-for-england-an-update)  
555 [england-an-update](https://www.gov.uk/government/publications/alcohol-attributable-fractions-for-england-an-update)
- 556 31. Holmes M V., Dale CE, Zuccolo L, Silverwood RJ, Guo Y, Ye Z, et al. Association  
557 between alcohol and cardiovascular disease: Mendelian randomisation analysis based  
558 on individual participant data. *BMJ.* 2014;349: g4164–g4164. doi:10.1136/bmj.g4164
- 559 32. Zhou H, Sealock JM, Sanchez-Roige S, Clarke T-K, Levey DF, Cheng Z, et al. Genome-  
560 wide meta-analysis of problematic alcohol use in 435,563 individuals yields insights  
561 into biology and relationships with other traits. *Nat Neurosci.* 2020;23: 809–818.  
562 doi:10.1038/s41593-020-0643-5
- 563 33. Davies NM, Dickson M, Davey Smith G, Windmeijer F, Van Den Berg GJ. The causal  
564 effects of education on adult health, mortality and income: Evidence from Mendelian  
565 randomization and the raising of the school leaving age. *Int J Epidemiol.* 2023;52:  
566 1878–1886. doi:10.1093/ije/dyad104
- 567 34. Davies NM, Dickson M, Davey Smith G, van den Berg GJ, Windmeijer F. The causal  
568 effects of education on health outcomes in the UK Biobank. *Nat Hum Behav.* 2018;2:  
569 117–125. doi:10.1038/s41562-017-0279-y
- 570 35. Bjelland I, Krokstad S, Mykletun A, Dahl AA, Tell GS, Tambs K. Does a higher  
571 educational level protect against anxiety and depression? The HUNT study. *Soc Sci*  
572 *Med.* 2008;66: 1334–1345. doi:10.1016/j.socscimed.2007.12.019
- 573 36. Tillmann T, Vaucher J, Okbay A, Pikhart H, Peasey A, Kubinova R, et al. Education and  
574 coronary heart disease: mendelian randomisation study. *BMJ.* 2017; j3542.  
575 doi:10.1136/bmj.j3542
- 576 37. Marees AT, Smit DJA, Ong JS, Macgregor S, An J, Denys D, et al. Potential influence of  
577 socioeconomic status on genetic correlations between alcohol consumption  
578 measures and mental health. *Psychol Med.* 2020;50: 484–498.  
579 doi:10.1017/S0033291719000357
- 580 38. Rosoff DB, Clarke TK, Adams MJ, McIntosh AM, Davey Smith G, Jung J, et al.  
581 Educational attainment impacts drinking behaviors and risk for alcohol dependence:  
582 results from a two-sample Mendelian randomization study with ~780,000  
583 participants. *Mol Psychiatry.* 2021;26: 1119–1132. doi:10.1038/s41380-019-0535-9
- 584 39. Saunders GRB, Wang X, Chen F, Jang S-K, Liu M, Wang C, et al. Genetic diversity fuels  
585 gene discovery for tobacco and alcohol use. *Nature.* 2022;612: 720–724.  
586 doi:10.1038/s41586-022-05477-4  
587