

1 **Multivariable Mendelian randomization to disentangle the alcohol harm paradox.**

2

3 Gemma Sawyer^{1*}, Hannah Sallis^{1,2}, Marcus Munafò^{1,3}, Liam Mahedy¹, Jasmine Khouja^{1,3}

4

5 ¹ MRC Integrative Epidemiology Unit, Population Health Sciences, Bristol Medical School,

6 University of Bristol, Bristol, United Kingdom

7 ² Centre for Academic Mental Health, Population Health Sciences, Bristol Medical School,

8 University of Bristol, Bristol, United Kingdom

9 ³ School of Psychological Sciences, University of Bristol, Bristol, United Kingdom

10

11 *Corresponding author

12 Email: gemma.sawyer@bristol.ac.uk

13

14 **Abstract**

15 The alcohol harm paradox, whereby low socioeconomic position (SEP) groups experience greater
16 alcohol-related harms despite reporting lower alcohol consumption, is yet to be fully understood
17 through observational studies because key drivers are correlated and share similar confounding
18 structures. Multivariable Mendelian randomization (MVMR) were conducted to estimate the direct
19 causal effect of number of drinks per week (DPW) and years of schooling (YOS) on multiple health
20 outcomes. Previously published genome-wide association summary (GWAS) statistics for DPW and
21 YOS were utilised, and summary statistics were generated from individual-level data from UK
22 Biobank (N = 462,818) for all health outcomes. Inverse variance weighted analyses demonstrated
23 evidence for direct effects of DPW and YOS on liver diseases, mental and behavioural disorders due
24 to alcohol, and stroke, indicating that increasing alcohol consumption increased the likelihood of
25 outcomes whereas increasing years of education decreased their likelihood. There was also evidence
26 for a direct effect of DPW on depression, anxiety, influenza/pneumonia, and heart disease. In
27 contrast, there was evidence of a total, but not direct, effect of DPW on depression,
28 influenza/pneumonia, epilepsy, and injuries when accounting for YOS. Although caution is required
29 when interpreting these results due to weak instruments for alcohol, these results provide some
30 evidence that the alcohol harm paradox is partially due to the protective effect of additional years of
31 education, resulting in a reduced likelihood of higher SEP groups developing many alcohol-related
32 outcomes. Replication with strong instruments would be necessary to draw causal inferences.

33

34

35

36

37

38

39 **Author Summary**

40 Individuals from lower socioeconomic backgrounds tend to disproportionately experience
41 alcohol-related physical and mental ill health, despite reporting lower alcohol consumption
42 than those from higher socioeconomic backgrounds. This is known as the alcohol harm
43 paradox. One key difficulty in understanding this paradox is due to methodological
44 limitations establishing the relative contribution of multiple complex social behaviours. In
45 this study, we used genetic variants associated with alcohol consumption and years of
46 education to explore their direct effects on multiple health outcomes. The findings indicate
47 that higher alcohol consumption and fewer years of education may potentially increase the
48 likelihood of developing various health conditions, including liver diseases, mental and
49 behavioural disorders due to alcohol, and stroke. This may suggest that the alcohol harm
50 paradox is due to the protective effect of additional years of education amongst those from
51 higher socioeconomic backgrounds, reducing their likelihood of developing the health
52 conditions. However, these findings are exploratory and limited by various methodological
53 issues, suggesting these findings should be interpreted with caution. Replication and further
54 studies are needed.

55

56 **Introduction**

57 Alcohol-related harms are common and represent a large burden of morbidity and mortality
58 worldwide, contributing to 5.3% of all deaths and 5.1% of global burden of disease [1].
59 Moreover, such alcohol-related harms tend to be disproportionately experienced by
60 individuals of low socioeconomic position (SEP) despite reporting lower alcohol consumption
61 compared to high SEP individuals, known as the alcohol harm paradox [2–5]. Despite evidence
62 for this paradox, there is limited understanding of its origins.

63

64 There have been multiple explanations proposed for the alcohol harm paradox. One
65 explanation is that, whilst low SEP individuals report consuming less alcohol, other patterns
66 of drinking behaviour are more common. For example, low SEP individuals are more likely to
67 be in the extreme ends of drinking consumption, with a greater proportion abstaining or
68 drinking very lightly compared to high SEP groups, but also being more likely to drink
69 excessively or binge drink [6]. The possibility that drinking patterns may account for the
70 alcohol harm paradox has been supported by research demonstrating a greater
71 socioeconomic gradient for acute health outcomes which are wholly attributable to alcohol,
72 compared to chronic conditions which are associated with a wide range of behaviours [7]. An
73 alternative explanation is that individuals of low SEP may be more likely to engage in other
74 unhealthy behaviours, such as tobacco use, which are associated with multiple adverse health
75 outcomes [8]. Observational studies have supported this explanation, providing evidence that
76 individuals of lower SEP are increasingly likely to smoke [3]. Furthermore, adjusting for
77 tobacco smoking reduces the association between low SEP and hospital admissions [9], while
78 causal mediation analysis demonstrated that 18% of the total effect of income on alcohol-
79 related mortality was due to indirect effects via smoking and BMI [10]. Whilst these proposed
80 explanations have received some support from observational studies, they are limited in their
81 ability to draw causal inferences and are yet to fully account for the alcohol harm paradox.

82

83 The primary complication with disentangling the alcohol harm paradox is that a combination
84 of highly correlated causes, including alcohol consumption, SEP, and smoking, could be
85 important drivers. Therefore, it is necessary to establish the relative causal contribution of
86 alcohol consumption alongside these other factors on the likelihood of developing multiple

87 adverse health outcomes with novel causal inference methods, such as Mendelian
88 randomization (MR). MR relies on Mendel’s law of random assortment, using genetic variants
89 associated with the exposure as instrumental variables to assess the total causal effect of the
90 exposure on the outcome [11]. Multivariable MR (MVMR) builds upon this method, using
91 genetic variants associated with multiple exposures to estimate the direct causal effect of
92 each exposure on the outcome, accounting for the effect of the other exposures [12]. The
93 validity of causal inferences drawn using MVMR relies on three key assumptions [13]: (1) each
94 exposure is robustly predicted by the genetic instruments; (2) there are no confounders of
95 the outcome and any of the genetic instruments; and (3) the genetic instruments only impact
96 the outcome through at least one of the exposures.

97

98 The current study will apply MVMR to the alcohol harm paradox to examine the direct causal
99 effect of alcohol consumption on adverse health outcomes whilst accounting for education
100 (as a proxy for SEP) and vice versa. We will first conduct MR to examine the total causal effect
101 of alcohol and education separately on adverse health, followed by MVMR to examine their
102 direct causal effects. Comparison of the MR and MVMR results will provide insights into the
103 relative contribution of alcohol and education. For example, if there appears to be a causal
104 effect of alcohol in both the MR and MVMR, this suggests that alcohol consumption impacts
105 the health outcome even when the impact of education is considered. However, if a causal
106 effect of alcohol in the MR is attenuated in the MVMR, this may indicate that the impact of
107 education was driving the evidence of a causal effect of alcohol in the MR.

108

109 **Materials and Methods**

110 This method was outlined in our pre-registered analysis plan
111 (<https://doi.org/10.17605/OSF.IO/5G8W4>) and the methods presented here are consistent with
112 this unless otherwise specified.

113

114 Exposures

115 Summary-level data reported by the two Genome-Wide Association Studies (GWAS) were
116 utilised to identify suitable genetic instruments associated with the relevant exposure
117 phenotypes: drinks per week (DPW) and years of schooling (YOS). In contrast with our pre-
118 registration, the main analysis reported here focuses solely on these two exposures and
119 additional supplementary analysis included cigarettes per day (CPD) as a third exposure (see
120 Supplementary Methods for details). We are focusing on the two exposures of DPW and YOS
121 because alcohol and smoking are highly correlated and both suffer from weak instrument bias
122 in the three-exposure MVMR, making it difficult to draw conclusions from such findings. To
123 aid interpretation, we simplified the analysis to a two-exposure model to explore whether
124 SEP plays a causal role in the alcohol harm paradox. Consequently, the results of this study
125 should be considered exploratory.

126

127 *GWAS & Sequencing Consortium of Alcohol and Nicotine Use (GSCAN)*

128 Liu and colleagues [14] report summary-level statistics from a GWAS meta-analysis of alcohol
129 use based on data from participants of European ancestry from 29 cohorts (N=941,280).
130 Alcohol use was defined as the reported number of drinks (combined across all alcohol types)
131 consumed per week (DPW) amongst active drinkers. Where individual studies recorded
132 categorical bins of drinks per week (e.g., 1-4, 5-9), the midpoint value was taken. Analyses
133 adjusted for age, sex, age and sex interaction, and 10 genetic principal components.

134 Independent variants were reported to be associated with DPW if they met the standard
135 significance threshold ($p < 5 \times 10^{-8}$). The associated SNPs explained 2.5% of the variance in DPW.
136 We utilised the publicly available summary statistics from this GWAS, excluding UK Biobank
137 (UKB), to minimise sample overlap, and 23andMe, due to data sharing restrictions
138 (N=226,223). Smoking (cigarettes per day) was also measured in this GWAS, as described in
139 the Supplementary Material (p. 1).

140

141 *Social Science Genetic Association Consortium (SSGAC)*

142 Okbay and colleagues [15] report summary-level statistics from a GWAS meta-analysis of
143 education, defined as years of schooling (YOS), based on data from participants of European
144 ancestry from 65 cohorts (N=293,723). Reported number of years of schooling was utilised
145 where this was available. Where individual studies reported qualifications, the International
146 Standard Classification of Education (ISCED; 1997) [16] was used to map each major
147 qualification that could be attained in each country into one of seven categories: pre-primary
148 education, primary education, lower secondary education, upper secondary education, post-
149 secondary non-tertiary education, first-stage tertiary education, and second-stage tertiary
150 education. This was subsequently utilised to impute a YOS value for each category. Analyses
151 adjusted for age, sex, age and sex interaction, ten genetic principal components, and cohort-
152 specific controls. Variants were reported to be associated with YOS if they met the genome-
153 wide significance threshold ($p < 5 \times 10^{-8}$) and were independent.

154

155 Health outcomes

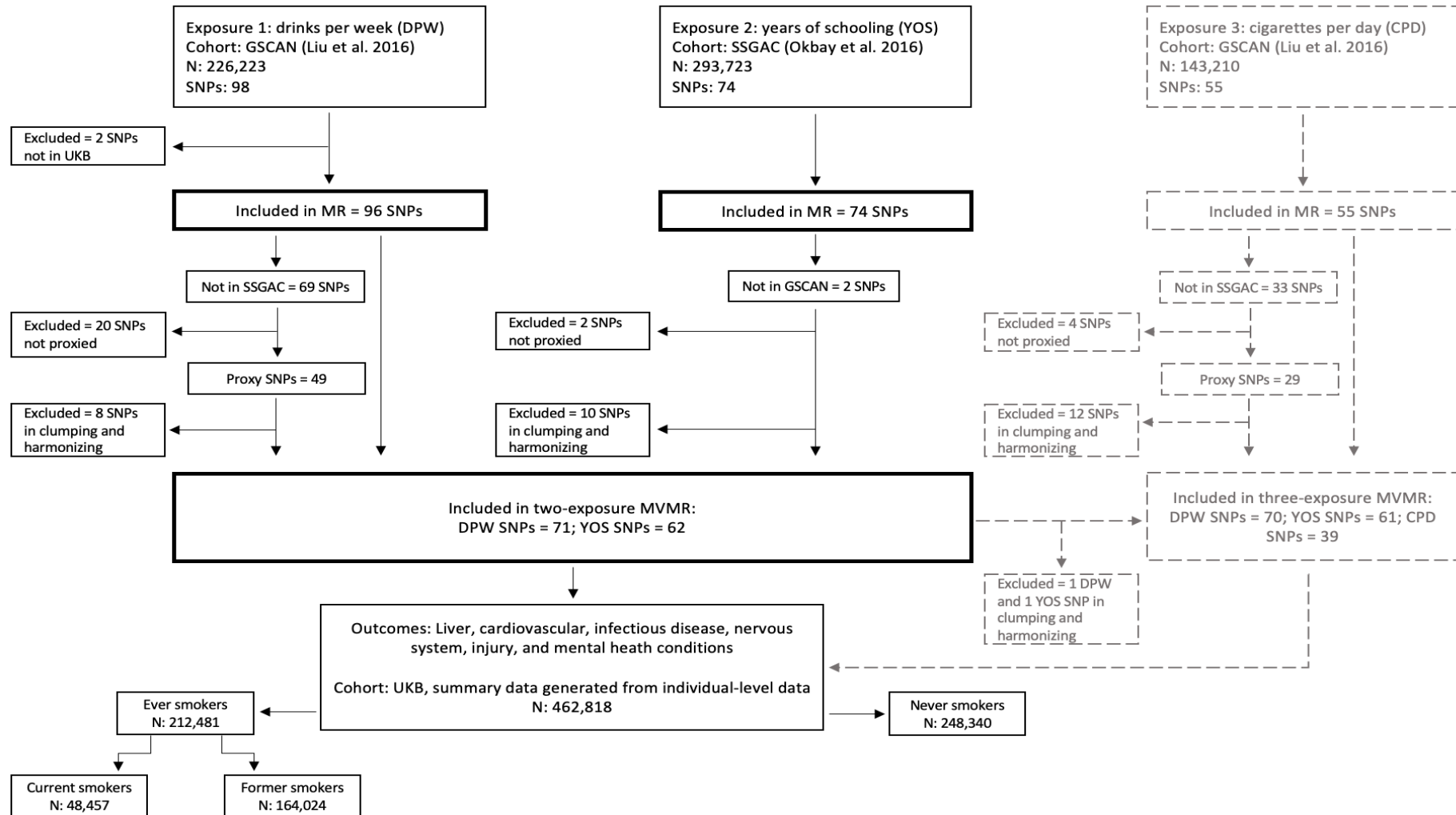
156 Individual-level data, including genetic and outcome data for all individual participants, was
157 obtained from UKB to generate summary statistics for multiple health outcomes.

158

159 *UK Biobank*

160 UKB is a population-based cohort, which recruited 500,000 people aged between 40-69 years
161 in 2006-2010. With their consent, they provided detailed information about their lifestyle,
162 physical measures and had blood, urine and saliva samples collected and stored for future
163 analysis. Using this individual-level data, we generated summary statistics by regressing each
164 available SNP on each health outcome through the MRC-IEU UKB GWAS pipeline [17] using a
165 BOLT-LMM (linear mixed model) to account for relatedness and population stratification.
166 Furthermore, we additionally adjusted for age, sex, and genotyping chip array. For the main
167 two-exposure MVMR analysis, this was conducted for the overall UKB sample; however, it
168 was also conducted in four smaller samples stratified by smoking status for comparison with
169 the supplementary three-exposure MVMR: ever smokers (defined as those reporting smoking
170 2 or more cigarettes), never smokers (defined as those reporting smoking 1 or less cigarettes),
171 current smokers, and former smokers (Figure 1).

172 **Figure 1.** Flowchart demonstrating the source of exposure and outcome data and the inclusion and exclusion of genetic variants (single
 173 nucleotide polymorphisms; SNPs) in this analysis. Details of the three-exposure MVMR (grey dashed lines) are in the Supplementary Materials.



174

175 Our pre-registered analysis specified 15 outcomes wholly or partially attributable to alcohol,
176 based upon ICD-10 summary diagnoses classification codes (UKB field ID 41270; see
177 Supplementary Table 1). However, once all the necessary exclusions had been made, four
178 outcomes (alcoholic cardiomyopathy, alcoholic myopathy, alcoholic polyneuropathy, and
179 alcoholic poisoning) had a case number below 50 or less than 0.1% in at least one of the
180 stratified datasets and were therefore removed from the analysis. The remaining outcomes
181 included alcoholic liver disease, other liver diseases, stroke, ischaemic heart disease (IHD),
182 influenza/pneumonia, viral hepatitis, epilepsy, injuries, mental and behavioural disorders due
183 to alcohol, depression, and anxiety.

184

185 Analysis

186 Analyses were conducted in R version 4.1.2 [18], using the *Mendelian Randomization*[19],
187 *TwoSampleMR* [20], *MVMR* [21] and *MR-PRESSO* [22] R packages.

188

189 *Selection of genetic variants*

190 Single nucleotide polymorphisms (SNPs) were selected for inclusion in the analysis if they
191 were reported to be associated with the exposure phenotype of interest (alcohol use or
192 education) and (conditionally) independent of any other SNP associations at the genome-
193 wide significance level ($p < 5 \times 10^{-8}$) in the relevant GWAS. These SNPs also needed to be
194 available in UKB, resulting in 96 DPW and 74 YOS SNPs in the univariable MR. For the MVMR
195 analyses, where a SNP from GSCAN (DPW) was not available in SSGAC (YOS), we selected
196 proxy SNPs with a minimum linkage disequilibrium (LD) R^2 of 0.8. Moreover, an additional
197 clumping stage was conducted in the MVMR to ensure all exposure SNPs were independent

198 (LD $R^2 < 0.1$, clumping window > 500 kb), resulting in 71 DPW and 62 YOS SNPs in the MVMR
199 (Figure 1; see Supplementary Table 2 for details).

200

201 We assessed instrument strength using a conditional F-statistic and instrument validity using
202 Cochran's Q-statistic. In line with conventional guidelines, the F-statistic should be greater
203 than 10 and the Q-statistic should be less than the number of SNPs [23].

204

205 *Univariable MR*

206 We estimated the total causal effects of alcohol use and education on all 11 health outcomes
207 using two-sample, summary level MR. The main analysis was conducted using inverse
208 variance weighted (IVW) regression [24], however; we also conducted sensitivity analyses
209 using three complementary MR methods MR-Egger [25], weighted median estimation [26],
210 and weighted mode estimation [27]. These methods hold different assumptions regarding
211 pleiotropy and therefore consistent results across the methods provide stronger evidence
212 that the observed effects are causal.

213

214 *Multivariable MR*

215 In MVMR analyses, we estimated the direct causal effect of alcohol use, education, and
216 tobacco use on all health outcomes using two sample, summary level MVMR with two
217 complimentary methods – MVMR-IVW and MVMR-Egger. Whilst we intended to conduct
218 MVMR-PRESSO in our pre-registered analysis plan, we had to remove this method due to
219 issues with the R package.

220

221

222 Results

223 The MR-IVW, MVMR-IVW, MR-Egger and MVMR-Egger results exploring the total and direct
224 effects of alcohol and education are displayed in Figure 2. The complete results of the MVMR
225 analyses exploring the direct effects of (1) alcohol and education (n = 133 SNPs) and (2)
226 alcohol, education, and smoking (n = 171 SNPs) on health outcomes are displayed in
227 Supplementary Tables 3-13. The results are presented in odds ratios (ORs) per standard
228 deviation (SD) increase in either drinks per week or years of schooling.

229

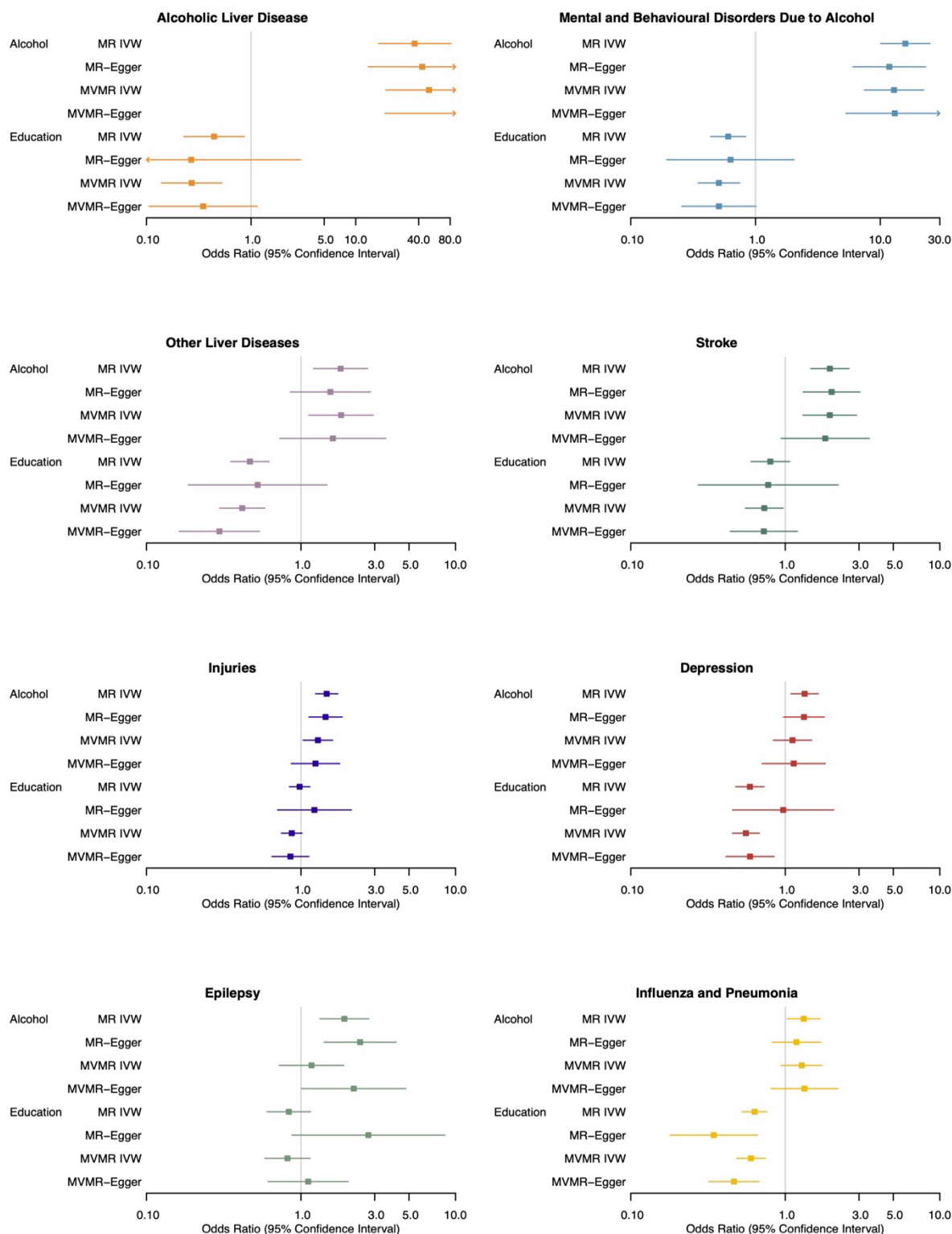
230 Instrument strength and heterogeneity

231 Instrument strength was calculated using the conditional F-statistic. In the MR, the F-statistics
232 suggest that the SNPs included in the analysis are strong instruments for alcohol (F = 14.87)
233 and education (F = 35.32). The conditional F-statistics in the two exposure MVMR indicate
234 that the included SNPs are strongly associated with education whilst accounting for the
235 effects of alcohol (F = 17.42), but not strongly associated with alcohol while accounting for
236 education (F = 6.32).

237

238 The Cochran's Q statistics were greater than the number of SNPs included in most of the
239 models, indicating heterogeneity. Therefore, the results also include MVMR-Egger, which
240 provides estimates that are robust to directional pleiotropy under the assumption that
241 pleiotropy is uncorrelated with the strength of the association between the SNP and
242 exposure. However, MVMR-Egger analyses have reduced statistical power compared with
243 IVW analyses and therefore we must consider the results from both analysis when drawing
244 conclusions. Where Egger results indicate a similar effect size but with larger confidence
245 intervals which cross the null, we interpret this as evidence in support of the IVW analysis.

246 **Figure 2.** Forest plots displaying the effect of alcohol (drinks per week) and education (years
 247 of schooling) on eight health outcomes using Mendelian randomization (MR) and
 248 multivariable MR (MVMR) analysis: inverse variance weighted (IVW) and Egger regression.



249

250 Alcoholic liver disease

251 There was evidence for a total (OR = 36.57, 95% CI 16.46 to 81.24) and direct (OR = 50.19,
252 95% CI 19.35 to 130.21) effect of alcohol on alcoholic liver disease when accounting for
253 education. There was also evidence that education decreased the odds of alcoholic liver
254 diseases in the univariable (OR = 0.44, 95% CI 0.23 to 0.86) and multivariable (OR = 0.27, 95%
255 CI 0.14 to 0.53) analysis when accounting for alcohol (Figure 2; Supplementary Table 3). Whilst
256 the MR-Egger and MVMR-Egger results were consistent with the IVW results for alcohol, for
257 education, the effect estimates were similar but the wider confidence intervals overlapped
258 the null.

259

260 Mental and behavioural disorders due to alcohol

261 There was evidence for a total (OR = 15.88, 95% CI 10.08 to 25.01) and direct (OR = 12.89,
262 95% CI 7.46 to 22.27) effect of alcohol on mental and behavioural disorders due to alcohol,
263 as well as a total (OR = 0.60, 95% CI 0.44 to 0.83) and direct (OR = 0.51, 95% CI 0.35 to 0.75)
264 effect of education on mental and behavioural disorders due to alcohol (Figure 2;
265 Supplementary Table 6). The MR- and MVMR-Egger findings were consistent with the IVW
266 findings for alcohol and showed similar effect estimates for education, although the
267 confidence intervals crossed the null.

268

269 Other liver diseases

270 There was evidence for a total (OR = 1.80, 95% CI 1.21 to 2.70) and direct (OR = 1.82, 95% CI
271 1.12 to 2.94) effect of alcohol on other liver diseases, as well as evidence for a total (OR =
272 0.47, 95% CI 0.35 to 0.62) and direct (Or = 0.42, 95% CI 0.30 to 0.58) effect of education on
273 other liver diseases (Figure 2; Supplementary Table 4). The MR- and MVMR-Egger results

274 calculated similar effect estimates, although the wider confidence intervals crossed the null
275 for alcohol and the total effect of education.

276

277 Stroke

278 There was evidence for a total (OR = 1.94, 95% CI 1.46 to 2.58) and direct (OR = 1.94, 95% CI
279 1.30 to 2.89) effect of alcohol on stroke, when accounting for education. Also, whilst there
280 was no clear evidence for a total effect of education on stroke, there was some evidence of a
281 direct effect in the MVMR when accounting for alcohol (OR = 0.73, 95% CI 0.55 to 0.97) (Figure
282 2; Supplementary Table 5). The MR- and MVMR-Egger findings were similar to the IVW
283 findings in terms of the effect estimates. However, the confidence intervals were wider and
284 therefore crossed the null for education and the direct effect of alcohol.

285

286 Injuries

287 There was evidence for a total (OR = 1.47, 95% CI 1.24 to 1.73) and direct (1.29, 95% CI 1.03
288 to 1.60) effect of alcohol on injuries. However, there was no evidence for a total (OR = 0.98,
289 95% CI 0.85 to 1.14) or direct (OR = 0.87, 95% CI 0.75 to 1.02) effect of education (Figure 2;
290 Supplementary Table 7). The MR- and MVMR-Egger results supported the IVW results for
291 education and the total effect of alcohol; however, the confidence intervals crossed the null
292 for the direct effect of alcohol.

293

294 Depression

295 In the univariable MR, there was evidence for a total effect of alcohol on depression (OR =
296 1.33, 95% CI 1.09 to 1.64); however, there was no evidence for a direct effect when
297 accounting for education (OR = 1.11, 95% CI 0.84 to 1.48). There was evidence that education

298 decreased the odds of depression in the univariable (OR = 0.59, 95% CI 0.48 to 0.73) and
299 multivariable analyses when accounting for alcohol (OR = 0.56, 95% CI 0.45 to 0.68) (Figure 2;
300 Supplementary Table 8). The MR- and MVMR-Egger results supported the IVW findings of a
301 total, but not direct, effect of alcohol (although the wider confidence intervals crossed the
302 null), as well as a direct effect of education. The MR-Egger did not however support IVW
303 evidence for a total effect of education.

304

305 Epilepsy

306 Whilst there was evidence for a total effect of alcohol on epilepsy (OR = 1.91, 95% CI 1.33 to
307 2.75), there was no evidence for a direct effect when accounting for education (OR = 1.17,
308 95% CI 0.72 to 1.89). Moreover, there was no evidence for a total (OR = 0.83, 95% CI 0.60 to
309 1.15) or direct (OR = 0.82, 95% CI 0.58 to 1.14) effect of education on epilepsy (Figure 2;
310 Supplementary Table 9). The MR-Egger results supported a total effect of alcohol and also
311 found some evidence for a direct effect, which was not indicated in the IVW findings. The MR-
312 and MVMR-Egger effect estimates for education were in the opposite direction to the IVW
313 results, although all confidence intervals crossed the null.

314

315 Influenza and pneumonia

316 There was evidence for a total (OR = 1.32, 95% CI 1.03 to 1.68) but not a direct effect of alcohol
317 on influenza/pneumonia when accounting for education (OR = 1.28, 95% CI 0.94 to 1.73).
318 There was evidence that education decreased the odds of influenza/pneumonia in the
319 univariable (OR = 0.63, 95% CI 0.53 to 0.76) and multivariable (OR = 0.60, 95% CI 0.48 to 0.74)
320 analysis (Figure 2; Supplementary Table 10). The MR- and MVMR-Egger results were primarily
321 consistent with the IVW results, supporting a total and direct effect of education and no direct

322 effect of alcohol. Whilst the effect estimate for the total effect of alcohol was similar, the MR-
323 Egger confidence interval crossed the null.

324

325 Other outcomes

326 There was no evidence for a total or direct effect of alcohol on IHD (Supplementary Table 11),
327 viral hepatitis (Supplementary Table 12), or anxiety (Supplementary Table 13). There was
328 evidence for a total (OR = 0.61, 95% CI 0.53 to 0.70) and direct (OR = 0.62, 95% CI 0.52 to 0.74)
329 effect of education on IHD when accounting for alcohol. There was also evidence for a total
330 (OR = 0.67, 95% CI 0.52 to 0.86) and direct (OR = 0.62, 95% CI 0.48 to 0.80) effect of education
331 on anxiety. There was no evidence for a total or direct effect of education on viral hepatitis.
332 Overall, the MR- and MVMR-Egger results were mostly similar to the IVW results for IHD,
333 anxiety, and viral hepatitis. The only differences were that the MR-Egger did not support a
334 total effect of education on IHD or anxiety.

335 Discussion

336 The current study has found evidence for direct effects of alcohol and education on alcoholic
337 and other liver diseases, mental and behavioural disorders due to alcohol, and stroke,
338 indicating that alcohol use increases the likelihood of such outcomes whereas years of
339 education decreases their likelihood. There was also evidence of a direct effect of education
340 on depression, anxiety, influenza/pneumonia, and IHD. In contrast, there was evidence of a
341 total, but not direct effect of alcohol on depression, influenza/pneumonia, epilepsy, and
342 injuries when accounting for education. These results are consistent with previous findings
343 from observational studies suggesting that both alcohol consumption and SEP may impact
344 the likelihood of developing numerous health conditions and that the alcohol harm paradox
345 is due to these multiplicative risk factors [3,4]. However, when interpreting these results, it is
346 important to be cautious and consider the strength of instruments. The conditional F-statistics
347 indicate that the instruments were not strongly associated with alcohol in the MVMR, despite
348 strong associations in the MR. Therefore, we cannot be as confident or draw causal inferences
349 from our estimates of direct effects; instead, our findings may be indicative of possible causal
350 effects which would need to be replicated with strong instruments to be confident. In
351 addition, we can only consider these results as exploratory as they were not all specified in
352 our pre-registered analysis plan.

353

354 For multiple outcomes, there was little difference between the total and direct effects of both
355 alcohol and education, including alcoholic liver disease, other liver diseases, and mental and
356 behavioural disorders due to alcohol. These results suggest that alcohol use increases the
357 likelihood of such outcomes when accounting for education, whereas years of education
358 decreases their likelihood when accounting for alcohol use. Therefore, for these outcomes, it

359 is possible that greater alcohol consumption and less education both causally contribute to
360 their likelihood and, as such, the alcohol harm paradox may be due to a combination of these
361 risk factors in low SEP groups, whereas high SEP groups are somewhat protected by additional
362 years of education. Moreover, there was evidence for a total and direct effect of alcohol on
363 stroke but only evidence for a direct, but not a total, effect of education. Again, these results
364 indicate that alcohol use increased the likelihood of stroke, even when accounting for
365 education, and education decreases the likelihood of stroke. However, it may also suggest
366 that failing to account for alcohol in the MR masked the effect of education on stroke.

367

368 For depression and influenza/pneumonia, there was little difference between the total and
369 direct effects of education; however, the evidence for a total effect of alcohol was attenuated
370 when accounting for education. This suggests that years of education decreases the likelihood
371 of developing depression and influenza/pneumonia, whereas alcohol use does not directly
372 influence the likelihood of such outcomes when education is considered alongside. Similarly,
373 for injuries and epilepsy, there was evidence for a total effect of alcohol which was attenuated
374 when education was considered, perhaps suggesting that alcohol does not directly influence
375 these outcomes. However, there was no evidence of a total or direct effect of education on
376 injuries and epilepsy these outcomes, indicating that education also does not influence these
377 outcomes. It is plausible that the attenuation of the total effect of alcohol is the result of
378 reduced instrument strength in the MVMR compared with the MR as opposed to education
379 driving the total effect of alcohol identified in the MR. Replication of our results with stronger
380 instruments is necessary to clarify such findings. The current results also support a total and
381 direct effect of education only on anxiety and IHD, whereby years of education decreased the
382 likelihood of developing these outcomes when accounting for alcohol. There was no evidence

383 for a total or direct effect of alcohol on either anxiety or IHD, nor a total or direct effect of
384 alcohol or education on viral hepatitis.

385

386 Strengths and Limitations

387 This is the first study, to our knowledge, to apply MVMR, a novel causal inference method, to
388 understand the direct causal effects of alcohol and education on multiple alcohol-related
389 conditions to enhance understanding of the alcohol harm paradox. However, this study also
390 has multiple limitations. As previously mentioned, the conditional F-statistics indicate that
391 alcohol suffers from weak instruments in the MVMR, which may possibly bias our results.
392 Heterogeneity is indicated by the Cochran's Q statistics and, even though we applied MR-
393 Egger to address this, heterogeneity may remain. This indicates that the analyses may also be
394 biased by invalid instruments. Directional pleiotropy is similarly likely to persist in our analyses
395 despite applying pleiotropy-robust methods as indicated by the MR-Egger intercepts, which
396 are not null in most of the models. This means that the genetic instruments may influence the
397 adverse health outcomes within this study via pathways that do not include alcohol or
398 education and therefore may not tell us about the causal effect of alcohol or education on
399 such outcomes. Moreover, DPW is a somewhat limited phenotype to reflect alcohol. This is
400 because many factors influence the effects of alcohol beyond number of drinks, including
401 binge patterns and alcohol types. Similarly, education is one factor that contributes to an
402 individual's SEP; factors such as income, neighbourhood, and occupation are also important
403 and may show different relationships. Therefore, focusing purely on DPW and YOS may be
404 restricting our understanding. Combined with the exploratory nature of these analyses, these
405 limitations suggest that caution is highly necessary in interpreting the current findings.

406

407 Future Research and Implications

408 Due to limitations within the study regarding weak instruments and possible pleiotropy, the
409 current study should be replicated with newly available GWAS data [28] and thus potentially
410 valid, stronger instruments can be utilised in these analyses. Replication will help confirm
411 whether the results presented in this study reflect the true causal effects of alcohol and
412 education or are due to methodological limitations. If the current findings were supported,
413 this would suggest that the alcohol harm paradox may be due to the protective effect of years
414 of schooling on many alcohol-related conditions resulting in a reduced likelihood of higher
415 SEP groups developing such outcomes. Future research may therefore benefit from exploring
416 the mechanisms through which education impacts such health outcomes to inform
417 preventative policy. Beyond this, it may be useful for future work to explore alternative
418 exposures, such as type of alcohol and income, and outcomes, including cancers to broaden
419 understanding.

420

421 Conclusion

422 This study found evidence for a direct effect of alcohol on alcoholic and other liver diseases,
423 mental and behavioural disorders due to alcohol, and stroke. There was also evidence for a
424 total effect of alcohol on depression, epilepsy, influenza/pneumonia, and injuries, which were
425 attenuated when education was accounted for. Despite weak instrument bias, such results
426 cautiously indicate that many partially alcohol-attributable conditions are causally impacted
427 by years of education, which we use here as a proxy for SEP. Replication with strong
428 instruments is necessary however to confirm these findings and future research may
429 consequently endeavour to explore the causal effect of education on additional partially

430 alcohol-attributable conditions and identify the mechanism through which further years of
431 education protects against these conditions.

432

433 **Acknowledgements**

434 This research has been conducted using the UK Biobank Resource under application number
435 9142. This work uses data provided by patients and collected by the NHS as part of their care
436 and support.

437

438 **Funding**

439 GS, HS, MM, LM, and JK are all members of the Medical Research Council (MRC) Integrative
440 Epidemiology Unit at the University of Bristol. This publication is the work of the authors and
441 they will serve as guarantors for the contents of this paper. GS is supported by a Wellcome
442 Trust PhD studentship in Molecular, Genetic and Lifecourse Epidemiology (ref:
443 218495/Z/19/Z). For the purpose of Open Access, the author has applied a CC BY public
444 copyright licence to any Author Accepted Manuscript version arising from this submission.

445

446 References

- 447 1. World Health Organization. Alcohol. 2018 [cited 9 Mar 2022]. Available:
448 <https://www.who.int/news-room/fact-sheets/detail/alcohol>
- 449 2. Smith K, Foster J. Alcohol, Health Inequalities and the Harm Paradox: Why some
450 groups face greater problems despite consuming less alcohol. 2014. Available:
451 [https://www.alcoholpolicy.net/2014/11/alcohol-health-inequalities-and-the-harm-](https://www.alcoholpolicy.net/2014/11/alcohol-health-inequalities-and-the-harm-paradox-ias-report-reviews-higher-harms-in-deprived-groups.html)
452 [paradox-ias-report-reviews-higher-harms-in-deprived-groups.html](https://www.alcoholpolicy.net/2014/11/alcohol-health-inequalities-and-the-harm-paradox-ias-report-reviews-higher-harms-in-deprived-groups.html)
- 453 3. Bellis MA, Hughes K, Nicholls J, Sheron N, Gilmore I, Jones L. The alcohol harm
454 paradox: Using a national survey to explore how alcohol may disproportionately
455 impact health in deprived individuals. *BMC Public Health*. 2016;16.
456 doi:10.1186/s12889-016-2766-x
- 457 4. Beard E, Brown J, West R, Angus C, Brennan A, Holmes J, et al. Deconstructing the
458 Alcohol Harm Paradox: A population based survey of adults in England. *PLoS One*.
459 2016;11. doi:10.1371/journal.pone.0160666
- 460 5. Møller SP, Pisinger VSC, Christensen AI, Tolstrup JS. Socioeconomic position and
461 alcohol-related harm in Danish adolescents. *J Epidemiol Community Health* (1978).
462 2019;73: 839–845. doi:10.1136/jech-2018-211634
- 463 6. Lewer D, Meier P, Beard E, Boniface S, Kaner E. Unravelling the alcohol harm paradox:
464 A population-based study of social gradients across very heavy drinking thresholds.
465 *BMC Public Health*. 2016;16. doi:10.1186/s12889-016-3265-9
- 466 7. Sadler S, Angus C, Gavens L, Gillespie D, Holmes J, Hamilton J, et al. Understanding
467 the alcohol harm paradox: an analysis of sex- and condition-specific hospital
468 admissions by socio-economic group for alcohol-associated conditions in England.
469 *Addiction*. 2017;112: 808–817. doi:10.1111/add.13726
- 470 8. Reitsma MB, Fullman N, Ng M, Salama JS, Abajobir A, Abate KH, et al. Smoking
471 prevalence and attributable disease burden in 195 countries and territories, 1990-
472 2015: A systematic analysis from the global burden of disease study 2015. *The Lancet*.
473 2017;389: 1885–1906. doi:10.1016/S0140-6736(17)30819-X
- 474 9. Gartner A, Trefan L, Moore S, Akbari A, Paranjothy S, Farewell D. Drinking beer, wine
475 or spirits - Does it matter for inequalities in alcohol-related hospital admission? A
476 record-linked longitudinal study in Wales. *BMC Public Health*. 2019;19.
477 doi:10.1186/s12889-019-8015-3
- 478 10. Peña S, Mäkelä P, Laatikainen T, Härkänen T, Männistö S, Heliövaara M, et al. Joint
479 effects of alcohol use, smoking and body mass index as an explanation for the alcohol
480 harm paradox: causal mediation analysis of eight cohort studies. *Addiction*. 2021;116:
481 2220–2230. doi:10.1111/add.15395
- 482 11. Davey Smith G, Ebrahim S. “Mendelian randomization”: Can genetic epidemiology
483 contribute to understanding environmental determinants of disease? *Int J Epidemiol*.
484 2003;32: 1–22. doi:10.1093/ije/dyg070
- 485 12. Sanderson E, Davey Smith G, Windmeijer F, Bowden J. An examination of
486 multivariable Mendelian randomization in the single-sample and two-sample
487 summary data settings. *Int J Epidemiol*. 2019;48: 713–727. doi:10.1093/ije/dyy262
- 488 13. Sanderson E, Glymour MM, Holmes M v., Kang H, Morrison J, Munafò MR, et al.
489 Mendelian randomization. *Nature Reviews Methods Primers*. 2022;2.
490 doi:10.1038/s43586-021-00092-5

- 491 14. Liu M, Jiang Y, Wedow R, Li Y, Brazel DM, Chen F, et al. Association studies of up to
492 1.2 million individuals yield new insights into the genetic etiology of tobacco and
493 alcohol use. *Nature Genetics*. Nature Publishing Group; 2019. pp. 237–244.
494 doi:10.1038/s41588-018-0307-5
- 495 15. Okbay A, Beauchamp JP, Fontana MA, Lee JJ, Pers TH, Rietveld CA, et al. Genome-
496 wide association study identifies 74 loci associated with educational attainment.
497 *Nature*. 2016;533: 539–542. doi:10.1038/nature17671
- 498 16. UNESCO. International Standard Classification of Education ISCED 1997. 2006.
499 Available: [https://isced.uis.unesco.org/wp-](https://isced.uis.unesco.org/wp-content/uploads/sites/15/2022/12/international-standard-classification-of-education-1997-en_0.pdf)
500 [content/uploads/sites/15/2022/12/international-standard-classification-of-](https://isced.uis.unesco.org/wp-content/uploads/sites/15/2022/12/international-standard-classification-of-education-1997-en_0.pdf)
501 [education-1997-en_0.pdf](https://isced.uis.unesco.org/wp-content/uploads/sites/15/2022/12/international-standard-classification-of-education-1997-en_0.pdf)
- 502 17. Mitchell R, Elsworth B, Raistrick C, Paternoster L, Hemani G, Gaunt T. MRC IEU UK
503 Biobank GWAS pipeline version 2. 2019.
504 doi:10.5523/bris.pnoat8cxo0u52p6ynfaeigei
- 505 18. R Core Team. R: A language and environment for statistical computing. R Foundation
506 for Statistical Computing. 2021 [cited 18 Mar 2022]. Available: [https://www.R-](https://www.R-project.org/)
507 [project.org/](https://www.R-project.org/)
- 508 19. Yavorska OO, Burgess S. MendelianRandomization: An R package for performing
509 Mendelian randomization analyses using summarized data. *Int J Epidemiol*. 2017;46:
510 1734–1739. doi:10.1093/ije/dyx034
- 511 20. Hemani G, Zheng J, Elsworth B, Wade KH, Haberland V, Baird D, et al. The MR-Base
512 platform supports systematic causal inference across the human phenome. *Elife*.
513 2018;7. doi:10.7554/eLife.34408
- 514 21. Spiller W, Bowden J, Sanderson E. MVMR: MVMR. R package version 0.3. 2022.
515 Available: <https://github.com/WSpiller/MVMR>
- 516 22. Verbanck M, Chen CY, Neale B, Do R. Detection of widespread horizontal pleiotropy in
517 causal relationships inferred from Mendelian randomization between complex traits
518 and diseases. *Nat Genet*. 2018;50: 693–698. doi:10.1038/s41588-018-0099-7
- 519 23. Sanderson E, Spiller W, Bowden J. Testing and correcting for weak and pleiotropic
520 instruments in two-sample multivariable Mendelian randomization. *Stat Med*.
521 2021;40: 5434–5452. doi:10.1002/sim.9133
- 522 24. Burgess S, Butterworth A, Thompson SG. Mendelian randomization analysis with
523 multiple genetic variants using summarized data. *Genet Epidemiol*. 2013;37: 658–
524 665. doi:10.1002/gepi.21758
- 525 25. Bowden J, Smith GD, Burgess S. Mendelian randomization with invalid instruments:
526 Effect estimation and bias detection through Egger regression. *Int J Epidemiol*.
527 2015;44: 512–525. doi:10.1093/ije/dyv080
- 528 26. Bowden J, Davey Smith G, Haycock PC, Burgess S. Consistent Estimation in Mendelian
529 Randomization with Some Invalid Instruments Using a Weighted Median Estimator.
530 *Genet Epidemiol*. 2016;40: 304–314. doi:10.1002/gepi.21965
- 531 27. Hartwig FP, Smith GD, Bowden J. Robust inference in summary data Mendelian
532 randomization via the zero modal pleiotropy assumption. *Int J Epidemiol*. 2017;46:
533 1985–1998. doi:10.1093/ije/dyx102
- 534 28. Saunders GRB, Wang X, Chen F, Jang S-K, Liu M, Wang C, et al. Genetic diversity fuels
535 gene discovery for tobacco and alcohol use. *Nature*. 2022;612: 720–724.
536 doi:10.1038/s41586-022-05477-4
537