

1 **Analysis of Frailty in Peritoneal Dialysis Patients Based on Logistic** 2 **Regression Model and XGBoost Model**

3
4 **Qi Liu^{a,†}, Guanchao Tong^{b,c,†}, Qiong Ye^{b,*,†}**

5 ^a Wenzhou Central Hospital, 252 Baili East Rd, Lucheng, Wenzhou, Zhejiang Province
6 325000, China

7 ^b Wenzhou-Kean University, 88 Daxue Rd, Ouhai, Wenzhou, Zhejiang Province 325060,
8 China.

9 ^c Kean University, 1000 Morris Avenue, Union, New Jersey 07083, USA.

10 * Corresponding author, e-mail: yeqiong@wku.edu.cn

11 † These authors contributed equally to this work and should be considered co-first authors.

12 13 **ABSTRACT:**

14 **Purpose:** The aim of this study was to establish a model that would enable healthcare
15 providers to use routine follow-up measures of peritoneal dialysis to predict frailty in those
16 patients.

17
18 **Design :** A cross-sectional design with Logistic regression and XGBoost machine learning
19 algorithms analysis.

20
21 **Methods:** One hundred and twenty-three cases of peritoneal dialysis patients who underwent
22 regular follow-up at our center were included in this study. We use the FRAIL scale to
23 confirm the frailty of the patients. Clinical and Laboratory data were obtained from the
24 peritoneal dialysis registration system. Factors associated with patient Frailty were identified
25 through regularized logistic regression and validated using an XGBoost model. The final
26 selected variables were in-cluded in the unregularized Logistic Regression to construct the
27 model

28
29 **Findings:** A total of 123 patients were reviewed in this study, with an average age of 61.58
30 years, and the median dialysis Duration was 38.5(18.07,60.53) months. 39 patients (31.71%)
31 were female, 54 PD patients (43.9%) were classified as frail. Age, Ferritin, and TCH are the
32 top three im-portant features labeled by the XGBoost. The results are consistent with the
33 regularized logistic regression.

35 **Conclusions:** In this study, age, total cholesterol, and ferritin are the most important features
36 associated with the frailty in peritoneal dialysis patients. This model can be used to predict
37 frailty status and help health monitoring of peritoneal dialysis patients.

38

39 **Clinical Evidence:** Logistic regression and XGBoost machine learning algorithms can be
40 used to construct a predictive model of frailty in peritoneal dialysis patients. The model could
41 provide doctors with an objective tool to find frailty in peritoneal dialysis patients. As the data
42 is obtained from routine examinations, the prediction model will not bring additional burden
43 to the work of doctors or nurses.

44

45 **KEYWORDS:** peritoneal dialysis; frailty; FRAIL scale; Logistic Regression; XGBoost
46 model

47

48 **INTRODUCTION**

49 Peritoneal dialysis can bring many benefits to patients with end-stage renal disease and
50 prolongs their lives. However, it also has disadvantages, such as infections, metabolic and
51 mechanical complications, risk of inadequate dialysis or limited possibilities to increase
52 adequacy, malnutrition, long-term viability, psychological problems related to indwelling
53 abdominal dialysis catheters, and fatigue from continuous use, particularly among elderly
54 people[1].

55 Frailty is a commonly used term to denote a multidimensional syndrome of loss of
56 reserves (energy, physical ability, cognition, health), which gives rise to vulnerability[2].
57 Frailty is highly prevalent in older patients with dialysis-dependent kidney failure[3].

58 The causes of frailty in PD patients are a little more complex. The buildup of toxins in
59 uremia can cause loss of appetite and fatigue. Among those undergoing dialysis, particularly
60 peritoneal dialysis (PD), challenges such as abdominal distention and bloating can exacerbate
61 the loss of appetite. This diminished appetite, combined with dietary restrictions and reduced
62 physical activity, leads to protein-energy wasting, muscle breakdown, and the onset of
63 sarcopenia[6], [7]. Elevated levels of uremic toxins in circulation and disruptions in acid-base
64 balance contribute to chronic inflammation and hinder the effectiveness of anabolic
65 hormones, ultimately resulting in catabolism and impaired energy utilization[6]. Moreover,
66 dialysis removes uremic toxins and restores homeostasis, thus theoretically improving

67 weakness[7]. The interaction between malnutrition, inflammation, and frailty often coexist
68 and have a combined effect on patient outcomes[8].

69 In patients with chronic kidney disease, both before or after dialysis initiation, frailty has
70 been linked with increased risks of falls, hospitalization, cognitive dysfunction, and
71 mortality[7], [9]. Early identification may enable timely intervention to prevent adverse
72 health outcomes in this group of patients.

73 A significant amount of research has employed statistical learning and machine learning
74 algorithms to address medical problems and identify relationships between various factors
75 through patient observation and indicators of different diseases[10]. Machine learning can
76 process large data sets and then efficiently process this data into clinical knowledge that
77 enables physicians to prepare and deliver treatments, ultimately improving outcomes[11].
78 Based on clinical data, machine learning models can diagnose aphasia, and urinary tract
79 infections, and predict breast cancer, among others, providing clinicians with a "second
80 opinion".

81 This study aims to analyze the relationship between frailty and various indicators
82 (especially nutritional related) through the observation of patients with regular peritoneal
83 dialysis follow-up in our center by using logistic regression and extreme Gradient Boost
84 (XGBoost) algorithms and try to find out the important factors of frailty in patients with
85 peritoneal dialysis, to intervene in the early stage and improve the quality of life of patients.

86

87 **MATERIALS AND METHODS**

88 **Participants**

89 A total of 123 patients with peritoneal dialysis followed up for more than 1 year were
90 included in the study. The inclusion criteria were patients on maintenance PD and age >18
91 years old, with basic listening, speaking, reading, and understanding skills. The exclusion
92 criteria were patients with critical illness, unable to cooperate with the required actions,
93 unable to understand the content of the scale, patients with acute infection, tumor patients, etc.

94 This study was approved by the Wenzhou Central Hospital Human Research Ethics
95 Committee, and prior written consent was obtained from the Participants.

96

97 **Data collection**

98 The study started with registration on September 02, 2023. Trained and qualified nurses
99 explained the study's purpose to patients and obtained their informed consent. They

100 administered the scale questions by reading them and recording the patient's responses.
101 Researchers then reviewed the completed scales to ensure data accuracy and consistency.
102 Clinical and Laboratory data were obtained from the peritoneal dialysis registration
103 system.

104

105 **Assessment of Frailty**

106 The FRAIL scale includes 5 components: Fatigue, Resistance, Ambulation (slow
107 walking speed), Illness, and Loss of Weight (5% or more in the previous year). Frail scale
108 scores range from 0–5 (i.e., 1 point for each component; 0=best to 5=worst) and represent
109 frail (3–5), pre-frail (1–2), and robust (0) health status[12]. The FRAIL scale has been
110 recommended by the latest international guidelines as the best screening tool for Frailty[13].
111 In a study of HD (hemodialysis) patients, the FRAIL scale proved to be an easy-to-apply tool,
112 identifying a high prevalence of frailty and being a predictor of hospital admission[14]. In this
113 study, we combine frail and pre-frail, classify 1-5 as frail, and 0 as non-frail status.

114

115 **Logistic Regression model**

116 Logistic regression is a widely used classification algorithm that uses a linear model to
117 predict the probability of a binary outcome[24]. The model of the binary logistic regression is
118 a linear regression of the log odds which can be expressed as[15]:

$$\text{logit}(p) = \log\left(\frac{p}{1-p}\right) = \beta_0 + \sum \beta_i x_i$$

119 It is a simple and effective way to model binary data, but it can sometimes suffer from
120 overfitting. The loss function of the Overfitted models will fail to replicate in future samples,
121 thus creating considerable uncertainty about the scientific merit of the finding[16].
122 Regularization is a technique used to avoid overfitting in machine learning models. The lasso,
123 ridge, and elastic net are popular regularized regression models for supervised learning[17].
124 Elastic Net regularization combines L1 (Lasso) and L2 (Ridge) regularization by adding a
125 penalty term to the objective function that is a combination of the absolute value and square
126 of the coefficients. The loss function of the elastic net model can be expressed as[18]:

$$L + \lambda \left(\frac{1-\alpha}{2}\right) \sum \beta_i^2 + \alpha \sum |\beta_i|$$

127

128 In the loss function, the value of the α controls the mix of the lasso and ridge regression.
129 When $\alpha = 0$, it becomes the pure ridge regression, and when $\alpha = 1$, it is the pure lasso
130 regression.

131

132 **XGBoost Model**

133 XGBoost was mainly designed for speed and performance using gradient-boosted
134 decision trees. It represents a way for machine boosting, or in other words, applying boosting
135 to machines[19]. It is based on the sparsity-aware algorithm and weighted quantile sketch,
136 which can converge the weak learners step-wisely into the ensemble to form a strong learner.
137 Overfitting also can be reduced largely in the XGBoost model through parallel calculation and
138 regularization lifting technology[20].

139

140 **Data Analysis**

141 IBM SPSS Statistics 25 and R-Studio software (version 4.3.2) were used for data
142 analysis. The Continuous data were expressed in different ways according to the results of
143 normal tests, mean \pm standard deviation, or median (interquartile range). The count data were
144 expressed as the percentage of cases. Regularized Logistic Regression analysis was used to
145 filter the effective variables for the frailty. The variables with non-zero regression coefficients
146 would be included in the final model. The importance of the prediction model variables was
147 ranked by XGBoost, by which the results of Regularized Logistic Regression analysis would
148 be verified. The final selected variables were included in the unregularized Logistic
149 Regression to construct the model (Figure 1).

150

151 **RESULTS**

152 **Participants and Baseline Frailty Status**

153 A total of 123 patients were reviewed in this study, with an average age of (61.58 ± 12.8)
154 years, and the median dialysis Duration was $38.5(18.07,60.53)$ months. 39 patients (31.71%)
155 were female, 54 patients with original kidney disease (43.9%) were hypertensive
156 nephropathy, and 54 PD patients (43.9%) were classified as frail(Table 1).

157

158 **Regularized Logistic Regression Results and Verified by XGBoost**

159 Using the Regularized Logistic Regression algorithm with optimal parameters
160 ($\text{Alpha}=0.5$, $\text{lambda}=0.15$), three significant factors associated with frailty occurrence in PD

161 patients, each with non-zero coefficients, were selected from clinical data. As shown in the
162 Table 2, the three most important factors are Age, Total Cholesterol, and Ferritin.

163

164 Using the XGBoost algorithm with optimal parameters ($\text{max_depth} = 4$, $\text{verbose} = 0$,
165 $\text{nrounds} = 20$). The factors are ranked by importance from XGBoost as shown in Table 3 and
166 Figure 2. Table 3 shows the three measures: Gain, Cover, and Frequency in the variable
167 importance matrix [19]. The Gain implies the relative contribution of the corresponding
168 feature to the model. The Cover shows the relative number of observations related to the
169 corresponding feature. Moreover, The Frequency represents the percentage of times a
170 particular feature occurs in the model. The Gain is the most relevant attribute for interpreting
171 the relative importance of each feature[19]. Figure 2 shows the visualization of the Gain of
172 the different features.

173 The top three features in the Gain column, Age, Total Cholesterol, and Ferritin, are
174 consistent with the results of the regularized logistic regression model.

175

176 **Unregularized Logistic Regression**

177 After applying the regularized logistic regression and being verified by XGBoost, we
178 determined that age, total cholesterol, and ferritin are the three significant factors associated
179 with the occurrence of frailty in PD patients. Then, we use the unregularized Logistic
180 Regression to obtain the relationship between the three variables and the occurrence of frailty.

181 Based on the results of Unregularized Logistic Regression, a frailty prediction model for
182 PD patients was established using three independent predictive factors: age, total cholesterol
183 (TCH), and ferritin. The prediction model is as follows:

184

$$\text{logit}(p) = -3.0444 + 0.0664 \times \text{Age} - 0.2157 \times \text{TCH} - 0.003 \times \text{Ferritin}$$

185

186 , where $\text{logit}(p)$ is equal to the log-odds of the p , which is $\log\left(\frac{p}{1-p}\right)$.

187 In the model above, the p is the probability of frailty. The model above shows that
188 increasing one unit (year) of the age will result in a 0.0664 increase in $\text{logit}(p)$, which means
189 there is a 6.8% increase in the odd of probability of frailty. Increasing one unit (mmol/L) of
190 the TCH will result in a 0.2157 decrease in $\text{logit}(p)$, which means there is a 19.4% decrease in
191 the odd of the probability of frailty. Increasing one unit (ug/L) of the Ferritin will result in a

192 0.003 decrease in $\text{logit}(p)$, which means there is a 0.30% decrease in the odd of the probability
193 of frailty.

194

195 The area under the receiver operating characteristic curve (AUC) for the unregularized
196 logistic regression model is 0.736 as shown in Figure 3. The model shows a positive
197 association between age and frailty, while total cholesterol and ferritin are negatively
198 associated with the development of frailty.

199

200 **DISCUSSION**

201 We found that 43.9% of peritoneal dialysis patients from our data had different levels of
202 frailty based on the FRAIL scale. The main related factors for frailty are age, total cholesterol,
203 and ferritin.

204 In this study, age was the most important factor for frailty in both logistic regression and
205 importance analysis with XGBoost, which is consistent with previous studies[21], [22]
206 (Figure 2). While the biological causative mechanisms of frailty are different from those
207 processes causing the aging process, age is still the most important factor affecting frailty.
208 With aging, one or more physiological systems change especially the neuro-muscular,
209 neuroendocrine, and immune systems[23]. These changes interact and accumulate, decreasing
210 physiological function and reserve. Frailty is thought to result when damage to multiple
211 physiological systems exceeds a threshold so much that repair mechanisms fail to maintain
212 system homeostasis[22], [24]. Peritoneal dialysis patients often face a lot of health challenges,
213 such as malnutrition, metabolic disorders, and cardiovascular disease[8]. Peritoneal dialysis
214 may affect patients' physiological function, immune system function, mental health, and
215 quality of life[1], [25]. The patients often have chronic diseases such as diabetes and
216 hypertension. Peritoneal dialysis patients would be sensitive to the age-related features, such
217 that the effect of age on frailty may be exacerbated.

218 Too much cholesterol could increase the risk of heart disease, stroke, and pancreatitis.
219 However, the low cholesterol is also related to nutrition, infections, tumors, and liver
220 disease[26], [27]. For patients on regular dialysis, the lower total cholesterol is usually due to
221 malnutrition and inflammation[28]. A cross-sectional study in older adults found being at a
222 high level of TCH was associated with a lower risk of frailty. A low TCH level might be the
223 most associated with frailty risk[29]. People with lower TCH (≤ 5.2 mmol/l) were more likely
224 to decline in functional status compared to others with higher TCH[27]. The complex effects

225 of cholesterol may be related to age. A report showed high midlife TCH is a risk factor for
226 subsequent dementia/Alzheimer's disease, but decreasing TCH after midlife may reflect
227 ongoing disease processes and may represent a risk marker for late-life cognitive
228 impairment[30]. Additionally, other studies show that total TCH is inversely associated with
229 mortality as a metabolic shift and reverse metabolism as well[31], [32]. Hypocholesterolemia
230 was associated not only with an increased risk of mortality but also with an increased rate of
231 complications (especially infections), clear biochemical evidence of malnutrition, and higher
232 duration and cost of hospitalization[33]. In our study, the total cholesterol of the patients was
233 4.26(1.54)mmol/L, and only 15 percent were above the upper limit of normal. Because the
234 overall TCH level is not high, this may be the reason why the lower the TCH, the higher the
235 risk of frailty in our study.

236 Ferritin is an important iron storage protein in the human body and participates in the
237 regulation of hematopoietic and immune systems. Ferritin levels can reflect the iron reserve
238 and nutritional status of the body, and it is related to a variety of diseases[34], [35].
239 We found a relationship between ferritin and frailty. A cross-sectional study in a tertiary care
240 center also showed ferritin was an independent significant predictor of frailty[36]. The effect
241 of ferritin on frailty may be related to factors including anemia, oxygen supply, aerobic
242 metabolism, inflammation, immune response, and malnutrition [37], [38].

243 As people age, frailty has long been considered a state that accelerates the risk of adverse
244 outcomes. Frailty is more common in patients with uremia and peritoneal dialysis[7].
245 Identifying biomarkers associated with frailty may benefit the care of peritoneal dialysis
246 patients. Our center's routine follow-up of peritoneal dialysis patients includes the complete
247 blood count (CBC), Biochemistry Panel, and other indicators. Compared to frailty assessment
248 scales such as FRAIL and FSQ(Frailty Screening Questionnaire), which include subjective
249 questions about fatigue, stair climbing difficulties, and community ambulation[39], [40], these
250 biochemical indicators are easy to obtain, stable, and objectives.

251 Our results may help to improve the ability to identify those adults at greatest risk of
252 frailty in the management of peritoneal dialysis patients and provide early intervention
253 afterward. We should pay attention to the age, total cholesterol, and ferritin levels during
254 routine examinations of peritoneal dialysis patients. Patients with frailty risk can be further
255 examined with a frailty scale to improve the accuracy of the diagnosis (such as the FRAIL
256 scale).

257 However, some indicators that have diagnostic significance for frailty in other articles
258 were not screened out in this study (such as albumin, hemoglobin, etc.) [36], [41]. The reason
259 may be that our sample size is too small. Therefore, in the future, we plan to expand the
260 sample size and use big data analytics to train and refine this model, and use the model to
261 detect the peritoneal dialysis patients. The model could provide doctors with an objective tool
262 to diagnose frailty in peritoneal dialysis patients. As the data is obtained from routine
263 examinations, the prediction model will not bring additional burden to the work of doctors or
264 nurses.

265

266 **CONCLUSION**

267 In this study, age, total cholesterol, and ferritin are the most important features associated
268 with the frailty in peritoneal dialysis patients. This model can be used to predict frailty status
269 and help health monitoring of peritoneal dialysis patients. In the future, we will collect more
270 data to verify and improve the accuracy of the model.

271

272

273 *Funding:* This work was supported by Wenzhou-Kean University 2023 Internal
274 (Faculty/Staff) Start-Up Research Grant, under ISRG2023023.

275

276 *Institutional Review Board Statement:* The study was conducted in accordance with the Dec-
277 laration of Helsinki and approved by Wenzhou Central Hospital.

278

279 *Informed Consent Statement:* Written informed consent has been obtained from the patients to
280 publish this paper.

281

282 *Data Availability Statement:* Dataset available on request from the authors

283

284 *Conflicts of Interest:* The authors declare no conflicts of interest.

285

286

287

288 **REFERENCES**

289 [1] R. Gokal and N. P. Mallick, "Peritoneal dialysis," *The Lancet*, vol. 353, no. 9155, pp.
290 823–828, Mar. 1999, doi: 10.1016/S0140-6736(98)09410-0.

- 291 [2] K. Rockwood *et al.*, “A global clinical measure of fitness and frailty in elderly people,”
292 *CMAJ*, vol. 173, no. 5, pp. 489–495, Aug. 2005, doi: 10.1503/cmaj.050051.
- 293 [3] M. G. Shlipak *et al.*, “The presence of frailty in elderly persons with chronic renal
294 insufficiency,” *American Journal of Kidney Diseases*, vol. 43, no. 5, pp. 861–867, May
295 2004, doi: 10.1053/j.ajkd.2003.12.049.
- 296 [4] G. C.-K. Chan, J. K.-C. Ng, P. M.-S. Cheng, K.-M. Chow, C.-C. Szeto, and P. K.-T. Li,
297 “Dietary Micronutrient Intake and Its Relationship with the Malnutrition–Inflammation–
298 Frailty Complex in Patients Undergoing Peritoneal Dialysis,” *Nutrients*, vol. 15, no. 23,
299 Art. no. 23, Jan. 2023, doi: 10.3390/nu15234934.
- 300 [5] J. J. Carrero *et al.*, “Muscle atrophy, inflammation and clinical outcome in incident and
301 prevalent dialysis patients,” *Clinical Nutrition*, vol. 27, no. 4, pp. 557–564, Aug. 2008,
302 doi: 10.1016/j.clnu.2008.04.007.
- 303 [6] D. Fouque *et al.*, “A proposed nomenclature and diagnostic criteria for protein-energy
304 wasting in acute and chronic kidney disease,” *Kidney Int*, vol. 73, no. 4, pp. 391–398,
305 Feb. 2008, doi: 10.1038/sj.ki.5002585.
- 306 [7] G. C.-K. Chan *et al.*, “Progression in Physical Frailty in Peritoneal Dialysis Patients,”
307 *Kidney and Blood Pressure Research*, vol. 46, no. 3, pp. 342–351, May 2021, doi:
308 10.1159/000515635.
- 309 [8] G. C.-K. Chan, W. W.-S. Fung, C.-C. Szeto, and J. K.-C. Ng, “From MIA to FIFA: The
310 vicious matrix of frailty, inflammation, fluid overload and atherosclerosis in peritoneal
311 dialysis,” *Nephrology (Carlton)*, vol. 28, no. 4, pp. 215–226, Apr. 2023, doi:
312 10.1111/nep.14150.
- 313 [9] G. C.-K. Chan *et al.*, “Polypharmacy Predicts Onset and Transition of Frailty,
314 Malnutrition, and Adverse Outcomes in Peritoneal Dialysis Patients,” *The Journal of*
315 *nutrition, health and aging*, vol. 26, no. 12, pp. 1054–1060, Dec. 2022, doi:
316 10.1007/s12603-022-1859-8.
- 317 [10] J. Song, G. Tong, and W. Zhu, “A Detecting System for Abrupt Changes in Temporal
318 Incidence Rate of COVID-19 and Other Pandemics,” *Stats*, vol. 6, no. 3, Art. no. 3, Sep.
319 2023, doi: 10.3390/stats6030058.
- 320 [11] K. A. Bhavsar, J. Singla, Y. D. Al-Otaibi, O. Y. Song, Y. B. Zikria, and A. K. Bashir,
321 “Medical diagnosis using machine learning: a statistical review,” *Computers, Materials*
322 *and Continua*, vol. 67, no. 1, Art. no. 1, Jan. 2021.
- 323 [12] J. Woo, R. Yu, M. Wong, F. Yeung, M. Wong, and C. Lum, “Frailty Screening in the
324 Community Using the FRAIL Scale,” *J Am Med Dir Assoc*, vol. 16, no. 5, pp. 412–419,
325 May 2015, doi: 10.1016/j.jamda.2015.01.087.
- 326 [13] E. Dent *et al.*, “Physical Frailty: ICF SR International Clinical Practice Guidelines for
327 Identification and Management,” *The Journal of nutrition, health and aging*, vol. 23, no.
328 9, pp. 771–787, Nov. 2019, doi: 10.1007/s12603-019-1273-z.
- 329 [14] E. M. S. Barbosa *et al.*, “Comparison between FRAIL Scale and Clinical Frailty Scale in
330 predicting hospitalization in hemodialysis patients,” *J Nephrol*, vol. 36, no. 3, pp. 687–
331 693, Apr. 2023, doi: 10.1007/s40620-022-01532-5.
- 332 [15] M. P. LaValley, “Logistic Regression,” *Circulation*, vol. 117, no. 18, pp. 2395–2399,
333 May 2008, doi: 10.1161/CIRCULATIONAHA.106.682658.
- 334 [16] M. A. Babyak, “What You See May Not Be What You Get: A Brief, Nontechnical
335 Introduction to Overfitting in Regression-Type Models,” *Psychosomatic Medicine*, vol.
336 66, no. 3, p. 411, Jun. 2004.
- 337 [17] J. Friedman, T. Hastie, and R. Tibshirani, “Regularization Paths for Generalized Linear
338 Models via Coordinate Descent,” *J Stat Softw*, vol. 33, no. 1, pp. 1–22, 2010.

- 339 [18] J. K. Tay, B. Narasimhan, and T. Hastie, “Elastic Net Regularization Paths for All
340 Generalized Linear Models,” *J Stat Softw*, vol. 106, p. 1, 2023, doi:
341 10.18637/jss.v106.i01.
- 342 [19] T. Chen and C. Guestrin, “XGBoost: A Scalable Tree Boosting System,” in *Proceedings*
343 *of the 22nd ACM SIGKDD International Conference on Knowledge Discovery and Data*
344 *Mining*, in KDD ’16. New York, NY, USA: Association for Computing Machinery,
345 Aug. 2016, pp. 785–794. doi: 10.1145/2939672.2939785.
- 346 [20] Y. Zhang *et al.*, “Comparison of Prediction Models for Acute Kidney Injury Among
347 Patients with Hepatobiliary Malignancies Based on XGBoost and LASSO-Logistic
348 Algorithms,” *International Journal of General Medicine*, vol. 14, pp. 1325–1335, Apr.
349 2021, doi: 10.2147/IJGM.S302795.
- 350 [21] J. K.-C. Ng *et al.*, “Frailty in Chinese Peritoneal Dialysis Patients: Prevalence and
351 Prognostic Significance,” *Kidney and Blood Pressure Research*, vol. 41, no. 6, pp. 736–
352 745, Oct. 2016, doi: 10.1159/000450563.
- 353 [22] L. P. Fried *et al.*, “Frailty in Older Adults: Evidence for a Phenotype,” *The Journals of*
354 *Gerontology: Series A*, vol. 56, no. 3, pp. M146–M157, Mar. 2001, doi:
355 10.1093/gerona/56.3.M146.
- 356 [23] J. Walston *et al.*, “Research agenda for frailty in older adults: toward a better
357 understanding of physiology and etiology: summary from the American Geriatrics
358 Society/National Institute on Aging Research Conference on Frailty in Older Adults,” *J*
359 *Am Geriatr Soc*, vol. 54, no. 6, pp. 991–1001, Jun. 2006, doi: 10.1111/j.1532-
360 5415.2006.00745.x.
- 361 [24] A. Clegg, J. Young, S. Iliffe, M. O. Rikkert, and K. Rockwood, “Frailty in elderly
362 people,” *The Lancet*, vol. 381, no. 9868, pp. 752–762, Mar. 2013, doi: 10.1016/S0140-
363 6736(12)62167-9.
- 364 [25] S.-M. Kim *et al.*, “Comparison of hemodialysis and peritoneal dialysis patients’ dietary
365 behaviors,” *BMC Nephrology*, vol. 21, Mar. 2020, doi: 10.1186/s12882-020-01744-6.
- 366 [26] J. Wang and Z. Hong, “Low Plasma Total Cholesterol Concentration: A Sensitive
367 Evaluation Marker in Hospitalized Patients with Nutritional Deficiency Malnutrition,”
368 *JFNR*, vol. 2, no. 9, pp. 551–555, Aug. 2014, doi: 10.12691/jfnr-2-9-4.
- 369 [27] B. W. M. Schalk, M. Visser, D. J. H. Deeg, and L. M. Bouter, “Lower levels of serum
370 albumin and total cholesterol and future decline in functional performance in older
371 persons: the Longitudinal Aging Study Amsterdam,” *Age Ageing*, vol. 33, no. 3, pp.
372 266–272, May 2004, doi: 10.1093/ageing/afh073.
- 373 [28] Y. Liu *et al.*, “Association Between Cholesterol Level and Mortality in Dialysis
374 Patients Role of Inflammation and Malnutrition,” *JAMA*, vol. 291, no. 4, pp. 451–459,
375 Jan. 2004, doi: 10.1001/jama.291.4.451.
- 376 [29] M. Yin *et al.*, “Cholesterol alone or in combination is associated with frailty among
377 community-dwelling older adults: A cross-sectional study,” *Exp Gerontol*, vol. 180, p.
378 112254, Sep. 2023, doi: 10.1016/j.exger.2023.112254.
- 379 [30] A. Solomon *et al.*, “Serum cholesterol changes after midlife and late-life cognition,”
380 *Neurology*, vol. 68, no. 10, pp. 751–756, Mar. 2007, doi:
381 10.1212/01.wnl.0000256368.57375.b7.
- 382 [31] A. H. Abdelhafiz, B. E. Loo, N. Hensey, C. Bailey, and A. Sinclair, “The U-shaped
383 Relationship of Traditional Cardiovascular Risk Factors and Adverse Outcomes in Later
384 Life,” *Aging Dis*, vol. 3, no. 6, pp. 454–464, Oct. 2012.
- 385 [32] U. M. Vischer *et al.*, “Cardiometabolic determinants of mortality in a geriatric
386 population: Is there a ‘reverse metabolic syndrome’?,” *Diabetes & Metabolism*, vol. 35,
387 no. 2, pp. 108–114, Apr. 2009, doi: 10.1016/j.diabet.2008.08.006.

- 388 [33] P. Ranieri, R. Rozzini, S. Franzoni, P. Barbisoni, and M. Trabucchi, “Serum Cholesterol
389 Levels as a Measure of Frailty in Elderly Patients,” *Experimental Aging Research*, vol.
390 24, no. 2, pp. 169–179, Mar. 1998, doi: 10.1080/036107398244300.
- 391 [34] W. Wang, M. A. Knovich, L. G. Coffman, F. M. Torti, and S. V. Torti, “Serum ferritin:
392 Past, present and future,” *Biochim Biophys Acta*, vol. 1800, no. 8, pp. 760–769, Aug.
393 2010, doi: 10.1016/j.bbagen.2010.03.011.
- 394 [35] M. N. Garcia-Casal, S.-R. Pasricha, R. X. Martinez, L. Lopez-Perez, and J. P. Peña-
395 Rosas, “Serum or plasma ferritin concentration as an index of iron deficiency and
396 overload,” *Cochrane Database of Systematic Reviews*, no. 5, 2021, doi:
397 10.1002/14651858.CD011817.pub2.
- 398 [36] A. Kumar, M. Dhar, M. Agarwal, A. Mukherjee, and V. Saxena, “Predictors of Frailty in
399 the Elderly Population: A Cross-Sectional Study at a Tertiary Care Center,” *Cureus*, vol.
400 14, no. 10, p. e30557, Oct. 2022, doi: 10.7759/cureus.30557.
- 401 [37] C. Dugan, K. Cabolis, L. F. Miles, and T. Richards, “Systematic review and meta-
402 analysis of intravenous iron therapy for adults with non-anaemic iron deficiency: An
403 abridged Cochrane review,” *J Cachexia Sarcopenia Muscle*, vol. 13, no. 6, pp. 2637–
404 2649, Dec. 2022, doi: 10.1002/jcsm.13114.
- 405 [38] O. A. Abulseoud *et al.*, “Attenuated initial serum ferritin concentration in critically ill
406 coronavirus disease 2019 geriatric patients with comorbid psychiatric conditions,” *Front*
407 *Psychiatry*, vol. 13, p. 1035986, 2022, doi: 10.3389/fpsyt.2022.1035986.
- 408 [39] K.-U. Saum, H. Müller, C. Stegmaier, K. Hauer, E. Raum, and H. Brenner,
409 “Development and Evaluation of a Modification of the Fried Frailty Criteria Using
410 Population-Independent Cutpoints,” *Journal of the American Geriatrics Society*, vol. 60,
411 no. 11, pp. 2110–2115, 2012, doi: 10.1111/j.1532-5415.2012.04192.x.
- 412 [40] I. Palomo *et al.*, “Characterization by Gender of Frailty Syndrome in Elderly People
413 according to Frail Trait Scale and Fried Frailty Phenotype,” *Journal of Personalized*
414 *Medicine*, vol. 12, no. 5, Art. no. 5, May 2022, doi: 10.3390/jpm12050712.
- 415 [41] K. Jayanama, O. Theou, J. M. Blodgett, L. Cahill, and K. Rockwood, “Frailty, nutrition-
416 related parameters, and mortality across the adult age spectrum,” *BMC Med*, vol. 16, no.
417 1, p. 188, Oct. 2018, doi: 10.1186/s12916-018-1176-6.

418

419

420

421

422

423

424

425

426

427

428

429

430

431

432

433

434
435
436
437
438
439
440
441
442
443
444
445
446

Table 1 Patient demographics. There are a total of one hundred and twenty-three patients in the dataset, of which forty-five Peritoneal Dialysis (PD) patients were frail.

Variable	All patients	Not frail	Frail
Number	123	69	54
Gender (%)			
Male	84(68.29)	50(72.46)	34(62.97)
Female	39(31.71)	19(27.54)	20(37.04)
Education level (%)			
Never go to school	19(15.45)	9(13.04)	10(18.52)
Primary school	54(43.90)	27(39.13)	27(50.00)
Junior school	33(26.83)	20(28.99)	13(24.07)
High school	13(10.57)	11(15.94)	2(3.70)
College degree or above	4(3.25)	2(2.90)	2(3.70)
Primary Diagnosis of Renal Disease (%)			
Hypertension	54(43.90)	34(49.28)	20(37.04)
Diabetes	50(40.65)	22(31.88)	28(51.85)
Chronic Glomerulonephritis	15(12.20)	9(13.04)	6(11.11)
Others	4(3.25)	4(5.80)	0(0)
Age(year)	61.58±12.56	57.94±11.78	66.56±11.68
Dialysis Duration (months)	38.50(42.46)	36.63(43.74)	38.00(36.72)
Vitamin D(nmol/L)	42.20(20.90)	41.50(21.60)	42.55(20.50)
HB(Hemoglobin)(g/L)	113.20±17.32	114.00±19.22	112.44±14.79
Albumin(g/L)	34.7(4.8)	34.75(4.8)	34.1(5.0)
TCH(Total Cholesterol)(mmol/L)	4.26(1.54)	4.38(1.96)	4.04(1.62)
TG(Triglyceride)(mmol/L)	2.09(1.59)	2.05(1.82)	2.08(1.54)
Ca(mmol/L)	2.32(0.21)	2.30±0.20	2.33±0.17
PTH(Parathyroid Hormone)(pg/mL)	198.50(330.75)	200.00(300)	193.50(362)
Prealbumin(mg/L)	335.00±143	350.85±102.80	345.98±108.66
Iron saturation	0.23(0.17)	0.21(0.19)	0.25(0.16)
Ferritin(ug/L)	78.70(119.40)	99.80(163.7)	63.35(97.2)
β2-microglobulin(mg/L)	36.55(20.25)	38.64(18.05)	34.42(23.99)
Transferrin(g/L)	2.49(0.93)	2.45(1.07)	2.54(0.79)

447
448
449
450
451
452
453
454
455
456
457
458
459
460
461
462

Table 2 The Importance and the Coefficients for the Regularized Model. We find three variables are significantly related to the frailty occurrence in PD patients: Age, Total Cholesterol, and Ferritin.

Variable	Variable Importance	Coefficients*
Gender	0	0
Age	0.0252664469	0.0252608776
Dialysis Duration	0	0
Education.Level	0	0
Protopathy	0	0
Vitamin D	0	0
HB	0	0
Albumin	0	0
TCH	0.0016228674	-0.0015955269
TG	0	0
Ca	0	0
PTH	0	0
Prealbumin	0	0
Iron saturation	0	0
Ferritin	0.0001208403	-0.0001204672
β2-microglobulin	0	0
Transferrin	0	0

463 *The Intercept is -1.7843008324
464

465 **Table 3** The Importance Matrix of the Variables from XGBoost There are three measures:
466 Gain, Cover and Frequency in the variable importance matrix The Gain is the most relevant
467 attribute for interpreting the relative importance of each feature.
468

Variable	Gain	Cover	Frequency
Age	0.17481068	0.08966518	0.09302326

Ferritin	0.15382618	0.06178086	0.07441860
TCH	0.08037195	0.04529906	0.06511628
HB	0.07744565	0.06675650	0.06976744
Vitamin D	0.07142420	0.07784804	0.06511628
TG	0.06544205	0.04840883	0.07441860
Iron.saturation	0.05993071	0.06914067	0.06046512
PTH	0.05386862	0.04312221	0.04186047
Ca	0.05379215	0.11827511	0.07906977
β2-microglobulin	0.05291816	0.09049445	0.06511628
transferrin	0.03860538	0.03130507	0.05581395
Albumin	0.03137946	0.05763450	0.05116279
Prealbumin	0.03117914	0.06748212	0.06046512
Protopathy	0.02292476	0.06530528	0.02790698
Dialysis Duration	0.02013171	0.02726236	0.05116279
Education Level	0.00622742	0.01585985	0.02790698
Gender	0.00572177	0.02435990	0.03720930

469

470



471

472

Figure 1 Flow Chart of the procedure: Regularized logistic regression analysis and the

473

XGBoost model were used to screen variables. The three features significantly related to the

474

frail were filtered by regularized logistic regression and are the top three important variables

475

in the XGBoost importance. The results from regularized logistic regression and XGBoost are

476

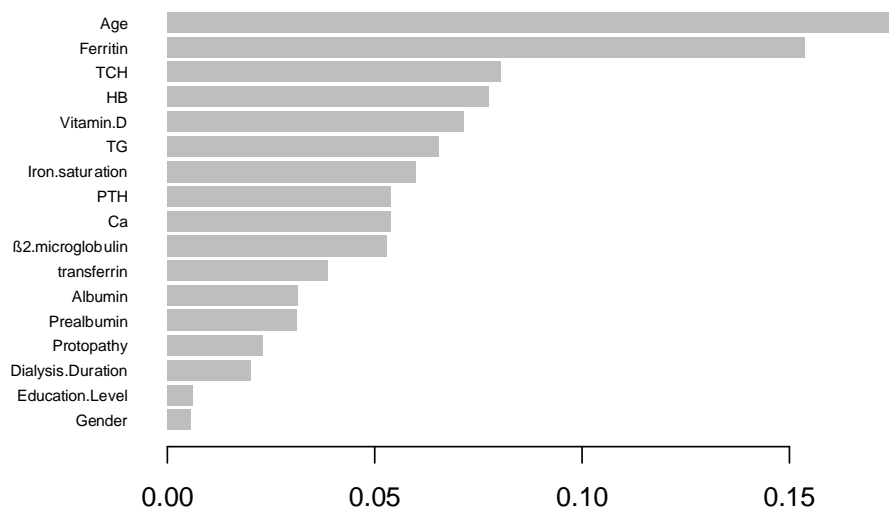
consistent. The unregularized logistic regression was used to construct the prediction model

477

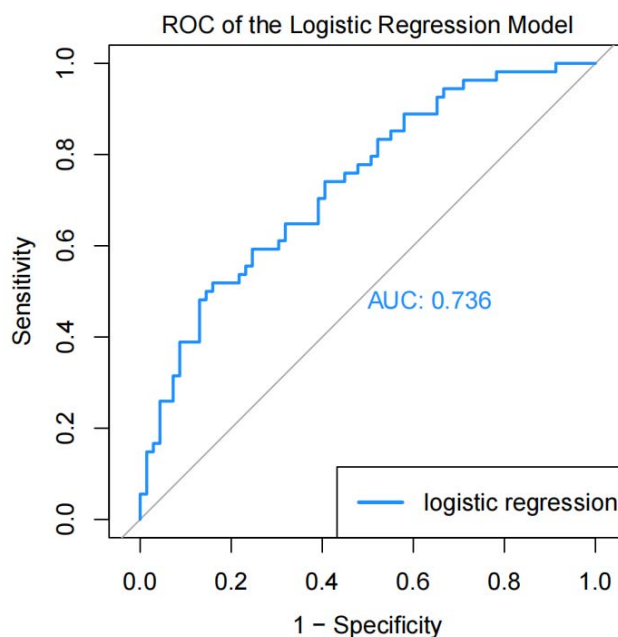
for the frail.

478

Visualization of the XGBoost Variable Importance



479
480 **Figure 2** *XGBoost Variable Importance Plot*: The Variable importance (Gain) of the
481 XGBoost. Age, Ferritin, and TCH are the top three important features labeled by the
482 XGBoost. The results are consistent with the regularized logistic regression.
483



484
485 **Figure 3** *The ROC of the Unregularized Logistic Regression Model*: The AUC for the
486 unregularized logistic regression model is 0.736
487

488

489

490

491

492

493

494

495

496

497