

1 **Causal effect of the gut microbiota on the risk of**
2 **psychiatric disorders and the mediating role**
3 **of immunophenotypes**

4

5 *Zhisheng Hong^{1,2*}, Ao He^{3*}, Guanglong Huang^{1*}, Xiaofeng Chen^{1,4}, Xiaoyu Wang^{1,4},*
6 *Xiaoyang Li^{1,2}, Hailun Chen^{1,2}, Xinqi Zhao^{1,2}, Ying Xu^{1,4}, Yangheng Xu^{1,4}, Pei*
7 *Ouyang¹, Hai Wang¹, Jiapeng Deng¹, Pengyu Chen¹, Xian Zhang^{1#}, Songtao Qi^{1#},*
8 *Yaomin Li^{1#}*

9

10 ¹Department of Neurosurgery, Institute of Brain Disease, Nanfang Hospital, Southern
11 Medical University, **Guangzhou, China, 510515;**

12 ²The Second College of Clinical Medicine, Southern Medical University, **Guangzhou,**
13 **China, 510515;**

14 ³Central Laboratory of the Second Affiliated Hospital, Kunming Medical University,
15 **Kunming, China, 650000;**

16 ⁴The First College of Clinical Medicine, Southern Medical University, **Guangzhou,**
17 **China, 510515;**

18 [#]Corresponding authors. Guangzhou Dadao Bei Street 1838#, **Guangzhou, China,**
19 **510515.** Fax: +86 20 61641806. E-mail addresses: lym712@163.com (Y.L.),
20 qisongtaonfyy@126.com (S.Q.), zxa@smu.edu.cn (X.Z.).

21 ^{*}These authors contributed equally to this work.

22 **Abstract**

23 **Background:** Growing evidence indicates a significant correlation between the gut
24 microbiota, immune system, and psychiatric disorders. Nevertheless, the impacts and
25 interactions of the gut microbiota and immunophenotypes on psychiatric disorders
26 remain unclear.

27 **Methods:** We utilized a bidirectional Mendelian randomization (MR) study to
28 evaluate the causal associations among the gut microbiota, immunophenotypes, and
29 psychiatric disorders, including attention-deficit/hyperactivity disorder (ADHD),
30 major depressive disorder (MDD), posttraumatic stress disorder (PTSD),
31 schizophrenia (SCZ), and Tourette's syndrome (TS). The primary analysis was
32 conducted using the inverse variance weighted (IVW) method, with several
33 complementary sensitivity analyses being performed to ensure the reliability of the
34 results.

35 **Results:** Our study reveals significant causal relationships between 22
36 immunophenotypes, 15 types of gut microbiota, and various psychiatric disorders. We
37 further sought to ascertain whether immunophenotypes act as intermediaries in the
38 pathway from gut microbiota to psychiatric disorders. In particular, three
39 immunophenotypes were identified that mediate the causal effects of different gut
40 microbiota on ADHD. Additionally, one immunophenotype was detected to mediate
41 the causal effects of gut microbiota on PTSD.

42 **Conclusions:** Our study indicates that immunophenotypes partially mediate the
43 pathway from the gut microbiota to psychiatric disorders.

44 **Keywords:** Gut microbiota; Immunophenotypes; Psychiatric disorders; Mendelian
45 randomization study; Mediation analysis.

46 **1. Introduction**

47 Psychiatric disorders, a kind of life-threatening and debilitating illness with
48 heterogeneous etiology and complicated pathogenesis, incur a deadweight burden and
49 have become a leading cause of disability worldwide [1]. Humanitarian emergencies,
50 pandemics, and fierce competition have significantly increased the incidence of
51 psychiatric disorders, affecting millions of people worldwide due to psychological
52 stress [2]. Consequently, it is of the utmost importance to determine probable causal
53 risk factors for various psychiatric disorders.

54 An increasing number of studies have reported that psychiatric disorders often overlap
55 genetically and clinically, suggesting that they all share a similar underlying
56 etiological mechanism [3–5]. Currently, the growing field of immuno-psychiatry
57 acknowledges the pivotal role of the immune system in maintaining homeostasis and
58 fortifying the resilience of central nervous system function [6]. Recent evidence
59 indicates that immune dysregulation is involved in the pathophysiology of various
60 psychiatric disorders [7–9]. Microglia, the brain's macrophages, have been implicated
61 in the pathogenesis of multiple psychiatric disorders, including depression, anxiety,
62 and PTSD, through neuroinflammation [10–12]. Nevertheless, the causal associations
63 between the immunophenotype and psychiatric disorders remain incomplete,
64 unsystematic, and unclear.

65 Studies in humans and animals have reported microbial shifts associated with
66 increased inflammation and alterations in host metabolism [13,14]. These microbes
67 play a pivotal role in the maturation of the immune response, thereby contributing to
68 homeostasis [15]. The microbiome profoundly influences peripheral immune
69 pathways within the gut-brain communication axis, which regulate responses to
70 neurogenesis [16], neuroinflammation [17], neurological injury [18], and
71 neurodegeneration [19]. In addition, a substantial body of previous observational
72 studies has demonstrated that there are discernible differences in the composition of

73 the gut microbiota between healthy individuals and those diagnosed with various
74 psychiatric disorders [20]. Nevertheless, the intricate nature of the gut microbiota
75 makes it challenging to achieve a comprehensive and detailed understanding solely
76 through observational studies.

77 A randomized controlled trial (RCT) is considered the most reliable method for
78 establishing a causal relationship in the context of scientific research. However, the
79 implementation of RCTs can be challenging or even unfeasible due to ethical
80 restrictions. As an alternative, Mendelian randomization is an analytical approach that
81 utilizes single nucleotide polymorphisms (SNPs) as an instrumental variable (IV) to
82 investigate the causal relationship between an exposure or a risk factor and a clinically
83 relevant outcome while minimizing the risk of bias and reverse causation [21]. In this
84 study, we employed a systematic bidirectional two-sample MR design to
85 comprehensively investigate the causal effects among the gut microbiome,
86 immunophenotypes, and various psychiatric disorders. Subsequently, we sought to
87 determine whether immunophenotypes act as mediators in the pathway from the gut
88 microbiota to psychiatric disorders.

89 **2. Methods**

90 **2.1 Study Design**

91 This study comprises three principal phases. The initial phase involves an
92 examination of the causal effects of 731 immunophenotypes on a range of major
93 psychiatric disorders. This is followed by an investigation of the causal effects of 207
94 gut microbiota on psychiatric disorders. Finally, a mediation analysis was conducted
95 to examine the role of immunophenotypes in the relationship between the gut
96 microbiota and psychiatric disorders. Furthermore, a reverse MR analysis was
97 conducted to circumvent the potential effects of reverse causality. The general design
98 of our study is shown in Figure 1.

99 To determine the unbiased causal effects of exposure on outcomes, MR analysis must
100 satisfy three fundamental assumptions: (I) relevance assumption: genetic variants are
101 strongly correlated with exposures; (II) independence assumption: genetic variants are
102 not associated with any confounding factors of the risk exposure-outcome association;
103 (III) exclusion restriction assumption: genetic variants do not affect the outcome
104 except through their potential impact on the exposure of interest [22,23]. This study
105 followed Strengthening the Reporting of Observational Studies in Epidemiology
106 (STROBE) Mendelian Randomization Reporting Guidelines [24].

107 **2.2 Genome-wide Association Study Data Sources**

108 Summary levels of the immunophenotype data were obtained from the latest GWAS
109 [25]. The study analyzed a total of 731 immunophenotypes (3,757 Sardinians),
110 comprising 118 absolute cell counts (AC), 389 median fluorescence intensities (MFI)
111 reflecting surface antigen levels, 32 morphological parameters (MP), and 192 relative
112 cell counts (RC). The GWAS data for the gut microbiome were generated from the
113 Dutch Microbiome Project study, which involved a total of 207 gut microbiota (7,738
114 European individuals) to evaluate the impact of host genetics on the gut microbiota
115 [26].

116 The GWAS summary data for ADHD [27], MDD [28], PTSD [29], SCZ [30], and TS
117 [31] were derived from the Psychiatric Genomics Consortium (PGC). All cohorts
118 were case-control studies, and cases met the criteria defined in the International
119 Statistical Classification of Diseases and Related Health Problems-10th Revision
120 (ICD-10) diagnosis code or medication prescription.

121 All participants were of European ancestry. The original publications contain detailed
122 diagnostic criteria and methods used to recruit participants for these GWASs. There
123 was no significant overlap between the GWAS datasets. The characteristics of the
124 selected GWAS data are listed in Table S1.

125 **2.3 Instrumental Variables Selection**

126 First, SNPs significantly associated with the immunophenotypes ($P < 5 \times 10^{-6}$) and the
127 gut microbiota ($P < 1 \times 10^{-5}$) were selected [32,33]. To guarantee the premise of
128 independence, IVs were pruned with linkage disequilibrium (LD) $r^2 > 0.001$ in the
129 1000 Genomes European data within 10 Mb windows [34]. To compensate for
130 missing SNPs, those with strong linkage disequilibrium ($r^2 > 0.8$) were utilized [35].
131 The proportion of variance in the explained phenotype (R^2) was calculated to indicate
132 the power of MR studies [36]. The F-statistic of each IV was calculated using the
133 formula $[R^2/(1-R^2)] \times [(N-K-1)/K]$ [37]. To prevent weak instrument bias from
134 influencing the results, any IV with an F-statistic less than 10 was removed from
135 consideration. The summary statistics were harmonized, and any mismatched strands
136 or palindromic SNPs were removed [38]. Additionally, the summary statistics were
137 aligned to ensure that each genetic variant was associated with the same effect allele.
138 The research findings are deemed reliable due to the meticulous selection of IVs.

139 **2.4 Primary Analysis**

140 Two-sample MR analysis was conducted using the multiplicative random effects
141 inverse variance weighted approach to evaluate the causal effects of the gut
142 microbiota and immunophenotype on psychiatric disorders [39]. To evaluate the
143 robustness of the primary estimates, the MR-Egger and Weighted Median methods
144 were employed to corroborate the IVW results [40,41]. The coherence in the
145 orientation of the odds ratio (OR) for IVW, MR-Egger, and weighted median was
146 deemed essential for the robustness of the findings. The false discovery rate (FDR)
147 was utilized to adjust for multiple tests, and a significant causal relationship was
148 established using an FDR-adjusted threshold of $P < 0.05$ [42]. A P-value of less than
149 0.05, but above the FDR threshold, was considered indicative of a nominal
150 association.

151 **2.5 Mediation Analysis**

152 Following the bidirectional analysis, the significant causal associations between the
153 gut microbiota or immunophenotype, and psychiatric disorders were included in the
154 two-step mediation analysis. Subsequently, the mediation proportions were calculated
155 according to the following formula: $(\beta_1 \times \beta_2) / \beta$, where β_1 indicates the impact of the
156 gut microbiota on mediators, β_2 indicates the impact of mediators on psychiatric
157 disorders, and β indicates the total impact of the gut microbiota on psychiatric
158 disorders [43]. Standard errors and confidence intervals (CIs) were calculated using
159 delta methods [44]. Effect estimates are reported as beta values (β) for the continuous
160 outcome and ORs for the binary outcome.

161 **2.6 Sensitivity Analysis**

162 Cochran's Q statistic was used to assess the heterogeneity across the individual causal
163 effects [45]. A leave-one-out analysis was conducted to detect outlier instrumental
164 variables [46]. MR-Egger regression and MR pleiotropy residual sum and outlier
165 (MR-PRESSO) analyses were performed to evaluate potential horizontal pleiotropy
166 [47,48]. Outliers identified by the MR-PRESSO outlier test were removed
167 step-by-step to reduce the effect of horizontal pleiotropy, and a corrected causal result
168 was recalculated. Furthermore, the Steiger test was employed to negate the potential
169 bias resulting from reverse causality [49].

170 **2.7 Reverse Analysis**

171 To assess the causal effects of psychiatric disorders on the gut microbiota and
172 immunophenotypes, a backward design was employed, with psychiatric disorders
173 serving as the exposures and the gut microbiota or immunophenotypes serving as the
174 outcomes. SNPs significantly associated with ADHD, MDD, and SCZ at the
175 genome-wide significance level ($P < 5 \times 10^{-8}$) were selected, while a higher cutoff ($P <$
176 1×10^{-5}) was used for PTSD and TS.

177 All analyses were conducted using R statistical software version 4.3.1 (accessed on
178 October 18, 2023, <https://www.r-project.org/>). MR analysis was performed using the
179 R-based packages “TwoSampleMR” (v.0.5.9) [50] and “MR_PRESSO” [51].

180 **3. Results**

181 **3.1 Instrumental Variables Selection**

182 After performing clumping and linkage disequilibrium pruning, we identified 10,613
183 SNPs associated with immunophenotypes and 1,962 SNPs related to the gut
184 microbiota. For the reverse analysis, we selected genetic instruments associated with
185 psychiatric disorders, with SNPs ranging from 26 to 155. All instrumental variables
186 exhibited F-statistics exceeding 10, thereby demonstrating a robust association with
187 exposure phenotypes. Further details on the specific genetic instrumental variables
188 used to infer causal effects are provided in Table S2.

189 **3.2 Causal Effects of Immunophenotypes on Psychiatric Disorders**

190 As shown in Figure 2 and Table S3A, we identified 275 potential causal associations
191 between immunophenotypes and five psychiatric disorders. Multiple tests identified
192 22 significant causal associations, as shown in Figure 3. The results of the subsequent
193 sensitivity analysis were robust to the causal effect analysis, as shown in Tables S3B
194 and S3C.

195 We identified 54 potential causal associations between immunophenotypes and
196 ADHD. After adjusting for multiple tests, we investigated five immunophenotypes
197 that contribute causally to the risk of ADHD from the myeloid cell panel, namely, the
198 level of HLA DR on CD33^{dim} HLA DR⁺ CD11b⁺ (OR = 1.027, 95% CI 1.019 - 1.035,
199 $P = 8.41 \times 10^{-11}$), the level of CD33 on CD33^{dim} HLA DR⁺ CD11b⁻ (OR = 1.017, 95%
200 1.008 - 1.026, $P = 2.31 \times 10^{-4}$), the level of CD33 on basophils (OR = 1.026, 95% CI
201 1.012 - 1.040, $P = 2.69 \times 10^{-4}$), the absolute level of monocytic myeloid-derived
202 suppressor cells (Mo MDSCs) (OR = 1.049, 95% CI 1.022 - 1.077, $P = 3.35 \times 10^{-4}$),

203 and the level of CD33 on CD33^{dim} HLA DR⁻ (OR = 1.025, 95% CI 1.011 - 1.039, P =
204 5.78×10^{-4}). Furthermore, the genetic increase in the level of herpes virus entry
205 mediator (HVEM) on effector memory (EM) CD4⁺ T cells (OR = 0.965, 95% CI
206 0.951 - 0.980, P = 4.04×10^{-6}) was potentially related to a decreased risk of ADHD.
207 Conversely, the level of CD38 on IgD⁺ CD38^{br} (OR = 1.050, 95% CI 1.027 - 1.073, P
208 = 1.72×10^{-5}) increased the incidence of ADHD. Interestingly, our findings indicate a
209 protective effect of elevated lymphocyte FSC-A parameters (OR = 0.947, 95% CI
210 0.919 - 0.975, P = 2.74×10^{-4}) on the risk of ADHD from a morphological perspective.

211 However, in leave-one-out analyses, we found that rs3865444 would significantly
212 drive the causal inference of the level of CD33 on CD33^{dim} HLA DR⁺ CD11b⁻, while
213 rs190188611 would significantly drive the causal inference of lymphocyte FSC-A
214 parameters, respectively. Consequently, both phenotypes were excluded from
215 subsequent mediation analyses, given the robustness of the conclusions.

216 We identified 52 potential causal associations between immunophenotypes and MDD.
217 After adjusting for multiple tests, we identified the level of CD4 on resting Tregs (OR
218 = 0.972, 95% CI 0.962 - 0.982, P = 3.66×10^{-8}) as a significant protective factor
219 against the risk of MDD.

220 We identified 63 potential causal associations between immunophenotypes and PTSD.
221 After adjustment for multiple tests, genetic prediction of two immunophenotypes was
222 associated with a decreased risk of PTSD: the level of CD11c on granulocytes (OR =
223 0.919, 95% CI 0.884 - 0.954, P = 1.15×10^{-5}) and the level of CD25 on IgD⁺ CD24⁻
224 (OR = 0.964, 95% CI 0.944 - 0.984, P = 5.24×10^{-5}). Furthermore, six phenotypes
225 were identified as being associated with an increased risk of PTSD: the relative
226 percentage of CD25⁺⁺ CD8^{br} among T cells (OR = 1.080, 95% CI 1.042 - 1.119, P =
227 2.55×10^{-5}), the level of HVEM on EM CD8^{br} (OR = 1.050, 95% CI 1.026 - 1.074, P =
228 2.58×10^{-5}), the relative percentage of IgD⁻ CD24⁻ among B cells (OR = 1.040, 95% CI
229 1.021 - 1.059, P = 2.97×10^{-5}), the myeloid DC SSC-A parameter (OR = 1.063, 95%
230 CI 1.031 - 1.096, P = 9.46×10^{-5}), the relative percentage of basophil among CD33^{dim}

231 HLA DR⁻ CD66b⁻ (OR = 1.061, 95% CI 1.029 - 1.094, P = 1.39×10⁻⁴), and the level
232 of IgD on IgD⁺ CD38^{br} (OR = 1.055, 95% CI 1.024 - 1.086, P = 3.60×10⁻⁴).

233 However, in leave-one-out analyses, the causal inference of the myeloid DC SSC-A
234 parameter was significantly driven by rs189299852. Consequently, this phenotype
235 was excluded from subsequent mediation analyses.

236 We identified 53 potential causal associations between immunophenotype and SCZ.
237 After adjusting for multiple tests, the relative percentage of CD11c⁺ monocytes
238 among monocytes (OR = 1.087, 95% CI 1.054 - 1.120, P = 8.90×10⁻⁸), and the
239 relative percentage of HLA DR⁺ CD8^{br} among T cells (OR = 1.041, 95% CI 1.020 -
240 1.062, P = 1.27×10⁻⁴) were identified as risk factors. Furthermore, the level of CD64
241 on CD14⁺ CD16⁺ monocytes (OR = 0.939, 95% CI 0.913 - 0.965, P = 5.74×10⁻⁶), the
242 relative percentage of CD28⁻ DN (CD4⁻CD8⁻) among T cells (OR = 0.962, 95% CI
243 0.946 - 0.985, P = 5.81×10⁻⁶), and the level of CD38 on transitional cells (OR = 0.951,
244 95% CI 0.926 - 0.976, P = 1.99×10⁻⁴) were identified as protective factors.

245 We identified 53 potential causal associations between immunophenotype and TS.
246 Nevertheless, following the application of multiple test correction, no
247 immunophenotype was found to be significantly associated with TS.

248 **3.3 Causal Effects of the Gut Microbiota on Psychiatric Disorders**

249 As shown in Figure 2 and Table S3D, we identified 66 potential causal associations
250 between the gut microbiota and five psychiatric disorders. Multiple tests identified 14
251 significant causal associations, as shown in Figure 3. The results of the subsequent
252 sensitivity analysis were robust to the causal effect analysis, as shown in Tables S3E
253 and S3F.

254 A total of 19 nominal causal effects of the gut microbiota on ADHD were identified.
255 After adjustment for the P-value, the MR analysis indicated that the genetic
256 predictions of *Streptococcus parasanguinis* (OR = 0.964, 95% CI 0.946 - 0.982, P =

257 8.49×10^{-5}) and *Alistipes indistinctus* (OR = 0.948, 95% CI 0.920 - 0.976, P =
258 3.16×10^{-4}) were associated with a decreased risk of ADHD. Conversely,
259 *Ruminococcus bromii* (OR = 1.110, 95% CI 1.048 - 1.175, P = 3.90×10^{-4}) and
260 *Ruminococcus callidus* (OR = 1.063, 95% CI 1.026 - 1.101, P = 7.14×10^{-4})
261 significantly increased the incidence of ADHD. Furthermore, *Bacteroides*
262 *massiliensis* (OR = 1.074, 95% CI 1.032 - 1.118, P = 4.19×10^{-4}) was potentially
263 related to a greater risk of ADHD. Interestingly, an unnamed family from the
264 order *Clostridiales* (OR = 1.102, 95% CI 1.042 - 1.165, P = 6.91×10^{-4}) was identified
265 as a risk factor for ADHD.

266 A total of eight nominal causal effects of the gut microbiota on MDD were identified.
267 After adjustment for the P-value, no gut microbiota was found to be significantly
268 associated with MDD.

269 Thirteen nominal causal effects of the gut microbiota on PTSD were identified. After
270 adjustment for the P-value, *S. parasanguinis* (OR = 0.904, 95% CI 0.880 - 0.929, P =
271 4.17×10^{-13}) was found to be significantly associated with a decreased risk of PTSD,
272 similar to that observed for ADHD.

273 A total of five nominal causal effects of the gut microbiota on SCZ were identified.
274 After adjustment for the P-value, genetic prediction of the family *Ruminococcaceae*
275 (OR = 0.879, 95% CI 0.832 - 0.928, P = 3.76×10^{-6}) was associated with a decreased
276 risk of SCZ. Notably, *R. callidus* (OR = 1.040, 95% CI 1.024 - 1.055, P = 6.02×10^{-7}),
277 from the family *Ruminococcaceae*, was determined to be significantly associated with
278 increased susceptibility to SCZ, similar to that observed for ADHD.

279 A total of 21 nominal causal effects of the gut microbiota on TS were identified. After
280 adjustment for the P-value, the genetic prediction of four gut microbiota (including
281 two genera and two species) was found to be associated with an increased risk of TS.
282 These included *Streptococcus thermophilus* (OR = 1.123, 95% CI 1.070 - 1.178, P =
283 2.25×10^{-6}), *Ruminococcaceae bacterium D16* (OR = 1.169, 95% CI 1.064 - 1.285, P =

284 1.14×10^{-3}), genus *Odoribacter* (OR = 1.440, 95% CI 1.186 - 1.750, P = 2.38×10^{-4}),
285 and an unnamed genus from the family *Ruminococcaceae* (OR = 1.175, 95% CI 1.083
286 - 1.276, P = 1.13×10^{-4}). Nevertheless, the genus *Barnesiella* (OR = 0.829, 95% CI
287 0.761 - 0.902, P = 1.58×10^{-5}), which belongs to the same family (family
288 *Porphyromonadaceae*) as the genus *Odoribacter*, was demonstrated to exert a
289 protective effect against TS.

290 3.4 Mediation Analysis

291 As shown in Figure 4 and Table S4, the gut microbiota and immunophenotype were
292 found to exert causal effects on psychiatric disorders, with the immunophenotype
293 serving as a partial mediator in the pathway from the gut microbiota to ADHD and
294 PTSD. However, in leave-one-out analyses, the causal inferences of *R. bromii* on the
295 level of CD33 on basophils and the level of CD33 on CD33^{dim} HLA DR⁻ were
296 significantly driven by rs12041621 and rs1884673. Consequently, these phenotypes
297 were excluded from mediation analysis to prevent the introduction of statistical bias
298 due to the influence of a single SNP.

299 Significant associations were identified between the genetic prediction of *R. bromii*
300 and a decreased level of HVEM on EM CD4⁺ (β = -0.325, 95% CI -0.557 - -0.093, P
301 = 5.95×10^{-3}), mediated 11.04% of the causal effect of *R. bromii* on ADHD.
302 Furthermore, we observed suggestive evidence indicating that an elevated level of *R.*
303 *callidus* was associated with a significantly greater level of HLA DR on CD33^{dim}
304 HLA DR⁺ CD11b⁺ (β = 0.246, 95% CI 0.173 - 0.319, P = 5.14×10^{-11}), which
305 mediated 10.60% of the causal effect of *R. callidus* on ADHD. Notably, a potential
306 association was identified between the genetic prediction of *S. parasanguinis* and a
307 decreased level of CD38 on IgD⁺ CD38^{br} (β = -0.132, 95% CI -0.211 - -0.054, P =
308 9.20×10^{-4}), which accounted for 17.48% of the causal effect of *S. parasanguinis* on
309 ADHD. Conversely, the genetic prediction of *S. parasanguinis* was an increase in the
310 level of CD25 on IgD⁺ CD24⁻ (β = 0.145, 95% CI 0.067 - 0.224, P = 3.04×10^{-4}),
311 which contributed to 5.35% of the causal effect of *S. parasanguinis* on PTSD.

312 **3.5 Reverse Analysis**

313 According to the backward analysis, as shown in Tables S5A and S5B, the onset of
314 ADHD significantly decreased the relative abundance of *Coprococcus catus* ($\beta =$
315 -0.222 , 95% CI $-0.311 - -0.133$, $P = 1.04 \times 10^{-6}$). Furthermore, we sought to ascertain
316 whether the previously identified significant causality exhibited reverse interference.
317 As shown in Tables S5C, S5D and S5E, our findings indicate that reverse causality
318 was not a potential factor in these instances.

319 **3.6 Sensitivity Analysis**

320 The Cochran's Q test indicated the absence of significant heterogeneity. No evidence
321 of horizontal pleiotropy was identified, as the intercept of MR-Egger did not
322 significantly deviate from zero. Additionally, no potential instrumental outliers were
323 detected at the nominal significance level of 0.05 by MR-PRESSO analysis. The
324 leave-one-out results indicate that no single instrumental variable drove the remaining
325 causal effects. These results serve to confirm the validity of our analysis and
326 demonstrate its robustness in avoiding unintentional errors.

327 **4. Discussion**

328 This study presents, for the first time, multiple novel potential associations between
329 genetically predicted gut microbiota or immunophenotypes and psychiatric disorders
330 using bidirectional MR analysis with mediation analysis. In addition, we identified
331 multiple potential pathways of immunophenotype-mediated causality between the gut
332 microbiota and psychiatric disorders. This provides a new direction for understanding
333 how the gut-brain axis may influence psychiatric disorders.

334 ADHD is a neurodevelopmental disorder that persists, characterized by inattention,
335 hyperactivity, and impulsivity [52]. The prevalence of ADHD varies across
336 populations and age groups, and a meta-analysis suggested that ADHD affects 5% of
337 children and adolescents and 2.5% of adults worldwide [53]. This study demonstrated

338 that *R. callidus* is associated with an increased risk of ADHD, which is mediated by
339 elevated expression of HLA DR on the CD33^{dim} HLA DR⁺ CD11b⁺ surface. HLA DR
340 gene region has been implicated in several psychiatric disorders, including
341 schizophrenia, bipolar disorder, and autism spectrum disorders [54]. Nevertheless,
342 current research has been unable to identify a correlation between ADHD and HLA.
343 Further studies are necessary to confirm this hypothesis. Moreover, our findings also
344 indicate that *R. bromii* may increase the risk of ADHD by reducing the expression of
345 HVEM on EM CD4⁺, which is regarded as a protective factor for ADHD. However,
346 few previous studies have suggested this, which may represent a novel perspective
347 that diverges from the previous belief that *R. bromii* is a probiotic [55]. Notably,
348 HVEM plays a role in the maintenance of T-cell immune homeostasis [56]. This
349 phenomenon may be attributed to the diminished coinhibitory effect of HVEM, which
350 stimulates effector memory T cells to secrete copious quantities of cytokines (e.g.,
351 IL-17 and IFN- γ) [57,58]. These cytokines trigger neuroinflammation, a process that
352 could contribute to the etiology of ADHD.

353 This study demonstrated that elevated levels of various myeloid cell phenotypes,
354 particularly high surface expression of CD33, are significantly and positively
355 associated with the risk of developing ADHD. CD33 is a molecule of the Siglec
356 family that is mainly expressed in myeloid cells, including macrophages and dendritic
357 cells, and is involved in regulating cellular activation, differentiation, and
358 inflammatory responses [59]. In addition, microglia, a vital subset of immune cells
359 within the central nervous system, also express CD33 molecules [60]. Synaptic
360 pruning mediated by microglia involves the elimination of excessive or weak synaptic
361 connections, thereby strengthening the more important and efficient neural pathways,
362 which, if their activities are abnormal, can affect neural circuitry development,
363 leading to ADHD-related symptoms [61,62]. Furthermore, under conditions of focal
364 brain injury or neuroinflammation, Mo MDSCs can infiltrate the brain and inhibit
365 neuronal inflammation by suppressing microglia activation, which is triggered by
366 factors like IFN- γ , GM-CSF, and TNF [63,64].

367 Surprisingly, this study revealed that ADHD could decrease the abundance of *C. catus*.
368 Previous studies have shown that the Mediterranean diet can increase the abundance
369 of *C. catus* [65]. It was postulated that patients with ADHD may experience appetite
370 suppression as a side effect of medication or as a consequence of abnormal eating
371 habits resulting from mood changes associated with the onset of ADHD.
372 Consequently, this could result in a reduction in the abundance of *C. catus*.
373 Furthermore, a reduction in the abundance of *C. catus* may result in a decrease in
374 butyrate production, which plays an important anti-inflammatory role in the central
375 nervous system [66,67]. This, in turn, may exacerbate ADHD symptoms.
376 Consequently, fluctuations in the prevalence of *C. catus* can be employed to inform
377 timely modification of the dietary regimen of ADHD patients, thereby preventing
378 exacerbation of the disease by establishing a diverse and healthy gut microbiota.

379 PTSD is a debilitating mental disorder with a lifetime prevalence of nearly 8% in the
380 general population [68]. Those with PTSD experience a constant state of hyperarousal
381 and fear, which may be associated with abnormal gene expression in the brain and
382 peripheral blood cells [69]. Furthermore, the coaggregation of PTSD and ADHD
383 within families implies the presence of shared familial risk factors for these disorders
384 [70]. In this investigation, *S. parasanguinis* was identified as a co-protective element
385 against ADHD and PTSD. This effect was found to be mediated by CD38 on IgD⁺
386 CD38^{br} and CD25 on IgD⁺ CD24⁻. *S. parasanguinis* is a gram-positive coccus that
387 typically forms a symbiotic relationship with the human body and has the capacity to
388 suppress the growth of pathogenic bacteria through the secretion of antibacterial
389 substances [71,72]. Notably, *S. parasanguinis* is known to colonize the
390 gastrointestinal tract and stimulate gene expression in Tregs, resulting in the
391 enhancement of anti-inflammatory cytokine secretion, thus indicating its
392 immunomodulatory capabilities [73]. Given the established associations between
393 ADHD and oxidative stress, as well as neuroinflammation, it can be postulated that *S.*
394 *parasanguinis* might exert an immunosuppressive effect through the downregulation
395 of CD38, which may play a role in promoting neurodegeneration and inflammatory

396 harm [74,75]. Equally significant is the role of CD25 in suppressing the activation of
397 self-reactive T cells through mechanisms that are independent of cytokines and reliant
398 on cell contact to promote immune tolerance [76,77]. *S. parasanguinis* has the
399 potential to alleviate chronic low-grade inflammation induced by prolonged stress
400 through the upregulation of CD25, which may contribute to immune regulation,
401 thereby exerting a protective effect on PTSD. Furthermore, the immunophenotypes
402 closely linked to the development of PTSD predominantly consist of B lymphocytes.
403 These cells may enter the prefrontal cortex, insula, amygdala, hippocampus, and other
404 brain regions either by crossing the blood-brain barrier due to the peripheral release of
405 proinflammatory cytokines or by directly infiltrating the central nervous system [78].
406 This process can intensify the manifestations of fear and anxiety. Further investigation
407 is required to elucidate the potential mechanisms of targeted B-cell intervention for
408 the alleviation or management of PTSD.

409 SCZ is a severe mental illness characterized by positive symptoms and cognitive
410 impairment [79]. Growing evidence indicates that the gut microbiota may influence
411 social behavior, emotion, and cognition via the gut-brain axis, with the potential to
412 impact the development of SCZ [80]. Our findings suggest that the increased
413 abundance of *Ruminococcus* may be a protective factor for SCZ. *Ruminococcus*
414 species are believed to produce butyrate, which can enhance antioxidant capacity and
415 regulate inflammatory mediators. Surprisingly, we also found that the increased
416 abundance of *R. callidus* may be a risk factor for SCZ, similar to that observed in
417 ADHD patients. Furthermore, our study demonstrated a significant correlation
418 between reduced levels of CD38 in transitional cells and increased susceptibility to
419 SCZ. This finding is substantiated by animal experiments, which underscore the
420 crucial involvement of CD38 in neurodevelopmental mechanisms such as
421 neuropeptide release and social cognition [81]. Moreover, immunophenotypes that
422 include CD8 molecules may increase susceptibility to SCZ, resembling MDD, which
423 is characterized by a reduced CD4/CD8 ratio in acute psychosis episodes [82]. The
424 underlying mechanism remains ambiguous, with speculation suggesting a potential

425 association with systemic inflammation triggered by adaptive immunity. In addition,
426 various subtypes of monocytes, including the relative percentage of CD11c+
427 monocytes among monocytes and the level of CD64 on CD14+ CD16+ monocytes,
428 have been shown to exhibit both detrimental and beneficial effects on SCZ. This
429 duality in effects may be attributed to the heterogeneity of monocytes circulating in
430 vivo, which display a combination of proinflammatory and anti-inflammatory traits
431 [83].

432 MDD is a pervasive mental disorder characterized by persistent low mood, sleep
433 disturbances, cognitive decline, and other symptoms [84]. There is a plethora of
434 evidence indicating that neuroinflammation can precipitate cellular immune disorders
435 and increase the risk of psychiatric disorders, and that Tregs play a pivotal role in
436 regulating the immune response [85]. MDD typically involves stress activation by the
437 immune system, leading to the release of stressor-induced circulating
438 proinflammatory cytokines [86,87]. Consequently, CD4⁺CD25⁺ Tregs with
439 immunomodulatory functions may significantly reduce anxiety-like behaviors by
440 inhibiting proinflammatory cytokines such as Th1, Th2, and Th17 cells, thereby
441 alleviating MDD [88]. Importantly, a significant increase in Tregs was previously
442 observed during antidepressant treatment [89], which strongly supports our
443 conclusion. In light of the aforementioned studies, we hypothesized that the level of
444 CD4 on resting Tregs subsets plays an important protective role in the pathogenesis of
445 MDD by regulating neuroinflammation and reducing oxidative stress.

446 TS is a neurological disorder characterized by repetitive and involuntary movements
447 and vocalizations, and can be divided into motor tics and vocal tics. These symptoms
448 often begin in childhood. A significant body of research has demonstrated that the
449 gut-brain axis plays a pivotal role in the pathophysiology of TS [90]. Fecal microbiota
450 transplantation (FMT) has been identified as a potential treatment for various
451 neurological and psychiatric disorders, including TS, by regulating the microbiota
452 ecology to maintain cytokine balance in the gut lymphoid tissue and reduce the

453 release of proinflammatory factors [91]. *S. thermophilus* is a safe probiotic with
454 anti-inflammatory, anti-cancer, and antioxidant properties [92]. However, our results
455 showed that a high abundance of *S. thermophilus* was a risk factor for TS, in contrast
456 to previous studies. Given the paucity of studies investigating the relationship
457 between *S. thermophilus* and TS, further research on its mechanism is warranted. In
458 addition, our study demonstrated that the increased abundance of *R. noname*, *G.*
459 *odoribacter*, and *R. bacterium D16* may be risk factors for TS. This may be because *R.*
460 *noname* and *R. bacterium D16* both belong to the *Ruminococcaceae* family, and the
461 variation in *R. UCG-004* is positively correlated with the anxiety-like behavior of
462 individuals with ADHD. Importantly, the comorbidity rate of ADHD and TS was
463 50%, which led us to infer that *G. odoribacter* and *R. bacterium D16* may be common
464 risk factors for both [93,94]. In fact, according to a study by Wang et al., *G.*
465 *odoribacter* may interfere with the dopamine metabolic pathway to cause TS
466 pathogenesis, which is consistent with our conclusion [95]. Finally, we found that
467 increased abundance of *G. barnesiella* reduced the risk of TS, possibly because *G.*
468 *barnesiella* is a natural gut microbe involved in competitive inhibition of pathogenic
469 bacteria and immune regulation, improving cognitive function and thereby
470 ameliorating TS-related symptoms [96,97].

471 There are several limitations to consider in this study. The current GWAS database
472 constraints hinder the analysis of data from other ethnic groups, and caution is advised
473 when interpreting our results in different populations. Moreover, given the inherent
474 diversity among patients with psychiatric disorders, future research could delve into
475 these subgroups in more detail. Finally, further prospective controlled trials may be
476 necessary to investigate the mechanisms underlying the potential roles of recently
477 discovered gut microbiota and immunophenotypes in psychiatric disorders.

478 **5. Conclusion**

479 In summary, our study comprehensively assessed the significant causal relationships
480 between 22 immunophenotypes, 15 gut microbiota, and five psychiatric disorders.
481 Furthermore, four potential causal pathways between gut microbiota,
482 immunophenotypes, and psychiatric disorders were identified. This highlights the
483 intricate pattern of interactions between the gut microbiota, immune system, and
484 psychiatric disorders. These findings provide valuable insights for risk assessment and
485 potential treatment strategies. Consequently, a more comprehensive understanding of
486 the underlying mechanisms governing these causal relationships could facilitate the
487 early identification, intervention, and prevention of psychiatric disorders.

488 **List of abbreviations**

489 MR: Mendelian randomization

490 ADHD: Attention-deficit/hyperactivity disorder

491 MDD: Major depressive disorder

492 PTSD: Posttraumatic stress disorder

493 SCZ: Schizophrenia

494 TS: Tourette's syndrome

495 IVW: Inverse variance weighted

496 RCT: Randomized controlled trial

497 SNP: Single nucleotide polymorphism

498 IV: Instrumental variable

499 GWAS: Genome-wide association studies

500 LD: Linkage disequilibrium

501 OR: Odds ratio

502 FDR: False discovery rate

503 CI: Confidence intervals

504 MR-PRESSO: MR pleiotropy residual sum and outlier analysis

505 MDSC: myeloid-derived suppressor cells

506 HVEM: Herpes virus entry mediator

507 **Supplementary Information**

508 Additional file 1: Supplementary Tables.xlsx.

509 Additional file 2: STROBE-MR checklist.docx.

510 **Acknowledgement**

511 The authors would like to express their gratitude to the investigators of the original

512 studies for sharing the GWAS summary statistics.

513 **Declarations**

514 **Competing interests**

515 The authors declare that they have no competing interests.

516 **Ethics approval and consent to participate**

517 All data used in this work are publicly available from studies with relevant participant
518 consent and ethical approval.

519 **Consent for publication**

520 Not applicable.

521 **Authors' contributions**

522 Z.H., A.H., and G.H. conceived and designed the project. Z.H., and A.H. drafted the
523 manuscript. X.C., X.W., X.L., H.C., and X.Z. investigated and collected the data. Z.H.,
524 Y.X.1, Y.X.2, and P.O. supervised and analyzed the data. A.H., G.H., and H.W.
525 conducted validation. J.D., and P.C. visualized the results. Y.L., S.Q., and X.Z.
526 revised the manuscript. All authors carefully revised the manuscript and approved the
527 version submitted.

528 **Funding**

529 This study was supported by the National Natural Science Foundation of China (grant
530 nos. 82203368); President Foundation of Nanfang Hospital, Southern Medical
531 University (2023H020); Science and Technology Projects in Guangzhou (grant nos.
532 202201011008); Natural Science Foundation of Guangdong Province, China
533 (2023A1515011775); College students' innovative entrepreneurial training plan
534 program (S202212121090); College students' innovative entrepreneurial training plan
535 program (S202312121119).

536 **Data availability**

537 The datasets analyzed in this study are publicly available summary statistics. The data
538 can be obtained through cited papers and websites.

539 **Code availability**

540 All R scripts applied in this study are available from the authors upon reasonable
541 request.

542

543 References

- 544 [1] Collins PY, Patel V, Joestl SS, March D, Insel TR, Daar AS, et al. Grand challenges in global
545 mental health. *Nature* 2011;475:27–30. <https://doi.org/10.1038/475027a>.
- 546 [2] Taquet M, Luciano S, Geddes JR, Harrison PJ. Bidirectional associations between
547 COVID-19 and psychiatric disorder: retrospective cohort studies of 62 354 COVID-19 cases
548 in the USA. *Lancet Psychiatry* 2021;8:130–40.
549 [https://doi.org/10.1016/S2215-0366\(20\)30462-4](https://doi.org/10.1016/S2215-0366(20)30462-4).
- 550 [3] Momen NC, Plana-Ripoll O, Agerbo E, Benros ME, Børglum AD, Christensen MK, et al.
551 Association between Mental Disorders and Subsequent Medical Conditions. *N Engl J Med*
552 2020;382:1721–31. <https://doi.org/10.1056/NEJMoa1915784>.
- 553 [4] Plana-Ripoll O, Pedersen CB, Holtz Y, Benros ME, Dalsgaard S, De Jonge P, et al.
554 Exploring Comorbidity Within Mental Disorders Among a Danish National Population.
555 *JAMA Psychiatry* 2019;76:259. <https://doi.org/10.1001/jamapsychiatry.2018.3658>.
- 556 [5] Kessler RC, Avenevoli S, McLaughlin KA, Green JG, Lakoma MD, Petukhova M, et al.
557 Lifetime co-morbidity of DSM-IV disorders in the US National Comorbidity Survey
558 Replication Adolescent Supplement (NCS-A). *Psychol Med* 2012;42:1997–2010.
559 <https://doi.org/10.1017/S0033291712000025>.
- 560 [6] Pape K, Tamouza R, Leboyer M, Zipp F. Immunoneuropsychiatry — novel perspectives on
561 brain disorders. *Nat Rev Neurol* 2019;15:317–28.
562 <https://doi.org/10.1038/s41582-019-0174-4>.
- 563 [7] Sewell MDE, Jiménez-Sánchez L, Shen X, Edmondson-Stait AJ, Green C, Adams MJ, et al.
564 Associations between major psychiatric disorder polygenic risk scores and blood-based
565 markers in UK biobank. *Brain Behav Immun* 2021;97:32–41.
566 <https://doi.org/10.1016/j.bbi.2021.06.002>.
- 567 [8] Kwon S, Cheon SY. Influence of the inflammasome complex on psychiatric disorders:
568 clinical and preclinical studies. *Expert Opin Ther Targets* 2021;25:897–907.
569 <https://doi.org/10.1080/14728222.2021.2005027>.
- 570 [9] Zhang R, Song J, Isgren A, Jakobsson J, Blennow K, Sellgren CM, et al. Genome-wide
571 study of immune biomarkers in cerebrospinal fluid and serum from patients with bipolar
572 disorder and controls. *Transl Psychiatry* 2020;10:58.
573 <https://doi.org/10.1038/s41398-020-0737-6>.
- 574 [10] Mondelli V, Vernon AC, Turkheimer F, Dazzan P, Pariante CM. Brain microglia in
575 psychiatric disorders. *Lancet Psychiatry* 2017;4:563–72.
576 [https://doi.org/10.1016/S2215-0366\(17\)30101-3](https://doi.org/10.1016/S2215-0366(17)30101-3).
- 577 [11] Smith KL, Kassem MS, Clarke DJ, Kuligowski MP, Bedoya-Pérez MA, Todd SM, et al.
578 Microglial cell hyper-ramification and neuronal dendritic spine loss in the hippocampus and

- 579 medial prefrontal cortex in a mouse model of PTSD. *Brain Behav Immun* 2019;80:889–99.
580 <https://doi.org/10.1016/j.bbi.2019.05.042>.
- 581 [12] Kreisel T, Frank MG, Licht T, Reshef R, Ben-Menachem-Zidon O, Baratta MV, et al.
582 Dynamic microglial alterations underlie stress-induced depressive-like behavior and
583 suppressed neurogenesis. *Mol Psychiatry* 2014;19:699–709.
584 <https://doi.org/10.1038/mp.2013.155>.
- 585 [13] Westfall S, Caracci F, Zhao D, Wu Q, Frolinger T, Simon J, et al. Microbiota metabolites
586 modulate the T helper 17 to regulatory T cell (Th17/Treg) imbalance promoting resilience to
587 stress-induced anxiety- and depressive-like behaviors. *Brain Behav Immun* 2021;91:350–68.
588 <https://doi.org/10.1016/j.bbi.2020.10.013>.
- 589 [14] Ling Z, Liu X, Cheng Y, Yan X, Wu S. Gut microbiota and aging. *Crit Rev Food Sci Nutr*
590 2022;62:3509–34. <https://doi.org/10.1080/10408398.2020.1867054>.
- 591 [15] O’Hara AM, Shanahan F. The gut flora as a forgotten organ. *EMBO Rep* 2006;7:688–93.
592 <https://doi.org/10.1038/sj.embor.7400731>.
- 593 [16] Humann J, Mann B, Gao G, Moresco P, Ramahi J, Loh LN, et al. Bacterial Peptidoglycan
594 Traverses the Placenta to Induce Fetal Neuroproliferation and Aberrant Postnatal Behavior.
595 *Cell Host Microbe* 2016;19:388–99. <https://doi.org/10.1016/j.chom.2016.02.009>.
- 596 [17] Rea K, Dinan TG, Cryan JF. The microbiome: A key regulator of stress and
597 neuroinflammation. *Neurobiol Stress* 2016;4:23–33.
598 <https://doi.org/10.1016/j.ynstr.2016.03.001>.
- 599 [18] Lee YK, Menezes JS, Umesaki Y, Mazmanian SK. Proinflammatory T-cell responses to gut
600 microbiota promote experimental autoimmune encephalomyelitis. *Proc Natl Acad Sci*
601 2011;108:4615–22. <https://doi.org/10.1073/pnas.1000082107>.
- 602 [19] Seo D, O’Donnell D, Jain N, Ulrich JD, Herz J, Li Y, et al. ApoE isoform– and
603 microbiota-dependent progression of neurodegeneration in a mouse model of tauopathy.
604 *Science* 2023;379:eadd1236. <https://doi.org/10.1126/science.add1236>.
- 605 [20] Nikolova VL, Smith MRB, Hall LJ, Cleare AJ, Stone JM, Young AH. Perturbations in Gut
606 Microbiota Composition in Psychiatric Disorders: A Review and Meta-analysis. *JAMA*
607 *Psychiatry* 2021;78:1343. <https://doi.org/10.1001/jamapsychiatry.2021.2573>.
- 608 [21] Sekula P, Del Greco M F, Pattaro C, Köttgen A. Mendelian Randomization as an Approach
609 to Assess Causality Using Observational Data. *J Am Soc Nephrol* 2016;27:3253–65.
610 <https://doi.org/10.1681/ASN.2016010098>.
- 611 [22] Emdin CA, Khera AV, Kathiresan S. Mendelian Randomization. *JAMA* 2017;318:1925.
612 <https://doi.org/10.1001/jama.2017.17219>.
- 613 [23] Larsson SC, Butterworth AS, Burgess S. Mendelian randomization for cardiovascular
614 diseases: principles and applications. *Eur Heart J* 2023;44:4913–24.
615 <https://doi.org/10.1093/eurheartj/ehad736>.
- 616 [24] Skrivankova VW, Richmond RC, Woolf BAR, Yarmolinsky J, Davies NM, Swanson SA, et al.
617 Strengthening the Reporting of Observational Studies in Epidemiology Using Mendelian
618 Randomization: The STROBE-MR Statement. *JAMA* 2021;326:1614.
619 <https://doi.org/10.1001/jama.2021.18236>.
- 620 [25] Orrù V, Steri M, Sidore C, Marongiu M, Serra V, Olla S, et al. Complex genetic signatures in
621 immune cells underlie autoimmunity and inform therapy. *Nat Genet* 2020;52:1036–45.
622 <https://doi.org/10.1038/s41588-020-0684-4>.

- 623** [26] Lopera-Maya EA, Kurilshikov A, Van Der Graaf A, Hu S, Andreu-Sánchez S, Chen L, et al.
624 Effect of host genetics on the gut microbiome in 7,738 participants of the Dutch Microbiome
625 Project. *Nat Genet* 2022;54:143–51. <https://doi.org/10.1038/s41588-021-00992-y>.
- 626** [27] Demontis D, Walters GB, Athanasiadis G, Walters R, Therrien K, Nielsen TT, et al.
627 Genome-wide analyses of ADHD identify 27 risk loci, refine the genetic architecture and
628 implicate several cognitive domains. *Nat Genet* 2023;55:198–208.
629 <https://doi.org/10.1038/s41588-022-01285-8>.
- 630** [28] Howard DM, Adams MJ, Clarke T-K, Hafferty JD, Gibson J, Shiralil M, et al. Genome-wide
631 meta-analysis of depression identifies 102 independent variants and highlights the
632 importance of the prefrontal brain regions. *Nat Neurosci* 2019;22:343–52.
633 <https://doi.org/10.1038/s41593-018-0326-7>.
- 634** [29] Nievergelt CM, Maihofer AX, Klengel T, Atkinson EG, Chen C-Y, Choi KW, et al.
635 International meta-analysis of PTSD genome-wide association studies identifies sex- and
636 ancestry-specific genetic risk loci. *Nat Commun* 2019;10:4558.
637 <https://doi.org/10.1038/s41467-019-12576-w>.
- 638** [30] Trubetskoy V, Pardiñas AF, Qi T, Panagiotaropoulou G, Awasthi S, Bigdeli TB, et al.
639 Mapping genomic loci implicates genes and synaptic biology in schizophrenia. *Nature*
640 2022;604:502–8. <https://doi.org/10.1038/s41586-022-04434-5>.
- 641** [31] Anorexia Nervosa Genetics Initiative, Eating Disorders Working Group of the Psychiatric
642 Genomics Consortium, Watson HJ, Yilmaz Z, Thornton LM, Hübel C, et al. Genome-wide
643 association study identifies eight risk loci and implicates metabo-psychiatric origins for
644 anorexia nervosa. *Nat Genet* 2019;51:1207–14. <https://doi.org/10.1038/s41588-019-0439-2>.
- 645** [32] Shen H-H, Zhang Y-Y, Wang X-Y, Wang C-J, Wang Y, Ye J-F, et al. Potential Causal
646 Association between Plasma Metabolites, Immunophenotypes, and Female Reproductive
647 Disorders: A Two-Sample Mendelian Randomization Analysis. *Biomolecules* 2024;14:116.
648 <https://doi.org/10.3390/biom14010116>.
- 649** [33] Ji D, Chen W-Z, Zhang L, Zhang Z-H, Chen L-J. Gut microbiota, circulating cytokines and
650 dementia: a Mendelian randomization study. *J Neuroinflammation* 2024;21:2.
651 <https://doi.org/10.1186/s12974-023-02999-0>.
- 652** [34] The 1000 Genomes Project Consortium, Corresponding authors, Auton A, Abecasis GR,
653 Steering committee, Altshuler DM, et al. A global reference for human genetic variation.
654 *Nature* 2015;526:68–74. <https://doi.org/10.1038/nature15393>.
- 655** [35] Guo B, Wang C, Zhu Y, Liu Z, Long H, Ruan Z, et al. Causal associations of brain structure
656 with bone mineral density: a large-scale genetic correlation study. *Bone Res* 2023;11:37.
657 <https://doi.org/10.1038/s41413-023-00270-z>.
- 658** [36] Tang M, Wang T, Zhang X. A review of SNP heritability estimation methods. *Brief*
659 *Bioinform* 2022;23:bbac067. <https://doi.org/10.1093/bib/bbac067>.
- 660** [37] Burgess S, Thompson SG, CRP CHD Genetics Collaboration. Avoiding bias from weak
661 instruments in Mendelian randomization studies. *Int J Epidemiol* 2011;40:755–64.
662 <https://doi.org/10.1093/ije/dyr036>.
- 663** [38] Hemani G, Zheng J, Elsworth B, Wade KH, Haberland V, Baird D, et al. The MR-Base
664 platform supports systematic causal inference across the human phenome. *eLife*
665 2018;7:e34408. <https://doi.org/10.7554/eLife.34408>.
- 666** [39] Slob EAW, Burgess S. A comparison of robust Mendelian randomization methods using

- 667 summary data. *Genet Epidemiol* 2020;44:313–29. <https://doi.org/10.1002/gepi.22295>.
- 668 [40] Bowden J, Davey Smith G, Burgess S. Mendelian randomization with invalid instruments:
669 effect estimation and bias detection through Egger regression. *Int J Epidemiol*
670 2015;44:512–25. <https://doi.org/10.1093/ije/dyv080>.
- 671 [41] Bowden J, Davey Smith G, Haycock PC, Burgess S. Consistent Estimation in Mendelian
672 Randomization with Some Invalid Instruments Using a Weighted Median Estimator. *Genet*
673 *Epidemiol* 2016;40:304–14. <https://doi.org/10.1002/gepi.21965>.
- 674 [42] Glickman ME, Rao SR, Schultz MR. False discovery rate control is a recommended
675 alternative to Bonferroni-type adjustments in health studies. *J Clin Epidemiol*
676 2014;67:850–7. <https://doi.org/10.1016/j.jclinepi.2014.03.012>.
- 677 [43] Ji D, Chen W-Z, Zhang L, Zhang Z-H, Chen L-J. Gut microbiota, circulating cytokines and
678 dementia: a Mendelian randomization study. *J Neuroinflammation* 2024;21:2.
679 <https://doi.org/10.1186/s12974-023-02999-0>.
- 680 [44] Wang Q, Dai H, Hou T, Hou Y, Wang T, Lin H, et al. Dissecting Causal Relationships
681 Between Gut Microbiota, Blood Metabolites, and Stroke: A Mendelian Randomization
682 Study. *J Stroke* 2023;25:350–60. <https://doi.org/10.5853/jos.2023.00381>.
- 683 [45] Kulinskaya E, Dollinger MB, Bjørkestøl K. On the moments of Cochran’s Q statistic under
684 the null hypothesis, with application to the meta-analysis of risk difference. *Res Synth*
685 *Methods* 2020;11:920–920. <https://doi.org/10.1002/jrsm.1446>.
- 686 [46] Burgess S, Bowden J, Fall T, Ingelsson E, Thompson SG. Sensitivity Analyses for Robust
687 Causal Inference from Mendelian Randomization Analyses with Multiple Genetic Variants.
688 *Epidemiology* 2017;28:30–42. <https://doi.org/10.1097/EDE.0000000000000559>.
- 689 [47] Burgess S, Thompson SG. Interpreting findings from Mendelian randomization using the
690 MR-Egger method. *Eur J Epidemiol* 2017;32:377–89.
691 <https://doi.org/10.1007/s10654-017-0255-x>.
- 692 [48] Verbanck M, Chen C-Y, Neale B, Do R. Detection of widespread horizontal pleiotropy in
693 causal relationships inferred from Mendelian randomization between complex traits and
694 diseases. *Nat Genet* 2018;50:693–8. <https://doi.org/10.1038/s41588-018-0099-7>.
- 695 [49] Hemani G, Tilling K, Davey Smith G. Orienting the causal relationship between imprecisely
696 measured traits using GWAS summary data. *PLOS Genet* 2017;13:e1007081.
697 <https://doi.org/10.1371/journal.pgen.1007081>.
- 698 [50] Hemani G, Zheng J, Elsworth B, Wade KH, Haberland V, Baird D, et al. The MR-Base
699 platform supports systematic causal inference across the human phenome. *eLife*
700 2018;7:e34408. <https://doi.org/10.7554/eLife.34408>.
- 701 [51] Verbanck M, Chen C-Y, Neale B, Do R. Detection of widespread horizontal pleiotropy in
702 causal relationships inferred from Mendelian randomization between complex traits and
703 diseases. *Nat Genet* 2018;50:693–8. <https://doi.org/10.1038/s41588-018-0099-7>.
- 704 [52] Park JH. Potential Inflammatory Biomarker in Patients with Attention Deficit Hyperactivity
705 Disorder. *Int J Mol Sci* 2022;23:13054. <https://doi.org/10.3390/ijms232113054>.
- 706 [53] Faraone SV, Asherson P, Banaschewski T, Biederman J, Buitelaar JK, Ramos-Quiroga JA, et
707 al. Attention-deficit/hyperactivity disorder. *Nat Rev Dis Primer* 2015;1:15020.
708 <https://doi.org/10.1038/nrdp.2015.20>.
- 709 [54] Tamouza R, Krishnamoorthy R, Leboyer M. Understanding the genetic contribution of the
710 human leukocyte antigen system to common major psychiatric disorders in a world

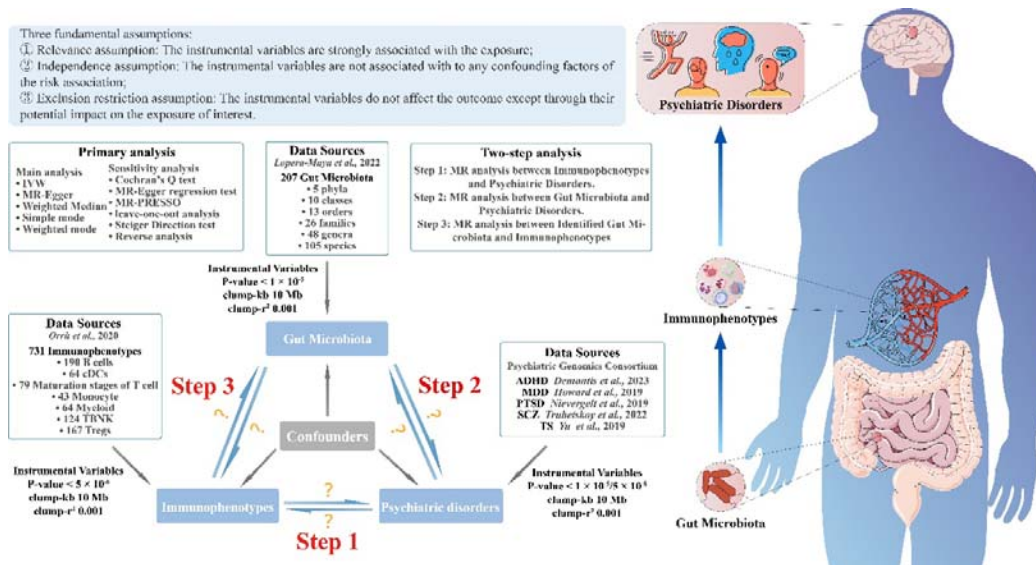
- 711 pandemic context. *Brain Behav Immun* 2021;91:731–9.
712 <https://doi.org/10.1016/j.bbi.2020.09.033>.
- 713 [55] Van De Wouw M, Boehme M, Lyte JM, Wiley N, Strain C, O’Sullivan O, et al. Short-chain
714 fatty acids: microbial metabolites that alleviate stress-induced brain–gut axis alterations. *J*
715 *Physiol* 2018;596:4923–44. <https://doi.org/10.1113/JP276431>.
- 716 [56] Wang Y, Subudhi SK, Anders RA, Lo J, Sun Y, Blink S, et al. The role of herpesvirus entry
717 mediator as a negative regulator of T cell-mediated responses. *J Clin Invest* 2005;115:711–7.
718 <https://doi.org/10.1172/JCI200522982>.
- 719 [57] Kaech SM, Wherry EJ, Ahmed R. Effector and memory T-cell differentiation: implications
720 for vaccine development. *Nat Rev Immunol* 2002;2:251–62. <https://doi.org/10.1038/nri778>.
- 721 [58] Jain A, Song R, Wakeland EK, Pasare C. T cell-intrinsic IL-1R signaling licenses effector
722 cytokine production by memory CD4 T cells. *Nat Commun* 2018;9:3185.
723 <https://doi.org/10.1038/s41467-018-05489-7>.
- 724 [59] Freeman S, Kelm S, Barber E, Crocker P. Characterization of CD33 as a new member of the
725 sialoadhesin family of cellular interaction molecules. *Blood* 1995;85:2005–12.
726 <https://doi.org/10.1182/blood.V85.8.2005.bloodjournal8582005>.
- 727 [60] Crocker PR, Paulson JC, Varki A. Siglecs and their roles in the immune system. *Nat Rev*
728 *Immunol* 2007;7:255–66. <https://doi.org/10.1038/nri2056>.
- 729 [61] Lukens JR, Eyo UB. Microglia and Neurodevelopmental Disorders. *Annu Rev Neurosci*
730 2022;45:425–45. <https://doi.org/10.1146/annurev-neuro-110920-023056>.
- 731 [62] Mordelt A, De Witte LD. Microglia-mediated synaptic pruning as a key deficit in
732 neurodevelopmental disorders: Hype or hope? *Curr Opin Neurobiol* 2023;79:102674.
733 <https://doi.org/10.1016/j.conb.2022.102674>.
- 734 [63] Ge Y, Cheng D, Jia Q, Xiong H, Zhang J. Mechanisms Underlying the Role of
735 Myeloid-Derived Suppressor Cells in Clinical Diseases: Good or Bad. *Immune Netw*
736 2021;21:e21. <https://doi.org/10.4110/in.2021.21.e21>.
- 737 [64] Melero-Jerez C, Ortega MC, Molin el-Vel azquez V, Clemente D. Myeloid derived suppressor
738 cells in inflammatory conditions of the central nervous system. *Biochim Biophys Acta BBA*
739 *- Mol Basis Dis* 2016;1862:368–80. <https://doi.org/10.1016/j.bbadis.2015.10.015>.
- 740 [65] Newman TM, Shively CA, Register TC, Appt SE, Yadav H, Colwell RR, et al. Diet, obesity,
741 and the gut microbiome as determinants modulating metabolic outcomes in a non-human
742 primate model. *Microbiome* 2021;9:100. <https://doi.org/10.1186/s40168-021-01069-y>.
- 743 [66] Reichardt N, Duncan SH, Young P, Belenguer A, McWilliam Leitch C, Scott KP, et al.
744 Phylogenetic distribution of three pathways for propionate production within the human gut
745 microbiota. *ISME J* 2014;8:1323–35. <https://doi.org/10.1038/ismej.2014.14>.
- 746 [67] Notting F, Pirovano W, Sybesma W, Kort R. The butyrate-producing and spore-forming
747 bacterial genus *Coproccoccus* as a potential biomarker for neurological disorders. *Gut*
748 *Microbiome* 2023;4:e16. <https://doi.org/10.1017/gmb.2023.14>.
- 749 [68] Shalev A, Liberzon I, Marmar C. Post-Traumatic Stress Disorder. *N Engl J Med*
750 2017;376:2459–69. <https://doi.org/10.1056/NEJMra1612499>.
- 751 [69] Girgenti MJ, Duman RS. Transcriptome Alterations in Posttraumatic Stress Disorder. *Biol*
752 *Psychiatry* 2018;83:840–8. <https://doi.org/10.1016/j.biopsych.2017.09.023>.
- 753 [70] Antshel KM, Kaul P, Biederman J, Spencer TJ, Hier BO, Hendricks K, et al. Posttraumatic
754 Stress Disorder in Adult Attention-Deficit/Hyperactivity Disorder: Clinical Features and

- 755 Familial Transmission. *J Clin Psychiatry* 2013;74:e197–204.
756 <https://doi.org/10.4088/JCP.12m07698>.
- 757 [71] Herrero ER, Slomka V, Bernaerts K, Boon N, Hernandez-Sanabria E, Passoni BB, et al.
758 Antimicrobial effects of commensal oral species are regulated by environmental factors. *J*
759 *Dent* 2016;47:23–33. <https://doi.org/10.1016/j.jdent.2016.02.007>.
- 760 [72] Garnett JA, Simpson PJ, Taylor J, Benjamin SV, Tagliaferri C, Cota E, et al. Structural
761 insight into the role of *Streptococcus parasanguinis* Fap1 within oral biofilm formation.
762 *Biochem Biophys Res Commun* 2012;417:421–6.
763 <https://doi.org/10.1016/j.bbrc.2011.11.131>.
- 764 [73] Li S, Li N, Wang C, Zhao Y, Cao J, Li X, et al. Gut Microbiota and Immune Modulatory
765 Properties of Human Breast Milk *Streptococcus salivarius* and *S. parasanguinis* Strains.
766 *Front Nutr* 2022;9:798403. <https://doi.org/10.3389/fnut.2022.798403>.
- 767 [74] Bozzatello P, De Rosa ML, Rocca P, Bellino S. Effects of Omega 3 Fatty Acids on Main
768 Dimensions of Psychopathology. *Int J Mol Sci* 2020;21:6042.
769 <https://doi.org/10.3390/ijms21176042>.
- 770 [75] Guerreiro S, Privat A-L, Bressac L, Toulorge D. CD38 in Neurodegeneration and
771 Neuroinflammation. *Cells* 2020;9:471. <https://doi.org/10.3390/cells9020471>.
- 772 [76] Zhang X. IL-10 is involved in the suppression of experimental autoimmune
773 encephalomyelitis by CD25+CD4+ regulatory T cells. *Int Immunol* 2004;16:249–56.
774 <https://doi.org/10.1093/intimm/dxh029>.
- 775 [77] Thornton AM, Shevach EM. CD4+CD25+ Immunoregulatory T Cells Suppress Polyclonal T
776 Cell Activation In Vitro by Inhibiting Interleukin 2 Production. *J Exp Med* 1998;188:287–96.
777 <https://doi.org/10.1084/jem.188.2.287>.
- 778 [78] Michopoulos V, Powers A, Gillespie CF, Ressler KJ, Jovanovic T. Inflammation in Fear- and
779 Anxiety-Based Disorders: PTSD, GAD, and Beyond. *Neuropsychopharmacology*
780 2017;42:254–70. <https://doi.org/10.1038/npp.2016.146>.
- 781 [79] Kahn RS, Sommer IE, Murray RM, Meyer-Lindenberg A, Weinberger DR, Cannon TD, et al.
782 Schizophrenia. *Nat Rev Dis Primer* 2015;1:15067. <https://doi.org/10.1038/nrdp.2015.67>.
- 783 [80] Liu JCW, Gorbovskaia I, Hahn MK, Müller DJ. The Gut Microbiome in Schizophrenia and
784 the Potential Benefits of Prebiotic and Probiotic Treatment. *Nutrients* 2021;13:1152.
785 <https://doi.org/10.3390/nu13041152>.
- 786 [81] Jin D, Liu H-X, Hirai H, Torashima T, Nagai T, Lopatina O, et al. CD38 is critical for social
787 behaviour by regulating oxytocin secretion. *Nature* 2007;446:41–5.
788 <https://doi.org/10.1038/nature05526>.
- 789 [82] Steiner J, Jacobs R, Panteli B, Brauner M, Schiltz K, Bahn S, et al. Acute schizophrenia is
790 accompanied by reduced T cell and increased B cell immunity. *Eur Arch Psychiatry Clin*
791 *Neurosci* 2010;260:509–18. <https://doi.org/10.1007/s00406-010-0098-x>.
- 792 [83] Melbourne JK, Rosen C, Chase KA, Feiner B, Sharma RP. Monocyte Transcriptional
793 Profiling Highlights a Shift in Immune Signatures Over the Course of Illness in
794 Schizophrenia. *Front Psychiatry* 2021;12:649494.
795 <https://doi.org/10.3389/fpsy.2021.649494>.
- 796 [84] Schramm E, Klein DN, Elsaesser M, Furukawa TA, Domschke K. Review of dysthymia and
797 persistent depressive disorder: history, correlates, and clinical implications. *Lancet*
798 *Psychiatry* 2020;7:801–12. [https://doi.org/10.1016/S2215-0366\(20\)30099-7](https://doi.org/10.1016/S2215-0366(20)30099-7).

- 799 [85] Gao X, Tang Y, Kong L, Fan Y, Wang C, Wang R. Treg cell: Critical role of regulatory
800 T-cells in depression. *Pharmacol Res* 2023;195:106893.
801 <https://doi.org/10.1016/j.phrs.2023.106893>.
- 802 [86] Schiepers OJG, Wichers MC, Maes M. Cytokines and major depression. *Prog*
803 *Neuropsychopharmacol Biol Psychiatry* 2005;29:201–17.
804 <https://doi.org/10.1016/j.pnpbp.2004.11.003>.
- 805 [87] Schlatter J, Ortuño F, Cervera-Enguix S. Lymphocyte subsets and lymphokine production in
806 patients with melancholic versus nonmelancholic depression. *Psychiatry Res*
807 2004;128:259–65. <https://doi.org/10.1016/j.psychres.2004.06.004>.
- 808 [88] Gao X, Tang Y, Kong L, Fan Y, Wang C, Wang R. Treg cell: Critical role of regulatory
809 T-cells in depression. *Pharmacol Res* 2023;195:106893.
810 <https://doi.org/10.1016/j.phrs.2023.106893>.
- 811 [89] Grosse L, Carvalho LA, Birkenhager TK, Hoogendijk WJ, Kushner SA, Drexhage HA, et al.
812 Circulating cytotoxic T cells and natural killer cells as potential predictors for antidepressant
813 response in melancholic depression. Restoration of T regulatory cell populations after
814 antidepressant therapy. *Psychopharmacology (Berl)* 2016;233:1679–88.
815 <https://doi.org/10.1007/s00213-015-3943-9>.
- 816 [90] Geng J, Liu C, Xu J, Wang X, Li X. Potential relationship between Tourette syndrome and
817 gut microbiome. *J Pediatr (Rio J)* 2023;99:11–6. <https://doi.org/10.1016/j.jpmed.2022.06.002>.
- 818 [91] Li H, Wang Y, Zhao C, Liu J, Zhang L, Li A. Fecal transplantation can alleviate tic severity
819 in a Tourette syndrome mouse model by modulating intestinal flora and promoting serotonin
820 secretion. *Chin Med J (Engl)* 2022;135:707–13.
821 <https://doi.org/10.1097/CM9.0000000000001885>.
- 822 [92] Martinović A, Cocuzzi R, Arioli S, Mora D. *Streptococcus thermophilus*: To Survive, or Not
823 to Survive the Gastrointestinal Tract, That Is the Question! *Nutrients* 2020;12:2175.
824 <https://doi.org/10.3390/nu12082175>.
- 825 [93] Khalifa N, Von Knorring A-L. Psychopathology in a Swedish Population of School Children
826 With Tic Disorders. *J Am Acad Child Adolesc Psychiatry* 2006;45:1346–53.
827 <https://doi.org/10.1097/01.chi.0000251210.98749.83>.
- 828 [94] Freeman RD, Tourette Syndrome International Database Consortium. Tic disorders and
829 ADHD: answers from a world-wide clinical dataset on Tourette syndrome. *Eur Child*
830 *Adolesc Psychiatry* 2007;16:15–23. <https://doi.org/10.1007/s00787-007-1003-7>.
- 831 [95] Wang Y, Xu H, Jing M, Hu X, Wang J, Hua Y. Gut Microbiome Composition Abnormalities
832 Determined Using High-Throughput Sequencing in Children With Tic Disorder. *Front*
833 *Pediatr* 2022;10:831944. <https://doi.org/10.3389/fped.2022.831944>.
- 834 [96] Fongang B, Satizabal C, Kautz TF, Wadop YN, Muhammad JAS, Vasquez E, et al. Cerebral
835 small vessel disease burden is associated with decreased abundance of gut *Barnesiella*
836 *intestinihominis* bacterium in the Framingham Heart Study. *Sci Rep* 2023;13:13622.
837 <https://doi.org/10.1038/s41598-023-40872-5>.
- 838 [97] Meyer K, Lulla A, Debroy K, Shikany JM, Yaffe K, Meirelles O, et al. Association of the
839 Gut Microbiota With Cognitive Function in Midlife. *JAMA Netw Open* 2022;5:e2143941.
840 <https://doi.org/10.1001/jamanetworkopen.2021.43941>.

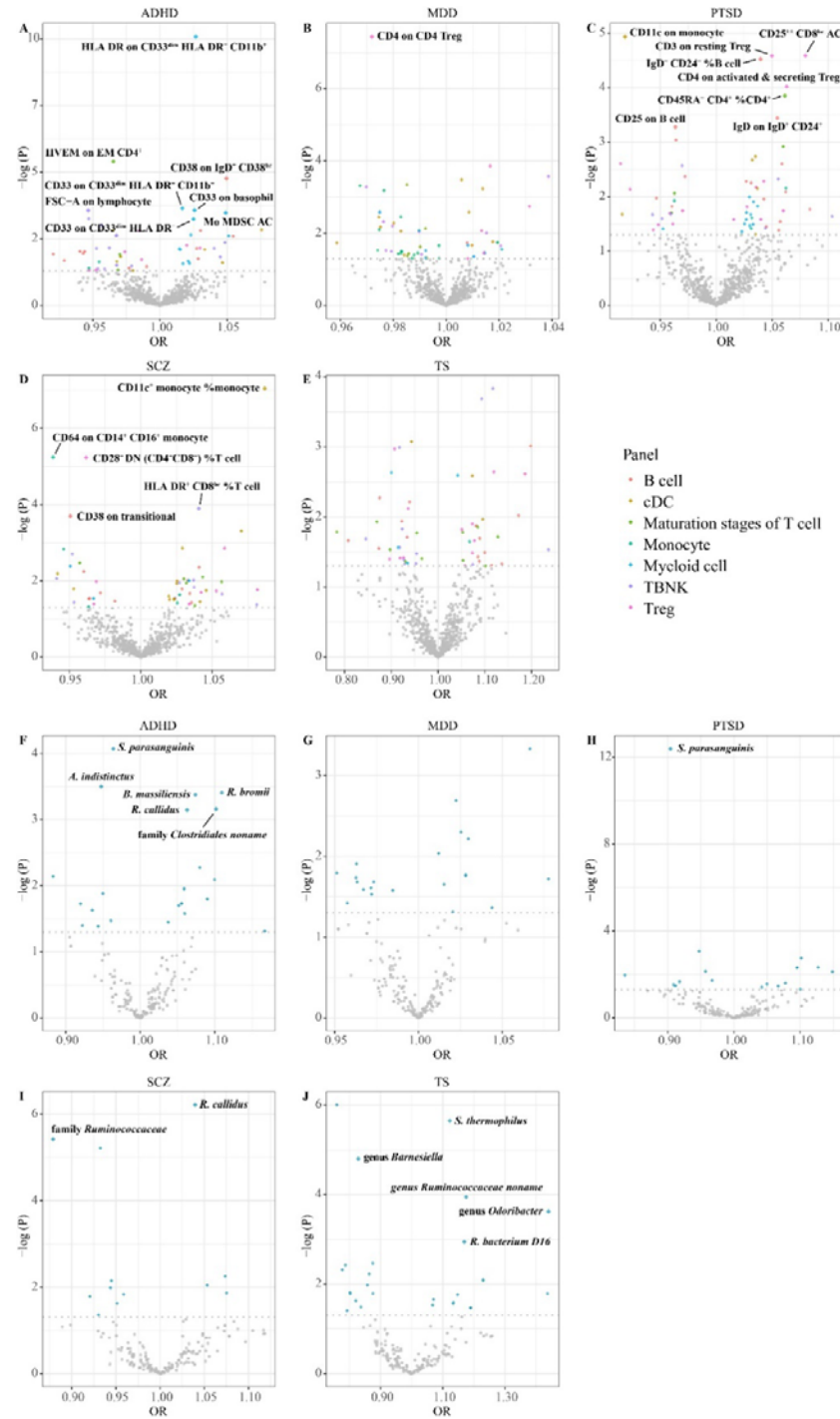
842

843 **Figures**



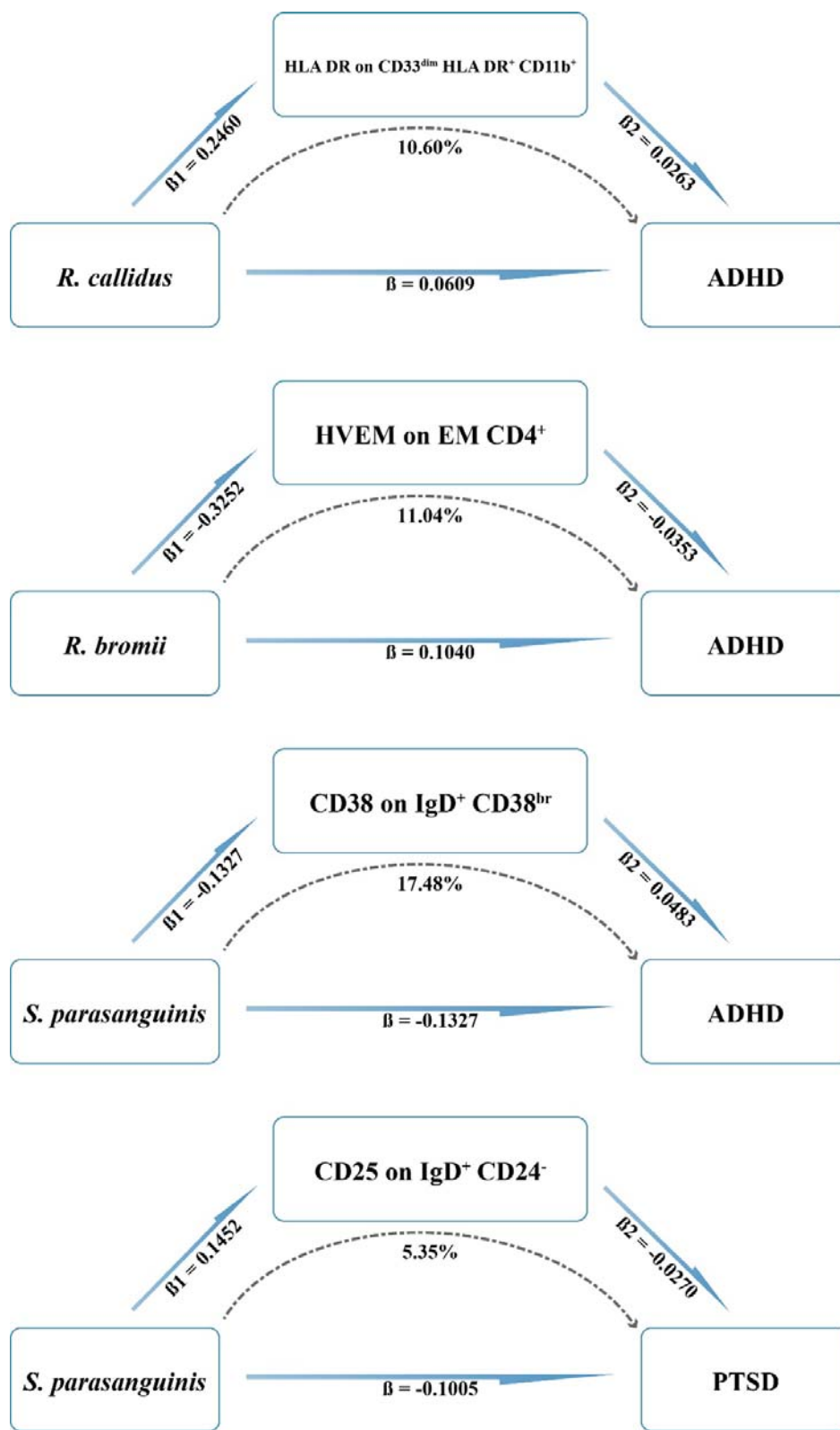
844

845 **Figure 1** The general design of the study.



846

847 **Figure 2** Volcano plots showing the effect estimates for each exposure to
 848 **psychiatric disorders.** A-E demonstrate the causal effect of immunophenotypes on
 849 **psychiatric disorders.** F-J demonstrate the causal effect of the gut microbiota on
 850 **psychiatric disorders.**



854

855 Figure 4 Immunophenotypes mediate the causal pathways from the gut
856 microbiota to ADHD and PTSD.

Three fundamental assumptions:

- ① Relevance assumption: The instrumental variables are strongly associated with the exposure;
- ② Independence assumption: The instrumental variables are not associated with to any confounding factors of the risk association;
- ③ Exclusion restriction assumption: The instrumental variables do not affect the outcome except through their potential impact on the exposure of interest.

Primary analysis

Main analysis

- IVW
- MR-Egger
- Weighted Median
- Simple mode
- Weighted mode

Sensitivity analysis

- Cochran's Q test
- MR-Egger regression test
- MR-PRESSO
- leave-one-out analysis
- Steiger Direction test
- Reverse analysis

Data Sources
Lopera-Maya et al., 2022

207 Gut Microbiota

- 5 phyla
- 10 classes
- 13 orders
- 26 families
- 48 genera
- 105 species

Two-step analysis

Step 1: MR analysis between Immunophenotypes and Psychiatric Disorders.

Step 2: MR analysis between Gut Microbiota and Psychiatric Disorders.

Step 3: MR analysis between Identified Gut Microbiota and Immunophenotypes

Data Sources
Orrù et al., 2020

731 Immunophenotypes

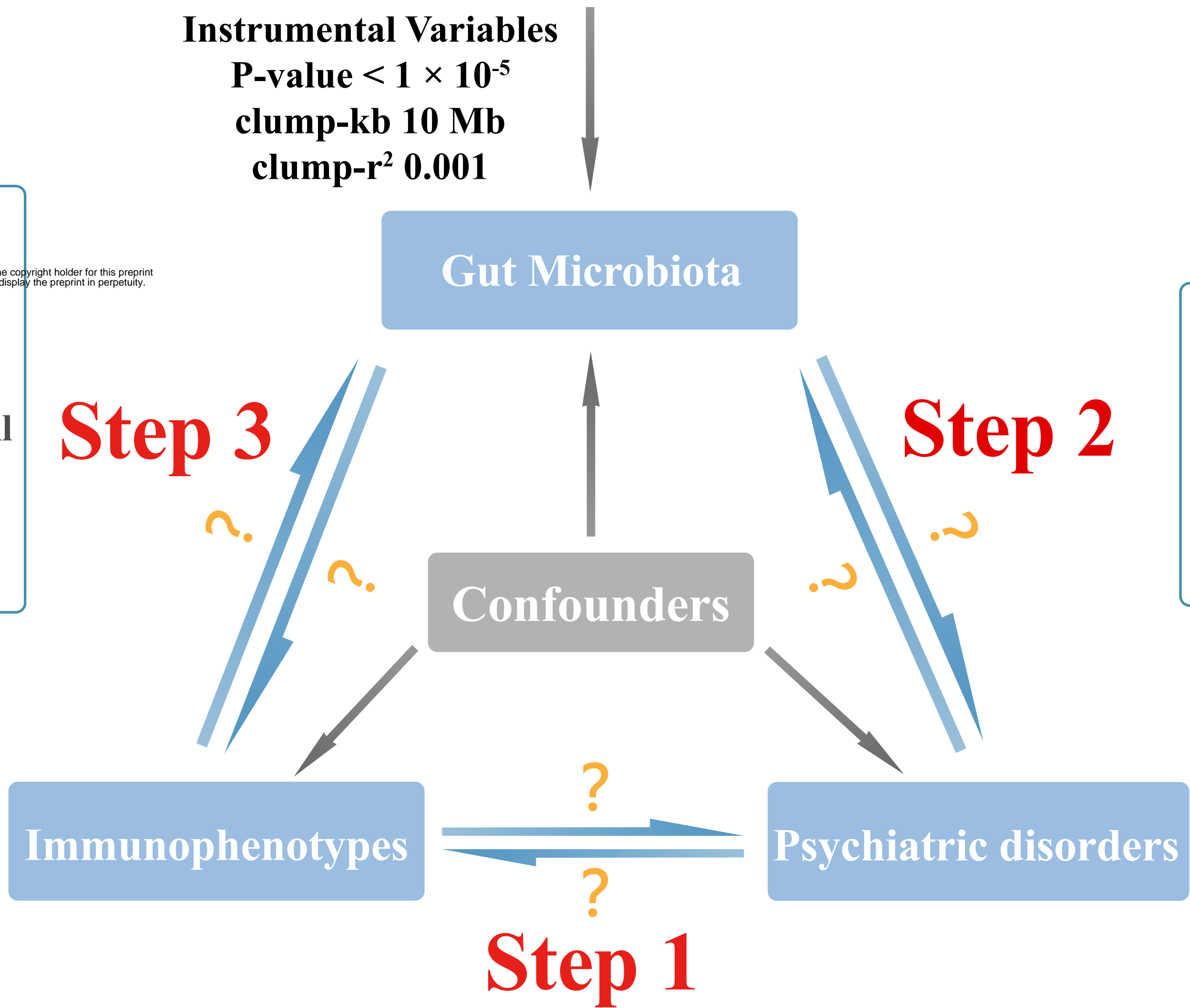
- 190 B cells
- 64 cDCs
- 79 Maturation stages of T cell
- 43 Monocyte
- 64 Myeloid
- 124 TBNK
- 167 Tregs

Instrumental Variables

P-value < 5×10^{-6}

clump-kb 10 Mb

clump-r² 0.001



Data Sources
Psychiatric Genomics Consortium

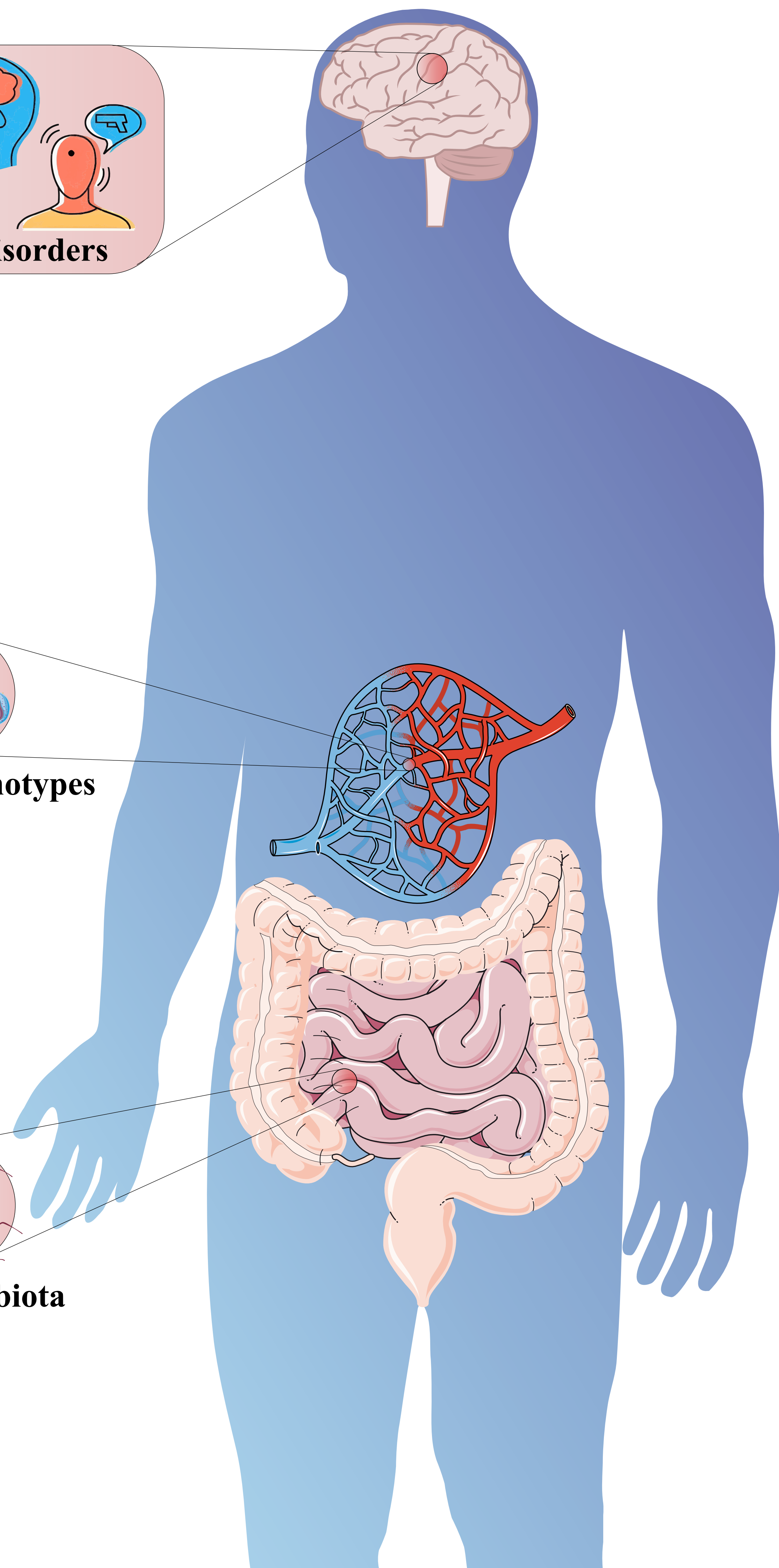
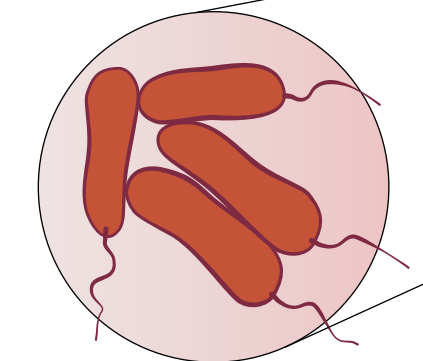
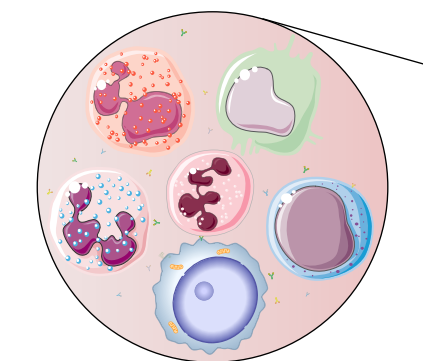
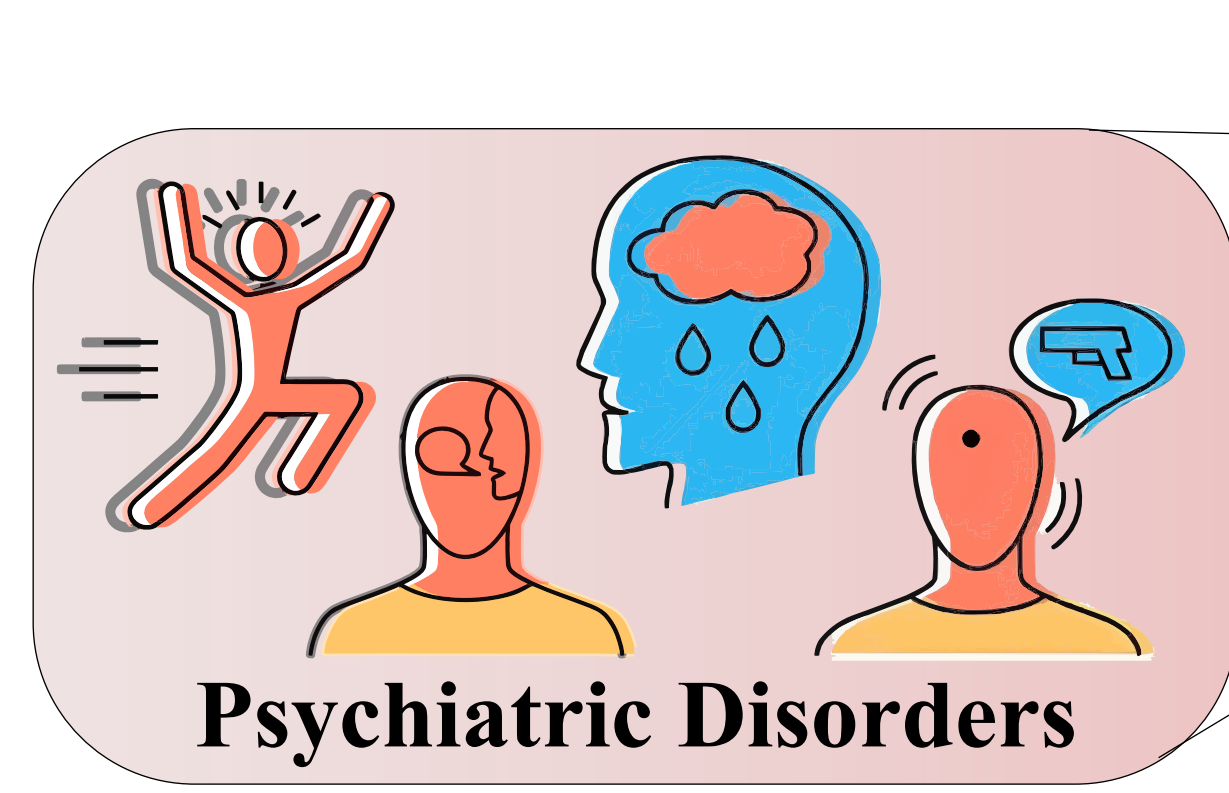
ADHD *Demontis et al., 2023*

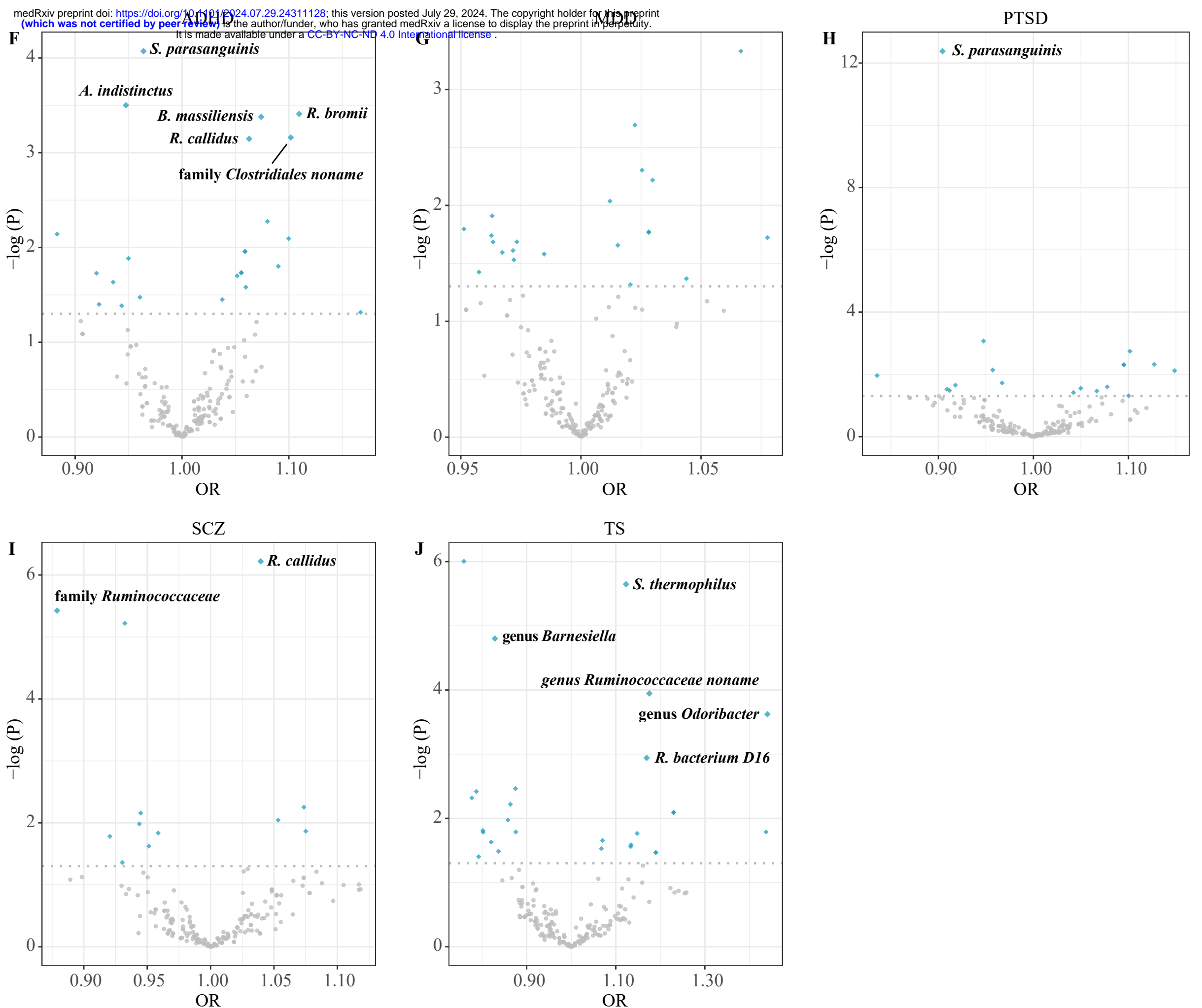
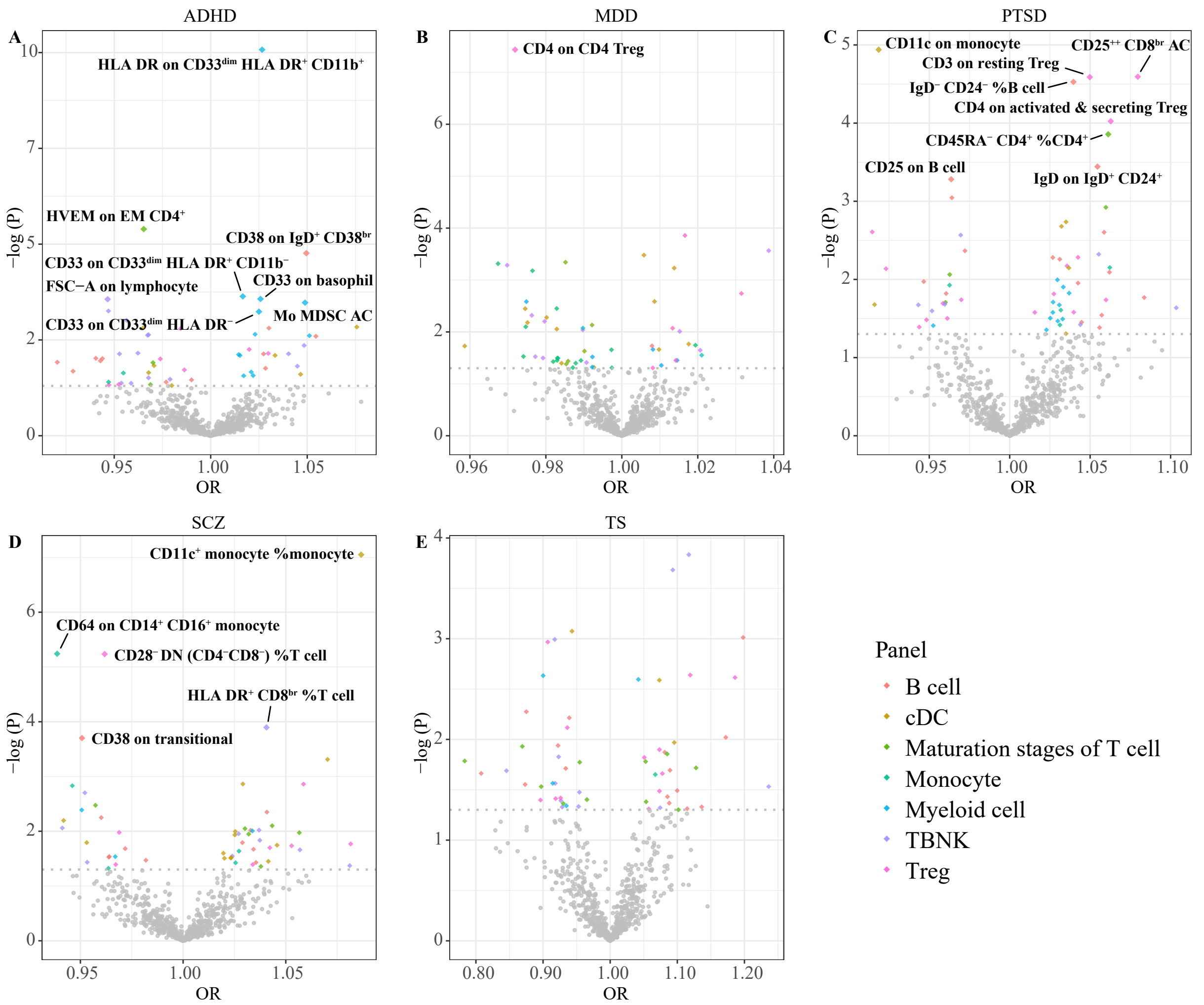
MDD *Howard et al., 2019*

PTSD *Nievergelt et al., 2019*

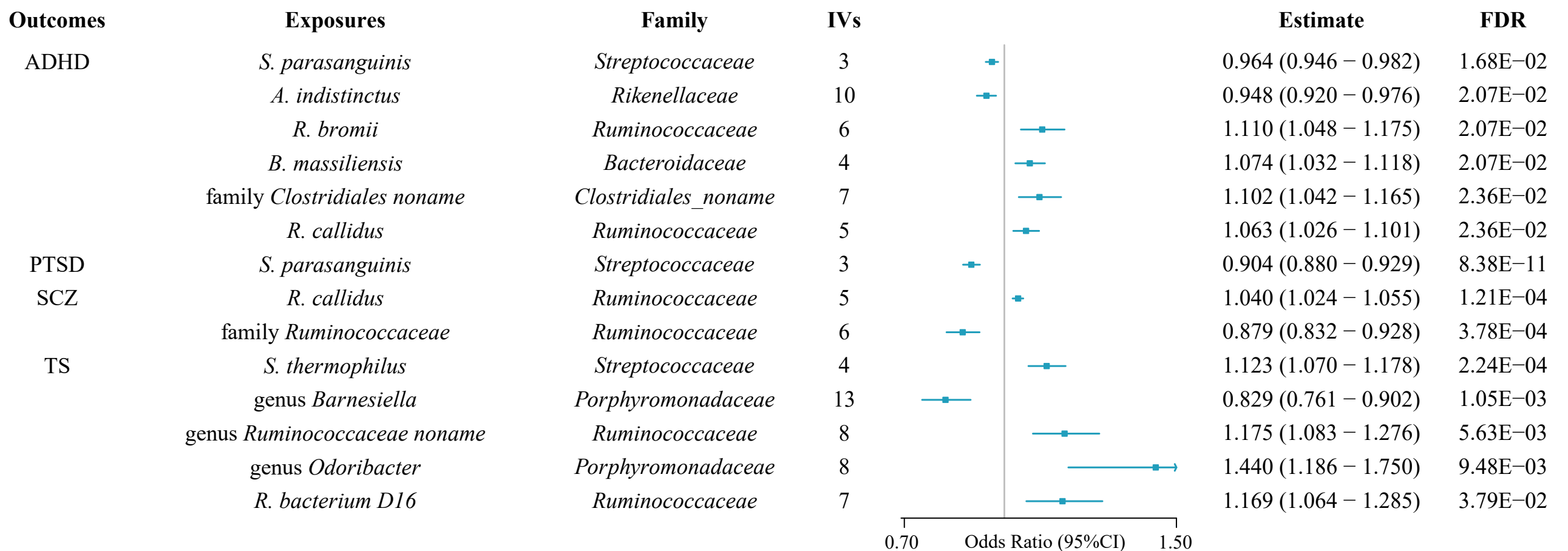
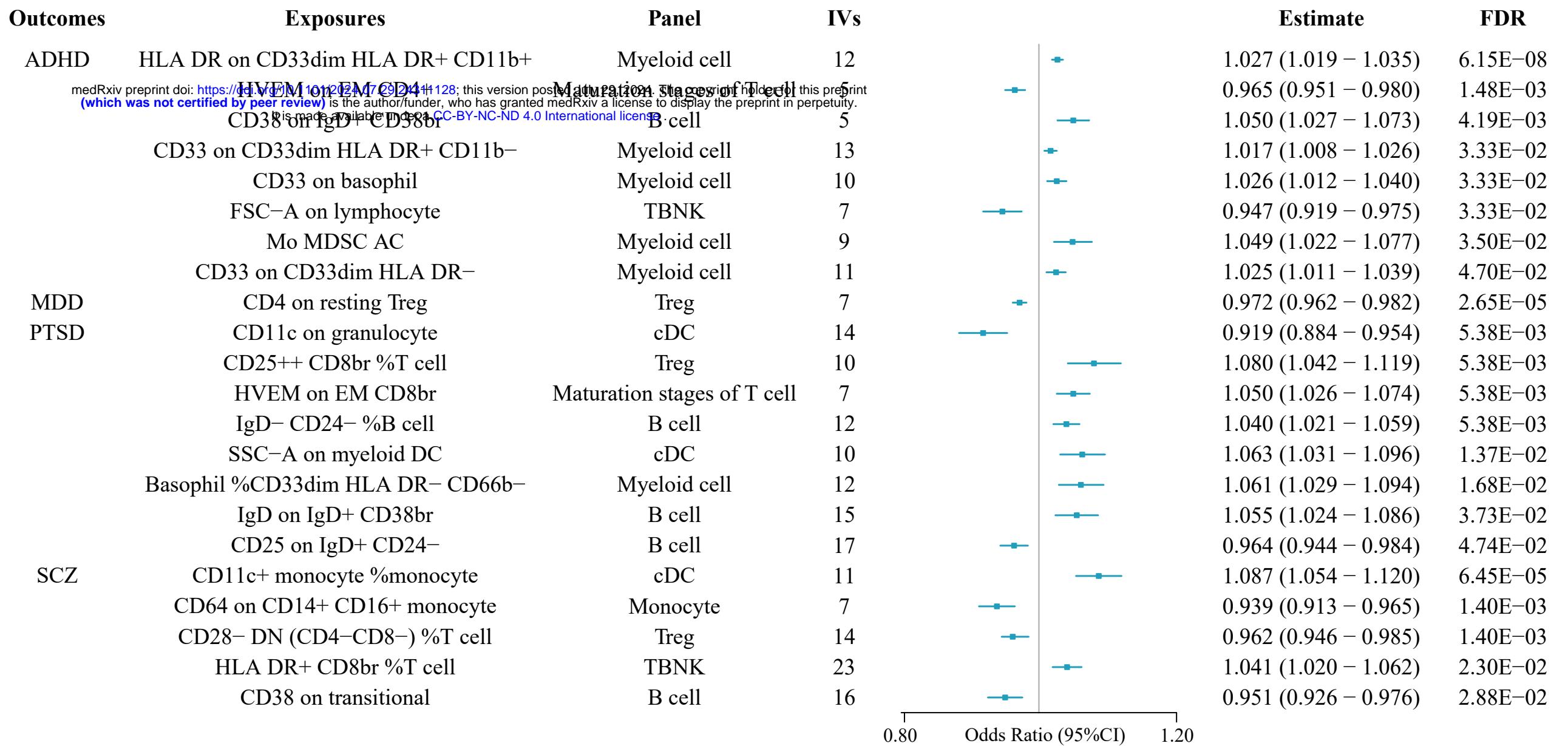
SCZ *Trubetskov et al., 2022*

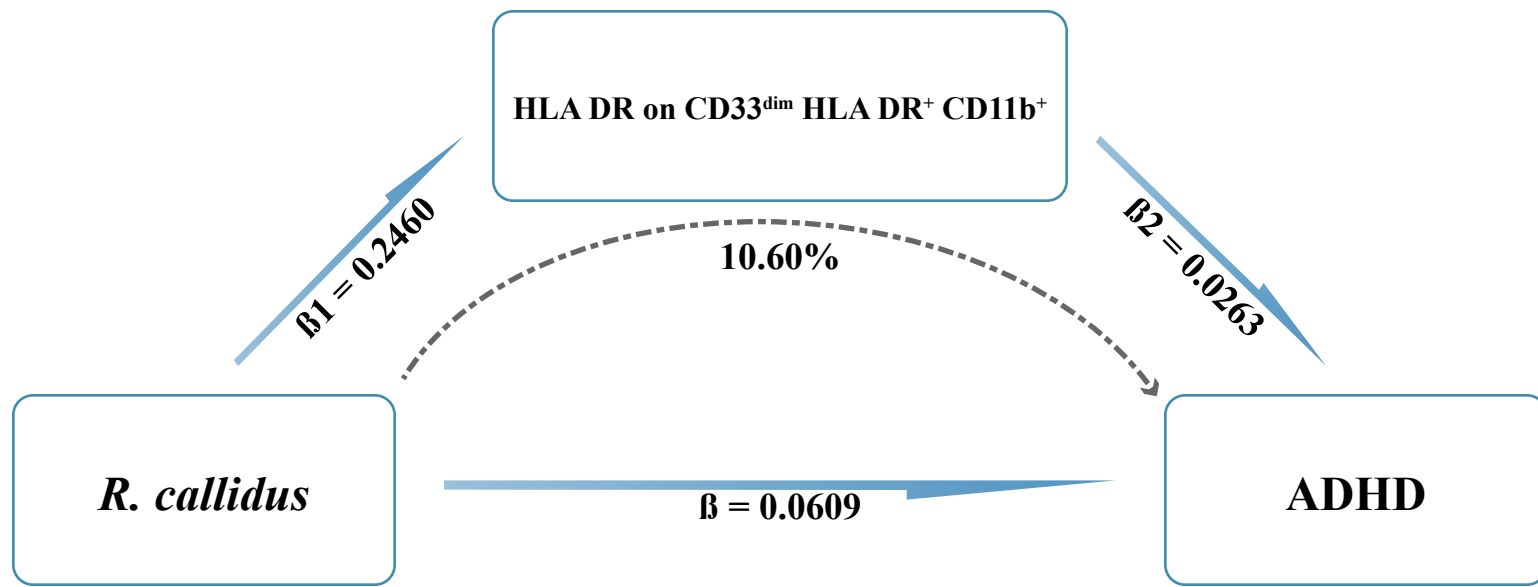
TS *Yu et al., 2019*





medRxiv preprint doi: <https://doi.org/10.1101/2024.07.29.24311128>; this version posted July 29, 2024. The copyright holder for this preprint (which was not certified by peer review) is the author/funder, who has granted medRxiv a license to display the preprint in perpetuity. It is made available under a [CC-BY-NC-ND 4.0 International license](https://creativecommons.org/licenses/by-nc-nd/4.0/).





medRxiv preprint doi: <https://doi.org/10.1101/2024.07.29.24311128>; this version posted July 29, 2024. The copyright holder for this preprint (which was not certified by peer review) is the author/funder, who has granted medRxiv a license to display the preprint in perpetuity. It is made available under a [CC-BY-NC-ND 4.0 International license](https://creativecommons.org/licenses/by-nc-nd/4.0/).

