

1 Article

# 2 Metformin Use and Thirty-Day Readmission Among Patients 3 with Bipolar Disorders: A Propensity Score-matching Analysis

4 Ting Zhai<sup>1,2,3\*</sup>

5 <sup>1</sup> School of Humanities, Southeast University, Nanjing, 211189, China  
6 <sup>2</sup> Institute of Child Development and Education, Southeast University, Nanjing 211189, China  
7 <sup>3</sup> Key Laboratory of Child Development and Learning Science (Southeast University), Ministry of Education,  
8 Nanjing 211189, China  
9 \* Correspondence: [matthewzhai@foxmail.com](mailto:matthewzhai@foxmail.com);

10 **Abstract:** Metformin may affect patients with multi-comorbid bipolar disorder through the inte-  
11 grated stress response, but their relationship remains unclear. This study aimed to explore the rela-  
12 tionship between metformin use and early (30-day) readmission in bipolar disorder patients. Data  
13 were extracted from the Medical Information Mart for Intensive Care IV database. Adult patients  
14 with a documented diagnosis of bipolar disorder were screened. Multivariable logistic regression  
15 and propensity score matching were used to investigate any association. Data on 1688 patients  
16 were included. The crude early (30-day) readmission was significantly higher in patients with  
17 metformin use (17/114 vs. 132/1574  $p = 0.033$ ). In the extended multivariable logistic models, the  
18 hazard ratio (HR) of metformin use was consistently significant in all models (HR range 1.87–2.99,  
19  $p < 0.05$  for all). After propensity score matching, the early (30-day) readmission remained signifi-  
20 cantly higher in the metformin use group ( $|t| > 1.64$ ). Although residual confounding cannot be ex-  
21 cluded, metformin use is associated with higher readmission.

22 **Keywords:** Bipolar disorders; Metformin; Readmission

## 24 1. Background

25 Medical comorbidity is very common in bipolar disorder (BD) and may affect its  
26 severity and course (Fagiolini et al., 2005), contributing to increased morbidity and mortal-  
27 ity (Hajek et al., 2005). Evidence also indicates that a substantial percentage of the cost  
28 of BD is due to comorbid, chronic non-communicable diseases that disproportionately  
29 affect people with bipolar disorders (e.g., cardiovascular disease) (Kleine-Budde et al.,  
30 2014). However, the predominance of recommendations based on opinion beyond the  
31 first-line treatment phase reflects the paucity of evidence and the absence of empirical  
32 guidance for the treatment of treatment-resistant, tertiary patients with comorbidities  
33 (Post et al., 2019).

34 Considering this reality, the generalisability of much-published research on this is-  
35 sue is problematic. The exclusion of individuals with BD from most pharmacological  
36 studies is most commonly encountered in clinical practice (e.g., patients with several  
37 comorbidities and suicidality), which will limit the extrapolation of results from these  
38 studies to clinical practice (Rosenblat et al., 2019).

39 New findings (Zhai, 2024) provide further evidence that the integrated stress re-  
40 sponse (ISR) should be taken seriously because it might improve the treatment response  
41 of the management strategies of comorbidities. Some drugs such as metformin, erlotinib,  
42 and sunitinib may work through this pathway. However, different pathologies may  
43 have distinct homeostatic set points that relate to phenotypic fitness, such as cognition.  
44 So, either reduced or increased ISR activation can be maladaptive (Costa-Mattioli &  
45 Walter, 2020). To further clarify the effects of these drugs, further research is necessary.

Citation: To be added by editorial staff during production.

Academic Editor: Firstname Lastname

Received: date

Revised: date

Accepted: date

Published: date



Copyright: © 2024 by the authors.

Submitted for possible open access

publication under the terms and

conditions of the Creative Commons

Attribution (CC BY) license

(<https://creativecommons.org/licenses/by/4.0/>)

11111111

46 Moreover, as one of the commonly used drugs to treat diabetes, we don't know whether  
47 long-term use of this drug will have any side effects on patients with bipolar disorder  
48 who also often suffer from metabolic diseases. It is hoped that this research will contrib-  
49 ute to a deeper understanding of the management of comorbidities in patients with bi-  
50 polar disorder.

51 Readmission is common in serious mental illness, leading to increased healthcare  
52 costs and adversity for the individual (Schennach et al., 2012). Readmission has been  
53 systematically used as a method for measuring the relapse and recurrence of psychiatric  
54 illness (Conley et al., 1999) and has often been used as a safe marker of outcomes in  
55 psychiatric disorders (Lin et al., 2010). The readmission rate of BD is an important proxy  
56 indicator of the frequency of relapse, quality of care, and prognosis, and a major focus of  
57 scrutiny for quality improvement for hospitals, health sector administrators, and poli-  
58 cymakers (Kristensen et al., 2015). While readmission during a chronic mental illness is  
59 not unexpected, it is typically unexpected, particularly within a short timeframe (within  
60 30 days) after discharge, especially if the individual is already engaged with mental  
61 health outpatient services (Muhammad et al., 2023).

62 Therefore, this study aimed to explore the relationship between metformin use and  
63 early (30-day) readmission in BD patients, using logistic regression and propensity score  
64 matching (PSM).

## 65 **2. Methods**

### 66 *2.1. Database introduction*

67 All the data in the current study were extracted from an online international data-  
68 base— Medical Information Mart for Intensive Care IV (MIMIC-IV)— that was published  
69 by the Massachusetts Institute of Technology, with approval from the review boards of  
70 the Massachusetts Institute of Technology and Beth Israel Deaconess Medical Center  
71 (Johnson et al., 2023). All the patients in the database were de-identified for privacy pro-  
72 tection, and the need for informed consent was waived. The author obtained access to  
73 this database (Record ID: 62627059) and was responsible for data extraction.

### 74 *2.2. Inclusion and exclusion criteria*

75 Adult patients with medical records indicating bipolar disorders. Patients who  
76 were younger than 18 years or whose gender was not recorded were excluded.

### 77 *2.3. Data extraction and outcome definition*

78 Data on the demographic characteristics, laboratory outcomes, and metformin use  
79 were extracted from the database. Metformin use was defined as the use of a metformin  
80 after admission. Biochemical indicators mainly refer to Surace et al. (2022), including  
81 number of white blood cells (WBC) (K/uL), number of red blood cells (m/uL), hemoglo-  
82 bin (HB) (g/dL), number of platelets (K/uL), number of neutrophils (K/uL), number of  
83 lymphocytes (K/uL), glucose (mg/dL), blood urea (mg/dL), creatinine (mg/dL), uric acid  
84 (mg/dL), aspartate aminotransferase (AST) (IU/L), alanine aminotransferase (ALT)  
85 (IU/L), albumin (g/dL), lactate dehydrogenase (LDH) (IU/L), total cholesterol (mg/dL),  
86 thyroid-stimulating hormone (TSH) (uIU/mL), and CRP (mg/L).

87 The primary endpoint was 30-day readmission. Each patient has a unique sub-  
88 ject\_id, and each admission of the patient will have a unique hadm\_id. Based on this in-  
89 dex, the admission and discharge time of each record can be used to calculate whether  
90 the patient has been readmitted within 30 days.

### 91 *2.4. Propensity score matching*

92 PSM was used to minimize the effect of confounding factors such as hemodynamic  
93 indices and disease severity, which may lead to outcome bias. The propensity score was  
94 assigned based on the probability that a patient would receive metformin therapy and  
95 estimated using a multivariable logistic regression model. The following variables were  
96 selected to generate the propensity score: real age, WBC, urea nitrogen, red blood cells,

97 platelet count, HB, and creatinine. Kernel density plots of the p score were used to ex-  
98 amine the PSM degree.

### 99 2.5. Management of missing data

100 Variables with missing data are common in the MIMIC IV database. For uric acid,  
101 TSH, LDH, total cholesterol, CRP, AST, albumin, ALT, absolute neutrophil count, abso-  
102 lute lymphocyte count, and glucose, more than 20% were missing and were removed  
103 from this analysis.

### 104 2.6. Statistical analysis

105 Continuous variables were provided as mean  $\pm$  SD or median and interquartile  
106 range (IQR) depending on their distribution, as determined by the Shapiro–Wilk test.  
107 They were compared using two independent-sample t-test or the Wilcoxon Rank Sum  
108 Test as appropriate. The Fisher exact test was used to compare categorical data reported  
109 as numbers and percentages.

110 Kaplan–Meier survival curves were generated, and both the Log-rank test and  
111 Wilcoxon (Breslow) test were utilized to compare the groups.

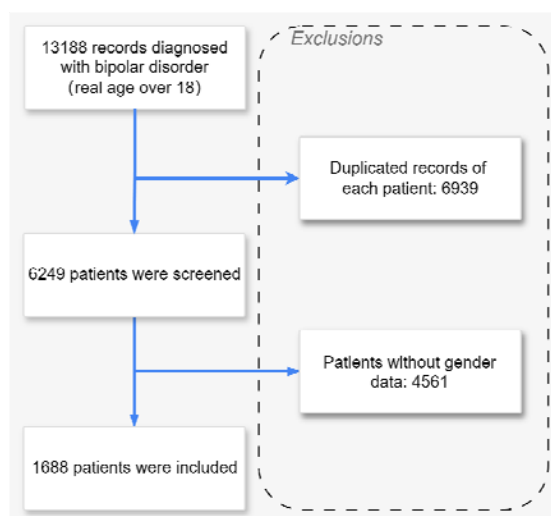
112 A multivariable Exponential regression and Cox proportional hazards model were  
113 used to assess the independent association between metformin use and 30-day readmis-  
114 sion, after testing the proportional hazards assumption. Results were presented as haz-  
115 ard ratios (HR) with 95% confidence intervals (CI).

116 PSM was used to minimize the imbalance between groups. All statistical analyses  
117 were performed using Stata 11.2 (Stata Corp., College Station, TX, USA).

## 118 3. Results

### 119 3.1. Baseline characteristics

120 Data on 1688 patients were included. The flow chart of patient selection is present-  
121 ed in Fig. 1. The comparisons of the baseline characteristics are listed in Table 1, after  
122 testing, continuous variables all conform to normal distribution. The overall 30-day re-  
123 admission rate was 8.8%. The difference in Albumin was small between the groups ( $3.3 \pm$   
124  $0.7$  vs.  $3.5 \pm 0.6$ ,  $p = 0.04$ ). The Red Blood Cells were also relatively similar in the met-  
125 formin use and no metformin use groups ( $3.7 \pm 0.7$  vs.  $3.8 \pm 0.6$ ,  $p = 0.03$ ), and the  
126 Creatinine was similar across the groups despite statistical significance ( $1.2 \pm 1.3$  vs.  $0.9$   
127  $\pm 0.3$ ,  $p = 0.01$ ). The Urea Nitrogen was significantly higher in patients with metformin  
128 use ( $18.9 \pm 14.3$  vs.  $15.9 \pm 7.1$ ,  $p = 0.04$ ) while Glucose was lower ( $123.2 \pm 44.5$  vs.  $168.4 \pm$   
129  $67.8$ ,  $p < 0.01$ ). However, the early (30-day) readmission was significantly higher in pa-  
130 tients with metformin use (8.4% vs. 14.9%,  $p = 0.03$ ).



**Figure 1.** Flow chart of patient selection from the MIMIC IV database.

**Table 1.** Comparisons of the baseline characteristics between patients with and without metformin use.

Factor	All patients	No metformin use	Metformin use	p-value	Test
N	1688	1574	114		
Male	843 (49.9%)	788 (50.1%)	55 (48.2%)	0.77	Fisher's exact
Real_age*, mean (SD)	52.5 (16.0) (n=1688)	52.1 (16.1) (n=1574)	57.4 (13.6) (n=114)	<0.01	Two sample t test
Race				<0.01	Fisher's exact
PATIENT DECLINED TO ANSWER /UNABLE TO OBTAIN/UNKNOWN	271 (16.1%)	262 (16.6%)	9 (7.9%)		
HISPANIC/LATINO	59 (3.5%)	54 (3.4%)	5 (4.4%)		
BLACK	178 (10.5%)	157 (10.0%)	21 (18.4%)		
WHITE	1126 (66.7%)	1053 (66.9%)	73 (64.0%)		
ASIAN	7 (0.4%)	6 (0.4%)	1 (0.9%)		
NATIVE HAWAIIAN OR OTHER PACIFIC ISLANDER	3 (0.2%)	2 (0.1%)	1 (0.9%)		
AMERICAN INDIAN/ALASKA NATIVE	2 (0.1%)	1 (0.1%)	1 (0.9%)		
MULTIPLE RACE/ETHNICITY	3 (0.2%)	3 (0.2%)	0 (0.0%)		
OTHER	39 (2.3%)	36 (2.3%)	3 (2.6%)		
Biochemical indices					
Thyroid Stimulating Hormone, mean (SD)	3.5 (6.4) (n=372)	3.6 (6.7) (n=339)	2.1 (1.6) (n=33)	0.21	
Lactate Dehydrogenase (LD), mean (SD)	424.2 (790.1) (n=651)	435.9 (810.9) (n=615)	224.2 (110.3) (n=36)	0.12	
Cholesterol, Total, mean (SD)	155.7 (55.1) (n=127)	154.9 (56.6) (n=113)	161.8 (42.4) (n=14)	0.66	Two sample t test
C-Reactive Protein, mean (SD)	64.4 (71.9) (n=93)	64.3 (72.1) (n=85)	65.3 (74.8) (n=8)	0.97	
Asparate Aminotransferase (AST), mean (SD)	166.1 (735.0) (n=961)	174.1 (757.1) (n=904)	38.9 (32.6) (n=57)	0.18	

131

132

133

134

Albumin, mean (SD)	3.3 (0.7) (n=724)	3.3 (0.7) (n=682)	3.5 (0.6) (n=42)	0.04
Alanine Aminotransferase (ALT), mean (SD)	154.0 (597.0) (n=958)	161.4 (614.7) (n=901)	37.1 (39.8) (n=57)	0.13
Absolute Neutrophil Count, mean (SD)	8.3 (5.9) (n=378)	8.3 (6.0) (n=349)	7.3 (4.5) (n=29)	0.38
Absolute Lymphocyte Count, mean (SD)	41.9 (261.3) (n=385)	42.7 (268.0) (n=356)	31.9 (160.2) (n=29)	0.83
Glucose, mean (SD)	126.2 (47.7) (n=1477)	123.2 (44.5) (n=1379)	168.4 (67.8) (n=98)	<0.01
White Blood Cells, mean (SD)	9.3 (6.1) (n=1469)	9.3 (6.3) (n=1373)	9.2 (3.5) (n=96)	0.85
Urea Nitrogen, mean (SD)	18.7 (13.9) (n=1479)	18.9 (14.3) (n=1381)	15.9 (7.1) (n=98)	0.04
Red Blood Cells, mean (SD)	3.7 (0.7) (n=1469)	3.7 (0.7) (n=1373)	3.8 (0.6) (n=96)	0.03
Platelet Count, mean (SD)	228.0 (104.9) (n=1469)	227.3 (105.9) (n=1373)	237.1 (89.2) (n=96)	0.38
Hemoglobin, mean (SD)	11.0 (2.0) (n=1470)	11.0 (2.0) (n=1374)	11.2 (1.8) (n=96)	0.48
Creatinine, mean (SD)	1.2 (1.2) (n=1482)	1.2 (1.3) (n=1384)	0.9 (0.3) (n=98)	0.01
Readmission_30days	149 (8.8%)	132 (8.4%)	17 (14.9%)	0.03 Fisher's exact

135 \* Real age = anchor\_age + admittime - anchor\_year  
 136 Note: Uric Acid and CRP were not recorded in the cases that met the inclusion criteria.

137 3.2. Association between metformin use and 30-day readmission

138 3.2.1 Survival analysis

139 With the Log-rank test for equality of survivor functions ( $P = 0.0109$ ) and Wilcoxon  
 140 (Breslow) test for equality of survivor functions ( $P = 0.0108$ ), we reject the null hypothesis  
 141 (there is no significant difference between the two drug groups). Figure A1 demonstrated  
 142 that the metformin group did have a more severe time-to-readmission profile.

143 3.2.2 Exponential regression

144 First, we perform the simplest single-parameter exponential regression. The results  
 145 showed that the risk ratio of metformin use was about 2.990, which means that metfor-  
 146 min users have a 199% higher risk of 30-day readmission than non-users. Since the risk  
 147 function of exponential regression is a constant, the assumption is too strong, so we relax  
 148 this assumption and perform Weibull regression.

149 The P value corresponding to the original hypothesis " $H_0: \ln p = 0$ " is 0.000, so the  
 150 exponential regression is strongly rejected, and it is believed that Weibull regression  
 151 should be used. Furthermore,  $\hat{p} = 0.183 < 1$ , so the risk function decreases over time, and  
 152 there is a negative duration dependence.

153 Next, we will conduct another generalization of exponential regression, namely  
 154 Gompertz regression. The P value corresponding to the original hypothesis " $H_0: \ln p = 0$ "  
 155 is 0.000, so the exponential regression is strongly rejected, and it is believed that  
 156 Gompertz regression should be used. As for choosing between Weibull regression and  
 157 Gompertz regression, it can be done according to the AIC criterion. Since the number of  
 158 explanatory variables and parameters of these two regressions are equal, the AIC crite-  
 159 rion is equivalent to maximizing the log-likelihood function. Since the log-likelihood  
 160 value of Weibull regression is -786 and the log-likelihood value of Gompertz regression  
 161 is -610, Gompertz regression should be selected.

Other candidate parametric regressions include lognormal regression and loglogistic regression belonging to the accelerated failure time model (AFT). Lognormal regression is performed first. The coefficients of the lognormal regression have the opposite sign to those of the proportional hazard model because they represent the semi-elasticity of the variable to the mean life span, while the coefficients in the proportional hazard model represent the semi-elasticity to the hazard rate. Obviously, the higher the hazard rate, the shorter the mean life span; therefore, the two have opposite effects. The log-likelihood value of the lognormal regression is -775, slightly inferior to that of the Gompertz regression.

Next, we perform logistic regression. The log-likelihood value of logistic regression is -784, which is also lower than that of Gompertz regression.

### 3.2.3 Cox regression

Since we are still unsure about the specific distribution of parametric regression, we perform semi-parametric Cox regression below (Model 1, Model 2, and Model 3). From Table A1, we can see that overall, the assumption of proportional hazards is acceptable. However, the variable Hemoglobin may violate the proportional hazards assumption, with a P value of 0.0339.

We test the proportional hazards model by introducing time-varying explanatory variables (TVC). Specifically, the interaction term between the variable Hemoglobin and time  $t$  is introduced, Cox regression is performed, and then the significance of this interaction term is tested. The p-value of the interaction term Hemoglobin $\times$ t is 0.217, so the interaction term can be considered to be insignificant at the 5% level, supporting the proportional hazard assumption.

In the multivariable logistic models (Table 2), we observed that the hazard ratio (HR) of metformin use was consistently significant in all models (HR range 1.87–2.99,  $p < 0.05$  for all).

**Table 2.** Association between metformin use and 30-day readmission.

	Hazard Ratio (coefficient) of metformin use	95% confidence interval	P
Single parameter exponential regression	2.990	(1.702-5.250)	0.000
Weibull regression	2.111	(1.213-3.675)	0.008
Gompertz regression	1.872	(1.079-3.248)	0.026
Lognormal AFT regression	-3.887	(-7.176-0.598)	0.021
Loglogistic AFT regression	-4.150	(-7.327-0.9718)	0.010
Model 1	1.903	(1.148-3.153)	0.013
Model 2	1.866	(1.075-3.238)	0.027
Model 3	1.902	(1.108-3.267)	0.020

Adjusted covariates: Model 1 = metformin use. Model 2 = Model 1 + (gender, real age, biochemical indices including white blood cell count, urea nitrogen, red blood cell count, platelet count, hemoglobin, and creatinine). Model 3 = Model 1 + white blood cell count + hemoglobin + real age (Screening by stepwise regression).

### 3.3. Outcomes after propensity score matching

The following is a one-to-one matching. Since the sample size is not very large, a matching with replacement is performed, and parallel.

The estimated value of ATT is 0.053, and the corresponding t value is 1.03 which is less than the critical value of 1.96, so it is not significant. Among the total 1454 observations, 151 in the control group (Untreated) are not in the common value range

(offsupport), and 0 in the treatment group (Treated) are not in the common value range (offsupport). The remaining 1303 observations are all in the common value range (onsupport).

Table A2 shows that the standardized deviations of most variables after matching are less than 10%, except for the variable red blood cells and HB, which has a deviation of 14.8% and 14.7%, which seems to be acceptable; and the results of most t-tests do not reject the original hypothesis that there is no systematic difference between the treatment group and the control group. Comparing the results with the pre-matching results, the standardized deviations of most variables were substantially reduced, but the deviations of the variables white blood cells and HB increased instead. From Figure A2, we can intuitively see that the standardized deviations of most variables are reduced after matching and most observations are within the common range (on support), so only a small number of samples will be lost when performing propensity score matching.

In summary, As can be seen from Table 3, the various propensity score matching results show that the average treatment effect of metformin use is positive and statistically significant (Most are significant at the 10% level,  $|t| > 1.64$ ).

**Table 3.** ATT of propensity score matching results.

	Difference	S.E.	T-stat
1:1 matching	0.053	0.052	1.03
1:10 matching	0.077	0.040	1.91
1:10 matching in the caliper*	0.076	0.040	1.88
Radius (caliper) matching	0.064	0.040	1.61
Kernel matching (using default kernel function and bandwidth)	0.062	0.039	1.58
Local linear regression matching (using default kernel function and bandwidth)	.068	0.040	1.70
Mahalanobis matching	0.088	0.040	2.18

\*  $0.25\hat{\sigma}_{pscore} = 0.01038327$ . To be conservative, the caliper range is set to 0.01, which means that one-to-10 matching is performed for observations with a 1% difference in propensity scores.

#### 4. Discussion

The present study demonstrates that in BD patients the use of metformin is associated with significantly increased early (30-day) readmission. This result was robust in the PSM analysis after adjustment for covariates.

From the perspective of BD itself, this finding is contrary to previous studies which have suggested that metformin may have a protective effect on cognitive and neurodegenerative disorders through the PERK (Chen et al., 2018; Kumar et al., 2023). Given that myelinating cells from either the central or the peripheral nervous system synthesize a large number of myelin proteins and lipids, they typically accumulate misfolded or unfolded proteins and activate both the unfolded protein response (UPR) and the ISR. Many studies have postulated a convergence between bipolar disorder and abnormal myelination (Chambers & Perrone-Bizzozero, 2004; Marlinge et al., 2014; Tkachev et al., 2003; Walterfang et al., 2009; Xu et al., 2022). In myelination disorders, the role of the ISR in pathology is complex. In some conditions, activation of the ISR is protective: Whereas

232 GCN2 protects oligodendrocytes and white matter during branch amino acid deficiency  
233 (She et al., 2013), PERK protects from demyelination and axonal degeneration in a  
234 mouse model of experimental autoimmune encephalomyelitis (Lin et al., 2007). Corre-  
235 spondingly, in mouse models of Charcot-Marie-Tooth disease that exhibit increased  
236 eIF2-P concentrations, germline ablation (D'Antonio et al., 2013; Pennuto et al., 2008) or  
237 pharmacological inhibition of GADD34 with sephin1 improved motor function and re-  
238 duced demyelination (Das et al., 2015). Counterintuitively, in the same model, removing  
239 one copy of PERK in all or just in Schwann cells partially reversed the pathology  
240 (Musner et al., 2016; Sidoli et al., 2016). Thus, inhibition of the ISR could have dis-  
241 ease-protective or disease-causing effects. However, the molecular mechanisms under-  
242 lying these two opposing outcomes remain unclear. However, for this article, this ob-  
243 servation may support the hypothesis that metformin blocks the inhibitory effect of ex-  
244 tracellular ATP on Schwann cell proliferation and differentiation by antagonizing  
245 lysosomal exocytosis (Jung et al., 2013; Shin et al., 2012). Schwann cells highly express P0  
246 and POS63del mRNA and protein at P28 (Wrabetz et al., 2006) and persistently activate  
247 PERK, which has detrimental effects on nerves (Musner et al., 2016).

248 What's more, from the perspective of metabolic disorders, metformin is a  
249 well-known drug for the treatment of diabetes and is widely used in clinical practice.  
250 However, permanent activation of the ISR, as determined by increased eIF2-P, is also not  
251 tolerated by pancreatic  $\beta$ -cells. Patients carrying a specific mutation in eIF2( $\gamma$ ), which  
252 results in a decrease in ternary complex (TC) and translation fidelity, exhibit hypergly-  
253 cemia and diabetes (Moortgat et al., 2016; Stanik et al., 2018). Accordingly, reduced TC  
254 owing to a loss-of-function mutation in CREP has been associated with diabetes  
255 (Abdulkarim et al., 2015). CREP-deficient  $\beta$ -cells are more susceptible to apoptosis: It  
256 seems that persistent activation of the ISR and ATF4 translation induces the transcrip-  
257 tion of the proapoptotic transcription factor CHOP, which promotes apoptosis (Zinszner  
258 et al., 1998). Thus, in  $\beta$ -cells, precise ISR-mediated translation regulation is important for  
259 adequate ER stress management. The observation that both enhancement and inhibition  
260 of the ISR lead to pathology indicates that normal  $\beta$ -cell function requires eIF2-P abun-  
261 dance to be maintained in a narrow range and/or that the ISR needs to switch on and off  
262 dynamically. Compound-based strategies that compensate for deviating eIF2-P abun-  
263 dance by adjusting the extent of ISR activation or inhibition will be required to improve  
264 the pathology associated with these disorders. Thus, depending on the disease, either  
265 ISR inhibition or ISR activation may be beneficial therapeutically. However, also due to  
266 metformin inhibits mitochondrial ATP production, and it is essential for  $\beta$ -cell insulin  
267 secretion (Lamontagne et al., 2017). Plus, prior studies have noted that metformin is  
268 proposed to potentially affect  $\beta$ -cells, especially at high circulating levels (Valle et al.,  
269 2022).

270 This study has several limitations. First, there are many confounders for metformin  
271 use in clinical practice, such as the disease severity and clinician preference. In the cur-  
272 rent study, we included as many confounders as possible to minimize potential bias.  
273 However, due to the retrospective nature, some information was unavailable in this da-  
274 tabase. Rigorously designed randomized controlled studies may be the only solution for  
275 the imbalance between these two groups. Second, we did not consider pre-admission  
276 mental disorder severity, medication compliance, and the dose/duration of individual  
277 metformin used in the hospital, and further research is necessary to confirm any associa-  
278 tion. Third, our study only included patients from a single center, which limits its gener-  
279 alizability to other hospitals with varying practices or resources. Finally, the causal rela-  
280 tionship between metformin use and early (30-day) readmission could not be confirmed.  
281 While the use of a propensity score can further support our speculation, it still cannot  
282 overcome the primary limitation associated with the observational nature of the study.  
283 Further prospective studies are needed to verify our hypothesis.



284  
285  
286  
287  
288  
289  
  
290  
291  
292  
293  
294  
295  
296  
297  
298  
299

## 5. Conclusions

The metformin use was associated with an increased risk of readmission and mortality. This emphasizes that drug treatment for BD patients should be combined with the management of comorbidities and taking preventative measures to manage the potential side effects of combined medication to reduce readmission. Future larger randomized clinical trials are required to confirm and validate this association.

**Supplementary Materials:** The following supporting information can be downloaded at: [www.mdpi.com/xxx/s1](http://www.mdpi.com/xxx/s1), Figure S1: title; Table S1: title; Video S1: title.

**Author Contributions:** All work was done by the only author Zhai Ting.

**Funding:** This research received no external funding

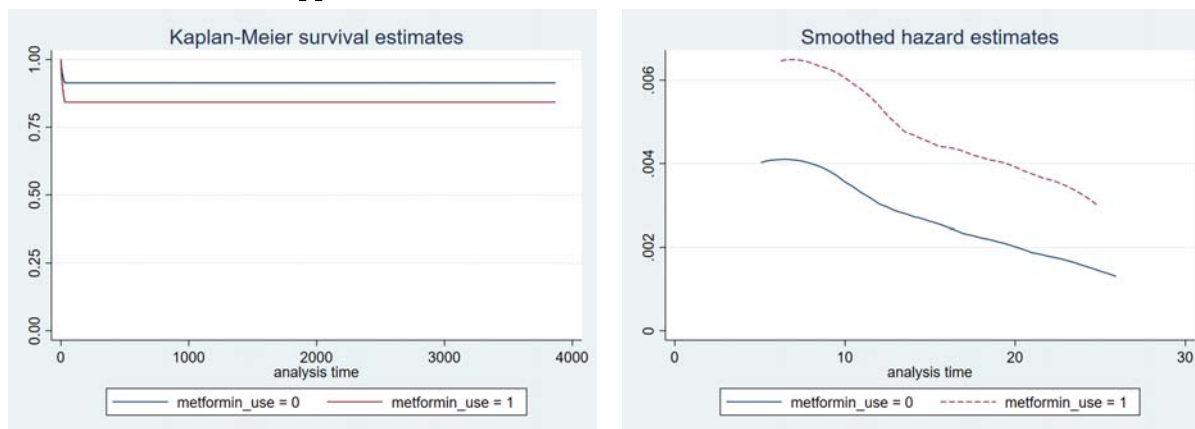
**Data Availability Statement:** The datasets presented in the current study are available in the MIMIC-IV database (<https://physionet.org/content/mimiciv/2.2/>).

**Acknowledgments:** The author thanks Prof. Deng Huihua for his help in discussing and reviewing the manuscript critically.

**Conflicts of Interest:** The authors declare no conflicts of interest.

300

### Appendix A



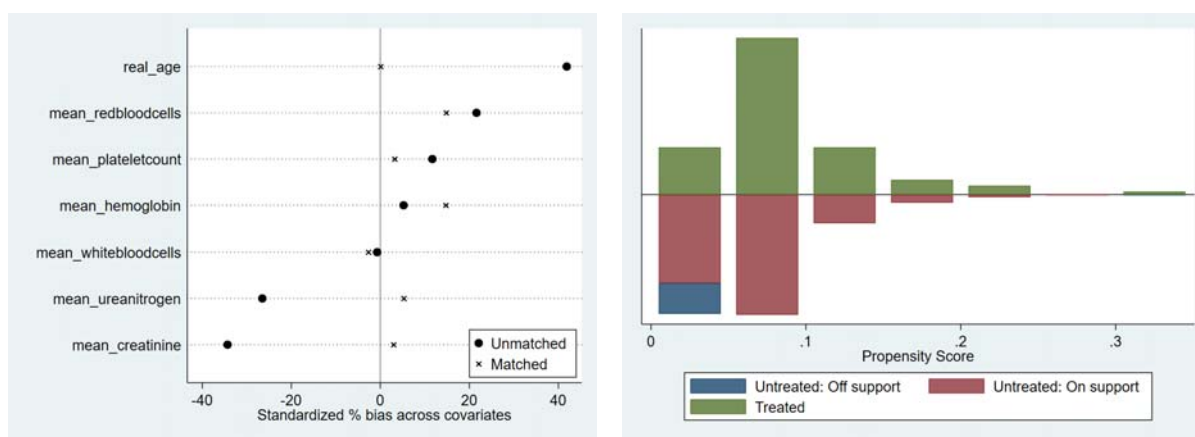
(a)

(b)

301

**Figure A1.** (a) Kaplan–Meier curves for the metformin use; (b) Risk function according to metformin use grouping.

302



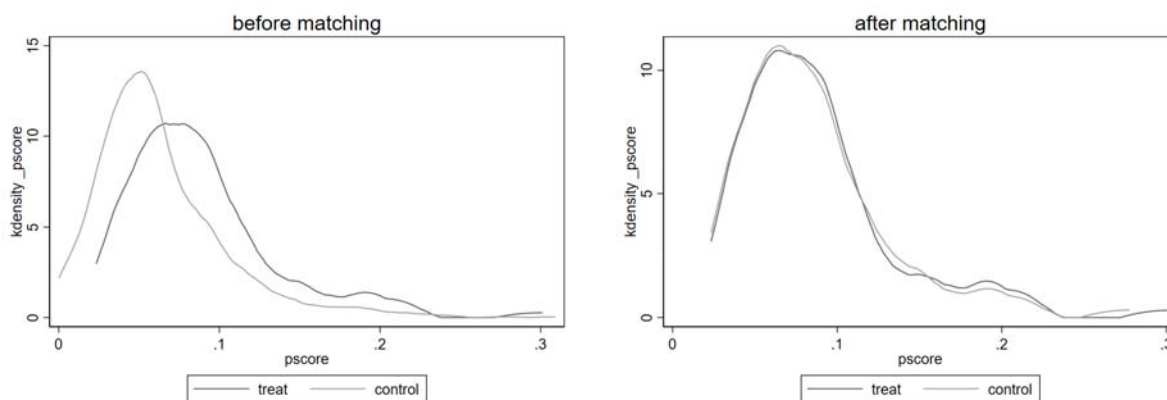
(a)

(b)

303

**Figure A2.** (a) Graphical representation of standardized deviations for each variable; (b) Common range of propensity scores.

304



(a)

(b)

305

**Figure A3.** Kernel density plots of the propensity score before and after propensity score matching.

306

307

**Table A1.** P value of test of proportional-hazards assumption.

	Model 1	Model 2	Model 3
Metformin use	0.9605	0.6039	0.8380
male	-	0.5441	-
WBC	-	0.7483	0.3883
Urea Nitrogen	-	0.8539	-
RBC	-	0.0548	-
Platelet Count	-	0.5019	-
Hemoglobin	-	0.0339	0.2842
Creatinine	-	0.8978	-
Real age	-	0.3169	0.4316

308

**Table A2.** Equilibrium metrics after matching.

Variable	Unmatched Matched	Mean		%bias	%reduct  bias	t-test		V(T)/ V(C)
		Treated	Control			t	p> t	
White blood cells	U	9.2287	9.2652	-0.7		-0.06	0.955	0.32*
	M	9.2287	9.3641	-2.7	-271	-0.25	0.802	0.82
Urea ni- trogen	U	15.878	18.875	-26.5		-2.02	0.044	0.25*
	M	15.878	15.282	5.3	80.1	0.58	0.564	1.08
Red blood cells	U	3.8072	3.6717	21.6		1.93	0.054	0.79
	M	3.8072	3.7143	14.8	31.4	1.07	0.285	0.96
Platelet count	U	238.59	227.16	11.7		1.02	0.30-8	0.7
	M	238.59	235.43	3.2	72.3	0.20	0.843	0.49*
hemoglo- bin	U	11.105	11.006	5.2		0.47	0.636	0.85
	M	11.105	10.826	14.7	-181.6	1.05	0.297	0.97
creatinine	U	0.88351	1.2056	-34.3		-2.41	0.016	0.05*
	M	0.88351	0.85565	3	91.3	0.64	0.521	0.99
Real age	U	59.372	53.144	41.9		3.66	0.000	0.71
	M	59.372	59.362	0.1	99.8	0.01	0.996	1.18

309

## 310 References

- 311 Abdulkarim, B., Nicolino, M., Igoillo-Esteve, M., Daures, M., Romero, S., Philippi, A., Senee, V., Lopes, M., Cunha, D. A., Harding,  
312 H. P., Derbois, C., Bendelac, N., Hattersley, A. T., Eizirik, D. L., Ron, D., Cnop, M., & Julier, C. (2015). A Missense  
313 Mutation in *PPP1R15B* Causes a Syndrome Including Diabetes, Short Stature, and Microcephaly. *Diabetes*, *64*(11),  
314 3951-3962. <https://doi.org/10.2337/db15-0477>
- 315 Chambers, J. S., & Perrone-Bizzozero, N. I. (2004). Altered myelination of the hippocampal formation in subjects with  
316 schizophrenia and bipolar disorder. *Neurochemical Research*, *29*(12), 2293-2302. <https://doi.org/10.1007/s11064-004-7039-x>

- 317 Chen, J., Zheng, G., Guo, H., Shi, Z.-n., Jiang, J., Wang, X.-y., Yang, X., & Liu, X.-y. (2018). The effect of metformin treatment on  
318 endoplasmic reticulum (ER) stress induced by status epilepticus (SE) via the PERK-eIF2 $\alpha$ -CHOP pathway. *Bosnian Journal*  
319 *of Basic Medical Sciences*, 18(1), 49-54. <https://doi.org/10.17305/bjbms.2017.2044>
- 320 Conley, R. R., Love, R. C., Kelly, D. L., & Bartko, J. J. (1999). Rehospitalization rates of patients recently discharged on a regimen of  
321 risperidone or clozapine. *American Journal of Psychiatry*, 156(6), 863-868. <https://doi.org/10.1176/ajp.156.6.863>
- 322 Costa-Mattioli, M., & Walter, P. (2020). The integrated stress response: From mechanism to disease [Review]. *Science*, 368(6489),  
323 384+, Article eaat5314. <https://doi.org/10.1126/science.aat5314>
- 324 D'Antonio, M., Musner, N., Scapin, C., Ungaro, D., Del Carro, U., Ron, D., Feltri, M. L., & Wrabetz, L. (2013). Resetting translational  
325 homeostasis restores myelination in Charcot-Marie-Tooth disease type 1B mice. *Journal of Experimental Medicine*, 210(4),  
326 821-838. <https://doi.org/10.1084/jem.20122005>
- 327 Das, I., Krzyzosiak, A., Schneider, K., Wrabetz, L., D'Antonio, M., Barry, N., Sigurdardottir, A., & Bertolotti, A. (2015). Preventing  
328 proteostasis diseases by selective inhibition of a phosphatase regulatory subunit. *Science*, 348(6231), 239-242.  
329 <https://doi.org/10.1126/science.aaa4484>
- 330 Fagiolini, A., Frank, E., Scott, J. A., Turkin, S., & Kupfer, D. J. (2005). Metabolic syndrome in bipolar disorder: findings from the  
331 Bipolar Disorder Center for Pennsylvanians. *Bipolar Disorders*, 7(5), 424-430.  
332 <https://doi.org/10.1111/j.1399-5618.2005.00234.x>
- 333 Hajek, T., Slaney, C., Garnham, J., Ruzickova, M., Passmore, M., & Alda, M. (2005). Clinical correlates of current level of  
334 functioning in primary care-treated bipolar patients. *Bipolar Disorders*, 7(3), 286-291.  
335 <https://doi.org/10.1111/j.1399-5618.2005.00182.x>
- 336 Johnson, A. E. W., Bulgarelli, L., Shen, L., Gayles, A., Shammout, A., Horng, S., Pollard, T. J., Hao, S., Moody, B., Gow, B., Lehman,  
337 L.-w. H., Celi, L. A., & Mark, R. G. (2023). MIMIC-IV, a freely accessible electronic health record dataset. *Scientific Data*,  
338 10(1), 1. <https://doi.org/10.1038/s41597-022-01899-x>
- 339 Jung, J., Shin, Y. H., Konishi, H., Lee, S. J., & Kiyama, H. (2013). Possible ATP release through lysosomal exocytosis from primary  
340 sensory neurons. *Biochemical and Biophysical Research Communications*, 430(2), 488-493.  
341 <https://doi.org/10.1016/j.bbrc.2012.12.009>
- 342 Kleine-Budde, K., Touil, E., Moock, J., Bramesfeld, A., Kawohl, W., & Roessler, W. (2014). Cost of illness for bipolar disorder: a  
343 systematic review of the economic burden [Review]. *Bipolar Disorders*, 16(4), 337-353. <https://doi.org/10.1111/bdi.12165>
- 344 Kristensen, S. R., Bech, M., & Quentin, W. (2015). A roadmap for comparing readmission policies with application to Denmark,  
345 England, Germany and the United States. *Health Policy*, 119(3), 264-273. <https://doi.org/10.1016/j.healthpol.2014.12.009>
- 346 Kumar, H., Chakrabarti, A., Sarma, P., Modi, M., Banerjee, D., Radotra, B. D., Bhatia, A., & Medhi, B. (2023). Novel therapeutic  
347 mechanism of action of metformin and its nanoformulation in Alzheimer's disease and role of AKT/ERK/GSK pathway.  
348 *European Journal of Pharmaceutical Sciences*, 181, 106348. <https://doi.org/https://doi.org/10.1016/j.ejps.2022.106348>
- 349 Lamontagne, J., Al-Mass, A., Nolan, C. J., Corkey, B. E., Madiraju, S. R. M., Joly, E., & Prentki, M. (2017). Identification of the signals  
350 for glucose-induced insulin secretion in INS1 (832/13) -cells using metformin-induced metabolic deceleration as a model.  
351 *Journal of Biological Chemistry*, 292(47), 19458-19468. <https://doi.org/10.1074/jbc.M117.808105>
- 352 Lin, C. H., Chen, M. C., Chou, L. S., Lin, C. H., Chen, C. C., & Lane, H. Y. (2010). Time to rehospitalization in patients with major  
353 depression vs. those with schizophrenia or bipolar I disorder in a public psychiatric hospital. *Psychiatry Research*, 180(2-3),  
354 74-79. <https://doi.org/10.1016/j.psychres.2009.12.003>
- 355 Lin, W. S., Bailey, S. L., Ho, H., Harding, H. P., Ron, D., Miller, S. D., & Popko, B. (2007). The integrated stress response prevents  
356 demyelination by protecting oligodendrocytes against immune-mediated damage. *Journal of Clinical Investigation*, 117(2),  
357 448-456. <https://doi.org/10.1172/jci29571>

- 358 Marlinge, E., Bellivier, F., & Houenou, J. (2014). White matter alterations in bipolar disorder: potential for drug discovery and  
359 development [Review]. *Bipolar Disorders*, 16(2), 97-112. <https://doi.org/10.1111/bdi.12135>
- 360 Moortgat, S., Desir, J., Benoit, V., Boulanger, S., Pendeville, H., Nassogne, M.-C., Lederer, D., & Maystadt, I. (2016). Two Novel  
361 *EIF2S3* Mutations Associated with Syndromic Intellectual Disability with Severe Microcephaly, Growth Retardation, and  
362 Epilepsy. *American Journal of Medical Genetics Part A*, 170(11), 2927-2933. <https://doi.org/10.1002/ajmg.a.37792>
- 363 Muhammad, N., Talpur, S., Sangroula, N., & Washdave, F. N. U. (2023). Independent Predictors of 30-Day Readmission to Acute  
364 Psychiatric Wards in Patients With Mental Disorders: A Systematic Review and Meta-Analysis [Review]. *Cureus Journal of*  
365 *Medical Science*, 15(7), 9, Article e42490. <https://doi.org/10.7759/cureus.42490>
- 366 Musner, N., Sidoli, M., Zambroni, D., Del Carro, U., Ungaro, D., D'Antonio, M., Feltri, M. L., & Wrabetz, L. (2016). *Perk* Ablation  
367 Ameliorates Myelination in S63del-Charcot-Marie-Tooth 1B Neuropathy. *Asn Neuro*, 8(2).  
368 <https://doi.org/10.1177/1759091416642351>
- 369 Pennuto, M., Tinelli, E., Malaguti, M., Del Carro, U., D'Antonio, M., Ron, D., Quattrini, A., Feltri, M. L., & Wrabetz, L. (2008).  
370 Ablation of the UPR-mediator CHOP restores motor function and reduces demyelination in Charcot-Marie-Tooth 1 B mice.  
371 *Neuron*, 57(3), 393-405. <https://doi.org/10.1016/j.neuron.2007.12.021>
- 372 Post, R. M., Yatham, L. N., Vieta, E., Berk, M., & Nierenberg, A. A. (2019). Beyond evidence-based treatment of bipolar disorder:  
373 Rational pragmatic approaches to management. *Bipolar Disorders*, 21(7), 650-659. <https://doi.org/10.1111/bdi.12813>
- 374 Rosenblat, J. D., Simon, G. E., Sachs, G. S., Deetz, I., Doederlein, A., DePeralta, D., Dean, M. M., & McIntyre, R. S. (2019). Treatment  
375 effectiveness and tolerability outcomes that are most important to individuals with bipolar and unipolar depression.  
376 *Journal of affective disorders*, 243, 116-120. <https://doi.org/10.1016/j.jad.2018.09.027>
- 377 Schennach, R., Obermeier, M., Meyer, S., Jäger, M., Schmauss, M., Laux, G., Pfeiffer, H., Naber, D., Schmidt, L. G., Gaebel, W.,  
378 Klosterkötter, J., Heuser, I., Maier, W., Lemke, M. R., Rütther, E., Klingberg, S., Gastpar, M., Seemüller, F., Möller, H. J., &  
379 Riedel, M. (2012). Predictors of Relapse in the Year After Hospital Discharge Among Patients With Schizophrenia.  
380 *Psychiatric Services*, 63(1), 87-90. <https://doi.org/10.1176/appi.ps.201100084>
- 381 She, P., Bunpo, P., Cundiff, J. K., Wek, R. C., Harris, R. A., & Anthony, T. G. (2013). General Control Nonderepressible 2 (GCN2)  
382 Kinase Protects Oligodendrocytes and White Matter during Branched-chain Amino Acid Deficiency in Mice. *Journal of*  
383 *Biological Chemistry*, 288(43), 31250-31260. <https://doi.org/10.1074/jbc.M113.498469>
- 384 Shin, Y. H., Lee, S. J., & Jung, J. (2012). Secretion of ATP from Schwann cells through lysosomal exocytosis during Wallerian  
385 degeneration. *Biochemical and Biophysical Research Communications*, 429(3-4), 163-167.  
386 <https://doi.org/10.1016/j.bbrc.2012.10.121>
- 387 Sidoli, M., Musner, N., Silvestri, N., Ungaro, D., D'Antonio, M., Cavener, D. R., Feltri, M. L., & Wrabetz, L. (2016). Ablation of *Perk*  
388 in Schwann Cells Improves Myelination in the S63del Charcot-Marie-Tooth 1B Mouse. *Journal of Neuroscience*, 36(44),  
389 11350-11361. <https://doi.org/10.1523/jneurosci.1637-16.2016>
- 390 Stanik, J., Skopkova, M., Stanikova, D., Brennerova, K., Barak, L., Ticha, L., Hornova, J., Klimes, I., & Gasperikova, D. (2018).  
391 Neonatal Hypoglycemia, Early-Onset Diabetes and Hypopituitarism Due to the Mutation in *EIF2S3* Gene Causing  
392 MEHMO Syndrome. *Physiological Research*, 67(2), 331-337. <https://doi.org/10.33549/physiolres.933689>
- 393 Surace, T., Capuzzi, E., Caldiroli, A., Ceresa, A., Esposito, C. M., Auxilia, A. M., Tagliabue, I., Capellazzi, M., Legnani, F., Di Paolo,  
394 M., Cirella, L., Zanelli Quarantini, F., Signorelli, M. S., Aguglia, E., Clerici, M., & Buoli, M. (2022). Which Clinical and  
395 Biochemical Parameters Are Associated with Lifetime Suicide Attempts in Bipolar Disorder? *Diagnostics*, 12(9), 2215.  
396 <https://doi.org/10.3390/diagnostics12092215>
- 397 Tkachev, D., Mimmack, M. L., Ryan, M. M., Wayland, M., Freeman, T., Jones, P. B., Starkey, M., Webster, M. J., Yolken, R. H., &  
398 Bahn, S. (2003). Oligodendrocyte dysfunction in schizophrenia and bipolar disorder. *Lancet*, 362(9386), 798-805.  
399 [https://doi.org/10.1016/s0140-6736\(03\)14289-4](https://doi.org/10.1016/s0140-6736(03)14289-4)

- 400 Valle, M. M. R., Vilas-Boas, E. A., Lucena, C. F., Teixeira, S. A., Muscara, M. N., & Carpinelli, A. R. (2022). Metformin disrupts  
401 insulin secretion, causes proapoptotic and oxidative effects in rat pancreatic beta-cells in vitro. *Journal of Biochemical and*  
402 *Molecular Toxicology*, 36(5), e23007. <https://doi.org/10.1002/jbt.23007>
- 403 Walterfang, M., Malhi, G. S., Wood, A. G., Reutens, D. C., Chen, J., Barton, S., Yücel, M., Velakoulis, D., & Pantelis, C. (2009).  
404 Corpus callosum size and shape in established bipolar affective disorder. *Australian and New Zealand Journal of Psychiatry*,  
405 43(9), 838-845, Article Pii 913777115. <https://doi.org/10.1080/00048670903107534>
- 406 Wrabetz, L., D'Antonio, M., Pennuto, M., Dati, G., Tinelli, E., Fratta, P., Previtali, S., Imperiale, D., Zielasek, J., Toyka, K., Avila, R.  
407 L., Kirschner, D. A., Messing, A., Feltri, M. L., & Quattrini, A. (2006). Different intracellular pathomechanisms produce  
408 diverse *Myelin Protein Zero* neuropathies in transgenic mice. *Journal of Neuroscience*, 26(8), 2358-2368.  
409 <https://doi.org/10.1523/jneurosci.3819-05.2006>
- 410 Xu, E., Nguyen, L., Hu, R., Stavish, C. M., Leibenluft, E., & Linke, J. O. (2022). The uncinate fasciculus in individuals with and at  
411 risk for bipolar disorder: A meta-analysis [Review]. *Journal of affective disorders*, 297, 208-216.  
412 <https://doi.org/10.1016/j.jad.2021.10.045>
- 413 Zhai, T. (2024). Druggable genome-wide Mendelian randomization for identifying the role of integrated stress response in  
414 therapeutic targets of bipolar disorder. *Journal of affective disorders*, 362, 843-852. <https://doi.org/10.1016/j.jad.2024.07.043>
- 415 Zinszner, H., Kuroda, M., Wang, X. Z., Batchvarova, N., Lightfoot, R. T., Remotti, H., Stevens, J. L., & Ron, D. (1998). CHOP is  
416 implicated in programmed cell death in response to impaired function of the endoplasmic reticulum. *Genes & Development*,  
417 12(7), 982-995. <https://doi.org/10.1101/gad.12.7.982>
- 418
- 419