

1 *Research Article - Therapy Study*

2 **Immune Modulation in Solid Tumors: A Phase 1b Study of**
3 **RO6870810 (BET Inhibitor) and Atezolizumab (PD-L1 Inhibitor)**

4
5 Daniel Marbach^{1*}, Jurriaan Brouer-Visser^{2*}, Laura Brennan², Sabine Wilson¹, Iakov I Davydov¹,
6 Nicolas Staedler¹, José Duarte¹, Iris Martinez Quetglas¹, Eveline Nüesch³, Marta Cañamero⁴,
7 Evelyne Chesné¹, George Au-Yeung⁵, Erika Hamilton⁶, Stephanie Lheureux⁷, Debra L
8 Richardson⁸, Iben Spanggaard⁹, Bruno Gomes¹⁰, Izolda Franjkovic⁴, Mark DeMario², Martin
9 Kornacker^{10#}, Katharina Lechner^{4#}

10

11 **Running title:** Combining BET and PD-L1 inhibitors in solid tumor patients

12

13 **Corresponding author:** Dr. Daniel Marbach, Roche Pharma Research and Early
14 Development, Pharmaceutical Sciences, Roche Innovation Center Basel, F. Hoffmann-La Roche
15 Ltd, Basel, Switzerland, Email: daniel.marbach.dml@roche.com

16

17 1. Roche Pharma Research and Early Development, Pharmaceutical Sciences, Roche Innovation
18 Center Basel, F. Hoffmann-La Roche Ltd, Basel, Switzerland.

19 2. Roche Pharma Research and Early Development, Roche Innovation Center New York, F.
20 Hoffmann-La Roche Ltd, New York, NY, USA

21 3. Product Development, Data Sciences, Roche Innovation Center Basel, F. Hoffmann-La Roche
22 Ltd, Basel, Switzerland.

23 4. Roche Pharma Research and Early Development, Roche Innovation Center Munich, F.
24 Hoffmann-La Roche Ltd, Penzberg, Germany.

25 5. Peter MacCallum Cancer Centre and Sir Peter MacCallum Department of Oncology, The
26 University of Melbourne, Melbourne, Victoria, Australia.

27 6. Sarah Cannon Research Institute, Nashville, TN, USA

28 7. Division of Medical Oncology and Hematology, Princess Margaret Cancer Centre, University
29 Health Network, University of Toronto, Toronto, ON, Canada

30 8. Division of Gynecologic Oncology, Stephenson Cancer Center, University of Oklahoma Health
31 Sciences Center, Oklahoma City, OK, United States

32 9. Department of Oncology, Rigshospitalet, Copenhagen University Hospital, Copenhagen,
33 Denmark

34 10. Roche Pharma Research and Early Development, Oncology Early Clinical Development,
35 Roche Innovation Center Basel, F. Hoffmann-La Roche Ltd, Basel, Switzerland.

36

37 * Contributed equally to the work described in the manuscript

38 # MK and KL are senior coauthors

39 ABSTRACT

40 **Purpose:** Bromodomain and extra-terminal domain (BET) inhibitors (BETi) have demonstrated
41 epigenetic modulation capabilities, specifically in transcriptional repression of oncogenic
42 pathways. Preclinical assays suggest that BETi potentially attenuates the PD1/PD-L1 immune
43 checkpoint axis, supporting its combination with immunomodulatory agents.

44 **Patients and Methods:** A Phase 1b clinical trial was conducted to elucidate the pharmacokinetic
45 and pharmacodynamic profiles of the BET inhibitor RO6870810, as monotherapy and in
46 combination with the PD-L1 antagonist atezolizumab, in patients with advanced ovarian
47 carcinomas and triple-negative breast cancer (TNBC). Endpoints included maximum tolerated
48 dosages, adverse event profiling, pharmacokinetic evaluations, and antitumor activity.
49 Pharmacodynamic and immunomodulatory effects were assessed in tumor tissue (by
50 immunohistochemistry and RNA-seq) and in peripheral blood (by flow cytometry and cytokine
51 analysis).

52 **Results:** The study was terminated prematurely due to a pronounced incidence of immune-related
53 adverse effects in patients receiving combination of RO6870810 and atezolizumab. Anti-tumor
54 activity was limited to 2 patients (5.6%) showing partial response. Although target engagement
55 was confirmed by established BETi pharmacodynamic markers in both blood and tumor samples,
56 BETi failed to markedly decrease tumor PD-L1 expression and had a suppressive effect on anti-
57 tumor immunity. Immune effector activation in tumor tissue was solely observed with the
58 atezolizumab combination, aligning with this checkpoint inhibitor's recognized biological effects.

59 **Conclusions:** The combination of BET inhibitor RO6870810 with the checkpoint inhibitor
60 atezolizumab presents an unfavorable risk-benefit profile for ovarian cancer and TNBC (triple-
61 negative breast cancer) patients due to the increased risk of augmented or exaggerated immune
62 reactions, without evidence for synergistic anti-tumor effects.

63 **Trial registration:** ClinicalTrials.gov ID NCT03292172

64 **Keywords:** bromodomain, BET inhibitor, immunotherapy, phase 1b solid tumors, TNBC, ovarian
65 cancer

66

67 BACKGROUND

68 Epigenetic modifications are fundamental in guiding gene expression patterns, and alterations in
69 these modifications are frequently associated with the onset of various malignancies(1). One
70 prominent mechanism of epigenetic regulation is the reversible acetylation of histones, which
71 allows for dynamic gene expression modulation in response to various stimuli. At the heart of this
72 process is the Bromodomain and extra-terminal domain (BET) protein family, which includes
73 BRD2, BRD3, and BRD4, and the testis-specific BRDT. Serving as epigenetic "readers", these
74 proteins specifically identify and bind to acetylated histones(2).

75
76 Recently, the therapeutic promise of BET protein inhibition has emerged, leading to the
77 development of small molecule BET inhibitors (BETi), such as JQ1, which acts by binding the
78 bromodomains of BET proteins, inhibiting their chromatin association and thereby modulating
79 gene expression(3, 4). RO6870810 (also known as RG6146 or TEN-010), is a new non-covalent
80 BETi. Despite its structural resemblance to JQ1, RO6870810 has superior solubility and stability,
81 potentially offering therapeutic advantages (5).

82
83 BRD4, a primary target of RO6870810, is a universal gene transcription regulator(6). It has been
84 linked to the upregulation of oncogenes like MYC, BCL2, CDK6, and FOSL1(7-10). Notably,
85 BRD4 preferentially binds to super-enhancers, which are vast regulatory regions known for
86 controlling genes necessitating high expression levels(11, 12). While the sensitivity to BETi isn't
87 solely dictated by super-enhancers(6, 13), genes adjacent to these regions may be linked to BRD4
88 inhibition.

89

90 In hematological malignancies, particularly those with MYC and BCL2 overexpression due to
91 super-enhancer-driven transcriptional control, BETi has shown moderate success(14, 15).
92 Accumulating evidence also suggests potential BETi susceptibility in solid tumors, like triple-
93 negative breast cancer (TNBC) and advanced ovarian cancer which presently need effective
94 treatments. Notably, BRD4 amplification has been documented in these cancers(16), and MYC
95 amplification is prevalent in recurring ovarian tumors(17). Furthermore, BET proteins' roles in
96 immune function have potential utility in cancer therapy. While early research highlighted JQ1's
97 ability to suppress immune regulators in various tumor models(18-20), newer preclinical studies
98 showcase BETi's diverse impacts on immune cell subtypes and activation.

99

100 The safety and efficacy of the BET inhibitor RO6870810 combined with venetoclax and rituximab
101 was previously investigated for the treatment of relapsed or refractory diffuse large B-cell
102 lymphoma (DLBCL) (20). In this phase 1b trial involving 39 patients, the combination therapy
103 showed tolerability with manageable toxicities. Dose-limiting toxicities included neutropenia,
104 diarrhea, and hyperbilirubinemia. The maximum tolerated dose (MTD) for the combination of
105 RO6870810 and venetoclax was established at 0.65 mg/kg for RO6870810 and 600 mg for
106 venetoclax. For the triple combination of RO6870810, venetoclax, and rituximab, the MTDs were
107 0.45 mg/kg, 600 mg, and 375 mg/m², respectively. The combination showed promising anti-tumor
108 activity with an overall response rate of 38.5% and complete responses in 20.5% of patients.

109

110 Another phase 1b trial was conducted to determine the maximum tolerated dose (MTD) and
111 optimal biological dose (OBD) of RO6870810 monotherapy in patients with advanced multiple
112 myeloma (21). Though pharmacodynamic results indicated the on-target effects of RO6870810,
113 clinical responses were infrequent and, when present, transient. These findings align with the

114 preliminary activity noted for RO6870810 in an earlier first-in-human dose-escalation study.
115 There, objective response rates (ORRs) stood at 25% (2/8) for nuclear protein of the testis
116 carcinoma (NUT carcinoma), 2% (1/47) for other solid tumors, and 11% (2/19) for diffuse large
117 B-cell lymphoma (DLBCL)(21).

118

119 In a study by Roboz G.J. et al.(22), 32 patients with relapsed/refractory acute myeloid leukemia
120 and hypomethylating agent–refractory myelodysplastic syndrome were treated with RO6870810
121 monotherapy(22). Significant reductions in circulating CD11b+ cells, a known pharmacodynamic
122 marker of BET inhibition, were observed at RO6870810 concentrations exceeding 120 ng/mL.
123 Most side effects were mild, and there were no treatment-related fatalities. Although some patients
124 showed signs of stabilization or remission, the development of RO6870810 as a standalone therapy
125 was discontinued due to its limited efficacy.

126

127 The ability of BETi to inhibit the PD-1/PD-L1 immune checkpoint pathway and bolster anti-tumor
128 immunity suggests that combining it with a checkpoint inhibitor could yield improved clinical
129 outcomes(23). Supporting this notion, preclinical studies using a combination of BETi with anti-
130 PD-1 or anti-PD-L1 antibodies have showcased synergistic anti-tumor effects in mouse models of
131 lymphoma(19), melanoma(24), and non-small cell lung cancer(25). Yet, clinical evidence from
132 such combination therapies remains unreported(23, 26).

133

134 In this study, we present findings from a phase 1b clinical trial involving TNBC and ovarian cancer
135 patients. These patients received treatment with the BETi RO6870810 as a monotherapy or in
136 combination with atezolizumab (Tecentriq), a humanized IgG1 monoclonal antibody targeting
137 PD-L1. Notably, atezolizumab has secured approval for treating PD-L1 positive metastatic

138 TNBC(27). Our study examines the potential anti-tumor immune activation facilitated by both
139 RO6870810 monotherapy and its combination with atezolizumab. We offer a detailed biomarker
140 analysis, highlighting transcriptional alterations and immune modulation in both tumor tissue and
141 peripheral blood. This is the first study to explore the effects of combining BET inhibition with
142 PD-L1 blockade to enhance therapeutic efficacy by targeting both the epigenetic regulation
143 pathways and immune checkpoint pathways simultaneously.

144

145 **METHODS**

146 **Study design**

147 We conducted a phase 1b, open-label, non-randomized trial on patients ≥ 18 years with TNBC and
148 advanced ovarian cancer. We explored two treatment strategies: (1) immediate combination of
149 RO6870810 administered subcutaneously, with intravenous atezolizumab (concomitant regimen,
150 Fig. 1a), and (2) an initial 21-day single-agent, subcutaneous RO6870810 treatment, followed by
151 its combination with intravenous atezolizumab (sequential regimen, Fig. 1b). The dose-escalation
152 followed a classic 3+3 design with initially planned doses of 0.30 mg/kg, 0.45 mg/kg, and 0.65
153 mg/kg. The study had four groups. Groups 1 and 2 focused on dose escalation for the concomitant
154 and sequential treatments, respectively. Patients in group 1 received a starting-dose of 0.30 mg/kg
155 for 14 days administered subcutaneously on a 3-week schedule. Once a cohort in group 1 was
156 completed and deemed safe, group 2 began the 21-day run-in period, during which RO6870810
157 monotherapy was administered to a minimum of 3 participants. Participants enrolled in group 2
158 initially received RO6870810 as monotherapy during the first 14 days of a 21-day run-in period,
159 starting at a dose of 0.30 mg/kg. Patients in the same dose level were treated simultaneously.
160 Following the run-in period, participants continued to receive RO6870810 at the same dose in
161 combination with 1200 mg atezolizumab in 21-day cycles. In the expansion phase, Cohorts 3 and

162 4 further investigated the concomitant regime for TNBC and ovarian cancer patients, using the
163 optimal dose determined in Cohort 1.

164

165 The study primarily aimed to ascertain the maximum tolerated dose (MTD) or maximum
166 administered dose (MDA) of RO6870810 both as a standalone treatment and in combination with
167 atezolizumab, by monitoring dose-limiting side effects and ongoing safety. The expansion groups
168 enabled us to gauge the early clinical efficacy of RO6870810 when paired with atezolizumab.
169 Additionally, understanding the immune modulation profiles of RO6870810, both as monotherapy
170 and when combined with PD-L1 inhibition, was a goal for this study.

171

172 Objective responses were assessed by investigators according to RECIST v1.1 and Immune
173 Modified RECIST criteria. The grading of all adverse events (AEs) was based on the National
174 Cancer Institute Common Toxicity Criteria for Adverse Events (NCI CTCAE) version 4.03.

175

176 The study's methodology, eligibility criteria, dosing schedules, and safety protocols are detailed in
177 the Supplementary Methods. Further information is accessible on ClinicalTrials.gov under trial ID
178 NCT03292172 or via this direct link: <https://clinicaltrials.gov/study/NCT03292172>.

179

180 **Sample collection and analysis**

181 Blood samples were collected at specified intervals for biomarker analysis. Flow cytometry was
182 conducted at Covance Central Laboratory using established protocols. Cytokine levels were
183 measured using the ELLA method by Microcoat Biotechnology. Tumor biopsies were processed
184 for immunohistochemistry and RNA-seq to study gene expression and pathway activity. The

185 detailed methods, including sample preparation, analytical procedures, and statistical analyses, are
186 provided in the supplementary methods section.

187

188 **RESULTS**

189 **Patient demographics and key clinical data**

190 *Dosing of RO6870810*

191 The dosing rationale was based on pharmacokinetic profile and tolerability of RO6870810
192 observed in patients with NUT carcinoma, other solid tumors, and DLBCL(21). In this study,
193 RO6870810 demonstrated overall tolerability across different indications except for a single dose-
194 limiting toxicity (DLT) of grade 3 cholestatic hepatitis observed in a patient with prostate cancer
195 at 0.45 mg/kg on a 28-day schedule. This led to the expansion of the cohort without additional
196 DLTs and dose escalation to 0.65 mg/kg. Although no DLTs were reported at this level during
197 cycle 1, treatment discontinuations due to fatigue in cycle 2 prompted the exploration of a 14 of
198 21 days schedule. This 0.65 mg/kg dose was identified as the recommended phase 2 dose for solid
199 tumors. Similarly, in the study by Dickinson et al.(15), the maximum tolerated dose (MTD) for
200 the combination of RO6870810 and venetoclax was established at 0.65 mg/kg for RO6870810 and
201 600 mg for venetoclax. For the triple combination of RO6870810, venetoclax, and rituximab, the
202 MTDs were determined to be 0.45 mg/kg for RO6870810, 600 mg for venetoclax, and 375 mg/m²
203 for rituximab.

204

205 Based on the safety profile and pharmacodynamic (PD) effects observed, a starting dose of 0.3
206 mg/kg for 14 days on a 3-week schedule was selected as appropriate for the initial dose cohort of
207 both groups. This dosage was anticipated to provide significant target PD effects while maintaining

208 a tolerable safety profile. This strategy aimed to optimize the therapeutic potential of RO6870810
209 in combination with atezolizumab for the patient population in this study.

210

211 *Participants*

212 Thirty-six (36) patients with metastatic advanced ovarian cancer (n= 29) or triple negative breast
213 cancer (n= 7) were included and received at least one dose of study drug in this open-label, dose
214 finding and expansion phase 1 study. The total of 36 safety evaluable patients were enrolled in
215 Denmark (8 patients), Canada (10 patients), the US (15 patients), and Australia (3 patients). Details
216 of the groups and cohorts and their dosages are provided in Table 1.

217

218 Twenty-seven patients were included in the dose escalation part (groups 1 and 2) and 9 patients
219 were treated in the expansion phase at the recommended phase 2 dose of 0.45mg/kg. The median
220 age of all enrolled female patients was 53 years (range: 34-72 years) with 22 patients (61.1%)
221 showing an ECOG score of 1 and 14 patients (38.9%) an ECOG score of 0. All 36 enrolled patients
222 discontinued the study treatment; the primary reasons for treatment discontinuation were
223 progressive disease (21 patients [58.3%]) and AEs (8 patients [22.2%]). Of the 36 patients
224 enrolled, 29 patients discontinued and 7 patients completed the study. The primary reasons for
225 study discontinuation were death (12 patients [33.3%]), followed by a reason of “other” (7 patients
226 [19.4%]). Further reasons of study discontinuation were withdrawal by the patient (6 patients
227 [16.7%], progressive disease and study terminated by Sponsor (2 patients [5.6%]).

228

229 *Safety*

230 The study was terminated prematurely because of frequency and severity of adverse events (AEs)
231 and an unfavorable risk-benefit profile of the combination of RO6870810 and Atezolizumab. All

232 participants (100%, 36/36) experienced at least one AE, with 97.2% (35/36) reporting treatment-
233 related AEs. A total of 473 AEs were documented. Discontinuation due to AEs affected 22.2%
234 (8/36) of patients.

235
236 Grade ≥ 3 AEs were reported in 63.9% (23/36) of patients, with serious adverse events (SAEs)
237 occurring in 58.3% (21/36). Of these, treatment-related Grade ≥ 3 AEs were observed in 41.7%
238 (15/36) of patients, and treatment-related SAEs in 33.3% (12/36). One dose-limiting toxicity
239 (DLT) was identified at dose level 3, attributed to a Grade 3 systemic immune activation event in
240 one patient from Group 1, Cohort 3, at a dosage of 0.65 mg/kg in combination with atezolizumab.
241 This event, deemed related to the study treatment, led to the discontinuation of treatment for this
242 patient.

243
244 Among the 21 patients (58.3%) who experienced SAEs, a total of 35 SAEs were reported. SAEs
245 occurring in $\geq 5\%$ of patients included systemic immune activation (4 patients [11.1%]), small
246 intestinal obstruction (3 patients [8.3%]), abdominal pain, chest pain, fatigue, and pyrexia (each
247 reported by 2 patients [5.6%]).

248
249 The system organ classes (SOCs) in which AEs were experienced by $\geq 50\%$ patients were: General
250 disorders and administration site conditions (35 patients [97.2%]), gastrointestinal disorder (29
251 patients [80.6%]), metabolism and nutrition disorder (23 patients [63.9%]), and respiratory,
252 thoracic and mediastinal disorders (19 patients [52.8%] each). The most frequently reported AEs,
253 affecting at least 30% of participants, included fatigue and injection site reactions (66.7%, 24/36
254 for each Preferred Term [PT]), diarrhea (50.0%, 18/36), nausea (44.4%, 16/36), decreased appetite
255 (41.7%, 15/36), pyrexia (36.1%, 13/36), and vomiting (30.6%, 11/36). Adverse events related to

256 the study treatment and reported by at least 30% of the patients, were injection site reactions
257 (66.7%, 24/36), fatigue (52.8%, 19/36), diarrhea (41.7%, 15/36), decreased appetite (36.1%,
258 13/36), and nausea (33.3%, 12/36).

259

260 The study recorded 15 deaths (41.7%), with nine deaths due to progressive disease and six deaths
261 (16.7%) reported during long-term follow-up where the cause of death was unknown. None of the
262 deaths were treatment-related.

263

264 Although there were laboratory abnormalities in both hematological (high and low) and clinical
265 chemistry (high and low) parameters, none of these were considered clinically significant. No
266 clinically meaningful differences from baseline were noted in the vital signs.

267

268 *Efficacy*

269 Response was measured according to RECIST overall response. Out of 31 evaluable patients, two
270 patients exhibited a partial response (PR), fifteen patients demonstrated stable disease (SD), and
271 fourteen patients were classified with progressive disease (PD) as their best objective response
272 (Figure 2). Further breakdown and detailed analysis of patient responses across different groups
273 and cohorts are documented in Table 2.

274

275 The two partial responses were observed in Group 1, Cohort 1, which received a dosage of 0.3
276 mg/kg concurrently, and in Group 1, Cohort 2, with a 0.45 mg/kg concurrent dosage. Five patients
277 were excluded from the clinical response evaluation due to the absence of post-baseline response
278 data and were therefore categorized as having progressive disease.

279

280 **Pharmacodynamic effects for BETi biomarkers**

281 Pharmacodynamic (PD) biomarkers for RO6870810 were evaluated in peripheral blood and tumor
282 tissue. BET inhibitors are known to target peripheral blood monocytes(28), which are critical
283 determinants of cancer-associated inflammation. A previous study with RO6870810 has suggested
284 that circulating monocyte levels in peripheral blood can be used as a potential biomarker for the
285 pharmacodynamic effects(29). Figure 3A presents the results of circulating monocytes following
286 concurrent or sequential administration of RO6870810 and atezolizumab. We observed a
287 significant decrease in CD14+/CD11b+ monocytes after the initial treatment cycle, with the lowest
288 counts recorded between days 8 and 14 post-treatment. These levels then recovered by day 21.

289
290 We further investigated the expression of genes affected by BET inhibitors (BETi) within the
291 tumor tissue using RNA sequencing (RNA-seq). The genes CD180, CCR2, MYC and HEXIM1
292 are previously reported pharmacodynamic markers of BETi in different settings(26). On day 21,
293 significant reductions in the levels of CCR2 and CD180 were confirmed under both the concurrent
294 regimen and the monotherapy initiation with RO6870810, while MYC and HEXIM1 were not
295 significantly affected (Figure 3B). The treatment also led to the downregulation of the BRD4 super
296 enhancer, alongside specific changes in the expression of apoptotic and BCL2 family genes
297 (Figure 3C). Notably, BCL2 and BCL2L1 were upregulated, whereas IGLL5 and IRF4 were
298 downregulated. These gene expression changes, particularly within the context of apoptosis and
299 lymphocyte regulation, underscore the potential mechanisms through which RO6870810 exerts its
300 anti-tumor effects.

301
302 We also examined the changes in cellular subsets and soluble biomarkers within peripheral blood
303 as assessed by flow cytometry and cytokine profiling. Besides the decrease in CD14+/CD11b+

304 monocytes discussed above, no notable changes were observed for the run-in cycle with
305 RO6870810 alone. In contrast, early phases of the combination therapy with atezolizumab were
306 characterized by a transient reduction in circulating immune cells, including CD4⁺ and CD8⁺
307 cells, CD16⁺CD56⁺ NK cells, CD19⁺ B cells, and CD14⁺/CD11b⁺ monocytes (Figure 4A). The
308 transient drop in circulating immune cells, potentially due to margination and extravasation, has
309 been previously described for other immunotherapeutic modalities involving T cell activation(30,
310 31). Following this initial reduction in circulating immune cells, there was an expansion of specific
311 cell types, particularly CD16⁺CD56⁺ NK cells and CD8⁺ T cells, but not CD4⁺ T cells (Figure
312 4A). Consequently, the ratio of CD4⁺ to CD8⁺ T cells shifted towards a higher proportion of
313 cytotoxic cells in the later phase of the combination therapy (Figure 4B).

314

315 In the combination therapy with atezolizumab, the concentration of sCD25, a soluble form of the
316 IL-2 receptor alpha chain, showed a marked increase on day 15 post-treatment initiation, with
317 levels remaining elevated through day 21 (Figure 4C). This elevation in sCD25 is indicative of T
318 cell activation, suggesting enhanced immune activation potentially conducive to antitumor
319 activity. Similarly, TNF α , a critical cytokine in inflammation and immune regulation, exhibited a
320 marked increase on-treatment with a peak at day 15 (Figure 4D). These effects were not observed
321 during the run-in cycle with RO6870810 alone, suggesting that the immune-stimulating effects in
322 the combination therapy are driven by atezolizumab.

323

324 We subsequently examined tumor tissue by RNA-seq in order to explore immune gene and
325 signature expression changes (Figure 5). Consistent with the established mechanism of action of
326 the PD-L1 inhibitor atezolizumab, we confirm up-regulation of immune effector gene signatures
327 in tumor tissues under the combination therapy, including signatures associated with CD8⁺ T cell

328 effector functions and antigen processing machinery. In sharp contrast, the same immune effector
329 signatures were down-regulated in patients treated with BETi alone (Figure 5A).

330

331 These observations were confirmed at the level of individual genes within those signatures (Figure
332 5B). We found marked increases in gene expression related to inflammation within the tumor
333 microenvironment. For example, genes related to T cell activation and infiltration, immune
334 surveillance, cytokine signaling, cell-mediated cytotoxicity and the IFN- γ response exhibited
335 significant up-regulation at day 21 under the combination therapy with both treatment regimens,
336 consistent with the induction of a robust antitumor immune environment. In contrast, a suppression
337 of these genes and pathways was observed during the BETi monotherapy run-in, aligning with a
338 more immunosuppressive tumor microenvironment (Figure 5B).

339

340 We further validated these findings using immunohistochemistry (IHC) data from tumor tissue
341 samples. Contrary to pre-clinical expectations that BET inhibition would suppress PD-L1
342 expression and thereby enhance anti-tumor immunity(19, 20, 32, 33) treatment with RO6870810
343 did not reduce PD-L1 expression during the monotherapy run-in phase. Additionally, RO6870810
344 failed to prevent the likely IFN- γ -induced upregulation of PD-L1 when combined with
345 atezolizumab (Supplementary Figure 1).

346

347 **DISCUSSION**

348 This is the first study to clinically evaluate the combination of BET inhibition and immune
349 checkpoint inhibition. Patients with advanced metastatic ovarian cancer and triple-negative breast
350 cancer were treated with the BET inhibitor RO6870810 and the PD-L1 inhibitor atezolizumab
351 following two alternative regimens, with or without an RO6870810 monotherapy run-in phase.

352 Despite the promising preclinical evidence suggesting potential synergistic effects of combining
353 BET inhibitors with checkpoint inhibitors, our phase 1b study highlights significant challenges
354 and limitations associated with this therapeutic strategy.

355

356 Although each agent has a manageable safety profile when used alone, the combination of
357 RO6870810 and atezolizumab led to pronounced immune-related adverse events (irAEs),
358 necessitating premature study termination. The majority of patients experienced treatment-related
359 adverse events, with a substantial proportion encountering severe (Grade ≥ 3) adverse events and
360 serious adverse events (SAEs). Notably, systemic immune activation (SIA) was a prominent SAE,
361 underscoring the potential for heightened immune responses when combining these agents. These
362 findings align with the known immune-stimulatory effects of checkpoint inhibitors but suggest
363 that the addition of BET inhibition may exacerbate these responses, leading to an unfavorable risk-
364 benefit profile.

365

366 Pharmacodynamic analyses confirmed target engagement by RO6870810, as evidenced by
367 changes in established BETi biomarkers in both peripheral blood and tumor tissue. However,
368 contrary to preclinical expectations, RO6870810 monotherapy did not significantly decrease
369 tumor PD-L1 expression and appeared to suppress anti-tumor immunity within the tumor
370 microenvironment (TME). This immunosuppressive effect was only reversed when RO6870810
371 was combined with atezolizumab, which induced immune effector activation in the TME. This
372 highlights the pivotal role of atezolizumab in stimulating anti-tumor immunity, consistent with its
373 known mechanism of action as a PD-L1 inhibitor.

374

375 The combination therapy also induced systemic immune effects, evidenced by transient reductions
376 in circulating immune cells followed by their expansion, and increased levels of soluble immune
377 activation markers such as sCD25 and TNF α . These systemic changes suggest that while the
378 combination can activate the immune system, it may also predispose patients to severe irAEs.

379

380 The observed changes in both circulating immune cells and soluble factors, following concomitant
381 and sequential administration of the treatments, but not with the monotherapy run-in phase using
382 RO6870810 alone, underscore the critical role of atezolizumab in eliciting the potential antitumor
383 immune response. Atezolizumab, by enhancing immune activation and possibly improving the
384 recognition and elimination of tumor cells, emerges as the primary driver behind the immune
385 modulatory effects observed, rather than RO6870810.

386

387 The anti-tumor activity observed in this study was limited, with only two patients (5.6%) achieving
388 partial responses. This modest efficacy, coupled with the high incidence of severe irAEs, further
389 supports the conclusion that the combination of RO6870810 and atezolizumab does not provide a
390 favorable therapeutic benefit for patients with advanced ovarian carcinomas and TNBC. The lack
391 of significant tumor PD-L1 modulation by RO6870810 and the observed immunosuppressive
392 effects during monotherapy suggest that BET inhibition may not enhance the efficacy of
393 checkpoint inhibitors in these cancer types.

394

395 Our study underscores the complexity of combining epigenetic modulators with immunotherapies.
396 The anticipated synergistic stimulation of anti-tumor immunity from combining BET inhibitors
397 with checkpoint blockade, as suggested by preclinical models, could not be confirmed in our
398 clinical study. This discrepancy underscores the significant challenges in translating preclinical

399 findings to clinical settings. The observed immunosuppressive effects of BETi monotherapy
400 within the TME suggest that we need better models and a deeper understanding of the context-
401 dependent effects of these agents on immune modulation.

402

403 **CONCLUSIONS**

404 The combination of RO6870810 and atezolizumab demonstrated some immune activation;
405 however, the associated severe irAEs and limited anti-tumor efficacy indicate that this therapeutic
406 approach is not viable for patients with advanced ovarian carcinomas and TNBC. These findings
407 highlight the importance of careful evaluation of combination strategies in clinical trials and the
408 need for continued exploration of novel therapeutic approaches to improve outcomes for patients
409 with these challenging malignancies.

410

411 **DECLARATIONS**

412 Ethics approval and consent to participate: This study was approved by each center's ethics
413 committee or institutional review board, and the study was conducted in accordance with the
414 principles of the Declaration of Helsinki and Good Clinical Practice guidelines. All participants
415 provided written informed consent. List of independent Ethics Committees/Institutional Review
416 Boards with dates of approval: (1) University Health Network Research Ethics Board, 700 Bay
417 Street, 17th Floor, Suite 1700, M5G 1Z6, Toronto, Ontario, CANADA (Approval: 12-Oct-2017);
418 (2) Dana Farber Cancer Institute/Dana-Farber/Harvard Cancer center, 450 Brookline Ave, OS-
419 200, Boston, MA, 02215, UNITED STATES (Approval: 07-Nov-2017); (3) Western Institutional
420 Review Board, 1019 39th Avenue SE, Ste 120, Puyallup, WA, 98374, UNITED STATES
421 (Approval: 18-Oct-2017); (4) Peter MacCallum Cancer Centre Ethics Committee, 305 Grattan
422 Street, 3000, Melbourne, Victoria, AUSTRALIA (Approval: 01-Aug-2018); (5) IntegReview

423 Ethical Review Board, 3001 S. Lamar Blvd., Suite 210, Austin, TX, 78704, UNITED STATES

424 (Approval: 03-Sept-2018).

425 Consent for publication: All of the authors have provided consent for publication.

426 Availability of data and materials: Qualified researchers may request access to individual

427 participant-level data through the clinical study data request platform

428 (<https://vivli.org/ourmember/roche/>). Further details on F. Hoffmann-La Roche Ltd's criteria for

429 eligible studies are available at <https://vivli.org/members/ourmembers/>. For further details on F.

430 Hoffmann-La Roche Ltd's Global Policy on the Sharing of Clinical Information and the

431 procedure to request access to related clinical study documents, see

432 <https://www.roche.com/innovation/process/clinical-trials/data-sharing>.

433 Competing interests: Authors¹⁻⁵ are employees and/or shareholders of F Hoffmann-La Roche. All

434 authors have received grants and non-financial or other support from F. Hoffmann-La Roche,

435 during the conduct of the study. Editorial support, funded by the sponsor, was provided by an

436 independent medical writer under the guidance of the authors.

437 Funding: Funded by F. Hoffmann-La Roche, Ltd.

438 Authors' contributions: GAY, EH, SL, DR, GS and IS served as site investigators for the trial. The

439 remaining authors made substantial contributions to the study's design and methodology, clinical

440 and laboratory assessments, data acquisition, and analysis. They were also involved in developing

441 the statistical approaches, conducting biomarker analyses, and interpreting the results of the trial.

442 Acknowledgements: We thank the patients and their families for participating in the clinical trial.

443 Editorial assistance was provided by Dr. A. Raja Choudhury.

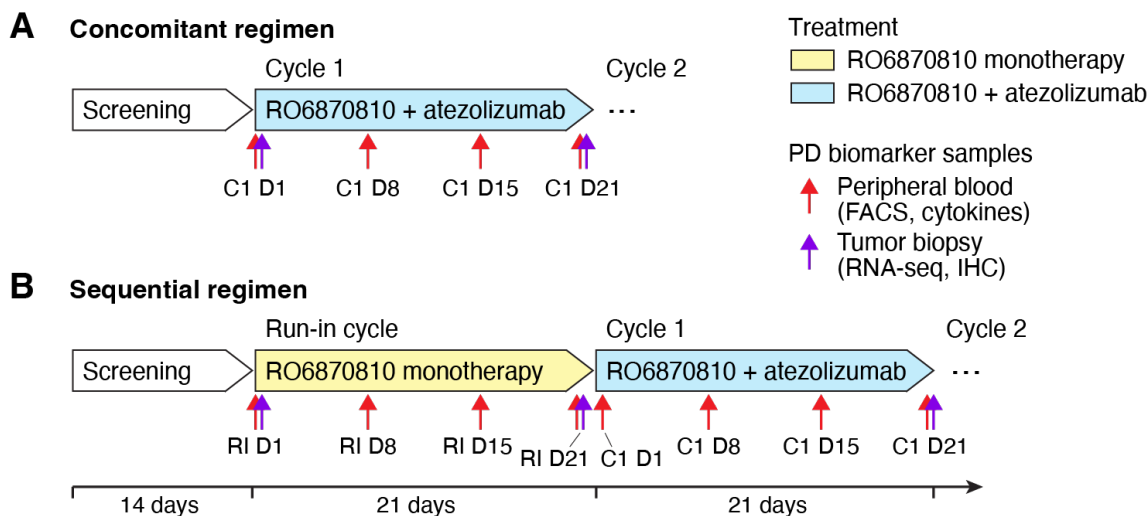
444 REFERENCES

- 445 1. Sharma S, Kelly TK, Jones PA. Epigenetics in cancer. *Carcinogenesis*. 2010;31(1):27-36.
- 446 2. Doroshov DB, Eder JP, LoRusso PM. BET inhibitors: a novel epigenetic approach. *Ann*
447 *Oncol*. 2017;28(8):1776-87.
- 448 3. Filippakopoulos P, Knapp S. Targeting bromodomains: epigenetic readers of lysine
449 acetylation. *Nat Rev Drug Discov*. 2014;13(5):337-56.
- 450 4. Filippakopoulos P, Qi J, Picaud S, Shen Y, Smith WB, Fedorov O, et al. Selective
451 inhibition of BET bromodomains. *Nature*. 2010;468(7327):1067-73.
- 452 5. Peirs S, Frismantas V, Matthijssens F, Van Loocke W, Pieters T, Vandamme N, et al.
453 Targeting BET proteins improves the therapeutic efficacy of BCL-2 inhibition in T-cell acute
454 lymphoblastic leukemia. *Leukemia*. 2017;31(10):2037-47.
- 455 6. Muhar M, Ebert A, Neumann T, Umkehrer C, Jude J, Wieshofer C, et al. SLAM-seq
456 defines direct gene-regulatory functions of the BRD4-MYC axis. *Science*. 2018;360(6390):800-5.
- 457 7. Dawson MA, Prinjha RK, Dittmann A, Giotopoulos G, Bantscheff M, Chan WI, et al.
458 Inhibition of BET recruitment to chromatin as an effective treatment for MLL-fusion leukaemia.
459 *Nature*. 2011;478(7370):529-33.
- 460 8. Delmore JE, Issa GC, Lemieux ME, Rahl PB, Shi J, Jacobs HM, et al. BET bromodomain
461 inhibition as a therapeutic strategy to target c-Myc. *Cell*. 2011;146(6):904-17.
- 462 9. Lockwood WW, Zejnullahu K, Bradner JE, Varmus H. Sensitivity of human lung
463 adenocarcinoma cell lines to targeted inhibition of BET epigenetic signaling proteins. *Proc Natl*
464 *Acad Sci U S A*. 2012;109(47):19408-13.
- 465 10. Zuber J, Shi J, Wang E, Rappaport AR, Herrmann H, Sison EA, et al. RNAi screen
466 identifies Brd4 as a therapeutic target in acute myeloid leukaemia. *Nature*. 2011;478(7370):524-
467 8.
- 468 11. Lovén J, Hoke HA, Lin CY, Lau A, Orlando DA, Vakoc CR, et al. Selective inhibition of
469 tumor oncogenes by disruption of super-enhancers. *Cell*. 2013;153(2):320-34.
- 470 12. Pott S, Lieb JD. What are super-enhancers? *Nat Genet*. 2015;47(1):8-12.
- 471 13. Sahni JM, Gayle SS, Webb BM, Weber-Bonk KL, Seachrist DD, Singh S, et al. Mitotic
472 Vulnerability in Triple-Negative Breast Cancer Associated with LIN9 Is Targetable with BET
473 Inhibitors. *Cancer Res*. 2017;77(19):5395-408.
- 474 14. Abedin SM, Boddy CS, Munshi HG. BET inhibitors in the treatment of hematologic
475 malignancies: current insights and future prospects. *Onco Targets Ther*. 2016;9:5943-53.
- 476 15. Dickinson M, Briones J, Herrera AF, González-Barca E, Ghosh N, Cordoba R, et al. Phase
477 1b study of the BET protein inhibitor RO6870810 with venetoclax and rituximab in patients with
478 diffuse large B-cell lymphoma. *Blood Adv*. 2021;5(22):4762-70.
- 479 16. Baratta MG, Schinzel AC, Zwang Y, Bandopadhyay P, Bowman-Colin C, Kutt J, et al.
480 An in-tumor genetic screen reveals that the BET bromodomain protein, BRD4, is a potential
481 therapeutic target in ovarian carcinoma. *Proc Natl Acad Sci U S A*. 2015;112(1):232-7.
- 482 17. Li C, Bonazzoli E, Bellone S, Choi J, Dong W, Menderes G, et al. Mutational landscape
483 of primary, metastatic, and recurrent ovarian cancer reveals c-MYC gains as potential target for
484 BET inhibitors. *Proc Natl Acad Sci U S A*. 2019;116(2):619-24.
- 485 18. Casey SC, Tong L, Li Y, Do R, Walz S, Fitzgerald KN, et al. MYC regulates the antitumor
486 immune response through CD47 and PD-L1. *Science*. 2016;352(6282):227-31.
- 487 19. Hogg SJ, Vervoort SJ, Deswal S, Ott CJ, Li J, Cluse LA, et al. BET-Bromodomain
488 Inhibitors Engage the Host Immune System and Regulate Expression of the Immune Checkpoint
489 Ligand PD-L1. *Cell Rep*. 2017;18(9):2162-74.

- 490 20. Zhu H, Bengsch F, Svoronos N, Rutkowski MR, Bitler BG, Allegrezza MJ, et al. BET
491 Bromodomain Inhibition Promotes Anti-tumor Immunity by Suppressing PD-L1 Expression. *Cell*
492 *Rep.* 2016;16(11):2829-37.
- 493 21. Shapiro GI, LoRusso P, Dowlati A, T. Do K, Jacobson CA, Vaishampayan U, et al. A
494 Phase 1 study of RO6870810, a novel bromodomain and extra-terminal protein inhibitor, in
495 patients with NUT carcinoma, other solid tumours, or diffuse large B-cell lymphoma. *British*
496 *journal of cancer.* 2021;124(4):744-53.
- 497 22. Roboz GJ, Desai P, Lee S, Ritchie EK, Winer ES, DeMario M, et al. A dose escalation
498 study of RO6870810/TEN-10 in patients with acute myeloid leukemia and myelodysplastic
499 syndrome. *Leukemia & Lymphoma.* 2021;62(7):1740-8.
- 500 23. Bechter O, Schöffski P. Make your best BET: The emerging role of BET inhibitor
501 treatment in malignant tumors. *Pharmacol Ther.* 2020;208:107479.
- 502 24. Nikbakht N, Tiago M, Erkes DA, Chervoneva I, Aplin AE. BET Inhibition Modifies
503 Melanoma Infiltrating T Cells and Enhances Response to PD-L1 Blockade. *J Invest Dermatol.*
504 2019;139(7):1612-5.
- 505 25. Adegbe DO, Liu S, Hattersley MM, Bowden M, Zhou CW, Li S, et al. BET Bromodomain
506 Inhibition Cooperates with PD-1 Blockade to Facilitate Antitumor Response in Kras-Mutant Non-
507 Small Cell Lung Cancer. *Cancer Immunol Res.* 2018;6(10):1234-45.
- 508 26. Shorstova T, Foulkes WD, Witcher M. Achieving clinical success with BET inhibitors as
509 anti-cancer agents. *British Journal of Cancer.* 2021;124(9):1478-90.
- 510 27. Schmid P, Adams S, Rugo HS, Schneeweiss A, Barrios CH, Iwata H, et al. Atezolizumab
511 and Nab-Paclitaxel in Advanced Triple-Negative Breast Cancer. *N Engl J Med.*
512 2018;379(22):2108-21.
- 513 28. Elfiky AMI, Hageman IL, Becker MAJ, Verhoeff J, Li Yim AYW, Joustra VW, et al. A
514 BET Protein Inhibitor Targeting Mononuclear Myeloid Cells Affects Specific Inflammatory
515 Mediators and Pathways in Crohn's Disease. *Cells.* 2022;11(18).
- 516 29. Ramasamy K, Nooka A, Quach H, Htut M, Popat R, Liedtke M, et al. A phase 1b dose-
517 escalation/expansion study of BET inhibitor RO6870810 in patients with advanced multiple
518 myeloma. *Blood Cancer Journal.* 2021;11(9):149.
- 519 30. Bröske A-ME, James I, Belousov A, Gomez E, Canamero M, Ooi C-H, et al. CD20-TCB,
520 a Novel T-Cell-Engaging Bispecific Antibody, Induces T-Cell-Mediated Killing in Relapsed or
521 Refractory Non-Hodgkin Lymphoma: Biomarker Results From a Phase I Dose-Escalation Trial.
522 *Blood.* 2019;134(Supplement_1):5319-.
- 523 31. Bröske A-ME, Korfi K, Belousov A, Wilson S, Ooi C-H, Bolen CR, et al.
524 Pharmacodynamics and molecular correlates of response to glofitamab in relapsed/refractory non-
525 Hodgkin lymphoma. *Blood advances.* 2022;6(3):1025-37.
- 526 32. Andrieu GP, Shafran JS, Smith CL, Belkina AC, Casey AN, Jafari N, et al. BET protein
527 targeting suppresses the PD-1/PD-L1 pathway in triple-negative breast cancer and elicits anti-
528 tumor immune response. *Cancer Lett.* 2019;465:45-58.
- 529 33. Jing X, Shao S, Zhang Y, Luo A, Zhao L, Zhang L, et al. BRD4 inhibition suppresses PD-
530 L1 expression in triple-negative breast cancer. *Exp Cell Res.* 2020;392(2):112034.
- 531 34. Mariathasan S, Turley SJ, Nickles D, Castiglioni A, Yuen K, Wang Y, et al. TGFβ
532 attenuates tumour response to PD-L1 blockade by contributing to exclusion of T cells. *Nature.*
533 2018;554(7693):544-8.
- 534
- 535

536 **FIGURES AND TABLES**

537



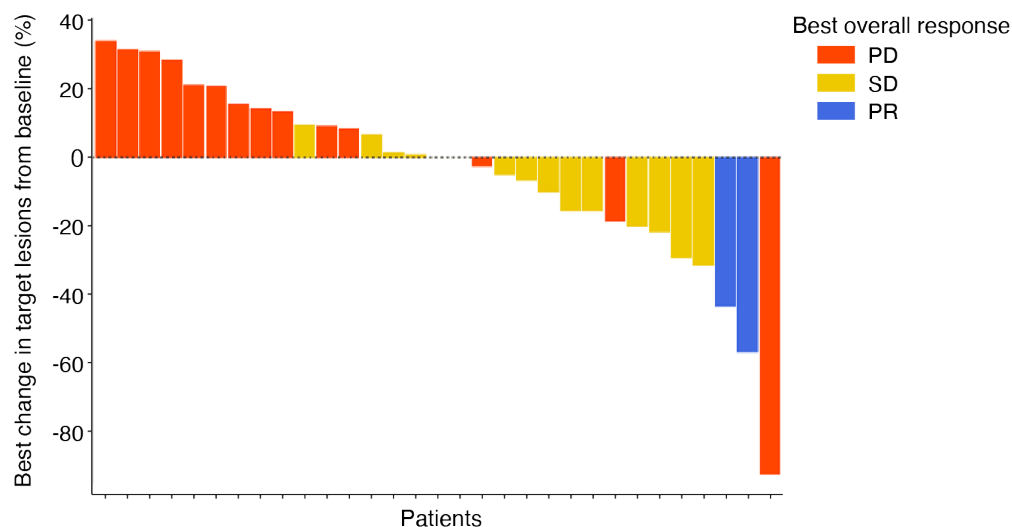
538

539

540 **Figure 1. Schematic Overview of Study Treatment Regimens and Pharmacodynamic**
541 **Biomarker Collection**

542 **A.** The concomitant regimen involved patients receiving a combination of RO6870810 and
543 atezolizumab from initiation. Tumor biopsies for RNA-sequencing and immunohistochemistry
544 (IHC) were taken at baseline (Cycle 1 Day 1 [C1 D1]) and post-first cycle (Cycle 1 Day 21 [C1
545 D21]), indicated by purple arrows. Peripheral blood samples for flow cytometry and cytokine
546 profiling, shown by red arrows, were collected on days 1, 8, 15, and 21. This regimen was applied
547 to patients in the dose escalation and both expansion cohorts.

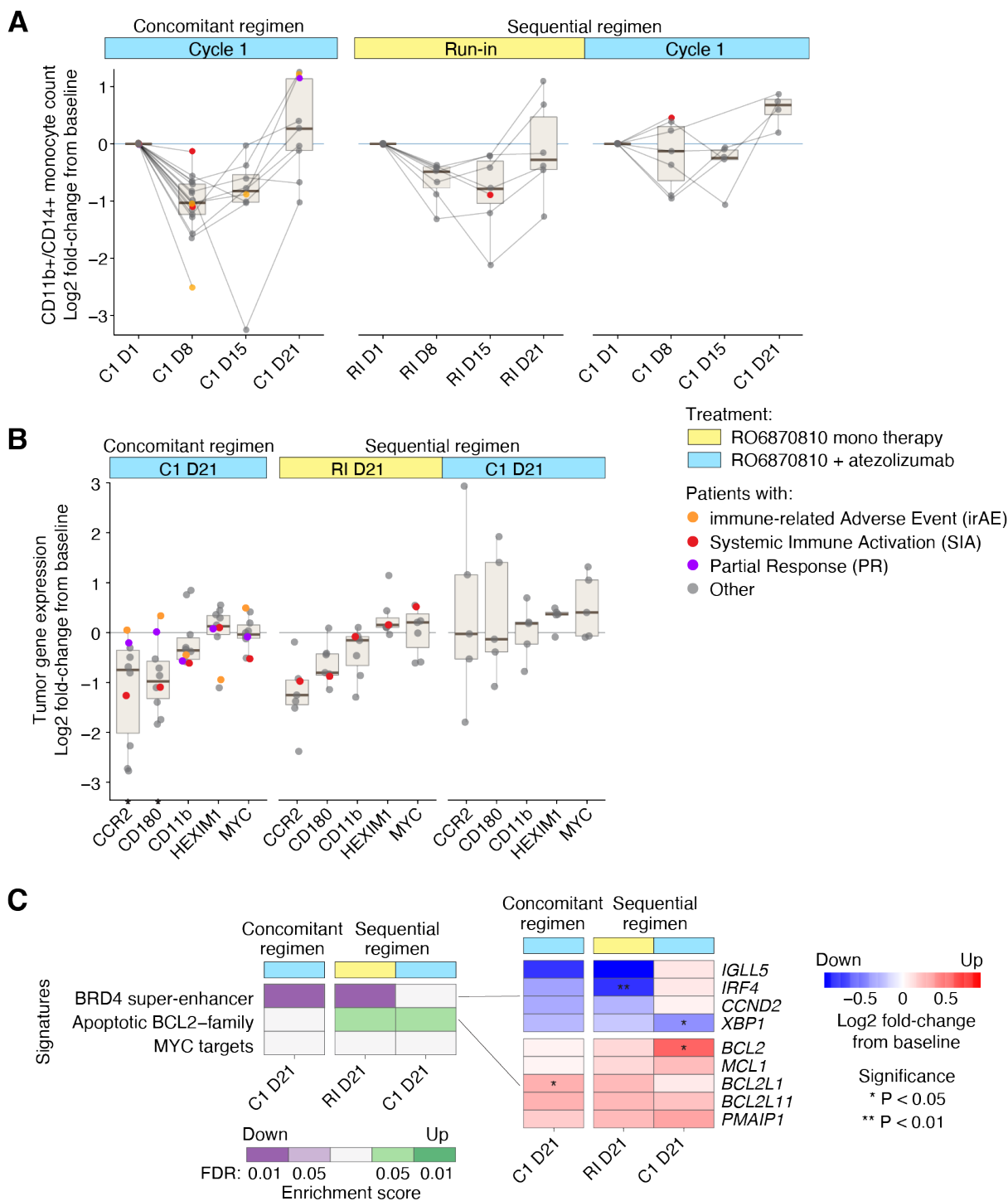
548 **B.** To evaluate the impact of RO6870810 as a single agent, an alternative group followed a
549 sequential regimen, starting with RO6870810 alone in a run-in cycle before transitioning to
550 combined treatment with atezolizumab. Tumor biopsies were performed at the run-in start (Run-
551 in Day 1 [RI D1]), post-run-in cycle (Run-In Day 21 [RI D21]), and after the initial cycle of
552 combination therapy (C1 D21). Peripheral blood sampling occurred on the same days during the
553 run-in and the first combination treatment cycle, facilitating a comprehensive analysis of
554 treatment-induced changes.



555

556 **Figure 2: Changes in Target Lesion Size and Best Overall Response**

557 Each bar represents the response of an individual patient, measured according to RECIST overall
558 response criteria. The y-axis corresponds to the maximum percentage change from baseline in sum
559 of longest diameters (SLD) in target lesions. Colors indicate the best overall response. Out of 36
560 patients, 31 were evaluable for clinical response. Two patients who exhibited a decrease in target
561 lesion size were still classified as having progressive disease due to progression in non-target
562 lesions or the appearance of new lesions.



563

564

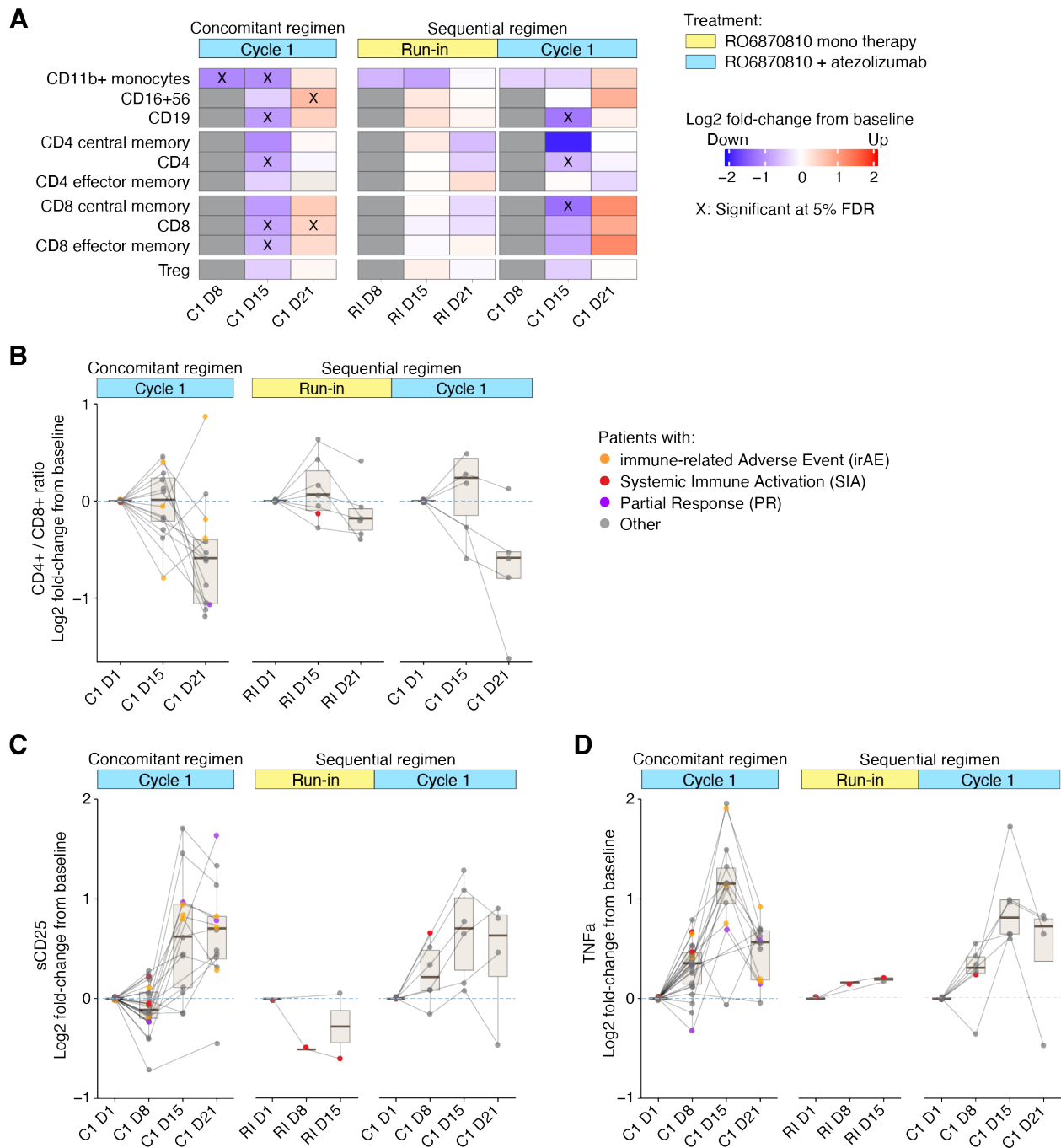
565 **Figure 3. Pharmacodynamic Responses of BET Inhibitor Biomarkers in Peripheral Blood**
 566 **and Tumor Tissue**

567 **A.** Quantification of CD14+/CD11b+ monocyte populations in peripheral blood, illustrating
 568 changes from baseline (expressed as log₂ fold-change from cycle onset) for individual patients
 569 (denoted as points), with longitudinal data from the same individual linked. Patients lacking

570 baseline or sequential samples are excluded. Color highlights patients with partial response
571 (purple), immune-mediated adverse events (orange), or systemic immune activation (red). Refer
572 to Fig. 1 for time point definitions. Boxplots depict median (center line), quartiles (box limits), and
573 variability (whiskers extend to 1.5x interquartile range).

574 **B.** Tumor expression levels of established BETi target genes, as determined by RNA-seq,
575 indicating gene expression modifications (log₂ fold-change) from the screening (pre-treatment)
576 sample. Exclusions apply for participants without screening or on-treatment samples. The same
577 color coding as in Panel A is used.

578 **C.** Gene signature enrichment analysis reflecting BETi downstream effects, with heatmaps
579 showcasing signature scores and gene expression alterations. Green and purple denote
580 significantly up- or down-regulated signatures, respectively, with red and blue highlighting
581 individual gene expression shifts within significant signatures. Asterisks indicate statistical
582 significance. Time points align with those in Panel B.



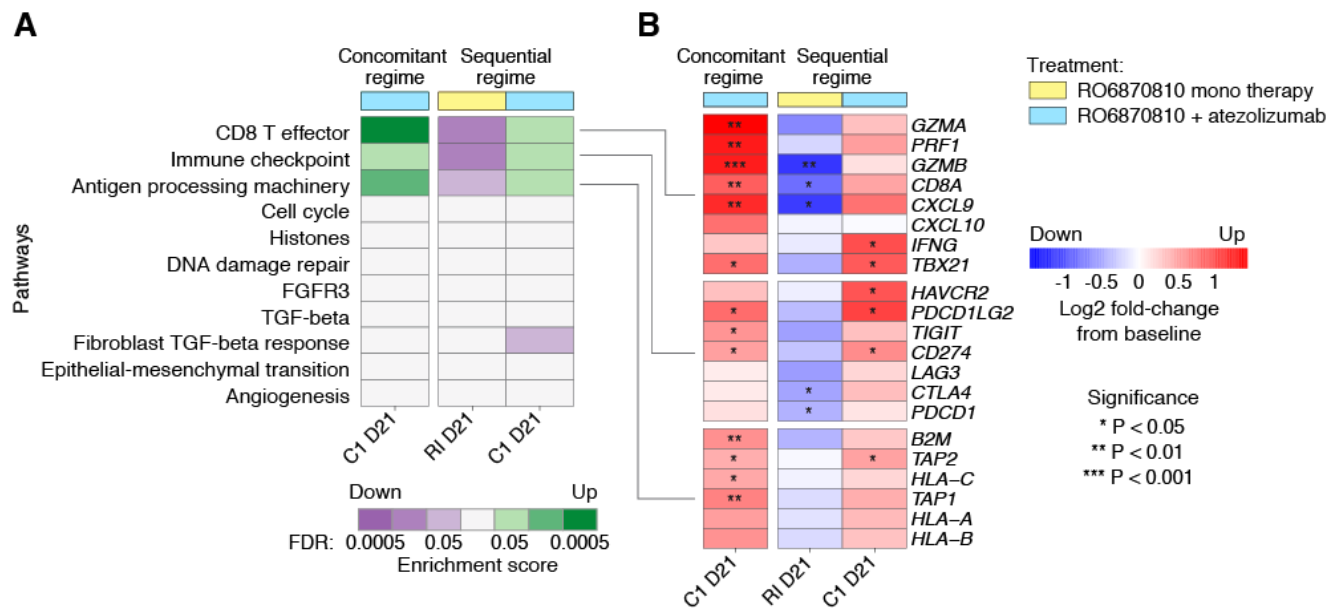
583

584 **Figure 4. Assessment of Immune Modulation by Flow Cytometry and Cytokine Analyses**

585 **A.** The variation in immune cell populations within peripheral blood, as determined by flow
 586 cytometry. Color depicts the log2 fold-change from baseline at each defined time point (refer to
 587 Fig. 1 for time points). Red indicates an increase, blue a decrease in cell population frequency,
 588 with significant alterations marked by an 'X' (FDR corrected p-value < 0.05).

589 **B.** Change from baseline in the CD4⁺/CD8⁺ cell ratio in peripheral blood, indicating shifts towards
590 either T helper cells (positive values) or cytotoxic cells (negative values). Continuous lines connect
591 sequential time point samples from individual patients, highlighting specific cases of interest in
592 color. Boxplots aggregate data at each time point.

593 **C, D.** Changes in soluble CD25 (sCD25) and TNF α levels from baseline in peripheral blood. The
594 visualization follows the format of Panel B.



595

596 **Figure 5. Differential Impact of BET inhibitor Monotherapy and Atezolizumab**
 597 **Combination Therapy on Immune Effector Pathways**

598 Heatmaps illustrate the contrasting effects of atezolizumab combination therapy and BET inhibitor
 599 monotherapy on immune effector pathways within tumor tissues, based on RNA sequencing data.

600 **A.** Enrichment scores for key immune pathways(34). Green indicates significant upregulation in
 601 combination therapy, suggesting enhanced immune activity. Purple marks downregulation in BETi
 602 monotherapy, implying reduced immune response.

603 **B.** Gene expression changes related to CD8 T effector, immune checkpoint, and antigen processing
 604 machinery pathways are highlighted. Red represents upregulated genes, reflecting pathway
 605 activation, while blue indicates downregulated genes, signifying pathway suppression. Significant
 606 changes are marked with asterisk.

607 **Table 1 Study Patients, by Group**

| GROUP 1 | | | GROUP 2 | | GROUP 3 | GROUP 4 | Total |
|---|---|---|--|--|-----------------------|---------------------|--------------|
| Cohort 1 (R06870810 0.30 mg/kg) sc + 1200mg Atezolizumab i.v. | Cohort 2 (R06870810 0.45 mg/kg) sc + 1200mg Atezolizumab i.v. | Cohort 3 (R06870810 0.65 mg/kg) sc + 1200mg Atezolizumab i.v. | Cohort 1^l (run-in with R06870810 0.30 mg/kg) sc THEN (R06870810 0.30 mg/kg) sc +1200mg Atezolizumab i.v. | Cohort 2^l (run-in with R06870810 0.45 mg/kg) sc THEN (R06870810 0.45 mg/kg) sc + 1200 mg Atezolizumab i.v. | Expn Group TNBC | Expn Group OC | |
| 4 | 7 | 6 | 4 | 6 | 3 | 6 | |

608 Expn = Expansion; OC = ovarian cancer; TNBC = triple negative breast cancer
609

610 **Table 2**

| Category | GROUP 1: Cohort 1 (RO6870810 0.30 mg/kg) + Atezo | GROUP 1: Cohort 2 (RO6870810 0.45 mg/kg) + Atezo | GROUP 1: Cohort 3 (RO6870810 0.65 mg/kg) + Atezo | GROUP 2: Cohort 1¹ (run-in with RO6870810 0.30 mg/kg) THEN (RO6870810 0.30 mg/kg) + Atezo | GROUP 2: Cohort 2¹ (run-in with RO6870810 0.45 mg/kg) THEN (RO6870810 0.45 mg/kg) + Atezo | GROUP 3: Expansion Group TNBC | GROUP 4: Expansion Group OC |
|-----------------|---|---|---|---|---|--|--|
| N | 4 | 7 | 6 | 4 | 6 | 3 | 6 |
| PR | 1 (25%) | 1 (14.3%) | 0 (0%) | 0 (0%) | 0 (0%) | 0 (0%) | 0 (0%) |
| SD | 1(25%) | 2 (28.6%) | 4 (66.7%) | 1 (25%) | 5 (83.3%) | 2 (66.7%) | 0 (0%) |
| PD | 2(50%) | 3 (42.9%) | 1 (16.7%) | 3 (75%) | 1 (16.7%) | 0 (0%) | 4 (66.7%) |
| Missing | 0 (0%) | 1 (14.3%) | 1 (16.7%) | 0 (0%) | 0 (0%) | 1 (33.3%) | 2 (33.3%) |
| Responder | 1 (25%) | 1 (14.3%) | 0 (0%) | 0 (0%) | 0 (0%) | 0 (0%) | 0 (0%) |
| Non-Responder | 3 (75%) | 6 (85.7%) | 6 (100%) | 4(100%) | 6 (100%) | 3 (100%) | 6 (100%) |

611 Response according to RECIST overall response. Responder is defined as any subject who exhibits a complete response or partial
612 response. Missing response is assumed as a non-responder.
613