

1 **Distinct patterns of microbiota and its function in end-stage liver cirrhosis**
2 **correlate with antibiotic treatment, intestinal barrier impairment and systemic**
3 **inflammation**

4 Laura Buttler¹, David A. Velazquez Ramirez^{2,3}, Anja Tiede^{1,3}, Anna M. Conradi^{2,3}, Sabrina Woltemate²,
5 Robert Geffers^{3,4}, Birgit Bremer¹, Vera Spielmann^{1,2}, Julia Kahlhöfer^{1,3}, Anke Kraft^{1,3,5,6,7}, Dirk Schlüter^{2,3,5},
6 Markus Cornberg^{1,3,5,6,7}, Heiner Wedemeyer^{1,3,5}, Christine Falk^{3,5,8}, Marius Vital^{2,3*,#}, Benjamin
7 Maasoumy^{1,3*,#}

8 *Equally contributed

9 1) Department of Gastroenterology, Hepatology, Infectious Diseases and Endocrinology, Hannover
10 Medical School, Hannover, Germany

11 2) Institute for Medical Microbiology and Hospital Epidemiology, Hannover Medical School, Hannover,
12 Germany

13 3) German Center for Infection Research (DZIF), Hannover-Braunschweig, Germany

14 4) Genome Analytics Research Group, Helmholtz Centre for Infection Research, Braunschweig,
15 Germany

16 5) Hannover Medical School, Excellence Cluster RESIST, Hannover, Germany.

17 6) TWINCORE, Centre for Experimental and Clinical Infection Research, Hannover, Germany

18 7) Center for Individualized Infection Medicine (CiiM), Hannover, Germany

19 8) Institute of Transplant Immunology, Hannover Medical School, Hannover, Germany

20

21 #: Authors for correspondence:

22 Email: maasoumy.benjamin@mh-hannover.de. Postal address: Department of Gastroenterology,

23 Hepatology, Infectious Diseases and Endocrinology, Hannover Medical School. OE5210, Carl-Neuberg-

24 Str. 1, 30625 Hannover, Germany. Telephone: +49 511 532-6529.

NOTE: This preprint reports new research that has not been certified by peer review and should not be used to guide clinical practice.

25 Email: vital.marius@mh-hannover.de. Postal address: Institute for Medical Microbiology and Hospital
26 Epidemiology, Hannover Medical School. OE5210, Carl-Neuberg-Str. 1, 30625 Hannover, Germany.
27 Telephone: +49 511 532-19823.

28

29 **Abstract**

30 **Background:** Decompensated liver cirrhosis (dLC) is associated with a dysbalanced microbiome,
31 however, reasons for those observations and resulting consequences for patients are largely
32 unexplored. We aimed to characterize bacterial and fungal components of gut microbiota applying
33 quantitative genome-resolved metagenomics and investigate their relation with gut barrier integrity,
34 inflammation and how this impacts the clinical outcome of dLC patients.

35 **Methods:** Samples were collected prospectively from 95 consecutive hospitalized dLC patients
36 between 2017 and 2022. Metagenomic shot-gun sequencing coupled to flow-cytometric analyses were
37 performed for qualitative and quantitative insights into gut microbiota on a compositional and
38 functional level. Plasma, CRP, Zonulin and CD163 were measured to investigate host functions.
39 Competing risk analyses were performed to compare cirrhosis-related complications within 90 days.

40 **Results:** Median baseline MELD was 16 and median age 57.6 years. Patients were clustered into three
41 groups (G1-G3) showing greatly distinct microbial patterns. G1 displayed lowest diversity and highest
42 *Enterococcus* relative abundance (77.97 %), whereas G2 was dominated by *Bifidobacteria* (52.31 %).
43 G3 was most diverse and clustered most closely with HC. Bacterial concentrations in patients were
44 lower compared with HC (median 2.65×10^9 cells/gram stool), especially for G1 (median of 2.65×10^9
45 cells/gram stool); G2 and G3 were in-between the two. Fungi were primarily detected in patient
46 samples and an overgrowth in G1 that was dominated by *Candida* spp (51.63 %) was observed.
47 Moreover, G1-patients most frequently received antibiotics (n=33; 86.8 %) at baseline and had higher
48 plasma levels of Zonulin (p=0.044), CD163 (p=0.019) and a numerically higher incidence of infections
49 (p=0.09).

50 **Conclusion:** Different bacterial clusters were observed at qualitative and quantitative levels and
51 correlated with fungal abundance. Antibiotic treatment contributed to dysbiosis in patients with dLC,
52 which translated into impairment of the intestinal barrier, translocation and systemic inflammation.

53 **Introduction**

54 Chronic liver diseases are frequently accompanied by changes of the intestinal microbiome.¹
55 Alterations can already be detected in early stages of liver disease and become increasingly aggravated
56 with the progression of hepatic fibrosis.^{1 2} Finally, patients with decompensated liver cirrhosis exhibit
57 a disrupted microbiome, characterized by a dramatically increased abundance of potentially
58 pathogenic bacteria and a reduction of commensal microbes.³ Particularly, elevated proportions of the
59 pathobionts *Enterococcus*, *Streptococcus* and *Enterobacteriaceae* have been reported.⁴ Along with a
60 dysbalanced bacterial composition are altered microbiome functions resulting in decreased levels of
61 bacterial key metabolites, such as short chain fatty acids (SCFA) and secondary bile acids (sBA). SCFA
62 are fermentation end-products with acetate, butyrate and propionate as the main components that
63 are generated by a myriad of diverse taxa that show decreased abundances in cirrhosis.^{5 6 7 8}
64 Physiologically, SCFA feed the epithelium promoting an intact gut barrier and act anti-inflammatory via
65 modulating the immune landscape.⁹ Reduced levels of SCFA-producing bacteria with a concomitant
66 increase of pathobionts impair the intestinal barrier, which may facilitate the translocation of
67 proinflammatory components into the circulation. This may significantly contribute to systemic
68 inflammation in patients with cirrhosis, which is considered to be a key factor for the development of
69 cirrhosis-associated immune dysfunction (CAID), infection susceptibility, hepatic decompensation (e.g.
70 encephalopathy) and acute-on-chronic-liver failure (ACLF).^{10 11 12 13 14} However, causes of intestinal
71 dysbiosis and direct clinical consequences in patients with end-stage liver disease remain largely
72 unexplored as studies including a clinical follow-up remain sparse in this population. Recently, Lehmann
73 and colleagues demonstrated that a lower intestinal diversity with an abundance of either Enterococci
74 or *Enterobacterales* species was linked to a lack of intestinal SCFA and a higher risk for infections in
75 patients with end-stage liver cirrhosis undergoing liver transplantation. Importantly, they also
76 documented that these severe alterations of the gut microbiota were not present in all patients with
77 advanced liver cirrhosis.¹⁵ A relative *Enterococcus* abundance of greater than 20 % was observed in

78 only 40 %, while in about 25 % of the patients microbiome diversity was not different from healthy
79 individuals.¹⁵

80 Reasons for the differences in the microbiota among cirrhotic patients still need to be determined. One
81 of the factors that might significantly interact with the microbiome is concomitant medication. The
82 frequent need for antibiotics to treat or prevent infections in these patients may induce collateral
83 damage on gut microbiota and influence of frequently prescribed drugs on the intestinal microbes
84 needs, hence, to be determined in the setting of end stage liver disease. Furthermore, bacteria are not
85 the only members of the intestinal microbiota. Recently, the role of the mycobiome gained attention
86 in the context of liver disease and reduced bacterial diversity has also been linked to dysbiotic
87 compositions of intestinal fungi.¹⁶ However, only little is known about the relevance of fungal dysbiosis
88 in advanced cirrhosis and how it influences the clinical course. Mycotic infections, such as spontaneous
89 fungal peritonitis, are rare, but severe complications in patients with end stage liver disease and the
90 role of fungi in the context of inflammation is still largely in the dark.¹⁷

91 Both treatment of complications and their prevention are essential for patients with decompensated
92 liver cirrhosis. This implicates the question whether distinct microbial features can function as a novel
93 tool in risk stratification and as a therapeutic target in clinical management. Therefore, it is essential
94 not only to identify unfavorable microbial features but gain a detailed understanding for their reason
95 and pathophysiological consequences. Our study provides novel quantitative insights into gut
96 microbiota in in the setting of end stage liver disease. We investigated the impact of medication on the
97 interplay between bacterial and fungal components of gut microbiota and how this affects the clinical
98 phenotype of patients with decompensated liver cirrhosis in terms of inflammation and cirrhosis-
99 associated complications.

100 **Methods**

101 **Study cohort**

102 All patients were recruited from INFEKTA registry, a prospective observational study including
103 consecutive patients with decompensated liver cirrhosis and ascites (German Clinical Trials Registry ID
104 DRKS00010664). Inclusion criteria are evidence of liver cirrhosis, presence of ascites requiring at least
105 one paracentesis and age of 18 or higher. Exclusion criteria were defined as malignant ascites, HIV-
106 infection, congenital immunodeficiencies and presence of any cancer disease, except for hepatocellular
107 carcinoma within the Milan criteria¹⁸. Furthermore, patients with a history of organ transplantation,
108 except for those with recurrent cirrhosis after a liver transplant, and complete portal vein thrombosis
109 were excluded. For our analysis, we enrolled all of 95 consecutive patients who were treated at
110 Hannover Medical School between 2017 and 2022 and for whom at least one stool sample was
111 available. A number of 19 healthy subjects served as control group (HC).

112

113 **Clinical data and endpoints**

114 Dietary questionnaires were available for a number of 86 patients. The date of sample collection was
115 defined as baseline. Liver transplantation (LTx)-free survival and occurrence of cirrhosis-related
116 complications were observed during 90 days of follow-up. The following clinical complications were
117 assessed:

- 118 - any infections, as described previously¹⁹
- 119 - acute-on-chronic-liver-failure (ACLF), as described previously²⁰
- 120 - overt hepatic encephalopathy (oHE), according to the West Haven criteria²¹.

121

122

123 **Processing of fecal samples and bioinformatics analyses**

124 DNA was extracted using the ZymoBIOMICS Miniprep Kit (ZYMO, USA) according to the manufacturer's
125 protocoll. For metagenomic analyses libraries were prepared (Illumina DNA Prep, Illumina, San Diego,
126 United States) and subsequently sequenced on an Illumina NovaSeq 6000 in paired-end mode (2 × 150
127 bp) as described previously.²² Raw reads were quality filtered using Kneaddata (Huttenhower lab;
128 v0.7.2) and subjected to metaPhlan4 to obtain taxonomic composition. For determining pathways of
129 specific key functions, namely, production of the SCFAs butyrate and propionate and of secondary bile
130 acids, gene catalogues from UHGG.v2 representative were used for mapping via Bbmap (from JGI;
131 v38.22; paired-end mode) as described previously.^{22,23} Reconstruction of genomes was done using
132 metaWRAP (v1.3.0) as outlined previously using cut-offs of 80 % completeness and 10 %
133 contamination.²² Genomes were annotated based on the genome taxonomy database (gtdb) using
134 gtdb-tk (v2.1.0).²⁴

135 Bacterial load, expressed as bacterial concentration per gram stool, was determined by fluorescent
136 staining combined with flow cytometry as described previously.²²

137 For mycobiome analyses the ITS region was amplified using a two-step approach as outlined in²⁵ and
138 obtained amplicons were sequenced on Illumina MiSeq (2 × 300 bp) as described previously.²²
139 Sequences were processed via the DADA2 pipeline (v1.20) in R (4.2.2) and annotated by blasting
140 merged sequences against the UNTIE database (v29.11.22) where 70 % identity and 70 % query
141 coverage were set as cut-offs. The number of reads assigned as fungal origin were recorded for
142 abundance estimations. For metagenomic based analyses quality filtered and decontaminated reads
143 were mapped to fungal reference sequences using Bbmap and relative abundance is expressed as
144 percentage of mapped reads of total reads.

145 Hierarchical clustering was based on Bray Curtis dissimilarities (BC) using the functions *vegdist* and
146 *hclust* (method=ward.D2) from the vegan package (v2.5.7). Networks were based on Spearman
147 correlations ($p < 0.01$ and Spearman's $\rho > 0.3$) and were visualized via cytoscape (v3.7.2). Phylogenetic

148 trees were constructed from single copy house-keeping genes using gtdb-tk. Detection of *vanA*, *vanB*
149 and *vanC* genes in samples was done by ariba.

150

151 **Measurement of plasma Zonulin and CD163 levels**

152 Plasma zonulin and CD163 levels were measured in a number of 82 patients with available plasma
153 samples as surrogate for intestinal permeability and macrophage activation following bacterial
154 translocation. Enzyme-linked immunosorbent assays (catalog number abx151842, abbexa, Leiden, NL
155 and DC1630, R&D Systems, Minneapolis, MN) were performed according to the respective
156 manufacturer`s instructions.

157

158 **Statistical analysis**

159 Baseline characteristics of patients were analyzed using IBM SPSS Statistics (Version 28, IBM®, New
160 York) and R Statistical Software (version 4.2.0, R foundation for statistical Computing, Vienna, Austria)
161 with the “tableone” package. Categorical values are depicted as number and percentage and compared
162 in a Chi-Square test. Continuous parameters, shown as median and interquartile range (IQR) were
163 analyzed with Man-Whitney-U test or with Kruskal-Wallis-test for comparisons of more than two
164 groups. Correlation of patient parameters with bacterial and fungal microbiota were done in R using
165 regression analyses (function *lm*) and spearman correlation. Boxplots were created with GraphPad
166 Prism (version 10.0). Competing risk analyses were done with R commander and plugin “EZR”.

167 Competing risk analyses were performed to compare LTx-free survival and the cirrhosis-associated
168 complications (treating LTx or LTx and death as competitors, respectively). Patients were censored with
169 the time point of LTx or end of follow-up. In a first step, the clinical outcome of microbiota groups was
170 compared. Here, G1 functioned as reference group. A number of three patients clustered with HC and
171 were therefore not considered for group comparisons. In a second step, the impact of increased Zonulin

172 (median HC Zonulin level fourfold increased) and elevated CD163 concentrations (median HC CD163
173 level tenfold increased) on clinical complications was analyzed.

174

175 **Ethics**

176 Our study was approved by the ethics committee of Hannover Medical School (Nr. 3188-2016) and
177 respected the declarations of Helsinki. All patients gave permission for the analysis of their data and
178 biomaterial in the form of written informed consent.

179 **Results**

180 **Clinical characteristics of the overall study cohort**

181 Median age was 57.6 years and 76.1 % were male patients (n=70). Median baseline MELD was 16 (**Table**
 182 **1a**). Most common cause of cirrhosis was alcohol-related (n=59; 64.1 %). At the time point of stool
 183 collection, 8.7 % of the patients (n=8) was diagnosed with SBP, almost a third (n=28; 30.4) had any
 184 infection, 14.1 % had ACLF (n=13) and 16.3 % (n=15) showed symptoms of oHE.

185

186 **Table 1a.** Baseline characteristics.

	All patients (n=95)	Group 1 (n=39)	Group 2 (n=24)	Group 3 (n=29)	p value*
Age (y)	57.6 (50.9-65.5)	59.41 (51.07-65.33)	56.64 (52.98-60.88)	55.83 (50.63-71.73)	0.715
Sex					0.885
- Male	70 (76.1)	29 (74.4)	18 (75.0)	23 (79.3)	
- Female	22 (23.9)	10 (25.6)	6 (25.0)	6 (20.7)	
Etiology**					
- ALD	45 (48.9)	18 (46.2)	14 (58.3)	13 (44.8)	0.559
- MetALD	14 (15.2)	4 (10.3)	4 (16.7)	6 (20.7)	0.483
- MASLD	9 (9.8)	2 (5.1)	3 (12.5)	4 (13.8)	0.430
- Viral	5 (5.4)	3 (7.7)	1 (4.2)	1 (3.4)	0.710
- PSC	4 (4.3)	1 (2.6)	2 (8.3)	1 (3.4)	0.530
- PBC	3 (3.3)	2 (5.1)	0 (0.0)	1 (3.4)	0.537
- AIH	7 (7.6)	2 (5.1)	2 (8.3)	3 (10.3)	0.716
- cryptogenic	10 (10.9)	6 (15.4)	1 (4.2)	3 (10.3)	0.379
- others	8 (8.7)	4 (10.3)	0 (0.0)	4 (13.8)	0.187
MELD	16 (12-22)	18 (14-24)	15 (12-20)	12 (10-14)	0.004
SBP at BL	8 (8.7)	3 (7.7)	1 (4.2)	4 (13.8)	0.445
Infection at BL	28 (30.4)	12 (30.8)	9 (37.5)	7 (24.1)	0.574
ACLF at BL	13 (14.1)	8 (20.5)	4 (16.7)	1 (3.4)	0.125
HE at BL	15 (16.3)	7 (17.9)	4 (16.7)	4 (13.8)	0.899
Laboratory values					
White blood cells (Tsd/μl)	6.00 (3.80-8.85)	6.30 (3.65-10.55)	5.70 (3.08-8.18)	4.60 (4.20-8.10)	0.703
Red blood cells (Mio/μl)	3.00 (2.58-3.44)	2.77 (2.46-3.20)	3.01 (2.75-3.42)	3.20 (2.85-3.45)	0.093
Hemoglobin (g/dl)	9.35 (8.23-11.10)	9.00 (7.80-9.80)	9.35 (8.65-10.32)	10.30 (8.50-11.60)	0.052

Platelets (Tsd/μl)	101.50 (61.50-168.75)	94.00 (57.50-145.00)	85.50 (61.25-201.25)	117.00 (88.00-152.00)	0.310
INR	1.31 (1.16-1.56)	1.48 (1.27-1.62)	1.38 (1.20-1.51)	1.16 (1.10-1.32)	0.001
Potassium (mmol/l)	4.1 (3.8-4.6)	4.20 (3.85-4.60)	3.90 (3.70-4.32)	4.30 (3.90-4.60)	0.259
Sodium (mmol/l)	134.50 (131.00-138.00)	134.00 (131.00-136.00)	136.00 (132.75-139.00)	134.00 (130.00-137.00)	0.294
Bilirubin (μmol/l)	27.00 (14.00-94.00)	55.00 (18.50-134.50)	21.00 (15.00-46.75)	17.50 (11.75-44.75)	0.021
Creatinine (μmol/l)	115.00 (90.00-143.00)	115.00 (96.50-139.00)	119.00 (88.75-144.75)	114.50 (80.50-139.50)	0.815
AST (U/l)	42.00 (32.00-66.75)	46.00 (33.00-75.50)	39.50 (33.00-53.00)	41.00 (32.00-82.00)	0.683
ALT (U/l)	26.00 (18.00-45.00)	26.50 (19.25-44.25)	25.50 (17.75-32.50)	24.00 (17.00-52.00)	0.960
AP (U/l)	142.50 (101.25-201.50)	134.00 (98.00-168.00)	152.00 (92.75-220.25)	162.00 (116.00-220.00)	0.182
Gamma-GT (U/l)	118.00 (59.50-221.00)	90.00 (43.50-170.50)	151.00 (73.00-257.50)	142.00 (71.00-259.00)	0.041
CRP (mg/l)	16.80 (8.00-30.00)	21.40 (9.40-32.40)	11.50 (6.05-24.75)	14.20 (8.15-21.65)	0.183
Serum-cholinesterase (kU/l)	2.04 (1.26-2.71)	1.54 (1.18-2.20)	2.09 (1.50-2.96)	2.21 (1.37-3.26)	0.183
Albumin (g/l)	30.00 (25.00-35.00)	28.00 (26.00-31.00)	33.00 (25.00-36.00)	28.00 (27.00-33.00)	0.467
Diabetes mellitus	24 (26.1)	7 (17.9)	8 (33.3)	9 (31.0)	0.307
Active alcohol consumption	9 (10.2)	2 (5.6)	2 (8.3)	5 (17.9)	0.256
Medication					
Any antibiotics within one week before BL	67 (75.3)	33 (89.2)	19 (79.2)	15 (51.7)	0.004
Norfloxacin within 1 week before BL	11 (12.2)	7 (18.9)	1 (4.2)	3 (10.3)	0.213
Rifaximin within 1 week before BL	38 (41.3)	14 (35.9)	16 (66.7)	8 (27.6)	0.011
Any other antibiotics	39 (42.4)	28 (71.8)	4 (16.7)	7 (24.1)	<0.001
- Vancomycin					
- Meropenem	6 (6.2)	6 (15.4)	0 (0.0)	0 (0.0)	0.013
- Ampicillin/Sulbactam	7 (7.6)	5 (12.8)	1 (4.2)	1 (3.4)	0.269
- Piperacillin/Tazobactam	7 (7.6)	5 (12.8)	1 (4.2)	1 (3.4)	0.269
- Ceftriaxone	10 (10.9)	8 (20.5)	1 (4.2)	1 (3.4)	0.039
- Clindamycin	11 (12.0)	9 (23.1)	1 (4.2)	1 (3.4)	0.019
	3 (3.3)	1 (2.6)	0 (0.0)	2 (6.9)	0.353
Number of different antibiotics	1.00 (0.00-2.00)	2.00 (1.00-2.50)	1.00 (0.00-1.00)	1.00 (0.00-1.00)	<0.001

Non selective beta blockers at BL	48 (52.7)	19 (50.0)	13 (54.2)	16 (55.2)	0.904
Carvedilol	40 (44.0)	18 (47.4)	11 (45.8)	11 (37.9)	0.726
Propranolol	8 (8.8)	1 (2.6)	2 (8.3)	5 (17.2)	0.112
Proton pump inhibitors at BL	74 (81.3)	32 (84.2)	18 (75.0)	24 (82.8)	0.644
Lactulose at BL	57 (62.6)	23 (60.5)	19 (79.2)	15 (51.7)	0.114
Ornithine aspartate at BL	28 (30.8)	8 (21.1)	12 (50.0)	8 (27.6)	0.050

187 Values as number (percentage) or median (interquartile range). * Chi-Square was used for comparison of categorical variables, Fisher-
 188 Freeman-Halton's exact for categorial covariables with less than five cases/field. Kruskal-Wallis test was performed for continuous values.
 189 **Results in more than 100 % due to mixed etiology.

190

191 **Gut bacteria clustered into three compositionally distinct groups that varied in concentrations and** 192 **in abundances of key functions**

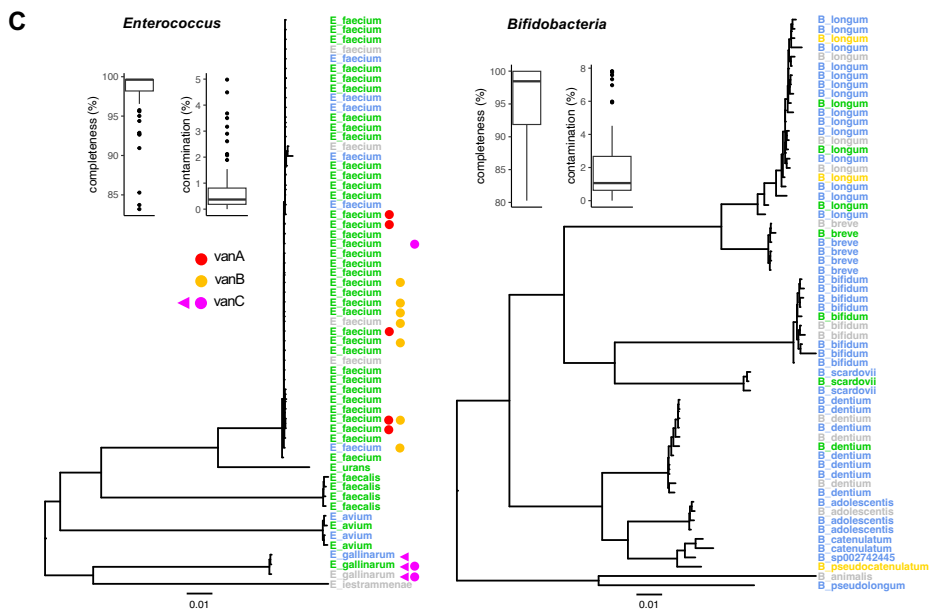
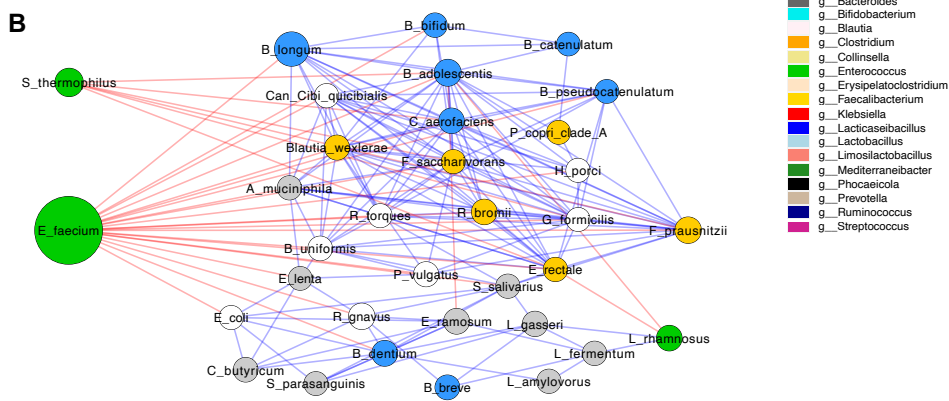
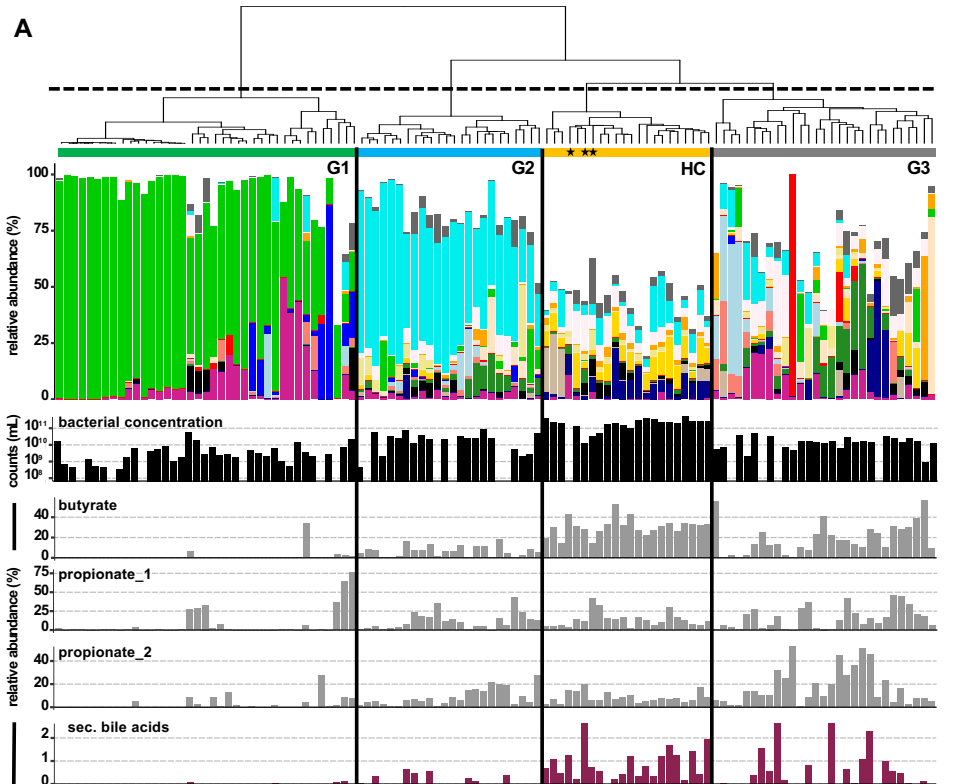
193 Diversity and composition of gut bacteria varied widely between patients and hierarchical clustering
 194 suggested three groups that were separated from healthy controls (HC). Group one (G1) was
 195 dominated by *Enterococcus sp* (77.97 % (51.67-95.44)), whereas *Bifidobacteria* were most abundant in
 196 group two (G2) (52.31 % (42.82-65.52)) (**Figure 1A; Suppl. figure 1**). The third group (G3) clustered
 197 most closely with HC showed a diverse pattern. Diversity based on observed species and the Shannon
 198 index was greatly distinct between groups, where G1 showed lowest values of 10 (8-17) (observed
 199 species) and 0.74 (0.22-1.37) (Shannon) followed by G2 (56 (42-79); 2.17 (1.98-2.62)) and G3 (62 (44-
 200 87); 2.72 (2.23-3.02)). HC displayed highest diversities with 261 (200 - 313) species and a Shannon index
 201 of 3.94 (3.68-4.28) (**Figure 1A; Suppl. figure 1**). Bacterial concentrations determined by flow cytometry
 202 followed this pattern: G1 was characterized by a low bacterial load of 2.65×10^9 cells/gram stool (1.21
 203 $\times 10^9$ - 6.67×10^9), which was 2 factors of magnitude lower compared with HC (2.38×10^{11} cells/gram
 204 stool (1.71×10^9 - 3.16×10^9). G2 and G3 showed higher values of 2.55×10^{10} cells/gram stool ($5.52 \times$
 205 10^9 - 3.77×10^{10}) and 1.52×10^{10} cells/gram stool (7.40×10^9 - 2.65×10^{10}), respectively, that were,
 206 however, still markedly below HC. Similar were results of abundances of microbial key pathways
 207 encoding enzymes for the synthesis of the SCFA butyrate and propionate as well as for secondary bile
 208 acids (sBA) (**Figure 1A**). Genes associated with butyrate and sBA were almost absent in G1 and also

209 lower in G2 (6.47 % (1.06-10.59) and 0.00 % (0.00-0.20)) and G3 (13.02 % (2.27-24.29) and 0.03 % (0.00-
210 0.71)) compared with HC, where 31.49 % (26.57-33.49) and 0.54 % (0.33-1.21), respectively, of
211 calculated genomes harbored genes of those pathways (**Figure 1A**; **Suppl. figure 2**). Propionate
212 pathways had higher values in patient groups G2 (pdicol: 5.82 % (2.47-14.26), suc: 8.66 % (2.94-16.48))
213 and G3 (pdicol: 10.49 % (5.30-26.31), suc: 13.02 % (2.27-24.29)) displaying similar concentrations as
214 those observed in HC (pdicol: 7.04 (5.03-8.69), suc: 12.12 (6.53-16.57)); with a few exceptions those
215 pathways were lower in samples derived from G1.

216 Correlation analyses revealed separate clustering of signature taxa of individual groups. *E. faecium*,
217 which was the main *Enterococcus* species, was negatively associated with a variety of other taxa such
218 as G2's *Bifidobacteria* species that, apart from *B. breve* and *B. dentium*, clustered closely together
219 (**Figure 1B**). Other taxa specific for G1, namely, *Streptococcus thermophilus* also correlated negatively
220 with several taxa of G2 and HC. *Faecalibacterium prausnitzii* of HC formed a counterpart that was
221 positively associated with a variety of taxa of HC as well as of G2 and G3, whose nodes formed a
222 separate group.

223 In total, we assembled 645 high-quality genomes of patient samples, where 59 and 62 genomes were
224 annotated as *Enterococcus* and *Bifidobacteria*, respectively (**Figure 1C**). The former was primarily
225 derived from samples of G1, where genomes were retrieved from 37 (94.9 %) samples and the bulk
226 was annotated as *E. faecium*. In five samples two genomes of this taxon were obtained (one sample
227 harbored three *Enterococci* genomes) with an average completeness of 97.79 % \pm 3.84 % and a
228 contamination of 0.84 % \pm 1.17 %. Genes associated with Vancomycin resistance were detected in 14
229 samples (11 (38 %) in G1), however, apart from vanC in all three *E. gallinarum* strains *E. faecium*
230 genomes were suspiciously devoid of *vanA,B* genes, most probably due to their presence on plasmids.
231 For *Bifidobacteria*, genomes from several distinct species were assembled that primarily derived from
232 samples of G2. Their average completeness was 95.59 % \pm 5.55 % with a contamination of 2.07 % \pm
233 2.21 % and up to four genomes were detected in one sample.

234

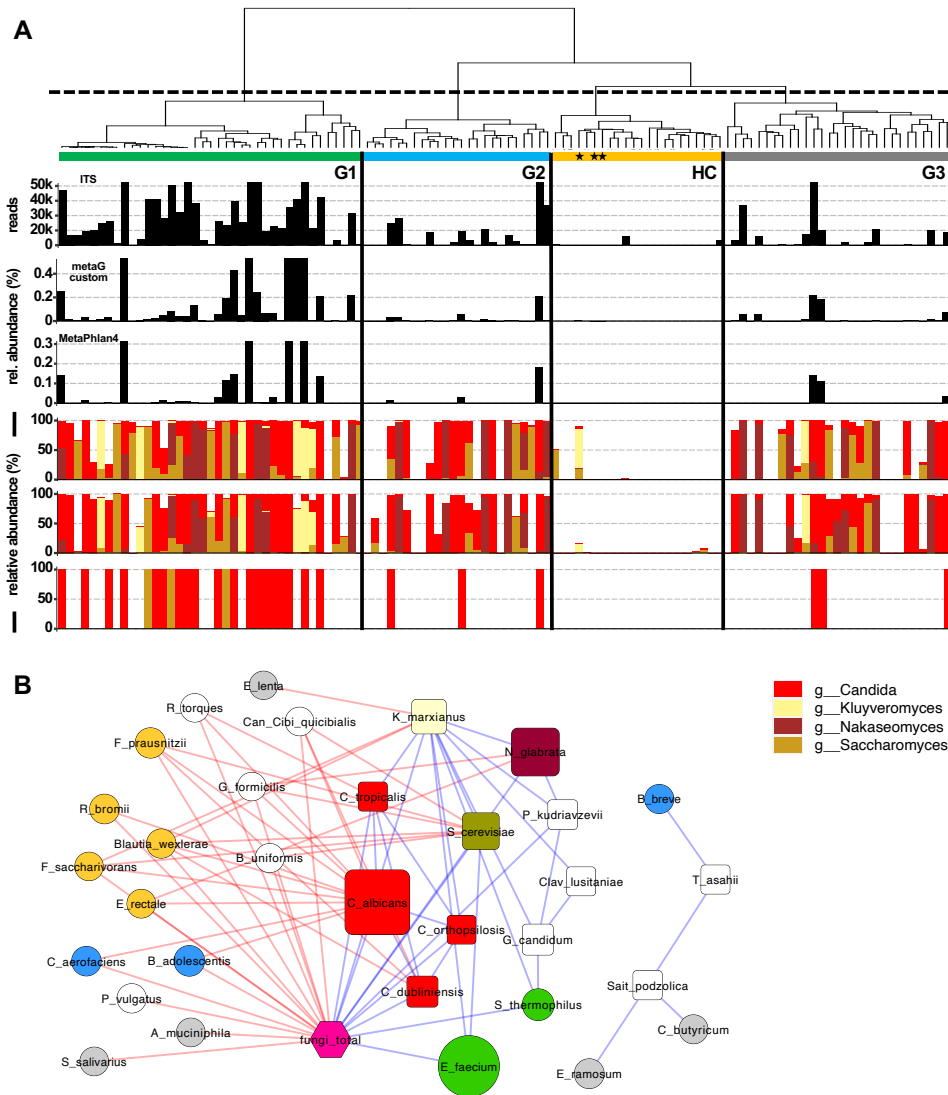


236 **Figure 1.** Bacterial communities of patients and healthy controls (HC). Panel **A** shows hierarchical clustering result
237 along with composition on the genus level for all samples yielding three distinct patient groups (G1-G3) and a
238 separate HC group (the black stars mark samples from patients that grouped together with HC). Below bacterial
239 cell concentrations measured by flow cytometry (bacterial concentration) as well as relative abundances of
240 pathways for the synthesis of butyrate, propionate (two pathways) and secondary bile acids are given. In panel **B**
241 network of bacterial species based on correlation analysis is given, where node size refers to mean abundance of
242 each species and colors of edges represent positive (blue) and negative (red) correlations. Species primarily
243 associated with a specific group from hierarchical clustering are color coded. Panel **C** shows phylogenetic trees
244 for genomes of *Enterococcus* and *Bifidobacteria* assembled from metagenomes of patient samples along with
245 their basic quality parameters completeness and contamination. Group origins of genomes are indicated by color
246 and presence of genes encoding vancomycin resistance (*vanABC*) in respective samples is given; the violet triangle
247 signifies *vanC* detection on genomes.

248

249 **Abundances of fungi were greatly distinct between patient groups and correlated with specific** 250 **bacterial taxa**

251 We analyzed fungal organisms based on three methods, namely, (i) amplification and sequencing of
252 the ITS region and by two metagenome-based analyses comprising (ii) a custom workflow based on
253 mapping reads to a comprehensive fungal database comprising a multitude of fungal genes and (iii)
254 MetaPhlan4 that uses specific single copy marker genes. Results between ITS and the custom
255 metagenomic approach were largely congruent and detected much higher fungal abundances in G1
256 compared with other groups (**Figure 2A; Suppl. figure 1**). Samples of HC were largely devoid of fungal
257 communities. Four genera dominated fungal compositions with species belonging to *Candida spp* being
258 the most abundant ((51.63 % (6.53-95.45)). Fungi of the related genus *Nakaseomyces* (0.00 % (0.00-
259 13.24)) and of the family *Saccharomycetaceae*, *Saccharomyces* (0.12 % (0.0-7.00)) and *Kluyveromyces*
260 (0.00 % (0.00-0.01)) were detected in patients as well, where results of ITS and the custom
261 bioinformatic approach yielded congruent insights (**Figure 2A**). Results based on MetaPlan4 were
262 supporting the general trend of G1 being most colonized by fungi, however, the method could only
263 detect taxa of the genera *Candida* and *Saccharomyces*, and showed lower sensitivities.



264

265 **Figure 2.** Fungal communities of patients and healthy controls (HC). Results in panel **A** are displayed according to
 266 groupings based on hierarchical clustering result of bacterial communities that are shown in Figure 1. Three
 267 different methods were applied based on (i) amplification of ITS region, (ii) custom metagenomic analysis and (iii)
 268 MetaPhlan4. Fungal concentrations measured by reads associated with fungi derived from the individual
 269 methods are given as black bars, whereas composition on the genus level is given in the three barplots below
 270 (same order as above). In panel **B** a network of fungal species and associated bacterial species based on
 271 correlation analyses is given, where node size refers to mean abundance of each species and colors of edges
 272 represent positive (blue) and negative (red) correlations. Bacterial species primarily associated with a specific
 273 group from hierarchical clustering are color coded (compare Figure 1).

274

275 Correlation analyses between bacterial and fungal species revealed a clear pattern, where total
 276 concentrations of fungi were positively correlated only with bacterial taxa of G1 (*E. faecium* and *S.*
 277 *thermophilus*), whereas bacteria of samples from other patient groups were all negatively correlated

278 with total fungi and individual fungal species. A few species (n=5) formed a separate module (**Figure**
279 **2B**).

280

281 **Antibiotic treatment significantly contributes to distinct intestinal microbiota compositions**

282 No differences in age and cirrhosis etiology was detected between groups, whereas median MELD was
283 higher in G1 than in the other groups. Administration of frequently prescribed drugs, e.g. non selective
284 beta blockers and proton pump inhibitors was almost equally distributed over the patient cohort (**Table**
285 **1a**). Furthermore, dietary and lifestyle habits were comparable between groups (**Table 1b**).

286 A high proportion of 75.3 % (n=67) received antibiotic treatment within one week before stool was
287 provided (**Table 1a**). The number of patients with intake of any antibiotics differed significantly between
288 groups (p=0.004), where G1 contained the highest quantity of patients with antibiotic treatment (n=33;
289 86.8 %), followed by G2 (n=19; 79.2 %). Furthermore, the median number of different antibiotics per
290 patient was significantly higher in G1 (p<0.001). In addition, the type of administered antibiotics
291 differed. Besides a significantly higher intake of Ceftriaxone in patients from G1 (p=0.019), also the
292 administration of Vancomycin (p=0.013) and Piperacillin/Tazobactam (p=0.039) was higher in this
293 group, whereas antibiotic treatment in G2 was mainly dominated by Rifaximin (n=16; 66.7 %; p=0.011)
294 (**Table 1a**).

295 **Table 1b.** Diet and lifestyle of the study cohort.

	All patients (n=86)	Group 1 (n=35)	Group 2 (n=24)	Group 3 (n=27)	p value*
Coffee drinkers	57 (66.3)	25 (71.4)	13 (54.2)	19 (70.4)	0.334
Smokers	31 (32.0)	12 (32.4)	11 (45.8)	8 (29.6)	0.432
Vegetarian	5 (5.8)	2 (6.1)	1 (4.2)	2 (7.4)	0.887
> 2 fruits/day	22 (26.5)	7 (21.9)	7 (29.2)	8 (29.6)	0.750
vegetable intake ≥ 5 days/week	45 (60.8)	20 (66.7)	10 (50.0)	15 (62.5)	0.486

296

297

298 **Abundance of Enterococcus is linked to an increase in surrogate markers of an impaired intestinal**
 299 **barriers and bacterial translocation**

300 Significantly greater concentrations of Zonulin were discovered in cirrhosis patients compared to HC
 301 (9.5 ng/ml (6.4-16.3) vs. 4.2 ng/ml (2.8-8.7); p=0.023). Patients of G1 reached highest median Zonulin
 302 values that exceeded the measured levels of the other patients significantly (12.8 ng/ml (8.0-17.6) vs.
 303 8.2 ng/ml (5.2-13.6); p=0.044) (**Figure 3A, B**). Similarly, CD163 concentrations were significantly
 304 elevated in LC patients contrasted to healthy subjects (2193.0 ng/ml (1377.0-3290.8) vs. 388.0 ng/ml
 305 (359.5-507.5); p<0.001). Likewise, G1 exhibited significantly higher CD163 levels than the other
 306 patients (2544.9 ng/ml (1448.4-4151.4) vs. 1836.0 ng/ml (1356.6-2565.3); p=0.019) (**Figure 3 C, D**).

307

308

309

310

311

312

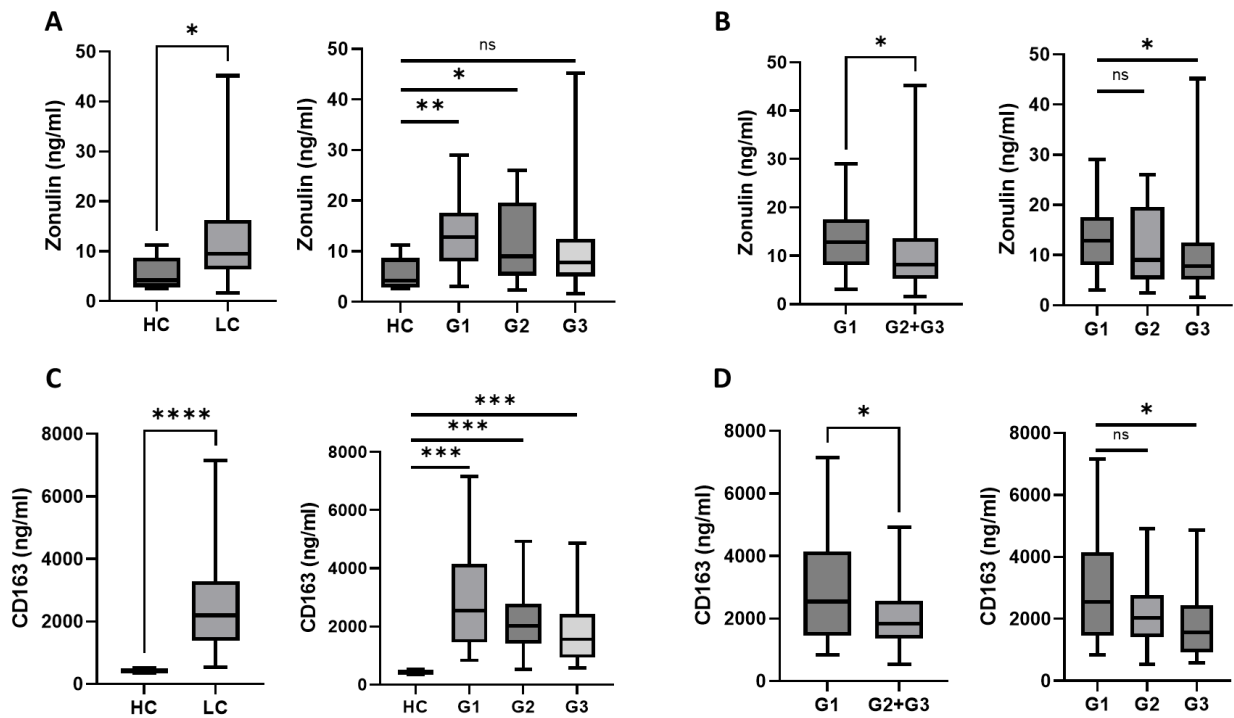
313

314

315

316

317



318

319

320

321

322

323

324

325

326

327

328

329

330

331

332

Figure 3. Zonulin levels were higher in patients than in HC ($p=0.023$) (A). Among cirrhosis patients, G1 displayed significantly higher Zonulin concentrations than the other patients ($p=0.044$) (B). CD163 concentrations in cirrhosis patients exceeded those of HC ($p<0.001$) (C), with highest values in G1 compared to the other patients ($p=0.019$) (D).

Microbiota profiles, impaired intestinal barrier and increased translocation translate in a numerical increase of certain cirrhosis-associated complications

In the overall study cohort, 27.2 % ($n=25$) of the patients died or underwent LTx within 90 days (Table 2a). Almost a third acquired any infection 30.4 % ($n=28$) with spontaneous bacterial peritonitis (SBP) being the most frequent ($n=13$; 46.4 %) (Table 2b). Mycotic infections were detected in 6.5 % ($n=6$) subjects within the observational period, with candida esophagitis in 3 cases, UTI in 2 patients and peritonitis in one case. Moreover, an episode of oHE occurred in 21.7 % ($n=20$) patients and 30.4 % ($n=28$) developed ACLF.

Regarding LTx-free survival, no differences between groups were detected in the competing risk analyses, treating G1 as reference group ($G2=HR=1.08$, $p=0.91$; $G3: HR=1.80$; $p=0.31$) (Figure 4 A). Of

333 note, incidences of infections were numerically higher in G1 than in G3 (n=14; 35.9 % vs. n=6, 20.7 %;
 334 HR=0.45, p=0.09) (Table 2a, Figure 4 B). Additionally, the risk for fungal infections was significantly
 335 increased among G1 patients compared to G3 (p<0.001) (Figure 4 C). Contrastingly, the likelihood for
 336 oHE (G2: HR=0.65, p=0.48; G3: HR=1.00, p=1.00) and ACLF (G2: HR=0.78, p=0.61; G3: HR=0.91, p=0.83)
 337 was almost equal between groups (Figure 4 D, E).

338

339 **Table 2a.** Incidences of complications during 90 days of follow-up.

	All patients (n=92)	Group 1 (n=39)	Group 2 (n=24)	Group 3 (n=29)
Death/LTx	25 (27.2)	11 (28.2)	7 (29.2)	7 (24.1)
Death	16 (17.4)	5 (12.8)	4 (16.7)	7 (24.1)
LTx	9 (9.8)	6 (15.4)	3 (12.5)	0 (0.0)
Infection	28 (30.4)	14 (35.9)	8 (33.3)	6 (20.7)
SBP	15 (16.3)	8 (20.5)	4 (16.7)	3 (10.3)
ACLF	28 (30.4)	12 (30.8)	7 (29.2)	9 (31.0)
Severe ACLF (≥ grade 2)	12 (13.0)	6 (15.4)	4 (16.7)	2 (6.9)
HE	20 (21.7)	9 (23.1)	4 (16.7)	7 (24.1)

340 Values as number (percentage).

341

342 **Table 2b.** Types of infections during 90 days of follow-up.

	All patients (n=28)	Group 1 (n=14)	Group 2 (n=8)	Group 3 (n=6)
SBP	13 (46.4)	7 (50.0)	3 (37.5)	3 (50.0)
UTI	5 (17.9)	3 (21.4)	0 (0.0)	2 (33.3)
Pneumonia	2 (7.1)	1 (7.1)	1 (12.5)	0 (0.0)
Bloodstream infection	4 (14.3)	3 (21.4)	1 (12.5)	0 (0.0)
Unknown	2 (7.1)	0 (0.0)	1 (12.5)	1 (16.7)
Others	6 (21.4)	3 (21.4)	2 (25.0)	1 (16.7)

343 Values as number (percentage). Results in more than 100 % due to presence of coinfections.

344

345

346

347 **Table 2c.** Infections causing pathogens.

	All patients (n=13)	Group 1 (n=8)	Group 2 (n=4)	Group 3 (n=2)
Enterococcus	5 (38.5)	3 (37.5)	2 (50.0)	0 (0.0)
S. aureus	2 (15.4)	1 (12.5)	1 (25.0)	0 (0.0)
Coagulase negative staphylococcus	3 (23.1)	1 (12.5)	2 (50.0)	0 (0.0)
Candida sp	6 (46.2)	5 (62.5)	0 (0.0)	1 (50.0)
others	2 (1.4)	0 (0.0)	1 (25.0)	1 (50.0)

348 Values as number (percentage). Results in more than 100 % due to presence of coinfections.

349

350

351

352

353

354

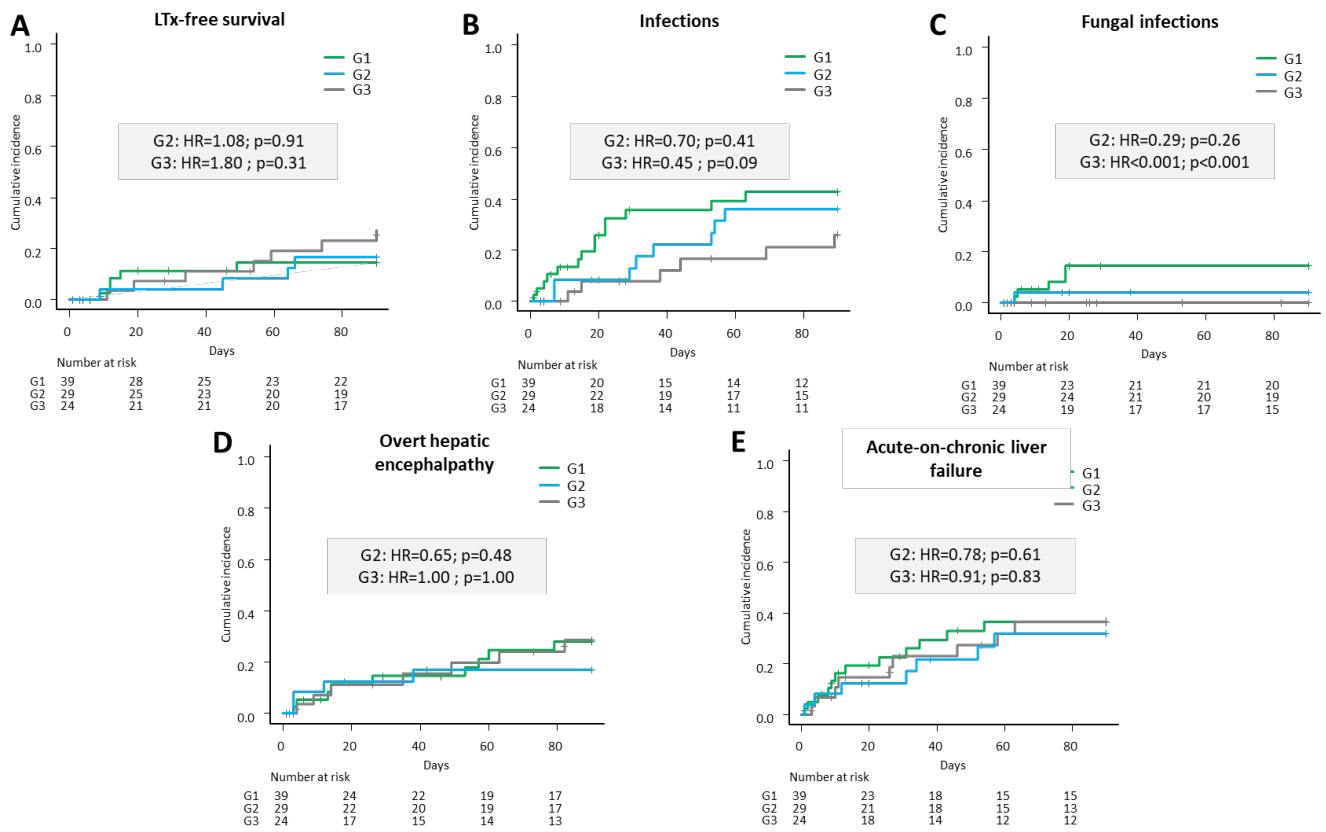
355

356

357

358

359



360 **Figure 4.** Competing risk analyses of liver transplantation (LTx)-free survival (A), infections (B), fungal infections
 361 (C), overt hepatic encephalopathy (D) (oHE) and acute-on-chronic liver failure (ACLF) (E). Group 1 (G1) was treated
 362 as reference group.

363

364 In a second step, the impact of increased Zonulin and elevated CD163 levels on the disease course were
 365 investigated. Although increased Zonulin concentrations were neither linked to inferior survival

366 (HR=0.81, p=0.75) nor to elevated risk for ACLF (HR=1.28, p=0.60), numerically higher incidences of
367 infectious complications (HR=1.83, p=0.16) and oHE (HR=2.23, p=0.11) were observed in these patients
368 (**Suppl. figure 3**). In line with this, the likelihood for oHE was statistically significantly increased in
369 subjects with elevated CD163 levels (HR=3.27, p=0.02) (**Suppl. Figure 4**).

370

371 **Proposal of an integrated model explaining interactions between antibiotic treatment, distinct**
372 **intestinal microbiota profiles and functioning, intestinal barriers, bacterial translocation and**
373 **infections in patients with cirrhosis**

374 In order to investigate how different parameters of various levels are connected correlation analyses
375 were performed and a mechanistic model is proposed in **Figure 5**. According to our model antibiotic
376 treatment greatly affected microbiota decreasing bacterial diversity and enriching for *Enterococci*.
377 Concurrently, lower bacterial cell concentrations and increased fungal colonization were observed in
378 those samples. Samples high in *Bifidobacteria* showed opposite patterns. Bacterial key functions,
379 namely, the capacity to synthesize SCFA and sBA, were associated with bacterial concentrations and
380 diversity as well as with *Bifidobacteria* (not sBA), whereas they were negatively associated with
381 *Enterococcus* and fungi. *Enterococci* and lower functional capacities of key metabolites were positively
382 associated with gut permeability (Zonulin) and inflammation (CD163 and CRP) that were also correlated
383 with each other. Elevated abundances of fungi were linked to CRP and the development of infections;
384 antibiotic treatment was associated with infections as well. *Bifidobacteria* did not correlate with any
385 patient parameters (**Figure 5**).

386

387

388

389

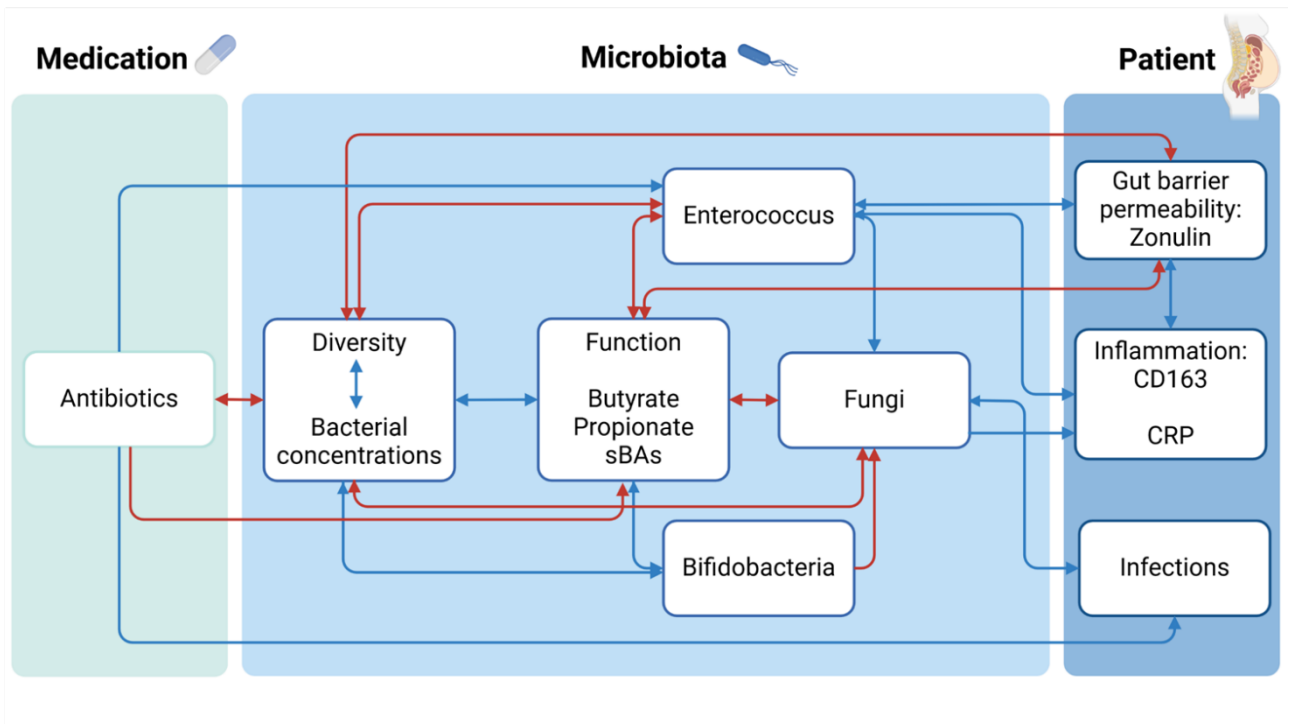
390

391

392

393

394



395 **Figure 5.** Proposal of an integrated model linking observed results of medication, gut microbiota and clinical
396 characteristics patients.

397 **Discussion**

398 Liver cirrhosis is characterized by irreversible liver damage that is related to high morbidity and poor
399 survival and accompanied by a dysbalanced intestinal microbiota, where the extent proportionally
400 increases with liver disease stages reaching its peak in decompensated cirrhosis.^{26 27 28} Our study
401 confirmed these prior data and provided additional quantitative insights demonstrating that, next to
402 composition, bacterial load was distinct between patient groups and lower compared to HC. Moreover,
403 we identified medication, specifically antibiotic treatment, as the main parameter explaining the
404 distinct microbial clusters observed, where a particular type dominated by *Enterococcus* was associated
405 with barrier dysfunction and inflammation. Importantly, we integrated a major, but so far largely
406 neglected component of gut microbiota, namely, the mycobiome, discovering an interplay between
407 fungi and specific bacterial taxa that correlated with systemic inflammation and infectious
408 complications.

409 The gut and the liver are tightly connected via reciprocal organ crosstalk forming the so-called gut-liver
410 axis.²⁹ The progression of hepatic disease is, hence, not limited to the liver, but directly influences the
411 intestinal environment and its microbial inhabitants. Typically, a reduction of alpha-diversity that is
412 often associated with increased abundances of pathobionts and lower levels of commensal bacteria
413 have been observed.³⁰ Our study supports those results and reiterated a clustering of samples into
414 groups either dominated by *Enterococcus* or *Bifidobacteria* as observed before.^{1 15 26} Those signature
415 taxa correlated with patient parameters, where only the former was correlated with barrier
416 malfunctioning and inflammation. Our study, hence, supports the general view that *Bifidobacteria* are
417 beneficial, also in the context of liver-disease patients, and concentrations of this taxon were associated
418 with higher bacterial loads, higher diversity and a lower fungal burden. Antibiotic treatment was
419 revealed as a major contributor for *Enterococcus* abundance (discussed in detail below), while
420 lactulose, which was recently shown to promote *Bifidobacteria* growth, did not significantly correlate
421 with abundances of this taxon in our study (p=0.18; data not shown).²⁶ Patients associated with G3
422 that represented the group most closely related to HC displaying highest diversities performed best in

423 many parameters and showed most discrimination to G1 including significantly lower levels of Zonulin
424 and CD163 along with a lower incidence of infections ($p < 0.1$). Those observations strengthen the
425 common view that a microbiota resembling healthy individuals the closest are the most beneficial, also
426 in the context of liver disease, and manipulations thereof should, hence, be done with care as outlined
427 below.

428 The loss of symbiotic microbes often implicates impaired microbiota functions¹⁵. Abundances of
429 pathways related to SCFA synthesis and bile acid transformations were markedly lower in our patient
430 cohort compared with HC, which was particularly pronounced in G1. This observation was recently
431 confirmed on a metabolomic level, where microbiota linked to an *Enterococci* bloom were largely
432 devoid of those metabolites.¹⁵ SCFA serve as nutrition for colonocytes and are, hence, essential for the
433 maintenance the intestinal barrier and act anti-inflammatory.⁵⁻⁹ Thus, reduced SCFA synthesis directly
434 contribute to barrier dysfunction and increased inflammation as indicated by results of our study. To
435 investigate the impact of microbiota patterns on host barrier functions, plasma Zonulin was measured.
436 Zonulin, a haptoglobin 2 pre-protein, is secreted by intestinal epithelial cells in response to stress
437 inducing factors, mainly due to increased pathobiont abundances.³¹ In line with this, cirrhosis patients
438 exhibited significantly increased Zonulin levels compared to HC in our study. Furthermore, Zonulin
439 correlated positively with *Enterococcus* abundance and negatively with microbiota diversity and SCFA
440 production potential, so that Zonulin levels of G1 exceeded those of the other patients markedly. After
441 secretion, Zonulin upregulates tight junction permeability.³²⁻³³ Reduced tightness of these intercellular
442 connections allows entrance of gut-derived bacteria and pathogen-associated molecular patterns
443 (PAMPs).³⁴ Once PAMPs reach the liver via the portal venous system, liver-resident macrophages
444 (Kupffer cells) quickly respond with the release of CD163.³⁵⁻³⁶ Importantly, the positive correlation
445 between Zonulin and CD163 in our study exemplifies the relationship between increased intestinal
446 permeability, translocation of bacterial products and inflammatory response (CRP). Recently, increased
447 pathobiont abundance has been discussed as predictor for nosocomial infection development in
448 cirrhosis.³⁷ Furthermore, expansion of *Enterococci* over time has been linked to a higher infection

449 vulnerability among patients undergoing LTx.¹⁵ Our data demonstrate that altered barrier functions
450 might be one out of several contributing factors for this association. In line, G1 patients showed highest
451 incidences of infections during follow-up. However, although incidences differed numerically in our
452 cohort, these disparities were not statistically significant in the competing risk models. This might be
453 explained by a too small sample size. Thus, larger studies will be required to draw final conclusions on
454 this issue.

455 While some studies have investigated intestinal bacterial composition, our study provides detailed
456 insights on the intestinal mycobiome in patients with decompensated cirrhosis. We demonstrated that
457 the extent of bacterial dysbiosis, along with a reduction of cell concentrations, are related to fungal
458 overgrowth in cirrhosis patients. Importantly, the group with the highest intestinal concentrations of
459 fungi indeed had a higher risk for fungal infections. This is of particular clinical importance as mycotic
460 infections, e.g. spontaneous fungal peritonitis, are severe complications, that potentially cause critical
461 illness and end in up to 30-50 % fatality.^{17 38} Furthermore, fungal abundance did correlate with both
462 inflammatory markers, i.e., CD163 and CRP suggesting a proinflammatory role that potentially
463 contributes to progression of tissue damage, organ dysfunction and therefore to several complications
464 apart from infections in these patients^{39 40}. *Enterococcus* was positively associated with fungi as well,
465 however, whether this observation is a result of an interplay between those taxa or confounded by
466 other factors, such as medication, needs to be elucidated in follow-up studies.

467 To uncover potential causes of the different patterns in our cohort, antibiotic treatment was analyzed.
468 Interestingly, it was found that patients with the lowest cell counts and the highest *Enterococcus* and
469 fungi abundance frequently received broad spectrum antibiotics, which might explain the reduction of
470 autochthonous bacteria. Furthermore, some of these preparations, for example meropenem or
471 ceftriaxone, have relatively low or even no efficacy against Enterococci. This might result in selective
472 growth advantage for this genus. Additionally, these patients received a significantly higher number of
473 different antibiotics within one week before stool was provided. This might further contribute to the
474 diminished autochthonous microbiota and the overall reduction of bacterial cell counts. With the

475 decrease of bacterial concentrations, not only the competition for nutrition, but also the diminished
476 bacterial release of antifungal metabolites, might enable fungi expansion.^{41 42 43} Moreover, beta-lactam
477 antibiotics, that were frequently prescribed to G1 patients, have been linked to the release of
478 peptidoglycans from bacteria.⁴⁴ A recent study reported enhanced growth of *Candida* in the presence
479 of these substances.⁴⁴ Hence, antibiotic treatment seems to contribute to increased fungi abundances
480 via multiple mechanisms. Contrastingly, antibiotic treatment in G2 was mainly dominated by rifaximin
481 that has been linked to a reduction of several pathogenic taxa whilst increasing commensals, such as
482 *Bifidobacteria* and *Faecalibacterium*.^{45 46 47}

483 Once any infection occurs, it will be repeatedly treated with antibiotics.⁴⁸ From the viewpoint of
484 dysbiosis, this might result in a vicious cycle, with repetitive damage of the intestinal microbiota,
485 leading to barrier dysfunction and recurrent infections. Hence, indication for antibiotic treatment
486 should be provided carefully in the setting of advanced liver disease. As the missing longitudinal sample
487 collection is a major limitation of our study, the regenerative capacity of the gut barrier in cirrhosis
488 patients needs to be investigated by further. In contrast, among patients with CHILD C cirrhosis and low
489 ascites protein levels prophylactic treatment with norfloxacin can reduce incidence of SBP and improve
490 one year survival.^{49 50} The preventive effect against SBP might be due to the reduction of gram-negative
491 bacteria, e.g. *Proteobacteria*, that has been observed in rats as well as in cirrhosis patients who
492 received norfloxacin as a prophylaxis. Contrastingly, the abundances of gram-positive cocci remained
493 stable during treatment.^{51 52} However, detailed insights into the microbiota modulating effects of
494 norfloxacin and its impact on long-term changes of the intestinal barrier remain to be determined. Of
495 note, we did not find any significant correlation of norfloxacin prophylaxis with microbiota
496 composition in our study.

497 In conclusion, distinct individual features of microbiota are present even in the end stage of liver
498 disease and linked to antibiotic treatment. These microbial patterns are strongly associated to intestinal
499 barrier functions that might play an important role for development of cirrhosis-related complications.

500 Further research is required to design novel, microbiota-based treatment options for patients with
501 decompensated liver cirrhosis.

502

503

504

505

506

507

508

509

510

511

512

513

514

515

516

517

518

519

520

521 **References**

- 522 1. Acharya C, Bajaj JS. Altered microbiome in patients with cirrhosis and complications. *Clin*
523 *Gastroenterol Hepatol*. 2019;17(2):307-321.
- 524 2. Wang Q, Chen C, Zuo S, Cao K, Li H. Integrative analysis of the gut microbiota and faecal and serum
525 short-chain fatty acids and tryptophan metabolites in patients with cirrhosis and hepatic
526 encephalopathy. *J Transl Med*. 2023;21(1):395.
- 527 3. Solé C, Guilly S, Da Silva K, et al. Alterations in gut microbiome in cirrhosis as assessed by
528 quantitative metagenomics: Relationship with acute-on-chronic liver failure and prognosis.
529 *Gastroenterology*. 2021;160(1):206-218.e13.
- 530 4. Bajaj JS, Heuman DM, Hylemon PB, et al. Altered profile of human gut microbiome is associated
531 with cirrhosis and its complications. *J Hepatol*. 2014;60(5):940-947.
- 532 5. Wong JMW, de Souza R, Kendall CWC, Emam A, Jenkins DJA. Colonic health: Fermentation and
533 short chain fatty acids. *J Clin Gastroenterol*. 2006;40(3):235-243.
- 534 6. Vital M, Karch A, Pieper DH. Colonic butyrate-producing communities in humans: An overview
535 using omics data. *mSystems*. 2017;2(6).
- 536 7. Singhal R, Donde H, Ghare S, et al. Decrease in acetyl-CoA pathway utilizing butyrate-producing
537 bacteria is a key pathogenic feature of alcohol-induced functional gut microbial dysbiosis and
538 development of liver disease in mice. *Gut Microbes*. 2021;13(1):1946367.
- 539 8. Kircher B, Woltemate S, Gutzki F, et al. Predicting butyrate- and propionate-forming bacteria of gut
540 microbiota from sequencing data. *Gut Microbes*. 2022;14(1):2149019.
- 541 9. Duscha A, Gisevius B, Hirschberg S, et al. Propionic acid shapes the multiple sclerosis disease
542 course by an immunomodulatory mechanism. *Cell*. 2020;180(6):1067-1080.e16.

- 543 10. Albillos A, Martin-Mateos R, Van der Merwe S, Wiest R, Jalan R, Álvarez-Mon M. Cirrhosis-
544 associated immune dysfunction. *Nat Rev Gastroenterol Hepatol*. 2022;19(2):112-134.
- 545 11. Albillos A, Lario M, Álvarez-Mon M. Cirrhosis-associated immune dysfunction: Distinctive features
546 and clinical relevance. *J Hepatol*. 2014;61(6):1385-1396.
- 547 12. Arvaniti V, D'Amico G, Fede G, et al. Infections in patients with cirrhosis increase mortality four-
548 fold and should be used in determining prognosis. *Gastroenterology*. 2010;139(4):1246-1256.e12565.
- 549 13. de Franchis R, Bosch J, Garcia-Tsao G, Reiberger T, Ripoll C. Baveno VII - renewing consensus in
550 portal hypertension. *J Hepatol*. 2022;76(4):959-974.
- 551 14. Moreau R, Jalan R, Gines P, et al. Acute-on-chronic liver failure is a distinct syndrome that
552 develops in patients with acute decompensation of cirrhosis. *Gastroenterology*. 2013;144(7):1426-
553 1437.e14379.
- 554 15. Lehmann CJ, Dylla NP, Odenwald M, et al. Fecal metabolite profiling identifies liver transplant
555 recipients at risk for postoperative infection. *Cell Host Microbe*. 2024;32(1):117-130.e4.
- 556 16. Bajaj JS, Liu EJ, Kheradman R, et al. Fungal dysbiosis in cirrhosis. *Gut*. 2018;67(6):1146-1154.
- 557 17. Hwang SY, Yu SJ, Lee J, et al. Spontaneous fungal peritonitis: A severe complication in patients
558 with advanced liver cirrhosis. *Eur J Clin Microbiol Infect Dis*. 2014;33(2):259-264.
- 559 18. Galle. EASL clinical practice guidelines: Management of hepatocellular carcinoma. *J Hepatol*.
560 2018;69(1):182-236.
- 561 19. Schultalbers M, Tergast TL, Simon N, et al. Frequency, characteristics and impact of multiple
562 consecutive nosocomial infections in patients with decompensated liver cirrhosis and ascites. *United*
563 *European Gastroenterol J*. 2020;8(5):567-576.

- 564 20. Kabbani A, Tergast TL, Manns MP, Maasoumy B. [Treatment strategies for acute-on-chronic liver
565 failure]. *Med Klin Intensivmed Notfmed*. 2021;116(1):3-16.
- 566 21. Vilstrup H, Amodio P, Bajaj J, et al. Hepatic encephalopathy in chronic liver disease: 2014 practice
567 guideline by the american association for the study of liver diseases and the european association for
568 the study of the liver. *Hepatology*. 2014;60(2):715-735.
- 569 22. Kircher B, Woltemate S, Gutzki F, et al. Predicting butyrate- and propionate-forming bacteria of
570 gut microbiota from sequencing data. *Gut Microbes*. 2022;14(1):2149019.
- 571 23. Vital M, Rud T, Rath S, Pieper DH, Schlüter D. Diversity of bacteria exhibiting bile acid-inducible
572 7 α -dehydroxylation genes in the human gut. *Comput Struct Biotechnol J*. 2019;17:1016-1019.
- 573 24. Chaumeil P, Mussig AJ, Hugenholtz P, Parks DH. GTDB-tk: A toolkit to classify genomes with the
574 genome taxonomy database. *Bioinformatics*. 2020;36(6):1925-1927.
- 575 25. Rath S, Heidrich B, Pieper DH, Vital M. Uncovering the trimethylamine-producing bacteria of the
576 human gut microbiota. *Microbiome*. 2017;5(1):54.
- 577 26. Odenwald MA, Lin H, Lehmann C, et al. Bifidobacteria metabolize lactulose to optimize gut
578 metabolites and prevent systemic infection in patients with liver disease. *Nat Microbiol*.
579 2023;8(11):2033-2049.
- 580 27. Ginès P, Krag A, Abraldes JG, Solà E, Fabrellas N, Kamath PS. Liver cirrhosis. *Lancet*.
581 2021;398(10308):1359-1376.
- 582 28. Qin N, Yang F, Li A, et al. Alterations of the human gut microbiome in liver cirrhosis. *Nature*.
583 2014;513(7516):59-64.
- 584 29. Hsu CL, Schnabl B. The gut-liver axis and gut microbiota in health and liver disease. *Nat Rev*
585 *Microbiol*. 2023;21(11):719-733.

- 586 30. Trebicka J, Macnaughtan J, Schnabl B, Shawcross DL, Bajaj JS. The microbiota in cirrhosis and its
587 role in hepatic decompensation. *J Hepatol.* 2021;75(Suppl 1):S67-S81.
- 588 31. Fasano A. Zonulin and its regulation of intestinal barrier function: The biological door to
589 inflammation, autoimmunity, and cancer. *Physiol Rev.* 2011;91(1):151-175.
- 590 32. Fasano A. Intestinal zonulin: Open sesame! *Gut.* 2001;49(2):159-162.
- 591 33. Seethaler B, Basrai M, Neyrinck AM, et al. Biomarkers for assessment of intestinal permeability in
592 clinical practice. *Am J Physiol Gastrointest Liver Physiol.* 2021;321(1):G11-G17.
- 593 34. Wiest R, Lawson M, Geuking M. Pathological bacterial translocation in liver cirrhosis. *J Hepatol.*
594 2014;60(1):197-209.
- 595 35. Grønbaek H, Rødgaard-Hansen S, Aagaard NK, et al. Macrophage activation markers predict
596 mortality in patients with liver cirrhosis without or with acute-on-chronic liver failure (ACLF). *J*
597 *Hepatol.* 2016;64(4):813-822.
- 598 36. Holland-Fischer P, Grønbaek H, Sandahl TD, et al. Kupffer cells are activated in cirrhotic portal
599 hypertension and not normalised by TIPS. *Gut.* 2011;60(10):1389-1393.
- 600 37. Bajaj JS, Reddy KR, Tandon P, et al. Association of serum metabolites and gut microbiota at
601 hospital admission with nosocomial infection development in patients with cirrhosis. *Liver Transpl.*
602 2022;28(12):1831-1840.
- 603 38. Bajaj JS, Reddy RK, Tandon P, et al. Prediction of fungal infection development and their impact
604 on survival using the NACSELD cohort. *Am J Gastroenterol.* 2018;113(4):556-563.
- 605 39. Engelmann C, Clària J, Szabo G, Bosch J, Bernardi M. Pathophysiology of decompensated
606 cirrhosis: Portal hypertension, circulatory dysfunction, inflammation, metabolism and mitochondrial
607 dysfunction. *J Hepatol.* 2021;75(Suppl 1):S49-S66.

608 40. Arroyo V, Angeli P, Moreau R, et al. The systemic inflammation hypothesis: Towards a new
609 paradigm of acute decompensation and multiorgan failure in cirrhosis. *J Hepatol.* 2021;74(3):670-
610 685.

611 41. Paterson MJ, Oh S, Underhill DM. Host-microbe interactions: Commensal fungi in the gut. *Curr*
612 *Opin Microbiol.* 2017;40:131-137.

613 42. Noverr MC, Huffnagle GB. Regulation of candida albicans morphogenesis by fatty acid
614 metabolites. *Infect Immun.* 2004;72(11):6206-6210.

615 43. Cottier F, Tan ASM, Yurieva M, et al. The transcriptional response of to weak organic acids,
616 carbon source, and inactivation unveils a role for in mediating the fungistatic effect of acetic acid. *G3*
617 *(Bethesda).* 2017;7(11):3597-3604.

618 44. Tan CT, Xu X, Qiao Y, Wang Y. A peptidoglycan storm caused by β -lactam antibiotic's action on
619 host microbiota drives candida albicans infection. *Nat Commun.* 2021;12(1):2560.

620 45. Patel VC, Lee S, McPhail MJW, et al. Rifaximin- α reduces gut-derived inflammation and mucin
621 degradation in cirrhosis and encephalopathy: RIFSYS randomised controlled trial. *J Hepatol.*
622 2022;76(2):332-342.

623 46. Ponziani FR, Zocco MA, D'Aversa F, Pompili M, Gasbarrini A. Eubiotic properties of rifaximin:
624 Disruption of the traditional concepts in gut microbiota modulation. *World J Gastroenterol.*
625 2017;23(25):4491-4499.

626 47. Brigidi P, Swennen E, Rizzello F, Bozzolascio M, Matteuzzi D. Effects of rifaximin administration on
627 the intestinal microbiota in patients with ulcerative colitis. *J Chemother.* 2002;14(3):290-295.

628 48. Angeli. EASL clinical practice guidelines for the management of patients with decompensated
629 cirrhosis. *J Hepatol.* 2018;69(2):406-460.

- 630 49. Moreau R, Elkrief L, Bureau C, et al. Effects of long-term norfloxacin therapy in patients with
631 advanced cirrhosis. *Gastroenterology*. 2018;155(6):1816-1827.e9.
- 632 50. Fernández J, Ruiz del Arbol L, Gómez C, et al. Norfloxacin vs ceftriaxone in the prophylaxis of
633 infections in patients with advanced cirrhosis and hemorrhage. *Gastroenterology*. 2006;131(4):1049-
634 1285.
- 635 51. Gómez-Hurtado I, Gimenez P, García I, et al. Norfloxacin is more effective than rifaximin in
636 avoiding bacterial translocation in an animal model of cirrhosis. *Liver Int*. 2018;38(2):295-302.
- 637 52. Ginés P, Rimola A, Planas R, et al. Norfloxacin prevents spontaneous bacterial peritonitis
638 recurrence in cirrhosis: Results of a double-blind, placebo-controlled trial. *Hepatology*.
639 1990;12(4):716-724.

640

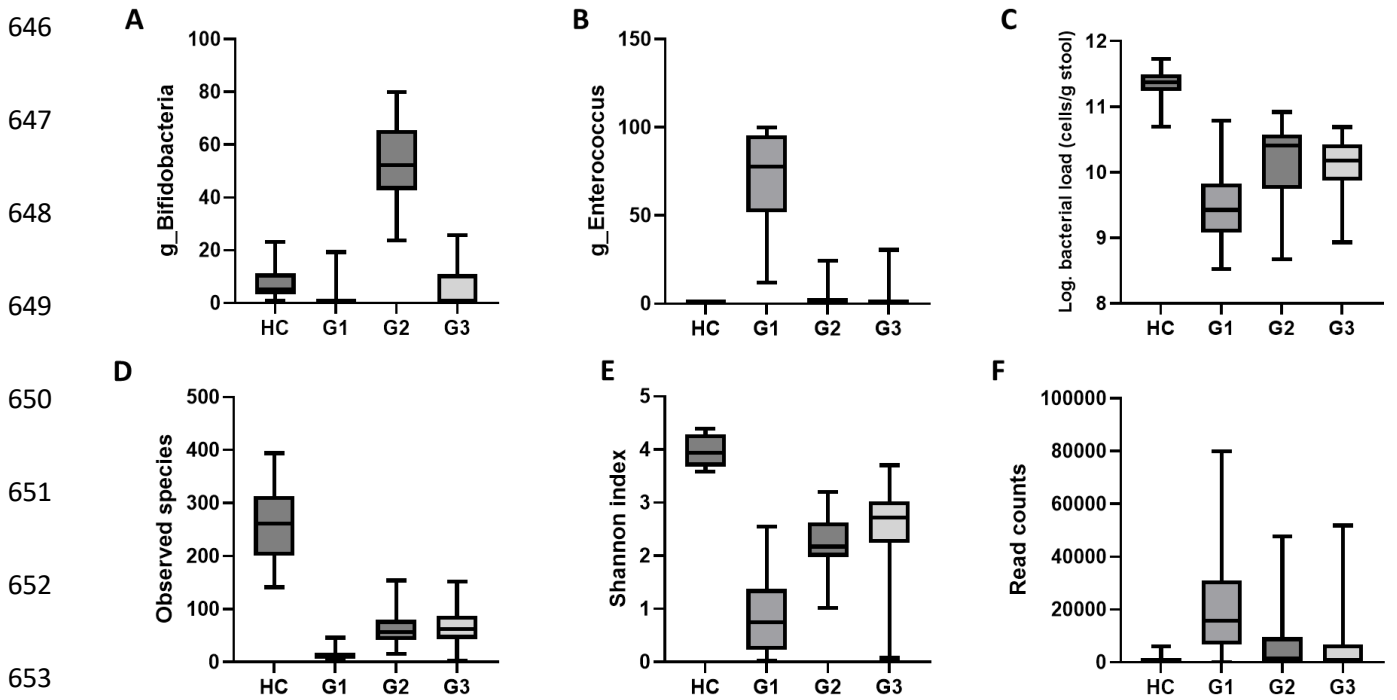
641

642

643

644 **Supplementary figures**

645 **Supplementary figure 1**



654 **Supplementary figure 1.** Bifidobacteria were most abundant in G2 (A), whereas Enterococcus dominated G1 (B).

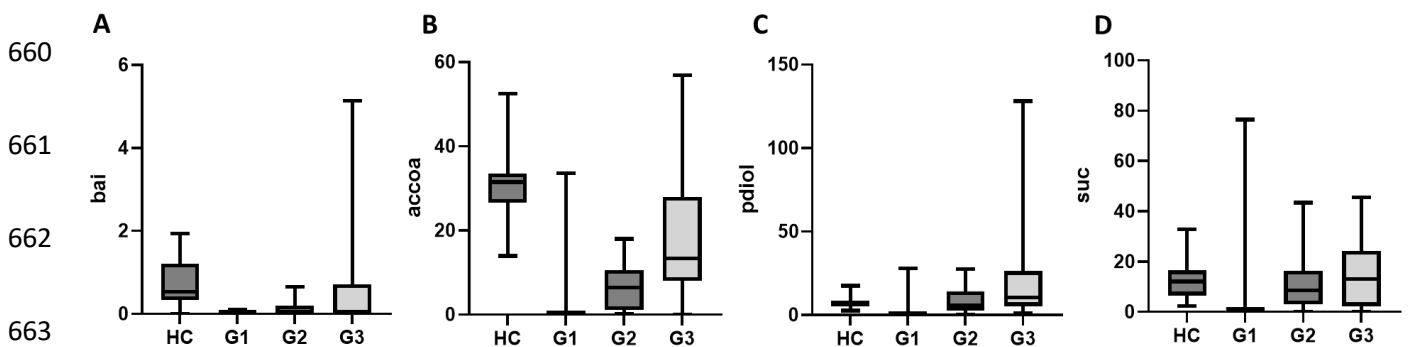
655 Overall bacterial concentrations were decreased in patients, with lowest values in G1 (C). Diversity, assessed by

656 observed species (D) and Shannon index (E), increased from G1 over G2 and G3 to healthy controls (HC). Fungi

657 are largely devoid in HC, but reached high abundances in G1 (F).

658

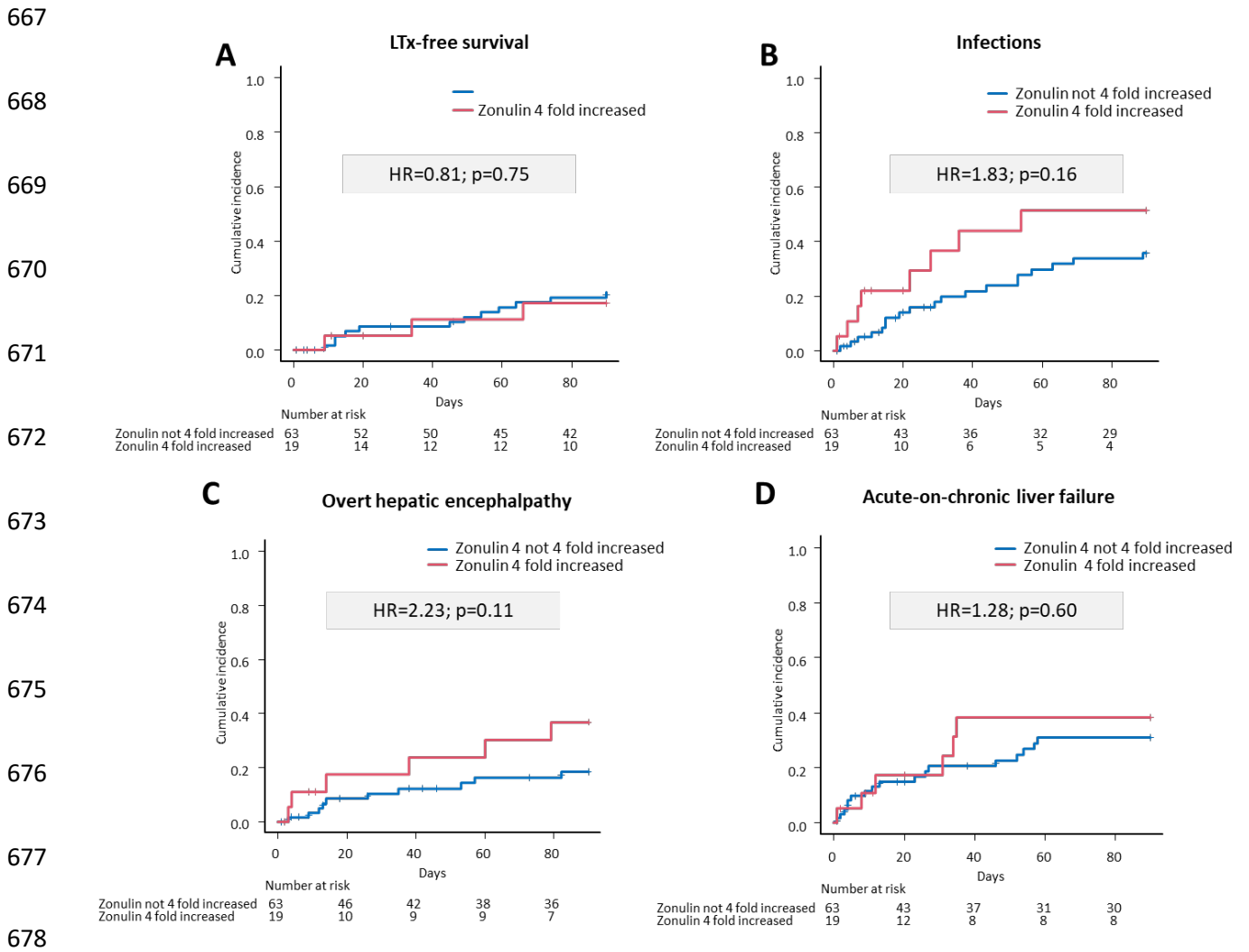
659 **Supplementary figure 2**



664 **Supplementary figure 2.** Microbial key pathways encoding enzymes for the synthesis of secondary bile acids (A)

665 and the short chain fatty acids butyrate (B) and propionate (C, D).

666 **Supplementary figure 3**



679 **Supplementary figure 3.** Competing risk analyses of liver transplantation (LTx)-free survival (A), infections (B),
 680 overt hepatic encephalopathy (C) (oHE) and acute-on-chronic liver failure (ACLF) (D) in patients with and without
 681 increased Zonulin levels.

682

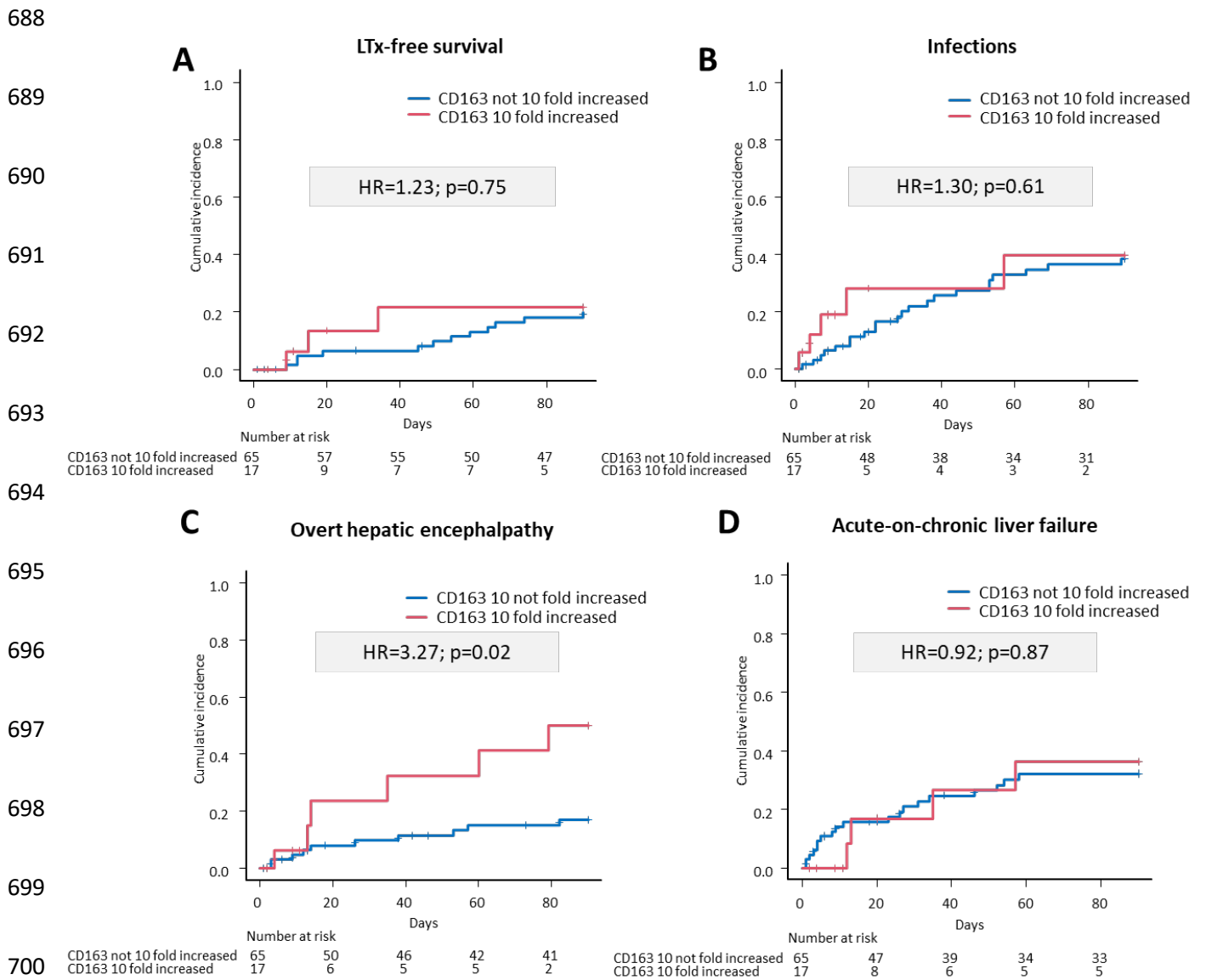
683

684

685

686

687 **Supplementary figure 4**



Supplementary figure 4. Competing risk analyses of liver transplantation (LTx)-free survival (A), infections (B), overt hepatic encephalopathy (C) (oHE) and acute-on-chronic liver failure (ACLF) (D) in patients with and without increased CD163 levels.