

Representational drawing ability is associated with the syntactic language comprehension phenotype in autistic individuals

Andrey Vyshedskiy^{1*}, Rohan Venkatesh², Edward Khokhlovich²

¹ Boston University, Boston, MA 02215, USA

² Independent researcher, Newton, MA 02459, USA

*Corresponding author: Andrey Vyshedskiy, Ph.D., Boston University, Boston, USA, Tel: +1 (617) 433-7724; E-mail: vysha@bu.edu

Abstract

The relationship between symbolic thinking and language abilities is a topic of intense debate. We have recently discovered three distinct phenotypes of language comprehension, which we defined as command, modifier and syntactic phenotypes (Vyshedskiy et al., 2024). Individuals in the *command* phenotype were limited to comprehension of simple commands, while those in the *modifier* phenotype showed additional comprehension of color, size, and number modifiers. Finally, individuals in the most-advanced *syntactic* phenotype added comprehension of spatial prepositions, verb tenses, flexible syntax, possessive pronouns, complex explanations, and fairytales. In this report we analyzed how these three language phenotypes differed in their symbolic thinking as exhibited through their drawing abilities. In a cohort of 39,654 autistic individuals 4- to 21-years-of-age, parents reported that ‘drawing, coloring and art’ was manifested by 36.0% of participants. Among these individuals, representational drawing was manifested by 54.1% of individuals with syntactic-, 27.7% of those with modifier-, and 10.1% of those with command-phenotype (all pairwise differences between the phenotypes were statistically significant, $p < 0.0001$). The ability to draw a novel image per parent’s description (e.g. a three-headed horse) was reported by 34.6% of individuals with syntactic-, 7.9% of those with modifier-, and 1.9% of individuals with command-phenotype (all pairwise differences between the phenotypes were statistically significant, $p < 0.0001$). These results show strong association between the representational drawing ability and the syntactic-language-comprehension-phenotype, suggesting a potential benefit of drawing interventions in language therapy.

Keywords: representational drawing, figurative drawing, syntactic language, patholinguistics

Introduction

Drawing has been commonly used as a window into participants' symbolic abilities (Beyn & Knyazeva, 1962; Levine et al., 1985; Thomas & Silk, 1990). Representational drawing – preplanned by the child and recognizable by parents – first appears in typical children around 3 to 4 years of age (Freeman, 1993; Golomb, 2003; Krampen, 2013; Thomas & Silk, 1990). Children with ASD, however, often experience impairments in representational drawing. In one of the first studies to test representational drawing in ASD, Scott and Baron-Cohen (Scott & Baron-Cohen, 1996) compared autistic individuals 8 to 16 years of age with controls matched on verbal mental age of around 4.5 years of age, calculated using the Test of Reception of Grammar (TROG) (Bishop, 2005). All participants passed the pre-test by copying the geometric forms. First, participants were asked to draw a picture of a man. When they had completed the drawing, the experimenter asked participants to draw another picture of a man, but this time to “draw a man that does not exist; an impossible man.” Second, participants were asked to draw a picture of a house. When they had completed the drawing, the experimenter asked participants to draw another picture of a house, but this time to “draw a house that does not exist; an impossible house.” Children with autism were significantly worse than matched controls in their ability to introduce “unreal” changes to their representations of people and houses: only 7.7% of participants with autism successfully drew an impossible house, and 8.3% an impossible man, compared to 100% and 86.8%, respectively, for the control group. Scott and Baron-Cohen concluded that children with autism have a deficit in imagining unreal objects, the phenomenon termed *mindblindness* by Baron-Cohen (Baron-Cohen, 1997). Leavers and Harris (Leavers & Harris, 1998) and later Allen and Craig (Allen & Craig, 2016) challenged this interpretation, suggesting instead that children with ASD may specifically struggle with executing new and complex visuo-spatial plans. Other studies confirm differences in representational drawing between children with ASD and typical children. For example, Low et al. reported that children with ASD produced fewer representational drawings compared to a typical children (Low et al., 2009). Craig et al. reported deficits in children with ASD compared to typical children when asked to draw unreal objects, such as ‘a man with two heads’ (Craig et al., 2001).

These important studies, however, were limited by a small number of participants. In 2015 we published a language training app for children (Dunn, Elgart, Lokshina, Faisman, Khokhlovich, et al., 2017b, 2017a; Dunn, Elgart, Lokshina, Faisman, Waslick, et al., 2017; Vyshedskiy et al., 2020; Vyshedskiy & Dunn, 2015), which invites parents to complete their child's evaluations. As a result, we accumulated over 200,000 longitudinal evaluations, mostly from children diagnosed with ASD. This gives us an opportunity to study representational drawing in a large number of ASD children. Parents were surveyed on the following three questions concerning children's drawing proclivities. One question polled caregivers on the child's general non-representational art proclivity: “[My child] does drawing, coloring, art.” Two other questions surveyed caregivers on their child's representational drawing: “[My child] draws a VARIETY of RECOGNIZABLE images (objects, people, animals, etc.)” and “[My child] can draw a NOVEL image following YOUR description (e.g. a three-headed horse).” The answer choices were: “very true,” “somewhat true,” and “not true.”

The goal of this article was to investigate the relationships between representational drawing and the three language comprehension phenotypes. Discovered recently, these three robustly distinct language comprehension phenotypes were defined as command, modifier and syntactic. Specifically, individuals in the *command* phenotype were limited to comprehension of simple commands, those in the *modifier* phenotype showed additional comprehension of color, size, and number modifiers; and finally, individuals in the most-advanced *syntactic* phenotype added comprehension of spatial prepositions, verb tenses, flexible syntax, possessive pronouns, complex explanations, and fairytales (Vyshedskiy et al., 2024). To study the association between the representational drawing ability and language phenotypes we focus on participants reported to “do drawing, coloring, art.” These participants clearly demonstrated both an interest in and the physical ability to engage in “drawing, coloring, art.” If the representational drawing ability is unrelated to language phenotypes, then equal proportion of these participants in each language phenotype should be expected to exhibit the representational drawing ability. Conversely, if one language phenotype shows a significant association with the representational drawing ability, this will suggest the possibility that some of neurological mechanisms underlying this phenotype are shared with those involved in representational drawing.

	Language comprehension items (verbatim)	Abbreviations used in dendrograms
1	Knows own name	Knows own name
2	Responds to 'No' or 'Stop'	Resp to no and stop
3	Responds to praise	Responds to praise
4	Can follow some commands	Can follow commands
5	Understands some simple modifiers (i.e., green apple vs. red apple or big apple vs. small apple)	Underst color and size
6	Understands several modifiers in a sentence (i.e., small green apple)	Underst two modifiers
7	Understands size (can select the largest/smallest object out of a collection of objects)	Underst size superlatives
8	Understands NUMBERS (i.e., two apples vs. three apples)	Understands numbers
9	Understands spatial prepositions (i.e., put the apple ON TOP of the box vs. INSIDE the box vs. BEHIND the box)	U. spatial prepositions
10	Understands verb tenses (i.e., I will eat an apple vs. I ate an apple)	Understands verb tenses
11	Understands simple stories that are read aloud	Underst simple stories
12	Understands elaborate fairy tales that are read aloud (i.e., stories describing FANTASY creatures)	Underst elabor fairytales
13	Understands possessive pronouns (i.e., your apple vs. her apple)	U. possessive pronouns
14	Understands the change in meaning when the order of words is changed (i.e., understands the difference between 'a cat ate a mouse' vs. 'a mouse ate a cat')	Underst flexible syntax
15	Understands explanations about people, objects or situations beyond the immediate surroundings (e.g., "Mom is walking the dog," "The snow has turned to water").	U. abstract explanations

Table 1. Language comprehension items as they were posed to parents. Answer choices were as follows: very true (0 points), somewhat true (1 point), and not true (2 points). Items 1 to 4 were assessed as a part of the Autism Treatment Evaluation Checklist (ATEC) (Rimland & Edelson, 1999a) ; the rest of items were a part of the Mental Synthesis Evaluation Checklist (MSEC) (Braverman et al., 2018a).

Methods

Participants

Participants were children and adolescents using a language therapy app that was made available gratis at all major app stores in September 2015 (Dunn, Elgart, Lokshina, Faisman, Khokhlovich, et al., 2017b, 2017a; Dunn, Elgart, Lokshina, Faisman, Waslick, et al., 2017; Vyshedskiy et al., 2020; Vyshedskiy & Dunn, 2015). Once the app was downloaded, caregivers were asked to register and to provide demographic details, including the child's diagnosis and

age. Caregivers completed the Autism Treatment Evaluation Checklist (ATEC) (Rimland & Edelson, 1999b), and an evaluation of language comprehension using the Mental Synthesis Evaluation Checklist (MSEC) (Braverman et al., 2018b). Inclusion criteria were the same as in the previous study (Vyshedskiy et al., 2024): parent-reported ASD diagnosis (a good reliability of such parent-reported diagnosis has been previously demonstrated (Jagadeesan et al., 2022)), absence of seizures (that commonly result in intermittent, unstable language comprehension deficits (Forman et al., 2022)), absence of serious and moderate sleep problems (that are also associated with intermittent, unstable language comprehension deficits (Levin et al., 2022)), age range of 4 to 21 years (the lower age cutoff was chosen to ensure that participants were exposed to all variety of items listed in Table 1 (Arnold & Vyshedskiy, 2022); the upper age cutoff was chosen to avoid analysis of participants who may be linguistically declining due to aging). These enrollment criteria resulted in 39,654 participants. Then we selected participants for this study based on their general proclivity for art. This, in turn, was determined by their caregiver answering “very true” to the question “[My child] does drawing, coloring, art” (part of ATEC subscale 3; the other answer choices were “somewhat true,” and “not true”). Thus, the study included 14,279 participants (36.0% of the original cohort). When caregivers have completed several evaluations, the last evaluation was used for analysis. The average age was 6.4 ± 2.4 years (range of 4 to 21 years), 72% participants were males. All caregivers consented to anonymized data analysis and publication of the results. The study was conducted in compliance with the Declaration of Helsinki (World Medical Association, 2013a). Using the Department of Health and Human Services regulations found at 45 CFR 46.101(b)(4), the Biomedical Research Alliance of New York LLC Institutional Review Board (IRB) determined that this research project is exempt from IRB oversight.

Representational drawing assessment

Two questions surveyed parents on their children’s representational drawing ability: “[My child] draws a VARIETY of RECOGNIZABLE images (objects, people, animals, etc.);” and “[My child] can draw a NOVEL image following YOUR description (e.g. a three-headed horse).” The answer choices were: “very true,” “somewhat true,” and “not true.”

Clustering analysis to determine language comprehension phenotype

All fifteen available *language comprehension* items were included in the cluster analysis to determine the language comprehension phenotype (Table 1). Unsupervised hierarchical clustering was performed using Ward’s agglomeration method with a Euclidean distance metric as in the previous study (Vyshedskiy et al., 2024). Two-dimensional heatmap was generated using the “pheatmap” package of R, freely available language for statistical computing.

Results

Compared to the previous investigation (Vyshedskiy et al., 2024), this study focused on participants who demonstrated a general proclivity for art, as determined by their caregiver answering “very true” to the question “[My child] does drawing, coloring, art” (N=14,279; 36.0% of the original cohort). Other participants may not have been exposed to “drawing,

coloring, and art,” may have physical disability, or may not have been interested in this activity and therefore were excluded from analysis.

Caregivers evaluated 15 language comprehension abilities (Table 1). To explore their co-occurrence, we used two common clustering methods: Unsupervised Hierarchical Cluster Analysis (UHCA) and Principal Component Analysis (PCA). Clustering techniques automatically organize abilities based on their co-occurrence. If two linguistic abilities are mediated by the same underlying mechanism, then, the breakdown of this mechanism should result in the absence of both abilities, causing them to be grouped into the same cluster. Importantly, the clustering analysis was devoid of any design or hypothesis, as the process is entirely driven by the data.

Figure 1A depicts the dendrogram generated by UHCA. The height of the branches indicates the distance between clusters, which is an indicator of greater dissimilarity. As in the previous study, three clusters have inter-cluster distances that are significantly larger than the distances between subgroups. The right-most cluster includes knowing the name, responding to ‘No’ or ‘Stop’, responding to praise, and following some commands (items 1 to 4 in Table 1). This cluster is identical to the command-language-comprehension-cluster identified in the previous study of 31,845 autistic individuals with the addition of the ‘responds to praise’ item that was not previously analyzed (Vyshedskiy et al., 2024). The cluster in the middle includes understanding color and size modifiers, several modifiers in a sentence, size superlatives, and numbers (items 5 to 8 in Table 1). This cluster is identical to the previously identified modifier-language-comprehension-cluster. The left-most cluster includes understanding of spatial prepositions, verb tenses, flexible syntax, possessive pronouns, explanations about people and situations, simple stories, and elaborate fairy tales (items 9 to 15 in Table 1). This cluster is identical to the previously identified syntactic-language-comprehension-cluster.

The PCA (Figure 1B) also demonstrates a clear separation between the same three clusters. The command items (knowing the name, responding to ‘No’ or ‘Stop’, responding to praise, and following some commands) are clustered in the top left corner. The modifier items (understanding color and size modifiers, several modifiers in a sentence, size superlatives, and numbers) are clustered in the lower middle. The syntactic items (understanding of spatial prepositions, verb tenses, flexible syntax, possessive pronouns, explanations about people and situations, simple stories, and elaborate fairy tales) are clustered in the top right corner.

The three-cluster solution was stable across multiple seeds as well as consistent across different age groups (4 to 6 years of age, Figure S1; 6 to 21 years of age, Figure S2;), and across different time points (first evaluation, Figure S3; last evaluation, Figure 1).

Next, we calculated UHCA and PCA of the 15 language comprehension abilities along with the *draws representationally* item defined as a “very true” response to the query “[My child] draws a VARIETY of RECOGNIZABLE images (objects, people, animals, etc.)” (Figure 2). Both UHCA and PCA grouped the *draws representationally* item with the syntactic items indicating their common co-occurrence.

Furthermore, we calculated UHCA and PCA of the 15 language comprehension abilities along with the *draws to description* item defined as a “very true” response to the query “[My child] can draw a NOVEL image following YOUR description (e.g. a three-headed horse)” (Figure 3). Both UHCA and PCA grouped the *draws to description* item with the syntactic items indicating their common co-occurrence.

As a control we calculated UHCA and PCA of the 15 language comprehension abilities along with the *hyperactivity* item, which is not expected to be related to any particular language ability and therefore should cluster into its own group. As expected, both UHCA and PCA clustered the hyperactivity item into its own group at a significant distance from the three language clusters, validating the effectiveness of both clustering techniques (Figure 4).

Having established that the representational drawing ability co-occurred with the cluster of syntactic language comprehension abilities, we aimed to assess the proportion of individuals in each language comprehension phenotype which exhibits representational drawing ability. To assign language comprehension phenotypes we utilized unsupervised hierarchical clustering analysis of all 14,279 participants (Figure 5, the dendrogram on top). The two-dimensional heatmap clearly shows the same three language comprehension phenotypes as were identified in the previous study of participants with language deficits (Vyshedskiy et al., 2024). Columns represent all the 14,279 participants and rows represent the 15 linguistic abilities. *Blue* indicates the presence of a linguistic ability (parent’s response=*very true*); *white* indicates an intermittent presence of a linguistic ability (parent’s response=*somewhat true*); and *red* indicates the lack of a linguistic ability (parent’s response=*not true*). The three clusters of participants match the three language comprehension abilities clusters. The cluster of participants termed “Syntactic Language Phenotype” shows the predominant blue color that indicated good skills across all three (syntactic, modifier, and command) language comprehension items (26.0% of participants, Table 2). The cluster of participants marked as “Command Language Phenotype” shows the predominant blue color indicating good skills only among the command-items (18.9%). The third cluster of participants marked “Modifier Language Phenotype” shows the predominant blue color indicating good skills only across modifier- and command-items (55.2%). The three phenotypes were stable across different seeds, age groups (4 to 6 and 6 to 21 years of age, Figures S4 and S5, respectively), and time points (first and last evaluations; Figures S6 and 2, respectively).

The representational drawing ability, as determined by a caregiver answering “very true” to the question “[My child] draws a VARIETY of RECOGNIZABLE images (objects, people, animals, etc.),” is indicated by short black vertical marks above the heatmap (marked `Representational_drawing`). Representational drawing was manifested by 54.1% of individuals with syntactic-, 27.8% of those with modifier-, and 10.1% of participants with command-phenotype (Table 3, all pairwise differences between the phenotypes were statistically significant, t-test: $p < 0.0001$). Age did not significantly affect this distribution. Among participants of 4- to 6-years-of-age, representational drawing was manifested by 48.5% of individuals with syntactic-, 24.6% of those with modifier-, and 10.1% of those with command-phenotype (Table S1, all pairwise differences between the phenotypes were statistically significant, $p < 0.0001$); among participants of 6- to 21-years-of-age, representational drawing

was manifested by 63.7% of individuals with syntactic-, 35.1% of those with modifier-, and 16.9% of those with command-phenotype (Table S2, all pairwise differences between the phenotypes were statistically significant, $p < 0.0001$).

Another question concerned with drawing-to-description ability was posed as follows: “[My child] can draw a NOVEL image following YOUR description (e.g. a three-headed horse).” The drawing-to-description ability was manifested by 34.6% of individuals with syntactic-, 7.9% of those with modifier-, and 1.9% of participants with command-phenotype (Table 4; all pairwise differences between the phenotypes were statistically significant, $p < 0.0001$). Age did not significantly affect this distribution. Among participants of 4- to 6-years-of-age, representational drawing was manifested by 28.4% of individuals with syntactic-, 6.6% of those with modifier-, and only 1.9% of individuals with command-phenotype (Table S3, all pairwise differences between the phenotypes were statistically significant, $p < 0.0001$); among participants of 6- to 21-years-of-age, representational drawing was manifested by 45.2% of individuals with syntactic-, 11.7% of those with modifier-, and 3.3% of those with command-phenotype (Table S4, all pairwise differences between the phenotypes were statistically significant, $p < 0.0001$).

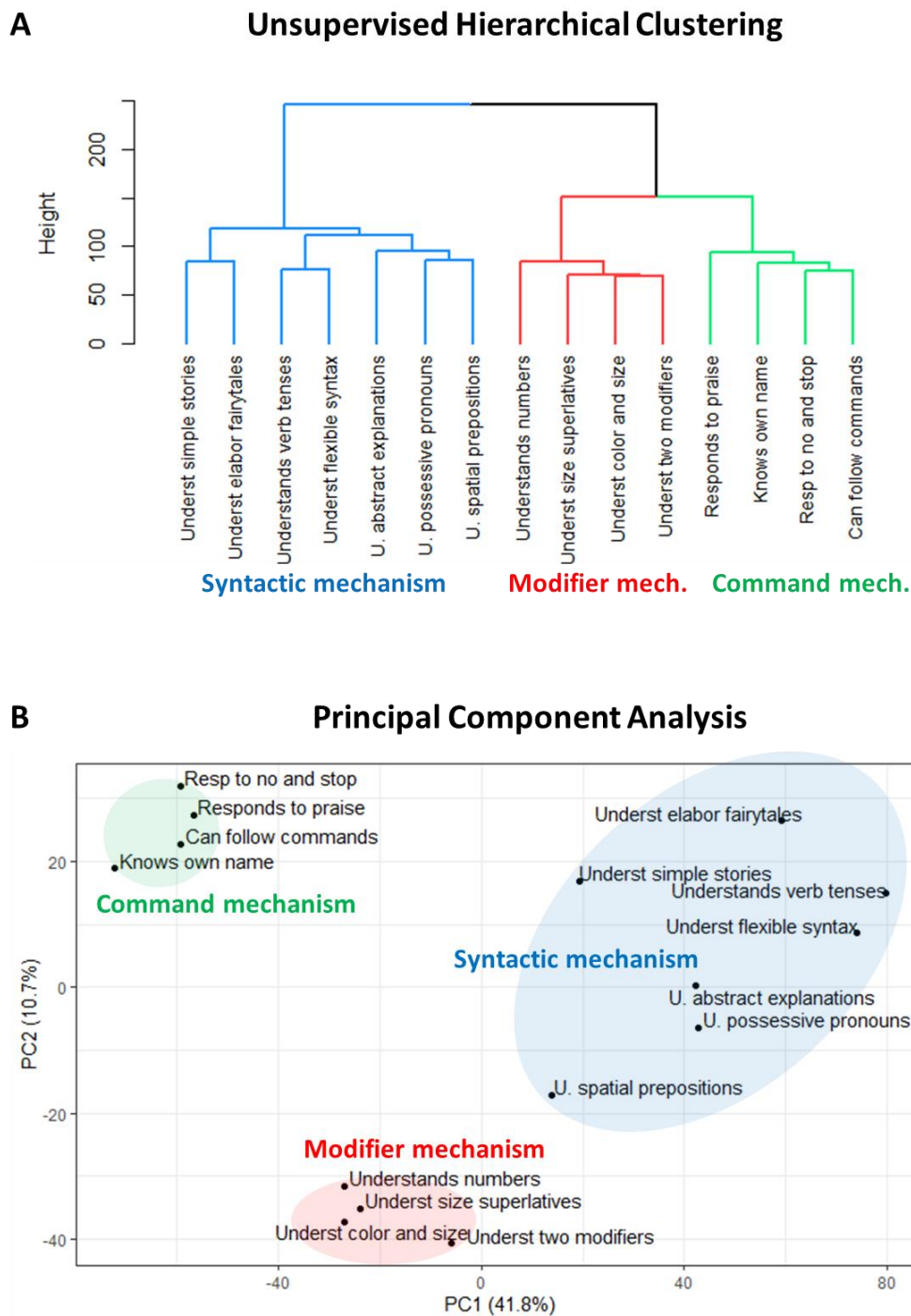


Figure 1. Clustering analysis of language comprehension items. (A) The dendrogram representing the hierarchical clustering of language comprehension abilities. (B) Principal component analysis of the 15 language comprehension abilities shows a clear separation between command, modifier, and syntactic items.

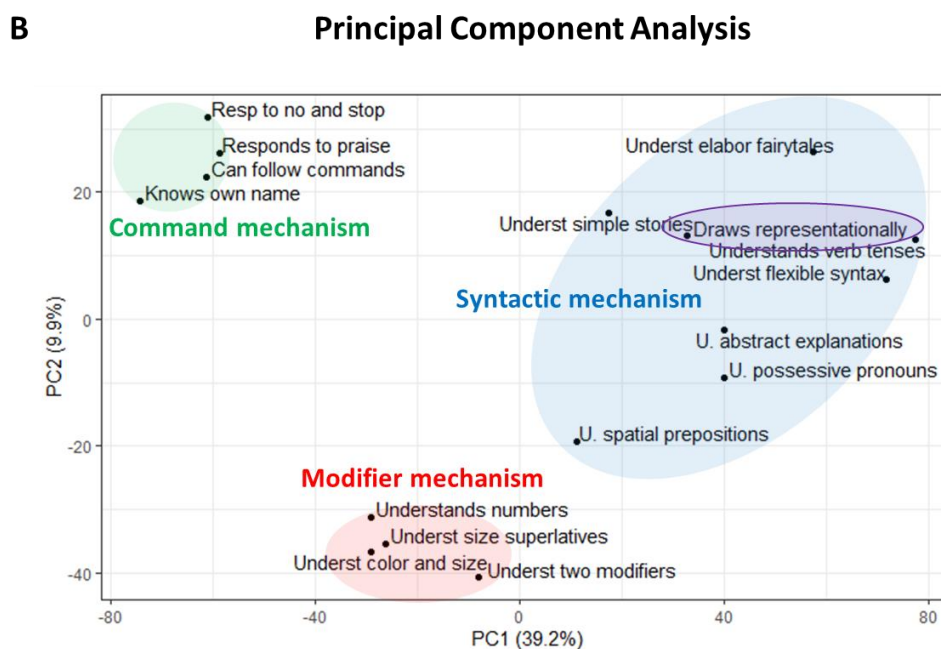
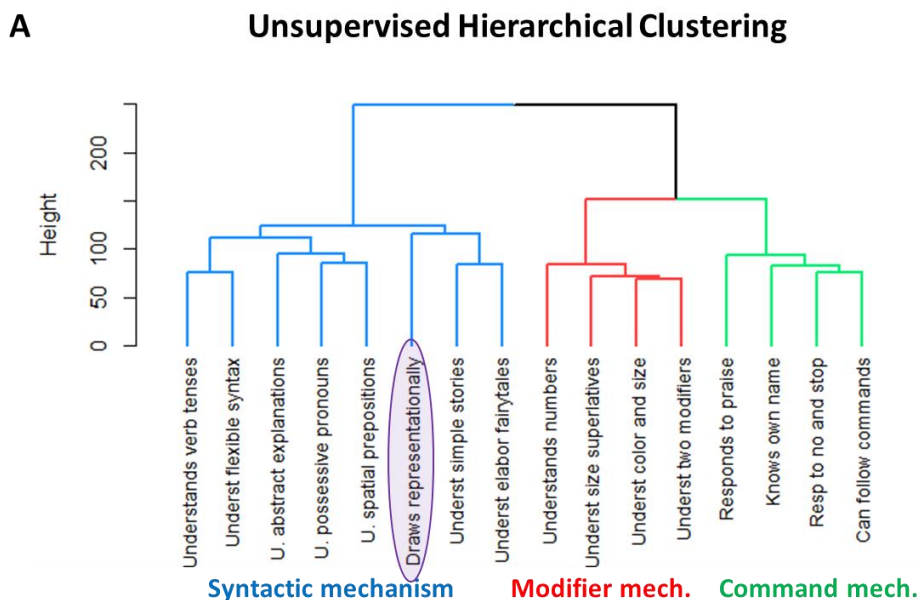


Figure 2. Clustering analysis of 15 language comprehension items along with the *draws representationally* item “My child draws a VARIETY of RECOGNIZABLE images (objects, people, animals, etc.)” (14,279 participants, 4 to 21 years of age, last evaluation). (A) The dendrogram representing the hierarchical clustering. The *draws representationally* item was clustered with *syntactic items*. (B) Principal component analysis clustered *draws representationally* item was clustered with *syntactic items*.

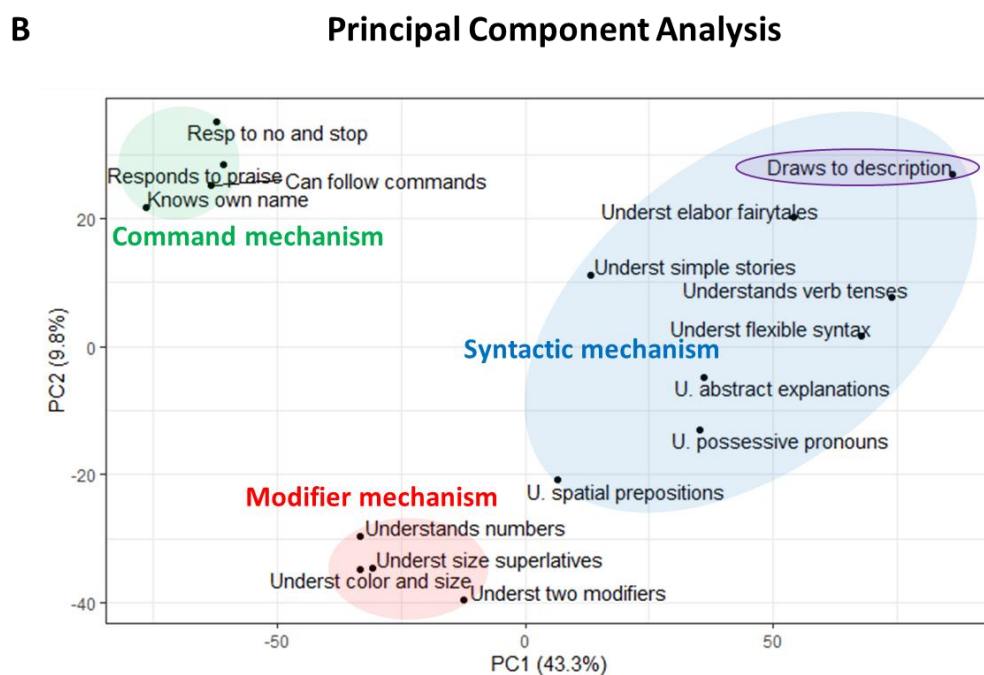
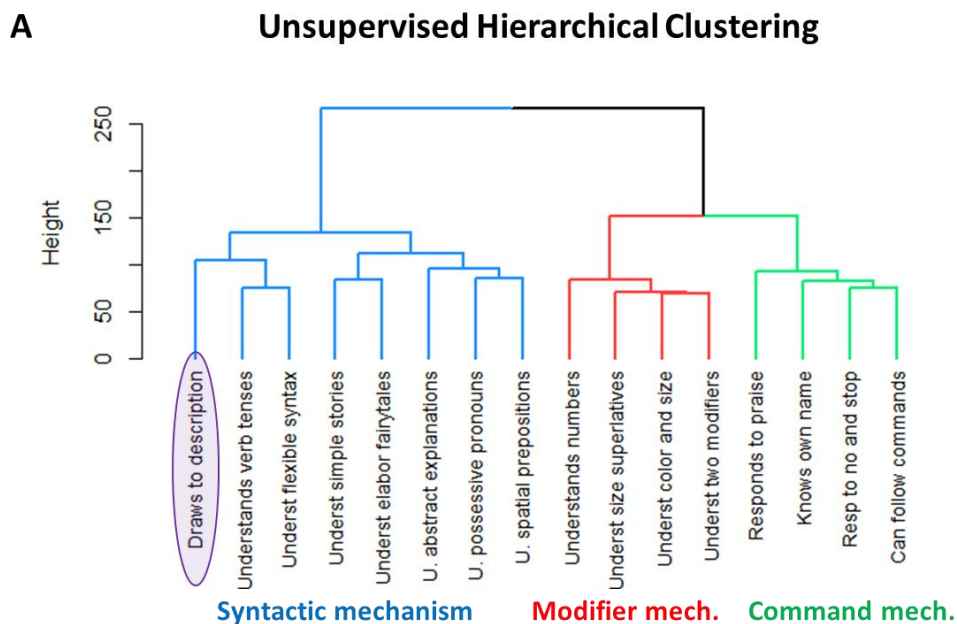
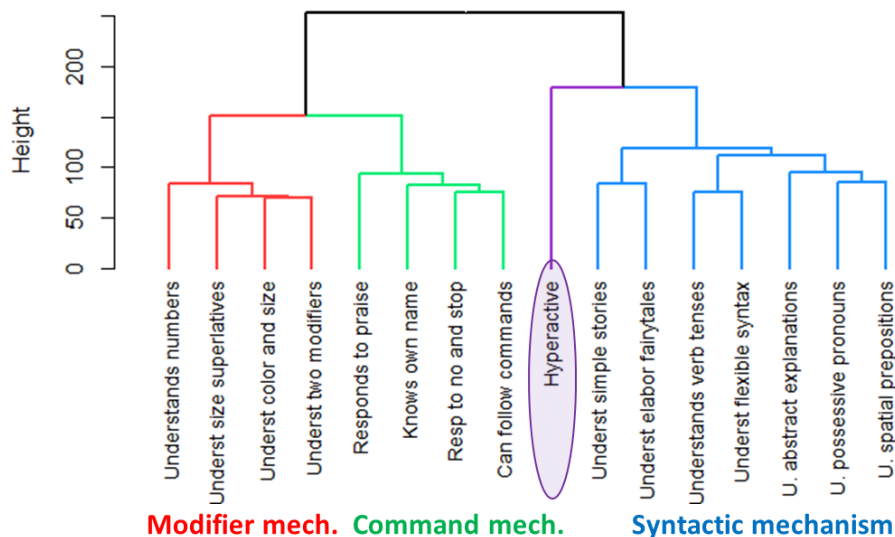


Figure 3. Clustering analysis of 15 language comprehension items along with the *draws to description* item “My child can draw a NOVEL image following YOUR description (e.g. a three-headed horse)” (14,279 participants, 4 to 21 years of age, last evaluation). (A) The dendrogram representing the hierarchical clustering. The *draws to description* item was clustered with *syntactic* items. (B) Principal component analysis clustered *draws to description* item was clustered with *syntactic* items.

A Unsupervised Hierarchical Clustering



B Principal Component Analysis

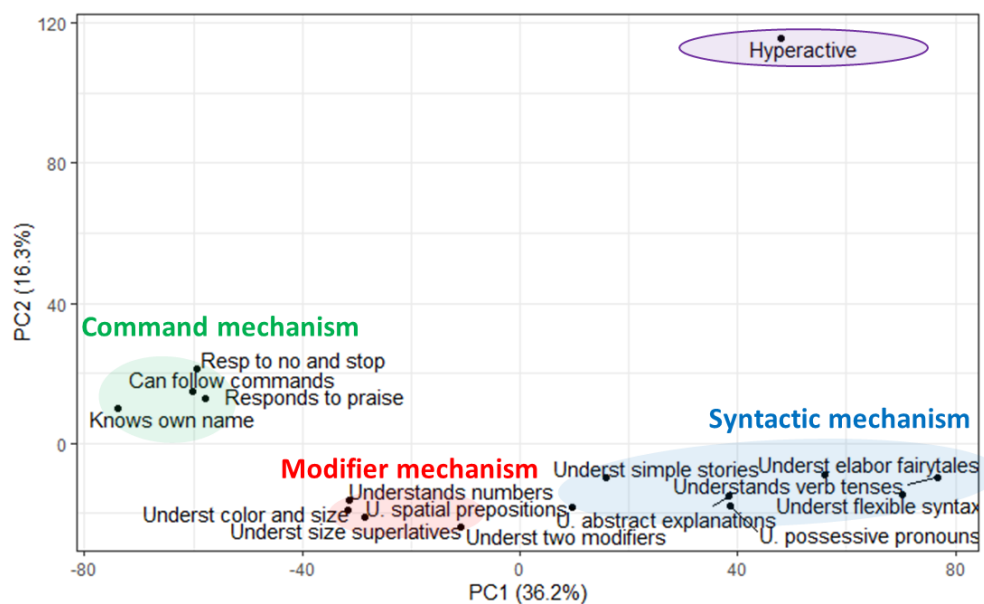


Figure 4. Clustering analysis of language comprehension items along with the *hyperactive* item (14,279 participants, 4 to 21 years of age, last evaluation). (A) The dendrogram representing the hierarchical clustering. The *hyperactive* item was clustered into its own group. (B) Principal component analysis shows a clear separation between language clusters (command, modifier, and syntactic) and the *hyperactive* item.

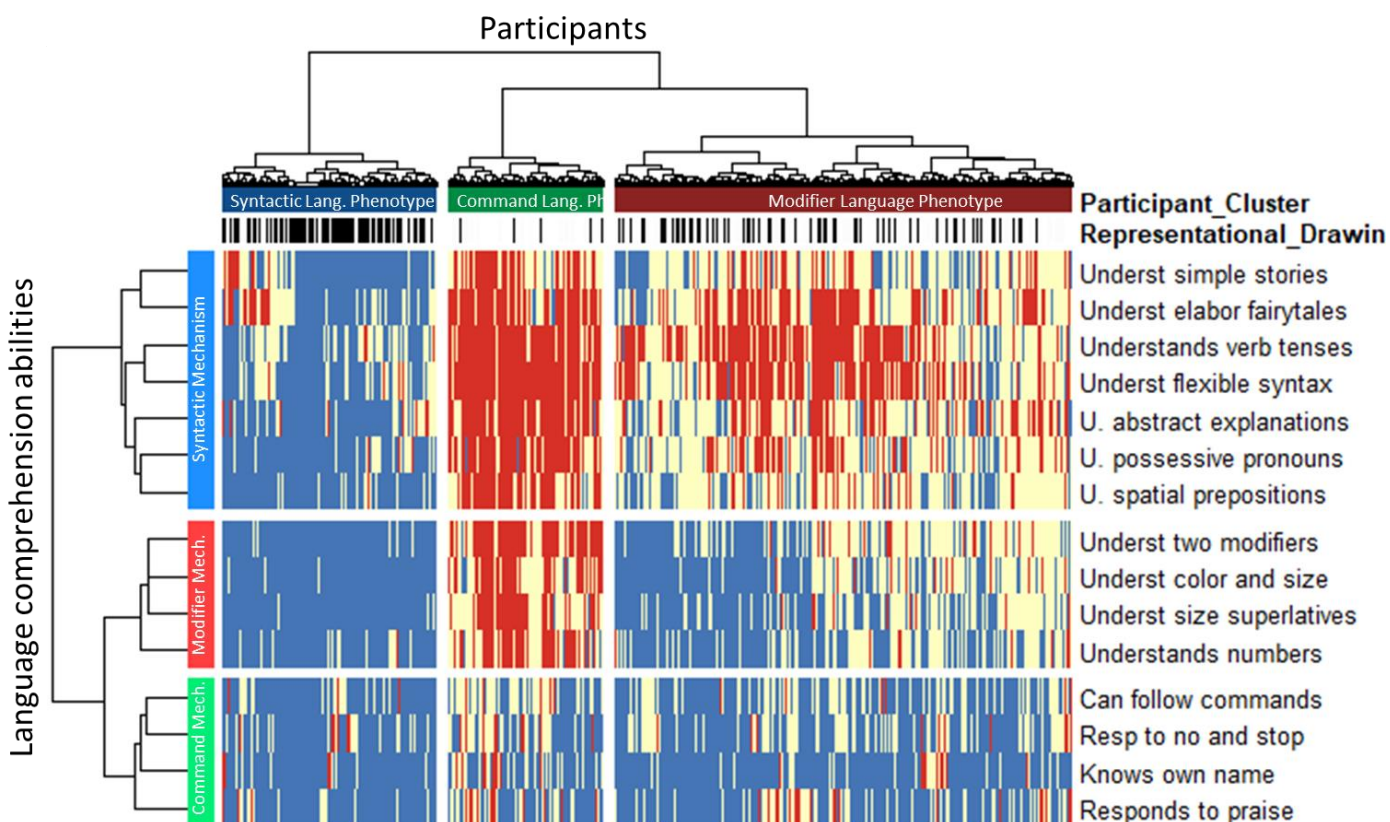


Figure 5. Two-dimensional heatmap relating participants to their language comprehension abilities. The 15 language comprehension abilities are shown as rows. The dendrogram representing language comprehension abilities is shown on the left. Participants are shown as 14,279 columns. The dendrogram representing participants is shown on the top. Blue color indicates the presence of a linguistic ability (the “very true” answer), red indicates the lack of a linguistic ability (the “not true” answer), and white indicates the “somewhat true” answer. The representational drawing ability is indicated by short black vertical marks above the heatmap (marked `Representational_drawing`).

	Syntactic Language Phenotype	Modifier Language Phenotype	Command Language Phenotype	Total
Number of participants	3711	7875	2693	14279
Percent of Total	26.0	55.2	18.9	100.0
Age, Mean (SD)	6.4 (2.4)	6.4 (2.5)	6.3 (2.5)	6.4 (2.4)
Percent Male	70.5	72.6	73.1	72.2

Table 2. Participant cluster statistics

	Syntactic Language Phenotype	Modifier Language Phenotype	Command Language Phenotype	Total
Number of participants per cluster	3711	7875	2693	14279
Number of participants with the representational drawing ability	2007	2185	272	4464
Percent (%)	54.1	27.7	10.1	31.3

Table 3. The representational drawing ability, determined by a caregiver answering “very true” to the question “[My child] draws a VARIETY of RECOGNIZABLE images (objects, people, animals, etc.)”

	Syntactic Language Phenotype	Modifier Language Phenotype	Command Language Phenotype	Total
Number of participants per cluster	3711	7875	2693	14279
Number of participants with the drawing-to-description ability	1283	622	50	1955
Percent (%)	34.6	7.9	1.9	13.7

Table 4. The drawing-to-description ability, determined by a caregiver answering “very true” to the question “[My child] can draw a NOVEL image following YOUR description (e.g. a three-headed horse).”

Discussion

Representational drawing and language share a profound relationship, both serving as essential tools for symbolic communication. A deficit in one symbolic ability is commonly paralleled by a deficit in another (Beyn & Knyazeva, 1962; Levine et al., 1985; Thomas & Silk, 1990). Autistic savants attract significant attention by often breaking the conventional connection between

representational drawing and language: their extraordinary drawing abilities stand in stark contrast to their limited language skills (Pring et al., 2012).

Relationships between representational drawing and language were never investigated in a large study. We recently discovered three distinct language comprehension mechanisms (command, modifier, and syntactic) and the three corresponding language comprehension phenotypes: individuals with the syntactic phenotype utilized all three mechanisms, while individuals with the modifier phenotype were restricted to the modifier and command mechanisms, and individuals with the command phenotype were confined to the command mechanism) (Vyshedskiy et al., 2024). The goal of this study was to relate the representational drawing ability to language comprehension in an unprecedentedly large cohort of 39,654 autistic individuals.

Parents reported that 36.0% of participants engaged in activities such as drawing, coloring, and art. These individuals demonstrated both an interest in and the physical ability to engage in these activities, making them the focus of this study. First, we conducted a clustering analysis of the 15 language comprehension abilities. Both unsupervised hierarchical clustering analysis (UHCA) and principal component analysis (PCA) confirmed the three distinct language comprehension mechanisms found in the previous study (Vyshedskiy et al., 2024) (Figure 1).

Next, we conducted clustering analysis of the 15 language comprehension abilities along with the *draws representationally* item “[My child] draws a VARIETY of RECOGNIZABLE images (objects, people, animals, etc.) (Figure 2).” Both UHCA and PCA grouped the *draws representationally* item with the syntactic items indicating their common co-occurrence and therefore, suggesting that they may share a common neurological mechanism. Furthermore, we calculated UHCA and PCA of the 15 language comprehension abilities along with the *draws to description* item “[My child] can draw a NOVEL image following YOUR description (e.g. a three-headed horse)” (Figure 3).” Again, both UHCA and PCA grouped the *draws to description* item with the syntactic items indicating their common co-occurrence and therefore, suggesting that they may share a common neurological mechanism. As a control, we conducted clustering analysis of the 15 language comprehension abilities along with the *hyperactivity* item, which is expected to have a mechanism completely unrelated to language comprehension. As anticipated, both UHCA and PCA clustered the hyperactivity item into its own group at a significant distance from the three language clusters, indicating no consistent co-occurrence between hyperactivity and language comprehension abilities (Figure 4).

Clustering analysis of participants confirmed the three distinct language comprehension phenotypes identified in the previous study (Vyshedskiy et al., 2024) and enabled us to assess the proportion of individuals in each language comprehension phenotype who exhibit the representational drawing ability. The representational drawing ability, defined by a caregiver answering “very true” to the question “[My child] draws a VARIETY of RECOGNIZABLE images (objects, people, animals, etc.),” was manifested by 54.1% of individuals with syntactic-, 27.8% of those with modifier-, and 10.1% of participants with command-phenotype. The drawing-to-description ability, determined by a caregiver answering “very true” to the question “[My child] can draw a NOVEL image following YOUR description (e.g. a three-headed horse),” was

manifested by 34.6% of individuals with syntactic-, 7.9% of those with modifier-, and 1.9% of participants with command-phenotype. The strong association between the representational drawing ability and syntactic language was observed in both examined age ranges: 4 to 6 and 6 to 21 years of age.

Limitations

One limitation of this study is that it cannot draw conclusions on the underlying nature of differences in representational drawing ability between language phenotypes. A deeper analysis with more extended surveys is necessary for this purpose. As an example, drawing contours of some animals can be automated through repetitive training. In this case the process of drawing is similar to writing a signature. There is little pre-planning and the complete contour of an animal can appear on paper in a single move. We attempted to address the potential influence of automated drawing by emphasizing the word VARIETY in the question “My child draws a VARIETY of RECOGNIZABLE images (objects, people, animals, etc.),” but we simply do not know how many individuals in our cohort have been trained to draw automatically.

Another drawing technique that we observed in autistic individuals was synthesis of elements directly on paper, rather than a mental pre-planning. Figure 6 shows a drawing by a verbal adolescent male diagnosed with ASD. This individual has a solid modifier-language-comprehension-phenotype. He understands colors, sizes, and numbers, but does not understand spatial prepositions, verb tenses, flexible syntax, possessive pronouns, complex explanations, and fairytales. His Vineland-II IQ standard score measured annually since he was 5 years of age is around 70. He is fond of drawing cats. When he was asked to draw “a cat with three heads,” he immediately began following the instruction. He started by drawing a cat with a single head, then added one head at a time until there were three heads drawn on paper, while counting aloud and using his finger to point to each head while counting. We surmise that such synthesis on paper is somewhat analogous to performing arithmetic on paper. Just as it is easier to add two- or three-digit numbers on paper than to do so mentally, synthesis on paper simplifies complex processes by providing a visual aid.

Clinical implications

Drawing holds significant therapeutic value in working with children with ASD, providing a non-verbal outlet for self-expression and communication (Schweizer et al., 2014). Through drawing, therapists can engage children in meaningful communication, allowing them to express their inner worlds, preferences, and emotions visually. Artistic activities can also aid in developing fine motor skills, sensory integration, and spatial awareness, which are areas of challenge for many children with ASD. Moreover, drawing promotes relaxation and can serve as a calming activity during therapy sessions, fostering a positive therapeutic environment. By harnessing the power of drawing, therapists can enhance communication, promote emotional regulation, and support the overall development of children with ASD (Di Renzo et al., 2017). The findings of this study imply an intriguing potential for drawing interventions. If representational drawing indeed shares some neurological mechanisms with syntactic language processing, it could potentially support the acquisition of syntactic language skills. Currently, controlled randomized studies exploring representational drawing interventions are lacking. However, the results from

case studies consistently align with this hypothesis (Schweizer et al., 2014; Servi, 2024; Wright et al., 2020).

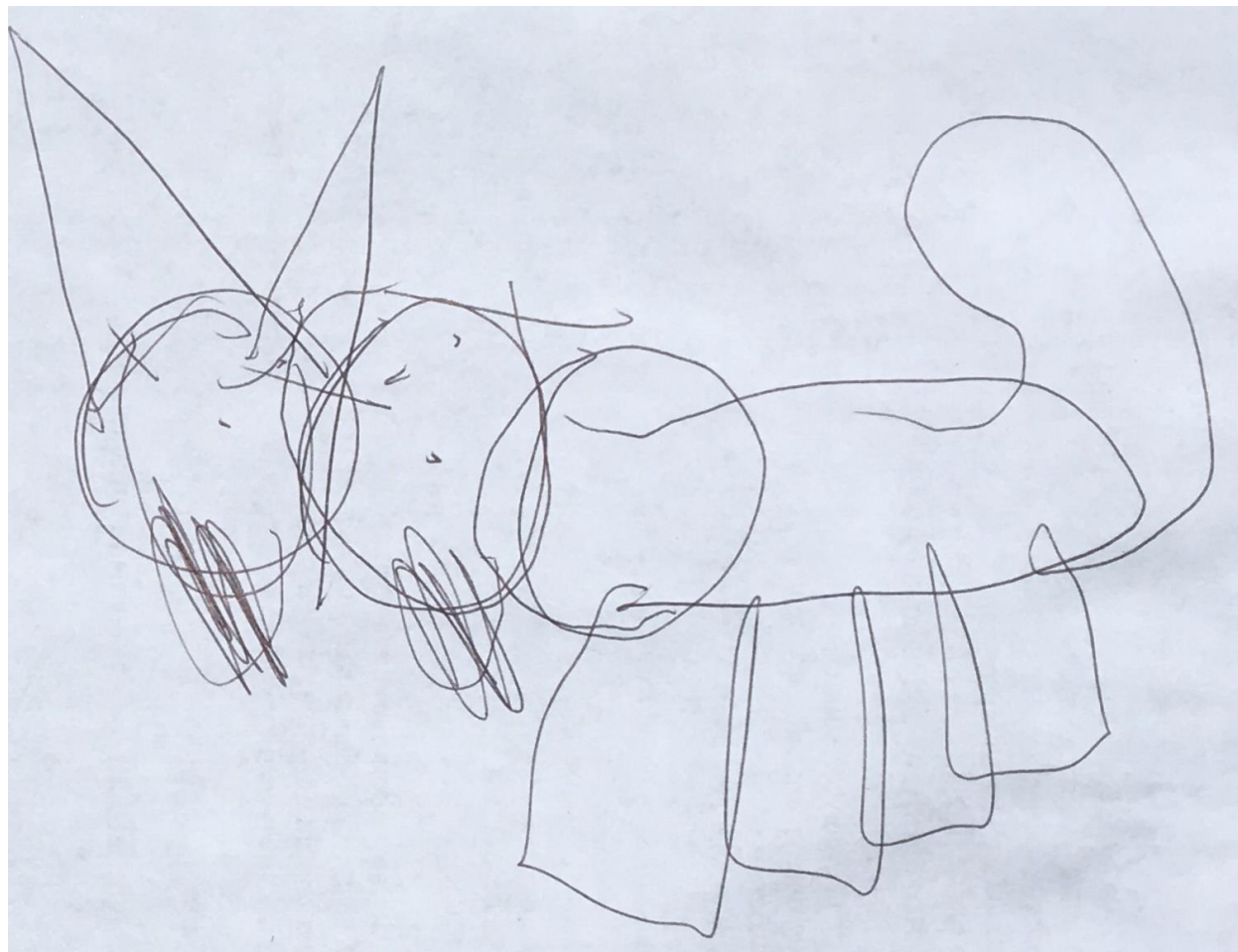


Figure 6. A drawing of “a cat with three heads” by a verbal adolescent male with a modifier-language-comprehension-phenotype.

Funding

This research received no external funding.

Acknowledgements

We wish to thank all participants’ caregivers who found time to complete children’s assessments. The authors are very grateful to Dr. Petr Ilyinskii for his scrupulous editing of this manuscript. The language therapy app used to collect the data presented in this manuscript was made possible by the contributions of Rita Dunn, Alexander Faisman, Jonah Elgart, Lisa Lokshina, and Yulia Dumov.

Author contributions

AV and EK designed the study. RV, EK, and AV analyzed the data. AV wrote the paper.

Competing Interests

Authors declare no competing interests.

Informed Consent

Caregivers have provided informed consent to anonymized data analysis and publication of the results. The study was conducted in compliance with the Declaration of Helsinki (World Medical Association, 2013b).

Compliance with Ethical Standards

Using the Department of Health and Human Services regulations found at 45 CFR 46.101(b)(4), the Biomedical Research Alliance of New York LLC Institutional Review Board (IRB) determined that this research project is exempt from IRB oversight.

Data Availability

De-identified raw data from this manuscript are available from the corresponding author upon reasonable request.

Code availability statement

Code is available from the corresponding author upon reasonable request.

References

- Allen, M. L., & Craig, E. (2016). Brief Report: Imaginative Drawing in Children with Autism Spectrum Disorder and Learning Disabilities. *Journal of Autism and Developmental Disorders*, 46(2), 704–712. <https://doi.org/10.1007/s10803-015-2599-y>
- Arnold, M., & Vyshedskiy, A. (2022). Combinatorial language parent-report score differs significantly between typically developing children and those with Autism Spectrum Disorders. *Journal of Autism and Developmental Disorders*. <https://doi.org/10.1007/s10803-022-05769-8>
- Baron-Cohen, S. (1997). *Mindblindness: An essay on autism and theory of mind*. MIT press. <https://books.google.com/books?hl=en&lr=&id=MDbcNu9zYZAC&oi=fnd&pg=PR9&dq=mindblindness+theory&ots=ZAYlvBXAbF&sig=F57BVzplBEnvKODMSMTvWNiJnlw>
- Beyn, E. S., & Knyazeva, G. R. (1962). The problem of prosopagnosia. *Journal of Neurology, Neurosurgery, and Psychiatry*, 25(2), 154.
- Bishop, D. V. M. (2005). Test for reception of grammar—Electronic. *London: Psychological Corporation*.
- Braverman, J., Dunn, R., & Vyshedskiy, A. (2018a). Development of the Mental Synthesis Evaluation Checklist (MSEC): A Parent-Report Tool for Mental Synthesis Ability Assessment in Children with Language Delay. *Children*, 5(5), Article 5. <https://doi.org/10.3390/children5050062>
- Braverman, J., Dunn, R., & Vyshedskiy, A. (2018b). Development of the Mental Synthesis Evaluation Checklist (MSEC): A Parent-Report Tool for Mental Synthesis Ability

- Assessment in Children with Language Delay. *Children*, 5(5), 62.
<https://doi.org/10.3390/children5050062>
- Craig, J., Baron-Cohen, S., & Scott, F. (2001). Drawing ability in autism: A window into the imagination. *Israel Journal of Psychiatry*, 38(3–4), 242–253.
- Di Renzo, M., Marini, C., Bianchi di Castelbianco, F., Racinaro, L., & Rea, M. (2017). Correlations between the drawing process in autistic children and developmental indexes. *Journal of Psychology & Psychotherapy*, 7(2), 1–9.
- Dunn, R., Elgart, J., Lokshina, L., Faisman, A., Khokhlovich, E., Gankin, Y., & Vyshedskiy, A. (2017a). Children With Autism Appear To Benefit From Parent-Administered Computerized Cognitive And Language Exercises Independent Of the Child’s Age Or Autism Severity. *Autism Open Access*, 7(217). <https://doi.org/10.4172/2165-7890.1000217>
- Dunn, R., Elgart, J., Lokshina, L., Faisman, A., Khokhlovich, E., Gankin, Y., & Vyshedskiy, A. (2017b). Comparison of performance on verbal and nonverbal multiple-cue responding tasks in children with ASD. *Autism Open Access*, 7, 218. <https://doi.org/10.4172/2165-7890.1000218>
- Dunn, R., Elgart, J., Lokshina, L., Faisman, A., Waslick, M., Gankin, Y., & Vyshedskiy, A. (2017). Tablet-Based Cognitive Exercises as an Early Parent-Administered Intervention Tool for Toddlers with Autism—Evidence from a Field Study. *Clinical Psychiatry*, 3(1). <https://doi.org/10.21767/2471-9854.100037>
- Forman, P., Khokhlovich, E., & Vyshedskiy, A. (2022). Longitudinal Developmental Trajectories in Young Autistic Children Presenting with Seizures, Compared to those Presenting without Seizures, Gathered via Parent-report Using a Mobile Application. *Journal of Developmental and Physical Disabilities*. <https://doi.org/10.1007/s10882-022-09851-y>
- Freeman, N. H. (1993). *Drawing: Public instruments of representation*. <https://psycnet.apa.org/record/1993-97468-006>
- Golomb, C. (2003). *The child’s creation of a pictorial world*. Psychology Press. <https://www.taylorfrancis.com/books/mono/10.4324/9781410609250/child-creation-pictorial-world-claire-golomb>
- Jagadeesan, P., Kabbani, A., & Vyshedskiy, A. (2022). Parent-reported assessment scores reflect ASD severity level in 2- to 7- year-old children. *Children*, 9(5), 701. <https://doi.org/doi.org/10.3390/children9050701>
- Krampen, M. (2013). *Children’s drawings: Iconic coding of the environment*. Springer Science & Business Media. https://books.google.com/books?hl=en&lr=&id=zK_7AwAAQBAJ&oi=fnd&pg=PA3&dq=Children%E2%80%99s+drawings:+Iconic+coding+of+the+environment.&ots=0hw-8cerqX&sig=DCdM9ICf5mbjFbago6r4-bLmmtg
- Leevers, H. J., & Harris, P. L. (1998). Drawing impossible entities: A measure of the imagination in children with autism, children with learning disabilities, and normal 4-year-olds. *The Journal of Child Psychology and Psychiatry and Allied Disciplines*, 39(3), 399–410.
- Levin, J., Khokhlovich, E., & Vyshedskiy, A. (2022). Longitudinal developmental trajectories in young autistic children presenting with sleep problems, compared to those presenting without sleep problems, gathered via parent-report using a mobile application. *Research in Autism Spectrum Disorders*, 97, 102024.

- Levine, D. N., Warach, J., & Farah, M. (1985). Two visual systems in mental imagery: Dissociation of “what” and “where” in imagery disorders due to bilateral posterior cerebral lesions. *Neurology*, *35*(7), Article 7.
- Low, J., Goddard, E., & Melsner, J. (2009). Generativity and imagination in autism spectrum disorder: Evidence from individual differences in children’s impossible entity drawings. *British Journal of Developmental Psychology*, *27*(2), 425–444. <https://doi.org/10.1348/026151008X334728>
- Pring, L., Ryder, N., Crane, L., & Hermelin, B. (2012). Creativity in savant artists with autism. *Autism*, *16*(1), 45–57. <https://doi.org/10.1177/1362361311403783>
- Rimland, B., & Edelson, S. M. (1999a). Autism treatment evaluation checklist (ATEC). *Autism Research Institute, San Diego, CA*. <http://www.autism.com>
- Rimland, B., & Edelson, S. M. (1999b). Autism treatment evaluation checklist (ATEC). *Autism Research Institute, San Diego, CA*. <http://www.autism.com>
- Schweizer, C., Knorth, E. J., & Spreen, M. (2014). Art therapy with children with Autism Spectrum Disorders: A review of clinical case descriptions on ‘what works.’ *The Arts in Psychotherapy*, *41*(5), 577–593.
- Scott, F. J., & Baron-Cohen, S. (1996). Imagining real and unreal things: Evidence of a dissociation in autism. *Journal of Cognitive Neuroscience*, *8*(4), 371–382.
- Servi, C. (2024). Language and drawing development after a combined intervention: A single-subject case study. *British Journal of Special Education*, *51*(1), 35–49. <https://doi.org/10.1111/1467-8578.12496>
- Thomas, G. V., & Silk, A. M. (1990). *An introduction to the psychology of children’s drawings*. New York University Press. <https://psycnet.apa.org/record/1990-97551-000>
- Vyshedskiy, A., & Dunn, R. (2015). Mental Imagery Therapy for Autism (MITA)-An Early Intervention Computerized Brain Training Program for Children with ASD. *Autism Open Access*, *5*(1000153), 2.
- Vyshedskiy, A., Khokhlovich, E., Dunn, R., Faisman, A., Elgart, J., Lokshina, L., Gankin, Y., Ostrovsky, S., deTorres, L., & Edelson, S. M. (2020). Novel prefrontal synthesis intervention improves language in children with autism. *Healthcare*, *8*(4), 566. <https://doi.org/doi.org/10.3390/healthcare8040566>
- Vyshedskiy, A., Venkatesh, R., & Khokhlovich, E. (2024). Are there distinct levels of language comprehension in autistic individuals – cluster analysis. *Npj Mental Health Research*, *3*(19). <https://doi.org/10.1038/s44184-024-00062-1>
- World Medical Association. (2013a). World Medical Association Declaration of Helsinki: Ethical principles for medical research involving human subjects. *JAMA*, *310*(20), Article 20.
- World Medical Association. (2013b). World Medical Association Declaration of Helsinki: Ethical principles for medical research involving human subjects. *JAMA*, *310*(20), 2191–2194.
- Wright, B. M., Benigno, J. P., Boster, J. B., McCarthy, J. W., & Cooaghan, B. K. (2020). “Tell Me About Your Picture”: Using Drawings to Support Expressive Language in Children With Autism Spectrum Disorder. *Communication Disorders Quarterly*, *42*(1), 3–11. <https://doi.org/10.1177/1525740119868440>