

Realist Synthesis Of non-pharmacological interVENTions for antipsychotic-induced weight gain (RESOLVE) in people living with severe mental illness

Authors: Maura MacPhee (University of British Columbia), Jo Howe (Aston University), Hafsah Habib (Aston University), Emilia Piwowarczyk (University of British Columbia), Geoff Wong (University of Oxford), Amy Ahern (University of Cambridge), Gurkiran Birdi (Aston University), Suzanne Higgs (University of Birmingham), Sheri Oduola (University of East Anglia), Alex Kenny (McPin Foundation), Annabel Walsh (McPin Foundation), Rachel Upthegrove (University of Birmingham, Early Intervention Service, Birmingham Women's and Children's NHS Foundation Trust), Katherine Allen (Birmingham and Solihull NHS Mental Health Foundation Trust), Max Carlish (Birmingham and Solihull NHS Mental Health Foundation Trust), Justine Lovell (Birmingham and Solihull NHS Mental Health Foundation Trust), Ian Maidment (Aston University)*

* Corresponding author, name and e-mail address: Aston University, Aston Triangle, Birmingham, B4 7ET

Key words: Realist Research, Obesity, Severe Mental Illness, Antipsychotics, antipsychotics, weight gain, obesity, realist review, lived experience.

Running title: Realist Synthesis non-pharmacological interventions antipsychotic weight gain in SMI

Acknowledgements: This publication presents independent research commissioned by the National Institute for Health and Care Research (NIHR: HSDR grant number - 131871). The views and opinions expressed by authors in this publication are those of the authors and do not necessarily reflect those of the NIHR or the Department of Health and Social Care. RU is supported by the NIHR Oxford Health Biomedical Research Centre. AA is funded by the Medical Research Council (grant MC_UU_00006/6). We thank Claire Duddy for conducting the searches for this review.

Potential conflicts of interest: RU reports paid speaker fee at non promotional educational event: Otsuka and Consultancy: Vitaris and Springer Healthcare unrelated to the current work. AA is a member of the Scientific Advisory Board for Weight Watchers and principal investigator on two investigator-led NIHR-funded trials where the intervention is provided by Weight Watchers at no cost.

Abstract

Introduction: Antipsychotic medications are used to treat individuals with severe mental illness. These medications are associated with rapid weight gain and several physical and mental risk factors. Early, proactive weight management is necessary to pre-empt these risk factors.

Methods: A realist review was conducted to identify contextual factors and underlying mechanisms associated with effective, non-pharmacological weight management interventions for this population. A stakeholder group of practitioners and a stakeholder group of individuals with lived experience and their family carers were integral to the review process.

Results: The realist review consisted of 58 documents where 41 papers were intervention studies of non-pharmacological weight management interventions for individuals with severe mental illness. Weight management interventions typically included nutrition counseling, physical activity and behaviour therapies offered over different time ranges by combinations of facilitators. Follow-up was rarely reported, and these intervention studies yielded mixed outcomes for weight loss/weight gain prevention, decreased clinical risk indicators and improved physical and mental health. Review documents and stakeholder discussions were used to construct a programme theory and 12 testable context-mechanism-outcome configurations. Review findings emphasise the significant effect of stigma/double stigma on individuals with severe mental illness and weight gain. Therapeutic practitioner relationships, family and peer support contribute to individuals' engagement with healthy behaviours.

Conclusions: Multi-country non-pharmacological interventions for weight management have had mixed results. This realist review identified characteristics and potential mechanisms that may make a significant, positive difference to individuals with severe mental illness. A realist evaluation with primary data is currently underway.

Practitioner Points

- Individuals with severe mental illness on antipsychotic medications are at high risk for rapid weight gain and associated adverse mental and physical outcomes.
- Early comprehensive assessment by knowledgeable, respectful practitioners promotes therapeutic relationship development and identification of individuals' specific risk factors and support, such as pre-existing disordered eating behaviours and the presence of family/carer and peer support.
- Case management or care coordination needs to be strengthened to ensure individuals' access to consistent primary and secondary services, as well as community-based services.

Introduction: Antipsychotic medications are typically used in the treatment of severe (also called serious) mental illness (SMI) (e.g. psychotic disorders, bipolar disorder and major depressive disorder with psychotic experience). Newer, second-generation antipsychotic medications, such as olanzapine, have fewer extrapyramidal side effects, but they are associated with rapid weight gain¹. Antipsychotic medication initiation for first-episode psychosis can lead to a 7% increase in body weight within the first year of treatment. Rapid weight gain in the first 6 weeks is a predictor for long-term weight management challenges due to antipsychotic medications.² Antipsychotic medications promote weight gain by adversely affecting appetite regulation, decreasing physical activity levels (e.g. fatigue) and altering the gut microbiome.³ Significant weight gain can reduce life expectancy and increase the risk of long-term physical health conditions, particularly obesity, cardiovascular disease and diabetes⁴. Weight gain can also create a double stigma for individuals with SMI, exacerbating some psychotic symptoms, such as paranoia, and increasing the risk of suicidal behaviour⁵ and other psychiatric disorders, such as anxiety and depression⁶.

Weight management programmes for the general population focus on reducing energy intake via nutrition education and increasing activity levels through guided exercise. These non-pharmacological interventions have demonstrated short-term and long-term effectiveness.⁷⁻⁹ Several countries' clinical practice guidelines for adults living with obesity recommend individualised plans for holistic care that address root causes of weight gain and provide support for sustainable behaviour changes.¹⁰⁻¹² These clinical practice guidelines emphasise the preventive or early use of non-pharmacological approaches.¹³

In the population of individuals with SMI and weight gain from antipsychotic medications, engagement with mainstream weight management programmes is limited due to factors such as low energy, double stigma and lack of social support.^{14 15} Non-pharmacological interventions have been trialed to limit antipsychotic medication weight gain for individuals with SMI, but they have had mixed

results with respect to clinical and cost effectiveness¹⁶. Many of these intervention studies were randomised controlled trials (RCTs) of limited duration with specially assigned resources and different outcomes indicators.^{3 17} Given equivocal results from RCT findings, this realist review was conducted to provide a more in-depth look at the contextual factors and underlying mechanisms associated with effective non-pharmacological interventions for weight gain in individuals with SMI on antipsychotic medications. Our research team decided to focus on community settings (e.g., independent living, with families/carers, in supportive housing) where the vast majority of this population live. For community-dwelling individuals with SMI, healthcare services are typically obtained through primary care services and family physicians or general practitioners (GPs) who do referrals to secondary services. Other healthcare access is through community mental health centres and rehabilitation programmes¹⁸.

A realist approach was used to answer the following questions: what types of non-pharmacological interventions are most effective for addressing weight gain from antipsychotic medications in individuals with SMI? What intervention characteristics are associated with intended outcomes? What underlying mechanisms are necessary to create the causal links between specific intervention characteristics and intended outcomes?

Realist approaches are used to construct a testable (i.e. it may be confirmed, refuted or refined) programme theory of what works under what circumstances for whom, as well as why specific interventions or services are effective or not.¹⁹ RESOLVE is a realist study with two phases: a review based on secondary data (the focus of this paper), and an evaluation phase based on primary data (in progress).²⁰ The starting point for the review of interventions in this paper was when individuals with SMI have been transitioned to community-based care after hospitalisation for first-episode psychosis and antipsychotic medication initiation. This review encompasses an over-arching programme theory of effective non-pharmacological interventions for individuals with SMI and weight gain from antipsychotic medications; and context-mechanism-outcome configurations (CMOCs) that provide more

granular causal explanations of “how” to plan care and how to implement interventions in community settings for this population.

Materials and Methods

The methods are more fully described in the published protocol,²⁰ but briefly the authors used a five-step process:

- a) two stakeholder/advisory groups were formed: a practitioner group and a lived experience group comprised of individuals with SMI and weight gain from antipsychotic medications and their informal family carers. The McPin Foundation, UK, was a partner on our research grant, organizing the lived experience group members for this project. The practitioner group was organized by the research lead with assistance from research team members. Both stakeholder groups provided documents and insights into important concepts to explore in the literature. Based on their initial document recommendations and discussions, the authors constructed an initial programme theory of what a successful recovery journey might look like for an individual with SMI and weight gain from antipsychotic medications;
- b) initial documents and stakeholder group discussions were used to establish a search strategy with inclusion/exclusion criteria;
- c) after obtaining documents via a search strategy developed with a medical information specialist, screening was performed of abstracts, followed by a full text screen of documents. Two reviewers independently screened 10% of the abstracts and full texts to ensure consistency of document inclusion;
- d) a coding framework was established by reviewers and the documents were coded according to their identification of key contextual factors associated with intended outcomes (i.e. effective weight

management). In addition, documents were coded for potential underlying mechanisms related to ‘why’ specific contextual factors were necessary to produce intended outcomes;

e) coded data were used to develop CMOCs and to refine the initial programme theory.

This review followed the RAMESES realist review quality and publication standards.¹⁹ An important feature of realist approaches is the inclusion of stakeholder groups to provide feedback and advice throughout the review process. Our stakeholder groups and the research team made a decision to develop the theory and CMOCs from the perspective of individuals with SMI and medication-induced weight gain (versus practitioners), since ultimately, effective weight management depends on how interventions and support work for individuals.

Search Strategy and Document Selection

The initial search strategy yielded 773 papers. Key search terms were severe or serious mental illness, antipsychotic medications, community, non-pharmacologic interventions, and support. Documents were retrieved from between 2000 and 2021 based on an initial search where the majority of intervention papers on weight management fell within that time period. Sources included MEDLINE/PubMed, Embase, Scopus, Web of Science (Core Collection), the Cochrane Library, CINAHL, PsycINFO, Sociological Abstracts and Google Scholar. Sources for grey literature included ETHOS (British Library Electronic Thesis Online), ProQuest Dissertations and Theses, OpenGrey (System for Information on Grey Literature in Europe), the King’s Fund Library Database, National Health Services Evidence, and the websites of relevant charities, non-profit groups, and professional bodies associated with individuals with SMI and weight management. Cluster searching techniques were used to identify additional papers, including ‘sibling’ (direct links to a single study) or ‘kinship’ (citations) papers. Forward and backward citation searches were used, as well as Google Scholar alerts for new publications (January 1 2022 to August 31 2023). Searching was conducted in an iterative fashion, depending on ongoing

feedback from the stakeholder groups. For example, the issue of food craving and bingeing was raised by individuals with lived experience, and documents were searched and included in the review to address pre-existing disordered eating behaviours.

Searching continued until sufficient data were located to refine the initial programme theory and CMOCs. Initial search terms also served as a deductive coding framework. Final documents were selected and coded based on their relevance, richness and rigour. Relevance is based on document content. Are there sections of the document that contain data that are relevant to theory and CMOC development? Richness is defined as whether the document contains content pertinent to Cs, Ms and Os, and whether the documents have clear C-M-O linkages. Rigour is based on the trustworthiness of the data.¹⁹ Table 1 displays inclusion and exclusion criteria for abstract and full text screening. Figure 1 is the PRISMA diagram of the inclusion/screening process. Supplementary files 1 and 2 are the data extraction spreadsheet and full search strategies, respectively.

Analysis and Synthesis

Two realist methodologists extracted data from the 58 included documents using NVivo software. Data were coded into conceptual categories corresponding with our deductive coding framework. Additional concepts were coded as “other.” The realist researchers met weekly to extract potential Cs-Ms-Os from each conceptual category. Initial CMOCs with corresponding quotes from review documents were shared monthly with the entire research team. At these meetings, the CMOCs and the programme theory were refined and validated by our team’s subject matter experts and the stakeholder groups. A significant contribution of subject matter experts and the lived experience group was replacement of any blaming or shaming language with neutral, non-stigmatizing language.

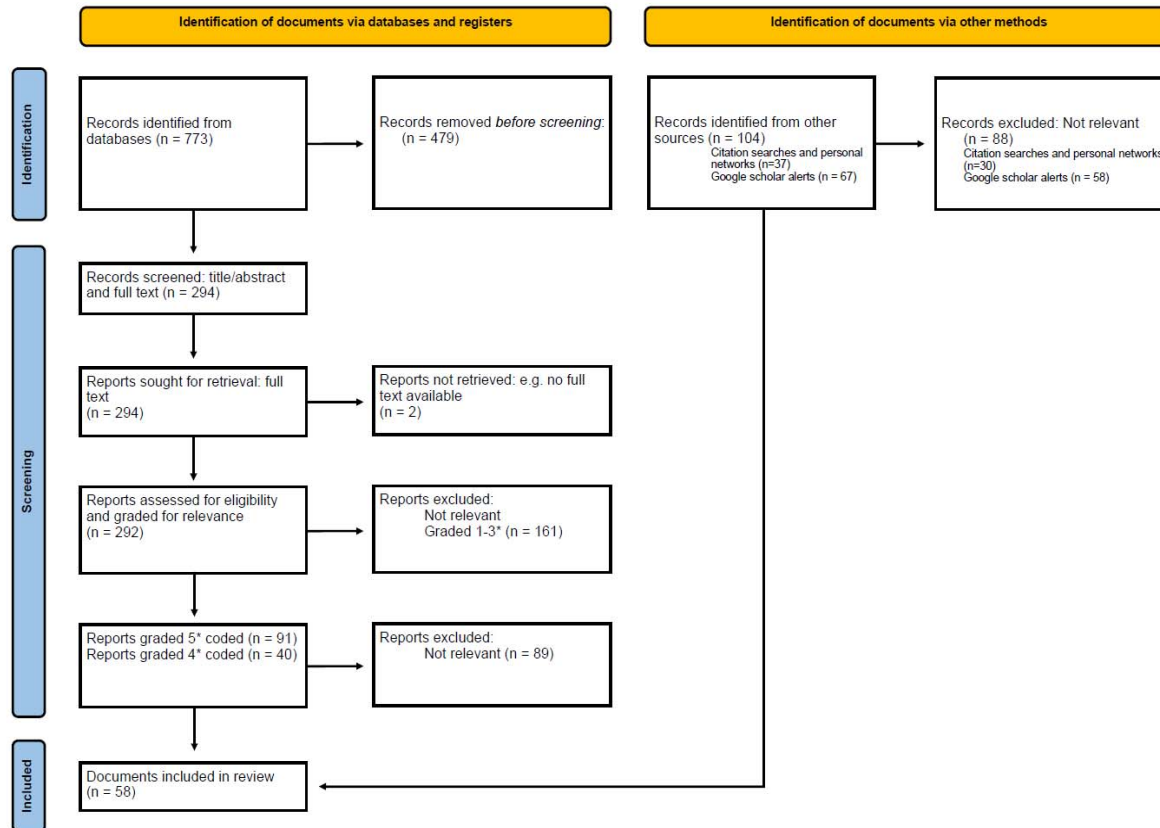
Table 1. Inclusion criteria and exclusion criteria used for abstract and full text screening

<p>INCLUSION CRITERIA</p> <p>Context</p> <p>-People living with SMI (schizophrenia, schizoaffective disorder, bipolar disorder and all other non-organic psychoses), taking antipsychotics (British National Formulary [BNF] 78, Chapter 4; section 3.6), different types of SMI, community living environments, dual diagnosis including SMI and intellectual disability - non-pharmacologic interventions</p> <p>-Support, family/carers, peers, friends, professionals/trained facilitators, peer/health mentors</p> <p>Mechanism</p> <p>Underlying mechanisms triggered by interventions, often associated with mid-range theory (e.g., social inclusion theory)</p> <p>Outcomes</p> <p>Weight, BMI, metabolic indicators, quality of life, satisfaction, adherence, sustainability</p> <p>EXCLUSION CRITERIA</p> <p>-People without SMI, medication other than antipsychotics, less than 18 years old</p>

Figure 1. PRISMA flow diagram

Results

Figure 1: PRISMA 2020 flow diagram for new systematic reviews which included searches of databases, registers and other sources



Adapted from: Page MJ, McKenzie JE, Bossuyt PM, Boutron I, Hoffmann TC, Mulrow CD, et al. The PRISMA 2020 statement: an updated guideline for reporting systematic reviews. *BMJ* 2021;372:n71. doi: 10.1136/bmj.n71. For more information, visit: <http://www.prisma-statement.org/>

As shown in the Interventions Table 2 (Supplementary file 3), there were 41 review documents pertaining to weight management interventions. Twenty-three of these papers were RCTs or RCTs with secondary analyses.²¹⁻⁴⁴ Other intervention papers were protocol papers,^{2, 45} pilot or feasibility studies.⁴⁶⁻⁵¹ Some papers were qualitative analyses of interventions or components of mixed methods studies.⁴⁷⁵²⁻⁵⁴ One study was a retrospective chart audit.⁵⁵ One notable paper was a two-year follow-up from an RCT, the only follow-up study in our review beyond the intervention period.⁴¹ The majority of papers were from the US.^{21, 26, 28-37, 39, 40, 43, 46, 47, 50-52, 56} Other papers were from England,^{2, 22, 25} the Netherlands,^{23, 24} Thailand,²⁷ Australia,^{53, 55} Switzerland,⁵⁷ Belgium,³⁸ Denmark,^{41, 45} and Sweden.⁴⁴

Table 2 illustrates the considerable intervention heterogeneity with respect to programme components, duration, facilitation and outcomes. Some of these RCTs were based on chronic illness management models, such as the Diabetes Prevention Program developed by the University of Pittsburgh.⁵⁸ Due to their focus on physical health, these interventions often required adaptations to address specific mental health issues associated with SMI, such as neurocognitive deficits.^{29 40} Many papers described multi-component interventions with three major components: nutrition counseling, physical activities and behaviour therapies.^{2 21–24 26–43 45–47 50 51 53 55 56} Many programmes, especially those with longer duration, such as 12 months, were phased programmes.^{2 21–25 28–30 32–36 47 59} Phased programmes consisted of three phases: an initial intensive one, followed by a second, longer maintenance phase, and a final one intended to cover individuals' transition to self-management. Most interventions included individual and group-based sessions.^{2 21 22 25 26 28–38 43 47 50–53 55 57 60} Outcome measures varied from an early emphasis on weight loss outcomes to combinations of other outcomes including clinical risk indicators, physical health and psychological health and wellbeing measures. Feasibility studies focused primarily on participants' satisfaction with programme components. Over time, there was a shift in papers' terminology from obesity/weight management to behaviour changes and lifestyle management.

A Program Theory of Non-pharmacological Interventions for Individuals with SMI and Weight Gain from Antipsychotic Medications

Given the mixed results from many of the intervention studies, particularly the RCTs, programme theory construction and CMOC development were primarily based on documents with interventions' participant and practitioner descriptions of effective non-pharmacological Interventions for antipsychotic-induced weight gain. Through ongoing stakeholder group discussions and subject matter experts' input, we refined the following programme theory:

The recovery journey for individuals with SMI and medication-induced weight gain begins with the development of trusting, therapeutic relationships with practitioners. The therapeutic relationship is where holistic assessment of mental and physical needs and co-developed goals can be pursued by individuals with their practitioners. Individuals need to be informed and aware of the deleterious side effects of anti-psychotic medications, particularly the impact that rapid weight gain can have on their health and wellbeing. A de-stigmatising approach is needed throughout individuals' recovery journey to overcome the double stigma of weight gain and SMI that adversely affects individuals' physical and mental health, their self-efficacy and willingness to participate in weight management programmes. Effective weight management programmes provide flexible offerings of nutrition planning, physical activities and behaviour therapies via individual or group sessions. Phased approaches, typically over 12 months or more, include an initial intensive phase to better prepare individuals for programme engagement, followed by a longer, second maintenance phase where individuals learn how to monitor their own health data and to set small, manageable behaviour change goals with support from skilled practitioners, trained facilitators and/or peer mentors. Easy-to-use tracking and self-monitoring devices are a useful source of objective data to raise individuals' awareness of behaviour change progress. During the third, transitional phase, individuals take control of their own health behaviours, which includes weight management. Given the number of physical and mental barriers associated with SMI, additional support from families/carers, friends and peers contribute to individuals' sense of achievement and belonging. Learning from peers with lived experience is especially important for raising hope for a positive future.

The Context-Mechanism-Outcome Configurations with Accompanying Citations and Extracted Quotes

Table 3 contains the 12 CMOCs that underpin the programme theory. The table includes references for all the review papers with related content as well as a few, illustrative exemplar quotes.

Sections of quotes are presented in bold to better demonstrate evidence in the literature for Cs, Ms and Os. The CMOCs are organised for practitioner use, beginning with therapeutic relationship development between individuals and practitioners, to characteristics of effective interventions and support.

Table 3. Context-Mechanisms-Outcomes configurations

1. Building therapeutic relationships with professionals

When individuals with SMI and weight gain from anti-psychotic medications have opportunities to develop therapeutic relationships with non-judgemental, honest professionals who objectively explain the importance of interventions in understandable, relatable terms (C), individuals are more apt to engage in weight management interventions and follow professionals' advice (e.g., going to the gym, changing eating behaviours) (O), because they feel respected by professionals (M) and they trust professionals' application of expert knowledge to their specific health needs (M).^{29 52 61-68}

Quotes:

Participants [SUs] emphasized that a **long history of working with a particular NPS** [non-peer support] **fostered a sense of trust and familiarity**. *"It's been three years...I get an honest response from her...I know she's not lying to me."*

Overall, non-peer providers were **appreciated for their expertise in the domain of health, their ability to translate health information into understandable terms, and the directness of their feedback**, with some exceptions.

"... they know what they're talking about...they're doctors, and they went to school for things. And if they say I need to lose a couple of pounds, then they're right...the doctor is more focused on...the objective sides...blood pressure, vital signs, blood work."

One participant explained,

*"That's the biggest thing...He did put it in things I could understand, but because he worded it certain ways, I was able to relate more to my own problems. I was able to communicate my own problems better because it was in **simple, plain English**."*

Another participant articulated the importance of their NPS's expertise in conveying health data, *"she showed me the levels of diabetes in my blood work...she took her time to explain what each level meant...they have different signs and signatures on the graph...but **she helped me understand**."*⁶³

Several respondents described not adhering to their usual treatment regimen because they did not feel like their opinions were valued. After participating in the CPCI program, participants stated that they felt less judged, more familiar with the providers at the clinic and more knowledgeable about healthy living—all factors that can contribute to a more positive health care experience⁵²

An essential component of mental health care is the **development of therapeutic relationships** (Akerjordet & Severinsson, 2004). This relationship is fundamental to the role of mental health professionals and includes consideration of **all aspects of the person**. The partnership developed within **the therapeutic relationship facilitates the achievement of individual health goals within a supportive and authentic relationship** (Akerjordet & Severinsson, 2004)⁶⁴

Support from the mental health nurse was considered important by the patients in changing their unhealthy lifestyle behaviour. Support and discussing lifestyle issues was considered important and desirable by a majority of the participating **patients because it made them feel respected as an individual**. They stated that, by asking them about lifestyle issues, mental health nurses showed interest. Moreover, some patients described that they indeed would follow the advice of the mental health nurse: **When she [nurse] gives me advice how to cook using healthy ingredients or to go to the fitness, I would follow this advice. The fact that she mentions it means for me that here is a problem. In this sense, I would follow her advice.**⁶⁸

2. The scope of practitioners

When practitioners working with individuals with SMI and weight gain from anti-psychotic medications have specialized knowledge of weight management challenges associated with SMI medications (C), proactive assessment and weight management are more likely to be incorporated into individuals' treatment plans (O), due to practitioners' awareness of critical mental and physical health indicators (M).^{15 24 38 44 52 62 63 67 69-75}

Quotes:

...one of the main goals of this review is to **encourage health professionals in testing and improving cardiorespiratory fitness levels as well as waist circumference in individuals with schizophrenia**. Indeed, one of the main examples of a significant clinical implication that can be drawn from this review relates to the improvement of cardiorespiratory fitness and waist circumference, which was attained in most studies⁷⁴

The present study also emphasizes the importance of a **comprehensive view in the care of persons with psychiatric disabilities**. Professionals in the psychiatric field should in their daily meetings with persons with psychiatric disabilities aim to increase the understanding of the importance of a healthy lifestyle and how it can reduce the risk of untimely illness and death. The professionals also have to support the mentally ill when making decisions both in the short and the long term and motivate the promotion of health and a life-long change in lifestyle⁴⁴

To give patients more realistic expectations about medication side effects, **prescribers should endeavor to have well-informed, patient-centered, individualized, and mutually respectful discussions proactively about medication side effects and the many uncertainties associated with them**. These discussions should include **explicit evaluations** of veterans' willingness to accept certain side effects like weight gain, assessment of other risk and protective factors regarding fitness and weight, and prevention strategies. They should incorporate emotional support for dealing with the downside of the trade-off and limited options.⁷⁰

...In the case of obesity, this has previously been attributed to lack of training and confidence around management.²⁰ **There may also be a lack of proactiveness from healthcare professionals, with the condition going unrecognised in patients' clinical notes, clinicians underestimating the severity of patients' excess weight**, clinicians lacking awareness of treatment options and having a negative attitude towards their efficacy, and the perception among clinicians that obesity arises from lifestyle choices with weight management being primarily the responsibility of the patient.^{11,21.15}

3. Coordinated/integrated care approaches

When all those involved in providing care (i.e., primary, secondary and social care services) to individuals with SMI and weight gain from anti-psychotic medications offer consistent contact and work in a collaborative, coordinated fashion with individuals to assess and monitor their care needs (C), co-developed goals are more likely to be met (O), due to a greater sense of shared responsibility between individuals and key services(M).^{52 63 76}

Quotes:

Individuals with severe mental illness (SMI) face significant health disparities and multiple barriers to engaging in health behaviour change. To reduce these health disparities, it is necessary to enhance the support individuals with SMI receive through the **collaboration of different healthcare providers**.

...**Integrated care models** seeking to maximize collaboration between physical and mental health providers (e.g., medical doctors, social workers, case managers, paraprofessional staff) have gained traction to counteract reliance on separate specialists providing treatment in silos (Rodgers et al., 2016). Such approaches are associated with improved care quality and physical health outcomes (e.g. improvements in cholesterol), and lower overall costs (Walker & Druss, 2018; Scharf et al., 2016).⁶³

Current CCMs (collaborative care models) are an iteration of the Chronic Care Model that acknowledges mental disorders also require a long-term and systematic approach to foster access and continuity of care to achieve optimal management. Moreover, mental health CCMs **emphasize collaboration among a team of mental health providers and PCPs within a practice to effect these changes, including coordination of care with specialists and community resources outside of primary care.... Care management** is a key operational component of CCM health care system redesign and represents a significant change from traditional physician-centered, primary care practice [12, 24, 86]. In the CCM practice environment, PCPs (primary care providers) are part of a team and are responsible for the screening and diagnosis of mental health conditions, prescribing appropriate medications, and referring complex cases to specialty mental health care as needed. **PCPs delegate and supervise many treatment tasks, which are coordinated by the care manager, to other members of the care team. Physicians are indirectly supported by mental health specialists, such as psychiatrists, who provide decision support for complex cases, as well as treatment recommendations** [7, 32]... Several systematic, meta-analytic reviews were published over the last year that provided robust support for CCMs as an **evidenced-based strategy for the management of mental health conditions in primary care settings**⁷⁶

4. Important assessment considerations: addressing negative body image

When individuals with SMI and weight gain from anti-psychotic medications have negative body image due to weight stigma, skilled professionals can help 'reframe' their situation (e.g. using functionality-based techniques) (C), potentially decreasing weight stigma and increasing positive body image (O) due to individuals' greater appreciation of themselves as holistic human beings (M).^{40 77 78}

Quotes:

Interventions may also need to address issues concerning current **societal stigma** regarding both psychotic experiences and excess weight, with the potential to draw on the **emerging body positivity movement** ideas concerning more compassionate approaches.⁷⁸

...**interventions aimed at improving functionality appreciation** could be regarded beneficial therapeutic targets in the treatment of psychosis. Previous studies demonstrated that functionality-based techniques (e.g., body functionality structured writing exercises) are **effective in reducing beliefs that the body is valued positively only through physical appearance, and in promoting a more holistic perception of the body** [34, 60].⁷⁷

5. Important assessment considerations: addressing existing disordered eating

When SUs with SMI and weight gain from anti-psychotic medications have existing disordered eating behaviours, early assessment by skilled professionals (C), may result in a more effective obesity management plan (O), due to individual and practitioner awareness (M) of how disordered eating behaviours can negatively impact an individual's mental and physical health.⁷⁹⁻⁸²

Quotes:

Any plan to prevent weight gain, promote weight loss, or install new health behaviours more generally in people with schizophrenia needs to consider that it will be dealing with a population where eating

and weight-related beliefs and behaviours are more likely to be altered. **Screening patients with a schizophrenia diagnosis for potential eating disorders should be incorporated as part of designing a treatment plan for weight management or metabolic health.**⁷⁹

Clinical practitioners should inquire about eating habits and empower individuals to eat a healthier diet. **Clinicians could also ask about eating in response to emotions and the impact of antipsychotic medication side effects on eating behaviours.** Through collaborative efforts and refocused attention on nutrition in the mental and medical health sectors, the diet and health of consumers may be improved....For those ready to make changes, **nutrition education should begin with defining healthy diets, evaluating the quality of individual diets, and exploring personal health risks from unhealthy eating.** Moderation in eating of all foods and establishment of lifelong healthy eating habits should be emphasized versus the notion of dieting and elimination of foods. Education efforts should be individualized and include planning and preparation of meals within cost and cooking limitations. Opportunities to taste and prepare healthy foods, particularly convenient healthy foods, could be incorporated. Registered dietitians could aid in nutrition education⁸⁰

...when creating weight management, weight gain prevention, or metabolic health plans with patients, **it is important to take mental health into consideration in the form of comorbid eating disorders.** **Notably, people with schizophrenia have higher rates of binge eating disorder** than the general population (approximately 10%, compared to 0.7–4.3% in community sample) (Kouidrat, Amad, Lalau, & Loas, 2014). ...abnormal eating behaviours that do not meet criteria for an eating disorder – such as food craving, food addiction, or night eating were also found to be highly prevalent in people with schizophrenia – 2.5 to 4 times higher than in the general population.... **As the rates for disordered eating are higher among people with schizophrenia spectrum disorder [SSD], it is important to train clinicians to look for, assess and manage eating disorders at various stages of the illness,** particularly modelled along the lines of those for substance-use disorders [56].⁸²

6. Behaviour change strategies to increase readiness for participation

When individuals with SMI and weight gain from anti-psychotic medications receive early behaviour change support from skilled professionals (C), they are more apt to consider participation in weight management options (O), because they have increased perceptions of self-efficacy (SE) (M).^{21 24 29 30 40 54 58 61 66 83–87}

Quotes:

Taken together, prior research and findings from this study indicate that **the relationship between SE [self-efficacy] and participation is robust and should be considered when designing and implementing weight management interventions for individuals with SMI.** Including a **short intervention bolstering SE** (i.e., **motivational interviewing** focused on identifying prior displays of SE and successful change) before the weight management intervention may be beneficial (Armstrong et al., 2011).⁴⁰

The theoretical base of the ACHIEVE Trial fits well within the psychiatric rehabilitation framework which emphasizes tenets of intrinsic skills building and environmental support [37,38]. **Motivational interviewing provides an important framework for helping participants problem solve and set goals for weight loss.** The ACHIEVE intervention operationalizes these models by providing frequent and extended contacts, opportunities for group interactions and social support, goal setting and self-negotiation, problem solving, and examples of new behavioural options²⁹

7. Early-to-maintenance phases of weight management

When individuals with SMI and weight gain from anti-psychotic medications are offered flexible program options (e.g., individual, group sessions) using an individualised ‘small steps’ approach by skilled practitioners (C), individuals are more apt to begin co-developing relevant, manageable behaviour change goals (O), because these approaches are easier to integrate into daily routines, building on individuals’ sense of achievement (M).^{22 29 30 34 40 44 46-48 51 53 54 58 63 65 67 69 75 80 84-86 88-94}

Quotes:

Results from these three studies confirm the effectiveness of lifestyle interventions for overweight and obese persons with severe mental illness in achieving clinically significant reduction in cardiovascular risk either **through group or individual coaching, and for different degrees of intensity of dietary and exercise programming**⁵⁴

Participants described how setting goals motivated positive changes to lifestyle and provided a framework by which to gradually ‘step up’ adjustments in a manageable way:

“... Once you reach the three-month goal, it gives you this spur to go for the six months...” (Pt.8)⁹³

Most lifestyle interventions are relatively short and intense programmes that usually have **at least three key components: exercise, diet and behavioural therapy [3, 4]**. Although these interventions are effective in the short term, the benefits are seldom sustained in the long term. The literature shows that while interventions aimed at making small but sustainable changes in lifestyle behaviour – **the ‘small steps approach’**– not only lead to small weight changes in the short term, **they prevent weight regain and result in more structural weight loss in the long term because such small changes can be sustained [5–7]**. The small-steps approach is of interest to clinical care, insofar as it might be **easier to implement in the daily care of patients than other interventions**. It may also be suitable for any patient and not just those who are highly motivated and stable⁶⁵

The In SHAPE health coach works with each participant to develop personalized lifestyle and fitness evaluations, and meets weekly with participants for 1-hour sessions at a local gym (e.g., YMCA). During the gym sessions, the health coach provides supported fitness coaching and **individualized attention to the participant’s nutrition goals and objectives**. The coaches also provide participants with support for managing mental health symptoms that interfere with exercise and healthy eating....At the start of the program, the health mentors meet with participants to conduct comprehensive lifestyle and fitness evaluations and develop personalized fitness plans for each participant with **shared goal setting**. **Helping participants translate lessons learned during individual coaching sessions at a fitness facility to their home and social environments might be critical for long-term weight loss success.**⁸⁸

The participants in this study [practitioners] described how to begin the **exploration of daily routines** in order to identify health factors such as diet, exercise, smoking habits, and alcohol consumption, with **the purpose being to collaborate with the patient and see what could or needed to be changed....**

Participants in this study stated that **changes must be adapted to what is important for the individual**. **Information must continue to be individualized and concrete, and practical examples should be given when the individuals need them**⁶²

8. Maintenance-to transition phases of weight management

When individuals with SMI and weight gain from anti-psychotic medications have ongoing, individualized support from empathic, trained practitioners and/or peer mentors to better manage their specific life challenges and opportunities (C), individuals are more likely to transition to autonomous goal-setting and self-monitoring (O), because they feel empowered by their increased perceptions of

control over lifestyle management (M).^{34 53 58 62 76 85 86 88 90 93 95}

Quotes:

The results from this study also highlight the importance of **identifying opportunities and obstacles** for the individuals... Communication and empathy are prerequisites for a good interpersonal relationship (Travelbee,1971). **Empathy** is characterized by the ability to share another individual's experiences and thereby understand his or her thoughts and feelings. This requires self-awareness and an understanding of the individual's actions and how to interpret them. These are characteristics that participants in this study perceive that they use in their work⁶²

In a recent systematic literature review examining health outcomes among persons with SMI receiving services in behavioural health homes, the inclusion of **peer support and/ or training in self-management skills** were associated with the greatest reduction in cardiometabolic risk factors⁶³

Maintenance of health behaviours and long-term sustainability were identified as key indicators of success. Exercise program design was grounded using aspects of self-determination theory (43, 44), including **key strategies structured to foster PA [physical activity] self-efficacy and improve perceived competence by offering a range of mastery experiences with education about monitoring exercise intensity and safe exercise progression** (45). **It was important to develop independent engagement with exercise during the program.** Toward the end of the program, care coordinators explored local provision to support transition to local fitness facilities for continuation of participants' exercise regimens at program termination.⁸⁶

9. Using tools for self-management

When individuals with SMI and weight gain from anti-psychotic medications employ data from easy-to-use, convenient, lifestyle tracking tools and self-monitoring devices (e.g., fitbits) to monitor the impacts of their behaviours (C), individuals are more motivated to attain and maintain lifestyle changes (O), due to increased self-awareness of how certain behaviours (e.g., diet, exercise) can positively or negatively influence their health (M).^{21 24 29 39 41-43 47 48 58 61 66 85 86 88 90 96-99}

Quotes:

The wearable physical activity trackers (Fitbits) were a motivator for participants and their [exercise] partners to increase their physical activity, even among those who were not able to work out together. **Overall, participants reported high satisfaction with using the activity tracking devices, stating the devices were easy to use, motivational, and helpful for setting and monitoring goals.** In many cases, participants reported a friendly competition with their partner for increasing daily steps. One participant commented, "We were competing against each other because we had the Fitbit. It was fun. I would do it again."⁸⁸

Self-monitoring and positive reinforcement are important aspects of successful weight loss trials. Participants are asked to fill out a "Tracker" as a self-monitoring tool outside of group sessions. Each tracker is used for one week; participants record the number of servings of fruits and vegetables, and respond yes or no to: exercising for 30 minutes; drinking sugar drinks; eating junk food; smart portions or smart snacks. **The Tracker provides a behavioural cue to participants.**²⁹

For most participants, the trial-and-error process of self-monitoring began with checking the calorie content of familiar foods, resulting in feelings of shock. **This led many to develop a greater understanding** of the role of food choices in weight gain and the need to change food habits. **Self-**

monitoring of physical activity often increased awareness of current activity levels and the need to walk more. Despite initial interest, few participants continued self-monitoring, citing challenges including that it was time consuming, not useful, or “too complicated.” The findings suggest that future interventions should expand support for self-monitoring, meal planning, tailored physical activity, and advocacy. Such interventions should also enhance **participants’ understanding of the corresponding impact of changes on weight loss and emphasize subjective wellness outcomes to maintain motivation.**⁹⁸

10. Succeeding with family and friend support

When individuals with SMI and weight gain from anti-psychotics have family members/friends who emotionally support them with encouragement, praise and recognition; provide practical support (e.g., transportation); and/or actively participate with them in weight management activities (C), individuals are more apt to achieve and sustain their behaviour change goals (O), due to increased social reinforcement for their lifestyle change efforts (M).^{40 43 70 71 80 86 88 93 95 100–103}

Quotes:

Participants cited empathy, validation, praise and encouragement from family members and significant others as supporting their efforts to achieve their health goals. *One participant described receiving praise from friends when she lost weight: ...“to the gym but she is going so she’ll say, ‘Why don’t you come along,’ and I eventually do go, and I feel better afterwards. And I’ve said, ‘Why don’t you come with me?’, just so she’ll go more consistently. So we’ve helped each other.”*⁹⁵

Participants viewed emotional support (e.g., encouragement, praise, recognition) and practical help (e.g., transportation) for health behaviour change as potential benefits of involving family members and friends in a lifestyle intervention along with the potential to enhance the quality of these relationships (Aschbrenner et al., 2012)...One support partner commented, “I think it brought us together—when you are with somebody and you are exercising, you can talk more and get whatever is off our chest, so I think it worked.”⁸⁸

*...my mum’s been very, like, ringing me up going, are you still eating healthy, and stuff, and that’s actually got me close to my mum again because me and my mum have been very distant...” (Pt.2) ...“they [friends] sort of changed with me, to sort of show well, we can do it as well, so you can.” (Pt.14)*⁹³

11. Facilitated, Peer Group Participation

When individuals with SMI and weight gain from antipsychotic medications participate in facilitated, community-based, small-group weight management programs with similar group participants in a psychologically safe, non-stigmatizing space (C), individuals are more likely to engage in activities and learn important social skills, such as co-operation and accountability (O), due to a sense of belonging among peers (M).^{22 28–30 34 38 40 44 46 48 49 51–54 58 63–65 75 81 83–85 92–94 99 102–109}

Quotes:

There was an overwhelming sense that service users found the peer group interaction and social support to be beneficial. Some service users had never met others with schizophrenia and had attempted weight loss at commercial programmes but did not want to talk about the impact of their medication because of stigma attached to severe mental illness. **“I find it fantastic ... meeting other groups of people on a similar medication with similar problems...”** (Service User S01/Q01)¹⁰⁵

*"I really enjoyed the group setting. And I could sit next to anybody in the class and be perfectly comfortable. Because we all shared this kind of common mental health issue ... I really liked the support ... You know, how did you do this week? What were your successes? What were your failures? "The part I didn't like was when the group setting ended. That was hard for me. I tried to go out and find another group ... like Weight Watchers, and I couldn't find a group that I clicked with. So it was really frustrating to have that camaraderie and then lose it."*³⁴

All of the participants who engaged with the CalMEND CPCI program reported that they found the activities involving groups to be helpful because of the support the group provided.... **Participants reported that the group atmosphere felt inclusive and nonjudgmental, which helped them make progress toward their goals...** Elizabeth and Anna respectively describe this phenomenon: *Everybody I've met is sort of like me. They all have the same problems ... so that we all share ... **we can all share and no one's critical, so that makes it safe.** Because when I leave [the CalMEND program], I just feel my self-esteem is just on cloud nine. I just feel comfortable. ... And not feel like you're gonna be judged.*

Samantha, who earlier reported feeling like she has been treated like a number in her medical care, describes the group benefits of CalMEND: *"... it's been helpful for me about the foods and then self esteem, that self esteem class. And just expressing your feelings. And just seeing how everybody else is doing too, and getting their input. That's important to have a social network of a support group system."*

[Anna]: *"Everybody I've met is sort of like me. They all have the same problems ... so that we all share ... we can all share and no one's critical, so that makes it safe. Because when I leave [the CalMEND program], I just feel my self-esteem is just on cloud nine. I just feel comfortable. ... And not feel like you're gonna be judged."*⁵²

*"We keep each other on track, asking each other what exercise we have done that week... **I felt more determined to stay on track then**" (Rose) and "I really enjoyed walking together each week" (Clover). One participant noted increased exercise changes that she made after attending the group each week: "So now I go on another walk as well, two walks each week" (Hyacinth) and "when the weather changes I use an exercise DVD, so I still get my exercise each week" (Hyacinth).⁶⁴*

Participants' need to establish friendships, bond with staff, feel a **sense of belonging, and gain support and encouragement from others** was a key issue. Being part of a group, making friends, and **peer support from people in a similar situation** were central. [...] Attending weekly sessions was viewed positively as a means of interacting socially with others. Littrell et al. (2003) attributed some of the benefits of their group-based intervention to the social support available. **Social networking** seems to be a key incentive for engaging people with SMI with group-based lifestyle interventions demonstrating that group activities are a useful format for delivering health promotion to this population: *I've tried weight-watchers and found that I didn't really get much out of going ... you never make any personal relationships with people. ... you **find that you can connect more with people here... having friendships here helps... I look forward to seeing people every week and that's what gives me that motivation to carry on coming...** (Participant 03)¹⁰⁶*

Several people noted that **accountability to self, to other group members, and to group leaders is what led to behaviour changes**. For example, one participant reported: *"Well, just knowing that I want to be accountable, because I don't want to disappoint the group or...myself, I guess" (intervention arm, 3 months)¹⁰⁸*

12. Trained Peer Mentor

When individuals with SMI and weight gain from anti-psychotic medications receive positive, unconditional support from appropriately trained, empathic, caring peers who openly share their own experiences and practical life skills (C), individuals are more likely to engage in and adopt healthier lifestyle behaviours (O) because peer supports' shared experiences are more credible to them (M) and there is an increased sense of hope (M) for more positive lifestyle outcomes.^{30 32 39 40 42 43 47 58 63 65 86 90 97}

98

Quotes:

Peer providers often attended directly to participants' **sense of self-efficacy and were described as offering unwavering support and belief in participants' capacity for change**. These findings are in line with extant qualitative literature examining peer-led interventions that emphasize the **importance of fostering self-determination, and hope, all grounded in shared experience as a crucial means of effecting change in individuals with SMI** (Lietz et al., 2014)...

Participants viewed their relationships with peer and non-peer providers positively, but described differences in the approach to practice, power dynamics present, and how they identified with each provider. Participants described peers as process-oriented while non-peer staff as task-oriented, focusing on accomplishing concrete objectives. Each provider sought to boost participants' motivation, **but peers built hope by emphasizing the possibility of change, while non-peer providers emphasized the consequences of inaction**. Participants **related to peer staff through shared experiences, while identifying the importance of having a shared treatment goal with their non-peer provider**. Overall, participants appreciated the unique roles of both peer and non-peer staff in supporting their health... In addition to the ability of PS [peer support] staff to deliver intervention content, there was frequent emphasis on their ability to **cultivate a positive social environment, in which people felt comfortable sharing their own experiences and participating in the intervention**: *"He... makes a situation where...it's less intense... where you'd like to be and where you'd like to go. And he makes you feel as though that you will achieve that - just give yourself some time and relax and have fun while you're doing it..."*⁶³

"Caring" was used to indicate that not only was the peer someone who was **truly concerned with their welfare**, but someone who also **understood the unique experience** of the participants and whose **efforts exceeded expectations**. Participants often described the peer-specialists as employees who came to work for *"more than just a paycheck."* One participant shared, *"[The PS] cares... [The PS] goes out [their] way to make sure you alright...[the PS] ain't got to do that."* (IP7) Another participant reiterated this sentiment, *"[The PS] really cares about how you're feeling. [The PS] knows what I'm going through. I hear voices sometimes, and [the PS] tells me that [they are] bipolar also. So, [the PS] got a similar...diagnosis."* (IP11)⁹⁰

Peers can use their own experiences to motivate clients to engage in healthy lifestyle changes and **serve as credible role models to support health behaviour change [11]...** Peer specialists' lived experience and **local knowledge were vital to develop practical adaptations and advice to support participants**. Peers' familiarity with participants' neighborhoods and socioeconomic limitations allowed them to share information about the best places to shop for healthy food as well as safe and affordable places to exercise. Their shared cultural backgrounds also enabled peers to provide practical advice on how to use healthier ingredients to prepare traditional dishes. Our findings suggest that peer specialists can **enhance the ecological validity of healthy lifestyle interventions for people with SMI**.⁵⁸

The first five CMOCs pertain to the initiation of a therapeutic relationship between community-based practitioners and individuals with SMI and medication-induced weight gain. The therapeutic relationship is an important social context for individuals with SMI, where they learn about their illness, prescribed antipsychotic medications, medication side effects and realistic management of their health needs.

In CMOC 1, the contextual factors of importance to individuals are practitioners who are non-judgmental and honest with them about the side effects of their antipsychotic medications. Because weight gain can be rapid, information needs to be conveyed early on in repeated, concrete, simple language that individuals can understand and relate to their own life circumstances.⁶³ The underlying mechanisms associated with relationship formation are individuals' perceptions that their opinions are respected (mechanism) by practitioners and trust (mechanism) in practitioners' advice to them.

Because the therapeutic relationship is a gateway to individuals' engagement in co-development of a weight management plan, a significant problem in primary care services is the scope and time/availability of practitioners. As detailed in CMOC 2, specialised knowledge and relational skills are needed by practitioners working with individuals with SMI and weight gain in community settings. Practitioners need to be aware (mechanism) of holistic screening and assessment for this specific population—to ensure more proactive management of weight gain for individuals with SMI.¹⁵

A number of different, community-based care models have been piloted to provide more holistic assessment and management of individuals' physical and mental health needs. As described in CMOC 3, key contextual characteristics of holistic care are collaboration and coordination across services. One mental health collaborative care model (CCM) included in our review documents was based on Wagner's chronic care model.⁷⁶ The CCM emphasises connections between mental health specialists and general practitioners, facilitated by a case/care manager, such as a mental health nurse.

Because continuity and trust relationships are important to individuals with SMI and weight gain, the case manager is often the consistent contact between the team and individuals. Another key characteristic of the CCM is measurement-based care: mental–physical health assessment tools are systematically used to track weight management progress, and the case manager is often responsible for monitoring, collecting and sharing data with the team and individuals. Shared data are an important means of ensuring individuals’ understanding of how their individualised weight management plan is making a difference to their quality of life.⁷⁶

Shared responsibility (mechanism) ensures effective, collaborative care across services, including engagement and collaboration with individuals. When the research team discussed this CMOC with the lived experience group members, the group members highlighted how siloed care often arises when no one takes responsibility for their role in complex care situations. The lived experience group members felt that services/practitioners need to accept their shared responsibility in care coordination and delivery. The lived experience group also stated that true person-centered care requires active engagement with individuals—beginning with assessment and continuing on to individuals’ independent control of their care decisions.

The following CMOCs – 4 (negative body image) and 5 (disordered eating behaviours) – acknowledge specific assessment components for individuals with SMI and weight gain. As defined in one review document, body image refers to how people feel and think about their bodies, and the associated field of research has identified six domains associated with body image, including physical, sensory and creative capabilities.¹¹⁰ Functionality appreciation techniques are designed to raise individuals’ appreciation (mechanism) of what their bodies are capable of doing. Focusing on body functionality (i.e. the body positivity movement) versus appearance is one way to positively ‘reframe’ how individuals view themselves.^{77 78}

Another assessment area is the presence of disordered eating behaviours, which are more common in people with psychosis than the general population.⁸² A systematic review of disordered eating behaviours in individuals with schizophrenia spectrum disorder reported rates of 4.4% to 45% for binge eating, 16.1% to 64% for food craving, 27% to 60.6% for food addiction, and 4% to 30% for night eating.⁸² There is some evidence that antipsychotic medications can exacerbate pre-existing disordered eating behaviours and contribute to medication-related weight gain.¹¹¹ Therefore, early assessment and management of pre-existing disordered eating behaviours can heighten individual and practitioner awareness (mechanism) of intervention options for holistic weight management.⁷⁹

Barriers to participation in weight management interventions include the double stigma of SMI and weight gain and the cognitive deficits and fatigue associated with SMI.^{29 40} As stated in CMOC 6, brief behaviour change interventions, such as motivational interviewing (MI), can be used to raise individuals' self-efficacy beliefs (i.e. 'I can do it') and readiness to participate in weight management planning and treatment.⁴⁰ Interventions often fail when individuals are not open to participation.⁶² Motivational interviewing is one 'guiding style' and a relational, strengths-based approach that foregrounds individuals' existing strengths and future aspirations. Furthermore, MI is a technique that practitioners can readily learn and apply.²⁹ Therefore, prior to the start of any intervention behaviour change strategies, such as MI, should be used to raise individuals' sense of self-efficacy (mechanism) and readiness to participate.⁷⁸

CMOCs 7 to 9 cover key characteristics of effective weight management interventions for individuals with SMI. In CMOC 7, during the early intervention phase, a primary focus is individual-practitioner co-development of small, manageable behaviour change goals that can be integrated into individuals' daily routines and social and home settings. Successful interventions are based on a few, specific skills which are broken into smaller units and repeated as needed. Learning aids, such as visual cues,²⁹ are also used to reduce memory and attention load and to improve adaptive functioning. Small,

progressive successes are more apt to build SUs' sense of achievement (mechanism),^{62 65 88} and there is some evidence that a 'small steps' approach is more effective in sustained long-term behaviour change.⁶⁵

CMOC 8 is a continuation of ongoing, collaborative goal-setting between individuals and trained practitioners and/or peer mentors. During the maintenance phase, individuals learn how to monitor their own progress and set their own behaviour change goals based on continued, individualised assistance with identification of potential/actual life opportunities and challenges. The transition phase is marked by individuals' capacity to take control of their own health behaviours as a result of their feelings of empowerment (mechanism). Empowerment represents how individuals feel when they have mastered the ability to enact valued health behaviours.⁸⁶

As stated in CMOC 9, easy-to-use tracking and self-monitoring tools may give more control to individuals as they learn to establish their own, small goals based on their increased self-awareness (mechanism) of how their health behaviours are associated with positive or negative health outcomes. As noted in one qualitative study of individuals with SMI and weight gain, when individuals began monitoring their caloric intake, they were surprised by what they learnt about their food choices. Raised awareness helped them develop healthier consumption habits.⁹⁸

CMOCs 10 to 12 describe the key types of support described in the review literature. With psychosis, early and intensive social support are often needed to help individuals develop a greater sense of self-efficacy and readiness to change. Ongoing reinforcement is important to sustain positive behaviour change. A primary source of emotional support is the family,^{88 95} although not all family members may be accessible or helpful. In an initial assessment, practitioners need to determine the individual's sources of support, particularly the role of family and peers.^{62 88} In one intervention for obesity management, the US Fit Together programme (See Table 2), education and activities were designed for individuals and their family members or friends. The individual participants stated that diet

and physical activity were easier to carry out with a family member who was also committed to improved health goals.⁸⁸ The outcomes were more positive and sustainable for individuals when their family members also succeeded in losing weight and making behaviour changes.⁸⁸

Individuals with SMI often have difficulty in establishing and maintaining social relationships.⁹⁵ Because family members (where available) are a key source of support for individuals (e.g. emotional, social, and material),^{88 112} practitioners should also determine – working with family and significant others – what types of resources and social reinforcement (mechanism) family/friend support need to provide optimal support, such as signposting to services or social prescribing contacts.⁷¹ Some review papers recommended that families and significant others should receive information and skills training on coping with SMI, as well as alerting them to possible medication side-effects.^{70 100}

Individuals learn from and adopt others' behaviours through social interactions, where observation, experience and positive reinforcement help to shape individuals' decisions and actions. Many group interventions, such as group-based weight management sessions, are built on the powerful influence of peer social support and a sense of belonging (mechanism).¹¹³ As noted in CMOC 11, facilitated sessions with similar group participants creates a non-stigmatising, psychologically safe space where individuals can openly share their particular needs and challenges with each other.^{52 105} In group-based interventions with high levels of peer interaction, participants reported a greater sense of co-operation while learning together,⁵³ increased knowledge of social roles,⁵¹ and a greater sense of social accountability.^{64 108} One review paper postulated that structured group-based education with a mix of didactic instruction and activities (e.g. cooking classes, shopping together, exercise classes) may be a more cost-effective alternative to one-on-one counseling, although there are logistical issues to consider.¹¹³

The final CMOC 12 represents a trend of using trained peer mentors with lived experience (i.e. of SMI and weight gain from antipsychotic medications) to facilitate group sessions, and to be available

as needed for one-on-one support. Peer mentors may be another cost-effective strategy for promoting positive behaviour change in this population.⁴⁷ The capacity of peer mentors to truly empathise with participants' recovery journeys was emphasised in the review documents. In the US PeerFit program, trained peer mentors were able to explore participants' past and present 'readiness to change' behaviours, based on their capacity to relate to programme participants' life stories.⁴⁷ In this intervention, a collaborative coaching and learning model was used, where a trained facilitator offered one-on-one counseling, while the peer mentor role modelled healthy behaviours and provided assistance and support with individuals' goal-setting. Peer mentors who were interviewed at the completion of the study stated that they preferred reciprocal, non-hierarchical relationships with participants; the coaching role made them uncomfortable.⁴⁷ Another intervention using trained facilitators and peer mentors reported how both types of support complemented each other.⁶³ In a related paper, interviews were conducted with programme participants who clearly differentiated between the characteristics of practitioners in facilitator roles (referred to as non-peer facilitators) and trained peer mentors (referred to as peer support).⁹⁰ Practitioners were described as task-oriented and goal-focused, while peer mentors were more positive and relational—thus building a sense of hope (mechanism) and the possibility of positive change. Given their own lived experiences, peer mentors were better able to contextualise how to make small and manageable lifestyle changes. Peer mentors were also described as providing unconditional and unwavering support. In this intervention, supervisors of peer mentors valued peer mentors' ability to 'normalise slips', such as a food binge or weight gain, and to provide credible examples of their own, very human struggles with non-healthy choices.⁹⁰

Discussion

This realist review is comprised of a programme theory of weight management for individuals with SMI and weight gain from antipsychotic medications, underpinned by 12 CMOCs with applicability

to practitioners caring for this population in community settings. A unique aspect of this realist review is the intertwined nature of an individual's SMI recovery journey and proactive weight management. It has been suggested that weight management must be addressed at the time of medication initiation and during consequent, regular follow-up sessions with practitioners.¹¹⁴

Comparable Literature to Support the CMOCs

Most international guidelines recommend that practitioners in primary care services identify individuals at risk for weight gain and refer them to community-based weight management services.¹¹⁴ The British Association for Psychopharmacology (BAP) guidelines, for example, recommend clear service agreements with respect to who takes the lead for monitoring healthcare needs of individuals with first-episode psychosis and potential, rapid weight gain from antipsychotics. The guidelines also highlight how practitioners should assist with determining what types of healthy behaviour change interventions are best suited for individuals in their care, depending on programme availability in local, community contexts.⁴

Because antipsychotic medication initiation can cause rapid weight gain and they may have pre-existing weight issues,¹¹⁵ individuals with SMI and weight gain often connect with primary care services after weight issues are already a health concern. An ongoing barrier to primary care management of individuals with SMI and weight gain is under-identification of and under-treatment for health risks from weight gain.¹¹⁴ One major reason for under-identification and under-referrals/treatment includes weight stigma—stigma that has negative ramifications for individuals with weight gain at societal levels, in the healthcare system, and internally or within oneself.^{114 116 117}

Individuals with SMI and weight gain are subject to many types of stigma, including societal biases towards individuals who are overweight/obese. Societal stigma can adversely influence health policies in diverse contexts (e.g. work, education) and threaten societal values of equity, diversity and

inclusivity.¹¹⁸ In the healthcare disciplines, weight stigma can adversely influence the quality of healthcare delivery.¹¹⁹ Among healthcare practitioners, other types of bias, such as race and sexual orientation, have decreased while weight bias has been increasing over recent years.¹²⁰ Healthcare practitioners with weight biases often consider individuals with weight issues as responsible for their weight.¹¹⁹ One survey study of UK practitioners and individuals with obesity reported that practitioners cited individuals' lack of interest (72%) and lack of motivation (61%) as major reasons for not discussing weight with them.¹²¹ Sixty-five percent of individuals living with obesity, however, wanted their practitioners to discuss weight and related co-morbidities during their appointments.¹²¹ In a multi-country survey study, individuals with weight gain issues reported healthcare avoidance due to their perceptions of critical judgment, and they also reported inattentive listening and less respect from practitioners.¹²² Some evidence suggests that weight stigma has a significant, adverse impact on individuals' social identity, resulting in avoidance of potentially stigmatizing public settings (e.g. gym) and stigma "escape" by engaging in unhealthy behaviours, such as stress-induced eating.¹¹⁷

An individual's sense of social identity is influenced by their social roles (e.g. partner, brother, son, employee). In socially stigmatizing settings, individuals' social identity becomes devalued and replaced by a stigmatized view of oneself: Individuals with self-stigma believe they have less self-worth and self-efficacy—resulting in withdrawal and in many instances, self-imposed isolation.^{116 123}

Therapeutic relationships with practitioners were considered one, important way to reduce self-stigma.¹²⁴ Other approaches that reduced self-stigma were behaviour change therapies¹²⁵ and positive relationships with families and friends—to build and maintain positive self-esteem and self-efficacy.¹²⁶¹²³ Because stigma related to SMI and/or weight is so ingrained in social/public and healthcare settings, some researchers recommended education for practitioners¹²⁷ and psychoeducation for individuals and their families to better recognize and actively address stigmatizing language and behaviours.¹²⁸

Given the pervasiveness of weight stigma in society and in healthcare, practitioners are urged to

“move away from a solely weight-centric approach to healthcare to a health-focused weight-inclusive one”.¹²⁷ A shift in care management from weight-centric to holistic health approaches requires practitioners to recognise that weight loss may not be achievable or sustainable for many individuals.¹²⁷ Practitioners, therefore, need to attenuate stigmatising beliefs and behaviours about weight, and instead promote modifiable health behaviours (versus weight loss) that will hopefully contribute to more respectful, trusting individual-practitioner relationships.^{127 129}

Our review’s programme theory and CMOCs emphasise the importance of therapeutic practitioner-SU relationships and relational approaches, including behaviour change strategies that invite honest, transparent conversations to engage individuals and to collaboratively establish realistic whole health goals between practitioners and individuals.¹³⁰ One behaviour change strategy, MI, can be used by practitioners to clarify goals and to establish consonance between goals and current behaviours. This approach is based on person-centred principles that respect individuals’ autonomy and support their self-efficacy.^{131 132}

Therapeutic practitioner-SU relationships are essential for uncovering pre-existing risk factors that can potentiate health risks from antipsychotic medications. For example, identification and management of existing disordered eating behaviours and negative body image are important components of early assessment and individual-practitioner goal-setting. Given the sensitivity of these risk factors, relational practitioner approaches are especially important for engaging individuals in honest and difficult conversations.^{133 134}

As indicated in our review, intervention studies for individuals with SMI and weight gain produced equivocal results with respect to weight loss, clinical markers and quality of life and psychological health and wellbeing. In the weight management literature (non-SMI), systematic reviews reported that successful weight loss was rarely maintained long-term.^{135 136} In one systematic review, the researchers surmised that interventions focused on weight loss may be insufficient to address

stigma, and may even accentuate it by their focus on weight loss.¹³⁶ Practitioners' use of a 'weight neutral' approach acknowledges the whole person and is more likely to trigger the underlying mechanisms in our review, such as individual's perceptions of respect from practitioners, trust in their practitioners, a greater sense of shared responsibility, and enhanced self-awareness, appreciation for self as a whole person, self-efficacy, achievement and control over their own health needs.

Our review has emphasised the importance of therapeutic relationships between individuals and practitioners, and this review also highlights how social support from others, such as families/carers, peers in group-based interventions and peer mentors have contributed to individuals' participation and successes in weight management/behaviour change programmes. Social influence (e.g., role modeling) and social norms can have a particularly significant impact on eating, for example.¹³⁷ The actual intervention components and delivery options, therefore, may be less significant than the presence of social support and social networks that trigger other, proposed underlying mechanisms—social reinforcement from others, credibility in behaviour change offerings, a sense of social belonging, and hope in a healthier future. In a US survey study with individuals with SMI, a greater sense of group belonging mitigated against self-stigma or negative beliefs about oneself.¹²³ Practitioners can assist individuals by helping them reflect on their personal values and affiliations when co-determining social support needs and opportunities.¹²³

A final emphasis in our review was models of care delivery and practitioner roles and responsibilities with respect to coordinated, collaborative holistic care management. National guidelines in the US,¹³⁸ Australia and New Zealand¹³⁹ and the UK¹⁴⁰ recommend routine monitoring and management of cardiometabolic risk indicators associated with antipsychotic medications and weight gain. In a systematic review of recommended metabolic risk screening for individuals with SMI, less than 50% of people were being appropriately monitored for one risk factor, and only 11% of this population was meeting recommended monitoring requirements.¹⁴¹ As we found in our review, gaps in

care delivery may be related to competency gaps between primary and secondary care services.

Integrated care may be a preferred delivery model for individuals with complex mental-physical health needs.¹⁴² Innovative practitioner partnerships are also being trialed to ease the burden for primary care services. For example, one pilot from Scotland is using clinical pharmacists to assist with physical health monitoring and poly-medication reviews for SUs with SMI.¹⁴³

Person-centered approaches foreground the importance of collaborative care planning among multi-disciplinary team members with individuals and family members being integral partners on the team.¹⁴⁴ The person-centered care model in mental health care focuses on potential recovery and an individual's specific functionality at any point in time. Rather than a diagnosis-dependent approach to care decisions, shared responsibility represents what information individuals need at any point in time, to engage in making decisions about their mental, physical and social care needs.¹⁴⁵ Recovery-oriented treatment for individuals with SMI and weight gain reinforces the starting point of our programme theory and CMOCs—the therapeutic relationship. When primary care practitioners focus on the quality of their relationships with individuals with SMI and weight gain, care planning and follow-through for individuals is greatly enhanced,¹⁴⁴ and ongoing participation of individuals and families in goal-setting and decision-making is associated with sustained, positive behaviour changes.¹⁴⁶

Limitations and Strengths

Our search strategy focused on non-pharmacological interventions for obesity management. This review did not include considerations of pharmacological or surgical interventions. Another limitation associated with our search strategy was the shift in terminology used to address interventions for weight management. In earlier literature, the focus was on weight gain/weight loss and typically one intervention at a time (e.g. physical activity). Over time, interventions became more complex with multiple components, a host of additional outcomes (e.g. clinical indicators, quality of life) and different terminology (e.g., behaviour changes, lifestyle management). Our initial search terms, therefore, may

not have captured all relevant papers.

A major concern of our lived experience group was a lack of literature on the influence of diverse cultures, religious faiths and ethnicities on intervention success. For example, the literature we reviewed did not specifically discuss if/how nutritional interventions were tailored to meet non-Western food preferences. Given the timeframe for our review, we were unable to do a fulsome search of literature describing the positive or negative influence of culture on intervention outcomes. Similarly, we were unable to do in-depth searches for technological innovations, such as smartphone apps and mobile health services, which may be promising ways to better connect SUs with healthcare services. Another area topic we did not have time to explore was adaptations of commercial programmes for individuals with SMI. Although some of our review literature suggested individuals' preference for programmes tailored to their needs, given the expense of bespoke interventions, more exploration should include adjuncts to existing, community-based weight management or behaviour change programmes. Many intervention studies were RCTs. In most instances, outcomes were reported at the conclusion of the studies with lack of follow-up to determine sustainability of interventions. The long-term effectiveness of the interventions reported in this review, therefore, is not known.

Strengths of our review included the use of Google Alerts to identify more recently published papers (2022–2024) and iterative search techniques to locate other, relevant documents. The major RCTs (e.g. multi-site studies) included within this review were often associated with secondary analyses of sub-groups in the target population or qualitative studies with RCT participants. References for RCT papers were used to locate kinship and sibling papers. A key strength of our realist review was the use of stakeholder groups and a research team with subject matter expertise to develop and validate the programme theory and CMOCs. The team and stakeholder groups met monthly to discuss and refine the CMOCs. Abstract and full text screening and coding was done by two experienced qualitative researchers with expertise in realist methods. Another key strength of this study is the current collection

of primary data during the study's evaluation phase to further refine the review's programme theory and CMOCs.

Conclusion

Our realist review identified twelve CMOCs and an accompanying theory of individuals' recovery and weight management—intertwined goals for individuals with SMI and weight gain from anti-psychotic medications. This population is at significant risk for adverse physical and mental health outcomes. Proactive practitioner interventions include holistic comprehensive assessment, as well as honest and open sharing of weight gain health risks, along with behaviour change therapies to promote individual engagement in community-based weight management interventions. Necessary support include family/carers and friends, practitioners, trained facilitators, peer group participants and peer mentors. Promising models of community-based services for this population feature collaboration and cooperation across secondary and primary services with a case manager serving as primary contact with individuals. The programme theory with its 12 CMOCs provide testable explanations for what works, for whom, when, how and why. This knowledge can be used to inform practice and research in the future.

References

1. Pillinger T, McCutcheon RA, Vano L, et al. Comparative effects of 18 antipsychotics on metabolic function in patients with schizophrenia, predictors of metabolic dysregulation, and association with psychopathology: a systematic review and network meta-analysis. *Lancet Psychiatry*. 2020;7(1):64-77. doi:10.1016/S2215-0366(19)30416-X
2. Holt RIG, Gossage-Worrall R, Hind D, et al. Structured lifestyle education for people with schizophrenia, schizoaffective disorder and first-episode psychosis (STEPWISE): Randomised controlled trial. *British Journal of Psychiatry*. 2019;214(2):63-73. doi:10.1192/bjp.2018.167
3. Holt RIG. The Management of Obesity in People with Severe Mental Illness: An Unresolved Conundrum. *Psychother Psychosom*. 2019;88(6):327-332. doi:10.1159/000503835
4. Cooper SJ, Reynolds GP, Barnes TRE, et al. BAP guidelines on the management of weight gain, metabolic disturbances and cardiovascular risk associated with psychosis and antipsychotic drug treatment. *Journal of Psychopharmacology*. 2016;30(8):717-748. doi:10.1177/0269881116645254

5. Sandhu A, Ives J, Birchwood M, Uptegrove R. The subjective experience and phenomenology of depression following first episode psychosis: A qualitative study using photo-elicitation. *J Affect Disord*. 2013;149(1-3):166-174. doi:10.1016/j.jad.2013.01.018
6. Pearl RL, Hernandez M, Bach C, Groshon L, Wadden TA. Prevalence of diagnosed psychiatric disorders among adults who have experienced and internalized weight stigma. *Obes Sci Pract*. 2023;9(6):681-687. doi:10.1002/osp4.700
7. Ahern AL, Wheeler GM, Aveyard P, et al. Extended and standard duration weight-loss programme referrals for adults in primary care (WRAP): a randomised controlled trial. *The Lancet*. 2017;389(10085):2214-2225. doi:10.1016/S0140-6736(17)30647-5
8. Ahern AL, Breeze P, Fusco F, et al. *Effectiveness and Cost-Effectiveness of Referral to a Commercial Open Group Behavioural Weight Management Programme in Adults with Overweight and Obesity: 5-Year Follow-up of the WRAP Randomised Controlled Trial.*; 2022. www.thelancet.com/
9. LeBlanc ES, Patnode CD, Webber EM, Redmond N, Rushkin M, O'Connor EA. Behavioral and pharmacotherapy weight loss interventions to prevent obesity-related morbidity and mortality in adults updated evidence report and systematic review for the US preventive services task force. *JAMA - Journal of the American Medical Association*. 2018;320(11):1172-1191. doi:10.1001/jama.2018.7777
10. National Institute for Health and Care Excellence. Obesity prevention Clinical guideline. Published online 2015. www.nice.org.uk/guidance/cg43
11. Obesity Canada. 5As of Obesity Management. Accessed April 4, 2024. <https://obesitycanada.ca/resources/5as/>
12. Agency for Healthcare Research and Quality. U.S. Preventive Services Task Force. Published 2019. Accessed April 4, 2024. <https://www.ahrq.gov/cpi/about/otherwebsites/uspstf/index.html>
13. Wharton S, Lau DCW, Vallis M, et al. Obesity in adults: A clinical practice guideline. *CMAJ*. 2020;192(31):E875-E891. doi:10.1503/cmaj.191707
14. Lee C, Piernas C, Stewart C, et al. Identifying effective characteristics of behavioral weight management interventions for people with serious mental illness: A systematic review with a qualitative comparative analysis. *Obesity Reviews*. 2022;23(1). doi:10.1111/obr.13355
15. Lee K, Akinola A, Abraham S. Antipsychotic-induced weight gain: exploring the role of psychiatrists in managing patients' physical health – challenges, current options and direction for future care. *BJPsych Bull*. Published online May 11, 2023:1-6. doi:10.1192/bjb.2023.29
16. Nyboe L, Lemcke S, Møller AV, Stubbs B. Non-pharmacological interventions for preventing weight gain in patients with first episode schizophrenia or bipolar disorder: A systematic review. *Psychiatry Res*. 2019;281. doi:10.1016/j.psychres.2019.112556
17. Stevens H, Smith J, Bussey L, et al. Weight management interventions for adults living with overweight or obesity and severe mental illness: a systematic review and meta-analysis. *British Journal of Nutrition*. 2023;130(3):536-552. doi:10.1017/S0007114522003403

18. Planner C, Gask L, Reilly S. Serious mental illness and the role of primary care. *Curr Psychiatry Rep.* 2014;16(8). doi:10.1007/s11920-014-0458-8
19. Wong G, Greenhalgh T, Westhrop G, Pawson R. Quality standards for realist syntheses and meta-narrative reviews. Published online 2014. doi:10.1111/jan.12095/pdf
20. Maidment ID, Wong G, Duddy C, et al. REalist Synthesis Of non-pharmacological interVEntions for antipsychotic-induced weight gain (RESOLVE) in people living with severe mental illness (SMI). *Syst Rev.* 2022;11(1). doi:10.1186/s13643-022-01912-9
21. Erickson ZD, Kwan CL, Gelberg HA, et al. A Randomized, Controlled Multisite Study of Behavioral Interventions for Veterans with Mental Illness and Antipsychotic Medication-Associated Obesity. *J Gen Intern Med.* 2017;32:32-39. doi:10.1007/s11606-016-3960-3
22. Gossage-Worrall R, Holt RIG, Barnard K, et al. STEPWISE - STructured lifestyle Education for People Wlth SchizophrEnia: A study protocol for a randomised controlled trial. *Trials.* 2016;17(1). doi:10.1186/s13063-016-1572-1
23. Looijmans A, Jörg F, Bruggeman R, Schoevers RA, Corpeleijn E. Multimodal lifestyle intervention using a web-based tool to improve cardiometabolic health in patients with serious mental illness: Results of a cluster randomized controlled trial (LION). *BMC Psychiatry.* 2019;19(1). doi:10.1186/s12888-019-2310-5
24. Looijmans A, Jörg F, Bruggeman R, Schoevers R, Corpeleijn E. Design of the Lifestyle Interventions for severe mentally ill Outpatients in the Netherlands (LION) trial; a cluster randomised controlled study of a multidimensional web tool intervention to improve cardiometabolic health in patients with severe mental illness. *BMC Psychiatry.* 2017;17(1). doi:10.1186/s12888-017-1265-7
25. Marshall M, Barrowclough C, Drake R, et al. The HELPER programme: HEalthy Living and Prevention of Early Relapse – three exploratory randomised controlled trials of phase-specific interventions in first-episode psychosis. *Programme Grants for Applied Research.* 2015;3(2):1-238. doi:10.3310/pgfar03020
26. Bartels SJ, Pratt SI, Aschbrenner KA, et al. Clinically significant improved fitness and weight loss among overweight persons with serious mental illness. *Psychiatric Services.* 2013;64(8):729-736. doi:10.1176/appi.ps.003622012
27. Meepring S, Gray R, Li X, et al. Evaluating the efficacy of the Thai Health Improvement Profile intervention for preventing weight gain in people with early stage psychosis: A randomized controlled trial. *Int J Nurs Stud.* 2023;146. doi:10.1016/j.ijnurstu.2023.104570
28. Daumit GL, Dickerson FB, Wang NY, et al. A Behavioral Weight-Loss Intervention in Persons with Serious Mental Illness. *New England Journal of Medicine.* 2013;368(17):1594-1602. doi:10.1056/nejmoa1214530
29. Casagrande SS, Jerome GJ, Dalcin AT, et al. Randomized trial of achieving healthy lifestyles in psychiatric rehabilitation: the ACHIEVE trial. *BMC Psychiatry.* Published online 2010.

30. Cabassa LJ, Stefancic A, Lewis-Fernández R, et al. Main outcomes of a peer-led healthy lifestyle intervention for people with serious mental illness in supportive housing. *Psychiatric Services*. 2021;72(5):490-497. doi:10.1176/appi.ps.202000304
31. Cabassa LJ, Stefancic A, O'Hara K, et al. Peer-led healthy lifestyle program in supportive housing: Study protocol for a randomized controlled trial. *Trials*. 2015;16(1). doi:10.1186/s13063-015-0902-z
32. Tuda D, Stefancic A, Hawes M, Wang X, Guo S, Cabassa LJ. Correlates of Attendance in a Peer-Led Healthy Lifestyle Intervention for People with Serious Mental Illness Living in Supportive Housing. *Community Ment Health J*. 2022;58(4):761-769. doi:10.1007/s10597-021-00881-y
33. Brown C. Weight Loss Intervention for People With Serious Mental Illness: A Randomized Controlled Trial of the RENEW Program. *Psychiatric Services*. 2011;62(7):800. doi:10.1176/appi.ps.62.7.800
34. Green CA, Yarborough BJH, Leo MC, et al. The STRIDE weight loss and lifestyle intervention for individuals taking antipsychotic medications: A randomized trial. *American Journal of Psychiatry*. 2015;172(1):71-81. doi:10.1176/appi.ajp.2014.14020173
35. Yarborough BJH, Leo MC, Stumbo S, Perrin NA, Green CA. STRIDE: A randomized trial of a lifestyle intervention to promote weight loss among individuals taking antipsychotic medications. *BMC Psychiatry*. 2013;13. doi:10.1186/1471-244X-13-238
36. Green CA, Yarborough BJH, Leo MC, et al. Weight maintenance following the STRIDE lifestyle intervention for individuals taking antipsychotic medications. *Obesity*. 2015;23(10):1995-2001. doi:10.1002/oby.21205
37. McKibbin CL, Patterson TL, Norman G, et al. A lifestyle intervention for older schizophrenia patients with diabetes mellitus: A randomized controlled trial. *Schizophr Res*. 2006;86(1-3):36-44. doi:10.1016/j.schres.2006.05.010
38. Verhaeghe N, Clays E, Vereecken C, et al. Health promotion in individuals with mental disorders: A cluster preference randomized controlled trial. *BMC Public Health*. 2013;13(1). doi:10.1186/1471-2458-13-657
39. Young AS, Cohen AN, Goldberg R, et al. Improving Weight in People with Serious Mental Illness: The Effectiveness of Computerized Services with Peer Coaches. *J Gen Intern Med*. 2017;32:48-55. doi:10.1007/s11606-016-3963-0
40. Bennett LL, Cohen AN, Young AS. Factors Associated with Weight Intervention Participation among People with Serious Mental Illness. *Journal of Nervous and Mental Disease*. 2018;206(11):896-899. doi:10.1097/NMD.0000000000000892
41. Jakobsen AS, Speyer H, Nørgaard HCB, et al. Effect of lifestyle coaching versus care coordination versus treatment as usual in people with severe mental illness and overweight: Two-years follow-up of the randomized CHANGE trial. *PLoS One*. 2017;12(10). doi:10.1371/journal.pone.0185881

42. Muralidharan A, Niv N, Brown CH, et al. Impact of Online Weight Management With Peer Coaching on Physical Activity Levels of Adults With Serious Mental Illness. *Psychiatr Serv*. 2018;69(10):1062-1068. doi:10.1176/appi.ps.201700391
43. Muralidharan A, Brown CH, Zhang Y, et al. Quality of life outcomes of web-based and in-person weight management for adults with serious mental illness. *J Behav Med*. 2020;43(5):865-872. doi:10.1007/s10865-019-00117-1
44. Forsberg KA, Björkman T, Sandman PO, Sandlund M. Physical health - A cluster randomized controlled lifestyle intervention among persons with a psychiatric disability and their staff. *Nord J Psychiatry*. 2008;62(6):486-495. doi:10.1080/08039480801985179
45. Speyer H, Nørgaard HCB, Hjorthøj C, et al. Protocol for CHANGE: A randomized clinical trial assessing lifestyle coaching plus care coordination versus care coordination alone versus treatment as usual to reduce risks of cardiovascular disease in adults with schizophrenia and abdominal obesity. *BMC Psychiatry*. 2015;15(1). doi:10.1186/s12888-015-0465-2
46. Brown C, Read H, Stanton M, Zeeb M, Jonikas JA, Cook JA. A Pilot Study of the Nutrition and Exercise for Wellness and Recovery (NEW-R): A Weight Loss Program for Individuals with Serious Mental Illnesses. *Psychiatr Rehabil J*. 2015;38(4):371-373. doi:10.1037/prj0000115
47. Aschbrenner KA, Naslund JA, Barre LK, Mueser KT, Kinney A, Bartels SJ. Peer health coaching for overweight and obese individuals with serious mental illness: intervention development and initial feasibility study. *Transl Behav Med*. 2015;5(3):277-284. doi:10.1007/s13142-015-0313-4
48. Beebe LH, Smith K. Feasibility of the Walk, Address, Learn and Cue (WALC) Intervention for Schizophrenia Spectrum Disorders. *Arch Psychiatr Nurs*. 2010;24(1):54-62. doi:10.1016/j.apnu.2009.03.001
49. Green CA, Janoff SL, Yarborough BJH, Yarborough MT. A 12-Week Weight Reduction Intervention for Overweight Individuals Taking Antipsychotic Medications. *Community Ment Health J*. 2014;50(8):974-980. doi:10.1007/s10597-014-9716-9
50. Jean-Baptiste M, Tek C, Liskov E, et al. A pilot study of a weight management program with food provision in schizophrenia. *Schizophr Res*. 2007;96(1-3):198-205. doi:10.1016/j.schres.2007.05.022
51. Van Citters AD, Pratt SI, Jue K, et al. A pilot evaluation of the in SHAPE individualized health promotion intervention for adults with mental illness. *Community Ment Health J*. 2010;46(6):540-552. doi:10.1007/s10597-009-9272-x
52. Nover CH. Mental Health in Primary Care: Perceptions of Augmented Care for Individuals With Serious Mental Illness. *Soc Work Health Care*. 2013;52(7):656-668. doi:10.1080/00981389.2013.797537
53. Watkins A, Denney-Wilson E, Curtis J, et al. Keeping the body in mind: A qualitative analysis of the experiences of people experiencing first-episode psychosis participating in a lifestyle intervention programme. *Int J Ment Health Nurs*. 2020;29(2):278-289. doi:10.1111/inm.12683

54. Bartels SJ, Pratt SI, Aschbrenner KA, et al. Pragmatic replication trial of health promotion coaching for obesity in serious mental illness and maintenance of outcomes. *American Journal of Psychiatry*. 2015;172(4):344-352. doi:10.1176/appi.ajp.2014.14030357
55. Curtis J, Watkins A, Rosenbaum S, et al. Evaluating an individualized lifestyle and life skills intervention to prevent antipsychotic-induced weight gain in first-episode psychosis. *Early Interv Psychiatry*. 2016;10(3):267-276. doi:10.1111/eip.12230
56. Ratliff JC, Palmese LB, Tonizzo KM, Chwastiak L, Tek C. Contingency management for the treatment of antipsychotic-induced weight gain: A randomized controlled pilot study. *Obes Facts*. 2012;5(6):919-927. doi:10.1159/000345975
57. Gillhoff K, Gaab J, Emini L, Maroni C, Tholuck J, Greil W. Effects of a Multimodal Lifestyle Intervention on Body Mass Index in Patients With Bipolar Disorder: A Randomized Controlled Trial. *Prim Care Companion J Clin Psychiatry*. 2010;12(5). doi:10.4088/PCC.09M00906YEL
58. O'Hara K, Stefancic A, Cabassa LJ. Developing a peer-based healthy lifestyle program for people with serious mental illness in supportive housing. *Transl Behav Med*. 2017;7(4):793-803. doi:10.1007/s13142-016-0457-x
59. Frank E, Wallace ML, Hall M, et al. An Integrated Risk Reduction Intervention can reduce body mass index in individuals being treated for bipolar I disorder: Results from a randomized trial. *Bipolar Disord*. 2015;17(4):424-437. doi:10.1111/bdi.12283
60. Goldberg RW, Reeves G, Tapscott S, et al. "MOVE!": Outcomes of a weight loss program modified for veterans with serious mental illness. *Psychiatric Services*. 2013;64(8):737-744. doi:10.1176/appi.ps.201200314
61. Archie SM, Goldberg JO, Akhtar-Danesh N, Landeen J, McColl L, McNiven J. Archie-et-al_2007-Psychotic Disorders, Eating Habits, and Physical Activity: Who Is Ready For Lifestyle Changes? *Psychiatric Services*. 2007;58(2):233-239.
62. Bergqvist A, Karlsson M, Foldemo A, Wärdig R, Hulstjö S. Preventing the development of metabolic syndrome in people with psychotic disorders-difficult, but possible: Experiences of staff working in psychosis outpatient care in Sweden. *Issues Ment Health Nurs*. 2013;34(5):350-358. doi:10.3109/01612840.2013.771234
63. Bochicchio L, Stefancic A, McTavish C, Tuda D, Cabassa LJ. "Being There" vs "Being Direct:" Perspectives of Persons with Serious Mental Illness on Receiving Support with Physical Health from Peer and Non-Peer Providers. *Administration and Policy in Mental Health and Mental Health Services Research*. 2021;48(3):539-550. doi:10.1007/s10488-020-01098-z
64. Park T, Foster K, Usher K. Participants' Voices From Within a Healthy Lifestyle Group. *Issues Ment Health Nurs*. 2017;38(2):107-112. doi:10.1080/01612840.2016.1248255
65. Shiner B, Whitley R, Van Citters AD, Pratt SI, Bartels SJ. Learning what matters for patients: Qualitative evaluation of a health promotion program for those with serious mental illness. *Health Promot Int*. 2008;23(3):275-282. doi:10.1093/heapro/dan018

66. Sylvia LG, Janos JA, Pegg SL, et al. Feasibility and acceptability of a lifestyle intervention for individuals with bipolar disorder. *J Psychiatr Pract*. 2019;25(6):451-460. doi:10.1097/PRA.0000000000000426
67. Yarborough BJH, Stumbo SP, Cavese JA, Yarborough MT, Green CA. Patient perspectives on how living with a mental illness affects making and maintaining healthy lifestyle changes. *Patient Educ Couns*. 2019;102(2):346-351. doi:10.1016/j.pec.2018.08.036
68. Verhaeghe N, De Maeseneer J, Maes L, Van Heeringen C, Annemans L. Health promotion in mental health care: Perceptions from patients and mental health nurses. *J Clin Nurs*. 2013;22(11-12):1569-1578. doi:10.1111/jocn.12076
69. Bradshaw T, Wearden A, Marshall M, et al. Developing a healthy living intervention for people with early psychosis using the Medical Research Council's guidelines on complex interventions: Phase 1 of the HELPER - InterACT programme. *Int J Nurs Stud*. 2012;49(4):398-406. doi:10.1016/j.ijnurstu.2011.10.008
70. Kreyenbuhl J, Lucksted A, Despeaux K, Sykes VM. Understanding Women Veterans' Experiences With and Management of Weight Gain From Medications for Serious Mental Illness: A Qualitative Study. *Psychiatr Rehabil J*. 2019;42(3):238-245. doi:10.1037/prj0000348.supp
71. Onwumere J, Howes S, Shiers D, Gaughran F. Physical health problems in people with psychosis: The issue for informal carers. *International Journal of Social Psychiatry*. 2018;64(4):381-388. doi:10.1177/0020764018763684
72. Pearsall R, Hughes S, Geddes J, Pelosi A. Understanding the problems developing a healthy living programme in patients with serious mental illness: A qualitative study. *BMC Psychiatry*. 2014;14(1). doi:10.1186/1471-244X-14-38
73. Usher K, Park T, Foster K. The experience of weight gain as a result of taking second-generation antipsychotic medications: The mental health consumer perspective. *J Psychiatr Ment Health Nurs*. 2013;20(9):801-806. doi:10.1111/jpm.12019
74. Chalfoun C, Karelis AD, Stip E, Abdel-Baki A. Running for your life: A review of physical activity and cardiovascular disease risk reduction in individuals with schizophrenia. *J Sports Sci*. 2015;34(16):1500-1515. doi:10.1080/02640414.2015.1119875
75. Vandyk AD, Baker C. Qualitative descriptive study exploring schizophrenia and the everyday effect of medication-induced weight gain. *Int J Ment Health Nurs*. 2012;21(4):349-357. doi:10.1111/j.1447-0349.2011.00790.x
76. Goodrich DE, Kilbourne AM, Nord KM, Bauer MS. Mental health collaborative care and its role in primary care settings. *Curr Psychiatry Rep*. 2013;15(8). doi:10.1007/s11920-013-0383-2
77. Mahfoud D, Fekih-Romdhane F, Abou Zeid J, et al. Functionality appreciation is inversely associated with positive psychotic symptoms in overweight/obese patients with schizophrenia. *BMC Psychiatry*. 2023;23(1). doi:10.1186/s12888-023-04795-9

78. Waite F, Langman A, Mulhall S, et al. The psychological journey of weight gain in psychosis. *Psychology and Psychotherapy: Theory, Research and Practice*. 2022;95(2):525-540. doi:10.1111/papt.12386
79. Alliende LM, Mittal VA. Weight stigma interventions as future avenues for stigma resistance: comment on Dubreucq et al. *Psychol Med*. 2023;53(14):6941-6943. doi:10.1017/S0033291723000946
80. Barre LK, Ferron JC, Davis KE, Whitley R. Healthy eating in persons with serious mental illnesses: Understanding and barriers. *Psychiatr Rehabil J*. 2011;34(4):304-310. doi:10.2975/34.4.2011.304.310
81. Sameby B, Söderberg H, Hedström M, Waern M. Health Improving Measures for Patients Suffering from Psychosis Development of treatment methods and an intervention program. *Nord J Nurs Res*. 2008;28(4):29-33.
82. Sankaranarayanan A, Johnson K, Mammen SJ, et al. Disordered eating among people with schizophrenia spectrum disorders: A systematic review. *Nutrients*. 2021;13(11). doi:10.3390/nu13113820
83. Beebe LH, Smith K, Burk R, et al. Effect of a motivational group intervention on exercise self-efficacy and outcome expectations for exercise in schizophrenia spectrum disorders. *J Am Psychiatr Nurses Assoc*. 2010;16(2):105-113. doi:10.1177/1078390310364428
84. McCloughen A, Foster K. Weight gain associated with taking psychotropic medication: An integrative review. *Int J Ment Health Nurs*. 2011;20(3):202-222. doi:10.1111/j.1447-0349.2010.00721.x
85. Park T, Usher K, Foster K. Description of a healthy lifestyle intervention for people with serious mental illness taking second-generation antipsychotics. *Int J Ment Health Nurs*. 2011;20(6):428-437. doi:10.1111/j.1447-0349.2011.00747.x
86. Smith J, Griffiths LA, Band M, et al. Early Intervention in Psychosis: Effectiveness and Implementation of a Combined Exercise and Health Behavior Intervention Within Routine Care. *Front Endocrinol (Lausanne)*. 2020;11. doi:10.3389/fendo.2020.577691
87. Sylvia LG, Pegg SL, Dufour SC, et al. Pilot study of a lifestyle intervention for bipolar disorder: Nutrition exercise wellness treatment (NEW Tx). *J Affect Disord*. 2019;250:278-283. doi:10.1016/j.jad.2019.03.033
88. Aschbrenner KA, Mueser KT, Naslund JA, et al. Feasibility study of increasing social support to enhance a healthy lifestyle intervention for individuals with serious mental illness. *J Soc Social Work Res*. 2016;7(2):289-313. doi:10.1086/686486
89. Bartels SJ, Aschbrenner KA, Pratt SI, et al. Implementation of a lifestyle intervention for people with serious mental illness in state-funded mental health centers. *Psychiatric Services*. 2018;69(6):664-670. doi:10.1176/appi.ps.201700368
90. Bochicchio L, Stefancic A, Gurdak K, Swarbrick M, Cabassa LJ. "We're All in this Together": Peer-specialist Contributions to a Healthy Lifestyle Intervention for People with Serious Mental Illness.

- Administration and Policy in Mental Health and Mental Health Services Research*. 2019;46(3):298-310. doi:10.1007/s10488-018-0914-6
91. Brown C, Goetz J, Hamera E, Gajewski B. Treatment response to the RENEW weight loss intervention in schizophrenia: Impact of intervention setting. *Schizophr Res*. 2014;159(2-3):421-425. doi:10.1016/j.schres.2014.09.018
 92. Carey ME, Barnett J, Doherty Y, et al. Reducing weight gain in people with schizophrenia, schizoaffective disorder, and first episode psychosis: Describing the process of developing the STructured lifestyle Education for People with SchizophrEnia (STEPWISE) intervention. *Pilot Feasibility Stud*. 2018;4(1). doi:10.1186/s40814-018-0378-1
 93. Pedley R, Lovell K, Bee P, et al. Collaborative, individualised lifestyle interventions are acceptable to people with first episode psychosis; a qualitative study. *BMC Psychiatry*. 2018;18(1). doi:10.1186/s12888-018-1692-0
 94. Porsdal V, Beal C, Kleivenes OK, et al. The Scandinavian Solutions for Wellness study - a two-arm observational study on the effectiveness of lifestyle intervention on subjective well-being and weight among persons with psychiatric disorders. *BMC Psychiatry*. 2010;10. doi:10.1186/1471-244X-10-42
 95. Aschbrenner K, Carpenter-Song E, Mueser K, Kinney A, Pratt S, Bartels S. A qualitative study of social facilitators and barriers to health behavior change among persons with serious mental illness. *Community Ment Health J*. 2013;49(2):207-212. doi:10.1007/s10597-012-9552-8
 96. Beebe LH, Faust Harris R. Using Pedometers to Document Physical Activity in Patients with Schizophrenia Spectrum Disorders: A Feasibility Study. *Journal of Psychosocial Nursing*. 2012;50(2):44-49.
 97. Cohen AN, Golden JF, Young AS. Peer wellness coaches for adults with mental illness. *Psychiatric Services*. 2014;65(1):129-130. doi:10.1176/appi.ps.650101
 98. Stefancic A, Bochicchio L, Tuda D, Harris Y, DeSomma K, Cabassa LJ. Strategies and lessons learned for supporting and supervising peer specialists. *Psychiatric Services*. 2021;72(5):606-609. doi:10.1176/appi.ps.202000515
 99. Williams J, Stubbs B, Gaughran F, Craig T. "Walk This Way" - a pilot of a health coaching intervention to reduce sedentary behaviour and increase low intensity exercise in people with serious mental illness: Study protocol for a randomised controlled trial. *Trials*. 2016;17(1). doi:10.1186/s13063-016-1660-2
 100. McKibbin CL, Kitchen KA, Wykes TL, Lee AA. Barriers and facilitators of a healthy lifestyle among persons with serious and persistent mental illness: Perspectives of community mental health providers. *Community Ment Health J*. 2014;50(5):566-576. doi:10.1007/s10597-013-9650-2
 101. Sayer J, Paniagua D, Ballentine S, et al. Perspectives on diet and physical activity among urban African Americans with serious mental illness. *Soc Work Health Care*. 2019;58(5):509-525. doi:10.1080/00981389.2019.1587662

102. Vazin R, McGinty EE, Dickerson F, et al. Perceptions of strategies for successful weight loss in persons with serious mental illness participating in a behavioral weight loss intervention: A qualitative study. *Psychiatr Rehabil J*. 2016;39(2):137-146. doi:10.1037/prj0000182
103. Xiao S, Baker C, Oyewumi LK. Psychosocial processes influencing weight management among persons newly prescribed atypical antipsychotic medications. *J Psychiatr Ment Health Nurs*. 2012;19(3):241-247. doi:10.1111/j.1365-2850.2011.01773.x
104. Forsberg KA, Lindqvist O, Bjorkman TN, Sandlund M, Sandman PO. Meanings of participating in a lifestyle programme for persons with psychiatric disabilities. *Scand J Caring Sci*. 2011;25(2):357-364. doi:10.1111/j.1471-6712.2010.00834.x
105. Gossage-Worrall R, Hind D, Barnard-Kelly KD, et al. STructured lifestyle education for people with SchizophrEnia (STEPWISE): Mixed methods process evaluation of a group-based lifestyle education programme to support weight loss in people with schizophrenia. *BMC Psychiatry*. 2019;19(1). doi:10.1186/s12888-019-2282-5
106. Roberts SH, Bailey JE. An ethnographic study of the incentives and barriers to lifestyle interventions for people with severe mental illness. *J Adv Nurs*. 2013;69(11):2514-2524. doi:10.1111/jan.12136
107. Roberts SH, Bailey JE. Incentives and barriers to lifestyle interventions for people with severe mental illness: A narrative synthesis of quantitative, qualitative and mixed methods studies. *J Adv Nurs*. 2011;67(4):690-708. doi:10.1111/j.1365-2648.2010.05546.x
108. Yarborough BJH, Stumbo SP, Yarborough MT, Young TJ, Green CA. Improving lifestyle interventions for people with serious mental illnesses: Qualitative results from the STRIDE study. *Psychiatr Rehabil J*. 2016;39(1):33-41. doi:10.1037/prj0000151
109. Phalen PL, Muralidharan A, Travaglini L, et al. Predictors of attendance in health and wellness treatment groups for people with serious mental illness. *Psychiatr Rehabil J*. Published online June 1, 2019. doi:10.1037/prj0000376
110. Alleva JM, Karos K, Meadows A, et al. "What can her body do?" Reducing weight stigma by appreciating another person's body functionality. *PLoS One*. 2021;16(5 May). doi:10.1371/journal.pone.0251507
111. Stogios N, Smith E, Asgariroozbehani R, et al. Exploring patterns of disturbed eating in psychosis: A scoping review. *Nutrients*. 2020;12(12):1-39. doi:10.3390/nu12123883
112. Chronister J, Fitzgerald S, Chou CC. The meaning of social support for persons with serious mental illness: A family member perspective. *Rehabil Psychol*. 2021;66(1):87-101. doi:10.1037/rep0000369
113. Muralidharan A, Peoples A, Lucksted A. Health Behavior Change Processes Among Adults With Serious Mental Illness Engaged in Illness Self-Management. *Qual Health Res*. 2021;31(6):1155-1168. doi:10.1177/1049732321992049

114. Blane DN, Macdonald S, O'Donnell CA. What works and why in the identification and referral of adults with comorbid obesity in primary care: A realist review. *Obesity Reviews*. 2020;21(4). doi:10.1111/obr.12979
115. Afzal M, Siddiqi N, Ahmad B, et al. Prevalence of Overweight and Obesity in People With Severe Mental Illness: Systematic Review and Meta-Analysis. *Front Endocrinol (Lausanne)*. 2021;12. doi:10.3389/fendo.2021.769309
116. Dubreucq J, Plasse J, Franck N. Self-stigma in serious mental illness: A systematic review of frequency, correlates, and consequences. *Schizophr Bull*. 2021;47(5):1261-1287. doi:10.1093/schbul/sbaa181
117. Hunger JM, Major B. Weight stigma mediates the association between BMI and self-reported health. *Health Psychology*. 2015;34(2):172-175. doi:10.1037/hea0000106
118. Brown A, Flint SW, Batterham RL. Pervasiveness, impact and implications of weight stigma. *EClinicalMedicine*. Published online 2022. doi:10.1016/j
119. Moore CH, Oliver TL, Randolph J, Dowdell EB. Interventions for reducing weight bias in healthcare providers: An interprofessional systematic review and meta-analysis. *Clin Obes*. 2022;12(6). doi:10.1111/cob.12545
120. Charlesworth TES, Banaji MR. Patterns of Implicit and Explicit Attitudes: I. Long-Term Change and Stability From 2007 to 2016. *Psychol Sci*. 2019;30(2):174-192. doi:10.1177/0956797618813087
121. Hughes CA, Ahern AL, Kasetty H, et al. Changing the narrative around obesity in the UK: A survey of people with obesity and healthcare professionals from the ACTION-IO study. *BMJ Open*. 2021;11(6). doi:10.1136/bmjopen-2020-045616
122. Puhl RM, Lessard LM, Himmelstein MS, Foster GD. The roles of experienced and internalized weight stigma in healthcare experiences: Perspectives of adults engaged in weight management across six countries. *PLoS One*. 2021;16(6 June). doi:10.1371/journal.pone.0251566
123. Treichler EBH, Lucksted AA. The role of sense of belonging in self-stigma among people with serious mental illnesses. *Psychiatr Rehabil J*. 2017;41(2):149-152. doi:10.1037/prj0000281
124. Browne J, Mueser KT, Meyer-Kalos P, Gottlieb JD, Estroff SE, Penn DL. The therapeutic alliance in individual resiliency training for first episode psychosis: Relationship with treatment outcomes and therapy participation. *J Consult Clin Psychol*. 2019;87(8):734-744. doi:10.1037/ccp0000418
125. Dubreucq J, Ycart B, Gabayet F, et al. Towards an improved access to psychiatric rehabilitation: availability and effectiveness at 1-year follow-up of psychoeducation, cognitive remediation therapy, cognitive behaviour therapy and social skills training in the FondaMental Advanced Centers of Expertise-Schizophrenia (FACE-SZ) national cohort. Running title: Psychosocial therapies in schizophrenia PhD and the FACE-SZ (FondaMental Academic Centers of Expertise for Schizophrenia) group*. *European Archives of Psychiatry and Clinical Neuroscience*. 2019;269(5):599-610. doi:10.1007/s00406-019-01001-4

126. Pharoah F, Mari J, Rathbone J, Wong W. Family intervention for schizophrenia. In: *Cochrane Database of Systematic Reviews*. John Wiley & Sons, Ltd; 2010. doi:10.1002/14651858.cd000088.pub2
127. Talumaa B, Brown A, Batterham RL, Kalea AZ. Effective strategies in ending weight stigma in healthcare. *Obesity Reviews*. Published online 2022. doi:10.1111/obr.13494
128. Morgan AJ, Reavley NJ, Ross A, Too LS, Jorm AF. Interventions to reduce stigma towards people with severe mental illness: Systematic review and meta-analysis. *J Psychiatr Res*. 2018;103:120-133. doi:10.1016/j.jpsychires.2018.05.017
129. de Jong M, Jansen N, van Middelkoop M. A systematic review of patient barriers and facilitators for implementing lifestyle interventions targeting weight loss in primary care. *Obesity Reviews*. 2023;24(8). doi:10.1111/obr.13571
130. Szczekala K, Kanadys K, Wiktor K, Wiktor H. Significance of motivational interviewing in public health. *Polish Journal of Public Health*. 2018;128(3):128-131. doi:10.2478/pjph-2018-0025
131. Armstrong MJ, Mottershead TA, Ronksley PE, Sigal RJ, Campbell TS, Hemmelgarn BR. Motivational interviewing to improve weight loss in overweight and/or obese patients: A systematic review and meta-analysis of randomized controlled trials. *Obesity Reviews*. 2011;12(9):709-723. doi:10.1111/j.1467-789X.2011.00892.x
132. Barnes RD, Ivezaj V. A systematic review of motivational interviewing for weight loss among adults in primary care. *Obesity Reviews*. 2015;16(4):304-318. doi:10.1111/obr.12264
133. Romano KA, Heron KE, Henson JM. Examining associations among weight stigma, weight bias internalization, body dissatisfaction, and eating disorder symptoms: Does weight status matter? *Body Image*. 2021;37:38-49. doi:10.1016/j.bodyim.2021.01.006
134. Stice E, Shaw HE. *Role of Body Dissatisfaction in the Onset and Maintenance of Eating Pathology A Synthesis of Research Findings.*; 2002.
135. Nordmo M, Danielsen YS, Nordmo M. The challenge of keeping it off, a descriptive systematic review of high-quality, follow-up studies of obesity treatments. *Obesity Reviews*. 2020;21(1). doi:10.1111/obr.12949
136. Ulian MD, Aburad L, da Silva Oliveira MS, et al. Effects of health at every size® interventions on health-related outcomes of people with overweight and obesity: a systematic review. *Obesity Reviews*. 2018;19(12):1659-1666. doi:10.1111/obr.12749
137. Higgs S, Thomas J. Social influences on eating. *Curr Opin Behav Sci*. 2016;9:1-6. doi:10.1016/j.cobeha.2015.10.005
138. Keepers GA, Fochtmann LJ, Anzia JM, et al. The American psychiatric association practice guideline for the treatment of patients with schizophrenia. *American Journal of Psychiatry*. 2020;177(9):868-872. doi:10.1176/appi.ajp.2020.177901
139. Galletly C, Castle D, Dark F, et al. Royal Australian and New Zealand College of Psychiatrists clinical practice guidelines for the management of schizophrenia and related disorders.

- Australian and New Zealand Journal of Psychiatry*. 2016;50(5):410-472.
doi:10.1177/0004867416641195
140. National Institute for Health and Care Excellence. Psychosis and schizophrenia in adults: prevention and management Clinical guideline. Published online 2014. Accessed April 5, 2024. www.nice.org.uk/guidance/cg178
 141. Melamed OC, Wong EN, LaChance LR, Kanji S, Taylor VH. Interventions to improve metabolic risk screening among adult patients taking antipsychotic medication: A systematic review. *Psychiatric Services*. 2019;70(12):1138-1156. doi:10.1176/appi.ps.201900108
 142. Woodall AA, Abuzour AS, Wilson SA, et al. Management of antipsychotics in primary care: Insights from healthcare professionals and policy makers in the United Kingdom. *PLoS One*. 2024;19(3 March). doi:10.1371/journal.pone.0294974
 143. Johnson CF, Ingram F, Thomson F, Srireddy P, Jani BD, Greenlaw N. General practice pharmacist-led antipsychotic physical health monitoring: a prospective intervention scoping study. *Fam Pract*. 2024;41(1):41-49. doi:10.1093/fampra/cm120
 144. Dixon LB, Holoshitz Y, Nossel I. Treatment engagement of individuals experiencing mental illness: Review and update. *World Psychiatry*. 2016;15(1):13-20. doi:10.1002/wps.20306
 145. El-Alti L. Shared Decision Making in Psychiatry: Dissolving the Responsibility Problem. *Health Care Analysis*. 2023;31(2):65-80. doi:10.1007/s10728-022-00451-7
 146. Hsieh WL, Li IH, Liu WI. Effects of empowerment-based illness management on the medication adherence and recovery of persons with schizophrenia: A systematic review and meta-analysis. *Int J Ment Health Nurs*. 2023;32(4):1008-1024. doi:10.1111/inm.13123