

1 **Trends in syphilis prevalence by race and ethnicity among people who are**
2 **pregnant in the United States 2016–2023.**

3 Yizhi Liang,¹ Nicolas A Menzies,¹ Minttu M Rönn¹

4 ¹Department of Global Health and Population, Harvard T.H. Chan School of Public
5 Health, Boston, MA

6

7 Corresponding author: Minttu M Rönn

8 Department of Global Health and Population

9 90 Smith Street, Rm 331

10 02120 Boston MA USA

11 Email mronn@hsph.harvard.edu

12

13 Disclosures: No conflict to declare

14 Funding: None

15 **One sentence summary line:**

16 In the United States, we estimated an increasing syphilis prevalence among people who
17 are pregnant, reaching 533 per 100,000 live births in 2023, with notable racial and
18 ethnic disparities.

19 **Abstract**

20 **Background:** This study aimed to estimate syphilis prevalence among people who are
21 pregnant with live births by race and ethnicity 2016–2023.

22 **Methods:** We analyzed data on syphilis infection from U.S. birth certificates using a
23 Bayesian mathematical model, adjusting for test sensitivity, specificity, and screening
24 coverage. We calibrated the model under two scenarios: (1) assuming screening
25 coverage is as estimated in Medicaid claims data and (2) assuming higher screening
26 coverage than observed in Medicaid claims data. We compared the estimates to
27 stillbirths attributable to syphilis reported through routine surveillance. We examined
28 racial and ethnic disparities using the index of disparity.

29 **Results:** In Scenario 1, syphilis prevalence among people who are pregnant with live
30 births increased from 101.1 (95% uncertainty interval [UI]: 87.5–120.5) per 100,000
31 live births in 2016 to 533.4 (95% UI: 496.6–581.0) per 100,000 live births in 202. In
32 Scenario 2, prevalence increased from 73.9 (95% UI: 51.2–130.0) per 100,000 live
33 births to 378.1 (95% UI: 295.5–592.0) per 100,000 live births over the same period.
34 With rising prevalence, relative racial and ethnic disparities narrowed over time.
35 Prevalence was estimated to be higher among women with stillbirths compared to
36 women with live births.

37 **Conclusions:** In the United States, improved estimates of screening coverage are
38 needed to understand the gaps in congenital syphilis prevention and to inform estimates
39 of syphilis prevalence among pregnant persons.

40 **Keywords:** Syphilis; Pregnancy; Racial and ethnic Disparities

41

1 Introduction

2 Syphilis is a sexually transmitted infection (STI) caused by the bacterium *Treponema*
3 *pallidum*.¹ After reaching a low of 2.1 diagnoses per 100,000 persons in 2001, the
4 syphilis diagnosis rate in the United States has been on the rise.² In 2023, the total
5 syphilis diagnosis rate in the general population was 2.3 times that of 2019.³ Syphilis
6 can be transmitted vertically during pregnancy, resulting in congenital syphilis, which
7 can lead to stillbirth, neonatal death, and other adverse birth outcomes.⁴ The rate of
8 congenital syphilis has also been increasing, and in 2023, it was 6.5 times that of 2016.³
9 The rate of syphilis in people who are pregnant has increased in parallel, as recorded in
10 the National Vital Statistics System's natality data files, which compile information
11 from birth certificates for all births occurring in the United States. Between 2016 and
12 2023, syphilis detections increased from 87.1 to 321.8 per 100,000 live births in natality
13 data files. An increase was observed across all ages and racial and ethnic groups, with
14 the largest increase in American Indian and Alaska Native people who are pregnant.⁵
15 Despite recommendations indicating a minimum of one syphilis test during pregnancy,
16 estimates reported in Medicaid claims data indicate that screening coverage remains
17 below recommendations,⁶ and no testing or untimely testing was indicated in 40% of
18 congenital syphilis cases in 2022.⁷ It is likely that syphilis detected in birth certificate
19 data underestimates the prevalence of syphilis in people who are pregnant. Birth
20 certificate data do not record information on syphilis testing, but mathematical
21 modeling can be used to estimate the prevalence of infection if we have external
22 information about testing coverage in a given population. For example, a mathematical
23 modeling analysis estimated that syphilis incidence was 50% higher than the number
24 of reported diagnoses in the US.⁸

25 In this study, we aimed to estimate syphilis prevalence among people who are pregnant
26 and who delivered live births in the United States from 2016 to 2023. We leveraged
27 information on maternal race and ethnicity and detected syphilis infections in birth
28 certificate data, together with information on syphilis screening coverage and test
29 sensitivity and specificity. We evaluated the trends in racial and ethnic disparities over
30 time. Quantifying the total prevalence of infection can aid syphilis prevention efforts
31 and improve health. Prevalence time trends can also improve understanding of the
32 magnitude and speed of syphilis re-emergence in different populations.

1 **Methods**

2 *Birth certificate data*

3 We used data from birth certificates of the United States, as maintained within the
4 National Vital Statistics System by the National Center for Health Statistics (NCHS)
5 and accessible from the National Bureau of Economic Research
6 (<https://www.nber.org/research/data/vital-statistics-natality-birth-data>). These records
7 include demographic and health-related microdata for all live births occurring within a
8 calendar year, as mandated by the birth registration requirements across the 50 states,
9 New York City, and the District of Columbia^{9,10}. Non-single delivery status is not
10 identifiable in the birth certificates,⁹ so we assumed that each record represents an
11 individual birth. Revised 2003 U.S. Standard Certificate of Live Birth was introduced
12 to improve data quality,¹¹ and by January 1, 2014, 96.2% of all births to U.S. residents
13 were documented utilizing the 2003 standard.¹² We restricted our analysis to 2016–
14 2023 to follow the years covered in the National Center for Health Statistics Brief on
15 trends in maternal syphilis rates during pregnancy.⁵

16 We defined seven racial and ethnic categories: non-Hispanic American Indian/Alaska
17 Native (AIAN), non-Hispanic Asian (Asian), non-Hispanic Black/African American
18 (Black), Hispanic/Latino (Hispanic), non-Hispanic Multiracial (Multiracial), non-
19 Hispanic Native Hawaiian/Other Pacific Islander (NHPI), and non-Hispanic White
20 (White).

21 Syphilis infection status reported in the birth certificates is extracted from the medical
22 records utilizing the Facility Worksheets,^{13,14} following the protocols outlined in the
23 “Guide to Completing the Facility Worksheets for the Certificate of Live Birth and
24 Report of Fetal Death (2003 Revision).”¹⁵ The identification of syphilis infection (also
25 referred to as lues) was determined by: i) a positive test for *Treponema pallidum*
26 presenting at the start of pregnancy or confirmed diagnosis during pregnancy with or
27 without documentation of treatment; ii) the presence of documented treatment for
28 syphilis during pregnancy was deemed sufficient in the absence of a definitive
29 diagnosis within the accessible records.¹⁵

1 *Statistical modeling*

2 We estimated syphilis prevalence among people who are pregnant with live births
3 stratified by year and race and ethnicity using a Bayesian mathematical modeling
4 approach. The model is anchored on the number of detected syphilis infections
5 observed in birth certificate data in each race and ethnicity and year stratum. We
6 modeled the probability of observing a positive syphilis infection among people who
7 are pregnant θ_{yr} as:

$$8 \quad \theta_{yr} = [P_{yr} \times \text{Sens} + (1 - P_{yr}) \times (1 - \text{Spec})] \times T_r$$

9 Where P_{yr} is syphilis prevalence among people who are pregnant stratified by race and
10 ethnicity and year, Sens and Spec are the sensitivity and specificity of syphilis
11 diagnostic testing; both assumed constant by year and population. T_r is the proportion
12 of people who are pregnant screened for syphilis during their pregnancy stratified by
13 race and ethnicity but assumed constant over 2016-2022.

14 Parameters and their prior distributions are presented in Table 1 Syphilis testing follows
15 an algorithm that can include multiple tests. To examine test sensitivity and specificity,
16 we conducted a random-effect meta-analysis to pool sensitivity and specificity on
17 estimates reported in a systematic review (Appendix Figure S1 and Figure S2).¹⁶ The
18 pooled estimates indicated high sensitivity (0.98; 95% uncertainty range: 0.97–0.99)
19 and specificity (0.99; 95% uncertainty range: 0.98–0.99), used in the analysis.

20 There is limited information on syphilis screening coverage among people who are
21 pregnant by race and ethnicity. Additionally, there are likely racial and ethnic
22 disparities in syphilis screening, with a higher proportion of congenital syphilis cases
23 occurring in AIAN and NHPI having no or untimely testing reported.¹⁷ Screening
24 coverage is a key parameter in estimating the prevalence of a condition, and we
25 calibrated the model under two scenarios. In the first scenario, referred to as “lower
26 screening coverage” (Scenario 1), we parameterized the prior distribution of screening
27 probability based on a study of syphilis screening coverage among Medicaid-insured
28 pregnant people.¹⁸ The study reported screening coverage for White, Black, and
29 Hispanic women. To determine prior distribution for AIAN, Asian, Multiracial, and
30 NHPI women, we used the lower and higher 95% confidence intervals for Black and

1 Hispanic women, who had the highest and lowest screening coverage, respectively.

2 Medicaid claims data may underestimate syphilis screening coverage in people who are
3 pregnant if their screening was not billed to Medicaid or not billed in a format that
4 itemizes services provided.^{6,19} In the second scenario, referred to as “higher screening
5 coverage” (Scenario 2), we allowed for more uncertainty and higher screening coverage
6 using a wider uncertainty range in the prior distribution: the 2.5th percentile of the prior
7 distribution reflected reported Medicaid screening coverage and the 97.5th percentile
8 represented the proportion of people who are pregnant receiving any prenatal care from
9 birth certificates (Table 1). The upper level assumes that all women who received
10 prenatal care received syphilis screening.

11 We calibrated the model to the observed syphilis infections in birth certificate data using
12 binomial likelihood:

$$13 \quad Y_{yr} \sim \text{Binomial}(n_{yr}, \theta_{yr})$$

14 Where Y_{yr} is the number of detected syphilis in birth certificate data by year and race
15 and ethnicity (Appendix Table S1). n_{yr} represents the number of women with live
16 births by year and race and ethnicity (Numbers reported in Appendix Table S2).

17 The model was developed in R (version 4.3.2) and Stan (version 2.26.1) with “rstan”²⁰,
18 “tidybayes”²¹, and “ggplot2”²² packages. Calibration was performed via Markov Chain
19 Monte Carlo sampling using the No-U-Turn Sampler (NUTS)²³. We specified 12,000
20 iterations per chain across four independent chains, with the first 8,000 designated as
21 burn-in. Convergence of the model was assessed using the potential scale reduction
22 factor (r-hat), where 1.1 was set as the indication of convergence.²⁴ The analytic code
23 is available at: [<https://github.com/Yizhi-Liang/Trends-Syph>].

24 *Comparison against external measures of burden*

25 We compared the modeled prevalence estimates and detected syphilis infections in the
26 birth certificate data against syphilis diagnoses among women of reproductive age (15–
27 44 years)²⁵ and syphilis diagnoses among people who are pregnant²⁶ (Appendix Table
28 S3 and Table S4). Birth certificate data allows estimation of syphilis prevalence among
29 people who are pregnant and delivered live births. Given that vertical transmission of

1 syphilis increases the risk of stillbirth, the syphilis burden may be higher among
2 pregnancies that did not result in live births. To further evaluate this, we obtained
3 stillbirths attributable to congenital syphilis²⁶ and the total number of stillbirths reported
4 as part of fetal death data from the NCHS.²⁷ We calculated the rate of syphilis
5 attributable to stillbirths and compared this to the prevalence estimate among live births.
6 This provides a crude estimate of the syphilis burden not measured in the analyses.

7 *Analysis*

8 Using 16,000 posterior samples, we calculated the mean and 95% uncertainty intervals
9 (UIs) to estimate syphilis prevalence by race and ethnicity and year. We examined
10 temporal trends in syphilis prevalence by comparing changes in estimated syphilis
11 prevalence over time, with 2016 used as the baseline. To evaluate racial and ethnic
12 disparities, prevalence ratios were computed with White women, who had the largest
13 number of live births, used as the reference population. We computed the Index of
14 Disparity to quantify the variance in the estimated syphilis prevalence across
15 races/ethnicity populations relative to the population mean, serving as a comprehensive
16 measure of relative disparities:²⁸

$$17 \quad \text{Index of Disparity}_y = 100 \times \left(\sum_{r=1}^R |P_{yr} - \bar{P}_y| \times w_{yr} \right) / \bar{P}_y$$

18 Where P_{yr} is the estimated syphilis prevalence for each race and ethnicity population
19 in a year, \bar{P}_y is the average of the estimated syphilis prevalence for the whole population
20 in the same analytical year, and w_{yr} is the population share for each race and ethnicity
21 in each year.

22 *Sensitivity analysis*

23 We tested alternative prior distributions for the syphilis prevalence by year and
24 race/ethnicity to examine the impact of the shape of the weakly informative prior
25 distribution on the posterior distribution (Appendix Table S5).

26 **Results**

27 We analyzed syphilis prevalence estimates in relation to detected cases recorded on

1 birth certificates, diagnoses reported among pregnant individuals, and those reported
2 among women of reproductive age (15-49 years). In the lower screening coverage
3 scenario, the estimated prevalence of syphilis was notably higher compared to other
4 measures, while the prevalence in the higher screening coverage scenario aligned
5 closely with the estimates from birth certificate data. When examining the reported
6 diagnosis rates among pregnant women, the lower screening coverage scenario showed
7 a prevalence-to-diagnosis ratio of 1.89 for 2023, while the higher screening coverage
8 scenario had a ratio of 1.34 (Figure 1). Over the years, the discrepancy between reported
9 syphilis diagnoses and cases detected on birth certificates diminished, converging in
10 2021.

11 We observed an increase in syphilis cases across all racial and ethnic populations from
12 2016 to 2023 in both scenarios (Figure 2). When comparing these prevalence estimates
13 to the syphilis cases detected in birth certificates, the estimates from the higher
14 screening coverage scenario indicated a burden of syphilis that closely resembled what
15 had been observed. However, in certain cases, the prevalence estimates were lower than
16 those detected in birth certificates. For instance, the higher screening coverage scenario
17 suggested that the syphilis prevalence among pregnant Asian individuals was less than
18 detected in the birth certificate data. This discrepancy implied the possibility of a
19 number of false positive syphilis cases in the birth certificate records.

20 The syphilis prevalence ratio comparing 2023 with 2016 was 5.2 in both scenarios: in
21 2016, the prevalence was 101.1 (95% UI: 87.5–120.5) per 100,000 live births, while in
22 2023, it reached 533.4 (95% UI: 496.6–581.0) per 100,000 live births in the lower
23 screening coverage scenario; they were 73.9 (95% UI: 51.2–130.0) in 2016 and 378.1
24 (95% UI: 295.5–592.0) in 2023 per 100,000 live births in the higher screening coverage
25 scenario. In the lower screening coverage scenario, the highest prevalence in 2016 was
26 among NHPI women at 875.9 (95% UI: 547.6–1376.1) per 100,000 live births, while
27 Asian women had the lowest at 22.0 (95% UI: 1.9–56.1) per 100,000 live births. This
28 rank remained the same in the higher screening coverage scenario, where the prevalence
29 for NHPI women was 574.0 (95% UI: 394.1–802.8), and for Asian women was 8.3 (95%
30 UI: 0.3–25.7). In 2022, under both scenarios, AIAN women were estimated to have the
31 highest prevalence (3790.5 per 100,000 live births, 95% UI: 2788.2–5384.5 in Scenario
32 1; 2466.2 per 100,000 live births, 95% UI: 2075.4–3111.5 in Scenario 2), followed by

1 NHPI women (1722.2 per 100,000 live births, 95% UI: 1174.5–2557.4 in Scenario 1;
2 1130.8 per 100,000 live births, 95% UI: 865.2–1474.9 in Scenario 2) and Black women
3 (1040.0 per 100,000 live births, 95% UI: 1003.5–1077.5 in Scenario 1; 886.9 per
4 100,000 live births, 95% UI: 786.5–1063.6 in Scenario 2). Asian women were estimated
5 to have the lowest prevalence (100.2 per 100,000 live births, 95% UI: 56.2–168.9 in
6 Scenario 1; 55.4 per 100,000 live births, 95% UI: 34.8–88.6 in Scenario 2).

7 All racial and ethnic populations, excluding Asian women, were estimated to have a
8 higher syphilis prevalence compared to White women between 2016 and 2023. The
9 absolute differences between populations widened, while the prevalence ratio
10 decreased over time in all racial and ethnic groups. This pattern emerged due to the
11 increase in syphilis prevalence estimated for the White population (Appendix Figure
12 S3 and Figure S4). There was a decreasing trend in the disparity of syphilis prevalence
13 across racial and ethnic groups in both scenarios and in syphilis detections observed in
14 birth certificate data, while the tendency for the detected syphilis cases was not as
15 obvious as those in the estimated prevalence, as measured by the Index of Disparity
16 (Figure 2). In 2016, the index was 110.8, 109.6, and 67.1 in estimated prevalence in the
17 lower screening coverage scenario, the higher screening coverage scenario, and
18 detected syphilis cases in birth certificates, respectively. The corresponding values in
19 2023 were 70.7, 66.8, and 59.8. The Index of Disparity decreased due to the rising
20 prevalence across all racial and ethnic populations.

21 In a sensitivity analysis, prevalence estimates were robust under different weakly
22 informative prior distributions, maintaining stability even when the prior distributions'
23 central values and the 95% uncertainty ranges were increased (Appendix Figure S5)

24 When we compared our estimates of syphilis prevalence among live births to the
25 prevalence among stillbirths based on stillbirths reported in surveillance data, the
26 estimated syphilis prevalence among live births was consistently lower than the proxy
27 estimates for stillbirths, with the discrepancy widening over the years (Figure 3). In
28 2023, the syphilis prevalence estimated among stillbirths based on surveillance data
29 was 1336.0 per 100,000 births, which was 2.5 (95% UI: 2.3–2.7) times the estimated
30 syphilis prevalence among those with live births in lower screening coverage scenario,
31 and 3.5 (95% UI: 2.3–4.5) times that of the prevalence in the higher screening coverage
32 scenario.

1 **Discussion**

2 We estimated an upward trend in syphilis prevalence associated with persistent racial
3 and ethnic disparities between 2016 and 2023. Racial and ethnic disparities were
4 predicted to increase over time on an absolute scale but diminish in relative terms,
5 driven by increasing burden in all racial and ethnic groups. In addition, we estimated
6 that syphilis prevalence in women who experience stillbirth is at least twice our
7 estimated syphilis prevalence among women with live births.

8 The disparities observed are rooted in systemic racism and are perpetuated by
9 socioeconomic factors such as poverty, inequalities in access to quality healthcare, and
10 broader social determinants of health.² In cases of congenital syphilis, the absence or
11 delay of syphilis screening during pregnancy has been identified as a critical factor,
12 particularly pronounced among AIAN and NHPI women.¹⁷ Improved estimates of
13 screening coverage are needed to understand the gaps in congenital syphilis prevention.
14 They are needed to inform the estimation of the underlying prevalence of syphilis in
15 people who are pregnant. The Healthy People 2030 project has documented a decline
16 in the proportion of people who are pregnant receiving early and adequate prenatal care
17 across all groups, with NHPI and AIAN women experiencing the lowest level of
18 adequate care in 2018–2022.²⁹ Studies on racial and ethnic disparities in syphilis among
19 people who are pregnant have focused on White, Black, and Hispanic populations.
20 There remain data gaps for the smaller racial and ethnic populations, such as NHPI and
21 AIAN, who are disproportionately affected by the poor quality of prenatal care and
22 higher burden of syphilis.^{3,18,30}

23 US Preventive Services Task Force recommends early syphilis screening for all people
24 who are pregnant, with a further recommendation for an additional test during the third
25 trimester for those at elevated risk.³¹ The American Academy of Pediatrics and the
26 American College of Obstetricians and Gynecologists have also updated their
27 guidelines, advocating for three syphilis screens (first trimester, third trimester, and at
28 delivery) as part of routine prenatal care.³²

29 The contribution of syphilis to stillbirths remains understudied. The identification of
30 stillbirths attributable to congenital syphilis presents a challenge; different infectious
31 diseases during pregnancy increase the risk of stillbirth, and there is inadequate

1 adherence to syphilis screening at the time of stillbirth.³³ Consequently, syphilis-
2 attributable stillbirths reported to congenital syphilis surveillance may present an
3 underestimate, and the discrepancy between syphilis prevalence in live births and
4 stillbirths may be higher than estimated.

5 Our study leverages a comprehensive dataset representing almost all live births in the
6 United States for 2016–2023. This allowed us to estimate prevalence for the smaller
7 racial and ethnic populations, such as AIAN and NHPI, who experience
8 disproportionate burden but are often not represented in analyses. Our findings
9 accounted for imperfect test sensitivity and specificity. The estimates were broadly
10 aligned and showed similar trends with surveillance data despite uncertainty around
11 testing coverage by time and in different populations. However, our analysis was
12 confined to pregnancies with live births, and it does not include the burden among
13 stillbirths. Our analysis is at the national level. There is geographic variation in syphilis
14 burden, and there may be variation in prenatal syphilis screening practices, which was
15 not accounted for in this study.

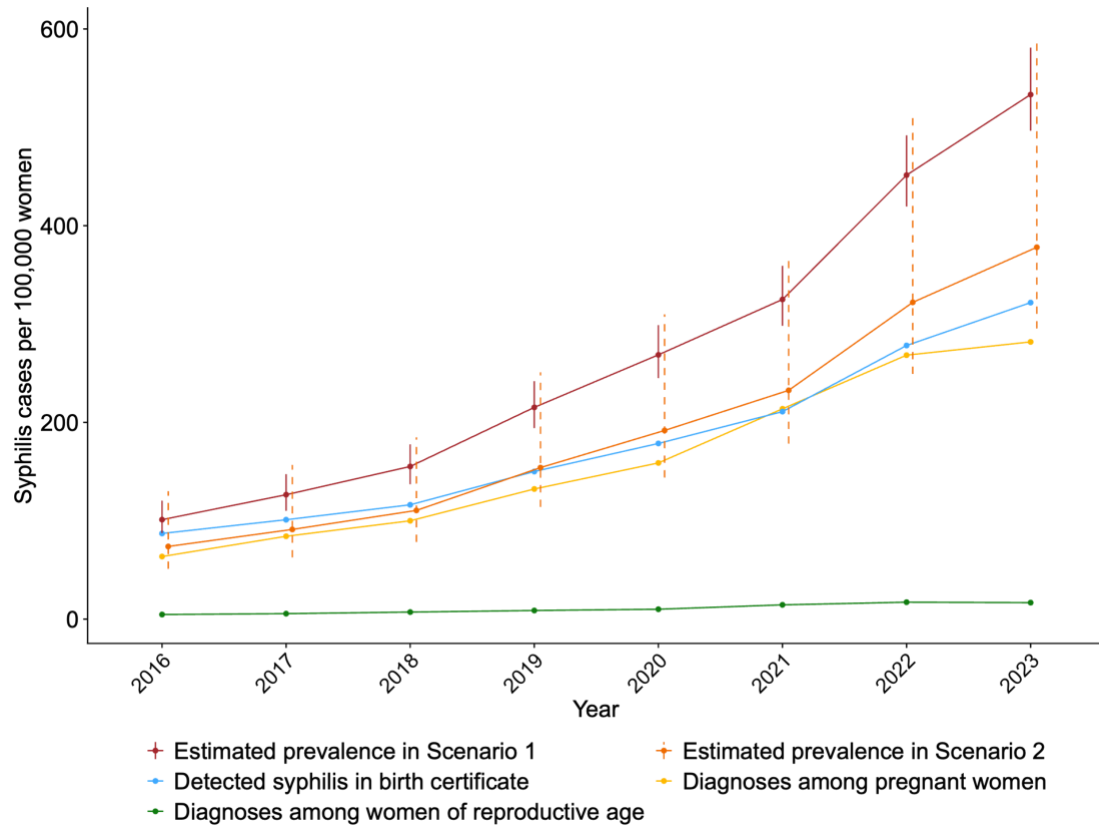
16 This study provides evidence of the increasing syphilis burden among people who are
17 pregnant with live births, demonstrating the increasing syphilis burden in all racial and
18 ethnic populations in the United States and the presence of racial and ethnic disparities.
19 Addressing these disparities is needed to improve inequalities in birth outcomes.

1 Table 1 Parameters used in the analysis for 2016–2023.

Parameter	Race and ethnicity	Estimate	Prior Distribution	Reference
Syphilis prevalence	All	<u>Scenario 1 (lower screening coverage) and 2 (higher screening coverage):</u> Mean: 0.13 95% Range: 0.01–0.52	<u>Scenario 1 (lower screening coverage) and 2 (higher screening coverage):</u> Beta(1, 5)	Weakly informative prior
Sensitivity	All	<u>Sensitivity analysis:</u> Appendix Table S5 Mean: 0.98 95% Range: 0.97–0.99	Beta(786.28, 18.93)	Appendix Figure S1
Specificity	All	Mean: 0.99 95% Range: 0.98–0.99	Beta(1365.88, 13.73)	Appendix Figure S2
Proportion of people who are pregnant screened for syphilis	Non-Hispanic American Indian/Alaska Native	<u>Scenario 1 (lower screening coverage):</u> Mean: 0.57 95% Range: 0.40–0.73	<u>Scenario 1 (lower screening coverage):</u> Beta(18.42, 13.80)	18,27
		<u>Scenario 2 (higher screening coverage):</u> Mean: 0.85 95% Range: 0.69–0.96	<u>Scenario 2 (higher screening coverage):</u> Beta(19.77, 3.37)	
Proportion of people who are pregnant screened for syphilis	Non-Hispanic Asian	<u>Scenario 1 (lower screening coverage):</u> Mean: 0.57 95% Range: 0.40–0.73	<u>Scenario 1 (lower screening coverage):</u> Beta(18.42, 13.80)	18,27
		<u>Scenario 2 (higher screening coverage):</u> Mean: 0.85 95% Range: 0.69–0.96	<u>Scenario 2 (higher screening coverage):</u> Beta(12.34, 1.52)	
Proportion of people who are pregnant screened for syphilis	Non-Hispanic Black/African American	<u>Scenario 1 (lower screening coverage):</u> Mean: 0.73 95% Range: 0.73–0.74	<u>Scenario 1 (lower screening coverage):</u> Beta(125389.27, 45297.09)	18,27
		<u>Scenario 2 (higher screening coverage):</u> Mean: 0.85 95% Range: 0.69–0.96	<u>Sensitivity analysis:</u> Beta(21.91, 3.53)	
Proportion of people who are pregnant screened for syphilis	Hispanic/Latino	<u>Scenario 1 (lower screening coverage):</u> Mean: 0.40 95% Range: 0.40–0.41	<u>Scenario 1 (lower screening coverage):</u> Beta(12236.60, 18319.62)	18,27
			<u>Scenario 2 (higher screening coverage):</u> Beta(5.04, 1.60)	

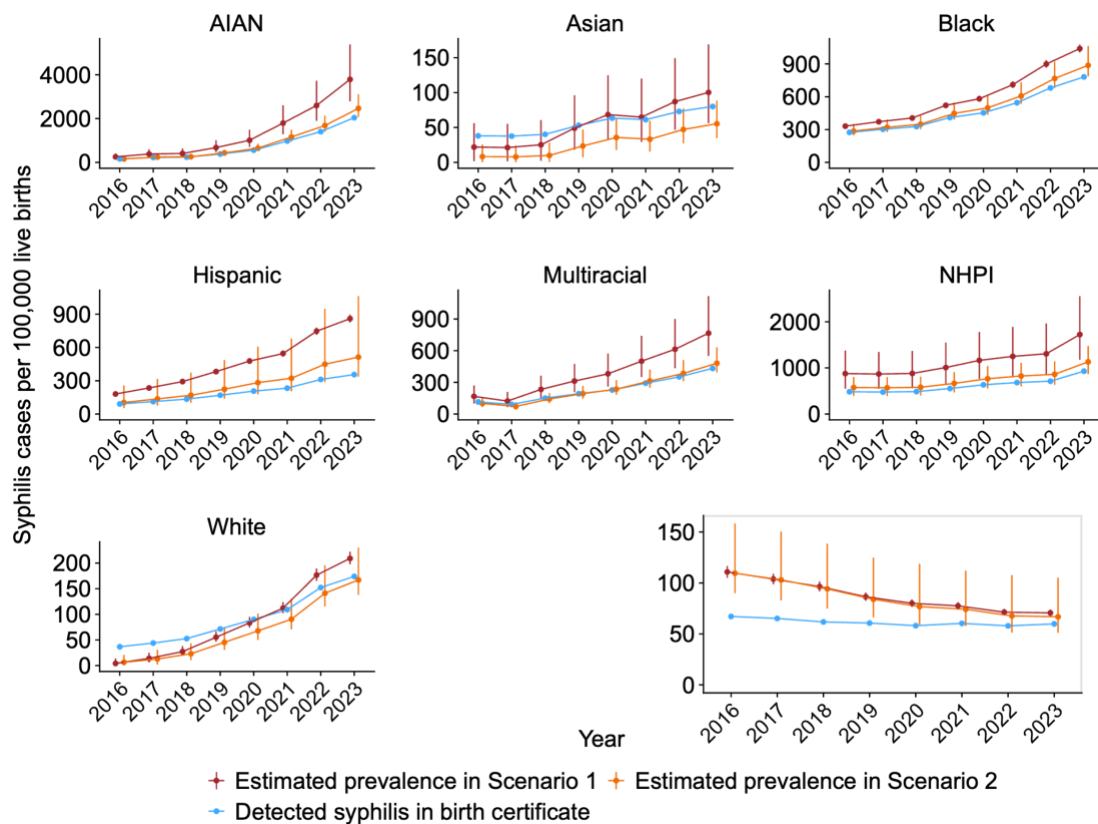
		<u>Scenario 2 (higher screening coverage):</u> Mean: 0.85 95% Range: 0.69–0.96		
Proportion of people who are pregnant screened for syphilis	Non-Hispanic Multiracial	<u>Scenario 1 (lower screening coverage):</u> Mean: 0.57 95% Range: 0.40–0.73	<u>Scenario 1 (lower screening coverage):</u> Beta(18.42, 13.80)	18,27
		<u>Scenario 2 (higher screening coverage):</u> Mean: 0.85 95% Range: 0.69–0.96	<u>Scenario 2 (higher screening coverage):</u> Beta(15.57, 2.28)	
Proportion of people who are pregnant screened for syphilis	Non-Hispanic Native Hawaiian/Other Pacific Islander	<u>Scenario 1 (lower screening coverage):</u> Mean: 0.57 95% Range: 0.40–0.73	<u>Scenario 1 (lower screening coverage):</u> Beta(18.42, 13.80)	18,27
		<u>Scenario 2 (higher screening coverage):</u> Mean: 0.85 95% Range: 0.69–0.96	<u>Scenario 2 (higher screening coverage):</u> Beta(25.28, 4.94)	
Proportion of people who are pregnant screened for syphilis	Non-Hispanic White	<u>Scenario 1 (lower screening coverage):</u> Mean: 0.68 95% Range: 0.68–0.69	<u>Scenario 1 (lower screening coverage):</u> Beta(154701.32, 71339.73)	18,27
		<u>Scenario 2 (higher screening coverage):</u> Mean: 0.85 95% Range: 0.69–0.96	<u>Scenario 2 (higher screening coverage):</u> Beta(13.05, 1.72)	

1 Figure 1. Comparison of the estimated syphilis prevalence per 100,000 live births,
2 detected syphilis in birth certificate data per 100,000 live births, syphilis diagnoses
3 among people who are pregnant per 100,000 women, and syphilis diagnoses among
4 women of reproductive age per 100,000 women for 2016–2023.



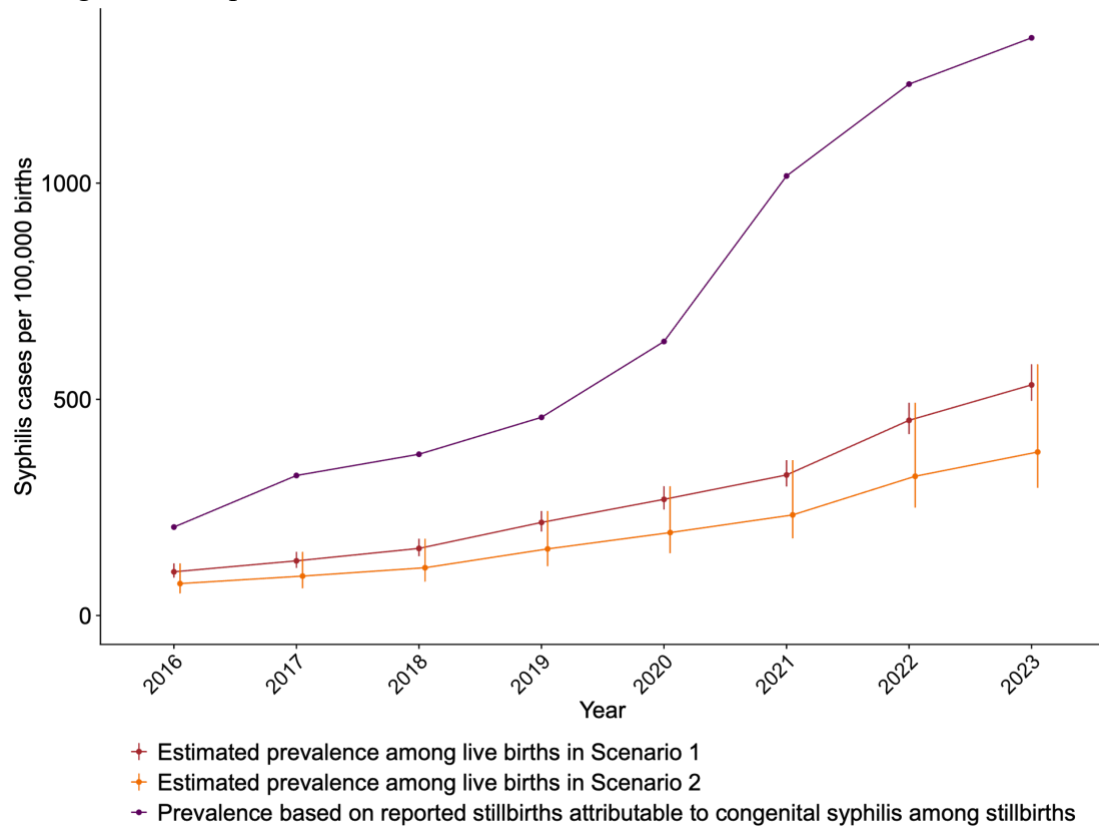
Footnote: In Scenario 1, we assume a lower screening coverage distribution among Medicare beneficiaries of each race/ethnicity. In Scenario 2, we assume a higher screening coverage distribution, ranging from the coverage reported by Medicare to the proportion of pregnant women receiving at least one prenatal care.

1 Figure 2. Comparison between the estimated syphilis prevalence per 100,000 live births
 2 and the detected syphilis in birth certificate data per 100,000 live births for 2016–2023.
 3 The y-axis varies by subplot. The Index of Disparity by year across race and ethnicity
 4 is shown in the right-bottom corner.



5
 6 Footnote: In Scenario 1, we assume a lower screening coverage distribution among
 7 Medicare beneficiaries of each race/ethnicity. In Scenario 2, we assume a higher
 8 screening coverage distribution, ranging from the coverage reported by Medicare to the
 9 proportion of pregnant women receiving at least one prenatal care. Race and ethnicity
 10 categories are non-Hispanic American Indian/Alaska Native (AIAN), non-Hispanic
 11 Asian (Asian), non-Hispanic Black/African American (Black), Hispanic/Latino
 12 (Hispanic), non-Hispanic Multiracial (Multiracial), non-Hispanic Native
 13 Hawaiian/Other Pacific Islander (NHPI), and non-Hispanic White (White).

1 Figure 3. Comparison between the estimated syphilis prevalence per 100,000 live births
2 and the prevalence based on reported stillbirths attributable to congenital syphilis
3 among stillbirths per 100,000 stillbirths.



Footnote: In Scenario 1, we assume a lower screening coverage distribution among Medicare beneficiaries of each race/ethnicity. In Scenario 2, we assume a higher screening coverage distribution, ranging from the coverage reported by Medicare to the proportion of pregnant women receiving at least one prenatal care.

1 References

- 2 1. Global progress report on HIV, viral hepatitis and sexually transmitted
3 infections, 2021 [Internet]. 2021. Available at:
4 <https://www.who.int/publications/i/item/9789240027077>. Accessed Dec 10,
5 2024.
- 6 2. Amerson EH, Valladares HBC, Leslie KS. Resurgence of Syphilis in the US—
7 USPSTF Reaffirms Screening Guidelines. *JAMA Dermatology*.
8 2022/11/01;158(11).
- 9 3. Sexually Transmitted Infections Surveillance, 2023 [Internet]. 2024. Available
10 at: <https://www.cdc.gov/sti-statistics/annual/index.html>. Accessed Dec 10, 2024.
- 11 4. Lago EG, Vaccari A, Fiori RM. Clinical features and follow-up of congenital
12 syphilis. *Sex Transm Dis*. 2013;40(2):85-94.
- 13 5. Gregory ECW, Ely DM. Trends and Characteristics in Maternal Syphilis Rates
14 During Pregnancy: United States, 2016-2022. *NCHS Data Brief*. 2024(496):1-
15 8.
- 16 6. Lanier P, Kennedy S, Snyder A, et al. Prenatal Syphilis Screening Among
17 Medicaid Enrollees in 6 Southern States. *Am J Prev Med*. 2022;62(5):770-6.
- 18 7. McDonald R, O'Callaghan K, Torrone E, et al. Vital Signs: Missed
19 Opportunities for Preventing Congenital Syphilis - United States, 2022.
20 *MMWR Morb Mortal Wkly Rep*. 2023;72(46):1269-74.
- 21 8. Spicknall IH, Kreisel KM, Weinstock HS. Estimates of the Prevalence and
22 Incidence of Syphilis in the United States, 2018. *Sex Transm Dis*.
23 2021;48(4):247-52.
- 24 9. User Guide to the 2022 Natality Public Use File [Internet]. 2023. Available at:
25 [https://ftp.cdc.gov/pub/Health_Statistics/NCHS/Dataset_Documentation/DVS/
26 natality/UserGuide2022.pdf](https://ftp.cdc.gov/pub/Health_Statistics/NCHS/Dataset_Documentation/DVS/natality/UserGuide2022.pdf). Accessed Dec 14, 2023.
- 27 10. U.S. Vital Statistics System. Major activities and developments, 1950-95
28 [Internet]. 1997. Available at: <https://www.cdc.gov/nchs/data/misc/usvss.pdf>.
29 Accessed Feb 12, 2024.
- 30 11. Revisions of the U.S. Standard Certificates and Reports [Internet]. 2003.
31 Available at: [https://www.cdc.gov/nchs/nvss/revisions-of-the-us-standard-
32 certificates-and-
33 reports.htm?CDC_AA_refVal=https%3A%2F%2Fwww.cdc.gov%2Fnchs%2F
34 nvss%2Fvital_certificate_revisions.htm](https://www.cdc.gov/nchs/nvss/revisions-of-the-us-standard-certificates-and-reports.htm?CDC_AA_refVal=https%3A%2F%2Fwww.cdc.gov%2Fnchs%2Fnvss%2Fvital_certificate_revisions.htm). Accessed Dec 14, 2023.
- 35 12. User Guide to the 2014 Natality Public Use File [Internet]. 2015. Available at:
36 [https://ftp.cdc.gov/pub/Health_Statistics/NCHS/Dataset_Documentation/DVS/
37 natality/UserGuide2014.pdf](https://ftp.cdc.gov/pub/Health_Statistics/NCHS/Dataset_Documentation/DVS/natality/UserGuide2014.pdf). Accessed Dec 14, 2023.
- 38 13. Facility Worksheet for the Live Birth Certificate [Internet]. 2016. Available at:
39 <https://www.cdc.gov/nchs/data/dvs/facility-worksheet-2016.pdf>. Accessed Dec
40 14, 2023.
- 41 14. Birth edit specifications for the 2003 Revision of the U.S. Standard Certificate
42 of Birth. [Internet]. 2005. Available at:
43 <https://www.cdc.gov/nchs/data/dvs/birth-edit-specifications.pdf>. Accessed Dec
44 14, 2023.
- 45 15. Guide to completing the facility worksheets for the Certificate of Live Birth and
46 Report of Fetal Death (2003 revision). 2006 update. [Internet]. 2006. Available
47 at: <https://www.cdc.gov/nchs/data/dvs/GuidetoCompleteFacilityWks.pdf>.
48 Accessed Dec 14, 2023.

- 1 16. Park IU, Tran A, Pereira L, Fakile Y. Sensitivity and Specificity of Treponemal-specific Tests for the Diagnosis of Syphilis. *Clinical Infectious Diseases*. 2020;71:S13-S20.
- 2
- 3
- 4 17. McDonald R. Vital Signs: Missed Opportunities for Preventing Congenital Syphilis—United States, 2022. *MMWR. Morbidity and Mortality Weekly Report*. 2023;72.
- 5
- 6
- 7 18. Lanier P, Kennedy S, Snyder A, et al. Prenatal Syphilis Screening Among Medicaid Enrollees in 6 Southern States. *Am J Prev Med*. 2022;62(5):770-6.
- 8
- 9 19. Rosenman MB, Tao G, Szucs KA, Wang J, Ambuehl R, Mahon BE. Prenatal Syphilis Screening Rates Measured Using Medicaid Claims and Electronic Medical Records. *Sexually Transmitted Diseases*. 2008;35(4):387-92.
- 10
- 11
- 12 20. Team SD. RStan: the R interface to Stan.
- 13 21. Kay M. tidybayes: Tidy data and geoms for Bayesian models. R package version. 2020;2(1):1.
- 14
- 15 22. Gómez-Rubio V. ggplot2-elegant graphics for data analysis. *Journal of Statistical Software*. 2017;77:1-3.
- 16
- 17 23. Hoffman MD, Gelman A. The No-U-Turn sampler: adaptively setting path lengths in Hamiltonian Monte Carlo. *J. Mach. Learn. Res*. 2014;15(1):1593-623.
- 18
- 19 24. Gelman A, Shirley K. Inference from simulations and monitoring convergence. *Handbook of markov chain monte carlo*. 2011;6:163-74.
- 20
- 21 25. Kim Elmore P. Maps, Charts, and Tables: Using the NCHHSTP AtlasPlus to visualize or download CDC’s HIV, viral hepatitis, STD, and TB surveillance data. 2017.
- 22
- 23
- 24 26. Sexually Transmitted Disease Surveillance 2022 [Internet]. 2024. Available at: <https://www.cdc.gov/std/statistics/2022/default.htm>. Accessed
- 25
- 26 27. Vital Statistics Online Data Portal [Internet]. 2023. Available at: https://www.cdc.gov/nchs/data_access/vitalstatsonline.htm. Accessed 2024.
- 27
- 28 28. Percy JN. A Summary Measure of Health Disparity. *Public Health Reports*. 2002;117(3):273-80.
- 29
- 30 29. Proportion of Pregnant Women who Receive Early and Adequate Prenatal Care [Internet]. 2022. Available at: [https://health.gov/healthypeople/objectives-and-data/browse-objectives/pregnancy-and-childbirth/increase-proportion-pregnant-women-who-receive-early-and-adequate-prenatal-care-mich-08/data?group=Race/Ethnicity%20\(of%20mother\)&from=2018&to=2022&tab=data-table&state=United%20States&populations=#edit-submit](https://health.gov/healthypeople/objectives-and-data/browse-objectives/pregnancy-and-childbirth/increase-proportion-pregnant-women-who-receive-early-and-adequate-prenatal-care-mich-08/data?group=Race/Ethnicity%20(of%20mother)&from=2018&to=2022&tab=data-table&state=United%20States&populations=#edit-submit). Accessed
- 31
- 32
- 33
- 34
- 35
- 36 30. Goyal MK, Hayes KL, Mollen CJ. Racial Disparities in Testing for Sexually Transmitted Infections in the Emergency Department. *Academic Emergency Medicine*. 2012;19(5):604-7.
- 37
- 38
- 39 31. Lin JS, Eder ML, Bean SI. Screening for Syphilis Infection in Pregnant Women. *JAMA*. 2018;320(9):918.
- 40
- 41 32. Screening for Syphilis in Pregnancy [Internet]. 2024. Available at: <https://www.acog.org/clinical/clinical-guidance/practice-advisory/articles/2024/04/screening-for-syphilis-in-pregnancy>. Accessed
- 42
- 43
- 44 33. Patel CG, Huppert JS, Tao G. Provider Adherence to Syphilis Testing Recommendations for Women Delivering a Stillbirth. *Sexually Transmitted Diseases*. 2017;44(11):685-90.
- 45
- 46

47