

1 **Trends in syphilis prevalence by race and ethnicity among people who are**
2 **pregnant in the United States 2014–2022.**

3 Yizhi Liang¹, Nicolas A Menzies¹, Minttu M Rönn¹

4 ¹Department of Global Health and Population, Harvard T.H. Chan School of Public
5 Health, Boston, MA

6

7 Corresponding author: Minttu M Rönn

8 Email mronn@hsph.harvard.edu

9

10 **One sentence summary line:**

11 We estimated an increasing syphilis prevalence among people who are pregnant,
12 reaching 462 per 100,000 live births in 2022, and notable racial and ethnic disparities
13 in prevalence.

14 **Running head:** Syphilis prevalence in people who are pregnant 2014–2022

15 **Abstract (max 150 words, unstructured)**

16 This study aimed to estimate syphilis prevalence among people who are pregnant with
17 live births by race and ethnicity 2014–2022. We analyzed data on syphilis infection
18 from birth certificates using a Bayesian model, adjusting for test sensitivity, specificity,
19 and screening coverage. We estimated syphilis prevalence among people who are
20 pregnant with live births increased from 88.7 (95% UI: 77.3–104.7) per 100,000 live
21 births in 2014 to 462.2 (95% UI: 430.9–502.4) per 100,000 live births in 2022. With
22 rising prevalence, relative racial and ethnic disparities narrowed over time. Syphilis
23 prevalence is likely higher among women with stillbirths, indicating a need for
24 improved screening and interventions.

25 **Keywords:** Syphilis; Pregnancy; Racial and ethnic Disparities

26

1 Introduction

2 Syphilis is a sexually transmitted infection (STI) caused by the bacteria *Treponema*
3 *pallidum* (1). After reaching a low of 2.1 diagnoses per 100,000 population in 2001, the
4 diagnosis rate for syphilis in the United States has been on the rise(2). In 2022, the
5 syphilis diagnosis rate in the general population was 1.8 times that of 2018. Syphilis
6 can be transmitted vertically during pregnancy, resulting in congenital syphilis, which
7 can lead to stillbirth, neonatal death, and other adverse birth outcomes (3). The rate of
8 congenital syphilis has also been increasing, and in 2022, it was 2.9 times that of
9 2018(4).

10 Estimates for the prevalence of syphilis in people who are pregnant are limited. Both
11 congenital syphilis diagnoses and syphilis diagnoses in the general population suggest
12 stark racial and ethnic disparities in the burden of disease. In 2022, the primary and
13 secondary syphilis diagnosis rate in general population women of all ages was 10.1
14 times among non-Hispanic American Indian or Alaska Native women compared to non-
15 Hispanic White women (5), while the ratio for congenital syphilis diagnoses cases was
16 11.9 (4).

17 Birth certificate registration records provide information on many health outcomes in
18 people who are pregnant and infants with live birth, including syphilis infection
19 identified during pregnancy (6). Leveraging a consistent data source on nearly all live
20 births in the US offers a long time span of trends with demographic information
21 available. This syphilis infection data lacks information on who was tested for syphilis
22 and the type of tests used. Adjusting for testing coverage and the sensitivity and
23 specificity of syphilis tests allows us to estimate the underlying prevalence in this
24 population.

25 We aimed to estimate syphilis prevalence among people who are pregnant and who
26 delivered live births in the United States from 2014 to 2022. Using the information on
27 maternal race and ethnicity, we evaluated the trends in racial and ethnic disparities over
28 time. Syphilis poses risks to both pregnant individual and their fetus, yet congenital
29 syphilis is preventable by testing and treatment during pregnancy (7, 8). Quantifying
30 the burden of infection can aid syphilis prevention efforts and improve health in these
31 populations. Prevalence time trends can also improve understanding of the magnitude

1 and speed of syphilis re-emergence in different populations.

2 **Methods**

3 *Birth certificate data*

4 We utilized data from birth certificates of the United States, as maintained within the
5 National Vital Statistics System by the National Center for Health Statistics (NCHS,
6 https://www.cdc.gov/nchs/data_access/vitalstatsonline.htm). These records include
7 demographic and health-related microdata for all live births occurring within a calendar
8 year, as mandated by the birth registration requirements across the 50 states, New York
9 City, and the District of Columbia (9, 10). Non-single delivery status is not identifiable
10 in the birth certificates (9), and we assumed that each record represents an individual
11 birth. Revised 2003 U.S. Standard Certificate of Live Birth was introduced to improve
12 data quality (11), and by January 1, 2014, 96.2% of all births to U.S. residents were
13 documented utilizing the 2003 standard (12). We restricted our analysis to cover the
14 years 2014–2022.

15 We defined seven racial and ethnic categories: non-Hispanic American Indian/Alaska
16 Native (AIAN), non-Hispanic Asian (Asian), non-Hispanic Black/African American
17 (Black), Hispanic/Latino (Hispanic), non-Hispanic Multiracial (Multiracial), non-
18 Hispanic Native Hawaiian/Other Pacific Islander (NHPI), and non-Hispanic White
19 (White).

20 Syphilis infection status in the birth certificates was extracted from the medical records
21 utilizing the Facility Worksheets (13, 14), in accordance with the protocols outlined in
22 the “Guide to Completing the Facility Worksheets for the Certificate of Live Birth and
23 Report of Fetal Death (2003 Revision).”(15) The identification of syphilis infection
24 (also referred to as lues) was determined by one of two criteria: (1) a positive test for
25 *Treponema pallidum* presenting at the start of pregnancy or confirmed diagnosis during
26 pregnancy with or without documentation of treatment; (2) the presence of documented
27 treatment for syphilis during pregnancy was deemed sufficient in the absence of a
28 definitive diagnosis within the accessible records (15).

1 *Statistical modeling*

2 We estimated syphilis prevalence among people who are pregnant with live births
3 stratified by year and race and ethnicity using a Bayesian model. The model is anchored
4 on syphilis positivity observed in birth certificate data in each race and ethnicity and
5 year stratum. We modeled the probability of observing a positive syphilis infection
6 among people who are pregnant θ_{yr} as:

7
$$\theta_{yr} = [P_{yr} \times \text{Sens} + (1 - P_{yr}) \times (1 - \text{Spec})] \times T_r$$

8 Where P_{yr} is syphilis prevalence among people who are pregnant stratified by race and
9 ethnicity and year, Sens and Spec are the sensitivity and specificity of syphilis
10 diagnostic test; both assumed constant by year and population. T_r is the proportion of
11 people who are pregnant screened for syphilis during their pregnancy stratified by race
12 and ethnicity but assumed constant over time.

13 Parameters and their prior distributions are presented in Table 1. To estimate a prior
14 distribution for test sensitivity and specificity, we conducted a random-effect meta-
15 analysis to pool sensitivity and specificity on estimates reported in a systematic review
16 (16) (Appendix Figure S1 and Figure S2).

17 There is limited information on syphilis screening coverage among people who are
18 pregnant by race and ethnicity, albeit we know there are racial and ethnic disparities in
19 testing and treatment (17). We relied on a study of screening coverage among Medicaid-
20 insured people who are pregnant in six southern states (18), which reported screening
21 coverage for White, Black, and Hispanic women. To determine prior distribution for
22 AIAN, Asian, Multiracial, and NHPI women, we used the lower and higher of 95%
23 confidence intervals for Black and Hispanic women.

24 We calibrated the model to the observed syphilis infections in birth certificate data using
25 binomial likelihood:

26
$$Y_{yr} \sim \text{Binomial}(n_{yr}, \theta_{yr})$$

27 Where Y_{yr} is the number of syphilis positivity in birth certificate data by year and race
28 and ethnicity (Appendix Table S1). n_{yr} represents the number of women with live

1 births by year and race and ethnicity (Numbers reported in Appendix Table S2).

2 The model was developed in R (version 4.3.2) and Stan (version 2.26.1) with “rstan”
3 (19), “tidybayes” (20), and “ggplot2” (21) packages. Calibration was performed via
4 Markov Chain Monte Carlo sampling using the No-U-Turn Sampler (NUTS) (22). We
5 specified 12,000 iterations per chain across four independent chains, with the first 8,000
6 designated as burn-in. Convergence of the model was assessed using the potential scale
7 reduction factor (r-hat), where 1.1 was set as the indication of convergence (23). The
8 analytic code is available at: [<https://github.com/Yizhi-Liang/Trends-Syph>].

9 *Comparison against external measures of burden*

10 We compared the prevalence estimates and syphilis positivity in the birth certificates
11 against syphilis diagnoses among women of reproductive age (15–44 years) (24) and
12 syphilis diagnoses among people who are pregnant (4) (Appendix Table S3 and Table
13 S4). Birth certificate data allows estimation of syphilis prevalence among people who
14 are pregnant who delivered live births. Given that vertical transmission of syphilis
15 increases the risk of stillbirth, the syphilis burden may be higher among pregnancies
16 that did not result in live births. To examine the discrepancy, we obtained stillbirths
17 attributable to congenital syphilis (4) and the total number of stillbirths reported as part
18 of fetal death data from the NCHS (25). We calculated the rate of syphilis attributable
19 to stillbirths and compared this to the prevalence estimate among live births. This
20 indicates the degree of unobserved syphilis burden not measured in the main analysis.

21 *Analysis*

22 Using 16,000 posterior samples, we calculated the mean and 95% uncertainty intervals
23 (UIs) to estimate syphilis prevalence by race and ethnicity and year. We calculated
24 different measures to describe changes in prevalence. Temporal trends in syphilis
25 prevalence were examined by comparing changes in estimated syphilis prevalence over
26 time, with 2014 used as the baseline. To evaluate racial and ethnic disparities,
27 prevalence ratios were computed with White women, who had the largest number of
28 live births and were used as the reference population. We computed the Index of
29 Disparity to quantify the variance in the estimated syphilis prevalence across
30 races/ethnicity populations relative to the population mean, serving as a comprehensive

1 measure of relative disparities (26):

$$2 \quad \text{Index of Disparity}_y = 100 \times \left(\sum_{r=1}^R |P_{yr} - \bar{P}_y| \times w_{yr} \right) / \bar{P}_y$$

3 Where P_{yr} is the estimated syphilis prevalence for each race and ethnicity population
4 in a year, \bar{P}_y is the average of the estimated syphilis prevalence for the whole population
5 in the same analytical year, and w_{yr} is the population share for each race and ethnicity
6 in each year.

7 *Sensitivity analysis*

8 The prior distribution used for screening coverage during pregnancy came from an
9 analysis of Medicaid insured population in six Southern States, which may not represent
10 the country. As a sensitivity analysis, we calibrated the model using a wider uncertainty
11 range in the prior distribution: the 2.5th percentile reflected reported Medicaid
12 screening rates and the 97.5th percentile represented the proportion of people who are
13 pregnant receiving any prenatal care from birth certificates (Table 1). The upper level
14 assumes that all women who received prenatal care received syphilis screening.

15 We also tested alternative prior distributions for the syphilis prevalence by year and
16 race and ethnicity to examine the impact of the shape of the weakly informative prior
17 distribution on the posterior distribution (Appendix Table S5).

18 **Results**

19 We estimated an increase in syphilis in all racial and ethnic populations during 2014–
20 2022, and syphilis prevalence estimates were higher than syphilis positivity in birth
21 certificate data (Figure 1). The syphilis prevalence ratio comparing 2022 with 2014 was
22 5.2: in 2014, the prevalence was 88.7 (95% UI: 77.3–104.7) per 100,000 live births,
23 and in 2022, it reached 462.2 (95% UI: 430.9–502.4) per 100,000 live births. The
24 highest prevalence in 2014 was among NHPI women at 659.0 (95% UI: 391.9–1044.0)
25 per 100,000 live births, while Asian women had the lowest at 10.3 (95% UI: 0.4–32.4)
26 per 100,000 live births. In 2022, AIAN women were estimated to have the highest
27 prevalence at 2610.9 (95% UI: 1908.3–3717.5) per 100,000 live births, followed by
28 NHPI women with 1316.7 (95% UI: 882.0–1975.4), and Black women with 909.7 (95%

1 UI: 876.4–994.0). Asian women were estimated to have the lowest prevalence at 97.9
2 (95% UI: 57.3–161.2) per 100,000 live births.

3 Compared to reported diagnoses among people who are pregnant, the estimated syphilis
4 prevalence was higher, and gaps between the two estimates remained stable, with a ratio
5 of 1.68 comparing prevalence to diagnoses (Figure 2). Conversely, the gap between
6 syphilis diagnoses and birth certificate positivity estimates decreased over time,
7 converging in 2021–2022. As expected, the syphilis prevalence among people who are
8 pregnant was higher than the syphilis diagnosis rate among women of reproductive age.

9 All racial and ethnic populations, excluding Asian women, were estimated to have a
10 higher syphilis prevalence compared to White women between 2014 and 2022. The
11 absolute differences between populations widened, while the prevalence ratio
12 decreased over time in all racial and ethnic groups. This pattern emerged due to the
13 increase in syphilis prevalence estimated for the White population (Appendix Figure
14 S3 and Figure S4). There was a decreasing trend in the disparity of syphilis prevalence
15 across racial and ethnic groups, as measured by the Index of Disparity (Figure 1). This
16 index decreased from 113.6 in 2014 (95% UI: 107.9–119.4) to 69.7 in 2022 (95% UI:
17 66.8–72.9). The Index of Disparity decreased due to the rising prevalence across all
18 racial and ethnic populations.

19 In a sensitivity analysis, we calibrated the model with a broader prior distribution for
20 syphilis screening coverage, assuming that the coverage could have been up to 100%.
21 If the screening coverage had been higher than reported in Medicaid claims analysis,
22 prevalence estimates would be lower for all racial and ethnic populations (Figure 3).
23 Compared to syphilis positivity data, these lower prevalence estimates would suggest
24 very similar levels of burden to those observed in the data and, in some cases,
25 prevalence estimates were lower than observed positivity. For example, higher
26 screening coverage than that used in the main analysis, implies Asian people who are
27 pregnant would have a lower syphilis prevalence than observed in birth certificates
28 across all years, which would mean a number of false positive syphilis cases in the birth
29 certificate records. In the second sensitivity analysis, prevalence estimates were robust
30 under different weakly informative prior distributions, maintaining stability even when
31 the prior distributions' central values and the 95% uncertainty ranges were increased
32 (Appendix Figure S5)

1 When we compared our estimate of syphilis prevalence among live births to the
2 prevalence among stillbirths based on surveillance data, the estimated syphilis
3 prevalence among live births was consistently lower than the proxy estimates for
4 stillbirths, with the discrepancy widening over the years (Figure 4). In 2022, the syphilis
5 prevalence estimated among stillbirths based on surveillance data was 1145.6 per
6 100,000 births, which was 2.5 (95% UI: 2.3–2.7) times the estimated syphilis
7 prevalence among those with live births.

8 **Discussion**

9 We estimated an upward trend syphilis prevalence associated with persistent racial and
10 ethnic disparities between 2014 and 2022. Racial and ethnic disparities were predicted
11 to increase over time on an absolute scale but diminish in relative terms, driven by
12 increasing burden in all racial and ethnic groups. In addition, we estimated that syphilis
13 prevalence in women who experience stillbirth is more than twice our estimated
14 syphilis prevalence among women with live births.

15 The disparities observed are rooted in systemic racism and are perpetuated by
16 socioeconomic factors such as poverty, inequalities in access to quality healthcare, and
17 broader social determinants of health (2). In cases of congenital syphilis, the absence
18 or delay of syphilis screening during pregnancy has been identified as a critical factor,
19 particularly pronounced among AIAN and NHPI women (17). Furthermore, in 2022,
20 Black and Hispanic people who are pregnant with congenital syphilis outcomes were
21 observed to have the highest rates of inadequate treatment for syphilis (17). The Healthy
22 People 2030 project has documented a decline in the proportion of people who are
23 pregnant receiving early and adequate prenatal care across all groups, with NHPI and
24 AIAN women experiencing the lowest in 2018–2022 (27). Studies on racial and ethnic
25 disparities in syphilis among people who are pregnant have focused on White, Black,
26 and Hispanic populations, and there remain data gaps for the smaller racial and ethnic
27 populations, such as NHPI and AIAN, who are disproportionately affected by the poor
28 quality of prenatal care, and syphilis prevention and treatment (18, 28).

29 US Preventive Services Task Force recommends early syphilis screening for all people
30 who are pregnant, with a further recommendation for an additional test during the third
31 trimester for those at elevated risk (8). The American Academy of Pediatrics and the

1 American College of Obstetricians and Gynecologists have also updated their
2 guidelines, advocating for three syphilis screens (first trimester, third trimester and at
3 delivery) as part of routine prenatal care (29).

4 The contribution of syphilis to stillbirths remains understudied. The identification of
5 stillbirths attributable to congenital syphilis presents a challenge; different infectious
6 diseases during pregnancy increase the risk of stillbirth, and there is inadequate
7 adherence to syphilis screening at the time of stillbirth (30). Consequently, syphilis
8 attributable stillbirths reported to congenital syphilis surveillance may present an
9 underestimate, and the discrepancy between syphilis prevalence in live births and
10 stillbirths may be higher than estimated.

11 Our study leverages a comprehensive dataset representing almost all live births in the
12 United States for 2014–2022. This allowed us to estimate prevalence for the smaller
13 racial and ethnic populations, such as AIAN and NHPI, who experience
14 disproportionate burden but are often not represented in analyses. Our findings
15 accounted for imperfect test sensitivity and specificity. The estimates were broadly
16 aligned and showed similar trends with surveillance data despite uncertainty around
17 testing coverage by time and in different populations. However, our analysis was
18 confined to pregnancies with live births, and it does not include the burden among
19 stillbirths. Our analysis is at the national level. There is geographic variation in syphilis
20 burden, and there may be variation in prenatal syphilis screening practices, which was
21 not accounted for in this study.

22 This study provides evidence of the increasing syphilis burden among people who are
23 pregnant with live births, demonstrating the increasing syphilis burden in all racial and
24 ethnic populations in the United States and presence of racial and ethnic disparities.
25 Addressing these disparities is needed to improve inequalities in birth outcomes.

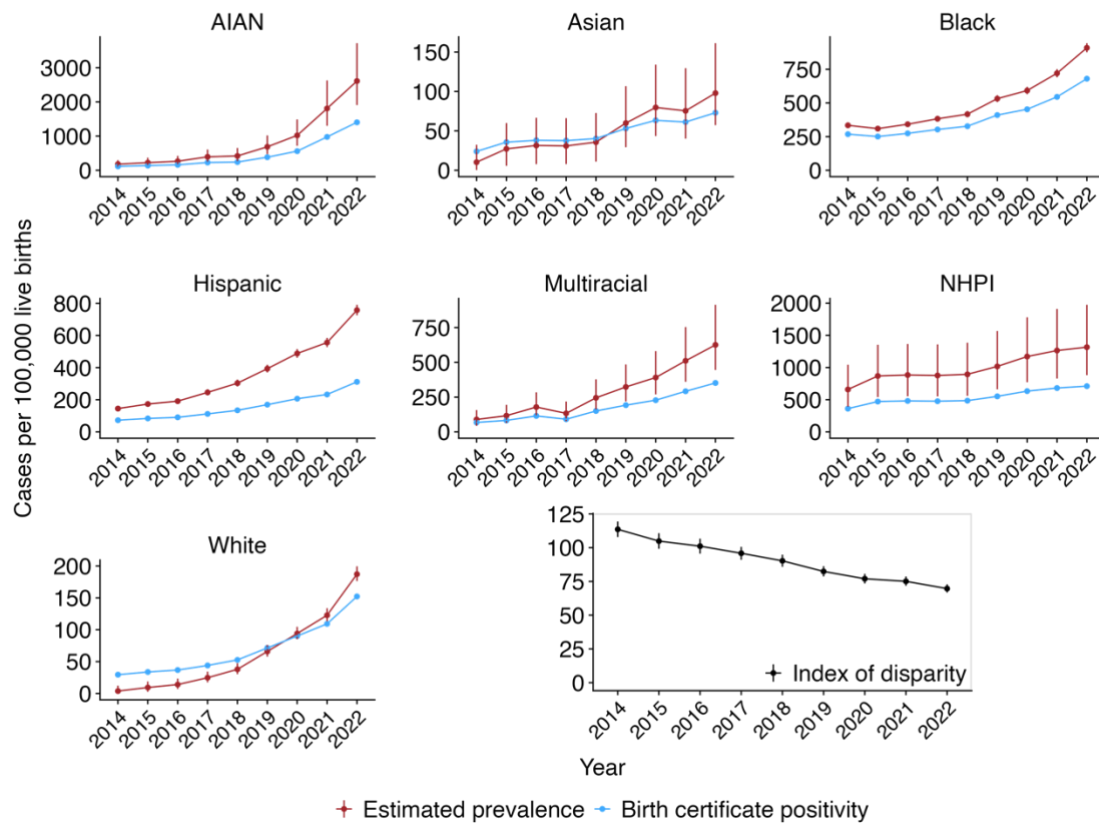
26

1 Table 1 Parameters used in the analysis for 2014–2022.

Parameter	Race and ethnicity	Estimate	Prior Distribution	Reference
Syphilis prevalence	All	<u>Main analysis:</u> Mean: 0.13 Range: 0.01–0.52	<u>Main analysis:</u> Beta(1, 5)	Weakly informative prior
		<u>Sensitivity analysis:</u> Appendix Table S5	<u>Sensitivity analysis:</u> Appendix Table S5	
Sensitivity	All	Mean: 0.98 Range: 0.97–0.99	Beta(786.28, 18.93)	Appendix Figure S1
Specificity	All	Mean: 0.99 Range: 0.98–0.99	Beta(1365.88, 13.73)	Appendix Figure S2
Proportion of people who are pregnant screened for syphilis	Non-Hispanic American Indian/Alaska Native	<u>Main analysis:</u> Mean: 0.57 Range: 0.40–0.73	<u>Main analysis:</u> Beta(18.42, 13.80)	(18, 25)
		<u>Sensitivity analysis:</u> Mean: 0.85 Range: 0.69–0.96	<u>Sensitivity analysis:</u> Beta(19.77, 3.37)	
Proportion of people who are pregnant screened for syphilis	Non-Hispanic Asian	<u>Main analysis:</u> Mean: 0.57 Range: 0.40–0.73	<u>Main analysis:</u> Beta(18.42, 13.80)	(18, 25)
		<u>Sensitivity analysis:</u> Mean: 0.85 Range: 0.69–0.96	<u>Sensitivity analysis:</u> Beta(12.34, 1.52)	
Proportion of people who are pregnant screened for syphilis	Non-Hispanic Black/African American	<u>Main analysis:</u> Mean: 0.73 Range: 0.73–0.74	<u>Main analysis:</u> Beta(125389.27, 45297.09)	(18, 25)
		<u>Sensitivity analysis:</u> Mean: 0.85 Range: 0.69–0.96	<u>Sensitivity analysis:</u> Beta(21.91, 3.53)	
Proportion of people who are pregnant screened for syphilis	Hispanic/Latino	<u>Main analysis:</u> Mean: 0.40 Range: 0.40–0.41	<u>Main analysis:</u> Beta(12236.60, 18319.62)	(18, 25)
		<u>Sensitivity analysis:</u> Mean: 0.85 Range: 0.69–0.96	<u>Sensitivity analysis:</u> Beta(5.04, 1.60)	
Proportion of people who are pregnant screened for syphilis	Non-Hispanic Multiracial	<u>Main analysis:</u> Mean: 0.57 Range: 0.40–0.73	<u>Main analysis:</u> Beta(18.42, 13.80)	(18, 25)
		<u>Sensitivity analysis:</u> Mean: 0.85 Range: 0.69–0.96	<u>Sensitivity analysis:</u> Beta(15.57, 2.28)	
Proportion of people who are pregnant screened for syphilis	Non-Hispanic Native Hawaiian/Other Pacific Islander	<u>Main analysis:</u> Mean: 0.57 Range: 0.40–0.73	<u>Main analysis:</u> Beta(18.42, 13.80)	(18, 25)
		<u>Sensitivity analysis:</u> Mean: 0.85 Range: 0.69–0.96	<u>Sensitivity analysis:</u> Beta(25.28, 4.94)	
Proportion of people who are pregnant screened for syphilis	Non-Hispanic White	<u>Main analysis:</u> Mean: 0.68 Range: 0.68–0.69	<u>Main analysis:</u> Beta(154701.32, 71339.73)	(18, 25)
		<u>Sensitivity analysis:</u> Mean: 0.85 Range: 0.69–0.96	<u>Sensitivity analysis:</u> Beta(13.05, 1.72)	

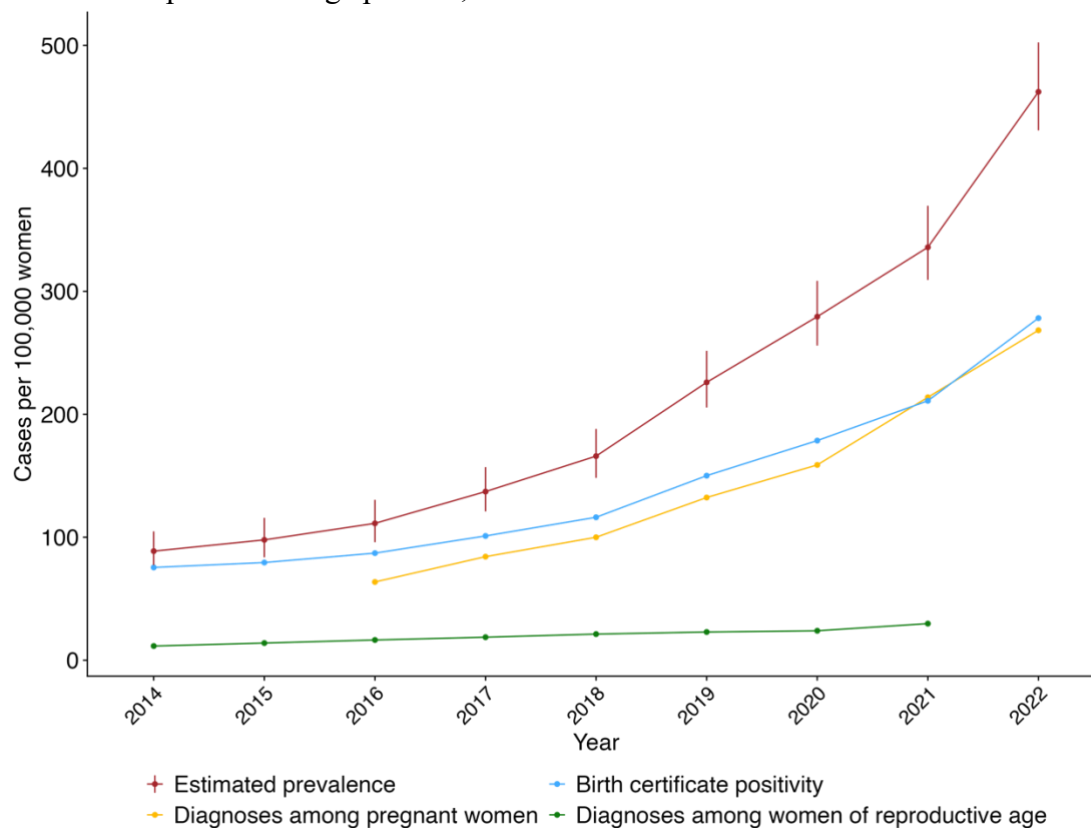
2

1 Figure 1. Comparison of the estimated syphilis prevalence and syphilis positivity in
 2 birth certificate data by race and ethnicity among people who are pregnant with live
 3 births per 100,000 live births, with the Index of Disparity for the estimated syphilis
 4 prevalence for 2014–2022. The y-axis varies by subplot.



6 Footnote: The Index of Disparity for the estimated syphilis prevalence by year among
 7 people who are pregnant with live births across race and ethnicity is shown in the right-
 8 bottom corner. Race and ethnicity categories: non-Hispanic American Indian/Alaska
 9 Native (AIAN), non-Hispanic Asian (Asian), non-Hispanic Black/African American
 10 (Black), Hispanic/Latino (Hispanic), non-Hispanic Multiracial (Multiracial), non-
 11 Hispanic Native Hawaiian/Other Pacific Islander (NHPI), and non-Hispanic White
 12 (White).

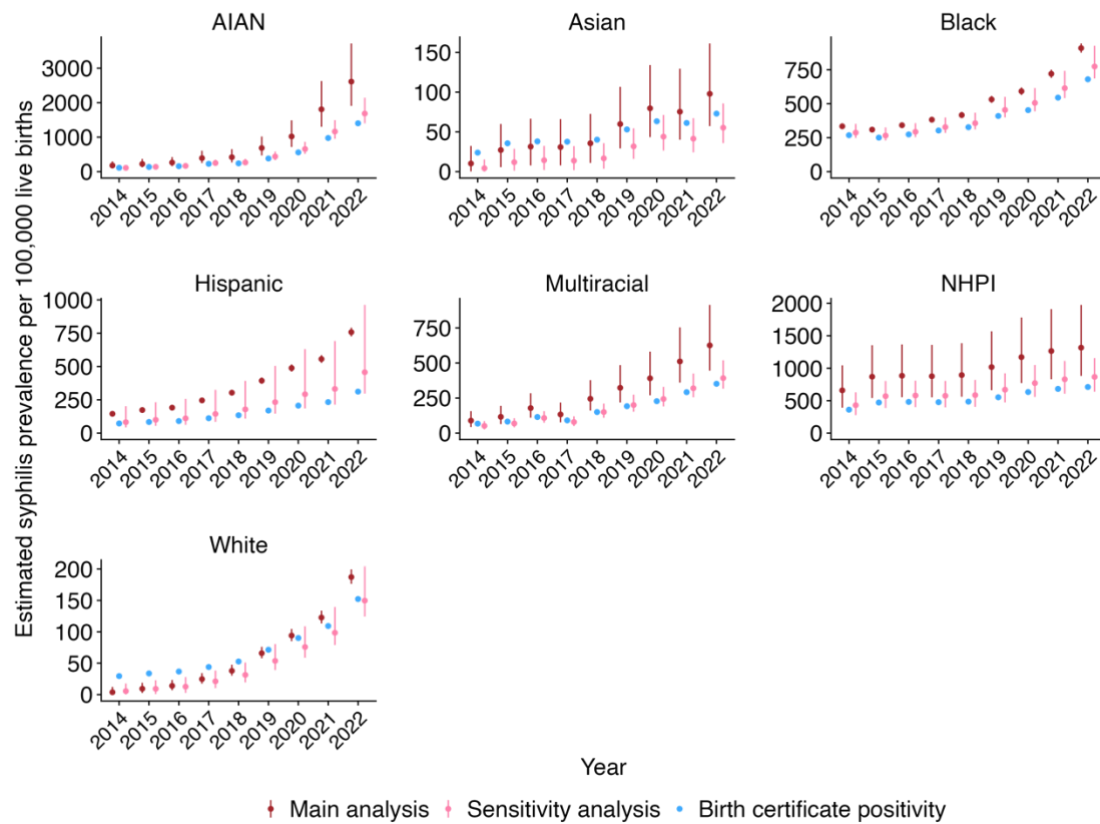
1 Figure 2. Comparison of the estimated syphilis prevalence per 100,000 live births,
2 syphilis positivity in birth certificate data per 100,000 live births, syphilis diagnoses
3 among people who are pregnant per 100,000 women, and syphilis diagnoses among
4 women of reproductive age per 100,000 women for 2014–2022.



5

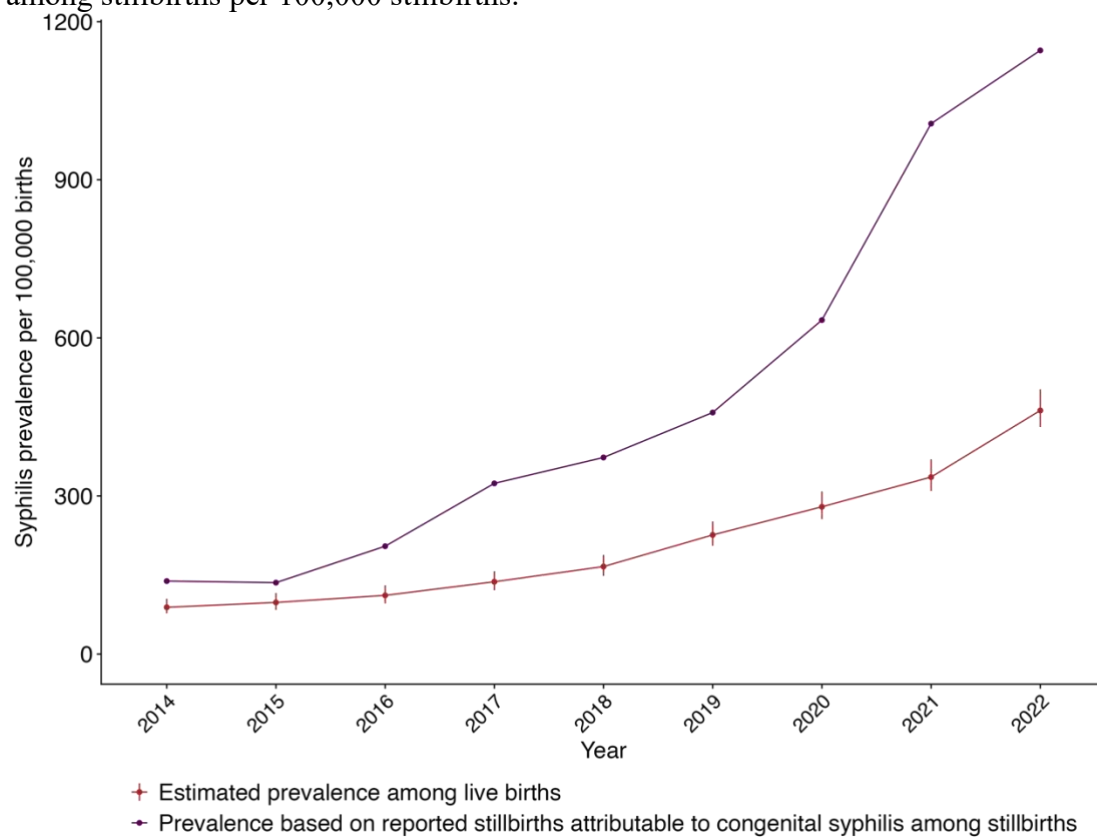
6 Footnote: all available data is presented for completeness.

1 Figure 3. Sensitivity analysis: the estimated syphilis prevalence per 100,000 live births
 2 with an alternative prior distribution for the proportion of people who are pregnant
 3 screened for syphilis, compared with the main analysis and syphilis positivity in birth
 4 certificate data per 100,000 live births for 2014–2022.



5
 6 Footnote: Race and ethnicity categories: non-Hispanic American Indian/Alaska Native
 7 (AIAN), non-Hispanic Asian (Asian), non-Hispanic Black/African American (Black),
 8 Hispanic/Latino (Hispanic), non-Hispanic Multiracial (Multiracial), non-Hispanic
 9 Native Hawaiian/Other Pacific Islander (NHPI), and non-Hispanic White (White).

1 Figure 4. Comparison between the estimated syphilis prevalence per 100,000 live births
2 and the prevalence based on reported stillbirths attributable to congenital syphilis
3 among stillbirths per 100,000 stillbirths.



1 References

- 2 1. PAHO. Global progress report on HIV, viral hepatitis and sexually transmitted
3 infections, 2021. 2021 [cited 2024 February 8]; Available from:
4 <https://www.who.int/publications/i/item/9789240027077>
- 5 2. Amerson EH, Valladares HBC, Leslie KS. Resurgence of Syphilis in the US—
6 USPSTF Reaffirms Screening Guidelines. *JAMA Dermatology*. 2022/11/01;158(11).
- 7 3. Lago EG, Vaccari A, Fiori RM. Clinical features and follow-up of congenital
8 syphilis. *Sex Transm Dis*. 2013 Feb;40(2):85-94.
- 9 4. CDC. Sexually Transmitted Disease Surveillance 2022. 2024 [cited 2024
10 January 30]; Available from: <https://www.cdc.gov/std/statistics/2022/default.htm>
- 11 5. CDC. NCHHSTP AtlasPlus. 2024 [cited 2024 Jan 12]; Available from:
12 <https://www.cdc.gov/nchhstp/atlas/index.htm>
- 13 6. Risk factors and adverse outcomes associated with syphilis infection during
14 pregnancy. *American Journal of Obstetrics & Gynecology MFM*. 2023/06/01;5(6).
- 15 7. Workowski KA, Berman SM. Centers for Disease Control and Prevention
16 Sexually Transmitted Disease Treatment Guidelines. *Clinical Infectious Diseases*.
17 2011;53(suppl_3):S59-S63.
- 18 8. Lin JS, Eder ML, Bean SI. Screening for Syphilis Infection in Pregnant Women.
19 *JAMA*. 2018;320(9):918.
- 20 9. NCHS. User Guide to the 2022 Natality Public Use File. 2023 [cited 2023 Dec
21 14]; Available from:
22 [https://ftp.cdc.gov/pub/Health_Statistics/NCHS/Dataset_Documentation/DVS/natality](https://ftp.cdc.gov/pub/Health_Statistics/NCHS/Dataset_Documentation/DVS/natality/UserGuide2022.pdf)
23 [/UserGuide2022.pdf](https://ftp.cdc.gov/pub/Health_Statistics/NCHS/Dataset_Documentation/DVS/natality/UserGuide2022.pdf)
- 24 10. Hertzler A. U.S. Vital Statistics System. Major activities and developments,
25 1950-95. 1997 [cited 2024 Feb 12]; Available from:
26 <https://www.cdc.gov/nchs/data/misc/usvss.pdf>
- 27 11. NCHS. Revisions of the U.S. Standard Certificates and Reports. 2003 [cited
28 2023 Dec 14]; Available from: [https://www.cdc.gov/nchs/nvss/revisions-of-the-us-](https://www.cdc.gov/nchs/nvss/revisions-of-the-us-standard-certificates-and-reports.htm?CDC_AA_refVal=https%3A%2F%2Fwww.cdc.gov%2Fnchs%2Fnvss%2Fvital_certificate_revisions.htm)
29 [standard-certificates-and-](https://www.cdc.gov/nchs/nvss/revisions-of-the-us-standard-certificates-and-reports.htm?CDC_AA_refVal=https%3A%2F%2Fwww.cdc.gov%2Fnchs%2Fnvss%2Fvital_certificate_revisions.htm)
30 [reports.htm?CDC_AA_refVal=https%3A%2F%2Fwww.cdc.gov%2Fnchs%2Fnvss%2](https://www.cdc.gov/nchs/nvss/revisions-of-the-us-standard-certificates-and-reports.htm?CDC_AA_refVal=https%3A%2F%2Fwww.cdc.gov%2Fnchs%2Fnvss%2Fvital_certificate_revisions.htm)
31 [Fvital_certificate_revisions.htm](https://www.cdc.gov/nchs/nvss/revisions-of-the-us-standard-certificates-and-reports.htm?CDC_AA_refVal=https%3A%2F%2Fwww.cdc.gov%2Fnchs%2Fnvss%2Fvital_certificate_revisions.htm)
- 32 12. NCHS. User Guide to the 2014 Natality Public Use File. 2015 [cited 2023 Dec
33 14]; Available from:
34 [https://ftp.cdc.gov/pub/Health_Statistics/NCHS/Dataset_Documentation/DVS/natality](https://ftp.cdc.gov/pub/Health_Statistics/NCHS/Dataset_Documentation/DVS/natality/UserGuide2014.pdf)
35 [/UserGuide2014.pdf](https://ftp.cdc.gov/pub/Health_Statistics/NCHS/Dataset_Documentation/DVS/natality/UserGuide2014.pdf)
- 36 13. NCHS. Facility Worksheet for the Live Birth Certificate. 2016 [cited 2023 Dec
37 14]; Available from: <https://www.cdc.gov/nchs/data/dvs/facility-worksheet-2016.pdf>
- 38 14. NCHS. Birth edit specifications for the 2003 Revision of the U.S. Standard
39 Certificate of Birth. 2005 [cited 2023 Dec 14]; Available from:
40 <http://www.cdc.gov/nchs/data/dvs/FinalBirthSpecs3-24-2005.pdf>
- 41 15. NCHS. Guide to completing the facility worksheets for the Certificate of Live
42 Birth and Report of Fetal Death (2003 revision). 2006 update. 2006 [cited 2023 Dec
43 14]; Available from:
44 <https://www.cdc.gov/nchs/data/dvs/GuidetoCompleteFacilityWks.pdf>
- 45 16. Park IU, Tran A, Pereira L, Fakile Y. Sensitivity and Specificity of Treponemal-
46 specific Tests for the Diagnosis of Syphilis. *Clinical Infectious Diseases*. 2020;71:S13-
47 S20.
- 48 17. McDonald R. Vital Signs: Missed Opportunities for Preventing Congenital

- 1 Syphilis—United States, 2022. *MMWR Morbidity and Mortality Weekly Report*.
- 2 2023;72.
- 3 18. Lanier P, Kennedy S, Snyder A, Smith J, Napierala E, Talbert J, et al. Prenatal
- 4 Syphilis Screening Among Medicaid Enrollees in 6 Southern States. *Am J Prev Med*.
- 5 2022 May;62(5):770-6.
- 6 19. Team SD. RStan: the R interface to Stan.
- 7 20. Kay M. tidybayes: Tidy data and geoms for Bayesian models. R package version.
- 8 2020;2(1):1.
- 9 21. Gómez-Rubio V. ggplot2-elegant graphics for data analysis. *Journal of*
- 10 *Statistical Software*. 2017;77:1-3.
- 11 22. Hoffman MD, Gelman A. The No-U-Turn sampler: adaptively setting path
- 12 lengths in Hamiltonian Monte Carlo. *J Mach Learn Res*. 2014;15(1):1593-623.
- 13 23. Gelman A, Shirley K. Inference from simulations and monitoring convergence.
- 14 *Handbook of markov chain monte carlo*. 2011;6:163-74.
- 15 24. Kim Elmore P. Maps, Charts, and Tables: Using the NCHHSTP AtlasPlus to
- 16 visualize or download CDC’s HIV, viral hepatitis, STD, and TB surveillance data. 2017.
- 17 25. NCHS. Vital Statistics Online Data Portal. 2023 [cited Dec 14, 2023; Available
- 18 from: https://www.cdc.gov/nchs/data_access/vitalstatsonline.htm
- 19 26. Percy JN. A Summary Measure of Health Disparity. *Public Health Reports*.
- 20 2002;117(3):273-80.
- 21 27. HHS. Proportion of Pregnant Women who Receive Early and Adequate Prenatal
- 22 Care. 2022 [cited 2024 Mar 20]; Available from:
- 23 [https://health.gov/healthypeople/objectives-and-data/browse-objectives/pregnancy-](https://health.gov/healthypeople/objectives-and-data/browse-objectives/pregnancy-and-childbirth/increase-proportion-pregnant-women-who-receive-early-and-adequate-prenatal-care-mich-08/data?group=Race/Ethnicity%20(of%20mother)&from=2018&to=2022&tab=data-table&state=United%20States&populations=#edit-submit)
- 24 [and-childbirth/increase-proportion-pregnant-women-who-receive-early-and-adequate-](https://health.gov/healthypeople/objectives-and-data/browse-objectives/pregnancy-and-childbirth/increase-proportion-pregnant-women-who-receive-early-and-adequate-prenatal-care-mich-08/data?group=Race/Ethnicity%20(of%20mother)&from=2018&to=2022&tab=data-table&state=United%20States&populations=#edit-submit)
- 25 [prenatal-care-mich-](https://health.gov/healthypeople/objectives-and-data/browse-objectives/pregnancy-and-childbirth/increase-proportion-pregnant-women-who-receive-early-and-adequate-prenatal-care-mich-08/data?group=Race/Ethnicity%20(of%20mother)&from=2018&to=2022&tab=data-table&state=United%20States&populations=#edit-submit)
- 26 [08/data?group=Race/Ethnicity%20\(of%20mother\)&from=2018&to=2022&tab=data-](https://health.gov/healthypeople/objectives-and-data/browse-objectives/pregnancy-and-childbirth/increase-proportion-pregnant-women-who-receive-early-and-adequate-prenatal-care-mich-08/data?group=Race/Ethnicity%20(of%20mother)&from=2018&to=2022&tab=data-table&state=United%20States&populations=#edit-submit)
- 27 [table&state=United%20States&populations=#edit-submit](https://health.gov/healthypeople/objectives-and-data/browse-objectives/pregnancy-and-childbirth/increase-proportion-pregnant-women-who-receive-early-and-adequate-prenatal-care-mich-08/data?group=Race/Ethnicity%20(of%20mother)&from=2018&to=2022&tab=data-table&state=United%20States&populations=#edit-submit)
- 28 28. Goyal MK, Hayes KL, Mollen CJ. Racial Disparities in Testing for Sexually
- 29 Transmitted Infections in the Emergency Department. *Academic Emergency Medicine*.
- 30 2012 2012-05-01;19(5):604-7.
- 31 29. ACOG. Screening for Syphilis in Pregnancy. 2024 [cited 2024 May 31];
- 32 Available from: [https://www.acog.org/clinical/clinical-guidance/practice-](https://www.acog.org/clinical/clinical-guidance/practice-advisory/articles/2024/04/screening-for-syphilis-in-pregnancy)
- 33 [advisory/articles/2024/04/screening-for-syphilis-in-pregnancy](https://www.acog.org/clinical/clinical-guidance/practice-advisory/articles/2024/04/screening-for-syphilis-in-pregnancy)
- 34 30. Patel CG, Huppert JS, Tao G. Provider Adherence to Syphilis Testing
- 35 Recommendations for Women Delivering a Stillbirth. *Sexually Transmitted Diseases*.
- 36 2017 2017-11-01;44(11):685-90.