



22 **Corresponding Author:** Alexandre Sabaté-Elabbadi, Epidemiology and Modelling of  
23 Antimicrobials Evasion (EMAE), Institut Pasteur, 25-28 rue du Dr Roux, 75015 Paris, France  
24 Email: [alexandre.elabbadi@pasteur.fr](mailto:alexandre.elabbadi@pasteur.fr).  
25 ORCID iD: <https://orcid.org/0000-0003-1103-1040>

26 **Keywords:** Lower respiratory tract infection; Coronavirus disease 2019; Chronic respiratory  
27 disease; Nationwide study; French National Hospital Discharge Database

28 **Main text word count:** 3275 words

29 **ABSTRACT**

30 **Introduction:** COVID-19 pandemic has modified the epidemiology of lower respiratory tract  
31 infections (LRTI), particularly in patients presenting a chronic respiratory disease (CRD).  
32 LRTI incidence substantially decreased at the start of the COVID-19 pandemic. However,  
33 studies focusing on the post-pandemic period are missing. We aimed to evaluate the impact of  
34 the pandemic and post-pandemic periods on hospital admissions for LRTI, with a focus on  
35 patients with CRD.

36 **Methods:** From July 2013 to June 2023, monthly numbers of adult hospitalisations for LRTI  
37 (excluding SARS-CoV-2) were extracted from the anonymized French National Hospital  
38 Discharge Database. They were modelled by regressions with autocorrelated errors. Three  
39 periods were defined: (1) early pandemic and successive lockdowns (April 2020 to May  
40 2021); (2) gradual lifting of restrictions and widespread SARS-CoV-2 vaccination (June 2021  
41 to June 2022); (3) withdrawal of restriction measures (July 2022 to July 2023). Analyses were  
42 computed for the entire series, by gender, age, severity, and pre-existing CRD

43 **Results:** Before the pandemic, LRTI hospitalisations showed a winter seasonal pattern with a  
44 rising trend. Pre-pandemic incidence was 96 (90.5 to 101.5) per 100,000 population.  
45 Compared with the pre-pandemic period, seasonality was no longer present and significant  
46 reductions were estimated in the first two periods: -43.64% (-50.11 to -37.17) and -32.97% (-  
47 39.88 to -26.05), respectively. A rebound with a positive trend and a seasonal pattern was  
48 observed in period 3. Similar results were observed for CRD patients with no significant  
49 difference with pre-pandemic levels in the last period (-9.21%; -20.9% to 1.67%), albeit with  
50 differential changes according to the type of CRD.

51 **Conclusions:** COVID-19 pandemic containment measures contributed to significant changes  
52 in LRTI incidence, with a rapid increase and return to a seasonal pattern after their gradual  
53 lifting, particularly in patients with CRD.

54 **Abstract word count:** 286 words

## 55 INTRODUCTION

56 Community-acquired lower respiratory tract infections (LRTI) encompass heterogeneous  
57 conditions of community onset, including community-acquired pneumonia (CAP), and other  
58 respiratory tract infections (acute bronchitis, acute exacerbation of chronic obstructive  
59 pulmonary disease (COPD), acute exacerbation of bronchiectasis) (1). LRTI remain the major  
60 cause of death from infectious diseases worldwide (2). In Europe, the burden is substantial  
61 with an incidence of 1.5 per 1,000 inhabitants, and the economic impact is considerable, with  
62 an estimated annual cost in Europe of 10 billion Euros (3). In addition, patients with chronic  
63 respiratory disease (CRD) are particularly at risk of respiratory infection (4,5), and related  
64 mortality (6).

65 The public health measures implemented in many countries to contain COVID-19 pandemic  
66 led to a substantial drop in hospitalisations for other causes of LRTI (7,8). This decline was  
67 partly driven by a decrease in the circulation of seasonal respiratory viruses (8,9), but also by  
68 a concomitant reduction in the number of bacterial infections associated with microorganisms  
69 usually involved in LRTI (10). This reduction in hospital admissions for LRTI was also  
70 observed in patients with CRD (11,12), as respiratory viruses are known to contribute  
71 significantly to CRD exacerbations in this population (13).

72 In France, as in many European countries, non-pharmaceutical interventions (NPI) varied  
73 during the pandemic (14); with particularly strict measures in 2020 until the spring of 2021,  
74 then a gradual relaxation of these measures until August 2022 when they were totally  
75 withdrawn (15). Data suggest that gradual easing of NPI has been accompanied by a  
76 resurgence in respiratory-transmitted viruses (16), notably respiratory syncytial virus (RSV)  
77 (17). However, studies analysing the overall changes in hospitalisations for LRTI associated  
78 with these NPI and their lifting during and after the pandemic, are lacking, particularly in  
79 patients with CRD. Moreover, if COVID-19 is evolving into a seasonal pattern as research

80 suggests (18), it is crucial to gather data on its post-pandemic impact on the overall LRTI  
81 burden.

82 We aimed to assess and quantify the impact of the pandemic on the trend of hospitalisations  
83 for LRTI and the characteristics and severity of inpatients, both overall and among those with  
84 a preexisting CRD, during and after the pandemic.

## 85 **METHODS**

### 86 **Study population and selection of hospital stays with LRTI**

87 Hospitalisations of patients aged > 15 years with LRTI (excluding SARS-CoV-2) in  
88 metropolitan France from July 2013 to June 2023 were extracted and aggregated monthly,  
89 from the French National Hospital Discharge Database (PMSI: Programme de Médicalisation  
90 des Systèmes d'Informations) (19). LRTI was defined by the presence of a related ICD-10  
91 code during hospital stay. Rates of hospitalisations per 100,000 inhabitants and per month  
92 were calculated, taking into account the French population growth. For each stay, gender, age,  
93 type (acute pneumonia, acute bronchitis, acute exacerbation of COPD, acute exacerbation of  
94 bronchiectasis) and severity of LRTI (moderate, severe, and death) (20), were also extracted.  
95 Presence of a CRD was defined by an ICD-10 code during the hospital stay. For more details  
96 on population selection, see **Table S1-3, Supplementary data**. We then classified the CRD  
97 into 8 non-exclusive categories representing the main CRD: (i) COPD, (ii) Asthma, (iii)  
98 Cystic Fibrosis and other bronchiectasis (CF-Bronchiectasis), (iv) interstitial lung disease  
99 (ILD), (v) thoracic oncology, (vi) pulmonary vascular disease (PVD), (vii) CRD associated  
100 with neuromuscular disease (CRD-NM), and (viii) lung transplantation.  
101 Finally, we also considered monthly numbers of hospitalisations with LRTI including SARS-  
102 CoV-2 in the last period (i.e. without restriction measures).

103        **Ethics Statement**

104        As this was a retrospective study of an anonymized database, ethics committee approval was  
105        not required, as per French law. The study was conducted using the Institut National de la  
106        Santé et de la Recherche Médicale permanent access to the the French National Hospital  
107        Discharge Database (PMSI).

## 108        **Statistical analyses**

109        To study the impact of the pandemic periods on changes in hospitalisations rates for LRTI,  
110        segmented regression models with autocorrelated errors were used (21). Three periods were  
111        defined: the first covers the start of the pandemic in France, including 3 successive lockdowns  
112        (April 2020 to May 2021); the second covers the gradual removal of restrictions and the  
113        widespread COVID-19 vaccination (June 2021 to June 2022); and the last, extending from  
114        July 2022 to July 2023, covers the last epidemic season without restriction measures (**Table**  
115        **S4, Supplementary data**). For each period, a regression line with a trigonometric function, if  
116        the series exhibited annual seasonality, was estimated. If non-significant, the slope was  
117        removed. We quantified the estimated difference in incidence and percent changes of monthly  
118        rates of hospitalisations for each intervention, as compared with the pre-pandemic period, by  
119        calculating the difference between the monthly estimated incidence predicted by the model  
120        and the one expected under the assumption of no change since the pre-pandemic period. More  
121        details are available in **Supplementary data**.

122        Analyses were performed for LRTI excluding SARS-CoV-2, by age group (15 to 54, 55 to 64,  
123        65 to 74 and >75 years), gender, type of LRTI (classified as pneumonia or other types of  
124        LRTI), severity, and presence of a CRD. A final analysis was related to the LRTI series  
125        including SARS-CoV-2 in the last period.

126        Statistical analyses were computed with SAS<sup>®</sup> Enterprise Guide (Version 8.3; SAS Institute  
127        Inc., Cary NC, USA) and R (Version 4.3.2; R Core Team, Vienna, Austria, 2023).

## 128        **RESULTS**

129        Between July 2013 and June 2023, 5,339,989 in-hospital stays for LRTI were identified  
130        (**Table 1**). Their median [Q1-Q3] age was 78 [65-87] years, and women accounted for 44.9%  
131        of inpatients. Overall, one third of patients (34.5%) had at least one CRD, mainly COPD

132 (19.4%). Almost 25% of patients were admitted to the ICU during their hospital stay, 60.5%  
133 of whom directly. The median hospital length of stay was 9 [5-15] days, and 729,568 (13.7%)  
134 patients died.

135 Overall, the age of patients hospitalised decreased after the onset of the pandemic and  
136 remained stable thereafter: 79 [65-87] years in pre-COVID period and around 76 [64-86]  
137 years for the 3 periods. The proportion of women decreased after the start of the pandemic,  
138 followed by an increase in periods 2 and 3. Similarly, in period 1, there was a drop in the  
139 proportion of patients with CRD (33.8% versus 34.5% in pre-pandemic period), mainly due to  
140 a reduction in COPD and asthma. In addition, the number of deaths increased during the early  
141 stages of the pandemic from 13.1% to 16.3% at period 1, as did the number of ICU  
142 admissions (23.6% to 25.5%). Noteworthy, mortality among patients admitted to the ICU  
143 increased from 20.8% to 22% during period 1. Overall, 20.9% of patients with an ICU stay  
144 died over the entire study period.

145 A segmented regression model with autocorrelated error fulfilling goodness-of-fit criteria was  
146 obtained for each series (**Figure 1 and Figures S1-2, 4-6, 8-9, Supplementary data**). The  
147 estimated differences in monthly rates of hospitalisations per 100,000 inhabitants during the  
148 periods are reported for all the considered series in **Table S5 (Supplementary data)** (in  
149 incidence rates) and **Figures 2 and Figure S3 in Supplementary data** (in percent change  
150 relative to the pre-pandemic period).

151 Monthly rate of hospitalisations for LRTI showed a winter seasonal pattern in the adult  
152 population during the pre-pandemic period, with a rising trend from 2013 to 2020 (**Figure**  
153 **1A**). Compared with the pre-pandemic period, a significant decrease in LRTI hospitalisations  
154 was observed in the early period 1 (-43.6%; 95% CI: -50.1% to -37.2%. **Figure 2A**). This  
155 decline was associated with a loss of the seasonality pattern and slope. Compared with the  
156 pre-pandemic period, the decrease was maintained but less marked during period 2 (-33.0%;



157 95% CI: -39.9% to -26.1%), and even less pronounced during period 3 (-18.5%; 95% CI: -  
158 29.2% to -7.9%). This was also associated with a significantly higher slope than in the pre-  
159 pandemic period (+2.3; 95% CI: 0.2 to 4.4; p=0.04) and a return to the seasonal pattern seen  
160 previously (**Figure 1A**). The same overall tendency occurred in the presence of at least one  
161 CRD, with a significant decrease in LRTI hospitalisations when successive lockdown and  
162 strict NPI measures were implemented, followed by a gradual increase at periods 2 and 3  
163 (**Figures 1B and 2A**). Notably, during period 3, there was a resurgence of seasonality and an  
164 upward slope (+0.7; 95% CI: +0.1 to +1.4; p=0.04). Furthermore, this trend had almost  
165 returned to the pre-pandemic level during period 3 and was not statistically different (-9.2%;  
166 95% CI: -20.9% to 1.7%). It should be noted that this reduction of hospitalisations in CRD  
167 inpatients was less pronounced than in those without CRD (**Figures 1C and 2A**).

168 Focusing on the different categories of CRD, the drop of LRTI hospitalisations involved all  
169 respiratory diseases during period 1 (**Figure 2B and Figure S1, Supplementary data**), and  
170 particularly asthma (-53.4%; 95% CI: -60.3% to -46.5%) and COPD (-41.8%; 95% CI: -  
171 49.0% to -34.6%). At periods 2 and 3, there was a gradual reduction of these differences in all  
172 categories of CRD. Altogether, at period 3, the average level of LRTI hospitalisations did not  
173 return to the pre-pandemic level for COPD (-14.8%; 95% CI: -25.5% to -4.1%),  
174 CF/bronchiectasis (-22.0%; 95% CI: -33.8% to -10.2%), thoracic oncology (-13.9%; 95% CI:  
175 -19.3% to -8.6%), lung transplantation (-19.9%; 95% CI: -26.9% to -12.8%) and CRD  
176 associated with NMD (-18.8%; 95% CI: -27.8% to -9.8%) (**Figure S1, Supplementary**  
177 **data**). Conversely, this difference was no longer significant for asthma (-4.1%; 95% CI: -  
178 16.8% to +8.7%) and ILD (-3.1%; 95% CI: -16.5% to +10.4%), as compared with the pre-  
179 pandemic period.

180 The decline in LRTI hospitalisations was more pronounced for moderately severe LRTI, as  
181 compared with severe LRTI and those associated with death (**Figures S2 and S3A**,

182 **Supplementary data**). In addition, moderate forms showed a significant upward trend during  
183 study period 3 (+1.8; 95% CI: +0.2 to +3.3;  $p=0.03$ ), a trend not seen in the two other forms  
184 (**Table S6 and Figure S3A, Supplementary data**). Notably, at period 3, the decrease in  
185 LRTI hospitalisations did not differ from that of the pre-pandemic period for the episodes  
186 associated with death (-2.2%; 95% CI: -10.9% to +6.4%).

187 Focusing on pneumonia, a sharper decline occurred during period 1 (-36.3%; 95% CI: -42.9%  
188 to -29.7%) than period 2 (-27.6%; 95% CI: -34.3% to -21.0%) (**Figures S3B and S4A,**  
189 **Supplementary data**). In period 3, there was a lower but still significant decrease (-13.3%;  
190 95% CI: -22.9% to -3.8%). For other types of LRTI, more pronounced trends were observed  
191 with a respective decrease of 56.6% (95% CI: -68.4% to -44.7%) at period 1, 45.7% (95% CI:  
192 -58.1% to -33.4%) at period 2 and 32.7% (95% CI: -45.6% to -19.9%) at period 3 (**Figure**  
193 **S3B and S4B, Supplementary data**). Moreover, unlike pneumonia, there was no increasing  
194 slope during period 3, although there was a seasonality pattern.

195 Although the decline in hospitalisations was greater among women, there was a marked  
196 decrease in period 1 in both genders. This change was gradually less important during periods  
197 2 and 3 compared to the pre-pandemic period (**Figure S3C and Figure S5, Supplementary**  
198 **data**). This feature was similar for all age categories studied, although the decline was  
199 greatest among oldest patients (i.e., over 75 years) (**Figure S3D and S6, Supplementary**  
200 **data**).

201 Concurrent with the increase in LRTI hospitalisations, the proportion of COVID-19  
202 hospitalisations among all LRTI decreased from period 1 to period 3 (**Figure S7,**  
203 **Supplementary data**). During period 1, they accounted for nearly half of all respiratory  
204 infections hospitalised, dropping to one-third during period 2, and less than 20% during the  
205 last epidemic season despite the reduction of NPI (**Table S7, Supplementary data**).  
206 Interestingly, COVID-19 hospitalisations exhibited a winter seasonality comparable to other

207 hospitalised LRTI at period 3. In this context, when comparing period 3 with the pre-  
208 pandemic period, the overall burden of hospitalisations for LRTI, (including COVID-19), is  
209 comparable to that of the pre-pandemic period (+0.3; 95% CI: -9.0% to +9.7%) (**Figure S8**  
210 **and Table S6, Supplementary data**). Notably, when a CRD is present, the increase in  
211 hospitalisations is more important at period 3 compared with the predicted level (**Figure S9,**  
212 **Supplementary data**), but not statistically significant: + 6.1% (95% CI: -3.4% to +15.7%)  
213 versus +1.0% (95% CI:-8.9% to +11.0%) if no CRD is present.

## 214 **DISCUSSION**

215 In this nationwide study using The French National Hospital Discharge Database, we showed  
216 a marked decrease of hospital admissions for LRTI unrelated to COVID-19 at the onset of the  
217 pandemic, followed by a subsequent rise coinciding with the lifting of COVID-19 control  
218 measures and a return to a seasonal pattern, particularly notable in patients with CRD. This  
219 increase in LRTI hospitalisations was associated with a return to pre-pandemic levels within  
220 this group, with some discrepancies depending on the type of CRD.

221 Our findings document the significant decline in hospital admissions for LRTI unrelated to  
222 COVID-19 when NPI measures were implemented to control the pandemic. This trend has  
223 been well documented in the literature, as these measures reduced the circulation of  
224 respiratory viruses (22–24), as well as some bacteria typically associated with LRTI (10,25).  
225 Following the partial relaxation and eventual complete lifting of COVID-19 control measures,  
226 a notable resurgence in hospitalisations for other LRTI was observed. This trend has been  
227 previously demonstrated, specifically in the paediatric population, and coincided with the  
228 sustained resurgence of the RSV epidemic (26). While post-pandemic COVID-19 data in the  
229 adult population are lacking, several studies have indicated an increase in the incidence of  
230 other LRTI following the easing of restrictions (23,27,28). Our study further contributes to

231 this understanding, highlighting that this increase is not only important when NPI are relaxed,  
232 but also follows a typical winter seasonal pattern consistent with pre-pandemic trends,  
233 underlining the role of seasonal viruses. Community-acquired pneumonia exhibited a lesser  
234 reduction in hospitalisations compared to non-pneumonic LRTI, such as exacerbations of  
235 COPD, bronchiolitis, and acute bronchitis. Pneumonia is indeed recognized as the primary  
236 cause of hospitalisations among all LRTI (29). The frequent involvement of respiratory  
237 viruses during acute bronchitis (30) and acute exacerbations of COPD (31) may have been  
238 particularly affected by NPI. However, during the period when NPI were completely lifted,  
239 the resurgence of non-pneumonic LRTI was less significant than that of pneumonia. This  
240 could be attributed to an increased focus on outpatient management of non-pneumonic LRTI  
241 during and extending after the pandemic. Furthermore, the continued adherence to some NPI  
242 by vulnerable populations (32) and health professionals (33) may have contributed to  
243 mitigating the increase in LRTI incidence beyond the pandemic.

244 Changes in hospital admissions for LRTI were primarily driven by mild-to-moderately severe  
245 forms of LRTI. Indeed, our findings indicate that the decrease in episodes of LRTI leading to  
246 ICU admission or death was less pronounced than that observed for mild-to-moderately  
247 severe forms of LRTI. It can be assumed that some of the latter cases were managed through  
248 outpatient care or required fewer medical consultations (34,35). Additionally, while the  
249 overall level of LRTI hospitalisations may not be entirely comparable to that of the pre-  
250 pandemic period, the rate of fatal LRTI episodes remained similar. This suggests that the  
251 criteria for hospitalisation for LRTI may have been more stringent and that hospitalised  
252 patients may have been more severe.

253 We found that patients with CRD accounted for 30% of all LRTI inpatients, with half of them  
254 diagnosed with COPD. Our findings underscore the significant impact of NPI on patients with  
255 CRD, demonstrating a substantial decrease in hospitalisations for LRTI during the most

256 restrictive NPI period, followed by a subsequent rise during the relaxation phases.  
257 Interestingly, a return to pre-pandemic levels was observed in CRD patients upon complete  
258 lifting of restrictions. This observation is particularly interesting as it highlights the  
259 vulnerability of this population to LRTI, while also emphasizing the critical role of NPI in  
260 mitigating the burden of LRTI among CRD individuals (23,36). This observation may be  
261 partly supported by a reduction in the circulation of respiratory viruses during the pandemic, a  
262 factor well-documented to trigger CRD exacerbations, notably asthma and COPD (23).  
263 Indeed, we observed the most significant initial decline in hospitalisations for these two  
264 populations. Moreover, we noted a return to pre-pandemic levels among hospitalised asthma  
265 patients. In contrast, for COPD patients, who accounted for more than half of CRD  
266 hospitalisations for LRTI, a notable increase was observed after removal of NPI, although it  
267 did not reach pre-pandemic levels. One possible explanation for this partial return to pre-  
268 pandemic levels might be an ongoing adherence to protective measures, such as wearing  
269 masks in the community and systematic hand washing (37). Interestingly, patients with ILD  
270 experienced a significant increase in hospitalisations following the lifting of NPIs, returning  
271 to pre-pandemic levels. LRTI account for approximately 20% of admissions in these patients  
272 (38) and may worsen their condition (39), emphasizing the importance of maintaining NPI  
273 measures in this population.

274 Following the complete release of NPI, COVID-19 still accounted for 20% of hospitalised  
275 LRTI, and exhibited an epidemic pattern overlapping with other LRTI, highlighting the  
276 propensity for SARS-CoV-2 to become seasonal (18). Despite variations in the pathogens  
277 involved, the overall level of LRTIs in period 3 did not significantly surpass pre-pandemic  
278 levels, indicating that the simultaneous occurrence of multiple respiratory pathogen epidemics  
279 did not lead to an excessive increase in hospitalisations for LRTIs in France. Finally, it is  
280 noteworthy that CRD patients experienced a more significant increase, highlighting the

281 particularly vulnerability of this population to respiratory pathogens, including COVID-19  
282 (40).

283 Our study has several strengths. Firstly, it utilizes national data encompassing all  
284 hospitalisations in France over a 10-year period. Secondly, the study period covers a complete  
285 epidemic season after the end of all NPI recommendations, allowing an examination of  
286 overall trends in hospitalisations for LRTI. Moreover, our approach provides an estimate of  
287 the burden of LRTI in patients with CRD at the national level post-pandemic. Identifying key  
288 interventions for LRTI control and prospectively demonstrating which of these are most  
289 acceptable and easily followed by vulnerable populations, such as CRD patients, could be  
290 effective in reducing the burden of these conditions on hospitals. While implementing all NPI  
291 measures like lockdowns may not be feasible or acceptable, some could be beneficial,  
292 particularly among patients with CRD. For example, measures such as mask-wearing have  
293 been shown to have a real impact on reducing the circulation of certain viruses such as RSV  
294 (22). Moreover, some of these less restrictive measures appear to be adhered to among  
295 patients with CRD (32,37). Therefore, targeted implementation of specific NPI on vulnerable  
296 populations (i.e., CRD, as well as older individuals) could be considered as a viable strategy  
297 for mitigating the burden of respiratory infections.

298 Our study presents limitations. Although our study suggests that the lifting of NPI impacts  
299 hospital admissions for LRTI, we were unable to determine which measures have the most  
300 significant impact. Furthermore, this is an observational study investigating the temporal  
301 relationship between hospitalisations for LRTI and NPI, but we cannot establish a strict  
302 correlation and cannot exclude the possibility that other factors may have influenced these  
303 variations. Moreover, medico-administrative databases have restricted access to clinical data,  
304 which limits the accuracy of our diagnoses. This limitation is inherent to such databases, and  
305 we utilized ICD-10 codes commonly used for research in these disease categories.

306 Nevertheless, the French public health insurance system regularly audits and randomly checks  
307 that coding records correspond to actual patient records, thereby reducing coding errors (41).  
308 Finally, due to imperfect pathogen coding in these databases, with many LRTI remaining  
309 unidentified, we could only study LRTI collectively.

310 Our study emphasizes that the lifting of restrictions is associated with a rapid return to the  
311 typical seasonality of LRTI. Hospitalisations for LRTI among patients with CRD returned to  
312 pre-pandemic levels. Finally, given the persistent circulation of COVID-19, its influence on  
313 hospitalisations remains significant.

314

### 315 **Acknowledgment**

316 The authors thank Bérénice Varga for her careful revision of the manuscript.

### 317 **Funding information**

318 Doctoral fellowship was received by ASE from Université Paris-Saclay. The funder has no  
319 role in the conceptualization, design, data collection, analysis, decision to publish, or  
320 preparation of the manuscript.

### 321 **Competing Interests**

322 ASE reports support for attending meeting from SOS Oxygène and LVL Medical outside the  
323 submitted work. MF reports grants from BioMérieux and personal fees from BioMérieux,  
324 Pfizer, SOS Oxygène and Fisher and Paykel outside the submitted work. LW reports personal  
325 fees from Pfizer, Sanofi and Heva outside the submitted work. DG, CBB and LB have no  
326 competing interests to declare.

327

## 328 REFERENCES

- 329 1. Woodhead M. New guidelines for the management of adult lower respiratory tract  
330 infections. *Eur Respir J*. 1 déc 2011;38(6):1250–1.
- 331 2. Troeger C, Blacker B, Khalil IA, Rao PC, Cao J, Zimsen SRM, et al. Estimates of the  
332 global, regional, and national morbidity, mortality, and aetiologies of lower respiratory  
333 infections in 195 countries, 1990–2016: a systematic analysis for the Global Burden of  
334 Disease Study 2016. *Lancet Infect Dis*. nov 2018;18(11):1191–210.
- 335 3. Welte T, Torres A, Nathwani D. Clinical and economic burden of community-acquired  
336 pneumonia among adults in Europe. *Thorax*. janv 2012;67(1):71–9.
- 337 4. Ramirez JA, Wiemken TL, Peyrani P, Arnold FW, Kelley R, Mattingly WA, et al. Adults  
338 Hospitalized With Pneumonia in the United States: Incidence, Epidemiology, and  
339 Mortality. *Clin Infect Dis*. 13 nov 2017;65(11):1806–12.
- 340 5. Torres A, Peetermans WE, Viegi G, Blasi F. Risk factors for community-acquired  
341 pneumonia in adults in Europe: a literature review. *Thorax*. nov 2013;68(11):1057–65.
- 342 6. Restrepo MI. COPD is associated with increased mortality in patients with community-  
343 acquired pneumonia. *Eur Respir J*. 1 août 2006;28(2):346–51.
- 344 7. Huh K, Jung J, Hong J, Kim M, Ahn JG, Kim JH, et al. Impact of Nonpharmaceutical  
345 Interventions on the Incidence of Respiratory Infections During the Coronavirus Disease  
346 2019 (COVID-19) Outbreak in Korea: A Nationwide Surveillance Study. *Clin Infect Dis*.  
347 8 avr 2021;72(7):e184–91.
- 348 8. Sakamoto H, Ishikane M, Ueda P. Seasonal Influenza Activity During the SARS-CoV-2  
349 Outbreak in Japan. *JAMA*. 19 mai 2020;323(19):1969.
- 350 9. Poole S, Brendish NJ, Clark TW. SARS-CoV-2 has displaced other seasonal respiratory  
351 viruses: Results from a prospective cohort study. *J Infect*. déc 2020;81(6):966–72.



- 352 10. Brueggemann AB, Jansen van Rensburg MJ, Shaw D, McCarthy ND, Jolley KA, Maiden  
353 MCJ, et al. Changes in the incidence of invasive disease due to *Streptococcus*  
354 *pneumoniae*, *Haemophilus influenzae*, and *Neisseria meningitidis* during the COVID-19  
355 pandemic in 26 countries and territories in the Invasive Respiratory Infection Surveillance  
356 Initiative: a prospective analysis of surveillance data. *Lancet Digit Health*. juin  
357 2021;3(6):e360–70.
- 358 11. Huh K, Kim YE, Ji W, Kim DW, Lee EJ, Kim JH, et al. Decrease in hospital admissions  
359 for respiratory diseases during the COVID-19 pandemic: a nationwide claims study.  
360 *Thorax*. sept 2021;76(9):939–41.
- 361 12. Shah SA, Quint JK, Nwaru BI, Sheikh A. Impact of COVID-19 national lockdown on  
362 asthma exacerbations: interrupted time-series analysis of English primary care data.  
363 *Thorax*. sept 2021;76(9):860–6.
- 364 13. Mallia P, Johnston SL. How Viral Infections Cause Exacerbation of Airway Diseases.  
365 *Chest*. oct 2006;130(4):1203–10.
- 366 14. Hale T, Angrist N, Goldszmidt R, Kira B, Petherick A, Phillips T, et al. A global panel  
367 database of pandemic policies (Oxford COVID-19 Government Response Tracker). *Nat*  
368 *Hum Behav*. 8 mars 2021;5(4):529–38.
- 369 15. gouvernement.fr [Internet]. 2022 [cité 30 nov 2023]. Covid-19 : fin du « pass  
370 sanitaire » le 1er août 2022. Disponible sur:  
371 <https://www.gouvernement.fr/actualite/covid-19-fin-du-pass-sanitaire-le-1er-aout-2022>
- 372 16. Launay T, Souty C, Vilcu AM, Turbelin C, Blanchon T, Guerrisi C, et al. Common  
373 communicable diseases in the general population in France during the COVID-19  
374 pandemic. Shaman J, éditeur. *PLOS ONE*. 11 oct 2021;16(10):e0258391.

- 375 17. Fourgeaud J, Toubiana J, Chappuy H, Delacourt C, Moulin F, Parize P, et al. Impact of  
376 public health measures on the post-COVID-19 respiratory syncytial virus epidemics in  
377 France. *Eur J Clin Microbiol Infect Dis.* nov 2021;40(11):2389–95.
- 378 18. Wiemken TL, Khan F, Puzniak L, Yang W, Simmering J, Polgreen P, et al. Seasonal  
379 trends in COVID-19 cases, hospitalizations, and mortality in the United States and  
380 Europe. *Sci Rep.* 8 mars 2023;13(1):3886.
- 381 19. ATIH. : Rapport d’activité ATIH 2021 [Internet]. ATIH; 2021. Disponible sur:  
382 [https://www.atih.sante.fr/sites/default/files/public/content/2196/rapport\\_dactivite\\_atih\\_20](https://www.atih.sante.fr/sites/default/files/public/content/2196/rapport_dactivite_atih_2021_1.pdf)  
383 [21\\_1.pdf](https://www.atih.sante.fr/sites/default/files/public/content/2196/rapport_dactivite_atih_2021_1.pdf)
- 384 20. Martin-Loeches I, Torres A, Nagavci B, Aliberti S, Antonelli M, Bassetti M, et al.  
385 ERS/ESICM/ESCMID/ALAT guidelines for the management of severe community-  
386 acquired pneumonia. *Eur Respir J.* avr 2023;61(4):2200735.
- 387 21. Lopez Bernal J, Cummins S, Gasparrini A. Interrupted time series regression for the  
388 evaluation of public health interventions: a tutorial. *Int J Epidemiol.* 9 juin 2016;dyw098.
- 389 22. Lengart L, Ouldali N, Honeyford K, Bognar Z, Bressan S, Buonsenso D, et al.  
390 Respective roles of non-pharmaceutical interventions in bronchiolitis outbreaks: an  
391 interrupted time-series analysis based on a multinational surveillance system. *Eur Respir*  
392 *J.* févr 2023;61(2):2201172.
- 393 23. Ho T, Shahzad A, Jones A, Raghavan N, Loeb M, Johnston N. Examining the effect of  
394 the COVID-19 pandemic on community virus prevalence and healthcare utilisation  
395 reveals that peaks in asthma, COPD and respiratory tract infection occur with the re-  
396 emergence of rhino/enterovirus. *Thorax.* déc 2023;78(12):1248–53.
- 397 24. Partridge E, McCleery E, Cheema R, Nakra N, Lakshminrusimha S, Tancredi DJ, et al.  
398 Evaluation of Seasonal Respiratory Virus Activity Before and After the Statewide

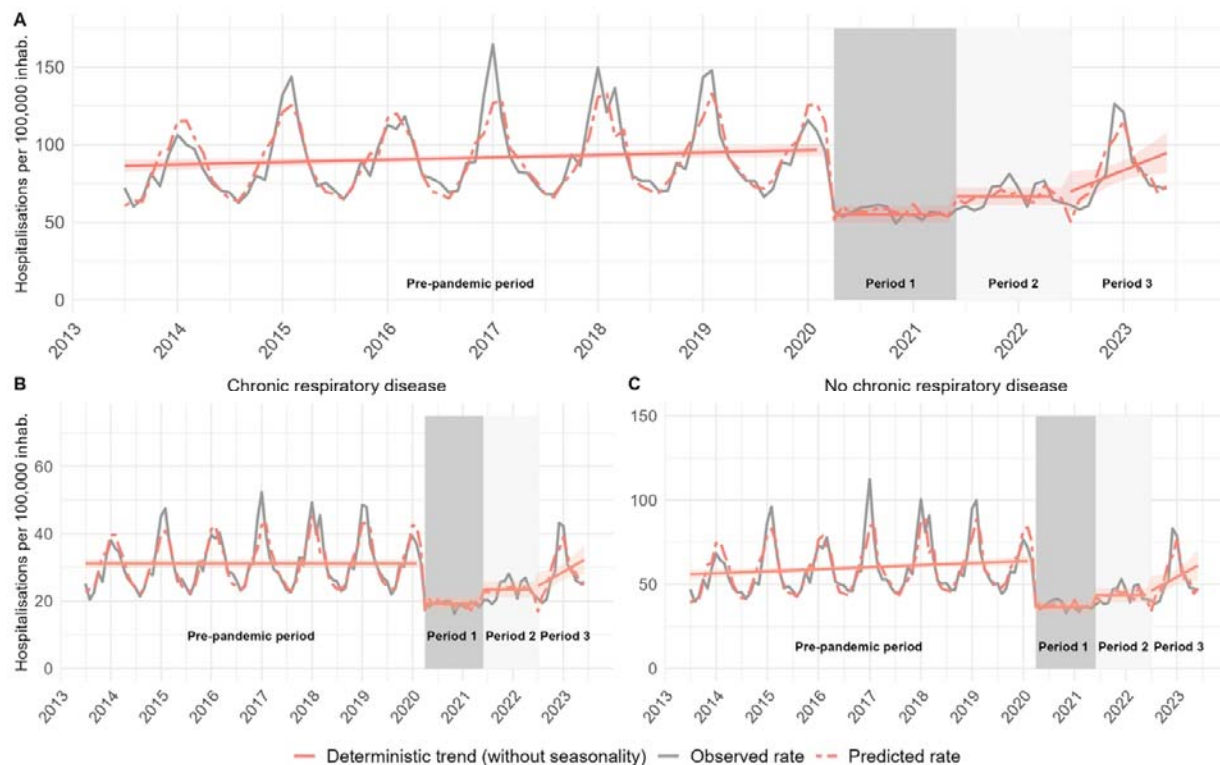
- 399 COVID-19 Shelter-in-Place Order in Northern California. *JAMA Netw Open*. 25 janv  
400 2021;4(1):e2035281.
- 401 25. Meyer Sauteur PM, Beeton ML, Uldum SA, Bossuyt N, Vermeulen M, Loens K, et al.  
402 *Mycoplasma pneumoniae* detections before and during the COVID-19 pandemic: results  
403 of a global survey, 2017 to 2021. *Eurosurveillance* [Internet]. 12 mai 2022 [cité 7 févr  
404 2024];27(19). Disponible sur: [https://www.eurosurveillance.org/content/10.2807/1560-](https://www.eurosurveillance.org/content/10.2807/1560-7917.ES.2022.27.19.2100746)  
405 [7917.ES.2022.27.19.2100746](https://www.eurosurveillance.org/content/10.2807/1560-7917.ES.2022.27.19.2100746)
- 406 26. Bardsley M, Morbey RA, Hughes HE, Beck CR, Watson CH, Zhao H, et al.  
407 Epidemiology of respiratory syncytial virus in children younger than 5 years in England  
408 during the COVID-19 pandemic, measured by laboratory, clinical, and syndromic  
409 surveillance: a retrospective observational study. *Lancet Infect Dis*. janv  
410 2023;23(1):56–66.
- 411 27. Zuo Z, Yang C, Ye F, Wang M, Wu J, Tao C, et al. Trends in respiratory diseases before  
412 and after the COVID-19 pandemic in China from 2010 to 2021. *BMC Public Health*. 1  
413 févr 2023;23(1):217.
- 414 28. Guadalupe-Fernández V, Martínez-Solanas E, Sabrià-Sunyé A, Ferrer-Mikoly C,  
415 Martínez-Mateo A, Ciruela-Navas P, et al. Investigating epidemiological distribution  
416 (temporality and intensity) of respiratory pathogens following COVID-19 de-escalation  
417 process in Catalonia, September 2016–June 2021: Analysis of regional surveillance data.  
418 González-Domenech CM, éditeur. *PLOS ONE*. 9 févr 2024;19(2):e0285892.
- 419 29. Schaberg T, Gialdroni-Grassi G, Huchon G, Leophonte P, Manresa F, Woodhead M. An  
420 analysis of decisions by European general practitioners to admit to hospital patients with  
421 lower respiratory tract infections. The European Study Group of Community Acquired  
422 Pneumonia (ESOCAP) of the European Respiratory Society. *Thorax*. 1 oct  
423 1996;51(10):1017–22.

- 424 30. Macfarlane J. Prospective study of the incidence, aetiology and outcome of adult lower  
425 respiratory tract illness in the community. *Thorax*. 1 févr 2001;56(2):109–14.
- 426 31. Zwaans WAR, Mallia P, Van Winden MEC, Rohde GGU. The relevance of respiratory  
427 viral infections in the exacerbations of chronic obstructive pulmonary disease—A  
428 systematic review. *J Clin Virol*. oct 2014;61(2):181–8.
- 429 32. Hurst JR, Cumella A, Niklewicz CN, Philip KEJ, Singh V, Hopkinson NS. Acceptability  
430 of hygiene, face covering and social distancing interventions to prevent exacerbations in  
431 people living with airways diseases. *Thorax*. mai 2022;77(5):505–7.
- 432 33. Yaacoby-Bianu K, Livnat G, Chalmers JD, Shteinberg M. Respiratory healthcare  
433 professionals' views on long-term recommendations of interventions to prevent acute  
434 respiratory illnesses after the COVID-19 pandemic. *ERJ Open Res*. oct  
435 2022;8(4):00114–2022.
- 436 34. Wu F, Burt J, Chowdhury T, Fitzpatrick R, Martin G, Van Der Scheer JW, et al. Specialty  
437 COPD care during COVID-19: patient and clinician perspectives on remote delivery.  
438 *BMJ Open Respir Res*. janv 2021;8(1):e000817.
- 439 35. Tuppin P, Lesuffleur T, Constantinou P, Atramont A, Coatsaliou C, Ferrat E, et al.  
440 Underuse of primary healthcare in France during the COVID-19 epidemic in 2020  
441 according to individual characteristics: a national observational study. *BMC Prim Care*. 9  
442 août 2022;23(1):200.
- 443 36. Kyriakopoulos C, Gogali A, Exarchos K, Potonos D, Tatsis K, Apollonatos V, et al.  
444 Reduction in Hospitalizations for Respiratory Diseases during the First COVID-19 Wave  
445 in Greece. *Respiration*. 2021;100(7):588–93.
- 446 37. Jones AW, King BE, Cumella A, Hopkinson NS, Hurst JR, Holland AE. Use of infection  
447 control measures in people with chronic lung disease: mixed methods study. *ERJ Open  
448 Res*. janv 2024;10(1):00403–2023.

- 449 38. Buschulte K, Kabitz HJ, Hagemeyer L, Hammerl P, Esselmann A, Wiederhold C, et al.  
450 Hospitalisation patterns in interstitial lung diseases: data from the EXCITING-ILD  
451 registry. *Respir Res.* 4 janv 2024;25(1):5.
- 452 39. Molyneaux PL, Maher TM. The role of infection in the pathogenesis of idiopathic  
453 pulmonary fibrosis. *Eur Respir Rev.* 1 sept 2013;22(129):376–81.
- 454 40. Aveyard P, Gao M, Lindson N, Hartmann-Boyce J, Watkinson P, Young D, et al.  
455 Association between pre-existing respiratory disease and its treatment, and severe  
456 COVID-19: a population cohort study. *Lancet Respir Med.* août 2021;9(8):909–23.
- 457 41. Tuppin P, De Roquefeuil L, Weill A, Ricordeau P, Merlière Y. French national health  
458 insurance information system and the permanent beneficiaries sample. *Rev*  
459 *DÉpidémiologie Santé Publique.* août 2010;58(4):286–90.

460

461 **FIGURE**

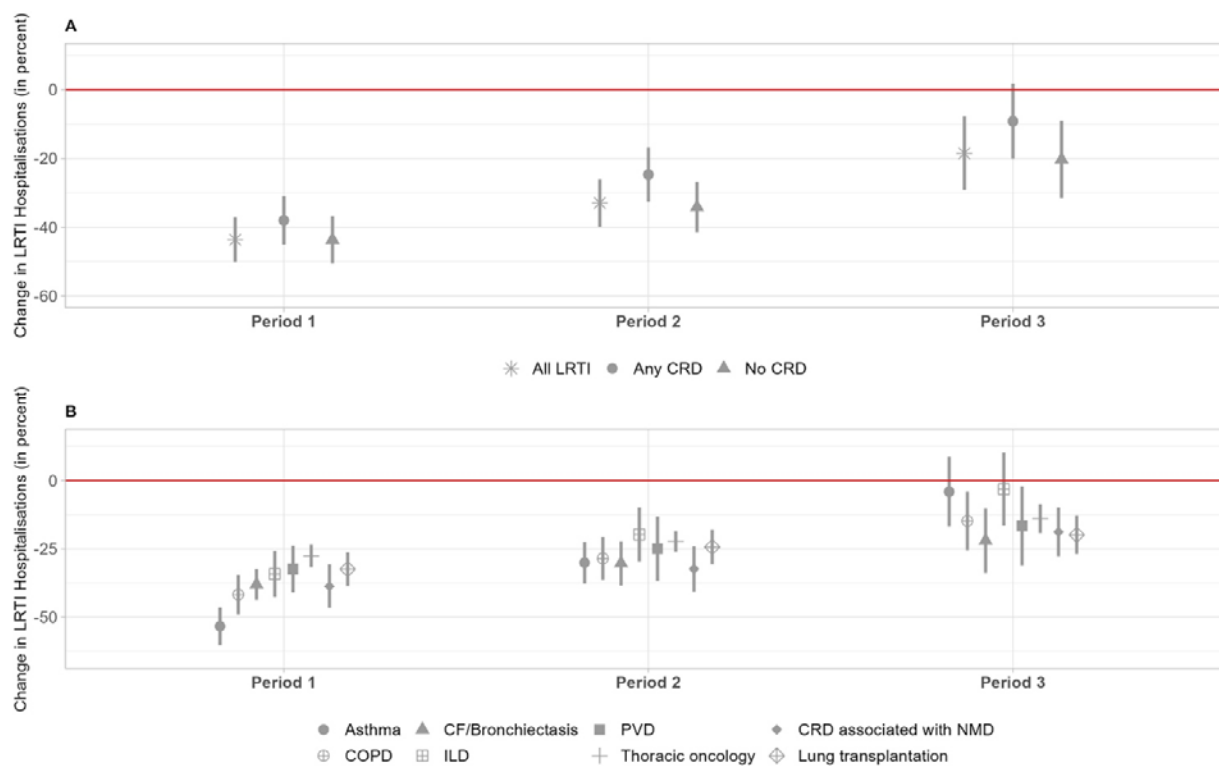


462

463 **Figure 1: Monthly hospitalisation rates of lower respiratory tract infection (excluding**  
464 **COVID-19 infection).**

465 Presentation of all hospital admissions for LRTI (A), and according to the presence (B) or  
466 absence (C) of a CRD. The observed incidence is depicted by the grey line. The model  
467 prediction is presented by the dotted red line, the predicted deterministic trend (regression  
468 line) and its 95% confidence intervals by the solid red line.

469



470

471 **Figure 2: Change in LRTI hospitalisation rates during study periods according to the**

472 **absence or presence of a CRD (A) and according to each category of CRD (B).**

473 Period 1 extends from April 2020 to May 2021, period 2 from June 2021 to June 2022 and

474 period 3 from July 2022 to June 2023. Abbreviations: LRTI: Lower respiratory tract infection;

475 CRD: Chronic respiratory disease; CF: cystic fibrosis; ILD: interstitial lung disease; PVD:

476 pulmonary vascular disease; NMD: neuromuscular disease.

477 **Table 1: Characteristics of the population hospitalised for lower respiratory tract infection (excluding SARS-CoV-2 infection) in France**  
 478 **from July 2013 to June 2023, overall and by study period**

	<b>All study period,</b>	<b>Pre-pandemic period,</b>	<b>Period 1,</b>	<b>Period 2,</b>	<b>Period 3,</b>
		July 2013 - March 2020	April 2020 - May 2023	June 2021 - June 2022	July 2022 - June 2023
	N=5,339,989*	N=3,914,800*	N=454,298*	N=442,162*	N=528,729*
<b>Age, years</b>	78 [65-87]	79 [65-87]	76 [64-86]	76 [64-86]	76 [65-86]
<b>Female gender</b>	2,397,253 (44.9%)	1,778,552 (45.4%)	186,733 (41.1%)	192,220 (43.5%)	239,748 (45.3%)
<b>CRD</b>	1,842,925 (34.5%)	1,351,657 (34.5%)	153,779 (33.8%)	153,690 (34.8%)	183,799 (34.7%)
COPD	1,033,930 (19.4%)	771,619 (19.7%)	80,799 (17.8%)	82,931 (18.8%)	98,581 (18.6%)
Asthma	173,729 (3.3%)	129,567 (3.3%)	11,673 (2.6%)	14,155 (3.2%)	18,334 (3.5%)
CF-Bronchiectasis	128,960 (2.4%)	94,155 (2.4%)	11,722 (2.6%)	10,746 (2.4%)	12,337 (2.3%)
ILD	111,601 (2.1%)	80,490 (2.1%)	9,762 (2.1%)	9,793 (2.2%)	11,556 (2.2%)
Thoracic oncology	235,558 (4.4%)	163,889 (4.2%)	24,963 (5.5%)	21,955 (5.0%)	24,751 (4.7%)
PVD	129,683 (2.4%)	91,194 (2.3%)	12,491 (2.7%)	12,098 (2.7%)	13,900 (2.6%)
CRD associated with NMD	8,410 (0.2%)	6,265 (0.2%)	719 (0.2%)	654 (0.1%)	772 (0.1%)
Lung transplantation	12,473 (0.2%)	8,677 (0.2%)	1,310 (0.3%)	1,181 (0.3%)	1,305 (0.2%)
<b>Type of LRTI</b>					
Pneumonia	4,050,133 (75.8%)	2,890,459 (73.8%)	376,531 (82.9%)	357,402 (80.8%)	425,741 (80.5%)
AECOPD	619,367 (11.6%)	481,563 (12.3%)	43,835 (9.6%)	44,293 (10.0%)	49,676 (9.4%)
AEBX	22,644 (0.4%)	16,729 (0.4%)	2,035 (0.4%)	1,890 (0.4%)	1,990 (0.4%)



	<b>All study period,</b>	<b>Pre-pandemic period,</b>	<b>Period 1,</b>	<b>Period 2,</b>	<b>Period 3,</b>
		July 2013 - March 2020	April 2020 - May 2023	June 2021 - June 2022	July 2022 - June 2023
	N=5,339,989*	N=3,914,800*	N=454,298*	N=442,162*	N=528,729*
Acute bronchitis	647,845 (12.1%)	526,049 (13.4%)	31,897 (7.0%)	38,577 (8.7%)	51,322 (9.7%)
<b>Admission to the ICU</b>	1,268,087 (23.7%)	922,894 (23.6%)	116,035 (25.5%)	104,909 (23.7%)	124,249 (23.5%)
Direct admission	766,869 (60.5%)	555,100 (60.1%)	70,063 (60.4%)	64,493 (61.5%)	77,213 (62.1%)
Time to ICU admission, days	0 [0-1]	0 [0-1]	0 [0-1]	0 [0-1]	0 [0-1]
Organ support	795,779 (62.8%)	581,481 (63.0%)	72,290 (62.3%)	64,737 (61.7%)	77,271 (62.2%)
SAPSII	33 [20-47]	33 [21-47]	32 [17-47]	32 [18-47]	33 [18-47]
<b>Hospital length of stay, days</b>	9 [5-15]	9 [5-15]	9 [5-16]	9 [4-15]	8 [4-15]
<b>Hospital Death</b>	729,568 (13.7%)	511,725 (13.1%)	74,118 (16.3%)	67,935 (15.4%)	75,790 (14.3%)

479 \*Median [Q1-Q3]; n (%)

480 Abbreviations: CRD: chronic respiratory disease; COPD: chronic obstructive pulmonary disease; CF: cystic fibrosis; ILD: interstitial lung disease; PVD:  
481 pulmonary vascular disease; NDM: neuromuscular disease; LRTI: lower respiratory tract infection; AECOPD: acute exacerbation of COPD; AEBX: acute  
482 exacerbation of bronchiectasis; ICU: intensive care unit; SAPSII: simplified acute physiology score