

Operationalizing multimorbidity in relation to mortality and physical function: findings from a prospective longitudinal cohort study

Han Sang Seo, PhD¹, Daniel Davis, PhD¹, Amal R. Khanolkar, PhD², Alun Hughes, PhD¹, Praveetha Patalay, PhD^{1,3}

1. MRC Unit for Lifelong Health and Ageing at University College London, London, UK
2. School of Life Course & Population Sciences at King's College London, London, UK
3. Centre for Longitudinal Studies at University College London, London, UK

*Address correspondence to:

Han Sang Seo, PhD. Email: han.seo.16@ucl.ac.uk

MRC Unit for Lifelong Health and Ageing at University College London, London, UK

Funding

This work was supported by the following grants: This work was supported by the UK Medical Research Council which provides core funding for the Medical Research Council Unit for Lifelong Health and Ageing at University College London and the Medical Research Council National Survey of Health and Development (grant numbers MC_UU_00019/1, MC_UU_00019/3). Han Sang Seo was supported by grant from Medical Research Council (grant number MC_UU_00019/3).

Abstract

BACKGROUND AND OBJECTIVES: There is little consensus on how multimorbidity should be operationalized in life course research. We set out to derive better empirical definitions for multimorbidity by examining its different operationalizations and their associations with mortality, functional independence and physical capability in a longitudinal population-representative cohort.

RESEARCH DESIGN AND METHODS: We used data from 2653 (51.6% female) study members in the MRC National Survey of Health and Development (NSHD), a British cohort born in 1946. We examined predictive utility of five multimorbidity operationalizations by age 63 (*binary multimorbidity, unweighted disease count, weighted disease count, clustered multimorbidity, cumulative multimorbidity*) using 16 chronic disease, to predict 12-year mortality and age 69 functional independence and physical capability (grip strength, chair rise speed, balance).

RESULTS: The multimorbidity operationalizations of *unweighted disease count* (16.3%) and *weighted disease count* (16.7%) explained the highest variation for mortality compared with other operationalizations. Similarly, explained variation for *unweighted disease count* (17.0%) and *weighted disease count* (16.4%) showed the highest prediction for functional independence and physical capability at age 69 years, with minor variations in physical performance measures where clustered multimorbidity also explained high variance (e.g. 8.6% for changes in chair rise speed). Binary multimorbidity, although frequently used in research was the least predictive of all outcomes.

DISCUSSION AND IMPLICATIONS: The associations between various multimorbidity measures and mortality and physical functioning lend support to important influence of multimorbidity on later-life health and functioning while highlighting the differences in variance prediction and point estimates

when different approaches to operationalizing multimorbidity are used. An unweighted disease count approach might be suitable for many epidemiological research questions as it is simple to estimate while being as predictive as other more complex approaches such as weighted disease counts.

Translational Significance:

Multimorbidity research urgently needs a standardized approach to its measurement and operationalization. This study simultaneously compares different strengths of association between multimorbidity definitions and mortality, functional independence and physical capability. This adds possibility by using the predictive utility for mortality, functional independence and physical capability as criteria for determining the usefulness of a given operationalization. Quantifying how these vary offers practical choices between methods of operationalizing multimorbidity for various purposes in research and clinical settings, for example, a targeted strategy aimed at understanding mortality, physical function and health care utilization.

KEYWORDS:

Multiple conditions; long-term conditions; mortality; life course; functioning

Background and Objectives

Multimorbidity is a public health priority for health and social care practitioners, researchers, and policy-makers.¹ More than half of older people aged 65 or over are living with multimorbidity, the prevalence of which is projected to increase from 54% to 68% over next two decades.² With the progress of medical science and increasing life expectancy, the prevalence of multimorbidity is increasing worldwide.³ It is expected to further increase in the coming years, now becoming the norm in the elderly.⁴ The prevalence of multimorbidity tends to be higher in older adults as people become more susceptible to chronic illnesses with increasing age.⁵

Multimorbidity has been associated with multiple undesirable outcomes including higher mortality,⁶ disability⁷ and lower functional capacity,⁸ decreased quality of life,⁹ polypharmacy and increased treatment burden.¹² Moreover, earlier age at multimorbidity onset prolongs the period spent in poorer health thereby widening socioeconomic and health inequalities over the life course.¹²

Several studies have attempted to identify specific multimorbidity patterns in older adults, beyond determining its basic presence or absence. Studies consistently show that chronic diseases tend to cluster in specific patterns. Moreover, multimorbidity may have a differential health impact if its constituent conditions are disparate or closely related.¹⁶ Individuals with disparate conditions may require more complex care, as long-term conditions in different physiological systems are more likely to result in polypharmacy and result in competing medical demands, in contrast to conditions within the same system.¹³

The wide variation in multimorbidity prevalence, from 13.1% to 71.8% in population studies¹⁵ arise because there is no consensus on its conceptual or operational definitions. This includes counting the

number and types of chronic conditions, thresholds, data sources, study populations and cohort characteristics such as age, sex and socioeconomic position. Estimates are higher if more chronic conditions are included, or if definitions are broader.¹⁸

Individuals with multimorbidity generally experience a higher risk of mortality in comparison to those without.⁷ The biological plausibility linking multimorbidity and mortality mirrors physiological mechanisms that heighten the risk of death in people with diseases. In a meta-analysis of 26 studies by Nunes et al.⁶ involving participants aged over 65 years, the presence of ≥ 2 or ≥ 3 diseases was linked to a pooled relative hazard ratio for mortality of 1.73 and 2.72, respectively. The mortality rate, on average, saw a 40% increase with the addition of each extra disease. Furthermore, mortality in older people is multifactorial and includes environmental and socioeconomic characteristics,²¹ as well as being influenced by geriatric conditions²² and healthcare actions.²³

Multimorbidity has been associated with greater functional limitations and a decline in physical functioning. Limitations in physical function due to multimorbidity decisively affect people's illness and treatment burden and their response capacity, which may further increase multimorbidity.²⁴ Apart from a few exceptions,²⁵ the association between multimorbidity and poor physical function in older adults was demonstrated in several cross-sectional and longitudinal studies.²⁶⁻³² According to a population-based study by Aarts et al., functional impairment from multimorbidity persists over time and often shows further worsening.²⁷ Jindai et al. showed that, in older individuals, the association between multimorbidity and functional limitation is strengthened in older age (>75) and females.²⁸ Measures of physical function, being important biomarkers of older adults' health statuses, can be used as an alternative to disease status for assessing the health of older persons.³¹

We aimed to derive better empirical definitions for multimorbidity by examining associations with later-life physical function and mortality. This endeavour aimed to offer insights useful for enhancing

healthcare delivery and formulating health policies tailored to individuals affected by multimorbidity. It adds to the literature by conducting a population-based analysis that involves study members being followed up throughout their lives. In particular, we measured the predictive utility of different multimorbidity constructs including *binary multimorbidity*, *unweighted disease count*, *weighted disease count*, *clustered multimorbidity*, and *cumulative multimorbidity* based on the duration of conditions. As the burden of multimorbidity increases, so does the individual's likelihood of developing these outcomes. However, different measures of multimorbidity will exhibit varying degrees of association strength, thereby offering distinct predictive utility.

Methods

Participants

The MRC National Survey of Health and Development (NSHD) was established in 1946 and is an ongoing longitudinal population-based study, sampled from births recorded in England, Wales, and Scotland one week in March 1946 (from a total of 16,695 registered births).³³ From these, a socially stratified sample of 5,362 (47.5% female) was selected at age 2 and followed since with data collections in adulthood at ages 26, 36, 43, 53 and 60-64 (63 on average) and 69 years.

Chronic disease assessment

The clinical diagnoses of chronic diseases were derived from multiple sources of information of study members, involving self-reports, medication records, anthropometric data, and specific clinical measurements. Developing a clinically derived list of chronic diseases was fundamental in operationalizing multimorbidity. For this, the Delphi technique, recognised as a structured communication tool, was used to attain an informed consensus regarding the classification of conditions

as chronic. The Delphi team comprised ten clinicians, each tasked with indicating their decision and providing it with a brief explanation using the same form (see Supplemental Table 1). At age 63, we derived definitions for: anaemia, cancer, coronary heart disease, diabetes, depression, dyslipidaemia, epilepsy, gastrointestinal disorders, hypertension, obesity, osteoarthritis, Parkinson's disease, psychotic disorders, respiratory disorders, rheumatoid arthritis, and stroke. Conditions were coded as present/not present at age 36, 43, 53, and 63; For full description and definitions, see (Supplemental Table 1).

Multimorbidity operationalizations

Various measures for multimorbidity operationalizations will be used to demonstrate the association to various outcomes (mortality and physical capability) and their relative predictive utility.

Binary multimorbidity

Based on multimorbidity defined as the co-occurrence of two or more diseases within an individual, we used the sum of reported conditions categorized into binary groups (0/1 and ≥ 2).

Unweighted disease count

This is the unweighted sum of the number of conditions out of the 16 specified, present in an individual.

Weighted disease count

Some studies have weighted each condition based on its burden before summing. Often weights are generated from within the analysis sample, which has drawbacks in terms of applicability to other datasets. We pooled weights across published studies,^{34–36} and indexes (i.e. Cambridge multimorbidity

score, Charlson comorbidity score, Chronic disease score etc)³⁷⁻⁴⁰ using random-effect meta-analysis (see Supplemental Table 7), using this to define a weighted sum score.

Clustered multimorbidity

Using the International Classification of Disease 10th Revision (ICD-10) system, we categorized the 9 index conditions into 7 physiological systems: *Cardiometabolic*: Diabetes, Hypertension, Obesity; *Neuropsychiatric*: Depression, Epilepsy; *Neoplasm*: Cancer; *Respiratory*: Respiratory disorders; *Digestive*: Gastrointestinal disorders; *Skin*: Dermatological disorders

Study members were classified into mutually exclusive groups:

- a) two or more conditions affecting one body system (associative MM)
- b) two or more conditions affecting two body systems (mixed MM)
- c) three or more conditions affecting three or more body systems (complex MM), following the definition of complex multimorbidity used in various studies.^{41,42}

Cumulative multimorbidity

To account for the duration of exposure to a given long-term condition, we made continuous variables for time since first incident report from each age (age 36, 43, 53, 63) up to age 63. We considered both linear and exponential weightings.

With linear weighting, weighted scores linearly increased with the increased total disease duration. It was assigned by dividing the total disease duration by 10. For example, if a study member had 20 years of diabetes and 10 years of hypertension, a score of 3 was given. Exponential weighting investigated if longer exposure to a long-term condition had geometrical impact on health. We applied the power of

1.1 to linear weighting. For example, using the same example above, the study member X would have a $3^{1.1} = 3.35$ score.

Outcomes

Mortality

All-cause mortality data was obtained from all consenting study members linked to the National Health Service (NHS) central register, starting from the age of 26 and onward. The variables included their year of death, death in 3 months (e.g. January-March), and death status. For these analyses, follow-up time was from ages 60-64 years (dependent on the timing of the nurse visits or postal questionnaire) to mortality, or censored due to emigration or the end of September 2018.

Physical function

Physical function, which denotes an individual's capacity to perform essential physical tasks necessary for daily functioning, is frequently evaluated through a combination of performance-based assessments and self-reported measures. We considered nurse-assessed personal and instrumental activities of daily living, and physical capability measures.

Functional independence

At age 60-64 (63 on average) and 69, we used the Office of Population Censuses and Surveys (OPCS) survey of disability, asking specifically about the difficulty with day-to-day activities. There were 20 items for general mobility, Activities of Daily Living (ADL) variables, and Instrumental Activities of Daily Living (IADL). These were summed to give a total disability score ranging from 0 (least disability) to 20 (worst disability) (see Supplemental Table 3).

Physical capability

We measured grip strength, chair rise time and standing balance during home visits at age 63 and 69 under the supervision of a trained nurse following standardized protocols.^{43,44} The selection of these three assessments was based on their widespread utilisation as fundamental indicators of physical capability within epidemiological research.⁴³ These tests can detect meaningful variation in physical capability between individuals in late life across the full spectrum of ability (see Supplemental Table 6). A score was recorded for each performance-based measure if the study member demonstrated willingness and capability to undergo the specific test. When a study member was unwilling or unable to fulfil the task, the nurse documented the reason, subsequently moving on to the next task in the assessment sequence. These assessments were conducted at a regular pace, and study members were permitted to use personal aids if necessary; however, the use and type of aid were documented. Assistance from another person was not permitted.

Covariates

Physical capability measures at 63 were used in the adjusted model to look at changes in physical capability from 63 to 69. Although sex and socioeconomic position were not included within the regression model, they were used in the descriptive study to look at stratified differences.

Statistical analysis

We described the distribution and prevalence of multimorbidity using the operationalizations defined above. Predictive utility was estimated using survival analyses (outcome = mortality), zero-inflated Poisson regression (outcome = functional independence), and linear regression (outcome = physical capability).

Descriptive statistics

Descriptive analyses of the study population comprised the summary statistics to investigate overarching patterns. These were performed by generating histograms and frequency tables to evaluate the distribution, means, and range of each variable within the dataset. Each variable underwent examination for potential outliers, and normality was tested for continuous variables by histogram and Shapiro-Wilk test. The characteristics of study members were presented as absolute numbers and proportions (%), or as mean \pm standard deviation (SD), or 95% confidence intervals (95% CI), as appropriate.

Survival analyses

From the dataset, two time variables were used; year at death and survival time (year at death minus year at completing the questionnaires either nurse or postal occurring between 2006-2010). Once the data were set as survival data, the longitudinal analysis approaches were used such as the Cox proportional hazards regression. The follow-up period for longitudinal analyses began between 2006-2010 to 2018: 8-12 years. In the analysis, the mortality rate was examined in relation to various multimorbidity measures at age 63. Cox proportional hazards modelling was used to test whether there were significant differences in rates between the sub-groups of the multimorbidity measures with the mortality. The proportional hazards assumption was checked amongst various multimorbidity measures graphically using Schoenfeld residuals.

Zero-inflated Poisson (ZIP) regression models

To test the effects of multimorbidity measures on independency; a count variable with excess zeros, and zero-inflated Poisson (ZIP) regression models were implemented for all multivariable models. In this study, the dependent variable was the count of disabilities observed among study members. Given the characteristics of the data on independence, the response of "no disability" was coded as 0 (zero

count), and the probability of experiencing "no disability" represents the phenomenon of "zero-inflation." Also, the models were fit for identical covariates (independency at 63) for both the count (number of disability scores) and inflate (no disability) portions of the ZIP model to assess the change in independency from age 63 to 69. Postestimation testing was undertaken to validate that the ZIP model stood as the most appropriate analytic approach when compared to linear, Poisson, and negative binomial regressions. The model coefficients were exponentiated to derive incidence rate ratios (IRRs), or the ratio of expected counts, which can be interpreted as a relative risk ratio. The models and estimates were interpreted based on p-values < 0.05 .

Linear regression models

Linear regression analysis was used to assess the mean difference in physical performance associated with each multimorbidity measure. Before undertaking regression analysis, model assumptions were tested by examining diagnostic plots depicting the relationship between condition or multimorbidity and the continuous outcomes. The graphical analyses demonstrated that the relevant assumptions were satisfied.

The coefficients produced from linear regression where the exposure is categorical indicate the average difference in units of the outcome when moving from the reference category to any particular category. For each outcome, the corresponding regression model was conducted with multimorbidity measures as exposure variables. Analyses were initially conducted unadjusted and then included age 63 physical limitation for changes in physical functioning in the adjusted model

Results

Descriptives

The sample included 2,653 individuals (51.6% female) (Table 1). 1,702 (64.2%) had *binary multimorbidity* with a similar prevalence in both sexes. Only 353 (13.3%) individuals did not have any condition. Three clusters were identified: 248 (9.4%) individuals had associative multimorbidity, 806 (30.4%) had mixed multimorbidity, and 648 (24.4%) had complex multimorbidity.

Multimorbidity and mortality

There were 172 deaths (6.48%) over a median 4.7 years of follow-up, giving a 5.2/1000 person-years mortality rate (Table 2). Study members with basic multimorbidity had a lower survival probability than those without (HR 1.76 (95% CI 1.24 to 2.49)). Higher *unweighted disease count* was associated with higher mortality, either continuous (HR 1.16 per disease (1.07 to 1.24)) or weighted (HR 1.12 (1.06 to 1.18)). Complex multimorbidity was associated with the highest mortality (HR 1.85 (1.23 to 2.78)). The HR for mortality with cumulative multimorbidity per one unit increase was 1.06 (1.00 to 1.13) for a linear and 1.05 (1.00 to 1.10) for an exponentiated model.

Somers' D (Figure 1), similar to R², gives explained variation to compare which model has the highest predictive power in Cox regression. *Unweighted disease count* (16.3%) and *weighted disease count* (16.7%) have shown the highest predictive power for mortality compared to other operationalizations.

Multimorbidity and physical function

Across the 20 measures of functional independence at age 69, 46.5% (N=999) of the study members at age 69 reported no difficulty, and 24.4% (N=525) reported one difficulty in all measures. A graded pattern was observed among those who reported difficulty for each task, with fewer people reporting

more problems. These results suggest that there may be some evidence of a ceiling effect in the self-reported measures, with the majority of study members reporting no difficulty with the 20 tasks assessed. The mean functional independence score was 1.66 and there was a presence of excess zero counts (46.5%).

In the analysis of the *unweighted disease count*, *weighted disease count*, and *cumulative multimorbidity* showed significant associations to both functional independence at age 63 and changes in functional independence. Higher scores on multimorbidity measures were generally associated with increased incidence of difficulties in functional independence tasks and increased changes in functional independence. The results of the logit model analysis indicated that no-disability group had lower scores on *unweighted disease count*, *weighted disease count*, and *cumulative multimorbidity*. In general, lower scores on multimorbidity measures were associated with an increased possibility of not having difficulties in independency tasks and not having changes in independency.

Cox-Snell R² (Figure 1), gives explained variation to compare which model has the highest predictive power for zero-inflated Poisson regression. *Unweighted disease count* (17.0%) and *weighted disease count* (16.4%), similar to Somer's D in Cox regression, have shown the highest predictive power for functional independence than any other measures within the exposure variables.

In the linear regression model analysis, *unweighted disease count*, *weighted disease count*, and *cumulative multimorbidity* showed significant associations to both physical capabilities and changes in physical capabilities. Higher scores on multimorbidity measures were generally associated with poorer physical capabilities and longitudinal decrease in physical capabilities.

Discussion and Implications

This study examined various multimorbidity operationalizations to compare predictive utilities for mortality and physical functioning in a longitudinal sample. Different multimorbidity measures, in general, were all associated with higher mortality and poorer physical function. *Unweighted disease count* demonstrated the highest predictive utility or variation explained. Both *weighted* and *cumulative multimorbidity* did not add any predictive value over the *unweighted disease count*. *Clustered multimorbidity* was less predictive of mortality outcomes but better predicted changes in physical functioning markers such as grip strength. Although most commonly used in multimorbidity studies, *binary multimorbidity* was insufficiently useful overall.

The higher mortality risk among study members with increasing disease count found in our study is consistent with other data showing a dose-response relationship.⁷

Previous studies have demonstrated that multimorbidity is linked to functional limitations both cross-sectionally and longitudinally.²⁶⁻³² We found that various operationalizations of multimorbidity were all associated with lower functional independence and physical capability. Moreover, individuals with more conditions, more severe diseases and specific disease patterns experienced larger changes in functional decline.⁸ Together, these contrast with research reporting no association between comorbidity⁴⁷ or grouped multimorbidity⁴⁸ with physical functioning. One similar cohort study showed at least 50% of the participants were functionally independent despite chronic disorders among older people over 65.⁴⁹

Our data simultaneously compare different strengths of association between multimorbidity definitions and mortality, functional independence and physical capability. Quantifying how these vary offers practical choices between methods of operationalizing multimorbidity for various purposes in research and clinical settings, for example a targeted strategy for understanding mortality, physical function and health care utilization for older people.

Our analyses benefit from prospective ascertainment of multimorbidity and serial measures of functional independence. We included many common chronic conditions, using the same conditions across different operationalizations. However, we were sometimes limited by questionnaire phrasing, where disease were often aggregated (e.g. respiratory disorders or gastrointestinal disorders), which could obscure relationships. The limited number of included conditions reinforces the need to corroborate these findings in much larger datasets with a larger number of conditions, such as electronic health records.

There have been changes in disease definitions and criteria over time, which makes it difficult to study some conditions in greater detail. For example, we had to group all respiratory conditions to account for different measurement methods over the last thirty years. Some conditions like coronary heart disease, stroke and kidney disorders were defined by self-report. However, self-reported diagnoses do not always lead to bias, and we have previously found >90% agreement for diabetes diagnosis between self-report and primary care diagnosis in this cohort.⁵⁰ In future, we may overcome general concerns over biased ascertainment by triangulating multiple sources, including self-report, electronic health records and biomarker assessments at multiple time points.

Multimorbidity research urgently needs a standardized approach to its measurement and operationalization. We add to this possibility by using predictive utility for mortality, functional independence and physical capability as criteria for determining the usefulness of a given operationalization. We showed that *unweighted disease count* was best in this respect, with the advantage of being conceptually straightforward and more likely to be robust.

Acknowledgements: We are grateful to the cohort members in the 1946 National Study of Health and Development who have provided data for research throughout their lives for their continuing support. We also thank members of the NSHD scientific and data collection teams.

Conflict of Interest: None declared.

Data Availability: The 1946 MRC National Survey of Health & Development (NSHD) data is available for research via application to the NSHD Data Sharing Committee, a data sharing agreement being in place between UCL and the academic institution that employs the researcher, and LHA resources being available to meet the requests for data sharing. Additionally, all proposals to use the NSHD data must support and adhere to the core principles of data sharing with the Medical Research Council (MRC).

For more information on the NSHD, access to data & collaborations, please see

<http://www.nshd.mrc.ac.uk/data/data-sharing>

or contact mrclha.enquiries@ucl.ac.uk

Further information can also be accessed at: <https://skylark.ucl.ac.uk>

Author Contributions: All authors conceptualized the research aims and contributed to the design of the study. HS prepared the dataset and conducted the analysis. HS and PP drafted the paper with input from all authors. All authors discussed the findings, contributed to drafting and read and approved the final manuscript.

References

1. Pefoyo AJK, Bronskill SE, Gruneir A, et al. The increasing burden and complexity of multimorbidity. *BMC Public Health*. 2015;15:415. doi:10.1186/s12889-015-1733-2
2. Kingston A, Robinson L, Booth H, Knapp M, Jagger C, MODEM project. Projections of multimorbidity in the older population in England to 2035: estimates from the Population Ageing and Care Simulation (PACSim) model. *Age Ageing*. 2018;47(3):374-380. doi:10.1093/ageing/afx201
3. Goodman RA, Posner SF, Huang ES, Parekh AK, Koh HK. Defining and measuring chronic conditions: imperatives for research, policy, program, and practice. *Prev Chronic Dis*. 2013;10:E66. doi:10.5888/pcd10.120239
4. Poblador-Plou B, van den Akker M, Vos R, Calderón-Larrañaga A, Metsemakers J, Prados-Torres A. Similar multimorbidity patterns in primary care patients from two European regions: results of a factor analysis. *PLoS One*. 2014;9(6):e100375. doi:10.1371/journal.pone.0100375
5. Marengoni A, Angleman S, Melis R, et al. Aging with multimorbidity: a systematic review of the literature. *Ageing Res Rev*. 2011;10(4):430-439. doi:10.1016/j.arr.2011.03.003
6. Nunes BP, Flores TR, Mielke GI, Thumé E, Facchini LA. Multimorbidity and mortality in older adults: A systematic review and meta-analysis. *Arch Gerontol Geriatr*. 2016;67:130-138. doi:10.1016/j.archger.2016.07.008
7. Quiñones AR, Markwardt S, Botosaneanu A. Multimorbidity Combinations and Disability in Older Adults. *J Gerontol A Biol Sci Med Sci*. 2016;71(6):823-830. doi:10.1093/gerona/glw035
8. Ryan A, Wallace E, O'Hara P, Smith SM. Multimorbidity and functional decline in community-dwelling adults: a systematic review. *Health Qual Life Outcomes*. 2015;13:168. doi:10.1186/s12955-015-0355-9
9. Fortin M, Dubois MF, Hudon C, Soubhi H, Almirall J. Multimorbidity and quality of life: a closer look. *Health Qual Life Outcomes*. 2007;5:52. doi:10.1186/1477-7525-5-52
10. Calderón-Larrañaga A, Poblador-Plou B, González-Rubio F, Gimeno-Feliu LA, Abad-Díez JM, Prados-Torres A. Multimorbidity, polypharmacy, referrals, and adverse drug events: are we doing things well? *Br J Gen Pract J R Coll Gen Pract*. 2012;62(605):e821-826. doi:10.3399/bjgp12X659295
11. Rosbach M, Andersen JS. Patient-experienced burden of treatment in patients with multimorbidity - A systematic review of qualitative data. *PLoS One*. 2017;12(6):e0179916. doi:10.1371/journal.pone.0179916
12. Khanolkar Amal, Chaturvedi N, Kuan V, et al. *Socioeconomic Inequalities in Prevalence and Development of Multimorbidity across Adulthood: Findings from the MRC 1946 National Survey of Health & Development*. *Epidemiology*; 2020. doi:10.1101/2020.08.14.20174037
13. Piette JD, Kerr EA. The Impact of Comorbid Chronic Conditions on Diabetes Care. *Diabetes Care*. 2006;29(3):725-731. doi:10.2337/diacare.29.03.06.dc05-2078

14. Yarnall AJ, Sayer AA, Clegg A, Rockwood K, Parker S, Hindle JV. New horizons in multimorbidity in older adults. *Age Ageing*. 2017;46(6):882-888. doi:10.1093/ageing/afx150
15. Fortin M, Stewart M, Poitras ME, Almirall J, Maddocks H. A systematic review of prevalence studies on multimorbidity: toward a more uniform methodology. *Ann Fam Med*. 2012;10(2):142-151. doi:10.1370/afm.1337
16. Cassell A, Edwards D, Harshfield A, et al. The epidemiology of multimorbidity in primary care: a retrospective cohort study. *Br J Gen Pract J R Coll Gen Pract*. 2018;68(669):e245-e251. doi:10.3399/bjgp18X695465
17. Quail JM, Lix LM, Osman BA, Teare GF. Comparing comorbidity measures for predicting mortality and hospitalization in three population-based cohorts. *BMC Health Serv Res*. 2011;11:146. doi:10.1186/1472-6963-11-146
18. Brilleman SL, Salisbury C. Comparing measures of multimorbidity to predict outcomes in primary care: a cross sectional study. *Fam Pract*. 2013;30(2):172-178. doi:10.1093/fampra/cms060
19. Landi F, Calvani R, Tosato M, et al. Impact of physical function impairment and multimorbidity on mortality among community-living older persons with sarcopaenia: results from the iSIRENTE prospective cohort study. *BMJ Open*. 2016;6(7):e008281. doi:10.1136/bmjopen-2015-008281
20. St John PD, Tyas SL, Menec V, Tate R. Multimorbidity, disability, and mortality in community-dwelling older adults. *Can Fam Physician Med Fam Can*. 2014;60(5):e272-280.
21. Silva V de L, Cesse EÂP, de Albuquerque M de FPM. Social determinants of death among the elderly: a systematic literature review. *Rev Bras Epidemiol Braz J Epidemiol*. 2014;17 Suppl 2:178-193. doi:10.1590/1809-4503201400060015
22. Woo J, Leung J. Multi-morbidity, dependency, and frailty singly or in combination have different impact on health outcomes. *Age Dordr Neth*. 2014;36(2):923-931. doi:10.1007/s11357-013-9590-3
23. Veras RP, Caldas CP, Motta LB da, et al. Integration and continuity of Care in health care network models for frail older adults. *Rev Saude Publica*. 2014;48(2):357-365. doi:10.1590/s0034-8910.2014048004941
24. Parsons S, Gale CR, Kuh D, Elliott J, Team THS. Physical capability and the advantages and disadvantages of ageing: perceptions of older age by men and women in two British cohorts. *Ageing Soc*. 2014;34(3):452-471. doi:10.1017/S0144686X12001067
25. Hudon C, Soubhi H, Fortin M. Relationship between multimorbidity and physical activity: Secondary analysis from the Quebec health survey. *BMC Public Health*. 2008;8(1):304. doi:10.1186/1471-2458-8-304
26. Garin N, Olaya B, Moneta MV, et al. Impact of Multimorbidity on Disability and Quality of Life in the Spanish Older Population. *PLoS ONE*. 2014;9(11). doi:10.1371/journal.pone.0111498
27. Aarts S, den Akker M van, Bosma H, et al. The effect of multimorbidity on health related functioning: temporary or persistent? Results from a longitudinal cohort study. *J Psychosom Res*. 2012;73(3):211-217. doi:10.1016/j.jpsychores.2012.05.014

28. Jindai K. Multimorbidity and Functional Limitations Among Adults 65 or Older, NHANES 2005–2012. *Prev Chronic Dis.* 2016;13. doi:10.5888/pcd13.160174
29. Jackson CA, Jones M, Tooth L, Mishra GD, Byles J, Dobson A. Multimorbidity patterns are differentially associated with functional ability and decline in a longitudinal cohort of older women. *Age Ageing.* 2015;44(5):810-816. doi:10.1093/ageing/afv095
30. Koller D, Schön G, Schäfer I, Glaeske G, van den Bussche H, Hansen H. Multimorbidity and long-term care dependency—a five-year follow-up. *BMC Geriatr.* 2014;14(1):70. doi:10.1186/1471-2318-14-70
31. Anton SD, Woods AJ, Ashizawa T, et al. Successful aging: Advancing the science of physical independence in older adults. *Ageing Res Rev.* 2015;24(Pt B):304-327. doi:10.1016/j.arr.2015.09.005
32. Marengoni A, Angleman S, Fratiglioni L. Prevalence of disability according to multimorbidity and disease clustering: a population-based study. *J Comorbidity.* 2011;1:11-18.
33. Wadsworth M. The origins and innovatory nature of the 1946 British national birth cohort study. *Longitud Life Course Stud.* 2010;1(2):121-136. doi:10.14301/llcs.v1i2.64
34. Diederichs C, Berger K, Bartels DB. The measurement of multiple chronic diseases--a systematic review on existing multimorbidity indices. *J Gerontol A Biol Sci Med Sci.* 2011;66(3):301-311. doi:10.1093/gerona/glq208
35. Tooth L, Hockey R, Byles J, Dobson A. Weighted multimorbidity indexes predicted mortality, health service use, and health-related quality of life in older women. *J Clin Epidemiol.* 2008;61(2):151-159. doi:10.1016/j.jclinepi.2007.05.015
36. Menendez ME, Neuhaus V, van Dijk CN, Ring D. The Elixhauser Comorbidity Method Outperforms the Charlson Index in Predicting Inpatient Death After Orthopaedic Surgery. *Clin Orthop.* 2014;472(9):2878-2886. doi:10.1007/s11999-014-3686-7
37. Charlson ME, Pompei P, Ales KL, MacKenzie CR. A new method of classifying prognostic comorbidity in longitudinal studies: development and validation. *J Chronic Dis.* 1987;40(5):373-383. doi:10.1016/0021-9681(87)90171-8
38. Payne RA, Mendonca SC, Elliott MN, et al. Development and validation of the Cambridge Multimorbidity Score. *CMAJ Can Med Assoc J J Assoc Medicale Can.* 2020;192(5):E107-E114. doi:10.1503/cmaj.190757
39. Clark DO, Von Korff M, Saunders K, Baluch WM, Simon GE. A chronic disease score with empirically derived weights. *Med Care.* 1995;33(8):783-795. doi:10.1097/00005650-199508000-00004
40. Groll DL, To T, Bombardier C, Wright JG. The development of a comorbidity index with physical function as the outcome. *J Clin Epidemiol.* 2005;58(6):595-602. doi:10.1016/j.jclinepi.2004.10.018
41. Harrison C, Britt H, Miller G, Henderson J. Examining different measures of multimorbidity, using a large prospective cross-sectional study in Australian general practice. *BMJ Open.* 2014;4(7):e004694. doi:10.1136/bmjopen-2013-004694

42. Kato D, Kawachi I, Saito J, Kondo N. Complex multimorbidity and mortality in Japan: a prospective propensity-matched cohort study. *BMJ Open*. 2021;11(8):e046749. doi:10.1136/bmjopen-2020-046749
43. Kuh D, Karunanathan S, Bergman H, Cooper R. A life-course approach to healthy ageing: maintaining physical capability. *Proc Nutr Soc*. 2014;73(2):237-248. doi:10.1017/S0029665113003923
44. Kuh D, Bassey EJ, Butterworth S, Hardy R, Wadsworth MEJ, Musculoskeletal Study Team. Grip strength, postural control, and functional leg power in a representative cohort of British men and women: associations with physical activity, health status, and socioeconomic conditions. *J Gerontol A Biol Sci Med Sci*. 2005;60(2):224-231. doi:10.1093/gerona/60.2.224
45. Martinez-Gomez D, Guallar-Castillon P, Garcia-Esquinas E, Bandinelli S, Rodríguez-Artalejo F. Physical Activity and the Effect of Multimorbidity on All-Cause Mortality in Older Adults. *Mayo Clin Proc*. 2017;92(3):376-382. doi:10.1016/j.mayocp.2016.12.004
46. Halonen P, Raitanen J, Jämsen E, Enroth L, Jylhä M. Chronic conditions and multimorbidity in population aged 90 years and over: associations with mortality and long-term care admission. *Age Ageing*. 2019;48(4):564-570. doi:10.1093/ageing/afz019
47. Baker TA, Whitfield KE. Physical functioning in older blacks: an exploratory study identifying psychosocial and clinical predictors. *J Natl Med Assoc*. 2006;98(7):1114-1120.
48. Parker L, Moran GM, Roberts LM, Calvert M, McCahon D. The burden of common chronic disease on health-related quality of life in an elderly community-dwelling population in the UK. *Fam Pract*. 2014;31(5):557-563. doi:10.1093/fampra/cm035
49. Santoni G, Marengoni A, Calderón-Larrañaga A, et al. Defining Health Trajectories in Older Adults With Five Clinical Indicators. *J Gerontol A Biol Sci Med Sci*. 2017;72(8):1123-1129. doi:10.1093/gerona/glw204
50. Pastorino S, Richards M, Hardy R, et al. Validation of self-reported diagnosis of diabetes in the 1946 British birth cohort. *Prim Care Diabetes*. 2015;9(5):397-400. doi:10.1016/j.pcd.2014.05.003

Table 1: Descriptive statistics of different multimorbidity operationalizations at age 63, n=2653

Multimorbidity operationalization	Total sample		Male (N=1,284)		Female (N=1,369)	
	N (%)	Mean (SD)	N (%)	Mean (SD)	N (%)	Mean (SD)
Binary multimorbidity						
2≥chronic conditions	1,702	--	821 (63.9%)	--	881 (64.4%)	--
0/1 chronic condition	(64.2%) 951 (35.8%)	--	463 (36.1%)	--	488 (35.6%)	--
Unweighted disease count		2.41 (1.81)	--	2.41 (1.80)	--	2.40 (1.81)
Weighted disease count		3.17 (2.49)	--	3.22 (2.56)	--	3.12 (2.44)
Clustered multimorbidity						
Complex MM	648 (24.4%)	--	263 (20.5%)	--	385 (28.1%)	--
Mixed MM	806 (30.4%)	--	400 (31.2%)	--	406 (29.7%)	--
Associative MM	248 (9.4%)	--	158 (12.3%)	--	90 (6.6%)	--
0/1 chronic condition	951 (35.8%)	--	463 (36.1%)	--	488 (35.6%)	--
Cumulative multimorbidity						
Linear	--	2.91 (2.39)	--	2.71 (2.33)	--	3.10 (2.44)
Exponential	--	3.37 (2.97)	--	3.12 (2.88)	--	3.59 (3.04)

Note: MM=Multimorbidity, SD=Standard deviation

Table 2: The relationship between multimorbidity measures in predicting mortality.

Multimorbidity operationalization	Categories	Number of deaths	HR (95% CI)	P-value
Binary multimorbidity	0/1 N=951	42 (4.4%)	1.00 (Ref.)	--
	2 \geq N=1,702	130 (7.6%)	1.76 (1.24 to 2.49)	0.002
Unweighted disease count	N=2653	172 (6.5%)	1.15 (1.07 to 1.24)	0.001
Weighted disease count	N=2653	172 (6.5%)	1.12 (1.06 to 1.18)	0.001
Clustered multimorbidity	0/1 N=951	42 (4.4%)	1.00 (Ref.)	--
	AssociativeMM N=248	20 (8.1%)	1.84 (1.08 to 3.13)	0.025
	MixedMM N=806	58 (7.2%)	1.65 (1.11 to 2.46)	0.013
	ComplexMM N=648	52 (8.0%)	1.85 (1.23 to 2.78)	0.024
Cumulative multimorbidity	Linear N=2653	172 (6.5%)	1.06 (1.00 to 1.13)	0.038
	Exponential N=2653	172 (6.5%)	1.05 (1.00 to 1.10)	0.033

Note: MM= Multimorbidity

Table 3: Zero-inflated Poisson regression coefficients and confidence interval, for the odds of no disability (inflate) and the disability scores (count), at age 69, and changes from age 63 -69

Multimorbidity operationalization	Independency at age 69		Changes in independency from age 63 to 69	
	OR- No disability (95% CI)	IRR - Severity of disability (95% CI)	OR- No disability (95% CI)	IRR - Severity of disability (95% CI)
Binary multimorbidity 0/1 (reference) 2≥	-- 0.48* (0.39 to 0.59)	-- 1.54* (1.27 to 1.87)	-- 0.61* (0.48 to 0.78)	-- 1.09 (0.90 to 1.33)
Unweighted disease Count	0.75* (0.70 to 0.79)	1.15* (1.11 to 1.19)	0.84* (0.78 to 0.90)	1.06* (1.02 to 1.10)
Weighted disease count	0.82* (0.79 to 0.85)	1.11* (1.08 to 1.13)	0.89* (0.84 to 0.93)	1.05* (1.02 to 1.07)
Clustered multimorbidity 0/1 (reference) Associative MM Mixed MM Complex MM	-- 0.84 (0.59 to 1.21) 0.59* (0.45 to 0.76) 0.26* (0.20 to 0.35)	-- 1.48* (1.09 to 2.01) 1.29* (1.03 to 1.60) 1.79* (1.46 to 2.19)	-- 0.93 (0.64 to 1.35) 0.68* (0.51 to 0.90) 0.38* (0.27 to 0.53)	-- 1.36 (0.99 to 1.85) 0.98 (0.80 to 1.22) 1.12 (0.91 to 1.37)
Cumulative multimorbidity Linear Exponential	0.84* (0.80 to 0.88) 0.87* (0.84 to 0.90)	1.11* (1.09 to 1.14) 1.09* (1.07 to 1.11)	0.89* (0.84 to 0.93) 0.90* (0.90 to 0.94)	1.07* (1.05 to 1.09) 1.05* (1.04 to 1.07)

Note: MM= Multimorbidity; IRR= Incident Rate Ratio; Coef=Coefficient of logit function; *p < 0.05

Table 4: Linear regression coefficients (unstandardized) and confidence interval for multimorbidity measures and physical performances, at age 69, and changes from age 63 -69

Multimorbidity measures	Grip strength @ 69	ΔGrip strength @ 63-69	Chair rise speed @69	Δ Chair rise speed @63-69	Standing balance @69	Δ Standing balance @63-69
Binary multimorbidity						
0/1 (reference)	--	--	--	--	--	--
2≥	-2.59* (-3.54 to -1.65)	-1.28* (-1.95 to -0.60)	-0.04* (-0.06 to -0.02)	-0.04* (-0.06 to 0.01)	-0.65* (-0.98 to -0.32)	-0.59* (-0.94 to -0.25)
Unweighted disease Count	-0.80* (-1.06 to -0.54)	-0.45* (-0.63 to -0.27)	-0.02* (-0.03 to -0.01)	-0.01* (-0.02 to 0)	-0.27* (-0.36 to -0.18)	-0.24* (-0.34 to -0.14)
Weighted disease count	-0.55* (-0.74 to -0.37)	-0.32* (-0.46 to -0.19)	-0.01* (-0.02 to 0)	-0.01* (-0.02 to 0)	-0.15* (-0.22 to -0.08)	-0.14* (-0.21 to -0.07)
Clustered multimorbidity						
0/1 (reference)	--	--	--	--	--	--
Associative MM	0.43 (-1.27 to 2.13)	-0.20 (-1.39 to 0.99)	-0.04* (-0.08 to -0.01)	-0.05* (-0.09 to -0.01)	-0.84* (-1.44 to -0.25)	-0.84* (-1.45 to -0.23)
Mixed MM	-2.04* (-3.16 to -0.92)	-0.82 (-1.60 to -0.04)	-0.02 (-0.05 to 0.01)	-0.03* (-0.05 to -0.01)	-0.33 (-0.72 to 0.07)	-0.30 (-0.70 to 0.10)
Complex MM	-4.48* (-5.69 to -3.28)	-2.27* (-3.11 to -1.43)	-0.06* (-0.09 to -0.04)	-0.04* (-0.07 to -0.02)	-1.00* (-1.43 to -0.57)	-0.89* (-1.32 to -0.45)
Cumulative multimorbidity						
Linear	-0.76* (-0.95 to -0.56)	-0.39* (-0.52 to -0.25)	-0.01* (-0.02 to 0)	-0.01* (-0.02 to 0)	-0.20* (-0.27 to -0.13)	-0.16* (-0.23 to -0.09)
Exponential	-0.62* (-0.77 to -0.46)	-0.31* (-0.43 to -0.20)	-0.01* (-0.02 to 0)	-0.01* (-0.02 to 0)	-0.16* (-0.21 to -0.10)	-0.13* (-0.19 to -0.07)

Note: MM= Multimorbidity; * $p < 0.05$;

Figure 1: Explained variation for which multimorbidity measures has the highest predictive utility for mortality (Somers's D), independency (ML cox-snell), and physical performances (R-squared).

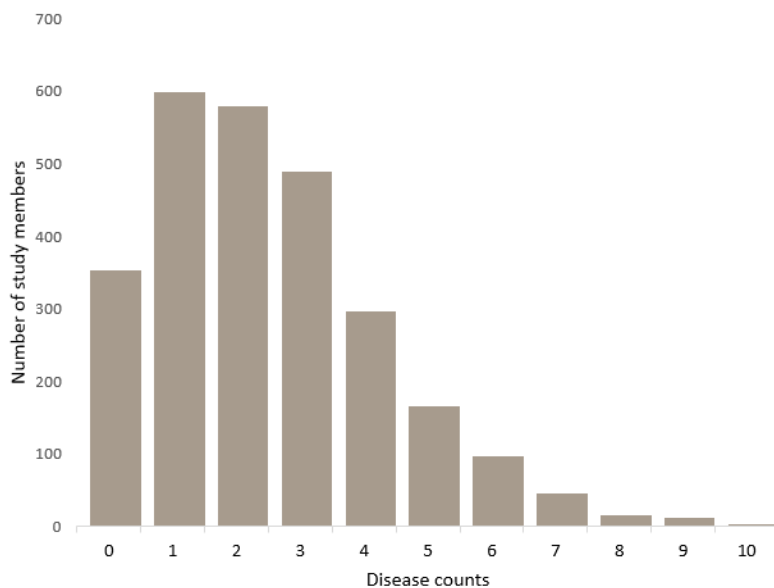


Supplementary file

Supplemental Table 1. 16 conditions contributing to multimorbidity score, with data sources and definitions

Conditions	Source of information	Definitions, criteria/cut-offs	Ages at which data available	Considered lifetime prevalence
Anaemia	Haemoglobin values & medication	Haemoglobin <13g/dl (males) or haemoglobin <12g/dl (females)	53, 63	No
Cancer	National statistics (linked cancer registry data)		All	Yes
Coronary heart disease	Self-report		43, 53, 63	Yes
Diabetes	Self-report & medication		43, 53, 63	Yes
Depression	Self-report & medication		All	No
Dyslipidaemia	Cholesterol/HDL values & medications	Total:HDL cholesterol ratio \geq 6.0mmol/l	53, 63	Yes
Epilepsy	Medication		All	No
Gastrointestinal disorders	Medication		All	No
Hypertension	Blood pressure values & medication	Current SBP \geq 140mmHg or current DBP \geq 90mmHg	All	Yes
Obesity	Measured height and weight	BMI \geq 30kg/m ²	All	No
Osteoarthritis	Self-report & medication		63	Yes
Parkinson's disease	Self-report & medication		63	Yes
Psychotic disorders	Medication		All	Yes
Respiratory disorders	Self-report & medication		All	No
Rheumatoid arthritis	Self-report & medication		53, 63	Yes
Stroke	Self-report		53, 63	Yes

Supplemental Figure 1. Distribution of disease count at age 63



Supplemental Table 2: Association between disease count (category) and 12-year mortality

Number of conditions	Deaths/ No. at risk	IR per 1000 / person year	HR (95% CI)	P-value
0	15/353	3.35	1.00 (Ref.)	
1	27/598	3.58	1.07 (0.57 to 2.01)	0.834
2	39/579	5.40	1.60 (0.88 to 2.90)	0.122
3	34/490	5.58	1.66 (0.90 to 3.04)	0.103
4	24/297	6.61	1.96 (1.03 to 3.74)	0.041
5	15/165	7.44	2.20 (1.07 to 4.50)	0.031
6	9/97	7.67	2.27 (0.99 to 5.19)	0.052
7	6/45	11.43	3.36 (1.30 to 8.66)	0.012
8	1/16	5.03	1.49 (0.20 to 11.30)	0.698
9	2/11	15.63	4.48 (1.03 to 19.67)	0.046
10	0/2		N/A	

Note: IR=Incident Ratio; HR=Hazard Ratio; CI=Confidence Interval.

Supplemental Table 3. 20 task lists included in the independency assessment at age 69

Independency	
Walk ¼ mile	Shopping/carry bag
Climb 12 flight of stairs	House work, laundry
Arms to reach/stretch	Prepare meal
Holding, Grip, turning	Feeding
Bending down	Washing face and hand
Keeping balance	Dressing
Paperwork, bills	Cut toe
Getting out house	Getting in/out chair
Taking medicine	Getting in/out bed
Getting around indoor	Bathing

Physical capability

Several physical capability measures were assessed during home visits at age 63 and 69. Under the supervision of a trained nurse, and following standardised protocols, three performance-based measures were collected at both time points: grip strength, chair rise time and standing balance. These three tests were chosen for assessment because they are some of the most commonly used measures of physical capability in epidemiological studies and were expected to detect meaningful variation in capability between individuals in late-life across the full spectrum of ability.

For each physical capability measures a score was recorded if the study member was willing and able to perform that particular test. If the study member was unable or unwilling to complete the task the reason was noted and the nurse progressed onto the next task.

To measure grip strength, study members were asked to squeeze the handle of a Nottingham electronic handgrip dynamometer: three tests in their dominant hand and three in their non-dominant hand. The dynamometers are accurate, linear and stable to $\pm 0.5\text{kg}$, with each machine calibrated at the start of the assessment using a back-loading rig. The retest variability within individual study members for maximal voluntary tests of strength in those unused to such measurements is about 9%. The nurse provided strong vocal encouragement throughout

the test to elicit maximal performance. The protocol differed slightly between data collection rounds. Two values were recorded for each hand and the highest used in analyses.

To measure chair rise time, study members were asked to perform 10 chair rises with their arms folded, as quickly as possible, and the time taken to complete the task, was recorded in seconds. The test was conducted using an armless, straight backed hard chair, with the seat approximately 46cm above the floor. Chair rise time was measured with a stopwatch as the time taken to rise from a sitting to a standing position with straight back and legs and then to sit down again 10 complete times as fast as possible. To ensure that all performance-based variables used followed a similar scale, with low values representing poor functional performance, the time taken to complete the task was converted into a measure of speed (number of rises per second).

To measure standing balance, study members were asked to fold their arms, stand on their preferred leg and raise their other leg a few inches above the ground, holding this position for a maximum of 30 seconds. The task was then repeated with the study members closing their eyes. For each test, the maximum time, up to 30 seconds, that the study member maintained the balance position was recorded. In line with previous work on these measures, performance time from the eyes-closed balance test were used, as a substantial ceiling effect was noted for the eyes-open test.

These tasks were performed at normal pace, and study members were allowed the use of personal aids if required, although the use and type of aid were noted. Help from another individual was prohibited.

Supplemental Table 4a: Sample characteristics of independency at age 69, n=2149

	All (N=2,149)	Male (N=1,052)	Female (N=1,097)	Sex differences	
	Mean (SD)	Mean (SD)	Mean (SD)	t	P-value
Independency	1.66 (2.81)	1.28 (2.67)	2.03 (2.90)	t = -6.23	<0.001

Supplemental Table 4b: Sample characteristics of grip strength at age 69, n=2103

	All (N=2,103)	Male (N=1,037)	Female (N=1,066)	Sex differences	
	Mean (SD)	Mean (SD)	Mean (SD)	t	P-value
Grip strength (kg)	32.02 (10.85)	40.19 (8.50)	24.08 (5.82)	t = 50.57	<0.001

Supplemental Table 4c: Sample characteristics of chair rise speed at age 69, n=1905

	All (N=1,905)	Male (N=926)	Female (N=979)	Sex differences	
	Mean (SD)	Mean (SD)	Mean (SD)	t	P-value
Chair rise speed (rise/s)	0.46 (0.22)	0.46 (0.14)	0.45 (0.27)	t = 0.77	0.44

Supplemental Table 4d: Sample characteristics of standing balance (eye closed), at age 69, n=1983

	All (N=1,983)	Male (N=980)	Female (N=1,003)	Sex differences	
	Mean (SD)	Mean (SD)	Mean (SD)	t	P-value
Standing balance (s)	3.92 (3.70)	4.22 (4.19)	3.62 (3.13)	t = 3.61	<0.001

Note: t= two-tailed t-test with unequal variances using Satterhwaite's d.f

Supplemental Table 5. Explained variations for which multimorbidity measures has the highest predictive utility for mortality (Somers' D) and independency (ML cox-snell)

Multimorbidity measures	Somer's D	ML(Cox-Snell) R2
Binary multimorbidity	0.120	0.086
Unweighted disease Count	0.163	0.170
Weighted disease count	0.167	0.164
Clustered multimorbidity	0.128	0.135
Cumulative multimorbidity		
Linear	0.083	0.157
Exponential	0.083	0.156

Note: MM= Multimorbidity

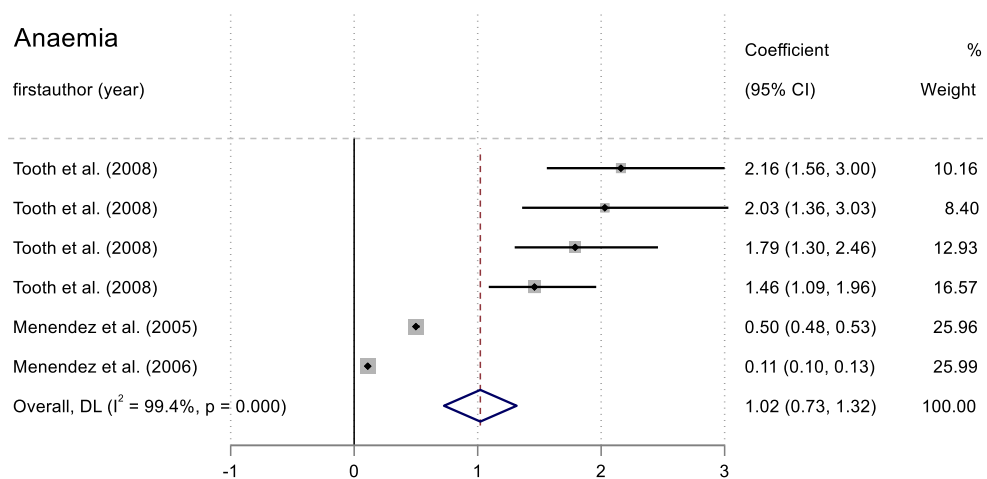
Supplemental Table 6. Explained variations for which multimorbidity measures has the highest predictive utility for physical performances (R-squared)

Multimorbidity measures	Grip strength @ 69	Δ Grip strength @ 63-69	Chair rise speed @69	Δ Chair rise speed @63-69	Standing balance @69	Δ Standing balance @63-69
Binary multimorbidity	0.014	0.591	0.009	0.085	0.008	0.101
Unweighted disease Count	0.017	0.593	0.015	0.084	0.016	0.107
Weighted disease count	0.016	0.593	0.012	0.083	0.010	0.102
Clustered multimorbidity	0.028	0.595	0.013	0.086	0.012	0.105
Cumulative multimorbidity						
Linear	0.027	0.595	0.012	0.082	0.015	0.105
Exponential	0.027	0.594	0.012	0.081	0.014	0.105

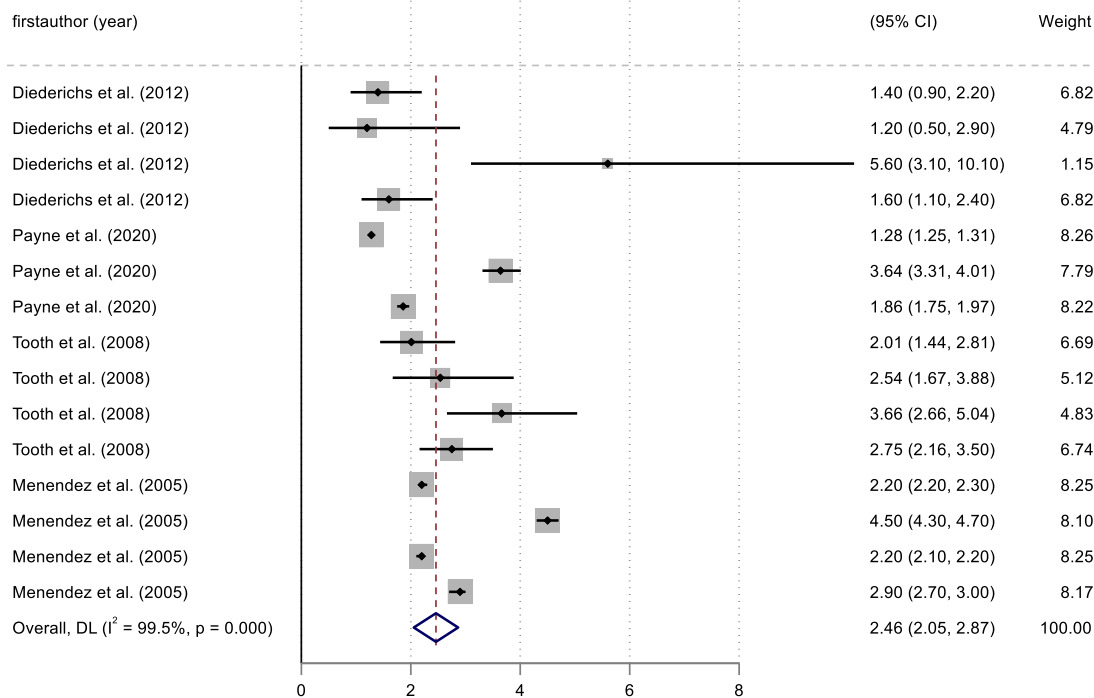
Supplemental Table 7. Pooled weighted multimorbidity score at age 63

measures	score	measures	score
Anaemia	1.02	Hypertension	1.21
Cancer	2.46	Obesity	0.11
Coronary heart disease	2.29	Osteoarthritis	1.82
Diabetes	1.97	Parkinson's disease	1.44
Depression	1.36	Psychotic disorders	1.13
Dyslipidaemia	1.20	Respiratory disorders	1.42
Epilepsy	1.65	Rheumatoid arthritis	1.04
Gastrointestinal disorders	1.06	Stroke	2.21

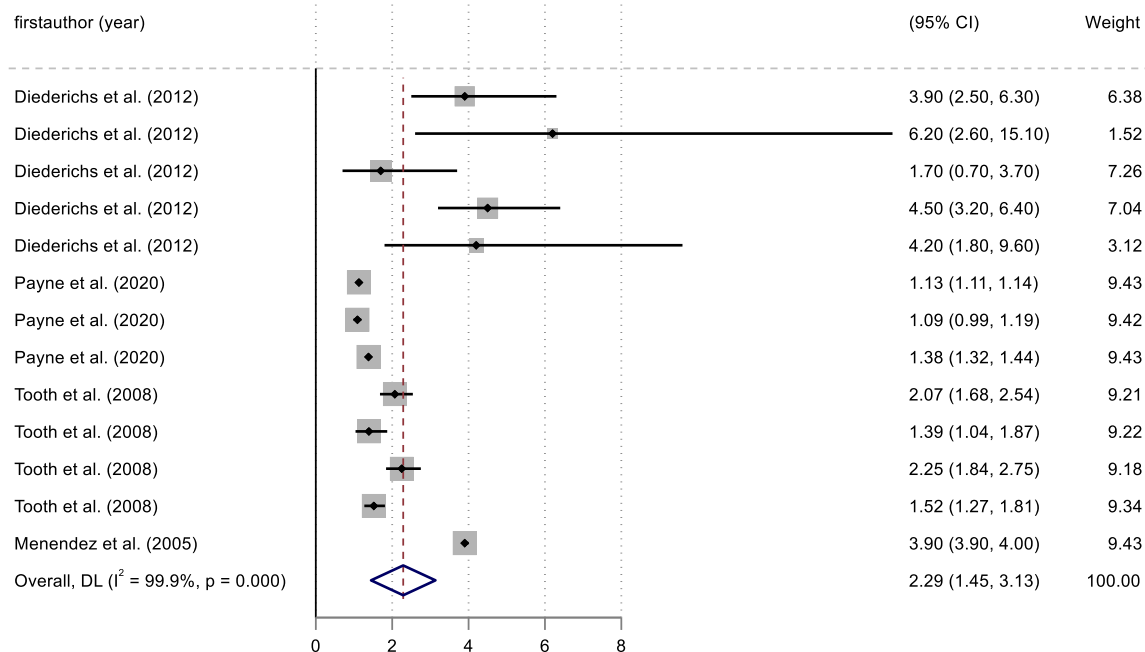
Supplemental Figure 2. Pooled weight of 16 conditions using random effect meta-analysis at age 63



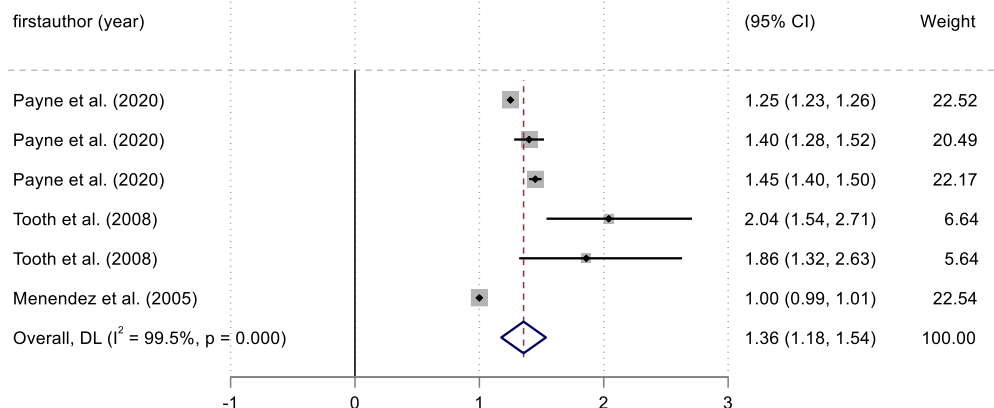
Cancer



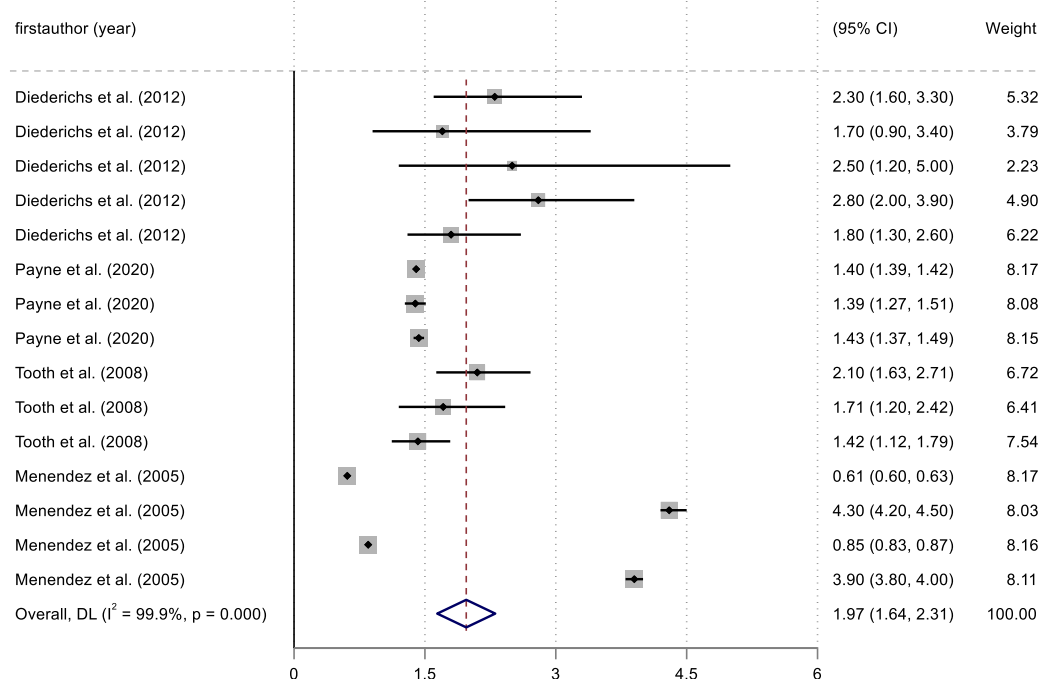
Coronary heart disease



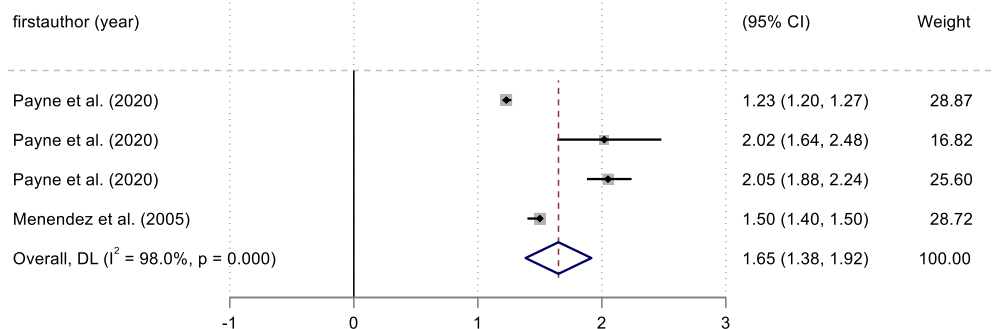
Depression



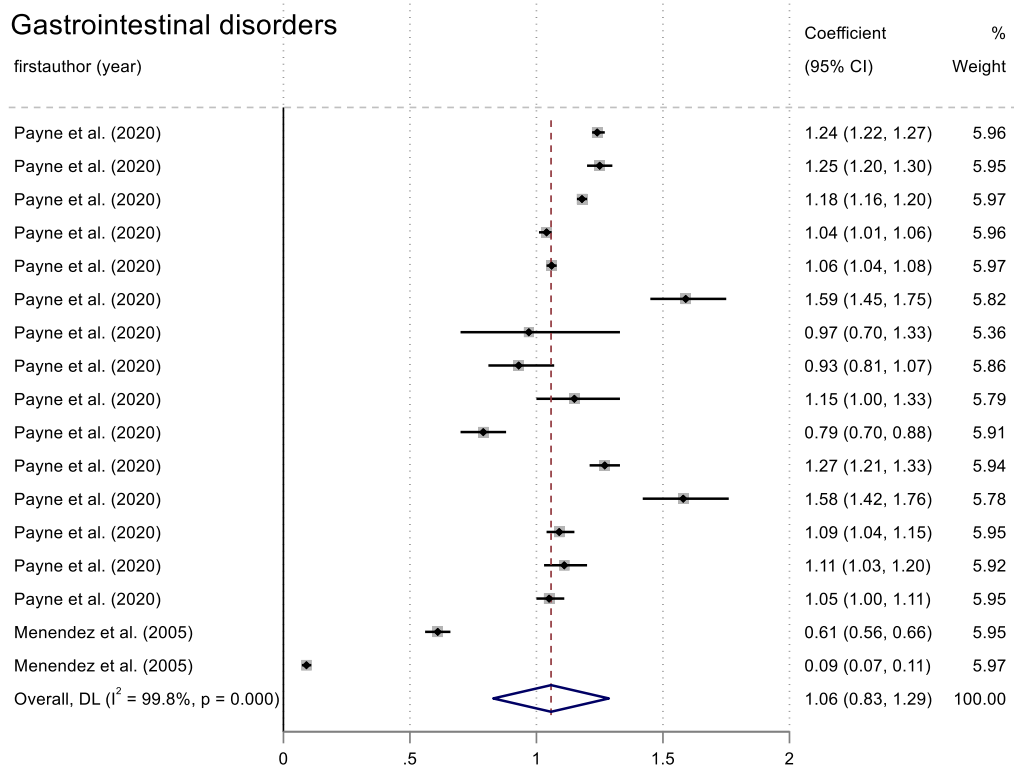
Diabetes



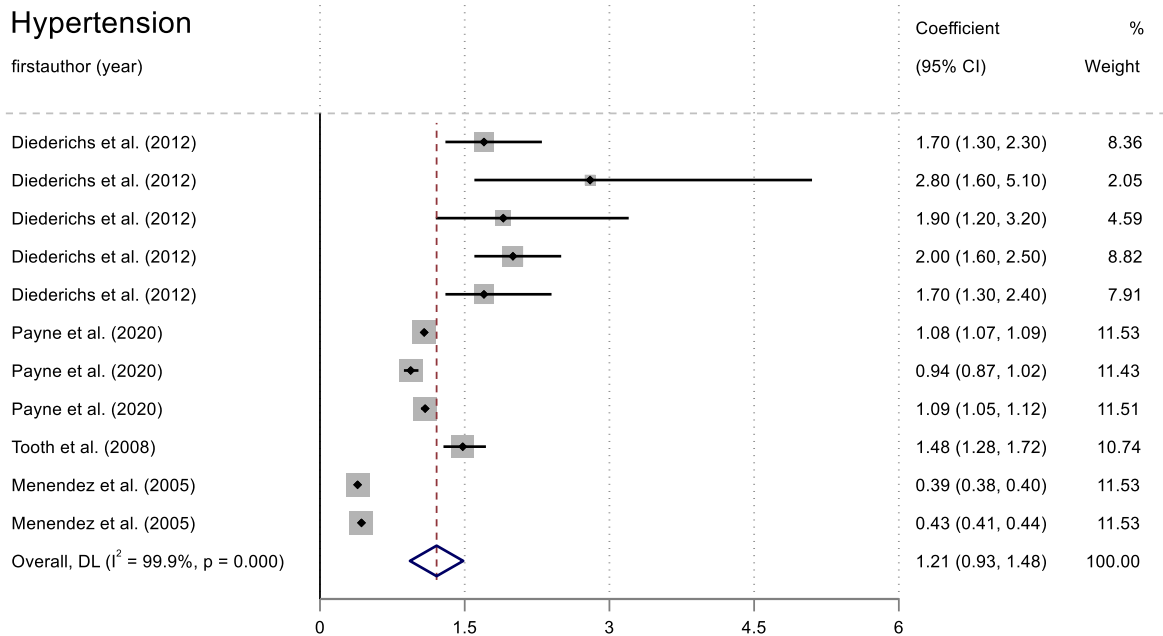
Epilepsy



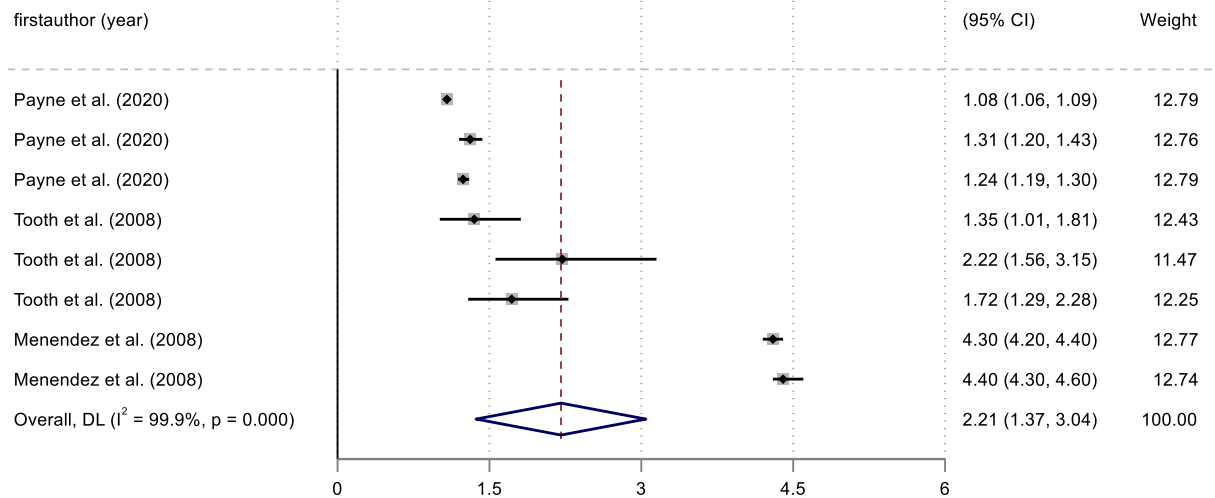
Gastrointestinal disorders



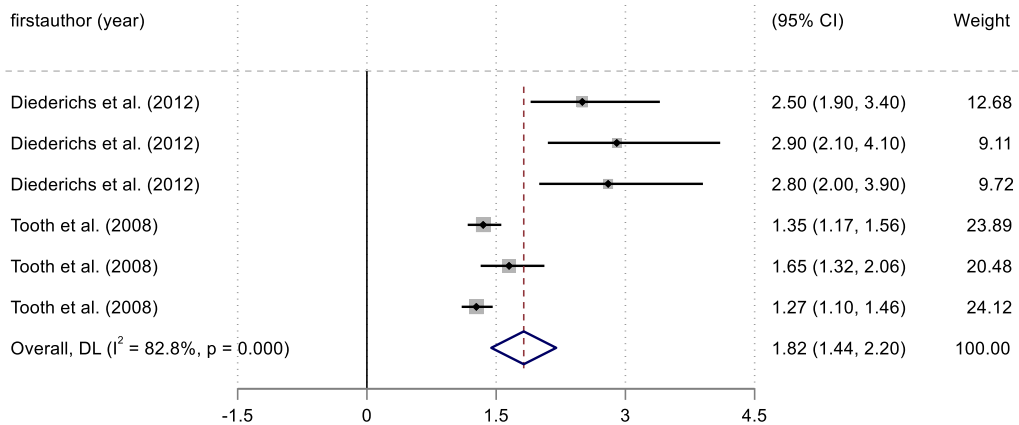
Hypertension



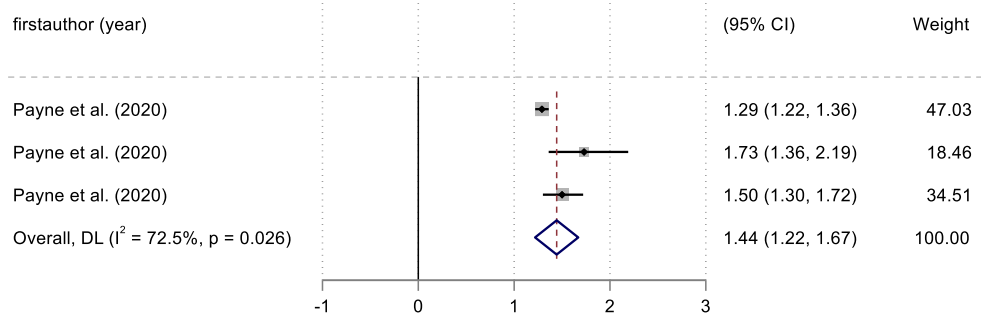
Kidney disorders



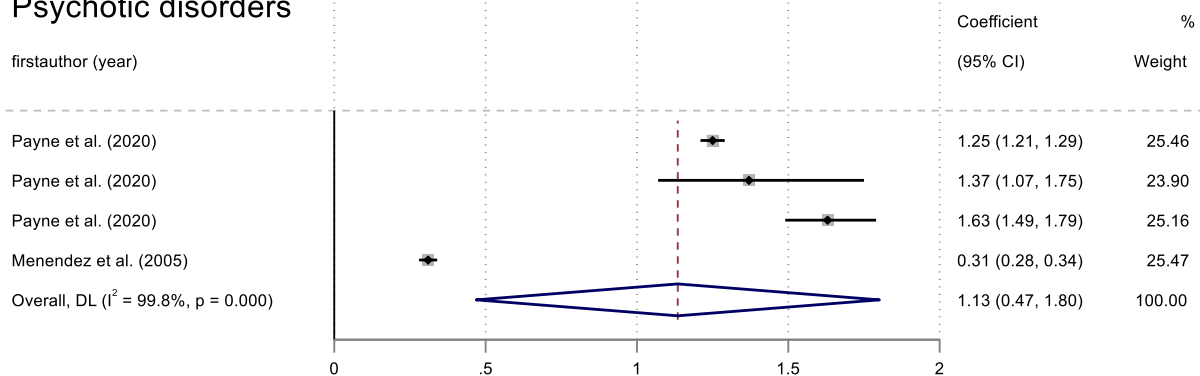
Osteoarthritis



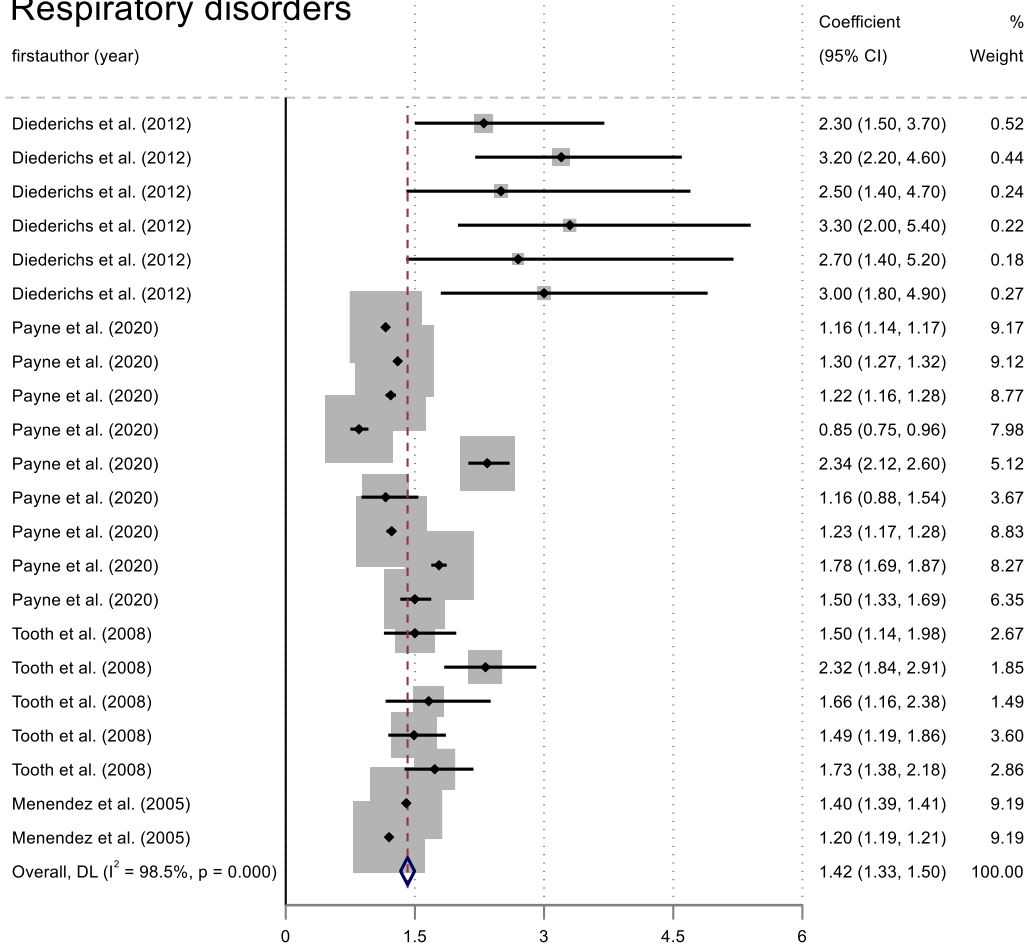
Parkinson's disease



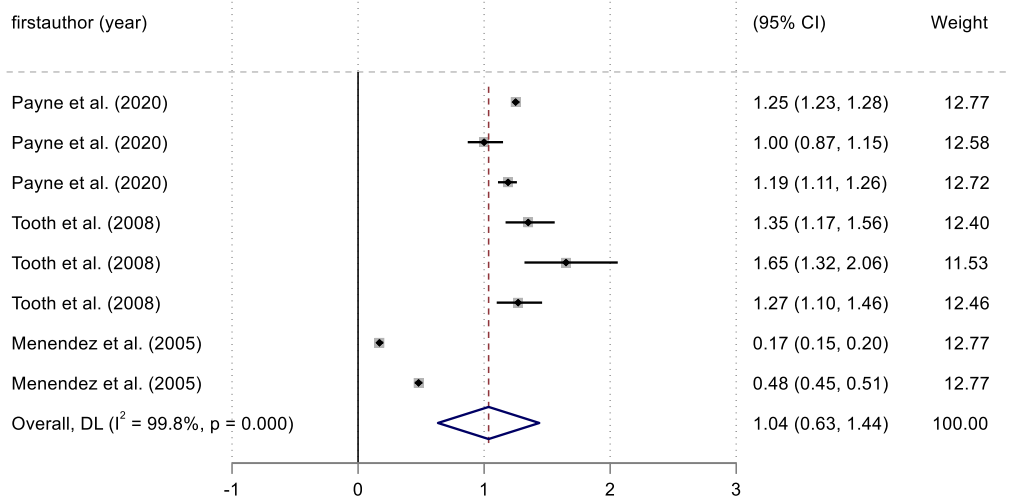
Psychotic disorders



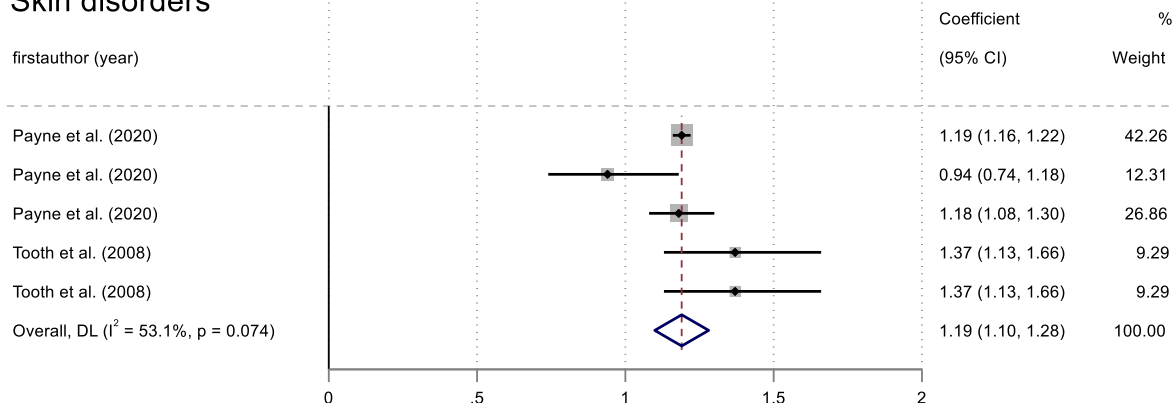
Respiratory disorders



Rheumatoid Arthritis



Skin disorders



Stroke

firstauthor (year)

