

Modelling the impact of initiation delay, duration and prior PrEP usage on the prophylactic efficacy of FTC/TDF-containing post-exposure prophylaxis

Lanxin Zhang¹, Simon Collins², Julie Fox³, Max von Kleist^{1, 4,§}

1 Project group 5 "Systems Medicine of Infectious Disease", Robert Koch Institute, Berlin, Germany

2 HIV i-Base, United Kingdom

3 Department of Infectious Disease, King's College London, United Kingdom

4 Mathematics for Data Science, Dep. of Mathematics and Computer Science, Freie Universität Berlin, Germany

§ Corresponding author: Max von Kleist

Nordufer 20, Berlin, 13353, Germany

E-mail addresses of authors:

LZ: lzhang@zedat.fu-berlin.de

SC: simon.collins@i-base.org.uk

JF: julie.fox@kcl.ac.uk

MvK: max.kleist@fu-berlin.de

Abstract

Introduction

Pre- and post-exposure prophylaxis (PrEP and PEP) are important pillars of the HIV prevention portfolio to reduce the risk of infection just before or after HIV exposure. While PrEP efficacy has been elucidated in many randomized clinical trials, corresponding data for PEP is extremely difficult to obtain in a controlled setting. Consequently, it is almost impossible to study the impact of PEP initiation delay and duration on HIV risk reduction clinically, which would inform recommendations on PEP use.

Methods

We employ pharmacokinetics, pharmacodynamics, and viral dynamics models, along with individual factors, such as drug adherence to investigate the impact of initiation delay and PEP duration on HIV risk reduction. We evaluated PEP using two- and three-drug regimens with a FTC/TDF backbone. Moreover, we study PEP efficacy in the context of PrEP-to-PEP transitions.

Results

In our simulations, early initiation of PEP emerged as a pivotal factor for HIV risk reduction. We found that 2-drug (FTC/TDF) PEP may insufficiently protect when initiated > 1 hour post-exposure. When adding a third drug, early initiation was still a critical factor, however, over 90% efficacy could be achieved when PEP was initiated 48hours post-exposure and taken for at least 14-28days, depending on the efficacy of the third-drug component. When investigating PrEP-PEP transitions, we observed that preceding PrEP can (i) contribute directly to prophylactic efficacy, and (ii) boost subsequent PEP efficacy by delaying initial viral dynamics and building-up drug concentrations, overall facilitating self-managed transitioning between PrEP and PEP.

Conclusions

Our study confirms the critical role of early (< 48 hours) PEP initiation, preferably with three drugs taken for 28days. Self-start with TDF/FTC and later addition of a third drug is better than not self-starting. Furthermore, our study highlights the synergy between recent PrEP intake and PEP and may help to inform recommendations on PEP use.

Introduction

The human immunodeficiency virus (HIV) remains a public health challenge with an estimated 1.3 million new infections in 2022 [1]. To date, with a handful of exceptions, HIV infection cannot be cured [2]. However, major successes in antiviral drug development allow to not only to prevent AIDS, but to suppress the virus to an extent where the treated individual is non-infectious [3,4]. However, an HIV diagnosis needs to be made and subsequent treatment currently needs to be taken life-long, which, in addition to individual burden, relies on HIV testing and treatment availability, medical care infrastructure and funding. HIV prevention through vaccination would constitute an ideal means to fight the pandemic. However, developing an effective HIV vaccine turned out to be extremely challenging, with all recent vaccine trials prematurely terminated due to failure in demonstrating clinical efficacy [5]. In the absence of effective vaccines, pre-exposure prophylaxis (PrEP) has partly taken its place. Four effective regimens are currently available: once daily emtricitabine (FTC) with either tenofovir disoproxil fumarate (TDF) or tenofovir alafenamide (TAF) can be administered orally, long-acting cabotegravir (CAB) can be injected every two months. Monthly dapivirine (DPV) vaginal rings to prevent infection through receptive vaginal intercourse recently received positive review by the European Medicines Agency (EMA). Twice-yearly injectable lenacapavir demonstrated potential in clinical phase III. Of the available PrEP options, oral TDF/FTC is widely available as a generic and rolled out in both low- and high-income countries.

Post-exposure prophylaxis (PEP) taken *after* suspected sexual-, or occupational exposure to HIV [6] denotes another important preventive measure to reduce infection risk. Current guidelines recommend to initiate oral PEP within 72hours after suspected virus exposure and to continue the regimen for 28 days [6–8]. National [6,8] and international guidelines [9] differ with regards to recommending two- or three-drug regimens for PEP: For example, TDF/FTC + raltegravir or dolutegravir are recommended in the US, whereas the WHO 2014 guidelines also discuss scenarios where two-drug regimens with generics may be recommended. To date, TDF/FTC denotes the preferred backbone in PEP, whereas different choices of third-component drugs may be used [10]. However, because of operational and ethical challenges no randomized controlled

trial has been conducted to test PEP efficacy directly. Current evidence for non-occupational PEP efficacy has been synthesized from animal transmission models, observational studies of health care workers receiving prophylaxis after occupational exposures, and observational- and case studies of PEP use [6,8]. However, results from observational studies may be impacted by many factors such as individual adherence- and risk behavior [11] and differences in regards to the utilized PEP drugs [8]. Although the developed guidelines are based on impressive trans-disciplinary synthesis of evidence across heterogeneous data sources, it has not been possible to date to elucidate the sensitivity of particular PEP regimen to delays in initiation, PEP duration, as well as the impact of PrEP on PEP efficacy.

In the absence of randomized controlled trial data on PEP efficacy, mathematical modelling may support the synthesis of evidence, by integrating available knowledge on drug pharmacokinetics, as well as early viral dynamics. However, to our knowledge, no such modelling exists to date. By considering population pharmacokinetics, we extended a recently developed mathematical model [12] to analyse PEP efficacy for two- and three-drug regimens, and to test the impact of delays in ‘time to PEP’, as well as PEP duration. Finally, we investigate the transition from PrEP to PEP, providing a comprehensive understanding of the continuum preventive portfolio.

Methods

We combined population pharmacokinetic models of oral FTC, TDF, EFV and DTG [13–16] with viral dynamics models [17,18] and a novel numerical scheme [19] to estimate the prophylactic efficacy of PEP with a TDF/FTC backbone for any dosing pattern of interest, as well as various PrEP-to-PEP transitions. The overarching goal was to understand sensitivity of PEP efficacy towards timing, delay and duration of PEP with- and without prior PrEP administration.

Prophylactic efficacy. In clinical trials, *average* HIV risk reduction is quantified in terms of incidence reduction in an intervention vs. a control arm [20–23]. In a mathematical model of within-host viral replication, the same quantity may be derived directly by computing the reduction of infection probability *per viral exposure* due to a prophylactic regimen \mathcal{S} :

$$\varphi = 1 - \frac{P_I(Y_t, \mathcal{S})}{P_I(Y_t, \emptyset)} \quad (1)$$

where $P_I(Y_t, \mathcal{S})$ and $P_I(Y_t, \emptyset)$ denote the the infection probability in the presence- and absence of a prophylactic regimen \mathcal{S} upon exposure with Y_t viral particles at time t . Notably, the infection probability is the complement of the probability that the virus may eventually be eliminated in the exposed host, i.e. $P_I(Y_t, \mathcal{S}) = 1 - P_E(Y_t, \mathcal{S})$.

Virus exposure model. We used previously developed exposure models for sex without condoms [24]. In these models, the number of infectious viruses (inoculum size Y_t) that are transmitted to- and reaching an anatomical site where they may spark an infection, are estimated from a binomial distribution, $Y_t \sim \mathcal{B}(\text{VL}, r)$, where VL denotes the donor virus load, and the ‘success rate’ r depended on the type of exposure. Throughout this study, unless stated otherwise, we utilize the exposure model designed for receptive vaginal intercourse.

HIV viral dynamics model. To compute the viral elimination probability in the exposed host for prophylactic regimen \mathcal{S} , we employ a within-host viral dynamics model [17,18], depicted in Fig S1. The model considers replication of free infectious viruses, early- and productively infected T-cells, as well as long-lived cells such as macrophages and latently infected T-cells, which are believed to be an obstacle for the within-host clearance of HIV [25]. The model was

derived from first principles [17] and allows to model pharmacodynamic effects of all antiviral classes [26]. Moreover, it allows to incorporate state-of-the-art population pharmacokinetic models.

Pharmacokinetics. We used the previously developed pharmacokinetic models of emtricitabine (FTC) [13] and tenofovir disoproxil fumarate (TDF) [14], which allow to predict prodrug pharmacokinetics in blood plasma, as well as the pharmacokinetics of the active tri-phosphorylated moieties in peripheral blood mononuclear cells (PBMC). In line our recent findings [12], we assume that the concentration of tenofovir-diphosphate (TFV-DP) and emtricitabine-triphosphate (FTC-TP) in PBMCs predicts the prophylactic effect. We adopted recently developed PK models for dolutegravir (DTG) [15] and efavirenz (EFV) [27]. To capture the impact of individual pharmacokinetic variability, we sampled PK parameters for 1000 virtual patients per drug, utilizing distributions described in the aforementioned original sources. We considered once daily oral doses of 300/200mg, 50mg and 400mg for TDF/FTC, DTG and EFV.

PK-PD link. The active intracellular components of TDF/FTC, i.e. TFV-DP and FTC-TP are nucleotides reverse transcriptase inhibitors (NRTI). To evaluate their combinatorial effect, we adopted a model for the molecular mechanism of action (MMOA) and drug-drug interaction [28]. For DTG and EFV, their direct effect can be modelled using the Emax equation [29], corrected by plasma protein binding, and was assumed to be additive with the TDF/FTC backbone.

Numerics. We adopted the numerical scheme (PGS) from [19] to formulate a set of ordinary differential equations that allows computing extinction probabilities $P_E(Y_t)$, \mathcal{S} of each compartment of the viral dynamics model, subject to pharmacokinetics and pharmacodynamics of the considered drugs, eq. (S16).

Results

‘Time to PEP’ is the most critical parameter.

Currently, the WHO recommends to initiate PEP up to 3 days after potential viral exposure and to continue PEP for 28 days [9]. Using our modelling framework, we evaluated how PEP initiation delay may alter prophylactic efficacy. As a first test case, we explored the efficacy of 2-drug (oral TDF/FTC) PEP, as these drugs may be available in many settings where PrEP is implemented. We created 1000 virtual individuals and simulated individual pharmacokinetics based on the dosing profiles in Fig 1A. Using the model, we then computed the prophylactic efficacy for each virtual individual, if a 2-drug PEP with daily TDF/FTC was initiated at different time points post viral exposure and taken for 28 days. Fig 1C (red line, grey areas) depicts summary statistics of derived PEP efficacy estimates across the cohort of virtual individuals (median, interquartile ranges and 95% confidence intervals). From the simulations, it is evident that $\geq 90\%$ 2-drug PEP efficacy is only achieved if TDF/FTC is initiated within one hour after virus exposure. Efficacy steeply drops to $< 50\%$ when TDF/FTC-PEP was initiated 20hours after virus exposure. We also found that longer duration of 2-drug TDF/TFC PEP could not compensate for delayed initiation (Fig 1B, Fig 1D red line) with efficacy remaining low (median efficacy $< 20\%$), when PEP was initiated 48hours after virus exposure and taken for up to 7 weeks. We tested whether a third drug component (DTG or EFV) may impact on prophylactic efficacy and change sensitivity to ‘time to PEP’ and ‘PEP duration’, Fig 1A–D. Compared to 2-drug PEP, 3-drug PEP provided $> 88\%$ protection against sexual transmission, when initiated 2days post-exposure and continued for 28days (Fig 1E). When initiated 2days post-exposure, we predicted that TDF/FTC + EFV provided $> 90\%$ HIV risk reduction when

taken at least for 2 weeks, whereas TDF/FTC + DTG provided 85 – 90% HIV risk reduction when taken for at least 4 weeks, Fig 1E. In contrast to 2-drug PEP, we predicted that PEP efficacy with TDF/FTC + EFV or DTG increased with extended duration of PEP.

Third drug may be added later, if TDF/FTC is initiated quickly.

In many settings, all three drugs may not be available within reasonable time. However, TDF/FTC may be readily available to individuals who already used, or have access to PrEP. We investigated whether prompt PEP initiation with TDF/FTC and later addition of a third drug may effectively prevent infection (schematic in Fig 2A). Reading Fig 2B-E bottom-to-top, indicates that adding DTG or EFV to a TDF/FTC backbone increases PEP efficacy (lowest row: TDF/FTC only) and that earlier addition of the third drug results in greater efficacy (top row). Reading Fig 2B-E horizontally (left-to-right), indicates that the earlier TDF/FTC is initiated, the better. For the three drug combinations, a ‘window of opportunity’ arises, where the PEP efficacy exceeds 95%. For TDF/FTC + DTG the duration of PEP strongly impacts on its prophylactic efficacy (compare panels B and D in Fig 2), whereas the impact is less strong for PEP with TDF/FTC + EFV, which is already efficient for 2 weeks PEP. The simulations highlight that if TDF/FTC is available within 12-24 hours, the third drug should be added in less than a weeks time and PEP should preferably be taken for 28days from the first TDF/FTC dose.

Previous PrEP can boost subsequent PEP efficacy and widen the ‘window of opportunity’

The pharmacologically active components of TDF and FTC (TFV-DP and FTC-TP respectively) are built-up slowly within HIV target cells [13,14,24,30], which limits the ‘window of opportunity’ for 2-drug (TDF/FTC) PEP (Fig 1C) and necessitates almost instantaneous PEP initiation to achieve sufficient efficacy. However, TFV-DP and FTC-TP may persist for many hours even after a single, or a few dosing events. To assess the combined impact of earlier TDF/FTC PrEP intake with PEP, we investigated the efficacy of PEP following an ‘on-demand’ (2-1-1) PrEP regimen [31] (schematic in Fig 3A). In our simulations, viral exposure occurs 2 (panels B, F), 3 (panels C, G) or 7 (panels D, H) days after the last PrEP ‘on demand’ dose. A two- or three drug PEP regimen is then initiated within 0–72 hours post virus exposure (x-axis) and continued for either for 7 (panels B-E) or 28 days (panels F-I).

Reading Fig 3B–D and Fig 3F–H left-to-right shows that if the last PrEP-on-demand dosing event was 7days ago, the added benefit of earlier PrEP-on-demand on subsequent PEP efficacy had almost vanished, compare to Fig 3E and Fig 3I (no preceding PrEP). However, if PrEP-on-demand was taken less than 7days prior to virus exposure, it increases subsequent PEP efficacy, as residual FTC-TP and TFV-DP concentrations may be present that either prevent infection in some individuals, delay sero-conversion [32,33], or result in a ‘pre-loading’ of drug concentrations for subsequent PEP. For example, if on-demand-PrEP was stopped 2days prior to virus exposure, subsequent PEP with TDF/FTC may be >90% efficient, even when initiated within three days, Fig 3B,F. For the three-drug PEP regimen we observed a >90% efficacy when initiated within three days after viral exposure and taken for >7days, Fig 3C,G. Overall, we observe that earlier PrEP combined with subsequent PEP can increase efficacy.

Next, we investigated the concomitant impact of preceding daily PrEP with 1–7 average doses per week, stopped 2days before viral exposure, in conjunction with subsequent 2-drug or 3-drug

PEP, initiated 2-, 3-, or 7days after virus exposure and taken for 28days (schematic in Fig 4A). As controls, we performed simulations without earlier PrEP (grey-shaded areas), as well as PrEP-only simulations (empty box plots) in Fig. 4B-D. Our simulations confirm the combined action of PrEP and PEP: Earlier PrEP boosts the efficacy of PEP, if PEP is initiated 2-, or 3days post-exposure, Fig. 4B-C: Compared both to ‘no-PrEP’ (grey-shaded areas), as well as ‘no-PEP’ (empty boxplots), prophylactic efficacy is increased for the PrEP+PEP combination. However, PEP does not offer any additional protection when initiated 7days post-exposure (compare empty- vs. coloured box-plots in Fig 4D). Interestingly, our model predicts that PrEP-only with 100% adherence offers > 90% protection, when stopped 2 days before virus exposure (empty bars in Fig. 4D). Also, for the PrEP+PEP combination we observe > 95% protection, if 4/7 doses of earlier PrEP were taken and 3-drug PEP was initiated 3days post exposure. For comparison, PEP-only offers only 50% (TDF/FTC/DTG) and 65% (TDF/FTC/EFV) protection if initiated 3days post exposure (Fig. 1C and Fig. 4C). If PEP is initiated 2days post-exposure, preceding PrEP may lift prophylactic efficacy from 90% (TDF/FTC/DTG) and 95% (TDF/FTC/EFV) to almost complete protection, if adherence during preceding PrEP was 2/7 doses (EFV) vs. 3/7 (DTG).

Lastly, we tested scenarios in which the probability of PEP adherence declined substantially over time. We modelled PrEP with incomplete adherence 48 hours prior to virus exposure (schematic: Fig 5A). We further assumed a substantial decrease in PEP-adherence after 7days, Fig 5B. Overall, compared to a full 28days PEP regimen simulated in Fig 4B, we can see a drug-specific decline in efficacy that is clearly seen in simulations without preceding PrEP (grey shaded area in Fig 4C): Two-drug TDF/FTC is already quite inefficient (< 20%) when initiated 2, 3 or 7days post exposure and hence poor PEP-adherence marginally impacts (grey-shaded areas in Fig 4B-D vs Fig 5C-E). In contrast, for the three-drug combinations, we see that poor PEP-adherence negatively impacts on prophylactic efficacy (compare shaded areas in Fig. 4B-C with Fig. 5C-D). However, if $\geq 4/7$ doses of earlier PrEP were taken and subsequent 3-drug PEP was initiated ≤ 3 days post-exposure, we predicted that prophylactic efficacy may exceed 95%. In summary, we observe that preceding PrEP can substantially boost subsequent PEP efficacy for all drug regimen, and ‘buy time’ with regards to PEP initiation, particularly if preceding PrEP adherence was good (≥ 3 doses/week).

Discussion

We evaluated the impact of delays in ‘time to PEP’, PEP duration and PrEP-to-PEP transition, based on a combined model of drug-specific pharmacokinetics and viral dynamics. Our modelling by-and-large confirms recent UK, US and WHO guidelines on PEP [6–8], which recommend to combine a TDF/FTC backbone with a third drug, initiate PEP as early as possible and to take it for 28days. Moreover, our simulations indicate that early PEP initiation after suspected virus exposure denotes the most critical parameter. For TDF/FTC two-drug PEP, instantaneous initiation would be required, which may be infeasible. Adding a third drug to the TDF/FTC-backbone ‘buys time’. However, protection may still be incomplete (Fig 1C), if a three drug PEP was initiated 72hours post virus exposure and taken for 28days. The duration of PEP was a less sensitive parameter for EFV, compared to DTG. The latter is contributed to the half-life ($t_{1/2}$) of the drugs, with DTG having a relatively short half-life ($t_{1/2} = 13.5 - 15.9$ h [15] compared to EFV ($t_{1/2} = 40 - 55$ h) [27]. The long half-life may increase the likelihood that virus is cleared before the drug is washed out of the body. While early PEP initiation may be particularly

difficult in settings with less established health infrastructure, we simulated scenarios, in which PEP may be initiated with available TDF/FTC and later intensified with a third drug. Overall, if TDF/FTC can be initiated within less than 24hours, the third drug may be added, as soon as it becomes available (Fig 2), on condition that PEP is taken 28days. We found that preceding TDF/FTC-based PrEP can substantially boost PEP efficacy, if stopped no more than 3 days before suspected virus exposure (Fig. 3), or taken at 4/7 days on average (Fig 4–5). Thus, individuals taking PrEP up to the time of exposure (-3days) could re-initiate the regimen and may add a third drug when it becomes available. The combined effects of PrEP+PEP in this scenario indicate synergy, which could arise from the fact that previous PrEP delays initial viral replication [33], or pre-loads drug levels for subsequent PEP. Our simulations further highlighted that daily PrEP-only with 100% adherence may provide > 90% protection, if stopped no more than 48hours before exposure (Fig. 4D and Fig. 5E). Essentially, this observation is backed by the long pharmacokinetic halflives of TFV-DP and FTC-TP in PBMCs, in the range of 4–7 and 1-2.2 days respectively [34–38].

Our work has a number of limitations: Foremost, there is a lack of data that could be inputted into the model, due to a lack of clinical research into PEP. To strengthen the model further clinical trials with clinically relevant endpoints may be required.

Our simulations refer to exposure with ‘wild type’ viruses, whereas NNRTI drug resistance, which may amount to 10 – 20% of transmitted viruses in Africa and the Americas [39, 40] may severely diminish EFV-based PEP efficacy [27] and thus the suitability of EFV as a PEP component. Notably, while we include EFV in our analysis to explore the impact of a 3rd drug components with very high molecular potency [41], we are not advocating EFV for PEP as it is contraindicated both for psychological side effects and low risk of serious liver toxicity. However, while some clinical trials suggest superiority of integrase inhibitors (DTG over EFV) [42–45] with regards to ‘time to viral load suppression’, we would like to emphasize that viral load kinetics decay more strongly for integrase inhibitors, merely because they inhibit a later stage of the viral replication cycle and not because of superior efficacy (or potency) [46–48]. Hence, the current preference for integrase inhibitors in PEP regimen should be motivated by tolerability and low prevalence of drug resistance rather than alleged efficacy. We did not investigate ritonavir-boosted protease inhibitors lopinavir (LPV/r) or atazanavir (ATV/r) as third drug components in our model [7]. While these compounds have high molecular potency [41] we expect PEP efficacy to be similar to EFV. However, previous work suggests very steep dose-response curves for LPV/r and ATV/r, implying that prophylactic effect may rapidly drop in case of incomplete PEP-adherence, or discontinuation [49]. In our model, we assume that the effect of the considered drugs is associated with systemic drug levels. Both EFV and DTG are lipophilic drugs that can rapidly cross cellular membranes by passive diffusion, such that their unbound drug concentration in plasma strongly correlates with effect-site concentrations (‘free drug hypothesis’ [50,51]). With regards to TDF/FTC, their phosphate moieties (TFV-DP/FTC-TP) in peripheral blood mononuclear cells (PBMCs) were used as an effect marker, since our recent work [12] indicated strong correlation with effect, whereas concentrations in tissue homogenates were not predictive regarding prophylactic efficacy.

With regards to pharmacodynamics, we simulated synergistic effects between TFV-DP and FTC-TP, based on recent results [28] and assumed that the direct antiviral effects of DTG and EFV are additive to the TDF/FTC-backbone.

In our simulations, we modelled viral challenges after sexual exposure (receptive vaginal intercourse). Notably, the majority of non-occupational PEP is administered after potential sexual exposure (PEPSE) [52] and women denote the major HIV risk group [53]. Occupational

virus exposures, through e.g. needle-stick injuries during healthcare procedures may lead to the translocation of larger amounts of viruses which may negatively impact on prophylactic efficacy [30]. Thus, our predictions may be optimistic regarding occupational exposures with patient blood.

Conclusions

Our modelling suggests that ‘time to PEP’ denotes the most critical parameter. Three-drug PEP, preferably initiated no later than 48hours after virus exposure, and taken for 28days remains the optimal regimen. Three-drug PEP for 14days is less efficient than 28days and 2-drug (TDF/FTC) PEP only has high efficacy, if started within one hour after exposure. Self-start 2-drug (TDF/FTC) PEP with a subsequent addition of a 3rd drug in the clinic works better than not self-starting. Lastly, previous PrEP intake < 7days prior to virus exposure boosts subsequent PEP efficacy and may widen the window period for ‘time to PEP’ past 72hours.

Sensitivity to 'time to PEP' and 'PEP duration'

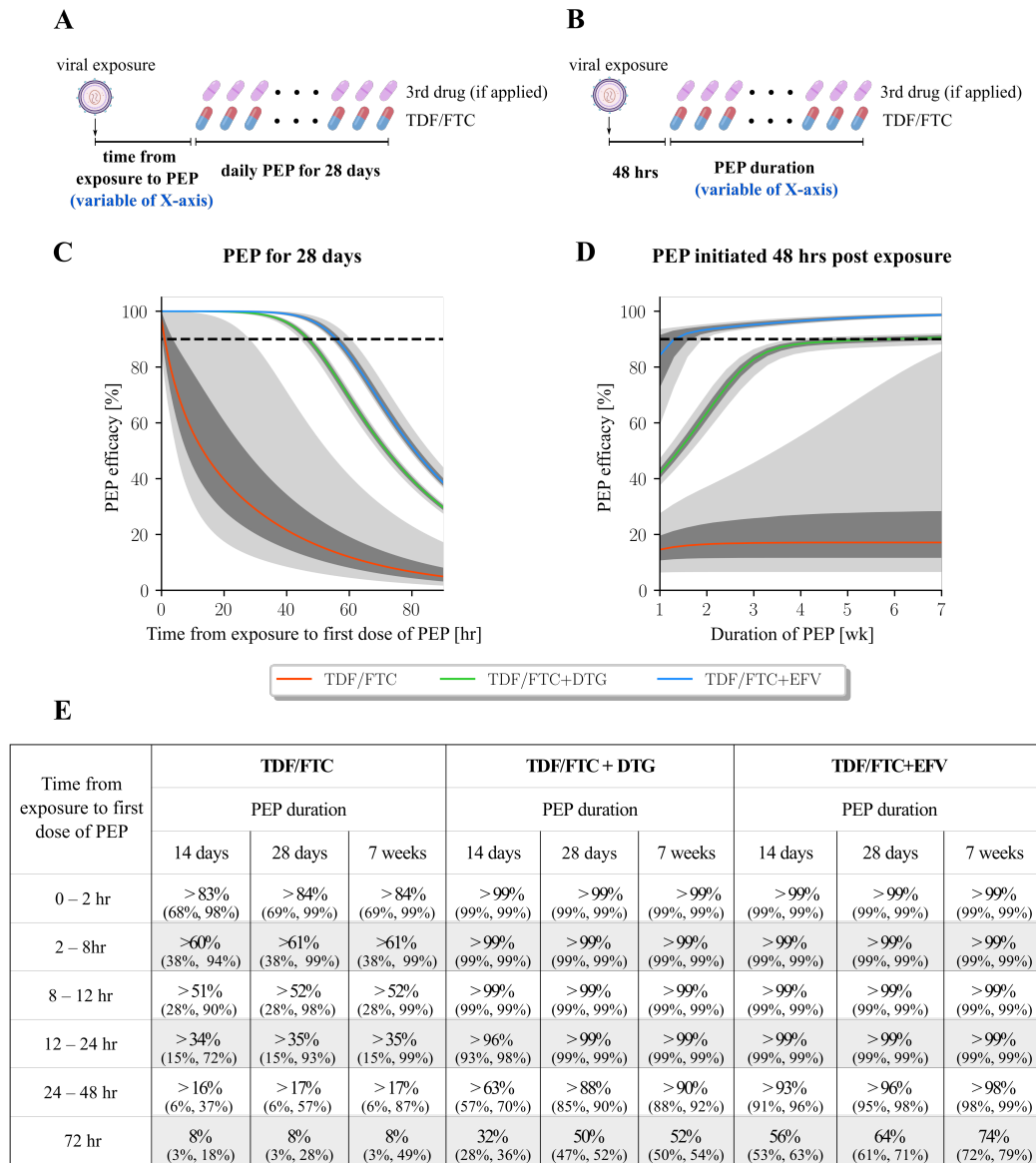


Fig 1. Sensitivity of TDF/FTC-based PEP on initiation delay and PEP duration. A & B: Schematic of the dosing regimen in panel C and D, respectively. C: PEP efficacy of TDF/FTC (red line), TDF/FTC + EFV (blue line), or TDF/FTC + DTG (green line) when initiated at different delays post virus exposure and taken for 28 days once-daily. D: Efficacy of TDF/FTC (red line), TDF/FTC + EFV (blue line) and TDF/FTC + DTG (green line) when initiated 48 hours post virus exposure and taken for different durations. E: Numerical results for different ‘times to PEP’, ‘PEP durations’ and regimen. Values denote the median efficacy and 95% confidence interval evaluated at the maximum ‘time to PEP’ of the indicated interval (e.g. 8hr for the 2-8hr interval). All computations were conducted on 1000 virtual patients. The daily oral dose for each drug corresponds to 300/200mg TDF/FTC, 50mg DTG and 400mg EFV. The colored lines depict the median predicted PEP efficacy, whereas the dark- and light grey areas present the inter-quartile range and the 95% confidence range, respectively. Dashed horizontal lines indicate 90% prophylactic efficacy.

Self-start PEP with TDF/FTC, then get third PEP drug at clinic

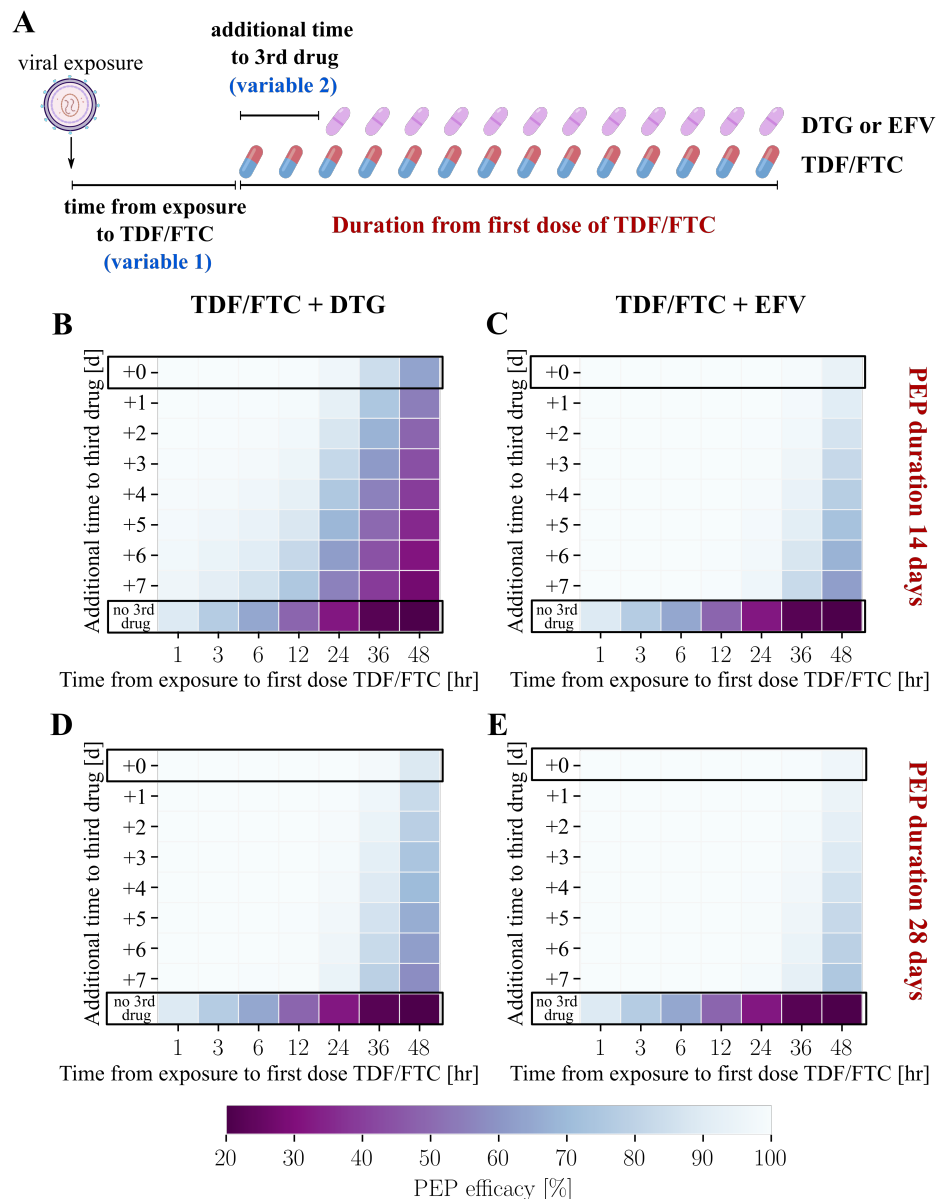


Fig 2. Efficacy of TDF/FTC-based PEP with delayed initiation of TDF/FTC and further delay of the third drug. A: Schematic of the dosing regimen. For the drug combinations TDF/FTC + DTG and TDF/FTC + EFV, PEP efficacy was computed for virus exposures occurring within 1 to 48 hours before the first dose of TDF/FTC. The third drug was then added to the PEP regimen 1 to 7 days after the first dose of TDF/FTC. B: PEP efficacy for the drug combination TDF/FTC + DTG, PEP duration was 14 days from the first dose of TDF/FTC. C: Corresponding PEP efficacy for TDF/FTC + EFV. D: PEP efficacy for TDF/FTC + DTG when taken for 28 days after the first TDF/FTC dose. E: Corresponding PEP efficacy for TDF/FTC + EFV. In panel B-E, the top row outlined in black denotes the scenario where the third drug is immediately added to the TDF/FTC backbone; the bottom row represents the scenario where no third drug was added to the TFC/TDF backbone.

Impact of previous on-demand PrEP on subsequent PEP efficacy

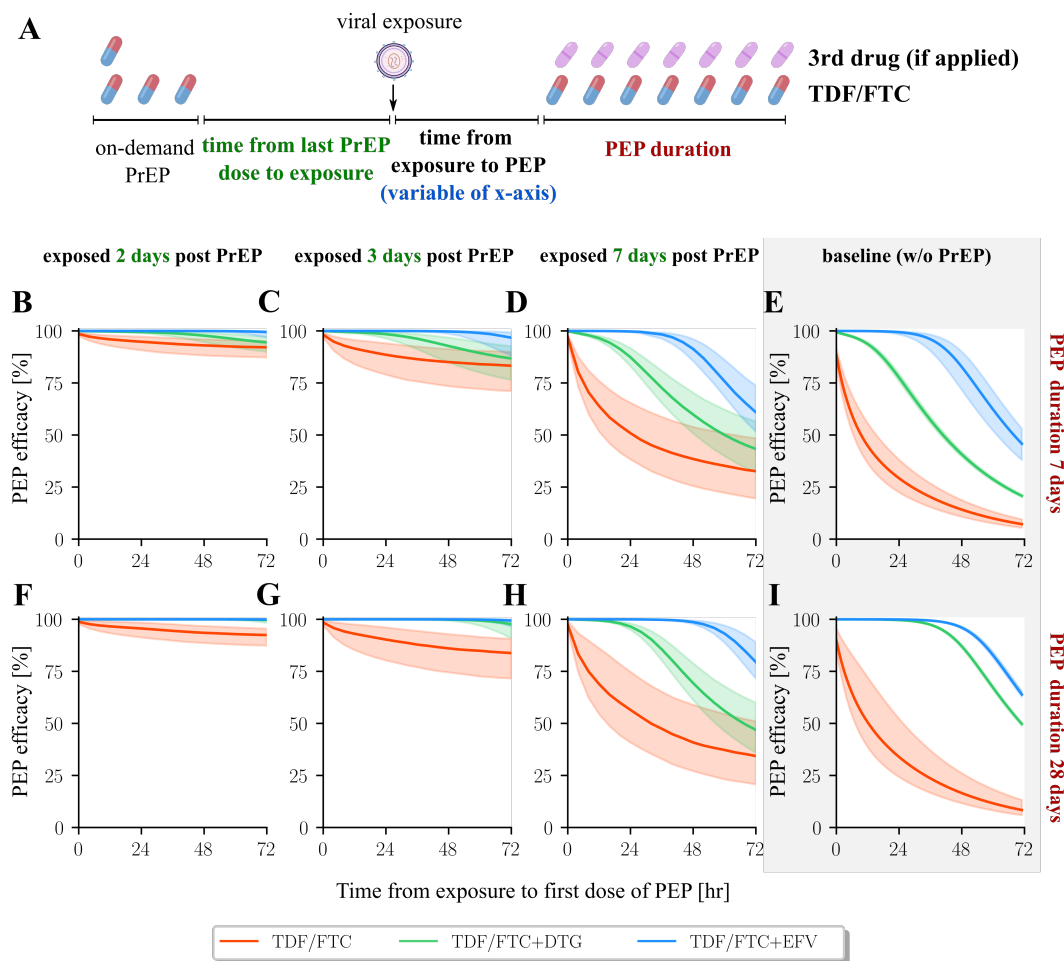


Fig 3. PEP Efficacy Following On-Demand PrEP. A: Schematic of the dosing regimen. Truvada was initially administered as "on-demand" PrEP (2-1-1), followed by viral exposure after a certain period. Subsequently, the PEP regimen was initiated after various time intervals, potentially incorporating a third drug. B-D: the efficacy profiles for PEP with overall duration of 7 days, and the exposure occurred 2 days, 3 days and 7 days after the on-demand PrEP, respectively. F-H: the efficacy profiles for PEP with overall duration of 28 days. E&I: PEP efficacy of baseline scenario without preceding PrEP. All computations were performed on 1000 virtual patients. The daily dose for each drug corresponds to 200 mg FTC, 300 mg TDF, 50 mg DTG, and 400 mg EFV. The colored lines represent the median efficacy value in cases where PEP was initiated at the respective time point along the x-axis. The shaded areas depict the quantile range of prophylactic efficacy.

Impact of previous daily PrEP on subsequent PEP efficacy

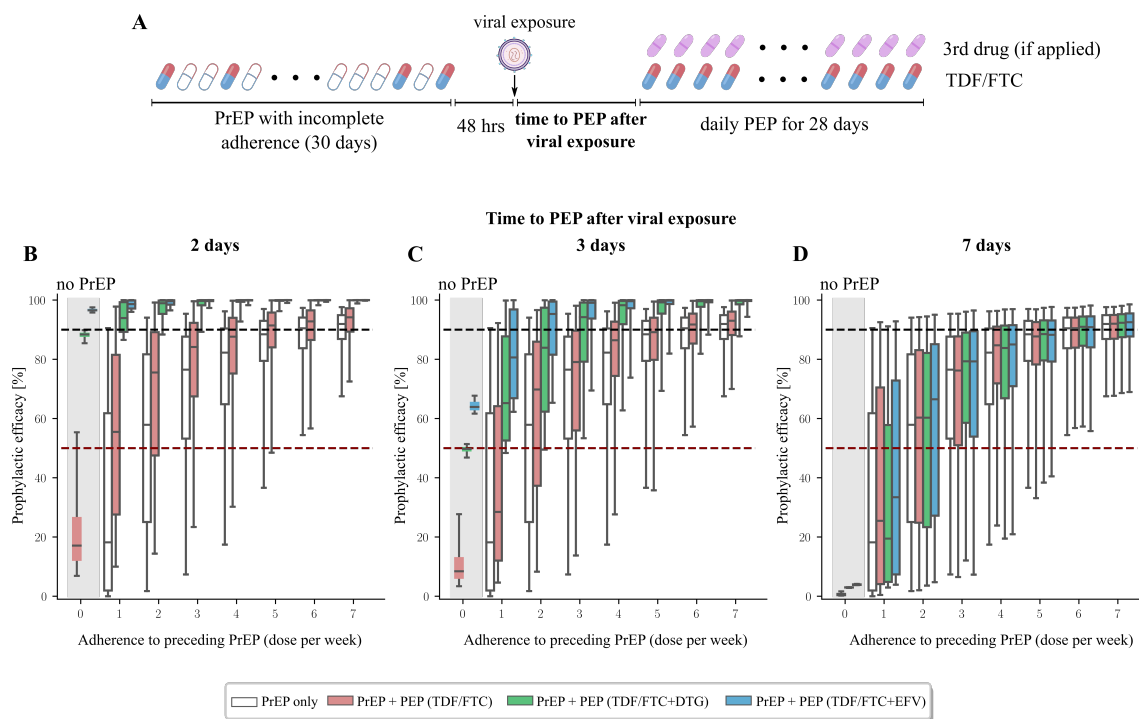


Fig 4. Predicted efficacy of once-daily PEP, in cases where PrEP was recently taken. A: Schematic of dosing regimen: PrEP with incomplete, variable levels of adherence was taken and stopped 24 hours before virus exposure. PEP with either TDF/FTC, or TDF/FTC + DTG or EFV was then initiated after a variable delay and taken for 28 days. PEP efficacy is calculated with regards to preceding PrEP adherence, as well as delay in PEP initiation. **B-D:** Computed prophylactic efficacy for the distinct PrEP+PEP regimen, if PEP was initiated 2, 3, or 7 days post-exposure and taken daily for 28 days. The grey-shaded area indicates PEP efficacy, with no prior PrEP, while empty boxplots highlight the prophylactic effect of preceding PrEP, without subsequent PEP. Boxplots show the median, interquartile ranges and whiskers encompass the 95% confidence interval.

Impact of previous daily PrEP on subsequent PEP efficacy with incomplete adherence

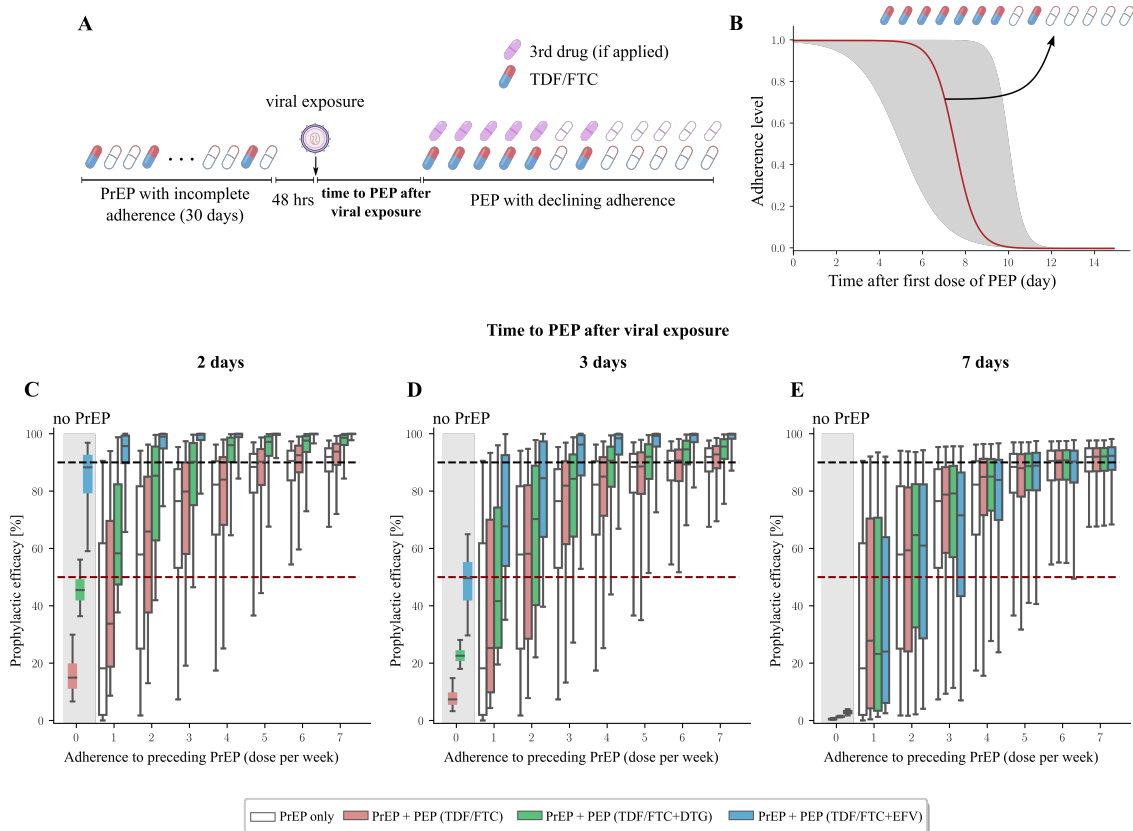


Fig 5. Predicted efficacy of PEP with strongly declining adherence, in cases where PrEP was recently taken. A: Schematic of dosing regimen: PrEP with incomplete, variable levels of adherence was taken and stopped 24 hours before virus exposure. PEP with either TDF/FTC, or TDF/FTC + DTG or EFV was then initiated after a variable delay and adherence strongly decreases over time. PEP efficacy is calculated with regards to preceding PrEP adherence, as well as delay in PEP initiation. B: Simulated PEP adherence probability with a half maximum at 7 days post PEP initiation. C–E: Computed prophylactic efficacy for the distinct PrEP+PEP regimen, if PEP was initiated 2, 3, or 7 days post-exposure and adherence declined substantially after 7 days. The grey-shaded area indicates PEP efficacy without prior PrEP, while empty boxplots highlight the prophylactic effect of preceding PrEP, without subsequent PEP. Boxplots show the median, interquartile ranges and whiskers encompass the 95% confidence interval.

Competing interests	305
The authors declare that no competing interests exist.	306
Authors' contributions	307
L.Z. and M.v.K. wrote the manuscript with help from J.F. and S.C. L.Z. and M.v.K. designed the research. L.Z. performed the research and L.Z., M.v.K., J.F. and S.C. analyzed the data.	308 309
Acknowledgements	310
Funding	311
M.v.K. acknowledges funding from the German ministry for science and education (BMBF), grant number 01KI2016, from the DFG research center MATH+, as well as "Sonderforschungsmittel" (SoFo) provided through the Robert-Koch Institute. The funders had no role in the design of the study or the decision to publish.	312 313 314 315
Data Availability Statement	316
All data and computational codes are available at https://github.com/KleistLab/PEP	317

Supporting Information

318

Supplementary Text S1: Viral dynamics of HIV

319

We employ a viral dynamic model of HIV [17, 18], which contains six viral compartments: free 320
 infectious viruses V , early infected cells, i.e. T-cells T_1 and macrophages M_1 , productively 321
 infected cells T_2 and M_2 , and the latently infected T-cells T_L . As depicted in Fig S1, the 322
 dynamics can be defined by 15 reactions whose reaction propensities are denoted as a_1 through 323
 a_{15} . The drug classes that are investigated in this work are also integrated in this viral dynamics. 324
 Equations (S1)–(S15) define the concrete propensity of reaction.

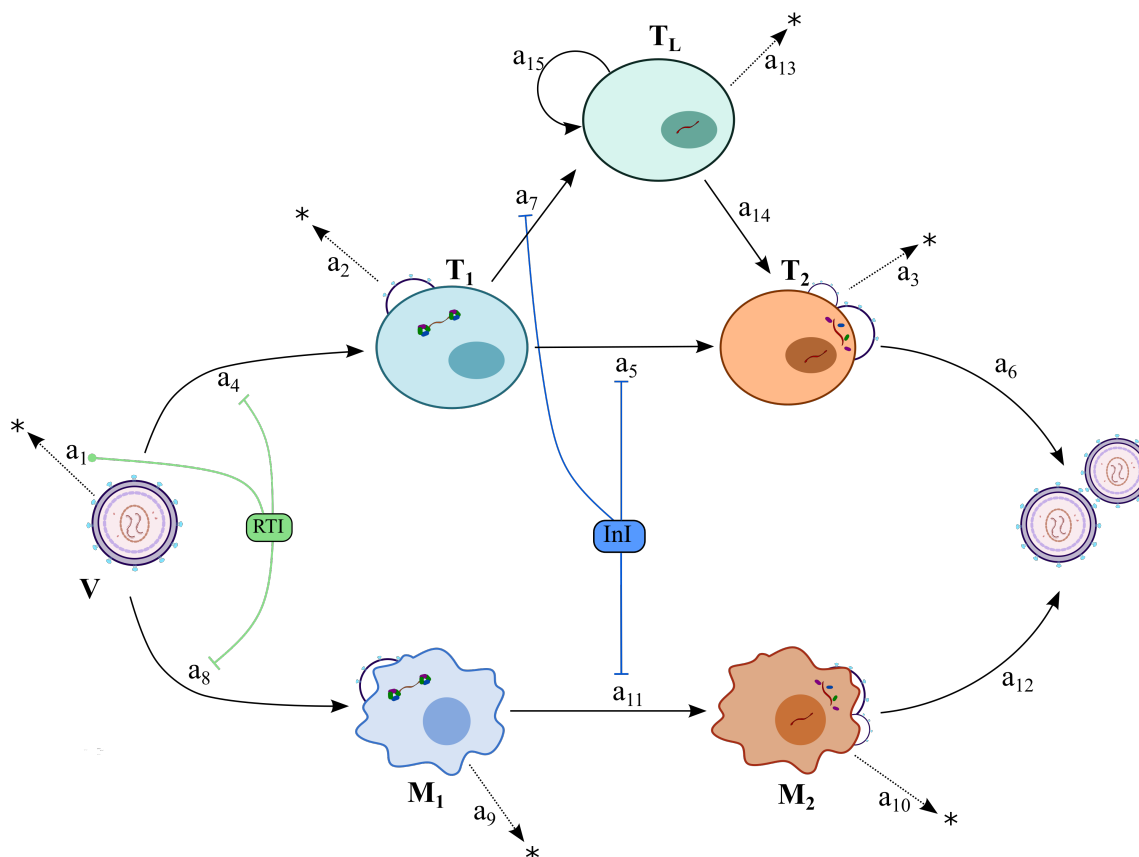


Figure S1. Illustration of the viral dynamic model and the interference mechanisms of different drug classes. Free infectious viruses V can infect target cells and create early infected T-cells T_1 and macrophages M_1 after successful infection. In early infected cells, the viral DNA can become integrated into the host genome, creating late infected cells T_2 and M_2 , which are able to release new viruses. Early infected T-cells T_1 can become latently infected, i.e. the cells will transition into a resting state, denoted as T_L . The latent infected T-cells can replicate itself or be reactivated and turn into T_2 cells. Viral compartments can also be eliminated. $a_{j \in 1 \dots 15}$ denotes the propensity of each reaction (see equations (S1)–(S15)). RTI: reverse transcriptase inhibitor; InI: integrase inhibitor.

325

R_1 : Clearance of free virus	$V \rightarrow *$	$a_1(t) = (CL + (1 + \eta(t)) \cdot (\beta_T \cdot T_u + \beta_M \cdot M_u)) \cdot V$ (S1)
R_2 : Clearance of T_1 -cell	$T_1 \rightarrow *$	$a_2 = (\delta_{PIC,T} + \delta_{T_1}) \cdot T_1$ (S2)
R_3 : Clearance of T_2 -cell	$T_2 \rightarrow *$	$a_3 = \delta_{T_2} \cdot T_2$ (S3)
R_4 : Infection of susceptible T-cell	$V \rightarrow T_1$	$a_4(t) = (1 - \eta(t)) \cdot \beta_T \cdot T_u \cdot V$ (S4)
R_5 : Integration of viral DNA into T_1	$T_1 \rightarrow T_2$	$a_5(t) = (1 - \eta(t)) \cdot (1 - p) \cdot k_T \cdot T_1$ (S5)
R_6 : Production of new virus	$T_2 \rightarrow V + T_2$	$a_6 = N_T \cdot T_2$ (S6)
R_7 : Transition of T_1 into latent infection	$T_1 \rightarrow T_L$	$a_7(t) = (1 - \eta(t)) \cdot p \cdot k_T \cdot T_1$ (S7)
R_8 : Infection of susceptible macrophage	$V \rightarrow M_1$	$a_8(t) = (1 - \eta(t)) \cdot \beta_M \cdot M_u \cdot V$ (S8)
R_9 : Clearance of M_1 -cell	$M_1 \rightarrow *$	$a_9 = (\delta_{PIC,M} + \delta_{M_1}) \cdot M_1$ (S9)
R_{10} : Clearance of M_2 -cell	$M_2 \rightarrow *$	$a_{10} = \delta_{M_2} \cdot M_2$ (S10)
R_{11} : Integration of viral DNA into M_1	$M_1 \rightarrow M_2$	$a_{11}(t) = (1 - \eta(t)) \cdot k_M \cdot M_1$ (S11)
R_{12} : Production of new virus	$M_2 \rightarrow V + M_2$	$a_{12} = N_M \cdot M_2$ (S12)
R_{13} : Clearance of T_L -cell	$T_L \rightarrow *$	$a_{13} = \delta_L \cdot T_L$ (S13)
R_{14} : Reactivation of T_L -cell	$T_L \rightarrow T_2$	$a_{14} = \alpha \cdot T_L$ (S14)
R_{15} : Replication of T_L -cell	$T_L \rightarrow T_L + T_L$	$a_{15} = \zeta \cdot T_L$ (S15)

Here we assume a continuous virus production model, where T_2 and M_2 cells will produce viruses continuously until they are eliminated. The used parameters except for the replication rate of T_L are listed in [18], Table 1 therein. The T_L replication rate ζ is adopted from [54].

Supplementary Text S2: numerical approach for PEP efficacy

329

In the *Methods* section we defined the prophylactic efficacy of a given prophylactic regimen, as the reduction in infection probability *per exposure*. Since extinction probability is the complement of infection probability, we can compute the extinction probability by adopting a recently developed numerical approach [19]. Based on the viral dynamics model in Fig S1, the extinction probability P_E of each single viral compartment can be derived as follows:

330

331

332

333

334

$$\begin{aligned}
 \frac{dP_E(\hat{V})}{dt} &= (a_1(t) + a_4(t) + a_8(t)) \cdot P_E(\hat{V}) - a_4(t) \cdot P_E(\hat{T}_1) - a_8(t) \cdot P_E(\hat{M}_1) - a_1(t) \\
 \frac{dP_E(\hat{T}_1)}{dt} &= (a_2 + a_5(t) + a_7(t)) \cdot P_E(\hat{T}_1) - a_5(t) \cdot P_E(\hat{T}_2) - a_7(t) \cdot P_E(\hat{T}_L) - a_2 \\
 \frac{dP_E(\hat{T}_2)}{dt} &= (a_3 + a_6)P_E(\hat{T}_2) - a_6 \cdot P_E(\hat{V}) \cdot P_E(\hat{T}_2) - a_3 \\
 \frac{dP_E(\hat{T}_L)}{dt} &= (a_{13} + a_{14} + a_{15}) \cdot P_E(\hat{T}_L) - a_{14} \cdot P_E(\hat{T}_2) - a_{15} \cdot P_E(\hat{T}_L)^2 - a_{13} \\
 \frac{dP_E(\hat{M}_1)}{dt} &= (a_9 + a_{11}(t))P_E(\hat{M}_1) - a_{11}(t) \cdot P_E(\hat{M}_2) - a_9 \\
 \frac{dP_E(\hat{M}_2)}{dt} &= (a_{10} + a_{12})P_E(\hat{M}_2) - a_{12} \cdot P_E(\hat{V}) \cdot P_E(\hat{M}_2) - a_{10}
 \end{aligned}
 \tag{S16}$$

The time-dependent reaction rates are given in eqs (S1)–(S15). The system of ordinary differential equations (S16) is solved backwards using standard ODE solvers, as outlined in [19].

335

336

References

1. UNAIDS. Global HIV and AIDS statistics — 2023 fact sheet. <https://www.unaids.org/en/resources/fact-sheet>, 2023.
2. Thumbi Ndung'u, Joseph M McCune, and Steven G Deeks. Why and where an HIV cure is needed and how it might be achieved. *Nature*, 576(7787):397–405, 2019.
3. Robert W Eisinger, Carl W Dieffenbach, and Anthony S Fauci. HIV viral load and transmissibility of HIV infection: undetectable equals untransmittable. *Jama*, 321(5):451–452, 2019.
4. Myron S Cohen, Ying Q Chen, Marybeth McCauley, Theresa Gamble, Mina C Hossainipour, Nagalingeswaran Kumarasamy, James G Hakim, Johnstone Kumwenda, Beatriz Grinsztejn, Jose HS Pilotto, et al. Prevention of HIV-1 infection with early antiretroviral therapy. *New England journal of medicine*, 365(6):493–505, 2011.
5. Raphael J Landovitz, Hyman Scott, and Steven G Deeks. Prevention, treatment and cure of HIV infection. *Nature Reviews Microbiology*, 21(10):657–670, 2023.
6. Fiona Cresswell, Kaveh Asanati, Sanjay Bhagani, Marta Boffito, Valerie Delpech, Jayne Ellis, Julie Fox, Linda Furness, Margaret Kingston, Massoud Mansouri, et al. UK guideline for the use of HIV post-exposure prophylaxis 2021. *HIV medicine*, 23(5):494–545, 2022.
7. World Health Organization. Guidelines on post-exposure prophylaxis for HIV and the use of co-trimoxazole prophylaxis for HIV-related infections among adults, adolescents and children: recommendations for a public health approach. <https://www.who.int/southeastasia/publications/i/item/9789241506830>, 2014.
8. Kenneth L Dominguez, Dawn K Smith, Vasavi Thomas, Nicole Crepaz, Karen Lang, Walid Heneine, Janet M McNicholl, Laurie Reid, Brandi Freelon, Steven R Nesheim, et al. Updated guidelines for antiretroviral postexposure prophylaxis after sexual, injection drug use, or other nonoccupational exposure to HIV—United States, 2016. <https://stacks.cdc.gov/view/cdc/38856>, 2016.
9. World Health Organization et al. Post-exposure prophylaxis to prevent HIV infection: joint WHO/ILO guidelines on post-exposure prophylaxis (PEP) to prevent hiv infection. <https://www.who.int/publications/i/item/9789241596374>, 2007.
10. P Gantner, C Allavena, C Duvivier, A Cabie, J Reynes, A Makinson, I Ravaux, S Bregiegon, L Cotte, D Rey, et al. Post-exposure prophylaxis completion and condom use in the context of potential sexual exposure to HIV. *HIV medicine*, 21(7):463–469, 2020.
11. Mauro Schechter, Regina F Do Lago, Aaron B Mendelsohn, Ronaldo I Moreira, Lawrence H Moulton, Lee H Harrison, Praca Onze Study Team, et al. Behavioral impact, acceptability, and HIV incidence among homosexual men with access to postexposure chemoprophylaxis for HIV. *JAIDS Journal of Acquired Immune Deficiency Syndromes*, 35(5):519–525, 2004.

12. Lanxin Zhang, Sara Iannuzzi, Ayyappa Chaturvedula, Elizabeth Irungu, Jessica E Haberer, 373
Craig W Hendrix, and Max von Kleist. Model-based predictions of protective HIV pre- 374
exposure prophylaxis adherence levels in cisgender women. *Nature medicine*, pages 1–10, 375
2023. 376
13. Katy L Garrett, Jingxian Chen, Brian M Maas, Mackenzie L Cottrell, Heather A Prince, 377
Craig Sykes, Amanda P Schauer, Nicole White, and Julie B Dumond. A pharmaco- 378
kinetic/pharmacodynamic model to predict effective HIV prophylaxis dosing strategies 379
for people who inject drugs. *Journal of Pharmacology and Experimental Therapeutics*, 380
367(2):245–251, 2018. 381
14. Rebecca N Burns, Craig W Hendrix, and Ayyappa Chaturvedula. Population pharmaco- 382
kinetics of tenofovir and tenofovir-diphosphate in healthy women. *The Journal of Clinical* 383
Pharmacology, 55(6):629–638, 2015. 384
15. Sulav Duwal, Laura Dickinson, Saye Khoo, and Max von Kleist. Hybrid stochastic 385
framework predicts efficacy of prophylaxis against HIV: An example with different 386
dolutegravir prophylaxis schemes. *PLOS Computational Biology*, 14(6):e1006155, 2018. 387
16. Laura Dickinson, Janaki Amin, Laura Else, Marta Boffito, Deirdre Egan, Andrew Owen, 388
Saye Khoo, David Back, Catherine Orrell, Amanda Clarke, et al. Pharmacokinetic and 389
pharmacodynamic comparison of once-daily efavirenz (400 mg vs. 600 mg) in treatment- 390
naive HIV-infected patients: results of the encoRe1 study. *Clinical Pharmacology &* 391
Therapeutics, 98(4):406–416, 2015. 392
17. Max Von Kleist, Stephan Menz, and Wilhelm Huisinga. Drug-class specific impact of 393
antivirals on the reproductive capacity of HIV. *PLOS Computational Biology*, 6(3):e1000720, 394
2010. 395
18. Max von Kleist, Stephan Menz, Hartmut Stocker, Keikawus Arasteh, Christof Schütte, 396
and Wilhelm Huisinga. HIV quasispecies dynamics during pro-active treatment switching: 397
impact on multi-drug resistance and resistance archiving in latent reservoirs. *PLoS ONE*, 398
6(3):e18204, 2011. 399
19. Lanxin Zhang, Junyu Wang, and Max von Kleist. Numerical approaches for the rapid 400
analysis of prophylactic efficacy against HIV with arbitrary drug-dosing schemes. *PLOS* 401
Computational Biology, 17(12):e1009295, 2021. 402
20. Jared M. Baeten, Deborah Donnell, Patrick Ndase, Nelly R. Mugo, James D. Campbell, 403
Jonathan Wangisi, Jordan W. Tappero, Elizabeth A. Bukusi, Craig R. Cohen, Elly 404
Katabira, Allan Ronald, Elioda Tumwesigye, Edwin Were, Kenneth H. Fife, James Kiarie, 405
Carey Farquhar, Grace John-Stewart, Aloysious Kakia, Josephine Odoyo, Akasiima 406
Mucunguzi, Edith Nakku-Joloba, Rogers Twesigye, Kenneth Ngunjiri, Cosmas Apaka, 407
Harrison Tamooah, Fridah Gabona, Andrew Mujugira, Dana Panteleeff, Katherine K. 408
Thomas, Lara Kidoguchi, Meighan Krows, Jennifer Revall, Susan Morrison, Harald 409
Haugen, Mira Emmanuel-Ogier, Lisa Ondrejcek, Robert W. Coombs, Lisa Frenkel, Craig 410
Hendrix, Namandjé N. Bumpus, David Bangsberg, Jessica E. Haberer, Wendy S. Stevens, 411
Jairam R. Lingappa, and Connie Celum. Antiretroviral prophylaxis for HIV prevention in 412

- heterosexual men and women. *New England Journal of Medicine*, 367(5):399–410, August 2012. 413
414
21. Jeanne M. Marrazzo, Gita Ramjee, Barbra A. Richardson, Kailazarid Gomez, Nyaradzo 415
Mgodi, Gonasagrie Nair, Thesla Palanee, Clemensia Nakabiito, Ariane van der Straten, 416
Lisa Noguchi, Craig W. Hendrix, James Y. Dai, Shayhana Ganesh, Banningi Mkhize, 417
Marthinette Taljaard, Urvi M. Parikh, Jeanna Piper, Benoît Mâsse, Cynthia Grossman, 418
James Rooney, Jill L. Schwartz, Heather Watts, Mark A. Marzinke, Sharon L. Hillier, 419
Ian M. McGowan, and Z. Mike Chirenje. Tenofovir-based preexposure prophylaxis for 420
HIV infection among african women. *New England Journal of Medicine*, 372(6):509–518, 421
February 2015. 422
22. Sinead Delany-Moretlwe, James P Hughes, Peter Bock, Samuel Gurrion Ouma, Portia 423
Hunidzarira, Dishiki Kalonji, Noel Kayange, Joseph Makhema, Patricia Mandima, Carrie 424
Mathew, et al. Cabotegravir for the prevention of HIV-1 in women: results from hptn 425
084, a phase 3, randomised clinical trial. *The Lancet*, 399(10337):1779–1789, 2022. 426
23. Michael C. Thigpen, Poloko M. Kebaabetswe, Lynn A. Paxton, Dawn K. Smith, Charles E. 427
Rose, Tebogo M. Segolodi, Faith L. Henderson, Sonal R. Pathak, Fatma A. Soud, Kata L. 428
Chillag, Rodreck Mutanhaurwa, Lovemore Ian Chirwa, Michael Kasonde, Daniel Abebe, 429
Evans Buliva, Roman J. Gvetadze, Sandra Johnson, Thom Sukalac, Vasavi T. Thomas, 430
Clyde Hart, Jeffrey A. Johnson, C. Kevin Malotte, Craig W. Hendrix, and John T. Brooks. 431
Antiretroviral preexposure prophylaxis for heterosexual HIV transmission in botswana. 432
New England Journal of Medicine, 367(5):423–434, August 2012. 433
24. S Duwal, V Sunkara, and M von Kleist. Multiscale systems-pharmacology pipeline to 434
assess the prophylactic efficacy of nrtis against HIV-1. *CPT Pharmacometrics Syst 435
Pharmacol*, 5(7):377–87, 07 2016. 436
25. Tae-Wook Chun, Susan Moir, and Anthony S Fauci. HIV reservoirs as obstacles and 437
opportunities for an HIV cure. *Nature Immunology*, 16(6):584–589, may 2015. 438
26. Sulav Duwal and Max von Kleist. Top-down and bottom-up modeling in system pharma- 439
cology to understand clinical efficacy: An example with nrtis of HIV-1. *European Journal 440
of Pharmaceutical Sciences*, 94:72–83, 2016. 441
27. Sulav Duwal, Daniel Seeler, Laura Dickinson, Saye Khoo, and Max von Kleist. The utility 442
of efavirenz-based prophylaxis against HIV infection. a systems pharmacological analysis. 443
Front Pharmacol, 10:199, 2019. 444
28. Sara Iannuzzi and Max von Kleist. Mathematical modelling of the molecular mechanisms 445
of interaction of tenofovir with emtricitabine against HIV. *Viruses*, 13(7):1354, jul 2021. 446
29. Ting-Chao Chou. Theoretical basis, experimental design, and computerized simulation 447
of synergism and antagonism in drug combination studies. *Pharmacological Reviews*, 448
58(3):621–681, 2006. 449

30. Sulav Duwal, Christof Schütte, and Max von Kleist. Pharmacokinetics and pharmacodynamics of the reverse transcriptase inhibitor tenofovir and prophylactic efficacy against HIV-1 infection. *PLOS ONE*, 7(7):e40382, 2012.
31. Guillemette Antoni, Cécile Tremblay, Constance Delaugerre, Isabelle Charreau, Eric Cua, Daniela Rojas Castro, François Raffi, Julie Chas, Thomas Huleux, Bruno Spire, et al. On-demand pre-exposure prophylaxis with tenofovir disoproxil fumarate plus emtricitabine among men who have sex with men with less frequent sexual intercourse: a post-hoc analysis of the anrs ipergay trial. *The lancet HIV*, 7(2):e113–e120, 2020.
32. Deborah Donnell, Eric Ramos, Connie Celum, Jared Baeten, Joan Dragavon, Jordan Tappero, Jairam R Lingappa, Allan Ronald, Kenneth Fife, Robert W Coombs, et al. The effect of oral preexposure prophylaxis on the progression of HIV-1 seroconversion. *AIDS*, 31(14):2007–2016, 2017.
33. Juan Ambrosioni, Elisa Petit, Geoffroy Liegeon, Montserrat Laguno, and José M Miró. Primary HIV-1 infection in users of pre-exposure prophylaxis. *The Lancet HIV*, 8(3):e166–e174, 2021.
34. Jose R Castillo-Mancilla, Jia-Hua Zheng, Joseph E Rower, Amie Meditz, Edward M Gardner, Julie Predhomme, Caitlin Fernandez, Jacob Langness, Jennifer J Kiser, Lane R Bushman, et al. Tenofovir, emtricitabine, and tenofovir diphosphate in dried blood spots for determining recent and cumulative drug exposure. *AIDS research and human retroviruses*, 29(2):384–390, 2013.
35. Jenna L Yager, Kristina M Brooks, Jose R Castillo-Mancilla, Cricket Nemkov, Mary Morrow, Skyler Peterson, Mustafa Ibrahim, Lane Bushman, Jennifer J Kiser, Samantha MaWhinney, et al. Tenofovir-diphosphate in peripheral blood mononuclear cells during low, medium and high adherence to emtricitabine/tenofovir alafenamide vs. emtricitabine/tenofovir disoproxil fumarate. *AIDS*, 35(15):2481–2487, 2021.
36. Xinhui Chen, Sharon M Seifert, Jose R Castillo-Mancilla, Lane R Bushman, Jia-Hua Zheng, Jennifer J Kiser, Samantha MaWhinney, and Peter L Anderson. Model linking plasma and intracellular tenofovir/emtricitabine with deoxynucleoside triphosphates. *PLOS ONE*, 11(11):e0165505, 2016.
37. Peter L Anderson, Albert Y Liu, Jose R Castillo-Mancilla, Edward M Gardner, Sharon M Seifert, Cricket McHugh, Theresa Wagner, Kayla Campbell, Mary Morrow, Mustafa Ibrahim, et al. Intracellular tenofovir-diphosphate and emtricitabine-triphosphate in dried blood spots following directly observed therapy. *Antimicrobial agents and chemotherapy*, 62(1):10–1128, 2018.
38. Nicolette A Louissaint, Ying-Jun Cao, Paul L Skipper, Rosa G Liberman, Steven R Tannenbaum, Sridhar Nimmagadda, Jean R Anderson, Stephanie Everts, Rahul Bakshi, Edward J Fuchs, et al. Single dose pharmacokinetics of oral tenofovir in plasma, peripheral blood mononuclear cells, colonic tissue, and vaginal tissue. *AIDS research and human retroviruses*, 29(11):1443–1450, 2013.

39. Sizulu Moyo, Gillian Hunt, Khangelani Zuma, Mpumi Zungu, Edmore Marinda, Musawenkosi Mabaso, Vibha Kana, Monalisa Kalimashe, Johanna Ledwaba, Inbarani Naidoo, et al. HIV drug resistance profile in south africa: findings and implications from the 2017 national HIV household survey. *PLOS ONE*, 15(11):e0241071, 2020. 489-492
40. World Health Organization. HIV drug resistance – brief report 2024. <https://www.who.int/publications/i/item/9789240086319>, 2024. 493-494
41. Lin Shen, Susan Peterson, Ahmad R Sedaghat, Moira A McMahon, Marc Callender, Haili Zhang, Yan Zhou, Eleanor Pitt, Karen S Anderson, Edward P Acosta, and Robert F Siliciano. Dose-response curve slope sets class-specific limits on inhibitory potential of anti-HIV drugs. *Nature medicine*, 14(7):762–6, Jul 2008. 495-498
42. George W Rutherford and Hacsí Horvath. Dolutegravir plus two nucleoside reverse transcriptase inhibitors versus efavirenz plus two nucleoside reverse transcriptase inhibitors as initial antiretroviral therapy for people with HIV: a systematic review. *PLOS ONE*, 11(10):e0162775, 2016. 499-502
43. Steve Kanters, Marco Vitoria, Michael Zoratti, Meg Doherty, Martina Penazzato, Ajay Rangaraj, Nathan Ford, Kristian Thorlund, Aslam H Anis, Mohammad Ehsanul Karim, et al. Comparative efficacy, tolerability and safety of dolutegravir and efavirenz 400mg among antiretroviral therapies for first-line HIV treatment: a systematic literature review and network meta-analysis. *EClinicalMedicine*, 28, 2020. 503-507
44. Avania Bangalee, S Hanley, and V Bangalee. Dolutegravir as first-line antiretroviral therapy in south africa: Beware the one-size-fits-all approach. *South African Medical Journal*, 112(10):787–790, 2022. 508-510
45. Karen Jacobson and Onyema Ogbuagu. Integrase inhibitor-based regimens result in more rapid virologic suppression rates among treatment-naïve human immunodeficiency virus-infected patients compared to non-nucleoside and protease inhibitor-based regimens in a real-world clinical setting: a retrospective cohort study. *Medicine*, 97(43):e13016, 2018. 511-515
46. Adriana Andrade, Jeremie Guedj, Susan L Rosenkranz, Darlene Lu, John Mellors, Daniel R Kuritzkes, Alan S Perelson, Ruy M Ribeiro, et al. Early HIV RNA decay during raltegravir-containing regimens exhibits two distinct subphases (1a and 1b). *AIDS*, 29(18):2419–2426, 2015. 516-519
47. Daniel A Donahue, Richard D Sloan, Bjorn D Kuhl, Tamara Bar-Magen, Susan M Schader, and Mark A Wainberg. Stage-dependent inhibition of HIV-1 replication by antiretroviral drugs in cell culture. *Antimicrobial agents and chemotherapy*, 54(3):1047–1054, 2010. 520-522
48. Ahmad R Sedaghat, Jason B Dinoso, Lin Shen, Claus O Wilke, and Robert F Siliciano. Decay dynamics of HIV-1 depend on the inhibited stages of the viral life cycle. *Proceedings of the National Academy of Sciences*, 105(12):4832–4837, 2008. 523-525

49. Sulav Duwal, Laura Dickinson, Saye Khoo, and Max von Kleist. Mechanistic frame- 526
work predicts drug-class specific utility of antiretrovirals for HIV prophylaxis. *PLOS* 527
computational biology, 15(1):e1006740, 01 2019. 528
50. Dennis A Smith, Li Di, and Edward H Kerns. The effect of plasma protein binding 529
on in vivo efficacy: misconceptions in drug discovery. *Nature reviews Drug discovery*, 530
9(12):929–939, 2010. 531
51. LB Avery, RP Bakshi, YJ Cao, and CW Hendrix. The male genital tract is not a pharma- 532
cological sanctuary from efavirenz. *Clinical Pharmacology & Therapeutics*, 90(1):151–156, 533
2011. 534
52. Binta Sultan, Paul Benn, and Laura Waters. Current perspectives in HIV post-exposure 535
prophylaxis. *HIV/AIDS-Research and Palliative Care*, pages 147–158, 2014. 536
53. Grant Murewanhema, Godfrey Musuka, Perseverance Moyo, Enos Moyo, and Tafadzwa 537
Dzinamarira. HIV and adolescent girls and young women in sub-saharan africa: A call 538
for expedited action to reduce new infections. *IJID regions*, 5:30–32, 2022. 539
54. Daniel B Reeves, Elizabeth R Duke, Thor A Wagner, Sarah E Palmer, Adam M Spivak, 540
and Joshua T Schiffer. A majority of HIV persistence during antiretroviral therapy is due 541
to infected cell proliferation. *Nature communications*, 9(1):1–16, 2018. 542