

1 **Isolation of *Borrelia puertoricensis* from ticks collected in Merida, Yucatan, Mexico**

2

3

4 Edwin Vázquez-Guerrero¹, Alexander R. Kneubehl², Guadalupe C. Reyes-Solís³, Carlos
5 Machain-Williams³, Aparna Krishnavajhala², Paulina Estrada-de los Santos¹, Job E.
6 Lopez^{2, 4, *} and J. Antonio Ibarra^{1, *}

7

8

9 ¹ Departamento de Microbiología, Escuela Nacional de Ciencias Biológicas, Instituto
10 Politécnico Nacional, Ciudad de México, México

11 ² Department of Pediatrics, Baylor College of Medicine, Houston, Texas, USA

12 ³ Centro de Investigaciones Regionales Dr. Hideyo Noguchi, Universidad Autónoma de
13 Yucatán, Mérida, México

14 ⁴ Department of Molecular Virology and Microbiology, Baylor College of Medicine,
15 Houston, Texas, USA.

16

17

18 **Corresponding authors:** J. Antonio Ibarra, jaig19@gmail.com / jibarrag@ipn.mx and
19 Job E. Lopez, job.lopez@bcm.edu

20

21

22

23

24 **Abstract**

25 Isolation of tick-borne relapsing fever (TBRF) spirochetes has proven to be a useful tool
26 to understand their distribution by geographic areas where the tick vectors inhabit.
27 However, their isolation and culture are not easy and in general an animal model is
28 needed to achieve this task. Here, argasid ticks were collected from a neighborhood in
29 Ciudad Cauce, Merida, Mexico, and *Borrelia puertoricensis* was isolated with an
30 immunosuppressed mouse model. By using this model, a higher number of spirochetes
31 were observed in blood samples, and these were successfully cultivated in Barbour-
32 Stoenner-Kelly (BSK)-IIB media. Genomic analyses confirmed that the isolate to be *B.*
33 *puertoricensis*. The present report shows that this spirochete is present in argasid ticks in
34 Ciudad Cauce and presents a potential medical and veterinary health risk.

35

36 **Author Summary**

37 Relapsing fever is a neglected disease caused by spirochetes bacteria of the *Borrelia* and
38 genus that are different than those in the Lyme disease group. These bacteria are
39 transmitted mostly by *Ornithodoros (Alectorobius)* soft ticks. In many countries, including
40 Mexico, *Ornithodoros* species are understudied and often misidentified. In this report we
41 obtained an isolate of *Borrelia puertoricensis* from ticks captured in a small park in the
42 city of Merida, Yucatan. These results emphasize the need for fine-scale vector
43 surveillance in neighborhoods to determine the abundance of *Borrelia* species, and to
44 define their impact on humans and domestic and wild animals.

45

46 Introduction

47 Relapsing fever (RF) is caused by pathogenic spirochetes in the genus *Borrelia*
48 and are primarily vectored in the Western Hemisphere by argasid ticks. These vectors
49 feed quickly, within five to 60 minutes, and then return to the nest, den, or under floor tiles
50 and windowsills inside houses [1,2]. Argasid ticks have a life cycle that complicates the
51 detection of the *Borrelia* species they transmit. Specially, the genus *Ornithodoros* feed
52 within five to 60 minutes and subsequently return to the cavity in which they dwell. This
53 includes wild animal nests or dens [1]. In the American continent TBRF is caused by
54 *Borrelia hermsii*, *Borrelia parkeri*, *Borrelia turicatae*, *Borrelia mazzottii*, and *Borrelia*
55 *venezuelensis*, which are all transmitted by different species of argasid ticks, while
56 *Borrelia miyamotoi* is transmitted by ixodid ticks [3]. However, in Latin America, the
57 distribution of argasids and the RF spirochete species they transmit has been unclear.

58 While RF spirochetes were described in Mexico in the twentieth century, the
59 disease is not recognized by healthcare providers [4]. Humans infected with TBRF
60 spirochetes show nonspecific symptoms that include sporadic fever, headache, myalgias,
61 chills, nausea, vomiting, rigors, and pregnancy complications [5]. TBRF is often
62 misdiagnosed as Lyme disease, although no isolates of the latter pathogen have been
63 described in Latin America.

64 There has been taxonomic confusion with argasid ticks from Latin America,
65 causing a poor understanding of the public health impact of RF borreliosis. For example,
66 in the early 1900s, a species of RF spirochete circulated in Panama causing significant
67 morbidity [6]. *Ornithodoros talaje* was implicated as the vector [7], but recent records of
68 this tick from Panama are absent. Another argasid from Panama that was not considered

69 as the vector of RF spirochetes was *Alectorobius (Ornithodoros) puertoricensis*, which
70 has previously been misidentified as *O. talaje*. A comparative analysis of *O. talaje* and *A.*
71 *puertoricensis* by Fox indicated that the two were synonymous [8]. Venzal's work further
72 showed that adults and nymphs of *O. talaje* and *A. puertoricensis* are morphologically
73 similar [9]. Recent collections of *A. puertoricensis* from Panama demonstrated that this
74 species transmits *Borrelia puertoricensis* [2]. Collectively, these studies indicated that
75 updated surveillance efforts are needed for *A. puertoricensis*.

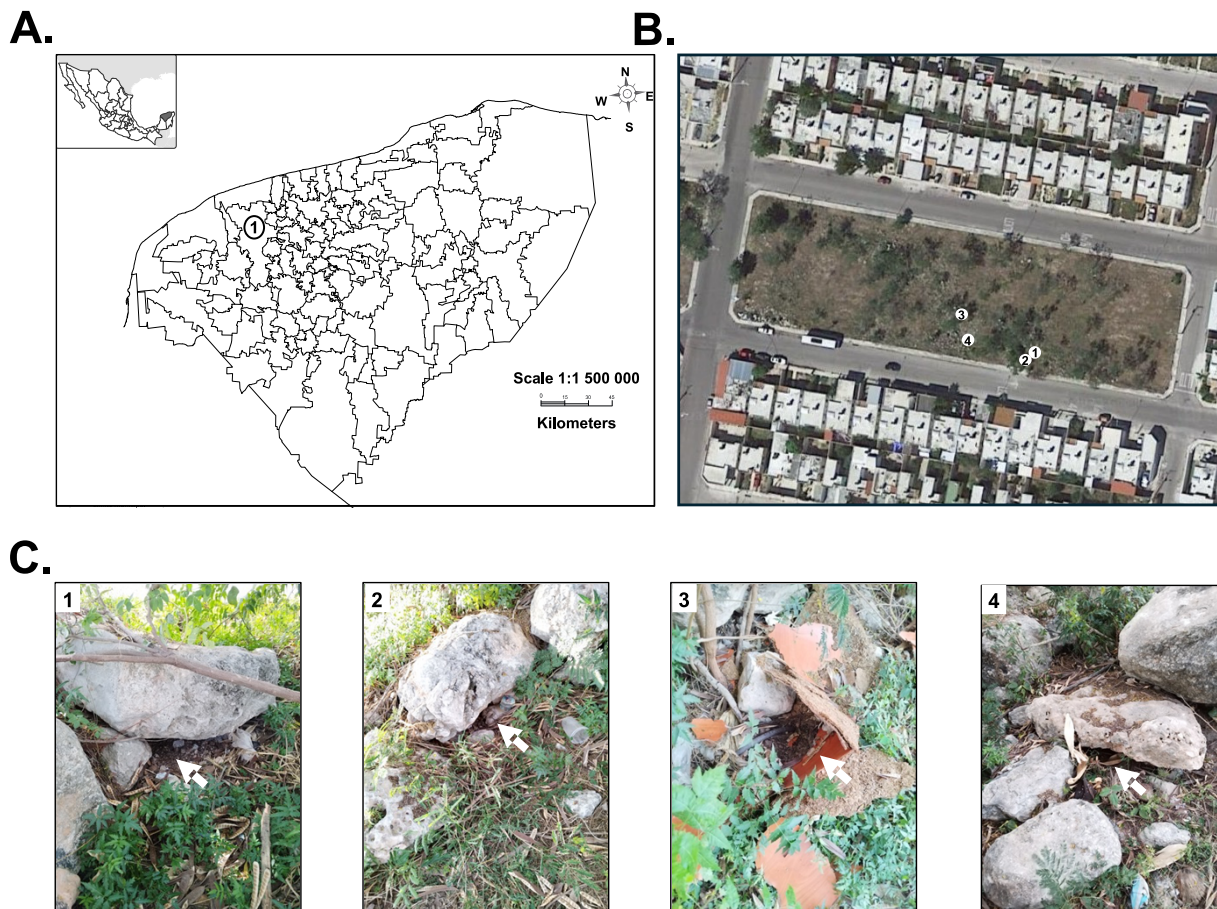
76 In Mexico, *A. puertoricensis* has been described in the state of Veracruz [10], but
77 it is unknown whether *B. puertoricensis* circulates in the country. We report surveillance
78 efforts in the state Yucatan, Mexico, and collected ticks in neighborhoods of Merida. Using
79 an immunosuppressed mouse model, we describe the isolation of a *Borrelia* species from
80 *A. puertoricensis* ticks. The genomic characterization of this spirochete identified it as *B.*
81 *puertoricensis*. We also performed a comparative analysis of the diagnostic antigen
82 *Borrelia* immunogenic protein A (BipA) across known species of RF spirochetes [11]. Our
83 results demonstrated that *B. puertoricensis* extends to the southeastern part of Mexico
84 and are found in areas with high human activity.

85 **Methods**

86 **Sampling sites**

87 In January 2023, argasid ticks were collected from a small park in the Ciudad
88 Caucel neighborhood in Merida city (latitude 20.985954, longitude -89.695441), the
89 capital of Yucatan (Fig 1A). Opossum (*Didelphis virginiana*) were sighted in the
90 neighborhood and four of their burrows were sampled using an aspirator or dry ice as a
91 source of carbon dioxide to bait ticks, as previously described [12] (Fig 1B, 1C). Collected

92 samples were placed in 50-ml ventilated centrifuge tubes and ticks from each burrow
93 were kept separated.



94
95 **Fig 1.** Collection and identification of *Alectorobius (Ornithodoros) puertoricensis* in
96 Yucatan, Mexico. Shown is a map of the state of Yucatan, the number 1 in the map shows
97 the location of Merida city, left upper corner map shows the location of Yucatan in Mexico
98 (A). Collection site was in Ciudad Caucel, here in a terrain map and the numbers indicate
99 location of the burrows (B). The white arrows in (C), panels 1 through 4, point to where
100 ticks were collected. In (C), C1 to C4 point to the respective locations in panel (B). Terrain
101 maps were obtained from Google maps and used under the “principles of fair use”
102 (<https://about.google/brand-resource-center/products-and-services/geo-guidelines/>).

103 **Argasid tick identification and classification**

104 Live ticks were returned to our laboratory in Mexico City and maintained at 25 °C
105 and 85% relative humidity inside a glass desiccator as described previously [11]. Ticks
106 were speciated by using light microscopy and previously described taxonomical guides
107 [13, 14, 15]. Molecular classification was done as follows: genomic DNA was isolated
108 from ticks (n = 3) with a DNeasy Blood and Tissue kit following the manufacturer's
109 instructions (Qiagen, Hilden, Germany). A ~475 nucleotide region of the mitochondrial
110 16S rDNA gene was amplified by PCR as previously described [16, 17] using the Tm
111 16S+1 (5'-CTGCTCAATGATTTTTTAAATTGC-3') and Tm 16S-1 (5'-
112 CCGGTCTGAACTCAGATCATGTA-3') primers. Amplification conditions were
113 performed, as previously described [16, 17]. PCR products were observed in 1% TAE
114 agarose gels and further submitted for sequencing to obtain a 2X coverage at Macrogen
115 Inc. (<https://dna.macrogen.com/>). Sequences were assembled and trimmed using
116 MUSCLE v5 and ChromasPro (<https://technelysium.com.au/wp/chromaspro/>) [18].
117 Consensus sequences obtained were compared with available sequences in GenBank
118 using BLASTn (<https://blast.ncbi.nlm.nih.gov>). Nucleotide identity was assigned based on
119 the expected value (e-value). In cases of identical e-values, we assigned the gene to the
120 sequence with the highest value. A phylogenetic analysis using the maximum likelihood
121 method was performed in PhyML 3.1 with the GTR+G model [19]. Sequences were
122 deposited in GenBank.

123 **Animal model**

124 All animal procedures were approved by our Institutional Animal Care and Use
125 Committee (CEI-ENCB protocol # ZOO-001-2022e1) To determine whether the collected

126 ticks were infected by *Borrelia* spp. a mouse model was used as described previously
127 with modifications [12]. Ticks were groups in pools and fed on one of three different mouse
128 strains (DBA/2J, C57BL/c or BALB/c) depending on the availability at the Instituto
129 Politécnico Nacional. In total, 27 animals were used. Two and a half microliters of blood
130 were collected from mouse tails for 18 consecutive days to evaluate the presence of
131 spirochetes by dark field microscopy (Olympus CX33 Microscope), as described
132 previously [2]. Spirochetes were counted per 6 µl of blood (dilution 1:2 with EDTA 1%)
133 under dark-field illumination by using a Petroff–Hausser counting chamber (Hausser
134 Scientific, Horsham, PA) with a depth of 0.02 mm [2]. When spirochetes were observed,
135 the infected mouse was euthanized by exsanguination to quantify and isolate the bacteria
136 as described [2]. If no bacteria were observed the mice were kept alive and after 30 days,
137 the animals were exsanguinated. The blood samples were centrifuged at 5,400 x g for
138 two minutes to obtain the sera. Serum samples were used to evaluate antibody responses
139 to *Borrelia* by immunoblotting, as described below.

140 Given that isolation of bacteria was not possible with the previous protocol even
141 when spirochetes were observed we opted to use a previously chemically induced
142 immunosuppression model [20, 21]. Briefly, seven and four days prior to feeding ticks, 10
143 mg/kg dexamethasone was subcutaneously administered to mice. Dexamethasone was
144 also administered twice a week during the experiment and the presence of spirochetes
145 was determined as described above. After seven days mice were exsanguinated, blood
146 was processed as described [2], and BSK-IIB media was inoculated with infected serum.

147 **Serology**

148 Immunoblotting was performed to assess seroconversion of mice to *Borrelia*
149 recombinant glycerophosphodiester phosphodiesterase (rGlpQ). The recombinant
150 protein was purified as described [22], electrophoresed, and transferred to polyvinylidene
151 fluoride (PVDF) membranes (Millipore). Immunoblotting was performed, as previously
152 described [22]. Serum samples were diluted 1:200 and used to probe the PVDF
153 membranes. HRP-conjugate recombinant protein G (diluted 1:4,000) was used to detect
154 IgG. Antibody binding was detected by chemiluminescence using Novex ECL Western
155 Blotting Detection Reagent (Invitrogen) and immunoblots were imaged with a ChemiDoc
156 MP (Bio-Rad, Hercules, California, USA).

157 **Bacterial culture**

158 For spirochete isolation, when bacteria were observed in murine blood, the animal was
159 exsanguinated by intracardiac puncture and whole blood was centrifuged at 500 x g for 5
160 min. The plasma was removed and centrifuged again at 5,000 x g for 10 min [23]. The
161 pellet was resuspended in 1 ml of BSK-IIB media and used to inoculate 4 ml of medium
162 [24], supplemented with 10 µg/ml rifampin, 4 µg/ml phosphomycin, and 0.5 µg/ml
163 amphotericin B [25]. Cultures were incubated at 35°C and 5% CO₂ for approximately eight
164 days. To assess bacterial growth, an aliquot of the culture was placed on a glass slide
165 and observed by dark field microscopy. When bacteria were detected, they were
166 subcultured in fresh BSK-IIB media for storage and DNA isolation purposes.

167 **Bacterial identification and genomics**

168 Spirochetes were grown for no more than two passages, and bacterial genomic
169 DNA was isolated using a phenol-chloroform procedure. Pulsed field electrophoreses was
170 performed to determine DNA quality, as described [26]. For an initial identification, a PCR

171 for the gene coding for the 16S rRNA and *flaB* was performed; Polymerase chain reaction
172 (PCR) conditions consisted of initial denaturation at 95°C for 2 min followed by 35 cycles
173 at 95°C for 30 sec, annealing at 55°C for 30 sec, and an extension at 72°C for 2 min; after
174 the last cycle, a final extension was performed at 72°C for 5 min [17]. To confirm the
175 expected molecular size for each amplicon, PCR products were observed in 1% TAE
176 agarose gel electrophoresis and further submitted for sequencing to obtain a 2X coverage
177 at Macrogen Inc. (<https://dna.macrogen.com/>). Sequences were assembled and trimmed
178 using MUSCLE v5 [18] and ChromasPro (<https://technelysium.com.au/wp/chromaspro/>).
179 Consensus sequences obtained were compared with available sequences in GenBank
180 using BLASTn (<https://blast.ncbi.nlm.nih.gov>). Nucleotide identity was assigned based on
181 the expected value (e-value). In cases of identical e-values, we assigned the gene to the
182 sequence with the highest value. A phylogenetic analysis using the maximum likelihood
183 method was performed in PhyML 3.1 with the GTR+G model [18]. Sequences were
184 deposited in GenBank.

185 To determine plasmid content and DNA integrity 1 µg of purified genomic DNA was
186 subjected to pulse field electrophoresis as previously described [17]. Long-read
187 sequencing was performed using the Oxford Nanopore Technologies (ONT) Mk1B
188 platform with the SQK-RBK114.96 library preparation kit and R10.4.1 flow cell. Short-read
189 sequences were generated by SeqCenter (SeqCenter, Pittsburgh, Pennsylvania, USA)
190 using an Illumina 2x150 library preparation kit. Plasmid-resolved genome assembly was
191 generated by using short-reads to polish the long-read data, as previously reported [27]
192 with modification. Due to the increase in accuracy for Oxford Nanopore Technologies'
193 platform and to prevent over polishing of the assembly, which can introduce errors, we

194 modified the polishing pipeline for genome assembly. The mean ONT coverage was 439x
195 and the mean Illumina coverage was 236x. Using a previously established approach [27],
196 completeness and QV scored (based on the Phred scale) were determined to be 99.89%
197 and Q53.82, respectively. The assembly was annotated with NCBI's Prokaryotic Genome
198 Annotation Pipeline and submitted to NCBI's GenBank (accession numbers CP149102-
199 CP149123).

200 **Results**

201 **Capture and identification of *Alectorobius (Ornithodoros)*** 202 ***puertoricensis***

203 Surveillance for argasid ticks was conducted in neighborhood parks in Ciudad
204 Cauce, located in the at the outskirts of west side of the Merida city (Fig 1A), capital city
205 of the Mexican state of Yucatan (892,000 persons by the 2020 national census).
206 Opossum (*Didelphis virginiana*) burrows were in a small park in the center of the
207 neighborhood (Fig 1B) and 466 soft ticks were collected from four burrows (Fig 1C, Table
208 1). The life stages included 279 nymphs, 28 larvae, and 159 adults (56 females and 103
209 males) (Table 1).

210

211

212

213

214

215

216 **Table 1. Characteristics of collected ticks.**

Number of inspected dens	Dens with ticks	Number of ticks collected per den	Stages ^a	Number of ticks for DNA extraction
			41A	
		103	(14♀, 27♂),	0
			59N, 3L	
		22	3N, 19L	0
4	4		109A	
		186	(38♀, 71♂),	2♀, 1N
			71N, 6L	
			9A	
		155	(4♀, 5♂),	0
			146N	
4	4	466	159A	
			(56♀, 103♂),	2♀, 1N
			279N, 28L	

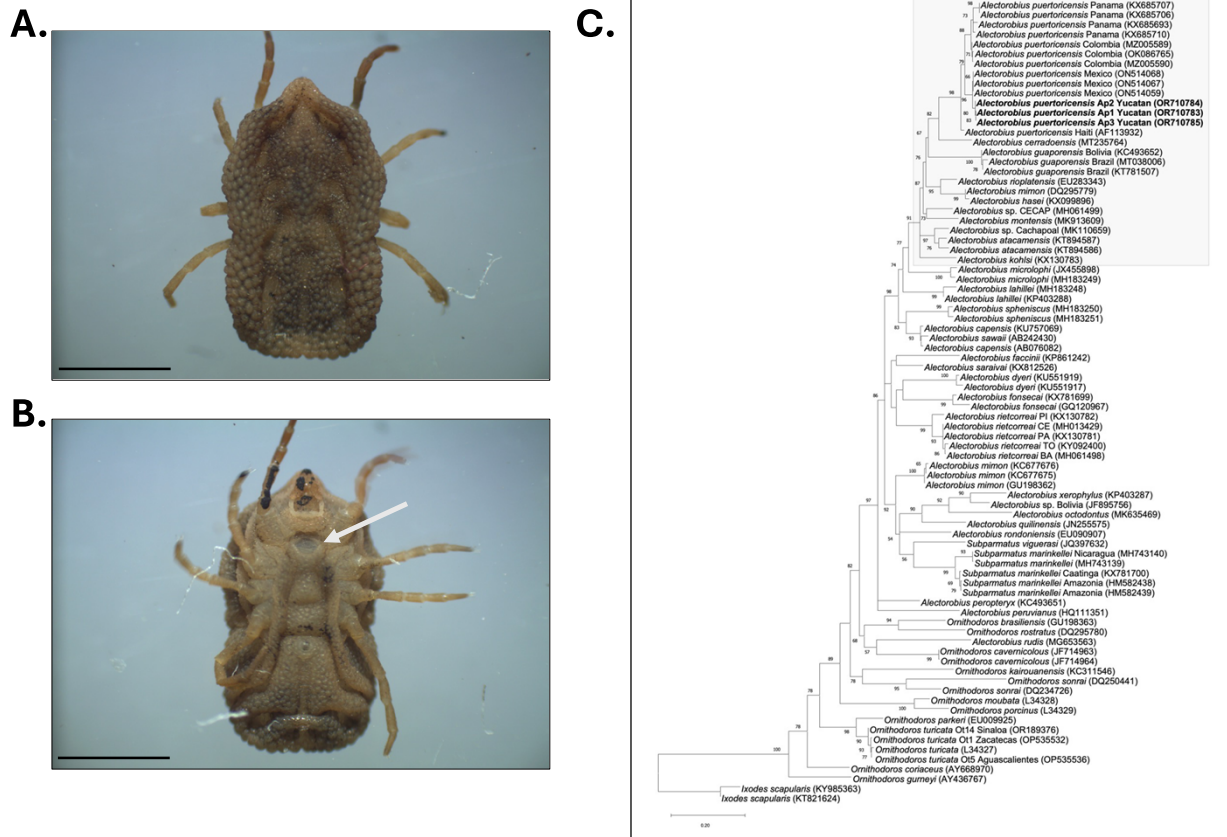
217 ^a A, adults; ♀, Females; ♂, Males; N, Nymphs; L, Larvae.

218

219

220 Morphological identification of adults and nymphs indicated that all collected ticks
 221 were *A. puertoricensis*. The morphology was consistent with the original descriptions of
 222 Fox (1947) and with specimens previously reported in a Mexico [15]. These included the
 223 absence of eyes, cheeks present, body oval, hood present and well developed, and
 224 tarsus I with subapical dorsal protuberance (Fig 2A, 2B).

225



226

227 **Fig 2.** Morphological and molecular identification of *A. puertoricensis*. Stereo microscope
 228 images of a female *A. puertoricensis* specimen. The dorsal view is shown in (A) and the
 229 ventral in (B). The white arrow points to the genital aperture. Scale bars: 3 mm. In (B), a
 230 phylogenetic analysis of mitochondrial DNA sequence fragments from soft ticks
 231 *Alectorobius* spp is shown. The analysis was performed with the maximum likelihood
 232 method using the GTR+G model. Bootstrap is shown in the branches. Shown in bold
 233 letters are the sequences of the analyzed ticks. In the gray box is the group *talaje*. In
 234 parenthesis the accession numbers at NCBI. The bar displays the differences between
 235 sequences. *Ixodes scapularis* was used as an outgroup.

236

237 Morphological speciation was complemented with molecular identification by
238 analyzing 16S rDNA mitochondrial sequences. Total DNA from three ticks was obtained
239 and analyzed (Ap1 to Ap3). BLASTn analysis indicated that sequences from the three
240 samples were ~97% identical to *A. puertoricensis* from multiple regions of Central
241 America and the Caribbean. The sequences were deposited in GenBank (OR710783-
242 OR710785) and phylogenetic analyses of all three sequences corroborated that they
243 grouped with *A. puertoricensis*, and they are in the same group as those reported from
244 Mexico, Panama, Colombia, and Haiti (Fig 2C). These results show that *A. puertoricensis*
245 is present in Mexico likely parasitizing opossums in urban neighborhoods.

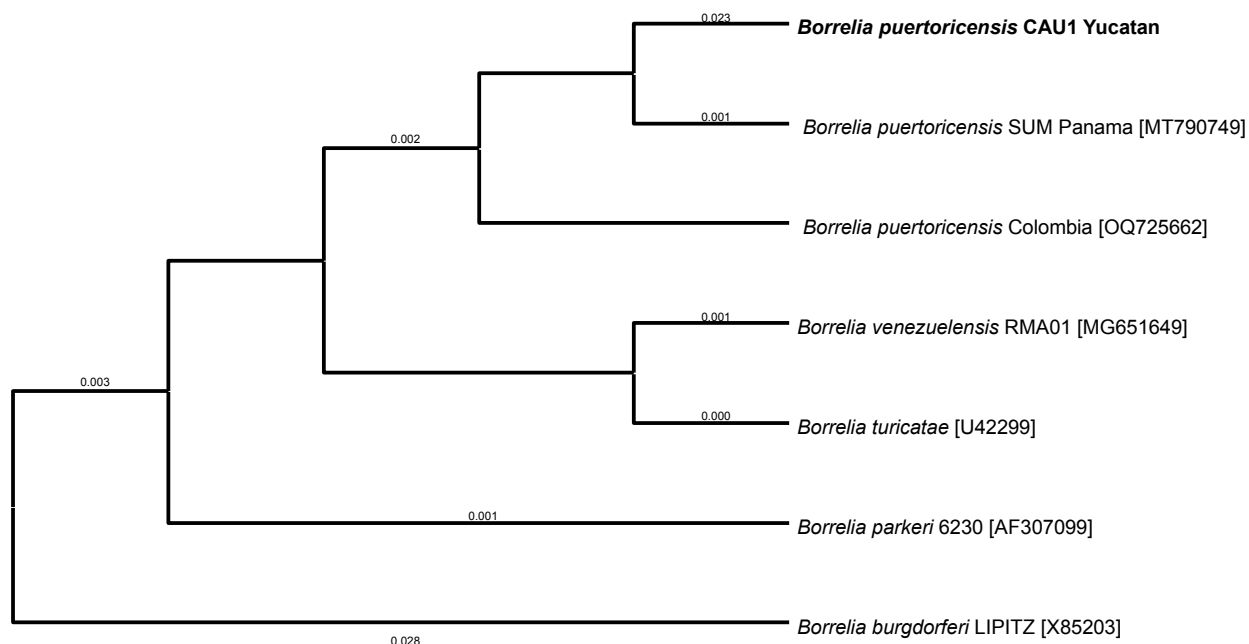
246 **Isolation of *Borrelia puertoricensis***

247 To determine whether the collected ticks were colonized by relapsing fever (RF)
248 spirochetes, we fed them on mice. We observed a low level of spirochetemia (2.5×10^4
249 bacteria per ml of blood) in four mice and failed to successfully culture the bacteria in
250 Barbour-Stoenner-Kelly (BSK)-IIB medium. The four cohorts of ticks that were infected
251 were subsequently fed on mice under chemical immunosuppression. We used one
252 DBA/2J mouse and three BALB/c mice. In these mice we observed higher bacterial
253 densities of 5×10^5 to 5×10^6 spirochetes per ml of blood. After seven days the four mice
254 were exsanguinated, blood was processed as described [2], and BSK-IIB media was
255 inoculated with infected serum. We successfully grew spirochetes that originated from the
256 DBA/2J mouse in medium and generated glycerol stocks. This isolate was stored at -70
257 °C and designated CAU1 (*B. puertoricensis* Ciudad Caucel isolate 1). DNA was extracted
258 from the cultures and used for PCR amplification and sequencing of the 16S rRNA coding

259 gene and *flaB*, which indicated that the spirochetes were *B. puertoricensis* (Fig 3). Given
260 these findings, we performed a whole genome analysis.

261

262



263

264 **Fig 3.** Maximum-likelihood tree constructed from *flaB* partial sequences of various
265 *Borrelia* species. The analysis was performed with the amino acid substitution model
266 Blosum62. Sequences generated in this study are in bold. Numbers represent bootstrap
267 support generated from 1000 replications. The NCBI accession numbers are in brackets
268 and *Borrelia burgdorferi* was used as outgroup.

269

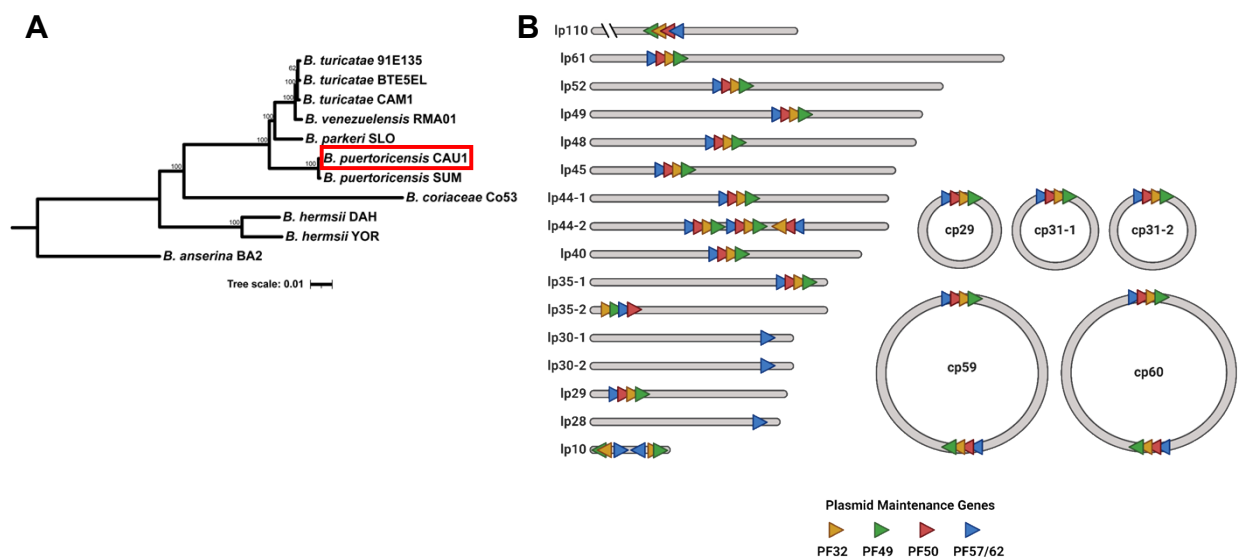
270 Genomic organization of BPUCAU1

271 Genomic DNA was purified, and spectrophotometry and pulsed field
272 electrophoresis indicated that quality DNA was purified for sequencing [2, 28]. The
273 genome was assembled as reported with minor modifications [27]. The coverages were

274 439x and 236x, for the short-reads and long-reads, respectively. The assembled and
275 annotated genome was deposited to NCBI's GenBank (accession numbers CP149102-
276 CP149123). A phylogenomic analysis of 650 single copy genes indicated that the CAU1
277 isolate was *B. puertoricensis* (Fig 4A). The genome consists of a 928,012 bp linear
278 chromosome, 16 linear plasmids (10,117 bp to 109,690 bp) and 5 circular plasmids
279 (28,746 bp to 59,605 bp) (Fig 4B). Taken together, these results showed that a pool of
280 the argasid ticks collected in Ciudad Cauce are colonized by *B. puertoricensis*.

281

282



283

284 **Fig 4.** Phylogenomic analysis of *B. puertoricensis* CAU1. The isolate is shown boxed with
285 a red rectangle and additional *Borrelia* genomes were included (A). The tree was
286 generated with an edge-linked proportional partition model with 1,000 ultra-fast
287 bootstraps. Scale bar indicates 0.02 substitutions per site. The genome of CAU1 is shown
288 in (B) and is composed of 16 linear plasmids (lp) and 5 circular plasmids (cp). The

289 numbers indicate the approximate size in base pairs and the colored triangles show the
 290 plasmid maintenance genes. PF, plasmid family.

291
 292 **Identification and analysis of the diagnostic antigen, *Borrelia***
 293 **immunogenic protein A (BipA)**

294 Since evidence suggests that BipA is a species-specific antigen that can be used
 295 to determine vertebrate exposure to RF spirochetes [11], we assessed the CAU1 genome
 296 and identified a homolog. An *in silico* translation of *bipA* indicated that it had 97.8% and
 297 71.6% amino acid identity with *B. puertoricensis* SUM (Panama) and *B. turicatae* CAM1
 298 (Mexico), respectively (Table 2) [2, 28]. The detection of a BipA homolog that is divergent
 299 from other known species (*B. turicatae*) in Mexico suggests that the antigen could be used
 300 serosurveillance studies.

302 **Table 2.** Amino acid identity between BipA homologs*

	<i>B. rec</i>	<i>B. dut</i>	<i>B. cro</i>	<i>B. his</i>	<i>B. pue</i>	<i>B. pue</i>	<i>B. par</i>	<i>B. tur</i>	<i>B. tur</i>	<i>B. tur</i>	<i>B. ven</i>	<i>B. fai</i>	<i>B. nie</i>	<i>B. her</i>	<i>B. cor</i>	<i>B. miy</i>
<i>B. recurrentis</i> A1		92.6	87.2	74.9	26.2	26.2	26.2	24.7	26.3	25.7	26.1	23.1	25.3	25.6	18.3	11
<i>B. duttonii</i> CR2A	92.6		89.2	77	26.4	26.4	26.5	24.6	26.2	25.9	26.1	23.1	25.2	25.3	18.1	10.7
<i>B. crocidurae</i> DOU	87.2	89.2		81.9	27	27	26.7	24.9	26.5	26.3	26.7	23.7	25.8	25.8	18.6	11.6
<i>B. hispanica</i> CRI	74.9	77	81.9		26.1	26.1	26.4	25.2	26.6	26.3	26.7	22.8	24.9	25	18.4	12.1
<i>B. puertoricensis</i> CAU1	26.2	26.4	27	26.1		97.8	70.6	66.4	72	71.6	72.5	56.2	36	35.4	31	17.3
<i>B. puertoricensis</i> SUM	26.2	26.4	27	26.1	97.8		70.1	66.4	72	71.4	72.5	56.2	35.8	35.9	31.5	18
<i>B. parkeri</i> SLO	26.2	26.5	26.7	26.4	70.6	70.1		73.9	79.2	79	79.4	56.4	31.3	33.2	29.3	17.3
<i>B. turicatae</i> BTE5EL	24.7	24.6	24.9	25.2	66.4	66.4	73.9		91.7	90.8	90	56.5	31.6	33.1	28.8	16.6
<i>B. turicatae</i> 91E135	26.3	26.2	26.5	26.6	72	72	79.2	91.7		97.7	96.8	60.5	34.2	35.7	31.3	18
<i>B. turicatae</i> BTCAM1	25.7	25.9	26.3	26.3	71.6	71.4	79	90.8	97.7		96.2	60.6	33.8	35.6	31.3	17.8
<i>B. venezuelensis</i> RMA01	26.1	26.1	26.7	26.7	72.5	72.5	79.4	90	96.8	96.2		60.9	34	35.3	31.9	18.1
<i>B. fainii</i> Qtaro	23.1	23.1	23.7	22.8	56.2	56.2	56.4	56.5	60.5	60.6	60.9		32.2	30.6	27.5	16.9
<i>B. nietonii</i> YOR	25.3	25.2	25.8	24.9	36	35.8	31.3	31.6	34.2	33.8	34	32.2		68.7	24.1	13.9
<i>B. hermsii</i> DAH	25.6	25.3	25.8	25	35.4	35.9	33.2	33.1	35.7	35.6	35.3	30.6	68.7		25	16
<i>B. coriaceae</i> Co53	18.3	18.1	18.6	18.4	31	31.5	29.3	28.8	31.3	31.3	31.9	27.5	24.1	25		15.5
<i>B. miyamotoi</i> CA17-2241	11	10.7	11.6	12.1	17.3	18	17.3	16.6	18	17.8	18.1	16.9	13.9	16	15.5	

303
 % of residues which are identical

* RF *Borrelia* genera, species, and isolate are shown in the far-left column, and abbreviations were transposed into the top of each row

304

305 Discussion

306 Despite that twenty-five species of *Ornithodoros* have been reported in Mexico
307 [15], studies of RF spirochetes and their vectors have been neglected and forgotten.
308 Three argasid species, *Ornithodoros turicata*, *Ornithodoros talaje*, and *Ornithodoros*
309 *dugesii* are known vectors of TBRF spirochetes and transmit *Borrelia turicatae*, *B.*
310 *mazzottii* and *B. dugesii*, respectively [3]. Although the presence of *A. puertoricensis* has
311 already been described in Mexico [29] and more recently specimens had been collected
312 in the Mexican state of Veracruz [10], the presence of *Borrelia puertoricensis* has not
313 been demonstrated. In Panama, this spirochete was isolated by using a MyD88(-/-)
314 immunodeficient transgenic murine model, confirming the existence of another *Borrelia*
315 sp. of the RF group and its vector [2].

316 Isolation of potential pathogens is essential for confirming their circulation in an
317 environment. For RF spirochetes, this is problematic for many reasons including: 1) the
318 vectors ecology; 2) vector misidentification; 3) insufficient diagnostic tests; and 4) difficulty
319 for culturing these bacteria. Recent improvements in culture medium formulations has
320 facilitated the increased success of RF spirochetes [2, 24]. However, the lack of
321 accessible animal models for RF spirochete isolation continued to be a challenge. This is
322 particularly true in laboratories where a genetically immunosuppressed mice are
323 complicated to maintain, such as many Latin America and other resource limited
324 countries.

325 Burgdorfer and Mavros showed that not all rodent species are competent hosts for
326 RF spirochetes [29], and it was not surprising that immunosuppressed mice were needed
327 for the isolation of *B. puertoricensis*. This *Borrelia* species has been challenging to
328 propagate in Institute of Cancer Research (ICR), BALB/c, C57BL/6, and DBA/2J mouse
329 strains [2]. A study using *A. puertoricensis* collected in Panama initially fed the ticks on
330 ICR mice and spirochetes were undetectable in the blood, but the animal weakly
331 seroconverted to RF *Borrelia* protein lysates [2]. This suggested that the ticks were
332 infected, and they were subsequently fed on a MyD88 ^{-/-} mouse. Spirochetes grew to
333 high densities in this mouse strain, which enabled successful spirochete isolation in BSK-
334 IIB medium. While MyD88 ^{-/-} mice were not available for our current study, chemically
335 induced immunosuppression was a cost-effective approach. We are currently generating
336 a colony of DBA/2J at the Escuela Nacional de Ciencias Biológicas that can be immune
337 suppressed for isolation of *B. puertoricensis* from the remaining tick cohorts. Additionally,
338 future work will focus on characterizing animal models to study the pathogenesis of *B.*
339 *puertoricensis*.

340 There is increasing evidence that *B. puertoricensis* is more prevalent in Latin
341 America than previously thought. This species was identified in argasid tick populations
342 in Panama [2], and DNA from this bacterium was detected in opossum blood in Colombia
343 [30]. Here we have shown that *B. puertoricensis* also circulates in the Yucatan peninsula
344 of Mexico. Our work also demonstrated an extended range of the tick vector, *A.*
345 *puertoricensis*. More work is needed to understand the public health impact of *B.*
346 *puertoricensis* on humans, domestic, and wild fauna. In addition to expanded tick
347 collections, we recommend increasing surveillance efforts to determine exposure to RF

348 spirochetes. There have been advances using recombinant BipA (rBipA) as an antigen
349 that can differentiate RF *Borrelia* species causing infection [11]. Future work will generate
350 rBipA from known species circulating in Mexico to aid in defining the public health impact
351 of this neglected pathogen.

352 **Acknowledgments**

353 We deeply thank Dr. Lilia Dominguez-López and Dr. José Luis González-Quiroz for
354 providing the mice for this study. This work was supported by funds to JAI from Secretaría
355 de Investigación y Posgrado-IPN (20230850, 20240122, 20241496) and by funds
356 provided to JEL from the National School of Tropical Medicine at Baylor College of
357 Medicine and by funds.

358

359 **References**

- 360 1. Donaldson TG, Perez de Leon AA, Li AI, Castro-Arellano I, Wozniak E, Boyle WK,
361 et al. Assessment of the geographic distribution of *Ornithodoros turicata*
362 (Argasidae): Climate variation and host diversity. PLoS Negl Trop Dis. 2016;
363 10(2):e0004383. doi: 10.1371/journal.pntd.0004383.
- 364 2. Bermudez SE, Armstrong BA, Dominguez L, Krishnavajhala A, Kneubehl AR,
365 Gunter SM, et al. Isolation and genetic characterization of a relapsing fever
366 spirochete isolated from *Ornithodoros puertoricensis* collected in central Panama.
367 PLoS Negl Trop Dis. 2021; 15(8):e0009642. doi: 10.1371/journal.pntd.0009642

- 368 3. Lopez JE, Krishnavahjala A, Garcia MN, Bermudez S. Tick-Borne Relapsing
369 Fever Spirochetes in the Americas. *Vet Sci.* 2016;3(3): 16. doi:
370 10.3390/vetsci6040098.
- 371 4. Faccini-Martínez ÁA, Silva-Ramos CR, Santodomingo AM, Ramírez-Hernández
372 A, Costa FB, Labruna MB, et al. Historical overview and update on relapsing fever
373 group *Borrelia* in Latin America. *Parasit Vectors.* 2022;15(1):196. doi:
374 10.1186/s13071-022-05289-5.
- 375 5. Beeson AM, Kjemtrup A, Oltean H, Schnitzler H, Venkat H, Ruberto I, et al. Soft
376 Tick Relapsing Fever — United States, 2012–2021. *MMWR Morb Mortal Wkly*
377 *Rep.* 2023; 72:777–781. doi: 10.15585/mmwr.mm7229a1.
- 378 6. Darling ST. The relapsing fever of Panama. *Arch Intern Med.* 1909; 4:150–85.
- 379 7. Bates LB, Dunn LH, John JHST. The Human ticks, *Ornithodoros talaje*,
380 demonstrated to be the transmitting agent of relapsing fever in Panamá by human
381 experimentation. *Am. J. Trop. Med.* 1921;1, 183–210.
- 382 8. Fox I. *Ornithodoros puertoricensis*, a new tick from rats in Puerto Rico. *J.*
383 *Parasitol.* 2947; 33(3); 253-259.
- 384 9. Venzal JM, Estrada-Pena A, Mangold AJ, González-Acuna D, Guglielmone AA.
385 The *Ornithodoros (Alectorobius) talaje* specie group (Acari: ixodida:argasidae):
386 description of *Ornithodoros (Alectorobius) rioplatensis* n. sp. From southern South
387 America. *J. Med. Entomol.* 2008; 45, 832–840. doi: 10.1603/0022-
388 2585(2008)45[832:toatsg]2.0.co;2.
- 389 10. Ballados-González GG, Bravo-Ramos JL, Grostieta E, Andrade-López AN,
390 Ramos-Vázquez JR, Chong-Guzmán LA, et al. Confirmation of the presence of

- 391 *Rickettsia felis* infecting *Ornithodoros puertoricensis* in Mexico. Med Vet Entomol.
392 2023;37(2):219-227. doi: 10.1111/mve.12624.
- 393 11. Curtis MW, Krishnavajhala A, Kneubehl AR, et al. Characterization of
394 immunological responses to *Borrelia* immunogenic protein A (BipA), a species-
395 specific antigen for North American tick-borne relapsing fever. Microbiol Spectr.
396 2022:e0172221. doi: 10.1128/spectrum.01722-21.
- 397 12. Vázquez-Guerrero E, González-Quiroz JL, Domínguez-López ML, Kneubehl AR,
398 Krishnavajhala A, Curtis MW, et al. New records of *Ornithodoros turicata* (Ixodida:
399 Argasidae) in rural and urban sites in the Mexican states of Aguascalientes and
400 Zacatecas indicate the potential for tick-borne relapsing fever. Exp Appl Acarol.
401 2023;91(1):99-110. doi: 10.1007/s10493-023-00830-2.
- 402 13. Cooley RA, Kohls GM. The Argasidae of North America, Central America and
403 Cuba. American Midland Naturalist Monograph. 1944; 1: 1–152.
- 404 14. Nava S, Venzal JM, González-Acuña D, Martins TF, Guglielmone AA. Ticks of the
405 Southern Cone of America: diagnosis, distribution, and hosts with taxonomy,
406 ecology and sanitary importance. 1st ed. London: Academic Press; 2017.
- 407 15. Guzmán-Cornejo C, Herrera-Mares A, Robbins RG, Rebollo-Hernández A. The
408 soft ticks (Parasitiformes: Ixodida: Argasidae) of Mexico: species, hosts, and
409 geographical distribution. Zootaxa. 2019;4623(3):zootaxa.4623.3.3. doi:
410 10.11646/zootaxa.4623.3.3.
- 411 16. Black WC 4th, Piesman J. Phylogeny of hard- and soft-tick taxa (Acari: Ixodida)
412 based on mitochondrial 16S rDNA sequences. Proc Natl Acad Sci USA. 1994;
413 11;91(21):10034-8. doi: 10.1073/pnas.91.21.10034.

- 414 17. Filatov S, Krishnavajhala A, Armstrong BA, Kneubehl AR, Nieto NC, Pérez De
415 León AA, et al. Isolation and Molecular Characterization of Tick-Borne Relapsing
416 Fever *Borrelia* Infecting *Ornithodoros (Pavlovskyella) verrucosus* Ticks Collected
417 in Ukraine. *J Infect Dis.* 2020;221(5):804-811. doi: 10.1093/infdis/jiz500.
- 418 18. Edgar RC. Muscle5: High-accuracy alignment ensembles enable unbiased
419 assessments of sequence homology and phylogeny. *Nat Commun.* 2022;13,
420 6968. doi: 10.1038/s41467-022-34630-w.
- 421 19. Tamura K, Stecher G, Kumar S. MEGA11: Molecular Evolutionary Genetics
422 Analysis Version 11. *Mol Biol Evol.* 2021;38(7):3022-3027. doi:
423 10.1093/molbev/msab120.
- 424 20. Cordoba MA, Del Coco VF, Sparo MD, Basualdo JA. Evaluación de un modelo
425 experimental de inmunosupresión química en ratones n: nih-swiss. Tercera
426 Época: *Revista Científica de la Facultad de Ciencias Médicas.* 2010; 2(2) 1-2.
427 <http://sedici.unlp.edu.ar/handle/10915/55516>.
- 428 21. Maggioncalda EC, Story-Roller E, Mylius J, Illei P, Basaraba RJ, Lamichhane G.
429 A mouse model of pulmonary *Mycobacteroides abscessus* infection. *Sci Rep.*
430 2020; 10(1):3690. doi: 10.1038/s41598-020-60452-1.
- 431 22. Vázquez-Guerrero E, Adan-Bante NP, Mercado-Uribe MC, Hernández-Rodríguez
432 C, Villa-Tanaca L, Lopez JE, et al. Case report: A retrospective serological analysis
433 indicating human exposure to tick-borne relapsing fever spirochetes in Sonora,
434 Mexico. *PLoS Negl Trop Dis.* 2019;13(4):e0007215. doi:
435 10.1371/journal.pntd.0007215.

- 436 23. Larsson C, Bergström S. A novel and simple method for laboratory diagnosis of
437 relapsing Fever borreliosis. *Open Microbiol J.* 2008; 2:10-12. doi:
438 10.2174/1874285800802010010.
- 439 24. Replogle AJ, Sexton C, Young J, Kingry LC, Schriefer ME, Dolan M, et al. Isolation
440 of *Borrelia miyamotoi* and other *Borreliae* using a modified BSK medium. *Sci Rep.*
441 2021; 11(1):1926. doi: 10.1038/s41598-021-81252-1.
- 442 25. Raffel SJ, Williamson BN, Schwan TG, Gherardini FC. Colony formation in solid
443 medium by the relapsing fever spirochetes *Borrelia hermsii* and *Borrelia turicatae*.
444 *Ticks Tick Borne Dis.* 2018; 9(2):281-287. doi: 10.1016/j.ttbdis.2017.11.001.
- 445 26. Simpson WJ, Garon CF, Schwan TG. Analysis of supercoiled circular plasmids in
446 infectious and non-infectious *Borrelia burgdorferi*. *Microb Pathog.* 1990; 8(2):109-
447 18. doi: 10.1016/0882-4010(90)90075-2.
- 448 27. Kneubehl AR, Krishnavajhala A, Leal SM, Replogle AJ, Kingry LC, Bermúdez SE,
449 et al. Comparative genomics of the Western Hemisphere soft tick-borne relapsing
450 fever borreliae highlights extensive plasmid diversity. *BMC Genomics.* 2022;
451 23(1):410. doi: 10.1186/s12864-022-08523-7.
- 452 28. Vázquez-Guerrero E, Kneubehl AR, Pellegrini-Hernández P, González-Quiroz JL,
453 Domínguez-López ML, Krishnavajhala A, et al. *Borrelia turicatae* from Ticks in
454 Peridomestic Setting, Camayeca, Mexico. *Emerg Infect Dis.* 2024; 30(2):380-383.
455 doi: 10.3201/eid3002.231053.
- 456 29. Burgdorfer W and Mavros A. Susceptibility of various species of rodents to the
457 relapsing fever spirochete, *Borrelia hermsii*. *Infect Immun.* 1970;2(3):256-259.

458 30. López Y, Faccini-Martínez ÁA, Muñoz-Leal S, Contreras V, Calderón A, Rivero R,
459 et al. *Borrelia puertoricensis* in opossums (*Didelphis marsupialis*) from Colombia.
460 Parasit Vectors. 2023; 16(1):448. doi: 10.1186/s13071-023-06016-4.

461