

Title: Effect of a behavior change intervention on complementary food contamination in rural Bangladesh: a cluster-randomized controlled trial

Authors: Tarique Md. Nurul Huda^{1,2†*}, Anna A. Müller-Hauser^{3,4†}, Shafinaz Sobhan^{3,4}, Md. Shaheen Hossain², Jesmin Sultana², Mahbubur Rahman^{2,5}, Mohammad Aminul Islam^{6,7}, Om Prasad Gautam⁸, Amanda S. Wendt³, Jillian L. Waid³, Sabine Gabrysch^{3,4,9}

¹ Department of Public Health, College of Applied Medical Sciences, Qassim University, Buraydah 51452, P.O. Box 6666, Saudi Arabia (t.huda@qu.edu.sa)

² Environmental Health and WASH, Health System and Population Studies Division, icddr,b, Dhaka, Bangladesh

³ Research Department 2, Potsdam Institute for Climate Impact Research (PIK), Member of the Leibniz Association, Potsdam, Germany

⁴ Charité – Universitätsmedizin Berlin, corporate member of Freie Universität Berlin and Humboldt-Universität zu Berlin, Institute of Public Health, Berlin, Germany

⁵ Global Health and Migration Unit, Department of Women's and Children's Health, Uppsala University, Uppsala, Sweden

⁶ Paul G. Allen School for Global Health, Washington State University, Pullman, Washington, USA

⁷ Food Microbiology Laboratory, Laboratory Sciences and Services Division, icddr,b, Dhaka, Bangladesh

⁸ WaterAid UK, London, UK

⁹ Heidelberg Institute of Global Health, Heidelberg University, Heidelberg, Germany

†These authors contributed equally

Word count:

Abstract: 247

Main text: 4581

Number of Tables: 4

Number of figures: 0

Supplementary table: 2

Supplementary figure: 1

Key words: Microbiological contamination, Food hygiene, Complementary feeding, Public health, Bangladesh.

*Corresponding author: Address correspondence to Tarique Md. Nurul Huda, Department of Public Health, College of Applied Medical Sciences, Qassim University, Buraydah 51452, P.O. Box 6666, Saudi Arabia (t.huda@qu.edu.sa)

Abstract

Children in low-resource settings often consume microbially contaminated food, posing a risk to their health. We evaluated the impact of a food hygiene intervention on complementary food contamination in Bangladesh. A three-year homestead food production intervention was complemented by an eight-month behavior change module to improve household food hygiene practices and evaluated in a cluster-randomized controlled trial including a dedicated study measuring outcomes along the hygiene pathway to intestinal health. In this analysis, we used multilevel regression to assess the intervention's impact on microbial food contamination, as well as on food hygiene knowledge (n=518) and reported practices (n=531) among mothers of children aged 6-23 months. Complementary food samples were collected from 342 households with children aged 6-18 months and tested for *Escherichia coli*. Overall, 46% of food samples were contaminated with *Escherichia coli* (42% intervention, 49% control), and there was no evidence that the intervention reduced food contamination (Odds Ratio: 0.7, 95% CI: 0.3-1.2, p=0.18). A higher proportion of intervention mothers could name all key food hygiene practices (22% intervention vs. 0% control), had access to a basic handwashing station near the kitchen (24% vs. 14%, p=0.03), reported washing hands before food preparation and child feeding (21% vs. 8%, p=0.001), washing and storing feeding utensils safely (61% vs. 49%, p=0.02), and preparing food fresh or reheating stored food (88% vs. 79%, p=0.03), compared to control mothers. The intervention thus improved knowledge and reported food hygiene practices among mothers, but this improvement did not result in a substantial reduction of complementary food contamination.

Trial registration number: NCT02505711

Introduction

There has been tremendous progress in child survival, and in the past 25 years, death due to diarrheal diseases has reduced globally¹. However, morbidity due to diarrhea has not decreased as fast. Diarrheal diseases continue to be among the leading causes of disability-adjusted life-years (DALYs) in children in 2019², and foodborne pathogens often contribute to a significant burden of diarrheal disease^{3,4}. In addition to causing diarrhea, enteric pathogens transmitted through contaminated food can also cause environmental enteric dysfunction (EED), a subclinical, chronic inflammatory disease of the small intestine which can impact child growth and development^{5,6}.

Microbiological contamination of food is widespread in low- and middle-income countries (LMICs)^{7,8,9,10,11}. There is evidence that food contributes more to the pathogen burden for infants than drinking water, as in many studies, the level of enteropathogens found in complementary foods was higher than in drinking water^{12,13}. Observational studies repeatedly found that poor food hygiene practices, including during preparation, storage, serving and feeding, are associated with microbiological contamination of complementary foods^{7,14,15,16,17,18,19}. Consumption of contaminated complementary foods creates a vicious cycle of diarrhea and malnutrition, threatening the health and development of children^{4,20}. Despite the high burden of disease associated with contaminated food and the high prevalence of poor food hygiene practices⁷, there has been a lack of attention to food hygiene in the water, sanitation, and hygiene (WASH) field, as well as in health and nutrition programs.

Several efficacy studies have shown that implementing the Hazard Analysis and Critical Control Points (HACCP) approach can identify risk factors and action points during food preparation, serving, feeding, and storage, which could minimize microbial contamination of infant foods in domestic settings in LMICs^{8,17,21,22,23}. However, the generalizability of these findings was limited by their short implementation periods (three to four weeks) and the very intensive contact with a small number of study participants (ranging from 10 to 120 households).

Recently, a few intervention studies in South Asia and sub-Saharan Africa attempted to improve caregiver food hygiene practices and thus reduce complementary food contamination by employing social and behavior-change techniques and emotional drivers^{16,24,25,26,27,28}. A proof-of-concept study in Nepal used a Behavior-Centered Design²⁹ approach to develop an innovative intervention package targeting multiple food hygiene behaviors and was successful in improving observed food hygiene practices and

reducing food contamination^{16, 28, 30}. This behavior-change model was adapted to rural Gambia and replicated in a relatively large community-based program²⁴ and effectively reduced microbial contamination in food and water. A food hygiene intervention in rural Malawi, as part of an integrated WASH project^{25, 27}, improved caregivers' food hygiene behaviors and reduced diarrhea in children, but did not present results on food contamination. Another food hygiene intervention was conducted in two peri-urban settlements in Kenya, although, to our knowledge, no results have yet been published²⁶. While these studies were of longer duration (three to nine months) and targeted more participants than previous HACCP studies, they still relied on rather intensive interpersonal contact to promote the adoption of food hygiene behaviors. There have been no evaluations of such an intervention at large scale and with less intensity yet. In addition, results on food contamination are only available from two intervention studies so far, in Nepal and The Gambia.

Building upon this background, a food hygiene behavior change module was integrated into a nutrition-sensitive agriculture intervention evaluated in a randomized controlled trial in rural Bangladesh, on a larger scale but with less intensity than previous studies, with the aim to encourage better food hygiene practices among mothers and thus minimize contamination of complementary foods given to their infants and young children. In this article, we assess its effect on reducing contamination in complementary foods, as well as evaluating mothers' food hygiene knowledge and reported behaviors as intermediate outcomes.

Methods

Study design and population

This analysis is part of the "Food Hygiene to reduce Environmental Enteric Dysfunction" (FHEED) study, conducted in the context of the cluster-randomized controlled trial "Food and Agricultural Approaches to Reducing Malnutrition" (FAARM) (ClinicalTrials.gov, ID: NCT02505711). The FAARM trial (2015–2019) evaluated the impact of a homestead food production (HFP) program, implemented by Helen Keller International from mid-2015 to late 2018, on stunting in children under three years of age³¹. It enrolled 2705 young married women and their children under three years of age from 96 settlements in 13 unions of Baniachong and Nabiganj subdistricts in Habiganj district, Sylhet division in northeastern Bangladesh. A woman was eligible if she reported to be 30 years or younger, was married, had access to at least 40 square meters of land, and was interested in participating in the study, based on a household listing conducted in all villages in the trial area³¹. Settlements, the unit of randomization, were formed as geographically contiguous areas containing 10 to 65 women, depending on the proximity of residence, with a 400 m buffer between settlements to limit contamination between trial arms.

The homestead food production program promoted year-round homestead gardening, small-scale poultry rearing, and nutrition and hygiene education in woman farmer's groups. In order to strengthen the food hygiene component of the intervention, we designed a food hygiene behavior change module that was delivered over eight months, from June 2017 to February 2018³². In doing so, we hoped to decrease food contamination and thus reduce the risk of undernutrition due to intestinal infections. As part of the FHEED study, we assessed the impact of the food hygiene component on microbiological contamination of complementary foods in households with children aged 6-18 months, on food hygiene knowledge and on reported behaviors of mothers with children aged 6-23 months.

Randomization and masking

Settlements (clusters) were randomized 1:1 using covariate-constrained randomization as described in the study protocol, with 48 clusters allocated to the intervention and 48 to the control group³¹. The interviewers and the lab staff were not engaged in any of the intervention activities. In addition, they were not informed about the intervention status of the settlements. However, it is possible that the interviewers observed intervention materials, like eye dangles in the kitchen, during data collection. The nature of the study did not allow masking of the implementation team or of participants in intervention

settlements. Participants were, however, not made aware that the food sample would be tested for microbiological contamination.

Development and implementation of food hygiene module

The food hygiene module was adapted from an intervention implemented in Nepal^{16,30}. Using a Behavior Centered Design approach²⁹ the module focused on emotional drivers of hygiene behaviors, such as disgust, nurture, affiliation and pride, and a change in the physical environment, e.g. through placement of visual cues/nudges. The module promoted four food hygiene behaviors: 1) cleanliness of cooking and serving utensils, 2) handwashing with soap and water before food preparation and feeding/eating, 3) safe storage of food and drinking water, and 4) fresh food preparation or thorough reheating of stored food. The behavior change module was implemented among all participant women in FAARM intervention settlements by locally recruited female food hygiene promoters. The food hygiene promoters delivered four attractive and engaging group events and four household visits. A detailed description of the food hygiene module has been published³².

Sample size

The sample size for this analysis depended on the number of mothers with children in the selected age groups. To assess microbial contamination in complementary food samples, we targeted all mothers with a child aged 6-18 months. Based on the FAARM surveillance system, we identified 402 mothers (intervention: 205; control: 197) eligible to participate in the survey. To assess maternal knowledge and reported practices, we targeted all mothers with a child aged 6-23 months at the time of data collection and identified 685 mothers (intervention: 346; control: 339) eligible to participate in the surveys.

Data collection

For this analysis, we used data collected as part of the FAARM and FHEED studies: (1) background characteristics collected during the FAARM baseline survey from March to May 2015; (2) complementary food samples and characteristics of these samples, as well as data on environmental spot-checks collected during the cross-sectional FHEED survey from July to September 2018; and (3) data on maternal food hygiene knowledge and reported behaviors collected as part of the routine assessment of the FAARM surveillance system from December 2018 to May 2019.

At baseline, we collected data on household and woman characteristics, such as age, education, household wealth, and religion from all households. We estimated each household's position within the

2014 Demographic and Health Survey national wealth quintiles according to Equity Tool guidelines using household asset information^{33, 34}. As part of the FHEED cross-sectional survey, we collected samples of children's complementary foods from all households with a child aged 6 to 18 months and conducted spot-checks to collect information on kitchen and food storage environments of these households (Supplementary Table 1).

Data on reported food hygiene behavior and food hygiene knowledge were collected by adding two questionnaire modules to three consecutive rounds of the FAARM routine assessment (conducted every two months) between December 2018 and May 2019. In the first round, we interviewed eligible mothers on reported food hygiene practices; the reference period was the previous day, questions were not prompted. In the following surveillance round, we asked about food hygiene knowledge. Questions covered general knowledge related to the key food hygiene practices addressed in the food hygiene module. Open-ended, unprompted, questions were used, asking "how" a specific behavior should be practiced and "why" this behavior is essential. In addition, we explored knowledge of five critical time points for handwashing that might directly or indirectly influence food contamination: 1) before food preparation, 2) before eating, 3) before child feeding, 4) after using the toilet, and 5) after touching animals or child feces. Trained interviewers conducted face-to-face interviews using a structured questionnaire. All survey data were collected using the tablet-based Open Data Kit (ODK) application³⁵.

Collection of complementary food samples

Trained research assistants collected food samples during child feeding, or – in case no feeding event was observed during the household visit – mothers were asked to prepare and serve food as if they would feed their 6-18 months old children. Mothers were asked to place the food in a sterile whirl pack bag with the usual utensils used to feed the child. This was most often by hand. While collecting food samples, the research assistants recorded the temperature of the food using a food thermometer (Manufacturer: SveBake, Model TP500), as well as characteristics of the food, including time of cooking/reheating and duration of food storage. Immediately after collection, food samples were stored in an insulated bag and transported to the food microbiology laboratory of icddr,b within 12 hours of collection, maintaining less than 10 °C temperature at all times. Food contamination was assessed by counting colony-forming units of *E. coli*, a WHO-recommended indicator organism for fecal contamination^{36,37}.

Enumeration of *E. coli*

For enumeration of *E. coli*, an aliquot of 25 g solid or 25 ml liquid sample was mixed well with 225 ml of 0.1% peptone water. Samples were diluted in a 10-fold serial dilution until the appropriate number of organisms was obtained. For each food sample, two plates of tryptone bile agar with x-glucuronide (TBX) medium (Oxoid, Basingstoke, U.K.) were inoculated with each dilution by pour plating and incubated at 44 °C for 18 to 24 h according to standard methodology^{9, 38}. The appearance of blue-green colonies on the TBX plate was indicative of the presence of *E. coli* and reported as colony-forming units per gram of food (CFU/g)³⁹. A detailed description is available elsewhere⁴⁰.

Outcomes

The primary outcome was microbiological contamination of complementary foods, measured as the percentage of complementary food samples with detectable *E. coli* (≥ 10 CFU/g food).

Secondary outcomes were the level of *E. coli* contamination in complementary foods, defined as absent/low (less than 10 CFU/g food), medium (10-100 CFU/g food), and high (more than 100 CFU/g food, which is the safety threshold for ready-to-eat foods in microbiological food quality guidelines³⁸), and mean \log_{10} transformed *E. coli* counts (\log_{10} CFU/g food).

We also assessed caregiver knowledge on food hygiene as well as reported caregiver food hygiene and handwashing behaviors. Reported food hygiene practices are presented as the proportion of respondents who mentioned performing the food hygiene and handwashing behaviors correctly in the past 24 hours (for information on composite indicators see Supplementary Table 1).

Data analysis

For descriptive tables, we calculated proportions for binary and categorical variables, and means and standard deviations for continuous variables. To assess the effect of the intervention on microbiological contamination as well as on food hygiene knowledge, facilities and reported practice, we compared intervention group outcomes to the control group. We used multilevel models, taking account of clustering by using settlement-level random effects. All analyses are intention-to-treat.

As a sensitivity analysis, we ran a mixed-effects logistic regression model adjusting for the slight imbalance in baseline wealth. We also performed a subgroup analysis, looking at the intervention effect in fresh food and stored food separately. All data analyses were performed in Stata version 15 (StataCorp, College Station, TX, USA).

Ethical Considerations

The FAARM trial protocol was positively reviewed by Heidelberg University in Germany (Ref.: S-121/2014) and the James P. Grant School of Public Health, BRAC University in Bangladesh (Ref.: 37A). The FHEED study protocol was positively reviewed by Heidelberg University (Ref.: S-606/2017) and icddr,b in Bangladesh (Ref.: PR-17126). All participants provided informed written consent by signature or thumbprint.

Results

Characteristics of the study population

We present data from 531 mothers with a child aged 6-23 months at the food hygiene assessment (79% of the 685 mothers eligible). On 518 of these 531 mothers, data on food hygiene knowledge were collected. Food samples were collected from 341 households with children aged 6-18 months (85% of the 402 eligible households). Details about reasons for exclusion are provided in Figure 1.

Baseline characteristics of intervention and control households were largely similar (Table 1). Households had on average 7 members at baseline, around three-quarters of households were Muslim and the remainder Hindu. About two-thirds of households had access to an improved latrine and over half had access to a functional handwashing facility. Almost 90% of mothers had some formal education. There were slightly more households belonging to the poorest wealth quintile in control than intervention settlements (15% vs. 10%).

Impact of the food hygiene intervention on food contamination

Of the 341 food samples tested, 46% were contaminated with *E. coli*. Mean \log_{10} *E. coli* counts among all samples were 1.11 CFU/g (SD=1.43) and among *E. coli* positive samples only, the mean was 2.43 CFU/g (SD=1.13). Most foods (88%) had been prepared on the day of sample collection, and around one third of food samples were freshly prepared before child feeding. The most common food was rice (71%), often served with vegetables, pulses, egg, fish, or meat. While there was not much difference in the type of food served, households in the intervention group were more likely to feed freshly prepared food to their children than households in the control group (OR: 1.8, CI: 1.02 – 3.1, Table 2).

Slightly fewer food samples from intervention households were contaminated with *E. coli* compared to samples from control households (42% vs. 49%; OR: 0.7, CI: 0.3 - 1.2); however, the evidence that there is an actual underlying difference is rather weak as the observed difference could easily be by chance ($p=0.18$, Table 2). Additionally, there were slightly fewer samples with a high grade of *E. coli* contamination in intervention compared to control households (greater than >100 CFU/g: intervention 24% vs. control 31%); yet again, this could be due to chance ($p=0.26$, Table 2).

After adjusting for wealth in sensitivity analysis, the small difference in food contamination between intervention and control households decreased further (Supplementary table 2). In separate analyses of

fresh and stored food samples, there was somewhat less contamination of fresh foods in intervention compared to control households (15% vs. 28%; OR: 0.4, CI: 0.2-1.2), while there was no difference at all in the contamination of stored foods (59% in both, OR: 1.0, CI: 0.5-2.0; Supplementary table 2).

The proportion of households with a clean kitchen or food preparation area was about the same in the intervention and control group and at a low level, at around a fifth. Also, the storage conditions for food and water along with the humidity and temperature of the storage area did not differ. However, intervention households were more likely to have a functional handwashing station in or near their kitchen compared to controls, though still less than a quarter (24% vs. 14%, OR: 1.9, CI: 1.1 - 3.3, Table 2).

Impact of the food hygiene intervention on mothers' food hygiene knowledge

Mothers from the intervention group had an overall better knowledge about food hygiene and handwashing practices than mothers from the control group. For example, 19% of intervention mothers could recall five critical time points for handwashing compared to only 5% of control mothers. The intervention especially increased knowledge about handwashing in the context of food preparation (51% vs. 24%), eating (76% vs. 60%) and child feeding (66% vs. 36%) while knowledge on handwashing after defecation was already above 90% and did not increase further (Table 3). Intervention mothers were also more likely to know about other key food hygiene behaviors, namely, to use clean utensils for food preparation (81% vs. 69%), to store food and water safe (48% vs. 23%), and to prepare food fresh or reheat stored foods thoroughly before serving (29% vs. 6%; Table 3). Twenty-two percent of intervention mothers could recall all key food hygiene behaviors, while none of the control group were able to do so.

The intervention also increased mothers' ability to describe how to correctly practice key food hygiene behaviors (Table 3), namely safe storage (65% vs. 54%) and reheating leftovers (86% vs. 73%), as well as proper hygiene before child feeding – which was at a low level overall (10% vs. <1%). We also assessed mothers' knowledge on the importance of certain food hygiene behaviors and found it was already above 90% for disease risk, food storage and cleaning of hands/utensils, with marginal improvements. The intervention increased mothers' knowledge of the importance of proper reheating of stored foods (70% vs. 54%).

Impact of the food hygiene intervention on mothers' reported behaviors

Mothers' reported behaviors were also improved (Table 4), with mothers from the intervention group more likely than controls to report washing hands before food preparation (45% vs. 19%), eating (58% vs.

28%), and child feeding (37% vs. 28%). The intervention also increased reported handwashing after defecation (68% vs. 48%), while there was not much improvement in reported handwashing after cleaning their children after defecation or after disposal of feces, mentioned by less than a third of mothers (Table 4). Moreover, mothers in the intervention group were more likely to report using clean feeding utensils (61% vs. 49%) and preparing foods fresh or reheating stored foods thoroughly (88% vs. 79%), while there was no difference in reported safe storage practices of food (15% vs. 12%) and water (70% vs. 69%; Table 4).

Discussion

Our trial results of a large-scale, low-intensity behavior change intervention using emotional drivers in two rural sub-districts in Sylhet division, Bangladesh, suggest that the intervention effectively improved knowledge and reported food hygiene practices among caregivers. However, the improvement was insufficient to result in a substantial reduction in microbiological contamination of complementary foods.

The food hygiene module had a high coverage, with more than 75% of women attending at least 7 out of 8 food hygiene sessions³². Accordingly, intervention mothers in our study showed overall higher knowledge of almost all food hygiene behaviors than controls, however only 20% remembered all critical times for handwashing and 22% all key food hygiene behaviors. Similarly, while most reported behaviors were higher in the intervention group than in the control group, they were still far from universal. Of the two main food hygiene behaviors linked to a successful reduction in food contamination in FAARM households⁴⁰, handwashing at critical times was particularly uncommon, with only 21% of mothers in intervention households (vs. 8% in control) reporting that they wash their hands with soap before food preparation and feeding. Fresh preparation of food before feeding was more commonly practiced than handwashing – 42% of food samples collected for food contamination analysis in intervention households were prepared fresh, compared to 30% in control – but also still far from universal. Moreover, the intervention did not increase the low levels of safe food storage and cleanliness of the food preparation and storage areas, which were identified as determinants of food contamination in other studies^{7, 19, 22, 41}, but were less effective in lowering food contamination in FAARM households⁴⁰.

Since people tend to over-report expected behaviors (social desirability bias)^{25, 42}, actual hygiene practice in study households was likely even lower than reported. In fact, during structured observation of food hygiene behaviors among a subsample of FAARM households with children aged 6-18 months, handwashing with soap was observed in only 12% of intervention households (and 2% of controls), and all recommended behaviors in only 10% of child feeding events⁴³. Food preparation is a multi-step process with several critical points that influence the risk of food contamination/re-contamination⁸. Therefore, single food hygiene practices have limited potential to prevent contamination, and consistent practice of multiple behaviors is likely needed to substantially reduce food contamination⁴⁰. In fact, our previous analyses suggest that the most successful single practices (reported handwashing at critical times and observed feeding of fresh food) could each reduce food contamination by about one-third if universally

practiced, and food contamination could be reduced by two-thirds if all (reported or observed) food hygiene practices were practiced⁴⁰.

Taken together, we see an attenuation of both intervention effect and absolute levels from relatively high knowledge of food hygiene to moderate reported behaviors and even lower actual behaviors, which could explain the lack of impact on food contamination found in this study, as well as the lack of impact on environmental enteric dysfunction and diarrhea prevalence that we reported in two previous studies^{44, 45}

In contrast to our findings, two food hygiene studies conducted in Nepal and The Gambia successfully changed several behaviors and reduced microbiological contamination of food^{24, 28}. The higher frequency of exposure and intensive promotional activities in the Nepal and The Gambia interventions may have contributed to their success. In Nepal, 15 promoters delivered weekly intervention activities to 120 mothers over three months, while we had monthly intervention activities delivered by 8 promoters to 1275 mothers over eight months^{30, 32}. In The Gambia, the intervention was delivered to 300 mothers within just 25 days, and additionally included four day-long community campaign events and frequent home visits by community volunteers during that period, with an additional follow-up visit conducted after five months. The intensive village-wide activities and interpersonal visits aimed to change behaviors and social norms²⁴. Our intervention was limited to a smaller number of contact points in order to maintain a workable balance with the ongoing activities of the homestead food production program, as more (or more frequent) visits would have been both difficult to implement and too time-consuming for the study participants³². Given the proximity of intervention and control settlements in our study area, we did not conduct a community- or village-wide campaign to prevent any spillover of intervention activities to controls³¹.

There is also the consideration of food sampling timing when comparing the results of our study with the other two. We collected food samples four months after the intervention had ended, while in Nepal and The Gambia, samples were collected sooner, within 45 days and one month, of the intervention ending^{24, 28}. It is possible that if we had collected samples immediately after the intervention, we might have seen a greater effect on food contamination. Nonetheless, we wanted to measure the longer-term impact of the intervention and thus evaluated after four months. Moreover, we collected only one food sample per household just before a caregiver fed the child, and at varying times over the day. Therefore, storage time, storage conditions, reheating time, and temperature varied widely. In contrast, the study in The Gambia collected two food samples per household and always in the same way, the first sample immediately after

food was prepared in the morning and before feeding the child, and the second sample after storing the same food and before feeding it at lunchtime²⁴. Despite higher food contamination levels in the second (stored) sample compared to the first (freshly cooked) sample in The Gambia, intervention households had substantially lower food contamination levels than control households at both sampling times²⁴. In our study, when we analyzed fresh and stored food samples separately in a subgroup analysis, we also found a reduction in food contamination in fresh food samples – though the evidence for a true difference was again rather weak – but no impact at all on contamination of stored food samples. This indicates that even if the intervention succeeded in improving safe food preparation to some extent, this effect was negated by suboptimal food storage and poor reheating practices, especially as reheating of stored food was overall rarely practiced by study households and – even if practiced – not found to be associated with a reduction in food contamination⁴⁰.

Finally, it is important to note that enabling technology and supportive infrastructure (e.g. handwashing station with soap and water in or near the kitchen, covering utensils and storage cabinets) can be critical in promoting behavior change and thus reduce food contamination^{46, 47}. We encouraged intervention mothers to reorganize their kitchen and food storage areas to facilitate the practice of the promoted food hygiene behaviors. We also promoted tippy taps for handwashing, but this basic technology was not effectively adopted by households. However, we did not provide any infrastructure such as kitchen sinks to support these changes³². The intervention increased access to a functional handwashing station with soap near the kitchen from 14% to 24%. But this may not be sufficient as still over 75% of households in the intervention group did not have access to a handwashing station with soap near the kitchen, which likely contributed to low handwashing rates. In contrast, in a comparable intervention study in Malawi⁴⁸, more than half of the intervention households had a handwashing facility with soap and water located close to the kitchen, and in the study in Nepal, more than 50% of study households had piped water on their compounds and about 40% of households had tap water inside the house³⁰. Therefore, creating a context-specific environment with enabling infrastructure, like locally acceptable and easily maintainable washing stations in the kitchen with running water, a sink, and proper drainage, that supports the adoption of food hygiene practices will be crucial for the success of future interventions.

Our study has strengths and limitations. To our knowledge, this is only the second food hygiene study (after the one in The Gambia) to implement a behavior change intervention with emotional drivers at scale and assess its impact on microbiological contamination of children's complementary foods in a randomized controlled trial. It was conducted in rural Sylhet, in a setting that is relatively typical for

Bangladeshi rural villages. The findings thus are likely generalizable to regions with similar demographic characteristics within Bangladesh and other low- and middle-income countries. While we did not have baseline data on food hygiene outcomes, which prevented us from looking at changes over time, the cluster-randomized design with 96 clusters and covariate-constrained randomization should ensure good balance of baseline characteristics, including food hygiene knowledge and practices. When using self-reported data to measure behaviors, social desirability bias is clearly an issue to consider^{25, 42}. However, the very low prevalence of several reported behaviors (e.g. handwashing with soap and safe food storage practices) and the comparisons to structured observation data collected in a subgroup⁴³ give us some confidence that this bias was not large (and for certain behaviors, e.g. using clean feeding utensils, actual practice was in fact better than reported). Most importantly, our main outcome, microbial food contamination, is an objective measure. In combination with previous analyses on observed food hygiene behaviors, environmental enteric dysfunction, and diarrhea prevalence^{43, 44, 45}, our data on food hygiene knowledge, reported behavior, household spot-checks, and food contamination provide us with a detailed understanding of the impact pathway and help comprehend why the food hygiene intervention likely failed to have the desired impact.

We conclude that the intervention based on emotional drivers was successfully implemented at scale and able to improve knowledge and reported practice of food hygiene behaviors but did not lead to a substantial decrease in the contamination of complementary foods, and consequently not to improved intestinal health in children. These findings suggest that in settings with a low level of hygiene infrastructure, changing the physical environment (e.g. access to piped water in the household and/or a kitchen sink with proper drainage) may be needed in addition to hygiene promotion to achieve sustained behavior change at a level sufficiently high to reduce microbiological contamination and improve child health. So, to succeed in the future, food hygiene interventions should consider all necessary contextual, psychosocial, and technological factors.

Funding source and their role

The FAARM trial was primarily funded by the German Federal Ministry of Education and Research (BMBF, grant number: 01ER1201). The FHEED study was financially supported by a project grant from Deutsche Forschungsgemeinschaft (DFG, German Research Foundation; Project number: 413269709). Foundation Fiat Panis further supported FHEED's research work. Helen Keller International received additional support from the Carrefour social responsibility program and other charitable donations for implementing the homestead food production program. Sabine Gabrysch received funding through a Recruiting Grant from Stiftung Charité. Funding organizations had no role in the trial design, the intervention or its implementation, in training, data collection, analysis, or interpretation of results.

Table 1: Baseline characteristics of households with mothers of young children among the FAARM study population in rural Sylhet, Bangladesh (2015)

Characteristics		Control (N=262)	Intervention (N=269)
		% mean (sd)	% mean (sd)
<u>Household</u>			
Religion	Muslim	76	77
	Hindu	24	23
Household members, average (n=529)		6.9 (3.1)	7.2 (3.0)
Wealth quintile ^a (n=528)	Poorest	15	10
	Lower	33	30
	Middle	23	26
	Upper	25	29
	Wealthiest	4	5
Access to improved latrine ^b (n=504)		66	64
Store drinking water safely ^c (n=504)		36	37
Presence of basic ^d handwashing station (n=504)		53	59
<u>Mothers</u>			
Mean age mothers		23 (4.1)	23 (3.8)
Education	None	11	15
	Primary	49	44
	Secondary	40	41
<p><i>Total: n= 531, indicated in the table if other; ^a An estimate of each household's position within the 2014 Demographic and Health Survey national wealth quintiles using Equity Tool guidelines using household asset information; ^b Defined as having a pit latrine with a slab or better and a sanitation facility that was not shared with other households according to JMP; ^c Considered safe if stored in a container fully covered as observed; ^d Handwashing station with water and soap as defined by WHO/UNICEF Joint Monitoring Programme; Abbreviations: sd: standard deviation</i></p>			

Table 2: Effect of the food hygiene intervention on food contamination and environmental characteristics

Characteristics	Control (N=168)	Intervention (N=173)	OR*/ Coef. [#]	CI	p-value
Food contamination					
Sample positive for <i>E. coli</i>	49	42	0.7	0.3 - 1.2	0.18
<i>E. coli</i> contamination:					
low (<10 CFU/g)	51	58			
medium (10-100 CFU/g)	18	17			
high (>100 CFU/g) (vs. medium or low)	31	24	0.7	0.4 - 1.3	0.26
Mean Log ₁₀ <i>E. coli</i> counts (CFU/g) among <i>E. coli</i> positive samples	2.48 (1.2)	2.35 (1.1)	-0.13	-0.5 - 0.2	0.46
Kitchen and food storage environment					
At least one basic handwashing station near kitchen	14	24	1.9	1.1 - 3.3	0.03
Kitchen area clean	21	17	0.7	0.3 - 1.4	0.32
Food preparation area clean	19	17	0.9	0.4 - 1.9	0.70
Safe storage of food and water	23	27	1.2	0.7 - 2.0	0.48
Mean temperature (°C) of food storage area	31.0 (1.8)	31.0 (1.9)	0.05	-0.5 - 0.6	0.85
Mean humidity of food storage area (in %)	83.6 (5.7)	83.7 (5.6)	0.51	-1.3 - 2.3	0.57
Food characteristics					
Food prepared fresh	30	42	1.8	1.02 - 3.1	0.04
Type of food: rice vs. other	73	69	0.8	0.5 - 1.4	0.49
Food cooked on day of sampling	86	90	1.5	0.7 - 3.3	0.29
<i>Total N=341; complementary food has been sampled from children age 6-18 months; * from mixed-effects logistic regression models with settlement-level random effects. # from mixed-effects linear regression models with settlement-level random effects; Abbreviations: sd: standard deviation; OR: odds ratio; Coef.: regression coefficient; CI: 95% confidence interval; CFU: Colony Forming Unit</i>					

Table 3: Intervention effect on food hygiene knowledge

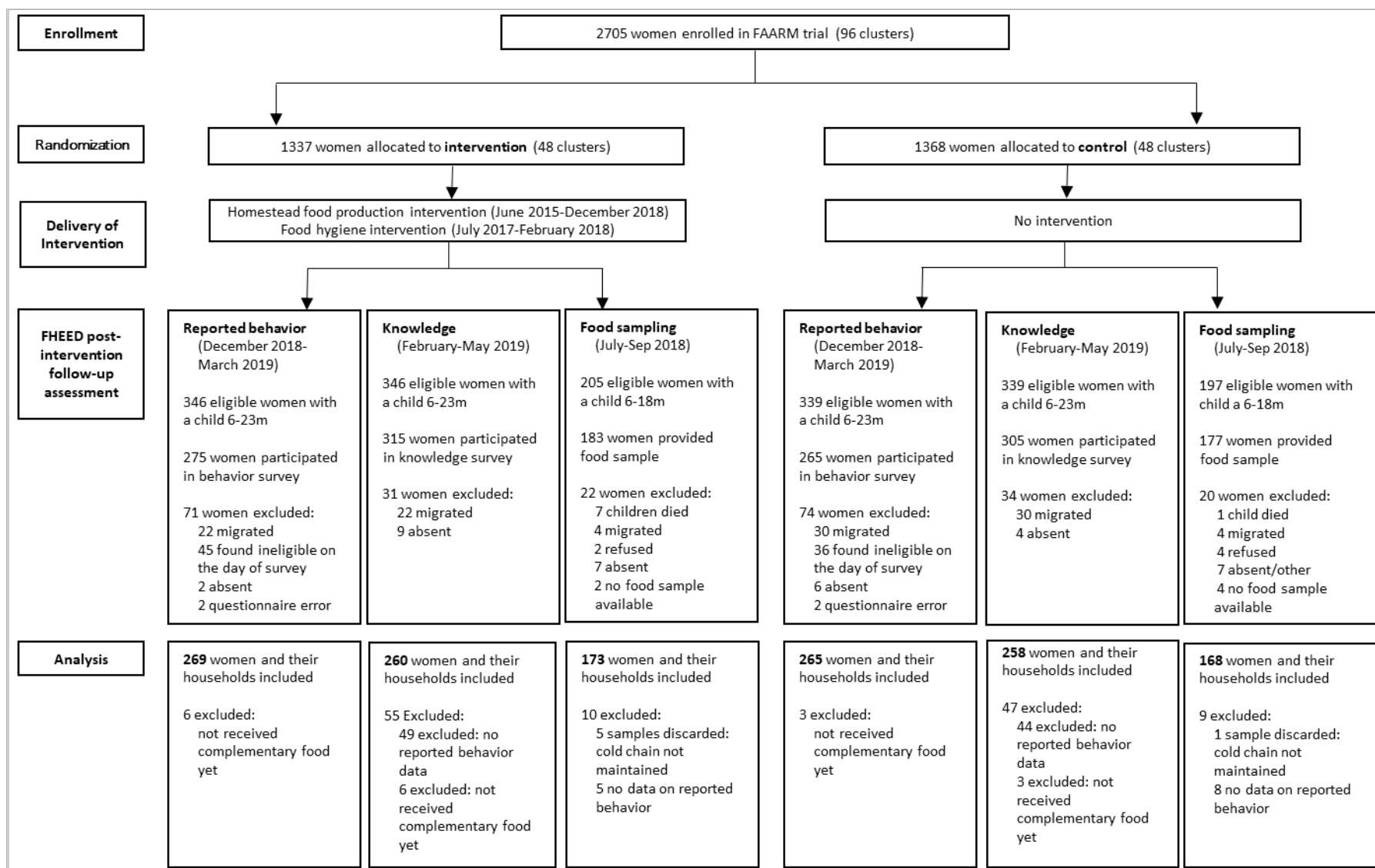
Characteristics	Control %	Intervention %	OR [*]	CI	p-value
Knowledge: handwashing at critical time points^a					
Before food preparation	24	51	3.5	2.2 - 5.6	< 0.001
Before eating	60	76	2.3	1.3 - 4.1	0.003
Before child feeding	36	66	5.5	2.6 - 11.2	< 0.001
After defecation	92	93	1.2	0.5 - 2.6	0.71
After handling animal/child feces	49	60	1.6	0.9 - 2.6	0.08
All critical times for handwashing mentioned	5	19	3.9	2.4 - 20.6	< 0.001
Knowledge: key food hygiene practices^b					
Wash hands with soap	81	93	4.1	1.7 - 10.2	0.002
Wash utensils with soap or store at clean place	69	81	3.1	1.1 - 8.2	0.03
Safe storage of food and water	23	48	8.0	2.9 - 21.8	< 0.001
Prepare foods fresh or reheat properly	6	29	13.0	4.3 - 39.4	< 0.001
All key food hygiene behaviors mentioned ^c	0	22	-	-	-
Knowledge: correct response regarding the concept of food hygiene^d					
<i>Able to describe correct practice of</i>					
Safe food storage	54	65	8.1	1.4 - 45.3	0.02
Reheating leftover foods	73	86	2.7	1.1 - 6.4	0.03
Food hygiene before feeding	0.9	10	12.4	3.1 - 50.0	< 0.001
<i>Able to describe</i>					
Diseases for unsafe food hygiene	93	98	5.1	0.9 - 29.5	0.07
Importance of safe food storage ^e	98	100	-	-	-
Importance of proper reheating	54	70	3.8	1.2 - 11.8	0.01
Importance of cleaning hands and utensils	90	96	5.8	1.1 - 29.6	0.03

Total N = 518; knowledge has been assessed in households with children 6-23 months of age; knowledge was classified as present if one correct answer – from several possible – was given; ^{} from mixed-effects logistic regression model with settlement-level random effects; ^a Proportion of respondents who could recall (unprompted) critical times for handwashing; ^b Proportion of respondents who could recall (unprompted) key food hygiene behaviors; ^c Due to the limited number of observations, a regression could not be performed; ^d Proportion of respondents who could answer questions related to important concepts of food hygiene correctly; ^e No effect size produced due to insufficient observations; Abbreviations: OR: odds ratio, CI: 95% confidence interval*

Table 4: Intervention effect on reported food hygiene behaviors, early 2019

Characteristics	Control %	Intervention %	OR [*]	CI	p-value
<u>Behavior: handwashing at critical time points</u>					
Before food preparation	19	45	4.0	2.3-7.0	<0.001
Before eating	28	58	4.7	2.6-8.2	<0.001
Before child feeding	18	37	3.2	1.8-5.7	<0.001
After defecation	48	68	2.7	1.5-4.8	0.001
After cleaning the child's bottom	18	25	1.7	0.8-3.3	0.142
After disposing child's feces	28	33	1.5	0.7-3.2	0.310
<u>Behavior: key food hygiene practices</u>					
Hands washed before food prep. and feeding	8	21	3.5	1.7-7.2	0.001
Feeding utensils cleaned	49	61	1.8	1.1-2.9	0.021
Food stored safely	12	15	1.1	0.4-3.4	0.832
Water stored safe	69	70	1.2	0.6-2.7	0.573
Food prepared fresh or reheated thoroughly	79	88	2.3	1.1-4.8	0.033

*Total: n=531; reported behavior has been assessed in households with children 6-23 months of age; * from mixed-effects logistic regression models with settlement-level random effects; Abbreviations: OR: odds ratio, CI: 95% confidence interval*



Supplementary Figure 1: Study Consort flow diagram

FAARM=Food and Agricultural Approaches to Reducing Malnutrition.

FHEED=Food Hygiene to reduce Environmental Enteric Dysfunction.

Supplementary Table 1: Variables presented with their definition and data source

Variable	Definition	Data source
Kitchen Environment		
Functional handwashing station near the kitchen	The handwashing station was considered functional if soap and water were present during spot-check.	Spot-check conducted the same day as food sample collection
Kitchen area clean	A kitchen was considered clean if no visible dirt, feces or animals were found at the time of the spot-check.	Spot-check
Food preparation area clean	The food preparation area was considered clean if no visible dirt, feces or animals were found at the time of the spot-check.	Spot-check
Safe storage of food and water	Food and water were considered to be safely stored if stored with cover, elevated from the ground, and no animals and flies were visible in the storage area.	Spot-check
Mean temperature (°C) of food storage area	The ambient temperature of the food storage area was measured and presented in degree Celsius.	Spot-check
Mean humidity of food storage area (in %)	The relative humidity of the food storage area was measured and presented as a percentage of the maximum possible humidity (given the same temperature).	Spot-check
Food prepared fresh/reheated	Food was freshly prepared or stored food was thoroughly reheated above 70°C as observed and recorded by the enumerator.	Spot-check
Food hygiene knowledge		
Knowledge: handwashing at critical time points	Knowledge of handwashing is presented as a proportion of caregivers who can recall the critical times for washing hands with soap without any prompt.	The routine assessment component of the surveillance system
All critical times for handwashing mentioned	This is presented as a proportion of caregivers who can recall all the critical times for washing hands with soap without any prompt.	Routine assessment
Knowledge: key food hygiene behaviors	Knowledge of food hygiene is presented as a proportion of caregivers who can recall the key food hygiene behaviors (unprompted), 1) wash hands with soap, 2) wash utensils with soap or store at a clean place, 3) store food and water covered, elevated from the ground and 4) prepare food fresh or reheated thoroughly.	Routine assessment
All key food hygiene behaviors mentioned	This is presented as a proportion of caregivers who can recall all four key food hygiene behaviors (unprompted).	Routine assessment
Proper safe food storage method	Correct if safe food storage was described as storing food fully covered and elevated from the ground.	Routine assessment
Proper reheating method	Correct if reheating of leftover food was described as reheating stored food until steaming hot.	Routine assessment
Proper food hygiene practices before feeding	Correct if the respondent mentioned washing hands with soap and water and cleaning feeding utensils.	Routine assessment
Diseases associated with unsafe food hygiene practices	Correct if caregivers could mention at least one disease/symptom associated with poor food hygiene.	Routine assessment
Importance of safe food storage	Correct if caregivers could name at least one reason for performing storing food safe.	Routine assessment
Importance of proper reheating	Correct if caregivers could name at least one reason for reheating leftover foods properly.	Routine assessment
Importance of cleaning hands and utensils	Correct if caregivers could name at least one reason for cleaning hands and utensils.	Routine assessment
Reported food hygiene behaviors		
Reported handwashing at critical times	Proportion of respondents who mentioned performing the handwashing behaviors correctly at critical times in the past 24 hours	Routine assessment
Reported food hygiene practices	Proportion of respondents who mentioned performing the food hygiene practices correctly at critical times in the past 24 hours	Routine assessment

Hands washed before food preparation and feeding	Respondent reported washing hands with soap and water before food preparation and feeding in the past 24 hours	Routine assessment
Feeding utensils cleaned	Child feeding utensils were considered clean when the caregiver reported washing them with soap and water from a clean water source and storing them at a clean place.	Routine assessment
Food stored safely	Storage of food was considered safe when the caregiver reported that food was stored fully covered and elevated from the ground.	Routine assessment
Water stored safely	Storage of water was considered safe when the caregiver reported that water was stored fully covered and elevated from the ground.	Routine assessment
Food prepared fresh or reheated thoroughly	Food was considered fresh or properly reheated when the caregiver reported fresh cooking or reheating of stored food until steaming hot	Routine assessment
Characteristics of participating mothers and their households		
Religion	As reported by the respondent	FAARM baseline survey
Wealth Quintile	We estimated each household's position within the 2014 Demographic and Health Survey national wealth quintiles using Equity Tool guidelines (www.equitytool.org) using household asset information.	FAARM baseline survey
No. of household members	As reported by the participant	FAARM baseline survey
Woman's age	As reported by the participant	FAARM baseline survey
Woman education	Measured as the number of school years completed	FAARM baseline survey
Improved latrine	Households with access to a pit latrine with a slab with or without water seal or better, not shared with other households.	FAARM baseline survey

Supplementary Table 2: Effect of the food hygiene intervention on food contamination, sensitivity and subgroup analyses

Model	Sensitivity analysis			Subgroup analysis						
	OR*	CI	p-value	OR*	Fresh food		p-value	OR*	Stored food	
					CI	p-value			CI	p-value
M1: random effect for settlement	0.7	(0.3 - 1.2)	0.18	0.4	(0.2 - 1.2)	0.12	1.03	(0.5 - 2.0)	0.94	
M2: M1 + fixed effect for baseline wealth	0.8	(0.4 - 1.5)	0.41	0.5	(0.2 - 1.5)	0.24	1.2	(0.6 - 2.4)	0.64	

Total N=341, n=124 for fresh food, n=217 for stored food; complementary food has been sampled from children aged 6-18 months; * from mixed-effects logistic regression models with settlement-level random effects, adjusted for additional variables as indicated in the table; interaction p=0.11 for M1 and p=0.19 for M2; Abbreviations: OR: odds ratio; CI: 95% confidence interval

References

1. GBD Diarrhoeal Diseases Collaborators, 2017. Estimates of global, regional, and national morbidity, mortality, and aetiologies of diarrhoeal diseases: a systematic analysis for the Global Burden of Disease Study 2015. *Lancet Infect Dis* 17: 909-948.
2. GBD 2019 Diseases and Injuries Collaborators, 2020. Global burden of 369 diseases and injuries in 204 countries and territories, 1990-2019: a systematic analysis for the Global Burden of Disease Study 2019. *Lancet* 396: 1204-1222.
3. Pires SM, Fischer-Walker CL, Lanata CF, Devleeschauwer B, Hall AJ, Kirk MD, Duarte AS, Black RE, Angulo FJ, 2015. Aetiology-specific estimates of the global and regional incidence and mortality of diarrhoeal diseases commonly transmitted through food. *PLoS One* 10: e0142927.
4. WHO, Fact sheets about food safety. Available at: <https://www.who.int/en/news-room/fact-sheets/detail/food-safety>. Accessed May 12, 2020.
5. George CM, Oldja L, Biswas SK, Perin J, Lee GO, Ahmed S, Haque R, Sack RB, Parvin T, Azmi IJ, Bhuyian SI, Talukder KA, Faruque AG, 2015. Fecal markers of environmental enteropathy are associated with animal exposure and caregiver hygiene in Bangladesh. *Am J Trop Med Hyg* 93: 269-75.
6. Humphrey JH, 2009. Child undernutrition, tropical enteropathy, toilets, and handwashing. *Lancet* 374: 1032-5.
7. Parvez SM, Kwong L, Rahman MJ, Ercumen A, Pickering AJ, Ghosh PK, Rahman MZ, Das KK, Luby SP, Unicomb L, 2017. *Escherichia coli* contamination of child complementary foods and association with domestic hygiene in rural Bangladesh. *Trop Med Int Health* 22: 547-557.
8. Islam MS, Mahmud ZH, Gope PS, Zaman RU, Hossain Z, Islam MS, Mondal D, Sharker MA, Islam K, Jahan H, Bhuiya A, Endtz HP, Cravioto A, Curtis V, Toure O, Cairncross S, 2013. Hygiene intervention reduces contamination of weaning food in Bangladesh. *Trop Med Int Health* 18: 250-8.
9. Islam MA, Ahmed T, Faruque AS, Rahman S, Das SK, Ahmed D, Fattori V, Clarke R, Endtz HP, Cravioto A, 2012. Microbiological quality of complementary foods and its association with diarrhoeal morbidity and nutritional status of Bangladeshi children. *Eur J Clin Nutr* 66: 1242-6.
10. Kaul M, Kaur S, Wadhwa S, Chhibber S, 1996. Microbial contamination of weaning foods. *Indian J Pediatr* 63: 79-85.
11. Oluwafemi F, Ibeh IN, 2011. Microbial contamination of seven major weaning foods in Nigeria. *J Health Popul Nutr* 29: 415-9.
12. Lanata CF, 2003. Studies of food hygiene and diarrhoeal disease. *Int J Environ Health Res* 13 Suppl 1: S175-83.
13. Kung'u JK, Boor KJ, Ame SM, Ali NS, Jackson AE, Stoltzfus RJ, 2009. Bacterial populations in complementary foods and drinking-water in households with children aged 10-15 months in Zanzibar, Tanzania. *J Health Popul Nutr* 27: 41-52.
14. Rahman MJ, Nizame FA, Nuruzzaman M, Akand F, Islam MA, Parvez SM, Stewart CP, Unicomb L, Luby SP, Winch PJ, 2016. Toward a scalable and sustainable intervention for complementary food safety. *Food Nutr Bull* 37: 186-201.
15. Motarjemi Y, Kaferstein F, Moy G, Quevedo F, 1993. Contaminated weaning food: a major risk factor for diarrhoea and associated malnutrition. *Bull World Health Organ* 71: 79-92.
16. Gautam OP, Curtis V, 2021. Food hygiene practices of rural women and microbial risk for children: Formative research in Nepal. *Am J Trop Med Hyg* 105: 1383-1395.

17. Ehiri JE, Azubuike MC, Ubbaonu CN, Anyanwu EC, Ibe KM, Ogbonna MO, 2001. Critical control points of complementary food preparation and handling in eastern Nigeria. *Bull World Health Organ* 79: 423-33.
18. Chidziwisano K, Tilley E, Malolo R, Kumwenda S, Musaya J, Morse T, 2019. Risk factors associated with feeding children under 2 years in rural Malawi-a formative study. *Int J Environ Res Public Health* 16.
19. Bick S, Perieres L, D'Mello-Guyett L, Baker KK, Brown J, Muneme B, Nala R, Dreibelbis R, Cumming O, 2020. Risk factors for child food contamination in low-income neighbourhoods of Maputo, Mozambique: An exploratory, cross-sectional study. *Matern Child Nutr*: e12991.
20. Ibrahim MK, Zambruni M, Melby CL, Melby PC, 2017. Impact of childhood malnutrition on host defense and infection. *Clin Microbiol Rev* 30: 919-971.
21. Sheth M, Patel J, Sharma S, Seshadri S, 2000. Hazard analysis and critical control points of weaning foods. *Indian J Pediatr* 67: 405-410.
22. Touré O, Coulibaly S, Arby A, Maiga F, Cairncross S, 2011. Improving microbiological food Safety in peri-urban Mali; an experimental study. *Food Control* 22: 1565-1572.
23. Touré O, Coulibaly S, Arby A, Maiga F, Cairncross S, 2013. Piloting an intervention to improve microbiological food safety in Peri-Urban Mali. *Int J Hyg Environ Health* 216: 138-145.
24. Manaseki-Holland S, Manjang B, Hemming K, Martin JT, Bradley C, Jackson L, Taal M, Gautam OP, Crowe F, Sanneh B, 2021. Effects on childhood infections of promoting safe and hygienic complementary-food handling practices through a community-based programme: A cluster randomised controlled trial in a rural area of The Gambia. *PLoS medicine* 18: e1003260.
25. Chidziwisano K, Tilley E, Morse T, 2020. Self-reported versus observed measures: validation of child caregiver food hygiene practices in rural Malawi. *Int J Environ Res Public Health* 17: 4498.
26. Mumma J, Simiyu S, Aseyo E, Anderson J, Czerniewska A, Allen E, Dreibelbis R, Baker KK, Cumming O, 2019. The safe start trial to assess the effect of an infant hygiene intervention on enteric infections and diarrhoea in low-income informal neighbourhoods of Kisumu, Kenya: a study protocol for a cluster randomized controlled trial. *BMC Infect Dis* 19: 1-11.
27. Chidziwisano K, Slekiene J, Mosler H-J, Morse T, 2020. Improving complementary food hygiene behaviors using the risk, attitude, norms, ability, and self-regulation approach in rural Malawi. *Am J Trop Med Hyg* 102: 1104.
28. Gautam O, 2015. Food hygiene intervention to improve food hygiene behaviours, and reduce food contamination in Nepal: an exploratory trial. Faculty of Infectious and Tropical Diseases London School of Hygiene & Tropical Medicine.
29. Aunger R, Curtis V, 2016. Behaviour Centred Design: towards an applied science of behaviour change. *Health Psychol Rev* 10: 425-446.
30. Gautam OP, Schmidt W-P, Cairncross S, Cavill S, Curtis V, 2017. Trial of a novel intervention to improve multiple food hygiene behaviors in Nepal. *Am J Trop Med Hyg* 96: 1415.
31. Wendt AS, Sparling TM, Waid JL, Mueller AA, Gabrysch S, 2019. Food and Agricultural Approaches to Reducing Malnutrition (FAARM): protocol for a cluster-randomised controlled trial to evaluate the impact of a Homestead Food Production programme on undernutrition in rural Bangladesh. *BMJ Open* 9: e031037.
32. Sobhan S, Müller-Hauser AA, Huda TM, Waid JL, Gautam OP, Gon G, Wendt AS, Gabrysch S, 2022. Design, delivery, and determinants of uptake: findings from a food hygiene behavior change intervention in rural Bangladesh. *BMC Public Health* 22: 1-18.
33. National Institute of Population Research and Training (NIPORT), Mitra and Associates, ICF International, 2016. Bangladesh Demographic and Health Survey 2014. Available at: <https://dhsprogram.com/pubs/pdf/FR311/FR311.pdf>. Accessed June 8, 2021.

34. EquityTool, Bangladesh - 2014 DHS (2016). Available at: <https://www.equitytool.org/bangladesh/>. Accessed.
35. Hartung C, Lerer A, Anokwa Y, Tseng C, Brunette W, Borriello G, 2010. Open data kit: tools to build information services for developing regions. Proceedings of the 4th ACM/IEEE international conference on information and communication technologies and development, 1-12.
36. WHO, 2011. Guidelines for drinking-water quality (4th Edition). Geneva: World Health Organization.
37. CDC, 2010. Microbiological indicator testing in developing countries: A fact sheet for the field practitioner: Centers for Disease Control and Prevention.
38. Gilbert RJ, de Louvois J, Donovan T, Little C, Nye K, Ribeiro CD, Richards J, Roberts D, Bolton FJ, 2000. Guidelines for the microbiological quality of some ready-to-eat foods sampled at the point of sale. PHLS Advisory Committee for Food and Dairy Products. *Commun Dis Public Health* 3: 163-7.
39. ISO, 2001. Microbiology of food and animal feeding stuffs. Horizontal method for the enumeration of beta-glucuronidase-positive *Escherichia coli*. Part 2: colony-count technique at 44 degrees C using 5-bromo-4-chloro-3-indolyl beta-D-glucuronide: International Standardization Organization ed. Geneva, Switzerland.
40. Müller-Hauser AA, Sobhan S, Huda TMN, Waid JL, Wendt AS, Islam MA, Rahman M, Gabrysch S, 2022. Key food hygiene behaviors to reduce microbial contamination of complementary foods in rural Bangladesh. *Am J Trop Med Hyg*: tpm210269.
41. Afifi ZE, Nasser SS, Shalaby S, Atlam SA, 1998. Contamination of weaning foods: organisms, channels, and sequelae. *J Trop Pediatr* 44: 335-337.
42. Huda TMN, Unicomb L, Johnston RB, Halder AK, Yushuf Sharker MA, Luby SP, 2012. Interim evaluation of a large scale sanitation, hygiene and water improvement programme on childhood diarrhea and respiratory disease in rural Bangladesh. *Soc sci med* 75: 604-611.
43. Sobhan S, Müller-Hauser AA, Gon G, Huda TMN, Waid JL, Wendt AS, Rahman M, Gabrysch S, 2024. Effect of a behaviour change intervention on household food hygiene practices in rural Bangladesh: A cluster-randomised controlled trial. *Int J Hyg Environ Health* 255: 114291.
44. Lambrecht NJ, Müller-Hauser AA, Sobhan S, Schmidt W-P, Huda TMN, Waid JL, Wendt AS, Kader A, Gabrysch S, 2023. Effect of a Homestead Food Production program on the prevalence of diarrhea and acute respiratory infection in children in Sylhet, Bangladesh: A cluster-randomized controlled trial. *The American Journal of Tropical Medicine and Hygiene*: tpm230152-tpm230152.
45. Müller-Hauser AA, Huda TMN, Sobhan S, Lambrecht NJ, Waid JL, Wendt AS, Ali S, Rahman M, Gabrysch S, 2023. Effect of a Homestead Food Production and Food Hygiene intervention on biomarkers of environmental enteric dysfunction in children younger than 24 months in rural Bangladesh: A cluster-randomized controlled trial. *The American Journal of Tropical Medicine and Hygiene*: tpm230491-tpm230491.
46. Dreifelbis R, Winch PJ, Leontsini E, Hulland KR, Ram PK, Unicomb L, Luby SP, 2013. The Integrated Behavioural Model for Water, Sanitation, and Hygiene: a systematic review of behavioural models and a framework for designing and evaluating behaviour change interventions in infrastructure-restricted settings. *BMC Public Health* 13: 1015.
47. Hulland KR, Leontsini E, Dreifelbis R, Unicomb L, Afroz A, Dutta NC, Nizame FA, Luby SP, Ram PK, Winch PJ, 2013. Designing a handwashing station for infrastructure-restricted communities in Bangladesh using the integrated behavioural model for water, sanitation and hygiene interventions (IBM-WASH). *BMC Public Health* 13: 877.

48. Chidziwisano K, Tilley E, Morse T, 2020. Self-reported versus observed measures: validation of child caregiver food hygiene practices in rural Malawi. *International journal of environmental research and public health* 17: 4498.