

Title: A multivalent RSV vaccine based on the Modified Vaccinia Ankara vector shows moderate protection against disease caused by RSV in older adults in a Phase 3 clinical study

ABSTRACT

Respiratory syncytial virus (RSV) causes a significant disease burden in older adults. The live recombinant vaccine based on a nonreplicating modified vaccinia Ankara (MVA-BN) poxvirus, MVA-BN-RSV, encoding for multiple proteins of RSV subtypes A and B, was assessed for efficacy against respiratory disease caused by RSV.

Adults aged ≥ 60 years, with or without underlying chronic conditions, were enrolled and randomized in a 1:1 ratio to receive a single dose of vaccine or placebo and were followed for disease caused by RSV infection during the 2022-2023 season. The 2 primary endpoints were RSV-associated lower respiratory tract disease (LRTD) with ≥ 3 and ≥ 2 symptoms; acute respiratory disease (ARD) was a key secondary endpoint. The humoral RSV-specific immune response was assessed at baseline and 14 days post-vaccination. Safety was evaluated by collection of solicited adverse events (AEs) and unsolicited AEs for 7 and 28 days post-vaccination respectively, and SAEs for the entire study period.

In total, 18348 participants were included in the final efficacy and safety analyses. Vaccine efficacy was 42.9% (95% CI: -16.1; 71.9) against RSV-associated LRTD with ≥ 3 symptoms, 59.0% (95% CI: 34.7; 74.3) against LRTD with ≥ 2 symptoms, and 48.8% (95% CI: 25.8; 64.7) against ARD. The primary objective was not met for LRTD with ≥ 3 symptoms since the lower bound of the 95% CI was below 20%, the prespecified success criterion. The vaccine-elicited immune response showed mean fold-increases of 1.7 for RSV A and B neutralizing antibodies and 2.9 and 4.3 for RSV-specific IgG and IgA, respectively. The vaccine displayed mild to moderate reactogenicity, and no safety concerns were identified.

NOTE: This preprint reports new research that has not been certified by peer review and should not be used to guide clinical practice.

1
2
3
4
5
6
7
8
9
10
11
12
13
14
15
16
17
18
19
20
21
22
23
24
25
26
27
28
29
30
31
32
33
34
35
36
37
38
39
40
41
42
43
44
45
46
47
48
49
50
51
52
53
54
55
56
57
58
59
60
61
62
63
64
65

1 MVA-BN-RSV induced suboptimal protection against RSV-associated LRTD, likely due to
2 suboptimal neutralizing antibody response. The vaccine had an acceptable safety profile and
3 confirmed immunogenicity, overall showing promise for MVA-BN-vectored constructs
4 targeting other diseases.
5
6
7
8
9

10 **Trial Registration:** Clinicaltrials.gov Identifier NCT05238025 (Registered February 14,
11 2022).
12
13
14

15 **Keywords:** RSV, respiratory syncytial virus, vaccine, MVA-BN-RSV, MVA-BN, efficacy,
16 safety, older adults, modified vaccinia virus Ankara.
17
18
19
20
21
22
23
24
25
26
27
28
29
30
31
32
33
34
35
36
37
38
39
40
41
42
43
44
45
46
47
48
49
50
51
52
53
54
55
56
57
58
59
60
61
62
63
64
65

1
2
3
4
5
6
7
8
9
10
11
12
13
14
15
16
17
18
19
20
21
22
23
24
25
26
27
28
29
30
31
32
33
34
35
36
37
38
39
40
41
42
43
44
45
46
47
48
49
50
51
52
53
54
55
56
57
58
59
60
61
62
63
64
65

Title: A multivalent RSV vaccine based on the Modified Vaccinia Ankara vector shows moderate protection against disease caused by RSV in older adults in a Phase 3 clinical study

Authors: Elke Jordan^a, Victoria Jenkins^c, Günter Silbernagl^a, Maria Paulina Velasco Chávez^a, Darja Schmidt^a, Frauke Schnorfeil^a, Stephanie Schultz^a, Liddy Chen^b, Fernanda Salgado^c, Jeanne-Marie Jacquet^c, Tobias Welte^{d*}, Laurence De Moerlooze^c

^a Bavarian Nordic, Bavarian Nordic GmbH, Martinsried, Germany,

^b Bavarian Nordic Inc., Durham, North Carolina, USA

^c Bavarian Nordic, Bavarian Nordic Switzerland AG, Zug, Switzerland

^d Medizinische Hochschule Hannover. Klinik für Pneumologie und Infektiologie

Carl-Neuberg-Straße 1, 30625 Hannover, Germany

*Dr Tobias Welte was the principal investigator of this clinical study. He passed away on 10 March 2024 before the finalization of this publication. We are grateful for his contribution.

Corresponding author:

Elke Jordan, PhD, Bavarian Nordic GmbH, Fraunhoferstrasse 13, 82152

Martinsried, Germany (Elke.Jordan@bavarian-nordic.com)

1 **Title: A multivalent RSV vaccine based on the Modified Vaccinia Ankara vector shows**
2 **moderate protection against disease caused by RSV in older adults in a Phase 3 clinical**
3 **study**

4 **1. Introduction**

5 Respiratory Syncytial Virus (RSV) is a cause of severe respiratory disease in children
6 below the age of 5 years, where the highest disease burden is observed, but also in older
7 adults, and adults with underlying comorbidities [1]. Meta analyses estimate the yearly global
8 incidence of RSV-acute respiratory infection (ARI) to be 6.7 per 1000 adults ≥ 65 years of
9 age worldwide [2], and 16.2 per 1000 adults ≥ 60 years of age in high income countries [3].
10 The associated estimated hospitalization rates are 1.0 per 1000 and 1.5 per 1000, respectively
11 [2, 3].

12 In the long search for an RSV vaccine, the F protein was recognized as an important
13 antigen able to elicit a protective humoral immune response, and the preF conformation of
14 the protein was identified as the target of naturally induced antibodies during RSV infection
15 [4]. Recent RSV vaccine candidates have used the preF protein as the vaccine antigen in
16 varied approaches: protein, mRNA or vector based [5]. Two vaccines became available in
17 2023 for the immunization of adults from the age of 60 years [6, 7]; both are protein-based
18 and use the RSV F protein, stabilized in its preF conformation. These vaccines elicit a high
19 neutralizing antibody response and have shown a protective efficacy for one RSV season of
20 more than 80% in adults ≥ 60 years against RSV-associated lower respiratory tract disease
21 (LRTD) [8, 9] and up to 94.1% against severe disease [8]. Data available beyond the initial
22 analysis, for a longer follow-up, reveal variable durability of efficacy according to the
23 platform. A drop in efficacy against RSV-associated LRTD was already visible from 82.4% to
24 63.0% from 3.7 to 8.6 months of follow-up in one RSV season for an mRNA vaccine [10,
25 11]; a decrease in efficacy was visible in the second RSV season for the available protein-

26 based vaccines [12, 13] with an approximate drop of -10% to -30%, depending on the study
27 and the LRTD endpoint; while for an adenovirus-vectored vaccine, sustained protection
28 against RSV-associated LRTD was observed in a third season of follow-up in phase 2 (78.7%
29 in season 3 versus 80.% in season 1) [14, 15], and no evidence of a decline in a second
30 season compared to season 1 was apparent in phase 3 [16].

31 The MVA-BN-RSV vaccine candidate was developed as an alternative, multiple antigen
32 approach, using the modified vaccinia Ankara (MVA-BN) poxvirus as a vector to express 5
33 RSV proteins: the F protein, which is expressed both in the preF and postF conformations,
34 the G protein of RSV types A and B, and the internal M2-1 and N proteins [15]. The potential
35 advantages of a multi-component vaccine, i.e. the induction of CD4+ and CD8+ T cell
36 responses, along with antibodies including IgAs, were demonstrated in preclinical studies
37 [17]. The immunogenicity profile of MVA-BN-RSV was characterized in Phase 1 and 2
38 clinical studies. The vaccine elicited RSV-specific IgG and IgA and a neutralizing response
39 against both RSV A and B subtypes [18, 19]. This was accompanied by broad T cell
40 responses as measured against 5 peptide pools representing the 5 encoded antigens [18, 19];
41 fold-increases in T cell responses appeared higher than the F-specific response reported for
42 preF focused vaccines [16]. This distinctive balance of humoral responses and strong cellular
43 responses stimulated by multiple antigens was thought to contribute to different pathways of
44 protection [16] and suggested potential for a multi-faceted mode of action. MVA-BN-RSV
45 was subsequently shown to prevent RSV colonization in an RSV challenge trial [20]. The
46 Phase 3 study reported here aimed to assess the protective efficacy of the vaccine against
47 LRTD associated with RSV in adults ≥ 60 years of age.

48 **2. Methods**

49 *2.1. Study design, population, and vaccination*

50 This was a randomized, double-blind, multicenter, placebo-controlled phase 3 study in
51 adults ≥ 60 years of age, which was conducted at over 100 sites in the US and Germany
52 between April 2022 and September 2023. Independent ethics committees or institutional
53 review boards for each trial site approved the study protocol and its amendments.

54 All study participants were apprised of the trial aspects and signed an informed consent
55 before any study procedure. The study was conducted according to the ethical principles of
56 the Declaration of Helsinki [21], and Good Clinical Practice guidelines [22] and the
57 applicable regulatory requirements. Safety during the trial was monitored by an Independent
58 Data Monitoring Committee, which reviewed unblinded safety data at regular intervals.

59 Study participants were randomly assigned in a 1:1 ratio to 2 groups to receive a single
60 dose of MVA-BN-RSV or placebo, administered intramuscularly in the deltoid muscle.
61 Participants could have one or more, clinically stable, chronic medical conditions such as
62 chronic cardiac disease and chronic lung disease, congestive heart failure, hypertension, type
63 2 diabetes mellitus, hyperlipoproteinemia, or hypothyroidism. Frailty was assessed for each
64 participant using the Tilburg frailty indicator. Previous vaccination with an RSV vaccine, or
65 any planned vaccination with an RSV vaccine other than the trial vaccine was an exclusion
66 criterion.

67 MVA-BN-RSV consists of MVA-BN [23] encoding 5 codon optimized RSV antigens: F
68 (subtype A, strain A long), G (subtype A, strain A2), G (subtype B, strain 185 37), N, and
69 M2-1 (both strain A2). MVA-BN-RSV and placebo were supplied by Bavarian Nordic A/S,
70 Denmark. MVA-BN-RSV was provided as a liquid frozen formulation containing at least $3 \times$
71 10^8 infectious units per 0.5 mL and placebo consisted of Tris-buffered saline.

72 *2.2. Objectives*

73 The primary objective of the study was to assess the clinical efficacy of the MVA-BN-
74 RSV vaccine against LRTD associated with RSV in adults ≥ 60 years of age, during one RSV

75 season. Two primary endpoints were defined: RSV-associated LRTD with at least 3
76 symptoms and RSV-associated LRTD with at least 2 symptoms; vaccine efficacy (VE) was
77 assessed for endpoints reported from 14 days post-vaccination until the end of one RSV
78 season. A key secondary objective was to assess VE against RSV-associated ARD during one
79 RSV season. The assessment of VE against severe LRTD was also a secondary objective, and
80 the assessment of VE against hospitalization or mortality related to confirmed RSV disease
81 was an exploratory objective. A supplementary analysis of VE according to RSV subtype was
82 performed, and subgroup analyses of efficacy according to age, sex, race, frailty, pre-existing
83 chronic conditions and region were conducted. Reactogenicity, safety and immunogenicity
84 were assessed as secondary objectives.

85 *2.3. Efficacy assessments*

86 Participants were followed for disease surveillance via monthly telephone calls and
87 electronic alerts 3 times a week until the end of the RSV season. The occurrence of
88 respiratory tract symptoms led to a visit at the study site to confirm symptoms and to collect a
89 nasopharyngeal swab within 5 days of symptom onset for polymerase chain reaction (PCR)
90 testing at the central laboratory.

91 RSV-associated ARD was defined by the presence of either 1 ARD symptom lasting for
92 at least 24 hours or 2 simultaneously occurring ARD symptoms (irrespective of duration),
93 with onset at least 14 days following vaccination until the end of one RSV season, with RSV-
94 association confirmed by PCR. ARD symptoms included: rhinorrhea, nasal congestion,
95 pharyngitis, earache, new cough or worsening of pre-existing cough, new wheezing or
96 worsening of pre-existing wheezing, new sputum production or worsening of pre-existing
97 sputum production, new shortness of breath or worsening of pre-existing shortness of breath,
98 fever $> 100^{\circ}\text{F}$ / $> 37.8^{\circ}\text{C}$ (oral temperature). RSV-associated LRTD was defined as i) severe
99 LRTD, i.e. the presence of at least 1 of the following signs: hypoxemia (oxygen saturation $<$

100 92% at rest in conjunction with an at least 3% decrease from baseline), respiratory rate > 25
101 breaths/Min, imaging evidence of new onset of bronchitis, bronchiolitis, or pneumonia, or ii)
102 LRTD with at least 3 or at least 2 of the following symptoms: new wheezing or worsening of
103 pre-existing wheezing, new shortness of breath or worsening of pre-existing shortness of
104 breath, new cough or worsening of pre-existing cough, new sputum production or worsening
105 of pre-existing sputum productions, signs of severe LRTD. All documented respiratory tract
106 symptoms with PCR-confirmed RSV positivity were adjudicated to be either ARD, LRTD
107 (severe, with 3-symptoms, or with 2-symptoms) or no endpoint by an independent
108 adjudication committee.

109 Study participants were also asked to complete the Respiratory Intensity and Impact
110 Questionnaire (RiiQ) [24] to assess changes in symptoms after RSV symptom onset until
111 symptoms resolved or until 21 days. Symptoms were self-reported based on a grading scale:
112 none, mild, moderate, severe.

113 *2.4. Immunogenicity assessments*

114 Serum antibody responses were assessed in a subset of approximately 600 participants,
115 from whom blood samples were collected at study entry and 14 days post-vaccination.
116 Antibody responses elicited by MVA-BN-RSV were measured using RSV-specific
117 immunoglobulin (Ig) G enzyme linked immunosorbent assay (ELISA), IgA ELISA and
118 plaque reduction neutralization test for RSV subtype A and subtype B, as described earlier
119 [19]. Serum assays were performed at Bavarian Nordic GmbH, Martinsried, Germany.

120 *2.5. Safety assessments*

121 Local and systemic solicited adverse events (AEs) were assessed for 7 days after
122 vaccination, unsolicited AEs were monitored for 28 days post vaccination and beyond if
123 ongoing. Information on SAEs was collected throughout the study. Vital signs (peripheral

124 oxygen saturation, respiratory rate, blood pressure, pulse rate and body temperature) were
125 assessed at on-site study visits. AEs were graded in intensity using the FDA Toxicity Grading
126 Scale for Healthy Adult and Adolescent Volunteers Enrolled in preventive Vaccine Clinical
127 Trials [25].

128 *2.6. Statistical methods*

129 The sample size was calculated based on an expected VE of 80% for RSV-associated
130 LRTD with ≥ 3 symptoms, and of 65% for LRTD with ≥ 2 symptoms. Assuming an incidence
131 rate of 0.2% for LRTD with ≥ 3 symptoms, and 0.4% for LRTD with ≥ 2 symptoms, in the
132 placebo group during one RSV season, approximately 20,000 participants vaccinated in the 2
133 treatment groups allowed the observation of at least 22 cases of LRTD with ≥ 3 symptoms
134 and 53 cases of LRTD with ≥ 2 symptoms, providing at least 90% and 85% power,
135 respectively.

136 A hierarchical testing strategy was employed. Endpoints were to be tested sequentially
137 against the null hypothesis of $VE \leq 20\%$ at the 2-sided significance level $\alpha=0.05$, i.e. the
138 lower bound of the 2-sided confidence interval (CI) around the estimate of VE was to be
139 greater than 20% to meet the objective for the respective endpoint.

140 The full analysis set (FAS) was the primary analysis set for efficacy assessments; it
141 consisted of participants who were randomized to any treatment arm and received the study
142 vaccination. The safety set (SS) was the primary analysis set for safety evaluation; it included
143 participants who received any MVA-BN-RSV vaccine or placebo.

144 During the study, multiple enrollers were identified through monitoring visits based on
145 similarities in participants details. A systematic verification of all study participants was then
146 performed with support from the vendor who processed participant compensation fees. In
147 total, 826 participants were identified as having been enrolled and vaccinated more than one
148 time in the trial, at different sites located mostly within a 30-mile distance. These participants

149 had received multiple doses of MVA-BN-RSV or placebo (in total 1824 vaccinations). These
150 multiple enrollers were included in the FAS for the primary efficacy analysis with group
151 allocation based on the first treatment received (MVA-BN-RSV or placebo) and with data
152 censored from the time of second vaccination. Multiple enrollers were included in the safety
153 set for safety analysis, with participants having received the MVA-BN-RSV vaccine at least
154 once analyzed in the MVA-BN-RSV group, and those who had only received placebo
155 analyzed in the placebo group.

156 For the primary analysis, VE against LRTD was defined as the relative reduction in the
157 hazard rate of LRTD associated with RSV in the MVA-BN-RSV vaccinated group compared
158 with that in the placebo group. For each of the 2 primary endpoints, a Cox proportional
159 hazards regression model based on the FAS, stratified by age group, was used as the primary
160 analysis to establish VE against LRTD. The follow-up time for participants who developed
161 LRTD associated with RSV was defined as (first LRTD onset date *minus* vaccination date
162 *plus* 1), and LRTD onset was defined as the date when the first LRTD symptoms were
163 observed, with the sample obtained at the related on-site visit being positive for RSV by
164 PCR. Participants who did not develop any LRTD event were censored at time of dropout or
165 at the end date of the RSV season. The same approach was adopted for the analysis of the key
166 secondary endpoint (ARD associated with RSV).

167 Post-hoc analyses were performed based on self-reported symptoms in the RiiQ. In the
168 RiiQ, 4 symptoms (coughing, wheezing, shortness of breath and sputum production)
169 constituted the Lower Respiratory Symptoms domain. Based on self-reported symptoms for
170 participants with PCR-confirmed RSV disease, VE against LRTD with at least 2 or 3 self-
171 reported symptoms among the 4 listed, was calculated. In addition, the area under the curve
172 (AUC) of the change from baseline in the RiiQ total score (defined as the mean of the 3

173 domain scores) and the mean duration of any symptoms were calculated for the 2 treatment
174 groups.

175 Descriptive summaries per group were provided for local and systemic solicited AEs
176 with any intensity and per intensity grade; unsolicited AEs, including any intensity, grade ≥ 3
177 and related events classified according to the Medical Dictionary for Regulatory Activities
178 (MedDRA); SAEs and related SAEs.

179 RSV subtype A and B neutralizing serum activity and RSV-specific IgG, IgA antibody
180 titers at baseline and 14 days post-vaccination were summarized descriptively by treatment
181 group. Geometric mean titers (GMT) and geometric mean fold-increases (GMFI) from
182 baseline were calculated with 95% CIs for all immunogenicity endpoints.

183 **3. Results**

184 *3.1. Study population*

185 A total of 18348 participants were enrolled and vaccinated; multiple enrollers were
186 counted once. Overall, 826 participants were identified as multiple enrollers. These
187 participants were handled appropriately during analyses and consequently did not affect the
188 reported results. A limited number of participants were identified by study sites as having
189 participated in another RSV clinical trial. These participants were excluded from efficacy
190 analyses. The resulting FAS and SS are described in Figure 1.

191 The demographic characteristics of participants were similar in the 2 groups (Table 1).
192 Their mean age was 70.4 years, more than 4000 (22.5%) were ≥ 75 years of age, 66.5% had
193 underlying chronic lung or cardiac diseases putting them at higher risk of severe RSV disease
194 and 10.7% were frail. Overall, 13.0% of study participants were Black or African American
195 and 28.7% were Hispanic or Latino.

196 *3.2. Efficacy*

217 The assumption used for sample size calculation of a 0.2% incidence for LRTD with ≥ 3
218 symptoms during one RSV season was confirmed since 21 cases were reported for 9188
219 placebo recipients (0.23%) during the RSV season. The cut-off date for the analysis of
220 efficacy was 6 March 2023, at which time, the RSV season was considered over based on
221 country-specific surveillance data [26, 27]. The number of LRTD events accrued by that time
222 was above the number required by the sample size estimation.

223 There were 12 reports of RSV-associated LRTD with ≥ 3 symptoms in the MVA-BN-
224 RSV group and 21 in the placebo group, giving a VE of 42.9% (95% CI: -16.1; 71.9) (Figure
225 2A). For this primary endpoint, the study failed to meet the success criterion of a lower bound
226 of the 95% CI greater than 20%. There were 25 reports of RSV-associated LRTD with ≥ 2
227 symptoms in the MVA-BN-RSV group and 61 in the placebo group, for a VE of 59.0% (95%
228 CI: 34.7; 74.3) (Figure 2B). For RSV-associated ARD, VE was 48.8% (95% CI: 25.8; 64.7)
229 with 42 reports in the MVA-BN-RSV group and 82 in the placebo group (Figure 3C). For
230 LRTD with ≥ 2 symptoms and ARD, the lower bound of the 95% CI was above 20%. Per the
231 planned hierarchical testing strategy, no formal conclusion can be drawn for these 2
232 endpoints, although positive efficacy was observed.

233 There were no hospitalizations due to RSV-associated disease during the study. There
234 were 2 cases of RSV-associated LRTD that met the definition of severe disease, both in the
235 placebo group. One had a respiratory rate > 25 breaths/Min and one had imaging evidence of
236 new onset of pneumonia.

237 The exploratory analysis of vaccine efficacy based on the number and intensity of
238 symptoms self-reported by participants in the RiiQ confirmed a moderate efficacy against
239 RSV-associated LRTD, which ranged from 58.1% (95% CI: 36.3; 72.5) to 77.8% (95% CI:
240 56.0; 88.8), depending on the number and severity of reported symptoms (Supplementary
241 Table 1). The analysis of the severity of symptoms of RSV-associated disease based on the

222 RiiQ showed that RSV-associated LRTD was milder in RSV vaccine recipients who
223 experienced breakthrough disease (Figure 3). The median duration of symptoms was also
224 lower in the RSV-MVA-BN group (11.5 days) than in the placebo group (15 days).

225 Subgroup analyses were consistent with the findings of the primary efficacy analysis
226 (data on file), except for the analysis per sex, which showed higher VE estimates in females
227 compared to males, for the primary and key secondary RSV disease endpoints
228 (Supplementary Table 2). However, while VE was substantially higher in female participants
229 compared to male participants in the subset with exactly 1 symptom and the subset with 3 or
230 more symptoms, it was almost the same in the subset with exactly 2 symptoms: 69.7% (95%
231 CI: 24.5; 87.8) in females *versus* 65.3% (95% CI: 18.0; 85.3) in males (Supplementary Table
232 3).

233 3.3. Immunogenicity

234 MVA-BN-RSV induced a humoral immune response in terms of neutralizing antibodies
235 against the 2 RSV subtypes, and of RSV-specific IgG and IgA (Table 2). Fourteen days after
236 RSV-MVA-BN vaccination, GMFIs were 1.7 for RSV A and RSV B neutralizing antibody
237 titers, and 2.9 and 4.3 for IgG and IgA antibody titers, respectively. The analysis of immune
238 responses per sex (Supplementary Table 4) showed slightly higher baseline titers and slightly
239 lower fold increases in males for all immunogenicity measurements.

240 3.4. Reactogenicity and safety

241 The most frequent solicited AEs, reported by more than 30% of vaccinees, were pain at
242 the injection site, myalgia, fatigue, and headache (Figure 4). Grade 3 solicited local AEs were
243 reported by 4.6% of MVA-BN-RSV vaccinees, and grade \geq 3 systemic AEs by 4.5% of
244 vaccine recipients. A similar proportion of participants (6.5%) in the 2 groups reported
245 unsolicited AEs during the 28 days following vaccination (Table 3); and during that same

246 period, 1.1% participants in the MVA-BN-RSV group compared to 0.6% in the placebo group
247 reported related unsolicited AEs. The reported unsolicited AEs were generally mild (Grade 1)
248 and self-limited. Grade ≥ 3 unsolicited AEs assessed as related to study intervention were
249 consistent with the solicited AEs reported following vaccination by participants. Vital sign
250 monitoring did not detect any physical findings of concern.

251 SAEs collected during the entire study period were reported with similar frequencies in
252 the 2 study groups: 5.5% and 4.7% in the MVA-BN-RSV group and in placebo group,
253 respectively. SAEs considered to be related to the study vaccination (possibly, probably, or
254 definitely related to study vaccination) occurred in 7 participants, (0.1%, 10 events) in the
255 MVA-BN-RSV group, and in 5 participants (0.1%, 5 events) in the placebo group. In both
256 groups, 1 event each of atrial fibrillation and pneumonia was reported. In the MVA-BN-RSV
257 group, there were also 2 events of cerebrovascular accident, 2 events of syncope, 1 event of
258 an altered state of consciousness, 1 event of pyrexia, and 1 participant presented the events of
259 injection site erythema and pruritus. In the placebo group, in addition, 1 event each of colitis,
260 wheezing, and thrombosis occurred. No fatal cases were considered to be related to the study
261 vaccination. A total of 75 participants died during the study: 41 (0.4%) in the MVA-BN-RSV
262 group and 34 (0.4%) in the placebo group. The most frequently reported fatal SAE by System
263 Organ Class was cardiac disorder in the 2 study groups. The causes of death reported among
264 study participants were representative of the most common causes of death in the elderly
265 adult population and, considering that these fatal events were more likely attributable to the
266 participant's underlying risk factors (e.g. diabetes mellitus type 2, hypertension), none of the
267 fatal events was considered by the study investigator to be related to study vaccination. The
268 safety information was continuously presented to the Data Monitoring Committee and no
269 concern was raised after review and assessment.

270 4. Discussion

271 This study was undertaken to assess the efficacy of the MVA-BN-RSV vaccine against
272 RSV-associated ARD and LRTD in adults ≥ 60 years of age.

273 The study population was reflective of the general population of older adults targeted for
274 RSV vaccination, as more than 4000 participants were ≥ 75 years of age, a majority had
275 underlying cardiac or respiratory conditions and 10.7% were frail. The study population
276 reasonably reflected racial and ethnic diversity in the study locations and was well balanced
277 for sex and other demographic characteristics across the two groups.

278 VE against LRTD with at least 3 symptoms was 42.9% (95% CI: -16.1; 71.9) and the
279 predefined success criterion of a CI lower bound greater than 20% was not met. Given this,
280 per the hierarchical testing strategy adopted, no formal conclusion on efficacy relating to the
281 endpoints tested next in the sequence can be made. The results of the analyses for VE against
282 RSV-associated LRTD with at least 2 symptoms and against ARD showed estimates of 59.0%
283 and 48.8% respectively with lower bounds above 20%, and are consistent with a positive,
284 although suboptimal, protection against RSV disease. The analysis of the patient-reported
285 outcomes through the RiiQ also confirmed the presence of efficacy against RSV-associated
286 disease, with moderate estimates that were in line with those reported in the primary analysis
287 for LRTD with at least 2 symptoms. The fact that the patient-reported severity and duration of
288 symptoms were lower in breakthrough cases in the vaccine group than in the placebo group
289 also supports the fact that the vaccine conferred some protection against RSV-associated
290 disease, although not to the expected level.

291 Subgroup analyses of VE for each of the disease endpoints per age, sex, race, underlying
292 chronic conditions, and geographic regions were performed (data on file). These analyses
293 were generally consistent with the primary analyses, except for the per sex analysis, which
294 showed higher VE estimates in females. The vaccine immunogenicity measured in this study

295 was in line with Phase 1 and 2 assessments, showing comparable fold-increases and post-
296 vaccination titers in the two sexes [18, 19]. In this study, the analysis of immunogenicity per
297 sex did not reveal major differences between males and females, although slightly higher
298 baseline levels, and thus slightly lower fold increases, were seen in males. Also, in earlier
299 studies [18, 19], cellular responses analyzed per sex showed similar values and fold-increases
300 in males and females (data on file). Other efficacy studies of RSV vaccines did not report a
301 higher efficacy in females [10, 28, 29], and the difference in VE across sexes observed in this
302 trial was not expected. In view of the similar immunogenicity and baseline characteristics in
303 males and females (data on file), we have not found an explanation, nor a plausible
304 physiological mechanism for a differential efficacy per sex for this vaccine. Generally,
305 females, including elderly women, usually mount a higher immune response to vaccines than
306 males, and vaccine efficacy in females tends to be higher regardless of age or vaccine [30]. A
307 study evaluating sex effect in influenza vaccine effectiveness showed a 19% (48% for
308 females and 29% for males, $p = 0.03$) difference in adults ≥ 50 years [31], although vaccine
309 efficacy is generally not considered different between females and males for available
310 influenza vaccines. A review article investigating sex differences in respiratory viral
311 pathogenesis of disease revealed males to be more susceptible than females to severe
312 outcomes from respiratory viral infections at younger and older ages in general, but no sex
313 specific data was found for RSV-associated disease in older adults [32].

314 Given that VE was substantially higher in females than in males for the subset with ≥ 3
315 symptoms, it may be possible that MVA-BN-RSV, a unique vaccine that expresses 5 RSV
316 proteins, proved more effective in females in preventing more severe disease, which would be
317 corroborated by the fact that, for LRTD with exactly 2 symptoms, VE was similar (65-70%)
318 in the two sexes. However, VE was also higher in females compared to males for the mild
319 disease subset (i.e. with ≤ 1 symptom), which does not validate the view that the sex

320 difference would be limited to more severe disease. Due to the small number of cases in
321 subgroups and the lack of identified biological plausibility, we cannot preclude the influence
322 of other random factors.

323 In our study, only 2 cases of RSV-associated disease with complications or of high
324 severity were reported, both in the placebo group; due to the low number of cases, this does
325 not inform on the level of protection that MVA-BN-RSV could afford against severe RSV
326 disease.

327 Before initiating vaccine efficacy evaluation in this Phase 3 study, the ability of MVA-
328 BN-RSV to prevent RSV infection and colonization was assessed in an RSV challenge trial,
329 where MVA-BN-RSV vaccination was effective at reducing the RSV viral load, the number
330 of RSV infections and symptoms after challenge [20], and vaccine efficacy against RSV-
331 confirmed, symptomatic infection was 79.3% to 88.5%. These values were not reproduced in
332 the efficacy study reported here. The RSV controlled human challenge trials have inherent
333 limitations due to the use of highly attenuated RSV strains causing mild to moderate upper
334 respiratory tract disease; such studies can reveal the protective potential of a vaccine, though
335 their results cannot be directly reflective of larger vaccine efficacy studies or real-world
336 analysis [33]. The results of the MVA-BN-RSV challenge trial are nevertheless coherent with
337 the efficacy estimated against ARD and milder LRTD with at least 2 symptoms, but do not
338 align with the efficacy seen against more severe LRTD.

339 The adopted vaccine approach proved unable to afford the pursued high level of
340 protection despite the strong and diverse T cell response elicited, which, given the recognized
341 importance of T cell responses for protection against RSV symptomatic infection [34], had
342 given confidence in the multi antigen approach. This broad T cell response was not capable of
343 counterbalancing a lower neutralizing antibody response, confirming the importance of a high
344 neutralizing antibody response and preF focus for optimal protection against RSV. Indeed, the

345 humoral immune response elicited by MVA-BN-RSV was lower than that elicited by preF-
346 focused vaccines. Although assays are different and values not directly comparable, the fold-
347 increases from baseline (1.7 for neutralizing antibodies and 2.9 for IgG) were lower than
348 those described for preF-based vaccines, which ranged 8-12 for neutralizing antibodies [8,
349 14, 35] and 8-13 for IgG [8, 14]. The efficacy observed for MVA-BN-RSV, was suboptimal
350 but was higher than that reported with two postF-based vaccines. These showed no efficacy
351 in Phase 3: one displayed a VE of -7.1% (90% CI: -106.9; 44.3) against RSV-associated acute
352 respiratory infection [36], and the other VEs of -7.9% (unspecified% CI: -8; 37) against RSV-
353 associated moderate-severe LRTD, and 12.6% (unspecified% CI: -14; 33) against ARD [37].
354 This is in contrast with the preF-focused vaccines, which all showed high efficacy in the
355 initial first RSV season evaluation regardless of the platform [8, 9, 10, 14]. MVA-BN-RSV,
356 which induces a mixed pre- and post-fusion expression of the RSV F protein, therefore
357 appears to confer an intermediate efficacy between that afforded by the postF-based and the
358 preF-based vaccines.

359 From an operational point of view, although the presence of participants who had
360 enrolled more than once and had received multiple vaccinations had no bearing on the
361 analysis, thanks to early detection and appropriate handling, the issue of multiple enrollers in
362 clinical studies is of concern, as this has potential to impair results, and should be a point of
363 attention in the conduct of trials.

364 The evaluation of MVA-BN-RSV in more than 9000 older individuals in this study
365 confirmed the mild to moderate reactogenicity profile of the vaccine. A similar number of
366 adverse events were observed among the 2 study groups and no safety concern was identified
367 by the Data Monitoring Committee. These data are in line with those obtained with the MVA-
368 BN poxvirus vaccine Jynneos® [38]. In all completed clinical trials, vaccinations with MVA-
369 BN or MVA-BN-based vaccines displayed a good safety profile and were well tolerated in all

370 the populations of healthy, elderly or immunocompromised individuals assessed. A recent
371 meta-analysis encompassing 8 clinical studies with MVA-BN, of which 6 were placebo-
372 controlled, showed that, following a single dose of MVA-BN, no difference with placebo was
373 demonstrated for the outcomes of SAEs, AEs of special interest or AEs requiring
374 discontinuation [39].

375 **5. Conclusions**

376 The MVA-BN-RSV vaccine demonstrated suboptimal efficacy against RSV-associated
377 LRTD, in this double-blind placebo-controlled randomized trial.-Although efficacy against
378 the first primary endpoint was not met, the vaccine displayed some, moderate protective
379 efficacy against RSV-associated LRTD and ARD. The immunogenicity of the vaccine was
380 also established, confirming that MVA-BN can be used as a vector platform, to build safe and
381 effective vaccines based on adequate constructs. This large trial also confirmed the safety of
382 the MVA-BN platform as a vector, including in an older population with co-morbidities.

383 All authors attest they meet the ICMJE criteria for authorship.

384 **References**

- 385 1. Piralla A, Chen Z, Zaraket H. An update on respiratory syncytial virus. *MC Infectious*
386 *Diseases* (2023) 23:734.
- 387 2. Shi T, Denouel A, Tietjen AK, Campbell I, Moran E, Li X, Campbell H, Demont,
388 Nyawanda BO, Chu HY et al. Global Disease Burden Estimates of Respiratory
389 Syncytial Virus–Associated Acute Respiratory Infection in Older Adults in 2015: A
390 Systematic Review and Meta-Analysis. *The Journal of Infectious Disease*,
391 2020;222(S7):S577–83
- 392 3. Savic M, Penders Y, Shi T, Branche A, Pirçon JY. Respiratory syncytial virus disease
393 burden in adults aged 60 years and older in high-income countries: A systematic

- 394 literature review and meta-analysis. *Influenza Other Respi Viruses*. 2023;17:e13031.
395 <https://doi.org/10.1111/irv.13031>
- 396 4. Mazur NI, Higgins D, Nunes MC, Melero JA, Langedijk AC, Horsley N, Buchholz
397 UJ, Openshaw PJ, McLellan JS, Englund JA et al. The respiratory syncytial virus
398 vaccine landscape: lessons from the graveyard and promising candidates. *Lancet*
399 *Infect Dis*. 2018 Oct;18(10):e295-e311. doi: 10.1016/S1473-3099(18)30292-5 Epub
400 2018 Jun 18
- 401 5. Topalidou X, Kalergis AM, Papazisis G. Respiratory Syncytial Virus Vaccines: A
402 Review of the Candidates and the Approved Vaccines. *Pathogens* 2023, 12, 1259.
403 <https://doi.org/10.3390/pathogens12101259>
- 404 6. US Food and Drug Administration, Abrysvo® package insert. Available at
405 <https://www.fda.gov/vaccines-blood-biologics/abrysvo>
- 406 7. US Food and Drug Administration, Arexvy® package insert. Available
407 at <https://www.fda.gov/vaccines-blood-biologics/arexvy>
- 408 8. Papi A, Ison MG, Langley JM, Lee D-M, Leroux-Roels I, Martinon-Torres F et al.
409 Respiratory Syncytial Virus Prefusion F Protein Vaccine in Older Adults. *N Engl J*
410 *Med* 2023;388:595-608. DOI: 10.1056/NEJMoa2209604
- 411 9. Walsh EE, Pérez Marc G, Zareba AM, Falsey AR, Jiang Q, Patton M et al. 2023
412 Efficacy and Safety of a Bivalent RSV Prefusion F Vaccine in Older Adults. *N Engl J*
413 *Med* 2023;388:1465-77. DOI: 10.1056/NEJMoa2213836
- 414 10. Wilson E, Goswami J, Baqui AH, Doreski PA, Perez-Marc G, Zaman K et al. Efficacy
415 and Safety of an mRNA-Based RSV PreF Vaccine in Older Adults. *N Engl J Med*
416 2023;389:2233-44. DOI: 10.1056/NEJMoa2307079
- 417 11. Wilson E, Goswami J, Doreski PA, Perez-Marc G, Jimenez G, Priddy F, Lin N, Le
418 Cam N, Slobod K, Stoszek SK et al. Efficacy and Safety of mRNA-1345, an RSV

- 419 Vaccine, in Older Adults: Results through ≥ 6 Months of Follow-up. RSVVW
420 ReSVINET Conference February 13-16 2024, Mumbai India. Abstract p.88.
421 <https://resvinet.org/wp-content/uploads/2024/02/Abstract-Booklet-09Feb24.2.pdf>
- 422 12. Ison MG, Papi A, Athan A, Feldman RG, Langley JM, Lee DG, Leroux-Roels I,
423 Martinon-Torres F, Schwarz T, van Zyl-Smit RN et al. Efficacy and Safety of
424 Respiratory Syncytial Virus (RSV) Prefusion F Protein Vaccine (RSVPreF3 OA) in
425 Older Adults Over 2 RSV Seasons. Clin Infect Dis. 2024 Jan 22:ciae010. doi:
426 10.1093/cid/ciae010. Online ahead of print
- 427 13. Walsh EE, Falsey A, Patton M, Stacey H, Eiras DP, Jiang Q, Woodside J, Mikati T,
428 Kalinina E, Cooper D et al. Efficacy of a Bivalent RSVpreF Vaccine in Older Adults
429 beyond a First RSV Season. RSVVW ReSVINET Conference February 13-16 2024,
430 Mumbai India. Abstract p.99. [https://resvinet.org/wp-](https://resvinet.org/wp-content/uploads/2024/02/Abstract-Booklet-09Feb24.2.pdf)
431 [content/uploads/2024/02/Abstract-Booklet-09Feb24.2.pdf](https://resvinet.org/wp-content/uploads/2024/02/Abstract-Booklet-09Feb24.2.pdf)
- 432 14. Falsey AR, Williams K, Gymnopoulou E, Bart S, Ervin J, Bastian AR, Menten J, De
433 Paepe E, Vandenberghe S, Chan EKH et al. Efficacy and safety of an Ad26.RSV.preF-
434 RSV preF protein vaccine in older adults. N Engl J Med. 2023;388:609-620
- 435 15. Jenkins, V.A.; Hoet, B., Hochrein, H., De Moerlooze, L. The Quest for a Respiratory
436 Syncytial Virus Vaccine for Older Adults: Thinking beyond the F Protein. Vaccines
437 2023, 11, 382. <https://doi.org/10.3390/vaccines1102038>
- 438 16. NCT04908683. A Study of an Adenovirus Serotype 26 Pre-fusion Conformation-
439 stabilized F Protein (Ad26. RSV. preF) Based Respiratory Syncytial Virus (RSV)
440 Vaccine in the Prevention of Lower Respiratory Tract Disease in Adults Aged 60
441 Years and Older (EVERGREEN).
442 [https://classic.clinicaltrials.gov/ct2/show/results/NCT04908683?term=vaccine+efficac](https://classic.clinicaltrials.gov/ct2/show/results/NCT04908683?term=vaccine+efficacy+Janssen&cond=RSV&draw=2&rank=1)
443 [y+Janssen&cond=RSV&draw=2&rank=1](https://classic.clinicaltrials.gov/ct2/show/results/NCT04908683?term=vaccine+efficacy+Janssen&cond=RSV&draw=2&rank=1)

- 444 17. Endt K, W. Y. (2022). A recombinant MVA-Based RSV Vaccine Induces T cell and
445 Antibody Responses that Cooperate in the Protection Against RSV Infection. *Front*
446 *Immunol*, 10.3389/fimmu.2022.841471
- 447 18. Samy N, Reichhardt D, Schmidt D, Chen LM, Silbernagl G, Vidojkovic S et al. Safety
448 and immunogenicity of novel modified vaccinia Ankara-vectored RSV vaccine: A
449 randomized phase I clinical trial. *Vaccine* 38 (2020) 2608-2613.
450 <https://doi.org/10.1016/j.vaccine.2020.01.055>
- 451 19. Jordan E, Lawrence SJ, Meyer TPH, Schmidt D, Schultz S, Mueller J et al. Broad
452 Antibody and Cellular Immune Response From a Phase 2 Clinical Trial With a Novel
453 Multivalent Poxvirus-Based Respiratory Syncytial Virus Vaccine. *The Journal of*
454 *Infectious Diseases*® 2021;223:1062–72
- 455 20. Jordan E, Kabir G, Schultz S, Silbernagl G, Schmidt D, Jenkins VA et al. Reduced
456 Respiratory Syncytial Virus Load, Symptoms, and Infections: A Human Challenge
457 Trial of MVA-BN-RSV Vaccine. *The Journal of Infectious Diseases*, Volume 228,
458 Issue 8, 15 October 2023, Pages 999–1011
- 459 21. World Medical Association. World Medical Association Declaration of Helsinki:
460 ethical principles for medical research involving human subjects. *JAMA*
461 2013;310:2191-4. doi:10.1001/jama.2013.281053
- 462 22. ICH Guideline for Good Clinical Practice E6 (R2) Step 5. Available at: [ICH E6 \(R2\)](https://www.ich.org/topics-and-press-releases)
463 [Good clinical practice - Scientific guideline | European Medicines Agency \(europa.eu\)](https://www.ich.org/topics-and-press-releases)
- 464 23. Suter M, Meisinger-Henschel C, Tzatzaris M, et al. Modified vaccinia Ankara strains
465 with identical coding sequences actually represent complex mixtures of viruses that
466 determine the biological properties of each strain. *Vaccine* 2009; 27:7442–50
- 467 24. Falsey AR, Walsh EE, Osborne RH, Vandendijck Y, Ren X, Witek J, Kang D, Chan E,
468 Scott J, Ispas G (2021) Comparative assessment of reported symptoms of influenza,

- 469 respiratory syncytial virus, and human metapneumovirus infection during
470 hospitalization and post-discharge assessed by Respiratory Intensity and Impact
471 Questionnaire: Influenza and Other Respiratory Viruses 2021
- 472 25. US Food and Drug Administration. Guidance for industry: toxicity grading scale for
473 healthy adult and adolescent volunteers enrolled in preventive vaccine clinical
474 trials. 2007 (<https://www.fda.gov/media/73679/download>)
- 475 26. Centers for Disease Control and Prevention. (2023, March). Retrieved from RSV
476 Surveillance: <https://www.cdc.gov/surveillance/nrevss/rsv/natl-trend.html>
- 477 27. RKI SurvStat. (2023, March). Retrieved from Robert Koch Institute:
478 <https://survstat.rki.de/Content/Query/Create.aspx>
- 479 28. Committee for Medicinal Products for Human Use (CHMP). EMA/227054/2023,
480 CHMP assessment report, Arexvy. 26 April 2023
- 481 29. US Food and Drug Administration, Abrysvo Cinical Review Memorandum:
482 <https://www.fda.gov/vaccines-blood-biologics/abrysvo>
- 483 30. Fink AI, Klein SL. Sex and gender impact immune responses to vaccines among the
484 elderly. *Physiology* (Bethesda). 2015 Nov;30(6):408-16. doi:
485 10.1152/physiol.00035.2015
- 486 31. Chambers C, Skowronski DM, Rose C, Serres G, Winter AL, Dickinson JA, Jassem
487 A, Gubbay JB, Fonseca K, Drews SJ, Charest H, Martineau C, Petric M, Krajden M.
488 Should Sex Be Considered an Effect Modifier in the Evaluation of Influenza Vaccine
489 Effectiveness? *Open Forum Infect Dis*. 2018 Sep 4;5(9):ofy211. doi:
490 10.1093/ofid/ofy211. PMID: 30263903; PMCID: PMC6143149
- 491 32. Ursin RL, Klein SL. Sex Differences in Respiratory Viral Pathogenesis and
492 Treatments. *Annu. Rev. Virol*. 2021. 8:393–414

- 493 33. Dayananda P, Chiu C, Openshaw P. Controlled Human Infection Challenge Studies
494 with RSV. *Curr Top Microbiol Immunol*. 2022 Jun 16. doi: 10.1007/82_2022_257.
495 Online ahead of print
- 496 34. Salaun B, De Smedt J, Vernhes C, Moureau A, Öner D, Bastian AR, Janssens M
497 Balla-Jhagihorsingh S, Aerssens J, Lambert C, Coenen S, Butler CC, Drysdale SB,
498 Wildenbeest JG, Pollard AJ, Openshaw PJM and Bont L. (2023) T cells, more than
499 antibodies, may prevent symptoms developing from respiratory syncytial virus
500 infections in older adults. *Front. Immunol*. 14:1260146. doi:
501 10.3389/fimmu.2023.1260146
- 502 35. Walsh EE, Falsey AR, Scott DA, Gurtman A, Zareba AM, Jansen KU et al. A
503 Randomized Phase 1/2 Study of a Respiratory Syncytial Virus Prefusion F Vaccine.
504 *The Journal of Infectious Diseases*® 2022;225:1357–66
- 505 36. Falloon J, Yu J, Esser MT, Villafana T, Yu L, Dubovsky F, Takas T et al. An
506 Adjuvanted, Postfusion F Protein–Based Vaccine Did Not Prevent Respiratory
507 Syncytial Virus Illness in Older Adults. *The Journal of Infectious Diseases*®
508 2017;216:1362–70
- 509 37. Novavax. Novavax Announces Topline RSV F Vaccine Data from Two Clinical Trials
510 in Older Adults [Internet]. 2022 [cited 2022Nov10]. Available from:
511 [https://ir.novavax.com/2016-09-25-Novavax-Announces-Topline-RSV-F-Vaccine-](https://ir.novavax.com/2016-09-25-Novavax-Announces-Topline-RSV-F-Vaccine-Data-from-Two-Clinical-Trials-in-Older-Adults)
512 [Data-from-Two-Clinical-Trials-in-Older-Adults](https://ir.novavax.com/2016-09-25-Novavax-Announces-Topline-RSV-F-Vaccine-Data-from-Two-Clinical-Trials-in-Older-Adults)
- 513 38. US Food and Drug Administration, Jynneos® package insert. Available at
514 <https://www.fda.gov/vaccines-blood-biologics/jynneos>
- 515 39. Nave, L.; Margalit, I.; Tau, N.; Cohen, I.; Yelin, D.; Lienert, F.; Yahav, D.
516 Immunogenicity and Safety of Modified Vaccinia Ankara (MVA) Vaccine—A

517 Systematic Review and Meta-Analysis of Randomized Controlled Trials. *Vaccines*
518 2023, 11, 1410. <https://doi.org/10.3390/vaccines110914100>

519 **Acknowledgments**

520 We thank the participants of the clinical study, the clinical site investigators and their staff
521 and the ICON clinical research team.

522 **Financial support.** This work was supported by Bavarian Nordic A/S.

523

Table 1. Demographics and baseline characteristics of participants (FAS)

	MVA-BN-RSV (N=9160)	Placebo (N=9188)
Age (years)		
Mean (SD)	70.4 (5.78)	70.5 (5.83)
Age Group, n (%)		
60 to 64	931 (10.2)	933 (10.2)
65 to 74	6166 (67.3)	6164 (67.1)
75 to 84	1889 (20.6)	1903 (20.7)
>= 85	174 (1.9)	188 (2.0)
Female sex, n (%)	4606 (50.3)	4680 (50.9)
Race, n (%)		
White	7786 (85.0)	7794 (84.8)
Black or African American	1185 (12.9)	1202 (13.1)
Other	189 (2.1)	192 (2.1)
Ethnicity, n (%)		
Hispanic or Latino	2605 (28.4)	2659 (28.9)
Not Hispanic or Latino	6464 (70.6)	6432 (70.0)
Other	91 (1.0)	97 (1.1)
Body mass index		
Mean (SD)	29.44 (6.094)	29.27 (5.958)
Tilburg Frailty Indicator Group, n (%)		
Non-frail (Total Score <5)	7980 (87.1)	7992 (87.0)
Frail (Total Score >=5)	966 (10.5)	995 (10.8)
Not Reported	214 (2.3)	201 (2.2)
Underlying chronic condition, n (%)		
Any chronic condition	6061 (66.2)	6145 (66.9)
Chronic Lung Diseases	1093 (11.9)	1192 (13.0)
Chronic Cardiac Diseases	5725 (62.5)	5760 (62.7)
Geographic Region, n (%)		
USA	8445 (92.2)	8468 (92.2)
Germany	715 (7.8)	720 (7.8)

The FAS was the primary analysis set for efficacy assessments and included participants who were randomized to any treatment arm and received the study vaccination; SD: standard deviation.

Table 2. Humoral immune response at baseline and 14 days post-vaccination (serum subset)

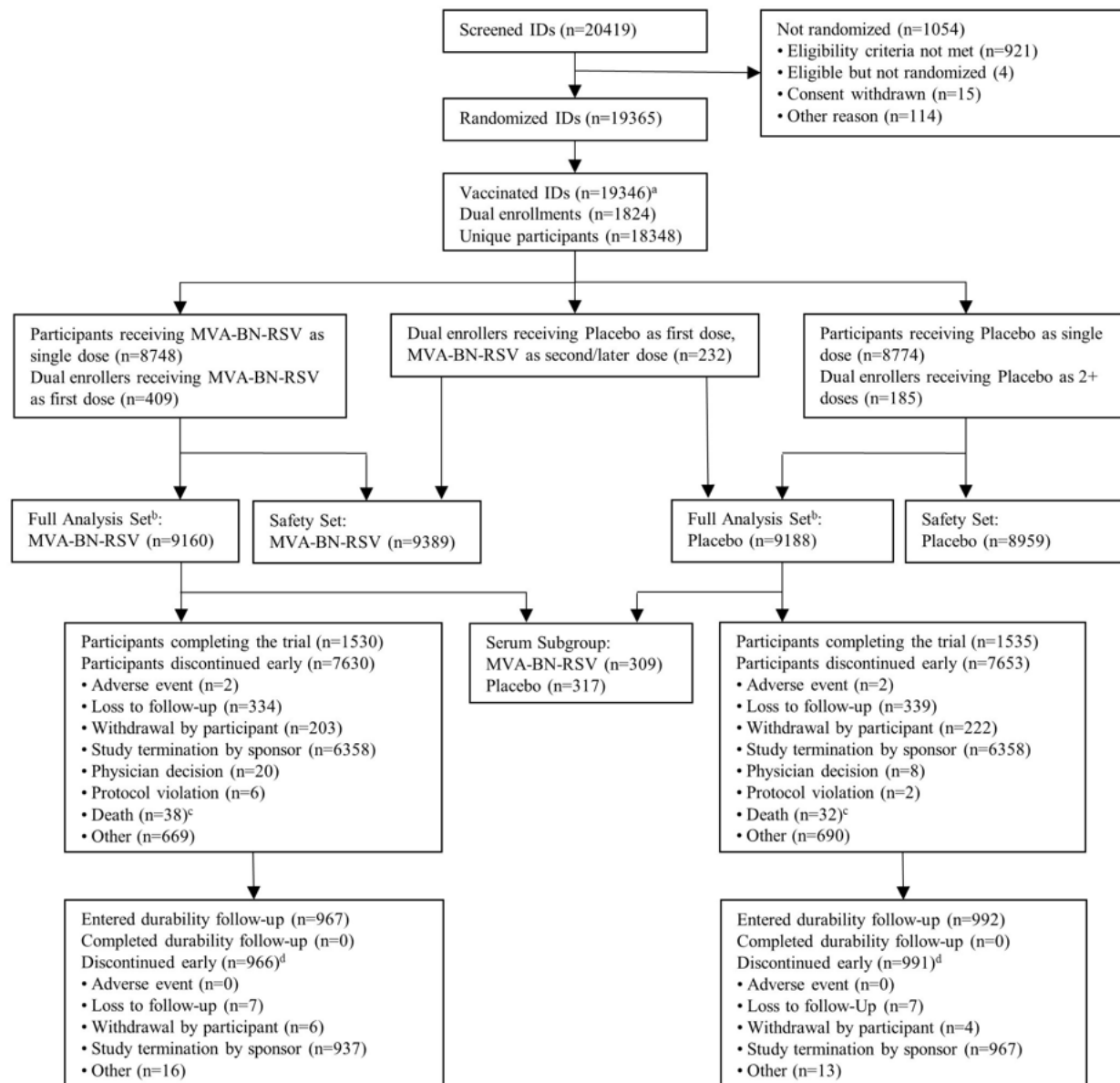
	n	MVA-BN-RSV (N=309)	n	Placebo (N=317)
RSV subtype A neutralizing antibodies				
GMT at baseline (95%CI)	306	275.1 ([249.4, 303.4])	314	310.6 (280.5, 343.9)
GMT at Day 15 (95%CI)	295	482.3 (436.9, 532.5)	290	307.7 (276.5, 342.4)
GMFI (95%CI)	292	1.74 (1.62, 1.86)	287	1.0 (0.95, 1.05)
RSV subtype B neutralizing antibodies				
GMT at baseline (95%CI)	306	289.5 (251.5, 333.1)	314	336.5 (292.1, 387.5)
GMT at Day 15 (95%CI)	295	475.3 (419.7, 538.3)	290	307.6 (265.4, 356.5)
GMFI (95%CI)	292	1.68 (1.56, 1.81)	287	0.95 (0.91, 0.99)
RSV IgG				
GMT at baseline (95%CI)	306	1510.6 (1386.4, 1646.0)	314	1590.1 (1468.3, 1722.0)
GMT at Day 15 (95%CI)	295	4335.5 (3963.7, 4742.2)	290	1562.9 (1440.5, 1695.6)
GMFI (95%CI)	292	2.87 (2.65, 3.10)	287	0.99 (0.96, 1.02)
RSV IgA				
GMT at baseline (95%CI)	306	1147.5 ([1019.8, 1291.1])	314	1060.3 (937.7, 1198.9)
GMT at Day 15 (95%CI)	295	4984.2 (4329.5, 5737.9)	290	1060.3 (937.7, 1198.9)
GMFI (95%CI)	292	4.33 (3.93, 4.76)	287	1.0 (0.96, 1.03)

CI: confidence interval; GMFI: geometric fold increase; GMT: geometric mean titre; Ig: immunoglobulin; n: number in analysis

Table 3. Frequency of Unsolicited Adverse Events and SAEs after vaccination (SS)

	MVA-BN-RSV (N=9389)	Placebo (N=8959)
Unsolicited Adverse Events (within 28 days after vaccination)		
All, n (%)	607 (6.5)	581 (6.5)
Grade ≥3, n (%)	71 (0.8)	45 (0.5)
Related, n (%)	103 (1.1)	50 (0.6)
Grade≥3 & Related, n (%)	11 (0.1)	2 (<0.05)
Serious Adverse Events (during the entire study period)		
All, n (%)	517 (5.5)	422 (4.7)
Related, n (%)	7 (0.1)	5 (0.1)
Fatal, n (%)	41 (0.4)	34 (0.4)

The safety set was the primary analysis set for safety evaluation; it included participants who received any MVA-BN-RSV vaccine or placebo. Related: thought to be related to study vaccination or placebo by the investigator.

Figure 1. Enrolment and disposition of participants in the analyses

a. Nineteen participants were randomized but not vaccinated; these included 12 additional participant withdrawals, 1 discontinuation of a noncooperative participant, 4 discontinuations after technical difficulties, 1 protocol violation, and 1 discontinuation for ineligibility (participation in another study).

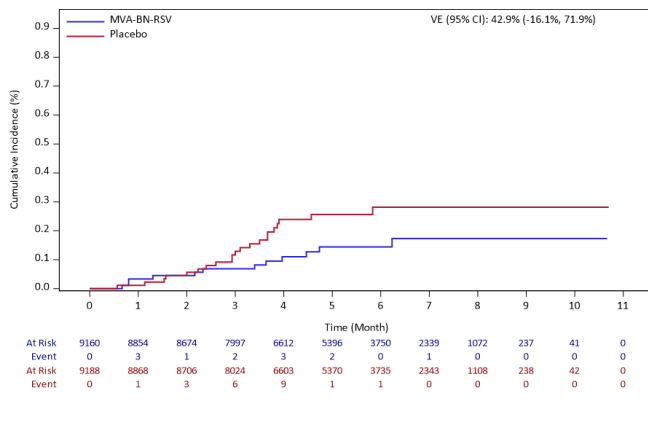
b. Treatment allocation based on the (first) randomization; 5 participants received a different treatment than the one they were randomized to (4 participants randomized to MVA-BN-RSV received placebo and 1 participant randomized to placebo received MVA-BN-RSV instead).

c. There were 5 additional deaths reported in the study: 2 deaths were reported after participant withdrawal and 1 after study completion. The other 2 participants were dual/multiple enrollers and were reported as withdrawn or discontinued from their first enrolment; their deaths were reported with a later enrolment.

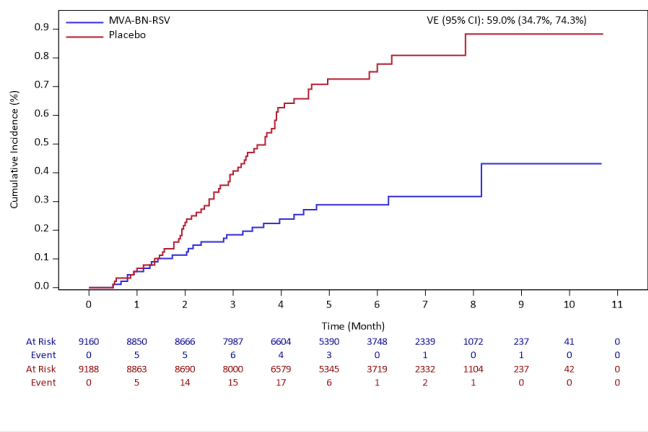
d. One participant in each treatment group confirmed consent for durability follow-up but did not have any activity and therefore were not counted as having discontinued durability follow-up

Figure 2. Cumulative incidence of RSV-associated LRTD and RSV-related ARD (FAS)

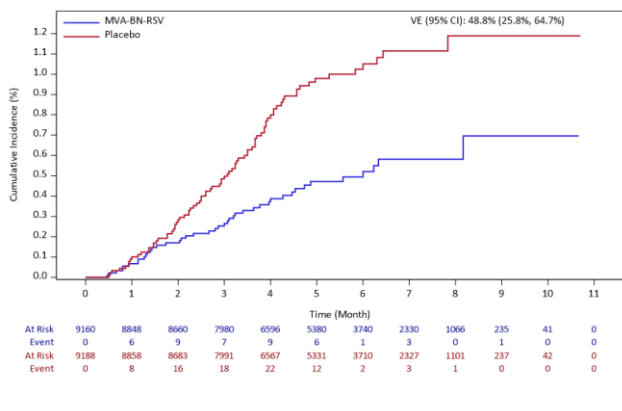
A RSV-associated LRTD with ≥ 3 symptoms



B RSV-associated LRTD with ≥ 2 symptoms

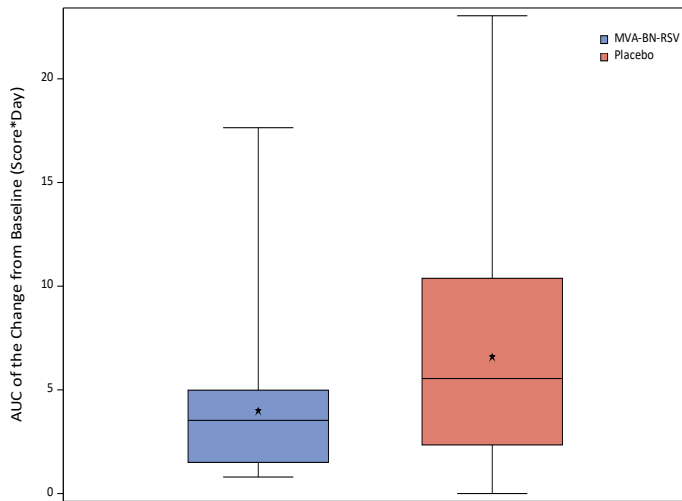


C RSV-associated ARD



This Figure presents the cumulative incidence of RSV-associated lower respiratory tract disease with at least 3 symptoms (Panel A), with at least 2 symptoms (Panel B) and RSV-associated acute respiratory disease (Panel C). The analysis included PCR-confirmed RSV-associated LRTD or ARD with onset at least 14 days after vaccination (full analysis set). The full analysis set was the primary analysis set for efficacy assessments; it consisted of participants who were randomized to any treatment arm and received the study vaccination.

Figure 3. Severity of RSV-associated LRTD symptoms based on RiiQ scores



This graph shows the total respiratory and systemic symptom severity among participants with RT-PCR–confirmed RSV-associated acute respiratory disease as measured with the Respiratory Infection Intensity and Impact Questionnaire (RiiQ); higher area-under-the-curve (AUC) values indicate greater symptom severity. The top and bottom of the box indicate the third and first quartiles, the whiskers indicate the range (minimum, maximum), the horizontal line inside the box indicates the median; the star indicates the mean value.

Figure 4a. Frequency of Solicited Local Adverse Events after vaccination (SS)

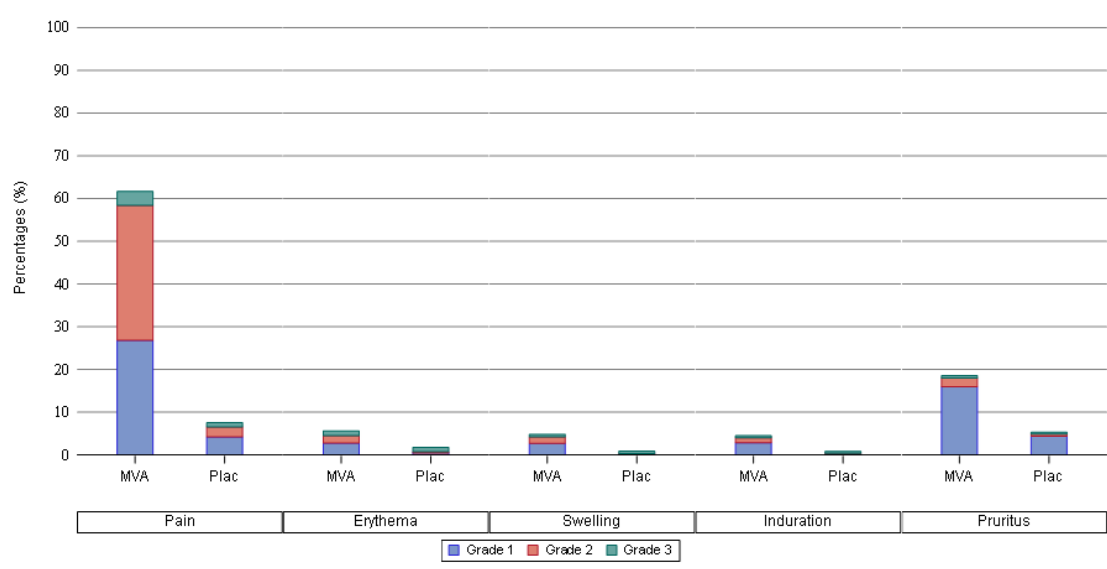
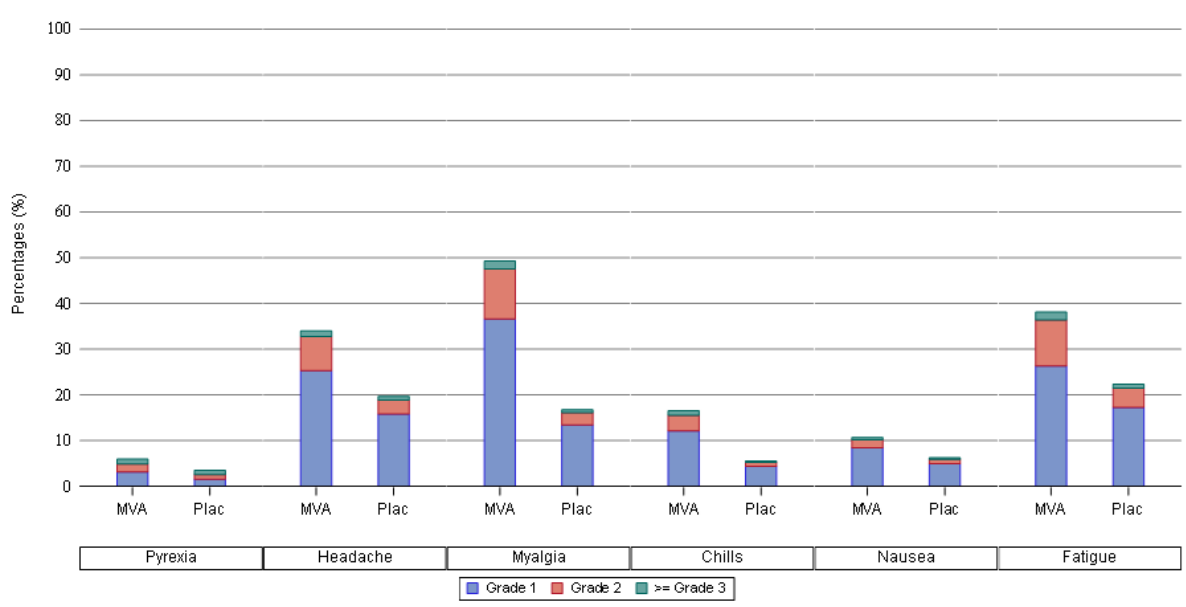


Figure 4b. Frequency of Solicited Systemic Adverse Events after vaccination (SS)



The safety set was the primary analysis set for safety evaluation; it included participants who received any MVA-BN-RSV vaccine or placebo. MVA: MVA-BN-RSV group; Plac: placebo group; Percentage: percentage of participants reporting an AE. In Figure 4a, solicited local AEs were pain, erythema, swelling, induration and pruritus reported at the injection site during the 7 days following vaccination. In Figure 4b, solicited systemic AEs were pyrexia, headache, myalgia, chills, nausea and fatigue reported during the 7 days following vaccination.

Subgroup Analyses by Sex for Table 15.2.5.1.1(2): Systemic Humoral Immunogenicity - Antibody Titers (Immunogenicity Analysis Set - Serum Subset)

Supplementary Table 1. Occurrence and Vaccine Efficacy of LRTD based on RiiQ Responses

Number of LRTD Symptoms in RiiQ	MVA-BN-RSV N=9160 n events	Placebo N=9188 n events	Vaccine Efficacy % (95% CI)
≥3 mild symptoms	18	51	64.8 (39.7; 79.4)
≥2 mild symptoms	31	74	58.1 (36.3; 72.5)
≥3 moderate symptoms	6	19	68.5 (21.1; 87.4)
≥2 moderate symptoms	10	45	77.8 (56.0; 88.8)

LRTD: lower respiratory tract disease; RiiQ: Respiratory Intensity and Impact Questionnaire; CI: confidence interval

Supplementary Table 2. Vaccine Efficacy against RSV-associated LRTD and ARD – Analysis per Sex (Full Analysis Set)

	N	MVA-BN-RSV		N	Placebo		Hazard Ratio (95% CI)	Vaccine Efficacy % (95% CI)
		n events (%)	Censor, n (%)		n events (%)	Censor, n (%)		
LRTD ≥ 3 symptoms								
Male	4554	10 (0.2)	4544 (99.8)	4508	7 (0.2)	4501 (99.8)	1.415 (0.539, 3.718)	-41.5 (-271.8, 46.1)
Female	4606	2 (<0.05)	4604 (100.0)	4680	14 (0.3)	4666 (99.7)	0.145 (0.033, 0.636)	85.5 (36.4, 96.7)
LRTD ≥ 2 symptoms								
Male	4554	17 (0.4)	4537 (99.6)	4508	27 (0.6)	4481 (99.4)	0.623 (0.340, 1.144)	37.7 (-14.4, 66.0)
Female	4606	8 (0.2)	4598 (99.8)	4680	34 (0.7)	4646 (99.3)	0.238 (0.110, 0.514)	76.2 (48.6, 89.0)
ARD								
Male	4554	28 (0.6)	4526 (99.4)	4508	33 (0.7)	4475 (99.3)	0.841 (0.508, 1.391)	15.9 (-39.1, 49.2)
Female	4606	14 (0.3)	4592 (99.7)	4680	49 (1.0)	4631 (99.0)	0.288 (0.159, 0.522)	71.2 (47.8, 84.1)

LRTD: lower respiratory tract disease; ARD: Acute respiratory disease; CI: confidence interval

Subgroup Analyses by Sex for Table 15.2.5.1.1(2): Systemic Humoral Immunogenicity - Antibody Titers (Immunogenicity Analysis Set - Serum Subset)

Supplementary Table 3. Vaccine efficacy against RSV-associated LRTD – post hoc analysis per sex, per exact number of symptoms (FAS)

Number of LRTD Symptoms	Sex	MVA-BN-RSV n	Placebo n	Vaccine Efficacy % (95% CI)
≤ 1 symptom	Female	6	15	59.7 (-4.0; 84.3)
	Male	11	6	-81.4 (-390.5; 32.9)
2 symptoms	Female	6	20	69.7 (24.5; 87.8)
	Male	7	20	65.3 (18.0; 85.3)
≥ 3 symptoms	Female	2	14	85.5 (36.4, 96.7)
	Male	10	7	-41.5 (-271.8, 46.1)

LRTD: lower respiratory tract disease; CI: confidence interval

Subgroup Analyses by Sex for Table 15.2.5.1.1(2): Systemic Humoral Immunogenicity - Antibody Titers (Immunogenicity Analysis Set - Serum Subset)

Supplementary Table 4. Humoral immune response at baseline and 14 days post-vaccination (serum subset) - per sex analysis

Sex	Parameter	Group	Visit	N	GMT	GMT (95% CI)	GMFI	GMFI (95% CI)
Female	RSV IgA (GMT)	MVA-BN-RSV	Baseline	162	960.2	(825.4; 1117.1)	.	
			Day 15	157	4347.1	(3609.0; 5236.1)	4.51	(3.94; 5.16)
		Placebo	Baseline	147	1015.2	(851.0; 1211.2)	.	
			Day 15	142	992.1	(832.6; 1182.1)	1.01	(0.96; 1.06)
	RSV IgG (GMT)	MVA-BN-RSV	Baseline	162	1370.8	(1211.3; 15510.3)	.	
			Day 15	157	4069.3	(3560.3; 4651.1)	2.95	(2.64; 3.29)
		Placebo	Baseline	147	1448.7	(1288.3; 1629.0)	.	
			Day 15	142	1407.6	(1253.1; 1581.1)	0.98	(0.95; 1.03)
	RSV Type A Neutralizing GMT	MVA-BN-RSV	Baseline	162	236.4	(204.6; 273.0)	.	
			Day 15	157	423.9	(369.9; 485.8)	1.75	(1.59; 1.93)
		Placebo	Baseline	147	283.5	(248.6; 323.4)	.	
			Day 15	142	271.3	(234.1; 314.4)	0.99	(0.93; 1.05)
	RSV Type B Neutralizing GMT	MVA-BN-RSV	Baseline	162	278.3	(229.5; 337.5)	.	
			Day 15	157	429.6	(360.3; 512.2)	1.58	(1.44; 1.73)
		Placebo	Baseline	147	267.0	(219.8; 324.4)	.	
			Day 15	142	255.8	(209.5; 312.4)	0.96	(0.90; 1.03)
Male	RSV IgA (GMT)	MVA-BN-RSV	Baseline	144	1402.0	(1170.7; 1679.1)	.	
			Day 15	138	5823.3	(4703.6; 7209.5)	4.13	(3.60; 4.74)
		Placebo	Baseline	167	1155.8	(980.9; 1334.6)	.	
			Day 15	148	1130.1	(949.9; 1344.6)	0.99	(0.94; 1.04)
	RSV IgG (GMT)	MVA-BN-RSV	Baseline	144	1685.1	(1499.1; 1894.1)	.	
			Day 15	138	4659.6	(4143.6; 5239.8)	2.78	(2.49; 3.10)
		Placebo	Baseline	167	1726.0	(1549.1; 1923.2)	.	
			Day 15	148	1727.9	(1542.9; 1935.1)	1.00	(0.96; 1.04)
	RSV Type A Neutralizing GMT	MVA-BN-RSV	Baseline	144	326.3	(287.5; 370.2)	.	
			Day 15	138	558.6	(484.7; 643.7)	1.71	(1.56; 1.88)
		Placebo	Baseline	167	336.5	(288.7; 392.2)	.	
			Day 15	148	347.1	(297.6; 404.9)	1.01	(0.93; 1.09)
	RSV Type B Neutralizing GMT	MVA-BN-RSV	Baseline	144	302.6	(245.9; 372.3)	.	
			Day 15	138	533.3	(447.5; 635.7)	1.80	(1.61; 2.02)
		Placebo	Baseline	167	412.4	(337.7; 503.5)	.	
			Day 15	148	367.0	(296.1; 455.0)	0.94	(0.90; 1.00)

GMT: geometric mean titer; GMFI: Geometric mean fold-increase; CI: confidence interval