

Running head: *APOE*, *Klotho*, sex, age and cognition

Impact of *APOE*, *Klotho* and sex on cognitive decline with aging

Kengo Shibata^{1#}, Cheng Chen^{3*}, Xin You Tai^{1,2}, Sanjay G Manohar^{1,2,3} & Masud Husain^{1,2,3}

¹ Nuffield Department of Clinical Neurosciences, University of Oxford, Oxford, UK

² Division of Clinical Neurology, John Radcliffe Hospital, Oxford University Hospitals Trust, Oxford, United Kingdom

³ Department of Experimental Psychology, University of Oxford, UK

#Corresponding author

Kengo Shibata

Address: Nuffield Department of Clinical Neurosciences. Level 6, West Wing, John Radcliffe Hospital, Oxford OX3 9DU

Email: kengo.shibata@ndcn.ox.ac.uk

Number of Figures & Tables: 8

Manuscript Word Count: 6676

Manuscript Page Count: 40

NOTE: This preprint reports new research that has not been certified by peer review and should not be used to guide clinical practice.

Running head: *APOE*, *Klotho*, sex, age and cognition

Abstract

The effects of *APOE* and *Klotho* genes, both implicated in aging, on human cognition as a function of sex and age are yet to be definitively established. Here we showed in the largest cohort studied to date ($N = 320,861$) that *APOE* homozygous $\epsilon 4$ carriers had a greater decline in cognition with aging compared to $\epsilon 3$ carriers ($\epsilon 4/\epsilon 3$ & $\epsilon 3/\epsilon 3$) as well as smaller hippocampi and amygdala ($N = 37,976$). Critically, sex and age differentially affected the decline in cognition. Younger (40 - 50 years) female homozygous $\epsilon 4$ carriers showed a cognitive advantage over female $\epsilon 3$ carriers, but this advantage was not present in males. By contrast, *Klotho*-VS heterozygosity did not affect cognition or brain volume, regardless of *APOE* genotype, sex or age. These cognitive trajectories with aging demonstrate clear sex-dependent antagonistic pleiotropy effects of *APOE* $\epsilon 4$, but no effects of *Klotho* genotype on cognition and brain volume.

[Word count: 148]

Keywords: aging, Alzheimer's Disease, antagonistic pleiotropy, apolipoprotein ϵ , cognition, *klotho*, neurodegeneration

Running head: *APOE*, *Klotho*, sex, age and cognition

Introduction

Several lines of evidence have suggested that genotype can influence the risk of cognitive decline and ultimately dementia^{1,2}. However, the relative contribution of genetic and environmental risk factors on brain health continues to be vigorously debated^{3,4}. Of all genes studied to date, the $\epsilon 4$ variant of the apolipoprotein E (*APOE*) gene has been most strongly identified as a significant risk factor for developing sporadic Alzheimer's disease (AD)^{1,5-7}. Even healthy carriers of the *APOE* $\epsilon 4$ gene have been reported to have accelerated cognitive decline compared to non-carriers⁸⁻¹⁰, with significant structural and functional brain alterations¹¹⁻¹³ and localised effects on the hippocampus¹⁴⁻¹⁷. As these effects are observed in asymptomatic individuals, before the onset of either mild cognitive impairment (MCI) or AD, genotyping provides a potentially powerful means of stratifying which individuals are more likely to develop dementia¹⁸.

However, the literature on how *APOE* $\epsilon 4$ influences the progression and manifestation of cognitive decline over the life span in healthy individuals remains mixed. Crucially, the directionality of the effects caused by carrying *APOE* $\epsilon 4$ on the brain has been perplexing, especially in younger individuals. Several studies have reported a cognitive advantage of carrying *APOE* $\epsilon 4$ at earlier ages¹⁹⁻²². These findings suggest that the *APOE* $\epsilon 4$ variant may confer an advantage in early adulthood, but this comes at the cost of a higher rate of cognitive decline and increased risk of dementia in later life. This pattern aligns with the concept of ***antagonistic pleiotropy***, where a gene that provides benefits in early life may lead to disadvantages with aging^{23,24}. This early life benefit of *APOE* $\epsilon 4$ might account for its evolutionary persistence.

In addition to the significant impact of the *APOE* genotype on mediating cognitive decline, studies have also emphasised the potentially crucial role of an individual's sex²⁵. Females compared to male carriers of the $\epsilon 4$ allele are reported to be at a higher risk of developing AD²⁶⁻²⁸ and experience faster rates of memory decline in MCI²⁹. A memory advantage in male

Running head: *APOE*, *Klotho*, sex, age and cognition

APOE ϵ 4 carriers in midlife (40 - 51 years old)³⁰ and a cognitive disadvantage in female *APOE* ϵ 4 carriers (50 - 80 years old)³¹ has also been reported. Therefore, the strong interaction between sex and age in cognitive resilience and decline underscores the importance of examining how sex differentially influences the impact of the *APOE* ϵ 4 allele. However, it remains to be definitively established how the *APOE* genotype and age, in relation to an individual's sex, affect cognition³².

In addition to *APOE*, another significant genetic factor considered important in influencing cognitive function is the *Klotho* genotype. The *Klotho* protein has been linked to increased lifespan when overexpressed in mice³³, while mice lacking this protein lived for shorter periods³⁴. Building on these findings, human studies have explored *Klotho*'s potential impact on brain health. Carrying one, but not two copies of the KL-VS haplotype, i.e., *Klotho*-VS heterozygosity (*Klotho* VS/FC) has been identified as a potential genetic factor with a protective effect, increasing longevity³⁵⁻³⁷ and crucially also improving cognition^{38,39}. *Klotho* VS/FC has also been associated with larger volumes of the right dorsolateral prefrontal cortex, and corresponding enhanced executive function, not seen in *Klotho* homozygotes⁴⁰.

Mechanistically, *Klotho* VS/FC has been associated with an increase in serum *Klotho* protein levels⁴¹ which has recently been shown to correlate with cognitive scores^{42,43}. Critically, *Klotho*-VS heterozygosity has been reported to be protective against amyloid deposition caused by *APOE* ϵ 4^{44,45}. These *Klotho*-mediated genetic effects have motivated the investigation into treatments targeting the *Klotho* pathway. However, the effects of *Klotho* VS/FC are still under considerable debate⁴⁶⁻⁴⁸. Conflicting findings have been reported with one study reporting that *Klotho* VS/FC does not confer a cognitive advantage⁴⁹ and another showing shorter, not longer, survival in heterozygous carriers⁴⁸. Any benefits conferred by *Klotho* genotype may potentially be age or sex-dependent and therefore warrant further investigation in larger sample sizes.

Running head: *APOE*, *Klotho*, sex, age and cognition

Here, we sought to address the polygenic effects of *APOE* and *Klotho* on cognition and brain structures throughout aging using an extensive dataset from the UK Biobank, the largest sample size studied reported to date. Studying individuals before disease onset allows the assessment of risk factors in a healthy population to capture early signs of cognitive changes in the healthy state. We established a composite behavioural score derived from a battery of cognitive tasks. In addition, structural MRI was used to extract grey matter volumes of predefined brain regions as a metric for brain integrity. We aimed to separately assess the role of each gene variant across age and sex on a composite score of cognition and grey matter volumes. The large sample size afforded by the UK Biobank allowed us to establish 1) the ages at which any effects of *APOE* and *Klotho* on cognition or brain structure appear 2) whether any of these effects are sex-dependent and 3) the interaction between these two different genes. We hypothesised that *APOE* homozygous $\epsilon 4$ carriers would exhibit more rapid cognitive decline and neuroanatomical differences with aging, while individuals with *Klotho*-VS heterozygosity would exhibit protective effects against such decline^{44,45}. By investigating these effects, we aimed to contribute to the current understanding of genetic predispositions to neurodegeneration in healthy individuals across sex and aging.

Running head: *APOE*, *Klotho*, sex, age and cognition

Results

APOE's effect on cognition is age and sex dependent

To study the effect of *APOE* and *Klotho* genotype on the cognitive functions of healthy adults, a composite score was derived from nine cognitive tasks of 312,524 participants aged 40-70, by taking the first principal component (See *methods* & **Table 2**). How this composite score of cognition varied with *APOE* genotype (ϵ 33/34, ϵ 44, ϵ 22/23), *Klotho* genotype (FC/FC, VS/FC), sex (female, male), and age was assessed using multiple linear regression. This gave a factorial 3 x 2 x 2 x age design, with effects visualised in **Figure 1 & 2**. Each main effect and interaction term without the age predictor reflected an effect at the baseline age of 40.

At baseline age, carrying *APOE* ϵ 44 positively affected cognition ($\beta = 0.23$, SE = 0.044, $t = 5.21$, $p < 0.001$) compared to ϵ 33/34 (**Figure 1, panel a & b**). By contrast, carrying *APOE* ϵ 22/23 negatively affected cognition ($\beta = -0.094$, SE = 0.020, $t = -4.65$, $p < 0.001$). No significant main effect of *Klotho*-VS/FC was observed (KL: $\beta = -0.022$, SE = 0.014, $t = -1.58$, $p = 0.11$, **Figure 2, panel a-f**). Furthermore, *Klotho* status did not interact with sex (KL X sex: $\beta = 0.030$, SE = 0.021, $t = 1.44$, $p = 0.15$) nor *APOE* genotype (KL X *APOE* ϵ 44: *Klotho* $\beta = 0.052$, SE = 0.081, $t = 0.64$, $p = 0.52$; KL X *APOE* ϵ 22/23: $\beta = -0.019$, SE = 0.038, $t = -0.49$, $p = 0.63$) nor age (KL X age: $\beta = 0.001$, SE = 0.001, $t = 0.79$, $p = 0.43$). Therefore, the anticipated protective effects of *Klotho* VS/FC for *APOE* ϵ 44 were not observed. The regression coefficients are plotted in **Figure 3**.

Across all genotypes, at the baseline age of 40, males showed significantly better cognition than females (sex: $\beta = 0.28$, SE = 0.011, $t = 25.34$, $p < 0.001$). However, the interaction between *APOE* and sex revealed that at age 40, males had substantially lower cognitive performance in ϵ 44 (ϵ 44 x sex: $\beta = -0.63$, SE = 0.065, $t = -9.71$, $p < 0.001$) and ϵ 22 (ϵ 22 x sex: $\beta = -0.18$, SE = 0.030, $t = -6.04$, $p < 0.001$) compared to females of the same genotype. To

Running head: *APOE*, *Klotho*, sex, age and cognition

reiterate, the directionality reported here only considers effects at the baseline age 40 (**Figure 3, panel a**).

Age plays a crucial role in cognitive decline, as evident in the trajectories of cognitive performance in all panels (**Figure 1 & 2**). Accordingly, age strongly reduced cognitive performance (main effect of age: $\beta = -0.12$, SE = 0.00, $t = -279.55$, $p < 0.001$). The following analysis reports the predictors and their relationship with age (**Figure 3: panel b**). The cognitive *advantage* associated with the *APOE* $\epsilon 44$ genotype that was seen at baseline age was reversed in older participants. Indeed, the expected negative influence of *APOE* $\epsilon 44$ on cognition increased with age (age x $\epsilon 44$: $\beta = -0.049$, SE = 0.003, $t = -19.07$, $p < 0.001$), underscoring an age-dependent and accelerated cognitive decline in *APOE* $\epsilon 44$ carriers. For carriers of *APOE* $\epsilon 22/23$, the slope of the cognitive change across age was less steep (slower) with aging compared to $\epsilon 33/34$ carriers (age x $\epsilon 22$: $\beta = 0.008$, SE = 0.001, $t = 7.00$, $p < 0.001$).

A significant age-by-sex interaction revealed that females had a faster decline in cognition with aging overall (age x sex: $\beta = 0.011$, SE = 0.001, $t = 17.23$, $p < 0.001$). Critically, this decline with age in *APOE* $\epsilon 44$ carriers was depended on sex, with females being more strongly impacted by the gene ($\epsilon 44$ x sex x age: $\beta = 0.035$, SE = 0.004, $t = 9.46$, $p < 0.001$) (**Visualised in Supplemental Info 1**). The *APOE* $\epsilon 22/23$ effect with age, albeit weaker, was also modulated by sex, whereby the early female advantage declined faster with age (age x $\epsilon 22/23$: $\beta = -0.18$, SE = 0.030, $t = -6.04$, $p < 0.001$). The coefficients from the statistics are visualised in **Figure 3 panels a-b** and summarised in **Table 2**.

Running head: *APOE*, *Klotho*, sex, age and cognition

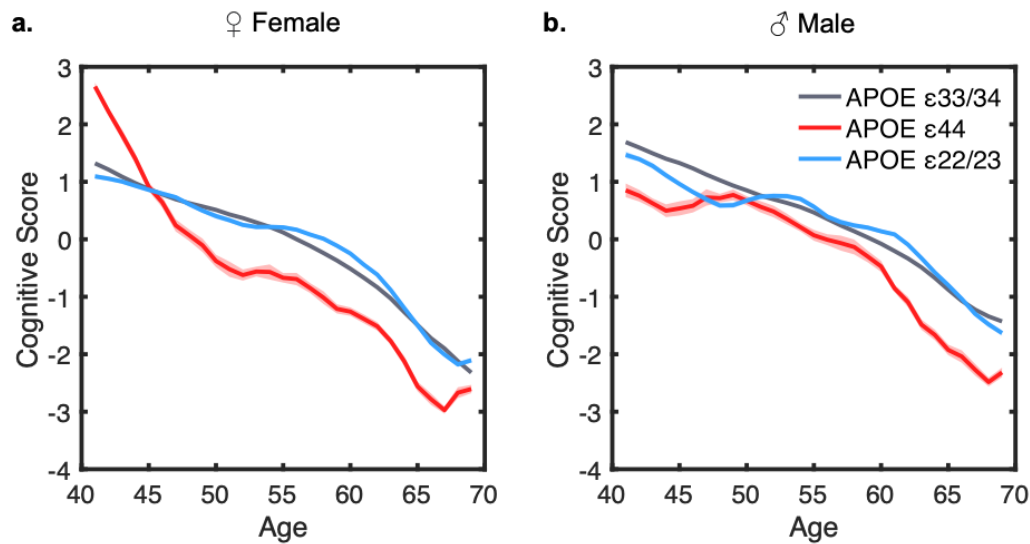


Figure 1: The influence of *APOE*, sex and age on cognitive performance

Panel a (Female): Comparison of cognitive composite scores among APOE ϵ 33/34 (grey), ϵ 44 (red), and ϵ 22/23 (blue) genotypes revealed genotype and age-dependent effects on cognition. Female ϵ 44 carriers demonstrated a cognitive advantage over ϵ 33/34 carriers until age 45, followed by a steeper decline. In ϵ 22/23 carriers, compared to ϵ 33/34, a modest cognitive improvement was observed between the ages of 55 and 65. **Panel b (Male):** Cognitive composite scores for males indicate that APOE ϵ 33/34 consistently outperformed ϵ 44 across all age groups. ϵ 22/23 carriers exhibit a slight cognitive improvement during middle age. Cognitive scores are represented using a three-year moving average with individual's ages rounded to the nearest integer. Shaded area represents standard error of the mean (SEM) for each age group.

Running head: *APOE*, *Klotho*, sex, age and cognition

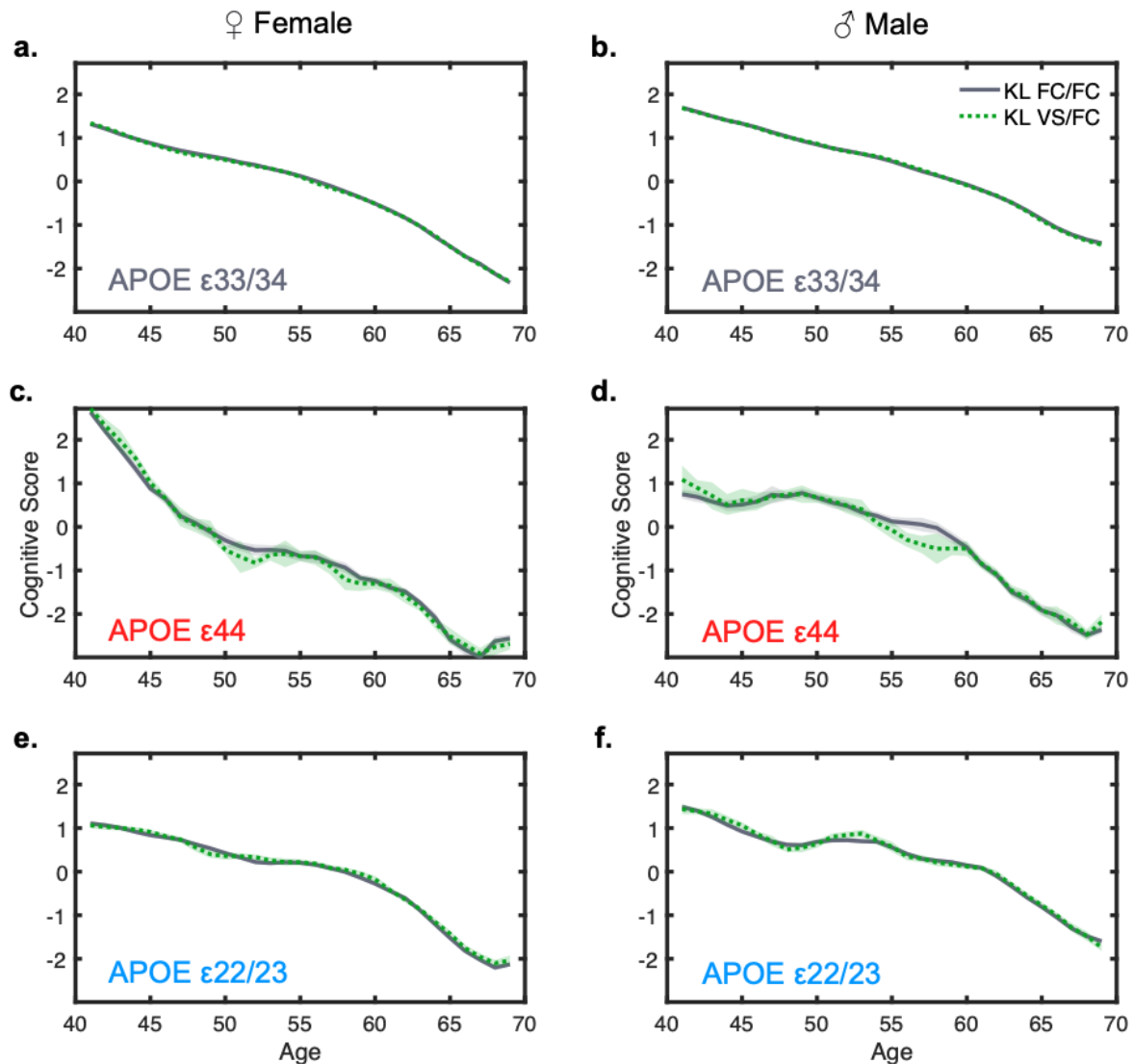


Figure 2: The influence of *Klotho*, sex and age on cognitive performance

Panel a-f (Left Panels Female, Right Panels Male): Comparison of cognitive scores between *Klotho* genotypes (*Klotho* FC/FC vs. FC/VS) showed minimal differences in cognition, regardless of *APOE* genotype. Contrary to expectations, the anticipated cognitive protection in *APOE* ε44 carriers by the *Klotho* VS/FC genotype was not evident, as shown in panels c & d. Cognitive scores are represented using a three-year moving average with individual's ages rounded to the nearest integer. Shaded area represents the SEM for each age group.

Running head: *APOE*, *Klotho*, sex, age and cognition

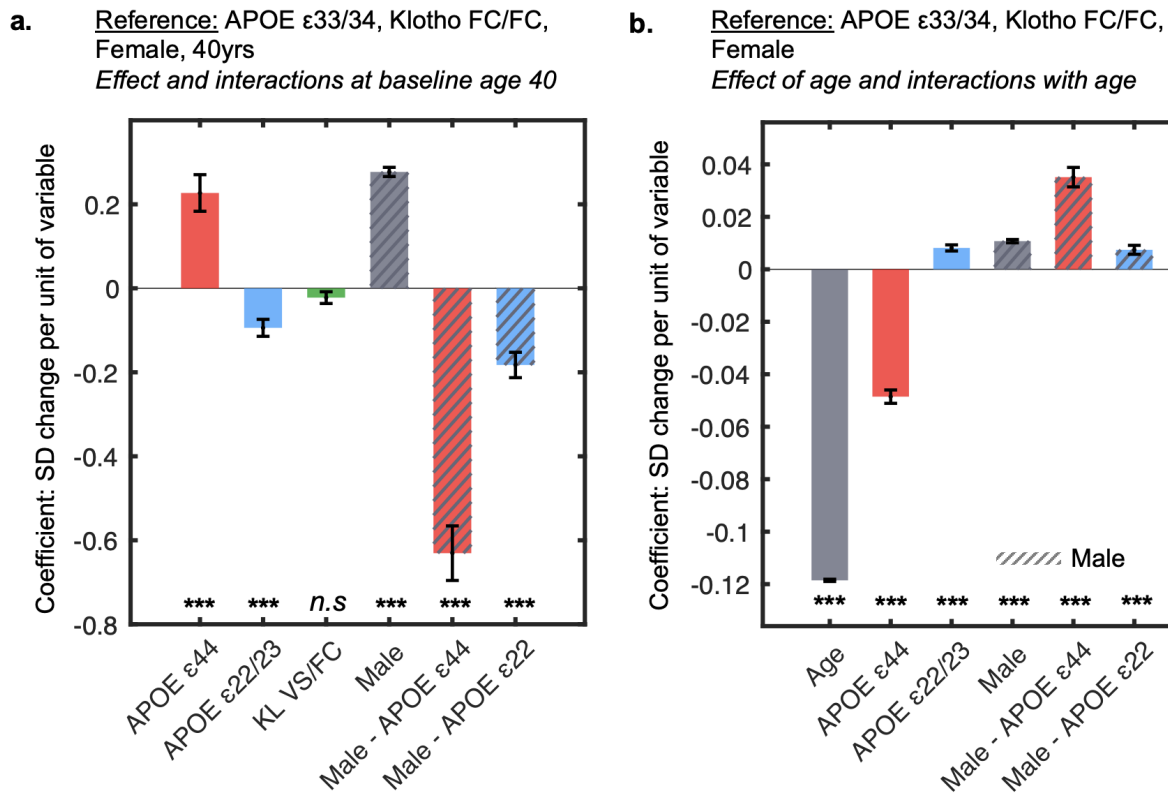


Figure 3: Multiple regression coefficients assessing the influence of *APOE*, *Klotho*, sex and age on cognition

Panel a: Coefficients from the multiple regression, representing the main effects and the interaction between sex and *APOE* genotype. Effects of sex and genotype on cognitive performance are shown, where reference variables are *APOE* ε33/34, *Klotho* FC/FC and female at baseline age of 40. **Panel b:** Coefficients from the multiple regression representing the effect of age on cognition, along with age interactions. Only statistically significant interactions are visualised. The cognitive composite score (units in SD) used is derived from the first principal component of cognitive tests from the UK Biobank. Error bars represent the SEM. Significance levels are denoted as follows: * $p < 0.05$, ** $p < 0.01$, *** $p < 0.001$.

Running head: *APOE, Klotho, sex, age and cognition*

Term	Estimate	SE	tStat	pValue
(Intercept)	1.657	0.007	225.59	< 0.001 ***
<i>APOE</i> ε44	0.227	0.044	5.209	< 0.001 ***
<i>APOE</i> ε22/23	-0.094	0.020	-4.654	< 0.001 ***
<i>Klotho-VS/FC</i>	-0.022	0.014	-1.582	0.11356
sex	0.277	0.011	25.335	< 0.001 ***
age	-0.119	0.000	-279.55	< 0.001 ***
<i>APOE</i> ε44: <i>Klotho-VS/FC</i>	0.052	0.081	0.640	0.5223
<i>APOE</i> ε22/23: <i>Klotho-VS/FC</i>	-0.019	0.038	-0.488	0.62549
<i>APOE</i> ε44:sex	-0.631	0.065	-9.710	< 0.001 ***
<i>APOE</i> ε22/23:sex	-0.183	0.030	-6.039	< 0.001 ***
<i>Klotho-VS/FC</i> :sex	0.030	0.021	1.439	0.15007
<i>APOE</i> ε44:age	-0.049	0.003	-19.066	< 0.001 ***
<i>APOE</i> ε22/23:age	0.008	0.001	7.001	< 0.001 ***
<i>Klotho-VS/FC</i> :age	0.001	0.001	0.792	0.42854
sex:age	0.011	0.001	17.230	< 0.001 ***
<i>APOE</i> ε44: <i>Klotho-VS/FC</i> :sex	0.000	0.121	0.003	0.99724
<i>APOE</i> ε22/23: <i>Klotho-VS/FC</i> :sex	0.015	0.057	0.263	0.79289
<i>APOE</i> ε44: <i>Klotho-VS/FC</i> :age	-0.006	0.005	-1.240	0.21511
<i>APOE</i> ε22/23: <i>Klotho-VS/FC</i> :age	0.004	0.002	1.950	0.051215
<i>APOE</i> ε44:sex:age	0.035	0.004	9.462	< 0.001 ***
<i>APOE</i> ε22/23:sex:age	0.007	0.002	4.341	< 0.001 ***
<i>Klotho-VS/FC</i> :sex:age	-0.001	0.001	-1.229	0.21895
<i>APOE</i> ε44: <i>Klotho-VS/FC</i> :sex:age	0.001	0.007	0.140	0.88869
<i>APOE</i> ε22/23: <i>Klotho-VS/FC</i> :sex:age	-0.002	0.003	-0.744	0.45668

Table 1: Regression model results for the effect of *APOE*, *Klotho*, sex and age
 Results of the multiple regression analysis, incorporating predictor: *APOE* (ε33/34, ε44, ε22/23), *Klotho* (FC/FC, FC/VS), sex, age, and all their possible interactions. Each row represents a predictor or interaction, with significant p-values highlighted in bold. The corresponding coefficients and standard errors (SE) are visually represented in Figure 3, Panels a & b.

Running head: *APOE*, *Klotho*, sex, age and cognition

Age determines the influence of *APOE* genotype

To evaluate the interactions between *APOE* genotype and sex in different age categories, we partitioned the analysis into three age categories, 40 – 50, 50 – 60 and 60 – 70 years. This segmentation was chosen to divide the age ranges into equal intervals to assess the age-related directionality of effects conferred by genes and sex on cognition. We excluded the *Klotho* variable from this follow-up analysis as it did not significantly predict cognition in the previously reported models. The positive effect of *APOE* ϵ 44 on cognition in the 40-50 age group (ϵ 44: $\beta = 0.12$, SE = 0.030, $t = 3.78$, $p < 0.001$), reversed to a negative effect in the subsequent age brackets; 50-60 (ϵ 44: $\beta = -0.85$, SE = 0.030, $t = -28.46$, $p < 0.001$) and 60-70 years (ϵ 44: $\beta = -0.76$, SE = 0.033, $t = -22.61$, $p < 0.001$) as illustrated in **Figures 4, panel a-c**. A similar pattern was observed for *APOE* ϵ 22/23, showing a negative effect in the 40-50 age range (ϵ 22/23: $\beta = -0.073$, SE = 0.014, $t = -5.14$, $p < 0.001$), which transitions to positive effects in the 50-60 (ϵ 22/23: $\beta = 0.100$, SE = 0.014, $t = 7.35$, $p < 0.001$) and 60-70 (ϵ 22/23: $\beta = 0.091$, SE = 0.015, $t = 6.03$, $p < 0.001$) age groups. The effect of being homozygous for *APOE* ϵ 4 is positive at younger ages and is only detrimental above 50 years of age.

Despite males generally displaying better cognition scores across all ages, a pronounced female advantage at ages 40-50 was shown by a significant interaction between sex and *APOE* ϵ 44 (sex X ϵ 44: $\beta = -0.70$, SE = 0.046, $t = -15.27$, $p < 0.001$) and *APOE* ϵ 22/23 (sex X ϵ 22/23: $\beta = 0.52$, SE = 0.045, $t = 11.54$, $p < 0.001$). However, this advantage was not apparent in the 50-60 age group (Male-*APOE* ϵ 44 bar in dashed red). It re-emerged in the 60–70-year-olds with *APOE* ϵ 44 females outperforming males (sex X ϵ 44: $\beta = -0.21$, SE = 0.048, $t = -4.32$, $p < 0.001$). Although female *APOE* ϵ 22/23 carriers had a cognitive advantage between 40-50 (sex X ϵ 22/23: $\beta = -0.25$, SE = 0.021, $t = -11.47$, $p < 0.001$), sex no longer affected this effect at older ages (sex X ϵ 22/23 - 50-60: $\beta = 0.006$, SE = 0.020, $t = 0.28$, $p = 0.78$; sex X ϵ 22/23 - 60-70: $\beta = -0.005$, SE = 0.022, $t = -0.23$, $p = 0.82$) (Male - *APOE* ϵ 22/23 bar in dashed purple). Detailed statistics for this model can be found in **Supplemental Info 2**. Overall, the positive

Running head: *APOE*, *Klotho*, sex, age and cognition

effect of carrying *APOE* $\epsilon 44$ and $\epsilon 22/23$ was sex-dependent, with females showing a strong advantage between 40-50 in both genotypes.

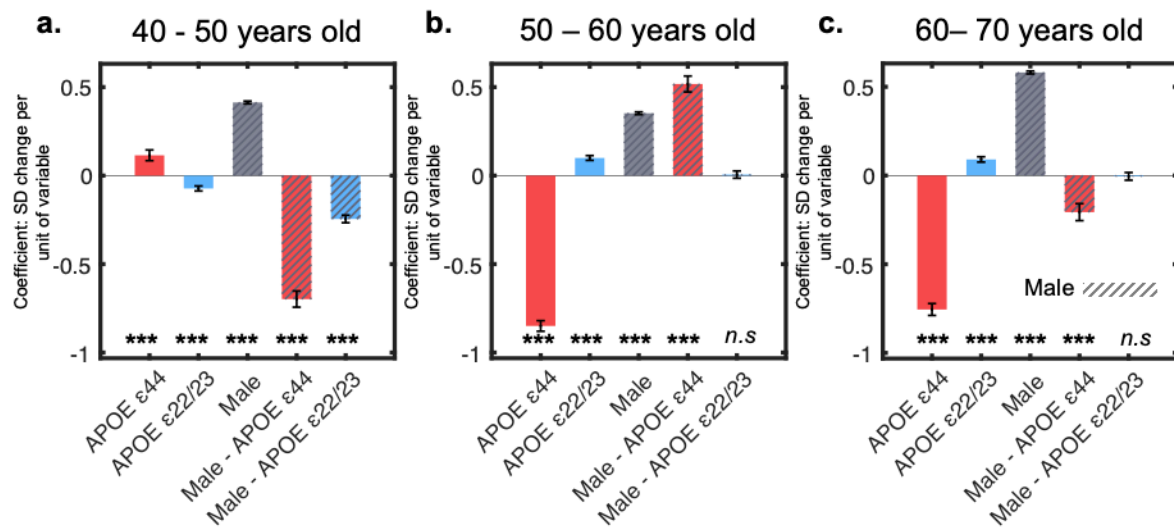


Figure 4: Effect of *APOE* and sex by age ranges

Panel a-c: Coefficient values for the main effects of *APOE* and sex, and their interaction, analysed through sub-sampling across three age groups: 40-50, 50-60, and 60-70 years. The *Klotho* genotype was not significant in the previous regression and thus excluded from these analyses. Error bars represent the SEM. Significance levels are indicated as * $p < 0.05$, ** $p < 0.01$, *** $p < 0.001$.

***APOE* $\epsilon 44$ associated with medial temporal lobe volume loss but increased visual cortex volume**

We next investigated differences in brain volume across genotypes in both sexes. Multiple regression analysis with Bonferroni correction for 137 multiple comparisons yielded six grey matter regions that significantly differed between carriers of *APOE* $\epsilon 33/34$ and $\epsilon 44$ (**Figure 5**). Regions with lower volumes in carriers of the $\epsilon 44$ variant were limited to the medial temporal lobe with medium effect sizes; left amygdala ($f = 0.17$), right amygdala ($f = 0.20$), left hippocampus ($f = 0.10$), right hippocampus ($f = 0.095$) (yellow). Albeit with a smaller effect size ($f = 0.0029, 0.037$ respectively), both left and right intracalcarine cortices were significantly increased in $\epsilon 44$ carriers (light blue).

Running head: *APOE*, *Klotho*, sex, age and cognition

A consistent and significant main effect of age was observed across all regions. The main effect of sex was significant for the left amygdala ($\beta = 14.41$, $SE = 2.41$, $t = 5.97$, $p < 0.001$) and left hippocampus ($\beta = 3.36$, $SE = 0.90$, $t = 3.72$, $p < 0.001$), where these regions were significantly larger in males. No other brain region was significantly modulated by sex. Importantly, there was no female advantage of brain volumes corresponding to the behavioural results. Furthermore, no significant interaction effects between *APOE* genotype and sex were detected across the examined regions. $\epsilon 22/23$ did not have significantly modulated brain regions compared to $\epsilon 33/34$, nor did *Klotho* VS/FC carriers over *Klotho* FC/FC carriers.

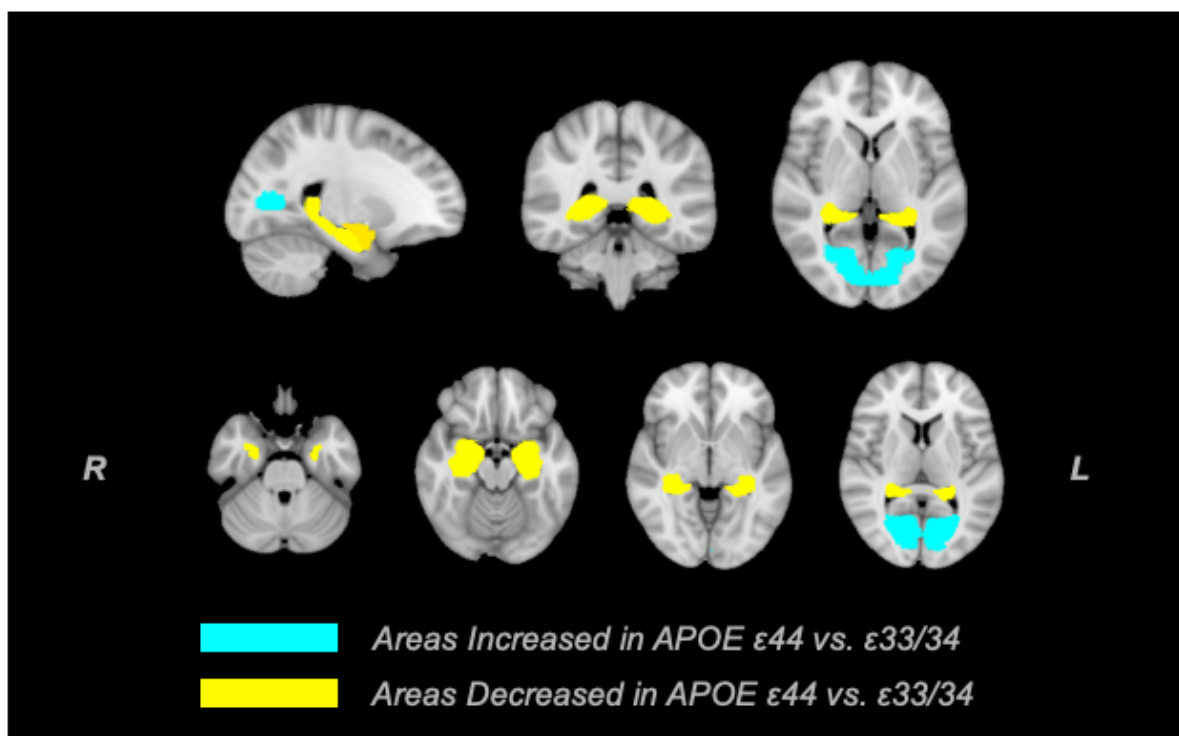


Figure 5: Brain regions modulated by *APOE* $\epsilon 44$ carriers compared to $\epsilon 33/34$ carriers

Brain topography illustrates grey matter regions with significantly increased (light blue) or decreased (yellow) volumes. The top row shows a coronal, sagittal and horizontal section of the brain using the MNI T2 template. The second row shows ventral to dorsal sections of the horizontal section. Region specific decline by age is shown in Figure 6.

Running head: *APOE*, *Klotho*, sex, age and cognition

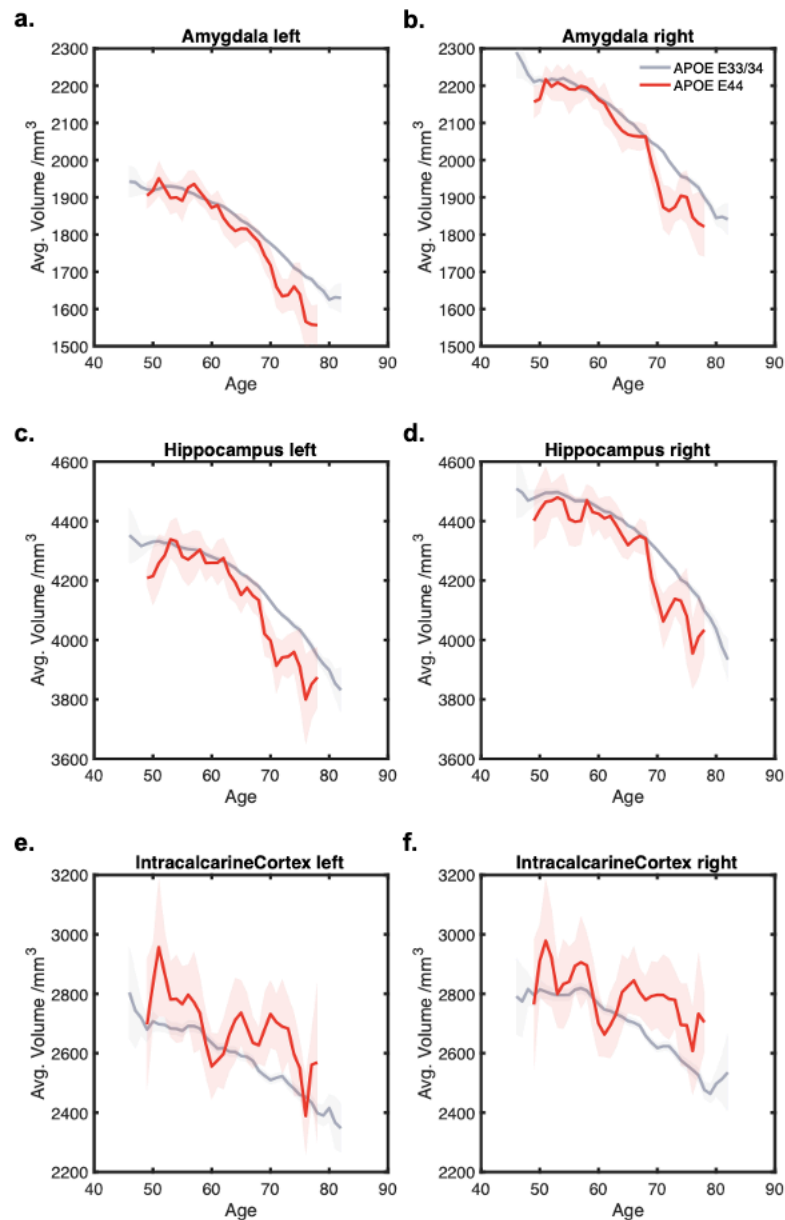


Figure 6: Effect of *APOE* ϵ 44 on Brain Volumes

Panels a-d: Significantly reduced brain regions in individuals with the *APOE* ϵ 44 compared to ϵ 33/ ϵ 34. **Panels e-f:** Regions with significantly increased volumes associated with the *APOE* ϵ 44 compared to ϵ 33/ ϵ 34. These changes in brain volume are visualised using three-year sliding averages. Shaded area represents the SEM for each age group.

Brain volumes correlate with cognitive scores

Given that six brain regions were significantly different between APOE ϵ 33/34 and ϵ 44, we assessed whether the volumes of these regions correlated with cognitive scores. Both total grey matter volume and the z-score sums of the regions that were significantly different in APOE ϵ 44 showed significant correlations with cognitive scores (**Figure 7**). To determine if the effect of genotype (ϵ 33/34 vs. ϵ 44) on cognition was mediated by brain volumes, a mediation analysis was also conducted. This analysis examined whether the relationship between the APOE ϵ 44 genotype and cognitive decline was mediated by brain volumes that were significantly reduced in APOE ϵ 44 carriers compared to ϵ 33/34 carriers. The results indicated that the ϵ 44 genotype was significantly associated with cognitive decline, and this relationship was partially mediated by brain volumes. Specifically, the mediation analysis revealed that the association between the ϵ 44 genotype and cognitive decline was attenuated when the indirect path involving brain volumes was included. This reduction was evidenced by a modest but significant indirect effect of $\beta = 0.0172$ ($p = 0.007$), as determined by the permutation test (see methods).

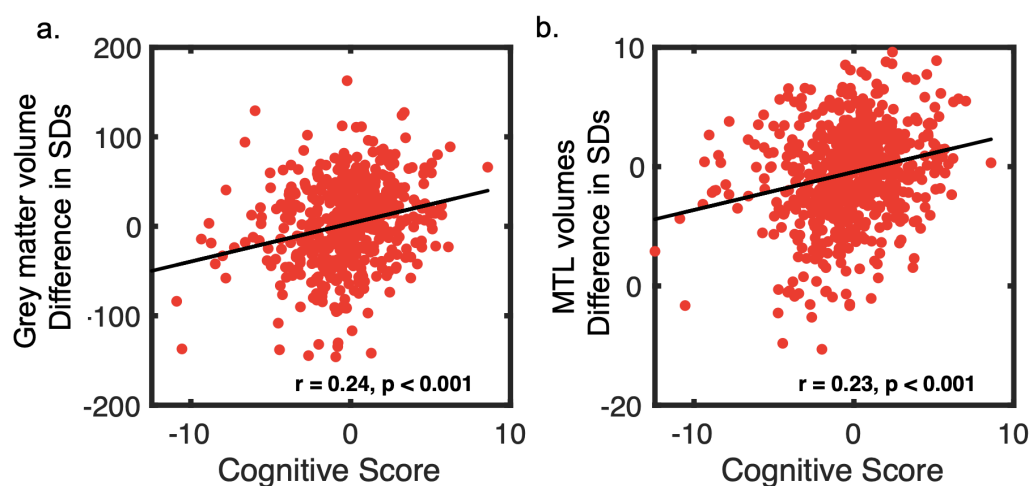


Figure 7: Correlation between brain volume and cognitive score in APOE ϵ 44

Panels a: Total grey volumes (standardised units) are z-scored and plotted against an individual's cognitive score. **Panels b:** Regions that were significantly affected by genotype (bilateral amygdala and hippocampus) plotted against an individual's cognitive score. Correlations are reported as Pearson's R.

Running head: *APOE*, *Klotho*, sex, age and cognition

Discussion

This study investigated the influence of apolipoprotein (*APOE*) and *Klotho* genotype, alongside the effects of age and sex on cognitive function and brain volume in the largest cohort of healthy individuals examined to date. The analysis revealed differential effects of *APOE* genotypes on cognition, as well as a notable absence of any effect of *Klotho*-VS heterozygosity. The interactions between *APOE* genotype, sex, and age, indicated a complex influence of sex and age on cognition. Most notably, the age-related cognitive trajectories showed an antagonistic pleiotropy effect, whereby the *APOE* ϵ 44 gene associated with a later life disadvantage conferred an advantage at younger ages²³. However, this effect was limited to younger female carriers of the *APOE* ϵ 44 variant, highlighting the importance of assessing sex-specific preclinical cognitive profiles for the early stages of dementia.

The deleterious effect of ϵ 44 on cognition emerges with age

The *APOE* ϵ 44 genotype has been highly associated with the pathogenesis of AD^{5,6}. Furthermore, *APOE* ϵ 4 homozygosity has been suggested as a new genetic form of AD (Fortea et al., 2024) and its risk in healthy individuals requires further investigation. Our study replicated the well-established decline in cognition of healthy *APOE* ϵ 44 carriers compared to ϵ 33/34 carriers⁸⁻¹⁰. However, we found that in our cohort of healthy participants, ϵ 44 carriers at the study baseline age (40 years) exhibited a cognitive advantage over ϵ 33/34 carriers. This is consistent with *APOE* ϵ 4's association with enhanced cognitive performance in younger adults¹⁹⁻²² and may be attributed to previously reported antagonistic pleiotropy effects²³. The highest known genetic risk factor for AD is paradoxically associated with earlier advantages with resistance to infection⁵⁰, improved fitness during foetal development⁵¹, enhanced fertility^{50,52} and here, higher cognitive abilities. These key benefits in early development likely explain the persistence of this AD-risk-conferring gene in our genome.

Antagonistic pleiotropy of cognition is sex-specific

Cognitive trajectories by age and sex revealed that young female *APOE* ϵ 44 carriers up to 45

Running head: *APOE, Klotho, sex, age and cognition*

years old displayed a cognitive advantage over ϵ 33/34 carriers, whereas males did not. Therefore, this antagonistic pleiotropy effect in cognition was specifically driven by females. Although a general female advantage in their 40s has been previously shown in cognition¹³, the data presented here show that this female advantage is pronounced specifically in *APOE* ϵ 44 carriers. The ϵ 44 female advantage in cognitive performance diminished with age, with males exhibiting higher cognitive abilities from mid-life onward, consistent with previous findings that males exhibit higher cognitive abilities at this age range³⁰. This finding is also supported by studies showing that female ϵ 44 carriers are more likely to go on to develop AD²⁸, have greater atrophy of the hippocampus¹⁷ and are at a higher risk of AD pathology⁵³. Furthermore, these results are aligned with a meta-analysis assessing the link between *APOE* ϵ 4 and sex differences, reporting that age differentially affected the risk of developing MCI and AD, with an increased risk of developing AD in women between 65 and 75 years of age²⁷. Therefore, age strongly impacts the sex-mediated decline in cognition, where we identify both an early-age advantage and a later-age decline. Further assessment of the mechanisms for age-related effects in females may be relevant to assess in terms of the recently characterized tau pathology in females^{54–56}. Given the impact of sex on brain health concerning AD, exploring sex-specific therapies might help to elucidate mechanisms underlying sex-related vulnerabilities across different ages⁵⁷.

***APOE* ϵ 44 effects on brain structure**

The analyses performed here also revealed that carrying ϵ 44 was associated with smaller hippocampi and amygdala. These grey matter volume differences also correlated with the cognitive score and mediated the effect of ϵ 44 on cognition, suggesting a potential structural basis for the cognitive decline observed in these individuals in later life. Given the time interval between cognitive testing and MRI scans (~10 years) such small but significant correlations reflect the potential association between brain anatomy and cognition. These findings are aligned with studies showing that genetic predispositions, especially *APOE* ϵ 44, can affect the hippocampus in healthy individuals^{15,58}. In this cohort, ϵ 44 carriers also had enlarged bilateral

Running head: *APOE*, *Klotho*, sex, age and cognition

intracalcarine cortices, consistent with a previous study on the same cohort reporting that the intracalcarine cortex correlated with the number of copies of $\epsilon 44$ alleles⁵⁹. While this dataset does not allow for causal inference, one potential explanation may be a compensatory recruitment process. For example, frontal activation in $\epsilon 44$ carriers has been discussed in relation to AD-related processes^{23,24,60}. Such a potentially protective or compensatory mechanism may enlarge the intracalcarine cortices in this genotype. This feature strongly associated with the visual cortex may also relate to the superior cognitive performance observed in $\epsilon 44$ carriers^{22,61}, which is reported to last through aging in some visual domains⁶². The analyses conducted here also showed an enlarged left amygdala and left hippocampus males compared to females. These brain areas are important regions related to the neuropathological lesions of AD⁶³. No significant association of female early advantage could be identified in grey matter volumes, although previous studies have shown reduced functional connectivity to the hippocampus in female *APOE* $\epsilon 4$ carriers¹⁶. Finally, no antagonistic pleiotropy effects were found in brain volumes, likely owing to the limited sample size that prevented equivalent analysis of age-related decline.

***APOE* $\epsilon 22/23$ effects**

The effects of the *APOE* $\epsilon 2$ variant were also assessed in comparison to the reference group of *APOE* $\epsilon 33/34$. The $\epsilon 2$ allele is associated with a lower risk of AD⁶⁴ and increased longevity⁶⁵. $\epsilon 2$ carriers are also more likely to live up to 100⁶⁶, but the cognitive trajectory across aging has not been clearly defined. When comparing the effects of carriers of the $\epsilon 22/23$ genes, we found that $\epsilon 2$ carrier advantages became evident with aging. The cognitive decline with age was less steep compared to the reference $\epsilon 33/34$ carrier group. This highlights the potential protective effect of this allele, especially with age. Sex also modulated the effects whereby the positive effects of $\epsilon 22/23$ were higher in females at younger ages but changed to a male advantage with aging as was the case for $\epsilon 44$ carriers. Although some previous studies have reported increased cortical thickness⁶⁷ and larger hippocampal volume in healthy elderly $\epsilon 2$ carriers⁶⁸,

Running head: *APOE*, *Klotho*, sex, age and cognition

reports are mixed with others showing no differences⁶⁹. Here, we also showed no difference in hippocampal volume.

Absence of *Klotho* effect

While extensive research in both mice^{33,34} and humans^{36,38} has explored the benefits of *Klotho*-VS heterozygosity, this study did not reveal any significant effects of *Klotho*-heterozygosity. Previous research suggested that individuals with the *Klotho*-VS/FC genotype displayed elevated neuropsychological test scores, as indicated by a global composite score³⁸. However, here the potential cognitive advantages associated with *Klotho* heterozygosity were not observed. Moreover, no effect on brain grey matter volumes was observed, which contrasts with previous findings indicating improved memory and executive functions in *Klotho* heterozygotes, correlated with a larger prefrontal cortex⁴⁰. Furthermore, *APOE* status did not modulate *Klotho* effects and therefore did not show the hypothesised, neuroprotective effects of *Klotho* VS/FC, contrary to prior findings^{44,45}. However, the results of at least one investigation concluded that *Klotho* VS/FC does not modify amyloid beta burden in individuals with *APOE* ϵ 4⁴⁷, which is aligned with the findings from this dataset.

One potential explanation for mixed findings in the literature is the lack of a direct correlation between *Klotho* genotype and *Klotho* protein levels. Recent studies demonstrating the beneficial effects of *Klotho* secretion have directly evaluated *Klotho* levels through injection⁷⁰ or quantification⁴¹. Secreted serum *Klotho* may benefit brain health, but in population-based cohort studies that solely investigate genotype, we may lack the sensitivity of quantifying protein levels, which may be highly influenced by transcription processes. *Klotho* secretion is also highly modulated by environmental factors like chronic stress⁷¹, which unlike socioeconomic status, is uncorrected for in this study. Further characterisation of the *Klotho* protein levels will be important to understand the genetic effects of *Klotho* on brain and behaviour and assess its therapeutic benefits on neurodegeneration and longevity.

Running head: *APOE, Klotho, sex, age and cognition*

Importance of large sample sizes

Understanding the progression of neurodegeneration requires assessing early changes preceding clinical diagnosis, a task facilitated by the UK Biobank data. The impact of genes has often been overshadowed by a focus on disease associations rather than risk factors in the healthy population. Here, we offer a new perspective by investigating genetic risk factors, age and sex in a large number of healthy participants. This cohort is the largest sample of *APOE* ϵ 4 carriers to date, which allows us to investigate varying factors influencing brain and behaviour. Furthermore, the characterisation of trajectories over time is a critical aspect of the analysis, which has been overshadowed in previous investigations assessing the interactions of *Klotho* and *APOE* genes of aging⁴⁶. Inconsistencies in previous research regarding cognitive advantages among ϵ 4 carriers may stem from limited statistical power, obscuring assessments of sex and age-related effects.

Study limitations

Although the UK Biobank provides a valuable resource for studying cognitive impairment, several limitations warrant discussion. Firstly, participants tend to be healthier and of a higher socioeconomic status than the general population⁷², potentially underrepresenting those at higher risk for cognitive impairment. Secondly, the 10-year average difference between behavioural testing and imaging data collection challenges the correlation of brain and behaviour. Thirdly, our analysis reduced various cognitive tasks into a composite score using principal component analysis, and therefore overlooked the variations across different cognitive domains. This analysis method was motivated by the lack of validated domain sensitivity of the tasks administered in the UK Biobank. While general cognition is important to study, specific cognitive domains should also be considered in future studies with pre-defined hypotheses, as some domains of cognition may be differentially affected. For example, in the context of *APOE*, short-term and long-term retention has been shown to exhibit distinct effects and may warrant separate consideration⁶¹. Improved cognitive testing which is sensitive to

Running head: *APOE*, *Klotho*, sex, age and cognition

subtle cognitive deficits may facilitate this line of research. Finally, as this cohort is made of healthy individuals, clinical conversion is not assessed, which may be critical to assess as not all cognitive decline in healthy is associated to pathological states. Notwithstanding these limitations, our study's broad age range and large sample size provide a strong foundation for future research on how to better stratify those at risk of developing dementia.

Conclusions

This study leveraged one of the most extensive genotyped cohorts of healthy individuals from the UK Biobank. The complex interplay between *APOE*, sex, and age, contributes to our understanding of how genetic effects are highly dependent on sex and age in both carriers of *APOE* $\epsilon 4$ and $\epsilon 2$. The female-specific antagonistic pleiotropy effects are a novel finding that highlights the importance of assessing sex-dependent cognitive trajectories of dementia. Finally, despite the absence of significant effects from *Klotho*-VS heterozygosity on cognition, the mechanisms of *Klotho* on cognition still warrant investigation. Protective genetic factors that may modify the deleterious effects of *APOE* $\epsilon 4$ in later life remain a critical target for the development of therapies and diagnostics against aging and neurodegeneration.

Running head: *APOE*, *Klotho*, sex, age and cognition

Methods

Participants

The participants in this study were drawn from the UK Biobank (<https://ukbiobank.ac.uk>), a population-based prospective cohort of healthy adults. 320,861 participants between the ages of 40 and 70 years were included in this study. Individuals with a history or current diagnoses of the following were excluded from the study: AD or Parkinson's disease, stroke, brain/head injury, transient ischaemic attack, subdural or subarachnoid haematoma; infection of the nervous system; brain abscess, haemorrhage, skull fracture, encephalitis, amyotrophic lateral sclerosis, meningitis, chronic neurological problem, multiple sclerosis and epilepsy. Those with alcohol, opioid and other dependencies were also removed from the analysis. Follow-up self-reported questionnaires and hospital records were used to assess inclusion in the study. Participants were genotyped during the data collection phase. Rarer variants of *APOE* ($\epsilon 1$) and *Klotho* (homozygous (VS/VS)) were not included in the analysis. The effects of carrying the *APOE* $\epsilon 44$ genotype were studied by comparing them to $\epsilon 33$ and $\epsilon 34$ carriers. For further exploratory analysis, we also compared $\epsilon 2$ carriers ($\epsilon 22$ and $\epsilon 23$) to the same reference ($\epsilon 33$ and $\epsilon 34$ carriers). The homozygous $\epsilon 4/\epsilon 4$ genotype was analysed relative to the reference as this group is recognised for having the most significant impact on cognition and brain changes, and a potential genetic form of AD⁷. The scarcity of homozygous carriers has limited this grouping; however, this limitation was overcome by the large sample size provided by the UK Biobank. For *Klotho*, the *Klotho*-VS heterozygous variant (FC/VS) was compared to the most common *Klotho* variant (FC/FC). 37,976 individuals had brain MRI data which was used to analyse differences in grey matter volume. Data was acquired from an initial baseline visit between 2006 and 2010, and the imaging visit occurred between 2014 and 2020. All participants provided written, informed consent and the study was approved by the Research Ethics Committee (REC number 11/NW/0382).

Running head: *APOE, Klotho, sex, age and cognition*

Cognitive testing

Cognitive testing was performed via fully automated touchscreen tasks. We analysed nine short cognitive tasks covering a range of cognitive domains, including processing speed, episodic memory, working memory and reasoning (**Table 1**). High validity and test-retest reliability of these UK Biobank tasks have been reported previously⁷³.

<p>Reaction Time Task - This task measured reaction time to visual stimuli using a modified Go/No-Go format. The mean time taken to respond to matching pairs was used as the measure of reaction time.</p>
<p>Trail-Making Task - Trail-making assessed executive function. Trail A required participants to click on numbers in ascending order. Trail B required participants to click on numbers and letters in an alternating and ascending pattern (e.g., 1-A-2-B-3-C). The difference in completion time between Trail A and B was used as an index of executive function.</p>
<p>Pairs Matching Task - This task assessed visual memory. Participants memorised the position of as many matching pairs of cards arranged randomly on a grid. The cards were then turned face down and participants were asked to select as many pairs as possible in the fewest tries. The number of incorrect matches until all matches were made was used as the outcome measure.</p>
<p>Fluid Intelligence Task - This task measured IQ by probing verbal and numerical reasoning. Participants answered 12 multiple-choice questions (between 3 and 5 choices) that examined logic and reasoning ability. We used the fluid intelligence score to index their performance.</p>
<p>Paired-associative Task - This task measured verbal declarative memory. Participants memorised word pairs displayed for 30 seconds. After a delay (Matrix Pattern Completion Task) one word of the pair was presented and the corresponding pair had to be selected from a choice of four options. The outcome variable was the number of correctly answered pairs.</p>
<p>Tower Task - This task tested planning abilities. Participants were shown 2 displays of 3 pegs and 3 different coloured hoops placed on the pegs. Participants counted how many moves it would take to go from one configuration of hoops to the other. The outcome variable was the number of items answered correctly in 3 minutes.</p>

Running head: *APOE, Klotho, sex, age and cognition*

Symbol-digit Substitution Task - This task measured processing speed. Participants were presented with a key that paired symbols with numbers. Participants were shown a row of symbols and entered the associated number using a keypad. The score was the number of correct symbol-digit matches made in 60 seconds.

Matrix Pattern Completion Task - This task tested non-verbal fluid reasoning. Participants were presented with a matrix design, with a missing piece in the lower right corner. Participants identified what the missing piece would look like from a list of options. The outcome variable was the number of items answered correctly in 3 minutes.

Numeric Memory Task - Short-term memory and working memory capacity was tested using a backward digit span task. Participants were simultaneously presented with a sequence of numbers and were asked to recall and repeat the numbers in reverse order. The outcome variable was the maximum number of digits correctly remembered in the reverse order.

Table 2: Cognitive tasks of the UK Biobank

Nine cognitive tasks from the UK Biobank were used to construct a composite cognitive score.

Running head: *APOE*, *Klotho*, sex, age and cognition

Behavioural analysis

Analyses were carried out on MATLAB R2021b. To examine the effect of genotype on cognitive functions, behavioural measures of each task were first z-scored. For tasks where lower values denoted superior performance (i.e. reaction time task, trail-making task, and pair-matching task), the values were adjusted so that negative z scores reflect below-average performance. Missing values were extrapolated using a matrix based on the age, sex, and *APOE* genotype of this participant. Principal component analysis (PCA) was applied to these scores to reduce dimensions and establish a composite score of cognition. The 1st principal component was taken as the composite score of cognition for each individual. These scores were corrected for socioeconomic status using the Townsend deprivation index and years of education.

We investigated the factors affecting cognition using multiple linear regression, modelling cognition as a function of *APOE*, *Klotho*, sex and age, and their interactions.

$$\begin{aligned} \text{Cognition} \sim & 1 + \text{APOE} + \text{Klotho} + \text{Age} + \text{Sex} + \\ & (\text{APOE} \times \text{Age}) + (\text{Klotho} \times \text{Age}) + (\text{Sex} \times \text{Age}) + (\text{APOE} \times \text{Sex}) + (\text{Klotho} \times \text{Sex}) + \\ & (\text{APOE} \times \text{Klotho} \times \text{Age}) + (\text{APOE} \times \text{Klotho} \times \text{Sex}) + (\text{APOE} \times \text{Sex} \times \text{Age}) + \\ & (\text{APOE} \times \text{Klotho} \times \text{Sex} \times \text{Age}) \end{aligned} \quad (1)$$

For the purpose of this analysis, the reference genotype was set to the most common grouping of variants of each of the genes studied; *APOE* ε33/34 and *Klotho* FC/FC. The reference sex was set as female. The minimum age was subtracted from all ages so that all main effects and interaction terms without the age predictor represent an effect at the minimum age in the data of 40 (*APOE* ε33/34: n = 3361, *APOE* ε44: n = 129, *APOE* ε22/23: n = 513). This regression model explained 44.2% of the variance in cognitive scores (R-squared = 0.442), with a highly significant fit (F = 12,700, p < .001). We used the Akaike Information Criterion (AIC) and Bayesian Information Criterion (BIC) to confirm the superiority of this complex model over a model without interactions between predictors. The full model had a lower AIC (AIC: 945,900)

Running head: *APOE*, *Klotho*, sex, age and cognition

compared to the simple multiple regression model (AIC: 947,490) with no interactions and explained 42.2% of the variance compared to 41.9% variance. The model incorporating all interactions revealed a significant age effect, prompting further analysis of the directionality of *APOE* and sex across three age brackets: 40-50, 50-60, and 60-70 years. This segmentation equally divides the age ranges into three groups to assess whether the directionality of main effects changes depending on age. As *Klotho* did not influence the results, its effect was excluded from these subsequent age-binned regressions. Each age group was analysed using the below regression model:

$$\text{Cognition} \sim 1 + \text{APOE} + \text{Sex} + (\text{APOE} \times \text{Sex}) \quad (2)$$

Imaging

Magnetic resonance imaging (MRI) data were acquired on Siemens Skyra 3T scanner as part of the UK Biobank neuroimaging protocol, on average around 10 years after the initial assessment. 1 mm isotropic voxel high-resolution T1-weighted images were collected and pre-processed using a standard previously published pipeline implementing quality control⁷⁴. For volumetric analysis of T1-imaged structures, gradient distortion correction and registration onto MNI152 space were applied. FAST (FMRIB's Automated Segmentation Tool) was used to segment white matter, grey matter, and cerebrospinal fluid. We extracted 137 imaging-derived phenotypes (IDPs) as key grey matter structures. Volumes were corrected for years of education, socioeconomic status, head size, scan date and table position using a general linear model. We examined the difference in grey matter volumes using a whole-brain approach across genotypes. We ran a multiple linear regression for each brain region and reported the brain regions that had a significant main effect of genotype. To correct for the multiple comparisons made across all brain regions, we applied Bonferroni correction with an adjusted alpha threshold of 0.05/137. Given the substantially smaller sample size and multiple regressions needed to be run for whole brain analysis, linear models which included interactions did not show any significant main effect or interaction effects. We therefore

Running head: *APOE, Klotho, sex, age and cognition*

assessed the additive effects of genotype, sex and age independently on grey matter volume using the following regressions. Regression models for $\epsilon 44$ and $\epsilon 22/23$ were assessed separately. Cohen's f was used as a measure of effect size.

APOE $\epsilon 33/34$ vs *APOE* $\epsilon 44$ and *APOE* $\epsilon 33/34$ vs *APOE* $\epsilon 22/23$ separately:

$$\begin{aligned} & \text{Grey Matter Volume}_T \sim 1 + \text{APOE} + \text{Sex} + \text{Age} \\ T \text{ for every grey matter volume} \end{aligned} \quad (3)$$

Klotho FC/FC vs. *Klotho* VS/FC

$$\begin{aligned} & \text{Grey Matter Volume}_T \sim 1 + \text{Klotho} + \text{Sex} + \text{Age} \\ T \text{ for every grey matter volume} \end{aligned} \quad (4)$$

Brain behaviour correlations

All brain volumes used for brain behaviour correlation analysis were z-scored. A mediation analysis was conducted to examine whether the reduction in brain volumes mediates the relationship between the *APOE* $\epsilon 44$ genotype and cognitive decline. For the purpose of this hypothesis driven analysis, participants with the *APOE* $\epsilon 22/23$ genotype were excluded, resulting in a binary *APOE* variable ($\epsilon 44$ vs. $\epsilon 34/33$). Volumes that were significantly reduced in carriers of *APOE* $\epsilon 44$ were z-scored and summed to create a composite measure of medial temporal lobe volume reduction. Logistic regression (*APOE* ~ Volume) and linear regressions (Cognitive Score ~ Volume and Cognitive Score ~ Volume + *APOE*) were performed to estimate the coefficients for the mediation model. The observed indirect effect ($a * b$) was calculated as the product of the coefficients from these models. A permutation test with 1000 permutations was conducted to assess the significance of the indirect effect by permuting the *APOE* variable and recalculating the indirect effect for each permutation. The p-value was determined by comparing the observed indirect effect to the distribution of permuted indirect effects.

Running head: *APOE, Klotho, sex, age and cognition*

Data availability

UK Biobank data is openly available at www.ukbiobank.ac.uk

Declaration of interests

The authors have no competing interests to declare.

Acknowledgements

This work was funded by Wellcome Trust Principal Research Fellowship to MH, the MRC Clinician Scientist Fellowship [MR/P00878X] and NIH Oxford Biomedical Research Centre to SGM, the Wellcome Trust PhD clinical fellowship to XT and the Berrow Foundation Scholarship to KS. The authors would like to thank Dr. Sofia Toniolo and Dr Sijia Zhao for their comments on the manuscript. For the purpose of open access, the author has applied a CC BY public copyright licence to any Author Accepted Manuscript version arising from this submission.

References

1. O'Donoghue, M. C., Murphy, S. E., Zamboni, G., Nobre, A. C. & Mackay, C. E. APOE genotype and cognition in healthy individuals at risk of Alzheimer's disease: A review. *Cortex* **104**, 103–123 (2018).
2. Loy, C. T., Schofield, P. R., Turner, A. M. & Kwok, J. B. Genetics of dementia. *The Lancet* **383**, 828–840 (2014).
3. Licher, S. *et al.* Genetic predisposition, modifiable-risk-factor profile and long-term dementia risk in the general population. *Nat. Med.* **25**, 1364–1369 (2019).
4. Tucker-Drob, E. M. & Briley, D. A. Continuity of genetic and environmental influences on cognition across the life span: A meta-analysis of longitudinal twin and adoption studies. *Psychol. Bull.* **140**, 949–979 (2014).
5. Corder, E. H. *et al.* Gene Dose of Apolipoprotein E Type 4 Allele and the Risk of Alzheimer's Disease in Late Onset Families. *Science* **261**, 921–923 (1993).
6. Kim, J., Basak, J. M. & Holtzman, D. M. The Role of Apolipoprotein E in Alzheimer's Disease. *Neuron* **63**, 287–303 (2009).
7. Fortea, J. *et al.* APOE4 homozygosity represents a distinct genetic form of Alzheimer's disease. *Nat. Med.* **30**, 1284–1291 (2024).
8. Lorus, N. *et al.* Vascular Disease and Risk Factors are Associated With Cognitive Decline in the Alzheimer Disease Spectrum. *Alzheimer Dis. Assoc. Disord.* **29**, 18–25 (2015).
9. Schiepers, O. J. G. *et al.* APOE E4 status predicts age-related cognitive decline in the ninth decade: longitudinal follow-up of the Lothian Birth Cohort 1921. *Mol. Psychiatry* **17**, 315–324 (2012).
10. Deary, I. J. *et al.* Cognitive change and the APOE ϵ 4 allele. *Nature* **418**, 932–932 (2002).
11. Sheline, Y. I. *et al.* APOE4 Allele Disrupts Resting State fMRI Connectivity in the Absence of Amyloid Plaques or Decreased CSF A β 42. *J. Neurosci.* **30**, 17035–17040 (2010).

Running head: *APOE, Klotho, sex, age and cognition*

12. Filippini, N. *et al.* Distinct patterns of brain activity in young carriers of the *APOE* - ϵ 4 allele. *Proc. Natl. Acad. Sci.* **106**, 7209–7214 (2009).
13. Jack, C. R. *et al.* Age, Sex, and *APOE* ϵ 4 Effects on Memory, Brain Structure, and β -Amyloid Across the Adult Life Span. *JAMA Neurol.* **72**, 511 (2015).
14. Price, J. L. & Morris, J. C. Tangles and plaques in nondemented aging and ?preclinical? Alzheimer’s disease. *Ann. Neurol.* **45**, 358–368 (1999).
15. Veldsman, M., Nobis, L., Alfaro-Almagro, F., Manohar, S. & Husain, M. The human hippocampus and its subfield volumes across age, sex and *APOE* ϵ 4 status. *Brain Commun.* **3**, fcaa219 (2021).
16. Heise, V. *et al.* Apolipoprotein E genotype, gender and age modulate connectivity of the hippocampus in healthy adults. *NeuroImage* **98**, 23–30 (2014).
17. Fleisher, A. Sex, Apolipoprotein E ϵ 4 Status, and Hippocampal Volume in Mild Cognitive Impairment. *Arch. Neurol.* **62**, 953 (2005).
18. Caselli, R. J. *et al.* Longitudinal Modeling of Age-Related Memory Decline and the *APOE* ϵ 4 Effect. *N. Engl. J. Med.* **361**, 255–263 (2009).
19. Marchant, N. L., King, S. L., Tabet, N. & Rusted, J. M. Positive Effects of Cholinergic Stimulation Favor Young *APOE* ϵ 4 Carriers. *Neuropsychopharmacology* **35**, 1090–1096 (2010).
20. Alexander, D. M. *et al.* The contribution of apolipoprotein E alleles on cognitive performance and dynamic neural activity over six decades. *Biol. Psychol.* **75**, 229–238 (2007).
21. Mondadori, C. R. A. *et al.* Better Memory and Neural Efficiency in Young Apolipoprotein E 4 Carriers. *Cereb. Cortex* **17**, 1934–1947 (2007).
22. Rusted, J. M. *et al.* *APOE* ϵ 4 polymorphism in young adults is associated with improved attention and indexed by distinct neural signatures. *NeuroImage* **65**, 364–373 (2013).
23. Tuminello, E. R. & Han, S. D. The Apolipoprotein E Antagonistic Pleiotropy Hypothesis: Review and Recommendations. *Int. J. Alzheimers Dis.* **2011**, 1–12 (2011).

Running head: *APOE, Klotho, sex, age and cognition*

24. Han, S. D. & Bondi, M. W. Revision of the apolipoprotein E compensatory mechanism recruitment hypothesis. *Alzheimers Dement.* **4**, 251–254 (2008).
25. Rusted, J. & Carare, R. O. Are the Effects of *APOE* ϵ 4 on Cognitive Function in Nonclinical Populations Age- and Gender-Dependent? *Neurodegener. Dis. Manag.* **5**, 37–48 (2015).
26. Genin, E. *et al.* *APOE* and Alzheimer disease: a major gene with semi-dominant inheritance. *Mol. Psychiatry* **16**, 903–907 (2011).
27. Neu, S. C. *et al.* Apolipoprotein E Genotype and Sex Risk Factors for Alzheimer Disease: A Meta-analysis. *JAMA Neurol.* **74**, 1178 (2017).
28. Farrer, L. A. Effects of Age, Sex, and Ethnicity on the Association Between Apolipoprotein E Genotype and Alzheimer Disease: A Meta-analysis. *JAMA* **278**, 1349 (1997).
29. Wang, X. *et al.* Sex Difference in the Association of *APOE*4 with Memory Decline in Mild Cognitive Impairment. *J. Alzheimers Dis.* **69**, 1161–1169 (2019).
30. Zokaei, N. *et al.* Sex and *APOE*: A memory advantage in male *APOE* ϵ 4 carriers in midlife. *Cortex* **88**, 98–105 (2017).
31. Mortensen, E. L. & Høgh, P. A gender difference in the association between *APOE* genotype and age-related cognitive decline. *Neurology* **57**, 89–95 (2001).
32. Nebel, R. A. *et al.* Understanding the impact of sex and gender in Alzheimer’s disease: A call to action. *Alzheimers Dement.* **14**, 1171–1183 (2018).
33. Kurosu, H. *et al.* Suppression of Aging in Mice by the Hormone Klotho. *Science* **309**, 1829–1833 (2005).
34. Kuro-o, M. *et al.* Mutation of the mouse klotho gene leads to a syndrome resembling ageing. *Nature* **390**, 45–51 (1997).
35. Arking, D. E. *et al.* Association of human aging with a functional variant of klotho. *Proc. Natl. Acad. Sci.* **99**, 856–861 (2002).

Running head: *APOE, Klotho, sex, age and cognition*

36. Arking, D. E., Atzmon, G., Arking, A., Barzilai, N. & Dietz, H. C. Association Between a Functional Variant of the *KLOTHO* Gene and High-Density Lipoprotein Cholesterol, Blood Pressure, Stroke, and Longevity. *Circ. Res.* **96**, 412–418 (2005).
37. Invidia, L. *et al.* The frequency of Klotho KL-VS polymorphism in a large Italian population, from young subjects to centenarians, suggests the presence of specific time windows for its effect. *Biogerontology* **11**, 67–73 (2010).
38. Dubal, D. B. *et al.* Life Extension Factor Klotho Enhances Cognition. *Cell Rep.* **7**, 1065–1076 (2014).
39. Mengel-From, J. *et al.* Genetic Variants in *KLOTHO* Associate With Cognitive Function in the Oldest Old Group. *J. Gerontol. A. Biol. Sci. Med. Sci.* **71**, 1151–1159 (2016).
40. Yokoyama, J. S. *et al.* Variation in longevity gene *KLOTHO* is associated with greater cortical volumes. *Ann. Clin. Transl. Neurol.* **2**, 215–230 (2015).
41. Yokoyama, J. S. *et al.* Systemic klotho is associated with *KLOTHO* variation and predicts intrinsic cortical connectivity in healthy human aging. *Brain Imaging Behav.* **11**, 391–400 (2017).
42. Linghui, D. *et al.* The relationship between serum klotho and cognitive performance in a nationally representative sample of US adults. *Front. Aging Neurosci.* **15**, 1053390 (2023).
43. Wu, Y. *et al.* Relationship of Klotho with cognition and dementia: Results from the NHANES 2011–2014 and Mendelian randomization study. *Transl. Psychiatry* **13**, 337 (2023).
44. Belloy, M. E. *et al.* Association of *Klotho* -VS Heterozygosity With Risk of Alzheimer Disease in Individuals Who Carry *APOE4*. *JAMA Neurol.* **77**, 849 (2020).
45. Erickson, C. M. *et al.* *KLOTHO* heterozygosity attenuates *APOE4* -related amyloid burden in preclinical AD. *Neurology* **92**, e1878–e1889 (2019).
46. Tank, R. *et al.* Testing for Interactions Between *APOE* and Klotho Genotypes on Cognitive, Dementia, and Brain Imaging Metrics in UK Biobank. *J. Alzheimers Dis.* **83**, 51–55 (2021).

Running head: *APOE, Klotho, sex, age and cognition*

47. Porter, T. *et al.* Klotho allele status is not associated with A β and APOE ϵ 4-related cognitive decline in preclinical Alzheimer's disease. *Neurobiol. Aging* **76**, 162–165 (2019).
48. De Vries, C. F. *et al.* Klotho, APOE ϵ 4, cognitive ability, brain size, atrophy, and survival: a study in the Aberdeen Birth Cohort of 1936. *Neurobiol. Aging* **55**, 91–98 (2017).
49. Deary, I. J. *et al.* KLOTHO genotype and cognitive ability in childhood and old age in the same individuals. *Neurosci. Lett.* **378**, 22–27 (2005).
50. Van Exel, E. *et al.* Effect of APOE ϵ 4 allele on survival and fertility in an adverse environment. *PLOS ONE* **12**, e0179497 (2017).
51. Smith, C. J., Ashford, J. W. & Perfetti, T. A. Putative Survival Advantages in Young Apolipoprotein ϵ 4 Carriers are Associated with Increased Neural Stress. *J. Alzheimers Dis.* **68**, 885–923 (2019).
52. Jasienska, G. *et al.* Apolipoprotein E (*ApoE*) polymorphism is related to differences in potential fertility in women: a case of antagonistic pleiotropy? *Proc. R. Soc. B Biol. Sci.* **282**, 20142395 (2015).
53. Barnes, L. L. *et al.* Sex Differences in the Clinical Manifestations of Alzheimer Disease Pathology. *Arch. Gen. Psychiatry* **62**, 685 (2005).
54. Wang, Y.-T. *et al.* Sex-specific modulation of amyloid- β on tau phosphorylation underlies faster tangle accumulation in females. *Brain* **147**, 1497–1510 (2024).
55. Filon, J. R. *et al.* Gender Differences in Alzheimer Disease: Brain Atrophy, Histopathology Burden, and Cognition. *J. Neuropathol. Exp. Neurol.* **75**, 748–754 (2016).
56. Buckley, R. F. *et al.* Sex Differences in the Association of Global Amyloid and Regional Tau Deposition Measured by Positron Emission Tomography in Clinically Normal Older Adults. *JAMA Neurol.* **76**, 542 (2019).
57. Snyder, H. M. *et al.* Sex biology contributions to vulnerability to Alzheimer's disease: A think tank convened by the Women's Alzheimer's Research Initiative. *Alzheimers Dement.* **12**, 1186–1196 (2016).

Running head: *APOE, Klotho, sex, age and cognition*

58. Tang, X., Holland, D., Dale, A. M. & Miller, M. I. APOE Affects the Volume and Shape of the Amygdala and the Hippocampus in Mild Cognitive Impairment and Alzheimer's Disease: Age Matters. *J. Alzheimers Dis.* **47**, 645–660 (2015).
59. McCorkindale, A. N., Mundell, H. D., Guennewig, B. & Sutherland, G. T. Vascular Dysfunction Is Central to Alzheimer's Disease Pathogenesis in APOE e4 Carriers. *Int. J. Mol. Sci.* **23**, 7106 (2022).
60. Scheller, E. *et al.* Brain Aging and APOE ε4 Interact to Reveal Potential Neuronal Compensation in Healthy Older Adults. *Front. Aging Neurosci.* **10**, 74 (2018).
61. Zokaei, N. *et al.* Short-term memory advantage for brief durations in human APOE ε4 carriers. *Sci. Rep.* **10**, 9503 (2020).
62. Lu, K. *et al.* Dissociable effects of APOE ε4 and β-amyloid pathology on visual working memory. *Nat. Aging* **1**, 1002–1009 (2021).
63. Berron, D. *et al.* Early stages of tau pathology and its associations with functional connectivity, atrophy and memory. *Brain* **144**, 2771–2783 (2021).
64. Corder, E. H. *et al.* Protective effect of apolipoprotein E type 2 allele for late onset Alzheimer disease. *Nat. Genet.* **7**, 180–184 (1994).
65. Drenos, F. & Kirkwood, T. B. L. Selection on Alleles Affecting Human Longevity and Late-Life Disease: The Example of Apolipoprotein E. *PLoS ONE* **5**, e10022 (2010).
66. Frisoni, G. B., Louhija, J., Geroldi, C. & Trabucchi, M. Longevity and the 2 Allele of Apolipoprotein E: The Finnish Centenarians Study. *J. Gerontol. A. Biol. Sci. Med. Sci.* **56**, M75–M78 (2001).
67. Liu, Y. *et al.* Effect of APOE ε4 Allele on Cortical Thicknesses and Volumes: The AddNeuroMed Study. *J. Alzheimers Dis.* **21**, 947–966 (2010).
68. Alexopoulos, P. *et al.* Hippocampal Volume Differences Between Healthy Young Apolipoprotein E ε2 and ε4 Carriers. *J. Alzheimers Dis.* **26**, 207–210 (2011).
69. Den Heijer, T. *et al.* Hippocampal, amygdalar, and global brain atrophy in different apolipoprotein E genotypes. *Neurology* **59**, 746–748 (2002).

Running head: *APOE, Klotho, sex, age and cognition*

70. Castner, S. A. *et al.* Longevity factor klotho enhances cognition in aged nonhuman primates. *Nat. Aging* **3**, 931–937 (2023).
71. Prather, A. A. *et al.* Longevity factor klotho and chronic psychological stress. *Transl. Psychiatry* **5**, e585–e585 (2015).
72. Fry, A. *et al.* Comparison of Sociodemographic and Health-Related Characteristics of UK Biobank Participants With Those of the General Population. *Am. J. Epidemiol.* **186**, 1026–1034 (2017).
73. Fawns-Ritchie, C. & Deary, I. J. Reliability and validity of the UK Biobank cognitive tests. *PLOS ONE* **15**, e0231627 (2020).
74. Alfaro-Almagro, F. *et al.* Image processing and Quality Control for the first 10,000 brain imaging datasets from UK Biobank. *NeuroImage* **166**, 400–424 (2018).