

Eye Movement Variations in Indoor, Outdoor, and Reading Scenarios and their Implications for Myopia

Qi Li¹, Chao Zhou², Tingting Liu¹, Yingxiang Han¹, Dajiang Wang³, Xiaofei Wang^{1,4*}

1. Key Laboratory for Biomechanics and Mechanobiology of Ministry of Education, Beijing Advanced Innovation Center for Biomedical Engineering, School of Biological Science and Medical Engineering, Beihang University, Beijing, China
2. Aerospace Center Hospital, Beijing, China
3. Senior Department of Ophthalmology, The Third Medical Center of PLA General Hospital, Beijing, China.
4. State Key Laboratory of Ophthalmology, Optometry and Visual Science, Eye Hospital, School of Ophthalmology and Optometry, Wenzhou Medical University, Wenzhou, China.

Keywords: Eye Movements, Myopia, Eye Tracking, Virtual Reality, Reading

Tables: 1

Figures: 6

Word count: 2769 (Manuscript Text)
220 (Abstract)

Correspondence: Xiaofei Wang
School of Biological Science and Medical Engineering
Beihang University
Room 424, Building 5
37 Xueyuan Road
Beijing 10083, China
xiaofei.wang@buaa.edu.cn

1 **ABSTRACT**

2 **Purpose:** To quantitatively measure eye movement behaviors in indoor,
3 outdoor, and reading scenarios to understand their potential link to myopia.

4 **Methods:** Forty-one healthy adult subjects freely viewed indoor and outdoor
5 scenes and performed reading activities using virtual reality (VR). Eye
6 movement data were recorded with the built-in eye tracker of the VR headset
7 (HTC Vive Pro Eye). Gaze and fixation data were calculated and reported for
8 eight regions of the visual field.

9 **Results:** Indoor scenes exhibited a more pronounced downward gaze than
10 outdoor environments. Significant differences ($p < 0.05$) in gaze and fixation
11 behaviors were observed between reading and other scenarios. In region 8
12 (peripheral inferior visual field), the median (1st quartile, 3rd quartile) number
13 of gaze points were 816 (463, 1175), 1123 (743, 1497), and 1705 (966, 2382)
14 for outdoor, indoor and reading scenarios, respectively. Similarly, fixation
15 behavior counts were 4 (1, 9), 7 (1, 11), and 39 (22, 54), respectively.

16 **Conclusions:** Downward gaze and fixation behaviors are more prevalent in
17 reading and indoor environments. Given that downwards eye movements can
18 induce instantaneous axial elongation, our results suggested a potential
19 biomechanical pathway for myopia progression through optic nerve traction and
20 ocular tissue remodeling. This study underscores the need for further research

- 1 to explore the specific role of eye movement behaviors in the progression of
- 2 myopia, especially in real-life settings.
- 3

1 INTRODUCTION

2 The global prevalence of myopia, particularly in East Asia, has become
3 a major public health issue.^{1,2} Beyond impairing vision quality, myopia can
4 progress to pathologic myopia, leading to severe complications such as
5 foveoschisis, retinal detachment and glaucoma.¹ Despite extensive research,
6 the exact mechanisms underlying myopia remain unclear.

7 Education and intensive near-work activities, such as reading, are major
8 risk factors for myopia.² Consistent evidences have shown that outdoor
9 activities can effectively slow down myopia progression.^{3,4} However, the
10 underlying mechanism are not fully understood. Current research largely focus
11 on the role of light exposure,^{5,6} but the findings have been mixed, with some⁷
12 supporting the hypothesis and others presenting contradictory evidence.⁸⁻¹⁰
13 Besides light intensity, other factors might be in play in the development and
14 progression of myopia. For example, studies have shown that reading has a
15 greater impact on students' myopia progression than light intensity.^{11,12}

16 Our previous studies¹³⁻¹⁶ and others^{17,18} have shown that the optic nerve
17 traction force in the antero-posterior direction during eye movement could
18 deform the posterior eye globe and potentially lead to growth and remodelling
19 of ocular tissues. Consistent with these findings, adduction and downward gaze
20 have been linked to transient axial length increases, independent of
21 accommodation effects.¹⁹⁻²¹ Additionally, interventions like prism lens wear,

1 which reduce convergence eye movement, have been shown to slow myopia
2 progression.²² These findings suggest that eye movement behavior across
3 various environments and activities may contribute to myopia progression, yet
4 the specific patterns of these movements have not been previously studied.
5 Therefore, the aim of this study was to quantitatively measure eye movement
6 behaviors in indoor and outdoor environments and during reading, using eye
7 tracking technology combined with virtual reality (VR).

8 **METHODS**

9 In this study, three distinct scenarios were used to analyze eye
10 movement characteristics: viewing indoor scenes, viewing outdoor scenes and
11 reading. Eye movement data were recorded under these scenarios to observe
12 variations in gaze and fixation patterns.

13 ***Subject Recruitment and Characteristics***

14 This study involved 41 healthy adult subjects (mean age = 24 years,
15 standard deviation = 3 years, 24 males and 17 females). All subjects had
16 myopia with refractive errors ranging from -1.00 to -6.00 diopters, which were
17 measured using an autorefractor. Each subject wore corrective glasses to
18 achieve optimal visual acuity during the study. Exclusion criteria included the
19 presence of abnormal stereo vision, strabismus, retinal disease, visual field
20 defects or other eye diseases, as well as restrictions in body movement and
21 balance, difficulties in comprehending or adhering to the instructions provided

1 by the research team, or an inability to engage in the full extent of the
2 experimental protocol. Written informed consent was obtained from all
3 participants. The study was approved by the Biomedical Ethics Committee of
4 Beihang University and was conducted in accordance with the guidelines of the
5 Declaration of Helsinki.

6 ***Virtual Reality Setup***

7 The VR device used in this study was HTC VIVE Pro Eye head-mounted
8 display (HMD), featuring a built-in eye tracker provided by Tobii (Tobii AB,
9 Stockholm, Sweden). The eye tracker offers a data output frequency of up to
10 120 Hz and an accuracy range of 0.5°–1.1°. Raw data of the eye tracker can
11 be exported using the HTC SRanipal software development kit.

12 To simulate both indoor and outdoor scenes, DeoVR Video Player was
13 utilized. 360° panoramic images were projected into the VR's 3D space using
14 Equi-Rectangular Projection. To simulate reading scenes, VR Kindle
15 application was utilized. The e-book was displayed in 2D Panel Mode, allowing
16 the user to adjust the location of the virtual Kindle to achieve a comfortable
17 reading distance.

18 ***VR Scene Selection and Categorization***

19 VR scene images were sourced from a 360° panoramic image database
20 compiled by Rai et al.²³ From this collection, we selected 12 images depicting
21 indoor spaces (6 images) and urban outdoor spaces (6 images) to represent

1 the indoor and outdoor scenarios in our study. The resolution of the chosen
2 images was greater than 5760×2880, facilitating the creation of clear,
3 immersive environments. **Figure 1** displays the 360° panoramic views of the
4 scene images for the indoor and outdoor settings.

5 ***Experimental Procedure and Data Recording***

6 Before the experiment, each subject underwent an eye movement
7 calibration. Following this, we launched the DeoVR scene player and data
8 recording applications to initiate the experiment. At the start, subjects were
9 oriented to face the center of the image by following guidance arrows to locate
10 a target at the image's center. They were instructed to close their eyes and rest
11 until a countdown reached zero, at which point they opened their eyes to freely
12 explore the VR environment. During the free exploration, no further instructions
13 were given until the exploration ended.

14 Subjects viewed each image for 25 seconds. Subsequently, they were
15 reoriented to the image's center and closed their eyes for a 10-second rest
16 before transitioning to the next image. After viewing all the scene images,
17 subjects engaged in reading a book in Kindle VR for 180 seconds until the
18 phrase "experiment ends" appeared in the VR scene.

19 Subjects were offered breaks after viewing each group of images to
20 prevent symptoms of discomfort such as dizziness or nausea, which can arise

1 from VR incompatibility. If a break was needed, they could remove the HMD
2 and rest. Before resuming, the eye movement calibration step was repeated.

3 The recorded eye movement data included timestamps, gaze origin and
4 gaze vector, data reliability, pupil size, eye openness for both eyes. Only the
5 data from the left eye was analyzed, as the data from both eyes were similar.

6 ***Data Processing and Eye Movement Parameters Calculation***

7 The raw data were exported as text files and later converted to .csv files
8 for data processing. The beginning of each viewing session was identified using
9 the eye openness data, as subjects were instructed to close their eyes before
10 starting tasks. Subsequently, a segment of 25 seconds of data following the
11 beginning was extracted, representing the eye movement data for that specific
12 image.

13 In the indoor and outdoor scenarios, for each scene image of a single
14 subject, the eye movement behaviors were analyzed. The eye movement
15 parameters were then calculated for each image of each subject. For reading,
16 recorded data were segmented into durations of 25s and the first six segments
17 were analyzed. This approach is similar to the analysis of the six images in the
18 indoor and outdoor tasks.

19 Eye movement behavior includes two major types: fixation behavior and
20 saccade behavior. Fixation was identified using the Dispersion Threshold

1 Identification (I-DT) algorithm.²⁴ The dispersion threshold of 1° and duration
2 threshold of 150ms was used in the algorithm.

3 ***Measurements of Gaze and Fixation Behaviors***

4 Gaze behavior was represented through gaze points in the visual field.
5 Specifically, gaze points were obtained by projecting the gaze vector onto a
6 spherical surface centered on the eye.²⁵ These gaze points on the spherical
7 surface were then plotted as a 2D map, similar to a standard human visual field
8 map. The visual field was divided into four sectors: nasal, superior, temporal,
9 and inferior. Each sector was further divided into two subregions, with a 10°
10 central vision boundary line as shown in **Figure 2**.

11 The density of gaze points on the visual field were plotted using a
12 probability density map.^{26,27} High density area indicates where subjects gaze
13 more frequently, as eye position data were recorded at a constant frequency.
14 For each scene within the indoor and outdoor scenarios, gaze points for each
15 subject were analyzed.

16 The gaze points or region-wise gaze points for each individual subject
17 were calculated separately for all 6 scenes in both indoor and outdoor scenarios.
18 For reading, gaze points were calculated for each subject during six
19 consecutive 25s periods to align with the six images per scenario in both indoor
20 and outdoor scenarios. ensuring consistent duration and data segments across
21 all conditions.

1 For fixation behavior, individual fixation locations in the visual field and
2 fixation durations were obtained using the I-DT algorithm. These fixation points
3 were then plotted as a probability density map, similar to the gaze behavior
4 analysis. Subsequently, the number of gaze events at each sector for a specific
5 subject across different scenarios was calculated, mirroring the approach used
6 for gaze behavior analysis.

7 ***Statistical Analysis***

8 The Kolmogorov-Smirnov test was used to compare the differences in
9 gaze and fixation behaviors between different scenarios. As multiple
10 comparisons were made, Bonferroni corrections were applied to adjust the p-
11 values for significance. A p-value of less than 0.05 was considered statistically
12 significant.

13 **RESULTS**

14 ***Gaze Behavior***

15 The probability density map in **Figure 3** illustrates the gaze behavior
16 across three scenarios: viewing indoor scenes, viewing outdoor scenes and
17 reading. The probability density of gaze points in reading (maximum probability
18 density of around 19) is much higher than that in indoor (maximum probability
19 density of around 6) and outdoor (maximum probability density of around 7).
20 Gaze points were largely concentrated in the inferior regions (region 7 and 8)
21 for all three scenarios.

1 Further, specific the number of gaze points in different regions for all
2 subjects in each scenario were shown in **Figure 4**. There were significant
3 differences between the reading and the other two scenarios in all 8 regions.
4 The number of gaze points in region 8 is also listed in **Table 1**. The number of
5 gaze points in region 8 was highest during reading, followed by the indoor
6 scenario, and then the outdoor scenario, suggesting more frequent eye
7 movement towards the inferior direction in reading and indoor scenarios.

8 The number of gaze points on nasal and temporal sides (region 2 and 6)
9 in reading is obviously less than that in indoor and outdoor. That indicates that
10 the majority of the gaze points were within a relatively narrow region in reading
11 compared to indoor and outdoor scenarios.

12 ***Fixation Behavior***

13 **Figure 5** shows the probability density of fixation points. **Figure 6** shows
14 the number of fixation times in different regions for all subjects across the three
15 scenarios. There were significant differences between the reading scenario and
16 the other two scenarios in region 1, 5, 7 and 8. The number of fixations in region
17 8 is shown in **Table 1**. There was also a significantly higher number of fixations
18 in the reading and indoor scenario than in the outdoor scenario.

19 **DISCUSSION**

20 In this study, we found distinct eye movement behaviors across various
21 scenarios, with a notably higher frequency of downward gaze and fixation

1 during reading compared to both indoor and outdoor settings. Indoor
2 environments also exhibited more downward gaze and fixation than outdoor
3 ones. According to previous studies¹³⁻¹⁸, downward eye movement has the
4 potential to cause transient axial elongation and could potentially have
5 longitudinal effects.

6 Our findings highlight a fundamental difference in the eye movement
7 patterns associated with reading, compared to those observed in outdoor and
8 indoor environments. Inferior areas consistently showed more gaze points and
9 fixation behaviors across all scenarios, particularly in reading. Notably, both
10 indoor and reading scenarios showed a higher count of these points compared
11 to outdoor scenarios.

12 Reading is a well-known risk factor for myopia. Our data showed that
13 reading involves more downwards gaze and potentially larger accumulative
14 optic nerve pulling in the antero-posterior direction, while outdoor activity has
15 the least downward eye movement. Our previous study¹⁴ has shown that the
16 traction force of the optic nerve on the eyeball during eye movement is
17 comparable to the force exerted by extraocular muscles and acts in the antero-
18 posterior direction. This traction force can deform the optic nerve head and the
19 deformation can be larger than those induced by a substantial intraocular
20 pressure elevation.^{13,15} Optic nerve head deformations induced by eye
21 movement has been shown to be correlated with normal tension glaucoma.²⁸
22 Growth and remodeling in tissues are influenced by mechanical factors such as

1 stress, leading to the concept of “stress-modulated growth”.²⁹ The optic nerve
2 traction force, if sustained or repeated over a long period, could potentially
3 stimulate the growth and remodeling of the eyeball. This assumption aligned
4 well with previous studies which have shown that downward eye movements
5 (without accommodation) are associated with a temporary increase in axial
6 length.^{19–21,30} Additionally, wearing prism lens to reduce eye convergence
7 during near work can slow myopia development.²² Furthermore, in the guinea
8 pig myopia model, eye elongation initially occurred around the optic nerve
9 rather than the macula.³¹ These findings suggest that the optic nerve traction
10 could be a factor related to myopia. This study provides some indirect
11 evidences and future studies with longitudinal data are needed to confirm this
12 hypothesis.

13 Time spent outdoors is known to be protective against myopia, but the
14 underlying mechanism remains elusive. Previous studies have primarily
15 focused on the role of light exposure during outdoor time,^{5,6} with some
16 suggesting that moderately bright light increases retinal dopamine levels,
17 thereby offering some protection against myopia.⁷ However, there are also
18 studies that challenged this hypothesis,^{8,9} which argued that light may not be
19 the actual mechanism.¹⁰ The spatial frequency characteristics of difference
20 scenes may be one of the missing drivers of the form deprivation myopia.³² Our
21 results suggested that eye movement behaviors differ during outdoor activity
22 compared to indoor and near work, such as reading. It's a new hypothesis that

1 these differences in eye movement behavior may be one factor contributing to
2 the effectiveness of outdoor activities in mitigating myopia progression. Further
3 research is warranted to investigate the role of eye movement in outdoor
4 activities and its potential correlation with myopia progression.

5 Previous studies on eye movement behaviors in different scenes have
6 primarily focused on the restorative effects, i.e., the recovery from mental
7 fatigue and stress, and their impact on the physiological and psychological
8 conditions of observers in natural scenes compared to urban and modern
9 architecture.^{33–36} These studies focused on visual attention towards targets, not
10 the eyeball. In contrast, this study examines the eyeball's movement behaviors
11 across different scenarios. Furthermore, we used a head-mounted eye tracker
12 to eliminate the effects of head movement, allowing us to measure eye
13 movement behaviors while subjects freely moved their heads and eyes. This
14 approach is different from other methods that restrict head movement to a small
15 range. Moreover, we employed VR technology to conduct the experiments.
16 Previous studies have shown that 3D cues are fundamentally different from
17 those in 2D pictures, which only provide intensity, texture, and color cues.³⁷ The
18 VR technology allowed subjects to observe the scene in a more immersive
19 manner, differing from other eye movement studies that used a laptop screen
20 to display a scene and asked the subject to view it from an aerial perspective,
21 which is far from reality.

1 In this study, especially in the indoor scenario, subjects were asked to
2 explore freely in the room. However, this is not typical behavior for most people
3 during indoor activities, which usually involve specific tasks. For example,
4 students usually remain indoors for academic activities such as attending
5 classes and studying. At home, they might engage in completing homework,
6 reading, or preparing for exams, along with other indoor leisure and screen time.
7 Therefore, real-life indoor scenarios often involve more near work compared to
8 the tasks in this study, likely resulting in a more pronounced downward gaze
9 due to these activities. However, even for free viewing tasks, subjects still move
10 their eyes more in the downward direction due to the region of interest or object
11 of interest being more concentrated below eye level, showing more downward
12 gaze and fixation behaviors. Further studies that accurately replicate everyday
13 indoor activities will enhance our understanding of eye movement behaviors in
14 indoor spaces.

15 We used gaze and fixation patterns to quantify eye movement behaviors
16 in this study. Prior studies have indicated that greater eye movement magnitude
17 is associated with increased traction force of the optic nerve,³⁸ thereby exerting
18 more force on the posterior sclera of the eyeball. However, the precise influence
19 of force duration at a specific magnitude remains unclear. It is plausible that
20 brief, instantaneous forces, such as those experienced during saccades, might
21 have a lesser effect on tissue growth and remodeling compared to a prolonged
22 period of sustained force of the same magnitude and cumulative duration during

1 fixation. Elucidating this requires a fundamental understanding of scleral growth
2 and remodeling processes. Further investigations into the sclera's response to
3 varying force magnitudes and durations are warranted to clarify this point.

4 **Conclusion**

5 This study identified unique patterns of eye movement across different
6 scenarios, with a notably higher frequency of downward gaze and fixation
7 during reading and indoor scenarios compared to outdoor settings. Such
8 persistent downward eye movements may be associated with an increased risk
9 of developing myopia, suggesting a potential link that warrants further
10 investigation.

11 **ACKNOWLEDGMENTS**

12 This research was supported by National Natural Science Foundation of
13 China (12272030, 12002025), Capital's Funds for Health Improvement and
14 Research (2022-2-5041), Beijing Natural Science Foundation (Z240017) and
15 the Fundamental Research Funds for the Central Universities.

16 **REFERENCES**

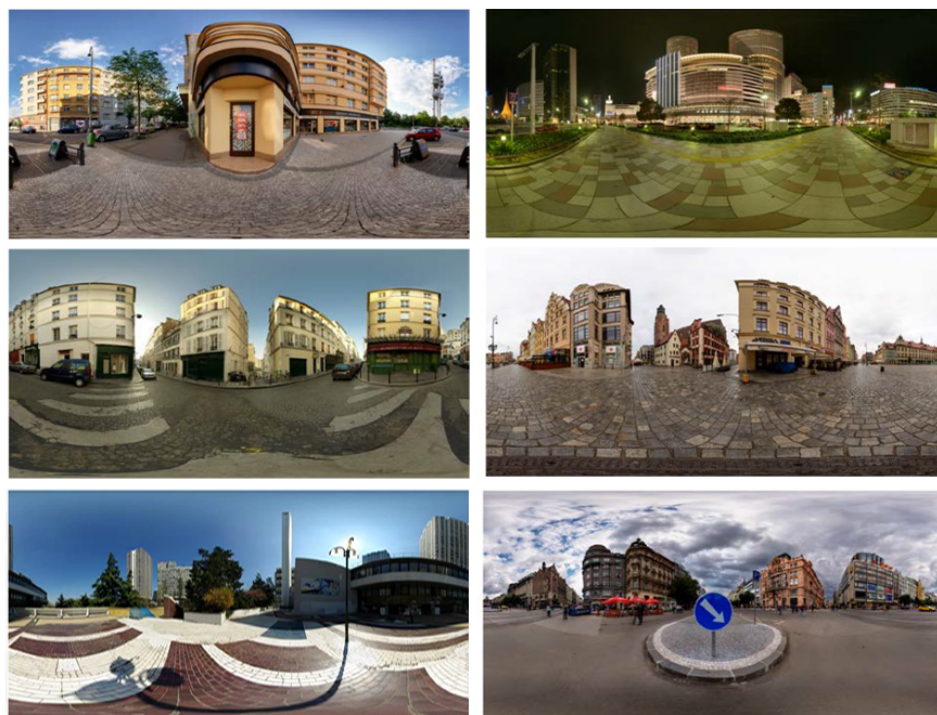
- 16 1. Ohno-Matsui K, Lai TYY, Lai CC, Cheung CMG. Updates of pathologic myopia. *Prog*
17 *Retin Eye Res.* 2016;52:156-187. doi:10.1016/j.preteyeres.2015.12.001
- 18 2. Morgan IG, French AN, Ashby RS, et al. The epidemics of myopia: Aetiology and
19 prevention. *Prog Retin Eye Res.* 2018;62:134-149.
20 doi:10.1016/j.preteyeres.2017.09.004
- 21 3. Yin G, Li JL, Ping T, Yan YL, Jonas JB. Outdoor activity and myopia progression in 4-
22 year follow-up of Chinese primary school children: The Beijing Children Eye Study.
23 *PLoS One.* 2017;12(4).

- 1 4. Dirani M, Tong L, Gazzard G, et al. Outdoor activity and myopia in Singapore teenage
2 children. *Br J Ophthalmol*. Published online 2009.
- 3 5. Cindy K, Scott AR. Correlation between light levels and the development of deprivation
4 myopia. *Invest Ophthalmol Vis Sci*. 2015;56(1):299-309.
- 5 6. Regan A, Arne O, Frank S. The Effect of Ambient Illuminance on the Development of
6 Deprivation Myopia in Chicks. *Invest Ophthalmol Vis Sci*. 2009;50(11):5348.
- 7 7. Feldkaemper M, Schaeffel F. An updated view on the role of dopamine in myopia. *Exp*
8 *Eye Res*. 2013;114(9):106-119.
- 9 8. Cohen Y. Development of Experimental Myopia in Chick in a Natural Environment.
10 *Invest Ophthalmol Vis Sci*. Published online 2016.
- 11 9. Zs A, Lfha B, Baa C, Kmb A, Elsia B. The development of and recovery from form-
12 deprivation myopia in infant rhesus monkeys reared under reduced ambient lighting.
13 *Vision Res*. 2021;183:106-117.
- 14 10. Ngo C, Saw SM, Dharani R, Flitcroft I. Does sunlight (bright lights) explain the
15 protective effects of outdoor activity against myopia? *Ophthalmic Physiol Opt*.
16 2013;33(3):368-372.
- 17 11. Saw SM, Gazzard G, Shih-Yen EC, Chua WH. Myopia and associated pathological
18 complications. *Ophthalmic Physiol Opt*. 2005;25(5):381-391. doi:10.1111/j.1475-
19 1313.2005.00298.x
- 20 12. Hepsen IF, Evreklioglu C, Bayramlar H. The effect of reading and near-work on the
21 development of myopia in emmetropic boys: a prospective, controlled, three-year
22 follow-up study. *Vision Res*. 2001;41(19):2511-2520. doi:10.1016/S0042-
23 6989(01)00135-3
- 24 13. Wang X, Rumpel H, Lim WEH, et al. Finite Element Analysis Predicts Large Optic
25 Nerve Head Strains During Horizontal Eye Movements. *Invest Ophthalmol Vis Sci*.
26 2016;57(6):2452-2462. doi:10.1167/iovs.15-18986
- 27 14. Wang X, Fisher LK, Milea D, Jonas JB, Girard MJA. Predictions of Optic Nerve Traction
28 Forces and Peripapillary Tissue Stresses Following Horizontal Eye Movements.
29 *Investig Ophthalmology Vis Sci*. 2017;58(4):2044. doi:10.1167/iovs.16-21319
- 30 15. Wang X, Beotra MR, Tun TA, et al. In Vivo 3-Dimensional Strain Mapping Confirms
31 Large Optic Nerve Head Deformations Following Horizontal Eye Movements. *Invest*
32 *Ophthalmol Vis Sci*. 2016;57(13):5825-5833. doi:10.1167/iovs.16-20560
- 33 16. Wang X, Chang S, Grinband J, et al. Optic nerve tortuosity and displacements during
34 horizontal eye movements in healthy and highly myopic subjects. *Br J Ophthalmol*.
35 2022;106(11):1596-1602. doi:10.1136/bjophthalmol-2021-318968

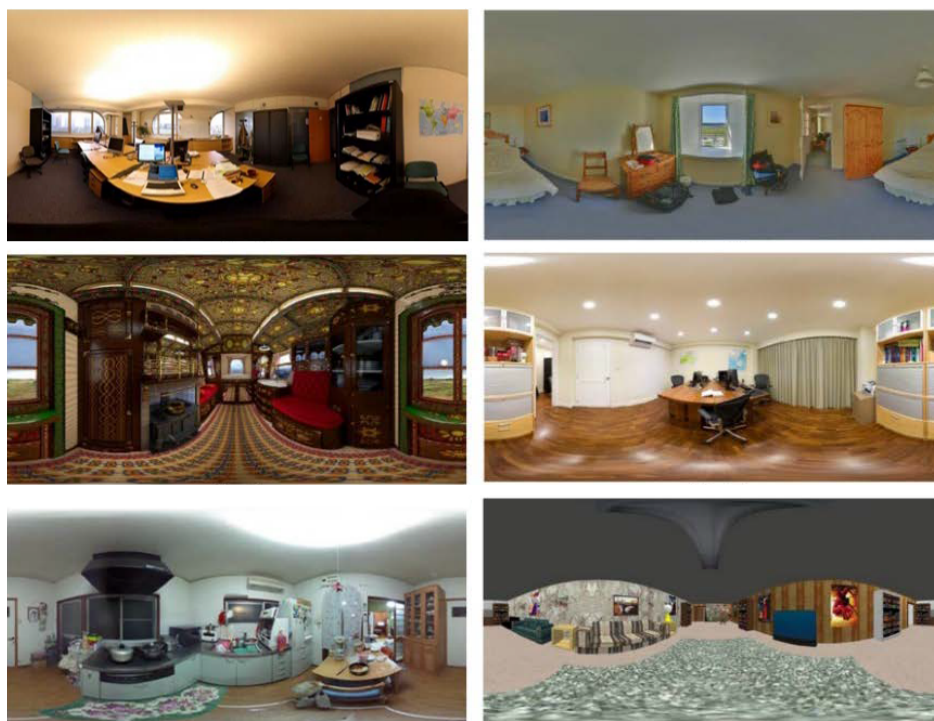
- 1 17. Demer JL, Clark RA, Suh SY, et al. Magnetic Resonance Imaging of Optic Nerve
2 Traction During Adduction in Primary Open-Angle Glaucoma With Normal Intraocular
3 Pressure. *Investig Ophthalmology Vis Sci*. 2017;58(10):4114. doi:10.1167/iovs.17-
4 22093
- 5 18. Demer JL. Optic Nerve Sheath as a Novel Mechanical Load on the Globe in Ocular
6 Duction. *Invest Ophthalmol Vis Sci*. 2016;57(4):1826-1838. doi:10.1167/iovs.15-18718
- 7 19. Ghosh A, Collins MJ, Read SA, Davis BA. Axial Length Changes with Shifts of Gaze
8 Direction in Myopes and Emmetropes. *Investig Ophthalmology Vis Sci*.
9 2012;53(10):6465. doi:10.1167/iovs.12-9973
- 10 20. Ghosh A, Collins MJ, Read SA, Davis BA, Chatterjee P. Axial elongation associated
11 with biomechanical factors during near work. *Optom Vis Sci*. 2014;91(3):322-329.
- 12 21. Bayramlar H, Çekiç O, Hepşen İF. Does convergence, not accommodation, cause
13 axial-length elongation at near? A biometric study in teens. *Ophthalmic Res*.
14 1999;31(4):304-308.
- 15 22. Cheng D, Woo GC, Drobe B, Schmid KL. Effect of bifocal and prismatic bifocal
16 spectacles on myopia progression in children: three-year results of a randomized
17 clinical trial. *JAMA Ophthalmol*. 2014;132(3):258-264.
- 18 23. Rai Y, Gutiérrez J, Callet PL. A Dataset of Head and Eye Movements for 360 Degree
19 Images. *Proc 8th ACM Multimed Syst Conf*. Published online 2017:205-210.
20 <https://doi.org/10.1145/3083187.3083218>
- 21 24. Salvucci DD, Goldberg JH. Identifying Fixations and Saccades in Eye-Tracking
22 Protocols. In: *Proceedings of the 2000 Symposium on Eye Tracking Research &*
23 *Applications*. ETRA '00. Association for Computing Machinery; 2000:71-78.
24 doi:10.1145/355017.355028
- 25 25. Imaoka Y, Flury A, de Bruin ED. Assessing Saccadic Eye Movements With Head-
26 Mounted Display Virtual Reality Technology. *Front Psychiatry*. 2020;11.
27 doi:10.3389/fpsy.2020.572938
- 28 26. Wang X, Koch S, Holmqvist K, Alexa M. Tracking the gaze on objects in 3D: how do
29 people really look at the bunny? *ACM Trans Graph*. 2018;37(6):1-18.
30 doi:10.1145/3272127.3275094
- 31 27. Naqshbandi K, Gedeon T, Abdulla UA. Automatic clustering of eye gaze data for
32 machine learning. In: *2016 IEEE International Conference on Systems, Man, and*
33 *Cybernetics (SMC)*. IEEE; 2016:001239-001244. doi:10.1109/SMC.2016.7844411
- 34 28. Chuangsuwanich T, Tun TA, Braeu FA, et al. Adduction induces large optic nerve head
35 deformations in subjects with normal-tension glaucoma. *Br J Ophthalmol*. Published
36 online April 3, 2023:bjo-2022-322461. doi:10.1136/bjo-2022-322461

- 1 29. Ambrosi D, Guana F. Stress-Modulated Growth. *Math Mech Solids*. 2007;12(3):319-
2 342. doi:10.1177/1081286505059739
- 3 30. Hoang QV, Wen Q, Paik DC, et al. Scleral growth stunting via sub-Tenon injection of
4 cross-linking solutions in live rabbits. *Br J Ophthalmol*. Published online 2021.
- 5 31. Bowrey HE, Zeng G, Dennis YT, et al. The effect of spectacle lenses containing
6 peripheral defocus on refractive error and horizontal eye shape in the guinea pig.
7 *Invest Ophthalmol Vis Sci*. 2017;58(5):2705-2714.
- 8 32. Flitcroft DI, Harb EN, Wildsoet CF. The Spatial Frequency Content of Urban and Indoor
9 Environments as a Potential Risk Factor for Myopia Development. *Investig*
10 *Ophthalmology Vis Sci*. 2020;61(11):42. doi:10.1167/iovs.61.11.42
- 11 33. Li C, Ge S, Wang R. Similarities and Differences in the Outsiders and Insiders' Visual
12 Preferences on Sacred Landscape. *Front Psychol*. 2022;13.
13 doi:10.3389/fpsyg.2022.743933
- 14 34. Abdi Sargezeh B, Tavakoli N, Daliri MR. Gender-based eye movement differences in
15 passive indoor picture viewing: An eye-tracking study. *Physiol Behav*. 2019;206:43-50.
16 doi:10.1016/j.physbeh.2019.03.023
- 17 35. Li C, Yuan Y, Sun C, Sun M. The Perceived Restorative Quality of Viewing Various
18 Types of Urban and Rural Scenes: Based on Psychological and Physiological
19 Responses. *Sustainability*. 2022;14(7). doi:10.3390/su14073799
- 20 36. Chen B, Gong C, Li S. Looking at buildings or trees? Association of human nature
21 relatedness with eye movements in outdoor space. *J Environ Psychol*.
22 2022;80:101756. doi:10.1016/j.jenvp.2022.101756
- 23 37. Liu C, Herrup K, Goto S, Shi BE. Viewing garden scenes: Interaction between Gaze
24 Behavior and Physiological Responses. *J Eye Mov Res*. 2020;13(1).
25 doi:10.16910/jemr.13.1.6
- 26 38. Suh SY, Le A, Shin A, Park J, Demer JL. Progressive Deformation of the Optic Nerve
27 Head and Peripapillary Structures by Graded Horizontal Duction. *Invest Ophthalmol*
28 *Vis Sci*. 2017;58(12):5015-5021. doi:10.1167/iovs.17-22596

FIGURES



Outdoor



Indoor

Figure 1. Panoramic images of the indoor and outdoor scenes used in this study. The outdoor scene primarily consists of urban open spaces and the indoor scenes feature various room spaces.

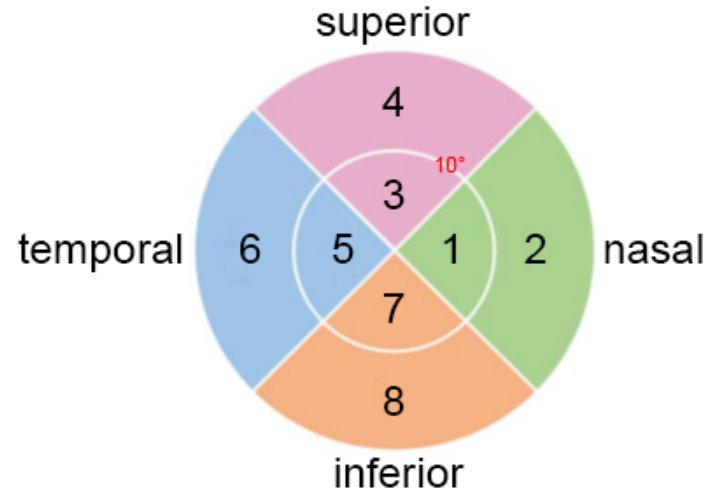


Figure 2. Illustration of the 8 regions of the visual field used in this study. The visual field was divided into four sectors: nasal, superior, temporal, and inferior. Each sector was further divided into two subregions, with a 10° boundary for central vision.

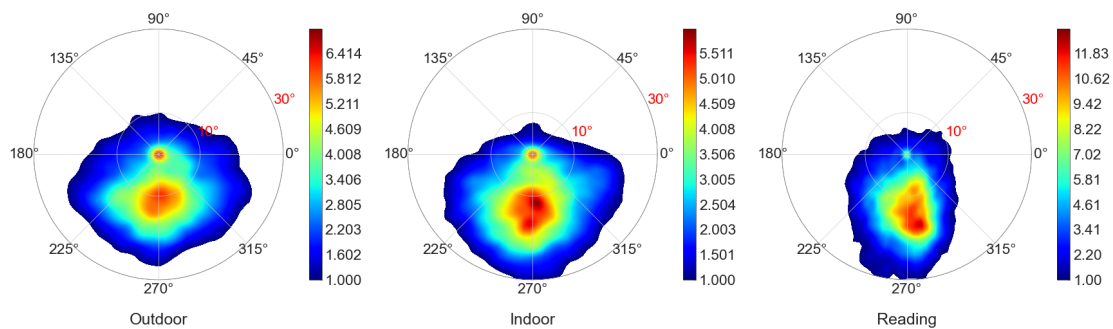


Figure 3. Gaze points probability density map on the visual field in all three scenarios. Note that the color scale ranges in each subfigure vary to better illustrate the relative distribution within each scenario.

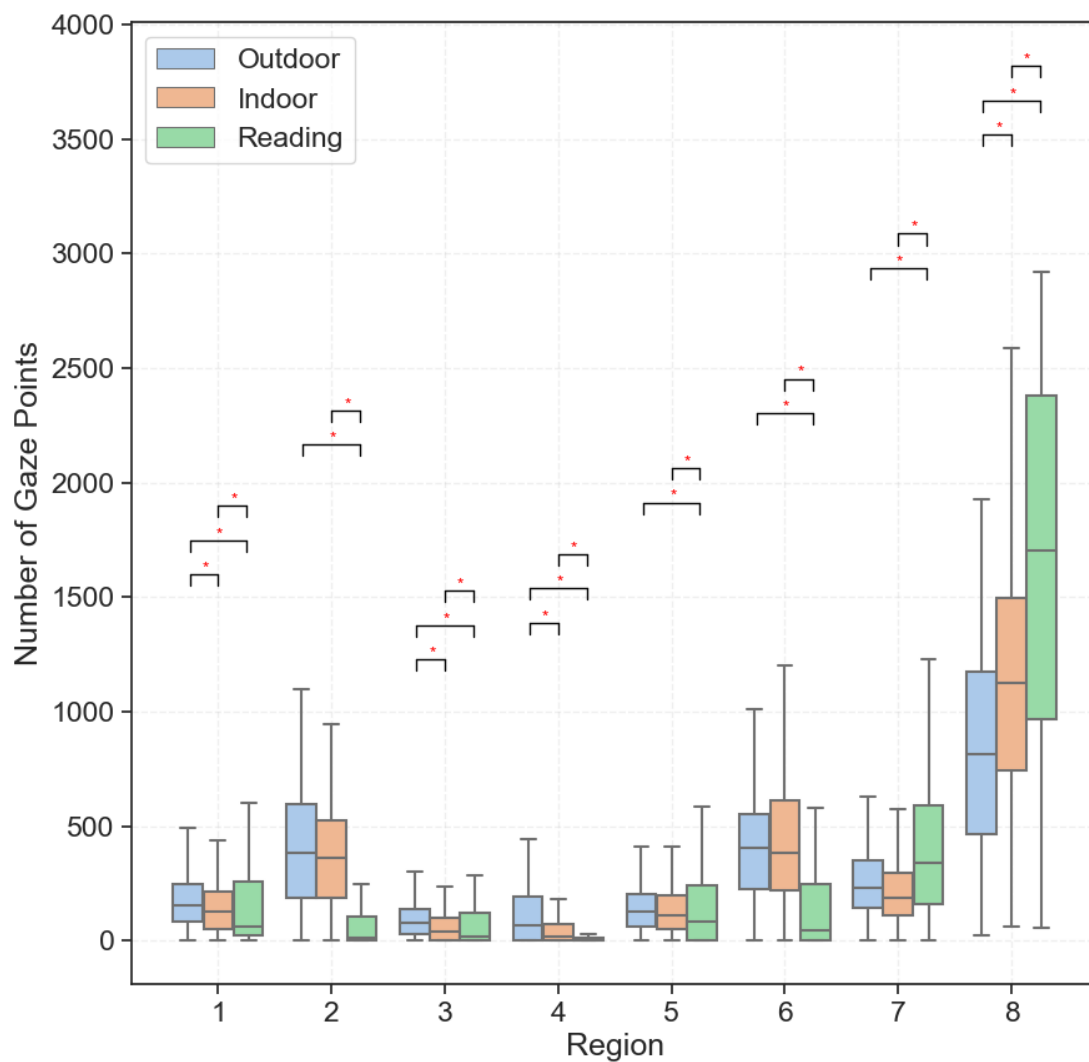


Figure 4. Box plot of the number of gaze points in different regions across all three scenarios. * indicates statistically significant differences.

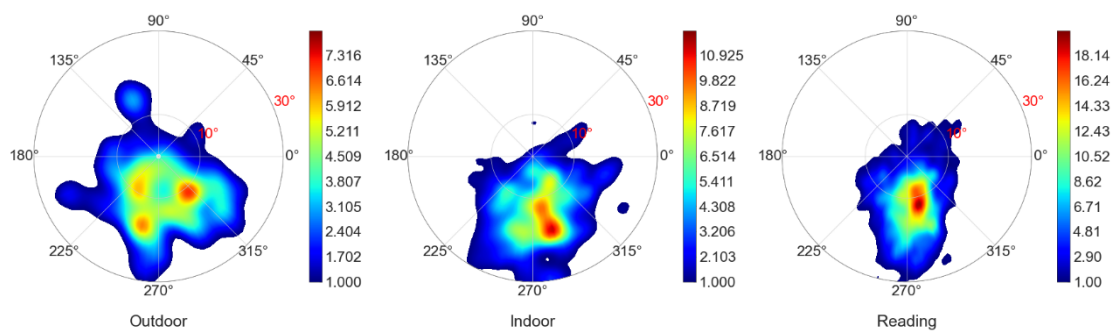


Figure 5. Fixation points probability density map on the visual field in all three scenarios. Note that the color scale ranges in each subfigure vary to better illustrate the relative distribution within each scenario.

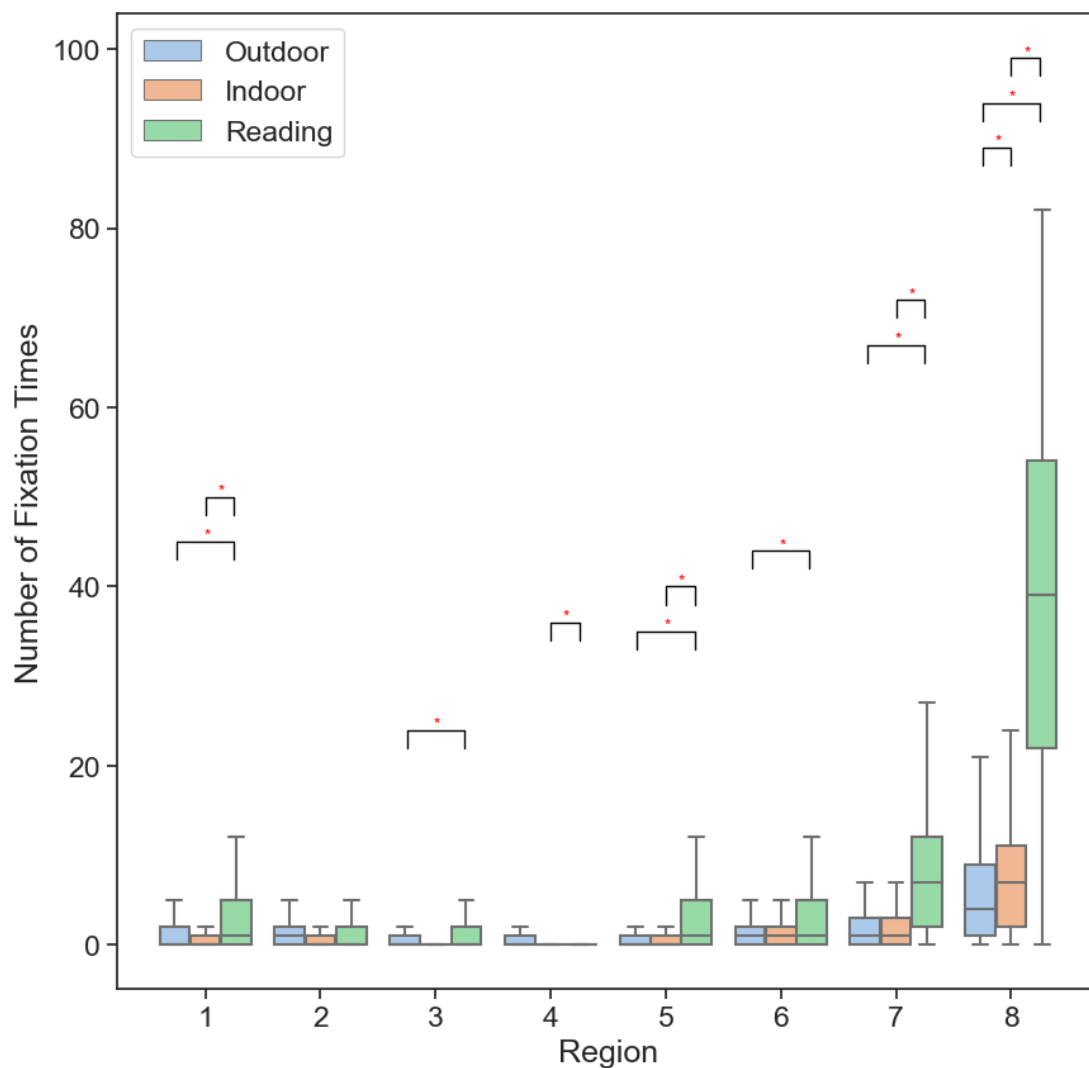


Figure 6. Box plot of the number of fixation times in different regions across all three scenarios. * Indicates statistically significant differences.

TABLES

Table 1. Number of gaze points and fixation times in region 8.

Scenarios	Number of gaze points	Number of fixation times
	Median (first quartile, third quartile)	Median (first quartile, third quartile)
Outdoor	816 (463, 1175)	4 (1, 9)
Indoor	1123 (743, 1497)	7 (2, 11)
Reading	1705 (966, 2382)	39 (22, 54)