

1 Association of natural induced antibodies against select Group B streptococcus surface proteins and  
2 invasive disease in early infancy

3 Sonwabile Dzanibe<sup>1,2</sup>, Alane Izu<sup>1</sup>, Ziyaad Dangor<sup>1,3</sup>, Gaurav Kwatra<sup>1,2,4</sup>, Peter V. Adrian<sup>1</sup>, Sheila Z.  
4 Kimaro Mlacha<sup>1</sup>, and Shabir A. Madhi<sup>1,3</sup>

5 Affiliation:

6 <sup>1</sup>South African Medical Research Council, Vaccines and Infectious Diseases Analytics Research Unit,  
7 Faculty of Health Sciences, University of the Witwatersrand, Johannesburg, South Africa.

8 <sup>2</sup> Division of Immunology, Department of Pathology, Institute of Infectious Diseases and  
9 Molecular Medicine, University of Cape Town, South Africa.

10 <sup>3</sup>Wits Infectious Diseases and Oncology Research Institute, Faculty of Health Sciences,  
11 University of the Witwatersrand, Johannesburg, South Africa

12 <sup>4</sup> Department of Clinical Microbiology, Christian Medical College, Vellore, India.

13 **Key words:** Group B *Streptococcus*; surface proteins; antibody; pregnant women; invasive disease

14 Word count: Abstract: 239 Text:

15 \*Corresponding author:

16 Shabir A. Madhi Email: [shabir.madhi@wits.ac.za](mailto:shabir.madhi@wits.ac.za)

17

18 **Abstract**

19 **Background:** Group B *streptococcus* (GBS) surface protein epitopes are potential targets for  
20 development of vaccines that could confer protection against invasive GBS disease (IGbsD) irrespective  
21 of the capsular serotype. The aim of this study was to determine the association of natural acquired  
22 mother-newborn GBS surface proteins specific serum IgG and IGbsD during early infancy (<90 days  
23 age).

24 **Methods** Clinical GBS isolates from 81 women who delivered either infant with IGbsD (n=38) and healthy  
25 controls (n=43) were assessed for surface expression of proteins Sip, GBS0393 and GBS206 using flow  
26 cytometry. Serum IgG titres to Sip, GBS0393 and GBS206 surface proteins were measured in paired  
27 maternal-infant sera on multiplex Luminex platform to determine IgG titres associated with reduce risk of  
28 IGbsD caused by GBS strains expressing homotypic protein.

29 **Results** Infant sera IgG GMT in IGbsD cases caused by strains expressing Sip and GBS2016 were lower  
30 (64 and 61 U/ml, respectively) compared to healthy controls born to women colonized by strains  
31 expressing the respective proteins (145 and 151 U/mL, respectively,  $p<0.01$ ). Moreover, increasing infant  
32 antibody titres against Sip and GBS2016 were associated with  $\geq 80\%$  adjusted disease risk (ADR)  
33 reduction to GBS isolates expressing homotypic proteins. Among women colonized with GBS isolates  
34 expressing GBS2106, mothers of cases had lower GBS2016-specific IgG GMT (249 U/mL) compared to  
35 mothers of controls (163 U/mL,  $\text{adj-}p=0.023$ ).

36 **Conclusion.** Increasing infant IgG titres to GBS2106 and Sip was associated with reduced IGbsD risk  
37 and therefore warranting further investigations as potential GBS vaccines and/or protein conjugants.

## 38 1. Introduction

39 Group B *Streptococcus* (GBS) is a leading cause of neonatal invasive disease, with a case fatality risk  
40 between 2-20% (1–4). Invasive GBS disease (IGbsD) is traditionally classified as early-onset (EOD, <7  
41 days of age) or late-onset disease (LOD, 7-90 days of age), reflecting possible differences in acquisition  
42 of GBS by the neonate and pathogenesis of illness. Maternal vaccination against GBS could theoretically  
43 prevent IGbsD in their infants, as suggested by reports on the inverse association between serotype-  
44 specific capsular antibody and risk for invasive GBS disease in infants born to women colonised with the  
45 homotypic serotype. (5–10). GBS capsular polysaccharide conjugated to protein carrier are being  
46 developed as vaccine candidates, including an experimental multivalent vaccine that was evaluated for  
47 safety and immunogenicity in pregnant and non-pregnant women. (11–14). The polysaccharide-protein  
48 conjugate vaccines are, however, serotype specific (currently targeting six of the 10 known GBS  
49 serotypes) (14,15), and have been expensive to produce.

50 Theoretically GBS common protein antigens either alone, or as protein conjugates to the capsular  
51 polysaccharide, could expand protection against a greater diversity of serotypes. Also, the protein  
52 epitopes could elicit antibody responses that may act synergistically with serotype-specific capsular  
53 antibody, enhancing the efficacy compared to conjugate vaccines using non-GBS protein epitopes as the  
54 conjugating protein.

55 Here, we investigated the absolute disease risk reduction (ADRR) of paired infant-maternal serum IgG to  
56 GBS surface proteins Sip, GBS0393 and GBS2106 between IGbsD due to strains expressing homotypic  
57 protein antigens in young infants (<90 days age) and matched controls. We show that increasing antibody  
58 titres against a novel GBS2106 surface protein in infant sera was associated with  $\geq 80\%$  IGbsD risk  
59 reduction.

60

## 61 2. Methods

### 62 2.1. Study population

63 We retrospectively analysed serum samples from young infants (<90 days age) and their mothers (Table  
64 1) that were previously enrolled in a case-control study investigating the association of capsular serotype-  
65 specific antibody and invasive GBS disease (10). Briefly, infants <90 days of age with GBS cultured from  
66 either blood, cerebrospinal fluid or other normally sterile sites were enrolled together with their mothers.  
67 Healthy young infants without invasive GBS disease were enrolled as the control group, matched for  
68 maternal HIV status, maternal age ( $\pm 2.5$  years), gestational age ( $\geq 37$  weeks or  $\pm 2$  weeks for preterm),  
69 and age of disease onset in the cases (<6 days for EOD or  $\pm 14$  days for LOD). Lower vaginal and rectal  
70 swabs were collected from the mothers at enrolment to determine GBS colonisation status and  
71 serotyping of GBS isolates was done by latex agglutination test as described (10). We limited our analysis  
72 to 83 women who had term deliveries ( $\geq 37$  weeks gestation) and were matched for colonizing serotype  
73 between mothers of cases and controls prior assessing protein surface expression.

### 74 2.2. Recombinant proteins

75 Putatively immunogenic surface proteins were identified *in silico* using the genome sequence of  
76 *Streptococcus agalactiae* NEM316 as previously described (16). Genes encoding proteins Sip,  
77 GBS0393, GBS1356 and GBS2106 were cloned into *E. coli*, recombinantly produced and purified using  
78 Ni<sup>2+</sup> affinity columns for serological testing as previously described (16).

### 79 2.3. Quantification of antibodies against GBS surface proteins

80 Purified recombinant proteins were desalted using PD-10 columns (GE Healthcare, Germany) and 50  
81  $\mu\text{g/mL}$  of each protein was coupled to unique microbeads (Bio-Rad, Hercules, CA) using an adaptation  
82 of Pickering et al. protocol (17). Sera was diluted 1:200 in PBS, 10% fetal bovine serum, 0.05% NaN<sub>3</sub>  
83 (PBS-FN) and mixed with an equal volume of protein-coupled beads. Bound antibodies were detected  
84 with goat anti-human IgG conjugated to R-phycoerythrin (Jackson ImmunoResearch, USA). Protein

85 specific IgG in maternal and infant sera were measured using Bio-plex 200 (Bio-Rad, Hercules, CA) in a  
86 multiplex immunological assay as described (16), and titres reported as arbitrary units per mL (U/mL).

#### 87 *2.4. Generation of GBS protein specific polyclonal antibodies*

88 Purified GBS proteins Sip, GBS0393, GBS1356 and GBS2106 were used to generate protein specific  
89 polyclonal antibodies in 6-week old female New Zealand white rabbits. The rabbits were injected  
90 subcutaneously with 250 µg of the recombinant proteins emulsified in complete Freud's adjuvant followed  
91 by two booster doses containing incomplete Freud's adjuvant at day 28 and 42 post primary  
92 immunisation. Blood was harvested by exsanguination at day-56 and isolated sera stored at -20°C.

#### 93 *2.5. Bacterial surface staining*

94 Clinical GBS isolates were cultured at 37°C in Todd Hewitt medium (Davies Diagnostics, South Africa)  
95 until OD<sub>600nm</sub> of 0.5. The cultures were washed with PBS and fixed using PBS, 0.1% paraformaldehyde  
96 solution at 37°C for 1 h and at 4°C for ~16 h. The fixed bacterial cells were washed twice with PBS and  
97 50 µL of the bacterial cells (OD<sub>600nm</sub> of 0.1) were incubated with 50 µL of PBS, 20% fetal calf serum and  
98 0.1% bovine serum albumin (PBS-FB) for 20 min. Bacterial samples were mixed with 100 µL of rabbit  
99 sera diluted 1:200 in PBS-FB and incubated for 1 h at 4°C. Cells were washed with PBS, 0.1% bovine  
100 serum albumin and stained with 50 µL of anti-rabbit IgG conjugated to R-phycoerythrin (Jackson  
101 ImmunoResearch, USA) diluted 1:200 in PBS-FB. Stained bacterial cells were washed, resuspended in  
102 200 µL and inspected by flow cytometry (FACS Calibur, Becton-Dickinson Bioscience). Results were  
103 analyzed using FlowJo software (version 10.1r5, Tree Star Inc., CA).

#### 104 *2.6. Statistical analysis*

105 The data was analysed using R (version 3.5 R Core Team, Vienna, Austria) and STATA software (version  
106 13.0 Stata-Corp, Tx USA). IgG antibody titres measured in both infant and maternal sera were log10  
107 transformed for parametric statistical comparisons and reported as geometric mean titres (GMT, U/mL).  
108 Student's t-test was used to compare serum IgG GMT in infants without IGbsD born to colonized

109 (colonized controls) and in infants with IGbsD (cases); and similarly, so in their mothers. All IgG titres to  
110 Sip, GBS0393 and GBS2106 were compared between cases and controls colonised with GBS strains  
111 expressing homotypic protein. Maternal age, maternal HIV status, gestational age and premature rupture  
112 of membrane were adjusted using multivariate regression. Fisher's exact test was used to compare  
113 proportions between groups. P-value < 0.05 was considered statistically significant.

114 Reverse cumulative plots (RCP) and stratified log rank tests were used to compare IgG distribution  
115 between cases and controls colonised with GBS strains expressing homotypic proteins. Where  
116 significant differences were found, we estimated the Absolute Disease Risk Reduction (ADRR) over a  
117 range of possible antibody concentrations using both a parametric (18) and non-parametric approach  
118 (19) For parametric estimation, we fit a Bayesian model assuming antibody concentrations for both cases  
119 and controls follow a Weibull distribution and disease incidence follows a Beta(25,25000) distribution,  
120 which is centred at 0.001.

## 121 *2.7. Ethics*

122 Informed consent was obtained from all study participants at enrolment in the original study, which  
123 included consent for future use of archived samples for further studies contingent upon approval by the  
124 Ethics committee. This study was approved by the Human Research Ethics Committee at the University  
125 of Witwatersrand (Approval number: M140902). Animal use for generating polyclonal antibodies was  
126 approved by the Animal Ethics Screening Committee of the University of Witwatersrand (Approval  
127 number: 2015/05/20/B).

128

129 Table 1 Demographic characteristics for mother-infant pairs colonised with group B Streptococcus isolates expressing either Sip, gbs2106 or gbs0393 on the bacterial surface.

	<b>SIP</b>			<b>GBS2106</b>			<b>GBS0393</b>		
	Case (n=27)	Colonized Control (n=30)	p-value	Case (n=38)	Colonized Control (n=38)	p-value	Case (n=34)	Colonized Control (n=37)	p-value
<b>Maternal</b>									
Median age in years (IQR)	25.8 (22.5-31.9)	25 (21.1-30.1)	0.313	28 (23.5-31.6)	25.3 (21.1-29.4)	0.106	27.2 (23.5-31.6)	25.9 (21.4-30.4)	0.400
Median parity (IQR)	1 (0-2)	0 (0-1)	0.163	1 (0-2)	0 (0-1)	0.028	1 (0-2)	0 (0-1)	0.056
Median gravidity (IQR)	2 (1-3)	1.5 (1-2)	0.145	2 (1-3)	2 (1-2)	0.048	2 (1-3)	2 (1-2)	0.086
PROM $\geq$ 18h (%)	3 (13.6)	1 (3.6)	0.308	3 (9.7) n=31	2 (5.9) n=34	0.663	3 (10.0) n=30	2 (6.1) n=33	0.662
Colonising serotype (%)									
Ia	11 (40.7)	15 (39.5) <sup>†</sup>		14 (36.8)	16 (34.8) <sup>†</sup>		14 (41.2)	19 (42.2) <sup>†</sup>	
Ib	2 (7.4)	2 (5.3) <sup>†</sup>		2 (5.3)	3 (6.5) <sup>†</sup>		2 (5.9)	3 (6.7) <sup>†</sup>	
II	1 (3.7)	2 (5.3) <sup>†</sup>		1 (2.6)	3 (6.5) <sup>†</sup>		1 (2.9)	3 (6.7) <sup>†</sup>	
III	10 (37.0)	12 (31.6) <sup>†</sup>		18 (47.4)	17 (37.0) <sup>†</sup>		14 (41.2)	13 (28.9) <sup>†</sup>	
V	3 (11.1)	7 (18.4) <sup>†</sup>	0.932	3 (7.9)	7 (15.2) <sup>†</sup>	0.732	3 (8.8)	7 (15.6) <sup>†</sup>	0.747
HIV-infected (%)	11 (40.7)	10 (33.3)	0.594	18 (47.4)	12 (31.6)	0.240	17 (50.0)	12 (32.4)	0.154

<i>Median CD4 cells/<math>\mu</math>L (IQR)</i>	387 (260-659)	550 (339-680)	0.518	385 (294-605)	384 (308-685)	>0.999	383 (280-620)	381 (295-515)	0.796
<b>Infant</b>									
<i>Median gestational age (IQR)</i>	40 (38.5-40.5)	39.2 (38.5-40.5)	0.749	40 (39-40.5)	40 (39-40.4)	0.527	40 (38.7-40.6)	39.5 (39-40.3)	0.544
<i>37 weeks (%)</i>	0 (0.0)	0 (0.0)	>0.999	0 (0.0)	0 (0.0)	>0.999	0 (0.0)	0 (0.0)	>0.999
<i>Median birth weight in grams (IQR)</i>	3010 (2800-3243)	3080 (2874-3446)	0.392	3080 (2846-3365)	3110 (2918-3484)	0.557	3060 (2809-3388)	3105 (2925-3450)	0.530
<i>&lt;2500 (%)</i>	1 (3.7)	0 (0.0)	0.474	1 (2.6)	0 (0.0)	>0.999	1 (2.9)	0 (0.0)	0.479
<i>Invasive disease onset</i>									
<i>LOD (%)</i>	12 (44.4)	15 (50.0)		18 (47.4)	19 (50.0)		15 (44.1)	17 (45.9)	
<i>EOD (%)</i>	15 (55.6)	15 (50.0)	0.792	20 (52.6)	19 (50.0)	>0.999	19 (55.9)	20 (54.1)	>0.999

130

131 †There were four women colonised with multiple GBS serotypes: Ia and Ib; Ia and V; II and III; II and V.

132 \*There was no difference between expression of protein and disease status, stratified by serotype

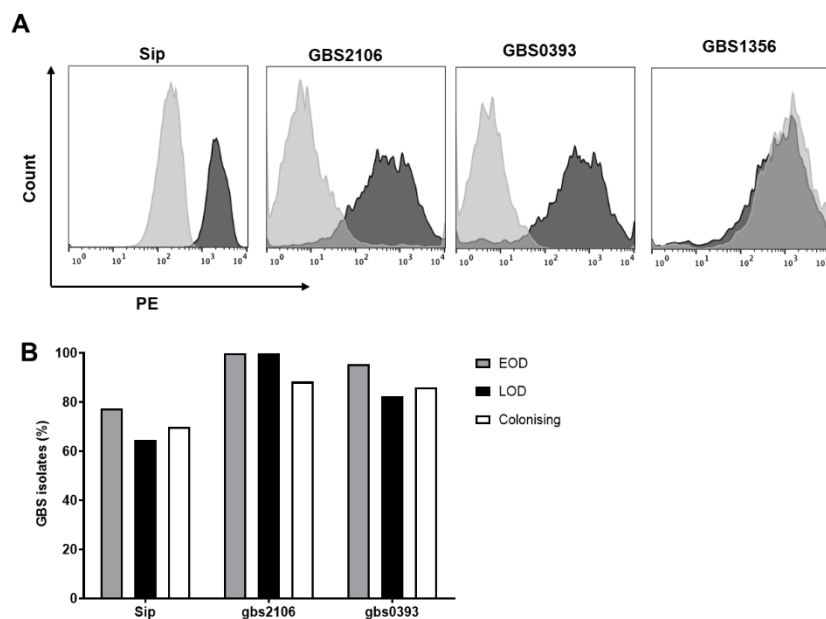


133

### 134 3. Results

#### 135 *Surface protein expression on clinical GBS isolates*

136 Using flow cytometry, we assessed the expression of Sip, GBS0393, GBS1356 and GBS2106 on the  
137 surface of *S. agalactiae* NEM316, a strain from which the recombinant proteins were cloned. Bacteria  
138 were stained with rabbit anti-sera collected pre- and post-immunisation, and the difference in  
139 fluorescence signal intensity used to measure accessibility of protein on the surface of GBS. Antibody  
140 binding on the surface of GBS bacteria were  $\geq 6$ -fold higher in antigen specific sera compared to pre-  
141 immunisation sera (control) for Sip, GBS0393 and GBS2106 (Figure 1A). No difference in fluorescence  
142 intensity was observed between control (pre-immunization) and anti-sera (post-immunization) for  
143 GBS1356 and therefore omitted from further analysis.



**Figure 1** Expression of proteins on surface of Group B streptococcus (GBS) clinical isolates. A) Binding of antibodies using antigen specific antisera (red) compared to the corresponding pre-immunisation sera (blue) to assess expression of each protein on the surface of GBS serotype III NEM316 strain. B) Distribution of surface proteins on GBS isolates from mothers of infants who remained healthy (white) or those that developed EOD (grey) and LOD (black).

144

145 GBS isolates collected from 83 mothers who were colonized at delivery were assessed for surface  
 146 expression of proteins Sip, GBS0393 and GBS2106. Of the 83 GBS isolates screened (38 from case  
 147 mothers and 43 from control mothers), Sip, GBS0393 and GBS2106 were expressed in 70.2%, 94% and  
 148 89.3% isolates, respectively. The demographic characteristics of mother-infant pairs whose colonizing  
 149 GBS isolate expressed the measured proteins were similar between cases and controls (Table 1). Sip  
 150 was expressed in 72.5% and 69.8% of case and controls isolates, respectively. GBS2106 protein was  
 151 expressed in 100% of GBS strains isolated from mothers of cases and by 88.4% of controls. GBS0393  
 152 protein was expressed in 90.0% and 86.0% in GBS strains isolated from mothers of cases and mothers  
 153 of control, respectively (Figure 1B).

154 *Antibody titres against GBS surface proteins in infant sera*

155 Antibody titres against Sip, GBS0393 and GBS2106 were compared between case and control infants  
 156 born to mothers colonized with GBS strains expressing homotypic proteins. IgG GMT were observed to  
 157 be significantly lower in case infants compared to controls for Sip and GBS2106 (Table 2). GBS0393  
 158 specific IgG GMT were similar between the two groups of infants (Table 2). Similarly, when infants were  
 159 stratified by IGbsD status and matching controls, IgG GMT for Sip and GBS2106 were lower in EOD and  
 160 LOD compared to corresponding healthy controls, whereas no statistically significant differences were  
 161 observed for GBS0393 IgG (Figure 2).

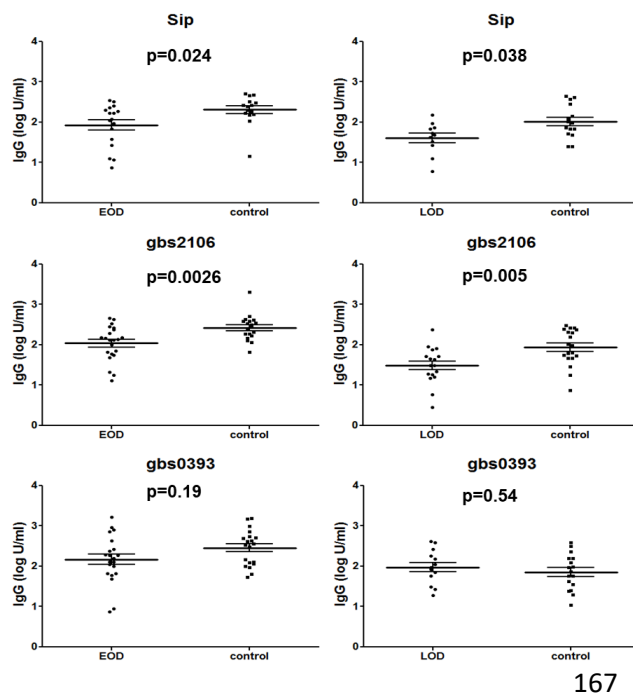
162 Table 2: Antibody levels against Sip, gbs2106 and gbs0393 in women of cases and controls as well as infant cases and  
 163 infant controls.

164

	<i>protein</i>	<b>Case (GMT, AU/mL)</b>	<b>Colonized (GMT, AU/mL)</b>	<b>Adjusted p-value<sup>1</sup></b>	<b>Log-rank p-value</b>
<i>infant</i>	sip	64 (40,102) n=27	145 (102,207) n=30	<b>0.008</b>	<b>0.004</b>
<i>infant</i>	gbs2106	61 (41,91) n=38	151 (107,213) n=38	<b>0.001</b>	<b>0.004</b>
<i>infant</i>	gbs0393	119 (78,181) n=34	150 (100,225) n=37	0.928	0.506
<i>mom</i>	sip	212 (143,315) n=27	268 (205,350) n=30	0.723	0.782
<i>mom</i>	gbs2106	163 (126,210) n=38	249 (197,313) n=38	<b>0.023</b>	<b>0.084</b>
<i>mom</i>	gbs0393	504 (331,769) n=34	370 (289,474) n=37	0.083	0.091

165 <sup>1</sup> adjusted for maternal age, maternal hiv status, serotype and PROM≥18h

166

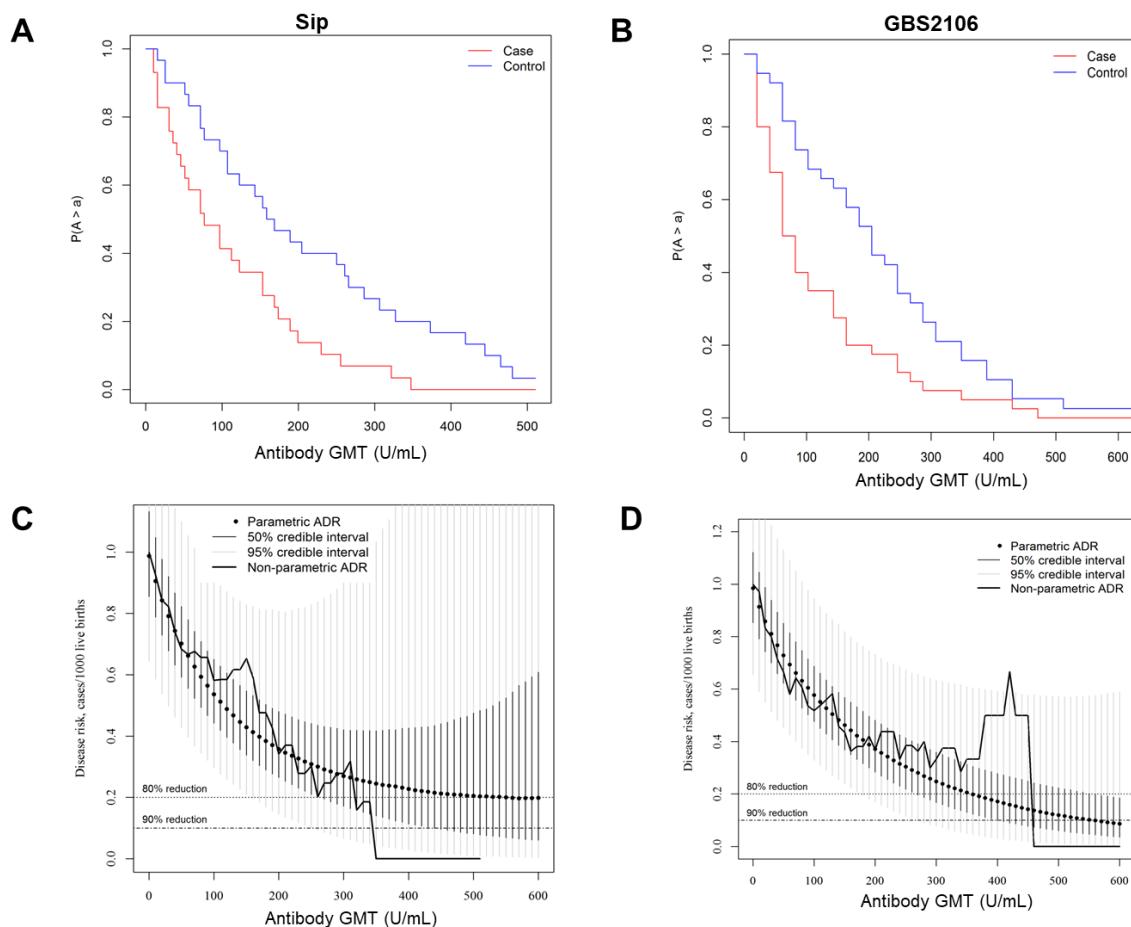


**Figure 2** Comparison of IgG against GBS surface in infants born to mothers colonised with GBS strain expressing the respective protein between those who developed EOD or LOD and their corresponding controls.

167

168 Since the reverse cumulative plots (RCP) of antibodies were significantly different between case and  
169 control infants for Sip and GBS2106 (Figure 3A & B), we estimated absolute disease risk (ADR) for IgG  
170 titres against Sip and GBS2106 in infants using parametric and non-parametric Bayesian modelling.  
171 Figure 3C shows the parametric and non-parametric estimation of ADR associated with Sip antibodies.  
172 The parametric estimated ADR decreases with increasing Sip antibodies and steadily levels off at 2 cases  
173 per 1000 live births. Antibody titres associated with a 90% ADR reduction were not found using the  
174 parametric model. Although for non-parametric modelling, the estimated ADR continuously decreased  
175 with increasing antibody titres, and titres of 260 U/mL and 330 U/mL were associated with an 80% and  
176 90% ADR reduction, respectively (Figure 3C). For GBS2106, the parametric estimation of the ADR  
177 monotonically decreased, and antibody titres associated with 80% and 90% reduction are 360 U/mL and  
178 560 U/mL, respectively (Figure 3D). The non-parametric ADR curve decreases with increasing antibody  
179 titres, although as antibody titres approaches 400 U/mL, ADR increases as cases and control RCP  
180 converges. Due to the convergent of RCP for cases and controls as GBS2106 titres exceed 400 U/mL,

181 the non-parametric estimated antibody titre associated with 80% and 90% reductions was both  
182 approximately 460 U/mL (Figure 3D).



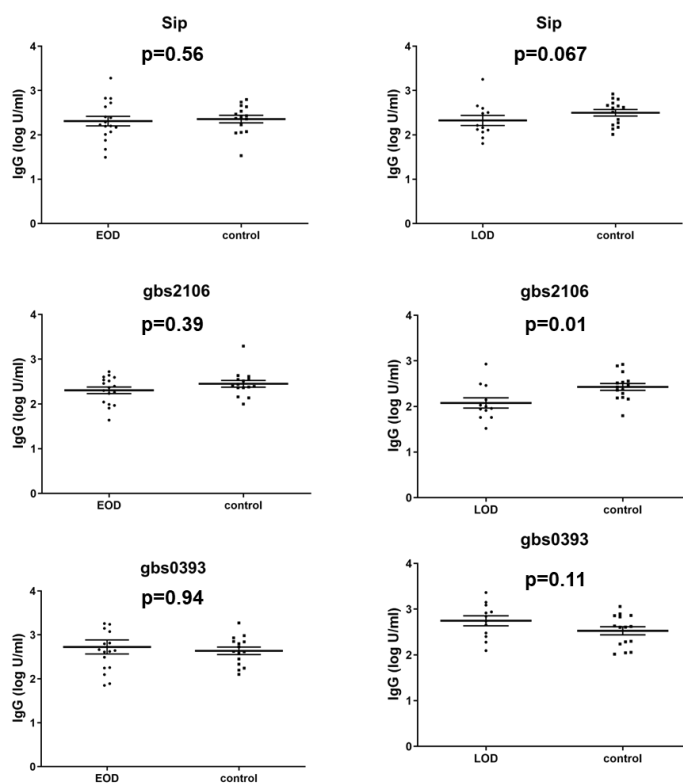
**Figure 3** Infant IgG titre associated with reduced risk of invasive group B Streptococcus disease (IGbsD). A & B Reverse cumulative distribution of IgG GMT (U/mL) against Sip and gbs02106 proteins in infant (<90 days of age) that remained healthy (blue) and those developed IGbsD (red). C, D Absolute disease risk (ADR) for IgG titres against Sip and GBS2106 in infants estimated using parametric and non-parametric Bayesian modelling

183

#### 184 *Antibody titres against GBS surface proteins in maternal sera*

185 When comparing antibody titres for Sip, GBS0393 and GBS2106 between mothers of cases and controls  
186 colonized with GBS strains expressing homotypic protein, we observed significantly lower IgG GMT for  
187 GBS2106 in case mothers compared to control mothers, albeit not statistically significant when adjusting  
188 for co-factor variates (Table 2). IgG GMT for Sip and GBS0393 did not differ between case mothers and

189 case controls. Further stratification of maternal IgG GMT by infant IGbsD classification, revealed  
190 significantly lower GBS2016-specific IgG GMT in mothers of LOD compared to match-controls (Figure  
191 4). A similar trend was observed for IgG GMT against Sip, being lower in mothers of LOD compared to  
192 controls, albeit not statistically significant (Figure 4).



**Figure 4** Comparison of maternal IgG against GBS surface proteins between mothers who delivered infants that developed either EOD or LOD and their corresponding controls colonized GBS strains expressing homotypic proteins.

193

## 194 Discussion

195 Here we show that increasing antibodies for Sip and GBS2106 proteins in infants born to GBS colonised  
196 mothers were associated with reduced risk of developing invasive GBS disease. Using Bayesian models  
197 described by Carey *et al.* and Fabbrini *et al.* (18,19), putative antibody thresholds associated with 80-  
198 90% reduction of invasive GBS disease in infants were computed to be 260-330 U/mL for Sip and 360-  
199 560 U/mL for GBS2106. Although this was an explorative analysis, these findings support the role of GBS  
200 proteins contribution to disease protection corroborating murine studies (20,21). Association between  
201 naturally induced antibodies against GBS surface protein and disease risk in infants have been previously

202 reported for Rib, FbsA and pilus island proteins (19,22,23), however no protective thresholds could be  
203 estimated in these studies.

204 Infants who developed EOD or LOD in turn had lower antibody titres against Sip and GBS2106 proteins  
205 compared to controls, further highlighting the importance of these proteins in GBS disease. Although Sip  
206 and GBS2016 are seemingly promising GBS vaccine candidates these results should be interpreted with  
207 extreme caution. Other factors such as gestational age, HIV infection and density of GBS colonisation  
208 could affect antibody levels in new-born infants. Trans-placental transfer of antibodies during pregnancy  
209 are highest  $\geq 36$  weeks of gestation and consequently pre-term infants would have received quantitatively  
210 lower protective antibodies. Maternal HIV infection impedes active transfer of IgG across the placenta  
211 (24) and we have previously demonstrated reduced trans-placental transfer of antibodies to GBS surface  
212 proteins including for Sip and GBS2106 of HIV-exposed uninfected infants (25). Whether colonising  
213 density of GBS in mothers increases transmission and/or risk of disease in infants remains to be known.  
214 Detection of GBS in urine of pregnant women was correlated with increasing grade of chorioamnionitis  
215 (26), a known risk factor for invasive GBS disease in their infants. Thus, we are cognisant of the possibility  
216 that the severity of GBS disease in the infants could also lead to the depletion of circulating antibodies  
217 resulting in the observed study outcomes.

218 In our study we used an in-house reference sera for reporting antibody titres and protective threshold that  
219 would otherwise vary by study setting and assay method. These proteins would need to be tested using  
220 standardized reference sera to determine universal protective threshold if any. Also, the observed  
221 association between protein specific antibodies and invasive GBS disease in our setting could be a proxy  
222 for capsular polysaccharide immunity previously shown to reduce the risk of GBS disease (10). Therefore,  
223 future studies would need to measure antibody-mediated killing induced by GBS proteins to further  
224 strengthen their role in protection against invasive disease.

225 Given the low incidence of GBS disease in the population, attempts to prove efficacy of a vaccine would  
226 require an infeasibly large sample size that would ultimately impeding vaccine licensure (27). An  
227 alternative pathway ought to expedite vaccine licensure would be to establish antibody levels associated  
228 with reduced risk of invasive GBS disease in infants. This approach has been illustrated in several studies  
229 which have reported that infants born to mothers with low circulating antibodies against GBS capsular  
230 polysaccharides have an increased risk of developing EOD GBS disease (7–10,19,28).

231 Therefore, in order for an antigen to be considered as a potential vaccine target against invasive GBS  
232 disease based on serological correlates of protection; the antigen should (i) be highly immunogenic, (ii)  
233 antigen-specific antibodies must efficiently cross the placenta, (iii) confer protection to both the mother  
234 and infant, (iv) antibodies must persist throughout infancy and (iv) possess a broad-spectrum target  
235 against disease causing GBS serotypes. Sip and GBS2106 are highly promising vaccine candidates,  
236 fulfilling at least 4/5 of the stipulated criteria. Both proteins were shown to be highly immunogenic GBS  
237 proteins (29), and in the absence of maternal HIV-infection, IgG against these proteins were efficiently  
238 transferred across the placental (30). Manning *et al.* reported that antibodies against Sip in infants  
239 persisted throughout infancy being detectable up until 6 months of age (31). Among the GBS clinical  
240 isolates analysed for the surface exposure of Sip and GBS2106,  $\geq 71\%$  isolates across all serotypes  
241 expressed these proteins. Here, we demonstrated that increasing maternal antibodies were associated  
242 with GBS disease reduction. Moreover, an oral based vaccine formulation of Sip was able to clear GBS  
243 vaginal colonization (32). We have previously shown that acquisition of GBS colonisation at the female  
244 genitourinary tract significantly increased systemic antibodies against Sip more so than when GBS  
245 acquisition occurred at the rectal tract (33). Therefore, Sip and gbs2106 fulfil most if not all criteria for an  
246 ideal GBS vaccine warranting inclusion as future vaccine candidates.

247

248

249

## 250 **References**

- 251 1. Edmond KM, Kortsalioudaki C, Scott S, Schrag SJ, Zaidi AKM, Cousens S, et al. Group B  
252 streptococcal disease in infants aged younger than 3 months: systematic review and meta-  
253 analysis. *Lancet*. 2012 Jan 4;379(9815):547–56.
- 254 2. Le Doare K, Heath PT. An overview of global GBS epidemiology. *Vaccine*. 2013 Aug 28;31  
255 Suppl 4:D7-12.
- 256 3. Dagnew AF, Cunningham MC, Dube Q, Edwards MS, French N, Heyderman RS, et al. Variation  
257 in reported neonatal group B streptococcal disease incidence in developing countries. *Clin Infect*  
258 *Dis*. 2012;55(1):91–102.
- 259 4. Liu L, Oza S, Hogan D, Perin J, Rudan I, Lawn JE, et al. Global, regional, and national causes  
260 of child mortality in 2000–13, with projections to inform post-2015 priorities: an updated  
261 systematic analysis. *Lancet*. 2015;385(9966):430–40.
- 262 5. Baker CJ, Edwards MS, Kasper DL. Role of antibody to native type III polysaccharide of group B  
263 *Streptococcus* in infant infection. *Pediatrics*. 1981 Oct;68(4):544–9.
- 264 6. Baker CJ, Reznik MA, Kasper DL. Response to Type III Polysaccharide in Women whose  
265 Infants have had Invasive Group B *Streptococcal* Infection. *N Engl J Med*. 1990;322(26):1857–  
266 60.
- 267 7. Lin F-YCY, Philips III JB, Azimi PH, Weisman LE, Clark P, Rhoads GG, et al. Level of maternal  
268 antibody required to protect neonates against early-onset disease caused by group B  
269 *Streptococcus* type Ia: a multicenter, seroepidemiology study. *J Infect Dis*. 2001 Oct  
270 15;184(8):1022–8.



- 271 8. Lin F-YC, Weisman LE, Azimi PH, Philips JB, Clark P, Regan J, et al. Level of maternal IgG  
272 anti-group B streptococcus type III antibody correlated with protection of neonates against early-  
273 onset disease caused by this pathogen. *J Infect Dis.* 2004 Sep 1;190(5):928–34.
- 274 9. Baker CJ, Carey VJ, Rench M a., Edwards MS, Hillier SL, Kasper DL, et al. Maternal antibody at  
275 delivery protects neonates from early onset group B streptococcal disease. *J Infect Dis.*  
276 2014;209(5):781–8.
- 277 10. Dangor Z, Kwatra G, Izu A, Adrian P, Cutland CL, Velaphi S, et al. Correlates of protection of  
278 serotype-specific capsular antibody and invasive Group B Streptococcus disease in South  
279 African infants. *Vaccine.* 2015;33(48):6793–9.
- 280 11. Baker CJ, Paoletti LC, Wessels MR, Guttormsen HK, Rench M a, Hickman ME, et al. Safety and  
281 immunogenicity of capsular polysaccharide-tetanus toxoid conjugate vaccines for group B  
282 streptococcal types Ia and Ib. *J Infect Dis.* 1999 Jan;179(1):142–50.
- 283 12. Kotloff KL, Fattom a, Basham L, Hawwari a, Harkonen S, Edelman R. Safety and  
284 immunogenicity of a tetravalent group B streptococcal polysaccharide vaccine in healthy adults.  
285 *Vaccine.* 1996 Apr;14(5):446–50.
- 286 13. Madhi SA, Cutland CL, Jose L, Koen A, Govender N, Wittke F, et al. Safety and immunogenicity  
287 of an investigational maternal trivalent group B streptococcus vaccine in healthy women and  
288 their infants: a randomised phase 1b/2 trial. *Lancet Infect Dis.* 2016;3099(16):1–12.
- 289 14. Absalon J, Segall N, Block SL, Center KJ, Scully IL, Giardina PC, et al. Safety and  
290 immunogenicity of a novel hexavalent group B streptococcus conjugate vaccine in healthy, non-  
291 pregnant adults: a phase 1/2, randomised, placebo-controlled, observer-blinded, dose-  
292 escalation trial. *Lancet Infect Dis.* 2021;21(2):263–74.
- 293 15. Buurman ET, Timofeyeva Y, Gu J, Kim JH, Kodali S, Liu Y, et al. A Novel Hexavalent Capsular

- 294 Polysaccharide Conjugate Vaccine (GBS6) for the Prevention of Neonatal Group B  
295 Streptococcal Infections by Maternal Immunization. *J Infect Dis.* 2019;220(1):105–15.
- 296 16. Dzanibe S, Adrian P V, Kimaro SZ, Madhi SA. Natural acquired group B Streptococcus capsular  
297 polysaccharide and surface protein antibodies in HIV-infected and HIV-uninfected children.  
298 Vaccine. 2016;
- 299 17. Pickering JW, Martins TB, Greer RW, Schroder MC, Astill ME, Litwin CM, et al. A multiplexed  
300 fluorescent microsphere immunoassay for antibodies to pneumococcal capsular  
301 polysaccharides. *Am J Clin Pathol.* 2002 Apr;117(4):589–96.
- 302 18. Carey VJ, Baker CJ, Platt R. Bayesian inference on protective antibody levels using case-  
303 control data. *Biometrics.* 2001;57(1):135–42.
- 304 19. Fabbrini M, Rigat F, Rinaudo CD, Passalacqua I, Khacheh S, Creti R, et al. The Protective Value  
305 of Maternal Group B Streptococcus Antibodies: Quantitative and Functional Analysis of  
306 Naturally Acquired Responses to Capsular Polysaccharides and Pilus Proteins in European  
307 Maternal Sera. *Clin Infect Dis.* 2016;63(6):746–53.
- 308 20. Martin D, Gagnon E, Boyer M, Charland N, Brodeur BR, Al MET, et al. Protection from Group B  
309 Streptococcal Infection in Neonatal Mice by Maternal Immunization with Recombinant Sip  
310 Protein. 2002;70(9):4897–901.
- 311 21. Brodeur BR, Martine B, Charlebois I, Hamel JJ, Couture F, Rioux CRCR, et al. Identification of  
312 Group B Streptococcal Sip Protein, Which Elicits Cross-Protective Immunity. Tuomanen EI,  
313 editor. *Infect Immun.* 2000;68(10):5610–8.
- 314 22. Larsson C, Lindroth M, Nordin P, Stålhammar-Carlemalm M, Lindahl G, Krantz I. Association  
315 between low concentrations of antibodies to protein alpha and Rib and invasive neonatal group  
316 B streptococcal infection. *Arch Dis Child Fetal Neonatal Ed.* 2006 Nov;91(6):F403-8.

- 317 23. Dangor Z, Kwatra G, Izu A, Adrian P, Cutland CL, Velaphi S, et al. Association between  
318 maternal Group B Streptococcus surface-protein antibody concentrations and invasive disease  
319 in their infants. *Expert Rev Vaccines*. 2015;14(12):1651–60.
- 320 24. de Moraes-Pinto MI, Verhoeff F, Chimsuku L, Milligan PJ, Wesumperuma L, Broadhead RL, et  
321 al. Placental antibody transfer: influence of maternal HIV infection and placental malaria. *Arch*  
322 *Dis Child Fetal Neonatal Ed*. 1998;79(3):F202-5.
- 323 25. Dzanibe S, Adrian PV, Kimaro Mlacha SZ, Dangor Z, Kwatra G, Madhi SA. Reduced  
324 transplacental transfer of group b streptococcus surface protein antibodies in HIV-infected  
325 mother-newborn dyads. *J Infect Dis*. 2017;215(3).
- 326 26. Anderson BL, Simhan HN, Simons KM, Wiesenfeld HC. Untreated asymptomatic group B  
327 streptococcal bacteriuria early in pregnancy and chorioamnionitis at delivery. *Am J Obstet*  
328 *Gynecol*. 2007;196(6):524.e1-524.e5.
- 329 27. Madhi SA, Dangor Z, Heath PT, Schrag S, Izu A, Meulen AS, et al. Considerations for a phase-  
330 III trial to evaluate a group B Streptococcus polysaccharide-protein conjugate vaccine in  
331 pregnant women for the prevention of early- and late-onset invasive disease in young-infants.  
332 *Vaccine*. 2013;31(Supplementary 4):D52–7.
- 333 28. Matsubara K, Katayama K, Baba K, Nigami H, Harigaya H, Sugiyama M. Seroepidemiologic  
334 studies of serotype VIII group B Streptococcus in Japan. *J Infect Dis*. 2002;186(6):855–8.
- 335 29. Meinke AL, Senn BM, Visram Z, Henics TZ, Minh DB, Schüler W, et al. Immunological  
336 fingerprinting of group B streptococci: from circulating human antibodies to protective antigens.  
337 *Vaccine*. 2010 Oct 8;28(43):6997–7008.
- 338 30. Dzanibe S, Adrian P V., Kimaro Mlacha SZ, Dangor Z, Kwatra G, Madhi SA. Reduced  
339 transplacental transfer of group b streptococcus surface protein antibodies in HIV-infected

- 340 mother-newborn dyads. *J Infect Dis.* 2017;215(3):415–9.
- 341 31. Manning SD, Wood S, Kasha K, Martin D, Rioux S, Brodeur B, et al. Naturally occurring  
342 antibodies for the group B streptococcal surface immunogenic protein (Sip) in pregnant women  
343 and newborn babies. *Vaccine.* 2006 Nov 17;24(47–48):6905–12.
- 344 32. Diaz-Dinamarca DA, Soto DA, Leyton YY, Altamirano-Lagos M. Oral vaccine based on a  
345 surface immunogenic protein mixed with alum promotes a decrease in *Streptococcus agalactiae*  
346 vaginal colonization in a mouse model. *Mol Immunol.* 2018;103:63–70.
- 347 33. Dzanibe S, Kwatra G, Adrian PV, Kimaro-Mlacha SZ, Cutland CL, Madhi SA. Association  
348 between antibodies against group B *Streptococcus* surface proteins and recto-vaginal  
349 colonisation during pregnancy. *Sci Rep.* 2017;7(1).

## 350 **Table and Figure Legends**

351 **Table 1:** Table 1 Demographic characteristics for mother-infant pairs colonised with group B  
352 *Streptococcus* isolates expressing either Sip, gbs2106 or gbs0393 on the bacterial surface.

353 **Table 2:** Antibody levels against Sip, gbs2106 and gbs0393 in women of cases and controls as well as  
354 infant cases and infant controls.

355 **Figure 1:** Expression of proteins on surface of Group B streptococcus (GBS) clinical isolates. A) Binding  
356 of antibodies using antigen specific antisera (red) compared to the corresponding pre-immunisation sera  
357 (blue) to assess expression of each protein on the surface of GBS serotype III NEM316 strain. B)  
358 Distribution of surface proteins on GBS isolates from mothers of infants who remained healthy (white) or  
359 those that developed EOD (grey) and LOD (black).

360 **Figure 2:** Comparison of IgG against GBS surface in infants born to mothers colonised with GBS strain  
361 expressing the respective protein between those who developed EOD or LOD and their corresponding  
362 controls.

363 **Figure 3:** Infant IgG titre associated with reduced risk of invasive group B Streptococcus disease (IGbsD).  
364 A & B) Reverse cumulative distribution of IgG GMT (U/mL) against Sip and gbs02106 proteins in infant  
365 (<90 days of age) that remained healthy (blue) and those developed IGbsD (red). C, D) Absolute disease  
366 risk (ADR) for IgG titres against Sip and GBS2106 in infants estimated using parametric and non-  
367 parametric Bayesian modelling.

368 **Figure 4:** Comparison of maternal IgG against GBS surface proteins between mothers who delivered  
369 infants that developed either EOD or LOD and their corresponding controls colonized GBS strains  
370 expressing homotypic proteins.