

IGSRT sensitivity and efficacy in High Risk vs Non High Risk Basal Cell Carcinoma

1 **TITLE: Radiation sensitivity and efficacy in aggressive and non-aggressive basal cell carcinoma (BCC) of the**
2 **skin: Image Guided Superficial Radiation Therapy achieves high rate of local control in sclerosing,**
3 **infiltrative, morpheaform and micronodular BCC subtypes as well as in non high risk BCCs, an analysis of**
4 **7994 BCC lesions.**

5 Word Count: 2766; Figure Count:6; Table Count: 8

6 Lio Yu, MD, DABR^a, Michael Kaczmariski^b, Clay Cockerell, MD, MBA, JD^c.

7 Affiliations:

8 a. Chief of Radiation Oncology, Laserderm Dermatology., Smithtown, NY

9 Research Chair, Dermatology Association of Radiation Therapy

10 b. New York Institute of Technology

11 c. Clinical Professor of Dermatology and Pathology

12 UT Southwestern Medical Center

13 Chair, DFW/Lake Granbury Dermatology Residency Program

14 Dallas, Texas

15 Corresponding Author: Lio Yu, MD (lio.yu@protonmail.com)

16

17

18

19

20

21

22

23

24

25

26

27

IGSRT sensitivity and efficacy in High Risk vs Non High Risk Basal Cell Carcinoma

28
29
30
31
32
33
34
35
36
37
38
39
40
41
42
43
44
45
46
47
48
49
50
51
52
53
54
55
56
57
58
59
60
61
62
63

ABSTRACT

Background

High risk (HR) basal cell carcinoma (BCC) subtypes have been associated with high recurrence rates that is felt to be better managed surgically. Specifically, Mohs Micrographic Surgery (MMS) is considered most effective for aggressive HR BCCs and superior to traditional nonsurgical techniques, including radiation. Recently, superficial radiation therapy with high resolution ultrasound image guidance called Image Guided Superficial Radiation Therapy (IGSRT) displayed high local control (LC) rates and is an emerging non-surgical alternative to MMS for non-melanoma skin cancer (NMSC).

Objectives

We present the largest experience in the USA on treatment of BCCs using IGSRT and specifically evaluate if there are differences in LC between HR BCC versus non-HR subtypes using this technology.

Methods

A retrospective analysis was conducted on 7,994 BCC lesions treated with IGSRT in the continental United States. We compared the results of BCCs treated with IGSRT separated by HR vs non HR groups including 339 HR BCC lesions and 7655 non HR BCC lesions. High risk was defined as infiltrative, micronodular, morpheaform, and sclerosing subtypes. Non-HR BCC included superficial, nodular, and not otherwise specified (NOS) subtypes. Local control (LC) rates at two and five years were calculated with actuarial life-table and Kaplan-Meier methods and statistically compared using log rank tests.

Results

IGSRT treatment of the HR BCC group showed no recurrences with two and five-year actuarial and KM LC rates all at 100%. In comparison, the non-HR BCC cohort achieved similar two and five-year actuarial LC rates of 99.71% and 99.24% (KM LC at 99.5% and 99.23%), respectively. No statistical differences in LC rates between the two cohorts ($p=0.278$ each) resulted. Patients tolerated treatment well with little or rare high grade RTOG toxicity reported in both cohorts.

Conclusion

HR BCC may be treated just as effectively as low risk BCC using IGSRT and presents a viable alternative to MMS. The targeted approach using IGSRT, incorporating high resolution dermal ultrasound (HRDUS), appear to enhance treatment accuracy and effectiveness demonstrating high LC rates in all subtypes of BCC comparable to MMS and is a viable non-surgical option.

IGSRT sensitivity and efficacy in High Risk vs Non High Risk Basal Cell Carcinoma

64 Plain language summary:

65 **Effectiveness of a non-surgical skin cancer treatment using an image guided form of radiation modality on all**
66 **subtypes of basal cell skin cancer.**

67 Recent studies using a non-surgical treatment combining low penetrance radiation with ultrasound called Image
68 Guided Superficial Radiation Therapy (IGSRT) showed promise in curing Basal Cell Cancer (BCC) of the skin,
69 which is the most common skin cancer worldwide afflicting millions annually. Recent studies on early stage (I, II)
70 BCCs treated with IGSRT (estimated combined total of ~1900 BCC cases) appear to rival the best surgical treatment
71 available called Mohs Micrographic Surgery (“Mohs” or MMS). Furthermore, certain subtypes of BCC appear to
72 behave more aggressively with worse outcomes even with surgery and is generally felt inappropriate for radiation
73 treatment. However, BCC subtypes were not specified in previous IGSRT studies.

74
75 This study presents the largest experience (using medical chart review) in approximately 8000 BCC cases treated by
76 IGSRT across the continental United States separated by aggressive vs non-aggressive subtypes for early stages (I,
77 II) as well as more advanced (stage III) BCC cases to evaluate the efficacy and safety.

78
79 This study confirms the high cure/control rate and safety of IGSRT for all subtypes of BCC which appear equivalent
80 with Mohs (although the study was not meant to be a head to head comparison of the 2 different modalities).

81 Moreover, the aggressive types of BCC showed similar (if not marginally better) cure rates than the more common
82 non-aggressive BCC subtypes.

83 The potential benefits to patients from this study show there is now a clinically proven non-surgical treatment with
84 the same effectiveness as surgery for the most common cancer on the planet.

85

86 Key Points

- 87 • This study provides evidence that backs up using IGSRT as a viable treatment option to MMS for both high
88 risk and non-high risk BCC cases, achieving similar local control rates for both groups.
- 89 • It highlights that high risk BCC is more sensitive to radiation therapies such as IGSRT than previously
90 believed, challenging the conventional practice of surgical treatment.

IGSRT sensitivity and efficacy in High Risk vs Non High Risk Basal Cell Carcinoma

91 **1 Introduction**

92 Skin cancer is the most common form of cancer globally and presents a significant health challenge with various
93 subtypes and varying prognoses. Among the many kinds of cancers, basal cell carcinoma (BCC) emerges as the most
94 common type, accounting for nearly 80% of non-melanoma skin cancers [1]. As the incidence of non-melanoma
95 skin cancers (NMSC) continues to rise with an estimation of 3.5 million patients with 5.4 million lesions each year
96 diagnosed in the United States as of 2012 and continues to rise, the need for developing effective strategies to
97 manage the disease becomes more imperative, particularly in the context of BCC [2].

98
99 For early stage BCC, which is the most common skin cancer amongst patients, several approaches are available for
100 these cases including surgical excision, radiotherapy, topical imiquimod, photodynamic therapy [3,4] and Mohs
101 Micrographic Surgery (MMS). Nevertheless, after BCC treatments (surgical or non-surgical) there is an increased
102 risk of future BCC developing with up to a 16% chance of the development of new BCCs within the first year after
103 initial treatment and an expected 5 year incidence for BCC developing of 45% as compared to the general US white
104 population [5] which demonstrates the scope of the problem.

105
106 Although basal cell carcinoma has a characteristic of slow progression, local invasiveness, and low metastatic
107 potential, there exist histological subtypes that are considered “high risk” that have been observed to have a more
108 aggressive nature and ability to recur [6] Certain histologies such as morpheic, sclerosing, infiltrative, and micro
109 nodular subtype present a challenge to typical treatment practices that have led to favoring surgical interventions
110 over alternative modalities [7].

111
112 According to the American Academy of Dermatology (AAD), surgical interventions with Mohs micrographic
113 surgery are widely recognized as the gold standard of care for patients with morpheaform and sclerosing BCCs due
114 to their ability to conserve healthy tissue and retain high cure rates [8]. Conventional wisdom in dermatological
115 oncology has long held the belief that high risk BCCs are less responsive to radiation therapy and less prone to
116 recur with surgery. This belief has been rooted by the inherent biological aggressiveness of these histologies backed
117 by prior observational data [10] Surgical management of high risk cases such as morpheaform BCC on the nose was

IGSRT sensitivity and efficacy in High Risk vs Non High Risk Basal Cell Carcinoma

118 observed to have an incomplete excision rate of 61.5% and at the ear of 50% [11]. Coupled with various concerns
119 about the efficacy and safety aspects of radiation therapies, this has led to vigilant or cautionary approaches in
120 treating these high risk BCC histologies. However, this established approach may not be suitable for all patients.
121 Several factors such as disfigurement, the overall health of the patient, or the ability to tolerate surgery treatments
122 may have an influence on treatment decisions. Thus, it is crucial to consider alternative and less invasive treatments
123 in selected cases [9].

124
125 As radiation therapy techniques have advanced recently, the introduction of image-guided superficial radiation
126 therapy (IGSRT) which is a combination of HRDUS with SRT has allowed for the reconsideration of methods
127 employed on treating skin cancer. Specifically, with regard to early stage NMSC (including high risk BCCs),
128 IGSRT, which is regarded as precision and targeted medicine, potentially mitigates limitations associated with
129 conventional non image-guided traditional radiation therapy (such a external/electron beam radiotherapy [XRT] and
130 superficial radiation therapy [SRT]) and has been shown to statistically improve outcomes on treatment of all major
131 histologies of NMSC, such as BCC, SCC and SCCIS [12-15]. On this basis, it stands to reason that re-assessment of
132 the previous notion of bypassing the option of radiotherapy in high risk subtypes of BCCs should be evaluated using
133 this more modern method of radiotherapy incorporating image guidance intrinsically to assess to see if the
134 prevailing sentiment of non-radiation approach still holds true.

135
136 We set out to evaluate the differences, if any, in the local control rate of aggressive high risk BCC subtypes in
137 comparison to the non-aggressive BCC subtypes treated with the use of this newer technology of IGSRT.

138 139 **2 Methods and methods**

140 From 2016-2023, pathologic proven BCCs of stage I, II,III (AJCC 8TH edition cancer staging with tumor stage T1,
141 T2, and T3) treated w IGSRT at multiple institutions throughout the continental United States were retrospectively
142 reviewed and analyzed. Only pure BCCs without combined or collision histologic components (ie, without any
143 squamous cell carcinoma (SCC), squamous cell carcinoma in situ (SCCIS), keratoacanthoma (KA), other non BCC
144 histologies) were selected. We separated the high risk (HR) BCC histology cohort from the non-HR BCCs, gathered

IGSRT sensitivity and efficacy in High Risk vs Non High Risk Basal Cell Carcinoma

145 the lesion characteristics, treatment parameters and analyzed the rate of recurrence deriving the lesion local control
146 post IGSRT treatment. Lesion and patient characteristics were summarized descriptively. Actuarial (life-table)
147 local control (LC) rate and Kaplan-Meier (KM) LC were calculated and plotted graphically. Comparison of the
148 actuarial LC and KMLC between the HR BCC vs non-HR BCC cohorts were performed using log-rank statistical
149 methods.

150
151 High risk histology are defined as Infiltrative, Micronodular, Morpheaform, and Sclerosing subtype of BCCs. Non-
152 HR BCC histology included superficial, nodular, or not otherwise specified (NOS) subtypes.

153
154 This study has been determined to be exempt by WCG-IRB under 45 CFR § 46.104(d)(4), because the research
155 involves the use of identifiable information which is recorded by the investigator in such a manner that the identity
156 of the human subjects cannot readily be ascertained directly or through identifiers linked to the subjects, the
157 investigator does not contact the subjects, and the investigator will not re-identify subjects.

158

159 **3 Results**

160 Patient/Lesion characteristics:

161

162 Between 2016-2023, 339 high risk (HR) BCC and 7655 non-HR BCC lesions were treated with IGSRT.

163 Table 1 summarizes the patient age and gender revealing a slight predominance of males (55.8%) overall however,
164 there were slightly more females proportionally in the HR group. Mean age of patients was 72.5 ranging from 19.7
165 to 104.5.

166

167 Table 2 demonstrates the anatomic distributions of NMSC lesions separated by risk groups. As expected, the most
168 common sites of BCC lesions were on the head and neck(H&N). There were more HR BCCs occurring in the H&N
169 region in comparison to the non-HR BCC cohort (90% vs 80%).

170

IGSRT sensitivity and efficacy in High Risk vs Non High Risk Basal Cell Carcinoma

171 Table 3 summarizes the different pathologic subtypes of high risk and non high risk BCC cohorts. Infiltrative
172 (57.2%) and sclerosing (22.4%) were the most common subtypes for the high risk BCC group. The most common
173 pathology subtypes for the non high risk BCC group were nodular (62.0%) and not otherwise specified (26.5%)
174 histology.

175
176 Table 4 summarizes high risk and non-high risk BCC lesion diameter and depth. The mean diameter and depths of
177 HR vs non-HR BCCs were similar with mean diameter slightly higher for the HR group(1.40cm) vs the non HR
178 BCC subset (1.27cm). Mean depths recorded by high resolution dermal ultrasound (HRDUS) for both groups were
179 equal(1.4mm each), however the median depth for non-HR cohort was lower (1.0 mm) vs the non HR cohort
180 (1.35mm).

181
182 Table 5 illustrates the tumor stage (based on AJCC 8th edition applied to all body locations rather than just the H&N
183 region to be consistent) separated by high risk and non high risk BCC lesions. The HR BCC cohort had slightly
184 higher proportion of stage II and III lesions whereas the non-HR cohort had a slightly higher proportion of stage I
185 lesions (74% vs 80%).

186
187 Table 6 summarizes the total fractions of treatments, total treatment dose, duration of treatment, and duration of
188 follow up separated by the HR vs non-HR cohort. The total treatment fractions were the same amongst the 2 groups
189 with a slightly higher total doses given to the HR BCC group (5502.4 cGy) vs the non-HR BCC group (5386.5
190 cGy). High risk lesions were treated for an average of 7.2 weeks and had an average follow up interval of 80.6
191 weeks. Non high risk lesions were treated for an average of 6.7 weeks with an average follow up interval of 101.17
192 weeks.

193
194 Table 7 summarizes the energies that the lesions were treated with (50kV, 70kV, or 100 kV exclusively, or mixed)
195 Lesions that were treated with more than one energy during the treatment course were termed as “mixed”.
196 Approximately 3.5% of high risk lesions and 11.2% of non-high risk lesions were treated with a mix of two or more
197 energies.

IGSRT sensitivity and efficacy in High Risk vs Non High Risk Basal Cell Carcinoma

198
199 Table 8 highlights the safety profile of IGSRT treatment for both groups. Overall, in both groups combined
200 approximately 4% (3.97%) of lesions had RTOG grade 3 or 4 toxicities showing the IGSRT treatment appeared safe
201 and well tolerated and similar in both groups.

202

203 3.1 Lesion Local Control

204 With a mean follow up of over 1.5 years in the HR cohort and almost 2 years in the non-HR group (going well past
205 5 years in a substantial number of lesions), there were no failures/recurrences in the HR BCC cohort w 100% local
206 control. In the non-HR BCC cohort there were 31 failures.

207

208 *Actuarial Local Control at 2 and 5 years:*

209 An actuarial 2 yr LC of 99.7% and 5 yr actuarial LC of 99.2% was achieved (Figure 1) in the non-HR group. The
210 actuarial LC rates for the HR group were 100% at both 2 and 5 years (Figure 2). There was no statistical difference
211 between the 2 cohorts' actuarial LC rates on log-rank testing ($p=0.278$) (Figure 3).

212

213 *Kaplan-Meier Local Control at 2 and 5 Years:*

214 The non-high risk 2 yr LC rate was 99.6%, and the 5 yr LC rate was 99.2% (Figure 4). The Kaplan-Meier analysis
215 shows 2 and 5 yr LC of 100% (Figure 5) for the high risk subtypes. Statistical analysis using the log-rank test
216 revealed no significant difference ($p=0.278$) in local control rates between the two cohorts (Figure 6).

217

218 4 Discussion

219 This paper presents a comprehensive analysis of superficial radiotherapy (ultrasound guided) treatment on the
220 largest reported series of BCC patients in the United States, with one cohort pathologically diagnosed with high risk
221 BCC subtypes consisting of 339 lesions of infiltrative, morpheaform, micronodular and sclerosing subtypes and the
222 other non-high risk BCC cohort (nodular, superficial and NOS subtypes) comprising of 7655 lesions. Both cohorts
223 underwent a similar treatment regimen with doses and energies using HRDUS guided superficial radiation therapy
224 (commercially and commonly referred to as IGSRT) using a previously published regimen (Ladd-Yu protocol) [12].

IGSRT sensitivity and efficacy in High Risk vs Non High Risk Basal Cell Carcinoma

225 The HR BCC cohort showed 100% KMLC which was minimally (and non statistically) higher than the non-HR

226 BCC subgroup (99.6% and 99.2% KM LC) at 2 and 5 years, respectively.

227 Both HR and non HR groups had low toxicity of treatment with the regimen used showing RTOG toxicity generally

228 limited to grades of 1 and 2, and rare instances of RTOG 3 and 4 toxicity.

229

230 These results shows that high risk histology subtypes of BCC are indeed radiosensitive using SRT combined w

231 HRDUS guidance. In fact, these aggressive BCC subtypes may actually be paradoxically more radiosensitive when

232 compared to standard/non-aggressive BCC subtypes. Although the number of HR cases are lower than the non-HR

233 BCC group, the authors feel that there are substantially sufficient number to justify the validity the results and

234 conclusions. This observation may actually be consistent with certain other higher grade cancers subtype radiation

235 response showing a similar paradoxically higher radiosensitivity and initial complete response rate than lower grade

236 cells such as in Bladder CA and lymphomas, etc [16]. Albeit in these other decidedly more life threatening cancers

237 with their tendency for distant or nodal metastases, the initial response may not translate to better outcome. We feel

238 that for the typically local only behavior of BCCs, that the radiosensitivity and complete response rate does indeed

239 translate to ultimate long term local control or “cure” (a term many dermatologists like to use for BCCs and other

240 early stage NMSC) of the target lesion.

241

242 The LC differences between the 2 groups are small(<1%) by log rank analyses with both cohorts showing

243 outstanding LC out past 5 years and no statistically significant difference in lesion local control rates by log rank

244 analysis. This improved LC in all subtypes of BCCs establishes that the relatively new modality of IGSRT is

245 appropriate for all BCCs regardless of subtype.

246

247 *Debunking Myths of radioresistance of HR BCC*

248 These results contribute to debunking the myth that radiation therapy is ineffective or less effective for high risk

249 BCCs. Our analysis shows an equivalent or actually lower failure rate (of 0%) compared to the non-high risk cohort

250 (at 0.5-0.8% failure).

251

IGSRT sensitivity and efficacy in High Risk vs Non High Risk Basal Cell Carcinoma

252 The most obvious explanation for this improvement is the new ability of IGSRT over tradiational non-image guided
253 radiotherapy modalities. In 2 recent studies using logistic-regression analysis and meta-analysis, LC in the treatment
254 of NMSC using IGSRT in comparison to non-image guided external radiation modalities (superficial radiation
255 therapy (SRT) or external beam radiation therapy (XRT including electron beam or photon beam radiotherapy) have
256 been shown to be superior and achieving statistically improved LC [14,15] and were attributed to the image
257 guidance factor. Whereas previously, the use of RT may not have been recommended for high risk BCCs due to
258 potentially higher recurrence rates, the advent of HRDUS in combination with SRT allow more precision to be
259 directed to the full depth of the tumor and ushers in an era of modern more exacting targeting of radiation beams that
260 appears to be associated with higher success rates rivaling that of surgical interventions such as MMS and present a
261 valuable treatment option especially for those who are not ideal candidates for surgical management. This paradigm
262 shifting development uses the HRUS which has high correlation with depth of tumor involvement [17] and is useful
263 not only in pre-treatment planning but also in evaluation during the midst of treatment as well as for following the
264 lesion post treatment at the post therapy area in both scenarios of surgical and non-surgical (including definitive
265 radiotherapeutic) treatment approaches. The imaging can give information to help in treatment
266 modification/adaptation and direct potential salvage therapy selection post therapy. HRDUS may also be helpful to
267 help differentiate the aggressive subtypes of BCC versus non-aggressive subtypes based on the echogenicity of the
268 ultrasound findings [17]. Further discussion of the use of HRUS is beyond the scope of this paper and may be a good
269 subject for future publications. The utility of HRDUS in surgical NMSC scenarios may benefit from further
270 research endeavors.

271
272 Based on the results of this study, IGSRT may indeed be a good option in these HR subtypes and in select situations
273 may be preferred over surgical excision/MMS in situations for patients with surgical fatigue, lesions in
274 cosmetically/functionally sensitive locations, poor performance status subjects on anticoagulation, or those who
275 cannot tolerate a prolonged surgical procedures requiring patient to remain still for extended periods of time, or
276 those who decline surgery.

277

IGSRT sensitivity and efficacy in High Risk vs Non High Risk Basal Cell Carcinoma

278 By examining the outcomes of these cases, this paper challenges the prevailing notions about the management of
279 high risk and non-risk BCCs and provides evidence that may change treatment perspectives and future guidelines.
280 A paradigm shift may be advocated for how high risk BCC is approached, moving away from previous notions of
281 surgical only treatments to a more customized evidence-based approach that is also non-surgical.

282
283 As the prevalence of skin cancer continues to expand, such advancements are critical in the evolving landscape of
284 cancer care ensuring that patients, in consultation with their dermatology and/or radiation/ oncology providers, make
285 the best decision with regard to selection of the treatment modalities best suited for the patients' specific situation to
286 maximize optimal outcomes as well as assuring safety minimizing short term and long term toxicity and
287 subsequently achieving the best quality of life, both functionally and cosmetically.

288

289 4.1 Limitations

290 A number of practices may have excluded these high risk BCCs categorically and steered these patients to Mohs
291 after discussion. Others did not exclude any histological subtypes. The category of not otherwise specified BCCs
292 may have certain BCCs that may have elements of high risk features that were simply not reported and perhaps
293 might have accounted for some of its failures.

294

295 Competing risks of death was not accounted for however, we feel that BCC typically does not affect mortality, thus
296 we felt exclusions based on this was not necessary and thus was not done in this paper.

297

298 5 Conclusion

299 IGSRT achieves high success rates in all subtypes of BCC in retrospective review on almost 8,000 cases in the USA.

300

301 HR BCC subtypes may actually be paradoxically more radiosensitive than or at least equivalent to other more
302 common "non-aggressive" BCC subtypes.

303

IGSRT sensitivity and efficacy in High Risk vs Non High Risk Basal Cell Carcinoma

304 There is no contraindications to using RT in the form of SRT combined w HRDUS (commonly called IGSRT) for
305 high risk subtypes of BCCs. In fact, in certain patients with any subtype of BCC, IGSRT may be preferential over
306 excision/MMS if the patient is a poor surgical candidate, has lesions in cosmetically/functionally sensitive locations
307 or if the patient prefers a non-surgical approach.

308

309

310

311

312

313

314

315

316

317

318

319

320

321

322

323

324

325

326

327

328

329

330

IGSRT sensitivity and efficacy in High Risk vs Non High Risk Basal Cell Carcinoma

331

332

333 **References:**

334 1 Katalinic A, Kunze U, Schäfer T. Epidemiology of cutaneous melanoma and non-melanoma skin cancer in
335 Schleswig-Holstein, Germany: incidence, clinical subtypes, tumour stages and localization (epidemiology of skin
336 cancer). *Br J Dermatol*. 2003 Dec;149(6):1200–6.

337

338 2 Rogers HW, Weinstock MA, Harris AR, Hinckley MR, Feldman SR, Fleischer AB, et al. Incidence estimate of
339 nonmelanoma skin cancer in the United States, 2006. *Arch Dermatol*. 2010 Mar;146(3):283–7.

340

341 3 Puig S, Berrocal A. Management of high-risk and advanced basal cell carcinoma. *Clin Transl Oncol*. 2015 Jul
342 1;17(7):497–503.

343

344 4 Rubin Adam I., Chen Elbert H., Ratner Désirée. Basal-Cell Carcinoma. *New England Journal of Medicine*.
345 2005;353(21):2262–9.

346

347 5 Marghoob A, Kopf AW, Bart RS, Sanfilippo L, Silverman MK, Lee P, et al. Risk of another basal cell carcinoma
348 developing after treatment of a basal cell carcinoma. *Journal of the American Academy of Dermatology*. 1993 Jan
349 1;28(1):22–8.

350

351 6 Tanese K. Diagnosis and Management of Basal Cell Carcinoma. *Curr Treat Options Oncol*. 2019 Feb 11;20(2):13.

352

353 7 Paolino G, Donati M, Didona D, Mercuri SR, Cantisani C. Histology of Non-Melanoma Skin Cancers: An Update.
354 *Biomedicines*. 2017 Dec 20;5(4):71.

355

356 8 Bichakjian C, Armstrong A, Baum C, Bordeaux JS, Brown M, Busam KJ, et al. Guidelines of care for the
357 management of basal cell carcinoma. *Journal of the American Academy of Dermatology*. 2018 Mar 1;78(3):540–59.

IGSRT sensitivity and efficacy in High Risk vs Non High Risk Basal Cell Carcinoma

- 358
- 359 9 Durmus Ucar AN, Durmus Kocaaslan FN, Salman A, Demirkesen C, Erdem Bayram F, Bayramicli M. Margin-
360 Controlled, Staged Surgical Excision in the Treatment of High-Risk Basal Cell Carcinomas of the Head and Neck
361 Region. *J Cutan Med Surg*. 2019 May;23(3):258–64.
- 362
- 363 10 Nguyen TH, Ho DQD. Nonmelanoma skin cancer. *Curr Treat Options in Oncol*. 2002 Jun 1;3(3):193–203.
- 364
- 365 11 Kappelin J, Nielsen K, Nilsson F, Bjellerup M, Ahnliide I. Surgical treatment of basal cell carcinoma: a case
366 series on factors influencing the risk of an incomplete primary excision. *Journal of the European Academy of*
367 *Dermatology and Venereology*. 2020 Mar 2; 34(11):2518–25.
- 368
- 369 12 Yu L, Oh C, Shea CR. The Treatment of Non-Melanoma Skin Cancer with Image-Guided Superficial Radiation
370 Therapy: An Analysis of 2917 Invasive and In Situ Keratinocytic Carcinoma Lesions. *Oncol Ther*. 2021 Feb 5;
371 9(1):153–66.
- 372
- 373 13 Tran A, Moloney M, Kaczmarek P, Zheng S, Desai A, Desai T, et al. Analysis of image-guided superficial
374 radiation therapy (IGSRT) on the treatment of early-stage non-melanoma skin cancer (NMSC) in the outpatient
375 dermatology setting. *J Cancer Res Clin Oncol*. 2023; 149(9):6283–91.
- 376
- 377 14 Yu L, Moloney M, Tran A, Zheng S, Rogers J. Local control comparison of early-stage non-melanoma skin
378 Cancer (NMSC) treated by superficial radiotherapy (SRT) and external beam radiotherapy (XRT) with and without
379 dermal image guidance: a meta-analysis. *Discov Oncol*. 2022 Nov 21;13(1):129.
- 380
- 381 15 Yu L, Moloney M, Zheng S, Rogers J. High resolution dermal ultrasound (US) combined with superficial
382 radiation therapy (SRT) versus non-image guided SRT or external beam radiotherapy (XRT) in early-stage epithelial
383 cancer: a comparison of studies. *BMC Cancer*. 2023 Jan 28;23(1):98.
- 384

IGSRT sensitivity and efficacy in High Risk vs Non High Risk Basal Cell Carcinoma

385 16 Kimball AS, Webb TJ. The Roles of Radiotherapy and Immunotherapy for the Treatment of Lymphoma. Mol
386 Cell Pharmacol. 2013 Jan 1;5(1):27–38.

387

388 17 Laverde-Saad A, Simard A, Nassim D, Jfri A, Alajmi A, O'Brien E, et al. Performance of Ultrasound for
389 Identifying Morphological Characteristics and Thickness of Cutaneous Basal Cell Carcinoma: A Systematic
390 Review. Dermatology. 2022;238(4):692–710.

391

392

393

394

395

396

397

398

399

400

401

402

403

IGSRT sensitivity and efficacy in High Risk vs Non High Risk Basal Cell Carcinoma

404 **Table 1 Patient Characteristics Tables ***

AGE AT FIRST TREATMENT						
	ALL	(min-max)	HR	(min-max)	non HR	(min-max)
	n =5758		n = 339		n =5419	
Mean Age	72.5	(19.7-104.5)	72.8	(40.0-97.5)	72.1	(19.7-104.5)
GENDER						
	ALL		HR		non HR	
Male	3208		166		3042	
Female	2545		173		2372	
Total	5753		339		5414	

*Not all patient genders and ages were available

405
406
407
408
409
410
411
412
413

IGSRT sensitivity and efficacy in High Risk vs Non High Risk Basal Cell Carcinoma

414 **Table 2** Anatomic distribution of NMSC lesions

	HR BCC	NON-HR BCC
Head and neck (H&N)	289/321 (90.03%)	5662/7106 (79.68%)
<i>H&N sublocation</i>		
Ear	55/321 (17.13%)	627/7106 (8.82%)
Cheek	38/321 (11.84%)	1143/7106 (16.08%)
Nose	135/321 (42.06%)	2145/7106 (30.19%)
Cutaneous lip	9/321 (2.80%)	249/7106 (3.50%)
Mucosal lip	1/321 (0.31%)	12/7106 (0.17%)
Forehead	26/321 (8.09%)	702/7106 (9.88%)
Temple	8/321 (2.49%)	233/7106 (3.28%)
Scalp	11/321 (3.43%)	209/7106 (2.94%)
Neck	6/321 (1.87%)	342/7106 (4.81%)
Extremities	18/321 (5.60%)	799/7106 (11.24%)
<i>Extremities sublocation*</i>		
Hand	4/321 (1.18%)	60/7106 (0.84%)
Trunk	11/321 (3.43%)	402/7106 (5.66%)
<i>Trunk sublocation</i>		
Chest	4/321 (1.25%)	211/7106 (2.97%)
Back	9/321 (2.80%)	445/7106 (6.26%)
Shoulder	3/321 (0.93%)	243/7106 (3.42%)

415 *Not all lesion sublocations are shown

416

417

418

419

420

Table 3 Pathology Subtypes^a of HR BCC and non-HR BCC

HR BCC					NON-HR BCC			
MN	SCL	INF	MOR	Total	NOS	SUP	NOD	Total
59/339 (17.4%)	76/339 (22.4%)	194/339 (57.2%)	10/339 (3.00%)	339	2025/7655 (26.5%)	887/7655 (11.5%)	4743/7655 (62.0%)	7655

421 ^aMN = Micronodular; SCL = Sclerosing; INF = Infiltrating; MOR = Morpheaform; NOS = Not otherwise
422 specified; SUP = Superficial; NOD = Nodular.

423

424

425

426

IGSRT sensitivity and efficacy in High Risk vs Non High Risk Basal Cell Carcinoma

427 **Table 4** BCC initial lesion sizes

BCC Subcategories	HR BCC	NON-HR BCC
Lesion diameter (cm) at start	N = 399	N = 7655
Mean \pm SD	1.4 \pm 1.00	1.27 \pm 0.84
Range	0.3–8.0	0.0–10.5
Median	1.0	1.0
BCC lesion depth (mm) at start	n = 339	n = 7655
Mean \pm SD	1.4 \pm 1.00	1.4 \pm 0.53
Range	0.3–8.0	0.0–4.82
Median	1.0	1.35

428
429
430
431
432
433
434
435
436
437

Table 5 Stage of NMSC lesions

	HR BCC	NON-HR BCC
Stage	n (%)	n (%)
I (0 to <2 cm)	252 (74.34)	6157 (80.43)
II (2 to <4 cm)	74 (21.83)	1295 (16.92)
III (\geq 4 cm)	11 (3.24)	96 (1.25)
Unspecified	2 (0.59)	107 (1.40)
Total	339(100)	7655 (100)

438
439
440
441

IGSRT sensitivity and efficacy in High Risk vs Non High Risk Basal Cell Carcinoma

442 **Table 6** Total number of treatment fractions, dose, duration, and follow-up interval

Characteristic	Statistic	HR BCC	NON-HR BCC
Total number of fractions	<i>N</i>	339	7655
	Mean \pm SD	20.3 \pm 0.94	20.0 \pm 1.24
	Range	13.0 to 25.0	12.0 to 32.0
	Median	20.0	20.0
Total treatment dose (cGy)	<i>N</i>	339	7655
	Mean \pm SD	5502.4 \pm 228.60	5386.5 \pm 234.08
	Range	4453.4 to 6595.88	3716.0 to 7363.7
	Median	5491.2	5420.3
Duration of treatment (weeks)	<i>N</i>	339	7655
	Mean \pm SD	7.2 \pm 2.13	6.7 \pm 4.17
	Range	0.14–24.29	0.14 to 61.71
	Median	6.86	6.57
Duration of follow-up (weeks)	<i>N</i>	339	7655
	Mean \pm SD	80.6 \pm 70.92	101.17 \pm 89.17
	Range	0.14–362.86	0.0 to 391.0
	Median	58.9	77.14

443
444
445
446
447
448
449

Table 7 NMSC lesion treatment by energy

	HR BCC	Non-HR BCC
Energy (kV)	N = 339	N = 7642
50	21 (6.2%)	1410 (18.5%)
70	167 (49.3%)	4059 (53.1%)
100	139 (41.0%)	1322 (17.3%)
Mixed	12 (3.5%)	851 (11.1%)
Total*	339 (100%)	7642 (100%)

*Some lesions did not have any lesion energy recorded

450
451
452
453
454
455
456
457

IGSRT sensitivity and efficacy in High Risk vs Non High Risk Basal Cell Carcinoma

458
459
460
461
462
463
464
465

Table 8 Safety—by lesion based on RTOG criteria
BCC

HR BCC **NON HR**

Characteristic GradeDescription		(n□=□229)	(n□=□4552)
Highest RTOG toxicity grade	1 Follicular, faint, or dull erythema; epilation; dry desquamation; decreased sweating	117/229 (51.1%)	2797/4552 (61.4%)
	2 Tender or bright erythema, patchy moist desquamation; moderate edema	108/229 (47.2%)	1569/4552 (34.5%)
	3 Confluent, moist desquamation other than skin folds; pitting edema	4/229 (1.7%)	183/4552 (4.02%)
	4 Ulceration, hemorrhage, necrosis	0/229 (0.0%)	3/4552 (0.07%)

466 *RTOG* (Radiation Treatment Oncology Group) (Not all lesions have documented scores)

467

468

469

470

471

472

473

474

475

476

477

478

479

480

481

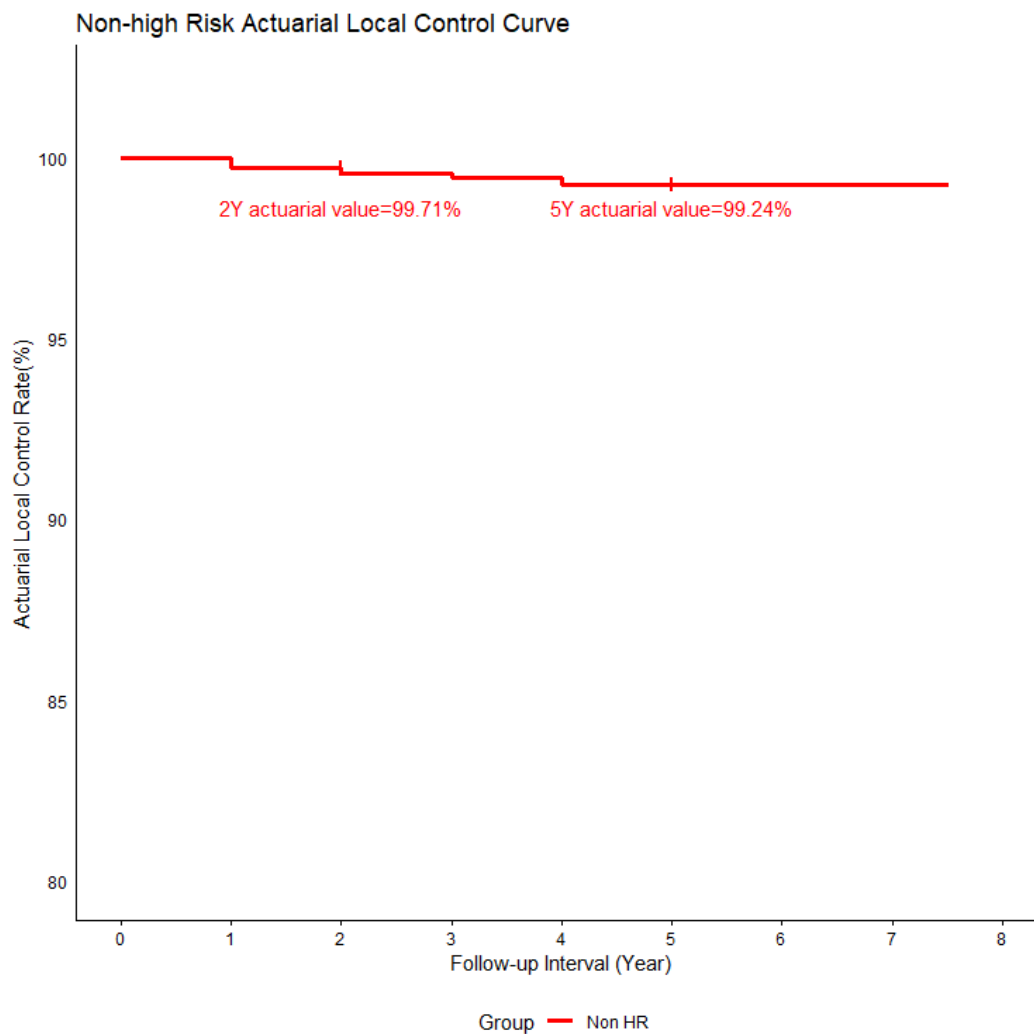
482 **FIGURES:**

IGSRT sensitivity and efficacy in High Risk vs Non High Risk Basal Cell Carcinoma

483 ACTUARIAL LOCAL CONTROL CURVES:

484

485



486

487

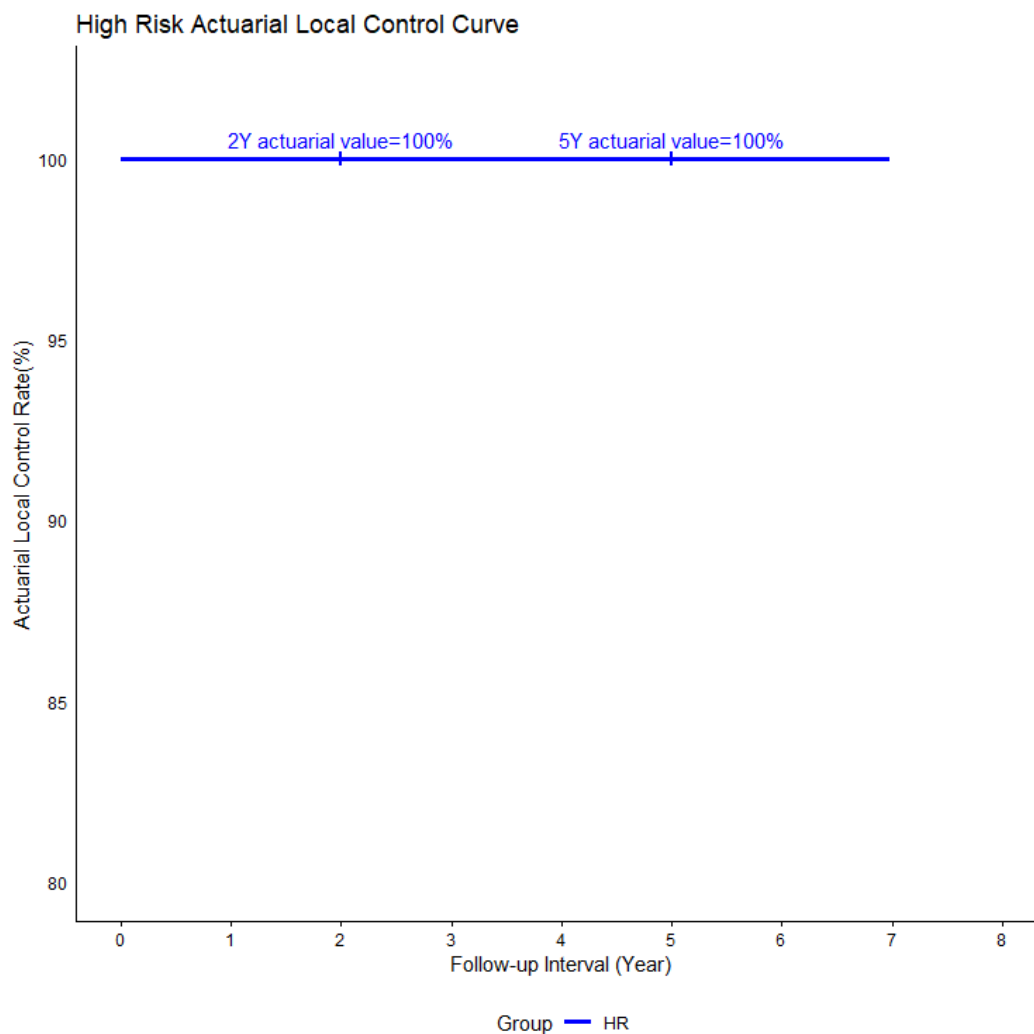
488 **Figure 1**

489

490

491

IGSRT sensitivity and efficacy in High Risk vs Non High Risk Basal Cell Carcinoma



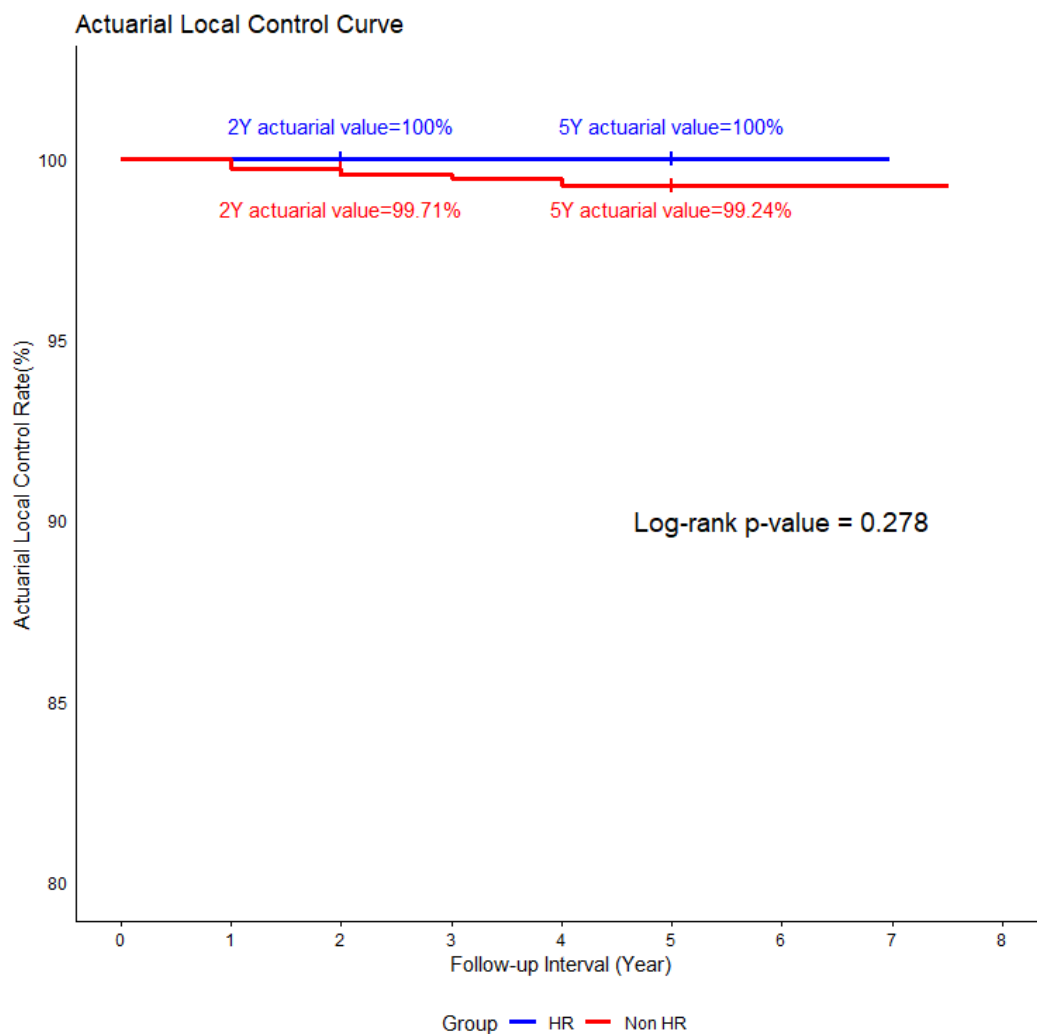
492

493 **Figure 2**

494

495

IGSRT sensitivity and efficacy in High Risk vs Non High Risk Basal Cell Carcinoma



496

497 **Figure 3**

498

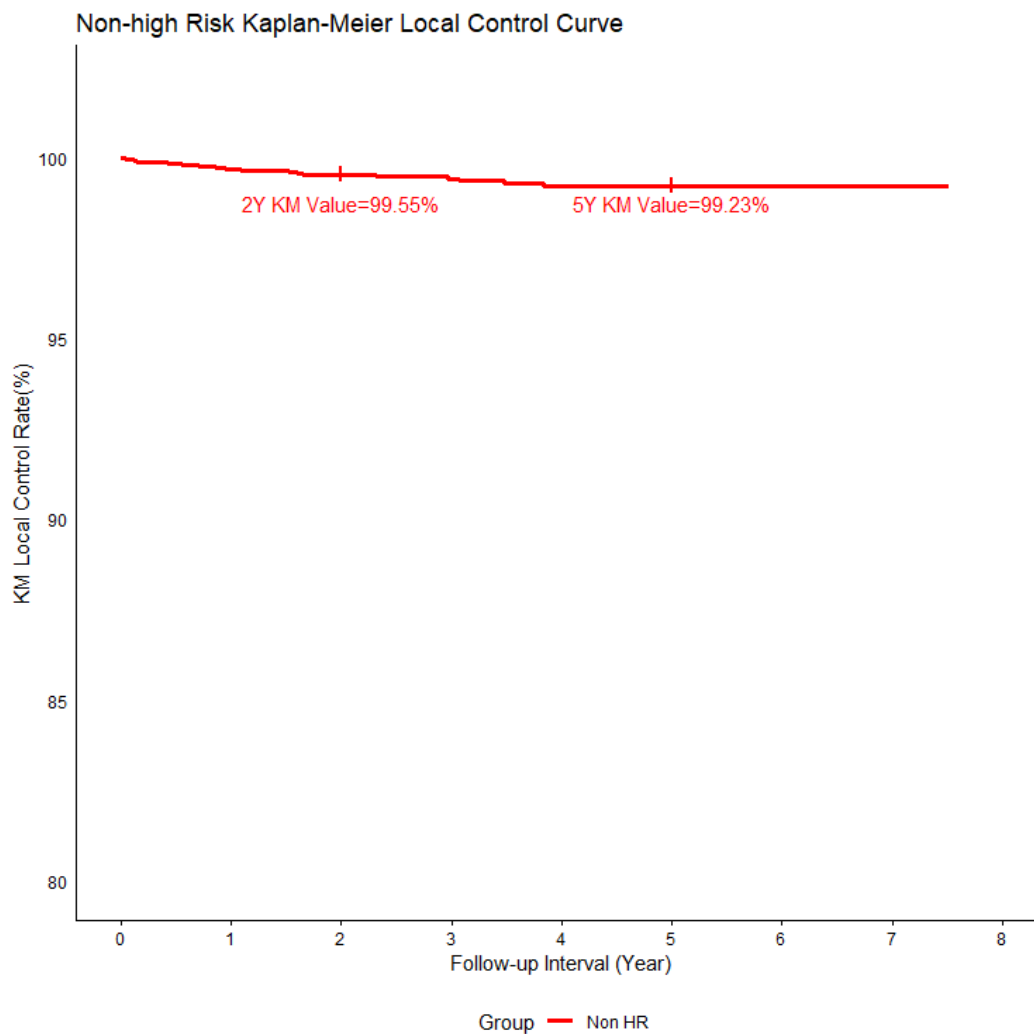
499

IGSRT sensitivity and efficacy in High Risk vs Non High Risk Basal Cell Carcinoma

500

501 KAPLAN-MEIER LOCAL CONTROL CURVES:

502



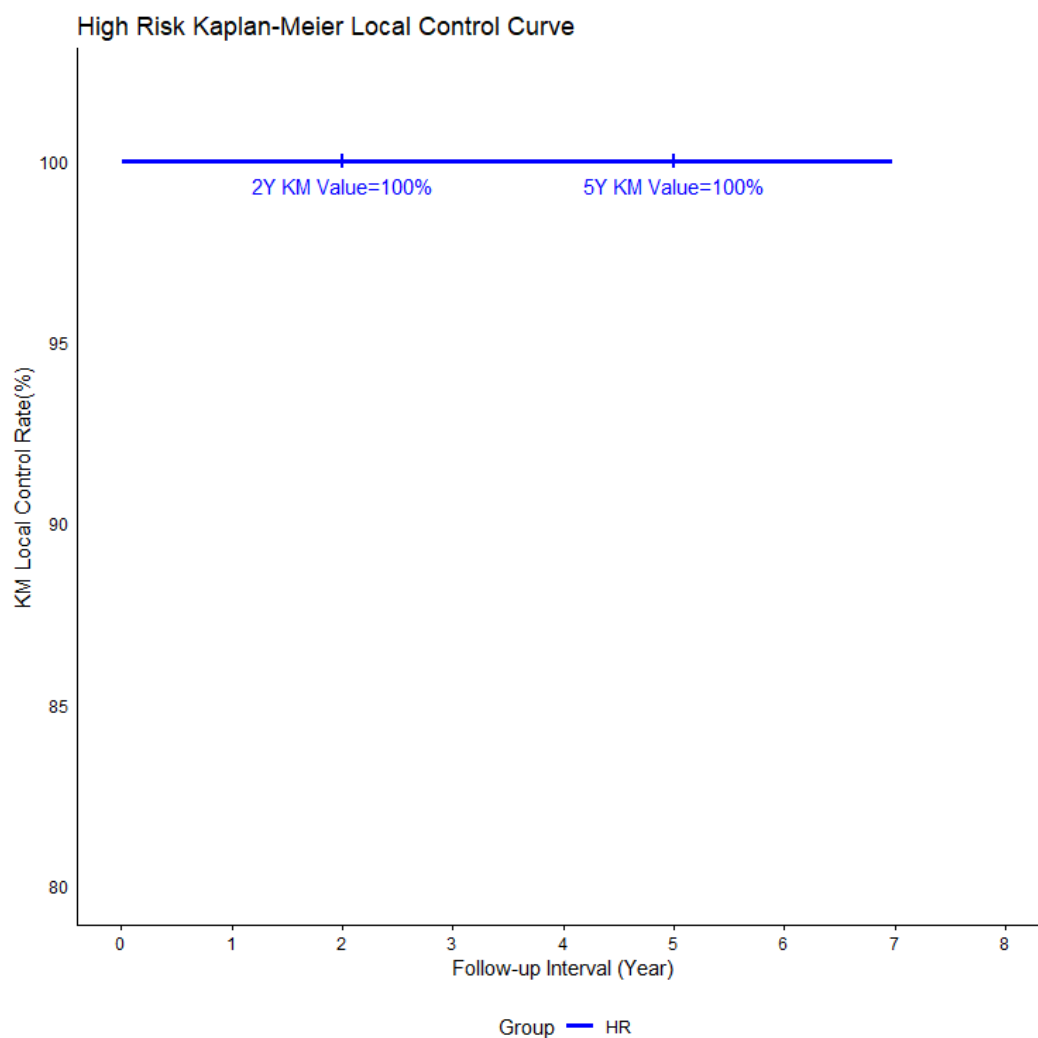
503

504

505 **Figure 4**

506

IGSRT sensitivity and efficacy in High Risk vs Non High Risk Basal Cell Carcinoma



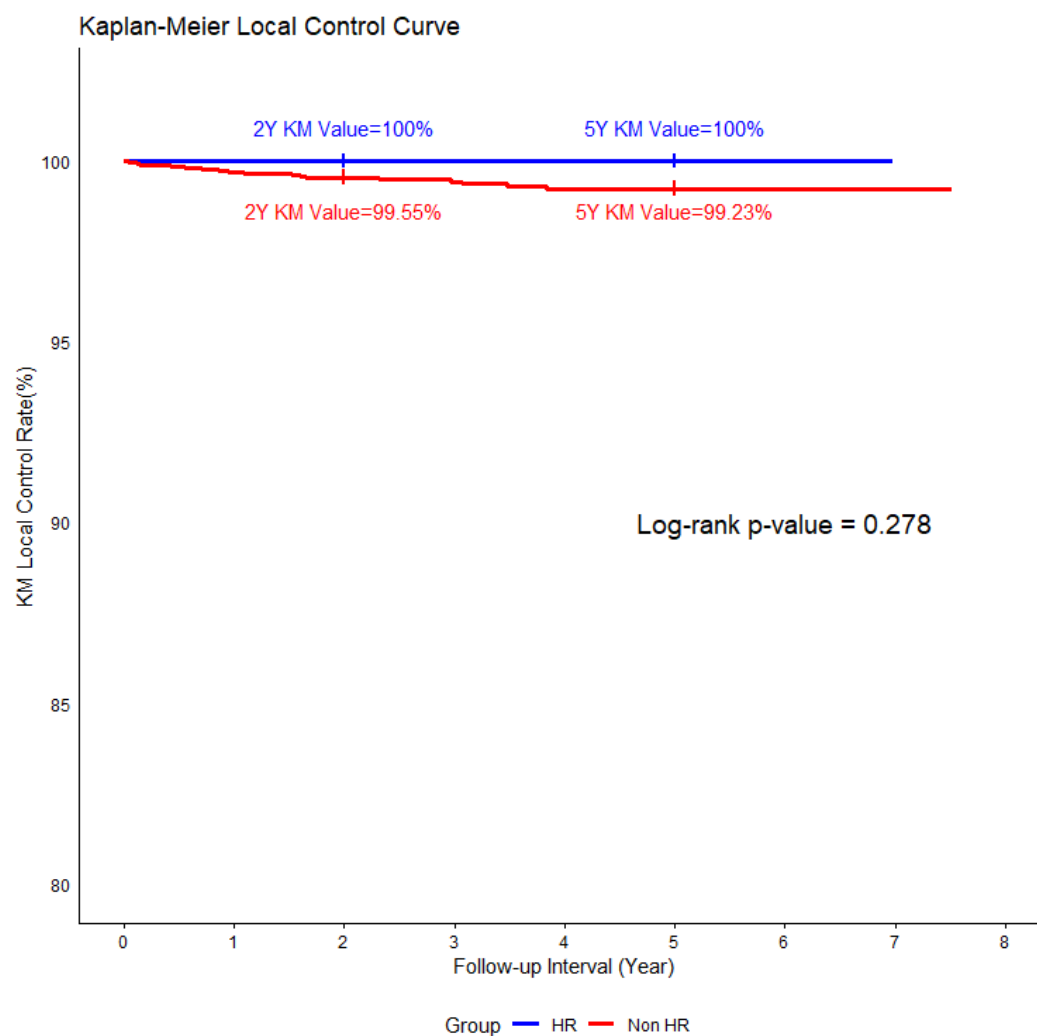
507

508

509 **Figure 5**

510

IGSRT sensitivity and efficacy in High Risk vs Non High Risk Basal Cell Carcinoma



511

512 **Figure 6**

513

514

515

516

517

518

519

IGSRT sensitivity and efficacy in High Risk vs Non High Risk Basal Cell Carcinoma

520

521 **FIGURE LEGENDS:**

522 **Figure 1:** Actuarial Local Control at 2 and 5 Years for non-High Risk BCC. The graph demonstrates high rates of
523 local control with actuarial 2 year local control of 99.71% and 5 year actuarial local control of 99.24%.

524 **Figure 2:** Actuarial Local Control at 2 and 5 Years for High Risk BCC. The graph demonstrates high rates of local
525 control with actuarial 2 and 5 year local control of 100% and 100%.

526

527 **Figure 3:** Actuarial Local Control Curve comparing High Risk and non-High Risk BCC groups. The blue line
528 represents High Risk BCCs, and the red line represents non High Risk BCCs. The log rank test revealed a p value of
529 0.278 indicating no statistical difference in local control rates between the two groups.

530

531 **Figure 4:** Kaplan-Meier Local Control at 2 and 5 Years for non-High Risk BCC. Kaplan-Meier local control curves
532 for the non-High Risk BCC cohort at 2 and 5 years treated with IGSRT is 99.55% and 99.23%, respectively.

533

534 **Figure 5:** Kaplan-Meier Local Control Curve for High Risk BCC. The 2 year and 5 year KM local control rate
535 using IGSRT are both 100%.

536

537 **Figure 6:** Kaplan-Meier (KM) Local Control (LC) at 2 and 5 years: KM Local Control Curves comparing High
538 Risk and non-High Risk BCC groups. The blue line represents High Risk BCCs, and the red line represents non
539 High Risk BCCs. The log rank test revealed a p value of 0.278 indicating no statistical difference in local control
540 rates between the two groups.

541

542

543

544

545

IGSRT sensitivity and efficacy in High Risk vs Non High Risk Basal Cell Carcinoma

546 **Declarations**

547 I. Funding:

548 A commercial company provided funding for the first author's time as an independent contractor for independent
549 researching and writing of this paper. The sponsor of the study was not involved in the study design, collection,
550 analysis, interpretation of data, or writing of the report. Writing of this paper and the submission process was solely
551 that of the first author and co-authors.

552 II. Conflict of Interest:

553 The first author has received research, speaking and/or consulting support from a commercial company. He has
554 served on an advisory board for another commercial company previously unrelated to this research. The other
555 authors have no conflicts of interest to disclose.

556 III. Availability of data and material:

557 The data underlying this article will be shared on reasonable request to the corresponding author.

558

559 IV. Ethic approvals/IRB:

560 This study has been determined to be exempt by WCG-IRB under 45 CFR § 46.104(d)(4), because the research
561 involves the use of identifiable information which is recorded by the investigator in such a manner that the identity
562 of the human subjects cannot readily be ascertained directly or through identifiers linked to the subjects, the
563 investigator does not contact the subjects, and the investigator will not re-identify subjects.

564

565 V. Consent to participate:

566 Not applicable

567 VI. Consent for publication:

568 Not applicable

569 VII. Code availability:

570 Not applicable

571

572

IGSRT sensitivity and efficacy in High Risk vs Non High Risk Basal Cell Carcinoma

573 VIII. Author contributions:

574 All authors have contributed to the manuscript and approved the final submitted version of the manuscript. Lio Yu-
575 Conceptualization, methodology, data collection and curation, supervision, data and statistics verification, writing-
576 original draft, review and editing. Michael Kaczmarski- data collection, data and statistics verification, tables and
577 figures, writing- original draft, review and editing. Clay J. Cockerell- concept refinement, supervision, review and
578 editing.

579
580 Acknowledgements: The authors would like to acknowledge the following people who were instrumental in
581 collecting and extracting data from various different locations, without whom this study would not be
582 possible: □ Amanda Boatner, Berta Benzschawel, Beth Ann Marogi, Brianna Moore, Carolyn Mahoot, Charles
583 Bingner, Cherie Hoppe, Diane Krause, Lio Yu, Eric Hill, Erica Kovaluskie, Isabella Moore, Jacob Britt, Jacqueline
584 Contino, Jennilee Kovaluskie, Jenny Folden, JoAnne Porta, Karen McKenna, Katie Curtiss, Kim McLaugherty,
585 Kimberly Wilke-Zuma, Krupal Patel, Lacy Smith, Leslie Walker, Lisa Gonzalez, Lisha Kelly, Macie Najera,
586 Mairead Moloney, Mandi Brown, Michael Kaczmarski, Michelle Smith, Nick Natalizio, Olivia Desalvo, Paula
587 Wright, Peter Kaczmarski, Prithvi Narasimhan, Rachel Lindley, Rachele Moore, Samantha Sheehan, Sarah Moss,
588 Soham More, Stacey Robinson, Tonya Johnson, and Yancy Boatner. Special thanks to Soham Moore and Prithi
589 Narasimhan from Sympto Health for data scraping of data from EMR's. We are indebted to Songzhu for statistical
590 calculations and LC curve generation.

591

592

593

594

595

596