

1 **AD PLASMA BIOMARKERS ARE STABLE FOR AN EXTENDED PERIOD AT -20°C: IMPLICATIONS**
2 **FOR RESOURCE-CONSTRAINED ENVIRONMENTS.**

3 Biniyam A. **Ayele**^{1,2}, Patrice L. **Whitehead**¹, Julianna **Pascual**¹, Tianjie **Gu**¹, Jamie **Arvizu**¹, Charles
4 **G. Golightly**¹, Larry D. **Adams**¹, Margaret A. **Pericak-Vance**^{1,3,4}, Jeffery M. **Vance**^{1,3,4}, Anthony J.
5 **Griswold**^{1,3*}

6 ¹ John P. Hussman Institute for Human Genomics, University of Miami Miller School of Medicine,
7 Miami, FL.

8 ² Department of Neurology, CHS, Addis Ababa University, Addis Ababa, Ethiopia

9 ³ Dr. John T Macdonald Foundation Department of Human Genetics, University of Miami Miller
10 School of Medicine, Miami, FL.

11 ⁴ Department of Neurology, University of Miami Miller School of Medicine, Miami, FL

12 **Running title:** Stability of AD blood based biomarkers

13 **Word counts:** 1915

14 **Correspondence:**

15 Anthony J. Griswold, PhD, Associate Professor of Human Genetics

16 The Dr. John T. Macdonald Foundation Department of Human Genetics

17 John P. Hussman Institute for Human Genomics

18 Associate Director, Center for Genome Technology, University of Miami Miller School of
19 Medicine

20 1501 NW 10th Avenue (M-860), BRB 318 Miami, FL 33136 (305) 243-5982 (office)

21 agriswold@med.miami.ed

22 **ABSTRACT**

23 Standard procedures for measuring Alzheimer’s disease (AD) plasma biomarkers include storage
24 at -80°C. This is challenging in countries lacking research infrastructure, such -80°C freezer. To
25 investigate stability of AD biomarkers from plasma stored at -20°C, we compared aliquots stored
26 at -80°C and others at -20°C for two, four, six, fifteen, and thirty-five weeks. pTau181, Aβ42,
27 Aβ40, NfL, and GFAP were measured for each timepoint. pTau181 and Aβ42/Aβ40 ratios
28 showed minimal variation for up to 15 weeks. NfL and GFAP had higher variability. This finding
29 of 15-week stability at -20°C enables greater participation in AD biomarker studies in resource
30 constrained environments.

31

32 **Keywords:** Alzheimer's disease; blood-based biomarkers; stability; resource-constrained

33

34 **INTRODUCTION**

35 Globally, Alzheimer’s disease (AD) is the most common cause of dementia accounting for
36 60%-80% of all cases [1–4]. Over 60% of AD patients reside in low- and middle-income countries
37 (LMIC) with exponential increase in prevalence expected by mid-century [1–4]. AD is
38 characterized by the extracellular deposition of beta amyloid plaques and intracellular
39 deposition of neurofibrillary tau tangles, which gradually result in damage and loss of neuronal
40 cells [5,6]. Current gold standard diagnostic methods to confirm the presence of amyloid beta
41 and tau deposition in the brain are advanced imaging techniques such as amyloid-PET and tau-

42 PET scans or measurement of cerebrospinal fluid (CSF) based biomarkers such as amyloid- β or
43 phosphorylated Tau [7–10]. However, given the invasive and expensive nature of these tests,
44 their use in resource constrained settings is prohibitive. However, blood-based biomarkers
45 (BBM) show potential for aiding in the early and accurate detection of AD neuropathology and
46 identifying presymptomatic or mild cognitive impairment (MCI) stages of AD cases [11–15].
47 Thus, plasma biomarkers could offer cost-effective, easily accessible, and scalable AD diagnostic
48 options for widespread use in resource constrained settings [7,16].

49 While plasma isolation is minimally invasive and low cost, appropriate preanalytical
50 handling is critical to limit variability in measurements. As recommended by the Standardization
51 of Alzheimer's Blood Biomarkers (SABB) working group of the Alzheimer's Association, plasma
52 should be stored immediately at -20°C for a maximum of two weeks with longer term storage at
53 -80°C [17]. Such a requirement is challenging in low-resource settings where -80°C storage is not
54 readily available nor is shipping of frozen aliquots practical or cost effective. An example of this
55 challenge presents itself in the DAWN study, a multi-center project funded by the National
56 Institute on Aging (NIA). DAWN aims to explore AD in diverse ancestral groups including nine
57 countries from sub-Saharan Africa (SSA) through the Africa Dementia Consortium (AfDC) [18].
58 This involves collection of detailed clinical and neuropsychological data and blood samples from
59 5000 indigenous Africans for genomic and biomarkers investigation. Critically, of the nine
60 countries participating in the DAWN study from Africa, only three have local access to -80°C
61 freezers, though all have access to -20°C storage.

62 While previous studies have indicated that intermittent storage of plasma samples at -
63 20°C for 2 weeks does not change biomarker levels [17], no study has shown stability of BBM

64 beyond two weeks. Herein we investigate the stability of biomarker measures of
65 phosphorylated threonine-181 of Tau (pTau181), amyloid- β 40 & 42 (A β 40 and A β 42),
66 neurofilament light chain (NfL), and glial fibrillary acidic protein (GFAP) from plasma stored at -
67 20°C for 2, 4, 6, 15, or 35 week timepoints. This approach could simplify plasma studies and
68 storage, particularly beneficial to enhance AD research in resource-limited settings, without
69 significantly compromising the integrity of the biomarker measurements.

70 **METHODS**

71 **Study setting and ethical considerations:**

72 The study was conducted at the John P. Hussman Institute for Human Genomics (HIHG) at the
73 University of Miami, Miller School of Medicine. The study was performed on the blood samples
74 obtained from ten anonymous healthy volunteers. Appropriate study ethical approval was
75 obtained from the University of Miami ethical review board, and all the volunteers gave a
76 written consent before the samples were collected.

77 **Sample collection and handling:**

78 Peripheral blood samples were collected from ten volunteers via venipuncture using a 21G
79 needle and collected into ethylene diamine tetraacetic acid (EDTA) tubes. Plasma was isolated
80 within 15 minutes of venipuncture via centrifugation for 10 min at 1,800 × g at room
81 temperature (RT) and 250mL plasma aliquots were made into pre-labeled barcoded
82 polypropylene storage tubes. Two aliquots per participant were stored within 60 minutes at -
83 80°C and the others at -20°C for 2, 4, 6, and 15 weeks before transfer to -80°C and biomarker

84 analysis (Figure 1). A subset of four individuals had enough plasma aliquots to extend storage to
85 35 weeks before transfer to -80°C.

86

87

88 **Sample analysis:**

89 Measurement of BBM was performed for a baseline measure from the aliquot stored at -80°C
90 and from those stored for 2, 4, 6, 15, and 35 weeks before transfer from -20°C to -80°C. We then
91 measured concentration of pTau181, Aβ42, Aβ40, NfL, and GFAP with Single molecule arrays
92 (Simoa™) chemistry using the pTau181 AdvantageV2 and NEUROLOGY 4-PLEX E assays on the
93 Quanterix HD-X [19]. Initial data analysis was performed using the Quanterix Analyzer v1.6
94 software to calculate standard curves and biomarker concentrations. Each aliquot was run in
95 duplicate on the assay plate.

96 **Statistical analysis**

97 The percentage change of plasma AD biomarker levels at 2, 4, 6, 15, and 35 weeks compared to
98 the baseline were calculated for each individual. The aggregate mean value and percentage
99 changes of each of the biomarkers at different timepoint were compared with the mean value
100 at the baseline for each of the study participants. We considered percentage change of +/- 10 %
101 as a cutoff point to define clinically significant changes for pTau181, Aβ42, and Aβ40 as
102 previously suggested [17]. Variability for NfL and GFAP can be upwards of 10% within a run for
103 the same sample as reported, suggesting that higher cutoff points are applicable for these
104 assays (Simoa® Neurology 4-Plex E).

105 **RESULTS**

106 Figure 2 summarizes the percentage changes of the mean values of each biomarker assayed
107 over time stored at -20°C before transfer to -80°C. There was a minimal mean percentage
108 changes for pTau181 compared to the baseline from weeks 2 through 15, with mean change of
109 <10% over the four timepoints with a noticeable decline of nearly 33% in aliquots stored for 35
110 weeks. The average level of A β 42/A β 40 ratio was stable over all study timepoints showing an
111 overall 5% reduction compared to the baseline. However, the individual measures of A β 42 and
112 A β 40 showed higher variability at the 15-week and 35-week timepoints.

113 Higher variability was observed in the concentration of GFAP and NfL at all five timepoints. We
114 observed a consistent increase in concentration of NfL at all timepoints compared to the
115 baseline, ranging from 11% increment at week 2 to 25% increment at week 35 compared to the
116 baseline measurement. Similar variability was observed in the level of GFAP over the five
117 timepoints. The overall variability of GFAP ranged from 7% at week 2 to 29% at week 35
118 compared to the baseline value.

119 We have analyzed the observed variation by individual samples at various timepoints to
120 understand the individual level variations. The concentration of pTau181 was stable in over the
121 five time points in 8 of the study participants. In two of the samples (202301377 and
122 202301372) pTau181 showed greater than 10% variability at week 2, week 6, and week 35
123 respectively. A β 42 and A β 40 showed relatively consistent stability in concentration in all 10
124 samples at all timepoints. GFAP and NfL concentration show variations across all samples with a
125 general increase over time (Figure 3).

126 **DISCUSSION**

127 The investigation of Alzheimer’s disease plasma biomarkers among diverse ancestry
128 populations has been extremely limited, though increasingly studies including African
129 Americans and Hispanic/Latino individuals from the US have emerged[20–25]. In particular,
130 there are nearly no studies in sub-Saharan Africa, with one recent study from the Democratic
131 Republic of Congo (DRC) a notable exception [26] . At least one barrier to inclusion of African
132 participants in biomarker study has been the availability of research infrastructure to support
133 the existing best practices [17]. Africa, and other low and middle income countries often lack -
134 80°C freezer storage due to cost of the instrumentation, reliability of the power grid, and cost of
135 backup and solar power. Furthermore, logistics for short term storage and shipping to central
136 repositories are hindered by lack of shipping infrastructure and availability of cold storage
137 materials such as dry ice or liquid nitrogen. Thus, this study investigated the stability of AD BBM
138 from plasma stored at -20°C for at timepoints beyond the current recommendation of 2 weeks.
139 Overall, after 15 weeks of storage at -20°C, the mean levels of pTau181 and the A β 42/A β 40 ratio
140 showed minimal variation compared to baseline, indicating their reliability for analysis in these
141 settings. However, the level of pTau181 dropped significantly at week 35. Moreover, the mean
142 concentrations of NfL and GFAP showed greater variability and increased over time points,
143 although the overall deviations of NfL and GFAP remained within acceptable manufacturer
144 limits, i.e. as much as 10% variability in duplicate runs.

145 To date, no study has investigated the stability of BBM past two weeks at -20°C freezer.
146 Verberk et al 2022, has reported concentration of pTau181 is resistance to delayed
147 centrifugation (24hrs) and storage at higher temperature (-20°C) for up to two weeks [17].

148 Despite the observed drop in the level of pTau181 at week 35, our observation supports the
149 stability of pTau when stored in -20°C freezer up to week 15, making its usability practical in
150 resource limited setting where the availability of a deep freezer is limited. Similarly, the
151 A β 42/A β 40 ratio was stable over the measured timepoints with mild reduction from the
152 baseline concentration. Finally, our study showed fluctuations in the concentrations of GFAP
153 and NfL across all five measurement timepoints when compared to the baseline levels. Both the
154 level of GFAP and NfL start increasing in the second week and maximal change from the
155 baseline was observed at week 35.

156 In the present study, the overall mean concentration of pTau181 and the A β 42/A β 40
157 ratio were comparable to a recent study by Griswold et al. 2024, [24] published on MedRxiv. The
158 study examined AD blood biomarker profiles in 2,086 individuals from diverse genetic
159 backgrounds, aiming to identify biomarker variations among different populations. Likewise, the
160 mean pTau181 levels were 1.98 pg/mL and 2.02 pg/mL for African Americans , and 1.84 pg/mL
161 for Caribbean Hispanics . Additionally, they reported mean A β 42/A β 40 ratios of 0.0477 and
162 0.0575 for African Americans and 0.0432 for Caribbean Hispanics. These findings closely align
163 with the aggregate mean concentrations observed in our study [24].

164 The underlying biological, chemical, or physical factors driving these deviations remain
165 unknown and have varied across studies. Our finding is congruent with a study by Lewczuk et al.
166 2018, which reported the concentration of NfL increases when samples are stored even for five
167 days at higher temperature such as room temperature or at 4 degrees [27]. However, Verbeck et
168 al 2022, has reported they haven't seen such an increase in level of NfL after two weeks storage
169 in refrigerator. Furthermore, Altmann et al. 2020 reported the serum level of NfL is resistant to

170 delayed centrifugation (24hrs) and up to three thawing and re-freezing cycles [28]. Whether
171 these variabilities are due to biological factors such as protein aggregation, chemical factors
172 such as assay performances, or physical features such as binding to sides of tubes remains to be
173 investigated.

174 In summary, up to 15 weeks of storage of plasma at -20°C does not significantly change
175 AD related plasma biomarker concentrations beyond assay specifications, though there are
176 modest increases in GFAP and NfL in all timepoints. This suggests that locations lacking -80°C
177 storage can utilize -20°C equipment and still maintain biomarker fidelity, allowing for greater
178 representation of biomarker studies from low- and middle- income countries, increasing the
179 diversity of studies in AD.

180 **Acknowledgement:** The authors are grateful to all the ten volunteers who donated their blood
181 to this study.

182 **Funding:** AG074865, AG072547, AG076482, AG062943, AG057659, AG066767

183 **Conflict of interest:** none

184 **Consent to publish:** Not applicable.

185 **Data Availability:** The raw dataset used for this study's conclusion can be accessed upon
186 reasonable request from the corresponding and senior author.

187 There are no sources in the current document.

188 **Reference:**

- 189 1. World Health Organization. Global action plan on the public health response to
190 dementia 2017–2025. World Health Organization; 2017.
- 191 2. Nichols E, Steinmetz JD, Vollset SE, et al. Estimation of the global prevalence of dementia
192 in 2019 and forecasted prevalence in 2050: an analysis for the Global Burden of Disease
193 Study 2019. *Lancet Public Health*. 2022;7(2):e105–25.
- 194 3. Rizzi L, Rosset I, Roriz-Cruz M. Global Epidemiology of Dementia: Alzheimer’s and
195 Vascular Types. *BioMed Res Int*. 2014;1–8.
- 196 4. Prince M, Wimo A, Guerchet M, Ali GC, Wu YT, Prina M. World Alzheimer Report 2015.
197 The Global Impact of Dementia: An analysis of prevalence, incidence, cost and trends.
- 198 5. DeTure MA, Dickson DW. The neuropathological diagnosis of Alzheimer’s disease. *Mol*
199 *Neurodegener*. 2019;14(1):32.
- 200 6. Bloom GS. Amyloid- β and Tau: The Trigger and Bullet in Alzheimer Disease Pathogenesis.
201 *JAMA Neurol*. 2014;71(4):505.
- 202 7. Teunissen CE, Verberk IMW, Thijssen EH, et al. Blood-based biomarkers for Alzheimer’s
203 disease: towards clinical implementation. *Lancet Neurol*. 2022;21(1):66–77.
- 204 8. Walhovd KB, Fjell AM, Brewer J, et al. Combining MR Imaging, Positron-Emission
205 Tomography, and CSF Biomarkers in the Diagnosis and Prognosis of Alzheimer Disease.
206 *Am J Neuroradiol*. 2010;31(2):347–54.

- 207 9. Palmqvist S, Zetterberg H, Mattsson N, et al. Detailed comparison of amyloid PET and
208 CSF biomarkers for identifying early Alzheimer disease. *Neurology*. 2015;85(14):1240–9.
- 209 10. Hameed S, Fuh JL, Senanarong V, et al. Role of Fluid Biomarkers and PET Imaging in Early
210 Diagnosis and its Clinical Implication in the Management of Alzheimer’s Disease. *J*
211 *Alzheimers Dis Rep*. 2020;4(1):21–37.
- 212 11. Shen X, Li J, Wang H, Li H, et al. Plasma amyloid, tau, and neurodegeneration biomarker
213 profiles predict Alzheimer’s disease pathology and clinical progression in older adults
214 without dementia. *Alzheimers Dement Diagn Assess Dis Monit*. 2020;12(1).
- 215 12. Mattsson N, Andreasson U, Zetterberg H, et al. Association of Plasma Neurofilament
216 Light With Neurodegeneration in Patients With Alzheimer Disease. *JAMA Neurol*
217 ;74(5):557.
- 218 13. Jack CR, Bennett DA, Blennow K, et al. A/T/N: An unbiased descriptive classification
219 scheme for Alzheimer disease biomarkers. *Neurology*. 2016;87(5):539–47.
- 220 14. Yu J, Li J, Suckling J, et al. Frequency and longitudinal clinical outcomes of Alzheimer’s
221 AT(N) biomarker profiles: A longitudinal study. *Alzheimers Dement*. 2019;15(9):1208–17.
- 222 15. Park JC, Han SH, Yi D, et al. Plasma tau/amyloid- β 1–42 ratio predicts brain tau deposition
223 and neurodegeneration in Alzheimer’s disease. *Brain*. 2019;142(3):771–86.
- 224 16. Agarwal M, Khan S. Plasma lipids as biomarkers for Alzheimer's disease: a systematic
225 review. *Cureus*. 2020;12(12).

- 226 17. Verberk IMW, Misdorp EO, Koelewijn J, et al. Characterization of pre-analytical sample
227 handling effects on a panel of Alzheimer's disease-related blood-based biomarkers:
228 Results from the Standardization of Alzheimer's Blood Biomarkers (SABB) working
229 group. *Alzheimers Dement J Alzheimers Assoc.* 2022;18(8):1484–97.
- 230 18. Akinyemi RO, Owolabi MO, Okubadejo N, et al. The African Dementia Consortium.
231 *Lancet Neurol.* 2023;22(1):28–9.
- 232 19. Wilson DH, Rissin DM, Kan CW, et al. The Simoa HD-1 Analyzer: A Novel Fully Automated
233 Digital Immunoassay Analyzer with Single-Molecule Sensitivity and Multiplexing. *SLAS*
234 *Technol.* 2016;21(4):533–47.
- 235 20. Jiang X, Bahorik AL, Graff-Radford NR, et al. Association of Plasma Amyloid- β and
236 Dementia Among Black and White Older Adults. *J Alzheimers Dis.* 2024;99(2):787–97.
- 237 21. Windon C, Iaccarino L, Mundada N, et al. Comparison of plasma and CSF biomarkers
238 across ethnoracial groups in the ADNI. *Alzheimers Dement Diagn Assess Dis Monit.*
239 2022;14(1):e12315.
- 240 22. Deniz K, Ho CCG, Malphrus KG, et al. Plasma Biomarkers of Alzheimer's Disease in
241 African Americans. *J Alzheimers Dis.* 2021;79(1):323–34.
- 242 23. Molina-Henry DP, Raman R, Liu A, et al. Racial and ethnic differences in plasma
243 biomarker eligibility for a preclinical Alzheimer's disease trial. *Alzheimers Dement.*
244 2024;20(6):3827–38.

245 24. Griswold AJ, Rajabli F, Gu T, et al. Generalizability of Tau and Amyloid Plasma Biomarkers
246 in Alzheimer's Disease Cohorts of Diverse Genetic Ancestries. *medRxiv*. 2024.

247 25. Griswold AJ, Rajabli F, Gu T, et al. Tau and Amyloid Plasma Biomarker Analysis in
248 Alzheimer's Disease Cohorts from Diverse Genetic Ancestries. *Alzheimers Dement*.
249 2023;19(S14):e078942.

250 26. Ikanga J, Patel SS, Roberts BR, et al. Association of plasma biomarkers with cognitive
251 function in persons with dementia and cognitively healthy in the Democratic Republic of
252 Congo. *Alzheimers Dement Diagn Assess Dis Monit*. 2023 Oct;15(4):e12496.

253 27. Lewczuk P, Ermann N, Andreasson U, et al. Plasma neurofilament light as a potential
254 biomarker of neurodegeneration in Alzheimer's disease. *Alzheimers Res Ther*.
255 2018;10(1):71.

256 28. Altmann P, Leutmezer F, Zach H, et al. Serum neurofilament light chain withstands
257 delayed freezing and repeated thawing. *Sci Rep*. 2020;10(1):19982.

258

259 **Legends:**

260 **Figure 1:** Plasma sampling, processing, and biomarkers analysis workflow.

261 **Figure 2:** Box plots showing percentage changes of the mean of the 10 individuals of different
262 AD blood biomarkers across five timepoints compared to the baseline. *Single solid dash line at

263 0: baseline measurement; *continuous dash lines: +/- 10% threshold. Black dots: outlier values
264 for each biomarkers.

265 **Figure 3:** Line graph showing percentage changes of plasma biomarkers individual participants
266 across various timepoints.

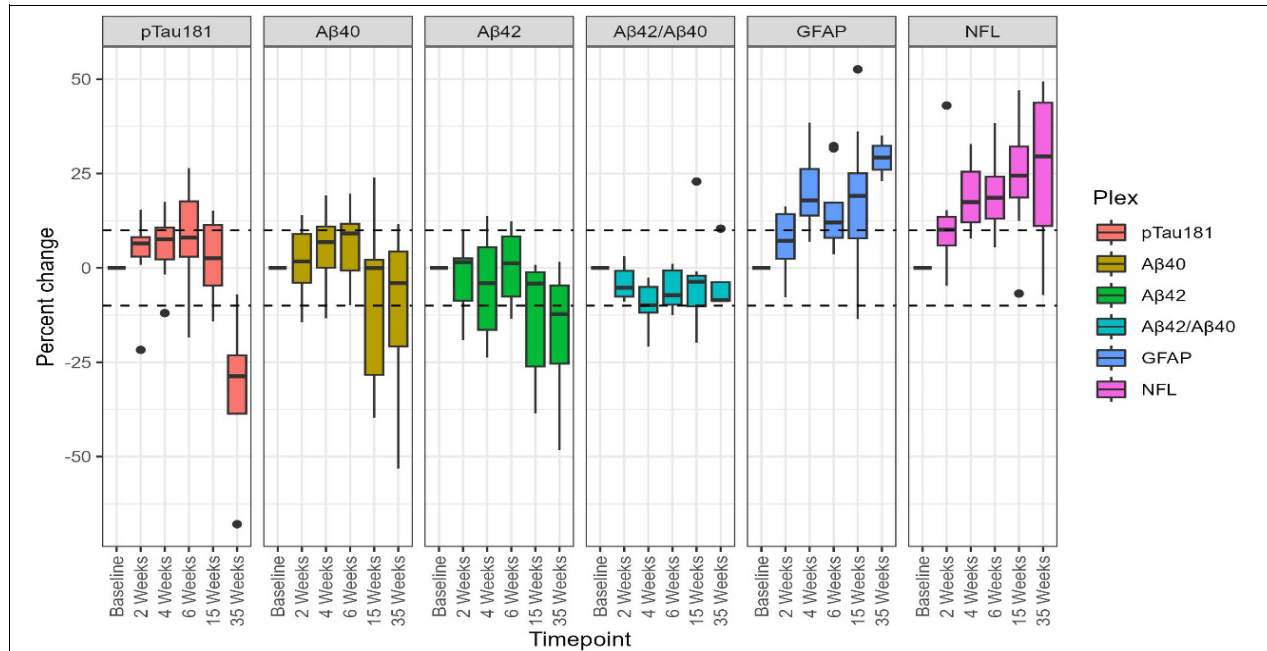


Figure 2: Box plots showing percentage changes of the mean of the 10 individuals of different AD blood biomarkers across five timepoints compared to the baseline. *Single solid dash line at 0: baseline measurement; *continuous dash lines: +/- 10% threshold. Black dots: outlier values for each biomarkers.

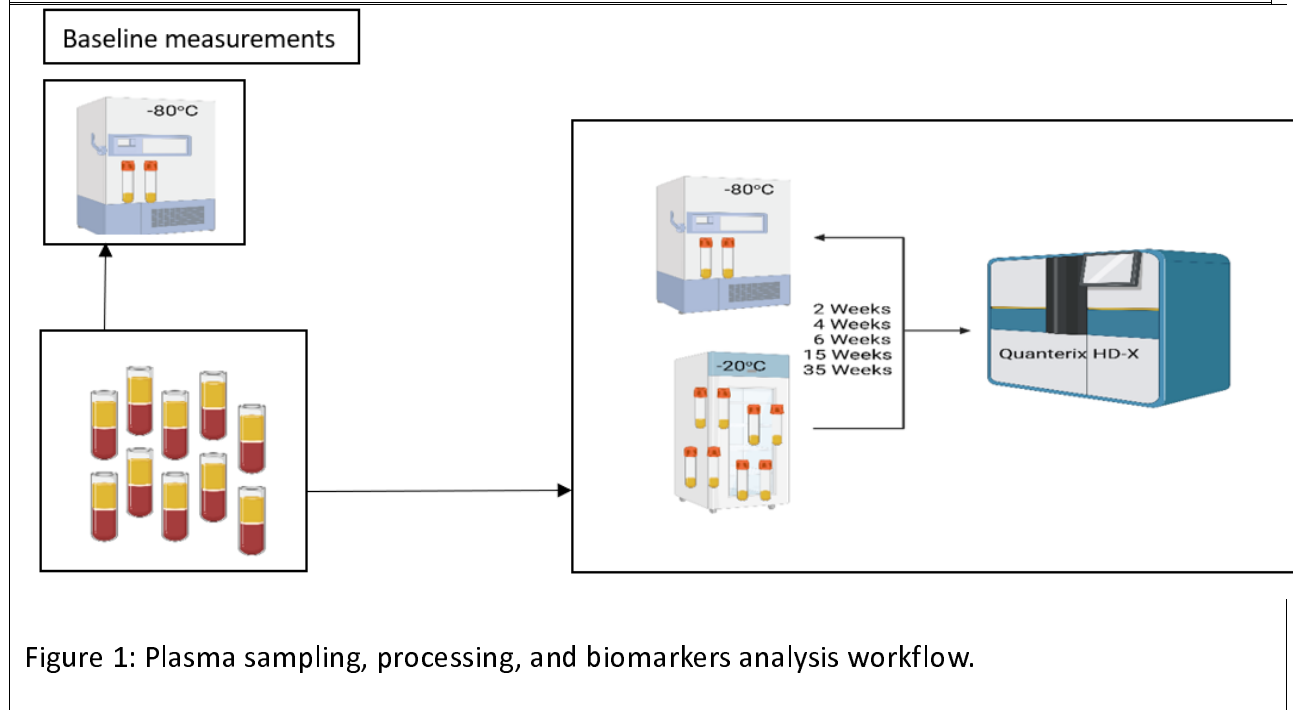
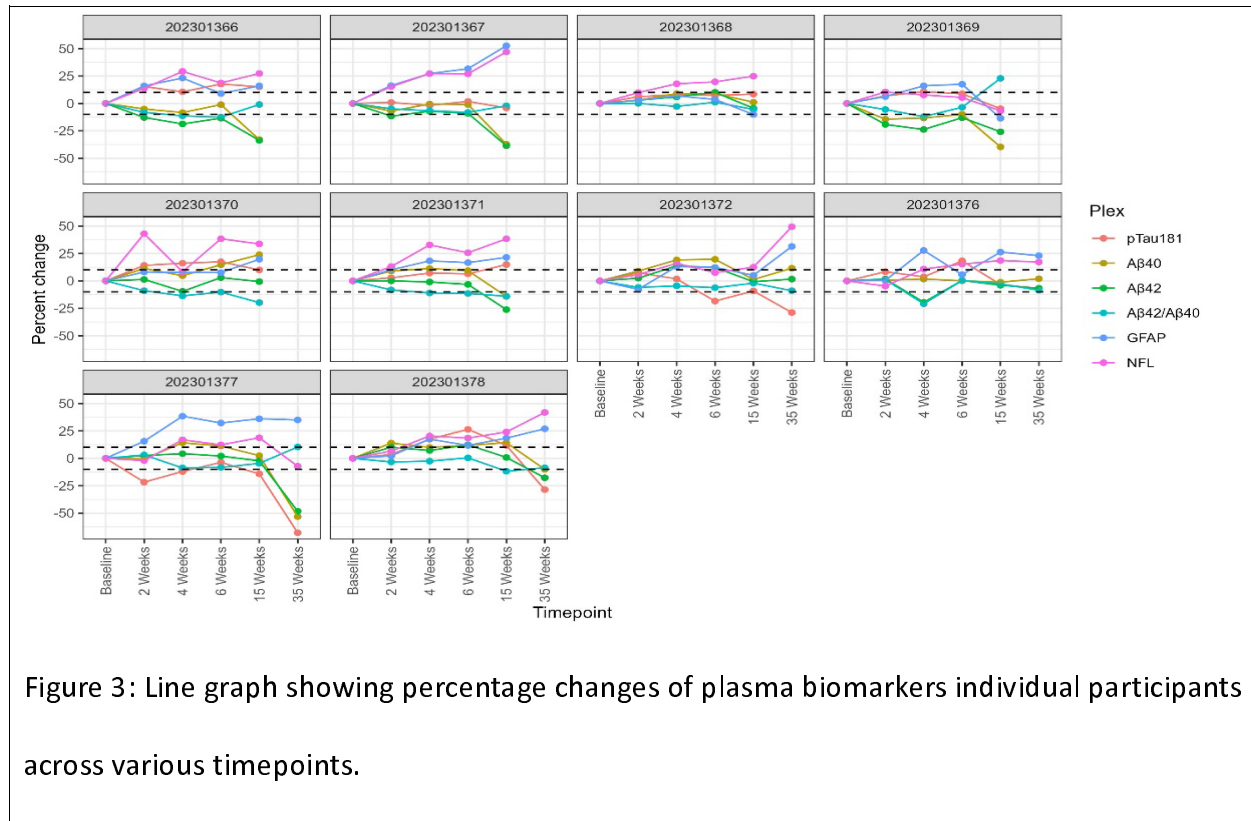


Figure 1: Plasma sampling, processing, and biomarkers analysis workflow.

2



3