

1 **Title:** Cancer as a novel Risk Factor for Major Adverse Cardiovascular Events in Secondary Prevention

2

3 **Authors:** Renzo Melchiori MD¹, Sara Diaz Saravia MD², Pablo Rubio MD¹, Lucas Szlaien MD¹, Romina Mouriño¹
4 MD, Martin O'Flaherty³ MD, MSc, PhD, Miguel Rizzo MD PhD⁴, Alejandro Hita MD PhD¹

5

6 **Affiliations:**

7 ¹Department of Cardiology and Echocardiography, Hospital Universitario Austral, Austral University, Buenos
8 Aires, Argentina

9 ²Department of Medicine, Icahn School of Medicine at Mount Sinai

10 ³Department of Public Health, Policy and Systems, University of Liverpool, United Kingdom

11 ⁴Department of Hematology and Oncology, Hospital Universitario Austral, Austral University, Buenos Aires,
12 Argentina

13

14 **Short Title:** Cancer as a Risk Factor in Secondary Prevention

15

16 **Corresponding Author:**

17 Renzo Melchiori MD¹

18 rmelchio@cas.austral.edu.ar

19 Department of Cardiology and Echocardiography, Hospital Universitario Austral, Austral University, Buenos
20 Aires, Argentina

21 +54 (11)-31073969

22

23 **Word Count:** 4834

24 **ABSTRACT**

25 **Introduction:** The inflammatory mechanisms of cancer can be associated with atherosclerosis development
26 and progression. Although there is an incidence rate of cardiovascular events in secondary prevention
27 following a first acute coronary syndrome (ACS).

28
29 **Methods:** A retrospective study cohort study including patients who underwent a PCI for first Acute Coronary
30 Syndrome (ACS), and without prior history of Major Cardiovascular Events (MACE) from 2008 to 2022 was
31 analyzed. Included patients were grouped according to the absence or presence of cancer: G1 non-oncologic,
32 and G2 oncologic (either prior or actual history). We compared the incidence rate ratio of MACE within 3 years
33 after STEMI between groups. Time-to-event analysis was conducted through proportional Cox regression
34 analysis, estimating hazard ratio, and corresponding 95% confidence intervals (95% CI)

35
36 **Results:** Out of 937 patients who underwent a PCI, 787 patients were included of which 88.7% (n=698)
37 presented without cancer. Over a median follow-up time of 45 months [IQR= 14-72], the incidence rate of
38 MACE was 4.4 cases per 1000 patients/months of follow-up (n=173 MACE events). When comparing both
39 groups, the incidence rate ratio of MACE was 1.9 (95% CI 1.24-2.99), significantly increased in the cancer group
40 (P=0.0032) without showing differences in median follow-up times. Cancer was an independent predictor of
41 MACE HR 1.84 (95% CI 1.19-2.85; P=0.006), adjusted for hypertension, dyslipidemia, diabetes, smoking history,
42 sedentary lifestyle, obesity, age, male gender, and family history of cardiovascular disease.

43
44 **Conclusions:** Patients with cancer represent a novel independent risk factor for MACE, even following
45 secondary preventive therapies. These results highlight future endpoints for cardiovascular prevention and
46 further public health interventions on this population.

47 INTRODUCTION

48 Cancer is the second cause of death worldwide, only surpassed by cardiovascular diseases (1). In recent
49 decades, cancer mortality rates have decreased, with a consequent increase in overall survival (2). For those
50 patients who survive cancer, oncological treatments and cardiovascular and cerebrovascular diseases become
51 the main causes of mortality (3, 4). In 2022, there were approximately 4.2 million cases of cancer in the region
52 of the Americas, and this number is projected to increase up to 6.7 million in 2045 according to the Pan-
53 American Health Organization. This growing number calls for a better understanding of the relationship of
54 cancer and cardiovascular disease in the long term.

55
56 Multiple studies have emphasized the relationship between the pathophysiological mechanisms of cancer and
57 cardiovascular disease (5-6). There is emerging evidence on the role of oncological disease as a precipitator of
58 chronic inflammation and long-term endothelial damage (7-11). Although there are multiple registry
59 publications in relation to the increase in cardiovascular events in the cancer population (3, 5, 17-21), the
60 evidence for secondary prevention is scarce.

61
62 However, less is known in terms of the excess risk of cancer on Major Adverse Cardiovascular Events (MACE) in
63 the context of secondary prevention. If this association exists, its role in modifying management and
64 prognostic strategies will need to be defined, implying a significant impact in public health and cardiovascular
65 prevention. Therefore, we sought to determine the independent association of oncological disease and its
66 effect on the incidence of MACE compared to patients without cancer in the secondary prevention setting.

67

68 METHODS

69 *Setting and Study Design*

70 A retrospective cohort study was conducted including adult patients (>17 years of age) who were admitted to
71 the Cardiac Care Unit at the Austral University Hospital with Acute Coronary Syndrome (ACS) from January 1st,
72 2009, to March 31st, 2023. This registry was formed through the review of Electronic Medical Records of
73 patients presenting with ACS during that period, and subjects were selected according to the eligibility criteria
74 defined (see section "Eligibility Criteria"). Institutional Ethical Approval was granted by the Ethics Board and
75 written informed consent was obtained from the patients before their admission to the institution
76 (Institutional Evaluation Committee of the Universidad Austral, CIE No. P21-022).

77

78 *Eligibility Criteria*

79 Patients eligible for this study included those who underwent Left Heart Catheterization (LHC) as part of the
80 therapeutic diagnostic strategy during their first hospitalization due to ACS. Patients with prior history of
81 Myocardial Infarction (MI), or Cerebrovascular disease (CVA), or either percutaneous Coronary Intervention
82 (PCI) or Coronary Artery Bypass Graft Surgery (CABG) were excluded.

83

84 *Exposure variable of interest*

85 The exposure group was defined as any active oncological history (under treatment) or referred, regardless of
86 its duration, prior to entry into the cohort, irrespective of the type of treatment received. The cancer history
87 necessary for our study was obtained from the patient's electronic medical records. It was characterized by the
88 type of neoplasm, defining hematologic neoplasia as leukemia, lymphomas, myeloproliferative syndromes,
89 and multiple myeloma, and solid organ tumors as any tumor that is non-hematological, establishing cellular
90 type where possible. The years since diagnosis were determined as the time from cancer diagnosis to
91 admission to the coronary unit or cardiovascular study as part of the admission. Oncological stage was
92 established according to the TNM classification system.

93

94 Regarding cancer therapies, it was assessed whether patients were under active treatment or not. Active
95 chemotherapy was defined as having received chemotherapy or immunotherapy within 90 days prior to initial
96 hospital presentation. Specific treatment types were categorized into chemotherapy, immunotherapy,
97 hormone therapy, and radiotherapy. Radiation therapy history was defined as radiation treatment to any
98 organ, establishing the cumulative dose, if possible, as the oncological treatment may have been administered
99 at another institution. It was also determined whether anthracyclines were used in the oncological treatment.

100 The time since completion of treatment was established in years at the time of admission for acute coronary
101 syndrome (ACS). Skin cancer basal cell carcinoma or squamous cell carcinoma were excluded.

102

103

104 ***Other exposure variables of interest and co-interventions***

105 The known risk factors were collected by the attending physician upon admission for the ACS in the electronic
106 medical records, including hypertension defined as systolic blood pressure greater than or equal to 140 mmHg
107 and/or diastolic blood pressure greater than or equal to 90 mmHg or the use of antihypertensive medications
108 at the time of hospitalization. Diabetes mellitus was defined as HbA1c levels greater than 6.5 mg/dL in the
109 laboratory and/or documented history in the medical record and/or use of insulin. Smoking history was
110 considered, including former and active smokers. Dyslipidemia was defined as values above normal for total
111 cholesterol, LDL cholesterol, and/or triglycerides, as well as the use of lipid-lowering medications. Obesity was
112 defined as a body mass index equal to or greater than 30. Sedentary lifestyle was defined as less than 2.5
113 hours of exercise per week, and family history included the presence of myocardial infarction or stroke in a
114 first-degree relative before the age of 55 for men or 65 for women.

115
116 The clinical variables and laboratory tests to assess adherence to secondary prevention goals were rate of
117 statins rate, dosing of statins (standardized to equivalent doses of atorvastatin), LDL value (mg/dl), use of dual
118 antiplatelet therapy (DAPT), duration of DAPT and use of Aspirin. These parameters were measured in both
119 oncology and non-oncology patients as part of their follow-up.

120
121 ***Primary outcome assessment, definition, and statistical analysis.***

122 The primary endpoint was the incidence rate of new MACE over the follow-up period since hospital discharge
123 after the primary ACS. MACE was defined as a composite of death by cardiovascular cause, non-fatal
124 Myocardial Infarction (MI), non-fatal Cerebrovascular Accident (CVA), and repeat non-staged Percutaneous
125 Coronary Intervention (PCI). Cardiovascular death was considered when the patient was admitted due to a
126 MACE. This does not include patients admitted for non-cardiovascular events who subsequently developed
127 STEMI or CVA during their hospitalization. The non-fatal myocardial infarction was considered using the
128 current universal definition of myocardial infarction at the time of admission (14).

129
130 Stroke was defined as compatible clinical symptoms plus imaging findings of brain injury on computed
131 tomography or magnetic resonance imaging (15). In our study, scheduled angioplasty was considered for all
132 PCI procedures performed after one month from the primary event due to symptoms or ischemia on stress
133 test.

134 The surveillance follow-up for MACE in each patient was conducted by the Primary Care Physician (PCP) or the
135 Principal Cardiologist. Patients who were not followed up at our institution were contacted by phone by
136 medical personnel who underwent a structured interview. (Table S5)

137
138 The secondary endpoint was the comparison of incidence rates of MACE in subpopulations of patients without
139 prior radiotherapy in any body region, and in patients without active chemotherapy at the time of ACS. The
140 objectives of secondary prevention were also derived from the Electronic Medical Record (EMR) data and were
141 aligned with the current guidelines of the American College of Cardiology (ACC) and the European Society of
142 Cardiology (ESC), conducted by the Primary Care Physician (PCP) or the Principal Cardiologist. These
143 parameters were measured in both oncological and non-oncological patients as part of their follow-up.

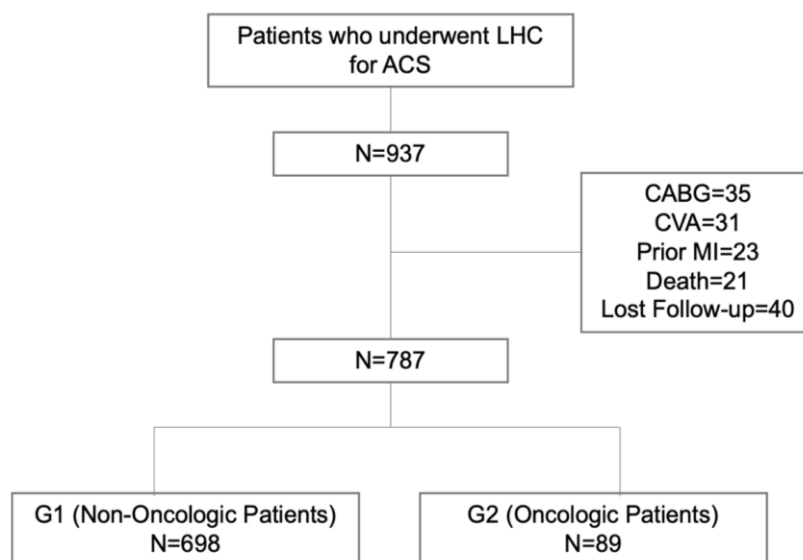
144
145 We estimated a sample power for time-to-event analysis, considering an alpha and beta error of 0.05 and 0.2,
146 respectively. Following the Friedman method, a total number of 167 MACE over the follow-up were necessary
147 to obtain a power of 80%. Categorical variables are reported as a frequency and percentage and subgroups
148 were compared using Chi-square or Fisher exact test, as appropriate. Continuous variables are reported as
149 mean and standard deviation (\pm SD) or as median (IQR), and were compared using the t test or Wilcoxon, for
150 normal or non-parametric distribution, respectively. To determine whether cancer acted as an independent
151 predictor of MACE, adjusted for traditional cardiovascular risk factors, a Cox regression model was conducted.
152 Hazard ratios and its corresponding 95%CI were estimated. Performance of the final model was evaluated
153 through calibration (observed vs expected outcomes) and discrimination with Harrell's c-statistics index.
154 Kaplan-Meier survival curves were computed and compared using the log-rank test. The same analysis was
155 performed with the secondary objective subpopulations. All statistical analyses were performed with Stata®
156 17.0BE.

157
158 **RESULTS**

159 An initial screening process detected 937 patients who had presented to our hospital for ACS and had
 160 undergone a LHC as part of their work-up. Of those patients, we excluded 35 patients who had undergone
 161 CABG, 31 CVA, prior myocardial infarction 23, death 21, and 40 patients were lost to follow-up. These patients
 162 who had been lost to follow-up were looked-up on national registries to ensure they were not deceased. A
 163 total of 787 patients who completed follow-up were included, 698 (88.7%) without cancer (G1) and 89 (11.3%)
 164 with a history of cancer or active cancer (G2). The median follow-up time for the entire cohort was 48 months
 165 (IQR=15-72), being 48 months (IQR=15-84) for G1 and 36 months (IQR=11-48) (0.03).

166
 167 Patients with cancer were significantly older (67 years/±10 vs 60.2 years ±11, p 0.0001) and had a higher
 168 prevalence of insulin-dependent diabetes mellitus (10% vs 4%, p=0.01). The rest of the baseline characteristics
 169 can be seen in Table 1. The therapeutic strategies and general therapeutic objectives for the management of
 170 ACS were adjusted to the guidelines available at that time (Table S1). There were no significant differences in
 171 LHC findings between the two groups, as seen on Table 1.

172
 173 Figure 1. Flow chart of patient selection



174
 175
 176 Table 1. Baseline Characteristics of both subpopulations at the time of ACS presentation

Variables	Total (N=787)	G1 (N=698)	G2 (N=89)	P Value
Age (years)	61 (SD ± 11)	60.2 (SD ± 11)	67 (SD ± 10)	0.0001
Male Sex	645 (82%)	572 (81.9%)	73 (82%)	0.98
Hypertension	496 (63%)	441 (63.2%)	55 (61.8%)	0.78
No DM	625 (79.4)	563 (80.5%)	63 (71%)	0.03
NIDDM	125 (17.5%)	108 (15.5%)	17 (19%)	0.38
IDDM	37 (4.7%)	28 (4%)	9 (10%)	0.56
History of Smoking	480 (61%)	430 (62%)	50 (56%)	0.32
Dyslipidemia	494 (62.7%)	442 (63.2%)	52 (58.4%)	0.33
Hyperuricemia	19 (2.41%)	16 (2.29%)	3 (3.7%)	0.53
Obesity	290 (36.9%)	267 (38.3%)	23 (25.8%)	0.022
Family History of Cardiovascular Disease	137 (17.4%)	130 (18.6%)	7 (7.9%)	0.012
Sedentarism	441 (56%)	405 (58%)	36 (40.4%)	0.002
Length of Stay (days)	3 (IQR 2-5)	3 (IQR 2-6)	4 (IQR 3-5)	0.1
Mean LVEF at time of Discharge (%)	54 (±10.5)	54 (±10)	53 (±11)	0.44
Number of Affected vessels				
0	72 (9.15%)	61 (8.74%)	11 (12.3%)	0.26
1	338 (42.9%)	306 (43.8%)	32 (35.9%)	0.15
2	277 (35.2%)	244 (34.9%)	33 (37.1%)	0.69
3	100 (12.7%)	87 (12.5%)	13 (14.6%)	0.59
Left Main	20 (2.54%)	18 (2.58%)	2 (2.25%)	0.851

Left Anterior Descending	475 (60.4%)	421 (60.3%)	54 (60.7%)	0.94
Left Circumflex	314 (39.9%)	276 (39.5%)	38 (42.7%)	0.56
Right Coronary	363 (46.1%)	315 (45.1%)	48 (53.9%)	0.11
Number of Treated Lesions				
1	405 (51.4%)	368 (53.5%)	37 (41.6%)	0.05
2	239 (30.4%)	209 (30.3%)	30 (33.7%)	0.58
3	70 (8.89%)	59 (8.6%)	11 (12.3%)	0.224
BARC Score				
0	579 (73.6%)	476 (68.2%)	67 (75.3%)	0.74
1	188 (23.9%)	202 (28.9%)	20 (22.5%)	0.69
2	16 (2.03%)	15 (2.15%)	1 (1.12%)	0.51
3	4 (0.51%)	3 (0.43%)	1 (1.12%)	0.32

177 *G1= Non-Oncologic Group, G2= Oncologic Group, DM= Diabetes Mellitus, NIDDM= Non-Insulin Dependent*
 178 *Diabetes Mellitus, IDDM= Insulin-Dependent Diabetes Mellitus.*

179 The median time from cancer diagnosis to cohort entry was 24 months for G2. The cell line and staging
 180 characteristics of the oncology population can be seen in Table S1-S2. The objectives and management of
 181 secondary prevention were aligned with the guidelines in effect at the time of MACE. There were no
 182 statistically significant differences between LDL values, statin adherence, statin dose, DAPT and aspirin use
 183 between the two groups at the time of MACE (Table S4).

184 **Incidence**

185 A total of 173 (21.9%) MACE were identified in the follow-up period in both groups combined. The cumulative
 186 incidence of MACE for G1 was 21.06% (147/698) and for G2 was 29.3% (26/89). G2 presented a significantly
 187 higher incidence density of MACE when compared to G1 [8 MACE/1000 patients/month (95% CI 5.5-11.8) vs 4
 188 MACE/1000 patients/month (95% CI 3.4-4.8), $p=0.0032$]. The rate of cardiovascular death during the follow-up
 189 period was 4.5% for G2 and 0.14% for G1 ($P=0.001$). Other findings on the MACE events during the follow-up
 190 period can be found on Table 2. The non-cardiovascular mortality of the entire cohort during the follow-up
 191 period was 1.01%. In G2, non-cardiovascular death was higher than in G1 [5 (5.62%) vs 3 (0.43%), $p = 0.001$].

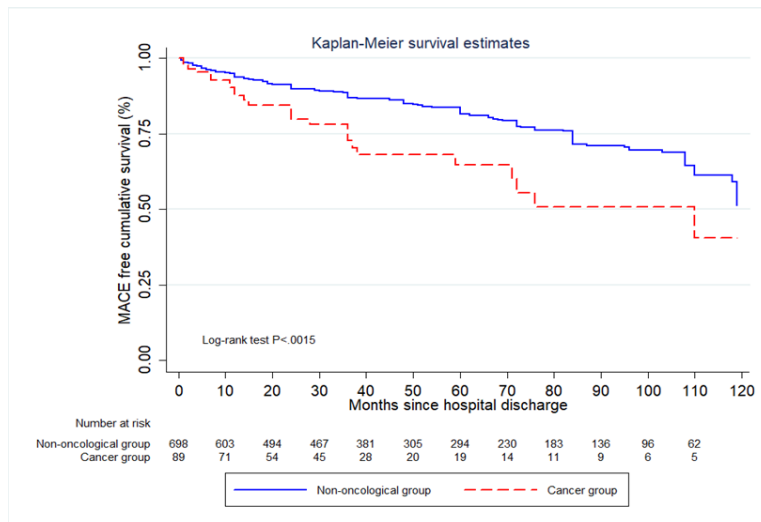
192 Table 2. Incidence of Major Adverse Cardiovascular Events

MACE	Total (N=787)	G1 (N=698)	G2 (N=89)	P Value
Total MACE	173 (21.9%)	147 (21.06%)	26 (29.2%)	0.0016
Cardiovascular Death	5 (0.64%)	1 (0.14%)	4 (4.5%)	0.001
Nonfatal Myocardial Infarction	101 (12.8%)	90 (12.9%)	11 (12.6%)	0.13
Nonfatal CVA	4 (0.51%)	2 (0.29%)	2 (2.25%)	0.0099
Repeat PCI	63 (8%)	54 (7.7%)	9 (10.5%)	0.056

195 **P-value for incidence rate ratio*

196 The Kaplan Meier curve showed a statistically significant difference in time-to-MACE between the two groups,
 197 with $p=0.0015$ (Figure 2) and a LR Chi 32.7.

198 Figure 2. Kaplan Meier Curve for Time-to-MACE.



202

203 Multivariate Cox hazard analysis showed that cancer was an independent predictor of MACE (HR 1.84, [95% CI
 204 1.19-2.85] p=0.006, Harrell's C p=0.63), adjusted for hypertension, dyslipidemia, diabetes, history smoking,
 205 sedentary lifestyle, obesity, age, sex, and family history of cardiovascular disease.

206

207

Table 3. Multivariate Analysis for MACE

Predictors for MACE	Hazard Ratio	95% Confidence Interval	P Value
History of Cancer	1.84	1.2-2.84	0.006
Smoking history	1.21	0.86-1.69	0.25
Diabetes Mellitus	1.29	0.90-1.86	0.16
Age	1.01	0.99-1.02	0.23
Male Sex	1.36	0.87-2.12	0.17
Dyslipidemia	1.1	0.79-1.54	0.56
Obesity	0.88	0.63-1.23	0.46
Hypertension	1.68	1.17-2.40	0.005
Sedentary	1.13	0.80-1.60	0.46
Family History	0.75	0.48-1.18	0.22

208

209

Secondary Outcomes

210

211

212

213

214

215

216 The subgroup of patients without active chemotherapy consisted of 71 patients. The total number of MACE in
 217 this subgroup analysis was 165, with 147 events in G1 and 18 events in G2. The Kaplan-Meier curve comparing
 218 both subgroups showed p=0.043 (Figure 4). Cox Hazard analysis showed a non-significant difference between
 219 the incidence of MACE between the two groups, with an HR 1.61 (95% CI 0.97-2.68, p=0.066), adjusted for the
 220 risk factors mentioned above (Table S5)

221

222

Figure 3. Kaplan-Meier Curve for Time to MACE comparing oncologic patients without prior Radiotherapy and non-oncologic patients.

223

224

225

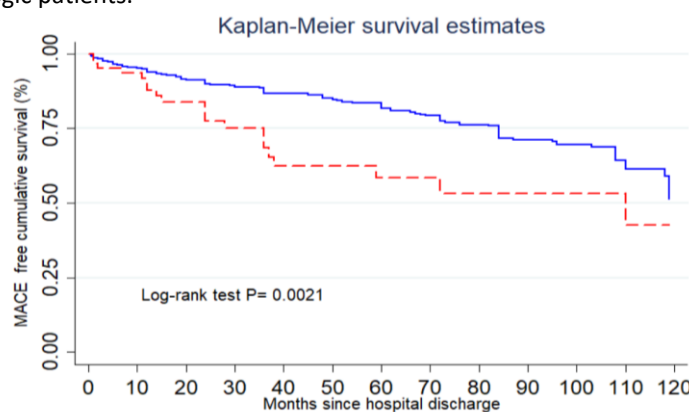
226

227

228

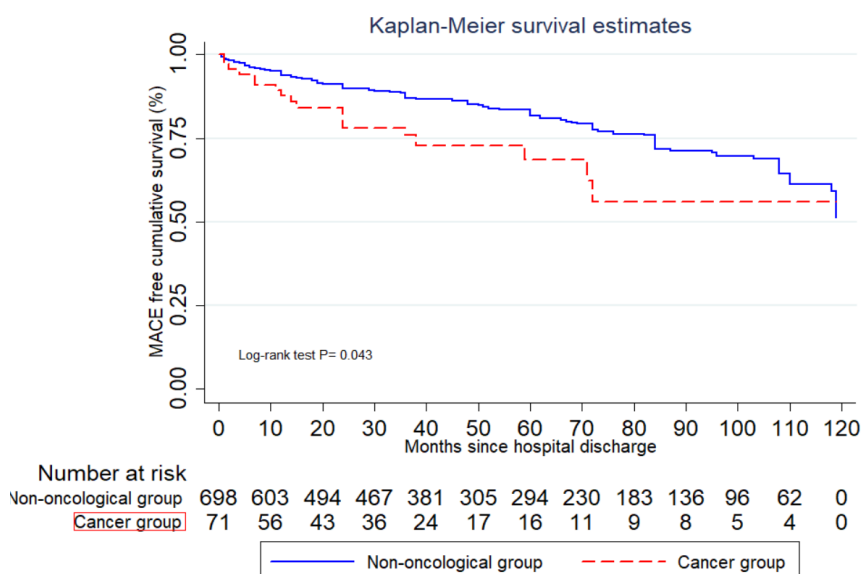
229

230



231
232
233
234
235
236
237
238
239
240
241
242
243
244
245
246
247
248
249

Figure 4. Kaplan-Meier Curve for Time to MACE comparing oncologic patients Without Active Chemotherapy and non-oncologic patients.



250
251
252
253
254
255
256
257
258
259
260
261
262
263
264
265
266
267
268
269
270

DISCUSSION

The present work demonstrates that a history of cancer is an independent risk factor in the secondary prevention in our Latin American population, regardless of age at the time of ACS, gender, diabetes, high blood pressure, dyslipidemia, sedentary lifestyle, history of smoking and inherited family history. A first consideration to consider is that cancer patients have historically been poorly reflected in primary and secondary cardiovascular prevention studies due to systematic exclusion.

In our population, a history of cancer increased the risk of MACE by 84% during follow-up. The difference in rate of MACE in both groups during follow-up was mainly due to an increase in cardiovascular death and stroke; the other components of MACE were not statistically significant. Cardiovascular death could not be explained by differences in the therapeutic strategies carried out during hospitalization. The population with cancer received the same treatment as the general population, in accordance with current guidelines regarding the use of primary or rescue PCI as appropriate.

Left ventricular ejection fraction (LVEF) is an important factor for survival after a coronary event (22, 23), and at discharge, the LVEF was similar in both groups, indicating that an impaired LVEF at the time of discharge is unlikely to explain the association between cancer and MACE during follow-up in our cohort. Diabetes is also considered an independent risk factor for subsequent events as well (24, 25). In our cohort, diabetic cancer patients experienced 30% of events during follow-up, while diabetic patients without a history of cancer

271 experienced 27% of events, with no statistically significant differences.

272

273 Recently, Tabata et al. (20) and Wright et al (26), assessed the incidence of major cardiovascular events in
274 patients with a history of cancer in a secondary prevention context without considering the management
275 strategies or care quality of secondary prevention. Our study is consistent with these findings despite
276 population differences, but we explicitly explored that the association was not due to lower attainment of
277 cardiovascular secondary prevention targets.

278

279 In recent years, an emphasis has been made on the impact of radiotherapy as a risk factor for coronary
280 atherosclerosis (27-29). In our population, the subgroup analysis excluding the history of radiotherapy showed
281 the same results as the general population of the cohort. The analysis of patients without active oncological
282 treatment presented a similar trend, with the survival curves being different from each other, demonstrating a
283 strong epidemiological implication without the exposure variable being an independent risk factor because it
284 did not reach statistical significance.

285

286 Previous studies have suggested that there might be some direct endothelial compromise with selected cancer
287 treatment in both pediatric and adult populations (9, 12-14). However, the rate of patients with active
288 chemotherapy treatment was 20% (18 out of 89 patients), and in the subgroup analysis the relationship
289 between cancer and worsened cardiovascular outcomes persisted. Therefore, in our results, this damage from
290 the oncologic treatment performed would not have an impact on generating distortion of the events, giving
291 greater value to the reported results. Patients with immunotherapies were underrepresented in our work, so
292 the results were not due to the atherogenic potentiation of these drugs. In summary, our results enhance an
293 association between oncological history and MACE beyond the cancer treatment strategy used. It would be
294 necessary to elucidate the individual impact of each therapy, type of cancer and latencies to give a specific
295 value to each situation and its future cardiovascular implication.

296

297 Currently, the inflammatory and multifactorial genesis of atheroma plaque is a well-established causal
298 mechanism. Among the possible pathophysiological mechanisms that would explain the findings, we believe
299 there would be a possible residual impact of endothelial inflammation linked to the oncological pathology and
300 the treatments received. Cancer, with its pro-inflammatory mechanisms and the deleterious effects of its
301 treatment, generates an increase in cytokines and pro-inflammatory factors that lead to an imbalance in
302 endothelial function, such as a decrease in Nitric Oxide, an increase in Endothelin-1, Interleukin-6 and Tumor
303 Growth Factors. (14, 30-33). Our study provides evidence that the association is likely real and not confounded
304 by other determinants of subsequent events in the cardiovascular secondary prevention setting. That suggests
305 a statistically significant and clinically relevant association between a history of cancer and the occurrence of
306 cardiovascular events in secondary prevention. Our results hence suggest the need to explore if patients with a
307 history of cancer should be considered for a stricter secondary prevention strategy, and further prospective
308 studies are needed to evaluate the true role of cancer in this phase.

309

310 **Limitations**

311 Our study was designed as a retrospective observational study and thus, data collection was limited to that
312 available at the time of the study, providing an inferior level of evidence compared to a prospective study.
313 Another limitation was that we adjusted for traditional cardiovascular risk factors such as hypertension,
314 smoking, diabetes, etc., but we did not adjust for frailty, low BMI, anemia, autoimmune disorders, among
315 other comorbidities that have been associated with worsening cardiovascular outcomes (34). Additionally, we
316 did not seek for the presence of clonal hematopoiesis of indeterminate potential (CHIP) in our cohort due to
317 insurance coverage limitations, despite being a condition associated with hematologic malignancy and
318 increased cardiovascular risk. Finally, the goals for secondary prevention for our cohort, such as optimal LDL
319 levels and statin doses, varied throughout our cohort given the rise of new guidelines with newer evidence.

320

321 **CONCLUSION**

322 In our population, the incidence rate ratio of major cardiovascular events was higher in cancer patients.
323 Oncological history behaved as an independent risk factor for major cardiovascular events, adjusted for classic
324 risk factors. These results highlight future endpoints for cardiovascular prevention and public health in this
325 population.

326

327 **ACKNOWLEDGMENTS**

328 RM was the designer and coordinator of this study SDS, LS, RM, and PR all contributed to data collection. RM
329 and SDS did the data analysis. RM, SDS, MR, MOF, AL collaborated equally to the writing of this manuscript.

330

331 SOURCES OF FUNDING

332 None

333

334 DISCLOSURES

335 This manuscript received no financial support. The authors have no conflicts of interest.

336

337 SUPPLEMENTARY FILES

338 Supplementary Tables 1-5

339 Supplementary Methods 1

340

341 REFERENCES

- 342 1. Mattiuzzi C, Lippi G. Current Cancer Epidemiology. *J Epidemiol Glob Health*. 2019 Dec;9(4):217–22.
- 343 2. Torre LA, Siegel RL, Ward EM, Jemal A. Global Cancer Incidence and Mortality Rates and
344 Trends—An Update. *Cancer Epidemiology, Biomarkers & Prevention*. 2016 Jan 12;25(1):16–27.
- 345 3. Zaorsky NG, Churilla TM, Egleston BL, Fisher SG, Ridge JA, Horwitz EM, et al. Causes of death among cancer
346 patients. *Annals of Oncology*. 2017 Feb 1;28(2):400–7.
- 347 4. Afifi AM, Saad AM, Al-Husseini MJ, Elmehrath AO, Northfelt DW, Sonbol MB. Causes of death after breast
348 cancer diagnosis: A US population-based analysis. *Cancer*. 2020;126(7):1559–67.
- 349 5. Padegimas A, Clasen S, Ky B. Cardioprotective Strategies to Prevent Breast Cancer Therapy-Induced
350 Cardiotoxicity. *Trends Cardiovasc Med*. 2020 Jan;30(1):22–8.
- 351 6. Zamorano JL, Lancellotti P, Rodriguez Munoz D, et al. 2016 ESC position paper on cancer treatments and
352 cardiovascular toxicity developed under the auspices of the ESC Committee for Practice Guidelines: the Task
353 Force for cancer treatments and cardiovascular toxicity of the European Society of Cardiology (ESC). *Eur Heart J*
354 2016;37:2768–801.
- 355 9. Gopal S, Miller KB, Jaffe IZ. Molecular mechanisms for vascular complications of targeted cancer therapies.
356 *Clin Sci (Lond)*. 2016 Oct 1;130(20):1763–79.
- 357 10. Ginckels P, Holvoet P. Oxidative Stress and Inflammation in Cardiovascular Diseases and Cancer: Role of
358 Non-coding RNAs. *Yale J Biol Med*. 2022 Mar;95(1):129–52.
- 359 7. Janssen-Heijnen ML, Szerencsi K, van de Schans SA, Maas HA, Widdershoven JW, Coebergh JW. Cancer
360 patients with cardiovascular disease have survival rates comparable to cancer patients within the age-cohort
361 of 8 years older without cardiovascular morbidity. *Crit Rev Oncol Hematol* 2010;76:196–207.
- 362 9. Leiva O, AbdelHameid D, Connors J, et al. Common Pathophysiology in Cancer, Atrial Fibrillation,
363 Atherosclerosis, and Thrombosis. *J Am Coll Cardiol CardioOnc*. 2021 Dec, 3 (5) 619–634.
- 364 10. Luigi Giusto Spagnoli, Elena Bonanno, Giuseppe Sangiorgi, Alessandro Mauriello
365 Role of Inflammation in Atherosclerosis. *Journal of Nuclear Medicine* Nov 2007, 48 (11) 1800-1815.
- 366 11. Libby P, Kobold S. Inflammation: a common contributor to cancer, aging, and cardiovascular diseases-
367 expanding the concept of cardio-oncology. *Cardiovasc Res*. 2019 Apr 15;115(5):824–829
- 368 12. Armenian SH, Xu L, Ky B, Sun C, Farol LT, Pal SK, et al. Cardiovascular Disease Among Survivors of Adult-
369 Onset Cancer: A Community-Based Retrospective Cohort Study. *J Clin Oncol*. 2016;34(10):1122–30.
- 370 13. Patnaik JL, Byers T, DiGiuseppi C, Dabelea D, Denberg TD. Cardiovascular disease competes with breast
371 cancer as the leading cause of death for older females diagnosed with breast cancer: a retrospective cohort
372 study. *Breast Cancer Res*. 2011 Jun 20;13(3):R64.
- 373 14. Thygesen K, Alpert JS, Jaffe AS, Chaitman BR, Bax JJ, Morrow DA, et al. Fourth Universal Definition of
374 Myocardial Infarction (2018). *Circulation*. 2018;138(20):e618–e51.
- 375 15. Sacco RL, Kasner SE, Broderick JP, Caplan LR, Connors JJ, Culebras A, et al. An updated definition of stroke
376 for the 21st century: a statement for healthcare professionals from the American Heart Association/American
377 Stroke Association. *Stroke*. 2013;44(7):2064–89.
- 378 16. Leiva, O, Xia, Y, Siddiqui, E. et al. Outcomes of Patients With Myeloproliferative Neoplasms Admitted With
379 Myocardial Infarction: Insights From National Inpatient Sample. *J Am Coll Cardiol CardioOnc*. 2023 Aug, 5 (4)
380 457–468.
- 381 17. Hibler, E, Tanaka, Y, Akhter, N. et al. Risk of Incident Heart Failure Among Young Adult Cancer Survivors. *J*
382 *Am Coll Cardiol CardioOnc*. 2023 Aug, 5 (4) 539–541.
- 383 18. Gangaraju, R, Chen, Y, Hageman, L. et al. Prediction of Coronary Heart Disease Events in Blood or Marrow
384 Transplantation Recipients. *J Am Coll Cardiol CardioOnc*. 2023 Aug, 5 (4) 504–517.

- 385 19. Bima, P, Lopez-Ayala, P, Koechlin, L. et al. Chest Pain in Cancer Patients: Prevalence of Myocardial
386 Infarction and Performance of High-Sensitivity Cardiac Troponins. *J Am Coll Cardiol CardioOnc.* 2023 Oct, 5 (5)
387 591–609.
- 388 20. Tabata, N., Sueta, D., Yamamoto, E., et al. Outcome of current and history of cancer on the risk of
389 cardiovascular events following percutaneous coronary intervention: A Kumamoto University malignancy and
390 Atherosclerosis (KUMA) study. *Eur Heart J.* 2017 Dec, 4(4), 290–300.
- 391 21. Cohen JB, Brown NJ, Brown SA, Dent S, van Dorst DCH, Herrmann SM, et al. Cancer Therapy-Related
392 Hypertension: A Scientific Statement From the American Heart Association. *Hypertension.* 2023;80(3):e46-e57.
- 393 22. Cohen JB, Geara AS, Hogan JJ, Townsend RR. Hypertension in Cancer Patients and Survivors: Epidemiology,
394 Diagnosis, and Management. *JACC CardioOncol.* 2019;1(2):238-51.
- 395 23. Perelshtein Brezinov, et al. Prognostic value of ejection fraction in patients admitted with acute coronary
396 syndrome: A real world study. *Medicine.* 2017; 96(9):p e6226.
- 397 24. Furtado et al. Long-term mortality after acute coronary syndromes among patients with normal, mildly
398 reduced, or reduced ejection fraction. *ESC Heart Fail.* 2023 Feb;10(1):442-452.
- 399 25. Joseph JJ, Deedwania P, Acharya T, Aguilar D, Bhatt DL, Chyun DA, et al. Comprehensive Management of
400 Cardiovascular Risk Factors for Adults With Type 2 Diabetes: A Scientific Statement From the American Heart
401 Association. *Circulation.* 2022;145(9):e722-e59.
- 402 26. Wright, et al. Risk Factor Control and Cardiovascular Event Risk in People With Type 2 Diabetes in Primary
403 and Secondary Prevention Settings. *Circulation.* 2020 Nov 17;142(20):1925-1936.
- 404 27. Sayed A, Munir M, Addison D, Abushouk AI, Dent SF, Neilan TG, et al. The underutilization of preventive
405 cardiovascular measures in patients with cancer: an analysis of the Behavioural Risk Factor Surveillance
406 System, 2011-22. *Eur J Prev Cardiol.* 2023;30(13):1325-32.
- 407 28. Belzile-Dugas E, Eisenberg MJ. Radiation-Induced Cardiovascular Disease: Review of an Underrecognized
408 Pathology. *J Am Heart Assoc.* 2021;10(18):e021686.
- 409 29. Cuomo JR, Javaheri SP, Sharma GK, Kapoor D, Berman AE, Weintraub NL. How to prevent and manage
410 radiation-induced coronary artery disease. *Heart.* 2018;104(20):1647-53.
- 411 30. Banfill K, Giuliani M, Aznar M, Franks K, McWilliam A, Schmitt M, et al. Cardiac Toxicity of Thoracic
412 Radiotherapy: Existing Evidence and Future Directions. *J Thorac Oncol.* 2021;16(2):216-27.
- 413 31. Tapia-Vieyra JV, Delgado-Coello B, Mas-Oliva J. Atherosclerosis and Cancer; A Resemblance with Far-
414 reaching Implications. *Arch Med Res.* 2017;48(1):12-26.
- 415 32. Narayan V, Thompson EW, Demissei B, Ho JE, Januzzi JL, Jr., Ky B. Mechanistic Biomarkers Informative of
416 Both Cancer and Cardiovascular Disease: JACC State-of-the-Art Review. *J Am Coll Cardiol.* 2020;75(21):2726-37.
- 417 33. John A, Gunes C, Bolenz C, Vidal YSS, Bauer AT, Schneider SW, Gorzelanny C. Bladder cancer-derived
418 interleukin-1 converts the vascular endothelium into a pro-inflammatory and pro-coagulatory surface. *BMC*
419 *Cancer.* 2020;20(1):1178.
- 420 34. Tran J, Norton R, Conrad N, Rahimian F, Canoy D, Nazarzadeh M, Rahimi K. Patterns and temporal trends of
421 comorbidity among adult patients with incident cardiovascular disease in the UK between 2000 and 2014: A
422 population-based cohort study. *PLoS Med* 2018;15:e1002513