

1 **Association of CSF α -Synuclein Seed Amplification Assay Positivity with Disease**
2 **Progression and Cognitive Decline: A Longitudinal Alzheimer's Disease Neuroimaging**
3 **Initiative Study**

4 Duygu Tosun PhD ^{1,2}, Zachary Hausle MS ², Pamela Thropp PhD ², Luis Concha-Marambio
5 PhD ³, Jennifer Lamoureux PhD ³, Russ Lebovitz MD PhD ³, Leslie M. Shaw PhD ⁴, Andrew B.
6 Singleton PhD ⁵, Michael W. Weiner MD ^{1,2} for the Alzheimer's Disease Neuroimaging
7 Initiative*, and Cornelis Blauwendraat PhD ⁵

8 1. Department of Radiology and Biomedical Imaging, University of California San
9 Francisco, 505 Parnassus Ave, M-391, San Francisco, CA, 94143, USA

10 2. Department of Veterans Affairs Medical Center, Northern California Institute for
11 Research and Education (NCIRE), 4150 Clement St, 151NC, San Francisco, CA, 94121,
12 USA

13 3. Amprion Inc., R&D Unit. 11095 Flintkote Ave., Ste D, San Diego, CA, 92121, USA

14 4. Department of Pathology and Laboratory Medicine, Perelman School of Medicine
15 University of Pennsylvania, 3400 Spruce St, Philadelphia, PA, 19104, USA

16 5. Center for Alzheimer's and Related Dementias, National Institute on Aging and National
17 Institute of Neurological Disorders and Stroke, National Institutes of Health, 9000
18 Rockville Pike, Bldg T44, Bethesda, MD, 20892, USA

19 Correspondence:

1 Duygu Tosun, PhD, Department of Radiology and Biomedical Imaging, University of California

2 San Francisco, San Francisco, CA, USA.

3 Email: duygu.tosun@ucsf.edu

4 <https://orcid.org/0000-0001-8644-7724>

5 Cornelis Blauwendraat, PhD, Center for Alzheimer's and Related Dementias, National Institute

6 on Aging and National Institute of Neurological Disorders and Stroke, National Institutes of

7 Health, Bethesda, MD, USA; Laboratory of Neurogenetics, National Institute on Aging, National

8 Institutes of Health, Bethesda, MD, USA.

9 Email: cornelis.blauwendraat@nih.gov

10 <https://orcid.org/0000-0001-9358-8111>

11 *Data used in preparation of this article were obtained from the Alzheimer's Disease

12 Neuroimaging Initiative (ADNI) database (adni.loni.usc.edu). As such, the investigators within

13 the ADNI contributed to the design and implementation of ADNI and/or provided data but did

14 not participate in analysis or writing of this report.

15

16

17

18

19

1 **ABSTRACT**

2 **INTRODUCTION:** CSF α -synuclein seed amplification assay (SAA) is a sensitive and specific
3 tool for detecting Lewy body (LB) co-pathology in AD.

4 **METHODS:** 1637 cross-sectional and 407 longitudinal CSF samples from ADNI were tested
5 with SAA. We examined longitudinal dynamics of A β , α -synuclein seeds, and p-tau181, along
6 with global and domain-specific cognition in stable SAA+, stable SAA-, and those who
7 converted to SAA+ from SAA-.

8 **RESULTS:** SAA+ individuals had faster cognitive decline than SAA-, notably in MCI, and
9 presented with earlier symptom onset. SAA+ conversion was associated with CSF A β 42-
10 positivity but did not impact progression of either A β 42 or p-tau181 status. A β 42, p-tau181, and
11 α -syn SAA were all strong predictors of clinical progression, particularly A β 42. In vitro α -syn
12 SAA kinetic parameters were associated with participant demographics, clinical profiles, and
13 cognitive decline.

14 **DISCUSSION:** These results highlight the interplay between A β and α -synuclein and their
15 association with disease progression.

16

17

18

19

1 INTRODUCTION

2 Alzheimer's disease (AD) and Lewy body disease (LBD), characterized by the pathological
3 deposition of amyloid-beta ($A\beta$) and alpha-synuclein (α -syn), respectively, are commonly
4 identified at autopsy. Up to half (25-50%) of autopsy cases exhibit Lewy body (LB) co-
5 pathology in sporadic early- and late-onset AD [1-4], familial/inherited AD [5], and Down's
6 Syndrome AD cases [6]. Pathological coexistence implies a potential interplay between $A\beta$ and
7 α -syn in the human brain. Despite the unique stereotypical progression of each pathology [7-9],
8 evidence suggests that these pathways potentially may overlap at later disease stages [1-4],
9 implicating a synergistic process known as 'crosstalk'.

10 Crosstalk has been observed in neurodegenerative diseases and can occur by impaired cellular
11 clearance processes, impaired protein homeostasis, synergy of disease related pathways, or when
12 amyloidogenic proteins such as $A\beta$, tau, and α -syn interact and cause aggregation [10-13]. Each
13 pathologic deposition occurs in distinct, observable locations in the brain: $A\beta$ plaques are
14 extracellular, tau neurofibrillary tangles (NFTs) are intracellular, and LB aggregates are in
15 vesicles and exosomes [14,15]. Despite this, interaction of these proteins may intersect at later
16 disease stages, potentially exacerbating disease progression. Our understanding of crosstalk in
17 living organisms, particularly in humans, remains limited. As such, the mechanism, and
18 dynamics of interaction between $A\beta$ and α -syn, and the subsequent impact on disease
19 progression are areas of active research.

20 With the recently developed cerebrospinal fluid (CSF) α -syn seed amplification assay (SAA)
21 technology, there is now in vivo evidence that individuals with both LB (α -syn) and AD ($A\beta$ and
22 tau) pathology exhibit faster cognitive decline than those with only LB or AD pathology [16-19].

1 In fact, evidence from autopsy studies showed that the A β and tau pathologies only account for a
2 portion of the observed variance in cognitive decline [20] while co-pathologies lower the
3 threshold for clinical symptoms of AD [21]. Accordingly, while current treatments with anti-A β
4 antibodies have been shown to slow cognitive decline, their impact is relatively modest, reducing
5 the rate of decline by approximately 25-40% [22-24]. This underscores the possibility that
6 additional pathologies may play a critical role. Given that α -syn is the most commonly observed
7 co-pathology in AD [25], the presence of α -syn pathology could help explain the variability in
8 cognitive decline that is not accounted for by A β and tau alone.

9 Recently, analysis of cross-sectional CSF samples from the Alzheimer's Disease Neuroimaging
10 Initiative (ADNI) study using SAA demonstrated an association between the presence of
11 misfolded α -syn and various factors such as age, disease stage, burden of AD pathology, and
12 rates of longitudinal cognitive decline [19]. We recently expanded the ADNI CSF α -syn SAA
13 analysis by incorporating longitudinal time points, aiming for a better understanding of
14 longitudinal downstream effects resulting from A β and α -syn pathologies in ADNI participants.
15 To our knowledge, this is the first study to incorporate longitudinal AD biomarker data with
16 longitudinal SAA data in an AD cohort where extensive longitudinal follow-up allowed us to
17 identify individuals who progressed from SAA-negative (SAA-) to SAA-positive (SAA+).

18 Here, in the context of AD co-pathologies, we hypothesize that SAA-positivity would
19 correspond to greater rates of cognitive decline and earlier onset of cognitive impairment.

20 Further, we postulate that the emergence of α -syn pathology is dependent on pre-existing AD A β
21 pathology, and the apolipoprotein E (*APOE*) ϵ 4 allele exerts a significant influence over this
22 interplay, since ϵ 4 has been increasingly recognized as a common genetic risk factor for both AD

1 and LBD [26-29]. *APOE* contributes to progression and cognitive decline in Parkinson's [30],
2 and $\epsilon 4$ has been shown to worsen α -syn pathology in AD+LB brains [31], suggesting a role in
3 modulating crosstalk. Lastly, the dichotomous outcome derived from the qualitative SAA
4 approach poses a limitation. To address this, we investigate the utility of SAA kinetic parameters
5 as quantitative indicators for the burden of α -syn seeds in CSF or the propagation of LB
6 pathology. Thus, we assess the association of the quantitative SAA kinetic parameters with
7 clinical characteristics, biomarker data, and cognitive outcome measures.

8 **METHODS**

9 **Study design and participants**

10 Data was obtained from the ADNI database (<https://adni.loni.usc.edu/>). The ADNI was launched
11 in 2003 as a public-private partnership, led by Principal Investigator Michael W. Weiner, MD.
12 The primary goal of ADNI has been to test whether serial magnetic resonance imaging (MRI),
13 positron emission tomography (PET), other biological markers, and clinical and
14 neuropsychological assessment can be combined to measure the progression of mild cognitive
15 impairment (MCI) and early AD. For up-to-date information, see www.adni-info.org. This study
16 employed a longitudinal examination of biomarker, demographic, clinical, and cognitive data.
17 The sample included all ADNI 1-3 cohort participants who had available CSF samples
18 (N=1637). The participant pool consisted of cognitively unimpaired (CU) individuals,
19 individuals with MCI, and individuals clinically diagnosed with dementia due to AD.
20 In summary, at the time of enrollment, participants in the ADNI study were aged between 55 and
21 90 years, had a study partner to provide an independent evaluation of functioning, and were

1 proficient in English or Spanish. For CU individuals, enrollment criteria included a Mini–Mental
2 State Examination (MMSE) score between 24 and 30, a Clinical Dementia Rating (CDR) of 0,
3 absence of depression, MCI, and dementia.

4 MCI participants were required to have MMSE scores between 24 and 30, a subjective memory
5 complaint, objective memory loss (adjusted for education) as measured by the Wechsler Memory
6 Scale Logical Memory II, a CDR of 0.5, no significant impairment in other cognitive domains,
7 essentially preserved daily living activities, and no dementia.

8 Participants diagnosed with dementia due to AD met the criteria with MMSE scores between 20
9 and 26, a CDR of 0.5 or 1.0, and fulfilled the NINCDS/ADRDA criteria for probable AD.

10 Exclusion criteria at the time of ADNI study enrollment included significant neurological disease
11 apart from AD (including PD and DLB), contraindications to neuroimaging or other ADNI
12 protocols, neuroimaging evidence of infection, infarction, lacunes, or other focal lesions,
13 psychiatric disorders, including psychotic features, alcohol abuse, significant systemic illness or
14 unstable medical condition, laboratory abnormalities that could interfere with the study, use of
15 certain psychoactive medications, and participation in other clinical trials.

16 **CSF α -synuclein seed amplification assay processing**

17 CSF samples were initially gathered into collection tubes provided to every participating ADNI
18 site. These were then transferred to polypropylene tubes and frozen on dry ice within an hour of
19 collection. The samples were subsequently shipped overnight, still on dry ice, to the ADNI
20 Biomarker Core laboratory at the University of Pennsylvania Medical Center. Upon their arrival

1 at the ADNI Biomarker Core laboratory, the CSF samples were thawed and aliquoted into 0.5
2 mL cryotubes for long-term storage at -80°C.

3 The CSF α -syn SAA testing was carried out by the Amprion Clinical Laboratory (CLIA ID No.
4 05D2209417; CAP No. 8168002) using a method clinically validated and compliant with
5 Clinical Laboratory Improvement Amendment (CLIA) standards.

6 For the analysis, each pristine aliquot of CSF was tested in three technical replicates within a 96-
7 well plate. The 100 μ L reaction mixture was composed of 100 mM PIPES pH 6.5, 0.5 M NaCl,
8 0.1% sarkosyl, 10 μ M ThT, 0.3 mg/mL recombinant α -syn, 40 μ L CSF, and two silicon nitride
9 beads [18]. Positive and negative quality control samples were included in each plate to ensure
10 assay accuracy.

11 The plates were sealed with an optical adhesive film and placed into a BMG LABTECH
12 FLUOstar Ω Microplate Reader. They were incubated at 42°C, with cycles of one minute of
13 shaking followed by 14 minutes of rest. Fluorescence was recorded after each shake, using an
14 excitation wavelength 440 nm and emission wavelength of 490 nm. After a total incubation
15 period of 20 hours, the maximum fluorescence intensity for each well was recorded. An
16 algorithm was then applied to the triplicate reading to categorize the result.

17 CSF samples were classified as follows: “PD/DLB-like Detected” if α -syn aggregates were
18 identified with an aggregation profile consistent with Type 1 seeds observed in Parkinson’s
19 Disease (PD) and Dementia with Lewy bodies (DLB); “MSA-like Detected” if α -syn aggregates
20 matched Type 2 seeds typically seen in Multiple System Atrophy (MSA); or “Not Detected” if

1 no α -syn aggregates were detected. Samples that did not yield a definitive result after two tests
2 were classified as “Indeterminate”.

3 The processing of ADNI CSF α -syn SAA was done in two phases. Phase-1 data were processed
4 in Q4 2023 and included 1,637 CSF samples from the latest CSF sample collection time point for
5 each participant. Phase-2 data were processed in Q1 2024 and incorporated CSF samples from
6 earlier collection time points specifically focusing on participants showing detectable seeding
7 activity from Phase-1. These earlier time points were from 222 participants and included those
8 classified as “PD/DLB-like Detected”, “MSA-like Detected”, “Indeterminate”, and those with
9 postmortem neuropathological confirmation, totaling 407 additional CSF samples. CSF samples
10 from earlier collection time points of participants whose most recent CSF samples were
11 classified as “Not Detected” were not processed unless they were in the autopsy cohort. This
12 decision assumed, supported by data from prior studies, that their earlier CSF samples would
13 also likely be classified as ‘Not Detected’.

14 For the in vitro assay of SAA, the following five kinetic parameters (illustrated in Supplemental
15 Figure S1) were estimated for each SAA+ replicate: 1) Time to Threshold (TTT, [hours]) – time
16 in hours when the fluorescence signal reaches the lower patient classification threshold (1000
17 RFU); 2) Maximum Fluorescence (Fmax, [RFU]) – maximum of the reaction signal in relative
18 fluorescence units (RFU); 3) AUC-Fluoro (RFU, [seconds]) – area under the signal versus time
19 reaction curve in RFU; 4) Maximum Slope (Smax, [RFU, seconds]) – maximum of the
20 derivative of the signal/time reaction curve in RFU/seconds; 5) Time to Smax (TSmax, [hours])
21 – the time in hours when the maximum slope occurs.

1 All CSF α -syn SAA analyses were performed with the analysts blinded to the participants'
2 demographic details, clinical profiles, and AD biomarker data. The integrity of the blinding was
3 maintained by utilizing unique specimen identifiers for randomly assigned sample shipments.

4 **Assessments of CSF AD biomarkers**

5 Pristine aliquots of CSF were examined using the Elecsys CSF A β 42, CSF phospho-tau181 (p-
6 tau181), and CSF total-tau electrochemiluminescence immunoassays (ECLIA) on a fully
7 automated Elecsys cobas e 601 instrument, utilizing a single lot of reagents for each biomarker.
8 The Roche Elecsys CSF immunoassays were used in accordance with a Roche Study Protocol at
9 the ADNI Biomarker Laboratory, following the kit manufacturer's instructions.

10 The analyses were carried out in a series of runs, with each sample run once (in singlicate) for
11 each biomarker test, from November 17, 2016, through June 22, 2022. This process followed a
12 standard new lot rollover protocol from the manufacturer, which involved repeated analyses of
13 quality control samples.

14 The analyte measuring ranges from the lower technical limit to the upper technical limit for each
15 biomarker were: 200 – 1700 pg/mL for the Elecsys CSF A β 42 immunoassay, and 8 – 120 pg/mL
16 for the Elecsys CSF p-tau181 immunoassay.

17 The AD CSF biomarker positivity was defined as “A β 42+” if CSF A β 42 was less than 980
18 pg/mL, and “p-tau181+” if CSF p-tau181 was greater than 24 pg/mL.

19 Subject ages at time of conversion to CSF A β 42 positivity (i.e., A β age) were estimated using
20 sampled iterative local approximation (SILA) on all ADNI subjects with CSF A β 42 data

1 available, as described in Betthausen et. al 2022 [32]. Records outside of the technical limits of
2 the Elecsys CSF A β 42 assay (lower technical limit of 200 pg/mL and upper technical limit of
3 1700 pg/mL) were excluded from the A β age estimation.

4 **Cognitive Assessments**

5 The global cognitive assessments included the CDR - Sum of Boxes (CDR-SB), the Alzheimer's
6 Disease Assessment Scale - cognitive subscale 11-item (ADAS-Cog11), MMSE based on a 30-
7 point questionnaire, and the Preclinical Alzheimer's Composite Score (PACC). The domain-
8 specific cognitive assessments included the composite measures of memory, executive function,
9 and language [33]. Observations in domain-specific measures were excluded if the standard error
10 of measurement for a given observation exceeded 0.6.

11 **Statistical Analysis**

12 All statistical analyses and data preparation were conducted in R (version 4.4.0), except SILA
13 A β age estimation, which was conducted in MATLAB. Holm-Bonferroni method, was used to
14 correct for multiple comparisons, when applicable.

15 Subjects with any MSA-like samples were excluded from all analyses because of small sample
16 size in this group, as detailed in the Results section. Indeterminate CSF α -syn SAA samples were
17 discarded for all primary analyses. Samples were designated as SAA- ("Not Detected") if no α -
18 syn aggregates were detected, and SAA+ ("PD/DLB-like Detected") if α -syn aggregates
19 conformed to Type 1 seeds, typically observed in PD and DLB. Subjects who were SAA- after
20 baseline were inferred to have been SAA- at all prior observations, as detailed in the Results
21 section.

1 Subjects were classified as “converters” in each measure if they were negative in a measure and
2 later were positive in that measure and remained positive at all subsequent observations. A
3 converting subject’s conversion date was estimated as the midpoint between their last biomarker
4 negative date and first biomarker positive date. Subjects who were positive in a measure and
5 were then negative at any subsequent observations were classified as reverse converters and were
6 excluded from analyses.

7 Subjects were classified as “Stable SAA–” if they had multiple CSF samples and were SAA– at
8 their last observation, “Stable SAA+” if they were SAA+ at two or more observations and were
9 not SAA– at any observation. Subjects that only had one CSF observation did not have enough
10 information to sort into these groups and were excluded from analyses that involved these
11 groupings.

12 Demographic, CSF biomarker, and cognitive measures were compared cross-sectionally for
13 subjects across the Stable SAA–, SAA Converter, and Stable SAA+ groups listed, with
14 observations before and after conversion included for SAA Converters. The most recent
15 observation with SAA data available was used for both the Stable SAA– and Stable SAA+
16 groups.

17 Pairwise group differences were assessed. Binary variables for converters were compared before
18 and after conversion using McNemar’s test, continuous variables using paired t-tests, and
19 diagnosis using paired sign tests. For all other group comparisons, categorical comparisons
20 between groups were performed using chi-squared tests when all categories had enough
21 observations, and Fisher’s tests when one or more did not. All cognitive measures and
22 continuous CSF A β 42 were compared between groups with ANCOVAs adjusted for age, sex,

1 years of education, diagnosis, and *APOE* $\epsilon 4$ genotype. Continuous CSF p-tau181 was compared
2 between groups with ANCOVAs adjusted for age, sex, years of education, diagnosis, *APOE* $\epsilon 4$
3 genotype, and CSF A β 42 status. Logistic regressions, adjusted for age, sex, years of education,
4 and *APOE* $\epsilon 4$ genotype, were performed to compare group differences in CSF AD biomarker
5 positivity.

6 Generalized Additive Mixed-effects Models (GAMMs) with penalized cubic regression
7 spline were fit to assess the changes in longitudinal cognitive outcome measures, as a function of
8 A β -time. A β -time at the cognitive assessment time was measured relative to the SILA-estimated
9 A β -age at CSF A β 42 positivity. GAMMs were fit separately for Stable SAA $^-$ and Stable SAA $^+$
10 groups while accounting for differences in age, sex, years of education, and *APOE* $\epsilon 4$ genotype.
11 A β -time at which Stable SAA $^-$ and Stable SAA $^+$ groups reached a cognitive performance
12 threshold defined as two standard deviations below the mean of CU participants were estimated
13 via bootstrap resampling.

14 To evaluate the effects of transitioning to SAA positivity among SAA Converters, we first
15 identified a reference group of Stable SAA $^-$ individuals. We matched their cognitive assessment
16 time points with those of SAA Converters at their last SAA $^-$ evaluation. The matching criteria
17 included age, sex, years of education, *APOE* $\epsilon 4$ genotype, and A β -time, using a 2-to-1 genetic
18 matching approach. The duration of cognitive assessments prior to the last SAA $^-$ evaluation for
19 SAA Converters was matched to the duration prior to the corresponding matched time point for
20 the Stable SAA $^-$ reference group. Matching was stratified by clinical diagnostic groups (i.e., CU,
21 MCI, and Dementia). We then applied piecewise mixed-effects regression models to the
22 longitudinal cognitive data, setting a predefined breakpoint at $t = 0$. This breakpoint represents

1 the estimated SAA conversion time for the SAA Converters and the midpoint between the
2 matched time point and the subsequent assessment for the Stable SAA– reference group. The
3 estimated cognitive decline rates before ($t < 0$) and after ($t > 0$) the breakpoint were compared
4 between the SAA Converters and the Stable SAA– reference groups.

5 Survival analysis was conducted for conversion in four outcomes: SAA positivity, A β 42
6 positivity, p-tau181 positivity, and clinical diagnosis progression (i.e., CU to MCI/Dementia or
7 MCI to Dementia). Time for all outcomes was measured from baseline. Kaplan-Meier survival
8 curves, stratified by the status of other outcomes at baseline and *APOE* ϵ 4 genotype, were
9 estimated for all outcomes. Cox proportional hazards models were fit for each outcome
10 separately. Person-period coding was used to reflect change in outcome measures. CSF SAA
11 status was included as time-variant predictors in models for CSF AD positivity and clinical
12 diagnosis progression models. Similarly, CSF A β 42 and p-tau181 statuses were included as
13 time-variant predictors in models for CSF SAA positivity and clinical diagnosis progression
14 models. Age at baseline, sex, and *APOE* ϵ 4 genotype were included in all models.

15 Next, we evaluated the extent to which the SAA kinetic parameters are associated with disease
16 characteristics and risk factors, with a particular focus on the Stable SAA+ and SAA Converter
17 cohorts. We assessed the independent effects of age, sex, *APOE* ϵ 4 status, clinical diagnosis, and
18 CSF A β 42 positivity on SAA kinetic parameters, in a full model including all of these factors.

19 Association of SA kinetic parameters with CSF A β 42 and p-tau181 levels were assessed using
20 linear regression models adjusted for age, sex, *APOE* ϵ 4 status, and clinical diagnosis, where p-
21 tau181 model was further adjusted for CSF A β 42 positivity. Similarly, the relationship between
22 SAA kinetic parameters and cognitive outcome scores cross-sectionally at the first CSF time-

1 point were assessed using linear regression models adjusted for age, sex, *APOE* ϵ 4 status, and
2 clinical diagnosis. To determine how changes in SAA kinetic parameters are associated with the
3 progression of cognitive decline, we used linear mixed-effects models (LMM), with cognitive
4 measure of interest as the outcome variable and time since the initial CSF sample collection, the
5 SAA kinetic parameter, and their interaction as predictor variables. We adjusted these models for
6 age, sex, educational years, and *APOE* ϵ 4 status, incorporating random intercepts and slopes to
7 account for correlations within subjects. We conducted these analyses for each SAA kinetic
8 parameter and within each clinical diagnostic category independently. Finally, leveraging
9 longitudinal kinetic data from the SAA Converter group, we repeated the association between
10 changes in SAA kinetic parameters and cognitive decline rates, using time since the initial SAA+
11 measurement in the longitudinal models.

12 In all SAA kinetic parameter association analyses we included the total CSF protein
13 concentration as a surrogate measurement for lipoproteins as it was shown to affect the kinetics
14 of α syn seed amplification in a concentration-dependent manner [34].

15 **RESULTS**

16 **ADNI SAA study cohort characteristics**

17 The initial set of CSF α -syn SAA analysis (Phase-1; Figure 1) comprised the latest CSF
18 specimens from 1,637 participants who were part of the ADNI 1-3 studies. Out of these, 368
19 (22.5%) specimens exhibited PD/DLB-like α -syn seeding activity (i.e., SAA+), while three
20 showed MSA-like α -syn seeding activity. No α -syn seeding aggregation was observed in 1,256
21 samples, which were thus classified as SAA-. The SAA outcomes were indeterminate for ten

1 samples. These findings from the cross-sectional CSF α -syn SAA have been previously reported
2 in detail [19].

3 The samples for the second set of longitudinal CSF α -syn SAA analysis (Phase-2; Figure 1) were
4 selected from those with available CSF samples from previous study timepoints, totaling 819.
5 This selection was narrowed down to include only those identified as SAA+ (192 individuals),
6 those with MSA-like α -syn seeding (one individual), or those with indeterminate seeding activity
7 (five individuals) as determined by the initial cross-sectional analysis at their last CSF collection
8 (Phase-1). Additionally, Phase-2 also included samples from all the participants from the ADNI
9 autopsy sub-cohort, which led to inclusion of an additional 24 individuals who were identified
10 SAA- at their last CSF collection. In total, Phase-2 comprised 407 longitudinal CSF samples
11 from 222 distinct participants.

12 **Assessment of Longitudinal CSF α -syn SAA profiles**

13 As depicted in Figure 1, the CSF samples from participants who were classified as SAA- at their
14 final CSF collection (totaling 24 individuals) consistently tested SAA- at all preceding
15 timepoints as well, suggesting stability of the SAA- findings retrospectively. Consequently, for
16 those individuals who were determined to be SAA- at their most recent CSF collection
17 according to Phase-1 analysis but were not selected for the longitudinal Phase-2 processing
18 (N=598), their CSF samples from earlier time points were deemed as SAA-. Including the 24
19 SAA- samples from the longitudinal Phase-2, these individuals (N=622) were collectively
20 classified as having a Stable SAA- status.

1 Among the 222 participants included in the longitudinal Phase 2 analysis, 63 were initially
2 classified as SAA- at their first CSF time point. Of these, 24 remained consistently SAA-, thus
3 described earlier as Stable SAA-. In contrast, 25 individuals progressed from SAA- to SAA+ by
4 their final CSF time point. Additionally, there were eight participants who, while initially SAA-,
5 had an interim CSF time point yielding indeterminate SAA results, but ultimately were found to
6 be SAA+ by their final CSF sample. Another five began as SAA- and maintained this status up
7 to their last CSF collection, which ended with an indeterminate SAA result. As one of the
8 infrequent instances of fluctuating SAA categories, there was one participant who initially tested
9 as SAA-, subsequently transitioned to SAA+, reverted to SAA-, and then returned to being
10 SAA+ by the subsequent assessments.

11 Out of the six participants who initially presented with indeterminate SAA results, five were
12 classified as SAA+ by the time of their last CSF collection. As one of the infrequent instances of
13 fluctuating SAA categories, there was one participant who initially had an indeterminate SAA
14 result, subsequently tested SAA-, and then transitioned to being SAA+ by the subsequent
15 assessments. In all the analyses described below, CSF samples with indeterminate SAA results
16 were excluded.

17 Among the 222 participants in the longitudinal Phase-2 study, 152 were initially classified as
18 SAA+ at their first CSF collection. Of these, 149 consistently tested SAA+ across all study
19 timepoints, i.e. stable SAA+. However, one participant changed from the SAA+ category to
20 exhibiting MSA-like seeding patterns by their final CSF collection. The CSF specimen with
21 MSA-like seeding was visibly discolored, likely due to blood contamination. Two rare cases of

1 fluctuating SAA categories included one individual transitioning from SAA+ to MSA-like and
2 then back to SAA+, and another who moved from SAA+ to SAA-, and then reverted to SAA+.

3 Additionally, there was a single case of a participant who initially presented with an MSA-like
4 seeding pattern and subsequently tested SAA+ in their final CSF sample. The CSF specimen
5 with MSA-like seeding was visibly discolored, likely due to blood contamination. For the
6 analyses that follow, any individual who showed MSA-like α -syn seed aggregation at any time
7 point, regardless of their initial or final CSF SAA status, was excluded. Moreover, the two
8 individuals demonstrating the patterns SAA- \rightarrow SAA+ \rightarrow SAA- \rightarrow SAA+ and SAA+ \rightarrow SAA-
9 \rightarrow SAA+ were also excluded from the study analyses. In total 5 out of 222 (2%) of the
10 participants in the longitudinal Phase-2 study were excluded from the study analysis.

11 In total, 34 individuals presented with SAA- \rightarrow SAA+ pattern. Converters averaged 2.5 years
12 between their last visit with a SAA- result and their first visit with a SAA+ result, with a
13 minimum of 0.9 years and a maximum of 6.1 years between those visits. The mid-point between
14 their last visit with a SAA- result and their first visit with a SAA+ result was considered as the
15 SAA conversion time. Among participants with a SAA- sample at baseline and follow up CSF
16 samples, proportion of SAA Converters within baseline diagnosis groups of CU, MCI, and
17 Dementia were 3.7% (11 out of 297), 6.7% (20 out of 299), and 5.1% (3 out of 59), respectively.

18 Among SAA Converters, 1 out of 11 (9%) subjects who were CU at baseline progressed to MCI
19 at their first visit after SAA conversion, and 10 out of 20 (50%) subjects who were MCI at
20 baseline were diagnosed with dementia at their first visit after SAA conversion. One converter
21 (5%) who was MCI at baseline was diagnosed as CU at their first visit after SAA conversion.

1 There were no significant differences in CSF levels of total protein, white blood cell count, and
2 red blood cell count between groups with CSF samples categorized as SAA+, SAA-, and
3 indeterminate.

4 **Cohort characteristics of Stable SAA-, SAA Converters, and Stable SAA+**

5 Next, we assessed the demographic, biomarker, and clinical characteristics of SAA groups,
6 including Stable SAA- group (N=622), SAA Converter group (N=34), and Stable SAA+ group
7 (N=149), as shown in Table 1.

8 The Stable SAA+ group, when compared to Stable SAA- individuals, had a higher proportion of
9 cognitively impaired individuals, lower levels of CSF A β 42, and poorer scores in all global and
10 domain-specific cognitive measures assessed in this study. Stable SAA+ group did not include
11 any participants with Hispanic/Latino ethnic background and a greater frequency of Asian racial
12 background but a lower frequency of Black/African American racial background in comparison
13 to the Stable SAA-. Although these racial and ethnic differences between Stable SAA+ and
14 Stable SAA- groups were significant (p=0.04), these results should be interpreted with caution
15 given the low ethnoracial diversity in ADNI.

16 SAA Converters exhibited a higher level of educational attainment when compared to
17 individuals who remained consistently Stable SAA- or Stable SAA+ throughout the ADNI
18 study. A greater frequency of *APOE* ϵ 4 homozygotes was observed among SAA Converters in
19 comparison to Stable SAA- group. SAA Converters at their last visit with a SAA- result had
20 increased levels of CSF p-tau181 and poorer performance on the PACC and executive function
21 composite score relative to the Stable SAA- group. In addition, SAA Converters at their first

1 visit with an SAA+ result presented with greater levels of CSF p-tau181 compared to the Stable
2 SAA+ group. Furthermore, SAA Converters were more likely to be from non-white racial groups
3 than those who were consistently Stable SAA+, though this result should be interpreted with
4 caution due to the small sample size.

5 Lastly, between their last SAA– assessment and the subsequent SAA+ result, five SAA
6 Converters who were previously diagnosed with MCI advanced to a clinical diagnosis of
7 dementia due to AD. Three individuals from the MCI SAA Converter group developed dementia
8 following their SAA+ conversion, while one individual initially classified as MCI SAA
9 Converter later reverted to CU, as detailed in Supplemental Table S2. Relative to their cognitive
10 performance at their last SAA– time point, SAA Converters demonstrated greater impairment in
11 all global and domain-specific cognitive measures except the executive function composite
12 measures at their initial SAA+ time point.

13 **Association of SAA-positivity with the rates of cognitive decline**

14 After accounting for differences in age, sex, years of education, *APOE* $\epsilon 4$ genotype, and CSF A β
15 42 and p-tau181 levels, Stable SAA+ CU participants, compared to their Stable SAA–
16 counterparts, experienced faster increases in ADAS-Cog11 and steeper decline in PACC,
17 memory and executive function composite scores (Table 2). Similarly, Stable SAA+ MCI
18 participants showed more rapid declines across all global and domain specific cognitive
19 measures assessed, relative to Stable SAA– MCI participants, with a medium Cohen’s f^2 effect
20 size of 0.15 – 0.21 [35]. Only SAA-positivity association rapid cognitive decline in ADAS-
21 Cog11, PACC, memory, executive function, and language measures within MCI survived Holm–
22 Bonferroni correction.

1 We next modeled the longitudinal trajectories of cognitive outcome measures as a function of
2 $A\beta$ -time, while adjusting for age, sex, years of education, and *APOE* $\epsilon 4$ genotype (Figure 2). We
3 estimated the relative $A\beta$ -time for the SAA+ and SAA- groups to reach a cognitive performance
4 threshold defined as two standard deviations below the mean of CU participants. For the SAA-
5 group, the time from CSF $A\beta 42$ positivity ($A\beta$ -time) to reach the cognitive performance
6 threshold was as follows: 5.72 ± 0.47 years for ADAS-Cog11, 0.61 ± 1.06 years for MMSE, 1.77
7 ± 0.55 years for the PACC, 12.02 ± 0.39 years for memory function, 13.82 ± 0.44 years for
8 executive function, and 16.41 ± 0.46 years for language function. In contrast, the SAA+
9 individuals reached the same cognitive performance thresholds 5.7 to 9.5 years earlier than their
10 SAA- counterparts. The $A\beta$ -time to threshold for the SAA+ group and significance of the
11 differences compared to SAA- were as follows: -0.40 ± 1.68 years for ADAS-Cog11
12 ($p=0.00049$), -5.63 ± 1.11 years for MMSE ($p<0.0001$), -7.75 ± 1.05 years for PACC
13 ($p<0.0001$), 4.00 ± 1.27 years for memory function ($p<0.0001$), 7.99 ± 1.37 years for executive
14 function ($p<0.0001$), and 10.74 ± 1.75 years for language function($p=0.0028$).

15 Next, we compared SAA Converters (N=34) with a matched group of Stable SAA- individuals
16 (Reference group) in a 2:1 ratio. Our aim was to assess their cognitive decline rates both before
17 and after the critical conversion point, denoted as $t=0$ (Figure 3). For SAA Converters, $t=0$
18 represents the approximate time of conversion to SAA+, while for the Reference group, it aligns
19 with the point where they were matched to the SAA Converters based on age, sex, years of
20 education, *APOE* $\epsilon 4$ status, $A\beta$ -time, and clinical diagnosis. After Holm-Bonferroni correction,
21 MCI SAA Converters compared to the MCI Reference group showed a significantly accelerated
22 decline in PACC ($z=4.10$ $p<0.0001$) and memory function ($z=4.52$ $p<0.0001$) after their
23 estimated time of SAA conversion.

1 **SAA Conversion time relative to CSF A β time**

2 The timing of the CSF A β 42 pathology relative to SAA conversion is illustrated in Figure 4.

3 Among the 34 SAA Converters, 70% (N=24; 7 out of 8 Dementia, 13 out of 15 MCI, and 4 out
4 of 11 CU) were CSF A β 42 positive before their SAA conversion time point. On average, A β -
5 time (i.e., time from CSF A β 42 positivity) for Dementia and MCI SAA Converters was 14.9
6 years and 9.4 years prior to their SAA conversion time, respectively, while A β -time for CU SAA
7 Converters was 2.7 years after their SAA conversion time.

8 **Risk for CSF α -syn SAA and AD biomarker conversion and change in clinical diagnosis**

9 Risks for CSF α -syn SAA, A β 42, and p-tau181 biomarker conversion, as well as change in
10 clinical diagnosis (from CU to MCI/Dementia or from MCI to Dementia), were assessed through
11 Cox proportional hazards regression survival analyses.

12 The survival analysis indicated a significant association of being CSF A β 42 positive (HR: 2.44;
13 95% CI: 1.05-5.68) with SAA conversion risk (Figure 5; Supplemental Figure S2). When CSF
14 A β 42-age and A β 42-time were used in a repeated survival analysis instead of CSF A β 42
15 positivity, the associations remained consistent (data not shown).

16 In contrast, the risk for CSF A β 42 conversion was associated with older age (HR: 1.06; 95% CI:
17 1.02-1.10) and *APOE* ϵ 4 genotype (Heterozygotes: HR: 3.05; 95% CI: 1.73-5.37; Homozygotes:
18 HR, 12.48; 95% CI, 4.19-37.15) (Figure 5; Supplemental Figure S3). Similarly, the risk for CSF
19 p-tau181 conversion was associated with older age (HR: 1.04; 95% CI, 1.00-1.08), and *APOE* ϵ 4
20 genotype (Heterozygotes: HR, 2.65; 95% CI, 1.46-4.80; Homozygotes: HR, 4.88; 95% CI, 1.84-
21 12.95) (Figure 5; Supplemental Figure S4).

1 The likelihood of change in clinical diagnosis, whether from CU to MCI/Dementia or MCI to
2 Dementia, was associated with CSF A β 42 positivity (HR: 3.18; 95% CI: 2.39-4.24), CSF p-
3 tau181 positivity (HR: 2.33; 95% CI: 1.82-2.98), CSF α -syn SAA positivity (HR: 1.49; 95% CI:
4 1.15-1.93), older age (HR, 1.02; 95% CI, 1.01-1.04), and *APOE* ϵ 4 genotype (Heterozygotes:
5 HR: 1.35; 95% CI: 1.04-1.75; Homozygotes: HR, 1.48; 95% CI, 1.02-2.14) as shown in Figure 5
6 and Supplemental Figure S5.

7 **Association of SAA kinetic parameters with cohort characteristics and cognitive decline**

8 Within the SAA+ group (N=368), we assessed the independent association of demographic (age,
9 sex, and *APOE* ϵ 4 status) and clinical factors (clinical diagnosis and CSF A β 42 positivity) with
10 the SAA kinetic parameters (Fmax, Smax, TTT, and TSmax) in a full model including all these
11 factors as well as the total CSF protein concentration. The kinetic parameter analyses were
12 repeated with continuous CSF A β 42 and p-tau181 levels, cognitive outcome measures, as well as
13 for the associations between change in cognition and change in SAA kinetic parameter, all
14 adjusted for age, sex, *APOE* ϵ 4 status, clinical diagnosis, and total CSF protein concentration,
15 Although uncorrected association between SAA kinetic parameters and various demographic
16 (age, sex) and clinical (diagnosis, CSF A β 42 positivity, CSF p-tau181 levels, ADAS-Cog11,
17 CDR-SB, and language function) factors were observed as illustrated in Figure S6, only a few
18 survived Holm–Bonferroni correction. Specifically, less steep Smax values were associated with
19 older age ($\beta = -0.040$; $p = 0.0013$) and MCI diagnosis compared to being CU or Dementia ($\beta = -$
20 0.74 ; $p = 0.0013$).

1 Next, we investigated whether the SAA kinetic parameters were associated with the follow-up
2 time, as an indicator of an association with the duration of α -syn pathology, by utilizing data
3 from individuals who transitioned to SAA positivity from SAA-. Longitudinal kinetic
4 parameters from SAA Converters were aligned at the time of their SAA conversion (i.e., $t=0$;
5 Figure 6). Following the SAA conversion time, both TTT and TSmax significantly decreased
6 over the subsequent years ($p < 0.01$), converging to the levels observed within the Stable SAA+
7 participants. In contrast, Fmax and Smax remained constant over time, at the level observed
8 within the Stable SAA+ participants. This constancy, combined with the decreasing TTT and
9 TSmax, as expected resulted in a significant increase in the AUC-Fluoro ($p = 0.03$) in years
10 following the SAA conversion time. When repeated within each diagnostic group (i.e., CU, MCI,
11 and Dementia) separately, similar longitudinal profiles were observed (Supplemental Figure S7).

12 **DISCUSSION**

13 We recently applied CSF α -syn SAA to the latest available CSF samples from the ADNI cohort
14 (Phase-1), examining the prevalence of LB pathology (i.e., SAA-positivity) and its correlation
15 with AD biomarkers and cognitive function [19]. Expanding upon this, we incorporated earlier
16 CSF samples (Phase-2) with particular focus on individuals who were SAA+ in Phase-1 (Figure
17 1). This allowed us to track the progression of CSF A β 42, α -syn seeds, and p-tau181, along with
18 comprehensive cognitive assessments, in three groups: those with consistent SAA-positivity
19 (Stable SAA+), those with consistent SAA-negativity (Stable SAA-), and those who converted
20 from SAA- to SAA+ status (SAA Converters). The major findings of this study were: 1) SAA+
21 individuals exhibited a more rapid cognitive decline compared to SAA- individuals, particularly
22 during the MCI stage. SAA+ participants reached a cognitive performance threshold - defined as

1 two standard deviations below the mean of CU individuals - 5.7–9.5 years earlier than their
2 SAA– counterparts. 2) In the subset with longitudinal CSF data, 34 individuals (~5%)
3 transitioned from SAA– to SAA+ status by their final CSF collection. These ‘SAA Converters’
4 experienced a more pronounced cognitive decline post-conversion than a matched cohort of
5 Stable SAA– individuals. 3) The risk of converting to SAA+ status was linked to CSF A β 42-
6 positivity. However, the SAA status itself did not influence the likelihood of becoming positive
7 for either CSF A β 42 or p-tau181 biomarkers. 4) The positivity in all three CSF biomarkers -
8 A β 42, p-tau181, and α -syn SAA - independently was associated with greater risk for a change in
9 clinical diagnosis (i.e., CU to MCI/Dementia or MCI to Dementia). Of these, CSF A β 42
10 positivity was the strongest risk indicator. 5) The SAA kinetic parameters of Smax was
11 associated with age and MCI diagnosis.

12 The relationship between SAA status and cognitive trajectories versus change in clinical
13 diagnosis presents a nuanced aspect of AD clinical progression. Most importantly, SAA+ was
14 associated with more rapid cognitive decline in a full adjusted model, predominantly during the
15 MCI stage. We also observed that following SAA conversion, individuals experienced an
16 accelerated decline in cognitive performance. Interestingly, the onset of cognitive impairment,
17 defined as two standard deviations below the mean of CU individuals, for Stable SAA+
18 compared to Stable SAA– was 5.5–9.4 years earlier for both global and domain-specific
19 cognitive measures. This observation was consistent with previous studies reporting earlier age
20 of symptom onset in AD patients with LB co-pathology [17,36,37]. Our observation that SAA-
21 positivity was a significant risk factor for change in clinical diagnosis, also aligns with findings
22 from these studies. As expected, in the context of AD co-pathologies, CSF A β 42-positivity as a
23 marker of A β -pathology was the strongest risk factor for change in clinical diagnosis.

1 Our findings provide insights into the interactions particularly of A β and α -syn within the AD
2 framework. CSF A β 42-positivity significantly increased the likelihood of conversion from
3 SAA $^-$ to SAA $^+$, supporting the hypothesis that α -syn co-pathology may not arise independently
4 but is rather facilitated by existing A β -pathology, especially in symptomatic individuals.
5 Interestingly, a notable proportion (55%) of CU exhibited SAA-positivity prior to A β 42-
6 positivity, challenging the linear progression model of AD and suggesting that the temporal
7 sequence and chronicity of AD pathologies may hold greater implications for cognitive decline
8 and clinical diagnosis than the mere presence of multiple pathological entities.

9 Nevertheless, supporting the hypothesis of A β 's influence on α -syn, our findings show that the
10 advent of α -syn pathology appears to be influenced by pre-existing A β deposits, with its onset
11 further modulated to some extent by the *APOE* ϵ 4 homozygosity ($p=0.078$). However, it is
12 important to note that our results do not indicate a significant impact of SAA-positivity on its
13 own in the conversion to biomarker positivity for CSF A β 42 or p-tau181. This suggests that the
14 effect of A β on α -syn is likely unidirectional, without evidence of a reciprocal relationship.

15 Consistent with neuropathological evidence from autopsy studies [2,5,6,38], which show a
16 higher prevalence of α -syn changes in brains with abundant neuritic plaques but not necessarily
17 correlating with the severity of neurofibrillary tangles, our findings did not identify a strong
18 association between SAA conversion and CSF p-tau181-positivity, as a tau biomarker. We
19 previously reported an inverse relationship between SAA $^+$ prevalence and CSF p-tau181 levels
20 and flortaucipir PET burden in the Dementia stage of the disease [19]. Consistently, although it
21 did not reach significance due to limited sample size ($p=0.12$; Supplemental Figure S8), the risk
22 for SAA conversion within CSF A β 42+ Dementia was marginally associated with lower levels

1 of CSF p-tau181 (HR: 0.21; 95% CI: 0.03-1.50). Immunostaining of brain tissues for tau and α -
2 syn antibodies has revealed a higher burden of α -syn pathology in AD with LBs (AD+LB)
3 compared to PD dementia cases. Interestingly, the pathological tau load was found to be similar
4 or even slightly lower in AD+LB compared to AD alone, with co-localization of phosphorylated
5 tau and α -syn within astrocytes in the middle temporal gyrus [39]. In contrast, autopsy literature
6 on PD frequently reports concurrent deposition of α -syn and tau, reflecting a complex interplay
7 that may differ from AD pathology. Reviews such as that by Twohig and Nielsen [37] posit that
8 α -syn may interact more significantly with tau than with A β , emphasizing the importance of
9 protein species, whether soluble or insoluble, in the early seeding events of these pathologies.
10 This suggests a potential divergence in the pathophysiological mechanisms underlying these
11 proteinopathies in different neurodegenerative disease presentations.

12 Taken together, our findings suggest possible interactions between AD and LB pathologies,
13 potentially involving crosstalk mechanisms and genetic predispositions such as the *APOE* ϵ 4
14 allele. These interactions may be influenced by compromised proteostasis, raising the question of
15 whether α -syn preferentially engages with one pathological species over another, or if it is
16 merely the timing of the emergence of these pathologies that dictates their interrelationship. It is
17 important to note that our study was not designed or powered to understand the mechanism by
18 which A β and α -syn as well as tau pathologies interact and coexist in the brain of AD cases.
19 Nevertheless, prior work has suggested that interaction between A β and α -syn may reduce
20 protein clearance, activate inflammatory processes, increase tau phosphorylation, and enhance
21 aggregation of each other [40]. Notably, the biomarkers currently utilized for detecting these
22 pathological changes may have inherent limitations, such that measurable changes in CSF A β 42
23 levels may precede alterations in p-tau levels.

1 Our findings revealed that following SAA conversion, the kinetic parameters TTT and TSmax
2 significantly decreased over subsequent years, converging to levels observed within the Stable
3 SAA+ participants. However, the Fmax and Smax remained constant over time, at levels similar
4 to those observed within the Stable SAA+ participants. One interpretation of our findings could
5 be a potential association between amplification time at the emergence of LB pathology in the
6 context of co-pathologies while in later stages SAA features remain stable over time. The faster
7 aggregation kinetics with time from the initial SAA-positivity might also be related to many
8 factors including: changing number of α -syn aggregates over time, changes in the biophysical
9 properties of the seeds, as well as presence of lipids, proteins or other compounds in the CSF.
10 The qualitative nature of the current SAA protocol though poses a limitation in assigning SAA-
11 positivity time to Stable SAA+ cases, potentially introducing an unknown source of
12 heterogeneity to the kinetic parameter measures. Nevertheless, within the Stable SAA+ group,
13 Fmax and Smax were associated with age, sex, CSF A β 42 positivity, MCI diagnosis, and CSF p-
14 tau181 levels. Future longitudinal studies with larger sample sizes are warranted to further
15 understand whether the associations between SAA kinetic parameters with these demographic
16 and AD characteristics are reflections of a widespread α -syn-driven LB pathology and a greater
17 leakage of misfolded α -syn species from degenerating neurons. Accordingly, recent studies
18 suggest that SAA kinetic parameters, particularly TTT and TSmax, were associated with clinical
19 and cognitive characteristics of PD and DLB patients, measured by Unified Parkinson's disease
20 rating scale part (UPDRS) III and Montreal Cognitive Assessment [41,42]. Although not
21 survived correction for multiple comparison, TSmax was associated with cognitive impairment
22 (ADAS-Cog11, CDR-SB, and language function) and decline (language domain). TSmax might
23 be inversely proportional to the density of α -syn seeds, therefore a faster amplification of α -syn

1 seeds might again be a reflection greater leakage of misfolded α -syn species from degenerating
2 neurons underlying greater cognitive worsening. Another crucial reason that warrants further
3 investigation is the extent to which LB-pathology contributes to clinical and cognitive
4 impairment (i.e., quantitative burden of LB-pathology) in a dose-specific manner might be
5 influenced by its primary pathology status versus co-pathology status.

6 Limitations of the study include the exclusion of individuals with prominent DLB clinical
7 features from ADNI, lack of measures associated with PD/DLB clinical features (e.g. UPDRS
8 and smell tests), as well as the limited ancestral diversity in the available ADNI cohorts, and
9 SAA kinetic parameters not quantified for SAA- participants. In addition, A β -PET and tau-PET
10 imaging, gold-standard biomarkers for AD A β and tau pathologies, were only available for a
11 limited number of study participants (51% and 28%, respectively).

12 **CONCLUSION**

13 In summary, our results highlight the potential for interplay between A β and α -syn and their
14 impact on disease progression, emphasizing the importance of further investigation into their
15 underlying mechanisms in the context of co-pathologies of AD. The longitudinal tracking of
16 SAA+ alongside other biomarkers prompts consideration of differential diagnosis between AD
17 and other neurodegenerative conditions, especially DLB. Moving forward, it is imperative to
18 broaden the detection of LB-pathology in diverse cohorts to enhance our understanding of the
19 causes and triggers of AD and LB co-pathologies.

20 **References**

- 1 [1] Hamilton RL. Lewy Bodies in Alzheimer's Disease: A Neuropathological Review of 145
2 Cases Using α -Synuclein Immunohistochemistry. *Brain Pathology*. 2000;10(3):378-384.
3 doi:10.1111/j.1750-3639.2000.tb00269.x
- 4 [2] Mikolaenko I, Pletnikova O, Kawas CH, O'Brien R, Resnick SM, Crain B, et al. Alpha-
5 Synuclein Lesions in Normal Aging, Parkinson Disease, and Alzheimer Disease: Evidence from
6 the Baltimore Longitudinal Study of Aging (BLSA). *J Neuropathol Exp Neurol*. 2005;64(2):156-
7 162. doi:10.1093/jnen/64.2.156
- 8 [3] Kovacs GG, Milenkovic I, Wöhler A, Höftberger R, Gelpi E, Haberler C, et al. Non-
9 Alzheimer neurodegenerative pathologies and their combinations are more frequent than
10 commonly believed in the elderly brain: a community-based autopsy series. *Acta Neuropathol*.
11 2013;126(3):365-384. doi:10.1007/s00401-013-1157-y
- 12 [4] Spina S, La Joie R, Petersen C, Nolan AL, Cuevas D, Cosme C, et al. Comorbid
13 neuropathological diagnoses in early versus late-onset Alzheimer's disease. *Brain*.
14 2021;144(7):2186-2198. doi:10.1093/brain/awab099
- 15 [5] Lippa CF, Fujiwara H, Mann DMA, Giasson B, Baba M, Schmidt ML, et al. Lewy Bodies
16 Contain Altered α -Synuclein in Brains of Many Familial Alzheimer's Disease Patients with
17 Mutations in Presenilin and Amyloid Precursor Protein Genes. *The American Journal of*
18 *Pathology*. 1998;153(5):1365-1370. doi:10.1016/S0002-9440(10)65722-7
- 19 [6] Lippa CF, Schmidt ML, Lee VMY, Trojanowski JQ. Antibodies to α -synuclein detect
20 Lewy bodies in many Down's syndrome brains with Alzheimer's disease. *Ann Neurol*.
21 1999;45(3):353-357. doi:10.1002/1531-8249(199903)45:3<353::AID-ANA11>3.0.CO;2-4

- 1 [7] Hansen L, Salmon D, Galasko D, Masliah E, Katzman R, DeTeresa R, et al. The Lewy body
2 variant of Alzheimer's disease: A clinical and pathologic entity. *Neurol.* 1990; 40(1):1-8
- 3 [8] Braak, H, Braak E. Neuropathological Stageing of Alzheimer-Related Changes. *Acta*
4 *Neuropathologica.* 1991; 82(4): 239–59. <https://doi.org/10.1007/BF00308809>.
- 5 [9] Thal DR, Rüb U, Orantes M, Braak H. Phases of A β -deposition in the human brain and its
6 relevance for the development of AD. *Neurology.* 2002;58:1791-1800
- 7 [10] Mandal PK, Pettegrew JW, Masliah E, Hamilton RL, Mandal R. Interaction between A β
8 Peptide and α Synuclein: Molecular Mechanisms in Overlapping Pathology of Alzheimer's and
9 Parkinson's in Dementia with Lewy Body Disease. *Neurochem Res.* 2006;31(9):1153-1162.
10 doi:10.1007/s11064-006-9140-9
- 11 [11] Tsigelny IF, Crews L, Desplats P, Shaked GM, Sharikov Y, Mizuno H, et al. Mechanisms
12 of Hybrid Oligomer Formation in the Pathogenesis of Combined Alzheimer's and Parkinson's
13 Diseases. Cookson MR, ed. *PLoS ONE.* 2008;3(9):e3135. doi:10.1371/journal.pone.0003135
- 14 [12] Ono K, Takahashi R, Ikeda T, Yamada M. Cross-seeding effects of amyloid β -protein and
15 α -synuclein: Cross-seeding effects of A β and α S. *Journal of Neurochemistry.* 2012;122(5):883-
16 890. doi:10.1111/j.1471-4159.2012.07847.x
- 17 [13] Bassil F, Brown HJ, Pattabhiraman S, Iwasyk JE, Maghames CM, Meymand ES, et al.
18 Amyloid-Beta (A β) Plaques Promote Seeding and Spreading of Alpha-Synuclein and Tau in a
19 Mouse Model of Lewy Body Disorders with A β Pathology. *Neuron.* 2020;105(2):260-275.e6.
20 doi:10.1016/j.neuron.2019.10.010

- 1 [14] Goedert M, Spillantini MG. A Century of Alzheimer's Disease. *Science*.
2 2006;314(5800):777-781. doi:10.1126/science.1132814
- 3 [15] Ngolab J, Trinh I, Rockenstein E, Mante M, Florio J, Trejo M, et al. Brain-derived
4 exosomes from dementia with Lewy bodies propagate α -synuclein pathology. *acta neuropathol*
5 *commun*. 2017;5(1):46. doi:10.1186/s40478-017-0445-5
- 6 [16] Palmqvist S, Rossi M, Hall S, Quadalti C, Mattsson-Carlgren N, Dellavalle S, et al.
7 Cognitive effects of Lewy body pathology in clinically unimpaired individuals. *Nat Med*.
8 2023;29(8):1971-1978. doi:10.1038/s41591-023-02450-0
- 9 [17] Quadalti C, Palmqvist S, Hall S, Rossi, M, Mammana A, Janelidze S, et al. Clinical effects
10 of Lewy body pathology in cognitively impaired individuals. *Nat Med*. 2023;29(8):1964-1970.
11 doi:10.1038/s41591-023-02449-7
- 12 [18] Bellomo G, Toja A, Paoletti FP, Ma Y, Farris CM, Gaetani L, et al. Investigating
13 α -synuclein co-pathology in Alzheimer's disease by means of cerebrospinal fluid
14 α -synuclein seed amplification assay. *Alzheimer's & Dementia*. Published online February
15 7, 2024;alz.13658. doi:10.1002/alz.13658
- 16 [19] Tosun D, Hausle, Z, Iwaki H, Thropp P, Lamoureaux J, Lee EB, et al. A cross-sectional
17 study of a-synuclein seed amplification assay in Alzheimer's Disease Neuroimaging initiative:
18 prevalence and associations with Alzheimer's Disease biomarkers and cognitive function.
19 *Alzheimers & Dementia*. 2024; This Issue. doi:10.1002/alz.13858

- 1 [20] Boyle PA, Wang T, Yu L, Wilson RS, Dawe R, Arfanakis K, et al. To what degree is late
2 life cognitive decline driven by age-related neuropathologies? *Brain*. 2021;144(7):2166-2175.
3 doi:10.1093/brain/awab092
- 4 [21] Kapasi A, DeCarli C, Schneider JA. Impact of multiple pathologies on the threshold for
5 clinically overt dementia. *Acta Neuropathol*. 2017;134(2):171-186. doi:10.1007/s00401-017-
6 1717-7
- 7 [22] Mintun MA, Lo AC, Duggan Evans C, Wessels AM, Ardayfio PA, Anderson SW, et al.
8 Donanemab in Early Alzheimer's Disease. *N Engl J Med*. 2021;384(18):1691-1704.
9 doi:10.1056/NEJMoa2100708
- 10 [23] Budd Haeberlein S, Aisen PS, Barkhof F, Chalkias S, Chen T, Cohen S, et al. Two
11 Randomized Phase 3 Studies of Aducanumab in Early Alzheimer's Disease. *J Prev Alz Dis*.
12 Published online 2022. doi:10.14283/jpad.2022.30
- 13 [24] van Dyck CH, Swanson CJ, Aisen P, Bateman RJ, Chen C, Gee M, et al. Lecanemab in
14 Early Alzheimer's Disease. *N Engl J Med*. 2023;388(1):9-21. doi:10.1056/NEJMoa2212948
- 15 [25] Robinson JL, Lee EB, Xie SX, Rennert L, Suh E, Bredenberg C, et al. Neurodegenerative
16 disease concomitant proteinopathies are prevalent, age-related and APOE4-associated. *Brain*.
17 2018;141(7):2181-2193. doi:10.1093/brain/awy146
- 18 [26] Tsuang DW, Wilson RK, Lopez OL, Luedeking-Zimmer EK, Leverenz JB, DeKosky ST,
19 et al. Genetic association between the APOE*4 allele and Lewy bodies in Alzheimer disease.
20 *Neurology*. 2005;64(3):509-513. doi:10.1212/01.WNL.0000150892.81839.D1

- 1 [27] Tsuang D, Leverenz JB, Lopez OL, Hamilton RL, Bennett DA, Schneider JA, et al. APOE
2 ϵ 4 Increases Risk for Dementia in Pure Synucleinopathies. *JAMA Neurol.* 2013;70(2):223.
3 doi:10.1001/jamaneurol.2013.600
- 4 [28] Dickson DW, Heckman MG, Murray ME, Soto AI, Walton RL, Diehl NN, et al. APOE ϵ 4
5 is associated with severity of Lewy body pathology independent of Alzheimer pathology.
6 *Neurology.* 2018;91(12). doi:10.1212/WNL.0000000000006212
- 7 [29] Gharbi A, Nasri A, Sghaier I, Kacem I, Mrabet S, Souissi A, et al. Subtypes of Dementia
8 with Lewy Bodies: Clinical Features, Survival, and Apolipoprotein E Effect. *ADR.*
9 2023;7(1):1277-1288. doi:10.3233/ADR-230064
- 10 [30] Real R, Martinez-Carrasco A, Reynolds RH, Lawton MA, Tan MMX, Shoai M, et al.
11 Association between the LRP1B and APOE loci and the development of Parkinson's disease
12 dementia. *Brain.* 2023; 146: 1873-1887. <https://doi.org/10.1093/brain/awac414>
- 13 [31] Jin Y, Li F, Sonoustoun B, Kondru NC, Martens YA, Qiao W, et al. APOE4 exacerbates α -
14 synuclein seeding activity and contributes to neurotoxicity in Alzheimer's disease with Lewy
15 body pathology. *Acta Neuropathol.* 2022;143(6):641-662. doi:10.1007/s00401-022-02421-8
- 16 [32] Betthausen TJ, Bilgel M, Kosciuk RL, Jedynek BM, An Y, Kellett KA, et al. Multi-method
17 investigation of factors influencing amyloid onset and impairment in three cohorts. *Brain.*
18 2022;145:4065-4079. doi:10.1093/brain/awac213

- 1 [33] Crane PK, Choi S, Gibbons LE, Mukherjee S, Zhu R, Scollard P, et al. Cognitive
2 assessments in ADNI: Lessons learned from the ADNI psychometrics project. *Alzheimer's*
3 *& Dementia*. 2021;17(S5):e056474. doi:10.1002/alz.056474
- 4 [34] Bellomo G, Paciotti S, Concha-Marambio L, Rizzo D, Wojdata AL, Chiasserini D, et al.
5 Cerebrospinal fluid lipoproteins inhibit α -synuclein aggregation by interacting with oligomeric
6 species in seed amplification assays. *Mol Neurodegeneration*. 2023;18(1):20.
7 doi:10.1186/s13024-023-00613-8
- 8 [35] Selya AS, Rose JS, Dierker LC, Hedeker D, Mermelstein RJ. A Practical Guide to
9 Calculating Cohen's f^2 , a Measure of Local Effect Size, from PROC MIXED. *Front Psychology*.
10 2012;3. doi:10.3389/fpsyg.2012.00111
- 11 [36] Malek-Ahmadi M, Beach TG, Zamrini E, Adler CH, Sabbagh MN, Shill HA, et al. Faster
12 cognitive decline in dementia due to Alzheimer disease with clinically undiagnosed Lewy body
13 disease. Ginsberg SD, ed. *PLoS ONE*. 2019;14(6):e0217566. doi:10.1371/journal.pone.0217566
- 14 [37] Twohig D, Nielsen HM. α -synuclein in the pathophysiology of Alzheimer's disease. *Mol*
15 *Neurodegeneration*. 2019;14(1):23. doi:10.1186/s13024-019-0320-x
- 16 [38] Schneider JA, Arvanitakis Z, Leurgans SE, Bennett DA. The neuropathology of probable
17 Alzheimer disease and mild cognitive impairment. *Ann Neurol*. 2009;66(2):200-208.
18 doi:10.1002/ana.21706
- 19 [39] Van Der Gaag BL, Deshayes NAC, Breve JJP, Bol JGJ, Jonker AJ, Hoozemans JJM, et al.
20 Distinct tau and alpha-synuclein molecular signatures in Alzheimer's disease with and without

1 Lewy bodies and Parkinson's disease with dementia. *Acta Neuropathol.* 2024;147(1):14.

2 doi:10.1007/s00401-023-02657-y

3 [40] Marsh SE, Blurton-Jones M. Examining the mechanisms that link β -amyloid and α -

4 synuclein pathologies. *Alzheimers Res Ther.* 2012;4(2):11. doi:10.1186/alzrt109

5 [41] Bräuer S, Rossi M, Sajapin J, Henle T, Gasser T, Parchi P, et al. Kinetic parameters of

6 alpha-synuclein seed amplification assay correlate with cognitive impairment in patients with

7 Lewy body disorders. *acta neuropathol commun.* 2023;11(1):162. doi:10.1186/s40478-023-

8 01653-3

9 [42] Brockmann K, Lerche S, Baiardi S, Rossi M, Wurster I, Quadalti C, et al. CSF α -synuclein

10 seed amplification kinetic profiles are associated with cognitive decline in Parkinson's disease.

11 *npj Parkinsons Dis.* 2024;10(1):24. doi:10.1038/s41531-023-00627-5

12

13 **DATA SHARING**

14 The ADNI data used in this study were obtained from the ADNI database

15 (<https://adni.loni.usc.edu>). All ADNI data are shared without embargo through the [LONI Image](#)

16 [and Data Archive](#) (IDA).

17 **ACKNOWLEDGEMENTS**

18 This work was supported in part by the Intramural Research Program of the National Institute on

19 Aging (NIA), and the Center for Alzheimer's and Related Dementias (CARD), within the

1 Intramural Research Program of the National Institute on Aging and the National Institute of
2 Neurological Disorders and Stroke (AG000546). Data collection and sharing for this project was
3 funded by the Alzheimer's Disease Neuroimaging Initiative (ADNI) (National Institutes of
4 Health Grant U01 AG024904). ADNI is funded by the National Institute on Aging, the National
5 Institute of Biomedical Imaging and Bioengineering, and through generous contributions from
6 the following: AbbVie, Alzheimer's Association; Alzheimer's Drug Discovery Foundation;
7 Araclon Biotech; BioClinica, Inc.; Biogen; Bristol-Myers Squibb Company; CereSpir, Inc.;
8 Cogstate; Eisai Inc.; Elan Pharmaceuticals, Inc.; Eli Lilly and Company; EuroImmun; F.
9 Hoffmann-La Roche Ltd and its affiliated company Genentech, Inc.; Fujirebio; GE Healthcare;
10 IXICO Ltd.; Janssen Alzheimer Immunotherapy Research & Development, LLC.; Johnson &
11 Johnson Pharmaceutical Research & Development LLC.; Lumosity; Lundbeck; Merck & Co.,
12 Inc.; Meso Scale Diagnostics, LLC.; NeuroRx Research; Neurotrack Technologies; Novartis
13 Pharmaceuticals Corporation; Pfizer Inc.; Piramal Imaging; Servier; Takeda Pharmaceutical
14 Company; and Transition Therapeutics. The Canadian Institutes of Health Research is providing
15 funds to support ADNI clinical sites in Canada. Private sector contributions are facilitated by the
16 Foundation for the National Institutes of Health (www.fnih.org). The grantee organization is the
17 Northern California Institute for Research and Education, and the study is coordinated by the
18 Alzheimer's Therapeutic Research Institute at the University of Southern California. ADNI data
19 are disseminated by the Laboratory for Neuro Imaging at the University of Southern California.

20 **CONFLICTS OF INTEREST**

21 D.T., Z.H., P.T., and L.M.S. receive funding from NIH/NIA.

22 C.B. have nothing to disclose.

1 L.C.M., J.L., and R.L. are full-time employee of Amprion Inc and hold stock or stock options of
2 Aprion Inc.

3 A.B.S. receives funding from Intramural Research Program of the National Institutes of Health;
4 received honoraria from Movement Disorders Journal and npjParkinson's Disease; received
5 travel support from Chan Zuckerberg Initiative, Michael J Fox Foundation, and Weill Cornell

6 M.W.W. serves on Editorial Boards for Alzheimer's & Dementia, and the Journal for Prevention
7 of Alzheimer's disease. He has served on Advisory Boards for Acumen Pharmaceutical,
8 Alzheon, Inc., Cerecin, Merck Sharp & Dohme Corp., and NC Registry for Brain Health. He also
9 serves on the USC ACTC grant which receives funding from Eisai for the AHEAD study. He has
10 provided consulting to BioClinica, Boxer Capital, LLC, Cerecin, Inc., Clario, Dementia Society
11 of Japan, Eisai, Guidepoint, Health and Wellness Partners, Indiana University, LCN Consulting,
12 Merck Sharp & Dohme Corp., NC Registry for Brain Health, Prova Education, T3D
13 Therapeutics, University of Southern California (USC), and WebMD. He has acted as a
14 speaker/lecturer for China Association for Alzheimer's Disease (CAAD) and Taipei Medical
15 University, as well as a speaker/lecturer with academic travel funding provided by: AD/PD
16 Congress, Cleveland Clinic, CTAD Congress, Foundation of Learning; Health Society (Japan),
17 INSPIRE Project; U. Toulouse, Japan Society for Dementia Research, and Korean Dementia
18 Society, Merck Sharp & Dohme Corp., National Center for Geriatrics and Gerontology (NCGG;
19 Japan), University of Southern California (USC). He holds stock options with Alzeca, Alzheon,
20 Inc., ALZPath, Inc., and Anven. Dr. Weiner received support for his research from the following
21 funding sources: National Institutes of Health (NIH)/NINDS/National Institute on Aging (NIA),
22 Department of Defense (DOD), California Department of Public Health (CDPH), University of

1 Michigan, Siemens, Biogen, Hillblom Foundation, Alzheimer’s Association, Johnson &
2 Johnson, Kevin and Connie Shanahan, GE, VUmc, Australian Catholic University (HBI-BHR),
3 The Stroke Foundation, and the Veterans Administration.

4 **FUNDING SOURCES**

5 Data analysis for this study was partially funded by NIH/NIA U19AG024904.

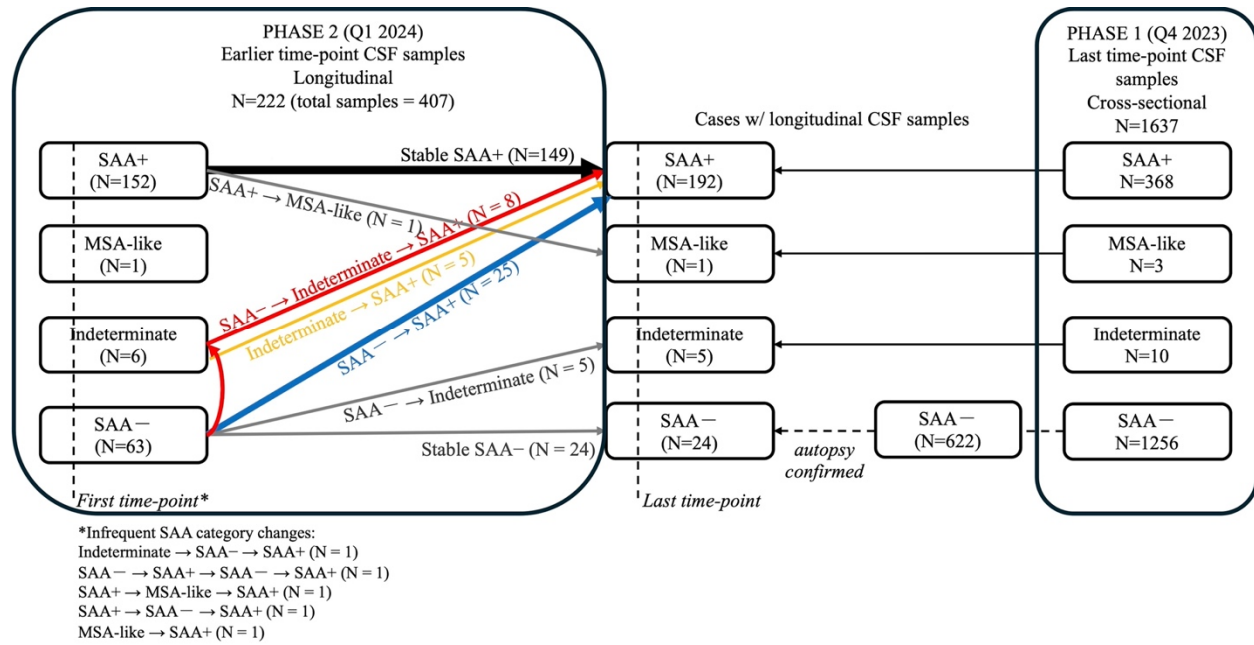
6 **CONSENT STATEMENT**

7 ADNI study was approved by each ADNI study site’s respective institutional review board and
8 informed written consents were obtained from all participants.

9 **KEYWORDS**

10 Alzheimer's disease, Lewy Body, SAA, co-pathology, cognitive decline

11 **FIGURE LEGENDS**



1

2 **Figure 1:** Graphical overview of the ADNI CSF α -syn Seed Amplification Assay (SAA)

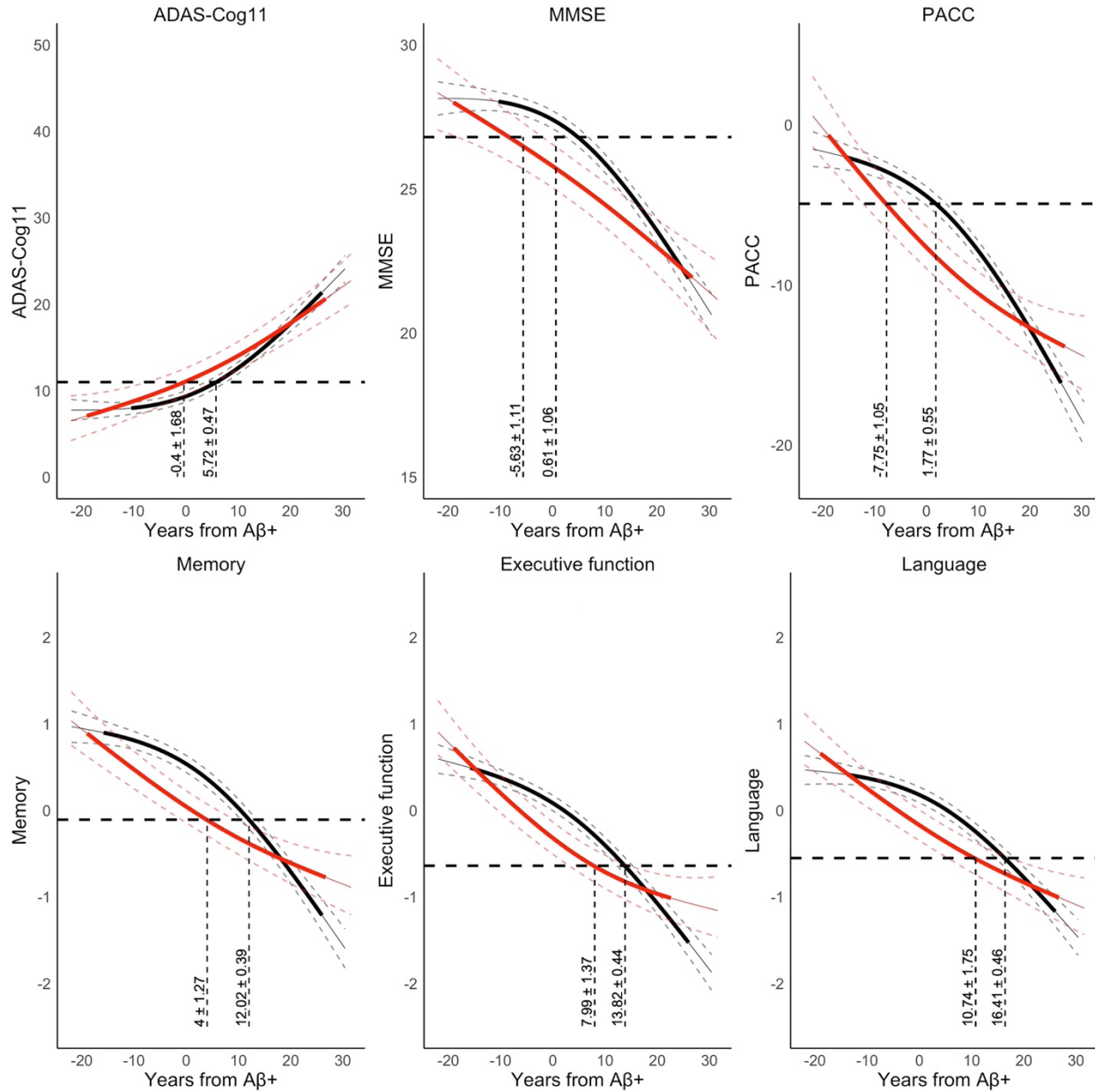
3 workflow. On the right, Phase-1 included SAA measurement of all ADNI 1-3 participants' most

4 recent time point, previously published (Tosun et al 2024). As follow-up in Phase-2 we included

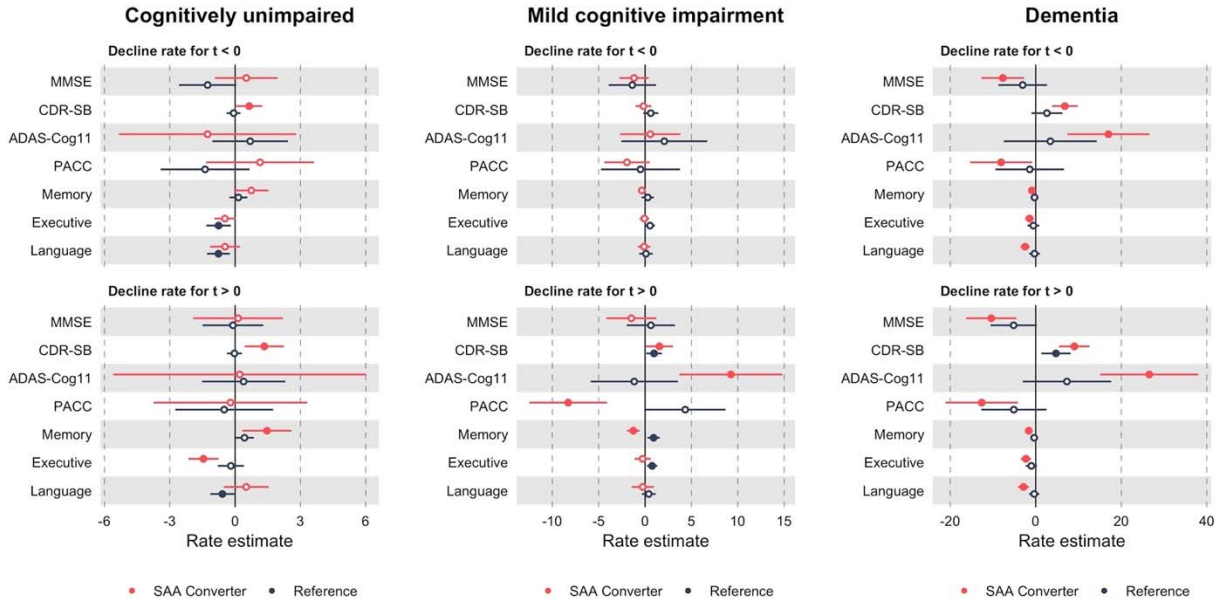
5 all previous CSF timepoints available from groups identified as 1) SAA+, 2) MSA-like, and 3)

6 indeterminate in Phase-1 processing, and 4) autopsy cohort, totaling 222 participants with 407

7 samples.

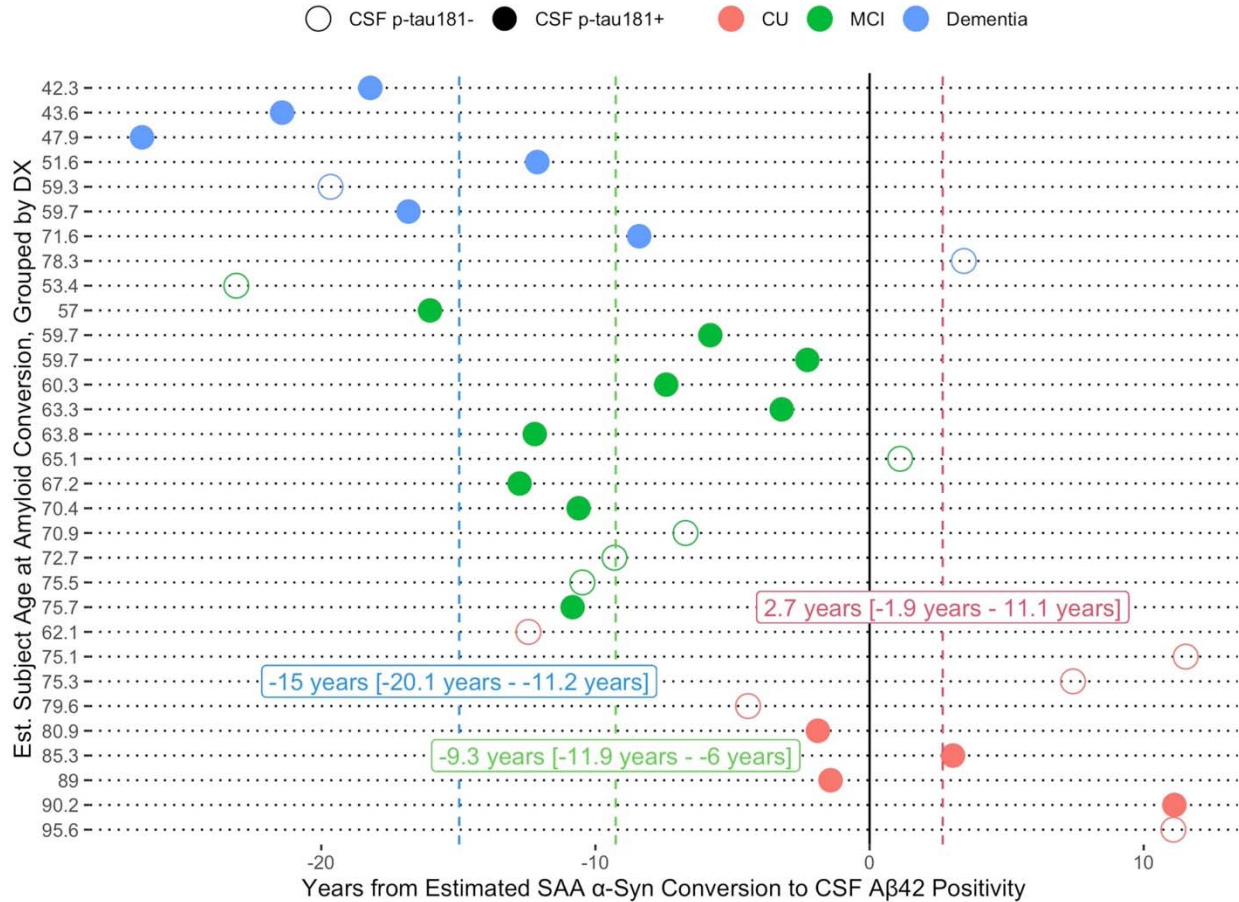


1
 2 **Figure 2:** The longitudinal trajectories of cognitive outcome measures as a function of Aβ-time,
 3 while adjusting for age, sex, years of education, and *APOE* ε4 genotype. Aβ-time at the cognitive
 4 assessment time was measured relative to the SILA-estimated Aβ-age at CSF Aβ42 positivity.
 5 Horizontal dashed lines indicate the cognitive performance threshold defined as two standard
 6 deviations below the mean of CU participants.



1

2 **Figure 3:** Cognitive decline rates for SAA Converters (N=34) and a matched group of Stable
3 SAA- individuals (Reference group). For SAA Converters, t=0 represents the approximate time
4 of conversion to SAA+, while for the Reference group, it aligns with the point where they were
5 matched to the SAA Converters based on age, sex, years of education, *APOE* $\epsilon 4$ status, $A\beta$ -time,
6 and clinical diagnosis in a 2:1 ratio. Closed and open circles indicate $p \leq 0$ and $p > 0$,
7 respectively, for the estimated cognitive decline rates.



1

2 **Figure 4:** Timing of the CSF A β 42 pathology (i.e., A β) relative to CSF α -syn SAA conversion.

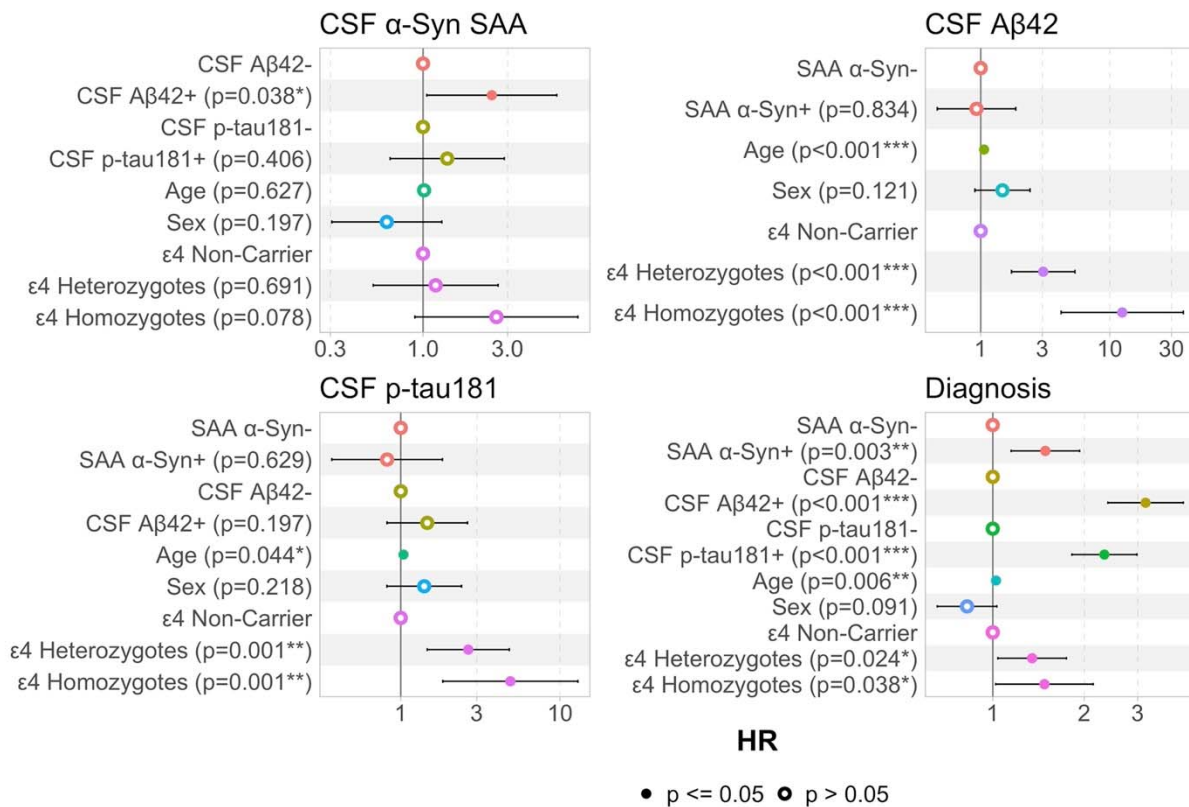
3 Three out of 34 SAA Converters had CSF A β 42 levels above the upper technical limit of 1700

4 pg/mL, therefore missing SILA CSF A β 42 age estimates. Closed and open circles indicate CSF

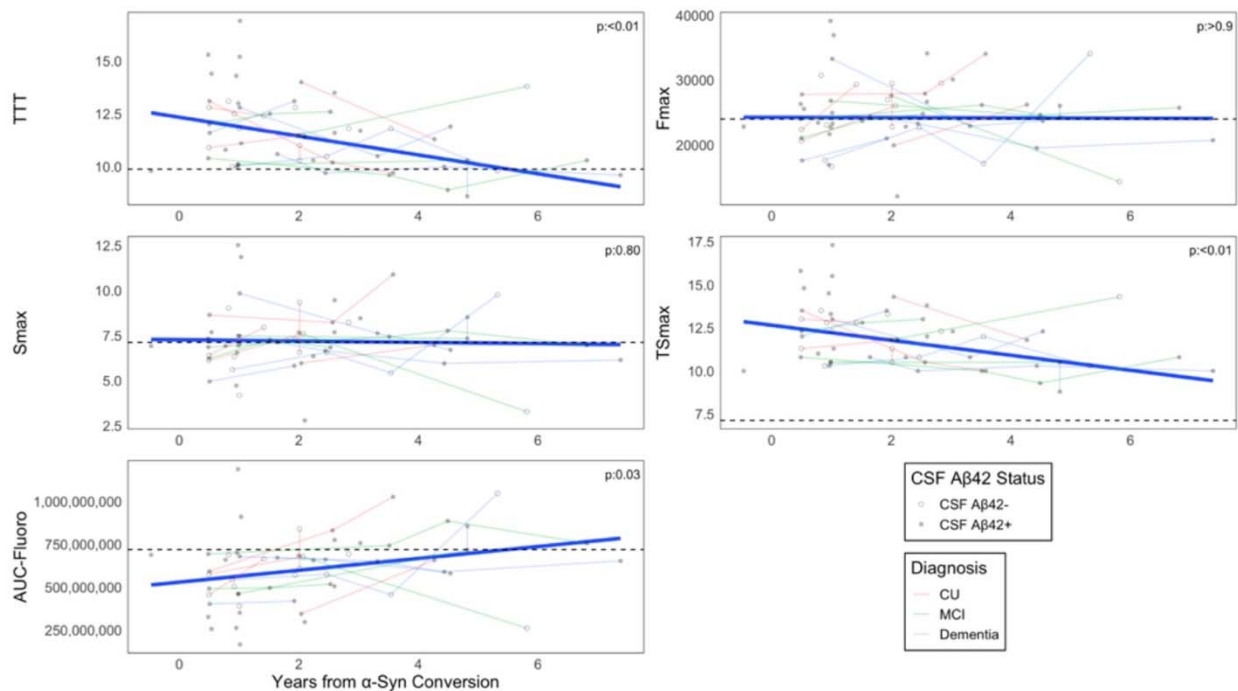
5 p-tau181 positive and negative participants at the time of SAA conversion, respectively. Vertical

6 dashed lines represent the median (IQR) for timing of the CSF A β pathology relative to CSF α -

7 syn SAA conversion time within each diagnostic group.



1
 2 **Figure 5:** Hazard ratios for predictors from adjusted Cox regression models predicting
 3 conversion in CSF α -syn SAA positivity, CSF A β 42 positivity, CSF p-tau181 positivity, and
 4 change in clinical diagnosis (whether from CU to MCI/Dementia or MCI to Dementia).



1

2 **Figure 6:** Change in SAA kinetic parameters over years after the SAA conversion time.

3 Horizontal dashed lines represent the average levels of kinetic parameters within Stable SAA+

4 participants.

5

6

7

8

9

10

Table 1: Demographic, clinical, and biomarker characteristics of the individuals with CSF α -syn SAA- stable over time (Stable SAA-), individuals with CSF α -syn SAA+ stable over time (Stable SAA+), and individuals progressed from CSF α -syn SAA- to CSF α -syn SAA+ (SAA Converters). For SAA Converters, cohort characteristics are provided before and after conversion time points (i.e., last time point with CSF α -syn SAA- and first time point with CSF α -syn SAA+, respectively). n (%) are provided for dichotomized and categorical variables, median (IQR) for continuous variables. Missing data counts and percentages for clinical and biomarker data are provided in Supplemental Table S1.

Characteristic	i. Stable SAA- N = 622	ii. SAA Converters (Before), N = 34	iii. SAA Converters (After), N = 34	iv. Stable SAA+ N = 149	p i vs. ii	p ⁷ ii vs. iii	p iii vs. iv	p i vs. iv
¹ Diagnosis					0.40	0.81	0.59	<0.0
CU	269 (43%)	11 (32%)	11 (32%)	36 (24%)				
MCI	213 (34%)	15 (44%)	10 (29%)	52 (35%)				
Dementia	140 (23%)	8 (24%)	13 (38%)	61 (41%)				
² Age	76 (71, 81)	76 (66, 79)	78 (70, 83)	78 (73, 81)	0.08	<0.001	0.67	0.1
¹ Male	316 (51%)	21 (62%)	21 (62%)	87 (58%)	0.29	N/A	0.89	0.1
³ Ethnicity					0.71	N/A	N/A	0.0
Hispanic or Latino	18 (2.9%)	0 (0%)	0 (0%)	0 (0%)				
Not Hispanic or Latino	599 (96%)	34 (100%)	34 (100%)	149 (100%)				
Unknown	5 (0.8%)	0 (0%)	0 (0%)	0 (0%)				
³ Race					0.13	N/A	0.01	0.0
Asian	4 (0.6%)	0 (0%)	0 (0%)	4 (2.7%)				
Black or African American	24 (3.9%)	1 (2.9%)	1 (2.9%)	4 (2.7%)				
More than one race	13 (2.1%)	3 (8.8%)	3 (8.8%)	0 (0%)				
White	581 (93%)	30 (88%)	30 (88%)	141 (95%)				
² Years of education	16.00 (14.00, 18.00)	18.00 (16.00, 20.00)	18.00 (16.00, 20.00)	16.00 (14.00, 18.00)	0.03	N/A	0.02	0.3
³ APOE ϵ 4 genotype					0.03	N/A	0.41	0.1
Non-Carrier	370 (59%)	15 (44%)	15 (44%)	80 (54%)				
Heterozygotes	202 (33%)	12 (35%)	12 (35%)	50 (34%)				
Homozygotes	50 (8.1%)	7 (21%)	7 (21%)	19 (13%)				
⁴ CSF A β 42	849 (591, 1,387)	732 (580, 1,024)	638 (516, 1,098)	690 (495, 1,211)	0.14	0.21	0.65	0.0
⁶ CSF A β 42+	338 (57%)	25 (74%)	23 (70%)	97 (66%)	0.13	>0.9	0.41	0.5
⁵ CSF p-tau181	24 (17, 35)	27 (21, 38)	27 (21, 43)	24 (18, 34)	0.04	>0.9	0.01	0.5
⁶ CSF p-tau181+	287 (49%)	20 (59%)	22 (67%)	72 (50%)	0.41	0.37	0.10	0.1
⁴ ADAS-Cog11	13 (7, 22)	15 (10, 23)	21 (10, 29)	19 (11, 30)	0.16	<0.001	0.90	<0.0
⁴ CDR-SB	1.0 (0.0, 3.0)	1.0 (0.5, 3.4)	2.0 (0.5, 4.9)	2.0 (0.5, 5.0)	0.37	<0.01	0.36	<0.0
⁴ PACC	-3 (-10, 1)	-6 (-10, -1)	-10 (-12, -1)	-8 (-15, -2)	<0.01	<0.01	0.50	<0.0
⁴ MMSE	28.0 (25.0, 30.0)	28.0 (25.0, 29.0)	26.0 (23.0, 29.0)	26.0 (22.0, 29.0)	0.10	<0.01	0.88	<0.0
⁴ Executive function	0.47 (0.01, 0.94)	0.36 (-0.23, 0.65)	0.26 (-0.06, 0.62)	0.10 (-0.55, 0.64)	0.05	0.22	0.21	<0.0
⁴ Memory	0.45 (-0.35, 1.10)	0.13 (-0.35, 0.75)	-0.40 (-0.65, 0.64)	-0.11 (-0.83, 0.64)	0.06	<0.001	0.77	<0.0
⁴ Language	0.51 (0.08, 0.82)	0.54 (-0.09, 0.81)	0.44 (-0.17, 0.76)	0.16 (-0.30, 0.62)	>0.9	0.04	0.25	<0.0

¹ Pearson's Chi-squared test

² One-way ANOVA

³ Fisher's exact test

⁴ ANCOVA adjusted for age, sex, education, diagnosis, and APOE

⁵ ANCOVA adjusted for age, sex, education, APOE, diagnosis, and CSF A β 42 status

⁶ Logistic regression adjusted for age, sex, education, diagnosis, and APOE

⁷ Paired t-test: all continuous variables; McNemar's test: all binary variables; paired sign test: diagnosis.

1
2
3
4
5
6

Table 2: Rates of change in cognitive outcome measures for Stable SAA– and Stable SAA+ groups. Rates of change in each cognitive outcome measure were separately modeled for all groups. Estimated rates were compared across groups after adjusting for age, sex, gender, *APOE* genotype, and CSF A β 42 and p-tau181 levels. Rates are listed as mean (SD).

*Significance survived Holm–Bonferroni correction.

Diagnosis	Measure	Stable SAA–	Stable SAA+	Cohen’s f^2 Effect size	p
Cognitively Unimpaired	ADAS-Cog11	0.11 (0.12)	0.16 (0.14)	0.14	0.0096
	CDR-SB	0.028 (0.056)	0.021 (0.049)	0.035	0.64
	MMSE	-0.041 (0.040)	-0.42 (0.034)	0.011	0.85
	PACC	-0.096 (0.14)	-0.14 (0.11)	0.091	0.040
	Memory composite	-0.015 (0.027)	-0.025 (0.020)	0.12	0.017
	Executive function composite	0.026 (0.026)	-0.037 (0.027)	0.13	0.024
	Language composite	-0.028 (0.015)	-0.033 (0.020)	0.087	0.14
Mild Cognitive Impairment	ADAS-Cog11	0.57 (0.55)	0.81 (0.54)	0.18	<0.001*
	CDR-SB	0.15 (0.21)	0.23 (0.21)	0.15	0.0078
	MMSE	-0.23 (0.29)	-0.34 (0.26)	0.15	0.0070
	PACC	-0.51 (0.62)	-0.76 (0.59)	0.17	0.0012*
	Memory composite	-0.084 (0.094)	-0.12 (0.087)	0.17	0.0015*
	Executive function composite	-0.041 (0.044)	-0.064 (0.054)	0.21	<0.001*
	Language composite	-0.054 (0.038)	-0.074 (0.036)	0.21	<0.001*
Dementia	ADAS-Cog11	3.90 (2.90)	4.40 (2.90)	0.067	0.24
	CDR-SB	1.60 (1.20)	1.70 (0.97)	0.034	0.63
	MMSE	-1.90 (1.60)	-2.30 (1.70)	0.10	0.098
	PACC	-2.70 (1.80)	-2.90 (2.00)	0.056	0.33
	Memory composite	-0.30 (0.15)	-0.33 (0.14)	0.095	0.076
	Executive function composite	-0.30 (0.12)	-0.27 (0.14)	0.098	0.40
	Language composite	-0.36 (0.30)	-0.40 (0.31)	0.058	0.26

1
2
3