

## The impact of genome-wide histocompatibility on liver transplantation outcomes

Semenova M<sup>1</sup>, Liukkonen V<sup>2,3</sup>, Markkinen S<sup>1</sup>, Färkkilä M<sup>2</sup>, Nordin A<sup>4</sup>, Partanen J<sup>1</sup>, Åberg F<sup>4</sup>, Hyvärinen K<sup>1\*</sup>

1. *Finnish Red Cross Blood Service, Research and Development, Helsinki, Finland*
2. *University of Helsinki, Faculty of Medicine, Helsinki, Finland*
3. *North Carelia Central Hospital, Gastroenterology, Joensuu, Finland*
4. *Transplantation and Liver Surgery, Helsinki University Hospital and University of Helsinki, Helsinki, Finland*

Short title: Genome-wide mismatches in liver transplantation

Corresponding author:

Kati Hyvärinen, PhD, Associate professor

Finnish Red Cross Blood Service

Research and Development

Biomedicum Helsinki 1, Haartmaninkatu 8, 00290 Helsinki, FINLAND

Phone +358 40 920 3083

[kati.hyvarinen@bloodservice.fi](mailto:kati.hyvarinen@bloodservice.fi)

## Abbreviations

aHR, adjusted hazard ratio

AR, Acute rejection

CI, Confidence interval

CHR, Chromosome

DNA, Deoxyribonucleic acid

DSA, Donor-specific antibody

eQTL, Expression quantitative trait loci

FDR, False discovery rate

GSA, Global screening array

HLA, Human leukocyte antigen

HSCT, hematopoietic stem cell transplantation

IQR, Interquartile range

LCL, Lateral collateral ligament

LT, Liver transplantation

MAF, Minor allele frequency

MD, Multi-Disease

MHC, Major histocompatibility complex

NA, Not available

POS, Position

QC, Quality control

## 1 **ABSTRACT**

2 Liver transplantation (LT) is the standard treatment for end-stage liver disease. The  
3 role of human leukocyte antigen (HLA) matching in LT remains unclear. Immunologic  
4 allograft injury and rejection continue to be concerns, especially when minimizing  
5 immunosuppression. While HLA matching currently has no established role in LT, non-  
6 HLA compatibility has attracted increased attention.

7 We compared 666 LT recipient-donor pairs and identified genomic mismatches  
8 outside HLA segment in different protein groups and 40 common gene deletions. We  
9 evaluated the associations with LT outcomes using adjusted Cox models.

10 Quartiles of missense variants coding for all proteins were associated with late  
11 rejection with an adjusted hazard ratio (aHR) 0.812 (95% confidence interval [CI]:  
12 0.674–0.977, P-value 0.028). Deletion mismatches tagged by rs11985201 and  
13 rs2342606 were associated with AR with aHR 1.483 (95% CI: 1.066–2.062, P-value  
14 0.019) and aHR 1.373 (95% CI: 1.011–1.865, P-value 0.042), respectively. Deletion  
15 mismatch in rs2174926 was associated with graft loss with aHR 2.332 (95% CI: 1.145–  
16 4.752, P-value 0.020) and in rs1944862 with late rejection with aHR 2.341 (95% CI:  
17 1.326–4.130, P-value 0.003). False detection rates <0.05 were not reached.

18 In conclusion, genome-wide mismatches may contribute to LT complications.  
19 However, robust large-scale studies are essential for validation.

20

## 21 **Keywords**

22 Acute rejection, late rejection, graft loss, overall survival, genome-wide  
23 incompatibility.

## 24 INTRODUCTION

25 Liver transplantation (LT) is the standard treatment for end-stage liver disease, acute  
26 liver failure and selected liver cancers. Survival after LT has improved in recent years,  
27 and more than 60% of recipients now survive over 10 years<sup>1</sup>. With modern  
28 immunosuppression regimens, immunological complications, including acute rejection  
29 (AR) or chronic rejection, rarely lead to graft loss, even though late AR has been  
30 associated with inferior graft and recipient survival<sup>2</sup>. Recognition of the potential role  
31 of donor-specific antibodies (DSA)<sup>3</sup>, especially under immunosuppression  
32 minimization, and reports of subclinical immunological damage and fibrosis in liver  
33 allografts<sup>4</sup> have revived interest in immunology in recent years, but majority of graft  
34 losses results from non-immunological reasons<sup>5</sup>.

35

36 Cancer, cardiovascular events, renal failure and infections are the major reasons for  
37 mortality after LT and immunosuppressive medication predisposes recipients to such  
38 events<sup>5</sup>. Thus, minimizing immunosuppression to improve survival has become a  
39 major target in post-LT management<sup>6</sup>. As the risk of complications varies between  
40 individuals, individualized approach to immunosuppression management could  
41 improve post-LT outcomes.

42 The significance of human leucocyte antigens (HLA) is well-understood in  
43 hematopoietic stem cell transplantation (HSCT)<sup>7</sup> and kidney transplantation<sup>8</sup>. In  
44 addition, in the last decade, mismatches between recipient and donor in genes located  
45 outside the HLA segment has emerged as a novel histocompatibility factor in HSCT<sup>9,10</sup>  
46 and kidney transplantation<sup>11-15</sup>. For example, according to a recent study, the kidney  
47 allograft survival was influenced by incompatibility in genes outside HLA<sup>12</sup>. In another  
48 recent study, researchers stated that genomic mismatch at *LIMS1* locus was  
49 associated with rejection of the kidney allograft<sup>11</sup>.

50 The effect of HLA compatibility on LT outcomes is still debated with studies showing  
51 mixed outcomes<sup>16,17</sup> and matching is not used in organ allocation. There is a clear lack  
52 of data about the role of genome-wide compatibility in LT. Identifying novel risk factors  
53 for immunological and other important post-LT complications could help with risk  
54 stratification and individualized management<sup>18</sup>.

55 In the present study, we analyzed the association of genome-wide incompatibility and  
56 time to any AR, late AR, graft loss and death in a LT cohort of 666 recipient-donor  
57 pairs to identify novel genetic risk factors for LT outcomes.

58

## 59 **STUDY SUBJECTS AND METHODS**

### 60 **Study cohort and design**

61 The study conforms to the principles of the Declaration of Helsinki and has been  
62 approved by the ethics committee of Helsinki University Hospital (HUS/155/2021), the  
63 Finnish Medicines Agency Fimea (FIMEA/2021/004031), and Abdominal Center,  
64 Helsinki University Hospital (HUS/155/2021/68).

65 The characteristics of the recipients are described in **Tables 1 and 2**. The flow chart  
66 of the study cohort is presented in **Figure 1**. In total, 894 liver transplantation recipients  
67 who had received a liver transplant between years 2000–2018 and their respective  
68 first transplantation donors were included in the present study. The DNA samples of  
69 both recipients and donors were extracted from whole blood samples at Finnish Red  
70 Cross Blood Service, Helsinki. After exclusion of individuals lacking DNA samples, the  
71 whole study cohort was divided into three different cohorts: Genotyping cohort 1  
72 consisting of 286 donors, Genotyping cohort 2 including 30 recipients and 125 donors,  
73 and Genotyping cohort 3 comprising 1202 individuals. Individuals who failed passing  
74 the quality control (QC), who's pair was missing genotyping information and those  
75 younger than 18 years old were excluded.

76 All ARs were biopsy confirmed according to BANFF-scheme<sup>19</sup>. Late rejection was  
77 determined as AR diagnosed over 90 days after the transplantation. Primary or  
78 secondary LT indication of primary sclerosing cholangitis, primary biliary cholangitis,  
79 or autoimmune hepatitis was categorized as autoimmune liver disease.

80

### 81 **Genotyping and genotype imputation**

82 **Supplementary Figure 1** presents the flow of genetic variants in pre- and post-  
83 imputation processes. Genotyping was performed at the Finnish Institute of Molecular  
84 Medicine, Helsinki, Finland. Cohort I was genotyped using Illumina Infinium™ Global

85 Screening Array (GSA)-24 v3.0 BeadChip + Multi-Disease (MD) drop-in customized  
86 with 34,191 Finnish variants. Cohorts II and III were genotyped using Illumina  
87 Infinium™ GSA-24 v2.0 + MD bead chip. Prior to genotype imputation, results in build  
88 GRCh37 were lifted over to the GRCh38<sup>20</sup>. Genotype imputation was performed with  
89 Beagle v4.1 program utilizing THL Biobank's SISu v3 reference panel according to  
90 Palta *et al.*<sup>21</sup> [https://www.protocols.io/view/genotype-imputation-workflow-v3-0-  
91 xbgfijw?step=4&comment\\_id=86624](https://www.protocols.io/view/genotype-imputation-workflow-v3-0-xbgfijw?step=4&comment_id=86624). In post-imputation QC, individuals with missing  
92 genotype >5% and variants with missing data rate >10%, minor allele frequency (MAF)  
93 <1%, and imputation INFO score <0.6 were excluded. In total, 8,706,949 common  
94 variants were available for the analyses.

95

## 96 HLA imputation and eplet mismatches

97 Imputation of alleles of HLA-A, -B, -C, -DRB1, -DQA1, -DQB1, and -DPB1 genes was  
98 performed according to Ritari *et al.*<sup>22</sup> utilizing R package HIBAG in RStudio version  
99 3.6.3. (<https://github.com/FRCBS/HLA-imputation>).

100 HLA eplet mismatches between recipients and donors were calculated for imputed  
101 HLA-A, -B, -C, -DRB, -DQB, and -DPB alleles utilizing HLAMatchmaker  
102 (<http://www.epitopes.net/>)<sup>23</sup>. HLA-A, -B, and -C alleles were matched using a [ABC  
103 Eplet Matching Program V4.0](#) and HLA-DRB, -DPB, -DQA, and -DQB alleles were  
104 matched using a [DRDQDP Eplet Matching Program V3.1](#) program. The programs  
105 were downloaded from <http://www.epitopes.net/downloads.html>.

106

## 107 Missense variant mismatch analyses

108 Prior to performing mismatch analyses, the variants coded on major histocompatibility  
109 complex (MHC) region on chromosome 6 and both sex chromosomes were excluded,  
110 leaving only autosomal non-HLA variants in the dataset. **Figure 2** shows the flow of  
111 variants. Functional annotation of variants was performed with Ensemble Variant  
112 Effect Predictor<sup>24</sup> release 106  
113 (<https://www.ensembl.org/info/docs/tools/vep/script/index.html>). Transcripts for all,  
114 transmembrane and secreted proteins, transmembrane proteins, and liver-related  
115 proteins were retrieved from UniProt 84 (<https://www.uniprot.org/>). Filtering operator

116 “consequence is missense\_variants” was utilized. Term missense variant refers to a  
117 nucleotide polymorphism changing the encoded amino acid in the protein.

118 The query strings for different protein groups were as follows:

119 1. Transmembrane and secreted proteins

120 (annotation:(type:transmem) OR locations:(location:"Secreted [SL-0243]") OR  
121 keyword:"Transmembrane [KW-0812]") AND reviewed:yes AND organism:"Homo  
122 sapiens (Human) [9606]"

123 2. Transmembrane proteins

124 (annotation:(type:transmem) OR keyword:"Transmembrane [KW-0812]") AND  
125 reviewed:yes AND organism:"Homo sapiens (Human) [9606]"

126 3. Liver-related proteins

127 annotation:(type:"tissue specificity" liver) AND reviewed:yes AND organism:"Homo  
128 sapiens (Human) [9606]"

129 We compared recipient and donor genomes pairwise and calculated missense variant  
130 mismatch sums between the genomes for four different protein groups: missense  
131 variants coding for 1) all proteins, 2) transmembrane and secreted proteins, 3)  
132 transmembrane proteins only, 4) liver-related proteins.

133 Cox proportional hazards models were utilized to investigate the effect of missense  
134 variant mismatches on time to AR, late rejection, graft loss, and overall survival. We  
135 analyzed both missense variant mismatch sums and quartiles of missense variant  
136 mismatch sums in each protein group. All models were adjusted with recipient and  
137 donor sex, recipient and donor age, cold ischemia time, HLA I eplet mismatch, HLA II  
138 eplet mismatch, year of transplantation, autoimmune liver disease, and initial  
139 calcineurin inhibitor type. Censoring occurred on the end of the follow up time, re-  
140 transplantation, or death. Kaplan-Meier plots were used to visualize the AR-, late  
141 rejection-, graft loss-, death-free survival of the recipients.

142

## 143 **Deletion analyses**

144 The study protocol presented by Markkinen *et al.*<sup>25</sup> was followed. 40 deletion-tagging  
145 variants and their frequencies in the study cohort are presented in **Supplementary**  
146 **Table S1**. Deletion mismatch was defined as a situation where recipient is

147 homozygous for a deletion-tagging allele and receives a liver from a donor that is either  
148 homozygous or heterozygous for the reference allele.

149 We analyzed the effect of homozygous mismatches in 40 deletion-tagging variants  
150 using adjusted Cox proportional hazards models. Censoring occurred on re-  
151 transplantation, death or end of the follow up time. The dependent variables were time  
152 to any AR, late AR, graft loss and death. We investigated the deletion-tagging variant  
153 mismatches separately and quartiles of sum of deletion-tagging variant mismatches.  
154 All models were adjusted with donor and recipient age, donor and recipient sex, cold  
155 ischemia time, HLA I eplet mismatch, HLA II eplet mismatch, year of transplantation,  
156 autoimmune liver disease and initial calcineurin inhibitor type. Kaplan-Meier survival  
157 curves were used to visualize the rejection-, graft loss- and death-and late rejection-  
158 free survival of the recipients. Full Cox models and Kaplan-Meier plots (**Figures 3–6**)  
159 are presented for variants with nominal P-values <0.05 and with n value of  
160 homozygous deletion-tagging variant mismatches >10 (**Supplementary Tables S1,**  
161 **S6–S9**).

162

### 163 **Expression quantitative trait loci results and regulatory element annotations**

164 Expression quantitative trait loci (eQTL) results were searched for four deletion-  
165 tagging variants rs11985201, rs2342606, rs2174926, and rs1944862, all with p-  
166 values <0.05 before correction for multiple comparisons, using FIVEx<sup>26</sup>  
167 <https://fivex.sph.umich.edu/> and eQTLGen phase I<sup>27</sup>  
168 <https://www.eqtlgen.org/phase1.html>. Regulatory elements were identified utilizing  
169 RegulomeDB<sup>28</sup> database <https://regulomedb.org/regulome-search/>. The Regulome  
170 DB rank varies from 1(a-f)–7 and the score ranges from 0–1 (with 1 as the most reliable  
171 result). Regulatory motifs and annotations were also explored using Haploreg<sup>29</sup> v4.2  
172 tool <https://pubs.broadinstitute.org/mammals/haploreg/haploreg.php>.

173

### 174 **Other statistical analyses**

175 Normality of variable distributions was evaluated using the Shapiro-Wilk normality test.  
176 In **Tables 1 and 2**, the variation between outcome groups was analyzed using the  
177 Pearson's chi-square test for categorical data (recipient gender, primary indication,



178 autoimmune liver disease and initial calcineurin inhibitor type) and the nonparametric  
179 Mann-Whitney U-test for nonnormally distributed data (recipient age, follow-up time,  
180 cold ischemia time, HLA eplet mismatch sum, HLA I eplet mismatch sum and HLA II  
181 eplet mismatch sum). P-values <0.05 were considered statistically significant.

182 To counteract the multiple comparison problem in mismatch analyses, false discovery  
183 rate (FDR) was determined and FDR <0.05 was considered statistically significant.

184 All analyses were performed using in R v3.6.3<sup>30</sup>.

185

## 186 **Data and code availability**

187 Individual genotype data are not publicly available due to restrictions issued by the  
188 ethical committee and current legislation in Finland that do not allow the distribution of  
189 pseudonymized personal data, including genetic and clinical data.

190 Analysis scripts are available at <https://github.com/FRCBS XXXXXX>.

191

## 192 **RESULTS**

### 193 **Characteristic of the study population**

194 Characteristics of the recipients in the study population are presented in **Tables 1 and**  
195 **2**. During the follow up time (median interquartile range [IQR] 7 [4–12] years), of the  
196 666 recipients, 42% experienced AR, 15% late rejection, 6% graft loss, and 24% died.  
197 Women had AR more often than men (51% vs. 49%, P-value 0.029). The median  
198 (IQR) time to AR was 21 (11–87) days. The median (IQR) time to late rejection was  
199 11 (5–23) months. The median (IQR) time to graft loss was 34 (4–77) months and the  
200 median (IQR) time to death was 3 (1–9) years.

201

### 202 **Missense variant mismatch analyses**

203 After the exclusion of sex chromosomes, MHC region, and non-missense variants,  
204 28,225 missense variants were available for the mismatch analyses. Of these  
205 missense variants, 9,337 variants code for both transmembrane and secreted  
206 proteins, 6,963 variants for transmembrane proteins only, and 3,199 variants for liver-

207 related proteins (**Figure 2**). **Table 3** shows results from Cox proportional hazards  
208 models, both the sums and quartiles of missense variant mismatches.  
209 **Supplementary figure S2** displays the effect of quartiles of missense variant  
210 mismatches of all proteins on late rejection -free survival. **Supplementary Figure S3**  
211 shows the effect of quartiles of missense variant mismatches of transmembrane  
212 proteins only on graft loss -free survival. All models were adjusted with recipient and  
213 donor age, recipient and donor sex, cold ischemia time, HLA I eplet mismatch, HLA II  
214 eplet mismatch, year of transplantation, autoimmune liver disease, and initial  
215 calcineurin inhibitor type. We observed an association between both the sum and  
216 quartiles of mismatches in missense variants in all proteins and time to late rejection  
217 (HR 0.998, 95% CI 0.996–0.999, P-value 0.011 and HR 0.812, 95% CI 0.674–0.977,  
218 P-value 0.028, respectively).

219

## 220 **Deletion analyses**

221 The results from adjusted Cox proportional hazards models showed that a deletion  
222 mismatch in variants rs11985201 and rs2342606 was associated with time to AR  
223 with HR 1.483 (95% CI: 1.066–2.062, P-value 0.019, **Supplementary Table S6**,  
224 **Figure 3** and HR 1.373 (95% CI: 1.011–1.865, P-value 0.042, **Supplementary**  
225 **Table S7, Figure 4**), respectively. In addition, time to late rejection was associated  
226 with deletion mismatch in rs1944862 with HR 2.341 (95% CI: 1.326–4.130, P-value  
227 0.003, **Supplementary Table S8, Figure 5**) and time to graft loss with a deletion  
228 mismatch in rs2174926 with HR 2.332 (95% CI: 1.145–4.752, P-value 0.020,  
229 **Supplementary Table S9, Figure 6**). However, the P-values did not reach the level  
230 of statistical significance FDR <0.05.

231 **Supplementary Tables S2–S5** summarize the results from adjusted Cox proportional  
232 hazards models for the 40 deletion-tagging variants separately for time to AR, late  
233 rejection, graft loss and overall survival. **Supplementary Figures S4–S7** display the  
234 effect of quartiles of overall deletion mismatch sums on LT endpoints. No association  
235 was found between the quartiles of overall deletion mismatch sums and LT endpoints.

236

237

## 238 **Expression quantitative trait loci analyses and regulatory element annotation**

239 We searched public databases to obtain information about regulatory functions for  
240 deletion-tagging variants rs11985201, rs2342606, rs2174926, and rs1944862.

241 **Table 4** shows the *cis*-eQTL results for deletion-tagging variants rs11985201,  
242 rs2342606, rs1944862, and rs2174926 in the FIVEx and eQTLGen phase I databases.  
243 Using FIVEx browser, we found rs2342606 to be associated with increased expression  
244 levels of TMEM254 antisense RNA 1 (*TMEM252-AS1*) gene in several different  
245 tissues. In eQTLGen phase I database, variant rs2342606 associated with altered  
246 expression of following genes: *TMEM254*, *TMEM254-AS1*, *FAM22B*, *RP11-119F19.2*,  
247 *FAM213A*, *SFTPD*, *RP11-137H2.4*, and *RP11-506M13.3*.

248 In FIVEx, rs11985201 associated with decreased expression levels of olfactory  
249 receptor family 4 subunit C member 6 (*OR4C6*) protein coding gene in lateral collateral  
250 ligament tissue. In eQTLGen phase I browser, we found variant rs11985201 to be  
251 associated with decreased expression level of indoleamine 2,3-dioxygenase 1 (*IDO1*)  
252 gene in blood cells.

253 Regulome DB and HaploReg tools were utilized for identifying regulatory elements  
254 (**Table 5**). Two of the variants, rs11985201 and rs2174926, got a high Regulome DB  
255 rank and score, which are both prediction scores informing the quality of supporting  
256 evidence in literature for regulatory role of variants. Using HaploReg v4.2 database,  
257 altered transcription factor regulatory motifs were found for variants rs11985201,  
258 rs2174926, and rs1944862. Deletion-tagging variant rs11985201 associated with  
259 alteration in zinc-finger transcription factor (*INSM1*) and nuclear transcription factor Y  
260 (*NF-Y*). Deletion-tagging variant rs2174926 was found to affect the forkhead box J2  
261 (*Foxj2*), forkhead box L1 (*Foxl1*), and forkhead box P1 (*Foxp1*) transcription factors.  
262 Deletion-tagging variant rs1944862 associated with alteration in forkhead box A (*Foxa*)  
263 and zinc finger and btb domain containing 33 (*ZBTB33*) transcription factors.

264

## 265 **DISCUSSION**

266 In the present study, we investigated the association between LT endpoints and  
267 genome-wide mismatches in 666 LT recipients-donor pairs. We inspected mismatches  
268 in missense variants changing the amino acid sequence of the encoded protein and,

269 additionally, in 40 common deletion-tagging variants. In deletion analyses, deletion-  
270 tagging variants rs11985201, rs2342606, rs2174926 and rs1944862 were associated  
271 with an increased risk of negative LT outcomes and could be novel histocompatibility  
272 factors in LT. However, the observed P-values did not pass FDR <0.05 level, hence  
273 further validation is needed.

274 Genetic differences between recipients and donors have been identified as an  
275 important factor in allograft rejection and has been a topic of active research over the  
276 last decade<sup>11-13</sup>. The importance of matching of HLA alleles has been well-established  
277 in kidney and hematopoietic stem cell transplantations<sup>31</sup>. However, the importance of  
278 HLA matching for LT recipients and donors remains controversial<sup>32-35</sup>. A recent study  
279 found that mismatch in HLA-A was associated with an increased risk of allograft loss  
280 after LT<sup>33</sup> while another meta-analysis found a significant association between HLA-C  
281 matching and increased risk of AR in LT<sup>36</sup>. However, an study conducted by Muro *et*  
282 *al.* indicates that HLA matching does not yield better LT outcomes and that poorer  
283 HLA matching showed better allograft survival and decreased rejection incidence<sup>34</sup>. In  
284 the present study the HLA I class eplet matchings in certain deletion-tagging variants  
285 associated with a higher risk of AR. However, the p-values did not reach the level of  
286 statistical significance FDR <0.05. Studies investigating the importance of non-HLA  
287 genetic factors in LT outcomes remain scarce.

288 Whole genome-wide incompatibility between recipient and donor has emerged as a  
289 potential risk factor in kidney transplantation<sup>11-14</sup>. A study conducted by Reindl-  
290 Schwaighofer *et al.* in 2019 demonstrated the effect of genome-wide genetic  
291 incompatibility between recipients and donors on graft survival in kidney  
292 transplantation<sup>12</sup>. The results indicated that mismatches in transmembrane and  
293 secreted proteins were associated with an increased risk of graft loss independently  
294 of HLA<sup>12</sup>. Markkinen *et al.* in 2022 reported that an increasing mismatch sum in  
295 kidney-related proteins increased the risk of time to AR after kidney transplantation<sup>25</sup>.  
296 In the present study, we found statistically significant association between time to late  
297 rejection and missense variant mismatches in all proteins group. The effect size,  
298 however, was small, suggesting limited practical application.

299 Another recent study found an association between kidney allograft rejection and  
300 genomic mismatch at *LIMS1* locus<sup>11</sup>. The results published by Steers *et al.* in 2019

301 were not confirmed in the Finnish patients by Markkinen *et al.* who instead found an  
302 association between AR and mismatch in deletions at the complement factor H related  
303 protein (CFHR) locus<sup>25</sup>. The present study did not find associations with LIMS or  
304 CFHR deletions. Instead, we found associations between four other deletion-tagging  
305 variants and outcomes of LT. All these results, together with those of HSCT<sup>9</sup>, suggest  
306 that deletion mismatches in general predispose to graft incompatibility but  
307 predominant deletions vary between transplant types and populations. Clearly, more  
308 studies on the role of deletion mismatches and how they lead to higher rejection risk  
309 are needed. We must note that LT differs from other transplantations as the liver has  
310 a tolerogenic microenvironment that enables it to regulate local immune responses<sup>37</sup>  
311 that may result in a higher tolerance against immunogenetic incompatibility in LT as  
312 compared to other transplantations.

313 Whenever a recipient receives an organ that possesses protein structures foreign to  
314 the recipient due to e.g., common deletions, there is a possibility of an immune reaction  
315 that may lead to negative post-LT outcomes. Therefore, when a recipient with a  
316 homozygous deletion receives a liver from a donor lacking the particular homozygous  
317 deletion, the immune system of the recipient identifies these protein structures on the  
318 liver as foreign and causes the production of DSAs that may mitigate antibody-  
319 mediated rejection. In addition, the lack of certain important immune regulatory  
320 proteins, such as CFHR1 may have a negative effect by itself.

321 Furthermore, genetic variants, and deletions as well, can regulate expression levels  
322 of genes that can be located close to or at longer distances to the variant. These eQTL  
323 effects can be screened from public databases. rs11985201 tags the deletion of  
324 metallopeptidase *ADAM3A* and *ADAM5P* pseudogenes. However, neither *ADAM3A*  
325 or *ADAM5P* are expressed in liver<sup>38,39</sup>. In addition, the variant affects binding motifs  
326 for INSM and NF-Y factors downregulates *IDO1* expression. rs2342606 tags the  
327 deletion of *LOC642521/LOC642538* genes but does not affect any known binding  
328 motifs. There is a limited information on these genes, but the *LOC642521* seems to  
329 be linked with a nuclear DNA-binding protein<sup>41</sup>. Variants rs11985201 and rs1944862  
330 were included in the top 15,000 methylation quantitative trait loci identified in human  
331 liver<sup>42</sup>, meaning that they are associated with DNA methylation – a process that can  
332 change the activity of certain DNA regions by either inhibiting or promoting the activity  
333 of transcription factors.

334 Strengths and limitations of the study may be observed. To be able to collect a  
335 reasonable cohort size from a single center, the LTs in the present study are from a  
336 relatively long period, extending 19 years in total. We compensated this potential effect  
337 by selecting the transplantation year as one of the covariates. The size of the cohort  
338 albeit one of the largest published so far for genome analyses included only 666  
339 recipient-donor pairs, which enables the recognition of only relatively large effect sizes  
340 for the p-values to pass the correction for multiple comparisons. Larger collaborative  
341 studies are warranted to overcome the power issue. This study is the first large-scale  
342 single-center study investigating the impact of genome-wide compatibility on time to  
343 AR, late rejection, graft loss and overall survival in LT. Single-center study in the  
344 relatively homogeneous Finnish population should limit heterogeneity in patient  
345 demographics, treatments, and genetic background. In addition, the recipients were  
346 not affected by immunization from or treatments of previous liver allografts as only the  
347 first LTs were included in the study cohort.

348 In conclusion, genetic incompatibility between recipients and donors on a whole-  
349 genome level may be a significant histocompatibility factor affecting LT outcomes.  
350 Robust large-scale studies are required to confirm the role of genome-wide  
351 mismatches and common variants in LTs.

352

### 353 **AUTHOR CONTRIBUTION**

354 MS, SM, JP, KH designed the study. MS and KH carried out the genome data  
355 analysis. VL, FÅ, AN, MF provided clinical data and clinical expertise. MS, SM, JP,  
356 FÅ, KH interpreted the results. MS and VL drafted the manuscript. All authors read,  
357 accepted and contributed to the final version of the manuscript.

358

### 359 **ACKNOWLEDGEMENTS**

360 The reference data for genotype imputation was obtained from THL Biobank (study  
361 number: BB2019\_12). We thank all study participants for their generous participation  
362 in biobank research.

363

364 **DISCLOSURE AND FUNDING**

365 The authors of this manuscript have no conflicts of interest to disclose.

366 The study was partially supported by funding from the Government of Finland VTR  
367 funding (to FRCBS). FÅ received grants from Mary and Georg Ehrnrooth Foundation  
368 and Medicinska Understödsföreningen Liv och Hälsa.

369

370 **SUPPORTING INFORMATION STATEMENT**

371 Supplementary information may be found online.

372



373 **REFERENCES**

- 374 1. ELTR. Evolution of LTs in Europe - European Liver Transplant Registry.  
375 Accessed May 24, 2024. <http://www.eltr.org/spip.php?article152>
- 376 2. Jadowiec CC, Morgan PE, Nehra AK, et al. Not All Cellular Rejections Are the  
377 Same: Differences in Early and Late Hepatic Allograft Rejection. *Liver*  
378 *Transplant*. 2019;25(3):425-435. doi:10.1002/LT.25411
- 379 3. O'Leary JG, Cai J, Freeman R, et al. Proposed Diagnostic Criteria for Chronic  
380 Antibody-Mediated Rejection in Liver Allografts. *Am J Transplant*.  
381 2016;16(2):603-614. doi:10.1111/AJT.13476
- 382 4. Vionnet J, Miquel R, Abraldes JG, et al. Non-invasive alloimmune risk  
383 stratification of long-term liver transplant recipients. *J Hepatol*.  
384 2021;75(6):1409-1419. doi:10.1016/j.jhep.2021.08.007
- 385 5. Watt KDS, Pedersen RA, Kremers WK, Heimbach JK, Charlton MR. Evolution  
386 of Causes and Risk Factors for Mortality Post Liver Transplant: Results of the  
387 NIDDK Long Term Follow-up Study. *Am J Transplant*. 2010;10(6):1420.  
388 doi:10.1111/J.1600-6143.2010.03126.X
- 389 6. Charlton M, Levitsky J, Aqel B, et al. International Liver Transplantation  
390 Society Consensus Statement on Immunosuppression in Liver Transplant  
391 Recipients. *Transplantation*. 2018;102(5):727-743.  
392 doi:10.1097/TP.0000000000002147
- 393 7. Fürst D, Müller C, Vucinic V, et al. High-resolution HLA matching in  
394 hematopoietic stem cell transplantation: a retrospective collaborative analysis.  
395 *Blood*. 2013;122(18):3220-3229. doi:10.1182/BLOOD-2013-02-482547
- 396 8. Teven S, Akemoto KT, Erasaki AIT, Jertson AWG, Ichael JM, Ecka C. Twelve  
397 Years' Experience with National Sharing of HLA-Matched Cadaveric Kidneys  
398 for Transplantation. <http://dx.doi.org/10.1056/NEJM200010123431504>.  
399 2009;343(15):1078-1084. doi:10.1056/NEJM200010123431504
- 400 9. McCarroll SA, Bradner JE, Turpeinen H, et al. Donor-recipient mismatch for  
401 common gene deletion polymorphisms in graft-versus-host disease. *Nat*  
402 *Genet*. 2009;41(12):1341-1344. doi:10.1038/ng.490
- 403 10. Ritari J, Hyvärinen K, Koskela S, et al. Computational Analysis of HLA-  
404 presentation of Non-synonymous Recipient Mismatches Indicates Effect on the  
405 Risk of Chronic Graft-vs.-Host Disease after Allogeneic HSCT. *Front Immunol*.  
406 2019;10(JULY). doi:10.3389/fimmu.2019.01625
- 407 11. Steers NJ, Li Y, Drace Z, et al. Genomic Mismatch at LIMS1 Locus and  
408 Kidney Allograft Rejection. *N Engl J Med*. 2019;380(20):1918-1928.  
409 doi:10.1056/nejmoa1803731
- 410 12. Reindl-Schwaighofer R, Heinzl A, Kainz A, et al. Contribution of non-HLA  
411 incompatibility between donor and recipient to kidney allograft survival:  
412 genome-wide analysis in a prospective cohort. *Lancet*. 2019;393(10174):910-  
413 917. doi:10.1016/S0140-6736(18)32473-5
- 414 13. Mesnard L, Muthukumar T, Burbach M, et al. Exome Sequencing and



- 415 Prediction of Long-Term Kidney Allograft Function. *PLoS Comput Biol.*  
416 2016;12(9):e1005088. doi:10.1371/journal.pcbi.1005088
- 417 14. Pineda S, Sigdel TK, Chen J, Jackson AM, Sirota M, Sarwal MM. Novel non-  
418 histocompatibility antigen mismatched variants improve the ability to predict  
419 antibody-mediated rejection risk in kidney transplant. *Front Immunol.*  
420 2017;8(DEC):1687. doi:10.3389/FIMMU.2017.01687
- 421 15. Zhang Z, Menon MC, Zhang W, et al. Genome-wide non-HLA donor-recipient  
422 genetic differences influence renal allograft survival via early allograft fibrosis.  
423 *Kidney Int.* 2020;98(3):758-768. doi:10.1016/j.kint.2020.04.039
- 424 16. Balan V, Ruppert K, Demetris AJ, et al. Long-term outcome of human  
425 leukocyte antigen mismatching in liver transplantation: Results of the national  
426 institute of diabetes and digestive and kidney diseases liver transplantation  
427 database. *Hepatology.* 2008;48(3):878-888. doi:10.1002/HEP.22435
- 428 17. Navarro VJ, Herrine S, Katopes C, Colombe B, Spain CV. The effect of HLA  
429 class I (A and B) and class II (DR) compatibility on liver transplantation  
430 outcomes: An analysis of the OPTN database. *Liver Transplant.*  
431 2006;12(4):652-658. doi:10.1002/LT.20680
- 432 18. Thomson AW, Vionnet J, Sanchez-Fueyo A. Understanding, predicting and  
433 achieving liver transplant tolerance: from bench to bedside. *Nat Rev*  
434 *Gastroenterol Hepatol.* 2020;17(12):719-739. doi:10.1038/s41575-020-0334-4
- 435 19. Demetris AJ, Batts KP, Dhillon AP, et al. Banff schema for grading liver  
436 allograft rejection: an international consensus document. *Hepatology.*  
437 1997;25(3):658-663. doi:10.1002/HEP.510250328
- 438 20. Pärn K, Fontarnau JN, Isokallio MA, et al. Genotyping chip data lift-over to  
439 reference genome build GRCh38/hg38. Accessed July 4, 2022.  
440 [https://www.protocols.io/view/genotyping-chip-data-lift-over-to-reference-](https://www.protocols.io/view/genotyping-chip-data-lift-over-to-reference-genome-n2bvjmbpvk5w/v2?version_warning=no)  
441 [genome-n2bvjmbpvk5w/v2?version\\_warning=no](https://www.protocols.io/view/genotyping-chip-data-lift-over-to-reference-genome-n2bvjmbpvk5w/v2?version_warning=no)
- 442 21. Pärn K, Isokallio MA, Fontarnau JN, Palotie A, Ripatti S, Palta P. *Genotype*  
443 *Imputation Workflow v3.0 V.2.*; 2019. [https://www.protocols.io/view/genotype-](https://www.protocols.io/view/genotype-imputation-workflow-v3-0-xbgfijw?step=4&comment_id=86624)  
444 [imputation-workflow-v3-0-xbgfijw?step=4&comment\\_id=86624](https://www.protocols.io/view/genotype-imputation-workflow-v3-0-xbgfijw?step=4&comment_id=86624)
- 445 22. Ritari J, Hyvärinen K, Clancy J, FinnGen, Partanen J, Koskela S. Increasing  
446 accuracy of HLA imputation by a population-specific reference panel in a  
447 FinnGen biobank cohort. *NAR genomics Bioinforma.* 2020;2(2):lqaa030.  
448 doi:10.1093/nargab/lqaa030
- 449 23. Duquesnoy RJ, Askar M. HLAMatchmaker: A Molecularly Based Algorithm for  
450 Histocompatibility Determination. V. Eplet Matching for HLA-DR, HLA-DQ, and  
451 HLA-DP. *Hum Immunol.* 2007;68(1):12-25.  
452 doi:10.1016/J.HUMIMM.2006.10.003
- 453 24. McLaren W, Gil L, Hunt SE, et al. The Ensembl Variant Effect Predictor.  
454 *Genome Biol.* 2016;17(1):1-14. doi:10.1186/S13059-016-0974-4/TABLES/8
- 455 25. Markkinen S, Helanterä I, Lauronen J, Lempinen M, Partanen J, Hyvärinen K.  
456 Mismatches in Gene Deletions and Kidney-related Proteins as Candidates for  
457 Histocompatibility Factors in Kidney Transplantation. *Kidney Int reports.*

- 458 2022;7(11):2484-2494. doi:10.1016/J.EKIR.2022.08.032
- 459 26. Kwong A, Boughton AP, Wang M, et al. FIVEx: an interactive eQTL browser  
460 across public datasets. *Bioinformatics*. 2022;38(2):559.  
461 doi:10.1093/BIOINFORMATICS/BTAB614
- 462 27. Vösa U, Claringbould A, Westra HJ, et al. Large-scale cis- and trans-eQTL  
463 analyses identify thousands of genetic loci and polygenic scores that regulate  
464 blood gene expression. *Nat Genet* 2021 539. 2021;53(9):1300-1310.  
465 doi:10.1038/S41588-021-00913-Z
- 466 28. Boyle AP, Hong EL, Hariharan M, et al. Annotation of functional variation in  
467 personal genomes using RegulomeDB. *Genome Res*. 2012;22(9):1790.  
468 doi:10.1101/GR.137323.112
- 469 29. Ward LD, Kellis M. HaploReg: a resource for exploring chromatin states,  
470 conservation, and regulatory motif alterations within sets of genetically linked  
471 variants. *Nucleic Acids Res*. 2012;40(Database issue):D930.  
472 doi:10.1093/NAR/GKR917
- 473 30. R Core Team. A Language and Environment for Statistical Computing. R  
474 Foundation for Statistical Computing, Vienna. - References - Scientific  
475 Research Publishing. Published 2022. Accessed January 8, 2024.  
476 <https://www.scirp.org/reference/referencespapers?referenceid=3456808>
- 477 31. Opelz G, Wujciak T, Döhler B, Scherer S, Mytilineos J. HLA compatibility and  
478 organ transplant survival. Collaborative Transplant Study. *Rev Immunogenet*.  
479 1999;1(3):334-342. Accessed August 6, 2023.  
480 <https://europepmc.org/article/med/11256424>
- 481 32. Balan V, Ruppert K, Demetris AJ, et al. Long-term outcome of human  
482 leukocyte antigen mismatching in liver transplantation: results of the National  
483 Institute of Diabetes and Digestive and Kidney Diseases Liver Transplantation  
484 Database. *Hepatology*. 2008;48(3):878-888. doi:10.1002/HEP.22435
- 485 33. Bricogne C, Halliday N, Fernando R, et al. Donor–recipient human leukocyte  
486 antigen A mismatching is associated with hepatic artery thrombosis, sepsis,  
487 graft loss, and reduced survival after liver transplant. *Liver Transplant*.  
488 2022;28(8):1306-1320. doi:10.1002/LT.26458
- 489 34. Muro M, López-Álvarez MR, Campillo JA, et al. Influence of human leukocyte  
490 antigen mismatching on rejection development and allograft survival in liver  
491 transplantation: Is the relevance of HLA-A locus matching being  
492 underestimated? *Transpl Immunol*. 2012;26(2-3):88-93.  
493 doi:10.1016/J.TRIM.2011.11.006
- 494 35. Muro M, Legaz I. Importance of human leukocyte antigen antibodies and  
495 leukocyte antigen/killer-cell immunoglobulin-like receptor genes in liver  
496 transplantation. *World J Gastroenterol*. 2023;29(5):766-772.  
497 doi:10.3748/WJG.V29.I5.766
- 498 36. Kok G, Ilcken EF, Houwen RHJ, et al. The Effect of Genetic HLA Matching on  
499 Liver Transplantation Outcome: A Systematic Review and Meta-Analysis. *Ann*  
500 *Surg Open*. 2023;4(3):e334. doi:10.1097/AS9.0000000000000334

- 501 37. Demetris AJ, Bellamy COC, Gandhi CR, Prost S, Nakanuma Y, Stolz DB.  
502 Functional Immune Anatomy of the Liver—As an Allograft. *Am J Transplant*.  
503 2016;16(6):1653-1680. doi:10.1111/AJT.13749
- 504 38. AGCOH. ADAM3A (ADAM metallopeptidase domain 3A (pseudogene)).  
505 Published June 1, 2014. Accessed October 6, 2023.  
506 [https://atlasgeneticsoncology.org/gene/53975/adam3a-\(adam-](https://atlasgeneticsoncology.org/gene/53975/adam3a-(adam-metallopeptidase-domain-3a-(pseudogene))/)  
507 [metallopeptidase-domain-3a-\(pseudogene\)\)/](https://atlasgeneticsoncology.org/gene/53975/adam3a-(adam-metallopeptidase-domain-3a-(pseudogene))/)
- 508 39. AGCOH. ADAM5 (ADAM metallopeptidase domain 5 (pseudogene)).  
509 Published November 1, 2014. Accessed October 6, 2023.  
510 <https://atlasgeneticsoncology.org/gene/60138/>
- 511 40. Lichtinghagen R, Michels D, Haberkorn CI, et al. Matrix metalloproteinase  
512 (MMP)-2, MMP-7, and tissue inhibitor of metalloproteinase-1 are closely  
513 related to the fibroproliferative process in the liver during chronic hepatitis C. *J*  
514 *Hepatol*. 2001;34(2):239-247. doi:10.1016/S0168-8278(00)00037-4
- 515 41. Seno A, Kasai T, Ikeda M, et al. Characterization of Gene Expression Patterns  
516 among Artificially Developed Cancer Stem Cells Using Spherical Self-  
517 Organizing Map. *Cancer Inform*. 2016;15:163. doi:10.4137/CIN.S39839
- 518 42. Bonder MJ, Kasela S, Kals M, et al. Genetic and epigenetic regulation of gene  
519 expression in fetal and adult human livers. *BMC Genomics*. 2014;15(1).  
520 doi:10.1186/1471-2164-15-860
- 521
- 522

## 523 **FIGURE LEGENDS**

524 **Figure 1. Flow of the study population.** Enrolling and exclusion of the liver  
525 transplantation recipients and donors. DNA, deoxyribonucleic acid; QC, quality  
526 control.

527 **Figure 2. Flow of genetic variants.** HLA, human leukocyte antigen; MHC, major  
528 histocompatibility complex.

529 **Figure 3. Kaplan-Meier plot displaying the effect of deletion-tagging variant**  
530 **rs11985201 mismatch on acute rejection-free survival.** The blue curve represents  
531 the 'deletion mismatch' group with recipients who were homozygous for a deletion-  
532 tagging allele G and received a transplant from a donor with TG or TT. The orange  
533 curve represents the 'no mismatch' group. Under the survival curve, a risk table is  
534 displayed with the number of recipients at risk of acute rejection. The presented hazard  
535 ratio, confidence intervals and P-value were calculate using Cox proportional hazards  
536 model. The model was adjusted with recipient and donor age, recipient and donor sex,  
537 cold ischemia time, HLA I eplet mismatch, HLA II eplet mismatch, year of  
538 transplantation, autoimmune liver disease and initial calcineurin inhibitor type.  
539 Deletion-tagging variant: rs11985201, Affected genes: ADAM metallopeptidase  
540 domain 3A (pseudogene) and domain 5 (pseudogene) (*ADAM3A/ADAM5P*). CI,  
541 confidence interval; HR, hazard ratio.

542 **Figure 4. Kaplan-Meier plot displaying the effect of deletion-tagging variant**  
543 **rs2342606 mismatch on acute rejection-free survival.** The blue curve represents  
544 the 'deletion mismatch' group with recipients who were homozygous for a deletion-  
545 tagging allele T and received a transplant from a donor with TC or CC. The orange  
546 curve represents the 'no mismatch' group. Under the survival curve, a risk table is  
547 displayed with the number of recipients at risk of acute rejection. The presented hazard  
548 ratio, confidence intervals and P-value were calculate using Cox proportional hazards  
549 model. The model was adjusted with recipient and donor age, recipient and donor sex,  
550 cold ischemia time, HLA I eplet mismatch, HLA II eplet mismatch, year of  
551 transplantation, autoimmune liver disease and initial calcineurin inhibitor type. Affected  
552 genes: C1D nuclear receptor corepressor pseudogene 3 (*LOC642521*) and C1D  
553 nuclear receptor corepressor pseudogene 2 (*LOC642538*). CI, confidence interval;  
554 HR, hazard ratio.

555

556 **Figure 5. Kaplan-Meier plot displaying the effect of deletion-tagging variant**  
557 **rs1944862 mismatch on graft loss-free survival.** The blue curve represents the  
558 'deletion mismatch' group with recipients who were homozygous for a deletion-tagging  
559 allele A and received a transplant from a donor with AG or GG. The orange curve  
560 represents the 'no mismatch' group. Under the survival curve, a risk table is displayed  
561 with the number of recipients at risk of late rejection. The presented hazard ratio,  
562 confidence intervals and P-value were calculate using Cox proportional hazards  
563 model. The model was adjusted with recipient and donor age, recipient and donor sex,  
564 cold ischemia time, HLA I eplet mismatch, HLA II eplet mismatch, year of  
565 transplantation, autoimmune liver disease and initial calcineurin inhibitor type. Affected

566 gene: olfactory receptor family 4 subunit (OR4P1P), pseudogene,. CI, confidence  
567 interval; HR, hazard ratio.

568 **Figure 6. Kaplan-Meier plot displaying the effect of deletion-tagging variant**  
569 **rs2174926 mismatch on graft loss-free survival.** The blue curve represents the  
570 'deletion mismatch' group with recipients who were homozygous for a deletion-tagging  
571 allele A and received a transplant from a donor with AG or GG. The orange curve  
572 represents the 'no mismatch' group. Under the survival curve, a risk table is displayed  
573 with the number of recipients at risk of graft loss. The presented hazard ratio,  
574 confidence intervals and P-value were calculate using Cox proportional hazards  
575 model. The model was adjusted with recipient and donor age, recipient and donor sex,  
576 cold ischemia time, HLA I eplet mismatch, HLA II eplet mismatch, year of  
577 transplantation, autoimmune liver disease and initial calcineurin inhibitor type. Affected  
578 gene: hypothetical protein (*LOC442434*). CI, confidence interval; HR, hazard ratio.

579

580

581

582

583

584

585

586

587

588

589

590

591

592

593

594

595

596

597

**Table 1. Characteristics of the study population for acute and late rejection groups.**

Characteristic	All recipients	Rejection	No rejection	P*	Late rejection	No late rejection	P*
n (%)	666 (100)	277 (42)	389 (58)		97 (15)	569 (85)	
Age (median, range)	54 (18–74)	52 (18–73)	55 (18–74)	<0.001 <sup>a</sup>	52 (18–73)	54 (45–61)	0.027 <sup>a</sup>
Gender, n (%)				0.029 <sup>b</sup>			0.135 <sup>a</sup>
Male	359 (54)	135 (49)	224 (58)		45 (46)	314 (55)	
Female	307 (46)	142 (51)	165 (42)		52 (54)	255 (45)	
Primary indication, n (%)							
Primary sclerosing cholangitis	128 (19)	65 (23)	63 (16)	0.024 <sup>b</sup>	21 (22)	107 (19)	0.605 <sup>b</sup>
Alcoholic cirrhosis	124 (19)	29 (10)	95 (24)	<0.001 <sup>b</sup>	10 (10)	114 (20)	0.033 <sup>b</sup>
Hepatocellular carcinoma and cirrhosis	80 (12)	28 (10)	52 (13)	0.248 <sup>b</sup>	7 (7)	73 (13)	0.161 <sup>b</sup>
Primary biliary cirrhosis	53 (8)	27 (10)	26 (7)	0.120 <sup>b</sup>	11 (11)	42 (7)	0.259 <sup>b</sup>
Cryptogenic (unknown) cirrhosis	41 (6)	13 (5)	28 (7)	0.245 <sup>b</sup>	6 (6)	35 (6)	1 <sup>b</sup>
NASH	28 (4)	3 (1)	25 (6)	0.001 <sup>b</sup>	2 (2)	26 (5)	0.388 <sup>b</sup>
Autoimmune cirrhosis	28 (4)	11 (4)	17 (4)	0.955 <sup>b</sup>	5 (5)	23 (4)	0.817 <sup>b</sup>
Polycystic disease	20 (3)	7 (3)	13 (3)	0.706 <sup>b</sup>	2 (2)	18 (3)	0.790 <sup>b</sup>
Other	164 (25)	94 (34)	70 (18)	<0.001 <sup>b</sup>	33 (34)	131 (23)	0.028 <sup>b</sup>
Autoimmune liver disease, n (%)	223 (33)	109 (39)	114 (29)	0.009 <sup>b</sup>	37 (38)	186 (33)	0.349 <sup>b</sup>
Transplantation year							
2000–2005	126 (19)	66 (24)	60 (15)	0.009 <sup>b</sup>	19 (20)	107 (19)	0.967 <sup>b</sup>
2006–2011	208 (31)	89 (32)	119 (31)	0.736 <sup>b</sup>	39 (40)	169 (30)	0.052 <sup>b</sup>
2012–2018	332 (50)	122 (44)	210 (54)	0.014 <sup>b</sup>	39 (40)	293 (51)	0.052 <sup>b</sup>
Calcineurin inhibitor, n (%)				0.436 <sup>b</sup>			0.193 <sup>b</sup>
Cyclosporine	545 (82)	232 (84)	313 (80)		85 (88)	460 (81)	
Tacrolimus	108 (16)	41 (15)	67 (17)		11 (11)	97 (17)	
Data not available	13 (2)	4 (1)	9 (2)		1 (1)	12 (2)	
				<b>Median (IQR)</b>			
Follow-up time <sup>c</sup> , months	82 (43–145)	97 (50–154)	73 (39–131)	0.002 <sup>a</sup>	91 (51–149)	79 (41–141)	0.103 <sup>a</sup>
Cold ischemia time, minutes	298 (258–357)	297 (257–336)	302 (263–366)	0.104 <sup>a</sup>	298 (259–337)	300 (258–359)	0.671 <sup>a</sup>

HLA eplet mismatch sum	27 (21–33)	29 (23–34)	26 (20–32)	0.002 <sup>a</sup>	29 (24–35)	27 (21–33)	0.026 <sup>a</sup>
HLA I eplet mismatch sum	17 (12–22)	17 (13–22)	16 (12–21)	0.022 <sup>a</sup>	18 (13–21)	17 (12–22)	0.126 <sup>a</sup>
HLA II eplet mismatch sum	10 (7–14)	11 (7–14)	10 (7–13)	0.032 <sup>a</sup>	11 (8–15)	10 (7–13)	0.107 <sup>a</sup>

599 HLA, human leukocyte antigen; IQR, interquartile range, NASH non-alcoholic steatohepatitis

600 \*The significance of variation was calculated between the outcome groups.

601 <sup>a</sup>The Mann–Whitney U-test.

602 <sup>b</sup>The Pearson chi-square test

603 <sup>c</sup>Includes time to last follow-up date, re-transplantation and death.

604

605

**Table 2. Characteristics of the study population for graft loss and overall survival groups.**

Characteristic	All recipients	Graft loss	No graft loss	P*	Deceased	Alive	P*
n (%)	666 (100)	42(6)	624 (94)		163 (24)	503 (76)	
Age (median, range)	54 (18–74)	50 (18–64)	54 (18–74)	0.007 <sup>a</sup>	58 (18–74)	52 (18–73)	<0.001 <sup>a</sup>
Gender, n (%)				0.494 <sup>b</sup>			0.543 <sup>b</sup>
Male	359 (54)	20 (48)	339 (54)		84 (52)	275 (55)	
Female	307 (46)	22 (52)	285 (46)		79 (48)	228 (45)	
Primary indication, n (%)							
Primary sclerosing cholangitis	128 (19)	12 (29)	116 (19)	0.166 <sup>b</sup>	23 (14)	105 (21)	0.073 <sup>b</sup>
Alcoholic cirrhosis	124 (19)	3 (7)	121 (19)	0.077 <sup>b</sup>	26 (16)	98 (19)	0.373 <sup>b</sup>
Hepatocellular carcinoma and cirrhosis	80 (12)	2 (5)	78 (13)	0.212 <sup>b</sup>	25 (15)	55 (11)	0.173 <sup>b</sup>
Primary biliary cirrhosis	53 (8)	5 (12)	48 (8)	0.495 <sup>b</sup>	11 (7)	42 (8)	0.624 <sup>b</sup>
Cryptogenic (unknown) cirrhosis	41 (6)	3 (7)	38 (6)	1 <sup>b</sup>	16 (10)	25 (5)	0.040 <sup>b</sup>
NASH	28 (4)	0 (0)	28 (4)	0.315 <sup>b</sup>	7 (4)	21 (4)	1 <sup>b</sup>
Autoimmune cirrhosis	28 (4)	1 (2)	27 (4)	0.833 <sup>b</sup>	7 (4)	21 (4)	1 <sup>b</sup>
Polycystic disease	20 (3)	0 (0)	20 (3)	0.477 <sup>b</sup>	2 (1)	18 (4)	0.206 <sup>b</sup>
Other	164 (25)	16 (38)	148 (24)	0.056 <sup>b</sup>	46 (28)	118 (23)	0.262 <sup>b</sup>
Autoimmune liver disease, n (%)	223 (33)	20 (48)	203 (33)	0.066 <sup>b</sup>	48 (29)	175 (35)	0.246 <sup>b</sup>
Transplantation year							
2000–2005	126 (19)	12 (29)	114 (18)	0.148 <sup>b</sup>	51 (32)	75 (15)	<0.001 <sup>b</sup>
2006–2011	208 (31)	15 (36)	193 (31)	0.634 <sup>b</sup>	58 (36)	150 (30)	0.200 <sup>b</sup>
2012–2018	332 (50)	15 (36)	317 (51)	0.083 <sup>b</sup>	54 (33)	278 (55)	<0.001 <sup>b</sup>
Calcineurin inhibitor, n (%)				0.071 <sup>b</sup>			0.393 <sup>b</sup>
Cyclosporine	545 (82)	38 (90)	507 (81)		135 (83)	410 (82)	
Tacrolimus	108 (16)	2 (5)	106 (17)		22 (13)	86 (17)	
Data not available	13 (2)	2 (5)	11 (2)		6 (4)	7 (1)	
				<b>Median (IQR)</b>			
Follow-up time <sup>c</sup> , months	82 (43–145)	34(4–77)	88 (47–147)	<0.001 <sup>a</sup>	39 (13–103)	93 (55–150)	<0.001 <sup>a</sup>
Cold ischemia time, minutes	298 (258–357)	284 (253–342)	299 (258–359)	0.573 <sup>a</sup>	316 (267–375)	294 (257–345)	0.013 <sup>a</sup>



HLA eplet mismatch sum	27 (21–33)	27 (21–32)	27 (21–33)	0.857 <sup>a</sup>	27 (21–35)	27 (21–33)	0.812 <sup>a</sup>
HLA I eplet mismatch sum	17 (12–22)	17 (11–21)	17 (12–22)	0.443 <sup>a</sup>	17 (12–23)	17 (12–21)	0.588 <sup>a</sup>
HLA II eplet mismatch sum	10 (7–14)	10 (7–14)	10 (7–14)	0.649 <sup>a</sup>	10 (7–14)	10 (7–14)	0.895 <sup>a</sup>

607 HLA, human leukocyte antigen; IQR, interquartile range, NASH non-alcoholic steatohepatitis

608 \*The significance of variation was calculated between the outcome groups.

609 <sup>a</sup>The Mann–Whitney U-test.

610 <sup>b</sup>The Pearson chi-square test

611 <sup>c</sup>Includes time to last follow-up date, re-transplantation and death.

612

613 **Table 3. Summary statistics of adjusted Cox proportional hazards models for four**  
 614 **different missense variant groups.**

Endpoint	Missense variants	Cox proportional hazards model			
		Sum of mismatches		Quartiles of mismatches	
		HR (95% CI)	P-value	HR (95% CI)	P-value
Time to acute rejection	All proteins	1.000(0.999–1.001)	0.891	1.003(0.900–1.118)	0.956
	Transmembrane and secreted proteins	1.000(0.998–1.002)	0.820	1.041(0.934–1.161)	0.466
	Transmembrane proteins	1.000(0.998–1.002)	0.787	1.021(0.916–1.138)	0.708
	Liver-related proteins	0.999(0.995–1.003)	0.484	0.985(0.883–1.099)	0.791
Time to late rejection	All proteins	0.998(0.996–0.999)	0.011	0.812(0.674–0.977)	0.028
	Transmembrane and secreted proteins	0.997(0.994–1.000)	0.070	0.890(0.740–1.071)	0.218
	Transmembrane proteins	0.997(0.993–1.001)	0.130	0.859(0.714–1.034)	0.109
	Liver-related proteins	0.994(0.987–1.001)	0.122	0.937(0.779–1.127)	0.489
Time to graft loss	All proteins	0.999(0.997–1.002)	0.657	0.866(0.649–1.156)	0.329
	Transmembrane and secreted proteins	0.996(0.991–1.001)	0.164	0.747(0.559–1.000)	0.050
	Transmembrane proteins	0.995(0.989–1.001)	0.125	0.740(0.551–0.994)	0.046
	Liver-related proteins	1.006(0.995–1.016)	0.297	1.163(0.869–1.556)	0.309
Overall survival	All proteins	0.999(0.998–1.001)	0.226	0.907(0.784–1.049)	0.189
	Transmembrane and secreted proteins	0.999(0.996–1.001)	0.358	0.897(0.777–1.036)	0.138
	Transmembrane proteins	0.999(0.996–1.002)	0.647	0.934(0.809–1.077)	0.348
	Liver-related proteins	0.997(0.991–1.002)	0.271	0.956(0.828–1.105)	0.546

615 MHC region and sex chromosomes excluded. CI, confidence interval; HR, hazard ratio.  
 616 Models were adjusted with donor and recipient age, donor and recipient sex, cold ischemia  
 617 time, HLA I eplet mismatch, HLA II eplet mismatch, year of transplantation, autoimmune liver  
 618 disease and initial calcineurin inhibitor type.

619

620

621

622

623 **4. cis-eQTL results of deletion-tagging variants rs11985201, rs2342606, rs2174926,**  
 624 **and rs1944862.**

FIVEx						
Variant	CHR:POS	Assessed allele	Gene	Effect size	P-value	Tissue
rs2342606	10:80034407	T	TMEM254-AS1	0.18–0.56	1.38x10 <sup>-25</sup> – 5.89x10 <sup>-8</sup>	Multiple tissues
rs1944862	11:55521460	G	OR4C6	-0.47	9.12x10 <sup>-13</sup>	LCL
rs11985201	NA	NA	NA	NA	NA	NA
rs2174926	NA	NA	NA	NA	NA	NA

eQTLGen phase I						
Variant	CHR:POS	Assessed allele	Gene	Z-score	P-value	Tissue
rs11985201	8: 39772878	A	IDO1	-5.10	3.32x10 <sup>-7</sup>	Blood
rs2342606	10:81845357	T	TMEM254	-20.46	4.89x10 <sup>-93</sup>	Blood
rs2342606	10:81822642	T	TMEM254-AS1	-16.80	2.49x10 <sup>63</sup>	Blood
rs2342606	10: 81468710	T	FAM22B	10.78	4.18 x10 <sup>-27</sup>	Blood
rs2342606	10: 81474464	T	RP11-119F19.2	8.44	3.13 x10 <sup>-17</sup>	Blood
rs2342606	10: 82180169	T	FAM213A	7.97	1.65 x10 <sup>-15</sup>	Blood
rs2342606	10: 81719933	T	SFTPD	-7.88	3.29 x10 <sup>-15</sup>	Blood
rs2342606	10: 82292525	T	RP11-137H2.4	-5.15	2.66 x10 <sup>-7</sup>	Blood
rs2342606	10: 81428750	T	RP11-506M13.3	4.95	7.38 x10 <sup>-7</sup>	Blood
rs1944862	NA	NA	NA	NA	NA	Blood
rs2174926	NA	NA	NA	NA	NA	Blood

625 CHR, chromosome; eQTL, expression quantitative loci; LCL, lateral collateral ligament; NA,  
 626 not available; POS, position.

627

628

629

630

631

632

633

634

635

636

637

638

639

640

641 **Table 5. Identification of regulatory elements.**

Deletion-tagging variant	Deleted gene	Regulome DB <sup>a</sup>		HaploReg <sup>b</sup>
		Rank	Score	Regulatory motifs altered
rs11985201	<i>ADAM3A/ADAM5P</i>	1b	0.710	INSM1, NF-Y
rs2342606	<i>LOC642521/LOC642538</i>	6	0.285	NA
rs2174926	<i>LOC442434</i>	1f	0.897	Foxj2, Foxl1, Foxp1
rs1944862	<i>OR4P1P</i>	6	0.187	Foxa, ZBTB33

642 NA, not available.

643 <sup>a</sup>Regulome DB, <https://www.regulomedb.org/regulome-search>

644 <sup>b</sup>HaploReg v4.2, <https://pubs.broadinstitute.org/mammals/haploreg/haploreg.php>

645

646

647

648

649

650

651

652

653

654

655

656

657

658

659

660

661

662

663

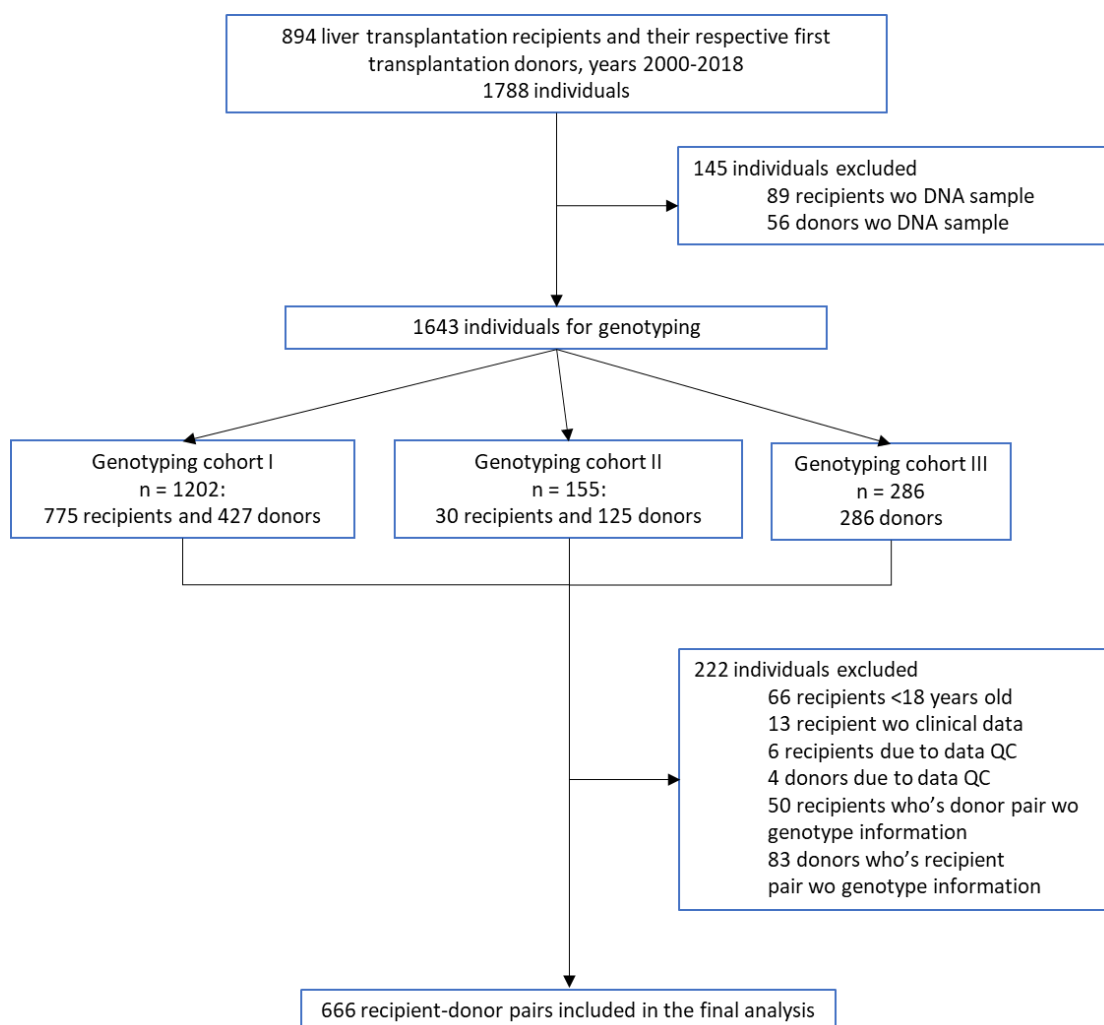
664

665

666

667

668

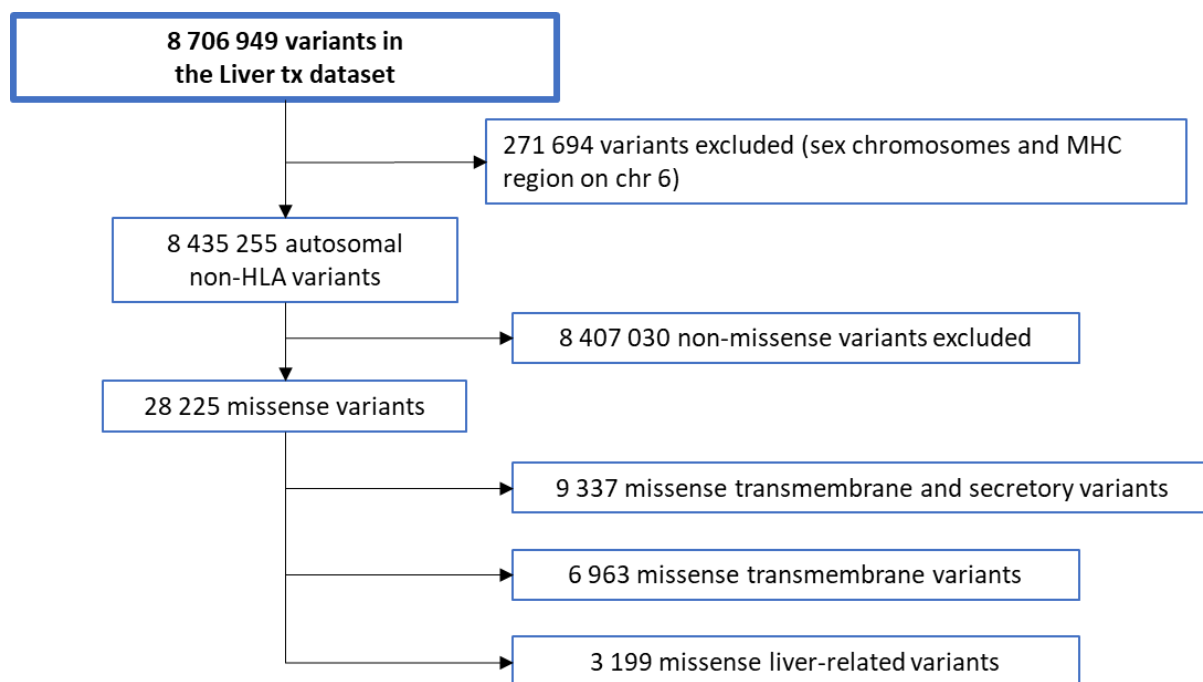


669

670 **Figure 1. Flow of the study population.** Enrolling and exclusion of the liver transplantation  
671 recipients and donors. DNA, deoxyribonucleic acid; QC, quality control.

672

673



674

675

676 **Figure 2. Flow of genetic variants.** HLA, human leukocyte antigen; MHC, major  
677 histocompatibility complex.

678

679

680

681

682

683

684

685

686

687

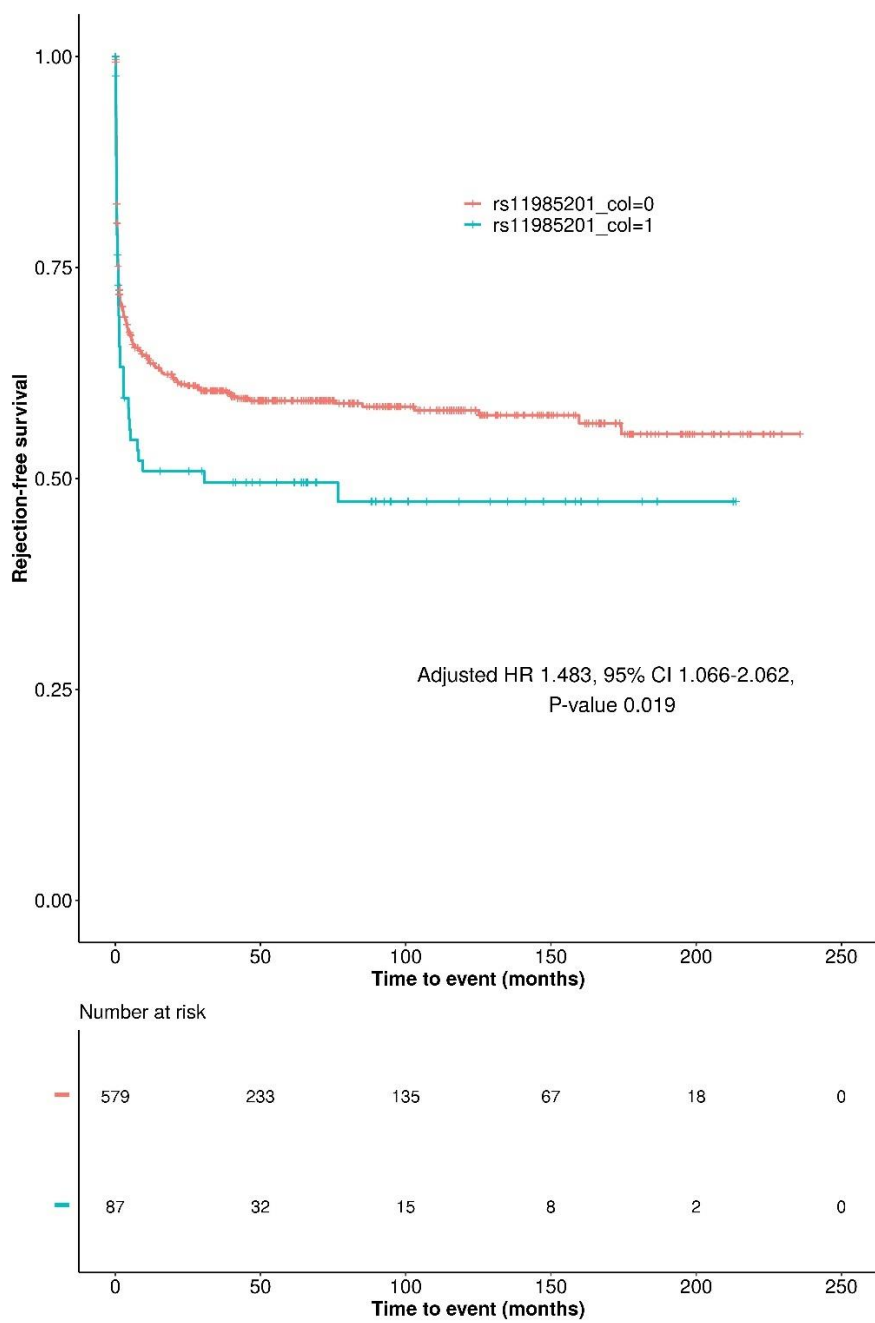
688

689

690

691

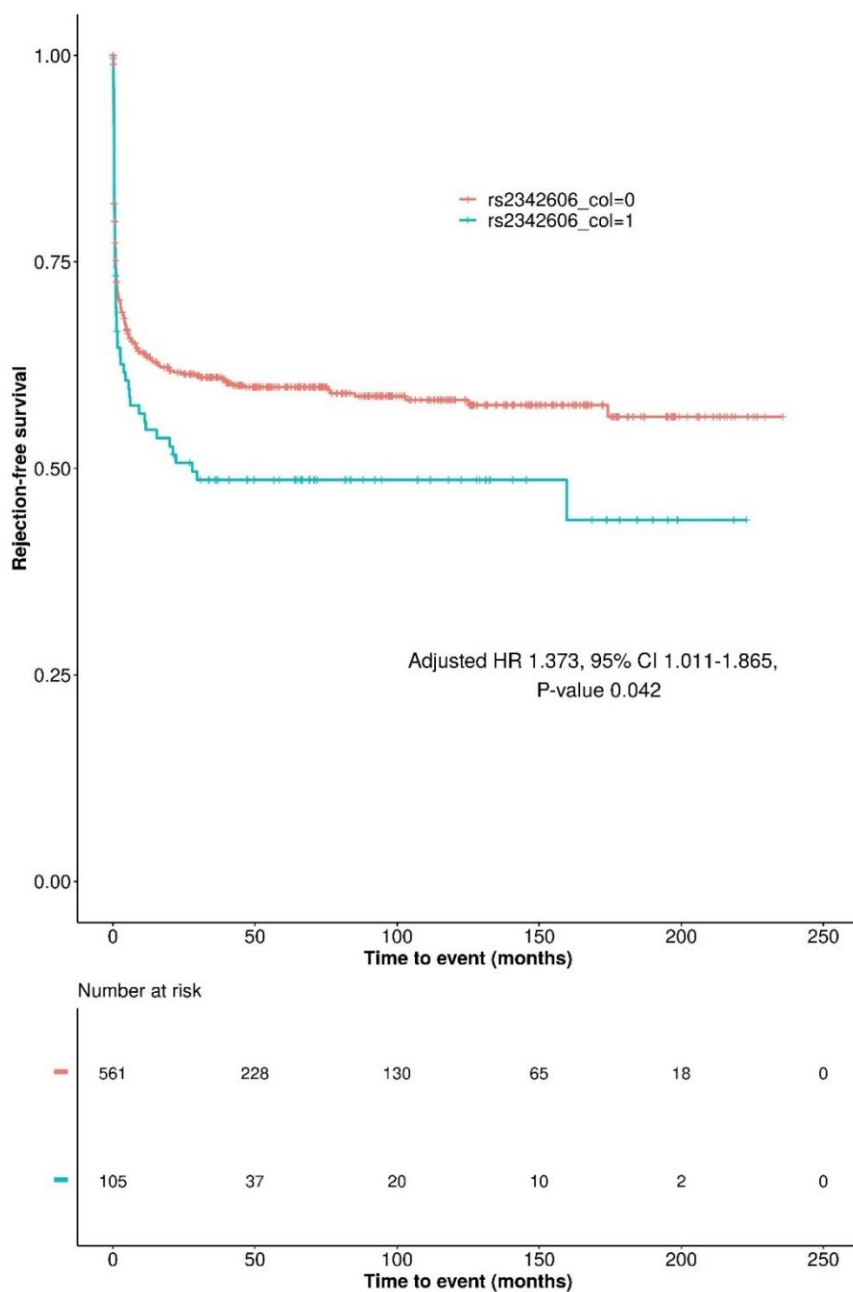
692



693

694 **Figure 3. Kaplan-Meier plot displaying the effect of deletion-tagging variant rs11985201**  
695 **mismatch on acute rejection-free survival.**

696



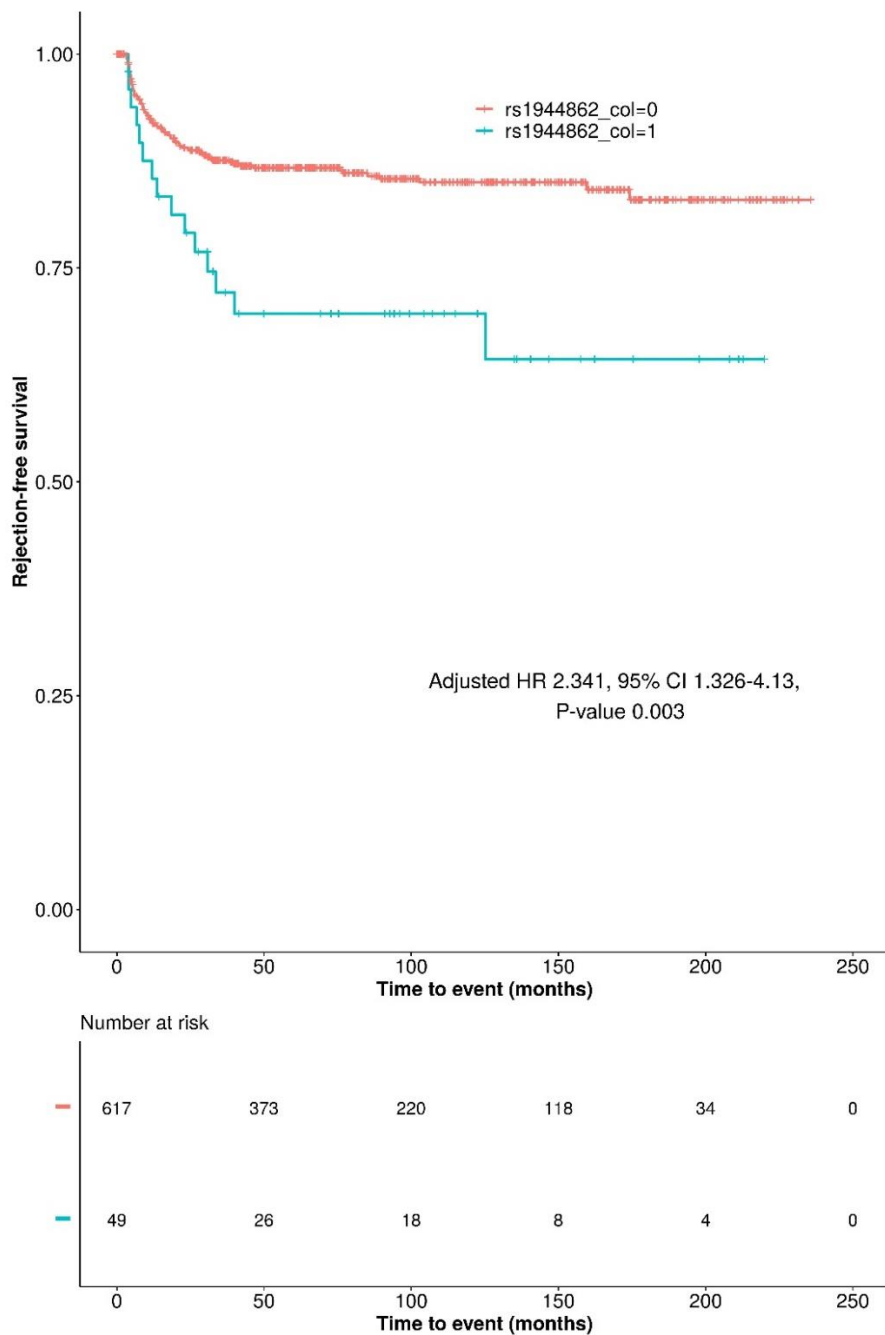
697

698 **Figure 4. Kaplan-Meier plot displaying the effect of deletion-tagging variant rs2342606 mismatch**  
699 **on acute rejection-free survival.**

700

701

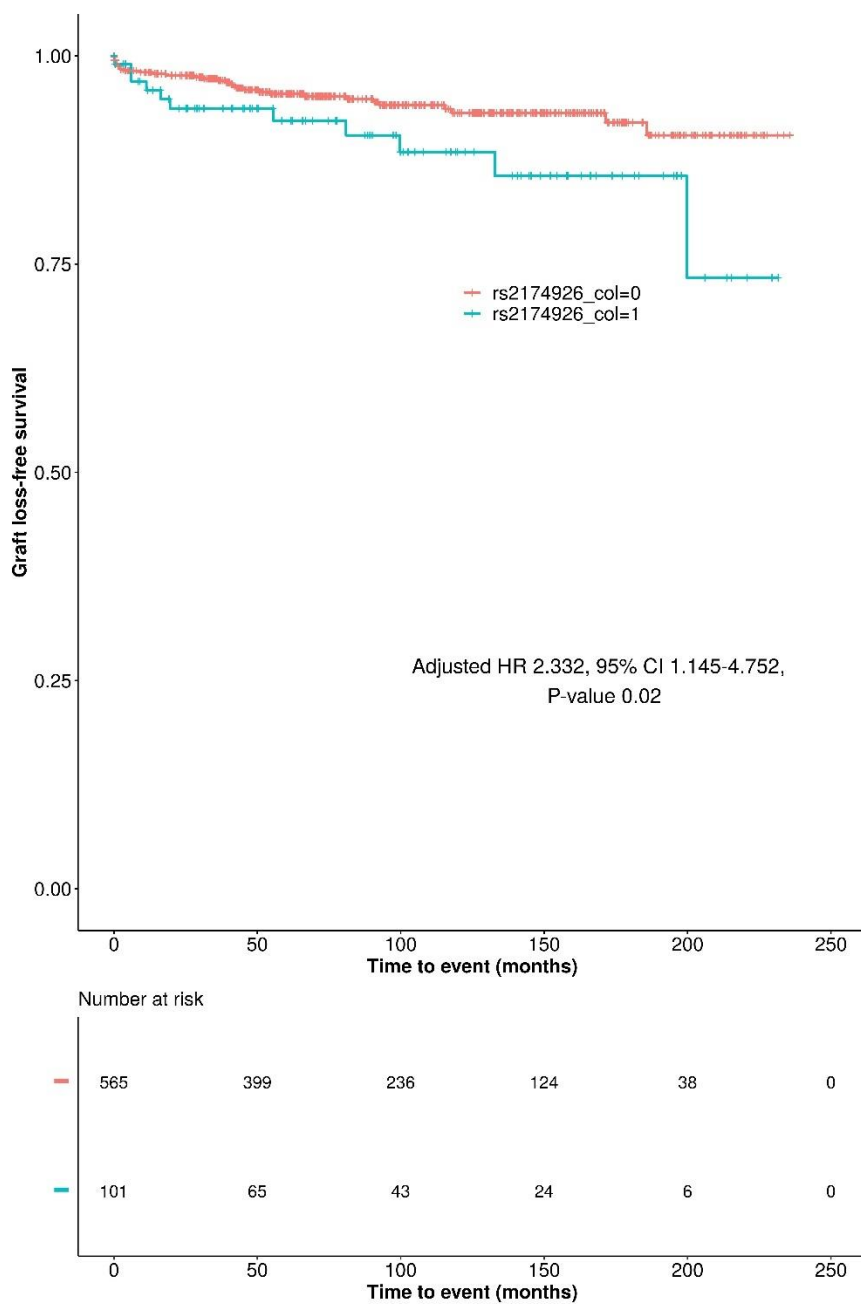




702

703 **Figure 5. Kaplan-Meier plot displaying the effect of deletion-tagging variant rs1944862 mismatch**  
704 **on late rejection-free survival..**

705



706

707 **Figure 6. Kaplan-Meier plot displaying the effect of deletion-tagging variant rs2174926 mismatch**  
708 **on graft loss-free survival.**