

Height-age as an alternative growth outcome

Height-age as an alternative to height-for-age z-scores to assess the effect of interventions on child linear growth in low- and middle-income countries

Kelly M Watson^{1,2}, Alison SB Dasiewicz¹, Diego G Bassani^{1,3}, Chun-Yuan Chen¹, Huma Qamar¹, Karen M O'Callaghan^{1,4}, Daniel E Roth^{1,2,3}

¹ Centre for Global Child Health, The Hospital for Sick Children, Toronto, Canada

² Department of Nutritional Sciences, University of Toronto, Toronto, Canada

³ Department of Paediatrics, University of Toronto, Toronto, Canada

⁴ Department of Nutritional Sciences, King's College London, London, UK

Corresponding Author:

Daniel Roth

Centre for Global Child Health

The Hospital for Sick Children

686 Bay St, Toronto, ON M5G 0A4, Canada

Tel: 416-813-7654 ext. 328807

Email: daniel.roth@sickkids.ca

Sources of Support: Kelly Watson was funded by the Canadian Institutes of Health Research (CIHR), through the Canadian Graduate Scholarship – Masters (CGS-M) and a project grant (#169133). The CIHR had no involvement in this study and does not restrict works for publication.

Abbreviations:

BONUSKids, BONE and mUScle health in Kids

CI, confidence interval

DIVIDS, Delhi Infant Vitamin D Supplementation

HAZ, height-for-age z-score

IPD, individual participant data

LAZ, length-for-age z-score

LMICs, low- and middle-income countries

LMS, lambda-mu-sigma

MD, mean difference

MDIG, Maternal vitamin D for Infant Growth

PMB, proportion of maximal benefit

RCT, randomized controlled trial

REB, research ethics board

SD, standard deviation

SE, standard error

SickKids, The Hospital for Sick Children

WHO-GS, WHO growth standards

Height-age as an alternative growth outcome

1 **Abstract**

2 **Background:** Assessments of the efficacy of interventions to improve child growth are
3 often based on differences in mean height-for-age z-scores (HAZ) and stunting (HAZ<-
4 2) in randomized controlled trials (RCTs). However, this approach does not account for
5 children's starting skeletal age and does not enable assessment of the extent to which
6 interventions optimized linear growth.

7 **Objective:** To develop and apply a new method using height-age to express linear
8 growth effects in RCTs.

9 **Methods:** Longitudinal individual participant data (IPD) from a Bangladeshi trial cohort
10 were used to compare height-age estimates derived from individual-level heights, mean
11 raw height, or mean HAZ. Then, using average height-age as a proxy for skeletal age,
12 we developed the 'proportion of maximal benefit' (PMB) metric to quantify intervention
13 effects relative to optimal growth for children's starting skeletal age. Optimal growth
14 occurs when height-age increases in parallel with chronological age (i.e., PMB=100%)
15 whereas no effect (versus control) corresponds to a PMB of 0%. Linear growth
16 outcomes in 4 published RCTs of nutrition-specific interventions were re-expressed as
17 mean height-age and PMB, and compared to effects conventionally expressed as
18 intervention-versus-control mean differences (MD) in HAZ.

19 **Results:** Mean height-age could be derived from any published estimate of mean raw
20 height or mean HAZ; however, to calculate the PMB, height or HAZ data were required
21 at both the beginning and end of the observation period. Interpretations of intervention
22 effects were consistent when expressed as either the height-age MD or HAZ MD. In

Height-age as an alternative growth outcome

23 contrast, the PMB does not have a corresponding metric on the HAZ scale, and
24 therefore provided a new way to quantify intervention efficacy.

25 **Conclusion:** Height-age can be used as an alternative to HAZ to express intervention
26 effects. The PMB has the advantage of conveying the extent to which an intervention
27 improved average linear growth in relation to a biologically-defined benchmark.

28 **Keywords:** Stunting; Low and Middle Income Countries; child growth; height-for-age Z-
29 scores; height-age

Height-age as an alternative growth outcome

30 INTRODUCTION

31 Child height is a general marker of health and nutritional status and is commonly used
32 as an outcome in interventional trials and evaluations of programs aimed at reducing
33 undernutrition in low- and middle-income countries (LMICs) (1, 2). Sex- and age-
34 standardized height-for-age z-scores (HAZ) and stunting (HAZ<-2) relative to the WHO
35 Growth Standards (WHO-GS) are conventionally used to quantify growth deficits in
36 individuals and populations (3). Candidate interventions to improve child health and
37 nutrition are often considered for adoption as public health programs in LMICs based on
38 the extent to which they increase mean HAZ and reduce stunting prevalence in
39 randomized controlled trials (RCTs). However, the conventional reliance on HAZ and
40 stunting to assess changes in child health and nutritional status have been questioned
41 (4-8). One limitation is that the use of stunting may lead to a disproportionate focus on
42 the sub-group of children classified as stunted, even though linear growth faltering
43 affects the entire height-for-age distribution in LMICs (5, 6). Another concern is that it is
44 unrealistic to expect a large change in HAZ or stunting in response to a single, short-
45 term intervention given that the cause of linear growth faltering is multi-factorial, leading
46 to interventions being perceived as failures even if they are shown to have other health
47 or social benefits (4, 8). Additionally, the use of HAZ (or raw height) in linear growth
48 outcome analyses does not enable definition of a population's maximum biologically
49 plausible growth that could occur over an observation period, so there is no objective
50 benchmark to evaluate the adequacy of a response to an intervention using the HAZ or
51 raw height scale.

52

Height-age as an alternative growth outcome

53 Height-age, defined as the age at which the observed height of children would be
54 considered normal, is an alternative way of expressing linear growth that conveys
55 information about the stage of maturation of long bones ('skeletal age'). Skeletal
56 maturation is driven by mechanisms intrinsic to the growth plate, such that skeletal age
57 and chronological age become uncoupled (skeletal age < chronological age) under
58 growth-inhibiting conditions (e.g., nutritional deficiencies) (9-11). Following remediation
59 of the causes of growth impairments, linear growth has been observed to proceed at a
60 rate expected for the younger skeletal age (or height-age), rather than chronological
61 age (9, 12-15).

62

63 Setting expectations for successful interventions based on HAZ and stunting, which are
64 normalized relative to expected growth for children's chronological age, may contribute
65 to the perception that candidate interventions often fail to improve linear growth (4, 8).

66 The aim of the present methodological study was to develop metrics to use height-age
67 as an alternative outcome to stunting and HAZ in RCT analysis and to demonstrate
68 these metrics in a pilot study to enable their wider application and further validation in
69 future research. As this was a novel application of height-age, we first compared
70 different ways of deriving height-age estimates using RCT datasets, which enabled us
71 to propose a preferred method for future uses. We also developed a new metric based
72 on height-age that quantifies the extent of linear growth improvement achieved by
73 interventions on the height-age scale.

74

Height-age as an alternative growth outcome

75 **METHODS**

76 *Data sources*

77 Individual participant data (IPD) from the Maternal Vitamin D for Infant Growth (MDIG)
78 trial (16) and follow-up BONE and mUScle health in Kids (BONUSKids) study in Dhaka,
79 Bangladesh (17) were used to compare height-age estimates generated from different
80 expressions of height data. Briefly, the MDIG trial was a randomized, placebo-
81 controlled, dose-ranging trial of maternal vitamin D supplementation during pregnancy
82 and lactation. One group received neither prenatal or postpartum vitamin D (placebo
83 group); three groups received prenatal supplementation only (4200 IU, 16,800 IU, or
84 28,000 IU per week); one group received prenatal and postpartum supplementation up
85 to 26-weeks (28,000 IU per week; denoted as ‘28000:28000 IU’ which corresponds to
86 ‘prenatal:postpartum’). The MDIG trial assessed linear growth in children from birth to
87 24 months of age, and the BONUSKids follow-up study assessed the MDIG trial cohort
88 at 4 years of age. Ethical approval was obtained from The Hospital for Sick Children’s
89 (SickKids) research ethics board (REB) for use of MDIG and BONUSKids IPD in this
90 study (SickKids REB #1000079659). Published estimates from selected intervention
91 trials (18-22) based on inclusion criteria (outlined below) were used in a pilot application
92 of novel height-age-based methods.

93

94 *Existing height-age derivation methods*

95 Height-age was defined as the age at which the WHO-GS median length or height
96 equaled children’s observed mean length or height (hereafter, “height” will refer to
97 measures of length or height). The WHO-GS height-for-age curves, which include the

Height-age as an alternative growth outcome

98 median growth trajectory, are generated by the lamda-mu-sigma (LMS) method (23),
99 using the publicly available WHO-LMS table containing the data underlying the WHO-
100 GS curves ('lenanthro.dta' file) (24). The relevant parameters from the WHO-GS LMS
101 table for calculating height-age were the median height (cm), and the corresponding
102 age (in days) and sex (male/female). Height-age is the age corresponding to the median
103 height in the WHO-GS LMS table closest to the observed mean height. If group-level
104 mean HAZ was the only estimate available in the published literature (e.g., only mean
105 HAZ, not mean height, was reported), the observed mean height was back-calculated
106 from the reported mean HAZ. Equation 1 was rearranged to solve for 'y' (the observed
107 height) (3). The median height (M) and coefficient of variation (S), corresponding to the
108 average age of children at the time (t) mean HAZ was measured, were selected from
109 the WHO-LMS table to facilitate this calculation. The power (L) in the WHO-LMS table is
110 always equal to 1 (24).

111 *Equation 1:*
$$Z_{ind} = \frac{[y/M(t)]^{L(t)} - 1}{S(t)L(t)}$$

112
113 The Supplementary Data file from Mansukoski *et al.* includes publicly available code to
114 derive height-age from mean HAZ (25).

115
116 *Extension of height-age derivation methods*

117 We considered mean height (rather than individual-level height or mean HAZ) to be the
118 preferred expression of height data for deriving height-age, since the expectation that
119 growth tracks along the median trajectory is applicable at the population level but not for
120 individual children, and mean height can be directly compared to the WHO-GS median

Height-age as an alternative growth outcome

121 (avoiding the back-calculation required for HAZ). Building on prior work, we documented
122 a method to derive height-age from mean height when data is disaggregated by sex, or
123 combining sexes using a sex-weighted or simple average of the WHO-GS LMS table
124 parameters (26).

125

126 We developed a new workflow for calculating height-age when children were measured
127 at or near two years of age (**Figure 1**). At this age, there is typically a switch from
128 measuring supine (recumbent) length to standing height which leads to a slight
129 reduction in measured stature (~0.7cm) (27). The WHO-LMS table presents the median
130 as recumbent length when age is <731 days (2 years) and standing height when age is
131 >=731 days (24). The WHO macro for calculating z-scores converts height
132 measurements to length for children under 2 years of age (by adding 0.7cm), or length
133 to height for children >=2 years (by subtracting 0.7cm) (28). Figure 1 shows how we
134 adjusted the WHO median values presented in the LMS table to ensure fair comparison
135 with observed measurements when determining height-age. For example, if using an
136 observed mean height measurement of 2-year-old children who have experienced prior
137 linear growth faltering to calculate height-age, it can be assumed that their calculated
138 average height-age will be *less* than 2 years. It is then necessary to convert WHO-GS
139 median values for children <2 years of age (which typically represent supine length
140 measurements) to standing height measurements, by subtracting 0.7cm from all
141 medians representing supine length measurements. This ensures the observed height
142 is compared with a median value reflecting a standing height measurement.

143

Height-age as an alternative growth outcome

144 *Development of the proportion of maximal benefit (the ‘PMB’) metric*

145 The ‘proportion of maximal benefit’ (PMB) was developed to quantify the extent to which
146 children in an intervention group reached a theoretical benchmark of optimal growth,
147 defined as the normal growth rate for their baseline height-age. The normal (‘optimal’)
148 growth rate for children’s average starting height-age was defined by the median
149 trajectory of the WHO-GS height-for-age chart; however, as the expected growth rate
150 constantly changes on the height-for-age scale (**Figure 2 Panel A**), the median
151 trajectory was converted to a plot of *height-age*-for-age, by changing the y-axis from
152 height (cm) to height-age (days) (**Figure 2 Panel B**). On this new scale, the normal
153 growth rate is achieved when height-age increases the same amount as chronological
154 age (slope = 1), and in contrast to the height-for-age curve, this relationship is constant
155 across age (straight-line function).

156
157 Using this simple 1-to-1 expected relationship between height-age and chronological
158 age, the theoretical maximum growth potential of children in the intervention group can
159 be defined by the group’s change in chronological age during the observation period
160 (ΔCA_i). The observed effect of the intervention, expressed as the intervention group’s
161 change in height-age during the observation period (ΔHA_i), can be compared to this
162 benchmark. The control group’s change in height-age during the observation period
163 (ΔHA_c) was used as the lower bound, as it was assumed that if the intervention
164 provided no benefit at all, growth in the intervention group(s) would proceed at the same
165 rate as in the control group. All changes (Δ s) were measured over the same observation

Height-age as an alternative growth outcome

166 period, expressed in the same units of time (days, months, etc.), and input into *Equation*
167 2 to calculate the PMB.

168 *Equation 2:*
$$PMB = \frac{\Delta HA_I - \Delta HA_C}{\Delta CA_I - \Delta HA_C} * 100\%$$

169
170 A PMB of 0% means that the change in height-age was equal in the intervention and
171 control groups during the intervention period, implying that the intervention had no
172 effect. A PMB of 100% means that height-age in the intervention group increased at the
173 same rate as chronological age, which implies achievement of the optimal growth rate
174 (Figure 2). While achieving 100% is mathematically possible, it is expected that the
175 PMB resulting from a single, short-term intervention that addresses only a fraction of the
176 factors inhibiting linear growth will be much lower than 100%. Therefore, achieving a
177 PMB of 100% should not be considered a realistic target for successful interventions in
178 such settings; however, further use of the PMB for a variety of interventions will be
179 required to establish specific PMB thresholds for policy-relevant applications.

180
181 *Application of height-age and the PMB in a pilot study*

182 i) Inclusion criteria
183 Inclusion criteria for intervention trials included in this pilot study were: 1) RCT or a
184 follow-up report of a previously conducted RCT; 2) conducted in a low, lower-middle, or
185 upper-middle income country as defined by the World Bank classifications (29); 3) study
186 population was infants or young children (between 0 to 5 years of age); 4) intervention

Height-age as an alternative growth outcome

187 was nutrition-specific (e.g., vitamin D supplementation); 5) study or group-level HAZ at
188 baseline and end-line of the intervention period were available.

189

190 The MDIG trial and BONUSKids study were also included and summary estimates were
191 generated to emulate having access to study or group-level data only, as was the case
192 with the other studies included. As well, for comparability with another vitamin D
193 supplementation trial included, only the 28000:28000 IU/week maternal vitamin D
194 supplementation group was included (the only group with postpartum supplementation),
195 the intervention period was defined as 0 to 6 months of age (the time post-delivery in
196 which the maternal intervention was ongoing), and the post-intervention period as 6 to
197 48 months.

198

199 ii) Preliminary steps

200 To re-express trial outcomes, mean HAZ was used to derive mean height-age as it was
201 more commonly reported than mean height and thereby enabled a more consistent
202 approach across included trials. As mean height was *a priori* defined as the preferred
203 method for deriving mean height-age, we compared height-age estimates (means and
204 95% CIs) derived from mean HAZ to corresponding estimates derived from mean height
205 or individual-level heights. The purpose of this preliminary step was to ensure mean
206 HAZ-derived height-age estimates in the pilot study were similar to estimates derived
207 from preferred methods. Individual-level child data (age, sex, length or height) from the
208 MDIG trial and BONUSKids study at the 3, 6, 9, 12, 24, and 48 months encounters were
209 used to generate these height-age estimates from the different expressions of height

Height-age as an alternative growth outcome

210 data (**Figure 3**). Differences between mean height-age estimates derived from mean
211 HAZ versus mean height, and height-age standard errors (SEs) derived from mean HAZ
212 versus individual-level heights were calculated. The mean, median, standard deviation
213 (SD), kurtosis, and skewness generated from kernel density plots of individual-level
214 height, HAZ, and height-age were also compared at the selected timepoints using MDIG
215 and BONUSKids data to identify any statistical differences of the height-age distribution
216 that may influence interpretation.

217

218 iii) Data extraction from included trials in the pilot study

219 Mean HAZ reported at baseline and end-line were extracted from published reports of
220 included trials. The average age of children at the time of measurement was extracted;
221 if the precise average age at baseline and/or end-line was not reported, the average
222 age was assumed to equal the timing of measurement (e.g., if scheduled end-line
223 follow-up was at 6 months, the average age was assumed to equal baseline age plus 6
224 months). Analyses were conducted combining sexes as it was assumed this was the
225 manner in which data would be most often reported. If the ratio of females and males
226 was reported, this was extracted to generate a sex-weighted WHO-GS LMS table;
227 otherwise, an equal ratio was assumed.

228

229 iv) Statistical analyses – application of the PMB and comparator outcomes

230 Extracted data were used to re-express mean HAZ and the associated 95% CI as mean
231 height-age with 95% CIs. The height-age mean difference (MD) (intervention minus
232 control) at the study end-line was determined with 95% CIs (30). This was compared to

Height-age as an alternative growth outcome

233 how results were reported in the published paper (HAZ MD); to ensure direct
234 comparability, we recalculated the HAZ MD using the same method as used for the
235 height-age MD (30). The MD between groups' changes in height-age during the
236 observation period (end-line height-age minus baseline height-age) was also
237 determined with 95% CIs using methods outlined in **Supplemental Methods** and
238 **Supplemental Table 1**, as an intermediary step to facilitate calculation of the PMB. To
239 calculate 95% CIs for the PMB, the 95% confidence bounds for the MD between groups'
240 changes in height-age were substituted in the PMB numerator in *Equation 2*, as the
241 numerator in *Equation 2* is the MD between the intervention and control group's change
242 in height-age over the observation period (i.e., to calculate the upper 95% bound for the
243 PMB, the upper bound of the 95% CI for the MD between groups' changes in height-age
244 was substituted into the numerator of the PMB metric; the same was done to calculate
245 the lower bound). As a sensitivity analysis, we repeated this exercise using mean height
246 if it was also reported at baseline and/or end-line to compare height-age and PMB
247 estimates generated from mean height versus mean HAZ. All analyses were performed
248 in STATA software version 17 (STATA Corp LLC).

249

250 **RESULTS**

251 Across six age timepoints in the MDIG/BONUSKids cohort, the maximum absolute
252 difference between mean height-age estimates generated from mean HAZ versus mean
253 height was 1 day (Range: 0 to 1). The maximum difference between SEs generated
254 from mean HAZ versus from a distribution of height-ages (generated from individual-
255 level heights), was 0.3 day (Range: 0 to 0.3) (**Table 1**). These results were similar when

Height-age as an alternative growth outcome

256 the analyses was disaggregated by sex. The distribution of individual height-age
257 estimates consistently showed slightly greater skewing (Mean skewness: 0.4 for height-
258 age; 0.05 for height; 0.01 for HAZ) and excess kurtosis (Mean kurtosis: 3.5 for height-
259 age; 3.2 for height; 3.1 for HAZ) compared to the raw height and HAZ distributions
260 (**Table 2**).

261
262 Including MDIG and BONUSKids, 7 reports of 4 trials of 2 distinct nutrition-specific
263 interventions implemented in LMICs were included in the pilot study (**Table 3**). The
264 interventions were the provision of 1 egg/day from 6 to 12 months of age (the Lulun and
265 Mazira trials) and maternal or infant vitamin D supplementation (the Delhi Infant Vitamin
266 D Supplementation (DIVIDS) and MDIG trials). Group/study-level mean HAZ was
267 available at baseline, end-line, and post-intervention follow-up (if applicable) for all
268 included studies. Group-level baseline LAZ for the DIVIDS trial was obtained from
269 another report (31).

270
271 The egg intervention introduced in the Lulun trial led to a significant increase in mean
272 LAZ at 12 months (19), while the same intervention in the Mazira trial did not (20). Infant
273 vitamin D supplementation in the DIVIDS trial led to a significant increase in LAZ at 6
274 months (21), while maternal vitamin D supplementation in the MDIG trial did not
275 improve children's linear growth at 1 year (16). Three of the four trials had post-
276 intervention follow-ups (Lulun, DIVIDS, and MDIG), and no sustained or latent
277 improvements in linear growth were observed (17, 18, 22).

278

Height-age as an alternative growth outcome

279 Inferences and directions of the intervention effects at end-line were consistent when
280 expressed on the HAZ and height-age scales (**Table 4**). For example, the Mazira trial
281 results expressed as the LAZ or height-age MD both indicated that the intervention did
282 not significantly improve linear growth. However, neither of these effect estimates
283 conveyed the extent of linear growth improvement achieved by this intervention relative
284 to a benchmark of children's optimal growth potential. The PMB revealed that the
285 provision of 1 egg/day for 6 months in this population achieved 9.4% of the intervention
286 group's growth potential beyond growth in the control group. For the Lulun trial, the LAZ
287 and height-age MD both showed that this intervention improved growth; the PMB
288 suggested that this intervention achieved 94% of the intervention group's optimal growth
289 potential. For the DIVIDS and MDIG trials, height-age was not derived at baseline as
290 the intervention began at birth, so the PMB could not be calculated (an intermediate
291 step to enable calculation of the PMB is determining the change in height-age from
292 baseline to end-line). For the trials with post-intervention follow-ups, the PMBs ranged
293 from -0.28% to 5.2% (Table 4).

294
295 The Lulun and Mazira trial results were plotted as LAZ-for-age (**Figure 4 Panel A**)
296 versus height-age-for-age (**Figure 4 Panel B**). In the Lulun trial, there was essentially
297 no change in the control group's LAZ with age (from baseline to end-line), while the
298 intervention group's LAZ increased towards 0 (Figure 4 Panel A), and the corresponding
299 change in height-age was nearly parallel with the change in chronological age (Figure 4
300 Panel B). No major differences were visually apparent between the intervention and
301 control groups in the Mazira trial on the LAZ-for-age or height-age-for-age scales.

Height-age as an alternative growth outcome

302

303 The sensitivity analysis showed that height-age estimates derived from mean
304 length/height (n=2 trials) did not notably differ from estimates calculated from mean
305 LAZ/HAZ, provided the age interval over which data was aggregated was narrow
306 **(Supplemental Table 2)**.

307

308 **DISCUSSION**

309 Childhood linear growth faltering is a pervasive public health problem in LMICs for
310 which progress towards global targets has been incomplete (32). New methods of
311 communicating the results of controlled trials and program evaluations may influence
312 public health priority-setting. In this work, height-age was used as an alternative
313 expression of group-average child linear growth, and the PMB was used to quantify the
314 extent of linear growth improvement achieved by nutrition-specific interventions tested
315 in RCTs in LMICs.

316

317 Application of height-age and the PMB metric to assess the effect of interventions builds
318 on findings from prior work demonstrating that the analysis of changes in mean HAZ
319 with age does not enable clear determinations of group-level catch-up growth (25). Due
320 in part to the popularity of the *Victora plots* (HAZ-by-age curves), it is conventionally
321 assumed that stable HAZ often seen after 2 years of age (beyond the *first 1000 days*)
322 reflects normal average growth and that an upward trend in HAZ (towards HAZ=0) is
323 evidence of catch-up (33). However, plotting of the Lulun trial results showed that the
324 control group's stable HAZ was sub-optimal on the height-age-for-age scale.

Height-age as an alternative growth outcome

325

326 Early definitions of catch-up growth suggested that the goal of catch-up was to return
327 children to their pre-faltering growth curve (34, 35), which may have provided the basis
328 for this assumption in HAZ-tracking. However, expecting an intervention to return a
329 previously faltered population-average HAZ to the median for chronological age
330 (HAZ=0) is usually unrealistic, as this would suggest that growth proceeds at a rate
331 faster than expected for chronological and skeletal age. While this may be observed at
332 the individual level (34), linear growth faltering in LMICs is due to numerous factors,
333 including inadequate dietary intake, infections and other inflammatory stimuli, and
334 psychosocial factors (2). Public health interventions, including nutrition-specific
335 interventions such as micronutrient supplementation, are often implemented for a
336 relatively short period of time and do not address all the factors limiting linear growth.
337 Therefore, even small increases in HAZ (or reductions in stunting) may be unlikely,
338 highlighting a need to temper general expectations and quantify the growth that could
339 feasibly occur in these settings (8).

340

341 The PMB incorporates a theory-based benchmark of optimal growth that could occur in
342 LMIC settings, based on a current understanding of the biology of long bone growth. In
343 developing the PMB metric, we assumed that a PMB of 100% would not be a realistic
344 expectation for a single intervention that is not designed to resolve all of the many
345 complex factors inhibiting children's growth in LMICs. As the PMB metric was developed
346 and applied for the first time in this work, we were unable to define thresholds of
347 success on the PMB scale. Even so, the PMB has potential value as it is a standardized

Height-age as an alternative growth outcome

348 measure of the extent to which optimal growth potential was achieved, permitting
349 assessment of the comparative efficacy of interventions and/or programs because it is
350 inherently normalized across ages and intervention durations. Further application of the
351 PMB metric to a wider array of interventions previously tested in LMICs is needed to
352 define the range of plausible PMB values and establish guidelines for using the PMB in
353 priority-setting.

354

355 A secondary benefit of the PMB is that it may serve as a plausibility check of trial results
356 in LMICs if a PMB of 100% is approximated or even exceeded. Although mathematically
357 possible, a $PMB > 100\%$ would imply that the intervention promoted growth beyond what
358 is expected for children's skeletal age, which is unlikely to occur even when substantive,
359 permanent changes are made to children's environments (36). Given these
360 expectations, an observed PMB of 94%, with an upper 95% CI exceeding 100%, as
361 calculated for the Lulun trial, should be interpreted with caution. When the Lulun trial
362 was first reported, it received considerable attention due to the impressive apparent
363 effect on linear growth (37, 38), especially given the simplicity of the intervention (19).
364 However, the findings of the Lulun trial were not confirmed in a similar trial in Malawi
365 (the Mazira study), which had a much larger sample (about 4 times greater than the
366 Lulun trial) (20). It is possible the Lulun trial findings occurred due to imperfect
367 randomization (19), and the very high PMB suggests the findings are unlikely to be
368 replicable.

369

Height-age as an alternative growth outcome

370 Findings of this study provide a toolkit for researchers to use in future applications of
371 height-age and the PMB to RCT analysis. First, we found that in secondary use studies
372 (i.e., re-analysis of published results), acceptable group-average height-age estimates
373 can be derived from reported mean HAZ if mean height is not available. When IPD is
374 available, it is feasible to generate individual child-level height-age estimates from
375 individual-level height, and then calculate the population-average height-age. However,
376 individual child height-age estimates are not readily interpretable as they incorrectly
377 imply that each child should track along the median curve of the growth standard. The
378 sensitivity analysis in the pilot study showed that derived height-age estimates are
379 sensitive to the width of the age range over which data are aggregated. Therefore,
380 estimating mean height from individual-level height data collected over a *narrow* age
381 range and then deriving the corresponding mean height-age is currently the
382 recommended approach. These and additional recommendations are summarized in
383 **Figure 5.**

384
385 Bone age based on radiographic criteria is another method of estimating skeletal age;
386 however, height-age may be preferable in faltered populations as it might provide a
387 more accurate portrayal of delays in long bone growth, which contributes to child height,
388 whereas bone age is based on radiographs of smaller bones in the hand and wrist (36).
389 Height-age is also more practical in LMICs and can be used to re-express previously
390 collected height data in trials. However, a limitation of the PMB metric is that it has
391 additional data requirements beyond what is needed for end-line comparisons of mean
392 HAZ, as evidenced by the incompleteness of results in the pilot study (Table 4). Also,

Height-age as an alternative growth outcome

393 this study relied on the WHO-GS LMS table for children 0 to 5 years of age to select a
394 height-age, yet growth faltering in LMICs has a prenatal onset and progresses in the
395 early postnatal period even with exclusive breastfeeding (39), such that postnatal length
396 deficits may be severe enough that the average observed length is smaller than the
397 WHO-GS median length at day 0. As well, there has been increased emphasis on
398 extending efforts for improving child growth into adolescence (i.e., beyond 5 years of
399 age) (40, 41), so height-age methods should be further developed to encompass these
400 age groups. Future work will incorporate other growth references, such as the
401 INTERGROWTH-21st standards for infants (42) and the WHO growth reference data
402 from 5 to 19 years, to extend the use of these methods from birth to adolescence.

403
404 Height-age is an alternative growth metric that can be used in place of HAZ and may
405 offer advantages for reporting and interpreting group-average faltering and catch-up
406 patterns in RCTs. Given the entrenched reliance on mean HAZ and stunting prevalence
407 in global child health research, program evaluation, and country-level monitoring in
408 LMICs, researchers may be reluctant to adopt alternative expressions of child growth.
409 Therefore, elaboration and further applications of the height-age-based methods
410 developed in this work are needed to expand and validate their use to stimulate
411 widespread adoption.

Height-age as an alternative growth outcome

Acknowledgements: DER, DGB, KMW, KMOC, ASBD, HQ, and CYC designed research; KMW conducted research; KMW, ASBD, HQ, and CYC analyzed data; and KMW and DER wrote the paper. KMW and DER had primary responsibility for final content. All authors read and approved the final manuscript.

Data Availability: Data described in the manuscript and code for the individual participant data analysis will not be made available because this data was from a trial for which consent for public sharing of individual participant data was not sought. Study-level data described in the manuscript and code for the pilot study came from publicly available reports of trials, and can be found in the respective published report cited in this paper; the extracted dataset used in this study is also available at <https://github.com/kelly-watsonn/HA1>.

Author Disclosures: The authors have no conflicts of interest or financial relationships relevant to the article to disclose.

Height-age as an alternative growth outcome

References

1. Victora CG, Christian P, Vdaletti LP, Gatica-Domínguez G, Menon P, Black RE. Revisiting maternal and child undernutrition in low-income and middle-income countries: variable progress towards an unfinished agenda. *Lancet*. 2021;397(10282):1388-99.
2. Black RE, Victora CG, Walker SP, Bhutta ZA, Christian P, de Onis M, et al. Maternal and child undernutrition and overweight in low-income and middle-income countries. *Lancet*. 2013;382(9890):427-51.
3. World Health Organization. WHO child growth standards: length/height-for-age, weight-for-age, weight-for-length, weight-for-height and body mass index-for-age: methods and development. Geneva: World Health Organization; 2006.
4. Frongillo EA, Leroy JL, Lapping K. Appropriate Use of Linear Growth Measures to Assess Impact of Interventions on Child Development and Catch-Up Growth. *Adv Nutr*. 2019;10(3):372-9.
5. Perumal N, Bassani DG, Roth DE. Use and Misuse of Stunting as a Measure of Child Health. *J Nutr*. 2018;148(3):311-5.
6. Roth DE, Krishna A, Leung M, Shi J, Bassani DG, Barros AJD. Early childhood linear growth faltering in low-income and middle-income countries as a whole-population condition: analysis of 179 Demographic and Health Surveys from 64 countries (1993-2015). *Lancet Glob Health*. 2017;5(12):e1249-e57.
7. Subramanian SV, Karlsson O, Kim R. Revisiting the stunting metric for monitoring and evaluating nutrition policies. *Lancet Glob Health*. 2022;10(2):e179-e80.
8. USAID. Stunting: Considerations for Use as an Indicator in Nutrition Projects. Arlington, VA: USAID Advancing Nutrition; 2020.

Height-age as an alternative growth outcome

9. Baron J, Klein KO, Colli MJ, Yanovski JA, Novosad JA, Bacher JD, et al. Catch-up growth after glucocorticoid excess: a mechanism intrinsic to the growth plate. *Endocrinology*. 1994;135(4):1367-71.
10. Finkelstein GP, Lui JC, Baron J. Catch-up growth: cellular and molecular mechanisms. *World Rev Nutr Diet*. 2013;106:100-4.
11. Lui JC, Nilsson O, Baron J. Growth plate senescence and catch-up growth. *Endocr Dev*. 2011;21:23-9.
12. Stevens DG, Boyer MI, Bowen CVA. Transplantation of epiphyseal plate allografts between animals of different ages. *J Pediatr Orthop*. 1999;19 3:398-403.
13. Marino R, Hegde A, Barnes KM, Schrier L, Emons JA, Nilsson O, et al. Catch-Up Growth after Hypothyroidism Is Caused by Delayed Growth Plate Senescence. *Endocrinology*. 2008;149(4):1820-8.
14. Gafni RI, Weise M, Robrecht DT, Meyers JL, Barnes KM, De-Levi S, et al. Catch-Up Growth Is Associated with Delayed Senescence of the Growth Plate in Rabbits. *Pediatr Res*. 2001;50(5):618-23.
15. Emons JA, Boersma B, Baron J, Wit JM. Catch-up growth: testing the hypothesis of delayed growth plate senescence in humans. *J Pediatr*. 2005;147(6):843-6.
16. Roth DE, Morris SK, Zlotkin S, Gernand AD, Ahmed T, Shanta SS, et al. Vitamin D Supplementation in Pregnancy and Lactation and Infant Growth. *N Engl J Med*. 2018;379(6):535-46.
17. O'Callaghan KM, Shanta SS, Fariha F, Harrington J, Mahmud AA, Emdin AL, et al. Effect of maternal prenatal and postpartum vitamin D supplementation on offspring

Height-age as an alternative growth outcome

bone mass and muscle strength in early childhood: follow-up of a randomized controlled trial. *Am J Clin Nutr.* 2022;115(3):770-80.

18. Iannotti L, Chapnick M, Nicholas J, Gallegos-Riofrio C, Moreno P, Douglas K, et al. Egg intervention effect on linear growth no longer present after two years. *Matern Child Nutr.* 2019;16.

19. Iannotti LL, Lutter CK, Stewart CP, Gallegos Riofrío CA, Malo C, Reinhart G, et al. Eggs in Early Complementary Feeding and Child Growth: A Randomized Controlled Trial. *J Pediatr.* 2017;140(1).

20. Stewart CP, Caswell B, Iannotti L, Lutter C, Arnold CD, Chipatala R, et al. The effect of eggs on early child growth in rural Malawi: the Mazira Project randomized controlled trial. *Am J Clin Nutr.* 2019;110(4):1026-33.

21. Kumar GT, Sachdev HS, Chellani H, Rehman AM, Singh V, Arora H, et al. Effect of weekly vitamin D supplements on mortality, morbidity, and growth of low birthweight term infants in India up to age 6 months: randomised controlled trial. *BMJ.* 2011;342:d2975.

22. Kumar GT, Kaur M, Rehman AM, Arora H, Rajput MM, Chugh R, et al. Effects of vitamin D supplementation in infancy on growth, bone parameters, body composition and gross motor development at age 3–6 years: follow-up of a randomized controlled trial. *Int J Epidemiol.* 2015;44(3):894-905.

23. Cole TJ. The LMS method for constructing normalized growth standards. *Eur J Clin Nutr.* 1990;44(1):45-60.

Height-age as an alternative growth outcome

24. WHO. Child growth standards - The WHO Anthro Software Packages and Macros STATA macro igrowup_update [Internet]. [cited 2022 Dec 12]. Available from: <https://www.who.int/tools/child-growth-standards/software>.
25. Mansukoski L, Qamar H, Perumal N, Aimone A, Bassani DG, Roth DE. Growth delay: an alternative measure of population health based on child height distributions. *Ann Hum Biol.* 2022;49(2):100-8.
26. Watson KM. HA1 [Internet]. 2024 [cited 2024 February 1]. Available from: <https://github.com/kelly-watsonn/HA1>.
27. Kourtis D, Magnusson ML, Smith F, Hadjipavlou A, Pope MH. Spine height and disc height changes as the effect of hyperextension using stadiometry and MRI. *Iowa Orthop J.* 2004;24:65-71.
28. WHO. WHO Child Growth Standards SAS igrowup package [Internet]. [cited 2023 Nov 12]. Available from: https://cdn.who.int/media/docs/default-source/child-growth/child-growth-standards/software/readme-sas.pdf?sfvrsn=5308a21e_2
29. World Bank Country and Lending Groups [Internet]. The World Bank Group [cited 2022 Jan 30]. Available from: <https://datahelpdesk.worldbank.org/knowledgebase/articles/906519-world-bank-country-and-lending-groups>.
30. Confidence Interval for Two Independent Samples, Continuous Outcome [Internet]. Boston University School of Public Health. 2017 [cited 2022 May 2]. Available from: https://sphweb.bumc.bu.edu/otit/mph-modules/bs/bs704_confidence_intervals/bs704_confidence_intervals5.html.

Height-age as an alternative growth outcome

31. Filteau S, Kumar GT, Cole TJ, Sachdev HS, De Stavola BL. Steady Growth in Early Infancy Is Associated with Greater Anthropometry in Indian Children Born Low Birth Weight at Term. *J Nutr*. 2019;149(9):1633-41.
32. United Nations Children's Fund (UNICEF), World Health Organization (WHO), International Bank for Reconstruction and Development/The World Bank. Levels and trends in child malnutrition: UNICEF / WHO / World Bank Group Joint Child Malnutrition Estimates: Key findings of the 2023 edition. New York: UNICEF and WHO; 2023. CC BY-NC-SA 3.0 IGO.
33. Prentice AM, Ward KA, Goldberg GR, Jarjou LM, Moore SE, Fulford AJ, et al. Critical windows for nutritional interventions against stunting. *Am J Clin Nutr*. 2013;97(5):911-8.
34. Prader A, Tanner JM, von HG. Catch-up growth following illness or starvation. An example of developmental canalization in man. *J Pediatr*. 1963;62:646-59.
35. Boersma B, Wit JM. Catch-up Growth. *Endocr Rev*. 1997;18(5):646-61.
36. Golden MH. Is complete catch-up possible for stunted malnourished children? *Eur J Clin Nutr*. 1994;48 Suppl 1:S58-70; discussion S1.
37. Lutter CK, Iannotti LL, Stewart CP. The potential of a simple egg to improve maternal and child nutrition. *Matern Child Nutr*. 2018;14 Suppl 3(Suppl 3):e12678.
38. The Incredible Egg [Internet]. American Egg Board [cited 2023 Nov 15]. Available from: <https://www.incredibleegg.org/nutrition/articles/research-around-the-world>.
39. Christian P, Lee SE, Donahue Angel M, Adair LS, Arifeen SE, Ashorn P, et al. Risk of childhood undernutrition related to small-for-gestational age and preterm birth in low- and middle-income countries. *Int J Epidemiol*. 2013;42(5):1340-55.

Height-age as an alternative growth outcome

40. Saavedra JM, Prentice AM. Nutrition in school-age children: a rationale for revisiting priorities. *Nutr Rev.* 2023;81(7):823-43.
41. Vaivada T, Lassi ZS, Irfan O, Salam RA, Das JK, Oh C, et al. What can work and how? An overview of evidence-based interventions and delivery strategies to support health and human development from before conception to 20 years. *Lancet.* 2022;399(10337):1810-29.
42. Villar J, Cheikh Ismail L, Victora CG, Ohuma EO, Bertino E, Altman DG, et al. International standards for newborn weight, length, and head circumference by gestational age and sex: the Newborn Cross-Sectional Study of the INTERGROWTH-21st Project. *Lancet.* 2014;384(9946):857-68.

TABLE 1 Height-age generated from mean length or height ('Mean Height'), mean LAZ or HAZ ('Mean HAZ'), or individual-level lengths or heights ('Individual-level Heights'), using individual participant data from the Maternal vitamin D for Infant Growth (MDIG) trial and the BONE and mUScle health in Kids (BONUSKids) follow-up the of the MDIG cohort

Encounter ¹ (months)	<i>n</i> participants	Mean age, d (Min, Max)	Height-age, d					
			Mean Height ²		Individual-level Heights ²		Mean HAZ ³	
			Mean (95% CI)	SE	Mean (95% CI)	SE	Mean (95% CI)	SE
3	1028	94 (91, 162)	73 (72, 74)	0.5	74 (73, 76)	0.8	73 (72, 75)	0.8
6	1037	185 (182, 262)	151 (149, 154)	1.3	154 (152, 157)	1.3	152 (149, 154)	1.3
9	1128	277 (273, 348)	233 (230, 236)	1.5	235 (232, 239)	1.6	233 (230, 236)	1.5
12	1165	368 (364, 427)	307 (304, 311)	1.8	310 (306, 313)	1.9	307 (304, 311)	1.8
24	1100	733 (666, 807)	592 (586, 599)	3.3	597 (591, 603)	3.2	592 (586, 599)	3.3
48	640	1510 (1431, 1553)	1242 (1226, 1259)	8.4	1251 (1235, 1268)	8.5	1242 (1226, 1258)	8.2

¹3-, 6-, 9-, 12-, and 24-month encounters measured during the MDIG trial; 48-month encounter measured during the BONUSKids study. ²Length (mean or individual-level) used at the 3-, 6-, 9-, 12-, and 24-month encounters; height (mean or individual-level) used at the 48-month encounter.

³Mean LAZ used at the 3-, 6-, 9-, 12-month encounters; mean HAZ used at the 24- and 48-month encounters.

CI, confidence interval; d, days; HAZ, height-for-age z-score; IPD, individual participant data; LAZ, length-for-age z-score; SE, standard error.

TABLE 2 Statistical properties of the height, HAZ, and height-age distributions, generated using individual participant data from the Maternal vitamin D for Infant Growth (MDIG) trial and the BONE and mUScle health in Kids (BONUSKids) follow-up the of the MDIG trial cohort

Encounter ¹ (months)	Length or height ² (cm)					LAZ or HAZ ²					Height-age ³ (months)				
	Mean	Med.	SD	Kurt.	Skew.	Mean	Med.	SD	Kurt.	Skew.	Mean	Med.	SD	Kurt.	Skew.
3	59.0	59.0	2.0	3.6	0.1	-0.9	-0.9	0.9	3.1	-0.2	2.5	2.4	0.7	5.4	0.7
6	64.9	65.0	2.2	3.0	0.0	-0.9	-0.8	1.0	3.0	-0.1	5.1	5.0	1.2	3.1	0.4
9	69.2	69.2	2.4	3.1	-0.1	-0.9	-0.9	1.0	3.1	-0.1	7.7	7.7	1.7	3.0	0.2
12	72.5	72.6	2.6	3.0	-0.1	-1.0	-1.0	1.0	3.1	-0.1	10.2	10.1	2.0	3.0	0.2
24	82.9	82.8	3.4	3.2	0.1	-1.4	-1.4	1.1	3.2	0.1	19.7	19.3	3.5	3.3	0.4
48	98.7	98.5	4.4	3.2	0.3	-1.2	-1.3	1.0	3.2	0.3	40.8	40.2	7.1	3.2	0.5

¹3-, 6-, 9-, 12-, and 24-month encounters measured during the MDIG trial; 48-month encounter measured during the BONUSKids study. ²Length and LAZ at the 3-, 6-, 9-, 12-, and 24-month encounters; height and HAZ at the 48-month encounter. ³Height-age generated at the individual-level, from length (3-, 6-, 9-, 12-, and 24-month encounters) or height (48-month encounter).

HAZ, height-for-age z-score; Kurt., kurtosis; LAZ, length-for-age z-score; Med., median; SD, standard deviation; Skew., skewness.

TABLE 3 Characteristics of trials and available follow-up studies included in the pilot study

Country, year(s) of study, study name, <i>n</i> , authors	Intervention	Effect on linear growth	Authors' conclusions
Ecuador, 2015, Lulun, <i>n</i> =163, Iannotti et al. (19)	Infants provided 1 egg/day from age 6-12 months	LAZ MD: 0.63 (95% CI: 0.38, 0.88)	Egg intervention significantly increases linear growth
Ecuador, 2017, Lulun follow-up, <i>n</i> =135, Iannotti et al. (18)	Follow-up of Lulun trial cohort after 2 years	HAZ MD: 0.082 (95% CI: -0.15, 0.31)	Results from Lulun trial attenuated
Malawi, 2018-2019, Mazira Project, <i>n</i> =660, Stewart et al. (20)	Infants provided 1 egg/day from age 6-12 months	LAZ MD: 0.07 (95% CI: -0.01, 0.15) ¹	Egg intervention did not benefit linear growth
India, 2007-2010, DIVIDS, <i>n</i> =2079, Kumar et al. (21)	Weekly infant vitamin D supplementation (1400 IU/week) from birth to 6 months	LAZ MD: 0.12 (95% CI: 0.02, 0.21) ²	Vitamin D supplementation significantly increased linear growth
India, 2012-2014, DIVIDS follow-up, <i>n</i> =912, Kumar et al. (22)	Follow-up of DIVIDS trial cohort after 3-6 years	HAZ MD: 0.06 (95% CI: -0.07, 0.19) ³	Results from DIVIDS attenuated
Bangladesh, 2014-2018, MDIG, <i>n</i> =1300, Roth et al. (16)	Varying doses ⁴ of maternal prenatal and postpartum weekly vitamin D supplementation	No significant difference between groups LAZ at 1 year (<i>p</i> =0.25) ⁵	Maternal vitamin D supplementation does not improve infant's linear growth

Height-age as an alternative growth outcome

Bangladesh, 2018-2020, BONUSKids, <i>n</i> =642, O'Callaghan et al. (17)	Follow-up of MDIG trial cohort at 4 years	No significant difference between groups HAZ at 4 years ($p=0.81$) ⁵	No comment on children's linear growth
--	--	---	---

¹Minimally adjusted comparison reported in Stewart et al. shown here; interpretation of effect unchanged when fully adjusted comparison considered. ²Adjusted comparison reported in Kumar et al. (DIVIDS) shown here; effect is insignificant when unadjusted comparison considered. ³Unadjusted comparison reported in Kumar et al. (DIVIDS follow-up) shown here; interpretation of effect unchanged when fully adjusted comparison considered. ⁴One group received neither prenatal or postpartum vitamin D (placebo group); three groups received prenatal supplementation only (4200 IU, 16,800 IU, or 28,000 IU per week); one group received prenatal and postpartum supplementation up to 26-weeks (28,000 IU/week). ⁵Analysis of variance (ANOVA) for multiple group comparisons used to measure effect on linear growth in Roth et al. (MDIG) and O'Callaghan et al. (BONUSKids).

BONUSKids, BONE and mUScle health in Kids; CI, confidence interval; DIVIDS, Delhi Infant Vitamin D Supplementation; HAZ, height-for-age z-score; LAZ, length-for-age z-score; MD, mean difference; MDIG, Maternal Vitamin D for Infant Growth.

TABLE 4 Effect of interventions quantified using conventional and height-age-based methods

Trial (intervention duration)	Time of assessment ²	Effect estimate (95% CI)		
		Mean difference (intervention - control)		PMB, %
		LAZ or HAZ ³	Height-age, d	
MDIG ¹ (0-6 months)	End of trial	0.11 (-0.077, 0.30)	4 (-3, 11)	NA ⁴
	Follow-up	0.06 (-0.20, 0.32)	16 (-38, 70)	5.2 (-15, 25)
DIVIDS (0-6 months)	End of trial	0.11 (0.001, 0.22)	4 (0, 8)	NA ⁴
	Follow-up	0.06 (-0.07, 0.19)	14 (-16, 44)	2.5 (-4.3, 9.3)
Lulun (6-12 months)	End of trial	0.32 (-0.067, 0.71)	12 (-11, 35)	94 (50, 138)
	Follow-up	-0.09 (-0.40, 0.22)	-40 (-96, 16)	-0.28 (-0.51, -0.06)
Mazira (6-12 months)	End of trial	0.02 (-0.15, 0.19)	4 (-7, 15)	9.4 (-9.4, 28)

¹Different primary end-line selected for this study (6 months) than the primary end-line reported in the MDIG trial (1 year). ²'Follow-up' represents measurement of children after an elapsed period of time following cessation of the trial. ³LAZ mean difference (MD) for all trials at end of trial; HAZ MD for all trials with follow-up. ⁴Height-age could not be calculated at baseline because methods were not developed in this work to address cases when the age of children approximates 0 days.

CI, confidence interval; d, days; DIVIDS, Delhi Infant Vitamin D Supplementation; HAZ, height-for-age z-score; LAZ, length-for-age z-score; MDIG, Maternal Vitamin D for Infant Growth; PMB, proportion of maximal benefit.

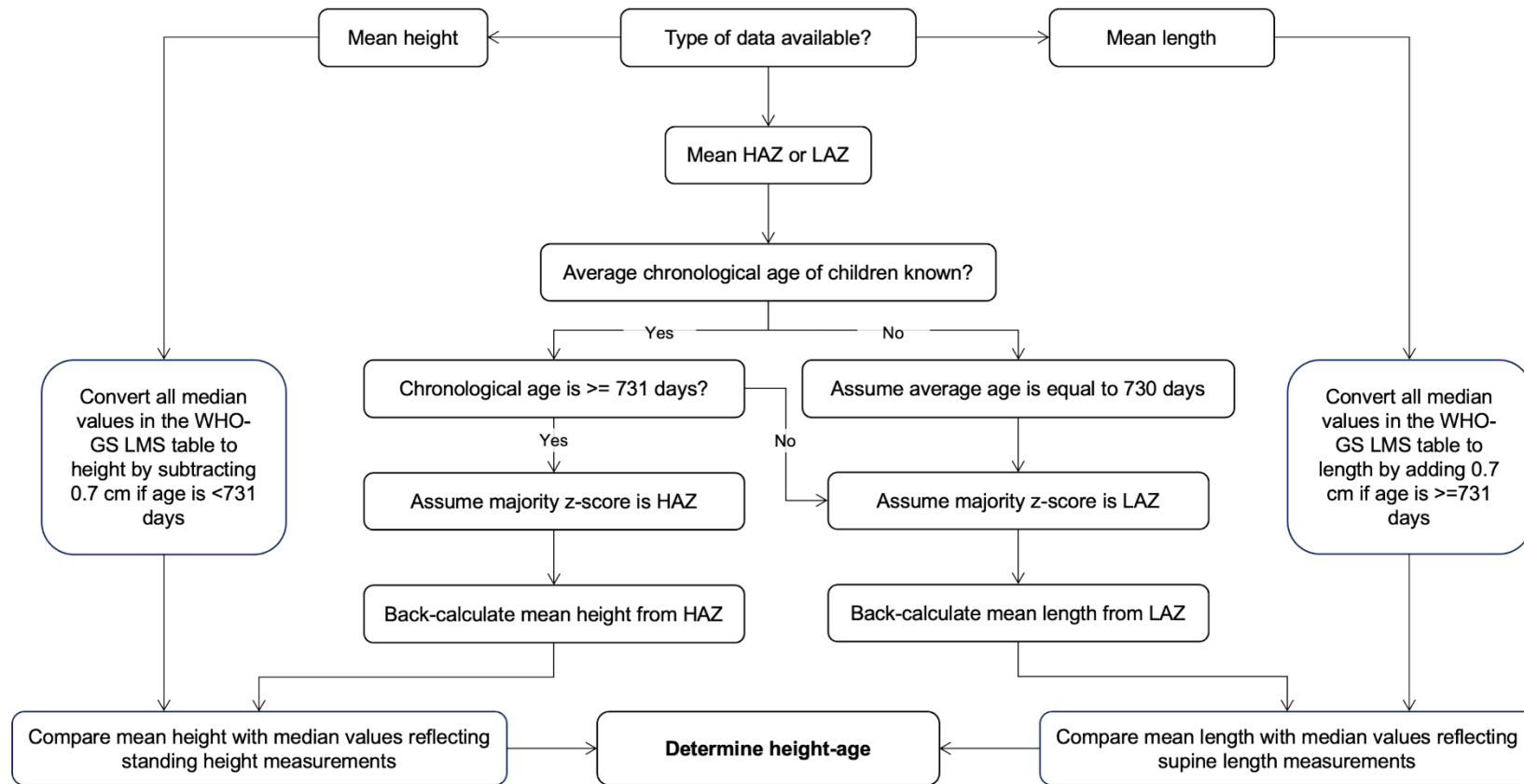


FIGURE 1 Workflow to determine height-age of children measured at or near two years of age. This workflow is intended to be used for studies in which a scheduled follow-up was at, or near, 2 years of age, as it addresses the 0.7 cm discontinuity in the WHO-GS median length/height values before and after 2 years (731 days) of age (due to the transition from supine length to standing height measurement). “Assume majority z-score is HAZ” and “Assume majority z-score is

Height-age as an alternative growth outcome

LAZ” indicates the need to assume that this was the type of z-score that was calculated for a majority of children by the WHO macro for calculating z-scores. It is then assumed that either a standing height (for majority HAZ) or recumbent length (for majority LAZ) measurement is back-calculated from the z-score. This affects the subsequent adjustment made to the WHO-GS median values to ensure fair comparison between the observed height or length and reference values (WHO-GS median) when estimating height-age.

HAZ, height-for-age Z-score; LAZ, length-for-age Z-score; LMS, lambda-mu-sigma; WHO-GS, World Health Organization Growth Standard.

Height-age as an alternative growth outcome

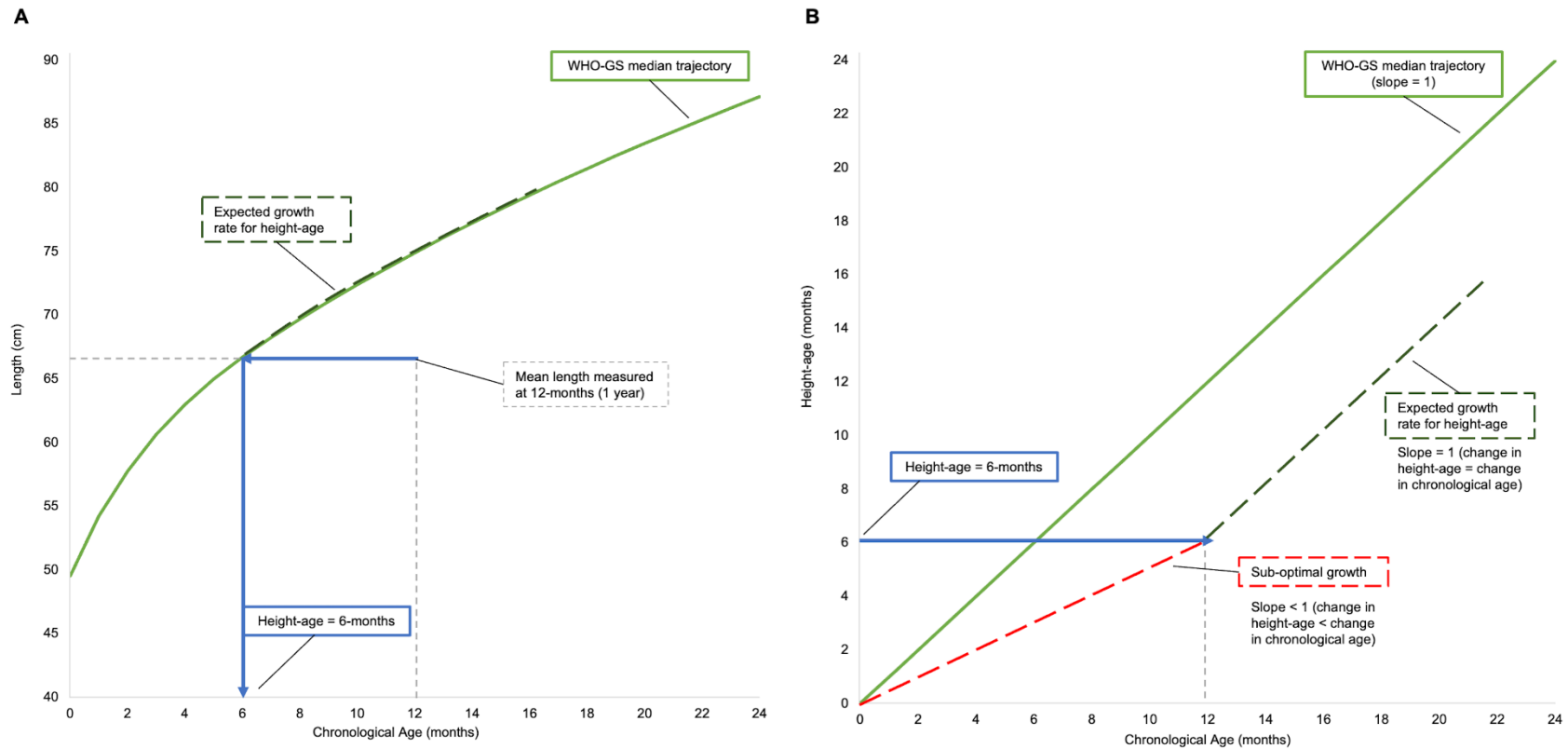


FIGURE 2 Schematic representation of the correspondence between the expected growth rate for baseline height-age given A) a conventional length-for-age curve and B) a plot of height-age as a function of chronological age. Assuming a hypothetical group of 1-year-old children who have experienced linear growth faltering, such that the average height-age is <1 year, were measured at the start of an intervention, panel A) shows that the expected growth

Height-age as an alternative growth outcome

rate for children's baseline height-age changes at any given age on the length-for-age scale, whereas panel B) shows that the expected growth rate on the height-age-for-age scale is a constant relationship across ages (slope = 1).

WHO-GS, World Health Organization Growth Standard.

Data source: WHO. WHO Child Growth Standards STATA igrowup package [Internet]. 2022 [cited 2023 Jul 19]. Available from: https://github.com/unicef-drp/igrowup_update

Height-age as an alternative growth outcome

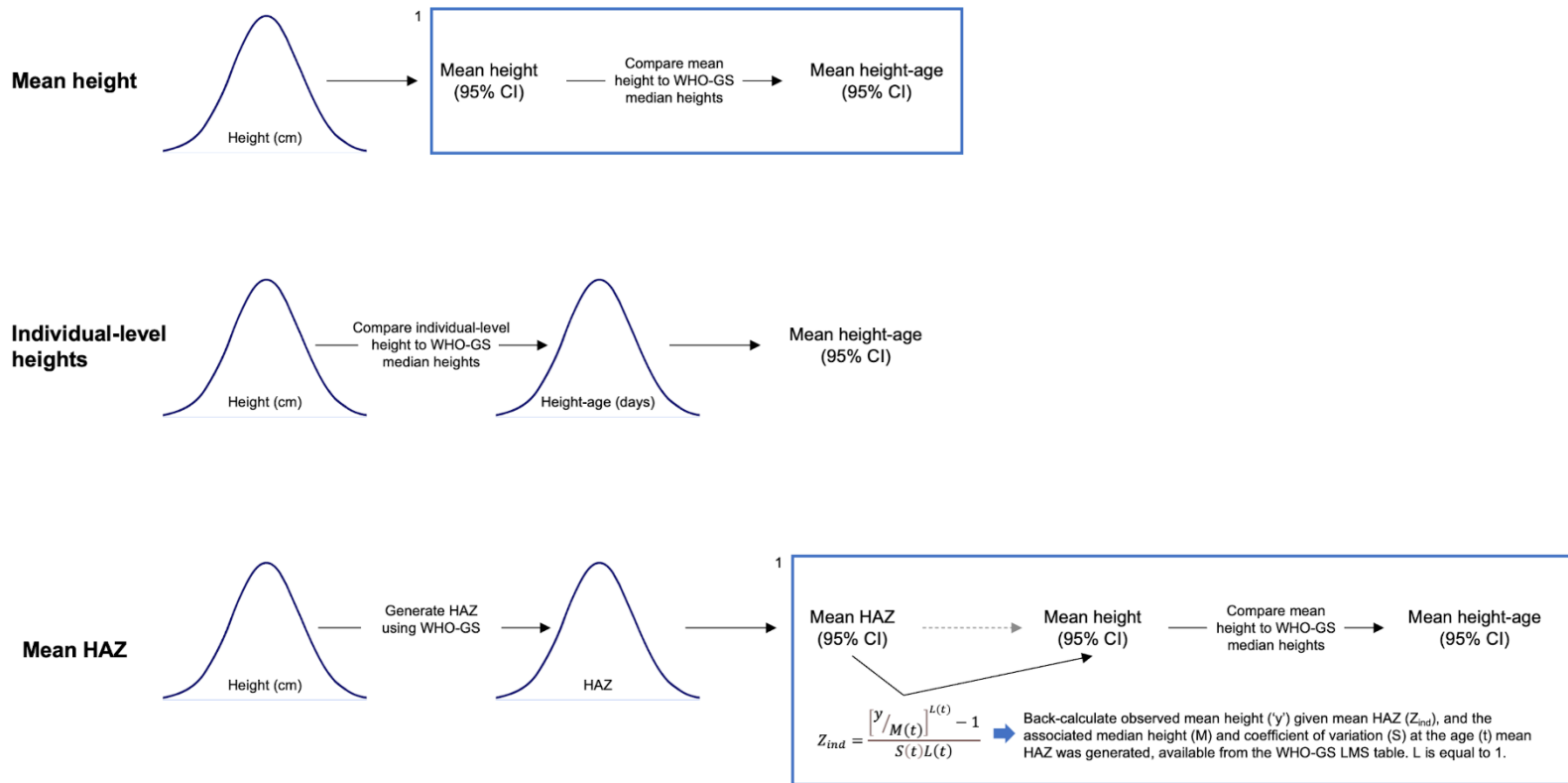


FIGURE 3 Approaches to derive height-age estimates based on available data. ‘Mean height’ represents using mean height or length to derive height-age; ‘Individual-level heights’ represents using individual-level heights or lengths to derive individual-level height-ages; ‘Mean HAZ’ represents using mean HAZ or LAZ to derive height-age. The normal distributions are used to depict individual-level child data from the MDIG trial and BONUSKids study. ¹The steps within the

Height-age as an alternative growth outcome

box represent the assumption that only mean height or HAZ are available for deriving height-age; the preceding steps are included to show how mean height and HAZ were generated from individual-level data.

CI, confidence interval; HAZ, height-for-age z-score; WHO-GS, World Health Organization Growth Standard.

Height-age as an alternative growth outcome

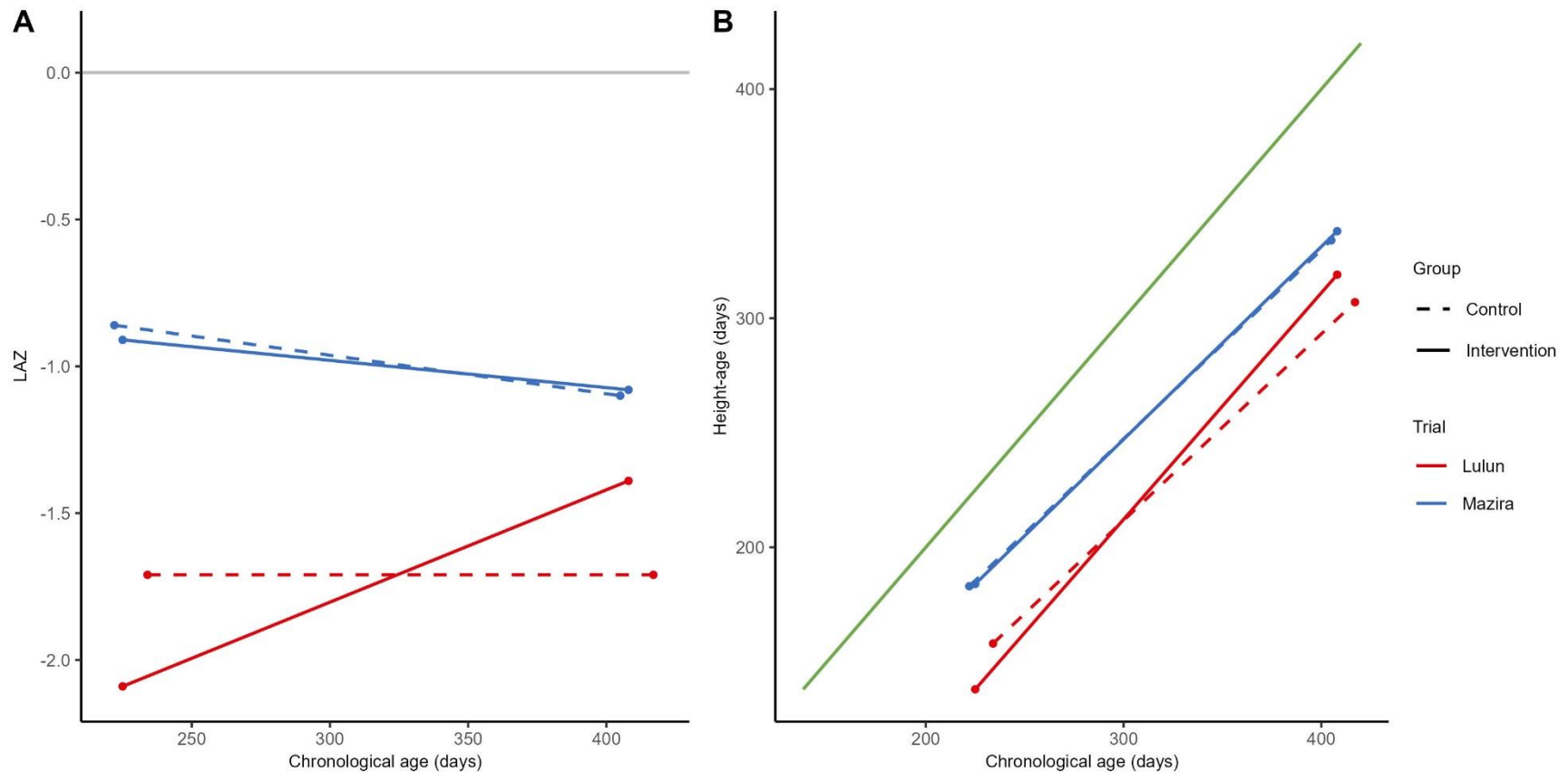


FIGURE 4 Linear growth from the start to end of the intervention period in the Lulun and Mazira egg supplementation trials expressed conventionally using mean LAZ (Panel A) and height-age (Panel B). The grey line in panel A) represents the WHO Growth Standards (WHO-GS) median (LAZ=0). The green line in panel B) represents the WHO-GS median when expressed as height-age as a function of chronological age. LAZ, length-for-age Z-score.

Height-age as an alternative growth outcome

Data sources:

Iannotti LL, Lutter CK, Stewart CP, Gallegos Riofrío CA, Malo C, Reinhart G, et al. Eggs in Early Complementary Feeding and Child Growth: A Randomized Controlled Trial. *J Pediatr*. 2017;140(1).

Stewart CP, Caswell B, Iannotti L, Lutter C, Arnold CD, Chipatala R, et al. The effect of eggs on early child growth in rural Malawi: the Mazira Project randomized controlled trial. *Am J Clin Nutr*. 2019;110(4):1026-33.

Height-age as an alternative growth outcome

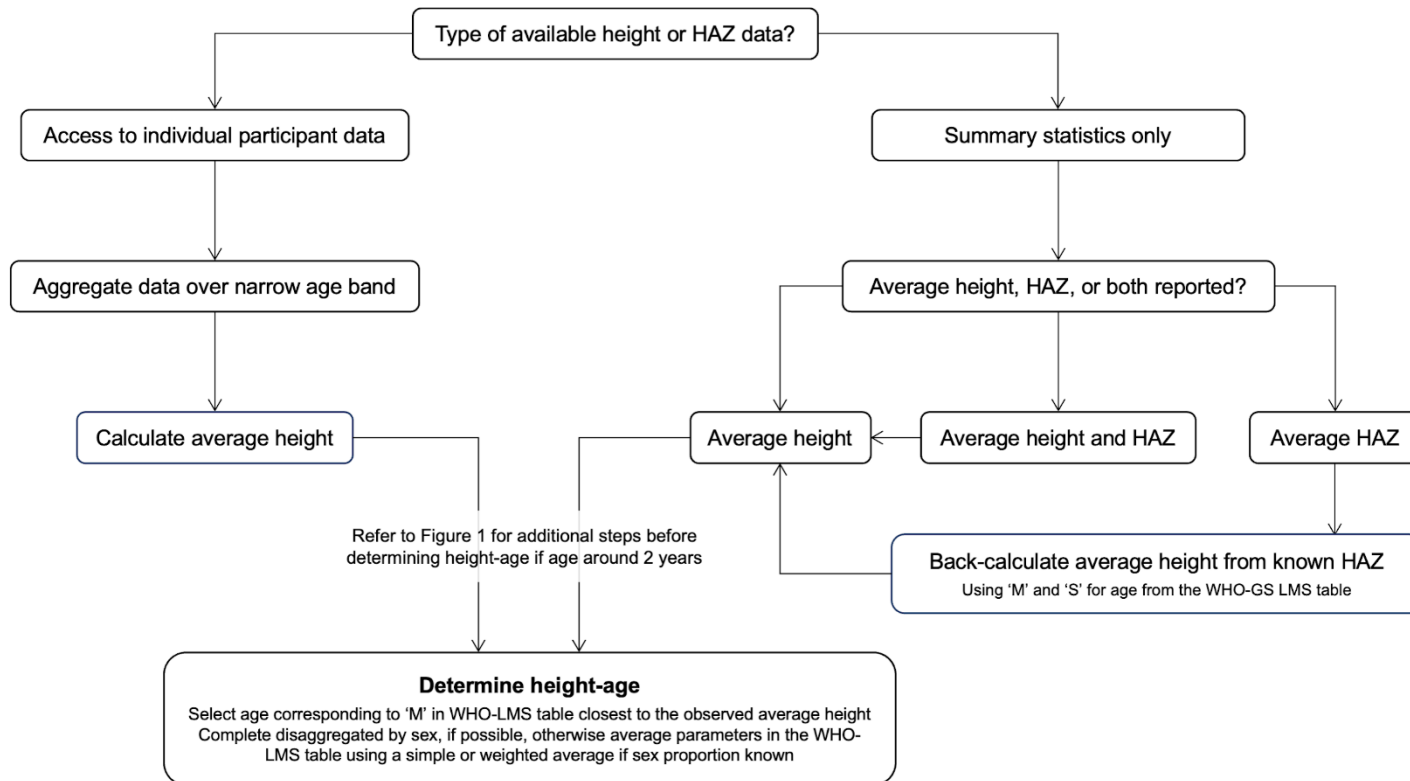


FIGURE 5 Workflow for determining height-age based on methods developed in this work. Height and HAZ are used in this figure to represent measured stature (height or length) of children.

LMS, lambda-mu-sigma; M, WHO-GS median height; S, WHO-GS coefficient of variation; WHO-GS, World Health Organization Growth Standard.