

Childhood trauma as a mediator between autistic traits and depression: evidence from the ALSPAC birth cohort

Authors:

Jack F G Underwood^{1,2,*}, Paul Madley-Dowd^{2,3,4}, Christina Dardani^{2,3}, Laura Hull², Alex S F Kwong^{2,3,5}, Rebecca M Pearson^{2,3,4,6}, Jeremy Hall¹, Dheeraj Rai^{2,3,4,7}

Affiliations:

¹ Neuroscience and Mental Health Innovation Institute, Cardiff University, United Kingdom

² Population Health Sciences, Bristol Medical School, University of Bristol, United Kingdom

³ MRC Integrative Epidemiology Unit (IEU), Bristol, United Kingdom

⁴ National Institute of Health Research Biomedical Research Centre, University of Bristol, United Kingdom

⁵ Division of Psychiatry, Centre for Clinical Brain Sciences, University of Edinburgh, United Kingdom

⁶ Department of Psychology, Manchester Metropolitan University, Manchester, United Kingdom

⁷ Avon and Wiltshire Partnership NHS Mental Health Trust, Bristol, United Kingdom

* Corresponding author: Dr Jack Underwood; email address: underwoodj4@cardiff.ac.uk

☒ Joint first author

Abstract

Background: Autism and autistic traits have been associated with greater risk of childhood trauma and adulthood psychopathology. However, the role that childhood trauma plays in the association between autism, autistic traits and depression in adulthood is poorly understood.

Methods: We used a UK-based birth cohort with phenotype and genotype data on autism, autistic traits, childhood trauma and depression in up to 9,659 individuals prospectively followed up from birth until age 28 years. Using mixed-effects growth-curve models, we assessed trajectories of depression symptoms over time according to the presence or absence of autism/ autistic traits and explored whether these differed by trauma exposure. We further investigated the association between autism/ autistic traits and depression in adulthood using confounder-adjusted logistic regression models and undertook mediation analyses to investigate the relationship with childhood trauma.

Results: All autism variables demonstrated increased depressive symptom trajectories between ages 10-28 years. Social communication difficulties (SCDs) were the most strongly associated with a depression diagnosis in adulthood (age 24 OR= 2.15; 95%CIs: 1.22-3.76). Trauma and autistic traits combined to further increase depression symptom scores. Mediation analyses provided evidence for direct pathways between autistic traits and increased risk of depression alongside indirect pathways through increased risk of trauma.

Conclusions: Autism/ autistic traits increase the odds of experiencing childhood trauma and of being diagnosed with depression at age 18 and 24. Depressive symptom trajectories emergent in childhood persist into adulthood. The combined effect of SCDs and childhood trauma is greater than the individual exposures, suggesting worse depression symptomatology following trauma in individuals with SCDs.

Keywords: ALSPAC, autism, depression, childhood trauma

Lay abstract

Autism and autistic traits are linked to higher chances of experiencing traumatic events in childhood and having mental health problems as an adult. However, we don't understand how childhood trauma influences the link between autistic traits and depression in adulthood.

Using data from a large birth cohort study in the UK, we tracked up to 9,659 people from birth until age 28 years. We looked at the links between autism, autistic traits, childhood trauma, and depression.

We found that all features related to autism were associated with more symptoms of depression between the ages of 10 and 28. Among these, difficulties in social communication were the most strongly connected to depression when they reached adulthood, more than doubling the risk.

We discovered that when childhood difficulties and autistic traits came together, the risk of experiencing depression symptoms increased even more. We showed that autistic traits raised the chances of depression both directly and indirectly, by increasing the chance of experiencing childhood trauma.

Taken together, our research shows that autism and autistic traits increase the likelihood of experiencing childhood trauma and being diagnosed with depression at ages 18 and 24. Signs of depression that appear in childhood tend to persist into adulthood. The combination of social communication difficulties and childhood trauma has a stronger impact on depression symptoms, indicating that people with these traits may experience more severe depression after facing traumatic events.

Background

Autism spectrum disorder (henceforth autism, using identity-first language, per community preference¹⁻³) is a lifelong neurodevelopmental condition characterised by difficulties with reciprocal social communication and repetitive or restricted interests and behaviours⁴. Its component traits extend into the general population^{5,6}, and potentially have distinct aetiologies conferred through environmental, common and rare genetic risk factors⁶⁻⁸. Substantial evidence has suggested that depression occurs more commonly in autistic individuals, with pooled lifetime prevalence estimated at 11-37%^{9,10}, and some evidence of shared genetic architecture between autism and depression ($r_g=0.412$; $p=1.40 \times 10^{-25}$)^{11,12}. In these individuals severity of social communication difficulties has been identified to be a core link to depression symptom severity and a key driver of quality of life^{13,14}.

Extensive work has suggested a robust association between childhood trauma and mental health difficulties in later life¹⁵⁻¹⁹. This is particularly strong for depression, with odds ratios for later depressive illness following any childhood trauma ranging from 1.4 to 2.9 in the general population²⁰⁻²³. Linkage studies of educational and healthcare records have shown that autistic children are at an elevated risk of maltreatment [odds ratio 1.86 (95%CI 1.36-2.52; $p<0.001$) in autistic children compared to matched general population controls], reinforcing results of qualitative and quantitative work in health care settings²⁴⁻²⁸. It seems therefore that autistic individuals are at an elevated risk of childhood trauma and subsequent depression, however studies are limited. In earlier work we reported that bullying explained a substantial proportion of the increased risk of depression in autism up to age 18¹⁴. A subsequent survey of 902 parents of autistic children suggested lower socioeconomic status and poorer parental mental health were linked to elevated numbers of childhood trauma, and that childhood trauma was linked to later wellbeing including an association with increased anxiety and depression²⁹. This supports studies which identified that bullying is associated with ADHD and depression in autistic children³⁰. Genetically informed designs in large

adult samples (UK Biobank), suggest that self-harm and suicidal behaviour and ideation have genetic correlations with autism, and this effect may be moderated by childhood trauma³¹. Here we substantially expand previous work, using an additional 10 years of follow-up data in the ALSPAC cohort to assess the association between autism and depression up to 28 years of age, account for potential genetic confounding, and explore whether any associations are mediated by childhood traumas.

Methods

Study design and participants

We used data from the ALSPAC birth cohort, which contains detailed prospectively-collected information on parents and children from pregnancy through to adulthood³²⁻³⁴. ALSPAC recruited pregnant women from Bristol and surroundings (Avon), UK, with expected dates of delivery 1st April 1991 to 31st December 1992, with an initial number of pregnancies enrolled of 14,541 (Figure 1). Further recruitment and enrolment increased data collected after the age of seven to 15,447 pregnancies, with 14,901 children alive at one year of age. 26 participants withdrew consent and are not included in this study. We included one child per multiple birth pregnancy to ensure statistical independence of observations (186 removed). Of the remaining children, eligibility criteria for inclusion in the current study included having at least one measure of autism diagnosis or autism-associated trait and at least one measure of depression or depressive symptoms at any time point (Figure 1).

Study data were collected and managed using REDCap electronic data capture tools hosted at the University of Bristol. REDCap (Research Electronic Data Capture) is a secure, web-based software platform designed to support data capture for research studies³⁵. Further information on the ALSPAC cohort is available on the study website (<http://www.bristol.ac.uk/alspac>)^{32,33}, which contains details of all the data that is available through a fully searchable data dictionary and variable search tool (<http://www.bristol.ac.uk/alspac/researchers/our-data/>).

Ethical approval

Ethical approval for the study (project B4018) was obtained from the ALSPAC Ethics and Law Committee and the Local Research Ethics Committees. Informed consent for the use of data collected via questionnaires and clinics was obtained from participants following the recommendations of the ALSPAC Ethics and Law Committee.

[Figure 1]

Measures

We briefly describe information on our exposure, outcome, mediator and confounder variables here. Further details of all measures can be found in the Supplementary Material.

Ascertainment of autism and autism-associated traits (exposure)

We utilised measures for autism diagnoses, autism associated traits and a polygenic score (PGS) for autism. Autistic children have previously been identified in the ALSPAC cohort using a multi-source approach, including review of clinical and educational records against International Classification of Diseases, 10th Revision [ICD-10] criteria^{14,35,36}. We included a measure of broad autism phenotype, the autism factor mean score, derived using factor analysis in ALSPAC as the mean of seven factors predictive of an autism diagnosis³⁷. We further used four independent trait predictors of autism which have been identified as being the best of 93 measures to predict ICD-10 autism diagnosis³⁷: the social communication difficulties trait (SCDs) - assessed at age 7 years via the Social Communication Disorder Checklist (SCDC)³⁸; the speech coherence trait (SC) - assessed at age 9 years via a subscale of the Children's Communication Checklist³⁹; the repetitive behaviour trait (RRB) - assessed at age 5 years via parental questionnaire response⁴⁰; and the low sociability trait (LS) - assessed at age 3 years via a subscale of the Emotionality, Activity and Sociability Temperament Scale⁴¹. For each autism measure the top decile scores were used to indicate case status in a binary measure of the trait. Finally, for the 6,380 children with genome-wide association (GWAS) data, we generated polygenic scores (PGS) for autism using standard QC methodologies at 13 p-thresholds in

PLINK following the approach described in Ripke *et al*⁴², using the 2019 Grove *et al* Psychiatric Genomics Consortia for Autism Spectrum Disorder dataset as a discovery sample¹². A threshold *p*-value of 0.5 was used for analyses as it explained maximum liability in our dataset⁴²⁻⁴⁵.

Ascertainment of depression (outcome)

We investigated both depressive symptom scores and formal clinical diagnosis of depression. The Short Mood and Feelings Questionnaire (SMFQ)⁴⁶, designed to measure depressive symptoms in children and adolescents, was administered at 11 time points between ages 10-28 years via postal questionnaires or in clinics⁴⁷. The computerized version of the Clinical Interview Schedule-Revised (CIS-R)⁴⁸ was also administered at ages 18 and 24 years to identify individuals with an ICD-10 diagnosis of depression.

Ascertainment of childhood trauma (mediator)

The childhood trauma measures used in this study have been described in detail elsewhere⁴⁹. In brief, we used a contemporaneous measure between ages 11-17 based on responses to 57 questions from mothers and children in prospective questionnaires and interviews about a range of potential childhood traumas covering the following categories: domestic violence, physical abuse, emotional abuse, emotional neglect, sexual abuse and bullying. These measures were supplemented with retrospective self-reported questionnaire data obtained at age 22, pertaining to events between ages 11-17⁴⁹.

Potential confounders

We considered the following covariates as they are associated with both autism and depression: (1) child sex, (2) maternal parity, (3) maternal occupational class, (4) mother's highest educational attainment, (5) financial problems when the child was 8 months old, (6) maternal age at delivery, (7) maternal Crown-Crisp anxiety score at 18 weeks' gestation and 8 weeks after delivery⁵⁰, (8) maternal antenatal and postnatal depression symptoms scale⁵¹, and (9) accommodation type¹⁴. We further examined potential genetic confounding of associations between autism, depression and

childhood trauma using a PGS for depression generated using the 2018 Psychiatric Genomics Consortia for Major Depressive Disorder dataset as the discovery sample following the same methodology as for the autism PGS⁵².

Statistical analysis

[Figure 2]

We provide descriptive statistics of the sample separated by presence of an autism diagnosis or autism-associated trait. We briefly describe the statistical analysis below with further details of all models and derivation of trajectories provided in the Supplementary Material. A visual aid for all analyses is presented in Figure 2. All analyses were conducted using Stata/MP 17.0 (34).

We first examined trajectories of depressive symptoms (continuous SMFQ scores) between ages 10-28 years among those with and without each autistic trait, estimated using mixed-effects growth curve models. To explore the influence of childhood trauma on depression trajectories we repeated these models using four categories representing the combination of the presence or absence of both autistic traits and trauma variables⁵³.

We then assessed the association between autistic traits and i) ICD-10 depression diagnosis at age 18 and 24 and ii) each trauma type at ages 11-17 using logistic regression. We ran models unadjusted, adjusted for all potential confounders and again with further adjustment for depression PGS in those with genetic data. Finally, we assessed whether associations between autistic traits and depression diagnosis were mediated by trauma. Models were fit for all autistic traits with an identified association with depression diagnosis, and all trauma types associated with the autistic trait. We used the parametric g-formula and Monte Carlo simulations to estimate the natural direct effect (NDE) of autistic traits on depression, and the natural indirect effect (NIE) that was mediated via trauma, using the g-formula package in STATA⁵⁴.

We provide details of our missing data assessment in the Supplementary Methods. To account for potential bias from missing data in logistic regression, we performed multiple imputation with chained equations using 100 imputations and 25 burn-in iterations, with both imputed and complete case results presented⁵⁵⁻⁵⁷.

Results

The total sample size was 9,517 (47.5% male). Full characteristics of our study sample, including auxiliary and outcome variables are listed in Supplementary Table S6. Those with an autism diagnosis or in the top decile for autism trait groups were more likely to be male and had a consistently higher prevalence of reported childhood trauma for all trauma domains, particularly bullying and victimisation, excluding sexual abuse.

When assessing trajectories of depression symptoms, participants with an autism diagnosis or elevated autism trait measures in childhood had higher model-predicted scores (indicating greater depression) at age 10 (Figure 3, Supplementary Table S7 and Supplementary Figure S1). These elevated symptom scores continued across all time points, demonstrating a consistent uplift in trajectory through to adulthood, although with large overlaps of confidence intervals at many ages. The greatest increase in model-predicted depression symptoms across childhood and into adulthood was seen in those scoring highest for SCD (Supplementary Table S7), followed by those with the highest autism factor mean score.

[Figure 3]

Both SCDs and exposure to any trauma resulted in higher model-predicted depression symptoms scores across all age ranges (10-28) compared to those with no trauma or lower SCDs (Figure 4, Supplementary Table S8). When individuals with SCDs had experienced trauma, their scores were generally predicted to be greater than any other individual group, although trajectories varied and had large confidence intervals. This pattern applied across all individual trauma sub-domains and

autism trait variables, with notable increases in depression scores between ages 12-20 of those with social communications difficulties who had experienced sexual or emotional abuse (Supplementary Results Figures S2-7).

[Figure 4]

In logistic regression models of depression diagnosis, individuals with SCDs had greater odds of depression at age 18 (imputed sample; adjusted odds ratio [adj.OR]=1.76, 95%CI 1.23-2.53; Table 1) and 24 years of age (imputed sample; adj.OR=1.60, 95%CI 1.07-2.39) than those without SCDs. Higher autism PGS was associated with increased risk of depression at age 18 but not at age 24. By contrast RRBs were associated with an increased risk of depression at 24 but not at age 18. None of the other autistic traits, autism diagnosis or autism factor mean score were clearly associated with a depression diagnosis at age 18 or 24, although 95%CI were wide, probably reflecting small numbers.

[Table 1]

Autism diagnosis plus a range of autistic traits were associated with increased risk of traumatic experiences between ages 11-17. SCDs were associated with increased odds of experiencing physical abuse (adj.OR=1.45, 95%CI 1.15-1.83; Supplementary Table S9), emotional abuse (adj.OR=1.99, 95%CI 1.50-2.63), and bullying (adj.OR=1.74, 95%CI 1.42-2.13). Elevated autism factor mean scores were associated with increased odds of experiencing emotional abuse (adj.OR=1.35, 95%CI 1.00-1.81), emotional neglect (adj.OR=1.92, 95%CI 1.41-2.61), and bullying (adj.OR=1.81, 95%CI 1.49-2.21), demonstrating the different patterns of trauma associated with each autism measure.

We further examined whether the associations between autistic traits in early childhood and depressive symptoms in adulthood were mediated by trauma in childhood (Supplementary Tables S10 & S11). We found evidence that trauma between ages 11 and 17 mediated associations between SCDs and depression diagnosis at age 18 (Natural Direct Effect (NDE): OR=1.54, 95%CI 0.96-

2.49; Natural Indirect Effect (NIE): OR=1.09, 95%CI 1.03-1.13; Proportion Mediated (PM)=16.54%) and 24 (NDE: OR=1.67, 95%CI 1.02-2.71; NIE: OR=1.09, 95%CI 1.04-1.15; PM=14.84%).

Discussion

In this longitudinal cohort study, we examined the interplay of autism, childhood trauma and depression symptom severity across development. We found that specific autistic traits, particularly SCDs in childhood, were associated with elevated depression symptom trajectories from age 10-28 and clinical diagnosis of depression in adulthood. Most autism variables analysed, including autism PGS but excluding low sociability, were associated with exposure to any childhood trauma. SCDs and autism factor mean score demonstrated the strongest association with any trauma and displayed specific autism trait to trauma subtype associations. These findings were robust to adjustment for potential confounders including polygenic scores for depression. Our trajectory analyses implied individuals with SCDs experience worse depression outcomes following trauma, as their depression symptoms scores were increased beyond either SCD or trauma independently.

The most common co-occurring conditions in autism are anxiety and depression, occurring at lifetime prevalence of 42% and 37% respectively¹⁰. We previously demonstrated in the ALSPAC dataset that SCDs are a key driver of depression in autistic children and young people¹⁴. This study extends on that work and is the first to show using a longitudinal methodology that depression symptoms associated with SCDs continue to be elevated into adulthood. These findings bolster a 2020 systematic review which postulated a model where SCDs confer depression risk in autistic individuals via social motivation, loneliness and isolation⁵⁸. Here we observed that elevated depression symptoms scores associated with some autistic traits fell from the age of 24 back to levels estimated in the wider sample. This likely reflects attrition from the study of those with the worst difficulties. An alternative hypothesis may be as autistic individuals grow into adulthood different features of their autism, such as RRBs, become relevant to risk of depression.

Considerable evidence suggests that autistic individuals experience both more traumatic experiences and experience them with greater intensity^{26,28,59,60}. We found differences in associations between autistic traits and trauma domains, with the strongest effect from SCDs, continuing into adulthood. SCDs may be especially important as individuals might consequently struggle understanding and communicating their emotions after trauma. This may make seeking support harder, with reports from experts by experience that neurodiverse reactions to trauma are often treated differently⁶¹. The effect of trauma on subsequent mental health outcomes in autism has rarely been studied, despite evidence in the general population to suggest a dramatic impact^{20,27}. Studies predominantly investigate bullying in children^{14,29,30}, with a small number examining the full range of trauma domains or following up into adulthood^{31,60,62}. Two previous studies have attempted to model relationships between these exposures. Hollocks *et al.* used structural equation modelling in 115 participants from a population-based longitudinal study to demonstrate an association between childhood trauma and rates of emotional and behavioural symptoms in adulthood⁶³. Shin, Wright and Johnston concluded from longitudinal data in older adults (50+) that autism polygenic score alone could not predict co-occurring mental health outcomes, but was a factor in outcomes when combined with early life experiences⁶⁴. As here, autism PGS increased risk of mental health conditions when combined with childhood trauma⁶⁵. The finding of direct and indirect effects between trauma, autism and depression is therefore novel but unsurprising, and further investigation into how these mediate and moderate at different ages would be enlightening. The current study improves on previous work through a longitudinal population-based cohort with a further 10 years of data into adulthood, and its incorporation of a broad range of confounders in modelling and multiple imputation to reduce the possibility of attrition bias. This population introduces limitations, as only a small number of participants (n=112) had an autism diagnosis, although this is consistent with the ~1% population prevalence estimates of autism⁶⁶. We used further measures with prior evidence in ALSPAC to identify autistic traits and phenotypic features in a binarized manner across the whole population^{14,36}, however our estimates remain limited by the

low prevalence of trauma in combination with these measures. To reduce exposure-mediator overlap we have ensured autistic traits are measured at prior time periods to trauma domains. The possibility of some reverse causation cannot be excluded; if participants unmeasured trauma exacerbated autistic traits or features (such as worsened social communication) and this aggravated depression symptomatology. There is also the possibility trauma itself causes the traits assessed, thus we are measuring the assessed phenotype consistent with an autism diagnosis. Although this is a longitudinal study the possibility of residual confounding cannot be excluded, and our estimates of the proportion mediated include considerable uncertainty.

Conclusions

Our findings demonstrate that autism, autism genetic liability and most autistic traits were associated with increased depression symptoms from early childhood to age 28, increased odds of childhood trauma, and increased odds of clinical diagnosis of depression in early adulthood. Social communication difficulties are particularly important, conferring the greatest risk for childhood trauma and the greatest increase in depression symptoms. Exposure to childhood trauma further increases depression symptom scores in autistic individuals, with modelling demonstrating that the increased risk of depression observed in autism is partially indirectly caused by increased childhood trauma. These findings add to evidence demonstrating autistic people are at greater risk of childhood trauma, resulting in more severe depressive outcomes. Better understanding of trauma responses in autistic adults may guide targeted interventions, improving subsequent mental health.

Acknowledgements

We are extremely grateful to all the families who took part in this study, the midwives for their help in recruiting them, and the whole ALSPAC team, which includes interviewers, computer and laboratory technicians, clerical workers, research scientists, volunteers, managers, receptionists and nurses. We thank Dr Hein Heuvelman, for his earlier versions of statistical code updated for this work.

Funding

The UK Medical Research Council and the Wellcome Trust (Grant ref: 217065/Z/19/Z) and the University of Bristol provide core support for ALSPAC. This publication is the work of the authors and Jack F G Underwood and Paul Madley-Dowd will serve as guarantors for the contents of this paper. This research was funded in whole, or in part, by the Wellcome Trust [222849/Z/21/Z, 227063/Z/23/Z, and 204813/Z/16/Z]. For the purpose of Open Access, the author has applied a CC BY public copyright licence to any Author Accepted Manuscript version arising from this submission. This study was supported by the National Institute for Health and Care Research Bristol Biomedical Research Centre at the University of Bristol and University Hospitals Bristol and the Weston NHS Foundation Trust. The views expressed are those of the author(s) and not necessarily those of the NIHR or the Department of Health and Social Care. J.F.G.U. was supported by a Wellcome Trust GW4-CAT Clinical Doctoral Fellowship (222849/Z/21/Z), and this research was funded in part by the Wellcome Trust. DR and PMD acknowledge support via the NIH (1R01NS107607) and the Baily Thomas Charitable Fund. DR, PMD and CD are members of the UK Medical Research Council (MRC) Integrative Epidemiology unit, which is funded by the MRC (MC_UU_00032/02 and MC_UU_00032/6) and the University of Bristol. LH is supported by the Elizabeth Blackwell Institute (incorporating Wellcome Trust grant 204813/Z/16/Z), University of Bristol, and the Rosetrees Trust. ASFK is supported by a Wellcome Early Career Award (227063/Z/23/Z). A comprehensive list of grants funding is available on the ALSPAC website (<http://www.bristol.ac.uk/alspac/external/documents/grant-acknowledgements.pdf>). The funding organisations had no role in the design and conduct of the study; collection, management, analysis and interpretation of the data; preparation, review or approval of the manuscript; and decision to submit the manuscript for publication.

References

1. Bury SM, Jellett R, Spoor JR, Hedley D. "It Defines Who I Am" or "It's Something I Have": What Language Do [Autistic] Australian Adults [on the Autism Spectrum] Prefer? *Journal of Autism and Developmental Disorders*. Published online February 28, 2020:1-11. doi:10.1007/s10803-020-04425-3
2. Buijsman R, Begeer S, Scheeren AM. 'Autistic person' or 'person with autism'? Person-first language preference in Dutch adults with autism and parents: <https://doi.org/10.1177/13623613221117914>. Published online August 11, 2022:136236132211179. doi:10.1177/13623613221117914
3. Kenny L, Hattersley C, Molins B, Buckley C, Povey C, Pellicano E. Which terms should be used to describe autism? Perspectives from the UK autism community. *Autism*. 2015;20(4):442-462. doi:10.1177/1362361315588200
4. Lai MC, Lombardo MV, Baron-Cohen S. Autism. In: *The Lancet*. Vol 383. Elsevier; 2014:896-910. doi:10.1016/S0140-6736(13)61539-1
5. Robinson EB, St Pourcain B, Anttila V, et al. Genetic risk for autism spectrum disorders and neuropsychiatric variation in the general population. *Nature genetics*. 2016;48(5):552. doi:10.1038/NG.3529
6. Bralten J, van Hulzen KJ, Martens MB, et al. Autism spectrum disorders and autistic traits share genetics and biology. *Molecular Psychiatry*. 2018;23(5):1205-1212. doi:10.1038/mp.2017.98
7. Antaki D, Guevara J, Maihofer AX, et al. A phenotypic spectrum of autism is attributable to the combined effects of rare variants, polygenic risk and sex. *Nature Genetics* 2022. Published online June 2, 2022:1-9. doi:10.1038/S41588-022-01064-5
8. Warrier V, Zhang X, Reed P, et al. Genetic correlates of phenotypic heterogeneity in autism. *Nature Genetics* 2022. 2022;54(9):1293-1304. doi:10.1038/s41588-022-01072-5
9. Lai MC, Kassee C, Besney R, et al. Prevalence of co-occurring mental health diagnoses in the autism population: a systematic review and meta-analysis. *Lancet Psychiatry*. 2019;6(10):819-829. doi:10.1016/S2215-0366(19)30289-5
10. Hollocks MJ, Lerh JW, Magiati I, Meiser-Stedman R, Brugha TS. Anxiety and depression in adults with autism spectrum disorder: a systematic review and meta-analysis. *Psychological Medicine*. 2019;49(4):559-572. doi:10.1017/S0033291718002283
11. Martin J, Taylor MJ, Lichtenstein P. Assessing the evidence for shared genetic risks across psychiatric disorders and traits. *Psychological Medicine*. 2018;48(11):1759-1774. doi:10.1017/S0033291717003440
12. Grove J, Ripke S, Als TD, et al. Identification of common genetic risk variants for autism spectrum disorder. *Nature Genetics*. 2019;51(3):431-444. doi:10.1038/s41588-019-0344-8
13. Oakley BF, Tillmann J, Ahmad J, et al. How do core autism traits and associated symptoms relate to quality of life? Findings from the Longitudinal European Autism Project: *Autism*. 2020;25(2):389-404. doi:10.1177/1362361320959959

14. Rai D, Culpin I, Heuvelman H, et al. Association of autistic traits with depression from childhood to age 18 years. *JAMA Psychiatry*. 2018;75(8):835-843. doi:10.1001/jamapsychiatry.2018.1323
15. Anda RF, Felitti VJ, Bremner JD, et al. The enduring effects of abuse and related adverse experiences in childhood. *European Archives of Psychiatry and Clinical Neuroscience* 2005 256:3. 2005;256(3):174-186. doi:10.1007/S00406-005-0624-4
16. Felitti VJ, Anda RF, Nordenberg D, et al. Relationship of Childhood Abuse and Household Dysfunction to Many of the Leading Causes of Death in Adults: The Adverse Childhood Experiences (ACE) Study. *American Journal of Preventive Medicine*. 1998;14(4):245-258. doi:10.1016/S0749-3797(98)00017-8
17. Sonuga-Barke EJS, Kennedy M, Kumsta R, et al. Child-to-adult neurodevelopmental and mental health trajectories after early life deprivation: the young adult follow-up of the longitudinal English and Romanian Adoptees study. *The Lancet*. 2017;389(10078):1539-1548. doi:10.1016/S0140-6736(17)30045-4
18. Shonkoff JP, Garner AS, Siegel BS, et al. The Lifelong Effects of Early Childhood Adversity and Toxic Stress. *Pediatrics*. 2012;129(1):e232-e246. doi:10.1542/PEDS.2011-2663
19. Baldwin JR, Wang B, Karwatowska L, et al. Childhood Maltreatment and Mental Health Problems: A Systematic Review and Meta-Analysis of Quasi-Experimental Studies. *AJP*. Published online January 11, 2023:appi.ajp.20220174. doi:10.1176/appi.ajp.20220174
20. Chapman DP, Whitfield CL, Felitti VJ, Dube SR, Edwards VJ, Anda RF. Adverse childhood experiences and the risk of depressive disorders in adulthood. *Journal of Affective Disorders*. 2004;82(2):217-225. doi:10.1016/J.JAD.2003.12.013
21. Cheong EV, Sinnott C, Dahly D, Kearney PM. Adverse childhood experiences (ACEs) and later-life depression: perceived social support as a potential protective factor. *BMJ Open*. 2017;7(9):e013228. doi:10.1136/BMJOPEN-2016-013228
22. Kessler RC, McLaughlin KA, Green JG, et al. Childhood adversities and adult psychopathology in the WHO World Mental Health Surveys. *The British Journal of Psychiatry*. 2010;197(5):378-385. doi:10.1192/BJP.BP.110.080499
23. Green JG, McLaughlin KA, Berglund PA, et al. Childhood Adversities and Adult Psychiatric Disorders in the National Comorbidity Survey Replication I: Associations With First Onset of DSM-IV Disorders. *Archives of General Psychiatry*. 2010;67(2):113-123. doi:10.1001/ARCHGENPSYCHIATRY.2009.186
24. Hoover DW, Kaufman J. Adverse childhood experiences in children with autism spectrum disorder. *Current Opinion in Psychiatry*. 2018;31(2):128-132. doi:10.1097/YCO.0000000000000390
25. McDonnell CG, Boan AD, Bradley CC, Seay KD, Charles JM, Carpenter LA. Child maltreatment in autism spectrum disorder and intellectual disability: results from a population-based sample. *Journal of Child Psychology and Psychiatry and Allied Disciplines*. 2019;60(5):576-584. doi:10.1111/jcpp.12993
26. Berg KL, Shiu CS, Acharya K, Stolbach BC, Msall ME. Disparities in adversity among children with autism spectrum disorder: a population-based study. *Developmental Medicine & Child Neurology*. 2016;58(11):1124-1131. doi:10.1111/DMCN.13161

27. Zarei K, Xu G, Zimmerman B, Giannotti M, Strathearn L. Adverse Childhood Experiences Predict Common Neurodevelopmental and Behavioral Health Conditions among U.S. Children. *Children* 2021, Vol 8, Page 761. 2021;8(9):761. doi:10.3390/CHILDREN8090761
28. Taylor JL, Gotham KO. Cumulative life events, traumatic experiences, and psychiatric symptomatology in transition-aged youth with autism spectrum disorder. *Journal of Neurodevelopmental Disorders*. 2016;8(1):1-11. doi:10.1186/S11689-016-9160-Y/TABLES/4
29. Rigles B. Trajectories of adverse childhood experiences among children with autism. *Research in Autism Spectrum Disorders*. 2021;89(October):101876. doi:10.1016/j.rasd.2021.101876
30. Zablotsky B, Bradshaw CP, Anderson C, Law PA. The association between bullying and the psychological functioning of children with autism spectrum disorders. *Journal of Developmental and Behavioral Pediatrics*. 2013;34(1):1-8. doi:10.1097/DBP.0B013E31827A7C3A
31. Warriar V, Baron-Cohen S. Childhood trauma, life-time self-harm, and suicidal behaviour and ideation are associated with polygenic scores for autism. *Molecular Psychiatry*. 2021;26(5):1670-1684. doi:10.1038/s41380-019-0550-x
32. Boyd A, Golding J, Macleod J, et al. Cohort Profile: the 'children of the 90s'--the index offspring of the Avon Longitudinal Study of Parents and Children. *International journal of epidemiology*. 2013;42(1):111-127. doi:10.1093/IJE/DYS064
33. Fraser A, Macdonald-wallis C, Tilling K, et al. Cohort Profile: the Avon Longitudinal Study of Parents and Children: ALSPAC mothers cohort. *International journal of epidemiology*. 2013;42(1):97-110. doi:10.1093/IJE/DYS066
34. Northstone K, Lewcock M, Groom A, et al. The Avon Longitudinal Study of Parents and Children (ALSPAC): an update on the enrolled sample of index children in 2019. *Wellcome Open Res*. 2019;4:51. doi:10.12688/wellcomeopenres.15132.1
35. Harris PA, Taylor R, Thielke R, Payne J, Gonzalez N, Conde JG. Research electronic data capture (REDCap)--a metadata-driven methodology and workflow process for providing translational research informatics support. *J Biomed Inform*. 2009;42(2):377-381. doi:10.1016/j.jbi.2008.08.010
36. Golding J, Ellis G, Gregory S, et al. Grand-maternal smoking in pregnancy and grandchild's autistic traits and diagnosed autism. *Scientific reports*. 2017;7:46179. doi:10.1038/srep46179
37. Steer CD, Golding J, Bolton PF. Traits contributing to the autistic spectrum. *PLoS ONE*. 2010;5(9):1-13. doi:10.1371/journal.pone.0012633
38. Skuse DH, Mandy WPL, Scourfield J. Measuring autistic traits: Heritability, reliability and validity of the Social and Communication Disorders Checklist. *British Journal of Psychiatry*. 2005;187(DEC.):568-572. doi:10.1192/bjp.187.6.568
39. Bishop DVM. Development of the Children's Communication Checklist (CCC): A Method for Assessing Qualitative Aspects of Communicative Impairment in Children. *The Journal of Child Psychology and Psychiatry and Allied Disciplines*. 1998;39(6):879-891. doi:10.1017/S0021963098002832
40. Goodman R, Ford T, Richards H, Gatward R, Meltzer H. The Development and Well-Being Assessment: Description and Initial Validation of an Integrated Assessment of Child and

Adolescent Psychopathology. *Journal of Child Psychology and Psychiatry*. 2000;41(5):645-655.
doi:10.1111/J.1469-7610.2000.TB02345.X

41. Buss AH, Plomin R. *Temperament (PLE: Emotion)*: *Early Developing Personality Traits*. Psychology Press; 2014. doi:10.4324/9781315745701
42. Ripke S, Neale BM, Corvin A, et al. Biological insights from 108 schizophrenia-associated genetic loci. *Nature*. 2014;511(7510):421-427. doi:10.1038/nature13595
43. Sadik A, Dardani C, Pagoni P, et al. Parental inflammatory bowel disease and autism in children. *Nature Medicine*. 2022;28(7):1406-1411. doi:10.1038/s41591-022-01845-9
44. Dardani C, Schalbroeck R, Madley-Dowd P, et al. Childhood Trauma As a Mediator of the Association Between Autistic Traits and Psychotic Experiences: Evidence From the Avon Longitudinal Study of Parents and Children Cohort. *Schizophrenia Bulletin*. Published online November 26, 2022:sbac167. doi:10.1093/schbul/sbac167
45. Autism Spectrum Disorders Working Group of The Psychiatric Genomics Consortium. Meta-analysis of GWAS of over 16,000 individuals with autism spectrum disorder highlights a novel locus at 10q24.32 and a significant overlap with schizophrenia. *Molecular Autism*. 2017;8(1):21. doi:10.1186/s13229-017-0137-9
46. Angold A, Erkanli A, Silberg J, Eaves L, Costello EJ. Depression scale scores in 8-17-year-olds: Effects of age and gender. *Journal of Child Psychology and Psychiatry and Allied Disciplines*. 2002;43(8):1052-1063. doi:10.1111/1469-7610.00232
47. Kwong ASF. Examining the longitudinal nature of depressive symptoms in the Avon Longitudinal Study of Parents and Children (ALSPAC). *Wellcome open research*. 2019;4:126. doi:10.12688/WELLCOMEOPENRES.15395.2
48. Lewis G, Pelosi AJ, Araya R, Dunn G. Measuring psychiatric disorder in the community: A standardized assessment for use by lay interviewers. *Psychological Medicine*. 1992;22(2):465-486. doi:10.1017/S0033291700030415
49. Croft J, Heron J, Teufel C, et al. Association of Trauma Type, Age of Exposure, and Frequency in Childhood and Adolescence with Psychotic Experiences in Early Adulthood. *JAMA Psychiatry*. 2019;76(1):79-86. doi:10.1001/jamapsychiatry.2018.3155
50. Crown S, Crisp AH. A Short Clinical Diagnostic Self-rating Scale for Psychoneurotic Patients: The Middlesex Hospital Questionnaire (M.H.Q.). *The British Journal of Psychiatry*. 1966;112(490):917-923. doi:10.1192/BJP.112.490.917
51. Cox JL, Holden JM, Sagovsky R. Detection of Postnatal Depression: Development of the 10-item Edinburgh Postnatal Depression Scale. *The British Journal of Psychiatry*. 1987;150(6):782-786. doi:10.1192/BJP.150.6.782
52. Wray NR, Ripke S, Mattheisen M, et al. Genome-wide association analyses identify 44 risk variants and refine the genetic architecture of major depression. *Nature Genetics* 2018 50:5. 2018;50(5):668-681. doi:10.1038/s41588-018-0090-3
53. Cadman T, Kwong ASF, Moran P, et al. Joint associations of parental personality traits and socio-economic position with trajectories of offspring depression: Findings from up to 6925 families in a UK birth cohort. *JCPP Advances*. 2021;1(3):e12028. doi:10.1002/jcv2.12028

54. Daniel RM, de Stavola BL, Cousens SN. Gformula: Estimating Causal Effects in the Presence of Time-Varying Confounding or Mediation using the G-Computation Formula: <https://doi.org/10.1177/1536867X1201100401>. 2012;11(4):479-517. doi:10.1177/1536867X1201100401
55. Little RJA, Rubin DB. *Statistical Analysis with Missing Data*. Wiley; 2014.
56. Rubin DB. *Multiple Imputation for Nonresponse in Surveys*. Vol 26. Wiley/Blackwell (10.1111); 1989. doi:10.2307/3172772
57. van Buuren S. Multiple imputation of discrete and continuous data by fully conditional specification. 16(3):219-242. doi:10.1177/0962280206074463
58. Smith IC, White SW. Socio-emotional determinants of depressive symptoms in adolescents and adults with autism spectrum disorder: A systematic review. *Autism*. 2020;24(4):995-1010. doi:10.1177/1362361320908101
59. Berg KL, Shiu C shi, Feinstein RT, Acharya K, MeDrano J, Msall ME. Children with developmental disabilities experience higher levels of adversity. *Research in Developmental Disabilities*. 2019;89:105-113. doi:10.1016/j.ridd.2019.03.011
60. Haruvi-Lamdan N, Horesh D, Zohar S, Kraus M, Golan O. Autism Spectrum Disorder and Post-Traumatic Stress Disorder: An unexplored co-occurrence of conditions. *Autism*. 2020;24(4):884-898. doi:10.1177/1362361320912143
61. Rarely an hour goes by that I dont think about what happened in hospital. Accessed November 19, 2023. <https://www.autism.org.uk/advice-and-guidance/stories/stories-from-the-spectrum-alexis-quinn>
62. Sizoo B, van den Brink W, Koeter M, Gorissen van Eenige M, van Wijngaarden-Cremers P, van der Gaag RJ. Treatment seeking adults with autism or ADHD and co-morbid Substance Use Disorder: Prevalence, risk factors and functional disability. *Drug and Alcohol Dependence*. 2010;107(1):44-50. doi:10.1016/j.drugalcdep.2009.09.003
63. Hollocks MJ, Meiser-Stedman R, Kent R, et al. The association of adverse life events and parental mental health with emotional and behavioral outcomes in young adults with autism spectrum disorder. *Autism Research*. 2021;14(8):1724-1735. doi:10.1002/aur.2548
64. Shin SH, Wright C, Johnston S. Early Life Experiences Moderate the Relationship Between Genetic Risk of Autism and Current and Lifetime Mental Health. *Frontiers in Psychiatry*. 2021;12:2175. doi:10.3389/FPSYT.2021.772841/BIBTEX
65. Shin SH, Wright C, Johnston S. Early Life Experiences Moderate the Relationship Between Genetic Risk of Autism and Current and Lifetime Mental Health. *Frontiers in Psychiatry*. 2021;12:2175. doi:10.3389/FPSYT.2021.772841/BIBTEX
66. Chiarotti F, Venerosi A. Epidemiology of autism spectrum disorders: A review of worldwide prevalence estimates since 2014. *Brain Sciences*. 2020;10(5):274. doi:10.3390/brainsci10050274

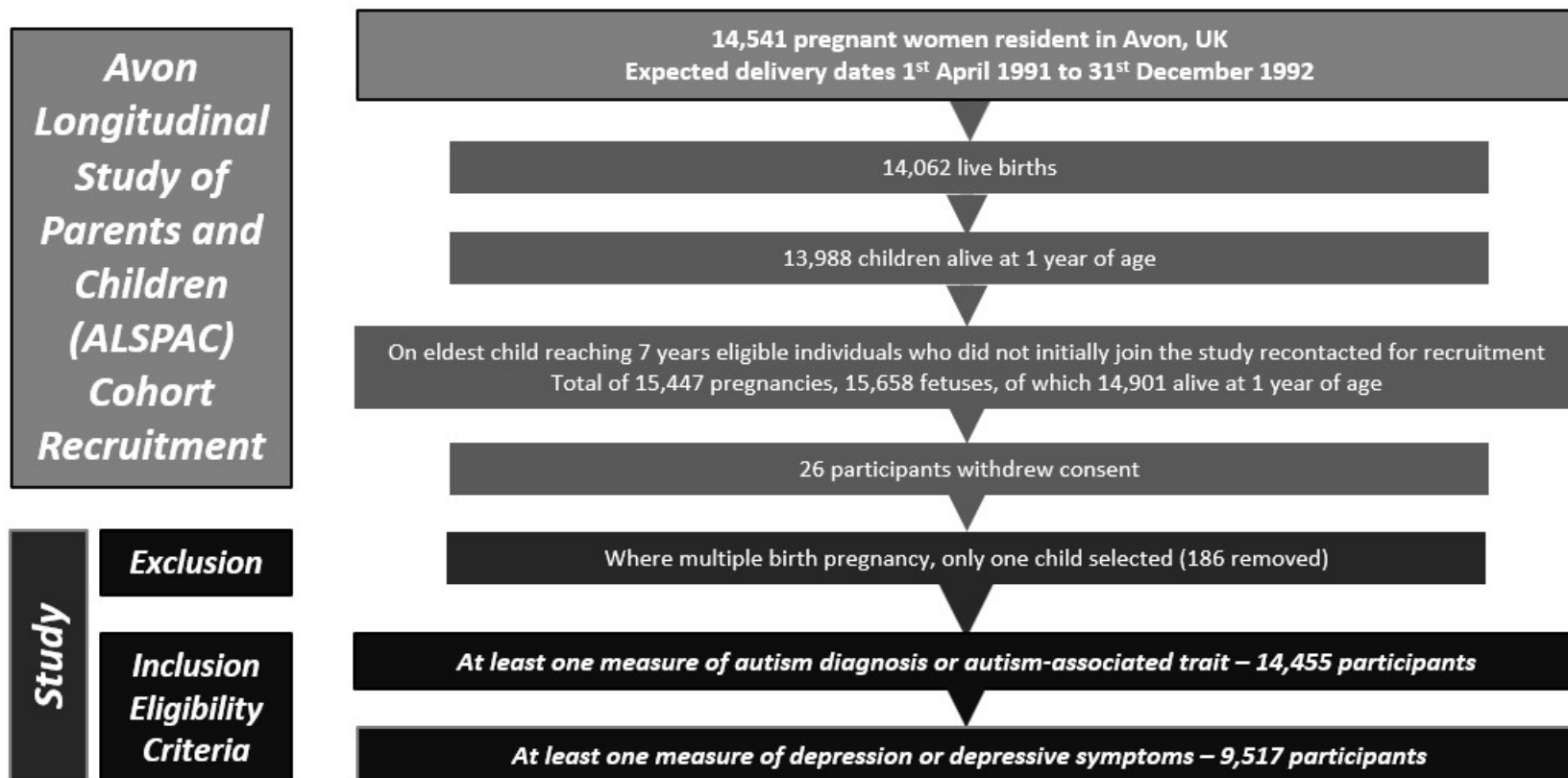
Tables & Figures

Table 1: Odds ratios for depression diagnoses at age 18 and 24 ascertained using the CIS-R by autism/autistic traits

Exposure	Model	Complete records analysis						Multiple imputation analysis	
		Age 18			Age 24			Age 18	Age 24
		N	Cases	OR (95% CI)	N	Cases	OR (95% CI)	OR (95% CI)	OR (95% CI)
Autism	Unadjusted	2943	216	0.37 (0.05-2.70)	2524	252	0.67 (0.16-2.81)	0.48 (0.13-1.78)	1.31 (0.54-3.18)
	Adjusted for confounders	2943	216	0.45 (0.06-3.40)	2524	252	0.89 (0.21-3.85)	0.61 (0.16-2.33)	1.61 (0.63-4.07)
	Adjusted for confounders and depression PGS	2262	161	0.63 (0.08-4.82)	1909	181	1.13 (0.26-4.96)	0.57 (0.15-2.19)	1.52 (0.60-3.89)
Social communication	Unadjusted	2633	190	1.56 (0.97-2.52)	2241	207	1.79 (1.13-2.83)	1.69 (1.21-2.37)	1.59 (1.08-2.35)
	Adjusted for confounders	2633	190	1.71 (1.04-2.83)	2241	207	1.86 (1.15-3.01)	1.76 (1.23-2.53)	1.60 (1.07-2.39)
	Adjusted for confounders and depression PGS	2054	144	1.82 (1.03-3.22)	1734	153	2.15 (1.22-3.76)	1.71 (1.19-2.46)	1.56 (1.04-2.34)
Speech coherence	Unadjusted	2651	189	0.61 (0.32-1.18)	2247	207	1.48 (0.92-2.37)	0.86 (0.56-1.32)	1.36 (0.93-2.00)
	Adjusted for confounders	2651	189	0.64 (0.33-1.24)	2247	207	1.62 (0.99-2.64)	0.87 (0.56-1.37)	1.38 (0.93-2.05)
	Adjusted for confounders and depression PGS	2061	143	0.61 (0.29-1.30)	1730	155	1.86 (1.06-3.26)	0.86 (0.55-1.35)	1.37 (0.92-2.04)
Repetitive behaviour	Unadjusted	2528	183	1.20 (0.62-2.33)	2158	204	1.28 (0.67-2.45)	1.24 (0.73-2.11)	1.75 (1.09-2.81)
	Adjusted for confounders	2528	183	1.21 (0.61-2.42)	2158	204	1.26 (0.65-2.46)	1.24 (0.71-2.16)	1.72 (1.04-2.83)
	Adjusted for confounders and depression PGS	1956	136	0.68 (0.24-1.94)	1651	146	1.63 (0.74-3.58)	1.22 (0.70-2.14)	1.70 (1.03-2.80)
Sociability	Unadjusted	2798	204	0.91 (0.56-1.47)	2393	229	1.09 (0.71-1.68)	0.84 (0.56-1.25)	1.19 (0.86-1.64)
	Adjusted for confounders	2798	204	0.95 (0.58-1.53)	2393	229	1.20 (0.78-1.87)	0.86 (0.57-1.29)	1.21 (0.87-1.69)
	Adjusted for confounders and depression PGS	2163	153	0.79 (0.42-1.46)	1832	167	0.88 (0.49-1.58)	0.85 (0.56-1.27)	1.20 (0.87-1.67)
Autism factor mean score	Unadjusted	2941	216	0.88 (0.50-1.55)	2520	252	1.01 (0.60-1.69)	1.06 (0.73-1.54)	1.16 (0.79-1.70)
	Adjusted for confounders	2941	216	0.97 (0.54-1.74)	2520	252	1.08 (0.63-1.86)	1.13 (0.76-1.69)	1.21 (0.81-1.80)
	Adjusted for confounders and depression PGS	2262	161	0.61 (0.28-1.37)	1909	181	1.26 (0.66-2.43)	1.14 (0.76-1.70)	1.21 (0.81-1.81)
Autism PGS	Unadjusted	2262	161	1.76 (1.14-2.72)	1909	181	1.44 (0.93-2.25)	1.70 (1.22-2.38)	1.09 (0.77-1.53)
	Adjusted for confounders	2262	161	1.82 (1.16-2.85)	1909	181	1.38 (0.88-2.16)	1.70 (1.20-2.41)	1.07 (0.75-1.51)

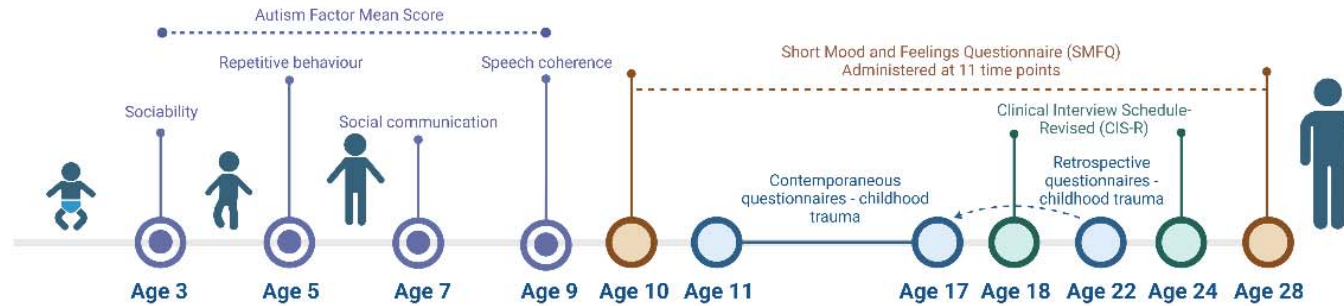
^a N for multiple imputation analysis = 9,517; N for PGS analysis = 6,380

Figure 1: *Flow chart of recruitment process to ALSPAC and the present study*

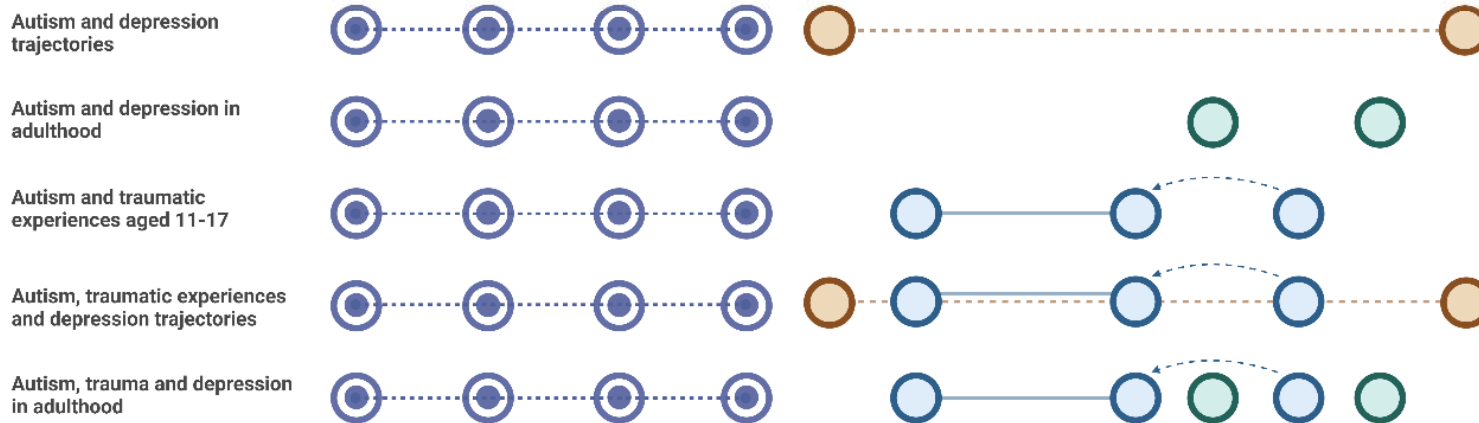


14,203 unique mothers initially enrolled in ALSPAC, increasing to 14,833 after subsequent recruitment as of September 2021.

Figure 2: Plot of analyses undertaken by demonstrating timeline of measures and outcomes incorporated for each analysis



Analyses:



Autism measures plotted in purple and white, trauma exposure measures plotted in blue, depression symptom measures plotted in brown, depression diagnosis assessment measures plotted in green.

Figure 3: Trajectories of depressive symptoms between age 10 and 28 according to the presence or absence of each autistic trait measure.

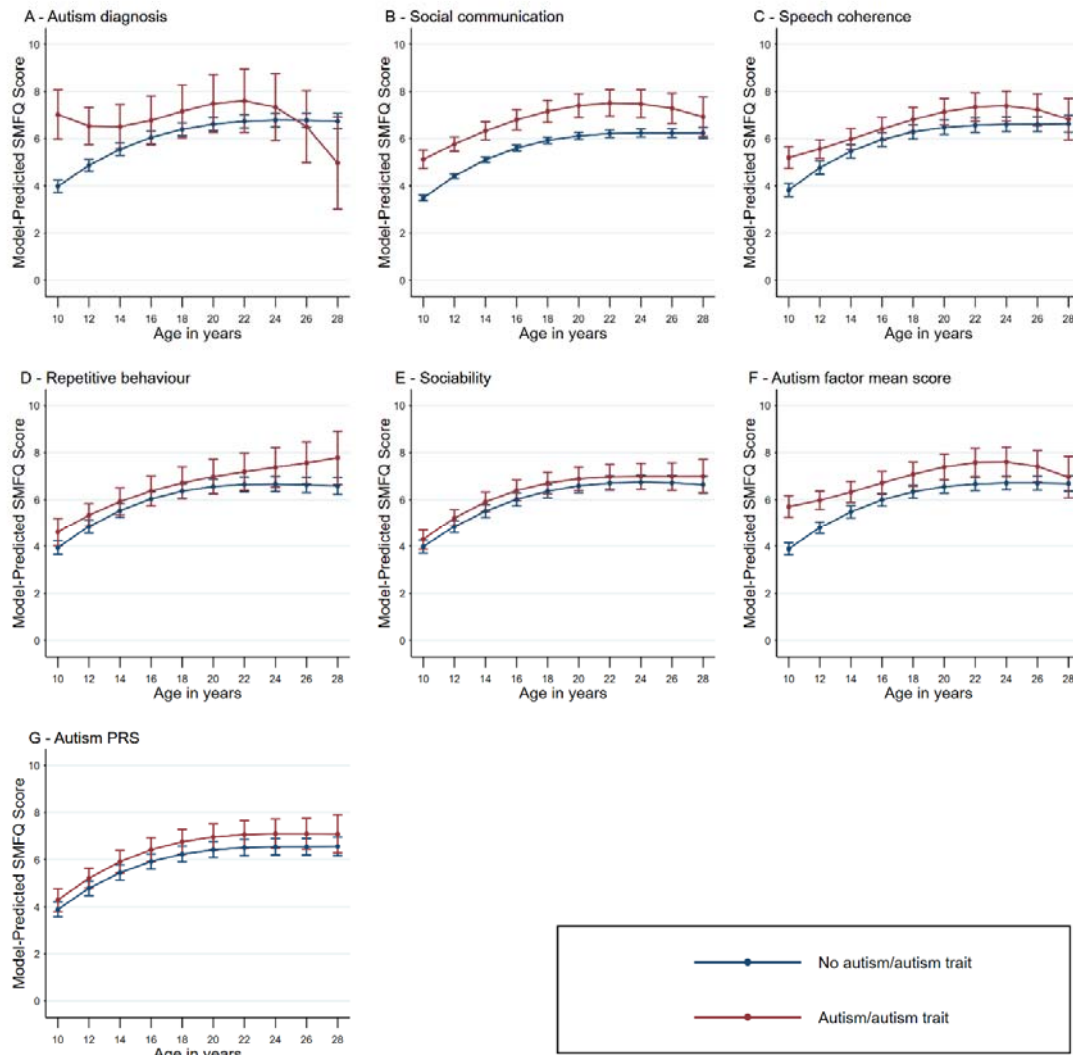


Figure 4: Trajectories of depressive symptoms between age 10 and 28 according to the presence or absence of the social communication trait and each trauma measure.

