

A novel monocyte-based biomarker of cardiovascular risk: comparison with QRISK3

Fatemah Almarri¹

Soundrie Padayachee²

Alexander Kerr¹

Ashish Patel¹

Albert Ferro¹

¹School of Cardiovascular and Metabolic Medicine and Sciences, British Heart Foundation Centre of Research Excellence, King's College London, London, UK

²Department of Ultrasonic Angiology, Guy's & St Thomas' Hospitals, London, UK

Short title: Blood biomarkers of cardiovascular risk

Correspondence: Professor Albert Ferro, King's College London (Waterloo Campus), 3.07 Franklin-Wilkins Building, 150 Stamford Street, London SE1 9NH, UK. Email albert.ferro@kcl.ac.uk

Word count: 4,291

TEXT ABSTRACT

Aims: Circulating monocyte-platelet aggregates (MPA) and CD14⁺/CD16⁺ monocytes are elevated in symptomatic patients with atherosclerotic cardiovascular disease. The aim of this study was to investigate their utility in prediction of early atherosclerosis in asymptomatic subjects, in comparison to a traditional cardiovascular risk calculator, QRISK3.

Methods: Asymptomatic patients attending the hypertension clinic at Guy's & St Thomas' Hospitals, London, and healthy volunteer subjects recruited by advertisement, were enrolled (n = 39). Blood (30 mL) was processed for flow cytometry to measure CD14 and CD16 expression on monocytes, and CD14⁺CD42b⁺ MPA. Using these measurements, a novel index termed the Monocyte Atherosclerotic Risk Score (MARS) was developed. All subjects also underwent carotid artery ultrasonic angiography.

Results: Both QRISK3 and MARS correlated significantly with carotid intima-media thickness (cIMT); however, the correlation was much closer for MARS ($r^2 = 0.8705$, $P < 0.0001$) than for QRISK3 ($r^2 = 0.3012$, $P = 0.0025$). ROC analysis revealed MARS to be highly predictive both of cIMT-determined high cardiovascular risk (C-index = 0.9273, $P = 0.0001$) and presence of carotid plaque (C-index = 0.9385, $P = 0.0022$), whereas QRISK3 was not.

Conclusions: MARS appears superior to QRISK3 in predicting both cIMT and carotid plaque disease. This may help to better identify asymptomatic individuals who would benefit from targeted imaging investigations and prophylactic therapies.

LAY SUMMARY

In healthy people with no clinical evidence of cardiovascular disease, prediction of risk of atherosclerotic disease (including coronary heart disease and stroke) is notoriously unreliable; although traditional cardiovascular risk calculators work well at a population level, they are much less reliable in individuals.

- We have developed a blood based biomarker, which we term MARS, which is highly predictive of silent atherosclerosis: much more so than the traditional risk calculator QRISK3, currently in use in the UK.
- This opens the way to develop a blood test which can be applied clinically to more precisely identify healthy individuals who are at high cardiovascular risk, and who would therefore benefit from further imaging investigations and intensive treatment of cardiovascular risk factors.

KEYWORDS

monocytes, monocyte-platelet aggregates, atherosclerosis, cardiovascular risk, biomarkers

INTRODUCTION

Despite important advances in treatment, atherosclerotic cardiovascular disease and its complications, including myocardial infarction, stroke and critical limb ischaemia, remain the commonest causes of death and disability worldwide.¹ A major contribution to this is the fact that identification of asymptomatic individuals with hitherto silent disease remains problematic, with the result that such individuals remain undetected until they present for medical attention with one of the complications. For example, despite increased awareness and screening for risk factors such as hypertension and dyslipidaemia, a recent study demonstrated that, in over 25 000 individuals without known coronary heart disease, atherosclerosis as detected by coronary computed tomography angiography was present in 42.1% of this population, with significant ($\geq 50\%$) stenosis in 5.2% and left main, proximal left anterior descending artery or three vessel disease in 1.9%.²

Since large scale application of arterial imaging modalities to asymptomatic people is not practical, attempts to identify at risk individuals have centred around the use of cardiovascular risk calculators. A variety of these are used around the world, such as the Framingham risk calculator, the European Society of Cardiology cardiovascular risk calculator or QRISK3, all of which generate a score indicative of risk of developing disease over a fixed time period or over the subject's lifetime based on their risk factor profile.³⁻⁵ However, although such calculators work well at a population level, they do not necessarily give an accurate prediction of risk in a given individual. For example, data from UK Biobank involving 233 233 women and 170 137 men showed that QRISK3 had only moderate discrimination for participants (Harrell's C-index 0.722 in women and 0.697 in men) and discrimination declined by age, so that QRISK3 systematically overpredicted cardiovascular risk, particularly in older participants, by as much as 20%.⁶ Similarly, a study by Li et al using QRISK3 as an

exemplar showed that risk prediction models based on routinely collected health data perform well for populations but with greater uncertainty for individuals.⁷ There is, therefore, a need to develop better methodologies to infer cardiovascular risk at an individual level, including the use of novel biomarkers related to risk.

Recent years have seen a surge of interest in the role of inflammation in the pathophysiology of atherosclerosis, and one of the principal cell types involved in atherogenesis in the developing plaque is the monocyte, as recently reviewed.⁸ Circulating CD16-expressing monocytes as well as monocyte-platelet aggregates (MPA) have been shown to be increased in patients with symptomatic atherosclerotic disease including coronary heart disease, stroke and peripheral arterial disease, and to be associated with their clinical course as well as with cardiovascular events.⁹⁻¹⁴ However, their practical utility as biomarkers of early asymptomatic disease has not previously been investigated.

In the present study, we investigated whether blood monocyte phenotype and MPA levels could be used to predict the presence and extent of atherosclerosis, as determined by carotid intima-media thickness (cIMT) using Duplex ultrasonography. We hypothesised that these biomarkers would prove superior to a standard cardiovascular risk calculator in such prediction.

METHODS

Subjects

Healthy subjects (n = 39) were recruited by advertisement and also sequentially from patients attending the Hypertension Clinics at Guy's and St Thomas' Hospitals, London, UK. Exclusion criteria were: age < 18 years, history of cardiovascular disease (other than hypertension), other significant co-morbidities, recent (within 2 weeks) ingestion of any medication, pregnancy, inability or unwillingness to provide informed consent. All subjects underwent full history and examination as well as electrocardiography, to exclude clinically significant cardiovascular or other disease. Blood pressure was measured in the sitting position, after a resting period of 5 min, three times at 2 min intervals, using a validated oscillometric device (Omron IntelliIT, Omron Corporation, Japan), according to the recommendations of the British and Irish Hypertension Society;¹⁵ the blood pressure of each individual was taken as the mean of the second and third values. Blood (50 mL) was then obtained by venesection for full blood count and biochemistry (renal, liver, bone, thyroid and lipid profiles, as well as plasma renin, aldosterone and metadrenalines) – all measured using routine laboratory techniques by Synnovis Laboratories (St Thomas' Hospital, London, UK) – and for processing for flow cytometry, as detailed below. On a separate occasion, and within one month of venesection, subjects underwent carotid ultrasonography to determine cIMT as well as the presence or absence of frank plaque disease. All subjects also had their 10 year risk of cardiovascular disease estimated using the QRISK3 risk calculator (<https://qrisk.org>). The study was approved by HRA and Health and Care Research Wales (research ethics committee reference number 21/NE/0189). All subjects gave written informed consent.

Flow cytometry of peripheral blood mononuclear cells

Blood was processed within 15-30 minutes of venesection. Initially, 100 μ l of blood was incubated with 20 μ l Human BD Fc-block (BD Pharmingen™) for 10 min on ice, to bind to Fc regions of antibodies and avoid nonspecific, false-positive antibody staining of cells. The sample was then incubated in the dark at 4°C with 5 μ l of the following antibodies for 30 min: phycoerythrin (PE)-labelled mouse anti-human CD14, fluorescein isothiocyanate (FITC)-labelled mouse anti-human CD16, allophycocyanin (APC)-labelled CD42b, Brilliant™ Violet 421 (BV421)-labelled mouse anti-human CD200R, Brilliant™ Violet 711 (BV711)-labelled mouse anti-human CD163, Alexa Fluor 647-labelled mouse anti-human CCR-2, and PE-cyanine 7 (Cy7) mouse anti-human HLA-DR (all from BD Pharmingen™). The samples were then subject to red cell lysis (Pharm Lyse Lysis Buffer, BD Biosciences) and washed in flow cytometry buffer (PBS, 0.5% [w/v] BSA, 2mM EDTA). The stained cells were resuspended in 4% paraformaldehyde and analysed using a MACSQuant Flow Cytometer (Miltenyi Biotec) within 72 hours. Fluorescence minus one (FMO) controls were used to determine positive antigen expression. Peripheral blood mononuclear cells were gated, and granulocytes excluded. Doublets were then identified and also excluded. Thereafter, gates for classical monocytes (CD14⁺/CD16⁻), non-classical monocytes (CD14^{dim}/CD16⁺), intermediate monocytes (CD14⁺/CD16⁺), and MPA (CD14⁺/CD42b⁺) were created (Figure 1).

Extracellular epitope expression was quantified in terms of % cellular expression by a blinded researcher using FlowJo v10 software (FlowJo LLC).

Carotid ultrasonography

cIMT was measured as the distance between lumen-intima and media-adventitia interfaces. All images were acquired by clinical vascular ultrasound scientists blinded to blood results. cIMT was measured from ultrasound images acquired using a Philips, Epic 7 duplex scanner (L9-2 transducer). Subjects were examined in the supine position. The common carotid artery was imaged in longitudinal section – using the imaging plane to be perpendicular to the posterior wall, for optimal visualization. Electrocardiography-gated images were acquired with the transducer positioned in anterior, posterior and lateral planes of the common carotid artery. cIMT was measured using Philips Q-lab, semi-automatic edge detection software. The ultrasound image acquired at end-diastole (at the R wave of the electrocardiogram) was used for calculating cIMT. cIMT was processed from posterior wall Images of the common carotid artery obtained at least 10 mm proximal to the carotid bifurcation. The right and left common carotid artery cIMT were computed separately. The maximum cIMT measurement was defined as the highest cIMT value from the average of 200 measurements obtained from a 1cm segment of the common carotid artery vessel wall, from either the right or left sides.

cIMT was compared to age- and sex-matched cIMT reference values for cardiovascular disease risk assessment.¹⁶ When a focal plaque of >1.5mm thickness was present in the carotid arteries, this was classified as high cardiovascular disease risk.

Statistics

Data were analysed using linear regression and construction of receiver operating characteristic (ROC) curves using GraphPad Prism version 10 (GraphPad Software, San Diego, California, USA). All demographic data are expressed as mean with standard deviation for normally distributed data, or median with interquartile range where data were non-normally distributed. For all analyses, statistical significance was taken as $P < 0.05$.

RESULTS

Subject characteristics

The characteristics of subjects recruited are summarised in Tables 1 and 2. Aside from blood pressures being significantly higher in the cohort recruited from the hypertension clinic, and the fact that several of these subjects were on cardiovascular medications whereas none of those recruited by advertisement were, all other demographic parameters and measurements (age, sex, smoking status, haematological and biochemical profiles) were not different between the two groups. For all further analyses described below, the two cohorts were merged and treated as a single larger cohort.

Carotid ultrasonography

Of the 39 subjects studied, 10 were found to have either unilateral or bilateral carotid plaque disease. cIMT was found to be very similar in the left and right carotid circulations (Figure 2A), with only one outlier found to have substantially different cIMT values on the two sides, as shown in the Bland-Altman plot (Figure 2B). Therefore, for all further analyses described below, the mean of left and right cIMT was taken as representing cIMT for each subject.

Monocyte phenotype and MPA: relationship to cIMT

Classical ($CD14^+CD16^-$) monocytes displayed a strong negative correlation, and both intermediate ($CD14^+CD16^+$) and non-classical ($CD14^{low}CD16^+$) monocytes displayed strong positive correlations, with cIMT (Figure 3A-C). Moreover, MPA correlated strongly and

positively with cIMT (Figure 3D). We developed a novel index, the monocyte atherosclerosis risk score (MARS), defined as:

$$MARS = \frac{\text{classical monocytes}}{MPA}$$

and this correlated best of all with cIMT (Figure 3E).

QRISK3 scores also correlated significantly with cIMT (Figure 3F); however, the r^2 value was much lower for QRISK3 than that for classical, intermediate and non-classical monocytes, or for MPA, indicating a much greater level of inter-individual variability at any given level of QRISK3 than for monocyte phenotype or for MPA. Moreover, although MARS (and indeed the individual components of monocyte phenotype and MPA) correlated significantly with QRISK3, the r^2 values for each of these correlations were low (Figures 4A-E).

We also determined the relationship between cIMT and monocytic expression of a number of other markers, namely CD200R, CD163, CD192 and HLA-DR, which have been reported to be associated with atherosclerosis.¹⁷⁻²⁰ Expression of CD200R was inversely correlated, and expression of each of the other three biomarkers positively correlated, to cIMT (Figures 5A-D), although the relationships were in all these cases non-linear.

MARS and cIMT-determined cardiovascular risk

Cardiovascular risk was defined by cIMT criteria as being high if $\geq 75^{\text{th}}$ centile for age and gender, and not high if below the 75^{th} centile.²¹ ROC curves were constructed to determine the ability of MARS and of QRISK3 to predict cIMT in the high range. Although both MARS

and QRISK3 showed significant predictive ability, the area under the curve (C-index) for MARS was substantially greater than that for QRISK3 (Figures 6A and 6B). Moreover, combining MARS with QRISK3 did not improve its predictive ability for high risk cIMT; nor did combining MARS with CD200R, CD163, CD192 or HLA-DR, either individually or in any combination, improve the predictive ability of MARS for high risk cIMT (Table 3).

Since 10 subjects had plaque disease detected on carotid ultrasonography whereas 32 did not, we also constructed ROC curves to determine the ability of both MARS and QRISK3 to predict the presence of plaque. MARS accurately and highly significantly predicted the presence of plaque, whereas QRISK3 did not (Figures 6C and 6D). Similar to our findings for high risk cIMT, we found that combining MARS with QRISK3 did not improve its predictive ability for presence of plaque; and combining MARS with CD200R, CD163, CD192 or HLA-DR, either singly or in any combination, did not predict plaque more reliably than MARS alone (Table 4).

DISCUSSION

Accurate prediction, at an early and asymptomatic stage, of individuals who are at future risk of atherosclerotic disease and its thrombotic complications is pivotal to effective application of prophylactic measures including lifestyle modifications, lipid lowering and antihypertensive therapies. All of these have been shown to improve clinical outcomes in the primary prevention setting, especially so in people with high risk of future cardiovascular disease as judged by standard risk calculators, as summarised in the recent guideline from the National Institute for Health and Care Excellence (NICE) which is used to underpin primary prevention of cardiovascular disease in England and Wales.²² However, it is clear that, although such calculators work well at a population level, they are much less predictive at an individual level.^{6,7} This is likely to be attributable to the fact that, although such calculators utilise well established risk factors for which good epidemiological data are available as to their influence on disease incidence and prevalence, by necessity they will not include all risk factors in any given individual, either because insufficient epidemiological data exists on the influence of these risk factors or because many risk factors are as yet poorly or even entirely unrecognised. There is therefore a pressing need to develop novel biomarkers, which accurately predict the presence of silent atherosclerotic disease at an individual level, irrespective of risk factor burden.

Although its use for secondary prevention is well established, the evidence for the use of antiplatelet therapy, in particular aspirin, in the context of primary prevention is entirely lacking.²³⁻²⁵ This is likely to reflect the fact that trials of antiplatelet therapy in this setting have been conducted in populations of patients with no clinical evidence of disease whose underlying atherosclerotic burden is not known, due to a lack of effective means of identifying this. Here again, a biomarker which can accurately detect silent disease in an

asymptomatic population may allow more effective targeting of such therapy, and possibly give rise to clearer evidence of benefit.

Our results show that circulating monocyte phenotype as well as MPA correlate much more closely with cIMT, a well validated surrogate marker of atherosclerotic burden, than does QRISK3 score, the current clinical standard in the UK and the measure advocated for basing decisions on antihypertensive and lipid lowering therapies in guidance issued by NICE for England and Wales.^{15,23} The MARS score correlates best of all with cIMT and, furthermore, is a considerably better predictor both of high risk cIMT and of the presence of carotid plaque than is QRISK3.

The gold standard for identifying atherosclerotic disease is by the use of imaging, such as Duplex imaging or angiography. However, such modalities are impractical to apply to large numbers of people who are clinically well, due to a number of factors: access limitations, the necessity to use ionising radiation and their expense. A blood biomarker which can more easily be applied as a screening tool at scale to identify people at high risk of atherosclerotic disease would therefore allow such imaging modalities to be more specifically targeted. Our data suggest the use of MARS as an accurate, highly sensitive and specific biomarker of atherosclerotic disease burden, which can fulfil that purpose.

Our study does have some limitations. The number of subjects included in this study is relatively small and so one might question the robustness of the findings in the general population. However, the regression and ROC analyses we have performed show that, even with a small sample size of this order, the relationships between MARS and both cIMT and carotid plaque are very strong and highly significant, attesting to their robustness – and indeed, since the objective of this work is to allow accurate prediction of risk in individual

subjects, the data demonstrate that such individualisation of risk is clearly attainable, and to a much more precise degree than QRISK3.

Additionally, the ultimate goal of this work is to predict cardiovascular events. This was not possible in the context of the present study, but for future development of this as a clinically useful biomarker it will be necessary to utilise it in a long term prospective clinical endpoint study. Nonetheless, given that silent atherosclerosis is the necessary precursor to future clinically evident cardiovascular disease, our study shows that MARS has clear potential in that regard.

In conclusion, measurement of monocyte phenotype (CD14 and CD16 positivity) as well as MPA, and the resultant index which we have termed MARS, accurately predicts cIMT and, moreover, accurately predicts at an individual level whether subjects are at high cardiovascular risk (as judged from cIMT) and indeed whether subjects have silent carotid plaque present. It does so much more robustly than does QRISK3, the clinical gold standard currently in use in the UK, and does not depend on detailed knowledge of each subject's risk factor profile (which are components of QRISK3). These findings open up the possibility of using MARS as a novel clinically applicable biomarker for identifying asymptomatic individuals with silent atherosclerotic disease, who merit more detailed imaging investigations and who would benefit from targeted intensive interventions on underlying risk factors.

FUNDING

FA was funded by a scholarship from Kuwait University, administered through the Kuwait Cultural Office (London, UK). This work was supported by a King's British Heart Foundation Centre for Excellence Award [RE/18/2/34213]. The content is solely the responsibility of the authors and does not necessarily represent the official views of any funding agencies.

CONFLICT OF INTEREST

The authors declare no conflicts of interest or relationships relevant to the contents of this paper to disclose.

AUTHORS' CONTRIBUTIONS

FA, SP and AK performed, and AP and AF conceived and designed, the experimental and clinical work. FA and AF undertook all statistical analyses. All the authors contributed to writing the manuscript.

REFERENCES

1. British Heart Foundation. *Heart Statistics*. Available from: <https://www.bhf.org.uk/what-we-do/our-research/heart-statistics> (accessed 4 May 2024).
2. Bergström G, Persson M, Adiels M, Björnson E, Bonander C, Ahlström H, et al. *Prevalence of Subclinical Coronary Artery Atherosclerosis in the General Population*. *Circulation* 2021;144(12):916-929. doi: 10.1161/CIRCULATIONAHA.121.055340.
3. D'Agostino RB Sr, Vasan RS, Pencina MJ, Wolf PA, Cobain M, Massaro JM, et al. *General cardiovascular risk profile for use in primary care: the Framingham Heart Study*. *Circulation* 2008;117(6):743-53. doi: 10.1161/CIRCULATIONAHA.107.699579.
4. European Society of Cardiology. *ESC CVD Risk Calculation App: Individual cardiovascular risk assessment for healthcare professionals*. Available from: <https://www.escardio.org/Education/ESC-Prevention-of-CVD-Programme/Risk-assessment/esc-cvd-risk-calculation-app> (accessed 4 May 2024).
5. Hippisley-Cox J, Coupland C, Brindle P. *Development and validation of QRISK3 risk prediction algorithms to estimate future risk of cardiovascular disease: prospective cohort study*. *BMJ* 2017;357:j2099. doi: 10.1136/bmj.j2099.
6. Parsons RE, Liu X, Collister JA, Clifton DA, Cairns BJ, Clifton L. *Independent external validation of the QRISK3 cardiovascular disease risk prediction model using UK Biobank*. *Heart* 2023;109(22):1690-1697. doi: 10.1136/heartjnl-2022-321231.
7. Li Y, Sperrin M, Belmonte M, Pate A, Ashcroft DM, van Staa TP. *Do population-level risk prediction models that use routinely collected health data reliably predict individual risks?* *Sci Rep* 2019;9(1):11222. doi: 10.1038/s41598-019-47712-5.

8. Kong P, Cui ZY, Huang XF, Zhang DD, Guo RJ, Han M. *Inflammation and atherosclerosis: signaling pathways and therapeutic intervention. Signal Transduct Target Ther* 2022;7(1):131. doi: 10.1038/s41392-022-00955-7.
9. Berg KE, Ljungcrantz I, Andersson L, Bryngelsson C, Hedblad B, Fredrikson GN, et al. *Elevated CD14⁺⁺CD16⁻ monocytes predict cardiovascular events. Circ Cardiovasc Genet* 2012;5(1):122-31. doi: 10.1161/CIRCGENETICS.111.960385.
10. Rogacev KS, Cremers B, Zawada AM, Seiler S, Binder N, Ege P, et al. *CD14⁺⁺CD16⁺ monocytes independently predict cardiovascular events: a cohort study of 951 patients referred for elective coronary angiography. J Am Coll Cardiol* 2012;60(16):1512-20. doi: 10.1016/j.jacc.2012.07.019.
11. Rogacev KS, Seiler S, Zawada AM, Reichart B, Herath E, Roth D, et al. *CD14⁺⁺CD16⁺ monocytes and cardiovascular outcome in patients with chronic kidney disease. Eur Heart J* 2011;32(1):84-92. doi: 10.1093/eurheartj/ehq371.
12. Wildgruber M, Aschenbrenner T, Wendorff H, Czubba M, Glinzer A, Haller B, et al. *The "Intermediate" CD14⁺⁺CD16⁺ monocyte subset increases in severe peripheral artery disease in humans. Sci Rep* 2016;6:39483. doi: 10.1038/srep39483.
13. Kaito M, Araya S, Gondo Y, Fujita M, Minato N, Nakanishi M, et al. *Relevance of distinct monocyte subsets to clinical course of ischemic stroke patients. PLoS One* 2013 Aug 2;8(8):e69409. doi: 10.1371/journal.pone.0069409.
14. Brown RA, Lip GYH, Varma C, Shantsila E. *Impact of Mon2 monocyte-platelet aggregates on human coronary artery disease. Eur J Clin Invest* 2018;48(5):e12911. doi: 10.1111/eci.12911.
15. National Institute for Health and Care Excellence. *Hypertension in adults: diagnosis and management*. Available from:

<https://www.nice.org.uk/guidance/ng136/chapter/Recommendations#starting-antihypertensive-drug-treatment> (accessed 4 May 2024).

16. Garipey J, Salomon J, Denarié N, Laskri F, Mégnien JL, Levenson J, et al. *Sex and topographic differences in associations between large-artery wall thickness and coronary risk profile in a French working cohort: the AXA Study. Arterioscler Thromb Vasc Biol* 1998;18(4):584-90. doi: 10.1161/01.atv.18.4.584.
17. Kassiteridi C, Cole JE, Griseri T, Falck-Hansen M, Goddard ME, Seneviratne AN, et al. *CD200 Limits Monopoiesis and Monocyte Recruitment in Atherosclerosis. Circ Res* 2021;129(2):280-295. doi: 10.1161/CIRCRESAHA.119.316062.
18. Guo L, Akahori H, Harari E, Smith SL, Polavarapu R, Karmali V, et al. *CD163+ macrophages promote angiogenesis and vascular permeability accompanied by inflammation in atherosclerosis. J Clin Invest* 2018;128(3):1106-1124. doi: 10.1172/JCI93025.
19. Lee MK, Moore XL, Fu Y, Al-Sharea A, Dragoljevic D, Fernandez-Rojo MA, et al. *High-density lipoprotein inhibits human M1 macrophage polarization through redistribution of caveolin-1. Br J Pharmacol* 2016;173(4):741-51. doi: 10.1111/bph.13319.
20. van Dijk RA, Rijs K, Wezel A, Hamming JF, Kolodgie FD, Virmani R, et al. *Systematic Evaluation of the Cellular Innate Immune Response During the Process of Human Atherosclerosis. J Am Heart Assoc* 2016;5(6):e002860. doi: 10.1161/JAHA.115.002860.
21. Stein JH, Korcarz CE, Hurst RT, Lonn E, Kendall CB, Mohler ER, et al. *Use of carotid ultrasound to identify subclinical vascular disease and evaluate cardiovascular disease risk: a consensus statement from the American Society of Echocardiography Carotid Intima-Media Thickness Task Force. Endorsed by the Society for Vascular Medicine. J Am Soc Echocardiogr* 2008;21(2):93-111. doi: 10.1016/j.echo.2007.11.011.

22. National Institute for Health and Care Excellence. *Cardiovascular disease: risk assessment and reduction, including lipid modification*. Available from: <https://www.nice.org.uk/guidance/ng238/chapter/Recommendations> (accessed 4 May 2024).
23. Bowman L, Mafham M, Wallendszus K, Stevens W, Buck G, Barton J, et al; ASCEND Study Collaborative Group. *Effects of Aspirin for Primary Prevention in Persons with Diabetes Mellitus*. *N Engl J Med* 2018;379(16):1529-1539. doi: 10.1056/NEJMoa1804988.
24. Gaziano JM, Brotons C, Coppolecchia R, Cricelli C, Darius H, Gorelick PB, et al; ARRIVE Executive Committee. *Use of aspirin to reduce risk of initial vascular events in patients at moderate risk of cardiovascular disease (ARRIVE): a randomised, double-blind, placebo-controlled trial*. *Lancet* 2018;392:1036–1046. doi: 10.1016/S0140-6736(18)31924-X.
25. McNeil JJ, Wolfe R, Woods RL, Tonkin AM, Donnan GA, Nelson MR, et al; ASPREE Investigator Group. *Effect of aspirin on cardiovascular events and bleeding in the healthy elderly*. *N Engl J Med* 2018;379:1509–1518. doi: 10.1056/NEJMoa1805819.

FIGURE LEGENDS

Figure 1. Gating for CM, NCM, and IM. Gating for monocyte subsets (classical, intermediate and non-classical) according to CD14 and CD16 expression and using respective Fluorescence Minus One (FMO) control samples.

Figure 2. Agreement between left and right cIMT. **A**, Linear correlation analysis of left vs right cIMT. **B**, Bland-Altman plot of difference vs average of left and right cIMT; the dotted lines represent the 95% limits of agreement.

Figure 3. Linear regression analyses of relationship between mean cIMT and monocyte indices or QRISK3 score. Relationships are shown between mean cIMT and classical (**A**), intermediate (**B**) and non-classical monocytes (**C**), MPA (**D**), MARS (**E**) and QRISK3 score (**F**).

Figure 4. Linear regression analyses of relationship between QRISK3 score and monocyte indices. Relationships are shown between QRISK3 score and classical (**A**), intermediate (**B**) and non-classical monocytes (**C**), MPA (**D**) and MARS (**E**).

Figure 5. Relationship between mean cIMT and other monocyte indices. Relationships are shown between mean cIMT and monocytic expression of CD200R (**A**), CD163 (**B**), CD192 (**C**) and HLA-DR (**D**).

Figure 6. Receiver operating characteristic (ROC) curve analysis of predictive ability of MARS and QRISK3 score for carotid disease. ROC curves are shown for ability of MARS to predict high risk cIMT (**A**) or presence of plaque (**C**), and of QRISK3 score to predict high risk cIMT (**B**) or presence of plaque (**D**).

Figure 1

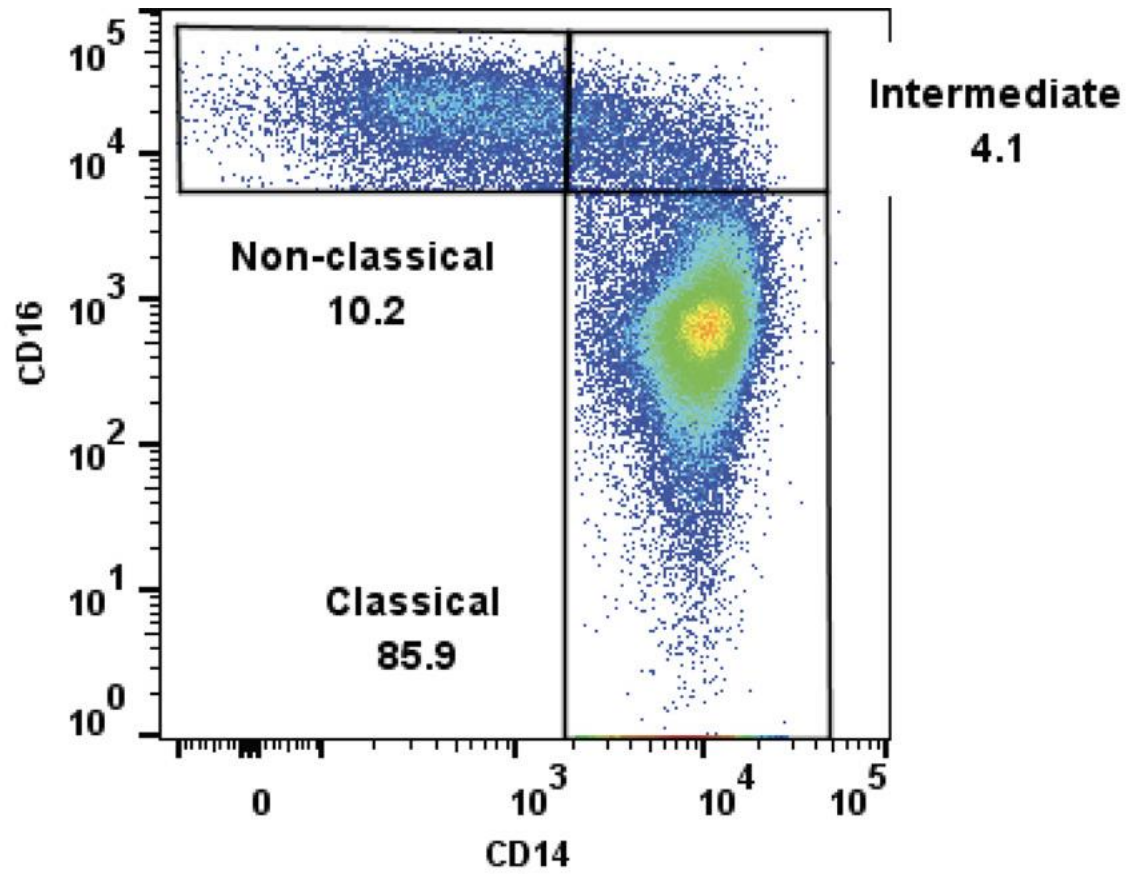


Figure 2

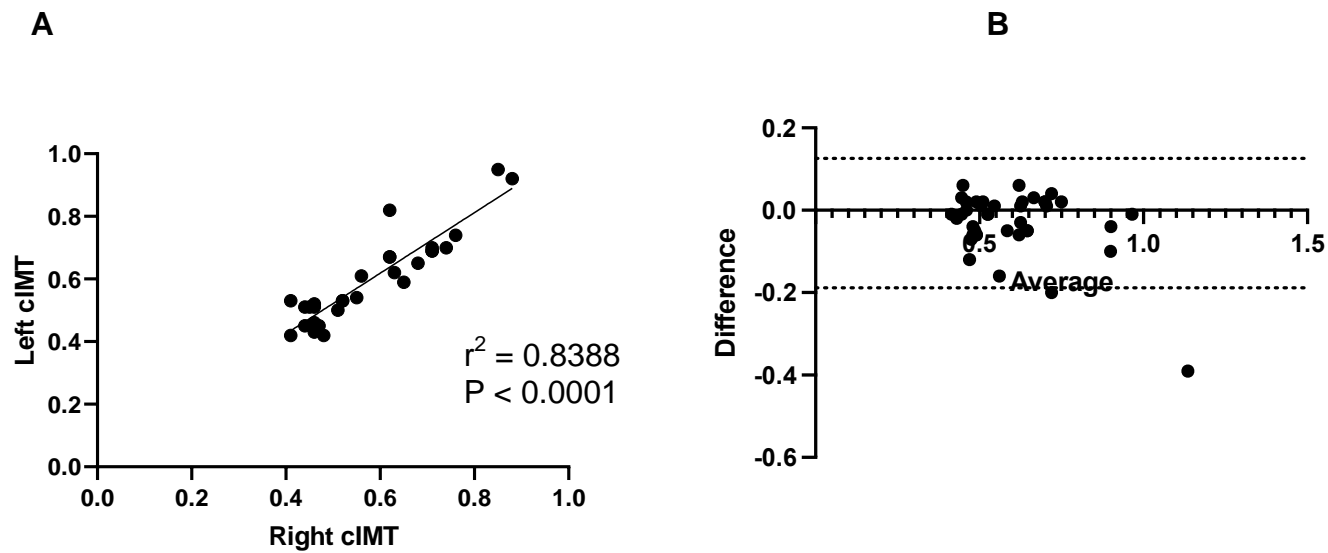


Figure 3

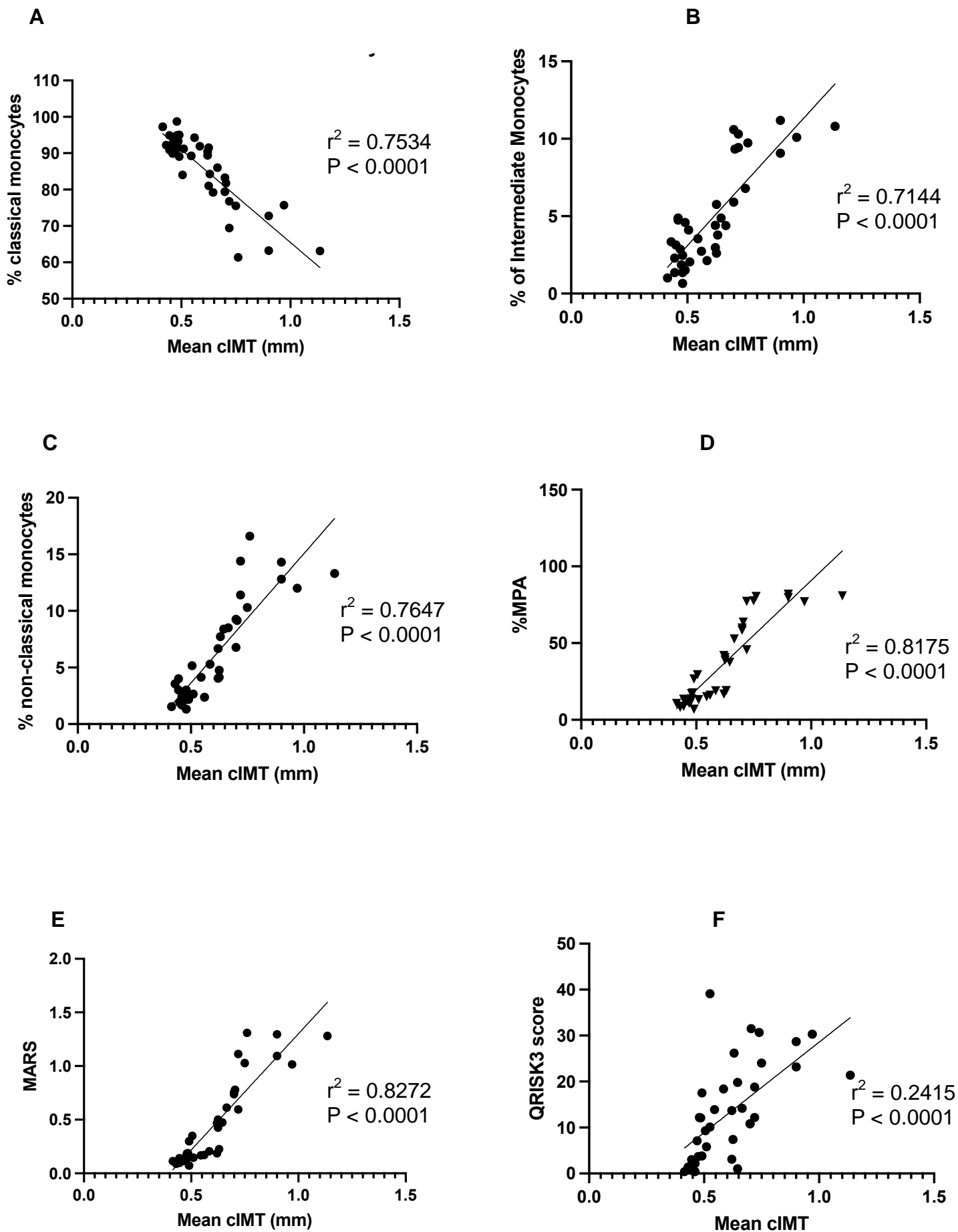


Figure 4

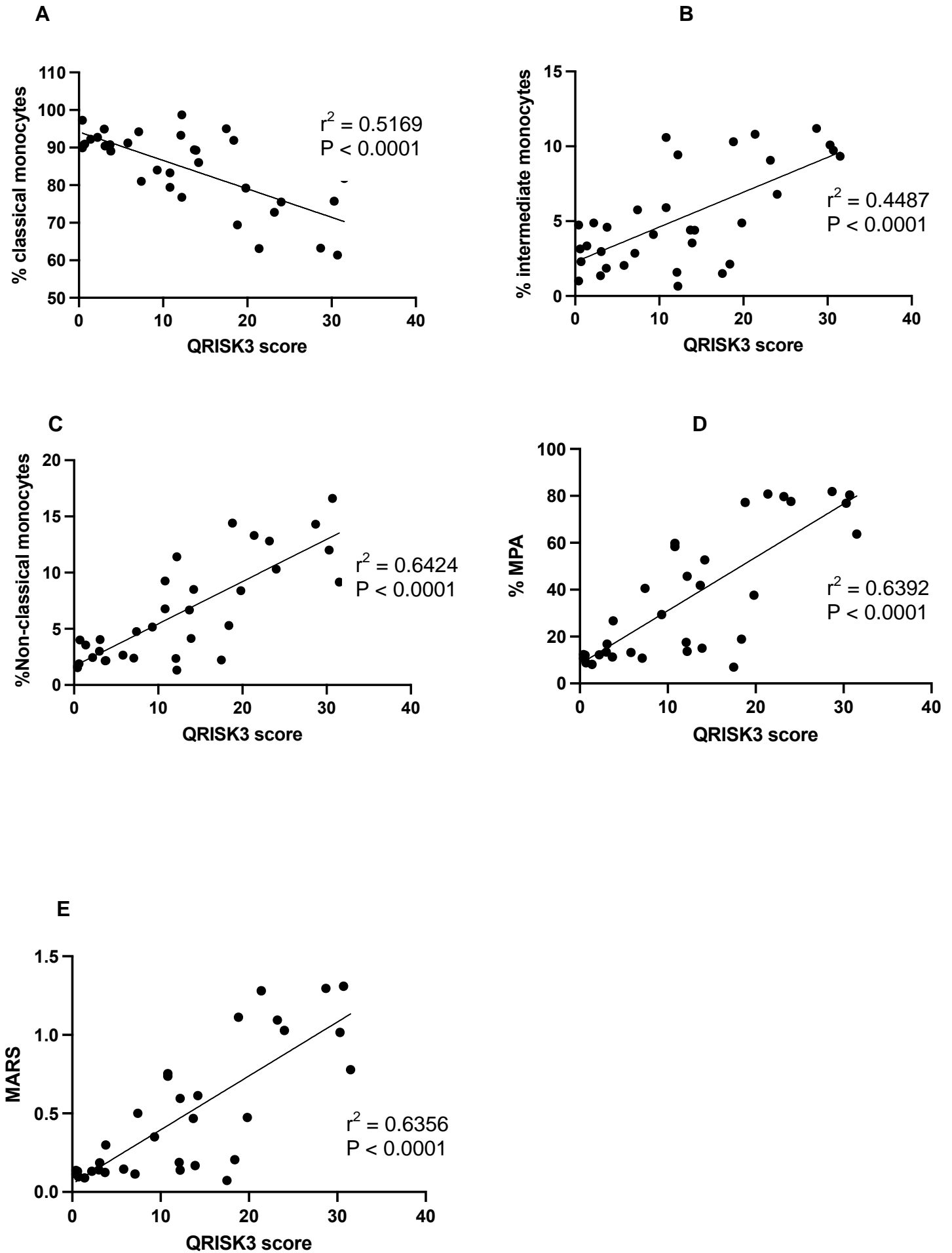


Figure 5

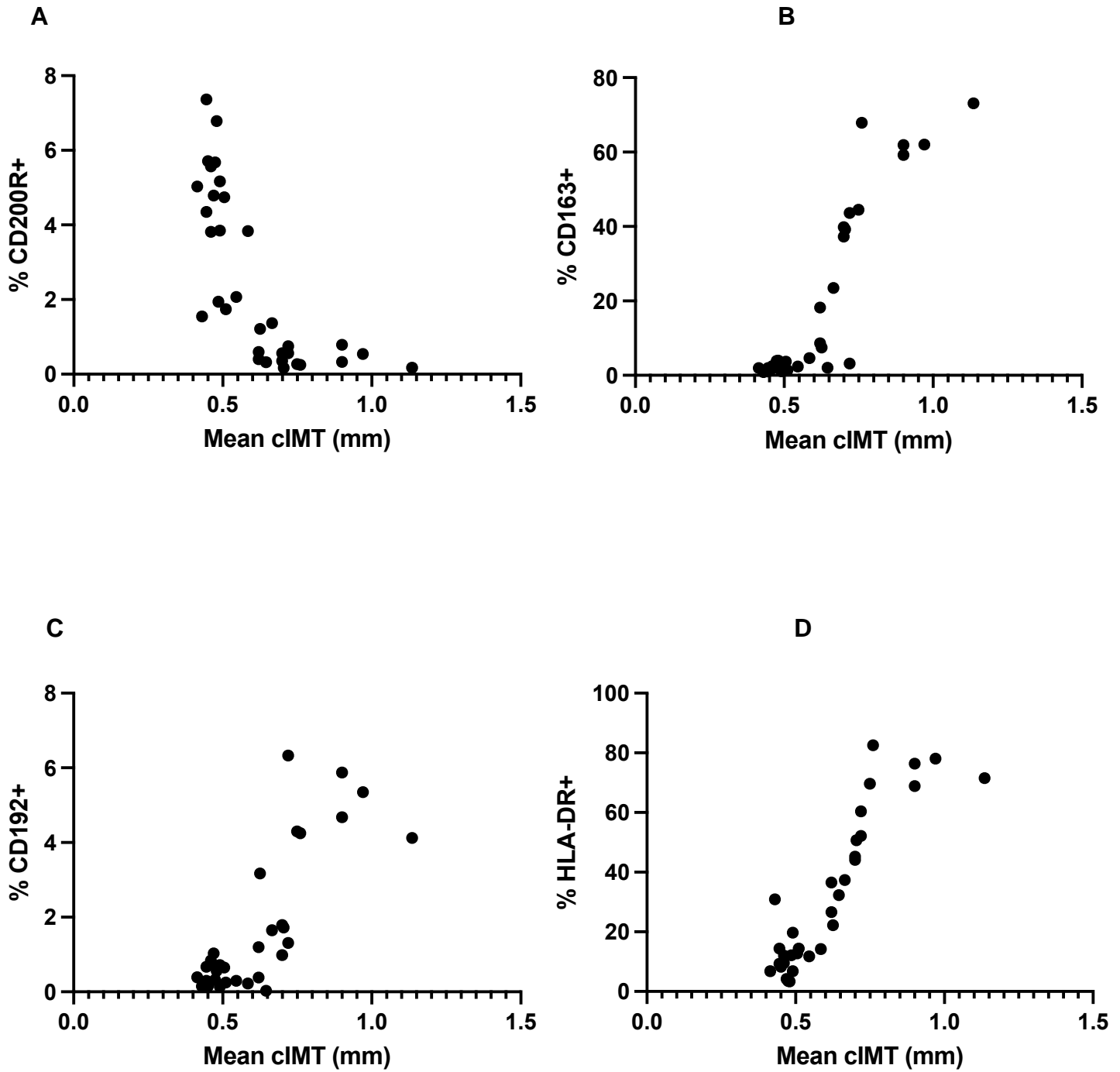


Figure 6

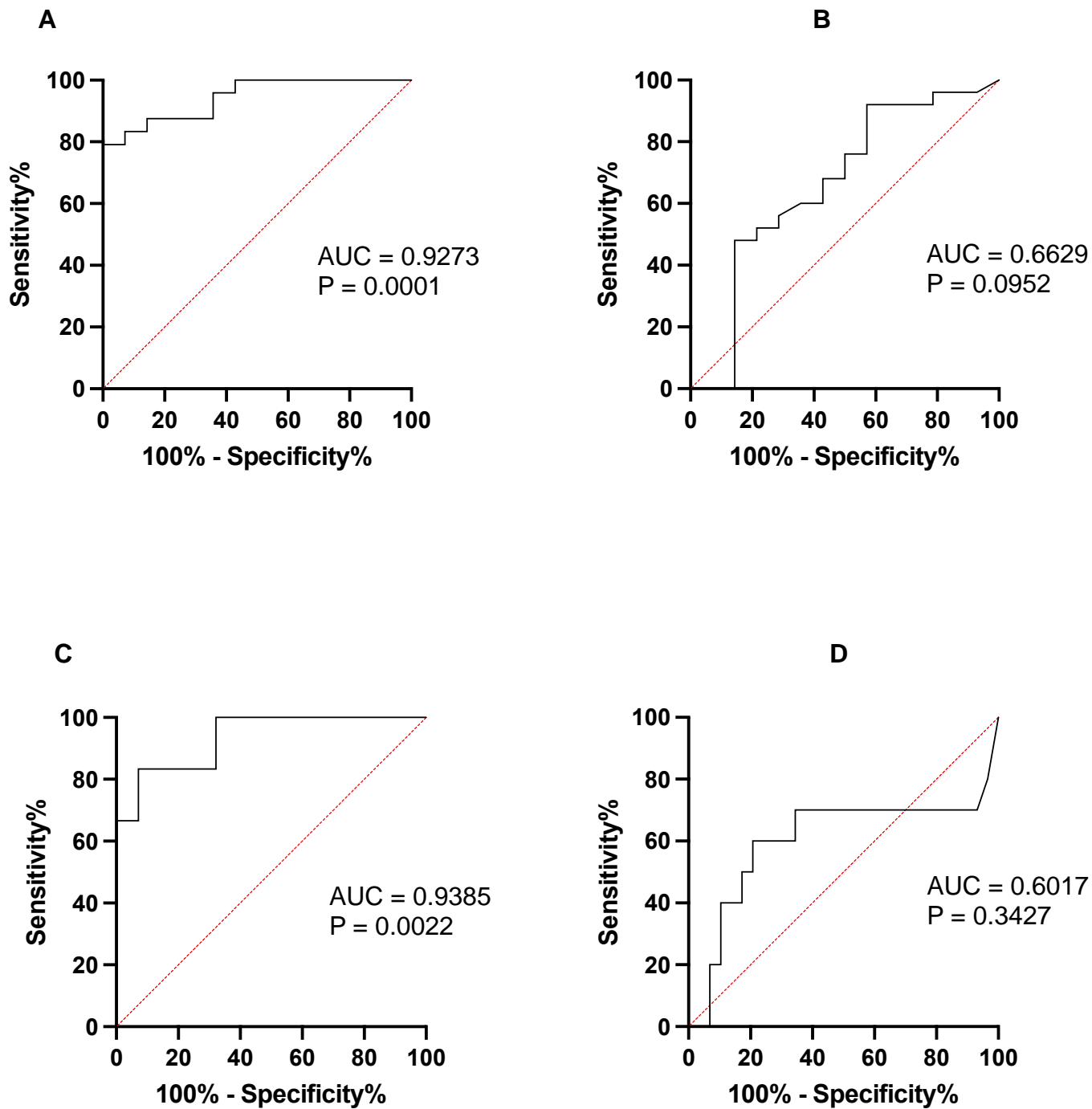


Table 1. Demographics of subjects recruited from the hypertension clinic

| | |
|--|------------|
| Number (male / female) | 14/12 |
| Age (years) | 41.1±16.3 |
| Smokers | 14 |
| Systolic blood pressure (mmHg) | 141.6±10.5 |
| Diastolic blood pressure (mmHg) | 88.7±10.3 |
| Creatinine (µmol/L) | 76.4±15.9 |
| HbA_{1c} (%) | 5.77±0.10 |
| Total cholesterol (mmol/L) | 4.95±1.06 |
| LDL-cholesterol (mmol/L) | 3.04±0.93 |
| HDL-cholesterol (mmol/L) | 1.39±0.42 |
| Triglycerides (mmol/L) | 1.42±0.96 |
| Haemoglobin (g/L) | 140.0±12.8 |
| Total white cell count (× 10⁹/L) | 6.14±1.41 |
| Neutrophil count (× 10⁹/L) | 3.73±1.20 |
| Monocyte count (× 10⁹/L) | 0.48±0.15 |
| Lymphocyte count (× 10⁹/L) | 1.67±0.47 |
| Platelet count (× 10⁹/L) | 254.0±13.8 |
| Medications | |
| - Beta blockers | 3 |
| - Alpha blockers | 2 |
| - Calcium channel blockers | 8 |
| - Renin-angiotensin system inhibitors | 14 |
| - Aspirin | 2 |
| - Diuretics | 6 |
| - Statins | 8 |

Table 2. Demographics of subjects recruited by advertisement

| | |
|--|------------|
| Number (male / female) | 5/8 |
| Age (years) | 39.6±11.7 |
| Smokers | 6 |
| Systolic blood pressure (mmHg) | 123.9±7.1 |
| Diastolic blood pressure (mmHg) | 78.8±2.1 |
| Creatinine (µmol/L) | 75.7±19.2 |
| HbA_{1c} (%) | 5.63±0.25 |
| Total cholesterol (mmol/L) | 5.38±0.73 |
| LDL-cholesterol (mmol/L) | 3.47±0.72 |
| HDL-cholesterol (mmol/L) | 1.44±0.23 |
| Triglycerides (mmol/L) | 1.07±0.34 |
| Haemoglobin (g/L) | 129.4±16.0 |
| Total white cell count (× 10⁹/L) | 5.44±1.69 |
| Neutrophil count (× 10⁹/L) | 3.19±1.26 |
| Monocyte count (× 10⁹/L) | 0.45±0.14 |
| Lymphocyte count (× 10⁹/L) | 2.07±0.61 |
| Platelet count (× 10⁹/L) | 240.1±54.0 |
| Medications | None |

Table 3. C-index for prediction of high risk cIMT: MARS alone and in combination with QRISK3 score or with other monocyte biomarkers

| | C-index (95% CI) | P value |
|---|-------------------------|----------------|
| MARS | 0.9273 (0.8414-1.000) | 0.0001 |
| MARS and QRISK3 | 0.8409 (0.7053-0.9766) | 0.0023 |
| MARS and CD200R | 0.8909 (0.7815-1.000) | 0.0005 |
| MARS and CD163 | 0.9136 (0.8151-1.000) | 0.0002 |
| MARS and CD192 | 0.7955 (0.6417-0.9492) | 0.0082 |
| MARS and HLA-DR | 0.8909 (0.7748-1.000) | 0.0005 |
| MARS and CD200R and CD163 | 0.9136 (0.8146-1.000) | 0.0002 |
| MARS and CD200R and CD192 | 0.8500 (0.7185-0.9815) | 0.0017 |
| MARS and CD200R and HLA-DR | 0.8773 (0.7592-0.9954) | 0.0007 |
| MARS and CD163 and CD192 | 0.8455 (0.7112-0.9798) | 0.0020 |
| MARS and CD163 and HLA-DR | 0.9273 (0.8392-1.000) | 0.0001 |
| MARS and CD192 and HLA-DR | 0.8545 (0.7243-0.9848) | 0.0015 |
| MARS and CD200R and CD163 and CD192 | 0.8682 (0.7453-0.9910) | 0.0010 |
| MARS and CD200R and CD163 and HLA-DR | 0.8591 (0.7299-0.9883) | 0.0013 |
| MARS and CD163 and CD192 and HLA-DR | 0.8545 (0.7222-0.9869) | 0.0015 |
| MARS and CD200R and CD163 and CD192 and HLA-DR | 0.8818 (0.7615-1.000) | 0.0006 |

Table 4. C-index for prediction of carotid plaque: MARS alone and in combination with QRISK3 score or with other monocyte biomarkers

| | C-index (95% CI) | P value |
|---|-------------------------|----------------|
| MARS | 0.9385 (0.8205-1.000) | 0.0022 |
| MARS and QRISK3 | 0.9231 (0.8108-1.000) | 0.0031 |
| MARS and CD200R | 0.9077 (0.7895-1.000) | 0.0044 |
| MARS and CD163 | 0.9538 (0.8725-1.000) | 0.0015 |
| MARS and CD192 | 0.9462 (0.8413-1.000) | 0.0018 |
| MARS and HLA-DR | 0.9385 (0.8416-1.000) | 0.0022 |
| MARS and CD200R and CD163 | 0.9308 (0.8315-1.000) | 0.0026 |
| MARS and CD200R and CD192 | 0.9385 (0.8326-1.000) | 0.0022 |
| MARS and CD200R and HLA-DR | 0.9154 (0.7978-1.000) | 0.0037 |
| MARS and CD163 and CD192 | 0.9538 (0.8620-1.000) | 0.0015 |
| MARS and CD163 and HLA-DR | 0.9462 (0.8604-1.000) | 0.0018 |
| MARS and CD192 and HLA-DR | 0.9462 (0.8413-1.000) | 0.0018 |
| MARS and CD200R and CD163 and CD192 | 0.9538 (0.8315-1.000) | 0.0015 |
| MARS and CD200R and CD163 and HLA-DR | 0.9462 (0.8526-1.000) | 0.0018 |
| MARS and CD163 and CD192 and HLA-DR | 0.9538 (0.8725-1.000) | 0.0015 |
| MARS and CD200R and CD163 and CD192 and HLA-DR | 0.9462 (0.8604-1.000) | 0.0018 |