

1 **Is aging acceleration mediating the association between hemoglobin glycation index and**
2 **cardiovascular disease?**

3

4 Na Liu, PhD ¹, Yun Li, PhD ², Mengying Li, PhD ¹, Yi Wang, MD ¹, Bo Li, MD ¹, Yongqiang
5 Lian, MD ¹, Jianfang Fu, PhD ¹, Xiaomiao Li, PhD ¹, Jie Zhou, PhD*¹.

6 ¹Department of Endocrinology, Xijing Hospital, Air Force Medical University, Xi'an 710032,
7 Shaanxi, China.

8 ²Department of Oncology, NHC Key Laboratory of Cancer Proteomics & State Local Joint
9 Engineering Laboratory for Anticancer Drugs, National Clinical Research Center for
10 Geriatric Disorders, Xiangya Hospital, Central South University, Changsha 410008, Hunan,
11 China

12

13 Short title: HGI, aging acceleration and CVD.

14

15 * Correspondence: Jie Zhou: zhoujie@fmmu.edu.cn

16

17 The total word count of the manuscript: 4884

18 **Abstract**

19 **Background:** The potential factors beyond HbA1c that increase the risk of cardiovascular
20 disease and age more quickly in people with diabetes are not yet clear. This study sought to
21 determine the prospective associations between discrepancies in observed and predicted
22 HbA1c levels, also known as the hemoglobin glycation index (HGI), and cardiovascular
23 disease risk. Additionally, the interactions of HGI with accelerated aging in relation to
24 cardiovascular disease risk were evaluated.

25 **Method:** This cross-sectional study included 9167 adults from the National Health and
26 Nutrition Examination Survey 1999–2010. The HGI is used to assess individual blood
27 glucose variability, and phenotypic age acceleration is employed to evaluate accelerated
28 aging. Regression analysis, restricted cubic spline and mediation analysis explore the
29 potential roles of phenotypic age acceleration in the relationship between HGI and CVD
30 mortality.

31 **Results:** Among the 9167 eligible participants (aged 20 years or older), 4390 (47.9%) were
32 males, and the median (IQR) age was 48.0 (15.0) years; 4403 (48.0%) had prediabetes and
33 diabetes, and 985 (10.7%) had cardiovascular disease. Restricted cubic splines showed that
34 the association between HGI and CVD risk was nonlinear ($p < 0.001$). The greater the
35 negative value of the HGI was, the greater the risk of CVD, and the association was
36 independent of age, sex and HbA1c. Mediation analyses confirmed that phenotypic age
37 acceleration acted as a mediator in the association between HGI and CVD risk (mediated
38 effect: OR, 68.7%, 95% CI: 36.4%-153%, $P=0.002$).

39 **Conclusion and Relevance:** The HGI serves as a robust biomarker for assessing the
40 acceleration of aging, regardless of HbA1c levels, and is associated with increased
41 susceptibility to cardiovascular disease, particularly among individuals characterized by
42 negative HGI.

43 **Keywords:** Aging acceleration; Hemoglobin glycation index; Cardiovascular disease.

44

45 **Introduction:**

46 Type 2 diabetes (T2D) and prediabetes are prevalent in individuals with cardiovascular
47 disease (CVD) and are linked to adverse cardiovascular outcomes¹. Glycated hemoglobin
48 A1c (HbA1c), a marker of protein glycosylation in erythrocytes, can partially indicate
49 cardiovascular disease risk in people with diabetes². However, it is crucial to acknowledge
50 that HbA1c inadequately represents glycemic control in approximately 40% of individuals
51 with diabetes³. Hence, identifying additional factors influencing CVD risk beyond HbA1c
52 may help mitigate the impact of this condition on adults, particularly in individuals with
53 diabetes.

54

55 Elevated glucose concentrations exacerbate the aging process and contribute to cardiac damage.
56 The hemoglobin glycation index (HGI), a measure of the mismatch between observed and
57 predicted HbA1c, reflects interindividual glucose variability³. Strong evidence indicates that
58 the HGI can serve as an indicator of vascular health status⁴ and is associated with the risk of
59 various diabetic vascular complications. The exact mechanisms mediating this association
60 remain unknown, raising the question of whether aging acceleration could play a prominent
61 role. Aging markers in clinical practice, such as leukocyte telomere length (LTL)⁵ and
62 phenotypic age acceleration (PAA)⁶, have been correlated with CVD. We hypothesized that
63 aging acceleration could be a mediator between HGI and CVD risk. Therefore, the detection
64 of a significantly lower HbA1c than blood sugar-matched HbA1c in patients may increase the
65 risk of age-related diseases, such as CVD. Accordingly, the primary objective of this study was

66 to investigate the impact of HGI on CVD using NHANES surveys of US populations while
67 also ascertaining the influence of aging on this process.

68 **Methods:**

69 **Study population**

70 The NHANES is an ongoing national cross-sectional survey, and data are available on the
71 website of the American Centers for Disease Control and Prevention
72 (<http://www.cdc.gov/nchs/nhanes.htm>). The study protocol was approved by the National
73 Center for Health Statistics' ethics review committee. All participants provided written
74 consent at the time of recruitment. The NHANES 1999-2010 data were chosen because C-
75 reactive protein (CRP), which was used to calculate phenotypic age, was collected from these
76 years.

77
78 A total of 59,731 adults (aged 20 to 85 years) were surveyed. Next, we excluded individuals
79 with missing laboratory data regarding age, albumin, creatinine, fasting plasma glucose (FPG),
80 CRP, alkaline phosphatase, and complete blood count with 5-part differential (n=46,958),
81 which were used to calculate phenotypic age; missing data on HbA1c (n=26), which were used
82 to calculate HGI; and missing questionnaire data about CVD (n=3,580). All participants were
83 free of severe anemia. Overall, a total of 9167 adults were surveyed, including 985 CVD
84 patients.

85

86 **Disease ascertainment**

87 The diagnosis of CVD was assessed by the NHANES medical conditions questionnaire (MCQ):

88 “Has a doctor or other health expert ever informed you that you have congestive heart
89 failure/coronary heart disease/angina pectoris/ myocardial infarction /stroke (MCQ160B-F)?”

90 A person was regarded as having CVD if he or she replied “yes” to any of the above questions.

91 Participants who provided “Do not know” or “Refused” responses were considered to have
92 missing data.

93

94 According to the ADA’s diabetes diagnostic criteria⁷, diagnosed diabetes and prediabetes were

95 defined by self-reported diagnosis and met 1 of the laboratory criteria (FPG level of ≥ 5.6

96 mmol/l or HbA1c level $\geq 5.7\%$).

97

98 **Key variables**

99 **(1) Biological aging markers**

100 Phenotypic age was calculated by using 9 aging-related variables⁸, including chronological age,

101 albumin, creatinine, glucose, CRP, lymphocyte percentage, mean cell volume, red blood cell

102 distribution width, alkaline phosphatase, and white blood cell count.

$$103 \text{ Phenotypic age} = 141.50 + \frac{\ln \left[-0.00553 \times \ln \left(\exp \left(\frac{-1.51714 \times \exp(xb)}{0.076927} \right) \right) \right]}{0.09165}$$

104 where

105 $xb = -19.907 - 0.0336 \times \text{Albumin} + 0.0095 \times \text{Creatinine} + 0.1953 \times \text{Glucose} + 0.0954 \times \text{LnC}$

106 $RP-0.0120 \times \text{Lymphocyte Percent} + 0.0268 \times \text{Mean Cell Volume} + 0.3306 \times \text{Red Cell}$
107 $\text{Distribution Width} + 0.00188 \times \text{Alkaline Phosphatase} + 0.0554 \times \text{White Blood Cell}$
108 $\text{Count} + 0.0804 \times \text{Chronological Age}$.

109 We then estimated PAA, calculated as the residuals resulting from a linear model regressing
110 phenotypic age on chronological age. A negative PAA value ($PAA < 0$) indicated a slow aging
111 group, indicating that the phenotypic age was younger than the chronological age. Conversely,
112 a positive PAA value ($PAA \geq 0$) indicates accelerated aging.

113

114 **(2) Telomere length**

115 We combined the NHANES surveys conducted in 1999-2000 and 2001-2002 because these
116 surveys measure LTL. The full details are available at <http://cdc.gov/nchs/nhanes>. The length
117 of telomeres is represented by the mean (standard deviation) of the telomere length relative to
118 the standard reference DNA ratio.

119

120 **(3) HGI**

121 The mismatch between glycemia and HbA1c was measured by the HGI. First, linear regression
122 models of observed HbA1c vs. observed FPG were used. The association of HbA1c levels with
123 FPG levels varied according to y-intercept. $\text{predicted HbA1c} = (0.45 \times \text{FPG}) + 2.99$. $\text{HGI} =$
124 $\text{observed-predicted HbA1c}$. Next, the HGI was categorized into tertiles. Participants in the
125 highest tertile of HGI exhibited an observed HbA1c level that exceeded the predicted value.
126 Those in the moderate tertile had an observed HbA1c close to the predicted level, resulting in

127 a near-zero HGI. Participants in the lowest tertile of HGI demonstrated an observed HbA1c
128 lower than predicted, leading to a negative HGI value.

129

130 **Statistical analysis**

131 All the statistical analyses were performed using R version 4.1.2. Missing data were imputed
132 using the multiple imputation chained equation procedure. Continuous variables are reported
133 as either the mean (\pm SD, standard deviation) or median (interquartile range [IQR]), while
134 categorical variables are presented as frequencies and percentages. Continuous variables were
135 analyzed by HGI tertiles using ANOVA, while categorical variables were assessed using chi-
136 square tests.

137

138 Multivariate linear regression models were developed to investigate the association between
139 HGI and accelerated aging, and β coefficients and their corresponding standard errors were
140 calculated. Multivariate logistic regression models were then constructed to explore potential
141 associations between HGI and CVD incidence, along with odds ratios (ORs) and 95%
142 confidence intervals (CIs). PAA was used as a possible mediator of the association between
143 HGI and CVD incidence. We separately used linear regression and logistic regression to
144 examine the relationships between HGI and PAA and between HGI and CVD mortality, with
145 a 4-knot (5th, 35th, 65th, 95th percentiles of HGI) (0.05, 0.35, 0.65, 0.95) restricted cubic
146 spline and smooth curve fitting. To test the robustness and potential variations in different

147 subgroups, we repeated the analyses stratified by sex (men and women), glucose state (NGM,
148 prediabetes and diabetes). $P < 0.05$ was considered to indicate statistical significance.

149

150 **Results:**

151 **1. General characteristics of participants according to HGI tertiles.**

152 The general characteristics of participants from the US NHANES by tertiles of HGI are shown
153 in Table 1. This study included 9167 participants with a median (IQR) age of 48.00 (15) years
154 and 48% males. Compared with those in tertile 1, participants in the other tertiles were more
155 likely to be older, female, and have a higher body mass index (BMI), HbA1c, TC, and LDL.
156 Specifically, participants in tertile 2 (moderate HGI) tended to have lower FPG, homeostasis
157 model assessment-insulin resistance (HOMA-IR) levels and prevalence rates of prediabetes
158 and diabetes.

159

160 **2. Associations between HGI and total CVD incidence.**

161 Among the 9167 participants, we identified 985 individuals with CVD. The subgroup analysis
162 of logistic regression showed that HGI was not an independent risk factor for CVD in the
163 moderate-HGI group. With adjustment for sex and age, the larger the absolute value of the HGI
164 was, the greater the risk of CVD. Interestingly, after further controlling for HbA1c, positive
165 HGI was no longer a risk factor for CVD, while negative HGI remained a risk factor for CVD
166 (Table 2). According to the restricted cubic spline regression models, the associations of HGI
167 and combined HbA1c with CVD incidence are shown in Fig. 1 and Figure S1. There was a U-

168 shaped relationship between HGI and CVD risk; however, there was an approximate L-shaped
169 relationship between HGI and CVD risk after further controlling for HbA1c.

170

171 **3. Relationship between HGI and accelerated aging.**

172 Apart from glycemic control, the duration of erythrocyte survival significantly impacts HbA1c
173 levels. There was a significant correlation between HbA1c and HGI in the accelerated aging
174 group ($r = 0.8$, $P < 0.001$), which was significantly greater than that in the decelerated aging
175 group (Figure S2A). We conducted further analysis to investigate the association between HGI
176 and aging. The general characteristics of the participants with LTL (NHANES 1999-2012) are
177 shown in Table S1. First, there is an inverted U-shaped relationship between HGI and LTL.
178 The absolute magnitude of HGI was negatively associated with telomere length (Figure S2B).

179

180 Additionally, we employed a restricted cubic spline to flexibly model and visualize the
181 associations between HGI, HbA1c and PAA (Fig. 2). A V-shaped correlation was observed
182 between HGI and PAA (p nonlinear 0.002). There was a stronger correlation between HGI and
183 PAA in people with diabetes or prediabetes than in those with NGM (Figure S2C-D). After
184 adjusting for HbA1c, a robust negative linear correlation between HGI and PAA was observed,
185 confirming that positive HGI is influenced mainly by HbA1c. Conversely, negative HGI
186 remains significantly associated with accelerated aging.

187

188 **4. The modifying effect of aging acceleration on the association between HGI and CVD**

189 **risk**

190 The length of telomeres is inversely associated with the risk of CVD, whereas elevated levels
191 of PAA are positively associated with the risk of CVD (Figure S4A-B). The association
192 between negative HGI and CVD risk disappeared after further controlling for PAA compared
193 to solely controlling for sex and age (Fig. 3A). Mediation analysis was used to investigate the
194 mediating effect of PAA between negative HGI and CVD. Specifically, HGI was negatively
195 correlated with PAA ($\beta \pm SE = -8.456 \pm 0.3369$, $p < 0.001$). Ultimately, the association between
196 HGI and CVD incidence was mediated by PAA in 68.7% (95% CI 36.4%-153%) of the
197 observational studies (Fig. 3B).

198

199 **Discussion:**

200 This study generated two key findings. First, we found that a negative HGI, rather than a
201 positive HGI, was significantly associated with a greater risk of CVD independent of HbA1c,
202 particularly in people with diabetes. Additionally, we observed that a negative HGI is a potent
203 and likely neglected indicator of accelerated aging, and identifying individuals with negative
204 HGI is crucial for the prevention and early intervention of aging-related diseases such as CVD.

205

206 Diabetes is widely accepted as a risk factor for CVD. HbA1c, as a *sine qua non* of diabetes
207 diagnosis, cannot capture glycemic variations well concentrations. In clinical practice, there is
208 often a discrepancy between plasma glucose and HbA1c levels, with the mismatch becoming

209 more prevalent in individuals with higher blood glucose concentrations. The HGI reflects the
210 difference between the predicted and observed HbA1c. People with positive HGI results were
211 mainly elderly people with diabetes and prediabetes, and people with negative HGI results were
212 mainly people with NGM. Individuals with positive HGI are prone to receiving excessive and
213 inappropriate treatment for hypoglycemia, while those with negative HGI experience
214 suboptimal glycemic control and an increased risk of diabetes-related complications³. Many
215 doubts have been aired about the consistent discrepancy between glycated hemoglobin and
216 actual glycemia. The current consensus is lacking regarding whether HGI, as an indicator of
217 individual plasma glucose variability, can effectively reflect the variations in CVD risk among
218 individuals with diabetes. An increasing body of evidence indicates that a positive HGI is
219 associated with increased protein glycation, can serve as an indicator of vascular health status
220 in individuals with impaired glucose metabolism⁴ and is associated with the risk of various
221 diabetic vascular complications, including CVD⁴ and diabetic nephropathy⁹. However, certain
222 studies have proposed that the association between HGI and macrovascular complications
223 diminishes after adjusting for HbA1c¹⁰. To elucidate the relationship between HGI and the
224 occurrence of CVD, we carried out a cross-sectional analysis of 9167 participants from the
225 NHANES cohort. The present study revealed that individuals with abnormal sugar metabolism
226 exhibit a greater degree of variability in HGI than do those with NGM. A positive HGI
227 heightens susceptibility to CVD, which is well reported¹¹. There is limited literature available
228 on the association between negative HGI and CVD risk. The present study revealed that
229 negative HGI levels were associated with a greater risk of CVD in individuals with

230 normoglycemia and abnormal glucose metabolism, indicating a U-shaped relationship
231 consistent with previous studies¹². This U-shaped relationship between HGI and CVD risk also
232 holds true in individuals with NGM but exhibits a stronger association with impaired glucose
233 regulation.

234

235 Although the precise biological mechanism underlying the correlation between HGI and CVD
236 risk remains unclear, it may be closely related to HbA1c, and previous studies have not assessed
237 this correlation. Our results suggest an approximate inverse correlation between HGI and the
238 incidence of CVD after adjusting for HbA1c. The HbA1c level is influenced by the lifespan of
239 red blood cells¹³ and the glucose gradient across their cell membrane¹⁴. The longer the average
240 lifespan of red blood cells is, the greater the measured level of HbA1c; conversely, the shorter
241 the average lifespan of red blood cells is, the lower the measured level of HbA1c¹³. This
242 inaccurately reflects actual blood glucose concentrations over the previous 2-3 months.
243 However, certain studies have proposed that there is considerable variation in red blood cell
244 survival rates within normal populations, with both individuals with DM and those without
245 DM having similar average lifespans and ranges for erythrocytes¹³. Therefore, can the
246 association between HGI and CVD risk be elucidated by examining cellular senescence?

247

248 Diabetes, along with other metabolic disorders, is commonly regarded as a condition that
249 accelerates aging. The risk of myocardial damage in diabetic patients is significantly increased,
250 which can be attributed not only to elevated blood sugar levels but also to aging¹⁵. The rate of

251 aging varies among individuals, resulting in differences in susceptibility to CVD as individuals
252 age¹⁶. Therefore, distinguishing the aging process among individuals of the same chronological
253 age will enhance early prevention by enabling earlier identification of individuals at high risk
254 for CVD. Biological aging is known to be assessed in a variety of ways, with the most
255 prominent ones being epigenetic clocks (represented as DNA methylation age) and the ILTL¹⁷.
256 Recently, aging measures based on clinically observable data, such as PAA, have been shown
257 to strongly predict susceptibility to various metabolic diseases¹⁸. Our study evaluated the
258 relationship between CVD and biological aging and demonstrated a significant positive
259 association between accelerated aging and CVD risk, in line with previous findings^{6,19}. .

260

261 To further elucidate whether HGI can accurately reflect interindividual differences in aging,
262 we analyzed the relationship between HGI and PAA. The results indicated a U-shaped
263 relationship between HGI and PAA, with lower PAA observed when HGI was close to zero.
264 This suggests that a closer alignment between the predicted and measured HbA1c levels
265 corresponds to a slower aging process, whereas a larger disparity indicates accelerated aging.
266 After controlling for HbA1c, HGI showed a nearly linear negative correlation with PAA,
267 suggesting that the relationship between HGI and aging is influenced by HbA1c. The
268 relationship between PAA and CVD risk in relation to HGI was further assessed in this study.
269 Notably, our findings demonstrate for the first time that the association between negative HGI
270 levels and increased CVD risk is no longer observed after adjusting for PAA. Mediation
271 analysis suggested that the relationship between negative HGI and CVD is fully mediated by

272 PAA. Previous studies have suggested that the HGI reflects interindividual variability in
273 susceptibility to hemoglobin glycation. Based on our findings, we propose that the
274 discrepancy between the measured HbA1c and true glucose concentrations may be attributed
275 to accelerated physiological aging. The variation in HGI is predominantly associated with the
276 aging process and may serve as an indicator of the aging rate to a certain extent.
277 Consequently, the relationship between HGI and cardiovascular disease risk can be elucidated
278 by accelerated physiological aging.
279
280 Telomeres, which are indicators of bodily aging, are closely associated with the occurrence of
281 age-related diseases such as metabolic syndrome, T2D, and CVD²⁰. The LTL serves as a more
282 accurate reflection of aging and can predict the risk of age-related diseases such as CVD^{21,22}.
283 To further elucidate the relationship between HGI and aging, we explored the correlation
284 between HGI and telomere length. Our results revealed a negative correlation between LTL
285 and CVD, providing evidence that CVD is an age-related disease. The absolute magnitude of
286 HGI, indicating the discrepancy between predicted and actual HbA1c levels, is positively
287 associated with telomere shortening. Previous studies have shown that the moderate-HGI group
288 exhibited the highest mtDNAcn, while the high-HGI group showed a decrease without
289 statistically significant differences²³, which indirectly suggested that both excessively positive
290 and negative HGIs are associated with accelerated aging. Our results provide additional
291 evidence supporting a positive correlation between the absolute magnitude of HGI and
292 telomere shortening. Elevated glycemia can lead to reduced activity of erythrocyte Na⁺-K⁺-

293 ATPase, resulting in an increased glucose gradient on the red blood cell membrane²⁴ and
294 increased HGI. Moreover, aging may contribute to a decrease in erythrocyte ATP content²⁵.
295 The interaction between diabetes and aging is associated with an increased risk of
296 complications such as CVD. Overall, HGI is linked to accelerated aging and shortened
297 telomeres.

298

299 The HGI is a clinically validated measurement index that is easily available in routine clinical
300 practice. Therefore, the HGI can serve as a convenient and accessible indicator of CVD risk to
301 assist clinicians in monitoring the risk of CVD in individuals, especially those with prediabetes
302 or diabetes. However, the lack of OGTT data might lead to potential underdiagnosis. Second,
303 the assessment of CVD risk was based on self-report questionnaires, which are susceptible to
304 recall bias. Due to the cross-sectional design of this study, it is challenging to establish a causal
305 relationship between HGI and CVD. Further research is required to comprehensively
306 understand the mechanisms underlying this correlation and whether targeting cellular aging
307 pathways could reduce the risk of CVD in individuals with elevated HGI levels.

308

309 **Conclusion**

310

311 The study presented evidence that individuals with a negative HGI may be at an elevated risk
312 for cardiovascular disease. HGI, being a clinically accessible and valuable indicator, can be
313 utilized to assess the acceleration of aging and is closely associated with an increased

314 susceptibility to age-related health issues, including cardiovascular disease. These findings
315 have the potential to aid in identifying individuals who could benefit from targeted
316 interventions, particularly in T2D, aimed at reducing their risk of developing cardiovascular
317 disease as they age.

318

319 **Acknowledgements:**

320 We sincerely thank all individuals who contributed to the study of NHANES.

321

322 **Sources of Funding:**

323 National Natural Science Foundation of China (NSFC): 82070839

324

325 **Disclosures:**

326 None.

327

328 **References:**

- 329 1. Marx N, Federici M, Schütt K, Müller-Wieland D, Ajjan RA, Antunes MJ, Christodorescu
330 RM, Crawford C, Di Angelantonio E, Eliasson B, et al. 2023 ESC Guidelines for the
331 management of cardiovascular disease in patients with diabetes. *Eur. Heart J.*
332 2023;44:4043–4140.
- 333 2. Cahn A, Wiviott SD, Mosenzon O, Goodrich EL, Murphy SA, Yanuv I, Rozenberg A,
334 Bhatt DL, Leiter LA, McGuire DK, et al. Association of Baseline HbA1c With
335 Cardiovascular and Renal Outcomes: Analyses From DECLARE-TIMI 58. *Diabetes*
336 *Care.* 2022;45:938–946.
- 337 3. Nayak AU, Singh BM, Dunmore SJ. Potential Clinical Error Arising From Use of HbA1c
338 in Diabetes: Effects of the Glycation Gap. *Endocr. Rev.* 2019;40:988–999.

- 339 4. Ahn CH, Min SH, Lee D-H, Oh TJ, Kim KM, Moon JH, Choi SH, Park KS, Jang HC, Ha
340 J, et al. Hemoglobin Glycation Index Is Associated With Cardiovascular Diseases in
341 People With Impaired Glucose Metabolism. *J. Clin. Endocrinol. Metab.* 2017;102:2905–
342 2913.
- 343 5. Schuermans A, Nakao T, Uddin MM, Hornsby W, Ganesh S, Shadyab AH, Liu S, Haring
344 B, Shufelt CL, Taub MA, et al. Age at Menopause, Leukocyte Telomere Length, and
345 Coronary Artery Disease in Postmenopausal Women. *Circ. Res.* 2023;133:376–386.
- 346 6. Chen L, Yin X, Zhao Y, Chen H, Tan T, Yao P, Tang Y. Biological ageing and the risks of
347 all-cause and cause-specific mortality among people with diabetes: a prospective cohort
348 study. *J. Epidemiol. Community Health.* 2022;76:771–778.
- 349 7. American Diabetes Association. 2. Classification and Diagnosis of Diabetes: Standards
350 of Medical Care in Diabetes-2020. *Diabetes Care.* 2020;43:S14–S31.
- 351 8. Levine ME, Lu AT, Quach A, Chen BH, Assimes TL, Bandinelli S, Hou L, Baccarelli AA,
352 Stewart JD, Li Y, et al. An epigenetic biomarker of aging for lifespan and healthspan.
353 *Aging.* 2018;10:573–591.
- 354 9. Xin S, Zhao X, Ding J, Zhang X. Association between hemoglobin glycation index and
355 diabetic kidney disease in type 2 diabetes mellitus in China: A cross- sectional inpatient
356 study. *Front. Endocrinol.* 2023;14:1108061.
- 357 10. Rhee E-J, Cho J-H, Kwon H, Park SE, Park C-Y, Oh K-W, Park S-W, Lee W-Y.
358 Association Between Coronary Artery Calcification and the Hemoglobin Glycation Index:
359 The Kangbuk Samsung Health Study. *J. Clin. Endocrinol. Metab.* 2017;102:4634–4641.
- 360 11. Brownlee M. Biochemistry and molecular cell biology of diabetic complications. *Nature.*
361 2001;414:813–820.
- 362 12. J Y, Q S, G X, M Y, G S. Sex-specific associations between haemoglobin glycation index
363 and the risk of cardiovascular and all-cause mortality in individuals with pre-diabetes and
364 diabetes: A large prospective cohort study. *Diabetes Obes. Metab.* [Internet]. 2024 [cited
365 2024 Jun 19];26. Available from: <https://pubmed.ncbi.nlm.nih.gov/38454654/>
- 366 13. Cohen RM, Franco RS, Khera PK, Smith EP, Lindsell CJ, Ciralo PJ, Palascak MB, Joiner
367 CH. Red cell life span heterogeneity in hematologically normal people is sufficient to
368 alter HbA1c. *Blood.* 2008;112:4284–4291.
- 369 14. Khera PK, Joiner CH, Carruthers A, Lindsell CJ, Smith EP, Franco RS, Holmes YR,
370 Cohen RM. Evidence for interindividual heterogeneity in the glucose gradient across the
371 human red blood cell membrane and its relationship to hemoglobin glycation. *Diabetes.*
372 2008;57:2445–2452.

- 373 15. Chia CW, Egan JM, Ferrucci L. Age-related Changes in Glucose Metabolism,
374 Hyperglycemia, and Cardiovascular Risk. *Circ. Res.* 2018;123:886.
- 375 16. LL, LB, FM, TL, PL, GC. Inflammation, Aging, and Cardiovascular Disease: JACC
376 Review Topic of the Week. *J. Am. Coll. Cardiol.* [Internet]. 2022 [cited 2024 Jun 19];79.
377 Available from: <https://pubmed.ncbi.nlm.nih.gov/35210039/>
- 378 17. RD, QF, YS, QL. Epigenetic clock: A promising biomarker and practical tool in aging.
379 *Ageing Res. Rev.* [Internet]. 2022 [cited 2024 Jun 19];81. Available from:
380 <https://pubmed.ncbi.nlm.nih.gov/36206857/>
- 381 18. Liu Z, Kuo P-L, Horvath S, Crimmins E, Ferrucci L, Levine M. A new aging measure
382 captures morbidity and mortality risk across diverse subpopulations from NHANES IV:
383 A cohort study. *PLoS Med.* 2018;15:e1002718.
- 384 19. MC-H, BB, RV, MK, VZ, RC, JE, DM, DP, MW, et al. Education, biological ageing,
385 all-cause and cause-specific mortality and morbidity: UK biobank cohort study.
386 *EClinicalMedicine* [Internet]. 2020 [cited 2024 Jun 19];29–30. Available from:
387 <https://pubmed.ncbi.nlm.nih.gov/33437953/>
- 388 20. Cheng F, Carroll L, Joglekar MV, Januszewski AS, Wong KK, Hardikar AA, Jenkins AJ,
389 Ma RCW. Diabetes, metabolic disease, and telomere length. *Lancet Diabetes Endocrinol.*
390 2021;9:117–126.
- 391 21. Cheng F, Luk AO, Tam CHT, Fan B, Wu H, Yang A, Lau ESH, Ng ACW, Lim CKP, Lee
392 HM, et al. Shortened Relative Leukocyte Telomere Length Is Associated With Prevalent
393 and Incident Cardiovascular Complications in Type 2 Diabetes: Analysis From the Hong
394 Kong Diabetes Register. *Diabetes Care.* 2020;43:2257–2265.
- 395 22. Peng H, Mete M, Desale S, Fretts AM, Cole SA, Best LG, Lin J, Blackburn E, Lee ET,
396 Howard BV, et al. Leukocyte telomere length and ideal cardiovascular health in American
397 Indians: the Strong Heart Family Study. *Eur. J. Epidemiol.* 2017;32:67–75.
- 398 23. LL, JY, YL, SH, YZ, MQ, FP, LX, WL, HZ, et al. High Hemoglobin Glycation Index
399 Is Associated With Telomere Attrition Independent of HbA1c, Mediated by TNF α . *J. Clin.*
400 *Endocrinol. Metab.* [Internet]. 2022 [cited 2024 Jun 19];107. Available from:
401 <https://pubmed.ncbi.nlm.nih.gov/34562085/>
- 402 24. Fb D, Pj D, GN, Sd B, MM, SG, Mj F. The effect of in vivo glucose administration on
403 human erythrocyte Ca²⁺-ATPase activity and on enzyme responsiveness in vitro to
404 thyroid hormone and calmodulin. *Diabetes* [Internet]. 1985 [cited 2024 Jun 19];34.
405 Available from: <https://pubmed.ncbi.nlm.nih.gov/2989051/>
- 406 25. Rabini RA, Petruzzi E, Staffolani R, Tesei M, Fumelli P, Pazzagli M, Mazzanti L.
407 Diabetes mellitus and subjects' ageing: a study on the ATP content and ATP-related

408 enzyme activities in human erythrocytes. *Eur. J. Clin. Invest.* 1997;27:327–332.

409

410

Table 1. Baseline characteristics by HGI among participants in the NHANES

characteristic	Overall	HGI			<i>P</i> ^b
		Tertile 1 (Low) N=3060 ^a	Tertile 2 (Moderate) N=3058 ^a	Tertile 3 (High) N=3049 ^a	
Age	48.00 (33.00, 65.00)	43.00 (30.00, 61.00)	46.00 (33.00, 63.00)	55.00 (40.00, 69.00)	<0.001
Sex					<0.001
Male	4,390 (48%)	1,654 (54%)	1,412 (46%)	1,324 (43%)	
Female	4,777 (52%)	1,406 (46%)	1,646 (54%)	1,725 (57%)	
SBP	123.66 ± 19.67	122.31 ± 18.99	122.37 ± 19.09	126.31 ± 20.62	<0.001
DBP	69.53 ± 12.56	69.82 ± 12.50	69.59 ± 12.10	69.18 ± 13.05	0.300
BMI	28.78 ± 6.68	28.20 ± 6.47	28.42 ± 6.40	29.72 ± 7.05	<0.001
Glucose	5.85 ± 1.90	6.03 ± 2.05	5.52 ± 1.13	6.00 ± 2.29	<0.001
HbA1c	5.63 ± 1.03	5.22 ± 0.78	5.46 ± 0.51	6.21 ± 1.33	<0.001

HOMA-IR	2.38 (1.45, 4.21)	2.45 (1.52, 4.32)	2.20 (1.39, 3.69)	2.54 (1.45, 4.65)	<0.001
TC	5.15 ± 1.08	5.07 ± 1.07	5.18 ± 1.06	5.21 ± 1.10	<0.001
TG	1.60 ± 1.19	1.63 ± 1.36	1.56 ± 1.02	1.63 ± 1.17	0.024
LDL	3.03 ± 0.93	2.95 ± 0.91	3.08 ± 0.93	3.07 ± 0.96	<0.001
HDL	1.39 ± 0.42	1.38 ± 0.43	1.39 ± 0.41	1.39 ± 0.41	0.200
HGI	-0.02 (-0.28, 0.23)	-0.39 (-0.59, -0.28)	-0.02 (-0.11, 0.05)	0.36 (0.23, 0.56)	<0.001
PAA	-0.80 (-4.18, 3.37)	-1.18 (-4.42, 3.12)	-1.35 (-4.44, 2.18)	0.23 (-3.51, 4.80)	<0.001
Prediabetes and diabetes (N, %)	4,403 (48%)	1,463 (48%)	1,039 (34%)	1,901 (62%)	<0.001

^a Mean ± SD; median (IQR); n (%)

^b Wilcoxon rank sum test; Pearson's chi-squared test; one-way ANOVA.

BMI, body mass index; DBP, diastolic blood pressure; HDL, high-density lipoprotein; HGI, hemoglobin glycation index; HOMA-IR: homeostasis model assessment-insulin resistance; LDL, low density lipoprotein; SBP, systolic blood pressure; T2D: type 2 diabetes; TC, total cholesterol; TG, triglyceride; PAA, phenotypic age acceleration.

Table 2. Logistic regression analysis for the association between HGI and cardiovascular disease

	Crude		Model 1		Model 2	
	OR (95% CI)	<i>P</i>	OR (95% CI)	<i>P</i>	OR (95% CI)	<i>P</i>
Low HGI, N=3060	0.454 (0.351-0.588)	<0.001	0.574 (0.441-0.746)	<0.001	0.623 (0.471-0.824)	0.001
Moderate HGI, N=3058	1.493 (0.417-5.348)	0.538	1.176 (0.296-4.679)	0.818	0.967 (0.241-3.872)	0.962
High HGI, N=3049	1.593 (1.373-1.8848)	<0.001	1.579 (1.340-1.861)	<0.001	1.177 (0.941-1.472)	0.153

CI, confidence interval; HGI, hemoglobin glycation index; OR, odds ratio.

Model 1, adjusted for sex and age; Model 2, adjusted for sex, age, and HbA1c.

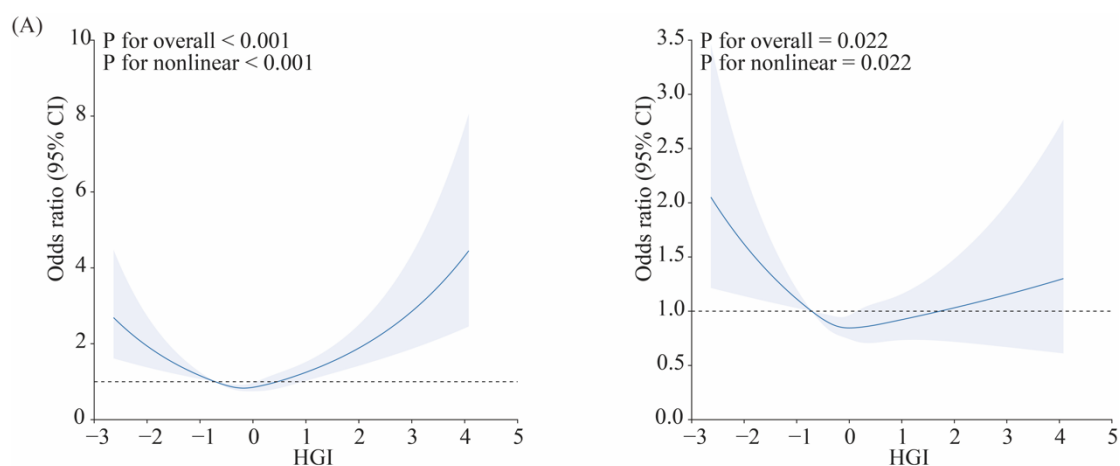


Figure 1. Association Between HGI and CVD Using a Restricted Cubic Spline Regression Model.

Graphs show ORs for CVD according to HGI adjusted for age and sex (A) and age, sex, and HbA1c (B). Data were fitted by a logistic regression model, and the model was conducted with 4 knots at the 5th, 35th, 65th, 95th percentiles of HGI (reference is the 5th percentile). Solid lines indicate ORs, and shadow shape indicate 95% CIs. OR, odds ratio; CI, confidence interval.

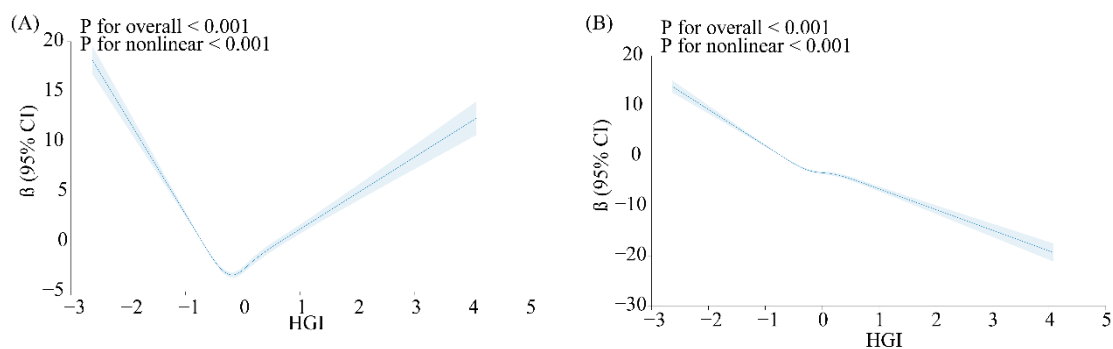


Figure 2. Association Between HGI and PAA Using a Restricted Cubic Spline Regression Model.

Graphs show β for PAA according to HGI (A) and adjusted for HbA1c (B). Data were fitted by a linear regression model, and the model was conducted with 4 knots at the 5th, 35th, 65th, 95th percentiles of HGI (reference is the 5th percentile). Solid lines indicate β , and shadow shape indicate 95% CIs. CI, confidence interval.

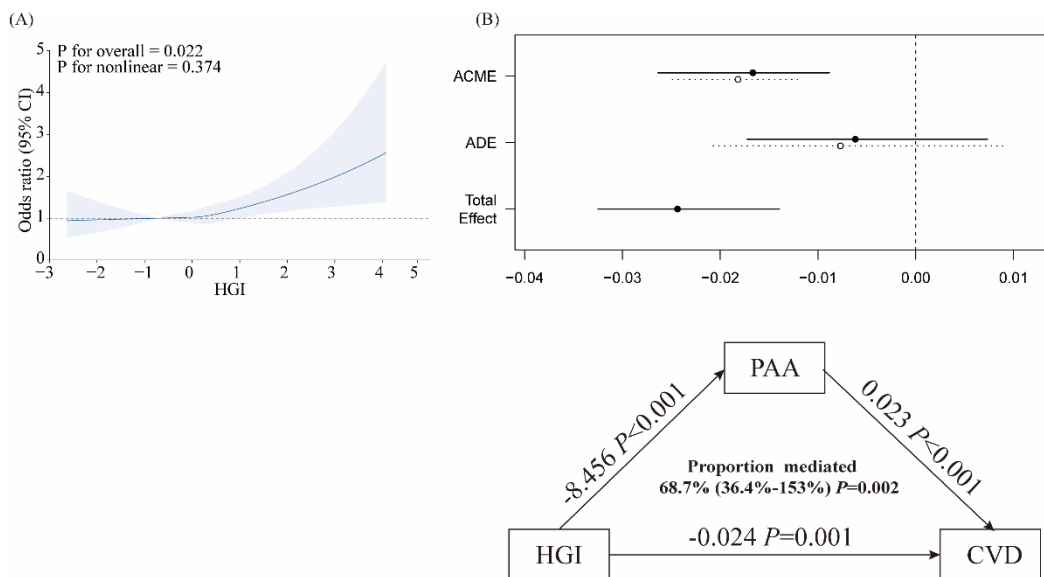


Figure 3. The relationship between negative HGI and CVD risk is mediated by accelerated aging.

Graphs show ORs for CVD according to HGI (A) and mediating effect of PAA on the relationship between HGI and the CVD risk in HGI tertile 1 (B). Adjusted for age, sex, and PAA. ACME, Average Causal Mediation Effect; ADE, Average Direct Effect.