

1 *The Journal of Psychiatric and Mental Health Nursing*

2 **Help-seeking needs related to suicide prevention for individuals in contact**
3 **with mental health services: A rapid scoping review**

4 Hwayeon Danielle Shin^{a,b}, Jessica Kemp^{a,b}, Samantha Groves^c, Laura Bennett-Poynter^c,
5 Charlotte Pape^{a,b}, Karen Lascelles^c, Gillian Strudwick^{a,b}

6 ^a *Campbell Family Mental Health Research Institute, Centre for Addiction and Mental Health,*
7 *Toronto, Ontario, Canada*

8 ^b *Institute of Health Policy, Management, and Evaluation, University of Toronto, Toronto,*
9 *Ontario, Canada*

10 ^c *Oxford Health NHS Foundation Trust, Oxford, United Kingdom*

11 **Funding**

12 This work was supported by the Centre for Addiction and Mental Health (CAMH) and Oxford
13 Health NHS Foundation Trust (OHFT).

14 **Author Contributions**

15 GS conceptualized this review. JK developed the search strategy with a librarian. HDS, JK, SG,
16 LBP, CP participated in screening titles and abstracts and assessing full texts against the
17 inclusion criteria. HDS, JK, SG, LBP, CP participated in data extraction and analysis. HDS and
18 JK developed tables and figures for data presentation. HDS wrote the first draft of the review
19 report. All authors critically reviewed and provided feedback on the manuscript. HDS worked on
20 manuscript revisions. KL and GS supervised all steps of this review.

21 **Acknowledgements**

22 We would like to thank librarian, Reena Besa, who helped us build the search strategy.
23

24 **Ethical Statements**

25 This is a scoping review on existing literature; therefore, it does not require ethical approval.
26

27 **Conflicts of Interest**

28 There are no conflicts of interest to declare with this submission.
29
30
31
32
33
34
35

36 **Structured Abstract**

37 **Introduction:** Prior mental health care utilization presents an important window of opportunity
38 for providing suicide prevention interventions. To date, no reviews have consolidated the help-
39 seeking needs of individuals in contact with mental health services. This warrants further
40 attention given this group may have different needs for interventions compared to the general
41 population who have not sought help previously.

42 **Aim:** The purpose of this rapid scoping review was to summarize the available literature on
43 help-seeking needs related to suicide prevention among individuals in contact with mental health
44 services from healthcare settings.

45 **Method:** Cochrane rapid review and Joanna Briggs Institute scoping review methodologies were
46 adapted, and databases, including MEDLINE, Scopus, CINAHL, PsycInfo, and EMBASE, were
47 searched.

48 **Results:** A total of 42 primary studies were included in analysis. Reported barriers and
49 facilitators to help-seeking behaviors identified within studies were mapped onto the socio-
50 ecological model. Barriers and facilitators identified included knowledge and attitudes toward
51 healthcare utilization, family and peer support, interactions with healthcare professionals,
52 provision of holistic care, and the creation of a supportive atmosphere and safe space to promote
53 open discussions of suicide-related concerns.

54 **Discussion:** The findings of this review offer valuable insights into areas for improvement in
55 addressing help-seeking needs for individuals who are in contact with health services related to
56 suicide prevention.

57 **Implication for Research:** The findings serve as a foundation for shaping mental health
58 initiatives informing approaches and care delivery tailored towards individuals who are in
59 contact with health services. The reported barriers and facilitators offer insights to inform the
60 development of mental health support tools to enhance care and considerations for evaluations.

61 **Accessible Summary**

62 **What is known on the subject:**

- 64 • When individuals contact healthcare services while experiencing suicidal thoughts or
65 behaviors, it is an important opportunity to offer them help and interventions to prevent
66 suicide; however, this does not necessarily mean that their needs are always met.
- 67 • Previous research has identified abundant evidence on help-seeking barriers and
68 facilitators for mental health support; however, we do not have a consolidated
69 understanding of the help-seeking needs, including unmet needs, for individuals in
70 contact with mental health services, which may differ from individuals who have not
71 sought care recently.

72 **What the paper adds to existing knowledge:**

- 73 • This review consolidated the reasons why health service users might seek or avoid help
74 when experiencing thoughts of suicide, organizing them as barriers and facilitators within
75 the adapted socio-ecological model.

76 **What are the implications for research:**

- 77 • The findings from the review can form the basis for shaping mental health initiatives
78 related to approaches and care delivery.
- 79 • The identified barriers and facilitators can provide valuable insights for designing mental
80 health support tools and considerations for evaluations.

81 **Background**

82 Every year, around 700,000 people die by suicide globally (World Health Organization, 2014,
83 2021). Based on an analysis of the World Mental Health Surveys (conducted 2001-2007)
84 involving 108,705 adults in developed countries, the estimated 12-month prevalence of suicidal
85 thoughts, plans, and attempts was 2.0%, 0.6%, and 0.3% respectively (Borges *et al.*, 2010). A
86 more recent meta-analysis of 66 studies including children and adolescents estimated the global
87 12-month prevalence of suicidal thoughts, plans and attempts to be 14.2%, 7.5% and 4.5%
88 respectively (Lim *et al.*, 2019). In line with these findings, evidence continues to highlight the
89 significant prevalence of suicide-related thoughts and behaviours among adults and youth
90 worldwide (Lovero *et al.*, 2023; Van Meter *et al.*, 2022), emphasizing the need for effective
91 suicide prevention and mental health support strategies.

92 Previous research has identified an abundance of evidence on risk factors for suicide and suicidal
93 behaviors (Favril *et al.*, 2023). Previous self-harm or suicide attempts are the strongest risk
94 factors for future suicide (Hawton *et al.*, 2015, 2020), with mental health conditions also
95 contributing to risk (Favril *et al.*, 2022). A study reviewing 2,674 patients who died by suicide
96 from eight healthcare systems found that 51.3% of individuals had at least one mental health
97 diagnosis recorded in the year before their death. The diagnoses associated with highest risk of
98 suicide were schizophrenia, bipolar, depressive, and anxiety disorders followed by attention
99 deficit hyperactivity disorder (ADHD) (Yeh *et al.*, 2019). Among individuals with mental health
100 conditions or a history of previous suicidal behaviors, demographic characteristics may increase
101 or decrease risk of suicide including, but not limited to, gender (Marconi *et al.*, 2023; Miranda-
102 Mendizabal *et al.*, 2019), age (Biswas *et al.*, 2020; Clements *et al.*, 2019; Hawton *et al.*, 2020;
103 Murphy *et al.*, 2012), sexual orientation (Liu *et al.*, 2019), socio-economic status (Cairns *et al.*,
104 2017; Qian *et al.*, 2023), experiences of marginalization (Pollock *et al.*, 2018; Rudes & Fantuzzi,
105 2022), geographic location (Knipe *et al.*, 2022), neurodiversity and autism (Cassidy *et al.*, 2020),
106 physical health (Qin *et al.*, 2022), and occupation (Windsor-Shellard & Gunnell, 2019).

107 Suicide is preventable through evidence-based interventions (Mann *et al.*, 2005; Nuij *et al.*, 2021;
108 Zalsman *et al.*, 2016). Connecting individuals experiencing suicidal ideation and behaviors with
109 appropriate mental health services is a critical aspect of suicide prevention and support efforts.
110 Many individuals who die by suicide or attempt suicide are already in contact or have been in
111 contact with mental health services (Stene-Larsen & Reneflot, 2019). A systematic review
112 examining rates of contact with primary and mental health services prior to suicide found that
113 among individuals who died by suicide, 57% had received mental health care in their lifetime,
114 and 31% had received care in the year before death (Stene-Larsen & Reneflot, 2019). This
115 finding is consistent with studies in other countries such as Wales (John *et al.*, 2020) and Sweden
116 (Bergqvist *et al.*, 2022). The recency of healthcare utilization prior to suicide presents a key
117 window of opportunity for individuals to be provided with suicide prevention interventions and
118 support.

119 **Rationale and aim**

120 Previous reviews have examined help-seeking behaviours regarding mental health among
121 individuals who are at increased risk of suicidal behaviours. A systematic review examining
122 help-seeking behaviors of adolescents for common mental health issues (including suicidal
123 ideation) found stigma and unfavorable perceptions of mental health services were primary
124 barriers to seeking help (Aguirre Velasco *et al.*, 2020). In contrast, prior positive experiences
125 with health services and increased mental health awareness were help-seeking facilitators
126 (Aguirre Velasco *et al.*, 2020). Another review focusing on adults looked at help-seeking
127 behaviors related to mental health needs (Adams *et al.*, 2022). The most frequently reported
128 influencing factors included patients' attitudes and perceived behavioral control, both of which
129 were significant predictors of help-seeking intentions (Adams *et al.*, 2022). Other studies have
130 identified additional factors which may play a significant role in influencing help-seeking
131 behaviors. These include knowledge, financial resources, gender or occupation-specific
132 stereotypes, and structural barriers/facilitators, such as place of residence (Gulliver *et al.*, 2010;
133 Radez *et al.*, 2021; Randles & Finnegan, 2022). However, what remains unclear is the
134 consolidated understanding of the help-seeking behaviours and barriers and facilitators to help-
135 seeking among individuals who are in contact with mental health services. This is important to
136 know since there may be unique interventions or supports available within the context of service
137 delivery, which may differ from those aimed at individuals who have not sought care previously.

138 The overall aim of this rapid scoping review is to describe the barriers and facilitators to help-
139 seeking for suicide prevention care among individuals who are in contact with and/or accessing
140 mental health services in healthcare settings. Understanding these are essential for improving
141 quality of care, reducing suicide risk, and ensuring that patient needs are met – all of which
142 contribute to the ongoing improvement of mental health services. Furthermore, this review is
143 part of a broader project aiming to inform a new iteration of a digital tool, which will be
144 designed to support suicide prevention care for individuals in contact with mental health services.
145 Before developing the new iteration of the tool, our goal is to identify currently unaddressed
146 help-seeking needs among individuals who are in contact with mental health services.

147 A preliminary search of MEDLINE was conducted in March 2023, which did not identify any
148 current or in-progress scoping or systematic reviews on this topic.

149 **Review questions**

- 150 1. What are the characteristics of studies that investigate help-seeking needs related to suicide
151 prevention care for individuals who are in contact with mental health services?
- 152 2. What are the barriers and facilitators of help-seeking related to suicide prevention care among
153 individuals in contact with mental health services?

154 **Methods**

155 We conducted a rapid scoping review, adapting the standard methodological guidelines for rapid
156 (i.e., Cochrane Rapid Reviews Methods Group guidelines (Garritty *et al.*, 2021)) and scoping
157 reviews (i.e., Joanna Briggs Institute (Peters *et al.*, 2015, 2020)). This type of review can be
158 beneficial to inform urgently needed practice. In this case, the review was conducted to urgently
159 inform a new iteration of a digital tool to support suicide prevention care in mental health
160 services. Researchers employ various approaches to conduct rapid reviews without

161 compromising rigor, aiming to streamline the review process to meet the urgent needs (Tricco *et*
162 *al.*, 2015). Here, we expedited the process by narrowing our search scope to the most relevant
163 databases for the topic, establishing strict eligibility criteria, involving two independent
164 reviewers in titles, abstracts, and full-text screening processes, and excluding the assessment of
165 study quality. There was no a priori protocol registered, and we prepared this review report
166 adhering to the Preferred Reporting Items for Systematic Reviews and Meta-Analyses extension
167 for Scoping Reviews guidelines (PRISMA-ScR) (Tricco *et al.*, 2018).

168 Eligibility criteria

169 Concept

170 The primary concepts under investigation were suicide, suicidal ideation/thoughts, and suicide
171 attempts. We followed the international definitions suggested by De Leo *et al.* (2021) to define
172 the above suicide phenomena (De Leo *et al.*, 2021). Studies examining non-suicidal self-injury
173 (i.e., self-harm behaviours and injuries without suicide intent) were ineligible for inclusion.
174 However, in some studies, suicide attempts were identified by self-harm codes (e.g., in
175 emergency department records). To be included, studies were required to have at least one of
176 these items as an outcome of interest. Additionally, studies were expected to describe help-
177 seeking needs, barriers or facilitators to help-seeking, or unmet needs related to suicide
178 prevention. Help-seeking was defined as a planned behaviour of actively seeking help from a
179 healthcare professional (or crisis line worker) initiated by recognizing an issue or changes in
180 health, in this case relating to mental health (Cornally & McCarthy, 2011). Help-seeking for
181 mental health is influenced by a combination of social, individual, and structural factors, as
182 mental health concerns are intricately tied to their surroundings and seeking help is navigated
183 through social engagement and cultural practices (Adams *et al.*, 2022; Jang *et al.*, 2007; Martinez
184 *et al.*, 2020; Mojtabai, 2009).

185 Population and Context

186 Herein, we define mental health services contact as either a visit or a phone call to any mental
187 health care professionals in healthcare settings. This typically indicates that individuals are
188 actively engaged with or seeking assistance from healthcare providers or institutions, and it can
189 also mean accessing services and receiving treatment. To be eligible for inclusion, studies
190 needed to focus on individuals in contact with mental health services from healthcare settings,
191 which could include in-patient, out-patient, primary care settings, emergency department, and
192 crisis line services. We included emergency departments because individuals seeking mental
193 health services can access care through the emergency department, where they undergo
194 assessments by healthcare providers for evaluation, stabilization, counseling, medication, or
195 referral to specialized mental health services. Additionally, we included crisis lines because they
196 offer a way to connect individuals in distress with trained responders, with a special focus on
197 suicide prevention. However, it is important to acknowledge that contact with health services
198 does not always result in the receipt of treatment, highlighting unmet help-seeking needs.
199 Additionally, our primary interest was exploring help-seeking needs subsequent to contact with
200 mental health services. When the timing of this contact was unclear, we determined temporality
201 based on information provided by the authors. Studies were included if individuals were in
202 contact with healthcare services either before or at the time of the study. However, studies
203 focusing solely on individuals managing suicide-related thoughts and behaviors independently,

204 without utilizing any formal healthcare services and relying solely on self-help tools or informal
205 carers (e.g., family or friends), were excluded.

206 Search Strategy

207 Our search strategy was developed with a health science librarian and followed the PRESS
208 guidelines (McGowan *et al.*, 2016). Before full searches were conducted, an initial limited search
209 of MEDLINE was undertaken to identify relevant articles, and then text contained in the titles
210 and abstracts alongside index terms of identified articles were used to inform development of the
211 final search strategy. The search strategy, including keywords and index terms, was adapted for
212 the following databases: MEDLINE, Scopus, CINAHL, PsycInfo, and EMBASE. Searches were
213 conducted on 9th May 2023, and the full search strategies are provided in Supplementary File 1.

214 Study selection

215 All records identified by database searching were collated and uploaded into Covidence, a
216 software to support literature screening (“Covidence systematic review software,” 2019), and
217 system-detected duplicates were automatically removed. Following piloting to ensure
218 consistency in screening, titles and abstracts were screened by two independent reviewers (HDS,
219 JK, SG, LBP, CP) against the inclusion criteria. Potentially relevant articles were retrieved in full,
220 and two independent reviewers (HDS, JK, SG, LBP, CP) read each full-text articles for detailed
221 inclusion assessment. Ineligible articles were excluded, and reasons for their exclusion were
222 documented. Any interpretation disagreements that arose between the reviewers were resolved
223 through team discussion.

224 Data extraction

225 Data were extracted from included articles by two of the five reviewers (HDS, JK, SG, LBP, CP)
226 using the data extraction tool on Covidence. Two independent reviewers initially piloted the tool
227 (HDS, JK) using two articles to assess the correctness and completeness of the extracted data.
228 After ensuring the consistency of data extraction, remaining articles were extracted by a single
229 reviewer, and validated by a second reviewer. General characteristics of the article (e.g., author,
230 publication country), design and methods including data sources, participant characteristics
231 including considerations for intersectionality to report the prevalence of inequalities, outcome of
232 interest, and barriers and facilitators for help-seeking, were extracted. See Supplementary File 2
233 for a full list of items in the data extraction tool. Any interpretation disagreements that arose
234 during the validation step were resolved through discussion between reviewers.

235 Data analysis and presentation

236 Data analysis was carried out independently by a single reviewer (HDS, JK, SG, LBP, CP) and
237 validated by a second reviewer. We used a directed content analysis approach (Hsieh & Shannon,
238 2005) to characterize extracted narrative data. Data is presented narratively and in table format.

239 During analysis, participant characteristics were extracted and organized using the
240 intersectionality framework (Crenshaw, 1989, 1991). The framework recognizes how social
241 identities are interconnected and can lead to experiences of different levels of social power and
242 positions, encompassing both privilege and oppression. As some groups, such as middle-aged
243 men (Qin *et al.*, 2022), sexual minority groups (Kidd *et al.*, 2023), adolescents (Biswas *et al.*,
244 2020), and individuals with mental health conditions (Yeh *et al.*, 2019), have high prevalence of
245 suicidal behaviours, we extracted data on these intersecting identities to gather a comprehensive
246 understanding of unmet needs among subgroups of individuals in contact with mental health

247 services. During the extraction process, we recognized that some authors interchangeably used
248 the terms, ‘gender’ and ‘sex’; for example, authors used women/men or female/male to define
249 both gender and sex. To facilitate accurate reporting, we exercised our best judgment based on
250 the categories as reported by the authors.

251 Extracted barriers and facilitators to help-seeking were organized using the adapted ecological
252 model (McLeroy *et al.*, 1988), categorizing them into the following five distinct, yet not
253 mutually exclusive levels: 1) Individual; 2) Interpersonal; 3) Organizational/Institutional; 4)
254 Community and Societal; and 5) National Policy/Law. Individual factors encompassed
255 participant characteristics such as knowledge, behaviors, skills, judgement, and attitudes
256 including perceived opinions. Interpersonal factors encompassed interactive processes and
257 relationships within primary social groups, whether formal or informal social networks, and
258 support systems including families, workgroups, and friendship networks. Institutional and
259 organizational factors encompassed characteristics of institutions and formal/informal
260 operational rules and regulations, such as training support for clinicians in hospitals. Community
261 and societal factors encompassed relationships among organizations, institutions, wider social
262 networks and informal networks within defined boundaries. National, policy and law levels
263 encompassed local, state, or national laws and policies, for example, health insurance concerns.
264 It was necessary for reviewers to interpret information to a certain extent, relying on what the
265 authors had reported. Differences in interpretation identified during the validation process were
266 addressed through discussion between reviewers.

267 **Results**

268 **Study inclusion**

269 Our search strategy yielded 2,493 citations (Figure 1). After automatic removal of duplicates,
270 1,755 articles were screened based on title and abstract. Of these, 128 articles proceeded to full-
271 text evaluation, ultimately resulting in 42 eligible studies. Reasons for exclusion were
272 documented and they are outlined in the PRISMA flow chart (Figure 1).

273 <Insert Figure 1>

274 **Characteristics of included studies**

275 Individual characteristics of included citations are organized in Table 1. The majority of studies
276 were observational (n=19) and qualitative (n=17), followed by mixed/multi-methods (n=3),
277 experimental (n=2), and quasi-experimental (n=1). Nearly half (n=19) of included studies were
278 published between 2011 to 2020, and 13 were published within the last three years (2021-2023).
279 Studies originated from the United States (n=16), United Kingdom (n=6), Australia (n=4),
280 Canada (n=3), Sweden (n=3), Norway (n=2), Netherlands (n=2) and elsewhere in Asia, Europe,
281 East Africa, and Oceania (see Table 2 for a summary of included studies). Suicide phenomena
282 examined included suicide attempt (i.e., behaviour) (n=34), suicide ideation (n=26), and death by
283 suicide (n=7). Data sources included interviews (n=23), surveys (n=14), health administrative
284 data (n=8), and other sources (n=5), such as data obtained from text-based or call-line crisis
285 services. Included studies commonly reported on demographic characteristics of participants
286 including age (n=35), sex (n=28), marital status (n=17), gender (n=15), race (n=13), ethnicity
287 (n=11), and income (n=10). Eighteen studies reported other characteristics such as previous
288 mental health diagnosis, medical history, and employment status. See Figure 2 for a full list of
289 characteristics reported in included studies.

290 <Insert Table 1>

291 <Insert Table 2>

292 <Insert Figure 2>

293 Help-seeking needs

294 Barriers to help-seeking

295 Included studies most commonly reported individual (n=28) and organizational (n=27) level
296 barriers for help-seeking, followed by interpersonal (n=25), community (n=11) and
297 policy/national level barriers (n=8). See Table 3. for a full list of examples, and the following
298 describes the barriers in order from most common to least common. Many barriers spanned
299 multiple levels of the socio-economic model; however, barriers are examined individually below.

300 *Individual Barriers* Barriers at the individual level included a lack of knowledge regarding where
301 to seek help, or lack of awareness regarding own mental health (Chung, 2010; Cleary, 2017;
302 Hom *et al.*, 2018; Jordan *et al.*, 2012; Kodama *et al.*, 2016; Kuramoto-Crawford *et al.*, 2017)
303 alongside attitudes, often related to prior experiences of support. This included perceptions that
304 support would not be effective (Adler *et al.*, 2020; Chia-Yi Wu *et al.*, 2012; Cleary, 2017;
305 Heinsch *et al.*, 2020; Pavulans *et al.*, 2012), and a distrust of mental health services and
306 professionals (Adler *et al.*, 2020; Hagen *et al.*, 2020; Hausmann-Stabile *et al.*, 2018; Holt *et al.*,
307 2023; Jones *et al.*, 2021; Skogstad *et al.*, 2006; Spence *et al.*, 2008). Further individual barriers
308 included fear and apprehension, including worries about hospital presentation and involuntary
309 hospitalization (Adler *et al.*, 2020; Holt *et al.*, 2023; Jones *et al.*, 2021; Jordan *et al.*, 2012;
310 Pavulans *et al.*, 2012; Rheinberger *et al.*, 2021). A study examining the impact of previous
311 mental health care on current disclosure of suicide risk found that men aged over 50 with a
312 history of mental health inpatient care were more likely to explicitly not disclose current suicidal
313 thoughts and behaviours than individuals who received outpatient or no previous care (Podlogar
314 *et al.*, 2022), possibly reflecting fear of re-hospitalization. Additional fears include police
315 involvement (Holt *et al.*, 2023), and potential loss of career (Adler *et al.*, 2020). Apprehension
316 surrounding imposing emotional burden and distress on families was also identified (Chung,
317 2010; Heinsch *et al.*, 2020) where in some cases individuals did not want to seek help in case this
318 resulted in family members discovering their experience with suicidality or other personal
319 information about themselves such as sexuality (Holt *et al.*, 2023). Additional individual barriers
320 identified included financial concerns regarding seeking help (e.g., missing work, not being able
321 to afford out-of-pocket costs) (Chung, 2010; Heinsch *et al.*, 2020; Holt *et al.*, 2023; Hom *et al.*,
322 2018; Kuramoto-Crawford *et al.*, 2017), spiritual and cultural beliefs (Chung, 2010), and
323 exacerbating mental health conditions, such as behavioural avoidance (Cleary, 2017; Lueck &
324 Poe, 2021).

325 *Organizational Barriers* At the organizational level, prior negative experiences were cited as an
326 important barrier preventing help-seeking. Such experiences included experiences of
327 ‘dehumanization’, ‘alienation’ and ‘isolation’ during hospitalization, and having basic and
328 cultural needs unmet (Adler *et al.*, 2020; de Lange *et al.*, 2022; Hausmann-Stabile *et al.*, 2018;
329 Holt *et al.*, 2023; Jones *et al.*, 2021; Pirkis *et al.*, 2001; Spence *et al.*, 2008; Talseth *et al.*, 1999,
330 1999; Umubyeyi *et al.*, 2016). Furthermore, multiple studies identified perceived lack of
331 knowledge and understanding among healthcare providers. This included needs related to mental
332 health and suicide prevention (Camgan, 1994; de Lange *et al.*, 2022; Rheinberger *et al.*, 2021),

333 alongside needs related to individual's identities, for example sexual and gender identity (de
334 Lange *et al.*, 2022). Some samples described being turned away from services, where some
335 patients felt their needs were viewed by services as either 'not serious enough' or 'too complex'
336 by healthcare providers (Adler *et al.*, 2020; McKay & Shand, 2018). Additionally, some samples
337 identified that within emergency departments, physical rather than mental health issues were
338 prioritised (Rheinberger *et al.*, 2021; Spence *et al.*, 2008). Further organizational barriers
339 identified included language barriers (Chung, 2010), referral mechanisms (Jordan *et al.*, 2012),
340 understaffing and long waiting times (Adler *et al.*, 2020; Rheinberger *et al.*, 2021; Spence *et al.*,
341 2008), the chaotic and rushed nature of settings such as emergency departments and inpatient
342 units (Adler *et al.*, 2020; Rheinberger *et al.*, 2021; Talseth *et al.*, 1999), lack of privacy
343 (Rheinberger *et al.*, 2021) and poor assistance post-discharge (Camgan, 1994; Heinsch *et al.*,
344 2020; Rheinberger *et al.*, 2021).

345 *Interpersonal Barriers* Several interpersonal level barriers were identified as influencing
346 individuals' willingness to seek help. Stigma was commonly cited as a key barrier to help-
347 seeking. Participants expressed concerns about being perceived as 'weak' or 'weird' by others
348 (Adler *et al.*, 2020; Cleary, 2017; Hausmann-Stabile *et al.*, 2018; Heinsch *et al.*, 2020; Holt *et al.*,
349 2023; Hom *et al.*, 2018; Jordan *et al.*, 2012; Umubyeyi *et al.*, 2016). This was particularly
350 pronounced among men and some occupational groups such as the military and firefighters.
351 Furthermore, individuals feared being perceived or treated differently or blamed by peers and
352 colleagues following disclosure of distress (Adler *et al.*, 2020; Chia-Yi Wu *et al.*, 2012; Hom *et*
353 *al.*, 2018; Jordan *et al.*, 2012). Negative interpersonal experiences with medical professionals,
354 marked by a superficial nature, lack of compassion and empathy, alongside sometimes
355 stigmatising views also led to feelings of frustration and in some cases, reluctance to seek
356 professional help (Camgan, 1994; Chia-Yi Wu *et al.*, 2012; Hausmann-Stabile *et al.*, 2018; Holt
357 *et al.*, 2023; Rheinberger *et al.*, 2021; Spence *et al.*, 2008). Furthermore, while informal
358 caregivers were described as having the potential to provide support, negative reactions from the
359 caregivers were also at times described as contributory to reduced help-seeking behaviours
360 (Spence *et al.*, 2008). After a suicide attempt, individuals varied in their willingness to confide in
361 family and friends, reflecting an ongoing hesitation to disclose stressors due to concerns of
362 creating emotional burden (Chung, 2010; Spence *et al.*, 2008). However, one study which
363 examined suicide attempt disclosure among veterans found that although many had experienced
364 unhelpful reactions (more commonly from romantic partners and friends), such reactions were
365 not associated with reported likelihood of seeking help for suicidal thoughts or behaviours in the
366 future (Ammerman *et al.*, 2021). Finally, some studies identified a lack of social connection or
367 support system as a barrier to support (Hagen *et al.*, 2020; Holt *et al.*, 2023; Renaud *et al.*, 2014;
368 Talseth *et al.*, 1999).

369 *Community and National/Policy Barriers* Community-level barriers included a lack of resources,
370 such as the absence of nearby hospitals for accessing care (Adler *et al.*, 2020; Barry *et al.*, 2023;
371 Heinsch *et al.*, 2020; Holt *et al.*, 2023; Spence *et al.*, 2008), and lack of integration of public
372 health suicide prevention initiatives in primary care settings (John *et al.*, 2020). For example,
373 individuals with a rural place of residence experienced barriers (such as travel time) that
374 negatively influenced help-seeking behaviours (Barry *et al.*, 2023). A study found that refugees
375 in Sweden had lower rates of specialised healthcare both prior to and after a suicide attempt
376 compared to Swedish-born individuals (Amin *et al.*, 2021). National/policy-level barriers beyond
377 the community level included lack of health insurance (Chung, 2010; Kuramoto-Crawford *et al.*,

378 2017; Umubyeyi *et al.*, 2016), as healthcare coverage is governed at the national or federal level
379 and varies across countries.

380 Facilitators to help-seeking

381 Facilitators for help-seeking were often identified as the opposite to many of the barriers
382 described above and were also not mutually exclusive. The most commonly reported facilitators
383 in the included studies were within the interpersonal (n=22), individual (n=16), and
384 organizational (n=15) domains, followed by community (n=10) and policy levels (n=1). See
385 Table 3. for a full list of examples, and the following describes the facilitators in order from most
386 common to least common.

387 *Interpersonal Facilitators* At the interpersonal level, friends and/or family played a crucial role
388 in facilitating help-seeking by offering emotional support and encouragement to seek help (Adler
389 *et al.*, 2020; Chia-Yi Wu *et al.*, 2012; Hagen *et al.*, 2020; Hausmann-Stabile *et al.*, 2018; Holt *et al.*,
390 *et al.*, 2023; McKay & Shand, 2018). Sometimes this social support was critical when individuals
391 chose not to, or did not feel able to seek help themselves (Barnes *et al.*, 2002; Heinsch *et al.*,
392 2020; Rheinberger *et al.*, 2021). In the case of professionals in the army, some stated support
393 from command was instrumental to accessing support, however, some also recognised feeling
394 that they were then treated differently following disclosure (Adler *et al.*, 2020). Peer support
395 from those who had shared similar experiences also encouraged help-seeking behaviour and
396 reduced perceived stigma (de Lange *et al.*, 2022; Jordans *et al.*, 2018). Past positive interactions
397 with healthcare professionals, where individuals had rapport in a trusting, caring, confidential,
398 and respectful relationship motivated service users to seek help or disclose their distress (Adler *et al.*,
399 *et al.*, 2020; Chia-Yi Wu *et al.*, 2012; Chung, 2010; Hagen *et al.*, 2020; Hausmann-Stabile *et al.*,
400 2018; Holt *et al.*, 2023; Jones *et al.*, 2021; McKay & Shand, 2018; Rheinberger *et al.*, 2021;
401 Talseth *et al.*, 1999). In one study, veterans rated mental health care professionals as the most
402 helpful person to disclose to regarding their experience of a prior suicide attempt. Among this
403 sample, reported positive reactions to disclosure was positively associated with reported
404 likelihood of disclosing their experience to others in the future, but not with reported likelihood
405 of future help-seeking (Ammerman *et al.*, 2021). Positive experiences such as being
406 acknowledged and treated as valued individuals by healthcare professionals, and staff members
407 acknowledging the socio-cultural needs of patients were also facilitators (Chung, 2010; Hagen *et al.*,
408 *et al.*, 2020; Holt *et al.*, 2023). However one study, which included individuals currently
409 imprisoned, reported that individuals who had no prior contact with a prison psychologist tended
410 to have higher intentions to seek future help for mental health concerns including suicidal
411 thoughts than those with contact (Skogstad *et al.*, 2006). Another study described a text
412 messaging intervention that promoted help-seeking behaviours whereby texts including
413 information about social welfare services and reminders about medical appointments were sent
414 (Kodama *et al.*, 2016).

415 *Individual Facilitators* At the individual level, having positive attitudes or confidence (Ilgen *et al.*
416 *et al.*, 2021; Skogstad *et al.*, 2006), capability to search for help from an online source or the
417 community, knowing where to seek help (Ilgen *et al.*, 2021; McKay & Shand, 2018; Voros *et al.*,
418 2022), self-awareness of their own mental health symptoms (Chia-Yi Wu *et al.*, 2012; Chung,
419 2010) and desire and willingness to seek help (Rainbow *et al.*, 2023; Skogstad *et al.*, 2006) acted
420 as facilitators. It is interesting to note that in one study, attitude was the strongest predictor for
421 help-seeking while suicide ideation measured on Suicidal Ideation Questionnaire was not
422 associated with intentions to seek help (Skogstad *et al.*, 2006). It was discussed in one study how

423 previous positive experience in mental health services could lead to positive attitudes for future
424 help-seeking (Holt *et al.*, 2023). Individual's sense of autonomy, believing that they are in
425 control of illness, was also important for help-seeking behaviours (Hagen *et al.*, 2020). Coping
426 strategies used during crisis or mental health challenges were important in supporting individuals
427 during future help-seeking behaviours (Jordan *et al.*, 2012; Rainbow *et al.*, 2023).

428 *Organizational Facilitators* At the organizational level, holistic and supportive care alongside
429 provision of detailed mental health assessments was reported as promoting help-seeking within
430 mental health services (Hagen *et al.*, 2020; Rheinberger *et al.*, 2021). In addition, normalization
431 of the presence of suicidal ideation and taking time to find out where these thoughts came from
432 was helpful (de Lange *et al.*, 2022). Young adults who identified themselves as sexual and
433 gender minority group members reported that asking relevant and inclusive questions about
434 sexual orientation, gender identity, and related characteristics was perceived as essential when
435 accessing informal or formal mental health care (de Lange *et al.*, 2022). Individualized care,
436 tailored to each person's unique needs and circumstances, also enhanced the likelihood of
437 engagement with mental health services by addressing specific challenges. Follow-up services,
438 including ongoing support and follow-up appointments, reinforced the idea that individuals are
439 valued and cared for beyond their initial crisis, encouraging continued engagement with mental
440 health resources (Adler *et al.*, 2020; Cleary, 2017; Holt *et al.*, 2023; Jordan *et al.*, 2012).

441 *Community Facilitators* At the community level, a social environment where mental health and
442 suicide are openly discussed can reduce stigma and normalize help-seeking behaviours (Chia-Yi
443 Wu *et al.*, 2012; Raingruber, 2002). Having easily accessible mental health services encourage
444 individuals to seek help (Umubyeyi *et al.*, 2016). Access to community-based support systems
445 (Jordan *et al.*, 2012), including community centers, mental health education programs, and
446 support groups foster a sense of belonging and social interaction, which breaks down barriers to
447 seeking help. Informal support networks consisting of neighbours, and even 'strangers' provide
448 emotional support and encouragement for individuals to seek help (Chung, 2010). Moreover, the
449 promotion of crisis hotlines (Karras *et al.*, 2017), along with disseminating information about
450 available assistance resources was one of the ways to increase individuals' knowledge of where
451 to go when in need of help. While rurality of residence was reported as a barrier to help seeking
452 behaviours due to limited access to services, rurality was reported as one predictor of using
453 hotline services (Thompson *et al.*, 2018). At the national level, a study identified the accessibility
454 of financial benefits as a facilitative factor. These benefits played a crucial role in alleviating
455 participants' stressors and enabling them to take time off from work, as directed by their mental
456 health providers (Chung, 2010).

457 <Insert Table 3>

458 **Discussion**

459 This scoping review identified 42 empirical studies that described the suicide-related help-
460 seeking needs of individuals who are in contact with and/or accessing mental health services in a
461 range of healthcare settings, such as in-patient, outpatient, emergency, and crisis line services.
462 The majority of articles were published between 2011 and 2020, and 13 articles were published
463 within the past three years (2021-2023). Almost all studies focused on suicide attempts and/or
464 ideation as suicide phenomena. Authors commonly described characteristics of participants' age,
465 sex, marital status, and gender. Barriers and facilitators to help-seeking behaviors related to
466 suicide prevention care among individuals in contact with mental health services were frequently

467 reported at individual, interpersonal and organizational levels. These barriers encompass a range
468 of factors, including stigma, lack of awareness, and systemic deficiencies in healthcare provision.
469 Conversely, facilitators include supportive relationships, positive attitudes, accessible services,
470 community resources, and financial benefits.

471 An important observation from this review when examining participant-reported characteristics
472 is the presence of reported indigeneity in the included studies. The current review focused on
473 individuals who are in contact with health services to receive support for suicide-related thoughts
474 and behaviors, and it is noteworthy that we found limited studies specific to Indigenous peoples
475 among other racialized groups. There was one study from New Zealand that reported indigeneity,
476 aiming to examine the help-seeking behaviors of prisoners seeking assistance from a prison
477 psychologist for their suicidal feelings (Skogstad *et al.*, 2006). Indigenous peoples are at a higher
478 risk of suicide, and these heightened risks are attributed to systemic marginalization, and the
479 enduring effects of cultural and social disparities, all of which are deeply rooted in historical
480 colonization (Pollock *et al.*, 2018). In addition, their experiences with health services impact
481 their help-seeking behaviors, and some may avoid hospitals due to lack of trust (Coombes *et al.*,
482 2022; Mbuli *et al.*, 2017). This observation may explain the scarcity of studies examining the
483 help-seeking behaviors of Indigenous peoples who are already accessing care, posing important
484 areas for further investigation in future research.

485 While the included studies lacked extensive discussion on how barriers and varying
486 intersectional identities affect individuals differently, it is crucial to consider the intersectional
487 perspective when interpreting the findings of this review. It is important to be mindful that some
488 individuals may encounter more barriers when seeking help compared to others. Individuals who
489 self-identified as sexual and gender minorities, relationships with peers and/or families, and
490 asking inclusive questions played a critical role in facilitating help-seeking behaviours (de Lange
491 *et al.*, 2022). This finding highlights the need to ensure practitioners' competency for working
492 with diverse groups. Middle-aged men, especially those working in 'masculine' occupations such
493 as the military, reported fear of being perceived as 'weak' as a barrier for seeking help (Adler *et al.*,
494 2020; Cleary, 2017). In addition, disclosing mental health needs can be more challenging in
495 certain cultures due to the presence of a more pronounced stigma (Chung, 2010). Social attitudes
496 towards mental health and suicide have made significant progress over the past decades, yet it is
497 important to acknowledge that lingering stigma surrounding suicide and mental health still
498 persists. The normalization of help-seeking is critical not only for men but for everyone.
499 Healthcare institutions and the broader social environment should be encouraged to work
500 collaboratively to provide safe and non-stigmatized spaces targeting marginalized groups with
501 the aim of supporting and normalizing help seeking. Recommendations for anti-stigma include
502 training healthcare professionals (Henderson *et al.*, 2014; Sreeram *et al.*, 2022) and launching
503 public awareness campaigns (Pirkis *et al.*, 2019) to reach a wider societal audience.

504 The current literature also describes barriers to help-seeking from the perspectives of parents and
505 healthcare professionals, and they provide valuable evidence relevant to the understanding of the
506 findings of this review (Moskos *et al.*, 2007; O'Keeffe *et al.*, 2021). Parents' perceived barriers
507 to help-seeking for their children included hopelessness, fear of being seen as 'weak', and feeling
508 apprehensive about disclosing mental health needs (Moskos *et al.*, 2007). In addition, carers
509 reported perceived feelings of judgment experienced by service users when seeking mental
510 health help in an emergency department (Moskos *et al.*, 2007). Seeking mental health help in
511 highly medicalized settings, such as an emergency department, made both caregivers and service

512 users feel as if they were being judged and perceived as ‘time wasters’, using resources
513 unnecessarily, or being considered less worthy than those with physical health issues (Moskos *et*
514 *al.*, 2007). A need for human connection and therapeutic interactions in healthcare setting was
515 reported (Moskos *et al.*, 2007), which is consistent with our review findings of facilitators for
516 help-seeking for individuals experiencing suicidal ideation and behaviours. Emergency
517 department healthcare professionals also recognized the therapeutic value of a person feeling
518 listened to; however, it was reported that the emergency department was not the right
519 environment for therapeutic conversations (O’Keeffe *et al.*, 2021). This is also described
520 elsewhere in the literature and explained that traditional emergency practice is deeply rooted in
521 biomedical practice which may conflict with expectations of patients seeking mental health
522 support (Shin *et al.*, 2020). For example, patients described formulaic question-and-answer risk
523 assessments, which is often the way emergency department professionals practice, as an
524 unhelpful way of addressing their needs; however, healthcare professionals reported feeling safer
525 using such tools as they are fearful of blame if someone goes on to die by suicide (O’Keeffe *et*
526 *al.*, 2021). It is important to acknowledge that emergency department professionals have the
527 intention to assist, yet they often feel ‘powerless’ (O’Keeffe *et al.*, 2021). Emergency department
528 professionals also recognized the complex nature of suicide ideation and behavior, yet they did
529 not hold the belief that they could adequately address someone’s needs or effectively help them
530 cease self-harm (O’Keeffe *et al.*, 2021).

531 A few studies were excluded from this review due to an ineligible context, as individuals were
532 not in contact with health services seeking or accessing mental health care. These studies
533 nonetheless provide valuable evidence relevant to the findings of this review. It was found that
534 individuals presented to the emergency department less frequently during the pandemic for
535 suicide ideation (Sass *et al.*, 2022; Svetcic *et al.*, 2021). Participants described feeling like a
536 burden to others due to an awareness of all healthcare services struggling under the pressure of
537 COVID-19 (Sass *et al.*, 2022). Digital tools can serve as a valuable tool to address the help-
538 seeking needs of individuals, particularly those who are hesitant to visit hospitals, especially
539 amidst pandemic situations and where there are concerns about being judged. Technologies offer
540 a variety of platforms and solutions that enable individuals to seek help remotely, thereby
541 minimizing the barriers linked to physical presence. Virtual mental health platforms,
542 telemedicine services, and crisis helplines accessible via phone or text provide discreet channels
543 for seeking assistance (Rassy *et al.*, 2021; Shin *et al.*, 2023). As demonstrated by the current
544 review’s findings, communication through crisis lines was found to be helpful in disclosing
545 mental health concerns and addressing needs (Ilgen *et al.*, 2021). These types of technologies not
546 only preserve anonymity but also allow individuals to communicate from the comfort of their
547 own environment, thus alleviating the fear of judgment often associated with face-to-face
548 interactions (Lehtimaki *et al.*, 2021).

549 The frequency counts are not appropriate to infer hierarchy of barriers and facilitators we
550 identified in this review. Additionally, this review did not perform meta-analysis to determine
551 the overall effect of these barriers and facilitators of help-seeking behaviours. However, it is
552 worth noting that barriers and facilitators span all levels, highlighting important considerations
553 for informing suicide prevention efforts at multiple levels to remove barriers and promote
554 facilitators. Technologies and digital tools can augment suicide prevention care in clinical
555 settings and online assessments are often preferred and reliable means for assessing sensitive
556 information such as suicidal thoughts and behaviors (Iorfino *et al.*, 2017). As we plan our next
557 phase of the overarching project of informing the next iteration of a digital tool to support suicide

558 prevention care, it is critical to consider the identified barriers to help-seeking and the existing
559 discrepancies in the adoption of digital tools. As such, one recommendation to address complex
560 barriers such as stigma without exacerbating existing digital equity gaps is to work closely with
561 individuals with lived experience to identify appropriate and effective interventions (Lyles *et al.*,
562 2023). Also, when looking at the existing apps for suicide prevention, 66 apps were identified
563 from app stores, of which 35 apps were found in both iOS and Android app stores (Wilks *et al.*,
564 2021). These apps were assessed for their contents, such as the presence of a safety plan and
565 crisis line access (Wilks *et al.*, 2021). However, it is also important to consider the list of barriers
566 and facilitators outlined in Table 3 as design considerations where appropriate, including the use
567 of inclusive language, fostering trust and transparency regarding data use, and ensuring the app is
568 freely accessible. This approach is essential to prevent the replication of barriers to help-seeking
569 using digital solutions.

570 Despite the valuable insights obtained from this rapid scoping review, limitations should be
571 acknowledged. The expedited nature of the review process inherently led to trade-offs that might
572 impact the comprehensiveness of findings. Without a quality assessment of included studies, we
573 likely introduced studies of varied methodological quality. Additionally, the accelerated process
574 led to the omission of grey literature searches, and search results may not have been as
575 exhaustive as in other types of literature reviews (e.g., systematic). Finally, the review included
576 solely English-language articles. This might have introduced publication bias and may not be
577 representative of help-seeking behaviors and needs in non-English speaking countries.

578 **Conclusion**

579 This review outlines the characteristics of studies that describe the suicide-related help-seeking
580 needs of individuals in contact with mental health services in any healthcare settings. The
581 majority of included studies were observational or qualitative in nature, varying in their details
582 about the barriers and facilitators for seeking mental health support for suicide ideation and
583 behaviors. Barriers and facilitators were detected across all levels of the adapted socio-ecological
584 model. Reported barriers and facilitators were not isolated to one single level; instead, they
585 interacted, underscoring the intricate and interrelated nature of help-seeking. Suggestions to
586 address help-seeking needs identified by studies include use of inclusive language, fostering trust,
587 and normalizing help-seeking behaviours. However, it is important to recognise that certain
588 barriers, such as stigma, are deeply rooted and systemic in nature, representing challenges that
589 have persisted for many years. As our research team moves forward with designing a new
590 iteration of a suicide prevention digital tool, it is crucial to involve individuals with lived
591 experience. This engagement will help identify and address barriers where appropriate and
592 capitalize on facilitators.

593 **References**

594 Adams, C., Gringart, E., & Strobel, N. (2022) Explaining adults' mental health help-seeking
595 through the lens of the theory of planned behavior: a scoping review. *Systematic Reviews*,
596 **11**, 160. doi:10.1186/s13643-022-02034-y

- 597 Adler, A., Jager-Hyman, S., Brown, G. K., *et al.* (2020) A qualitative investigation of barriers to
598 seeking treatment for suicidal thoughts and behaviors among army soldiers with a
599 deployment history. *Archives of Suicide Research*, **24**, 251–268.
600 doi:10.1080/13811118.2019.1624666
- 601 Aguirre Velasco, A., Cruz, I. S. S., Billings, J., *et al.* (2020) What are the barriers, facilitators
602 and interventions targeting help-seeking behaviours for common mental health problems
603 in adolescents? A systematic review. *BMC Psychiatry*, **20**, 293. doi:10.1186/s12888-020-
604 02659-0
- 605 Amin, R., Rahman, S., Tinghog, P., *et al.* (2021) Healthcare use before and after suicide attempt
606 in refugees and Swedish-born individuals. *Social Psychiatry and Psychiatric
607 Epidemiology: The International Journal for Research in Social and Genetic
608 Epidemiology and Mental Health Services*, **56**, 325–338. doi:10.1007/s00127-020-01902-
609 z
- 610 Ammerman, B. A., Carter, S. P., Gebhardt, H. M., *et al.* (2021) An initial investigation of suicide
611 attempt disclosures among US veterans. *Crisis: The Journal of Crisis Intervention and
612 Suicide Prevention*, **42**, 411–417. doi:10.1027/0227-5910/a000727
- 613 Barnes, Ikeda, & Kresnow (2002) Help-seeking behavior prior to nearly lethal suicide attempts.
614 *Suicide and Life-Threatening Behavior*, **32**, 68–75. doi:10.1521/suli.32.1.5.68.24217
- 615 Barry, R., Rehm, J., de Oliveira, C., *et al.* (2023) Help-seeking behavior among adults who
616 attempted or died by suicide in Ontario, Canada. *Suicide & Life-Threatening Behavior*,
617 **53**, 54–63. doi:10.1111/sltb.12921

- 618 Bergqvist, E., Probert-Lindström, S., Fröding, E., *et al.* (2022) Health care utilisation two years
619 prior to suicide in Sweden: a retrospective explorative study based on medical records.
620 *BMC Health Services Research*, **22**, 664.
- 621 Biswas, T., Scott, J. G., Munir, K., *et al.* (2020) Global variation in the prevalence of suicidal
622 ideation, anxiety and their correlates among adolescents: A population based study of 82
623 countries. *eClinicalMedicine*, **24**. doi:10.1016/j.eclinm.2020.100395
- 624 Borges, G., Nock, M. K., Abad, J. M. H., *et al.* (2010) Twelve-month prevalence of and risk
625 factors for suicide attempts in the World Health Organization World Mental Health
626 Surveys. *The Journal of Clinical Psychiatry*, **71**, 21777.
- 627 Cairns, J.-M., Graham, E., & Bambra, C. (2017) Area-level socioeconomic disadvantage and
628 suicidal behaviour in Europe: a systematic review. *Social Science & Medicine*, **192**, 102–
629 111.
- 630 Camgan, J. T. (1994) The psychosocial needs of patients who have attempted suicide by
631 overdose. *Journal of Advanced Nursing*, **20**, 635–642. doi:10.1046/j.1365-
632 2648.1994.20040635.x
- 633 Cassidy, S. A., Robertson, A., Townsend, E., *et al.* (2020) Advancing our understanding of self-
634 harm, suicidal thoughts and behaviours in autism. *Journal of Autism and Developmental*
635 *Disorders*, **50**, 3445–3449.
- 636 Cedereke, M., & Öjehagen, A. (2007) Formal and informal help during the year after a suicide
637 attempt: A one-year follow-up. *International Journal of Social Psychiatry*, **53**, 419–429.
638 doi:10.1177/0020764007078345
- 639 Chia-Yi Wu, Whitley, R., Stewart, R., *et al.* (2012) Pathways to Care and Help-Seeking
640 Experience Prior to Self-Harm: A Qualitative Study in Taiwan. *Journal of Nursing*

- 641 *Research (Lippincott Williams & Wilkins)*, **20**, 32–42.
- 642 doi:10.1097/JNR.0b013e3182466e64
- 643 Chung, I. (2010) Changes in the sociocultural reality of chinese immigrants: challenges and
644 opportunities in help-seeking behaviour. *The International Journal of Social Psychiatry*,
645 **56**, 436–47. doi:10.1177/0020764009105647
- 646 Cleary, A. (2017) Help-seeking patterns and attitudes to treatment amongst men who attempted
647 suicide. *Journal of Mental Health (Abingdon, England)*, **26**, 220–224.
648 doi:10.3109/09638237.2016.1149800
- 649 Clements, C., Hawton, K., Geulayov, G., *et al.* (2019) Self-harm in midlife: analysis using data
650 from the Multicentre Study of Self-harm in England. *The British Journal of Psychiatry*,
651 **215**, 600–607.
- 652 Coombes, J., Hunter, K., Bennett-Brook, K., *et al.* (2022) Leave events among Aboriginal and
653 Torres Strait Islander people: a systematic review. *BMC Public Health*, **22**, 1488.
654 doi:10.1186/s12889-022-13896-1
- 655 Cornally, N., & McCarthy, G. (2011) Help-seeking behaviour: A concept analysis.
656 *International Journal of Nursing Practice*, **17**, 280–288.
- 657 Covidence systematic review software (2019). Melbourne, Australia. Retrieved from
658 www.covidence.org
- 659 Crenshaw, K. (1989) Demarginalizing the intersection of race and sex: A black feminist critique
660 of antidiscrimination doctrine, feminist theory and antiracist politics. *U. Chi. Legal f.*, 139.
- 661 Crenshaw, K. (1991) Mapping the Margins: Intersectionality, Identity Politics, and Violence
662 against Women of Color. *Stanford Law Review*, **43**, 1241–1299. doi:10.2307/1229039

- 663 de Lange, J., van Bergen, D. D., Baams, L., *et al.* (2021) Experiences and needs of sexual and
664 gender minority young adults with a history of suicidal ideation regarding formal and
665 informal mental healthcare. *Sexuality Research & Social Policy: A Journal of the NSRC*,
666 No-Specified. doi:10.1007/s13178-021-00657-9
- 667 de Lange, J., van Bergen, D. D., Baams, L., *et al.* (2022) Experiences and Needs of Sexual and
668 Gender Minority Young Adults with a History of Suicidal Ideation Regarding Formal and
669 Informal Mental Healthcare. *Sexuality Research and Social Policy*, **19**, 1829–1841.
670 doi:10.1007/s13178-021-00657-9
- 671 De Leo, D., Goodfellow, B., Silverman, M., *et al.* (2021) International study of definitions of
672 English-language terms for suicidal behaviours: a survey exploring preferred terminology.
673 *BMJ Open*, **11**, e043409.
- 674 Denneson, Basham C., Dickinson K.C., *et al.* (2010) Suicide risk assessment and content of VA
675 health care contacts before suicide completion by veterans in Oregon. *Psychiatric*
676 *Services*, **61**, 1192–1197. doi:10.1176/ps.2010.61.12.1192
- 677 Favril, L., Yu, R., Geddes, J. R., *et al.* (2023) Individual-level risk factors for suicide mortality in
678 the general population: an umbrella review. *The Lancet Public Health*, **8**, e868–e877.
- 679 Favril, L., Yu, R., Uyar, A., *et al.* (2022) Risk factors for suicide in adults: systematic review and
680 meta-analysis of psychological autopsy studies. *BMJ Ment Health*, **25**, 148–155.
- 681 Garritty, C., Gartlehner, G., Nussbaumer-Streit, B., *et al.* (2021) Cochrane Rapid Reviews
682 Methods Group offers evidence-informed guidance to conduct rapid reviews. *Journal of*
683 *Clinical Epidemiology*, **130**, 13–22.

- 684 Gulliver, A., Griffiths, K. M., & Christensen, H. (2010) Perceived barriers and facilitators to
685 mental health help-seeking in young people: a systematic review. *BMC Psychiatry*, **10**,
686 113. doi:10.1186/1471-244X-10-113
- 687 Hagen, J., Loa Knizek, B., & Hjelmeland, H. (2020) “ ... I felt completely stranded”: liminality
688 and recognition of personhood in the experiences of suicidal women admitted to
689 psychiatric hospital. *International Journal of Qualitative Studies on Health and Well-*
690 *Being*, **15**. doi:10.1080/17482631.2020.1731995
- 691 Hausmann-Stabile, C., Gulbas, L., & Zayas, L. H. (2018) Treatment Narratives of Suicidal
692 Latina Teens. *Archives of Suicide Research* □: *Official Journal of the International*
693 *Academy for Suicide Research*, **22**, 165–172. doi:10.1080/13811118.2017.1304305
- 694 Hawton, K., Bale, L., Brand, F., *et al.* (2020) Mortality in children and adolescents following
695 presentation to hospital after non-fatal self-harm in the multicentre study of self-harm: a
696 prospective observational cohort study. *The Lancet Child & Adolescent Health*, **4**, 111–
697 120.
- 698 Hawton, K., Bergen, H., Cooper, J., *et al.* (2015) Suicide following self-harm: findings from the
699 multicentre study of self-harm in England, 2000–2012. *Journal of Affective Disorders*,
700 **175**, 147–151.
- 701 Heinsch, M., Sampson, D., Huens, V., *et al.* (2020) Understanding ambivalence in help-seeking
702 for suicidal people with comorbid depression and alcohol misuse. *PLoS ONE*, **15**.
703 doi:10.1371/journal.pone.0231647
- 704 Henderson, C., Noblett, J., Parke, H., *et al.* (2014) Mental health-related stigma in health care
705 and mental health-care settings. *The Lancet Psychiatry*, **1**, 467–482. doi:10.1016/S2215-
706 0366(14)00023-6

- 707 Holt, N. R., Botelho, E., Wolford-Clevenger, C., *et al.* (2023) Previous mental health care and
708 help-seeking experiences: Perspectives from sexual and gender minority survivors of
709 near-fatal suicide attempts. *Psychological Services*, No-Specified.
710 doi:10.1037/ser0000745
- 711 Hom, M. A., Stanley, I. H., Spencer-Thomas, S., *et al.* (2018) Mental health service use and
712 help-seeking among women firefighters with a career history of suicidality.
713 *Psychological Services*, **15**, 316–324. doi:10.1037/ser0000202
- 714 Hsieh, H.-F., & Shannon, S. E. (2005) Three Approaches to Qualitative Content Analysis.
715 *Qualitative Health Research*, **15**, 1277–1288. doi:10.1177/1049732305276687
- 716 Ilgen, M. A., Stewart, H. J., Lhermitte, S. L., *et al.* (2021) Developing and testing crisis line
717 facilitation to encourage help seeking in adults receiving inpatient treatment for a suicidal
718 crisis. *Cognitive and Behavioral Practice*, **28**, 15–21. doi:10.1016/j.cbpra.2020.05.004
- 719 Iorfino, F., Davenport, T. A., Ospina-Pinillos, L., *et al.* (2017) Using New and Emerging
720 Technologies to Identify and Respond to Suicidality Among Help-Seeking Young People:
721 A Cross-Sectional Study. *J Med Internet Res*, **19**, e247. doi:10.2196/jmir.7897
- 722 Jang, Y., Kim, G., Hansen, L., *et al.* (2007) Attitudes of older Korean Americans toward mental
723 health services. *Journal of the American Geriatrics Society*, **55**, 616–620.
- 724 John, A., DelPozo-Banos, M., Gunnell, D., *et al.* (2020) Contacts with primary and secondary
725 healthcare prior to suicide: Case-control whole-population-based study using person-level
726 linked routine data in Wales, UK, 2000-2017. *The British Journal of Psychiatry*, **217**,
727 717–724. doi:10.1192/bjp.2020.137
- 728 Jones, N., Gius, B. K., Shields, M., *et al.* (2021) Investigating the impact of involuntary
729 psychiatric hospitalization on youth and young adult trust and help-seeking in pathways

- 730 to care. *Social Psychiatry and Psychiatric Epidemiology: The International Journal for*
731 *Research in Social and Genetic Epidemiology and Mental Health Services*, **56**, 2017–
732 2027. doi:10.1007/s00127-021-02048-2
- 733 Jordan, J., McKenna, H., Keeney, S., *et al.* (2012) Providing meaningful care: Learning from the
734 experiences of suicidal young men. *Qualitative Health Research*, **22**, 1207–1219.
735 doi:10.1177/1049732312450367
- 736 Jordans, M., Rathod, S., Fekadu, A., *et al.* (2018) Suicidal ideation and behaviour among
737 community and health care seeking populations in five low- and middle-income countries:
738 A cross-sectional study. *Epidemiology and Psychiatric Sciences*, **27**, 393–402.
739 doi:10.1017/S2045796017000038
- 740 Karras, E., Lu, N., Elder, H., *et al.* (2017) Promoting help seeking to veterans: A comparison of
741 public messaging strategies to enhance the use of the veterans crisis line. *Crisis: The*
742 *Journal of Crisis Intervention and Suicide Prevention*, **38**, 53–62. doi:10.1027/0227-
743 5910/a000418
- 744 Kidd, G., Marston, L., Nazareth, I., *et al.* (2023) Suicidal thoughts, suicide attempt and non-
745 suicidal self-harm amongst lesbian, gay and bisexual adults compared with heterosexual
746 adults: analysis of data from two nationally representative English household surveys.
747 *Social Psychiatry and Psychiatric Epidemiology*. doi:10.1007/s00127-023-02490-4
- 748 Knipe, D., Padmanathan, P., Newton-Howes, G., *et al.* (2022) Suicide and self-harm. *The Lancet*,
749 **399**, 1903–1916.
- 750 Kodama, T., Syouji, H., Takaki, S., *et al.* (2016) Text Messaging for Psychiatric Outpatients:
751 Effect on Help-Seeking and Self-Harming Behaviors. *Journal of Psychosocial Nursing*
752 *and Mental Health Services*, **54**, 31–7. doi:10.3928/02793695-20160121-01

- 753 Kuramoto-Crawford, S. J., Han B., & McKeon R.T. (2017) Self-reported reasons for not
754 receiving mental health treatment in adults with serious suicidal thoughts. *Journal of*
755 *Clinical Psychiatry*, **78**, e631–e637. doi:10.4088/JCP.16m10989
- 756 Leavey, G., Rosato, M., Galway, K., *et al.* (2016) Patterns and predictors of help-seeking
757 contacts with health services and general practitioner detection of suicidality prior to
758 suicide: a cohort analysis of suicides occurring over a two-year period. *BMC Psychiatry*,
759 **16**, 120. doi:10.1186/s12888-016-0824-7
- 760 Lehtimaki, S., Martic, J., Wahl, B., *et al.* (2021) Evidence on Digital Mental Health Interventions
761 for Adolescents and Young People: Systematic Overview. *JMIR Ment Health*, **8**, e25847.
762 doi:10.2196/25847
- 763 Lim, K.-S., Wong, C. H., McIntyre, R. S., *et al.* (2019) Global lifetime and 12-month prevalence
764 of suicidal behavior, deliberate self-harm and non-suicidal self-injury in children and
765 adolescents between 1989 and 2018: a meta-analysis. *International Journal of*
766 *Environmental Research and Public Health*, **16**, 4581.
- 767 Liu, R. T., Sheehan, A. E., Walsh, R. F. L., *et al.* (2019) Prevalence and correlates of non-
768 suicidal self-injury among lesbian, gay, bisexual, and transgender individuals: A
769 systematic review and meta-analysis. *Clinical Psychology Review*, **74**, 101783.
770 doi:10.1016/j.cpr.2019.101783
- 771 Lovero, K. L., Dos Santos, P. F., Come, A. X., *et al.* (2023) Suicide in global mental health.
772 *Current Psychiatry Reports*, **25**, 255–262.
- 773 Lueck, J. A., & Poe, M. (2021) Bypassing the waitlist: examining barriers and facilitators of
774 help-line utilization among college students with depression symptoms. *Journal of*
775 *Mental Health*, **30**, 308–314. doi:10.1080/09638237.2020.1760225

- 776 Lyles, C. R., Nguyen, O. K., Khoong, E. C., *et al.* (2023) Multilevel Determinants of Digital
777 Health Equity: A Literature Synthesis to Advance the Field. *Annual Review of Public*
778 *Health*, **44**, 383–405. doi:10.1146/annurev-publhealth-071521-023913
- 779 Mann, J. J., Apter, A., Bertolote, J., *et al.* (2005) Suicide Prevention Strategies A Systematic
780 Review. *JAMA*, **294**, 2064–2074. doi:10.1001/jama.294.16.2064
- 781 Marconi, E., Monti, L., Marfoli, A., *et al.* (2023) A systematic review on gender dysphoria in
782 adolescents and young adults: focus on suicidal and self-harming ideation and behaviours.
783 *Child and Adolescent Psychiatry and Mental Health*, **17**, 110. doi:10.1186/s13034-023-
784 00654-3
- 785 Martinez, A. B., Co, M., Lau, J., *et al.* (2020) Filipino help-seeking for mental health problems
786 and associated barriers and facilitators: a systematic review. *Social Psychiatry and*
787 *Psychiatric Epidemiology*, **55**, 1397–1413. doi:10.1007/s00127-020-01937-2
- 788 Mbuji, V., Fulbrook, P., & Jessup, M. (2017) Indigenous peoples’ experiences and perceptions
789 of hospitalisation for acute care: A metasynthesis of qualitative studies. *International*
790 *Journal of Nursing Studies*, **71**, 39–49.
- 791 McGowan, J., Sampson, M., Salzwedel, D. M., *et al.* (2016) PRESS Peer Review of Electronic
792 Search Strategies: 2015 Guideline Statement. *Journal of Clinical Epidemiology*, **75**, 40–
793 46. doi:10.1016/j.jclinepi.2016.01.021
- 794 McKay, K., & Shand, F. (2018) Advocacy and luck: Australian healthcare experiences following
795 a suicide attempt. *Death Studies*, **42**, 392–399. doi:10.1080/07481187.2017.1359218
- 796 McLeroy, K. R., Bibeau, D., Steckler, A., *et al.* (1988) An Ecological Perspective on Health
797 Promotion Programs. *Health Education Quarterly*, **15**, 351–377.

- 798 Miranda-Mendizabal, A., Castellví, P., Parés-Badell, O., *et al.* (2019) Gender differences in
799 suicidal behavior in adolescents and young adults: systematic review and meta-analysis
800 of longitudinal studies. *International Journal of Public Health*, **64**, 265–283.
801 doi:10.1007/s00038-018-1196-1
- 802 Mojtabai, R. (2009) Unmet need for treatment of major depression in the United States.
803 *Psychiatric Services*, **60**, 297–305.
- 804 Moskos, M. A., Olson, L., Halbern, S. R., *et al.* (2007) Utah youth suicide study: Barriers to
805 mental health treatment for adolescents. *Suicide and Life-Threatening Behavior*, **37**, 179–
806 186.
- 807 Murphy, E., Kapur, N., Webb, R., *et al.* (2012) Risk factors for repetition and suicide following
808 self-harm in older adults: multicentre cohort study. *The British Journal of Psychiatry*, **200**,
809 399–404.
- 810 Nuij, C., van Ballegooijen, W., de Beurs, D., *et al.* (2021) Safety planning-type interventions for
811 suicide prevention: meta-analysis. *British Journal of Psychiatry*, 1–8.
812 doi:10.1192/bjp.2021.50
- 813 O’Keeffe, S., Suzuki, M., Ryan, M., *et al.* (2021) Experiences of care for self-harm in the
814 emergency department: Comparison of the perspectives of patients, carers and
815 practitioners. *BJPsych Open*, **7**. doi:10.1192/bjo.2021.1006
- 816 Pavulans, K. S., Bolmsjö, I., Edberg, A.-K., *et al.* (2012) Being in want of control: Experiences
817 of being on the road to, and making, a suicide attempt. *International Journal of*
818 *Qualitative Studies on Health & Well-Being*, **7**, 1–11. doi:10.3402/qhw.v7i0.16228
- 819 Peters, M. D. J., Godfrey, C. M., Khalil, H., *et al.* (2015) Guidance for conducting systematic
820 scoping reviews. *JBI Evidence Implementation*, **13**. Retrieved from

- 821 https://journals.lww.com/ijebh/fulltext/2015/09000/guidance_for_conducting_systematic
822 [_scoping_reviews.5.aspx](https://journals.lww.com/ijebh/fulltext/2015/09000/guidance_for_conducting_systematic)
- 823 Peters, M. D. J., Marnie, C., Tricco, A. C., *et al.* (2020) Updated methodological guidance for
824 the conduct of scoping reviews. *JBI Evidence Synthesis*, **18**.
825 doi:<https://doi.org/10.11124/JBIES-20-00167>
- 826 Pirkis, J., Burgess, P., Meadows, G., *et al.* (2001) Self-reported needs for care among persons
827 who have suicidal ideation or who have attempted suicide. *Psychiatric Services*
828 (*Washington, D.C.*), **52**, 381–3.
- 829 Pirkis, J., Rossetto, A., Nicholas, A., *et al.* (2019) Suicide Prevention Media Campaigns: A
830 Systematic Literature Review. *Health Communication*, **34**, 402–414.
831 doi:[10.1080/10410236.2017.1405484](https://doi.org/10.1080/10410236.2017.1405484)
- 832 Podlogar, M. C., Gutierrez, P. M., & Joiner, T. E. (2022) Past levels of mental health
833 intervention and current nondisclosure of suicide risk among men older than age 50.
834 *Assessment*, **29**, 1611–1621. doi:[10.1177/10731911211023577](https://doi.org/10.1177/10731911211023577)
- 835 Pollock, N. J., Naicker, K., Loro, A., *et al.* (2018) Global incidence of suicide among Indigenous
836 peoples: a systematic review. *BMC Medicine*, **16**, 145. doi:[10.1186/s12916-018-1115-6](https://doi.org/10.1186/s12916-018-1115-6)
- 837 Qian, J., Zeritis, S., Larsen, M., *et al.* (2023) The application of spatial analysis to understanding
838 the association between area-level socio-economic factors and suicide: a systematic
839 review. *Social Psychiatry and Psychiatric Epidemiology*, **58**, 843–859.
840 doi:[10.1007/s00127-023-02441-z](https://doi.org/10.1007/s00127-023-02441-z)
- 841 Qin, P., Syeda, S., Canetto, S. S., *et al.* (2022) Midlife suicide: A systematic review and meta-
842 analysis of socioeconomic, psychiatric and physical health risk factors. *Journal of*
843 *Psychiatric Research*.

- 844 Radez, J., Reardon, T., Creswell, C., *et al.* (2021) Why do children and adolescents (not) seek
845 and access professional help for their mental health problems? A systematic review of
846 quantitative and qualitative studies. *European Child & Adolescent Psychiatry*, **30**, 183–
847 211. doi:10.1007/s00787-019-01469-4
- 848 Rainbow, Tatnell R., Blashki G., *et al.* (2023) Revisiting the factor structure of the suicide-
849 related coping scale: Results from two samples of Australian online help-seekers.
850 *Psychiatry Research*, **324**, 115195. doi:10.1016/j.psychres.2023.115195
- 851 Raingruber, B. (2002) Client and provider perspectives regarding the stigma of and
852 nonstigmatizing interventions for depression. *Archives of Psychiatric Nursing*, **16**, 201–7.
- 853 Randles, R., & Finnegan, A. (2022) Veteran help-seeking behaviour for mental health issues: a
854 systematic review. *BMJ Mil Health*, **168**, 99–104.
- 855 Rassy, J., Bardon, C., Dargis, L., *et al.* (2021) Information and communication technology use in
856 suicide prevention: Scoping review. *Journal of Medical Internet Research*, **23**, e25288.
- 857 Renaud, J., Seguin, M., Lesage, A. D., *et al.* (2014) Service use and unmet needs in youth suicide:
858 a study of trajectories. *Canadian Journal of Psychiatry. Revue Canadienne de*
859 *Psychiatrie*, **59**, 523–30.
- 860 Rheinberger, Macdonald D., McGillivray L., *et al.* (2021) “A sustained, productive, constructive
861 relationship with someone who can help”-A qualitative exploration of the experiences of
862 help seekers and support persons using the emergency department during a suicide crisis.
863 *International Journal of Environmental Research and Public Health*, **18**, 10262.
864 doi:10.3390/ijerph181910262
- 865 Rudes, G., & Fantuzzi, C. (2022) The association between racism and suicidality among young
866 minority groups: a systematic review. *Journal of Transcultural Nursing*, **33**, 228–238.

- 867 Saini, P., Chopra, J., Hanlon, C. A., *et al.* (2021) A case series study of help-seeking among
868 younger and older men in suicidal crisis. *International Journal of Environmental*
869 *Research and Public Health*, **18**. doi:10.3390/ijerph18147319
- 870 Sass, C., Farley, K., & Brennan, C. (2022) “They have more than enough to do than patch up
871 people like me.” Experiences of seeking support for self-harm in lockdown during the
872 COVID-19 pandemic. *Journal of Psychiatric & Mental Health Nursing (John Wiley &*
873 *Sons, Inc.)*, **29**, 544–554. doi:10.1111/jpm.12834
- 874 Shin, H. D., Durocher, K., Sequeira, L., *et al.* (2023) Information and communication
875 technology-based interventions for suicide prevention implemented in clinical settings: a
876 scoping review. *BMC Health Services Research*, **23**, 281. doi:10.1186/s12913-023-
877 09254-5
- 878 Shin, H. D., Price, S., & Aston, M. (2020) A poststructural analysis: Current practices for suicide
879 prevention by nurses in the emergency department and areas of improvement. *Journal of*
880 *Clinical Nursing*, **n/a**. doi:10.1111/jocn.15502
- 881 Skogstad, Deane F.P., & Spicer J. (2006) Social-cognitive determinants of help-seeking for
882 mental health problems among prison inmates. *Criminal Behaviour and Mental Health*,
883 **16**, 43–59. doi:10.1002/cbm.54
- 884 Spence, J. M., Bergmans, Y., Strike, C., *et al.* (2008) Experiences of substance-using suicidal
885 males who present frequently to the emergency department. *CJEM*, **10**, 339–346.
886 doi:10.1017/s1481803500010344
- 887 Sreeram, A., Cross, W. M., & Townsin, L. (2022) Anti-stigma initiatives for mental health
888 professionals—A systematic literature review. *Journal of Psychiatric and Mental Health*
889 *Nursing*, **29**, 512–528. doi:10.1111/jpm.12840

- 890 Stene-Larsen, K., & Reneflot, A. (2019) Contact with primary and mental health care prior to
891 suicide: A systematic review of the literature from 2000 to 2017. *Scandinavian Journal of*
892 *Public Health*, **47**, 9–17. doi:10.1177/1403494817746274
- 893 Svetlicic, J., Stapelberg, N. J. C., & Turner, K. (2021) Suicide prevention during COVID-19:
894 identification of groups with reduced presentations to emergency departments.
895 *Australasian Psychiatry*, **29**, 333–336. doi:10.1177/1039856221992632
- 896 Talseth, A.-G., Lindseth, A., Jacobsson, L., *et al.* (1999) The meaning of suicidal psychiatric in-
897 patients' experiences of being cared for by mental health nurses. *Journal of Advanced*
898 *Nursing*, **29**, 1034–1041. doi:10.1046/j.1365-2648.1999.00990.x
- 899 Thompson, L. K., Sugg, M. M., & Runkle, J. R. (2018) Adolescents in crisis: A geographic
900 exploration of help-seeking behavior using data from Crisis Text Line. *Social Science &*
901 *Medicine (1982)*, **215**, 69–79. doi:10.1016/j.socscimed.2018.08.025
- 902 Tricco, A. C., Antony, J., Zarin, W., *et al.* (2015) A scoping review of rapid review methods.
903 *BMC Medicine*, **13**, 224. doi:10.1186/s12916-015-0465-6
- 904 Tricco, A. C., Lillie, E., Zarin, W., *et al.* (2018) PRISMA Extension for Scoping Reviews
905 (PRISMA-ScR): Checklist and Explanation. *Annals of Internal Medicine*, **169**, 467–473.
906 doi:10.7326/M18-0850
- 907 Umubyeyi, A., Mogren, I., Ntaganira, J., *et al.* (2016) Help-seeking behaviours, barriers to care
908 and self-efficacy for seeking mental health care: a population-based study in Rwanda.
909 *Social Psychiatry and Psychiatric Epidemiology*, **51**, 81–92. doi:10.1007/s00127-015-
910 1130-2

- 911 Van Meter, A. R., Knowles, E. A., & Mintz, E. H. (2022) Systematic Review and Meta-analysis:
912 International Prevalence of Suicidal Ideation and Attempt in Youth. *Journal of the*
913 *American Academy of Child & Adolescent Psychiatry*. doi:10.1016/j.jaac.2022.07.867
- 914 Voros, Fekete S., Szabo Z., *et al.* (2022) High prevalence of suicide-related internet use among
915 patients with depressive disorders - a cross-sectional study with psychiatric in-patients.
916 *Psychiatry Research*, **317**, 114815. doi:10.1016/j.psychres.2022.114815
- 917 WHO (2014) Preventing suicide: A global imperative. *World Health Organization*. Retrieved
918 June 27, 2021, from <https://www.who.int/publications/i/item/9789241564779>
- 919 Wilks, C. R., Chu, C., Sim, D., *et al.* (2021) User Engagement and Usability of Suicide
920 Prevention Apps: Systematic Search in App Stores and Content Analysis. *JMIR Form*
921 *Res*, **5**, e27018. doi:10.2196/27018
- 922 Windsor-Shellard, B., & Gunnell, D. (2019) Occupation-specific suicide risk in England: 2011–
923 2015. *The British Journal of Psychiatry*, **215**, 594–599.
- 924 World Health Organization (2021) Suicide worldwide in 2019: global health estimates. Retrieved
925 from <https://www.who.int/publications/i/item/9789240026643>
- 926 Yeh, H.-H., Westphal, J., Hu, Y., *et al.* (2019) Diagnosed mental health conditions and risk of
927 suicide mortality. *Psychiatric Services*, **70**, 750–757.
- 928 Zalsman, G., Hawton, K., Wasserman, D., *et al.* (2016) Suicide prevention strategies revisited:
929 10-year systematic review. *The Lancet Psychiatry*, **3**, 646–659. doi:10.1016/S2215-
930 0366(16)30030-X
- 931
932

Table 1. Study characteristics

Author, Year	Country of Origin	Design	Aim of Study	Sample Description	Suicide Phenomena	Health Services Setting	Data Source
(Adler <i>et al.</i> , 2020)	USA	Qualitative	Examine barriers to treatment among Army soldiers who experienced a recent suicidal crisis and had a history of deployment	12 army soldiers receiving psychiatric inpatient treatment	Suicide attempt/behaviour; Suicidal ideation	Inpatient psychiatric unit	Interview
(Amin <i>et al.</i> , 2021)	Sweden	Observational	Investigate if the patterns of inpatient and specialised outpatient psychiatric and somatic healthcare use differ between refugees and Swedish born individuals 3 years before and after a suicide attempt Examine whether healthcare use differs among refugees as a result of sex, age, education or receipt of disability pension	85,771 individuals who had attempted suicide and were treated by specialist healthcare (81,916 Swedish-born, 3,855 refugees)	Suicide attempt/behaviour	Specialist healthcare services (inpatient and outpatient)	Health admin
(Ammerman <i>et al.</i> , 2021)	USA	Observational	Explore how experiences and reactions related to disclosing a prior suicide attempt relates to future help-seeking outcomes	37 veterans with previous suicide attempt receiving psychiatric inpatient treatment	Suicide attempt/behaviour	Inpatient psychiatric unit	Survey
(Barnes <i>et al.</i> , 2002)	USA	Observational	Describe the help-seeking behaviors engaged in by adolescents and young adults prior to a nearly lethal suicide attempt	153 adolescents and young adults (aged 13-34) treated at an emergency hospital following a suicide	Suicide attempt/behaviour	Emergency department	Survey

			Examine the association between help-seeking behaviors and nearly lethal suicide attempts	attempt			
(Barry <i>et al.</i> , 2023)	Canada	Observational	Determine the number of individuals who seek help prior to suicide or a suicide attempt, separated by urban or rural status Examine the association between rurality and help-seeking among individuals who have died or attempted suicide	9,848 individuals who died by suicide identified through emergency department data and verified by coronial data. 82,480 individuals who attempted suicide and presented to an emergency department	Death by suicide; Suicide attempt/behaviour	Emergency department	Health admin (coronial data for death by suicide)
(Camgan, 1994)	UK (Northern Ireland)	Qualitative	Investigate the psychosocial needs, of individuals who have attempted suicide by self-poisoning Evaluate healthcare support received during and following the suicide attempt	6 individuals who were in hospital following a suicide attempt by intentional overdose	Suicide attempt/behaviour	Emergency department	Interview
(Cedereke & Öjehagen, 2007)	Sweden	Qualitative	Examine formal and informal help related to clinical and social needs that patients who attempted suicide received the	140 individuals who had been treated at a medical emergency inpatient unit	Suicide attempt/behaviour	Medical emergency inpatient unit	Interview

			<p>year following their suicide attempt</p> <p>Examine whether help from services was perceived to be adequate by patients</p> <p>Investigate whether patients who had repeat suicide attempts during the follow-up differed from those who did not</p>	<p>following a suicide attempt</p>			
(Chia-Yi Wu <i>et al.</i> , 2012)	Taiwan	Qualitative	<p>Explore how and why people with deliberate self-harm access formal or informal help sources and related factors</p>	<p>20 individuals who presented to the emergency department following self-harm and were referred to a suicide prevention center</p>	Suicide attempt/behaviour	Suicide prevention centre following emergency department presentation	Interview
(Chung, 2010)	USA	Qualitative	<p>Examine the interplay of informal and formal help-seeking processes within a sample of Chinese immigrants in the USA</p>	<p>31 Chinese immigrants who enrolled for treatment at a mental health clinic following a suicide attempt after re-settling in USA</p>	Suicide attempt/behaviour	Mental health clinics	Interview
(Cleary, 2017)	Ireland	Qualitative	<p>Examine psychiatric service use and attitudes to treatment among a sample of men who made a medically serious</p>	<p>52 men who presented to three hospitals in Ireland following a medically serious</p>	Suicide attempt/behaviour	Emergency department, inpatient psychiatric unit,	Interview

			suicide attempt.	suicide attempt.		outpatient services	
(de Lange <i>et al.</i> , 2022)	Netherlands	Qualitative	Explore experiences and needs related to formal and informal mental health care for sexual and gender minority youth who were experiencing suicidal ideation.	23 young adults who identified as sexual gender minority group (aged 18-35)	Suicide attempt/behaviour; Suicidal ideation	Most young adults interviewed received mental health care from a healthcare professional (e.g., psychologist, psychiatrist)	Interview; Focus group
(Denneson <i>et al.</i> , 2010)	USA	Observational	Describe health care contacts at a Department of Veterans Affairs medical center in Oregon in the year prior to the death of veterans by suicide	112 veterans who died by suicide in Oregon and had contact with a single Veterans Affairs Medical Centre in the year before their death	Death by suicide; Suicide attempt/behaviour; Suicidal ideation	Veterans Affairs Medical Center	Health admin
(Hagen <i>et al.</i> , 2020)	Norway	Mixed Methods	Explore how patients experience suicidality and their experience of being in a psychiatric hospital	11 women who were admitted to a psychiatric hospital and were experiencing suicidality	Suicide attempt/behaviour; Suicidal ideation	Psychiatric acute section	Interview; Other: Participant observation in the hospital.
(Hausmann-Stabile <i>et al.</i> , 2018)	USA	Mixed methods (Qualitative Report)	Examine the pathways related to and characteristics of services provided to adolescents following suicidal crisis, and examine what the adolescent's experiences of	68 Latina adolescents (aged 11-19) who had attempted suicide and had contact with medical and mental health services	Suicide attempt/behaviour; Suicidal ideation	Range of mental health services (e.g., inpatient, outpatient)	Interview

			care				
(Heinsch <i>et al.</i> , 2020)	Australia	Qualitative	Explore the experience of individuals with comorbid depression and alcohol use disorders who had previously attempted suicide regarding the help they sought and received prior to and following the attempt	6 individuals with a prior suicide attempt who had participated in the Self-Help for Alcohol and other drug and Depression (SHADE) study	Suicide attempt/behaviour; Suicidal ideation	Range of mental health services (e.g., mental health professional, phone helpline)	Interview
(Holt <i>et al.</i> , 2023)	USA	Qualitative	Explore the lived experience of sexual and gender minority individuals who have had a recent near fatal suicide attempt. Specific focus on help-seeking and previous mental health care experiences	22 individuals who identified as sexual and gender minority group and had reported at least one near-fatal suicide attempt in the past 18 months.	Suicide attempt/behaviour; Suicidal ideation	Range of mental health services (e.g., inpatient, outpatient, helpline)	Interview
(Hom <i>et al.</i> , 2018)	USA	Observational	Identify the rates of professional and nonprofessional mental health service use and help-seeking, alongside preferred sources of support among female firefighters with a history of suicidality Identify possible barriers to treatment seeking for	119 female firefighters who have a history of suicidal thoughts, plans, or attempts	Suicide attempt/behaviour; Suicidal ideation	Range of mental health services (e.g., psychologist, therapist, counselor, psychiatrist, and other medical providers including physicians and nurse)	Survey

			psychological problems and correlates of mental health service use among this group			practitioners)	
(Ilgen <i>et al.</i> , 2021)	USA	Experimental	Analyze the immediate effect of the Crisis Line Facilitation intervention on self-reported help seeking for suicidal crisis among veterans.	301 veterans receiving psychiatric inpatient treatment for a recent suicidal crisis (defined as significant ideation, plan, and/or recent attempt requiring psychiatric hospitalization)	Suicide attempt/behaviour; Suicidal ideation	Crisis line and inpatient psychiatric care	Survey; Interview
(John <i>et al.</i> , 2020)	UK (Wales)	Observational	Examine the type and timing of healthcare contacts in individuals who died by suicide in Wales	5130 individuals who died by suicide identified using The Suicide Information Database-Wales 1721 suicide deaths were eligible for full-linked analysis	Death by suicide	Range of health services (e.g., general practice, emergency department, secondary care)	Health admin
(Jones <i>et al.</i> , 2021)	USA	Qualitative	Explore the impact of involuntary hospitalization on youth and young adult's trust, help-seeking and engagement with clinicians	40 youth and young adults (aged 16-27) who had been involuntarily hospitalized to a psychiatric hospital.	Suicide attempt/behaviour; Suicidal ideation	Psychiatric hospital	Interview
(Jordan <i>et al.</i> , 2012)	UK (Northern Ireland)	Qualitative	Determine the preferences, and key features and processes of appropriate services and clinical care for young men	36 formerly suicidal young men	Suicide attempt/behaviour; Suicidal ideation	Range of mental health services (e.g., inpatient,	Interview

			who are suicidal			outpatient, community mental health nursing, counseling)	
(Jordans <i>et al.</i> , 2018)	Netherlands	Observational	Identify the prevalence of non-fatal suicidal behaviour within community and health facility based populations in five low- and middle-income countries	6470 individuals presenting at primary care facilities	Suicide attempt/behaviour; Suicidal ideation	Primary care	Survey
(Karras <i>et al.</i> , 2017)	USA	Experimental (Pilot)	Evaluate messaging strategies to enhance use of the Veterans Crisis Line	The overall Veterans Crisis Line call rate for all pilot city sites was 4.81 per 1,000 veterans (exact total call number not provided).	Suicide attempt/behaviour; Suicidal ideation	Crisis line	Other: Veteran Crisis Line call data.
(Kodama <i>et al.</i> , 2016)	Japan	Quasi-experimental	Assess a mobile phone intervention, with a focus on help-seeking and self-harming behaviours	30 psychiatric outpatients who had experienced suicidal ideation	Suicide attempt/behaviour; Suicidal ideation	Outpatient psychiatric care	Health admin; Survey
(Kuramoto-Crawford <i>et al.</i> , 2017)	USA	Observational	Examine self-reported reasons for not receiving mental health treatment among adults with suicidal thoughts in the past year Examine whether sociodemographic characteristics and health	8400 American citizens completing the National Surveys on Drug Use and Health Experiencing suicidal ideation or previous attempt	Suicide attempt/behaviour; Suicidal ideation	Individuals considered seeking help but could not gain access due to various self-reported reasons	Survey

			insurance status was associated with reasons				
(Leavey <i>et al.</i> , 2016)	UK (Northern Ireland)	Observational	Examine predictors of health and social care service contact in the 12-month period prior to suicide and General Practitioner detection of suicidality	361 Suicide deaths recorded by the Coroner's Office	Death by suicide	General Practitioner services and a range of mental health services (e.g., nursing services, social workers, emergency services)	Health admin
(Lueck & Poe, 2021)	USA	Observational	Identify psychological determinants of utilizing a helpline and examine potential barriers in order to inform effective help-line promotion	22 Students (currently in counseling)	Death by suicide	Helpline	Survey
(McKay & Shand, 2018)	UK	Qualitative	Examine the stories of adults who have previously attempted suicide including exploring experiences of Australian healthcare services	20 individuals who had attempted suicide in the previous 18 months	Suicide attempt/behaviour	Following suicide attempt, all but one individual received mental health care.	Interview
(Pavulans <i>et al.</i> , 2012)	Sweden	Qualitative	Explore the lived experience of being suicidal and having made a suicide attempt to identify potential implications for health care professionals concerning how to meet, care for and treat people who have made a suicide attempt and	10 individuals who had recently attempted suicide (within 3 weeks) and were receiving psychiatric inpatient treatment	Suicide attempt/behaviour	Inpatient psychiatric unit	Interview

			help them not to attempt suicide again				
(Pirkis <i>et al.</i> , 2001)	Australia	Observational	Examine the self-reported needs of users of mental health services who are suicidal (and non-suicidal), and examine whether these needs of met	245 individuals with suicidal ideation (from a total survey pool of 10,641 adults).	Suicide attempt/behaviour; Suicidal ideation	Range of mental health services	Survey
(Podlogar <i>et al.</i> , 2022)	USA	Observational	Investigate whether certain level of past mental health care receipt is associated with later explicit nondisclosure of suicide risk to a health care professional Explore whether severity of current suicidal ideation and other hypothesized psychological constructs (i.e., willingness to seek help for suicidal thoughts) may impact any associations	282 men aged 50+ with varied history of previous mental health care utilisation	Suicide attempt/behaviour; Suicidal ideation	Inpatient and outpatient mental health care	Survey
(Rainbow <i>et al.</i> , 2023)	Australia	Observational	Evaluate factor structure, internal consistency, convergent and divergent validity of Suicide-Related Coping Scale (SRCS) in two Australian online help-seeking samples	1,266 visitors to a mental health website who are experiencing suicidal ideation 693 users of a suicide safety planning mobile app	Suicidal ideation	Users of a suicide prevention mobile app, and visitors to a mental health website	Survey

(Raingruber, 2002)	USA	Qualitative	Explore issues that influence the care of depressed and suicidal individuals from the perspective of clients, licensed mental health professionals, primary care physicians, police officers, high school teachers, counselors, and parents	10 mental health care clients	Suicide attempt/behaviour; Suicidal ideation	Range of mental health services	Interview
(Renaud <i>et al.</i> , 2014)	Canada	Mixed methods	Determine what health care services were received by individuals who died by suicide, and what healthcare needs these individuals had	67 individuals who had died by suicide who were aged 25 or younger	Death by suicide	Range of health services (e.g., medical services, allied health, specialized mental health services, helpline, etc.)	Health admin; Interview
(Rheinberger <i>et al.</i> , 2021)	Australia	Qualitative	Understand the experiences of help seekers when presenting to the emergency department as a result of suicidal crisis. A focus on what works and doesn't work, and areas for improvement of care	17 individuals who had presented to a emergency department as a result of suicidal crises within the past 18 months	Suicide attempt/behaviour; Suicidal ideation	Emergency department	Interview
(Saini <i>et al.</i> , 2021)	UK (England)	Observational	Compare help-seeking among younger and older men who attended a therapeutic centre for men who are in suicidal crisis	546 Men attending a centre for men experiencing suicidal crisis.	Suicide attempt/behaviour	Suicide prevention centre	Health admin and survey; Other: Questionnaires completed with therapist during session
(Skogstad <i>et al.</i> , 2006)	New Zealand	Observational	Assess whether prisoners' help seeking intentions related to a personal-emotional problem,	527 male prison inmates	Suicidal ideation	Prison	Survey

			such as suicidal feelings, can be predicted using variables from the Theory of Planned Behaviour				
(Spence <i>et al.</i> , 2008)	Canada	Qualitative	Investigate the experiences including needs and barriers to care alongside substance use history of men who have repeat presentations to emergency departments following suicidal crises	25 males with suicide ideation or history of suicide intent with additional history of substance use problems, who had either been discharged from the emergency department, or admitted for inpatient psychiatric care	Suicide attempt/behaviour; Suicidal ideation	Emergency department	Interview
(Talseth <i>et al.</i> , 1999)	Norway	Qualitative	Explore the experiences of individuals with prior suicide attempts or ideation related to their lived experience of care receipt from mental health nurses	21 individuals receiving inpatient psychiatric care with previous suicide ideation or suicide attempt	Suicide attempt/behaviour; Suicidal ideation	Psychiatric inpatient hospital	Interview
(Thompson <i>et al.</i> , 2018)	USA	Observational	Examine help-seeking behaviors by adolescent and young adults for a national text-based crisis support service	Adolescent crisis line users. 849,483 crisis Text Line conversation records	Death by suicide; Suicidal ideation	Crisis text and phone line	Other: Text-based crisis service data
(Umubyeyi <i>et al.</i> , 2016)	Rwanda	Observational	Investigate help-seeking behaviours, barriers to care, and self-efficacy for help-	247 young adults (aged 20-35) who were experiencing	Suicidal ideation	Range of health services (e.g., health centre or a	Interview

			seeking among young adults with current depression and/or suicidality in a low-income setting	depression and/or suicidality		district hospital, trained mental health professional)	
(Voros <i>et al.</i> , 2022)	Hungary	Observational	Assess the internet use patterns among psychiatric inpatients, with a focus on suicide-related content and its impact on help-seeking	113 psychiatric inpatients with depressive disorders	Suicide attempt/behaviour; Suicidal ideation	Inpatient psychiatric unit	Survey

Table 2. Summary of included studies

Characteristic	N	%	Citations of studies containing characteristic
Study Design			
<i>Observational</i>	19	45.2	(Amin <i>et al.</i> , 2021; Ammerman <i>et al.</i> , 2021; Barnes <i>et al.</i> , 2002; Barry <i>et al.</i> , 2023; Denneson <i>et al.</i> , 2010; Hom <i>et al.</i> , 2018; John <i>et al.</i> , 2020; Jordans <i>et al.</i> , 2018; Kuramoto-Crawford <i>et al.</i> , 2017; Leavey <i>et al.</i> , 2016; Lueck & Poe, 2021; Pirkis <i>et al.</i> , 2001; Podlogar <i>et al.</i> , 2022; Rainbow <i>et al.</i> , 2023; Saini <i>et al.</i> , 2021; Skogstad <i>et al.</i> , 2006; Thompson <i>et al.</i> , 2018; Umubyeyi <i>et al.</i> , 2016; Voros <i>et al.</i> , 2022)
<i>Qualitative</i>	17	40.4	(Adler <i>et al.</i> , 2020; Camgan, 1994; Cedereke & Öjehagen, 2007; Chia-Yi Wu <i>et al.</i> , 2012; Chung, 2010; Cleary, 2017; de Lange <i>et al.</i> , 2022; Heinsch <i>et al.</i> , 2020; Holt <i>et al.</i> , 2023; Jones <i>et al.</i> , 2021; Jordan <i>et al.</i> , 2012; McKay & Shand, 2018; Pavulans <i>et al.</i> , 2012; Raingruber, 2002; Rheinberger <i>et al.</i> , 2021; Spence <i>et al.</i> , 2008; Talseth <i>et al.</i> , 1999)
<i>Mixed or Multi-Method</i>	3	7.1	(Hagen <i>et al.</i> , 2020; Hausmann-Stabile <i>et al.</i> , 2018; Renaud <i>et al.</i> , 2014)
<i>Experimental</i>	2	4.8	(Ilgen <i>et al.</i> , 2021; Karras <i>et al.</i> , 2017)
<i>Quasi- experimental</i>	1	2.4	(Kodama <i>et al.</i> , 2016)
Country of Origin			
United States (US)	16	38.1	(Adler <i>et al.</i> , 2020; Ammerman <i>et al.</i> , 2021; Barnes <i>et al.</i> , 2002; Chung, 2010; Denneson <i>et al.</i> , 2010; Hausmann-Stabile <i>et al.</i> , 2018; Holt <i>et al.</i> , 2023; Hom <i>et al.</i> , 2018; Ilgen <i>et al.</i> , 2021; Jones <i>et al.</i> , 2021; Karras <i>et al.</i> , 2017; Kuramoto-Crawford <i>et al.</i> , 2017; Lueck & Poe, 2021; Podlogar <i>et al.</i> , 2022; Raingruber, 2002; Thompson <i>et al.</i> , 2018)
<i>United Kingdom (including studies set in individual UK countries and across the UK)</i>	6	14.3	(Camgan, 1994; John <i>et al.</i> , 2020; Jordan <i>et al.</i> , 2012; Leavey <i>et al.</i> , 2016; McKay & Shand, 2018; Saini <i>et al.</i> , 2021)
Australia	4	9.5	(Heinsch <i>et al.</i> , 2020; Pirkis <i>et al.</i> , 2001; Rainbow <i>et al.</i> , 2023; Rheinberger <i>et al.</i> , 2021)

Canada	3	7.1	(Barry <i>et al.</i> , 2023; Renaud <i>et al.</i> , 2014; Spence <i>et al.</i> , 2008)
Sweden	3	7.1	(Amin <i>et al.</i> , 2021; Cedereke & Öjehagen, 2007; Pavulans <i>et al.</i> , 2012)
Norway	2	4.8	(Hagen <i>et al.</i> , 2020; Talseth <i>et al.</i> , 1999)
Netherlands	2	4.8	(de Lange <i>et al.</i> , 2022; Jordans <i>et al.</i> , 2018)
Japan	1	2.4	(Kodama <i>et al.</i> , 2016)
Ireland	1	2.4	(Cleary, 2017)
Taiwan	1	2.4	(Chia-Yi Wu <i>et al.</i> , 2012)
Rwanda	1	2.4	(Umubyeyi <i>et al.</i> , 2016)
New Zealand	1	2.4	(Skogstad <i>et al.</i> , 2006)
Hungary	1	2.4	(Voros <i>et al.</i> , 2022)
Publication Years			
1994-2000	2	4.8	(Camgan, 1994; Talseth <i>et al.</i> , 1999)
2001-2010	8	19.0	(Barnes <i>et al.</i> , 2002; Cedereke & Öjehagen, 2007; Chung, 2010; Denneson <i>et al.</i> , 2010; Pirkis <i>et al.</i> , 2001; Raingruber, 2002; Skogstad <i>et al.</i> , 2006; Spence <i>et al.</i> , 2008)
2011-2020	19	45.2	(Adler <i>et al.</i> , 2020; Chia-Yi Wu <i>et al.</i> , 2012; Cleary, 2017; Hagen <i>et al.</i> , 2020; Hausmann-Stabile <i>et al.</i> , 2018; Heinsch <i>et al.</i> , 2020; Hom <i>et al.</i> , 2018; John <i>et al.</i> , 2020; Jordan <i>et al.</i> , 2012; Jordans <i>et al.</i> , 2018; Karras <i>et al.</i> , 2017; Kodama <i>et al.</i> , 2016; Kuramoto-Crawford <i>et al.</i> , 2017; Leavey <i>et al.</i> , 2016; McKay & Shand, 2018; Pavulans <i>et al.</i> , 2012; Renaud <i>et al.</i> , 2014; Thompson <i>et al.</i> , 2018; Umubyeyi <i>et al.</i> , 2016)
2021	7	16.7	(Amin <i>et al.</i> , 2021; Ammerman <i>et al.</i> , 2021; Ilgen <i>et al.</i> , 2021; Jones <i>et al.</i> , 2021; Lueck & Poe, 2021; Rheinberger <i>et al.</i> , 2021; Saini <i>et al.</i> , 2021)
2022	3	7.1	(de Lange <i>et al.</i> , 2022; Podlogar <i>et al.</i> , 2022; Voros <i>et al.</i> , 2022)
2023	3	7.1	(Barry <i>et al.</i> , 2023; Holt <i>et al.</i> , 2023; Rainbow <i>et al.</i> , 2023)

Table 3. Barriers and facilitators to help-seeking related to suicide prevention care among individuals who are in contact with mental health services

Level	Barriers Count	Citations	Examples	Facilitators Count	Citations	Examples
Individual	28	(Adler <i>et al.</i> , 2020; Barry <i>et al.</i> , 2023; Camgan, 1994; Chia-Yi Wu <i>et al.</i> , 2012; Chung, 2010; Cleary, 2017; Denneson <i>et al.</i> , 2010; Hagen <i>et al.</i> , 2020; Hausmann-Stabile <i>et al.</i> , 2018; Heinsch <i>et al.</i> , 2020; Holt <i>et al.</i> , 2023; Hom <i>et al.</i> , 2018; Ilgen <i>et al.</i> , 2021; Jones <i>et al.</i> , 2021; Jordan <i>et al.</i> , 2012; Karras <i>et al.</i> , 2017; Kodama <i>et al.</i> , 2016; Kuramoto-Crawford <i>et al.</i> , 2017; Leavey <i>et al.</i> , 2016; Lueck & Poe, 2021; McKay & Shand, 2018; Pavulans <i>et al.</i> , 2012; Pirkis <i>et al.</i> , 2001; Podlogar <i>et al.</i> , 2022; Saini <i>et al.</i> , 2021; Skogstad <i>et al.</i> , 2006; Spence <i>et al.</i> , 2008; Umubyeyi <i>et al.</i> , 2016)	Lack of knowledge, negative attitudes towards help-seeking, negative prior experiences in hospitals leading to distrust in hospitalizations, financial concerns	16	(Chia-Yi Wu <i>et al.</i> , 2012; Chung, 2010; de Lange <i>et al.</i> , 2022; Hagen <i>et al.</i> , 2020; Hausmann-Stabile <i>et al.</i> , 2018; Hom <i>et al.</i> , 2018; Ilgen <i>et al.</i> , 2021; Jordan <i>et al.</i> , 2012; Karras <i>et al.</i> , 2017; Kodama <i>et al.</i> , 2016; Leavey <i>et al.</i> , 2016; McKay & Shand, 2018; Pavulans <i>et al.</i> , 2012; Rainbow <i>et al.</i> , 2023; Skogstad <i>et al.</i> , 2006; Voros <i>et al.</i> , 2022)	Knowledge (knowing where to search for help), positive attitudes toward help-seeking, financial means, self-awareness, coping strategies
Interpersonal	25	(Adler <i>et al.</i> , 2020; Ammerman <i>et al.</i> , 2021; Camgan, 1994; Chia-Yi Wu <i>et al.</i> , 2012; Chung, 2010; Cleary, 2017; Denneson <i>et al.</i> , 2010; Hagen <i>et al.</i> , 2020; Hausmann-Stabile <i>et al.</i> , 2018;	Negative interaction with healthcare professionals, lack of social connection, lack of understanding of	22	(Adler <i>et al.</i> , 2020; Ammerman <i>et al.</i> , 2021; Barnes <i>et al.</i> , 2002; Chia-Yi Wu <i>et al.</i> , 2012; Chung, 2010; de Lange <i>et al.</i> , 2022; Denneson <i>et al.</i> , 2010;	Positive relationship with family and friends, friends and family providing emotional support and encouragement, peer

		Heinsch <i>et al.</i> , 2020; Holt <i>et al.</i> , 2023; Hom <i>et al.</i> , 2018; Jones <i>et al.</i> , 2021; Jordan <i>et al.</i> , 2012; Jordans <i>et al.</i> , 2018; Kuramoto-Crawford <i>et al.</i> , 2017; Lueck & Poe, 2021; McKay & Shand, 2018; Podlogar <i>et al.</i> , 2022; Renaud <i>et al.</i> , 2014; Rheinberger <i>et al.</i> , 2021; Skogstad <i>et al.</i> , 2006; Spence <i>et al.</i> , 2008; Talseth <i>et al.</i> , 1999),	LGBTQ+ issues by healthcare professionals, negative reactions from informal caregivers impacting self-harm tendencies, fear of burdening friends and family with emotional distress, fear of being perceived differently by peers		Hagen <i>et al.</i> , 2020; Hausmann-Stabile <i>et al.</i> , 2018; Heinsch <i>et al.</i> , 2020; Holt <i>et al.</i> , 2023; Jones <i>et al.</i> , 2021; Jordan <i>et al.</i> , 2012; Kodama <i>et al.</i> , 2016; McKay & Shand, 2018; Pavulans <i>et al.</i> , 2012; Raingruber, 2002; Rheinberger <i>et al.</i> , 2021; Skogstad <i>et al.</i> , 2006; Spence <i>et al.</i> , 2008; Talseth <i>et al.</i> , 1999; Umubyeyi <i>et al.</i> , 2016)	support from those with similar experiences reducing stigma, positive interactions with healthcare professionals building trust and rapport, text message interventions providing information and reminders
Organizational/ Institutional	27	(Adler <i>et al.</i> , 2020; Amin <i>et al.</i> , 2021; Camgan, 1994; Cedereke & Öjehagen, 2007; Chia-Yi Wu <i>et al.</i> , 2012; Chung, 2010; de Lange <i>et al.</i> , 2022; Denneson <i>et al.</i> , 2010; Hagen <i>et al.</i> , 2020; Hausmann-Stabile <i>et al.</i> , 2018; Heinsch <i>et al.</i> , 2020; Holt <i>et al.</i> , 2023; Hom <i>et al.</i> , 2018; John <i>et al.</i> , 2020; Jones <i>et al.</i> , 2021; Jordan <i>et al.</i> , 2012; Lueck & Poe, 2021; McKay & Shand, 2018; Pavulans <i>et al.</i> , 2012; Pirkis <i>et al.</i> , 2001; Podlogar <i>et al.</i> , 2022; Renaud <i>et al.</i> , 2014; Rheinberger <i>et al.</i> , 2021; Skogstad <i>et al.</i> , 2006; Spence <i>et al.</i> , 2008; Talseth <i>et al.</i> , 1999; Umubyeyi <i>et al.</i> , 2016)	Healthcare distrust, dehumanization and feelings of isolation during hospitalization, unmet needs and treatment misalignment with patient expectations, limited control over treatment decisions discouraging seeking help, language barriers, long wait-times	15	(Adler <i>et al.</i> , 2020; Ammerman <i>et al.</i> , 2021; Chung, 2010; Cleary, 2017; de Lange <i>et al.</i> , 2022; Denneson <i>et al.</i> , 2010; Hagen <i>et al.</i> , 2020; Holt <i>et al.</i> , 2023; Jordan <i>et al.</i> , 2012; Raingruber, 2002; Rheinberger <i>et al.</i> , 2021; Skogstad <i>et al.</i> , 2006; Spence <i>et al.</i> , 2008; Talseth <i>et al.</i> , 1999; Umubyeyi <i>et al.</i> , 2016)	Holistic care that creates a supportive atmosphere was reported to promote help-seeking, normalization of presence of suicidal ideation and taking time to find out where these thoughts came from, asking relevant and inclusive questions about sexual orientation, gender identity, and related issues was perceived as critical, individualized care, tailored to each person's unique needs

						and circumstances, follow-up services, including ongoing support and follow-up appointments
Community	11	(Adler <i>et al.</i> , 2020; Amin <i>et al.</i> , 2021; Barry <i>et al.</i> , 2023; Chung, 2010; Holt <i>et al.</i> , 2023; John <i>et al.</i> , 2020; Jordan <i>et al.</i> , 2012; Kuramoto-Crawford <i>et al.</i> , 2017; Leavey <i>et al.</i> , 2016; Pavulans <i>et al.</i> , 2012; Thompson <i>et al.</i> , 2018)	Rurality of residence, lack of accessible services, lack of integration of public health suicide prevention initiatives in primary care settings	10	(Adler <i>et al.</i> , 2020; Barnes <i>et al.</i> , 2002; Chia-Yi Wu <i>et al.</i> , 2012; Chung, 2010; Heinsch <i>et al.</i> , 2020; Jordan <i>et al.</i> , 2012; Leavey <i>et al.</i> , 2016; Pavulans <i>et al.</i> , 2012; Thompson <i>et al.</i> , 2018; Umubyeyi <i>et al.</i> , 2016)	Availability of community resources, nearby hospitals, open discussions about mental health and suicide reducing stigma, accessible mental health services, community-based support systems, informal support networks beyond families and friends providing encouragement, crisis hotlines and dissemination of information about assistance resources
Policy/National/Law	8	(Amin <i>et al.</i> , 2021; Chung, 2010; Denneson <i>et al.</i> , 2010; Heinsch <i>et al.</i> , 2020; Holt <i>et al.</i> , 2023; Jordans <i>et al.</i> , 2018; Renaud <i>et al.</i> , 2014; Umubyeyi <i>et al.</i> , 2016).	Lack of health insurance	1	(Chung, 2010)	Financial benefits provided through government assistance programs

Figure 1. PRISMA flow chart

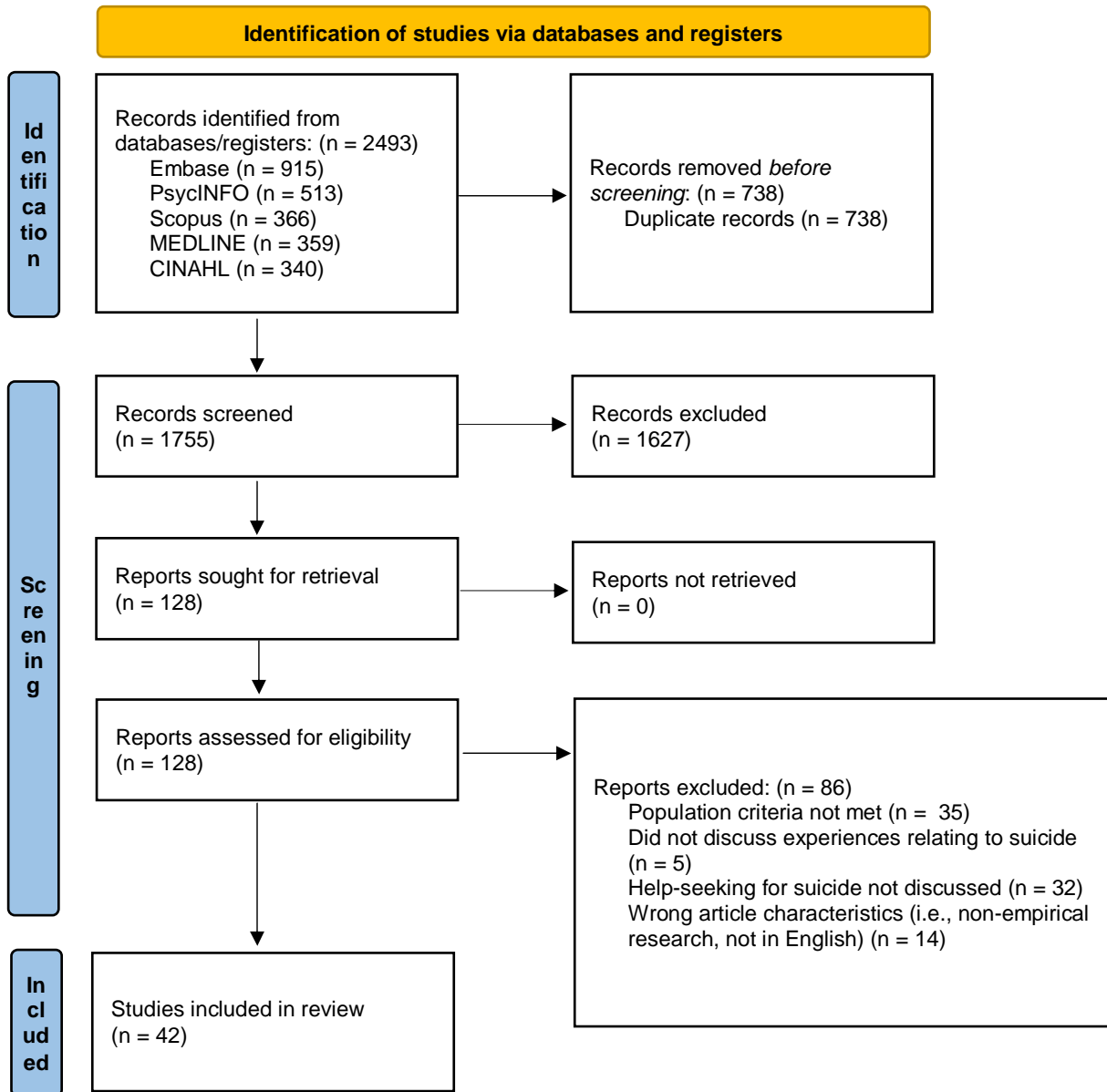


Figure 2. Reported characteristics of participants

