

Sundar, et al.
VL Patient Insights Manuscript

1 **Patient insights research exploring disease awareness, patient life experience, and current**
2 **management of visceral leishmaniasis in Bihar, India**

3

4 Shyam Sundar,¹ Fabiana Alves,² Koert Ritmeijer,³ Margriet den Boer,⁴ Colin Forsyth,⁵ Bethan
5 Hughes,⁶ Clare Zamble,⁷ Kirsten Carter⁸, Gerhild Angyalosi^{8,*}

6

7 ¹Institute of Medical Sciences, Banaras Hindu University, Varanasi, India; ²Drugs for Neglected
8 Diseases Initiative, Geneva, Switzerland; ³Médecins Sans Frontières, Amsterdam, Netherlands;
9 ⁴Médecins Sans Frontières, London, UK; ⁵Drugs for Neglected Diseases Initiative, New York,
10 NY, USA; ⁶Novartis Pharmaceuticals UK Ltd, London, UK; ⁷Lumanity, London, UK; ⁸Novartis
11 Pharma AG, Basel, Switzerland

12

13 ***Corresponding Author:**

14 Gerhild Angyalosi

15 Novartis Pharma AG

16 Basel, Switzerland

17 gerhild.angyalosi@novartis.com

18 ORCID ID : 0000-0001-9988-582X

19

20 **Title Length:** 143 characters (limit: 250)

21 **Short Title:** Patient Insights into Visceral Leishmaniasis in Bihar, India (61 characters; limit: 70)

Sundar, et al.
VL Patient Insights Manuscript

22 **ABSTRACT**

23 **Background:** Visceral leishmaniasis (VL) is a vector-borne disease caused by *Leishmania*
24 parasites and transmitted by sand fly bites, targeted for elimination in India. VL primarily affects
25 rural, low-income populations with limited health care access. In South Asia, few studies have
26 explored patients' perspectives, diagnoses, and treatment experiences, and how these experiences
27 influence their expectations about treatment.

28
29 **Methodology/principal findings:** A qualitative study was conducted in Bihar, India, using
30 moderator-facilitated, protocol-defined discussion. Eighteen adult patients and 12 caregivers of
31 children diagnosed with and treated for VL within the last 12 months were identified by self-
32 report. Mean time from symptom onset to diagnosis was 13.8 days. Challenges of the patient life
33 experience included lack of urgency by health care professionals, delayed diagnosis, and
34 unavailability of current standard-of-care therapy where a patient receives their diagnosis (63%
35 switched to a different center for treatment, at times delaying treatment). Key barriers include
36 out-of-pocket financial burden, absence from work/home duties, and long-distance travel to
37 hospitals. Patients expressed a preference (29/30) for a potential oral treatment that could be
38 taken close to home over the current standard of care (infusions/injections in clinics).

39
40 **Conclusions/significance:** This study reveals new insights and confirms previous research
41 showing access to care for patients with VL in the Bihar area remains a challenge. Although
42 most patients with VL seek care early, diagnosis often requires multiple visits to a health care
43 facility. Despite access to therapy in public hospitals, a substantial number of patients prefer
44 private clinics. Even in public locations, many patients need to move from the diagnostic center

Sundar, et al.
VL Patient Insights Manuscript

45 to another center to receive therapy, creating an additional burden for patients. As a potential
46 alternative to current parenteral treatment, oral therapy would be preferred by adult patients and
47 caregivers of pediatric patients and may reduce barriers to access to care.

Sundar, et al.
VL Patient Insights Manuscript

48 **AUTHOR SUMMARY**

49 This is an interview-based investigation of patient awareness, experience, and individual
50 challenges for adults and caregivers of children seeking diagnosis and effective care for visceral
51 leishmaniasis (VL) in rural districts of Bihar, India. Patients' descriptions of their health
52 experiences revealed obstacles at every stage, including limited information about the illness at
53 the community level, financial burdens associated with loss of work, and cost of travel to seek
54 diagnosis. Although our study was subject to recall bias, it elicited insights from the patients'
55 own experiences and revealed deterrents and burdens that may not have been visible otherwise.
56 Our study also found that most patients would prefer a potential oral treatment for VL over the
57 current parenteral-based standard of care. This patient-driven approach of identifying unmet
58 needs and potential gaps in public health access can be useful in furthering the aims of the
59 National Elimination Program for VL in India and in other areas with endemic VL, particularly
60 those planning to introduce elimination programs.

Sundar, et al.
VL Patient Insights Manuscript

61 INTRODUCTION

62 Visceral leishmaniasis (VL), also known as kala-azar, is a vector-borne disease found in 90
63 countries in the tropics, subtropics, and southern Europe, in settings ranging from rain forests to
64 deserts [1]. In India, VL is endemic among 54 districts across 4 states of Bihar, Jharkhand, West
65 Bengal, and Uttar Pradesh, leaving a population of approximately 140 million people at risk of
66 infection [2].

67
68 VL was targeted for elimination in India by 2020 [3], and in the last decade, several major policy
69 changes have been implemented with the goal of elimination. Reported cases of VL have been
70 consistently decreasing in India, from 16.82 cases per 100,000 in 1990 to 0.60 cases in 2019 [4,
71 5]. The most recent provisional government data showed that in 2023 there were 520 VL cases
72 nationwide and only 4 deaths [6], indicating control of the disease and potentially putting the
73 goal of eliminating VL as a public health problem within reach. Provisional government analysis
74 shows it is likely that all 633 subdistricts endemic for VL achieved elimination target (of <1 VL
75 case per 10,000 population at the sub-district level [7]) in 2023 [8]. Elimination of VL is a high
76 priority in India, with government monetary incentives in place to encourage detection and
77 diagnosis in the community, and to assist patients with obtaining treatment [9]; however, little is
78 known about patients' perspectives, diagnoses, and treatment experiences, and how these
79 experiences influence their expectations about treatment.

80
81 In the Indian subcontinent, VL is caused by *Leishmania donovani* parasites; human transmission
82 occurs via the sand fly *Phlebotomous argentipes*, without known animal reservoirs [10].
83 Symptoms of VL include irregular bouts of fever, weight loss, liver and spleen enlargement, and

Sundar, et al.
VL Patient Insights Manuscript

84 anemia; untreated, VL is fatal in >95% of cases [3]. Post kala-azar dermal leishmaniasis (PKDL)
85 is a cutaneous disease occurring in areas of India where VL is prevalent and can appear months
86 or years after a patient has been treated for VL or sometimes in patients with no past VL history
87 [5, 11]. Patients with chronic PKDL can be a reservoir for sustained VL transmission, and thus
88 are an important factor in achieving total VL elimination [5].

89
90 VL is mostly prevalent in rural areas and affects primarily low-income populations with limited
91 healthcare access [10]. Prevalence is associated with malnutrition, population displacement, poor
92 housing, a weak immune system, and poverty [3]. In a previous study in Bihar, residence in
93 highly marginalized communities was found to be the greatest risk factor for being affected by
94 VL [12].

95
96 In India, the current standard-of-care therapy for VL consists of 10 mg/kg single-dose liposomal
97 amphotericin B by intravenous infusion [13, 14]. Although highly efficacious, infusions are
98 challenging in resource-limited settings, requiring drug refrigeration and close monitoring of
99 patient renal function and electrolyte levels [15]. Because access to medication is challenging in
100 the areas where VL is most prevalent, even when tests and medicines are free of charge, roughly
101 three-quarters of households affected by VL in Bangladesh [16, 17] and Bihar [13] experience
102 financial hardship in obtaining diagnosis and treatment due to factors such as travel costs and
103 missed work.

104
105 A few studies on knowledge of and attitudes toward VL, barriers to care and reporting, and costs
106 of patient management have been conducted in Bihar, other parts of India, and Nepal [18-22].

Sundar, et al.
VL Patient Insights Manuscript

107 One key single-center, cross-sectional study conducted at a research hospital in Bihar evaluated
108 the patient quality of life (QoL) associated with VL in India using the abbreviated quality of life
109 survey from the World Health Organization (WHO BREF) QoL tool [23]. VL was shown to
110 have a significant negative impact on physical, psychological, social relationship, and
111 environmental domains of QoL in 95 patients. In a separate study, semi-structured, in-depth
112 interviews explored QoL among 29 patients with VL treated at a medical institute in Bihar who
113 were coinfecting with HIV [24]. This study also reported substantial negative impact on patients,
114 especially economically. Despite these initial findings, deeper insights are needed, particularly
115 into the early part of the patient life experience before patients have been admitted to the kinds of
116 research hospitals in which previous studies have been conducted. These insights could provide a
117 more comprehensive understanding of the VL patient experience.

118
119 In response to this unmet need and in the context of the National Elimination Program, we aimed
120 to understand perspectives of people affected by VL who had sought care in their communities
121 by identifying and recruiting study participants from their homes, rather than from a research or
122 treatment facility. The stated objectives of our qualitative study were as follows: to gain insights
123 regarding patients' experience of the disease, diagnosis, and treatment; to better understand
124 current levels of disease awareness and barriers in diagnosis and treatment access; and to explore
125 the acceptability of an oral treatment formulation among adult patients and caregivers of
126 pediatric patients. The results of our research provide useful insights into challenges and barriers
127 reported by patients seeking treatment in a historical area of high VL prevalence.

128

129 **METHODS**

Sundar, et al.
VL Patient Insights Manuscript

130 **Study Design**

131 A qualitative study was conducted using moderator-facilitated discussion, with a predefined set
132 of screening criteria and following a protocol-defined discussion guide. Institutional Review
133 Board (IRB) ethics approval was received from Sigma-IRB (<https://www.sigma-irb.com/>) on
134 December 28, 2022. Recruitment took place in districts across Bihar, the region that accounts for
135 the majority of VL cases in India, clustered into 3 groups: 1) Vaishali, Gopalganj, and Saran; 2)
136 Saharsa, Madherpura, Araria, Purnia, and Katihar; and 3) Muzaffarpur, East Champaran,
137 Sitamarhi, and Samastipur. The data report is shared in **Supporting Information 1**.

138
139 Interviewers visited district hospitals to identify villages/townships that were hotspots of patients
140 with VL in the past 24 months (per study eligibility criteria). Recruiters met with local
141 pharmacists, community health care professionals (HCPs), and local leaders/village council
142 members to confirm the relevance of target areas. Recruitment was conducted door-to-door,
143 where consent was gained for screening. Patients were recruited via a screening questionnaire to
144 determine eligibility and willingness to take part in the interview. If written or audio-recorded
145 consent was given, respondents could be screened face-to-face at that time or at a later
146 appointment arranged at the respondent's convenience. Sixty-minute, face-to-face, in-depth
147 interviews were conducted in Hindi by a local partner agency, which were transcribed,
148 translated, and analyzed in a standardized way using an analysis grid, to identify patterns and
149 frequency of mention of key themes and datapoints.

150
151 Inclusion criteria consisted of the following: adult patients aged ≥ 18 years or parents/legal
152 guardians of pediatric patients aged < 18 years, self-reported as having been diagnosed with VL

Sundar, et al.
VL Patient Insights Manuscript

153 and treated in the last 2 years, and from a mix of agricultural and nonagricultural backgrounds,
154 with $\leq 50\%$ having agricultural work as their main occupation. All participants recruited had been
155 diagnosed and treated within the last 12 months. The screening process aimed for an equal
156 distribution between genders among adult patients and a mix of ages among pediatric patients:
157 ≤ 4 children aged < 5 years and ≥ 8 children aged 5 to 17 years. The sample size was chosen to
158 balance feasibility and reasonable robustness for analysis.

159
160 Fieldwork began in February/March 2023. After review of a partial sample (22 completed
161 interviews), it was noted that there was little consistency in the types of treatments the patients
162 recalled being given. In addition, some patients reported being treated in the private sector,
163 which was an unexpected finding. Because patients were unable to name the treatments that they
164 received and many appeared to have received multiple treatments during their illness, the
165 researchers felt it necessary to add a disease validation measure into the protocol. Recruitment
166 was paused in June 2023 and the protocol was resubmitted to the IRB and approved June 14,
167 2023 to include required proof of confirmed diagnosis either as documentation (ie, VL treatment
168 card, blood test result, doctor's letter) or details of an HCP or Accredited Social Health Activist
169 (ASHA; a community health worker employed by India's Ministry of Health and Family
170 Welfare), who would be able to confirm VL diagnosis and/or treatment. In July 2023 recruitment
171 recommenced, and previously recruited patients were requested to provide documentation to
172 support their diagnosis and treatment. The 8 patients recruited after the revision of the protocol
173 were all required to provide a VL treatment card.

174

Sundar, et al.
VL Patient Insights Manuscript

175 Data were collected using the discussion guide in Hindi, consisting of 5 sections: context and
176 patient/caregiver activation; patient journey overview; patient journey: initial symptoms to
177 diagnosis; patient journey: treatment and follow-up; and potential new VL treatment (**Table 1**).

178

179 **Table 1. Patient Interview Discussion Guide**

Section	Specific objective(s) covered	Timing
1. Context and patient/caregiver activation	Explore awareness levels of VL with a focus on what the patient's awareness was before experiencing the disease. Do they know sand flies spread the disease and the preventative measures to take against sand flies? Did they have prior awareness about VL symptoms and how to treat and manage it? How did they learn about the condition? What are the general public perceptions and stigmas?	10 minutes
2. Patient journey overview	Capture overall timings of the VL patient journey to set the stage for a more in-depth exploration and discussion. Understand the impact the disease has: emotionally, physically, socially, practically, and financially.	10 minutes
3. Patient journey: initial symptoms to	In-depth exploration of the journey to diagnosis, focusing on the barriers and	14 minutes

Sundar, et al.
VL Patient Insights Manuscript

	diagnosis	challenges to getting a diagnosis, teasing apart the practical barriers versus any personal barriers or gender-specific barriers and exploring the role of awareness and education in expediting their journey.	
4.	Patient journey: treatment and follow-up	Understanding their treatment experience, with particular focus on challenges related to the in-patient infusion process and unpacking what happens afterward in terms of monitoring and follow-up.	12 minutes
5.	Potential new VL treatment	Gauge reactions to a potential new treatment to understand what will drive value for these patients and to inform the development of a phase 3 TPP.	14 minutes

180 TPP, target product profile; VL, visceral leishmaniasis.

181

182 RESULTS

183 Participants

184 Eighteen adult patients and 12 caregivers of children who self-reported being diagnosed and
185 treated for VL within the last 12 months were included (N=30; **Table 2**). Inclusion criteria
186 allowed for treatment within the last 24 months, but all had been diagnosed and treated within
187 the previous 12-month period. Twelve out of 30 participants or caregivers validated diagnosis
188 and treatment with a VL card; 13 out of 30 had lost or no longer possessed a VL card; and 5 out

Sundar, et al.
VL Patient Insights Manuscript

189 of 30 were unavailable for recontact for retrospective validation. Patients were located in
190 approximately 25 dispersed villages throughout the region (**Fig 1**), with a maximum of 2
191 respondents interviewed per village. Most patients were farmers (n=15) and homemakers (n=10),
192 19 (63%) had received a secondary/higher secondary school certificate or above, and 23 (77%)
193 reported income representing working class and above categories (**Table 2**). This group includes
194 9 patients who were from the middle lower class, with an annual income of \$6,000 to \$18,000
195 (\leq 500,000- \leq 1,500,000) for the entire family.

196

Table 2. Participant Demographics (N=30)

	Overall (N=30)
Adult patients, n	18
Age, mean (range), years	37 (21-60)
Time since VL treatment, mean (range), months	9.5 (6-12)
Males/females, n	12/6
Caregivers of pediatric patients, n	12
Patient age, mean (range), years	11 (10-14)
Time since VL treatment, mean (range), months	10.5 (8-12)
Male patient/female patient, n	6/6
Caregiver identity, n	
Mother	6
Father	3

Sundar, et al.

VL Patient Insights Manuscript

Grandmother	2
Grandfather	1
Total adults and caregivers combined, n	30
Occupation, n	
Homemaker	10
Student	2
Farmer	15
Shop owner	1
Unemployed	2
Education level, n	
School class 5-9	10
Passed class 8	1
SSC/HSC	16
Graduate/postgraduate	3
Household class according to NCCS, ^a n	
Middle lower class	9
Below middle class (working class)	13
Lower middle class (working class, but financially poorer than “below middle class”)	1
Lower class (at Indian poverty level)	3
Below lower class (below international poverty level)	3

Sundar, et al.
VL Patient Insights Manuscript

Poor class (below Indian poverty level) 1

197 VL, visceral leishmaniasis; SSC/HSC, secondary/higher secondary school certificate; NCCS,
198 New Consumer Classification System.

199 ^aThe NCCS classification system considers the education of the chief wage earner and the number
200 of consumer durables owned by the household to assign a household class level [25].

201

202 **Fig 1. Geographic locations of interviews.^a**

203 ^aNumbers denote the approximate location of respondent villages, not individual respondent
204 identification numbers. Maximum 2 respondents interviewed per location.

205

206 The overall patient experience could be described as following the path of pre-diagnosis,
207 diagnosis, treatment, and follow-up (**Fig 2**). The timeline for patients ran from Day 0 (onset of
208 symptoms) to first touchpoint (primary care), presentation to diagnosing clinic, receiving
209 diagnosis and treatment, treatment initiated, symptoms resolved, and follow-up (**Fig 3**).

210 Excluding 1 outlier of 90 days, mean time to diagnosis was 13.8 days; range 3 to 21 days;

211 median 7.5 days (**Fig 2**). Including the outlier, mean time to diagnosis was 16.3 days; range 3 to

212 90 days; median 12 days. No significant differences were observed between males and females

213 (excluding outlier). For adult patients, mean time to diagnosis was 10 days (range 3-21 days;

214 median 8.25 days). Mean time to diagnosis was 19 days (range 5-25 days; median 13.5 days) for

215 pediatric patients (according to caregiver responses).

216

217 **Fig 2. Summary of life experiences of 18 adults and 12 caregivers of children with VL.**

218 VL, visceral leishmaniasis.

Sundar, et al.
VL Patient Insights Manuscript

219 ^aExcluding 1 anomaly of 90 days. Mean, median, and range breakdowns (with and without
220 outlier) below.

221 - Mean 16.4 days (with outlier); 13.8 days (without outlier).

222 - Median 12 days (with outlier); 7.5 days (without outlier).

223 - Range 3 to 90 days (with outlier); 3 to 21 days (without outlier).

224

225 **Fig 3. Breakdown of patients' experiences of VL.**

226 VL, visceral leishmaniasis.

227 ^aMedian, 3 days; mean, 3.8 days.

228

229 **Patient Life Experience**

230 *Prediagnosis*

231 VL was suspected at onset of illness by 5 out of 30 participants; of these 5, 2 suspected VL based

232 on suggestion from someone else. The first symptoms experienced associated with VL were

233 often fever and fatigue. As a result of overlapping symptoms with malaria or common seasonal

234 conditions, such as flu, it was common among patients to consider other illnesses before VL.

235 Twenty-one out of 30 patients attempted self-medication and rest upon symptom onset and did

236 not seek treatment until their symptoms persisted for several days. The first point of care was

237 generally a local pharmacist or village doctor (an informal medical practitioner located within a

238 village who fills the gap between local pharmacies and regional hospitals); in these settings,

239 patients often found a low sense of urgency, delaying their diagnosis (**Fig 2**). During this

240 prediagnosis phase, the HCPs, like patients, also considered illnesses other than VL could be

241 responsible. Half of the patients visited a second primary care setting after a couple of days of no

Sundar, et al.
VL Patient Insights Manuscript

242 improvement (**Fig 3**), and 11 patients remained under the care of nonspecialized HCPs for 2
243 weeks before VL was diagnosed (**Fig 2**). Delays in seeking diagnosis and treatment also arose
244 from practical barriers for patients and differed between men and women, with women reporting
245 a need for childcare support, whereas men reported the risk of lost wages and a need for time off
246 from work. The challenges patients faced prior to diagnosis included burdensome and
247 debilitating physical symptoms, emotional stressors, absence from work and school, and
248 financial burden.

249

250 *Diagnosis*

251 Upon diagnosis, most patients (n=19; 63%) had to switch to a government hospital for treatment:
252 15 were referred from a primary health center where treatment for VL was not available, 2
253 switched from a private doctor for cost reasons, and 2 switched from another government
254 hospital because treatment was not available there (**Fig 2**). These switches caused a 1- to 2-day
255 delay in treatment initiation; thereafter, treatment was started immediately. The time from
256 symptom onset to diagnosis (2-3 weeks in most cases) is in line with the expectations of the
257 Indian National Elimination Program [14]. However, our research shows 7 caregivers of
258 pediatric patients reported taking >2 weeks to present to a diagnostic setting (from 5-9 additional
259 days), due to financial/logistical barriers as well as the desire to seek private care for their child.

260

261 *Treatment*

262 Although treatment is free in a government hospital setting, some patients (n=6; 4 pediatric and 2
263 adult patients) received treatment in a private healthcare setting (**Fig 2**). All of these patients paid
264 out of pocket at a private hospital due to the fear of long wait times at government hospitals and

Sundar, et al.
VL Patient Insights Manuscript

265 a lack of trust in the quality of the treatment there. Among the 24 patients who received
266 treatment in a government hospital, 21 were inpatient (treatment duration range, 1-4 days) and 3
267 were treated as outpatients (treatment duration range, 1-3 days). The majority of patients (n=27)
268 described receiving infusion treatment, but patient descriptions indicated single-dose liposomal
269 amphotericin B may not have been used in some cases. Some patients recalled being treated by
270 injection and/or tablets. Patients began feeling better around 1 week after treatment initiation
271 (range 1 day to 2 months), with most reporting resumption of normal activities approximately 1
272 week after treatment completion.

273

274 The key challenges in this part of the patient life experience were financial burden and the need
275 to travel long distances to obtain treatment. Patients all reported travel burdens; the average
276 reported distance patients needed to travel for treatment was 15 to 20 km (range 3-45 km), with
277 associated financial costs. For those patients who had to return to a distant facility for diagnosis,
278 or those who had to switch treatment facility, the travel burden was even higher. One female
279 adult patient described her experience as *“We delayed the treatment by two weeks because of the*
280 *financial issue. I faced problem financially because we had to pay the expense of vehicle for*
281 *travelling. And my school and coaching was getting missed because of my weakness and*
282 *dizziness.”* Additional challenges for patients and caregivers included unpaid leave from work
283 and finding support for childcare and other responsibilities at home. Furthermore, 8 inpatients
284 reported needing to be accompanied so they could be provided food from outside the hospital
285 during their stay, resulting in costs for food and accommodation near the hospital. As the
286 caregiver of one female pediatric patient noted *“I didn’t spent money in the treatment. But I had*
287 *to spent money in travelling and etc. Costs getting to hospitals.”*

Sundar, et al.
VL Patient Insights Manuscript

288

289 *Follow-up*

290 All patients were offered follow-up, ranging between 2 days and 2 months posttreatment.

291 Posttreatment, the majority of patients (n=28) attended the first follow-up appointment and 8

292 reported attending a second follow-up appointment. For 18 patients, these consultations

293 consisted of a blood test, which they understood was to evaluate for any sign of VL. Thirteen

294 participants or caregivers reported that they were also given medication for what they understood

295 could be to improve their overall health or strength. Follow-up requirements added to the overall

296 financial and time burden experienced by patients with VL, and only 1 patient reported receiving

297 financial reimbursement from the government upon recovery.

298

299 **Disease Awareness**

300 Patients and caregivers reported limited awareness and understanding of VL prior to their own

301 experience. Prior to their own or their family member's diagnosis, the majority of patients and

302 caregivers (>60%) had heard of VL and were familiar with the disease at least by name (kala-

303 azar). Approximately 30% of participants could recognize the seriousness of VL as a disease, but

304 few (<20%) of the patients/caregivers had any understanding of VL in terms of transmission and

305 associated symptoms. One adult female patient noted "*Before, I didn't know anything, like how it*

306 *happens and why it happens. I heard [of VL] first time when I suffered from this,*" whilst another

307 adult male patient commented that "*if someone gets too ill then people in the village think that*

308 *supernatural activity has happened to him and people start to keep distance from that person.*

309 *That's why patient doesn't tell anyone and try to get it cured faster at home.*" After their

310 experience with VL, the majority of patients and caregivers gained a clearer understanding of the

Sundar, et al.
VL Patient Insights Manuscript

311 disease and the importance of treatment; however, confusion still persisted about disease
312 transmission. They reported feeling motivated to promote awareness of VL and wanting to
313 advise others in their communities to act quickly if they experienced similar symptoms. Patients
314 also were prepared to advise others where to seek treatment to prevent delays.

315

316 **Potential New Oral Treatment**

317 Patients expressed a preference for a potential oral treatment over infusions/injections, with
318 anticipation that it could be taken closer to home and reduce out-of-pocket costs. Among adult
319 patients, all respondents would choose oral therapy over that which they received, but some
320 perceived that the tablets would have a slower onset of action and it may take longer to feel
321 better/be cured. As the caregiver of a male pediatric patient stated, *“I would choose 14 days*
322 *treatment because in this time, the patient would get cured completely and slowly.”* Both
323 treatment durations discussed (7 days and 14 days) were acceptable, with an overall preference
324 for 7 days. Of those who responded, patients stated that they would be willing to pay a maximum
325 of \$72 (□5985) from their pocket for their treatment course, with a range of \$0.12 per tablet to
326 \$72 for the whole course. The high end of this range represents many months of work for
327 patients in lower socioeconomic categories.

328

329 Caregivers reported good acceptability of a hypothetical pediatric treatment (capsule containing
330 mini-tablets, which could be added to a spoonful of a child’s food): most think mini-tablets
331 would work for their children. The oral route was preferred versus infusions/injections by 11 out
332 of 12 caregivers to avoid painful injections, and as it would presumably not require HCP
333 administration or travel. Caregivers mentioned they would pay ≤\$60 (□4987) for this treatment,

Sundar, et al.
VL Patient Insights Manuscript

334 with a range of \$0.50 per tablet to \$60 for the whole course. The caregiver who stated a
335 preference for infusion suggested that they felt 1 infusion may be easier to manage than multiple
336 oral treatments.

337

338 **DISCUSSION**

339 **Patient Life Experience**

340 In summary, the findings of this study indicate that across the patient life experience, the route to
341 diagnosis of VL was challenging, consisting of multiple touchpoints. Despite the patients' and
342 caregivers' rapid presentation to HCPs in their local communities following symptom onset,
343 challenges in making a differential diagnosis, sometimes coupled with a lack of urgency from
344 community HCPs, appeared to contribute to delays in diagnosis and treatment. Further delays
345 resulted when patients were diagnosed in a facility that did not have the appropriate VL
346 treatment available. During the treatment phase, patients faced financial challenges associated
347 with travel to another healthcare facility and were burdened by the need to disrupt work or home
348 life responsibilities during treatment that was often far from home. Patients attended at least one
349 follow-up appointment as suggested. After their experience with VL, patients and caregivers had
350 a better understanding of VL and were motivated to promote awareness of the disease in their
351 local communities.

352

353 **Barriers to VL Treatment**

354 Poverty is an overwhelming risk factor for VL and PKDL [26]. Poor housing, malnutrition, and
355 lack of sanitation create and exacerbate barriers to disease care, education, and awareness.
356 Leishmaniasis disease can co-occur with malnutrition and HIV infection, estimated to co-occur

Sundar, et al.
VL Patient Insights Manuscript

357 in 3.4% of patients with VL in India [27], further complicating diagnosis and treatment. Even
358 when treatment is free, households may experience catastrophic effects of direct and indirect
359 medical costs, compounding existing financial strain in low-income communities. The financial
360 impacts of leishmaniasis are especially burdensome for women, who disproportionately
361 experience poverty [26]. Although the majority of patients (77%) in the current study came from
362 a socioeconomic background between middle lower class and below middle class (working
363 class) categories, they still experienced substantial financial hardship (see **Table 2** for details).

364
365 Throughout the VL life experience, the key barriers to treatment identified in this study relate to
366 financial burden, absence from work/home duties, and long-distance travel to hospital settings.
367 The effect of these barriers to treatment was amplified by the need for multiple appointments
368 throughout the patient life experience from prediagnosis through follow-up, often at several
369 different locations. Financial incentives for VL identification, diagnosis, and treatment are
370 offered to HCPs and patients from the National Centre for Vector Borne Diseases Control
371 (NCVBDC) [9, 28].

372

Callout Box 1

Financial Incentives [9, 28] as of December 2023

- ASHAs [29] are offered \$6 (₹500) for case identification, complete treatment and follow-up of each VL or PKDL patient
- One time wage loss incentives/compensation of (\$6 [₹500]) is offered by the NVBDCP to patients with VL [2]
- In addition, the State Governments of Bihar and Jharkhand offer compensation of \$79 (₹6600) and \$48 [₹4000] for each patient with PKDL who completes treatment [2]

373

374 Free diagnosis and treatment for VL and PKDL patients are offered at all community health
375 centers and primary healthcare centers in endemic areas. However, although standard-of-care
376 therapy is available for free under the National Elimination Program, with accompanying

Sundar, et al.
VL Patient Insights Manuscript

377 financial incentives, our research shows there are high out-of-pocket costs for patients along the
378 treatment continuum and a lack of awareness of the incentive program. In the current study, only
379 one patient reported receipt of any reimbursement from the program. The participants' accounts
380 of financial challenges throughout the treatment process suggest that they encountered financial
381 hardships. Consequently, these results imply that there may be obstacles for patients to benefit
382 from this financial reimbursement program. Also, notably 6 of 30 participants were treated in the
383 private sector, with high associated additional costs (not specified by participants in the current
384 interviews).

385

386 **Future Opportunity to Bring Treatment Closer to Patients**

387 Although substantial progress has been made toward elimination of VL in India, challenges
388 remain in traversing the “last mile” toward elimination, including careful surveillance despite
389 rough terrain, low socioeconomic conditions, and lack of awareness [7]. Successful VL
390 elimination and prevention of resurgence will require integration of control efforts into national
391 health programs [10]. A critical action called for in the WHO roadmap is to develop more
392 effective and user-friendly treatment and diagnostics for VL [3] to support the elimination of VL.
393 There is an unmet need for new oral, efficacious, safe, well-tolerated, convenient, short-course,
394 easy-to-use drugs in VL; current research is ongoing to identify and develop new drugs
395 addressing this need. Our research demonstrated that a hypothetical oral treatment for VL would
396 be preferred by 29/30 patients and caregivers due to convenience and at-home administration.
397 Patients considered that an oral treatment would resolve barriers, such as finding childcare while
398 in the hospital, cost of transportation to the hospital, and a partner having to miss work to look
399 after the family. However, it is important to note that the majority of the patients in this study

Sundar, et al.
VL Patient Insights Manuscript

400 (n=27) came from middle lower to lower middle class backgrounds (working class and above),
401 whereas many patients with VL have traditionally come from more economically disadvantaged
402 backgrounds [26] (See **Table 2**). The unexpectedly high incomes noted here may explain why
403 patients reported being willing to pay up to \$72 for a potential course of oral VL treatment.

404

405 **VL Elimination in India**

406 In order to achieve the global goal of leishmaniasis elimination by 2030, continued international
407 efforts must address these risk factors and vulnerabilities [3]. Strategies to prevent VL
408 resurgence and support elimination programs are currently a global topic of interest. In 2023,
409 Bangladesh was the first country to eliminate VL as a public health problem [30]. VL
410 elimination in India is considered possible and feasible because VL features focal transmission,
411 does not have an animal reservoir, is transmitted through a single vector, has an effective
412 diagnostic test, and can be effectively treated using a single-dose infusion. Indeed, VL incidence
413 rates in India have been substantially reduced, with the most recent provisional government data
414 reporting only 520 VL cases nationwide in 2023, 329 of which were in Bihar, compared with
415 >9000 cases in 2014 [6].

416

417 Our study results suggest a potential target of improvement in the VL patient life experience is
418 reducing time to treatment. Although patients presenting with fever often first seek care from
419 local practitioners in a timely manner, they may experience a substantial delay between symptom
420 onset and diagnosis and subsequent initiation of treatment. Thus, prompt treatment initiation
421 requires awareness and alignment from local private medical practitioners (qualified or
422 unqualified). Apart from the benefit of reducing disease morbidity for the individual, the public

Sundar, et al.
VL Patient Insights Manuscript

423 health benefit in reducing time to treatment is because VL and PKDL patients serve as potential
424 disease reservoirs in the community. Infection studies have shown that patients with VL or
425 PKDL can pass the infection to sand flies when bitten, continuing the cycle of infection and
426 transmission [31, 32]. VL and PKDL patients were found to be no longer infectious to sand flies
427 by 30 days posttreatment (by microscopy) [32]. An earlier study of the patient's care-seeking
428 experience in VL in Bangladesh, India, and Nepal argued that improvement in the public health
429 sector is crucial to eliminating VL, with findings strongly adapted to local conditions [33].

430

431 **Study Limitations**

432 Study limitations include the challenges of undertaking studies in these areas, such as the low
433 literacy rates in the region; the extremely remote locations with poor transport links that created
434 barriers to healthcare access and also fieldwork; and the potential for recall bias due to time
435 elapsed (≤ 12 months) since treatment. Because this study was designed to be self-reported, the
436 majority of respondents were not able to recall specific treatment details (frequency and
437 duration); patients were also unable to distinguish VL-specific treatment from supportive
438 treatment. Although many patients described receiving infusion treatment, patient descriptions
439 indicated that the standard-of-care single-dose liposomal amphotericin B may not be used in all
440 cases. Features such as complex treatment regimens, difficulty differentiating supportive versus
441 active therapies, lack of information given to patients about the names of their medications, and
442 concomitant treatments add to the challenges in discerning VL-specific therapy. This confusion
443 prompted the protocol amendment to require documentation of VL diagnosis and treatment after
444 the first 22 completed interviews; however, 18/30 patients could not provide documentation for
445 their VL diagnoses and treatments (they had lost their VL card or were unavailable for follow-up

Sundar, et al.
VL Patient Insights Manuscript

446 contact). Patients enrolled in this study tended to have a higher income and education level than
447 would be expected among patients with VL in India. Additionally, the caregiver sample reflects
448 only the experience of caregivers of pediatric patients aged 10 to 14 years, although there was an
449 attempt to enroll caregivers of younger pediatric patients.

450
451 In contrast to previous studies of VL in India [23, 24, 33, 34] that recruited patients directly from
452 VL hospitals, our study allowed us to identify patients in their local setting and better understand
453 their individual needs and barriers to care. This patient-centric approach is both a limitation and a
454 strength. This is a limitation of the study, as initially we did not have VL cards and confirmation
455 of diagnosis for all patients and needed to add this validation step for previously interviewed
456 patients. However, selecting patients outside the clinic setting revealed a group of patients
457 choosing private health care who would have been missed otherwise. This approach to
458 identifying unmet needs and potential gaps can be useful in furthering the aims of the National
459 Elimination Program for VL.

460

461 **Future Research**

462 Building on our research into patient beliefs and experiences in the public and private health
463 sectors when seeking care for VL, future research in this area is needed to understand the
464 segmentation between care in the private and public sectors. Despite an assumption that public
465 health care covers all needs for VL, the extent to which the private sector is utilized in VL care is
466 still not fully understood. Opportunities for collaboration between private and public sectors
467 could therefore be further explored. In addition, considering the previously mentioned lack of
468 uptake in the financial reimbursement program, it may be worthwhile to investigate the obstacles

Sundar, et al.
VL Patient Insights Manuscript

469 patients encounter in accessing the currently available financial assistance for VL diagnosis and
470 treatment.

471
472 Furthermore, as per the diagnostic guidelines in the Indian health care system, VL is suspected in
473 patients following persistent fever (≥ 14 days) or even earlier when no response has been
474 achieved with antimalarial medications [14]. Our findings indicated that patients sought care
475 much sooner than 14 days after symptom onset, demonstrating an opportunity for earlier
476 diagnosis. Potential adaptations in the current health care system guidelines that encourage
477 earlier testing for VL may result in quicker diagnosis and treatment and reduced patient burden.
478 However, early diagnosis is also limited by available serological diagnostic methods. A validated
479 diagnostic tool with multiple uses for different causes of fever at the point of care such as the
480 development of an antigen-based rapid diagnostic test can be used for both VL diagnosis and
481 determination of cure, would represent a significant advancement in the management of patients
482 with VL.

483
484 Finally, leveraging the learnings from this research, it may be fruitful to pursue similar patient
485 experience research in East Africa, a region of high VL incidence and a target of current and
486 future WHO elimination strategies [3].

487

488 **CONCLUSIONS**

489 Although in a relatively small sample size, this study reveals barriers to disease awareness and
490 access to care for patients with VL in the Bihar area. Our data demonstrate that even though most
491 patients with VL seek care for symptoms early, diagnosis occurs, on average, 14 days following

Sundar, et al.
VL Patient Insights Manuscript

492 symptom onset. The current standard-of-care therapy was often unavailable in the health care
493 centers where a patient received their diagnosis, further delaying treatment administration. Oral
494 therapy as an alternative to current parenteral treatment would be preferred both by adult patients
495 and caregivers of pediatric patients and may result in decentralization of treatment and lessening
496 the current financial and travel burden associated with access to the current standard of care.

497

498 **Acknowledgments**

499 Medical writing support was provided by Katie Gersh, PhD, CMPP, of Lumanity
500 Communications Inc., and was funded by Novartis. The study was conducted by Kadence
501 International, under direction from the authors and funded by Novartis. We gratefully
502 acknowledge contributions of the patients and their families who volunteered to participate in
503 this study.

504

505 **Author Contributions**

506 All authors reviewed and approved the manuscript. S. Sundar: lead author, in addition to
507 conceiving, methodology, validation, analysis, and writing. F. Alves: methodology, critical
508 review/editing. K. Ritmeijer: conceptualization, methodology, analysis, writing. M. den Boer:
509 conceptualization and interpretation, critical review/editing. C. Forsyth: methodology, critical
510 review/editing. B. Hughes: design, conceptualization, analysis, and writing. C. Zamble:
511 methodology, execution and analysis of the market research. K. Carter: design,
512 conceptualization, analysis, and writing. G. Angyalosi: conceptualization, design, data
513 interpretation, analysis and writing.

Sundar, et al.
VL Patient Insights Manuscript

514 REFERENCES

- 515 1. Centers for Disease Control and Prevention Epidemiology & Risk Factors [cited January
516 31, 2024]. Available from: <https://www.cdc.gov/parasites/leishmaniasis/epi.html>.
- 517 2. World Health Organization. Independent Assessment of Kala-Azar Elimination
518 Programmed India [cited February 26, 2024]. Available from:
519 [https://cdn.who.int/media/docs/default-source/searo/evaluation-reports/independent-assessment-
520 of-kala-azar-elimination-programme-in-
521 india.pdf?sfvrsn=fa0d8baa_2#:~:text=The%20independent%20assessment%20of%20the,MoHF
522 W%20C%20GoI\)%20under%20the%20overall](https://cdn.who.int/media/docs/default-source/searo/evaluation-reports/independent-assessment-of-kala-azar-elimination-programme-in-india.pdf?sfvrsn=fa0d8baa_2#:~:text=The%20independent%20assessment%20of%20the,MoHF%20W%20C%20GoI)%20under%20the%20overall).
- 523 3. World Health Organization. Ending the neglect to attain the Sustainable Development
524 Goals: A road map for neglected tropical diseases 2021–2030 [cited December 14, 2021].
525 Available from: <https://www.who.int/publications/i/item/9789240010352>.
- 526 4. Dhamnetiya D, Jha RP, Shalini, Bhattacharyya K. India's performance in controlling
527 Visceral Leishmaniasis as compared to Brazil over past three decades: findings from global
528 burden of disease study. *J Parasit Dis.* 2021;45(4):877-86. Epub 2021/11/19. doi:
529 10.1007/s12639-021-01375-0.
- 530 5. Kumar A, Singh VK, Tiwari R, Madhukar P, Rajneesh, Kumar S, et al. Post kala-azar
531 dermal leishmaniasis in the Indian sub-continent: challenges and strategies for elimination. *Front*
532 *Immunol.* 2023;14:1236952. Epub 2023/08/28. doi: 10.3389/fimmu.2023.1236952.
- 533 6. National Center for Vector Borne Diseases Control Kala-Azar Situation in India [cited
534 February 26, 2024]. Available from:
535 <https://ncvbdc.mohfw.gov.in/index4.php?lang=1&level=0&linkid=467&lid=3750>.
- 536 7. World Health Organization Visceral leishmaniasis elimination: India gears-up to
537 overcome last-mile challenges [cited February 26, 2024]. Available from:
538 [https://www.who.int/news/item/29-07-2021-visceral-leishmaniasis-elimination-india-gears-up-
539 to-overcome-last-mile-challenges](https://www.who.int/news/item/29-07-2021-visceral-leishmaniasis-elimination-india-gears-up-to-overcome-last-mile-challenges).
- 540 8. Bill & Melinda Gates Foundation, Tripathi B. Expert Q&A: How India took on a deadly
541 neglected tropical disease. Jan 29, 2024 [cited March 7, 2024]. Available from:
542 <https://www.gatesfoundation.org/ideas/articles/visceral-leishmaniases-ntds-india>.
- 543 9. National Center for Vector Borne Diseases Control. Kala-Azar Elimination Initiative
544 [cited December 5, 2023]. Available from:
545 <https://ncvbdc.mohfw.gov.in/index4.php?lang=1&level=0&linkid=466&lid=3751>.
- 546 10. Sundar S, Singh OP, Chakravarty J. Visceral leishmaniasis elimination targets in India,
547 strategies for preventing resurgence. *Expert Rev Anti Infect Ther.* 2018;16(11):805-12. Epub
548 2018/10/06. doi: 10.1080/14787210.2018.1532790.
- 549 11. Kumar P, Chatterjee M, Das NK. Post Kala-Azar Dermal Leishmaniasis: Clinical
550 Features and Differential Diagnosis. *Indian J Dermatol.* 2021;66(1):24-33. Epub 2021/04/30. doi:
551 10.4103/ijd.IJD_602_20.
- 552 12. Priyamvada K, Bindroo J, Sharma MP, Chapman LAC, Dubey P, Mahapatra T, et al.
553 Visceral leishmaniasis outbreaks in Bihar: community-level investigations in the context of
554 elimination of kala-azar as a public health problem. *Parasit Vectors.* 2021;14(1):52. Epub
555 2021/01/17. doi: 10.1186/s13071-020-04551-y.
- 556 13. Sundar S, Arora R, Singh SP, Boelaert M, Varghese B. Household cost-of-illness of
557 visceral leishmaniasis in Bihar, India. *Trop Med Int Health.* 2010;15 Suppl 2:50-4. Epub
558 2010/05/22. doi: 10.1111/j.1365-3156.2010.02520.x.

Sundar, et al.
VL Patient Insights Manuscript

- 559 14. National Center for Vector Borne Diseases Control. Operational Guidelines on Kala-Azar
560 (Visceral Leishmaniasis) Elimination in India 2015 [cited February 12, 2024]. Available from:
561 <https://ncvbdc.mohfw.gov.in/WriteReadData/1892s/opertional-guideline-KA-2015.pdf>.
- 562 15. Singh OP, Singh B, Chakravarty J, Sundar S. Current challenges in treatment options for
563 visceral leishmaniasis in India: a public health perspective. *Infect Dis Poverty*. 2016;5:19. Epub
564 2016/03/10. doi: 10.1186/s40249-016-0112-2.
- 565 16. Anoop Sharma D, Bern C, Varghese B, Chowdhury R, Haque R, Ali M, et al. The
566 economic impact of visceral leishmaniasis on households in Bangladesh. *Trop Med Int Health*.
567 2006;11(5):757-64. Epub 2006/04/28. doi: 10.1111/j.1365-3156.2006.01604.x.
- 568 17. Ozaki M, Islam S, Rahman KM, Rahman A, Luby SP, Bern C. Economic consequences
569 of post-kala-azar dermal leishmaniasis in a rural Bangladeshi community. *Am J Trop Med Hyg*.
570 2011;85(3):528-34. Epub 2011/09/08. doi: 10.4269/ajtmh.2011.10-0683.
- 571 18. Govil D, Sahoo H, Pedgaonkar SP, Chandra Das K, Lhungdim H. Assessing Knowledge,
572 Attitudes, and Preventive Practices Related to Kala-A: A Study of Rural Madhepura, Bihar,
573 India. *Am J Trop Med Hyg*. 2018;98(3):857-63. Epub 2017/12/28. doi: 10.4269/ajtmh.16-0978.
- 574 19. Jayakumar B, Murthy N, Misra K, Burza S. "It's just a fever": Gender based barriers to
575 care-seeking for visceral leishmaniasis in highly endemic districts of India: A qualitative study.
576 *PLoS Negl Trop Dis*. 2019;13(6):e0007457. Epub 2019/06/28. doi:
577 10.1371/journal.pntd.0007457.
- 578 20. Lim D, Banjara MR, Singh VK, Joshi AB, Gurung CK, Das ML, et al. Barriers of
579 Visceral Leishmaniasis reporting and surveillance in Nepal: comparison of governmental VL-
580 program districts with non-program districts. *Trop Med Int Health*. 2019;24(2):192-204. Epub
581 2018/12/20. doi: 10.1111/tmi.13189.
- 582 21. Medley GF, Hollingsworth TD, Olliaro PL, Adams ER. Health-seeking behaviour,
583 diagnostics and transmission dynamics in the control of visceral leishmaniasis in the Indian
584 subcontinent. *Nature*. 2015;528(7580):S102-8. Epub 2015/12/04. doi: 10.1038/nature16042.
- 585 22. Meheus F, Boelaert M, Baltussen R, Sundar S. Costs of patient management of visceral
586 leishmaniasis in Muzaffarpur, Bihar, India. *Trop Med Int Health*. 2006;11(11):1715-24. Epub
587 2006/10/24. doi: 10.1111/j.1365-3156.2006.01732.x.
- 588 23. Veeri RB, Gupta AK, Pal B, Siddiqui NA, Priya D, Das P, et al. Assessment of quality of
589 life using WHOQOL-BREF in patients with visceral leishmaniasis. *Health Qual Life Outcomes*.
590 2019;17(1):53. Epub 2019/03/30. doi: 10.1186/s12955-019-1112-2.
- 591 24. Nair M, Kumar P, Pandey S, Kazmi S, Moreto-Planas L, Ranjan A, et al. Quality of life
592 perceptions amongst patients co-infected with Visceral Leishmaniasis and HIV: A qualitative
593 study from Bihar, India. *PLoS One*. 2020;15(2):e0227911. Epub 2020/02/11. doi:
594 10.1371/journal.pone.0227911.
- 595 25. Media Research Users Council India. New consumer classification system [cited June 26,
596 2024]. Available from: [https://mruc.net/assets/frontend/new-consumer-classification-](https://mruc.net/assets/frontend/new-consumer-classification-system.html)
597 [system.html](https://mruc.net/assets/frontend/new-consumer-classification-system.html).
- 598 26. Grifferty G, Shirley H, McGloin J, Kahn J, Orriols A, Wamai R. Vulnerabilities to and
599 the Socioeconomic and Psychosocial Impacts of the Leishmaniasis: A Review. *Res Rep Trop*
600 *Med*. 2021;12:135-51. Epub 2021/07/01. doi: 10.2147/RRTM.S278138.
- 601 27. Kaur R, Kumar R, Chaudhary V, Devi V, Dhir D, Kumari S, et al. Prevalence of HIV
602 infection among visceral leishmaniasis patients in India: A systematic review and meta-analysis.
603 *Clinical Epidemiology and Global Health*. 2024;25. doi: 10.1016/j.cegh.2023.101504.

Sundar, et al.
VL Patient Insights Manuscript

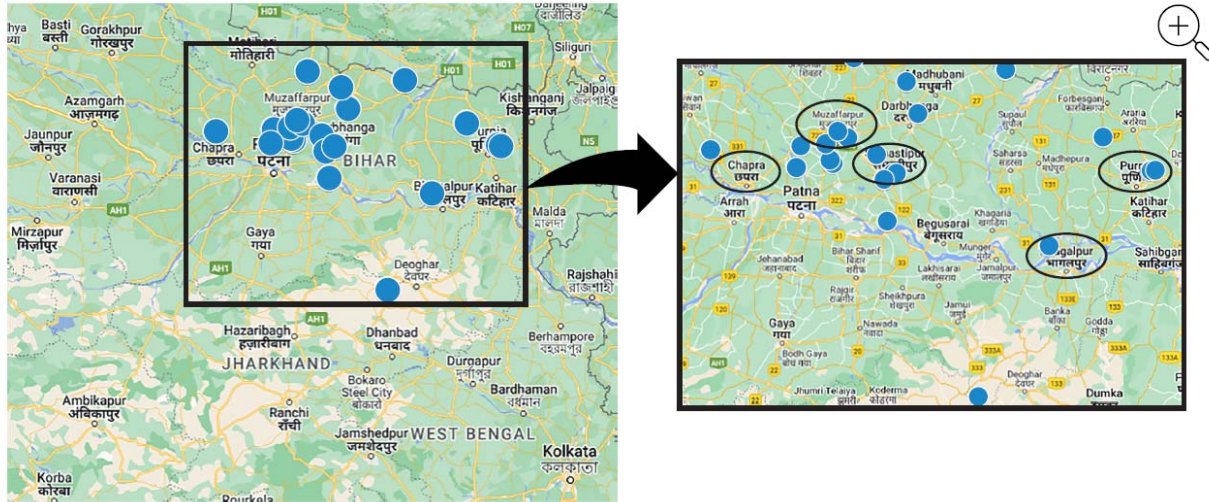
- 604 28. Gill N, Pandey D, Roy N, Dhingra N, Jain S. Kala-azar in India – progress and
605 challenges towards its elimination as a public health problem. *Weekly Epidemiological Record*.
606 2021;26:267-79. doi: 10.1371/journal.
607 29. Ministry of Health & Family Welfare Government of India. National Health Mission
608 [cited December 14, 2023]. Available from:
609 <https://nhm.gov.in/index1.php?lang=1&level=1&sublinkid=150&lid=226>.
610 30. Nagi N. Bangladesh eliminates visceral leishmaniasis. *Lancet Microbe*. 2024. Epub
611 2024/02/02. doi: 10.1016/S2666-5247(24)00028-4.
612 31. Mondal D, Bern C, Ghosh D, Rashid M, Molina R, Chowdhury R, et al. Quantifying the
613 infectiousness of Post-Kala-Azar Dermal Leishmaniasis Toward Sand Flies. *Clin Infect Dis*.
614 2019;69(2):251-8. Epub 2018/10/26. doi: 10.1093/cid/ciy891.
615 32. Singh OP, Tiwary P, Kushwaha AK, Singh SK, Singh DK, Lawyer P, et al.
616 Xenodiagnosis to evaluate the infectiousness of humans to sandflies in an area endemic for
617 visceral leishmaniasis in Bihar, India: a transmission-dynamics study. *Lancet Microbe*.
618 2021;2(1):e23-e31. Epub 2021/02/23. doi: 10.1016/S2666-5247(20)30166-X.
619 33. Mondal D, Singh SP, Kumar N, Joshi A, Sundar S, Das P, et al. Visceral leishmaniasis
620 elimination programme in India, Bangladesh, and Nepal: reshaping the case finding/case
621 management strategy. *PLoS Negl Trop Dis*. 2009;3(1):e355. Epub 2009/01/23. doi:
622 10.1371/journal.pntd.0000355.
623 34. Pal B, Murti K, Siddiqui NA, Das P, Lal CS, Babu R, et al. Assessment of quality of life
624 in patients with post kalaazar dermal leishmaniasis. *Health Qual Life Outcomes*. 2017;15(1):148.
625 Epub 2017/07/26. doi: 10.1186/s12955-017-0720-y.

626

Sundar, et al.
VL Patient Insights Manuscript

627 **FIGURES**

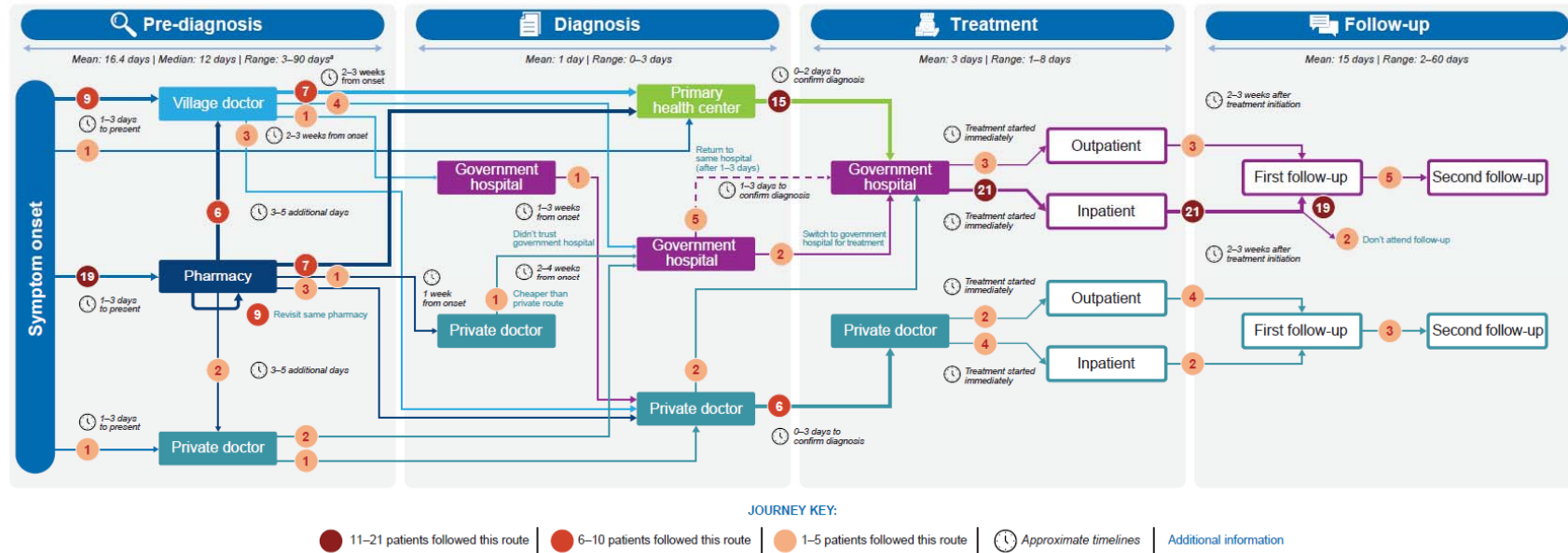
628 **Fig 1. Geographic locations of interviews.^a**



629

630 ^aMaximum 2 respondents interviewed per location.

Fig 2. Summary of life experiences of 18 adults and 12 caregivers of children with VL.










VL, visceral leishmaniasis.

^aDuring pre-diagnosis :excluding 1 anomaly of 90 days. Mean, median, and range breakdowns (with and without outlier) below.

- Mean 16.4 days (with outlier); 13.8 days (without outlier).
- Median 12 days (with outlier); 7.5 days (without outlier).
- Range 3-90 days (with outlier); 3-21 days (without outlier).

Fig 3. Breakdown of patients' experiences of VL.

	 Onset of symptoms	 First touchpoint(s) – primary care	 Present to diagnosing clinic	 Receive diagnosis and treatment	 Treatment initiation	 Symptoms resolved	 Follow-up
Timeline	Day 0	First touchpoint within 3 days^a of experiencing symptoms (range: 1–25 days)	~2–3 weeks after first experiencing symptoms (range: 2–100 days)	+1 day on average (range: 0–3 days)	0–2 days on average	Patients started feeling better ~1 week after treatment was initiated (range: 1 day–2 months)	All patients are offered follow-up at variable periods (range: 2 days–2 months)
Additional detail	<ul style="list-style-type: none"> • Symptoms included fever, body pain, fatigue, loss of appetite 	<ul style="list-style-type: none"> • Patients sought advice from local medical shop/pharmacist and were given oral treatment (ie, paracetamol) • Half of those patients then visited another primary care setting (ie, primary health centers or village doctor) after a couple of days of no improvement • Some patients (n=9) revisited the same pharmacy multiple times 	<ul style="list-style-type: none"> • n=26 specified receiving a blood test for diagnosis, and n=7 also described a clinical assessment and/or urine sample • Happened across a range of clinics (n=15 primary health centers, n=7 government hospitals, n=8 private) • In the government hospital setting, patients were often prescribed treatment for symptoms (nonspecific to VL) while waiting for results 	<ul style="list-style-type: none"> • Small delay of several days to confirm diagnosis while diagnostic tests were run in both private and government hospital settings 	<ul style="list-style-type: none"> • 65% switched to a different practice setting for treatment (n=19) and therefore experienced a delay of 1–2 days in starting treatment. Otherwise, treatment was initiated immediately 	<ul style="list-style-type: none"> • ~1 week after treatment was completed, patients started to resume normal activities/work 	<ul style="list-style-type: none"> • Majority of patients (n=18) attended 1 follow-up • Eight patients reported attending a second follow-up

VL, visceral leishmaniasis.

^aMedian, 3 days; mean, 3.8 days.