

1 **Prevalence of the Cefazolin Inoculum Effect (CzIE) in Nasal Colonizing**
2 **Methicillin-Susceptible *Staphylococcus aureus* in Patients from Intensive**
3 **Care Units in Colombia and Use of a Modified Rapid Nitrocefin Test for**
4 **Detection**

5
6 Lina P. Carvajal^{a*}, Sandra Rincon^{a*}, Sara I. Gomez-Villegas^b, Juan M. Matiz-
7 González^a, Karen Ordoñez^c, Alejandra Santamaria^c, Leonardo Ospina-Navarro^d,
8 Jaime Beltran^d, Fredy Guevara^{e,f}, Yardany R. Mendez^{g,h}, Soraya Salcedoⁱ,
9 Alexandra Porras^j, Albert Valencia-Moreno^j, Haley Grennia^k, Alexander Deyanov^k,
10 Rodrigo Baptista^{k,l,m}, Vincent H. Tamⁿ, Diana Panesso^{a,k,l,m}, Truc T. Tran^{k,l,m},
11 William R. Miller^{k,l,m}, Cesar A. Arias^{k,l,m#}, Jinnethe Reyes^{a#}

12
13 **Affiliations**

14 ^aMolecular Genetics and Antimicrobial Resistance Unit, Universidad El Bosque,
15 Bogota, Colombia.

16 ^bBrigham and Women's Hospital, Harvard Medical School, Boston, MA, USA

17 ^cDepartment of Infectious Diseases, ESE Hospital Universitario, San Jorge de
18 Pereira, Pereira, Colombia.

19 ^dClinica Colsubsidio Calle 100, Bogota, Colombia.

20 ^eServicio de Infectología, Fundación Santafe de Bogota, Bogota, Colombia.

21 ^fClinica Reina Sofia, Colsanitas, Bogota, Colombia.

22 ^gGrupo de Investigacion en Epidemiologia Clinica de Colombia (GRECO),
23 Universidad Pedagogica y Tecnologica de Colombia, Tunja, Colombia.

24 ^hHospital Regional de Duitama, Duitama, Colombia.

25 ⁱOrganizacion Clinica General del Norte, Barranquilla, Colombia.

26 ^jLos Cobos Medical Center, Bogota, Colombia.

27 ^kCenter for Infectious Disease, Houston Methodist Research Institute, Houston, TX

28 USA

29 ^lDivision of Infectious Diseases and Department of Medicine, Houston Methodist

30 Hospital, Houston, TX USA 77030.

31 ^mDepartment of Medicine, Weill Cornell Medical College, New York, NY.

32 ⁿDepartament of Pharmacy Practice and Translational Research, University of

33 Houston, Houston, Texas, United States.

34

35 Running title: Cefazolin Inoculum Effect in Colonizing MSSA in the ICU.

36

37 *Lina P. Carvajal and Sandra Rincon contributed equally to this work. Author order

38 was determined alphabetically.

39

40 #Corresponding authors:

41 Jinnethe Reyes, Molecular Genetics and Antimicrobial Resistance Unit,

42 Universidad El Bosque, Bogota, Colombia. reyesjinnethe@unbosque.edu.co

43 Cesar A. Arias, Division of Infectious Diseases and Department of Medicine,

44 Houston Methodist Hospital, Houston and Center for Infectious Disease, Houston

45 Methodist Research Institute Houston, TX USA 77030; Department of Medicine,

46 Weill Cornell Medical College, New York, NY. caarias@houstonmethodist.org

47

48

49

50 **ABSTRACT**

51 The cefazolin inoculum effect (CzIE) has been associated with poor clinical
52 outcomes in patients with MSSA infections. We aimed to investigate the point
53 prevalence of the CzIE among nasal colonizing MSSA isolates from ICU patients in
54 a multicenter study in Colombia (2019-2023). Patients underwent nasal swabs to
55 assess for *S. aureus* colonization on admission to the ICU and some individuals
56 had follow-up swabs. We performed cefazolin MIC by broth-microdilution using
57 standard and high-inoculum and developed a modified nitrocefin-based rapid test
58 to detect the CzIE. Whole genome sequencing was carried out to characterize
59 BlaZ types and allotypes, phylogenomics and Agr-typing. All swabs were subjected
60 to 16S-rRNA metabarcoding sequencing to evaluate microbiome characteristics
61 associated with the CzIE. A total of 352 patients were included; 46/352 (13%)
62 patients were colonized with *S. aureus*; 22% (10/46) and 78% (36/46) with MRSA
63 and MSSA, respectively. Among 36 patients that contributed with 43 MSSA
64 colonizing isolates, 21/36 (58%) had MSSA exhibiting the CzIE. BlaZ type A and
65 BlaZ-2 were the predominant type and allotype in 56% and 52%, respectively.
66 MSSA belonging to CC30 were highly associated with the CzIE and SNP analyses
67 supported transmission of MSSA exhibiting the CzIE among some patients of the
68 same unit. The modified nitrocefin rapid test had 100%, 94.4% and 97.7%
69 sensitivity, specificity and accuracy, respectively. We found a high prevalence point
70 prevalence of the CzIE in MSSA colonizing the nares of critically-ill patients in
71 Colombia. A modified rapid test was highly accurate in detecting the CzIE in this
72 patient population.

73

74

75 INTRODUCTION

76 *Staphylococcus aureus* is a human pathogen and a leading cause of community
77 and healthcare-associated infections (HAI). *Staphylococcus* species (*S. aureus*
78 and coagulase negative staphylococci [CoNS]) reside in similar ecological niches
79 in the human body, nasal cavity, nasopharynx, skin, and mucous membranes.¹⁻⁴ It
80 is estimated that about 20% (range 12–30%) of the healthy human population is
81 permanently colonized with *S. aureus*, 30% of which are intermittent carriers
82 (range 16-70%) and 20% are regarded as non-colonized.¹⁻⁴ The current evidence
83 suggests that there is variability in colonization rates due to geographical location
84 and characteristics of the tested populations.¹

85

86 Colonization by *S. aureus* is a well-recognized risk factor for the development of
87 subsequent infections, in particular, bacteremia and hospital-associated
88 pneumonia.⁵⁻⁷ At risk patients include those admitted to the ICU, representing a
89 vulnerable group of individuals with major organic dysfunctions, comorbidities and
90 receiving prolonged courses of broad-spectrum antibiotics. For example, nasal
91 colonization with methicillin-resistant *S. aureus* (MRSA) is a known risk factor for
92 developing ventilator-associated pneumonia due to these organisms.⁸
93 Furthermore, screening for multidrug-resistant organisms (MDRO) is often
94 performed in these vulnerable patient populations to guide isolation policies and
95 decolonization strategies.⁹

96

97 Information on the rates of *S. aureus* colonization in patients in the ICU setting in
98 developing countries is limited. Olarte et al., reported that in a population of 708
99 patients from one ICU in Bogota, Colombia, the rate of *S. aureus* colonization at
100 admission was 25.8% (7.2% for MRSA and 18.5% for MSSA).¹⁰ In a prospective
101 Latin-American study that included a cohort of 675 patients enrolled between 2011
102 and 2014 in hospitals across nine countries of the region, MSSA were responsible
103 for a substantial number (53.7%) of cases of bacteremia.¹¹ Aggregated data from
104 the Colombian National Health Institute indicates that *S. aureus* is the fourth and
105 third most common pathogens causing hospital-associated and ICU-related
106 infections, respectively.¹² MSSA accounted for 66% of the infections in the
107 Colombian ICUs.¹²

108
109 β -lactams are the first line therapy for MSSA infections and, with cefazolin
110 frequently being the “go-to” choice in deep-seated infections.¹³ This preference is
111 largely due to its better side effect profile and tolerability, longer half-life, improved
112 adherence, and low costs, and comparable outcomes.¹⁴⁻¹⁶ In addition, cefazolin is
113 also the first-choice option for surgical prophylaxis in a variety of surgical
114 interventions including cardiac to orthopedic surgery.¹⁷⁻¹⁸ However, a concern with
115 using cefazolin is the presence of the inoculum effect (CzIE). Indeed, the CzIE has
116 been associated with therapeutic failures in patients with MSSA bloodstream
117 infections,^{19,20} and with the progression to chronic osteomyelitis in children.²¹ In
118 Latin-America, a high prevalence of the CzIE among clinical MSSA isolates
119 recovered from invasive infections has been documented.^{22,23} Studies have

120 documented rates of the CzIE in Colombia ranging from 34% to 63% in
121 bloodstream and osteomyelitis infections, respectively.²³ A more recent study
122 focusing on bloodstream isolates from reported a point prevalence of 40% for the
123 CzIE.²²

124

125 In this work, we postulated that the prevalence of the CzIE in colonizing MSSA
126 isolates recovered from patients in the ICU would be higher compared to other
127 patient populations, likely due to increased use of antimicrobials (particularly β -
128 lactams) in these patients. Thus, we conducted a multicenter study to investigate
129 the point prevalence of the CzIE among nasal colonizing MSSA isolates from ICU
130 patients in four different cities in Colombia. Additionally, we tested the ability of a
131 modified colorimetric test to identify the CzIE in MSSA recovered from ICU
132 patients.

133

134 **MATERIALS AND METHODS**

135 **Patient enrollment and nasal swab sampling**

136 We performed a prospective observational cohort study that included 352 patients
137 admitted to six adult ICUs in six high complexity-hospitals in Colombia, enrolled
138 between October 2019 to August 2023, (Universidad El Bosque IRB protocol 476-
139 2018). The Human Subjects Review Committee of the participant institutions
140 approved the study. Patients or their authorized representative provided signed
141 consent for participation in the study. Inclusion criteria encompassed adult patients
142 (>18 years old), admitted at ICU, and provided signed consent. Exclusion criteria

143 encompassed patients from whom samples were not collected upon ICU
144 admission (or those from whom samples were obtained >24 hours after
145 admission), and patients diagnosed with COVID-19. Participating centers (affiliated
146 with medical schools and private hospitals) were in Bogota, (3 hospitals; hospitals
147 C, D, E), Pereira (1 hospital; hospital B), Barranquilla (1 hospital; hospital A), and
148 Duitama (1 hospital; hospital G). Two nasal swabs were obtained from the anterior
149 nares (one for microbiological screening of multidrug-resistant pathogens (MDRO)
150 and one for microbiome analysis) at 24 hours of admission to the ICU. Samples
151 were taken by trained nurses and physicians, who were members of the
152 participating centers. Nasal samples were obtained from both nostrils and taken
153 using swabs placed immediately in AIMES transport media (to collect and preserve
154 the nasal samples for microbiological screening) and DNA/RNA Shield to stabilize
155 nucleic acids for microbiome analyses. These samples were kept at 4°C until they
156 were shipped to the reference laboratory at Universidad El Bosque. MDRO
157 pathogens included Carbapenem-Resistant (CR) *Klebsiella pneumoniae*,
158 Enterobacterales, *Pseudomonas* and *Acinetobacter*. Methicillin-Resistant
159 *Staphylococcus aureus*, and Vancomycin-Resistant *Enterococcus* using
160 chromogenic agar media (CHROMagar-Orientation). Subsequently, a follow-up
161 nasal swab was planned to be collected from the patients before ICU discharge or
162 hospital transfer (day 1 to day 24), unless the patient died during the ICU stay
163 before a sample could be taken or if there were personnel were unable to collect
164 the sample. However, only 175 out of 352 patients had follow-up nasal swabs.

165

166 **Microbiological screening**

167 Nasal swabs were inoculated onto BHI agar and incubated overnight. Then, using
168 a 10 μ L calibrated loop, a loopful of bacterial culture was transferred to 5 mL of BHI
169 broth that was incubated for 2 hours at 37°C. Serial dilutions of the BHI broth were
170 performed on saline solution. 500 μ L of a 10^{-5} dilution was spread onto
171 Chromogenic agar media (CHROMagar-Orientation) using a sterile glass spreader
172 and incubated at 37°C for 18 hours. Colonies compatible with *S. aureus* were
173 recovered and sub-cultured on BHI agar and identified at genus-species level
174 using a multiplex PCR, which also confirmed the presence of the *mecA* gene.²⁴
175 Further, oxacillin susceptibility testing was performed using the agar dilution
176 method following CLSI guidelines.²⁵

177

178 **Cefazolin high inoculum effect determination**

179 Cefazolin susceptibility testing was performed by broth microdilution using a
180 standard inoculum of 5×10^5 CFU/mL following CLSI guidelines.²⁶ Additionally,
181 cefazolin MICs were determined using a high bacterial inoculum (5×10^7 CFU/mL),
182 as previously described,^{22,27} in three biological replicates. Cefazolin concentrations
183 were from 0.03 to 64 mg/L. Reading of the MIC values at high inoculum and
184 interpretation of the results was carried-out by three independent investigators. The
185 CzIE was defined as MIC of ≤ 8 mg/L at standard inoculum and ≥ 16 mg/L at high
186 bacterial inoculum.

187

188 **Modification of the rapid test protocol to identify MSSA with CzIE**

189 We used a previously published²⁸ rapid nitrocefin test to identify isolates exhibiting
190 the CzIE with a modification using ampicillin disks (10 µg; Oxoid) instead of
191 ampicillin solution.²⁹ Briefly, 1 mL of BHI broth (Oxoid) and one disk of ampicillin
192 (10 µg) were combined in a 2 mL tube, vigorously mixed for at least 30 seconds
193 and incubated for 10 min at room temperature. The assay required that the
194 ampicillin disk was completely submerged into the broth. Next, the solution was
195 mixed vigorously for 30 seconds, and the disk was then removed from the broth
196 using sterile loop or tweezers, leaving 1 mL solution of BHI broth containing
197 ampicillin ready to use. Colonies from a pure and fresh culture (less than 72 hours)
198 with similar morphological features were selected on BHI agar using a 1-µL
199 calibrated sterile loop. Then, the content of 1 µL loop full of bacterial colonies was
200 resuspended in 1 mL of ampicillin solution followed by vigorous vortexing for 2 min
201 and incubated for 10 min at 36±1°C. Subsequently, the bacterial suspension was
202 vortexed again for 2 min. Then, a second incubation of 10 min at 35 ±1°C followed
203 by 2 minutes of vigorous vortexing was performed. Next, the solution was
204 centrifuged at 5,000 rpm for 10 min at room temperature. A volume of 25 µL of the
205 supernatant was transferred into a 0.2-mL tube containing 25 µL of freshly
206 prepared nitrocefin solution (stock concentration 400 µM prepared in phosphate-
207 buffered saline [PBS] at 0.1 M, pH 7.0, as previously reported).^{28,29} This process
208 ensured that the bacterial cell pellet at the bottom of the tube was not disturbed.
209 Subsequently, the nitrocefin tubes were incubated at room temperature (15 to
210 25°C, mean of 22°C) and protected from light, followed by visual inspection to
211 monitor color change at 30 min, 1 h, and 2 h. The results were interpreted under

212 the incident light and compared with controls (see below). A positive result was any
213 observed change in color (from yellow to red) between 30 min to 2 h (See
214 Supplemental Material) (**Fig.1**). Quality control strains ATCC *S. aureus* 29213
215 (lacking the CzIE and with a negative rapid test) and TX0117 (exhibiting the CzIE
216 and with a positive modified rapid test) were included as control strains, as
217 previously described.^{22,28,29} Performance metrics (sensitivity, specificity, and
218 accuracy) of the modified rapid test were compared to MIC determination at high
219 inoculum (gold standard) using MedCalc software.

220

221 **Whole genome sequencing, assembly, and genomic analysis**

222 Bacterial DNA extraction was carried out on overnight BHI cultures after
223 lysostaphin treatment using a Qiagen Kit. Library preparation was performed using
224 Illumina prepkit, and sequencing was performed on the Illumina platform NextSeq
225 2000. The raw reads obtained from sequencing by Illumina MiSeq were subjected
226 to quality control by FastQC and Trimmomatic.^{30,31} Subsequently, the reads were
227 assembled with SPAdes,³² annotation was performed using PROKKA³³ and the
228 identification of species was verified employing StrainSeeker, KmerFinder and
229 MLST. Sequence Type (ST) and Clonal Complex identification, as well as
230 submission and curation of new STs, was performed on the PubMLST platform.

231

232 Identification of the *blaZ* gene was performed by BLASTn using the sequence from
233 the strain *S. aureus* ATCC 29213 extracted with SeqKit³⁴ and translated using
234 MEGAX.³⁵ BlaZ typing was carried out taking into account the amino acids at
235 positions 128 and 216, corresponding to positions 119 and 207 including the signal

236 peptide, as we previously described.²² Finally, the assignment of BlaZ allotypes
237 (unique amino acid sequences in the analyzed genomes) was performed as
238 previously described using an identity matrix for protein sequence comparison
239 elaborated with the previously described 29 allotypes.²²

240

241 The presence of virulence determinants as accessory gene regulator (Agr) was
242 searched using *in silico* PCR,³⁶ and BLASTn based on the sequence of the four
243 reported *agr* loci (I-IV). Additionally, the Pantone-Valentine Leukocidin (PVL)
244 encoding genes (*lukS* and *lukF*) were searched by *in silico* PCR,³⁷ and BLASTn
245 using the coding sequences of *lukS* (ABD22441.1) and *lukF* (ABD21112.1) from
246 *Staphylococcus aureus* subsp. *aureus* USA300_FPR3757.

247

248 **Phylogenomic analysis**

249 Phylogenetic inference of the nasal MSSA genomes was performed using the core
250 genome (orthologous genes present in at least 95% of the genomes) obtained with
251 Roary,³⁸ using a nasal colonizer *S. argenteus* genome as the outgroup recovered
252 in this work. Orthogroups were individually aligned with PRANK,³⁹ and then
253 concatenated to obtain a consensus matrix. The maximum likelihood (ML) tree was
254 built with the consensus matrix in RAxML⁴⁰ using the GTR evolutionary model and
255 a branch support analysis of 1,000 bootstrap replicates. The resulting ML
256 phylogenetic tree was plotted using iTOL.⁴¹

257

258 **Library preparation and 16S sequencing**

259 Among the 36 patients colonized with MSSA, twenty-three nasal swabs collected
260 at admission to ICU (10 patients colonized by MSSA exhibiting the CzIE and 13 by
261 MSSA lacking the CzIE) were available for microbiome analysis. Total DNA was
262 obtained using DNA easy Blood and Tissue kit (QIAGEN). DNA samples were
263 subjected to bacterial diversity characterization by amplicon sequencing of the
264 hypervariable region V4 of the 16S rRNA.⁴² For the sequencing process, microbial
265 amplicon libraries were built using barcode primers 515-F (5'-GTG CCA GCM GCC
266 GCG GTA A-3') and 806-R (5'-GGA CTA CHV GGG TWT CTA AT-3').⁴³ After
267 sequencing, forward and reverse raw reads were demultiplexed and merged after
268 primer removal using bcl2fastqc software (Illumina). The Quantitative Insights into
269 Microbial Ecology (QIIME2) program was used to extract barcodes and primers
270 from the resulting paired-end sequences.⁴⁴ Then, DADA2 (QIIME2 plugin) was
271 used to remove chimera reads and evaluate the quality of the resulting reads with
272 a Q-Score plot to select the minimum length with an average quality ≥ 30 . In
273 addition, DADA2 was also used to infer amplicon sequence variants (ASV) by
274 clustering all identical sequenced reads, and taxonomic assignment of ASVs was
275 performed using the Silva v132 database.⁴⁵ Finally, a read abundance matrix of the
276 microbial groups identified for each sample, at the phylum or genus level, was
277 generated.

278

279 The resulting matrix was used for the calculation of a Bray-Curtis dissimilarity
280 matrix that was utilized for PCoA analysis using the `ordinate` and `plot_ordination`
281 functions. Differences between groups were evaluated by PERMANOVA and
282 ANOSIM analysis using `adonis2` and `anosim` functions, respectively. Furthermore,

283 microbial α -diversity metrics (Shannon and Simpson indexes, and Richness) were
284 calculated with the function `estimate_richness`, using the abundance matrix
285 rarefied per sample to 2000 reads through `rarefy_even_depth` function. All
286 functions are contained in the Phyloseq and Vegan R packages.^{46,47} Taxonomic
287 relative abundance matrices were employed to describe general microbiome
288 composition (all phyla/genera are showed, except taxa with a relative abundance <
289 0.5%) in CzIE-positive MSSA and CzIE-negative MSSA nasal microbiome groups.
290 In addition, a differential abundance taxa analysis between groups was performed
291 via `run_lefSe` function of the Microbiome Marker R package, using default options
292 (p-value < 0.05 and an LDA > 2 or LDA < -2).⁴⁸ All graphs and statistical
293 comparisons (Mann-Whitney tests) were done using the Graph Pad Prism software
294 v8.0.1.

295

296 **Core SNPs Analysis**

297 The core genome SNPs of the 43 MSSA nasal isolates was built with kSNP4
298 (<https://sourceforge.net/projects/ksnp/>), using a kmer size set to 19, the optimum
299 size estimated by the kSNP4 program Kchooser.⁴⁹ Pairwise core SNP distance
300 matrix was constructed with the core SNPs using the SNP-dist script
301 (<https://github.com/tseemann/snp-dists>).

302

303 **Data availability.**

304 The genomes of the Methicillin-Susceptible *Staphylococcus aureus* isolates, and
305 the nasal microbiome sequencing were submitted to the NCBI GenBank database
306 under the BioProject numbers PRJNA1107600 and PRJNA1108236, respectively.

307

308 RESULTS

309 Colonizing MSSA isolates from ICU patients showed a high prevalence of the 310 Czie.

311 A total of 352 patients were included in the study from 2019 to 2023. The patients
312 were enrolled in six ICUs located in four different cities of Colombia (Barranquilla,
313 Pereira, Bogota and Duitama). Nasal swabs were obtained from all the 352
314 patients on admission at ICU. Subsequent nasal swabs were collected in 175
315 patients at follow-up (see Materials and Methods). 46/352 (13%) patients included
316 in the study were colonized by *S. aureus*. Among those with *S. aureus*
317 colonization, 22% (10/46) and 78% (36/46) were colonized by MRSA and MSSA,
318 respectively (**Table 1 and Fig. 2**).

319

320 Among the 46 patients colonized with *S. aureus* who had a nasal swab taken at
321 admission, 22 (48%) had an additional nasal swab taken in the follow-up period of
322 time which varied from day 1 to 24 after admission (**Fig. 2**). A total of 37/46
323 patients (70%) were colonized by *S. aureus* in the first nasal swab upon admission
324 to the ICU (30 and 7 with MSSA and MRSA, respectively) (**Fig. 2**). Among the 22
325 patients who underwent a follow up nasal swab, 9 were found to be colonized by *S.*
326 *aureus* only in the second swab on days 1 to 24 (colonization was absent upon
327 admission to the ICU), suggesting a potential acquisition during the hospital stay or
328 lack of detection in the first swab (**Fig. 2**). Among the 22 patients, 13 were positive
329 in the first swab and 8 negative in the second swab. Of note, 5 patients were
330 colonized on admission and remained colonized on the second swab taken in the

331 follow up period (only with MSSA) (**Fig. 2**). A total of 53 *Staphylococcus aureus*
332 isolates were found in 46 patients (**Fig. 2**); 39 isolates (73%) recovered in nasal
333 swabs taken on admission, (7 MRSA and 32 MSSA) and 14 (27%) isolates (3
334 MRSA and 11 MSSA) on follow up swabs (**Table 1 and Fig. 2**).

335

336 Among 36 patients that contributed 43 MSSA colonizing isolates, 21/36 (58%) had
337 nasal colonization with MSSA exhibiting the CzIE (**Table 2 and Fig. 2**). Of these,
338 11 patients were colonized on admission to the ICU, 6 patients during the follow-up
339 period only (range of 3 to 24 days) and 4 patients were colonized at admission and
340 remained colonized during the follow-up (range 4 to 7 days) (**Fig. 2**). The CzIE was
341 identified in 25/43 (58%) of nasal colonizing MSSA (geometric mean of cefazolin
342 MIC of 41.07 mg/L, range 16-128 mg/L).

343

344 **A modified rapid nitrocefin test identified the CzIE in nasal colonizing MSSA** 345 **isolates with high accuracy**

346 Due to logistic issues to obtain ampicillin powder for the rapid nitrocefin test
347 previously published, we opted to modify the test by using ampicillin discs (10 µg)
348 for β-lactamase (BlaZ) induction, since such disks are widely available in
349 developing countries (See Supplemental Material).

350

351 Compared to the gold standard (MICs using high inoculum by broth microdilution),
352 the modified rapid test identified colonizing MSSA isolates with the CzIE with a
353 sensitivity of 100%, specificity of 94.4% and an overall accuracy of 97.7%. Table

354 S1 shows that the test showed 100% sensitivity with the three common types of
355 class A β -lactamases (Type A, B and C). The specificity was lower (87.5%) in
356 isolates harboring type B β -lactamase. All colonizing MSSA isolates without *blaZ*
357 gene (CzIE negative), were also correctly identified as negative with the modified
358 CzIE test (**Table S1**).

359

360 **Genomic characteristics of nasal colonizing MSSA isolates from ICU.**

361 Whole genome sequencing of the 43 MSSA isolates indicated that 91% (39/43) of
362 the nasal colonizing MSSA isolates carried the *blaZ* gene (**Fig. 3**). Among them,
363 BlaZ type A and type C were identified in 41% (n=16/39), and 36% (n=14/39) of
364 isolates, respectively. BlaZ type B was the less common type, detected in 23%
365 (n=9/39) of MSSA carrying *blaZ*.

366

367 When analyzing 25 nasal colonizing MSSA isolates that exhibited the CzIE, BlaZ
368 type A was the predominant type in 56% (14/25 isolates), followed by BlaZ type C
369 in 40% (n=10/25). BlaZ-2 was the predominant allotype in 52% (n=13/25). A novel
370 allotype BlaZ-29 (derived from type C BlaZ) was detected in three isolates
371 displaying the CzIE (**Fig. 3**).

372

373 Among 18 MSSA lacking the CzIE, 14 isolates harbored the *blaZ* gene and type B
374 was the most predominant BlaZ type identified in 57% (8 out of 14) of these
375 genomes. BlaZ-1 (from type C) and BlaZ-7 (from type B) were the most common

376 allotypes detected in MSSA lacking the CzIE (57%, 4 isolates of each allotype)
377 **(Fig. 3)**.

378

379 We identified a high diversity of clonal lineages among 43 nasal colonizing MSSA
380 isolates from ICU patients, represented by eight major clades related to the clonal
381 complexes identified (CC1, CC5, CC9, CC15, CC22, CC30, CC45 and CC398)
382 **(Fig. 3)**. The MSSA that exhibited the CzIE (n = 25) clustered into five clonal
383 groups, CC1 (n = 2), CC5 (n = 2), CC15 (n = 4), CC30 (n = 13), and CC45 (n = 4).
384 Notably, CC30 was the predominant lineage identified among MSSA displaying the
385 CzIE (52%, 13 out of 25 isolates), with most of the isolates belonged to ST30 (12
386 out 13 CC30 isolates). Of note, all isolates displaying the CzIE and carrying Agr-III,
387 belonged to CC30 and harbored BlaZ type A and allotype BlaZ-2. MSSA lacking
388 the CzIE clustered into six clonal complexes, CC1 (n = 2), CC5 (n = 7), CC9 (n = 1),
389 CC22 (n = 2), CC45 (n = 2), and CC398 (n = 4); CC5 was the most common genetic
390 background, identified in 39% (7 out of 18 of the MSSA without the CzIE), followed
391 by CC398 found in 22% (n=4 isolates). Further, we found that CC9, CC22, and
392 CC398 were lineages exclusively detected in MSSA isolates lacking the CzIE **(Fig.**
393 **3)**.

394

395 Phylogenomic analyses indicated that the MSSA population was heterogeneous
396 with the absence of geographical or hospital associations with particular clades,
397 except for a clade belonging to CC45 where five out of six MSSA were recovered
398 from the same hospital in the city of Pereira **(Fig. 3)**. The most common clonal

399 cluster (CC) associated with the CzIE was CC30 (n=13/43). A minor clustering of
400 isolates exhibiting the CzIE (n = 4) was observed in CC15.

401

402 Using the genomic data we also analyzed MSSA isolates recovered from the same
403 patient to evaluate genetic relatedness between these isolates and if subsequent
404 isolates acquired or lost the CzIE. A total of 5 patients had MSSA obtained from
405 samples taken on day of admission as well as in the follow up time (4 to 7 days).

406 Whereas two patients had two MSSA isolates recovered only in the day of
407 admission (**Fig. 4 and Table S2**). Among the isolates exhibiting the CzIE and
408 recovered from samples taken at different time points, 3 pairs of isolates
409 (6013/6014, 6048/6204, and 7022/7030) (**Fig. 4 and Table S2**) showed high
410 genomic relatedness with <20 SNPs difference, suggesting the same MSSA strain.

411 In contrast, isolates 6039/6043, and 6441/6461 recovered from two patients at
412 different time points, displayed distinct genomic, phenotypic, and phylogenetic
413 features suggesting that the patients were colonized with different strains. Similarly,
414 MSSA recovered from the same nasal sample on admission in two patients
415 (isolates 6354/6355 and 6773/6774) showed a distinct genotype and a large
416 evolutionary distance (**Fig. 4**), indicating that the patient was colonized with two
417 different unrelated strains of MSSA. Thus, our findings suggest that three patients
418 retained the same colonizing MSSA during their stay in the ICU and two patients
419 were colonized by a different strain (**Fig. 4 and Table S2**). Of note, isolate pairs
420 6204/6043 and 6441/6354 were recovered from different patients in hospital B. The
421 pairs shared a high degree of genomic similarity (<20 SNPs), suggesting

422 transmission of MSSA exhibiting the CzIE among patients of the same unit (**Fig. 4**
423 **and Table S2**).

424

425 **Components of the nasal microbiota in patients colonized by CzIE positive**
426 **MSSA had not differences.**

427 Using 16S rRNA amplicon sequencing from patients 23 patients (10 colonized by
428 MSSA exhibiting the CzIE and 13 lacking the CzIE), we attempted to identify
429 microbial communities and estimate their diversity and abundance in the context of
430 the CzIE phenotype. At the phylum level, most of the bacterial population (>80%) in
431 both groups consisted of three ASVs (Amplicon Sequence Variants) (*Firmicutes*,
432 *Bacteroidota*, and *Proteobacteria*) (**Fig. S1A**). In both groups, *Firmicutes* was the
433 most abundant taxa followed by *Proteobacteria* in CzIE-positive group and
434 *Bacteroidota* in the patients with MSSA lacking the CzIE. No statistically significant
435 differences were observed at the taxonomic level.

436

437 At the genus level, we found an abundance of staphylococci (39.4%) and *Bacillus*
438 (3.8%) in the microbiome of patients colonized with MSSA exhibiting the CzIE
439 compared to the patients lacking the CzIE (abundances of 22.9% and 0.04%
440 respectively), Patients colonized with MSSA without the CzIE had a higher
441 abundance of streptococci (3.9 %) and *Moraxella* (3.2%) compared to patients
442 colonized with MSSA showing CzIE (abundances of 1.3 % and 0.06%,
443 respectively) (**Fig. S1A**) No statistically significant differences were observed for
444 these abundances at genus level.

445

446 Also, we found no statistically significant differences in α -diversity between MSSA
447 CzIE(+) and MSSA CzIE(-) colonized patients (**Fig. S1B**). However, a lower α -
448 diversity tendency was observed in the MSSA CzIE(+) group, mainly at the genus
449 level. Likewise, the β -diversity estimated using PCoA plots also indicated that the
450 general bacterial population structure was indistinct between patient groups in both
451 taxonomic levels, with a non-significant PERMANOVA (Phylum, $p=0.94$; Genus,
452 $p=0.24$) and ANOSIM (Phylum, $p=0.96$; Genus, $p=0.59$) analyses (**Fig. S2**). A
453 differential abundance analysis using LefSe showed a unique statistically
454 significant enriched genus (*Anaerococcus* spp.) ($p=0.039$, LDA score=4.34) in the
455 nasal microbiome of colonized patients with MSSA exhibiting the CzIE (**Fig. S1C**),
456 with a significant major relative abundance in this group of patients.

457 **DISCUSSION**

458 We postulated that antibiotic pressure, particularly the use of broad-spectrum β -
459 lactam antibiotics may favor the emergence of the CzIE effect in colonizing *S.*
460 *aureus*. Our findings support our hypothesis, since we found a high point
461 prevalence (58%) of nasal colonization with MSSA exhibiting the CzIE in our
462 multicenter cohort of ICU patients in Colombia. Previous studies^{19,22,23} have shown
463 a high frequency of the CzIE in Colombian MSSA isolates recovered from patients
464 with bacteremia and bone and joint infections and our study confirms that this
465 phenotype seems to be prevalent in Colombian *S. aureus*, although regional
466 variability in the frequency of the CzIE have been documented in MSSA isolates
467 recovered from bacteremia.^{19,20,22,23,50-52} Indeed, among the Latin-American
468 countries (a region with high prevalence of this phenotype) Colombia seems to

469 have one of the highest rates of the CzIE in the region for reasons that are not
470 clear.^{22,23} Data in critically ill and, particularly ICU patients, are scarce and our
471 findings provide some support that this phenotype can be frequently found among
472 critically ill patients that experience heavy antibiotic administration.

473

474 The genomic analyses revealed that nasal colonizing MSSA from ICU patients
475 exhibiting the CzIE possessed similar characteristics as previously documented in
476 MSSA isolates with this phenotype and recovered from invasive infections.^{21,22}
477 Moreover, our findings support the notion that nasal colonization in the ICU is a
478 very dynamic process. Indeed, we found that patients in the ICU are commonly
479 colonized with more than one strain of *S. aureus* during the course of the ICU stay.
480 In patients who underwent more than one sampling during the ICU stay, we could
481 determine instances in which the patients were colonized with either the same or
482 different strains. Moreover, we were able to isolate at least two different *S. aureus*
483 strains from the same swab in two patients. Most importantly, our phylogenomic
484 studies provide support of potential transmission of MSSA strains exhibiting the
485 CzIE between different patients in the ICU in the same unit (**Fig. 4**).

486

487 Our findings also support a clear association of the CzIE with CC30, harboring
488 BlaZ type A, allotype-2 with Agr type III. We have previously documented this
489 association in isolates from bloodstream infections in Latin America and has also
490 been confirmed in isolates from Korean hospitals.⁵²⁻⁵⁴ Of note, in a cohort study of
491 pediatric patients with acute osteomyelitis, MSSA exhibiting the CzIE and
492 possessing Agr-III were associated with progression to chronic osteomyelitis.²¹ Of

493 interest, alteration of Agr function has been identified in MSSA displaying the
494 CzIE.^{50,54} Indeed, Agr is responsible of a signaling mechanism in response to
495 population density that plays a preponderant role in activation of expression of
496 virulence factors including the repression of cell-wall associated determinants in *S.*
497 *aureus*. Furthermore, perturbation in the activity of Agr in *S. aureus* has been
498 associated with decreased activity of several antibiotics (ie. β -lactams,
499 vancomycin).⁵⁵ Mutations in *agr* were found in MRSA isolates exhibiting reduced
500 vancomycin susceptibility phenotypes (ie, hVISA, VISA).⁵⁵ In addition, upregulation
501 of *agr* was identified in *S. aureus* clinical strains under the presence of sub-
502 inhibitory concentrations of oxacillin.⁵⁶ Thus, variations in Agr may be associated
503 with the CzIE and this phenotype could also be marker of enhanced virulence in
504 certain genetic backgrounds.

505

506 Although no significant differences were seen in the alpha and beta diversity
507 analyses between CzIE-positive and CzIE-negative nasal microbiomes,
508 *Anaerococcus* spp. were found to be enriched in the CzIE-positive group. Previous
509 studies have described *Anaerococcus* and other genera (*Corynebacterium*,
510 *Fingoldia*, *Peptoniphilus*, *Propionibacterium*, and *Staphylococcus*) as typical
511 health-associated human upper respiratory tract (URT) bacteria, with a depletion in
512 pathological conditions as chronic rhinosinusitis (CRS).^{57,58} Other studies have
513 shown that anaerobic bacteria, including *Anaerococcus* are more abundant in
514 middle meatuses of nasal cavities in CRS patients compared to healthy subjects.⁵⁹

515 Thus, the relationship of *Anaerococcus* spp. colonization with MSSA exhibiting the
516 CzIE in the nose needs to be further investigated.

517

518 The CzIE is difficult to detect in the routine clinical microbiology laboratory. Indeed,
519 the cefazolin MICs at high inoculum are cumbersome to perform and interpret. We
520 previously developed a rapid nitrocefin colorimetric test based on the observation
521 that we could detect high activities of BlaZ released to the milieu in strains that
522 exhibit this phenotype.^{28,29} In a validation study that included a large collection of
523 Latin American strains, we found that the test had an overall specificity and
524 sensitivity of 88.9% and 82.5%, respectively.²⁸ However, we found that ampicillin
525 powder (used to prepare a solution to induce *blaZ*) was not widely available and
526 could be expensive in low resource setting laboratories. Thus, we decided to
527 replace the powder by using an ampicillin disk with a period of incubation of 10 min
528 in BHI broth to release enough ampicillin to serve as the inducer solution. Using
529 the isolates recovered from patients in the ICU, we performed an initial validation of
530 the rapid modified nitrocefin test. Compared with the gold standard (cefazolin MICs
531 at high inoculum), the rapid nitrocefin test exhibited an accuracy of 97.7% (100%
532 sensitivity and 94% specificity). Moreover, the previous version of the test had
533 issues with isolates that harbored Type C BlaZ. The new modified version of the
534 test seems to perform better for type C enzymes with an accuracy of 100%. Of
535 note both type A and C BlaZ enzymes are highly associated with the CzIE.^{22,23,28}
536 The reasons for this discrepancy are not clear and we are currently performing a
537 large validation study to determine specific metrics of the modified test.

538

539 Our study has several important limitations, as follows: *i)* we included only six
540 participant centers in different cities in Colombia that may not reflect the situation
541 and complexity of ICUs in other regions. Nevertheless, the included centers have
542 different levels of complexity and capabilities; *ii)* the access to clinical information
543 was limited, therefore, the clinical impact of our findings is unknown; *iii)* we were
544 unable to recover bacterial isolates from patients which developed infections due to
545 logistic difficulties in the clinical laboratories of the participating centers and, *iv)*
546 microbiome analyses were only performed in representative samples of patients
547 colonized with MSSA, since we only were able to sequence and analyze 23
548 samples.

549

550 In summary, we found a high point prevalence of the CzIE in colonizing MSSA
551 isolates in ICU patients. Our findings suggest that a complex and dynamic process
552 of colonization of MSSA isolates occurs in ICU patients likely influenced by
553 antibiotic and infection control practices with evidence of patient-to patient
554 transmission of CzIE MSSA strains. The clinical relevance of these findings is the
555 subject of subsequent studies.

556

557 **Acknowledgments**

558 The authors thank to Maria Jose Cadavid, Camilo Castellar, Laura Ibarra, Catalina
559 Orejuela and Mauricio Uribe from UGRA, Universidad El Bosque for the technical
560 assistance in this study. Also, to Monica Huertas from Universidad Pedagogica y
561 Tecnologica de Colombia for logistical assistance. This work was supported by
562 Ministerio de Ciencia, Tecnologia e Innovación, grant 130880764152, CT 776-2018

563 to J.R. and Universidad El Bosque, Convocatoria Interna grant PCI 2023-0002 to
564 J.R. CAA is supported by National Institutes of Health (NIH)/National Institute of
565 Allergy and Infectious Diseases (NIAID) grants K24AI121296, R01AI134637,
566 R01AI148342–01, and P01AI152999.

567

568 **Author Contributions**

569 Lina P. Carvajal, Conceptualization, Experimental Assays, Formal analysis,
570 Methodology Coordination, Writing and Original draft; Sandra Rincon,
571 Conceptualization, Experimental Assays, Formal analysis, Methodology
572 Coordination, Writing and Original draft; Sara I. Gomez-Villegas, Methodology
573 Modification and Experiments; Juan M. Matiz-González, Bioinformatic Analysis;
574 Karen Ordoñez, Patient Enrollment; Alejandra Santamaria, Microbiology Testing in
575 Hospital; Leonardo Ospina and Jaime Beltran, Patient Enrollment; Fredy Guevara,
576 Patient Enrollment; Yardany Mendez, Patient Enrollment; Soraya Salcedo, Patient
577 Enrollment; Alexandra Porras and Albert Valencia, Patient Enrollment; Haley
578 Grennia, Alexander Deyanov, Rodrigo Baptista, Sequencing of isolates; Vincent H.
579 Tam, Experimental Assays; Diana Panesso, Experimental Assays and Formal
580 Analysis; Truc T. Tran, Experimental Assays and Formal analysis; William R. Miller,
581 Formal Analysis and Review; Cesar A. Arias, Conceptualization, Writing, Review,
582 Editing and Funding acquisition; Jinnethe Reyes, Conceptualization, Writing,
583 Review, Editing and Funding acquisition.

584

585 **REFERENCES**

- 586 1. Piewngam P, Otto M. 2024. *Staphylococcus aureus* colonisation and strategies
587 for decolonisation. *Lancet Microbe* S2666-5247:00040-5.
- 588 2. Sakr A, Brégeon F, Mège JL, Rolain JM, Blin O. 2018. *Staphylococcus aureus*
589 Nasal Colonization: An Update on Mechanisms, Epidemiology, Risk Factors,
590 and Subsequent Infections. *Front Microbiol* 9:2419.
- 591 3. Peacock SJ, de Silva I, Lowy FD. 2001. What determines nasal carriage of
592 *Staphylococcus aureus*? *Trends Microbiol* 9:605-10.
- 593 4. Gosbell IB, van Hal SJ. 2013. *Staphylococcus aureus* colonisation: some
594 questions answered. *Lancet Infect Dis* 13:380-1.
- 595 5. Fraser TG, Fatica C, Scarpelli M, Arroliga AC, Guzman J, Shrestha NK, Hixson
596 E, Rosenblatt M, Gordon SM, Procop GW. 2010. Decrease in *Staphylococcus*
597 *aureus* colonization and hospital-acquired infection in a medical intensive care
598 unit after institution of an active surveillance and decolonization program. *Infect*
599 *Control Hosp Epidemiol* 31:779-83.
- 600 6. Wertheim HF, Vos MC, Ott A, van Belkum A, Voss A, Kluytmans JA, van Keulen
601 PH, Vandenbroucke-Grauls CM, Meester MH, Verbrugh HA. 2004. Risk and
602 outcome of nosocomial *Staphylococcus aureus* bacteraemia in nasal carriers
603 versus non-carriers. *Lancet* 364:703-5.
- 604 7. von Eiff C, Becker K, Machka K, Stammer H, Peters G. 2001. Nasal carriage as
605 a source of *Staphylococcus aureus* bacteremia. Study Group. *N Engl J Med*
606 344:11-6.
- 607 8. Tilahun B, Faust AC, McCorstin P, Ortegon A. 2015. Nasal colonization and
608 lower respiratory tract infections with methicillin-resistant *Staphylococcus*
609 *aureus*. *Am J Crit Care* 24:8-12.

- 610 9. Gu GY, Chen M, Pan JC, Xiong XL. 2023. Risk of multi-drug-resistant organism
611 acquisition from prior bed occupants in the intensive care unit: a meta-analysis.
612 J Hosp Infect 139:44-55.
- 613 10. Olarte NM, Valderrama IA, Reyes KR, Garzón MI, Escobar JA, Castro B,
614 Vanegas N. 2010. Colonización por *Staphylococcus aureus* resistente a la
615 meticilina en una unidad de cuidados intensivos de adultos de un hospital
616 colombiano: caracterización fenotípica y molecular con detección de un clon de
617 circulación en la comunidad. Biomedica 30:353-61.
- 618 11. Seas C, Garcia C, Salles MJ, Labarca J, Luna C, Alvarez-Moreno C, Mejía-
619 Villatoro C, Zurita J, Guzmán-Blanco M, Rodríguez-Noriega E, Reyes J, Arias
620 CA, Carcamo C, Gotuzzo E, Members of the Latin America Working Group on
621 Bacterial Resistance. 2018. *Staphylococcus aureus* bloodstream infections in
622 Latin America: results of a multinational prospective cohort study. J Antimicrob
623 Chemother 73:212–222.
- 624 12. Instituto Nacional de Salud. INAS. Vigilancia por whonet en el ambito
625 hospitalario.2020.[https://www.ins.gov.co/BibliotecaDigital/vigilancia-por-whonet-](https://www.ins.gov.co/BibliotecaDigital/vigilancia-por-whonet-de-resistencia-antimicrobiana-en-el-ambito-hospitalario-colombia-2020.pdf)
626 [de-resistencia-antimicrobiana-en-el-ambito-hospitalario-colombia-2020.pdf](https://www.ins.gov.co/BibliotecaDigital/vigilancia-por-whonet-de-resistencia-antimicrobiana-en-el-ambito-hospitalario-colombia-2020.pdf)
- 627 13. Novy E, Martinière H, Roger C. 2023. The Current Status and Future
628 Perspectives of Beta-Lactam Therapeutic Drug Monitoring in Critically Ill
629 Patients. Antibiotics (Basel) 12:681.
- 630 14. Pliakos EE, Ziakas PD, Mylonakis E. 2021. The Cost-effectiveness of Cefazolin
631 Compared with Antistaphylococcal Penicillins for the Treatment of Methicillin-
632 Sensitive *Staphylococcus aureus* Bacteremia. Open Forum Infectious Diseases
633 8:ofab476.

- 634 15. Miller MA, Fish DN, Barber GR, Barron MA, Goolsby TA, Moine P, Mueller SW.
635 2020. A comparison of safety and outcomes with cefazolin versus nafcillin for
636 methicillin-susceptible *Staphylococcus aureus* bloodstream infections. J
637 Microbiol Immunol Infect 53:321-327.
- 638 16. Twilla JD, Algrim A, Adams EH, Samarin M, Cummings C, Finch CK. 2020.
639 Comparison of Nafcillin and Cefazolin for the Treatment of Methicillin-
640 Susceptible *Staphylococcus aureus* Bacteremia. Am J Med Sci 360:35-41.
- 641 17. Bratzler DW, Dellinger EP, Olsen KM, Perl TM, Auwaerter PG, Bolon MK, Fish
642 DN, Napolitano LM, Sawyer RG, Slain D, Steinberg JP, Weinstein RA,
643 American Society of Health-System Pharmacists (ASHP) Infectious Diseases
644 Society of America (IDSA) Surgical Infection Society (SIS) Society for
645 Healthcare Epidemiology of America (SHEA). 2013. Clinical practice guidelines
646 for antimicrobial prophylaxis in surgery. Surg Infect 14:73–156.
- 647 18. Calic D, Ariano RE, Arora RC, Grocott HP, Lakowski TM, Lillico R, Zelenitsky
648 SA. 2018. Evaluation of cefazolin antimicrobial prophylaxis during cardiac
649 surgery with cardiopulmonary bypass. J Antimicrob Chemother 73:768–771.
- 650 19. Miller WR, Seas C, Carvajal LP, Diaz L, Echeverri AM, Ferro C, Rios R, Porras
651 P, Luna C, Gotuzzo E, Munita JM, Nannini E, Carcamo C, Reyes J, Arias CA.
652 2018. The Cefazolin Inoculum Effect Is Associated with Increased Mortality in
653 Methicillin-Susceptible *Staphylococcus aureus* Bacteremia. Open Forum Infect
654 Dis 5:ofy123.
- 655 20. Lee S, Song KH, Jung SI, Park WB, Lee SH, Kim YS, Kwak YG, Kim YK, Kiem
656 SM, Kim HI, Kim ES, Park KH, Kim NJ, Jang HC, Kim HB; Korea Infectious
657 Diseases (KIND) study group. 2018. Comparative outcomes of cefazolin versus

- 658 nafcillin for methicillin-susceptible *Staphylococcus aureus* bacteraemia: a
659 prospective multicentre cohort study in Korea. Clin Microbiol Infect 24:152-158.
- 660 21. McNeil JC, Sommer LM, Boyle M, Hogan P, Vallejo JG, Hultén KG, Flores AR,
661 Kaplan SL, Fritz S. 2020. Cefazolin Inoculum Effect and Methicillin-Susceptible
662 *Staphylococcus aureus* Osteoarticular Infections in Children. Antimicrob Agents
663 Chemother 64:e00703-20.
- 664 22. Carvajal LP, Rincon S, Echeverri AM, Porrás J, Ríos R, Ordoñez KM, Seas C,
665 Gomez-Villegas SI, Diaz L, Arias CA, Reyes J. 2020. Novel Insights into the
666 Classification of Staphylococcal β -Lactamases in Relation to the Cefazolin
667 Inoculum Effect. Antimicrob Agents Chemother 64:e02511-19.
- 668 23. Rincon S, Reyes J, Carvajal LP, Rojas N, Cortés F, Panesso D, Guzmán M,
669 Zurita J, Adachi JA, Murray BE, Nannini EC, Arias CA. 2013. Cefazolin high-
670 inoculum effect in methicillin-susceptible *Staphylococcus aureus* from South
671 American hospitals. J Antimicrob Chemother 68:2773-8.
- 672 24. Martineau F, Picard FJ, Lansac N, Ménard C, Roy PH, Ouellette M, Bergeron
673 MG. 2000. Correlation between the resistance genotype determined by
674 multiplex PCR assays and the antibiotic susceptibility patterns of
675 *Staphylococcus aureus* and *Staphylococcus epidermidis*. Antimicrob Agents
676 Chemother 44:231-8.
- 677 25. CLSI. Performance Standards for Antimicrobial Susceptibility Testing. 33rd
678 ed. Wayne PA: CLSI supplement M100; 2023.
- 679 26. Clinical and Laboratory Standards Institute CLSI, Performance Standards for
680 Antimicrobial Susceptibility Testing: Twenty-first Informational Supplement
681 M100-S21, 2012. Wayne, PA, USA.

- 682 27. Bourreau A, Le Mabecque V, Broquet A, Caillon J. 2023. Prevalence of a
683 cefazolin inoculum effect associated with *blaZ* gene types, and clinical
684 outcomes among methicillin-susceptible *Staphylococcus aureus* blood isolates
685 of patients with infective endocarditis. *Infect Dis Now* 53:104626.
- 686 28. Rincon S, Carvajal LP, Gomez-Villegas SI, Echeverri AM, Rios R, Dinh A,
687 Pedroza C, Ordoñez KM, Nannini E, Sun Z, Fowler VG, Murray BE, Miller WR,
688 Palzkill T, Diaz L, Arias CA, Reyes J. 2021. A Test for the Rapid Detection of the
689 Cefazolin Inoculum Effect in Methicillin-Susceptible *Staphylococcus aureus*. *J*
690 *Clin Microbiol* 59: e01938-20.
- 691 29. Gomez-Villegas SI, Panesso D, Singh K, Rincon S, Carvajal LP, Jacques-Palaz
692 K, Rizvi S, Burnham CA, Abbott A, Dien Bard J, Westblade L, Fritz SA, Zimmer
693 B, Dingle TC, Butler-Wu S, Miller WR, Reyes J, Arias CA. 2023. Optimization of
694 a Nitrocefin-Based Rapid Test for the Detection of the Cefazolin Inoculum Effect
695 (CzIE) in Methicillin-Susceptible *Staphylococcus aureus*. *Open Forum*
696 *Infectious Diseases* 10:ofad500.644.
- 697 30. Leggett RM, Ramirez-Gonzalez RH, Clavijo BJ, Waite D, Davey RP. 2013.
698 Sequencing quality assessment tools to enable data-driven informatics for high
699 throughput genomics. *Front Genet* 4:288.
- 700 31. Bolger AM, Lohse M, and Usadel B. 2014. "Trimmomatic: A flexible trimmer for
701 Illumina sequence data. *Bioinformatics* 30:2114–2120.
- 702 32. Bankevich A, Nurk S, Antipov D, Gurevich AA, Dvorkin M, Kulikov AS, Lesin
703 VM, Nikolenko SI, Pham S, Prjibelski AD, Pyshkin AV, Sirotkin AV, Vyahhi N,
704 Tesler G, Alekseyev MA, Pevzner PA. 2012. SPAdes: a new genome assembly

- 705 algorithm and its applications to single-cell sequencing. *J Comput Biol* 19:455-
706 77.
- 707 33. Weemann T. 2014. Prokka: rapid prokaryotic genome annotation.
708 *Bioinformatics* 30:2068-9.
- 709 34. Shen W, Le S, Li Y, Hu F. 2016. SeqKit: A Cross-Platform and Ultrafast Toolkit
710 for FASTA/Q File Manipulation. *PLoS One* 11:e0163962.
- 711 35. Kumar S, Stecher G, Li M, Knyaz C, Tamura K. 2018. MEGA X: Molecular
712 Evolutionary Genetics Analysis across Computing Platforms. *Mol Biol Evol.*
713 35:1547-1549.
- 714 36. Strommenger B, Cuny C, Werner G, Witte W. 2004. Obvious lack of association
715 between dynamics of epidemic methicillin-resistant *Staphylococcus aureus* in
716 central Europe and *agr* specificity groups. *Eur J Clin Microbiol Infect Dis* 23:15-
717 9.
- 718 37. Lina G, Piémont Y, Godail-Gamot F, Bes M, Peter MO, Gauduchon V,
719 Vandenesch F, Etienne J. 1999. Involvement of Pantón-Valentine leukocidin-
720 producing *Staphylococcus aureus* in primary skin infections and pneumonia.
721 *Clin Infect Dis* 29:1128-32.
- 722 38. Page AJ, Cummins CA, Hunt M, Wong VK, Reuter S, Holden MT, Fookes M,
723 Falush D, Keane JA, Parkhill J. 2015. Roary: rapid large-scale prokaryote pan
724 genome analysis. *Bioinformatics* 31:3691-3.
- 725 39. Löytynoja A. 2014. Phylogeny-aware alignment with PRANK. *Methods Mol Biol*
726 1079:155-70.
- 727 40. Stamatakis A. 2014. RAxML version 8: a tool for phylogenetic analysis and
728 post-analysis of large phylogenies. *Bioinformatics* 30:1312-3.

- 729 41. Letunic I, Bork P. 2021. Interactive Tree of Life (iTOL) v5: an online tool for
730 phylogenetic tree display and annotation. *Nucleic Acids Res* 49:W293-W296.
- 731 42. Sadowsky MJ, Staley C, Heiner C, Hall R, Kelly CR, Brandt L, & Khoruts A.
732 2017. Analysis of gut microbiota - An ever changing landscape. *Gut Microbes*
733 8:268-275.
- 734 43. Caporaso JG, Lauber CL, Walters WA, Berg-Lyons D, Lozupone CA,
735 Turnbaugh PJ, Fierer N, & Knight R. 2011. Global patterns of 16S rRNA
736 diversity at a depth of millions of sequences per sample. *Proc Natl Acad Sci U*
737 *S A* 108:4516-22.
- 738 44. Bolyen E, Rideout JR, Dillon MR, Bokulich NA, Abnet CC, Al-Ghalith GA. 2019.
739 Reproducible, interactive, scalable and extensible microbiome data science
740 using QIIME 2. *Nat Biotechnol* 37:852-857.
- 741 45. Yilmaz P, Parfrey LW, Yarza P, Gerken J, Pruesse E, Quast C, Schweer T,
742 Peplies J, Ludwig W, Glöckner FO. 2014. The SILVA and "All-species Living
743 Tree Project (LTP)" taxonomic frameworks. *Nucleic Acids Res* 42:D643-8.
- 744 46. Dixon, P. 2003. VEGAN, a package of R functions for community ecology.
745 *Journal of Vegetation Science* 14:927–930.
- 746 47. McMurdie PJ, & Holmes S. 2013. phyloseq: An R Package for Reproducible
747 Interactive Analysis and Graphics of Microbiome Census Data. *Plos One* 8: 1-
748 11.
- 749 48. Cao Y, Dong Q, Wang D, Zhang P, Liu Y, & Niu C. 2022. microbiomeMarker: an
750 R/Bioconductor package for microbiome marker identification and visualization.
751 *Bioinformatics* 38:4027-4029.

- 752 49. Hall BG and Nisbet J. 2023. "Building Phylogenetic Trees from Genome
753 Sequences With kSNP4" *Mol Biol Evol* 40:msad235.
- 754 50. Lee SO, Lee S, Park S, Lee JE, Lee SH. 2019. The Cefazolin Inoculum Effect
755 and the Presence of type A *blaZ* Gene according to *agr* Genotype in Methicillin-
756 Susceptible *Staphylococcus aureus* Bacteremia. *Infect Chemother* 51:376-385.
- 757 51. Wang SK, Gilchrist A, Loukitcheva A, Plotkin BJ, Sigar IM, Gross AE, O'Donnell
758 JN, Pettit N, Buros A, O'Driscoll T, Rhodes NJ, Bethel C, Segreti J, Charnot-
759 Katsikas A, Singh K, Scheetz MH. 2018. Prevalence of a Cefazolin Inoculum
760 Effect Associated with *blaZ* Gene Types among Methicillin-Susceptible
761 *Staphylococcus aureus* Isolates from Four Major Medical Centers in Chicago.
762 *Antimicrob Agents Chemother* 62:e00382-18.
- 763 52. Chong YP, Park SJ, Kim ES, Bang KM, Kim MN, Kim SH, Lee SO, Choi SH,
764 Jeong JY, Woo JH, Kim YS. 2015. Prevalence of *blaZ* gene types and the
765 cefazolin inoculum effect among methicillin-susceptible *Staphylococcus aureus*
766 blood isolates and their association with multilocus sequence types and clinical
767 outcome. *Eur J Clin Microbiol Infect Dis* 34:349-55.
- 768 53. Svishchuk J, Ebbert K, Waddell B, Izydorczyk C, Acosta N, Somayaji R, Rabin
769 HR, Bjornson CL, Lisboa L, Gregson DB, Conly JM, Surette MG, Parkins MD.
770 2023. Epidemiology and impact of methicillin-sensitive *Staphylococcus aureus*
771 with β -lactam antibiotic inoculum effects in adults with cystic fibrosis. *Antimicrob*
772 *Agents Chemother* 67:e00136-23.
- 773 54. Wi YM, Park YK, Moon C, Ryu SY, Lee H, Ki HK, Cheong HS, Son JS, Lee JS,
774 Kwon KT, Kim JM, Ha YE, Kang CI, Ko KS, Chung DR, Peck KR, Song JH.
775 2015. The cefazolin inoculum effect in methicillin-susceptible *Staphylococcus*

- 776 *aureus* blood isolates: their association with dysfunctional accessory gene
777 regulator (*agr*). *Diagn Microbiol Infect Dis* 83:286-91.
- 778 55. Singh R, Ray P. 2014. Quorum sensing-mediated regulation of staphylococcal
779 virulence and antibiotic resistance. *Future Microbiol* 9:669-81.
- 780 56. Viedma E, Pérez-Montarelo D, Villa J, Muñoz-Gallego I, Larrosa N, Fernández-
781 Hidalgo N, Gavaldà J, Almirante B, Chaves F. 2018. Sub-inhibitory
782 concentrations of oxacillin modify the expression of *agr* locus in *Staphylococcus*
783 *aureus* clinical strains belonging to different clonal complexes. *BMC Infect Dis*
784 18:177.
- 785 57. Hoggard M, Biswas K, Zoing M, Wagner-Mackenzie B, Taylor MW, and Douglas
786 RG. 2017. Evidence of microbiota dysbiosis in chronic rhinosinusitis. *Int Forum*
787 *Allergy Rhinol* 7:230-239.
- 788 58. Wagner-Mackenzie B, Waite DW, Hoggard M, Douglas RG, Taylor MW, and
789 Biswas K. 2017. Bacterial community collapse: a meta-analysis of the sinonasal
790 microbiota in chronic rhinosinusitis. *Environ Microbiol* 19:381–392.
- 791 59. Copeland E, Leonard K, Carney R, Kong J, Forer M, Naidoo Y, Oliver BGG,
792 Seymour JR, Woodcock S, Burke CM, Stow NW. 2018. Chronic Rhinosinusitis:
793 Potential Role of Microbial Dysbiosis and Recommendations for Sampling
794 Sites. *Front Cell Infect Microbiol* 8:57.

Table 1. Distribution of *S. aureus* isolates recovered from 46 patients on admission and follow-up by hospital.

Hospital (No patients)	Methicillin-susceptible <i>S. aureus</i> (MSSA)			Methicillin-resistant <i>S. aureus</i> (MRSA)		
	No of patients (No isolates) at admission	No isolates at follow-up	No of patients (No isolates) at follow-up	No isolates at admission	No isolates at admission	No isolates at follow-up
A (5)	3 (3)	1	2 (2)	2	2 (2)	0
B (15)	12 (17)	11	6 (3)	1	3 (3)	2
C (4)	3 (3)	3	0 (1)	1	1 (1)	0
D (14)	11 (11)	9	2 (3)	3	3 (3)	0
E (3)	3 (4)	4	0 (0)	0	0 (0)	0
G (5)	4 (5)	4	1 (1)	0	1 (1)	1
Total (46)	36 (43)	32	10 (10)	7	10 (10)	3

Table 2. Distribution of the frequency of the CzIE in colonizing MSSA recovered from ICU patients in 6 Colombian hospitals by gold standard testing.

Hospital	No of MSSA isolates	No of isolates (%) with CzIE	No of isolates (%) without CzIE
A	3	3 (100)	0 (0)
B	17	10 (59)	7 (41)
C	3	1 (33)	2 (67)
D	11	4 (36)	7 (64)
E	4	3 (75)	1 (25)
G	5	4 (80)	1 (20)
Total	43	25 (58)	18 (42)

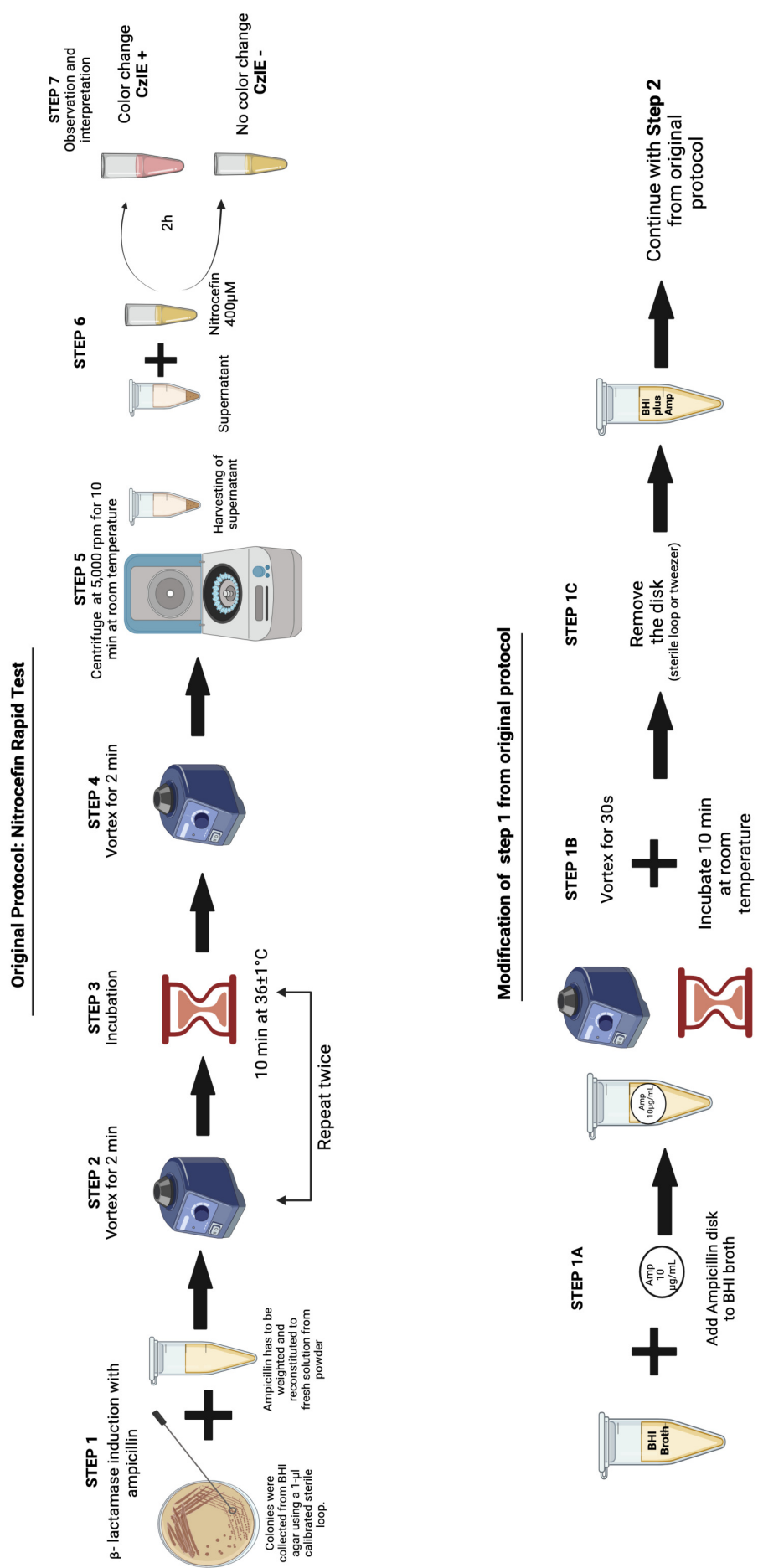


Fig. 1. Modified protocol of the nitrocefin rapid test to identify MSSA with the CzIE.

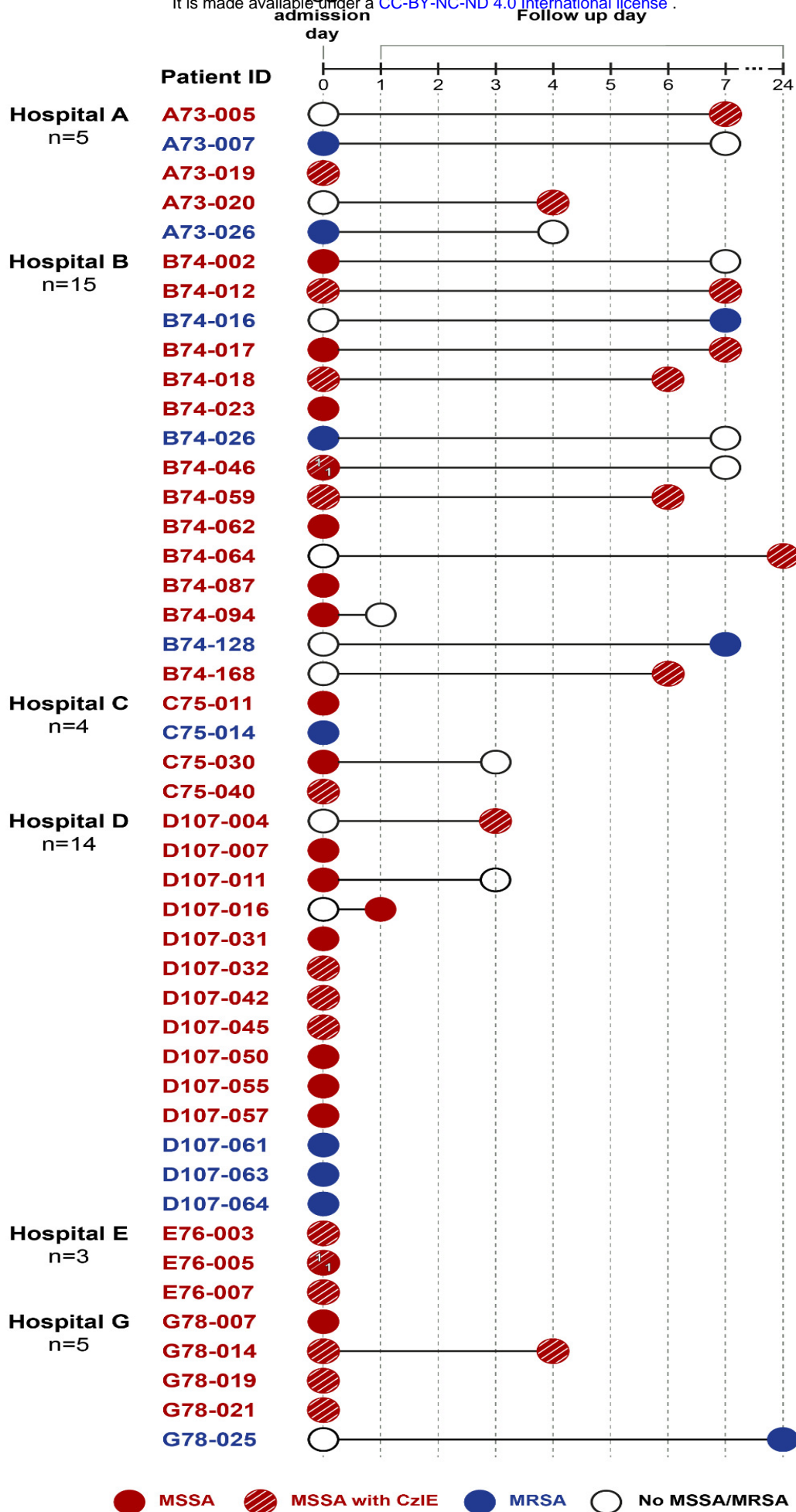


Fig. 2. Timeline of sampling and isolate recovery in ICU patients colonized by *S. aureus* (MSSA or MRSA). Sampling is denoted by circles; filled circles represent nasal swabs positive for MSSA (red) or MRSA (blue); empty circles indicate samples negative for *S. aureus*. Circles with lines across indicate isolates positive for the CzIE. Patient B74-046 and E76-005 had two isolates recovered in the same swab, one displaying the CzIE and the other lacking the CzIE.

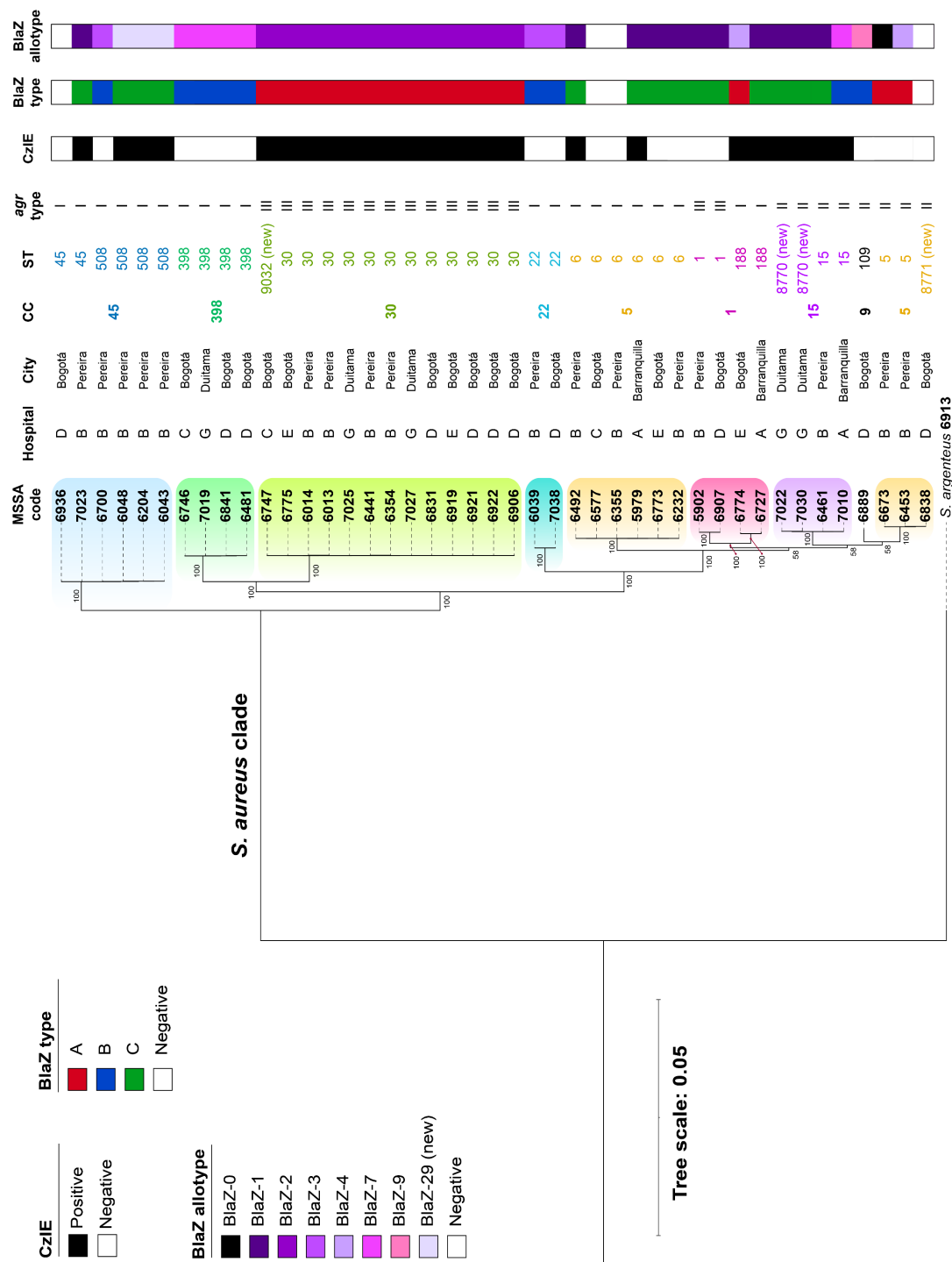


Fig. 3. Phylogenetic tree of colonizing methicillin-susceptible *S. aureus* (MSSA) isolates recovered from ICU patients in Colombian hospitals. Maximum likelihood phylogenetic tree from the core genome (1939 genes) of 43 MSSA and one *S. argenteus* isolate (outgroup). Support bootstrap values are showed for each clade. Colored shadows over the tree branches show the clonal complexes (CC) within the sample, followed by Sequence Type (ST) and *agr* type. The CzHI was determined by gold standard (CFZ MIC)

Patient ID	Isolate ID (Sample Day)	6013	6014	6039	6043	6048	6204	6355	6354	6441	6461	6773	6774	7022	7030
B74-012	6013 (0)	0	6	11883	11552	11552	11552	11945	176	179	11997	11925	11834	12006	11998
	6014 (7)	6	0	11889	11557	11557	11557	11951	182	185	12003	11931	11840	12012	12003
B74-017	6039 (0)	11883	11889	0	12967	12967	12967	8093	11883	11885	8086	8077	8032	8100	8088
	6043 (7)	11552	11557	12967	0	0	0	12995	11544	11546	12954	12977	12837	12963	12952
B74-018	6048 (0)	11552	11557	12967	0	0	0	12995	11544	11546	12954	12977	12837	12963	12952
	6204 (6)	11552	11557	12967	0	0	0	12995	11544	11546	12954	12977	12837	12963	12952
B74-046	6355 (0)	11945	11951	8093	12995	12995	12995	0	11948	11949	4394	94	4129	4410	4397
	6354 (0)	176	182	11883	11544	11544	11544	11948	0	4	11994	11928	11837	12009	12001
B74-059	6441 (0)	179	185	11885	11546	11546	11546	11949	4	0	11995	11929	11838	12010	12002
	6461 (6)	11997	12003	8086	12954	12954	12954	4394	11994	11995	0	4373	4216	190	176
E76-005	6773 (0)	11925	11931	8077	12977	12977	12977	94	11928	11929	4373	0	4107	4388	4375
	6774 (0)	11834	11840	8032	12837	12837	12837	4129	11837	11838	4216	4107	0	4230	4216
G78-014	7022 (0)	12006	12012	8100	12963	12963	12963	4410	12009	12010	190	4388	4230	0	17
	7030 (4)	11998	12003	8088	12952	12952	12952	4397	12001	12002	176	4375	4216	17	0

Number of core SNPs

Different *S. aureus* strain



Related *S. aureus* strain

< 20 SNPs

Fig. 4. Count matrix of the core SNPs among colonizing MSSA isolates. Core SNPs of the 43 MSSA analyzed (30927 SNPs). MSSA pairs are indicated by white blocks and MSSA isolates with CzIE in red. Cells are colored according to SNPs count between two MSSA: Green, MSSA genomes with < 20 SNPs difference; yellow to orange scale, MSSA genomes with ≥ 20 SNPs likely representing a different strain. Day 0 correspond to admission sampling.