

1 Article Title: **Infectious Complications Following CD30 Chimeric Antigen Receptor T-Cell Therapy**
2 **in Adults**

3 Short Title: **Infections After CD30.CAR T-Cell Therapy**

4
5 Authors: Felicia Cao*¹, Yueling Xiu*², Michael Mohnasky*³, Jonathan S. Serody^{4,5}, Paul Armistead^{4,5},
6 Gianpietro Dotti^{5,6}, Melody Smith⁷, Jonathan Huggins⁸, Julia Messina⁸, Bhanu Ramachandran⁹, Jennifer
7 Saullo⁸, Joseph Stromberg⁹, Manish K. Saha¹⁰, Megan Walsh³, Barbara Savoldo^{5,11}, Natalie Grover^{4,5},
8 Heather I. Henderson**⁹, and Tessa M. Andermann**^{5,9}

9 *Co-first authors

10 **Co-senior authors

11
12 **Affiliations:**

13 ¹ Divisions of Hematology and Oncology, Department of Medicine, University of North Carolina at
14 Chapel Hill, North Carolina, USA

15
16 ² Gillings School of Public Health, University of North Carolina at Chapel Hill, North Carolina, USA

17
18 ³ School of Medicine, University of North Carolina at Chapel Hill, North Carolina, USA

19
20 ⁴ Division of Hematology, Department of Medicine, University of North Carolina at Chapel Hill, North
21 Carolina, USA

22
23 ⁵ Lineberger Comprehensive Cancer Center, University of North Carolina at Chapel Hill, Chapel Hill,
24 North Carolina, USA

25
26 ⁶ Department of Microbiology and Immunology, University of North Carolina at Chapel Hill, North
27 Carolina, USA

28
29 ⁷ Division of Blood & Marrow Transplantation and Cellular Therapy, Department of Medicine, Stanford
30 University, California, USA

31
32 ⁸ Division of Infectious Diseases, Department of Medicine, Duke University, North Carolina, USA

33
34 ⁹ Division of Infectious Diseases, Department of Medicine, University of North Carolina at Chapel Hill,
35 North Carolina, USA

36
37 ¹⁰ Division of Nephrology, Department of Medicine, University of North Carolina at Chapel Hill, North
38 Carolina, USA

39
40 ¹¹ Division of Hematology-Oncology, Department of Pediatrics, University of North Carolina at Chapel
41 Hill, North Carolina, USA

42
43 **Corresponding Author:**

44 Tessa Andermann

45 111 Mason Farm Rd. Cb#7036

46 Medical Biomolecular Research Building #2340-B

47 Chapel Hill, NC 27599-7036

48 Tessa_andermann@med.unc.edu

49 (919) 843-0834

50
51 Word Count (text): 3892

52 Word Count (abstract): 250

53 Figure/Table Count: 7 (4 supplementary)

54 Reference Count: 29

55 **ABSTRACT**

56 Infections are increasingly recognized as a common complication of chimeric antigen receptor (CAR) T-
57 cell therapy. The incidence of clinically-defined infection after CD19.CAR T-cell therapy for
58 relapsed/refractory lymphoma ranges from 60-90% in the first year after CAR T-cell therapy and is the
59 most common cause for non-relapse mortality. However, infectious risk after CAR T-cell therapy
60 targeting other malignancies is not well understood. Herein, we report for the first time, infectious
61 complications after CD30.CAR T-cell treatment for patients with Hodgkin's lymphoma and peripheral T-
62 cell lymphoma. Since CD30 is only expressed on a subset of activated T and B-cells, we hypothesized
63 that CD30.CAR T-cell patients would have reduced incidence and severity of infections after infusion
64 compared to CD19.CAR T-cell patients. We retrospectively evaluated all 64 patients who received
65 CD30.CAR T-cells at a single institution between 2016-2021, and assessed infections within one year
66 after cell infusion, comparing these data to a contemporary cohort of 50 patients who received
67 CD19.CAR T-cells at the same institution between 2018-2021. 23 CD30.CAR T-cell patients (36%) and
68 18 CD19.CAR T-cell patients (36%) developed a microbiologically confirmed infection. Infection
69 severity and bacterial infections were higher in the CD19.CAR T-cell group compared to CD30.CAR T-
70 cell recipients who more commonly had grade 1 respiratory viral infections. Our data reflect expected
71 outcomes for severity and infection type in CD19.CAR T-cell patients and provide a benchmark for
72 comparison with the novel CD30.CAR T-cell product. Although our findings require replication in a
73 larger cohort, they have implications for antimicrobial prophylaxis guidelines after CD30.CAR T-cell
74 therapy.

75
76

77 **KEY POINTS**

78

79

80

81

82

83

- 1) The incidence of infections within the first year after CD30.CAR T-cell therapy was equivalent to that following CD19.CAR T-cell therapy
- 2) Viral infections were more common after CD30.CAR T-cell therapy but bacterial infections predominated after CD19.CAR T-cell therapy.

84 INTRODUCTION

85 Chimeric antigen receptor (CAR) T-cell therapy has revolutionized the treatment of relapsed and
86 refractory hematological malignancies. The first FDA approved CAR T-cells targeted CD19, a surface
87 glycoprotein expressed on all B cells, for treatment of B cell malignancies including leukemia and
88 lymphoma¹. CD19.CAR T-cells are now the standard of care for patients with aggressive non-Hodgkin's
89 lymphoma who have progressed after two prior lines of therapy²⁻⁶.

90
91 Commonly recognized side effects of CAR T-cell treatment include cytokine release syndrome (CRS)
92 and immune effector cell associated neurotoxicity (ICANS)^{7,8}. However, infections are increasingly being
93 recognized as common, and often severe, complications following CAR T-cell therapy. Infections are the
94 most frequent cause of non-relapse related mortality after CD19.CAR T-cell therapy for patients with
95 non-Hodgkin's lymphoma^{9,10}. The incidence of clinically-defined infections after CD19.CAR T-cell
96 treatment ranged from 60 to 90% within one-year post-infusion, with 15-30% of infections being severe
97 or life-threatening⁹⁻¹². Infections were most commonly seen in the first month post CD19.CAR T-cell
98 infusion, with the highest incidence of bacterial infections during this time period. Factors associated with
99 infectious risk following CD19.CAR T-cell therapy included incidence of CRS/ICANS and corticosteroid
100 use⁹⁻¹¹. The CAR-HEMATOTOX model has been proposed to risk stratify patients treated with
101 CD19.CAR T-cells who are at highest risk for hematotoxicity and severe infectious complications due to
102 delayed hematopoietic recovery¹³.

103
104 In contrast, CD30 is transiently expressed by subsets of activated T and B cells and is highly expressed
105 on hematological malignancies including Hodgkin's lymphoma and anaplastic large cell lymphoma¹⁴⁻¹⁶.
106 Brentuximab vedotin is a CD30 directed antibody-drug conjugate (ADC) that has been approved for
107 treatment of patients with relapsed or refractory Hodgkin's lymphoma^{17,18}. Our group in a multi-center
108 study characterized the outcome of patients, receiving CD30.CAR T-cell therapy and found an overall
109 response rate (ORR) of 72% for the treatment of patients with relapsed/refractory Hodgkin lymphoma at
110 6 weeks post-treatment, with 36% progression-free survival over one year¹⁹. Another ongoing clinical
111 trial is evaluating efficacy of CD30.CAR T-cells for patients with relapsed/refractory peripheral T-cell
112 lymphoma (NCT04083495).

113
114 The patient population receiving CD30.CAR T-cell therapy differs substantially from CD19.CAR T-cell
115 therapy, as Hodgkin's lymphoma tends to affect younger patients who receive less cytotoxic
116 chemotherapy and more ADC or immunotherapy based treatments^{20,21}. Infectious risk after CD30.CAR T-
117 cell therapy has not previously been characterized, including types of infections and their severity after

118 CD30.CAR T-cell infusion. Currently, antimicrobial prophylaxis for any CAR T-cell treatment is based
119 on existing guidelines for patients receiving CD19.CAR T-cells, although little data exists to inform
120 prophylaxis after CAR T-cell treatments targeting different antigens^{22,23}. Herein, we sought to
121 characterize infectious risk during the first year after CD30.CAR T-cell infusion, benchmarked against
122 infectious outcomes following CD19.CAR T-cell therapy, in order to more appropriately tailor
123 antimicrobial prophylaxis for our patients.

124

125 METHODS

126 *Patient cohort*

127 Patients in this study were adults ≥ 18 years of age at the University of North Carolina at Chapel Hill
128 (UNCCH) with relapsed or refractory CD30+ lymphomas as part of clinical trials NCT02690545,
129 NCT03602157, NCT04083495, and NCT02663297. Of note, NCT02663297 investigated CD30.CAR T-
130 cell infusion as consolidation after autologous stem cell transplant for CD30+ lymphoma (16 patients in
131 this study)²⁴. All patients who received CD30.CAR T-cell therapy from July 1, 2016 through July 31,
132 2021 were included in this retrospective review. For comparison, we included all adult patients ≥ 18 years
133 of age at UNCCH who received CD19.CAR T-cells either as a commercial product or as part of a clinical
134 trial (NCT03016377, NCT03696784, or NCT03594162) from April 1, 2018 through November 30, 2021.
135 Consent was not required for inclusion in this study but was required for treatment with CD30.CAR T-
136 cells. Approval was obtained from the UNCCH institutional review board (IRB#20-2745, PI:
137 Andermann).

138

139 *Treatment and prophylaxis*

140 Manufacture of CD30.CAR T-cells was performed as described previously¹⁹. Patients received 1-200 x
141 10^6 CD30 targeted CAR-T cells for relapsed or refractory disease following lymphodepleting
142 chemotherapy. Patients enrolled in NCT03602157 (12 patients) received CD30.CAR T-cells and
143 additional T-cells co-expressing CD30.CAR and C-C Motif Chemokine Receptor 4 (CCR4). The majority
144 of patients received antimicrobial prophylaxis consisting of valacyclovir 500mg daily or twice daily per
145 provider preference and trimethoprim/sulfamethoxazole 160mg/800mg once per day, three times per
146 week, starting at lymphodepletion (valacyclovir) or at day+30 (trimethoprim-sulfamethoxazole) until 6
147 months to one-year post-infusion or CD4 ≥ 200 . Patients also received neutropenia prophylaxis with
148 levofloxacin 500mg daily and fluconazole 400mg daily when absolute neutrophil count (ANC) ≤ 500 cells
149 per mm². The severity of CRS and ICANS were graded as described previously²⁵. Patients with grade ≥ 2
150 CRS or ICANS were treated with tocilizumab (8mg/kg per dose IV) and/or corticosteroids as per
151 institutional standards and previously published guidelines²⁵.

152

153 *Data collection and infection definitions*

154 Patient information was manually extracted from the electronic medical record and entered into a
155 REDCap database by at least two independent reviewers (M.M., F.C., J.S., M.S., B.R.). Discrepancies
156 between reviewers were resolved through adjudication by the primary study investigator (T.M.A.).
157 Information regarding infections and antibiotics was abstracted starting 30 days prior through 365 days
158 after CAR T-cell infusion. When censoring events were considered in select figures, patients were
159 censored at relapse, next line of treatment, or at last contact with UNCCH.

160

161 Only microbiologically determined infections were included in this study, based on a positive culture or
162 diagnostic test. One exception to this definition was the diagnosis of dermatomal Varicella Zoster Virus
163 (VZV) which was included without an available positive diagnostic test if presentation met criteria as
164 determined by the treating clinician. Bloodstream infections were adjudicated based on CDC/NHSN
165 criteria²⁶. Upper respiratory tract infections were based on clinical judgement and the absence of an
166 oxygen requirement or infiltrates on chest imaging; lower respiratory tract infections were defined by
167 infiltrates on chest imaging and lower respiratory tract symptoms. Infection severity was defined as mild
168 (Grade 1), moderate (Grade 2), or severe (Grade 3) based on previously published Blood & Marrow
169 Transplant Clinical Trials Network (BMT-CTN) 2023 criteria²⁷.

170

171 *Statistical analysis*

172 Continuous variables are reported as median and range; categorical variables are reported as number and
173 percentage. For comparing characteristics between patients with and without infections, the Kruskal-
174 Wallis test was used for continuous variables and Fisher's exact test was used for categorical variables.
175 The association between risk factors and time to infection among CD30.CAR T-cell patients was
176 estimated using Fine-Gray subdistribution hazard models, treating all-cause mortality as a competing
177 event²⁸. ANC of 1.8 cells/mm² was used as cut-off based on the institutional laboratory reference range.
178 Age was modeled as a second-degree polynomial after evaluating its functional form in relation to
179 infection risk. In cumulative-incidence curves, patients contributed time from the date of infusion until the
180 earliest of the following: first infection (overall and stratified by pathogen type), death, or administrative
181 censoring at 365 days post-infusion. As a secondary analysis, patients were censored if relapse occurred
182 within one year after infusion. P-values less than 0.05 were considered statistically significant. Analyses
183 were performed using R software version 4.3.2, with the *cmprsk* package used to estimate the cumulative
184 incidence of infection.

185

186 **RESULTS**

187 **Patient characteristics**

188 Sixty-four adult patients received CD30.CAR T-cells at the University of North Carolina at Chapel Hill
189 (UNCCH) from 2016 to 2021 (Table 1). Fifty patients (78%) had Hodgkin's lymphoma (HL) and 14
190 patients (22%) had peripheral T-cell lymphoma. Patient characteristics for CD30.CAR T-cell treated
191 patients are described in **Table 1**, stratified by infection status. The median age was 40.9 (range 18 to 77)
192 years. This was a heavily pre-treated patient population, with patients receiving a median of four lines of
193 therapy (range 2 to 17) prior to CAR T-cell therapy. Fifty-six patients (88%) had received a
194 hematopoietic stem cell transplantation (HSCT) prior to CAR T-cell treatment, with the vast majority
195 being autologous transplants.

196
197 For comparison, we included the cohort of all 50 patients treated with CD19.CAR T-cells at UNCCH
198 from 2018 to 2021 (**Supplementary Table S1**). Twelve patients within this group (24%) had acute
199 lymphoblastic leukemia (ALL), 30 (60%) had diffuse large B-cell lymphoma (DLBCL), and eight (16%)
200 had follicular lymphoma or mantle cell lymphoma. The median age was 60.6 (range 21 to 81) years.
201 Similar to the CD30.CAR T-cell therapy cohort, patients were heavily pre-treated, having received a
202 median of four (range 2 to 12) prior treatment lines. The proportion of those receiving CD19.CAR T-cells
203 who had received a prior HSCT (14 patients, 28%) was lower compared to those receiving a CD30
204 product at our institution.

205
206 The incidence of cytokine release syndrome (CRS) and immune effector cell-associated neurotoxicity
207 syndrome (ICANS) was lower in the CD30.CAR T-cell cohort (**Table 1**) compared to the CD19.CAR T-
208 cell cohort (**Supplementary Table S1**). Sixteen patients (25%) who received CD30.CAR T-cells
209 experienced CRS of any grade, with only five patients (8%) demonstrating Grade 2 CRS, and none with
210 Grade 3 or higher CRS. No patients were diagnosed with ICANS after CD30.CAR T-cell infusion. In
211 contrast, 34 patients (68%) in the CD19.CAR T-cell group developed CRS of any grade, with 16 patients
212 (32%) who developed Grade 2 CRS and one patient (2%) who developed Grade 3 CRS. 14 patients (28%)
213 developed ICANS after CD19.CAR T-cell therapy.

214 215 **Incidence of infections after CAR T-cell therapy**

216 Twenty-three patients (36%) developed a microbiologically confirmed infection within one year after
217 CD30.CAR T-cell therapy. The cumulative incidence of all infections within one year after CD30.CAR
218 T-cell treatment is shown in **Figure 1**. Six bacterial infections, 21 viral infections, and one fungal
219 infection were seen in 23 CD30.CAR T-cell patients. When censoring for relapse, three bacterial

220 infections and 16 viral infections were reported in 16 CD30.CAR T-cell patients (**Supplementary Figure**
221 **S1**). No fungal infections were observed after censoring for relapse.

222
223 In comparison, the same proportion of CD19.CAR T-cell patients (n=18, 36%) developed an infection
224 within one year from cell infusion (**Figure 1**). Eighteen bacterial infections, 12 viral infections, and three
225 fungal infections were reported in 18 infected CD19.CAR T-cell patients. When censoring for relapse,
226 seven bacterial infections and six viral infections were reported in 10 patients (**Supplementary Figure**
227 **S1**).

228
229 The incidence of bacterial, viral, and fungal infections from days 0-28, days 29-90, and days 91-365 for
230 CD30 and CD19.CAR T-cell patients are shown in **Figure 2**. In the CD30.CAR T-cell cohort, viral
231 infections were more common than bacterial infections at all timepoints. This contrasts with CD19.CAR
232 T-cell patients, in which bacterial infections were more common than viral infections, most prominently
233 in the first 28 days after CAR T-cell infusion. This difference holds even when censoring for relapse
234 (**Supplementary Figure S1**). Fungal infections were rare, occurring only in one patient who received
235 CD30.CAR T-cells and three patients who received CD19.CAR T-cells, and only in the setting of
236 relapsed disease. A list of causative infectious organisms is shown in **Table 2**, which again highlights that
237 viral infections were more common after CD30.CAR T-cell therapy, and bacterial infections are more
238 common after CD19.CAR T-cell treatment.

239
240 Notably, the incidence of infections was higher in patients with relapsed disease after day 90, as 13
241 infections were seen during this time in the CD30.CAR T-cell cohort and 22 infections in the CD19.CAR
242 T-cell cohort. However, this appears to correlate with disease recurrence as there were only five
243 infections that occurred in the CD30.CAR T-cell cohort and three infections in the CD19.CAR T-cell
244 cohort in non-relapsed patients. Nonetheless, similar to previously published data for CD19.CAR T-cell
245 therapy, patients receiving CD30.CAR T-cell therapy may be at increased risk for infectious complication
246 for a prolonged period post-cell infusion, although bacterial infections were more common in the first 28
247 days in both our data and prior literature⁹⁻¹².

248 249 **Severity of infections after CAR T-cell therapy**

250 To further understand the clinical relevance of infections seen after CAR T-cell therapy, the severity of
251 infections was assessed using BMT-CTN 2023 criteria²⁷. The severity of microbiologically confirmed
252 infections within one year after CD30 or CD19.CAR T-cell infusion is shown in **Figure 3**. Similar data,
253 censored for relapsed disease, are shown in **Supplementary Figure S2**. For CD30.CAR T-cell patients,

254 most infections were mild with three grade 1 bacterial infections and 18 grade 1 viral infections. Severe or
255 life-threatening infections were rare, with only one grade 3 bacterial infection and one grade 3 viral
256 infection found in the CD30.CAR T-cell cohort. When censoring for relapse within one year of
257 CD30.CAR T-cell infusion, only one grade 3 viral infection (of a total of 19 infections) remained.

258
259 In contrast, the CD19.CAR T-cell patients had more severe infections overall with four grade 3 bacterial
260 infections but no severe or life-threatening viral infections. When censoring for relapse, there were two
261 grade 3 bacterial infections (total n=13 infections) within one year of CD19.CAR T-cell infusion. These
262 data demonstrate that overall severity of infection was lower in the CD30.CAR T-cell patients compared
263 to the CD19.CAR T-cell cohort. In summary, most infections in the CD30.CAR T-cell group were caused
264 by respiratory viral pathogens and were milder whereas more patients in the CD19.CAR T-cell group had
265 bacterial infections with higher severity.

266

267 **Factors associated with increased infectious risk**

268 Baseline characteristics of the 23 patients who developed a microbiologically confirmed infection in the
269 first year after CD30.CAR T-cell therapy were compared to the 41 patients who did not develop an
270 infection in **Table 1**. In univariate analysis, the only baseline characteristic significantly different between
271 these two groups was ANC at 30 days prior to cell infusion ($p=0.004$). After adjusting for age, $ANC \leq 1.8$
272 cells/mm^2 at day -30 remained significantly associated with infection risk, with an adjusted hazard ratio
273 (HR) of 3.4 (95% confidence interval [CI] 1.5 – 8.1). The small number of patients in our study limited
274 our ability to include additional covariates in our model.

275

276 Steroid use was not associated with increased infection risk in CD30.CAR T-cell patients, with 11
277 patients (48%) receiving steroids within a year of cell infusion in the infected group and 17 patients
278 (42%) receiving steroids within a year of cell infusion in the non-infected group. Steroid use was
279 generally low dose (less than or equivalent to 40mg prednisone daily) or a one-time single dose in the
280 CD30.CAR T-cell group; in this cohort, steroids were not used for treatment of CRS/ICANS, and instead
281 were given for a variety of indications including premedication prior to chemotherapy or surgery, or for
282 adrenal insufficiency. This contrasts with CD19.CAR T-cell patients, in which steroid use was mostly for
283 treatment of CRS/ICANS and significantly associated with infection risk ($p=0.02$) (**Supplementary**
284 **Table S1**). Steroid use was higher in the infected group, likely due to treatment for ICANS ($n=9$, 50%)
285 compared to patients who had no infections ($n=5$, 15.6%, $p=0.02$ for infected v. non-infected). Notably,
286 this same relationship between steroid use and infectious risk has been observed in prior studies in
287 CD19.CAR T-cell recipients^{10,11}. Infection-related mortality was a significant cause of death in the

288 CD19.CAR T-cell group, with 7 (63.6%) infection-related deaths and only 4 (36.5%) relapsed-related
289 deaths in the infected group compared to 13 (86.7%) relapse-related deaths and 2 (13.3%) “other” causes
290 of death in the non-infected group (p=0.004). Overall, these data show that CD19.CAR T-cell patients
291 have more measured variables associated with infection risk in univariate analysis compared to
292 CD30.CAR T-cell patients.

293

294 **Immune reconstitution after CD30.CAR T-cell therapy**

295 Given the significant association between day-30 ANC and infectious complications in CD30.CAR T
296 patients, we sought to better understand the trajectory of immune reconstitution after CD30.CAR T-cell
297 therapy. We examined the kinetics of absolute neutrophil and lymphocyte counts (ANC and ALC) 30
298 days prior to, and at multiple timepoints after, CAR T-cell infusion. Differences in ANC and ALC in
299 CD30.CAR T-cell patients with and without infections are shown in **Figure 4**. The nadir for ALC was on
300 day 0 of CAR T-cell infusion as expected, secondary to lymphodepleting chemotherapy. Surprisingly, the
301 nadir for ANC was seen on day 60, a finding which cannot be explained by lymphodepletion. There were
302 no significant differences in ANC and ALC between the infected and non-infected groups over time
303 except for a lower ANC 30 days prior (p=0.004) and at day 0 (p=0.01) in those receiving CD30.CAR T-
304 cells who were infected. Similarly, when comparing ANC and ALC for infected and non-infected
305 CD19.CAR T-cell patients, there were no significant differences in ANC and ALC at most timepoints.
306 The only exceptions were for ANC at 9 months post-cell infusion (p=0.02) and ALC at 30 days prior to
307 cell infusion (p=0.04); in both instances, cell counts were higher in infected patients, a finding likely
308 spurious due to multiple testing.

309

310 There were significant differences seen when comparing ANC and ALC between CD30 and CD19.CAR
311 T-cell patients as seen in **Figure 5**. There was no difference in ANC and ALC 30 days prior to cell
312 infusion in the two cohorts. However, significant differences were seen at multiple timepoints on and
313 after cell infusion. ANC was significantly lower in the CD19.CAR T-cell cohort compared to the
314 CD30.CAR T-cell group at every timepoint on or after cell infusion except at day 60 and 1 year. Similar
315 results were seen for ALC, which was significantly lower in the CD19.CAR T-cell versus CD30.CAR T-
316 cell cohort at every timepoint on or after cell infusion except for day +60. Of note, these statistical
317 comparisons were performed after removing CD30.CAR T-cell patients enrolled in clinical trial
318 NCT02663297, since an immediately preceding autologous HSCT may have influenced blood counts²⁴.
319 However, since the statistical trends were similar, all patient data was shown in the figure.

320

321 **DISCUSSION**

322 In these two cohorts of 114 patients in total treated with CD30 or CD19.CAR T-cells for
323 relapsed/refractory hematological malignancies, we found a similar incidence of microbiologically
324 confirmed infections within one year from cell infusion. Notably, when censoring for relapse, the
325 incidence of infection was higher in CD30.CAR T-cell (27%) versus CD19.CAR T-cell recipients (16%).
326 Infections in the CD30.CAR T-cell cohort were primarily viral (versus bacterial in the CD19.CAR T-cell
327 group) and were less severe. As expected, for both groups, a greater proportion of infections were seen in
328 the initial 30-day period after cell infusion. Unexpectedly, the higher incidence of viral infections in the
329 CD30.CAR T-cell cohort is not related to lymphopenia, as ALC was significantly lower at most
330 timepoints after CD19.CAR T-cell infusion compared to CD30.CAR T-cell therapy. Instead, ANC 30
331 days prior to CAR T infusion was significantly lower in infected patients.

332
333 There were multiple differences between the two cohorts which may contribute to variability in infection
334 types and severity. Yet, the CD19.CAR T-cell treated cohort remains an appropriate benchmark for
335 comparison in our review of infection outcomes following CD30.CAR T-cell treatment, with results from
336 our CD19 cohort similar to those published previously.⁹⁻¹² One important difference between the two
337 cohorts is the inclusion of a majority of patients with Hodgkin's lymphoma in the CD30 group, as these
338 patients tend to be younger at diagnosis. This was reflected in the lower median age for the CD30
339 compared to the CD19 cohort (40.9 v. 60.6 years). Additionally, most patients in the CD30 cohort had
340 received prior HSCT, including 29 total patients who received autologous HSCT within 90 days prior to
341 CD30.CAR T-cell therapy. Despite this additional immunosuppression in the CD30 group, infection risk
342 was much less frequent and less severe.

343
344 Antimicrobial prophylaxis use, including both antibacterials and antivirals, was similar between infected
345 and non-infected patients in both the CD30 and CD19.CAR T-cell cohorts, but overall higher in the
346 CD19.CAR T-cell treated patients (**Tables 1 and Supplementary Table S1**). We postulate this to be a
347 consequence of more standardized and increased antimicrobial prophylaxis use in patients post
348 CD19.CAR T-cell therapy (i.e., patients underwent CD30.CAR T-cell treatment starting 2 years earlier
349 (2016 v. 2018) than CD19.CAR T-cell patients). With regards to antiviral prophylaxis, five cases of VZV
350 infection were observed in CD30.CAR T-cell patients while none were in CD19.CAR T-cell patients.
351 This may be related to a higher proportion of patients on valacyclovir prophylaxis in the CD19 cohort as
352 four of the five patients who developed VZV reactivation were not on prophylaxis at time of infection.

353
354 Another difference between the two cohorts was the incidence of CRS/ICANS, which was far less
355 frequent and less severe in CD30.CAR T-cell patients. No patients developed ICANS after CD30.CAR T-

356 cell infusion compared to 28% of CD19.CAR T-cell patients. The difference in ICANS/CRS between the
357 two cohorts could be an explanation for why steroid use was significantly linked with infections ($p=0.02$)
358 in the CD19.CAR T-cell cohort but not in the CD30.CAR T-cell cohort ($p=0.8$) as overall high-dose
359 steroid use was much more common in the former (**Table 1 and Supplementary Table S1**).

360
361 Another complicating factor may be the differences in lymphodepletion regimens between the two
362 cohorts. The majority of CD30.CAR T-cell treated patients received fludarabine and bendamustine for
363 lymphodepletion ($n=37$, 57.8%) with other regimens consisting of fludarabine/cyclophosphamide ($n=3$,
364 4.7%), bendamustine ($n=7$, 10.9%), and autologous HSCT ($n=16$, 26.0%). In contrast, the majority of
365 CD19.CAR T-cell receiving patients were treated with fludarabine/cyclophosphamide ($n=44$, 88%) with
366 some patients receiving fludarabine/bendamustine ($n=5$, 10%) or bendamustine alone ($n=1$, 2%) as
367 alternative lymphodepletion regimens (**Table 1 and Supplementary Table S1**). Bendamustine use prior
368 to apheresis for CD19.CAR T-cell therapy has been associated with lower T-cell counts at apheresis.²⁹
369 However, since ALC at multiple timepoints post infusion was lower in the CD19.CAR T-cell cohort, who
370 mostly did not receive bendamustine compared to CD30.CAR T-cell cohort, it seems unlikely that
371 lymphodepletion alone is enough to account for differences in infections and immune recovery.

372
373 Strengths of this study include a relatively large total cohort of 114 CAR T-cell recipients and inclusion
374 of only microbiologically confirmed infections, with far less between-clinician bias. To our knowledge,
375 this is the first report of infection incidence and severity for patients treated with CD30.CAR T-cell
376 therapy, broadening our understanding of the epidemiology of infectious risk post-CAR T-cell infusion.
377 Limitations include heterogeneous disease types that preclude direct comparison between cohorts, with
378 more than four different hematological malignancies represented (Hodgkin's lymphoma, DLBCL, ALL,
379 and peripheral T cell lymphoma). Lymphocyte subsets and immunoglobulin levels were not routinely
380 collected on patients, which limited our assessment of immune reconstitution after CAR T-cell treatment.
381 Also, the majority of patients returned to their local oncologist for follow-up after the first month after
382 CAR T-cell infusion. While this may have limited data collection, all outside medical records available to
383 the investigators were reviewed. Finally, the COVID-19 pandemic unfolded during the study duration,
384 which may have reduced follow-up and data collection for patients treated after March 2020. Increased
385 respiratory viral testing overall due to COVID-19 may have led to increased detection of
386 microbiologically confirmed viral infections. Yet this difference would not have explained the increased
387 number of viral infections after CD30.CAR T-cell therapy, as patients were assessed during similar time
388 periods after 2020. Notably, the incidence of COVID-19 was comparable between the two cohorts, with

389 six cases (9%) of COVID-19 in CD30.CAR T-cell patients and four cases (8%) in CD19.CAR T-cell
390 patients.

391
392 In conclusion, this is the first study to report infections after CD30.CAR T-cell therapy for
393 relapsed/refractory Hodgkin's lymphoma or peripheral T-cell lymphoma. Identification of reduced ANC
394 prior to CD30.CAR T-cell infusion as a significant factor for infections after cell infusion may serve as a
395 marker for identifying patients at higher risk for infection, although further investigation is needed to
396 replicate these findings in a larger cohort. Given differences in infection risk following treatment,
397 CD30.CAR T-cell treated patients may not benefit as much from antibacterial prophylaxis as much as
398 they might from prophylactic valacyclovir for prevention of HSV and VZV. Additional studies on the
399 infectious risk of novel CAR T-cell therapies are needed with the potential to identify patients at highest
400 risk of developing infections and to tailor antimicrobial prophylaxis after CAR T-cell treatment.

401

402 **Acknowledgements**

403 The authors would like to acknowledge the staff of the University of North Carolina Chapel Hill and
404 UNC Hospitals, in particular the staff and patients at the Lineberger Cancer Center.

405

406 This work was supported in part by the following: F.C. is funded by National Cancer Institute UNC
407 Immunotherapy Training Grant T32 1T32CA28527-01. MM is funded by the Infectious Disease Society
408 of America Grants for Emerging Researchers (G.E.R.M). TMA is funded by the Amy Strelzer
409 Manasevit/Be The Match Foundation Award, a K23 NIAID/NIH Career Development Award
410 (AI163365), and the UNC Center for Gastrointestinal Biology and Disease pilot award. REDCap use was
411 made possible through grant UL1TR002489 from the Clinical and Translational Science Award program
412 of the Division of Research Resources, NIH. J.S.S. is supported by R01 155098 from NHLBI.

413

414 **Authorship Contributions**

415 T.M.A., M.S., J.H., J.M., and N.G. conceived of and designed the study with feedback from J.S.S., P.A.,
416 G.D., and B.S. who interpreted the data. T.M.A., F.C., M.M., J.S., M.K.S., and B.R. reviewed and
417 collected data from electronic health records and assisted in constructing the tables and figures. Y.X. and
418 H.H. performed the statistical analysis for the project and created the tables and figures. T.M.A. and F.C.,
419 wrote the manuscript with significant help from M.M. All authors contributed to the editing of the
420 manuscript and approved the final version.

421

422 **Conflicts of Interest**

423 J.S.S. has IP for the use of ILC2 cells to treat and prevent GVHD and for the use of STING agonists to
424 enhance CAR T-cell function; he receives royalty payments from Tessa Therapeutics for the CD30.CAR
425 T-cell product. G.D. has acted as a consultant of Bellicum Pharmaceutical and Tessa Therapeutics, serves
426 as a consultant for Catamaran, and has pending patents in the field of CAR T-cells. M.K.S. receives
427 honoraria from Calliditas, Travers, ChemoCentryx, and Elsevier. B.S. acted as a consultant of Tessa
428 Therapeutics. N.S.G. has served on an advisory board or consulted for Novartis, Kite, Seagen, ADC
429 Therapeutics, BMS, and Caribou Biosciences. T.M.A. serves as a consultant for Seres Therapeutics.
430 Otherwise, the remaining authors declare no conflicts of interest.

431

432

433 **REFERENCES**

- 434
- 435 1. Scheuermann RH, Racila E. CD19 Antigen in Leukemia and Lymphoma Diagnosis and
436 Immunotherapy. *Leuk Lymphoma*. 1995;18(5-6):385-397. doi:10.3109/10428199509059636
- 437 2. Neelapu SS, Locke FL, Bartlett NL, et al. Axicabtagene Ciloleucel CAR T-Cell Therapy in Refractory
438 Large B-Cell Lymphoma. *N Engl J Med*. 2017;377(26):2531-2544. doi:10.1056/NEJMoa1707447
- 439 3. Schuster Stephen J., Bishop Michael R., Tam Constantine S., et al. Tisagenlecleucel in Adult Relapsed
440 or Refractory Diffuse Large B-Cell Lymphoma. *N Engl J Med*. 2019;380(1):45-56.
441 doi:10.1056/NEJMoa1804980
- 442 4. Abramson JS, Palomba ML, Gordon LI, et al. Lisocabtagene maraleucel for patients with relapsed or
443 refractory large B-cell lymphomas (TRANSCEND NHL 001): a multicentre seamless design study.
444 *The Lancet*. 2020;396(10254):839-852. doi:10.1016/S0140-6736(20)31366-0
- 445 5. Locke Frederick L., Miklos David B., Jacobson Caron A., et al. Axicabtagene Ciloleucel as Second-
446 Line Therapy for Large B-Cell Lymphoma. *N Engl J Med*. 2022;386(7):640-654.
447 doi:10.1056/NEJMoa2116133
- 448 6. Kamdar M, Solomon SR, Arnason J, et al. Lisocabtagene maraleucel versus standard of care with
449 salvage chemotherapy followed by autologous stem cell transplantation as second-line treatment in
450 patients with relapsed or refractory large B-cell lymphoma (TRANSFORM): results from an interim
451 analysis of an open-label, randomised, phase 3 trial. *The Lancet*. 2022;399(10343):2294-2308.
452 doi:10.1016/S0140-6736(22)00662-6
- 453 7. Santomaso B, Bachier C, Westin J, Rezvani K, Shpall EJ. The Other Side of CAR T-Cell Therapy:
454 Cytokine Release Syndrome, Neurologic Toxicity, and Financial Burden. *Am Soc Clin Oncol Educ*
455 *Book*. 2019;(39):433-444. doi:10.1200/EDBK_238691
- 456 8. Frigault MJ, Amoloja T, Burke LM, et al. Rates of cytokine release syndrome (CRS) and immune
457 effector cell-associated neurotoxicity syndrome (ICANS) from Center for International Blood and
458 Marrow Transplant Research (CIBMTR) data on US subjects (SUBJ) with lymphoma following
459 chimeric antigen receptor T cell therapy (CAR-T). *J Clin Oncol*. 2023;41(16_suppl):7528-7528.
460 doi:10.1200/JCO.2023.41.16_suppl.7528
- 461 9. Hill JA, Li D, Hay KA, et al. Infectious complications of CD19-targeted chimeric antigen receptor-
462 modified T-cell immunotherapy. *Blood*. 2018;131(1):121-130. doi:10.1182/blood-2017-07-793760
- 463 10. Wudhikarn K, Palomba ML, Pennisi M, et al. Infection during the first year in patients treated with
464 CD19 CAR T cells for diffuse large B cell lymphoma. *Blood Cancer J*. 2020;10(8):79.
465 doi:10.1038/s41408-020-00346-7
- 466 11. Zhu F, Wei G, Liu Y, et al. Incidence and Risk Factors Associated with Infection after Chimeric
467 Antigen Receptor T Cell Therapy for Relapsed/Refractory B-cell Malignancies. *Cell Transplant*.
468 2021;30:09636897211025503. doi:10.1177/09636897211025503
- 469 12. Reynolds GK, Sim B, Spelman T, et al. Infections in haematology patients treated with CAR-T
470 therapies: A systematic review and meta-analysis. *Crit Rev Oncol Hematol*. 2023;192:104134.
471 doi:10.1016/j.critrevonc.2023.104134

- 472 13.Rejeski K, Perez A, Sesques P, et al. CAR-HEMATOTOX: a model for CAR T-cell-related
473 hematologic toxicity in relapsed/refractory large B-cell lymphoma. *Blood*. 2021;138(24):2499-2513.
474 doi:10.1182/blood.2020010543
- 475 14.Stein H, Mason DY, Gerdes J, et al. The expression of the Hodgkin's disease associated antigen Ki-1
476 in reactive and neoplastic lymphoid tissue: evidence that Reed-Sternberg cells and histiocytic
477 malignancies are derived from activated lymphoid cells. *Blood*. 1985;66(4):848-858.
- 478 15.Sabattini E, Pizzi M, Tabanelli V, et al. CD30 expression in peripheral T-cell lymphomas.
479 *Haematologica*. 2013;98(8):e81-e82. doi:10.3324/haematol.2013.084913
- 480 16.van der Weyden CA, Pileri SA, Feldman AL, Whisstock J, Prince HM. Understanding CD30 biology
481 and therapeutic targeting: a historical perspective providing insight into future directions. *Blood*
482 *Cancer J*. 2017;7(9):e603-e603. doi:10.1038/bcj.2017.85
- 483 17.Younes A, Gopal AK, Smith SE, et al. Results of a Pivotal Phase II Study of Brentuximab Vedotin for
484 Patients With Relapsed or Refractory Hodgkin's Lymphoma. *J Clin Oncol*. 2012;30(18):2183-2189.
485 doi:10.1200/JCO.2011.38.0410
- 486 18.Lai C, Kandahari AM, Ujjani C. The Evolving Role of Brentuximab Vedotin in Classical Hodgkin
487 Lymphoma. *Blood Lymphat Cancer Targets Ther*. 2019;9:63-71. doi:10.2147/BLCTT.S231821
- 488 19.Ramos CA, Grover NS, Beaven AW, et al. Anti-CD30 CAR-T Cell Therapy in Relapsed and
489 Refractory Hodgkin Lymphoma. *J Clin Oncol Off J Am Soc Clin Oncol*. 2020;38(32):3794-3804.
490 doi:10.1200/JCO.20.01342
- 491 20.Paunescu AC, Copie CB, Malak S, et al. Quality of life of survivors 1 year after the diagnosis of
492 diffuse large B-cell lymphoma: a LYSA study. *Ann Hematol*. 2022;101(2):317-332.
493 doi:10.1007/s00277-021-04689-4
- 494 21.Kreissl S, Müller H, Goergen H, et al. Health-Related Quality of Life in Patients With Hodgkin
495 Lymphoma: A Longitudinal Analysis of the German Hodgkin Study Group. *J Clin Oncol*.
496 2020;38(25):2839-2848. doi:10.1200/JCO.19.03160
- 497 22.Haidar G, Garner W, Hill JA. Infections after anti-CD19 chimeric antigen receptor T-cell therapy for
498 hematologic malignancies: timeline, prevention, and uncertainties. *Curr Opin Infect Dis*.
499 2020;33(6):449-457. doi:10.1097/QCO.0000000000000679
- 500 23.Wudhikarn K, Perales MA. Infectious complications, immune reconstitution, and infection
501 prophylaxis after CD19 chimeric antigen receptor T-cell therapy. *Bone Marrow Transplant*.
502 2022;57(10):1477-1488. doi:10.1038/s41409-022-01756-w
- 503 24.Grover NS, Hucks G, Riches ML, et al. Anti-CD30 CAR T cells as consolidation after autologous
504 haematopoietic stem-cell transplantation in patients with high-risk CD30+ lymphoma: a phase 1 study.
505 *Lancet Haematol*. 2024;11(5):e358-e367. doi:10.1016/S2352-3026(24)00064-4
- 506 25.Lee DW, Santomasso BD, Locke FL, et al. ASTCT Consensus Grading for Cytokine Release
507 Syndrome and Neurologic Toxicity Associated with Immune Effector Cells. *Biol Blood Marrow*
508 *Transplant*. 2019;25(4):625-638. doi:10.1016/j.bbmt.2018.12.758

- 509 26.Tomlinson D, Mermel LA, Ethier MC, Matlow A, Gillmeister B, Sung L. Defining bloodstream
510 infections related to central venous catheters in patients with cancer: a systematic review. *Clin Infect*
511 *Dis Off Publ Infect Dis Soc Am*. 2011;53(7):697-710. doi:10.1093/cid/cir523
- 512 27.Shahid Z, Etra AM, Levine JE, et al. Defining and Grading Infections in Clinical Trials Involving
513 Hematopoietic Cell Transplantation: A Report From the BMT CTN Infectious Disease Technical
514 Committee. *Transplant Cell Ther Off Publ Am Soc Transplant Cell Ther*. 2024;30(5):540.e1-540.e13.
515 doi:10.1016/j.jtct.2024.03.001
- 516 28.Fine JP, Gray RJ. A Proportional Hazards Model for the Subdistribution of a Competing Risk. *J Am*
517 *Stat Assoc*. 1999;94(446):496-509. doi:10.2307/2670170
- 518 29.Iacoboni G, Navarro V, Martín-López AÁ, et al. Recent Bendamustine Treatment Before Apheresis
519 Has a Negative Impact on Outcomes in Patients With Large B-Cell Lymphoma Receiving Chimeric
520 Antigen Receptor T-Cell Therapy. *J Clin Oncol Off J Am Soc Clin Oncol*. 2024;42(2):205-217.
521 doi:10.1200/JCO.23.01097
- 522

TABLES AND FIGURES

Table 1. Demographics and treatment-related complications of patients with and without microbiologically confirmed infections within one year after anti-CD30 CAR-T therapy.

	Infected*	Not infected	Total	P-value
	N= 23	N = 41	N = 64	
Median age [range]	36.3 [18.0, 75.7]	41.3 [20.1, 77.0]	40.9 [18.0, 77.0]	0.894
Sex (male), n (%)	13 (56.5)	29 (70.7)	42 (65.6)	0.382
Race, n (%)				0.109
Caucasian	20 (87.0)	30 (73.2)	50 (78.1)	
African American	3 (13.0)	4 (9.8)	7 (10.9)	
Other	0 (0.0)	7 (17.1)	7 (10.9)	
Ethnicity, n (%)				0.218
Hispanic	0 (0.0)	1 (2.4)	1 (1.6)	
Non-Hispanic	23 (100.0)	36 (87.8)	59 (92.2)	
Unknown	0 (0.0)	4 (9.8)	4 (6.3)	
Malignancy, n (%)				1
Hodgkin lymphoma (HL)	18 (78.3)	32 (78.0)	50 (78.1)	
Peripheral T cell lymphoma	5 (21.7)	9 (22.0)	14 (21.9)	
Disease state prior to treatment, n (%)				0.523
Complete Remission (CR)	5 (21.7)	15 (36.6)	20 (31.3)	
Partial Remission (PR)	4 (17.4)	7 (17.1)	11 (17.2)	
Stable Disease (SD)	1 (4.3)	3 (7.3)	4 (6.3)	
Progressive Disease (PD)	13 (56.5)	16 (39.0)	29 (45.3)	
KPS score (median [range]) ¹	90.0 [70.0, 100.0]	90.0 [70.0, 100.0]	90.0 [70.0, 100.0]	0.824
HCT-CI score (median [range]) ²	2.0 [2.0, 5.0]	2 [2.0, 6.0]	2.0 [2.0, 6.0]	0.373
Prior lines of chemotherapy (median [range])	6.0 [2.0, 17.0]	4.0 [2.0, 10.0]	4.0 [2.0, 17.0]	0.017
CAR T lymphodepletion regimen, n (%)				0.120
Fludarabine/Bendamustine	15 (65.2)	22 (53.7)	37 (57.8)	
Fludarabine/Cyclophosphamide	1 (4.3)	2 (4.9)	3 (4.7)	
Bendamustine	4 (17.4)	3 (7.3)	7 (10.9)	
Post-HCT infusion	2 (8.7)	14 (34.1)	16 (26.0)	
Other	1 (4.3)	0 (0.0)	1 (1.6)	
HSCT before CAR T, n (%)	20 (87.0)	36 (87.8)	56 (87.5)	1
HSCT type				0.586
Allogenic	1 (4.3)	5 (12.2)	6 (9.4)	
Autologous	19 (82.6)	31 (75.6)	50 (78.1)	
Median Duration between HSCT and CAR T-cell infusion (Days, median [range])	1212.5 [21.0, 3655.0]	758.0 [16.0, 6186.0]	1087.0 [16.0, 6186.0]	0.095
Auto HSCT within 90 days of CAR T-cell infusion	10 (43.5)	19 (46.3)	29 (45.3)	1.000
HSCT within 1 year after CAR T, n (%)	0 (0)	0(0)	0 (0)	NA
Steroids (Day-30 through 1 year post-CAR T), n (%) ³	11 (47.8)	17 (41.5)	28 (43.8)	0.818
Antimicrobial prophylaxis				
Fluoroquinolones	14 (60.9)	27 (65.9)	41 (64.1)	0.899
Fluconazole	14 (60.9)	24 (58.5)	28 (43.8)	1.000
Bactrim (trimethoprim-sulfamethoxazole)	10 (43.5)	19 (46.3)	29 (45.3)	1.000
Valacyclovir	16 (69.6)	32 (78.0)	48 (75.0)	0.652
Median ANC at Day -30 (median [range])	2.5 [1.1, 5.2]	4.0 [0.0, 40.8]	3.4 [0.0, 40.8]	0.004

Median ALC at Day -30 (median [range])		0.9 [0.2, 2.2]	0.7 [0.1, 3.4]	0.7 [0.1, 3.4]	0.407
ANC at lymphodepletion (median [range]) ⁴		3.1 [1.4, 5.8]	3.4 [1.0, 20.7]	3.2 [1.0, 20.7]	0.200
ALC at lymphodepletion (median [range]) ⁵		0.9 [0.1, 2.6]	0.6 [0.0, 3.3]	0.7 [0.0, 3.3]	0.315
Total days of neutropenia (median [range]) ⁶		0 [0, 27]	0 [0, 33]	0 [0, 33]	0.265
Total days of lymphopenia (median [range]) ⁷		7 [0, 115]	7 [0, 46]	7 [0, 115]	0.455
Patients with pre-treatment infection within 30 days prior to CAR-T, n (%)		0 (0.0)	3 (7.3)	3 (4.7)	0.476
Pre-CART infections by organism, n (%)					0.414
	Bacterial	0 (0.0)	2 (66.7)	2 (66.7)	
	Fungal	0 (0.0)	0 (0.0)	0 (0.0)	
	Viral	0 (0.0)	1 (33.3)	1 (33.3)	
Cytokine-release syndrome (CRS), n (%)		6 (26.1)	10 (24.4)	16 (25.0)	1
CRS grade, n (%)					0.979
	Grade 1	4 (17.4)	7 (17.1)	11 (17.2)	
	Grade 2	2 (8.7)	3 (7.3)	5 (7.8)	
CRS treatment (Tocilizumab), n (%) ⁸		2 (8.7)	3 (7.3)	5 (7.8)	1
Neurotoxicity (ICANS), n (%)		0 (0.0)	0 (0.0)	0 (0.0)	NA
ICU Admission (within 30 days of CAR-T infusion, n (%))		1 (4.3)	2 (4.9)	3 (4.7)	1
Relapse within 1 year after CAR T-cell therapy, n (%)		16 (69.6)	21 (51.2)	37 (58)	0.245
Cause of Death					0.388
	Infection-related	3 (37.5)	2 (40.0)	5 (8)	
	Relapse-related	5 (62.5)	2 (40.0)	7 (11)	
	Unknown	0 (0.0)	1 (20.0)	1 (2)	
Mortality within 30 days of CAR T, n (%)		0 (0.0)	0 (0.0)	0 (0.0)	NA

*28 total infections in 23 patients during the follow-up period. Three patients had two infections; one patient had three infections.

¹KPS, Karnofsky Performance Status

²HCT-CI, Hematopoietic Stem Cell Transplant-specific Comorbidity Index

³HSCT, Hematopoietic Stem Cell Transplant

⁴Steroids (30 days prior to CAR T through 1 year after CAR T) include dexamethasone, prednisone, and methylprednisolone

⁵ANC, absolute neutrophil count

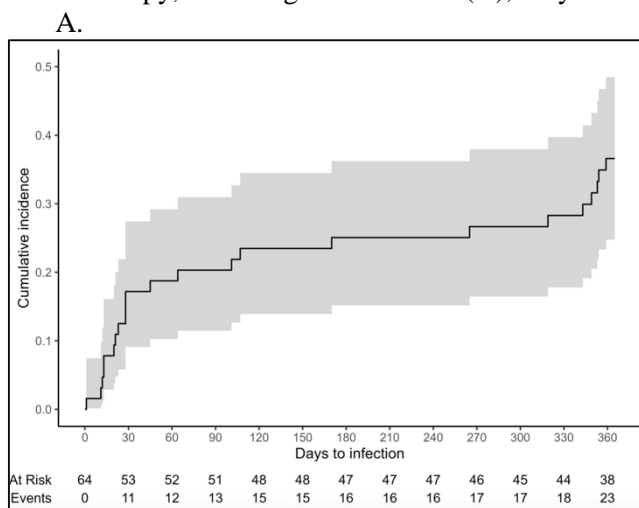
⁶ALC, absolute lymphocyte count

⁷Neutropenia defined as ANC <500 cells/mm³

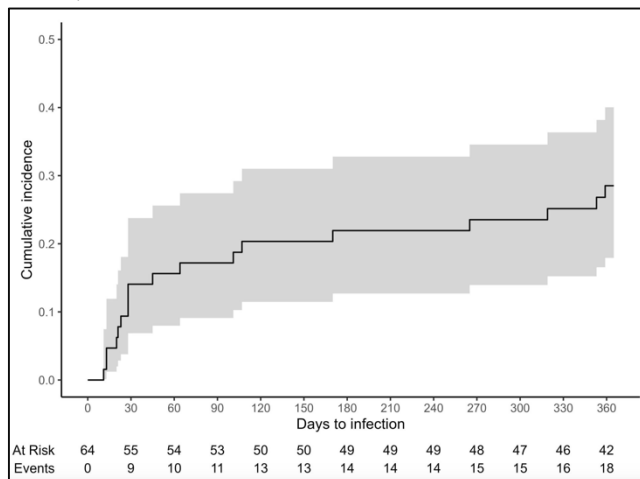
⁸Lymphopenia defined as ALC <200 cells/mm³

⁹CRS was only treated with Tocilizumab in this cohort

Figure 1. Greater numbers of viral infections were observed after CD30. CAR T-cell therapy compared to bacterial infections. Cumulative incidence curves demonstrating time to first infections in the one year after CD30 CAR T-cell therapy, including all infections (A), only viral infections (B), and only bacterial infections (C).



B.



C.

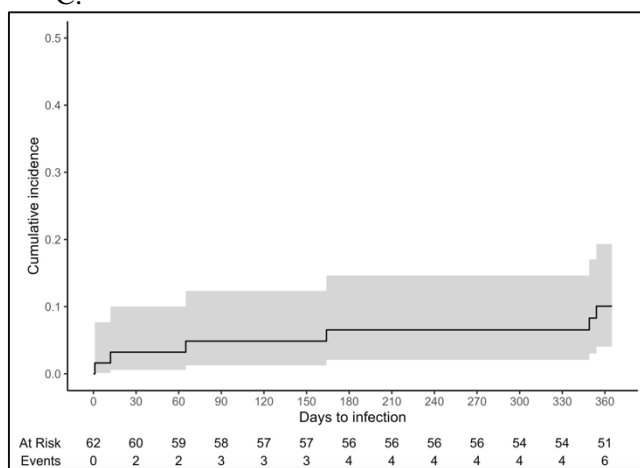
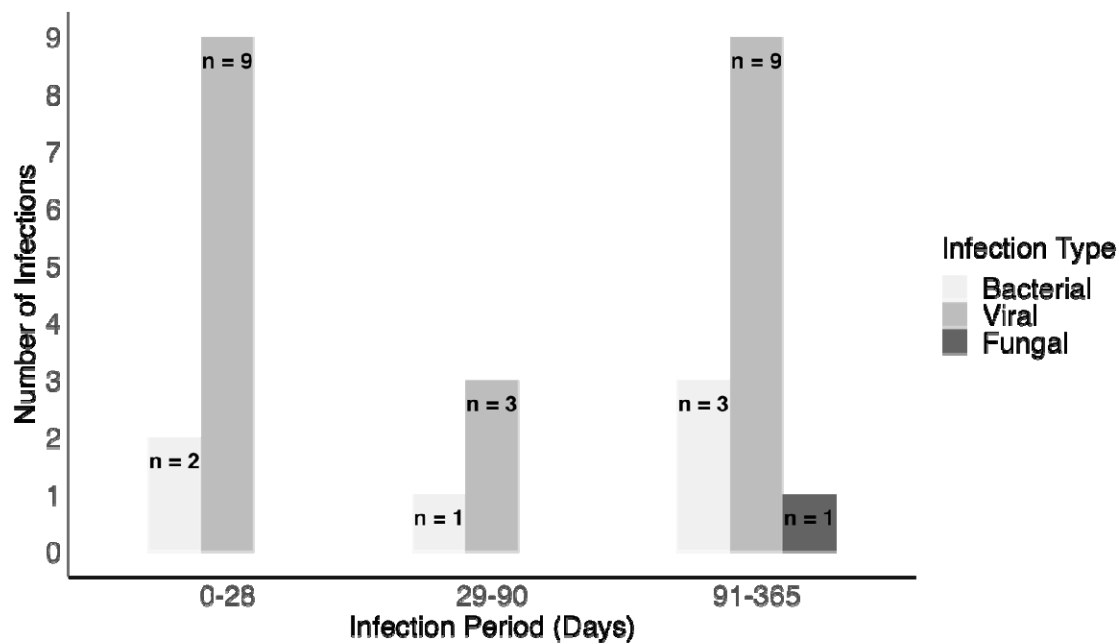


Figure 2. Similar numbers of microbiologically confirmed infections were observed between CD30 and CD19.CAR T-cell recipients. Number of infections including bacterial, viral, and fungal etiologies during the first 1 year following CAR T-cell therapy, broken into infection periods (0-28, 29-90, and 91-365 days) and compared between anti-CD30 CAR-T therapy (A) and anti-CD19 CAR-T therapy (B). All available data are shown, regardless of relapse.

A.



B.

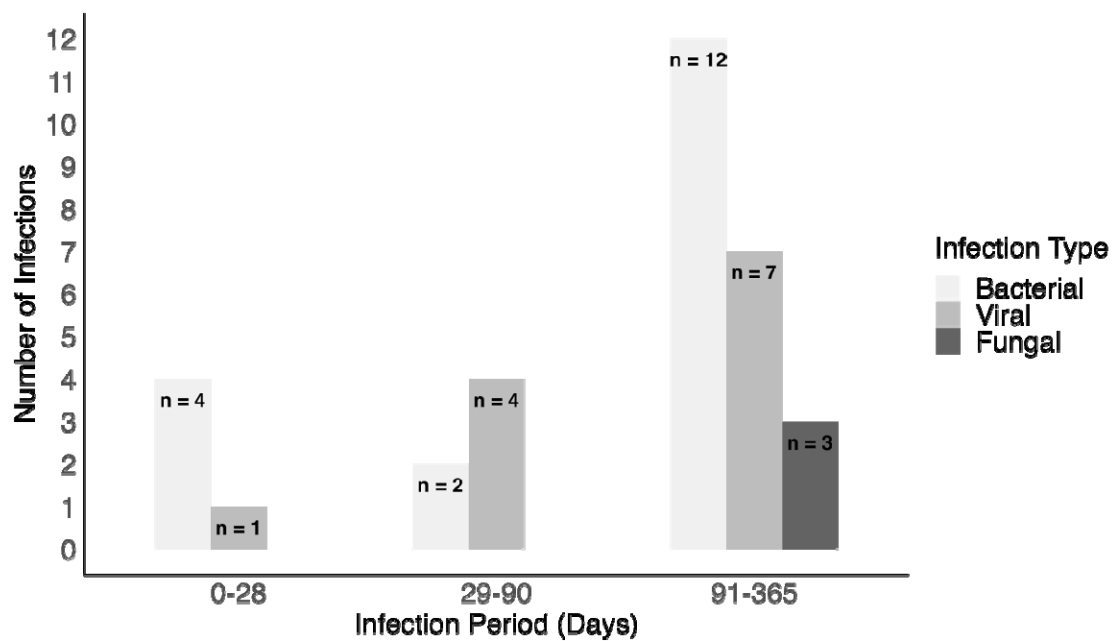


Table 2. Infectious organisms subdivided by bacterial, viral, or fungal etiology after (A) CD30 CAR T-cell therapy or (B) CD19 CAR T-cell therapy. Number in parathesis indicates total number of infections for causative organism. EBV = Epstein Barr Virus. HSV = Herpes Simplex Virus. RSV = Respiratory Syncytial Virus. SARS-CoV-2 = COVID-19. VZV = Varicella Zoster Virus.

A.

Infections after CD30 CAR T-cell therapy		
Bacterial	Viral	Fungal
<i>Escherichia coli</i>	Coronavirus NL63	<i>Pneumocystis jirovecii</i>
<i>Serratia marcescens</i>	EBV (2)	
<i>Staphylococcus aureus</i> (2)	HSV	
<i>Staphylococcus epidermidis</i>	Influenza A	
<i>Streptococcus dysgalactiae</i>	Rhinovirus (6)	
	RSV (2)	
	SARS-CoV-2 (6)	
	VZV (5)	

B.

Infections after CD19 CAR T-cell therapy		
Bacterial	Viral	Fungal
Bacterial vaginosis	HSV (3)	<i>Fusarium species</i>
<i>Campylobacter spp.</i>	Norovirus	<i>Pneumocystis jirovecii</i> (2)
<i>Citrobacter braakii</i>	Rhinovirus (3)	
<i>Enterococcus faecalis</i>	RSV	
<i>Escherichia coli</i>	SARS-CoV-2 (4)	
<i>Klebsiella pneumoniae</i> (3)		
<i>Staphylococcus aureus</i>		
<i>Serratia marcescens</i>		
<i>Staphylococcus epidermidis</i>		
<i>Streptococcus agalactiae</i>		
<i>Streptococcus mitis</i>		

Figure 3. More severe infections and more infections of bacterial origin were observed after CD19.CAR T-cell therapy compared to CD30.CAR T-cell therapy. Number of infections including bacterial, viral, and fungal etiologies of different severities occurring during the first 1 year following CAR T-cell therapy, broken into infection periods (0-28, 29-90, and 91-365 days), and compared between anti-CD30 CAR-T therapy (A) and anti-CD19 CAR-T therapy (B). Of note, two infections in B are not shown as their severity was determined as “unknown”. All other available data are shown, regardless of relapse.

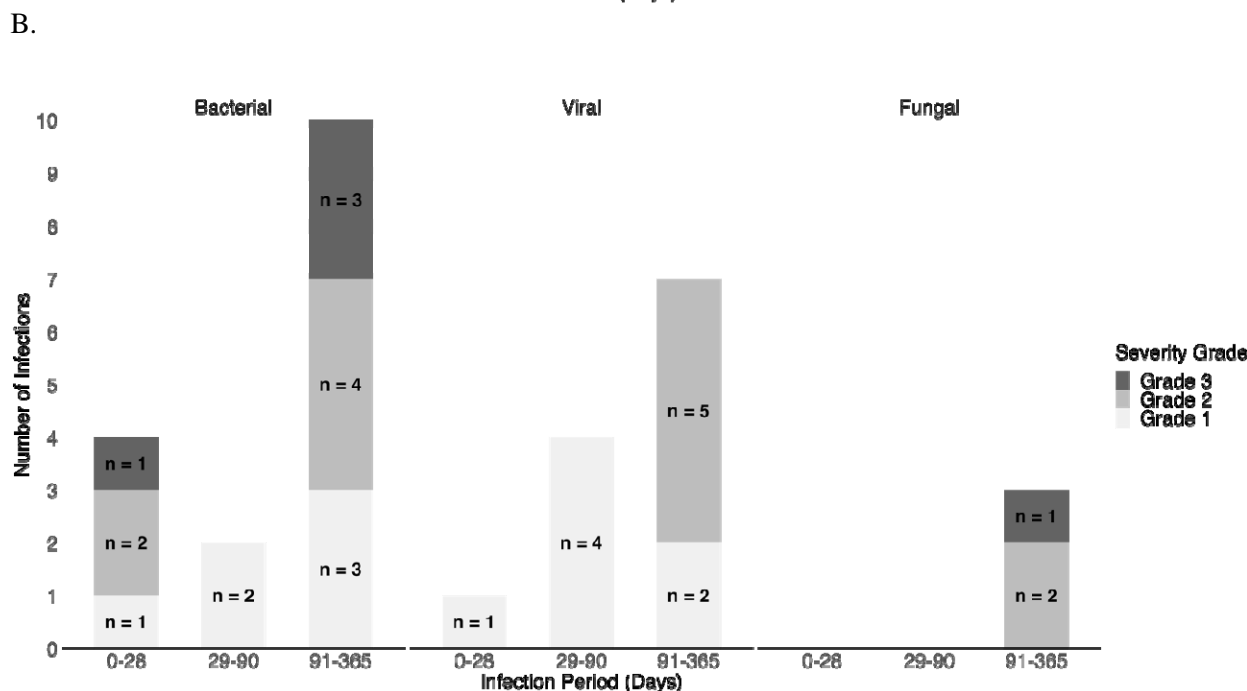
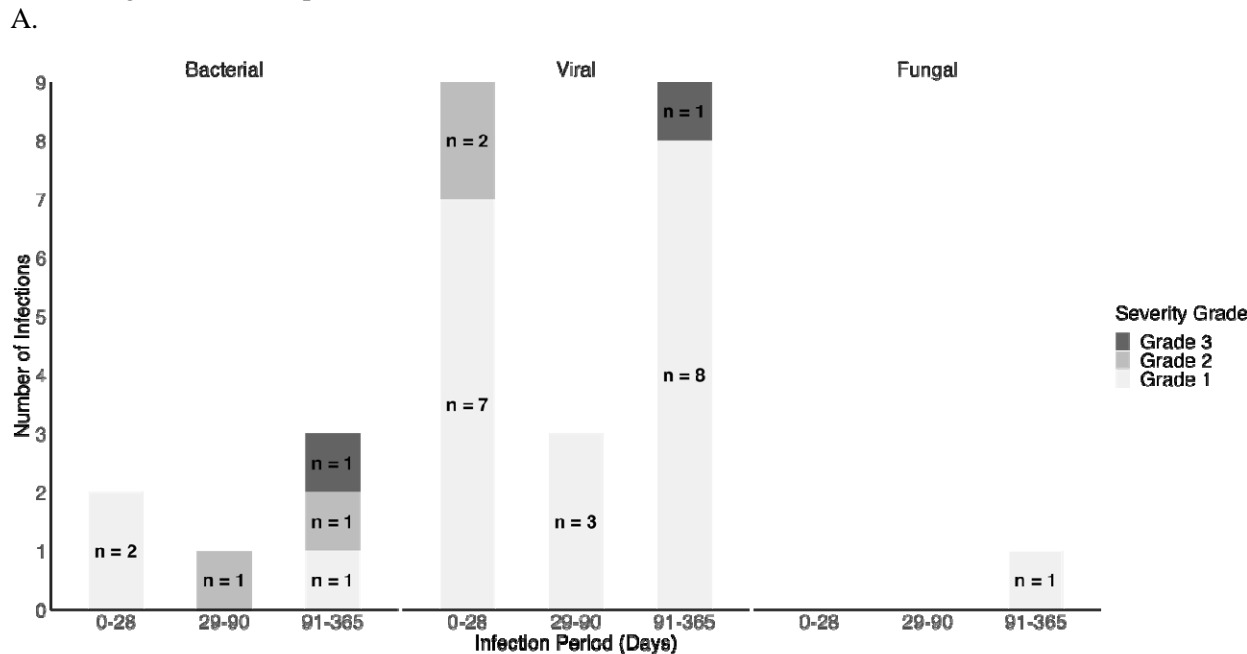


Figure 4. Immune recovery after CD30 CAR T-cell therapy demonstrates rare differences between infected and uninfected patients within 1 year after infusion. Absolute neutrophil counts (ANC, Figure 4A) and absolute lymphocyte counts (ALC; Figure 4B) are demonstrated at timepoints relative to the day of CAR-T infusion. Comparisons between infected and uninfected patients were performed using the Wilcoxon rank-sum test, with p-value <0.05 being given one star and p-value <0.01 being given two stars at the top of the plot.

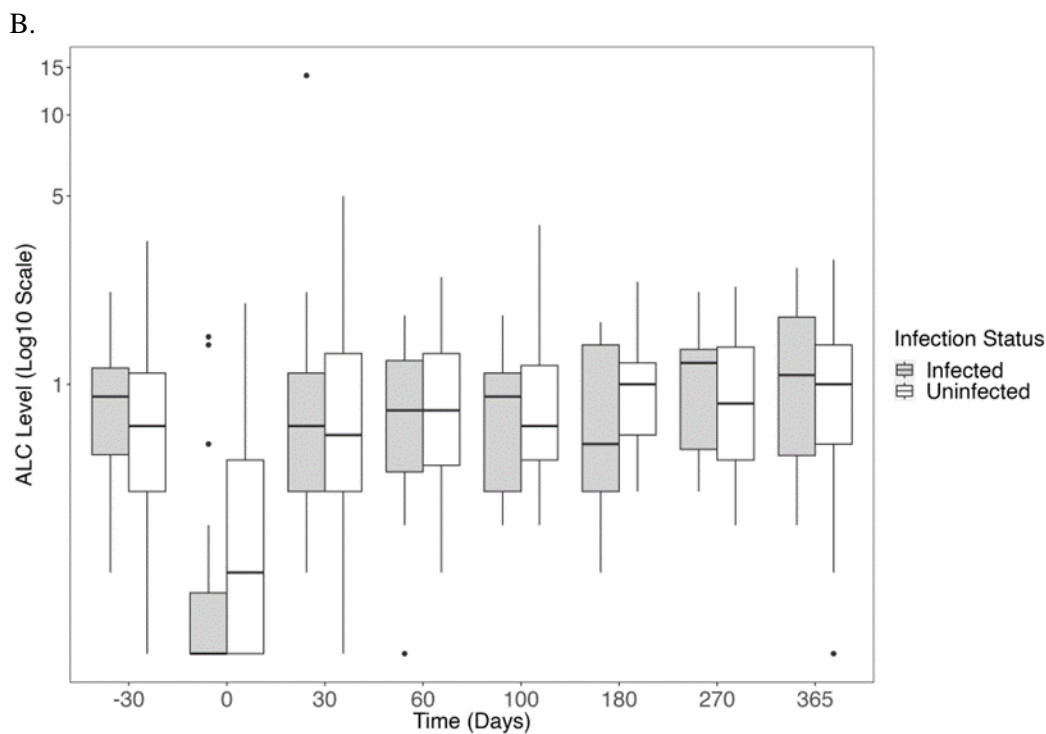
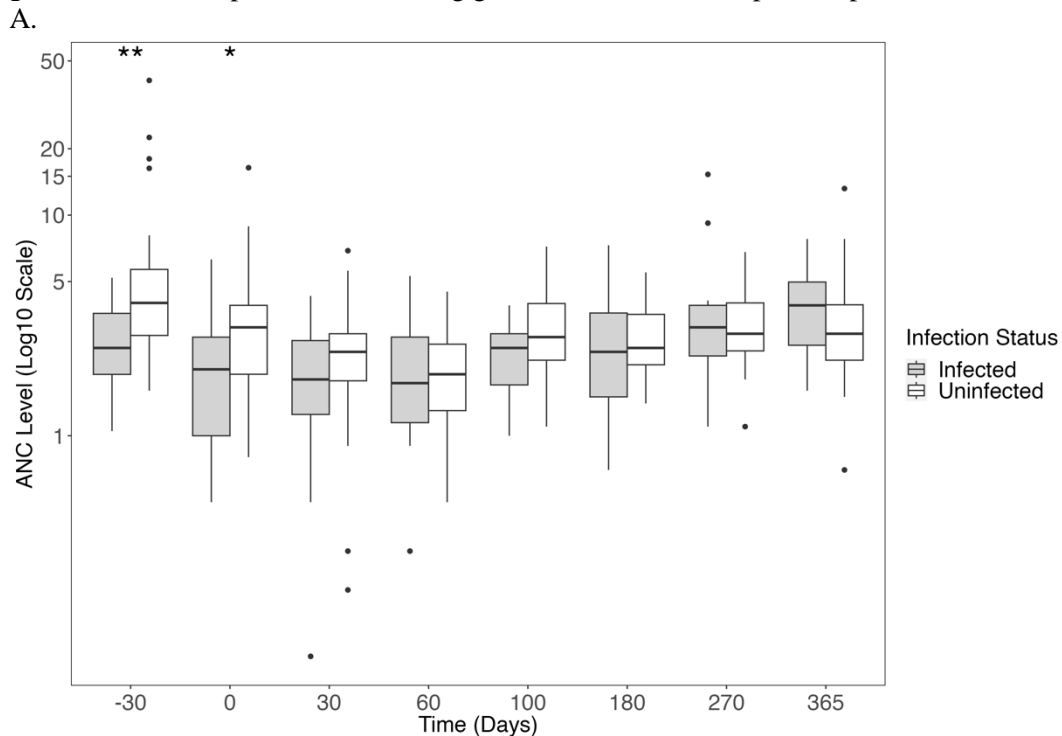
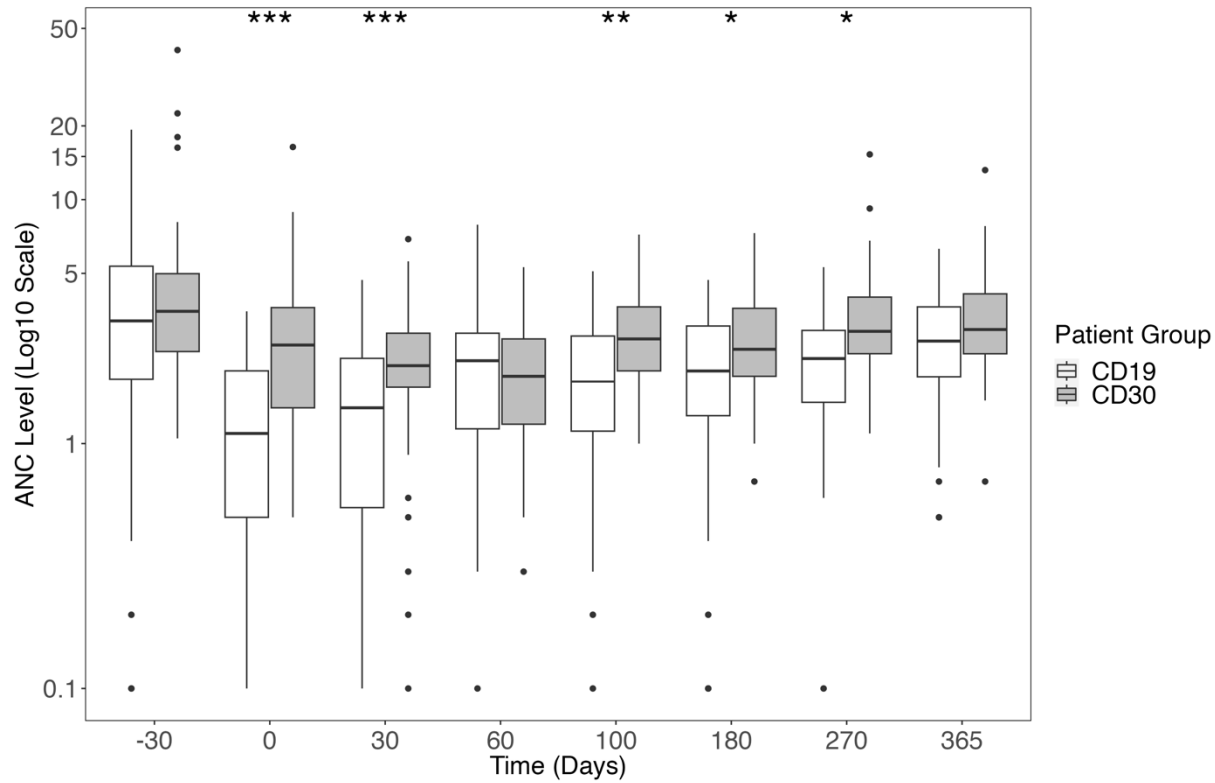


Figure 5. Immune recovery after CAR T-cell therapy demonstrates significant differences between CD30 and CD19 products within 1 year after infusion. Absolute neutrophil counts (ANC, Figure 5A) and absolute lymphocyte counts (ALC; Figure 4B) are demonstrated at timepoints relative to the day of CAR-T infusion. Comparisons between CD30 and CD19 recipients were performed using the Wilcoxon rank-sum test, with p-value <0.05 as one star, p-value <0.01 with two stars, and p-value <0.005 with three stars at the top of the plot.

A.



B.

