

Medical Findings in Infants Prenatally Identified with Sex Chromosome Trisomy in Year One of Life

Nicole Tartaglia^{ab}, Shanlee Davis^{ab}, Susan Howell^{ab}, Samantha Bothwell^{ab}, Kayla Nocon^{ab}, Karen Kowal^c, Chijioke Ikomi^c, Andrew Keene^{ab}, Victoria Reynolds^c, Agnethe Berglund^d, Judith Ross^c

Affiliations: ^aDepartment of Pediatrics, University of Colorado School of Medicine, Aurora, Colorado, USA; ^bExtraordinary Kids Program, Children's Hospital Colorado, Aurora, Colorado, USA; ^cNemours Children's Hospital, Wilmington, DE, USA; and ^dDepartment of Clinical Genetics, Aarhus University Hospital, Aarhus, Denmark

Address correspondence to: Nicole Tartaglia, MD, Developmental Pediatrics, 13123 East 16th Ave, B140, 720-777-6630, nicole.tartaglia@cuanschutz.edu

Short title: Medical Findings in Infants with Sex Chromosome Trisomy

Conflict of Interest Disclosures (includes financial disclosures): The authors have no conflicts of interest to disclose.

Funding/Support: All phases of this study were supported by NIH/NICHD R01HD091251, NIH/NICHD K23HD092588, NIH/NCATS Colorado CTSA Grant Number UL1 TR002535.

Role of Funder/Sponsor: The NIH had no role in the design and conduct of the study. Contents are the authors' sole responsibility and do not necessarily represent official NIH views.

Clinical Trial Registration and Data Sharing Statement (if any): This study is registered on ClinicalTrials.gov NCT03396562 <https://clinicaltrials.gov/study/NCT03396562>. Data sharing is available through requests from NICHD DASH (<https://dash.nichd.nih.gov/>) and includes deidentified individual participant data, study protocols, DASH data codebook, and the informed consent form. The data will be made available to researchers who provide methodologically sound proposals approved by the NICHD DASH Data or Biospecimen Access Committee.

Abbreviations: AGA: Average for gestational age; AMA: Advanced maternal age; ASD: Atrial septal defect; BW: Birth weight; BL: Birth length; CDC: Centers for Disease Control; COMIRB: Colorado Multiple Institutional Review Board; CVS: Chorionic villus sampling; GU: Genitourinary; LGA: Large for gestational age NICU: Neonatal Intensive Care Unit; PE: Pressure equalizing; SCT: Sex chromosome trisomies; SGA: Small for gestational age, VSD: Ventricular septal defect

Article Summary

Medical findings in largest cohort of prenatally identified infants with XXY, Trisomy X, and XYY from birth to 12 months and implications for pediatric care.

What's Known on This Subject:

46 One in ~500 individuals have an extra X or Y chromosome, or sex chromosome trisomy (SCT).
47 Prenatal screening is now routinely identifying SCT, however there are few studies to guide
48 perinatal and infant care for these individuals.

49

50 **What This Study Adds:**

51

52 This prospective observational study presents medical features for 327 infants with prenatally
53 identified SCT from birth through the first year of life. Results identify where proactive
54 screenings and/or interventions may be warranted for infants with SCT.

55

56

57

58

59

60

61

62

63

64

65

66

67

68

69

70

71

72

73

74

75

76

77

78

79

80

81

82

83

84

85
86
87
88
89
90
91
92
93
94
95
96
97
98
99
100
101
102
103
104
105
106
107
108
109
110
111

Contributors Statement Page

Drs. Nicole Tartaglia and Shanlee Davis conceptualized and designed the study, designed data collection instruments, supervised data collection, collected data, developed data analysis plan, drafted the initial manuscript, and critically reviewed and revised the manuscript.

Dr. Judith Ross conceptualized and designed the study, supervised data collection, collected data, and critically reviewed and revised the manuscript.

Dr. Chijioke Ikomi, Dr. Agnethe Berglund, Susan Howell and Karen Kowal collected data and critically reviewed and revised the manuscript.

Samantha Bothwell conducted data analysis, generated tables and figures, and critically reviewed and revised the manuscript.

Kayla Nocon and Victoria Reynolds participated in participant recruitment, study visit coordination, data collection and management, and critically reviewed and revised the manuscript.

Andrew Keene participated in data collection, data sharing, manuscript preparation, and critically reviewed and revised the manuscript.

All authors approved the final manuscript as submitted and agree to be accountable for all aspects of the work.

112
113
114
115
116
117
118
119
120
121
122
123
124
125
126
127
128
129
130
131
132
133
134
135
136
137
138
139
140
141
142
143
144
145
146
147

ABSTRACT:

BACKGROUND AND OBJECTIVE:

Sex chromosome trisomies (SCT), including XXY, XYY, and XXX syndromes, have been historically underdiagnosed. Noninvasive prenatal cell-free DNA screening has significantly increased identification of these conditions, leading to a need for pediatric care for a growing population of newborns with SCT. Our goal was to analyze and compare perinatal features, medical diagnoses, and physical features in infants with prenatal identification of SCT conditions through the first year of life.

METHODS:

The eXtraordinary Babies Study is an ongoing, prospective natural history study of prenatally identified children with SCT conducted by interdisciplinary teams in Colorado and Delaware. Participants were enrolled prior to 12 months of age and had pregnancy, birth, medical histories, and physical exams completed by board-certified pediatricians at 2, 6, and/or 12-month visits. Descriptive statistics were followed by comparisons between SCT groups using t-tests or ANOVA, Fisher exact, and correlations between medical features with alpha of 0.05. Relative risks were calculated compared to general population rates.

RESULTS:

327 infants were included in the analysis (XXY=195, XXX=79, XYY=53). Major congenital anomalies were rare (1.7%). Relative risk compared to general population was elevated for breastfeeding difficulties (51.7%;RR 2.7), positional torticollis (28.2%;RR 7.2), eczema (48.0%;RR 3.5), food allergies (19.3%;RR 2.4), constipation requiring intervention (33.9%;RR 7.6), small cardiac septal defects (7.7%;RR 17.2), and structural renal abnormalities (4.4%;RR 9.7). Inpatient hospitalization was required for 12.4%, with 59.5% of hospitalizations attributable to respiratory infections.

DISCUSSION:

These findings of medical conditions with a higher prevalence can inform anticipatory guidance and medical management for pediatricians caring for infants with SCT.

KEYWORDS: XXY, Klinefelter syndrome, XYY, XXX, sex chromosome aneuploidy, infant

148

149 INTRODUCTION:

150 Sex chromosome trisomies (SCT) occur in approximately 1:500 births and include XXY
151 (Klinefelter syndrome) and XYY syndrome in males, and XXX (Trisomy X) syndrome in
152 females.^{1,2} Historically, prenatal diagnosis of SCT occurred only when chorionic villi sampling
153 (CVS) or amniocentesis was indicated, such as due to abnormal ultrasound findings or advanced
154 maternal age, accounting for only 5-10% of all cases of SCT.³ An additional 5-25% were
155 diagnosed postnatally upon presentation of clinical symptoms, however 65-90% of SCT cases
156 remained undiagnosed.³ The adoption of cell-free DNA (cfDNA) screening into routine prenatal
157 care in the US has led to a marked increase in the prenatal identification of SCT,⁴ resulting in a
158 large cohort of infants with a known diagnosis. With a median of over 4,000 visits annually per
159 pediatric physician,⁵ each pediatrician will have several patients with SCT in their practice.

160 Due to the previously low rate of diagnosis in the prenatal period, there is a paucity of
161 research on medical features in the early years of life. Prior international newborn screening
162 studies identified 200 infants with SCT in the 1960's. These reports suggest that most infants
163 with SCT are born at term and are not at an increased risk of congenital malformations or
164 medical conditions during the neonatal period.^{6,7} In childhood, tall stature and mild hypotonia
165 are commonly described in the literature, as well as reports of atopic conditions, autoimmunity,
166 constipation, seizure disorders, tremor, and recurrent respiratory infections.⁷⁻¹² However, the
167 preexisting literature relies on small sample sizes and selection bias, and therefore may not be
168 generalizable to the population identified through prenatal cfDNA screening. Furthermore, while
169 the medical complexity of these children is often assumed to be low, there is no information on
170 healthcare utilization, such as hospitalization or surgery. Prevalence data for medical

171 comorbidities collected prospectively are needed to guide best care practices for pediatric SCT
172 care and provide appropriate counseling to parents.

173 The surge of infants with SCT being identified by prenatal cfDNA screening provides a
174 rich opportunity for prospective study of these infants to inform the natural history of these
175 conditions. The eXtraordinary Babies Study collects comprehensive data on health and
176 development for prenatally identified infants with SCT starting within the first year of life to
177 better inform least-biased risk and guide counseling and care for these infants. The aim of this
178 study is to describe the prospective physical and medical features in the perinatal period and first
179 year of life for a large, prenatally ascertained cohort of infants with SCT, and to compare
180 features between SCT conditions and to the general population estimates.

181

182 METHODS:

183 Parents of infants identified prenatally and subsequently confirmed to have SCT were
184 invited to participate in an IRB-approved natural history study called the eXtraordinary Babies
185 Study at one of two sites in Colorado or Delaware (ClinicalTrials.gov NCT03396562; COMIRB
186 17-0118; Nemours IRB# 1151006). Comprehensive descriptions of study methodology including
187 recruitment and assessment measures have been previously published and are summarized in
188 Figure 1, and this report focuses on medical and physical features identified within the first year
189 of life.¹³ In brief, inclusion criteria include genetic testing by amniocentesis or postnatal
190 cytogenetic testing confirming SCT with less than 20% mosaicism with a typical cell line,
191 gestational age at or above 34 weeks at birth, and enrollment prior to 12 months of age.
192 Following written informed consent, data were collected by medical providers using review of
193 medical records and a standardized interview with the parent(s) developed for the study that

194 included detailed birth and medical histories. Study visits occurred at 2, 6, and/or 12-months of
195 age depending on timing of enrollment, and visits were conducted in-person and/or via telehealth
196 due to COVID-19 restrictions during the study period.

197 Demographic data were collected through a standardized parent survey, and 4 Factor
198 Hollingshead Index was calculated as previously described.¹⁴ Physical examination was
199 conducted by board-certified pediatrician at 2, 6, and/or 12-month visits in person visits.
200 Birthweight (BW) and length (BL) measurements were converted to z-scores for gestational age
201 and sex according to US norms.¹⁵ Descriptive metrics (proportions, means) and estimates (95%
202 confidence intervals or standard deviations) for each outcome were calculated for the whole
203 sample as well as stratified by SCT. Outcomes were compared between SCT groups using
204 fisher's exact tests, for low cell counts, or ANOVA followed by pairwise comparisons. Finally,
205 when rigorous published data were available for the general pediatric population, risk ratios and
206 95% confidence intervals were calculated by unconditional maximum likelihood estimation
207 (Wald) in the epitools R package to determine whether the SCT sample proportion differed from
208 what is expected in the general population. All analyses were two-sided with a type 1 error rate
209 set at 0.05. Data were stored and managed in the secure REDCap database and all analyses were
210 conducted in RStudio v2022.12.0 using R v.4.2.2.

211

212 RESULTS:

213 The full sample consisted of 327 infants (XXY n=195, XXX n=79, XYY n=53)
214 representing 47 US states (Figure 2) and diverse racial and ethnic backgrounds (Table 1). Nearly
215 all (95%) were initially identified to have SCT via prenatal cfDNA screening performed either
216 for advanced maternal age or no clinical indication (elective), while the minority (~5%) had

217 abnormal ultrasound and/or biochemical markers prompting prenatal genetic testing (Table 2).
218 All participants except for 3 females with XXX were non-mosaic; the 3 mosaic cases were
219 47,XXX/46,XX with <20% 46,XX cell line in all cases. Pregnancies were largely
220 uncomplicated, and the vast majority of the cohort was born full-term via vaginal delivery at a
221 mean gestational age 38.7 ± 1.5 weeks. Most infants (85.2%) were average-for-gestational age
222 (AGA), however, infants with XXY and XXX had lower mean weight and length z-scores at
223 birth than those with XYY.

224 Major congenital anomalies were identified in 1.7% of the cohort, including hypospadias
225 (n=3, all subcoronal), cleft lip/palate (n=1), and clubfoot (n=1), which is not different from
226 general population estimates (up to 3%¹⁶) (Table 3). Common minor congenital anomalies
227 (Figure 3) were fifth digit clinodactyly (49.0%), epicanthal folds (45.1%), torticollis (28.2%),
228 plagiocephaly (18.8%), umbilical hernia (9.1%), and preauricular tags (6.3%). Overall mean z-
229 score for intercanthal distance was nearly a full standard deviation higher than norms (z-score –
230 0.94 (95% CI: -1.37, 2.79), however only 2.7% met criteria for hypertelorism (z-score > 2.0).
231 There were very few differences in the rates of physical findings between SCT groups. Males
232 with XXY had lower stretched penile length compared to XYY at 2 months (p<0.001), however
233 mean length in the XXY group was only a quarter of a standard deviation below the mean for the
234 general population, and only 8 (5.4%) met criteria for short penis length (stretch penile length z-
235 score <-2.0) in those with a study exam who had not received testosterone treatment (Table 4).

236 Study protocol did not include standard imaging, however of those who had clinical
237 postnatal echocardiograms completed (n=109), cardiac septal defects (atrial and/or ventricular)
238 were found in 23 (21.1%), which is 7.7% of the cohort overall. None of the infants with
239 identified ASD or VSD required invasive cardiac procedures within the first year of life,

240 however one infant required surgery for a symptomatic vascular ring secondary to double aortic
241 arch. Of the 78 infants who had a clinical renal ultrasound, 13 (16.7%) had a structural
242 abnormality, which represents 4.4% of the full cohort (vs 0.45% in the general population,¹⁷
243 $p<0.001$). When stratified by karyotype, girls with XXX were more likely to have received an
244 echocardiogram and/or renal ultrasound, however the proportion with abnormal findings of those
245 who had imaging did not significantly differ between SCT subtypes.

246 Breastfeeding difficulties occurred in half of the cohort and equally between the three
247 SCT conditions, predominantly due to difficulties with latch and/or inadequate milk transfer.
248 Despite this, the mean duration of breastmilk feeding was 8.0 ± 5.5 months with 61.1% of infants
249 still receiving breastmilk at 6 months and 43.3% at 12 months, both at or above US national
250 statistics (58.2% and 37.6%, respectively).¹⁸ The presence of breastfeeding difficulties was
251 associated with receiving a frenotomy (21.7% vs 4.8%, $p<0.001$), earlier age of formula
252 introduction (3.6 ± 3.5 vs 4.7 ± 3.5 months, $p=0.013$), as well as a diagnosis of failure to thrive
253 (28.0% vs 11.9%, $p=0.002$). There was no relationship with breastfeeding difficulties and
254 hypotonia, micrognathia, high arched palate, reflux, or constipation ($p>0.05$ for all). Constipation
255 was more common in all SCT groups compared to the general population (33.9% vs 7.0%,
256 $p<0.001$)¹⁹ and was associated with hypotonia ($p<0.001$).

257 Atopic conditions were present in 54.7% of all infants within the first year of life.
258 Eczema was present in 48.0% of all infants with SCT vs 13.7% in general population (RR 3.5
259 [3.1-3.9], $p<0.001$)²⁰ and allergies (food, environmental, and/or medication) were present in
260 24.2% vs 10.4% in the general population (RR 2.6 [2.1-3.2], $p<0.001$)²¹. The risk of food
261 allergies was 2.4 times greater in infants with SCT compared to general population estimates
262 (19.3% vs 8%, 95% CI 1.9-3.1, $p<0.001$)²², with a mean age of 5.8 ± 4.0 months at diagnosis.

263 Food allergies were more common among infants with eczema (28.7% vs 11.0%, $p=0.001$) and
264 reflux (31.6% vs 13.7%, $p<0.001$).

265 Acute infectious diagnoses including otitis media (21.1%), bronchiolitis (12.8%) and
266 pneumonia (2.7%) were similar to estimates in the general population. Overall, 12.4% of the
267 cohort required inpatient hospitalization within the first year of life, with 59.5% of these
268 hospitalizations attributable to respiratory etiologies. Surgeries occurred in 10.7% of the cohort,
269 with the most common indication being for repair of minor GU anomalies.

270 Weight and weight-for-length z-scores increase in the first year of life for all SCTs, while
271 length z-scores increase from birth to the first year of age for boys but not XXX (Table 4 and
272 Figure S1). By 12 months of age, growth parameters in all 3 groups were within 1 standard
273 deviation of the mean for the general population.

274

275 DISCUSSION:

276 This large, prospective cohort study describes the comprehensive natural history of
277 prenatal, birth, physical findings and medical conditions arising within the first year of life for
278 infants prenatally identified to have SCT. Overall, major congenital anomalies and complex
279 medical conditions were uncommon and there were minimal differences in perinatal and infant
280 findings between SCT groups. We observed several findings warranting clinical consideration
281 within the first year of life, including breastfeeding problems, failure to thrive, torticollis,
282 constipation, structural cardiac and renal differences and atopic conditions (Table 5). The results
283 from this study directly inform pediatric care as providers and families can be reassured that a
284 prenatal diagnosis of SCT is not associated with complex medical or physical abnormalities
285 within the first year of life, but proactive monitoring for select at-risk conditions is warranted.

286 Our results support that pregnancies affected by SCT are generally healthy and neither
287 fetal nor maternal complications are obviously different from the general population. Based on
288 these observations, standard prenatal care is appropriate, aside from genetic counseling and
289 decisions on timing of diagnostic genetic testing.²³ However, as conditions requiring medical
290 interventions occurred in approximately 1 out of 4 neonates in our cohort, we recommend that
291 delivery is planned at a facility equipped to manage potential neonatal complications including
292 hypoglycemia, hyperbilirubinemia requiring phototherapy, and respiratory insufficiency.
293 Furthermore, our observed prevalence of transient neonatal hypoglycemia may be an
294 underestimate as most term, AGA infants are not routinely evaluated for hypoglycemia and
295 neonatal hypoglycemia often does not present with overt symptoms.²⁴ Therefore, neonates with
296 SCT may benefit from routine glucose screening and additional research.

297 While major congenital malformations were rare, structural cardiac and renal anomalies
298 occurred more commonly than expected and this prevalence is likely underestimated given the
299 minority of participants had echocardiograms or renal imaging. Indications for echocardiogram
300 or renal imaging varied, with some being performed as general screening due to a known
301 chromosomal abnormality and others due to prenatal concern or postnatal exam findings such as
302 murmur. Congenital cardiac and renal anomalies have been previously associated with XXX,²⁵
303 but these conditions in males with SCT are primarily limited to case reports.²⁶⁻³⁰ The high
304 prevalence of abnormal imaging among all infants with SCTs supports universal postnatal
305 screening with echocardiogram and renal ultrasound to identify anatomical defects, however it is
306 also important to acknowledge that none of the individuals required intervention within the first
307 year of life unless symptoms were present. Longitudinal follow up and additional studies are

308 needed to confirm whether structural cardiac and renal imaging findings in SCTs have clinical
309 implications warranting universal imaging in asymptomatic individuals.

310 Interestingly, in males with XXY, structural cardiac and renal defects were just as
311 common as genital abnormalities which traditionally have been more commonly associated with
312 XXY. While cumulatively ~10% of the XXY cohort did have minor genitourinary differences
313 which have previously been attributed to testosterone differences in XXY, penile structural
314 abnormalities (hypospadias and chordee) were also observed in 4.4% of males with XYY,
315 suggesting a possible etiology associated with the additional sex chromosome rather than a
316 hormonal etiology. Regarding penile size, true micropenis on our examination was rare, with
317 mean penile length z-score in XXY of -0.3 in those not treated with testosterone. This is
318 important as there is common belief that XXY is associated with short penile length. While a
319 thorough GU examination is advised, most babies will have typical genitalia. Subsequent
320 analyses will evaluate serum hormone concentrations and relationship to health, physical, and
321 developmental outcomes.

322 Despite a highly motivated study sample with >90% attempting breastfeeding,
323 breastfeeding difficulties were present in over half of the sample and associated with inadequate
324 growth for a subset in the first months of life. We did not systemically evaluate quality of
325 breastfeeding, reasons for breastfeeding challenges, or ankyloglossia which warrant further
326 study. We noted a high rate of frenotomy procedures with differences between karyotypes (29%
327 in XYY). Ankyloglossia occurs in ~7% of infants in the general population³¹ and is a known
328 cause of breastfeeding difficulties. Further, frenotomy can be beneficial if ankyloglossia is
329 present.³²⁻³³ The high rate of frenotomy observed in our cohort highlights the need for additional
330 research to identify the true prevalence and classifications of ankyloglossia in infants with SCT,

331 the actual contribution to feeding problems, and whether frenotomy directly improves
332 breastfeeding. Breastfeeding challenges may reflect neurodevelopmental delays in oral-motor
333 planning and coordination, congruent with previous studies that have identified oral-motor
334 dyspraxia in SCTs.³⁴⁻³⁷ Other anatomical differences (such as micrognathia or high-arched
335 palate),³⁸ low muscle tone, or poor endurance could also theoretically contribute to feeding
336 difficulties, however we did not observe a relationship with these features and feeding problems
337 in our cohort. The relationship of early feeding problems with later developmental outcomes will
338 be explored in future analyses as the cohort ages. From a clinical perspective, proactive support
339 with lactation consultation may be beneficial, and it is important to appreciate that many infants
340 with SCT were able to receive breastmilk for a similar duration as the general population, either
341 through adequate lactation support and/or expressed breastmilk. Studies of the etiology of
342 breastfeeding problems and specific interventions to support successful breastfeeding in this
343 population are needed.

344 The prevalence of atopic conditions was one of the most striking medical findings
345 occurring in the first year, with nearly half having eczema and 1 in 5 with a food allergy. This
346 association has been previously reported in SCTs, although we did not expect to find this high of
347 prevalence within the first year of life. While we did not systematically capture disease severity,
348 anecdotally eczema was rarely severe and improved with age. Nevertheless, these findings
349 suggest an altered immune system response in infants with SCT that warrants additional
350 investigation.

351 We acknowledge limitations of the study, including sample size discrepancies between
352 SCT groups, subjectivity of some of the outcomes, and reliance on published reference data for
353 comparison to the general population. Overestimation of some findings may occur given a

354 diagnosis of a genetic condition may introduce bias to search for and potentially identify
355 abnormalities. It is also possible that our study underestimates the true prevalence of congenital
356 anomalies in SCTs as our study does not include fetuses that may have been spontaneously or
357 electively terminated. Recognizing these limitations, this study contributes vital statistics
358 describing early phenotypic features in SCTs and has important counseling and clinical
359 management implications.

360 As this cohort ages through the toddler and school-aged years, comprehensive
361 prospective data collection will allow for broader descriptions on the natural history of medical
362 features into childhood. Ongoing recruitment priorities include increased racial, ethnic, and
363 socioeconomic diversity of the study cohort and more balanced sample sizes between the three
364 SCT conditions. Analyses exploring the relationships of family medical history,
365 neurodevelopmental outcomes, reproductive hormone concentrations, and other systemic
366 biomarkers may identify specific predictors or subpopulations most at risk for poorer health
367 outcomes that would guide more intensive early supports, therapies, and medical follow-up.

368 As prenatal cfDNA screening is now routinely identifying SCT conditions and more
369 infants are presenting to primary care providers with a prenatal diagnosis, there is an acute need
370 for contemporary evidence on perinatal and infant comorbidities to guide counseling and care.
371 Our results support that counselors and medical providers can reassure families that most infants
372 have a typical perinatal course, and that most medical conditions that arise are common in the
373 general pediatric population, well-known to pediatric providers, and respond to evidence-based
374 interventions. For those medical conditions that are indeed more common and cause challenges
375 in the first year of life, anticipatory guidance and close monitoring can facilitate appropriate
376 interventions and timely support.

ACKNOWLEDGEMENTS

We would like to acknowledge additional team members contributing to this study including previous research coordinators Amira Herstik, Tanea Tanda, Sierra Kaiser, Caroline Harrison, Jillian Kirk, Mariah Brown, Amanda Alstrom, Gabrielle Stefy, and Julia Jaen. We would like to thank AXYS (www.genetic.org), Living with XXY, and the Colorado Genetic Counseling Symposium, for support in recruitment and study dissemination, the ACMG Newborn Screening Translational Research Network team for support with database design and data sharing.

REFERENCES

1. Nielsen J. Sex Chromosome Abnormalities found among 34,910 newborn children: results from a 13-year incidence study in Arhus, Denmark. *Birth Defects Orig Artic Ser.* 1990;26(4):209-23.
2. Morris JK, Alberman E, Scott C, Jacobs P. Is the prevalence of Klinefelter syndrome increasing? *Eur J Hum Genet.* Feb 2008;16(2):163-70. doi:10.1038/sj.ejhg.5201956
3. Bojesen A, Juul S, Gravholt CH. Prenatal and postnatal prevalence of Klinefelter syndrome: a national registry study. *J Clin Endocrinol Metab.* Feb 2003;88(2):622-6.
4. Loughry L, Pynaker C, White M, Halliday J, Hui L. State-wide increase in prenatal diagnosis of klinefelter syndrome on amniocentesis and chorionic villus sampling: Impact of non-invasive prenatal testing for sex chromosome conditions. *Prenat Diagn.* Feb 2023;43(2):156-161.
5. Pediatrics AAo. *Socioeconomic Survey of Pediatric Practices.* American Academy of Pediatrics; 2009.
6. Robinson A. Studies on infants and children with sex chromosomal abnormalities. *Advances in pathobiology.* 1977;(6):214-26.
7. Robinson A, Bender BG, Linden MG. Summary of clinical findings in children and young adults with sex chromosome anomalies. *Birth Defects Orig Artic Ser.* 1990;26(4):225-8.
8. Liu K, Kurien BT, Zimmerman SL, et al. X Chromosome Dose and Sex Bias in Autoimmune Diseases: Increased Prevalence of 47,XXX in Systemic Lupus Erythematosus and Sjögren's Syndrome. *Arthritis Rheumatol.* 05 2016;68(5):1290-1300.
9. Panimolle F, Tiberti C, Spaziani M, et al. Non-organ-specific autoimmunity in adult 47,XXY Klinefelter patients and higher-grade X-chromosome aneuploidies. *Clin Exp Immunol.* Sep 2021;205(3):316-325.
10. Borodyanskya M, Tartaglia N, Davis S, Hagerman R. Tremor in Children with Sex Chromosome Aneuploidy. *Journal of Investigative Medicine.* 2007;55(1):S247.
11. Wigby K, D'Epagnier C, Howell S, et al. Expanding the phenotype of Triple X syndrome: A comparison of Prenatal versus Postnatal Diagnosis. *American Journal of Medical Genetics - Part A.* 2016;170(11):2870-2881.

12. Bojesen A, Juul S, Birkebaek NH, Gravholt CH. Morbidity in Klinefelter syndrome: a Danish register study based on hospital discharge diagnoses. *J Clin Endocrinol Metab.* Apr 2006;91(4):1254-60.
13. Tartaglia N, Howell S, Davis S, et al. Early neurodevelopmental and medical profile in children with sex chromosome trisomies: Background for the prospective eXtraordinary babies study to identify early risk factors and targets for intervention. *Am J Med Genet C Semin Med Genet.* Jun 2020;184(2):428-443.
14. Hollingshead A. *Four Factor Index of Social Status.* Yale University Department of Psychology; 1975.
15. Olsen IE, Groveman SA, Lawson ML, Clark RH, Zemel BS. New intrauterine growth curves based on United States data. *Pediatrics.* Feb 2010;125(2):e214-24.
16. Egbe AC. Birth defects in the newborn population: race and ethnicity. *Pediatr Neonatol.* Jun 2015;56(3):183-8.
17. Egbe A, Uppu S, Lee S, Stroustrup A, Ho D, Srivastava S. Congenital malformations in the newborn population: a population study and analysis of the effect of sex and prematurity. *Pediatr Neonatol.* Feb 2015;56(1):25-30.
18. Centers for Disease Control, National Center for Immunizations and Respiratory Diseases, Breastfeeding Facts, 2021-2022 National Immunization Survey - Child, 2023.
19. Loening-Baucke V. Prevalence, symptoms and outcome of constipation in infants and toddlers. *J Pediatr.* Mar 2005;146(3):359-63.
20. Choragudi S, Yosipovitch G. Trends in the Prevalence of Eczema Among US Children by Age, Sex, Race, and Ethnicity From 1997 to 2018. *JAMA Dermatol.* 2023 Apr 1;159(4):454-456.
21. Zablotsky B, Black LI, Akinbami LJ. Diagnosed Allergic Conditions in Children Aged 0-17 Years: United States, 2021. *NCHS Data Brief.* Jan 2023;(459):1-8.
22. Gupta RS, Springston EE, Warrier MR, et al. The prevalence, severity, and distribution of childhood food allergy in the United States. *Pediatrics.* Jul 2011;128(1):e9-17.
23. Howell S, Davis SM, Thompson T, Brown M, Tanda T, Kowal K, Alston A, Ross J, Tartaglia NR. Noninvasive prenatal screening (NIPS) results for participants of the eXtraordinary babies study: Screening, counseling, diagnosis, and discordance. *J Genet Couns.* 2023 Feb;32(1):250-259.
24. Thornton PS, Stanley CA, De Leon DD, et al. Recommendations from the Pediatric Endocrine Society for Evaluation and Management of Persistent Hypoglycemia in Neonates, Infants, and Children. *J Pediatr.* Aug 2015;167(2):238-45.
25. Wigby K, D'Epagnier C, Howell S, et al. Expanding the phenotype of Triple X syndrome: A comparison of prenatal versus postnatal diagnosis. *American journal of medical genetics Part A.* Nov 2016;170(11):2870-2881.
26. Peng R, Zheng J, Xie HN, He M, Lin MF. Genetic anomalies in fetuses with tetralogy of Fallot by using high-definition chromosomal microarray analysis. *Cardiovasc Ultrasound.* May 06 2019;17(1):8.
27. Rudnik-Schöneborn S, Schüler HM, Schwanitz G, Hansmann M, Zerres K. Further arguments for non-fortuitous association of Potter sequence with XYY males. *Ann Genet.* 1996;39(1):43-6.
28. Barroeta JE, Stopyra GA. 47,XXY with associated bilateral renal agenesis. *Arch Pathol Lab Med.* Mar 2004;128(3):e44-5.

29. Nwosu BU, Hopkins TB. Newborn with Klinefelter syndrome and posterior urethral valves. *Urology*. Nov 2008;72(5):1033-5
30. Rao VS, Mooring PK. Ebstein's anomaly in XXY Klinefelter's syndrome. *Am J Dis Child*. Aug 1970;120(2):164-5.
31. Cruz PV, Souza-Oliveira AC, Notaro SQ, et al. Prevalence of ankyloglossia according to different assessment tools: A meta-analysis. *J Am Dent Assoc*. Nov 2022;153(11):1026-1040.e31.
32. O'Shea JE, Foster JP, O'Donnell CP, et al. Frenotomy for tongue-tie in newborn infants. *Cochrane Database Syst Rev*. Mar 11 2017;3(3):CD011065.
33. Cordray H, Raol N, Mahendran GN, et al. Quantitative impact of frenotomy on breastfeeding: a systematic review and meta-analysis. *Pediatr Res*. Jan 2024;95(1):34-42
34. Salbenblatt J, Meyers DC, Bender B, Linden MG, Robinson A. Gross and fine motor development in 47,XXY and 47,XYY males. *Pediatrics*. 1987;80(240-244)
35. Salbenblatt JA, Meyers DC, Bender BG, Linden MG, Robinson A. Gross and fine motor development in 45,X and 47,XXX girls. *Pediatrics*. Oct 1989;84(4):678-82.
36. Samango-Sprouse C, Rogol A. XXY The Hidden Disability and a Prototype for an Infantile Presentation of Developmental Dyspraxia (IDD). *Infants and Young Children*. 2002;15(1):11-18.
37. Martin S, Cordeiro L, Richardson P, Davis S, Tartaglia N. The Association of Motor Skills and Adaptive Functioning in XXY/Klinefelter and XXYY Syndromes. *Phys Occup Ther Pediatr*. 2019;39(4):446-459.
38. Close S, Fennoy I, Smaldone A, Reame N. Phenotype and Adverse Quality of Life in Boys with Klinefelter Syndrome. *J Pediatr*. Sep 2015;167(3):650-7.
39. Gianni ML, Bettinelli ME, Manfra P, et al. Breastfeeding Difficulties and Risk for Early Breastfeeding Cessation. *Nutrients*. 2019 Sep 20; 11(10):2266.
40. Daniel M, Kleis L, Cemeroglu AP. Etiology of failure to thrive in infants and toddlers referred to a pediatric endocrinology outpatient clinic. *Clin Pediatr (Phila)*. Oct 2008;47(8):762-5.
41. Barberio B, Judge C, Savarino EV, Ford AC. Global prevalence of functional constipation according to the Rome criteria: a systematic review and meta-analysis. *Lancet Gastroenterol Hepatol*. Aug 2021;6(8):638-648.
42. Sood MR. Chronic functional constipation and fecal incontinence in infants, children, and adolescents: Treatment. In: Li BUK, ed. *UpToDate*. Wolters Kluwer; 2024.
43. Gupta RS, Warren CM, Smith BM, et al. The Public Health Impact of Parent-Reported Childhood Food Allergies in the United States. *Pediatrics*. 2018;142(6):e20181235.
44. Choragudi S, Yosipovitch G. Trends in the Prevalence of Eczema Among US Children by Age, Sex, Race, and Ethnicity From 1997 to 2018. *JAMA Dermatol*. Apr 1 2023;159(4):454-456.
45. Chen MM, Chang HC, Hsieh CF, Yen MF, Chen TH. Predictive model for congenital muscular torticollis: analysis of 1021 infants with sonography. *Arch Phys Med Rehabil*. Nov 2005;86(11):2199-203.
46. Aarnivala HE, Valkama AM, Pirttiniemi PM. Cranial shape, size and cervical motion in normal newborns. *Early Hum Dev*. Aug 2014;90(8):425-30.
47. Virtanen HE, Toppari J. Epidemiology and pathogenesis of cryptorchidism. *Hum Reprod Update*. Jan-Feb 2008;14(1):49-58.

48. Christopher SE, Meira SH, Jane P, Yvonne M, Linda DS. Epidemiologic trends in penile anomalies and hypospadias in the state of California, 1985–2006. *Journal of Pediatric Urology*. 2011;7(3):294-298.
49. Montag S, Palmer LS. Abnormalities of penile curvature: chordee and penile torsion. *ScientificWorldJournal*. Jul 28 2011;11:1470-8.
50. Pathai S, Cumberland PM, Rahi JS. Prevalence of and early-life influences on childhood strabismus: findings from the Millennium Cohort Study. *Arch Pediatr Adolesc Med*. Mar 2010;164(3):250-7.
51. Liu Y, Chen S, Zühlke L, et al. Global birth prevalence of congenital heart defects 1970-2017: updated systematic review and meta-analysis of 260 studies. *Int J Epidemiol*. Apr 1 2019;48(2):455-463.
52. Egbe A, Uppu S, Lee S, Stroustrup A, Ho D, Srivastava S. Congenital malformations in the newborn population: a population study and analysis of the effect of sex and prematurity. *Pediatr Neonatol*. Feb 2015;56(1):25-30.
53. Straathof EJM, Heineman KR, Hamer EG, Hadders-Algra M. Patterns of atypical muscle tone in the general infant population - Prevalence and associations with perinatal risk and neurodevelopmental status. *Early Hum Dev*. Jan 2021;152:105276.

TABLE 1: Participant Demographics

| | Overall | XXX | XXY | XYY | ANOVA or Fisher's Exact Test p-value |
|--|----------------|----------------|----------------|-----------------|---|
| n | 327 | 79 | 195 | 53 | |
| Enrollment site (%) | | | | | 0.741 |
| Colorado | 249 (76.1) | 58 (73.4) | 149 (76.4) | 42 (79.2) | |
| Nemours | 78 (23.9) | 21 (26.6) | 46 (23.6) | 11 (20.8) | |
| Enrollment Age in Months Median (IQR) | 4.6 (2.5, 7.6) | 6.0 (3.1, 8.7) | 3.0 (2.3, 7.0) | 6.4 (3.3, 11.0) | |
| Enrollment Visit Window (%) | | | | | 0.002*1 |
| 2 months | 163 (49.8) | 30 (38.0) | 115 (59.0) | 18 (34.0) | |
| 6 months | 90 (27.5) | 30 (38.0) | 40 (20.5) | 20 (37.7) | |
| 12 months | 71 (21.7) | 19 (24.1) | 38 (19.5) | 14 (26.4) | |
| Other | 3 (0.9) | 0 | 2 (1.0) | 1 (1.9) | |
| Race (%) | | | | | 0.364 |
| Asian | 10 (3.1) | 4 (5.1) | 6 (3.1) | 0 | |
| Black | 9 (2.8) | 1 (1.3) | 5 (2.6) | 3 (5.7) | |
| Other / More than one race | 38 (11.6) | 6 (7.6) | 25 (12.8) | 7 (13.2) | |
| White | 270 (82.6) | 68 (86.1) | 159 (81.5) | 43 (81.1) | |
| Ethnicity (%) | | | | | 0.969 |
| Hispanic/Latino | 50 (15.3) | 11 (13.9) | 31 (15.9) | 8 (15.1) | |
| Not Hispanic/Latino | 277 (84.7) | 68 (86.1) | 164 (84.1) | 45 (84.9) | |
| Hollingshead | | | | | 0.368 |
| 4-factor Index mean (SD) | 53.0 (9.8) | 54.4 (7.8) | 52.7 (10.4) | 52.2 (10.3) | |
| Annual Household Income (%) | | | | | 0.604 |
| < \$75,000 | 43 (13.1) | 8 (10.1) | 25 (12.8) | 10 (18.9) | |
| \$75,000-150,000 | 109 (33.3) | 26 (32.9) | 65 (33.3) | 18 (34.0) | |
| \$150,000-250,000 | 85 (26.0) | 26 (32.9) | 48 (24.6) | 11 (20.8) | |
| >\$250,000 | 88 (26.9) | 18 (22.8) | 56 (28.7) | 14 (26.4) | |
| Did not report | 2 (0.6) | 1 (1.3) | 1 (0.5) | 0 | |
| Underrepresented (%)² | 101 (30.9) | 22 (27.8) | 64 (32.8) | 15 (28.3) | 0.689 |
| Region (US Census Bureau) (%) | | | | | 0.336 |

| | Overall | XXX | XXY | XYY | ANOVA or Fisher's Exact Test p-value |
|---------------|----------------|------------|------------|------------|---|
| International | 7 (2.1) | 0 | 3 (1.5) | 4 (7.5) | |
| Midwest | 47 (14.4) | 12 (15.2) | 30 (15.4) | 5 (9.4) | |
| Northeast | 68 (20.8) | 16 (20.3) | 39 (20) | 13 (24.5) | |
| South | 86 (26.3) | 23 (29.1) | 51 (26.2) | 12 (22.6) | |
| West | 119 (36.4) | 28 (35.4) | 72 (36.9) | 19 (35.8) | |

Categorical data are represented as n (%), and continuous data are mean (standard deviation)

*p<0.05

1 Pairwise comparison analysis: 2 month visit XXY > XXX, XYY

2 Underrepresented includes non-White, Hispanic, and/or family income <\$50K USD/year

TABLE 2: Prenatal and Perinatal History

| | Overall | XXX | XXY | YYY | ANOVA or Fisher's Exact p-value |
|---|----------------|--------------|--------------|-------------|--|
| n | 327 | 79 | 195 | 53 | |
| Initial Genetic Test | | | | | |
| Cell-free DNA Screening | 315 (96.3) | 75 (94.9) | 188 (96.9) | 51 (96.2) | 0.651 |
| CVS ¹ or Amniocentesis | 35 (10.7) | 6 (7.6) | 20 (10.3) | 9 (17) | 0.247 |
| Reason for Prenatal Test | | | | | |
| | | | | | 0.595 |
| Abnormal Ultrasound or Serum Test | 15 (4.6) | 6 (7.6) | 6 (3.1) | 3 (5.7) | |
| Advanced Maternal Age (AMA) | 165 (50.5) | 35 (44.3) | 104 (53.3) | 26 (49.1) | |
| Routine/Elective | 127 (38.8) | 33 (41.8) | 74 (37.9) | 20 (37.7) | |
| Other ² | 20 (6.1) | 5 (6.3) | 11 (5.6) | 4 (7.5) | |
| Parental Age at Birth | | | | | |
| Maternal age (yrs) mean (SD) | 34.9 (4.9) | 35.7 (4.9) | 34.8 (5.0) | 34.1 (4.6) | 0.153 |
| Paternal age (yrs) mean (SD) | 36.7 (5.9) | 37.4 (5.8) | 36.3 (6.0) | 36.9 (5.4) | 0.316 |
| Gestational Diabetes | | | | | |
| | 29 (8.9) | 11 (13.9) | 15 (7.7) | 3 (5.7) | 0.215 |
| Delivery Method | | | | | |
| | | | | | 0.634 |
| Cesarian section | 109 (33.3) | 28 (35.4) | 61 (31.3) | 20 (37.7) | |
| Gestational Age (weeks) mean (SD) | | | | | |
| | 38.7 (1.4) | 38.6 (1.5) | 38.7 (1.4) | 38.8 (1.4) | 0.755 |
| Gestational Age Category³ | | | | | |
| | | | | | 0.607 |
| Preterm (34-36 weeks) | 27 (8.3) | 5 (6.3) | 16 (8.2) | 6 (11.3) | |
| Full Term (≥ 37.0 weeks) | 300 (91.7) | 74 (93.7) | 179 (91.8) | 47 (88.7) | |
| Growth Parameters at Birth⁴ | | | | | |
| Birthweight (grams) mean (SD) | 3230 (542) | 3130 (544) | 3210 (520) | 3420 (580) | 0.009* ⁵ |
| Birthweight Z-score mean (SD) | -0.25 (0.87) | -0.23 (0.91) | -0.33 (0.82) | 0.04 (0.92) | 0.022* ^{5,6} |
| Birth Length (cm) mean (SD) | 50.4 (2.9) | 49.5 (2.6) | 50.5 (2.9) | 51.5 (2.8) | <0.001* ⁵ |
| Birth Length Z-score mean (SD) | 0.02 (0.95) | -0.12 (0.91) | -0.02 (0.96) | 0.36 (0.91) | 0.024* ^{5,7} |
| Birth Size Category | | | | | |
| | | | | | 0.108 ⁶ |
| Small for gestational age | 35 (10.7) | 6 (7.6) | 26 (13.3) | 3 (5.7) | |
| Average for gestational age | 279 (85.3) | 68 (86.1) | 165 (84.6) | 46 (86.8) | |
| Large for gestational age | 12 (3.7) | 4 (5.1) | 4 (2.1) | 4 (7.5) | |
| Neonatal Medical Course | | | | | |

| | Overall | XXX | XXY | XYY | ANOVA or Fisher's Exact p-value |
|-------------------------------|----------------|------------|------------|------------|--|
| Intubation and/or Ventilation | 15 (4.6) | 5 (6.3) | 7 (3.6) | 3 (5.7) | 0.452 |
| Hyperbilirubinemia | 47 (14.4) | 9 (11.4) | 29 (14.9) | 9 (17.0) | 0.655 |
| Hypoglycemia | 25 (7.6) | 5 (6.3) | 16 (8.2) | 4 (7.5) | 0.955 |
| NICU Admission ⁸ | 35 (10.7) | 11 (13.9) | 19 (9.7) | 5 (9.4) | 0.586 |

Categorical data are represented as n (%), and continuous data are mean (standard deviation)

*p<0.05

1 CVS = Chorionic Villus Sampling

2 Other; other reasons include previous pregnancy with chromosome abnormality (n=6), IVF pregnancy (n=3), genetic disorder in family (n=5), previous high risk pregnancy (n=3), other pregnancy complication (n=3)

3 Study inclusion criteria required birth ≥ 34 weeks gestation

4 Based on Fenton gestational age growth curves

5 Pairwise comparisons analysis: XXY, XXX<XYY

6 Pairwise comparisons analysis: XXY<XXX, XYY

7 Pairwise comparisons analysis: XXX<XXY, XYY

8 NICU Admissions were for respiratory distress, hypoglycemia, and feeding difficulties

TABLE 3: Medical Problems from Birth to 12 months

| | Overall | XXX | XXY | XYX | ANOVA or Fisher's Exact p-value |
|---|----------------|------------|------------|------------|--|
| n | 298 | 71 | 182 | 45 | |
| Breastfeeding Problems | 154 (51.7) | 39 (54.9) | 90 (49.5) | 25 (55.6) | 0.983 |
| Aspiration | 12 (4.0) | 4 (5.6) | 6 (3.3) | 2 (4.4) | 0.630 |
| Allergies - Any | 72 (24.2) | 13 (18.3) | 49 (26.9) | 10 (22.2) | 0.331 |
| Food/Formula Allergies | 58 (19.5) | 10 (14.1) | 39 (21.4) | 9 (20.0) | 0.428 |
| Food Allergy onset mean age (SD) | 5.8 (4.0) | 3.8 (2.7) | 6.5 (4.1) | 4.6 (3.8) | 0.089 ⁴ |
| Environmental/Seasonal Allergies | 19 (6.4) | 1 (1.4) | 15 (8.2) | 3 (6.7) | 0.106 |
| Environmental/Seasonal age at onset mean (SD) | 6.9 (3.4) | 9.0 (NA) | 6.8 (3.8) | 7.0 (1.0) | 0.838 |
| Medication Allergy | 6 (2.0) | 3 (4.2) | 3 (1.6) | 0 | 0.356 |
| Medication Allergy age at onset mean (SD) | 10.5 (4.2) | 11.3 (5.0) | 9.7 (4.0) | NA (NA) | 0.678 |
| Eczema | 143 (48.0) | 23 (32.4) | 97 (53.3) | 23 (51.1) | 0.008 ^{*4,5} |
| Reactive Airway Disease | 5 (1.7) | 0 | 4 (2.2) | 1 (2.2) | 0.555 |
| Otitis Media | 63 (21.1) | 11 (15.5) | 42 (23.1) | 10 (22.2) | 0.363 |
| Bronchiolitis | 38 (12.8) | 6 (8.5) | 23 (12.6) | 9 (20.0) | 0.208 |
| Pneumonia | 8 (2.7) | 1 (1.4) | 7 (3.8) | 0 | 0.392 |
| Croup | 11 (3.7) | 2 (2.8) | 8 (4.4) | 1 (2.2) | 0.764 |
| Delayed dental eruption ¹ | 15 (5.0) | 4 (5.6) | 11 (6.0) | 0 | 0.244 |
| 1 st Dental eruption age mean (SD) | 8.0 (2.3) | 8.4 (2.1) | 8.0 (2.2) | 7.7 (2.7) | 0.328 |
| Gastroesophageal Reflux Disease | 89 (29.9) | 17 (23.9) | 62 (34.1) | 10 (22.2) | 0.153 |
| Constipation | 101 (33.9) | 32 (45.1) | 56 (30.8) | 13 (28.9) | 0.077 ⁵ |
| Eosinophilic esophagitis | 1 (0.3) | 1 (1.4) | 0 | 0 | 0.361 |
| Failure to Thrive (FTT) ² | 54 (18.1) | 19 (26.8) | 30 (16.5) | 5 (11.1) | 0.073 ⁵ |
| FTT age at diagnosis mean (SD) | 2.9 (3.7) | 3.0 (4.1) | 2.9 (3.7) | 2.6 (2.4) | 0.981 |
| Hearing Loss | 4 (1.3) | 0 | 4 (2.2) | 0 | 0.481 |
| Strabismus | 71 (23.8) | 14 (19.7) | 45 (24.7) | 12 (26.7) | 0.610 |
| Cleft Palate | 1 (0.3) | 0 | 1 (0.5) | 0 | 1.000 |
| Polydactyly | 3 (1.0) | 0 | 2 (1.1) | 1 (2.2) | 0.766 |
| Clubfoot | 1 (0.3) | 1 (1.4) | 0 | 0 | 0.380 |
| Torticollis | 88 (29.5) | 19 (26.8) | 56 (30.8) | 13 (28.9) | 0.855 |
| Plagiocephaly | 75 (25.2) | 15 (21.1) | 49 (26.9) | 11 (24.4) | 0.655 |

| | Overall | XXX | XXY | XYX | ANOVA or Fisher's Exact p-value |
|--|----------------|------------|------------|------------|--|
| Velopharyngeal Insufficiency | 2 (0.7) | 0 | 2 (1.1) | 0 | 1.000 |
| Cardiac ASD or VSD – entire group | 23 (7.7) | 11 (15.5) | 9 (4.9) | 3 (6.7) | 0.021* ^{4,5} |
| Cardiac ASD or VSD – echo subset (n=109) ⁶ | 23 (21.1) | 11 (23.9) | 9 (19.6) | 3 (17.6) | 0.858 |
| Other cardiac finding ⁷ – entire group | 31 (10.4) | 11 (15.5) | 16 (8.8) | 4 (8.9) | 0.280 |
| Inguinal Hernia | 3 (1.0) | 0 (0) | 2 (1.1) | 1 (2.2) | 0.517 |
| Congenital Hip Dislocation / Dysplasia | 4 (1.4) | 1 (1.5) | 1 (0.5) | 2 (5.1) | 0.098 |
| Renal malformation – entire group | 13 (4.4) | 9 (12.7) | 3 (1.6) | 1 (2.2) | 0.003* ^{4,5} |
| Renal malformation – renal ultrasound subset (n=78) ⁸ | 13 (16.7) | 9 (16.1) | 3 (23.1) | 1 (11.1) | 0.790 |
| Umbilical Hernia | 39 (13.1) | 8 (11.3) | 23 (12.6) | 8 (17.8) | 0.505 |
| Hypotonia | 116 (38.9) | 27 (38.0) | 72 (39.6) | 17 (37.8) | 0.985 |
| Febrile Seizure | 1 (0.3) | 0 | 1 (0.5) | 0 | 1.000 |
| GU anomaly (% males; n=227) | 21 (9.3) | NA | 19 (10.4) | 2 (4.4) | 0.265 |
| Hypospadias ⁹ | 3 (1.3) | NA | 2 (1.2) | 1 (2.2) | 1.000 |
| Penile chordee or webbing | 12 (5.3) | NA | 11 (6.0) | 1 (2.2) | 0.468 |
| Hydrocele | 16 (7.0) | NA | 15 (8.2) | 1 (2.2) | 0.206 |
| Cryptorchidism | 12 (5.3) | NA | 11 (6.0) | 1 (2.2) | 0.468 |
| Any hospitalization (excludes NICU) | 37 (12.4) | 7 (9.9) | 22 (12.1) | 8 (17.8) | 0.459 |
| Hospitalization for respiratory infection | 22 (7.4) | 5 (7.0) | 13 (7.1) | 4 (8.9) | 0.905 |
| Age (months) of first hospitalization | 5.9 (4.0) | 4.4 (4.7) | 7.8 (3.6) | 4.8 (3.7) | 0.292 |
| Any surgery (one or more surgeries) | 32 (10.7) | 6 (8.5) | 18 (9.9) | 8 (17.8) | 0.240 |
| Ear PE tubes | 7 (2.3) | 1 (1.4) | 5 (2.7) | 1 (2.2) | 1.000 |
| Tonsillectomy / Adenoidectomy | 2 (0.7) | 0 | 2 (1.1) | 0 | 1.000 |
| GU surgery (excludes circumcision) ¹⁰ | 10 (3.4) | 1 (1.4) | 6 (3.3) | 3 (6.7) | 0.325 |
| Other surgery ¹¹ | 13 (4.4) | 3 (4.2) | 6 (3.3) | 4 (8.9) | 0.232 |
| Age (months) of first surgery | 8.2 (3.5) | 10.6 (1.6) | 8.8 (3.1) | 6.0 (4.1) | 0.103 ³ |
| Frenotomy (frenulectomy) procedure ¹² | 38 (12.8) | 2 (2.8) | 23 (12.6) | 13 (28.9) | <0.001* ^{3,5} |

Participants who have completed their 12-month study visit are included. Categorical data are represented as n (%), and continuous data are mean (standard deviation). All ages are in months. *p<0.05

1 Delayed dental eruption defined as lack of eruption by 12 months of age

2 Failure to Thrive defined as medical evaluation and intervention required due to inadequate weight gain, also called growth faltering or inadequate weight gain

3 Pairwise comparisons analysis: XXY, XXX ≠ XYX

| | Overall | XXX | XXY | XYY | ANOVA or Fisher's Exact p-value |
|----|---|-----|-----|-----|---------------------------------------|
| 4 | Pairwise comparisons analysis: XXY ≠ XXX, XYY | | | | |
| 5 | Pairwise comparisons analysis: XXX ≠ XXY, XYY | | | | |
| 6 | Echocardiogram group total n=109 (46 XXX, 46 XXY, 17 XYY) | | | | |
| 7 | Other cardiac findings included (some participants had more than 1 finding): Patent Ductus Arteriosus (n=4), Pulmonic stenosis (n=5), Situs inversus (n=1), Patent Foramen Ovale (n=13), Double aortic arch & vascular ring, repair required (n=1), Right aortic arch (n=1), Bicuspid aortic valve (n=1) | | | | |
| 8 | Renal ultrasound group total n=61 (43 XXX, 11 XXY, 7 XYY). Renal ultrasound findings included: Hydronephrosis (n=5), Pelvic caliectasis (n=6), Bilateral small kidneys (n=2), Duplicated collecting system (n=1), Nephrocalcinosis (n=1) (1 participant had both duplicated collecting system and hydronephrosis, 1 participant had both hydronephrosis and pelvic caliectasis) | | | | |
| 9 | All cases of hypospadias classified as subcoronal hypospadias, no surgical intervention indicated | | | | |
| 10 | GU surgical repairs include: Hidden penis (n=3), penile webbing / chordee (n=6), Bifid scrotum(n=1), ear tag(n=1), ureterocele-ectomy (n=1), some participants had >1 finding | | | | |
| 11 | Other surgeries included: anoplasty (n=1), dermoid cyst removal (n=2), ear tag or accessory digit removal (n=4), g-tube placement (n=1), hip dislocation repair (n=1), supraglottoplasty (n=2), tenotomy (n=1), vascular ring repair (n=1) | | | | |
| 12 | Frenotomy not included as surgery | | | | |

Table 4 Physical Examination Growth z-scores at 2, 6, and 12 months¹

| | Overall | XXX | XXY | XYY | ANOVA or Fisher's Exact p-value |
|---|--------------|-------------|--------------|-------------|---------------------------------|
| <i>2-month Physical Exam Subset</i> | 135 | 20 | 108 | 7 | |
| Weight z-score mean (SD) | -0.7 (1.1) | -0.79 (1.0) | -0.76 (1.0) | 0.35 (1.7) | 0.023* ² |
| Length z-score mean (SD) | -0.59 (1.2) | -0.51 (1.2) | -0.71 (1.1) | 1.1 (1.6) | <0.001* ² |
| Weight-for-Length z-score mean (SD) | -0.23 (1.1) | -0.43 (0.8) | -0.17 (1.1) | -0.53 (1.3) | 0.487 |
| Head circumference z-score mean (SD) | -0.12 (1.1) | -0.3 (0.9) | -0.17 (1.1) | 1.1 (1.7) | 0.008* ² |
| Stretched Penile Length z-score (SD) (males only w/o history of testosterone, n=110; XXY = 103, XYY = 7) ³ | -0.23 (0.76) | NA | -0.29 (0.72) | 0.73 (0.90) | <0.001* |
| Z-Score < -2.0 | 2 (1.5) | NA | 2 (1.9) | 0 (0) | 1.000 |
| <i>6-month Physical Exam Subset</i> | 193 | 42 | 130 | 21 | |
| Weight z-score mean (SD) | -0.11 (1.1) | -0.31 (1.0) | -0.11 (1.1) | 0.39 (1.4) | 0.114 |
| Length z-score mean (SD) | -0.17 (1.2) | -0.34 (1.1) | -0.18 (1.2) | 0.20 (1.6) | 0.245 |
| Weight-for-Length z-score mean (SD) | 0.08 (1.1) | -0.04 (1.0) | 0.08 (1.2) | 0.40 (0.9) | 0.335 |
| Head circumference z-score mean (SD) | 0.06 (1.2) | -0.05 (0.8) | -0.06 (1.2) | 1.02 (1.4) | <0.001* ² |
| Stretched Penile Length z-score (SD) (males only w/o history of testosterone, n=71; XXY = 50, XYY = 21) ³ | 0.15 (1.1) | NA | 0.16 (1.1) | 0.09 (1.0) | 0.783 |
| Z-Score < -2.0 | 2 (1.0) | NA | 2 (1.5) | 0 (0) | 1.000 |
| <i>12-month Physical Exam Subset</i> | 255 | 55 | 164 | 36 | |
| Weight z-score mean (SD) | 0.27 (1.1) | -0.08 (0.8) | 0.28 (1.1) | 0.69 (1.2) | 0.005* ^{2,4} |
| Length z-score mean (SD) | 0.05 (1.2) | -0.39 (1.0) | 0.07 (1.2) | 0.60 (1.5) | 0.001* ^{2,4} |
| Weight-for-Length z-score mean (SD) | 0.35 (1.1) | 0.15 (0.8) | 0.36 (1.1) | 0.60 (1.1) | 0.184 |
| Head circumference z-score mean (SD) | 0.24 (1.1) | 0.04 (1.0) | 0.17 (1.1) | 0.78 (1.2) | 0.006* ² |
| Stretched Penile Length z-score (SD) (males only w/o history of testosterone, n=100; XXY = 64, XYY = 36) ³ | 0.08 (1.1) | NA | 0.08 (1.1) | 0.08 (1.0) | 0.994 |
| Z-Score < -2.0 | 8 (3.6) | NA | 7 (4.9) | 1 (2.9) | 0.253 |

1 Total sample size receiving in person physical examination at each study visit is variable due to enrollment age and COVID-19 restrictions

2 Pairwise comparisons analysis: XXY, XXX < XYY

3 In XXY, those previously treated with exogenous testosterone were excluded: 2-month n=5 (4.6%), 6-month n=80 (61.5%), 12-month n=100 (61.0%)

4 Pairwise comparisons analysis: XXX < XXY, XYY

TABLE 5: Medical Conditions at Higher Risk in Infants with Prenatal SCT Diagnosis and Guidance for Clinical Care

| Feature | General Prevalence ^a | SCT Prevalence (95% CI) | Relative Risk in SCT | Considerations for Clinical Care |
|---|---------------------------------|-------------------------|----------------------|---|
| Infant-related breastfeeding difficulties | 19% ³⁹ | 51.7% (46-57.4%) | 2.7 (2.1-3.4) | Encourage prenatal breastfeeding classes if parent wishes to breastfeed Proactive lactation consultation after delivery Breast pump for expressed breastmilk in case of delay with successful latch or ongoing breastfeeding challenges Targeted history in newborn nursery and first well child checks Evaluate for ankyloglossia and consider referral for further evaluation |
| Failure to Thrive / Growth Faltering | 10% ⁴⁰ | 18.1% (13.7-22.5%) | 1.8 (1.3.-2.5) | Early feeding / breastfeeding support as above Close follow-up for growth / weight gain in first months of life Caloric supplementation and other medical work-up as indicated Consideration of feeding therapy by feeding specialist, speech, or occupational therapy |
| Constipation (requiring intervention) | 7.0% ^{41,42} | 33.9% (28.5-39.3%) | 5.2 (4.3-6.3) | Sorbitol-containing juices (eg, apple, prune, or pear) Lactulose, polyethylene glycol, glycerin suppositories under physician supervision; Referral to gastroenterology if needed |
| Any Allergies | 10.4% | 24.2% (19.3%-29%) | 2.6 (2.1-3.2) | |
| Food / Formula Allergies | 8.8% ⁴³ | 19.5% (15-24%) | 2.4 (1.9-3.1) | Awareness of increased risk and consideration of allergic etiology for feeding, reflux, constipation, or colic concerns Parent education of milk protein and food allergy symptoms, staged introduction of new foods, indications for diphenhydramine administration, and when to seek emergent care |
| Eczema | 13.7% ⁴⁴ | 48.0% (42.3-53.7%) | 3.5 (3.1-3.9) | Awareness of increased risk, targeted physical exam, standard pediatric eczema interventions |
| Positional Torticollis | 3.9% ^{45,46} | 28.2% (23.1-33.3%) | 7.2 (5.1-10.2) | Targeted physical examination for identification Recommend tummy time, neck stretching exercises, and positioning Consider referral to physical therapy Consider referral for molding helmet if associated with plagiocephaly |
| Male genitourinary abnormalities | | | | Targeted physical examination for cryptorchidism, hypospadias, chordee, webbing, short phallus |
| Cryptorchidism (XXY only) [^] | 1.1% ⁴⁷ | 3.5% (1.4-5.6%) | 2.3 (1.1-4.6) | |
| Hypospadias | 0.4% ⁴⁸ | 1.3% (0-2.6%) | 3.1 (1.0-9.6) | Referral to Pediatric Urology if abnormalities identified |
| Chordee | 4.5% ⁴⁹ | 5.3% (2.7-7.8%) | 1.3 (0.75-2.3) | Consider infant testosterone therapy if stretched penile length < 2cm in term infant |
| Penis length z-score <-2.0 | 2.5% | 3.5% (0.4-27.8%) | 1.8 (0.38, 8.2) | |
| Strabismus | 2.4% ⁵⁰ | 6.7% (3.9-9.6%) | 3.1 (2.0-4.8) | Targeted physical examination with awareness of possible pseudostrabismus related to epicanthal folds Referral to ophthalmology if present after 6 months of age |
| Cardiac septal defects | 0.45% ⁵¹ | 7.7% (4.7-10.7%) | 17.2 (11.6-25.4) | Targeted cardiac examination Echocardiogram and referral to cardiology if abnormal findings |

| | | | | |
|---|---------------------|--------------------|---------------|--|
| Renal malformations | 0.46% ⁵² | 4.4% (2-6.7%) | 9.7 (5.16.5) | Renal ultrasound to evaluate for structural abnormalities Referral to pediatric nephrology and/or urology if structural defects found |
| Hypotonia | 8% ⁵³ | 32.9% (27.6-38.2%) | 3.9 (3.0-5.1) | Close monitoring of motor development due to increased risk for delays Referral for physical therapy if associated with delays Further neurologic evaluation if severe or asymmetric |
| Other minor dysmorphologies (epicanthal folds, increased intercanthal distance, clinodactyly, ear differences) | -- | -- | -- | No clinical implications, reassurance to family |

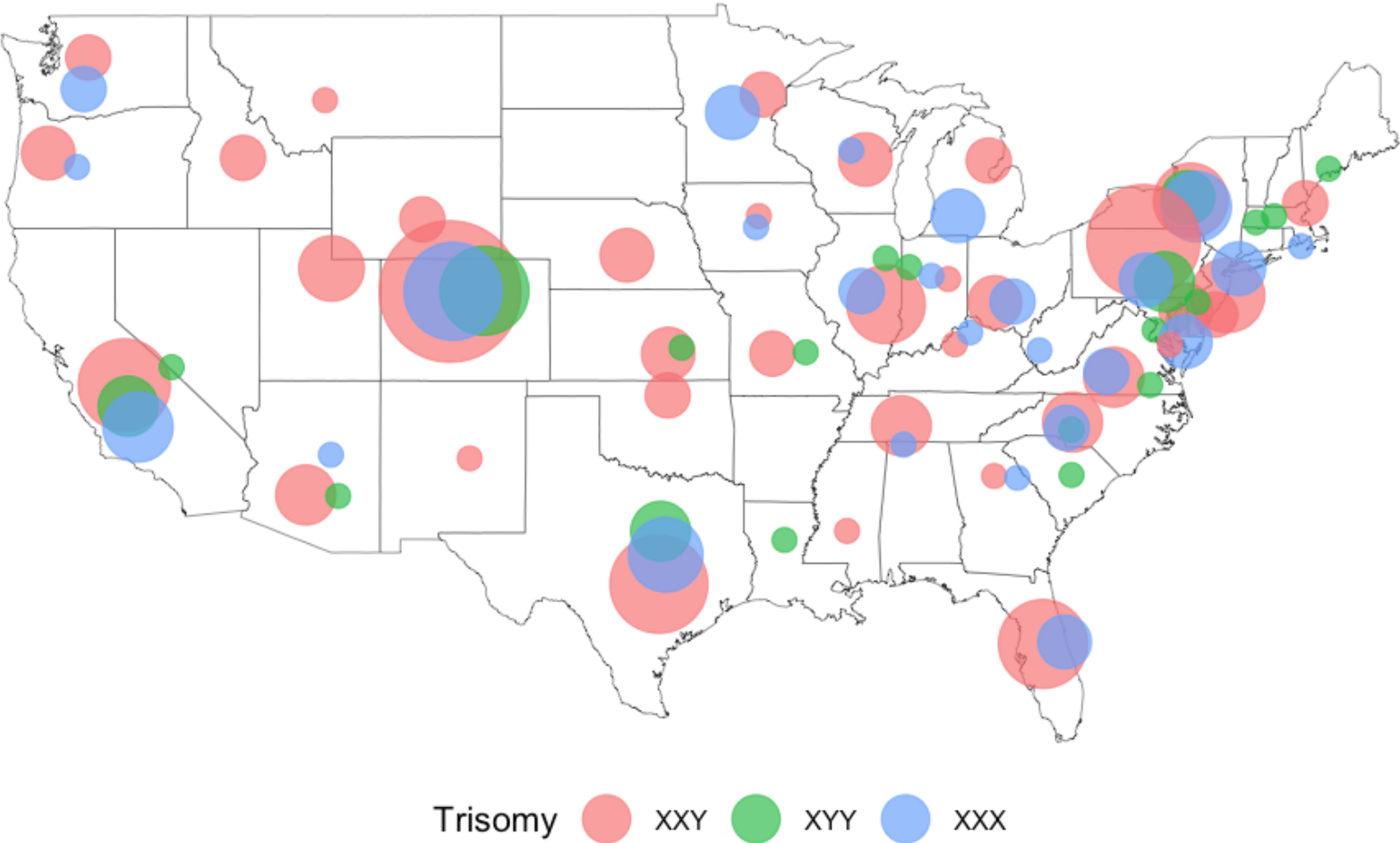
^aEstimated general pediatric population based on cited literature references; SCT = sex chromosome trisomy

[^]XYY prevalence not different than the general population

FIGURE 1: Schematic of eXtraordinary Babies Study Visits



FIGURE 2: Participant US Regional Representation



Point Sizes range from N = 1 to N = 38. Hawaii and Alaska are both represented with N = 1. N = 9 patients are international.

FIGURE 3: Physical Features on Examination

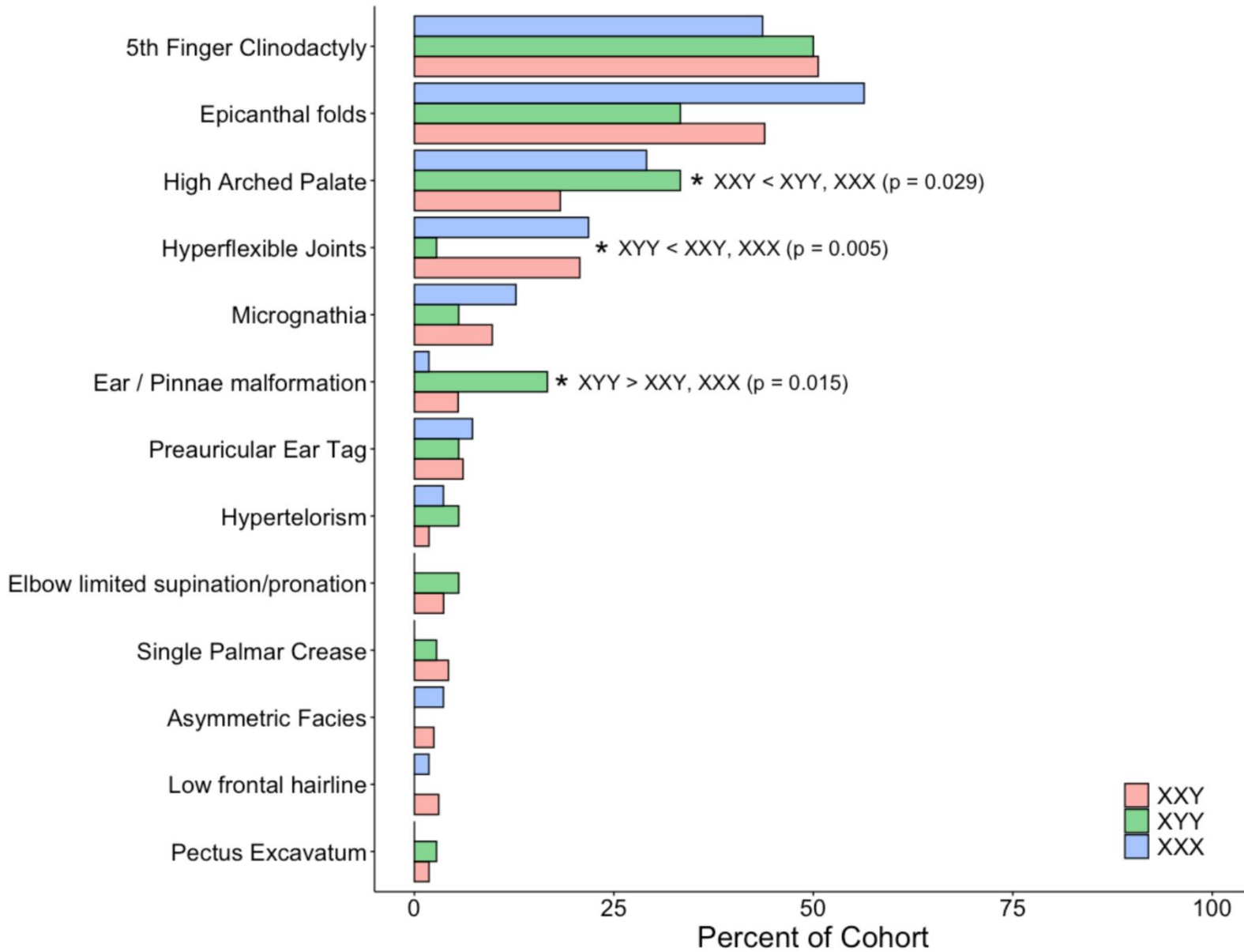
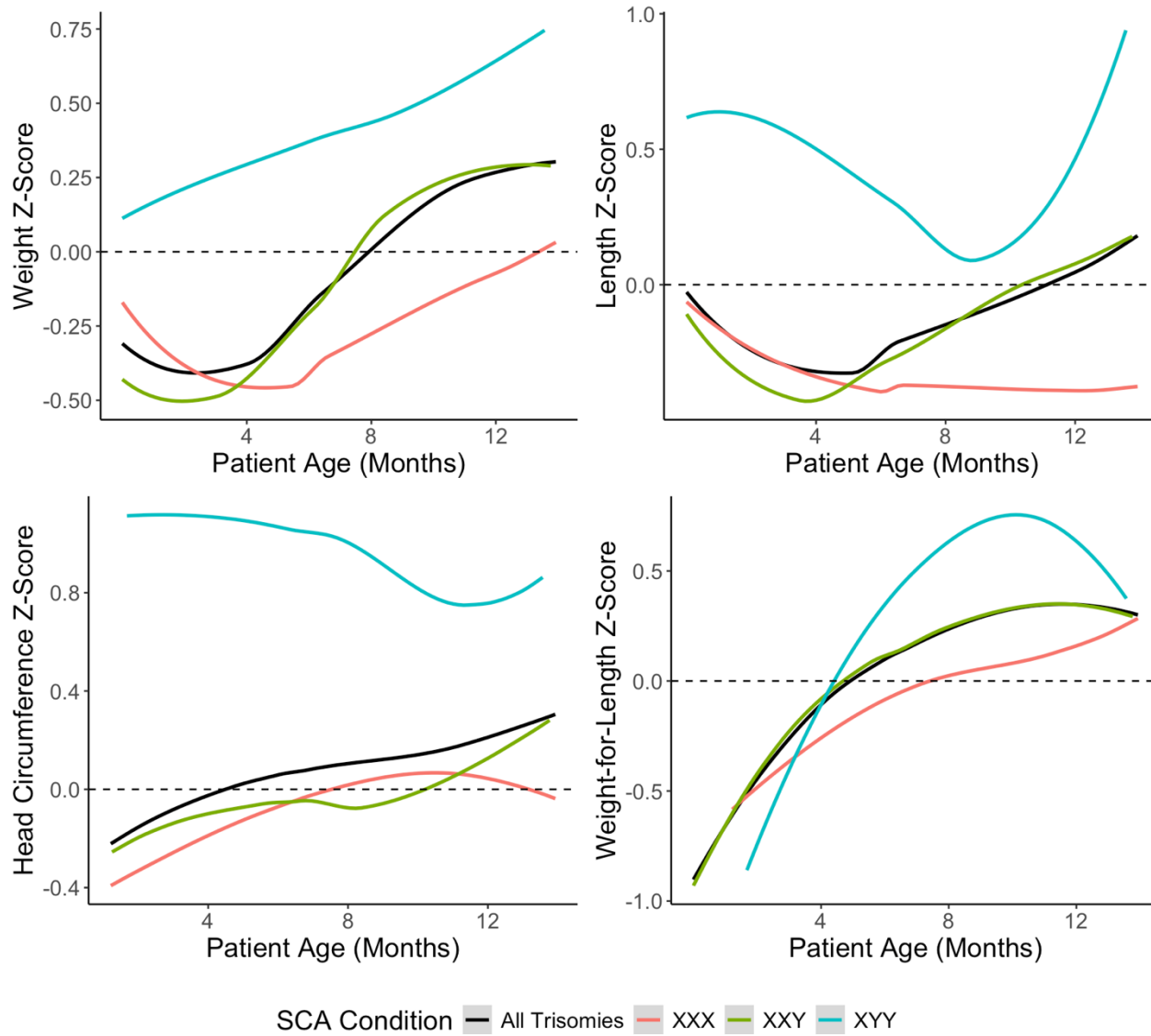


FIGURE S1: Participant Growth Z-Score Trajectories



Caption: LOESS (locally estimated scatterplot smoothing) smoothed trajectories of growth parameter z-scores by trisomy condition