

# 1 **Prevalence and risk factors related to *Fasciola* spp. transmission in**

## 2 **Northern Vietnam: A cross-sectional study in multiple hosts**

3 Vinh Hoang Quang<sup>1,2,3,4</sup>, Veronique Dermauw<sup>3</sup>, Dung Do Trung<sup>1\*</sup>, Binh Vu Thi Lam<sup>1</sup>, Nguyen Thi  
4 Thu Hien<sup>1</sup>, Nguyen Ngoc Ha<sup>1</sup>, Dao Thi Ha Thanh<sup>5</sup>, Brecht Devleeschauwer<sup>2,6</sup>, Theodorus de Jong<sup>3</sup>,  
5 Linda Paredis<sup>3</sup>, Nathalie De Wilde<sup>2</sup>, Stijn Casaert<sup>2</sup>, Katja Polman<sup>7</sup>, Steven Callens<sup>4</sup>, Pierre Dorny<sup>3</sup>,  
6 Bruno Levecke<sup>2\*</sup>

7 <sup>1</sup>Department of Parasitology, National Institute of Malariology, Parasitology and Entomology, Hanoi,  
8 Vietnam

9 <sup>2</sup>Department of Translational Physiology, Infectiology and Public Health, Ghent University, Belgium

10 <sup>3</sup>Unit of Zoonoses, Department of Biomedical Sciences, Institute of Tropical Medicine, Antwerp,  
11 Belgium

12 <sup>4</sup>Department of Internal Medicine and Pediatrics, Faculty of Medicine and Health Sciences, Ghent  
13 University, Belgium

14 <sup>5</sup> Parasitology Department, National Institute of Veterinary Research, Hanoi, Vietnam

15 <sup>6</sup>Department of Epidemiology and Public Health, Sciensano, Brussels, Belgium

16 <sup>7</sup>Unit of Medical Helminthology, Department of Biomedical Sciences, Institute of Tropical Medicine,  
17 Antwerp, Belgium

18 \*Corresponding authors: [dotrungdung.nimpe.vn@gmail.com](mailto:dotrungdung.nimpe.vn@gmail.com) and [bruno.levecke@ugent.be](mailto:bruno.levecke@ugent.be)

## 19 **Abstract**

20 **Background:** Fascioliasis, caused by *Fasciola hepatica* and *Fasciola gigantica*, is a global veterinary  
21 problem in livestock and an emerging zoonotic disease in various countries. Here we present  
22 prevalence estimates of *Fasciola* spp. in all hosts involved in the life cycle and identified risk factors  
23 associated with *Fasciola* transmission in northern Vietnam.

24 **Methodology/Principal findings:** We conducted a cross-sectional survey in a community in Nghe An  
25 province where fascioliasis is endemic and inhabitants commonly consume raw vegetables. Applying  
26 a simple random and cluster sampling approach, we collected 1,137 stool and 1,390 blood samples  
27 from 1,396 human participants. From 664 buffaloes and cattle, we collected 656 fecal and 534 blood  
28 samples. We also collected 330 lymnaeid snails and 233 water plant samples. Human and animal  
29 fecal samples were examined by copro-microscopy, while blood samples were screened by ELISA  
30 to detect *Fasciola* serum antibodies. We examined infections in snails using PCR and metacercariae  
31 on water plants deploying an in-house technique. Descriptive analysis and logistic regression models  
32 were applied to estimate the prevalence of and risk factors for *Fasciola* infections. While the  
33 prevalence of *Fasciola* infections was very low in humans (0% by copro-microscopy; 0.07% by  
34 ELISA), it was high in animals (52% by copro-microscopy; 54% by ELISA). In the multivariable  
35 analysis, age was the only factor associated with *Fasciola* infections in animals. *Fasciola* could not  
36 be detected in any of the sampled water plants or lymnaeid snails..

37 **Conclusion/Significance:** This study indicated a high prevalence of *Fasciola* infections in animals  
38 and a very low prevalence in humans in a rural community in northern Vietnam. It is recommended  
39 to implement a control program to reduce the infection rate in buffaloes and cattle. Furthermore,  
40 health education activities for livestock owners should be carried out in *Fasciola* endemic areas.

## 41 **Author Summary**

42 Fascioliasis is a parasitic disease, caused by the flatworms *Fasciola hepatica* and *Fasciola gigantica*,  
43 affecting the liver of livestock and humans. Although human fascioliasis is known to occur  
44 worldwide, it mainly affects the poorest communities in rural areas across subtropical and tropical  
45 countries, with recent emergence in countries such as Vietnam. We conducted a cross-sectional  
46 survey on *Fasciola* spp. infections in different hosts (e.g., humans, buffaloes, cattle, water plants, and  
47 snails) in a rural community in northern Vietnam. Our results showed a high prevalence of fascioliasis  
48 in livestock, and a very low prevalence in humans, in a rural community in Nghe An province.  
49 *Fasciola* could not be detected in the sampled lymnaeid snails and water plants. In livestock, the  
50 occurrence of *Fasciola* infection was associated with increasing age. Treatment of the community  
51 livestock population as well as specific awareness campaigns for livestock owners are suggested to  
52 reduce disease transmission.

## 53 **1. Introduction**

54 Fascioliasis is a parasitic disease caused by the trematode species *Fasciola hepatica* and *F. gigantica*  
55 [1]. It is one of the most important parasitic diseases of livestock globally. Today, it is estimated that  
56 2.4 million people are infected, and that 180 million people are at risk in over 70 countries [2, 3]. The  
57 most affected countries are Bolivia, Peru, Egypt, Iran and Vietnam [3]. The World Health  
58 Organization (WHO) recommends large-scale deworming programs in endemic countries where at-  
59 risk populations are periodically provided an anthelmintic treatment [3].

60 Infected livestock and humans (final hosts) shed worm eggs with their stool. Once in a favorable  
61 environment (i.e., freshwater sources), miracidia (larval stage) develop in the eggs, hatch, and infect  
62 freshwater snails (intermediate hosts). In the snail tissue, the miracidia undergo several development  
63 stages (sporocysts and rediae) and various rounds of asexual multiplication. Subsequently, an  
64 exponential number of free-swimming cercariae (larval stage) are released from the snail and encyst  
65 into metacercariae (infectious stage) on water plants (the carrier). Susceptible livestock and humans  
66 acquire the infection by ingesting these contaminated raw water plants. Following infection,  
67 metacercariae excyst and the larvae migrate through the liver where they mature to hermaphrodite  
68 adults in the bile ducts and start producing eggs [4, 5].

69 In Vietnam, the incidence of human fascioliasis has escalated to concerning levels, prompting the  
70 WHO to classify it as a major public health concern [6, 7], and listing it as one of the countries that  
71 suffer the most from this disease [3]. Between 2014 and 2017, the annual number of human  
72 fascioliasis cases increased by a factor of four (from 2,994 to 11,706 cases; data made available by  
73 the National Institute of Malariology, Parasitology, and Entomology (NIMPE) and the Institute of  
74 Malariology, Parasitology, and Entomology Quy Nhon (IMPE-QN)). Most of these cases originate  
75 from the Red River Delta and Central Vietnam. The farming systems in rural areas in Vietnam allow

76 livestock to freely graze, spreading *Fasciola* eggs beyond the pastures. Livestock feces is also often  
77 used or sold as fertilizer [8, 9]. These practices explain the geographical overlap in fascioliasis  
78 distribution across both humans and livestock, with the highest prevalence of *Fasciola* infection in  
79 livestock (up to 72%) being observed in the Red River Delta and Central Vietnam [7].

80 The aims of this study were (i) to estimate the prevalence of *Fasciola* spp. infection in the different  
81 hosts included in the lifecycle, i.e., humans, buffaloes, cattle, water plants and lymnaeid snails; (ii)  
82 to identify risk factors associated with *Fasciola* infections in a rural community in Northern  
83 Vietnam. The results from this study are important for updating information on fascioliasis  
84 epidemiology and developing effective control strategies in highly endemic areas.

## 85 **2. Methods**

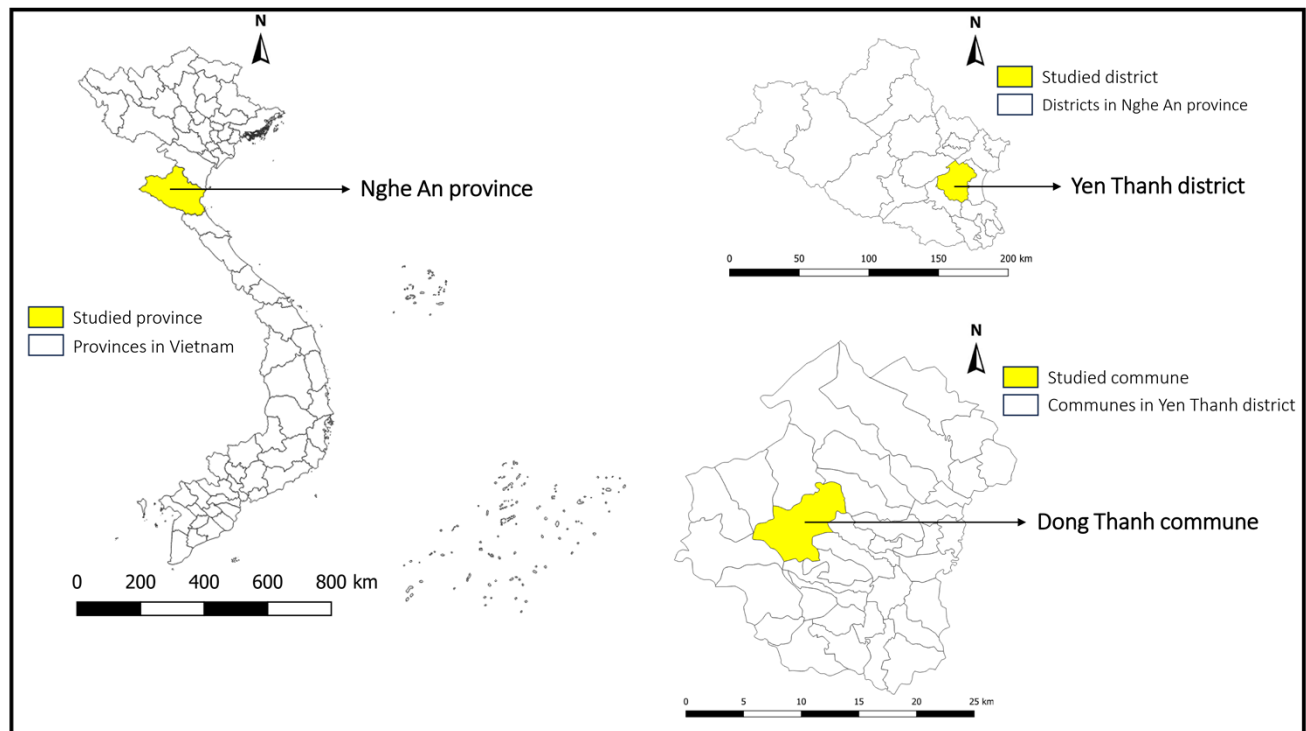
### 86 **2.1. Ethics statement**

87 This study was reviewed and approved by the institutional review boards of both NIMPE in Vietnam  
88 (No. 02-2022/HDDD), and the Ghent University Hospital/Faculty of Medicine and Health Sciences,  
89 Ghent University in Belgium (No BC-08915). Before the start of the fieldwork, we informed the  
90 provincial and district health officers, and the Dong Thanh Commune People's Committee (including  
91 the commune medical doctors and veterinarians) about the study aims and procedures, which  
92 subsequently also approved the study. Detailed information on the study objectives and procedures  
93 was provided to each participant on the first visit, and a signed informed consent from each participant  
94 aged 10 years and older was obtained before enrolment. Children between 5 and 18 years old were  
95 asked to verbal assent, and their parents were invited to provide a written informed consent. Any  
96 individual that tested positive for fascioliasis based on any of the applied laboratory tests was  
97 informed and advised to consult a medical doctor at the Provincial General Hospital or the NIMPE  
98 hospital for further examination. For the animal study, we obtained permission from the owners to  
99 collect fecal and serum samples of their livestock.

### 100 **2.2. Study site**

101 This study was conducted in Dong Thanh commune of the Yen Thanh district in the Nghe An  
102 province in Northern Vietnam. The selection of this study site was based on (i) historical data on the  
103 presence of fascioliasis, (ii) cultural behaviors that favor disease transmission (i.e. consumption of  
104 raw vegetables), (iii) the presence of both buffaloes and cattle that have access to crop fields (e.g.,  
105 rice and water plants) and (iv) the accessibility of the study site. Nghe An province consists of 21  
106 districts of which Yen Thanh has the second-highest number of human fascioliasis cases (between  
107 2012 and 2020, 398 cases were reported by the Center for Disease Control of Nghe An province).

108 Yen Thanh district consists of 39 communes of which Dong Thanh commune had the highest number  
109 of positive cases of fascioliasis (between 2012 and 2020, 39 cases were reported by the Center for  
110 Disease Control of Nghe An province). This commune has 8,490 registered inhabitants across 2,036  
111 households. The main occupation of residents in this commune is farming. In total, there were 873  
112 buffaloes and cattle, which were raised by 452 households. In this commune, there were 370 hectares  
113 of rice fields and a canal system to irrigate the fields.



114  
115 **Fig 1. Map of Vietnam showing the locations of Nghe An province, Yen Thanh district, and Dong Thanh commune.**  
116 The map was created using QGIS Desktop version 3.36.2 software

117

### 118 **2.3. Study design**

119 Between April and May 2022, we conducted a cross-sectional study both, (i) to estimate the  
120 prevalence of *Fasciola* spp. in different hosts, including humans, buffaloes, cattle, and lymnaeid  
121 snails, and on water plants, and (ii) to identify putative risk factors for *Fasciola* spp. infections in the

122 Dong Thanh commune. In the following sections, we will discuss each of the study populations in  
123 more detail.

### 124 2.3.1. Human population

125 A list of all households was provided by the Dong Thanh Commune People's Committee. Based  
126 on this list 623 households were randomly selected using R software [10]. During the first house visit,  
127 eligible household members were invited to participate, and subsequently asked to provide a stool  
128 and blood sample and to complete a structured questionnaire. People were eligible when they met the  
129 following inclusion criteria (i) being a Dong Thanh commune resident or having been in the commune  
130 for at least six months at the first visit, and (ii) being at least five years old. Whenever possible, three  
131 eligible household members were invited to participate. In case more than three people were present  
132 in the household, we randomly selected three participants. Only the selected individuals that signed  
133 an informed consent form, and in case of children, provided verbal assent, participated in the study.  
134 Each participant was interviewed using an individual questionnaire to obtain demographic  
135 characteristics, and knowledge, awareness, attitudes, and practices of fascioliasis (see **Info S1** for a  
136 template of the questionnaire). One household member was also interviewed to obtain general  
137 information on water and sanitation practices, livestock and crop management, and culinary practices  
138 (see **Info S2** for a template of the questionnaire). Subsequently, venous blood samples were collected  
139 by health staff. Each participant was given a pre-labeled plastic container, and they were asked to  
140 provide a stool sample by the next day (visit 2). These stool samples were collected by health workers  
141 or during the third visit when water plant samples were collected (see section 2.3.4 Water plants).  
142 Participants who did not provide stool samples during these two consecutive visits were asked to  
143 bring the sample to the commune health station.



144 2.3.2. Buffalo and cattle population

145 A list of all households that raised water buffaloes (*Bubalus bubalis*) and cattle was provided by  
146 the local veterinarian. The research team visited each of the households on this list. On arrival, the  
147 owner was informed about the study's aims and procedures. Only animals for which the owner  
148 assented were included in the study. Both a venous blood sample and a rectal feces sample were  
149 collected from each animal. In addition, general information about the animals was collected,  
150 including number of animals owned by the household, age, sex, and animal species (buffaloes vs.  
151 cattle).

152 2.3.3. Snail population

153 In total, five different snail habitats (vegetable field, irrigation canal, rice field, shallow pond, and  
154 lake) were identified by the village head. At each habitat, two team members searched for snails for  
155 15 minutes. All snails were collected while recording the habitat of the snails. Upon arrival at the  
156 commune health station, the collected lymnaeid snails were initially identified as by Doanh et al. [11],  
157 and stored in containers with 70% ethanol on a species and habitat basis. Finally, these containers  
158 were sealed by parafilm and transferred to the Institute of Tropical Medicine, Antwerp (Belgium) for  
159 molecular analysis.

160 2.3.4. Water plants

161 At the first visit, households were instructed to collect water plants in the three following days (see  
162 **Info S3** for a template of the instructions). For this, we provided them with a plastic bag with a unique  
163 household ID number and asked them to collect about 300 grams of freshwater plants that they would  
164 consume either raw or undercooked. The samples were collected by health workers of villages and  
165 delivered to the research team at the commune health station. Next, these samples were kept at 4 °C  
166 before being transferred to NIMPE for further analysis within three days.

## 167      **2.4. Sample size calculation**

168      For the sample size calculation of humans, we ran simulations in the statistical software R (2020)  
169 [10], envisaging a probability of 95% to attain the apparent prevalence and a maximum precision of  
170 5% for a prevalence estimate for each of the two study populations [12]. To account for clustering of  
171 the human study populations, we considered a design effect of 3 [13]. Based on the reported  
172 prevalence (humans: 7.8%) [14], a total of 1,381 humans were aimed to be sampled. For  
173 buffaloes/cattle we aimed to sample all animals present in the commune. For the water plants, we  
174 asked each selected households in the human study to provide freshwater plant samples. Finally, all  
175 lymnaeid snails were searched across all habitats for a duration of 15 minutes.

## 176      **2.5. Laboratory analysis**

### 177      2.5.1. Stool samples

178      Both human and animal stool samples were processed within 24 hours of collection at the  
179 commune health station. All stool samples were examined microscopically for *Fasciola* spp. eggs by  
180 means of the commercially available Fluke Catcher (Provinos). The method was shown to be the  
181 most sensitive and precise technique for *Fasciola* diagnosis in human stool, as compared to other  
182 techniques such as Kato-Katz and Mini-FLOTAC [15]. For the animal samples, eight grams of stool  
183 were processed for each animal separately, while for human samples two grams of four individual  
184 stool samples were pooled. In case *Fasciola* eggs were observed in these pools, the individual stool  
185 samples that formed the pool were individually processed. This cascaded pooled test strategy for  
186 human samples was preferred, as the prevalence was expected to be low. To obtain the fecal egg  
187 counts (FECs; expressed as eggs per gram stool (EPG)), the raw egg counts were divided by eight  
188 and two for animal and human samples, respectively. The presence of any helminth egg other than

189 *Fasciola* (e.g., *Paramphistomum* in animals) was recorded. **Info S4** provides a detailed standard  
190 operating procedure (SOP) for both animal and human samples.

### 191 2.5.2. Serum samples

192 Collected blood sample tubes were placed in a fridge (4 °C). The next day, the clotted blood was  
193 separated by centrifugation at 3,000 rpm for 15 min, and the serum was dispensed into pre-labeled  
194 vials, and stored at -20 °C at the commune health station. Once the fieldwork was completed, all the  
195 serum samples were transferred to NIMPE in a cool box. At NIMPE, aliquots were frozen at -86 °C  
196 until further analysis. The serum samples were examined for exposure to fascioliasis by means of a  
197 commercial antibody (Ab)-ELISA (BioX K211, BioX, Rochefort, Belgium). The optical density ratio  
198 (ODr in %) was calculated by multiplying the optical density (OD) of the sample by 100 and dividing  
199 it by the OD of the positive control. A sample was considered positive when the OD  $\geq$  15%, while  
200 values less than 10% were considered negative. In all other scenarios, the test result was considered  
201 inconclusive. This test was developed to detect fascioliasis in cattle and sheep. For the human  
202 samples, the test was modified by using an anti-human IgG and by standardization of the test result  
203 with positive human sera [16]. **Info S5** provides a detailed SOP of this Ab-ELISA for both animal  
204 and human samples.

### 205 2.5.3. Snails

206 For the DNA extraction, individual snails were crushed in a 100  $\mu$ L 5% CHELEX solution and we  
207 added 0.015  $\mu$ L PhHV-1 solution (Phocid Herpes Virus subunit 1, kindly provided by the European  
208 Virus Archive GLOBAL) to control for inhibition of the PCR reaction. Then, the samples were  
209 incubated one hour at 56 °C and for 30 min at 95 °C. Afterwards the mixture was centrifuged for 7  
210 min at 13,000 g. The supernatant containing the DNA was subjected to a multiplex PCR amplifying  
211 DNA of both an ITS1 segment of *Fasciola* spp. (716 bp) and the gB gene of PhHV-1 (89 bp). The

212 PCR reactions were performed in a 25  $\mu$ L volume containing 1x Qiagen® Multiplex PCR mix, 0.25  
213  $\mu$ L template DNA, 0.25  $\mu$ M Fasc-ITS1 F (5' TCT ACT CTT ACA CAA GCG ATA CAC 3') and  
214 Fasc-ITS1 R primers (5' GGC TTT CTG CCA AGA CAA G 3') [17] and 0.375  $\mu$ M PhHV-1 F (5'  
215 GGG CGA ATC ACA GAT TGA ATC 3') and PhHV-1 R primers (5' GCG GTT CCA AAC GTA  
216 CCA A 3') [18]. The reaction mixture was run in a Biometra Thermal Cycler for 5 min at 95 °C, 40  
217 cycles of 30 sec at 95°C, 30 sec at 55 °C and 30 sec at 72 °C and ending with a final elongation at 72  
218 °C for 5 min. The PCR products were run on a 2% agarose gel for 30 min at 100 V and visualized by  
219 EtBr staining and UV light illumination. For samples that did not present the 89 bp inhibition control,  
220 the PCR reaction was repeated on dilutions of the DNA until a fifth of the original concentration  
221 samples that still did not present the control sequence were disregarded.

#### 222 2.5.4. Water plants

223 Water plant samples were immediately processed upon arrival at NIMPE. As samples were  
224 collected over three consecutive days, representing different water plants, we weighed the sample and  
225 divided it over four piles. Then, 25 gram of each pile was transferred into a plastic ziplock bag of 5  
226 L. Subsequently, the samples were processed by applying an in-house validated laboratory technique  
227 [19]. In brief, 1 L of tap water was added to the plastic bag, which was closed and put into a 10 L  
228 ziplock plastic bag to avoid leakage. The bag was put in a concrete mixer for 10 min. Subsequently,  
229 the sample was sieved over a tower of three metal sieves (30 cm x 3 cm in diameter) each with a  
230 different mesh size (from top to bottom: 500  $\mu$ m, 350/355  $\mu$ m, 100  $\mu$ m). To enhance recovery of the  
231 metacercariae, plant material was sieved in two steps. To be more explicit, half of the sample was  
232 transferred on the sieves, while thoroughly washing the material. Then this half was discarded, and  
233 the second half was sieved and washed. In addition, the ziplock bag was thoroughly rinsed, and the  
234 content was transferred over the tower of sieves. To further reduce the volume, the material on the

235 100 µm sieve was recovered and sieved over a pluriStrainer sieve (diameter: 3 cm, mesh size: 150  
236 µm). Then, the material on the pluriStrainer sieve was collected in a small recipient by inverting it  
237 and washing/rinsing it with tap water using a 1 mL pipet. Finally, the entire content was screened for  
238 the presence of metacercariae using a stereomicroscope. To this end, parts of the content was  
239 transferred into a petri dish and screened, after which the petri dish was washed and filled again.  
240 When metacercariae were detected, they were transferred to a 1.5 mL tube containing 70% ethanol.  
241 These preserved samples were stored at room temperature to confirm the presence of *Fasciola*  
242 metacercariae based on a molecular analysis [19].

## 243 **2.6. Statistical data analysis**

244 The statistical data analysis was conducted in three consecutive steps. First, we conducted a  
245 descriptive analysis of the data, separately summarizing the demographic characteristics of different  
246 study populations based on host species, age, sex (all), education, and occupation (in humans only).  
247 The apparent prevalence was estimated for each diagnostic test separately by dividing the number of  
248 positive cases by the number of sampled cases. The "binom" package in R was utilized to estimate  
249 the prevalence of *Fasciola* infection and its associated Wilson or exact (when cell counts were less  
250 than five) 95% confidence interval (95% CI). The intensity of infections based on copro-microscopy  
251 was classified into light ( $0 \text{ EPG} < \text{FEC} \leq 10 \text{ EPG}$ ), moderate ( $11 \text{ EPG} < \text{FEC} < 25 \text{ EPG}$ ), and heavy  
252 ( $\geq 25 \text{ EPG}$ ) [20]. Generalized mixed models were built to identify putative risk factors for *Fasciola*  
253 infections in livestock, with the test result on copro-microscopy (absence *vs.* presence of eggs) as  
254 outcome variable and host species (buffaloes *vs.* cattle), age (in months), sex (bull *vs.* cow), and  
255 sources of feed and drinking water as predictive variables, while accounting for household as a  
256 random effect. The sources of feed and drinking water were captured through questionnaires (see  
257 **Info S2**). For the source of feed, seven variables were included: cut and carry, growing in or near

258 water bodies (yes vs. no); cut and carry, grown elsewhere (yes vs. no); tethering (yes vs. no); factory  
259 product (yes vs. no); free roaming/grazing, in or near waterbodies (yes vs. no); free roaming/grazing  
260 elsewhere (yes vs. no); other (yes vs. no). For the source of drinking water, seven variables were  
261 included (piped water into dwelling (yes vs. no); tubewell/borehole (yes vs. no); protected dug well  
262 (yes vs. no); rainwater collection (yes vs. no); surface water (yes vs. no); other (yes vs. no); do not  
263 know (yes vs. no). The model buildup was conducted in three consecutive steps. First, we performed  
264 a univariate analysis, where variables resulting in a  $p$ -value  $<0.20$  were considered in the next step.  
265 Second, the main effects of these variables were explored. Variables not significantly ( $p$ -value  $>0.05$ )  
266 explaining the presence of eggs in stool ('ANOVA' function with type III test), were omitted from  
267 the model. In a final step, two-way interactions between the remaining variables were explored. For  
268 this, we compared the main effect model with a two-way interaction model ('ANOVA' function,  $\text{Chi}^2$   
269 test). Due to a poor agreement between copro-microscopy and Ab-ELISA for buffaloes (suggesting  
270 that the Ab-ELISA kit is not appropriate for this host species), we restricted the analysis to copro-  
271 microscopy only. Putative risk factors for human *Fasciola* spp. were not explored as the prevalence  
272 was too low (copro-microscopy: 0% and Ab-ELISA:  $<1\%$ ). The data were analyzed using R software  
273 version 4.3.3 for Windows [21].

## 274 **3. Results**

### 275 **3.1. Prevalence of *Fasciola* infection in humans**

276 A total of 1,396 human individuals participated in the study, of which the majority were females  
277 (55.30%). A quarter of the participants (25.50%) were below the age of 18, and half were between  
278 18 and 59 years of age (18 to 39 years: 21.85%; 40 to 59 years: 35.46%). Another 17.12% were at  
279 least 60 years old. In a negligible percentage (0.07%), the age was not recorded. The educational level  
280 varied across the participants. Half of the participants finished high school (53.94%), while 21.70%

281 had either primary school or no education. Another 17.34% completed secondary school. A small  
282 fraction had no formal education (1.79%) or a vocational or bachelor's degree (5.23%). Most of the  
283 participants were farmers (59.31%), underscoring the agricultural character of the region. Other  
284 occupational categories included government service or civil servants (3.44%), workers (4.80%),  
285 school children (26.29%), and individuals with various other occupations (6.09%). For a marginal  
286 percentage (0.07%) the occupation was not recorded.

287 Out of the 1,396 individuals from 623 households that participated in this study, 1,131 individuals  
288 across 520 households provided both blood and stool. A stool or a blood sample alone were provided  
289 by 6 participants (6 households) and 259 participants (103 households), respectively. *Fasciola*  
290 prevalence was found to be extremely low. Testing of 1,390 human serum samples with Ab-ELISA  
291 revealed the presence of antibodies in just one sample, yielding an apparent prevalence of 0.07%  
292 (95% CI: 0.00 – 0.40%). Similarly, copro-microscopy of 1,137 human stool samples detected no  
293 *Fasciola* egg (95%CI: 0.00 – 0.32%). Given this low prevalence of *Fasciola* infections, we did not  
294 pursue risk factor analysis.

## 295 **3.2. Prevalence, intensity, and risk factors of *Fasciola* infection in buffaloes and** 296 **cattle**

### 297 3.2.1. Prevalence

298 In total 664 animals from 415 households were included in this study, of which 446 (67.17%)  
299 were cattle and 218 (32.83%) were buffaloes. Majority of the animals were cows (77.41% vs.  
300 22.59%). The age of the animals ranged between 6 and 200 months. In total 534 (80.42%) serum  
301 samples and 656 (98.80%) stool samples were collected. Testing of 534 livestock serum samples with  
302 Ab-ELISA revealed *Fasciola* antibodies in 289 samples, resulting in a prevalence of 54.12% (95%  
303 CI: 49.88 – 58.30%). Similarly, based on copro-microscopy *Fasciola* eggs were detected in 338 out

304 of the 656 livestock stool samples, resulting in a prevalence of 51.52% (95% CI: 47.70–55.33%). The  
305 prevalence of *Fasciola* spp. according to copro-microscopy and Ab-ELISA in the different livestock  
306 species is presented in **Table 1**. The *Fasciola* prevalence by copro-microscopy was similar in  
307 buffaloes (53.74%) and cattle (50.45%). In contrast, the seroprevalence was markedly lower in  
308 buffaloes (8.67%) when compared to cattle (75.90%). In cattle, the prevalence based on copro-  
309 microscopy was higher in cows than in bulls (56.09% vs. 28.09%), while there was no difference in  
310 prevalence among sexes in buffaloes. In both livestock species prevalence based on copro-  
311 microscopy increased with age.



312 **Table 1. The prevalence of *Fasciola* spp. in buffaloes and cattle in the Dong Thanh commune based on copro-microscopy and Ab-ELISA.**

	Buffaloes				Cattle			
	Copro-microscopy		Ab-ELISA		Copro-microscopy		Ab ELISA	
	Prevalence (%) (n/N)	95% CI	Prevalence (%) (n/N)	95% CI	Prevalence (%) (n/N)	95% CI	Prevalence (%) (n/N)	95% CI
<b>Sex</b>								
Cow	52.94 (81/153)	45.06-60.68	7.63 (9/118)	4.06-13.86	56.09 (198/353)	50.88-61.17	79.5 (221/278)	74.36-83.82
Bull	55.74 (34/61)	43.30-67.49	10.91 (6/55)	5.10-21.83	28.09 (25/89)	19.81-38.18	63.86 (53/83)	53.12-73.37
<b>Age (months)</b>								
≤12	31.58 (12/38)	19.08-47.46	16.67 (6/36)	7.87-31.89	19.4 (13/67)	11.71-30.42	53.85 (35/65)	41.85-65.41
13 to 36	58.14 (50/86)	47.58-68.00	9.21 (7/76)	4.53-17.81	45.77 (92/201)	39.03-52.67	76.07 (124/163)	68.97-81.97
37 to 60	53.57 (15/28)	35.81-70.47	9.09 (2/22)	1.12-29.16	68.82 (64/93)	58.81-77.33	85.51 (59/69)	75.34-91.93
>60	61.29 (38/62)	48.85-12.42	0 (0/39)	0.00-9.03	66.67 (54/81)	55.85-75.97	87.5 (56/64)	77.23-93.53
<b>Total</b>	<b>53.74 (115/214)</b>	<b>47.05-60.29</b>	<b>8.67 (15/173)</b>	<b>5.32-13.81</b>	<b>50.45 (223/442)</b>	<b>45.81-55.09</b>	<b>75.9 (274/361)</b>	<b>71.23-80.02</b>

314 **Table 2** compares the results of copro-microscopy and Ab-ELISA for the detection of *Fasciola*  
 315 infections. In buffaloes, there was an agreement in test results (positive/positive or  
 316 negative/negative/suspected) in 67 out of the 169 animals (39.65%). In the remaining 102 samples,  
 317 the majority (43.20%) of the animals tested positive on copro-microscopy but negative on Ab-ELISA.  
 318 In cattle, there was a better agreement in test results (64.43% vs. 39.65%). In the remaining animals,  
 319 1.68% tested positive on copro-microscopy and negative on Ab-ELISA, while 31.09% tested positive  
 320 on Ab-ELISA but negative on copro-microscopy.

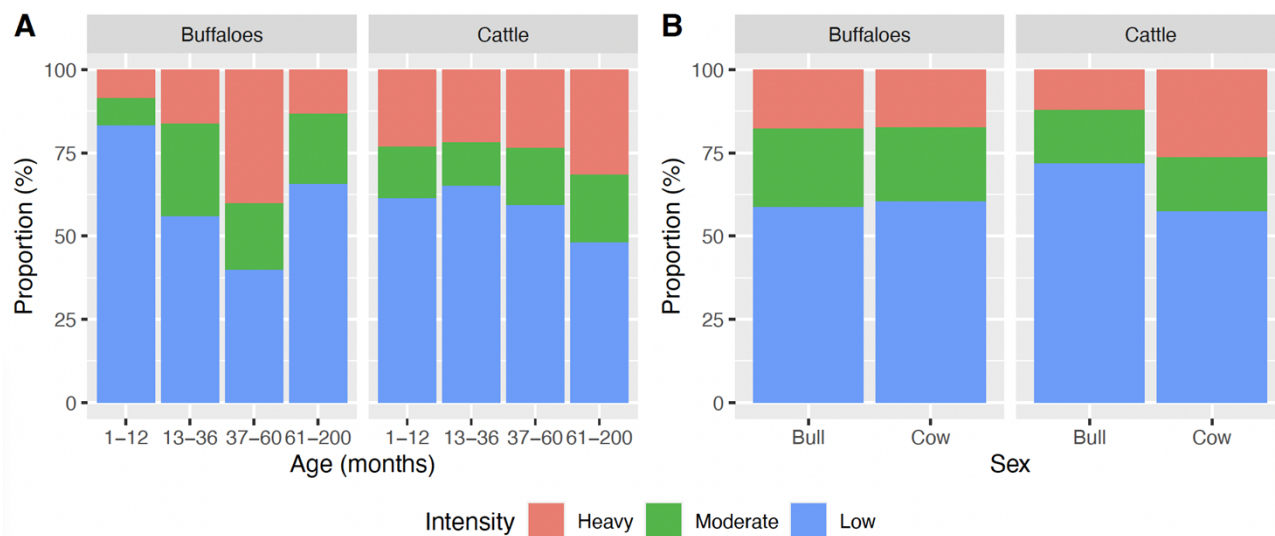
321 **Table 2. Comparison in test results across copro-microscopy and Ab-ELISA for the detection of *Fasciola* infections**  
 322 **in buffaloes and cattle.**

Ab-ELISA	Copro-microscopy	Buffaloes		Cattle	
		n	%	n	%
Negative	Negative	58	34.32	69	19.33
Negative	Positive	73	43.20	6	1.68
Suspected	Negative	12	7.10	7	1.96
Suspected	Positive	11	6.51	3	0.84
Positive	Negative	6	3.55	111	31.09
Positive	Positive	9	5.33	161	45.10
<b>Total</b>		<b>169</b>	<b>100%</b>	<b>357</b>	<b>100%</b>

323

### 324 3.2.2. Infection intensity

325 Overall, the majority (59.47%) of animals had low intensity infections, followed by moderate  
 326 infections (18.34%). Heavy intensity infections were observed in 22.19% of the animals. Across the  
 327 buffaloes and cattle, the proportion of low infections was 60.00% and 59.19%, respectively. **Fig 2**  
 328 further illustrates the infection intensities across age groups (**Fig 2A**) and sex (**Fig 2B**) for each of  
 329 these animal species separately. Generally, the figure indicates some important differences between  
 330 animal species. While in cattle the proportion of moderate-to-heavy intensity infections increase with  
 331 age and are highest in bulls, in buffaloes there was a peak in the moderate-to-heavy intensity  
 332 infections in animals between the age of 37 and 60 months, and no differences across sexes were  
 333 observed.



334

335 **Fig 2. The intensity of *Fasciola* infections across age groups and sex according to copro-microscopy for buffaloes**  
336 **and cattle.** These bar plots represent the infection intensity measured by copro-microscopy across age groups (**Fig2A**)  
337 and sex (**Fig 2B**) for buffaloes and cattle.

338

339 3.2.3. Risk factors for *Fasciola* infections in buffaloes and cattle

340 The univariate analysis revealed that sex ( $p = 0.020$ ), age (in months;  $p = 0.006$ ) and feeding by  
341 cut and carry, grown in or near water bodies ( $p = 0.078$ ) impacted the *Fasciola* infections. For all  
342 other variables the  $p$ -value exceeded 0.20. In the multivariable analysis, only age resulted in a  $p$ -value  
343  $<0.05$ , highlighting that the odds of a *Fasciola* infection was 1.00 (95% confidence interval: 1.00;  
344 1.02;  $p = 0.006$ ) times higher when an animal was 1 month older. Putting this in a different  
345 perspective, the odds of infections in animals 60 months of age (75<sup>th</sup> quantile) is 1.18 higher than that  
346 of animals that are 18 months of age (25<sup>th</sup> quantile).

### 347 3.3. Prevalence of *Fasciola* infection in snails

348 In total, 330 lymnaeid snails were collected from 38 different locations. These locations  
349 encompassed a variety of habitats, including nine vegetable fields, nine irrigation canals, nine rice  
350 fields, eight shallow ponds, and three lakes, spread across nine villages. Molecular analysis of the  
351 collected snails was performed to detect the presence of *Fasciola* infections. Three snails were

352 disregarded because of inhibition of the PCR reaction, noticed by the absence of amplification of the  
353 inhibition control PhHV-1. On the remaining 327 lymnaeid snails, the analysis did not reveal any  
354 *Fasciola* infections, resulting in a prevalence of 0.00% (95% CI: 0.00–1.12%).

#### 355 **3.4. Prevalence of *Fasciola metacercariae* on plants**

356 A total of 623 households were visited, out of which 287 provided raw vegetable samples they  
357 commonly consume within three days after the household visit. Among these samples, 54 were  
358 identified as non-water plants, and were therefore discarded from any further analysis. The remaining  
359 233 water plant samples were meticulously examined, yet no *Fasciola metacercariae* were detected  
360 in any of the samples, indicating a prevalence of 0.00% (95% CI: 0.00–1.57%).

## 361 **4. Discussion**

362 Human fascioliasis has escalated to concerning levels in Vietnam, prompting the WHO to classify it  
363 as a major public health concern [3]. As the disease transmission involves multiple hosts, it is of  
364 utmost importance to gain insights in the disease occurrence and associated risk factors, with the goal  
365 to design control strategies. In the present study, we estimated the prevalence of *Fasciola* spp.  
366 infection in all hosts included in the lifecycle and identified putative risk factors in a rural community  
367 in Northern Vietnam where (i) historical data show the highest number of cases of human fascioliasis,  
368 (ii) cultural behaviors are practiced that favor disease transmission, and where (iii) both cattle and  
369 buffaloes have access to crop fields. Our results showed a high prevalence of *Fasciola* infection in  
370 livestock, but a very low prevalence in humans. The parasite could not be detected in the collected  
371 lymnaeid snails or on water plants. We also observed distinct differences in the results of copro-  
372 microscopy and Ab-ELISA for diagnosing fascioliasis in livestock.

### 373 **Low prevalence of human fascioliasis cases despite a high number of historical cases and** 374 **high prevalence in livestock**

375 Despite the historical data reported by the Center for Disease Control of Nghe An province in Dong  
376 Thanh (between 2012 and 2020, 39 cases were reported by the Center for Disease Control of Nghe  
377 An province) and the high prevalence in livestock (cattle: 53.74%; buffaloes: 50.45%), we found no  
378 human cases based on copro-microscopy and only one case on Ab-ELISA. This discrepancy between  
379 the historical prevalence data and our findings may have several reasons. Firstly, changes in farming  
380 practices may have significantly contributed to the reduction in *Fasciola* spp. transmission among  
381 humans. During our fieldwork, we observed that, while the consumption of raw vegetables remains  
382 common, most of these vegetables are cultivated in residents' private gardens, breaking the life cycle  
383 of fascioliasis. These gardens include water plants such as morning glory, rice paddy herb, and fish

384 mint. Another factor that may influence the reporting and detection of *Fasciola* spp. infections is the  
385 variability in the diagnostic kits used. In this study, we re-examined 100 of the 1,390 human serum  
386 samples using several commercial diagnostic kits for *Fasciola* antibody detection, including the  
387 Cortez kit (Human Fasciola IgG ELISA Test Kit, Diagnostic Automation, Cortez Diagnostics Inc.,  
388 California, USA ), the Khoa Thuong commercial kit from Vietnam (AccuElis Fasciola spp. Detection  
389 Kit, KT Biotech, Ho Chi Minh City Vietnam), and the Bio-X kit. Furthermore, we submitted these  
390 100 serum samples to the CDC of Nghe An, which currently uses the Cortez kit as the diagnostic for  
391 detecting *Fasciola* spp. antibodies in human sera. Our findings revealed that the Khoa Thuong and  
392 Bio-X kits each detected one positive case, aligning with our initial test results. Conversely, when  
393 tested at the National Institute of Malariology, Parasitology, and Entomology (NIMPE), the Cortez  
394 kit identified two positive cases. Unexpectedly, the CDC Nghe An results indicated seven positive  
395 samples. When summarizing the positive cases across the different Ab-ELISA kits, a total of eight  
396 positive samples were identified. These eight samples were subsequently subjected to *Fasciola* ES  
397 Western Blot IgG kit (LDBIO Diagnostic, 24 AV. Joannes Masset, Lyon, France) which revealed  
398 that only one sample consistently tested positive across all methods, corroborating our initial results.

399 Our findings also indicate that the prevalence of *Fasciola* infection in animals is not a reliable  
400 predictor of the prevalence in humans in endemic regions, aligning with previous studies published  
401 by Mas-Coma [22] and Tolan [23]. Similarly, a study in Kenya reported no *Fasciola* eggs in human  
402 fecal samples, whereas the infection rates in cattle, sheep, and goats were 46.0%, 29.9%, and 24.1%,  
403 respectively [24].

404 **A control program is recommended to reduce the infection rate in cattle and buffaloes**  
405 Vietnam currently lacks a coordinated and extensive treatment program for *Fasciola* spp. in livestock.  
406 In general, animals are only treated for trematode infections at the owner's request or when specific

407 symptoms such as weakness, weight loss, or diarrhea are detected. Although certain studies have  
408 implemented fascioliasis treatments, these initiatives have typically targeted specific subsets within  
409 buffalo and cattle populations rather than including the entire population [25, 26]. In livestock, there  
410 is a high risk of infection because the animals are allowed to graze most of the time during the year  
411 [7]. With the practice of free-range animal husbandry and the high prevalence of *Fasciola* spp.  
412 infection in animals, there is a clear need for a comprehensive fluke control program in the region.

### 413 **Age is an important risk-factor of fascioliasis in livestock**

414 Of all the risk-factors that we explored for livestock (host species, age, sex, and source of feed and  
415 water), age was the sole risk-factor, with the prevalence of infections increasing over age. Our study  
416 demonstrated a positive association between *Fasciola* infection prevalence and intensity and  
417 increasing age of livestock. This observation suggests that older animals may have experienced  
418 prolonged exposure to the infective stage of the fluke in comparison to their younger counterparts  
419 [27]. Older animals, particularly adult buffaloes used in activities such as plowing paddy fields, are  
420 more frequently exposed to environments where the intermediate stages of *Fasciola* thrive, such as  
421 wet and marshy areas [28]. This frequent exposure accumulates over time, contributing to the  
422 increased risk observed in older age groups. This is supported by previous research in Malaysia  
423 showing a higher prevalence of infection in cattle older than five years compared to younger animals  
424 [29]. Previous research has indicated that the prevalence of *Fasciola* infection is notably higher in  
425 older age groups compared to younger ones in buffaloes [30, 31], and in cattle [32, 33].

### 426 **Serodiagnosis needs to be carefully deployed across animal hosts**

427 For livestock, we deployed two diagnostic tests with different biomarkers, one that detects eggs in  
428 stool (copromicroscopy: Fluke Catcher, Provinos) and one that detects anti-*Fasciola* antibodies in  
429 serum (Ab-ELISA: BioX K211, BioX, Rochefort, Belgium). Given the intermittent shedding of eggs

430 by adult flukes in the liver [34], the presence of low numbers of parasites [35], and the long prepatent  
431 period (10-14 weeks) [36], it is expected that seroprevalence would be higher than that based on  
432 copro-microscopy [37, 38]. Although this expected discrepancy was observed in cattle (copro-  
433 prevalence: 50.45% vs. Ab-ELISA: 75.90%), in buffaloes the copro-prevalence in buffaloes (53.74%)  
434 was significantly higher than the seroprevalence (8.67%). This unexpected finding might be  
435 explained by the fact that the Ab-ELISA kit developed by Bio-X for detecting *Fasciola* spp.  
436 antibodies in the serum of cattle and sheep might not be suitable for detecting antibodies of *Fasciola*  
437 in water buffaloes (*B. bubalis*). Therefore, we recommend that future studies consider the suitability  
438 of the Ab-ELISA kit for detecting *Fasciola* antibodies in the serum of water buffaloes.

#### 439 **Absence of *Fasciola* in snails and water plants**

440 In total, we examined 330 lymnaeid snails across 38 different habitats and 233 water plant samples  
441 across 233 households. Despite these sampling efforts, we did not observe any of the samples  
442 infected/contaminated with *Fasciola*. Given the high prevalence of fascioliasis in livestock, the  
443 reasons for the absence of *Fasciola* might have been due to methodological flaws of the study,  
444 including the small sample size, and a less optimal sampling strategy.

445 Our research primarily focused on understanding the prevalence of *Fasciola* spp. infection in humans  
446 rather than in animals. Consequently, we prioritized the collection of aquatic plants commonly  
447 consumed raw by households. This focus inherently limited our ability to sample other aquatic plants  
448 in the study area that might be contaminated with *Fasciola*, such as those used for livestock feed,  
449 including various types of grasses and rice plants. In their 2012 study, Pham et al. detected  
450 metacercariae of *Fasciola* spp. on submerged grass in proximity to cattle-grazing areas. Out of the  
451 1,350 samples examined, 255 tested positive for the presence of metacercariae [7].



452 The timing and scope of snail sampling presented another notable limitation in our study. Snail  
453 samples were collected at a single time in May, coinciding with the onset of the rainy season in the  
454 region. This period may not be optimal as it likely did not capture the peak snail population, resulting  
455 in a total of only 327 lymnaeid snail samples. Previous studies in Vietnam have reported *Fasciola*  
456 infection rates in snails ranging from 0% to 1.8% [39]. Therefore, the relatively low number of  
457 samples collected in our study limits the likelihood of detecting positive cases. Similar results were  
458 observed in a comparable study conducted in the Philippines, which found no positive cases of  
459 *Fasciola* spp. among 750 lymnaeid snail samples [40]. Our sample size was significantly smaller than  
460 those reported in other studies, such as the study by Quy et al., which examined 2,269 snails and  
461 identified a *Fasciola* infection rate of 0.5% [14]; the study by Bui et al, which analyzed 24,488 snails  
462 with an infection rate ranging from 0% to 0.7% [41]; and the study by Suhardono et al, which  
463 investigated 10,159 snails and found an infection rate of 1.8% [42]. To enhance the detection of  
464 *Fasciola* spp. and to gain a comprehensive understanding of its transmission in snails, it is common  
465 for studies to collect snail samples at different times throughout the year [33, 40, 43]. These  
466 longitudinal studies provide more representative data on the prevalence and transmission dynamics  
467 of *Fasciola* spp. in snails over time.

## 468 **Conclusion**

469 We confirmed a high prevalence of fascioliasis in livestock in a North Vietnamese rural area, with  
470 older animals being at higher risk of infection and in need of treatment. Our findings in humans were  
471 not in line with historical data and underscore potential behavioral changes that impede (zoonotic)  
472 disease transmission and the need for more reliable diagnostic tests in national and provincial  
473 laboratories to inform health decision-making. We also highlight the need for an Ab-ELISA that is

474 validated for use in buffaloes, and that further research is required to improve both sampling and  
475 diagnostic means to demonstrate infections in snails and water plants

## 476 **5. Acknowledgments**

477 This study was supported by the EmFaVie project, funded by the Flemish Interuniversity Council -  
478 University Development Cooperation (VLIR-UOS, grant number VN2020SIN317A103, granted to  
479 BL and DDT), and the FasciCoM project, jointly funded by the Research Foundation - Flanders  
480 (FWO, grant number G0E2921N, granted to BL) and the Vietnamese National Foundation for  
481 Science and Technology Development (NAFOSTED, grant number FWO.108.2020.01, granted to  
482 DDT). The funders had no role in study design, data collection and analysis, decision to publish, or  
483 preparation of the manuscript. We thank the European Virus Archive GLOBAL (EVA-GLOBAL)  
484 project for providing PhHV-1, which received funding from the European Union's Horizon 2020  
485 research and innovation program under grant agreement No 871029. We would like to extend our  
486 special thanks to all the study participants involved in this survey. We are particularly grateful to our  
487 field team members, Nguyen Duc Thuy, Tran Thi Tuyen, Nguyen Huu Truong, and Dinh Cong Thinh,  
488 for their dedicated support during the fieldwork. We also appreciate the assistance provided by the  
489 Nghe An Province Center for Disease Control, the Yen Thanh Health District Center, and the health  
490 stations in Dong Thanh commune.

## 491 6. References

- 492 1. Mas-Coma S, Bargues MD, Valero MA. Fascioliasis and other plant-borne trematode  
493 zoonoses. *International Journal for Parasitology*. 2005;35(11):1255-78. doi:  
494 <https://doi.org/10.1016/j.ijpara.2005.07.010>.
- 495 2. Fürst T, Keiser J, Utzinger J. Global burden of human food-borne trematodiasis: a systematic  
496 review and meta-analysis. *The Lancet Infectious Diseases*. 2012;12(3):210-21. doi: 10.1016/S1473-  
497 3099(11)70294-8.
- 498 3. Organization WH. Report of the WHO informal meeting on use of triclabendazole in  
499 fascioliasis control: WHO headquarters, Geneva, Switzerland 17–18 October 2006. World Health  
500 Organization, 2007.
- 501 4. Bogitsh BJ, Carter CE, Oeltmann TN. *Human parasitology*: Academic Press; 2012.
- 502 5. CDC. Fascioliasis, Parasite Biology CDC2019. Available from:  
503 <https://www.cdc.gov/dpdx/fascioliasis/index.html>.
- 504 6. Nguyen Thu H, Dermauw V, Tran Huy T, Roucher C, Dorny P, Nguyen Thi H, et al.  
505 Diagnosing Human Fascioliasis Using ELISA Immunoassays at a Tertiary Referral Hospital in  
506 Hanoi: A Cross-Sectional Study. *Trop Med Infect Dis*. 2022;7(5). Epub 20220517. doi:  
507 10.3390/tropicalmed7050076. PubMed PMID: 35622703; PubMed Central PMCID:  
508 PMC9147183.
- 509 7. Bui TD, Doanh PN, Saegerman C, Losson B. Current status of fasciolosis in Vietnam: an  
510 update and perspectives. *J Helminthol*. 2016;90(5):511-22. Epub 20151113. doi:  
511 10.1017/s0022149x15000929. PubMed PMID: 26564097.
- 512 8. Anderson N, Luong TT, Vo NG, Bui KL, Smooker PM, Spithill TW. The sensitivity and  
513 specificity of two methods for detecting *Fasciola* infections in cattle. *Veterinary Parasitology*.  
514 1999;83(1):15-24. doi: [https://doi.org/10.1016/S0304-4017\(99\)00026-6](https://doi.org/10.1016/S0304-4017(99)00026-6).
- 515 9. Nguyen TGT, Le TH, Dao THT, Tran TLH, Praet N, Speybroeck N, et al. Bovine fasciolosis  
516 in the human fasciolosis hyperendemic Binh Dinh province in Central Vietnam. *Acta Tropica*.  
517 2011;117(1):19-22. doi: <https://doi.org/10.1016/j.actatropica.2010.09.003>.
- 518 10. (2020) RCT. A language and environment for statistical computing. R Foundation for  
519 Statistical Computing, Vienna, Austria.
- 520 . Available from: <https://www.R-project.org/>.
- 521 11. Doanh PN HH, Duc NV, Thach DTC. New data on intermediate host of *Fasciola* in Vietnam.  
522 *J Biol*. 2012;(34):139-44 (Vietnamese).
- 523 12. Naing L, Winn T, Rusli B. Practical issues in calculating the sample size for prevalence  
524 studies. *Archives of orofacial Sciences*. 2006;1:9-14.
- 525 13. Fitzmaurice GM, Laird NM, Ware JH. *Applied longitudinal analysis*: John Wiley & Sons;  
526 2012.
- 527 14. Tran QM, Yeatman H, Flood V, NC C, BV T. Prevalence and Risks of Fascioliasis among  
528 Adult Cohorts in Binh Dinh and Quang Ngai Provinces-Central Viet Nam: Wollongong; 2015.
- 529 15. Zárate-Rendón DA, Vlaminck J, Levecke B, Briones-Montero A, Geldhof P. Comparison of  
530 Kato-Katz Thick Smear, Mini-FLOTAC, and Flukefinder for the Detection and Quantification of  
531 *Fasciola hepatica* Eggs in Artificially Spiked Human Stool. *Am J Trop Med Hyg*. 2019;101(1):59-  
532 61. doi: 10.4269/ajtmh.18-0988. PubMed PMID: 31074405; PubMed Central PMCID:  
533 PMC6609204.

- 534 16. Perez-C JE, Giraldo-Pinzon EJ, Aguilar-Marín S. First Report of Human Fascioliasis in an  
535 Endemic Region of Bovine Fascioliasis in Caldas-Colombia. *Vector-Borne and Zoonotic Diseases*.  
536 2016;16(6):377-81. doi: 10.1089/vbz.2015.1900.
- 537 17. Grabner DS, Mohamed F, Nachev M, Méabed EMH, Sabry AHA, Sures B. Invasion Biology  
538 Meets Parasitology: A Case Study of Parasite Spill-Back with Egyptian *Fasciola gigantica* in the  
539 Invasive Snail *Pseudosuccinea columella*. *Plos One*. 2014;9(2). doi: 10.1371/journal.pone.0088537.  
540 PubMed PMID: WOS:000331258100062.
- 541 18. Niesters HGM. Clinical virology in real time. *Journal of Clinical Virology*. 2002;25:3-12. doi:  
542 [https://doi.org/10.1016/S1386-6532\(02\)00197-X](https://doi.org/10.1016/S1386-6532(02)00197-X).
- 543 19. Fan D. Development and optimization of a tool for the detection of *Fasciola* spp.  
544 metacercariae on water plants: University of Antwerp; 2022.
- 545 20. Kurnianto H, Ramanoon SZ, Aziz NAA, Indarjulianto S. Prevalence, risk factors, and  
546 infection intensity of fasciolosis in dairy cattle in Boyolali, Indonesia. *Vet World*. 2022;15(6):1438-  
547 48. Epub 20220612. doi: 10.14202/vetworld.2022.1438-1448. PubMed PMID: 35993064; PubMed  
548 Central PMCID: PMCPMC9375217.
- 549 21. (2024) RCT. The R Project for Statistical Computing. Available from: [https://www.r-](https://www.r-project.org/)  
550 [project.org/](https://www.r-project.org/).
- 551 22. Mas-Coma S. Human fascioliasis: epidemiological patterns in human endemic areas of South  
552 America, Africa and Asia. *Southeast Asian J Trop Med Public Health*. 2004;35(Suppl 1):1-11.
- 553 23. Tolan RW, Jr. Fascioliasis Due to *Fasciola hepatica* and *Fasciola gigantica* Infection: An  
554 Update on This ‘Neglected’ Neglected Tropical Disease. *Laboratory Medicine*. 2011;42(2):107-16.  
555 doi: 10.1309/lmlfbb8pw4sa0yji.
- 556 24. Kipyegen CK, Muleke CI, Otachi EO. Human and animal fasciolosis: Coprological survey in  
557 Narok, Baringo and Kisumu counties, Kenya. *Onderstepoort Journal of Veterinary Research*.  
558 2022;89(1):1954.
- 559 25. Lan Anh NT, Thanh DTH, Hoan DH, Thuy DT, Khong NV, Anderson N. The transmission  
560 of *Fasciola* spp. to cattle and contamination of grazing areas with *Fasciola* eggs in the Red River Delta  
561 region of Vietnam. *Tropical Animal Health and Production*. 2014;46(4):691-6. doi: 10.1007/s11250-  
562 014-0542-4.
- 563 26. Dam Van Phai TVT, Dao Thi Ha Thanh, Nguyen Thi Phuong,, Nguyen Thi Hang PTLH,  
564 Desmecht Daniel, Bui Tran Anh Dao. Prevalence of Fasciolosis in free grazing buffalo along the Red  
565 river  
566 alluvial grounds and treatment medicine. *JOURNAL OF VETERINARY SCIENCE AND*  
567 *TECHNOLOGY (Vietnamese)*. 2019;XXVI(5):79-87.
- 568 27. Japa O, Siriwechviriyaya P, Prakhamin K. Occurrence of fluke infection in beef cattle around  
569 Phayao Lake, Phayao, Thailand. *Vet World*. 2020;13(2):334-7. Epub 20200220. doi:  
570 10.14202/vetworld.2020.334-337. PubMed PMID: 32255976; PubMed Central PMCID:  
571 PMCPMC7096287.
- 572 28. Copeman D, Copland R, Gray GD. Overcoming liver fluke as a constraint to ruminant  
573 production in South-East Asia: Australian Centre for International Agricultural Research; 2008.
- 574 29. Rita N, Mursyidah A, Khadijah S. The prevalence of helminthiasis in cattle, Terengganu,  
575 Peninsular Malaysia. 2017.
- 576 30. Nurhidayah N, Satrija F, Retnani EB, Astuti DA, Murtini S. Prevalence and risk factors of  
577 trematode infection in swamp buffaloes reared under different agro-climatic conditions in Java Island  
578 of Indonesia. *Vet World*. 2019;13(4):687-94. Epub 20200415. doi: 10.14202/vetworld.2020.687-694.  
579 PubMed PMID: 32546913; PubMed Central PMCID: PMCPMC7245721.

- 580 31. Portugaliza HP, Balaso IMC, Descallar JCB, Lañada EB. Prevalence, risk factors, and spatial  
581 distribution of *Fasciola* in carabao and intermediate host in Baybay, Leyte, Philippines. *Veterinary*  
582 *Parasitology: Regional Studies and Reports*. 2019;15:100261. doi:  
583 <https://doi.org/10.1016/j.vprsr.2018.100261>.
- 584 32. LOEURNG V, CHEA B, TUM S, Seng M. Challenge and Prevalence of Fasciolosis in Cattle  
585 in Pursat Province, Cambodia. *International Journal of Environmental and Rural Development*.  
586 2016;7(1):70-6.
- 587 33. Sam Thi Nguyen STN, Duc Tan Nguyen DTN, Thoai Van Nguyen TVN, Vu Vy Huynh VVH,  
588 Duc Quyet Le DQL, Fukuda Y, et al. Prevalence of *Fasciola* in cattle and of its intermediate host  
589 *Lymnaea* snails in central Vietnam. 2012.
- 590 34. Waseem Shahzad WS, Khalid Mehmood KM, Rashid Munir RM, Waqar Aslam WA,  
591 Muhammad Ijaz MI, Rashid Ahmad RA, et al. Prevalence and molecular diagnosis of *Fasciola*  
592 *hepatica* in sheep and goats in different districts of Punjab, Pakistan. 2012.
- 593 35. Rehman T, Khan MN, Abbas RZ, Babar W, Sikandar A, Zaman MA. Serological and  
594 coprological analyses for the diagnosis of *Fasciolagigantica* infections in bovine hosts from Sargodha,  
595 Pakistan. *Journal of Helminthology*. 2016;90(4):494-502. Epub 2015/08/24. doi:  
596 10.1017/S0022149X15000711.
- 597 36. Rabia I, Sabry H, Nagy F. Comparison between different immunological techniques for  
598 detection of circulating *Fasciola* antigen in sheep. *New York Science Journal*. 2010;3(7).
- 599 37. Ahmad-Najib M, Wan-Nor-Amilah WAW, Kin WW, Arizam MF, Noor-Izani NJ. Prevalence  
600 and Risk Factors of Bovine Fascioliasis in Kelantan, Malaysia: A Cross-Sectional Study. *Trop Life*  
601 *Sci Res*. 2021;32(2):1-14. Epub 20210629. doi: 10.21315/tlsr2021.32.2.1. PubMed PMID:  
602 34367511; PubMed Central PMCID: PMCPMC8300943.
- 603 38. Yıldırım A, İca A, Duzlu O, İnci A. Prevalence and risk factors associated with *Fasciola*  
604 *hepatica* in cattle from Kayseri province, Turkey. 2007.
- 605 39. Hoang Quang V, Levecke B, Do Trung D, Devleesschauwer B, Vu Thi Lam B, Goossens K,  
606 et al. *Fasciola* spp. in Southeast Asia: A systematic review. *PLoS Negl Trop Dis*.  
607 2024;18(1):e0011904. Epub 20240117. doi: 10.1371/journal.pntd.0011904. PubMed PMID:  
608 38232120; PubMed Central PMCID: PMCPMC10843148.
- 609 40. Martin I GL, Cabrera EC. Morphological Characterization of Emerging Cercariae among  
610 *Lymnaeid* Snails from Barangay Cawongan, Padre Garcia, Batangas, Philippines. *Journal of*  
611 *Parasitology Research*. 2018;2018(1):5241217. doi: <https://doi.org/10.1155/2018/5241217>.
- 612 41. Dung BT, Doanh PN, The DT, Loan HT, Losson B, Caron Y. Morphological and molecular  
613 characterization of *lymnaeid* snails and their potential role in transmission of *Fasciola* spp. in  
614 Vietnam. *Korean J Parasitol*. 2013;51(6):657-62. Epub 20131231. doi: 10.3347/kjp.2013.51.6.657.  
615 PubMed PMID: 24516270; PubMed Central PMCID: PMCPMC3916454.
- 616 42. Suhardono, Roberts JA, Copeman DB. Biological control of *Fasciola gigantica* with  
617 *Echinostoma revolutum*. *Veterinary Parasitology*. 2006;140(1):166-70. doi:  
618 <https://doi.org/10.1016/j.vetpar.2006.02.028>.
- 619 43. Ngoen-klan R, Piangjai S, Somwang P, Moophayak K, Sukontason K, Sukontason KL, et al.  
620 Emerging Helminths Infection in Snails and Cyprinoid Fish in Sewage Treatment Wetlands Waters  
621 in Cambodia. *Asian Journal of Water, Environment and Pollution*. 2010;7:13-21.

## 623 **7. Supporting information**

624 **Info S1. Individual questionnaire for human participants**

625 **Info S2. Household questionnaire for head of household**

626 **Info S3. Instructions for collecting freshwater plants**

627 **Info S4. Standard operating procedure for stool sample examination**

628 **Info S5. Standard operating procedure for serum antibody detection (Ab-ELISA)**

629

630