

---

## **Exercise hypertension and cardiopulmonary exercise performance in essential hypertensive patients taking diverse antihypertensive medications**

Pan Wen<sup>1</sup> Ji Tengfei<sup>1</sup> Jing Zhicong<sup>2</sup> Hu Bingtao<sup>3</sup> Liu Dan<sup>1</sup> Wei Jin<sup>1#</sup>

1 Department of Cardiology, XJTU Affiliated Second Hospital, Xi'an, Shaanxi, 710082, China;

2 Department of Cardiology, XJTU Affiliated First Hospital, Xi'an, Shaanxi, 710051, China;

3 Department of Rehabilitation Medicine, XJTU Affiliated Second Hospital, Xi'an, Shaanxi, 710082, China.

Wen Pan and Ji Tengfei contributed equally to this work.

# Corresponding author: Wei Jin, [weijin@mail.xjtu.edu.cn](mailto:weijin@mail.xjtu.edu.cn), The Second Affiliated Hospital of Xi'an Jiaotong University, Xi'an

## **BACKGROUND:**

There is mounting evidence that exercise hypertension (EH) in hypertensive patients is linked to cardiovascular disease events, end-organ damage, and mortality. Nevertheless, standardized treatment options for reducing EH in these patients have yet to be established. Our study provides robust clinical evidence regarding the selection of antihypertensive medications for hypertensive patients with EH. Concurrently, we assessed the impact of specific antihypertensive drugs on cardiorespiratory exercise performance in hypertensive patients.

## **METHODS:**

Clinical data from 205 patients with essential hypertension who achieved standard resting blood pressure after 3 months of medication were retrospectively collected from the Cardiology Department of Xi'an Jiaotong University Second Affiliated Hospital and the Cardiology Department of Xi'an Jiaotong University First Affiliated Hospital between April 2023 and April 2024. Baseline characteristics, hypertension treatment options, and cardiopulmonary exercise test (CPET) indicators were recorded. Hypertension treatment options included monotherapy with  $\beta$ -blockers (BBs), angiotensin receptor neprilysin inhibitors (ARNI), angiotensin-converting enzyme inhibitors/angiotensin II receptor blockers (ACEI/ARB), or calcium channel blockers (CCB); as well as combination therapy without BBs or ARNI, ARNI combined with non-BBs, BBs combined with non-ARNI, and BBs + ARNI combined with other drugs. Patients were categorized into EH group and general group based on their CPET results. Logistic regression analysis was used to

---

assess the correlation between diverse monotherapy or combination treatment options and EH. Additionally, based on specific drug usage, patients were divided into four groups for further analysis:  $\beta$ -blocker group (with BBs but no ARNI), ARNI group (with ARNI but no BBs),  $\beta$ -blocker + ARNI combined group (with both BBs and ARNI), and other drug group (without BBs or ARNIs). Multiple sample rank sum tests along with multiple comparison analyses were conducted to evaluate the effects of specific drugs on heart rate response (HRr), blood pressure response (BPr), peak oxygen uptake ( $VO_{2peak}$ ),  $\Delta VO_2/\Delta W$ , VE/VCO<sub>2</sub> slope, peak minute ventilation ( $VE_{peak}$ ), anaerobic threshold (AT), and heart rate recovery at 1 minute post-exercise (HRR at 1min).

## RESULTS:

In monotherapy options, BBs significantly reduced the risk of EH across all three models constructed (OR=0.072, 95% CI:0.012-0.43,  $p=0.004$ ); For combination therapy options, BBs combined with non-ARNI also showed a significant reduction in EH risk across all three models constructed (OR=0.172, 95% CI:0.052-0.572,  $p=0.004$ ); while BBs + ARNI combined with other drugs demonstrated a decreased the risk of EH in model 1 and model 2 (OR=0.145, 95% CI:0.041-0.508,  $p=0.003$ ) and (OR=0.15, 95% CI:0.039-0.574,  $p=0.006$ ). Among the specific drug group, BBs were found to be more effective than other drugs in reducing HPr (14.60 vs. 17.60 bpm/met,  $p=0.002$ ), BPr (12.70 vs.14.40 mmHg/met,  $p=0.014$ ),  $VO_{2peak}$  (16.80 vs. 18.80 ml/kg/min,  $p=0.023$ ), HRR at 1min $\leq$ 12 times/minute proportion ( 12.7% vs. 34.1%,  $p=0.003$ ), and than ARNI in reducing BPr (12.70 vs. 14.60 mmHg/met,

---

$p=0.035$ ) and  $VO_{2peak}$  (16.80 vs. 18.80 ml/kg/min,  $p=0.006$ ). Furthermore, BBs + ARNI were found to be more effective than other drugs in reducing HRr (14.25 vs. 17.60 bpm/met,  $p=0.031$ ),  $VO_{2peak}$  (16.30 vs 18.80 ml/kg/min,  $p=0.008$ ), and than ARNI in reducing  $VO_{2peak}$  (16.30 vs 19.30 ml/kg/min,  $p=0.002$ ).

## CONCLUSIONS:

Among essential hypertensive patients achieving standard resting blood pressure levels through antihypertensive therapy, monotherapy or combination therapy involving BBs can reduce the risk of EH. However, ACEI/ARBs, ARNI or CCBs alone did not demonstrate a reduction in EH risk. Compared to ARNI alone or combined use thereof, monotherapy or combination therapy involving BBs reduces cardiorespiratory tolerance, slows down heart rate and blood pressure responses during exercise, and increases vagal tone following physical activity in hypertensive patients.

**Key words:** essential hypertension cardiopulmonary exercise test exercise hypertension antihypertensive medications  $\beta$ -blockers ARNI

## NOVELTY AND RELEVANCE

### What Is New?

We elucidated the effects of diverse hypertension treatment options on EH risk in essential hypertensive patients, as well as the influence of specific antihypertensive medications on cardiopulmonary exercise performance in this population.

---

## What Is Relevant

Essential hypertension (EH) primarily involves sympathetic nervous system(SNS) activation.  $\beta$ -blockers(BBs) inhibit cardiac SNS activation, thereby reducing EH incidence. Although BBs negatively impact exercise tolerance during exercises, they increase post-exercise vagal nerve tone.

## Clinical/Pathophysiological Implications?

This study offers valuable insights into antihypertensive treatment options for essential hypertensive patients with EH.

### Nonstandard Abbreviations and Acronyms

EH	Exercise hypertension
CPET	Cardiopulmonary exercise test
SBP	Systolic blood pressure
BBs	$\beta$ -blockers
ARNI	Angiotensin receptor neprilysin inhibitors
CCB	Calcium channel blockers
BPr	Blood pressure response
$VO_{2peak}$	Peak oxygen uptake
RER	Respiratory exchange rate
$\Delta VO_2/\Delta W$	Ratio of oxygen uptake change to power change
$VE/VCO_2$ slope	Carbon dioxide ventilation equivalent slope
$VE_{peak}$	Peak minute ventilation

---

AT	Anaerobic threshold
HRR at 1min	Heart rate recovery at 1 minute post-exercise
SNS	Sympathetic nervous system
HRr	Heart rate response
NPs	Natriuretic peptide system
RAAS	Renin-angiotensin-aldosterone system
MET	Metabolic equivalent

## Introduction.

Essential hypertension is a significant global public health issue by the WHO<sup>[1]</sup>. The impact of hypertension on end organ damage is a key focus for prevention and treatment<sup>[2]</sup>. Mounting evidence indicates a strong correlation between exercise hypertension (EH) and cardiovascular disease events, end organ damage, and mortality<sup>[3-6]</sup>. While the pathogenesis of EH remains incompletely elucidated, ongoing research suggests associations with the sympathetic nervous system (SNS), natriuretic peptide system (NPs), renin-angiotensin-aldosterone system (RAAS), adrenal function, and genetic factors<sup>[7]</sup>. Previous clinical studies have predominantly focused on the potential link between  $\beta$ -blockers(BBs) and reduced blood pressure during exercise. Additionally, there is limited effect of RAAS inhibitors on EH incidence. Furthermore, there is currently insufficient research regarding the influence of new-generation drugs targeting both RAAS and NPs systems—such as angiotensin receptor-neprilysin inhibitors (ARNI)—on EH incidence<sup>[8]</sup>. This investigation seeks to elucidate the effects of diverse hypertension treatment options

on EH risk in essential hypertensive patients, as well as their cardiopulmonary exercise performance.

## **1. Data and Methods**

### **1.1 Baseline Data**

This retrospective multicenter study investigated 2073 patients with essential hypertension undergoing medication at the Department of Cardiology in the Second Affiliated Hospital of Xi'an Jiaotong University and the First Affiliated Hospital of Xi'an Jiaotong University from April 2023 to April 2024. Following the application of inclusion and exclusion criteria, a total of 205 patients were selected as final research subjects. Detailed inclusion and exclusion criteria are provided in Figure 1. Patients were categorized into the EH group and the general group based on their PCET results, after which their baseline characteristics were compared.

Comprehensive baseline data is available in Table 1. This study received approval from the Medical Ethics Committee of the Second Affiliated Hospital of Xi'an Jiaotong University (approval number: 2020055).

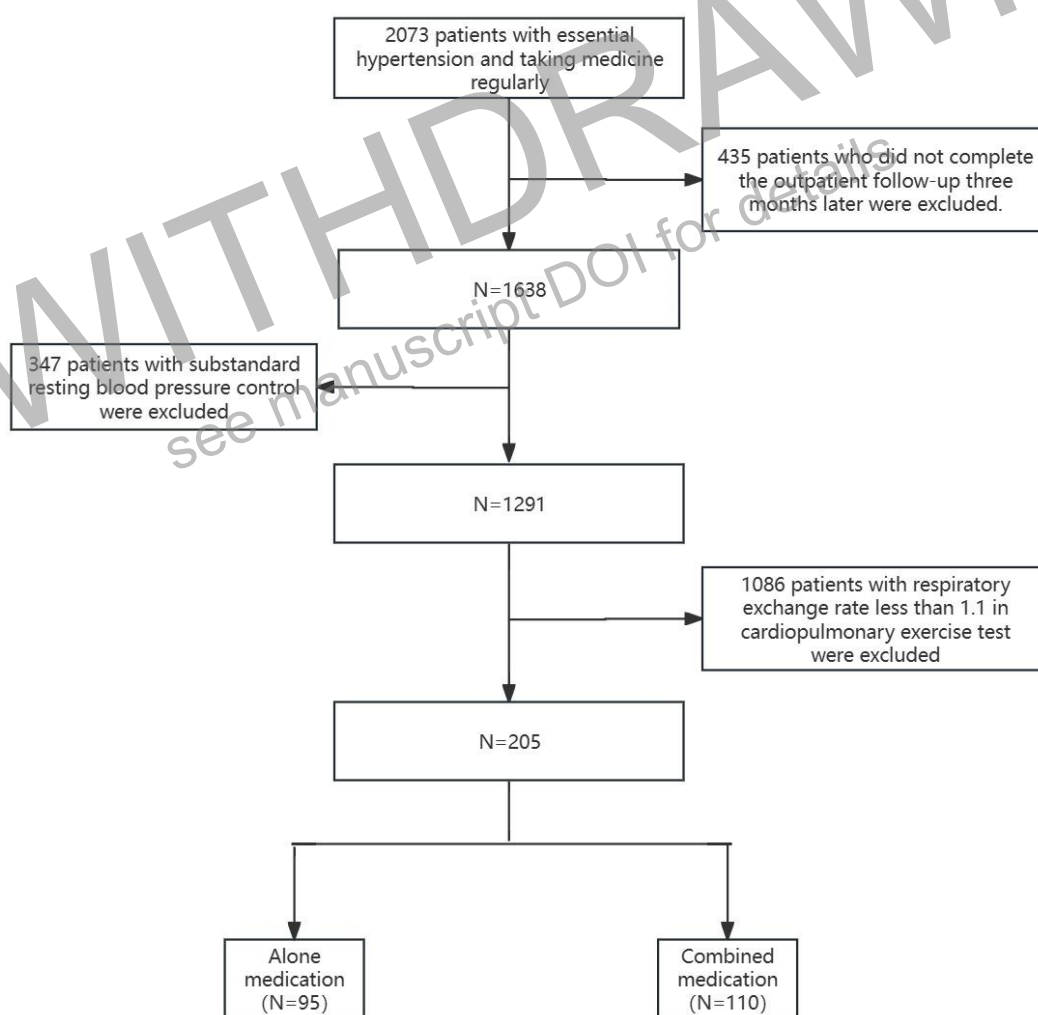
**Table 1: Comparison of Baseline Data between Two Groups**

	EH (−) n=138	EH (+) n=67	Z/t/ $\chi^2$	p
Age[years, m(P25,P75)]	58 (50,64)	58 (50,63)	Z=-0.131	0.896
sex[n(%)]				
man	112 (81.2%)	42 (62.7%)	$\chi^2=8.235$	0.004
woman	26 (18.8%)	25 (37.3%)		
address [n(%)]				
city	67 (48.6%)	41 (61.2%)	$\chi^2=2.892$	0.089
village	71 (51.4%)	26 (38.8%)		
smoke [n(%)]	97 (70.3%)	38 (56.7%)	$\chi^2=3.695$	0.055
CHD [n(%)]	111 (80.4%)	51 (76.1%)	$\chi^2=0.507$	0.477
diabetes [n(%)]	41 (29.7%)	12(17.9%)	$\chi^2=3.276$	0.07
hyperlipemia [n(%)]	39 (28.3%)	18 (26.9%)	$\chi^2=0.044$	0.834
hypertension [n(%)]				
Level 1	51 (37%)	28 (41.8%)	$\chi^2=1.301$	0.522
Level 2	39 (28.3%)	14 (20.9%)		
Level 3	48 (34.8%)	25 (37.3%)		
BMI ( $\bar{x} \pm s$ )	25.81±2.81	26.44±3.21	t=-1.442	0.151
LVEF[% , m(P25,P75)]	65 (62,68)	66 (63,69)	Z=-0.993	0.321



proBNP[pg/ml, m(P25,P75)]	42.39 (17.52,128.28)	41 (18.3,65.5)	Z=-0.949	0.342
SBP[mmHg,( $\bar{x} \pm s$ )]	121.23±15.31	123.18±10.178	t=-0.944	0.346

Note: BMI (Body Mass Index), LVEF (Left Ventricular Ejection Fractions), pro-BNP (pro-Brain Natriuretic Peptide), SBP (Systolic blood pressure), CHD (coronary heart disease); 1mmHg=0.133kPa



**Figure 1: Flow chart of patient inclusion and exclusion**

Inclusion Criteria: ① Meeting the diagnostic criteria for essential hypertension [9] and receiving antihypertensive medication for a minimum of 3 months. ② with well-controlled

---

resting blood pressure, defined as systolic blood pressure <140 mmHg and diastolic blood pressure <90 mmHg. ③ Achieving a respiratory exchange rate (RER)  $\geq 1.1$  during cardiopulmonary exercise testing. 4. Providing signed informed consent.

Exclusion Criteria: ① Acute myocardial infarction within the past month. ② Cognitive impairment precluding cooperation with study procedures. 3. Having malignant tumors.

## **1.2 Research Methods**

### **1.2.1 Data Collection**

Through a comprehensive review of the electronic medical record system, we collected relevant clinical data on patients, encompassing gender, age, body mass index (BMI), place of residence, hypertension, diabetes, coronary heart disease, hyperlipidemia, smoking status, Left Ventricular Ejection Fraction (LVEF), plasma pro-brain natriuretic peptide (pro-BNP), and antihypertensive treatment options.

Cardiopulmonary exercise test: The equipment is preheated for 15 minutes, and environmental parameters, gas volume, flow rate, and gas concentration are calibrated. After excluding any contraindications in all patients, they are equipped with an ECG and a face mask in a room maintained at a temperature of 20-25°C and a humidity of 40%-50%. Subsequently, the patients undergo progressive incremental exercise testing on a cycle ergometer until exhaustion (RER  $\geq 1.10$ ). During the exercise, the patient's inhaled and exhaled gases are collected using a gas analysis instrument to measure oxygen concentration, carbon dioxide concentration, etc. Additionally, blood pressure is monitored every minute using an automated blood pressure monitor during exercise.

### **1.2.2 Diagnostic criteria and assessment indicators**

---

In 1983, Dlin et al. <sup>[10]</sup> first introduced the concept of EH, which refers to an abnormal increase in blood pressure during or after physical activity. Currently, there is no universally accepted standard for diagnosing EH. However, most researchers utilize the criteria of male systolic blood pressure  $\geq 210$ mmHg and female systolic blood pressure  $\geq 190$ mmHg during maximal exercise <sup>[11]</sup>.

Heart rate response (HRr) during physical activity can be determined using the formula  $HRr = (HR_{max} - HR_{rest}) / (MET_{max} - MET_{rest})$ . Under typical circumstances, there exists a linear correlation between heart rate and metabolic equivalent (MET). As physical activity intensity escalates, the heart rate increases at an approximate pace of 10 beats per minute for each additional MET. Current research suggests that the autonomic nervous system primarily governs the heart rate response <sup>[12]</sup>.

Heart rate recovery at 1 minute (HRR at 1 min) is defined as the difference between the maximum heart rate achieved during exercise load testing and the heart rate measured one minute after the conclusion of the test. An HRR at 1 min value of  $\leq 12$  beats per minute is utilized as a criterion for abnormal heart rate recovery, serving as an established indicator of reactivation of the parasympathetic nervous system of the heart <sup>[13]</sup>.

The blood pressure response (BPr) is determined by the formula  $BPr = (BPr_{max} - BPr_{rest}) / (MET_{max} - MET_{rest})$ . It has been observed that with increasing exercise intensity, systolic blood pressure increases at a rate of  $(10 \pm 2)$  mmHg per additional MET <sup>[14]</sup>.

---

Peak oxygen uptake ( $VO_{2peak}$ ) signifies exercise endurance;  $\Delta VO_2/\Delta W$  indicates aerobic metabolic capacity;  $VE/VCO_2$  slope indicates ventilatory effectiveness; peak minute ventilation ( $VE_{peak}$ ) reflects ventilatory capacity; and anaerobic threshold (AT) represents maximal aerobic metabolic capacity [15].

### 1.2.3 masked method

Patient data were collected by non-participating nursing staff, and cardiopulmonary exercise tests were conducted by independent medical personnel in accordance with relevant standards and regulations.

### 1.2.4 Statistical methods

The data were analyzed utilizing SPSS 27.0. Continuous variables with a normal distribution were presented as mean $\pm$ standard deviation, while those with a non-normal distribution were represented as median (first quartile, third quartile). The comparison of means between two groups was assessed using t-test or Mann-Whitney U test, and for multiple group comparisons, Analysis of Variance or Kruskal-Wallis tests were employed. Categorical variables were expressed as counts (proportions), with inter-group comparisons assessed using  $\chi^2$  tests. In this analysis, EH was considered as the dependent variable, while gender, age, BMI, residence location, hypertension status, diabetes, coronary heart disease, hyperlipidemia, smoking habits, LVEF, pro-BNP, and antihypertensive therapy options served as independent variables. Logistic regression analysis was used to assess the effect of different antihypertensive therapies on the risk of EH. Details regarding dependent and independent variables along with their respective values are presented in Table 2.

Statistical significance was considered based on a 2-tailed  $p < 0.05$ .

**Table 2: Dependent and Independent Variables and Their Assignments**

Variables	factor	coding schemes provided
Y	EH	1= No, 2= Yes.
X1	Age	Continuous digital variable
X2	Sex	1= No, 2= Yes.
X3	BMI	Continuous digital variable
X4	Address	1= village, 2= city.
X5	smoke	1= No, 2= Yes.
X6	Hypertension	1= Hypertension level 1, 2= Hypertension level 2, 3= Hypertension level 3.
X7	CHD	1= No, 2= Yes.
X8	Diabetes	1= No, 2= Yes.
X9	Hyperlipemia	1= No, 2= Yes.
X10	EF	Continuous digital variable
X11	pro-BNP	Continuous digital variable
X12	Alone medication	1=CCB, 2=BBs, 3=ARNI, 4=ACEI/ARB
X13	Combined medication	1=Combination therapy without BBs or ARNI, 2= ARNI combined with BBs, 3=BBs combined with non-ARNI, 4=BBs + ARNI combined with other drugs

## 2.Results

### 2.1 Association between different monotherapy and the risk of EH

The study developed a binary logistic regression model that integrated various individual drug regimens, gender, age, BMI, residence, smoking history, hypertension grade, history of coronary heart disease, history of diabetes, history of hyperlipidemia, LVEF and pro-BNP. The results indicated a significant decrease in the risk of EH with the use of BBs (OR=0.072, 95% CI: 0.012-0.43,  $p=0.004$ ). In contrast, CCBs, ARNI and ACEI/ARB did not exhibit statistically significant differences in the risk of EH as detailed in Table 3.

WITHDRAWN  
see manuscript DOI for details

**Table 3: Association between different single drugs and the risk of EH**

Variables	Risk of exercise-induced hypertension								
	Model 1			Model 2			Model 3		
	OR	95%CI	<i>P</i>	OR	95%CI	<i>P</i>	OR	95%CI	<i>P</i>
CCB	reference			reference			reference		
ARNI	1.19	0.319-4.442	0.796	1.356	0.327-5.618	0.675	1.954	0.395-9.675	0.412
BBs	0.081	0.017-0.396	0.002	0.073	0.014-0.386	0.002	0.072	0.012-0.43	0.004
ACEI/ARB	0.927	0.327-2.631	0.887	0.765	0.247-2.362	0.641	0.878	0.262-2.942	0.832

Model 1 is not adjusted.

Model 2 adjusted for model 1 plus age at baseline, sex, smoking status, address and BMI.

Model 3 adjusted for model 2 plus LVEF, proBNP, hypertension, diabetes, coronary heart disease, and hyperlipemia diseases (yes or no)

## 2.2. Association between different combination drugs and risk of EH

By integrating various combination therapy options, along with gender, age, BMI, residence, smoking history, hypertension grade, history of coronary heart disease, history of diabetes, history of hyperlipidemia, LVEF value and pro-BNP into a binary logistic regression model, the study revealed that the use of BBs in combination with non-ARNI significantly decreased the risk of EH (OR=0.172; 95% CI: 0.052-0.572;  $p=0.004$ ). Furthermore, ARNI combined with BBs and other medications were found to notably reduce the risk of EH in Models 1 and 2 (OR=0.145, 95% CI: 0.041-0.508,  $p=0.003$ ) and (OR=0.15, 95% CI: 0.039-0.574;  $p=0.006$ ), respectively but did not demonstrate statistically significant differences in Model 3. Detailed information is provided in Table 4.



**Table 4: Association between different combination drugs and risk of EH**

Variables	Risk of exercise-induced hypertension								
	Model 1			Model 2			Model 3		
	OR	95%CI	<i>p</i>	OR	95%CI	<i>p</i>	OR	95%CI	<i>p</i>
Combination therapy without BBs or ARNI	reference			reference			reference		
ARNI combined with non-BBs	0.753	0.171-3.312	0.707	0.634	0.137-2.936	0.56	0.689	0.132-3.591	0.658
BBs combined with non-ARNI	0.2	0.069-0.578	0.003	0.192	0.062-0.593	0.004	0.172	0.052-0.572	0.004
BBs + ARNI combined with other drugs	0.145	0.041-0.508	0.003	0.15	0.039-0.574	0.006	0.283	0.067-1.188	0.085

Model 1 is not adjusted.

Model 2 adjusted for model 1 plus age at baseline, sex, smoking status, address and BMI.

Model 3 adjusted for model 2 plus LVEF, proBNP, hypertension, diabetes, coronary heart disease, and hyperlipemia diseases (yes or no)

---

### 2.3 The Influence of a Specific Medication Regimen on CPET indicators

205 patients were stratified into four groups based on the use of specific medications: the  $\beta$ -blocker group (with BBs but no ARNI), the ARNI group (with ARNI but no BBs), the  $\beta$ -blocker + ARNI combined group (with both BBs and ARNI), and the other drugs group (without BBs or ARNI). We utilized the Kruskal-Wallis test and multiple comparison analysis to evaluate the impact of these specific drug regimens on cardiopulmonary exercise performance. Our results revealed that compared to the other drugs group, the  $\beta$ -blocker group exhibited reduced HPr ( $p=0.002$ ), BPr ( $p=0.014$ ),  $VO_{2peak}$  ( $p=0.023$ ), and a proportion of HRR at 1 min  $\leq 12$  bpm ( $p=0.003$ ). Additionally, compared to the ARNI group, the  $\beta$ -blocker group showed lower BPr ( $p=0.035$ ) and  $VO_{2peak}$  ( $p=0.006$ ). Furthermore, when compared to those in the other drugs group, participants in the  $\beta$ -blocker + ARNI combined cohort displayed decreased HRr ( $p=0.031$ ) and  $VO_{2peak}$  ( $p=0.008$ ). Lastly, when comparing with those in the ARNI Group, the  $\beta$ -blocker+ARNI Combined Group had lower  $VO_{2peak}$  ( $p=0.002$ ). For detailed data please refer to Table 5 and Figure 2 for more information.

**Table 5:** The Influence of a Specific Medication Regimen on CPET indicators[m(P25,P75)]

	other drug group (n=91)	ARNI group (n=21)	$\beta$ -blocker group (n=63)	$\beta$ -blocker + ARNI combined group (n=30)	H	p
HRr	17.60 (15.00,24.00)	17.50 (10.45,27.50)	14.60 (12.00,18.10)	14.25(11.67,20.47)	16.333	0.001
HRR at 1min[n(%)]						
$\leq 12$ bpm	31 (34.1%)	5 (23.8%)	8 (12.7%)	6(20.0%)	9.607	0.022
$> 12$ bpm	60 (65.9%)	16 (76.2%)	55 (87.3%) #	24 (80.0%)		
BPr	14.40 (11.90, 17.30)	14.60 (12.45, 17.10)	12.70 (10.90, 14.60)	13.95 (11.75, 16.47)	12.217	0.007
VO <sub>2peak</sub> (ml/kg/min)	18.80 (15.70, 21.50)	19.30 (17.25, 22.30)	16.80 (14.70, 19.20)	16.30 (14.05, 18.45)	21.727	0.001
$\Delta$ VO <sub>2</sub> / $\Delta$ W (ml/min/W)	10.20 (6.70, 11.10)	10.20 (8.77, 11.00)	9.90 (9.20, 10.60)	9.65 (8.70, 10.75)	0.764	0.858
VE/VCO <sub>2</sub> slope	27.60 (26.10,29.50)	28.10 (25.85, 29.85)	27.70 (25.90, 29.30)	27.30 (26.22, 29.90)	0.332	0.954
peakVE(l/min)	54.78 (50.82, 57.86)	56.49 (51.35, 59.19)	53.78 (51.47, 56.81)	56.64 (50.77, 58.67)	2.602	0.457

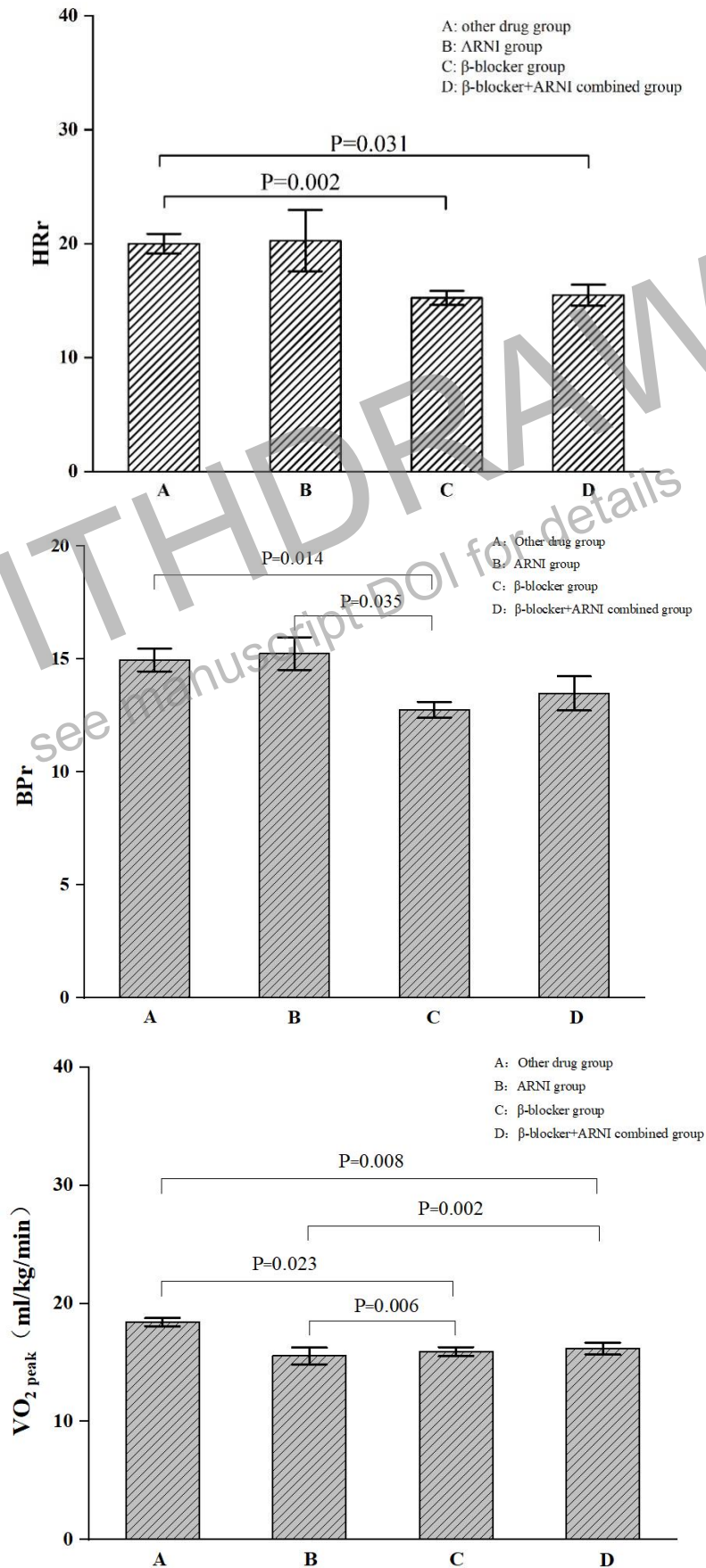
---

AT(ml/kg/min)	11.90 (10.80, 13.70)	11.50 (10.70, 12.70)	11.60 (10.40, 13.30)	12.15 (10.75, 13.52)	3.890	0.274
---------------	----------------------	----------------------	----------------------	----------------------	-------	-------

---

Note:# Compared with other drug groups,  $p=0.003$

WITHDRAWN  
see manuscript DOI for details



---

**Fig. 2: Comparison of HR<sub>r</sub>, BPr and VO<sub>2peak</sub> of four groups of patients.**

### **3.discussion**

The study findings suggest that achieving standard blood pressure control in essential hypertensive patients, whether through the use of BBs alone or in combination with other medications, results in a significant reduction in the risk of EH. However, monotherapy such as ACEI/ARB, ARNI, or CCB did not demonstrate a reduction in the risk of EH. Compared with the use of ARNI alone or in combination,  $\beta$ -blocker do not impact aerobic metabolic efficiency, maximum aerobic capacity, ventilation capacity and efficiency during exercise on a cycle ergometer. Nevertheless, they do reduce exercise tolerance while slowing heart rate and blood pressure responses during physical activity and increasing vagal tone following physical activity.

The activation of the sympathetic nervous system represents a fundamental physiological adaptation triggered by the body due to physical exertion [16]. This system efficiently transmits signals to various effectors, including the heart, blood vessels, and body fluids, serving as the primary mechanism for elevating blood pressure during exercise. Miyai N [17] observed a significant elevation in levels of norepinephrine, a neurotransmitter of the sympathetic nervous system, in patients with EH, indicating a potential link between EH and excessive norepinephrine.  $\beta$ -blockers function by antagonizing norepinephrine receptors and have demonstrated efficacy in reducing the incidence of EH, consistent with the findings of this study. Kokkinos P [18] and colleagues reported on the beneficial effects of  $\beta$ -blockers in

mitigating EH among male hypertensive patients. Our inclusion of female patients further corroborates these observations.

During physical activity, there is a reduction of approximately 25% in renal blood flow <sup>[19]</sup>, leading to the activation of RAAS. This activation is believed to induce vasoconstriction and elevate blood pressure to ensure adequate blood flow supply to skeletal muscle and exercising organs. It represents a physiological process of fluid redistribution without causing excessive elevation of blood pressure during physical activity <sup>[20]</sup>, as observed by Warner JG Jr <sup>[21]</sup>. While RAAS inhibitors can moderately reduce EH, their impact on EH remains inconclusive. Previous studies have confirmed an increase in BNP levels during physical activity <sup>[22,23]</sup>. Sacubitril, a component of ARNI, reduces blood pressure by inhibiting BNP degradation. However, since EH is not primarily caused by increased cardiac chamber load, ARNI does not effectively mitigate EH. The combination of BBs and ARNI with other medications did not yield statistically significant results in Model 3. We hypothesize that patients with comorbidities such as diabetes, hyperlipidemia, and coronary heart disease may exhibit heightened sympathetic nervous system activity at baseline. This could lead to downregulation of myocardial  $\beta$ -receptors and reduced responsiveness to sympathetic stimulation induced by physical activity.

We have observed a reduction in  $VO_{2peak}$  in patients receiving BBs, indicating a limitation in maximum exercise tolerance<sup>[24]</sup>. This is associated with the decrease in maximum cardiac output resulting from the reduced heart rate and myocardial work during exercise induced by BBs. Studies have reported an 18.2% reduction in

---

maximum heart rate and a 3.3% decrease in maximum exercise power among patients receiving  $\beta$ -blockers [25]. In addition to cardiovascular effects, research suggests that  $\beta$ -blockers alter glucose and lipid metabolism, leading to changes in skeletal muscle energy metabolism and contributing to decreased exercise tolerance [26]. Our study did not observe any adverse effects of BBs on ventilatory function, likely due to the widespread clinical use of selective  $\beta_1$  receptor blockers which do not significantly affect bronchial distribution of  $\beta_2$  receptors [27,28]. Furthermore, we noted a lower incidence of post-exercise heart rate decreases of less than 12 beats per minute among patients taking BBs. This can be attributed to the ability of these agents to reduce sympathetic nervous system activity while increasing parasympathetic nervous system tone [29]. Recent research has linked post-exercise parasympathetic nervous system activity with cardiovascular disease prognosis [30,31]. Current evidence consistently supports the view that  $\beta$ -blockers effectively reduce both exercise heart rate and blood pressure responses [32-34].

In conclusion, essential hypertension (EH) primarily involves sympathetic nervous system activation. BBs inhibit cardiac sympathetic nervous system activation, thereby reducing the risk of EH. Although BBs negatively impact exercise tolerance during cycling load exercises, they increase post-exercise vagal nerve tone. This study provides valuable insights into antihypertensive treatment options for hypertensive patients with EH. However, it is important to note that the effects of  $\alpha_1$ -receptor inhibitors on EH were not observed in this study. Additionally, our observations were limited to a 3-month medication period and did not include data from longer-term medication use.



---

## Author Contributions

Pan Wen and Ji Tengfei designed the study, drafted the article, approved its final version, and made the decision to submit and publish this article. Wei Jin analyzed the data, revised the article's intellectual content, and approved the final version. Hu Bingtao acquired the data, revised the article's intellectual content, and approved the final version. Jing Zhicong and Liu Dan curated the data and figures, edited the article, and approved its final version. Wei Jin was responsible for the conceptualization, methodology, project administration, and editing of the article.

## Sources of Funding

This study was funded by the Key Research and Development Program of Shaanxi Province grant 2020ZDLSF02-09

## Disclosures

None

## References

- [1] Mills KT, Bundy JD, Kelly TN, et al. Global Disparities of Hypertension Prevalence and Control: A Systematic Analysis of Population-Based Studies From 90 Countries. *Circulation*. 2016;134(6):441-450.
- [2] Cuspidi C, Tadic M, Grassi G, Mancia G. Treatment of hypertension: The ESH/ESC guidelines recommendations. *Pharmacol Res*. 2018;128:315-321.
- [3] Moore, Myles N et al. Exercise blood pressure and cardiac structure: A systematic review and meta-analysis of cross-sectional studies. *J Sci Med Sport*. 2021;24(9):925-

---

930.

- [4] Lee J, Vasan RS, Xanthakis V. Association of Blood Pressure Responses to Submaximal Exercise in Midlife With the Incidence of Cardiovascular Outcomes and All-Cause Mortality: The Framingham Heart Study. *J Am Heart Assoc.* 2020;9(11):e015554.
- [5] Fletcher GF, Ades PA, Kligfield P, et al. Exercise standards for testing and training: a scientific statement from the American Heart Association. *Circulation.* 2013; 128(8): 873-934.
- [6] Lee J, Vasan RS, Xanthakis V. Association of Blood Pressure Responses to Submaximal Exercise in Midlife With the Incidence of Cardiovascular Outcomes and All-Cause Mortality: The Framingham Heart Study. *J Am Heart Assoc.* 2020;9(11):e015554.
- [7] Giang KW, Hansson PO, Mandalenakis Z, et al. Long-term risk of stroke and myocardial infarction in middle-aged men with a hypertensive response to exercise: a 44-year follow-up study. *J Hypertens.* 2021;39(3):503-510.
- [8] Mert KU, Şener E, Yılmaz AS, et al. The association of exaggerated hypertensive response to exercise and beta-blockers use in hypertensives. *Clin Exp Hypertens.* 2020;42(8):707-713.
- [9] Whelton PK, Carey RM, Aronow WS, et al. 2017 ACC/ AHA/ AAPA/ ABC/ ACPM/ AGS/ APhA/ASH/ASPC/NMA/PCNA Guideline for the Prevention, Detection, Evaluation, and Management of High Blood Pressure in Adults: A Report of the American College of Cardiology/American Heart Association Task Force on Clinical Practice Guidelines [published correction appears in *Hypertension.* 2018 Jun;71(6):e140-e144. doi: 10.1161/HYP.000000000000076]. *Hypertension.* 2018;71(6):e13-e115.

- 
- [10] Dlin RA, Hanne N, Silverberg DS, et al. Follow-up of normotensive men with exaggerated blood pressure response to exercise. *Am Heart J*. 1983;106(2):316-320.
- [11] Lauer MS, Levy D, Anderson KM, et al. Is there a relationship between exercise systolic blood pressure response and left ventricular mass? The Framingham Heart Study. *Ann Intern Med*. 1992;116(3):203-210.
- [12] Cornelissen VA, Verheyden B, Aubert AE, et al. Effects of aerobic training intensity on resting, exercise and post-exercise blood pressure, heart rate and heart-rate variability. *J Hum Hypertens*. 2010;24(3):175-182.
- [13] Javorka M, Zila I, Balhárek T, et al. Heart rate recovery after exercise: relations to heart rate variability and complexity. *Braz J Med Biol Res*. 2002;35(8):991-1000.
- [14] Jennings GL, Deakin G, Korner P, et al. What is the dose-response relationship between exercise training and blood pressure?. *Ann Med*. 1991;23(3):313-318.
- [15] Tran, Derek. "Cardiopulmonary Exercise Testing." *Methods in molecular biology (Clifton, N.J.)* vol. 1735 (2018): 285-295.
- [16] Tokushige, Akihiro, and Mitsuru Ohishi. "Pathophysiology of the exaggerated blood pressure response to exercise." *Hypertension research : official journal of the Japanese Society of Hypertension* vol. 45,12 (2022): 2028-2029.
- [17] Miyai, Nobuyuki et al. "Ambulatory blood pressure, sympathetic activity, and left ventricular structure and function in middle-aged normotensive men with exaggerated blood pressure response to exercise." *Medical science monitor : international medical journal of experimental and clinical research* vol. 11,10 (2005): CR478-84.
- [18] Kokkinos, Peter et al. "Beta-blockade mitigates exercise blood pressure in hypertensive

- 
- male patients.” *Journal of the American College of Cardiology* vol. 47,4 (2006): 794-8.
- [19] Rocha, Marcos P et al. “Renal blood flow during exercise: understanding its measurement with Doppler ultrasound.” *Journal of applied physiology (Bethesda, Md. : 1985)* vol. 134,4 (2023): 1004-1010.
- [20] Baffour-Awuah B, Man M, Goessler KF, et al. Effect of exercise training on the renin-angiotensin-aldosterone system: a meta-analysis. *J Hum Hypertens.* 2024;38(2):89-101.
- [21] Warner JG Jr, Metzger DC, Kitzman DW, et al. Losartan improves exercise tolerance in patients with diastolic dysfunction and a hypertensive response to exercise. *J Am Coll Cardiol.* 1999;33(6):1567-1572.
- [22] Burger AL, Wegberger C, Tscharré M, et al. Impact of an Ultra-Endurance Marathon on Cardiac Function in Association with Cardiovascular Biomarkers. *Sports Med Open.* 2024;10(1):67. Published 2024 Jun 8.
- [23] Lee G, Sou SM, Twerenbold R, et al. B-type natriuretic peptide and clinical judgment in the detection of exercise-induced myocardial ischemia. *Am J Med.* 2014;127(5):427-435.
- [24] Notarius CF, Millar PJ, Murai H, et al. Inverse relationship between muscle sympathetic activity during exercise and peak oxygen uptake in subjects with and without heart failure. *J Am Coll Cardiol.* 2014;63(6):605-606.
- [25] Fikenzer S, Fikenzer K, Laufs U, et al. Effects of cardioselective beta-blockade on plasma catecholamines and performance during different forms of exercise. *J Sports Med Phys Fitness.* 2020;60(4):643-649.
- [26] Hashimoto H, Mandai S, Shikuma S, et al. The Effect of Antihypertensive Therapy on Skeletal Muscle Mass and Bone Mineral Density in Patients With End-Stage Kidney

- 
- Disease. *J Ren Nutr.* 2024;34(3):223-234.
- [27] Peel C, Mossberg KA. Effects of cardiovascular medications on exercise responses. *Phys Ther.* 1995;75(5):387-396.
- [28] Dransfield MT, Voelker H, Bhatt SP, et al. Metoprolol for the Prevention of Acute Exacerbations of COPD. *N Engl J Med.* 2019;381(24):2304-2314.
- [29] Alzahrani AA, Cao LL, Aldossary HS, et al.  $\beta$ -Adrenoceptor blockade prevents carotid body hyperactivity and elevated vascular sympathetic nerve density induced by chronic intermittent hypoxia. *Pflugers Arch.* 2021;473(1):37-51.
- [30] Peçanha T, de Brito LC, Fecchio RY, et al. Metaboreflex activation delays heart rate recovery after aerobic exercise in never-treated hypertensive men. *J Physiol.* 2016; 594(21):6211-6223.
- [31] Desai MY, De la Peña-Almaguer E, Mannting F. Abnormal heart rate recovery after exercise as a reflection of an abnormal chronotropic response. *Am J Cardiol.* 2001; 87(10):1164-1169.
- [32] Mancia G, Kjeldsen SE, Kreutz R, Pathak A, Grassi G, Esler M. Individualized Beta-Blocker Treatment for High Blood Pressure Dictated by Medical Comorbidities: Indications Beyond the 2018 European Society of Cardiology/European Society of Hypertension Guidelines. *Hypertension.* 2022;79(6):1153-1166.
- [33] Wong GW, Boyda HN, Wright JM. Blood pressure lowering efficacy of beta-1 selective beta blockers for primary hypertension. *Cochrane Database Syst Rev.* 2016;3(3):CD007451. Published 2016 Mar 10.

---

[34] Wong GW, Wright JM. Blood pressure lowering efficacy of nonselective beta-blockers for primary hypertension. *Cochrane Database Syst Rev.* 2014; 2014(2): CD007452.  
Published 2014 Feb 28.

## Author information

---

### Authors and Affiliations

**Department of Cardiology, XJTU Affiliated Second Hospital, Xi'an, Shaanxi, 710082, China**

Pan Wen ; Ji Tengfei ; Liu Dan; Wei Jin

**Department of Cardiology, XJTU Affiliated First Hospital, Xi'an, Shaanxi, 710051, China**

Jing Zhicong

**Department of Rehabilitation Medicine, XJTU Affiliated Second Hospital, Xi'an, Shaanxi, 710082, China**

Hu Bingtao

---

### Corresponding author

Correspondence to Wei Jin

### Doctor of Medicine

Pan Wen; Wei Jin

### Master of Medicine

Ji Tengfei ;Liu Dan; Jing Zhicong; Hu Bingtao

---

WITHDRAWN  
see manuscript DOI for details