

Diet pattern determines circulating FGF21 levels while distinct *FGF21* variants influence diet pattern and FGF21 levels

Stina Ramne¹, Mario García-Ureña¹, Matthew P Gillum^{1,2}, Lars Ängquist¹, Torben Hansen¹, Jordi Merino^{1,3,4,5}, Niels Grarup^{1*}

¹Novo Nordisk Foundation Center for Basic Metabolic Research, Faculty of Health and Medical Sciences, University of Copenhagen, Copenhagen, Denmark

²Novo Nordisk A/S, Early Innovation, Outreach, and Alliances, Måløv, Denmark

³Novo Nordisk Foundation Center for Genomic Mechanisms of Disease, Broad Institute of MIT and Harvard, Cambridge, MA, USA

⁴Diabetes Unit, Endocrine Division, Massachusetts General Hospital, Boston, MA, USA

⁵Center for Genomic Medicine, Massachusetts General Hospital, Boston, MA, USA

*Correspondence: Niels Grarup, niels.grarup@sund.ku.dk

Abstract

Experimental and genetic studies suggest that FGF21 modulates macronutrient and alcohol preferences. However, FGF21's regulation of human appetite remains elusive. To address this gap in translation, we investigated the relationships between plasma FGF21 levels, *FGF21* genetic variation and habitual macronutrient intake in a large human population. We show that the main macronutrient-associated variant rs838133 and the FGF21 cis-pQTL rs838131, both in the *FGF21* gene, are distinct genetic signals. Effect directions also suggest that the influence of *FGF21* variation on macronutrient intake appear more complex than by direct mediation through plasma FGF21. Only when considering this complexity at *FGF21*, is plasma FGF21 estimated to reduce alcohol and increase protein and fat intake using mendelian randomization. Importantly, plasma FGF21 levels are also markedly elevated by high alcohol and low protein intake. This supports the diet-regulatory mechanism of FGF21 in humans, but highlights the need for mechanistic characterization of the *FGF21* genetic region.

1 **Introduction**

2 Diet is one of the main modifiable risk factors for cardiometabolic diseases. A better understanding
3 of the mechanisms underlying dietary behaviors is critical to identify strategies to prevent and
4 manage these diseases. A promising biological regulator of dietary preferences is the hepatic
5 hormone fibroblast growth factor 21 (FGF21). FGF21 exerts a wide range of beneficial metabolic
6 effects (1), and although the development of FGF21-based drugs for treatment of mainly metabolic
7 liver disease is advancing (2), a lot of questions regarding FGF21's endocrine regulation of dietary
8 preferences in humans remain unanswered.

9 Experimental studies have shown that administration or overexpression of FGF21 in animals reduce
10 alcohol and sugar preference while promoting protein feeding (3-6). Similar effects have been
11 suggested in a human trial, where FGF21 receptor activation reduced sweet taste preference (7). On
12 the other hand, alcohol and sugar intake and protein restriction, induce a robust FGF21 response in
13 humans (8-13). This points to a negative feedback regulation of appetite and intake of these
14 macronutrients, acting to protect us from an imbalanced consumption (14, 15).

15 Most research of this diet-regulatory mechanism comes from animal models, but human relevance
16 of such a mechanism is supported by the fact that the *FGF21* locus is the strongest signal in genome-
17 wide association studies (GWASs) of macronutrient intake (16-20). Nevertheless, there are gaps in
18 the translation of this research that potentially could be addressed by incorporating individual level
19 data on plasma FGF21 protein levels, genetic variation and habitual dietary intake in large population
20 cohorts. For example, experimental work suggests that FGF21's control over sweet taste preference
21 is secondary to its control over protein preference (6, 12, 21), but this has not been studied in the
22 context of the complex human diet. Furthermore, although there is a clear link between FGF21 and
23 alcohol intake (5), the experimental research on FGF21's role in macronutrient appetite generally
24 neglects alcohol, which sometimes is referred to as the fourth macronutrient. The human literature
25 on plasma FGF21 levels related to dietary intake in humans is also generally limited to the acute
26 effects of small dietary experiments, whereas the research on long-term self-selected complex
27 dietary habits is limited to studies of *FGF21* genetic variation. Thus, the association between
28 habitual dietary intake and plasma FGF21 levels has not been studied, which is important as diet
29 may alter FGF21 levels, and FGF21 levels may alter diet.

30 In addition, there appears to be a discordance in direction of effects in previous observations of
31 genetic *FGF21* variation and macronutrient intake. The lead diet-associated *FGF21* rs838133 A-
32 allele associates with higher relative carbohydrate and sugar intake but lower protein and fat intake
33 (16, 18-20). This allele has in functional studies been demonstrated to cause elevated plasma FGF21
34 levels (22). The same was shown for rs838145 (17). Given that FGF21 administrations in animals shift
35 preferences from sugar to protein (6, 21), we would expect FGF21-increasing alleles to associate
36 with macronutrient intake in the opposite direction, as the most intuitive would be that a genetic
37 variant influences a behavior through altered protein levels. This discordant directionality of *FGF21*
38 variants is an intriguing conundrum, that may have implications for our ability to estimate the casual
39 effects of FGF21 on macronutrient preference in humans using mendelian randomization (MR).

40 By mapping out the relationships between plasma FGF21 levels, *FGF21* genetic variation and
41 habitual macronutrient intake in an observational setting, we aimed to investigate the directionality
42 of *FGF21* genetic associations with macronutrient intake, whether the postprandial relationship
43 between macronutrient intake and plasma FGF21 is preserved in the long-term perspective, the
44 macronutrient priorities of FGF21's dietary regulation, and lastly the possibilities for genetically
45 estimating the casual effect of FGF21 on macronutrient preferences in humans.

46 **Results**

47 **Evidence of distinct *FGF21* signals influencing macronutrient intake and plasma FGF21 levels**

48 First, we aimed to better understand previous observations at the *FGF21* genetic region. We used
49 summary statistics from GWASs of plasma FGF21 levels (23) and macronutrient intake (20) to
50 investigate the confluence between genetic variants influencing these phenotypes. Visual
51 inspection at the *FGF21* region suggested distinct genetic signals for plasma FGF21 levels and
52 macronutrient intake (Figure 1), despite that the two lead variants, the intronic rs838131 variant (MAF
53 49%) for plasma FGF21 levels and the synonymous rs838133 variant (MAF 43%) for macronutrient
54 intake, are located only 1,148 bases from each other (LD $R^2=0.33$, $D'=0.62$). Fine-mapping coupled
55 with functional annotations to find probable causal variants showed no overlap between the
56 identified variants for plasma FGF21 levels and macronutrient intake (Supplemental table 1,
57 Supplemental figure 1). Colocalization analyses of plasma FGF21 levels and macronutrient intake in
58 this genetic region demonstrated a probability of >0.99 that there is an association with both studied
59 traits explained by two independent variants and minimal probability that these traits are colocalized

60 (Supplemental table 2). Taken together, these investigations of GWAS summary statistics provide
61 evidence that there are two distinct genetic signals at the *FGF21* locus for plasma FGF21 levels and
62 macronutrient intake.

63 **Phenotypic variation related to the distinct *FGF21* variants**

64 Next, we compared the two *FGF21* variants' associations with plasma FGF21 levels and
65 macronutrient and alcohol intake data measured with repeated 24-hour recalls (24HRs) expressed
66 as percentages or total energy intake (E%) in the UK Biobank (UKBB). As expected, the rs838131
67 variant was much more strongly associated with higher plasma FGF21 levels than the rs838133
68 variant, and this was minimally altered when conditioning on rs838133 (Figure 2a-c). Similarly, the
69 rs838133 variant was much more strongly associated with macronutrient intake than the rs838131
70 variant, predominantly with low protein and fat intakes and high free sugar and alcohol intake, and
71 these associations were minimally altered when conditioning on the rs838131 variant (Figure 2d-f,
72 Supplemental figure 2). These analyses strengthen the notion of two distinct genetic signals, where
73 rs838131 alters plasma FGF21 levels and rs838133 alters macronutrient intake.

74 We estimated haplotypes of the two *FGF21* variants and performed score tests with plasma FGF21
75 levels and macronutrient intakes (Figure 2g-j). The most common haplotype, rs838131-C and
76 rs838133-G (CG, frequency 40%) was strongly associated with lower FGF21 plasma levels and
77 associated with lower alcohol and free sugar intake, and higher protein and fat intake. In contrast,
78 the rs838131-A and rs838133-G haplotype (AG, frequency 15%) showed an opposite association
79 with plasma FGF21 levels, while the associations with macronutrient intake remained in the same
80 direction as the CG haplotype. The common rs838131-A and rs838133-A haplotype (AA, frequency
81 39%) was associated with higher plasma FGF21 levels, but to a reduced degree than the AG
82 haplotype, while this haplotype most strongly associated with macronutrient intake, positively with
83 alcohol and free sugar and negatively with protein and fat. The rs838133-A and rs838131-C
84 haplotype (CA, frequency 5%) associated negatively with plasma FGF21 levels but not with
85 macronutrient intake. These haplotype analyses suggest that the effect of the rs838131 A allele on
86 plasma FGF21 levels is attenuated by the rs838133 A allele, whereas the effect of the rs838133 A
87 allele on macronutrient intake is strengthened by the rs838131 A allele. The same conclusions were
88 reached from comparison of all nine possible genotype group combinations of the rs838131 and
89 rs838133 variants (Supplemental figure 3).

90 **Phenotypic associations between plasma FGF21 and macronutrient intake**

91 The differentiation between the *FGF21* genetic signals for plasma FGF21 levels and macronutrient
92 intake, respectively, raises the question whether an association between habitual macronutrient
93 intake and plasma FGF21 levels exists, or if this only is reflected in the acute response to intake of
94 specific macronutrients. We investigated the cross-sectional associations between macronutrient
95 intake and plasma FGF21 levels in the UKBB. We found that a higher intake of alcohol and free sugar,
96 while lower intake of protein, complex carbohydrate and fat, were associated with higher plasma
97 FGF21 levels (Figure 3a). We also studied intake of macronutrients modeled as substitutions (24) to
98 come closer at understanding the macronutrient priorities in FGF21 regulation. These analyses
99 demonstrated that both lower protein intake and higher alcohol intake, in substitution for any other
100 macronutrient, were strongly associated with higher plasma FGF21 levels (Figure 3b). Higher alcohol
101 intake at the expense of protein intake was most strongly associated with high plasma FGF21 levels.
102 The general direction of these associations aligns with the effects that experimental macronutrient
103 manipulations have on postprandial FGF21 responses, indicating that plasma FGF21 levels cross-
104 sectionally reflect a consequence of macronutrient intake.

105 We further showed that the effect sizes of the associations between macronutrient intake and
106 plasma FGF21 were somewhat attenuated but still highly significant when restricting to individuals
107 with obesity (BMI ≥ 30) (Supplemental table 3) and when restricting to individuals that had fasted for
108 at least 6 h before given their blood sample (Supplemental table 4). Furthermore, these associations
109 were not substantially affected by adjustment for either of the distinct *FGF21* variants rs838131 and
110 rs838133, nor if adjusting for a weighted SNP-score based on all seven protein quantitative traits loci
111 (pQTLs) identified for plasma FGF21 levels in the UKBB (23) (Supplemental table 5). This indicates
112 that macronutrient intake is a stronger determinant of plasma FGF21 levels than *FGF21* genetic
113 variation.

114 **Estimates of FGF21's effects on macronutrient intake using mendelian randomization**

115 The direction of the associations with the *FGF21* variants appears to not fit with a potential
116 mechanism where *FGF21* variants act through plasma FGF21 levels to alter macronutrient intake
117 given previous experimental evidence, as further supported by the lack of colocalization between
118 these traits. This potentially impedes estimation of the casual effects of FGF21 on macronutrient
119 intake using MR with these variants as instrumental variables (IVs) (25). To investigate this, we first

120 performed one-sample two-stage least-squares MR estimating the potentially causal effect of
121 FGF21 on macronutrient intake substitutions in the UKBB. We compared different IVs: the single
122 plasma FGF21 cis-pQTL (rs838131), a weighted SNP score of 7 FGF21 pQTLs (23), and a weighted
123 SNP score of only 6 FGF21 trans-pQTLs, thus excluding rs838131. We did not study rs838133 as an
124 IV, as it explains little variation in plasma FGF21 levels and rather is associated with the outcome.
125 As expected, using the rs838131 as IV, the MR-estimates suggested that FGF21 increases alcohol
126 and free sugar intake at the expense of fat intake (Figure 4a). When using the weighted SNP score,
127 plasma FGF21 was instead estimated to reduce alcohol intake in replacement of protein, which was
128 further strengthened when using only the FGF21 trans-pQTLs SNP score (Figure 4b-c). This model of
129 trans-pQTLs demonstrated MR-estimates of FGF21 reducing alcohol in substitution for any
130 macronutrient, as well as increasing protein intake at the expense of any other macronutrient (Figure
131 4c), which align with the effects on diet preferences from experimental FGF21 research. We show
132 similar effects of plasma FGF21 on macronutrient intake without modelling substitutions
133 (Supplemental figure 4).

134 These one-sample MR results were replicated in two-sample MR analyses using GWAS summary
135 statistics of plasma FGF21 levels (23), protein, fat and carbohydrate intake (20), as well as alcohol
136 use in drinks per week (26). We performed leave-one-out sensitivity analysis and observed that only
137 when excluding rs838131 as IV, could we find MR support for that plasma FGF21 levels increase
138 protein and fat intake and reduce alcohol intake (Figure 4d-k, Supplemental figure 5), aligning with
139 findings in experimental animal models. We found no effect of FGF21 on carbohydrate intake in two-
140 sample MR analyses. MR heterogeneity was consistently reduced when excluding the rs838131
141 variant as IV (Supplemental table 6). All studied IVs, including rs838131, passed the Steiger filtering
142 test indicating that they influence the outcome through the exposure and not the other way around.

143 **Discussion**

144 This study maps the relationship between genetic variation, plasma FGF21 levels and self-reported
145 habitual macronutrient intake in a large free-living population. Combining these data has only
146 recently become possible owing to new large-scale proteomic resources. We find distinct genetic
147 signals at the *FGF21* locus for plasma FGF21 levels and macronutrient intake. We also demonstrate
148 bidirectional effects between macronutrient intake and plasma FGF21 levels similar to experimental
149 evidence, where plasma FGF21 are markedly elevated by primarily high alcohol and low protein

150 intake, whereas MR analyses supports an effect of plasma FGF21 on reducing alcohol intake and
151 increasing protein and fat intake.

152 Two different genetic loci in the *FGF21* gene are responsible for two separate effects. One led by
153 rs838131, responsible for increasing FGF21 levels. The other led by rs838133, responsible for
154 altering macronutrient preferences. The intronic rs838131 variant is until now unreported in PubMed
155 or the GWAS catalog. Thus, we have limited knowledge of its molecular consequences. The
156 synonymous rs838133 variant, however, has been shown to yield higher FGF21 plasma levels owing
157 to faster translation and increased protein stability (22). Despite this, we show that this variant is
158 only weakly associated with plasma FGF21 levels.

159 This study also demonstrates that *FGF21* genetic variants associate with plasma FGF21 levels and
160 macronutrient intake in opposite direction to what would be the most intuitive pathway, i.e. that a
161 genetic variant acts through altered protein levels to influence a behavior. However, the observed
162 directions fit with a scenario where *FGF21* variation alters macronutrient intake, and subsequent
163 effects on plasma FGF21 levels of such intake, but this is less intuitive for a cis-gene-protein
164 relationship. Other mechanisms explaining how *FGF21* genetic variation influences macronutrient
165 preference could be at play, for example the case of FGF21 resistance. This has mainly been
166 discussed in the context of obesity (27), but Bayoumi et al. have postulated it in relation to rs838133
167 (22). If we similarly speculate that chronically elevated FGF21 levels owing to *FGF21* genetic
168 variation could result in FGF21 resistance in the brain, then the FGF21 signal to shift dietary
169 preferences may be attenuated. This could fit with the observed direction of effect of the *FGF21*
170 variants in this study, but if this was the case we would expect to observe colocalization of the
171 genetic signals for plasma and macronutrient intake. Alternatively, as the Olink measurements of
172 plasma FGF21 levels in the UKBB most likely reflect total FGF21, including the inactive form (28), it
173 is possible that the associations for the *FGF21* variants are explained by high levels of inactive
174 FGF21. Future genetic investigations of both total and active circulating levels of FGF21 would be
175 valuable and molecular characterization of the *FGF21* variants is needed to determine how they
176 affect diet preferences. This is important to understand if continued exposure to high FGF21 levels
177 can lead to FGF21 resistance, since this may be crucial for the implementation of FGF21-based
178 therapies.

179 The current findings also raise concerns for using MR to study the potentially causal effects of FGF21.
180 It is generally preferred to use cis-pQTLs as IVs when studying causal effect of proteins, as this
181 suggests a more certain relationship between the IV and exposure (29). Although, evidence of
182 colocalization should preferably also be present (30), which is not the case of the FGF21 cis-pQTL
183 rs838131. In both one- and two sample MR, only when excluding the rs838131 variant as IV, could
184 we demonstrate MR-estimated effects of FGF21 on reducing alcohol intake and increasing protein
185 and fat intake. This direction of effect aligns with experimental evidence and suggests that FGF21
186 might have similar effects on macronutrient preference in humans as seen in animals. In contrast,
187 MR using solely rs838131 as IV, generated weak estimates of FGF21 in the opposite direction. A
188 previous two-sample MR study using another single *FGF21* variant as IV, identified as the lead FGF21
189 cis-pQTL in a Swedish population (rs2548957; LD with rs838131 $r^2=0.63$, $D'=0.94$), also found
190 estimates of FGF21 increasing alcohol intake (31, 32). These MR estimates using solely the *FGF21*
191 locus oppose experimental data and the MR estimates from genome-wide IV selection, and are thus
192 likely not a correct representation of causal effects. Nevertheless, it should be noted that several of
193 the other IVs in our MR analyses may not be unproblematic. Variants in both *GCKR* and *MLXIPL* have
194 previously been identified in macronutrient intake GWASs too (20), and their gene products are in
195 various ways involved in carbohydrate metabolism (33, 34). The product of *MLXIPL*, carbohydrate
196 response element binding protein (ChREBP), is also necessary for generating the FGF21 plasma
197 response following intake of both sugar (3) and alcohol (35). Thus, the MR analyses should be
198 interpreted with caution, even though they are supported by experimental evidence, and underlines
199 the need for rigorous consideration of mechanisms and assumptions for IV selection.

200 While our MR analyses suggest that there is an effect of FGF21 on macronutrient intake, we also
201 demonstrate that the cross-sectional relationship between macronutrient intake and plasma FGF21
202 levels, primarily reflects the effect that macronutrient intake has on FGF21 levels. These strong
203 associations indicate that long-term habitual diet has similar effects on fasting plasma FGF21 levels
204 as how a macronutrient load affects the acute postprandial FGF21 response. This interpretation is
205 supported by the fact that macronutrient intake was assessed with multiple 24HRs spread out
206 months apart, not in direct connection to the plasma samples, and that these associations remained
207 when restricting to blood samples taken after minimum 6 h of fasting. Long-term effects of dietary
208 habits on fasting FGF21 has previously been suggested from a few randomized dietary interventions
209 in humans (11, 36, 37), but distinguishing between randomly allocated diet interventions and self-

210 selected diet is of importance in this context, as FGF21 also regulates macronutrient selection.
211 Ultimately, we show that habitual macronutrient intake associates with plasma FGF21 levels
212 independent of *FGF21* genetic variation, highlighting the strength of which macronutrient
213 determines plasma FGF21 levels.

214 Lastly, this study increases our understanding of the prioritized nutrients under FGF21's control.
215 Through the use of macronutrient substitution models we were able to take into consideration that
216 intake data is compositional, i.e. that increasing intake of one nutrient inherently displaces another
217 (38). This is of particular importance when studying FGF21, as several macronutrients are involved
218 in its regulation, primarily alcohol, sugar and protein. With substitution modeling we show that free
219 sugar intake was only strongly associated with plasma FGF21 when substituting protein, and that
220 higher alcohol intake was strongly associated with higher FGF21 levels even in substitution for free
221 sugar, together suggesting that free sugar intake is less deterministic of plasma FGF21 levels than
222 alcohol and protein intake. This is in line with our previous meal study testing macronutrient
223 interactions on postprandial FGF21 secretion in humans, where we found that protein outweighed
224 sucrose in the secretory regulation of FGF21 (12). Mice experiments have also indicated that the
225 effect of FGF21 on sugar intake is secondary to its effects on protein intake (6, 21). Alcohol has been
226 neglected in these previous macronutrient comparisons, but as alcohol is the strongest acute
227 inducer of acute FGF21 secretion (9, 39), it is not surprising to find the highest plasma FGF21 levels
228 among the macronutrient substitutions defined by high alcohol intake. We also adapted the method
229 for modeling macronutrient substitutions as outcomes in genetic analyses. Here, the associations
230 between the diet-associated rs838133 variant and macronutrient substitutions were contrastingly
231 stronger for free sugar and complex carbohydrate than alcohol in one direction, while both protein
232 and fat were strongly associated in the opposite direction. On the other hand, with MR using IVs from
233 across the genome but excluding rs838131, we found that FGF21 mainly reduces alcohol intake and
234 increases protein and fat intake, with no effect on carbohydrate intake. Taken together, genetic
235 variation at the *FGF21* gene specifically appears mainly associated with an imbalance in
236 carbohydrate and protein intake, while FGF21 variation in entirety (plasma level measurements or IV
237 estimation from across the genome) appears more strongly associated with alcohol and protein
238 imbalance. These divergent observations of macronutrient associations with plasma FGF21 and the
239 *FGF21* locus are not yet understood and requires further investigation.

240 In conclusion, this study provides evidence of two independent *FGF21* signals accounting for
241 elevating plasma FGF21 levels and altering macronutrient preferences. Effect directions does not
242 suggest that the influence of genetic *FGF21* variation on macronutrient intake are directly mediated
243 by FGF21 levels, for yet unknown reasons. Using MR, we demonstrate support for that FGF21
244 reduces alcohol and increases protein and fat intake in humans, alike observations in animal
245 models. Furthermore, plasma FGF21 levels are markedly elevated by higher alcohol and lower
246 protein intake, indicating that FGF21 production is regulated by the dietary behaviors that FGF21 is
247 postulated to regulate. These findings are of great significance for the precision nutrition field, as
248 genotype-based targeted approaches based on relevant *FGF21* variation, may have the potential to
249 increase the success rate of dietary interventions to prevent and manage cardiometabolic disorders.

250 **Method**

251 ***UKBB study population***

252 The UKBB is a prospective cohort study covering 502,166 individuals aged 40-69 collected between
253 2006 and 2010 from 22 different sites in the UK. All participants signed informed consent prior to
254 participation. Participants took part in a wide range of assessments including sociodemographic
255 questionnaires, lifestyle questionnaires, anthropometrics, and blood samples, etc. (40).

256 ***UKBB genotype data***

257 Genotyping of the UKBB was mainly performed using the Applied Biosystems UK Biobank Axiom
258 Array, but also in part the Applied Biosystems UK BiLEVE Axiom Array by Affymetrix. Quality control,
259 imputation and other details are provided in the UKBB method documentation. In the genetic
260 analyses of this study, we only included individuals that were of British ancestry (41). We aligned the
261 two studied *FGF21* genetic variants, rs838131 and rs831833, so that we assessed the effect of the
262 FGF21-increasing alleles. We calculated weighted SNP-scores of the pQTLs for FGF21 identified in
263 Sun et al (23), by weighting the genotype data of each SNP by their effect size in the discovery sample
264 and summed together. We calculated one weighted SNP-score with all seven pQTLs and one SNP-
265 score with only the trans-pQTLs, excluding the cis-pQTL rs838131.

266 ***UKBB plasma FGF21 protein measurements***

267 Measurement of plasma FGF21 protein levels were performed using the Olink platform as part of the
268 UKBB-PPP initiative, wherein 2,922 plasma proteins were measured in 53,058 participants of the
269 UKBB (23). Olink utilizes the proximity extension assay technology for targeted proteomics analysis.
270 Protein abundances are expressed as normalized protein expression (NPX) levels. More details are
271 provided in the UKBB method documentation. In this study, we only utilized FGF21 measurements
272 from instance 0, i.e. at the initial assessment visit. Participants were not required to fast before this
273 blood collection, and the mean (SD) fasting time at sample collection was 3.8 (2.5) h. Therefore, all
274 analyses of plasma FGF21 protein levels are adjusted for fasting time.

275 ***UKBB diet assessment***

276 Dietary intakes in the UKBB were assessed using the web-based 24HR method Oxford WebQ, which
277 asks about intake of 238 different food and drink items consumed within the last 24 hours. At least
278 one 24HR assessment of intake has been provided from 210,856 UKBB participants, while most have
279 provided more than one assessment, up to a maximum of five assessments (42). Invitations to fill
280 out web-based 24HRs after attending the baseline assessment were sent out with a gap of 3-4
281 months between each to capture intake across the seasons. Food and drink intake frequencies were
282 multiplied by standard portion sizes and the nutrient composition of each item to translate the data
283 into daily nutrient intakes (42). In this study, we excluded 24HR assessments with reported energy
284 intakes above 20,000 kJ for men and 18,000 kJ for women (42). We calculated the average nutrient
285 intake across each individual's varying number of 24HR assessments for total energy intake and the
286 macronutrients of interest: total fat, total protein, total carbohydrate, free sugar (defined as added
287 sugar plus naturally occurring sugar in fruit juices, honey and syrup), and alcohol. We further
288 calculated percentages of energy intake of these macronutrients and calculated intake of *complex*
289 *carbohydrate* by subtracting intake of free sugar from intake of total carbohydrate. Thus, we studied
290 the E% of fat, protein, complex carbohydrate, free sugar and alcohol, which together makes up 100%
291 of the total energy intake.

292 ***UKBB statistical analyses***

293 Linear regression analyses between macronutrient intake E% and plasma FGF21 levels were
294 adjusted for the following covariates: age, sex, study center, fasting time, BMI, and total energy
295 intake. We also modelled the associations between macronutrient substitutions and plasma FGF21
296 levels using the leave-one-out method as described by Song et al (24). For example, to model higher

297 intake of alcohol in substitution for protein, the associations between alcohol intake and plasma
298 FGF21 levels were in addition to the covariates, adjusted for intake of fat, complex carbohydrate and
299 free sugar, leaving out protein from the model (24). Thus, the effect of alcohol on FGF21 is only
300 allowed to vary at the expense of protein intake, as all other macronutrients are held constant. This
301 substitution modelling was performed for each possible pairwise macronutrient substitution. These
302 analyses were also performed stratified for BMI <30 kg/m² and ≥30 kg/m², as well as stratified for
303 fasting time <6 h and ≥6 h. We also evaluated the influence of adjusting for the *FGF21* genetic
304 variants on the associations between macronutrient substitutions and plasma FGF21 levels.

305 When analyzing the association between the *FGF21* genetic variants and plasma FGF21 levels the
306 following covariates were included in the model: age, sex, study center, fasting time, BMI, and 10
307 genetic principal components (PCs). We used an additive genetic model and the *FGF21* genetic
308 variants were aligned to the FGF21-increasing allele, which for both the rs838131 and rs838133
309 variants were the A allele.

310 The associations between the *FGF21* genetic variants and macronutrient intake E% were adjusted
311 for the following covariates: age, sex, study center, BMI, total energy intake, and 10 genetic PCs. We
312 also adapted the leave-one-out method to study macronutrient substitutions as outcomes when
313 investigating the associations between genetic variants and macronutrient intake. If modeling higher
314 alcohol intake in substitution for protein, the associations between a genetic variant and alcohol
315 intake were, in addition to the listed covariates, adjusted for intake of fat, complex carbohydrate,
316 and free sugar – leaving out protein. With this approach we add the macronutrients as dependent
317 variables alongside the genetic variant. This can be interpreted as if the both the exposure (genetic
318 variants) and the outcome (e.g. alcohol intake) are adjusted for these macronutrient covariates, and
319 thus, represent the alcohol-protein substitution. Throughout the study we present associations with
320 macronutrients modelled both in isolation and as substitutions, to demonstrate that the results and
321 conclusions are robust to the interpretational differences between these two models.

322 We used the R-package *haplo.stats* to estimate haplotypes of the two *FGF21* variants rs838131 and
323 rs838133, and test their respective association with plasma FGF21 levels and macronutrient
324 intakes. We used *haplo.score* tests (43) adjusted for age, sex, study center, fasting time, BMI, and
325 10 genetic PCs for plasma FGF21 levels, and adjusted for age, sex, study center, BMI, total energy
326 intake, and 10 genetic PCs for macronutrient intakes.

327 We also constructed genotype groups of all nine possible combinations of the rs838131 variant (CC,
328 AC or AA) and the rs838133 variant (GG, AG, AA). We investigated how these groups associated with
329 plasma FGF21 levels and macronutrient intake in comparison to the reference group rs838131 CC
330 and rs838133 GG. Associations with plasma FGF21 were adjusted for age, sex, study center, fasting
331 time, BMI, and 10 genetic PCs, and associations with macronutrients were adjusted for age, sex,
332 study center, BMI, total energy intake, and 10 genetic PCs.

333 We used the *IVreg* R-package to conduct one-sample two-stage least-squares MR analyses
334 estimating the causal effect of plasma FGF21 on macronutrient intake (modeled both isolated and
335 as substitutions). A variety of IVs were compared: the FGF21-associated rs838131 variant (the cis
336 pQTL), the total pQTL weighted SNP-score, and the trans-pQTL SNP-score excluding the rs838131
337 variant. The MR analyses were adjusted for age, sex, study center, fasting time, BMI, total energy
338 intake, and 10 genetic PCs.

339 All analyses have been performed in R version 4.3.3.

340 ***Analyses of GWAS summary statistics***

341 We utilized summary statistics data of common genetic variants from the plasma FGF21 GWAS
342 within the UKBB-PPP project by Sun et al. (23) and GWAS summary statistics on protein,
343 carbohydrate and fat intake by Merino et al. (20) to plot the region covering both the entire
344 macronutrient signal and the plasma FGF21 signal on chromosome 19 (chr19:49180000 to
345 chr19:49300000, GRCh37) together with LDproxy data from the European 1000 Genomes panel for
346 each respective lead variant.

347 This region was then fine-mapped using the R-package *CARMA* (44) for plasma FGF21, protein
348 intake, fat intake and carbohydrate intake. We chose this fine-mapping method since it can correct
349 for LD differences between summary statistics from meta-analyses and an external reference panel.
350 Here we ran *CARMA* with the default settings utilizing the European 1000 Genomes reference panel
351 Phase 3 version 5 and its functional annotations. We only deemed as probable causal variants those
352 that were genome-wide significant ($P < 5 \times 10^{-8}$) and had posterior inclusion probabilities (PIPs) > 0.1 .
353 Variants with a PIP > 0.5 were plotted in the supplemental regional plots.

354 We ran colocalization analyses under the single causal variant assumption with the *coloc* R-package
355 (45) to test for colocalization between plasma FGF21 levels and protein, fat and carbohydrate intake
356 in the genomic region previously described. In addition to using the summary statistics from the Sun
357 et al. FGF21 GWAS (23) and the macronutrient GWASs by Merino et al. (20), we ran the same
358 colocalization analysis with summary statistics from the earlier Merino et al. GWASs on protein
359 intake, fat intake and carbohydrate intake in the CHARGE consortium (18). This to test for
360 colocalization with no overlapping individuals between the macronutrient traits and the plasma
361 FGF21 levels, i.e. in two independent populations. The colocalization analyses were run using the
362 approximate Bayesian factor (abf) method using the default prior probabilities (45).

363 We used the R-package *TwoSampleMR* to run two-sample MR analyses (46) using GWAS summary
364 statistics, estimating the effect of plasma FGF21 levels (23) on protein, fat and carbohydrate intake
365 (20), as well as alcohol use in drinks per week (26). We identified IVs for plasma FGF21 levels as
366 genome-wide significant variants ($P < 5 \times 10^{-8}$) and with LD clumping using the European 1000
367 Genomes reference panel (distance 500 kb, R^2 threshold 0.01). Two-sample MR were performed
368 using both the inverse variance weighted method and the Egger method. We evaluated each IV's
369 influence on these MR-estimates by testing every IV individually and using a leave-one-out approach.
370 We also evaluated the heterogeneity of each tested MR model, as well as the directionality of each
371 IV using the Steiger filtering function.

372 **Data availability**

373 The UKBB data is made publicly available after an application procedure as described
374 here <http://www.ukbiobank.ac.uk/using-the-resource/>.

375 GWAS summary statistics of FGF21 plasma protein UKBB-PPP project are available at
376 <https://www.synapse.org/Synapse:syn51365301>.

377 Summary statistics of meta-analyzed GWASs of macronutrient intake in UKBB and CHARGE are
378 available at https://t2d.hugeamp.org/dinspector.html?dataset=Merino2022_DietaryIntake_EU.

379 GWAS summary statistics of macronutrient intake in only CHARGE are available in dbGaP with
380 accession number phs000930, at [https://www.ncbi.nlm.nih.gov/projects/gap/cgi-
381 bin/study.cgi?study_id=phs000930.v10.p1](https://www.ncbi.nlm.nih.gov/projects/gap/cgi-bin/study.cgi?study_id=phs000930.v10.p1).

382 GWAS summary statistics of alcohol use (drinks/week) is available at the GWAS catalog
383 (GCST007461) at <https://www.ebi.ac.uk/gwas/studies/GCST007461>.

384 **Acknowledgements**

385 This work was supported by grants from the Novo Nordisk Foundation (grant numbers
386 NNF23SA0084103 and NNF18CC0034900).

387 **Disclosures**

388 The authors NG and MPG are currently employed at Novo Nordisk A/S.

389 **References**

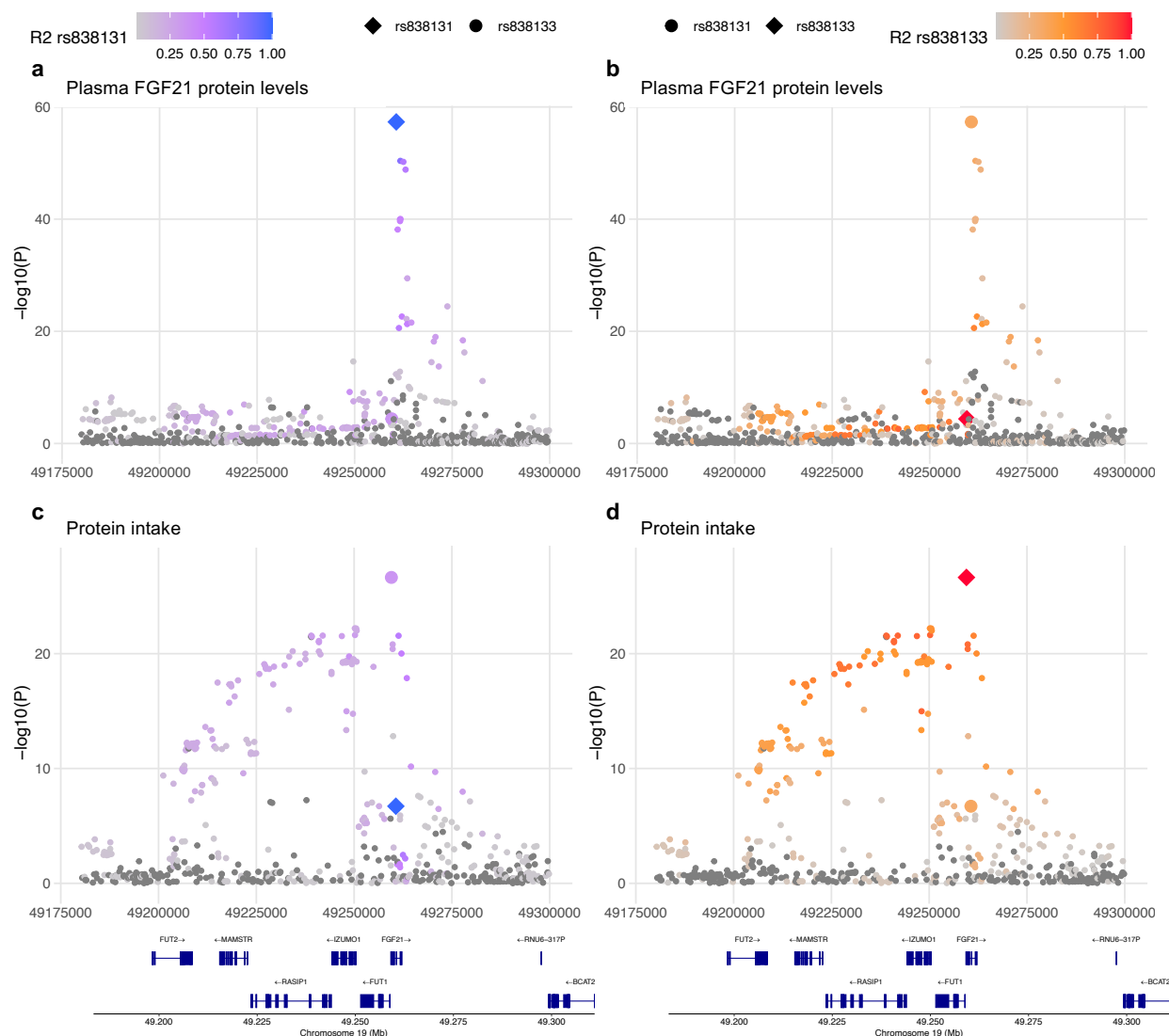
- 390 1. Flippo KH, Potthoff MJ. Metabolic Messengers: FGF21. *Nat Metab.* 2021;3(3):309-17.
- 391 2. Harrison SA, Rolph T, Knot M, Dubourg J. FGF21 Agonists: An Emerging Therapeutic for
392 Metabolic Dysfunction-Associated Steatohepatitis and Beyond. *J Hepatol.* 2024.
- 393 3. von Holstein-Rathlou S, BonDurant LD, Peltekian L, Naber MC, Yin TC, Clafin KE, et al.
394 FGF21 Mediates Endocrine Control of Simple Sugar Intake and Sweet Taste Preference by the Liver.
395 *Cell Metab.* 2016;23(2):335-43.
- 396 4. Jensen-Cody SO, Flippo KH, Clafin KE, Yavuz Y, Sapouckey SA, Walters GC, et al. FGF21
397 Signals to Glutamatergic Neurons in the Ventromedial Hypothalamus to Suppress Carbohydrate
398 Intake. *Cell Metab.* 2020;32(2):273-86 e6.
- 399 5. Flippo KH, Trammell SAJ, Gillum MP, Aklan I, Perez MB, Yavuz Y, et al. FGF21 suppresses
400 alcohol consumption through an amygdalo-striatal circuit. *Cell Metab.* 2022;34(2):317-28.e6.
- 401 6. Larson KR, Chaffin AT, Goodson ML, Fang Y, Ryan KK. Fibroblast Growth Factor-21 Controls
402 Dietary Protein Intake in Male Mice. *Endocrinology.* 2019;160(5):1069-80.
- 403 7. Baruch A, Wong C, Chinn LW, Vaze A, Sonoda J, Gelzleichter T, et al. Antibody-mediated
404 activation of the FGFR1/Klotho complex corrects metabolic dysfunction and alters food
405 preference in obese humans. *Proceedings of the National Academy of Sciences.*
406 2020;117(46):28992-9000.
- 407 8. Dushay JR, Toschi E, Mitten EK, Fisher FM, Herman MA, Maratos-Flier E. Fructose ingestion
408 acutely stimulates circulating FGF21 levels in humans. *Mol Metab.* 2015;4(1):51-7.
- 409 9. Desai BN, Singhal G, Watanabe M, Stevanovic D, Lundasen T, Fisher FM, et al. Fibroblast
410 growth factor 21 (FGF21) is robustly induced by ethanol and has a protective role in ethanol
411 associated liver injury. *Mol Metab.* 2017;6(11):1395-406.
- 412 10. Soberg S, Sandholt CH, Jespersen NZ, Toft U, Madsen AL, von Holstein-Rathlou S, et al.
413 FGF21 Is a Sugar-Induced Hormone Associated with Sweet Intake and Preference in Humans. *Cell*
414 *Metab.* 2017;25(5):1045-53 e6.
- 415 11. Laeger T, Henagan TM, Albarado DC, Redman LM, Bray GA, Noland RC, et al. FGF21 is an
416 endocrine signal of protein restriction. *J Clin Invest.* 2014;124(9):3913-22.
- 417 12. Ramne S, Duizer L, Nielsen MS, Jørgensen NR, Svenningsen JS, Grarup N, et al. Meal sugar-
418 protein balance determines postprandial FGF21 response in humans. *Am J Physiol Endocrinol*
419 *Metab.* 2023.

- 420 13. Stankevic E, Israelsen M, Juel HB, Madsen AL, Ångquist L, Aldiss PSJ, et al. Binge drinking
421 episode causes acute, specific alterations in systemic and hepatic inflammation-related markers.
422 *Liver Int.* 2023;43(12):2680-91.
- 423 14. Hill CM, Qualls-Creekmore E, Berthoud HR, Soto P, Yu S, McDougal DH, et al. FGF21 and
424 the Physiological Regulation of Macronutrient Preference. *Endocrinology.* 2020;161(3).
- 425 15. Khan MSH, Kim SQ, Ross RC, Corpodean F, Spann RA, Albarado DA, et al. FGF21 acts in the
426 brain to drive macronutrient-specific changes in behavioral motivation and brain reward signaling.
427 Preprint at bioRxiv <https://doi.org/10.1101/2024.03.05.583399>. 2024.
- 428 16. Chu AY, Workalemahu T, Paynter NP, Rose LM, Giulianini F, Tanaka T, et al. Novel locus
429 including FGF21 is associated with dietary macronutrient intake. *Hum Mol Genet.* 2013;22(9):1895-
430 902.
- 431 17. Tanaka T, Ngwa JS, van Rooij FJ, Zillikens MC, Wojczynski MK, Frazier-Wood AC, et al.
432 Genome-wide meta-analysis of observational studies shows common genetic variants associated
433 with macronutrient intake. *Am J Clin Nutr.* 2013;97(6):1395-402.
- 434 18. Merino J, Dashti HS, Li SX, Sarnowski C, Justice AE, Graff M, et al. Genome-wide meta-
435 analysis of macronutrient intake of 91,114 European ancestry participants from the cohorts for
436 heart and aging research in genomic epidemiology consortium. *Mol Psychiatry.* 2019;24(12):1920-
437 32.
- 438 19. Meddens SFW, de Vlaming R, Bowers P, Burik CAP, Linner RK, Lee C, et al. Genomic analysis
439 of diet composition finds novel loci and associations with health and lifestyle. *Mol Psychiatry.* 2020.
- 440 20. Merino J, Dashti HS, Sarnowski C, Lane JM, Todorov PV, Udler MS, et al. Genetic analysis of
441 dietary intake identifies new loci and functional links with metabolic traits. *Nature Human*
442 *Behaviour.* 2021.
- 443 21. Solon-Biet SM, Clark X, Bell-Anderson K, Rusu PM, Perks R, Freire T, et al. Toward
444 reconciling the roles of FGF21 in protein appetite, sweet preference, and energy expenditure. *Cell*
445 *Rep.* 2023;42(12):113536.
- 446 22. Bayoumi A, Elsayed A, Han S, Petta S, Adams LA, Aller R, et al. Mistranslation Drives
447 Alterations in Protein Levels and the Effects of a Synonymous Variant at the Fibroblast Growth
448 Factor 21 Locus. *Adv Sci (Weinh).* 2021;8(11):2004168.
- 449 23. Sun BB, Chiou J, Traylor M, Benner C, Hsu YH, Richardson TG, et al. Plasma proteomic
450 associations with genetics and health in the UK Biobank. *Nature.* 2023;622(7982):329-38.
- 451 24. Song M, Giovannucci E. Substitution analysis in nutritional epidemiology: proceed with
452 caution. *Eur J Epidemiol.* 2018;33(2):137-40.
- 453 25. Sanderson E, Glymour MM, Holmes MV, Kang H, Morrison J, Munafò MR, et al. Mendelian
454 randomization. *Nat Rev Methods Primers.* 2022;2.
- 455 26. Liu M, Jiang Y, Wedow R, Li Y, Brazel DM, Chen F, et al. Association studies of up to 1.2
456 million individuals yield new insights into the genetic etiology of tobacco and alcohol use. *Nat*
457 *Genet.* 2019;51(2):237-44.
- 458 27. Fisher FM, Chui PC, Antonellis PJ, Bina HA, Kharitonov A, Flier JS, et al. Obesity is a
459 fibroblast growth factor 21 (FGF21)-resistant state. *Diabetes.* 2010;59(11):2781-9.
- 460 28. Zhen EY, Jin Z, Ackermann BL, Thomas MK, Gutierrez JA. Circulating FGF21 proteolytic
461 processing mediated by fibroblast activation protein. *Biochem J.* 2016;473(5):605-14.
- 462 29. Burgess S, Thompson SG. Interpreting findings from Mendelian randomization using the MR-
463 Egger method. *Eur J Epidemiol.* 2017;32(5):377-89.
- 464 30. Zuber V, Grinberg NF, Gill D, Manipur I, Slob EAW, Patel A, et al. Combining evidence from
465 Mendelian randomization and colocalization: Review and comparison of approaches. *Am J Hum*
466 *Genet.* 2022;109(5):767-82.

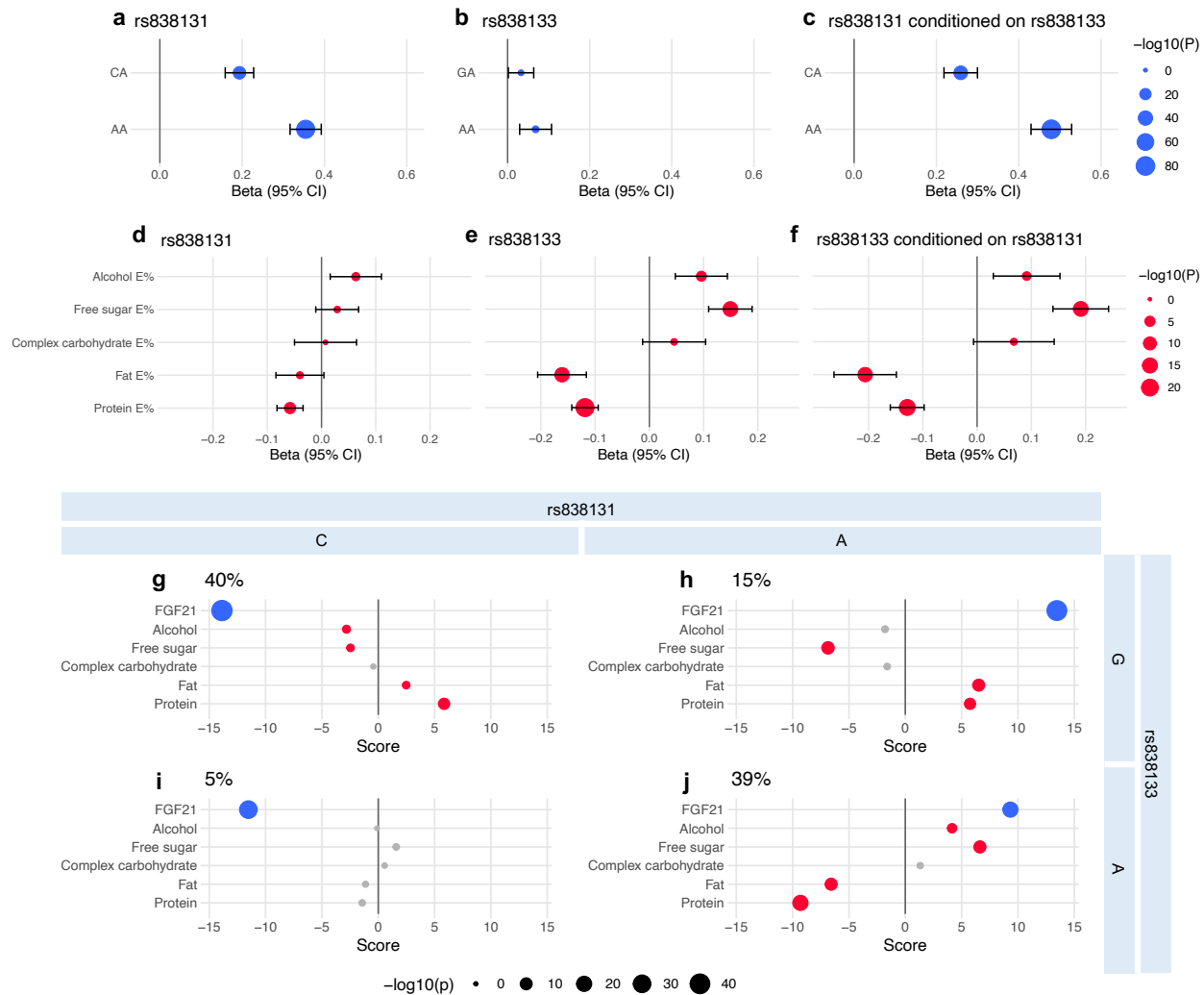
- 467 31. Larsson SC, Michaëlsson K, Mola-Caminal M, Höjjer J, Mantzoros CS. Genome-wide
468 association and Mendelian randomization study of fibroblast growth factor 21 reveals causal
469 associations with hyperlipidemia and possibly NASH. *Metabolism*. 2022;137:155329.
- 470 32. Larsson SC, Michaëlsson K, Mola-Caminal M, Höjjer J, Mantzoros CS. Corrigendum to
471 "Genome-wide association and Mendelian randomization study of fibroblast growth factor 21
472 reveals causal associations with hyperlipidemia and possibly NASH" [Metab Volume 137,
473 December 2022, 155329]. *Metabolism*. 2023;143:155555.
- 474 33. Raimondo A, Rees MG, Gloyn AL. Glucokinase regulatory protein: complexity at the
475 crossroads of triglyceride and glucose metabolism. *Curr Opin Lipidol*. 2015;26(2):88-95.
- 476 34. Ortega-Prieto P, Postic C. Carbohydrate Sensing Through the Transcription Factor ChREBP.
477 *Front Genet*. 2019;10:472.
- 478 35. Singh C, Jin B, Shrestha N, Markhard AL, Panda A, Calvo SE, et al. ChREBP is activated by
479 reductive stress and mediates GCKR-associated metabolic traits. *Cell Metab*. 2024;36(1):144-
480 58.e7.
- 481 36. Gosby AK, Lau NS, Tam CS, Iglesias MA, Morrison CD, Caterson ID, et al. Raised FGF-21 and
482 Triglycerides Accompany Increased Energy Intake Driven by Protein Leverage in Lean, Healthy
483 Individuals: A Randomised Trial. *PLoS One*. 2016;11(8):e0161003.
- 484 37. Geidl-Flueck B, Hochuli M, Spinaz GA, Gerber PA. Do Sugar-Sweetened Beverages Increase
485 Fasting FGF21 Irrespective of the Type of Added Sugar? A Secondary Exploratory Analysis of a
486 Randomized Controlled Trial. *Nutrients*. 2022;14(19).
- 487 38. Merino J, Tobias DK. The unique challenges of studying the genetics of diet and nutrition.
488 *Nat Med*. 28. United States 2022. p. 221-2.
- 489 39. Sørberg S, Andersen ES, Dalsgaard NB, Jarlhelt I, Hansen NL, Hoffmann N, et al. FGF21, a
490 liver hormone that inhibits alcohol intake in mice, increases in human circulation after acute
491 alcohol ingestion and sustained binge drinking at Oktoberfest. *Mol Metab*. 2018;11:96-103.
- 492 40. Sudlow C, Gallacher J, Allen N, Beral V, Burton P, Danesh J, et al. UK biobank: an open
493 access resource for identifying the causes of a wide range of complex diseases of middle and old
494 age. *PLoS Med*. 2015;12(3):e1001779.
- 495 41. Bycroft C, Freeman C, Petkova D, Band G, Elliott LT, Sharp K, et al. The UK Biobank resource
496 with deep phenotyping and genomic data. *Nature*. 2018;562(7726):203-9.
- 497 42. Bradbury KE, Young HJ, Guo W, Key TJ. Dietary assessment in UK Biobank: an evaluation of
498 the performance of the touchscreen dietary questionnaire. *J Nutr Sci*. 2018;7:e6.
- 499 43. Schaid DJ, Rowland CM, Tines DE, Jacobson RM, Poland GA. Score tests for association
500 between traits and haplotypes when linkage phase is ambiguous. *Am J Hum Genet*.
501 2002;70(2):425-34.
- 502 44. Yang Z, Wang C, Liu L, Khan A, Lee A, Vardarajan B, et al. CARMA is a new Bayesian model
503 for fine-mapping in genome-wide association meta-analyses. *Nat Genet*. 2023;55(6):1057-65.
- 504 45. Giambartolomei C, Vukcevic D, Schadt EE, Franke L, Hingorani AD, Wallace C, et al.
505 Bayesian test for colocalisation between pairs of genetic association studies using summary
506 statistics. *PLoS Genet*. 2014;10(5):e1004383.
- 507 46. Hemani G, Zheng J, Elsworth B, Wade KH, Haberland V, Baird D, et al. The MR-Base platform
508 supports systematic causal inference across the human phenome. *Elife*. 2018;7.
- 509

510

511 **Figures**

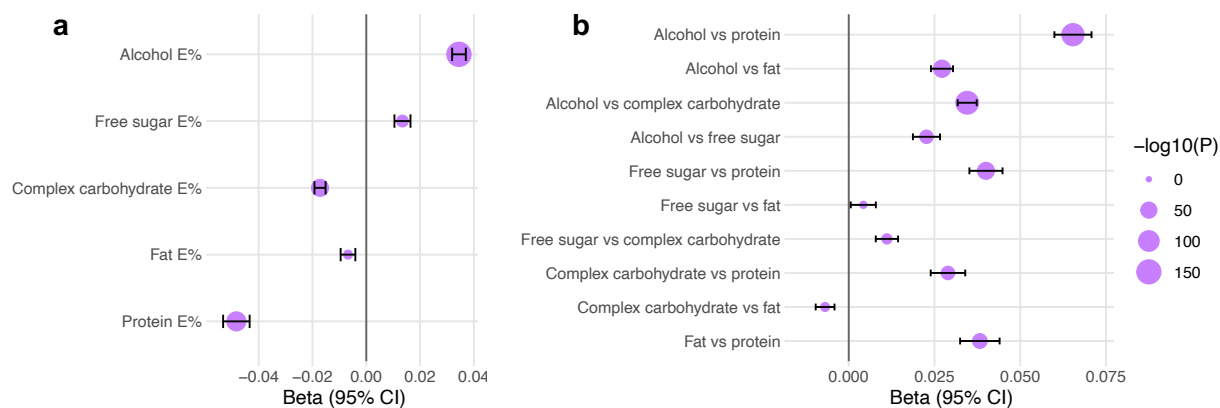


512
513 **Figure 1. Regional plots of the genetic associations at the FGF21 locus.** Plots display position
514 49180000 to 49300000 at chromosome 19. **a**, Associations with plasma FGF21 with color-scale
515 representing LD R^2 with rs838131. **b**, Associations with plasma FGF21 with color-scale representing
516 LD R^2 with rs838133. **c**, Associations with protein intake with color-scale representing LD R^2 with
517 rs838131. **d**, Associations with protein intake with color-scale representing LD R^2 with



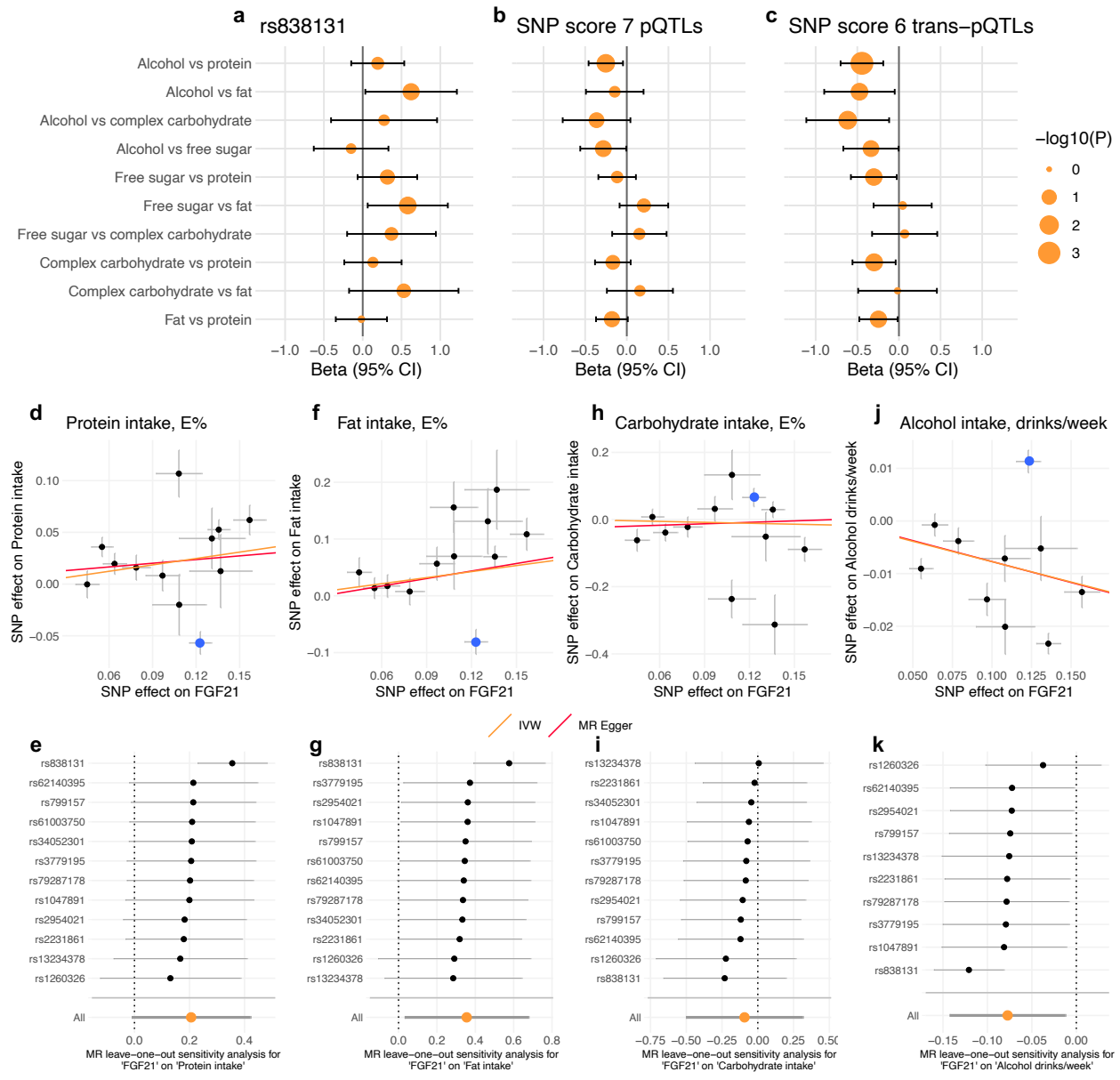
518
 519 **Figure 2. Association of the rs838131 and rs838133 variants in association with plasma FGF21**
 520 **levels and macronutrient intake.** Associations between **a**, rs838131, **b**, rs838133, and **c**, rs838131
 521 conditioned on rs838133 and plasma FGF21 levels. Analyses with plasma FGF21 levels (a-c) are
 522 adjusted for age, sex, study center, fasting time, BMI and 10 genetic PCs (n=38,779). Associations
 523 between **d**, rs838131, **e**, rs838133, and **f**, rs838133 conditioned on rs838131 and macronutrient
 524 intake. Analyses with macronutrient intake (d-f) are adjusted for age, sex, study center, BMI, total
 525 energy intake and 10 genetic PCs (n=146,241-157,508). Haplotype score test of plasma FGF21 levels
 526 and macronutrient intake levels with haplotypes generated from the two FGF21 variants (g-j). G) CG
 527 haplotype, H) AG haplotype, I) CA haplotype, J) AA haplotype. Blue dots represent associations with
 528 plasma FGF21 levels, adjusted for age, sex, study center, fasting time, BMI and 10 genetic PCs. Red
 529 dots represent associations with macronutrient intake, adjusted for age, sex, study center, total
 530 energy intake, BMI and 10 genetic PCs. Grey dots are non-significant score tests.

531



532

533 **Figure 3. Associations between macronutrient intake and plasma FGF21 levels. a,** Association
534 for intake of isolated macronutrients and **b,** associations for macronutrient intake modeled as
535 pairwise substitutions. Analyses were adjusted for age, sex, study center, fasting time, BMI and total
536 energy intake in addition to macronutrients for substitution modelling (n=21,604).



537

538

539

540

541

542

543

544

545

546

Figure 4. MR analyzes estimating the effects of plasma FGF21 on macronutrient intake. a-c demonstrates one-sample MR analyses estimating the effect of plasma FGF21 on macronutrient intake substitutions using different IVs: **a**, the FGF21 cis-pQTL (rs838131), **b**, all 7 FGF21 pQTLs composed into a weighted score, and **c**, only the 6 trans-pQTLs (excluding rs838131) composed into a weighted score. Analyses were adjusted for age, sex, study center, fasting time, BMI, total energy intake and 10 genetic PCs in addition to macronutrients for substitution modelling (n=15,512-16,400). **d-k** demonstrates two-sample MR analyses estimating the effect of plasma FGF21 on macronutrient intake using GWAS summary statistics. Scatter plots depicting the relationship between each variant's effect on both plasma FGF21 and **d**, protein intake, **f**, fat intake, **h**,

547 carbohydrate intake and **j**, alcohol intake (the rs838131 variant is highlighted in blue). Sensitivity
548 leave-one-out analyses are presented for **e**, protein intake, **g**, fat intake **i**, carbohydrate intake, and
549 **k**, alcohol intake, wherein MR effect estimates represent those when excluding the indicated variant
550 as IV from the model.