

1 **Assessment of ten-year cardiovascular disease risk in Bangladesh: A comparative**
2 **analysis of laboratory and non-laboratory-based WHO risk prediction models**

3 Md Mostafa Monower^{1*}, Shehab Uddin Al Abid¹, Mahfuzur Rahman Bhuiyan¹, Mohammad
4 Abdullah Al Mamun¹, Sohel Reza Choudhury¹

5
6 ¹ Department of Epidemiology & Research, National Heart Foundation Hospital & Research
7 Institute, Dhaka, Bangladesh

8
9 ***Correspondence to:**

10 Dr. Md Mostafa Monower, Department of Epidemiology & Research, National Heart Foundation
11 Hospital & Research Institute, 26/4, Darussalam Rd, Mirpur-1, Dhaka-1216, Bangladesh.

12 Email: dr.monower@gmail.com Telephone: (8802) 58054708-12, Ex-7253

13
14 **Author and Co-authors:**

15 1. Md Mostafa Monower¹, MBBS, MPhil
16 ORCID iD: <https://orcid.org/0000-0002-1531-5633>
17 Email: dr.monower@gmail.com

18
19 2. Shehab Uddin Al Abid¹, MBBS, MSc
20 ORCID iD: <https://orcid.org/0000-0003-0656-0271>
21 Email: Shehababid79@gmail.com

22
23 3. Mahfuzur Rahman Bhuiyan, MBBS, MPH, PGDDP
24 ORCID iD: <https://orcid.org/0000-0001-6962-7264>
25 Email: mahfuzdoc@yahoo.com

26
27 4. Mohammad Abdullah Al Mamun, MBBS, MPH
28 ORCID iD: <https://orcid.org/0000-0002-3377-1122>
29 Email: abdullah.mmcm26@gmail.com

30
31 5. Sohel Reza Choudhury¹, MBBS, MMedSc, PhD
32 ORCID iD: <http://orcid.org/0000-0002-7498-4634>
33 Email: choudhurys@nhf.org.bd

34
35 ¹ Department of Epidemiology & Research, National Heart Foundation Hospital & Research
36 Institute, Dhaka, Bangladesh

38
39
40
41
42
43
44
45
46
47
48
49
50
51
52
53
54
55
56
57
58
59
60
61
62
63
64

Abstract

Objectives: This study aimed to estimate the 10-year cardiovascular diseases (CVD) risk in Bangladeshi adults using updated 2019 WHO laboratory-based and non-laboratory-based models, identify key CVD risk determinants, and assess the agreement between two models.

Methods: We conducted a cross-sectional analysis of nationally representative Bangladesh STEPS 2018 survey data, involving 2767 adults aged 40-69 years without prior CVDs, using both versions of the updated 2019 WHO 10-year CVD risk prediction models. Logistic regression identified determinants and model agreement was assessed using Bland-Altman Plot, concordance, and Kappa statistics with STATA version 17.

Results: In the laboratory-based model, 10.32% (95% CI: 8.78-12.11) of the population was at elevated risk ($\geq 10\%$), while the non-laboratory-based model showed 9.25% (95% CI: 7.7-11.08). Males had significantly higher risk than females in both models ($p < 0.0001$). Elevated 10-year CVD risk was associated with age increments of five years (OR=4.29, 95% CI: 3.48-5.30), being female (OR=0.31, 95% CI: 0.18-0.53), urban residence (OR=1.82, 95% CI: 1.20-2.74), residing in Dhaka division (OR=2.44, 95% CI: 1.26-4.73), and higher education (OR=2.42, 95% CI: 1.06-5.51). Key metabolic factors included high waist-hip ratio (OR=2.08, 95% CI: 1.22-3.52) and elevated triglycerides (OR=2.70, 95% CI: 1.65-4.41). Comparing models, Bland-Altman plots showed limit of agreement (-3.16, 3.52) with mean difference of 0.18, proportional bias (males: $y = -0.43 + 1.11x$; females: $y = -0.43 + 1.16x$), Lin's Concordance Correlation Coefficient (LCCC) 0.90 (95% CI: 0.89-0.91), and a Kappa statistic of 0.69 (95%CI: 0.67-0.72).

Conclusion: A substantial portion of the adult Bangladeshi population is at elevated risk of a cardiovascular event within the next decade, with males at higher risk per both models. Sociodemographic, and metabolic factors indicating potential target groups for intervention. The non-laboratory-based model generally shows agreement with the laboratory-based model and can serve as an alternative in settings with limited laboratory resources, though caution is advised for high-risk individuals.

65 **Introduction**

66 Cardiovascular diseases (CVDs) stand as the leading cause of global mortality, accounting for
67 an estimated 17.9 million lives annually and constituting about 32% of all deaths
68 worldwide.[1] The majority of these fatalities occur in low and middle-income countries
69 (LMICs),[1] where challenges such as inadequate healthcare infrastructure, limited access to
70 essential services, and low health literacy intensify the impact of these burden.[2], [3]
71 Bangladesh, characterized as an LMIC, is experiencing a rapidly growing burden of CVDs,
72 propelled by demographic shifts and lifestyle changes.[4]
73 Early identification of at-risk populations is one of the effective strategies to prevent CVDs.[5],
74 [6] In this context, the World Health Organization's (WHO) updated risk prediction charts can
75 serve as a valuable tool,[7] which can identify individuals who would benefit most from
76 preventive interventions such as statin therapy.[8] These charts, revised in 2019, estimate
77 the 10-year risk of a major cardiovascular event using factors such as age, gender, blood
78 pressure, smoking status, cholesterol level, and presence of diabetes.[9] The adaptations of
79 these models for 21 different global regions improve CVD risk prediction accuracy by
80 accommodating variations in risk factor levels and disease incidences across diverse
81 settings.[9] Additionally, these new models incorporate both fatal and non-fatal
82 cardiovascular outcomes, providing a more extensive assessment of CVD risk compared to
83 models that only predict mortality.[9]
84 Bangladesh aims to achieve a 25% reduction in premature mortality from non-communicable
85 diseases (NCDs) by 2025, as part of its commitment to reducing CVD impact,[10] continuing
86 and expanding upon the targets set in earlier plans.[11] For resource limited settings like
87 Bangladesh, the revised WHO 2019 models offer a viable strategy for assessing CVD risk and
88 facilitating targeted interventions such as lifestyle modifications and pharmacotherapy.[6],
89 [12] These models are available in two forms: a laboratory-based version that includes
90 biochemical markers like total cholesterol and blood glucose, and a non-laboratory-based
91 version that relies on clinical and demographic information alone.[8], [9]

92 Evaluation of these models within the Bangladeshi context, the 2018 Bangladesh STEPS
93 survey, provides a unique opportunity through its collected comprehensive data on non-
94 communicable disease risk factors.[13] By identifying potential target groups for intervention,
95 and by evaluating whether simpler, non-laboratory methods can substitute for lab-based
96 assessments, this study could markedly influence public health policies and patient
97 management strategies, not only in Bangladesh but also as an example for similar global
98 settings. In this context, this study aimed to estimate the prevalence of the 10-year
99 cardiovascular disease risk using both laboratory and non-laboratory-based models, identify
100 the key determinants of CVD risk, particularly using the laboratory-based model, and assess
101 the agreement between the two models.

102 **Methodology**

103 ***Study design setting and sampling***

104 This study used data from the 2018 Bangladesh STEPS survey, focusing on non-communicable
105 diseases (NCDs). Conducted from February to May 2018, the survey employed a cross-
106 sectional design with two-stage stratified cluster sampling. Of 496 initial primary sampling
107 units (PSUs), 495 were selected from urban and rural sectors across all eight divisions. In
108 each PSU, 20 households were systematically chosen, and one adult was randomly selected
109 per household. A total of 8,185 individuals completed the interview, 7,208 completed physical
110 measurements, and 7,056 provided blood samples.[13], [14] After applying inclusion criteria
111 for age (40-69 years) and exclusion criteria for previous CVDs and missing data, the study
112 included 2,767 participants from 493 PSUs with complete datasets across all measured
113 variables (**S1 Fig**). Data completeness was paramount; therefore, observations with missing
114 values were excluded from the analysis. We utilized a complete-case analysis approach, which
115 was justified due to the minimal impact of missing data: only 0.8% (n=22) of the data were
116 missing (SBP=1, WHR=4, BMI=2, and education level=15). This approach was not expected
117 to introduce any substantial bias, as the percentages of missing data for these variables were
118 very low.

119 **Data collection**

120 Data collection adhered to the WHO STEPS methodology (Version 3.2) and was conducted in
121 three phases. STEP-1 involved structured interviews to gather demographic and lifestyle risk
122 factors such as residence, education, occupation, diet, physical activity, and tobacco use,
123 acknowledging that some degree of recall bias may still be present in self-reported data.
124 STEP-2 included physical measurements and blood pressure assessments. In the final phase,
125 STEP-3, blood samples were collected under aseptic conditions to ensure data accuracy and
126 reliability. Participants were required to fast for 12 hours prior to sample collection, while
127 individuals with diabetes were advised to bring their medication and take it immediately after
128 the sample was collected. The detailed methodological procedure was described in the 2018
129 STEPS Bangladesh report.[13], [14]

130 **Blood pressure measurements**

131 Blood pressure was measured using "BP-BOSO-Medicus Control" digital monitor, which was
132 validated by the German Hypertension League.[15] Participants were asked to rest for 15
133 minutes with uncrossed legs before measurements. Three consecutive readings were taken
134 at three-minute intervals, and the mean of the last two was computed for analysis.[13]

135 **Blood sample collection**

136 Participants fasted overnight before their appointment for blood sample collection. During the
137 visit, 5 ml of blood was drawn: 2 ml was allocated for serum glucose testing in a Fluoride-
138 oxalate vacutainer, and 3 ml was used for a lipid profile analysis in a standard tube. Samples
139 were processed and transported to the NIPSOM Lab within 24 hours, with stringent cold
140 chain.[13]

141 **Biochemical analysis**

142 Blood glucose levels were assessed using a Human® kit from Germany. TG levels were
143 measured using Elitech® kits with controls from Humatrol/serodos®. Cholesterol levels were
144 determined using an Elitech® kit with Humatrol® controls from Germany. All assays were
145 conducted at the NIPSOM laboratory using a biochemistry auto analyzer (Selectra Pro M).[13]

146 **Estimation of 10-year CVD risk**

147 To estimate the 10-year risk of CVDs, we utilized the updated 2019 WHO 10-year CVD risk
148 prediction models, which were tailored for 21 WHO epidemiological subregions and offered
149 two versions per region-one requiring laboratory results and another not.[8], [9] Given the
150 wide-ranging data collection in this dataset, including cholesterol measurements, we
151 employed both the risk models, utilizing a STATA command developed by the authors of the
152 revised WHO 2019 10-year CVD risk prediction models and tailored for Bangladesh.[16] The
153 risk estimation was designed to calculate on various factors.

- 154 • Age: Grouped as 40–44, 45–49, 50–54, 55–59, 60–64, and 65–69 years.
- 155 • Sex: Analyzed by male and female categories.
- 156 • Smoking status: Classified participants as smokers or non-smokers.
- 157 • Systolic blood pressure (SBP): Categories included <120 mm Hg, 120–139 mm Hg,
158 140–159 mm Hg, 160–179 mm Hg, and ≥180 mm Hg.
- 159 • Body mass index (BMI): BMI was calculated by dividing a respondent's weight in
160 kilograms (kg) by the square of their height in meters (m²); <20, 20–24, 25–29, 30–
161 34, and ≥35 kg/m².
- 162 • Total cholesterol: Laboratory measured blood cholesterol level (mmol/L).
- 163 • Diabetes: Defined by a fasting blood glucose level >126 mg/dl or current use of
164 antidiabetic medication; categorized as present or absent.

165 The CVD risk levels were categorized into five groups indicating the percentage risk of
166 likelihood of experiencing a fatal or non-fatal major cardiovascular event, such as myocardial
167 infarction or stroke, over the next 10 years: <5%, 5% to <10%, 10% to <20%, 20% to
168 <30%, and $\geq 30\%$. [8]

169 ***Explanatory variables***

170 In this study, the outcome variable was defined based on the total CVD risk score, with a
171 score of $\geq 10\%$ classified as elevated CVD risk and a score of <10% classified as lower CVD
172 risk. [17] Potential factors associated with elevated CVD risk among the Bangladeshi
173 population were identified through a literature review and the availability of data from this
174 survey. [4], [18], [19] Sociodemographic variables considered included residence type (rural
175 or urban) and geographic division of the country (Barisal, Chittagong, Dhaka, Khulna,
176 Mymensingh, Rajshahi, Rangpur, and Sylhet), as well as educational attainment (no formal
177 education, primary, secondary, and more than secondary). Metabolic factors included waist
178 hip ratio and blood triglyceride level. Central obesity was determined using waist-hip-ratio
179 thresholds of ≥ 0.90 for males and ≥ 0.85 for females. [20] A triglyceride level of ≥ 150 mg/dl
180 was classified as elevated.

181 ***Statistical analysis***

182 Descriptive statistics were used to summarize the WHO 10-year CVD risk, stratified by gender,
183 presenting weighted percent prevalence and 95% confidence intervals. Pearson's chi-squared
184 test was conducted to assess the significance of differences. Variables estimating CVD risk
185 and associated covariates were detailed by frequency, percentage, or medians with
186 interquartile ranges (25th to 75th percentiles) as appropriate, as shown in **S1 & S2 Table**.
187 Sampling weights were incorporated to estimate prevalence more accurately, ensuring a
188 representative analysis of the study population.

189 To assess the influence of potential confounders on the association between 10-year lab-
190 based CVD risk and its determinants, a stepwise design adjusted logistic regression was
191 performed. This model adjusted for age, sex, and socio-demographic variables (urban/rural

192 residence, division, education level), and metabolic risk factors (waist-hip ratio and
193 triglyceride level). Variables traditionally used for estimating CVD risk such as smoking status,
194 systolic blood pressure, history of diabetes, total cholesterol, and body mass index were
195 excluded from the model, with the exception of non-modifiable factors like age and sex.
196 Outcomes were dichotomized, and independent variables were included methodically based
197 on literature recommendations. The associations were illustrated using odds ratios (ORs) with
198 95% confidence intervals (CIs). All statistical analyses were two-tailed, with a significance
199 level set at $p < 0.05$ for main effects and $p < 0.001$ for interaction effects. Multicollinearity was
200 assessed using the variance inflation factor (VIF), with a threshold of five indicating significant
201 multicollinearity.

202 The agreement between lab-based and non-lab-based risk charts was evaluated using Bland-
203 Altman plots and Lin's concordance coefficient correlation (LCCC) for continuous CVD risk
204 scores, and Cohen's kappa for categorical CVD risk classifications. The Bland-Altman method
205 plotted the difference between lab-based and non-lab-based risk scores against their average,
206 and limits of agreement were calculated as the mean difference \pm 1.96 standard deviations
207 (SD) of the mean difference. The agreement between the laboratory-based and non-
208 laboratory-based cardiovascular risk predictions was further assessed using Lin's Concordance
209 Correlation Coefficient (LCCC), which ranges from -1 to 1, with 1 indicating perfect
210 concordance. Cohen's kappa was employed to measure the categorical agreement between
211 the two risk charts, categorizing kappa values as follows: less than 0 indicating no agreement;
212 0.01 to 0.20 as slight agreement; 0.21 to 0.40 as fair agreement; 0.41 to 0.60 as moderate
213 agreement; 0.61 to 0.80 as substantial agreement; and 0.81 to 1.00 as almost perfect
214 agreement. Data preparation and analysis were conducted using STATA version 17, ensuring
215 rigorous statistical examination and reproducibility of the results.

216 ***Ethical consideration***

217 The protocol for the 2018 Bangladesh STEPS study was approved by the Bangladesh Medical
218 Research Council (BMRC). Before conducting interviews and collecting specimens, informed
219 written consent was obtained from all participants. Furthermore, in March 2023, the NCD
220 Microdata Repository of the World Health Organization (WHO) granted permission to access
221 and use the dataset. Since this research involves secondary data that was collected with prior
222 ethical approval and participant consent, no additional ethical clearance or further consent for
223 publication was required. Our study complies with the ethical guidelines for the analysis of
224 secondary data.

225 **Results**

226 The results presented in **Table 1** indicate estimated prevalence of 10-year cardiovascular
227 disease (CVD) risk, stratified by gender and assessed using both laboratory-based and non-
228 laboratory-based revised WHO models. In the laboratory-based model, more than two-third
229 portion of the population was categorized at very low risk (<5%), but higher risk categories
230 also indicated important observations. Specifically, the prevalence of low risk (5%-<10%),
231 moderate risk (10%-<20%), high risk (20%-<30%), and very high risk (\geq 30%) were 26.62%
232 (95% CI: 24.35-29.03), 9.49% (95% CI: 7.96-11.27), 0.81% (95% CI: 0.42-1.58), and
233 0.03% (95% CI: 0.01-0.12), respectively. Notably, males exhibited significantly higher
234 prevalence across these elevated risk categories compared to females ($p < 0.0001$).

235 **Table 1: Estimated prevalence of WHO 10-year CVD risk by gender**

236

Risk Model Type	Risk levels	Males (n=1452) % (95%CI)	Females (n=1315) % (95%CI)	Overall (n=2767) % (95%CI)
Laboratory based model (categorical)	Very low (<5%)	49.28 (45.89-52.68)	77.95 (74.25-81.25)	63.05 (60.53-65.51)
	Low (5%-<10%)	34.75 (31.51-38.13)	17.83 (14.97-21.11)	26.62 (24.35-29.03)
	Moderate (10%-<20%)	14.40 (11.75-17.51)	4.18 (2.85-6.07)	9.49 (7.96-11.27)
	High (20%-<30%)	1.52 (0.77-2.99)	0.04 (0.01-0.18)	0.81 (0.42-1.58)
	Very high (≥30%)	0.05 (0.01-0.22)	0	0.03 (0.01-0.12)
p<0.0001				
Laboratory based model (binary)	Low risk (<10%)	84.03 (80.91-86.73)	95.78 (93.89-97.11)	89.68 (87.89-91.22)
	Elevated risk (≥10%)	15.97 (13.27-19.09)	4.22 (2.89-6.11)	10.32 (8.78-12.11)
p<0.0001				
Non-laboratory-based model (categorical)	Very low (<5%)	49.23 (45.85-52.61)	80.49 (77.16-83.43)	64.24 (61.73-66.68)
	Low (5%-<10%)	35.56 (32.34-38.91)	16.71 (14.09-19.71)	26.50 (24.24-28.90)
	Moderate (10%-<20%)	14.11 (11.36-17.39)	2.75 (1.73-4.33)	8.65 (7.11 – 10.49)
	High (20%-<30%)	1.10 (0.56-2.19)	0.05 (0.01-0.40)	0.61 (0.31-1.16)
	Very high (≥30%)	0	0	0
p<0.0001				
Non-laboratory-based model (binary)	Low risk (<10%)	84.78 (81.52-87.56)	97.2 (95.62-98.22)	90.75 (88.92-92.3)
	Elevated risk (≥10%)	15.22 (12.44-18.48)	2.80 (1.78-4.38)	9.25 (7.7-11.08)
p<0.0001				

237 *n = Sample size, % = weighted percentage; 95%CI = 95% confidence interval;*
 238 *p < 0.05 indicates statistical significance; significance was assessed using Pearson’s chi-squared test*
 239

240

241 Similarly, the non-laboratory-based model showed comparable patterns. The prevalence for
242 low risk was 26.50% (95% CI: 24.24-28.90), for moderate risk was 8.65% (95% CI: 7.11-
243 10.49), and for high risk was 0.61% (95% CI: 0.31-1.16). No individuals were recorded at
244 the very high-risk level. This model also indicated clear gender disparities, with males
245 consistently demonstrating higher risk levels than females ($p < 0.0001$).

246 When categorizing risk into broader categories (**Table 1**), in the laboratory-based model,
247 10.32% (95% CI: 8.78-12.11) of the overall population was identified at elevated risk
248 ($\geq 10\%$), with a significant disparity between genders. Specifically, 15.97% (95% CI: 13.27-
249 19.09) of males were at elevated risk, contrasted with only 4.22% (95% CI: 2.89-6.11) of
250 females showing the same level of risk. Similarly, the non-laboratory-based model
251 demonstrated that 9.25% (95% CI: 7.7-11.08) of participants were at elevated risk, with
252 males again showing a higher risk prevalence of 15.22% (95% CI: 12.44-18.48) compared
253 to 2.80% (95% CI: 1.78-4.38) among females. The marked gender differences in elevated
254 risk were statistically significant in both models ($p < 0.0001$), emphasizing the robustness of
255 these findings and indicating a significant gender-based divergence in CVD risk across the
256 Bangladeshi population.

257 Age-sex adjusted and multivariate adjusted forest plot (**Fig 1**) identified several associations
258 between sociodemographic and metabolic factors with the elevated ($\geq 10\%$) 10-year CVD risk.
259 In the multivariate adjusted model, age showed a strong association, with each five-year
260 increase in age nearly quadruples the risk (OR = 4.29, 95% CI: 3.48-5.30). There was a
261 notable difference by gender; females had lower odds compared to males (OR = 0.31, 95%
262 CI: 0.18-0.53). Urban residency was associated with greater odds compared to rural
263 residency (OR = 1.82, 95% CI: 1.20-2.74). Among divisions, Dhaka showed a higher
264 association (OR = 2.44, 95% CI: 1.26-4.73) relative to Barisal. Higher educational attainment
265 correlated with increased odds, with those having more than a secondary education showing
266 the highest odds (OR = 2.42, 95% CI: 1.06-5.51). Metabolic factors such as a substantially
267 high waist-hip ratio (OR = 2.08, 95% CI: 1.22-3.52) and elevated triglyceride levels (OR =

268 2.70, 95% CI: 1.65-4.41) were also associated with higher odds. The comparison between
269 age-sex adjusted model and multivariate adjusted model demonstrated minor variations of
270 odds ratios (ORs), indicating stable estimates upon the inclusion of additional
271 sociodemographic and metabolic factors.

272 **Fig 1: Association of laboratory based 10-year CVD risk ($\geq 10\%$) and its determinants**

273 *Limits of agreement*

274 The Bland-Altman plots (**Fig 2**) for the overall population and both sexes demonstrated the
275 level of agreement between laboratory-based and non-laboratory-based CVD risk scores. The
276 average of the two methods was plotted against their difference, with the mean difference
277 indicated by a purple line and the limits of agreement by dotted red lines at +1.96 and -1.96
278 standard deviations from the mean difference. For the overall population, the mean difference
279 of 0.18 indicated that, on average, laboratory-based scores were slightly higher than non-
280 laboratory-based scores. The 95% limits of agreement, ranging from -3.16 to 3.52, covered
281 most differences and suggested reasonable agreement, considering clinical importance. For
282 males, the mean difference was 0.22 with limits of agreement from -3.51 to 3.96, showing
283 substantial variability despite general agreement. For females, the mean difference was lower
284 at 0.13, with narrower limits of agreement from -2.71 to 2.97, indicating slightly better
285 consistency than in males.

286 **Fig 2: Bland-Altman plots level of agreement between laboratory-based and non-laboratory-
287 based WHO 10-year CVD risk scores (A) Overall population (B) Among males (C) Among
288 females**

289 Across all plots, there was a noticeable trend indicating that the discrepancy between the
290 laboratory-based and non-laboratory-based methods increased as the average CVD risk
291 scores rose. This proportional bias, highlighted by the regression equations (males: $y = -0.43$
292 $+ 1.11x$; females: $y = -0.43 + 1.16x$), suggested that differences widened more than
293 proportionally with rising risk scores, which was higher in females, where the regression line's
294 steeper slope pointed to greater discrepancies at higher scores.

295 *Agreement by Lin's Concordance Correlation Coefficient (LCCC)*

296 The Lin's Concordance Correlation Coefficient (LCCC) value was found to be 0.90 (95% CI:
 297 0.89-0.91), as shown in **Table 2**, indicating a high level of agreement between the laboratory-
 298 based and non-laboratory-based 10-year CVD risk scores. Upon stratification by sex, the LCCC
 299 was calculated at 0.89 (95% CI: 0.88-0.90) for males and 0.87 (95% CI: 0.86-0.88) for
 300 females, demonstrating similarly high agreement for both genders in the 10-year CVD risk
 301 assessments.

302 **Table 2: Agreement between laboratory-based and non-laboratory-based 10-Year**
 303 **CVD risk scores by Lin's concordance correlation coefficient and kappa statistic**

304

Measurement	Male	Female	Overall
Lin's Concordance Correlation Coefficient (LCCC)			
LCCC	0.89 (95%CI: 0.88-0.90)	0.87 (95%CI: 0.86-0.88)	0.90 (95%CI: 0.89-0.91)
Kappa Statistic (Categorical Agreement)			
Kappa	0.68 (95%CI: 0.64-0.71)	0.66 (95%CI: 0.61-0.71)	0.69 (95%CI: 0.67-0.72)

305 *95%CI = 95% confidence interval*

306

307 *Categorical agreement*

308 In the overall population, substantial agreement was observed (**Table 2**) between the
 309 laboratory-based and non-laboratory-based methods when the risk scores were categorized
 310 using a five-group classification system based on different levels of CVD risk. The Kappa
 311 statistic for the entire sample was 0.69 (95%CI: 0.67-0.72), indicating substantial
 312 agreement. When stratified by sex, the level of agreement varied; for males, the Kappa
 313 statistic was 0.68 (95%CI: 0.64-0.71), and for females, the Kappa statistic was slightly lower
 314 at 0.66 (95%CI: 0.61-0.71). These findings indicate that both methods generally exhibited
 315 substantial agreement across the total population and both genders, suggesting that the
 316 observed patterns are unlikely to be due to random variation.

317 **Discussion**

318 This study assessed the 10-year risk of fatal and non-fatal CVD in Bangladesh using both
319 laboratory-based and non-laboratory-based revised WHO 2019 risk prediction models,
320 highlighting sociodemographic and metabolic factors associated CVD risk. Moreover, the
321 findings demonstrated the agreement between the models to underscore the similarity of
322 estimation.

323 The laboratory-based model identified 10.32% of the population as being at elevated risk
324 ($\geq 10\%$) (**Table 1**), slightly higher than the 9.25% identified by the non-laboratory-based
325 model. This prevalence was lower than those reported in previous studies in Bangladesh,
326 which reported rates from 14.9% to 27.5%. [12], [17], [21], [22] Comparative studies from
327 other LMIC regions reported lower moderate to high CVD risk prevalence: 8.8% (laboratory-
328 based) and 12.6% (non-laboratory-based) in Bhutan, and 8.4% (laboratory-based) and 7.5%
329 (non-laboratory-based) in Eastern Sub-Saharan Africa. [23], [24] Over three-fifths of the
330 population were categorized as very low risk ($< 5\%$), and about one-fifth as low risk (5% -
331 $< 10\%$), with similar patterns in both models. Although the likelihood of cardiovascular events
332 is generally lower in people with lower risk, it is crucial to understand that they are not entirely
333 risk-free. [25] If effective public health measures are not implemented, cardiovascular events
334 could still occur among those with lower risk categories, who make up the majority of the
335 population. [26]

336 The low readiness index in primary care settings, such as Upazila Health Complexes (UHCs),
337 compared to District Hospitals (DHs), indicates that the primary healthcare system is ill-
338 equipped to handle the growing burden of CVD. Facilities that offer both diagnostic and
339 treatment services for CVDs are limited, and only a small fraction have adequately trained
340 staff for managing these conditions. [27] The introduction of NCD corners has increased
341 awareness and improved care for conditions like diabetes, hypertension, and chronic
342 obstructive pulmonary disease. However, challenges persist, such as the absence of specific

343 guidelines, a shortage of trained personnel, inadequate laboratory facilities, insufficient
344 logistics and medications, and poor recording and reporting systems.[28]
345 Among the population, the impacts of both sociodemographic and metabolic determinants on
346 CVD risk were clearly delineated in the age-sex adjusted and multivariate adjusted models.
347 Age was confirmed as a fundamental determinant, with each five-year increment nearly
348 quadrupling CVD risk, mirroring global data that underscores aging as a primary risk factor
349 for cardiovascular deterioration.[29] Gender differences were also evident, with females
350 displaying significantly lower risk odds compared to males, aligning with international studies
351 that suggest hormonal protections in females and generally later onset of CVD.[30] These
352 results are consistent with global trends observed in other studies, which consistently report
353 higher CVD risk in males across various populations.[31], [32]
354 Urban residency was associated with higher CVD risk compared to rural, reflecting the
355 influence of urbanization on health through lifestyle changes such as increased sedentary
356 behavior and dietary shifts towards processed foods.[19] Living in the Dhaka division was
357 also associated with CVD risk, consistent with previous research identifying stress and
358 pollution as contributing factors.[33] Surprisingly, higher educational attainment correlated
359 with increased CVD risk, contrasting with some global findings where education typically
360 reduces risk through improved health literacy and access to care.[34] In Bangladesh, this
361 may highlight adverse lifestyle factors associated with higher education and socio-economic
362 status, such as less physical activity and higher caloric intake.[19] Metabolic factors, including
363 waist-hip ratio and elevated triglyceride levels, were strongly linked with higher CVD risk,
364 consistent with findings from the REACTION study.[35] The robustness of these associations,
365 demonstrated by their consistency across various model adjustments, suggests that the
366 association are minimally influenced by confounding factors.

367 The Bland-Altman analysis in this study explained a general agreement between laboratory-
368 based and non-laboratory-based CVD risk assessment methods, with minor mean differences,
369 underscoring the role of biochemical markers in risk calculations. Furthermore, narrow limit
370 of agreement for females indicated better consistency compared to males. These observations
371 support existing literature that validates non-laboratory methods as reliable alternatives for
372 CVD risk assessment, making them particularly beneficial in resource-constrained
373 environments.[23], [36] The Lin's Concordance Correlation Coefficient (LCCC) values
374 demonstrated substantial agreement (overall LCCC = 0.90), with slightly higher concordance
375 in males. These findings confirm the consistency of both assessment methods in evaluating
376 CVD risk, supporting their use across various clinical and epidemiological settings. Similar
377 findings of high concordance between the two WHO CVD risk assessment methods were
378 reported in comparative studies from Bangladesh and India.[21], [37] Moreover, the Kappa
379 statistics indicated substantial agreement across the total population and both genders using
380 the five-group classification system. Similarly, studies conducted in North India reported lower
381 Kappa values, whereas those in Bhutan noted higher values.[23], [37] This agreement is key
382 for public health strategies, aiding high-risk population identification and intervention. Non-
383 laboratory methods are beneficial for their simplicity and low resource needs.

384 The regression line indicated an increasing discrepancy between the two methods as average
385 CVD risk scores rose, which was more evident in females. This trend suggests the non-
386 laboratory method may struggle with complex risk factors at higher CVD risk levels. Despite
387 the general agreement and validation of non-laboratory methods as cost-effective
388 alternatives, the observed increasing discrepancies with rising CVD risk scores in both genders
389 necessitate cautious use, particularly for higher risk assessments among female individuals,
390 and suggest potential benefits from complementary detailed laboratory evaluations.

391 *Clinical and policy implication*

392 The implications of findings from this paper are influential for both clinical practice and policy
393 development. Clinically, non-laboratory-based CVD risk scores should be used cautiously for
394 high-risk individuals, who may require precise evaluations using laboratory-based methods.
395 From a policy perspective, integrating WHO risk prediction models into national health
396 guidelines and screening programs could effectively identify at-risk populations, supporting
397 cost-effective preventive strategies. Leveraging simpler, non-laboratory models for
398 widespread use, particularly in resource-limited settings, can effectively reach a broader
399 population. Training community health workers to conduct assessments and initiate
400 preventive measures, such as providing health advice and making referrals, could further
401 democratize access to critical health services and enhancing the health resilience of the
402 Bangladeshi population.[8]

403 *Strengths and limitations*

404 This study used both laboratory-based and non-laboratory-based WHO updated risk
405 prediction models tailored for the Bangladeshi population, enhancing CVD risk assessment
406 precision. Utilizing a country representative dataset ensures findings are broadly applicable
407 across Bangladesh. Major strengths include analysis of gender variability, sociodemographic
408 and metabolic determinants, and model comparison, enriching our understanding of CVD risk.
409 Despite these valuable insights, the study is subject to several limitations. Its cross-sectional
410 design limits the ability to establish causality. Self-reported data on lifestyle factors may
411 introduce recall bias. The focus on individuals aged 40-69 does not fully represent younger
412 adults increasingly affected by lifestyle-related health issues. Additionally, findings may not
413 be generalizable to other countries due to variations in diet, lifestyle, and health infrastructure
414 that are specific to Bangladesh.

415 **Conclusion**

416 This study has demonstrated that a substantial portion of the adult Bangladeshi population is
417 at elevated risk of cardiovascular event within the next decade, with males at higher risk
418 according to both laboratory-based and non-laboratory-based models. Moreover, the findings
419 have highlighted the association between sociodemographic and metabolic factors and
420 cardiovascular health risk, indicating potential target groups for intervention. Notably, the
421 non-laboratory-based model have shown substantial agreement with the laboratory-based
422 model and can serve as an alternative in settings with limited laboratory resources, although
423 caution is advised for high-risk individuals.

424 To improve the non-laboratory-based model's accuracy at higher risk scores, future research
425 may consider incorporating accessible predictive markers like waist circumference or detailed
426 familial health histories. Regular validation and recalibration of both models through
427 longitudinal studies will help maintain their relevance, particularly for younger adults.
428 Additionally, exploring how socioeconomic and biological factors interact could deepen
429 understanding of CVD risk disparities across different genders and socioeconomic groups.
430 Effective intervention strategies should also be developed, leveraging community health
431 initiatives, targeted educational programs, and mobile health technology.

432 **Acknowledgements:** We express our gratitude to the participants of the Bangladesh STEPS
433 2018 survey for their invaluable contributions. This research was made possible by the
434 dedicated efforts of the National Institute of Preventive and Social Medicine (NIPSOM) and
435 the Ministry of Health and Family Welfare of Bangladesh. We also thank the World Health
436 Organization for their support and for providing access to the necessary datasets.

437 **Author Contributions:** Choudhury, Abid, and Monower conceptualized and designed the
438 study framework. Monower conducted the statistical analysis and, along with Abid, performed
439 the initial data interpretation. Monower drafted the initial manuscript. Bhuiyan, Mamun, Abid,
440 Monower, and Choudhury made critical revisions for intellectual content. All authors approved
441 the final version and agree to be accountable for all aspects of the work, ensuring questions
442 related to accuracy or integrity are appropriately investigated and resolved.

443 **Declaration of conflict of interests:** The authors affirm that there are no conflicts of
444 interest regarding the research, authorship, or publication of this article.

445 **Funding:** No financial support was received for the conduct of this research or the preparation
446 of this article.

447 **Competing interests:** There are no competing interests to declare.

448 **Patient consent for publication:** Not applicable as this study did not require direct patient
449 involvement; it utilized existing data from the Bangladesh STEPS 2018 survey.

450 **Data availability statement:** Data for this study were obtained from the publicly accessible
451 datasets of the Bangladesh STEPS 2018 survey, which are available via the World Health
452 Organization NCD Microdata Repository. The data can be accessed from the repository at the
453 following URL: <https://extranet.who.int/ncdsmicrodata/index.php/home> [accessed on 21 Mar
454 2023]. Following the repository's instructions, the data can be downloaded.

455 **References**

- 456 [1] World Health Organization (WHO), 'Cardiovascular diseases (CVDs)', Geneva: World Health
457 Organization. Accessed: Feb. 27, 2024. [Online]. Available: [https://www.who.int/news-](https://www.who.int/news-room/fact-sheets/detail/cardiovascular-diseases-(cvds))
458 [room/fact-sheets/detail/cardiovascular-diseases-\(cvds\)](https://www.who.int/news-room/fact-sheets/detail/cardiovascular-diseases-(cvds))
- 459 [2] S. Yusuf *et al.*, 'Cardiovascular Risk and Events in 17 Low-, Middle-, and High-Income Countries',
460 *New England Journal of Medicine*, vol. 371, no. 9, pp. 818–827, Aug. 2014, doi:
461 10.1056/nejmoa1311890.
- 462 [3] D. H. Peters, A. Garg, G. Bloom, D. G. Walker, W. R. Brieger, and M. Hafizur Rahman, 'Poverty and
463 access to health care in developing countries', *Ann N Y Acad Sci*, vol. 1136, pp. 161–171, 2008,
464 doi: 10.1196/annals.1425.011.
- 465 [4] S. J. Mumu, F. F. Stanaway, and D. Merom, 'Rural-to-urban migration, socio-economic status and
466 cardiovascular diseases risk factors among Bangladeshi adults: A nationwide population based
467 survey', *Front Public Health*, vol. 11, Apr. 2023, doi: 10.3389/fpubh.2023.860927.
- 468 [5] D. Zhao, J. Liu, W. Xie, and Y. Qi, 'Cardiovascular risk assessment: A global perspective', *Nat Rev*
469 *Cardiol*, vol. 12, no. 5, pp. 301–311, May 2015, doi: 10.1038/nrcardio.2015.28.
- 470 [6] World Health Organization (WHO), 'WHO package of essential noncommunicable (PEN) disease
471 interventions for primary health care', Geneva: World Health Organization, 2020. Accessed: Mar.
472 11, 2024. [Online]. Available: <https://www.who.int/publications/i/item/9789240009226>
- 473 [7] World Health Organization (WHO), 'WHO updates Cardiovascular Risk Charts', Geneva: World
474 Health Organization . Accessed: Feb. 06, 2024. [Online]. Available:
475 <https://www.who.int/news/item/02-09-2019-who-updates-cardiovascular-risk-charts#>
- 476 [8] World Health Organization (WHO), 'HEARTS technical package for cardiovascular disease
477 management in primary health care: risk based CVD management', Geneva: World Health
478 Organization, 2020. Accessed: Feb. 19, 2024. [Online]. Available:
479 <https://www.who.int/publications/i/item/9789240001367>
- 480 [9] S. Kaptoge *et al.*, 'World Health Organization cardiovascular disease risk charts: revised models to
481 estimate risk in 21 global regions', *Lancet Glob Health*, vol. 7, no. 10, pp. e1332–e1345, Oct.
482 2019, doi: 10.1016/S2214-109X(19)30318-3.
- 483 [10] Bangladesh. Directorate General of Health Services and WHO Bangladesh, 'Multisectoral Action
484 Plan for Prevention and Control of Noncommunicable Diseases 2018-2025: with a three year
485 operational plan.', Dhaka: Non-communicable Disease Control Programme, Directorate General
486 of Health Services, May 2018. Accessed: Apr. 13, 2023. [Online]. Available:
487 [ttps://www.who.int/docs/default-source/searo/ncd/ban-ncd-action-plan-2018-2025.pdf?sfvrsn](https://www.who.int/docs/default-source/searo/ncd/ban-ncd-action-plan-2018-2025.pdf?sfvrsn)
- 488 [11] Directorate General of Health Services Ministry of Health and Family Welfare and WHO
489 Bangladesh, 'Strategic Plan for Surveillance and Prevention of Non-Communicable Diseases in
490 Bangladesh 2011-2015', *NCD Unit Directorate General of Health Services*, 2011, Accessed: Apr.
491 13, 2023. [Online]. Available: [https://www.iccp-](https://www.iccp-portal.org/system/files/plans/Bangladesh_NCD_Strategic_Plan_2011__2015.pdf)
492 [portal.org/system/files/plans/Bangladesh_NCD_Strategic_Plan_2011__2015.pdf](https://www.iccp-portal.org/system/files/plans/Bangladesh_NCD_Strategic_Plan_2011__2015.pdf)

- 493 [12] J. Y. Islam, M. M. Zaman, M. Moniruzzaman, S. Ara Shakoor, and A. H. M. E. Hossain, 'Estimation
494 of total cardiovascular risk using the 2019 WHO CVD prediction charts and comparison of
495 population-level costs based on alternative drug therapy guidelines: A population-based study of
496 adults in Bangladesh', *BMJ Open*, vol. 10, no. 7, Jul. 2020, doi: 10.1136/bmjopen-2019-035842.
- 497 [13] World Health Organization, 'National STEPS Survey for Non-communicable Diseases Risk Factors
498 in Bangladesh 2018', Country Office for Bangladesh, 2018. Accessed: Apr. 12, 2023. [Online].
499 Available: <https://apps.who.int/iris/handle/10665/332886>
- 500 [14] B. K. Riaz *et al.*, 'Risk factors for non-communicable diseases in Bangladesh: Findings of the
501 population-based cross-sectional national survey 2018', *BMJ Open*, vol. 10, no. 11, Nov. 2020,
502 doi: 10.1136/bmjopen-2020-041334.
- 503 [15] M. M. Monower, S. U. Al Abid, A. K. Abrar, and S. R. Choudhury, 'Salt intake across the
504 hypertension care cascade in the Bangladeshi adult population: a nationally representative cross-
505 sectional study', *BMJ Open*, vol. 14, no. 4, Apr. 2024, doi: 10.1136/bmjopen-2023-081913.
- 506 [16] S. Kaptoge and L. Pennells, 'University of Cambridge. Cardiovascular Epidemiology Unit.
507 Programs. World Health Organization (WHO) CVD risk score'. Accessed: Dec. 07, 2023. [Online].
508 Available: <http://ceu.phpc.cam.ac.uk/software/erfc/>
- 509 [17] A. A. M. Hanif *et al.*, 'Ten-years cardiovascular risk among Bangladeshi population using non-
510 laboratorybased risk chart of the World Health Organization: Findings from a nationally
511 representative survey', *PLoS ONE*, vol. 16, no. 5 May. Public Library of Science, May 01, 2021. doi:
512 10.1371/journal.pone.0251967.
- 513 [18] H. Rehman *et al.*, 'Epidemiologic studies targeting primary cardiovascular disease prevention in
514 South Asia', *Indian Heart Journal*, vol. 70, no. 5. Elsevier B.V., pp. 721–730, Sep. 01, 2018. doi:
515 10.1016/j.ihj.2018.01.029.
- 516 [19] S. J. Mumu, A. K. M. F. Rahman, P. P. Fahey, L. Ali, and D. Merom, 'Lifestyle risk factors and
517 metabolic markers of cardiovascular diseases in Bangladeshi ruralto-urban male migrants
518 compared with their non-migrant siblings: A sibling-pair comparative study', *PLoS One*, vol. 17,
519 no. 9 September, Sep. 2022, doi: 10.1371/journal.pone.0274388.
- 520 [20] World Health Organization (WHO), 'Waist circumference and waist-hip ratio: report of a WHO
521 expert consultation', Geneva: World Health Organization, 2011. Accessed: Jul. 12, 2023. [Online].
522 Available: <https://www.who.int/publications/i/item/9789241501491>
- 523 [21] K. Fatema, N. A. Zwar, A. H. Milton, B. Rahman, and L. Ali, 'Application of two versions of the
524 WHO/international society of hypertension absolute cardiovascular risk assessment tools in a
525 rural Bangladeshi population', *Open*, vol. 5, p. 8140, 2015, doi: 10.1136/bmjopen-2015.
- 526 [22] M. M. Zaman, M. Moniruzzaman, K. N. Chowdhury, S. Zareen, and A. E. Hossain, 'Estimated total
527 cardiovascular risk in a rural area of Bangladesh: A household level cross-sectional survey done
528 by local community health workers', *BMJ Open*, vol. 11, no. 8, Aug. 2021, doi: 10.1136/bmjopen-
529 2020-046195.

- 530 [23] K. Chhezom, M. S. Gurung, and K. Wangdi, 'Comparison of Laboratory and Non-Laboratory-Based
531 2019 World Health Organization Cardiovascular Risk Charts in the Bhutanese Population', *Asia
532 Pac J Public Health*, vol. 36, no. 1, pp. 29–35, Jan. 2024, doi: 10.1177/10105395231211997.
- 533 [24] A. Bendera, K. Nakamura, K. Seino, and S. Alemi, 'Performance of the non-laboratory based 2019
534 WHO cardiovascular disease risk prediction chart in Eastern Sub-Saharan Africa', *Nutrition,
535 Metabolism and Cardiovascular Diseases*, 2024, doi: 10.1016/j.numecd.2024.01.026.
- 536 [25] J. D. Berry *et al.*, 'Lifetime Risks of Cardiovascular Disease', *New England Journal of Medicine*, vol.
537 366, no. 4, pp. 321–329, Jan. 2012, doi: 10.1056/NEJMoa1012848.
- 538 [26] C. Miao *et al.*, 'Cardiovascular Health Score and the risk of cardiovascular diseases', *PLoS One*,
539 vol. 10, no. 7, Jul. 2015, doi: 10.1371/journal.pone.0131537.
- 540 [27] T. Biswas, M. M. Haider, R. Das Gupta, and J. Uddin, 'Assessing the readiness of health facilities
541 for diabetes and cardiovascular services in Bangladesh: A cross-sectional survey', *BMJ Open*, vol.
542 8, no. 10. BMJ Publishing Group, 2018. doi: 10.1136/bmjopen-2018-022817.
- 543 [28] L. B. Rawal *et al.*, 'Non-communicable disease (NCD) corners in public sector health facilities in
544 Bangladesh: A qualitative study assessing challenges and opportunities for improving NCD
545 services at the primary healthcare level', *BMJ Open*, vol. 9, no. 10, Oct. 2019, doi:
546 10.1136/bmjopen-2019-029562.
- 547 [29] S. Costantino, F. Paneni, and F. Cosentino, 'Ageing, metabolism and cardiovascular disease',
548 *Journal of Physiology*, vol. 594, no. 8. Blackwell Publishing Ltd, pp. 2061–2073, Apr. 15, 2016. doi:
549 10.1113/JP270538.
- 550 [30] A. H. E. M. Maas and Y. E. A. Appelman, 'Gender differences in coronary heart disease',
551 *Netherlands Heart Journal*, vol. 18, no. 12, pp. 598–603, Nov. 2010, doi: 10.1007/s12471-010-
552 0841-y.
- 553 [31] O. Perelshtein Brezinov *et al.*, 'Gender-Related Cardiovascular Risk in Healthy Middle-Aged
554 Adults', *American Journal of Cardiology*, vol. 118, no. 11, pp. 1669–1673, Dec. 2016, doi:
555 10.1016/j.amjcard.2016.08.045.
- 556 [32] M. Walli-Attaei *et al.*, 'Variations between women and men in risk factors, treatments,
557 cardiovascular disease incidence, and death in 27 high-income, middle-income, and low-income
558 countries (PURE): a prospective cohort study', *The Lancet*, vol. 396, no. 10244, pp. 97–109, Jul.
559 2020, doi: 10.1016/S0140-6736(20)30543-2.
- 560 [33] P. Joseph *et al.*, 'Cardiovascular disease, mortality, and their associations with modifiable risk
561 factors in a multi-national South Asia cohort: A PURE substudy', *Eur Heart J*, vol. 43, no. 30, pp.
562 2831–2840, Aug. 2022, doi: 10.1093/eurheartj/ehac249.
- 563 [34] N. Khan *et al.*, 'Low educational attainment is associated with higher all-cause and cardiovascular
564 mortality in the United States adult population', *BMC Public Health*, vol. 23, no. 1, Dec. 2023, doi:
565 10.1186/s12889-023-15621-y.

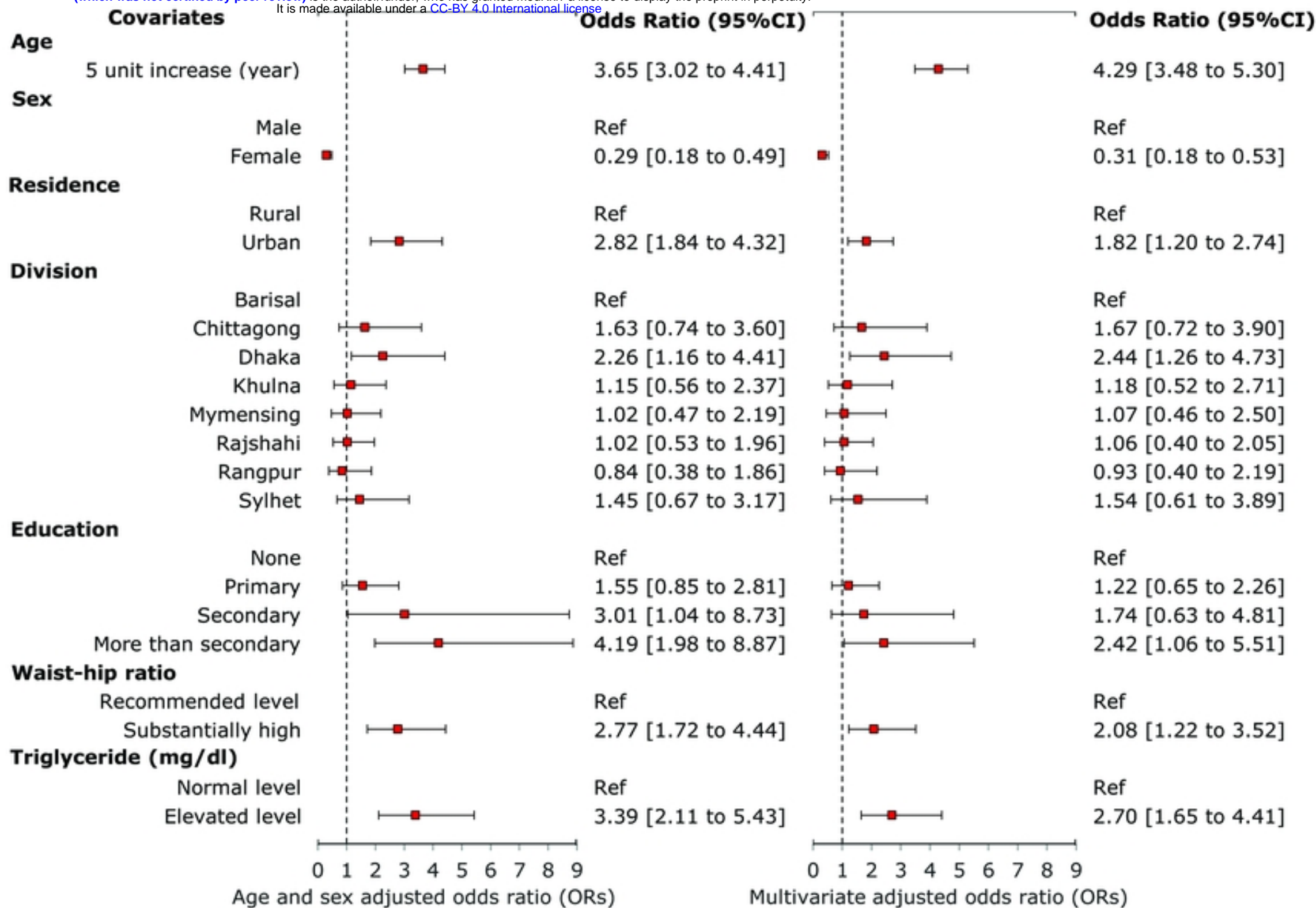
- 566 [35] W. Su, J. Wang, and Y. Mu, 'Association between hypertriglyceridemic waist phenotype and
567 increased urinary albumin– creatinine ratio in Chinese adults: The reaction study', *Diabetes,*
568 *Metabolic Syndrome and Obesity*, vol. 13, pp. 2965–2974, 2020, doi: 10.2147/DMSO.S257736.
- 569 [36] W. C. Guzman-Vilca, G. A. Quispe-Villegas, F. F. Váscones Román, A. Bernabe-Ortiz, and R. M.
570 Carrillo-Larco, 'Agreement between the laboratory-based and non-laboratory-based WHO
571 cardiovascular risk charts: a cross-sectional analysis of a national health survey in Peru', *BMJ*
572 *Open*, vol. 12, no. 11, Nov. 2022, doi: 10.1136/bmjopen-2022-063289.
- 573 [37] P. Ananda Selva Das, M. Dubey, R. Kaur, H. R. Salve, C. Varghese, and B. Nongkynrih, 'WHO Non-
574 Lab-Based CVD Risk Assessment: A Reliable Measure in a North Indian Population', *Glob Heart*,
575 vol. 17, no. 1, 2022, doi: 10.5334/gh.1148.
- 576
- 577

578 **Supporting information**

579 S1 Fig: Participant selection flowchart for the Study (Total n=2767)

580 S1 Table: Socio-demographic characteristics of the participants

581 S2 Table: CVD risk factors distribution of the participants

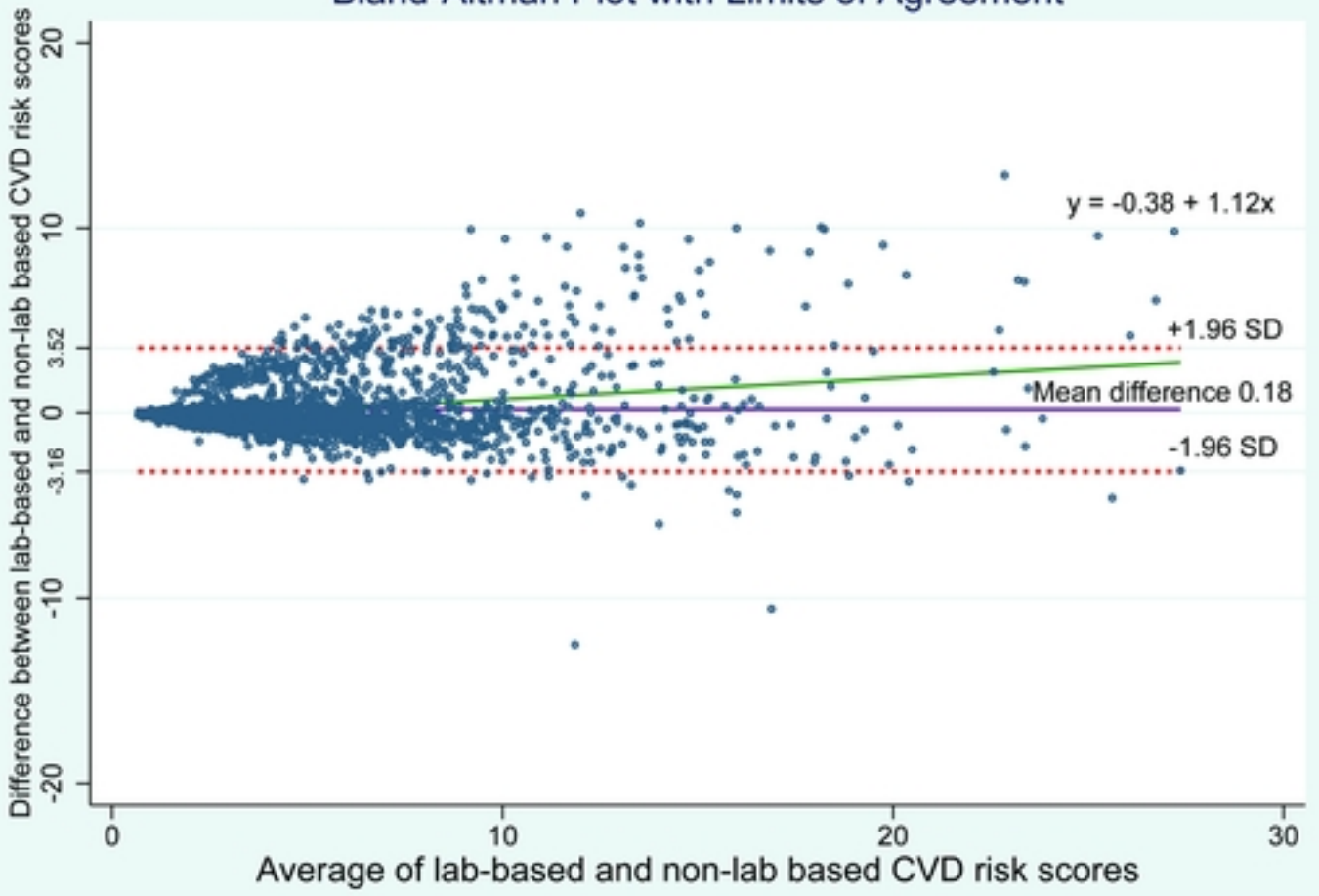


Forest plot showing adjusted odds ratios (ORs) for sociodemographic factors (age, sex, residence, division, education) and metabolic factors (waist-hip ratio, triglycerides) associated with 10-year cardiovascular disease (CVD) risk $\geq 10\%$, compared to reference categories or per 5-unit increase

Significant level for main effect $p < 0.05$ and for interaction $p < 0.001$
 (n= 2767, Strata: 16, PSU: 493, population size (40-69 years): 41,543,591)

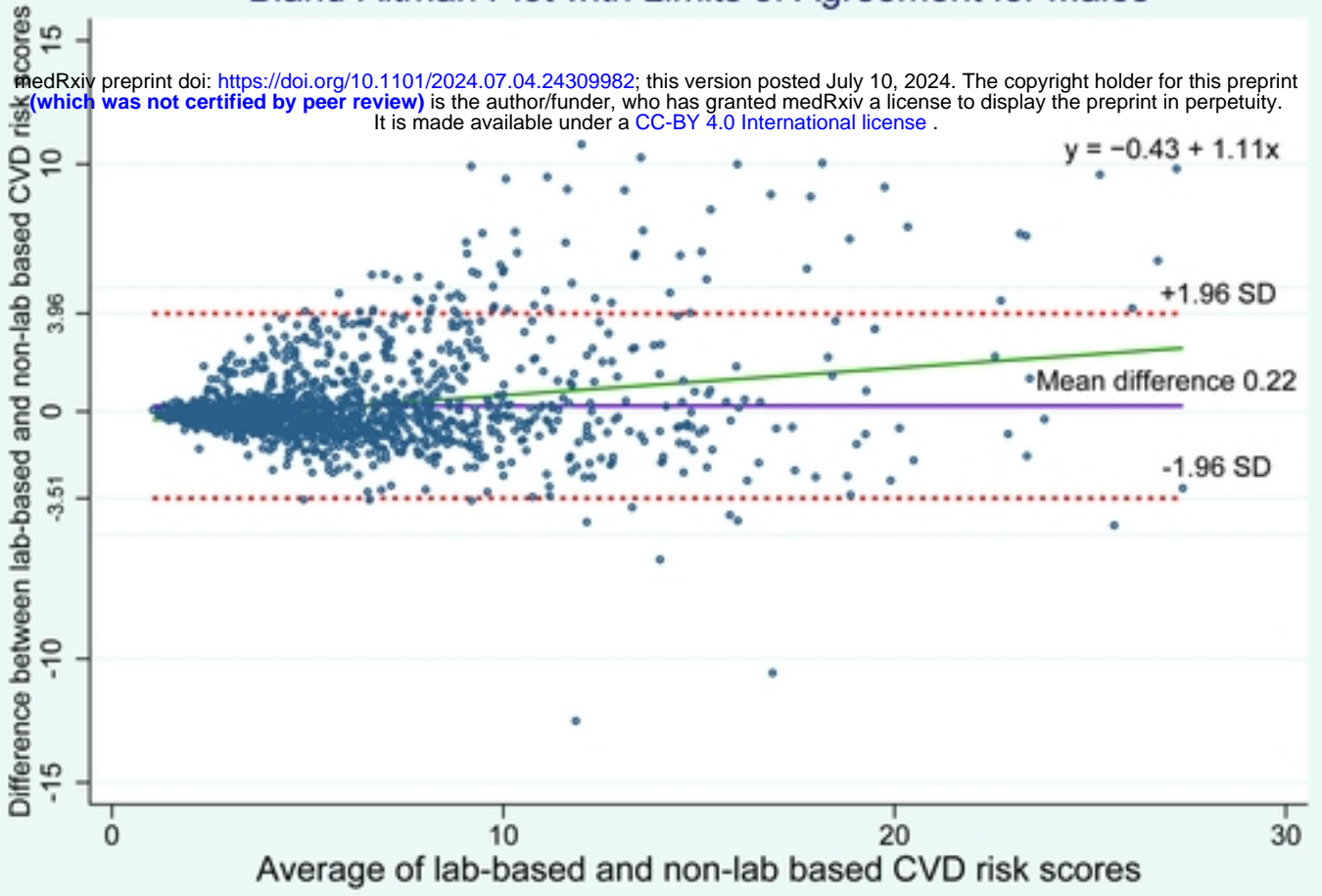
Fig 1: Association of laboratory based 10-year CVD risk ($\geq 10\%$) and

Bland-Altman Plot with Limits of Agreement



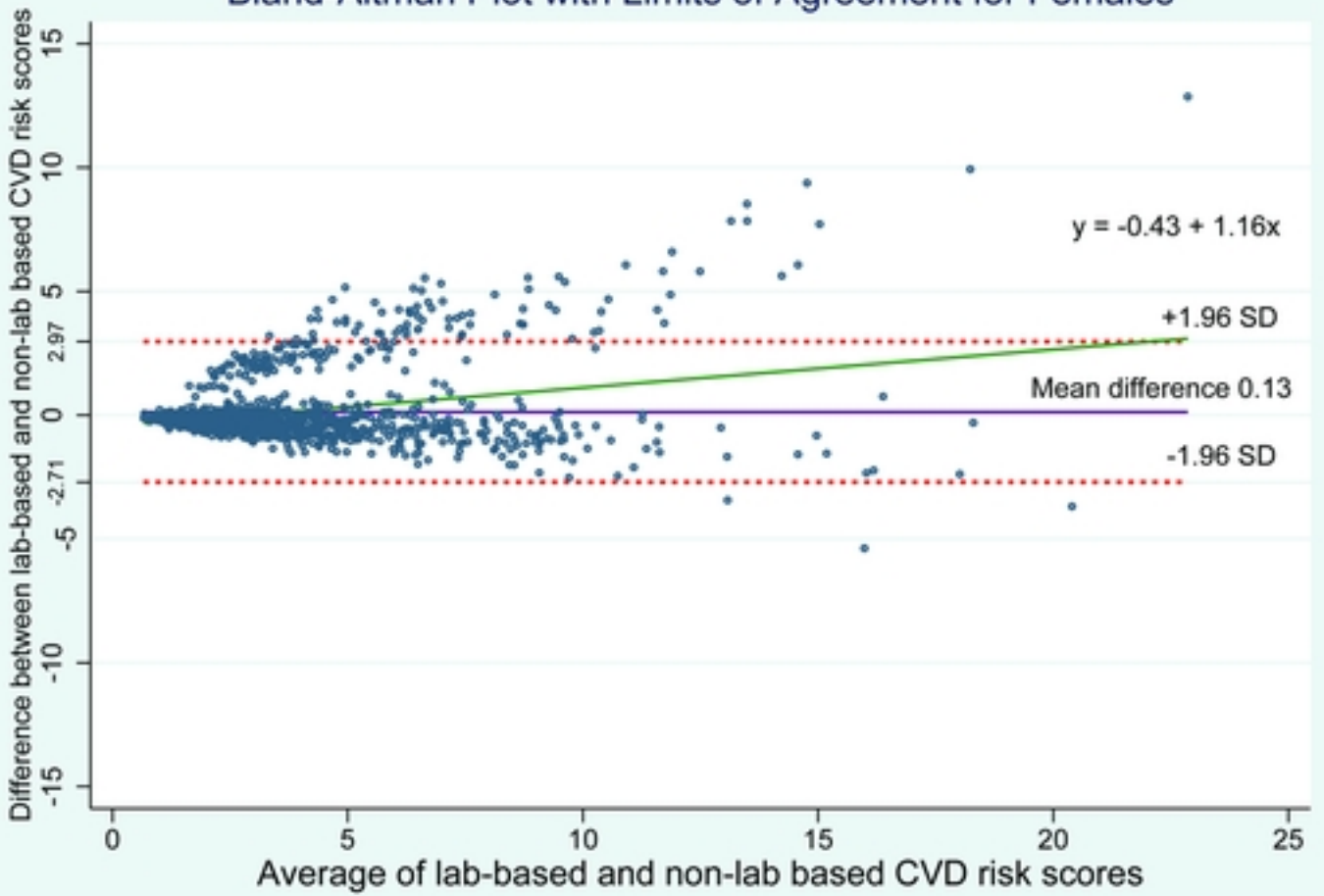
(A)

Bland-Altman Plot with Limits of Agreement for Males



(B)

Bland-Altman Plot with Limits of Agreement for Females



(C)

Fig 2: Bland-Altman plots level of agreement