

1
2
3
4
5
6
7
8
9
10
11
12
13
14
15
16
17
18
19
20
21
22
23
24
25
26
27
28
29
30
31
32
33
34

Bladder-resident bacteria associated with increased risk of recurrence after electrofulguration in women with antibiotic-recalcitrant urinary tract infection

Jashkaran G. Gadhvi^{1,4*}, Parker R.M. Kenne^{2*}, Kevin C. Lutz^{3,5}, Fatima Khan¹, Qiwei Li³, Philippe E. Zimmern⁴, Nicole J. De Nisco^{1,4}

¹ Department of Biological Sciences, The University of Texas at Dallas, Richardson, TX

² The University of Texas Southwestern Medical School, Dallas, TX

³ Department of Mathematics, The University of Texas at Dallas, Richardson, TX

⁴ Department of Urology, The University of Texas Southwestern Medical Center, Dallas, TX

⁵ Peter O'Donnell Jr. School of Public Health, The University of Texas Southwestern Medical Center, Dallas, TX

*These authors contributed equally

Please address correspondence to Nicole J. De Nisco (nicole.denisco@utdallas.edu)

Running head: Bladder-resident bacteria correlate with increased risk of UTI.

Keywords: Fluorescence in situ hybridization, recurrent UTI, electrofulguration, postmenopausal women, bladder

35 **Abstract:**

36 **Background.** Antibiotic-recalcitrant recurrent urinary tract infection (rUTI) is has become
37 increasingly observed in postmenopausal women. Therefore, when standard antibiotic therapies
38 have failed, some elect electrofulguration (EF) of areas of chronic cystitis when detected on
39 office cystoscopy. EF is thought to remove tissue-resident bacteria that have been previously
40 detected in the bladder walls of postmenopausal women with rUTI. We hypothesized that
41 increased bladder bacterial burden may be associated with incomplete rUTI resolution following
42 EF.

43 **Methods.** Following IRB approval, bladder biopsies were obtained from 34 consenting
44 menopausal women electing EF for the advanced management of rUTI. 16S rRNA FISH was
45 performed using both universal and *Escherichia* probes and tissue-resident bacterial load was
46 quantified. Time to UTI relapse after EF was recorded during a six-month follow-up period and
47 the association of bladder bacterial burden and clinical covariates with UTI relapse was assessed.

48 **Results.** We observed bladder-resident *Escherichia* in 52% of all participants and in 92% of
49 participants with recent *E. coli* UTI. Time-to-relapse analysis revealed that women with high
50 bladder bacterial burden as detected by the universal probe had a significantly ($p=0.035$) higher
51 risk of UTI within six months of EF (HR=3.15, 95% CI: 1.09-9.11). Interestingly, bladder-
52 resident *Escherichia* was not significantly associated ($p=0.26$) with a higher risk of UTI relapse
53 (HR= 2.14, 95% CI: 0.58-7.90).

54 **Conclusions.** We observed that total bladder bacterial burden was associated with a 3.1x
55 increased risk of rUTI relapse within six months. Continued analysis of the relationship between
56 bladder bacterial burden and rUTI outcomes may provide insight into the management of these
57 challenging patients.

59 **Introduction**

60 Urinary tract infections (UTI) are among the most common bacterial infections and can
61 progress into more serious conditions like recurrent UTI (rUTI) and pyelonephritis (1, 2). rUTI,
62 defined as two UTI episodes in 6 months or three UTI episodes in 12 months, has become a
63 significant clinical challenge in the older female population (3, 4). Ikäheimo *et al.* followed 179
64 women for 12 months after initial presentation to a clinic for treatment of UTI to assess the
65 incidence of rUTI, and within that period 53% of individuals ≥ 55 y/o experienced rUTI (5). A
66 separate study found a high incidence of resistance or allergy to multiple front-line UTI
67 antibiotics in postmenopausal women with rUTI (6). In older women, several factors are
68 associated with a higher risk of rUTI, including institutionalization, catheterization, incontinence,
69 antimicrobial exposure, and decreased functional status (3). Of these factors, the contribution of
70 prior antimicrobial exposure to rUTI is particularly concerning, as the development of antibiotic
71 resistance reduces the number of options available to clinicians for treating rUTI and leaves
72 patients vulnerable to pyelonephritis and urosepsis (2, 7, 8). Therefore, a deeper understanding of
73 how bacterial pathogens colonize and persist in the urinary tract and the role of bladder-resident
74 bacteria in the rUTI patient outcomes is needed.

75 Uropathogenic *Escherichia coli* (UPEC) is the most common causative agent of UTI.
76 Studies in mice have shown that UPEC forms intracellular bacterial communities (IBCs) and
77 quiescent intracellular reservoirs (QIR) that can seed future infections (9-12). Additional studies
78 in mice and in vitro systems have also found that uropathogens *Klebsiella pneumoniae* and
79 *Enterococcus faecalis* can also invade bladder epithelial cells (13-15). The presence of tissue-
80 embedded bacteria in the bladders of human patients with rUTI was confirmed in our study of 14
81 bladder biopsies from postmenopausal women with rUTI. Fluorescence *in situ* hybridization

82 (FISH) using universal bacterial 16S rRNA demonstrated that bladder-resident bacteria were
83 present in 11 out of 14 patients in all layers of the urothelium and even within the sub-urothelial
84 mesenchymal regions (16). One treatment modality for women with antibiotic-recalcitrant rUTI
85 that exploits our understanding of uropathogen tissue invasion is cystoscopy with
86 electrofulguration (EF) directly to areas of visible chronic cystitis (17, 18). Retrospective
87 assessment of 95 women undergoing EF for rUTI from 2004 to 2016 indicated 65% of women
88 experienced a reduction in their number of UTIs per year when followed for an average of 4.9
89 years EF (17).

90 However, EF procedures do not resolve rUTI in some patients, thus prompting the
91 question of whether the burden of bladder-resident bacteria may influence the early EF
92 outcomes. Furthermore, the identity of these bladder-resident bacteria remains unknown as
93 previous work employing FISH to identify bladder-resident bacteria has only utilized universal,
94 and not genus-specific, bacterial probes (16, 19). To address these questions, systematic analysis
95 was performed on bladder biopsies taken from 34 post-menopausal women prior to undergoing
96 EF for antibiotic-recalcitrant rUTI. Tissue samples were analyzed with FISH probes to both
97 universal 16s rRNA sequences, and to *Escherichia spp.* specific sequences. The biopsies were
98 independently analyzed to quantify and characterize genus-specific detection of bacteria within
99 the bladder wall. This study represents the first successful genus-specific typing of bladder-wall
100 resident *Escherichia* in postmenopausal women suffering from uncomplicated antibiotic-
101 recalcitrant rUTI. Strikingly, we found that elevated bladder tissue bacterial burden correlated
102 with an increased risk of rUTI relapse within the first 6 months after EF. Therefore, this
103 observation identifies a new prognostic bladder indicator, easily obtained through biopsy during

104 the EF procedure, that could influence the early management following EF for improved clinical
105 outcomes.

106 **Methods**

107 **Patient Recruitment**

108 Following institutional review board (STU-042018-072, MR 17-120) approval, eligible
109 postmenopausal women undergoing EF were recruited from the Urology clinic at the University
110 of Texas Southwestern Medical Center. EF was indicated in menopausal women with a history
111 of uncomplicated antibiotic-recalcitrant rUTI, completely negative upper and lower urinary tract
112 evaluations, and areas of visible chronic cystitis on office flexible cystoscopy. Exclusion criteria
113 included neurogenic bladder, pelvic procedure for incontinence or pelvic organ prolapse within 6
114 months prior, uncontrolled diabetes, >stage 2 prolapse, voiding dysfunction, ongoing
115 chemotherapy, renal insufficiency, use of indwelling catheters, intermittent catheterization, no
116 cystitis found on cystoscopy, or any upper urinary tract anomaly explaining rUTI.

117 **Cystitis Stage Classification**

118 Cystitis stages were devised for in-house classification of chronic cystitis bladder
119 involvement. Based on cystoscopy findings, areas of chronic cystitis can be categorized
120 according to their extension to the trigone (stage 1 or trigonitis), trigone and bladder base (stage
121 2), trigone, bladder base and lateral walls of the bladder (stage 3) or the rest of the bladder (stage
122 4 or pancystitis) (20).

123 **Sample Collection and Preservation**

124 Bladder biopsies were obtained from menopausal women who met the study criteria and
125 provided informed consent. For Fluorescence in Situ Hybridization (FISH) analysis, the
126 collected biopsies were immediately placed in 4% paraformaldehyde and fixed for 6 hours at
127 room temperature or overnight at 4°C. The fixed biopsies were then paraffin embedded and

128 longitudinally sectioned (5 μm) using sterile solutions and equipment as described previously
129 (21).

130 **Fluorescence in situ hybridization (FISH)**

131 All staining steps were performed in aseptic conditions as previously reported (21, 22).
132 Sequential sections were incubated overnight at 55°C with either: 10nM 16S rRNA-647
133 (Universal) + 10nM *Esco473-488* (*Escherichia*), 10nM *Esco473-488* (*Escherichia*) alone or
134 10nM scramble-647 + 10nM scramble-488 probe sets diluted in hybridization buffer (23). After
135 washing, sections were counterstained with 1 $\mu\text{g}/\text{mL}$ Hoechst, washed and then mounted.
136 Confocal microscopy was performed on a Zeiss LSM800 with a 63x objective.

137 **Image Analysis**

138 Images were processed and analyzed with ImageJ. Ten random images including the
139 urothelial region, the lumen and the basal region were taken for each biopsy tissue. Anatomical
140 regions (i.e. lumen, urothelium, lamina propria) present with the images were defined were
141 defined using Hematoxylin and Eosin (H&E) staining on serial sections. Dotted lines represent
142 the delineation between the urothelium and the sub-urothelium. After imaging was performed,
143 two separate, clinically blinded or unaware of the EF outcomes evaluators performed analysis
144 and quantification of bacteria present within each tissue layer. Quantified bacterial counts were
145 then used for statistical analyses of bladder bacterial burden.

146 **Statistical Analysis**

147 Sample sizes balanced feasibility of biopsy acquisition with statistical power for
148 detecting appropriate effect sizes. For example, for the survival analysis a sample size of $N=31$
149 provides 80% power to detect large effect sizes ($\text{HR}>2$) (24). All statistical analyses were
150 performed in GraphPad Prism 8.1.0 or in R Studio version 4.0.2 with a level of significance of

151 $\alpha = 0.05$. Pairwise associations between continuous variables were measured using Spearman's
152 correlation coefficient with p -values generated by permutation. Differences between continuous
153 variables by group were analyzed Mann-Whitney-Wilcoxon test (for two group comparison) or
154 Kruskal–Wallis test (for multiple group comparison).

155 **Time-to-Relapse Analysis**

156 UTI episodes were recorded in a six-month follow-up study in which patients were
157 followed through chart review in electronic medical records and phone calls. UTI relapse was
158 defined as one symptomatic, culture-proven UTI episode within six months after the EF
159 procedure. Survival analysis was performed on the relapse group using Kaplan-Meier analysis
160 and Cox proportional hazards models. All model assumptions for Cox regression including
161 proportional hazards, influential observations, and linearity (for quantitative predictors) were
162 carefully evaluated using the Schoenfeld test, deviance residual plots, and Martingale residual
163 plots, respectively. Participants were dichotomized about the median for Universal bacteria and
164 by presence or absence for the *Escherichia* probe. No other variables in our data set were
165 associated with both the independent and dependent variables, Universal bacteria and rUTI
166 relapse, respectively. This implies that there are likely to be no confounders between Universal
167 bacteria and rUTI relapse in our data set. The Mantel-Cox log-rank test was used to compare
168 survival curves in the Kaplan-Meier analysis to determine if groups differed with respect to time-
169 to-relapse. We then performed Cox regression to account for clinical covariates. Because some
170 variables were correlated and the number of events per covariate was about two, we performed
171 regularization on the Cox regression model with all the covariates using LASSO from the glmnet
172 library in R Studio. Penalization techniques such as LASSO are recommended especially when
173 the number of events per covariate is less than four or five (25). To identify confounders, we

174 determined if any variables were associated with both the independent and dependent variables:
175 universal bacteria and rUTI relapse, respectively. We used the p-value and 95% confidence
176 interval of the hazard ratio corresponding to each covariate to quantify their association with the
177 hazard and survival time.

178 **Role of funders**

179 The funders had no role in study design, data collection, data analysis, data interpretation
180 or writing of the report. All authors accept responsibility for the decision to submit for
181 publication.

182 **Ethics Statement**

183 This study was performed with approval from the Institutional Review Boards of the
184 University of Texas Southwestern Medical Center and the University of Texas at Dallas (STU-
185 042018-072, MR 17-120). Informed, written consent was obtained from all patients before
186 performance of study procedures or collection of study-related data.

187 **Results**

188 **Patient characteristics and urine culture history**

189 All patients were postmenopausal except one who was perimenopausal (PNK036) with a
190 mean age of 69 years and age range from 44-92 years (**Table 1**). Their demographic
191 characteristics are presented in Table 1. The participants had body mass indices ranging from 19
192 – 47.7 (median, 25.8). Ten women (29%) suffered from Type 2 diabetes mellitus and the median
193 parity of the cohort was two (**Table 1**). Most of the women (76%) had gynecologic surgical
194 history ranging including Cesarean section, abdominal hysterectomy, vaginal hysterectomy, sling
195 placement, and nephrectomy. Of the 34 patients, three had previously undergone at least one EF
196 procedure (PNK 025, PNK027, and PNK033). Twenty-three participants (68%) had allergies to
197 antibiotics. Specifically, recorded allergies were to Nitrofurantoin (24%), Fluoroquinolones
198 (29%), Macrolides (13%), Sulfonamides (41%), Aminoglycosides (3%), Penicillin (15%) and
199 Cephalosporin (9%). Fifteen participants (44%) had allergies to multiple antibiotics (**Table 1**).

200 **Table 2** provides a description of the stage classifications of chronic cystitis used to
201 stratify patients. Eight women were classified as Stage 1 (24%), nine as Stage 2 (26%), two as
202 Stage 3 (6%), and nine as Stage 4 (44%). We also evaluated available urine culture history
203 within one year prior to EF and found that 21 women (62%) had a history of *E. coli* UTI, 10
204 (30%) had *Klebsiella pneumoniae* UTI, and 8 (24%) had *E. faecalis* UTI (**Table 2**). All
205 participants had taken at least one course of antibiotic therapy within one year prior to the study
206 with many having had several courses without durable resolution of their rUTI condition. Of the
207 34 patients, 16 had a UTI episode requiring antibiotic treatment within 6 months post-EF.

208

209 **Genus specific FISH reveals *Escherichia coli* bacterial communities within the bladder**
210 **wall.**

211 Using universal probes for 16S rRNA gene, we detected bacteria within the bladder wall
212 of 31/34 patients. Of these 34 patients, the universal FISH quantification had been reported for
213 11 patients in a previous study published by our group (26). **Figure 1A** shows representative
214 micrographs from various stages (1, 2 and 4) of cystitis. Bacteria were present not just in the
215 bladder urothelium, but also in the lumen and the sub-urothelial regions. Because *E. coli* is the
216 most common causative agent of UTI and rUTI, we used a previously validated 16S rRNA probe
217 for *Escherichia* (*Esco473*) to identify potential tissue-resident *E. coli* in a subset of the biopsies
218 (23). We first performed our own in-house validation and confirmed that the *Esco473* probe was
219 able to label *E. coli* isolated from patient PNK007 and not *Staphylococcus epidermidis* (**Figure**
220 **S1**). Then we tested if the *Esco473* probe could detect potential *E. coli* within our bladder
221 biopsies (**Figure 1B**). We found *Escherichia spp.* present in 12/23 (52%) of the biopsies and in
222 12/13 biopsy sections from women with recent history of *E. coli* UTI. We further confirmed the
223 colocalization of both the universal as well as the *Escherichia* probe within biopsy tissues –
224 PNK041 (**Figure 2A**). We also observed instances, especially in women without recent history
225 of *E. coli* UTI, where only the universal probe was detected suggesting that these bladder-
226 resident bacteria do not belong to the genus *Escherichia* and may represent other genera of
227 uropathogenic bacteria or potentially members of the urinary microbiota – PNK046 (**Figure 2B**).

228

229 **Bacterial burden and localization within the bladder wall**

230 We then quantified the bladder resident bacteria within each layer of the urothelium to
231 better understand the bladder burden of bacteria detected by the universal and *Esco 473* probes
232 and the tissue distribution. The median total bladder bacterial burden, inclusive of lumen,
233 urothelium, and suburothelium, detected by the Universal probe was 19 (IQR: 3-38.75) while the

234 median total number of *Escherichia* was two (IQR: 0-18) (**Figure 3**). The largest bacterial
235 burden detected by the Universal probe was in PNK046 with 368 bacteria, whereas the largest
236 *Escherichia* community detected was in PNK041 with 26 bacteria (**Figure 3**). Interestingly, no
237 *Escherichia* populations were observed in PNK046. However, this patient had no recent history
238 of *E. coli* UTI, and their most recent UTI was suspected to be caused by *Streptococcus*
239 *agalactiae*. (**Table 2**).

240 To ascertain the location of these communities of tissue-associated bacteria, we
241 quantitated the bacteria present in lumen, urothelium, and suburothelium in PNK027-PNK052.
242 Bacterial community tissue localization for PNK016-PNK026 was reported previously in
243 Ebrahimzadeh et al (26). Bacterial communities were observed at all layers of the urothelial
244 mucosa, from the bladder lumen to the urothelial and sub-urothelial layers (**Figure 4**). Tissue-
245 resident (i.e., urothelial, or sub-urothelial) bacteria were detected by the universal probe in 87%
246 of patients and their community sizes ranged from a single bacterium to large communities of up
247 to 45 bacteria (**Figure 4A**). The largest urothelial and sub-urothelial communities detected by the
248 Universal probe were observed in PNK046 (N=181) and PNK050 (N=21), respectively (**Figure**
249 **4A**). Luminal bacteria were detected by the universal probe in 43% of patient samples with
250 PNK046 having the largest luminal bacterial community (N=149).

251 Similarly, *Escherichia spp.* were detected by the *Esco 473* probe in 52% of participant
252 biopsies and in 92% of biopsies obtained from patients suspected of having *E. coli* as a causative
253 UTI pathogen from their urine culture history within one year prior to EF (**Table 2**). The largest
254 urothelial and sub-urothelial communities detected by the *Escherichia* probe were observed in
255 PNK036 (N=17) and PNK044 (N=9), respectively (**Figure 4B**). The largest community of
256 luminal *Escherichia* community was observed in PNK041 (N=17).

257

258 **Higher bladder bacterial burden is associated with increased risk of UTI relapse.**

259 To begin to understand the association between bladder-resident bacteria in rUTI disease
260 progression, we examined the correlation between bladder bacterial burden and rUTI relapse
261 following EF. Since rUTI is defined as two UTIs within six months, we considered participants
262 who experienced a UTI within six months of the EF procedure for this analysis. Eighteen out of
263 34 (53%) patients had a UTI relapse within six months of the EF procedure (**Table 2**). We
264 observed that patients with higher bacterial burdens had about a 3.1 times greater risk of rUTI
265 relapse within six months (HR = 3.09, 95% CI: 1.16-8.74; $p = 0.025$) compared to women with
266 lower bladder bacterial burdens (**Figure 5A**). We then sought to determine if *Escherichia*-
267 specific bladder burden was associated with a higher risk of rUTI relapse but observed no
268 evidence of an association between higher *Escherichia* bladder burden and increased risk of UTI
269 within 6 months post-EF (HR= 2.14; 95% CI: 0.58-7.90; $p = 0.26$) (**Figure 5B**). An exploratory
270 analysis was performed to determine if any other variables were associated with the risk of rUTI
271 relapse. Age (**Figure S2A**), Diabetes and its types (**Figure S2 C & D**) and stage of cystitis
272 (**Figure S2E**) were not associated with increased risk of relapse, but Universal bacterial burden
273 was significantly associated (**Figure S2B**). We further sought to measure the association
274 between the survival times of rUTI relapse patients and covariates using the Cox proportional
275 hazards model. We found that universal bacteria (i.e., total bacterial burden) was the only
276 variable associated with a higher risk of rUTI relapse (HR: 3.15, 95% CI=1.09 to 9.11, $p =$
277 0.035) (**Figure S3**). No other variables were associated with both universal bacteria and rUTI
278 relapse, thus all other variables were removed by LASSO.

279

280 **Discussion**

281 One hypothesized mechanism for recurrent symptomatic bacteriuria is via reactivation of
282 quiescent intracellular reservoirs (QIRs) (27-32). There is robust evidence for the presence of
283 IBCs and QIRs in mouse models of UTI (9, 33, 34). Justice et al. and Anderson et al. used mouse
284 models of urinary tract infection and found that IBCs were formed by UPEC cells that had
285 invaded bladder epithelial cells and were protected from the host immune system. The IBCs
286 were able to persist in the bladder for several weeks and could cause recurrent infections (35,
287 36). Mysorekar *et al.* demonstrated the presence of UPEC QIRs within the endosomal
288 compartments of murine bladder superficial and underlying transitional epithelial cells (33, 37).

289 More recent work has extended the evidence for IBCs and QIRs to human specimens.
290 Rosen *et al.* analyzed human urine samples and found that IBCs were also present within
291 exfoliated superficial cells from patients with urinary tract infections caused by UPEC (30).
292 Using human bladder biopsy samples, De Nisco and colleagues directly observed IBCs and QIRs
293 in the bladders of women with uncomplicated rUTI (16). These bacterial reservoirs were found
294 not only within the urothelium, but within the underlying bladder wall layers and were found to
295 be associated with evidence of chronic inflammation. Recently, Wolfe et al. demonstrated the
296 presence of bacteria in bladder biopsy tissues of females with and without Interstitial Cystitis
297 (IC) (19). The current study extends our knowledge of bladder-resident bacteria associated with
298 rUTI by identifying populations of *Escherichia* within bladder tissue and finding that a higher
299 burden of bladder-resident bacteria is correlated with an enhanced risk of rUTI relapse within 6-
300 months following EF.

301 This study provides definitive evidence that in some women suffering from
302 uncomplicated rUTI *Escherichia spp.* had taken residence below the urothelial surface of the

303 bladder wall. Surprisingly, given *E. coli* is responsible for nearly 75% of uncomplicated UTI, an
304 increased load of tissue-associated of *Escherichia spp.* as detected by 16S rRNA FISH was not
305 significantly associated with an increased risk of a symptomatic UTI episode within six months
306 following EF (1). In fact, the majority of bacteria detected by the universal probe in the bladder
307 biopsies were not found to be hybridized by the *Escherichia* probe. This finding raises the
308 question of the identity of these bacterial species found deep within the bladder urothelium of
309 rUTI patients and their role in UTI recurrence. Interestingly, a study in a different population of
310 women suffering from IC and not from UTI, found evidence for bladder-associated
311 *Staphylococcus and Lactobacillus*, as well as other bacterial genera, using amplicon sequencing
312 techniques (19). However, these genera have yet to be directly visualized within the bladder
313 wall.

314 Under the proposed mechanism for antibiotic-refractory rUTI, in which tissue-resident
315 bacterial communities develop within protected niches, one would expect the physical
316 destruction of these communities by an EF procedure to reduce the risk of UTI recurrence. In
317 fact, several clinical studies on EF have confirmed a marked reduction in UTI recurrence after
318 EF (17, 18, 38). However, some women have failed EF, while others have been candidates for
319 repeat EF (39). One possible explanation for these failures from our study findings is that when
320 EF is performed in women with a high load of bladder resident bacteria, these tissue-resident
321 bacteria may be present beyond areas of observable cystitis. Thus, EF may be successful in
322 eradicating the infection at the fulgurated sites but falls short of eradicating tissue-resident
323 bacteria located elsewhere in the bladder, thus possibly explaining UTI recurrence in the 6
324 months following EF. Another explanation is borne out from our data in that following EF,
325 deeper tissue-resident bacteria from other genera are present and are now unmasked and

326 exposed, allowing the start a new cycle of UTI. Interestingly, preliminary evidence from a
327 separate study indicates that the EF procedure may also alter uroplakin IIIa expression on the
328 urothelial surface (40). It is also interesting that stage of cystitis was not associated with an
329 increased risk of rUTI relapse, but this could be due to the relatively small sample size of our
330 current study. More studies need to be conducted to understand the relationship between short
331 and long-term EF efficacy and bladder-resident bacterial burden in women managed by EF for
332 antibiotic-recalcitrant rUTI.

333 The main limitations of this study are sample size and diverse degrees of chronic cystitis
334 ranging from early stages to very advanced stages of cystitis when the whole bladder surface is
335 involved (stage 4). Although we used all available metadata to assess potential confounders and
336 did not identify any of these variables as confounding, it is possible that our results may be
337 confounded by unmeasured clinical or demographic variables. Another limitation of the study is
338 that the built-in selection bias of hazard ratios only allows for associative and not causal
339 interpretation (41). Additionally, because of ethics concerns with taking bladder biopsies from
340 healthy individuals, our study did not include a group of healthy human comparators without
341 UTI history. Although we specifically focused on a growing yet underrepresented group of
342 patients, i.e postmenopausal women, future work is needed to expand our findings to other age
343 groups. Furthermore, it is a limitation that 16S rRNA probes can only provide genus or family-
344 level identification and few genus-specific few probe sets have been validated in bladder tissue
345 (42). Future studies should develop more probe sets that can identify other uropathogenic genera
346 as well as genera that comprise the urinary microbiota (43, 44). Once these new probe sets are
347 developed, it will be important to determine the association between the genera information of

348 bacteria embedded within the bladder and those identified in urine cultures from future UTI
349 episodes.

350 Future studies should also include confirmation that these bladder-resident bacteria are in
351 fact intracellular, and not just residing inside the bladder layers. Additionally, the procurement of
352 bladder biopsies has been mostly restricted to situations when chronic lesions observed on
353 cystoscopy are concerning for early stages of cancer. Several studies have indicated that those
354 situations are rare in women (45-48). However, in light of the data presented here that suggest
355 bladder bacterial burden is associated with rUTI relapse following EF, 16S rRNA FISH of
356 bladder biopsies may serve as a prognostic indicator for clinicians performing EF for the
357 advanced management of rUTI. For example, for patients seeking EF for antibiotic-recalcitrant
358 rUTI, assessment of tissue-resident bladder bacterial load may help to predict their likelihood to
359 respond to therapy or inform the type or duration of antibiotics prescribed after the EF procedure.
360 If additional studies confirm the association of bladder bacterial load and different clinical
361 outcomes after EF, then the quantification of bladder-resident bacteria by FISH serve as a
362 valuable tool for patient stratification and management immediately following the EF procedure
363 that could lead to improved clinical outcomes for the millions of women suffering from
364 antibiotic-refractory rUTI (4, 49, 50).

365

366 **Author Contributions**

367 Study design and administration was performed by QL, PEZ, NJD. Recruitment was performed
368 by PEZ. The FISH analyses were performed by JGG, PRK. Investigation and interpretation of
369 data was performed by JGG, PRK, FK. Visualization of microscopy results was performed by
370 JGG, PRK. Statistical Analyses were performed by KCL, QL. Supervision and Funding

371 acquisition by PEZ, NJD. Final manuscript preparation by PRK, JGG, PEZ and NJD. All authors
372 reviewed and edited the manuscript. All authors have confirmed that they had full access to all
373 the data in the study and accept responsibility to submit for publication.

374

375 **Declaration of Interests**

376 The authors declare no competing interests.

377 **Acknowledgements**

378 The authors would like to sincerely thank the women who participated in this study. This work
379 was supported by a grant from National Institutes of Health (1R01DK131267-01) to N.J.D as
380 well as by the Felicia and John Cain Distinguished Chair in Women's Health to P.E.Z.

381

382 **References**

- 383 1. Foxman B. Epidemiology of urinary tract infections: incidence, morbidity, and economic
384 costs. *Am J Med.* 2002;113 Suppl 1A:5S-13S.
- 385 2. Matthews SJ, Lancaster JW. Urinary Tract Infections in the Elderly Population. *The*
386 *American Journal of Geriatric Pharmacotherapy.* 2011;9(5):286-309.
- 387 3. Stamm WE, Raz R. Factors contributing to susceptibility of postmenopausal women to
388 recurrent urinary tract infections. *Clin Infect Dis.* 1999;28(4):723-5.
- 389 4. Glover M, Moreira CG, Sperandio V, Zimmern P. Recurrent urinary tract infections in
390 healthy and nonpregnant women. *Urol Sci.* 2014;25(1):1-8.
- 391 5. Ikaheimo R, Siitonen A, Heiskanen T, Karkkainen U, Kuosmanen P, Lipponen P, et al.
392 Recurrence of urinary tract infection in a primary care setting: analysis of a 1-year follow-up of
393 179 women. *Clin Infect Dis.* 1996;22(1):91-9.
- 394 6. Malik RD, Wu YR, Christie AL, Alhalabi F, Zimmern PE. Impact of Allergy and
395 Resistance on Antibiotic Selection for Recurrent Urinary Tract Infections in Older Women.
396 *Urology.* 2018;113:26-33.
- 397 7. Manseck AS, Otto W, Schnabel M, Denzinger S, Burger M, Spachmann PJ. Geriatric
398 Patients and Symptomatic Urinary Tract Infections: Analysis of Bacterial Range and Resistance
399 Rates at a 3rd Level of Care Hospital in Germany. *Urologia Internationalis.* 2022;106(3):298-
400 303.

- 401 8. Gleckman RA, Bradley PJ, Roth RM, Hibert DM. Bacteremic urosepsis: a phenomenon
402 unique to elderly women. *J Urol*. 1985;133(2):174-5.
- 403 9. Justice SS, Hung C, Theriot JA, Fletcher DA, Anderson GG, Footer MJ, et al.
404 Differentiation and developmental pathways of uropathogenic *Escherichia coli* in urinary tract
405 pathogenesis. *Proceedings of the National Academy of Sciences of the United States of America*.
406 2004;101(5):1333-8.
- 407 10. Anderson GG, Palermo JJ, Schilling JD, Roth R, Heuser J, Hultgren SJ. Intracellular
408 bacterial biofilm-like pods in urinary tract infections. *Science*. 2003;301(5629):105-7.
- 409 11. Anderson GG, Dodson KW, Hooton TM, Hultgren SJ. Intracellular bacterial
410 communities of uropathogenic *Escherichia coli* in urinary tract pathogenesis. *Trends in*
411 *Microbiology*. 2004;12(9):424-30.
- 412 12. Kern MB, Struve C, Blom J, Fridodt-Møller N, Krogfelt KA. Intracellular persistence
413 of *Escherichia coli* in urinary bladders from mecillinam-treated mice. *Journal of Antimicrobial*
414 *Chemotherapy*. 2005;55(3):383-6.
- 415 13. Rosen DA, Pinkner JS, Jones JM, Walker JN, Clegg S, Hultgren SJ. Utilization of an
416 intracellular bacterial community pathway in *Klebsiella pneumoniae* urinary tract infection and
417 the effects of FimK on type 1 pilus expression. *Infect Immun*. 2008;76(7):3337-45.
- 418 14. Oelschlaeger TA, Tall BD. Invasion of cultured human epithelial cells by *Klebsiella*
419 *pneumoniae* isolated from the urinary tract. *Infect Immun*. 1997;65(7):2950-8.
- 420 15. Horsley H, Malone-Lee J, Holland D, Tuz M, Hibbert A, Kelsey M, et al. *Enterococcus*
421 *faecalis* subverts and invades the host urothelium in patients with chronic urinary tract infection.
422 *PLoS One*. 2013;8(12):e83637.
- 423 16. De Nisco NJ, Neugent M, Mull J, Chen L, Kuprasertkul A, de Souza Santos M, et al.
424 Direct Detection of Tissue-Resident Bacteria and Chronic Inflammation in the Bladder Wall of
425 Postmenopausal Women with Recurrent Urinary Tract Infection. *J Mol Biol*.
426 2019;431(21):4368-79.
- 427 17. Crivelli JJ, Alhalabi F, Zimmern PE. Electrofulguration in the advanced management of
428 antibiotic-refractory recurrent urinary tract infections in women. *Int J Urol*. 2019;26(6):662-8.
- 429 18. Ribeiro-Filho L, Suartz CV, Braz N, Siqueira M, Hirasaki F, Mitre AI, et al. Long-term
430 efficacy of complete trigonal electrofulguration for women with recurrent urinary tract
431 infections. *Neurourol Urodyn*. 2023;42(1):188-93.
- 432 19. Wolfe AJ, Rademacher DJ, Mores CR, Evans RJ, Overholt T, Halverson T, et al.
433 Detection of Bacteria in Bladder Mucosa of Adult Females. *J Urol*. 2023;209(5):937-49.
- 434 20. Ma R, Chavez JA, Christie AL, Zimmern PE. Electro-fulguration for extensive
435 inflammatory bladder lesions in post-menopausal women with antibiotic-recalcitrant recurrent
436 urinary tract infections. *Int Urogynecol J*. 2023;34(7):1415-22.
- 437 21. Neugent ML, Gadhvi J, Palmer KL, Zimmern PE, De Nisco NJ. Detection of Tissue-
438 resident Bacteria in Bladder Biopsies by 16S rRNA Fluorescence In Situ Hybridization. *J Vis*
439 *Exp*. 2019(152).
- 440 22. Vaishnava S, Yamamoto M, Severson KM, Ruhn KA, Yu X, Koren O, et al. The
441 antibacterial lectin RegIIIgamma promotes the spatial segregation of microbiota and host in the
442 intestine. *Science*. 2011;334(6053):255-8.
- 443 23. Poppert S, Essig A, Stoehr B, Steingruber A, Wirths B, Juretschko S, et al. Rapid
444 diagnosis of bacterial meningitis by real-time PCR and fluorescence in situ hybridization. *J Clin*
445 *Microbiol*. 2005;43(7):3390-7.

- 446 24. Wang H, Chen D, Pan Q, Hueman MT. Using Weighted Differences in Hazards as Effect
447 Sizes for Survival Data. *J Stat Theory Pract.* 2022;16(1).
- 448 25. Greenland S, Mansournia MA, Altman DG. Sparse data bias: a problem hiding in plain
449 sight. *Bmj-Brit Med J.* 2016;353.
- 450 26. Ebrahimzadeh T, Kuprasertkul A, Neugent ML, Lutz KC, Fuentes JL, Gadhvi J, et al.
451 Urinary prostaglandin E2 as a biomarker for recurrent UTI in postmenopausal women. *Life Sci*
452 *Alliance.* 2021;4(7).
- 453 27. Hunstad DA, Justice SS. Intracellular lifestyles and immune evasion strategies of
454 uropathogenic *Escherichia coli*. *Annu Rev Microbiol.* 2010;64:203-21.
- 455 28. Blango MG, Mulvey MA. Persistence of uropathogenic *Escherichia coli* in the face of
456 multiple antibiotics. *Antimicrob Agents Chemother.* 2010;54(5):1855-63.
- 457 29. Hannan TJ, Mysorekar IU, Hung CS, Isaacson-Schmid ML, Hultgren SJ. Early severe
458 inflammatory responses to uropathogenic *E. coli* predispose to chronic and recurrent urinary tract
459 infection. *PLoS Pathog.* 2010;6(8):e1001042.
- 460 30. Rosen DA, Hooton TM, Stamm WE, Humphrey PA, Hultgren SJ. Detection of
461 intracellular bacterial communities in human urinary tract infection. *PLoS Med.*
462 2007;4(12):e329.
- 463 31. Schilling JD, Lorenz RG, Hultgren SJ. Effect of trimethoprim-sulfamethoxazole on
464 recurrent bacteriuria and bacterial persistence in mice infected with uropathogenic *Escherichia*
465 *coli*. *Infect Immun.* 2002;70(12):7042-9.
- 466 32. Mulvey MA, Schilling JD, Hultgren SJ. Establishment of a persistent *Escherichia coli*
467 reservoir during the acute phase of a bladder infection. *Infect Immun.* 2001;69(7):4572-9.
- 468 33. Mysorekar IU, Hultgren SJ. Mechanisms of uropathogenic *Escherichia coli* persistence
469 and eradication from the urinary tract. *Proc Natl Acad Sci U S A.* 2006;103(38):14170-5.
- 470 34. Mulvey MA, Lopez-Boado YS, Wilson CL, Roth R, Parks WC, Heuser J, et al. Induction
471 and evasion of host defenses by type 1-piliated uropathogenic *Escherichia coli*. *Science.*
472 1998;282(5393):1494-7.
- 473 35. Justice SS, Lauer SR, Hultgren SJ, Hunstad DA. Maturation of intracellular *Escherichia*
474 *coli* communities requires SurA. *Infect Immun.* 2006;74(8):4793-800.
- 475 36. Anderson GG, Dodson KW, Hooton TM, Hultgren SJ. Intracellular bacterial
476 communities of uropathogenic *Escherichia coli* in urinary tract pathogenesis. *Trends Microbiol.*
477 2004;12(9):424-30.
- 478 37. Mysorekar IU, Mulvey MA, Hultgren SJ, Gordon JI. Molecular Regulation of Urothelial
479 Renewal and Host Defenses during Infection with Uropathogenic *Escherichia coli* *210. *Journal*
480 *of Biological Chemistry.* 2002;277(9):7412-9.
- 481 38. Hussain SA, Alhalabi F, Zimmern PE. Long-term efficacy of fulguration of trigonitis for
482 recurrent urinary tract infections in women. *Urological Science.* 2015;26(3):197-201.
- 483 39. Chavez JA, Christie AL, Zimmern PE. Favorable Outcomes of Repeat Electrofulguration
484 Procedures in Women With Antibiotic-refractory Recurrent Urinary Tract Infections. *Urology.*
485 2020;146:83-9.
- 486 40. Kuprasertkul A, Gadhvi J, Fuentes J, Khan F, Neugent M, De Nisco NJ, et al. Reduced
487 urothelial expression of uroplakin-IIIa in cystitis areas in bladders of postmenopausal women
488 with recurrent urinary tract infections: pilot study. *World J Urol.* 2022;40(7):1723-30.
- 489 41. Hernán MA. The Hazards of Hazard Ratios. *Epidemiology.* 2010;21(1):13-5.

- 490 42. Clarridge JE, 3rd. Impact of 16S rRNA gene sequence analysis for identification of
491 bacteria on clinical microbiology and infectious diseases. *Clin Microbiol Rev.* 2004;17(4):840-
492 62, table of contents.
- 493 43. Price TK, Wolff B, Halverson T, Limeira R, Brubaker L, Dong Q, et al. Temporal
494 Dynamics of the Adult Female Lower Urinary Tract Microbiota. *mBio.* 2020;11(2).
- 495 44. Neugent ML, Kumar A, Hulyalkar NV, Lutz KC, Nguyen VH, Fuentes JL, et al.
496 Recurrent urinary tract infection and estrogen shape the taxonomic ecology and function of the
497 postmenopausal urogenital microbiome. *Cell Rep Med.* 2022;3(10):100753.
- 498 45. Saginala K, Barsouk A, Aluru JS, Rawla P, Padala SA, Barsouk A. Epidemiology of
499 Bladder Cancer. *Med Sci (Basel).* 2020;8(1).
- 500 46. Kumano M, Miyake H, Nakano Y, Fujisawa M. Significance of random bladder biopsies
501 in non-muscle invasive bladder cancer. *Curr Urol.* 2013;7(2):57-61.
- 502 47. Matalka I, Bani-Hani K, Shotar A, Bani Hani O, Bani-Hani I. Transitional cell carcinoma
503 of the urinary bladder: a clinicopathological study. *Singapore Med J.* 2008;49(10):790-4.
- 504 48. Srikousthubha, Suresh, C VR, Hingle S. Profile of lesions in cystoscopic bladder
505 biopsies: a histopathological study. *J Clin Diagn Res.* 2013;7(8):1609-12.
- 506 49. Mabeck CE. Treatment of uncomplicated urinary tract infection in non-pregnant women.
507 *Postgrad Med J.* 1972;48(556):69-75.
- 508 50. Stamm WE, McKevitt M, Roberts PL, White NJ. Natural history of recurrent urinary
509 tract infections in women. *Rev Infect Dis.* 1991;13(1):77-84.
- 510

511 **Tables**

Clinical Characteristic	
Mean age, years (SD)	69 (10.9)
Range	44 - 92
Median BMI, kg/m² (IQR)	25.8 (23.1 – 30.8)
Obese (BMI ≥ 30)	9 (26%)
Diabetic (all type II)	10 (29%)
Parity	31 (91%)
Median (IQR)	2 (1 – 3)
Gynecologic Surgical History*	
Any Surgery	26 (76%)
Cesarean Section	8 (24%)
Abdominal Hysterectomy	8 (24%)
Vaginal Hysterectomy	6 (13%)
Sling Placement	9 (26%)
Nephrectomy	2 (6%)
Other (BSO, cancer resection, Hysteroscopy, Cystectomy)	18 (53%)
Prior EF procedure	3 (9%)
Antibiotic Allergies*	
Any	23 (68%)
Multiple	15 (44%)
Nitrofurantoin	8 (24%)
Fluoroquinolones (Ciprofloxacin, Levofloxacin)	10 (29%)
Macrolides (Azithromycin, Erythromycin, Clindamycin)	6 (13%)
Sulfonamides	14 (41%)
Aminoglycosides (Gentamicin, Tobramycin)	1 (3%)
Penicillin	5 (15%)
Cephalosporin	3 (9%)

512

513 **Table 1. Patient clinical characteristics.** Overview of cohort clinical characteristics including
514 age, body mass index (BMI), diabetes, parity, gynecologic surgical history, and antibiotic
515 allergies. SD: Standard deviation; IQR: Interquartile range. *Patients with multiple factors in a
516 single category were counted separately for summation of each factor.

517

518

519

	Cystitis Stage	Urine Culture History (≤1 yr. prior to EF)	Antibiotic History (≤1 yr. to EF)	Relapse ≤6 mo.
PNK016	4	<i>P. aeruginosa</i> , <i>P. mirabilis</i> , <i>M. morganii</i> , <i>E. faecalis</i>	Cefepime (IV), FOF, Amikacin, Cephalexin, Ertapenem, GEN	+
PNK017	4	<i>E. coli</i> , <i>Enterobacter spp.</i>	CIP, Cephalexin, NIT, TMP/SMX	+
PNK018	1	<i>E. coli</i> , <i>E. faecalis</i> , <i>K. oxytoca</i>	CIP, Ertapenem (IV), FOF, Cefuroxime, Cefdinir, NIT, AMC	+
PNK019	4	<i>E. coli</i> , <i>K. pneumoniae</i> , <i>E. cloacae</i>	FOF, Cephalexin, AMC	-
PNK020	3	<i>E. coli</i>	NIT, Cephalexin	-
PNK021	4	<i>K. pneumoniae</i> , <i>E. coli</i>	CRO, Amoxicillin, Cephalexin, TMP/SMX, Cefazolin	+
PNK022	2	<i>E. coli</i>	FOF, Ertapenem, Azithromycin, CIP, NIT, Meropenem	-
PNK023	3	<i>K. pneumoniae</i>	Cefoxitin, DOX, Cefuroxime, FOF	+
PNK024	4	<i>S. epidermidis</i> , <i>K. pneumoniae</i>	LVX, CIP, GEN, NIT	-
PNK025	4	<i>E. coli</i> , <i>K. pneumoniae</i>	FOF, Cefazolin, TMP/SMX, NIT	+
PNK026	1	<i>ESBL E. coli</i>	FOF, Meropenem (IV), GEN (IV), Cephalexin, Rifaximin	+
PNK027	4	<i>K. pneumoniae</i> , <i>E. coli</i>	Levaquin, CIP, TMP/SMX, AMC, Amoxicillin, Cefazolin	-
PNK028	4	<i>E. coli</i>	Cephalexin, CRO	-
PNK029	1	<i>E. faecalis</i>	Levaquin	-
PNK031	2	<i>E. coli</i> , <i>K. pneumoniae</i> , <i>K. aerogenes</i>	CIP, NIT, TMP/SMX, DOX, CRO	-
PNK032	1	<i>E. coli</i>	NIT, Cefuroxime	-
PNK033	2	<i>E. faecalis</i>	CIP, Levaquin, Amoxicillin, FOF, Cephalexin, TMP/SMX	+
PNK034	2	<i>E. faecalis</i> , <i>K. pneumoniae</i>	Cephalexin, NIT	+
PNK035	4	<i>E. coli</i>	AMC, NIT, Amoxicillin, TMP/SMX, Cefazolin	-
PNK036	2	<i>S. agalactiae</i> , <i>K. aerogenes</i> , <i>K. pneumoniae</i>	AMC	-
PNK039	2	none	GEN	-
PNK040	2	<i>E. coli</i>	Aztreonam, NIT	-
PNK041	4	<i>E. coli</i>	NIT, TMP/SMX	+
PNK042	4	none	NIT	-
PNK043	4	<i>E. coli</i>	Cephalexin, CIP, Cefuroxime	+
PNK044	4	<i>K. pneumoniae</i> , <i>E. coli</i>	NIT, Cephalexin, CIP, TMP/SMX	+
PNK045	2	<i>E. faecalis</i> , <i>E. coli</i>	LVX, NIT	-
PNK046	1	<i>S. agalactiae</i>	NIT, CIP	+
PNK047	2	none	NIT, Cephalexin	-
PNK048	1	none	Cephalexin, CIP, NIT	-
PNK049	4	<i>K. pneumoniae</i> , <i>E. coli</i> , <i>Citrobacter braaki</i> , <i>E. faecalis</i>	Amoxicillin, CIP	+
PNK050	1	<i>E. faecalis</i> , <i>S. epidermidis</i>	TMP/SMX	+
PNK051	1	<i>E. coli</i>	NIT	-
PNK052	4	<i>E. coli</i>	LVX, TMP/SMX, CIP, Cefuroxime	+

520 **Table 2. Cystitis stages, patient urine culture and antibiotic history within one year prior to**
521 **EF.** ESBL: extended spectrum beta-lactamase. NIT: nitrofurantoin, CIP: Ciprofloxacin, AMC:
522 Amoxicillin-Clavulanate, FOF: Fosfomycin, DOX: Doxycycline, GEN: Gentamicin, LVX:
523 Levofloxacin, CRO: Ceftriaxone, TMP/SMX: trimethoprim/sulfamethoxazole. Recurrent UTI
524 relapse data for patients experience UTI within 6 months of electrofulgurations (EF) was denoted
525 by (+) and not as (-).

526

527 **Figure Legends**

528

529

530 **Figure 1. Genus specific FISH reveals presence of *Escherichia* in bladder tissues**

531 **independent of cystitis stage.** Representative micrographs show Universal probe (**A**) in magenta
532 and *Escherichia* specific probe (**B**) in green detects tissue-resident bladder bacteria in all stages
533 of cystitis. Scale bar: 20µm.

534

535 **Figure 2. Co-hybridization with *Escherichia* and Universal probes allows simultaneous**

536 **detection.** (**A**) Bacteria can be detected using both the *Escherichia* and the Universal probe
537 simultaneously on the bladder biopsy sections. (**B**) Co-hybridization demonstrates that the tissue
538 resident bacteria in PNK046 are not *Escherichia*. Scale bar: 20µm.

539

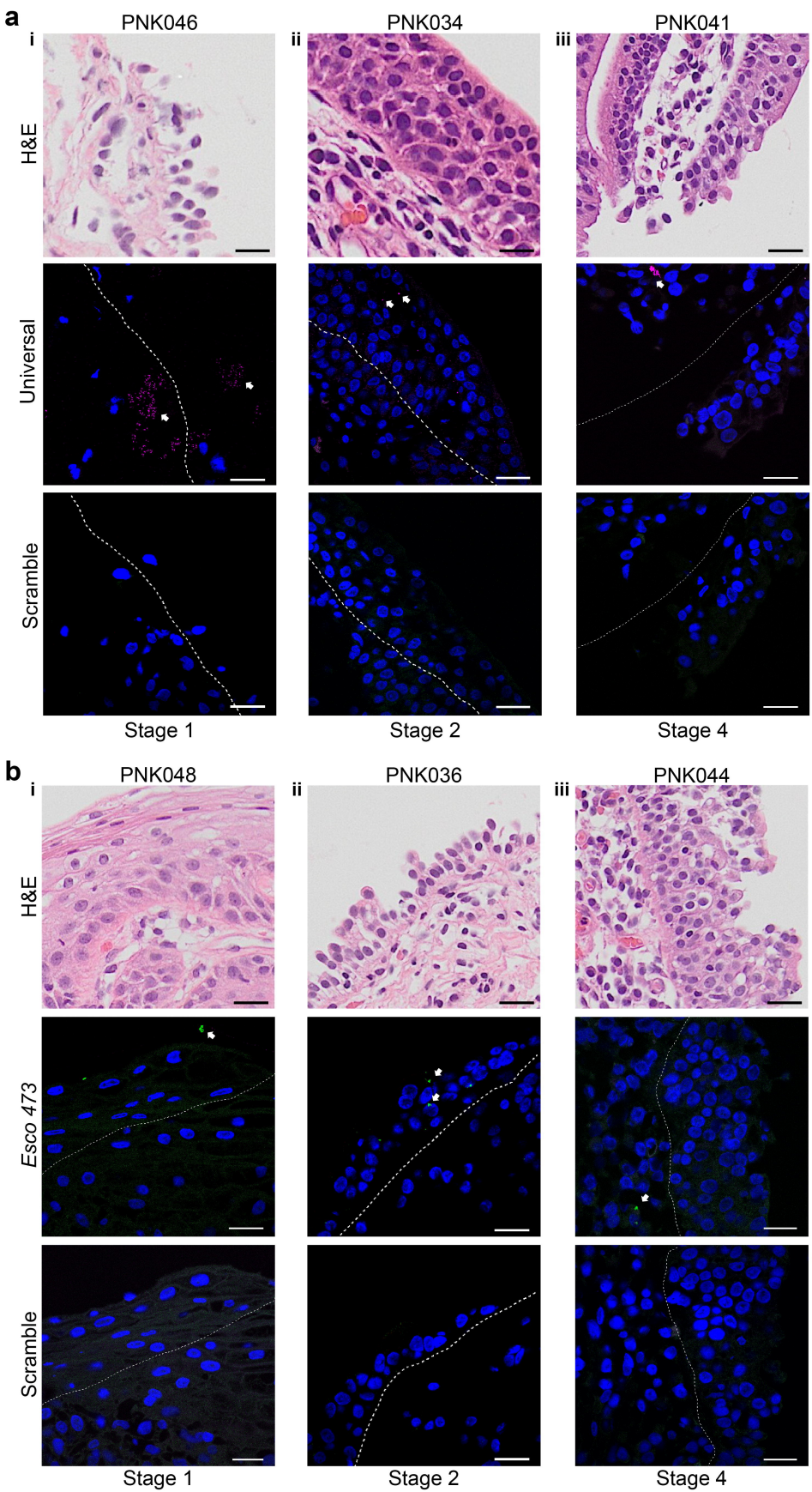
540 **Figure 3. Quantification of total Universal and *Escherichia* bacterial load.** Total bacterial

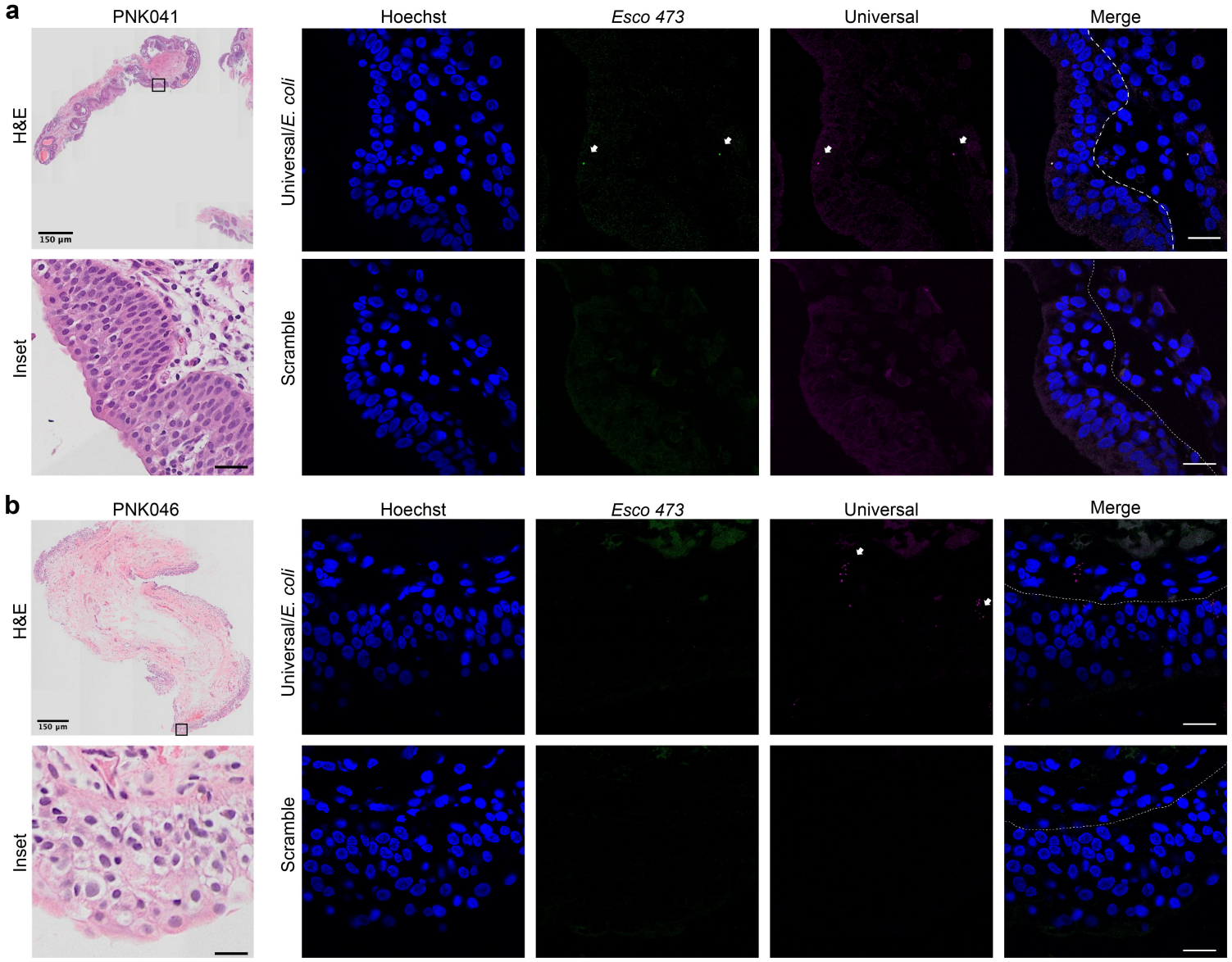
541 count detected per patient biopsy with the Universal (magenta) and *Escherichia* (green) probes.
542 Whiskers extend to the furthest data that are within 1.5 times the IQR. Outliers lie outside 1.5
543 times the IQR and are indicated by solid black dots outside of the whiskers when present. Each
544 box indicates the IQR. The median is indicated by the solid line inside each box..

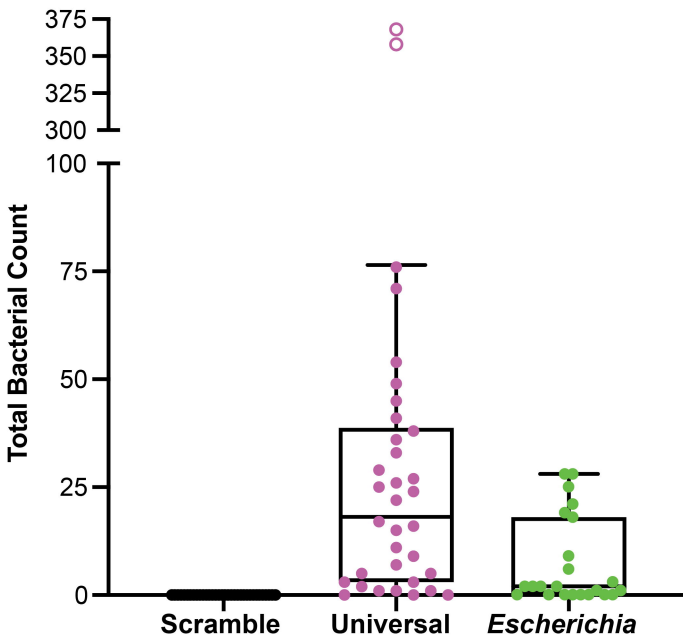
545

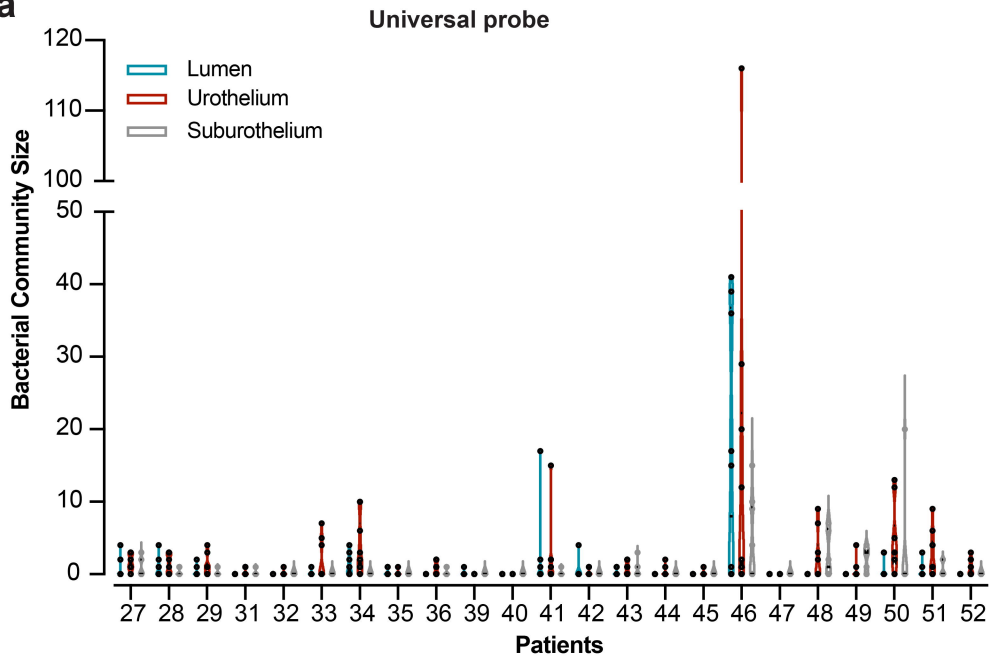
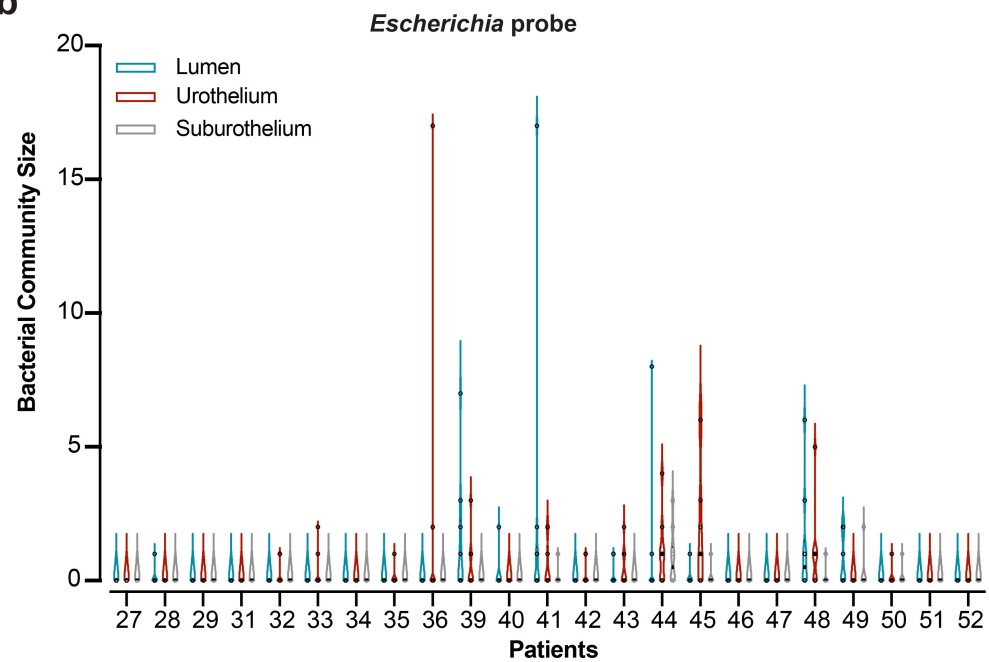
546 **Figure 4. Localization of bacteria detected by Universal and *Escherichia* probes in the**
547 **bladder wall.** Quantification of bacteria detected by Universal (**A**) or the *Escherichia* (**B**) probe
548 in the bladder lumen, urothelium and suburothelium of each patient. Whiskers represent minima
549 and maxima of the data distribution while boxes denote the interquartile range and solid lines
550 denote the median.

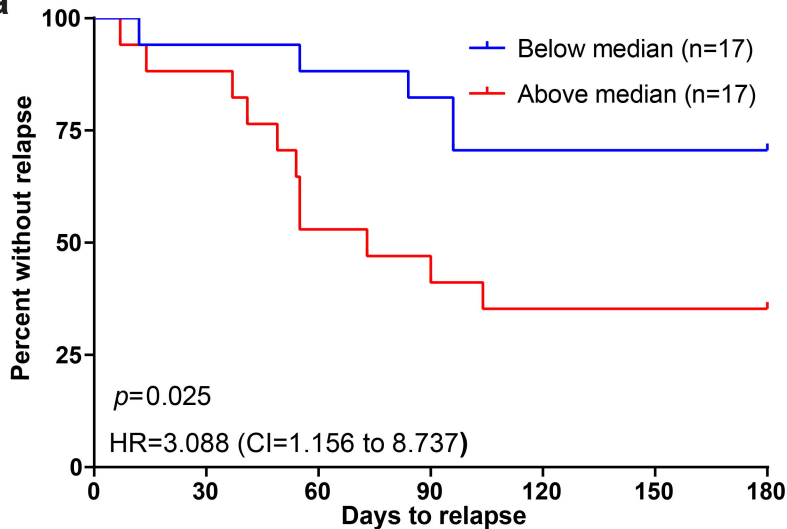
551
552 **Figure 5. Elevated bladder bacterial burden is associated with a higher risk of rUTI relapse**
553 **within 6 months of EF.** Kaplan-Meier analysis of the association between total bladder bacterial
554 burden as detected by the universal probe (**A**) or *Escherichia* burden (**B**) and risk of UTI within
555 six months of EF. Risk tables under each plot give the number of participants at risk and the
556 cumulative number of events (A had 16 events; B had 9 events). About 53% of the sample (18 of
557 34 participants) were right-censored due to not having an event during the observation period.
558 Follow up time Median (IQR): 180 (55-180) days post EF. HR: Hazard ratio; CI: confidence
559 interval.



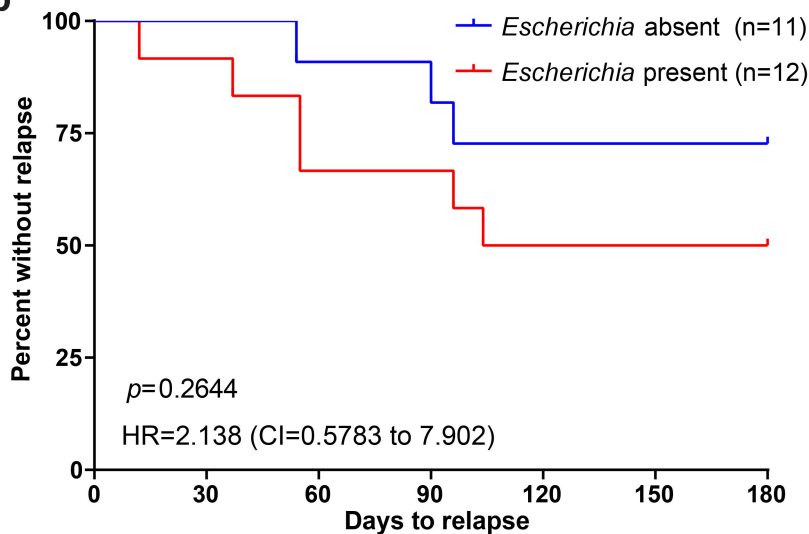




a**b**

a

n at risk	0 days	30 days	60 days	90 days	120 days	150 days	180 days
<median	17	16	15	14	12	12	12
>median	17	15	9	8	6	6	6

b

n at risk	0 days	30 days	60 days	90 days	120 days	150 days	180 days
<median	11	11	10	10	8	8	8
>median	12	11	8	8	6	6	6