

# INHERITED INFERTILITY - MAPPING LOCI ASSOCIATED WITH IMPAIRED FEMALE REPRODUCTION

*Sanni Ruotsalainen<sup>1</sup>, Juha Karjalainen<sup>1,2,3,4,5</sup>, Mitja Kurki<sup>1,2,3,4,5</sup>, Elisa Lahtela<sup>1</sup>, Matti Pirinen<sup>1,6,7</sup>, Juha Riihonen<sup>1</sup>, Jarmo Ritar<sup>8</sup>, Silja Tammi<sup>8</sup>, Jukka Partanen<sup>8</sup>, Hannele Laivuori<sup>1,9,10,11</sup>, FinnGen\*, Aarno Palotie<sup>1,2,3,4,5,12</sup>, Henrike Heyne<sup>1,2,13,14,15</sup>, Mark Daly<sup>1,2,3,4,5</sup>, Elisabeth Widen<sup>1\*\*</sup>*

- 1) Institute for Molecular Medicine Finland (FIMM), HiLIFE, University of Helsinki, Helsinki, Finland
- 2) Program for Medical and Population Genetics, Broad Institute of MIT and Harvard, Cambridge, MA, USA
- 3) Stanley Center for Psychiatric Research, Broad Institute of MIT and Harvard, Cambridge, MA, USA.
- 4) Analytic and Translational Genetics Unit, Massachusetts General Hospital, Boston, MA, USA.
- 5) Center for Genomic Medicine, Massachusetts General Hospital, Boston, MA, USA.
- 6) Department of Mathematics and Statistics, University of Helsinki, Helsinki, Finland
- 7) Department of Public Health, University of Helsinki, Helsinki, Finland
- 8) Finnish Red Cross Blood Service, R&D, Helsinki, Finland
- 9) Medical and Clinical Genetics, University of Helsinki and Helsinki University Hospital, Helsinki, Finland
- 10) Department of Obstetrics and Gynecology, Tampere University Hospital, Tampere, Finland
- 11) Faculty of Medicine and Health Technology, Center for Child, Adolescent and Maternal Health Research, University of Tampere, Tampere, Finland
- 12) Psychiatric and Neurodevelopmental Genetics Unit, Department of Psychiatry, Massachusetts General Hospital, Boston, MA, USA
- 13) Digital Health Center, Hasso Plattner Institute for Digital Engineering, University of Potsdam, Potsdam, Germany
- 14) Hasso Plattner Institute for Digital Health at Mount Sinai, Icahn School of Medicine at Mount Sinai, New York, NY, USA
- 15) Department of Genetics and Genomic Sciences, Icahn School of Medicine at Mount Sinai, New York, NY, USA

\* A full list of the FinnGen research team members appears at the end of the paper.

\*\*Corresponding author

E-mail: [elisabeth.widen@helsinki.fi](mailto:elisabeth.widen@helsinki.fi)

## ABSTRACT

Female infertility is a common and complex health problem affecting millions of women worldwide. While multiple factors can contribute to this condition, the underlying cause remains elusive in up to 15-30% of cases. In our large genome-wide association study (GWAS) of 22,849 women with infertility and 198,989 controls from the Finnish population cohort FinnGen, we unveil a unique landscape of genetic factors associated with the disease. Our recessive analysis identified a low-frequency stop-gained mutation in *TBPL2* (p.Arg331Ter; minor allele frequency (MAF) = 1.2%) with an impact comparable to highly penetrant monogenic mutations (OR = 650,  $p = 4.1 \times 10^{-25}$ ). While previous studies have linked the homologous gene to anovulation and sterility in knockout mice, the severe consequence of the p.Arg331Ter mutation was evidenced by homozygous carriers having significantly fewer offspring (average of 0.16) compared to women belonging to the other genotype groups (average of 1.75 offspring,  $p = 1.4 \times 10^{-15}$ ). Notably, all homozygous women who had given birth had received infertility therapy. Moreover, our age-stratified analyses identified three additional genome-wide significant loci. Two loci were associated with early-onset disease (infertility diagnosed before age 30), located near *CHEK2* and within the major histocompatibility complex (MHC) -region. The third locus, associated with late-onset disease, had its lead SNP located in an intron of a lncRNA gene. Taken together, our data highlight the significance of rare recessive alleles in shaping female infertility risk. The results further provide evidence supporting specific age-dependent mechanisms underlying this complex disorder.

# 1 INTRODUCTION

2 Infertility affects millions of individuals of reproductive age worldwide. WHO  
3 estimates that the lifetime prevalence of infertility in the Americas and Europe is 20%  
4 and 16.5%, respectively.<sup>1</sup> Although infertility may stem from factors related both to  
5 women and men, it is commonly attributed to female factors, either entirely or in  
6 part.<sup>2</sup> Ovarian dysfunction is a prevalent underlying reason, and age-related infertility  
7 is also on the rise due to delayed childbirth. Yet in 15-30% of cases, the cause of  
8 infertility remains unexplained despite thorough clinical investigation.<sup>2,3</sup>

9  
10 Certain pre-existing conditions, such as polycystic ovarian syndrome (PCOS),  
11 endometriosis, and uterine fibroids, are associated with increased infertility risk in  
12 women. Genome-wide association studies (GWAS) have identified 20, 40, and 30  
13 common variant loci linked to these conditions, respectively, implicating hormone  
14 signaling and cell growth pathways.<sup>4-6</sup> A more recent GWAS meta-analysis of  
15 40,024 women affected by infertility from 6 different cohorts further identified  
16 significant genetic correlations between all-cause female infertility and endometriosis  
17 and fibroids, and a correlation between anovulatory infertility and polycystic ovary  
18 syndrome (PCOS) <sup>7</sup>. In that study, the majority of the 19 reported infertility loci were  
19 also associated with endometriosis, PCOS, or fibroids.<sup>7</sup>

20  
21 While the previous GWAS analyses of infertility and its related disorders in women  
22 have targeted common genetic variation, it can be expected that rare or low-  
23 frequency recessive variants may be particularly significant causes of impaired  
24 reproduction. In fact, our previous exploration of over 40,000 coding variants across  
25 >2,000 disease phenotypes in the Finnish population cohort FinnGen, revealed a

26 recessive association of female infertility with low-frequency variant near  
 27 *PKHDL1/EBAG9*.<sup>8</sup> That study comprised 7,980 women affected by infertility. We now  
 28 present results from an expanded recessive association analysis encompassing  
 29 22,849 women affected by infertility and 198,989 controls from the FinnGen cohort.  
 30 Genetic drift and historical bottlenecks have shaped the Finnish population structure  
 31 leading to an enrichment of genetic variants in the 0.5-5% allele frequency range in  
 32 the current population.<sup>9</sup> Thus, we expect the FinnGen cohort to be highly potent and  
 33 well-suited for the successful identification of such mutations impacting reproduction.

## 34 SUBJECTS AND METHODS

### 35 Study cohort and data

36 We studied female infertility in the large Finnish research project FinnGen<sup>9</sup>  
 37 (<https://www.finngen.fi/en>) launched in 2017. FinnGen is a public-private research  
 38 project, combining genome and digital healthcare data on over 500,000 Finns. The  
 39 nationwide research project aims to provide novel medically and therapeutically  
 40 relevant insight into human diseases. FinnGen is a pre-competitive partnership of  
 41 Finnish biobanks and their background organizations (universities and university  
 42 hospitals) and international pharmaceutical industry partners and Finnish biobank  
 43 cooperative (FINBB). All FinnGen partners are listed here:  
 44 <https://www.finngen.fi/en/partners>. This study is based on FinnGen data release 12  
 45 including 520,210 participants of which 293,373 (56,39 %) are females.

46

### 47 Definition of female infertility

48 The clinical disease endpoint ‘female infertility’ was constructed based on the  
 49 register codes using the Finnish version of the International Classification of  
 50 Diseases, 10th revision (ICD-10) diagnosis codes and harmonizing them with  
 51 definitions from ICD-8 and ICD-9 as follow: at least one record of female infertility  
 52 diagnosis (N97\* or N98\* [ICD-10], or 628\* [ICD8 and 9]), or at least one record of  
 53 purchased medication used for infertility treatments (ATC codes G03GA\* or  
 54 G03GB\*) or a record of a procedure used for treatment of infertility (e.g.  
 55 insemination), (NOMESCO codes: TLW00, TLW10, TLW11, TLW12, TLW14 or  
 56 TLW20). Women with an infertility record including only ICD10 code N97.4 (“Female  
 57 infertility associated with male factors”) were excluded from the analyses. As

controls, we used women who have given birth based on data from the Medical Birth Register and the Finnish Population Register. Using these criteria, we identified 22,849 women affected by infertility and 198,989 controls.

61

**Table 1:** Basic characteristics of the study cohort.

	All	Cases	Controls
<b>N (%)</b>	221,838 [100]	22,849 [10.29]	198,989 [89.70]
<b>Age (mean [SD])<sup>a</sup></b>	61.40 [16.33]	51.09 [12.91]	62.59 [16.26]
<b>BMI (mean [SD])<sup>b</sup></b>	27.50 [5.72]	27.21 [5.96]	27.53 [5.69]
<b>Given birth (N [%])</b>	216,469 [97.57]	17,480 [76.50]	198,989 [100]
<b>Age at first birth (mean [SD])<sup>c</sup></b>	26.20 [5.11]	30.22 [5.77]	25.84 [4.89]
<b>N offspring (mean [SD])</b>	2.22 [1.22]	1.50 [1.19]	2.30 [1.19]
<b>Endometriosis (N [%])</b>	16,618 [7.49]	4,607 [20.16]	12,011 [6.03]
<b>PCOS (N [%])</b>	1,691 [0.76]	1,011 [4.42]	590 [0.29]
<b>Leiomyoma of uterus (N [%])</b>	35 199 [15.86]	3 346 [14.64]	31 853 [16.01]

63

<sup>a</sup> Age at end of follow-up or death

<sup>b</sup> BMI information available only for 150,636 [67.90 %] women (15,453 [67.63 %] cases and 135 183 [67.93 %] controls

<sup>c</sup> Information available only for women who have given birth at least once (n = 216,469, 17,489 cases and 198,989 controls).

69

The basic clinical characteristics of cases and controls are presented in **Table 1**. Given that the Drug Reimbursement Register contains data starting from 1995, women who have received in vitro fertilization (IVF) therapy prior to this date cannot be identified as cases unless they have received a record of infertility in the Hospital Discharge Register (HILMO). In addition, given that our resolution to distinguish

75 between cases and controls is much higher for women suffering from reduced fertility  
 76 starting from the mid-1990's, the FinnGen women identified as cases are younger  
 77 than the controls (difference of the mean = 11.99 years,  $p < 1 \times 10^{-324}$ ;  
 78 **Supplementary Figure 1**). In the analyses, this age difference has been considered  
 79 by using birth year as a covariate in the GWAS analyses, and when calculating the  
 80 disease prevalence. In the analyses of disease enrichment, both cases and controls  
 81 have been matched by birth year.

82

83 5,701 (24.95 %) of cases were secondary infertility cases, i.e., they received the  
 84 infertility diagnosis after having at least one child. On average, the cases with  
 85 infertility who have at least one child were on average 4.37 years older than controls  
 86 when giving birth for the first time ( $p < 1 \times 10^{-324}$ ; **Supplementary Figure 2**)

87

## 88 Genotyping and imputation

89 FinnGen samples were genotyped with multiple Illumina and Affymetrix arrays  
 90 (Thermo Fisher Scientific, Santa Clara, CA, USA). Genotype calls were made with  
 91 GenCall and zCall algorithms for Illumina and AxiomGT1 algorithm for Affymetrix  
 92 chip genotyping data batch-wise. Genotyping data produced with previous chip  
 93 platforms were lifted over to build version 38 (GRCh38/hg38) following the protocol  
 94 described here: [dx.doi.org/10.17504/protocols.io.nqtdwn](https://doi.org/10.17504/protocols.io.nqtdwn). Samples with sex  
 95 discrepancies, high genotype missingness ( $> \square 2\%$ ), excess heterozygosity in  
 96 common variants (allele frequency  $> 0.05$ ) ( $\pm 3SD$ ) per batch, and non-Finnish  
 97 ancestry were removed. Variants with high missingness ( $> \square 2\%$ ), deviation from  
 98 Hardy–Weinberg equilibrium ( $P \square < \square 1 \times 10^{-6}$ ) and low minor allele count ( $MAC \square < \square 3$ )  
 99 were removed.

100

101 Pre-phasing of genotyped data was performed with Eagle 2.3.5  
 102 (<https://data.broadinstitute.org/alkesgroup/Eagle/>) with the default parameters,  
 103 except the number of conditioning haplotypes was set to 20,000. Imputation of the  
 104 genotypes was carried out by using the population-specific Sequencing Initiative  
 105 Suomi (SISu) v4.2 imputation reference panel with Beagle 4.1 (version 08Jun17.d8b,  
 106 [https://faculty.washington.edu/browning/beagle/b4\\_1.html](https://faculty.washington.edu/browning/beagle/b4_1.html)) as described in the  
 107 following protocol: [dx.doi.org/10.17504/protocols.io.nmndc5e](https://doi.org/10.17504/protocols.io.nmndc5e). SISu v4.2 imputation  
 108 reference panel was developed using the high-coverage (25–30x) whole-genome  
 109 sequencing data generated at the Broad Institute of MIT and Harvard and at the  
 110 McDonnell Genome Institute at Washington University, USA; and jointly processed  
 111 at the Broad Institute. Variant callset was produced with Genomic Analysis Toolkit  
 112 (GATK) HaplotypeCaller algorithm by following GATK best practices for variant  
 113 calling. Genotype-, sample- and variant-wise quality control was applied in an  
 114 iterative manner by using the Hail framework v0.2. The resulting high-quality WGS  
 115 data for 3,775 individuals were phased with Eagle 2.3.5 as described above. As a  
 116 post-imputation quality control, variants with INFO score < 0.7 were excluded.

117

# 118 Genome-wide association study

119 A total of 221,838 (22,849 cases and 198,989 controls) female samples from  
 120 FinnGen Data Freeze 12 were analyzed using REGENIE<sup>10</sup>. All models were adjusted  
 121 for age at the end of follow-up or death, birth year, genotyping batch, and first ten  
 122 principal components (PC). Both additive and recessive models were performed,  
 123 using imputed genotypes (n variants = 21,296,962). Recessive analyses were  
 124 performed for variants with at least 2 homozygous carriers for the minor allele (n



variants = 15,421,131). All variants reaching genome-wide significance p-value threshold of  $5 \times 10^{-8}$  were considered genome-wide significant (GWS). All GWS regions were fine-mapped using SUSIE<sup>11</sup>, and independent genome-wide significant loci were determined as ‘good quality’ credible sets from those analyses.

To investigate the effect of advanced maternal age on reduced fertility, we also performed age-stratified GWAS. Based on the maternal age corresponding to the first record of female infertility, we divided our cases into ‘early-onset’ (‘infertility diagnosis before age of 30’, n = 9,185) and ‘late-onset’ (‘infertility diagnosis after age of 30’, n = 13,664) cases (**Supplementary Figure 3**). The age-stratified analyses were performed using both the additive and the recessive GWAS models, similarly as for the ‘all cases’ scenario described above, using the same set of controls.

## Genetic correlations and disease enrichment

To explore the connection of female infertility with underlying disorders of female reproductive traits, we calculated both 1) genetic correlations and 2) case enrichments with our female infertility endpoints across 4 disease endpoints created and analyzed in FinnGen: ‘Endometriosis’, ‘Endometriosis ESRM stage 3 or 4’, ‘Leiomyoma of uterus’ and ‘PCOS’. A complete list of endpoints analysed in FinnGen, and their definitions is available at <https://www.finnngen.fi/en/researchers/clinical-endpoints>. We also calculated heritability estimates for both female infertility endpoints, as well as for all the four underlying disorders of female reproductive traits listed above. Summary statistics from the additive GWAS for female infertility endpoints were used to calculate genetic correlations. The genetic correlations and heritability estimates were calculated using the LDSC software.<sup>12,13</sup>

150

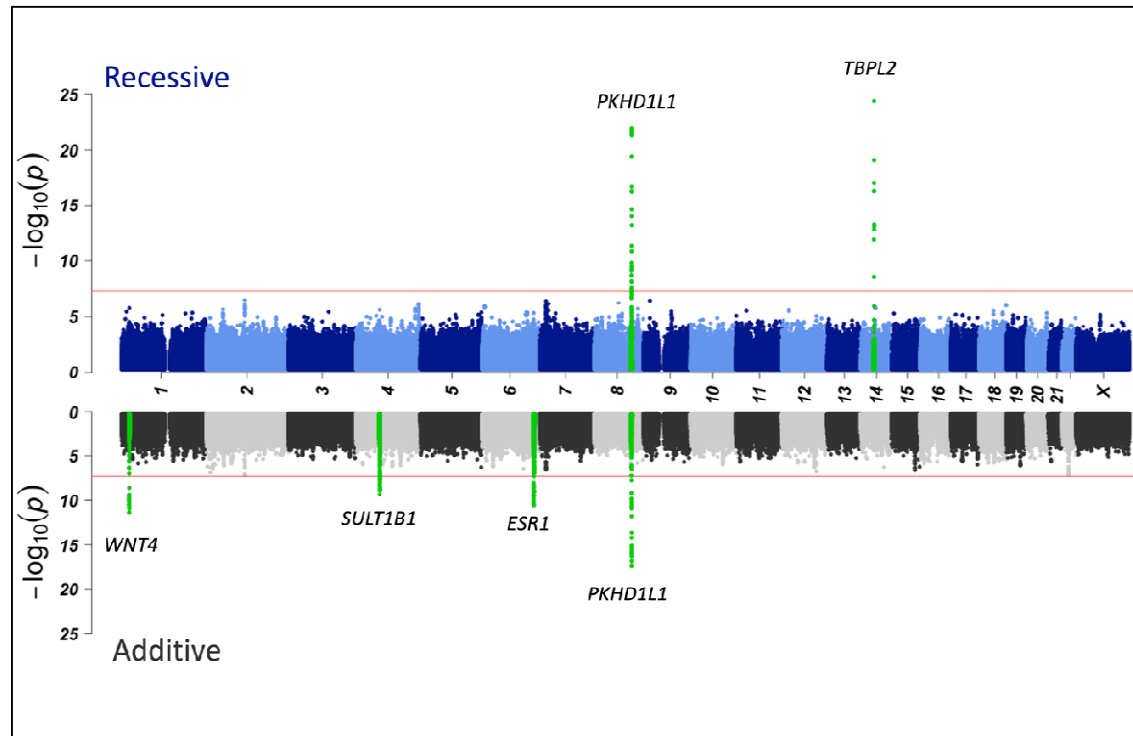
151 The prevalence in our female infertility cases and controls separately was calculated  
 152 for the four underlying disorders of female reproductive traits, and its enrichment to  
 153 cases vs. controls was calculated. P- values for the enrichments were calculated  
 154 using Fisher's exact test<sup>14</sup>. In these analyses, controls were matched with cases for  
 155 their birth year, since the birth year distribution of the controls and cases were  
 156 significantly different.

# RESULTS

## GWAS results

To elucidate the genetic predisposition to female infertility, we performed GWAS analyses on 22,849 women affected by from infertility and 198,989 women who had given birth without a history of infertility or infertility treatment. Both a recessive and a traditional additive model were used for the analyses. The recessive GWAS pinpointed two genome-wide significant loci: one nearby *PKHD1L1*, and another at *TBPL2*. The *TBPL2* locus has not been previously associated with female infertility or any disorder associated with infertility in GWAS. In contrast, *PKHD1L1* has previously been implicated in two GWAS analyses of female infertility- we have reported a recessive association between *PKHD1L1* and female infertility<sup>8</sup>, while Venkatesh and coworkers later reported a genome-wide significant association between the locus and female infertility using an additive model<sup>7</sup>.

We next ran the additive GWAS analysis in our cohort of cases and controls and identified genome-wide significant association at four distinct loci on chromosomes 1, 4, 6, and 8 near genes *WNT4*, *SULT1B1*, *ESR1*, and *PKHD1L1*, respectively. Statistical fine-mapping further identified a fifth independent significant association signal on *ESR1* locus (**Figure 1**). All these loci have previously been associated either with female infertility or with pre-existing conditions that increase the risk of female infertility, such as endometriosis, uterine fibroids, and PCOS (**Table 2**). Locuszoom plots for all significant GWS regions from both scans are available in **Supplementary Figure 4** (loci identified by the additive model) and **Supplementary Figure 5** (loci identified by the recessive model).



**Figure 1:** Manhattan plots for female infertility. Additive results are grey and recessive are blue dots. Genome-wide significant loci ( $\pm 500$  kB) have been highlighted with green and labeled with the nearest gene of the lead variant.

Given that the *PKHD1L1* locus yielded genome-wide significant association in both the recessive and the additive analyses, we analyzed the mode of inheritance for all identified association signals in more detail. For this purpose, we selected the lead variant (i.e. variant with the smallest p-value) at all significant loci, and plotted the proportion of affected cases in each genotype group (**Supplementary Figure 6** and **Supplementary Figure 7**). This data confirms that both the *PKHD1L1* and *TBPL2* loci exhibit a recessive mode of action, i.e. the proportion of cases with infertility is significantly elevated only among homozygous carriers of the effect allele. In contrast, at the remaining loci, the percentage of affected cases increases across the three genotype groups consistent with an additive mode of action.

**Table 2:** Independent GWAS hits and their representative variants identified by either additive or recessive model. The lead variant from the recessive and the additive models at the shared locus (*PKHD1L1*) are within the same credible set (LD = 1).

SNPID (rsid)	Most severe consequence	Nearest gene	OR [95% CI]	P-value	Maf	Fin enrichment <sup>a</sup>	Known associations <sup>c</sup>
<b>Recessive</b>							
chr8_109459837_G_C (rs17368310) <sup>b</sup>	splice donor variant	<i>PKHD1L1</i>	2.34 [1.98-2.78]	1.47×10 <sup>-22</sup>	0.07	1.42	Female infertility
chr14_55424219_T_A (rs144313315)	stop gained	<i>TBPL2</i>	650.1 [190.7-2216.1]	4.11×10 <sup>-25</sup>	0.01	43.04	-
<b>Additive</b>							
chr1_22139327_T_C (rs61768001)	intron variant	<i>WNT4</i>	1.10 [1.07-1.13]	4.4×10 <sup>-12</sup>	0.16	0.99	Endometriosis, fibroids
chr4_69718365_T_G (rs13138435)	downstream gene variant	<i>SULT1B1</i>	0.93 0.91-0.95]	4.57×10 <sup>-10</sup>	0.31	0.8	Uterine leiomyomata and fibroids
chr6_151230382_G_T (rs35977392)	upstream gene variant	<i>ESR1</i>	0.93 0.91-0.95]	3.97×10 <sup>-11</sup>	0.35	0.88	Endometriosis
chr8_109459837_G_C (rs17368310)	splice donor variant	<i>PKHD1L1</i>	1.19 [1.14-1.23]	3.79×10 <sup>-18</sup>	0.07	1.42	Female infertility

<sup>a</sup> Compared to Non-Finnish Europeans in gnomAD v3<sup>15</sup>

<sup>b</sup> Representative variant was changed to coding variant from lead variant chr8\_109515401\_CAAT\_C (rs58870933),  $r^2 = 1$ .

<sup>c</sup> Known associations for genes have been defined from NHGRI-EBI GWAS Catalog<sup>16</sup> and previous publications for female infertility and underlying disorders.

All three loci identified to have an additive effect showed evidence for pleiotropy, i.e. assessment of the infertility-associated loci by PheWas of 2,460 endpoints in FinnGen indicated association with two or more other diseases of the female

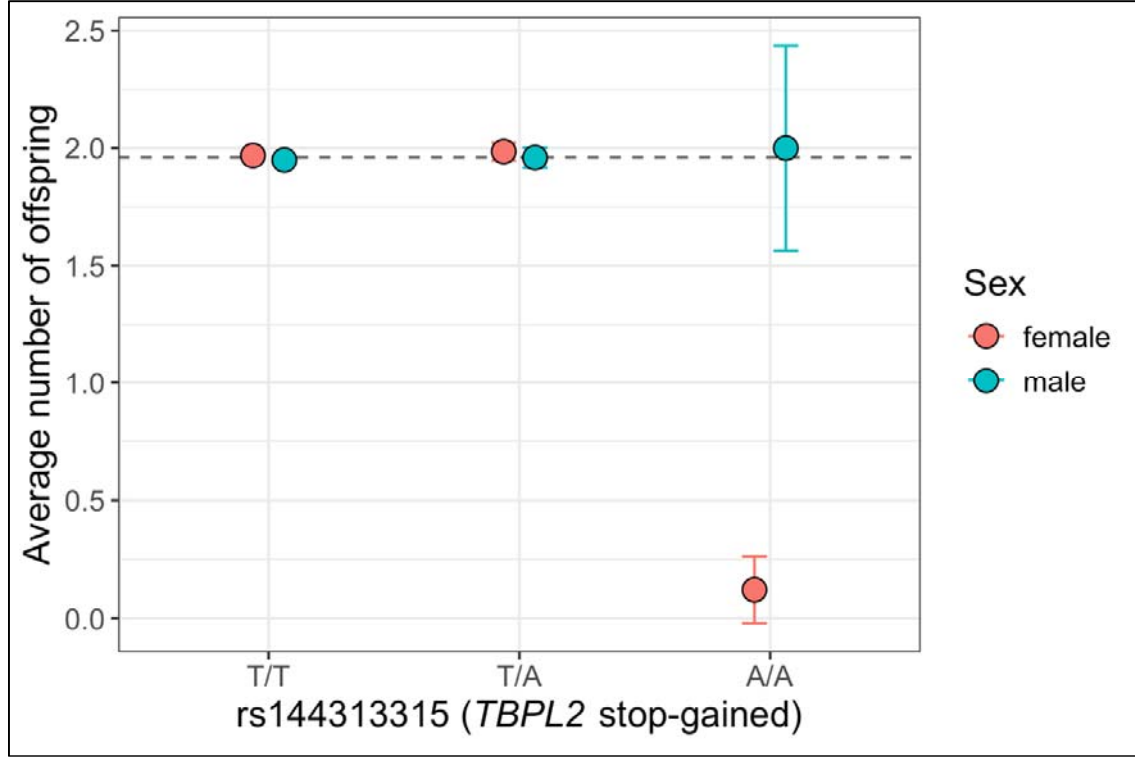
reproductive tract. In contrast, the two recessive loci (near *TBPL2* and *PKHD1L1*) were specifically associated only with infertility (**Table 2**).

### *TBPL2* locus

The strongest association was observed in the recessive analysis at the *TBPL2* locus, with an OR of 650.1 ( $p = 4.11 \times 10^{-25}$ ). The lead variant in this locus, rs144313315 (chr14:55424219\_T/A), is a rare stop-gained mutation (p.Arg331Ter, MAF 1.1% in Finland) which is highly enriched to Finland (43 times compared to non-Finnish Europeans). The variant appears rather evenly distributed across Finland, with an allele frequency range of 0.84-2.38 % (**Supplementary Figure 8**).

Although infertility is a condition causing considerable stress to patients, most affected women will successfully conceive a child. To assess the prognosis for women carrying two copies of the *TPBL2* mutation, we analyzed the number of offspring in the entire FinnGen cohort across the *TBPL2* genotype groups. The average number of offspring among all FinnGen women with and without a history of infertility is 1.50 [SD = 1.19] vs. 1.77 [SD = 1.43], respectively. However, the average number of offspring was significantly reduced among homozygous female carriers of the p.Arg331Ter mutation. PheWAS analysis revealed a genome-wide significant recessive association between the mutation and the number of offspring ( $\beta = -1.28$  SD,  $p = 4.25 \times 10^{-15}$ ) with homozygous carriers having an average of only 0.16 [SD=0.58] offspring. According to the registry data, only four homozygous women for the *TBPL2* mutation had given birth, and none of them had conceived without infertility treatment (**Figure 2; Supplementary Table 1**). No such effect was

234 observed at the *PKHD1L1* locus, where the number of offspring was only slightly  
 235 reduced among homozygous carriers of the minor allele (**Supplementary Figure 9**).  
 236



237  
 238 **Figure 2:** Average number of offspring for genotype groups for rs14413315 (*TBPL2* stop-  
 239 gained variant) separately for females and males who have reached age 45. The dashed  
 240 line represents the overall average number of offspring in FinnGen among women who have  
 241 reached age 45 (=1.96).

242  
 243 These data indicate that the p.Arg331Ter mutation in *TPBL2* is associated with a  
 244 rather severe form of infertility. These results are supported by previously published  
 245 studies in mice, which reported that female mice lacking this gene are infertile female  
 246 mice due to anovulation.

247

## Age-stratified analysis

Female fertility gradually decreases with age, starting to decline more rapidly in women in their early thirties. To assess whether genetic susceptibility varies with age, we conducted age-stratified analyses. We analyzed women diagnosed with or treated for infertility below the age of 30 (early-onset) separately from those diagnosed or treated at age 30 or above (late-onset). These age-stratified analyses identified three additional genome-wide significant loci associated with infertility: two with early-onset disease near *CHEK2* and the major histocompatibility complex (MHC) region on chromosome 9, and one with late-onset disease, with the lead SNP located in an intron of the lncRNA gene ENSG00000284418 (**Supplementary Figure 10**)

The strongest association signal exclusively associated with early-onset infertility was a frameshift mutation, c.1100delC (rs555607708), in *CHEK2*, which previously has been shown to confer increased risk for breast and ovarian cancer. The mutation is additionally associated with leiomyoma, thyroid cancer, and myeloproliferative disorders in FinnGen. A recent study including women from FinnGen and the Estonian biobank further reported that the mutation is associated with an increased risk for PCOS (OR = 13.46 [5.68–31.89],  $p = 1.68 \times 10^{-9}$ )<sup>17</sup>

The other association signal exclusively associated with early-onset infertility was within the major histocompatibility complex (MHC) region. To pinpoint the exact location of the signal, we imputed the classical HLA alleles as well as *MICA* and *MICB*<sup>18</sup> and tested these alleles for association with our female infertility endpoints. None of the tested variants showed significant association for any of the infertility



endpoint tested. The complete association results of these additional association tests across the MHC region are presented in **Supplementary Table 2**.

## Genetic correlations and case enrichments among cases

Given that three of the significantly associated loci detected by the primary GWAS analyses showed pleiotropic association with female reproductive system disorders, such as PCOS, endometriosis, and leiomyoma of the uterus, we next examined their genetic overlap with infertility on a genomic scale. The strongest genetic correlation ( $r_g$ ) was observed between infertility and endometriosis ( $r_g = 0.46$ ,  $p = 2.69 \times 10^{-15}$ ), with similar correlation estimates with endometriosis found among both early-onset and late-onset cases (**Supplementary Figure 11**). In contrast, although there was a significant enrichment of PCOS among women affected by infertility (**Table 3**), the genetic correlation between the two diseases was only 0.22 ( $p = 0.014$ ). Interestingly, both the genetic correlation and case enrichment with PCOS increased among early-onset cases. Heritability estimates for all analyzed female infertility-related endpoints are presented in **Supplementary Figure 12**.

**Table 3:** Genetic correlations with female infertility (rg) and enrichment of female infertility cases (Enrichment) among four underlying disorders for female reproduction.

Phenotype	N cases	rg [95% CI]	P-value (rg)	Enrichment	P-value (Enr)
Endometriosis	20 190	0.46 [0.35-0.58]	$2.69 \times 10^{-15}$	3.83	$< 1 \times 10^{-324}$
Endometriosis ASRM stages 3,4	10 127	0.48 [0.35-0.61]	$1.76 \times 10^{-13}$	5.53	$< 1 \times 10^{-324}$
Leiomyoma of uterus	42 107	0.30 [0.19-0.41]	$8.78 \times 10^{-08}$	1.44	$1.01 \times 10^{-73}$
Polycystic ovarian syndrome (PCOS)	2 214	0.22 [0.04-0.39]	0.014	9.27	$< 1 \times 10^{-324}$

## DISCUSSION

Our GWAS analyses, encompassing more than 20,000 Finnish women affected by infertility and 198,000 controls, showcase a diverse landscape of associated loci. The analyses reveal that a portion of unexplained female infertility may be attributed to high-impact recessively acting disruptive mutations present at >1% frequency in the population. Specifically, our analyses point to a mutation in the Tata-box binding protein-like 2 gene (*TBPL2*), which encodes a transcription factor protein crucial for transcription initiation during oocyte growth. Based on our findings, this mutation is a significant contributor to female infertility in Finland.<sup>19</sup> The mutation introduces a premature stop codon (p.Arg331Ter) in the terminal DNA-binding part of the protein, and can hence be expected to significantly impair the transcription of the downstream targets. In our follow-up analyses, the *TBPL2* mutation was associated only with infertility and no other diseases. The variant's association with a smaller number of offspring suggests that the mutation is associated with severe infertility. Prior data have indeed shown that the absence of *TBPL2* leads to oocytes failing to develop and renders female mice sterile.<sup>20</sup>

According to data from GnomAD (v3.1.2), loss-of-function mutations in *TBPL2* are rare, with the stop-gained mutation associated with infertility in this study being an exception. Apart from our findings, there are only scattered reports of coding mutations in *TBPL2* detected in women with infertility. Three reports describe homozygous and compound heterozygous stop-gained mutations (c.788+3A>G, p.Arg233Ter and c.802C>T, p.Arg268Ter) in women with infertility from four unrelated Chinese families.<sup>21,22</sup> In a fourth report, a homozygous missense mutation was linked to infertility, oocyte maturation arrest, and degradation in two sisters from

a consanguineous family.<sup>23</sup> Notably, all published cases have exhibited treatment-resistant primary infertility. In our study, most homozygous mutation carriers had not given birth. However, based on data from the Medical Birth Register, two out of 41 carriers had given birth to one child, whereas two carriers had given birth to more than one child. All four women had undergone IVF therapy, although more detailed information on the potential use of donor oocytes is not available.

Over the past few decades, there has been a considerable shift in childbearing demographics in developed countries, characterized by more women choosing to delay childbearing.<sup>24,25</sup> Since a woman's age is one of the key factors influencing fertility, this trend has resulted in a higher average age at which women first experience infertility. This pattern is also evident in FinnGen, where we observe steadily increasing ages at first birth among women born between the 1950s and the 1980s ( **Supplementary Figure 13**). Interestingly, previous research indicates that the causes of infertility may differ between older and younger women, with those over 35 years of age being nearly twice as likely to experience unexplained infertility compared to younger women.<sup>26</sup>

In support of specific age-dependent mechanisms, our GWAS analyses suggest that some associated loci indeed exert their effect in an age-dependent manner. Some loci, such as *TBPL2*, are uniformly associated with infertility in both early and late-onset cases, but we identified two loci uniquely associated with infertility only among women diagnosed before age 30, and one locus associated with late-onset disease. One of the loci associated with early-onset infertility is a frameshift alteration (c.1100delC) in the tumor suppressor gene *CHEK2*, associated with a 32% lifetime

risk for breast cancer.<sup>27</sup> Finding association with early-onset infertility likely reflects a link with PCOS, as the c.1100delC mutation is significantly associated with PCOS in FinnGen<sup>16</sup>, and the proportion of PCOS cases is increased among women with early-onset infertility compared to all infertility cases (0.077 vs. 0.046, respectively).

The second locus associated with the early-onset infertility was the major histocompatibility complex (MHC) region on chromosome 6. The data indicate that the association is rather sharply defined to a region between 30018523 and 33018523 bp on chromosome 6, and fine-mapping analyses suggest that the signal is not associated with the classical MHC effect. The classical MHC genes encode proteins involved in antigen presentation to T cells, whereas a key function for non-classical MHC I molecules is to mediate inhibitory or activating stimuli in natural killer (NK) cells. Given that the survival of the embryo in the uterus depends on the maintenance of immune tolerance at the maternal-fetal interface, and that the pregnant uterus is predominantly populated with NK cells, one may speculate that the association findings tag an underlying mechanism that might be related to local immune tolerance.<sup>28</sup> Further functional studies are nonetheless warranted to explore and verify such an effect.

Taken together, our data point towards a unique landscape of genetic factors associated with female infertility. The results specifically highlight the significant role of recessive low-frequency variants, with the stop-gained mutation in *TBPL2* exhibiting an impact comparable to highly penetrant monogenic mutations.

## REFERENCES

1. Organization, W. H. & others. Infertility Prevalence Estimates: 1990–2021. 2023.
2. Carson, S. A. & Kallen, A. N. Diagnosis and Management of Infertility: A Review. *JAMA - Journal of the American Medical Association* vol. 326 Preprint at <https://doi.org/10.1001/jama.2021.4788> (2021).
3. Sadeghi, M. R. Unexplained infertility, the controversial matter in management of infertile couples. *Journal of Reproduction and Infertility* vol. 16 Preprint at (2015).
4. Day, F. *et al.* Large-scale genome-wide meta-analysis of polycystic ovary syndrome suggests shared genetic architecture for different diagnosis criteria. *PLoS Genet* **14**, (2018).
5. Rahmioglu, N. *et al.* The genetic basis of endometriosis and comorbidity with other pain and inflammatory conditions. *Nat Genet* **55**, (2023).
6. Gallagher, C. S. *et al.* Genome-wide association and epidemiological analyses reveal common genetic origins between uterine leiomyomata and endometriosis. *Nat Commun* **10**, (2019).
7. Venkatesh, S. S. *et al.* Genome-wide analyses identify 21 infertility loci and over 400 reproductive hormone loci across the allele frequency spectrum. *medRxiv* 2023–2024 (2024).
8. Heyne, H. O. *et al.* Mono- and biallelic variant effects on disease at biobank scale. *Nature* **613**, (2023).
9. Kurki, M. I. *et al.* Author Correction: FinnGen provides genetic insights from a well-phenotyped isolated population (Nature, (2023), 613, 7944, (508-518),

10.1038/s41586-022-05473-8). *Nature* Preprint at  
<https://doi.org/10.1038/s41586-023-05837-8> (2023).

10. Mbatchou, J. *et al.* Computationally efficient whole-genome regression for quantitative and binary traits. *Nat Genet* **53**, (2021).
11. Wang, G., Sarkar, A., Carbonetto, P. & Stephens, M. A simple new approach to variable selection in regression, with application to genetic fine mapping. *J R Stat Soc Series B Stat Methodol* **82**, (2020).
12. Bulik-Sullivan, B. *et al.* LD score regression distinguishes confounding from polygenicity in genome-wide association studies. *Nat Genet* **47**, (2015).
13. Bulik-Sullivan, B. *et al.* An atlas of genetic correlations across human diseases and traits. *Nat Genet* **47**, (2015).
14. Fisher, R. A. On the Interpretation of  $\chi^2$  from Contingency Tables, and the Calculation of P. *Journal of the Royal Statistical Society* **85**, (1922).
15. Karczewski, K. J. *et al.* The mutational constraint spectrum quantified from variation in 141,456 humans. *Nature* **581**, (2020).
16. Buniello, A. *et al.* The NHGRI-EBI GWAS Catalog of published genome-wide association studies, targeted arrays and summary statistics 2019. *Nucleic Acids Res* **47**, (2019).
17. Tyrmi, J. S. *et al.* Leveraging Northern European population history: Novel low-frequency variants for polycystic ovary syndrome. *Human Reproduction* **37**, (2022).
18. Tammi, S. *et al.* Accurate multi-population imputation of MICA, MICB, HLA-E, HLA-F and HLA-G alleles from genome SNP data. *bioRxiv* 2023.12.05.570226 (2023) doi:10.1101/2023.12.05.570226.

19. Yu, C. *et al.* TBPL2/TFIIA complex establishes the maternal transcriptome through oocyte-specific promoter usage. *Nat Commun* **11**, (2020).
20. Gazdag, E. *et al.* TBP2 is essential for germ cell development by regulating transcription and chromatin condensation in the oocyte. *Genes Dev* **23**, (2009).
21. Du, T. *et al.* Compound heterozygous mutations in TBPL2 were identified in an infertile woman with impaired ovarian folliculogenesis. *J Assist Reprod Genet* **40**, (2023).
22. Tora, L. & Vincent, S. D. What defines the maternal transcriptome? *Biochemical Society Transactions* vol. 49 Preprint at <https://doi.org/10.1042/BST20201125> (2021).
23. Wang, Y. *et al.* A homozygous missense mutation in TBPL2 is associated with oocyte maturation arrest and degeneration. *Clin Genet* **100**, (2021).
24. Hochler, H. *et al.* The Impact of Advanced Maternal Age on Pregnancy Outcomes: A Retrospective Multicenter Study. *J Clin Med* **12**, (2023).
25. Heffner, L. J. Advanced Maternal Age — How Old Is Too Old? *New England Journal of Medicine* **351**, (2004).
26. Maheshwari, A., Hamilton, M. & Bhattacharya, S. Effect of female age on the diagnostic categories of infertility. *Human Reproduction* **23**, (2008).
27. Mars, N. *et al.* The role of polygenic risk and susceptibility genes in breast cancer over the course of life. *Nat Commun* **11**, (2020).
28. Sharma, S. Natural killer cells and regulatory T cells in early pregnancy loss. *International Journal of Developmental Biology* vol. 58 Preprint at <https://doi.org/10.1387/ijdb.140109ss> (2014).



## List of Figures

**Figure 1:** Manhattan plots for female infertility. Additive results are grey and recessive are blue dots. Genome-wide significant loci ( $\pm$  500 kB) have been highlighted with green and labeled with the nearest gene of the lead variant. .... 10

**Figure 2:** Average number of offspring for genotype groups for rs14413315 (*TBPL2* stop-gained variant) separately for females and males who have reached age 45. The dashed line represents the overall average number of offspring in FinnGen among women who have reached age 45 (=1.96)..... 13

## List of Tables

<b>Table 1:</b> Basic characteristics of the study cohort. ....	4
<b>Table 2:</b> Independent GWAS hits and their representative variants identified by either additive or recessive model. The lead variant from the recessive and the additive models at the shared locus (PKHD1L1) are within the same credible set (LD = 1). ....	11
<b>Table 3:</b> Genetic correlations with female infertility (rg) and enrichment of female infertility cases (Enrichment) among four underlying disorders for female reproduction.....	16

## Ethics statement

Study subjects in FinnGen provided informed consent for biobank research, based on the Finnish Biobank Act. Alternatively, separate research cohorts, collected prior the Finnish Biobank Act came into effect (in September 2013) and start of FinnGen (August 2017), were collected based on study-specific consents and later transferred to the Finnish biobanks after approval by Fimea (Finnish Medicines Agency), the National Supervisory Authority for Welfare and Health. Recruitment protocols followed the biobank protocols approved by Fimea. The Coordinating Ethics Committee of the Hospital District of Helsinki and Uusimaa (HUS) statement number for the FinnGen study is Nr HUS/990/2017.

The FinnGen study is approved by Finnish Institute for Health and Welfare (permit numbers: THL/2031/6.02.00/2017, THL/1101/5.05.00/2017, THL/341/6.02.00/2018, THL/2222/6.02.00/2018, THL/283/6.02.00/2019, THL/1721/5.05.00/2019 and THL/1524/5.05.00/2020), Digital and population data service agency (permit numbers: VRK43431/2017-3, VRK/6909/2018-3, VRK/4415/2019-3), the Social Insurance Institution (permit numbers: KELA 58/522/2017, KELA 131/522/2018, KELA 70/522/2019, KELA 98/522/2019, KELA 134/522/2019, KELA 138/522/2019, KELA 2/522/2020, KELA 16/522/2020), Findata permit numbers THL/2364/14.02/2020, THL/4055/14.06.00/2020, THL/3433/14.06.00/2020, THL/4432/14.06/2020, THL/5189/14.06/2020, THL/5894/14.06.00/2020, THL/6619/14.06.00/2020, THL/209/14.06.00/2021, THL/688/14.06.00/2021, THL/1284/14.06.00/2021, THL/1965/14.06.00/2021, THL/5546/14.02.00/2020, THL/2658/14.06.00/2021, THL/4235/14.06.00/2021, Statistics Finland (permit numbers: TK-53-1041-17 and TK/143/07.03.00/2020 (earlier TK-53-90-20)

TK/1735/07.03.00/2021, TK/3112/07.03.00/2021) and Finnish Registry for Kidney Diseases permission/extract from the meeting minutes on 4th July 2019.

The Biobank Access Decisions for FinnGen samples and data utilized in FinnGen Data Freeze 11 include: THL Biobank BB2017\_55, BB2017\_111, BB2018\_19, BB\_2018\_34, BB\_2018\_67, BB2018\_71, BB2019\_7, BB2019\_8, BB2019\_26, BB2020\_1, BB2021\_65, Finnish Red Cross Blood Service Biobank 7.12.2017, Helsinki Biobank HUS/359/2017, HUS/248/2020, HUS/430/2021 §28, §29, HUS/150/2022 §12, §13, §14, §15, §16, §17, §18, §23, §58, §59, HUS/128/2023 §18, Auria Biobank AB17-5154 and amendment #1 (August 17 2020) and amendments BB\_2021-0140, BB\_2021-0156 (August 26 2021, Feb 2 2022), BB\_2021-0169, BB\_2021-0179, BB\_2021-0161, AB20-5926 and amendment #1 (April 23 2020) and it's modifications (Sep 22 2021), BB\_2022-0262, BB\_2022-0256, Biobank Borealis of Northern Finland\_2017\_1013, 2021\_5010, 2021\_5010 Amendment, 2021\_5018, 2021\_5018 Amendment, 2021\_5015, 2021\_5015 Amendment, 2021\_5015 Amendment\_2, 2021\_5023, 2021\_5023 Amendment, 2021\_5023 Amendment\_2, 2021\_5017, 2021\_5017 Amendment, 2022\_6001, 2022\_6001 Amendment, 2022\_6006 Amendment, 2022\_6006 Amendment, 2022\_6006 Amendment\_2, BB22-0067, 2022\_0262, 2022\_0262 Amendment, Biobank of Eastern Finland 1186/2018 and amendment 22§/2020, 53§/2021, 13§/2022, 14§/2022, 15§/2022, 27§/2022, 28§/2022, 29§/2022, 33§/2022, 35§/2022, 36§/2022, 37§/2022, 39§/2022, 7§/2023, 32§/2023, 33§/2023, 34§/2023, 35§/2023, 36§/2023, 37§/2023, 38§/2023, 39§/2023, 40§/2023, 41§/2023, Finnish Clinical Biobank Tampere MH0004 and amendments (21.02.2020 & 06.10.2020), BB2021-0140 8§/2021, 9§/2021, §9/2022, §10/2022, §12/2022, 13§/2022, §20/2022,

§21/2022, §22/2022, §23/2022, 28§/2022, 29§/2022, 30§/2022, 31§/2022, 32§/2022, 38§/2022, 40§/2022, 42§/2022, 1§/2023, Central Finland Biobank 1-2017, BB\_2021-0161, BB\_2021-0169, BB\_2021-0179, BB\_2021-0170, BB\_2022-0256, BB\_2022-0262, BB22-0067, Decision allowing to continue data processing until 31st Aug 2024 for projects: BB\_2021-0179, BB22-0067, BB\_2022-0262, BB\_2021-0170, BB\_2021-0164, BB\_2021-0161, and BB\_2021-0169, and Terveystalo Biobank STB 2018001 and amendment 25th Aug 2020, Finnish Hematological Registry and Clinical Biobank decision 18th June 2021, Arctic biobank P0844: ARC\_2021\_1001.

## Declaration of interests

The authors declare no competing interests.

## Data and code availability

Individual level data: The Finnish biobank data can be accessed through the Fingenious® services (<https://site.fingenious.fi/en/>) managed by FINBB. Finnish Health register data can be applied from Findata (<https://findata.fi/en/data/>).

Summary statistics: Summary statistics from each data release will be made publicly available after a one year embargo period and can be accessed freely from: [www.finngen.fi/en/access\\_results](http://www.finngen.fi/en/access_results).

## Acknowledgements

We want to acknowledge the participants and investigators of the FinnGen study. The FinnGen project is funded by two grants from Business Finland (HUS 4685/31/2016 and UH 4386/31/2016) and the following industry partners: AbbVie Inc., AstraZeneca UK Ltd, Biogen MA Inc., Bristol Myers Squibb (and Celgene Corporation & Celgene International II Sàrl), Genentech Inc., Merck Sharp & Dohme LCC, Pfizer Inc., GlaxoSmithKline Intellectual Property Development Ltd., Sanofi US Services Inc., Maze Therapeutics Inc., Janssen Biotech Inc, Novartis AG, and Boehringer Ingelheim International GmbH. Following biobanks are acknowledged for delivering biobank samples to FinnGen: Auria Biobank ([www.auria.fi/biopankki](http://www.auria.fi/biopankki)), THL Biobank ([www.thl.fi/biobank](http://www.thl.fi/biobank)), Helsinki Biobank ([www.helsinginbiopankki.fi](http://www.helsinginbiopankki.fi)), Biobank Borealis of Northern Finland (<https://www.ppsbp.fi/Tutkimus-ja-opetus/Biopankki/Pages/Biobank-Borealis-briefly-in-English.aspx>), Finnish Clinical Biobank Tampere ([www.tays.fi/en-US/Research\\_and\\_development/Finnish\\_Clinical\\_Biobank\\_Tampere](http://www.tays.fi/en-US/Research_and_development/Finnish_Clinical_Biobank_Tampere)), Biobank of Eastern Finland ([www.ita-suomenbiopankki.fi/en](http://www.ita-suomenbiopankki.fi/en)), Central Finland Biobank ([www.ksshp.fi/fi-FI/Potilaalle/Biopankki](http://www.ksshp.fi/fi-FI/Potilaalle/Biopankki)), Finnish Red Cross Blood Service Biobank ([www.veripalvelu.fi/verenluovutus/biopankkitoiminta](http://www.veripalvelu.fi/verenluovutus/biopankkitoiminta)), Terveystalo Biobank ([www.terveystalo.com/fi/Yritystietoa/Terveystalo-Biopankki/Biopankki/](http://www.terveystalo.com/fi/Yritystietoa/Terveystalo-Biopankki/Biopankki/)) and Arctic Biobank (<https://www.oulu.fi/en/university/faculties-and-units/faculty-medicine/northern-finland-birth-cohorts-and-arctic-biobank>). All Finnish Biobanks are members of BBMRI.fi infrastructure (<https://www.bbmri-eric.eu/national-nodes/finland/>). Finnish Biobank Cooperative -FINBB (<https://finbb.fi/>) is the coordinator of BBMRI-ERIC operations in Finland. The Finnish biobank data can be



accessed through the Fingenious® services (<https://site.fingenious.fi/en/>) managed by FINBB.

## Full list of FinnGen authors

Full Name	Affiliation	E-mail
Aarno Palotie	Institute for Molecular Medicine Finland (FIMM), HiLIFE, University of Helsinki, Helsinki, Finland; Broad Institute of MIT and Harvard; Massachusetts General Hospital	aarno.palotie@helsinki.fi
Mark Daly	Institute for Molecular Medicine Finland (FIMM), HiLIFE, University of Helsinki, Helsinki, Finland; Broad Institute of MIT and Harvard; Massachusetts General Hospital	mark.daly@helsinki.fi
Bridget Riley-Gills	Abbvie, Chicago, IL, United States	bridget.rileygillis@abbvie.com
Howard Jacob	Abbvie, Chicago, IL, United States	howard.jacob@abbvie.com
Dirk Paul	Astra Zeneca, Cambridge, United Kingdom	dirk.paul@astrazeneca.com
Slav Petrovski	Astra Zeneca, Cambridge, United Kingdom	slav.petrovski@astrazeneca.com
Heiko Runz	Biogen, Cambridge, MA, United States	heiko.runz@biogen.com
Sally John	Biogen, Cambridge, MA, United States	sally.john@biogen.com
George Okafo	Boehringer Ingelheim, Ingelheim am Rhein, Germany	george.okafo@boehringer-ingelheim.com
Robert Plenge	Bristol Myers Squibb, New York, NY, United States	robert.plenge@bms.com
Joseph Maranville	Bristol Myers Squibb, New York, NY, United States	joseph.maranville@bms.com
Mark McCarthy	Genentech, San Francisco, CA, United States	mccarthy.mark@gene.com
Margaret G. Ehm	GlaxoSmithKline, Collegeville, PA, United States	meg.g.ehm@gsk.com
Kirsi Auro	GlaxoSmithKline, Espoo, Finland	kirsi.m.auro@gsk.com
Simonne Longerich	Merck, Kenilworth, NJ, United States	simonne.longerich@merck.com
Anders Mälarstig	Pfizer, New York, NY, United States	anders.malarstig@pfizer.com
Katherine Klinger	Translational Sciences, Sanofi R&D, Framingham, MA, USA	katherine.klinger@sanofi.com
Clement Chatelain	Translational Sciences, Sanofi R&D, Framingham, MA, USA	clement.chatelain@sanofi.com
Matthias Gossel	Translational Sciences, Sanofi R&D, Framingham, MA, USA	matthias.gossel@sanofi.com
Karol Estrada	Maze Therapeutics, San Francisco, CA, United States	kestrada@mazetx.com
Robert Graham	Maze Therapeutics, San Francisco, CA, United States	rgraham@mazetx.com
Dawn Waterworth	Janssen Research & Development, LLC, Spring House, PA, United States	dwaterwo@its.jnj.com

Chris O'Donnell	Novartis Institutes for BioMedical Research, Cambridge, MA, United States	chris.odonnell@novartis.com
Nicole Renaud	Novartis Institutes for BioMedical Research, Cambridge, MA, United States	nicole.renaud@novartis.com
Tomi P. Mäkelä	HiLIFE, University of Helsinki, Finland, Finland	tomi.makela@helsinki.fi
Jaakko Kaprio	Institute for Molecular Medicine Finland (FIMM), HiLIFE, University of Helsinki, Helsinki, Finland	jaakko.kaprio@helsinki.fi
Petri Virolainen	Auria Biobank / University of Turku / Hospital District of Southwest Finland, Turku, Finland	petri.virolainen@tyks.fi
Antti Hakanen	Auria Biobank / University of Turku / Hospital District of Southwest Finland, Turku, Finland	antti.hakanen@tyks.fi
Terhi Kilpi	THL Biobank / Finnish Institute for Health and Welfare (THL), Helsinki, Finland	terhi.kilpi@thl.fi
Markus Perola	THL Biobank / Finnish Institute for Health and Welfare (THL), Helsinki, Finland	markus.perola@thl.fi
Jukka Partanen	Finnish Red Cross Blood Service / Finnish Hematology Registry and Clinical Biobank, Helsinki, Finland	jukka.partanen@veripalvelu.fi
Anne Pitkäranta	Helsinki Biobank / Helsinki University and Hospital District of Helsinki and Uusimaa, Helsinki	anne.pitkaranta@hus.fi
Taneli Raivio	Helsinki Biobank / Helsinki University and Hospital District of Helsinki and Uusimaa, Helsinki	taneli.raivio@hus.fi
Jani Tikkanen	Northern Finland Biobank Borealis / University of Oulu / Northern Ostrobothnia Hospital District, Oulu, Finland	jani.tikkanen@ppshp.fi
Raisa Serpi	Northern Finland Biobank Borealis / University of Oulu / Northern Ostrobothnia Hospital District, Oulu, Finland	raisa.serpi@ppshp.fi
Tarja Laitinen	Finnish Clinical Biobank Tampere / University of Tampere / Pirkanmaa Hospital District, Tampere, Finland	tarja.laitinen@pshp.fi
Veli-Matti Kosma	Biobank of Eastern Finland / University of Eastern Finland / Northern Savo Hospital District, Kuopio, Finland	veli-matti.kosma@uef.fi
Jari Laukkanen	Central Finland Biobank / University of Jyväskylä / Central Finland Health Care District, Jyväskylä, Finland	jari.laukkanen@ksshp.fi
Marco Hautalahti	FINBB - Finnish biobank cooperative	marco.hautalahti@finbb.fi
Outi Tuovila	Business Finland, Helsinki, Finland	outi.tuovila@businessfinland.fi

Raimo Pakkanen	Business Finland, Helsinki, Finland	raimo.pakkanen@businessfinland.fi
Jeffrey Waring	Abbvie, Chicago, IL, United States	jeff.waring@abbvie.com
Bridget Riley-Gillis	Abbvie, Chicago, IL, United States	bridget.rileygillis@abbvie.com
Fedik Rahimov	Abbvie, Chicago, IL, United States	fedik.rahimov@abbvie.com
Ioanna Tachmazidou	Astra Zeneca, Cambridge, United Kingdom	ioanna.tachmazidou@astrazeneca.com
Chia-Yen Chen	Biogen, Cambridge, MA, United States	chiayen.chen@biogen.com
Heiko Runz	Biogen, Cambridge, MA, United States	heiko.runz@biogen.com
Zhihao Ding	Boehringer Ingelheim, Ingelheim am Rhein, Germany	zhihao.ding@boehringer-ingelheim.com
Marc Jung	Boehringer Ingelheim, Ingelheim am Rhein, Germany	marc_oliver.jung@boehringer-ingelheim.com
Hanati Tuoken	Boehringer Ingelheim, Ingelheim am Rhein, Germany	hanati.tuoken@boehringer-ingelheim.com
Shameek Biswas	Bristol Myers Squibb, New York, NY, United States	Shameek.Biswas@bms.com
Rion Pendergrass	Genentech, San Francisco, CA, United States	penders2@gene.com
Margaret G. Ehm	GlaxoSmithKline, Collegeville, PA, United States	meg.g.ehm@gsk.com
David Pulford	GlaxoSmithKline, Stevenage, United Kingdom	david.x.pulford@gsk.com
Neha Raghavan	Merck, Kenilworth, NJ, United States	neha.raghavan@merck.com
Adriana Huertas-Vazquez	Merck, Kenilworth, NJ, United States	adriana.huertas.vazquez@merck.com
Jae-Hoon Sul	Merck, Kenilworth, NJ, United States	jae.hoon.sul@merck.com
Anders Målarstig	Pfizer, New York, NY, United States	anders.malarstig@pfizer.com
Xinli Hu	Pfizer, New York, NY, United States	xinli.hu@pfizer.com
Åsa Hedman	Pfizer, New York, NY, United States	asa.hedman@pfizer.com
Katherine Klinger	Translational Sciences, Sanofi R&D, Framingham, MA, USA	katherine.klinger@sanofi.com
Robert Graham	Maze Therapeutics, San Francisco, CA, United States	rgraham@mazetx.com
Manuel Rivas	Maze Therapeutics, San Francisco, CA, United States	mrivas@mazetx.com
Dawn Waterworth	Janssen Research & Development, LLC, Spring House, PA, United States	dwaterwo@its.jnj.com
Nicole Renaud	Novartis Institutes for BioMedical Research, Cambridge, MA, United States	nicole.renaud@novartis.com
Ma'en Obeidat	Novartis Institutes for BioMedical Research, Cambridge, MA, United States	maen.obeidat@novartis.com
Jonathan Chung	Novartis Institutes for BioMedical Research, Cambridge, MA, United States	jonathan.chung@novartis.com
Jonas Zierer	Novartis Institutes for BioMedical Research, Cambridge, MA, United States	jonas.zierer@novartis.com

Mari Niemi	Novartis Institutes for BioMedical Research, Cambridge, MA, United States	mari.niemi@novartis.com
Samuli Ripatti	Institute for Molecular Medicine Finland (FIMM), HiLIFE, University of Helsinki, Helsinki, Finland	samuli.ripatti@helsinki.fi
Johanna Schleutker	Auria Biobank / Univ. of Turku / Hospital District of Southwest Finland, Turku, Finland	johanna.schleutker@utu.fi
Markus Perola	THL Biobank / Finnish Institute for Health and Welfare (THL), Helsinki, Finland	markus.perola@thl.fi
Mikko Arvas	Finnish Red Cross Blood Service / Finnish Hematology Registry and Clinical Biobank, Helsinki, Finland	mikko.arvas@veripalvelu.fi
Olli Carpén	Helsinki Biobank / Helsinki University and Hospital District of Helsinki and Uusimaa, Helsinki	olli.carpén@helsinki.fi
Reetta Hinttala	Northern Finland Biobank Borealis / University of Oulu / Northern Ostrobothnia Hospital District, Oulu, Finland	reetta.hinttala@oulu.fi
Johannes Kettunen	Northern Finland Biobank Borealis / University of Oulu / Northern Ostrobothnia Hospital District, Oulu, Finland	johannes.kettunen@oulu.fi
Arto Mannermaa	Biobank of Eastern Finland / University of Eastern Finland / Northern Savo Hospital District, Kuopio, Finland	arto.mannermaa@uef.fi
Katriina Aalto-Setälä	Faculty of Medicine and Health Technology, Tampere University, Tampere, Finland	katriina.aalto-setälä@tuni.fi
Mika Kähönen	Finnish Clinical Biobank Tampere / University of Tampere / Pirkanmaa Hospital District, Tampere, Finland	mika.kahonen@uta.fi
Jari Laukkanen	Central Finland Biobank / University of Jyväskylä / Central Finland Health Care District, Jyväskylä, Finland	jari.laukkanen@kssh.fi
Johanna Mäkelä	FINBB - Finnish biobank cooperative	johanna.makela@finbb.fi
Reetta Kälviäinen	Northern Savo Hospital District, Kuopio, Finland	reetta.kalviainen@kuh.fi
Valtteri Julkunen	Northern Savo Hospital District, Kuopio, Finland	valtteri.julkunen@kuh.fi
Hilkka Soininen	Northern Savo Hospital District, Kuopio, Finland	hilkka.soininen@uef.fi
Anne Remes	Northern Ostrobothnia Hospital District, Oulu, Finland	anne.remes@oulu.fi
Mikko Hiltunen	University of Eastern Finland, Kuopio, Finland	mikko.hiltunen@uef.fi
Jukka Peltola	Pirkanmaa Hospital District, Tampere, Finland	jukka.peltola@pshp.fi
Minna Raivio	Hospital District of Helsinki and Uusimaa, Helsinki,	minna.raivio@geri.fi

	Finland	
Pentti Tienari	Hospital District of Helsinki and Uusimaa, Helsinki, Finland	pentti.tienari@hus.fi
Juha Rinne	Hospital District of Southwest Finland, Turku, Finland	juha.rinne@tyks.fi
Roosa Kallionpää	Hospital District of Southwest Finland, Turku, Finland	roosa.kallionpaa@tyks.fi
Juulia Partanen	Institute for Molecular Medicine Finland, HiLIFE, University of Helsinki, Finland	juulia.partanen@helsinki.fi
Adam Ziemann	Abbvie, Chicago, IL, United States	adam.ziemann@abbvie.com
Nizar Smaoui	Abbvie, Chicago, IL, United States	nizar.smaoui@abbvie.com
Anne Lehtonen	Abbvie, Chicago, IL, United States	anne.lehtonen@abbvie.com
Susan Eaton	Biogen, Cambridge, MA, United States	susan.eaton@biogen.com
Heiko Runz	Biogen, Cambridge, MA, United States	heiko.runz@biogen.com
Sanni Lahdenperä	Biogen, Cambridge, MA, United States	sanni.lahdenpera@biogen.com
Shameek Biswas	Bristol Myers Squibb, New York, NY, United States	shameek.biswas@bms.com
Natalie Bowers	Genentech, San Francisco, CA, United States	bowersn1@gene.com
Edmond Teng	Genentech, San Francisco, CA, United States	teng.edmond@gene.com
Rion Pendergrass	Genentech, San Francisco, CA, United States	penders2@gene.com
Fanli Xu	GlaxoSmithKline, Brentford, United Kingdom	chun-fang.2.xu@gsk.com
David Pulford	GlaxoSmithKline, Stevenage, United Kingdom	david.x.pulford@gsk.com
Kirsi Auro	GlaxoSmithKline, Espoo, Finland	kirsi.m.auro@gsk.com
Laura Addis	GlaxoSmithKline, Brentford, United Kingdom	laura.x.addis@gsk.com
John Eicher	GlaxoSmithKline, Brentford, United Kingdom	john.d.eicher@gsk.com
Qingqin S Li	Janssen Research & Development, LLC, Titusville, NJ 08560, United States	QLi2@its.jnj.com
Karen He	Janssen Research & Development, LLC, Spring House, PA, United States	khe2@its.jnj.com
Ekaterina Khramtsova	Janssen Research & Development, LLC, Spring House, PA, United States	ekhrants@its.jnj.com
Neha Raghavan	Merck, Kenilworth, NJ, United States	neha.raghavan@merck.com
Martti Färkkilä	Hospital District of Helsinki and Uusimaa, Helsinki, Finland	martti.farkkila@hus.fi
Jukka Koskela	Hospital District of Helsinki and Uusimaa, Helsinki, Finland	jukka.koskela@helsinki.fi
Sampsa Pikkarainen	Hospital District of Helsinki and Uusimaa, Helsinki, Finland	sampsa.pikkarainen@hus.fi
Airi Jussila	Pirkanmaa Hospital District, Tampere, Finland	airi.jussila@pshp.fi
Katri Kaukinen	Pirkanmaa Hospital District, Tampere, Finland	katri.kaukinen@tuni.fi

Timo Blomster	Northern Ostrobothnia Hospital District, Oulu, Finland	timo.blomster@ppshp.fi
Mikko Kiviniemi	Northern Savo Hospital District, Kuopio, Finland	mikko.kiviniemi@kuh.fi
Markku Voutilainen	Hospital District of Southwest Finland, Turku, Finland	markku.voutilainen@tyks.fi
Mark Daly	Institute for Molecular Medicine, Finland (FIMM), HiLIFE, University of Helsinki, Helsinki, Finland; Broad Institute of MIT and Harvard; Massachusetts General Hospital	mark.daly@helsinki.fi
Jeffrey Waring	Abbvie, Chicago, IL, United States	jeff.waring@abbvie.com
Nizar Smaoui	Abbvie, Chicago, IL, United States	nizar.smaoui@abbvie.com
Fedik Rahimov	Abbvie, Chicago, IL, United States	fedik.rahimov@abbvie.com
Anne Lehtonen	Abbvie, Chicago, IL, United States	anne.lehtonen@abbvie.com
Tim Lu	Genentech, San Francisco, CA, United States	lut8@gene.com
Natalie Bowers	Genentech, San Francisco, CA, United States	bowersn1@gene.com
Rion Pendergrass	Genentech, San Francisco, CA, United States	penders2@gene.com
Linda McCarthy	GlaxoSmithKline, Brentford, United Kingdom	linda.c.mccarthy@gsk.com
Amy Hart	Janssen Research & Development, LLC, Spring House, PA, United States	ahart13@its.jnj.com
Meijian Guan	Janssen Research & Development, LLC, Spring House, PA, United States	mguan4@its.jnj.com
Jason Miller	Merck, Kenilworth, NJ, United States	jason.miller4@merck.com
Kirsi Kalpala	Pfizer, New York, NY, United States	kirsi.kalpala@pfizer.com
Melissa Miller	Pfizer, New York, NY, United States	melissa.r.miller@pfizer.com
Xinli Hu	Pfizer, New York, NY, United States	xinli.hu@pfizer.com
Kari Eklund	Hospital District of Helsinki and Uusimaa, Helsinki, Finland	kari.eklund@hus.fi
Antti Palomäki	Hospital District of Southwest Finland, Turku, Finland	ajpalo@utu.fi
Pia Isomäki	Pirkanmaa Hospital District, Tampere, Finland	pia.isomaki@pshp.fi
Laura Pirilä	Hospital District of Southwest Finland, Turku, Finland	laura.pirila@fimnet.fi,laura.pirila@tyks.fi
Oili Kaipiainen-Seppänen	Northern Savo Hospital District, Kuopio, Finland	oili.kaipiainen-seppanen@kuh.fi
Johanna Huhtakangas	Northern Ostrobothnia Hospital District, Oulu, Finland	johanna.huhtakangas@kuh.fi
Nina Mars	Institute for Molecular Medicine Finland (FIMM), HiLIFE, University of Helsinki, Helsinki, Finland	nina.mars@helsinki.fi
Jeffrey Waring	Abbvie, Chicago, IL, United States	jeff.waring@abbvie.com
Fedik Rahimov	Abbvie, Chicago, IL, United States	fedik.rahimov@abbvie.com

Apinya Lertratanakul	Abbvie, Chicago, IL, United States	apinya.lertratanakul@abbvie.com
Nizar Smaoui	Abbvie, Chicago, IL, United States	nizar.smaoui@abbvie.com
Anne Lehtonen	Abbvie, Chicago, IL, United States	anne.lehtonen@abbvie.com
Coralie Viollet	AstraZeneca, Cambridge, United Kingdom	coralie.viollet@astrazeneca.com
Marla Hochfeld	Bristol Myers Squibb, New York, NY, United States	mhochfeld@celgene.com
Natalie Bowers	Genentech, San Francisco, CA, United States	bowersn1@gene.com
Rion Pendergrass	Genentech, San Francisco, CA, United States	penders2@gene.com
Jorge Esparza Gordillo	GlaxoSmithKline, Brentford, United Kingdom	jorge.x.esparza-gordillo@gsk.com
Kirsi Auro	GlaxoSmithKline, Espoo, Finland	kirsi.m.auro@gsk.com
Dawn Waterworth	Janssen Research & Development, LLC, Spring House, PA, United States	dwaterwo@its.jnj.com
Fabiana Farias	Merck, Kenilworth, NJ, United States	fabiana.farias@merck.com
Kirsi Kalpala	Pfizer, New York, NY, United States	kirsi.kalpala@pfizer.com
Nan Bing	Pfizer, New York, NY, United States	nan.bing@pfizer.com
Xinli Hu	Pfizer, New York, NY, United States	xinli.hu@pfizer.com
Tarja Laitinen	Pirkanmaa Hospital District, Tampere, Finland	tarja.laitinen@pshp.fi
Margit Pelkonen	Northern Savo Hospital District, Kuopio, Finland	margit.pelkonen@kuh.fi
Paula Kauppi	Hospital District of Helsinki and Uusimaa, Helsinki, Finland	paula.kauppi@hus.fi
Hannu Kankaanranta	University of Gothenburg, Gothenburg, Sweden/ Seinäjoki Central Hospital, Seinäjoki, Finland/ Tampere University, Tampere, Finland	hannu.kankaanranta@tuni.fi
Terttu Harju	Northern Ostrobothnia Hospital District, Oulu, Finland	terttu.harju@oulu.fi
Riitta Laheesmaa	Hospital District of Southwest Finland, Turku, Finland	rilahes@utu.fi
Nizar Smaoui	Abbvie, Chicago, IL, United States	nizar.smaoui@abbvie.com
Coralie Viollet	AstraZeneca, Cambridge, United Kingdom	coralie.viollet@astrazeneca.com
Susan Eaton	Biogen, Cambridge, MA, United States	susan.eaton@biogen.com
Hubert Chen	Genentech, San Francisco, CA, United States	chenh37@gene.com
Rion Pendergrass	Genentech, San Francisco, CA, United States	penders2@gene.com
Natalie Bowers	Genentech, San Francisco, CA, United States	bowersn1@gene.com
Joanna Betts	GlaxoSmithKline, Brentford, United Kingdom	joanna.c.betts@gsk.com
Kirsi Auro	GlaxoSmithKline, Espoo, Finland	kirsi.m.auro@gsk.com
Rajashree Mishra	GlaxoSmithKline, Brentford, United Kingdom	rajashree.x.mishra@gsk.com
Majd Mouded	Novartis, Basel, Switzerland	majd.mouded@novartis.com
Debby Ngo	Novartis, Basel, Switzerland	debby.ngo@novartis.com
Teemu Niiranen	Finnish Institute for Health and Welfare (THL), Helsinki, Finland	teemu.niiranen@thl.fi



Felix Vaura	Finnish Institute for Health and Welfare (THL), Helsinki, Finland	fehva@utu.fi
Veikko Salomaa	Finnish Institute for Health and Welfare (THL), Helsinki, Finland	veikko.salomaa@thl.fi
Kaj Metsärinne	Hospital District of Southwest Finland, Turku, Finland	kaj.metsarinne@tyks.fi
Jenni Aittokallio	Hospital District of Southwest Finland, Turku, Finland	jemato@utu.fi
Mika Kähönen	Pirkanmaa Hospital District, Tampere, Finland	mika.kahonen@uta.fi
Jussi Hernesniemi	Pirkanmaa Hospital District, Tampere, Finland	jussi.hernesniemi@tuni.fi
Daniel Gordin	Hospital District of Helsinki and Uusimaa, Helsinki, Finland	daniel.gordin@hus.fi
Juha Sinisalo	Hospital District of Helsinki and Uusimaa, Helsinki, Finland	juha.sinisalo@hus.fi
Marja-Riitta Taskinen	Hospital District of Helsinki and Uusimaa, Helsinki, Finland	marja-riitta.taskinen@helsinki.fi
Tiinamaija Tuomi	Hospital District of Helsinki and Uusimaa, Helsinki, Finland	tiinamaija.tuomi@hus.fi
Timo Hiltunen	Hospital District of Helsinki and Uusimaa, Helsinki, Finland	timo.hiltunen@hus.fi
Jari Laukkanen	Central Finland Health Care District, Jyväskylä, Finland	jari.laukkanen@ksshp.fi
Amanda Elliott	Institute for Molecular Medicine Finland (FIMM), HiLIFE, University of Helsinki, Helsinki, Finland; Broad Institute, Cambridge, MA, USA and Massachusetts General Hospital, Boston, MA, USA	aelliott@broadinstitute.org
Mary Pat Reeve	Institute for Molecular Medicine Finland (FIMM), HiLIFE, University of Helsinki, Helsinki, Finland	mary.reeve@helsinki.fi
Sanni Ruotsalainen	Institute for Molecular Medicine Finland (FIMM), HiLIFE, University of Helsinki, Helsinki, Finland	sanni.ruotsalainen@helsinki.fi
Dirk Paul	Astra Zeneca, Cambridge, United Kingdom	dirk.paul@astrazeneca.com
Natalie Bowers	Genentech, San Francisco, CA, United States	bowersn1@gene.com
Rion Pendergrass	Genentech, San Francisco, CA, United States	penders2@gene.com
Audrey Chu	GlaxoSmithKline, Brentford, United Kingdom	audrey.y.chu@gsk.com
Kirsi Auro	GlaxoSmithKline, Espoo, Finland	kirsi.m.auro@gsk.com
Dermot Reilly	Janssen Research & Development, LLC, Boston, MA, United States	dreill11@its.jnj.com
Mike Mendelson	Novartis, Boston, MA, United States	mike.mendelson@novartis.com

Jaakko Parkkinen	Pfizer, New York, NY, United States	jaakko.parkkinen@pfizer.com
Melissa Miller	Pfizer, New York, NY, United States	melissa.r.miller@pfizer.com
Tuomo Meretoja	Hospital District of Helsinki and Uusimaa, Helsinki, Finland	tuomo.meretoja@hus.fi
Heikki Joensuu	Hospital District of Helsinki and Uusimaa, Helsinki, Finland	heikki.joensuu@hus.fi
Olli Carpén	Hospital District of Helsinki and Uusimaa, Helsinki, Finland	olli.carpen@helsinki.fi
Johanna Mattson	Hospital District of Helsinki and Uusimaa, Helsinki, Finland	johanna.mattson@hus.fi
Eveliina Salminen	Hospital District of Helsinki and Uusimaa, Helsinki, Finland	eveliina.e.salminen@hus.fi
Annika Auranen	Pirkanmaa Hospital District, Tampere, Finland	anaura@utu.fi
Peeter Karihtala	Northern Ostrobothnia Hospital District, Oulu, Finland	peeter.karihtala@oulu.fi
Päivi Auvinen	Northern Savo Hospital District, Kuopio, Finland	paivi.auvinen@kuh.fi
Klaus Elenius	Hospital District of Southwest Finland, Turku, Finland	klaus.elenius@utu.fi
Johanna Schleutker	Hospital District of Southwest Finland, Turku, Finland	johanna.schleutker@utu.fi
Esa Pitkänen	Institute for Molecular Medicine Finland (FIMM), HiLIFE, University of Helsinki, Helsinki, Finland	esa.pitkanen@helsinki.fi
Nina Mars	Institute for Molecular Medicine Finland (FIMM), HiLIFE, University of Helsinki, Helsinki, Finland	nina.mars@helsinki.fi
Mark Daly	Institute for Molecular Medicine Finland (FIMM), HiLIFE, University of Helsinki, Helsinki, Finland; Broad Institute of MIT and Harvard; Massachusetts General Hospital	mark.daly@helsinki.fi
Relja Popovic	Abbvie, Chicago, IL, United States	relja.popovic@abbvie.com
Jeffrey Waring	Abbvie, Chicago, IL, United States	jeff.waring@abbvie.com
Bridget Riley-Gillis	Abbvie, Chicago, IL, United States	bridget.rileygillis@abbvie.com
Anne Lehtonen	Abbvie, Chicago, IL, United States	anne.lehtonen@abbvie.com
Margarete Fabre	AstraZeneca, Cambridge, United Kingdom	margarete.fabre@astrazeneca.com
Jennifer Schutzman	Genentech, San Francisco, CA, United States	schutzman.jennifer@gene.com
Natalie Bowers	Genentech, San Francisco, CA, United States	bowersn1@gene.com
Rion Pendergrass	Genentech, San Francisco, CA, United States	penders2@gene.com
Diptee Kulkarni	GlaxoSmithKline, Brentford, United Kingdom	diptee.a.kulkarni@gsk.com
Kirsi Auro	GlaxoSmithKline, Espoo, Finland	kirsi.m.auro@gsk.com
Alessandro Porello	Janssen Research & Development, LLC, Spring	APorrell@ITS.JNJ.com

	House, PA, United States	
Andrey Loboda	Merck, Kenilworth, NJ, United States	andrey_loboda@merck.com
Heli Lehtonen	Pfizer, New York, NY, United States	heli.lehtonen@pfizer.com
Stefan McDonough	Pfizer, New York, NY, United States	stefan.McDonough@pfizer.com
Sauli Vuoti	Janssen-Cilag Oy, Espoo, Finland	svuoti@its.jnj.com
Kai Kaarniranta	Northern Savo Hospital District, Kuopio, Finland; Department of Molecular Genetics, University of Lodz, Lodz, Poland	kai.kaarniranta@uef.fi
Joni A Turunen	Helsinki University Hospital and University of Helsinki, Helsinki, Finland; Eye Genetics Group, Folkhälsan Research Center, Helsinki, Finland	joni.turunen@helsinki.fi
Terhi Ollila	Hospital District of Helsinki and Uusimaa, Helsinki, Finland	terhi.ollila@hus.fi
Hannu Uusitalo	Pirkanmaa Hospital District, Tampere, Finland	hannu.uusitalo@tuni.fi
Juha Karjalainen	Institute for Molecular Medicine Finland (FIMM), HiLIFE, University of Helsinki, Helsinki, Finland	juha.karjalainen@helsinki.fi
Esa Pitkanen	Institute for Molecular Medicine Finland (FIMM), HiLIFE, University of Helsinki, Helsinki, Finland	esa.pitkanen@helsinki.fi
Mengzhen Liu	Abbvie, Chicago, IL, United States	mengzhen.liu@abbvie.com
Heiko Runz	Biogen, Cambridge, MA, United States	heiko.runz@biogen.com
Stephanie Loomis	Biogen, Cambridge, MA, United States	stephanie.loomis@biogen.com
Erich Strauss	Genentech, San Francisco, CA, United States	strauss.erich@gene.com
Natalie Bowers	Genentech, San Francisco, CA, United States	bowersn1@gene.com
Hao Chen	Genentech, San Francisco, CA, United States	haoc@gene.com
Rion Pendergrass	Genentech, San Francisco, CA, United States	penders2@gene.com
Kaisa Tasanen	Northern Ostrobothnia Hospital District, Oulu, Finland	kaisa.tasanen-maatta@oulu.fi
Laura Huilaja	Northern Ostrobothnia Hospital District, Oulu, Finland	laura.huilaja@oulu.fi
Katariina Hannula-Jouppi	Hospital District of Helsinki and Uusimaa, Helsinki, Finland	katariina.hannula-jouppi@hus.fi
Teea Salmi	Pirkanmaa Hospital District, Tampere, Finland	teea.salmi@pshp.fi
Sirkku Peltonen	Hospital District of Southwest Finland, Turku, Finland	sipelto@utu.fi
Leena Koulu	Hospital District of Southwest Finland, Turku, Finland	leena.koulu@tyks.fi
Nizar Smaoui	Abbvie, Chicago, IL, United States	nizar.smaoui@abbvie.com
Fedik Rahimov	Abbvie, Chicago, IL, United States	fedik.rahimov@abbvie.com
Anne Lehtonen	Abbvie, Chicago, IL, United States	anne.lehtonen@abbvie.com

David Choy	Genentech, San Francisco, CA, United States	choy.david@gene.com
Rion Pendergrass	Genentech, San Francisco, CA, United States	penders2@gene.com
Dawn Waterworth	Janssen Research & Development, LLC, Spring House, PA, United States	dwaterwo@its.jnj.com
Kirsi Kalpala	Pfizer, New York, NY, United States	kirsi.kalpala@pfizer.com
Ying Wu	Pfizer, New York, NY, United States	ying.wu3@pfizer.com
Pirkko Pussinen	Hospital District of Helsinki and Uusimaa, Helsinki, Finland	pirkko.pussinen@helsinki.fi
Aino Salminen	Hospital District of Helsinki and Uusimaa, Helsinki, Finland	aino.m.salminen@helsinki.fi
Tuula Salo	Hospital District of Helsinki and Uusimaa, Helsinki, Finland	tuula.salo@helsinki.fi
David Rice	Hospital District of Helsinki and Uusimaa, Helsinki, Finland	david.rice@helsinki.fi
Pekka Nieminen	Hospital District of Helsinki and Uusimaa, Helsinki, Finland	pekka.nieminen@helsinki.fi
Ulla Palotie	Hospital District of Helsinki and Uusimaa, Helsinki, Finland	ulla.palotie@helsinki.fi
Maria Siponen	Northern Savo Hospital District, Kuopio, Finland	maria.siponen@uef.fi
Liisa Suominen	Northern Savo Hospital District, Kuopio, Finland	liisa.suominen@uef.fi
Päivi Mäntylä	Northern Savo Hospital District, Kuopio, Finland	paivi.mantyla@uef.fi
Ulvi Gursoy	Hospital District of Southwest Finland, Turku, Finland	ulvi.gursoy@utu.fi
Vuokko Anttonen	Northern Ostrobothnia Hospital District, Oulu, Finland	vuokko.anttonen@oulu.fi
Kirsi Sipilä	Research Unit of Oral Health Sciences Faculty of Medicine, University of Oulu, Oulu, Finland; Medical Research Center, Oulu, Oulu University Hospital and University of Oulu, Oulu, Finland	kirsi.sipila@oulu.fi
Rion Pendergrass	Genentech, San Francisco, CA, United States	pendergrass.sarah@gene.com
Hannele Laivuori	Institute for Molecular Medicine Finland (FIMM), HiLIFE, University of Helsinki, Helsinki, Finland	hannele.laivuori@helsinki.fi
Venla Kurra	Pirkanmaa Hospital District, Tampere, Finland	venla.kurra@tuni.fi
Laura Kotaniemi-Talonen	Pirkanmaa Hospital District, Tampere, Finland	laura.kotaniemi-talonen@tuni.fi
Oskari Heikinheimo	Hospital District of Helsinki and Uusimaa, Helsinki, Finland	oskari.heikinheimo@helsinki.fi
Ilkka Kalliala	Hospital District of Helsinki and Uusimaa, Helsinki, Finland	ilkka.kalliala@hus.fi
Lauri Aaltonen	Hospital District of Helsinki and Uusimaa, Helsinki, Finland	lauri.aaltonen@helsinki.fi

	Finland	
Varpu Jokimaa	Hospital District of Southwest Finland, Turku, Finland	varpu.jokimaa@utu.fi
Johannes Kettunen	Northern Ostrobothnia Hospital District, Oulu, Finland	Johannes.Kettunen@oulu.fi
Marja Vääräsmäki	Northern Ostrobothnia Hospital District, Oulu, Finland	marja.vaarasmaki@oulu.fi
Outi Uimari	Northern Ostrobothnia Hospital District, Oulu, Finland	outi.uimari@oulu.fi
Laure Morin-Papunen	Northern Ostrobothnia Hospital District, Oulu, Finland	lmp@cc.oulu.fi
Maarit Niinimäki	Northern Ostrobothnia Hospital District, Oulu, Finland	maarit.niinimaki@oulu.fi
Terhi Pilttonen	Northern Ostrobothnia Hospital District, Oulu, Finland	terhi.pilttonen@oulu.fi
Katja Kivinen	Institute for Molecular Medicine Finland (FIMM), HiLIFE, University of Helsinki, Helsinki, Finland	katja.kivinen@helsinki.fi
Elisabeth Widen	Institute for Molecular Medicine Finland (FIMM), HiLIFE, University of Helsinki, Helsinki, Finland	elisabeth.widen@helsinki.fi
Taru Tukiainen	Institute for Molecular Medicine Finland (FIMM), HiLIFE, University of Helsinki, Helsinki, Finland	taru.tukiainen@helsinki.fi
Mary Pat Reeve	Institute for Molecular Medicine Finland (FIMM), HiLIFE, University of Helsinki, Helsinki, Finland	mary.reeve@helsinki.fi
Mark Daly	Institute for Molecular Medicine Finland (FIMM), HiLIFE, University of Helsinki, Helsinki, Finland; Broad Institute of MIT and Harvard; Massachusetts General Hospital	mark.daly@helsinki.fi
Niko Välimäki	University of Helsinki, Helsinki, Finland	niko.valimaki@helsinki.fi
Eija Laakkonen	University of Jyväskylä, Jyväskylä, Finland	eija.k.laakkonen@jyu.fi
Jaakko Tyrmi	University of Oulu, Oulu, Finland / University of Tampere, Tampere, Finland	jaakko.tyrmi@oulu.fi
Heidi Silven	University of Oulu, Oulu, Finland	heidi.silven@student.oulu.fi
Eeva Sliz	University of Oulu, Oulu, Finland	eeva.sliz@oulu.fi
Riikka Arffman	University of Oulu, Oulu, Finland	riikka.arffman@oulu.fi
Susanna Savukoski	University of Oulu, Oulu, Finland	susanna.savukoski@oulu.fi
Triin Laisk	Estonian biobank, Tartu, Estonia	triin.laisk@ut.ee
Natalia Pujol	Estonian biobank, Tartu, Estonia	natalia.pujolgualdo@oulu.fi
Mengzhen Liu	Abbvie, Chicago, IL, United States	mengzhen.liu@abbvie.com
Bridget Riley-Gillis	Abbvie, Chicago, IL, United States	bridget.rileygillis@abbvie.com

Rion Pendergrass	Genentech, San Francisco, CA, United States	penders2@gene.com
Janet Kumar	GlaxoSmithKline, Collegeville, PA, United States	janet.x.kumar@gsk.com
Kirsi Auro	GlaxoSmithKline, Espoo, Finland	kirsi.m.auro@gsk.com
Iiris Hovatta	University of Helsinki, Finland	iiris.hovatta@helsinki.fi
Chia-Yen Chen	Biogen, Cambridge, MA, United States	chiayen.chen@biogen.com
Erkki Isometsä	Hospital District of Helsinki and Uusimaa, Helsinki, Finland	erkki.isometsa@hus.fi
Hanna Ollila	Institute for Molecular Medicine Finland (FIMM), HiLIFE, University of Helsinki, Helsinki, Finland	hanna.m.ollila@helsinki.fi
Jaana Suvisaari	Finnish Institute for Health and Welfare (THL), Helsinki, Finland	jaana.suvisaari@thl.fi
Antti Mäkitie	Department of Otorhinolaryngology - Head and Neck Surgery, University of Helsinki and Helsinki University Hospital, Helsinki, Finland	antti.makitie@helsinki.fi
Argyro Bizaki-Vallaskangas	Pirkanmaa Hospital District, Tampere, Finland	argyro.bizaki-vallaskangas@tuni.fi
Sanna Toppila-Salmi	University of Eastern Finland and Kuopio University Hospital, Department of Otorhinolaryngology, Kuopio, Finland and Department of Allergy, Helsinki University Hospital and University of Helsinki, Finland	sanna.salmi@helsinki.fi
Tytti Willberg	Hospital District of Southwest Finland, Turku, Finland	tytti.willberg@tyks.fi
Elmo Saarentaus	Institute for Molecular Medicine Finland (FIMM), HiLIFE, University of Helsinki, Helsinki, Finland	elmo.saarentaus@helsinki.fi
Antti Aarnisalo	Hospital District of Helsinki and Uusimaa, Helsinki, Finland	antti.aarnisalo@hus.fi
Eveliina Salminen	Hospital District of Helsinki and Uusimaa, Helsinki, Finland	eveliina.e.salminen@hus.fi
Elisa Rahikkala	Northern Ostrobothnia Hospital District, Oulu, Finland	elisa.rahikkala@ppshp.fi
Johannes Kettunen	Northern Ostrobothnia Hospital District, Oulu, Finland	johannes.kettunen@oulu.fi
Kristiina Aittomäki	Department of Medical Genetics, Helsinki University Central Hospital, Helsinki, Finland	kristiina.aittomaki@helsinki.fi
Fredrik Åberg	Transplantation and Liver Surgery Clinic, Helsinki University Hospital, Helsinki University, Helsinki, Finland	fredrik.aberg@helsinki.fi
Mitja Kurki	Institute for Molecular Medicine Finland (FIMM), HiLIFE, University of Helsinki, Helsinki, Finland;	mkurki@broadinstitute.org

	Broad Institute, Cambridge, MA, United States	
Samuli Ripatti	Institute for Molecular Medicine Finland (FIMM), HiLIFE, University of Helsinki, Helsinki, Finland	samuli.ripatti@helsinki.fi
Mark Daly	Institute for Molecular Medicine, Finland (FIMM), HiLIFE, University of Helsinki, Helsinki, Finland; Broad Institute of MIT and Harvard; Massachusetts General Hospital	mark.daly@helsinki.fi
Juha Karjalainen	Institute for Molecular Medicine Finland (FIMM), HiLIFE, University of Helsinki, Helsinki, Finland	juha.karjalainen@helsinki.fi
Aki Havulinna	Institute for Molecular Medicine Finland (FIMM), HiLIFE, University of Helsinki, Helsinki, Finland; Finnish Institute for Health and Welfare (THL), Helsinki, Finland	aki.havulinna@helsinki.fi
Juha Mehtonen	Institute for Molecular Medicine Finland (FIMM), HiLIFE, University of Helsinki, Helsinki, Finland	juha.mehtonen@helsinki.fi
Priit Palta	Institute for Molecular Medicine Finland (FIMM), HiLIFE, University of Helsinki, Helsinki, Finland	priit.palta@helsinki.fi
Shabbeer Hassan	Institute for Molecular Medicine Finland (FIMM), HiLIFE, University of Helsinki, Helsinki, Finland	shabbeer.hassan@helsinki.fi
Pietro Della Briotta Parolo	Institute for Molecular Medicine Finland (FIMM), HiLIFE, University of Helsinki, Helsinki, Finland	pietro.dellabriottaparolo@helsinki.fi
Wei Zhou	Broad Institute, Cambridge, MA, United States	wzhou@broadinstitute.org
Mutaamba Maasha	Broad Institute, Cambridge, MA, United States	mmaasha@broadinstitute.org
Shabbeer Hassan	Institute for Molecular Medicine Finland (FIMM), HiLIFE, University of Helsinki, Helsinki, Finland	shabbeer.hassan@helsinki.fi
Susanna Lemmelä	Institute for Molecular Medicine Finland (FIMM), HiLIFE, University of Helsinki, Helsinki, Finland	susanna.lemmela@helsinki.fi
Manuel Rivas	University of Stanford, Stanford, CA, United States	mrivas@stanford.edu
Aarno Palotie	Institute for Molecular Medicine Finland (FIMM), HiLIFE, University of Helsinki, Helsinki, Finland	aarno.palotie@helsinki.fi
Aoxing Liu	Institute for Molecular Medicine Finland (FIMM), HiLIFE, University of Helsinki, Helsinki, Finland	aoxing.liu@helsinki.fi
Arto Lehisto	Institute for Molecular Medicine Finland (FIMM), HiLIFE, University of Helsinki, Helsinki, Finland	arto.lehisto@helsinki.fi
Andrea Ganna	Institute for Molecular Medicine Finland (FIMM), HiLIFE, University of Helsinki, Helsinki, Finland	aganna@broadinstitute.org
Vincent Llorens	Institute for Molecular Medicine Finland (FIMM), HiLIFE, University of Helsinki, Helsinki, Finland	vincent.llorens@helsinki.fi
Hannele Laivuori	Institute for Molecular Medicine Finland (FIMM),	hannele.laivuori@helsinki.fi

	HiLIFE, University of Helsinki, Helsinki, Finland	
Taru Tukiainen	Institute for Molecular Medicine Finland (FIMM), HiLIFE, University of Helsinki, Helsinki, Finland	taru.tukiainen@helsinki.fi
Mary Pat Reeve	Institute for Molecular Medicine Finland (FIMM), HiLIFE, University of Helsinki, Helsinki, Finland	mary.reeve@helsinki.fi
Henrike Heyne	Institute for Molecular Medicine Finland (FIMM), HiLIFE, University of Helsinki, Helsinki, Finland	hheyne@broadinstitute.org
Nina Mars	Institute for Molecular Medicine Finland (FIMM), HiLIFE, University of Helsinki, Helsinki, Finland	nina.mars@helsinki.fi
Joel Rämö	Institute for Molecular Medicine Finland (FIMM), HiLIFE, University of Helsinki, Helsinki, Finland	joel.ramo@helsinki.fi
Elmo Saarentaus	Institute for Molecular Medicine Finland (FIMM), HiLIFE, University of Helsinki, Helsinki, Finland	elmo.saarentaus@helsinki.fi
Hanna Ollila	Institute for Molecular Medicine Finland (FIMM), HiLIFE, University of Helsinki, Helsinki, Finland	hanna.m.ollila@helsinki.fi
Rodos Rodosthenous	Institute for Molecular Medicine Finland (FIMM), HiLIFE, University of Helsinki, Helsinki, Finland	rodos.rodosthenous@helsinki.fi
Satu Strausz	Institute for Molecular Medicine Finland (FIMM), HiLIFE, University of Helsinki, Helsinki, Finland	satu.strausz@helsinki.fi
Tuula Palotie	University of Helsinki and Hospital District of Helsinki and Uusimaa, Helsinki, Finland	tuula.palotie@helsinki.fi
Kimmo Palin	University of Helsinki, Helsinki, Finland	kimmo.palin@helsinki.fi
Javier Garcia-Tabuenca	University of Tampere, Tampere, Finland	javier.graciatabuenca@tuni.fi
Harri Siirtola	University of Tampere, Tampere, Finland	harri.siirtola@tuni.fi
Tuomo Kiiskinen	Institute for Molecular Medicine Finland (FIMM), HiLIFE, University of Helsinki, Helsinki, Finland	tuomo.kiiskinen@helsinki.fi
Jiwoo Lee	Institute for Molecular Medicine Finland (FIMM), HiLIFE, University of Helsinki, Helsinki, Finland; Broad Institute, Cambridge, MA, United States	jiwoo.lee@helsinki.fi
Kristin Tsuo	Institute for Molecular Medicine Finland (FIMM), HiLIFE, University of Helsinki, Helsinki, Finland; Broad Institute, Cambridge, MA, United States	kristintsuo@fas.harvard.edu
Amanda Elliott	Institute for Molecular Medicine Finland (FIMM), HiLIFE, University of Helsinki, Helsinki, Finland; Broad Institute, Cambridge, MA, USA and Massachusetts General Hospital, Boston, MA, USA	aelliott@broadinstitute.org
Kati Kristiansson	THL Biobank / Finnish Institute for Health and Welfare (THL), Helsinki, Finland	kati.kristiansson@thl.fi



Mikko Arvas	Finnish Red Cross Blood Service / Finnish Hematology Registry and Clinical Biobank, Helsinki, Finland	mikko.arvas@veripalvelu.fi
Kati Hyvärinen	Finnish Red Cross Blood Service, Helsinki, Finland	kati.hyvarinen@veripalvelu.fi
Jarmo Ritari	Finnish Red Cross Blood Service, Helsinki, Finland	jarmo.ritari@veripalvelu.fi
Olli Carpén	Helsinki Biobank / Helsinki University and Hospital District of Helsinki and Uusimaa, Helsinki	olli.carpén@helsinki.fi
Johannes Kettunen	Northern Finland Biobank Borealis / University of Oulu / Northern Ostrobothnia Hospital District, Oulu, Finland	johannes.kettunen@oulu.fi
Katri Pylkäs	University of Oulu, Oulu, Finland	katri.pylkas@oulu.fi
Eeva Sliz	University of Oulu, Oulu, Finland	eeva.sliz@oulu.fi
Minna Karjalainen	University of Oulu, Oulu, Finland	minna.k.karjalainen@oulu.fi
Tuomo Mantere	Northern Finland Biobank Borealis / University of Oulu / Northern Ostrobothnia Hospital District, Oulu, Finland	tuomo.mantere@oulu.fi
Eeva Kangasniemi	Finnish Clinical Biobank Tampere / University of Tampere / Pirkanmaa Hospital District, Tampere, Finland	eeva.kangasniemi@pshp.fi
Sami Heikkinen	University of Eastern Finland, Kuopio, Finland	sami.heikkinen@uef.fi
Arto Mannermaa	Biobank of Eastern Finland / University of Eastern Finland / Northern Savo Hospital District, Kuopio, Finland	arto.mannermaa@uef.fi
Eija Laakkonen	University of Jyväskylä, Jyväskylä, Finland	eija.k.laakkonen@jyu.fi
Nina Pitkanen	Auria Biobank / University of Turku / Hospital District of Southwest Finland, Turku, Finland	Niina.Pitkanen@tyks.fi
Samuel Lessard	Translational Sciences, Sanofi R&D, Framingham, MA, USA	samuel.lessard@sanofi.com
Clément Chatelain	Translational Sciences, Sanofi R&D, Framingham, MA, USA	clement.chatelain@sanofi.com
Lila Kallio	Auria Biobank / University of Turku / Hospital District of Southwest Finland, Turku, Finland	Lila.Kallio@tyks.fi
Tiina Wahlfors	THL Biobank / Finnish Institute for Health and Welfare (THL), Helsinki, Finland	tiina.wahlfors@thl.fi
Jukka Partanen	Finnish Red Cross Blood Service / Finnish Hematology Registry and Clinical Biobank, Helsinki, Finland	jukka.partanen@veripalvelu.fi
Eero Punkka	Helsinki Biobank / Helsinki University and Hospital District of Helsinki and Uusimaa, Helsinki	eero.punkka@hus.fi

Raisa Serpi	Northern Finland Biobank Borealis / University of Oulu / Northern Ostrobothnia Hospital District, Oulu, Finland	raisa.serpi@ppshp.fi
Sanna Siltanen	Finnish Clinical Biobank Tampere / University of Tampere / Pirkanmaa Hospital District, Tampere, Finland	sanna.siltanen@pshp.fi
Veli-Matti Kosma	Biobank of Eastern Finland / University of Eastern Finland / Northern Savo Hospital District, Kuopio, Finland	veli-matti.kosma@uef.fi
Teijo Kuopio	Central Finland Biobank / University of Jyväskylä / Central Finland Health Care District, Jyväskylä, Finland	teijo.kuopio@ksshp.fi
Anu Jalanko	Institute for Molecular Medicine Finland (FIMM), HiLIFE, University of Helsinki, Helsinki, Finland	anu.jalanko@helsinki.fi
Huei-Yi Shen	Institute for Molecular Medicine Finland (FIMM), HiLIFE, University of Helsinki, Helsinki, Finland	huei-yi.shen@helsinki.fi
Risto Kajanne	Institute for Molecular Medicine Finland (FIMM), HiLIFE, University of Helsinki, Helsinki, Finland	risto.kajanne@helsinki.fi
Mervi Aavikko	Institute for Molecular Medicine Finland (FIMM), HiLIFE, University of Helsinki, Helsinki, Finland	mervi.aavikko@helsinki.fi
Helen Cooper	Institute for Molecular Medicine Finland (FIMM), HiLIFE, University of Helsinki, Helsinki, Finland	helen.cooper@helsinki.fi
Denise Öller	Institute for Molecular Medicine Finland (FIMM), HiLIFE, University of Helsinki, Helsinki, Finland	denise.oller@helsinki.fi
Rasko Leinonen	Institute for Molecular Medicine Finland (FIMM), HiLIFE, University of Helsinki, Helsinki, Finland; European Molecular Biology Laboratory, European Bioinformatics Institute, Cambridge, UK	rasko@ebi.ac.uk
Henna Palin	Finnish Clinical Biobank Tampere / University of Tampere / Pirkanmaa Hospital District, Tampere, Finland	henna.palin@pshp.fi
Malla-Maria Linna	Helsinki Biobank / Helsinki University and Hospital District of Helsinki and Uusimaa, Helsinki	malla-maria.linna@hus.fi
Mitja Kurki	Institute for Molecular Medicine Finland (FIMM), HiLIFE, University of Helsinki, Helsinki, Finland; Broad Institute, Cambridge, MA, United States	mkurki@broadinstitute.org
Juha Karjalainen	Institute for Molecular Medicine Finland (FIMM), HiLIFE, University of Helsinki, Helsinki, Finland	juha.karjalainen@helsinki.fi
Pietro Della Briotta Parolo	Institute for Molecular Medicine Finland (FIMM),	pietro.dellabriottaparolo@helsinki.fi

	HiLIFE, University of Helsinki, Helsinki, Finland	
Arto Lehisto	Institute for Molecular Medicine Finland (FIMM), HiLIFE, University of Helsinki, Helsinki, Finland	arto.lehisto@helsinki.fi
Juha Mehtonen	Institute for Molecular Medicine Finland (FIMM), HiLIFE, University of Helsinki, Helsinki, Finland	juha.mehtonen@helsinki.fi
Wei Zhou	Broad Institute, Cambridge, MA, United States	wzhou@broadinstitute.org
Masahiro Kanai	Broad Institute, Cambridge, MA, United States	mkanai@broadinstitute.org
Mutaamba Maasha	Broad Institute, Cambridge, MA, United States	mmaasha@broadinstitute.org
Zhili Zheng	Broad Institute, Cambridge, MA, United States	zhengzhi@broadinstitute.org
Hannele Laivuori	Institute for Molecular Medicine Finland (FIMM), HiLIFE, University of Helsinki, Helsinki, Finland	hannele.laivuori@helsinki.fi
Aki Havulinna	Institute for Molecular Medicine Finland (FIMM), HiLIFE, University of Helsinki, Helsinki, Finland; Finnish Institute for Health and Welfare (THL), Helsinki, Finland	aki.havulinna@helsinki.fi
Susanna Lemmelä	Institute for Molecular Medicine Finland (FIMM), HiLIFE, University of Helsinki, Helsinki, Finland	susanna.lemmela@helsinki.fi
Tuomo Kiiskinen	Institute for Molecular Medicine Finland (FIMM), HiLIFE, University of Helsinki, Helsinki, Finland	tuomo.kiiskinen@helsinki.fi
L. Elisa Lahtela	Institute for Molecular Medicine Finland (FIMM), HiLIFE, University of Helsinki, Helsinki, Finland	laura.lahtela@helsinki.fi
Mari Kaunisto	Institute for Molecular Medicine Finland (FIMM), HiLIFE, University of Helsinki, Helsinki, Finland	mari.kaunisto@helsinki.fi
Elina Kilpeläinen	Institute for Molecular Medicine Finland (FIMM), HiLIFE, University of Helsinki, Helsinki, Finland	elina.kilpelainen@helsinki.fi
Timo P. Sipilä	Institute for Molecular Medicine Finland (FIMM), HiLIFE, University of Helsinki, Helsinki, Finland	timo.p.sipila@helsinki.fi
Oluwaseun Alexander Dada	Institute for Molecular Medicine Finland (FIMM), HiLIFE, University of Helsinki, Helsinki, Finland	alexander.dada@helsinki.fi
Awaisa Ghazal	Institute for Molecular Medicine Finland (FIMM), HiLIFE, University of Helsinki, Helsinki, Finland	awaisa.ghazal@helsinki.fi
Anastasia Kytölä	Institute for Molecular Medicine Finland (FIMM), HiLIFE, University of Helsinki, Helsinki, Finland	anastasia.shcherban@helsinki.fi
Rigbe Weldatsadik	Institute for Molecular Medicine Finland (FIMM), HiLIFE, University of Helsinki, Helsinki, Finland	rigbe.weldatsadik@helsinki.fi
Sanni Ruotsalainen	Institute for Molecular Medicine Finland (FIMM), HiLIFE, University of Helsinki, Helsinki, Finland	sanni.ruotsalainen@helsinki.fi
Kati Donner	Institute for Molecular Medicine Finland (FIMM), HiLIFE, University of Helsinki, Helsinki, Finland	kati.donner@helsinki.fi

Timo P. Sipilä	Institute for Molecular Medicine Finland (FIMM), HiLIFE, University of Helsinki, Helsinki, Finland	timo.p.sipila@helsinki.fi
Anu Loukola	Helsinki Biobank / Helsinki University and Hospital District of Helsinki and Uusimaa, Helsinki	anu.loukola@hus.fi
Päivi Laiho	THL Biobank / Finnish Institute for Health and Welfare (THL), Helsinki, Finland	paivi.laiho@thl.fi
Tuuli Sistonen	THL Biobank / Finnish Institute for Health and Welfare (THL), Helsinki, Finland	tuuli.sistonen@thl.fi
Essi Kaiharju	THL Biobank / Finnish Institute for Health and Welfare (THL), Helsinki, Finland	essi.kaiharju@thl.fi
Markku Laukkanen	THL Biobank / Finnish Institute for Health and Welfare (THL), Helsinki, Finland	markku.laukkanen@thl.fi
Elina Järvensivu	THL Biobank / Finnish Institute for Health and Welfare (THL), Helsinki, Finland	elina.jarvensivu@thl.fi
Sini Lähteenmäki	THL Biobank / Finnish Institute for Health and Welfare (THL), Helsinki, Finland	sini.lahteenmaki@thl.fi
Lotta Männikkö	THL Biobank / Finnish Institute for Health and Welfare (THL), Helsinki, Finland	lotta.mannikko@thl.fi
Regis Wong	THL Biobank / Finnish Institute for Health and Welfare (THL), Helsinki, Finland	regis.wong@thl.fi
Auli Toivola	THL Biobank / Finnish Institute for Health and Welfare (THL), Helsinki, Finland	auli.toivola@thl.fi
Minna Brunfeldt	THL Biobank / Finnish Institute for Health and Welfare (THL), Helsinki, Finland	minna.brunfeldt@thl.fi
Hannele Mattsson	THL Biobank / Finnish Institute for Health and Welfare (THL), Helsinki, Finland	hannele.mattsson@thl.fi
Kati Kristiansson	THL Biobank / Finnish Institute for Health and Welfare (THL), Helsinki, Finland	kati.kristiansson@thl.fi
Susanna Lemmelä	Institute for Molecular Medicine Finland (FIMM), HiLIFE, University of Helsinki, Helsinki, Finland	susanna.lemmela@helsinki.fi
Sami Koskelainen	THL Biobank / Finnish Institute for Health and Welfare (THL), Helsinki, Finland	sami.koskelainen@thl.fi
Tero Hiekkalinna	THL Biobank / Finnish Institute for Health and Welfare (THL), Helsinki, Finland	tero.hiekkalinna@helsinki.fi
Teemu Paajanen	THL Biobank / Finnish Institute for Health and Welfare (THL), Helsinki, Finland	teemu.paajanen@thl.fi
Priit Palta	Institute for Molecular Medicine Finland (FIMM), HiLIFE, University of Helsinki, Helsinki, Finland	priit.palta@helsinki.fi
Shuang Luo	Institute for Molecular Medicine Finland (FIMM),	shuang.luo@helsinki.fi

	HiLIFE, University of Helsinki, Helsinki, Finland	
Tarja Laitinen	Pirkanmaa Hospital District, Tampere, Finland	tarja.laitinen@pshp.fi
Mary Pat Reeve	Institute for Molecular Medicine Finland (FIMM), HiLIFE, University of Helsinki, Helsinki, Finland	mary.reeve@helsinki.fi
Shanmukha Sampath Padmanabhuni	Institute for Molecular Medicine Finland (FIMM), HiLIFE, University of Helsinki, Helsinki, Finland	sam.padmanabhuni@helsinki.fi
Marianna Niemi	University of Tampere, Tampere, Finland	marianna.niemi@tuni.fi
Harri Siirtola	University of Tampere, Tampere, Finland	harri.siirtola@tuni.fi
Javier Gracia-Tabuenca	University of Tampere, Tampere, Finland	javier.graciatabuenca@tuni.fi
Mika Helminen	University of Tampere, Tampere, Finland	mika.helminen@tuni.fi
Tiina Luukkaala	University of Tampere, Tampere, Finland	tiina.luukkaala@tuni.fi
Iida Vähätalo	University of Tampere, Tampere, Finland	iida.vahatalo@epshp.fi
Jyrki Tammerluoto	Institute for Molecular Medicine Finland (FIMM), HiLIFE, University of Helsinki, Helsinki, Finland	jyrki.tammerluoto@helsinki.fi
Marco Hautalahti	Finnish Biobank Cooperative - FINBB	marco.hautalahti@finbb.fi
Johanna Mäkelä	Finnish Biobank Cooperative - FINBB	johanna.makela@finbb.fi
Sarah Smith	Finnish Biobank Cooperative - FINBB	sarah.smith@finbb.fi
Tom Southerington	Finnish Biobank Cooperative - FINBB	tom.southerington@finbb.fi
Petri Lehto	Finnish Biobank Cooperative - FINBB	petri.lehto@finbb.fi