

1 **VIDAS® TB-IGRA accuracy in tuberculosis patients and persons at varying risk of**
2 **exposure**

3 Delia Goletti¹, Niaz Banaei², Rahul Batra³, Anne Emmanuelle Berger⁴, Azra Blazevic⁵, Elisabeth
4 Botelho-Nevers⁶, Ronan Breen³, Natalie Bruiners⁷, Emmanuelle Cambau⁸, Etienne Carbonnelle⁹,
5 Charles L. Daley¹⁰, Cécile Descotes-Genon¹¹, Francesco Di Gennaro¹², Florence Doucet-
6 Populaire¹³, Aliasgar Esmail¹⁴, Julia Dolores Estrada Guzman¹⁵, Luc Fontana¹⁶, Maria Laura
7 Gennaro⁷, Deborah Handler⁷, Rosa María Herrera Torres¹⁵, Daniel Hoft⁵, Nahed Ismail¹⁷,
8 Margaux Isnard¹¹, Alfred Lardizabal⁷, François Xavier Lesage¹⁸, Amanda Lopes¹⁹, Williams
9 Luciano López Vidal¹⁵, Rene Machado Contreras¹⁵, Philippe Manivet²⁰, Hubert Marotte²¹,
10 Frédéric Méchai²², Amel Medjahed-Artebasse²³, Richard Meldau¹⁴, Yves Mérieux²⁴, Jacques
11 Morel²⁵, Faiza Mougari⁸, Suzette Oelofse¹⁴, Fabrizio Palmieri¹², Jean Luc Perrot²⁶, Elisa
12 Petruccioli¹, David T. Pride²⁷, Edouard Tuailon²⁸, Caryn Upton²⁹, Naadira Vanker²⁹, Keertan
13 Dheda^{14,30}

14
15 ¹Translational Research Unit, National Institute for Infectious Diseases L. Spallanzani-IRCCS, Rome,
16 Italy.

17 ²Stanford University School of Medicine, Stanford, CA, USA.

18 ³Guy's and St Thomas' NHS Foundation Trust, London, UK.

19 ⁴Laboratory of Immunology, University Hospital of Saint-Etienne, 42055 Saint-Etienne cedex 02, France.

20 ⁵Saint Louis University School of Medicine, St. Louis, MO, USA.

21 ⁶Infectious Diseases Department, University Hospital of Saint-Etienne, 42055 Saint-Etienne cedex 02,
22 France.

23 ⁷Public Health Research Institute, New Jersey Medical School, Rutgers University, Newark, NJ, USA.

24 ⁸APHP-GHU Nord Bichat Hospital, Service de mycobacteriologie specialisee et de reference, associate
25 laboratory of the National reference center for mycobacteria; Université Paris Cité IAME UMR1137
26 Inserm, 75018 Paris, France.

27 ⁹Department of microbiology, Avicenne Hospital, Bobigny, France.

28 ¹⁰Division of Mycobacterial and Respiratory Infections, National Jewish Health, Denver, CO, USA.

29 ¹¹Department of Infectious Diseases, Centre Hospitalier de Chambéry, Chambéry, France.

30 ¹²Respiratory Infectious Disease Unit Department, National Institute for Infectious Diseases L.
31 Spallanzani-IRCCS, Rome, Italy.

32 ¹³Department of Bacteriology-Hygiene, APHP Université Paris-Saclay, Antoine Beclere Hospital,
33 Clamart, France.

34 ¹⁴Centre for Lung Infection and Immunity, Division of Pulmonology, Department of Medicine and UCT
35 Lung Institute & South African MRC/UCT Centre for the Study of Antimicrobial Resistance, University
36 of Cape Town, Cape Town, South Africa.

37 ¹⁵Facultad de Medicina Mexicali, Universidad Autónoma de Baja California, 21000 Mexicali, B.C.,
38 Mexico.

39 ¹⁶Occupational and Environmental Health Department, University Hospital of Saint-Etienne, 42055 Saint-
40 Etienne cedex 02, France.

- 41 ¹⁷College of Medicine, University of Illinois at Chicago, Chicago, IL, USA.
- 42 ¹⁸Desbrest Institute of Epidemiology and Public Health, Univ Montpellier, INSERM, CHU, Montpellier,
43 France.
- 44 ¹⁹APHP-GHU Nord Lariboisiere Hospital, Service de Medecine interne, 75010 Paris, France.
- 45 ²⁰APHP GHU Nord Lariboisière Hospital, Centre de Ressources biologiques, 75010 Paris, France.
- 46 ²¹Université Jean Monnet, Rheumatology Department, CHU Saint-Etienne, INSERM, Mines Saint-
47 Etienne, 42055 Saint-Etienne cedex 02, France.
- 48 ²²Department of infectious diseases, Avicenne Hospital, Hôpitaux universitaires Paris Seine-Saint-Denis,
49 AP-HP, UFR SMBH, Université Sorbonne Paris Nord, Bobigny, France.
- 50 ²³CLAT 92, Anti-TB center of Nanterre, Nanterre, France.
- 51 ²⁴Etablissement Français du Sang Auvergne-Rhône-Alpes, Lyon, France.
- 52 ²⁵Department of Rheumatology, CHU and University of Montpellier, Phymedexp, University of
53 Montpellier, Inserm, CNRS, Montpellier, France.
- 54 ²⁶Dermatology Department, University Hospital of Saint-Etienne, 42055 Saint-Etienne cedex 02, France.
- 55 ²⁷University of California San Diego, La Jolla, CA, USA.
- 56 ²⁸Pathogenesis and Control of Chronic and Emerging Infections, INSERM U1058, University of
57 Montpellier, Montpellier University Hospital, Montpellier.
- 58 ²⁹TASK Applied Science, Cape Town, South Africa.
- 59 ³⁰Faculty of Infectious and Tropical Diseases, Department of Immunology and Infection, London School
60 of Hygiene and Tropical Medicine, London, UK.

61

62 **Take-home message:** The first fully automated interferon- γ -release assay—the bioMérieux

63 VIDAS[®] TB-IGRA—is highly specific and displays greater sensitivity than QuantiFERON[®]-TB

64 Gold Plus, and thus represents a valuable new and streamlined diagnostic tool for TB infection.

65

66 ***Corresponding author:**

67 Prof. Keertan Dheda

68 Department of Medicine. H.46.41, Old Main Bldg. Groote Schuur Hospital, Observatory, Cape

69 Town, South Africa, 7925

70 Email: keertan.dheda@uct.ac.za

71 **ABSTRACT**

72 **Background:** Detection and treatment of individuals with presumed latent tuberculosis (TB)
73 infection (i.e., excluding active disease; LTBI) is imperative to achieve global TB control, as
74 they represent a potential transmission reservoir. However, more sensitive and user-friendly
75 diagnostic tools are needed.

76 **Methods:** We evaluated the accuracy for TB infection detection of the new VIDAS[®] TB-IGRA
77 (bioMérieux), a fully automated, single tube (thus eliminating the need for batch testing)
78 overnight incubation assay, compared to the QuantiFERON[®]-TB Gold Plus (QFT-Plus,
79 QIAGEN), in a global multi-centre cross-sectional study (NCT04048018) that included patients
80 with TB disease ($n=200$) or participants at varying levels of TB exposure ($n=1460$; mixed
81 exposure-risk-population).

82 **Results:** VIDAS[®] TB-IGRA identified TB disease with greater sensitivity than QFT-Plus
83 (97.5% vs. 80.7%, $P<0.01\%$), and yielding significantly fewer false-negatives (2.5% vs. 17.5%;
84 $P<0.01\%$) and indeterminate results (1.0% vs. 9.5%; $P=0.02\%$). In the mixed exposure-risk-
85 population, negative (NPA) and positive percent agreement (PPA) were 90.1% (1097/1217) and
86 92.1% (223/242), respectively. PPA increased with TB-exposure risk (up to 95.7% for high-risk
87 participants), whereas NPA decreased (starting from 96.9% for low-risk participants).
88 Regression analyses revealed that VIDAS[®] TB-IGRA had a better fit with the risk-exposure
89 gradient than the QFT-Plus. Specificity in extremely low TB-exposure risk participants ($n = 125$)
90 was high for both VIDAS[®] TB-IGRA and QFT-Plus (97.6% vs. 95.2%; $P=8.33\%$).

91 **Conclusions:** VIDAS[®] TB-IGRA displayed greater sensitivity than QFT-Plus, had a lower
92 indeterminate rate, correlated better with an exposure gradient, and was highly specific,
93 suggesting that it is a potentially valuable tool for the diagnosis of LTBI.

94 **INTRODUCTION**

95 Tuberculosis (TB), due to infection by *Mycobacterium tuberculosis* (*Mtb*) is a significant global
96 health problem that resulted in 1.3 million estimated deaths in 2022 [1]. TB is transmitted from
97 person-to-person *via* bacteria-containing respiratory droplets [2]. The probability of being
98 infected depends on the likelihood and degree of exposure, which is referred to as TB-exposure
99 risk [3, 4]. Approximately 5–10% of *Mtb*-infected individuals develop TB disease (also called
100 active TB); however, most infections (90–95%) are controlled by the host immune response and
101 do not progress [2]. This asymptomatic non-transmissible state, known as latent TB infection
102 (LTBI), can later progress to TB disease in response to triggers, such as impaired immune
103 function, and represents an important reservoir for disease. Current research further suggests a
104 continuum from exposure to disease, with transition between states dependent on modulators of
105 host immunity [2, 5–9]. Hereafter the term TB infection is used to represent all stages of
106 infection with *M. tuberculosis* without clinical manifestations of TB disease, as suggested
107 in [10].

108
109 TB diagnosis remains challenging, particularly in middle/low-income countries. Furthermore,
110 there is no gold-standard for the diagnosis of TB infection. Current methods –the tuberculin skin
111 test (TST) and interferon (IFN)- γ -release assays (IGRAs)– assess host response to infection [9,
112 11–14] and neither can differentiate between TB disease and TB infection or predict risk of
113 progression to TB disease. IGRAs, such as QuantiFERON-TB Gold Plus (QFT-Plus; QIAGEN)
114 and T-SPOT-TB (Oxford Immunotec), are *in vitro* blood tests that measure T cell-mediated
115 release of IFN- γ in response to synthetic *Mtb* complex-specific antigens (*e.g.*, ESAT-6 and

116 CFP-10) [15]. These tests show enhanced specificity for *Mtb* relative to the TST and can be
117 performed in a single patient visit.

118

119 Studies have shown the benefit of systematic testing and treatment for presumed TB infection in
120 people with HIV, pulmonary-TB household contacts under-5 years old and groups at clinical risk
121 for TB, including immigrants to low-burden settings, those receiving anti-tumour necrosis factor
122 (TNF) treatment or dialysis, and organ-related or bone marrow transplant patients [16–18]. More
123 recently, the World Health Organization (WHO) has advocated for TB infection screening and
124 treatment of household contacts, even in TB-endemic settings, and modelling studies have
125 indicated TB eradication will be impossible without treating the large reservoir of TB
126 infection [19]. These findings highlight the importance of streamlined testing methods for TB
127 infection. However, currently available IGRAs are often cumbersome to perform, requiring
128 several steps and often the need for batch testing, which leads to complex laboratory workflows,
129 introduces variability, and delays results [11, 12, 15, 20].

130

131 To address the unmet need for improved TB testing methods, bioMérieux developed the VIDAS[®]
132 TB-IGRA, the first IGRA to be fully automated, from sample pipetting to result interpretation.
133 This test, based on ESAT-6 and CFP-10 peptides-specific CD4⁺ and CD8⁺ T-cell responses [21]
134 requires a single whole-blood sample per patient and provides results within 17 hours. Here, we
135 assessed the accuracy for TB infection detection of VIDAS[®] TB-IGRA vs. QFT-Plus in an
136 international, multi-centre, cross-sectional study of participants with culture-confirmed TB disease
137 or with varying levels of TB-exposure risk (mixed exposure risk population). Since there is no
138 gold standard to diagnose LTBI, sensitivity was evaluated in patients with TB disease and

139 specificity was evaluated in persons at extremely low TB risk. Figure 1 provides an overview of
140 the study sub-groups and the performance characteristics.

141

142 **METHODS**

143 *Study Design and Participants*

144 Study participants were recruited, between December 2019 and December 2020, incorporating
145 i) the TB disease population, or ii) the mixed exposure risk population. The TB disease
146 population contained 200 culture-confirmed patients with TB disease recruited at 10 sites in both
147 low (France, Italy, UK, USA) and high TB-incidence countries (South Africa, Mexico). The
148 mixed exposure risk population contained 1,460 individuals recruited from 18 sites, with or
149 without identified risk factors for TB, and no history of TB disease or TB infection, as assessed
150 by questionnaire. See Supplementary Table S1 and Supplementary Figure S2 for more details on
151 study sites and participant flow, respectively.

152 The mixed exposure risk population was stratified in nine subgroups, along a gradient of TB-
153 exposure risk, ranging from extremely low (blood-bank donors in France) to extremely high risk
154 (same-bedroom TB-case contacts). The subgroups were further pooled into aggregate low-,
155 medium-, and high-risk groups (Supplementary Table S2).

156 In this paper, the term TB infection is used to represent all stages of infection with *Mtb* without
157 clinical manifestations of TB disease, as suggested in [10].

158 Patients with TB disease were recruited within 15 days of TB treatment. TB disease was defined
159 as positive TB culture followed by *Mtb*-complex species identification. HIV-infected patients
160 were excluded. In addition, the following exclusion criteria applied to both populations:

161 treatment with TNF- α inhibitors within 3 months prior to enrolment, TST within 12 weeks prior

162 to enrolment, self-reported pregnancy, history of nontuberculous mycobacterial infection. Patient
163 demographic information is listed in table 1.

164

165 Written informed consent was obtained from all participants. Study protocols were approved by
166 Institutional Review Boards (IRB) or Independent Ethics Committees (IEC) as appropriate
167 (Supplementary Table S3). See supplementary information for the full list of study sites and site
168 staff.

169

170 *Sample collection and testing*

171 Whole blood samples from each study participant were tested with the VIDAS[®] TB-IGRA
172 (bioMérieux, Marcy-l'Étoile, France) and QFT-Plus (QIAGEN, Hilden, Germany). Testing
173 procedures and result analysis followed the manufacturer's instructions.

174 The VIDAS[®] TB-IGRA was performed with reagents and VIDAS[®]3 instruments provided by
175 bioMérieux. For this test, samples are loaded into the instrument with three stimulation reagents:
176 AG, antigen; MIT, mitogen (positive control); NIL, negative control. All steps are performed by
177 the VIDAS[®]3 instrument, i.e., sample and reagent transfers, 37°C incubation for 16 hours,
178 automated enzyme-linked immunofluorescent assay (ELFA) to measure IFN- γ . Qualitative
179 results are automatically determined using previously established thresholds (Supplementary
180 Table S4), notably 0.35 IU/mL for AG-NIL values.

181

182 *Statistical analyses*

183 The rate of positive, negative or indeterminate results was calculated relative to the total number
184 of results for the population analysed, i.e., including indeterminate results. Statistical significance

185 of differences between QFT-Plus and VIDAS[®] TB-IGRA was calculated using McNemar's test
186 for paired data, with $P < 5\%$ considered as significant.

187

188 For the TB disease population, sensitivity of QFT-Plus and VIDAS[®] TB-IGRA were
189 independently calculated, excluding indeterminate results.

190 For the mixed exposure risk population, positive percent agreement (PPA) and negative percent
191 agreement (NPA) of VIDAS[®] TB-IGRA relative to QFT-Plus were calculated, along with 95%
192 confidence intervals (95% CIs). Study participants with indeterminate results from either test
193 were not included in NPA/PPA computations. See Supplementary Methods for more
194 information.

195

196 Logistic regression was performed to assess association between TB-exposure levels and
197 positivity rates for individuals in the mixed exposure risk population (Table 5) considering:
198 1) the three aggregate risk groups (low, medium, and high) and 2) the three subgroups within the
199 aggregate high-risk group (i.e., high-, very high-, and extremely high-risk subgroups). In each
200 case, a univariate regression (unadjusted model) was performed. When necessary, the model was
201 adjusted using three potential confounding variables that were present for all individuals and
202 potentially related to TB infection: age, sex, and geographic area (defined as EU, US, or rest of
203 world). For each variable, independence from exposure-risk level was first assessed using the
204 Chi-square test for qualitative variables (sex and geographic area) and the Kruskal–Wallis Test
205 for continuous variables (age), with $\alpha = 1\%$ for independence tests, before including it as a
206 confounding factor in the model. This avoids sampling over-representation of some items in the

207 different exposure-risk levels. Results are reported as unadjusted and adjusted odds ratios (OR)
208 with 95% CIs. All statistical analyses were performed using SAS software v.9.4.

209

210 **RESULTS**

211 *VIDAS[®] TB-IGRA showed superior sensitivity in the TB disease population*

212 In the TB disease population (200 culture-confirmed TB disease patients) the VIDAS[®] TB-IGRA
213 showed higher sensitivity compared to QFT-Plus (97.5% vs. 80.7% respectively, $P<0.01\%$, see
214 table 2). VIDAS[®] TB-IGRA significantly detected more TB disease cases than QFT-Plus (193 vs
215 146 among the 200 patients included in the analysis, i.e., 96.5% vs. 73.0%, $P<0.01\%$), and led to
216 fewer false-negative (2.5% vs. 17.5%, $P<0.01\%$) and indeterminate results (1.0% vs. 9.5%,
217 $P=0.02\%$). In summary, patients with TB disease were better identified by VIDAS[®] TB-IGRA as
218 compared to QFT-Plus.

219

220 *Clinical performance of the VIDAS[®] TB-IGRA in the mixed exposure risk population*

221 In the mixed exposure risk population (1,460 individuals without TB symptoms, at various levels
222 of TB-exposure risk) the positivity rate was significantly higher for VIDAS[®] TB-IGRA than
223 QFT-Plus (23.5% vs. 16.6% respectively, $P<0.01\%$, see table 2). NPA and PPA were 90.1% and
224 92.1%, respectively (table 3) indicating good agreement between the two tests.

225

226 *Analysis of discrepant results in the mixed exposure risk population*

227 To better understand the agreement between VIDAS[®] TB-IGRA and QFT-Plus in the mixed
228 exposure risk population, we conducted two additional analyses.

229 We first evaluated whether discordant results were distributed around the cut-off of each test. We
230 found they were distributed along the entire measuring interval, particularly when the VIDAS®
231 TB-IGRA scored positive (Supplementary Figure S2). This indicates that discrepancies are not
232 merely due to variability around the cut-off, and thus may result from other factors, such as
233 different sensitivity of the tests.

234 Next, we divided the mixed exposure risk population into nine subgroups ranked along a
235 gradient from extremely-low to extremely-high TB-exposure risk. The subgroups may also be
236 distributed into aggregate low-, medium-, and high-risk groups (Supplementary Table S2).
237 Table 4 contains the VIDAS® TB-IGRA and QFT-Plus results for the subgroups and the
238 aggregate groups. For both tests, the positivity rate increased with exposure risk, which is
239 consistent with the expected likelihood for TB infection. However, the positivity rate was
240 significantly higher for VIDAS® TB-IGRA vs. QFT-Plus in the aggregate medium- and high-risk
241 groups, but not in the aggregate low-risk group (figure 2). NPA and PPA (VIDAS® TB-IGRA
242 relative to QFT-Plus) varied along the risk gradient. As shown in figure 3 and Supplementary
243 Table S5, PPA increased with the risk, whereas NPA decreased. For the aggregate low-,
244 medium, high-risk groups, NPA was 96.9%, 92.2%, and 76.9%, respectively, while PPA was
245 61.5%, 85.7%, and 95.7%, respectively.

246
247 Moreover, to assess association between exposure-risk level and test positivity, we performed the
248 logistic regression analyses described in the Methods. Among possible confounding variables
249 assessed for individuals within the three aggregate risk categories, only age showed
250 independence from risk-exposure level ($P=4.4\%$ for age; $P<0.01\%$ for sex and area) and was
251 therefore analysed by univariate logistic regression. For both tests, univariate odds of a positive

252 result were significantly associated with age (OR:1.01 [95%CI: 1.00, 1.02] for both tests;
253 $P=1.0\%$ and 2.2% , respectively), indicating that probability of a positive result increased by 1%
254 for each additional year of age. Age was therefore included as a covariate in both adjusted
255 models.

256

257 Adjusted and unadjusted ORs for individuals in different TB-exposure risk categories are shown
258 in table 5 and Supplementary Figure S3. For the VIDAS[®] TB-IGRA, positivity rates of
259 individuals in aggregate medium- and high-risk categories were significantly higher than those in
260 the aggregate low-risk category, with unadjusted ORs of 2.54 [95%CI: 1.5, 4.29] and 20.11
261 [95%CI: 12.07, 33.49], respectively. This indicates that odds of a positive result with VIDAS[®]
262 TB-IGRA were 20.11 times higher for individuals in the high-risk vs. the low-risk category. For
263 QFT-Plus, only the positivity rate for individuals in the aggregate high-risk category was
264 significantly different from the aggregate low-risk category (unadjusted OR:17.7 [95%CI: 9.86,
265 31.79]).

266

267 Results for both tests were similar after adjusting for age; adjusted ORs for aggregate medium-
268 and high-risk groups with VIDAS[®] TB-IGRA were 2.55 [95%CI: 1.51, 4.32] and 20.17 [95%CI:
269 12.1, 33.61], respectively, and adjusted OR for aggregate high-risk group with QFT-Plus was
270 17.7 [95%CI: 9.85, 31.81]. Collectively, these results show a better association between TB-
271 exposure risk and positivity rate with VIDAS[®] TB-IGRA than QFT-Plus.

272

273 We next focused on the subgroups at high-, very high-, and extremely high-risk. For this
274 analysis, all potential confounding variables (sex, geographic area, and age) showed independence

275 from exposure level ($P=69.5\%$ for sex; $P=7.0\%$ for area; $P=32.5\%$ for age). Univariate analyses
276 revealed significant association between geographic area and positivity rate for both tests
277 ($P<0.01\%$ for each test); sex was unrelated to positivity rate for both ($P=12.3\%$ for VIDAS[®] TB-
278 IGRA; $P=86.2\%$ for QFT-Plus). Univariate odds of a positive result were also significantly
279 associated with age for the VIDAS[®] TB-IGRA (OR:1.02 [95%CI: 1.00, 1.03], $P=1.0\%$) but not
280 the QFT-Plus (OR:1.01 [95%CI: 1.00, 1.02], $P=16.5\%$). Consequently, age and geographic area
281 were used as cofactors in the VIDAS[®] TB-IGRA adjusted model, whereas only area was
282 included in the QFT-Plus adjusted model.

283

284 Adjusted and unadjusted ORs for the three highest subgroups are shown in table 5 and
285 Supplementary Figure S4. Positivity rates for individuals in the extremely high-risk category
286 were significantly different from those in the high-risk category with both the VIDAS[®] TB-
287 IGRA and QFT-Plus, with unadjusted ORs of 2.64 [95%CI: 1.5, 4.65] and 2.07 [95%CI: 1.22,
288 3.5], respectively. However, significance for the QFT-Plus was lost after adjusting for
289 geographic area (OR:1.72 [95%CI: 0.97, 3.03]), whereas for the VIDAS[®] TB-IGRA, the
290 difference remained significant (OR:2.1 [95%CI: 1.13, 3.91]). These data suggest a better
291 association between exposure and positivity rate for VIDAS[®] TB-IGRA among TB-case
292 contacts.

293

294 *Specificity in blood donors*

295 We evaluated the specificity for TB infection detection by analysing the results obtained from
296 blood donors recruited in Lyon, France ($n=125$), a low endemic area, with 5.7 new cases per
297 100,000 habitants in 2018 [22]. Because lifestyle and travel history of blood donors are

298 thoroughly analysed (to avoid any health risks for transfusion recipients) they are persons with
299 the lowest TB-exposure risk level. For these individuals, specificity of the VIDAS[®] TB-IGRA
300 and QFT-Plus was 97.6% and 95.2% (P=8.33%) respectively (table 2), with an NPA of 100%
301 (95% CI: 96.9, 100.0) (Supplementary Table S5). These results indicate that VIDAS[®] TB-IGRA
302 correctly identifies those not infected with *Mtb* and is therefore a high-specificity test for TB
303 infection.

304 305 *Rate of indeterminate results*

306 Lastly, we compared the rate of indeterminate results for the entire study population ($n=1660$)
307 obtained with each test and found that the VIDAS[®] TB-IGRA yielded significantly fewer
308 indeterminate results than the QFT-Plus: 0.1% (2/1660) vs. 1.2% (20/1660), respectively,
309 $P=0.01\%$. This suggests the VIDAS[®] TB-IGRA may be valuable for patient management, as a
310 lower frequency of indeterminate results will decrease the need for repeated testing.

311

312 **DISCUSSION**

313 In this study, we assessed the accuracy for TB infection detection of the newly developed
314 VIDAS[®] TB-IGRA—the first fully automated IGRA—relative to the FDA-approved QFT-Plus,
315 in an international cross-sectional study of culture-confirmed TB patients (TB disease
316 population) or individuals at varying levels of TB-exposure risk (mixed exposure risk
317 population).

318

319 In the TB disease population, VIDAS[®] TB-IGRA showed greater sensitivity than QFT-Plus
320 (97.5% vs. 80.7%, respectively) with fewer false-negative and indeterminate results. Notably, the
321 QFT-Plus results are generally consistent with previous studies (11–27). The higher sensitivity of

322 the VIDAS[®] TB-IGRA may be due to both the reagent design [21] and the full automation of the
323 test.

324

325 In the mixed exposure risk population, VIDAS[®] TB-IGRA yielded a significantly higher
326 positivity rate than QFT-Plus, with NPA and PPA values indicating good agreement between the
327 tests. Then, to assess the accuracy, we stratified this cohort into subgroups with different levels
328 of TB-exposure risk and analysed positivity along the exposure gradient. This is a useful
329 strategy [10] in the absence of a test-based gold standard, as the infection probability depends on
330 likelihood of *Mtb* exposure. For the subgroup at the lowest risk level—individuals expected to be
331 negative—both VIDAS[®] TB-IGRA and QFT-Plus displayed high specificity. Conversely, for the
332 subgroup at the highest TB-risk level—most likely to be infected—positivity rates for VIDAS[®]
333 TB-IGRA and QFT-Plus were 71.4% and 55.7%, respectively. These results are consistent with
334 the enhanced sensitivity of the VIDAS[®] TB-IGRA observed in the TB disease population. NPA
335 and PPA values led to similar conclusions. At the extremes of the TB exposure gradient, both
336 tests largely agree on the most likely result but disagree on the least likely result.

337

338 Logistic regression analysis shows that the odds of a positive result with VIDAS[®] TB-IGRA
339 significantly increased with the risk of TB-exposure for individuals in aggregate medium- and
340 high-risk groups relative to the aggregate low-risk group, even after adjusting for age. For QFT-
341 Plus, only ORs in the aggregate high-risk group were significant (relative to the aggregate low-
342 risk group) before and after adjustment. When focusing only on contact cases (aggregate-high
343 group) we found that odds of a positive result for individuals at the extremely high-risk category
344 were significantly higher than those in the high-risk category with both tests. However, for QFT-

345 Plus, significance was lost after adjusting for confounding variables. Thus, VIDAS[®] TB-IGRA
346 may discriminate among persons at different levels of TB-exposure risk.

347

348 TB continues to pose a significant threat to public health, and reliable diagnostic methods are
349 needed to support global TB control and eradication efforts [40]. The VIDAS[®] TB-IGRA
350 represents the first test of its kind that is fully automated from sample input to results
351 interpretation, thereby facilitating ease of use, saving time and improving laboratory workflows,
352 while decreasing the possibility for human error and variability. Our data demonstrates that
353 VIDAS[®] TB-IGRA has a higher sensitivity for TB infection detection compared to QFT-Plus—
354 the most used IGRA worldwide—suggesting that this new assay can be a tool to improve current
355 TB diagnostic capabilities.

356

357 A limitation of this study is that study participants were recruited from only two countries with
358 high TB-incidence rates, South Africa and Mexico. However, the results obtained in this study
359 are similar to those from a previous study [41] with, notably, 101 patients with TB disease from
360 Burkina Faso (a high TB-incidence country) as well as France and the US, showing that VIDAS[®]
361 TB-IGRA had consistently higher sensitivity than QFT-Plus, with fewer indeterminate results.
362 Nevertheless, our study incorporated an international multi-centre design and inclusion of a large
363 cohort of individuals at varying levels of TB-exposure risk, thereby allowing test evaluation over
364 a wide exposure gradient. Future studies evaluating VIDAS[®] TB-IGRA accuracy in additional
365 high-burden countries, ease of implementation, and better turnaround time in different
366 operational settings are required.

367

368 In conclusion, our findings show that compared to the QFT-Plus, the VIDAS® TB-IGRA offers
369 increased sensitivity and reliability (*i.e.*, fewer indeterminate results) for TB infection detection,
370 without sacrificing specificity, thus representing a new and valuable tool in global efforts to end TB.

371
372 **ACKNOWLEDGEMENTS**

373 This work was funded by bioMérieux. We are grateful to all study participants. We thank all
374 bioMérieux members who took part in this work. We are grateful to the bioMérieux Data
375 Science team for assisting with the statistical evaluation of the data, and the bioMérieux Clinical
376 Affairs team for coordinating the study. The authors thank Laura Marinelli (BioScience Writers,
377 USA) for providing medical writing support, which was funded by bioMérieux (Marcy L'Etoile,
378 France).

379 **REFERENCES**

- 380 1. Global tuberculosis report 2023. Geneva: World Health Organization; 2023. Licence: CC
381 BY-NC-SA 3.0 IGO. .
- 382 2. Centers For Disease Control and Prevention. Tuberculosis Fact Sheets [Internet]. The
383 Difference Between Latent TB Infection and TB Disease; 2019. Available from:
384 <https://www.cdc.gov/tb/publications/factsheets/general/lbtbiandactivetb.htm>.
- 385 3. Aissa K, Madhi F, Ronsin N, Delarocque F, Lecuyer A, Decludt B, Remus N, Abel L,
386 Poirier C, Delacourt C. Evaluation of a model for efficient screening of tuberculosis contact
387 subjects. *Am J Respir Crit Care Med* United States; 2008; 177: 1041–1047.
- 388 4. Acuña-Villaorduña C, Jones-López EC, Fregona G, Marques-Rodrigues P, Gaeddert M,
389 Geadas C, Hadad DJ, White LF, Molina LPD, Vinhas S, Ribeiro-Rodrigues R, Salgame P,
390 Palaci M, Alland D, Ellner JJ, Dietze R. Intensity of exposure to pulmonary tuberculosis
391 determines risk of tuberculosis infection and disease. *European Respiratory Journal*
392 [Internet] European Respiratory Society; 2018 [cited 2022 Apr 11]; 51 Available from:
393 <https://erj.ersjournals.com/content/51/1/1701578>.
- 394 5. Barry CE, Boshoff HI, Dartois V, Dick T, Ehrt S, Flynn J, Schnappinger D, Wilkinson RJ,
395 Young D. The spectrum of latent tuberculosis: rethinking the biology and intervention
396 strategies. *Nature Reviews Microbiology* 2009; 7: 845–855.
- 397 6. Esmail H, Barry CE, Wilkinson RJ. Understanding latent tuberculosis: the key to improved
398 diagnostic and novel treatment strategies. *Drug Discovery Today* 2012; 17: 514–521.
- 399 7. Drain PK, Bajema KL, Dowdy D, Dheda K, Naidoo K, Schumacher SG, Ma S, Meermeier
400 E, Lewinsohn DM, Sherman DR. Incipient and Subclinical Tuberculosis: a Clinical Review
401 of Early Stages and Progression of Infection. *Clin Microbiol Rev* 2018; 31.
- 402 8. Sousa J, Saraiva M. Paradigm changing evidence that alter tuberculosis perception and
403 detection: Focus on latency. *Infection, Genetics and Evolution* 2019; 72: 78–85.
- 404 9. Goletti D, Delogu G, Matteelli A, Migliori GB. The role of IGRA in the diagnosis of
405 tuberculosis infection, differentiating from active tuberculosis, and decision making for
406 initiating treatment or preventive therapy of tuberculosis infection. *Int J Infect Dis* 2022; :
407 S1201-9712(22)00126-6.
- 408 10. Framework for the evaluation of new tests for tuberculosis infection. Geneva: World Health
409 Organization; 2020. Licence: CC BY-NC-SA 3.0 IGO. .
- 410 11. Pai M, Behr M. Latent Mycobacterium tuberculosis Infection and Interferon-Gamma
411 Release Assays. *Microbiology Spectrum* 2016; 4.
- 412 12. Pai M, Sotgiu G. Diagnostics for latent TB infection: incremental, not transformative
413 progress. *European Respiratory Journal* 2016; 47: 704–706.

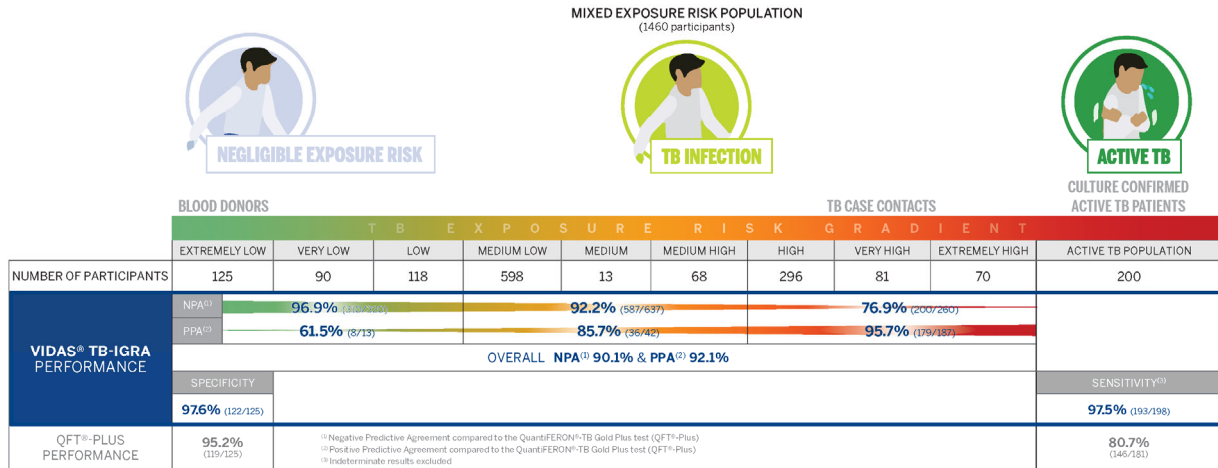
- 414 13. Goletti D, Lee M-R, Wang J-Y, Walter N, Ottenhoff THM. Update on tuberculosis
415 biomarkers: From correlates of risk, to correlates of active disease and of cure from disease.
416 *Respirology* 2018; 23: 455–466.
- 417 14. Kontsevaya I, Cabibbe AM, Cirillo DM, DiNardo AR, Frahm N, Gillespie SH, Holtzman
418 D, Meiwes L, Petruccioli E, Reimann M, Ruhwald M, Sabiiti W, Saluzzo F, Tagliani E,
419 Goletti D. Update on the diagnosis of tuberculosis. *Clin Microbiol Infect* 2023; : S1198-
420 743X(23)00340-3.
- 421 15. Pai M, Denkinger CM, Kik SV, Rangaka MX, Zwerling A, Oxlade O, Metcalfe JZ,
422 Cattamanchi A, Dowdy DW, Dheda K, Banaei N. Gamma interferon release assays for
423 detection of Mycobacterium tuberculosis infection. *Clin Microbiol Rev* 2014; 27: 3–20.
- 424 16. Dheda K, van Zyl Smit R, Badri M, Pai M. T-cell interferon-gamma release assays for the
425 rapid immunodiagnosis of tuberculosis: clinical utility in high-burden vs. low-burden
426 settings. *Curr Opin Pulm Med United States*; 2009; 15: 188–200.
- 427 17. Latent TB Infection : Updated and consolidated guidelines for programmatic management.
428 *World Health Organization* [Internet] 2019; Available from:
429 <https://www.who.int/tb/publications/2018/latent-tuberculosis-infection/en/>.
- 430 18. Latent Tuberculosis Infection Resources [Internet]. CDC Latent Tuberculosis Infection
431 Resources; 2020 [cited 2020 Feb 3]. Available from:
432 <https://www.cdc.gov/tb/publications/ltbi/ltbiresources.htm>.
- 433 19. Dheda K, Barry CE 3rd, Maartens G. Tuberculosis. *Lancet* England; 2016; 387: 1211–
434 1226.
- 435 20. van Zyl-Smit RN, Pai M, Peprah K, Meldau R, Kieck J, Juritz J, Badri M, Zumla A, Sechi
436 LA, Bateman ED, Dheda K. Within-subject variability and boosting of T-cell interferon-
437 gamma responses after tuberculin skin testing. *Am J Respir Crit Care Med* United States;
438 2009; 180: 49–58.
- 439 21. Petruccioli E, Farroni C, Cuzzi G, Vanini V, Palmieri F, Vittozzi P, Goletti D. VIDAS(®)
440 TB-IGRA reagents induce a CD4(+) and CD8(+) T-cell IFN- γ response for both TB
441 infection and active TB. *Int J Tuberc Lung Dis* 2022; 26: 65–68.
- 442 22. Guthman J-P, Laporal S, Lévy-Bruhl D. La tuberculose maladie en France en 2018. Faible
443 incidence nationale, forte incidence dans certains territoires et groupes de population. *Bull*
444 *Epidémiol Head* 2020; : 196–203.
- 445 23. Ferrara G, Losi M, Meacci M, Meccugni B, Piro R, Roversi P, Bergamini BM, D'Amico R,
446 Marchegiano P, Rumpianesi F, Fabbri LM, Richeldi L. Routine Hospital Use of a New
447 Commercial Whole Blood Interferon- γ Assay for the Diagnosis of Tuberculosis Infection.
448 *American Journal of Respiratory and Critical Care Medicine* 2005; 172: 631–635.
- 449 24. Lee JY. Comparison of two commercial interferon- assays for diagnosing Mycobacterium
450 tuberculosis infection. *European Respiratory Journal* 2006; 28: 24–30.

- 451 25. Tsiouris SJ, Coetzee D, Toro PL, Austin J, Stein Z, El-Sadr W. Sensitivity Analysis and
452 Potential Uses of a Novel Gamma Interferon Release Assay for Diagnosis of Tuberculosis.
453 *Journal of Clinical Microbiology* 2006; 44: 2844–2850.
- 454 26. Adetifa IM, Lugos MD, Hammond A, Jeffries D, Donkor S, Adegbola RA, Hill PC.
455 Comparison of two interferon gamma release assays in the diagnosis of Mycobacterium
456 tuberculosis infection and disease in The Gambia. *BMC Infectious Diseases* 2007; 7.
- 457 27. Dewan PK, Grinsdale J, Kawamura LM. Low Sensitivity of a Whole-Blood Interferon- γ
458 Release Assay for Detection of Active Tuberculosis. *Clinical Infectious Diseases* 2007; 44:
459 69–73.
- 460 28. Mazurek GH, Weis SE, Moonan PK, Daley CL, Bernardo J, Lardizabal AA, Reves RR,
461 Toney SR, Daniels LJ, LoBue PA. Prospective Comparison of the Tuberculin Skin Test and
462 2 Whole-Blood Interferon- Release Assays in Persons with Suspected Tuberculosis.
463 *Clinical Infectious Diseases* 2007; 45: 837–845.
- 464 29. Kanunfre KA, Leite OHM, Lopes MI, Litvoc M, Ferreira AW. Enhancement of Diagnostic
465 Efficiency by a Gamma Interferon Release Assay for Pulmonary Tuberculosis. *Clinical and*
466 *Vaccine Immunology* 2008; 15: 1028–1030.
- 467 30. Ling DI, Pai M, Davids V, Brunet L, Lenders L, Meldau R, Calligaro G, Allwood B, Zyl-
468 Smit R van, Peter J, Bateman E, Dawson R, Dheda K. Are interferon- γ release assays useful
469 for diagnosing active tuberculosis in a high-burden setting? *European Respiratory Journal*
470 2011; 38: 649–656.
- 471 31. Danel C, Kabran M, Inwoley A, Badje A, Herrmann JL, Moh R, Lecarrou J, Gabillard D,
472 Ntakpe JB, Deschamps N, Ouattara E, Perronne C, Eholie S, Anglaret X. Quantiferon-TB
473 Gold: Performance for Ruling out Active Tuberculosis in HIV-Infected Adults with High
474 CD4 Count in Côte d’Ivoire, West Africa. Goletti D, editor. *PLoS ONE* 2014; 9: e107245.
- 475 32. Xia H, Wang X, Li F, Longuet C, Vernet G, Goletti D, Zhao Y, Lagrange PH. Diagnostic
476 Values of the QuantiFERON-TB Gold In-Tube Assay Carried out in China for Diagnosing
477 Pulmonary Tuberculosis. Herrmann JL, editor. *PLOS ONE* 2015; 10: e0121021.
- 478 33. El Azbaoui S, Sabri A, Ouraini S, Hassani A, Asermouh A, Agadr A, Abilkassem R, Dini
479 N, Kmari M, Akhaddar A, Laktati Z, Aieche S, El Hafidi N, Ben Brahim F, Bousfiha AA,
480 Ailal F, Deswarte C, Schurr E, Amar L, Bustamante J, Boisson-Dupuis S, Casanova JL,
481 Abel L, El Baghdadi J. Utility of the QuantiFERON[®]-TB Gold In-Tube
482 assay for the diagnosis of tuberculosis in Moroccan children. *The International Journal of*
483 *Tuberculosis and Lung Disease* 2016; 20: 1639–1646.
- 484 34. Boddu D, Verghese VP, Michael JS, Chacko A, Jeyaseelan V. Utility of the
485 QuantiFERON-TB Gold In-tube test (QFT) compared with the Tuberculin Skin Test (TST)
486 in diagnosing tuberculosis in Indian children with malnutrition: A prospective study.
487 *International Journal of Infectious Diseases* 2016; 45: 339.

- 488 35. Telisinghe L, Amofa-Sekyi M, Maluzi K, Kaluba-Milimo D, Cheeba-Lengwe M, Chiwele
489 K, Kosloff B, Floyd S, Bailey S-L, Ayles H. The sensitivity of the QuantiFERON®-TB
490 Gold Plus assay in Zambian adults with active tuberculosis. *The International Journal of*
491 *Tuberculosis and Lung Disease* 2017; 21: 690–696.
- 492 36. Du F, Xie L, Zhang Y, Gao F, Zhang H, Chen W, Sun B, Sha W, Fang Y, Jia H, Xing A,
493 Du B, Zheng L, Gao M, Zhang Z. Prospective Comparison of QFT-GIT and T-SPOT.TB
494 Assays for Diagnosis of Active Tuberculosis. *Scientific Reports* 2018; 8.
- 495 37. Kim YJ, Kang JY, Kim SI, Chang MS, Kim YR, Park YJ. Predictors for false-negative
496 QuantiFERON-TB Gold assay results in patients with extrapulmonary tuberculosis. *BMC*
497 *Infectious Diseases* [Internet] 2018 [cited 2021 Jul 28]; 18 Available from:
498 <https://www.ncbi.nlm.nih.gov/pmc/articles/PMC6131843/>.
- 499 38. Hong JY, Park SY, Kim A, Cho S-N, Hur Y-G. Comparison of QFT-Plus and QFT-GIT
500 tests for diagnosis of M. tuberculosis infection in immunocompetent Korean subjects.
501 *Journal of Thoracic Disease* 2019; 11: 5210–5217.
- 502 39. Masood KI, Jamil B, Akber A, Hassan M, Islam M, Hasan Z. Testing for Mycobacterium
503 tuberculosis infection using the QuantiFERON-TB GOLD assay in patients with comorbid
504 conditions in a tertiary care endemic setting. *Tropical Diseases, Travel Medicine and*
505 *Vaccines* 2020; 6.
- 506 40. World Health Organization Global Tuberculosis Report 2021 [Internet]. 2021 Oct Available
507 from: [https://www.who.int/teams/global-tuberculosis-programme/tb-reports/global-](https://www.who.int/teams/global-tuberculosis-programme/tb-reports/global-tuberculosis-report-2021)
508 [tuberculosis-report-2021](https://www.who.int/teams/global-tuberculosis-programme/tb-reports/global-tuberculosis-report-2021).
- 509 41. Diagbouga S, Djibougou AD, Pease C, Alcaide A, Berthoux A, Bruiners N, Cirillo DM,
510 Combary A, Falchero N, Handler D, Kabore A, Lardizabal A, Lopes A, Loubet M, Manivet
511 P, Margain C, Meunier V, Mougari F, Onyuka A, Rivoiron S, Sagna T, Sanvert M,
512 Sawadogo L, Simpoire J, Cambau E, Gennaro ML. Preliminary diagnostic performance of
513 the VIDAS® TB-IGRA for the detection of Mycobacterium tuberculosis infection and
514 disease [Internet]. medRxiv; 2022 [cited 2022 Apr 22]. p. 2022.04.01.22271763 Available
515 from: <https://www.medrxiv.org/content/10.1101/2022.04.01.22271763v1>.

517 **FIGURES**

518

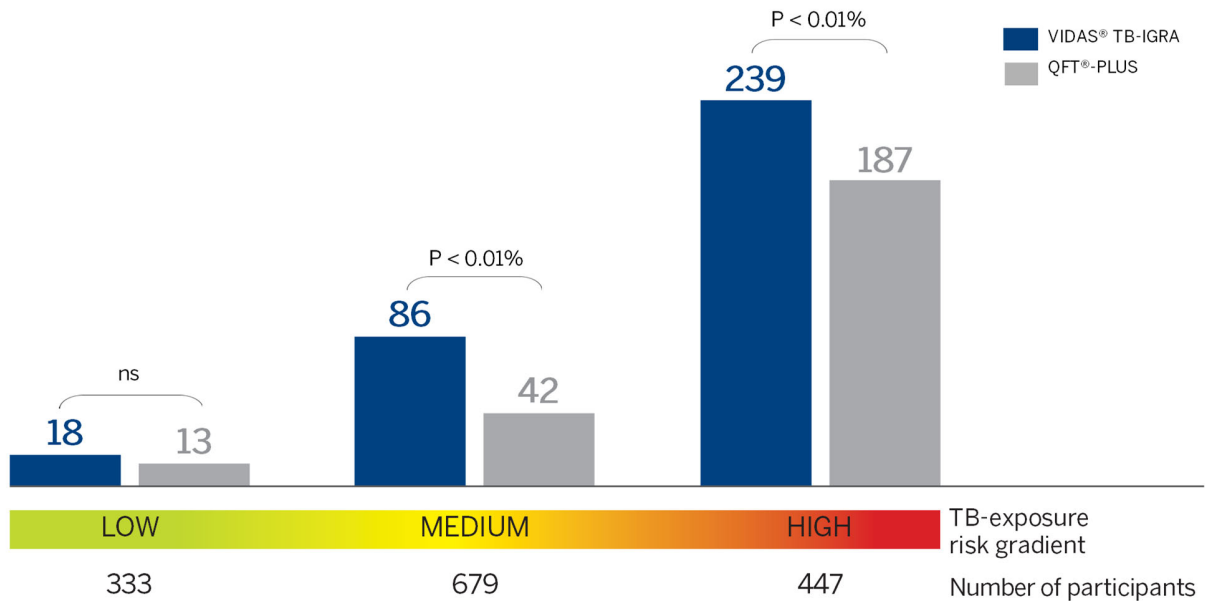


519

520 **Figure 1.** Overview of the study populations and the accuracy evaluated for VIDAS® TB-IGRA
521 and QFT-Plus.
522

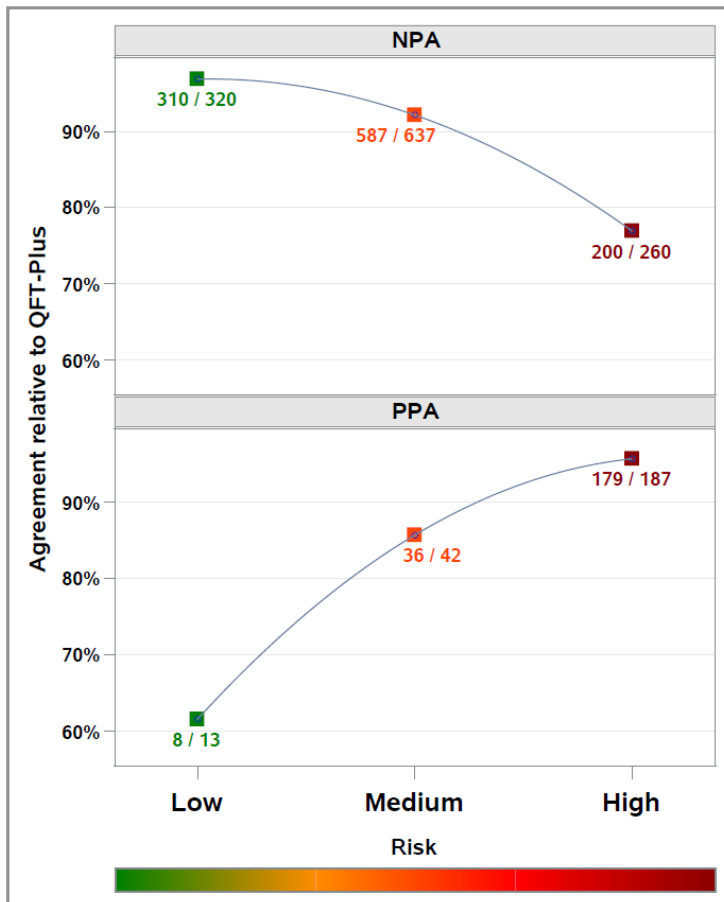
523

524



525

526 **Figure 2.** Positive results with VIDAS® TB-IGRA and QFT-Plus for participants in the
527 aggregate low-, medium-, and high-risk groups in the mixed exposure risk population (excludes
528 those with TB disease). ns: not significant; P-values calculated with the McNemar test are
shown.



529

530 **Figure 3.** Negative percent agreement (NPA, top graph) and positive percent agreement (PPA,
 531 bottom graph) for the VIDAS[®] TB-IGRA relative to the QFT-Plus for participants in the
 532 aggregate low-, medium-, and high-risk groups in the mixed exposure risk population (excludes
 533 those with TB disease). Numbers reported next to the points correspond to the number of
 534 concordant samples divided by the number of participants in the aggregate group with negative
 535 (for NPA) or positive (for PPA) QFT-Plus result. As TB-exposure risk rises, NPA decreases and
 536 PPA increases. This indicates that at a low probability of infection, most participants negative by
 537 QFT-Plus were also negative by VIDAS[®] TB-IGRA (high NPA), whereas one-third of those
 538 positive by QFT-Plus were negative by VIDAS[®] TB-IGRA (lower PPA). Conversely, at high
 539 probability of infection, most participants positive by QFT-Plus were also positive by VIDAS[®]
 540 TB-IGRA (high PPA), whereas about one-fourth of those negative by QFT were positive by
 541 VIDAS[®] TB-IGRA (lower NPA). PPA and NPA values for all nine TB-exposure risk
 542 subcategories are shown in the Supplementary Table S5.

543 TABLES

544 TABLE 1. Demographic information for the participants enrolled in this study.

		TB disease population (n = 200)	Mixed exposure risk population (n = 1,460)	P-value *
Gender Number (%)	Female	57 (28.5%)	947 (64.9%)	< 0.01%
	Male	143 (71.5%)	513 (35.1%)	
Age	IQR	19	23	0.03%
	Median	31	35	
BCG- vaccinated Number (%)	Yes	132 (66.0%)	534 (36.6%)	< 0.01%
	No	16 (8.0%)	627 (42.9%)	
	Unknown	52 (26.0%)	299 (20.5%)	
HIV- infected*** Number (%)	Yes	N/A***	22 (1.5%)	N/A
	No	N/A***	1210 (82.9%)	
	Unknown	N/A***	228 (15.6%)	

545 * TB disease and Mixed exposure risk populations were compared either with the Mann-Whitney test for
546 Age, or with the Chi square test for Gender and BCG vaccination.

547 ** HIV-positivity was an exclusion criterion for patients in the TB disease population.

548 **Abbreviations:** BCG, bacille Calmette–Guérin; HIV, human immunodeficiency virus; IQR, interquartile
549 range; N/A, Not Available.

550

551 **TABLE 2.** Results obtained with the VIDAS[®] TB-IGRA and QFT-Plus tests for the TB disease
 552 and mixed exposure risk populations, as well as the blood donor subgroup at extremely low risk
 553 for TB. Percentages are shown in brackets while 95% Confidence Intervals are shown in square
 554 brackets.

	TB disease population (n = 200)		
	VIDAS[®] TB-IGRA	QFT-Plus	P-value**
True Positive	193 (96.5%)	146 (73.0%)	<0.01%
False Negative	5 (2.5%)	35 (17.5%)	<0.01%
Indeterminate	2 (1.0%)	19 (9.5%)	0.02%
Sensitivity* [95%CI]	97.5% (193/198) [94.2, 99.2]%	80.7% (146/181) [74.3, 85.8]%	<0.01%***
	Mixed exposure risk population (n = 1,460)		
	VIDAS[®] TB-IGRA	QFT-Plus	P-value**
Positive	343 (23.5%)	242 (16.6%)	<0.01%
Negative	1,117 (76.5%)	1,217 (83.4%)	<0.01%
Indeterminate	0 (0.0%)	1 (0.1%)	NC
	Extremely Low Risk Subgroup / Blood Donors (n = 125)		
	VIDAS[®] TB-IGRA	QFT-Plus	P-value
Positive	3 (2.4%)	6 (4.8%)	NC
Negative	122 (97.6%)	119 (95.2%)	8.33% (NS)
Indeterminate	0 (0.0%)	0 (0.0%)	NA
Specificity [95%CI]	97.6% (122/125) [93.1, 99.5]%	95.2% (119/125) [89.8, 98.2]%	8.33% (NS)

* Excluding indeterminate results.

** Unless otherwise stated, the McNemar's test for paired data was used, comparing the results identified on the row with all other results, e.g., for the first row: True Positive vs (False Negative + Indeterminate).

*** Calculated using the Bowker's Symmetry Test.

Abbreviations: CI, confidence interval. NA, not applicable. NC, not calculated. NS, non-significant. QFT-Plus, QuantiFERON-TB Gold Plus.

555

556

557 **TABLE 3.** Negative percent agreement (NPA) and positive percent agreement (PPA) for the
 558 VIDAS® TB-IGRA relative to the QFT-Plus test for participants in the mixed exposure risk
 559 population.

Mixed exposure risk population		QFT-Plus		
		Negative	Positive	Total*
VIDAS® TB-IGRA	Negative	1097	19	1116
	Positive	120	223	343
	Total*	1217	242	1459
NPA* [95%CI]	90.1% [88.3; 91.7]%			
PPA* [95%CI]	92.1% [88.1; 94.9]%			

*Excluding indeterminate results.

Abbreviations: CI, confidence interval; QFT-Plus, QuantiFERON-TB Gold Plus.

560

561

562 **TABLE 4.** VIDAS® TB-IGRA and QFT-Plus test results for individuals within each subgroup of
 563 the mixed exposure risk population.

TB-Exposure Risk	Participants (n)	Number of Negative Results (%)		Number of Positive Results (%)	
		VIDAS® TB-IGRA	QFT-Plus	VIDAS® TB-IGRA	QFT-Plus
Extremely Low	125	122 (97.6%)	119 (95.2%)	3 (2.4%)	6 (4.8%)
Very Low	90	80 (88.9%)	84 (93.3%)	10 (11.1%)	6 (6.7%)
Low	118	113 (95.8%)	117 (99.2%)	5 (4.2%)	1 (0.8%)
Aggregate Low	333	315 (94.6%)	320 (96.1%)	18 (5.4%)	13 (3.9%)
Medium Low	598	553 (92.5%)	593 (99.2%)	45 (7.5%)	5 (0.8%)
Medium	13	12 (92.3%)	13 (100.0%)	1 (7.7%)	0 (0.0%)
Medium High	68	28 (41.2%)	31 (45.6%)	40 (58.8%)	37 (54.4%)
Aggregate Medium	679	593 (87.3%)	637 (93.8%)	86 (12.7%)	42 (6.2%)
High	296	152 (51.4%)	184 (62.2%)	144 (48.6%)	112 (37.8%)
Very High	81	36 (44.4%)	45 (55.6%)	45 (55.6%)	36 (44.4%)
Extremely High	70	20 (28.6%)	31 (44.3%)	50 (71.4%)	39 (55.7%)
Aggregate High	447	208 (46.5%)	260 (58.2%)	239 (53.5%)	187 (41.8%)

Abbreviations: QFT-Plus, QuantiFERON-TB Gold Plus.

564
 565

566 **TABLE 5.** Univariate and multivariate odds ratios determined by logistic regression for
 567 participants at different levels of TB exposure risk.

		VIDAS® TB-IGRA			QFT-Plus		
Risk group	<i>n</i>	Positive Results (%)	Unadjusted OR [95%CI]*	Adjusted OR [95% CI]**	Positive Results (%)	Unadjusted OR [95% CI]	Adjusted OR [95% CI]**
Aggregate Low	333	18 (5.4%)	1	1	13 (3.9%)	1	1
Aggregate Medium	679	86 (12.7%)	2.54 [1.50, 4.29]	2.55 [1.51, 4.32]	42 (6.2%)	1.62 [0.86, 3.07]	1.63 [0.86, 3.08]
Aggregate High	447	239 (53.5%)	20.11 [12.07, 33.49]	20.17 [12.10, 33.61]	187 (41.8%)	17.70 [9.86, 31.79]	17.70 [9.85, 31.81]
Risk subgroup	<i>n</i>	Positive Results (%)	Unadjusted OR [95%CI]	Adjusted OR [95% CI]**	Positive Results (%)	Unadjusted OR [95% CI]	Adjusted OR [95% CI]**
High	296	144 (48.6%)	1	1	112 (37.8%)	1	1
Very High	81	45 (55.6%)	1.32 [0.81, 2.16]	1.50 [0.86, 2.59]	36 (44.4%)	1.31 [0.80, 2.16]	1.45 [0.84, 2.49]
Extremely High	70	50 (71.4%)	2.64 [1.50, 4.65]	2.10 [1.13, 3.91]	39 (55.7%)	2.07 [1.22, 3.50]	1.72 [0.97, 3.03]

568 *Significant associations are shown in bold.

569 **Adjusted for age of study participants.

570 ***Adjusted for age of study participants and geographic area (defined as EU, US, or rest of world).

571 ****Adjusted for geographic area.

572 **Abbreviations:** CI, confidence interval; OR, odds ratio; QFT-Plus, QuantiFERON Plus.

573

574