

1 **Title:** Fecal metaproteomics enables functional characterization of remission in patients with
2 inflammatory bowel disease

3 **Authors:**

4 Maximilian Wolf^{a,b,1}, Julian Lange^c, Dirk Benndorf^d, Lina Welz^e, Susanna Nikolaus^e, Laura Sievers^e,
5 Florian Tran^e, Kay Schallert^f, Patrick Hellwig^{c,g}, Stefan Schreiber^e, Matthias Gunzer^{f,h}, Philip
6 Rosenstiel^e, Udo Reichl^{c,g}, Konrad Aden^{e,2} and Robert Heyer^{a,f,2}

7 a. Multidimensional Omics Analyses group, Faculty of Technology, Bielefeld University,
8 Universitätsstrasse 25, 33615 Bielefeld, Germany

9 b. Graduate School DILS, Bielefeld Institute for Bioinformatics Infrastructure (BIBI), Bielefeld University,
10 Universitätsstrasse 25, 33615 Bielefeld, Germany

11 c. Bioprocess Engineering, Otto-von-Guericke University Magdeburg, Universitätsplatz 2,
12 39106 Magdeburg, Germany

13 d. Applied Biosciences and Process Engineering, Anhalt University of Applied Science, Bernburger Straße
14 56, 06366 Koethen, Germany

15 e. Institute of Clinical Molecular Biology, Christian-Albrechts University of Kiel, Rosalind-Franklin-Straße
16 12, 24105 Kiel, Germany

17 f. Leibniz-Institut für Analytische Wissenschaften – ISAS – e.V., Bunsen-Kirchhoff-Str. 11,
18 44139 Dortmund, Germany

19 g. Max Planck Institute for Dynamics of Complex Technical Systems, Sandtorstraße 1,
20 39106 Magdeburg, Germany

21 h. Institute for Experimental Immunology and Imaging Center Essen, University Hospital Essen,
22 Hufelandstrasse 55, 45147 Essen, Germany

23 1. Corresponding Author (maximilian.wolf@uni-bielefeld.de)

24 2. Contributed equally.

25

26 **Short title:** Characterization of IBD remission with metaproteomics

27

28 **Adress for correspondence:** Maximilian Wolf, Multidimensional Omics Analyses group, Faculty of

29 Technology, Bielefeld University, , Universitätsstrasse 25, 33615 Bielefeld, Germany (E-Mail:

30 maximilian.wolf@uni-bielefeld.de, phone: +49 521 106-2908)

31 **Conference Presentation:** 5th International metaproteomics symposium, Avignon, France

32 **Abbreviations:**

CD	Crohn's disease
CLCA1	Calcium-activator chloride channel regulator 1
CRP	C-reactive protein
DEF3A	Neutrophil defensin 3
E.C.	Enzyme comission
eMayo	Endoscopic Mayo
FASP	Filter-aided sample preparation
FC	Fecal calprotectin
HBI	Harvey-Bradshaw index
IBD	Inflammatory bowel disease
IL-6	Interleukin 6
KEGG	Kyoto Encyclopedia of Genes and Genomes
LAMP1	Lysosomal-associated membrane protein 1
NET	Neutrophil extracellular trap

PIGR	Polymeric immunoglobulin receptor
PPW	Pentose phosphate pathway
TCA	Tricarboxylic acid
UC	Ulcerative colitis
VNN1	Pantetheinase

34 **Abstract**

35 **Background:** The gut microbiome is an important contributor to the development and the course of
36 inflammatory bowel disease (IBD). While changes in the gut microbiome composition were observed in
37 response to IBD therapy using biologics, studies elucidating human and microbial proteins and pathways
38 in dependence on therapy success are sparse.

39 **Methods:** Fecal samples of a cohort of IBD patients were collected before and after 14 weeks of treatment
40 with three different biologics. Clinical disease activity scores were used to determine the clinical response
41 and remission. Fecal metaproteomes of remitting patients (n=12) and of non-remitting patients (n=12)
42 were compared before treatment and changes within both groups were assessed over sampling time to
43 identify functional changes and potential human and microbial biomarkers.

44 **Results:** The abundance of proteins associated with the intestinal barrier, neutrophilic granulocytes, and
45 immunoglobulins significantly decreased in remitting patients. In contrast, an increase of those proteins
46 was observed in non-remitting patients. There were significant changes in pathways of microbial
47 metabolism in samples from patients with remission after therapy. This included, for example, an
48 increased abundance of proteins from butyrate fermentation. Finally, new potential biomarkers for the
49 prediction and monitoring of therapy success could be identified, e.g. human lysosome-associated
50 membrane glycoprotein 1, a cytotoxicity marker, or microbial anthranilate synthase component 2, a part
51 of the tryptophan metabolism.

52 **Conclusions:** Distinct changes of proteins related to gut inflammation and gut microbiome metabolism
53 showed whether IBD remission was achieved or not. This suggests that metaproteomics could be a useful
54 tool for monitoring remission in IBD therapies.

55 **Keywords:** Clinical trials, Biomarkers, Microbiology

56 **1. Introduction**

57 Crohn's disease (CD) and ulcerative colitis (UC), summarized under the term inflammatory bowel diseases
58 (IBD), are chronic, recurrent inflammations of the intestinal tract that place enormous physical and
59 psychosocial burdens on the patient [1, 2]. IBD has been shown to be linked to the patient's genetics and
60 environmental factors. However, the patient's intestinal microbiome also plays a special role in the
61 etiology [3–6]. The permanent exposure of the intestinal epithelium to diverse microbial antigens requires
62 a fine orchestration of the immune response in the case of pathogen infection, while still exhibiting a
63 tolerance of commensal microorganisms [7]. This is ensured in the intestine of healthy individuals by an
64 intact epithelial barrier as well as a broad spectrum of immunologically active substances, such as
65 cytokines or adhesion molecules. In patients with IBD, the inflammatory response is inappropriate and the
66 epithelial barrier is damaged, which can lead to infiltration of the intestinal tissue with microorganisms
67 and consequent inflammatory cascades [8].

68 Various therapeutic approaches such as drug, surgery, nutritional intervention, and fecal transplantation
69 are used to treat this inflammation and to achieve remission, a medical condition characterized by
70 decreasing severity of disease symptoms and mucosal healing [9]. Typical drugs are small-molecule drugs
71 and biologics. Small molecule drugs, such as thiopurines, aminosalicylates, or steroids, are inexpensive,
72 non-immunogenic molecules, but are characterized by a short half-life and low selectivity and efficacy [10,
73 11]. In contrast, biologics are large complex molecules, in the form of monoclonal antibodies or antibody-
74 drug-conjugates, which specifically bind to certain molecules involved in IBD pathogenesis, particularly
75 those that interfere with immune cell communication or migration [12]. Although monoclonal antibodies
76 have a higher half-life, effectiveness, and selectivity, antibodies can be recognized as antigens by the
77 patient's immune system and thus their long-term effectiveness can be severely limited. In addition to the
78 immunogenicity of the antibodies, other factors contribute to widely varying efficacies of treatments in
79 different patients, such as genetic polymorphisms or metabolic potential of the patient's gut microbiome
80 [13–15].

81 Despite increasing efforts and the introduction of novel targeted therapies in the treatment of IBD (anti-
82 TNF, anti- $\alpha_4\beta_7$ integrin, anti-IL12/23, anti-IL23, JAK inhibitors, S1P modulators) the overall long-term
83 disease control is still considerably low at approximately 40% [16].

84 The early assessment of biomarkers that are associated with a favorable or unfavorable treatment
85 response to biologic therapies might therefore help to guide early treatment decision (e.g. switch
86 treatment class). Huge efforts have been undertaken to investigate the role of the intestinal microbiome
87 as a potential driver of treatment response in IBD. In this context most studies have initially focused on
88 analysis species diversity using 16S analysis, whilst lately metabolic properties (in-silico metabolic
89 modelling [17], fecal metabolomics [18]) have been the focus of investigation.

90
91 Although the metaproteome reflects the actual proteins expressed in the microbiome and the human
92 proteins in the stool sample and might show a stronger association with the inflammation state as gen-
93 based methods [19], there are only very few publications on longitudinal studies of IBD patients using
94 metaproteomic methods compared to a multitude of metagenomic studies [20–24]. Therefore, this study
95 aimed to use metaproteomic approaches to investigate the host and microbial metabolism as well as the
96 abundance of proteins representing the host's immune response, to determine differences between
97 patients who achieved remission with biologics therapy and those who did not.

98

99 **2. Material and Methods**

100 *Patients and sampling*

101 In the course of this study, the 26 patients with IBD, including 13 patients diagnosed with CD and 13
102 patients diagnosed with UC, were treated with three different therapeutic agents (Infliximab: n=7,
103 Vedolizumab: n=9, Olamkizept n=10) at the University Hospital Schleswig Holstein, as described before
104 [13, 25]. At baseline and after 14 weeks of treatment, C-reactive protein (CRP) and Interleukin 6 (IL-6) in
105 the blood, calprotectin and blood leukocytes in the stool of the patients were measured by ELISA. Disease
106 intensity was characterized using the MAYO score for UC and the Harvey-Bradshaw index (HBI) for CD
107 patients. The participants provided paired stool samples at baseline and after 14 weeks of therapy. To
108 inactivate potential pathogenic material during sample processing, 200 µL of 1% Sodium dodecyl sulfate
109 (SDS) solution were added to 200 µg of the stool samples and this solution was heated to 99°C for 10
110 minutes.

111 *Metaproteomic analysis*

112 Metaproteomic analysis was performed according to a previously established workflow [26, 27]. The
113 proteins of the solutions were extracted using phenol in a ball mill. The protein concentration was then
114 determined using the Amido Black assay. Subsequently, 10 µg protein of the samples were tryptically
115 digested (enzyme-substrate ratio 1:100) on a filter according to the filter-aided sample preparation (FASP)
116 protocol [28]. LC/MS-MS measurements were performed using an UltiMate 3000 RSLCnano
117 chromatography system (Thermo Fisher Scientific, Bremen, Germany) with a C18 reversed phase pre-
118 column (Acclaim PepMap100 C18, Thermo Fisher Scientific, Bremen, Germany) and a C18 reversed-phase
119 separation column (Acclaim PepMap100 C18, Thermo Fisher Scientific, Bremen, Germany) coupled to a
120 timsTOF mass spectrometer (Bruker Daltonik GmbH, Bremen, Germany). Further details are summarised
121 in Supplementary Note 1. Compass DataAnalysis 5.1 software (Bruker Daltonik GmbH, Bremen, Germany)
122 was used to process and analyze the mass spectra. Using the search engine Mascot™ 2.6 (Matrix Science,

123 London, Great Britain) and the following parameters: enzyme trypsin, one missed cleavage, monoisotopic
124 mass, carbamidomethyl as fixed and oxidation as variable modification, ± 0.02 Da precursor and ± 0.02 Da
125 MS/MS fragment tolerance and a false discovery rate of 1 %, the peptides were annotated with the entries
126 of UniProtKB/SwissProt (16/01/2019) and a metagenome database published by Qin et al. [29], used in a
127 previous IBD study [30]. Identifications of redundant homologous proteins generated by these searches
128 were combined into protein groups (hereafter referred to as metaproteins) based on shared peptides
129 using MetaProteomAnalyzer, version 3.4. Metaproteins without functional or taxonomic annotation were
130 assigned using the BLAST and the UniProtKB/SwissProt database. Blast hits with an e-value $< 10^{-4}$ were
131 used for annotation according to the lowest common ancestor rule. Metaproteins with less than 10 spectra
132 were excluded from the following analysis. Subsequently, the spectral counts of the protein groups were
133 normalized to the total spectral count of the respective sample. Finally, a result matrix additionally
134 consisting of taxonomic annotation, enzyme commission (E.C.) number, Kyoto Encyclopedia of Genes and
135 Genomes (KEGG) orthologies, UniProtKB reference cluster, and UniProt keywords was generated, which
136 was used for the analysis. The MS files are available under accession number PXD053257 in the PRIDE
137 Archive.

138 *Orthogonal validation of Lysosomal-associated membrane protein 1 (LAMP1) with independent validation*
139 *cohort using ELISA*

140 For validation of biomarker discovery from metaproteomics experiments, fecale aspirates of n = 58
141 patients with UC aged 20-80 years were sampled between 2021 and 2023 at the First Medical Department
142 of University Hospital Schleswig-Holstein, Campus Kiel, Germany. All patients provided written informed
143 consent and biomaterial sampling from patients was approved by the local ethics committee of Kiel
144 University (Vote#: B231/98). Fecale aspirates were sampled during colonoscopy by flushing the distal
145 colon with water followed by aspiration of the fluids. Patients were recruited as a broad cross-sectional
146 cohort at different stages of disease activity and displayed an equal distribution of endoscopic Mayo

147 (eMayo) scores (0 – 3) and complete Mayo scores (0 – 11). Remission was defined as an endoscopic Mayo
148 Score of ≤ 1 and a complete Mayo score of ≤ 2 . Samples were kept frozen at -80 degrees and measured by
149 ELISA according to the manufacturer (LAMP1: Abcam, ab277464) at the First Medical Department of
150 University Hospital Innsbruck, Austria. Measurements below the detection level were excluded from the
151 final analysis.

152 *Statistical analysis*

153 For statistical analysis, R-statistics (version 1.3.1093) was used. Unpaired samples (samples at baseline or
154 week 14 from patients with and without remission) were analyzed applying Wilcoxon rank sum test, paired
155 samples (samples at baseline and week 14 from patients with remission, samples at baseline and week 14
156 from patients without remission) were analyzed applying Wilcoxon signed rank test using the method
157 “wilcox.test”. The visualization with violin plots was realized using the libraries “ggplot2” and
158 “ggstatsplot”. Volcano plots were created using Python (version 3.8.13) and the libraries “pandas”,
159 “numpy”, and “matplotlib”.

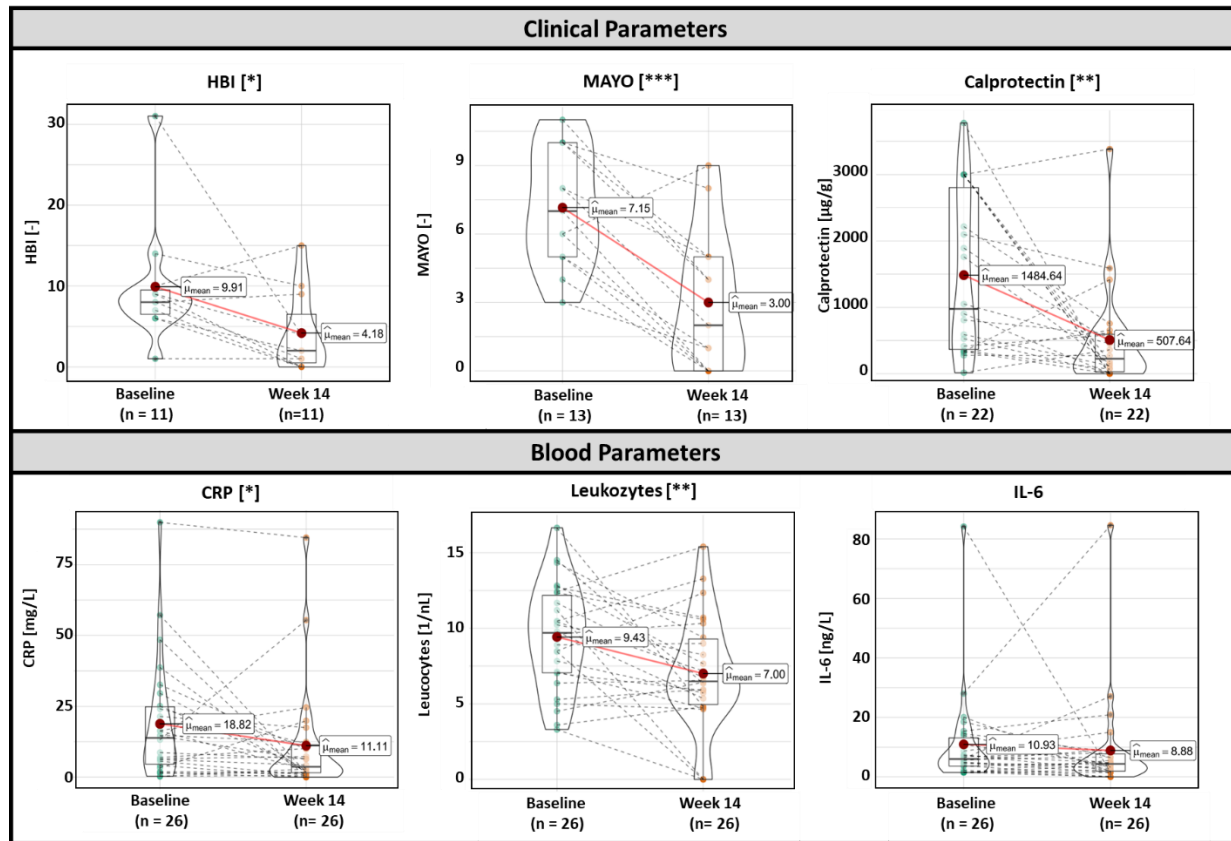
160

161 **3. Results**

162 *Characteristics of the study cohort*

163

164 In total, 26 patients provided fecal samples before and after 14 weeks of biologics therapy. The therapy
165 with one of three biologics (Infliximab: n=7, Vedolizumab: n=9, Olamkizept n=10) led to an overall
166 significant decrease in clinical disease scores (HBI: from 9.91 ± 7.32 to 4.18 ± 4.78 , p-Value 0.042)(Mayo
167 score: from 7.15 ± 2.48 to 3.00 ± 2.99 , p-value < 0.001)(Figure 1). As remission was characterized as a Mayo
168 score ≤ 2 respectively an HBI ≤ 4 and a concentration of serum CRP ≤ 5 mg/L, 12 out of 26 patients reached
169 by definition a remitting state of the disease, 12 did not achieve remission and 2 patients were in remission
170 during the whole therapy. 19 patients showed an overall response to the therapy. In line with the MAYO
171 and HBI score, the concentration of Calprotectin decreased significantly by 77%, CRP by 73% and blood
172 leucocytes by 33% across all patients. The concentration of IL-6 was also reduced after therapy by 27%,
173 but this difference was not statistically significant (Figure 1).



174

175 **Figure 1. Clinical and blood parameters of individuals with IBD at baseline and after 14 weeks of therapy with Infliximab,**
176 **Vedolizumab, or Olamkicept.** Data are presented as violin plots, displaying the distribution of the data. Boxes depict the inner
177 quartile range, with the median (black line) and mean (red dot). The outer shape clarifies the kernel probability density of the
178 data. The dashed black lines indicate changes in the values for each patient. To analyze differences in paired samples Wilcoxon
179 signed-rank test was used (* p<0.05, ** p<0.01, *** p<0.001). Abbreviations: HBI (Harvey Bradshaw Index), CRP (C-reactive
180 protein), IL-6 (Interleukin-6)

181

182 *Metaproteomics analysis*

183

184 To more specifically characterize the developments of the host inflammation and metabolism as well as
185 the gut microbiome due to the induction of remission, we compared the fecal metaproteomes of remitting
186 patients (n=12) at baseline (BL), and after 14 weeks (W14) of biologics therapy. Furthermore, we analyzed
187 the changes in the fecal metaproteomes from patients (n=12) who did not achieve remission throughout

188 the therapy and, to check for possible metaprotein signatures predictive of therapy success, we compared
189 the metaproteomes of the two groups of patients before the therapy started.

190 On average over all measured samples, 10,268 ($\pm 2,149$) metaproteins were identified and 31 % of spectra
191 were assigned to bacteria, 1 % to archaeal species, and 0.5 % were assigned to viral proteins. Moreover,
192 40 % of spectra were assigned to eukaryotic proteins (Supplementary Table 1).

193

194

195

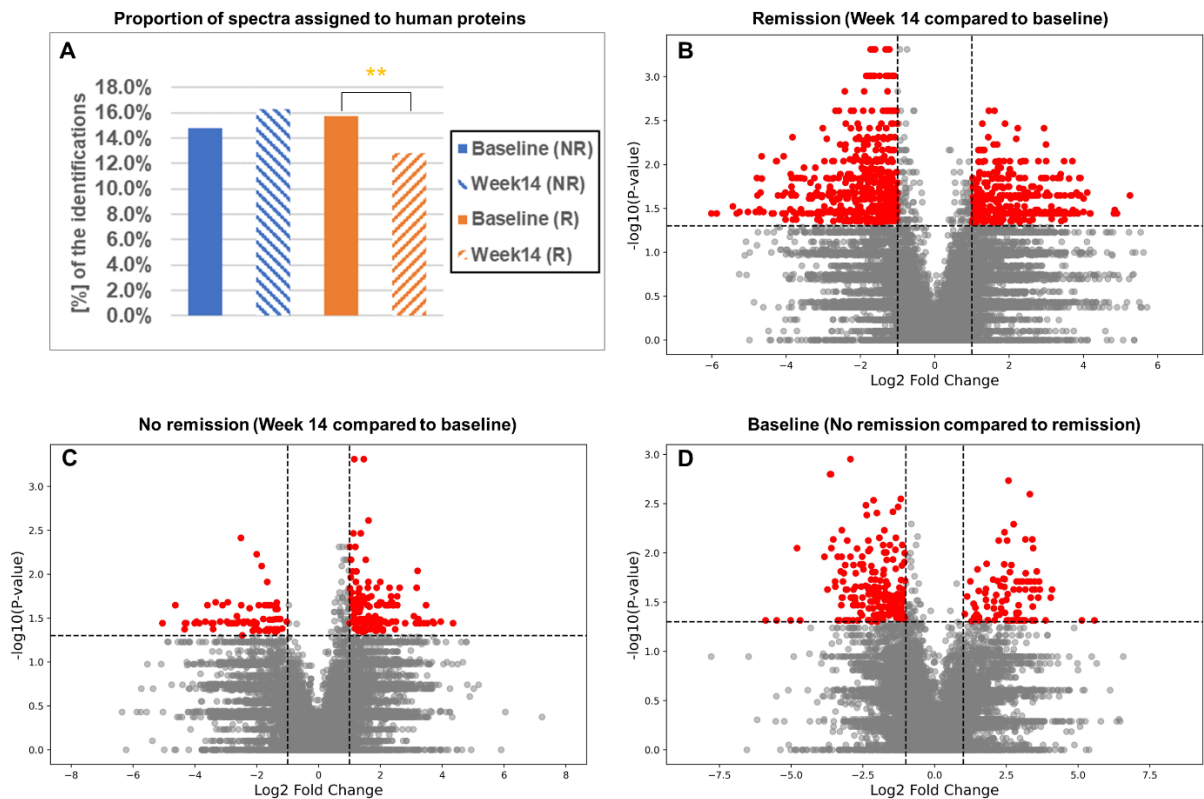
196 *Fecal metaproteome alterations through therapy in patients with remission*

197

198 Numerous changes in the fecal metaproteomes of remitting patients (n=12) were observed.

199 The proportion of spectra assigned to human proteins decreased significantly from 15.7 % to 12.8% (p
200 <0.01) after the therapy in remitting patients (Figure 2A). Furthermore, 1,164 proteins were identified with
201 significantly altered abundance (p-value<0.05, Figure 2B). These included human proteins such as
202 immunoglobulin lambda variable 1-44 (p<0.001, fold change W14/BL: 0.52), lactotransferrin (p<0.001, fold
203 change W14/BL: 0.3), progranulin (p<0.001, fold change W14/BL: 0.43), stomatin-like protein 3 (p<0.001,
204 fold change W14/BL: 0.4) or peptidoglycan recognition protein 1 (PGLYRP1, p<0.001, fold change
205 W14/BL: 0.42), which were significantly reduced. In addition, the abundance of various microbial proteins
206 was also altered. The proteins with the lowest p-value included 50S ribosomal protein L7/L12 (p<0.001,
207 fold change W14/BL: 0.31), 3-octaprenyl-4-hydroxybenzoate carboxy-lyase (p<0.001, fold change
208 W14/BL: 0.60), DNA-directed RNA polymerase subunit beta (p<0.001, fold change W14/BL: 0.41), PAN2-
209 PAN3 deadenylation complex catalytic subunit (p<0.001, fold change W14/BL: 0.33) and small ribosomal
210 subunit biogenesis GTPase RsgA (p<0.001, fold change W14/BL: 0.32)(Table 1).

211



212

213 **Figure 2. Proportion of spectra assigned to human proteins and differentially expressed metaproteins.** A: Proportion of spectra
214 assigned to human proteins in samples from non-remitting and remitting patients at baseline and after 14 weeks of therapy
215 (Wilcoxon signed-rank test: ** $p < 0.01$. B: Volcano plot showing enrichment and depletion of metaproteins in baseline samples
216 from non-remitting patients compared to baseline samples from remitting patients. C: Volcano plot showing enrichment and
217 depletion of metaproteins in samples from remitting patients after 14 weeks of therapy compared to baseline. D: Volcano plot
218 showing enrichment and depletion of metaproteins in samples from non-remitting patients after 14 weeks of therapy compared
219 to baseline. In (B), (C), and (D), red dots describe sequences that have been enriched or depleted by factor 2 with a significance
220 level of $p < 0.05$, calculated by Wilcoxon signed-rank test (B, C) and Wilcoxon rank sum test (D). The p-values and fold changes
221 depicted in (B), (C), and (D) are shown in Table S2.

222

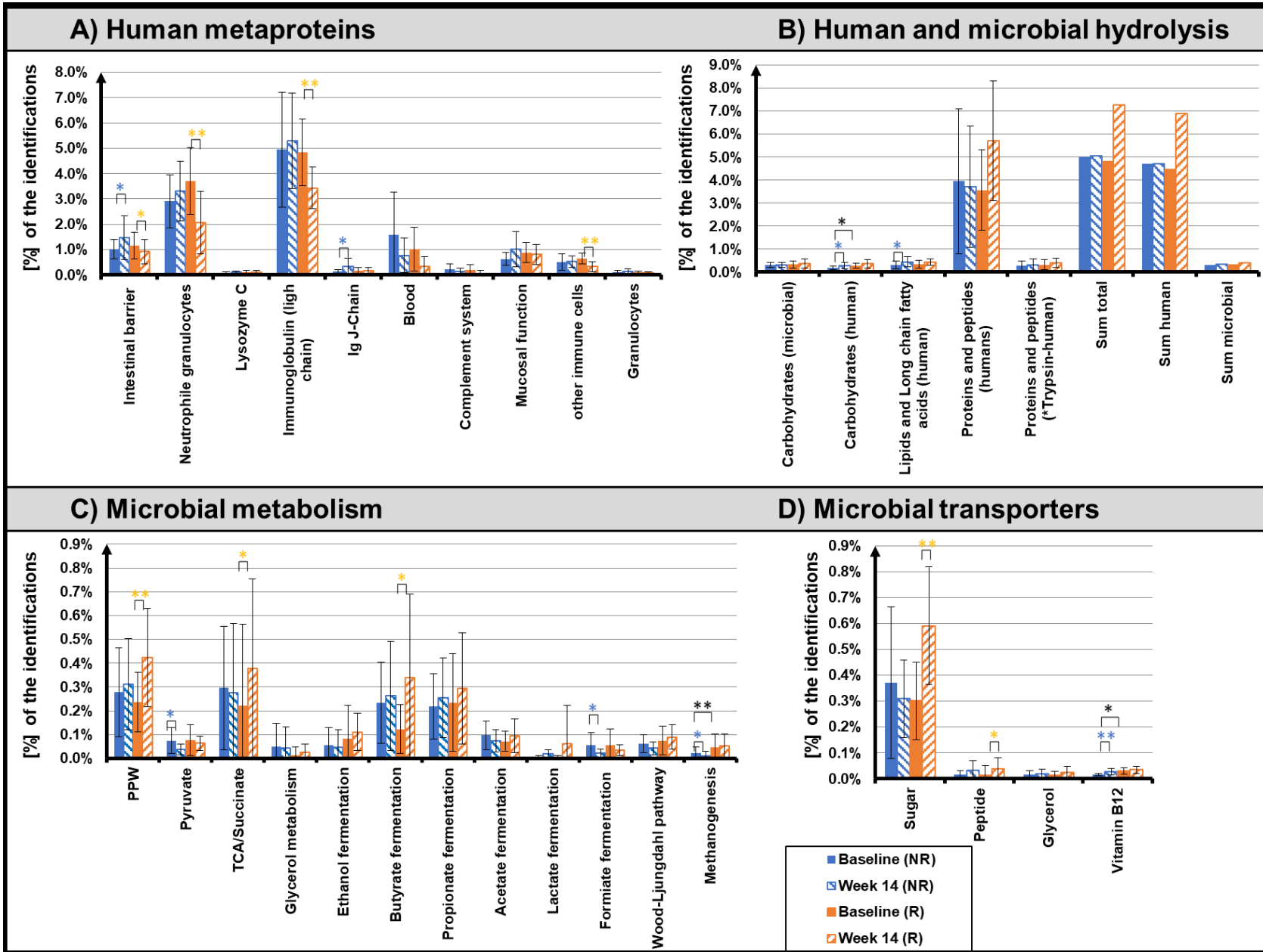
223 **Table 1. Significantly altered human and microbial metaproteins with lowest p-values (calculated with Wilcoxon signed-rank**
224 **test) in samples from patients with remission at week 14 compared to baseline.** Unknown metaproteins were excluded. The
225 taxonomy column shows the lowest confirmed taxonomic rank. Metaproteins assigned to the kingdom Metazoa were considered

226 as host (human) metaprotein. Wilcoxon rank sum test was used to analyze differences between unpaired samples (n=24). The
 227 function was inferred by UniProt keywords or GO term annotation.

Human metaproteins (ID)	Description	Function	Taxonomy	Average % abundance	Fold change (W14/BL)	p-Value
8343	Immunoglobulin lambda variable 1-44	Adaptive immunity	Species: <i>Homo Sapiens</i>	3.93×10^{-1}	0.52	<0.001
10087	Lactotransferrin	Antimicrobial	Phylum: Chordata	1.34×10^{-1}	0.30	<0.001
12875	Granulins	Cytokine	Class: Mammalia	2.95×10^{-2}	0.43	<0.001
138	Stomatin-like protein 3	signal transduction	Species: <i>Homo Sapiens</i>	8.96×10^{-2}	0.40	<0.001
11321	Peptidoglycan recognition protein 1	Innate immunity	Species: <i>Homo Sapiens</i>	5.49×10^{-2}	0.42	<0.001
Microbial metaproteins (ID)	Description	Function	Taxonomy	Average % abundance	Fold change (W14/BL)	p-Value
15670	50S ribosomal protein L7/L12	Ribosomal protein	Species: <i>Persephonella marina</i>	3.42×10^{-2}	0.31	<0.001
17989	3-octaprenyl-4-hydroxybenzoate carboxy-lyase	Ubiquinone biosynthesis	Species: <i>Vibrio vulnificus</i>	1.56×10^{-2}	0.60	<0.001
17075	DNA-directed RNA polymerase subunit beta	Transcription	Species: <i>Clostridium novyi</i>	1.12×10^{-2}	0.41	<0.001
15292	PAN2-PAN3 deadenylation complex catalytic subunit	mRNA processing	Species: <i>Lodderomyces</i>	6.09×10^{-3}	0.33	<0.001
13358	Small ribosomal subunit biogenesis GTPase RsgA	Ribosome biogenesis	Genus: <i>Bacillus</i>	5.16×10^{-3}	0.32	<0.001

228
 229 The comparison of functionally grouped proteins showed that intestinal barrier (p=0.034, fold change
 230 W14/BL: 0.79), neutrophil granulocytes (p=0.009, fold change W14/BL: 0.56), "other immune cells"
 231 (p=0.003, fold change W14/BL: 0.51) and immunoglobulin light chain proteins (p<0.001, fold change
 232 W14/BL: 0.71) were significantly reduced in remission patients at week 14, compared to baseline (Figure
 233 2 A, B). In contrast, we observed several microbial processes such as butyrate fermentation (p=0.042, fold
 234 change W14/BL: 2.76), the pentose phosphate pathway (PPW, p=0.007, fold change W14/BL: 1.79),
 235 succinate synthesis (p=0.016, fold change W14/BL: 1.71) and sugar (p=0.003, fold change W14/BL: 1.97)
 236 and peptide transport (p=0.029, fold change W14/BL: 2.83), that were significantly increased in patients
 237 with clinical remissions (Figure 1C). Furthermore, we observed changes in the abundance of proteins of
 238 the blood (p=0.052, fold change W14/BL: 0.33), microbial lactate fermentation (p=0.569, fold change
 239 W14/BL: 8.41) or the complement system (p=0.107, fold change W14/BL: 0.30) which however, were not
 240 significant.

241



243 **Figure 3. Overview of the functional assignment of identified metaproteins from patients at baseline and after 14 weeks of therapy.** Data from patients who did not achieve remission
244 are displayed in blue, data from patients who achieved remission are displayed in orange. Significant changes are marked with *. Identified metaproteins were functionally assigned
245 to host metaproteins (A), microbial and human hydrolysis enzymes (B), microbial metabolism (C), and microbial transporters (D) (Supplementary Table 3). Data are presented as
246 normalized average spectral abundance. All metaproteins assigned to the kingdom Metazoa were considered as host metaproteins. "Human trypsin" was shown as separated bar in
247 (B) since its abundance was potentially increased due to the trypsin used for tryptic digestion. The Wilcoxon rank sum test was used to analyze differences in independent samples (n
248 = 26, * p < 0.05, ** p < 0.01). The Wilcoxon signed rank test was used to analyze differences in dependent samples (n = 26, * p < 0.05, ** p < 0.01 for patients who achieved remission,
249 n = 26, * p < 0.05, ** p < 0.01 for patients who did not achieve remission). Bar graphs show \pm standard deviation.

250

251 *Fecal metaproteome alterations through therapy in patients without remission*

252

253 In patients without remission (n=12), the proportion of spectra assigned to human proteins increased non-

254 significantly from 14.8 % to 16.3 % and only 375 metaproteins changed significantly in abundance

255 (p<0.05). Human metaproteins which increased significantly, include LAMP1 (p=0.002, fold change

256 W14/BL: 3.05), polymeric immunoglobulin receptor (PIGR, p=0.005, fold change W14/BL: 1.58),

257 pantetheinase (VNN1, p=0.005, fold change W14/BL: 1.70), calcium-activated chloride channel regulator

258 1 (CLCA1, p=0.007, fold change W14/BL: 1.84) and neutrophil defensin 3 (DEF3A, p=0.007, fold change

259 W14/BL: 2.88). Microbial metaproteins which were significantly altered include e.g., ribosomal RNA large

260 subunit methyltransferase H (p<0.001, fold change W14/BL: 2.76) and anthranilate synthase component

261 2 (p=0.003, fold change W14/BL: 2.56) (Table 2).

262 **Table 2. Significantly altered human and microbial metaproteins with lowest p-values (calculated with Wilcoxon signed-rank**

263 **test) in samples from patients without remission at week 14 compared to baseline.** Unknown metaproteins were excluded. The

264 taxonomy column shows the lowest confirmed taxonomic rank. Metaproteins assigned to the kingdom Metazoa were considered

265 as host (human) metaprotein. The function was inferred by UniProt keywords or GO term annotation.

Human metaproteins (ID)	Description	Function	Taxonomy	Average % abundance	Fold change (W14/BL)	p-Value
12709	Lysosome-associated membrane glycoprotein 1	host-virus interaction	Class: Mammalia	9.25×10^{-3}	3.05	0.002
8549	Polymeric immunoglobulin receptor	polymeric Ig binding	Class: Mammalia	5.75×10^{-1}	1.58	0.005
11174	Pantetheinase	acute inflammatory response	Class: Mammalia	4.69×10^{-2}	1.70	0.005
102	Calcium-activated chloride channel regulator 1	calcium transport	Species: <i>Homo sapiens</i>	3.80×10^{-1}	1.84	0.007
368	Neutrophil defensin 3	Antimicrobial	Order: Primates	1.29×10^{-1}	2.88	0.007
Microbial metaproteins (ID)	Description	Function	Taxonomy	Average % abundance	Fold change (W14/BL)	p-Value
14309	Ribosomal RNA large subunit methyltransferase	rRNA processing	Species: <i>Clostridium difficile</i>	7.77×10^{-3}	2.76	<0.001
15465	Anthranilate synthase component 2	tryptophan biosynthesis	Species: <i>Salmonella enterica</i>	8.41×10^{-3}	2.56	0.003
11588	Uncharacterized protein HI_0392	acyltransferase activity	Species: <i>Bacillus subtilis</i>	9.08×10^{-3}	2.01	0.005
11586	Alpha-monoglucosyldiacylglycerol synthase	Carbohydrate metabolism	Species: <i>Streptococcus</i>	1.03×10^{-2}	2.27	0.005
22126	Putative oligopeptide transport ATP-binding protein	Translocase	Species: <i>Bacillus subtilis</i>	8.44×10^{-3}	2.06	0.007

266

267
268 Even in patients who did not achieve remission, differences in the metabolic processes and host protein
269 abundance in stool metaproteome were observed after 14 weeks of therapy (Figure 3). Proteins of the
270 intestinal barrier ($p=0.035$, fold change W14/BL: 1.40), IG-J chains ($p=0.017$, fold change W14/BL: 2.22)
271 and human carbohydrate metabolism ($p=0.011$, fold change W14/BL: 1.49) were significantly increased in
272 abundance. An insignificant increase was observed for e.g., immunoglobulin light chains ($p=0.850$, fold
273 change W14/BL: 1.07) and proteins from neutrophilic granulocytes ($p=0.428$, fold change W14/BL: 1.14).
274 In contrast, the microbial metabolic pathways of formate fermentation ($p=0.013$, fold change
275 W14/BL: 0.34) and pyruvate synthesis ($p=0.004$, fold change W14/BL: 0.50) were significantly decreased,
276 whereas vitamin B12 transport ($p<0.001$, fold change W14/BL: 1.60) was significantly increased. Human
277 blood ($p=0.296$, fold change W14/BL: 0.50) and complement system ($p=0.266$, fold change W14/BL: 0.65)
278 proteins were not significantly decreased.

279
280

281 *Fecal metaproteome alterations between patients with and without remission at baseline*

282
283 Whereas the proportion of spectra assigned to human proteins was not significantly different at baseline
284 between remitting and non-remitting patients (Figure 2A), a total of 550 metaproteins were significantly
285 altered between patients with and without remission at baseline (p -value < 0.05 , Figure 2B). Human
286 proteins that were significantly increased in remission patients included DEF3A ($p=0.003$, ratio R/NR: 4.37),
287 HLA class II histocompatibility antigen, DR alpha chain ($p=0.003$, ratio R/NR: 5.27), or CLCA1 ($p=0.004$, ratio
288 R/NR: 2.74) (Table 3). In contrast, human metaproteins like centromere protein F were significantly
289 increased in non-remitting patients ($p=0.002$, R/NR: 0.17). Significantly changed microbial proteins
290 included riboflavin biosynthesis protein RibBA ($p=0.002$, ratio R/NR: 12.24), chloramphenicol

291 acetyltransferase 2 (p=0.002, R/NR: 0.17) and polyphosphate kinase (p=0.001, only in patients with
292 Remission).

293

294 **Table 3. Significantly altered human and microbial metaproteins between patients with and without remission at baseline with**
295 **lowest p-Values.** Unknown metaproteins were excluded. The taxonomy column shows the lowest confirmed taxonomic rank.
296 Metaproteins assigned to the kingdom Metazoa were considered as host (human) metaprotein. Wilcoxon rank sum test was used
297 to analyze differences between unpaired samples (n=24). The function was inferred by UniProt keywords or GO term annotation.

Human metaproteins (ID)	Description	Function	Taxonomy	Average % abundance	Fold change (R/NR)	p-Value
9938	Double homeobox protein 4-like protein 4	transcription regulation	Species: <i>Homo Sapiens</i>	9.1×10^{-2}	7.65	0.001
23146	Centromere protein F	cell cycle	Species: <i>Homo Sapiens</i>	1.43×10^{-3}	0.17	0.002
368	Neutrophil defensin 3	antimicrobial	Order: Primates	1.79×10^{-1}	4.37	0.003
17966	HLA class II histocompatibility antigen, DR alpha chain	adaptive immunity	Species: <i>Homo Sapiens</i>	8.36×10^{-3}	5.27	0.003
17342	Calcium-activated chloride channel regulator 1	calcium transport	Class: Mammalia	1.29×10^{-2}	2.74	0.004
Microbial metaproteins (ID)	Description	Function	Taxonomy	Average % abundance	Fold change (R/NR)	p-Value
8869	Riboflavin biosynthesis protein RibBA	riboflavin biosynthesis	Superkingdom: Bacteria	1.65×10^{-3}	12.24	0.002
23145	Chloramphenicol acetyltransferase 2	antibiotic resistance	Species: <i>Escherichia coli</i>	1.43×10^{-3}	0.17	0.002
23148	UDP-N-acetylmuramoyl-tripeptide--D-alanyl-D-alanine	cell wall biogenesis/degradation	Species: <i>Synechocystis sp. PCC 6803</i>	1.04×10^{-2}	0.10	0.003
20508	Polyphosphate kinase	kinase	Class: Gammaproteobacteria	2.03×10^{-1}	only in patients	0.003
3908	N-acetylneuraminatase epimerase	carbohydrate metabolism	Family: <i>Enterobacteriaceae</i>	1.11×10^{-3}	only in patients	0.003

298

299

300 To disentangle host and microbial processes, we independently assessed metaproteomes attributed to
301 humans or microbiota (Figure 3). Concerning the functional processes of the gut microbiome, the
302 abundance of proteins involved in vitamin 12 transport was significantly higher (p=0.014, ratio R/NR: 1.86)
303 and the abundance of proteins of microbial methanogenesis (p=0.003, ratio R/NR: 0.34) was found
304 significantly lower in patients who achieved remission. (Figure 3C). Other non-significantly different
305 processes in terms of their protein abundance included bacteriocin transport (p=0.059, ratio R/NR: 3.88),
306 glycerol metabolism (p=0.159, ratio R/NR: 0.26) or succinate metabolism (p=0.143, ratio R/NR 0.74).

307 No processes to which human proteins were grouped, were significantly altered, except for proteins
308 assigned to carbohydrate hydrolysis (p=0.024, ratio R/NR:). Proteins of neutrophil granulocytes (p=0.143,

309 ratio R/NR: 1.28) and proteins of mucosal functions ($p=0.060$, ratio R/NR: 1.42) were present in lower
310 abundance in patients who did not achieve remission.

311

312

313 *Identification of disease-specific biomarker candidates for monitoring the success of IBD therapy*

314

315 For the identification of disease-specific biomarker candidates for monitoring or predicting the success of
316 IBD therapy, only metaproteins with an average relative abundance of at least 0.01% in at least one patient
317 group (R-BL, R-W14, NR-BL, NR-W14) were considered. The most promising human and microbial
318 biomarkers, in our opinion, for which a pathogenesis contribution can be traced, are shown in Figure 4.
319 The first microbial biomarker shown, anthranilate synthase component 2 (Meta-Protein 15465, *Salmonella*
320 *enterica*) increases significantly during therapy in patients who did not achieve remission (NR-BL/NR-W14:
321 $p<0.005$). Furthermore, 3-octaprenyl-4-hydroxybenzoate carboxy-lyase (Meta-Protein 17989, *Vibrio*
322 *vulnificus*, R-BL/R-W14: $p<0.001$) was found significantly decreased and glutamate dehydrogenase (Meta-
323 Protein 1031, Unknown Superkingdom, R-BL/R-W14: $p=0.002$) was found significantly increased in
324 remitting patients.

325 The abundance of the human proteins S100-A8 (R-BL/R-W14: $p=0.012$) and CRP (R-BL/R-W14: $p=0.036$)
326 decreased in patients with remission in the course of therapy. Significant changes were also observed for
327 the human protein DEF3A (R-BL/NR-BL: $p=0.001$, R-BL/R-W14: $p=0.021$, NR-BL/NR-W14: $p=0.007$). Only in
328 patients without remission does the human protein LAMP1 (NR-BL/NR-W14: $p=0.003$) increase. In
329 contrast, the PGLYRP1 decreases significantly in patients with remission (R-BL/R-W14: $p=0.001$). Likewise,
330 the protein Granulins decreases significantly in remission patients (R-BL/R-W14: $p<0.001$).

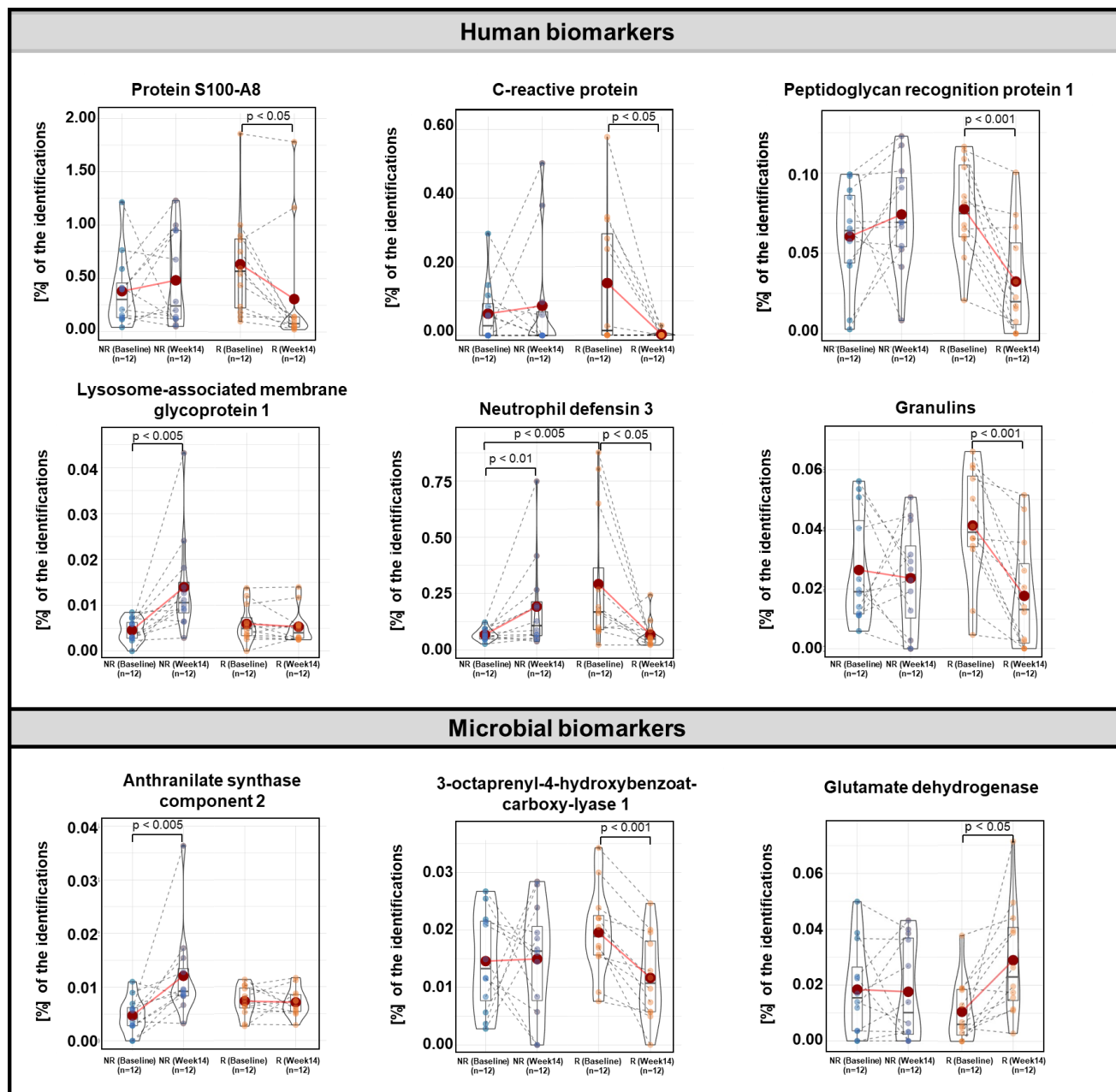
331 In a first attempt to validate the finding from the metaproteomic biomarker discovery, LAMP1, as a
332 probable indicator for the failure of the therapy, was measured with ELISAs in fecal washes of UC patients

333 (Figure S1). A large but statistically insignificant ($p=0.069$) increase in the abundance of LAMP1 in was

334 found in patients, who were not in remission.

335

336



337

338 **Figure 4. Panel of potential marker metaproteins as violin plots.** Relative abundance of the marker metaproteins in fecal samples

339 from IBD patients who achieved remission (R) and IBD patients who did not achieve remission (NR) at baseline and after 14 weeks

340 of biologics therapy. The means are illustrated as red dots. P-values were calculated with Wilcoxon signed-rank test (between

341 timepoints of remitting or non-remitting patients) and Wilcoxon rank sum test (between remitting and non-remitting patients at

342 baseline).

343

344 **4. Discussion**

345 *Fecal metaproteome alterations through therapy in patients with remission*

346 With the help of the analysis of the fecal metaproteomes from patients who achieved remission, a large
347 number of changes in the course of therapy could be determined. These are obvious by the large number
348 of significantly altered proteins and the significantly decreased proportion spectra assigned to human
349 proteins in the course of the therapy, which was described previously to be indicative of disease activity
350 [31].

351 The changes indicate on the one hand that the immune response of this group of patients has decreased
352 and on the other hand that proteins of the microbial metabolism are present in increased abundance.

353 The significantly decreased abundance of intestinal barrier proteins, as well as the decrease in blood
354 proteins, indicate an increased integrity of the epithelial layer of the intestine [32, 33]. Furthermore, the
355 decreased abundance of proteins from neutrophilic granulocytes is a sign of less translocation to the gut
356 of these immune cells [34, 35], which are an important driver of inflammation in IBD. The significantly
357 decreased human proteins, immunoglobulins, lactotransferrin, or progranulin have already been
358 associated with IBD [36–38]. Their decline in abundance suggests an ameliorated disease course. The
359 significant decrease in PGLYRP1 also indicates less dysbiosis with the gut microbiome, as this protein,
360 which is also part of neutrophil extracellular traps (NETs), recognizes bacterial cell wall structures and
361 initiates the inflammatory response [39, 40].

362 The reduced dysbiosis is also recognizable in the significantly increased abundance of microbial metabolic
363 pathways, such as the PPW, the tricarboxylic acid cycle /succinate metabolism, or butyrate fermentation.

364 The PPW is crucial for biomass increase and growth and an increased abundance of its enzymes may
365 indicate a prosperous intestinal microbiome [41], further supported by increased transport of sugars and
366 peptides. The increased metabolism of succinate, which promotes the release of pro-inflammatory

367 cytokines, could prevent the accumulation of it in the feces, which is a phenomenon observed in IBD
368 inflammation, and thereby further improve growth conditions [42]. Finally, butyrate fermentation in
369 particular is of great importance for the well-being of the patient, as butyrate serves as an energy source
370 for colonocytes and has great anti-inflammatory potential [43, 44]. The increased synthesis of butyrate
371 can also serve as an indicator of the stability of remission [45].

372

373 *Fecal metaproteome alterations through therapy in patients without remission*

374 Based on the altered processes and proteins of the patients who did not achieve remission, a strongly
375 deviating reaction of the intestinal immune system and the gut microbiome to the therapy can be stated.
376 Immune-relevant processes and protein groups, like proteins from neutrophils or immunoglobulins, which
377 showed a clear decline in patients with remission, are not significantly decreased in this group of patients.
378 The increase of immunoglobulin light chain and immunoglobulin J-chain could also be a hint at the
379 formation of anti-drug antibodies, which are a major cause of therapy failure in biologics treatment [46],
380 The increased formation of microbiome targeting immunoglobulins was observed in active IBD [47], so
381 the target of those antibodies needs to be elucidated. Nevertheless, the secretion of immunoglobulins
382 into the gut lumen depends on the PIGR [48], which is one of the most significantly increased proteins in
383 non-remitting patients, supporting the hypothesis of an increased antibody response.

384 Other individual proteins, that have been described as the IBD susceptibility locus, such as VNN1 [49], or
385 that are associated with the immune response in IBD, like LAMP1 [50], are present in significantly
386 increased abundance after therapy. These findings indicate an ongoing inflammation whose character has
387 changed due to the induction of therapy. The reason for an ongoing inflammation could be the expansion
388 of apoptosis-resistant immune cells, which was observed in non-responding IBD patients in reaction to
389 biologics therapy. Immune modulatory therapies have also been shown to increase LAMP1 abundance

390 [51], which is often used to measure degranulation and cytotoxic potential of cytotoxic lymphocytes [52].
391 Increased cytotoxicity was observed in IBD patients in association with increased apoptosis in the intestinal
392 mucosa [53]. Identification of epithelial proteins like VNN1, PIGR, and CLCA1 among the most significantly
393 increased proteins and the significant increase in the abundance of intestinal barrier proteins in general,
394 would support this hypothesis. Increased abundance of proteins from neutrophilic granulocytes, especially
395 antimicrobial DEF3A, could be a reaction to increased microbial evasion due to barrier defects. As microbial
396 metabolite synthesis, like butyrate fermentation or formate synthesis, which is significantly decreased in
397 non-remitting patients, potentially limits the cytotoxic effects of immune cells [54, 55], the lack of a healthy
398 microbiome could contribute to therapy failure.

399 Nevertheless, there are some changes in the metaproteome of these patients that indicate at least a
400 slightly beneficial response to therapy. Proteins of microbial vitamin B12 transport were significantly
401 increased, which could indicate a reduced dysbiosis of the gut microbiome [56]. Furthermore, the
402 abundance of human blood proteins was halved. As fecal hemoglobin was previously identified as a
403 biomarker for intestinal inflammation [57], the decline of blood proteins could indicate at least a minor
404 amelioration of the disease. This is also supported by the reduction of proteins coupled to the complement
405 system. As this pathway is part of the innate immune response and the response to microbial-associated
406 molecular patterns this could also be a hint to less pronounced microbial dysbiosis.

407

408 *Fecal metaproteome alterations between patients with and without remission at baseline*

409 As there are no reliable biomarkers to predict the success of a therapy and clinicians often empirically try
410 different drugs to achieve remission [58], our final comparison aimed to identify metaprotein patterns,
411 that are likely to predict the success of biologics therapy before the therapy started.

412 In healthy individuals, the defense against pathogenic organisms in the human intestine takes place
413 through a balanced reaction of the innate and adaptive immune system [59]. Increased immune response
414 is seen at the onset of therapy, particularly in patients who subsequently achieve remission. Proteins of
415 the innate immune system, such as neutrophil DEF3A, and the adaptive immune system, such as HLA class
416 II histocompatibility antigen, are increased significantly in remitting patients. A high amount of alpha-
417 defensins was indeed described as a prediction of therapy response in IBD therapy before [60].

418 Furthermore, ROS are an important instrument of the intestinal immune response. But they represent a
419 double-edged sword in the pathogenesis of IBD, as a fine-tuned regulation is necessary to eliminate
420 pathogens, but at the same time avoid killing commensal microorganisms and damage tissue. The
421 increased abundance of microbial proteins that synthesize the antioxidants riboflavin and polyphosphate
422 in patients, who achieve remission suggests an active contribution of the gut microbiome to tissue
423 protection in these individuals [61]. In contrast, microbial processes that act as a sink for the anti-
424 inflammatory molecule hydrogen [62], such as methanogenesis and glycerol metabolism, are more
425 prevalent in patients who do not achieve remission. These changes indicate an imbalance of the immune
426 response and the microbiome concerning oxidative stress, which possibly promotes the depletion of
427 beneficial microorganisms and tissue damage, which seems to extend during the therapy, as stated above.
428 This hypothesis is underlined by the increased abundance of blood proteins in patients without remission.
429 Furthermore, the increased abundance of chloramphenicol acetyltransferase 2 in non-remitting patients
430 hints at an involvement of the gut resistome, which is expanded in many diseases [63].

431 For other significantly changed proteins like Double homeobox protein 4-like protein 4, a transcription
432 factor or centromere protein F, a marker for poor prognosis in cancer [64, 65], no connection to IBD or gut
433 immunity is described underlining the knowledge gaps still existing.

434 In general, predictive biomarkers are described as dependent on used biologic [66], which renders the
435 general assessment of predictive biomarkers hard in the present study. Nevertheless, as microbiome

436 fitness and human protein biomarkers are included in nearly all predictive models, the prediction of
437 therapy success using metaproteomics appears feasible. Taking into account other omics levels, like
438 metabolomics, and a personalized approach, thereby benefitting from knowledge about e.g., individual
439 polymorphisms of a patient, would further improve prediction potential [67].

440 *Identification of disease-specific biomarkers*

441 To be able to predict the success of therapy before medication or to assess the effectiveness of ongoing
442 therapy, the search for biomarkers is a central topic of ongoing research. As we opted to identify markers,
443 which are present in easily detectable abundances, we only considered metaproteins with an average
444 relative abundance of at least 0.01% in at least one patient group (R-BL, R-W14, NR-BL, NR-W14).

445 In particular, fecal calprotectin (FC) and CRP have been investigated in a large number of studies using
446 antibody-based methods such as ELISA [68–70]. Although their use is often hindered by disadvantages
447 such as a lack of specificity [71], we considered them as biomarkers in our cohort. Both show a significant
448 decrease in patients with remission, but there is no significant difference between patients with and
449 without remission at baseline to predict therapy success. Taken together with the observation of outlying
450 individuals, the need for more specific biomarkers or a panel of biomarkers is obvious.

451 The earlier-mentioned increased antimicrobial potential in patients without remission is supported by the
452 consideration of DEF3A. Furthermore, the data presented in Figure 4 regarding the abundance of the
453 proteins of neutrophil granulocytes are depicted reliably, so the protein seems to be suitable as a marker
454 protein for the invasion of this type of leukocyte. The violin plot (Figure 4) further implies that a high
455 amount of DEF3A, which has broad antimicrobial activity [72], in a patient's feces predicts therapy success
456 at baseline, whereas a low amount could be proof of a successful therapy after termination. Interestingly,
457 high DEF3A was also evaluated as a positive predictive marker in cancer immunotherapy [73].

458 A marker for reduced dysbiosis in remission patients could also be the human PGLYRP1. Since this protein
459 is involved in antigen recognition [40], the decrease in this protein may indicate reduced invasion of
460 intestinal tissue by microorganisms. The significant decrease in granulins also indicates a decrease in
461 immune response and inflammation in remission patients.

462 In contrast, the significant increase in LAMP1, an essential protein of natural killer cell cytotoxicity [74],
463 may indicate a change in the nature of inflammation in patients without remission. This means physicians
464 may have to change the therapeutic strategy, for example to antibodies against NKG2D, which induces
465 cytolytic natural killer cells and T-cells upon interaction with stress-related molecules [75]. The validation
466 of LAMP1 with an ELISA also showed a higher abundance in non-remitting patients, but the increase was
467 not significant. Nevertheless, the strong elevation in distinct patients showed the relevance of the protein
468 for specific individuals supporting a precision medicine approach to the treatment of IBD patients.

469 As all human markers depicted in Figure 4 are also described in other malignancies [73, 76–80], their
470 specificity in IBD has to be evaluated further. Since microbial dysbiosis and associated functional and
471 taxonomic differences are hallmarks of IBD, there are also many attempts to discover microbial biomarkers
472 for disease monitoring or responsiveness to therapies. The significant differences in the microbial
473 biomarkers proposed in Figure 4 show, that they are suitable for disease monitoring. Markers for the
474 different development of microbial metabolism in patients with and without remission could be
475 anthranilate synthase component 2 (Meta-Protein 15465, *Salmonella enterica*), which is involved in of the
476 tryptophan metabolism and quorum sensing [81]. An increased tryptophan metabolism is under
477 investigation to aggravate disease activity in IBD patients [82]. Furthermore, anthranilate has antimicrobial
478 potential and by increasing in patients who did not achieve remission, the antimicrobial milieu in these
479 patients could be further worsened. Furthermore, the species the metaprotein is annotated to, *Salmonella*
480 *enterica*, is described to benefit from inflammation, to overcome colonization resistance and to play a role
481 in the onset of IBD [83, 84].

482 In contrast a decreasing abundance of 3-octaprenyl-4-hydroxybenzoate carboxylase (Meta-Protein
483 17989, *Vibrio vulnificus*), which catalyzes an intermediate step in the biosynthesis of ubiquinone, an
484 antioxidant and tested as supplement in inflammatory diseases, could serve as a marker of less oxidative
485 stress and a more hospitable environment for microorganisms. A similar sign of regrowth of a beneficial
486 gut flora could be glutamate dehydrogenase (Meta-Protein 1031, Unknown Superkingdom), which has
487 great importance for microbes in gut colonization and is the most abundant metaprotein found in fecal
488 samples from healthy individuals [85, 86]. Nevertheless, as the gut microbiome underlies huge
489 interindividual and intraindividual changes, finding a single microbial marker protein remains a challenging
490 task, and a panel of marker proteins or the functional assessment of the microbiome might be more
491 promising.

492
493 Despite the ability of metaproteomics to characterize the induced changes in the remission of IBD patients
494 in contrast to non-remitting patients, the present study has limitations. Due to the small number of study
495 participants, the power of the statistical data analysis is limited. Furthermore, the field of participants is
496 quite heterogeneous with regard to their disease. In the evaluation, neither the type of disease (UC, CD)
497 or its local occurrence nor the type of therapeutic agent was considered. Due to the different mechanisms
498 of action of the drugs, different changes in the gastrointestinal microbiome are to be expected [87],
499 leading to specific metaproteome patterns especially between patients treated with different biologics.
500 This could minimize the observations on the microbial aspects of the analysis. Larger clinical panels,
501 taking into account the different biologics and disease subtypes, to evaluate the differences identified here
502 would be useful.

503 Furthermore, the influence of environmental influences, e.g. changes in the patient's diet in the course of
504 therapy, on the metaproteome of the study participants is difficult to assess, which could make the already
505 large interindividual differences even more significant.

506 Moreover, many identified meta-proteins, some of which changed significantly in the course of therapy,
507 could not be annotated. Analyzing different metaproteomic data sets may hold potential to help in
508 annotation of these potentially disease relevant features [88].

509

510 Fecal metaproteomics enabled us to monitor the success of biological-based IBD therapy deduced from
511 proteins linked with inflammation and bacterial metabolisms, showing its potential for clinical application.
512 Remitting patients showed a decrease in immune functions, in particular, decreased abundance of
513 neutrophilic proteins and an increased abundance of several microbial functions, like butyrate synthesis.
514 The fecal metaproteomes of patients with an unsuccessful therapy were marked by increased abundance
515 of immunoglobulin proteins and signs of cytotoxicity and tissue damage. Furthermore, we proposed
516 several new potential biomarker candidates, which could also be of interest for further antibody-based
517 monitoring of IBD therapy.

518

519 **5. Funding**

520 This research was supported by the German Research Foundation (Deutsche Forschungsgemeinschaft,
521 DFG) under Germany's Excellence Strategy –EXC2167-Project ID 390884018 “Precision Medicine in Chronic
522 Inflammation” (K.A.) the RU5042-miTarget (to K.A.), the EKFS (Clinician Scientist Professorship, K.A.), the
523 BMBF (eMED Juniorverbund “Try-IBD” 01ZX1915A).

524

525 **6. Acknowledgements**

526 Not applicable.

527 **7. Data Availability Statement**

528 The mass spectrometry proteomics data have been deposited to the ProteomeXchange Consortium via
529 the PRIDE partner repository with the dataset identifier PXD053257.

530 Reviewer access details

531 Log in to the PRIDE website using the following details:

532 Project accession: PXD053257

533 Token: ZUI01Soinr2K

534 Alternatively, reviewer can access the dataset by logging in to the PRIDE website using the following
535 account details:

536 Username: reviewer_pxd053257@ebi.ac.uk

537 Password: z6lsKunGzcvs

538 **8. Conflicts of Interest:**

539 Not applicable.

540

541 **9. Author contributions:**

- 542 ● Conceptualization: R.H., K.A.
- 543 ● Experiments metaproteomics: J.L., P.H.
- 544 ● ELISA experiments: L.W., S.N., F.T., S.T.
- 545 ● Data evaluation: J.L., M.W., L.W., S.N., F.T., S.T.
- 546 ● Bioinformatics: K.S., J.L., M.W.
- 547 ● Graphical abstract: K.S.
- 548 ● Supervision: R.H., K.A.
- 549 ● critical revision of the manuscript: D.B., M.G., R.H., K.A., K.S., U.R., P.R.
- 550 ● writing—original draft: M.W.
- 551 ● writing—review and editing: R.H., K.A.

552

553 All authors have read and agreed to the published version of the manuscript.

554

555 **References**

- 556 [1] Yu YR, Rodriguez JR. Clinical presentation of Crohn's, ulcerative colitis, and indeterminate colitis:
557 Symptoms, extraintestinal manifestations, and disease phenotypes. *Semin Pediatr Surg* 2017; 26(6):
558 349–55
559 [<https://doi.org/10.1053/j.sempedsurg.2017.10.003>][PMID: 29126502]
- 560 [2] Bernabeu P, Belén-Galipienso O, van-der Hofstadt C, *et al.* Psychological burden and quality of life in
561 newly diagnosed inflammatory bowel disease patients. *Front Psychol* 2024; 15: 1334308
562 [<https://doi.org/10.3389/fpsyg.2024.1334308>][PMID: 38348263]
- 563 [3] Benoni C, Nilsson A. Smoking habits in patients with inflammatory bowel disease. A case-control
564 study. *Scand J Gastroenterol* 1987; 22(9): 1130–6
565 [<https://doi.org/10.3109/00365528708991970>][PMID: 3423738]
- 566 [4] Glassner KL, Abraham BP, Quigley EMM. The microbiome and inflammatory bowel disease. *J Allergy*
567 *Clin Immunol* 2020; 145(1): 16–27
568 [<https://doi.org/10.1016/j.jaci.2019.11.003>][PMID: 31910984]
- 569 [5] Lange KM de, Moutsianas L, Lee JC, *et al.* Genome-wide association study implicates immune
570 activation of multiple integrin genes in inflammatory bowel disease. *Nat Genet* 2017; 49(2): 256–61
571 [<https://doi.org/10.1038/ng.3760>][PMID: 28067908]
- 572 [6] Ye BD, McGovern DPB. Genetic variation in IBD: progress, clues to pathogenesis and possible clinical
573 utility. *Expert Rev Clin Immunol* 2016; 12(10): 1091–107
574 [<https://doi.org/10.1080/1744666X.2016.1184972>][PMID: 27156530]
- 575 [7] Wu H-J, Wu E. The role of gut microbiota in immune homeostasis and autoimmunity. *Gut Microbes*
576 2012; 3(1): 4–14
577 [<https://doi.org/10.4161/gmic.19320>][PMID: 22356853]

- 578 [8] Wei J, Feng J. Signaling pathways associated with inflammatory bowel disease. *Recent Pat Inflamm*
579 *Allergy Drug Discov* 2010; 4(2): 105–17
580 [<https://doi.org/10.2174/187221310791163071>][PMID: 20001899]
- 581 [9] Cai Z, Wang S, Li J. Treatment of Inflammatory Bowel Disease: A Comprehensive Review. *Front Med*
582 (Lausanne) 2021; 8: 765474
583 [<https://doi.org/10.3389/fmed.2021.765474>][PMID: 34988090]
- 584 [10] Liu J, Di B, Xu L-L. Recent advances in the treatment of IBD: Targets, mechanisms and related therapies.
585 *Cytokine Growth Factor Rev* 2023; 71-72: 1–12
586 [<https://doi.org/10.1016/j.cytogfr.2023.07.001>][PMID: 37455149]
- 587 [11] Na S-Y, Moon W. Perspectives on Current and Novel Treatments for Inflammatory Bowel Disease. *Gut*
588 *Liver* 2019; 13(6): 604–16
589 [<https://doi.org/10.5009/gnl19019>][PMID: 31195433]
- 590 [12] Yamamoto-Furusho JK, Parra-Holguín NN. Emerging therapeutic options in inflammatory bowel
591 disease. *World J Gastroenterol* 2021; 27(48): 8242–61
592 [<https://doi.org/10.3748/wjg.v27.i48.8242>][PMID: 35068868]
- 593 [13] Aden K, Rehman A, Waschina S, *et al.* Metabolic Functions of Gut Microbes Associate With Efficacy of
594 Tumor Necrosis Factor Antagonists in Patients With Inflammatory Bowel Diseases. *Gastroenterology*
595 2019; 157(5): 1279-1292.e11
596 [<https://doi.org/10.1053/j.gastro.2019.07.025>][PMID: 31326413]
- 597 [14] Ben-Horin S, Chowers Y. Review article: loss of response to anti-TNF treatments in Crohn's disease.
598 *Aliment Pharmacol Ther* 2011; 33(9): 987–95
599 [<https://doi.org/10.1111/j.1365-2036.2011.04612.x>][PMID: 21366636]
- 600 [15] Netz U, Carter JV, Eichenberger MR, *et al.* Genetic polymorphisms predict response to anti-tumor
601 necrosis factor treatment in Crohn's disease. *World J Gastroenterol* 2017; 23(27): 4958–67
602 [<https://doi.org/10.3748/wjg.v23.i27.4958>][PMID: 28785150]

- 603 [16] Mishra N, Aden K, Blase JI, *et al.* Longitudinal multi-omics analysis identifies early blood-based
604 predictors of anti-TNF therapy response in inflammatory bowel disease. *Genome Med* 2022; 14(1):
605 110
606 [<https://doi.org/10.1186/s13073-022-01112-z>][PMID: 36153599]
- 607 [17] Bauer E, Thiele I. From metagenomic data to personalized in silico microbiotas: predicting dietary
608 supplements for Crohn's disease. *NPJ Syst Biol Appl* 2018; 4: 27
609 [<https://doi.org/10.1038/s41540-018-0063-2>][PMID: 30083388]
- 610 [18] Vich Vila A, Hu S, Andreu-Sánchez S, *et al.* Faecal metabolome and its determinants in inflammatory
611 bowel disease. *Gut* 2023; 72(8): 1472–85
612 [<https://doi.org/10.1136/gutjnl-2022-328048>][PMID: 36958817]
- 613 [19] Mills RH, Vázquez-Baeza Y, Zhu Q, *et al.* Evaluating Metagenomic Prediction of the Metaproteome in
614 a 4.5-Year Study of a Patient with Crohn's Disease. *mSystems* 2019; 4(1)
615 [<https://doi.org/10.1128/mSystems.00337-18>][PMID: 30801026]
- 616 [20] Ding NS, McDonald JAK, Perdonés-Montero A, *et al.* Metabonomics and the Gut Microbiome
617 Associated With Primary Response to Anti-TNF Therapy in Crohn's Disease. *J Crohns Colitis* 2020;
618 14(8): 1090–102
619 [<https://doi.org/10.1093/ecco-jcc/jjaa039>][PMID: 32119090]
- 620 [21] Effenberger M, Reider S, Waschina S, *et al.* Microbial Butyrate Synthesis Indicates Therapeutic Efficacy
621 of Azathioprine in IBD Patients. *J Crohns Colitis* 2021; 15(1): 88–98
622 [<https://doi.org/10.1093/ecco-jcc/jjaa152>][PMID: 32687146]
- 623 [22] Lloyd-Price J, Arze C, Ananthakrishnan AN, *et al.* Multi-omics of the gut microbial ecosystem in
624 inflammatory bowel diseases. *Nature* 2019; 569(7758): 655–62
625 [<https://doi.org/10.1038/s41586-019-1237-9>][PMID: 31142855]

- 626 [23] Schierova D, Roubalova R, Kolar M, *et al.* Fecal Microbiome Changes and Specific Anti-Bacterial
627 Response in Patients with IBD during Anti-TNF Therapy. *Cells* 2021; 10(11)
628 [<https://doi.org/10.3390/cells10113188>][PMID: 34831411]
- 629 [24] Schirmer M, Franzosa EA, Lloyd-Price J, *et al.* Dynamics of metatranscription in the inflammatory
630 bowel disease gut microbiome. *Nat Microbiol* 2018; 3(3): 337–46
631 [<https://doi.org/10.1038/s41564-017-0089-z>][PMID: 29311644]
- 632 [25] Schreiber S, Aden K, Bernardes JP, *et al.* Therapeutic Interleukin-6 Trans-signaling Inhibition by
633 Olamkicept (sgp130Fc) in Patients With Active Inflammatory Bowel Disease. *Gastroenterology* 2021;
634 160(7): 2354-2366.e11
635 [<https://doi.org/10.1053/j.gastro.2021.02.062>][PMID: 33667488]
- 636 [26] Sydor S, Dandyk C, Schwerdt J, *et al.* Discovering Biomarkers for Non-Alcoholic Steatohepatitis
637 Patients with and without Hepatocellular Carcinoma Using Fecal Metaproteomics. *Int J Mol Sci* 2022;
638 23(16)
639 [<https://doi.org/10.3390/ijms23168841>][PMID: 36012106]
- 640 [27] Biemann R, Buß E, Benndorf D, *et al.* Fecal Metaproteomics Reveals Reduced Gut Inflammation and
641 Changed Microbial Metabolism Following Lifestyle-Induced Weight Loss. *Biomolecules* 2021; 11(5)
642 [<https://doi.org/10.3390/biom11050726>][PMID: 34066026]
- 643 [28] Heyer R, Schallert K, Büdel A, *et al.* A Robust and Universal Metaproteomics Workflow for Research
644 Studies and Routine Diagnostics Within 24 h Using Phenol Extraction, FASP Digest, and the
645 MetaProteomeAnalyzer. *Front Microbiol* 2019; 10: 1883
646 [<https://doi.org/10.3389/fmicb.2019.01883>][PMID: 31474963]
- 647 [29] Qin J, Li R, Raes J, *et al.* A human gut microbial gene catalogue established by metagenomic
648 sequencing. *Nature* 2010; 464(7285): 59–65
649 [<https://doi.org/10.1038/nature08821>][PMID: 20203603]

- 650 [30] Lehmann T, Schallert K, Vilchez-Vargas R, *et al.* Metaproteomics of fecal samples of Crohn's disease
651 and Ulcerative Colitis. *J Proteomics* 2019; 201: 93–103
652 [<https://doi.org/10.1016/j.jprot.2019.04.009>][PMID: 31009805]
- 653 [31] Zhang X, Deeke SA, Ning Z, *et al.* Metaproteomics reveals associations between microbiome and
654 intestinal extracellular vesicle proteins in pediatric inflammatory bowel disease. *Nat Commun* 2018;
655 9(1): 2873
656 [<https://doi.org/10.1038/s41467-018-05357-4>][PMID: 30030445]
- 657 [32] Szymanska E, Wierzbicka A, Dadalski M, Kierkus J. Fecal Zonulin as a Noninvasive Biomarker of
658 Intestinal Permeability in Pediatric Patients with Inflammatory Bowel Diseases-Correlation with
659 Disease Activity and Fecal Calprotectin. *J Clin Med* 2021; 10(17)
660 [<https://doi.org/10.3390/jcm10173905>][PMID: 34501351]
- 661 [33] Fu Y, Wang L, Xie C, *et al.* Comparison of non-invasive biomarkers faecal BAFF, calprotectin and FOBT
662 in discriminating IBS from IBD and evaluation of intestinal inflammation. *Sci Rep* 2017; 7(1): 2669
663 [<https://doi.org/10.1038/s41598-017-02835-5>][PMID: 28572616]
- 664 [34] Guerrant RL, Araujo V, Soares E, *et al.* Measurement of fecal lactoferrin as a marker of fecal
665 leukocytes. *J Clin Microbiol* 1992; 30(5): 1238–42
666 [<https://doi.org/10.1128/jcm.30.5.1238-1242.1992>][PMID: 1583125]
- 667 [35] Yadav SK, Ito N, Mindur JE, *et al.* Fecal Lcn-2 level is a sensitive biological indicator for gut dysbiosis
668 and intestinal inflammation in multiple sclerosis. *Front Immunol* 2022; 13: 1015372
669 [<https://doi.org/10.3389/fimmu.2022.1015372>][PMID: 36341389]
- 670 [36] Dai J, Liu W-Z, Zhao Y-P, Hu Y-B, Ge Z-Z. Relationship between fecal lactoferrin and inflammatory
671 bowel disease. *Scand J Gastroenterol* 2007; 42(12): 1440–4
672 [<https://doi.org/10.1080/00365520701427094>][PMID: 17852860]

- 673 [37] Wei F, Zhang Y, Jian J, *et al.* PGRN protects against colitis progression in mice in an IL-10 and TNFR2
674 dependent manner. *Sci Rep* 2014; 4: 7023
675 [<https://doi.org/10.1038/srep07023>][PMID: 25387791]
- 676 [38] Bourgonje AR, Roo-Brand G, Lisotto P, *et al.* Patients With Inflammatory Bowel Disease Show IgG
677 Immune Responses Towards Specific Intestinal Bacterial Genera. *Front Immunol* 2022; 13: 842911
678 [<https://doi.org/10.3389/fimmu.2022.842911>][PMID: 35693832]
- 679 [39] Cho JH, Fraser IP, Fukase K, *et al.* Human peptidoglycan recognition protein S is an effector of
680 neutrophil-mediated innate immunity. *Blood* 2005; 106(7): 2551–8
681 [<https://doi.org/10.1182/blood-2005-02-0530>][PMID: 15956276]
- 682 [40] Dziarski R, Gupta D. The peptidoglycan recognition proteins (PGRPs). *Genome Biol* 2006; 7(8): 232
683 [<https://doi.org/10.1186/gb-2006-7-8-232>][PMID: 16930467]
- 684 [41] Rashida Z, Laxman S. The pentose phosphate pathway and organization of metabolic networks
685 enabling growth programs. *Current Opinion in Systems Biology* 2021; 28: 100390
686 [<https://doi.org/10.1016/j.coisb.2021.100390>]
- 687 [42] Wei Y-H, Ma X, Zhao J-C, Wang X-Q, Gao C-Q. Succinate metabolism and its regulation of host-microbe
688 interactions. *Gut Microbes* 2023; 15(1): 2190300
689 [<https://doi.org/10.1080/19490976.2023.2190300>][PMID: 36946592]
- 690 [43] Canani RB, Di Costanzo M, Leone L, Pedata M, Meli R, Calignano A. Potential beneficial effects of
691 butyrate in intestinal and extraintestinal diseases. *World J Gastroenterol* 2011; 17(12): 1519–28
692 [<https://doi.org/10.3748/wjg.v17.i12.1519>][PMID: 21472114]
- 693 [44] Donohoe DR, Garge N, Zhang X, *et al.* The microbiome and butyrate regulate energy metabolism and
694 autophagy in the mammalian colon. *Cell Metab* 2011; 13(5): 517–26
695 [<https://doi.org/10.1016/j.cmet.2011.02.018>][PMID: 21531334]

- 696 [45] Buffet-Bataillon S, Bouguen G, Fleury F, Cattoir V, Le Cunff Y. Gut microbiota analysis for prediction of
697 clinical relapse in Crohn's disease. *Sci Rep* 2022; 12(1): 19929
698 [<https://doi.org/10.1038/s41598-022-23757-x>][PMID: 36402792]
- 699 [46] Marsal J, Barreiro-de Acosta M, Blumenstein I, Cappello M, Bazin T, Sebastian S. Management of Non-
700 response and Loss of Response to Anti-tumor Necrosis Factor Therapy in Inflammatory Bowel Disease.
701 *Front Med (Lausanne)* 2022; 9: 897936
702 [<https://doi.org/10.3389/fmed.2022.897936>][PMID: 35783628]
- 703 [47] Masu Y, Kanazawa Y, Kakuta Y, *et al.* Immunoglobulin subtype-coated bacteria are correlated with the
704 disease activity of inflammatory bowel disease. *Sci Rep* 2021; 11(1): 16672
705 [<https://doi.org/10.1038/s41598-021-96289-5>][PMID: 34404881]
- 706 [48] Turula H, Wobus CE. The Role of the Polymeric Immunoglobulin Receptor and Secretory
707 Immunoglobulins during Mucosal Infection and Immunity. *Viruses* 2018; 10(5)
708 [<https://doi.org/10.3390/v10050237>][PMID: 29751532]
- 709 [49] Gensollen T, Bourges C, Rihet P, *et al.* Functional polymorphisms in the regulatory regions of the VNN1
710 gene are associated with susceptibility to inflammatory bowel diseases. *Inflamm Bowel Dis* 2013;
711 19(11): 2315–25
712 [<https://doi.org/10.1097/MIB.0b013e3182a32b03>][PMID: 23949622]
- 713 [50] Jin L, Li L, Hu C, *et al.* Integrative Analysis of Transcriptomic and Proteomic Profiling in Inflammatory
714 Bowel Disease Colon Biopsies. *Inflamm Bowel Dis* 2019; 25(12): 1906–18
715 [<https://doi.org/10.1093/ibd/izz111>][PMID: 31173627]
- 716 [51] Muharam R, Febri RR, Prabowo KA, Bustami A, Mansur IG. Increased Levels of CD107a and
717 Intracellular Cytokines in IL-2 Stimulated PBMCs from Endometriosis Patients. *Int J Inflamm* 2021; 2021:
718 5760959
719 [<https://doi.org/10.1155/2021/5760959>][PMID: 34616540]

- 720 [52] Sudworth A, Dai K-Z, Vaage JT, Kveberg L. Degranulation Response in Cytotoxic Rat Lymphocytes
721 Measured with a Novel CD107a Antibody. *Front Immunol* 2016; 7: 572
722 [<https://doi.org/10.3389/fimmu.2016.00572>][PMID: 28003815]
- 723 [53] Souza HSP, Tortori CJA, Castelo-Branco MTL, *et al.* Apoptosis in the intestinal mucosa of patients with
724 inflammatory bowel disease: evidence of altered expression of FasL and perforin cytotoxic pathways.
725 *Int J Colorectal Dis* 2005; 20(3): 277–86
726 [<https://doi.org/10.1007/s00384-004-0639-8>][PMID: 15503066]
- 727 [54] Zaiatz-Bittencourt V, Jones F, Tosetto M, *et al.* Butyrate limits human natural killer cell effector
728 function. *Sci Rep* 2023; 13(1): 2715
729 [<https://doi.org/10.1038/s41598-023-29731-5>][PMID: 36792800]
- 730 [55] Wenzel TJ, Gates EJ, Ranger AL, Klegeris A. Short-chain fatty acids (SCFAs) alone or in combination
731 regulate select immune functions of microglia-like cells. *Mol Cell Neurosci* 2020; 105: 103493
732 [<https://doi.org/10.1016/j.mcn.2020.103493>][PMID: 32333962]
- 733 [56] Kundra P, Geirnaert A, Pugin B, Morales Martinez P, Lacroix C, Greppi A. Healthy adult gut microbiota
734 sustains its own vitamin B12 requirement in an in vitro batch fermentation model. *Front Nutr* 2022;
735 9: 1070155
736 [<https://doi.org/10.3389/fnut.2022.1070155>][PMID: 36532531]
- 737 [57] Kato J, Hiraoka S, Nakarai A, Takashima S, Inokuchi T, Ichinose M. Fecal immunochemical test as a
738 biomarker for inflammatory bowel diseases: can it rival fecal calprotectin? *Intest Res* 2016; 14(1): 5–
739 14
740 [<https://doi.org/10.5217/ir.2016.14.1.5>][PMID: 26884729]
- 741 [58] Moss AC. Approach to Treatment Failure in Inflammatory Bowel Disease. *Gastroenterol Hepatol (N Y)*
742 2022; 18(6): 360–3
743 [PMID: 36398141]

- 744 [59] Round JL, Mazmanian SK. The gut microbiota shapes intestinal immune responses during health and
745 disease. *Nat Rev Immunol* 2009; 9(5): 313–23
746 [<https://doi.org/10.1038/nri2515>][PMID: 19343057]
- 747 [60] Kanmura S, Uto H, Numata M, *et al.* Human neutrophil peptides 1-3 are useful biomarkers in patients
748 with active ulcerative colitis. *Inflamm Bowel Dis* 2009; 15(6): 909–17
749 [<https://doi.org/10.1002/ibd.20854>][PMID: 19107772]
- 750 [61] Segawa S, Fujiya M, Konishi H, *et al.* Probiotic-derived polyphosphate enhances the epithelial barrier
751 function and maintains intestinal homeostasis through integrin-p38 MAPK pathway. *PLoS One* 2011;
752 6(8): e23278
753 [<https://doi.org/10.1371/journal.pone.0023278>][PMID: 21858054]
- 754 [62] Tian Y, Zhang Y, Wang Y, *et al.* Hydrogen, a Novel Therapeutic Molecule, Regulates Oxidative Stress,
755 Inflammation, and Apoptosis. *Front Physiol* 2021; 12: 789507
756 [<https://doi.org/10.3389/fphys.2021.789507>][PMID: 34987419]
- 757 [63] Fredriksen S, Warle S de, van Baarlen P, Boekhorst J, Wells JM. Resistome expansion in disease-
758 associated human gut microbiomes. *Microbiome* 2023; 11(1): 166
759 [<https://doi.org/10.1186/s40168-023-01610-1>][PMID: 37507809]
- 760 [64] Landberg G, Erlanson M, Roos G, Tan EM, Casiano CA. Nuclear autoantigen p330d/CENP-F: A marker
761 for cell proliferation in human malignancies. *Cytometry* 1996; 25(1): 90–8
762 [[https://doi.org/10.1002/\(SICI\)1097-0320\(19960901\)25:1<90::AID-CYTO10>3.0.CO;2-P](https://doi.org/10.1002/(SICI)1097-0320(19960901)25:1<90::AID-CYTO10>3.0.CO;2-P)]
- 763 [65] Zhuo Y-J, Xi M, Wan Y-P, *et al.* Enhanced expression of centromere protein F predicts clinical
764 progression and prognosis in patients with prostate cancer. *Int J Mol Med* 2015; 35(4): 966–72
765 [<https://doi.org/10.3892/ijmm.2015.2086>][PMID: 25647485]
- 766 [66] Caenepeel C, Falony G, Machiels K, *et al.* Dysbiosis and Associated Stool Features Improve Prediction
767 of Response to Biological Therapy in Inflammatory Bowel Disease. *Gastroenterology* 2024; 166(3):

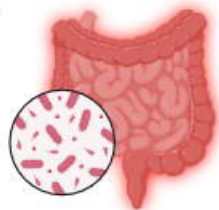
- 768 483–95
- 769 [<https://doi.org/10.1053/j.gastro.2023.11.304>][PMID: 38096956]
- 770 [67] Stevens TW, Matheeuwsen M, Lönnkvist MH, *et al.* Systematic review: predictive biomarkers of
- 771 therapeutic response in inflammatory bowel disease-personalised medicine in its infancy. *Aliment*
- 772 *Pharmacol Ther* 2018; 48(11-12): 1213–31
- 773 [<https://doi.org/10.1111/apt.15033>][PMID: 30378142]
- 774 [68] Schoepfer AM, Beglinger C, Straumann A, Trummler M, Renzulli P, Seibold F. Ulcerative colitis:
- 775 correlation of the Rachmilewitz endoscopic activity index with fecal calprotectin, clinical activity, C-
- 776 reactive protein, and blood leukocytes. *Inflamm Bowel Dis* 2009; 15(12): 1851–8
- 777 [<https://doi.org/10.1002/ibd.20986>][PMID: 19462421]
- 778 [69] D'Haens G, Ferrante M, Vermeire S, *et al.* Fecal calprotectin is a surrogate marker for endoscopic
- 779 lesions in inflammatory bowel disease. *Inflamm Bowel Dis* 2012; 18(12): 2218–24
- 780 [<https://doi.org/10.1002/ibd.22917>][PMID: 22344983]
- 781 [70] Anindita B, Sugihartono T, Miftahussurur M, *et al.* High levels of fecal calprotectin and C-reactive
- 782 protein in patients with colitis. *J Med Life* 2023; 16(1): 48–51
- 783 [<https://doi.org/10.25122/jml-2021-0311>][PMID: 36873123]
- 784 [71] Nowak JK, Kalla R, Satsangi J. Current and emerging biomarkers for ulcerative colitis. *Expert Rev Mol*
- 785 *Diagn* 2023; 23(12): 1107–19
- 786 [<https://doi.org/10.1080/14737159.2023.2279611>][PMID: 37933807]
- 787 [72] Cunliffe RN. Alpha-defensins in the gastrointestinal tract. *Mol Immunol* 2003; 40(7): 463–7
- 788 [[https://doi.org/10.1016/s0161-5890\(03\)00157-3](https://doi.org/10.1016/s0161-5890(03)00157-3)][PMID: 14568393]
- 789 [73] Berghmans E, Jacobs J, Deben C, *et al.* Mass Spectrometry Imaging Reveals Neutrophil Defensins as
- 790 Additional Biomarkers for Anti-PD-(L)1 Immunotherapy Response in NSCLC Patients. *Cancers (Basel)*
- 791 2020; 12(4)
- 792 [<https://doi.org/10.3390/cancers12040863>][PMID: 32252405]

- 793 [74] Krzewski K, Gil-Krzewska A, Nguyen V, Peruzzi G, Coligan JE. LAMP1/CD107a is required for efficient
794 perforin delivery to lytic granules and NK-cell cytotoxicity. *Blood* 2013; 121(23): 4672–83
795 [<https://doi.org/10.1182/blood-2012-08-453738>][PMID: 23632890]
- 796 [75] Vadstrup K, Bendtsen F. Anti-NKG2D mAb: A New Treatment for Crohn's Disease? *Int J Mol Sci* 2017;
797 18(9)
798 [<https://doi.org/10.3390/ijms18091997>][PMID: 28926962]
- 799 [76] Allin KH, Nordestgaard BG. Elevated C-reactive protein in the diagnosis, prognosis, and cause of
800 cancer. *Crit Rev Clin Lab Sci* 2011; 48(4): 155–70
801 [<https://doi.org/10.3109/10408363.2011.599831>][PMID: 22035340]
- 802 [77] Dang Q, Zhou H, Qian J, *et al.* LAMP1 Overexpression Predicts for Poor Prognosis in Diffuse Large B-
803 cell Lymphoma. *Clin Lymphoma Myeloma Leuk* 2018; 18(11): 749–54
804 [<https://doi.org/10.1016/j.clml.2018.07.288>][PMID: 30082222]
- 805 [78] Klupp F, Kahlert C, Franz C, *et al.* Granulin: An Invasive and Survival-Determining Marker in Colorectal
806 Cancer Patients. *Int J Mol Sci* 2021; 22(12)
807 [<https://doi.org/10.3390/ijms22126436>][PMID: 34208547]
- 808 [79] Schnell A, Huang L, Regan BML, *et al.* Targeting PGLYRP1 promotes antitumor immunity while
809 inhibiting autoimmune neuroinflammation. *Nat Immunol* 2023; 24(11): 1908–20
810 [<https://doi.org/10.1038/s41590-023-01645-4>][PMID: 37828379]
- 811 [80] Shabani F, Farasat A, Mahdavi M, Gheibi N. Calprotectin (S100A8/S100A9): a key protein between
812 inflammation and cancer. *Inflamm Res* 2018; 67(10): 801–12
813 [<https://doi.org/10.1007/s00011-018-1173-4>][PMID: 30083975]
- 814 [81] Palmer GC, Jorth PA, Whiteley M. The role of two *Pseudomonas aeruginosa* anthranilate synthases in
815 tryptophan and quorum signal production. *Microbiology (Reading)* 2013; 159(Pt 5): 959–69
816 [<https://doi.org/10.1099/mic.0.063065-0>][PMID: 23449919]

- 817 [82] Nikolaus S, Schulte B, Al-Massad N, *et al.* Increased Tryptophan Metabolism Is Associated With Activity
818 of Inflammatory Bowel Diseases. *Gastroenterology* 2017; 153(6): 1504-1516.e2
819 [<https://doi.org/10.1053/j.gastro.2017.08.028>][PMID: 28827067]
- 820 [83] Schultz BM, Paduro CA, Salazar GA, *et al.* A Potential Role of Salmonella Infection in the Onset of
821 Inflammatory Bowel Diseases. *Front Immunol* 2017; 8: 191
822 [<https://doi.org/10.3389/fimmu.2017.00191>][PMID: 28293241]
- 823 [84] Stecher B, Robbiani R, Walker AW, *et al.* Salmonella enterica serovar typhimurium exploits
824 inflammation to compete with the intestinal microbiota. *PLoS Biol* 2007; 5(10): 2177–89
825 [<https://doi.org/10.1371/journal.pbio.0050244>][PMID: 17760501]
- 826 [85] Kolmeder CA, Been M de, Nikkilä J, *et al.* Comparative metaproteomics and diversity analysis of human
827 intestinal microbiota testifies for its temporal stability and expression of core functions. *PLoS One*
828 2012; 7(1): e29913
829 [<https://doi.org/10.1371/journal.pone.0029913>][PMID: 22279554]
- 830 [86] Girinathan BP, Braun S, Sirigireddy AR, Espinola-Lopez J, Govind R. Correction: Importance of
831 Glutamate Dehydrogenase (GDH) in Clostridium difficile Colonization In Vivo. *PLoS One* 2016; 11(10):
832 e0165579
833 [<https://doi.org/10.1371/journal.pone.0165579>][PMID: 27768767]
- 834 [87] Ruszkowski J, Daca A, Szewczyk A, Dębska-Ślizień A, Witkowski JM. The influence of biologics on the
835 microbiome in immune-mediated inflammatory diseases: A systematic review. *Biomed Pharmacother*
836 2021; 141: 111904
837 [<https://doi.org/10.1016/j.biopha.2021.111904>][PMID: 34328113]
- 838 [88] Sun Z, Ning Z, Figeys D. The Landscape and Perspectives of the Human Gut Metaproteomics. *Mol Cell*
839 *Proteomics* 2024; 23(5): 100763
840 [<https://doi.org/10.1016/j.mcpro.2024.100763>][PMID: 38608842]
- 841

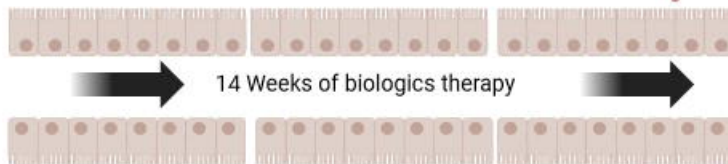
Remission

anti-TNF- α /
anti-Integrin- $\alpha_4\beta_7$ /
anti-IL-6



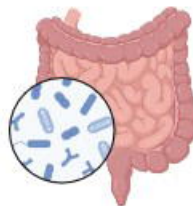
n=24

- neutrophil-derived proteins initially more abundant
- DEFA3 and CLCA1 initially more abundant



14 Weeks of biologics therapy

n=12

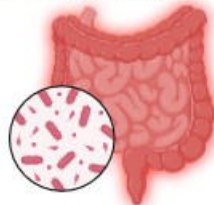


- neutrophil-derived proteins ↓
- blood and intestinal barrier proteins ↓
- butyrate synthesis ↑
- pentose-phosphate pathway ↑



Metaproteome Analysis

- proteins from microbial methanogenesis initially more abundant
- proteins from microbial vitamin B12 transport initially less abundant



- LAMP1, PIGR, VNN1, CLCA1, DEFA3 ↑
- intestinal barrier proteins ↑
- formate fermentation ↓
- pyruvate synthesis ↓

no Remission

n=12