

1 **Genome-wide association studies of thyroid-related hormones,**
2 **dysfunction, and autoimmunity among 85,421 Chinese**
3 **pregnancies**

4

5 Yuandan Wei^{1,2#}, Jianxin Zhen^{2#}, Liang Hu^{3#}, Yuqin Gu¹, Yanhong Liu¹, Xinxin Guo¹, Zijing Yang¹,
6 Hao Zheng¹, Shiyao Cheng¹, Fengxiang Wei^{3*}, Likuan Xiong^{2,4*}, Siyang Liu^{1*}

7

8 1. School of Public Health (Shenzhen), Shenzhen Campus of Sun Yat-sen University, Shenzhen,

9 Guangdong 518107, China

10 2. Central Laboratory, Shenzhen Baoan Women's and Children's Hospital, Shenzhen, Guangdong

11 518102, China

12 3. Longgang District Maternity & Child Healthcare Hospital of Shenzhen City (Longgang Maternity

13 and Child Institute of Shantou University Medical College), Shenzhen, Guangdong 518172, China

14 4. Shenzhen Key Laboratory of Birth Defects Research, Shenzhen, Guangdong 518102, China

15

16

17 # Those authors contribute equally

18 *: Correspondence should be addressed to

19 Siyang Liu liusy99@mail.sysu.edu.cn

20 Likuan Xiong xionglk@sina.cn

21 Fengxiang Wei haowei727499@163.com

22

23

24

25

26 **Abstract**

27 Maintaining normal thyroid function is crucial in pregnancy, yet thyroid dysfunction
28 and the presence of thyroid peroxidase antibodies (TPOAb) affect 0.5% to 18% of
29 pregnant women. Here, we conducted a genome-wide association study (GWAS) of
30 eight thyroid traits, including two thyroid-related hormones, four thyroid dysfunctions,
31 and two thyroid autoimmunity measurements among 85,421 Chinese pregnant women
32 to investigate the genetic basis of thyroid function during pregnancy. Our study
33 identified 176 genetic loci, including 125 previously unknown genome-wide
34 associations. Joint epidemiological and Mendelian randomization analyses revealed
35 significant associations between the gestational thyroid phenotypes and gestational
36 complications, birth outcomes, and later-age health outcomes. Specifically,
37 genetically elevated thyroid-stimulating hormone (TSH) levels during pregnancy
38 correlated with lower glycemic levels, reduced blood pressure, and longer gestational
39 duration. Additionally, TPOAb and thyroid functions during pregnancy share genetic
40 correlations with later-age thyroid and cardiac disorders. These findings provide novel
41 insights into the genetic determinants of thyroid traits during pregnancy, which may
42 lead to new therapeutics, early pre-diagnosis and preventive strategies starting from
43 early adulthood.

44

45

46 **Introduction**

47 Pregnancy represents a crucial phase in human reproduction, impacting both maternal
48 and offspring health. Particularly, normal maternal thyroid function and lack of
49 autoimmunity during pregnancy, commonly assessed by measuring circulating
50 thyroid-stimulating hormone (TSH), free thyroxine (FT4) levels, and presence and
51 quantification of thyroid peroxidase antibodies (TPOAb), holds significant relevance
52 for pregnancy outcomes and long-term health^[1,2]. Thyroid dysfunctions during
53 pregnancy are determined by these measurements and demonstrate varying
54 prevalence, ranging from 0.5% for overt hypothyroidism (defined as elevated TSH
55 levels and low free T4 concentrations) to 3.47% for subclinical hypothyroidism
56 (defined as elevated TSH levels with normal FT4 concentrations)^[3], and 18% for
57 thyroid autoimmunity^[2]. Observationally epidemiologic studies have consistently
58 linked abnormal thyroid function tests during pregnancy to adverse maternal and
59 infant outcomes, including preterm birth^[4], low birth weight^[5], miscarriage, and
60 preeclampsia^[6]. However, the underlying biological mechanisms controlling the
61 population variability of TSH, FT4, TPOAb, and thyroid dysfunctions during
62 pregnancy, and their potential causal relationships with pregnancy and long-term
63 health outcomes remain unclear.

64
65 Previous research indicates that a significant portion of the inter-individual variability
66 in thyroid hormone levels among general populations can be attributed to genetics.
67 Twin and family studies estimate heritable contributions to approximately 64%-70.8%
68 for serum TSH, 39%-80% for FT4^[7-9], and 48.8% for anti-thyroid peroxidase
69 antibody (TPOAb)^[9]. Large-scale meta-genome-wide association studies of thyroid
70 hormones among general European populations have identified lead SNPs explaining
71 22.8% of TSH variation and 4% of FT4 variation, respectively^[10,11]. These studies
72 suggest that genetics may also influence thyroid function measurements during
73 gestation, an aspect that has been under-studied. Notably, unlike thyroid functions
74 outside the pregnancy period, changes in the hormonal environment during pregnancy
75 lead to more complex alterations in a woman's thyroid function. Maternal demand for
76 thyroid rises during pregnancy due to fetal use of thyroid hormones and an increase in
77 thyroxine-binding globulin (TBG), among other reasons^[12]. In particular, human
78 chorionic gonadotrophin (hCG), which is structurally similar to TSH, significantly
79 increases in early pregnancy, leading to higher thyroid hormone production,
80 eventually resulting in decreased TSH levels under negative feedback regulation
81 eventually^[13]. Therefore, GWAS studies based on pregnant women may not be
82 extrapolated from studies on general adults, and would greatly enhance our
83 understanding of the genetic basis of thyroid-related traits throughout life. However,
84 very few GWAS on thyroid-related traits have included pregnant women. To date,
85 only one candidate gene study that involved 974 healthy pregnant women, reported an
86 association between the number of TSH-raising alleles and subclinical

87 hypothyroidism in pregnancy^[14]. In addition, the association between subclinical
88 dysfunction and pregnancy outcomes, as well as the efficacy of treating mild
89 abnormalities, remains uncertain and controversial owing to the lack of robust causal
90 evidence^[15,16].

91

92 To elucidate the genetic factors influencing thyroid function and disorders during
93 pregnancy, and their potential causal impact on pregnancy complications, birth
94 outcomes, and later-age physical conditions, we conducted a genome-wide
95 association and Mendelian randomization study among 85,421 Chinese pregnant
96 participants with non-invasive prenatal test (NIPT) sequencing data, comprehensive
97 pregnancy screening and medical records from two hospitals in China. We focused on
98 the most commonly used thyroid biomarkers in pregnancy assessments, including
99 thyroid-stimulating hormone (TSH) and free thyroxine (FT4), and thyroid
100 autoimmunity measurements such as anti-thyroid peroxidase antibody (TPOAb)
101 levels and positivity. Additionally, we examined four clinical or subclinical thyroid
102 statuses, including subclinical hypothyroidism (SHO), isolated hypothyroxinemia
103 (ISH), overt hyperthyroidism (OHP), subclinical hyperthyroidism (SHP).

104

105 **Results**

106 **Study design and demographic characteristics**

107 Our study design and analysis scheme are depicted in **Figure 1**. Briefly, we enrolled
108 pregnant women during routine pregnancy screening at two maternal and child
109 healthcare hospitals – abbreviated as Longgang and Baoan hospitals, located in
110 Shenzhen, a metropolitan city in southern China. We imputed genotypes and
111 examined population structure from non-invasive prenatal test sequencing data
112 following a standardized protocol developed by our laboratory^[17,18]. We conducted
113 GWAS analyses for 2 thyroid-related hormones (TSH and FT4) within reference
114 ranges, 4 thyroid dysfunctions (subclinical hypothyroidism, isolated
115 hypothyroxinemia, subclinical hyperthyroidism, and overt hyperthyroidism), and 2
116 thyroid autoimmunity traits (TPOAb levels and TPOAb positivity) for each of the two
117 hospitals, followed by a fixed-effect meta-analysis across 12.7 million SNPs
118 (**Methods**). Subsequently, phenotypic association and Mendelian randomization
119 analyses were used to investigate the relationships between these eight traits,
120 gestational complications such as gestational diabetes mellitus (GDM), birth
121 outcomes, and later-life physical conditions using summary statistics from GWAS.
122 Since TSH and FT4 have been investigated in prior GWAS studies in the general
123 population, we further conducted conditional analyses to identify potential novel
124 association signals within the established loci for these two traits. We evaluated the
125 GWAS results by examining the consistency of effect size estimates between the two

126 independent hospitals, the direction of effect sizes with an external GWAS with a
127 smaller sample size (NIPT PLUS cohort, $n = 4,688$), and by comparing effect size
128 estimates with publicly available GWAS data for the same phenotypes among general
129 populations, if available.

130

131 Following the screening process, our analysis included a total of over 85,000 subjects,
132 amalgamating data from the two hospitals (Methods for inclusion and exclusion
133 criteria). Among them, 67,323 participants had available TSH level data within the
134 reference range, and 67,047 participants had available FT4 level data within the
135 reference range. The sample sizes and demographic characteristics of the research
136 subjects included in the GWAS analysis for each trait, such as TSH levels, FT4 levels,
137 TPOAb levels, age, BMI, and gestational weeks at the time of thyroid function
138 measurement, are detailed in **Table S1**. The majority of subjects were in the age range
139 of 29 to 30 years. As expected, maternal serum TSH concentrations decreased from 8
140 to 12 weeks and then increased in both cohorts, while the opposite changing pattern
141 was observed for FT4 (**Figure S1**), corresponding to the increase of hCG during
142 pregnancy^[19].

143

144 **Genetic associations with normal thyroid function during pregnancy**

145 We identified 38 genome-wide significant loci associated with serum TSH levels and
146 22 loci associated with serum FT4 levels (P -values $\leq 5 \times 10^{-8}$) (**Figure 2 and**
147 **Table S2**). The genomic inflation factor for the 12,699,587 SNPs was 1.068 for TSH
148 and 1.069 for FT4, suggesting negligible inflation of test statistics in the genome-wide
149 association analysis (**Figure S2**). Among the 60 loci, 4 TSH loci and 13 FT4 loci
150 were identified as novel, with the lead variant situated more than 500kb away and
151 demonstrated LD R^2 less than 0.1 from any previously established loci (**Table S3;**
152 **Figure S3**).

153

154 Among all loci, 59/60(98.3%) loci demonstrated consistent directionality and had a
155 nominally significant P -value below 0.05 between the two hospitals, suggesting little
156 heterogeneity and high fidelity of our genetic discoveries (**Table S2, Figure S4A,**
157 **Figure S4C**). The remaining *SERPINA7* locus was a known locus associated with
158 FT4 in a previous study and the difference in effect size estimates may be attributed to
159 variations in fetal sex distribution between the two hospitals. In comparison with the
160 GWAS statistics with the NIPT PLUS cohort, 86.7% (52/60) of lead SNPs showed
161 consistent effect directions (**Figure S5, Table S2**).

162

163 Given that available genetic studies on thyroid function among East Asians are
164 limited to small sample sizes in the general population (e.g., 3,618 Koreans^[20], 4,581
165 Chinese^[21], and 437 Chinese^[22]), with only a few suggestive significant sites

166 identified for TSH, and the lack of publicly available GWAS summary statistics, we
167 compared our effect size estimates with the two largest-scale GWAS studies of TSH
168 and FT4 in European populations ($N_{\text{TSH}}=249,715$; $N_{\text{FT4}}=49,269$)^[10,23]. Among the
169 loci, 49/60 (81.6%) loci exhibited P -values below 0.05 with consistent directional
170 effects compared with the European dataset (**Figure S4B, Figure S4D, Table S2**).
171 While the consistent effect size estimates suggest shared genetic determinants
172 between the two populations (European and East Asian) and between pregnancy and
173 non-pregnancy status, differences in the comparison could be attributed to different
174 LD structures between Europeans and East Asians, as indicated by differing allele
175 frequencies for the lead SNP (**Figure S6**) or potential effect modifications driven by
176 pregnancy status. Further investigation is required to clarify these hypotheses.

177

178 **Novel loci and association signals for TSH and FT4**

179 The 4 newly identified loci associated with TSH levels comprise *HNRNPA3*, *FGF10*,
180 *IGF1*, and *MAGED2* (**Figure 2A, Table S2, Figure S3**). The 13 novel loci associated
181 with FT4 levels include *SNX7*, *RRP15*, *TRH*, *PDCL2*, *CAST*, *CGA*, *FIG4*, *UNCX*,
182 *TRHR*, *ZNF462*, *GRK5*, *METTL15*, and *SGF29* (**Figure 2B, Table S2, Figure S3**).
183 Potential eGenes which expression in 49 issues in GTEx demonstrates colocalization
184 signals with the 17 loci are presented in **Table S4**. Among the 17 loci, *HMGA2*, *IGF1*,
185 *CGA* and *TRHR* contain SNPs that were previously reported to have genome-wide
186 associations with several thyroid-related traits in prior GWAS analyses (**Table S3B**).
187 And some loci include genes directly involved in thyroid functions, such as *TRH* and
188 *TRHR*, as well as genes involved in the regulation of protein signal transduction and
189 cell proliferation (**Table S5**).

190

191 Furthermore, through stepwise conditional analyses, we identified that 13 out of the
192 60 loci contained more than two independent signals, contributing to a total of 33
193 independent signals (**Table S6, Figure S7**). Particularly, we identified 10 novel
194 significant signals within 10 loci known for their involvement in thyroid function
195 traits [10 TSH-associated loci: *CAPZB*, *IGFBP5*, *PDE8B*, *VEGFA*, *GLIS3*, *XPA*,
196 *MBIP*, *CEP128*, *DETI*, and *MAF*; 3 FT4-associated loci: *GLIS3*, *FOXE1*, and *DETI*]
197 (**Table S7, Methods**).

198

199 Among the 33 independent signals, the genetic effects of all 33 (100%) SNPs were
200 consistent across the two hospitals (**Table S6**), and 26 out of 33 (78.8%) signals
201 demonstrated consistent direction and significance at $P=0.05$ compared to the two
202 European datasets mentioned earlier^[10,23] (**Table S6**).

203

204 Collectively, we identified a total of 53 independent association signals across 38 loci
205 for TSH levels and 27 signals across 22 loci for the FT4 levels, collectively
206 explaining 6.6% and 2.8% of the phenotypic variance, respectively.

207

208 **Genetic associations with normal thyroid function within 8-12 gestational weeks**

209 Considering the strong stimulation of thyroid function by hCG, leading to a
210 significant reduction in TSH and an increase in FT4 during early pregnancy (weeks 8
211 to 12, Figure S1), we conducted a more focused GWAS analysis within this specific
212 timeframe (weeks 8 to 12) to investigate potential association loci related to hCG
213 stimulation. Within the 8 to 12 weeks period, we identified 20 genome-wide
214 significant loci associated with TSH levels and 11 loci associated with FT4 levels
215 (**Figure S8**). However, after applying the Bonferroni correction, we did not find any
216 loci associated with TSH/FT4 within 8 to 12 weeks that were related to previously
217 published hCG GWAS after Bonferroni correction (**Table S8**)^[24]. These findings
218 suggest that the gestational TSH and FT4 level do not share a significant genetic
219 correlation with hCG.

220

221 Interestingly, when comparing the genetic effects of the 31 loci within the 8 to 12
222 weeks period with the effects estimated from the entire pregnancy period, we
223 observed that the effect size for 4 out of the 20 TSH loci and 6 out of the 11 FT4 loci
224 did not have overlapping 95% confidence intervals between the two periods (**Figure**
225 **S9 and Table S9**). Notably, the TSH receptor locus (*TSHR*, marked by the nearest
226 gene *CEP128*) showed stronger associations with TSH and FT4 specifically during
227 the 8 to 12 weeks timeframe of pregnancy. According to GTEx, we found that the
228 lead SNP mutation rs17111346-G, associated with TSH levels during the 8-12
229 gestational weeks, was associated with a higher TSHR expression level in several
230 tissues and organs (**Figure S10**). In our study, this variant was associated with
231 increased TSH levels and reduced FT4 levels (**Table S9**). These observations may
232 provide a genetic explanation for the occurrence of hypothyroxinemia during this
233 stage, despite hCG stimulation. Individuals carrying specific genetic variants,
234 unrelated to hCG stimulation but associated with lower FT4 and higher TSH during
235 early pregnancy, such as the rs17111346-G variant, may have a higher risk of
236 developing hypothyroxinemia, despite hCG stimulation.

237

238

239 **Identification of genetic associations with thyroid dysfunction**

240 During early pregnancy, the fetus heavily relies on maternal thyroid hormones.
241 Evidence underscores the correlation between untreated clinical thyroid dysfunction
242 and adverse birth outcomes^[25,26]. Subclinical hypothyroidism, characterized by low
243 TSH levels but normal FT4 level, and isolated hypothyroxinaemia, characterized by
244 low free T4 levels and normal TSH levels—represent common mild thyroid
245 dysfunctions during pregnancy associated with adverse pediatric outcomes, including
246 preterm birth^[4]. Nevertheless, the optimal management of subclinical thyroid
247 dysfunction remains contentious, as some treatments for subclinical hypothyroidism
248 or hypothyroxinemia have not significantly improved cognitive or birth

249 outcomes^[26,27]. Moreover, untreated overt hyperthyroidism during pregnancy is linked
250 to various maternal and fetal complications, such as pre-eclampsia and pregnancy loss,
251 while subclinical hyperthyroidism is not thought to be associated with adverse birth
252 outcomes^[28].

253

254 To elucidate the genetic underpinnings of these thyroid dysfunctions, we conducted a
255 GWAS analysis on four categorical traits: subclinical hypothyroidism, isolated
256 hypothyroxinemia, overt hyperthyroidism, and subclinical hyperthyroidism (cases).
257 We utilized pregnant women with euthyroid function, defined as those maintaining
258 TSH and FT4 levels within the pregnancy-specific reference range throughout
259 pregnancy, as the control group. Notably, we also examined clinical hypothyroidism;
260 however, the statistical power was limited due to the small number of cases
261 ($N_{\text{Longgang}}=464$, $N_{\text{Baoan}}=148$) and robust genetic associations were not identified.
262 Specifically, we excluded individuals who tested positive for TPOAb from both the
263 case and control populations in the analysis for isolated hypothyroxinemia. After
264 exclusions, the sample sizes of the included research subjects were as follows: (1)
265 subclinical hypothyroidism [$N=73,050$ (Longgang: 3,666 cases versus 43,525 controls;
266 Longgang: 1,244 cases versus 24,615 controls)]; (2) isolated hypothyroxinemia:
267 [$N=50,407$ (Longgang: 2,981 cases versus 37,152 controls; Longgang: 613 cases
268 versus 9,961 controls)]; (3) subclinical hyperthyroidism [$N=72,631$ (Longgang: 2,598
269 cases versus 43,525 controls; Longgang: 1,893 cases versus 24,615 controls)] ; (4)
270 overt hyperthyroidism [$N=69,788$ (Longgang: 1,229 cases versus 43,525 controls;
271 Longgang: 419 cases versus 24,615 controls)].

272

273 Our analysis led to the identification of 18, 8, 12, and 7 genome-wide association loci
274 associated with maternal subclinical hypothyroidism, isolated hypothyroxinemia,
275 subclinical hyperthyroidism, and overt hyperthyroidism, respectively (**Figure 3**,
276 **Table S10**, **Figure S11**). eGenes with colocalization signals with these 45 loci are
277 presented in **Table S4**. All lead SNPs in these 45 loci exhibited consistent
278 directionality within two hospitals, with 42 out of 45 (93.3%) compared at a *P-value*
279 below 0.05 with consistent directionality (**Figure S12A**). When we replicated these
280 45 lead SNPs with the NIPT PLUS cohort, 77.8% (35/45) SNPs showed consistent
281 directions of genetic effects (**Figure S12B**).

282

283 As no previous GWAS studies have been conducted on the four thyroid dysfunctions
284 investigated in this study, we were unable to directly compare the outcome with
285 external datasets. However, we noted that most of these loci have been reported to be
286 associated with thyroid-related traits such as hypothyroidism, TSH, and FT4 (**Table**
287 **S3B**). After excluding loci previously associated with thyroid traits, we identified 2
288 novel low-frequency genome-wide thyroid-traits loci including isolated
289 hypothyroxinemia-related *SPRY1* (rs190595112-G, MAF=0.012, OR[95%]:4.22[2.52-
290 7.07], $P= 4.77E-08$) and overt hyperthyroidism-related *GAPVD1* (rs78254323-T,

291 MAF=0.04, OR[95%]: 1.72[1.42-2.09], P= 3.94E-08). These two variants
292 demonstrated consistent directionality and significance between the two hospital
293 cohorts (**Table S10**). The *GAPVD1* locus demonstrated certain levels of evidence of
294 associations with *GAPVD1* expression in the thyroid, while we did not find eGene for
295 *SRY1* locus in all tissues (**Table S4**).

296

297 **Genetic associations with thyroid autoimmunity**

298 Thyroid autoimmunity, characterized by the presence of antibodies targeting
299 thyroperoxidase, thyroglobulin, and thyroid-stimulating hormone receptor antibodies
300 (TRAbs), is prevalent among pregnant women and is often diagnosed through the
301 detection of thyroperoxidase antibodies (TPOAb) in clinical settings. This condition
302 is associated with thyroid dysfunction and adverse obstetric outcomes^[29]. In this study,
303 we conducted genome-wide association studies (GWAS) focusing on TPOAb
304 quantitative levels and positivity during pregnancy (**Methods**). The sample sizes of
305 the included research subjects were as follows (1) quantitative TPOAb levels [N=
306 60,225 (Longgang: 46,023; Longang: 14,202)]; (2) TPOAb-positivity [N=
307 69,061(Longgang: 7,324 cases versus 45,542 controls; Longang: 2,894 cases versus
308 13,301 controls)].

309

310 We identified 38 and 33 loci associated with TPOAb levels and TPOAb positivity,
311 respectively (**Figure 4, Figure S13 and Table S11**), revealing 35 and 30 newly
312 identified association loci, respectively compared to previously reported signals in the
313 GWAS catalog. Most of the loci for both traits were shared. The four most significant
314 novel loci including *VANGL2*, *CTLA4*, *GPX6*, and *GPRI74*, were identified as
315 associated with Graves' disease (GD)/Hashimoto's thyroiditis (HT) in the Japanese
316 population^[30] (**Table S3B**). We identified 4 missense variants in novel loci:
317 rs7522061-C in *FCRL3*, rs3775291-T in *TLR3*, rs12793348-G in *PANX1* and
318 rs229527-C in *CIQTNF6*. GWAS-eQTL co-localization analyses identified several
319 TPOAb levels and positivity-related loci that regulate the expression of *RPS26*,
320 *RNASET2*, *CIQTNF6*, *FCRL1*, *FCRL3* genes in multiple tissues (**Table S4**). Previous
321 study has reported that *RNASET2* is expressed in CD4 + T-helper and CD8 + T
322 cells^[31], while *FCRL3* is expressed at high levels during the maturation of B-cells and
323 is thought to regulate B-cell signaling in both positive and negative ways^[32]. *FCRL1*
324 also plays a role in the assembly of the BCR signalosome, influences B cell signaling,
325 and enhances humoral responses^[33].

326

327 For consistency, 67 out of 71 (94.4%) loci demonstrated consistent direction and
328 significance at $P=0.05$ between the two hospitals (**Figure S14A, Table S11**). When
329 replicating GWAS for TPOAb levels and positivity in the NIPT PLUS cohort, 62 out
330 of 71 (87.3%) loci showed consistent directions of genetic effects (**Figure S14B,**
331 **Table S11**). Comparing the results with external datasets, we initially compared our
332 results with the largest previous GWAS study on TPOAb levels and positivity,

333 conducted by Marco Medici et al. in the European population in 2014 ($N_{\text{TPOAb-}}$
334 $\text{levels}=16,528$ and $N_{\text{TPOAb-positivity}}=18,297$)^[34]. Since the study involved 2.14 million
335 variants, only 58 of our lead variants (for their proxy SNPs) were available for
336 analysis in this study. Among these SNPs, 50 loci (86.2%) exhibited a consistent
337 direction of effect between Chinese pregnant women and the European population
338 **(Figure S15, Table S12)**.

339
340 Given the unavailability of previous GWAS summary data for TPOAb in the East
341 Asian population and the high correlation between TPOAb positivity and autoimmune
342 thyroid diseases such as Graves' disease and Hashimoto's thyroiditis^[35], we also
343 examined our associations for TPOAb positivity using the GWAS results for Graves'
344 disease and Hashimoto's thyroiditis from the Biobank Japan (BBJ)^[30]. Of these 33 loci,
345 *H2BC8* (rs1051365311) and its proxy SNP were not available in the BBJ dataset.
346 According to the result, 15 loci (*FCRL3*, *VANGL2*, *CTLA4*, *LPP*, *CLNK*, *TCF7*, *IRF4*,
347 *GPX6*, *HBS1L*, *RNASET2*, *FAM76B*, *IFT81*, *MAF*, *C1QTNF6*, and *GPR174*) in
348 Grave's disease **(Table S13, Figure S16A)** and 2 loci (*GPX6*, *VANGL2*) in
349 Hashimoto's thyroiditis showed significant associations **(Table S13, Figure S16B)**.
350 The high degree of concordance (32 out of 33) in the direction of locus effects
351 suggests a shared genetic basis between TPOAb positivity during pregnancy and
352 autoimmune thyroid diseases.

353 354 **Pairwise genetic correlation among thyroid traits**

355 To explore the pairwise genetic correlation among the thyroid traits investigated, we
356 employed LD score regression^[36]. The analysis revealed a significant genetic
357 correlation between TSH and all other thyroid traits, including TPOAb levels and
358 positivity. Conversely, FT4 exhibited correlation with thyroid dysfunctions but not
359 with TPOAb levels and positivity **(Figure S17, Table S14)**. Additionally, we
360 observed a correlation between TPOAb level/positivity and subclinical
361 hypothyroidism. Nonetheless, this genetic correlation lost significance when the
362 analysis was restricted to euthyroid individuals, suggesting that the observed
363 correlation stemmed from shared genetics between TPOAb and TSH.

364
365 Consistent with the established inverse correlation in TSH and FT4 regulation through
366 the Hypothalamus-Pituitary-Thyroid Axis (HPT)^[37], we observed a significant
367 inverse genetic correlation between TSH and FT4 levels (the genetic correlation
368 calculated by LDSC: $rg_{\text{TSH-FT4}}=-0.16$, $se=0.04$, $P=8.6E-5$)**(Figure S17, Table S14)**,
369 along with shared associations at 11 loci (TSH: *CAPZB*, *TNSI*, *GLIS3*, *XPA*, *MBIP*,
370 *DETI*, *MAF*, and FT4: *FIG4*, *GLIS3*, *FOXE1*, *DETI*) (Bonferroni-corrected threshold
371 $p \leq 0.05/60$) **(Figure S18, Table S15)**. At these 11 loci, alleles associated with
372 higher TSH levels were consistently associated with lower FT4 except for three loci -
373 *FIG4*, *XPA*, and *FOXE1* – where genetic effects were observed in the same direction
374 for both thyroid-related hormones.

375

376 **The influence of thyroid-related traits on gestational complications and fetal**
377 **obstetric outcomes**

378 Previous large meta-analyses of observational studies have demonstrated an
379 association between subclinical thyroid dysfunction and maternal complications and
380 adverse birth outcomes, including gestational diabetes mellitus (GDM)^[38],
381 hypertensive disorders^[39], miscarriage^[40], preterm birth, and low birth weight^[4,5].
382 However, RCTs investigating treatments for mild thyroid function abnormalities have
383 yielded inconclusive results^[27], resulting in uncertainty and controversy regarding the
384 relationship between subclinical dysfunction and pregnancy outcomes, as well as the
385 therapeutic value of addressing mild abnormalities^[41,42]. High-quality Mendelian
386 randomization studies in clinical thyroidology are deemed crucial for gaining valuable
387 insights into the relationship between thyroid functions and birth outcomes^[43].
388 However, to date, only one MR study has explored the causal effect of TSH and FT4
389 levels within the normal range on birth weight and did not identify statistically
390 significant causal associations^[44].

391

392 Here, we applied joint phenotypic association and Mendelian randomization to
393 investigate the impact of thyroid function during pregnancy on gestational
394 complications such as hypertension, and gestational diabetes, as well as birth
395 outcomes including birth weight, birth length, and gestational duration (**Table S18**).
396 Adhering to the three preconditions for a robust MR analysis, we utilize strong
397 instrumental variables ($F > 10$), accounted for heterogeneity and horizontal
398 pleiotropy by applying an inverse weighted approach of random effect (IVWRE) as
399 primary results, and conducted several sensitivity analyses, including six additional
400 two-sample MR approaches and three scenarios including overlapping (Meta-Meta)
401 and non-overlapping samples (Longgang-Bao and Baoan-Longgang)^[45]. In addition,
402 for MR analysis of the relationship between thyroid traits and pregnancy
403 complications, we accounted for the bi-directionality of the causal estimates
404 (**Method**). Notably, due to the extreme imbalance in the number of cases and controls
405 of gestational hypertension and preeclampsia, we employed quantitative systolic and
406 diastolic blood pressure as indicators for hypertension. Considering the substantial
407 genetic correlation among the gestational thyroid traits (**Figure S17**), we employed a
408 Bonferroni testing criteria based on the total number of investigated gestational
409 complication and fetal obstetric outcomes (N=14). The statistical results of all
410 methods are presented in **Table S18 and S20**, while the instrumental variables used
411 are listed in **Table S19**.

412

413 Phenotypic association tests revealed numerous strong associations between TSH and
414 FT4 within the normal range, thyroid dysfunction, and glucose and blood pressure
415 traits, including significant associations between ISH and GDM ($P < 0.004$) (**Figure**
416 **5A, Table S17**). Mendelian randomization suggested consistent potential causal

417 associations for a few of these correlations after Bonferroni correction, including a
418 significant negative effect of TSH on fasting plasma glucose (FPG), oral glucose
419 tolerance at 1 hour (OGTT1H), and systolic blood pressure (SBP), as well as a
420 significant effect of FT4, SHO, SHP on SBP (**Figure 5B-C, Table S18**, $P < 0.004$).
421 Additionally, we found a nominally significant protective effect of genetically
422 increased thyroid hormone (FT4) on GDM, consistent between MR and observational
423 studies (observational study: OR_{longgang} [95%CI]: 0.861[0.833~0.89], $P_{\text{longgang}}=8.49E-$
424 19; MR: $OR[95\%CI]:0.844[0.732\sim0.972]$, $P=1.88E-02$). Reverse Mendelian
425 randomization did not identify significant potential causal associations between the
426 pregnancy phenotypes and thyroid-related phenotypes after Bonferroni correction
427 (**Figure 5B, Table S20**).

428

429 As for birth outcomes, observational analysis in the Longgang and Baoan study
430 consistently showed that maternal FT4 levels within the reference range were
431 significantly associated with lower birth weight, shorter birth length and a higher risk
432 of low birth weight. Correspondingly, we also observed a consistently significant
433 positive correlation between isolated hypothyroxinemia during pregnancy and greater
434 birth weight, as well as a significant association between TPOAb levels and
435 decreasing birth weight (**Figure 6A, Table S17**). However, in MR analysis, we only
436 discovered a significant potential causal effect of elevated TSH levels during
437 pregnancy on greater gestational duration (days) after Bonferroni correction ($\beta_{\text{MR-}}$
438 $_{\text{IVWRE}} 95\%CI=0.07[0.04-0.11]$, $P_{\text{MR-IVWRE}}=7.80E-5$) (**Figure 6B, Table S18**). Similar
439 results were observed across other methods of Mendelian randomization, except for
440 simple mode (SM), which showed attenuation toward the null. We did not identify
441 MR associations between thyroid dysfunction and birth outcomes (**Figure 6B, Table**
442 **S18**).

443

444 **Bidirectional Mendelian randomization study between gestational thyroid traits** 445 **and 220 phenotypes in BioBank Japan**

446 We further investigated the potential relationship between thyroid-related traits during
447 pregnancy and 220 health phenotypes and outcomes in Biobank Japan (BBJ), with an
448 average age of 62, by conducting a bidirectional Mendelian randomization analysis
449 (**Methods**). Consistent significant associations in both directions suggest genetic
450 sharing rather than causal relation. The Bonferroni testing criteria are based on the
451 total number of investigated BBJ phenotypes ($N=220$), considering the substantial
452 genetic correlation among the gestational thyroid traits (**Figure S17**). Results
453 surpassing the Bonferroni and MR Egger pleiotropy testing criteria, which mainly
454 pertain to BBJ thyroid and cardiac disorders, are discussed herein. The instrumental
455 variables used in the forward MR analysis are presented in **Table S22**.

456

457 Regarding thyroid autoimmunity, forward MR analysis suggested that genetically
458 determined elevated susceptibility to TPOAb positivity is associated with an increased

459 risk for all 7 thyroid disorders, with 6 of these associations remaining significant after
460 Bonferroni correction: Graves' disease (OR [95%CI]:1.55[1.41~1.704], $P=9.68E-20$),
461 thyroid preparations usage (1.364[1.259~1.478], $P=2.66E-14$), hypothyroidism
462 (1.441[1.297~1.6], $P=9.10E-12$), hyperthyroidism(1.478[1.318~1.658], $P=2.37E-11$),
463 Hashimoto thyroiditis(1.454[1.27~1.666], $P=6.61E-08$), and goiter
464 (1.163[1.077~1.256], $P=1.12E-04$) (**Figure 7, Figure S19A~F, Table S21**). Similar
465 observations apply to TPOAb levels and for euthyroid TPOAb positivity with normal
466 TSH and FT4 levels (**Figure S19G~N**). However, in the reverse MR, statistics are
467 unavailable for thyroid cancer, hypothyroidism, Hashimoto thyroiditis and goiter due
468 to unavailability of instrumental variables. Significant bidirectionality was observed
469 for Graves' disease and thyroid preparations, and same effect direction was observed
470 for hyperthyroidism (**Figure 7**). Therefore, we infer that TPOAb positivity and levels
471 during pregnancy are genetically correlated with the BBJ thyroid disorders. In
472 addition to thyroid-related diseases, forward MR also revealed that genetic TPOAb
473 positivity is associated with a reduced risk of depression (OR [95%CI]:
474 OR[95%CI]:0.848[0.793~0.907], $P=1.60E-06$) and an increased risk of Cardiac
475 valvular disease (OR [95%CI]: OR[95%CI]:1.109[1.052~1.169], $P=1.24E-04$)
476 (**Figure S19O~P**). Reverse MR is unavailable for both disorders due to a lack of IVs
477 (**Figure 7, Table S23**).

478
479 In the forward MR analysis of both normal TSH, FT4 and thyroid dysfunction, we
480 observed that genetically elevated TSH levels, and a high risk of subclinical
481 hypothyroidism were linked to an increased usage of thyroid preparations, while overt
482 hyperthyroidism was linked to a decreased usage of thyroid preparations ($P < 1.72E-$
483 04) (**Figure 7, Figure S20A~C and Table S21**). Except for overt hyperthyroidism,
484 TSH and subclinical hypothyroidism suggest bi-directionality of the MR effect. In
485 addition, genetically elevated TSH (OR [95%CI]:0.66[0.55-0.79], $P=1.12E-05$) and
486 subclinical hypothyroidism (OR[95%CI]:0.81[0.74-0.89], $P=8.54E-06$) were
487 associated with a lower risk of goiter (**Figure S20D-E**). However, reverse MR is
488 unavailable for both disorders due to a lack of IVs (**Figure 7, Table S23**). Moreover,
489 we found genetically elevated TSH levels but not thyroid dysfunction are associated
490 with a reduced risk of atrial fibrillation (OR [95%CI]: 0.868[0.81~0.931], $P=7.91E-05$)
491 (**Figure S20F**), which did not demonstrate evidence of causality in the reverse MR,
492 suggesting potential causal relation.

493

494 Discussion

495 Utilizing hospital electronic medical records and NIPT data from 85,421 Chinese
496 pregnancies, we conducted the first and most comprehensive GWAS studies to date of
497 thyroid traits during pregnancy, encompassing thyroid-related hormones, dysfunction,
498 and autoimmunity. Simultaneously, our GWAS facilitates the exploration of thyroid

499 function's impact on gestational complications as well as on birth outcomes, utilizing
500 the methods of Mendelian randomization.

501

502 In summary, we identified 176 genome-wide loci, among which 125 genome-wide
503 associations had not been previously reported for the 8 thyroid-related traits. This
504 significantly enhances our understanding of the genetic basis of thyroid traits during
505 pregnancy. The high consistency of genetic effects observed across two independent
506 hospitals, and in comparison with external datasets demonstrates the robustness of our
507 GWAS results. Particularly, while the *TRH* and *TRHR* genes are well-established in
508 the thyroid axis^[37], our study is the first to identify them as genome-wide association
509 loci for thyroid function (FT4), signifying a significant power gain in our analysis.
510 Moreover, we identified 33 independent association signals in 13 loci (TSH: *CAPZB*,
511 *IGFBP5*, *PDE8B*, *VEGFA*, *GLIS3*, *XPA*, *MBIP*, *CEP128*, *DETI*, and *MAF*; FT4:
512 *GLIS3*, *FOXE1*, and *DETI*) by the stepwise conditional analysis, suggesting allelic
513 heterogeneity at the thyroid-associated loci. Additionally, comparing the genetic
514 associations with normal TSH and FT4 within 8-12 gestations suggests that
515 individuals carrying specific genetic variants have a higher risk of hypothyroxinemia,
516 despite hCG stimulation.

517

518 In the first GWAS of gestational thyroid dysfunction, we identified 18, 8, 12 and 7
519 genome-wide loci associated with subclinical hypothyroidism, isolated
520 hypothyroxinemia, and subclinical hyperthyroidism, and overt hyperthyroidism
521 during pregnancy, respectively. Additionally, our study has doubled the number of
522 genome-wide loci associated with TPOAb levels and positivity. These loci also
523 exhibited connections with other thyroid-related traits and conditions, including
524 hypothyroidism, TSH levels, and the use of thyroid preparations. Further functional
525 and mechanistic studies may be warranted to explore potential new therapeutic targets.

526

527 We completed the first joint epidemiological and Mendelian randomization analysis
528 of gestational thyroid phenotypes and complications. Statistics suggest that
529 genetically predicted lower TSH and higher FT4 correlate with elevated blood
530 glucose levels. However, we did not identify a significant MR association between
531 thyroid dysfunction and GDM, implying a continuum of TSH and FT4 action on
532 blood glucose and blood pressure regulation. Previous studies have yielded
533 conflicting conclusions regarding the association between subclinical hypothyroidism
534 and GDM^[46-48], and our results suggest that the impact of abnormal thyroid function
535 on GDM varies depending on the criteria used for TSH and blood glucose assessment.
536 Moreover, our results suggest the involvement of TSH and FT4 in blood pressure
537 regulation. While a previous MR analysis suggested that genetically predicted TSH
538 elevation leads to reduced systolic blood pressure, this finding lacked significance
539 after Bonferroni correction^[49]. Our study provides more robust evidence to support
540 this conclusion.

541

542 In the investigation of relationship of gestational thyroid phenotypes and birth
543 outcomes, retrospective observational analyses revealed that isolated
544 hypothyroxinemia was associated with higher birth weight, while FT4 levels within
545 the reference range were inversely associated with birth weight, aligning with findings
546 from a previous large meta-analysis^[5]. However, we did not find sufficient evidence
547 to suggest that abnormal TSH levels during pregnancy (overt and subclinical
548 hyperthyroidism, subclinical hypothyroidism) and TPOAb positivity increase the risk
549 of adverse outcomes such as preterm delivery, macrosomia, and low birth weights.
550 Nonetheless, we cannot exclude the possibility that thyroid dysfunction and
551 autoimmunity may contribute to other adverse outcomes. Consistent with a previous
552 MR study^[44], we also did not identify an MR association between maternal TSH
553 levels within the reference range and birth weight. Notably, our MR analyses provide
554 evidence suggesting that maternal TSH levels during pregnancy may potentially
555 influence gestational duration, although the effect may be nonlinear. Notably,
556 genetically predicted higher maternal TSH are nominally associated with a heightened
557 risk of preterm birth, and previous research has demonstrated a U-shaped association
558 between FT4 levels and preterm birth^[50]. Further validation through intervention
559 studies is warranted to ascertain the genuine effects.

560

561 TPOAb is commonly acknowledged as a pathogenic antibody associated with
562 Hashimoto's thyroiditis (HT), yet its role in Graves' disease (GD) remains uncertain,
563 despite the fact that 50–70% of individuals with GD also exhibit TPOAb
564 positivity^[51,52]. TPOAb has been proposed as a marker of impaired thyroid function
565 rather than a direct cause of thyroid damage^[2]. Our bidirectional MR analyses with
566 BBJ phenotypes suggest a genetic correlation between TPOAb positivity and several
567 thyroid disorders in older, general individuals, regardless of their thyroid function
568 status. Additionally, we observed that genetically predicted maternal TPOAb
569 positivity was associated with an increased risk of cardiac valvular disease, consistent
570 with previous observations of an association between thyroid autoimmunity and
571 rheumatic heart valve disease^[53]. In addition, in line with the findings of previous MR
572 studies conducted in population of European ancestry^[23,54], identified protective
573 effects of lower thyroid function during pregnancy against atrial fibrillation and goiter
574 in East Asians. The consistently observed genetic correlation or MR associations of
575 gestational thyroid phenotypes and later-age thyroid and cardiac diseases suggest the
576 potential for early screening of thyroid disorders in early adulthood and may warrant
577 further clinical studies.

578

579 Despite the positive findings, there are limitations in our study. Firstly, while we
580 conducted the first and most comprehensive GWAS study of thyroid-related traits in
581 pregnancy, focusing on a critical period of human reproduction, the study population
582 consisted solely of Chinese women, potentially limiting the generalizability of our

583 findings to other ancestries. However, we would like to note that non-invasive
584 prenatal testing data are widely adopted in clinical settings due to their high
585 sensitivity and specificity^[55]. The methods used in this study^[17,18] will facilitate
586 further investigations into thyroid-related traits in pregnancy across different
587 populations, enhancing our understanding of the trans-ancestral genetic basis. In
588 addition, the shared genetic correlation between the gestational thyroid traits in this
589 study and the thyroid phenotypes in European general population suggests that the
590 existence of strong correlation between thyroid traits in different life stages.

591

592 Secondly, in our Mendelian randomization analysis examining the relationship
593 between gestational thyroid traits and complications as well as birth outcomes, we
594 utilized a strategy involving two-sample MR analytical methods within a single
595 cohort setting, which has been empirically proved not to be prone to sample-
596 overlapping bias if the IVs were sufficiently strong^[45]. Nonetheless, to enhance the
597 robustness of our findings, replication in a two-sample MR without sample overlap
598 would be ideal. We attempted to address this by conducting analyses in multiple
599 scenarios, including using exposures from one hospital and outcomes from the other
600 hospitals, to support our MR results. These strategies consistently suggested that
601 genetically determined elevated TSH levels during pregnancy were associated with
602 lower glycemic levels, reduced blood pressure, and longer gestational duration.
603 Furthermore, in our MR study of gestational thyroid traits and birth outcomes, we did
604 not differentiate between fetal genetic and intrauterine effects of exposure on birth
605 outcomes. This aspect could benefit from expansion of sample size in family genomes
606 from birth cohorts in Chinese ancestry^[56]. Additionally, when analyzing the impact of
607 thyroid traits on other outcomes, we focused solely on additive linear effects, without
608 considering nonlinear effects. Finally, in the bidirectional MR study between
609 gestational thyroid traits and phenotypes in BBJ, we were unable to distinguish
610 genetic correlation from potential causal effect of the exposures of thyroid related
611 traits during pregnancy on a later-age health result. This purpose can be addressed
612 when GWAS studies of the same thyroid traits investigated in this study among
613 general East Asian population become available, enabling a multi-variable Mendelian
614 randomization analysis integrating GWAS statistics of thyroid traits in pregnancy and
615 among the general populations^[57].

616

617 Despite the genetic findings, our study suggests two clinical implications. First, serum
618 levels of TSH and FT4 exhibit substantial interindividual variation among healthy
619 individuals, with much smaller intraindividual variation^[58]. This indicates that each
620 person has a unique setpoint for TSH and FT4^[59]. Hence, when initiating RCTs or
621 treatments for thyroid disorders in pregnant women, it may be beneficial to consider
622 the genomic profile of the patients, as revealed in our study. This approach can help
623 prevent overtreatment, may explain the varying responses of the pregnant women to
624 medications such as levothyroxine, commonly prescribed for gestational thyroid

625 disorders^[27]. Secondly, as pregnancy screening represents the most comprehensive
626 physical examination during early adulthood for most women, it is valuable to explore
627 early diagnosis and preventive strategies for thyroid disorders later in life, starting
628 from this critical early period.
629

630 **Methods**

631 **Longgang and Baoan Study**

632 The Longgang Study enrolled 70,608 pregnant women who received NIPT results
633 during the first or second trimester at Longgang District Maternal and Child Health
634 Hospital, located in the eastern region of Shenzhen, China, between 2017 and 2022.
635 Of these, 58,351 participants had available measurements for TSH, FT4, and TPOAb
636 levels.

637

638 The Baoan Study included 50,948 pregnant women who visited the Baoan District
639 Maternal and Child Health Hospital in the western region of Shenzhen, China, and
640 completed an NIPT test during the first or second trimester between 2017 and 2022.
641 Of these, 33,781 participants had available TSH measurements, 33,516 had FT4
642 measurements, and 16,393 had TPOAb measurements.

643

644 This study was reviewed and approved by the Ethics Committee of School of Public
645 Health (Shenzhen), Sun Yat-Sen University (2021. No.8), as well as the Institutional
646 Board of Shenzhen Baoan Women's and Children's Hospital (LLSC2021-04-01-10-
647 KS) and Longgang District Maternity and Child Healthcare Hospital of Shenzhen
648 City (LGFYYXLLL-2022-024). The study strictly adhered to regulations governing
649 ethical considerations and personal data protection. Data collection was approved by
650 the Human Genetic Resources Administration of China (HGRAC). Written informed
651 consent of all participants were obtained.

652

653 **Biochemical measurements and definition of thyroid-related traits**

654 Because TSH and FT4 concentrations during pregnancy are related to gestational
655 week, pregnancy-specific reference ranges are recommended^[1]. In this project, the
656 diagnosis of thyroid dysfunction was based on a method-specific and pregnancy-
657 specific reference interval, as recommended by the Chinese Medical Association
658 Guideline on the diagnosis and management of thyroid diseases during pregnancy and
659 postpartum (2nd edition)^[60]. We also used the cutoff value provided by the kit
660 company to determine whether the subject was in a TPOAb positivity state.

661

662 In the Longgang study, thyroid function tests measured concentrations of thyroid
663 stimulating hormone (TSH), free thyroxine (FT4), and anti-thyroid peroxidase
664 antibody (TPOAb). These measurements were taken during a physical examination
665 using the UniCel DxI 800 Immunoassay System (Beckman Coulter Inc., Brea, CA,
666 USA) along with its respective system accessory kit. The reference ranges for TSH
667 are 0.05-3.55 mIU/L for the first trimester, 0.21-3.31 mIU/L for the second trimester,
668 and 0.43-3.71 mIU/L for the third trimester. The reference ranges for FT4 are 9.01-
669 15.89 pmol/L for the first trimester, 6.62-13.51 pmol/L for the second trimester, and

670 6.42-10.75 pmol/L for the third trimester^[60]. TPOAb positivity was defined according
671 to the cutoff (TPOAb > 9 IU/mL).

672

673 In Baoan study, serum levels of TSH, FT4, and TPOAb were measured by Abott
674 I2000 Immunoassay System. The reference ranges of TSH are (0.07-3.38 mIU/L),
675 (0.34-3.51 mIU/L) and (0.34-4.32 mIU/L) for the first trimester, second trimester and
676 third trimester, respectively. And the reference ranges of FT4 are (11.30-17.80
677 pmol/L), (9.30-15.20 pmol/L) and (7.90-14.10 pmol/L) for the first trimester, second
678 trimester, and third trimester, respectively^[60]. The cut-off value we used for TPOAb
679 positivity is 5.6 IU/ml.

680

681 In each study, a pregnant woman with both TSH and FT4 levels within the
682 pregnancy-specific reference range was considered a subject with normal thyroid
683 function (ie, euthyroidism). The serum TSH and FT4 levels were analyzed as
684 continuous variables after inverse normal transformation, based on the euthyroid
685 subjects. Additionally, for the GWAS of continuous TPOAb levels, pregnant women
686 exhibiting TPOAb levels below the minimum detection limits of the assay (0.25
687 IU/ml for the Longgang Study and 0.159 IU/ml for the Baoan Study) were excluded.
688 TPOAb levels were natural log-transformed before performing the GWAS analysis.

689

690 The thyroid dysfunction was defined following the 2017 medical guidelines of the
691 American Thyroid Association for the Diagnosis and Management of Thyroid Disease
692 During Pregnancy and the Postpartum^[1]. Specifically, overt hyperthyroidism was
693 defined as a TSH concentration below the lower limit of the reference range,
694 accompanied by an FT4 concentration exceeding the upper limit of the reference
695 range. Subclinical hyperthyroidism was defined as a TSH concentration below the
696 lower limit of the reference range while maintaining a normal FT4 concentration.
697 Subclinical hypothyroidism was defined by as a TSH concentration upper the limit of
698 the reference range with normal FT4 concentration. Isolated hypothyroxinemia is
699 typically defined as having an FT4 concentration below the lower limit of the
700 reference range while maintaining a normal maternal TSH concentration.

701

702 To comprehend the genetic underpinnings of these thyroid dysfunctions, we
703 conducted a GWAS analysis on four categorical traits: subclinical hypothyroidism,
704 isolated hypothyroxinemia, overt hyperthyroidism, and subclinical hyperthyroidism
705 (case group). We used pregnant women with euthyroid function, defined as those
706 maintaining TSH and FT4 levels within the pregnancy-specific reference range
707 throughout pregnancy, as the control group. Specifically, we excluded individuals
708 who tested positive for TPOAb from both the case and control populations in the
709 analysis for isolated hypothyroxinemia (**Table S1**). It is worth noting that we also
710 examined overt hypothyroidism; however, the statistical power was limited due to the

711 small number of cases ($N_{\text{Longgang}}=464$, $N_{\text{Baolan}}=148$) and we did not identify robust
712 genetic associations.

713

714 **Statistical analysis**

715 For all participants, baseline characteristics were described using mean \pm standard
716 deviation, and results of thyroid function tests (TSH, FT4, and TPOAb) for different
717 pregnancies were presented in median [interquartile range]. In the phenotype
718 association analysis of thyroid-related traits with gestational complications and fetal
719 obstetric outcomes, quantitative traits were analyzed using multiple linear regression,
720 and categorical traits were analyzed using logistic regression. All statistical analyses
721 were conducted using R version 4.3.2.

722

723 **Genotyping, Imputation, and Variant annotation**

724 Non-invasive prenatal testing (NIPT), which employs low-pass massively parallel
725 sequencing of cell-free DNA fragments from peripheral blood of a pregnant woman,
726 has gained prominence as an unparalleled screening test for fetal aneuploidy due to its
727 high sensitivity and specificity^[61]. Our prior research and recent study have illustrated
728 that when NIPT data (0.06x – 0.3x) are integrated with a reference panel, it can
729 achieve high accuracy in genotype imputation, matching or even exceeding the
730 performance of an array^[17,18].

731

732 In summary, we first collected data from NIPT for 121,578 pregnant women in Baoan
733 and Longgang Hospitals in Shenzhen city, Guangdong Province. Each of these
734 participants was whole-genome sequenced to 9.9-21.9 million cleaned reads,
735 representing a sequencing depth of around 0.11x-0.25x. Next, we applied BWA^[62] to
736 align the cleaned reads to the Genome Reference Consortium Human Reference 38

737 (GRCh38) and used the rmdup option in samtools^[63] to remove potential PCR

738 duplicates. The GATK realignment and base quality recalibration method was utilized
739 to align the reads and adjust base quality scores^[64]. After that, the alignment files were
740 stored as bam files.

741

742 Subsequently, we employed the Glimpse software (version 1.1.1)^[65], which
743 implements an algorithm for genotype imputation, in conjunction with a deep whole-
744 genome sequencing reference panel of 10K Chinese^[66], to perform individual
745 genotype imputation for the NIPT data. Finally, variant annotation was carried out
746 using Ensembl Variant Effect Predictor^[67] (version 101), utilizing indexed GRCh38
747 cache files (version 109). All the data used for annotation were obtained in advance
748 from the Ensembl FTP server (<https://ftp.ensembl.org/pub/>). Considering that a
749 variant can span across multiple transcripts, we employed the "--pick" option to
750 assign a single consequence block to each variant based on a predefined set of default
751 criteria in VEP. In addition, the "--nearest" option was applied to identify the nearest

752 gene with a protein-coding transcription start site (TSS) for variants located in the
753 intergenic region.

754

755 **Genome-wide association analysis in individual Studies**

756 The association of the SNPs was analyzed by GWAS in PLINK 2.0, using linear
757 regression for three continuous traits (levels of TSH, FT4, and TPOAb) and logistic
758 regression for five binary phenotypes (subclinical hypothyroidism, isolated
759 hypothyroxinemia, subclinical hyperthyroidism, overt hyperthyroidism, and TPOAb
760 positivity), separately in two cohorts (Baoan and Longgang). The genotype-phenotype
761 association was conducted using an additive genetic model on SNP dosages.
762 Moreover, analyses were adjusted for the gestational week of the thyroid test,
763 maternal age, and the top ten principal components to account for population
764 stratification.

765

766 **Meta-analysis**

767 We conducted fixed-effect GWAS meta-analyses based on an inverse-variance
768 weighting of Baoan and Longgang using METAL software^[68]. To visualize the meta-
769 analysis results, we generated a Manhattan plot and a quantile–quantile (QQ) plot
770 with an R script.

771

772 In terms of interpreting the results of the meta-analysis, we defined the lead SNP as
773 the SNP with the most significant P-value in the single-SNP association test within a
774 1-Mbp window. A locus was considered to have reached the significance threshold if
775 the lead SNP within that locus had a P-value $\leq 5 \times 10^{-8}$. A locus is considered novel
776 locus for the trait if its leading SNP is in linkage equilibrium (LD $R^2 < 0.2$) with any
777 known variants (listed in the GWAS Catalog as of December 31, 2023) on the same
778 chromosome. Specifically, using the GWAScatalog database, we obtained all the
779 trait-related known variants located on the same chromosome as our novel lead
780 variants (Triat ID in the Experimental Factor Ontology: TSH: EFO_0004748, FT4:
781 EFO_0005130, thyroid peroxidase antibody measurement: EFO_0005666, and
782 hyperthyroidism: EFO_0009189)^[69]. And then, for all of our novel SNPs, we use East
783 Asians (EAS) and Europeans (EUR) populations in the 1000G genome to calculate
784 the linkage disequilibrium R-square between variants we identified and all known
785 SNPs on the same chromosome using LDpair (<https://ldlink.nih.gov/?tab=ldpair>). And
786 the results of linkage disequilibrium R-square between novel variants and known
787 variants are shown in **Table S4A**.

788

789 **Conditional analysis**

790 Stepwise conditional analyses were performed for the GWAS-meta results to identify
791 independent signals that affect TSH and FT4 levels, conditioning on the most
792 significant variants (known and novel) identified in our GWAS. After conditioning on
793 the lead genome-wide significant variant, variants identified within a 1 MB region of

794 the variant with a p-value $< 5.0 \times 10^{-8}$ were considered independent significant
795 signals. These conditional analyses were repeated, adding in the conditional lead
796 variants until no variant had a conditional p-value less than the genome-wide
797 significance ($P < 5.0 \times 10^{-8}$). To determine whether the identified independent
798 significant signals at known loci were independent novel signals, we analyzed East
799 Asian (EAS) and European (EUR) populations from the 1000 Genomes Project. We
800 used LDpair (<https://ldlink.nih.gov/?tab=ldpair>) to calculate the linkage
801 disequilibrium R-square (R^2) between the variants we identified and those previously
802 associated with trait-linked traits. Subsequently, we defined an SNP as an independent
803 significant signal at a locus if the R^2 was less than 0.2 in both EAS and EUR
804 populations.

806 **Consistency and replication**

807 To enhance the reproducibility of the findings, we checked internal and external
808 consistency across different datasets. Consistency between the two hospitals involved
809 examining the consistency of the effect direction of the lead SNPs and assessing the
810 significance of the GWAS P-values in the Baoan and Longgang Studies. On the other
811 hand, consistency of our meta-GWAS results and external datasets involved
812 examining the consistency in an independent dataset from three separate cohorts
813 (ThyroidOmics Consortium, the GWAS meta-analysis of Alexander T Williams et al.,
814 the GWAS meta-analysis of M. Medici et al)^[10,11,34].

815
816 Beyond the participants previously referenced, our research included 4,688
817 individuals who attended Baoan District Maternal and Child Health Hospital for
818 maternity check-ups during their 40-week gestation. Throughout 2020 and 2021, these
819 participants underwent non-invasive prenatal testing (NIPT) in the first or second
820 trimester. These samples notably underwent more in-depth sequencing than standard
821 NIPT, achieving an average depth of 0.3x. The serum levels of TSH, FT4, and
822 TPOAb in NIPT PLUS cohort in were measured by Abott I2000 Immunoassay
823 System with its respective system accessory kit. Using a process similar to Baoan
824 Study, we completed GWAS for thyroid-related traits in the NIPT PLUS cohort.

826 **eQTL Colocalization analysis**

827 Colocalization analyses were performed for novel lead variants using *coloc* R
828 package^[70]. Gene expression data from 49 tissues in European ancestry samples
829 included in the GTEx Project version 8 release were used (<https://gtexportal.org/>)^[71].
830 GWAS data from a region spanning ± 1 Mb around each novel SNPs were compiled,
831 integrated with the corresponding GTEx eQTL data for each specific tissue, and
832 subsequently used as the input for related analyses. Regions that show evidence of
833 colocalization between eQTL and GWAS signals were identified using pre-defined
834 thresholds: $PP4 \geq 0.75$ and $PP4/PP3 \geq 3$ ^[70]. Here, PP4 denotes the posterior
835 probability of Hypothesis 4, which assesses the likelihood that both the assumed

836 model is correct and that the GWAS and expression data are simultaneously
837 associated with a single causal variant. PP3 denotes the posterior probability that two
838 distinct causal variants exist for GWAS and expression data, respectively. Given the
839 genetic structural differences between our East Asian cohort and European
840 populations, our findings should be considered an exploratory endeavor.

841

842 **Genetic correlation estimate**

843 The meta GWAS summary statistics were used to estimate SNP-based heritability and
844 genetic correlation (r_g) for all phenotypes using LD Score Regression^[36,72]. GCTA
845 was used to calculate LD score files using a deep whole-genome sequencing reference
846 panel of 10k Chinese^[36,66,73].

847

848 **Mendelian randomization**

849 Mendelian randomization (MR) is a method for inferring causal associations between
850 exposures and outcomes through the use of genetic variants as instrumental variables
851 ^[74]. To avoid bias caused by linkage disequilibrium, we selected the IV (instrumental
852 variable) SNPs that reached genome-wide significance in GWAS meta-analysis ($P < 5$
853 $\times 10^{-8}$) and achieved independence in linkage disequilibrium (LD) $r^2 = 0.2$ by GCTA-
854 COJO analysis^[75]. The SNPs with a minor allele frequency (MAF) of <0.01 were
855 excluded^[76].

856

857 Since GWAS summary data for maternal and fetal pregnancy outcomes in East Asian
858 ancestry is currently unavailable, we conducted Mendelian randomization analyses
859 between thyroid-related traits and maternal and fetal pregnancy outcomes using the
860 two-sample method within a single cohort^[45,77], utilizing the TwoSampleMR package
861 after completing our GWAS-meta analysis of the Baoan Study and Longgang
862 Study^[78]. We implemented MR analyses under 3 scenarios:

- 863 (1) Meta-Meta: the two-sample MR method is conducted in one-sample setting;
- 864 (2) Baoan-Longgang: Baoan Study served as the source of exposed GWAS data, while
865 the Longgang Study provided the outcome population.
- 866 (3) Longgang-Baoan: Longgang Study served as the source of exposed GWAS data,
867 while the Baoan Study provided the outcome population.

868

869 In order to achieve sufficient power as much as possible, we regard meta-meta as the
870 main MR result, and the MR results of the remaining two situations serve as support
871 for the meta-meta result.

872

873 The variance of continuous traits explained by variants (R^2) was estimated using the
874 formula $R^2 = (effect\ size)^2 \times 2 \times MAF \times (1 - MAF) / [(effect\ size)^2 \times 2 \times MAF \times (1 -$
875 $MAF) + (SE)^2 \times 2 \times N \times MAF \times (1 - MAF)]$, where the effect size is measured in
876 units of the continuous traits after inverse normal transformation. We calculated the
877 F-statistic to evaluate the instrument strength, with values greater than 10 indicating

878 sufficient strength. We applied inverse variance-weighted (IVW), inverse variance-
879 weighted using multiplicative random effects (IVWRE), MR-Egger, weighted median
880 (WM) methods, weighted mode, and outlier methods using MR PRESSO^[79]. If MR
881 PRESSO successfully excludes outlier IVs, we re-execute the MR analysis using the
882 new set of IV SNPs. To avoid the effects of the presence of heterogeneity in IVs, the
883 IVWRE method is regarded as the most accurate estimation.

884

885 **Maternal and fetal pregnancy outcomes**

886 We made full use of relevant data on gestational diabetes and gestational hypertension
887 in our cohort. Because the prevalence of gestational hypertension and preeclampsia
888 was less than 2% in our cohort (gestational hypertension: 0.95% for Longgang and
889 0.47% for Baoan; preeclampsia: 0.42% for Longgang and 1.39% for Baoan), we did
890 not include these two pregnancy complications in our analysis.

891

892 Finally, we included five blood glucose traits (FPG: Fasting Plasma Glucose; HBA1c:
893 Glycated Hemoglobin; OGTT0H: Oral Glucose Tolerance Test at 0 hours; OGTT1H:
894 Oral Glucose Tolerance Test at 1 hour; OGTT2H: Oral Glucose Tolerance Test at 2
895 hours) and two blood pressure traits (SBP: Systolic Blood Pressure; DBP: Diastolic
896 Blood Pressure) in our analysis. We completed the meta-GWAS analyses for these
897 seven quantitative traits and Gestational Diabetes Mellitus (GDM).

898

899 Furthermore, we conducted GWAS and meta-GWAS analyses for six birth outcomes,
900 including gestational duration (birth gestational days), preterm birth (deliveries
901 occurring at less than 37 weeks gestational age), birth weight, birth length, low birth
902 weight (defined as birth weight less than 2500g), and macrosomia (defined as birth
903 weight more than 4000g)^[5,80]. For the birth outcomes of birth gestational days and
904 preterm birth, we limited the study subjects to mothers who delivered live-born
905 offspring through vaginal delivery.

906

907 Given that some studies have shown that TPOAb positivity with euthyroid is also a
908 risk factor for various pregnancy complications^[1], we included euthyroid TPOAb
909 positivity as an exposure to our analysis. Therefore, after deciding on the list of IV
910 SNPs, we conducted MR analyses of associations between 9 thyroid-related traits
911 (TSH levels within reference range during pregnancy, FT4 levels within reference
912 range during pregnancy, subclinical hypothyroidism during pregnancy, isolated
913 hypothyroxinemia during pregnancy, overt hyperthyroidism during pregnancy,
914 subclinical hyperthyroidism during pregnancy, TPOAb levels during pregnancy,
915 TPOAb positivity with euthyroid during pregnancy, and TPOAb positivity during
916 pregnancy) and 14 maternal and neonatal outcomes (GDM, FPG, HBA1c, OGTT0H,
917 OGTT1H, OGTT2H, SBP, DBP, birth gestational days, preterm birth, birth weight,
918 birth length, low birth weight, macrosomia).

919

920 We also used phenotypic associations to explore associations between 9 thyroid traits
921 and 14 maternal and neonatal outcomes. We collected birth outcome data for 92,132
922 pregnant women with thyroid function test results from two hospitals (**Table S16**).
923 Before performing phenotypic association analyses, we excluded pregnant women
924 with multiple pregnancies, vitro fertilization, and aborted stillbirth outcomes. In the
925 regression analysis of birth length, birth weight, low birth weight, and Macrosomia,
926 we adjusted for fetal sex, BMI, age, and birth gestational days. For the analysis of
927 gestational duration and preterm birth, we adjusted only for fetal sex, maternal BMI,
928 and maternal age.

929

930 Because the 9 thyroid trait exposures are highly correlated (**Figure S17, Table S14**),
931 we computed the Bonferroni correction mainly based on the number of outcomes. A
932 Bonferroni correction for the 14 traits ($P\text{-value} < 0.05/14 = 0.0036$) was applied on
933 the IVWRE P-value to define significant results of phenotypic associations and MR.

934

935 **Biobank Japan Study (BBJ)**

936 To investigate the potential causal association between thyroid traits during pregnancy
937 and the physical conditions/diseases in older age, we conducted a bidirectional two-
938 sample Mendelian randomization study using our GWAS results and datasets from
939 the BioBank Japan Study. The BioBank Japan Study conducted genome-wide
940 association studies for 220 deep phenotypes (including diseases, biomarkers, and
941 medication usage) in a cohort of 179,000 Japanese individuals^[30]. Approximately 47%
942 of these subjects were women, and the average age of all subjects was over 62
943 years^[81].

944

945 A Bonferroni correction for the 220 traits ($P\text{-value} < 0.05/220 = 0.00023$) was
946 applied on the IVWRE P-value to define significant MR results.

947

948 **Data Availability**

949 GWAS summary statistics for the eight thyroid traits investigated can be accessed
950 through the GWAS catalog (Study Accession: GCST90296455- GCST90296462) and
951 GWAS Atlas upon publication, with approval from the Human Genetic Resources
952 Administration of China (HGRAC) (ID: XXX). Researchers can register and gain
953 access to use data. Raw sequencing data have been deposited to the Genome
954 Sequence Archive (GSA) for Human (<https://ngdc.cnbc.ac.cn/gsa-human/>) at the BIG
955 Data Center, Beijing Institute of Genomics, Chinese Academy of Sciences, under the
956 BioProject accession number (GSA-Human: HRA006833), with approval from
957 HGRAC (ID: XXX). In compliance with the regulations of the Ministry of Science
958 and Technology of the People's Republic of China, the raw sequencing data contain
959 information unique to an individual and thus require controlled access. Researchers

960 who are interested in collaboration are welcome to contact Siyang Liu
961 (liusy99@mail.sysu.edu.cn).
962

963 **Acknowledgments**

964 The study was supported by the Shenzhen Basic Research Foundation
965 (20220818100717002), Guangdong Basic and Applied Basic Research Foundation
966 (2022B1515120080), the National Natural Science Foundation of China (31900487,
967 82203291) and the Shenzhen Health Elite Talent Training Project. Computation of
968 this study was supported by BrightWing High-performance Computing Platform,
969 School of Public Health (Shenzhen) and the National Supercomputing Center in
970 GuangZhou.
971
972

973 **Author contribution**

974 Design, management, or subject recruitment of the individual studies: S. L, F. W, L.
975 X, J. Z, and data curation: J. Z, Y. W, Z. Y, L. H, J. Z, S. H, and genotyping of the
976 individual studies: Y. W, Y. G, Y. L, Z. Y, and statistical methods, analysis,
977 bioinformatics, or interpretation of the results in the individual studies: Y. W, Y. G, S.
978 C, H. Z, Z. Y, X. G; and drafting of manuscript: Y. W, S. L, Y. G, and critical
979 revision of manuscript: all authors.
980

981 **Competing interests**

982 All authors declare no competing financial interests.
983
984

985 **Figure legends**

986 **Figure 1. Schematic design of the study.**

987 **TSH**: thyroid stimulating hormone; **FT4**: free thyroxine; **TPOAb** thyroid peroxidase
988 antibody. **BBJ**: BioBank Japan Study. Created with BioRender.com.
989

990 **Figure 2. The manhattan plots for GWAS meta-analyses of TSH(A), and FT4(B).**

991 The x-coordinate of the SNPs in the plot represents their position on each
992 chromosome when the y-coordinate implies their P-value ($-\log_{10}$ scale) of the
993 association test. The black dotted horizontal line indicates the significant threshold for
994 the genome-wide association test (i.e., 5×10^{-8}). Genomic loci containing phenotype-
995 associated variants previously reported in the GWAS catalog are colored in black,
996 while novel loci are colored in red.

997

998 **Figure 3. The manhattan plots for GWAS meta-analyses of thyroid dysfunction:**
999 subclinical hypothyroidism(A), isolated hypothyroxinemia (B), overt
1000 hyperthyroidism(C), and subclinical hyperthyroidism(D).

1001 The x-coordinate of the SNPs in the plot represents their position on each
1002 chromosome when the y-coordinate implies their P-value (-log₁₀ scale) of the
1003 association test. The black dotted horizontal line indicates the significant threshold for
1004 the genome-wide association test(i.e., 5×10^{-8}). Genomic loci containing phenotype-
1005 associated variants previously reported in the GWAS catalog are colored in black,
1006 while novel loci are colored in red.

1007

1008

1009 **Figure 4. The manhattan plots for GWAS meta-analyses of thyroid**

1010 **autoimmunity: TPOAb levels (A), TPOAb positivity (B).** The x-coordinate of the
1011 SNPs in the plot represents their position on each chromosome when the y-coordinate
1012 implies their P-value (-log₁₀ scale) of the association test. The black dotted horizontal
1013 line indicates the significant threshold for the genome-wide association test(i.e., 5×10^{-8}).
1014 Genomic loci containing phenotype-associated variants previously reported in the
1015 GWAS catalog are colored in black. Before performing the GWAS analysis, TPOAb
1016 levels were natural log-transformed.

1017

1018

1019 **Figure 5. The association between thyroid-related traits and maternal blood**

1020 **glucose and blood pressure traits during pregnancy: (A)Observational analysis. (B)**
1021 **Bidirectional mendelian randomization. (C)The forest plot of MR results under 3**
1022 **scenarios between TSH and 5 blood glucose and blood pressure traits.**

1023 In Figure A, the upper left triangle of each grid indicates the phenotypic association
1024 results in the Longgang cohort, while the lower right triangle indicates the phenotypic
1025 association results in the Baoan cohort. To facilitate the comparison of effect
1026 estimates corresponding to different traits, we converted the absolute values of the
1027 estimates of phenotypic associations into Q-quantiles for plotting. Shaded areas
1028 indicate that the results of the associations between FPG and each of SHO, OHP, and
1029 EUTb(+) are unavailable due to an insufficient number of subjects in Baoan hospital.

1030 In Figure B, the upper left triangle of each grid indicates the results of forward MR
1031 (thyroid traits as exposure variables), while the lower right triangle indicates reverse
1032 MR (thyroid traits as outcome variables).

1033 In Figure C, the MR results for three scenarios are shown: (1) Meta-Meta: the two-
1034 sample MR method is conducted in one-sample setting; (2) Baon-Longgang: Baoan
1035 Study served as the source of exposed GWAS data, while the Longgang Study
1036 provided the outcome population. (3) Longgang-Baoan: Longgang Study served as
1037 the source of exposed GWAS data, while the Baoan Study provided the outcome
1038 population.

1039 TSH: TSH levels within reference range during pregnancy; FT4: FT4 levels within
1040 reference range during pregnancy; SHO: subclinical hypothyroidism during
1041 pregnancy; ISH: isolated hypothyroxinemia during pregnancy, OHP: overt
1042 hyperthyroidism during pregnancy; SHP: subclinical hyperthyroidism during
1043 pregnancy, TPOAb: TPOAb levels, Tb(+): TPOAb positivity during pregnancy and
1044 EUTb(+): TPOAb positivity with normal functioning thyroids(ie, euthyroid). SBP:
1045 systolic blood pressure; DBP: diastolic blood pressure, HBA1c, Glycated hemoglobin;
1046 FPG, Fasting plasma glucose, OGTT0H, Oral glucose tolerance test 0 hour; OGTT1H,
1047 Oral glucose tolerance test 1 hour; OGTT2H, Oral glucose tolerance test 2 hour,
1048 GDM, Gestational diabetes mellitus.

1049
1050

1051 **Figure 6. The association between thyroid-related traits during pregnancy and**
1052 **birth outcomes:** (A)Prospective observational analysis. (B) Mendelian randomization.
1053 (C)Mendelian randomization analysis for casual associations between TSH and
1054 thyroid cancer and between TSH and gestational duration.

1055 In Figure A, the upper left triangle of each grid indicates the phenotypic association
1056 results in the Longgang cohort, while the lower right triangle indicates the phenotypic
1057 association results in the Baoan cohort.

1058 In Figure C, TSH and gestational duration are based on summary statistics from the
1059 meta-analysis of the Baoan and Longgang Study. ($N_{TSH} = 67,471$, and $N_{\text{gestational duration}} = 51,592$).
1060 The results of the IVW, IVWRE, MR Egger, Simple mode, and Weighted
1061 mode methods are based on the analysis of the IVs excluded by MR PRESSO. The
1062 crosshairs on the plots represent the 95% confidence intervals for each SNP-TSH or
1063 SNP-outcome association. IVW, Inverse Variance Weighted; IVWRE, Inverse
1064 Variance Weighted with Multiplicative Random Effects.

1065 TSH: TSH levels within reference range during pregnancy; FT4: FT4 levels within
1066 reference range during pregnancy; SHO: subclinical hypothyroidism during
1067 pregnancy; ISH: isolated hypothyroxinemia during pregnancy, OHP: overt
1068 hyperthyroidism during pregnancy; SHP: subclinical hyperthyroidism during
1069 pregnancy, TPOAb: TPOAb levels; Tb(+): TPOAb positivity during pregnancy and
1070 EUTb(+):TPOAb positivity with normal functioning thyroids(ie, euthyroid).

1071
1072

1073 **Figure 7. The results of bidirectional mendelian randomization analysis between**
1074 **thyroid-related traits during pregnancy and thyroid-related diseases in middle-**
1075 **aged and elderly people.**

1076 The upper left triangle of each grid indicates the results of forward MR (thyroid traits
1077 as exposure variables), while the lower right triangle indicates the results of reverse
1078 MR (thyroid traits as outcome variables). Shaded areas indicate that reverse MR
1079 results with goiter, Hashimoto's thyroiditis, hypothyroidism and thyroid cancer as the
1080 exposure variable are not available due to insufficient number of IVs.

1081 TSH: TSH levels within reference range during pregnancy; FT4: FT4 levels within
1082 reference range during pregnancy; SHO: subclinical hypothyroidism during
1083 pregnancy; ISH: isolated hypothyroxinemia during pregnancy, OHP: overt
1084 hyperthyroidism during pregnancy; SHP: subclinical hyperthyroidism during
1085 pregnancy, TPOAb: TPOAb levels, Tb(+): TPOAb positivity during pregnancy and
1086 EUTb(+): TPOAb positivity with normal functioning thyroids (ie, euthyroid).
1087
1088
1089
1090

1091 **Reference**

- 1092 [1] Alexander E K, Pearce E N, Brent G A, et al. 2017 Guidelines of the American
1093 Thyroid Association for the Diagnosis and Management of Thyroid Disease During
1094 Pregnancy and the Postpartum[J]. *Thyroid*, 2017, 27(3): 315-389.
- 1095 [2] De Leo S, Pearce E N. Autoimmune thyroid disease during pregnancy[J]. *Lancet*
1096 *Diabetes Endocrinol*, 2018, 6(7): 575-586.
- 1097 [3] Dong A C, Stagnaro-Green A. Differences in Diagnostic Criteria Mask the True
1098 Prevalence of Thyroid Disease in Pregnancy: A Systematic Review and Meta-
1099 Analysis[J]. *Thyroid*, 2019, 29(2): 278-289.
- 1100 [4] Korevaar T I M, Derakhshan A, Taylor P N, et al. Association of Thyroid Function
1101 Test Abnormalities and Thyroid Autoimmunity With Preterm Birth: A Systematic
1102 Review and Meta-analysis[J]. *Jama*, 2019, 322(7): 632-641.
- 1103 [5] Derakhshan A, Peeters R P, Taylor P N, et al. Association of maternal thyroid
1104 function with birthweight: a systematic review and individual-participant data meta-
1105 analysis[J]. *Lancet Diabetes Endocrinol*, 2020, 8(6): 501-510.
- 1106 [6] Lee S Y, Cabral H J, Aschengrau A, et al. Associations Between Maternal Thyroid
1107 Function in Pregnancy and Obstetric and Perinatal Outcomes[J]. *J Clin Endocrinol*
1108 *Metab*, 2020, 105(5): e2015-23.
- 1109 [7] Panicker V, Wilson S G, Spector T D, et al. Heritability of serum TSH, free T4 and
1110 free T3 concentrations: a study of a large UK twin cohort[J]. *Clin Endocrinol (Oxf)*,
1111 2008, 68(4): 652-9.
- 1112 [8] Hansen P S, Brix T H, Sørensen T I, et al. Major genetic influence on the
1113 regulation of the pituitary-thyroid axis: a study of healthy Danish twins[J]. *J Clin*
1114 *Endocrinol Metab*, 2004, 89(3): 1181-7.
- 1115 [9] Nolan J, Campbell P J, Brown S J, et al. Genome-wide analysis of thyroid
1116 function in Australian adolescents highlights SERPINA7 and NCOA3[J]. *Eur J*
1117 *Endocrinol*, 2021, 185(5): 743-753.
- 1118 [10] Teumer A, Chaker L, Groeneweg S, et al. Genome-wide analyses identify a role
1119 for SLC17A4 and AADAT in thyroid hormone regulation[J]. *Nat Commun*, 2018,
1120 9(1): 4455.
- 1121 [11] Williams A T, Chen J, Coley K, et al. Genome-wide association study of thyroid-

- 1122 stimulating hormone highlights new genes, pathways and associations with thyroid
1123 disease[J]. *Nat Commun*, 2023, 14(1): 6713.
- 1124 [12] Krassas G E, Poppe K, Glinoeer D. Thyroid Function and Human Reproductive
1125 Health[J]. *Endocrine Reviews*, 2010, 31(5): 702-755.
- 1126 [13] Korevaar T I M, Medici M, Visser T J, et al. Thyroid disease in pregnancy: new
1127 insights in diagnosis and clinical management[J]. *Nat Rev Endocrinol*, 2017, 13(10):
1128 610-622.
- 1129 [14] Porcu E, Medici M, Pistis G, et al. A meta-analysis of thyroid-related traits
1130 reveals novel loci and gender-specific differences in the regulation of thyroid
1131 function[J]. *PLoS Genet*, 2013, 9(2): e1003266.
- 1132 [15] Fitzgerald S P, Bean N G, Fitzgerald S P, et al. The application of new concepts
1133 of the assessment of the thyroid state to pregnant women[J]. *Front Endocrinol*
1134 (Lausanne), 2022, 13: 987397.
- 1135 [16] Cappola A R, Casey B M. Thyroid Function Test Abnormalities During
1136 Pregnancy[J]. *Jama*, 2019, 322(7): 617-619.
- 1137 [17] Liu S, Huang S, Chen F, et al. Genomic Analyses from Non-invasive Prenatal
1138 Testing Reveal Genetic Associations, Patterns of Viral Infections, and Chinese
1139 Population History[J]. *Cell*, 2018, 175(2): 347-359.e14.
- 1140 [18] Liu S, Huang S, Liu Y, et al. Utilizing Non-Invasive Prenatal Test Sequencing
1141 Data Resource for Human Genetic Investigation[J]. *bioRxiv*, 2023:
1142 2023.12.11.570976.
- 1143 [19] Hershman J M. The role of human chorionic gonadotropin as a thyroid stimulator
1144 in normal pregnancy[J]. *J Clin Endocrinol Metab*, 2008, 93(9): 3305-6.
- 1145 [20] Kwak S H, Park Y J, Go M J, et al. A genome-wide association study on thyroid
1146 function and anti-thyroid peroxidase antibodies in Koreans[J]. *Hum Mol Genet*, 2014,
1147 23(16): 4433-42.
- 1148 [21] Zhan M, Chen G, Pan C M, et al. Genome-wide association study identifies a
1149 novel susceptibility gene for serum TSH levels in Chinese populations[J]. *Hum Mol*
1150 *Genet*, 2014, 23(20): 5505-17.
- 1151 [22] Huang L, Bai F, Zhang Y, et al. Preliminary study of genome-wide association
1152 identified novel susceptibility genes for thyroid-related hormones in Chinese
1153 population[J]. *Genes Genomics*, 2022, 44(8): 1031-1038.
- 1154 [23] Zhou W, Brumpton B, Kabil O, et al. GWAS of thyroid stimulating hormone
1155 highlights pleiotropic effects and inverse association with thyroid cancer[J]. *Nat*
1156 *Commun*, 2020, 11(1): 3981.
- 1157 [24] Thareja G, Belkadi A, Arnold M, et al. Differences and commonalities in the
1158 genetic architecture of protein quantitative trait loci in European and Arab
1159 populations[J]. *Hum Mol Genet*, 2023, 32(6): 907-916.
- 1160 [25] Chaker L, Razvi S, Bensenor I M, et al. Hypothyroidism[J]. *Nature Reviews*
1161 *Disease Primers*, 2022, 8(1): 30.
- 1162 [26] Stagnaro-Green A. Thyroid and pregnancy — time for universal screening?[J].
1163 *Nature Reviews Endocrinology*, 2017, 13(4): 192-194.

- 1164 [27] Casey B M, Thom E A, Peaceman A M, et al. Treatment of Subclinical
1165 Hypothyroidism or Hypothyroxinemia in Pregnancy[J]. *N Engl J Med*, 2017, 376(9):
1166 815-825.
- 1167 [28] Lee S Y, Pearce E N. Assessment and treatment of thyroid disorders in pregnancy
1168 and the postpartum period[J]. *Nat Rev Endocrinol*, 2022, 18(3): 158-171.
- 1169 [29] Poppe K, Velkeniers B, Glinoeer D. The role of thyroid autoimmunity in fertility
1170 and pregnancy[J]. *Nat Clin Pract Endocrinol Metab*, 2008, 4(7): 394-405.
- 1171 [30] Sakaue S, Kanai M, Tanigawa Y, et al. A cross-population atlas of genetic
1172 associations for 220 human phenotypes[J]. *Nat Genet*, 2021, 53(10): 1415-1424.
- 1173 [31] Chu X, Pan C M, Zhao S X, et al. A genome-wide association study identifies
1174 two new risk loci for Graves' disease[J]. *Nat Genet*, 2011, 43(9): 897-901.
- 1175 [32] Kochi Y, Yamada R, Suzuki A, et al. A functional variant in FCRL3, encoding Fc
1176 receptor-like 3, is associated with rheumatoid arthritis and several autoimmunities[J].
1177 *Nat Genet*, 2005, 37(5): 478-85.
- 1178 [33] Mamidi M K, Huang J, Honjo K, et al. FCRL1 immunoregulation in B cell
1179 development and malignancy[J]. *Front Immunol*, 2023, 14: 1251127.
- 1180 [34] Medici M, Porcu E, Pistis G, et al. Identification of novel genetic Loci associated
1181 with thyroid peroxidase antibodies and clinical thyroid disease[J]. *PLoS Genet*, 2014,
1182 10(2): e1004123.
- 1183 [35] Antonelli A, Ferrari S M, Corrado A, et al. Autoimmune thyroid disorders[J].
1184 *Autoimmun Rev*, 2015, 14(2): 174-80.
- 1185 [36] Bulik-Sullivan B K, Loh P R, Finucane H K, et al. LD Score regression
1186 distinguishes confounding from polygenicity in genome-wide association studies[J].
1187 *Nat Genet*, 2015, 47(3): 291-5.
- 1188 [37] Ortiga-Carvalho T M, Chiamolera M I, Pazos-Moura C C, et al. Hypothalamus-
1189 Pituitary-Thyroid Axis[J]. *Compr Physiol*, 2016, 6(3): 1387-428.
- 1190 [38] Wang D, Wan S, Liu P, et al. Relationship between excess iodine, thyroid
1191 function, blood pressure, and blood glucose level in adults, pregnant women, and
1192 lactating women: A cross-sectional study[J]. *Ecotoxicol Environ Saf*, 2021, 208:
1193 111706.
- 1194 [39] Han Y, Wang J, Wang X, et al. Relationship Between Subclinical
1195 Hypothyroidism in Pregnancy and Hypertensive Disorder of Pregnancy: A Systematic
1196 Review and Meta-Analysis[J]. *Front Endocrinol (Lausanne)*, 2022, 13: 823710.
- 1197 [40] Thangaratnam S, Tan A, Knox E, et al. Association between thyroid
1198 autoantibodies and miscarriage and preterm birth: meta-analysis of evidence[J]. *Bmj*,
1199 2011, 342: d2616.
- 1200 [41] Brent G A. The debate over thyroid-function screening in pregnancy[J]. *N Engl J*
1201 *Med*, 2012, 366(6): 562-3.
- 1202 [42] Stagnaro-Green A. Clinical guidelines: Thyroid and pregnancy - time for
1203 universal screening?[J]. *Nat Rev Endocrinol*, 2017, 13(4): 192-194.
- 1204 [43] Medici M, Peeters R P, Teumer A, et al. The importance of high-quality
1205 mendelian randomisation studies for clinical thyroidology[J]. *Lancet Diabetes*

- 1206 Endocrinol, 2019, 7(9): 665-667.
- 1207 [44] Zhang X, Wu P, Chen Y, et al. Does Maternal Normal Range Thyroid Function
1208 Play a Role in Offspring Birth Weight? Evidence From a Mendelian Randomization
1209 Analysis[J]. *Front Endocrinol (Lausanne)*, 2020, 11: 601956.
- 1210 [45] Minelli C, Del Greco M F, Van Der Plaats D A, et al. The use of two-sample
1211 methods for Mendelian randomization analyses on single large datasets[J]. *Int J*
1212 *Epidemiol*, 2021, 50(5): 1651-1659.
- 1213 [46] Fernández Alba J J, Castillo Lara M, Jiménez Heras J M, et al. High First
1214 Trimester Levels of TSH as an Independent Risk Factor for Gestational Diabetes
1215 Mellitus: A Retrospective Cohort Study[J]. *J Clin Med*, 2022, 11(13).
- 1216 [47] Knight B A, Shields B M, Hattersley A T, et al. Maternal hypothyroxinaemia in
1217 pregnancy is associated with obesity and adverse maternal metabolic parameters[J].
1218 *Eur J Endocrinol*, 2016, 174(1): 51-7.
- 1219 [48] Haddow J E, Craig W Y, Neveux L M, et al. Free Thyroxine During Early
1220 Pregnancy and Risk for Gestational Diabetes[J]. *PLoS One*, 2016, 11(2): e0149065.
- 1221 [49] Giontella A, Lotta L A, Overton J D, et al. Association of Thyroid Function with
1222 Blood Pressure and Cardiovascular Disease: A Mendelian Randomization[J]. *J Pers*
1223 *Med*, 2021, 11(12).
- 1224 [50] Zhou Y, Liu Y, Zhang Y, et al. Identifying Non-Linear Association Between
1225 Maternal Free Thyroxine and Risk of Preterm Delivery by a Machine Learning
1226 Model[J]. *Front Endocrinol (Lausanne)*, 2022, 13: 817595.
- 1227 [51] Soh S B, Aw T C. Laboratory Testing in Thyroid Conditions - Pitfalls and
1228 Clinical Utility[J]. *Ann Lab Med*, 2019, 39(1): 3-14.
- 1229 [52] Daramjav N, Takagi J, Iwayama H, et al. Autoimmune Thyroiditis Shifting from
1230 Hashimoto's Thyroiditis to Graves' Disease[J]. *Medicina (Kaunas)*, 2023, 59(4).
- 1231 [53] Evangelopoulou M E, Alevizaki M, Toumanidis S, et al. Mitral valve prolapse in
1232 autoimmune thyroid disease: an index of systemic autoimmunity?[J]. *Thyroid*, 1999,
1233 9(10): 973-7.
- 1234 [54] Ellervik C, Roselli C, Christophersen I E, et al. Assessment of the Relationship
1235 Between Genetic Determinants of Thyroid Function and Atrial Fibrillation: A
1236 Mendelian Randomization Study[J]. *JAMA Cardiol*, 2019, 4(2): 144-152.
- 1237 [55] Norton M E, Jacobsson B, Swamy G K, et al. Cell-free DNA analysis for
1238 noninvasive examination of trisomy[J]. *N Engl J Med*, 2015, 372(17): 1589-97.
- 1239 [56] Huang S, Liu S, Huang M, et al. The Born in Guangzhou Cohort Study enables
1240 generational genetic discoveries[J]. *Nature*, 2024, 626(7999): 565-573.
- 1241 [57] Richardson T G, Sanderson E, Elsworth B, et al. Use of genetic variation to
1242 separate the effects of early and later life adiposity on disease risk: mendelian
1243 randomisation study[J]. *Bmj*, 2020, 369: m1203.
- 1244 [58] Andersen S, Pedersen K M, Bruun N H, et al. Narrow individual variations in
1245 serum T(4) and T(3) in normal subjects: a clue to the understanding of subclinical
1246 thyroid disease[J]. *J Clin Endocrinol Metab*, 2002, 87(3): 1068-72.
- 1247 [59] Kuś A, Chaker L, Teumer A, et al. The Genetic Basis of Thyroid Function: Novel

- 1248 Findings and New Approaches[J]. *J Clin Endocrinol Metab*, 2020, 105(6).
- 1249 [60] Writing Committee for Guidelines on Diagnosis and Management Of thyroid
1250 Diseases During Pregnancy and Postpartum; Chinese Society Of endocrinology C M A.
1251 Guideline on diagnosis and management of thyroid diseases during pregnancy and
1252 postpartum(2 edition)[J]. *Chin J Endocrinol Metab*, 2019, 35(8).
- 1253 [61] Hartwig T S, Ambye L, Sørensen S, et al. Discordant non-invasive prenatal
1254 testing (NIPT) - a systematic review[J]. *Prenat Diagn*, 2017, 37(6): 527-539.
- 1255 [62] Li H, Durbin R. Fast and accurate short read alignment with Burrows-Wheeler
1256 transform[J]. *Bioinformatics*, 2009, 25(14): 1754-60.
- 1257 [63] Li H, Handsaker B, Wysoker A, et al. The Sequence Alignment/Map format and
1258 SAMtools[J]. *Bioinformatics*, 2009, 25(16): 2078-9.
- 1259 [64] DePristo M A, Banks E, Poplin R, et al. A framework for variation discovery and
1260 genotyping using next-generation DNA sequencing data[J]. *Nat Genet*, 2011, 43(5):
1261 491-8.
- 1262 [65] Rubinacci S, Ribeiro D M, Hofmeister R J, et al. Efficient phasing and
1263 imputation of low-coverage sequencing data using large reference panels[J]. *Nat*
1264 *Genet*, 2021, 53(1): 120-126.
- 1265 [66] Cheng S, Xu Z, Bian S, et al. The STROMICS genome study: deep whole-
1266 genome sequencing and analysis of 10K Chinese patients with ischemic stroke reveal
1267 complex genetic and phenotypic interplay[J]. *Cell Discov*, 2023, 9(1): 75.
- 1268 [67] Cunningham F, Allen J E, Allen J, et al. Ensembl 2022[J]. *Nucleic Acids Res*,
1269 2022, 50(D1): D988-d995.
- 1270 [68] Willer C J, Li Y, Abecasis G R. METAL: fast and efficient meta-analysis of
1271 genomewide association scans[J]. *Bioinformatics*, 2010, 26(17): 2190-1.
- 1272 [69] Sollis E, Mosaku A, Abid A, et al. The NHGRI-EBI GWAS Catalog:
1273 knowledgebase and deposition resource[J]. *Nucleic Acids Res*, 2023, 51(D1): D977-
1274 d985.
- 1275 [70] Giambartolomei C, Vukcevic D, Schadt E E, et al. Bayesian test for
1276 colocalisation between pairs of genetic association studies using summary statistics[J].
1277 *PLoS Genet*, 2014, 10(5): e1004383.
- 1278 [71] The Genotype-Tissue Expression (GTEx) project[J]. *Nat Genet*, 2013, 45(6):
1279 580-5.
- 1280 [72] Bulik-Sullivan B, Finucane H K, Anttila V, et al. An atlas of genetic correlations
1281 across human diseases and traits[J]. *Nat Genet*, 2015, 47(11): 1236-41.
- 1282 [73] Yang J, Lee S H, Goddard M E, et al. GCTA: a tool for genome-wide complex
1283 trait analysis[J]. *Am J Hum Genet*, 2011, 88(1): 76-82.
- 1284 [74] Geng T, Smith C E, Li C, et al. Childhood BMI and Adult Type 2 Diabetes,
1285 Coronary Artery Diseases, Chronic Kidney Disease, and Cardiometabolic Traits: A
1286 Mendelian Randomization Analysis[J]. *Diabetes Care*, 2018, 41(5): 1089-1096.
- 1287 [75] Yang J, Ferreira T, Morris A P, et al. Conditional and joint multiple-SNP analysis
1288 of GWAS summary statistics identifies additional variants influencing complex
1289 traits[J]. *Nat Genet*, 2012, 44(4): 369-75, s1-3.

- 1290 [76] Cui Z, Hou G, Meng X, et al. Bidirectional Causal Associations Between
1291 Inflammatory Bowel Disease and Ankylosing Spondylitis: A Two-Sample Mendelian
1292 Randomization Analysis[J]. *Front Genet*, 2020, 11: 587876.
- 1293 [77] Hemani G, Zheng J, Elsworth B, et al. The MR-Base platform supports
1294 systematic causal inference across the human phenome[J]. *Elife*, 2018, 7.
- 1295 [78] Hemani G, Tilling K, Davey Smith G. Orienting the causal relationship between
1296 imprecisely measured traits using GWAS summary data[J]. *PLoS Genet*, 2017, 13(11):
1297 e1007081.
- 1298 [79] Verbanck M, Chen C Y, Neale B, et al. Detection of widespread horizontal
1299 pleiotropy in causal relationships inferred from Mendelian randomization between
1300 complex traits and diseases[J]. *Nat Genet*, 2018, 50(5): 693-698.
- 1301 [80] Goldenberg R L, Culhane J F, Iams J D, et al. Epidemiology and causes of
1302 preterm birth[J]. *Lancet*, 2008, 371(9606): 75-84.
- 1303 [81] Nagai A, Hirata M, Kamatani Y, et al. Overview of the BioBank Japan Project:
1304 Study design and profile[J]. *J Epidemiol*, 2017, 27(3s): S2-s8.
1305

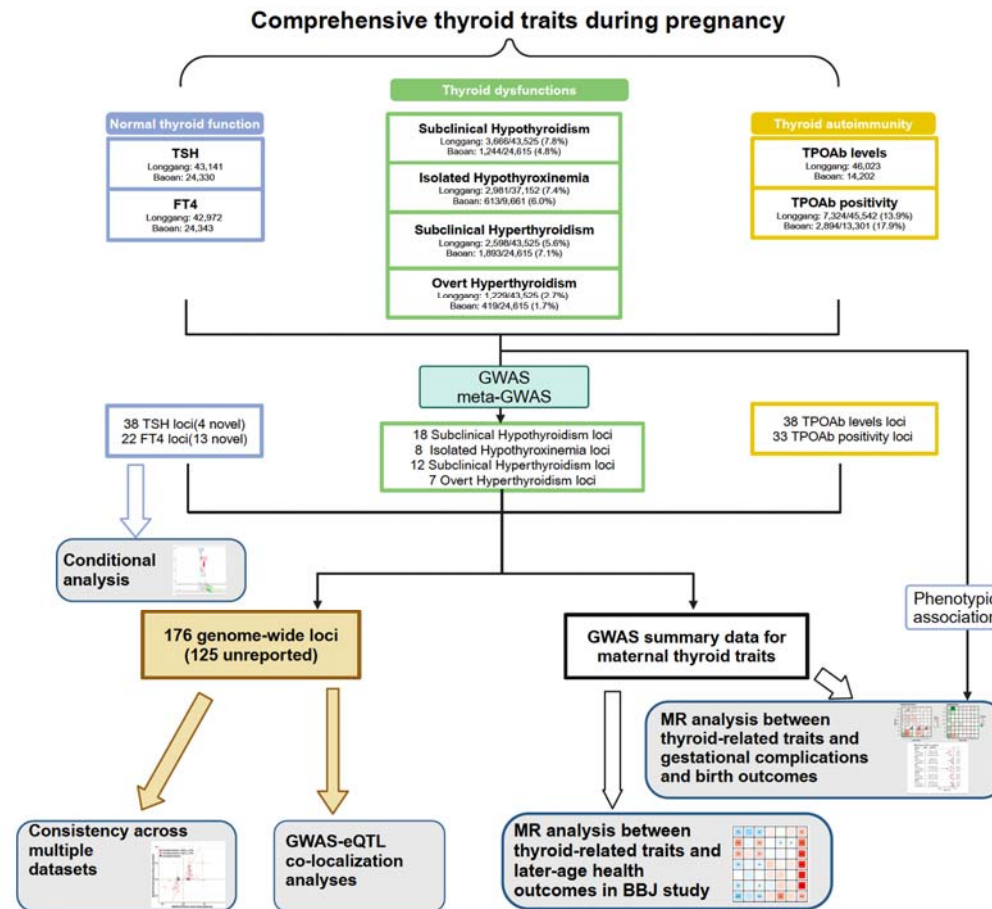


Figure 1. Schematic design of the study. TSH: thyroid stimulating hormone; FT4: free thyroxine; TPOAb thyroid peroxidase antibody. BBJ: Biobank Japan study.

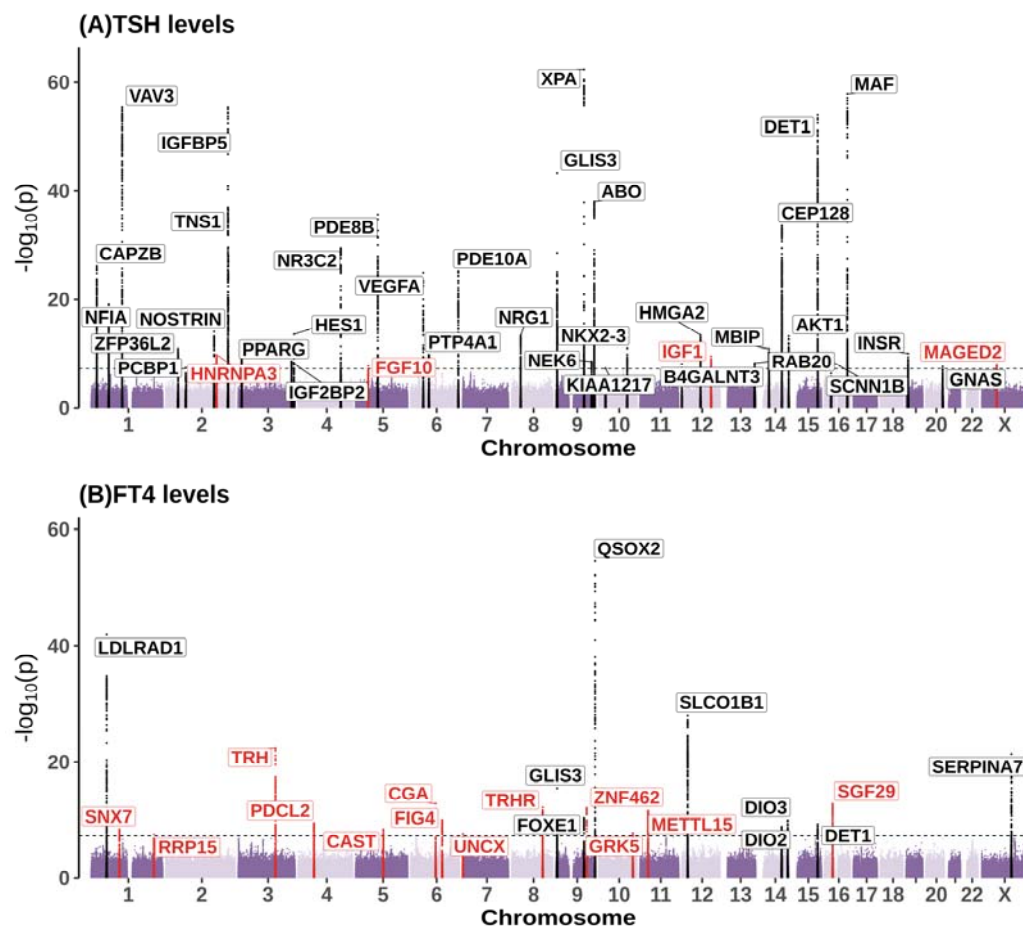


Figure 2. The Manhattan for GWAS meta-analyses of TSH(A), and FT4(B).

The x-coordinate of the SNPs in the plot represents their position on each chromosome when the y-coordinate implies their P-value ($-\log_{10}$ scale) of the association test. The black dotted horizontal line indicates the significant threshold for the genome-wide association test (i.e., 5×10^{-8}). Genomic loci containing phenotype-associated variants previously reported in the GWAS catalog are colored in black, while novel loci are colored in red.

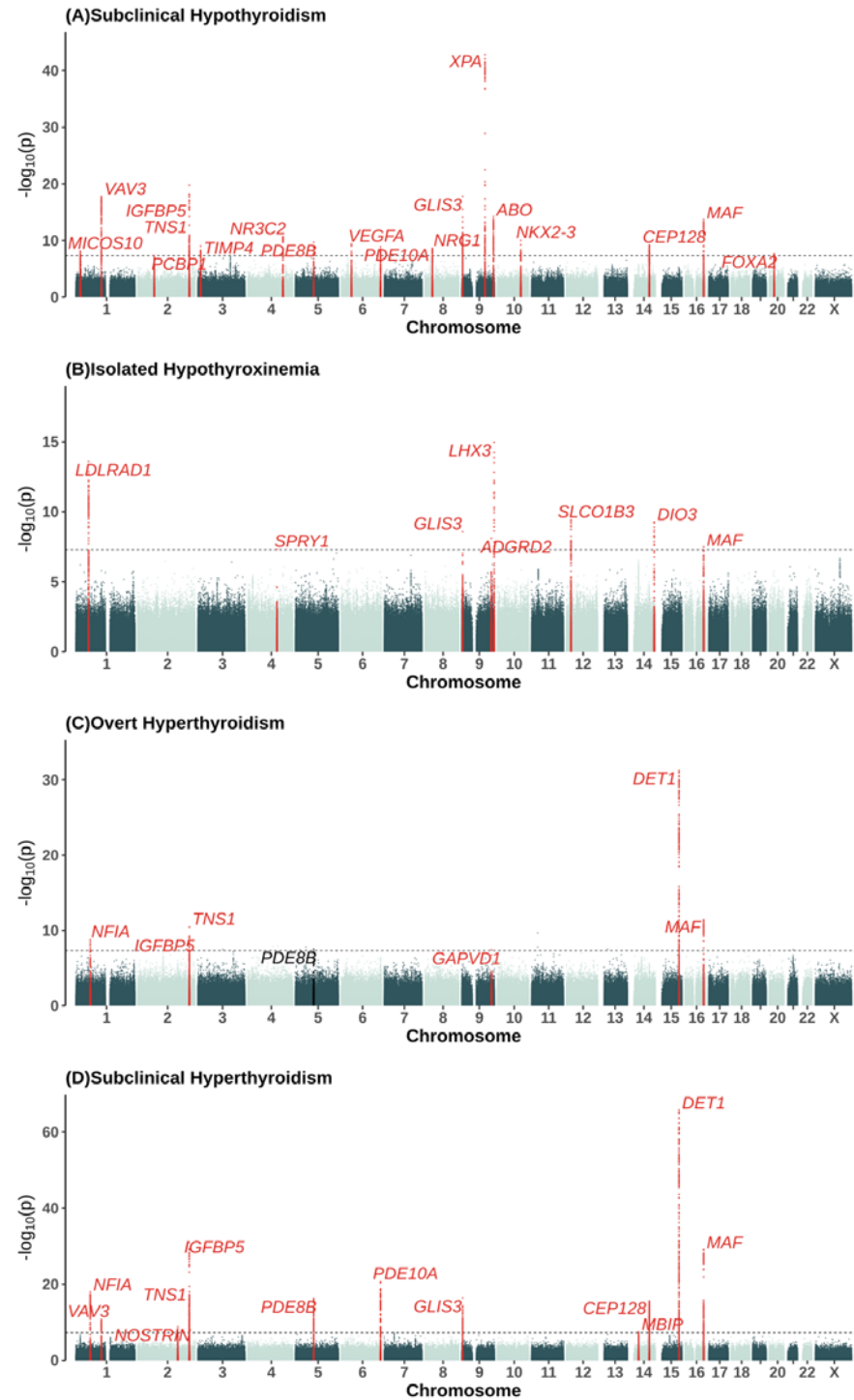


Figure 3. The manhattan plots for GWAS meta-analyses of thyroid dysfunction: subclinical hypothyroidism(A), isolated hypothyroxinemia (B), overt hyperthyroidism(C), and subclinical hyperthyroidism(D). Figure 2. The Manhattan for GWAS meta-analyses of TSH(A), and FT4(B).

The x-coordinate of the SNPs in the plot represents their position on each chromosome when the y-coordinate implies their P-value ($-\log_{10}$ scale) of the

association test. The black dotted horizontal line indicates the significant threshold for the genome-wide association test (i.e., 5×10^{-8}). Genomic loci containing phenotype-associated variants previously reported in the GWAS catalog are colored in black, while novel loci are colored in red.

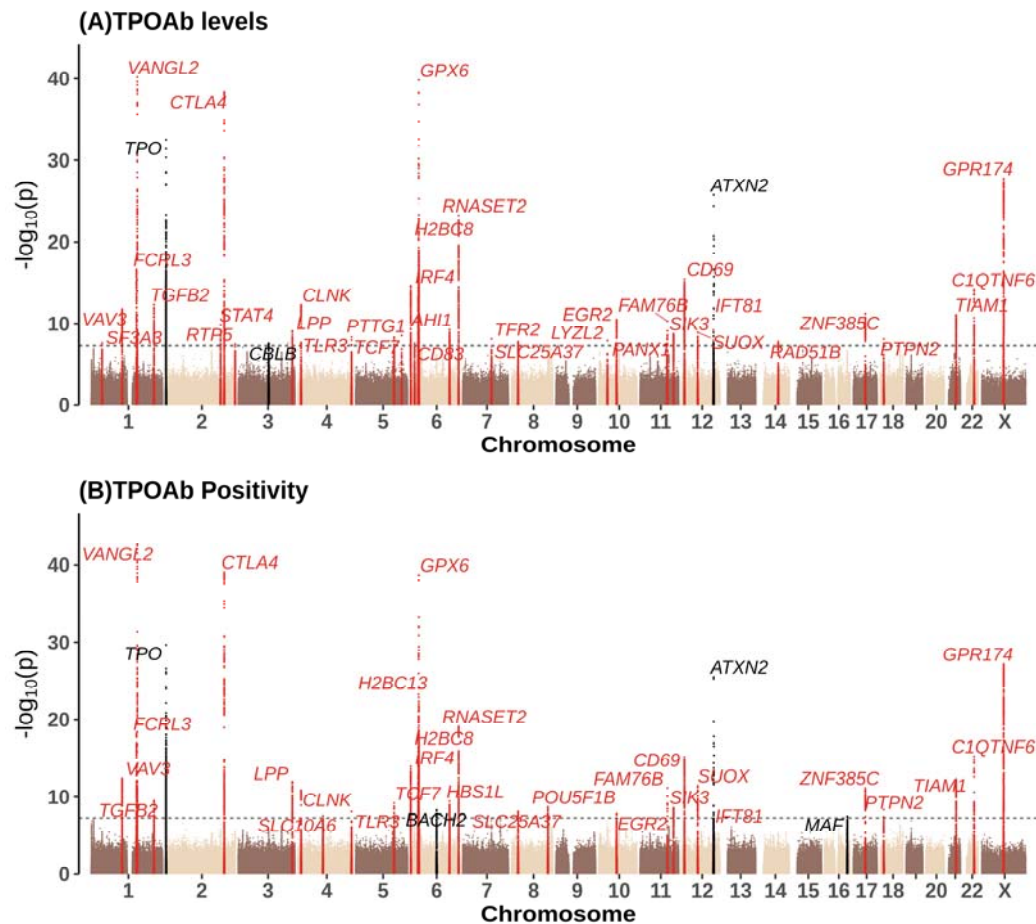


Figure 4. The manhattan plot for GWAS meta-analyses of thyroid autoimmunity: TPOAb levels (A), TPOAb positivity (B). The x-coordinate of the SNPs in the plot represents their position on each chromosome when the y-coordinate implies their P-value ($-\log_{10}$ scale) of the association test. The black dotted horizontal line indicates the significant threshold for the genome-wide association test (i.e., 5×10^{-8}). Genomic loci containing phenotype-associated variants previously reported in the GWAS catalog are colored in black. Before performing the GWAS analysis, TPOAb levels were natural log-transformed.

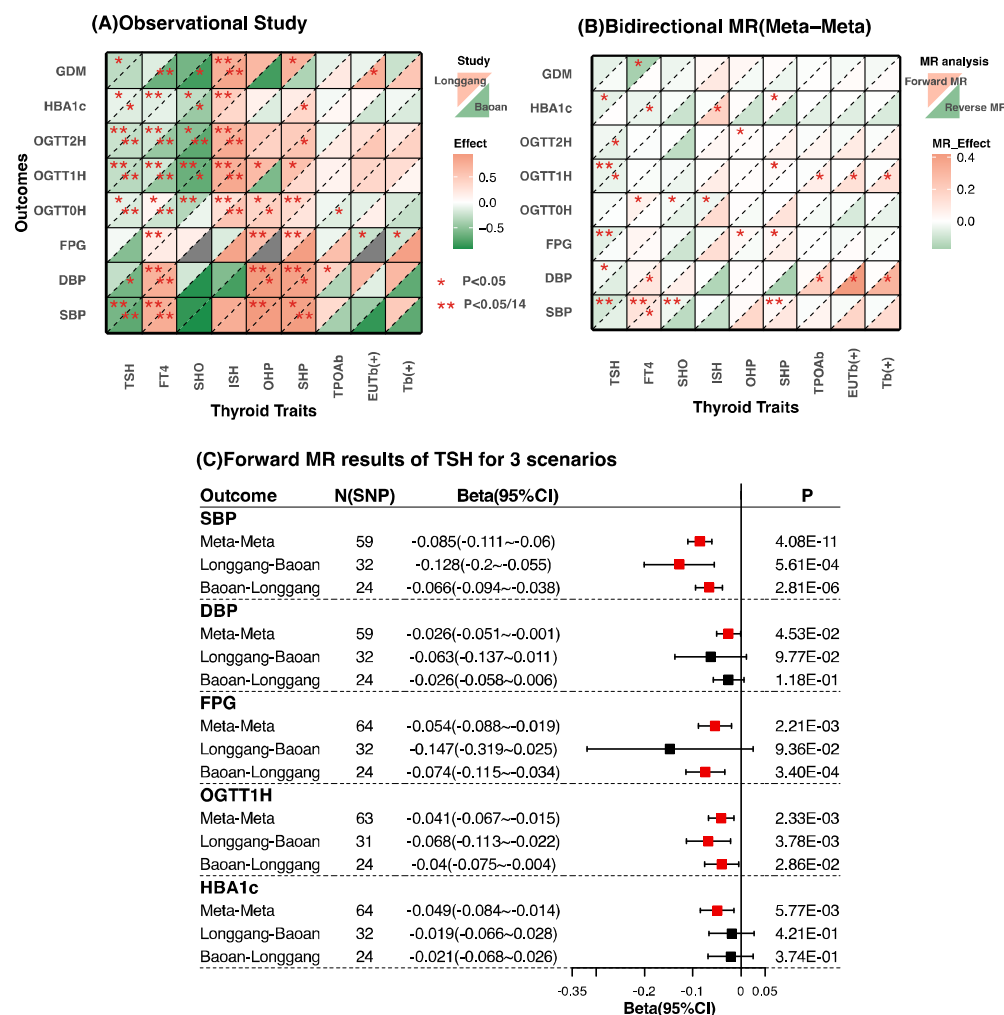


Figure 5. The association between thyroid-related traits and maternal blood glucose and blood pressure traits during pregnancy: (A) Observational analysis. (B) Bidirectional mendelian randomization. (C) The forest plot of MR results under 3 scenarios between TSH and 5 blood glucose and blood pressure traits.

In Figure A, the upper left triangle of each grid indicates the phenotypic association results in the Longgang cohort, while the lower right triangle indicates the phenotypic association results in the Baoan cohort. To facilitate the comparison of effect estimates corresponding to different traits, we converted the absolute values of the estimates of phenotypic associations into Q-quantiles for plotting.

In Figure B, the upper left triangle of each grid indicates the results of forward MR (thyroid traits as exposure variables), while the lower right triangle indicates reverse MR (thyroid traits as outcome variables).

In Figure C, the MR results for three scenarios are shown: (1) Meta-Meta: the two-sample MR method is conducted in one-sample setting; (2) Baoan-Longgang: Baoan Study served as the source of exposed GWAS data, while the Longgang Study provided the outcome population. (3) Longgang-Baoan: Longgang Study served as

the source of exposed GWAS data, while the Baoan Study provided the outcome population.

TSH: TSH levels within reference range during pregnancy; FT4: FT4 levels within reference range during pregnancy; SHO: subclinical hypothyroidism during pregnancy; ISH: isolated hypothyroxinemia during pregnancy, OHP: overt hyperthyroidism during pregnancy; SHP: subclinical hyperthyroidism during pregnancy, TPOAb: TPOAb levels, Tb(+): TPOAb positivity during pregnancy and EUTb(+): TPOAb positivity with normal functioning thyroids(ie, euthyroid). SBP: systolic blood pressure; DBP: diastolic blood pressure, HBA1c, Glycated hemoglobin; FPG, Fasting plasma glucose, OGTT0H, Oral glucose tolerance test 0 hour; OGTT1H, Oral glucose tolerance test 1 hour; OGTT2H, Oral glucose tolerance test 2 hour, GDM, Gestational diabetes mellitus.

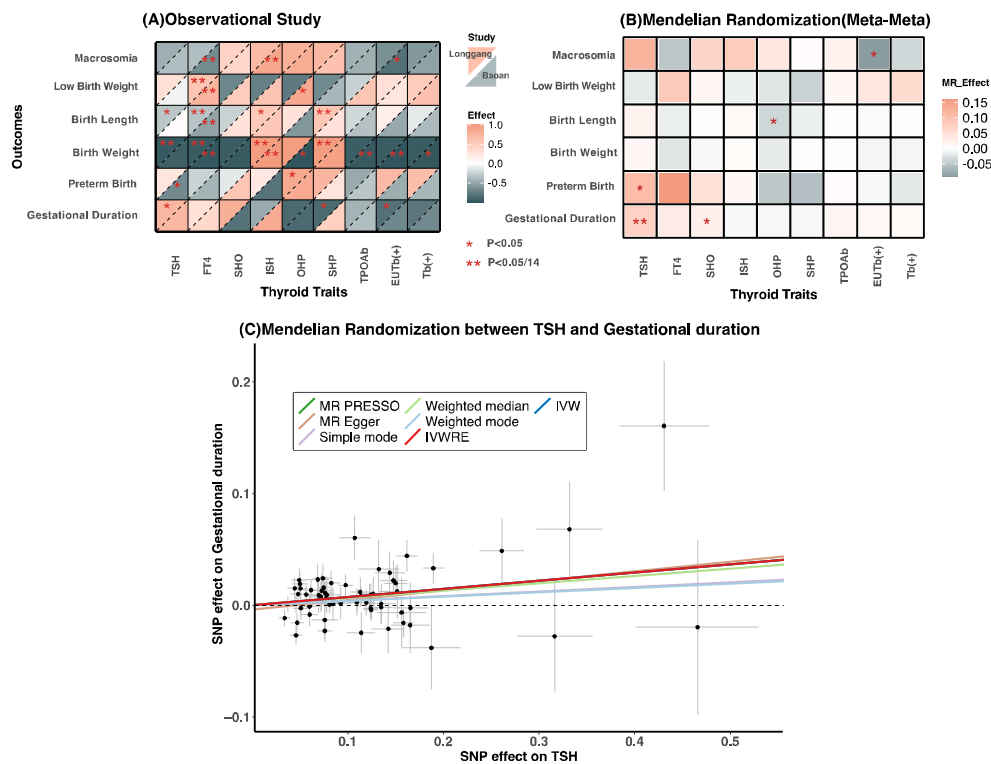


Figure 6. The association between thyroid-related traits during pregnancy and birth outcomes. (A) Prospective observational analysis. (B) Mendelian randomization. (C) Mendelian randomization analysis for causal associations between TSH and thyroid cancer and between TSH and gestational duration.

In Figure A, the upper left triangle of each grid indicates the phenotypic association results in the Longgang cohort, while the lower right triangle indicates the phenotypic association results in the Baoan cohort.

In Figure C, TSH and gestational duration are based on summary statistics from the meta-analysis of the Baoan and Longgang Study. ($N_{TSH} = 67,471$, and $N_{gestational\ duration} = 51,592$). The results of the IVW, IVWRE, MR Egger, Simple mode, and Weighted mode methods are based on the analysis of the IVs excluded by MR PRESSO. The

crosshairs on the plots represent the 95% confidence intervals for each SNP-TSH or SNP-outcome association. IVW, Inverse Variance Weighted; IVWRE, Inverse Variance Weighted with Multiplicative Random Effects.

TSH: TSH levels within reference range during pregnancy; FT4: FT4 levels within reference range during pregnancy; SHO: subclinical hypothyroidism during pregnancy; ISH: isolated hypothyroxinemia during pregnancy, OHP: overt hyperthyroidism during pregnancy; SHP: subclinical hyperthyroidism during pregnancy, TPOAb: TPOAb levels; Tb(+): TPOAb positivity during pregnancy and EUTb(+):TPOAb positivity with normal functioning thyroids(ie, euthyroid).

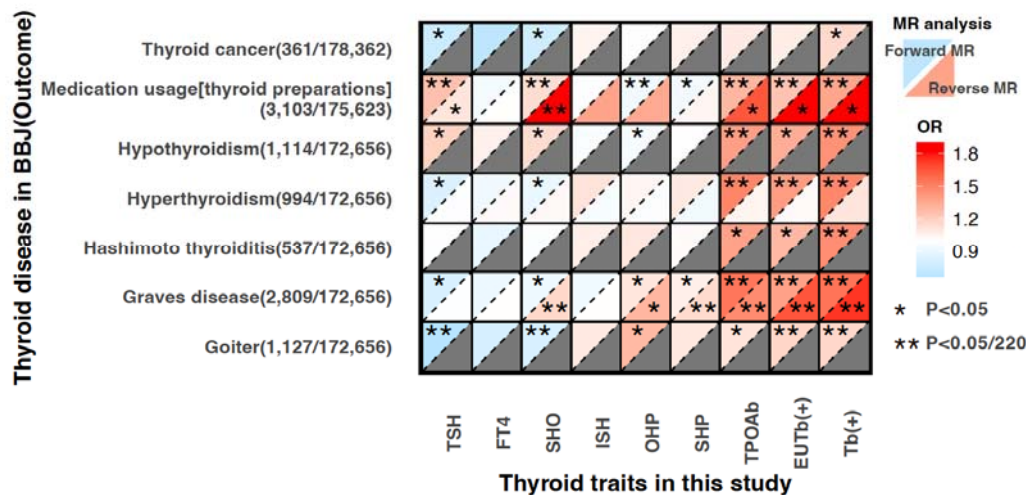


Figure 7. The results of bidirectional mendelian randomization analysis between thyroid traits during pregnancy and thyroid-related diseases in middle-aged and elderly people.

The upper left triangle of each grid indicates the results of forward MR (thyroid traits as exposure variables), while the lower right triangle indicates the results of reverse MR (thyroid traits as outcome variables).

TSH: TSH levels within reference range during pregnancy; FT4: FT4 levels within reference range during pregnancy; SHO: subclinical hypothyroidism during pregnancy; ISH: isolated hypothyroxinemia during pregnancy, OHP: overt hyperthyroidism during pregnancy; SHP: subclinical hyperthyroidism during pregnancy, TPOAb: TPOAb levels, Tb(+): TPOAb positivity during pregnancy and EUTb(+): TPOAb positivity with normal functioning thyroids (ie, euthyroid).