

1 Genetically Predicted IL-18 Inhibition and Risk of Cardiovascular Events: A 2 Mendelian Randomization Study

3
4 Stephen Brennan, MB^{1,2}, Peter J. Kelly MD^{1,3,4}, Sarah Gorey, MB³, Pádraig Synnott, MB³,
5 Dipender Gill, MB,⁵ Martin Dichgans, MD^{6,7,8}, Marios Georgakis, PhD^{6,9,10}, Marie-Joe Dib,
6 PhD¹¹, Eloi Gagnon, MA¹², Niall Mahon, MB¹³, Gavin Blake, MB¹³, Christina Jern, PhD^{14,15},
7 Hugh S. Markus, PhD¹⁶, William Whiteley PhD^{17,18}, John J. McCabe, PhD^{3,4,19}.

- 8
9 1. Stroke Service, Department of Neurology, Mater Misericordiae University Hospital, Dublin,
10 Ireland
11 2. School of Medicine, University of Galway, Galway, Ireland
12 3. Health Research Board Stroke Clinical Trials Network Ireland, Dublin, Ireland,
13 4. School of Medicine, University College Dublin, Dublin, Ireland
14 5. Department of Epidemiology and Biostatistics, School of Public Health, Imperial College
15 London, London, UK.
16 6. Institute for Stroke and Dementia Research, University Hospital, LMU Munich, Germany
17 7. German Center for Neurodegenerative Disease, Munich, Germany
18 8. Munich Cluster for Systems Neurology (SyNergy), Munich, Germany
19 9. Center for Genomic Medicine, Massachusetts General Hospital, Boston, United States
20 10. Program in Medical and Population Genetics, Broad Institute of Harvard and the Massachusetts
21 Institute of Technology, Boston, United States
22 11. Cardiovascular Division, Perelman School for Advanced Medicine, University of Pennsylvania,
23 Philadelphia, USA.
24 12. Centre de recherche de l'Institut universitaire de cardiologie et de pneumologie de Québec, Laval
25 University, Québec (QC), Canada
26 13. Department of Cardiology, Mater Misericordiae University Hospital, Dublin, Ireland

NOTE: This preprint reports new research that has not been certified by peer review and should not be used to guide clinical practice.

27 14. Department of Clinical Genetics and Genomics, Sahlgrenska University Hospital, Gothenburg,
28 Sweden

29 15. Department of Laboratory Medicine, Institute of Biomedicine, the Sahlgrenska Academy,
30 University of Gothenburg, Gothenburg, Sweden

31 16. Stroke Research Group, Department of Clinical Neuroscience, University of Cambridge,
32 Cambridge, United Kingdom

33 17. Nuffield Department of Population Health, University of Oxford, Oxford, United Kingdom

34 18. Centre for Clinical Brain Sciences, University of Edinburgh, Edinburgh, United Kingdom

35 19. Stroke Service, Department of Geriatric Medicine, Mater Misericordiae University Hospital,
36 Dublin, Ireland

37

38 Corresponding author: Stephen Brennan, MB,

39 Stroke Service, Department of Neurology,

40 Mater Misericordiae University Hospital, Dublin, Ireland

41 T: +353-1-803-2000, E: stephenbrennan@mater.ie

42

43 Total manuscript word count (including Title Page, Abstract, Text, References, and Figures
44 Legends): 7033

45

46

47

48

49

50

51

52

53 **Abstract**

54 **Background:** Inflammation is an emerging target for the prevention and treatment of
55 cardiovascular disease (CVD). This drug-target Mendelian randomization (MR) study aimed
56 to predict the on-target effects of IL-18 inhibition on CVD risk. Furthermore, we aimed to
57 explore the effects of IL-18 inhibition on cardio-metabolic traits, cardiac structure, and
58 function, and identify potential adverse outcomes.

59

60 **Methods:** We selected five independent circulating IL-18-lowering variants around the *IL-18*
61 gene locus from the Systematic and Combined AnaLysis of Olink Proteins (SCALLOP)
62 consortium. We then performed two-sample MR analyses to investigate the association of
63 genetically proxied IL-18-inhibition on downstream inflammatory markers, risk of CVD,
64 cardiac magnetic resonance (CMR) imaging measurements of cardiac structure and function,
65 cardiometabolic traits, and a selection of potential adverse effects. We utilized data from the
66 UK Biobank, Cardiogram, GIGASTROKE, and other large genomic consortia (sample range:
67 3,301-1,320,016).

68

69 **Results:** Following correction for multiple comparisons, one standard deviation (SD) lower
70 in genetically-predicted circulating IL-18 was associated with reductions in downstream
71 biomarkers of IL-18 signaling, including C-reactive protein (SD change -0.02, 95% CI -0.03,
72 -0.02), tumor necrosis factor (SD change -0.19, CI -0.25, -0.14), interferon-gamma (SD
73 change -0.15, CI -0.22, -0.08), and CXCL10 (SD change -0.13, CI -0.16, -0.09). Lower
74 genetically-predicted IL-18 levels were associated with reduced risk of cardio-embolic stroke
75 (Odds Ratio [OR] 0.85, CI 0.79-0.92), but not other stroke subtypes. Furthermore, lower
76 genetically predicted IL-18 levels were associated with reduced risk of peripheral arterial
77 disease (OR 0.91, CI 0.84-0.97), atrial fibrillation (OR 0.94, CI 0.89-0.99), and heart failure

78 (OR 0.84, CI 0.77-0.92), as well as improvements in CMR traits, including a reduction in left
79 atrial volume (β -0.02, CI -0.03, -0.00). Lower genetically-predicted IL-18 levels were
80 associated with lower risk of chronic kidney disease, autoimmune diseases, a favorable
81 cardio-metabolic profile, and higher odds of lung cancer, but not infections.

82

83 **Conclusions:**

84 Our study provides genetic support that impaired IL-18 signaling may be causally associated
85 with a lower risk of cardio-embolic stroke, possibly mediated through prevention of cardiac
86 re-modelling, heart failure and atrial fibrillation. IL-18 represents a potential target for anti-
87 inflammatory therapy in stroke and CVD that warrants further investigation in clinical trials.

88

89

90

91

92

93

94

95

96

97

98

99

100

101

102

103 **Clinical Perspective**

104 What is new?

- 105 • Using multi-omic data, this Mendelian Randomization study provides evidence that
- 106 IL-18 lowering is associated with a lower lifetime risk of cardiac remodeling, heart
- 107 failure, and cardio-embolic stroke.
- 108 • A significant proportion of the protective effect of impaired IL-18 signaling on cardio-
- 109 embolic stroke was mediated through a reduced risk of AF.

110 What are the clinical implications?

- 111 • These data provide compelling evidence that the IL-18 signaling pathway is a
- 112 promising druggable target for the treatment of heart failure and the prevention of
- 113 cardio-embolic stroke.
- 114 • Several monoclonal antibodies targeting IL-18 are in development for the treatment of
- 115 atopic dermatitis and could be considered for re-purposing for cardiovascular disease.

116

117

118

119

120

121

122

123

124

125

126

127

128 **Abbreviations**

129 HF: Heart failure

130 NLRP: NOD-like receptor family pyrin domain-containing

131 AF: Atrial fibrillation

132 IL-18: Interleukin-18

133 CMR: Cardiac magnetic resonance

134 CRP: C-reactive protein

135 IFN- γ : Interferon-gamma

136 CVD: cardiovascular disease

137 MR: Mendelian randomization

138 GWAS: Genome-wide association study

139

140

141

142

143

144

145

146

147

148

149

150

151

152

153 **Introduction**

154 Inflammation has emerged as a promising target for the treatment of atherosclerosis and the
155 secondary prevention of coronary events.^{1,2} The first anti-inflammatory trials for secondary
156 prevention after stroke have primarily focused on the therapeutic potential of these agents in
157 patients with atherosclerotic mechanisms and excluded patients with cardio-embolic stroke.³
158 However, several complementary lines of evidence also support the importance of
159 inflammatory mechanisms in the pathophysiology and progression of heart failure (HF), atrial
160 fibrillation (AF), and cardio-embolic stroke. Animal models provide compelling data that the
161 NOD-like receptor family pyrin domain-containing 3 (NLRP) inflammasome is upregulated
162 in cardiomyocytes in the pathogenesis of AF and promotes structural and electrical atrial
163 remodeling.⁴ Inflammatory signaling is implicated in several pathways central to the
164 pathophysiology of HF, including mitochondrial dysfunction, calcium homeostasis, cardiac
165 fibrosis, and impaired cardiomyocyte contractility.^{5,6} Inflammatory markers are associated
166 with incident AF in population-based studies^{7,8} and AF-related stroke.⁹ Despite these
167 promising data, the results of the first RCTs of anti-inflammatory therapies in HF,^{10,11} and
168 AF¹² have been neutral.

169

170 The NLRP3 inflammasome mediates some of its effects through activation of interleukin-1 β
171 (IL-1 β) via caspase-1 and leads to downstream IL-6 expression. Pre-clinical,¹³
172 observational,^{14,15} and genetic studies¹⁶ have coalesced to identify the IL-1 β -interleukin-6
173 (IL-6) signaling pathway as a promising target for risk reduction in cardiovascular disease¹⁷
174 and stroke.¹⁸ Significantly less attention has been given to the role of interleukin-18 (IL-18),
175 which is also cleaved to its active form by caspase-1 following activation by the NLRP3
176 inflammasome.¹³ IL-18 is a potent pro-inflammatory cytokine that promotes atherosclerotic
177 plaque progression in pre-clinical work.¹³ However, experimental data have also

178 demonstrated that IL-18 signaling plays a key role in cardiomyocyte hypertrophy, ventricular
179 dysfunction, and cardiac fibrosis.¹⁹⁻²² Elevated IL-18 levels are observed in patients with HF
180 and correlate with disease severity, but whether this inflammatory response is a cause or a
181 consequence of the pathogenesis of HF is unknown.²³ Some, but not all, prospective cohort
182 studies have reported that IL-18 is associated with incident coronary events²⁴⁻²⁶ and HF,^{24, 27}
183 but not incident stroke.²⁴ It remains uncertain whether pharmacological inhibition of the IL-
184 18 signaling pathway is a viable treatment option for a variety of cardiovascular diseases,
185 including coronary disease, stroke, AF, and HF.

186
187 In the absence of RCTs of therapeutics targeting the IL-18 signaling pathway for the
188 treatment of cardiovascular disease, genetic studies can offer valuable insights into the on-
189 target effect of these pharmacological agents.^{28, 29} Drug-target Mendelian Randomization
190 (MR) employs genetic variants associated with the levels or activity of drug-target proteins,
191 thus serving as proxies for pharmacological agents.²⁸ The primary aim of this study is to
192 explore the potential benefit of IL-18 inhibition on cardiovascular outcomes using a drug-
193 target MR approach.

194

195 **Methods**

196 **Study design**

197 We used MR to assess the causal association between genetically proxied downregulation of
198 IL-18 signaling and: 1) cardiovascular disease outcomes, with replication in non-overlapping
199 samples where possible; 2) cardiometabolic and inflammatory traits, including cardiac
200 magnetic resonance (CMR) measures of cardiac structure and function; and 3) potential
201 adverse and beneficial effects associated with reduced IL-18 signaling. An overview of the
202 study design is detailed in Figure 1.

203 Initially, we examined the validity of our genetic instrument as a pharmacological proxy for
204 downregulated IL-18 signaling by assessing its impact on established downstream
205 biomarkers: IL-6, C-reactive protein (CRP), interferon-gamma (IFN- γ), and tumor necrosis
206 factor. These biomarkers were identified from pre-clinical³⁰ and early-phase clinical studies
207 of therapies targeting the IL-18 signaling pathway.^{31,32} Circulating levels of IL-1 β were
208 selected as a negative control because as IL-1 β functions through an alternative signaling
209 pathway, its levels are not expected to be affected by IL-18 signaling. Two-sample *cis*-MR
210 was then used to elucidate the relationship between on-target reduced IL-18 signaling and the
211 risk of cardiovascular disease. Subsequent analyses assessed the bidirectional effects between
212 liability to diseases identified in primary analyses and circulating IL-18 levels. We undertook
213 a mediation analysis to identify pathways that contribute to the effect of genetically predicted
214 IL-18 blockade on cardio-embolic stroke. Finally, we explored the effect of downregulated
215 IL-18 signaling on longevity and a selection of clinically relevant outcomes to identify
216 potential adverse outcomes associated with an impaired host immune response. We used
217 parental age at death, a partially heritable trait, as an indirect measure of longevity.³³

218

219 **Data Sources**

220 For our primary CVD outcomes, we obtained summary statistics for stroke from
221 GIGASTROKE ($N_{\text{cases}} = 62,100$), peripheral arterial disease from the GoLEAD and Summit
222 Consortium ($N_{\text{cases}} = 12,086$), coronary artery disease from CARDIoGRAMplusC4D (N_{cases}
223 $= 181,522$), HF from Aragam et al.'s GWAS of ischaemic and non-ischaemic HF in the UK
224 Biobank (UKB) ($N_{\text{cases}} = 6,504$), dilated cardiomyopathy from Ning et al.'s GWAS in UKB
225 ($N_{\text{cases}} = 1,303$) and AF from Nielsen's genome-wide association meta-analysis with UKB
226 excluded ($N_{\text{cases}} = 45,800$). Summary statistics for lipid traits were derived from the Global
227 Lipids Genetics Consortium ($N = 1,320,016$) and a UKB GWAS conducted by Richardson et

228 al (N = 115,082). For inflammatory markers, summary statistics were sourced as follows:
229 CRP from Said et al.'s GWAS involving over 500,000 individuals; tumor necrosis factor from
230 The INTERVAL Study (N = 3,301); interferon-gamma from Ahola-Olli et al.'s GWAS (N =
231 7,701); IL-1 beta from deCODE (N = 35,559); CXCL10 from Gudjonsson et al.'s GWAS (N
232 = 5,366), and IL-6 from a genome-wide meta-analysis by Zhao et al (N = 14,743). Summary
233 statistics for cardiac magnetic resonance (CMR) imaging traits were sourced from four
234 GWAS in UKB ($N_{\text{range}} = 16,920\text{-}41,505$). Detailed information on all data sources used in
235 this study is available in the Supplementary Methods or Supplementary Table 1.

236

237 ***Instrumental variable selection***

238 Summary statistics for circulating IL-18 concentration were obtained from the Scallop
239 Consortium's genome-wide association meta-analysis of 90 Olink-measured proteins from 13
240 contributing cohorts containing 21,758 European individuals.³⁴ We identified common
241 (minor allele frequency >0.01) *cis*-genetic variants associated with circulating IL-18
242 concentration at genome-wide significance from within a 100kb flanking region of the *IL-18*
243 gene (hg19: chromosome 11: 112013974-112034840). Variants were then clumped using a
244 linkage disequilibrium (LD) threshold $r^2 < 0.1$ and a distance threshold of 100kb, utilizing
245 data from the 1000 Genomes Project European reference panel. This methodology selected
246 five partially correlated *cis*-variants with the strongest association with circulating IL-18
247 concentration within each LD region from around the *IL-18* gene, as described in
248 Supplementary Table 2. Instrument strength was assessed through the calculation of an *F*-
249 statistic and a mean *F*-statistic >10 was considered strong. For bidirectional MR analyses, we
250 created instruments for each cardiometabolic disease by selecting genetic variants associated
251 with each outcome at genome-wide significance from throughout the genome. We clumped
252 these variants using an LD threshold of $r^2 < 0.001$ and a distance threshold of 10,000 kb. We

253 relaxed our significance threshold for HF to 5×10^{-7} due to a scarcity of genome-wide
254 significant variants.

255

256 **Statistical analysis**

257 ***Mendelian randomization analyses***

258 Causal estimates from MR analyses rely on three key assumptions: (i) relevance, where the
259 genetic instrument must be associated with the exposure; (ii) independence, where the
260 instrument is not associated with any confounders of the exposure-outcome relationship; and
261 (iii) exclusion restriction, where the instrument affects the outcome solely through its effect
262 on the exposure.³⁵ Random-effects inverse-variance weighted (IVW) models were used in
263 primary MR analyses. For all significant associations, we conducted a range of sensitivity
264 analyses to assess for possible violations of the underlying assumptions of MR, including
265 weighted median and mode to assess for consistency of results, MR Egger to assess for
266 directional pleiotropy and MR PRESSO to adjust for the effect of potential outliers.³⁵ We
267 repeated all analyses using generalized inverse variance weighted MR, which adjusts for
268 residual pairwise LD among variants included in our IL-18 instrument.³⁵

269

270 ***Mediation analysis***

271 Following the methodology described by Woolf et al., we employed two-step *cis*-MR to
272 calculate the proportion of the effect of downregulated IL-18 signaling on cardio-embolic
273 stroke that was mediated by downstream cardiometabolic traits identified in primary
274 analyses.³⁶ This involved estimating the effect of IL-18 on each potential mediator, followed
275 by assessing the impact of each mediator on the outcome while adjusting for IL-18. We then
276 calculated the proportion of IL-18's overall effect on cardioembolic stroke mediated by each
277 outcome by dividing the indirect effect by the total effect. We used the weighted median

278 estimator for the mediation analysis if heterogeneity was detected in the inverse-variance
279 weighted MR estimate. Standard errors and the 95% CI for the proportion mediated were
280 calculated using the delta method.³⁷

281

282 *Colocalization and LD check*

283 Bayesian colocalization was used to determine if levels of circulating IL-18 and our primary
284 outcomes share a single causal variant at the IL-18 gene locus, which may indicate a causal
285 pathway between the exposure and the outcome.³⁸ Colocalization involves calculating
286 posterior probabilities (PP) for five hypotheses to assess the likelihood that the genetic
287 variants influencing two traits at a specific locus are overlapping or distinct. H0 suggests that
288 there is no genetic association with either trait; H1 and H2 suggest that only the first or
289 second trait has a genetic association; H3 suggests that both traits are associated but have
290 different causal variants; and H4 suggests that both traits are associated and share a single
291 causal variant. Colocalization analyses rely on a well-powered outcome GWAS and sufficient
292 variant coverage in the region of interest.^{38, 39} A posterior probability (PP) for H3 (distinct
293 causal variant) and H4 (shared causal variant) less than 0.8, in the context of a statistically
294 significant MR association, may signal an underpowered outcome GWAS to determine if the
295 association is due to a shared causal variant or from a confounding variant in LD (i.e.
296 horizontal pleiotropy). LD Check is an alternative method for co-localization when variant
297 coverage is insufficient for Bayesian colocalization.³⁹ LD Check estimates the LD between
298 the sentinel IL-18 variant and the top 30 variants from the same genomic region in each
299 outcome study. Causality with the sentinel IL-18 variant is suggested if at least one of the top
300 30 SNPs exhibits strong LD ($r^2 > 0.8$).³⁹

301

302

303 ***Reporting and packages***

304 Results from MR analyses are reported as odds ratios (OR) for binary outcomes and standard
305 deviation (SD) difference for continuous outcomes per SD lower in genetically predicted IL-
306 18 levels. Results from bidirectional MR analyses are reported as the effect of a one-unit
307 increase in the log odds of genetic liability for each cardiometabolic disease. We applied the
308 Benjamini-Hochberg method to control for the false discovery rate (FDR) across all
309 phenotypes and report the unadjusted and FDR-adjusted p-values. Associations with a
310 nominal p-value <0.05 and a Benjamini-Hochberg adjusted p-value >0.05 were deemed
311 suggestive. Associations with a Benjamini-Hochberg adjusted p-value <0.05 were considered
312 significant. Analyses were performed in R (v4.2.1; R Foundation for Statistical Computing)
313 with the TwoSampleMR, MendelianRandomisation, Coloc and TwoStepCisMR packages.

314

315 **Standard Protocol Approvals, Registrations, and Patient Consents**

316 All contributing studies obtained appropriate informed consent from participants and received
317 ethical approval before commencement. This study was conducted in adherence to the
318 guidelines for Strengthening the Reporting of Observational Studies in Epidemiology –
319 Mendelian randomization (STROBE- MR), as detailed in the Supplement.

320

321 **Data availability**

322 This study utilizes publicly available, summary-level GWAS data that can be accessed
323 through the GWAS Catalogue (<https://www.ebi.ac.uk/gwas/home>) and the Integrative
324 Epidemiology Unit (IEU) OpenGWAS project (<https://gwas.mrcieu.ac.uk/>) or specific cohort
325 portals, including The Scallop Consortium (<https://zenodo.org/records/2615265>), The Centre
326 for Statistical Genetics (<https://csg.sph.umich.edu/willer/public/afib2018/>), Pan-UK Biobank
327 (<https://pan.ukbb.broadinstitute.org/>), The Human Genetics Amplifier (HuGeAMP)

328 (<https://kp4cd.org/node/169>), The Usher Institute of Population Health Sciences and
329 Informatics (<https://datashare.ed.ac.uk/handle/10283/3209>), The Cardiovascular Disease
330 Knowledge Portal (<https://cvd.hugeamp.org/downloads.html>), The NBDC Human Database
331 (<https://humandbs.dbcls.jp/en/>), The Complex Trait Genetics Lab
332 (https://cncr.nl/research/summary_statistics/) and FinnGen
333 (https://www.finngen.fi/en/access_results).

334

335 **Results**

336 **Genetically downregulated IL-18 signaling and cardiometabolic biomarkers**

337 Our instrument for lower genetically downregulated IL-18 signaling, composed of 5 variants,
338 had a mean F -statistic of 124, indicating an appropriate average instrument strength, and
339 explained 3.64% of the total variation of circulating IL-18 levels in the Scallop Consortium.
340 Lower genetically predicted IL-18 levels were associated with several downstream
341 biomarkers of IL-18 signaling, suggesting that our instruments represented a proxy for IL-18
342 signaling downregulation. The downstream biomarkers that were significantly associated
343 with genetically proxied IL-18 levels included C-reactive protein (CRP) (SD change -0.02,
344 95% CI -0.03, -0.02, $p_{\text{fdr}} < 0.001$), tumor necrosis factor (SD change -0.19, 95% CI -0.25, -
345 0.14, $p_{\text{fdr}} < 0.001$), interferon-gamma (IFN- γ) (SD change -0.15, 95% CI -0.22, -0.08, p_{fdr}
346 < 0.001) and CXCL10 (SD change -0.13, 95% CI -0.16, -0.09, $p_{\text{fdr}} < 0.001$), but not IL-1 β or
347 IL-6 (Figure 2). Lower genetically predicted IL-18 levels were associated with higher
348 diastolic blood pressure (SD change 0.02, 95% CI 0.02, 0.03, $p_{\text{fdr}} = < 0.001$) and body mass
349 index (SD change 0.02, 95% CI 0.02, 0.01, $p_{\text{fdr}} = 0.017$), but had no association with lipid
350 subfractions.

351

352

353

354 **Genetically downregulated IL-18 signaling and cardiometabolic diseases**

355 Lower genetically predicted IL-18 levels (1 SD decrease in IL-18 levels) were associated
356 with 15% lower odds of cardio-embolic stroke (OR 0.85, 95% CI 0.79-0.92, $p_{\text{fdr}} < 0.001$,
357 Figure 3) and 9% lower odds of peripheral arterial disease (OR 0.91, 95% CI 0.84-0.97, p_{fdr}
358 $= 0.027$), but had no association with other stroke subtypes, coronary artery disease or aortic
359 stenosis. In UKB, lower genetically predicted IL-18 levels were also associated with reduced
360 odds of both all-cause HF (OR 0.83, 95% CI 0.75-0.91, $p_{\text{fdr}} < 0.001$) and dilated
361 cardiomyopathy (OR 0.74, 95% CI 0.58-0.93, $p_{\text{fdr}} = 0.031$). When assessing related cardio-
362 metabolic diseases, lower genetically predicted IL-18 levels were associated with lower odds
363 of chronic kidney disease (CKD) (OR 0.91, 95% CI 0.84-0.99, $p_{\text{fdr}} = 0.027$), and type 2
364 diabetes mellitus (T2DM) (OR 0.97, 95% CI 0.95-0.99, $p_{\text{fdr}} = 0.027$). Additionally, there was
365 a trend towards an association between lower genetically predicted IL-18 levels and reduced
366 risk of AF (OR 0.94, 95% CI 0.89-0.99, $p_{\text{fdr}} = 0.054$), which did not maintain significance
367 following false discovery rate adjustment. Associations for HF were successfully replicated
368 in a non-overlapping sample of American cohort studies (OR 0.85, 95% CI 0.75-0.95, p
369 $= 0.004$, Supplementary Table 3). For AF, results were directionally similar but did not reach
370 statistical significance in the UK Biobank (UKB) (OR 0.96, 95% CI 0.92-1.00, $p = 0.061$).

371

372 In colocalization analyses between IL-18 and AF, peripheral arterial disease, HF, cardio-
373 embolic stroke, CKD and T2DM, the posterior probabilities of $H3$ and $H4$ were less than 0.8
374 and this along with the low minimum p-values in the *IL-18* gene region in each of the
375 outcome summary statistics implies suboptimal power for colocalization, the presence of
376 confounding by LD or multiple causal variants within the gene region. We subsequently
377 conducted an LD Check analysis and obtained the LD correlation between the sentinel

378 variant (rs5744249) from the *IL-18* gene locus and the top 30 variants within 100kb of
379 rs5744249 with the lowest p-values from the cardio-embolic stroke, AF, peripheral arterial
380 disease, HF, CKD and T2DM summary statistics. At least one top *cis*-variant from each
381 outcome dataset, except for peripheral arterial disease, exhibited strong LD ($r^2 > 0.8$) with the
382 sentinel variant. This suggests potential causal associations between IL-18 and cardio-
383 embolic stroke, AF, HF, CKD and T2DM

384

385 **Genetically downregulated IL-18 signaling and cardiac magnetic resonance imaging** 386 **traits**

387 In UKB, there were directionally consistent improvements in all measures of cardiac
388 structure and function with lower genetically predicted IL-18 levels as displayed in Figure 3,
389 with the exception of left and right ventricular ejection fractions. Following adjustment for
390 multiple testing, lower genetically predicted IL-18 levels were associated with a reduction in
391 left atrial size (SD change -0.02, 95% CI -0.03, -0.00, $p_{\text{fdr}} = 0.022$) and left ventricular end-
392 systolic volume (SD change -0.08, 95% CI -0.13, -0.02, $p_{\text{fdr}} = 0.039$).

393

394 **Genetically downregulated IL-18 signaling and potential adverse effects**

395 Lower genetically predicted IL-18 levels were associated with a longer parental lifespan, an
396 indirect measure of longevity (SD change 0.02 years, 95% CI 0.01-0.04, $p_{\text{fdr}} = 0.005$), and
397 reduced risk of a range of autoimmune diseases, including atopic dermatitis (OR 0.86, 95%
398 CI 0.83-0.90, $p_{\text{fdr}} < 0.001$), psoriasis (OR 0.84-0.89, $p_{\text{fdr}} < 0.001$), asthma (OR 0.90, 95% CI
399 0.86-0.94, $p_{\text{fdr}} < 0.001$), and rheumatoid arthritis (OR 0.85, 95% CI 0.81-0.90, $p_{\text{fdr}} < 0.001$,
400 Figure 4). There was also a trend toward an association between lower genetically predicted
401 IL-18 levels and reduced risk of ulcerative colitis (OR 0.88, 95% CI 0.79-0.98, $p_{\text{fdr}} = 0.051$),
402 which did not maintain significance following false discovery rate adjustment. While lower

403 genetically predicted IL-18 levels were not significantly associated with an increased risk of
404 infection, it was associated with higher odds of lung cancer (OR 1.15, 95% CI 1.11-1.20, p_{fdr}
405 <0.001) and multiple sclerosis (OR 1.17, 95% CI 1.03-1.32, $p_{\text{fdr}} = 0.041$).

406

407 **Bidirectional relationship between cardiometabolic diseases and IL-18 levels**

408 In reverse MR analyses, genetic liability to cardio-embolic stroke was not significantly
409 associated with circulating levels of IL-18 (β representing the effect of one unit increase in
410 the log odds of genetic liability for cardioembolic stroke -0.03, 95% CI -0.08-0.02, $p =$
411 0.267). Similarly, circulating levels of IL-18 were not affected by genetic liability to AF (β
412 0.00, 95% CI -0.03-0.04, $p = 0.879$), HF (β -0.03, 95% CI -0.22-0.16, $p = 0.743$), CKD (β 0.01,
413 95% CI -0.07-0.06, $p = 0.821$), peripheral arterial disease (β 0.07, 96% CI -0.26-0.39, $p =$
414 0.686), or higher BMI (β 0.05, 95% CI -0.01-0.12, $p = 0.104$).

415

416 **Mediation analyses**

417 We performed two-step network MR mediation analyses to quantify the extent to which
418 downstream cardiometabolic traits mediate the relationship between IL-18 signaling and
419 cardio-embolic stroke. We observed that genetic liability to AF accounted for 25% of the
420 total effect of lower genetically predicted IL-18 levels on cardio-embolic stroke (proportion-
421 mediated 25.1%, 95% CI 22.4-27.8%, $p < 0.001$, Supplementary Table 4).

422

423 Genetic liability to all-cause HF accounted for 5.6% of the total effect (proportion-mediated
424 5.3%, 95% CI 1.7-8.8%, $p = 0.003$), while genetic liability to CKD mediated 2.8% of the total
425 effect of downregulated IL-18 signaling on cardio-embolic stroke (proportion-mediated
426 2.8%, 95% CI 0.1-5.7%, $p = 0.054$). However, BMI had a more modest impact, mediating
427 1.61% of the total effect (proportion-mediated 1.6%, 95% CI -2.0-5.2%, $p = 0.383$), while

428 genetic liability to T2DM had little impact, mediating only 0.8% of the total effect of lower
429 genetically predicted IL-18 levels on cardio-embolic stroke (proportion-mediated 0.8%, 95%
430 CI -2.8-4.4%, $p=0.657$)

431

432 **Sensitivity analyses**

433 The MR estimates from generalized IVW, weighted median, weighted mode, MR Egger, and
434 MR PRESSO are reported in Supplementary Tables 5.1-5.24. No heterogeneity was observed
435 across all MR analyses, as indicated by Cochran's Q and Rucker's Q statistics. Estimates
436 were consistent with primary results when using generalized IVW MR to model residual LD,
437 and directionally similar across weighted median and weighted mode methods. The p-values
438 for the MR Egger intercept test and the global MR PRESSO test were not significant,
439 suggesting an absence of marked pleiotropy.

440

441 **Discussion**

442 Leveraging data from large-scale genomic, proteomic and imaging studies, we have
443 demonstrated new and important evidence linking IL-18 signaling to HF, peripheral arterial
444 disease, atrial cardiomyopathy, and cardio-embolic stroke. Lower genetically predicted IL-18
445 levels were associated with reduced concentrations of several downstream inflammatory
446 cytokines and exhibited protective effects on cardiac structure and function. Genetic liability
447 to AF and HF mediated a significant proportion of the risk-lowering effect of IL-18 signaling
448 on cardioembolic stroke. Lower genetically predicted IL-18 levels were associated with a
449 favorable metabolic profile overall, with a lower risk of T2DM, CKD, autoimmune disease,
450 and enhanced longevity.

451

452 The present data are supported by several lines of evidence from experimental models,
453 observational studies, and emerging data from RCTs implicating the NLRP3-inflammasome
454 and IL-18 activation in HF and AF. The NLRP3-inflammasome is activated by pro-
455 inflammatory mediators, such as IL-1 β and TNF-alpha, damage-associated molecular
456 patterns (DAMPs) secondary to ischemia-reperfusion injury, and angiotensin II over-
457 expression from renin-angiotensin activation.^{4, 21, 40} IL-18 activation ensues secondary to
458 NLRP3 inflammasome formation in leukocytes, endothelial cells, fibroblasts, and
459 cardiomyocytes.²¹ The binding of IL-18 to its receptor triggers the recruitment of tumor
460 necrosis factor receptor-associated factor-6 (TRAF6), and the activation of nuclear factor
461 Kappa B (NF- κ B) and p38 mitogen-activated protein kinase (MAPK).²¹ This cascade results
462 in the synthesis of secondary inflammatory mediators, including IFN- γ and TNF- α .³⁰ In-vitro
463 and animal models have demonstrated that disrupting the IL-18 signaling pathway can reduce
464 myocardial hypertrophy, improve contractile function, and decrease fibrosis.^{21, 22} IL-18
465 mediates β -adrenergic receptor stimulation-induced macrophage infiltration, cardiac
466 inflammation, and fibrosis.²⁰ IL-18 also triggers apoptosis in microvascular endothelial cells
467 through activation of NF- κ B and upregulates the expression of osteopontin, fibronectin, and
468 matrix metalloproteinase 2 (MMP-2) in human cardiac fibroblasts.²¹ In humans, IL-18 levels
469 increase in proportion to disease progression in both HF²³ and AF.^{41, 42} In the Atherosclerosis
470 Risk in Communities (ARIC) study circulating IL-18 in mid-life was associated with future
471 risk of HF.²⁴ Similarly, Henry et al.'s meta-analysis of four population-based studies
472 demonstrated an association between IL-18 levels and risk of incident HF.²⁷
473
474 Our results suggest that the IL-18 signaling pathway is a viable treatment target in AF, HF
475 and cardio-embolic stroke. Our data were derived from non-overlapping cohorts and
476 demonstrated biologically consistent results, implicating IL-18 at the center of multiple

477 downstream pro-inflammatory pathways, cardiac remodeling, AF, HF, and ultimately cardio-
478 embolic stroke. Our two-step *cis*-MR analysis suggests that the reduced risk of cardioembolic
479 stroke associated with downregulated IL-18 signaling is likely mediated through its
480 protective effects against lifetime cardiac remodeling, cardiomyopathy, and AF. Our results
481 are supported by Schmidt et al.'s recent *cis*-MR study which showed that targeting the IL-18
482 receptor is associated with four left ventricular CMR traits and risk of dilated
483 cardiomyopathy.⁴³ Furthermore, in their candidate gene study, Wang et al. demonstrated that
484 three variants associated with IL18 gene expression increased risk of AF and left atrial
485 enlargement.⁴⁴

486

487 The global burden of stroke, HF and AF is increasing.^{45, 46} There is a pressing need to identify
488 and develop disease-modifying therapies that prevent stroke and slow disease progression in
489 both HF and atrial cardiopathy. In atherosclerosis, colchicine and canakinumab have both
490 shown benefit in reducing major adverse cardiovascular events (MACE) in coronary artery
491 disease.^{1, 2} Although colchicine did not reduce the risk of MACE after non-cardioembolic
492 stroke, a 20% reduced risk was observed in an on-treatment analysis suggesting a possible
493 biological effect.³ Apart from the treatment of atherosclerosis, there is also increasing interest
494 in targeting inflammation in HF and AF. Whilst there is some evidence that colchicine
495 reduces the risk of postoperative AF following cardiac surgery and decreases AF recurrence
496 after pulmonary vein isolation or ablation⁴⁷, a recent RCT was neutral.¹² Currently, no
497 licensed anti-inflammatory therapies have been proven to prevent hard outcomes in HF.
498 RCTs investigating the potential of TNF α inhibition were neutral.^{10, 11} Anakinra, an anti-IL-1
499 monoclonal antibody, improved several surrogate markers of cardiac function but failed to
500 significantly reduce hospitalization for HF or death.⁴⁸ While genetic studies have identified
501 the IL-6 signaling pathway as a potential druggable target for AF, they do not support a

502 causal role in HF or cardio-embolic stroke.¹⁶ Consequently, future experimental work and
503 RCTs should now focus on the potential benefit of IL-18 pathway suppression in the
504 treatment of HF and the prevention of cardio-embolic stroke.

505

506 Our results suggest that IL-18 inhibition would likely have a favourable cardio-metabolic
507 profile. Downregulated IL-18 signaling reduced risk of CKD and T2DM, which are key risk
508 factors for cardiovascular disease. However, we did observe that IL-18 suppression was
509 associated with marginal increases in diastolic blood pressure and BMI while having minimal
510 effect on lipid fractions and systolic blood pressure. The clinical relevance of these findings
511 will need to be explored in future studies. We show that downregulated IL-18 signaling is
512 associated with lower risk of atopic disease, which supports the rationale for ongoing clinical
513 trials of IL-18 signaling-blocking therapies in atopic dermatitis. Promising agents for
514 potential repurposing in cardiovascular disease include GSK1070806 and Camoteskimab,
515 which are human monoclonal antibodies targeting IL-18, as well as tadekinig α , a
516 recombinant human IL-18 binding protein that sequesters IL-18. Immunomodulatory
517 therapies carry potential risks, notably with respect to host response to infections and
518 malignancy. Our study shows that downregulated IL-18 signaling increases the risk of lung
519 cancer, but not other cancers or infection. Most importantly, we show that reduced IL-18
520 signaling is associated with enhanced lifespan, indicative of a net positive effect on all-cause
521 mortality.

522

523 Previous data from experimental models and some epidemiological studies suggested that IL-
524 18 was associated with atherosclerosis and coronary disease.^{26, 49} Apart from a modest
525 association with peripheral arterial disease that did not have LD Check support, we did not
526 find any compelling evidence that IL-18 signaling is causally associated with atherosclerotic

527 endpoints. On the contrary, prior MR studies have implicated IL-6 signaling in coronary
528 artery disease and atherosclerotic stroke.¹⁶ Together with data from CANTOS suggesting the
529 potential benefit of IL-1 β -IL-6 axis suppression,² our analysis supports the rationale of
530 ongoing trials focusing on the high potential of IL-6 pathway inhibition in atherosclerosis.¹⁷
531
532 Our study has several strengths. The MR study design minimizes bias from reverse causation
533 and environmental confounders, while cis-MR provides an evaluation of the effects of
534 directly perturbing a drug target on disease outcomes. We leveraged large multi-omic
535 datasets to uncover new insights into how downregulated IL-18 signaling influences
536 cardiovascular disease. Moreover, we developed a robust genetic cis-instrument that mirrors
537 the effects of reduced IL-18 signaling on downstream biomarkers and conducted a
538 comprehensive set of mediation and sensitivity analyses to improve confidence in our
539 findings. We were also able to validate our findings for HF in independent cohorts. We
540 acknowledge some limitations. Although we utilized large genomic consortia for outcome
541 summary statistics, our analyses may have been underpowered to detect associations with
542 rarer phenotypes. Effect sizes derived from drug-target MR studies reflect lifelong
543 perturbation of the drug target rather than the short-term treatment durations typically seen in
544 clinical practice, potentially leading to significant differences in the observed benefits. Two-
545 sample MR methods assume a linear relationship between genetically proxied exposures and
546 outcomes. In cases of non-linearity, the MR estimates reflect a population average effect
547 rather than capturing potentially varying effects across different levels of exposure. Similarly,
548 in clinical practice, the biological response to drugs often requires surpassing a specific
549 therapeutic dose, a detail that two-sample MR studies might not capture due to their reliance
550 on average effects. Two-step *cis*-MR relies on several assumptions including linearity, and
551 may yield unreliable estimates when the mediator or outcome is not continuous, potentially

552 impacting the accuracy of our effect size estimates and the interpretation of IL-18 signaling
553 mediation on cardio-embolic stroke through AF, HF, CKD, and T2DM. Our analyses were
554 limited to individuals of European ancestry to minimize confounding by population
555 stratification and the potential impact of downregulated IL-18 signaling on risk of cardio-
556 vascular disease in non-European ancestries remains to be explored. Finally, our MR
557 estimates reflect the impact of downregulated IL-18 signaling on incident disease, and it
558 remains unclear how applicable these findings are to individuals with established disease, who
559 are more likely to be prioritized for treatment and inclusion in clinical trials.

560

561 In conclusion, this study used large-scale multi-omic data to explore the effects of genetically
562 downregulated IL-18 signaling on cardiovascular disease. We provide compelling data which
563 suggests the IL-18 pathway is causally implicated in the evolution of cardiomyopathy, from
564 structural remodelling through to an increased risk of HF and cardio-embolic stroke. These
565 data strongly suggest that IL-18 represents a viable target for the prevention and treatment of
566 stroke and heart failure, with a favorable cardiometabolic and autoimmune profile, that
567 warrants further exploration in clinical trials.

568

569 **Sources of funding**

570 PJK has received funding from the Irish Health Research Board. DG is supported by the
571 British Heart Foundation Centre of Research Excellence (RE/18/4/34215) at Imperial College
572 London.

573

574 **Disclosures**

575 The authors have no relevant conflicts of interest to disclose.

576

577 References

- 578 1. Xia M, Yang X, Qian C. Meta-analysis evaluating the utility of colchicine in
579 secondary prevention of coronary artery disease. *Am J Cardiol.* 2021;140:33-38
- 580 2. Ridker PM, Everett BM, Thuren T, MacFadyen JG, Chang WH, Ballantyne C, et al.
581 Antiinflammatory therapy with canakinumab for atherosclerotic disease. *New*
582 *England Journal of Medicine.* 2017;377:1119-1131
- 583 3. Kelly P, Lemmens R, Weimar C, Walsh C, Purroy F, Barber M, et al. Long-term
584 colchicine for the prevention of vascular recurrent events in non-cardioembolic stroke
585 (convince): A randomised controlled trial. *The Lancet.* 2024
- 586 4. Yao C, Veleva T, Scott L, Cao S, Li L, Chen G, et al. Enhanced cardiomyocyte nlrp3
587 inflammasome signaling promotes atrial fibrillation. *Circulation (New York, N.Y.).*
588 2018;138:2227-2242
- 589 5. McKechnie DGJ, Papacosta AO, Lennon LT, Welsh P, Whincup PH, Wannamethee
590 SG. Inflammatory markers and incident heart failure in older men: The role of nt-
591 probnp. *Biomarkers in Medicine.* 2021;15:413-425
- 592 6. Szabo TM, Frigy A, Nagy EE. Targeting mediators of inflammation in heart failure: A
593 short synthesis of experimental and clinical results. *Int J Mol Sci.* 2021;22
- 594 7. Conen D, Ridker PM, Everett BM, Tedrow UB, Rose L, Cook NR, et al. A
595 multimarker approach to assess the influence of inflammation on the incidence of
596 atrial fibrillation in women. *Eur Heart J.* 2010;31:1730-1736
- 597 8. Aviles RJ, Martin DO, Apperson-Hansen C, Houghtaling PL, Rautaharju P, Kronmal
598 RA, et al. Inflammation as a risk factor for atrial fibrillation. *Circulation.*
599 2003;108:3006-3010
- 600 9. Aulin J, Siegbahn A, Hijazi Z, Ezekowitz MD, Andersson U, Connolly SJ, et al.
601 Interleukin-6 and c-reactive protein and risk for death and cardiovascular events in
602 patients with atrial fibrillation. *Am Heart J.* 2015;170:1151-1160
- 603 10. Mann DL, McMurray JJ, Packer M, Swedberg K, Borer JS, Colucci WS, et al.
604 Targeted anticytokine therapy in patients with chronic heart failure: Results of the
605 randomized etanercept worldwide evaluation (renewal). *Circulation.* 2004;109:1594-
606 1602
- 607 11. Chung ES, Packer M, Lo KH, Fasanmade AA, Willerson JT. Randomized, double-
608 blind, placebo-controlled, pilot trial of infliximab, a chimeric monoclonal antibody to
609 tumor necrosis factor-alpha, in patients with moderate-to-severe heart failure: Results
610 of the anti-tnf therapy against congestive heart failure (attach) trial. *Circulation.*
611 2003;107:3133-3140
- 612 12. Benz AP, Amit G, Connolly SJ, Singh J, Acosta-Vélez JG, Conen D, et al. Colchicine
613 to prevent atrial fibrillation recurrence after catheter ablation: A randomized, placebo-
614 controlled trial. *Circulation: Arrhythmia and Electrophysiology.* 2024;17:e01238
- 615 13. Abbate A, Toldo S, Marchetti C, Kron J, Van Tassell BW, Dinarello CA. Interleukin-1
616 and the inflammasome as therapeutic targets in cardiovascular disease. *Circulation*
617 *research.* 2020;126:1260-1280
- 618 14. Kaptoge S, Seshasai SR, Gao P, Freitag DF, Butterworth AS, Borglykke A, et al.
619 Inflammatory cytokines and risk of coronary heart disease: New prospective study
620 and updated meta-analysis. *Eur Heart J.* 2014;35:578-589
- 621 15. Papadopoulos A, Palaiopanos K, Bjorkbacka H, Peters A, de Lemos JA, Seshadri S, et
622 al. Circulating interleukin-6 levels and incident ischemic stroke: A systematic review
623 and meta-analysis of prospective studies. *Neurology.* 2021

- 624 16. Georgakis MK, Malik R, Gill D, Franceschini N, Sudlow CLM, Dichgans M, et al.
625 Interleukin-6 signaling effects on ischemic stroke and other cardiovascular outcomes:
626 A mendelian randomization study. *Circ Genom Precis Med.* 2020;13:e002872
- 627 17. Ridker PM, Rane M. Interleukin-6 signaling and anti-interleukin-6 therapeutics in
628 cardiovascular disease. *Circ Res.* 2021;128:1728-1746
- 629 18. McCabe JJ, Walsh C, Gorey S, Harris K, Hervella P, Iglesias-Rey R, et al. C-reactive
630 protein, interleukin-6, and vascular recurrence after stroke: An individual participant
631 data meta-analysis. *Stroke.* 2023
- 632 19. Toldo S, Mezzaroma E, O'Brien L, Marchetti C, Seropian IM, Voelkel NF, et al.
633 Interleukin-18 mediates interleukin-1-induced cardiac dysfunction. *Am J Physiol*
634 *Heart Circ Physiol.* 2014;306:H1025-1031
- 635 20. Xiao H, Li H, Wang J-J, Zhang J-S, Shen J, An X-B, et al. Il-18 cleavage triggers
636 cardiac inflammation and fibrosis upon β -adrenergic insult. *European Heart Journal.*
637 2017;39:60-69
- 638 21. O'Brien LC, Mezzaroma E, Van Tassell BW, Marchetti C, Carbone S, Abbate A, et al.
639 Interleukin-18 as a therapeutic target in acute myocardial infarction and heart failure.
640 *Mol Med.* 2014;20:221-229
- 641 22. Yu Q, Vazquez R, Khojini EV, Patel C, Venkataramani R, Larson DF. Il-18 induction
642 of osteopontin mediates cardiac fibrosis and diastolic dysfunction in mice. *Am J*
643 *Physiol Heart Circ Physiol.* 2009;297:H76-85
- 644 23. Yamaoka-Tojo M, Tojo T, Inomata T, Machida Y, Osada K, Izumi T. Circulating levels
645 of interleukin 18 reflect etiologies of heart failure: Th1/th2 cytokine imbalance
646 exaggerates the pathophysiology of advanced heart failure. *J Card Fail.* 2002;8:21-27
- 647 24. Jia X, Buckley L, Sun C, Al Rifai M, Yu B, Nambi V, et al. Association of interleukin-
648 6 and interleukin-18 with cardiovascular disease in older adults: Atherosclerosis risk
649 in communities study. *European Journal of Preventive Cardiology.* 2023;30:1731-
650 1740
- 651 25. Kaptoge S, Seshasai SRK, Gao P, Freitag DF, Butterworth AS, Borglykke A, et al.
652 Inflammatory cytokines and risk of coronary heart disease: New prospective study
653 and updated meta-analysis. *European Heart Journal.* 2013;35:578-589
- 654 26. Jefferis BJ, Papacosta O, Owen CG, Wannamethee SG, Humphries SE, Woodward M,
655 et al. Interleukin 18 and coronary heart disease: Prospective study and systematic
656 review. *Atherosclerosis.* 2011;217:227-233
- 657 27. Henry A, Gordillo-Marañón M, Finan C, Schmidt AF, Ferreira JP, Karra R, et al.
658 Therapeutic targets for heart failure identified using proteomics and mendelian
659 randomization. *Circulation.* 2022;145:1205-1217
- 660 28. Gill D, Georgakis M, Walker V, Schmidt A, Gkatzionis A, Freitag D, et al. Mendelian
661 randomization for studying the effects of perturbing drug targets [version 2; peer
662 review: 3 approved, 1 approved with reservations]. *Wellcome Open Research.* 2021;6
- 663 29. Minikel EV, Painter JL, Dong CC, Nelson MR. Refining the impact of genetic
664 evidence on clinical success. *Nature.* 2024;629:624-629
- 665 30. Kaplanski G. Interleukin-18: Biological properties and role in disease pathogenesis.
666 *Immunological reviews.* 2018;281:138-153
- 667 31. Gabay C, Fautrel B, Rech J, Spertini F, Feist E, Kötter I, et al. Open-label,
668 multicentre, dose-escalating phase ii clinical trial on the safety and efficacy of
669 tadekinig alfa (il-18bp) in adult-onset still's disease. *Annals of the Rheumatic*
670 *Diseases.* 2018;77:840-847
- 671 32. Robertson MJ, Kirkwood JM, Logan TF, Koch KM, Kathman S, Kirby LC, et al. A
672 dose-escalation study of recombinant human interleukin-18 using two different

- 673 schedules of administration in patients with cancer. *Clinical Cancer Research*.
674 2008;14:3462-3469
- 675 33. Pilling LC, Atkins JL, Bowman K, Jones SE, Tyrrell J, Beaumont RN, et al. Human
676 longevity is influenced by many genetic variants: Evidence from 75,000 uk biobank
677 participants. *Aging (Albany NY)*. 2016;8:547
- 678 34. Folkersen L, Gustafsson S, Wang Q, Hansen DH, Hedman ÅK, Schork A, et al.
679 Genomic and drug target evaluation of 90 cardiovascular proteins in 30,931
680 individuals. *Nature metabolism*. 2020;2:1135-1148
- 681 35. Richmond RC, Smith GD. Mendelian randomization: Concepts and scope. *Cold
682 Spring Harbor perspectives in medicine*. 2022;12:a040501
- 683 36. Woolf B, Zagkos L, Gill D. Twostepcismr: A novel method and r package for
684 attenuating bias in cis-mendelian randomization analyses. *Genes*. 2022;13:1541
- 685 37. Tofighi D, MacKinnon DP. Rmediation: An r package for mediation analysis
686 confidence intervals. *Behavior research methods*. 2011;43:692-700
- 687 38. Zuber V, Grinberg NF, Gill D, Manipur I, Slob EA, Patel A, et al. Combining
688 evidence from mendelian randomization and colocalization: Review and comparison
689 of approaches. *The American Journal of Human Genetics*. 2022;109:767-782
- 690 39. Zheng J, Haberland V, Baird D, Walker V, Haycock PC, Hurler MR, et al. Phenome-
691 wide mendelian randomization mapping the influence of the plasma proteome on
692 complex diseases. *Nature genetics*. 2020;52:1122-1131
- 693 40. Mezzaroma E, Abbate A, Toldo S. The inflammasome in heart failure. *Curr Opin
694 Physiol*. 2021;19:105-112
- 695 41. Liu Y, Luo D, Liu E, Liu T, Xu G, Liang X, et al. Mirna21 and il-18 levels in left
696 atrial blood in patients with atrial fibrillation undergoing cryoablation and their
697 predictive value for recurrence of atrial fibrillation. *Journal of Interventional Cardiac
698 Electrophysiology*. 2022;64:111-120
- 699 42. Luan Y, Guo Y, Li S, Yu B, Zhu S, Li S, et al. Interleukin-18 among atrial fibrillation
700 patients in the absence of structural heart disease. *Europace*. 2010;12:1713-1718
- 701 43. Schmidt AF, Bourfiss M, Alasiri A, Puyol-Anton E, Chopade S, van Vugt M, et al.
702 Druggable proteins influencing cardiac structure and function: Implications for heart
703 failure therapies and cancer cardiotoxicity. *Science advances*. 2023;9:eadd4984
- 704 44. Wang Y-H, Fu L, Wang B, Li S-F, Sun Z, Luan Y. Genetic variants of interleukin-18
705 are associated with reduced risk of atrial fibrillation in a population from northeast
706 china. *Gene*. 2017;626:269-274
- 707 45. Savarese G, Becher PM, Lund LH, Seferovic P, Rosano GM, Coats AJ. Global burden
708 of heart failure: A comprehensive and updated review of epidemiology.
709 *Cardiovascular research*. 2022;118:3272-3287
- 710 46. Collaborators GBDS. Global, regional, and national burden of stroke, 1990-2016: A
711 systematic analysis for the global burden of disease study 2016. *Lancet Neurol*.
712 2019;18:439-458
- 713 47. Kommu S, Arepally S. The effect of colchicine on atrial fibrillation: A systematic
714 review and meta-analysis. *Cureus*. 2023;15
- 715 48. Van Tassell BW, Canada J, Carbone S, Trankle C, Buckley L, Oddi Erdle C, et al.
716 Interleukin-1 blockade in recently decompensated systolic heart failure: Results from
717 redhart (recently decompensated heart failure anakinra response trial). *Circulation:
718 Heart Failure*. 2017;10:e004373
- 719 49. Wang J, Sun C, Gerdes N, Liu C, Liao M, Liu J, et al. Interleukin 18 function in
720 atherosclerosis is mediated by the interleukin 18 receptor and the na-cl co-transporter.
721 *Nature Medicine*. 2015;21:820-826
722

723 **Figure 1. Overview of the study design.**

724 Stage 1 includes a graphical depiction of the interleukin-18 signaling pathway and a Manhattan plot
725 illustrating the genome-wide association study of circulating concentration of interleukin-18 in the Scallop
726 consortium. The red line indicates the genome-wide significance threshold (5×10^{-8}).

727

728 **Figure 2. The association between genetically downregulated IL-18 signaling and**
729 **cardiometabolic biomarkers**

730 Shown are the results derived from random-effects inverse-variance weighted Mendelian randomization
731 analyses. OR indicates odds ratio; CI, confidence interval; SD, standard deviation; FDR, false discovery
732 rate; CXCL10, C-X-C motif chemokine ligand 10.

733

734 **Figure 3. The association between genetically downregulated IL-18 signaling and**
735 **cardiometabolic diseases.**

736 Shown are the results derived from random-effects inverse-variance weighted Mendelian randomization
737 analyses. OR indicates odds ratio; CI, confidence interval; SD, standard deviation.

738

739 **Figure 4. The association between genetically downregulated IL-18 signaling and**
740 **cardiac magnetic resonance imaging traits.**

741 Shown are the results derived from random-effects inverse-variance weighted Mendelian randomization
742 analyses. OR indicates odds ratio; CI, confidence interval; SD, standard deviation.

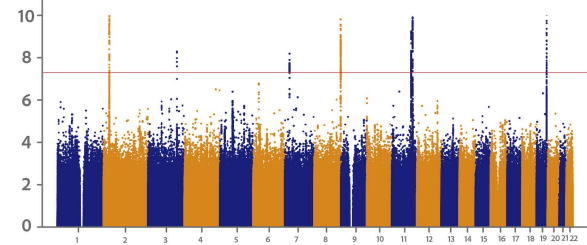
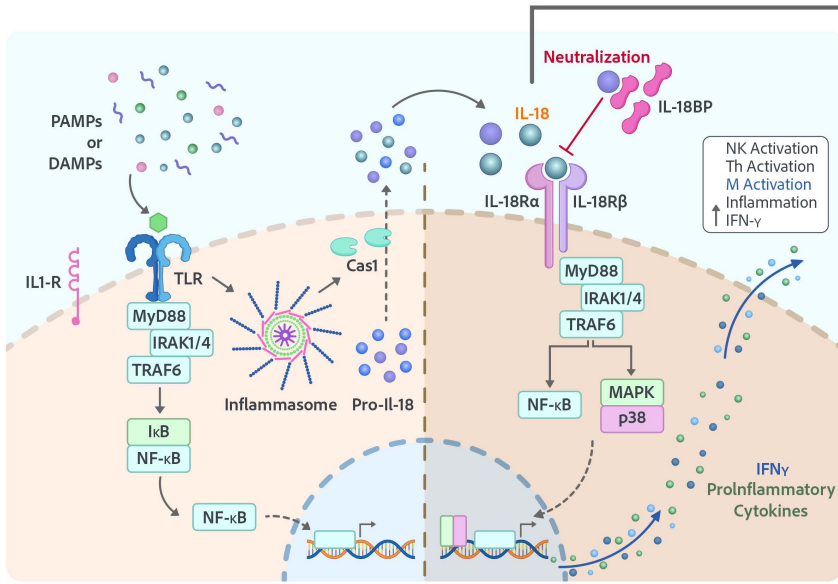
743

744 **Figure 5. The association between genetically downregulated IL-18 signaling and**
745 **oncological, autoimmune, neurological, and infectious diseases**

746 Shown are the results derived from random-effects inverse-variance weighted Mendelian randomization
747 analyses. OR indicates odds ratio; CI, confidence interval; SD, standard deviation.

Instrument Selection

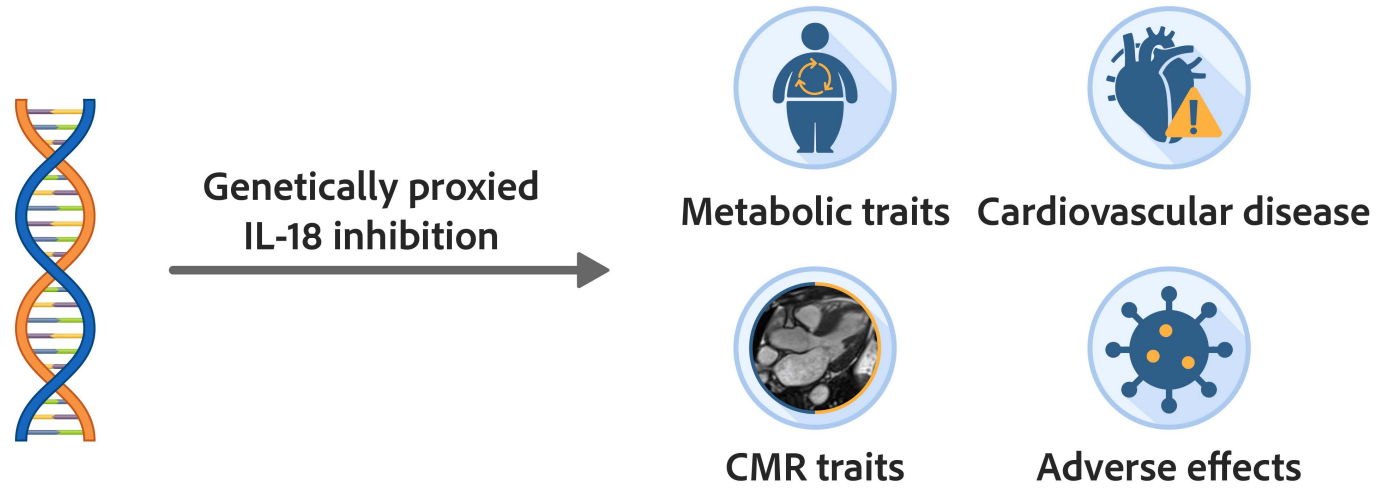
Step 1



Circulating levels of **IL-18** in the Scallop Consortium

Two-sample Mendelian Randomization

Step 2



Exploratory Two-step Mediation

Step 3

