

# Trajectories of physical activity after ischemic stroke: exploring prediction of change

## Authors:

Andreas Gammelgaard Damsbo, MD<sup>1,2</sup>, Rolf Ankerlund Blauenfeldt, MD, PhD<sup>1,2</sup>, Grethe Andersen, MD DMSc<sup>1,2</sup>, Søren P. Johnsen, MD, PhD<sup>3</sup>, Janne Kaergaard Mortensen, MD PhD<sup>1,2</sup>

## Affiliations:

1: Danish Stroke Centre, Department of Neurology, Aarhus University Hospital, Skejby, Denmark

2: Faculty of Health, Department of Clinical Medicine, Aarhus University, Denmark

3: Danish Center for Health Services Research, Department of Clinical Medicine, Aalborg University, Denmark

**Short title:** Change in physical activity after ischemic stroke

## Corresponding author:

Andreas Gammelgaard Damsbo, [andrlr@rm.dk](mailto:andrlr@rm.dk); Aarhus University Hospital, Department of Neurology, Palle Juul-Jensens Boulevard 165, DK-8200 Aarhus N, Denmark.

**Total word count:** 5999

1 **Abstract**

2 **Background and aims**

3 Physical activity (PA) is associated with lower risk of stroke and better functional outcome.  
4 However, sedentary behavior after stroke is prevalent. We aimed to identify predictors for  
5 PA after first-time ischemic stroke and to develop prediction models to assess change in PA  
6 after stroke.

7 **Methods**

8 We used the Physical Activity Scale for the Elderly (PASE) to quantify PA prior to stroke and  
9 six months after stroke. Demographic and clinical data were enriched with registry data on  
10 socioeconomic status (SES). Associations with post-stroke PA were analyzed using linear  
11 regression. Elastic net regression models were used to predict decrease from higher PASE  
12 quartile to the lowest and increase from lowest to higher.

13 **Results**

14 A total of 523 patients, from The Efficacy of Citalopram Treatment in Acute Ischemic Stroke  
15 (TALOS) trial, had complete PASE data. Median [IQR] age was 69 years [59, 77], 181 (35%)  
16 were female and median [IQR] National Institute of Health Stroke Scale score was 3 [2, 5].  
17 Overall, median PASE score did not change, but 20 % of patients decreased to the lowest  
18 PASE quartile whereas 48% from the lowest PASE quartile increased to a higher level.  
19 The prediction model performance, as represented by the area under receiver operating  
20 curve, was 0.679 for predicting a decrease and 0.619 for predicting an increase in PA. SES  
21 was the most consistent predictor for both decrease and for a lack of increase in PA.

22 **Conclusions**

23 Almost 1/2 of the least active patients increased their PA after stroke whereas 1/5  
24 decreased to the least active level with socioeconomic factors being the most consistent  
25 predictors for change. Despite including comprehensive data, the PA prediction models had  
26 a modest predictive performance. Efforts to optimize PA should include all stroke survivors  
27 to improve PA for previously inactive patients and prevent PA decrease.

28

29 Non-standard Abbreviations and Acronyms

30

PA	Physical Activity
PASE	Physical Activity Scale for the Elderly
SES	Socioeconomic status
TALOS	The Efficacy of Citalopram Treatment in Acute Ischemic Stroke
IQR	Interquartile range
NIHSS	National Institute of Health Stroke Scale
WHO-5	World Health Organization 5-item Well-being Index
mRS	modified Rankin Scale
FED	Family equivalent disposable
CI	confidence intervals
BMI	body mass index
OR	Odds ratio
AUROC	Area under receiver operated curve
PPV	Positive predictive value
NPV	Negative predictive value

31

## 32 Introduction

33 Within the past three decades, stroke outcome has improved as a result of optimized  
34 primary prophylaxis, acute stroke treatment and rehabilitation.<sup>1-4</sup> Although survival has  
35 improved, life after stroke may still be complicated by depression, cognitive impairment,  
36 physical impairment, and lower quality of life.<sup>5,6</sup>

37  
38 In the 1950s, a series of papers were published to investigate the beneficial effects of  
39 physical activity (PA) on cardio-vascular risk factors for the first time.<sup>7,8</sup> Since then the body  
40 of evidence for the positive effect of PA on stroke risk has been growing.<sup>9</sup> Studies have  
41 shown that patients with a higher pre-stroke PA level, experience less acute infarct  
42 growth<sup>10</sup>, fewer depressive symptoms,<sup>11</sup> and better cognitive outcome.<sup>12,13</sup> Studies have  
43 shown that any increase in PA is clinically relevant, and that sedentary behavior should be  
44 avoided, which has also been included in recent guidelines.<sup>14-17</sup>

45  
46 Despite the mounting evidence of PA as an important modifiable risk factor, PA intervention  
47 after stroke has proven difficult.<sup>18-20</sup> The level of PA is likely to be affected by stroke, due to  
48 motor impairment and fear of falling, and depression or cognitive impairment may decrease  
49 PA.<sup>21,22</sup> Inequality in health driven by socioeconomic status may also be important as low  
50 socioeconomic status affects the level of PA among the elderly in general,<sup>23</sup> affects the  
51 chance of receiving reperfusion treatment and is associated to lower functional outcome.<sup>24</sup>

52  
53 The aim of this study was to explore changes from pre-stroke to post-stroke PA. Further, we  
54 aimed to develop a prediction tool based on socioeconomical data and other available  
55 variables at stroke onset that may identify patients with a risk of decrease and patients  
56 likely to increase PA post-stroke.

## 57 Methods

58 This study is a post-hoc analysis of data from The Efficacy of Citalopram Treatment in Acute  
59 Ischemic Stroke (TALOS) trial, which was a randomized, double-blinded, placebo-controlled  
60 multicenter study on citalopram treatment after ischemic stroke. The trial inclusion period  
61 was from 2013 to 2016.<sup>25</sup>

62 Inclusion and exclusion criteria have been reported in detail elsewhere.<sup>26</sup> In short, the study  
63 included patients with a first time ischemic stroke within the past seven days. Patients not  
64 able to give consent were included with consent from next of kin, and patients with a  
65 diagnosis of dementia or other neurodegenerative disease, antidepressant treatment,  
66 indications of noncompliant behavior, other life-threatening diseases, or contraindications  
67 to citalopram were not included.<sup>26</sup> Patients without data on PA were excluded from the  
68 present study (n=119, 19%).

69 Individual-level clinical data may be shared upon reasonable request after finalizing a  
70 collaboration agreement. Registry-based data is available from relevant public registries  
71 after completing registration and relevant applications.

## 72 [Primary outcome](#)

73 Physical activity was assessed using the Physical Activity Scale in the Elderly (PASE)  
74 questionnaire. The PASE questionnaire is designed to incorporate both exercise as well as  
75 more general activities including housework, gardening, caring for others and time spent at  
76 work. The PASE is a validated 12-item self-assessed questionnaire on overall PA during the  
77 past seven days. The score ranges from 0 to 793 with a higher score corresponding to a  
78 higher level of PA.<sup>27</sup> Information on pre-stroke PA was obtained at inclusion where the  
79 patients were asked to report on the level of PA during the past seven days prior to stroke  
80 onset. The same questionnaire was used at six months follow-up.

81 The PASE score was categorized into quartiles based on pre-stroke PASE score. The full  
82 dataset was split based on pre-stroke PASE score into quartile 2-4 and quartile 1 for  
83 developing prediction models. The outcomes for the two models respectively, was defined  
84 as a decrease to the lowest PASE score quartile at six months or increase to any higher PASE  
85 score quartile at six months.

## 86 [Potential predictors](#)

### 87 [Clinical data](#)

88 Baseline data was obtained from the Danish Stroke Registry.<sup>28</sup> This registry contains detailed  
89 information on stroke patients in Denmark with a high level of completeness.<sup>29</sup>

90 These data include information on stroke severity at admission, measured by the National  
91 Institute of Health Stroke Scale (NIHSS) score, sex, thrombolysis and/or thrombectomy  
92 treatment, living arrangements, tobacco smoking, alcohol consumption (defined as above  
93 7/14 units daily for females/males), hypertension, diabetes, prior transitory ischemic attack,

94 newly diagnosed or known atrial fibrillation, prior myocardial infarction, peripheral arterial  
95 disease and body mass index (BMI).  
96 Well-being was assessed at admission using the World Health Organization 5-item Well-  
97 being Index (WHO-5) for a continuous score of 0-100 range, with higher scores indicating  
98 better well-being.<sup>30</sup> Functional status was recorded using the categorical modified Rankin  
99 Scale (mRS). The score ranges from 0 to 6, with higher scores indicating a greater deficit. The  
100 score was dichotomized for a score of 0 or > 0.<sup>31</sup>

101 No data on ethnicity was included.

#### 102 Socioeconomic status

103 Socioeconomic data was retrieved from relevant registries at Statistics Denmark.<sup>32</sup>

104 Information on income, education and employment status were included to assess  
105 socioeconomic status (SES). All were defined at the time of study inclusion. We considered  
106 income group as the overall tertile (low, medium, high) of family equivalent disposable  
107 (FED) income averaged over the five calendar years preceding index stroke. The FED income  
108 accounts for members in the household as well as the rental value of property owned.  
109 Education was defined as the highest attained educational level, categorized according to  
110 The International Standard Classification of Education and divided into three categories: low  
111 (0-2), medium (3-4) and high (5-9).<sup>33</sup> Employment status was defined according to the  
112 International Classification of Status in Employment. The classification was dichotomized in  
113 working or not working (not employed or retired) as only few very were not employed and  
114 not retired.

115 All data was linked on the individual level based on the Danish Civil Registration Number.

116 Due to data safety regulations governing registry-based data, counts below five are  
117 rounded.

#### 118 Statistics

119 Pre-stroke and six months post-stroke PASE scores were compared using a paired Wilcoxon  
120 rank sum test of different medians.

121 Baseline characteristics of patients are shown stratified by category of change in PA level.

122 Changes in PASE score quartiles are visualized with a Sankey plot.

123 A complete dataset was created using chained equations (predictive mean matching) for  
124 continuous variables and logistic regression for binary. A total of 10 imputations with each

125 10 iterations were generated. Regression models were created for each imputed dataset  
126 and results were pooled across all models.

#### 127 Regression analysis

128 Univariable and multivariable linear regression models were created with follow-up PASE  
129 score as the outcome. Results are presented as mean difference in PASE score with 95 %  
130 confidence intervals (CI). Analyses were performed using the raw data set excluding body  
131 mass index due to a high proportion of patients with missing values and repeated using a  
132 complete dataset after multiple imputation for multivariable analysis.

#### 133 Prediction models

134 The prediction models were based on elastic net logistic regression for outcome  
135 classification.<sup>34</sup> All variables were standardized and coefficients were returned on original  
136 scale. The prediction models were tuned with regards to penalty ratio (alpha-values, 0 to 1  
137 by 0.1 increments) through nested 10-fold cross validation with selection of model  
138 parameters for the model with lowest mean squared error. The final model is 10-fold cross  
139 validated. Prediction models were based on the complete dataset after imputation with  
140 results pooled across all imputed datasets.  
141 This elastic net model type was chosen, as it provides model coefficients for inference. No  
142 CIs are available, however. Coefficients are presented as both median and mean odds ratios  
143 (OR) based on cross validation. Variables with both median and mean OR  $\neq$  1 are reported as  
144 significant. Median coefficients are visualized in a bar plot. The five most important  
145 variables (highest absolute log(OR)) for each model is reported in the text.  
146 Predictive performance measures include sensitivity, specificity, positive predictive value,  
147 negative predictive value and area under receiver operated curve (AUROC) as well as a  
148 calibration plot. For clinical application, the goal was an AUROC of at least 0.7.

#### 149 Software

150 All analyses were performed using R Statistical Software 4.3.3 and all packages were  
151 installed from The Comprehensive R Archive Network.<sup>35</sup> Plots were created with ggplot2  
152 3.5.0 and ggalluvial 0.12.5.<sup>36,37</sup> Prediction models were developed using glmnet 4.1-8.<sup>38</sup>  
153 Multiple imputation was performed using mice 3.16.0.<sup>39</sup>

## 154 Results

155 Overall, 523 patients had PASE scores available at both baseline and six months. Median  
156 [Interquartile range, IQR] pre-stroke PASE score was 137 [84; 202] with a total range of 0 to

157 574. At six months, the median PASE score was 135 [78; 206] with a range of 0 to 486. These  
158 were not statistically different. Median [IQR] age was 69 [59, 77], ranging from 19 to 99 and  
159 181 (35%) were females. Median [IQR] NIHSS score was 3 [2, 5] and 197 patients (38 %)  
160 received either intravenous thrombolysis, endovascular treatment or both. See Table 1 for  
161 more details. Demographic and clinical data on the complete TALOS population has been  
162 reported previously.<sup>25</sup>

163

164 A total of 78 (19.9 %) patients experienced a decrease in PA to the 1<sup>st</sup> PASE quartile at six  
165 months as compared to their pre-stroke PA level. Of the patients in the 1<sup>st</sup> PASE quartile  
166 pre-stroke, 63 (48.1 %) patients had increased their PA level at six months. In Figure 1 PA  
167 level changes are visualized.

168

169 Between sexes, the PA groups distribution differed as females reported lower PASE scores  
170 both prior to stroke and at follow-up. Females were also older, had a higher NIHSS score,  
171 more often lived alone, more were not employed, had a lower household income and had a  
172 lower educational level. Males reported higher alcohol consumption and more had  
173 diabetes. Please refer to Supplementary table 1 for all details.

174

175 Patients excluded, including patients who died, from the TALOS cohort were significantly  
176 older, had higher NIHSS and lower BMI, were less often employed and had lower pre-stroke  
177 WHO-5 scores (data not shown).<sup>25</sup>

#### 178 [Regression analyses](#)

179 In the multivariable linear regression analysis, we found that higher age (-0.86; CI: -1.8, -  
180 0.08; per year), higher acute NIHSS score (-2.3; CI: -4.2, -0.39; per point) and low family  
181 income (-30; CI: -50, -10) correlated to a significantly lower six months PASE score. Variables  
182 that correlated to a higher score were higher pre-stroke PASE score (0.32, CI: 0.22, 0.42; per  
183 point), atrial fibrillation (22, CI: 2.8;40) and higher WHO-5 well-being score (0.60; CI: 0.26,  
184 0.95; per point). Please see Table 2.

#### 185 [Predictors for a decrease in PA](#)

186 The model predicting decrease in PA level had a sensitivity of 0.887, a specificity of 0.331, a  
187 positive predictive value (PPV) of 0.673 and a negative predictive value (NPV) of 0.654. The  
188 median AUROC was 0.675. The most important variables predicting a decreased PA were



189 living alone (OR 2.4), EVT treatment (OR 1.9), lower family income (OR 1.6), hypertension  
190 (OR 1.4) and no employment (OR 1.4).

191 Median tuning parameters for the pooled models were  $\alpha=1$  and  $\lambda=0.013$ .

#### 192 Predictors for an increase in PA

193 The model predicting increase in PA level performed with a sensitivity of 0.618 and  
194 specificity of 0.575, PPV was 0.617 and NPV was 0.576, while the median AUROC was 0.619.

195 The most important variables affecting prediction of PA increase were current smoking (OR  
196 0.55), lower educational level (OR 0.59), previous TIA (OR 0.62), pre-stroke mRS > 0 (0.74)  
197 and no employment (OR 0.79).

198 Median tuning parameters were  $\alpha=1$  and  $\lambda=0.038$ .

199 Please refer to Figure 2 for calibration plots as well as Table 3 and Figure 3 for an overview  
200 of all variables in both models.

#### 201 Discussion

202 Among 523 first-ever ischemic stroke patients, we found that approximately one in five  
203 patients experienced a decrease in PA six months after stroke to the lowest quartile. But  
204 also, that approximately half of patients who were in the lowest quartile prior to stroke,  
205 increased their PA level to a higher quartile six months after stroke.

206

207 In the multivariable linear regression model, we found that higher age, higher NIHSS score  
208 at stroke admission, and lower family income level were associated with a lower PASE score  
209 six months after stroke, and higher pre-stroke PASE score, atrial fibrillation and higher WHO-  
210 5 well-being score were associated to a higher score. Notably, a higher pre-stroke PASE  
211 score was correlated to higher post-stroke score by only 0.32 points per point, indicating  
212 that other factors besides habits influence PA level. Also, known or newly diagnosed atrial  
213 fibrillation was associated to higher six months PASE score, which may reflect, that these  
214 patients receive focused intervention as part of their cardiological evaluation.

215

216 We developed two machine-learning models to predict changes in PA based on two  
217 clinically different patient groups among first ever stroke patients: patients in the three  
218 highest PASE quartiles and patients in the lowest PASE quartile group. The overall model

219 performance was only modest in both cases, but the statistical model used allows for some  
220 inference on the variables included.

221 In predicting decrease, the model showed that living alone, endovascular treatment  
222 (signifying a more severe stroke at onset), lower family income, no employment, and  
223 hypertension were the most important factors, all with higher odds for a decrease in PA  
224 level. The model showed a high sensitivity, but poor calibration. In predicting increase from  
225 the lowest PA level to a higher level, smoking, lower educational level, previous TIA  
226 diagnosis, pre-stroke mRS > 0, and no employment, all showed lower odds of increase. The  
227 findings are in line with previous studies indicating a positive correlation between SES and  
228 health status and PA, though patterns of PA may be different in SES groups as lower paid  
229 work tend to be more physically demanding, while people in higher SES groups tend to  
230 spend more time on PA during leisure time.<sup>40,41</sup>

231

232 Only two other previous studies were identified to have reported PA both before and after  
233 stroke. Botö et al,<sup>22</sup> found that pre-stroke physical inactivity and stroke severity were  
234 associated with post-stroke physical inactivity. They included 190 patients with first ever  
235 and recurrent stroke as well as both ischemic and hemorrhagic strokes, representing a very  
236 heterogeneous stroke population. Stroke severity, fear of falling and pre-stroke physical  
237 inactivity were associated to post-stroke inactivity. Unfortunately, 43% of the study  
238 population was lost to follow-up which increases the risk of selection bias. The present  
239 study has a larger sample size (n=523) and a low number of lost to follow-up and uses a  
240 more detailed and concrete questionnaire taking many different every-day and household  
241 activities into account when calculating a continuous score for a more nuanced measure on  
242 PA.

243 The other study was the Danish ExStroke trial by Krarup et al, which also used the PASE  
244 questionnaire.<sup>20</sup> This was a randomized trial on PA intervention including patients with  
245 ischemic stroke within 3 months after stroke, that found no effect of verbal intervention to  
246 change PA levels after 6 months. The median PASE in the ExStroke trial was 70 but was  
247 recorded at a median of 10 [5;23,5] days after stroke onset, which may explain the  
248 difference from this current trial. The ExStroke trial also reported no significant change in in  
249 overall PASE score at 6 months, but they did not report any data on patient-level change.

250 There are important limitations to the present study. It is a post-hoc analysis of patients  
251 included in the TALOS trial, and the population constitutes primarily of patients with mild  
252 ischemic strokes (median NIHSS was 3), which may limit the generalizability of the results.  
253 The PASE score includes time spent at work independently of the type of work and was  
254 developed for people aged 65+ resulting in working contributing with a relatively high score  
255 compared to other activities measured by the scale. The analyses are, however, adjusted for  
256 employment, which should counteract this imbalance. The PASE score may also have other  
257 limitations such as only regarding the seven days prior to questioning and generalizing this  
258 measure, but has been shown valid as a measure of physical activity.<sup>27</sup>  
259 Strengths of this study includes, that patients were included with no age limit and pre-  
260 stroke PA was assessed shortly after stroke admission. Patients were included by consent  
261 from next of kin if not able themselves, which have extended the possible range of acute  
262 stroke symptoms, though we did not have PA information from the most severely disabled  
263 patients and those lost to follow-up.<sup>25</sup> Patients included were all first-ever stroke patients,  
264 who are expected to be more homogeneous in their post-stroke behavior. The data  
265 included were comprehensive and reflects the data available upon stroke admission, that  
266 would generally be available in a clinical setting.<sup>28</sup>  
267 Several factors may limit the predictive performance of our models. The model to predict  
268 decrease showed signs of overfitting to the data with high sensitivity and low specificity as  
269 well as problematic calibration. This may have been caused by the pre-stroke high PA level  
270 group being more heterogeneous compared to the low pre-stroke PA group. Other  
271 quantitative biological measures not available for inclusion in these models could be  
272 retrieved from regular laboratory tests or imaging such as infarct location and volume, or  
273 small vessel disease burden to potentially increase model performance. Qualitative  
274 measures on social life or feeling of loneliness, may also be relevant, but difficult to  
275 incorporate in a statistical model.<sup>42</sup> No specific steps were taken to ensure demographic  
276 diversity in the patient population or in the trial steering committee.  
277  
278 In conclusion, change in PA level after first-time ischemic stroke is highly dynamic. This  
279 study shows that positive change is possible, as half of patients in the lowest PA quartile  
280 increased to a higher level after stroke. Awareness, however, should also be paid to the 20%  
281 of patients decreasing to the lowest PA quartile as well as to the patients with a persistently

282 low PA level. Despite comprehensive data, predicting change in PA was only possible with  
283 modest results but showed that socioeconomic status and lifestyle factors were important  
284 for PA change. Our study should encourage further research into the underlying factors at  
285 play in physical activity behavior after stroke, and guide future rehabilitation efforts and  
286 help identify vulnerable patients to prevent inactivity or improve PA after stroke.

287

#### 288 [Acknowledgments](#)

289 None

290

#### 291 [Sources of Funding](#)

292 No specific funds funded this study

293

#### 294 [Disclosures](#)

295 None

296

#### 297 [Supplemental Material](#)

298 Tables S1

299

## 300 References

- 301 1. Stinear CM, Lang CE, Zeiler S, Byblow WD. Advances and challenges in stroke  
302 rehabilitation. *The Lancet Neurology*. 2020;19:348–360. doi: 10.1016/S1474-  
303 4422(19)30415-6
- 304 2. National Institute of Neurological Disorders and Stroke rt-PA Stroke Study Group. Tissue  
305 Plasminogen Activator for Acute Ischemic Stroke. *N Engl J Med*. 1995;333:1581–1588.  
306 doi: 10.1056/NEJM199512143332401
- 307 3. Berkhemer OA, Fransen PSS, Beumer D, van den Berg LA, Lingsma HF, Yoo AJ,  
308 Schonewille WJ, Vos JA, Nederkoorn PJ, Wermer MJH, et al. A Randomized Trial of  
309 Intraarterial Treatment for Acute Ischemic Stroke. *N Engl J Med*. 2015;372:11–20. doi:  
310 10.1056/NEJMoa1411587
- 311 4. Feigin VL, Brainin M, Norrving B, Martins S, Sacco RL, Hacke W, Fisher M, Pandian J,  
312 Lindsay P. World Stroke Organization (WSO): Global Stroke Fact Sheet 2022.  
313 *International Journal of Stroke*. 2022;17:18–29. doi: 10.1177/17474930211065917
- 314 5. Hackett ML, Pickles K. Part I: frequency of depression after stroke: an updated  
315 systematic review and meta-analysis of observational studies. *International Journal of*  
316 *Stroke*. 2014;9:1017–1025. doi: 10.1111/ijvs.12357
- 317 6. Damsbo AG, Kraglund KL, Buttenschøn HN, Johnsen SP, Andersen G, Mortensen JK.  
318 Predictors for wellbeing and characteristics of mental health after stroke. *Journal of*  
319 *Affective Disorders*. 2020;264:358–364. doi: 10.1016/j.jad.2019.12.032
- 320 7. Morris JN, Heady JA, Raffle PAB, Roberts CG, Parks JW. CORONARY HEART-DISEASE AND  
321 PHYSICAL ACTIVITY OF WORK. *The Lancet*. 1953;262:1053–1057. doi: 10.1016/S0140-  
322 6736(53)90665-5
- 323 8. Morris JN, Heady JA, Raffle PAB, Roberts CG, Parks JW. CORONARY HEART-DISEASE AND  
324 PHYSICAL ACTIVITY OF WORK. *The Lancet*. 1953;262:1111–1120. doi: 10.1016/S0140-  
325 6736(53)91495-0
- 326 9. Kramer SF, Hung SH, Brodtmann A. The Impact of Physical Activity Before and After  
327 Stroke on Stroke Risk and Recovery: a Narrative Review. *Curr Neurol Neurosci Rep*.  
328 2019;19:28. doi: 10.1007/s11910-019-0949-4
- 329 10. Blauenfeldt RA, Hougaard KD, Mouridsen K, Andersen G. High Prestroke Physical Activity  
330 Is Associated with Reduced Infarct Growth in Acute Ischemic Stroke Patients Treated  
331 with Intravenous tPA and Randomized to Remote Ischemic Perconditioning.  
332 *Cerebrovascular diseases (Basel, Switzerland)*. 2017;44:88–95. doi: 10.1159/000477359
- 333 11. Bovim M, Indredavik B, Hokstad A, Cumming T, Bernhardt J, Askim T. Relationship  
334 between pre-stroke physical activity and symptoms of post-stroke anxiety and  
335 depression: An observational study. *Journal of Rehabilitation Medicine*. 2019;51:755–  
336 760. doi: 10.2340/16501977-2610

- 337 12. Damsbo AG, Mortensen JK, Kraglund KL, Johnsen SP, Andersen G, Blauenfeldt RA.  
338     Prestroke Physical Activity and Poststroke Cognitive Performance. *Cerebrovascular*  
339     *Diseases*. 2020;632–638. doi: 10.1159/000511490
- 340 13. Pålman U, Sävborg M, Tarkowski E. Cognitive dysfunction and physical activity after  
341     stroke: the Gothenburg cognitive stroke study in the elderly. *Journal of stroke and*  
342     *cerebrovascular diseases : the official journal of National Stroke Association*.  
343     2012;21:652–8. doi: 10.1016/j.jstrokecerebrovasdis.2011.02.012
- 344 14. Warburton DER, Bredin SSD. Health benefits of physical activity: a systematic review of  
345     current systematic reviews. *Curr Opin Cardiol*. 2017;32:541–556. doi:  
346     10.1097/HCO.0000000000000437
- 347 15. Mok A, Khaw K-T, Luben R, Wareham N, Brage S. Physical activity trajectories and  
348     mortality: population based cohort study. *BMJ*. 2019;l2323. doi: 10.1136/bmj.l2323
- 349 16. Ahmadi MN, Rezende LFM, Ferrari G, Cruz BDP, Lee I-M, Stamatakis E. Do the  
350     associations of daily steps with mortality and incident cardiovascular disease differ by  
351     sedentary time levels? A device-based cohort study. *Br J Sports Med*. 2024;58:261–268.  
352     doi: 10.1136/bjsports-2023-107221
- 353 17. Kleindorfer DO, Towfighi A, Chaturvedi S, Cockcroft KM, Gutierrez J, Lombardi-Hill D,  
354     Kamel H, Kernan WN, Kittner SJ, Leira EC, et al. 2021 Guideline for the Prevention of  
355     Stroke in Patients With Stroke and Transient Ischemic Attack: A Guideline From the  
356     American Heart Association/American Stroke Association. *Stroke*. 2021;52:e364–e467.  
357     doi: 10.1161/STR.0000000000000375
- 358 18. Saunders DH, Mead GE, Fitzsimons C, Kelly P, Wijck F van, Verschuren O, Backx K,  
359     English C. Interventions for reducing sedentary behaviour in people with stroke.  
360     *Cochrane Database of Systematic Reviews*. 2021 [cited 2022 Sep 6];doi:  
361     10.1002/14651858.CD012996.pub2
- 362 19. Aguiar LT, Nadeau S, Martins JC, Teixeira-Salmela LF, Britto RR, Faria CDC de M. Efficacy  
363     of interventions aimed at improving physical activity in individuals with stroke: a  
364     systematic review. *Disability and Rehabilitation*. 2020;42:902–917. doi:  
365     10.1080/09638288.2018.1511755
- 366 20. Boysen G, Krarup L-H, Zeng X, Oskedra A, Korv J, Andersen G, Gluud C, Pedersen A,  
367     Lindahl M, Hansen L, et al. ExStroke Pilot Trial of the effect of repeated instructions to  
368     improve physical activity after ischaemic stroke: a multinational randomised controlled  
369     clinical trial. *BMJ*. 2009;339:b2810–b2810. doi: 10.1136/bmj.b2810
- 370 21. Nicholson S, Sniehotta FF, Van Wijck F, Greig CA, Johnston M, Mcmurdo MET, Dennis M,  
371     Mead GE. A systematic review of perceived barriers and motivators to physical activity  
372     after stroke. *International Journal of Stroke*. 2013;8:357–364. doi: 10.1111/j.1747-  
373     4949.2012.00880.x
- 374 22. Botö S, Buvarp D, Hansson P-O, Sunnerhagen KS, Persson CU. Physical inactivity after  
375     stroke: Incidence and early predictors based on 190 individuals in a 1-year follow-up of

- 376 the fall study of Gothenburg. *Journal of Rehabilitation Medicine*. 2021;53:jrm00224–  
377 jrm00224. doi: 10.2340/16501977-2852
- 378 23. Stalling I, Albrecht BM, Foettinger L, Recke C, Bammann K. Associations between  
379 socioeconomic status and physical activity among older adults: cross-sectional results  
380 from the OUTDOOR ACTIVE study. *BMC Geriatrics*. 2022;22:396. doi: 10.1186/s12877-  
381 022-03075-7
- 382 24. Buus SMØ, Schmitz ML, Cordsen P, Johnsen SP, Andersen G, Simonsen CZ.  
383 Socioeconomic Inequalities in Reperfusion Therapy for Acute Ischemic Stroke. *Stroke*.  
384 2022;53:2307–2316. doi: 10.1161/STROKEAHA.121.037687
- 385 25. Kraglund KL, Mortensen JK, Damsbo AG, Modrau B, Simonsen SA, Iversen HK, Madsen  
386 M, Grove EL, Johnsen SP, Andersen G. Neuroregeneration and Vascular Protection by  
387 Citalopram in Acute Ischemic Stroke (TALOS). *Stroke*. 2018;49:2568–2576. doi:  
388 10.1161/STROKEAHA.117.020067
- 389 26. Kraglund K, Mortensen J, Grove E, Johnsen SP, Andersen G. TALOS: a multicenter,  
390 randomized, double-blind, placebo-controlled trial to test the effects of citalopram in  
391 patients with acute stroke. *International Journal of Stroke*. 2015;10:985–987. doi:  
392 10.1111/ijvs.12485
- 393 27. Washburn RA, McAuley E, Katula J, Mihalko SL, Boileau RA. The physical activity scale for  
394 the elderly (PASE): evidence for validity. *Journal of clinical epidemiology*. 1999;52:643–  
395 51. doi: 10.1097/00005768-199706001-00022
- 396 28. Johnsen SP, Ingeman A, Hundborg HH, Schaarup SZ, Gyllenborg J. The Danish Stroke  
397 Registry. *Clin Epidemiol*. 2016;8:697–702. doi: 10.2147/CLEP.S103662
- 398 29. Wildenschild C, Mehnert F, Wernich Thomsen R, Klingenberg Iversen H, Vestergaard K,  
399 Ingeman A, Johnsen SP. Registration of acute stroke: Validity in the Danish stroke  
400 registry and the Danish national registry of patients. *Clinical Epidemiology*. 2013;6:27–  
401 36. doi: 10.2147/CLEP.S50449
- 402 30. Topp CW, Østergaard SD, Søndergaard S, Bech P. The WHO-5 well-being index: A  
403 systematic review of the literature. *Psychotherapy and Psychosomatics*. 2015;84:167–  
404 176. doi: 10.1159/000376585
- 405 31. Quinn TJ, Dawson J, Walters MR, Lees KR. Reliability of the Modified Rankin Scale.  
406 *Stroke*. 2009;40:3393–3395. doi: 10.1161/STROKEAHA.109.557256
- 407 32. Erlangsen A, Fedyszyn I. Danish nationwide registers for public health and health-related  
408 research. *Scand J Public Health*. 2015;43:333–339. doi: 10.1177/1403494815575193
- 409 33. Schneider SL. The International Standard Classification of Education 2011 [Internet]. In:  
410 Elisabeth Birkelund G, editor. *Class and Stratification Analysis*. Emerald Group  
411 Publishing Limited; 2013 [cited 2024 Mar 1]. p. 365–379. doi: 10.1108/S0195-  
412 6310(2013)0000030017

- 413 34. Zou H, Hastie T. Regularization and variable selection via the elastic net. *J Royal*  
414 *Statistical Soc B*. 2005;67:301–320. doi: 10.1111/j.1467-9868.2005.00503.x
- 415 35. R Core Team. R: A Language and Environment for Statistical Computing. 2024;
- 416 36. Wickham H. ggplot2: Elegant Graphics for Data Analysis [Internet]. Springer-Verlag New  
417 York; 2016.
- 418 37. Brunson J. ggalluvial: Layered Grammar for Alluvial Plots. *JOSS*. 2020;5:2017. doi:  
419 10.21105/joss.02017
- 420 38. Friedman J, Hastie T, Tibshirani R. Regularization Paths for Generalized Linear Models via  
421 Coordinate Descent. *J. Stat. Soft.* 2010 [cited 2022 Aug 26];33. doi:  
422 10.18637/jss.v033.i01
- 423 39. Buuren S van, Groothuis-Oudshoorn K. mice : Multivariate Imputation by Chained  
424 Equations in R. *Journal of Statistical Software*. 2011;45:121108. doi:  
425 10.18637/jss.v045.i03
- 426 40. Bauman AE, Reis RS, Sallis JF, Wells JC, Loos RJ, Martin BW. Correlates of physical  
427 activity: why are some people physically active and others not? *The Lancet*.  
428 2012;380:258–271. doi: 10.1016/S0140-6736(12)60735-1
- 429 41. Stalsberg R, Pedersen AV. Are Differences in Physical Activity across Socioeconomic  
430 Groups Associated with Choice of Physical Activity Variables to Report? *International*  
431 *Journal of Environmental Research and Public Health*. 2018 [cited 2024 May 9];15. doi:  
432 10.3390/ijerph15050922
- 433 42. Espernberger KR, Fini NA, Peiris CL. Personal and social factors that influence physical  
434 activity levels in community-dwelling stroke survivors: A systematic review of  
435 qualitative literature. *Clin Rehabil*. 2021;35:1044–1055. doi:  
436 10.1177/0269215521993690
- 437





Table 1: Baseline variables stratified by the direction of change in PA

Characteristic	Pre-stroke PASE quartiles 2-4			Prestroke PASE quartile 1		
	Overall, N = 392	Decrease, N = 78	Persistently high, N = 314	Overall, N = 131	Increase, N = 63	Persistently low, N = 68
<i>Clinical data</i>						
Age	67 (57, 74)	72 (65, 79)	65 (56, 72)	76 (67, 80)	73 (67, 79)	77 (70, 83)
Female sex	116 (30%)	29 (37%)	87 (28%)	65 (50%)	28 (44%)	37 (54%)
Admission NIHSS	3.0 (2.0, 5.0)	3.0 (2.0, 7.0)	3.0 (2.0, 5.0)	3.0 (2.0, 6.0)	3.0 (2.0, 4.8)	4.0 (2.0, 7.5)
Missing	<10	<5	<10	<10	<5	<5
Treated with IVT	144 (37%)	25 (32%)	119 (38%)	46 (35%)	25 (40%)	21 (31%)
Treated with EVT	27 (6.9%)	9 (12%)	18 (5.7%)	10 (7.6%)	5 (7.9%)	5 (7.4%)
Placebo trial treatment	202 (52%)	35 (45%)	167 (53%)	67 (51%)	33 (52%)	34 (50%)
<i>Lifestyle and chronic diseases</i>						
Living alone	107 (28%)	37 (49%)	70 (23%)	65 (50%)	26 (41%)	39 (57%)
Missing	<10	<5	<5	0	0	0
Body mass index	27.1 (24.4, 30.4)	25.1 (23.0, 29.7)	27.4 (24.6, 30.5)	25.6 (22.5, 29.9)	26.0 (24.4, 30.3)	24.4 (21.0, 29.4)
Missing	129	27	102	36	18	18
Current smoker	120 (31%)	30 (40%)	90 (29%)	44 (35%)	14 (24%)	30 (45%)
Missing	11	<5	<10	<10	<5	<5
High alcohol consumption	34 (8.9%)	9 (12%)	25 (8.2%)	13 (10%)	8 (13%)	5 (7.6%)
Missing	10	<5	<10	<10	<5	<5
Hypertension	185 (48%)	46 (60%)	139 (45%)	81 (62%)	38 (60%)	43 (63%)
Missing	<10	<5	<5	0	0	0
Diabetes	38 (9.8%)	9 (12%)	29 (9.3%)	19 (15%)	8 (13%)	11 (16%)
Missing	<10	<5	<5	<10	<5	<5
Previous TIA	10 (2.6%)	<5 (<6.6%)	<10 (<3.2%)	<5 (<3.8%)	<5 (<7.9%)	<5 (<7.5%)
Missing	<10	<5	<5	<5	0	<5
Atrial fibrillation	57 (15%)	12 (16%)	45 (15%)	25 (19%)	14 (22%)	11 (16%)
Missing	<10	<5	<5	0	0	0
Previous MI	33 (8.5%)	9 (12%)	24 (7.7%)	8 (6.1%)	<5 (<7.9%)	<5 (<7.4%)
Missing	<10	<5	<5	0	0	0
Peripheral arterial disease	12 (3.1%)	<5 (<6.6%)	<10 (<3.2%)	9 (7.1%)	<5 (<8.1%)	<5 (<7.8%)
Missing	<10	<5	<5	<10	<5	<5
<i>Socio-economic factors</i>						
Not employed	179 (46%)	54 (69%)	125 (40%)	109 (83%)	60 (88%)	49 (78%)
Family income						
High	155 (40%)	12 (15%)	143 (46%)	27 (21%)	12 (18%)	15 (24%)
Medium	130 (33%)	29 (37%)	101 (32%)	46 (35%)	19 (28%)	27 (43%)
Low	107 (27%)	37 (47%)	70 (22%)	58 (44%)	37 (54%)	21 (33%)
Educational level						

Trajectories of physical activity after stroke

Version 2.8

High	77 (22%)	11 (15%)	66 (23%)	19 (16%)	6 (9.7%)	13 (22%)
Medium	168 (48%)	30 (42%)	138 (49%)	39 (32%)	15 (24%)	24 (40%)
Low	107 (30%)	30 (42%)	77 (27%)	64 (52%)	41 (66%)	23 (38%)
Missing	40	7	33	<10	<10	<5
<i>Assessments</i>						
Pre-stroke WHO-5 score	80 (68, 88)	76 (60, 92)	80 (68, 88)	72 (53, 84)	80 (64, 86)	68 (46, 80)
Missing	<5	0	<5	<5	0	<5
Pre-stroke mRS > 0	43 (11%)	13 (17%)	30 (9.6%)	46 (35%)	15 (24%)	31 (46%)

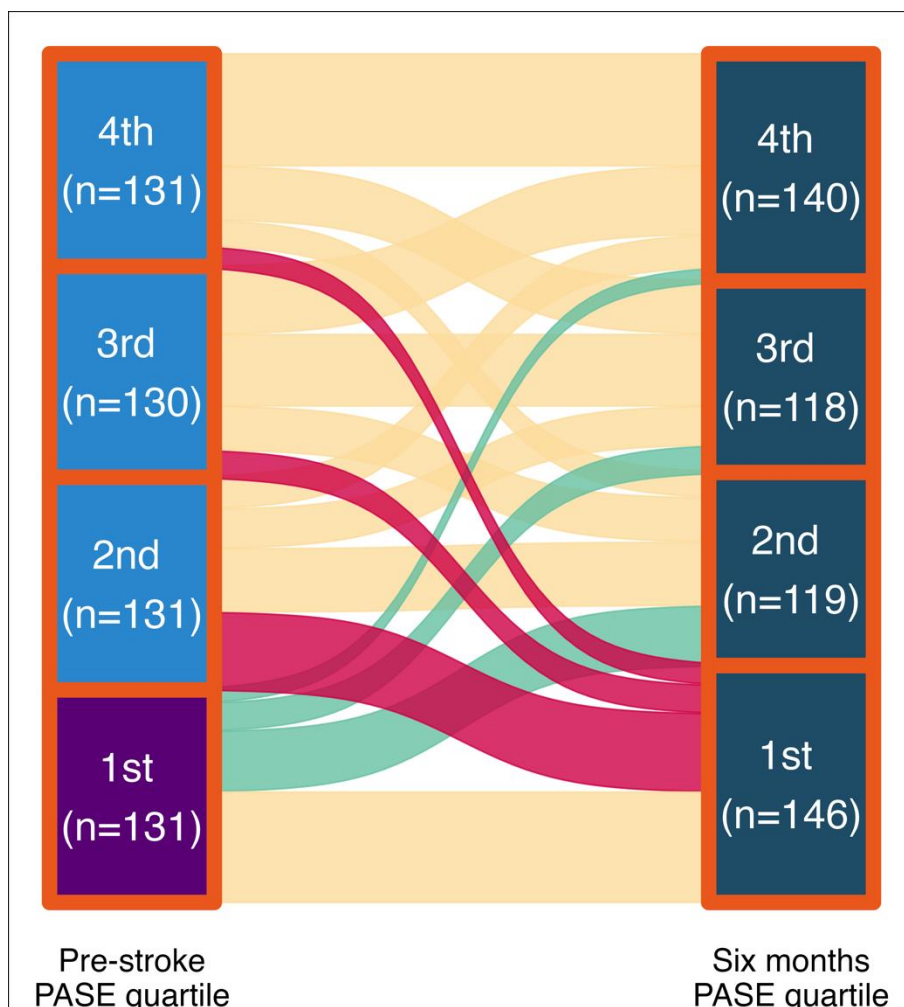
\*High alcohol consumption defined as above 7/14 units daily for females/males.

All columns are median (IQR) or n (%).

EVT: Endovascular Thrombectomy; IVT: Intravenous Thrombolysis; MI: Myocardial Infarction; mRS: modified Rankin Scale; NIHSS: National Institute of Health Stroke Scale; PASE: Physical Activity Scale in the Elderly; TIA: Transitory Ischemic Attack; WHO-5: World health Organization 5-item Well-being Index.

440

441



442

443

Figure 1 PA level changes from pre-stroke to post-stroke

444

Marked in green are patients with increased level of PA from low to a higher level. Red marks patients with decreased level of PA from a higher level to a low level.

445

446

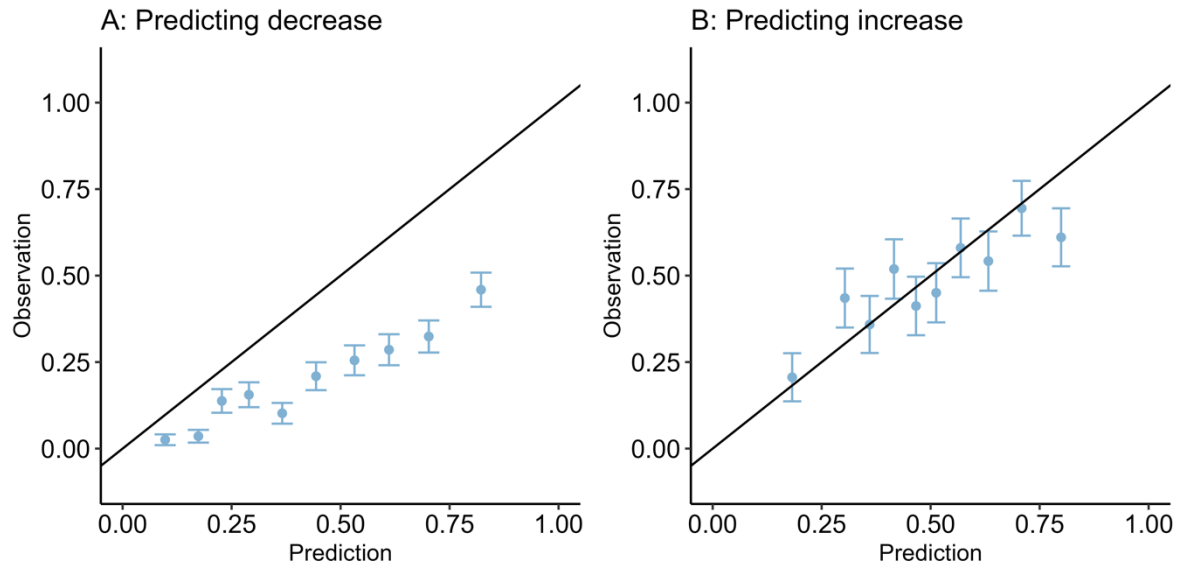
447

Table 2: Linear regression analysis of six months PASE score						
Variables	Univariable analyses			Multivariable analysis		
	N	Coefficient	95% CI	N	Coefficient	95% CI
<i>Clinical data</i>						
Age	523	<b>-2.4</b>	<b>[-3.0; -1.9]</b>	432	<b>-0.86</b>	<b>[-1.6; -0.08]</b>
Female sex	523	<b>-38</b>	<b>[-53; -22]</b>	432	-2.4	[-17; 13]
Admission NIHSS	513	<b>-3.7</b>	<b>[-5.4; -2.0]</b>	432	<b>-2.3</b>	<b>[-4.2; -0.39]</b>
Treated with IVT	523	14	[-2.1; 30]	432	7.1	[-7.9; 22]
Treated with EVT	523	-9.3	[-39; 20]	432	-3.6	[-35; 28]
Placebo trial treatment	523	7.2	[-8.0; 22]	432	3.6	[-9.7; 17]
<i>Lifestyle and chronic diseases</i>						
Pre-stroke PASE score	523	<b>0.51</b>	<b>[0.44; 0.59]</b>	432	<b>0.32</b>	<b>[0.22; 0.42]</b>
Living alone	517	<b>-46</b>	<b>[-61; -30]</b>	432	-12	[-28; 3.5]
Body mass index	358	<b>1.8</b>	<b>[0.14; 3.5]</b>			
Current smoker	507	<b>-18</b>	<b>[-34; -1.9]</b>	432	-6.1	[-21; 8.9]
High alcohol consumption*	510	5.6	[-21; 32]	432	5.2	[-18; 28]
Hypertension	519	<b>-32</b>	<b>[-47; -17]</b>	432	-3.0	[-17; 11]
Diabetes	517	-19	[-43; 5.0]	432	-16	[-38; 6.1]
Previous TIA	517	-2.8	[-51; 46]	432	10	[-31; 52]
Atrial fibrillation	518	1.3	[-19; 22]	432	<b>22</b>	<b>[2.8; 40]</b>
Previous MI	517	2.8	[-25; 31]	432	2.0	[-24; 28]
Peripheral arterial disease	511	-38	[-76; 0.70]	432	-7.4	[-43; 29]
<i>Socio-economic factors</i>						
Not employed	523	<b>-70</b>	<b>[-84; -56]</b>	432	-16	[-34; 2.4]
Lower family income	523			432		
High		0.00	—		0.00	—
Medium		<b>-40</b>	<b>[-57; -23]</b>		-15	[-33; 2.3]
Low		<b>-79</b>	<b>[-97; -62]</b>		<b>-30</b>	<b>[-50; -10]</b>
Lower educational level	474			432		
High		0.00	—		0.00	—
Medium		-17	[-38; 3.7]		-3.7	[-22; 15]
Low		<b>-46</b>	<b>[-67; -24]</b>		-7.2	[-27; 13]
<i>Assessments</i>						
Pre-stroke WHO-5 score	521	0.87	[0.49; 1.3]	432	<b>0.60</b>	<b>[0.26; 0.95]</b>
Pre-stroke mRS > 0	523	<b>-58</b>	<b>[-77; -38]</b>	432	-16	[-34; 2.3]

\*High alcohol consumption defined as above 7/14 units daily for females/males.  
 CI: confidence interval; EVT: Endovascular Thrombectomy; IVT: Intravenous Thrombolysis; MI: Myocardial Infarction; mRS: modified Rankin Scale; NIHSS: National Institute of Health Stroke Scale; PASE: Physical Activity Scale in the Elderly; TIA: Transitory Ischemic Attack; WHO-5: World health Organization 5-item Well-being Index.

448

449



450  
451

*Figure 2 Calibration plots*

452 Calibration plots of the two prediction models. A calibration plot compares the model  
453 prediction probability to the fraction of observed events in the data set in binned groups (here  
454 each 10 %). In a well calibrated model, the predicted probability and fraction of observed  
455 events should be proportional with a slope of one (i.e. follow the plotted black line).

456

457

Table 3: Combined table of model ORs from the two prediction models

Variables	Decrease to low PA level		Increase to higher PA level	
	Median OR	Mean OR	Median OR	Mean OR
<i>Clinical data</i>				
Age	<b>1.01</b>	<b>1.01</b>	<b>0.981</b>	<b>0.980</b>
Female sex	1.00	0.979	<b>0.918</b>	<b>0.876</b>
Admission NIHSS	<b>1.05</b>	<b>1.05</b>	<b>0.954</b>	<b>0.955</b>
Treated with IVT	<b>0.810</b>	<b>0.825</b>	<b>1.01</b>	<b>1.08</b>
Treated with EVT	<b>1.89</b>	<b>1.86</b>	1.00	1.01
Placebo trial treatment	<b>0.923</b>	<b>0.883</b>	1.00	1.01
<i>Lifestyle and chronic diseases</i>				
Pre-stroke PASE score	<b>0.995</b>	<b>0.995</b>	<b>1.01</b>	<b>1.01</b>
Living alone	<b>2.40</b>	<b>2.41</b>	1.00	0.924
Body mass index	<b>0.964</b>	<b>0.964</b>	1.00	1.01
Current smoker	<b>1.36</b>	<b>1.35</b>	<b>0.549</b>	<b>0.545</b>
High alcohol consumption*	1.00	1.04	1.00	1.13
Hypertension	<b>1.38</b>	<b>1.39</b>	1.00	0.959
Diabetes	1.00	1.01	1.00	0.919
Previous TIA	1.00	0.909	<b>0.617</b>	<b>0.537</b>
Atrial fibrillation	1.00	0.969	<b>1.10</b>	<b>1.15</b>
Previous MI	<b>1.31</b>	<b>1.31</b>	<b>1.11</b>	<b>1.30</b>
Peripheral arterial disease	<b>1.09</b>	<b>1.18</b>	1.00	0.970
<i>Socio-economic factors</i>				
Not employed	<b>1.37</b>	<b>1.36</b>	<b>0.792</b>	<b>0.795</b>
Lower family income	<b>1.56</b>	<b>1.55</b>	<b>0.946</b>	<b>0.924</b>
Lower educational level	<b>1.05</b>	<b>1.07</b>	<b>0.594</b>	<b>0.596</b>
<i>Assessments</i>				
Pre-stroke WHO-5 score	<b>0.993</b>	<b>0.993</b>	<b>1.01</b>	<b>1.01</b>
Pre-stroke mRS > 0	<b>1.15</b>	<b>1.15</b>	<b>0.735</b>	<b>0.747</b>

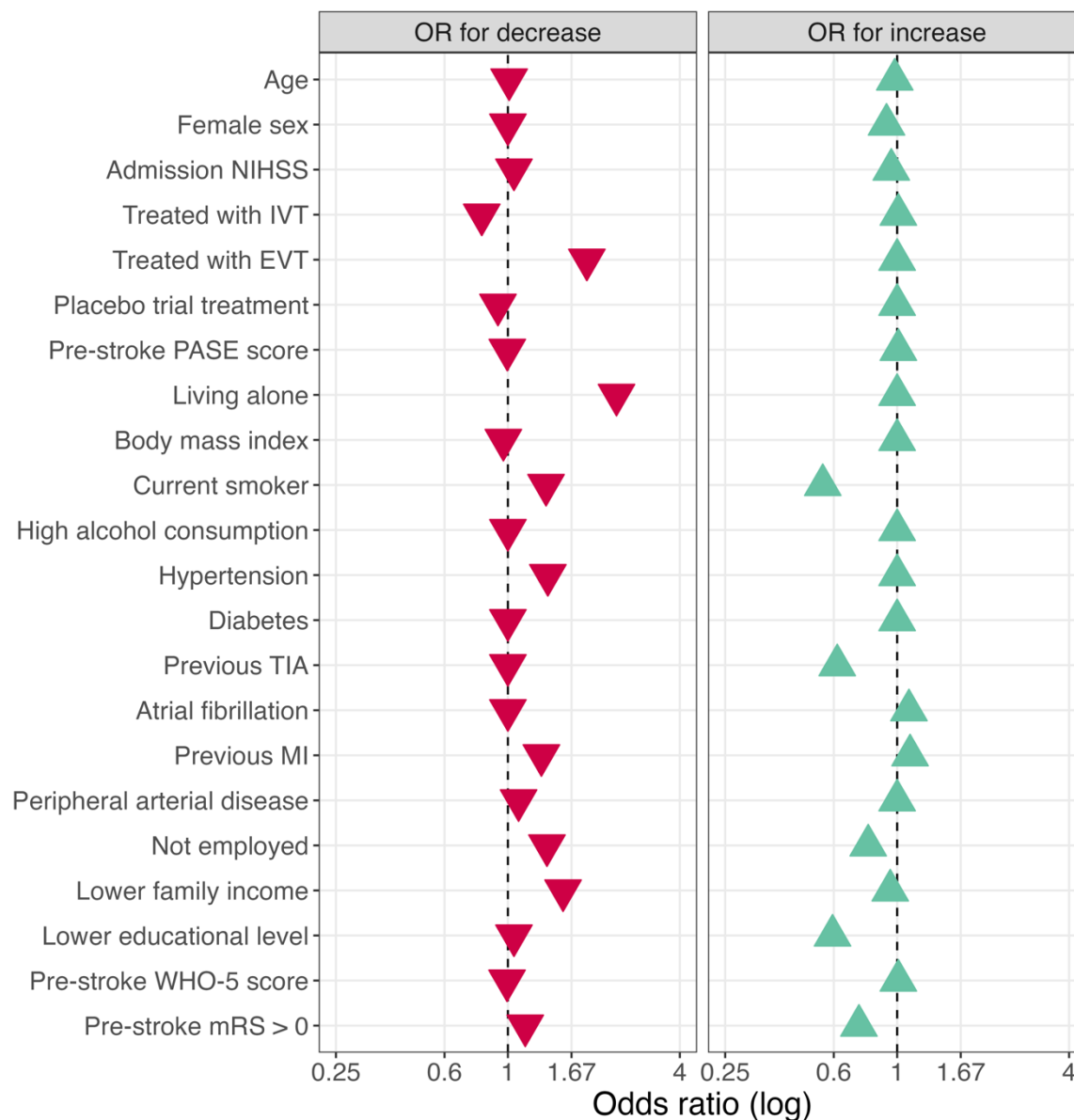
\*High alcohol consumption defined as above 7/14 units daily for females/males.

EVT: Endovascular Thrombectomy; IVT: Intravenous Thrombolysis; MI: Myocardial Infarction; mRS: modified Rankin Scale; NIHSS: National Institute of Health Stroke Scale; PASE: Physical Activity Scale in the Elderly; TIA: Transitory Ischemic Attack; WHO-5: World health Organization 5-item Well-being Index.

Variable ORs where both median and mean values are  $\neq 1$  are considered statistically relevant and highlighted in bold.

458

459



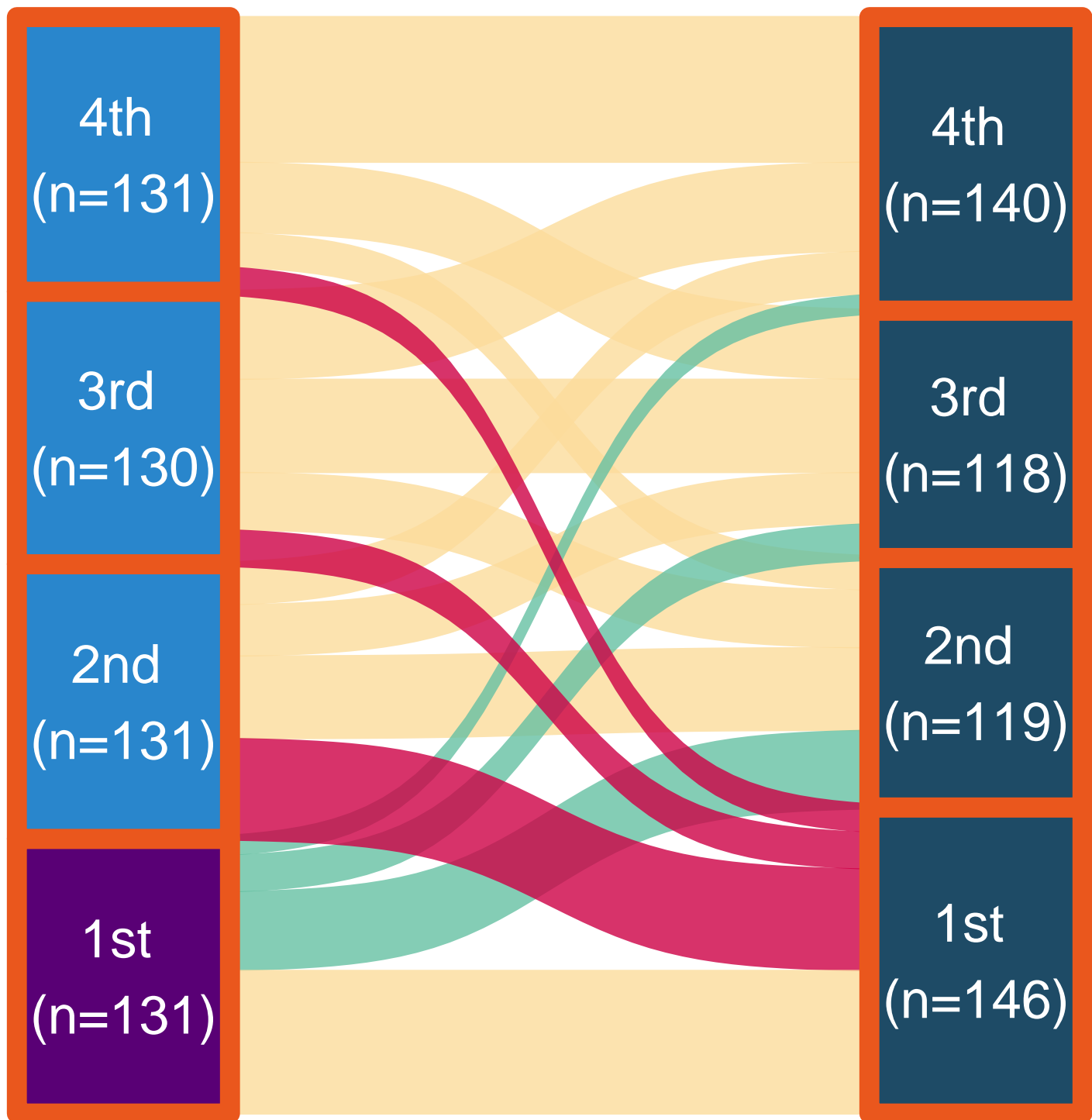
460

461 *Figure 3 Visualization of odds ratios for each prediction models*

462 High alcohol consumption is defined as above 7/14 units daily for females/males.

463 EVT: Endovascular Thrombectomy; IVT: Intravenous Thrombolysis; MI: Myocardial Infarction; mRS:  
 464 modified Rankin Scale; NIHSS: National Institute of Health Stroke Scale; PASE: Physical Activity Scale in the  
 465 Elderly; TIA: Transitory Ischemic Attack; WHO-5: World health Organization 5-item Well-being Index.

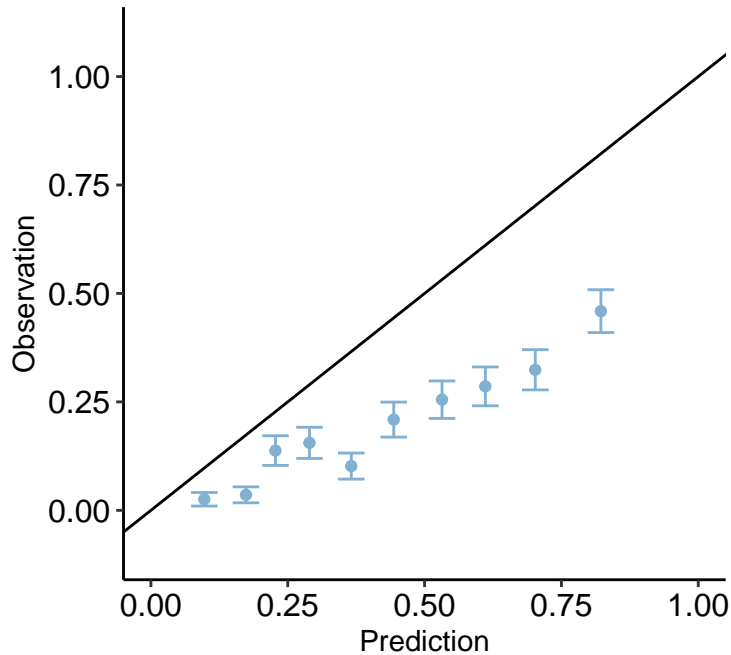




Pre-stroke  
PASE quartile

Six months  
PASE quartile

A: Predicting decrease



B: Predicting increase

